

# INVESTOR PRESENTATION

November 2021

Modern exploration of the highly  
prospective and underexplored  
Tanami Gold Province



**hamelin  
gold**

ASX code : HMG

# Disclaimer and compliance statement

This presentation has been prepared by Hamelin Gold Limited ("Hamelin"). The information contained in this presentation is a professional opinion only and is given in good faith. Certain information in this document has been derived from third parties and though Hamelin has no reason to believe that it is not accurate, reliable or complete, it has not been independently audited or verified by Hamelin.

Any forward-looking statements included in this document involve subjective judgement and analysis and are subject to uncertainties, risks and contingencies, many of which are outside the control of, and maybe unknown to Hamelin. In particular, they speak only as of the date of this document, they assume the success of Hamelin's strategies, and they are subject to significant regulatory, business, competitive and economic uncertainties and risks. Actual future events may vary materially from the forward looking statements and the assumptions on which the forward looking statements are based. Recipients of this document ("Recipients") are cautioned to not place undue reliance on such forward-looking statements.

Hamelin makes no representation or warranty as to the accuracy, reliability or completeness of information in this document and does not take responsibility for updating any information or correcting any error or omission which may become apparent after this document has been issued.

To the extent permitted by law, Hamelin and its officers, employees, related bodies corporate and agents ("Agents") disclaim all liability, direct, indirect or consequential (and whether or not arising out of the negligence, default or lack of care of Hamelin and/or any of its Agents) for any loss or damage suffered by a Recipient or other persons arising out of, or in connection with, any use or reliance on this presentation or information.

The information in this report that relates to Exploration Results is based on information compiled by Mr. Peter Bewick who is a Member of the Australasian Institute of Mining and Metallurgy. Mr. Bewick holds shares and options in Hamelin. He is a full time employee of Hamelin, and has sufficient experience which is relevant to the style of mineralisation under consideration to qualify as a Competent Person as defined in the 2012 Edition of the 'Australian Code for Reporting of Exploration Results, Mineral Resources and Ore Reserves'. Mr Bewick consents to the inclusion in the report of the matters based on the information compiled by him, in the form and context in which it appears.

Hamelin confirms that it is not aware of any new information or data that materially affects the information in the relevant ASX releases and the form and context of the announcement has not materially changed. Hamelin confirms that the form and context in which the Competent Person's findings are presented have not been materially modified from the original market announcements.

The 'Newmont Tanami Operations AGES Paper 20 March 2018' referred to in this presentation is Schneider S., Perazzo S., Griesel L., Robinson C. 2018 Tanami Operations, Callie mine: Multiple new discoveries supporting transformational growth in a mature mining camp. NTGS AGES conference paper 2018, and can be found at:  
[https://geoscience.nt.gov.au/gemis/ntgsjspui/bitstream/1/87086/4/SchneiderAGES2018\\_paper.pdf](https://geoscience.nt.gov.au/gemis/ntgsjspui/bitstream/1/87086/4/SchneiderAGES2018_paper.pdf)

This announcement has been approved for release by the Board of Hamelin.



# Hamelin Gold

**Modern exploration to unlock one of Australia's most underexplored gold provinces**



- Hamelin Gold Ltd successfully demerged from Encounter Resources Ltd in October 2021
- IPO completed raising A\$10M to fund gold exploration at the 100% owned West Tanami Project in WA
  - Belt-scale exploration opportunity
  - A 2,277km<sup>2</sup> land position across 100km of prospective strike
  - Numerous advanced drill targets and large untested, under cover areas
  - Opportunity to apply exploration learnings from Newmont's +14Moz Callie gold operation
- Highly respected team assembled with a clear strategy and focus
- Well funded following successful \$10M IPO

# Hamelin Gold

## Board of Directors and capital structure



**Mr Will Robinson**  
**Non Executive Chairman**

*B.Comm, MAusIMM*

- Managing Director of Encounter Resources for the past 15 years
- Non-Executive Director of Hampton Hill Mining
- Former President of the Association of Mining and Exploration Companies



**Mr Peter Bewick**  
**Managing Director**

*B.Eng (Hons), MAusIMM*

- Geologist with over 30 years industry experience
- Former Exploration Director of Encounter Resources (2005-2021)
- Non-Executive Director of Encounter Resources and Mincor Resources



**Mr Justin Osborne**  
**Non Executive Director**

*B.Sc (Hons), FAusIMM, MAICD*

- Former Exploration Manager (2013-14) and Executive Director (2015-21) of Gold Road Resources
- Previous 10 years at Gold Fields in senior exploration and development strategy roles



**Mr Philip Crutchfield**  
**Non Executive Director**

*B.Comm., LL.B (Hons), LL.M LSE*

- Current Non-Executive Director of Encounter Resources and Black Cat Syndicate
- Former Chairman of Zip Co (2015-21)
- Board member of the Victorian Bar Foundation and Melbourne Law School Foundation

### CAPITAL STRUCTURE

ASX code	HMG
Shares on Issue	110M
Director, employee and broker options	6.5M
Market capitalisation	\$22m
Cash (before IPO costs)	\$10M
Enterprise value	\$12M

### SUBSTANTIAL SHAREHOLDERS

Gold Fields Ltd	10%
Silver Lake Resources	10%

*Top 20 holds 55%*



# The West Tanami gold province – a sleeping giant



## **HIGHLY CREDENTIALLED TEAM**

Focused and highly skilled exploration team assembled with proven track record of discovery in new belts



## **NEW DATA AND NEW APPROACH**

Reduce exploration risk and increase discovery potential by applying new concepts and innovative exploration techniques



## **UNDERCOVER POTENTIAL**

Vast areas of prospective geology and extensions of mineralised structures beneath thin transported cover



## **INFRASTRUCTURE**

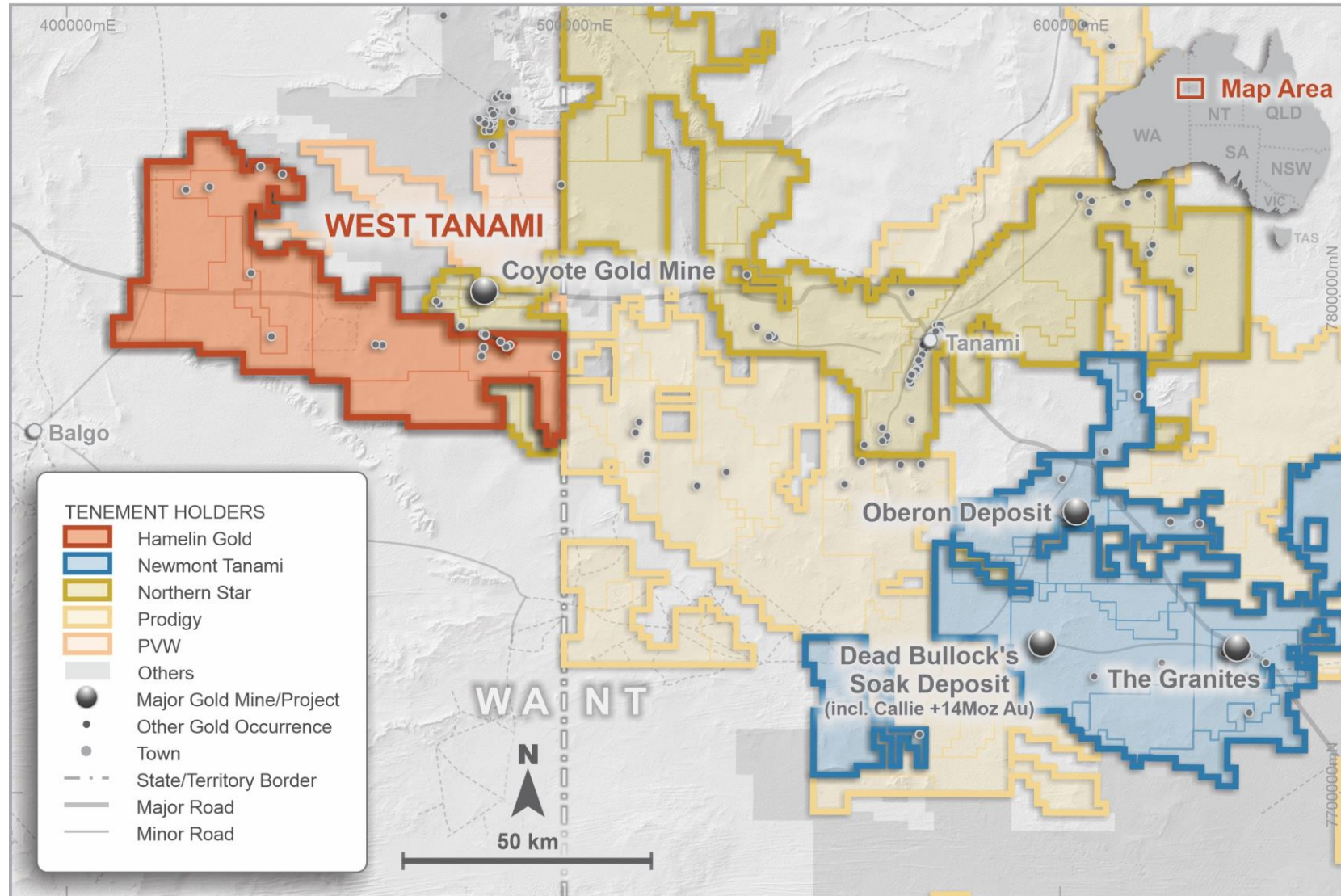
Major investments underway to open up this new mineral district including sealing Tanami Road and installing the Newmont Gas Pipeline



## **A WORLD-CLASS GOLD PROVINCE**

High grade, high margin gold discoveries by Newmont at Callie have recast the prospectivity of the Tanami

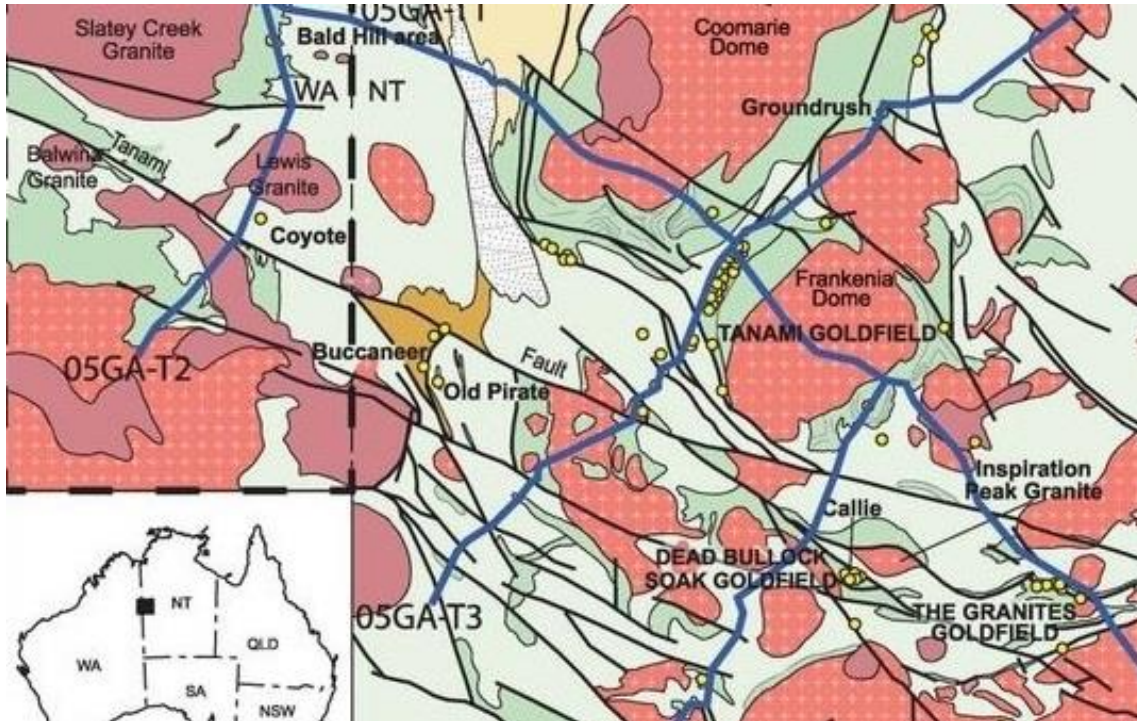
# The Tanami Gold Province



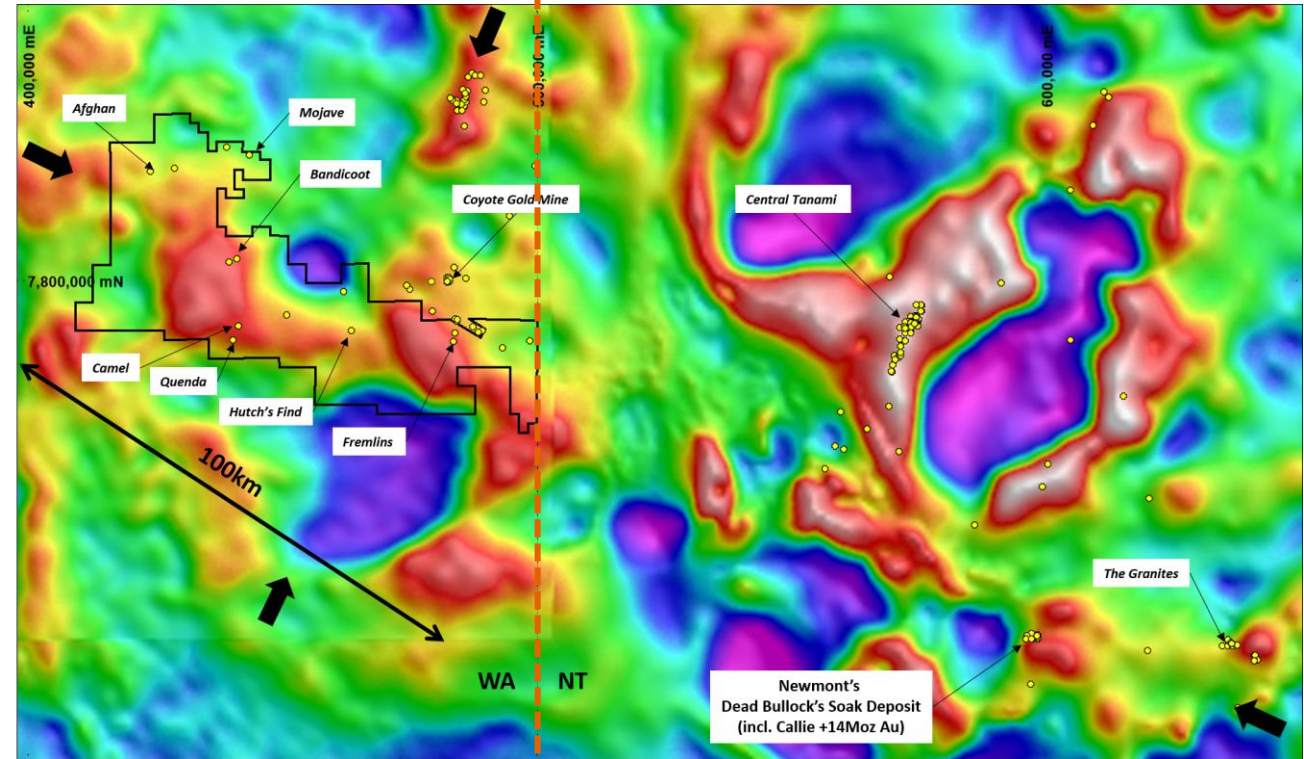


# West Tanami: Major extension of the Tanami Gold Province

~0.7Moz Au ← → ~25Moz Au



Tanami Geology and gold occurrences



West Tanami leasing with gold occurrences over regional gravity data

... same geology, same key structures, **but underexplored**



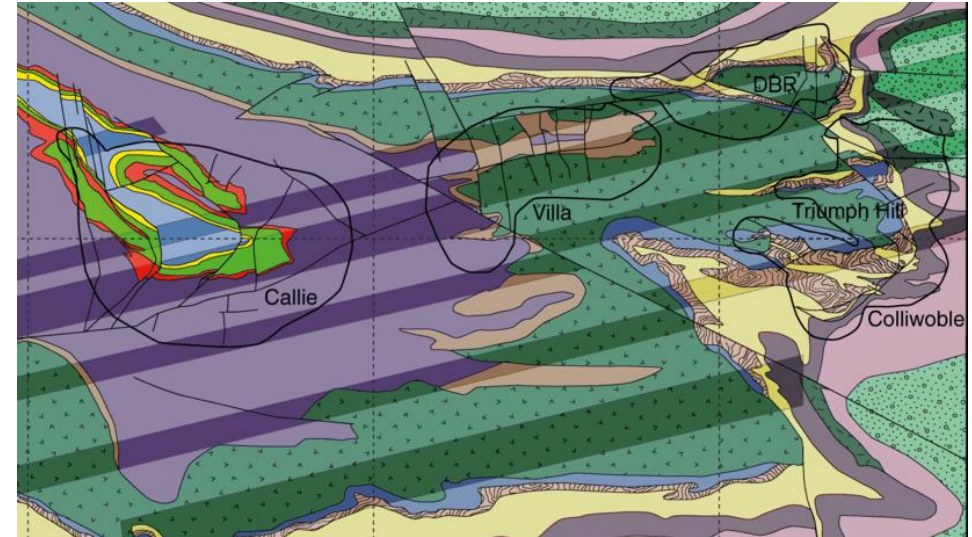
# Newmont's DBS Gold Complex (+14Moz)

## A world-class gold system

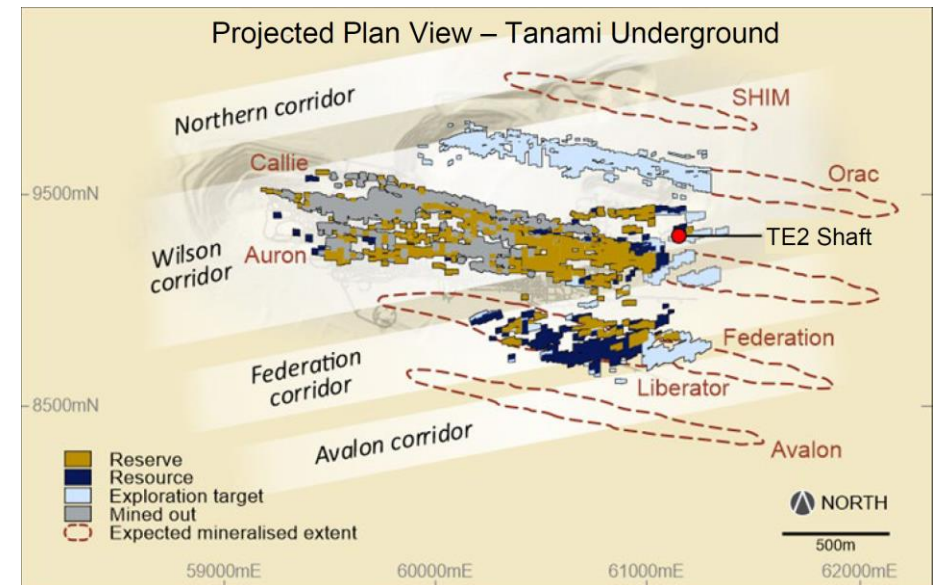
- A progressive series of large, high grade discoveries:
  - Callie (1991)
  - Auron (2007)
  - Federation (2013)
  - Liberator (2016)
- Located in the centre of the Tanami Fault Corridor
- Deposits hosted by a sequence of interbedded sediments in tightly folded antiform
- High grade gold mineralisation within a swarm of centimetre scale vein sets in a broader structural corridor



Refer to Newmont Tanami Operations AGES Paper 20 March 2018



**Simplified geology of the Dead Bullock's Soak gold camp**



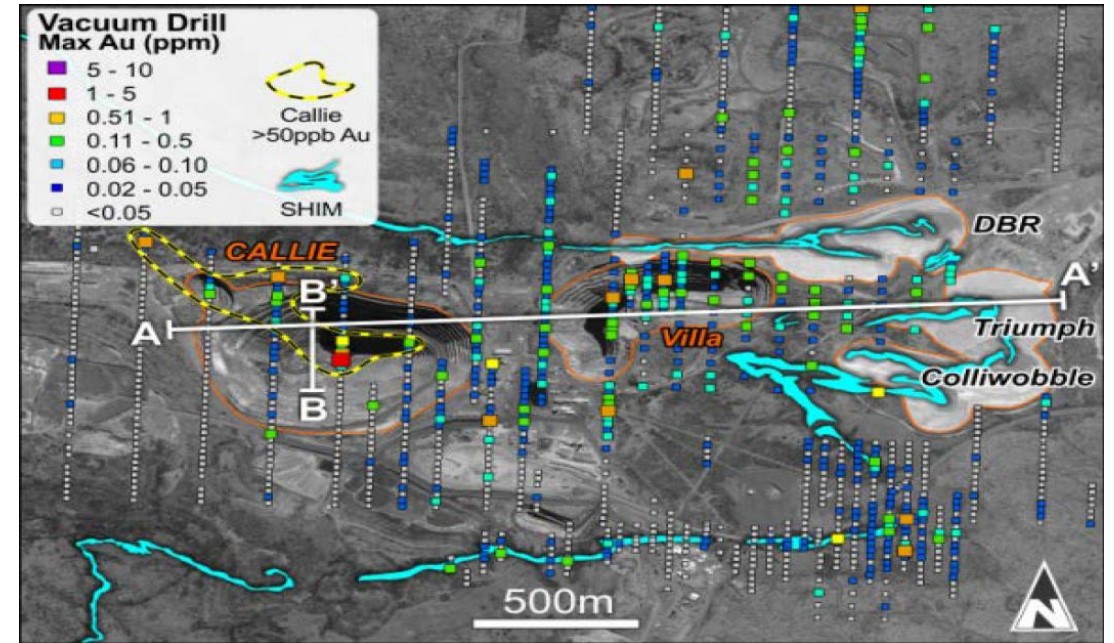
**Plan view of Tanami Underground Deposits**



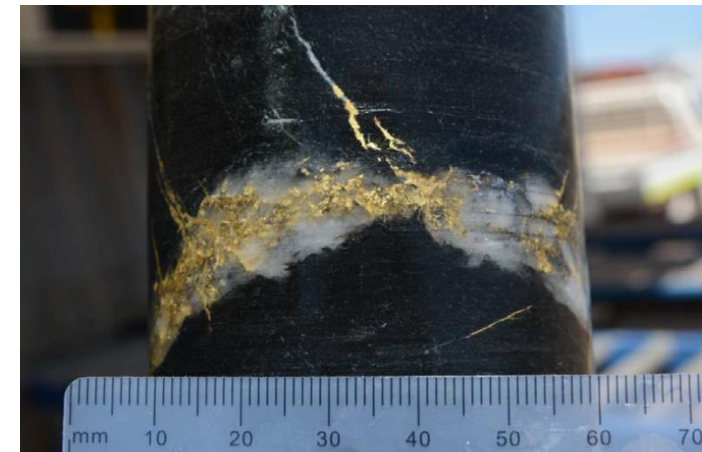
# Exploration learnings

## Newmont 's Tanami discovery journey

- Deposit under thin (~5m) of sand cover
- Near surface, +50ppb gold contour outlines Callie deposit
- A series of high-grade underground discoveries followed initial discovery of modest open pit deposits
- Best mineralisation hosted within the core of an antiform
- Understanding of the structural setting key to discovery success
- Key exploration learnings by Newmont<sup>1</sup>:
  - "Be open to variation of the theme.."
  - "..challenge conventional wisdom"
  - "Follow up those isolated high-grade 'fliers'.."



*Near surface gold anomalism over Dead Bullock's Soak deposits*



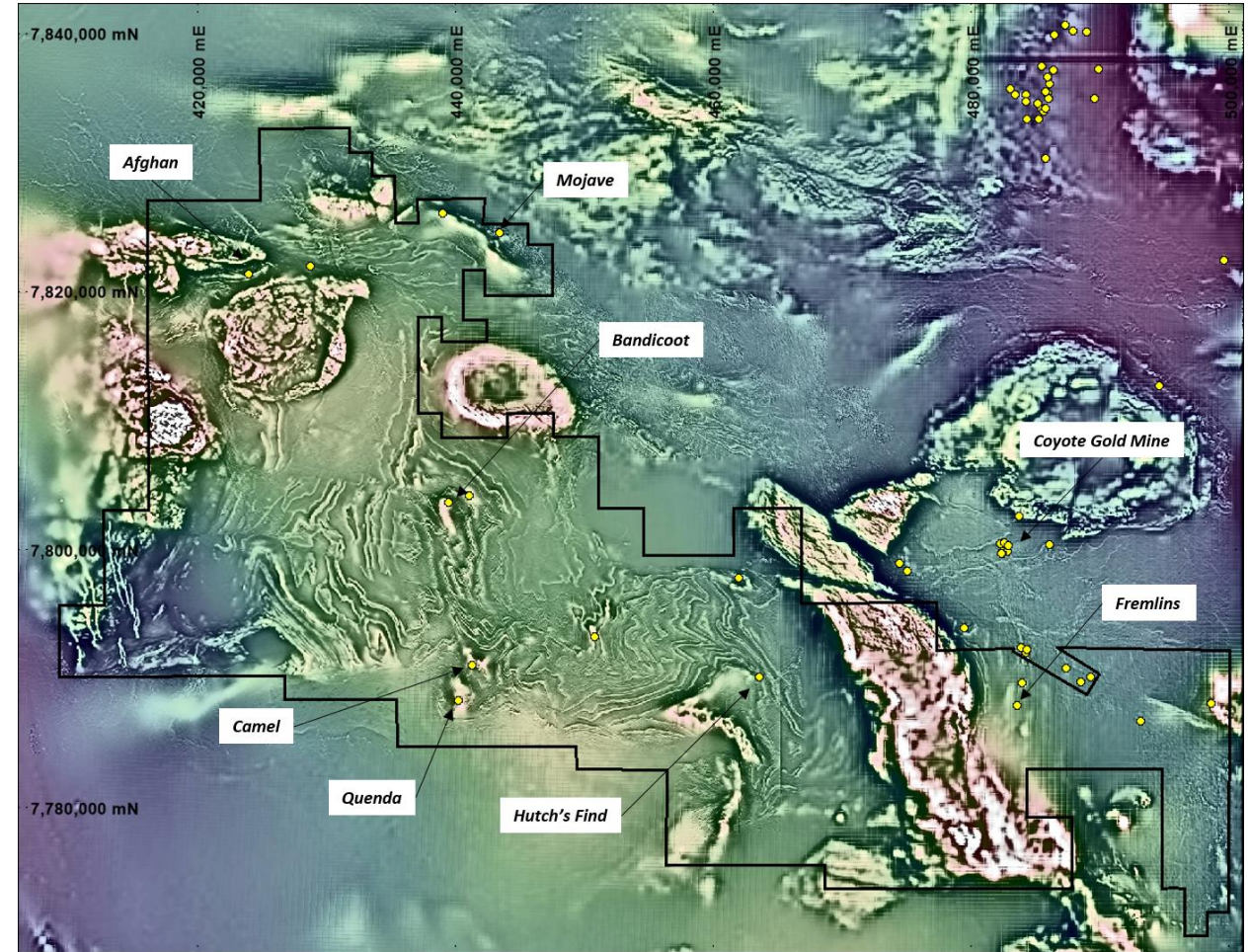
*Ultra high grade gold veinlet from Federation deposit*



# One of Australia's most underexplored gold provinces

## Hamelin holds 100% interest in the West Tanami Gold Project

- Belt scale gold project (~2,277km<sup>2</sup>) in a Tier 1 jurisdiction
- 100km of strike along the major structural corridor interpreted to be the key controlling structure for gold mineralisation in the Tanami
- Extensive areas of shallow cover and limited deeper drilling (30 holes greater than 200m deep)
- Modern, prioritised and focused strategy to assess
  - Open, high-grade gold intersections
  - Significant kilometre scale geochemical anomalies
  - Large untested geophysical targets



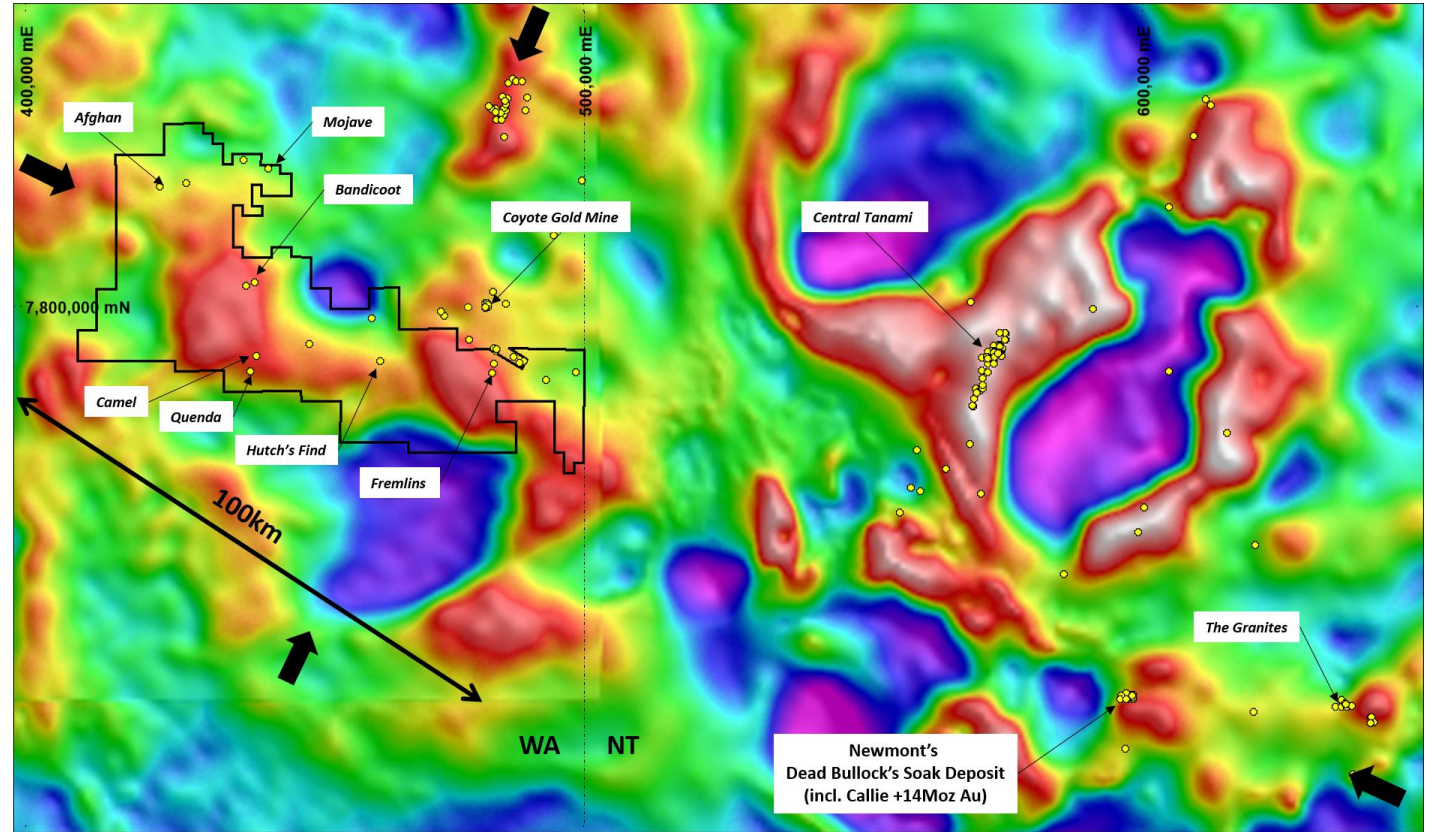
*Key prospect locations on detailed aeromagnetics*



# West Tanami: a disjointed exploration history

## Strong foundations in place for meaningful modern exploration

- Historical exploration program driven by very shallow drilling and conventional geochemical programs – largely ineffective (~70% of all holes <10m deep)
- Inconsistent exploration funding due to operational financial pressures
- Hiatus in exploration from 2012 – 2018
- Acquired by Encounter in 2018
- Limited on-ground exploration by Newcrest Mining under Encounter JV from 2018 – 2021 (~\$5m):
  - 18,400 line km aeromagnetic survey
  - Extensive heritage clearance survey
  - 28 RC holes (8,122m) at three prospects
- Groundwork set for major exploration drive

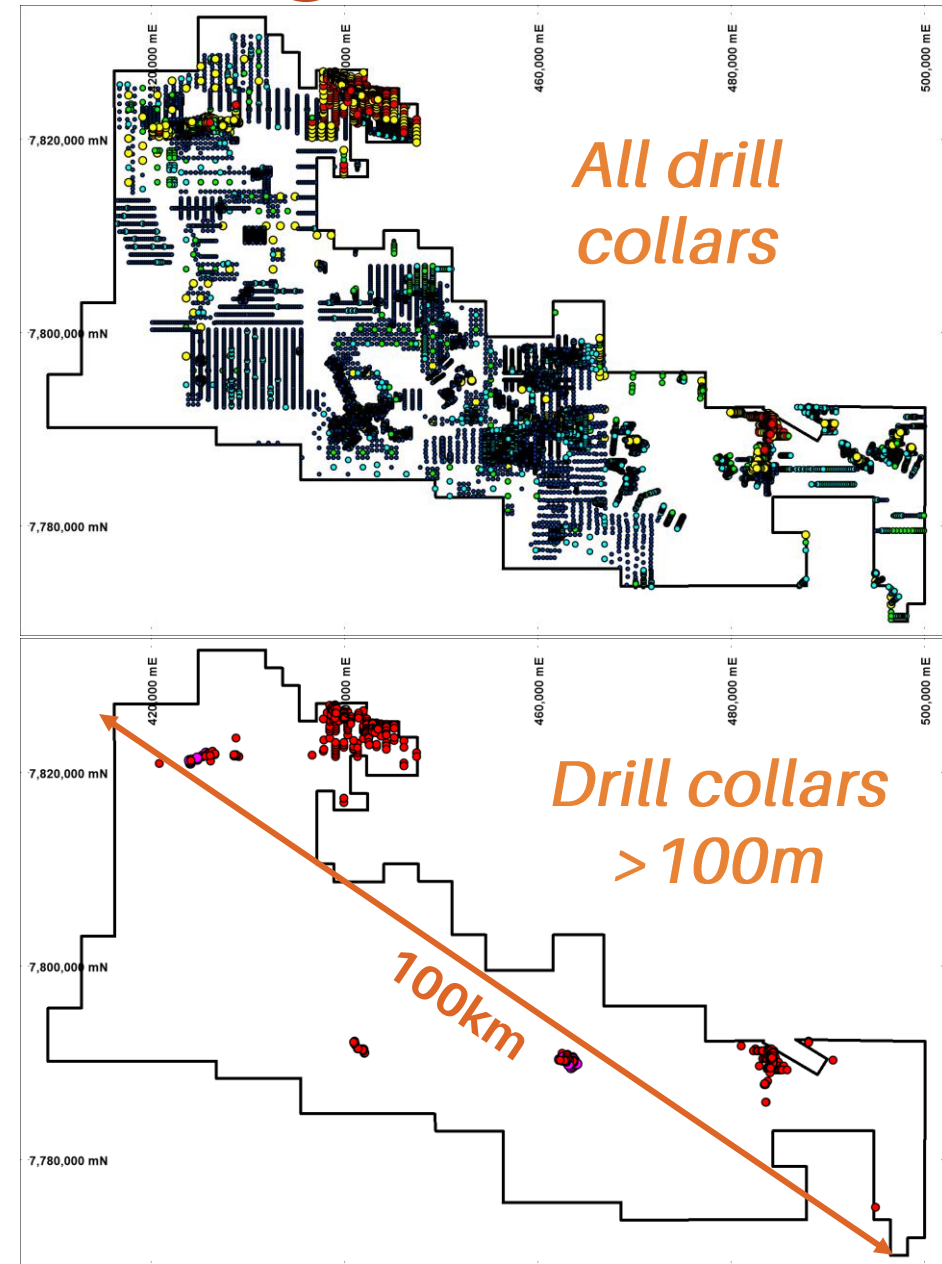


*West Tanami leasing with gold occurrences over regional gravity data*

# West Tanami: an underexplored gold province

## Ineffective testing of bedrock targets

- Largely covered terrain with a stripped regolith profile
- Shallow geochemical drilling is ineffective over extensive parts of the project
- Significant gold systems that have been identified have limited drill testing at depth
- High grade 'fliers' identified at Hutch's Find and Camel that remain open at depth and along strike
- Targeted diamond and RC drilling planned to test for potential high grade gold shoots





# Hamelin exploration strategy

## Adopting a modern, systematic approach

- Understanding the structural architecture is the key to exploration success
  - Complete detailed aeromagnetic coverage
  - Complete structural and stratigraphic interpretation and targeting program
  - Conduct diamond drilling of priority targets to confirm structural and stratigraphic model
- Understanding the regolith is key to determining the effectiveness of previous exploration
  - Complete ASTER and radiometrics coverage
  - Complete regolith amenability map
  - Apply modern surface geochemistry techniques in applicable areas to see through transported cover



*Orientation Fine Fraction soil sampling – Tanami June 2021*



# Priority West Tanami prospects

## MOJAVE

- +7km long gold-arsenic anomaly that includes thick mineralised drill intersections strengthening at bottom of hole

## BANDICOOT AND QUENDA

- Large, untested magnetic anomalies coincident with gold-arsenic geochemical anomaly
- EIS co-funded drilling (\$150,000)

## CAMEL

- 7.2m @ 3.1g/t Au from 95m in last drilling completed in 2010<sup>1</sup>

## AFGHAN

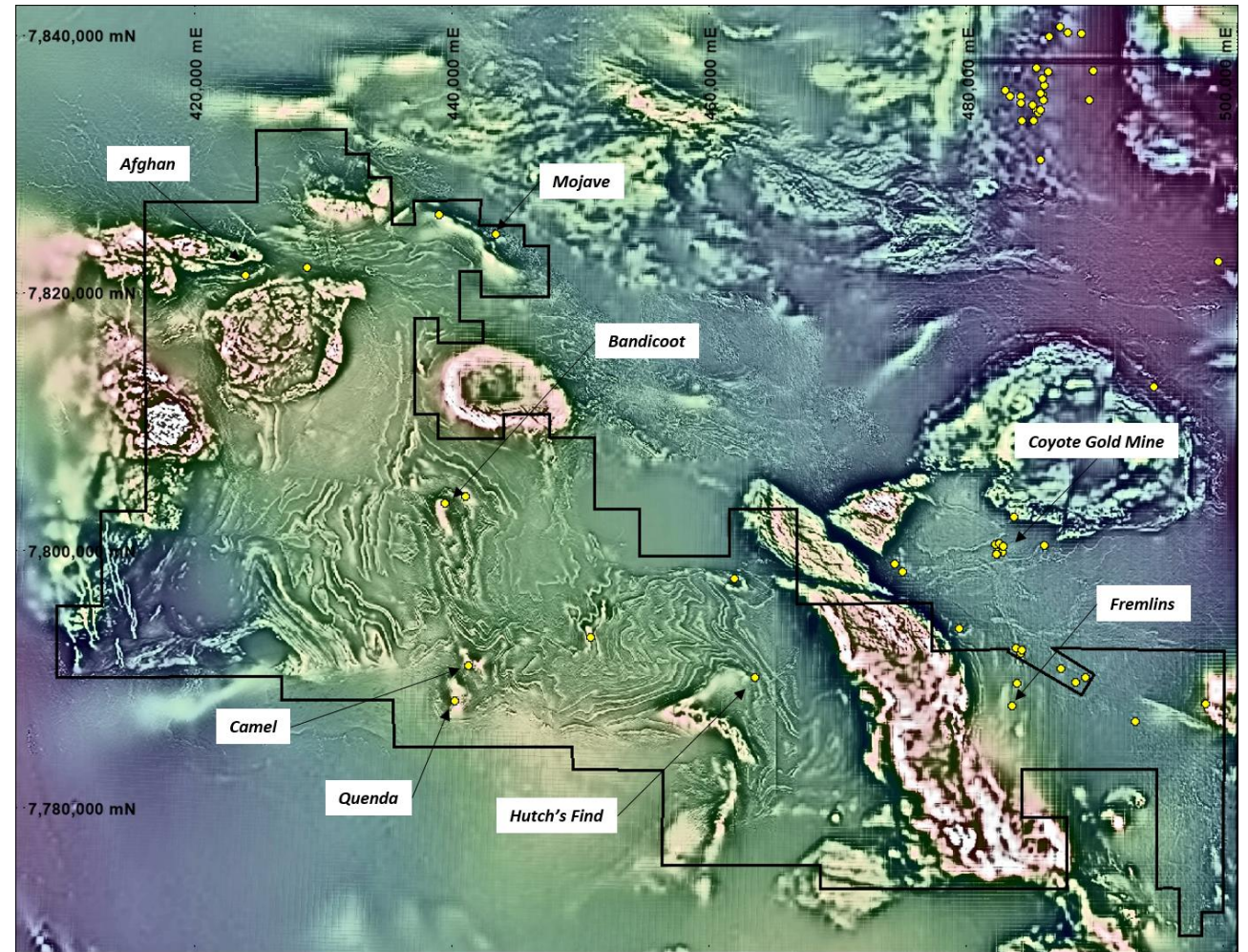
- +7.5km long gold anomaly in shallow RAB drilling
- Best intersection of 10m @ 1.6g/t Au from 4m<sup>1</sup>

## HUTCH'S FIND

- Limited drilling of +5km long gold/arsenic anomaly
- 19m @ 2.3g/t Au from 98m and 10m @ 5.4g/t Au from 123m<sup>1</sup>

## FREMLINS

- +5km long gold anomaly with limited drilling deeper
- 3m @ 2.95g/t Au from 51m and 80m @ 0.19g/t Au from 52m to EOH<sup>1</sup>

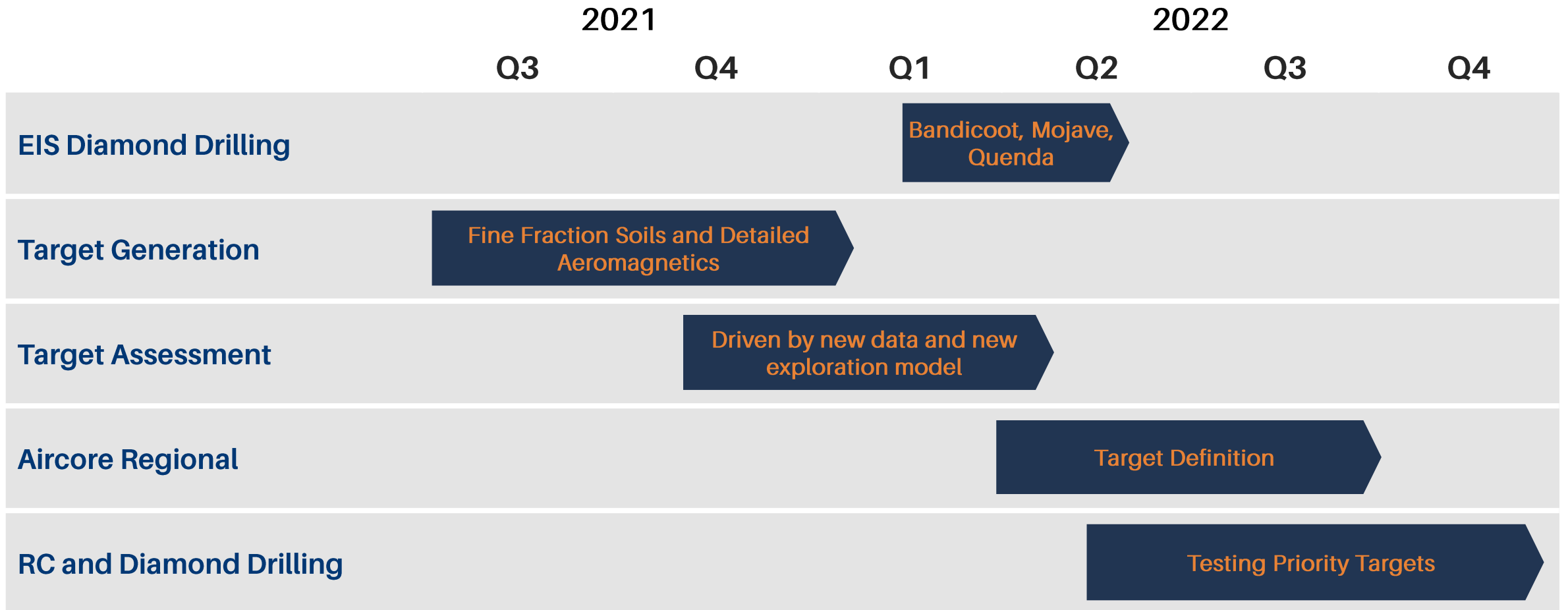


**Key Prospects over TMI magnetics**



# First 18 months of exploration activity

Gearing up for a major drill program in 2022



# Investment Summary

The people and the project + the focus and the funding

## EXPLORATION POTENTIAL

- 100km of strike in Australia's most underexplored Tier 1 gold district
- New geophysical datasets, geological understanding and exploration approach
- Large scale gold and arsenic anomalies defined in shallow drilling
- High grade gold mineralisation in limited deeper drilling
- Significant areas untested under shallow cover

## CORPORATE

- Experienced board and management team
- Extensive greenfields and near mine exploration knowledge
- Proven project generation and discovery success
- Well funded following successful \$10M IPO
- Strong shareholder base

