



## AGM Managing Director's Presentation

Legacy Minerals Ltd (**ASX: LGM**, “**Legacy Minerals**” or the “**Company**”) is pleased to advise that the presentation to be made at today's Annual General Meeting by Chief Executive Officer and Managing Director, Mr Christopher Byrne, will be available on the Company's website.

A copy of Mr Byrne's presentation is attached.

Approved by the directors of Legacy Minerals Holdings Limited.

### For more information:

**Chris Byrne**

CEO & Managing Director

[chris.byrne@legacyminerals.com.au](mailto:chris.byrne@legacyminerals.com.au)

**+61 (0) 499 527 547**

Christopher Byrne, CEO & Managing Director

2021 Annual General Meeting

## COMPANY PRESENTATION



# DISCLAIMER

This presentation may contain certain statements and projections provided by or on behalf of Legacy Minerals Holdings Limited (**ASX: LGM, Legacy Minerals, or the Company**) with respect to the anticipated future undertakings. These forward-looking statements reflect various assumptions by or on behalf of Legacy Minerals.

Accordingly, these statements are subject to significant business, economic and competitive uncertainties and contingencies associated with the mining industry which may be beyond the control of Legacy Minerals which could cause actual results or trends to differ materially, including but not limited to price and currency fluctuations, geotechnical factors, drilling and production results, development progress, operating results, reserve estimates, legislative, fiscal and regulatory developments, economic and financial markets conditions in various countries, approvals and cost estimates, environmental risks, ability to meet funding requirements, share price volatility. Accordingly, there can be no assurance that such statements and projections will be realised. Legacy Minerals makes no representations as to the accuracy or completeness of any such statement of projections or that any forecasts will be achieved.

Additionally, Legacy Minerals makes no representation or warranty, express or implied, in relation to, and no responsibility or liability (whether for negligence, under statute or otherwise) is or will be accepted by Legacy Minerals or by any of their respective officers, directors, shareholders, partners, employees, or advisers as to or in relation to the accuracy or completeness of the information, statements, opinions or matters (express or implied) arising out of, contained in or derived from this presentation or any omission from this presentation or of any other written or oral information or opinions provided now or in the future to any interested party or its advisers. In furnishing this presentation, Legacy Minerals undertakes no obligation to provide any additional or updated information whether as a result of new information, future events or results or otherwise.

Nothing in this material should be construed as either an offer to sell or a solicitation of an offer to buy or sell securities. It does not include all available information and should not be used in isolation as a basis to invest in Legacy Minerals.

This presentation contains exploration results and historic exploration results as originally reported the Company's Prospectus dated 28 July 2021 and released 9 September and subsequent ASX market announcements. The Company confirms that it is not aware of any new information that materially affects the information included in the original market announcements and that all material assumptions and technical parameters underpinning the estimates in the relevant market announcements continue to apply and have not materially changed. The Company confirms that the form and context in which the Competent Persons' findings are presented have not been materially modified from the original market announcements.

The information in this presentation that relates to Exploration Targets, Exploration Results, Mineral Resources or Ore Reserves is based on information compiled by Thomas Wall, a Competent Person who is a Member of the Australian Institute of Geoscientists. Mr Wall is the Technical Director is a full-time employee of Legacy Minerals Limited and a shareholder, who has sufficient experience that is relevant to the style of mineralisation and type of deposit under consideration and to the activity being undertaken to qualify as a Competent Person as defined in the 2012 edition of the Australasian Code for Reporting of Exploration Results, Mineral Resources and Ore Reserves. Mr Wall consents to the inclusion in the report of the matters based on his information in the form and context in which it appears.

The release of these presentation materials has been authorised by the Board



# COMPANY HIGHLIGHTS

ASX:LGM

## ACTIVELY DRILLING



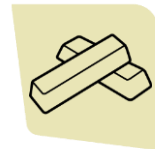
- **Diamond drilling commenced 15 Nov at Harden**
- Maiden drilling at Harden returned high-grade gold assays
- Planned drilling of **16,000m** over 2 years
- **Drill rig secured to commence in January at Bauloora**

## VALUE LEVERAGED TO EXPLORATION SUCCESS



- **\$5.2M cash in hand**
- Five significant projects - 100% owned and unencumbered
- **Expected strong news flow over coming months**

## EXPLORATION POTENTIAL



- **Discovery Potential** – multiple drill ready targets across numerous projects
- **Resource Potential** - high grade and shallow exploration targets

## JURISDICTION AND EXPOSURE



- **Prime position in the Lachlan Fold Belt**
- Diverse mineral system exposure



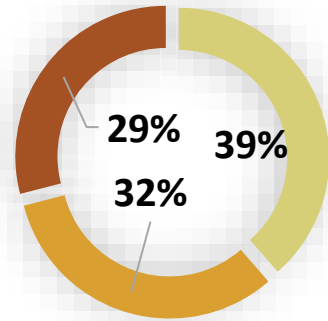


# COPROATE SNAPSHOT

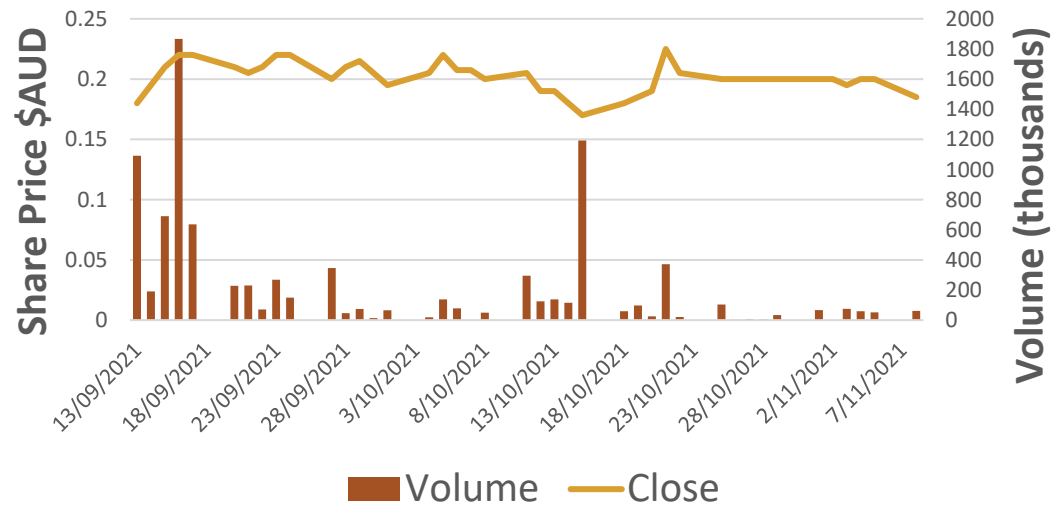
## CAPITAL STRUCTURE

<b>ASX Share Price<sup>1</sup></b>	<b>\$0.185</b>
Shares on Issues	75.2M
Options on Issue (\$0.3)	4.9M
Market Capitalisation	~ \$15M
Cash (at 30-Sep-21)	\$5.2M
Debt	Nil

## ISSUED CAPITAL



■ IPO Shareholders  
■ Board and Management  
■ Other Shareholders



## DIRECTORS



**Dr David Carland**  
Non-Executive  
Chairman

Investment banker with over 40 experience. Has held senior positions at UBS, Bankers Trust, CRA (now Rio Tinto). Was recently the Non-Executive Chair of Rex Minerals (**RXM**) and is a director with Agua Resources (**AGR**)



**Christopher Byrne**  
CEO and Managing  
Director

Engineer with diverse experience in the mining sector with Anglo American across maintenance, operations, and capital works. Proven record of delivering large and complex mining and infrastructure projects in greenfield and brownfield environments



**Thomas Wall**  
Executive Director &  
Exploration Manager

Geologist with wide ranging experience exploration industry with senior roles at Peak Gold Mines and New South Resources. Demonstrated exploration and mining success across a variety of commodities and deposit styles



**Douglas Menzies**  
Non-Executive  
Director

Geologist with 28 years of widespread experience in the porphyry gold-copper districts of PNG and Australia, epithermal gold-silver projects in Australia, Indonesia, Fiji, Laos, Chile. Doug has held senior positions at Rio Tinto, Wafi-Golpu, and is a director at Godolphin Resources (**GRL**)



**Matthew Wall**  
Non-Executive  
Director

Commercial specialist with over 35 years of experience in metals and mining across sales, marketing, logistics, trading, and risk management. Matt has held senior management roles with Rio Tinto, EDF Trading and Wood Mackenzie



# PORTFOLIO

## Harden Project Au – Quartz vein gold

- Long forgotten, high-grade gold mines
- 1.4km strike of mines open along strike and down plunge

## Bauloora Project Au-Ag – Low Sulphidation

- Bonanza Ag grades and high-grade Au and base metals
- One of the largest low sulphidation systems in NSW

## Cobar Project Au-Cu (Pb-Zn) – Cobar Type

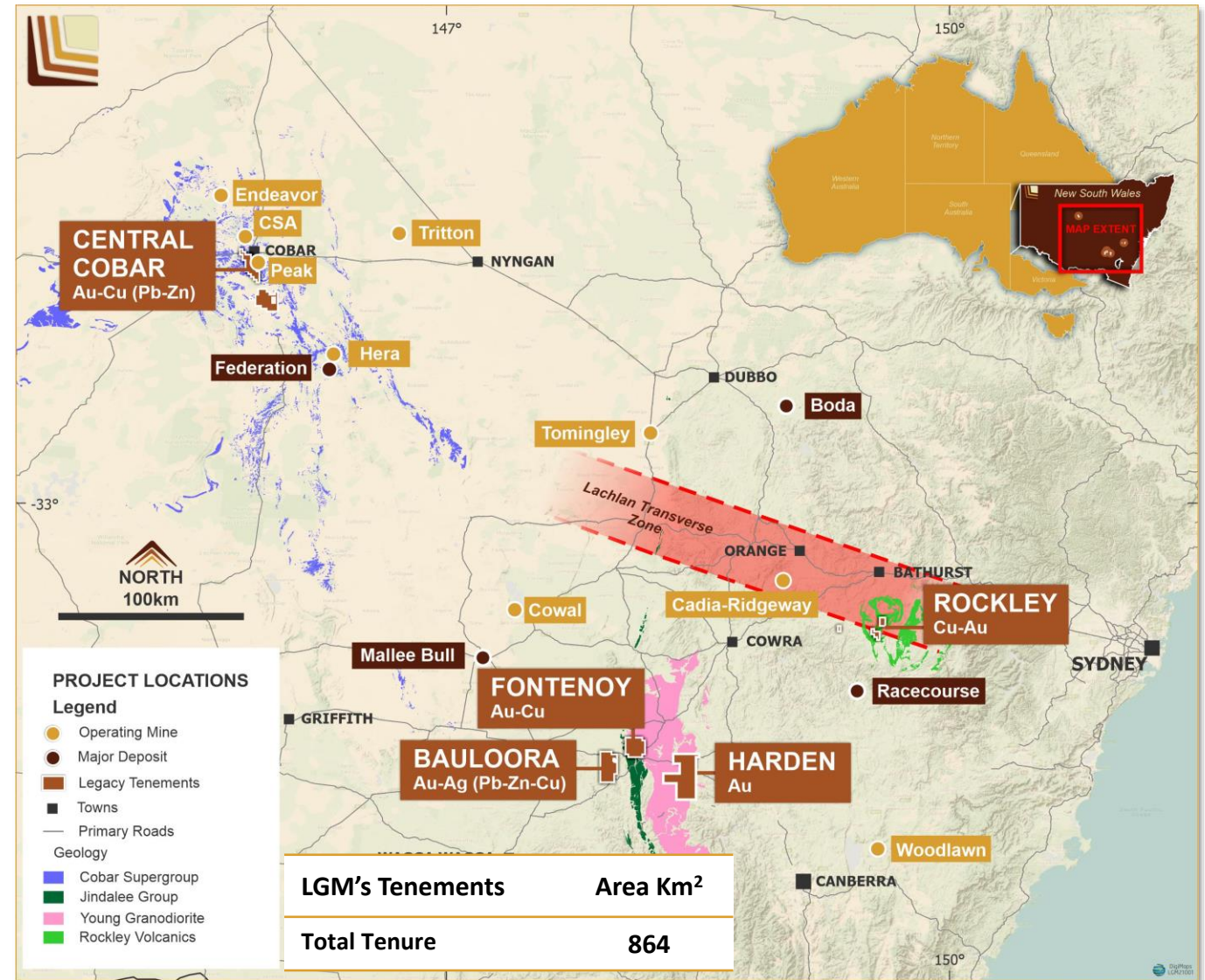
- Undrilled targets surrounded by operating Au and Cu mines
- Untested geophysical and geochemical anomalism

## Fontenoy Project Au-Cu – VHMS

- 8km long zone of Au and Cu anomalism defined in soils and drilling
- 79m at 0.27% Cu from 1.5m, 22m at 0.67g/t Au from 20m<sup>1</sup>

## Rockley Cu-Au – Porphyry related Cu-Au

- Ordovician Macquarie Arc host rocks with **undrilled porphyry potential**
- Historical high-grade copper mines, rock chips up to **4.26% Cu** and **90g/t Ag<sup>1</sup>**





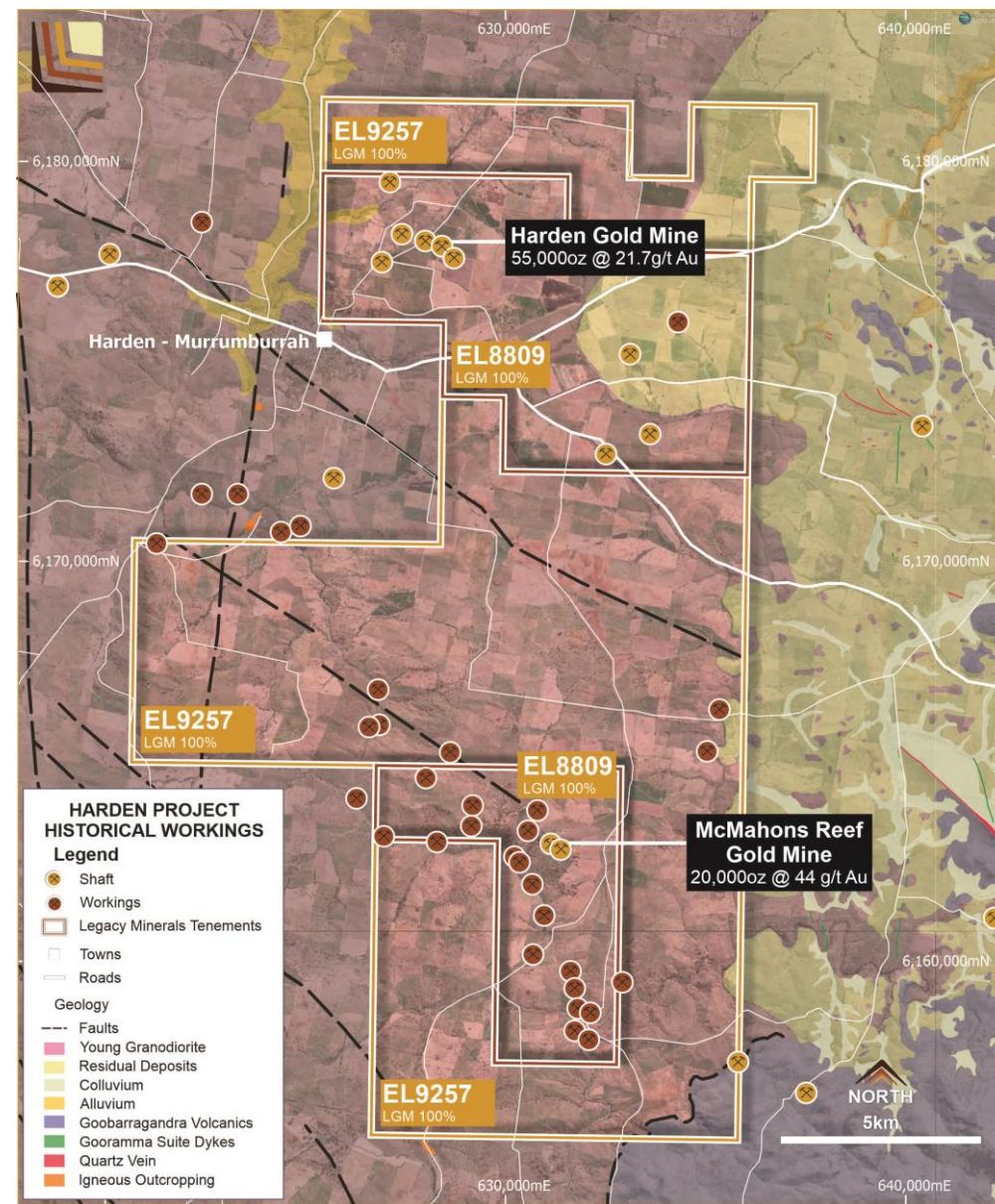
# HARDEN Au

## Successful Maiden RC Campaign

- High-grade intercepts across multiple holes
- Diamond drill campaign underway

## Project Highlights

- Multiple mineralised faults with significant strike length
- Contains the two largest historical hard rock mines in a district that has produced **460,000 oz of gold<sup>1</sup>**
- These two mines produced **75,000 oz Au at 28.6g/t Au<sup>1</sup>**
  - **Production grades of up to 50g/t Au**
- Mineralised from surface - open along strike and down plunge





# HARDEN PROJECT

## High-grade drill intercepts

### Maiden RC Drilling<sup>1</sup>:

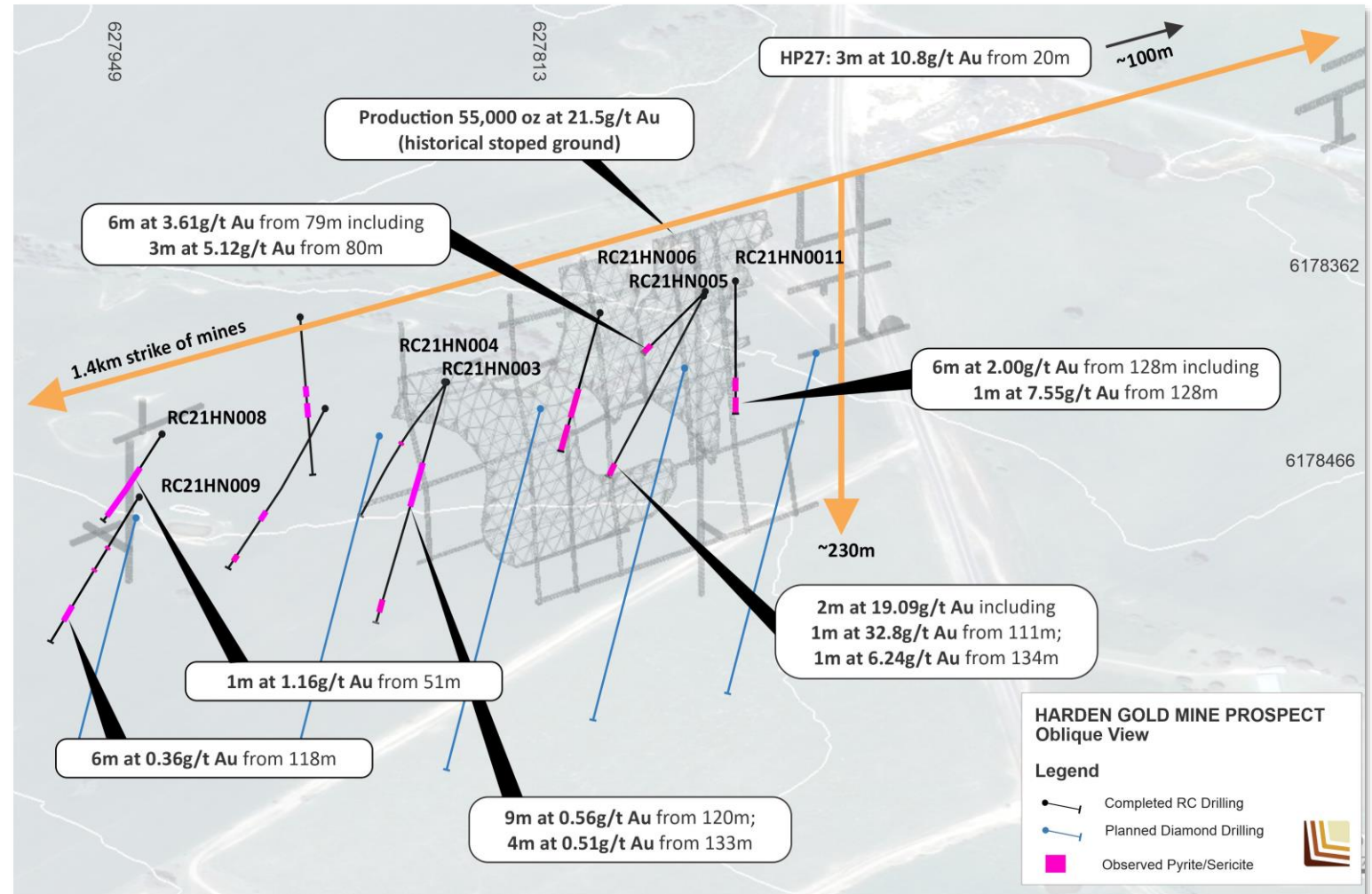
- **2m at 19.1g/t Au within 5m at 7.8g/t Au from 111m**
- **3m at 5.1g/t Au from 80m**
- **1m at 7.6g/t Au from 128m**

### Historic intercepts<sup>2</sup>:

- **3.6m at 21.7g/t Au from 116m incl. 2m at 37.9g/t Au**
- **3m at 10.8g/t Au from 20m incl. 1m at 19.2g/t Au**

## Significant strike length

- Historical workings mapped for 1.4km





# HARDEN PROSPECT

## Parallel Gold Veining

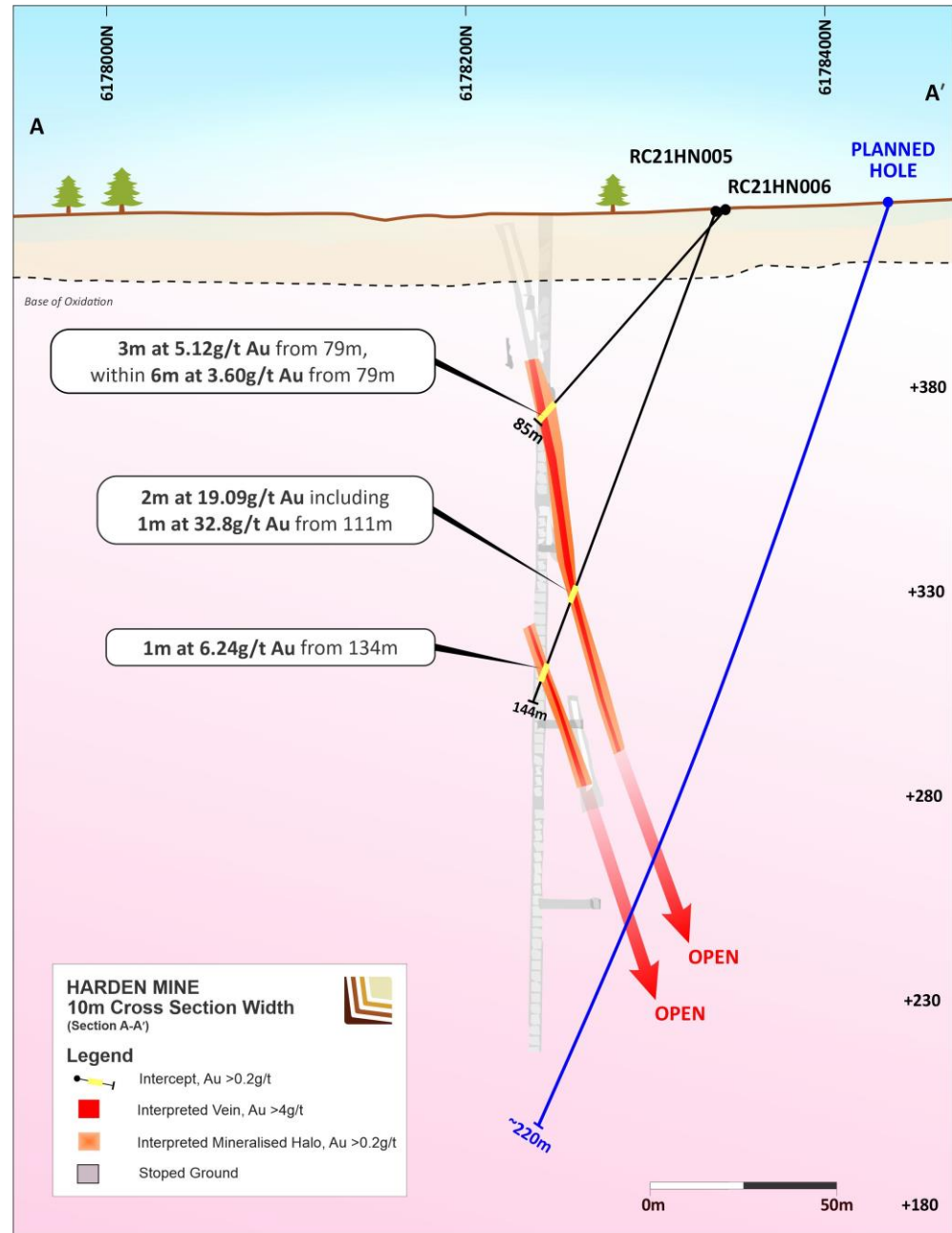
- Broad gold zones intercepted – **9m at 0.6g/t Au** from 120m
- Parallel high grade gold veining identified
- Highlights **growth potential of the system**

## High-grade gold

- High-grade gold mineralisation in country rock surrounding historically stoped ground

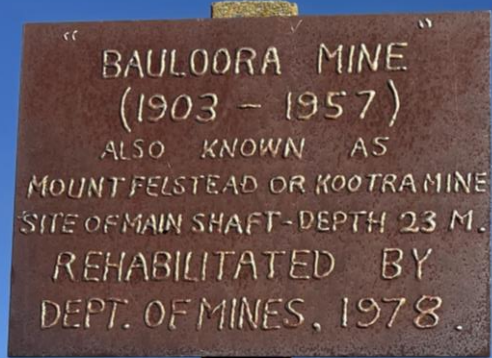
## Open along strike and down plunge

- **November 15 diamond drilling commenced**
- Testing down plunge beneath workings under the main stoped ground



## Project Highlights

- Bonanza Ag grades and high-grade Au and base metals
- One of the largest low sulphidation systems in NSW – 27km<sup>2</sup> of alteration and mineralisation
- Drilling planned to commence January 2022



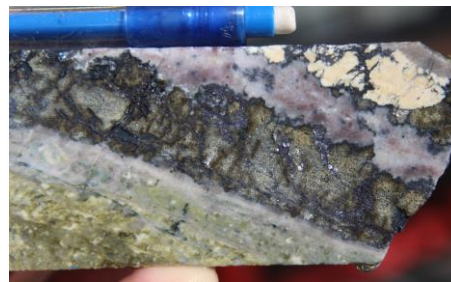
# BAULOORA Au-Ag



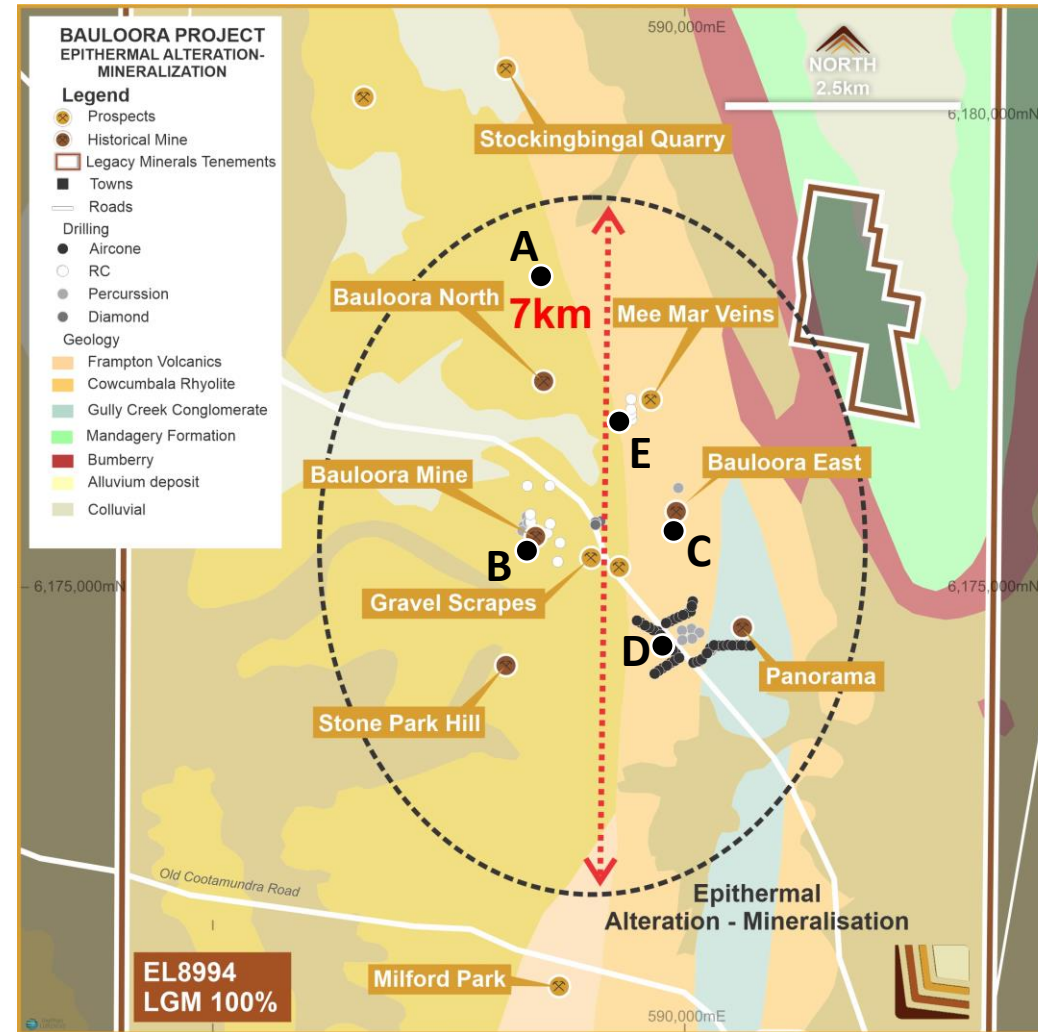
A



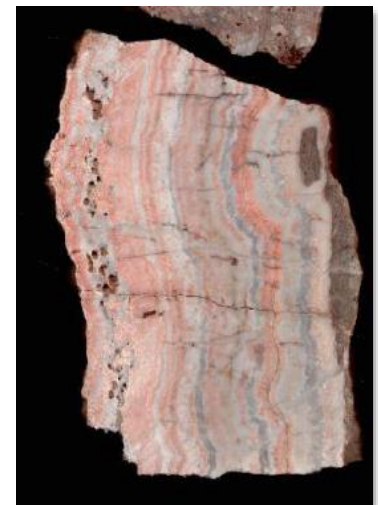
B: 19.8g/t Au, 462g/t Ag



C



D: 15.1g/t Au



E: 39.1g/t Au 267g/t Ag



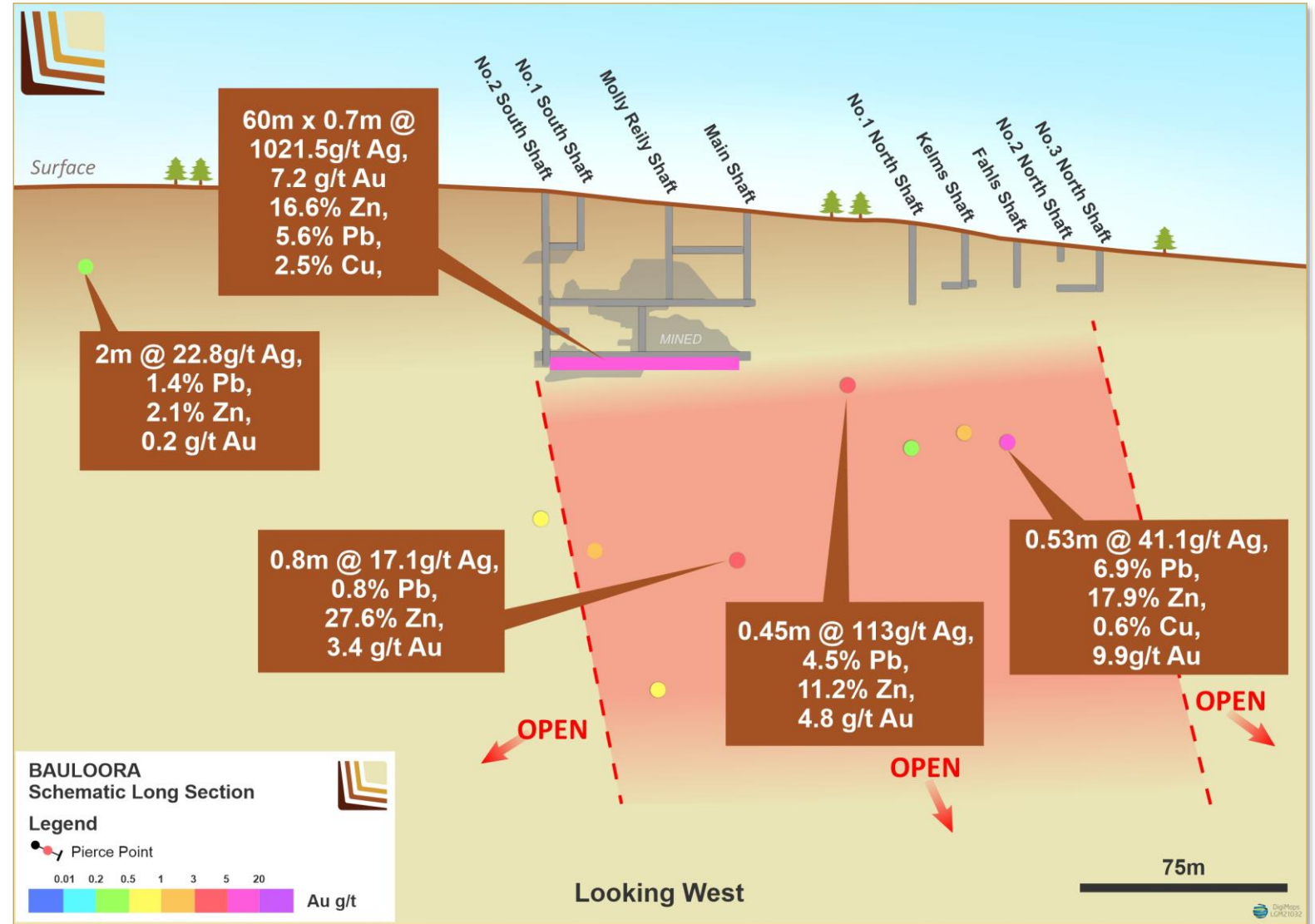
# BAULOORA

## Target rich project

1. Bauloora Mine prospect
  - Open along strike and down plunge
2. Mee Mar prospect
  - up to 5m wide and strike > 2km
  - **39g/t Au** rock chip samples<sup>1</sup>
3. Gravel Scrapes prospect
  - **8g/t Au** rock chip samples<sup>1</sup>
4. Panorama Prosect

## Bauloora Mine prospect

- Historic high-grade mines with **ore widths up to 3.5m<sup>1</sup>**
- **3701g/t Ag, 6.9g/t Au, 29% Pb, 26% Zn, 6.4% Cu** (face sample at Bauloora Mine)<sup>1</sup>



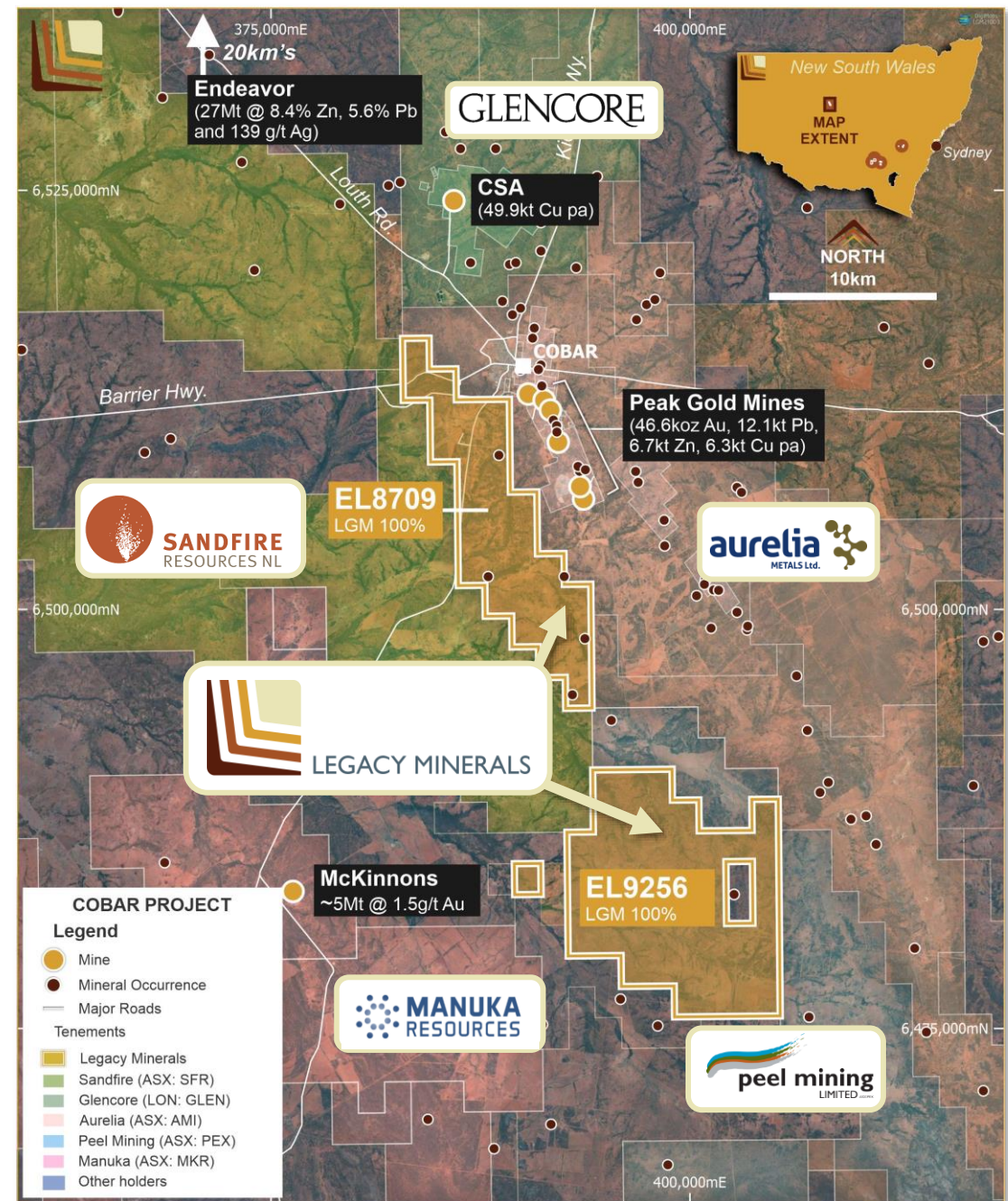


# COBAR

## Au-Cu (Pb-Zn)

### Project Highlights

- Undrilled targets surrounded by operating and historical Au and Cu mines
- Proximity to infrastructure and skilled mining workforce
- World class jurisdiction seeing continued exploration success

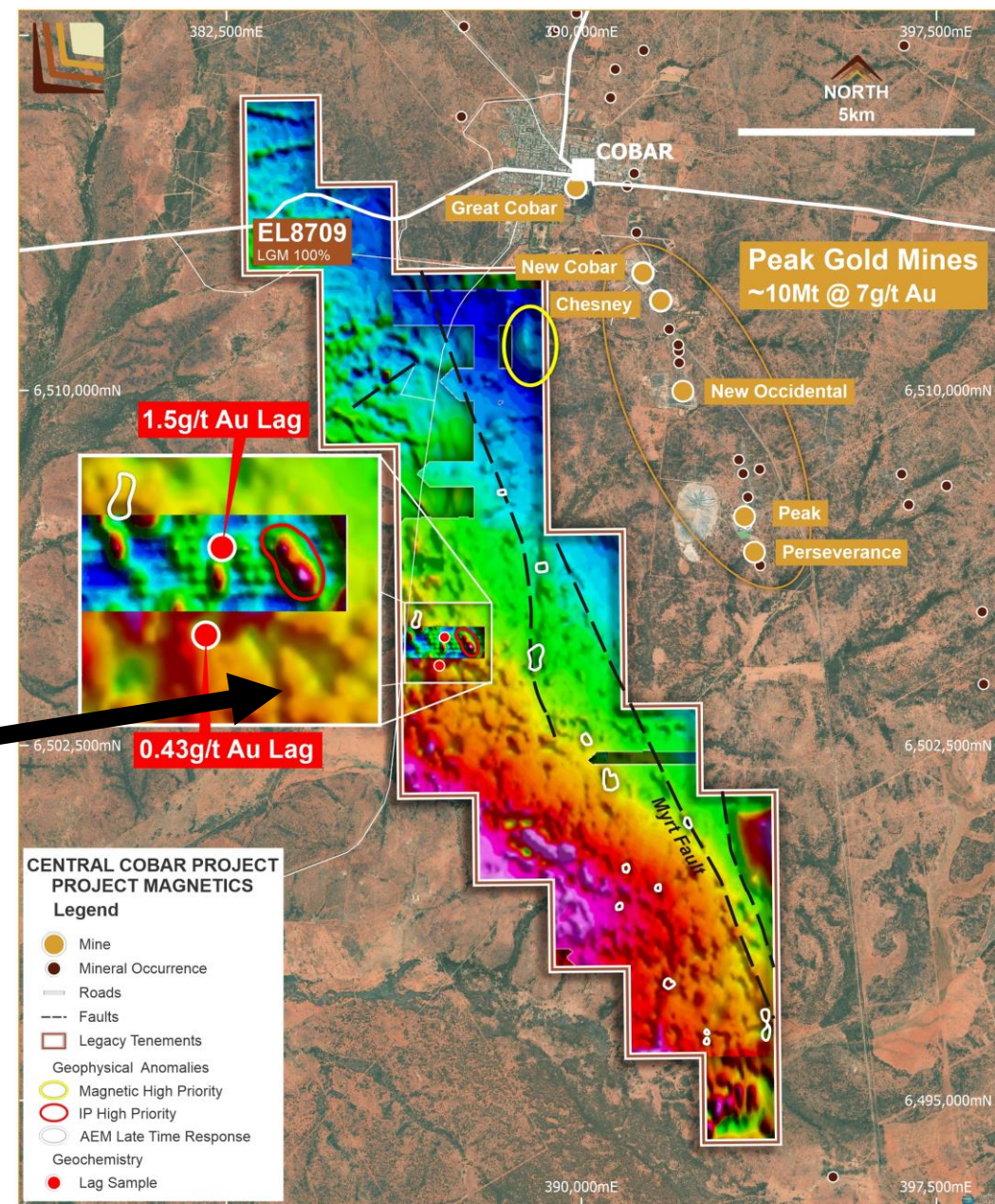




## Untested Potential

- **Undrilled geophysical anomalies**
  - Late time AEM conductors, IP, and magnetic targets
- **Geochemically anomalous**
  - Gold in lag up to **1.5g/t Au & 0.43g/t Au<sup>1</sup>**
- **Detail mag results expected December 2021**
  - >1,000km of co-operative government aerial magnetics and radiometrics flown

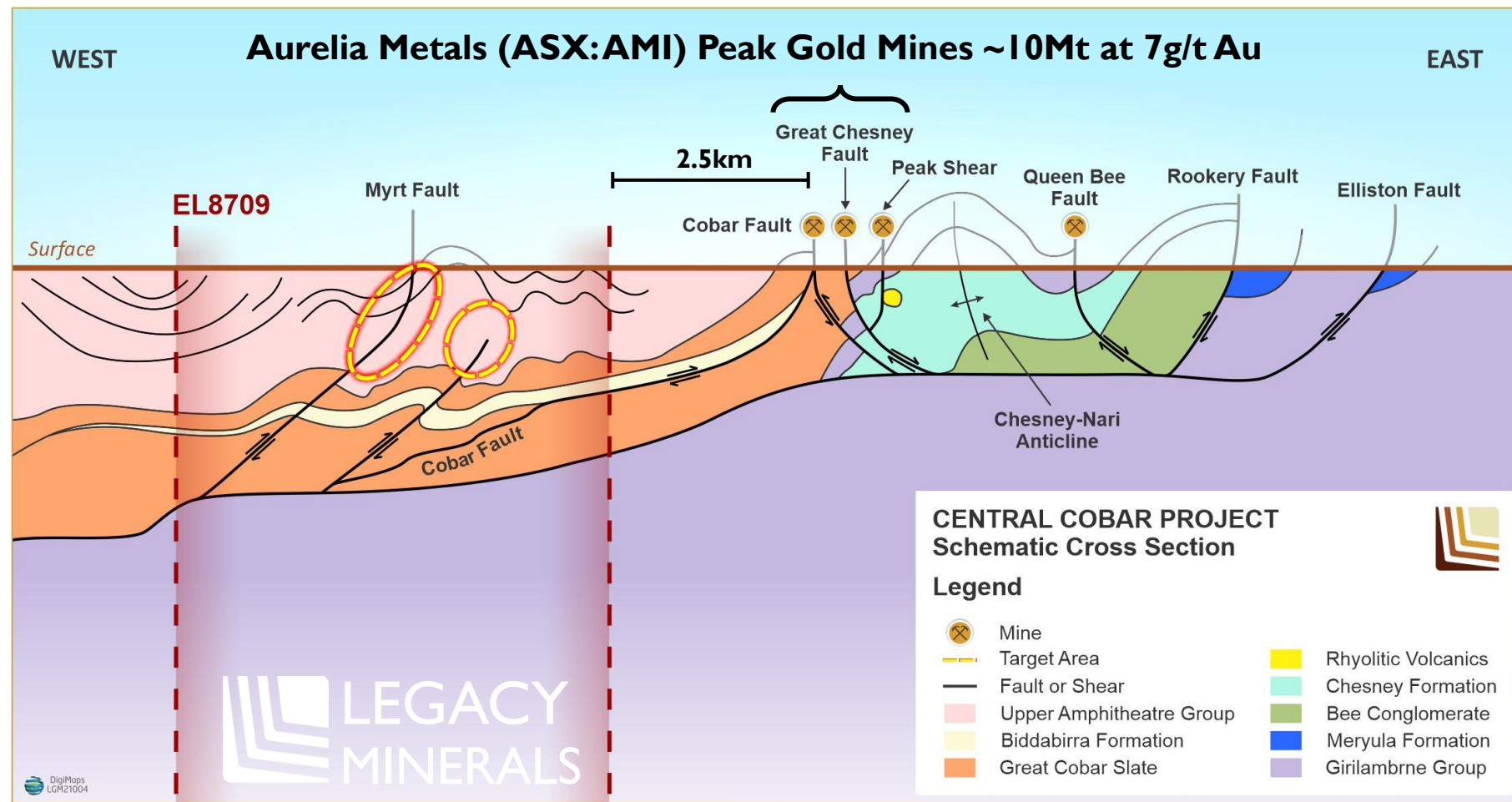
**Workings**  
(Yarrowonga Anomaly)





## All the right ingredients

- ✓ Structural complexity
- ✓ Geochemical anomalism
- ✓ Geophysical anomalism
- ✓ Neighbouring world class deposits
- ✓ Proximity to infrastructure and skilled mining workforce





# FONTENYOY

## Project highlights

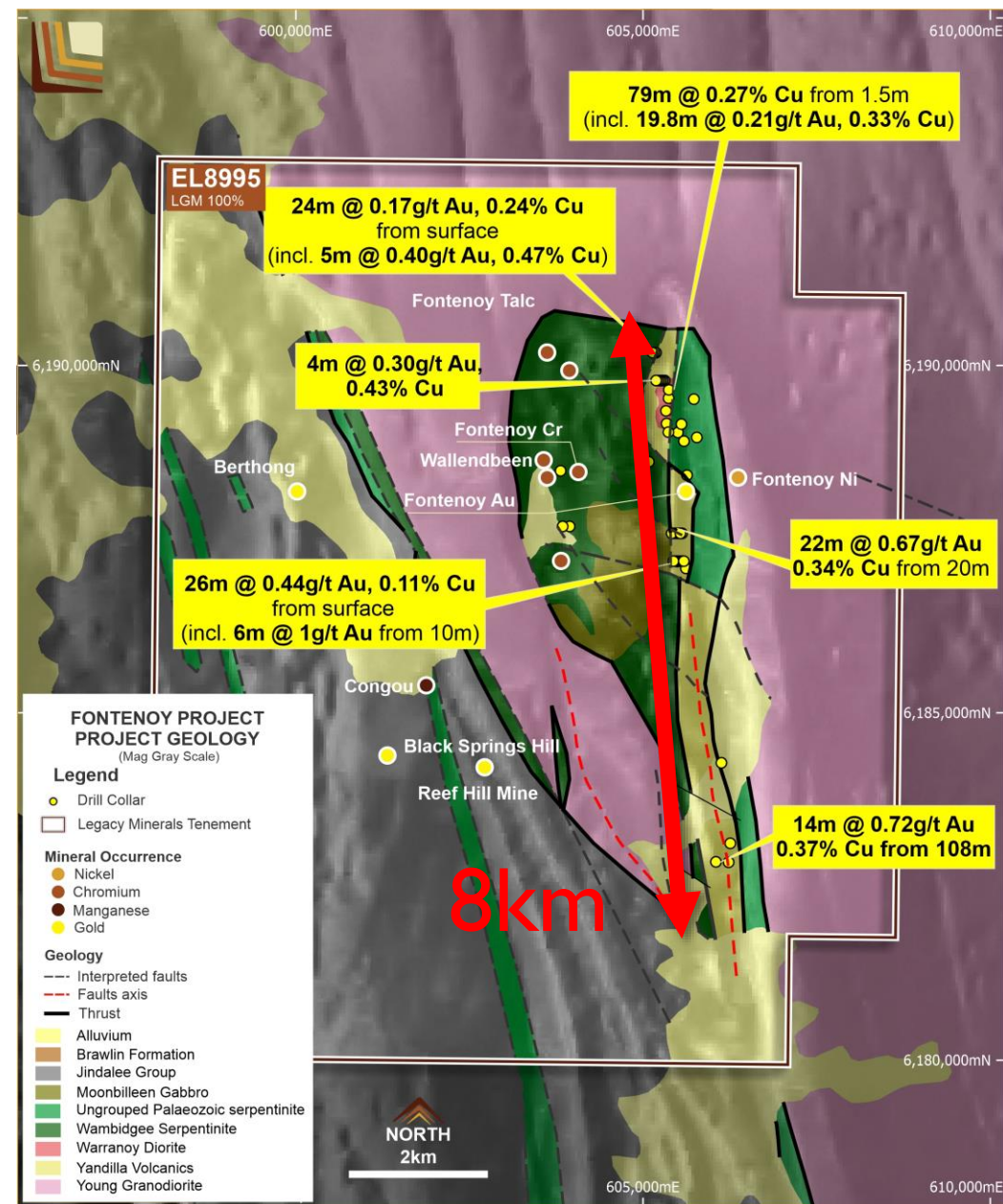
- Multiple wide Au and Cu drill intercepts
- Mineralised for +8km in length
  - Significant scale
  - Mineralised from surface
- Potential for moderate-high grade structurally controlled Au-Cu
- Low-cost generative exploration work to define high conviction structural targets for future RC drill campaign

## MINERAL SYSTEM – volcanic hosted massive sulphides

- Systems that have the potential to host mines - VHMS deposits in the Lachlan Oregon include McPhillamys (**60.8 million tonnes @ 1.04g/t for 2.02M Oz**)

## Significant historic drilling results

- 26m at 0.44g/t Au from surface incl. 6m at 1g/t Au
- 79m at 0.27% Cu from 1.5m incl. 8.8m at 0.33g/t Au



# ROCKLEY

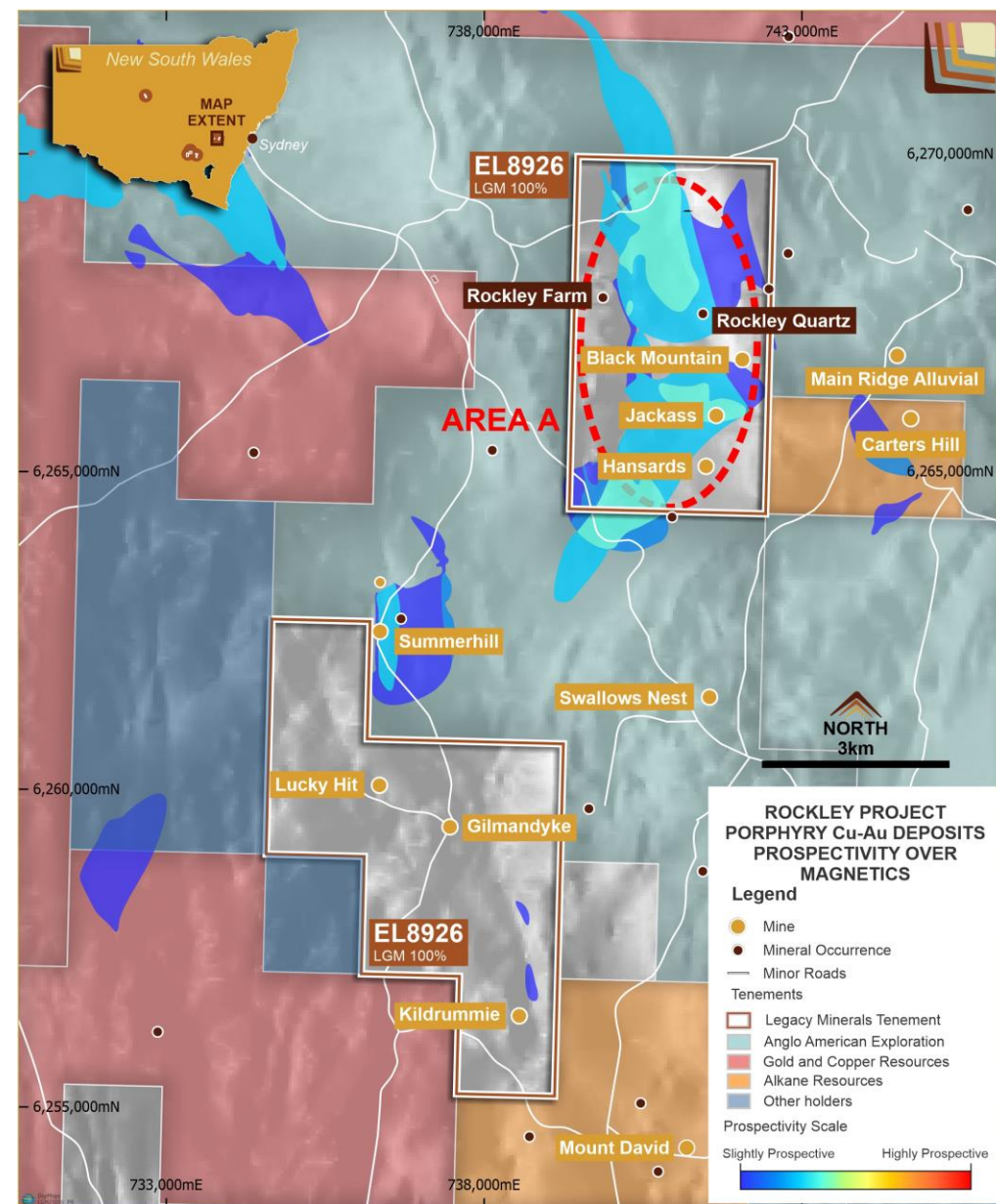
## Porphyry prospectivity recognition

2019 regional assessment by the Geological Survey of NSW/Kenex found the Legacy Minerals tenement (**Area A**) to be the most prospective area for porphyry related Cu-Au within the entire Rockley-Gulgong Volcanics

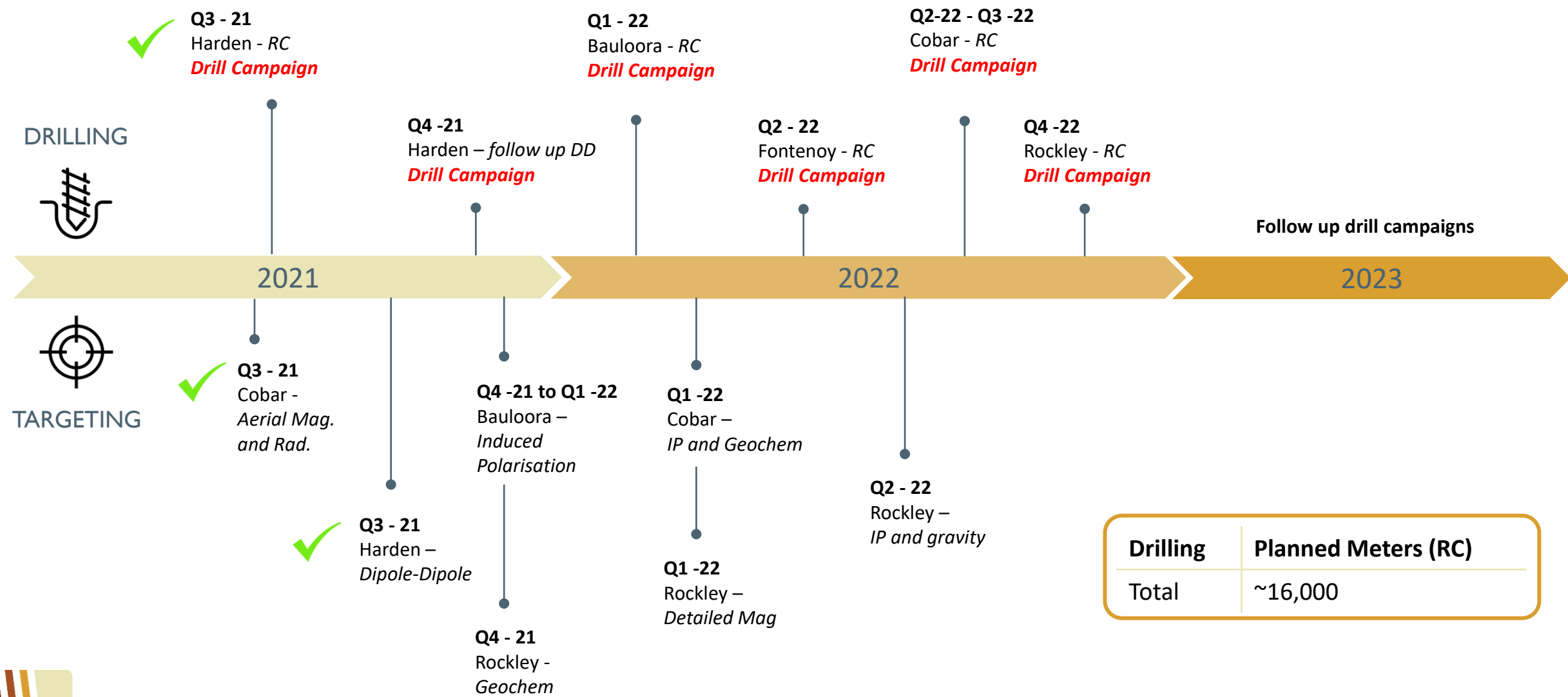
## All the right ingredients for cu-au porphyry

- Historic high grade gold and copper mines grading up 21% Cu
- Geochemically anomalous - Rock chips up to 4% Cu
- <15km NW of the Bushgranger Porphyry (Xtract Resources)
  - 920m @ 0.3% Cu inc. 156m @ 0.48% Cu
- Right rock hosts in the right district:
  - Cadia-Ridgeway (50M oz Au, 8.7Mt Cu)
  - Boda porphyry Cu-Au discovery (Alkane)

## Rockley – home to world class miners/explorers



# INDICATIVE TIMELINE AND DRILL METERS



Drilling	Planned Meters (RC)
Total	~16,000



# THANK YOU

Chris Byrne

*CEO and Managing Director*

[chris.byrne@legacyminerals.com.au](mailto:chris.byrne@legacyminerals.com.au)

+61 (0) 499 527 547



# LEGACY MINERALS

**ASX:LGM**