



Exploring for world class discoveries in the **Yalgoo Region**

February 2022

ASX:TEM





- Any material used in this presentation is only an overview and summary of certain data selected by the management of Tempest Minerals Ltd ("TEM").
- The presentation does not purport to contain all the information that a prospective investor may require in evaluating a possible investment in TEM nor does it contain all the information which would be required in a disclosure document prepared in accordance with the requirements of the Corporations Act and should not be used in isolation as a basis to invest in TEM. Recipients of this presentation must make their own independent investigations, consideration and evaluation of TEM.
- TEM recommends that potential investors consult their professional advisor/s as an investment in TEM is considered to be speculative in nature.
- Statements in this presentation are made only as of the date of this presentation unless otherwise stated and the information in this presentation remains subject to change without notice. Reliance should not be placed on information or opinions contained in this presentation.
- To the maximum extent permitted by law, TEM disclaims any responsibility to inform any recipient of this presentation on any matter that subsequently comes to its notice which may affect any of the information contained in this document and presentation and undertakes no obligation to provide any additional or updated information whether as a result of new information, future events or results or otherwise.
- No representation or warranty, express or implied, is made as to the fairness, accuracy, completeness or correctness of the information, opinions or conclusions contained in or derived from this presentation or any omission from this presentation or of any other written or oral information or opinions provided now or in the future to any person.
- To the maximum extent permitted by law, neither TEM nor, any affiliates, related bodies corporate and their respective officers, directors, employees, advisors and agents, nor any other person, accepts any liability as to or in relation to the accuracy or completeness of the information, statements, opinions or matters (express or implied) arising out of, contained in or derived from this presentation or any omission from this presentation or of any other written or oral information or opinions provided now or in the future to any person.

Competent Persons Statement

The scientific and technical information contained within this Presentation is based on, and fairly represents information prepared by Mr Don Smith, a Competent Person who is a Member of the Australian Institute of Mining and Metallurgy (Ausimm) and Australian Institute of Geoscience (AIG). Mr Smith is the Managing Director of Tempest Minerals Ltd and has sufficient experience that is relevant to the style of mineralisation and type of deposit under consideration and to the activity being undertaken to qualify as a Competent Person as defined in the 2012 Edition of the "Australasian Code for Reporting of Exploration Results, Mineral Resource and Ore Reserves". Mr Smith consents to the inclusion in this presentation of the matters based on his information in the form and context in which it appears.

Corporate Overview



Directors and Management



BRIAN MOLLER

Non-executive Chairman

Brian has been a partner at the legal firm HopgoodGanim for 30 years and leads the Corporate Advisory and Governance practice. Brian is the chair or a non-executive director of several ASX listed companies; and was critical in the progression of LSE listed SolGold PLC to becoming one of the largest copper gold developments in the world.



DON SMITH

Managing Director

Don Smith is a Geologist and entrepreneur who holds a Bachelor of Science from Newcastle University and an MBA from The Australian Institute of Business. With over 20 years in the mining industry, he has held roles in junior through to multinational firms on projects spanning 6 continents and numerous commodities. Don is involved with a number of private and publicly listed resource companies.



VINCENT MASCOLO

Non-executive Director

Vincent Mascolo is a qualified Mining Engineer with extensive experience in a variety of fields including, gold and coal mining, quarrying and civil-works. Vincent is a member of both the Australian Institute of Mining and Metallurgy and the Institute of Engineers of Australia. Vincent is the CEO of AIM listed Atlantic Lithium Ltd.



ANDREW HAYTHORPE

Non-executive Director

Andrew Haythorpe has 30 years experience in geology, funds management and has been a Director and Chairman of a number of TSX and ASX listed companies including Crescent Gold. Andrew has been involved in over A\$300 million of mergers, acquisitions and capital raisings. Currently he is a Managing Director of Goldoza Ltd and Stunlara Metals Pty Ltd and chairman of Allup Silica Ltd.



OWEN BURCHELL

Non-executive Director

Owen Burchell is a Mining Engineer with 20 years of technical, operational and corporate experience including management positions at Rio Tinto, BHP and Barrick Gold through to numerous mining start-ups, closures and operational turnaround projects. Owen is Managing Director of imminent ASX IPO Abarta Resources Limited.

ASX Code

TEM

Shares on Issue

397.9m

Share Price

\$0.023

Cash (Dec 21)

\$1.7m

Debt

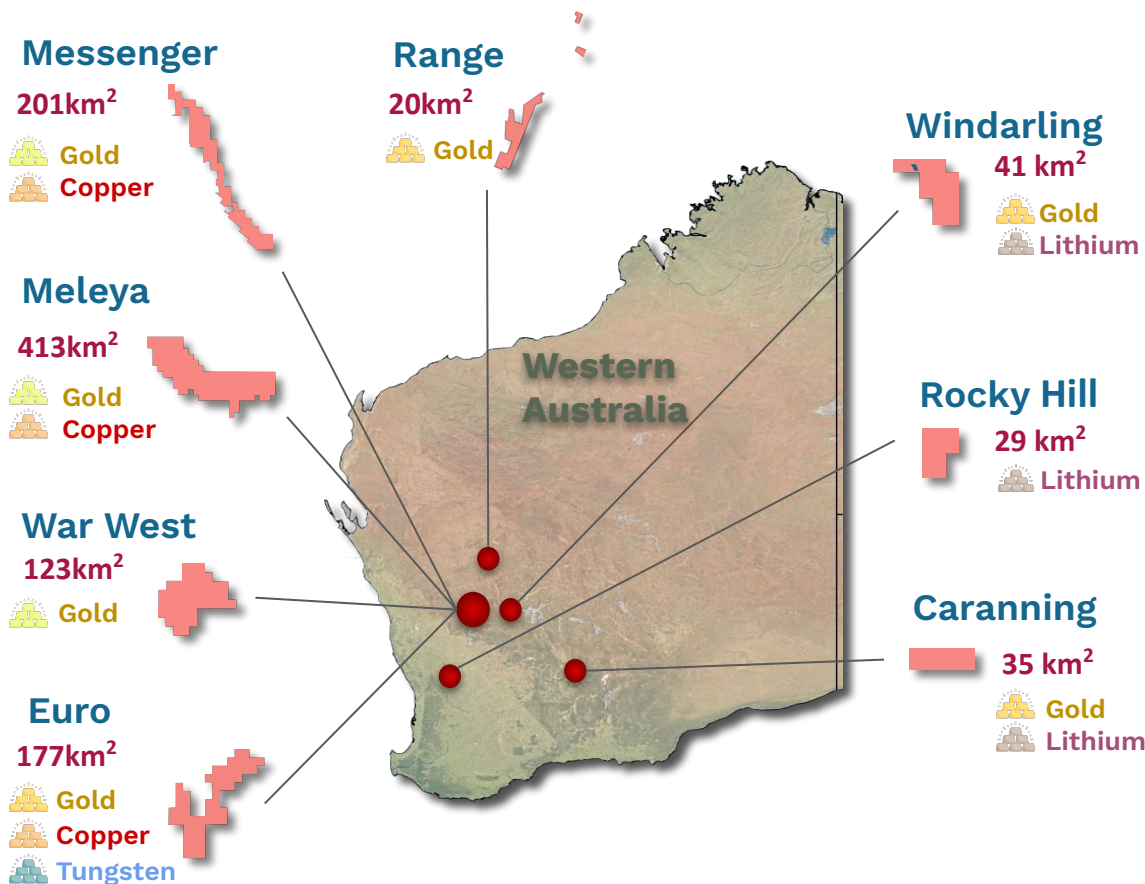
\$0m

Market Cap

\$10.98m

Rank	Top Shareholders	Holding (15 Feb 2022)
1	V-DOOR PTY LTD	12.8M - 3.2%
2	GALT INDUSTRIES PTY LTD	12.3M - 3.1%
3	MR PAUL GREGORY BROWN & MRS JESSICA ORIWIA BROWN <BROWN SUPER FUND A/C>	7.0M - 1.8%
4	CAP HOLDINGS PTY LTD <CAP A/C>	6.5M - 1.6%
5	HSBC CUSTODY NOMINEES (AUSTRALIA) LIMITED	5.4M - 1.4%
	TOP 20	29%

Project Overview



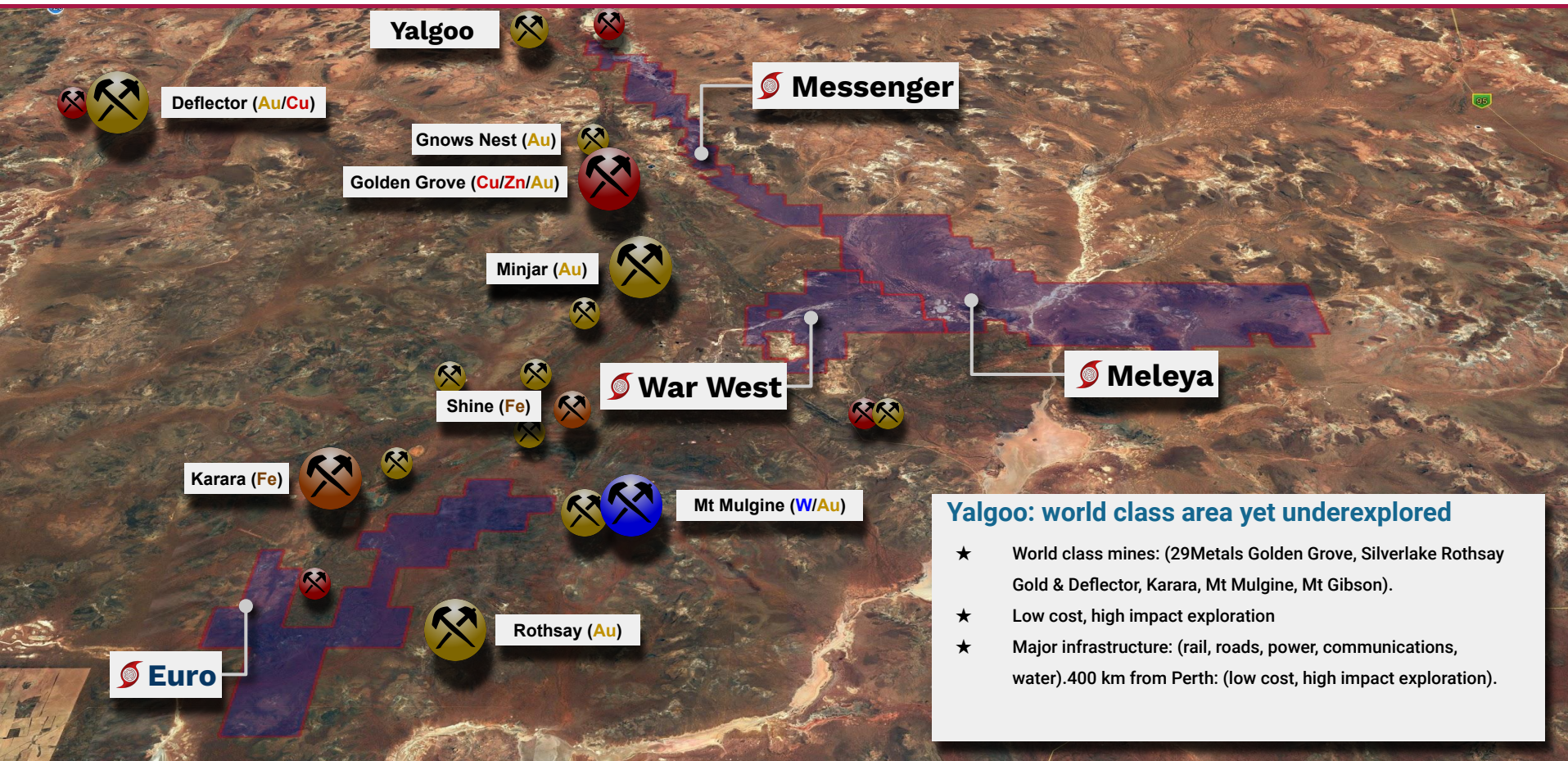
Yalgoo Projects

- Contains the Messenger, Meleya, War West and Euro projects.
- ~900km² tenure across the 4 projects.
- Neighbouring operations include Golden Grove (ASX:29M), Yalgoo (ASX:GCY), Rothsay & Deflector Mines (ASX:SLR) and Minjar Gold Mine.
- **Euro Drilling Recently Completed**
*Awaiting assays
- **Drilling at Meleya commencing Q1 2022**

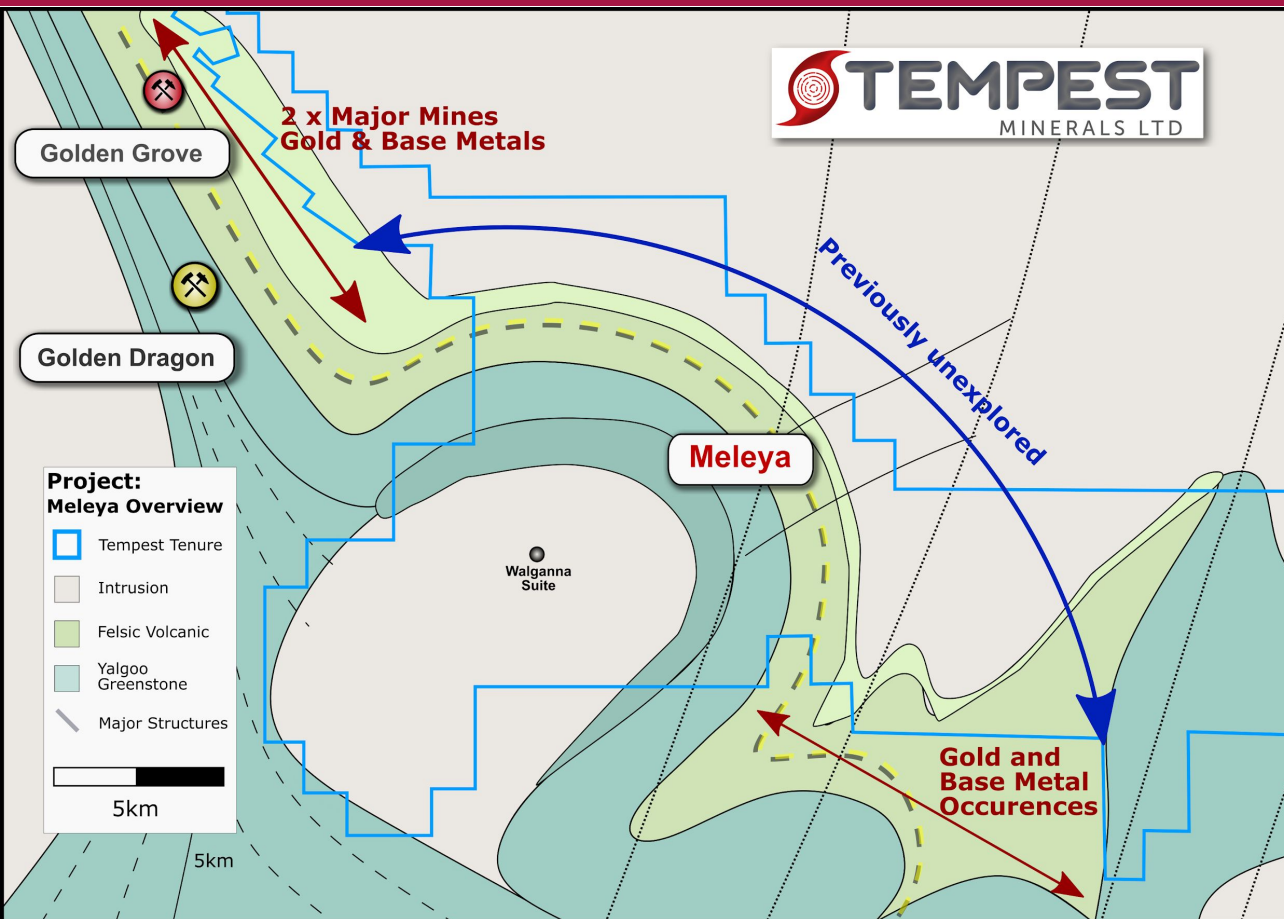
Mt Magnet Projects

- Contains the Range Gold Project in a region with >6Moz past gold production.
- On the same gold trend as Westgold's 8Moz Cue Operations & Ramelius' 5Moz Magnet Operations.
- New geological modelling strengthens project potential.
- **Target zones at Range to be drill tested across the next 18 months.**

Yalgoo Projects

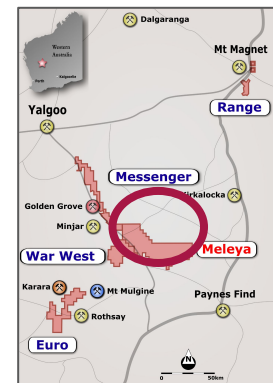


Meleya: A New Province



Golden Grove Analogue

- 50+km of strike of previously unknown greenstone belt
- No previous leases and never explored.
- Strong geophysical and geochemical signatures
- **One of the most exciting exploration targets in Australia today.**
- **Government co-funded drilling commencing Q1 2022**



Meleya: Multiple Geochem Anomalies



Golden Grove Extension?

- New terrain - Previously unexplored Greenstone belt.
- Along strike from Golden Grove Copper-Zinc-Lead-Gold-Silver VMS.

2020

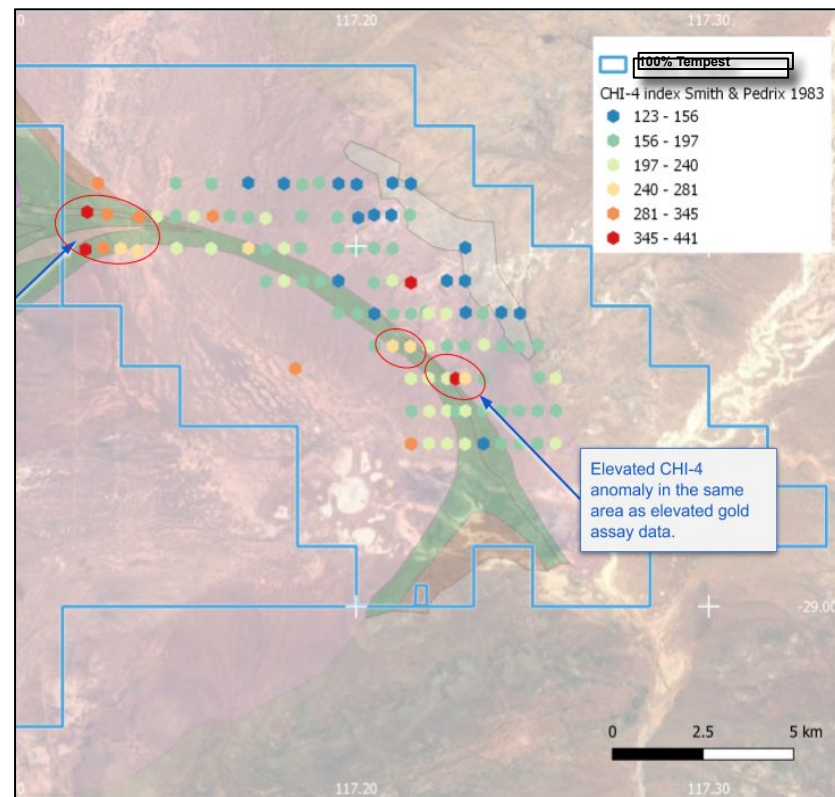
- Exclusive TEM datasets give unparalleled regional detail
- Extensive regional geochemistry and mapping confirm prospectivity

2021

- Ongoing data analyses and modelling
- Numerous drill targets identified
- Drill approval and planning in progress

2022

- Ongoing fieldwork
- Drilling to commence Q1 2022.



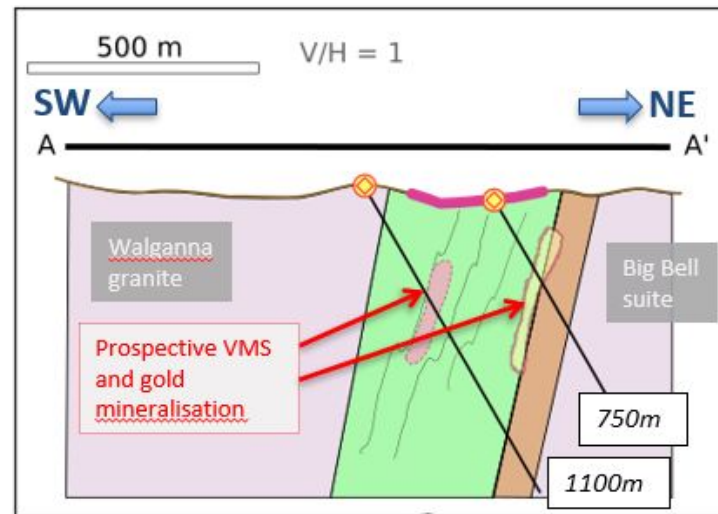


First Drilling In New Region

- Tempest to drill first holes into the Meleya Project
- 2 x deep stratigraphic drillholes co-funded by government EIS program
- Widespread regional drilling to follow

Exciting Story!

- ★ First holes into an unexplored new geological region along strike from multiple world class mines
- ★ The Meleya Project represents one of the best potential upside projects in Australia today



Initial EIS cofunded drillholes with interpreted geology

Euro: Historic Results -> Modern View

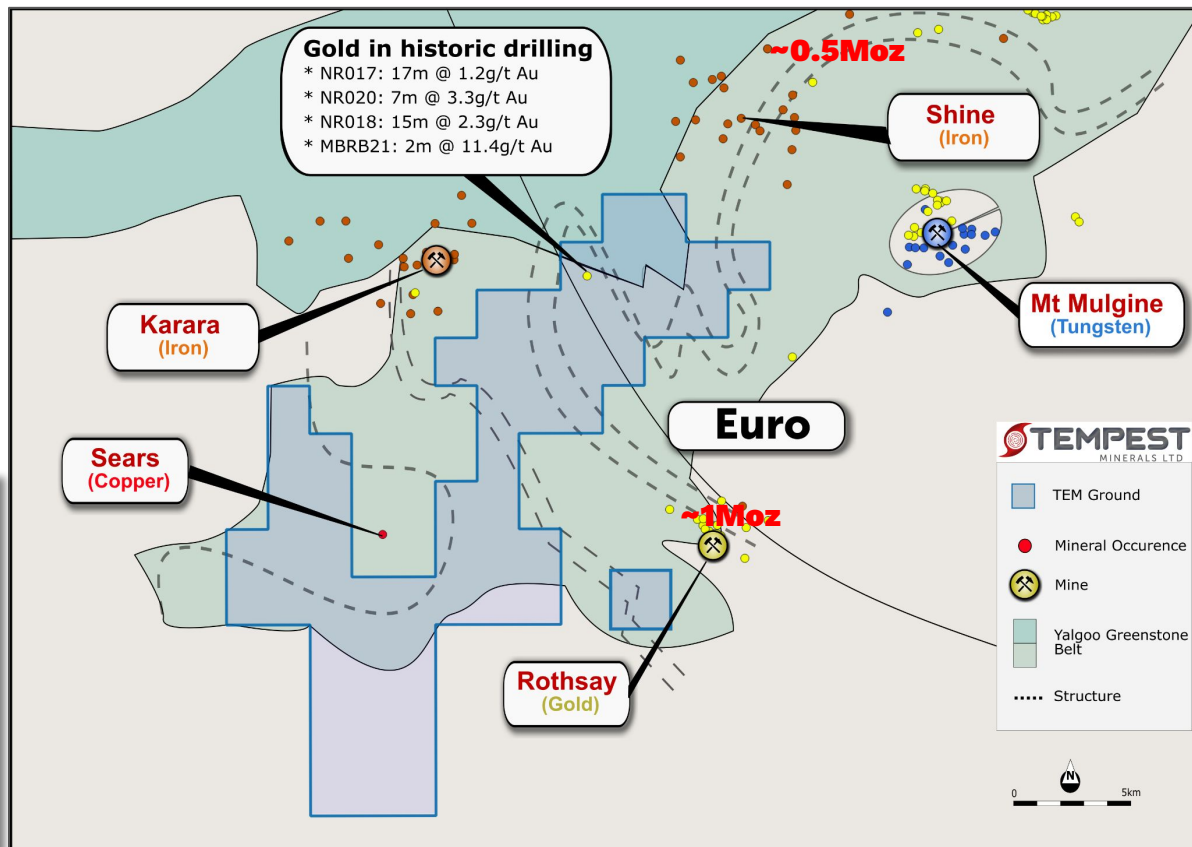
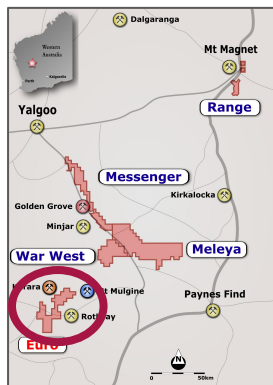


A Forgotten Gem

- High grade intercepts drilled in 1990's and 2000's never followed up
- New geological understanding
- Significant historic drilling

HOLE ID	DEPTH	INTERVAL
NR017	20m	17m @ 1.2g/t
NR020	20m	8m @ 0.9g/t (including 5m @ 1.3g/t)
NR018	15m	15m @ 2.3 g/t (including 7m @ 3.4g/t)
MBRB21	0	2m @ 11.4 g/t

- ★ Recent drilling intercepted thick mineralisation and visible sulphide
- ★ New geological understanding highlights exciting potential



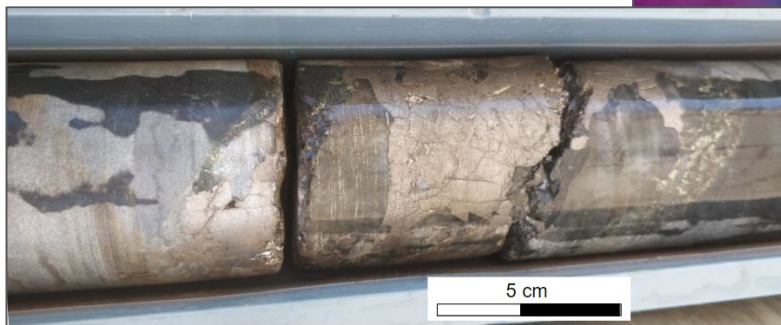
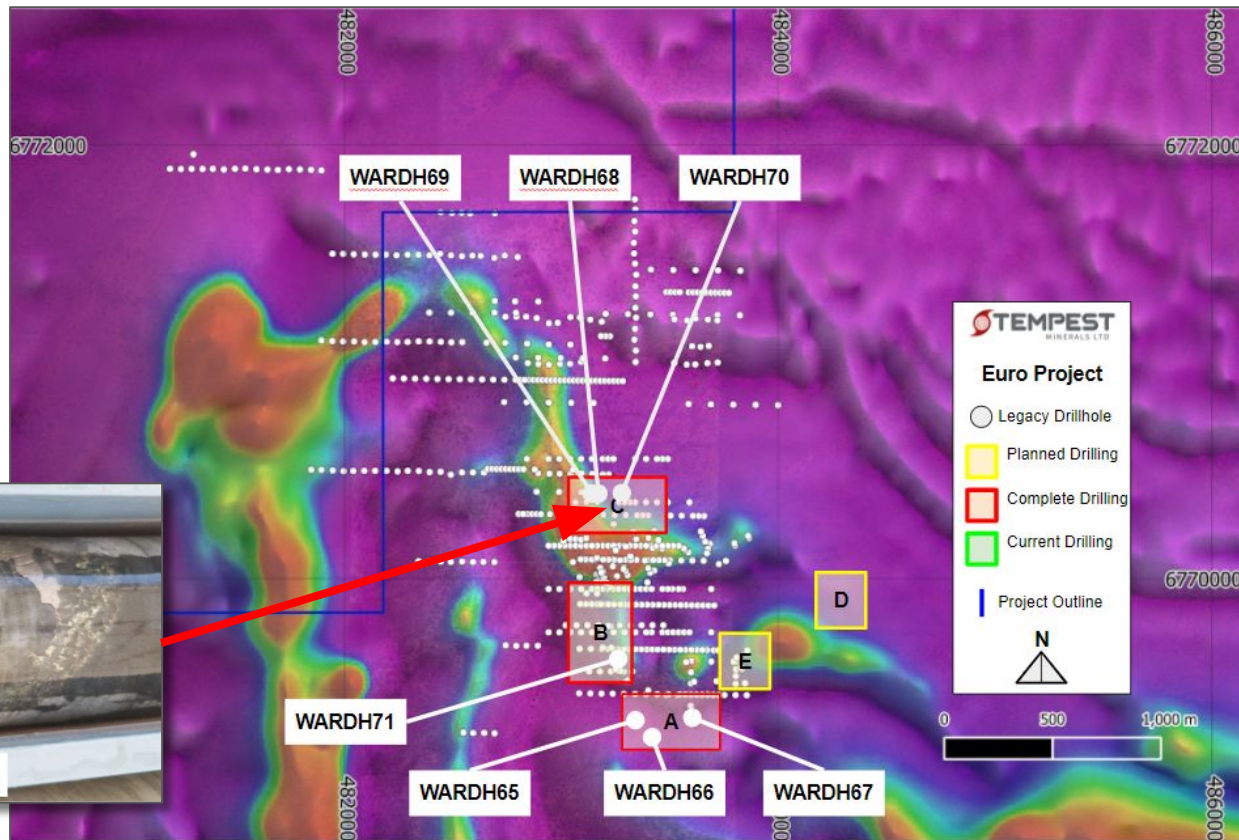
* DMIRS WAMEX reports A48951, a65803

Euro: Sulphides In Recent Drilling



Sulphides in recent drilling

- Sulphides visible in multiple holes including semi-massive zones
- Thick zones of alteration and mineralisation intersected in all holes to date
- Drilling to date aims to confirm historic drilling and extend known mineralisation
- Drilling extends zone of previously identified mineralisation
- Laboratory results due in Q1 2022



Pyrrhotite and chalcopyrite vein WARDH0068 (164.10m)

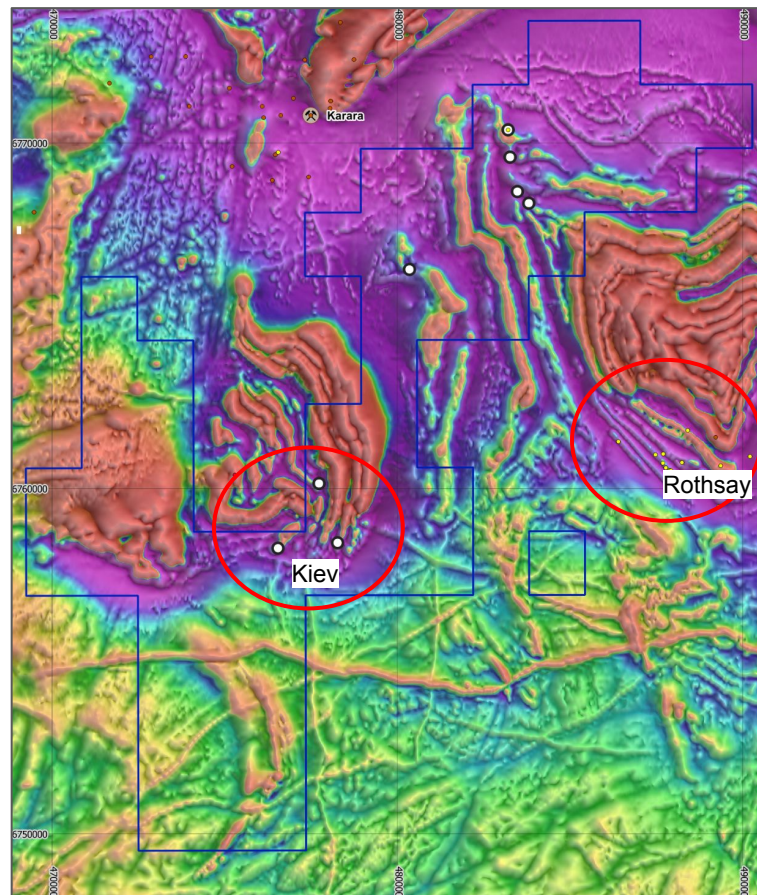


Technology driven exploration

- New exploration targets generated from regional datasets exclusive to TEM
- New geological model emerging with huge potential
- Field work and surface sampling ongoing
- 10's of km strike extent

Multi-commodity opportunities

- Gold: Target similar size and style of magnetic anomaly to Rothsay Mine (~1 MOz Au)
- Iron formations discovered in field mapping
- Lithium noted in historic records

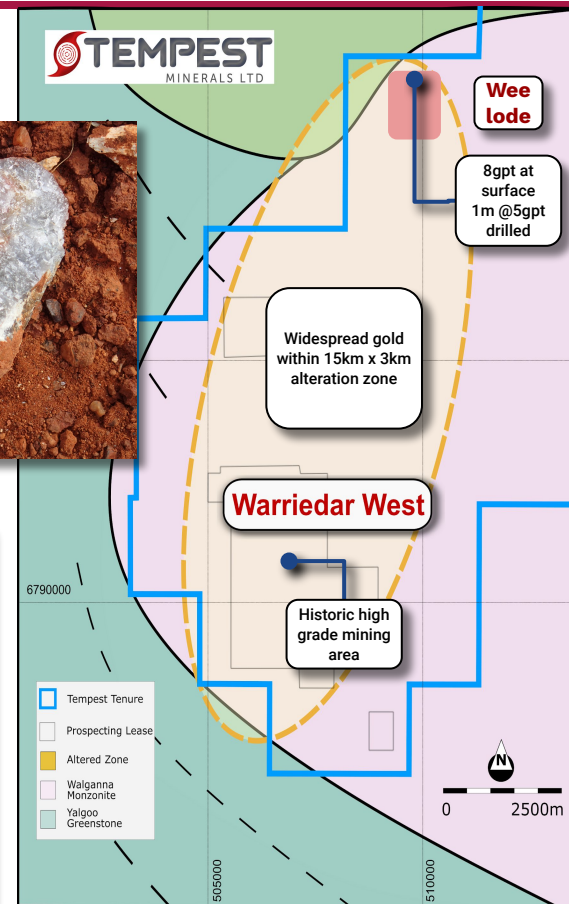
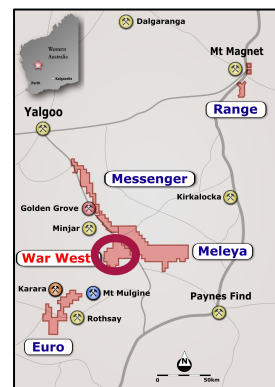


War West: Continuing The Discovery



Intrusive Related System

- Area of historic high grade alluvial nugget and vein gold production
- Multiple kilometre scale gold anomalies within 15km x 3km alteration zone
- Intrusive potential highlighted by DeGrey Mining (ASX:DEG) Hemi Discovery and Northern Star (ASX:NST) Pogo Mine.
- Further fieldwork and drilling planned in 2022



* ASX release 15 Jan 2021 "Exploration Update - Further gold intersected at Warriedar"

War West: New Gold Discovery - Nearby Mills



New Gold Model

- **Discovery:** IRG model proven by widespread shallow gold <18km from major processing facility
- **Discovery:** Gold bearing 'IRG' veins discovered at Wee Lode (2m @ 8gpt from surface and 1m @ 5gpt from 7m)
- **Discovery:** New shallow greenstone belt with same signature as nearby major mines

Minjar

- Underutilised 0.8 Mtpa mill capacity

Wee Lode

- Oxide gold and greenstone belt discovery

Messenger: Unexplored Beside Majors

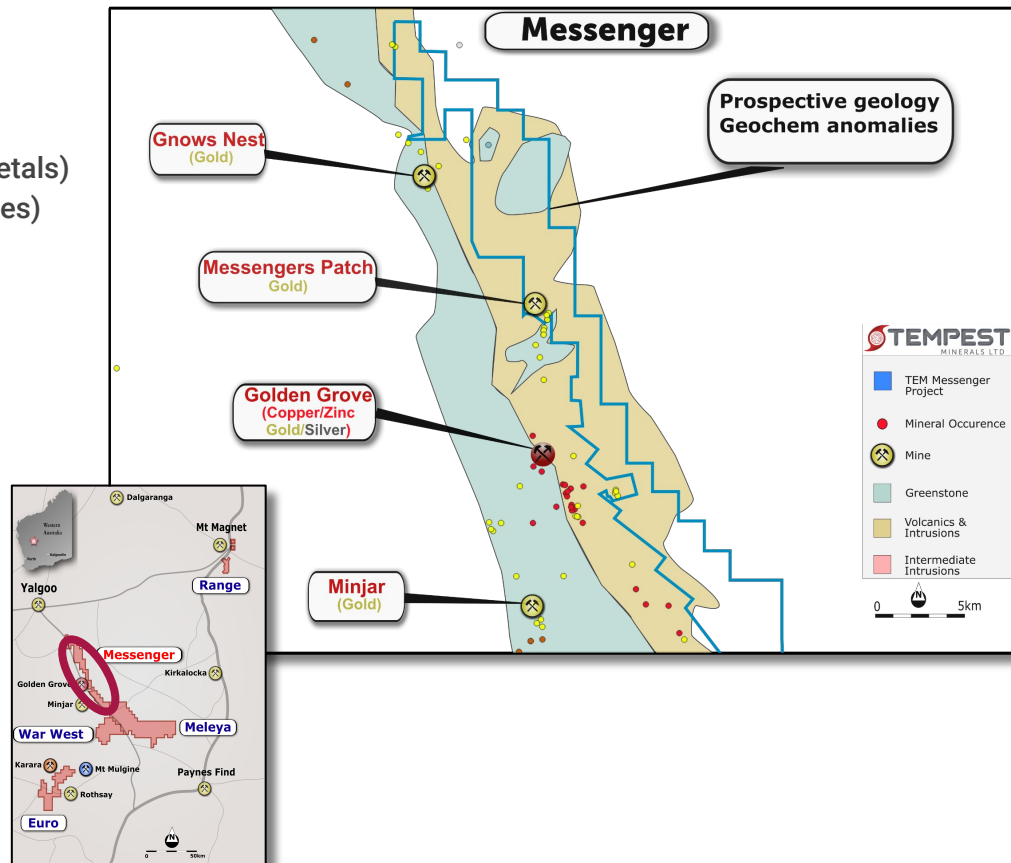


Proximity

- Nearby mines:
 - Golden Grove gold and base metals mine (29 Metals)
 - Deflector gold-copper mine (SilverLake Resources)
 - Minjar gold mine (Jinan Hi-tech)
- Nearby exploration / discoveries
 - Gnows Nest (Emu Gold)
 - Yalgoo (Gascoyne Resources)
 - Golden Grove North (Venture Minerals)

Untapped Potential

- 200km² unexplored high potential project
- Established gold and base metal geology
- Multiple targets



Range: Part Of The Big One

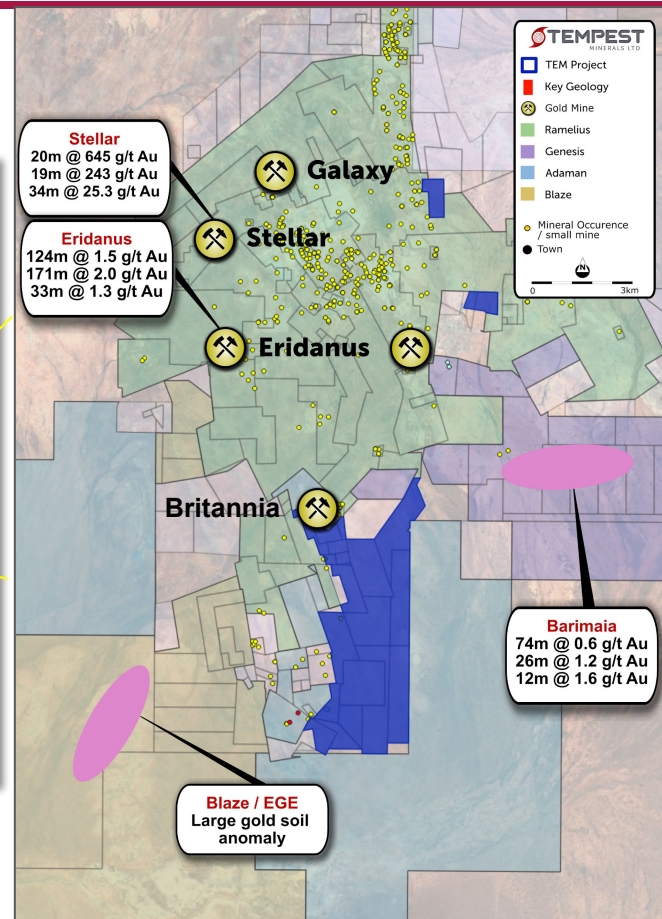
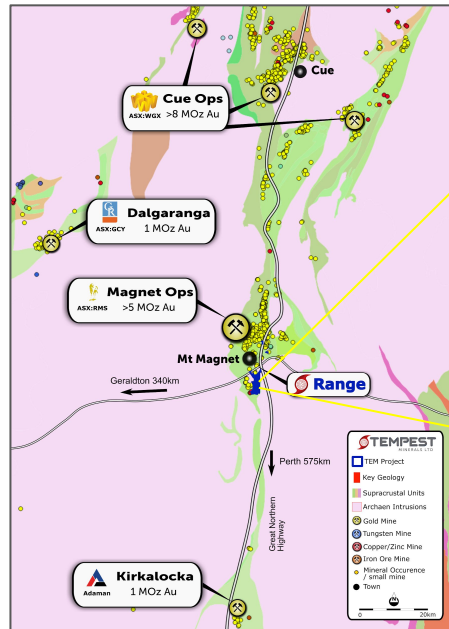


World Class Location

- Prolific gold region - >6Moz historical production in Mount Magnet alone
- Adjacent success stories include:
 - Ramelius ASX:RMS
 - Genesis ASX:GMD
 - Westgold ASX:WGX
- Tenements adjacent to Ramelius' Mt Magnet operations to the north and west and Genesis to East

Surrounded by Gold

- New geological models for the region include Intrusion Related Gold which further increases the prospectivity of the area.
- Undocumented historic workings along strike from Britannia open pit.
- Wide spread mineralized shears, intrusives and alteration confirmed in recent field work.
- Target generation in progress with drill testing in 2022

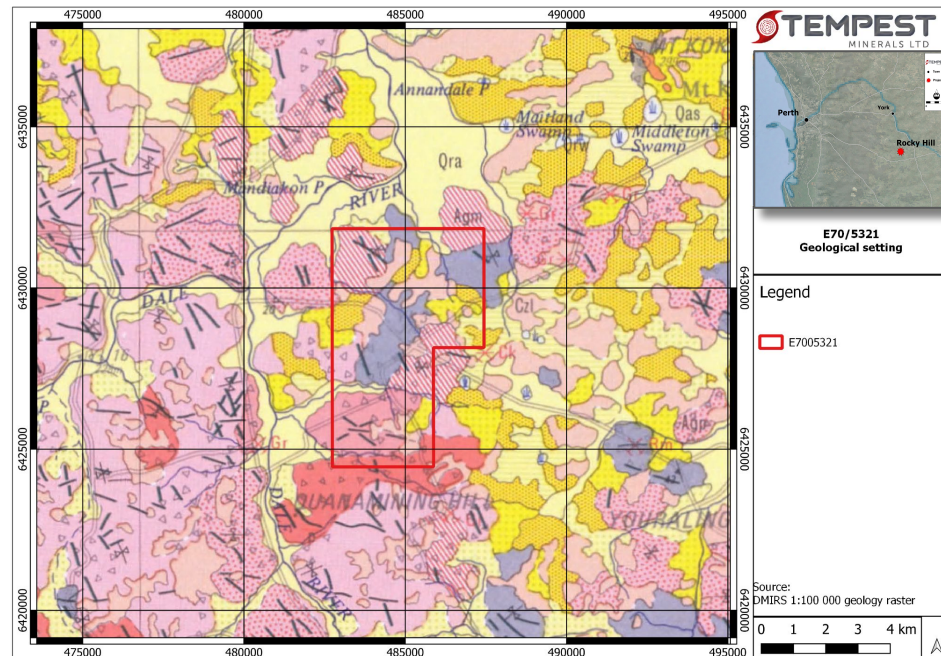


Rocky Hill: New Lithium Exploration



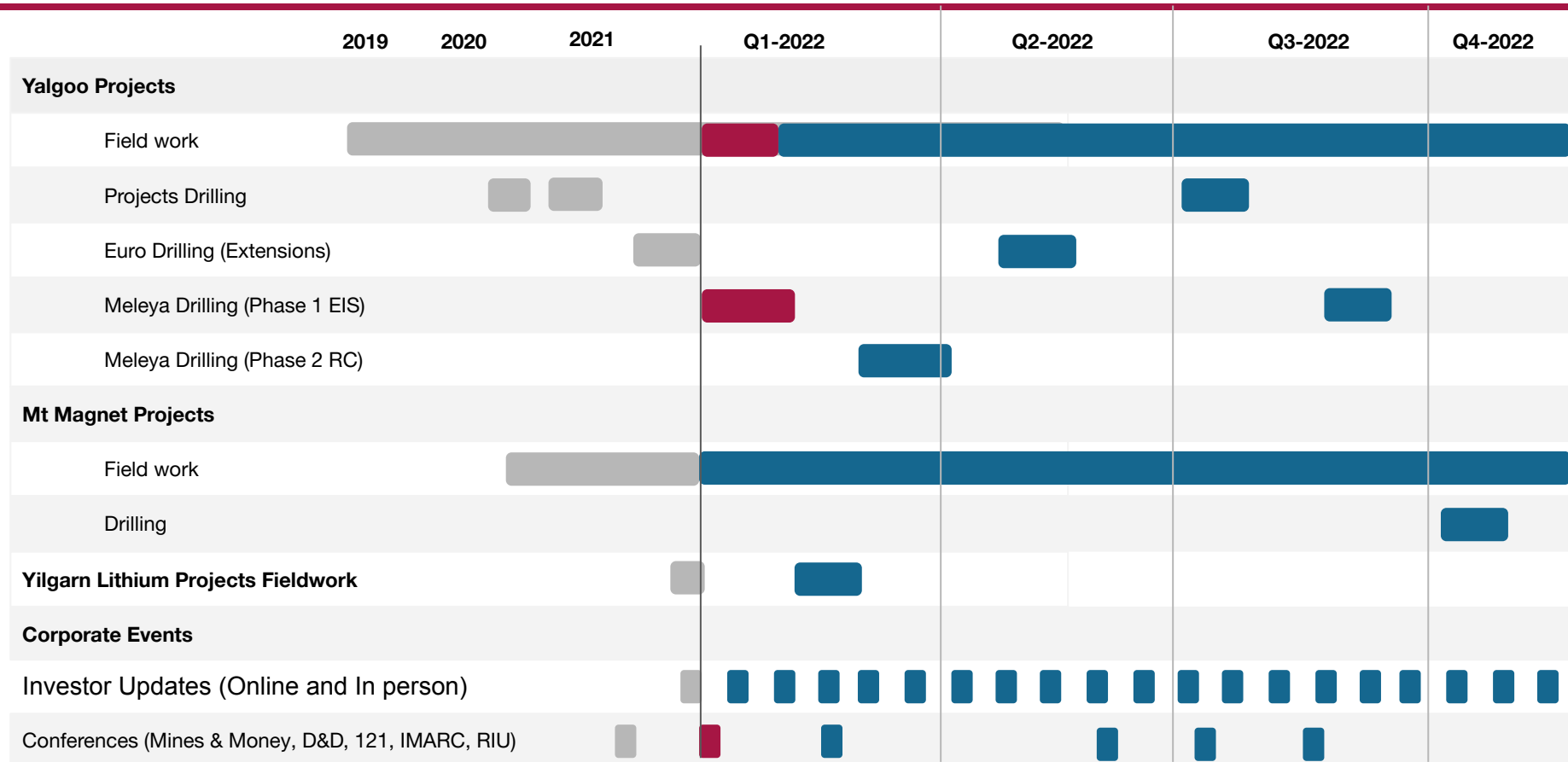
Fieldwork commenced

- Reconnaissance fieldwork commenced
- Prospective for lithium and industrial commodities
- Surface sampling completed with surface samples taken for high sensitivity multi-element analysis
- Further work planned
- Part of the South West Terrane - current industry hotspot
- Part of the GSW Accelerated Geoscience Program



Timeline

Completed
 In progress
 Planned





Level 2, Suite 9,
389 Oxford Street,
Mt Hawthorn
Western Australia 6016



+61 8 9200 0435



info@tempestminerals.com



[Tempestminerals.com](https://tempestminerals.com)



[Tempest Minerals](#)



[Tempest Minerals](#)



[Tempest Minerals](#)



[Tempest Minerals](#)