



## FOCUSED ON Au-Cu DISCOVERY IN THE LACHLAN FOLD BELT

COMPANY PRESENTATION FEB 2022



ASX: LGM



# DISCLAIMER

This presentation may contain certain statements and projections provided by or on behalf of Legacy Minerals Holdings Limited (**ASX: LGM, Legacy Minerals, or the Company**) with respect to the anticipated future undertakings. These forward-looking statements reflect various assumptions by or on behalf of Legacy Minerals.

Accordingly, these statements are subject to significant business, economic and competitive uncertainties and contingencies associated with the mining industry which may be beyond the control of Legacy Minerals which could cause actual results or trends to differ materially, including but not limited to price and currency fluctuations, geotechnical factors, drilling and production results, development progress, operating results, reserve estimates, legislative, fiscal and regulatory developments, economic and financial markets conditions in various countries, approvals and cost estimates, environmental risks, ability to meet funding requirements, share price volatility. Accordingly, there can be no assurance that such statements and projections will be realised. Legacy Minerals makes no representations as to the accuracy or completeness of any such statement of projections or that any forecasts will be achieved.

Additionally, Legacy Minerals makes no representation or warranty, express or implied, in relation to, and no responsibility or liability (whether for negligence, under statute or otherwise) is or will be accepted by Legacy Minerals or by any of their respective officers, directors, shareholders, partners, employees, or advisers as to or in relation to the accuracy or completeness of the information, statements, opinions or matters (express or implied) arising out of, contained in or derived from this presentation or any omission from this presentation or of any other written or oral information or opinions provided now or in the future to any interested party or its advisers. In furnishing this presentation, Legacy Minerals undertakes no obligation to provide any additional or updated information whether as a result of new information, future events or results or otherwise.

Nothing in this material should be construed as either an offer to sell or a solicitation of an offer to buy or sell securities. It does not include all available information and should not be used in isolation as a basis to invest in Legacy Minerals.

This presentation contains exploration results and historic exploration results as originally reported the Company's Prospectus dated 28 July 2021 and released 9 September and subsequent ASX market announcements. The Company confirms that it is not aware of any new information that materially affects the information included in the original market announcements and that all material assumptions and technical parameters underpinning the estimates in the relevant market announcements continue to apply and have not materially changed. The Company confirms that the form and context in which the Competent Persons' findings are presented have not been materially modified from the original market announcements.

The information in this presentation that relates to Exploration Targets, Exploration Results, Mineral Resources or Ore Reserves is based on information compiled by Thomas Wall, a Competent Person who is a Member of the Australian Institute of Geoscientists. Mr Wall is the Technical Director is a full-time employee of Legacy Minerals Limited and a shareholder, who has sufficient experience that is relevant to the style of mineralisation and type of deposit under consideration and to the activity being undertaken to qualify as a Competent Person as defined in the 2012 edition of the Australasian Code for Reporting of Exploration Results, Mineral Resources and Ore Reserves. Mr Wall consents to the inclusion in the report of the matters based on his information in the form and context in which it appears.

The release of these presentation materials has been authorised by the Board.



# INVESTMENT SUMMARY - WHY LEGACY MINERALS?

## SIGNIFICANT NEAR-TERM DISCOVERY EXPOSURE



- Bauloora – drill testing underway within one of the **largest epithermal systems in NSW**
- Harden – following up **high-grade gold assays** from maiden drill campaign
- Rockley – **prime position** in a previously overlooked porphyry district

## VALUE LEVERAGED TO EXPLORATION SUCCESS



- **\$4.2M cash in hand** – well funded for discovery opportunities
- Six significant projects - 100% owned and unencumbered
- Focused on discovery with strong news flow over coming months
- **Competitive market cap provides foundation for significant growth**

## THE RIGHT ROCKS



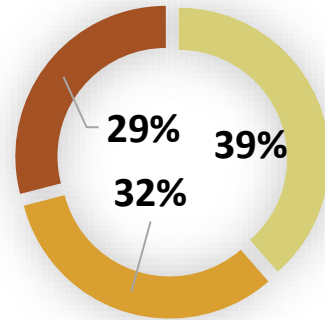
- **World class Lachlan Fold Belt** – Prime tenement locations
- **Moz Discovery Potential** – High quality drill targets
- Right exposure to the right commodities – gold, copper, and base metals

# CORPORATE SNAPSHOT

## CAPITAL STRUCTURE<sup>1</sup>

<b>ASX Share Price</b>	<b>\$0.16</b>
Shares on Issues	75.2M
Options on Issue (\$0.3)	4.9M
Market Capitalisation	\$12M
Cash (at Dec-21)	\$4.2M
Debt	Nil

## ISSUED CAPITAL



■ IPO Shareholders  
■ Board and Management  
■ Other Shareholders



## DIRECTORS



**Dr David Carland**  
Non-Executive  
Chairman

Investment banker with over 40 experience. Has held senior positions at UBS, Bankers Trust, CRA (now Rio Tinto). Was recently the Non-Executive Chair of Rex Minerals (RXM) and is a director with Agnia Resources (**AGR**)



**Douglas Menzies**  
Non-Executive  
Director

Geologist with 28 years of widespread experience in the porphyry gold-copper districts of PNG and Australia, epithermal gold-silver projects in Australia, Indonesia, Fiji, Laos, Chile. Doug has held positions at Rio Tinto, Wafi-Golpu, and is a director at Godolphin Resources (**GRL**)



**Matthew Wall**  
Non-Executive  
Director

Commercial specialist with over 35 years of experience in metals and mining across sales, marketing, logistics, trading, and risk management. Matt has held senior management roles with Rio Tinto, EDF Trading and Wood Mackenzie

## MANAGEMENT



**Christopher Byrne**  
CEO & Managing  
Director

Electrical Engineer with diverse experience in the mining sector with Anglo American across maintenance, operations, and capital works. Proven record of delivering large and complex mining and infrastructure projects in greenfield and brownfield environments



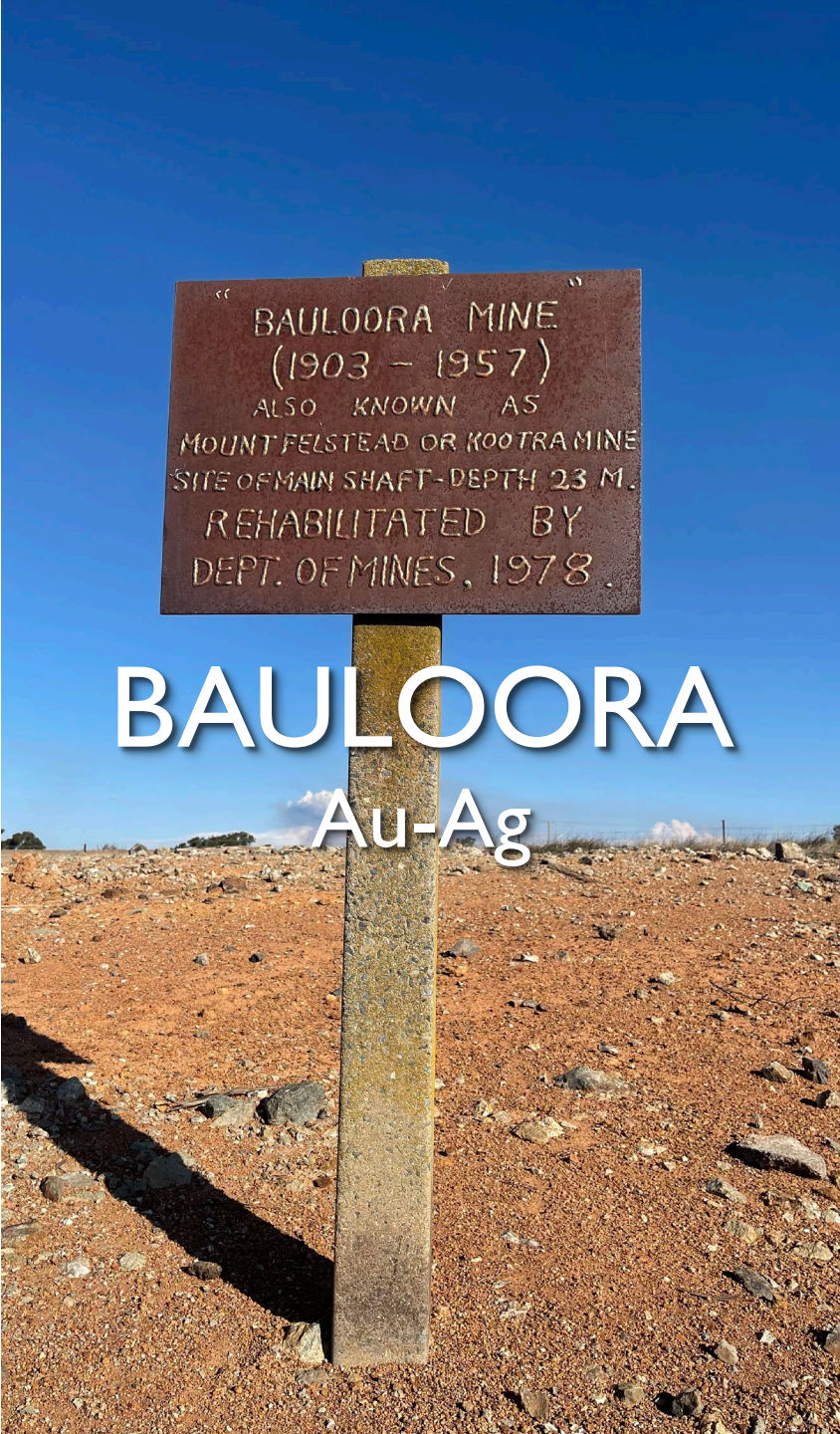
**Thomas Wall**  
Exploration Manager  
& Executive Director

Geologist with wide ranging exploration industry experience with senior roles at Peak Gold Mines and New South Resources. Demonstrated exploration and mining success across a variety of commodities and deposit styles



LEGACY MINERALS





“BAULOORA MINE”  
(1903 – 1957)  
ALSO KNOWN AS  
MOUNT FELSTEAD OR KOOTRAMINE  
SITE OF MAIN SHAFT - DEPTH 23 M.  
REHABILITATED BY  
DEPT. OF MINES, 1978.

# BAULOORA

Au-Ag

One of the largest low sulphidation  
epithermal Au-Ag alteration and  
geochemical footprints in NSW

# WHY EPITHERMALS? – WORLD CLASS POTENTIAL

## NSW's Largest Low-Sulphidation Epithermals

**Cowal Evolution Mining, ~15Moz<sup>1</sup>**

- 'Gold Zone' defined by **7.5 x 2km of >0.1 g/t Au**

**Mineral Hill Kingston Resources, ~624koz Au, 4.5Moz Ag<sup>2,3</sup>**

**Bauloora (Legacy Minerals)**

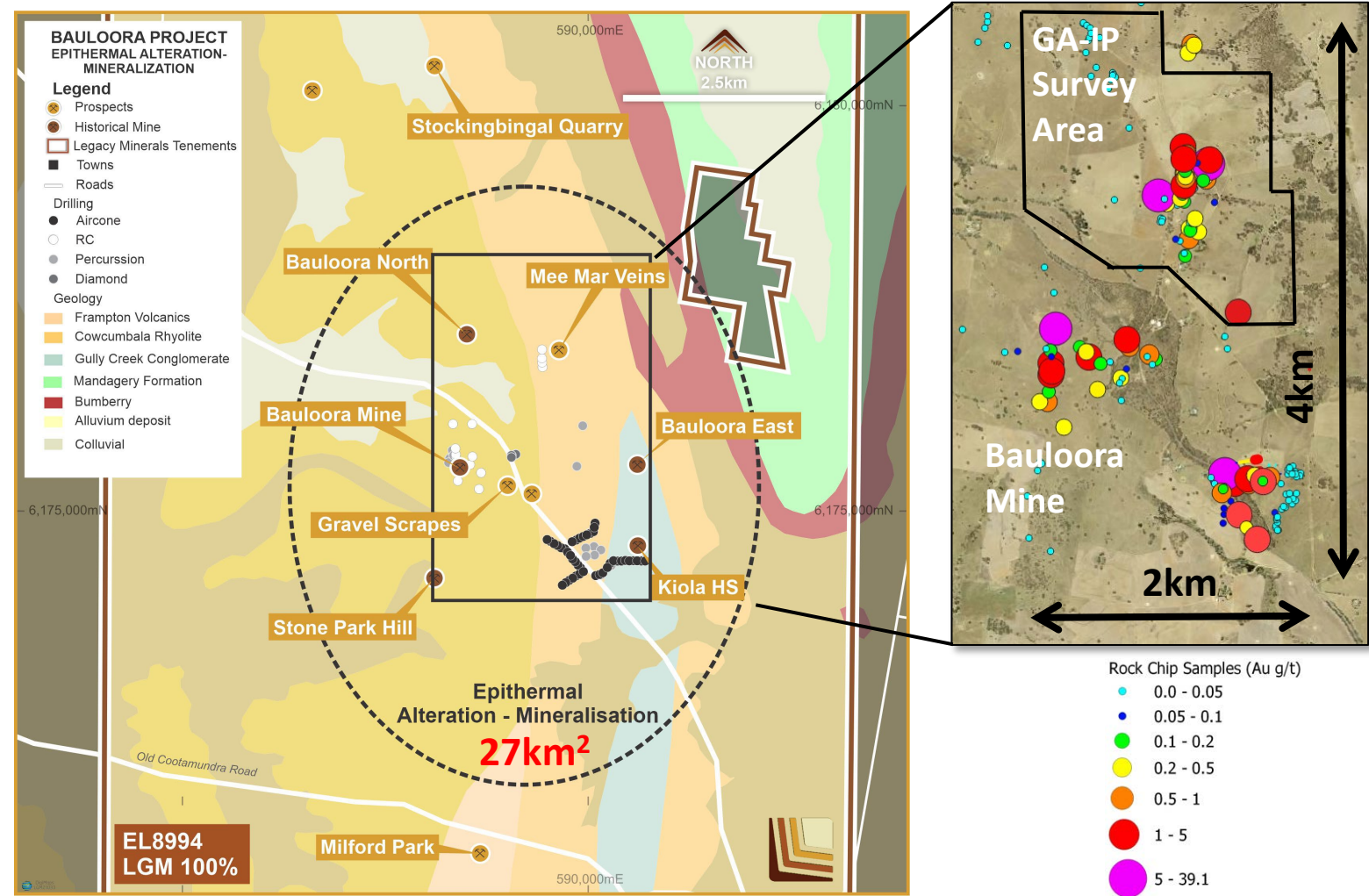
## Bauloora - Scale and Grade

- Bonanza Ag grades, high-grade Au and base metals
- **27km<sup>2</sup> zone of alteration and mineralisation**
  - Defined in geochem and geological mapping
- Priority target area – **4km by 2km**
- Veins up to 5m wide and strike > 2km with up to **39g/t Au** rock chip samples

## Virtually Untested

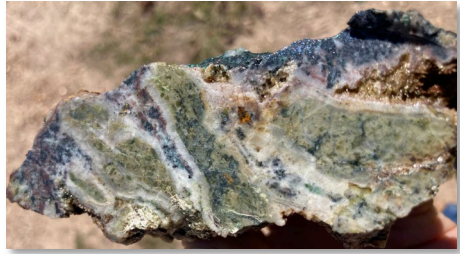
- Only 37 drill holes across 27km<sup>2</sup>, most before 1995
  - **One drill hole per 72 ha**
- **Shallow with an average depth of 88m**

## Bauloora Project Area





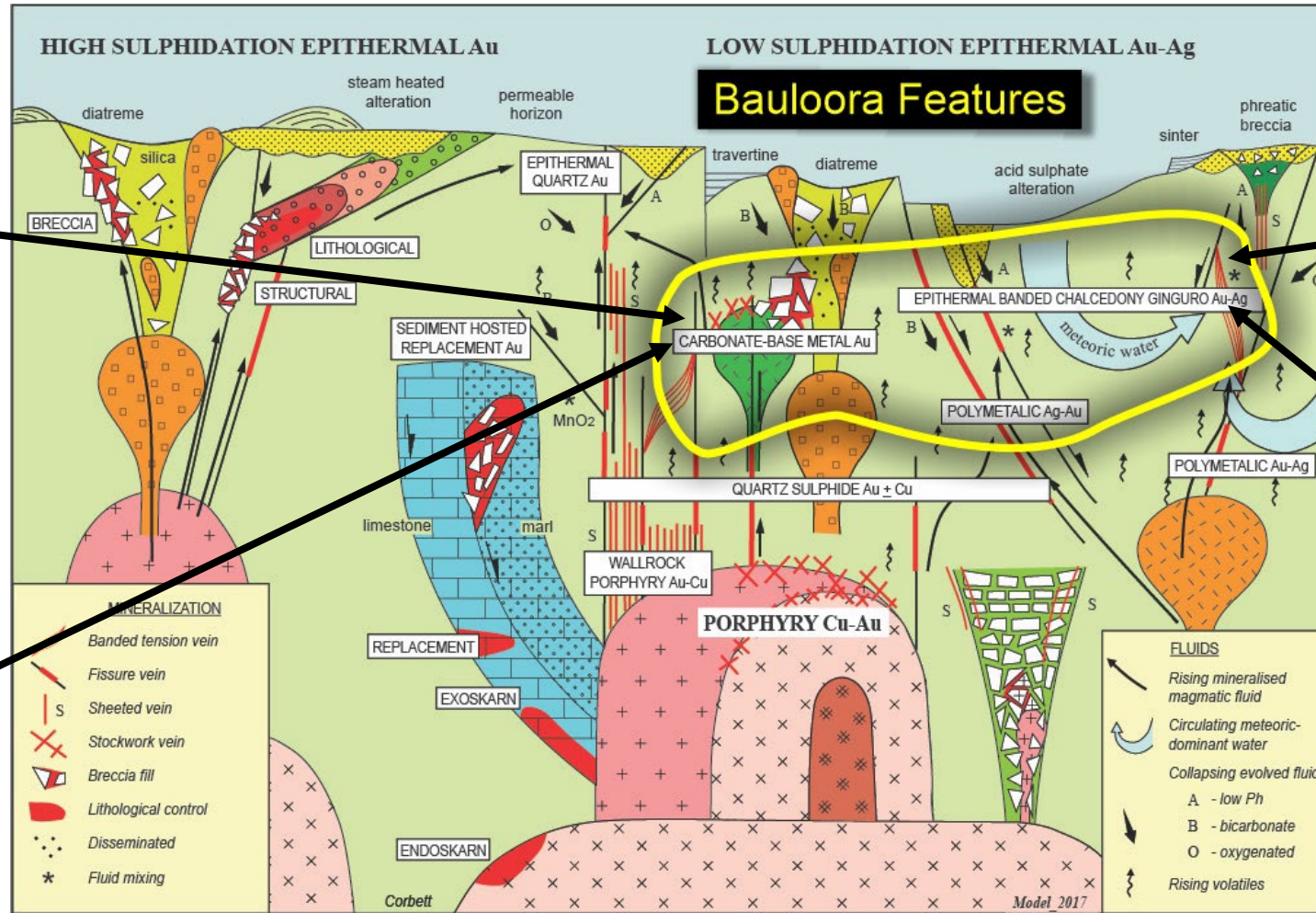
# BAULOORA - ALL THE RIGHT INGREDIENTS



**19.8g/t Au, 462g/t Ag,  
6.28% Cu, 9.38% Pb+Zn**  
(Bauloora Mine Prospect)



**Assays pending**  
(Bauloora Mine Prospect)



**15.1g/t Au**  
(Panorama Prospect)



**39.1g/t Au, 267g/t Ag**  
(Mee Mar Vien Prospect)

Schematic model for epithermal and porphyry mineralisation with an interpretation of features at Bauloora, Corbett, 2008 and modified from Corbett 2002, 2004

# BAULOORA MINE - BONAZA GRADES

## Open along strike and at Depth

- Current strike of prospect is ~400m
- Average hole depth from historical drilling is 95m

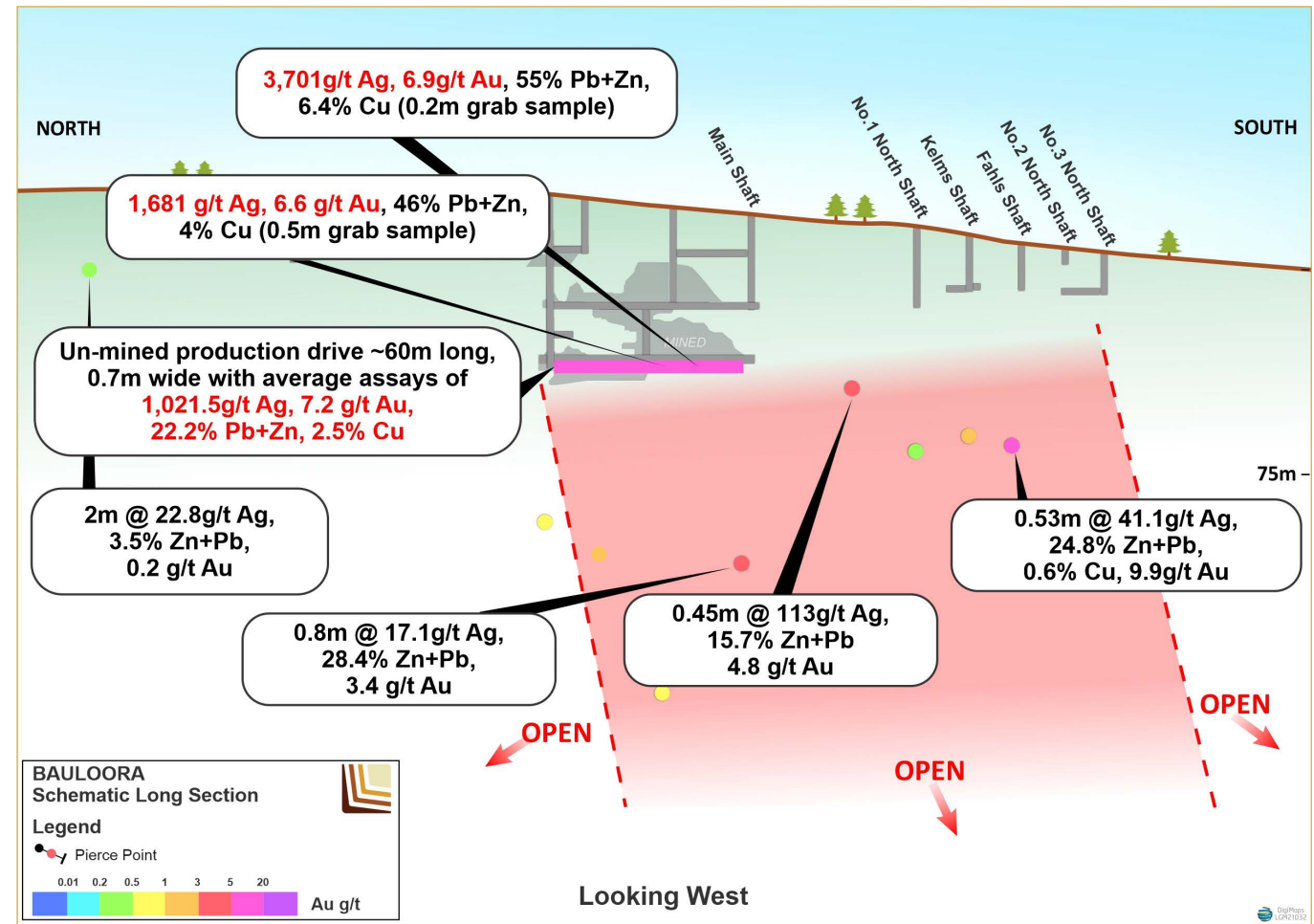
## Drilling Underway

- RC campaign planned to test depth and strike extensions

## What to look for in the next 6 months

- Initial drilling assays (Mar/Apr)
- Down Hole Electromagnetics (Apr)
- GAIP - completion of large gradient array program (Mar)
  - 90km, 50m line spacing, 3,600 stations
- Large scale soil program

## Bauloora Mine Prospect





A photograph of a rocky hillside with sparse vegetation and a large tree on the left. The text 'HARDEN' and 'Au' is overlaid on the image.

**HARDEN**  
Au

**High-grade gold mines in one of the  
least explored gold districts in NSW**



# LONG FORGOTTEN GOLDFIELD

- District has produced **~460,000 oz of gold<sup>1</sup>** with the two largest historical hard rock mines held within LGM's tenements
- These two mines produced **~75,000 oz Au at 28.6g/t Au<sup>1</sup>**

## High-grade drill intercepts<sup>1, 2</sup>

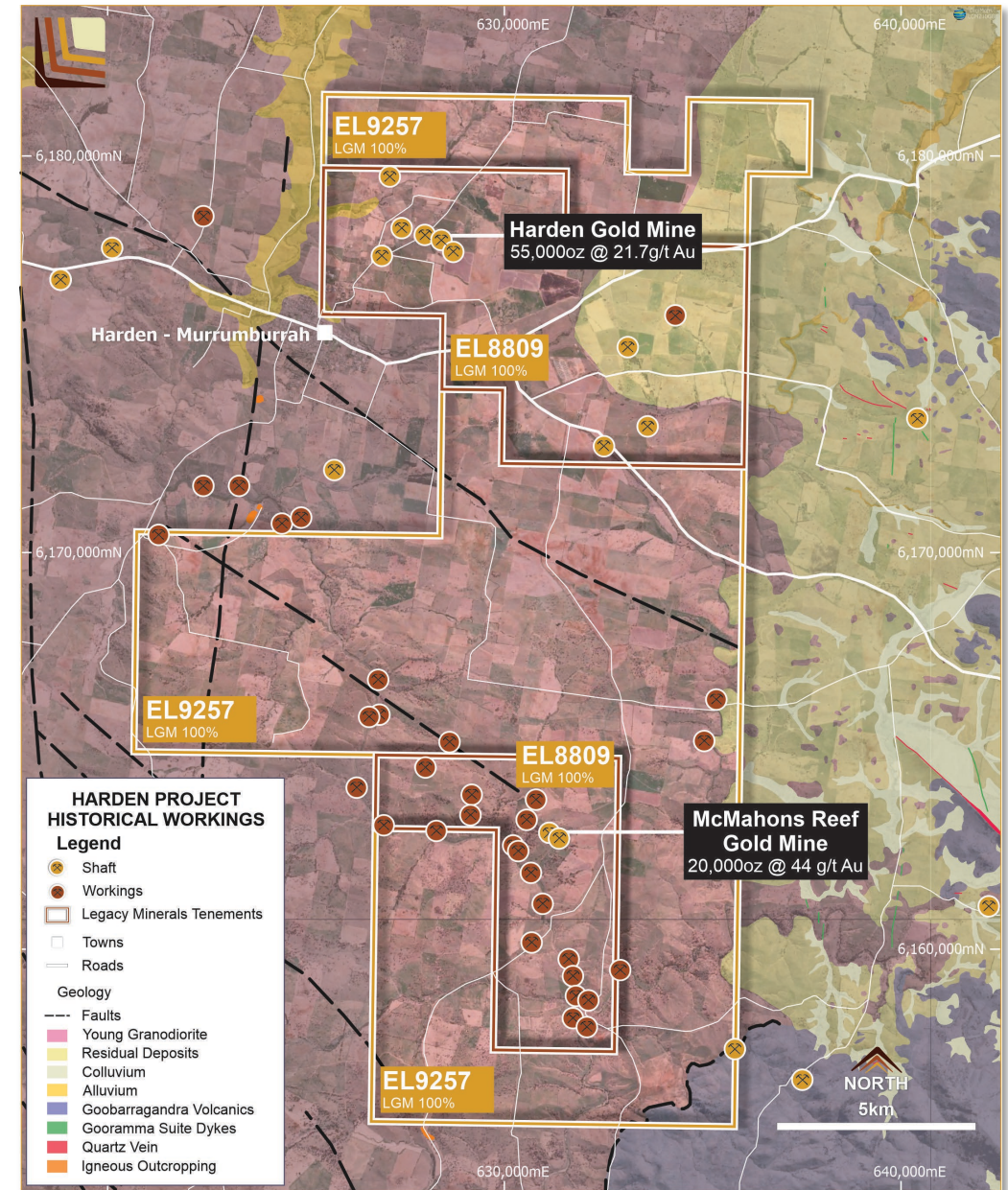
- **5m at 7.06g/t Au** from 110m incl. **2m at 17.17g/t Au** (RC21HN005)
- **4m at 4.12g/t Au** from 79m incl. **3m at 6.41g/t Au** (RC21HN006)
- **6m at 3.65g/t Au** from 128m incl. **3m at 6.41g/t Au** (RC21HN011)
- **3.6m at 21.7g/t Au** from 116m incl. **2m at 37.9g/t Au** (MR05)
- **3m at 10.8g/t Au** from 20m incl. **1m at 19.2g/t Au** (HP27/8)

## Significant project scale

- Multiple known mineralised faults with significant potential to define more

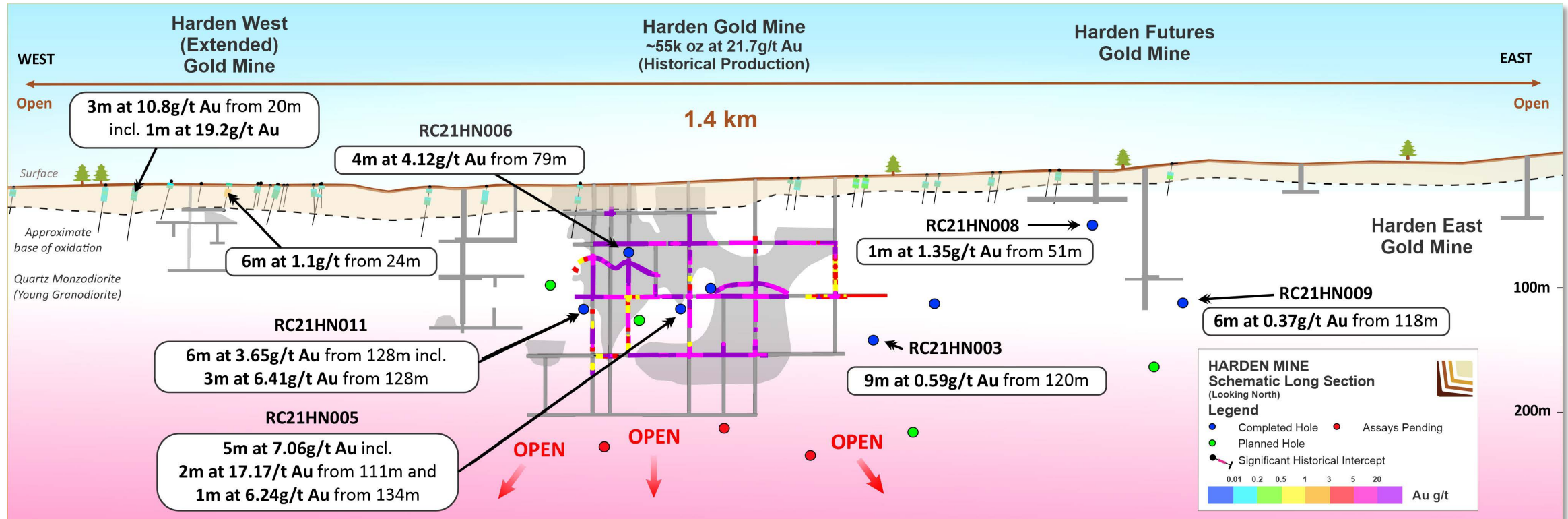
## Early Rudimentary Mining = Grade Left Behind

- Interpreted cut-off grade between 12-15g/t Au<sup>1</sup>
- 1907 - earmarked hydro electric project that would have helped dewater the mine not delivered until 1928
- **Mining operations ceased in 1913<sup>1</sup>**



# DEVELOPING GOLD DISCOVERY

## Harden Mine Corridor



### What to look for in the next 6 months

- Diamond drilling assays (Feb/Mar)
- Drill plans to follow up on results from diamond drilling



A photograph of a rocky, hilly landscape. In the foreground, there are dark, jagged rock formations with some green plants and dry grass growing on them. A large, leafy tree stands on the right side of the frame. The background shows a clear blue sky with some light clouds and distant hills.

ROCKLEY  
Cu - Au

**Prime position in a previously  
over-looked porphyry district  
in the Lachlan Fold Belt**



# EMERGING PORPHYRY DISTRICT

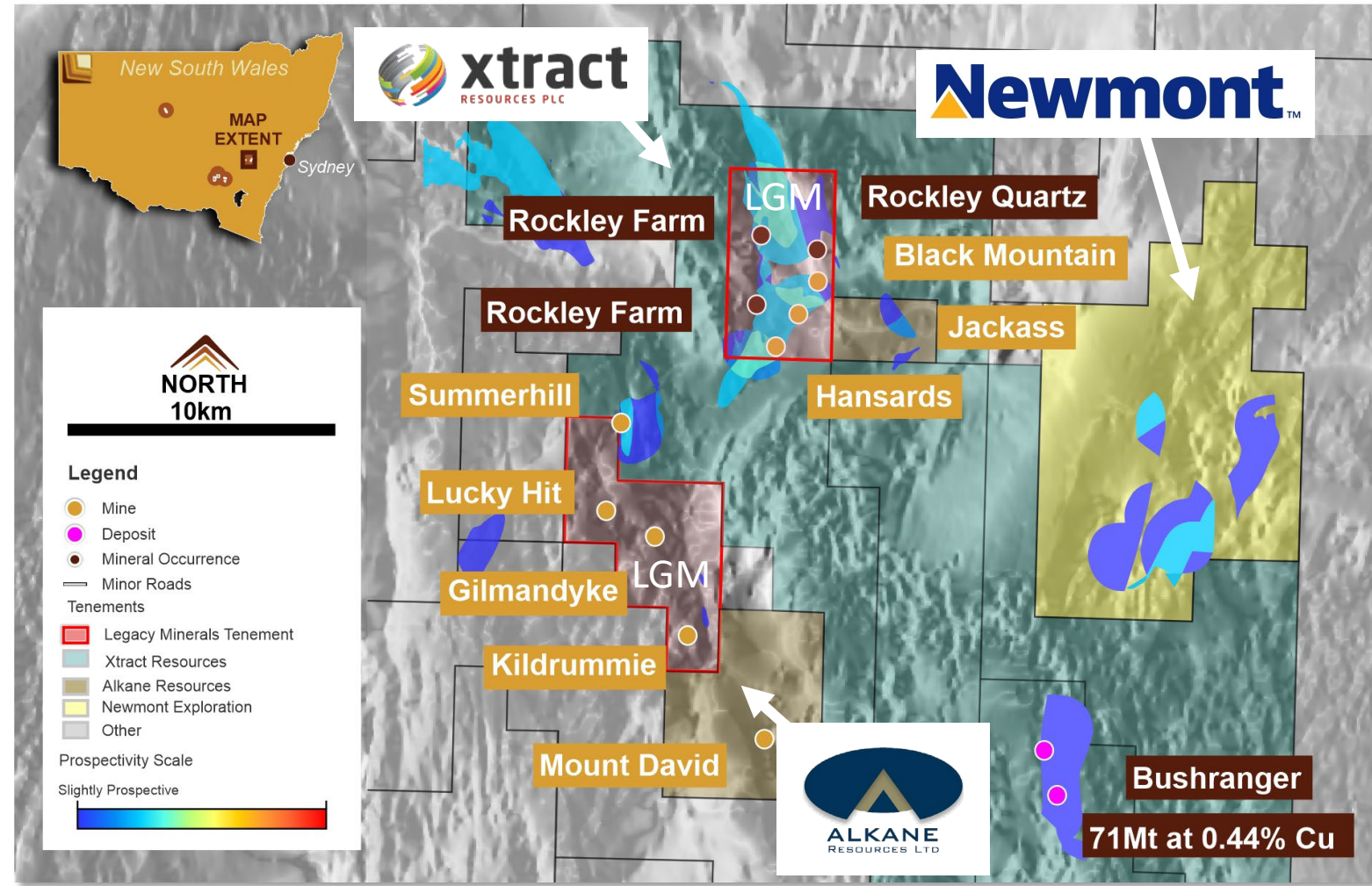
## The Bushranger Porphyry (LON:XTR)

- Inferred Mineral Resource **71Mt at 0.44% Cu<sup>1</sup>**
  - “Good chance” of 500Mt<sup>1</sup>
- Projected to **1bt Project** in the future<sup>1</sup>
- High-grade mineralised cap<sup>1</sup>
  - **Preserved close to surface**
  - Drilling intercepts the porphyry **from 11m**
- Recent intercepts include:
  - **920m @ 0.3% Cu inc. 156m @ 0.48% Cu<sup>2</sup>**

## LGM Porphyry prospectivity recognised

Assessment by the Geological Survey of NSW found the Legacy Minerals tenement to **be the most prospective area for porphyry related Cu-Au** within the entire Rockley-Gulgong Volcanics

**Surrounded by world class miners/explorers**



# ROCKLEY - Growing copper-gold story

## All the right ingredients to host a Cu-Au porphyry

- Right host rocks in the right district
  - Macquarie Arc **Ordovician** host rocks
  - In the **Lachlan Transverse Zone (LTZ)**
- **Historic high grade gold and copper mines** grading up **21% Cu**
- Geochemically anomalous - rock chips up to **4% Cu**
- Geophysically anomalous – potassium high and magnetic low

## Overlooked and untested

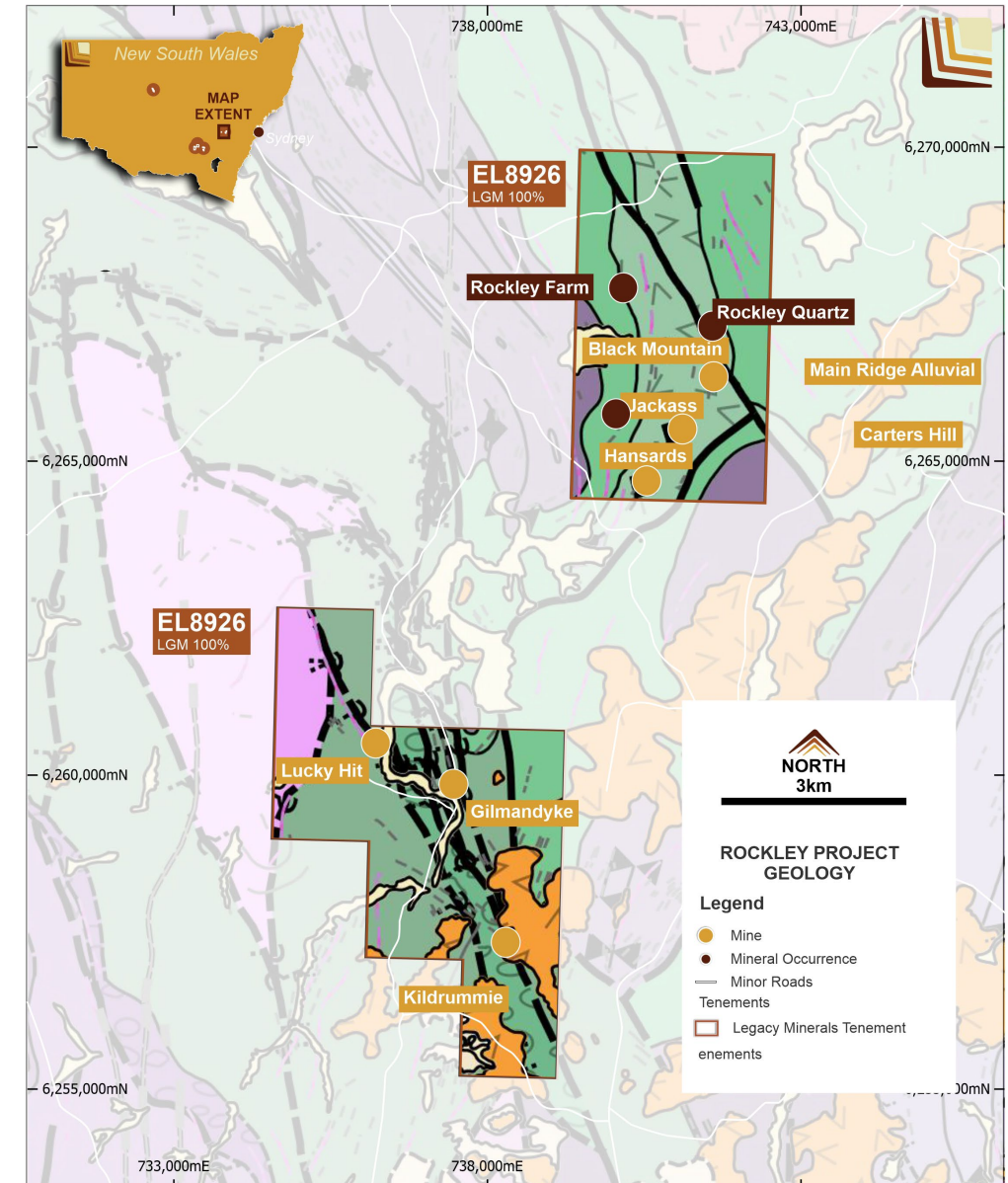
- District proven to host significant porphyry mineralisation
- Limited of geochemistry sampling and geophysical surveys across the tenement
- Scarcity of drilling across the tenement
  - Only 22 RAB historical holes in south of the porphyry area of interest
  - **No holes deeper than 15m depth**



Pyrite vein within silica altered sandstone (assays pending)  
Rockley Quartz Prospect



Bucky quartz vein with azurite staining (assays pending)  
Quartz Hill Prospect





# ROCKLEY – Another preserved porphyry?

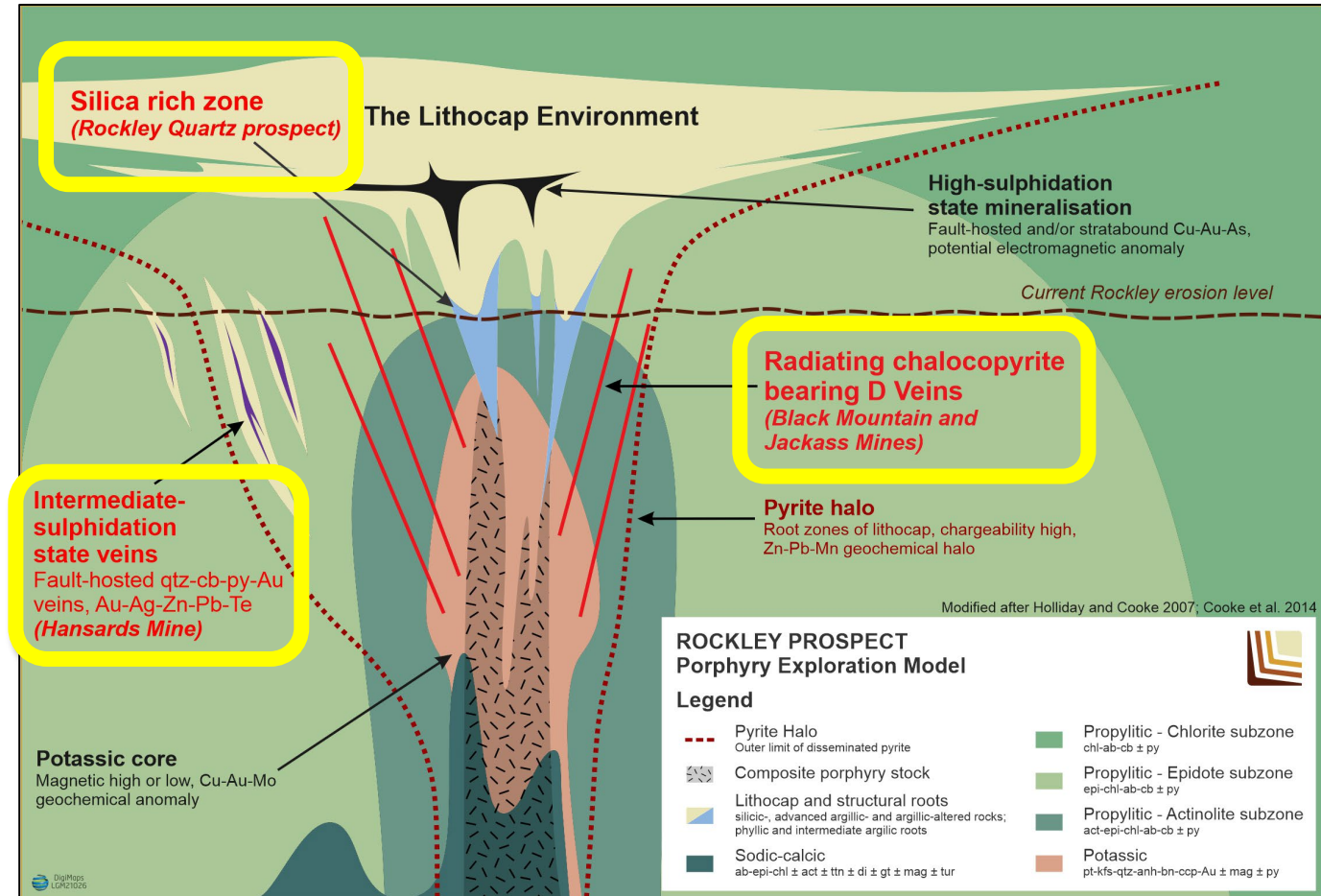


## Carbonate blades (Rockley Quartz Prospect)

The presence of moulds and quartz replacement of Bladed Carbonate of interpreted epithermal origin indicates the preservation of porphyry mineralisation at depth <sup>1</sup>.

## What to look for in the next 6 months

- Rock chip assays (Feb)
- Airborne magnetics and radiometrics (Mar)
- Large scale soil geochemistry program (May)



Schematic interpretative model for the project modified after Holliday and Cooke 2007; Cooke et al. 2014





COBAR  
Au-Cu-Pb-Zn

FONTENOY  
Cu-Au

MULHOLLAND  
Sn-Ni-Cu

**Diversity of quality exploration assets**

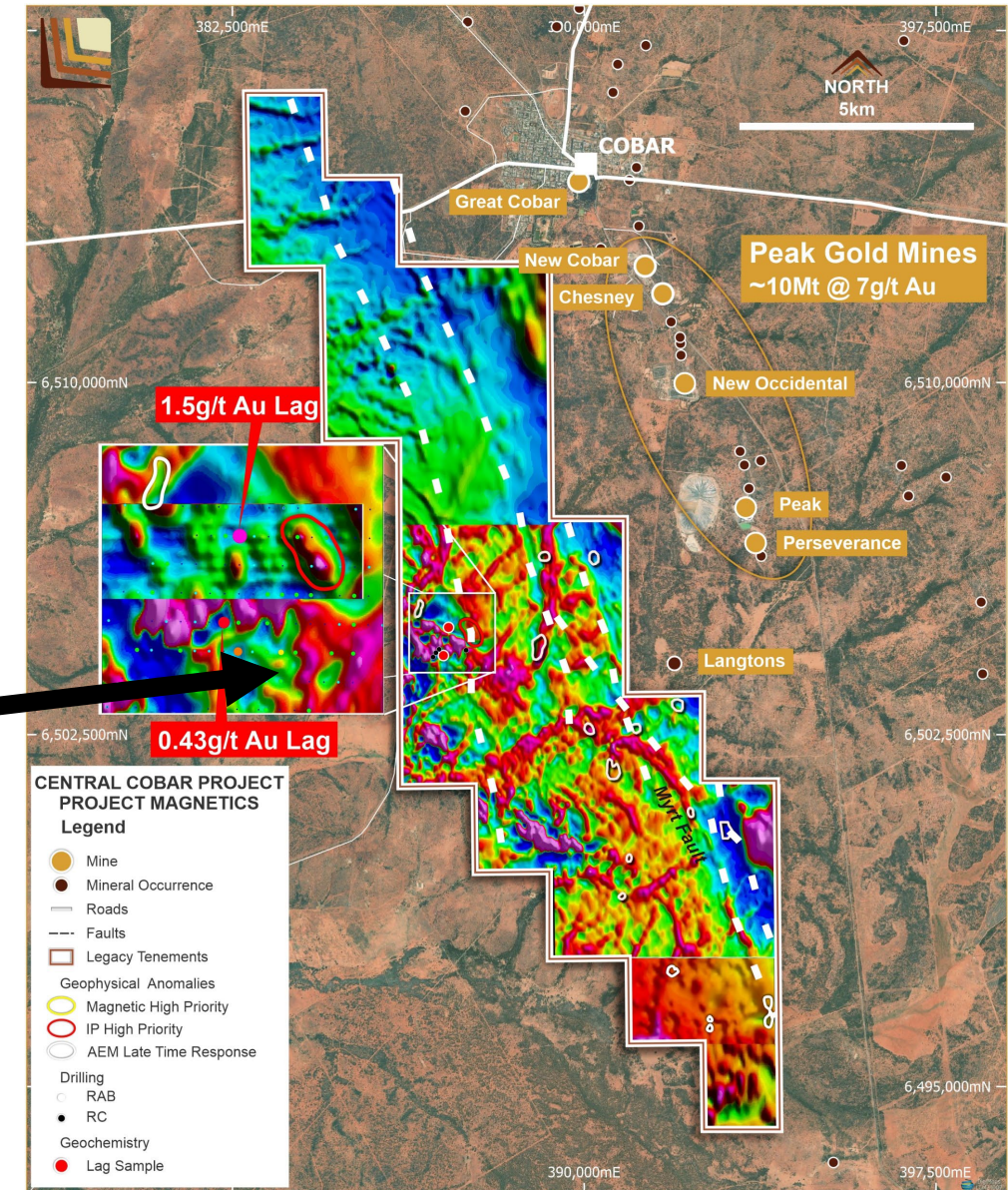


# COBAR – ENVIABLE POSITION

## Untested potential within a world class mining district

- **Undrilled geophysical anomalies**
  - AEM conductors, IP, and magnetic targets
- **Geochemically anomalous**
  - Gold in lag up to **1.5g/t Au & 0.43g/t Au<sup>1</sup>**
- **Detail aerial magnetic results returned**
  - Highlight significant structural complexity
  - Numerous coincident AEM conductors

**Workings**  
(Yarrowonga  
Anomaly)





# MULHOLLAND

## Emerging tin-copper and nickel district

- Located 500m S-E of Sky Metals (ASX: SKY) growing Sn-Cu 3KEL prospect and less than 3km from their Sn-Cu Doradilla Prospect
- SKY raised \$5.8M in October to explore for tin and focus on Doradilla

## Mulholland Prospectivity and Geology

- **Known skarns and untested anomalies<sup>1</sup>** – Bobs Tank/Mulga Tank
- Covers several significant drill ready Ni and Sn-W prospects

## Tin drilling<sup>2</sup>

Two drill holes, **1,200m apart** tested the EM conductor and intersected:

- **6m at 0.21% Sn** from 99.75m and **2m at 0.17% Sn** from 117m

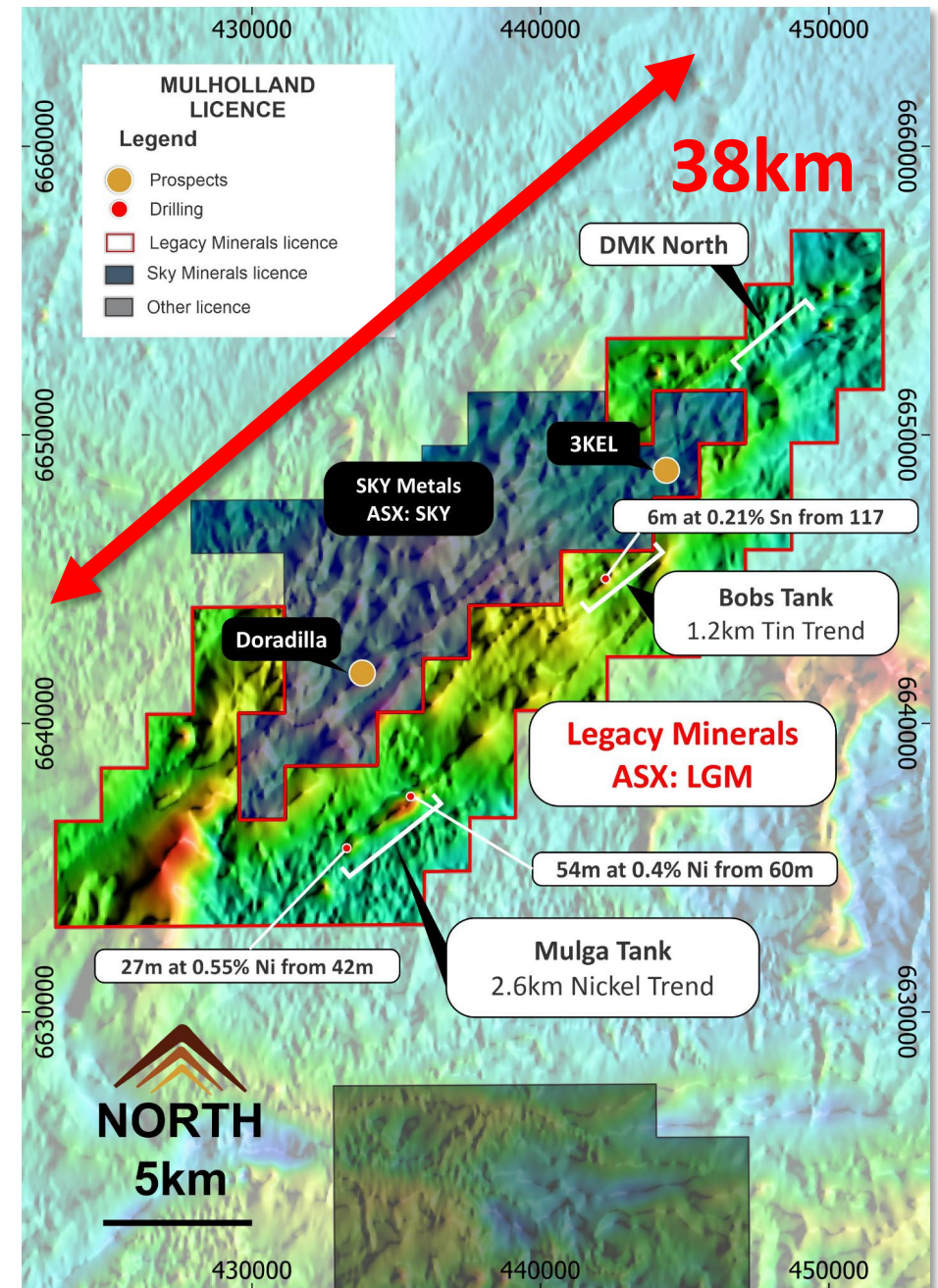
## Nickel drilling<sup>2</sup>

Significant intercepts include:

- **44m at 0.45% Ni** from 42m incl. **27m at 0.55% Ni**
- **54m at 0.40% Ni** from 63m incl. **15m at 0.50% Ni**

Open at depth:

- From a 2008 18 hole RAB campaign **9 of the 13 mineralised holes ended in mineralisation**



# FONTENYO

## Large Copper and Gold System

- Multiple wide Au and Cu drill intercepts
- Mineralised for +8km in length
  - Numerous undrilled walk up drill targets
  - Mineralised from surface
- Potential for moderate-high grade structurally controlled Au-Cu
- Three main target areas

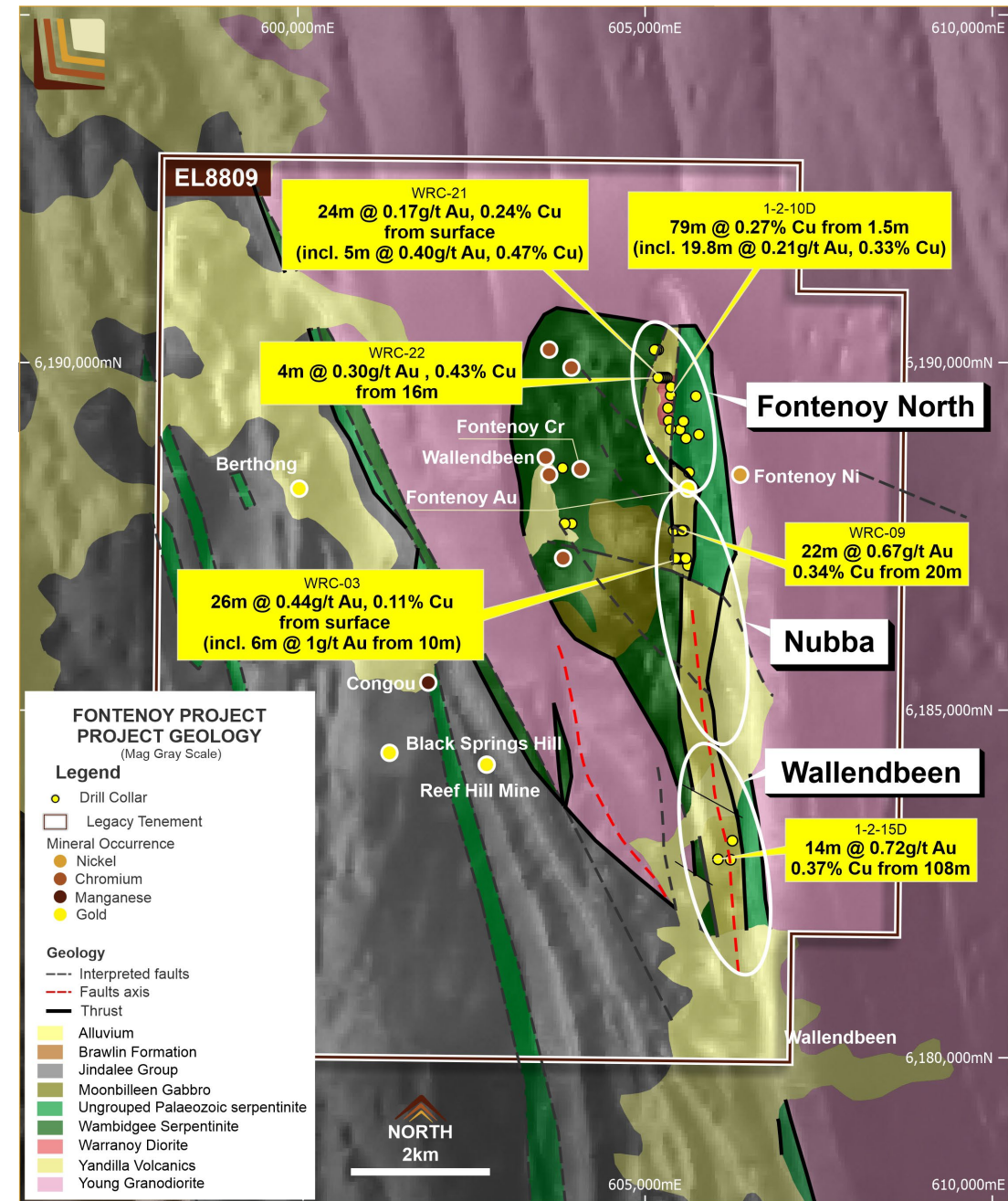
## Highly encouraging drilling

Highlight Drill intersects include:

- **79m at 0.27% Cu** from 1.5m incl. **8.8m at 0.33g/t Au**
- **26m at 0.44g/t Au** from surface incl. **6m at 1g/t Au**
- **14m at 0.73g/t Au** and **0.34% Cu** from 108m.

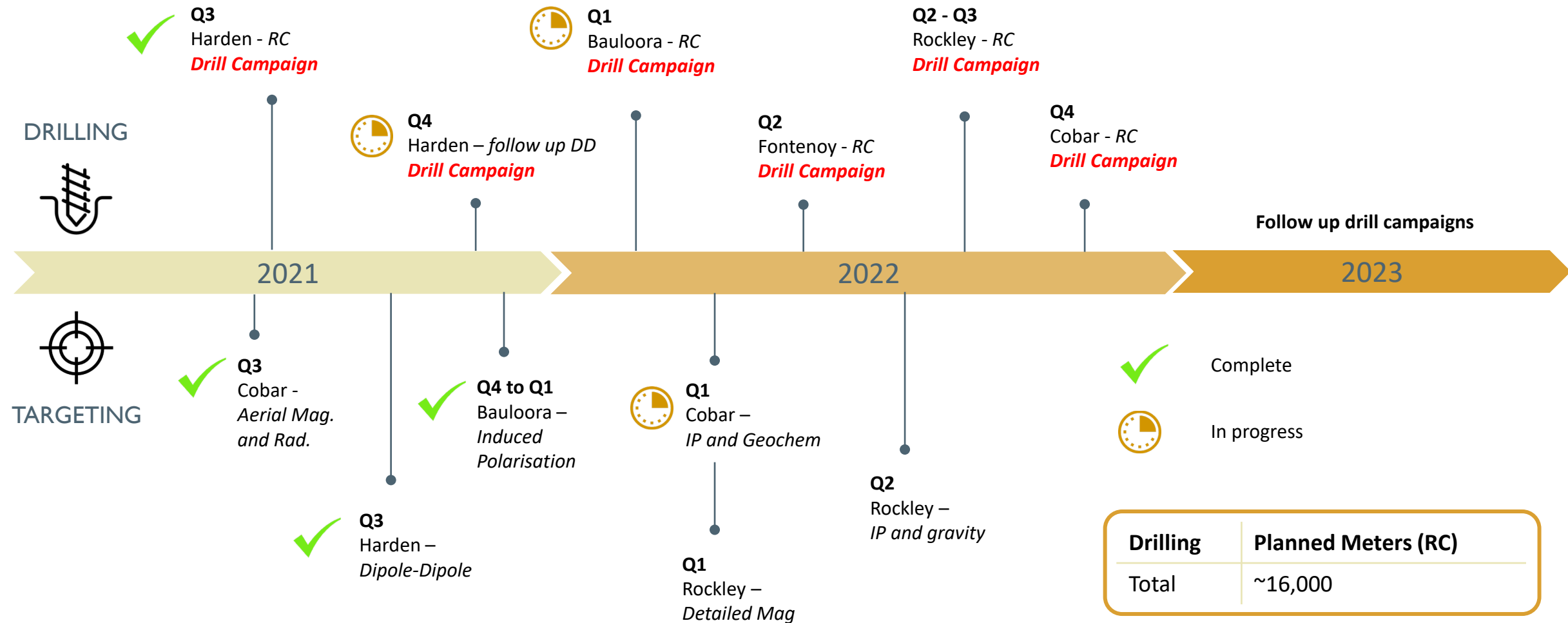


LEGACY MINERALS



8km

# EXPLORATION PROGRAM





# INVESTMENT SUMMARY



Immediate discovery opportunities



Value leveraged to exploration success



Depth of projects and quality tenements



Focused on delivering shareholder value



LEGACY MINERALS

## CONTACT

**ASX:LGM**

**Chris Byrne**

*CEO and Managing Director*

[chris.byrne@legacyminerals.com.au](mailto:chris.byrne@legacyminerals.com.au)

**+61 (0) 499 527 547**

**Victoria Humphries**

*Media & Investor Relations*

[victoria@nwrcommunications.com.au](mailto:victoria@nwrcommunications.com.au)

**+61 (0) 431 151 676**