



# A Strategic and Diversified Australian Exploration Portfolio Focused on Critical Commodities

Investor Presentation

April 2022

**ASX:NMR**



# Disclaimer

In preparing this information Native Mineral Resources did not take into account the investment objectives, financial situation and particular needs of the individual investors. Before making an investment decision on the basis of this information, the investor needs to consider, with or without the assistance of a financial advisor, whether the investment is appropriate in light of their particular investment needs, objectives and financial circumstances.

## Forward Looking Statements

Native Mineral Resources has prepared this presentation based on information available to it. No representation or warranty, express or implied, is made as to the fairness, accuracy, completeness or correctness of the information, opinions and conclusions contained in this announcement. To the maximum extent permitted by law, none of Native Mineral Resources, its directors, employees or agents, advisers, nor any other person accepts any liability, including, without limitation, any liability arising from fault or negligence on the part of any of them or any other person, for any loss arising from the use of this announcement or its contents or otherwise arising in connection with it. The information contained within this document is not an offer, invitation, solicitation or other recommendation with respect to the subscription for, purchase or sale of any security, and neither this announcement nor anything in it shall form the basis of any contract or commitment whatsoever. This announcement may contain speculative and forward-looking statements that are subject to risk factors associated with the exploration for gold, copper, nickel and other minerals and metals, mining and production businesses. It is believed that the expectations reflected in these statements are reasonable but they may be affected by a variety of variables and changes in underlying assumptions which could cause actual results or trends to differ materially, including but not limited to price fluctuations, actual demand, currency fluctuations, drilling and production results, Resource or Reserve estimations, loss of market, industry competition, environmental risks, physical risks, legislative, fiscal and regulatory changes, economic and financial market conditions in various countries and regions, political risks, project delay or advancement, approvals and cost estimates. The information in this document relates to, and contains extracts and modified figures from, previous ASX public announcements made by Native Mineral Resources. Native Mineral Resources confirms that it is not aware of any new information or data that materially affects the information included in the in the following presentation and that all material assumptions and technical parameters underpinning the information provided continue to apply and have not materially changed. No reference to Resource or Reserves are presented and all projects are exploration phase only.

Authorised to release to the ASX by Mr. Blake Cannavo, CEO.

## Competent Person statement

The information that relates to Exploration Targets and Exploration Results is based on, and fairly represents, information compiled by Dr Simon Richards, a Competent Person, who is a Member of the AIG and AusIMM. Dr Richards is the Chief Geologist of NMR. Dr Richards has sufficient experience in both mining and exploration, which is relevant to the style of mineralisation and type of deposit under consideration, and to the activity he is undertaking, to qualify as a Competent Person as defined in the 2012 Edition of the 'Australasian Code for Reporting of Exploration Results, Mineral Resources and Ore Reserves'. Dr Richards consents to the inclusion of the matters based on his information in the form and context in which it appears.

# Corporate Snapshot

Native Mineral Resources (**ASX:NMR**) is a company focused on the exploration of a strategic and diversified Australian exploration portfolio focused on critical commodities including copper, nickel, gold, REE, PGE, cobalt and lithium.

The Company's holds projects in both Western Australia and Queensland, located in pedigree Australian exploration settings, in highly competitive ground, with its projects comparable to those of global significance.

## Directors & Management

Blake Cannavo	Managing Director & CEO
James Walker	Non-Executive Chair
Philip Gardner	Non-Executive and Independent Director
Marika White	Company Secretary

**NMR**  
ASX Code

**\$0.205**  
\*Share Price

**99.13m**  
\*Shares on Issue

**\$20.32m**  
\*Market Cap

**\$2.43m**  
Cash at 31 Dec 21

# Investment Highlights



## Truly strategic and diversified portfolio of Critical Commodities

→ NMR are developing previously identified Copper, nickel, gold, REE and PGE targets



## Leaders amongst giants

→ Committed to exploring frontier terrains where exploration can have significant rewards (e.g. Olympic Dam)



## Balanced risk profile

→ Explore both frontier and proven deposit-hosting terrains where mineral discovery is low-risk but high-potential



## Explore using smart technologies and smart geology

→ To create a competitive advantage



## Forward thinking

→ NMR continually add value to targets by creating previously unrecognised opportunities for discovery



# Company Overview

## CAPITAL STRUCTURE – 5 April 2022

Current Holding Balance Shares	99.127M
Share Price	A\$ 0.205
Market Capitalisation	A\$ 20.32M

## BOARD OF DIRECTORS

Mr. Blake Cannavo	Managing Director & CEO
Mr. James Walker	Independent & Non-Exec Chair
Mr. Philip Gardner	Independent & Non-Exec Director
Ms. Marika White	Company Secretary

## MANAGEMENT TEAM

Mr. Blake Cannavo	Managing Director & CEO
Dr. Simon Richards	Chief Geologist
Mr. Isaac Eadndel	Senior Geologist
Mr. Andrew Chung	Project Services Manager
Mr. David Pensini	General Manager
Mr. Chris Jacobs	Chief Financial Officer



Blake Cannavo  
Managing Director & CEO



James Walker  
Independent Non-Exec  
Chair



Philip Gardner  
Independent Non-Exec  
Director



Marika White  
Company Secretary



Dr. Simon Richards  
Chief Geologist



Isaac Eadndel  
Senior Geologist



Andrew Chung  
Project Services  
Manager



David Pensini  
General Manager



Chris Jacobs  
Chief Financial Officer



# Company Strategy

## Building a strategic exploration portfolio

NMR has a clear strategy for short and long-term exploration and company growth

### Short lead-in time to discovery



NMR have a diversified portfolio with specific tenements containing targets that are well-defined and “ready-to-drill”. Nullarbor Ni and IOCG targets, Maneater Au Cu

### Smart exploration to grow portfolio value



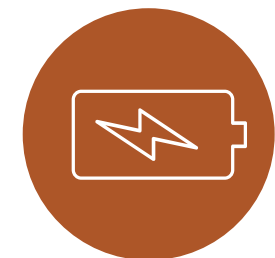
NMR will target specific regions utilising new and proven exploration techniques and technologies.

### Holding and exploring ground in Tier-1 Regions



Obtaining ground in prospective regions with competitive tenement areas surrounded by “Giants” drives market cap

### Critical Commodity Focus



Cu, Ni & Au with significant opportunity for Co, PGE, and REE, all required for EV's. Lithium potential on all tenements, particularly Mt Vettors.



# World-class asset portfolio

Location	Tenement ID	Tenement Name	Sub-Block (Sqkm)	Key Commodity	Status
Palmerville, QLD	11980	Limestone Creek	4 (13.2)	Cu, Au	Granted, 100% NMR Owned
Palmerville, QLD	18325	Bald Hills	15 (49.4)	Cu, Au	
Palmerville, QLD	19537	Mitchell River South	33 (108.6)	Cu, Au	
Palmerville, QLD	26891	Palmerville North	63 (207.27)	Cu, Au	
Palmerville, QLD	26893	Palmerville West	100 (329)	Cu, Au	
Palmerville, QLD	26894	Palmerville East	84 (276.36)	Cu, Au	
Palmerville, QLD	26895	Palmerville South	63 (292.81)	Cu, Au	
Palmerville, QLD	27396	East Palmerville North	100 (329)	Cu, Au	
Palmerville, QLD	27452	East Palmerville South	65 (213.85)	Cu, Au	
Maneater Hill, QLD	28038	Maneater Hill	19 (62.51)	Cu, Au, Ag, Pb	Forecast Grant Q3 2022
Eastern Goldfields, WA	E37/1362	Music Well	58 (162)	Au, Li	Granted, 100% NMR Owned
Eastern Goldfields, WA	E37/1363	Music Well	39 (109)	Au, Li	
Eastern Goldfields, WA	E31/1203	Arcoona	61 (171)	Ni, Au, Li, REE	
Eastern Goldfields, WA	E24/210	Mt Vettters	35 (98)	Ni, Au, Li, REE	
Nullarbor, WA	E69/3849	South Nullarbor	25 (70)	Au, Cu (IOCG)	
Nullarbor, WA	E69/3850	Central Nullarbor	26 (72.8)	Au, Cu (IOCG)	
Nullarbor, WA	E69/3852	Helios	41 (114.8)	Ni, Cu, Co, PGE	
Nullarbor, WA	E69/4035	Mundra East	196 (TBA)	Au, Cu (IOCG)	Application
Nullarbor, WA	E69/4036	Mundra West	151 (TBA)	Au, Cu (IOCG)	Application
TOTAL			2,679.60 km²		



# Western Australia Project Snapshot

Surrounded by opportunity in productive  
and highly competitive ground

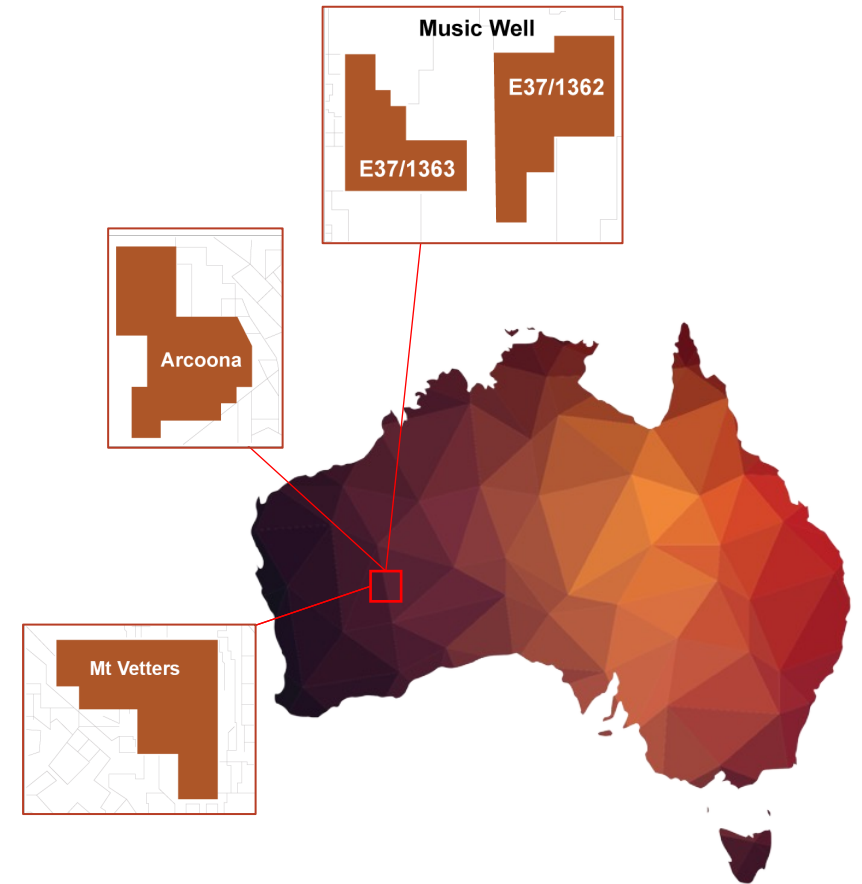
## Eastern Goldfields

### Au, Ni, REE & Li

- 4 Greenfields exploration tenements
  - Music Well (2 tenements), Arcona & Mt Vettters.
- Exploring granite hosted Au adjacent to proven “gold-in-granite” area.

### Surrounded by great projects

- **Northern Star** >660,000 oz Au combined resource and >400,000 oz Au past production (Bundarra project area).
- **Mandilla Project** Anglo Australia Resources (\$65m market cap)
- **Bundarra Project** Northern Star (2017 sold for \$8.5M)



# Western Australia Project Snapshot

Surrounded by opportunity in productive  
and highly competitive ground

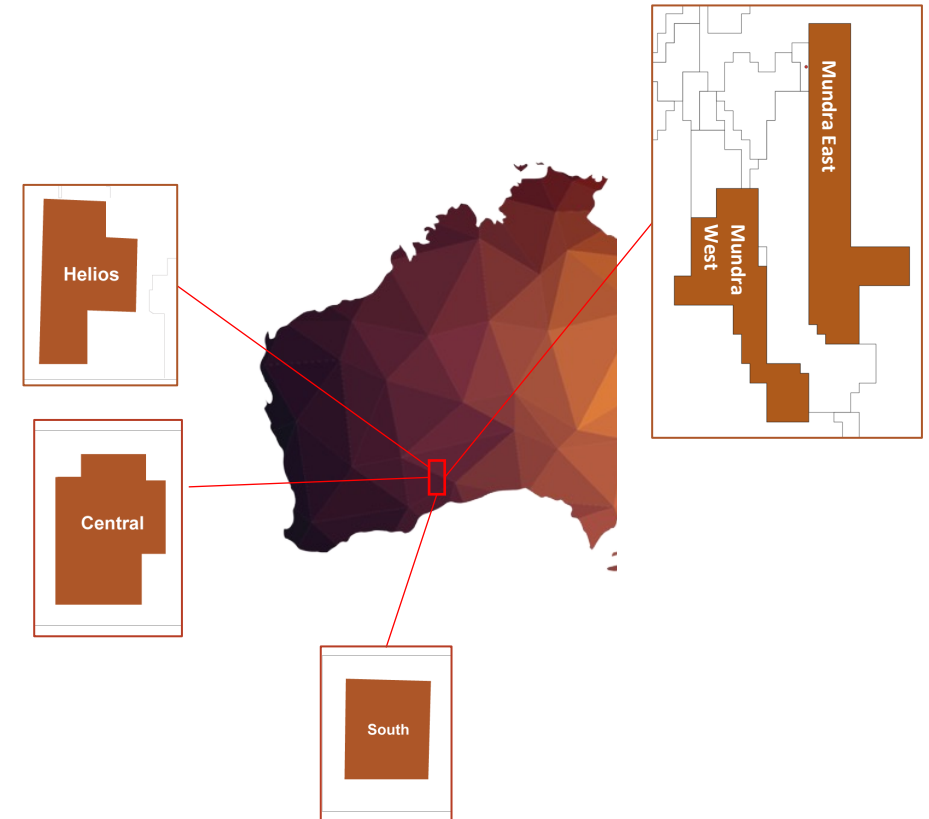
## Nullarbor Project

**Au, Cu, Ni, PGE & Co**

- 3 Greenfields exploration tenements – Helios, Central and Southern
- First explorer advantage
- Exploring for IOCG (Olympic dam type - BHP) and Intrusion-related Ni, Co, Cu & PGE
- IGO Nova-Bollinger (total Ni Resource is >20Mt @ ~2.25% Cu - \$7B market cap)
- Legend Mining Mawson Ni et al. (\$200m market cap)
- Surrounded by frontier exploration companies including Rio Tinto, Maria Resources, BHP Nickel West and Red Metals

*Four successful Ni discoveries from Four “eye” shaped targets incl Nova-Bollinger.*

*NMR’s “eye” meets the same exploration criteria! The odds are in NMR’s favour.*





# Queensland Project Snapshot

Surrounded by opportunity in productive  
and highly competitive ground

## Palmerville Project

### Cu & Au

- 9 x tenements in region with many copper and gold mines.

### Mines within the same Chillagoe Formation

- **Mungana Porphyry**, Base metal 1.956 Mt @ 14.3% Zn, 2.8% Cu, 2.2% Pb, 188g/t Ag and 1.15g/t Au (inferred 2 Moz Au)
- **Red Dome** pre-mining reserve of 15 Mt @ 2.6 g/t Au
- NMR just won competitive highly competitive Government Funding of \$200,000<sup>1</sup> to undertake project-wide geophysics.

## Maneater Breccia

### Cu, Au, Ag & Pb

- 1 x tenement over prospective, sulfide-bearing breccia pipe

Comparable to other breccia deposits in north QLD.

- **Mt Wright** (>1 Moz Au) ex Resolute Mining (\$359m market cap)
- **Mt Leyshon** (>3.5 Moz Au)
- **Kidston** (>5 Moz Au)



<sup>1</sup> ASX Release - [NMR awarded \\$200,000 CEI grant](#) – 18 February 2022



# West Australian Projects



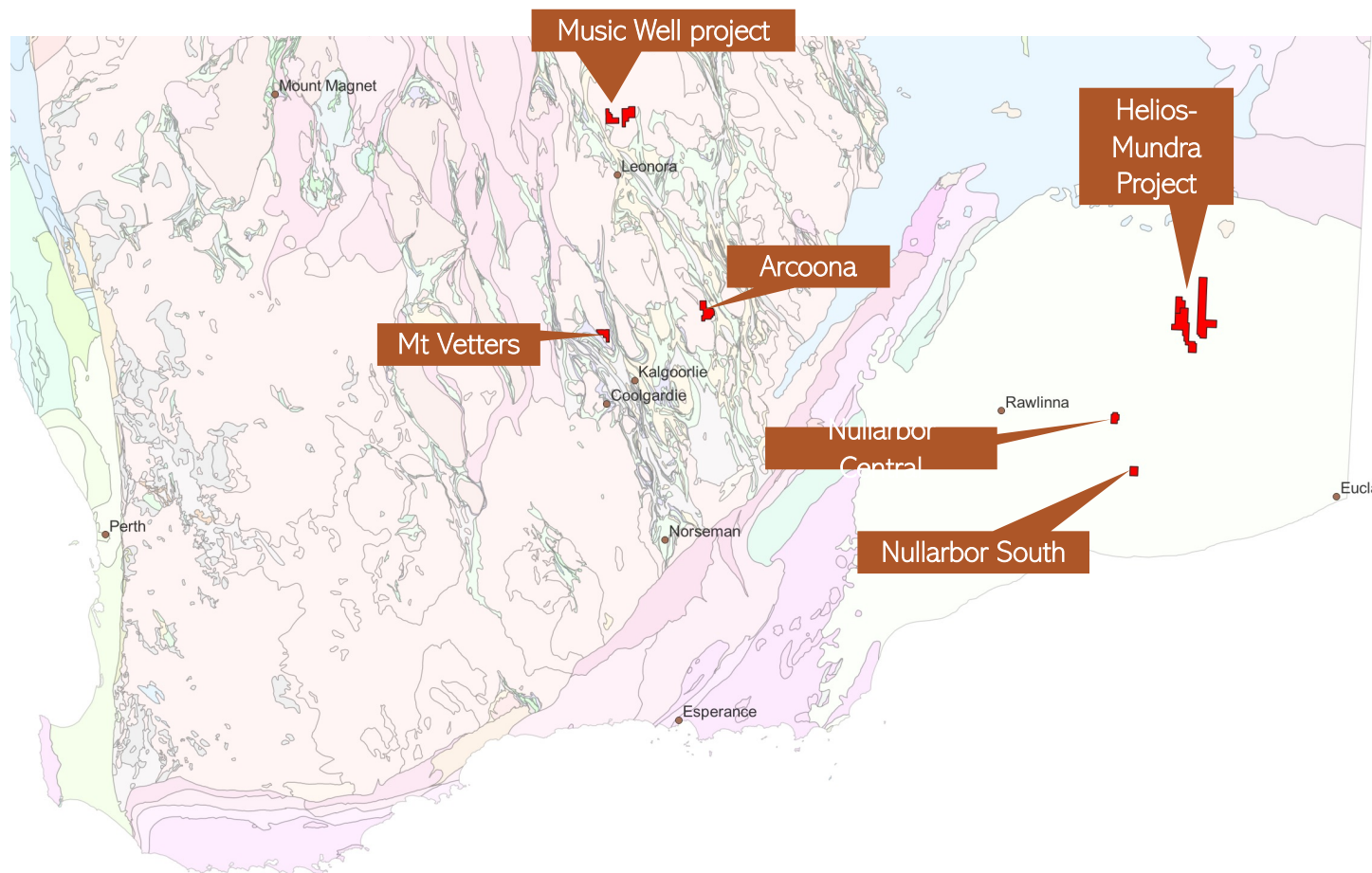


# Western Australia: Project Highlights

## Tenements and targets in a world class mining district



- Clearly defined exploration portfolio targeting critical minerals and metals
- Exploration currently underway on projects in world class areas
- Multiple factors driving positive growth in tenement value
- Key commodity focus (Au, Ni, Cu, PGE, REE)
- Rapid project development
- Experienced team

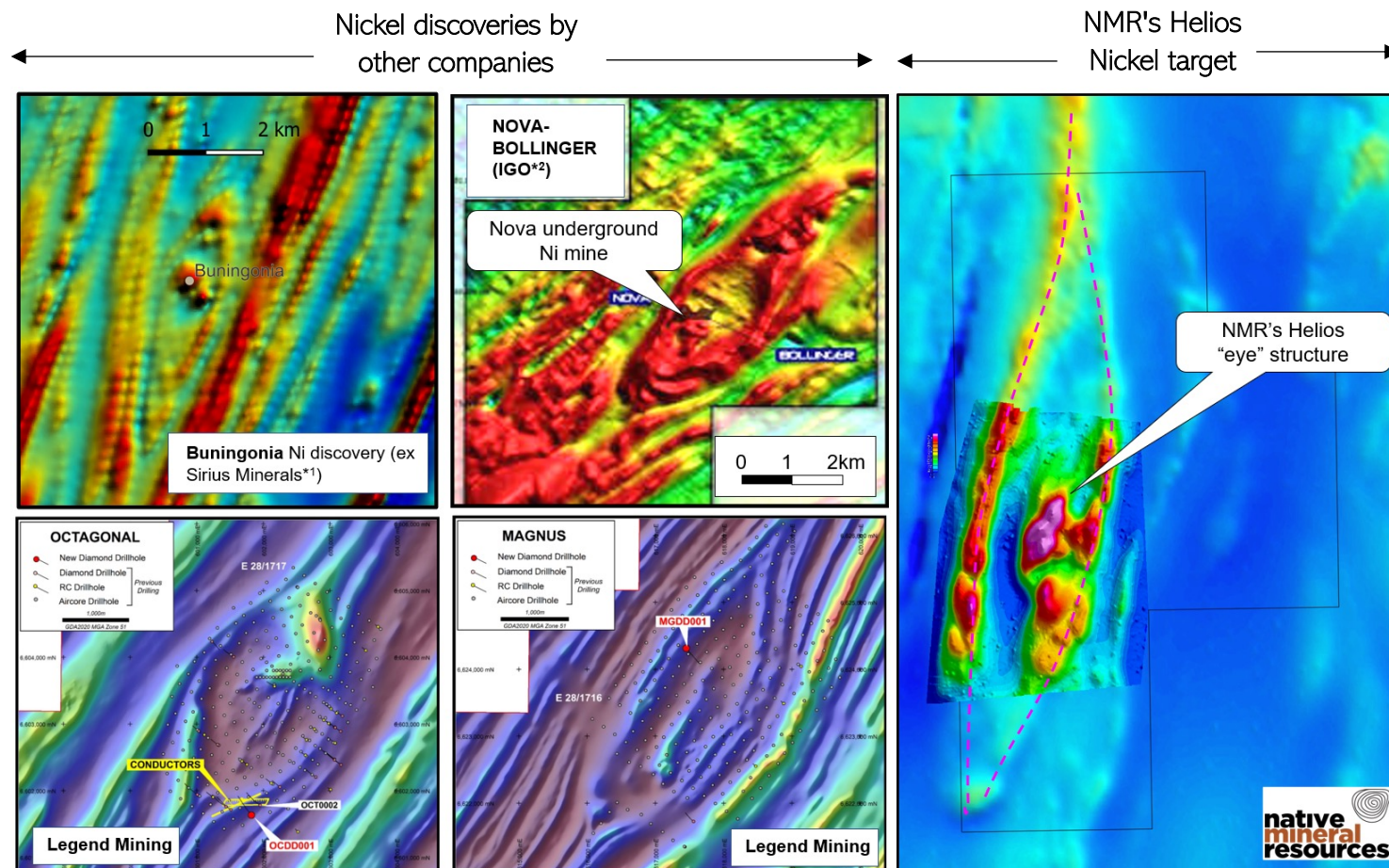


# Nullarbor Project: Helios Nickel Target - WA



Five eye-shaped targets in the adjacent Frazer Range have proven Nickel, including the Nova-Bollinger Ni, Cu, Co deposit - NMR believes it has the sixth Nickel eye.

- First drill hole completed to 500m depth and over 350m of diamond drilling into basement rocks - with assays awaiting<sup>1</sup>
- No previous drilling – Frontier Terrain
- Extremely prospective – meeting all the requirements to date for other peer deposits and deposit styles
- Drone-based geophysics completed by late 2021 - only a few weeks after being granted
- Nickel, platinum and palladium already identified in drilling on the tenements to the west of 69/3852
- Mining majors looking for Nickel, Copper, Gold and other minerals surrounding the Tenement
- NMR first mover advantage = choice of the best targets



<sup>1</sup> ASX Release - [Exploration update - Helios and Central](#) - 9 March 2022



# Nullarbor Project WA: Helios

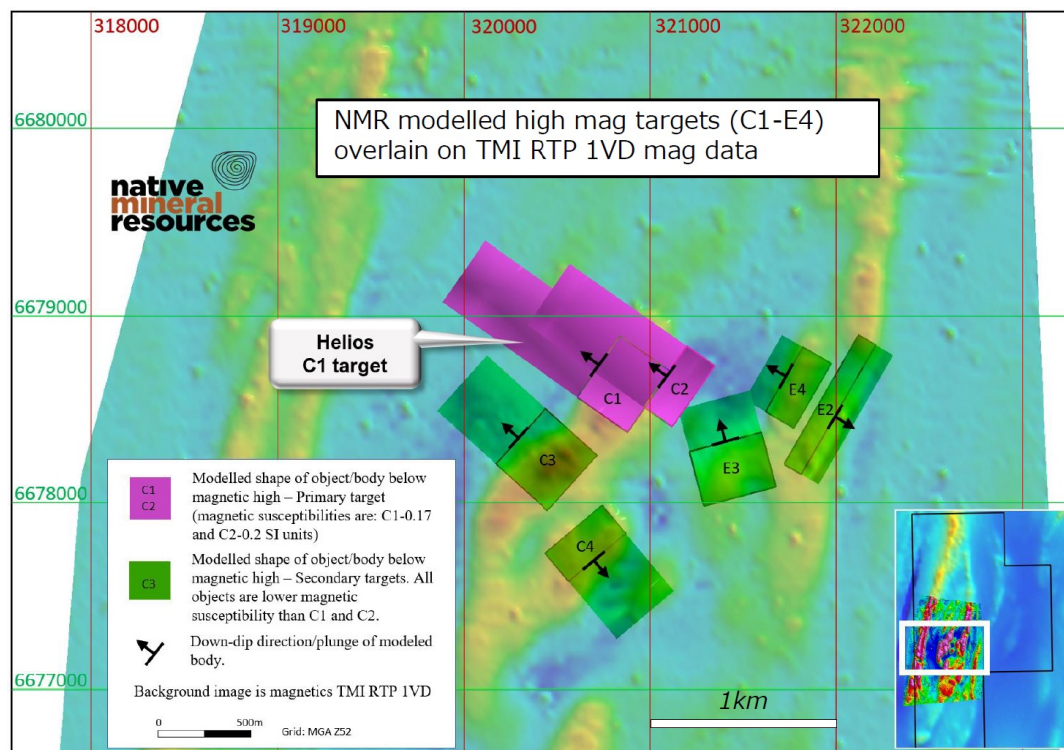
## Comparing with other Nickel deposits



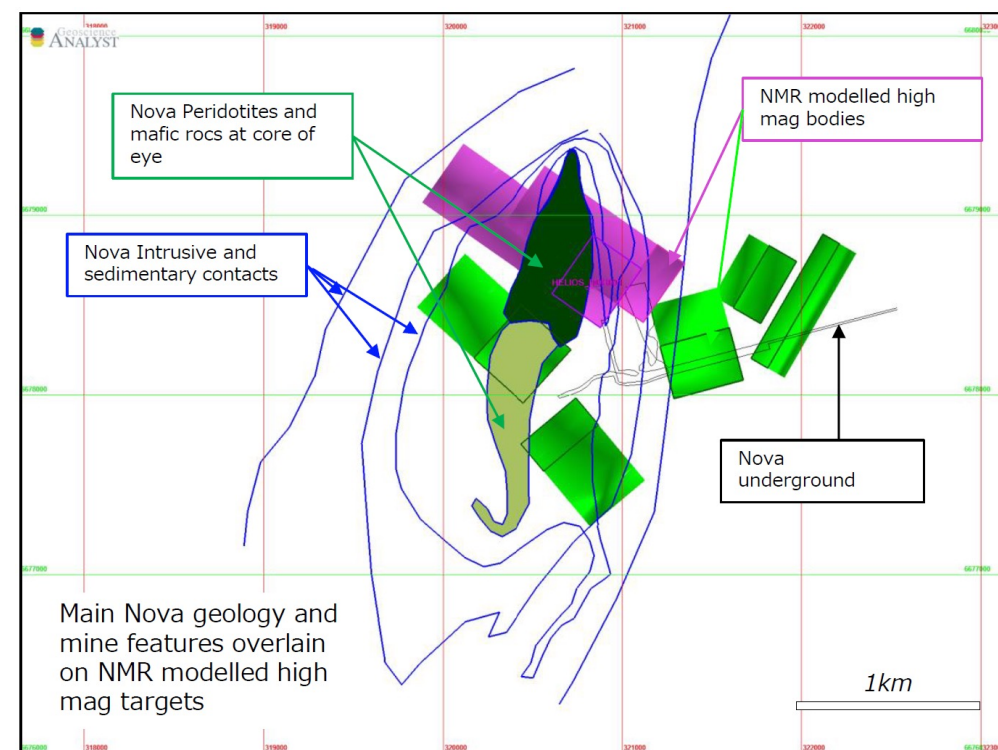
Features are directly comparable with the Nova-Bollinger Eye

- Same size and shape as the Nova-Bollinger nickel deposit area and host rocks
- Same age rocks dated by WMC ~50km to the NE (1400-1100 Ma)
- Modelling demonstrated high magnetic bodies (17-20 x 10<sup>-3</sup> SI units) in the center of the eye, similar to Nova-Bollinger.

**Helios - Modeled magnetic bodies**



**Simplified geology outline from the Nova-Bollinger Ni deposit overlain on Helios modeled magnetic bodies**



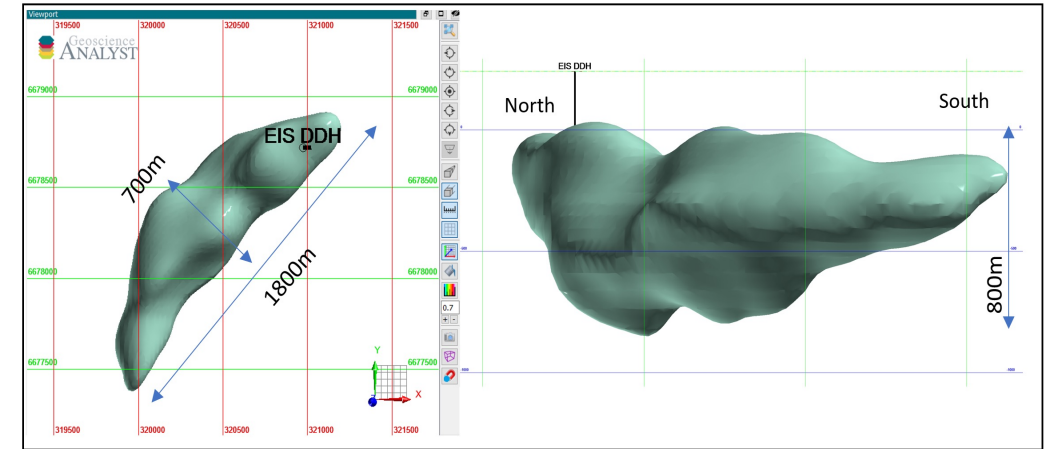
# Nullarbor Project WA: Helios

## Comparing with other Nickel deposits

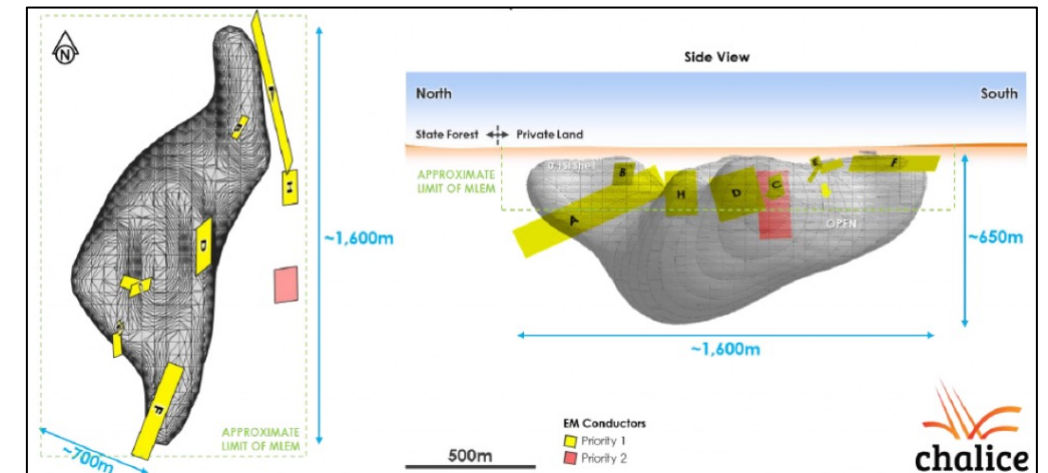


**Magnetic inversion iso-surface is directly comparable with the Julimar-Gonneville Nickel deposit.**

- The magnetic inversion of drone and airborne magnetics from both projects are a similar size and shape.
- Same age rocks dated by WMC ~50km to the NE (1400-1100 Ma.).
- Modelling demonstrated high magnetic bodies (17-20 x 10<sup>-3</sup> SI units) in the center comparable to the Gonneville intrusive suite.
- NMR to complete Electromagnetic survey over Helios to help pinpoint sulfides.



**Helios - drone-mag inversion iso-surface**

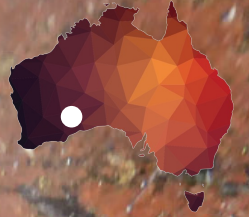


**Julimar (Gonneville) - Air-mag inversion iso-surface**



# Nullarbor Project WA: Helios

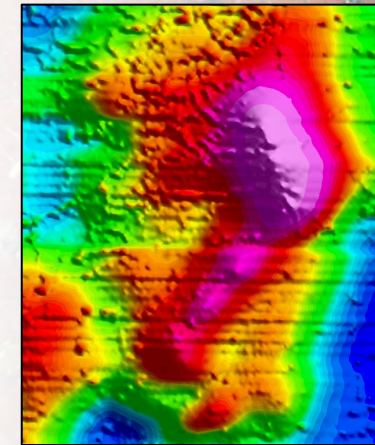
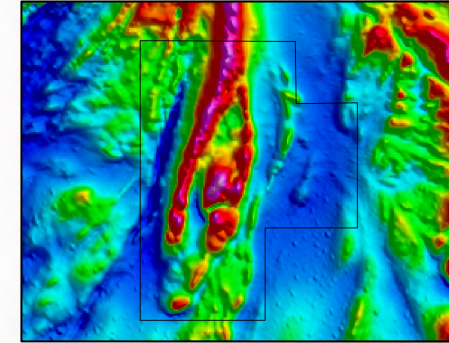
## Expectations for 2022-2023



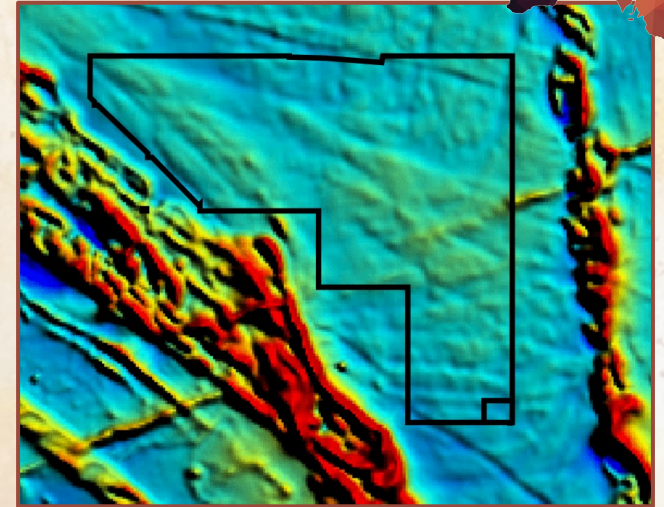
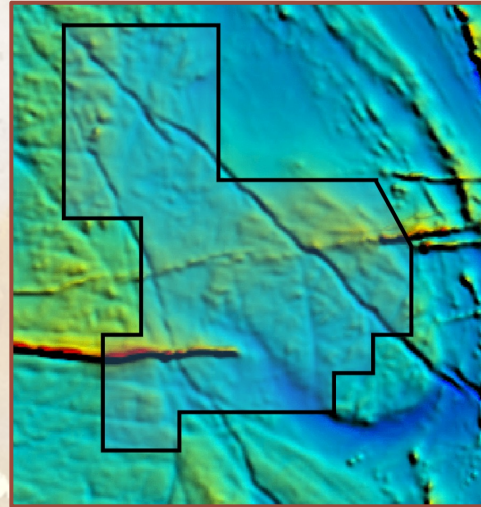
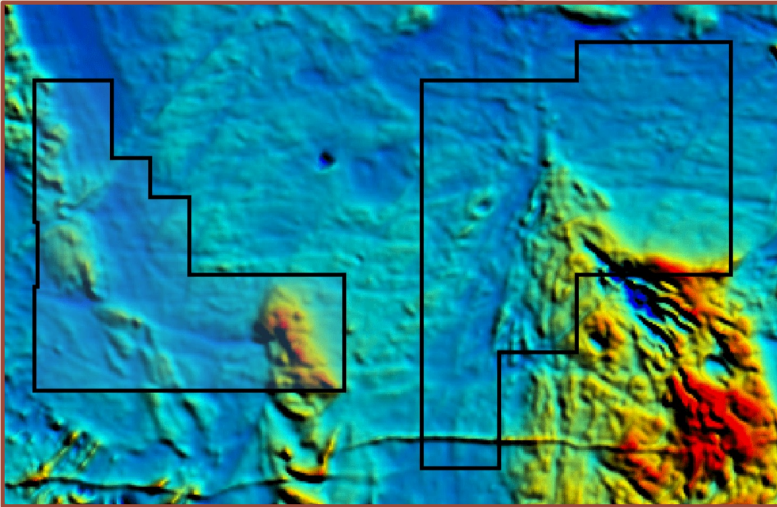
### Expectations for 2022-2023 – Nullarbor

- 1) NMR have already completed drilling at Helios and have submitted samples for assay and geochemistry.
- 2) NMR are planning an electromagnetic (EM) survey which will aim to delineate the “conductive” metal sulfides that we are anticipating near the current drill hole.
- 3) A gravity survey is planned for both the central and northern tenements. Metal has a high density so this technique will be used to constrain the potential zone of mineralisation. Combining magnetics, gravity and EM with our initial drill results will give NMR both quick, and sulfide-targeted results.
- 4) Once NMR identify the sulfide targets on each tenement, drilling will continue to test the extent and depth of mineralisation.

NMR are targeting both intrusion-related Ni-Co-Cu-PGE mineralisation at Helios along with IOCG mineralisation at its Central target. Expectations are to discover sulfides within the first, or follow up drill holes.







### 1) Music Well Summary

#### Music Well

- High resolution airborne geophysics completed.
- Rock chip and bulk sampling gold veins completed
- High-grade visible Gold identified. Follow-up targeting ready to progress.
- Targeting additional Gold using soil and bio-geochemistry.
- Four diamond drill holes (NMR won a co-funded diamond drilling program) completed end 2021 and confirmed vein continues to >50m depth.

### 2) Arcoona Summary

#### Arcoona

- High-resolution airborne geophysics completed.
- New extensions to greenstones identified on tenement
- Targeting gold (soil sampling already shows gold anomalies over interpreted greenstones)
- Also targeting lithium in pegmatites hosted within intrusives.
- Soil sampling planned to commence early 2022.
- NMR are developing tenement and target-specific methods to enhance the detection of gold, nickel and lithium indicators under cover.

### 3) Mt Vettters Summary

#### Mt Vettters

- New opportunities for shallow Rare Earth Elements (REE) identified.
- Sampling campaign to begin early 2022.
- Adjacent to proven Nickel and Gold mines near the mining town of Kalgoorlie.
- Previously unrecognized potential for future metals and minerals



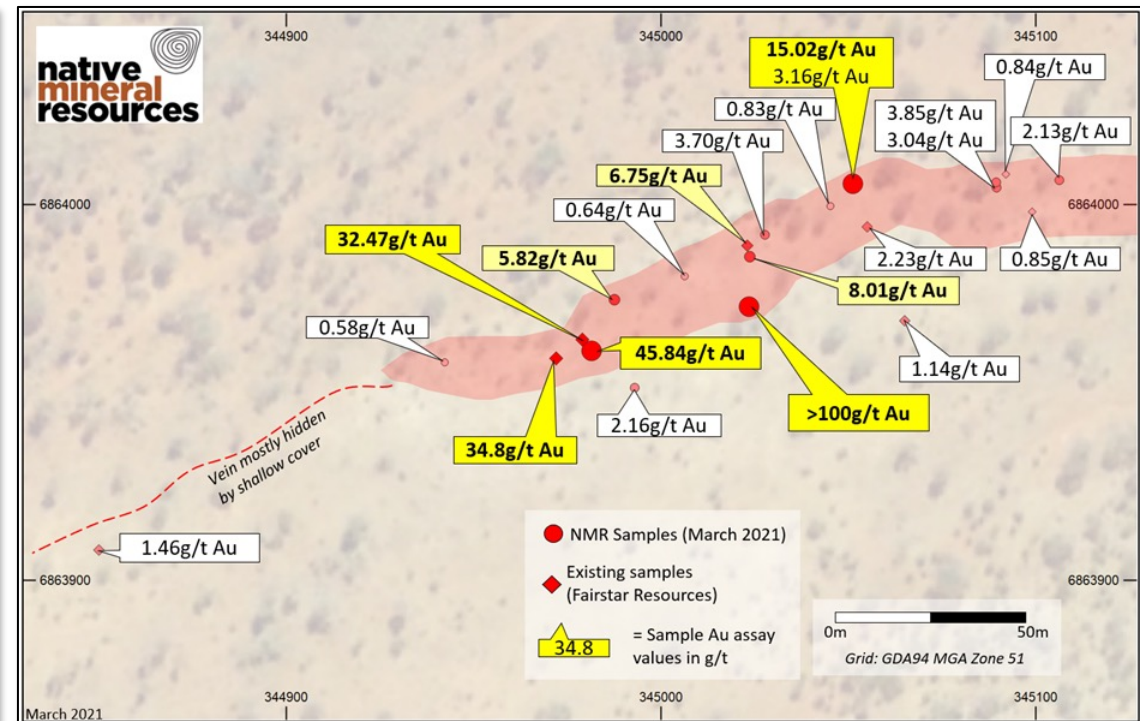
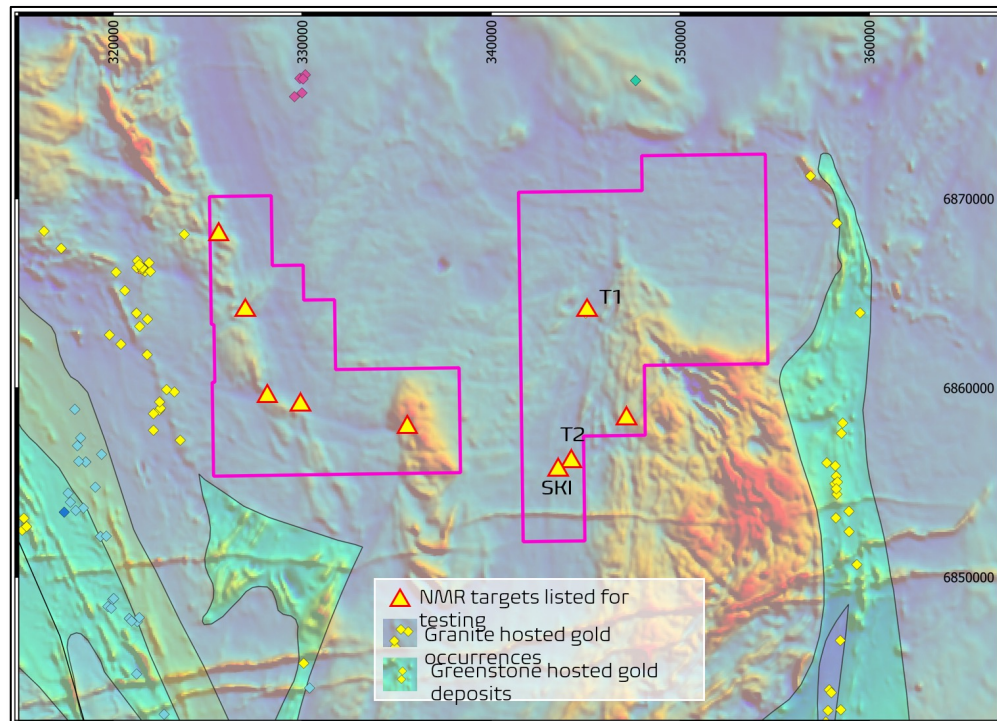
# Eastern Goldfields WA: Music Well

## Gold & Lithium



NMR have an established exploration plan driven by science, application of new techniques and technologies, all backed by geological experience in narrow vein gold mineralisation.

- HIGHLY COMPETITIVE AND PROSPECTIVE - surrounded by tenements held by Yilgarn “giants” including Northern Star, FMG, Round Oak, Darlot Mining Co (Gold Fields) and other large competitive companies.
- Strategic position located along-strike from existing >1Moz mineral deposits and projects.
- Gold-bearing veins already discovered + gold anomalies across the project identified for immediate follow up.
- SMART EXPLORATION – NMR just completed a high-resolution airborne (fixed wing) magnetics survey over E37/1363.





# Eastern Goldfields WA: Music Well

## Expectations for 2022-2023

### Expectations for 2022-2023 – Music Well East and West

- 1) NMR have already completed a trenching program at Music Well. Sampling and field work will help delineate where the high-grade gold-bearing rocks are originating from.
- 2) A second high-grade target has already been identified. Sampling will help focus follow-up trenching and help identify the extent of a potentially new, narrow vein gold deposit.
- 3) NMR have also recognised the potential for Lithium (Li) pegmatites. Pegmatites have already been identified across the tenement and these will be sampled for their geochemistry and Li potential.
- 4) Surface geochemistry will be the fundamental tool used to delineate targets on Music Well West.
- 5) Shallow drilling will be used to test the basement below the geochemical "bullseyes" with the specific interest in targeting the gold veins under shallow cover.

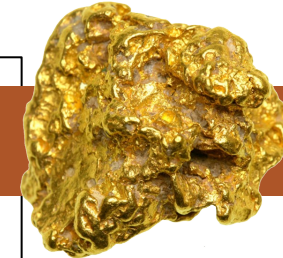
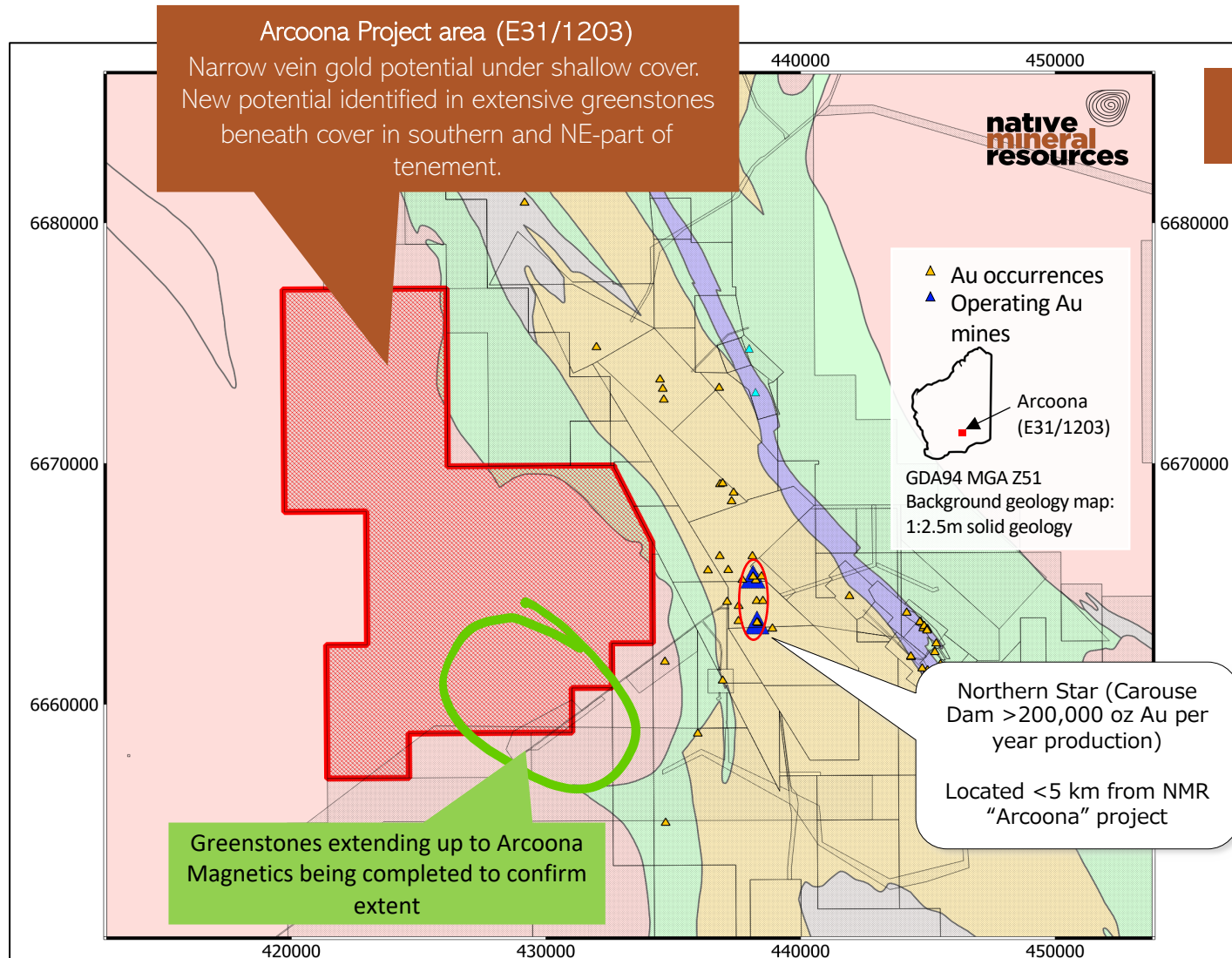
**NMR are anticipating uncovering several gold targets in the 2022-2023 field campaigns.**





# Eastern Goldfields WA: Mt Vettters

## Gold, Lithium and Rare Earth Targets



High resolution airborne magnetics survey just completed – results to be announced shortly

- **NEW OPPORTUNITIES ARISING FROM NEW DATA**  
Greenstones (main gold bearing rocks of the Yilgarn) extending into tenement!
- **PROVEN Au ANOMALIES (soil) IN UNDER EXPLORED TERRAIN**  
DMIRS soil geochemistry map shows gold occurrences above regions where greenstones are found on the tenement.
- **ADJACENT TO MAJOR GOLD DEPOSITS** - Surrounded by tenements held by large mining companies including Northern Stars Carouse Dam gold mine (ex Saracen) located only 5km to the east.

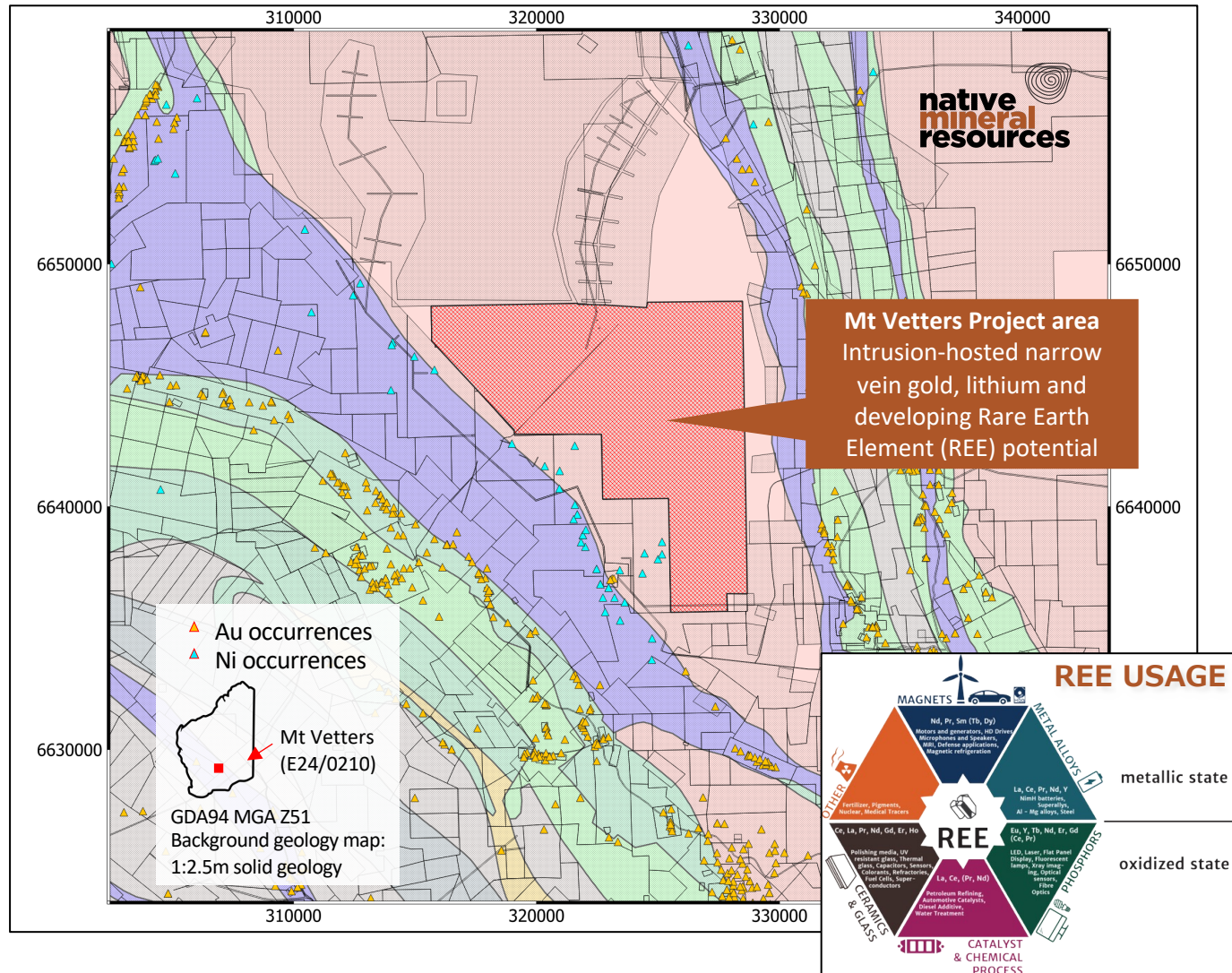
### Expected outcomes for 2022-2023

- 1) Soil sampling and specific geochemistry for Ni and Au over the buried greenstones.
  - 2) Positive results will guide NMR to undertake a drilling program to test the composition of the basement in the vicinity of the geochemical bullseye.
  - 3) Further drilling and sample assays will be used to zoom-in on potential zone of mineralisation.
- NMR have already identified many targets on Arcoona that have previously been overlooked.



# Eastern Goldfields WA: Arcoona

## Gold, Nickel and Lithium



**Mt Vettters** lies adjacent to multiple Ni mines and in an area prospective for granite hosted **Gold**

Field campaign to start in April 2022 to identify Au and REE prospectivity.

Also prospective for **Lithium, Rare Earth Elements (REE)** including the lanthanide series elements (La, Ce, Pr, Nd, Pm, Sm, Eu, Gd, Tb, Dy, Ho, Er, Tm, Yb, and Lu) plus Sc and Y, V etc

### Expected outcomes for 2022-2023

- 1) Soil sampling and cutting-edge geochemical analysis to help identify anomalous Ni and/or REE under shallow cover.
- 2) Follow-up drilling to basement to estimate thickness and extent of potential mineralisation.
- 3) After pinpointing any high-grade anomalous REE or Ni geochemistry, NMR will undertake a more comprehensive drilling campaign to help define a potential resource close to Kalgoorlie.

The tenement is close to Kalgoorlie, the heart of mining country in the Yilgarn. The tenement lies in a high priority exploration "fariway" making exploration quick and easy, which in-turn helps gain positive returns on expenditure.



# Queensland Projects





# Palmerville Project QLD

## Copper & Gold Targets

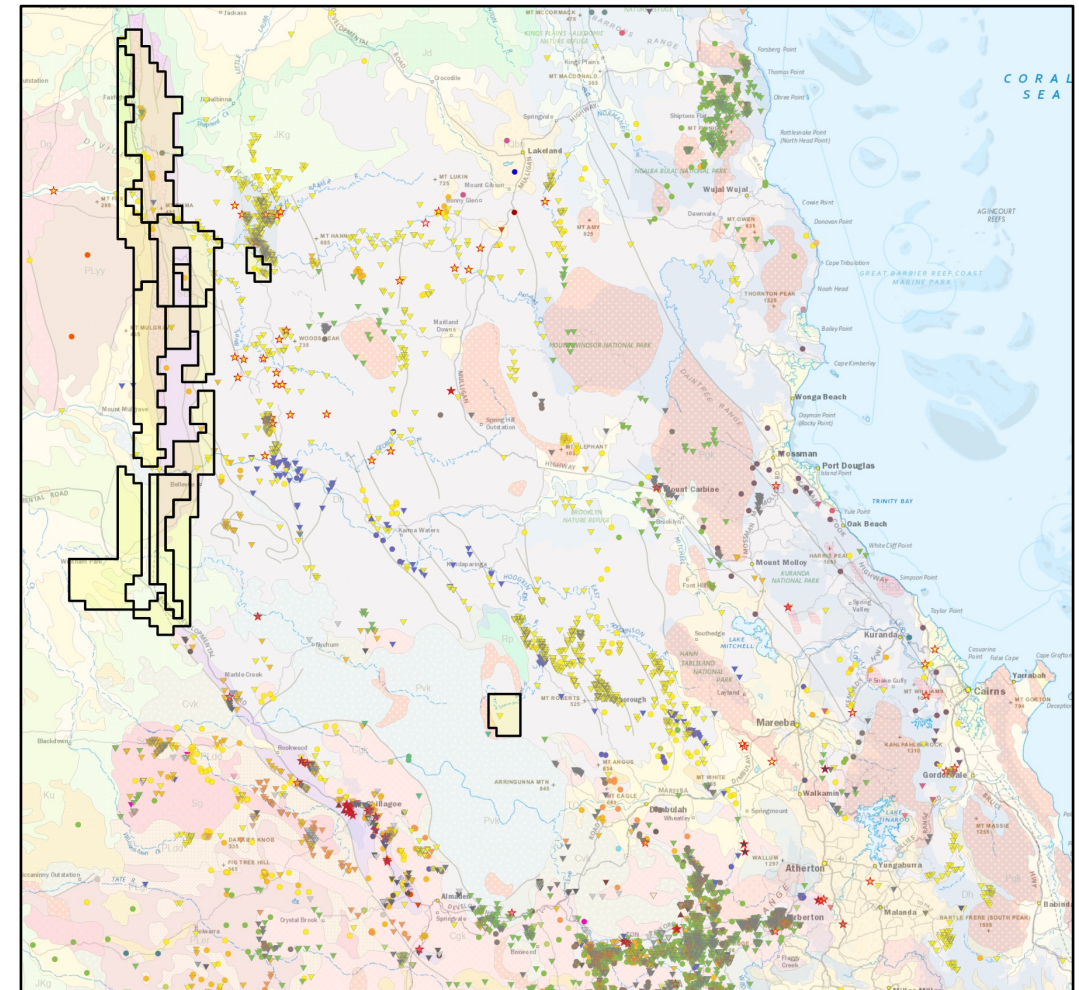


### Overview

- 130-kilometer-long tenement package covering almost the entire northern Chillagoe Formation
- Most underexplored part of the Chillagoe Formation = increased opportunity for discovery
- Close to existing mines and infrastructure
- One of the fastest growing areas of exploration for copper and gold in Queensland
- Tenements cover part of the extremely rich Palmerville Goldfields

### Attributes

- Significant area made up of 9 tenements, 527 sub-blocks, 1819 km<sup>2</sup>, 100% owned by NMR
- NMR was just awarded \$200,000 government funding to undertake geophysical survey over the entire project
- Over 60 targets identified including Copper, Gold, Antimony & REE's
- Copper targets at Leane's, Fairlight (historical copper mining area), Glenroy, Bald Hills, Reb Hill, Big Bend, etc
- Multiple copper breccias identified for immediate follow-up



# Palmerville Project QLD



## Leane's Copper

- Copper already identified at Leane's prospect
- Surface samples of up to **31.1% Cu**
- Shallow drill intercepts of 33m @0.49 including 2m @1.1% Cu (LRC04)
- 9 Drill holes
- Interpreted top of deeper porphyry system, with geophysics planned before deep drilling completed

## Fairlight

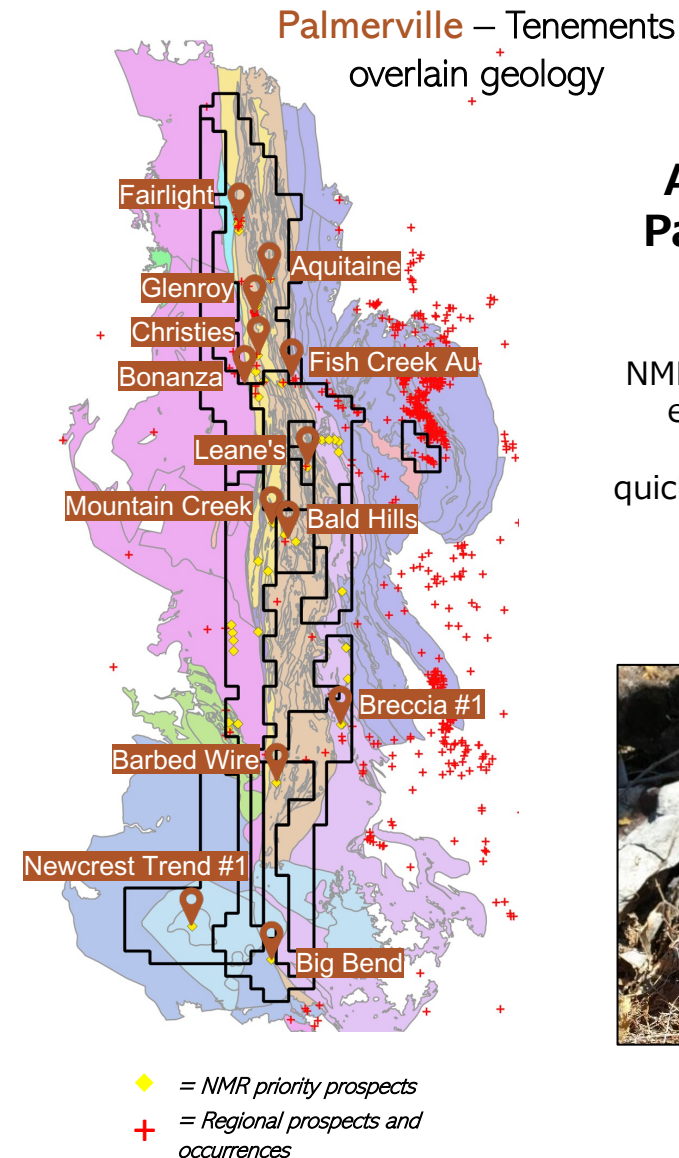
- The Fairlight mine is an ~30m deep shaft at the contact between red jaspers and altered mafic intrusives.
- NMR's first ever field trip discovered a new historical mine to the south of the documented mines.
- Samples returning positive results of up to **7.99% Cu with 9ppm Ag**.

## Glenroy

- Glenroy also associated with historical mine shafts
- Samples from NMRs recent field campaign returned grades of **5.26% Cu**

## Bald Hills

- Located on major, prospective regional aeromagnetic anomaly
- Same copper belt as Leane's copper breccia project
- Also contains historical copper workings.
- Anomalous gold and copper values from soil and rock chip sampling, 0.26ppm Au and 0.575% Cu.



## A small selection of Palmerville gold and copper prospects.

NMR are about to complete an entire project-wide airborne geophysical survey to help quickly and effectively prioritise these targets.





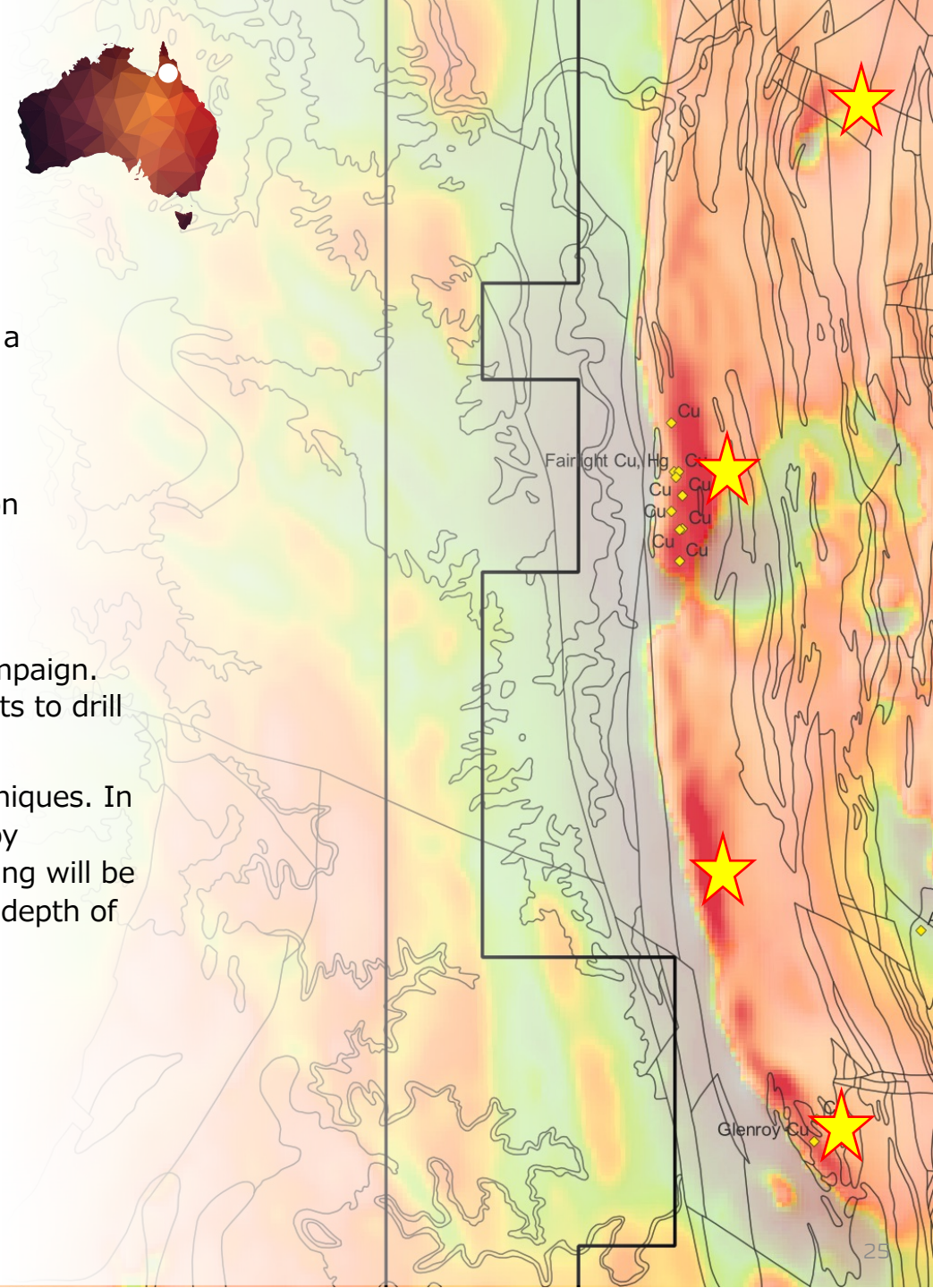
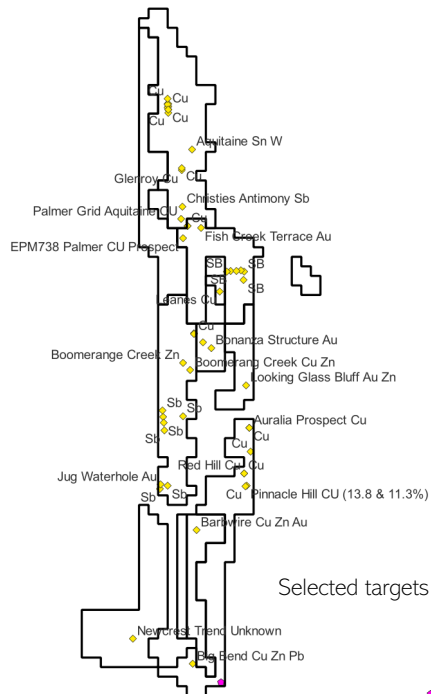
# Palmerville Project QLD

## Expected outcomes for 2022-2023

### Expectations for 2022-2023 – Palmerville Project

- 1) With so many targets in the Palmerville Project Area, NMR are confident that a discovery is close at hand. **Our 2022-2023 program is oriented towards making this discovery.**
- 2) Fairlight is a historical copper mining area. NMR anticipate that follow-up sampling, targeted electromagnetic survey and drilling will result in delineation of significant copper mineralisation at depth and along strike.
- 3) Copper-bearing breccias will be a focus of the up coming campaign. The aim is to convert anomalous surface geochemistry targets to drill targets in the short term.
- 4) Where necessary, NMR will adopt electromagnetic (EM) techniques. In particular, the team will advance the Leane's Copper target by undertaking EM over the anticipated magnetic anomaly. Drilling will be used to test any resulting EM conductor(s) below the current depth of drilling.

Selected targets in the Palmerville Project area



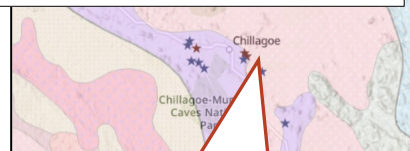
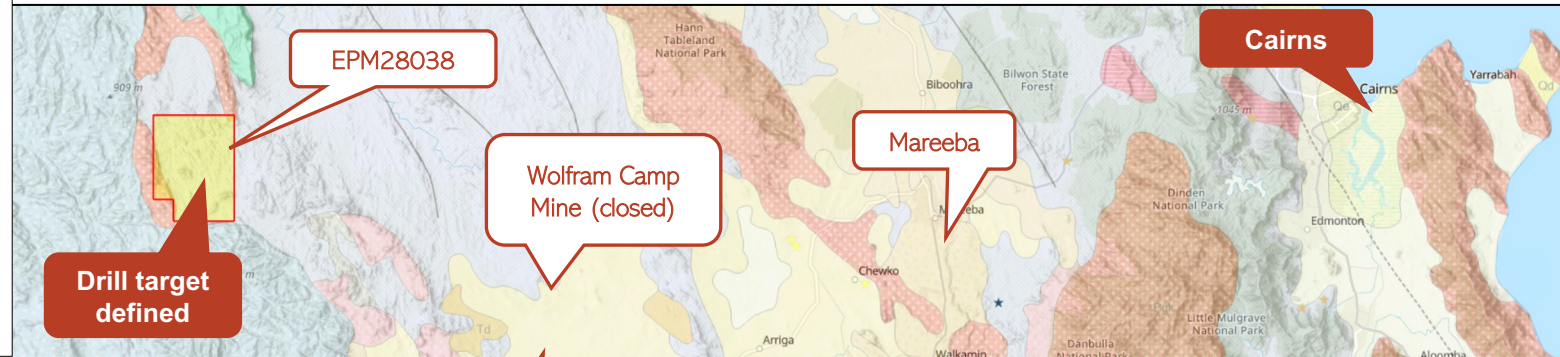


# Maneater Beccia Project - QLD



North Queensland is a proven geological setting for Gold-bearing breccia pipes including:

Mt Wright (>1 Moz Au)  
Mt Leyshon (>3.5 Moz Au)  
Kidston (>5 Moz Au)

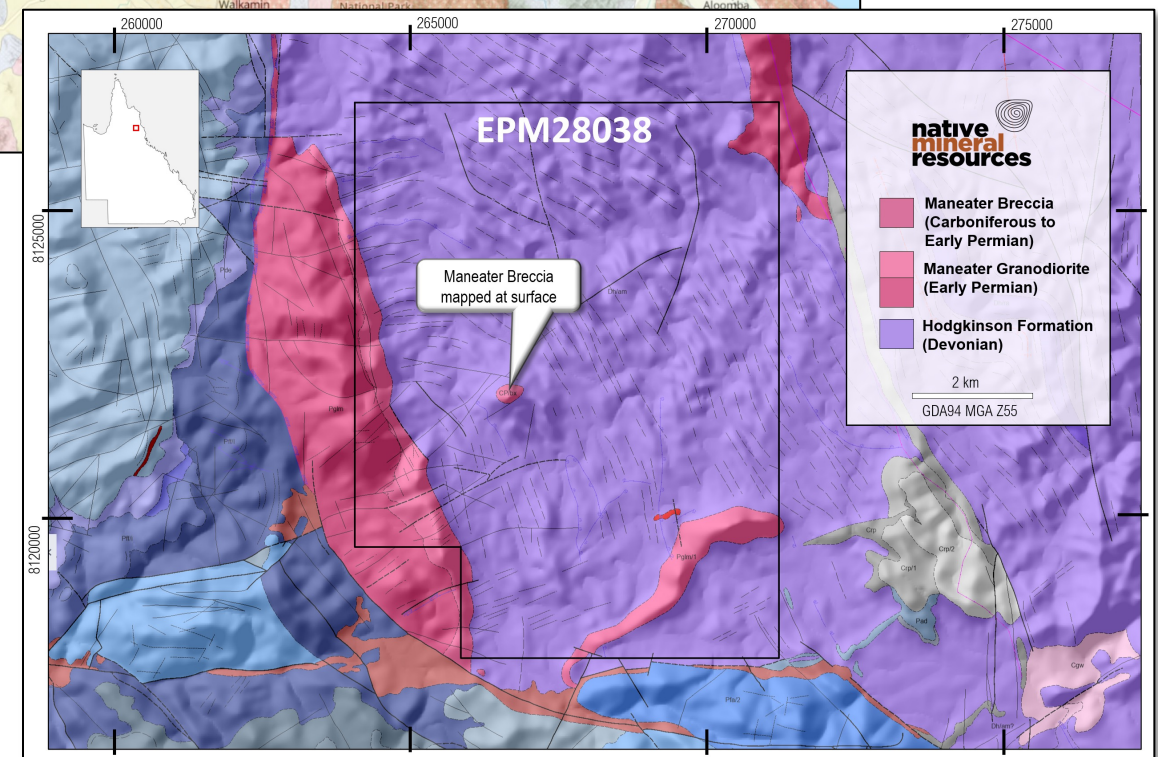


Chillagoe town and mines =  
Infrastructure nearby

Only 50km from  
Dimbulah by dirt road

## PROJECT SUMMARY

- Precise **target and model already defined** therefore no “research and targeting” period
- High potential, existing mineralisation = **rapid results**
- Close to infrastructure
- Access already exists to drill site
- Highly sought-after area – e.g. NMR’s maneater tenement is bound by FMG to the west





# Maneater Beccia Project - QLD



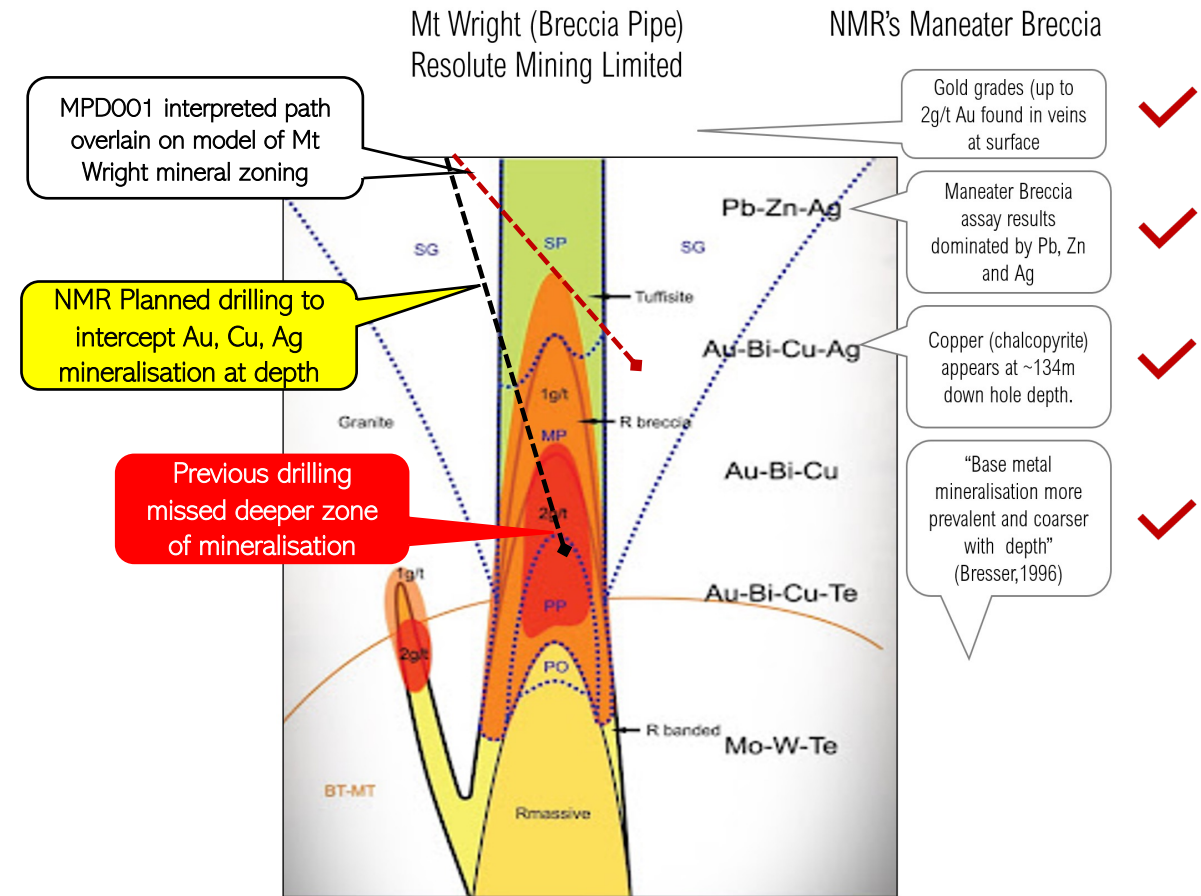
## Simple and straightforward exploration plan: DRILL DEEPER!

### The Maneater Breccia meets Resolute Mining's exploration criteria for mineralised breccia pipes in North Queensland:

- Well defined topographic high.
- Breccia pipe proven in drilling and surface mapping.
- Open cavities and clast-supported breccia containing sulfides.
- Well-defined metal zoning indicative of shallow levels within other zoned breccia deposits.
- Reported increasing metal content with depth.

### Positive results already obtained from previous diamond drilling:

- Goldfields report states: **"Increasing metal abundance with depth"**.
- **>300m of sulfides in breccia** (from 48m to 356m down hole depth).
- **80-100% sulfides** reported at ~240m down hole.
- **Increasing copper** (chalcopyrite) with increasing depth.
- Historical diamond drillhole (MPD001) assays show an impressive intersection of **94m @ 4.45g/t of Silver (Ag)** apparent intersection at 53 degrees true thickness of 71.9m.
- Ag intercepts commence at 50m below surface and reach up to **15.8g/t Ag** at 200m down hole depth.
- High Pb & Zn at shallow levels.
- Low gold grade at shallow levels (a good indicator).
- Intrusive porphyry noted in drill logs.
- Clay and sericite alteration = upper level.



Schematic cross section and mineral zoning from Resolute Mining's Mt Wright Breccia Gold mine.

# Palmerville Project QLD

## Expected outcomes for 2022-2023

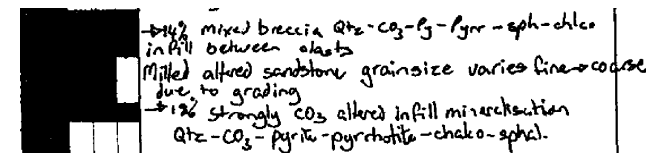


### Expectations for 2022-2023 – Maneater Project

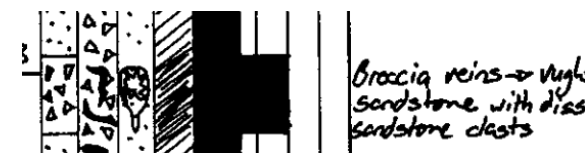
Existing drilling already showing positive results including 94m of drilling at 4.45g/t Silver! In addition, over 300m of the drill core contains sulfides including Pb, Zn, Cu in addition to Ag and hints of gold as expected at the level of exposure.

- 1) Based on existing results and comparison with other similar deposits, NMR anticipate deeper drilling to reveal significant Gold and Copper mineralisation.
- 2) Drilling will be completed as soon as possible after the ground has been granted thereby expediting anticipated positive results.
- 3) With return of positive results, drilling will continue in 2023 to define the extents of the mineralisation.

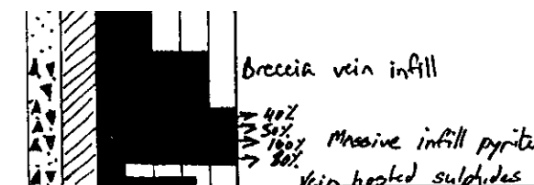
@~136m Pyrite + Pyrrhotite + Chalcopyrite + Sphalerite



Vugs = shallow level with gold deeper down



Up to 100% sulphides  
@~240m down-hole!

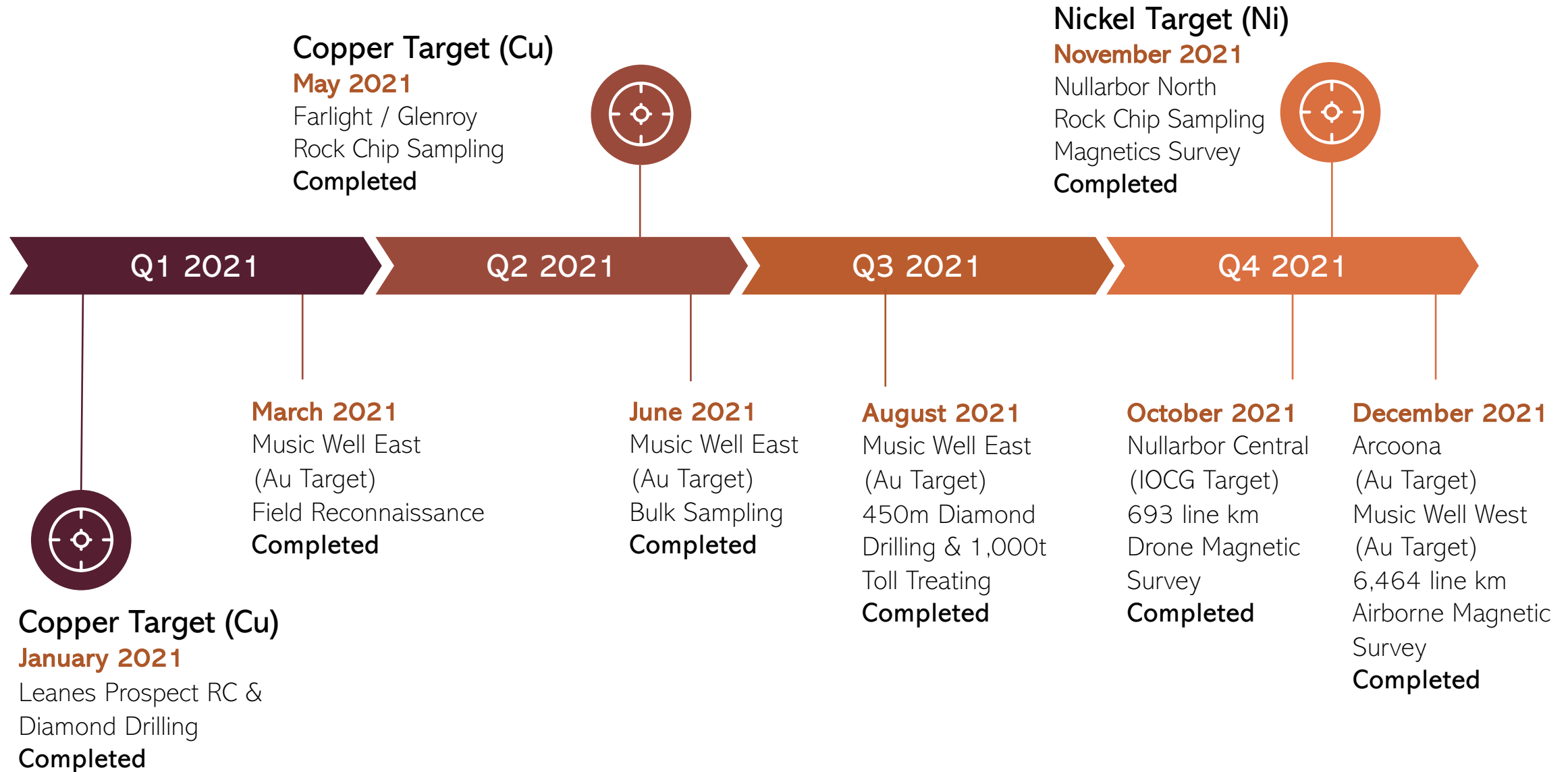


- With increasing depth,
- Metal content/sulfide content increases
  - Specifically Pb increases
  - Zn increases
  - Ag over 94m @ 4.45g/t.

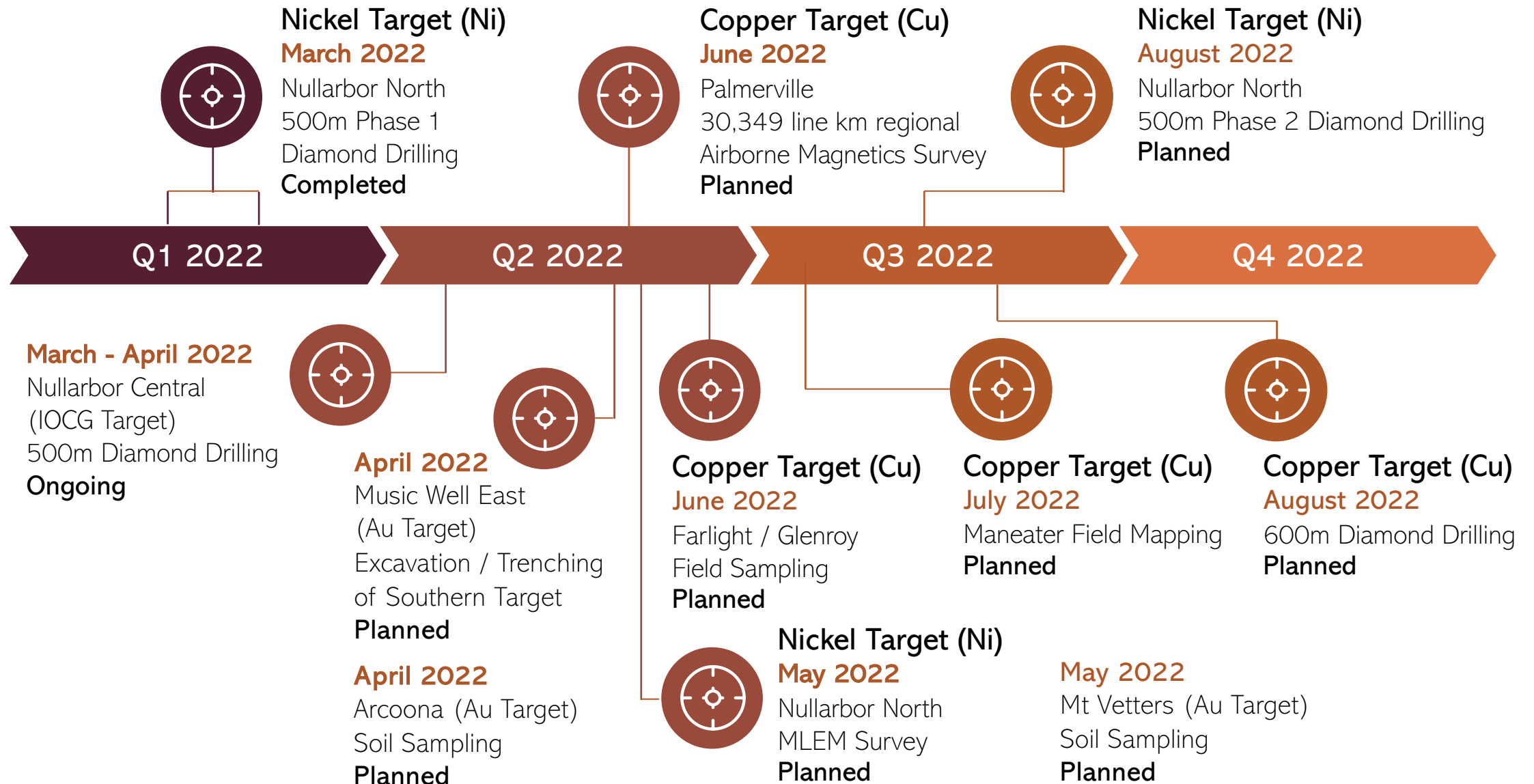
PREFIX	Au	Zn	Pb	STRUC	ALT	1	2	3	4	5	6	7	8	9
0263														
	38	0.010	991	326										
	39	0.000	4130	716										
	41	0.000	1541	602										
	42	0.016	121	80										



# Works Completed



# Newsflow Catalysts





# Set for success



**The right portfolio.**



**The right size portfolio -  
specific to target(s), work  
program and opportunity.**



**Key commodities managed  
under a smart “exploration  
umbrella” – well designed  
exploration plan for every  
tenement and every  
commodity.**



**2021 consolidation and  
target reconciliation.  
2022 exploration oriented  
to discovery, outcomes and  
rapid growth in value.**



**Foundation value and  
growth in tenement value  
based on asset portfolio.  
“great real estate”**



**Added value/growth  
through well-designed,  
smart & target-specific  
exploration strategies.**





+61 2 6583 7833



[info@nmresources.com.au](mailto:info@nmresources.com.au)



[www.nmresources.com.au](http://www.nmresources.com.au)

## CONTACT

**Blake Cannavo**

Managing Director & CEO

Tel: +61 457 777 880

Email: [blake@nmresources.com.au](mailto:blake@nmresources.com.au)

## NEW SOUTH WALES

Suite 10, 6-14 Clarence St,  
Port Macquarie, NSW 2444

## QUEENSLAND

Suite 59, Level 54, 111 Eagle  
St, Brisbane, Qld 4000