



# demetallica

*An active explorer with a copper-dominant,  
high-grade base metals exploration portfolio*

---

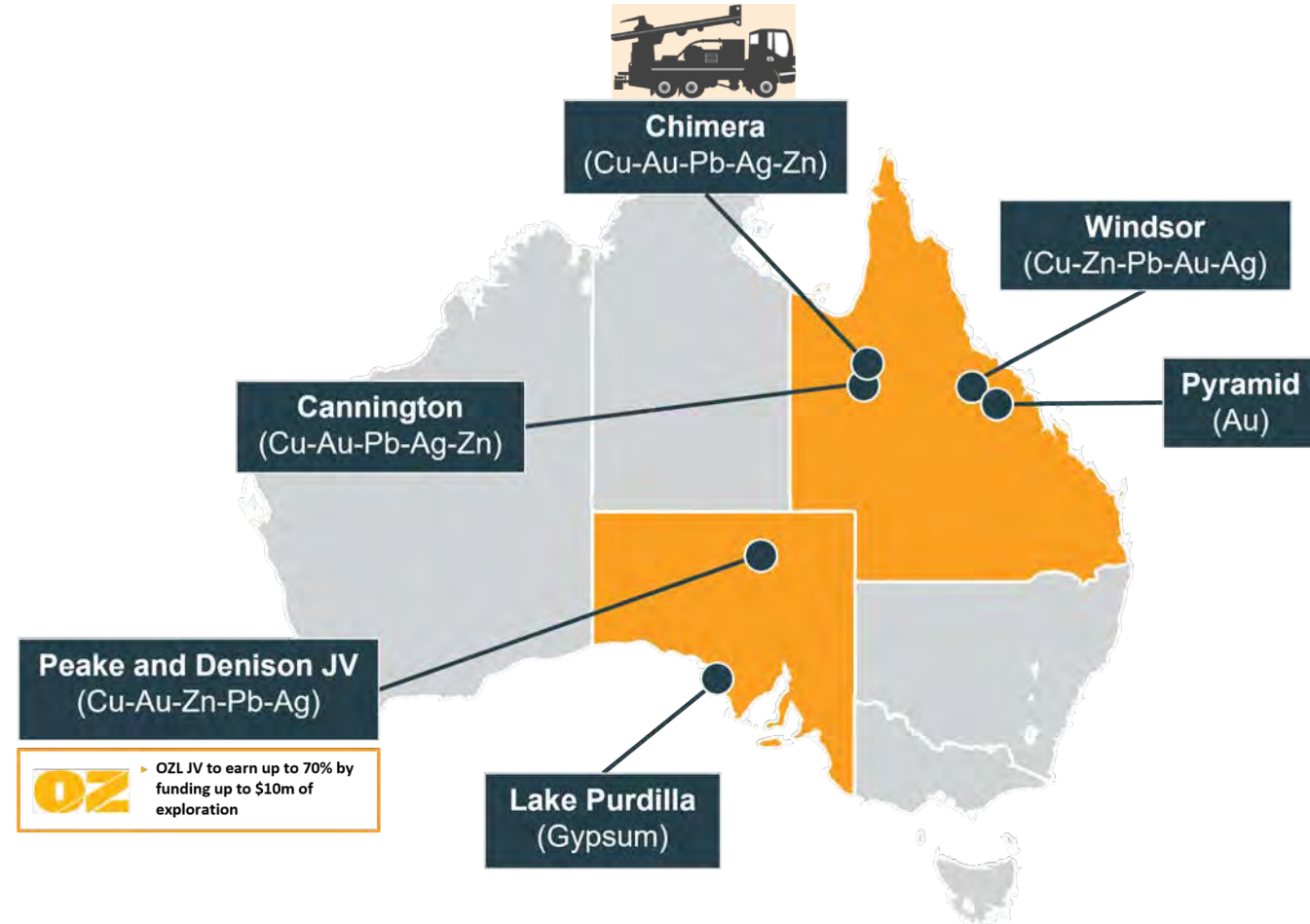
**First Drill Assays from Jericho**

Presentation - 4 July 2022

# Jericho – key asset of Chimera Polymetal Project

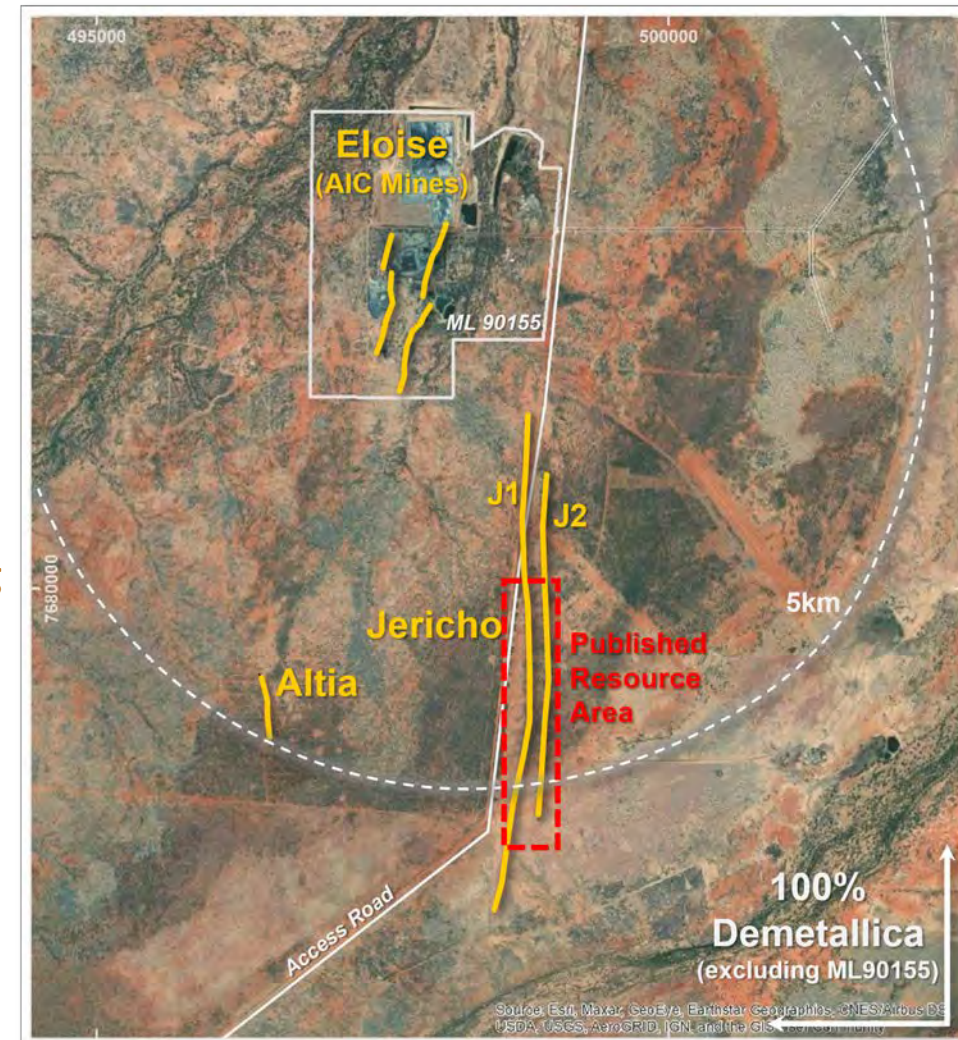
## CHIMERA POLYMETAL PROJECT (pronounced *Ky-mer-ah*)

- ▶ JORC 2012 Mineral Resource Estimate for Jericho
- ❖ RC drilling to improve Jericho Cu resource classification
- ❖ First RC assays demonstrably support that objective

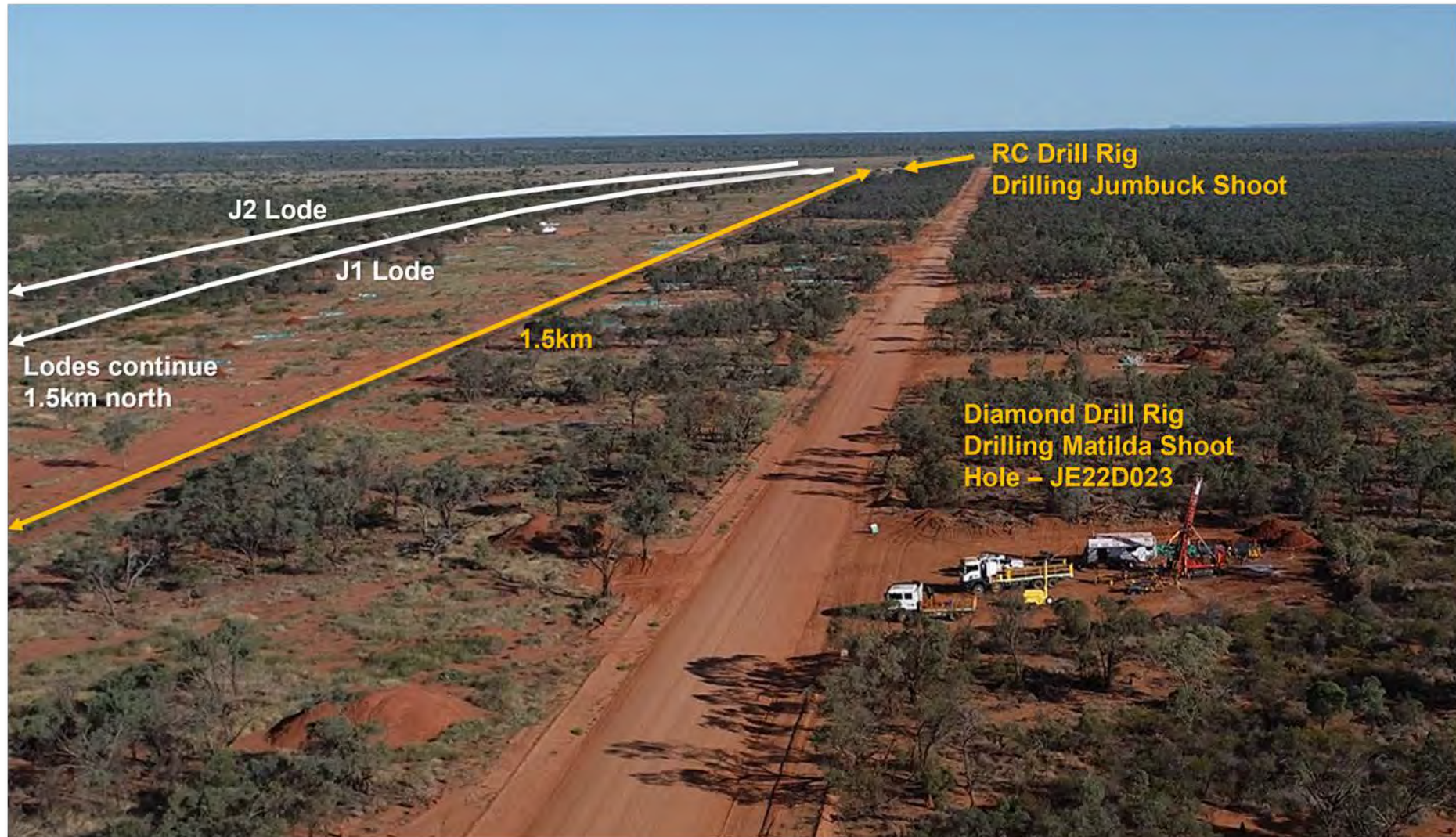


# Jericho - Drilling Objectives

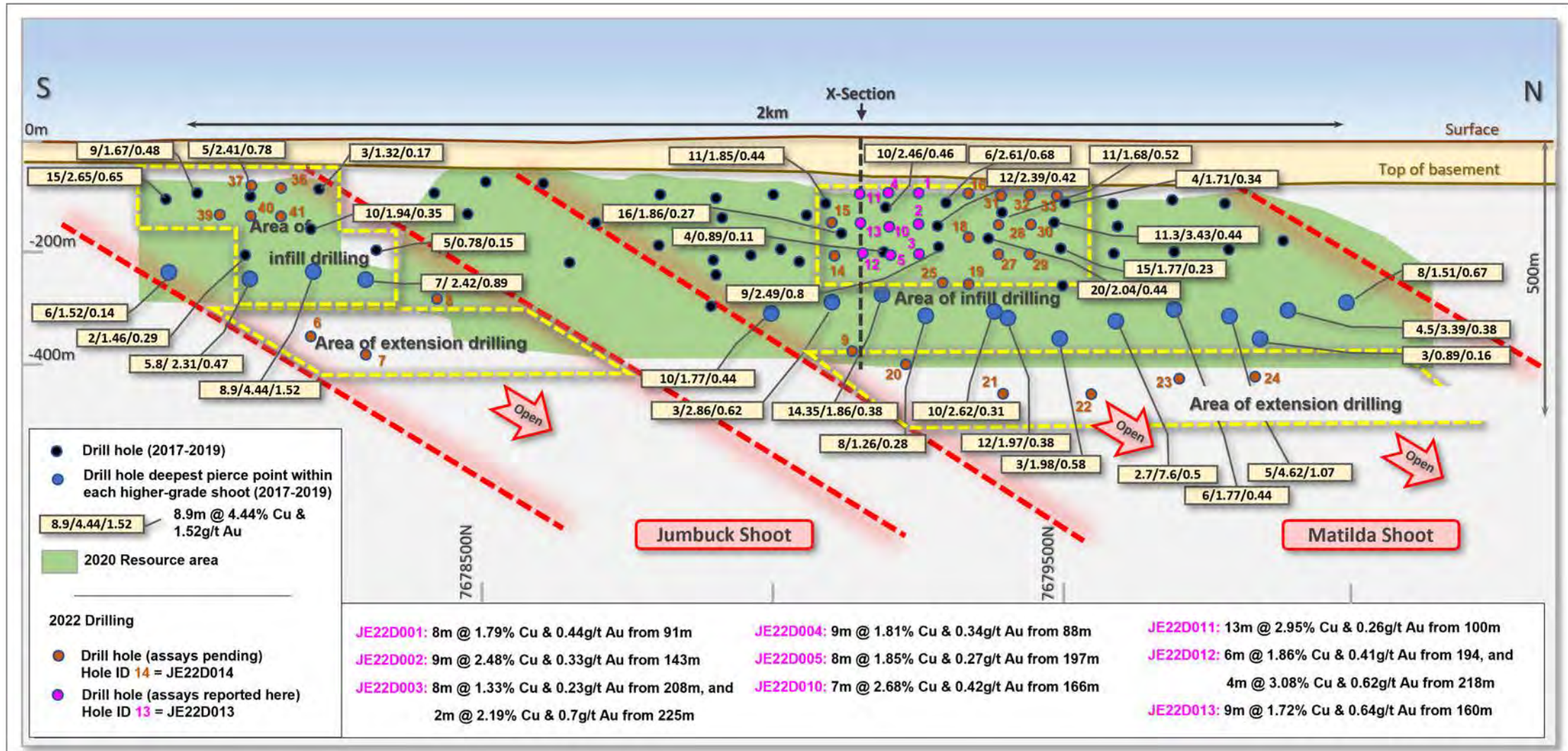
- ▶ Iron Sulphide Copper-Gold (ISCG) mineralisation in lodes J1 and J2
  - ▶ J1 and J2 are parallel and strike up to 3.7km (both lodes open along strike and at depth)
- ▶ 2022 objectives at Jericho:
  1. lift resource classification (confidence level) through RC infill drilling
  2. expand resource to 13-15Mt Cu (circa 45% - 65% increase) through diamond drilling
- ▶ 2 rigs are drilling into Jericho; ~14,000m campaign now 60% complete overall
  1. 27 RC holes completed
  2. 9 Diamond holes completed



# Jericho – actively drilling through into August



# Jericho – drilling on J1 Lode



# Jericho – Assays from initial 9 RC holes

Selected assays from 5 of the 9 RC holes

Interval❖	For full disclosure refer DRM report to ASX dated 4 July 2022				Hole #	Down-hole depth to interval
13m	2.95%	Cu	0.26g/t	Au	JE22D011	100m
9m	2.48%	Cu	0.33g/t	Au	JE22D002	143m
7m	2.68%	Cu	0.42g/t	Au	JE22D010	166m
9m	1.81%	Cu	0.34g/t	Au	JE22D004	88m
8m	1.85%	Cu	0.27g/t	Au	JE22D005	197m

❖ Intersection measurements are down-hole widths

Pervasive chalcopyrite in pyrrhotite intersected by all RC infill holes, as predicted (chips from hole #11 shown here)

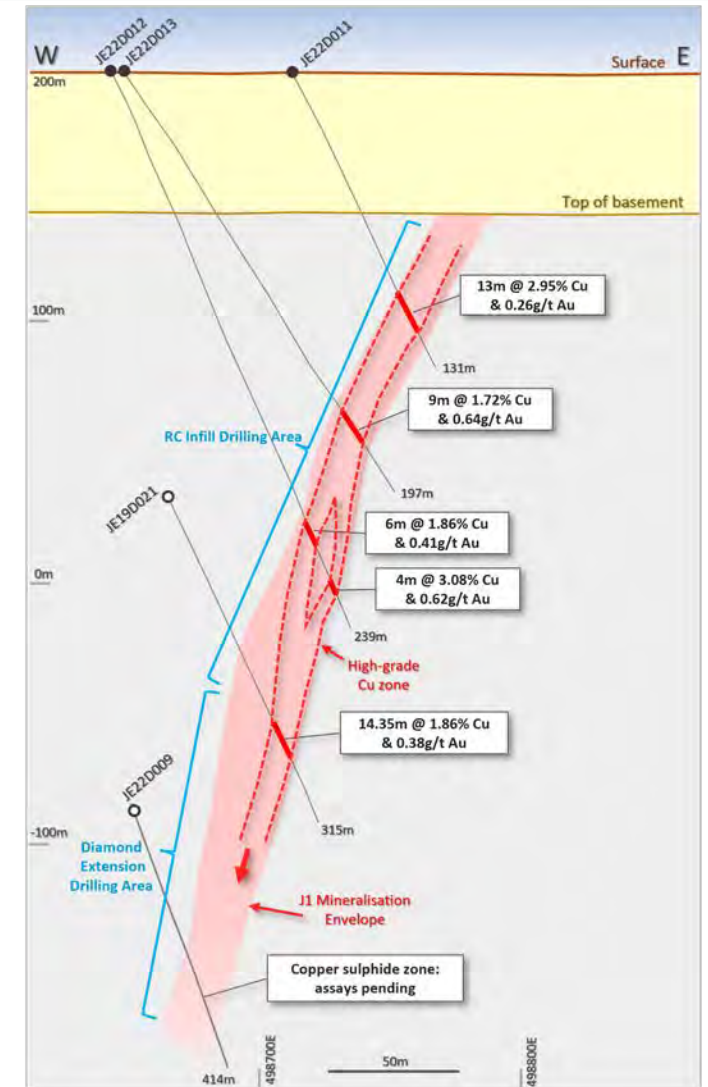


# Jericho – working 24/7 towards new MRE in October

## LAB BATCH RESULTS NOW FLOWING IN PROGRESSIVELY

- 27 RC resource infill holes completed – 18 to go
- Multiple RC assay batches to be reported
- ❖ 9 diamond resource extension holes completed – 4 to go
- ❖ First diamond core assays expected in 2 weeks

## UPDATED JORC MINERAL RESOURCE ESTIMATE (MRE) TO BE PUBLISHED IN OCTOBER 2022



# For more information contact:

## DEMETALLICA LIMITED

[www.demetallica.com.au](http://www.demetallica.com.au)

ASX: DRM

Level 1, 8 Beulah Road, Norwood, SA 5067

T: 08 8132 3400

E: [admin@demetallica.com.au](mailto:admin@demetallica.com.au)

W: [www.demetallica.com.au](http://www.demetallica.com.au)

### ***Andrew Woskett***

Managing Director

T: +61 8 8132 3400

### ***Glen Little***

Manager Exploration & Business Development

T: +61 8 8132 3400

E: [glittle@demetallica.com.au](mailto:glittle@demetallica.com.au)

# Important Notices and Disclaimers

## COMPETENT PERSON'S STATEMENT

Information in this report that relates to Exploration Results and the Exploration Target is based on information compiled by Mr. Glen Little who is a Member of the Australian Institute of Geoscientists. Mr. Little holds shares in and is a full-time employee of Demetallica and has sufficient experience which is relevant to the style of mineralisation under consideration to qualify as a Competent Person as defined in the 2012 Edition of the 'Australian Code for Reporting of Exploration Results, Mineral Resources and Ore Reserves'. Mr Little consents to the inclusion in the report of the matters based on the information compiled by him, in the form and context in which it appears.

Information in this report that relates to the Jericho Mineral Resource Estimate is extracted from Demetallica's Prospectus dated 8 April 2022.

## FORWARD LOOKING STATEMENTS

This report may contain forward-looking statements that are subject to risk factors associated with a mineral exploration business. Forward looking statements include those containing such words as "anticipate", "estimates", "forecasts", "should", "could", "may", "intends", "will", "expects", "plans", "potential" or similar expressions. Such forward-looking statements are not guarantees of future performance and involve known and unknown risks, uncertainties, assumptions, and other important factors, many of which are beyond the control of the Company. It is believed that the expectations reflected in these statements are reasonable, but they may be affected by a range of variables and changes in underlying assumptions which could cause actual results or trends to differ materially. The Company does not make any representation or warranty as to the accuracy of such statements or assumptions.

# Important Notices and Disclaimers

The material in this presentation has been prepared by Demetallica Limited (“Company”).

This presentation may not be reproduced, redistributed or passed on, directly or indirectly, to any other person, or published, in whole or in part, for any purpose without prior written approval of the Company. The material contained in this presentation is for information purposes only. This presentation is not an offer or invitation for subscription or purchase of, or a recommendation in relation to, securities in the Company and neither this presentation nor anything contained in it shall form the basis of any contract or commitment. Any offering of any of the Company's securities to Australian persons will be subject to Australian securities laws. The distribution of this document in jurisdictions outside of Australia may be restricted by law, and persons in to whose possession this document comes should inform themselves about, and observe, all such restrictions.

This presentation is not financial product or investment advice. It does not take into account the investment objectives, financial situation and particular needs of any investor. Before making an investment in the Company, an investor or prospective investor should consider whether such an investment is appropriate to their particular investment needs, objectives and financial circumstances, seek legal and taxation advice as appropriate and consult a financial adviser if necessary.

This presentation has been prepared by the Company based on information currently available to it. No representation or warranty, express or implied, is made as to the fairness, accuracy, completeness or correctness of the information, opinions and conclusions contained in this presentation. To the maximum extent permitted by law, none of the Company or its subsidiaries or affiliates or the directors, employees, agents, representatives or advisers of any such party, nor any other person accepts any liability for any loss arising from the use of this presentation or its contents or otherwise arising in connection with it, including without limitation, any liability arising from fault or negligence on the part of the Company or its subsidiaries or affiliates or the directors, employees, agents, representatives or advisers of any such party.