



RNA-DIRECTED THERAPEUTICS TO TREAT CANCER AND PROTECT THE HEART

Quarterly Investor Update Presentation

Authorised for release by Phillip Lynch CEO & MD on July 27, 2022

DISCLAIMER

Investment in Race Oncology (Race) is subject to investment risk, including possible loss of income and capital invested. Race does not guarantee any particular rate of return or performance, nor do they guarantee the repayment of capital. This presentation is not an offer or invitation for subscription or purchase of or a recommendation of securities. It does not take into account the investment objectives, financial situation and particular needs of the investor. Before making any investment in Race, the investor or prospective investor should consider whether such an investment is appropriate to their particular investment needs, objectives and financial circumstances and consult an investment advisor if necessary. This presentation may contain forward-looking statements regarding the potential of the Company's projects and interests and the development and therapeutic potential of the company's research and development. Any statement describing a goal, expectation, intention or belief of the company is a forward-looking statement and should be considered an at-risk statement. Such statements are subject to certain risks and uncertainties, particularly those inherent in the process of discovering, developing and commercialising drugs that are safe and effective for use as human therapeutics and the financing of such activities. There is no guarantee that the Company's research and development projects and interests (where applicable) will receive regulatory approvals or prove to be commercially successful in the future. Actual results of further research could differ from those projected or detailed in this presentation. As a result, you are cautioned not to rely on forward-looking statements. Consideration should be given to these and other risks concerning research and development programs referred to in this presentation.

CORPORATE SNAPSHOT

ISSUED CAPITAL

Shares ¹	159.5m
Options ¹	13.4m
Shareholders ²	9,302

MARKET CAPITALISATION

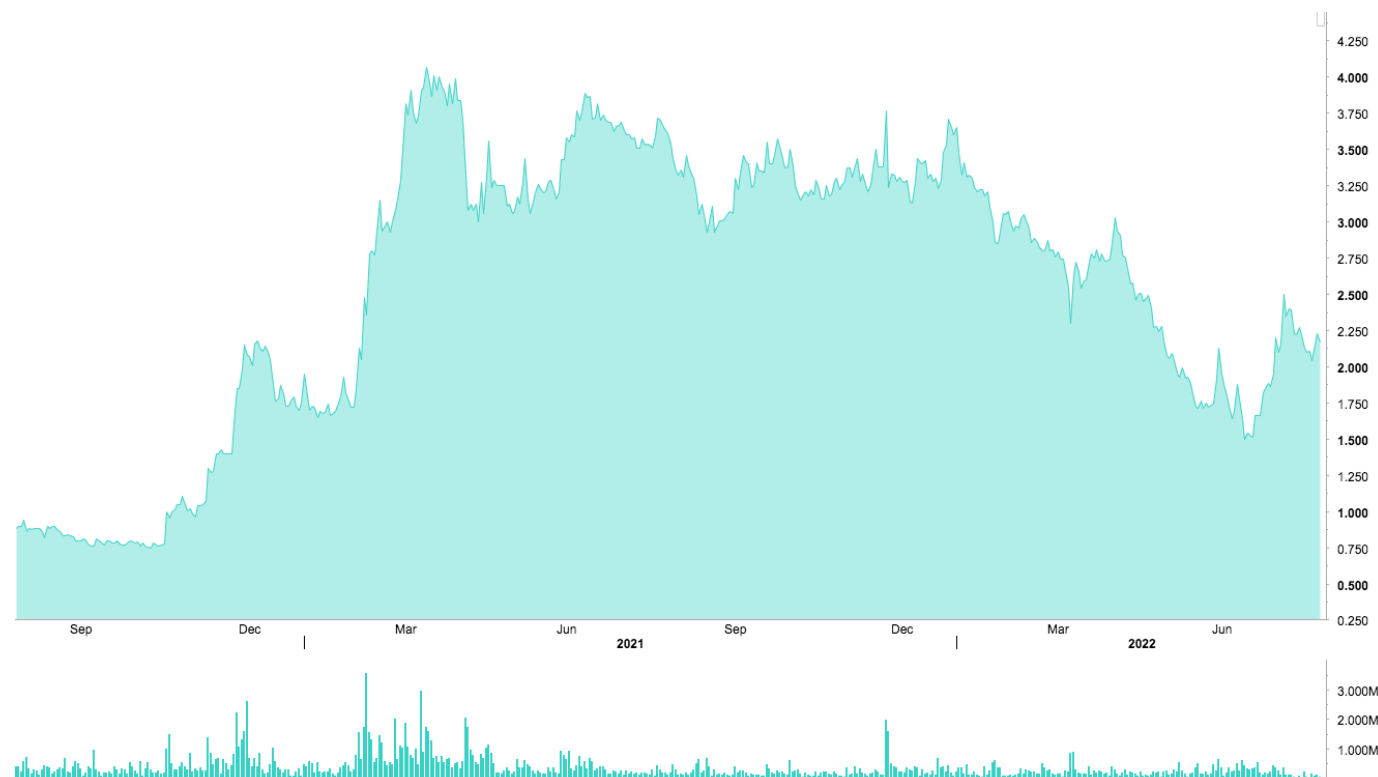
Share price ¹	\$2.17
Market value ¹	\$355.7m
Cash ²	\$33.5m
Enterprise value	\$322.2m

SIGNIFICANT SHAREHOLDERS

Dr Daniel Tillett (Director & CSO)	8.5%
Dr John Cullity (Chairman)	5.1%
Merchant Opportunities Fund	4.8%

1. As at 26 July 2022.
2. As at 30 June 2022

ASX 24 MONTH PERFORMANCE

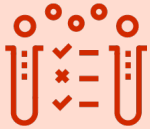


QUARTERLY HIGHLIGHTS

CLINICAL PHASE 1B - R/R AML STATUS

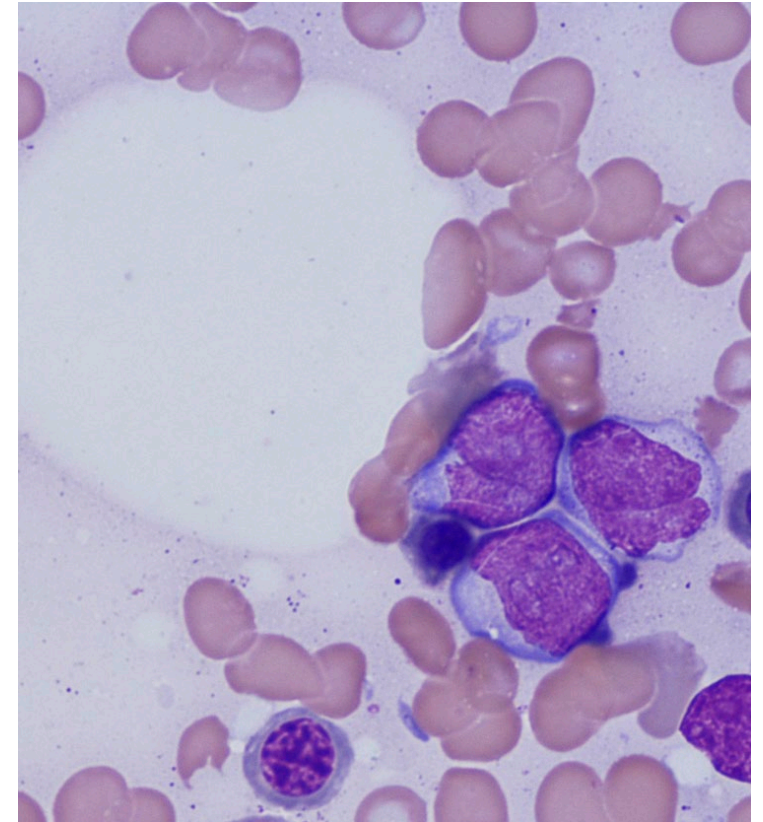


2020 Phase 2 trial demonstrated an impressive 40% overall response rate for Zantrene as a single agent in R/R AML¹



CURRENT R/R AML PHASE 1B/2 TRIAL

- Phase 1b/2 combination study in up to 29 R/R AML patients (NCT04989335)
- Regimen. Zantrene + fludarabine + clofarabine
- PI. Prof Arnon Nagler, Chaim Sheba, Israel
- First patient treated Aug. 2021, Phase 1b completed in May. 2022



PHASE 1B TRIAL HIGHLIGHTS

- Encouraging clinical responses in heavily pre-treated patients: 3/6 patients successfully bridged to stem cell transplant
- Now advancing to Phase 2 – efficacy stage
- Open label study results to be reported in stages

1. Canaani J et al. A phase II study of bisantrene in patients with relapsed/refractory acute myeloid leukemia Eur J Haematol. 2020;00:1-7.

MELANOMA & ZANTRENE

IMPROVING IMMUNOTHERAPY



- One of the most lethal and treatment resistant cancers with 5-year survival rate for advanced melanoma around 25%¹
- FTO is overexpressed in ~50% of all metastatic melanomas and inhibition of FTO overcomes immune-therapy (checkpoint) resistance²

PRECLINICAL (MOUSE) DATA HIGHLIGHTS



- Zantrene with immunotherapy shrinks melanoma tumours that do not respond to immunotherapy alone
- Activates immune cells in a manner consistent with better targeting of tumours
- Reduces the expression of immune therapy resistance genes in human melanoma tumour cells
- Supports future clinical trials using Zantrene with immune therapy in melanoma patients



1. www.cancer.net/cancer-types/melanoma/statistics

2. Yang, S., Wei, J., Cui, Y.-H., Park, G., Shah, P., Deng, Y., et al. (2019). m6A mRNA demethylase FTO regulates melanoma tumorigenicity and response to anti-PD-1 blockade. *Nature Communications*, 10(1), 1131-14.

MELANOMA & ZANTRENE SYNERGY WITH BRAF & MEK KINASE INHIBITORS



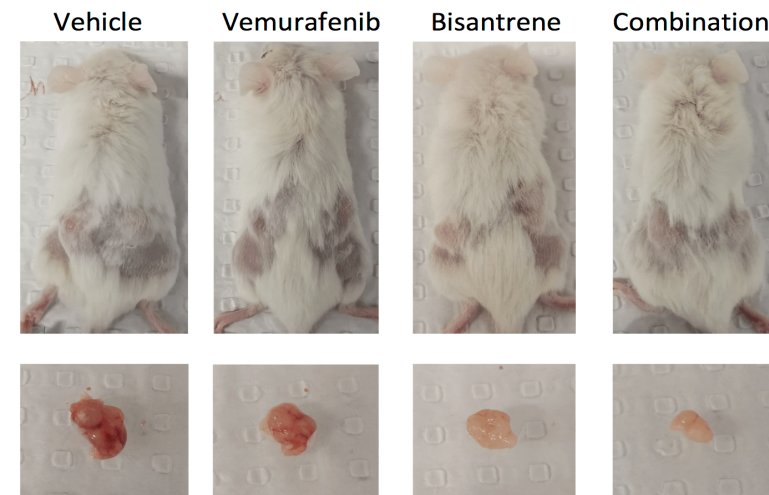
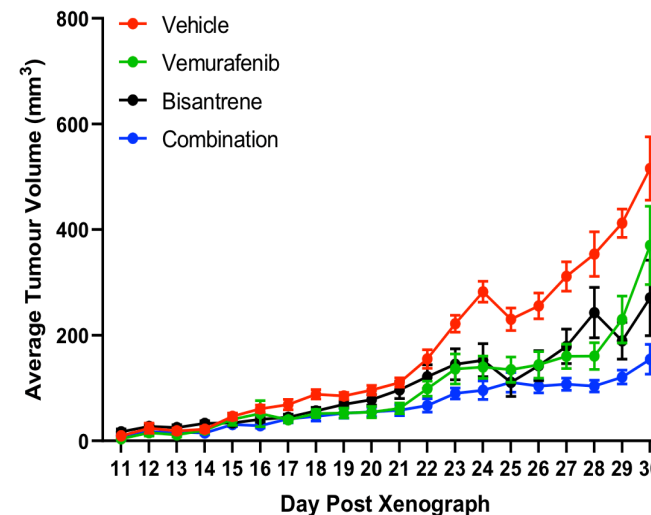
- BRAF and MEK inhibitors are effective with many melanomas, but the most patients relapse.

PRECLINICAL (CELL & MOUSE) DATA HIGHLIGHTS

- Zantrene with BRAF inhibitor (vemurafenib) or MEK inhibitors (binimetinib and cobimetinib) better kills human melanoma cells
- Zantrene synergizes with vemurafenib to better kill melanoma organoid tumours
- Zantrene with vemurafenib better kills human melanoma tumours in a mouse xenograft model
- Supports future clinical trials using Zantrene with BRAF and MEK inhibitors in melanoma patient



Tumour Growth (IGR3)



1. www.cancer.net/cancer-types/melanoma/statistics

2. Yang, S., Wei, J., Cui, Y.-H., Park, G., Shah, P., Deng, Y., et al. (2019). m6A mRNA demethylase FTO regulates melanoma tumorigenicity and response to anti-PD-1 blockade. *Nature Communications*, 10(1), 1131–14.

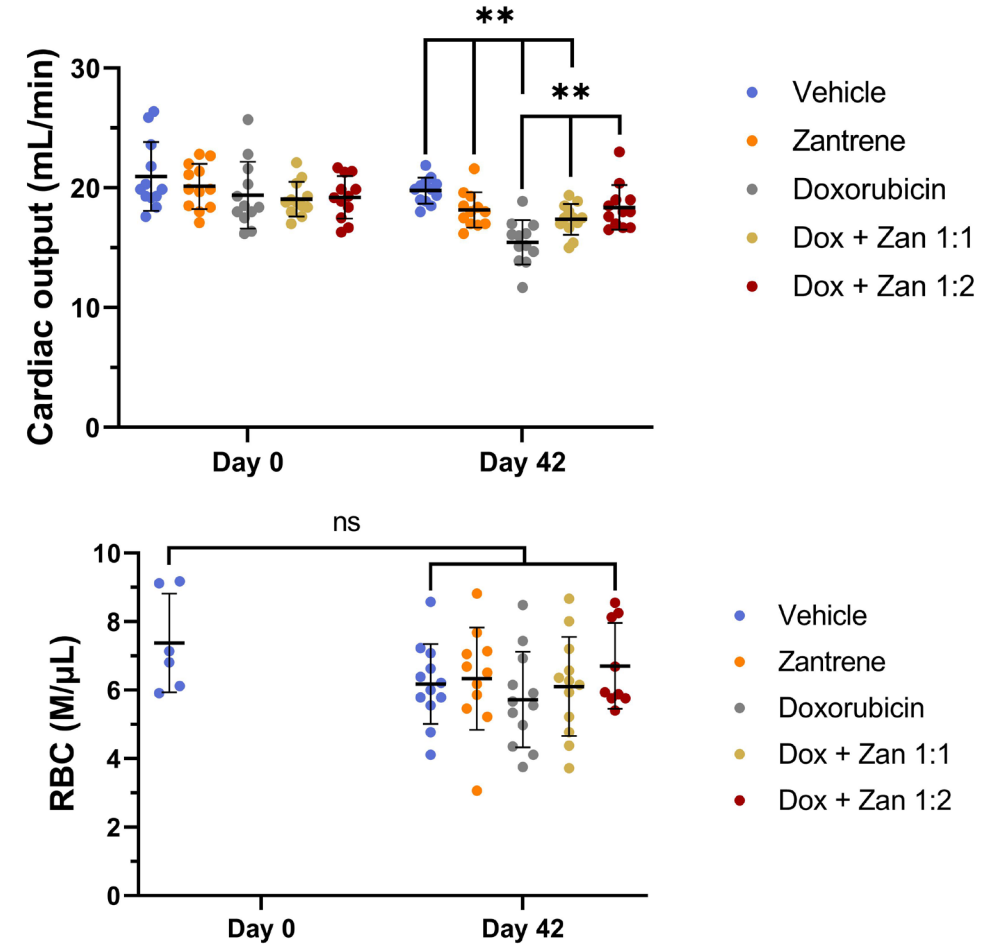
ZANTRENE PROTECTS HEARTS FROM DOXORUBICIN CARDIOTOXICITY



- Zantrene protects the hearts of mice from permanent damage caused by doxorubicin
- Heart protection was achieved using higher levels of chemotherapy treatment with no extra general toxicity



- Supports future clinical trials using Zantrene with anthracyclines
- Update expected on clinical trial design in Q3 CY 2022



ON MARKET SHARE BUYBACK

- For up to 4 million shares over 12 months
- Purchases at Board discretion; at no more than 5% above 5 day VWAP
- Allows us to address periods where the share price may not reflect the robust outlook for the company
- Committed preclinical and clinical programs remain fully funded
- On market purchases confirmed on 25 July and 26 July 2022



SUMMARY OF QUARTERLY FINANCIALS TO 30 JUNE 2022

ITEM	Current Qtr \$A'000	Year to Date (12 months) \$A'000
R&D	(1,329)	(4,475)
Product manufacturing and operating costs	(494)	(881)
Advertising and marketing	(33)	(209)
Staff costs	(139)	(524)
Admin and corporate	(169)	(981)
Interest	9	54
Tax incentives		708
<i>Net cash from /(used) operating activity</i>	(2155)	(6,308)
<i>Cashflows</i>		
Proceeds from equity issues		29,700
Proceeds from Option exercise		1,293
Cash and cash equivalents at beginning of period	35,679	9,322
<i>Cash and cash equivalents at of end period</i>	33,541	33,539
Funding available	15.6 quarters of cash	

EXPECTED NEWS - 2022

- Pre-clinical - *in vitro*
 - Updates on AML, breast cancer, multiple myeloma, kidney cancer and cardioprotection
- Pre-clinical - *in vivo*
 - Animal studies in breast cancer, multiple myeloma and kidney cancer
 - Animal work assessing cardioprotection from carfilzomib-induced heart damage
- Clinical
 - First patient treatment in the extramedullary AML clinical trial.
 - Progress updates on AML Phase 2 trial at Chaim Sheba, Israel
 - Clinical trial plan for cardioprotection in breast cancer patients
 - Clinical trial plan FTO-focused solid tumour trials



Contact us:

Phil Lynch CEO & MD – phillip.lynch@raceoncology.com

Dr Daniel Tillett CSO & Exec Director - daniel.tillett@raceoncology.com