

The background features a close-up of a gas burner with a bright blue flame. A large, dark blue, stylized letter 'B' is superimposed over the right side of the image, partially obscuring the flame. The overall color palette is dominated by various shades of blue.

# ENERGY Blue.

## CORPORATE PRESENTATION

26 July 2022

## Disclaimer

### Not an offer or invitation

This Presentation does not constitute an offer of any securities in BLU, in any jurisdiction, nor an invitation to apply for such securities, in any jurisdiction, and will not form part of any contract for the acquisition of BLU shares. This presentation is not a prospectus, disclosure document or other offering document under Australian law or under any other law.

### Restrictions

This presentation has been prepared for publication in Australia and may not be released to US wire services or distributed in the United States. The New Shares have not been, and will not be, registered under the US Securities Act of 1933 (the “**US Securities Act**”) and may not be offered or sold in the United States except in transactions exempt from, or not subject to, the registration requirements of the US Securities Act and applicable US state securities laws. The distribution of this presentation in the United States and elsewhere outside Australia may be restricted by law. Persons who come into possession of this presentation should observe any such restrictions as any non-compliance could contravene applicable securities laws. Please refer to the section of this document headed “International Offer Restrictions” for more information.

### Not financial product advice

This presentation does not provide investment advice or financial product advice. You should obtain professional advice and carry out your own independent investigations and assessment of the information in this presentation (including any assumptions) before acting. Before making an investment decision to acquire shares in the Company, you should consider the appropriateness of available information, including the Company's other periodic and continuous disclosure announcements lodged with ASX, having regard to your own investment objectives, financial position and particular needs, and seek professional advice from your accountant, tax adviser, stockbroker, lawyer, or other professional adviser.

### No representation or warranties

The Company makes no representation and gives no warranties (express or implied) in relation to any information, opinions and conclusions contained in this presentation. The truth, accuracy or completeness of any information provided by the Company in this presentation is not assured or warranted and no responsibility or liability is accepted by the Company, its related bodies corporate or its directors, officers and advisors for any reliance placed on such information. To the fullest extent permitted by law, none of the Company and its related bodies corporate, or their respective directors, employees, agents or advisers, nor any other person, accepts liability for any loss arising from the use of this presentation or its contents or otherwise arising in connection with it, including without limitation, any liability from fault or negligence on the part of the Company, its related bodies corporate or any of their respective directors, employees, agents or advisers. BLU accepts no responsibility to update any person regarding any inaccuracy, omission or change in information in this presentation or any other information made available to a person, nor any obligation to furnish the person with any further information.

### Past and future performance

Past performance of the Company, including share price performance, should not be relied upon as an indicator of future performance.

This presentation also contains certain statements which may constitute “forward-looking statements.” Wherever possible, words such as “intends”, “expects”, “scheduled”, “estimates”, “anticipates”, “believes”, and similar expressions that certain actions, events or results “may”, “could”, “would”, “might” or “will” be taken, occur or be achieved, have been used to identify these forward-looking statements. Such statements are only expectations or beliefs and are subject to inherent risks and uncertainties which could cause actual values, results or performance to differ materially from those expressed or implied in this presentation. No representation or warranty, express or implied is made by BLU that any forward-looking statement contained in this presentation will occur, be achieved or prove to be correct. You are cautioned against relying upon any forward-looking statement.

### Investment Risk

An investment in shares in BLU (including New Shares) is subject to investment and other known and unknown risks, some of which are beyond the control of BLU. Shareholders and prospective investors should have regard to the risks outlined in this presentation, including the “Key Risks” section of this presentation, when making their investment decision.

### Market and industry data

This presentation contains information relating to the industries, segments and markets in which the Company operates (“Industry Data”). Unless otherwise stated, this information has been prepared by the Company using both publicly available data and its own internally generated data. The Company's internally generated data is based on estimates and assumptions that the directors and management of the Company believe are reasonable. In addition to the Industry Data, the presentation contains third party market data, estimates and projections. There is no assurance regarding the accuracy of such information and the third party information, and the Industry Data, has not been independently verified by the Company.

### Financial data

All dollar values are in Australian dollars (“\$” or “A\$” or “AUD”) unless stated otherwise.

### Acknowledgement and agreement

By accepting, accessing or reviewing this presentation, you acknowledge and agree to the terms set out in this “Disclaimer” section of this presentation and in the “International Offer Restrictions” section of this presentation

## Disclaimer continued

### Eligibility

Determination of eligibility of investors for the purposes of the Placement is determined by reference to a number of matters, including legal requirements, logistical and registry constraints and the discretion of BLU and the Joint Lead Managers. BLU, the Joint Lead Managers and their respective related bodies corporate, directors, officers and advisers, disclaim any duty or liability (including for negligence) in respect of that determination and the exercise or otherwise of that discretion, to the maximum extent permitted by law. For the avoidance of doubt, the Placement is not underwritten.

The Joint Lead Managers may rely on information provided by or on behalf of institutional investors in connection with managing and conducting the Placement without having independently verified that information and the Joint Lead Managers do not assume responsibility for the accuracy or completeness of that information. The Joint Lead Managers may have interests in the securities of the Company, including by providing corporate advisory services to the Company. Further, the Joint Lead Managers may act as market maker or buy or sell those securities or associated derivatives as principal or agent. The Joint Lead Managers may receive fees for acting in their capacity as joint lead managers.

## Competent Person Statement & Listing Rule 5.42 Disclosure

The estimates of Reserves and Contingent Resources noted throughout this ASX Announcement have been provided by Mr John Hattner of Netherland, Sewell and Associates Inc (NSAI) and were originally reported in the Company's market announcements of 25 January 2012, 26 February 2013, 19 March 2013, 8 December 2015, 28 February 2019, 22 January 2022 and 14 July 2022. NSAI independently regularly reviews the Company's Reserves and Contingent Resources. Mr Hattner is a full-time employee of NSAI, has over 30 years of industry experience and 20 years of experience in reserve estimation, is a licensed geologist and a member of the Society of Petroleum Engineers (SPE), and has consented to the use of the information presented herein. The estimates in the reports by Mr Hattner have been prepared in accordance with the definitions and guidelines set forth in the 2018 Petroleum and Resource Management System (PRMS) approved by the SPE, utilising a deterministic methodology. Blue Energy confirms that it is not aware of any new information or data that materially affects the information included in any of the announcements relating to ATP 813, 814 or 854 referred to in this report and that all of the material assumptions and technical parameters underpinning the estimates in the announcements continue to apply and have not materially changed.

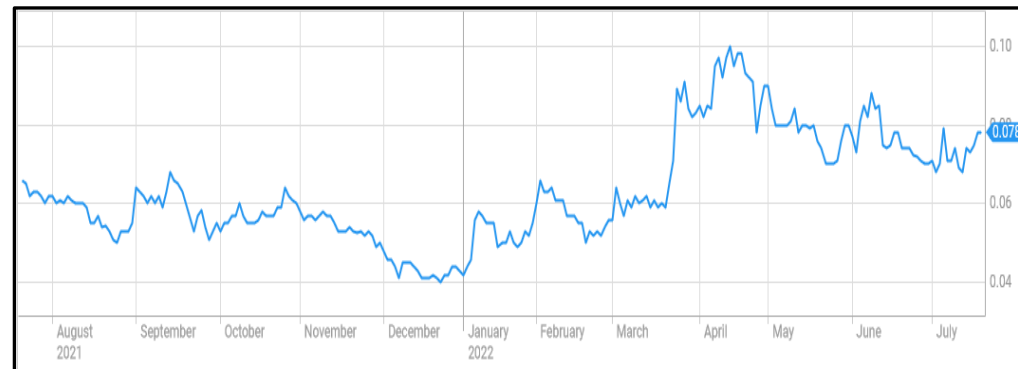
<sup>++</sup> Listing Rule 5.28.2: The estimated quantities of petroleum that may potentially be recovered by the application of a future development project(s) relate to undiscovered accumulations. These estimates have both an associated risk of discovery and a risk of development. Further exploration appraisal and evaluation is required to determine the existence of a significant quantity of potentially moveable hydrocarbons.

# CORPORATE OVERVIEW

## Metrics

<b>Cash (30/06/2022)</b>	\$6.85 million
<b>Debt</b>	Nil
<b>Shares on Issue before offer</b>	1,528,214,889
<b>Market Cap (21/07/22)</b>	~\$119 million

## Share Price



## Board

<b>Executive Chairman:</b>	John Ellice-Flint
<b>Managing Director:</b>	John Phillips
<b>Deputy Chair (non exec):</b>	Rod Cameron
<b>Audit Chair (non exec):</b>	Mark Hayward

## Reserves and Resources

	1P/1C	2P/2C	3P/3C
<b>Reserves (PJ)*</b>	0	78	335
<b>Resources (PJ)*</b>	314	1,418	4,504

# DIRECTORS WITH DEEP EXPERIENCE



**John Ellice-Flint** BSc (Hons) Harvard, AMP

## **Executive Chairman**

- Geologist by training
- 50 years global oil and gas industry experience operations, exploration, production and commercial
- Senior exec in Unocal
- CEO Santos



**John Phillips** Bsc (Hons), GAICD

## **Managing Director**

- Geologist by training
- 38 Years oil and gas experience in operations, exploration, development and management
- Technical and management roles at Delhi, Exxon, Conoco, Novus, Magellan and Sunshine Gas



**Rod Cameron** BAdmin (Hons), MBA, MFM, FAICD, FCPA

## **Deputy Chairman**

### **Non-Executive Director**

- 35 years energy and resources experience in financial and executive roles
- Management positions at NAB, Rio Telstra Atlantic Richfield



**Mark Hayward** BBus(ACC), MAICD, FCA

## **Chair of Risk and Audit Committee**

### **Non-Executive Director**

- Chartered Accountant by training
- 30 years with EY with domestic and international audit partner roles in energy and resources sector

# RESERVES AND RESOURCES

Permit	Block	Date	Method	Certifier	1P (PJ)	1C (PJ)	2P (PJ)	2C (PJ)	3P (PJ)	3C (PJ)
ATP854P	Whole Permit	22/01/2022	SPE/PRMS	NSAI	0	90	0	194	0	398
ATP813P	Whole Permit	29/10/2014	SPE/PRMS	NSAI	0	0	0	61	0	830
ATP814P	Sapphire	14/07/2022	SPE/PRMS	NSAI	0	154.3	66.5	213.9	253.2	214.1
ATP814P	Central	5/12/2015	SPE/PRMS	NSAI	0	50	12	99	75	306
ATP814P	Monslatt	5/12/2015	SPE/PRMS	NSAI	0	0	0	619	0	2,054
ATP814P	Lancewood	5/12/2015	SPE/PRMS	NSAI	0	5	0	23	1	435
ATP814P	Hillalong	27/02/2019	SPE/PRMS	NSAI	0	0	0	182	0	237
ATP814P	South	30/06/2013	SPE/PRMS	NSAI	0	15	0	27	6	30
<b>Total (PJ)</b>					<b>0</b>	<b>314.3</b>	<b>78</b>	<b>1,418</b>	<b>335</b>	<b>4,504</b>

\*All numbers are net to Blue Energy

# STRATEGY

- **Blue Energy** (BLU) has a vision to become Australia's next east coast domestic gas supplier from its 100% owned acreage across three key basins
- **BLU** has a large asset base (4,500+PJ) with executed gas supply agreements for ~500+ PJ of long term gas supply with key retail providers and Industrial users, including:
  - ✓ Energy Australia
  - ✓ Origin Energy; and
  - ✓ Queensland Pacific Metals
- **Fundamentals** remain strong driven by the imminent domestic gas shortage expected on the East Coast from 2023 (or sooner)
- **Nation Building Infrastructure** needed to provide energy security and manufacturing future
- **Active 3rd party infrastructure** providers looking to underwrite gas pipelines



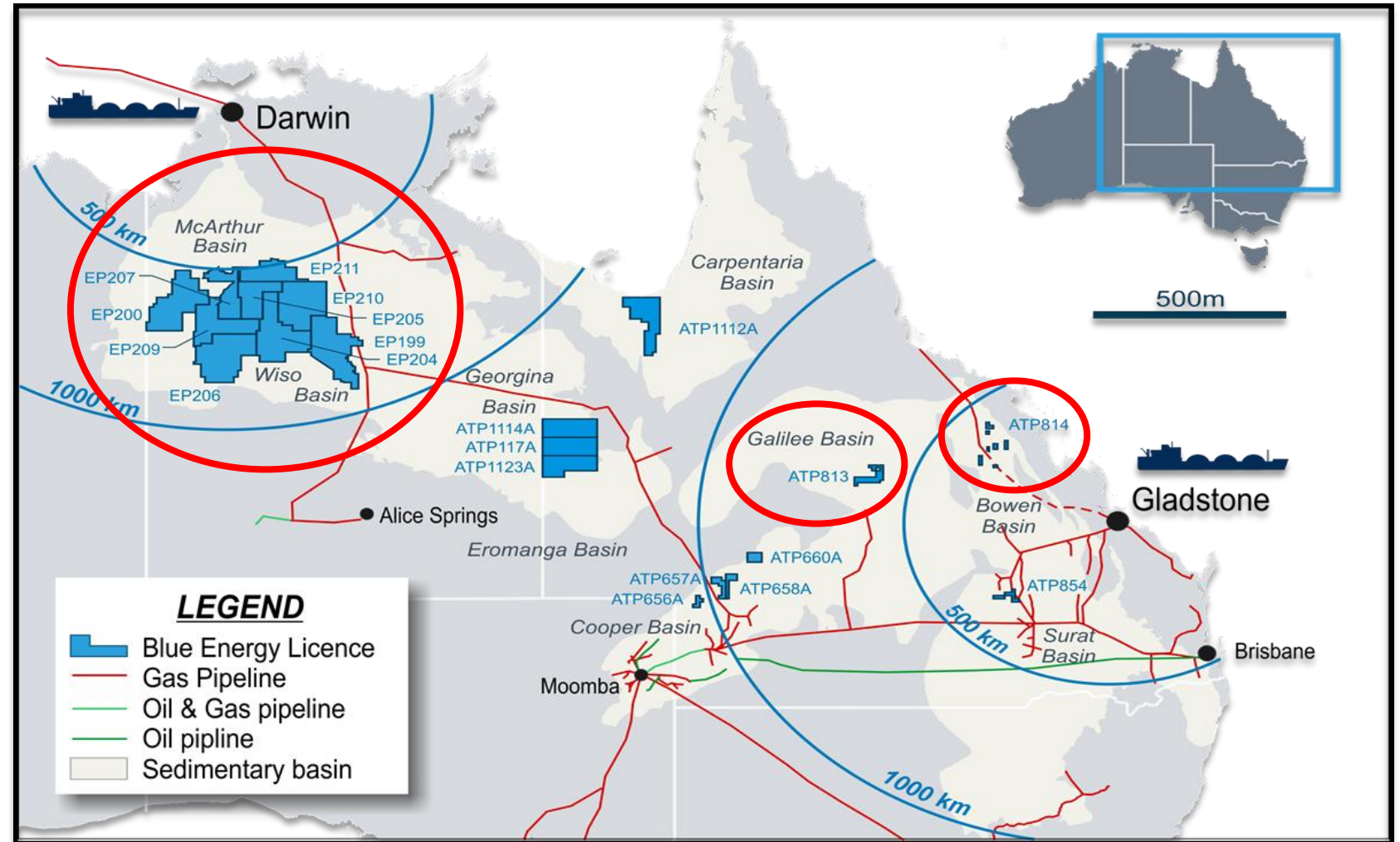


# ASSETS IN THE 3 KEY NEW GAS SUPPLY BASINS

Bowen Basin

Beetaloo Basin

Galilee Basin





# OVERVIEW

## The East Coast Gas Market needs more gas supply to firm renewable energy roll out and underpin manufacturing :

- The North Bowen Basin provides de-risked gas potential - 300+ existing producing gas wells with 16 years of production
- The North Bowen Basin has scale – 15,000 PJ of discovered as resource - equivalent to 30 years of domestic demand
- It is development ready
- Needs 450 km of nation building gas pipeline infrastructure

## Blue's has solid position in the North Bowen Basin and is actively drilling :

- 3,276 PJ\* of Gas Resources (and 2P reserves) – operator
- Pilot drilling underway to firm existing Blue supply Agreements with Origin and EnergyAustralia
- Blue received recent resource and reserve upgrade in the Sapphire block (PL 1034) from NSAI independent certifier

\*See Pages 2 and 3 for Listing Rule 5 Disclosure

# MONETISATION PATH IS CLEAR

Gas offtake agreements for Bowen Basin underpin southern pipeline construction

## BLU's achievements

- Origin Energy and Blue
  - ✓ Heads of Agreements for 300 PJ of gas over 10 years at Wallumbilla
- Energy Australia and Blue
  - ✓ Heads of Agreement for 100 PJ of gas over 10 years at Wallumbilla

Townsville gas offtake underpins additional field development utilising existing infrastructure

- Queensland Pacific Metals and Blue
  - ✓ MoU for 112 PJ of gas over 15 years

**Total Blue Bowen gas under supply agreement = 512 PJ**

Wallumbilla daily spot gas price 21<sup>st</sup> July 2022 = A\$46.29/GJ ( = A\$46 million/PJ)

# EAST COAST GAS MARKET NEEDS NEW SUPPLY

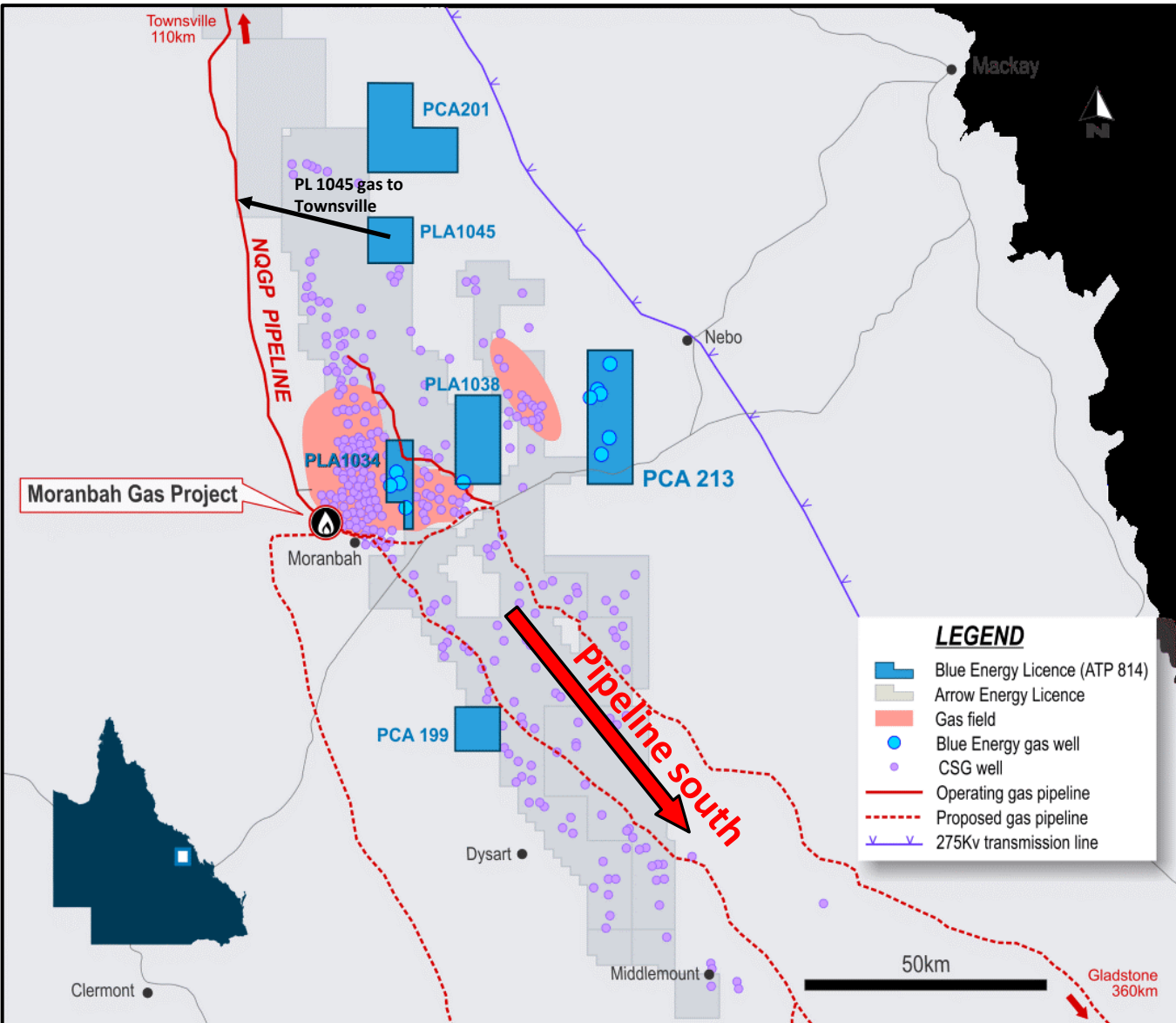
## BLUE'S GAS WILL UNDERPIN NEW GAS INFRASTRUCTURE

- 400 PJ of new Blue gas supply into Wallumbilla – underpins a new nation building gas pipeline
- Blue's gas supports a 20" pipeline open access pipeline but capable of taking the full Bowen Basin volume over time – ie up to 15,000 PJ
- **Federal Government** looking for new build gas infrastructure – Integrated Gas Infrastructure Plan
- **Qld Government** looking to utilise coal mine gas - KPMG State/Fed study phase 1 finds gas pipeline is feasible – Phase 2 of study underway
- **Opportunity** to participate in new pipeline funding and ownership
- **Bowen Basin** has 30 years of domestic east coast gas supply – long term annuity for investors bookended by long term gas offtake and large upstream gas reserves.

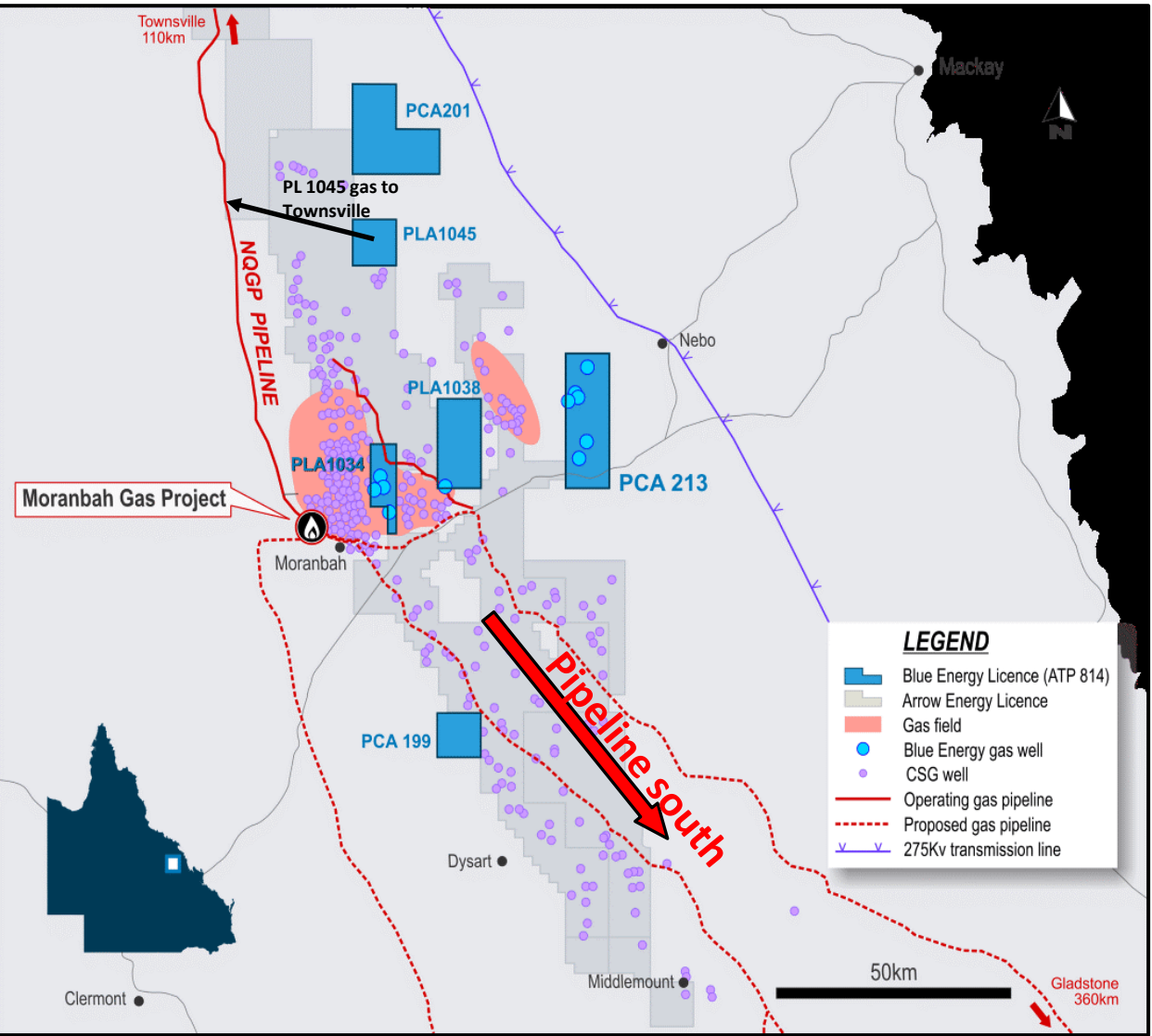


# BLUE'S BOWEN GAS – LONG TERM & RELIABLE SUPPLY

- North Bowen has ~15,000 PJ gas resource – NSAI
- 30 years east coast domestic gas demand
- Blue has ~3,000 PJ of the total gas resource – NSAI
- 8 years of east coast domestic gas demand



# BLUE'S BOWEN GAS – RECENT RESERVE & RESOURCE UPDATES



- Sapphire Block (PL A 1034)**

2P and 3P reserve add and 1C & 2C upgrade

Permit	1P (PJ)		2P (PJ)		3P (PJ)		1C (PJ)		2C (PJ)		3C (PJ)	
	new	'old	new	'old	new	'old	new	'old	new	'old	new	'old
ATP 814P, Sapphire Block, Qld	-	-	66.5	59	253.2	216	154.3	66	213.9	108	214.4	186
% change	-	-	+12.7%	-	+17.2%	-	+133.7%	-	+98.1%	-	+15.2%	-

Source: NSAI, Blue Energy.

- Other PL A's and PCA reviews are underway by NSAI and will follow (eg PL A 1038; 1045 and PCA's 213 and 201)**

# SECOND SAPPHIRE PILOT DRILLING AND TESTING

- **Current Activities**

- Drilling up to 4 lateral CSG wells and a vertical in PL 1034 (Sapphire);
- Testing of the multi lateral wells to demonstrate deliverability

- **New activities**

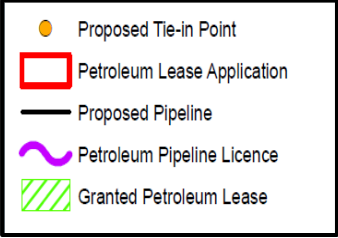
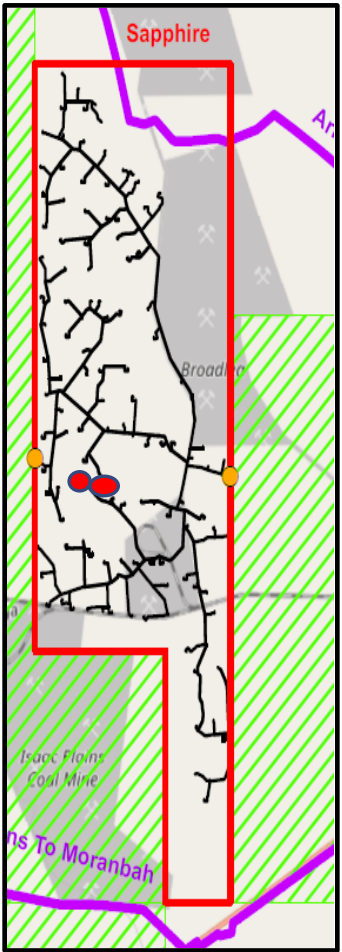
- Drilling an additional 4 lateral CSG wells and a vertical in PL 1034 (Sapphire) to accelerate pilot gas production
  - Rational: - to provide more rapid draw down of the Pilot 1 seam intersections on closer well spacing;
- Testing of the multi lateral wells to demonstrate deliverability

- **Target Outcomes**

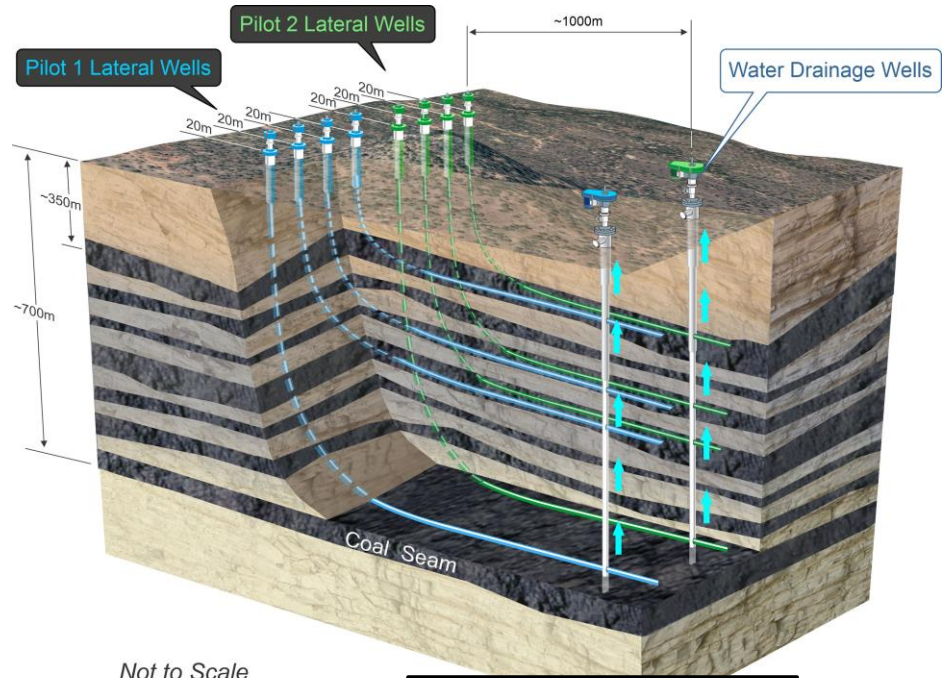
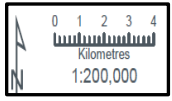
- 2P Reserves build to aggregate 500 PJ in PL's to back gas offtake agreements with Origin, Energy Australia and Queensland Pacific Metals;
- Deliverability and reserve build then underpins economics of standalone gas pipeline to the Wallumbilla interconnect



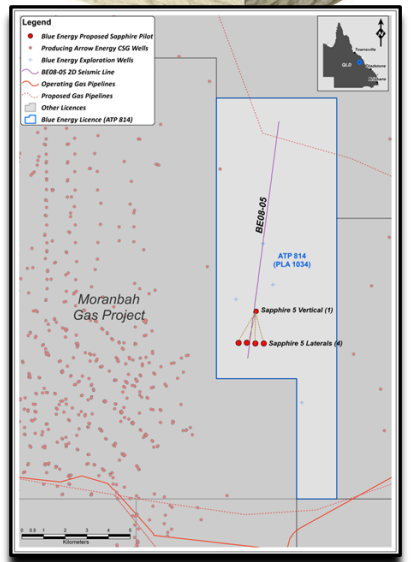
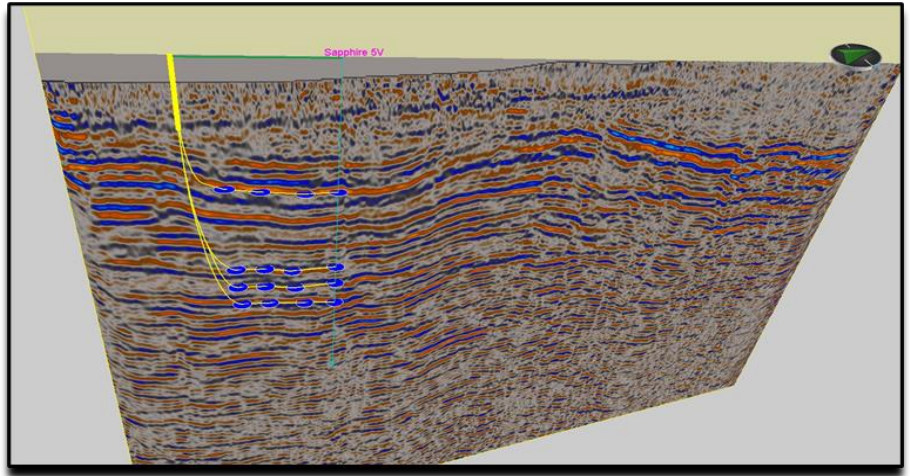
# RESERVE BUILD APPRAISAL WELL LOCATIONS (OVERLAIN ON PROPOSED DEVELOPMENT PLAN WELL FIELDS)



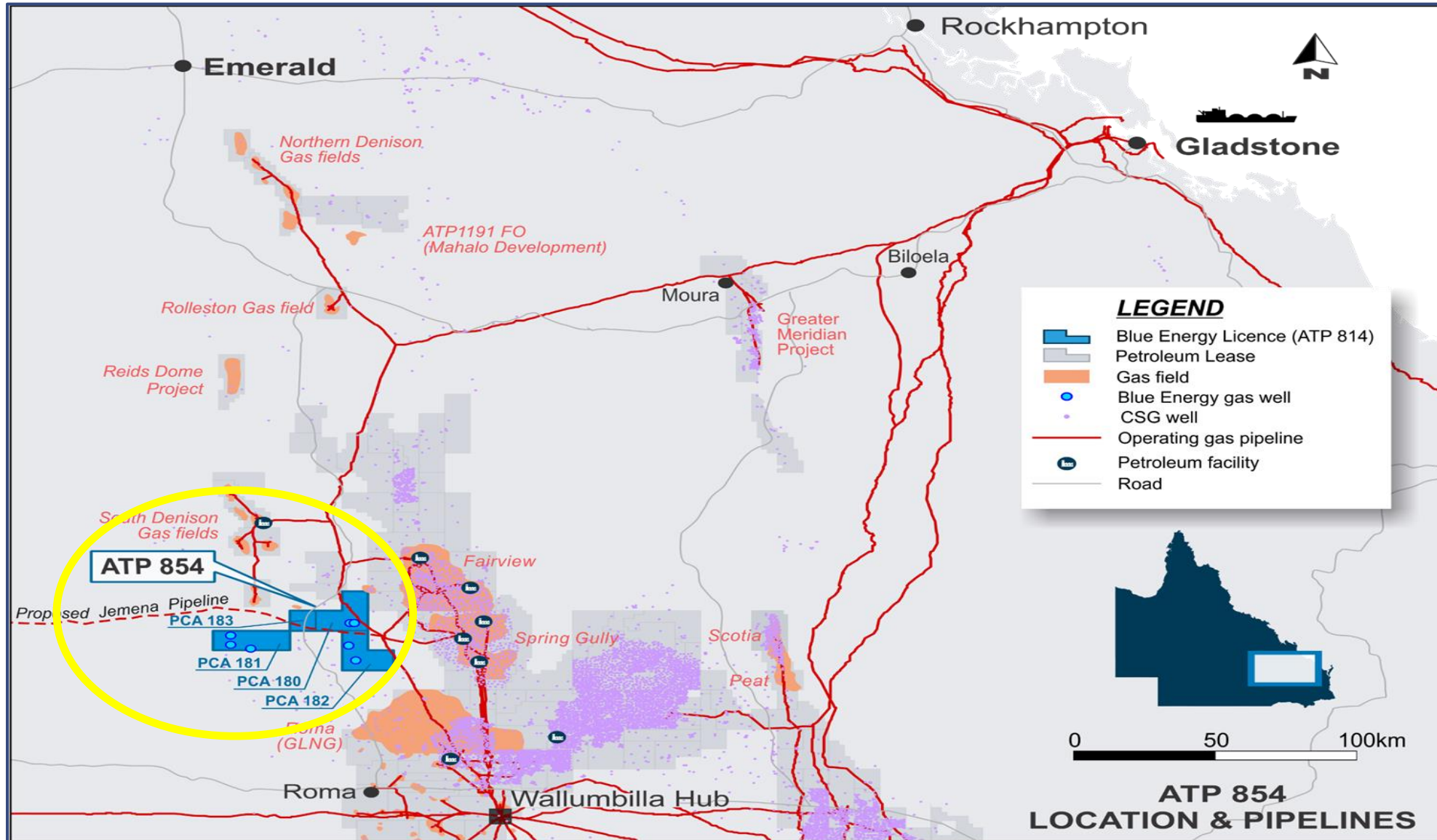
Reserve Build Program  
combination wells



Not to Scale

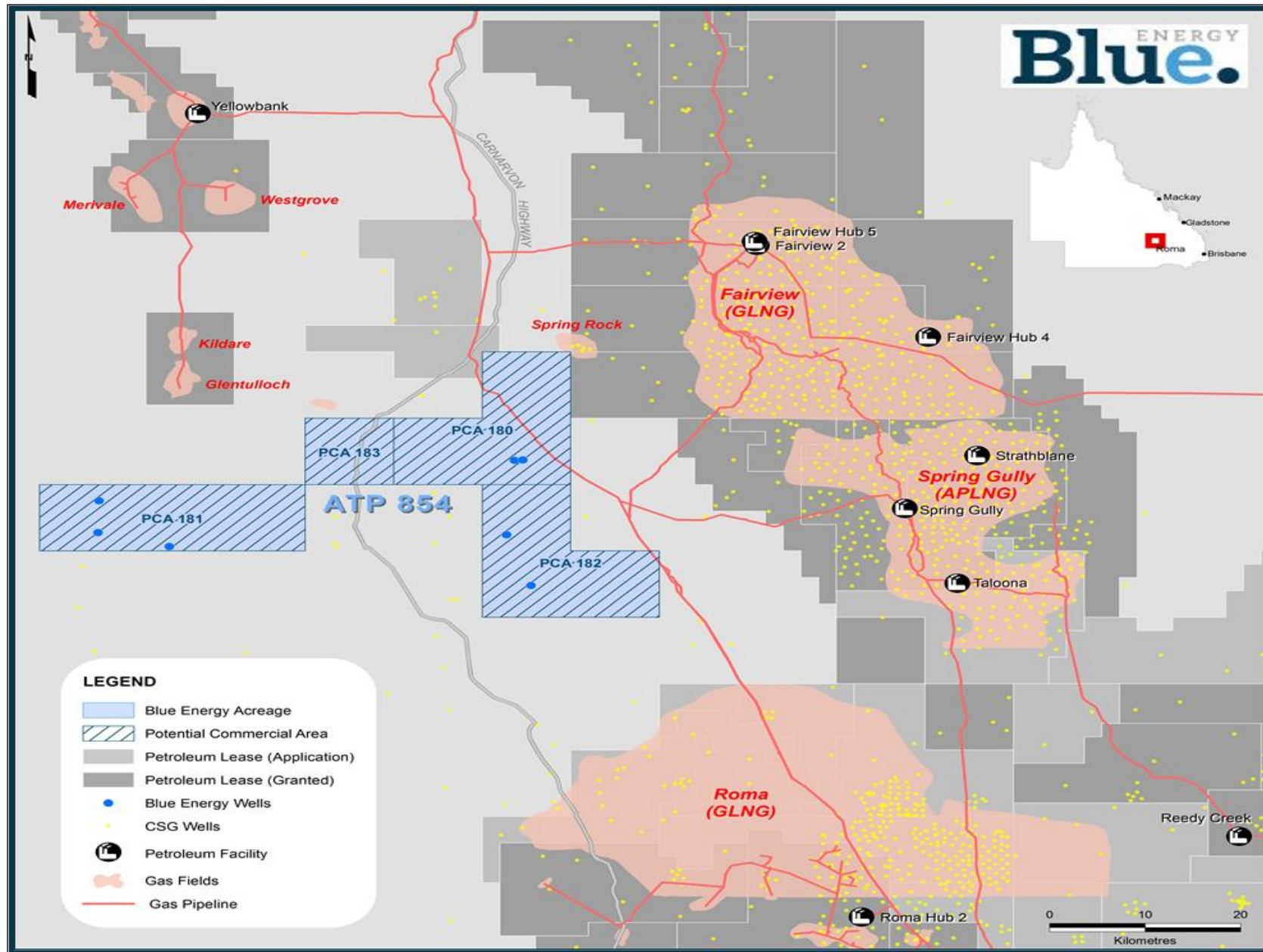


# BLUE'S OTHER GAS OPTION – ATP 854 - SURAT BASIN





# ATP 854 – CLOSE TO EXISTING INFRASTRUCTURE AND GAS FIELDS



# ATP 854 - 100% BLUE – INFRASTRUCTURE IN PLACE

Option to supply  
gas into  
Wallumbilla and  
Gladstone

## NSAI Gas Resource upgrade

- January 2022 - 300% upgrade in Contingent Resource by NSAI
  - ✓ Resource upgrade will allow acceleration of resource appraisal
- ATP854 now becomes a material gas resource – 398 PJ Contingent Resource
  - ✓ Un-contracted gas resource

Permit	1C (PJ)		1P (PJ)		2C (PJ)		2P (PJ)		3C (PJ)		3P (PJ)	
	new	old	new	old	new	old	new	old	new	old	new	old
ATP854P Surat Basin Qld	90	22	-	-	194	47	-	-	398	101	-	-
% Change	+309%				+313%				+294%			

## ATP 854 location

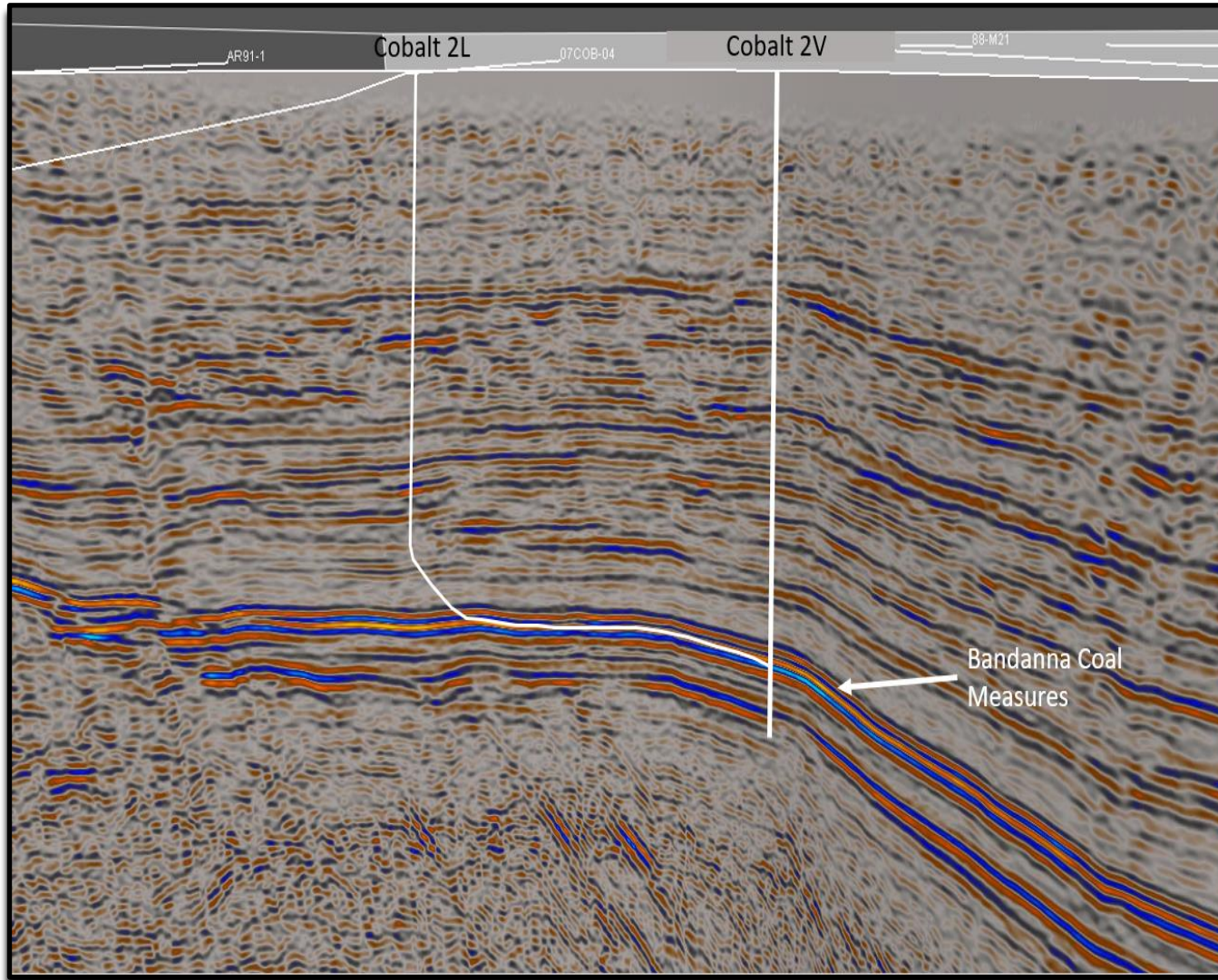
- Two gas pipelines passing through the permit
  - ✓ Connectivity to both Gladstone and Wallumbilla
- Same Permian coal seam gas target as GLNG's Fairview gas field
  - ✓ Additional Jurassic Walloon CSG play

## Proposed work program

- Pilot drilling program to establish reserves and commercial flow rates
- Vertical well and up to two in seam lateral wells



# ATP 854 – PROPOSED DRILLING PROGRAM



# DETAILED USE OF FUNDS

Activity	Description	Base Case
<b>Bowen Basin ATP814</b>		
PL 1034 (Sapphire) Duplicate Pilot		
Vertical wells	1	\$1,000,000
Lateral wells	4	\$4,000,000
Testing	1	\$500,000
Opex		\$500,000
PL 1038 (Central)		
Vertical well	1	\$1,000,000
PL 1045 (Lancewood)		
Vertical well	1	\$1,000,000
<b>Northern Territory</b>		
2D Seismic	500km	\$3,600,000
<b>Surat Basin ATP 854</b>		
Pilot drilling program		
vertical well	1	\$1,500,000
Lateral well	2	\$3,000,000
Testing and completion		\$800,000
<b>Working capital</b>		\$2,000,000
<b>Total</b>		<b>\$18,900,000</b>



# CATALYSTS

Blue's current drilling activity and production testing in the North Bowen Basin

Additional North Bowen reserve and resource upgrades for other Blue Blocks

East Coast gas shortage – Victoria has no gas in storage in 3 weeks

Additional Gas Sales Agreements for north Bowen Gas

- So far committed only 17% of Blue's 3,256 PJ Bowen Gas resource

Electricity market in turmoil – need for gas firming and new generating capacity





# ENERGY Blue.

---