

Deal Name:	Driver Australia Seven
Issuer:	Perpetual Corporate Trust Limited (ABN 99 000 341 533) of Level 18, 123 Pitt Street, Sydney NSW 2000 Australia in its capacity as trustee of the Driver Australia Seven Trust.
Originator of the Receivables:	Volkswagen Financial Services Australia Pty Ltd
Seller of the Receivables:	Volkswagen Financial Services Australia Pty Ltd
Servicer name:	Volkswagen Financial Services Australia Pty Ltd
Reporting Entity:	Volkswagen Financial Services Australia Pty Ltd ABS Operations (Physical Address) Level 1, 24 Muir Road, Chullora NSW 2190 (Postal Address) Locked Bag 4002 Chullora NSW 2190
Contact:	Phone: +61 2 9751 6257 Fax: +61 2 9695 6399 Email: ABSOperations.Australia@vwfs.com.au
Corporate Service Provider:	Perpetual Corporate Trust Limited (ABN 99 000 341 533) of Level 18, 123 Pitt Street, Sydney NSW 2000 Australia in its personal capacity.



Contents

Page	Table of Contents
1	Cover
2	Contents
3	Reporting Details
4	Parties Overview
5	Transaction Events I
6	Transaction Events II
7	Transaction Events III
8	Information regarding the Notes I
9	Information regarding the Notes II
10	Cash Collateral Account
11	Credit Enhancement
12	Swap Fixing / Waterfall
13	Retention of Net Economic Interest
14	Amortisation Profile I
15	Amortisation Profile II
16	Run Out Schedule I
18	Run Out Schedule II
19	Outstanding Contracts I
21	Outstanding Contracts II
22	Arrears
24	Net Salvage Loss
25	Net Salvage After Recoveries
26	Prepayments
27	Pool Data I
29	Pool Data II
30	Pool Data III
32	Pool Data IV
34	Pool Data V
36	Pool Data VI
37	Pool Data VII
43	Pool Data VIII
45	Pool Data IX
47	Hardship Extensions
48	Engine Type
50	Contract Level Data

Reporting Details

Deal Overview

Pool Cut Date	31/10/2021	Publication Date:	16/09/2022 (16th of each month)
Scheduled Date of Clean-Up-Call	11/2025	Payment Date:	21/09/2022 (21st of each month)
Legal Maturity Date	21/01/2030	Reporting Date:	31/08/2022
Issue Date	22/11/2021	Asset Collection Period:	from 01/08/2022 until 31/08/2022
Period No.:	10	Interest Accrual Period	from 22/08/2022 until 21/09/2022
Reporting frequency:	Monthly	Note Payment Period:	from 22/08/2022 until 21/09/2022
Next Payment Date:	21/10/2022	Days accrued:	30

Vehicle Type at Pool Cut	Number of Contracts	Percentage of Contracts	Outstanding Discounted Receivables Balance	Percentage Outstanding Discounted Receivables Balance
New	10,680	70.07%	463,158,976.27 AUD	77.19%
Used	4,561	29.93%	136,866,121.79 AUD	22.81%
Total	15,241	100.00%	600,025,098.06 AUD	100.00%

Credit Type at Pool Cut	Number of Contracts	Percentage of Contracts	Outstanding Discounted Receivables Balance	Percentage Outstanding Discounted Receivables Balance
Chattel Mortgage	9,371	61.49%	414,965,143.56 AUD	69.16%
Consumer Loan	5,870	38.51%	185,059,954.50 AUD	30.84%
Total	15,241	100.00%	600,025,098.06 AUD	100.00%

Parties Overview

Lead Managers:	<p>Australia and New Zealand Banking Group Limited (ABN 11 005 357 522) ANZ Tower 242 Pitt Street Sydney, NSW 2000 Australia</p> <p>Bank of America Merrill Lynch (which is the trading name of Merrill Lynch International) (ARBN 125 336 567) Merrill Lynch Financial Centre 2 King Edward Street London EC1A 1HQ United Kingdom</p>	Security Trustee:	<p>P.T. Limited (ABN 67 004 454 666) Level 18 123 Pitt Street Sydney NSW 2000 Australia</p>
Trustee:	<p>Perpetual Corporate Trust Limited (ABN 99 000 341 533) of Level 18, 123 Pitt Street, Sydney NSW 2000 Australia in its capacity as trustee of the Driver Australia Seven Trust.</p>	Trust Manager:	<p>Perpetual Nominees Limited (ABN 37 000 733 700) of Level 18, 123 Pitt Street, Sydney NSW 2000 Australia in its capacity as the trust manager for the Driver Australia Seven Trust</p>
Sub Trust Manager:	<p>Volkswagen Financial Services Australia Pty Limited (ABN 20 097 071 460) Level 1, 24 Muir Road, Chullora, NSW 2190</p>	Account Bank:	<p>Australia and New Zealand Banking Group Limited (ABN 11 005 357 522) ANZ Tower 242 Pitt Street Sydney, NSW 2000 Australia</p>
Clearing Systems:	<p>Austraclear Limited 30-32 Grosvenor Street. Sydney, NSW 2000</p>	Swap Counterparty:	<p>ING Bank N.V. (ID 26 300 892 I) Bijlmerdreef 106 1102 CT Amsterdam The Netherlands</p>
Servicer:	<p>Volkswagen Financial Services Australia Pty Limited (ABN 20 097 071 460) Level 1, 24 Muir Road, Chullora, NSW 2190 email: ABSOperations.Australia@vwfs.com.au phone: +61 2 9751 6257</p>	Rating Agencies:	<p>Fitch Ratings Attn.: Australia Surveillance Suite 15.01, Level 15, 135 King Street Sydney, NSW 2000 Australia email: australia.surveillance@fitchratings.com</p> <p>Moody's Attn.: Monitor Sydney Level 10, 1 O'Connell Street Sydney, NSW 2000 Australia email: Monitor.Sydney@moodys.com</p>

Transaction Events (I)

Clean-Up Call Condition

Percentage of Current Outstanding Discounted Receivables Balance	73.93%	The Clean-Up-Call Condition is expected to be reached in 11/2025.
Min. Percentage of Outstanding Discounted Receivables Balance	10.00%	

Clean-Up Call

VWFS Australia will have the right at its option to exercise a Clean-Up Call and to repurchase all (but not only some) of the Purchased Receivables from the Issuer at any time when the then outstanding Aggregate Discounted Receivables Balance is less than ten (10) per cent. of the Aggregate Cut-off Date Discounted Receivables Balance and, assuming the Transaction Documents are given full effect, all payment obligations under the Notes, including principal and accrued interest, will thereby be fulfilled in accordance with the Order of Priority (the Clean-up Call Conditions).

Repurchase of Receivables	Number of contracts	% of Contracts	Outstanding Discounted Receivables Balance	% of Outstanding Discounted Receivables Balance	Interest Compensation Payment	Re-Purchase Price
Current Period	-	0.00%	- AUD	0.00%	- AUD	- AUD
Previous Periods	-	0.00%	- AUD	0.00%	- AUD	- AUD
Total	-	0.00%	- AUD	0.00%	- AUD	- AUD

If a repurchase of receivables occurred, it would only result from non-eligibility as of the respective Pool Cut Date (which has been discovered at a later stage), a Legitimate Repudiation of a Receivables Contract, a Reloaded Contract or a Flat-Cancelled Contract.

Transaction Party Replacements

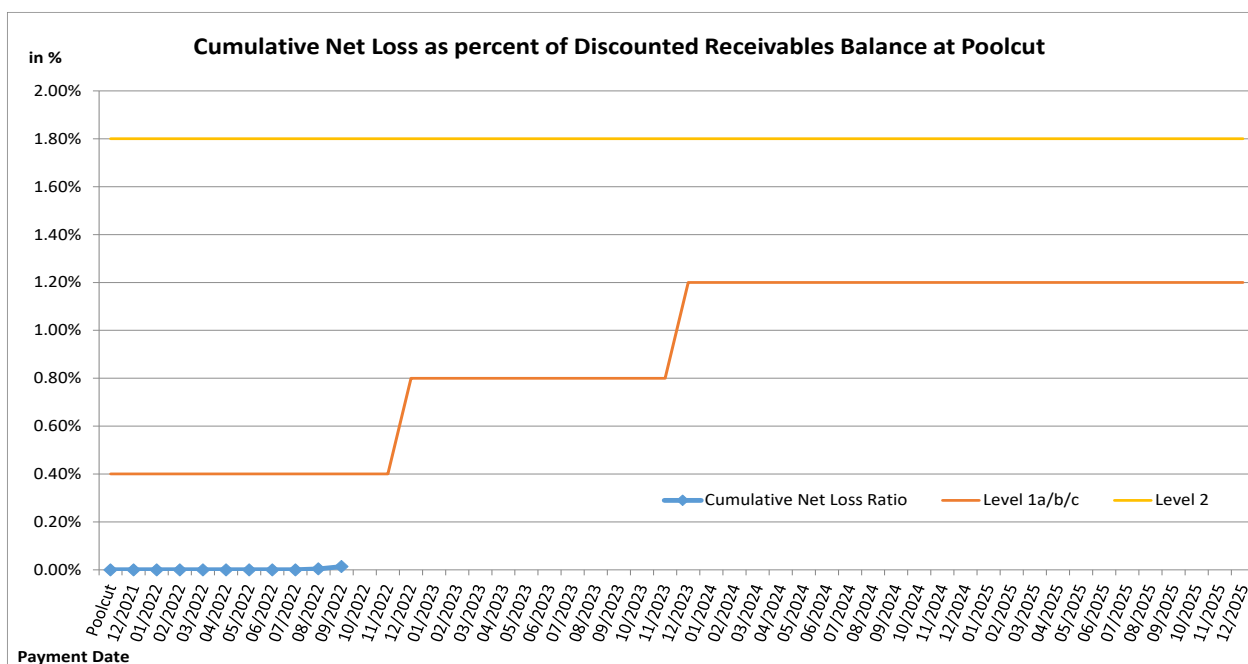
Capacity of Transaction Party	Date of Replacement	Reason for Replacement	Replaced Party	Replaced by

Transaction Events (II)

Credit Enhancement Increase Conditions

Level 1a Credit Enhancement Increase Condition - Cumulative Net Losses do not amount to 0.4% for any Payment Date prior to or during Nov 2022	NO
Level 1b Credit Enhancement Increase Condition - Cumulative Net Losses do not amount to 0.8% for any Payment Date from Dec 2022 but prior to or during Nov 2023	NO
Level 1c Credit Enhancement Increase Condition - Cumulative Net Losses do not amount to 1.2% for any Payment Date after Nov 2023	NO
Level 2 Credit Enhancement Increase Condition - Cumulative Net Losses do not amount to 1.8% for any Payment Date	NO

Net losses	Net Loss Amount
Net Salvage Loss registered in current Period	57,706.41 AUD
Cumulative Net Salvage Loss incl. current Period	81,146.71 AUD
Cumulative Net Salvage Loss as of the End of the Monthly Period	81,146.71 AUD
Discounted Balance as of Pool Cut Date	600,025,098.06 AUD
Cumulative Net Loss as percentage of Discounted Receivables Balance at Pool Cut	0.01352%



Transaction Events (III)

Account Bank:

Australia and New Zealand Banking Group Limited

Current Rating *

Minimum required Rating (if no short term Rating available, the higher long term rating is applicable)

or

Fitch			Moody's		
Long Term	Short Term	Outlook	Long Term	Short Term	Outlook
A+	F1	Stable	Aa3	P-1	Stable
-	F1	-	A2	P-1	-
A	-	-	A2	P-1	-

If the Account Bank ceases to have the Account Bank Required Rating it shall, at its own cost,

(i) transfer the accounts to an Eligible Collateral Bank, or

(ii) provide a guarantee from an Eligible Guarantor, or

If none of the measures is taken within a given timespan, the Issuer may enter into new banking arrangements at its own initiative with another Account Bank.

(Please refer to the Prospectus for a complete description of the mechanism)

Required Rating:

Fulfilled

Swap Counterparty

ING Bank N.V.

Current Rating *

Minimum required Rating for Class A Notes

Minimum required Rating for Class B Notes

Fitch			Moody's		
Long Term	Short Term	Outlook	Long Term	Short Term	Outlook
AA-	F1+	Stable	A1	P-1	Stable
A	F1	-	A3	-	-
-	-	-	A3	-	-

If the Swap Bank falls below the above mentioned Minimum Rating (Level I) it shall provide Eligible Credit Support by means of Cash or certain types of Prime Debt Obligations

If the Swap Bank ceases to have the even lower Rating as an Eligible Swap Counterparty (Level II) it shall, at its own cost,

(i) transfer all rights and obligations under the Swap Agreement to another Eligible Swap Partner or

(ii) provide a guarantee from an Eligible Guarantor.

If none of the measures is taken within a given timespan, the Issuer may enter into new arrangements at its own initiative with another Swap Bank.

(Please refer to the Prospectus for a complete description of the mechanism)

Required Rating:

Fulfilled

Servicer

Volkswagen Financial Services Australia Pty Ltd

If the Monthly Remittance Condition is satisfied, VWFS Australia, as the Servicer, is required to pay collections of the Purchased Receivables (including proceeds from the disposition of any Financed Objects) received by it during each Monthly Period into the Distribution Account in a single deposit no later than the Payment Date for that Monthly Period.

If the Monthly Remittance Condition is not met, the Servicer must remit collections received by it in respect of the Purchased Receivables in accordance with the procedure outlined in detail in "ADMINISTRATION OF THE PURCHASED RECEIVABLES UNDER THE SERVICING AGREEMENT - Commingling".

**Monthly
Remittance
Condition:**

Fulfilled

Information regarding the Notes I

Rating at Issue Date	Class A	Class B
Moody's	Aaa (sf)	Aa2 (sf)
Fitch	AAAsf	NRsf

Current Rating	Class A	Class B
Moody's	Aaa (sf)	Aa2 (sf)
Fitch	AAAsf	NRsf

Information on Notes	Class A	Class B
Legal maturity date	21/01/2030	21/01/2030
Scheduled Clean Up Call	Nov 2025	Nov 2025
ISIN:	AU3FN0063434	AU3FN0063442
Common Code:	239718256	239718272
Nominal Amount	100,000.00 AUD	100,000.00 AUD

Information on Interest	Class A	Class B
Spread/ Margin	70 bps	100 bps
Index Rate	1-Month-BBSW	1-Month-BBSW
Fixed/Floating	floating	floating
Current Coupon	1-Month-BBSW + 70	1-Month-BBSW + 100
Day Count Convention	actual/365	actual/365

Information regarding the Notes II

Monthly Period:	08/2022
Payment Date:	21/09/2022
Interest Accrual Period (from/until)	from 22/08/2022 until 21/09/2022
Days accrued	30
Index Rate	1-Month-BBSW
Base Interest Rate:	1.9500%
Day Count Convention	actual/365

Interest Payments	Class A	Class B
Total Interest Amount of the Reporting Period	834,204.19 AUD	80,013.70 AUD
Paid Interest	834,204.19 AUD	80,013.70 AUD

Unpaid Interest	Class A	Class B
Unpaid Interest in the Reporting Period	- AUD	- AUD
Cumulative unpaid Interest	- AUD	- AUD

Note Balance	Class A	Class B
Note Balance as of Poolcut	526,200,000.00 AUD	33,000,000.00 AUD
Note Balance as of the Beginning of the Period	382,999,405.80 AUD	33,000,000.00 AUD
Redemption Amount per Class	15,948,701.04 AUD	- AUD
Class Balance as of the End of the Period	367,050,704.76 AUD	33,000,000.00 AUD

Payments to Investors per note	Class A	Class B
Interest Per Note	158.53 AUD	242.47 AUD
Principal Repayment by note	3,030.92 AUD	- AUD
Number of Notes	5,262	330
Note Factor	0.6975498	1.0000000

Overcollateralisation Percentage	Class A	Class B
Initial OC Percentage at Poolcut	12.3037%	6.8039%
Current OC Percentage	17.2600%	9.8200%
Target OC Percentage	26.0000%	18.0000%

Subordinated Loan	
Balance as of the Beginning of the Period	34,115,247.75 AUD
Regular Redemption from Waterfall	- AUD
Redemption from Cash Collateral Account	- AUD
Balance as of the End of the Period	34,115,247.75 AUD

Cash Collateral Account

Cash collateral account (CCA)	Value
CCA Opening Balance - Initial balance at poolcut	7,200,000.00 AUD
Balance as of the beginning of the period	6,000,000.00 AUD
Specified General Cash Collateral Account Balance	6,000,000.00 AUD
the greater of: 1.20 per cent of the Aggregate Discounted Receivables Balance as of the end of the Monthly Period; and	5,323,386.19 AUD
the lesser of: \$6,000,000; and	6,000,000.00 AUD
the aggregate outstanding principal amount of the Class A Notes and Class B Notes as of the end of the Monthly Period	415,999,405.80 AUD
Payments	- AUD
General payment from CCA	- AUD
General payment to CCA	- AUD
Balance as of the end of the period	6,000,000.00 AUD

Credit Enhancement

Credit Enhancement as of Poolcut Date	% of Aggregate Discounted Receivables Balance	Value
Class B Note	5.50%	33,000,000.00 AUD
Subordinated Loan	5.80%	34,825,098.06 AUD
Overcollateralisation	1.00%	6,000,000.00 AUD
Cash Collateral Account	1.20%	7,200,000.00 AUD

Cash Collateral Account (CCA)	Value	in % of Outstanding Discounted Receivables Balance as of Poolcut Date
Initial Balance at Poolcut	7,200,000.00 AUD	1.20%
Initial Targeted Balance at Poolcut	7,200,000.00 AUD	1.20%
Current Targeted Balance	6,000,000.00 AUD	1.00%
Balance as of the Beginning of the Period	6,000,000.00 AUD	1.00%
Payment from CCA	- AUD	0.00%
Payment to CCA	- AUD	0.00%
Balance as of the End of the Period	6,000,000.00 AUD	1.00%

Calculation of Credit Enhancement

Initially, Driver Australia Seven's Credit Enhancement consists of the respective Note Issue in comparison to the Discounted Receivables Balance as of Poolcut, minus any Senior Debt Issuance. This 'Overcollateralisation' (i.e. Credit Enhancement excluding the Cash Collateral Account) is specific for each Note Series and increases with its seniority.

Subsequently, the 'Overcollateralisation' is calculated (as an Overcollateralisation Percentage) on a monthly basis, all on end of month figures. Considering the seniority of the respective Note Series, redemption is made until a Target Overcollateralisation Percentage has been reached. All remaining funds will be used to perform payments in the more junior positions of the Order of Priority.

The Target OC percentages for each Note Class are determined subject to 3 items:

- They will increase in 2 steps in case the Cumulative Net Loss Ratio exceeds a certain level and Credit Enhancement Increase Condition is met.
- They will increase to 100% if the Aggregate Discounted Receivables Balance falls below 10.00% of the Aggregate Discounted Receivables Balance at Cut-Off Date (without a Clean-Up Call being exercised).
- A Foreclosure Event causes the transaction to switch into sequential payment mode, in which case the OC Percentages will not determine the maximum redemption amount and may be exceeded.

In addition, there is the 'General Cash Reserve', in the form of a Cash Collateral Account, which is in principle to the benefit of all Tranches over the entire lifetime of the transaction.

Swap Fixing / Waterfall

Amortising Interest Rate Swap	Class A	Class B
Initial Principal	526,200,000.00 AUD	33,000,000.00 AUD
Underlying Principal for Reporting Period	382,999,405.80 AUD	33,000,000.00 AUD
Paying Leg	Fixed Interest Rate	Fixed Interest Rate
Receiving Leg	Floating Interest Rate	Floating Interest Rate
Net Swap Payments - Net Swap Receipts	(353,859.10 AUD)	(26,883.70 AUD)

Available Distribution Amount Calculation	Payment to waterfall position	Remaining Amount
1) i) Available Collections Amount from Contracts	17,998,425.81 AUD	17,998,425.81 AUD
1) ii) Available Collections - Interest on Trust Account	7,974.14 AUD	18,006,399.95 AUD
2) Drawings From Cash Collateral Account as provided for in clause 12.1 of the Issue Supplement	- AUD	18,006,399.95 AUD
3) i) Net Swap Receipts - Class A	353,859.10 AUD	18,360,259.05 AUD
3) ii) Net Swap Receipts - Class B	26,883.70 AUD	18,387,142.75 AUD
4) Damages and Indemnity Payments to Issuer	- AUD	18,387,142.75 AUD
5) Other Reimbursement Amounts	- AUD	18,387,142.75 AUD
6) Buffer Release Amount	(1,130,890.26 AUD)	17,256,252.49 AUD
Remaining Rounding Amount (M-1)	44.38 AUD	17,256,296.87 AUD

Waterfall	Payment to waterfall position	Remaining Amount
Available Distribution Amount	- AUD	17,256,296.87 AUD
1) Trust Beneficiary \$1	(1.00 AUD)	17,256,295.87 AUD
2) Taxes	- AUD	17,256,295.87 AUD
3) Trust Fees & Expenses and Servicer Fees	(393,336.15 AUD)	16,862,959.72 AUD
4. a) Net Swap Payments - Class A Notes	- AUD	16,862,959.72 AUD
4. b) Net Swap Payments - Class B Notes	- AUD	16,862,959.72 AUD
5. a) Interest accrued in prev. month - Class A	(834,204.19 AUD)	16,028,755.53 AUD
5. b) Interest Shortfalls from prior months - Class A	- AUD	16,028,755.53 AUD
6. a) Interest accrued in prev. month - Class B	(80,013.70 AUD)	15,948,741.83 AUD
6. b) Interest Shortfalls from prior months - Class B	- AUD	15,948,741.83 AUD
7) Payment to Cash Collateral Account	- AUD	15,948,741.83 AUD
8) Principal Payment - Class A	(15,948,701.04 AUD)	40.79 AUD
9) Principal Payment - Class B	- AUD	40.79 AUD
Remaining Rounding Amount (Current Period)	(40.79 AUD)	- AUD
10) Penalties, Costs, Expenses, Damages, Losses or Liabilities	- AUD	- AUD
11) Other Payment to Swap Counterparties	- AUD	- AUD
12) Subordinated Loan Accrued and Unpaid Interest	- AUD	- AUD
Interest Accrued this period on the Subordinated Loan	- AUD	- AUD
Unpaid Interest on the Subordinated Loan	- AUD	- AUD
13) Subordinated Loan Principal	- AUD	- AUD
14) Surplus Income Distribution to Beneficiary of the Trust	- AUD	- AUD

Distribution of Cash Collateral Account surplus	Payment	Remaining Amount
Payment from CCA	- AUD	- AUD
Payment of Interest Accrued this period on the Subordinated Loan	- AUD	- AUD
Payment of Unpaid Interest on the Subordinated Loan	- AUD	- AUD
Payment in respect of regular redemption to subordinated lender	- AUD	- AUD
Distribution to Beneficiary of the Trust	- AUD	- AUD

Retention of Net Economic Interest

Period	Poolcut	Balance as at Current Period
Total Assets	684,926,843.21 AUD	495,449,851.08 AUD
Nominal Receivables Balance	684,926,843.21 AUD	495,449,851.08 AUD
First loss piece	48,025,098.06 AUD	49,564,811.45 AUD
Subordinated Loan balance	34,825,098.06 AUD	34,115,247.75 AUD
Overcollateralisation	6,000,000.00 AUD	9,449,563.70 AUD
General Cash Collateral Account balance	7,200,000.00 AUD	6,000,000.00 AUD
Actual retention	7.01%	10.00%

In its capacity as originator and original lender, VWFSA complies with the retention requirement of a material net economic interest in accordance with Article 6 (3) (d) of the European Securitisation Regulation.

By adhering to Article 6 (3) (d) of the European Securitisation Regulation, VWFSA will keep the exposures designated for retention on its balance sheet on an ongoing basis.

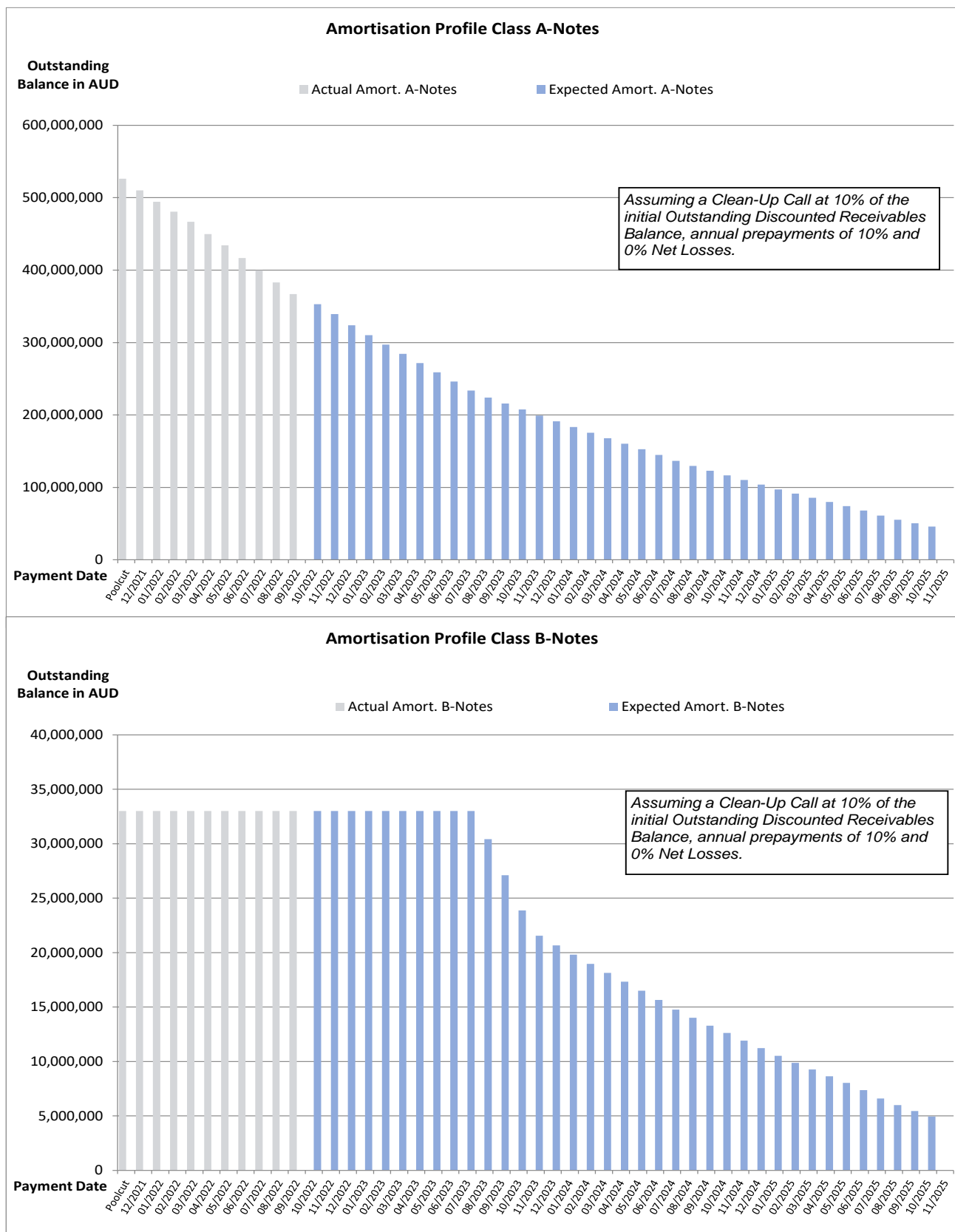
The latest end of month level of retention will be published on a monthly basis in the investor report.

Amortisation Profile I

Note Class	Class A		Class B	
WAL	At Closing: 1.85 yrs	Current: 1.55 yrs	At Closing: 2.84 yrs	Current: 1.97 yrs
Payment Date	Actual Note Balance	Forecasted Note Balance	Actual Note Balance	Forecasted Note Balance
Poolcut	526,200,000.00 AUD	- AUD	33,000,000.00 AUD	- AUD
12/2021	510,049,185.54 AUD	- AUD	33,000,000.00 AUD	- AUD
01/2022	494,276,866.74 AUD	- AUD	33,000,000.00 AUD	- AUD
02/2022	480,766,050.30 AUD	- AUD	33,000,000.00 AUD	- AUD
03/2022	466,604,640.18 AUD	- AUD	33,000,000.00 AUD	- AUD
04/2022	449,793,707.82 AUD	- AUD	33,000,000.00 AUD	- AUD
05/2022	434,204,927.58 AUD	- AUD	33,000,000.00 AUD	- AUD
06/2022	416,766,133.38 AUD	- AUD	33,000,000.00 AUD	- AUD
07/2022	399,553,605.18 AUD	- AUD	33,000,000.00 AUD	- AUD
08/2022	382,999,405.80 AUD	- AUD	33,000,000.00 AUD	- AUD
09/2022	367,050,704.76 AUD	- AUD	33,000,000.00 AUD	- AUD
10/2022	-	353,110,487.11 AUD	-	33,000,000.00 AUD
11/2022	-	339,208,299.54 AUD	-	33,000,000.00 AUD
12/2022	-	323,867,077.56 AUD	-	33,000,000.00 AUD
01/2023	-	310,144,162.24 AUD	-	33,000,000.00 AUD
02/2023	-	297,025,931.76 AUD	-	33,000,000.00 AUD
03/2023	-	284,344,119.90 AUD	-	33,000,000.00 AUD
04/2023	-	271,514,362.48 AUD	-	33,000,000.00 AUD
05/2023	-	259,050,618.33 AUD	-	33,000,000.00 AUD
06/2023	-	246,275,628.10 AUD	-	33,000,000.00 AUD
07/2023	-	233,776,243.85 AUD	-	33,000,000.00 AUD
08/2023	-	224,134,889.14 AUD	-	30,427,101.61 AUD
09/2023	-	215,767,682.82 AUD	-	27,113,926.05 AUD
10/2023	-	207,561,555.54 AUD	-	23,875,290.74 AUD
11/2023	-	199,298,120.87 AUD	-	21,545,742.80 AUD
12/2023	-	191,110,131.25 AUD	-	20,660,554.73 AUD
01/2024	-	183,229,331.08 AUD	-	19,808,576.33 AUD
02/2024	-	175,405,470.59 AUD	-	18,962,753.58 AUD
03/2024	-	167,854,586.79 AUD	-	18,146,441.82 AUD
04/2024	-	160,209,138.31 AUD	-	17,319,906.84 AUD
05/2024	-	152,652,220.86 AUD	-	16,502,942.79 AUD
06/2024	-	144,737,772.97 AUD	-	15,647,326.81 AUD
07/2024	-	136,637,806.86 AUD	-	14,771,654.79 AUD
08/2024	-	129,595,859.57 AUD	-	14,010,363.20 AUD
09/2024	-	122,954,539.78 AUD	-	13,292,382.68 AUD
10/2024	-	116,766,012.37 AUD	-	12,623,352.69 AUD
11/2024	-	110,185,339.04 AUD	-	11,911,928.54 AUD
12/2024	-	103,844,441.25 AUD	-	11,226,426.09 AUD
01/2025	-	97,218,558.86 AUD	-	10,510,114.47 AUD
02/2025	-	91,337,535.74 AUD	-	9,874,328.19 AUD
03/2025	-	85,705,158.60 AUD	-	9,265,422.55 AUD
04/2025	-	79,873,954.32 AUD	-	8,635,022.09 AUD
05/2025	-	74,275,695.22 AUD	-	8,029,804.89 AUD
06/2025	-	68,237,193.56 AUD	-	7,376,993.90 AUD
07/2025	-	61,008,634.17 AUD	-	6,595,528.02 AUD
08/2025	-	55,430,594.67 AUD	-	5,992,496.72 AUD
09/2025	-	50,388,501.06 AUD	-	5,447,405.52 AUD
10/2025	-	45,791,053.50 AUD	-	4,950,384.16 AUD
11/2025	-	- AUD	-	- AUD

*Based on the following assumptions: CPR of 10%, Net Losses of 0% and Clean Up Call at 10% of the original outstanding discounted receivables balance

Amortisation Profile II

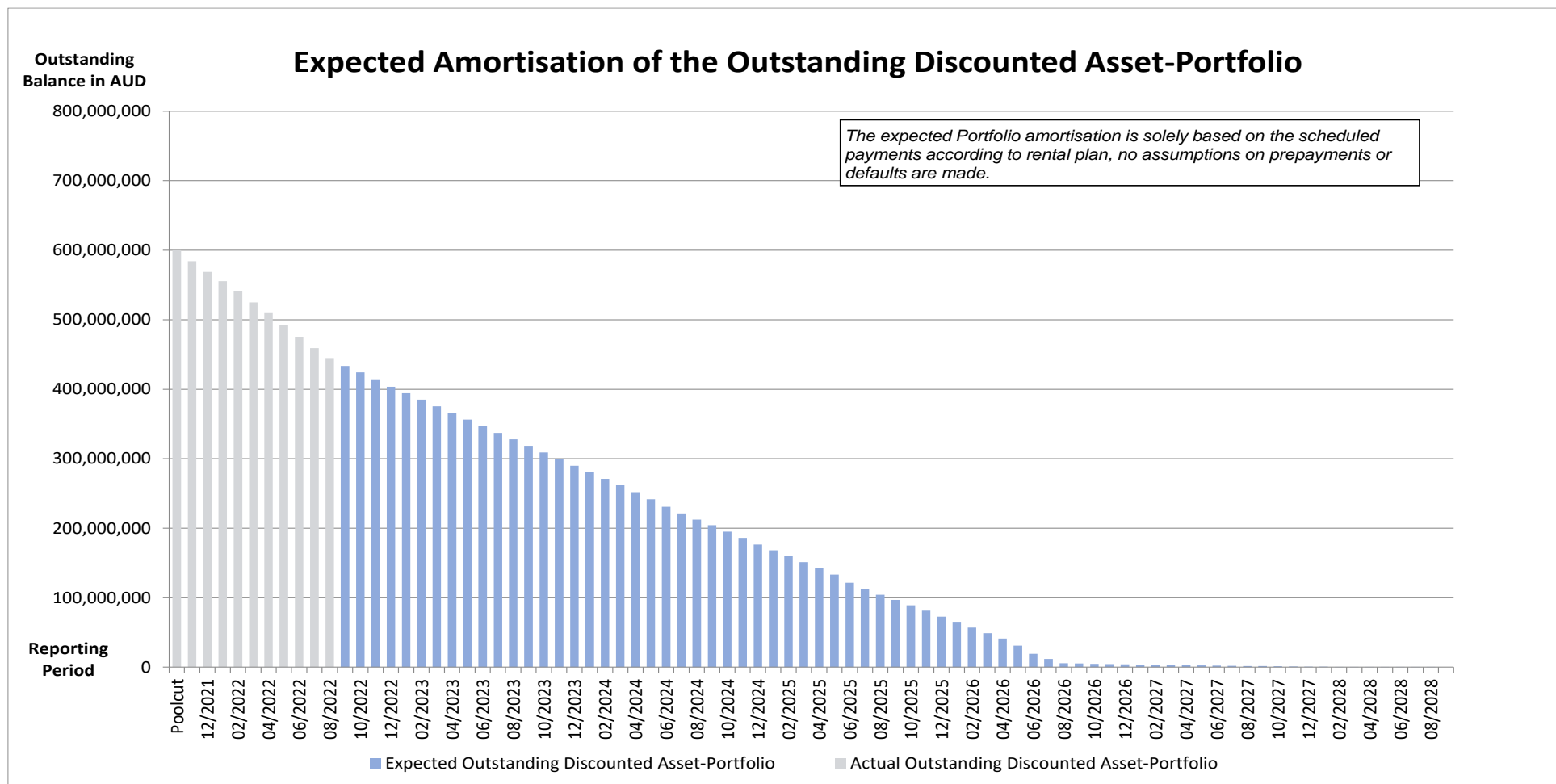


Run Out Schedule I

End of Collection Period	Interest	Principal	Nominal Instalments
arrears	101,506.18 AUD	881,010.27 AUD	982,516.45 AUD
09/2022	1,854,499.27 AUD	9,175,909.12 AUD	11,030,408.39 AUD
10/2022	2,087,667.69 AUD	9,365,111.59 AUD	11,452,779.28 AUD
11/2022	2,051,559.19 AUD	11,029,734.32 AUD	13,081,293.51 AUD
12/2022	2,001,664.13 AUD	9,649,973.75 AUD	11,651,637.88 AUD
01/2023	1,957,112.27 AUD	9,279,684.29 AUD	11,236,796.56 AUD
02/2023	1,912,442.96 AUD	9,361,319.92 AUD	11,273,762.88 AUD
03/2023	1,867,895.52 AUD	9,435,830.93 AUD	11,303,726.45 AUD
04/2023	1,822,539.96 AUD	9,352,627.34 AUD	11,175,167.30 AUD
05/2023	1,777,647.63 AUD	9,661,470.29 AUD	11,439,117.92 AUD
06/2023	1,731,048.89 AUD	9,653,986.41 AUD	11,385,035.30 AUD
07/2023	1,684,416.74 AUD	9,701,745.22 AUD	11,386,161.96 AUD
08/2023	1,637,551.01 AUD	9,243,000.47 AUD	10,880,551.48 AUD
09/2023	1,592,690.83 AUD	9,295,115.36 AUD	10,887,806.19 AUD
10/2023	1,547,621.02 AUD	9,490,101.27 AUD	11,037,722.29 AUD
11/2023	1,501,456.30 AUD	9,754,988.46 AUD	11,256,444.76 AUD
12/2023	1,454,198.61 AUD	9,268,918.26 AUD	10,723,116.87 AUD
01/2024	1,409,406.00 AUD	9,446,104.05 AUD	10,855,510.05 AUD
02/2024	1,363,454.72 AUD	9,418,703.67 AUD	10,782,158.39 AUD
03/2024	1,317,890.40 AUD	9,542,577.67 AUD	10,860,468.07 AUD
04/2024	1,271,529.22 AUD	9,647,041.28 AUD	10,918,570.50 AUD
05/2024	1,224,777.93 AUD	10,168,658.97 AUD	11,393,436.90 AUD
06/2024	1,175,384.62 AUD	10,941,642.03 AUD	12,117,026.65 AUD
07/2024	1,122,157.30 AUD	9,431,289.02 AUD	10,553,446.32 AUD
08/2024	1,076,345.50 AUD	8,946,239.17 AUD	10,022,584.67 AUD
09/2024	1,032,879.37 AUD	8,318,811.78 AUD	9,351,691.15 AUD
10/2024	992,469.19 AUD	9,073,057.80 AUD	10,065,526.99 AUD
11/2024	948,453.78 AUD	9,041,477.08 AUD	9,989,930.86 AUD
12/2024	904,472.62 AUD	9,509,786.35 AUD	10,414,258.97 AUD
01/2025	858,211.66 AUD	8,382,039.09 AUD	9,240,250.75 AUD
02/2025	817,437.51 AUD	8,320,560.76 AUD	9,137,998.27 AUD
03/2025	776,987.23 AUD	8,710,042.05 AUD	9,487,029.28 AUD
04/2025	734,616.46 AUD	8,522,009.26 AUD	9,256,625.72 AUD
05/2025	693,168.28 AUD	9,410,526.05 AUD	10,103,694.33 AUD
06/2025	647,389.47 AUD	11,811,685.82 AUD	12,459,075.29 AUD
07/2025	589,957.21 AUD	8,907,207.05 AUD	9,497,164.26 AUD
08/2025	546,630.49 AUD	8,167,563.86 AUD	8,714,194.35 AUD
09/2025	506,898.27 AUD	7,558,794.87 AUD	8,065,693.14 AUD
10/2025	470,128.96 AUD	7,599,671.31 AUD	8,069,800.27 AUD
11/2025	433,161.94 AUD	7,893,546.23 AUD	8,326,708.17 AUD
12/2025	394,790.01 AUD	8,421,834.04 AUD	8,816,624.05 AUD
01/2026	353,872.18 AUD	7,694,388.86 AUD	8,048,261.04 AUD
02/2026	316,461.54 AUD	8,194,081.69 AUD	8,510,543.23 AUD
03/2026	276,762.01 AUD	8,073,534.58 AUD	8,350,296.59 AUD
04/2026	237,492.92 AUD	7,758,140.80 AUD	7,995,633.72 AUD
05/2026	199,757.42 AUD	10,220,629.03 AUD	10,420,386.45 AUD
06/2026	150,070.28 AUD	11,652,117.49 AUD	11,802,187.77 AUD
07/2026	93,481.73 AUD	7,409,149.95 AUD	7,502,631.68 AUD
08/2026	57,440.64 AUD	6,219,584.87 AUD	6,277,025.51 AUD
09/2026	27,204.26 AUD	351,492.17 AUD	378,696.43 AUD

10/2026	25,494.46 AUD	392,900.28 AUD	418,394.74 AUD
11/2026	23,586.56 AUD	328,557.15 AUD	352,143.71 AUD
12/2026	21,988.78 AUD	334,800.17 AUD	356,788.95 AUD
01/2027	20,366.88 AUD	321,983.23 AUD	342,350.11 AUD
02/2027	18,800.48 AUD	334,837.65 AUD	353,638.13 AUD
03/2027	17,203.59 AUD	371,389.33 AUD	388,592.92 AUD
04/2027	15,403.95 AUD	310,586.81 AUD	325,990.76 AUD
05/2027	13,892.98 AUD	304,621.77 AUD	318,514.75 AUD
06/2027	12,411.15 AUD	293,772.80 AUD	306,183.95 AUD
07/2027	10,982.00 AUD	277,952.45 AUD	288,934.45 AUD
08/2027	9,629.93 AUD	261,010.23 AUD	270,640.16 AUD
09/2027	8,360.24 AUD	247,572.97 AUD	255,933.21 AUD
10/2027	7,155.85 AUD	232,604.40 AUD	239,760.25 AUD
11/2027	6,024.40 AUD	213,450.41 AUD	219,474.81 AUD
12/2027	4,986.01 AUD	195,255.97 AUD	200,241.98 AUD
01/2028	4,036.06 AUD	176,950.45 AUD	180,986.51 AUD
02/2028	3,175.42 AUD	159,481.88 AUD	162,657.30 AUD
03/2028	2,399.52 AUD	142,468.05 AUD	144,867.57 AUD
04/2028	1,706.53 AUD	125,637.62 AUD	127,344.15 AUD
05/2028	1,095.29 AUD	99,290.47 AUD	100,385.76 AUD
06/2028	612.31 AUD	68,278.36 AUD	68,890.67 AUD
07/2028	280.20 AUD	41,560.29 AUD	41,840.49 AUD
08/2028	77.99 AUD	15,211.85 AUD	15,289.84 AUD
09/2028	4.02 AUD	631.31 AUD	635.33 AUD
10/2028	0.95 AUD	194.34 AUD	195.29 AUD
11/2028	- AUD	- AUD	- AUD
Total	51,834,334.87 AUD	443,615,516.21 AUD	495,449,851.08 AUD

Run Out Schedule II



Outstanding Contracts I - Overview

Total Portfolio as of Poolcut Date			Product Type			
Contract Status Development	Number of Contracts	Outstanding Discounted Receivables Balance	Chattel Mortgage		Consumer Loan	
			Number of Contracts	Outstanding Discounted Receivables Balance	Number of Contracts	Outstanding Discounted Receivables Balance
Normal	15,241	600,025,098.06 AUD	9,371	414,965,143.56 AUD	5,870	185,059,954.50 AUD
In Advance	-	- AUD	-	- AUD	-	- AUD
In Arrears	-	- AUD	-	- AUD	-	- AUD
Paid out/Matured	-	- AUD	-	- AUD	-	- AUD
Early Payout	-	- AUD	-	- AUD	-	- AUD
Gross Salvage	-	- AUD	-	- AUD	-	- AUD
Net Salvage	-	- AUD	-	- AUD	-	- AUD
Total	15,241	600,025,098.06 AUD	9,371	414,965,143.56 AUD	5,870	185,059,954.50 AUD

Total Portfolio as of Previous Month			Product Type			
Contract Status Development	Number of Contracts	Outstanding Discounted Receivables Balance	Chattel Mortgage		Consumer Loan	
			Number of Contracts	Outstanding Discounted Receivables Balance	Number of Contracts	Outstanding Discounted Receivables Balance
Normal	10,635	368,856,986.88 AUD	7,292	281,374,302.09 AUD	3,343	87,482,684.79 AUD
In Advance	1,194	34,860,313.99 AUD	434	14,039,670.77 AUD	760	20,820,643.22 AUD
In Arrears	1,776	55,365,756.11 AUD	771	26,747,810.84 AUD	1,005	28,617,945.27 AUD
Paid out/Matured	158	- AUD	97	- AUD	61	- AUD
Early Payout	1,474	- AUD	774	- AUD	700	- AUD
Gross Salvage	3	126,785.03 AUD	2	41,634.28 AUD	1	85,150.75 AUD
Net Salvage	1	23,440.30 AUD	1	23,440.30 AUD	-	- AUD
Total	15,241	459,233,282.31 AUD	9,371	322,226,858.28 AUD	5,870	137,006,424.03 AUD

Total Portfolio as of Current Reporting Period			Product Type			
Contract Status Development	Number of Contracts	Outstanding Discounted Receivables Balance	Chattel Mortgage		Consumer Loan	
			Number of Contracts	Outstanding Discounted Receivables Balance	Number of Contracts	Outstanding Discounted Receivables Balance
Normal	10,222	339,931,492.51 AUD	6,880	257,455,890.10 AUD	3,342	82,475,602.41 AUD
In Advance	1,621	53,492,027.14 AUD	796	28,716,943.75 AUD	825	24,775,083.39 AUD
In Arrears	1,539	50,096,936.26 AUD	690	25,699,361.90 AUD	849	24,397,574.36 AUD
Paid out/Matured	178	- AUD	111	- AUD	67	- AUD
Early Payout	1,673	- AUD	888	- AUD	785	- AUD
Gross Salvage	3	95,060.30 AUD	3	95,060.30 AUD	-	- AUD
Net Salvage	5	80,087.96 AUD	3	52,068.73 AUD	2	28,019.23 AUD
Total	15,241	443,695,604.17 AUD	9,371	312,019,324.78 AUD	5,870	131,676,279.39 AUD

Outstanding Contracts I - Overview

Total Portfolio as of Poolcut Date			Balloon				Type of Car			
Contract Status Development	Number of Contracts	Outstanding Discounted Receivables Balance	Balloon		No Balloon		New Vehicle		Used Vehicle	
			Number of Contracts	Outstanding Discounted Receivables Balance	Number of Contracts	Outstanding Discounted Receivables Balance	Number of Contracts	Outstanding Discounted Receivables Balance	Number of Contracts	Outstanding Discounted Receivables Balance
Normal	15,241	600,025,098.06 AUD	4,261	251,558,699.25 AUD	10,980	348,466,398.81 AUD	10,680	463,158,976.27 AUD	4,561	136,866,121.79 AUD
In Advance	-	- AUD	-	- AUD	-	- AUD	-	- AUD	-	- AUD
In Arrears	-	- AUD	-	- AUD	-	- AUD	-	- AUD	-	- AUD
Paid out/Matured	-	- AUD	-	- AUD	-	- AUD	-	- AUD	-	- AUD
Early Payout	-	- AUD	-	- AUD	-	- AUD	-	- AUD	-	- AUD
Gross Salvage	-	- AUD	-	- AUD	-	- AUD	-	- AUD	-	- AUD
Net Salvage	-	- AUD	-	- AUD	-	- AUD	-	- AUD	-	- AUD
Total	15,241	600,025,098.06 AUD	4,261	251,558,699.25 AUD	10,980	348,466,398.81 AUD	10,680	463,158,976.27 AUD	4,561	136,866,121.79 AUD

Total Portfolio as of Previous Month			Balloon				Type of Car			
Contract Status Development	Number of Contracts	Outstanding Discounted Receivables Balance	Balloon		No Balloon		New Vehicle		Used Vehicle	
			Number of Contracts	Outstanding Discounted Receivables Balance	Number of Contracts	Outstanding Discounted Receivables Balance	Number of Contracts	Outstanding Discounted Receivables Balance	Number of Contracts	Outstanding Discounted Receivables Balance
Normal	10,635	368,856,986.88 AUD	3,260	176,354,525.26 AUD	7,375	192,502,461.62 AUD	7,628	294,059,209.65 AUD	3,007	74,797,777.23 AUD
In Advance	1,194	34,860,313.99 AUD	228	9,666,227.53 AUD	966	25,194,086.46 AUD	816	25,606,509.41 AUD	378	9,253,804.58 AUD
In Arrears	1,776	55,365,756.11 AUD	342	16,180,346.98 AUD	1,434	39,185,409.13 AUD	1,213	40,592,598.23 AUD	563	14,773,157.88 AUD
Paid out/Matured	158	- AUD	19	- AUD	139	- AUD	96	- AUD	62	- AUD
Early Payout	1,474	- AUD	409	- AUD	1,065	- AUD	925	- AUD	549	- AUD
Gross Salvage	3	126,785.03 AUD	2	121,055.04 AUD	1	5,729.99 AUD	1	35,904.29 AUD	2	90,880.74 AUD
Net Salvage	1	23,440.30 AUD	1	23,440.30 AUD	-	- AUD	1	23,440.30 AUD	-	- AUD
Total	15,241	459,233,282.31 AUD	4,261	202,345,595.11 AUD	10,980	256,887,687.20 AUD	10,680	360,317,661.88 AUD	4,561	98,915,620.43 AUD

Total Portfolio as of Current Reporting Period			Balloon				Type of Car			
Contract Status Development	Number of Contracts	Outstanding Discounted Receivables Balance	Balloon		No Balloon		New Vehicle		Used Vehicle	
			Number of Contracts	Outstanding Discounted Receivables Balance	Number of Contracts	Outstanding Discounted Receivables Balance	Number of Contracts	Outstanding Discounted Receivables Balance	Number of Contracts	Outstanding Discounted Receivables Balance
Normal	10,222	339,931,492.51 AUD	3,117	164,371,979.08 AUD	7,105	175,559,513.43 AUD	7,307	271,121,008.13 AUD	2,915	68,810,484.38 AUD
In Advance	1,621	53,492,027.14 AUD	355	16,719,820.20 AUD	1,266	36,772,206.94 AUD	1,163	39,944,863.74 AUD	458	13,547,163.40 AUD
In Arrears	1,539	50,096,936.26 AUD	306	15,940,410.12 AUD	1,233	34,156,526.14 AUD	1,052	37,462,638.93 AUD	487	12,634,297.33 AUD
Paid out/Matured	178	- AUD	19	- AUD	159	- AUD	100	- AUD	78	- AUD
Early Payout	1,673	- AUD	459	- AUD	1,214	- AUD	1,055	- AUD	618	- AUD
Gross Salvage	3	95,060.30 AUD	2	58,558.15 AUD	1	36,502.15 AUD	1	35,361.22 AUD	2	59,699.08 AUD
Net Salvage	5	80,087.96 AUD	3	72,565.79 AUD	2	7,522.17 AUD	2	46,338.74 AUD	3	33,749.22 AUD
Total	15,241	443,695,604.17 AUD	4,261	197,163,333.34 AUD	10,980	246,532,270.83 AUD	10,680	348,610,210.76 AUD	4,561	95,085,393.41 AUD

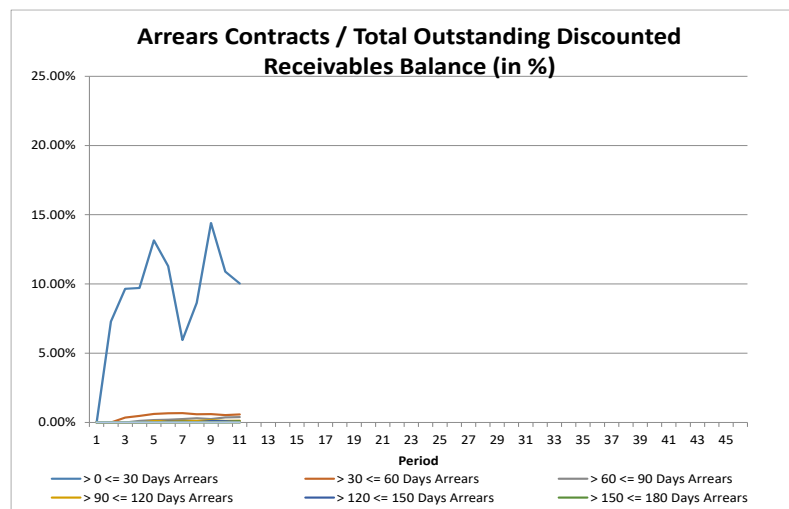
Outstanding Contracts II - Collections

Collections This Reporting Month by Status	Change in Contract Statuses From Last Month	Number of Contracts This Month	Collections
Normal	(413)	10,222	8,843,064.48 AUD
In Advance	427	1,621	2,083,791.30 AUD
In Arrears	(237)	1,539	1,145,277.90 AUD
Paid out/Matured	20	178	16,880.80 AUD
Early Payout	199	1,673	5,834,235.54 AUD
Gross Salvage	-	3	1,588.41 AUD
Net Salvage	4	5	73,587.38 AUD
Total	-	15,241	17,998,425.81 AUD

Development of Pool within Reporting Period	Number of Active Contracts	Total Number of Contracts	Collection Variations	Outstanding Nominal Balance
Beginning of Period	13,608	15,241		514,085,582.13 AUD
Scheduled Collections For Contracts Active This Period			11,430,504.72 AUD	11,430,504.72 AUD
Collections Variations From Normal Contracts This Period			107,460.22 AUD	
Collection Variations From Contracts Paying Out Early This Period			5,816,762.02 AUD	
Collection Variations From Contracts Paying Out/Maturing This Period			1,575.39 AUD	
Collection Variations from Contracts in Advance This Period			935,278.03 AUD	
Collection Variations from Contract In Arrears This Period			(226,164.67 AUD)	
Collection Variations from Contracts Going Into Gross Salvage This Period			(616.62 AUD)	
Collection Variations from Contracts Going Into Net Salvage This Period			70,617.14 AUD	
Other Variations From Scheduled Collections This Period			- AUD	
<i>Instalment Collection Variations</i>			6,704,911.51 AUD	6,704,911.51 AUD
Contract Fees Collected This Period			77,773.13 AUD	
Interest Compensation Collections This Period			(214,763.55 AUD)	
<i>Non Instalment Collection Variations</i>			(136,990.42 AUD)	
Actual Collections For Contracts Active This Period			17,998,425.81 AUD	
Number of Contracts Paid Out Early This Month	199			
Number of Contracts Paid Out/Matured This Month	20			
Number of Contracts Into Net Salvage This Month	4			
Repurchased Contracts	-	-		
Less Recoveries After Net Salvage				- AUD
Reduced Nominal Balance Due to Unpaid Rental At Net Salvage				60,911.71 AUD
Reduced Nominal Balance Due to Unpaid Rental At Early Payout				457,714.80 AUD
Reduced Nominal Balance Due to Other				(18,311.69 AUD)
End of Period	13,385	15,241		495,449,851.08 AUD

Arrears Contracts

Total Portfolio					Chattel Mortgage		Consumer Loan	
Days in Arrears	Number of Contracts	Number of Contracts (%)	Outstanding Discounted Receivables Balance	Outstanding Discounted Receivables Balance (%)	Number of Contracts	Outstanding Discounted Receivables Balance	Number of Contracts	Outstanding Discounted Receivables Balance
> 0 <= 30	1,390	10.38%	44,515,617.06 AUD	10.03%	586	21,352,905.07 AUD	804	23,162,711.99 AUD
> 30 <= 60	81	0.61%	2,569,782.08 AUD	0.58%	52	1,770,634.97 AUD	29	799,147.11 AUD
> 60 <= 90	41	0.31%	1,735,016.70 AUD	0.39%	31	1,473,572.09 AUD	10	261,444.61 AUD
> 90 <= 120	17	0.13%	565,314.02 AUD	0.13%	14	534,594.04 AUD	3	30,719.98 AUD
> 120 <= 150	6	0.04%	217,094.72 AUD	0.05%	6	217,094.72 AUD	-	- AUD
> 150 <= 180	3	0.02%	377,962.71 AUD	0.09%	2	301,452.19 AUD	1	76,510.52 AUD
> 180 <= 210	1	0.01%	108,807.90 AUD	0.02%	1	108,807.90 AUD	-	- AUD
> 210 <= 240	-	0.00%	- AUD	0.00%	-	- AUD	-	- AUD
> 240 <= 270	1	0.01%	57,671.46 AUD	0.01%	-	- AUD	1	57,671.46 AUD
> 270 <= 300	1	0.01%	9,368.69 AUD	0.00%	-	- AUD	1	9,368.69 AUD
> 300 <= 330	-	0.00%	- AUD	0.00%	-	- AUD	-	- AUD
> 330 <= 360	-	0.00%	- AUD	0.00%	-	- AUD	-	- AUD
> 360	-	0.00%	- AUD	0.00%	-	- AUD	-	- AUD
Total	1,541	11.51%	50,156,635.34 AUD	11.31%	692	25,759,060.98 AUD	849	24,397,574.36 AUD



Arrears Contracts

Total Portfolio					Balloon				Vehicle Status			
Days in Arrears	Number of Contracts	Number of Contracts (%)	Outstanding Discounted Receivables Balance	Outstanding Discounted Receivables Balance (%)	Balloon		No Balloon		New		Used	
					Number of Contracts	Outstanding Discounted Receivables Balance	Number of Contracts	Outstanding Discounted Receivables Balance	Number of Contracts	Outstanding Discounted Receivables Balance	Number of Contracts	Outstanding Discounted Receivables Balance
> 0 <= 30	1,390	10.38%	44,515,617.06 AUD	10.03%	263	13,438,179.75 AUD	1,127	31,077,437.31 AUD	959	33,532,575.66 AUD	431	10,983,041.40 AUD
> 30 <= 60	81	0.61%	2,569,782.08 AUD	0.58%	20	941,836.87 AUD	61	1,627,945.21 AUD	49	1,788,530.46 AUD	32	781,251.62 AUD
> 60 <= 90	41	0.31%	1,735,016.70 AUD	0.39%	12	738,758.04 AUD	29	996,258.66 AUD	26	1,121,458.13 AUD	15	613,558.57 AUD
> 90 <= 120	17	0.13%	565,314.02 AUD	0.13%	6	267,047.29 AUD	11	298,266.73 AUD	11	481,210.75 AUD	6	84,103.27 AUD
> 120 <= 150	6	0.04%	217,094.72 AUD	0.05%	1	33,343.03 AUD	5	183,751.69 AUD	3	170,371.59 AUD	3	46,723.13 AUD
> 150 <= 180	3	0.02%	377,962.71 AUD	0.09%	3	377,962.71 AUD	-	- AUD	2	301,452.19 AUD	1	76,510.52 AUD
> 180 <= 210	1	0.01%	108,807.90 AUD	0.02%	1	108,807.90 AUD	-	- AUD	-	- AUD	1	108,807.90 AUD
> 210 <= 240	-	0.00%	- AUD	0.00%	-	- AUD	-	- AUD	-	- AUD	-	- AUD
> 240 <= 270	1	0.01%	57,671.46 AUD	0.01%	1	57,671.46 AUD	-	- AUD	1	57,671.46 AUD	-	- AUD
> 270 <= 300	1	0.01%	9,368.69 AUD	0.00%	-	- AUD	1	9,368.69 AUD	1	9,368.69 AUD	-	- AUD
> 300 <= 330	-	0.00%	- AUD	0.00%	-	- AUD	-	- AUD	-	- AUD	-	- AUD
> 330 <= 360	-	0.00%	- AUD	0.00%	-	- AUD	-	- AUD	-	- AUD	-	- AUD
> 360	-	0.00%	- AUD	0.00%	-	- AUD	-	- AUD	-	- AUD	-	- AUD
Total	1,541	11.51%	50,156,635.34 AUD	11.31%	307	15,963,607.05 AUD	1,234	34,193,028.29 AUD	1,052	37,462,638.93 AUD	489	12,693,996.41 AUD

Net Salvage Loss

Net Salvage Loss This Period			
Product Type	Type of Car	Number of Contracts	Net Salvage Loss
Chattel Mortgage	New	1	23,946.41 AUD
	Used	1	5,729.99 AUD
Total Chattel Mortgage		2	29,676.40 AUD
Consumer Loan	New	-	- AUD
	Used	2	28,030.01 AUD
Total Consumer Loan		2	28,030.01 AUD
Total		4	57,706.41 AUD

Cumulative Net Salvage Loss as of the End of the Monthly Period	81,146.71 AUD
Outstanding Discounted Receivables Balance at Poolcut	600,025,098.06 AUD
Cumulative Net Loss Ratio	0.01352%

Monthly Period	Per Period		Cumulative Net Salvage Loss	
	Number of Contracts	Net Salvage Loss	Number of Contracts	Net Salvage Loss
11/2021	-	- AUD	-	- AUD
12/2021	-	- AUD	-	- AUD
01/2022	-	- AUD	-	- AUD
02/2022	-	- AUD	-	- AUD
03/2022	-	- AUD	-	- AUD
04/2022	-	- AUD	-	- AUD
05/2022	-	- AUD	-	- AUD
06/2022	-	- AUD	-	- AUD
07/2022	1	23,440.30 AUD	1	23,440.30 AUD
08/2022	4	57,706.41 AUD	5	81,146.71 AUD
09/2022	-	- AUD	-	- AUD
10/2022	-	- AUD	-	- AUD
11/2022	-	- AUD	-	- AUD
12/2022	-	- AUD	-	- AUD
01/2023	-	- AUD	-	- AUD
02/2023	-	- AUD	-	- AUD
03/2023	-	- AUD	-	- AUD
04/2023	-	- AUD	-	- AUD
05/2023	-	- AUD	-	- AUD
06/2023	-	- AUD	-	- AUD
07/2023	-	- AUD	-	- AUD
08/2023	-	- AUD	-	- AUD
09/2023	-	- AUD	-	- AUD
10/2023	-	- AUD	-	- AUD
11/2023	-	- AUD	-	- AUD
12/2023	-	- AUD	-	- AUD
01/2024	-	- AUD	-	- AUD
02/2024	-	- AUD	-	- AUD
03/2024	-	- AUD	-	- AUD
04/2024	-	- AUD	-	- AUD
05/2024	-	- AUD	-	- AUD
06/2024	-	- AUD	-	- AUD
07/2024	-	- AUD	-	- AUD
08/2024	-	- AUD	-	- AUD
09/2024	-	- AUD	-	- AUD
10/2024	-	- AUD	-	- AUD
11/2024	-	- AUD	-	- AUD
12/2024	-	- AUD	-	- AUD
01/2025	-	- AUD	-	- AUD
02/2025	-	- AUD	-	- AUD
03/2025	-	- AUD	-	- AUD
04/2025	-	- AUD	-	- AUD
05/2025	-	- AUD	-	- AUD
06/2025	-	- AUD	-	- AUD
07/2025	-	- AUD	-	- AUD
08/2025	-	- AUD	-	- AUD
09/2025	-	- AUD	-	- AUD
10/2025	-	- AUD	-	- AUD
11/2025	-	- AUD	-	- AUD
Total	5	81,146.71 AUD		

Net Salvage After Recoveries

Net Salvaged Contracts						
Product Type	Vehicle Status	Number of Contracts	Gross Salvage Loss	Net Salvage Loss	Recoveries After Net Salvage	Net Salvage Loss After Recoveries
Chattel Mortgage	New	2	92,206.47 AUD	47,386.71 AUD	- AUD	47,386.71 AUD
	Used	1	28,877.00 AUD	5,729.99 AUD	- AUD	5,729.99 AUD
Total Chattel Mortgage		3	121,083.47 AUD	53,116.70 AUD	- AUD	53,116.70 AUD
Consumer Loan	New	-	- AUD	- AUD	- AUD	- AUD
	Used	2	90,093.43 AUD	28,030.01 AUD	- AUD	28,030.01 AUD
Total Consumer Loan		2	90,093.43 AUD	28,030.01 AUD	- AUD	28,030.01 AUD
Total		5	211,176.90 AUD	81,146.71 AUD	- AUD	81,146.71 AUD

Prepayments

Period Number	Reporting Period	Unscheduled Payments	Opening Outstanding Discounted Receivables Balance	Periodic CPR	Annualised CPR
0	Poolcut	- AUD	- AUD		
1	11/2021	5,188,258.11 AUD	600,025,098.06 AUD	0.86%	10.03%
2	12/2021	4,579,685.92 AUD	584,284,031.03 AUD	0.78%	8.85%
3	01/2022	2,741,342.02 AUD	568,933,158.93 AUD	0.48%	5.53%
4	02/2022	3,337,851.56 AUD	555,556,298.45 AUD	0.60%	7.56%
5	03/2022	5,445,824.85 AUD	541,478,701.09 AUD	1.01%	11.22%
6	04/2022	4,593,099.08 AUD	524,992,591.30 AUD	0.87%	10.14%
7	05/2022	6,363,116.33 AUD	509,466,787.17 AUD	1.25%	13.76%
8	06/2022	6,297,060.40 AUD	492,432,848.37 AUD	1.28%	14.49%
9	07/2022	5,980,710.84 AUD	475,580,922.30 AUD	1.26%	13.84%
10	08/2022	5,404,312.88 AUD	459,209,842.01 AUD	1.18%	13.01%

The annualised Constant Prepayment Rate (CPR) of the underlying receivables is based upon the most recent periodic CPR. Periodic CPR is equal to the total unscheduled principal received in the most recent period divided by the start of period principal balance. This is then annualised as follows:

$$1 - ((1 - \text{Periodic CPR})^{\text{number of periods in a year}})$$

Pool Data I

Down Payments

Total Portfolio						Product Type			
Down Payment	Number of Contracts	Percentage of Contracts	Outstanding Discounted Receivables Balance	Percentage of Balance	Down Payment/ Purchase Price in %	Chattel Mortgage		Consumer Loan	
						Number of Contracts	Outstanding Discounted Receivables Balance	Number of Contracts	Outstanding Discounted Receivables Balance
No Down Payment	2,368	17.69%	81,620,217.08 AUD	18.40%	0.00%	1,615	61,777,434.90 AUD	753	19,842,782.18 AUD
0.01 - 10,000.00	6,631	49.54%	200,972,612.54 AUD	45.30%	10.91%	3,941	130,606,085.27 AUD	2,690	70,366,527.27 AUD
10,000.01 - 20,000.00	2,564	19.16%	83,310,679.09 AUD	18.78%	26.79%	1,634	59,757,528.56 AUD	930	23,553,150.53 AUD
20,000.01 - 30,000.00	948	7.08%	33,587,142.65 AUD	7.57%	35.94%	578	24,041,784.08 AUD	370	9,545,358.57 AUD
30,000.01 - 40,000.00	423	3.16%	15,623,694.06 AUD	3.52%	42.88%	271	11,490,828.18 AUD	152	4,132,865.88 AUD
40,000.01 - 50,000.00	198	1.48%	9,581,186.51 AUD	2.16%	44.33%	131	7,446,683.95 AUD	67	2,134,502.56 AUD
50,000.01 - 60,000.00	105	0.78%	5,792,898.27 AUD	1.31%	45.86%	79	5,050,819.90 AUD	26	742,078.37 AUD
60,000.01 - 70,000.00	53	0.40%	3,674,809.04 AUD	0.83%	46.57%	44	3,408,565.90 AUD	9	266,243.14 AUD
70,000.01 - 80,000.00	25	0.19%	1,448,905.84 AUD	0.33%	50.50%	18	1,152,793.22 AUD	7	296,112.62 AUD
80,000.01 - 90,000.00	16	0.12%	1,075,647.78 AUD	0.24%	54.10%	13	945,419.21 AUD	3	130,228.57 AUD
90,000.01 - 100,000.00	13	0.10%	1,434,597.67 AUD	0.32%	46.59%	9	1,213,211.35 AUD	4	221,386.32 AUD
100,000.01 - 110,000.00	8	0.06%	940,578.92 AUD	0.21%	45.16%	8	940,578.92 AUD	-	- AUD
110,000.01 - 120,000.00	5	0.04%	658,969.72 AUD	0.15%	48.81%	5	658,969.72 AUD	-	- AUD
120,000.01 - 130,000.00	6	0.04%	703,494.99 AUD	0.16%	52.46%	3	483,815.04 AUD	3	219,679.95 AUD
130,000.01 - 140,000.00	4	0.03%	559,606.09 AUD	0.13%	47.99%	4	559,606.09 AUD	-	- AUD
140,000.01 - 150,000.00	-	0.00%	- AUD	0.00%	0.00%	-	- AUD	-	- AUD
> 150,000.00	18	0.13%	2,630,475.96 AUD	0.59%	63.49%	16	2,433,131.76 AUD	2	197,344.20 AUD
Total	13,385	100.00%	443,615,516.21 AUD	100.00%	19.61%	8,369	311,967,256.05 AUD	5,016	131,648,260.16 AUD

Statistics Down Payments	
Minimum Down Payment	- AUD
Maximum Down Payment	630,000.00 AUD
Weighted Average Down Payment (Customers that made a Down Payment)	16,735.78 AUD
Weighted Average Down Payment	13,656.59 AUD

Type of Payment

Total Portfolio				
Type of Payment	Number of Contracts	Percentage of Contracts	Outstanding Discounted Receivables Balance	Percentage of Balance
Direct Debit	13,157	98.30%	436,087,937.79 AUD	98.30%
Other	228	1.70%	7,527,578.42 AUD	1.70%
Total	13,385	100.00%	443,615,516.21 AUD	100.00%

Product Type			
Chattel Mortgage		Consumer Loan	
Number of Contracts	Outstanding Discounted Receivables Balance	Number of Contracts	Outstanding Discounted Receivables Balance
8,223	306,591,690	4,934	129,496,248
146	5,375,566	82	2,152,013
8,369	311,967,256.05 AUD	5,016	131,648,260.16 AUD

Pool Data I

Down Payments

Total Portfolio						Balloon				Vehicle Status			
Down Payment	Number of Contracts	Percentage of Contracts	Outstanding Discounted Receivables Balance	Percentage of Balance	Down Payment/ Purchase Price in %	Balloon		No Balloon		New		Used	
						Number of Contracts	Outstanding Discounted Receivables Balance	Number of Contracts	Outstanding Discounted Receivables Balance	Number of Contracts	Outstanding Discounted Receivables Balance	Number of Contracts	Outstanding Discounted Receivables Balance
No Down Payment	2,368	17.69%	81,620,217.08 AUD	18.40%	0.00%	801	41,259,989.30 AUD	1,567	40,360,227.78 AUD	1,569	64,413,131.64 AUD	799	17,207,085.44 AUD
0.01 - 10,000.00	6,631	49.54%	200,972,612.54 AUD	45.30%	10.91%	1,731	79,594,548.91 AUD	4,900	121,378,063.63 AUD	4,494	151,954,424.40 AUD	2,137	49,018,188.14 AUD
10,000.01 - 20,000.00	2,564	19.16%	83,310,679.09 AUD	18.78%	26.79%	696	34,625,038.25 AUD	1,868	48,685,640.84 AUD	1,936	66,258,458.56 AUD	628	17,052,220.53 AUD
20,000.01 - 30,000.00	948	7.08%	33,587,142.65 AUD	7.57%	35.94%	266	16,086,707.98 AUD	682	17,500,434.67 AUD	777	27,979,959.64 AUD	171	5,607,183.01 AUD
30,000.01 - 40,000.00	423	3.16%	15,623,694.06 AUD	3.52%	42.88%	109	7,180,909.70 AUD	314	8,442,784.36 AUD	360	13,592,723.13 AUD	63	2,030,970.93 AUD
40,000.01 - 50,000.00	198	1.48%	9,581,186.51 AUD	2.16%	44.33%	67	5,639,274.03 AUD	131	3,941,912.48 AUD	163	7,734,373.44 AUD	35	1,846,813.07 AUD
50,000.01 - 60,000.00	105	0.78%	5,792,898.27 AUD	1.31%	45.86%	40	3,628,716.95 AUD	65	2,164,181.32 AUD	95	5,321,147.58 AUD	10	471,750.69 AUD
60,000.01 - 70,000.00	53	0.40%	3,674,809.04 AUD	0.83%	46.57%	23	2,390,241.07 AUD	30	1,284,567.97 AUD	46	3,124,671.49 AUD	7	550,137.55 AUD
70,000.01 - 80,000.00	25	0.19%	1,448,905.84 AUD	0.33%	50.50%	9	674,791.38 AUD	16	774,114.46 AUD	24	1,322,146.36 AUD	1	126,759.48 AUD
80,000.01 - 90,000.00	16	0.12%	1,075,647.78 AUD	0.24%	54.10%	5	614,060.97 AUD	11	461,586.81 AUD	15	1,006,275.90 AUD	1	69,371.88 AUD
90,000.01 - 100,000.00	13	0.10%	1,434,597.67 AUD	0.32%	46.59%	7	1,022,325.34 AUD	6	412,272.33 AUD	10	1,188,771.16 AUD	3	245,826.51 AUD
100,000.01 - 110,000.00	8	0.06%	940,578.92 AUD	0.21%	45.16%	2	409,764.63 AUD	6	530,814.29 AUD	6	644,060.68 AUD	2	296,518.24 AUD
110,000.01 - 120,000.00	5	0.04%	658,969.72 AUD	0.15%	48.81%	4	618,275.56 AUD	1	40,694.16 AUD	4	541,031.89 AUD	1	117,937.83 AUD
120,000.01 - 130,000.00	6	0.04%	703,494.99 AUD	0.16%	52.46%	4	628,699.71 AUD	2	74,795.28 AUD	5	517,182.04 AUD	1	186,312.95 AUD
130,000.01 - 140,000.00	4	0.03%	559,606.09 AUD	0.13%	47.99%	3	497,161.66 AUD	1	62,444.43 AUD	4	559,606.09 AUD	-	- AUD
140,000.01 - 150,000.00	-	0.00%	- AUD	0.00%	0.00%	-	- AUD	-	- AUD	-	- AUD	-	- AUD
> 150,000.00	18	0.13%	2,630,475.96 AUD	0.59%	63.49%	13	2,220,262.11 AUD	5	410,213.85 AUD	15	2,405,908.02 AUD	3	224,567.94 AUD
Total	13,385	100.00%	443,615,516.21 AUD	100.00%	19.61%	3,780	197,090,767.55 AUD	9,605	246,524,748.66 AUD	9,523	348,563,872.02 AUD	3,862	95,051,644.19 AUD

Statistics Down Payments	
Minimum Down Payment	- AUD
Maximum Down Payment	630,000.00 AUD
Weighted Average Down Payment (Customers that made a Down Payment)	16,735.78 AUD
Weighted Average Down Payment	13,656.59 AUD

Type of Payment

Total Portfolio				
Type of Payment	Number of Contracts	Percentage of Contracts	Outstanding Discounted Receivables Balance	Percentage of Balance
Direct Debit	13,157	98.30%	436,087,937.79 AUD	98.30%
Other	228	1.70%	7,527,578.42 AUD	1.70%
Total	13,385	100.00%	443,615,516.21 AUD	100.00%

Balloon				Vehicle Status			
Balloon		No Balloon		New		Used	
Number of Contracts	Outstanding Discounted Receivables Balance	Number of Contracts	Outstanding Discounted Receivables Balance	Number of Contracts	Outstanding Discounted Receivables Balance	Number of Contracts	Outstanding Discounted Receivables Balance
3,716	193,374,701	9,441	242,713,237	9,371	342,808,197	3,786	93,279,741
64	3,716,066	164	3,811,512	152	5,755,675	76	1,771,903
3,780	197,090,767.55 AUD	9,605	246,524,748.66 AUD	9,523	348,563,872.02 AUD	3,862	95,051,644.19 AUD

Pool Data II

Distribution of Contracts and Vehicles per Borrower

Number of Contracts Per Borrower	Number of Customers	Percentage of Customers	Number of Contracts	Percentage of Contracts	Outstanding Discounted Receivables Balance	Percentage of Balance
1	15,814	99.13%	13,160	98.11%	529,096,060.22 AUD	98.24%
2	130	0.81%	230	1.71%	8,807,575.13 AUD	1.64%
3	9	0.06%	24	0.18%	696,627.64 AUD	0.13%
4	-	0.00%	-	0.00%	- AUD	0.00%
5	-	0.00%	-	0.00%	- AUD	0.00%
6 - 10	-	0.00%	-	0.00%	- AUD	0.00%
> 10	-	0.00%	-	0.00%	- AUD	0.00%
Total	15,953	100.00%	13,414	100.00%	538,600,262.99 AUD	100.00%

Top 20 Borrower

Ranking	Outstanding Discounted Receivables Balance	Percentage of Overall Balance	Number of Contracts
1	612,000.60 AUD	0.13796 %	1
2	382,909.07 AUD	0.08632 %	1
3	382,909.07 AUD	0.08632 %	1
4	376,527.14 AUD	0.08488 %	1
5	376,527.14 AUD	0.08488 %	1
6	362,199.38 AUD	0.08165 %	1
7	357,361.97 AUD	0.08056 %	1
8	343,542.61 AUD	0.07744 %	1
9	326,971.60 AUD	0.07371 %	1
10	326,971.60 AUD	0.07371 %	1
11	314,697.91 AUD	0.07094 %	1
12	313,401.95 AUD	0.07065 %	1
13	279,907.70 AUD	0.06310 %	1
14	265,965.57 AUD	0.05995 %	1
15	264,031.60 AUD	0.05952 %	1
16	261,763.08 AUD	0.05901 %	1
17	259,786.07 AUD	0.05856 %	1
18	257,061.88 AUD	0.05795 %	1
19	252,228.02 AUD	0.05686 %	1
20	245,462.48 AUD	0.05533 %	1
	6,562,226.44 AUD	1.47926 %	20

Pool Data III

Distribution by Outstanding Discounted Receivables Balance

Total Portfolio					Product Type			
Distribution by Outstanding Discounted Receivables Balance	Number of Contracts	Percentage of Contracts	Outstanding Discounted Receivables Balance	Percentage of Balance	Chattel Mortgage		Consumer Loan	
					Number of Contracts	Outstanding Discounted Receivables Balance	Number of Contracts	Outstanding Discounted Receivables Balance
0.00 - 10,000.00	1,191	8.90%	6,947,023.96 AUD	1.57%	560	3,316,231.84 AUD	631	3,630,792.12 AUD
10,000.01 - 20,000.00	2,897	21.64%	44,664,705.30 AUD	10.07%	1,480	22,962,917.17 AUD	1,417	21,701,788.13 AUD
20,000.01 - 30,000.00	3,289	24.57%	81,482,991.95 AUD	18.37%	1,929	47,937,056.81 AUD	1,360	33,545,935.14 AUD
30,000.01 - 40,000.00	2,458	18.36%	85,283,116.75 AUD	19.22%	1,666	57,786,593.20 AUD	792	27,496,523.55 AUD
40,000.01 - 50,000.00	1,488	11.12%	66,149,964.63 AUD	14.91%	1,056	47,062,951.94 AUD	432	19,087,012.69 AUD
50,000.01 - 60,000.00	753	5.63%	40,929,000.41 AUD	9.23%	562	30,504,868.79 AUD	191	10,424,131.62 AUD
60,000.01 - 70,000.00	414	3.09%	26,615,017.69 AUD	6.00%	333	21,431,673.09 AUD	81	5,183,344.60 AUD
70,000.01 - 80,000.00	263	1.96%	19,646,996.21 AUD	4.43%	225	16,791,593.74 AUD	38	2,855,402.47 AUD
80,000.01 - 90,000.00	182	1.36%	15,366,978.91 AUD	3.46%	157	13,219,462.14 AUD	25	2,147,516.77 AUD
90,000.01 - 100,000.00	132	0.99%	12,456,343.34 AUD	2.81%	115	10,854,844.82 AUD	17	1,601,498.52 AUD
100,000.01 - 110,000.00	91	0.68%	9,515,880.60 AUD	2.15%	74	7,752,612.17 AUD	17	1,763,268.43 AUD
110,000.01 - 120,000.00	62	0.46%	7,088,324.71 AUD	1.60%	58	6,625,395.66 AUD	4	462,929.05 AUD
120,000.01 - 130,000.00	44	0.33%	5,456,761.84 AUD	1.23%	40	4,958,628.34 AUD	4	498,133.50 AUD
130,000.01 - 140,000.00	28	0.21%	3,761,510.48 AUD	0.85%	26	3,490,978.14 AUD	2	270,532.34 AUD
140,000.01 - 150,000.00	19	0.14%	2,750,511.56 AUD	0.62%	18	2,605,626.89 AUD	1	144,884.67 AUD
> 150,000.00	74	0.55%	15,500,387.87 AUD	3.49%	70	14,665,821.31 AUD	4	834,566.56 AUD
Total	13,385	100.00%	443,615,516.21 AUD	100.00%	8,369	311,967,256.05 AUD	5,016	131,648,260.16 AUD

Statistics Outstanding Discounted Receivables Balance	
Minimum Outstanding Discounted Receivables Balance	- AUD
Maximum Outstanding Discounted Receivables Balance	612,000.60 AUD
Average Outstanding Discounted Receivables Balance	33,142.74 AUD

Distribution by Original Balance

Total Portfolio					Product Type			
Distribution by Original Balance	Number of Contracts	Percentage of Contracts	Outstanding Discounted Receivables Balance	Percentage of Balance	Chattel Mortgage		Consumer Loan	
					Number of Contracts	Outstanding Discounted Receivables Balance	Number of Contracts	Outstanding Discounted Receivables Balance
0.00 - 10,000.00	95	0.71%	372,455.36 AUD	0.08%	35	134,175.01 AUD	60	238,280.35 AUD
10,000.01 - 20,000.00	1,316	9.83%	12,859,833.46 AUD	2.90%	587	5,776,439.34 AUD	729	7,083,394.12 AUD
20,000.01 - 30,000.00	2,716	20.29%	45,917,476.68 AUD	10.35%	1,392	23,670,552.74 AUD	1,324	22,246,923.94 AUD
30,000.01 - 40,000.00	2,742	20.49%	66,316,899.14 AUD	14.95%	1,574	38,173,192.86 AUD	1,168	28,143,706.28 AUD
40,000.01 - 50,000.00	2,107	15.74%	67,775,717.19 AUD	15.28%	1,394	44,663,897.40 AUD	713	23,111,819.79 AUD
50,000.01 - 60,000.00	1,614	12.06%	62,742,632.46 AUD	14.14%	1,158	44,947,312.02 AUD	456	17,795,320.44 AUD
60,000.01 - 70,000.00	1,049	7.84%	48,613,665.22 AUD	10.96%	758	34,988,309.59 AUD	291	13,625,355.63 AUD
70,000.01 - 80,000.00	534	3.99%	29,166,239.17 AUD	6.57%	421	23,059,686.40 AUD	113	6,106,552.77 AUD
80,000.01 - 90,000.00	300	2.24%	19,241,006.28 AUD	4.34%	249	16,081,010.99 AUD	51	3,159,995.29 AUD
90,000.01 - 100,000.00	201	1.50%	14,173,448.88 AUD	3.19%	175	12,339,933.44 AUD	26	1,833,515.44 AUD
100,000.01 - 110,000.00	226	1.69%	17,968,570.88 AUD	4.05%	195	15,523,916.23 AUD	31	2,444,654.65 AUD
110,000.01 - 120,000.00	102	0.76%	8,751,928.28 AUD	1.97%	91	7,759,185.93 AUD	11	992,742.35 AUD
120,000.01 - 130,000.00	94	0.70%	9,136,939.04 AUD	2.06%	73	7,165,614.20 AUD	21	1,971,324.84 AUD
130,000.01 - 140,000.00	71	0.53%	7,627,742.43 AUD	1.72%	64	6,860,907.54 AUD	7	766,834.89 AUD
140,000.01 - 150,000.00	50	0.37%	5,674,921.76 AUD	1.28%	47	5,330,466.51 AUD	3	344,455.25 AUD
> 150,000.00	168	1.26%	27,276,039.98 AUD	6.15%	156	25,492,655.85 AUD	12	1,783,384.13 AUD
Total	13,385	100.00%	443,615,516.21 AUD	100.00%	8,369	311,967,256.05 AUD	5,016	131,648,260.16 AUD

Statistics	
Minimum Original Balance	5,392.89 AUD
Maximum Original Balance	670,450.00 AUD
Weighted Average Original Receivables Balance (by ODRB)	69,573.94 AUD

Pool Data III

Distribution by Outstanding Discounted Receivables Balance

Total Portfolio					Balloon				Vehicle Status			
Distribution by Outstanding Discounted Receivables Balance	Number of Contracts	Percentage of Contracts	Outstanding Discounted Receivables Balance	Percentage of Balance	Balloon		No Balloon		New		Used	
					Number of Contracts	Outstanding Discounted Receivables Balance	Number of Contracts	Outstanding Discounted Receivables Balance	Number of Contracts	Outstanding Discounted Receivables Balance	Number of Contracts	Outstanding Discounted Receivables Balance
0.00 - 10,000.00	1,191	8.90%	6,947,023.96 AUD	1.57%	32	205,827.13 AUD	1,159	6,741,196.83 AUD	522	2,937,594.90 AUD	669	4,009,429.06 AUD
10,000.01 - 20,000.00	2,897	21.64%	44,664,705.30 AUD	10.07%	202	3,226,642.50 AUD	2,695	41,438,062.80 AUD	1,686	26,611,570.38 AUD	1,211	18,053,134.92 AUD
20,000.01 - 30,000.00	3,289	24.57%	81,482,991.95 AUD	18.37%	573	14,680,916.34 AUD	2,716	66,802,075.61 AUD	2,369	58,979,621.10 AUD	920	22,503,370.85 AUD
30,000.01 - 40,000.00	2,458	18.36%	85,283,116.75 AUD	19.22%	810	28,484,238.83 AUD	1,648	56,798,877.92 AUD	1,936	67,338,384.38 AUD	522	17,944,732.37 AUD
40,000.01 - 50,000.00	1,488	11.12%	66,149,964.63 AUD	14.91%	703	31,482,760.37 AUD	785	34,667,204.26 AUD	1,237	55,038,676.05 AUD	251	11,111,288.58 AUD
50,000.01 - 60,000.00	753	5.63%	40,929,000.41 AUD	9.23%	452	24,601,999.78 AUD	301	16,327,000.63 AUD	644	35,003,011.75 AUD	109	5,925,988.66 AUD
60,000.01 - 70,000.00	414	3.09%	26,615,017.69 AUD	6.00%	282	18,163,303.90 AUD	132	8,451,713.79 AUD	339	21,750,468.05 AUD	75	4,864,549.64 AUD
70,000.01 - 80,000.00	263	1.96%	19,646,996.21 AUD	4.43%	196	14,658,902.54 AUD	67	4,988,093.67 AUD	223	16,692,825.28 AUD	40	2,954,170.93 AUD
80,000.01 - 90,000.00	182	1.36%	15,366,978.91 AUD	3.46%	140	11,832,553.97 AUD	42	3,534,424.94 AUD	161	13,601,499.24 AUD	21	1,765,479.67 AUD
90,000.01 - 100,000.00	132	0.99%	12,456,343.34 AUD	2.81%	108	10,201,740.71 AUD	24	2,254,602.63 AUD	124	11,696,769.92 AUD	8	759,573.42 AUD
100,000.01 - 110,000.00	91	0.68%	9,515,880.60 AUD	2.15%	81	8,469,057.14 AUD	10	1,046,823.46 AUD	84	8,780,815.25 AUD	7	735,065.35 AUD
110,000.01 - 120,000.00	62	0.46%	7,088,324.71 AUD	1.60%	56	6,409,100.71 AUD	6	679,224.00 AUD	57	6,515,096.85 AUD	5	573,227.86 AUD
120,000.01 - 130,000.00	44	0.33%	5,456,761.84 AUD	1.23%	38	4,710,342.30 AUD	6	746,419.54 AUD	38	4,708,054.62 AUD	6	748,707.22 AUD
130,000.01 - 140,000.00	28	0.21%	3,761,510.48 AUD	0.85%	24	3,224,359.27 AUD	4	537,151.21 AUD	24	3,217,634.32 AUD	4	543,876.16 AUD
140,000.01 - 150,000.00	19	0.14%	2,750,511.56 AUD	0.62%	15	2,172,974.46 AUD	4	577,537.10 AUD	16	2,316,863.61 AUD	3	433,647.95 AUD
> 150,000.00	74	0.55%	15,500,387.87 AUD	3.49%	68	14,566,047.60 AUD	6	934,340.27 AUD	63	13,374,986.32 AUD	11	2,125,401.55 AUD
Total	13,385	100.00%	443,615,516.21 AUD	100.00%	3,780	197,090,767.55 AUD	9,605	246,524,748.66 AUD	9,523	348,563,872.02 AUD	3,862	95,051,644.19 AUD

Statistics Outstanding Discounted Receivables Balance	
Minimum Outstanding Discounted Receivables Balance	- AUD
Maximum Outstanding Discounted Receivables Balance	612,000.60 AUD
Average Outstanding Discounted Receivables Balance	33,142.74 AUD

Distribution by Original Balance

Total Portfolio					Balloon				Vehicle Status			
Distribution by Original Balance	Number of Contracts	Percentage of Contracts	Outstanding Discounted Receivables Balance	Percentage of Balance	Balloon		No Balloon		New		Used	
					Number of Contracts	Outstanding Discounted Receivables Balance	Number of Contracts	Outstanding Discounted Receivables Balance	Number of Contracts	Outstanding Discounted Receivables Balance	Number of Contracts	Outstanding Discounted Receivables Balance
0.00 - 10,000.00	95	0.71%	372,455.36 AUD	0.08%	-	- AUD	95	372,455.36 AUD	15	64,203.53 AUD	80	308,251.83 AUD
10,000.01 - 20,000.00	1,316	9.83%	12,859,833.46 AUD	2.90%	42	541,566.15 AUD	1,274	12,318,267.31 AUD	440	4,438,529.89 AUD	876	8,421,303.57 AUD
20,000.01 - 30,000.00	2,716	20.29%	45,917,476.68 AUD	10.35%	234	4,574,375.95 AUD	2,482	41,343,100.73 AUD	1,651	27,874,487.07 AUD	1,065	18,042,989.61 AUD
30,000.01 - 40,000.00	2,742	20.49%	66,316,899.14 AUD	14.95%	530	14,402,191.41 AUD	2,212	51,914,707.73 AUD	1,957	47,092,007.11 AUD	785	19,224,892.03 AUD
40,000.01 - 50,000.00	2,107	15.74%	67,775,717.19 AUD	15.28%	660	22,901,978.16 AUD	1,447	44,873,739.03 AUD	1,644	52,303,948.74 AUD	463	15,471,768.45 AUD
50,000.01 - 60,000.00	1,614	12.06%	62,742,632.46 AUD	14.14%	650	27,505,727.11 AUD	964	35,236,905.35 AUD	1,378	53,170,912.01 AUD	236	9,571,720.45 AUD
60,000.01 - 70,000.00	1,049	7.84%	48,613,665.22 AUD	10.96%	466	23,253,980.15 AUD	583	25,359,685.07 AUD	915	42,157,706.25 AUD	134	6,455,958.97 AUD
70,000.01 - 80,000.00	534	3.99%	29,166,239.17 AUD	6.57%	306	17,854,985.54 AUD	228	11,311,253.63 AUD	462	24,960,385.86 AUD	72	4,205,853.31 AUD
80,000.01 - 90,000.00	300	2.24%	19,241,006.28 AUD	4.34%	200	13,367,815.45 AUD	100	5,873,190.83 AUD	243	15,501,376.69 AUD	57	3,739,629.59 AUD
90,000.01 - 100,000.00	201	1.50%	14,173,448.88 AUD	3.19%	143	10,559,770.00 AUD	58	3,613,678.88 AUD	177	12,426,038.45 AUD	24	1,747,410.43 AUD
100,000.01 - 110,000.00	226	1.69%	17,968,570.88 AUD	4.05%	157	12,882,942.94 AUD	69	5,085,627.94 AUD	206	16,309,592.30 AUD	20	1,658,978.58 AUD
110,000.01 - 120,000.00	102	0.76%	8,751,928.28 AUD	1.97%	80	7,074,183.96 AUD	22	1,677,744.32 AUD	90	7,816,970.05 AUD	12	934,958.23 AUD
120,000.01 - 130,000.00	94	0.70%	9,136,939.04 AUD	2.06%	71	7,082,731.83 AUD	23	2,054,207.21 AUD	85	8,293,870.64 AUD	9	843,068.40 AUD
130,000.01 - 140,000.00	71	0.53%	7,627,742.43 AUD	1.72%	60	6,605,288.33 AUD	11	1,022,454.10 AUD	66	7,029,631.38 AUD	5	598,111.05 AUD
140,000.01 - 150,000.00	50	0.37%	5,674,921.76 AUD	1.28%	44	5,052,272.34 AUD	6	622,649.42 AUD	48	5,431,912.39 AUD	2	243,009.37 AUD
> 150,000.00	168	1.26%	27,276,039.98 AUD	6.15%	137	23,430,958.23 AUD	31	3,845,081.75 AUD	146	23,692,299.66 AUD	22	3,583,740.32 AUD
Total	13,385	100.00%	443,615,516.21 AUD	100.00%	3,780	197,090,767.55 AUD	9,605	246,524,748.66 AUD	9,523	348,563,872.02 AUD	3,862	95,051,644.19 AUD

Statistics	
Minimum Original Balance	5,392.89 AUD
Maximum Original Balance	670,450.00 AUD
Weighted Average Original Receivables Balance (by ODRB)	69,573.94 AUD

Pool Data IV

Interest Rate paid by the Receivable Debtor

Total Portfolio					Product Type			
Interest Rate paid by the Receivable Debtor	Number of Contracts	Percentage of Contracts	Outstanding Discounted Receivables Balance	Percentage of Balance	Chattel Mortgage		Consumer Loan	
					Number of Contracts	Outstanding Discounted Receivables Balance	Number of Contracts	Outstanding Discounted Receivables Balance
0.00%	-	0.00%	- AUD	0.00%	-	- AUD	-	- AUD
0.01% - 1.00%	-	0.00%	- AUD	0.00%	-	- AUD	-	- AUD
1.01% - 2.00%	581	4.34%	18,214,929.27 AUD	4.11%	358	12,508,177.14 AUD	223	5,706,752.13 AUD
2.01% - 3.00%	850	6.35%	38,046,467.91 AUD	8.58%	573	30,594,429.60 AUD	277	7,452,038.31 AUD
3.01% - 4.00%	1,190	8.89%	51,357,770.67 AUD	11.58%	1,180	51,056,956.94 AUD	10	300,813.73 AUD
4.01% - 5.00%	1,404	10.49%	55,017,408.08 AUD	12.40%	1,120	45,987,990.13 AUD	284	9,029,417.95 AUD
5.01% - 6.00%	1,927	14.40%	68,081,084.60 AUD	15.35%	1,225	47,738,277.71 AUD	702	20,342,806.89 AUD
6.01% - 7.00%	2,483	18.55%	75,372,977.20 AUD	16.99%	1,090	38,908,177.49 AUD	1,393	36,464,799.71 AUD
7.01% - 8.00%	1,979	14.79%	55,249,142.40 AUD	12.45%	713	24,087,631.12 AUD	1,266	31,161,511.28 AUD
8.01% - 9.00%	1,857	13.87%	54,144,276.63 AUD	12.21%	1,270	39,205,603.39 AUD	587	14,938,673.24 AUD
9.01% - 10.00%	853	6.37%	23,034,973.78 AUD	5.19%	676	18,553,490.96 AUD	177	4,481,482.82 AUD
10.01% - 11.00%	197	1.47%	4,256,881.59 AUD	0.96%	146	3,113,518.80 AUD	51	1,143,362.79 AUD
11.01% - 12.00%	31	0.23%	537,988.84 AUD	0.12%	12	168,095.70 AUD	19	369,893.14 AUD
12.01% - 13.00%	10	0.07%	77,201.33 AUD	0.02%	1	3,384.93 AUD	9	73,816.40 AUD
13.01% - 14.00%	10	0.07%	140,713.80 AUD	0.03%	2	33,615.43 AUD	8	107,098.37 AUD
14.01% - 15.00%	10	0.07%	76,556.59 AUD	0.02%	1	3,556.17 AUD	9	73,000.42 AUD
15.01% - 16.00%	3	0.02%	7,143.52 AUD	0.00%	2	4,350.54 AUD	1	2,792.98 AUD
> 16.00%	-	0.00%	- AUD	0.00%	-	- AUD	-	- AUD
Total	13,385	100.00%	443,615,516.21 AUD	100.00%	8,369	311,967,256.05 AUD	5,016	131,648,260.16 AUD

Statistics Interest Rate		
Minimum Interest Rate Debtor		1.40%
Maximum Interest Rate Debtor		15.24%
Weighted Average Interest Rate Debtor		5.94%

Pool Data IV

Interest Rate paid by the Receivable Debtor

Total Portfolio					Balloon				Vehicle Status			
Interest Rate paid by the Receivable Debtor	Number of Contracts	Percentage of Contracts	Outstanding Discounted Receivables Balance	Percentage of Balance	Balloon		No Balloon		New		Used	
					Number of Contracts	Outstanding Discounted Receivables Balance	Number of Contracts	Outstanding Discounted Receivables Balance	Number of Contracts	Outstanding Discounted Receivables Balance	Number of Contracts	Outstanding Discounted Receivables Balance
0.00%	-	0.00%	- AUD	0.00%	-	- AUD	-	- AUD	-	- AUD	-	- AUD
0.01% - 1.00%	-	0.00%	- AUD	0.00%	-	- AUD	-	- AUD	-	- AUD	-	- AUD
1.01% - 2.00%	581	4.34%	18,214,929.27 AUD	4.11%	188	8,054,594.83 AUD	393	10,160,334.44 AUD	581	18,214,929.27 AUD	-	- AUD
2.01% - 3.00%	850	6.35%	38,046,467.91 AUD	8.58%	369	23,266,485.34 AUD	481	14,779,982.57 AUD	849	38,035,468.12 AUD	1	10,999.79 AUD
3.01% - 4.00%	1,190	8.89%	51,357,770.67 AUD	11.58%	532	31,953,609.71 AUD	658	19,404,160.96 AUD	1,088	47,924,500.45 AUD	102	3,433,270.22 AUD
4.01% - 5.00%	1,404	10.49%	55,017,408.08 AUD	12.40%	577	31,131,438.89 AUD	827	23,885,969.19 AUD	1,133	46,073,957.40 AUD	271	8,943,450.68 AUD
5.01% - 6.00%	1,927	14.40%	68,081,084.60 AUD	15.35%	657	34,418,436.97 AUD	1,270	33,662,647.63 AUD	1,484	55,878,144.92 AUD	443	12,202,939.68 AUD
6.01% - 7.00%	2,483	18.55%	75,372,977.20 AUD	16.99%	627	30,398,737.87 AUD	1,856	44,974,239.33 AUD	1,765	57,840,693.33 AUD	718	17,532,283.87 AUD
7.01% - 8.00%	1,979	14.79%	55,249,142.40 AUD	12.45%	384	17,744,973.95 AUD	1,595	37,504,168.45 AUD	1,095	34,885,410.99 AUD	884	20,363,731.41 AUD
8.01% - 9.00%	1,857	13.87%	54,144,276.63 AUD	12.21%	318	14,793,982.40 AUD	1,539	39,350,294.23 AUD	1,149	38,306,538.89 AUD	708	15,837,737.74 AUD
9.01% - 10.00%	853	6.37%	23,034,973.78 AUD	5.19%	113	4,879,728.51 AUD	740	18,155,245.27 AUD	322	10,413,261.98 AUD	531	12,621,711.80 AUD
10.01% - 11.00%	197	1.47%	4,256,881.59 AUD	0.96%	12	373,607.53 AUD	185	3,883,274.06 AUD	30	701,520.00 AUD	167	3,555,361.59 AUD
11.01% - 12.00%	31	0.23%	537,988.84 AUD	0.12%	1	31,740.43 AUD	30	506,248.41 AUD	12	154,538.96 AUD	19	383,449.88 AUD
12.01% - 13.00%	10	0.07%	77,201.33 AUD	0.02%	-	- AUD	10	77,201.33 AUD	3	10,239.73 AUD	7	66,961.60 AUD
13.01% - 14.00%	10	0.07%	140,713.80 AUD	0.03%	2	43,431.12 AUD	8	97,282.68 AUD	6	99,773.68 AUD	4	40,940.12 AUD
14.01% - 15.00%	10	0.07%	76,556.59 AUD	0.02%	-	- AUD	10	76,556.59 AUD	4	18,846.06 AUD	6	57,710.53 AUD
15.01% - 16.00%	3	0.02%	7,143.52 AUD	0.00%	-	- AUD	3	7,143.52 AUD	2	6,048.24 AUD	1	1,095.28 AUD
> 16.00%	-	0.00%	- AUD	0.00%	-	- AUD	-	- AUD	-	- AUD	-	- AUD
Total	13,385	100.00%	443,615,516.21 AUD	100.00%	3,780	197,090,767.55 AUD	9,605	246,524,748.66 AUD	9,523	348,563,872.02 AUD	3,862	95,051,644.19 AUD

Statistics Interest Rate			
Minimum Interest Rate Debtor			1.40%
Maximum Interest Rate Debtor			15.24%
Weighted Average Interest Rate Debtor			5.94%

Pool Data V

Original Term

Total Portfolio					Product Type			
Length of Original Term (months)	Number of Contracts	Percentage of Contracts	Outstanding Discounted Receivables Balance	Percentage of Balance	Chattel Mortgage		Consumer Loan	
					Number of Contracts	Outstanding Discounted Receivables Balance	Number of Contracts	Outstanding Discounted Receivables Balance
0 - 11	-	0.00%	- AUD	0.00%	-	- AUD	-	- AUD
12 - 23	41	0.31%	251,130.78 AUD	0.06%	26	170,278.52 AUD	15	80,852.26 AUD
24 - 35	314	2.35%	3,245,755.10 AUD	0.73%	198	2,490,021.17 AUD	116	755,733.93 AUD
36 - 47	1,483	11.08%	34,070,136.56 AUD	7.68%	1,040	27,242,526.85 AUD	443	6,827,609.71 AUD
48 - 59	1,997	14.92%	62,063,576.44 AUD	13.99%	1,293	45,081,976.81 AUD	704	16,981,599.63 AUD
60 - 71	8,941	66.80%	323,785,643.90 AUD	72.99%	5,812	236,982,452.70 AUD	3,129	86,803,191.20 AUD
> 71	609	4.55%	20,199,273.43 AUD	4.55%	-	- AUD	609	20,199,273.43 AUD
Total	13,385	100.00%	443,615,516.21 AUD	100.00%	8,369	311,967,256.05 AUD	5,016	131,648,260.16 AUD

Statistics Original Term			
Minimum Original Term in months			12
Maximum Original Term in months			84
Weighted Average Original Term month (by ODRB)			57.29

Remaining Term

Total Portfolio					Product Type			
Length of Remaining Term (months)	Number of Contracts	Percentage of Contracts	Outstanding Discounted Receivables Balance	Percentage of Balance	Chattel Mortgage		Consumer Loan	
					Number of Contracts	Outstanding Discounted Receivables Balance	Number of Contracts	Outstanding Discounted Receivables Balance
0 - 11	853	6.37%	8,440,628.51 AUD	1.90%	514	6,219,634.81 AUD	339	2,220,993.70 AUD
12 - 23	1,625	12.14%	37,042,220.30 AUD	8.35%	1,085	28,747,679.74 AUD	540	8,294,540.56 AUD
24 - 35	2,862	21.38%	88,536,459.28 AUD	19.96%	1,838	63,746,689.59 AUD	1,024	24,789,769.69 AUD
36 - 47	6,674	49.86%	254,774,315.76 AUD	57.43%	4,433	189,393,483.78 AUD	2,241	65,380,831.98 AUD
48 - 59	926	6.92%	38,609,592.30 AUD	8.70%	499	23,859,768.13 AUD	427	14,749,824.17 AUD
60 - 71	388	2.90%	13,988,379.98 AUD	3.15%	-	- AUD	388	13,988,379.98 AUD
> 71	57	0.43%	2,223,920.08 AUD	0.50%	-	- AUD	57	2,223,920.08 AUD
Total	13,385	100.00%	443,615,516.21 AUD	100.00%	8,369	311,967,256.05 AUD	5,016	131,648,260.16 AUD

Statistics Remaining Term			
Minimum Remaining Term in months			0
Maximum Remaining Term in months			74
Weighted Average Remaining Term in months (by ODRB)			39.36

Distribution by Seasoning

Total Portfolio					Product Type			
Seasoning (months)	Number of Contracts	Percentage of Contracts	Outstanding Discounted Receivables Balance	Percentage of Balance	Chattel Mortgage		Consumer Loan	
					Number of Contracts	Outstanding Discounted Receivables Balance	Number of Contracts	Outstanding Discounted Receivables Balance
0 - 11	275	2.05%	10,440,889.68 AUD	2.35%	151	6,453,889.42 AUD	124	3,987,000.26 AUD
12 - 23	10,319	77.09%	367,786,310.48 AUD	82.91%	6,596	262,214,244.63 AUD	3,723	105,572,065.85 AUD
24 - 35	2,269	16.95%	59,007,357.58 AUD	13.30%	1,383	39,703,598.92 AUD	886	19,303,758.66 AUD
36 - 47	114	0.85%	2,230,592.65 AUD	0.50%	60	1,415,446.30 AUD	54	815,146.35 AUD
48 - 59	388	2.90%	4,009,248.22 AUD	0.90%	178	2,180,076.78 AUD	210	1,829,171.44 AUD
60 - 71	15	0.11%	111,373.07 AUD	0.03%	1	- AUD	14	111,373.07 AUD
> 71	5	0.04%	29,744.53 AUD	0.01%	-	- AUD	5	29,744.53 AUD
Total	13,385	100.00%	443,615,516.21 AUD	100.00%	8,369	311,967,256.05 AUD	5,016	131,648,260.16 AUD

Statistics Seasoning			
Minimum Seasoning in months			3
Maximum Seasoning in months			82
Weighted Average Seasoning Term in months (by ODRB)			17.97

Pool Data V

Original Term

Total Portfolio					Balloon				Vehicle Status			
Length of Original Term (months)	Number of Contracts	Percentage of Contracts	Outstanding Discounted Receivables Balance	Percentage of Balance	Balloon		No Balloon		New		Used	
					Number of Contracts	Outstanding Discounted Receivables Balance	Number of Contracts	Outstanding Discounted Receivables Balance	Number of Contracts	Outstanding Discounted Receivables Balance	Number of Contracts	Outstanding Discounted Receivables Balance
0 - 11	-	0.00%	- AUD	0.00%	-	- AUD	-	- AUD	-	- AUD	-	- AUD
12 - 23	41	0.31%	251,130.78 AUD	0.06%	3	53,147.61 AUD	38	197,983.17 AUD	12	93,878.52 AUD	29	157,252.26 AUD
24 - 35	314	2.35%	3,245,755.10 AUD	0.73%	18	823,800.10 AUD	296	2,421,955.00 AUD	100	1,349,256.57 AUD	214	1,896,498.53 AUD
36 - 47	1,483	11.08%	34,070,136.56 AUD	7.68%	298	12,721,295.36 AUD	1,185	21,348,841.20 AUD	1,027	27,602,964.60 AUD	456	6,467,171.96 AUD
48 - 59	1,997	14.92%	62,063,576.44 AUD	13.99%	587	28,407,830.62 AUD	1,410	33,655,745.82 AUD	1,615	54,727,307.19 AUD	382	7,336,269.25 AUD
60 - 71	8,941	66.80%	323,785,643.90 AUD	72.99%	2,874	155,084,693.86 AUD	6,067	168,700,950.04 AUD	6,358	250,857,806.08 AUD	2,583	72,927,837.82 AUD
> 71	609	4.55%	20,199,273.43 AUD	4.55%	-	- AUD	609	20,199,273.43 AUD	411	13,932,659.06 AUD	198	6,266,614.37 AUD
Total	13,385	100.00%	443,615,516.21 AUD	100.00%	3,780	197,090,767.55 AUD	9,605	246,524,748.66 AUD	9,523	348,563,872.02 AUD	3,862	95,051,644.19 AUD

Statistics Original Term			
Minimum Original Term in months			12
Maximum Original Term in months			84
Weighted Average Original Term month (by ODRB)			57.29

Remaining Term

Total Portfolio					Balloon				Vehicle Status			
Length of Remaining Term (months)	Number of Contracts	Percentage of Contracts	Outstanding Discounted Receivables Balance	Percentage of Balance	Balloon		No Balloon		New		Used	
					Number of Contracts	Outstanding Discounted Receivables Balance	Number of Contracts	Outstanding Discounted Receivables Balance	Number of Contracts	Outstanding Discounted Receivables Balance	Number of Contracts	Outstanding Discounted Receivables Balance
0 - 11	853	6.37%	8,440,628.51 AUD	1.90%	188	4,900,605.49 AUD	665	3,540,023.02 AUD	518	6,133,563.31 AUD	335	2,307,065.20 AUD
12 - 23	1,625	12.14%	37,042,220.30 AUD	8.35%	373	15,248,176.70 AUD	1,252	21,794,043.60 AUD	1,147	30,030,130.48 AUD	478	7,012,089.82 AUD
24 - 35	2,862	21.38%	88,536,459.28 AUD	19.96%	806	39,665,266.31 AUD	2,056	48,871,192.97 AUD	2,118	73,789,757.80 AUD	744	14,746,701.48 AUD
36 - 47	6,674	49.86%	254,774,315.76 AUD	57.43%	2,142	120,653,823.91 AUD	4,532	134,120,491.85 AUD	4,799	198,707,604.97 AUD	1,875	56,066,710.79 AUD
48 - 59	926	6.92%	38,609,592.30 AUD	8.70%	271	16,622,895.14 AUD	655	21,986,697.16 AUD	627	28,298,689.05 AUD	299	10,310,903.25 AUD
60 - 71	388	2.90%	13,988,379.98 AUD	3.15%	-	- AUD	388	13,988,379.98 AUD	277	10,158,707.04 AUD	111	3,829,672.94 AUD
> 71	57	0.43%	2,223,920.08 AUD	0.50%	-	- AUD	57	2,223,920.08 AUD	37	1,445,419.37 AUD	20	778,500.71 AUD
Total	13,385	100.00%	443,615,516.21 AUD	100.00%	3,780	197,090,767.55 AUD	9,605	246,524,748.66 AUD	9,523	348,563,872.02 AUD	3,862	95,051,644.19 AUD

Statistics Remaining Term			
Minimum Remaining Term in months			0
Maximum Remaining Term in months			74
Weighted Average Remaining Term in months (by ODRB)			39.36

Distribution by Seasoning

Total Portfolio					Balloon				Vehicle Status			
Seasoning (months)	Number of Contracts	Percentage of Contracts	Outstanding Discounted Receivables Balance	Percentage of Balance	Balloon		No Balloon		New		Used	
					Number of Contracts	Outstanding Discounted Receivables Balance	Number of Contracts	Outstanding Discounted Receivables Balance	Number of Contracts	Outstanding Discounted Receivables Balance	Number of Contracts	Outstanding Discounted Receivables Balance
0 - 11	275	2.05%	10,440,889.68 AUD	2.35%	68	3,801,863.04 AUD	207	6,639,026.64 AUD	179	7,693,199.75 AUD	96	2,747,689.93 AUD
12 - 23	10,319	77.09%	367,786,310.48 AUD	82.91%	2,933	162,766,552.25 AUD	7,386	205,019,758.23 AUD	7,372	289,977,525.05 AUD	2,947	77,808,785.43 AUD
24 - 35	2,269	16.95%	59,007,357.58 AUD	13.30%	621	26,402,314.85 AUD	1,648	32,605,042.73 AUD	1,585	45,856,311.09 AUD	684	13,151,046.49 AUD
36 - 47	114	0.85%	2,230,592.65 AUD	0.50%	32	1,296,006.06 AUD	82	934,586.59 AUD	84	1,791,742.44 AUD	30	438,850.21 AUD
48 - 59	388	2.90%	4,009,248.22 AUD	0.90%	126	2,824,031.35 AUD	262	1,185,216.87 AUD	290	3,153,737.19 AUD	98	855,511.03 AUD
60 - 71	15	0.11%	111,373.07 AUD	0.03%	-	- AUD	15	111,373.07 AUD	9	67,980.96 AUD	6	43,392.11 AUD
> 71	5	0.04%	29,744.53 AUD	0.01%	-	- AUD	5	29,744.53 AUD	4	23,375.54 AUD	1	6,368.99 AUD
Total	13,385	100.00%	443,615,516.21 AUD	100.00%	3,780	197,090,767.55 AUD	9,605	246,524,748.66 AUD	9,523	348,563,872.02 AUD	3,862	95,051,644.19 AUD

Statistics Seasoning			
Minimum Seasoning in months			3
Maximum Seasoning in months			82
Weighted Average Seasoning Term in months (by ODRB)			17.97

Pool Data VI

Product Type

Total Portfolio					Balloon				Vehicle Status			
Product Type	Number of Contracts	Percentage of Contracts	Outstanding Discounted Receivables Balance	Percentage of Balance	Balloon		No Balloon		New		Used	
					Number of Contracts	Outstanding Discounted Receivables Balance	Number of Contracts	Outstanding Discounted Receivables Balance	Number of Contracts	Outstanding Discounted Receivables Balance	Number of Contracts	Outstanding Discounted Receivables Balance
Chattel Mortgage	8,369	62.53%	311,967,256.05 AUD	70.32%	2,968	162,193,423.86 AUD	5,401	149,773,832.19 AUD	6,199	252,040,436.58 AUD	2,170	59,926,819.47 AUD
Consumer Loan	5,016	37.47%	131,648,260.16 AUD	29.68%	812	34,897,343.69 AUD	4,204	96,750,916.47 AUD	3,324	96,523,435.44 AUD	1,692	35,124,824.72 AUD
Total	13,385	100.00%	443,615,516.21 AUD	100.00%	3,780	197,090,767.55 AUD	9,605	246,524,748.66 AUD	9,523	348,563,872.02 AUD	3,862	95,051,644.19 AUD

Vehicle Status

Total Portfolio					Product Type			
Type of Car	Number of Contracts	Percentage of Contracts	Outstanding Discounted Receivables Balance	Percentage of Balance	Chattel Mortgage		Consumer Loan	
					Number of Contracts	Outstanding Discounted Receivables Balance	Number of Contracts	Outstanding Discounted Receivables Balance
New Vehicles	9,523	71.15%	348,563,872.02 AUD	78.57%	6,199	252,040,436.58 AUD	3,324	96,523,435.44 AUD
Used Vehicles	3,862	28.85%	95,051,644.19 AUD	21.43%	2,170	59,926,819.47 AUD	1,692	35,124,824.72 AUD
Total	13,385	100.00%	443,615,516.21 AUD	100.00%	8,369	311,967,256.05 AUD	5,016	131,648,260.16 AUD

Balloon

Total Portfolio				
Balloon	Number of Contracts	Percentage of Contracts	Outstanding Discounted Receivables Balance	Percentage of Balance
Balloon	3,780	28.24%	197,090,767.55 AUD	44.43%
No Balloon	9,605	71.76%	246,524,748.66 AUD	55.57%
Total	13,385	100.00%	443,615,516.21 AUD	100.00%

Pool Data VII

Distribution by Vehicle Brand and Models

Total Portfolio						Product Type			
Make	Model	Number of Contracts	Percentage of Contracts	Outstanding Discounted Receivables Balance	Percentage of Balance	Chattel Mortgage		Consumer Loan	
						Number of Contracts	Outstanding Discounted Receivables Balance	Number of Contracts	Outstanding Discounted Receivables Balance
Volkswagen Group Vehicles									
AUDI	A1	53	0.40%	1,113,180.93 AUD	0.25%	26	552,669.59 AUD	27	560,511.34 AUD
	A3	277	2.07%	9,309,181.20 AUD	2.10%	126	4,696,673.90 AUD	151	4,612,507.30 AUD
	A4	131	0.98%	4,584,958.28 AUD	1.03%	73	3,085,524.78 AUD	58	1,499,433.50 AUD
	A5	83	0.62%	3,668,247.69 AUD	0.83%	59	2,707,131.22 AUD	24	961,116.47 AUD
	A6	29	0.22%	1,480,091.88 AUD	0.33%	19	1,127,632.44 AUD	10	352,459.44 AUD
	A7	14	0.10%	1,053,228.42 AUD	0.24%	12	998,067.55 AUD	2	55,160.87 AUD
	A8	4	0.03%	175,708.71 AUD	0.04%	3	148,639.13 AUD	1	27,069.58 AUD
	E-TRON	9	0.07%	911,695.62 AUD	0.21%	8	849,378.84 AUD	1	62,316.78 AUD
	Q2	101	0.75%	2,741,425.46 AUD	0.62%	42	1,225,700.40 AUD	59	1,515,725.06 AUD
	Q3	276	2.06%	9,761,272.61 AUD	2.20%	149	5,577,493.68 AUD	127	4,183,778.93 AUD
	Q5	304	2.27%	13,180,410.80 AUD	2.97%	200	8,857,300.34 AUD	104	4,323,110.46 AUD
	Q7	229	1.71%	14,181,905.90 AUD	3.20%	178	11,415,930.46 AUD	51	2,765,975.44 AUD
	Q8	22	0.16%	2,029,219.08 AUD	0.46%	20	1,917,328.08 AUD	2	111,891.00 AUD
	R8	7	0.05%	990,895.84 AUD	0.22%	6	846,011.17 AUD	1	144,884.67 AUD
	TT	12	0.09%	435,968.89 AUD	0.10%	8	365,565.19 AUD	4	70,403.70 AUD
	SubTotal	1,551	11.59%	65,617,391.31 AUD	14.79%	929	44,371,046.77 AUD	622	21,246,344.54 AUD
BENTLEY	BENTAYGA	2	0.01%	501,010.86 AUD	0.11%	2	501,010.86 AUD	-	- AUD
	CONTINENTAL	5	0.04%	682,492.83 AUD	0.15%	4	606,064.94 AUD	1	76,427.89 AUD
	SubTotal	7	0.05%	1,183,503.69 AUD	0.27%	6	1,107,075.80 AUD	1	76,427.89 AUD
LAMBORGHINI	AVENTADOR	1	0.01%	343,542.61 AUD	0.08%	1	343,542.61 AUD	-	- AUD
	HURACAN	3	0.02%	922,649.13 AUD	0.21%	3	922,649.13 AUD	-	- AUD
	URUS	2	0.01%	606,879.30 AUD	0.14%	1	326,971.60 AUD	1	279,907.70 AUD
	SubTotal	6	0.04%	1,873,071.04 AUD	0.42%	5	1,593,163.34 AUD	1	279,907.70 AUD
PORSCHE	BOXSTER	9	0.07%	1,010,740.69 AUD	0.23%	9	1,010,740.69 AUD	-	- AUD
	CARRERA / 911	25	0.19%	4,760,813.21 AUD	1.07%	22	4,430,394.06 AUD	3	330,419.15 AUD
	CAYENNE	81	0.61%	7,422,535.41 AUD	1.67%	73	6,996,855.26 AUD	8	425,680.15 AUD
	CAYMAN	1	0.01%	86,927.70 AUD	0.02%	-	- AUD	1	86,927.70 AUD
	MACAN	109	0.81%	8,149,041.80 AUD	1.84%	101	7,483,321.61 AUD	8	665,720.19 AUD
	PANAMERA	-	0.00%	- AUD	0.00%	-	- AUD	-	- AUD
	TAYCAN	13	0.10%	2,275,687.18 AUD	0.51%	13	2,275,687.18 AUD	-	- AUD
	SubTotal	238	1.78%	23,705,745.99 AUD	5.34%	218	22,196,998.80 AUD	20	1,508,747.19 AUD
SKODA	FABIA	41	0.31%	603,371.27 AUD	0.14%	11	209,381.67 AUD	30	393,989.60 AUD
	KAROQ	55	0.41%	1,290,172.03 AUD	0.29%	20	469,445.12 AUD	35	820,726.91 AUD
	KODIAQ	105	0.78%	3,482,855.75 AUD	0.79%	41	1,468,424.26 AUD	64	2,014,431.49 AUD
	KAMIQ	69	0.52%	1,475,231.31 AUD	0.33%	17	332,267.27 AUD	52	1,142,964.04 AUD
	SCALA	41	0.31%	893,847.90 AUD	0.20%	12	278,521.64 AUD	29	615,326.26 AUD
	OCTAVIA	107	0.80%	2,448,845.52 AUD	0.55%	23	524,153.30 AUD	84	1,924,692.22 AUD
	RAPID	1	0.01%	7,730.39 AUD	0.00%	-	- AUD	1	7,730.39 AUD
	SUPERB	26	0.19%	780,378.16 AUD	0.18%	12	427,104.45 AUD	14	353,273.71 AUD
	SubTotal	445	3.32%	10,982,432.33 AUD	2.48%	136	3,709,297.71 AUD	309	7,273,134.62 AUD
VOLKSWAGEN	AMAROK	784	5.86%	25,936,736.93 AUD	5.85%	608	20,613,846.30 AUD	176	5,322,890.63 AUD
	ARTEON	7	0.05%	242,987.85 AUD	0.05%	3	93,514.72 AUD	4	149,473.13 AUD
	CADDY	102	0.76%	1,962,298.53 AUD	0.44%	93	1,846,898.25 AUD	9	115,400.28 AUD
	CARAVELLE	4	0.03%	117,689.43 AUD	0.03%	3	83,796.10 AUD	1	33,893.33 AUD
	CRAFTER	141	1.05%	4,634,623.53 AUD	1.04%	138	4,513,504.68 AUD	3	121,118.85 AUD
	GOLF	425	3.18%	8,478,785.40 AUD	1.91%	156	3,409,526.84 AUD	269	5,069,258.56 AUD
	JETTA	12	0.09%	66,656.81 AUD	0.02%	2	11,121.61 AUD	10	55,535.20 AUD
	MULTIVAN	39	0.29%	1,552,006.20 AUD	0.35%	23	967,605.39 AUD	16	584,400.81 AUD
	NEW BEETLE	4	0.03%	45,904.09 AUD	0.01%	1	16,922.24 AUD	3	28,981.85 AUD
	PASSAT	44	0.33%	1,028,732.14 AUD	0.23%	18	360,833.06 AUD	26	667,899.08 AUD
	POLO	177	1.32%	2,496,117.52 AUD	0.56%	54	778,090.52 AUD	123	1,718,027.00 AUD
	SCIROCCO	2	0.01%	36,398.27 AUD	0.01%	-	- AUD	2	36,398.27 AUD
	T-CROSS	168	1.26%	3,579,393.46 AUD	0.81%	50	1,086,692.88 AUD	118	2,492,700.58 AUD
	T-ROC	104	0.78%	2,892,562.59 AUD	0.65%	32	974,327.24 AUD	72	1,918,235.35 AUD
	TIGUAN	578	4.32%	16,411,753.48 AUD	3.70%	262	8,102,756.96 AUD	316	8,308,996.52 AUD
	TOUAREG	91	0.68%	4,846,857.67 AUD	1.09%	68	3,922,787.24 AUD	23	924,070.43 AUD

Pool Data VII

Distribution by Vehicle Brand and Models

Total Portfolio						Balloon				Vehicle Status			
Make	Model	Number of Contracts	Percentage of Contracts	Outstanding Discounted Receivables Balance	Percentage of Balance	Balloon		No Balloon		New		Used	
						Number of Contracts	Outstanding Discounted Receivables Balance	Number of Contracts	Outstanding Discounted Receivables Balance	Number of Contracts	Outstanding Discounted Receivables Balance	Number of Contracts	Outstanding Discounted Receivables Balance
Volkswagen Group Vehicles													
AUDI	A1	53	0.40%	1,113,180.93 AUD	0.25%	12	404,722.36 AUD	41	708,458.57 AUD	28	817,286.11 AUD	25	295,894.82 AUD
	A3	277	2.07%	9,309,181.20 AUD	2.10%	112	5,220,604.69 AUD	165	4,088,576.51 AUD	176	6,929,290.35 AUD	101	2,379,890.85 AUD
	A4	131	0.98%	4,584,958.28 AUD	1.03%	48	2,409,983.06 AUD	83	2,174,975.22 AUD	81	3,626,743.47 AUD	50	958,214.81 AUD
	A5	83	0.62%	3,668,247.69 AUD	0.83%	37	2,101,674.78 AUD	46	1,566,572.91 AUD	51	2,782,134.96 AUD	32	886,112.73 AUD
	A6	29	0.22%	1,480,091.88 AUD	0.33%	8	585,482.30 AUD	21	894,609.58 AUD	15	1,064,460.36 AUD	14	415,631.52 AUD
	A7	14	0.10%	1,053,228.42 AUD	0.24%	9	947,742.06 AUD	5	105,486.36 AUD	10	939,227.71 AUD	4	114,000.71 AUD
	A8	4	0.03%	175,708.71 AUD	0.04%	-	- AUD	4	175,708.71 AUD	2	120,907.14 AUD	2	54,801.57 AUD
	E-TRON	9	0.07%	911,695.62 AUD	0.21%	8	852,924.32 AUD	1	58,771.30 AUD	9	911,695.62 AUD	-	- AUD
	Q2	101	0.75%	2,741,425.46 AUD	0.62%	39	1,255,097.66 AUD	62	1,486,327.80 AUD	75	2,221,666.42 AUD	26	519,759.04 AUD
	Q3	276	2.06%	9,761,272.61 AUD	2.20%	109	4,990,814.33 AUD	167	4,770,458.28 AUD	230	8,884,757.39 AUD	46	876,515.22 AUD
	Q5	304	2.27%	13,180,410.80 AUD	2.97%	146	7,902,238.72 AUD	158	5,278,172.08 AUD	217	10,698,289.11 AUD	87	2,482,121.69 AUD
	Q7	229	1.71%	14,181,905.90 AUD	3.20%	117	9,154,968.37 AUD	112	5,026,937.53 AUD	145	10,889,365.48 AUD	84	3,292,540.42 AUD
	Q8	22	0.16%	2,029,219.08 AUD	0.46%	13	1,347,705.36 AUD	9	681,513.72 AUD	19	1,843,652.35 AUD	3	185,566.73 AUD
	R8	7	0.05%	990,895.84 AUD	0.22%	6	912,066.15 AUD	1	78,829.69 AUD	4	681,623.91 AUD	3	309,271.93 AUD
	TT	12	0.09%	435,968.89 AUD	0.10%	5	291,687.87 AUD	7	144,281.02 AUD	1	114,261.94 AUD	11	321,706.95 AUD
	SubTotal	1,551	11.59%	65,617,391.31 AUD	14.79%	669	38,377,712.03 AUD	882	27,239,679.28 AUD	1,063	52,525,362.32 AUD	488	13,092,028.99 AUD
BENTLEY	BENTAYGA	2	0.01%	501,010.86 AUD	0.11%	2	501,010.86 AUD	-	- AUD	1	314,697.91 AUD	1	186,312.95 AUD
	CONTINENTAL	5	0.04%	682,492.83 AUD	0.15%	2	305,074.33 AUD	3	377,418.50 AUD	-	- AUD	5	682,492.83 AUD
	SubTotal	7	0.05%	1,183,503.69 AUD	0.27%	4	806,085.19 AUD	3	377,418.50 AUD	1	314,697.91 AUD	6	868,805.78 AUD
LAMBORGHINI	AVENTADOR	1	0.01%	343,542.61 AUD	0.08%	1	343,542.61 AUD	-	- AUD	-	- AUD	1	343,542.61 AUD
	HURACAN	3	0.02%	922,649.13 AUD	0.21%	2	780,151.60 AUD	1	142,497.53 AUD	2	780,151.60 AUD	1	142,497.53 AUD
	URUS	2	0.01%	606,879.30 AUD	0.14%	2	606,879.30 AUD	-	- AUD	2	606,879.30 AUD	-	- AUD
	SubTotal	6	0.04%	1,873,071.04 AUD	0.42%	5	1,730,573.51 AUD	1	142,497.53 AUD	4	1,387,030.90 AUD	2	486,040.14 AUD
PORSCHE	BOXSTER	9	0.07%	1,010,740.69 AUD	0.23%	8	954,703.04 AUD	1	56,037.65 AUD	7	916,314.16 AUD	2	94,426.53 AUD
	CARRERA / 911	25	0.19%	4,760,813.21 AUD	1.07%	22	4,527,192.92 AUD	3	233,620.29 AUD	18	3,913,055.93 AUD	7	847,757.28 AUD
	CAYENNE	81	0.61%	7,422,535.41 AUD	1.67%	54	5,822,788.71 AUD	27	1,599,746.70 AUD	65	6,546,046.95 AUD	16	876,488.46 AUD
	CAYMAN	1	0.01%	86,927.70 AUD	0.02%	-	- AUD	1	86,927.70 AUD	-	- AUD	1	86,927.70 AUD
	MACAN	109	0.81%	8,149,041.80 AUD	1.84%	75	6,311,689.76 AUD	34	1,837,352.04 AUD	90	7,247,065.55 AUD	19	901,976.25 AUD
	PANAMERA	-	0.00%	- AUD	0.00%	-	- AUD	-	- AUD	-	- AUD	-	- AUD
	TAYCAN	13	0.10%	2,275,687.18 AUD	0.51%	13	2,275,687.18 AUD	-	- AUD	13	2,275,687.18 AUD	-	- AUD
	SubTotal	238	1.78%	23,705,745.99 AUD	5.34%	172	19,892,061.61 AUD	66	3,813,684.38 AUD	193	20,898,169.77 AUD	45	2,807,576.22 AUD
SKODA	FABIA	41	0.31%	603,371.27 AUD	0.14%	3	53,159.00 AUD	38	550,212.27 AUD	38	582,180.75 AUD	3	21,190.52 AUD
	KAROQ	55	0.41%	1,290,172.03 AUD	0.29%	8	236,022.23 AUD	47	1,054,149.80 AUD	55	1,290,172.03 AUD	-	- AUD
	KODIAQ	105	0.78%	3,482,855.75 AUD	0.79%	28	1,148,579.24 AUD	77	2,334,276.51 AUD	96	3,290,824.84 AUD	9	192,030.91 AUD
	KAMIQ	69	0.52%	1,475,231.31 AUD	0.33%	5	144,222.14 AUD	64	1,331,009.17 AUD	69	1,475,231.31 AUD	-	- AUD
	SCALA	41	0.31%	893,847.90 AUD	0.20%	9	217,847.72 AUD	32	676,000.18 AUD	41	893,847.90 AUD	-	- AUD
	OCTAVIA	107	0.80%	2,448,845.52 AUD	0.55%	26	906,402.79 AUD	81	1,542,442.73 AUD	95	2,286,678.57 AUD	12	162,166.95 AUD
	RAPID	1	0.01%	7,730.39 AUD	0.00%	-	- AUD	1	7,730.39 AUD	1	7,730.39 AUD	-	- AUD
	SUPERB	26	0.19%	780,378.16 AUD	0.18%	10	415,954.82 AUD	16	364,423.34 AUD	19	684,627.41 AUD	7	95,750.75 AUD
	SubTotal	445	3.32%	10,982,432.33 AUD	2.48%	89	3,122,187.94 AUD	356	7,860,244.39 AUD	414	10,511,293.20 AUD	31	471,139.13 AUD
VOLKSWAGEN	AMAROK	784	5.86%	25,936,736.93 AUD	5.85%	282	11,683,228.79 AUD	502	14,253,508.14 AUD	640	22,548,426.40 AUD	144	3,388,310.53 AUD
	ARTEON	7	0.05%	242,987.85 AUD	0.05%	5	208,172.09 AUD	2	34,815.76 AUD	2	77,742.40 AUD	5	165,245.45 AUD
	CADDY	102	0.76%	1,962,298.53 AUD	0.44%	22	603,404.48 AUD	80	1,358,894.05 AUD	81	1,684,385.78 AUD	21	277,912.75 AUD
	CARAVELLE	4	0.03%	117,689.43 AUD	0.03%	2	49,419.69 AUD	2	68,269.74 AUD	3	83,796.10 AUD	1	33,893.33 AUD
	CRAFTER	141	1.05%	4,634,623.53 AUD	1.04%	39	1,619,050.18 AUD	102	3,015,573.35 AUD	136	4,536,760.07 AUD	5	97,863.46 AUD
	GOLF	425	3.18%	8,478,785.40 AUD	1.91%	108	2,990,169.49 AUD	317	5,488,615.91 AUD	273	6,208,407.08 AUD	152	2,270,378.32 AUD
	JETTA	12	0.09%	66,656.81 AUD	0.02%	2	14,210.40 AUD	10	52,446.41 AUD	4	16,475.31 AUD	8	50,181.50 AUD
	MULTIVAN	39	0.29%	1,552,006.20 AUD	0.35%	13	684,946.04 AUD	26	867,060.16 AUD	28	1,234,124.04 AUD	11	317,882.16 AUD
	NEW BEETLE	4	0.03%	45,904.09 AUD	0.01%	-	- AUD	4	45,904.09 AUD	-	- AUD	4	45,904.09 AUD
	PASSAT	44	0.33%	1,028,732.14 AUD	0.23%	13	454,740.17 AUD	31	573,991.97 AUD	23	732,416.32 AUD	21	296,315.82 AUD
	POLO	177	1.32%	2,496,117.52 AUD	0.56%	22	445,433.41 AUD	155	2,050,684.11 AUD	149	2,299,512.10 AUD	28	196,605.42 AUD
	SCIROCCO	2	0.01%	36,398.27 AUD	0.01%	-	- AUD	2	36,398.27 AUD	-	- AUD	2	36,398.27 AUD
	T-CROSS	168	1.26%	3,579,393.46 AUD	0.81%	25	638,372.28 AUD	143	2,941,021.18 AUD	168	3,579,393.46 AUD	-	- AUD
	T-ROC	104	0.78%	2,892,562.59 AUD	0.65%	21	705,159.53 AUD	83	2,187,403.06 AUD	104	2,892,562.59 AUD	-	- AUD
	TIGUAN	578	4.32%	16,411,753.48 AUD	3.70%	169	6,165,797.99 AUD	409	10,245,955.49 AUD	500	14,802,987.47 AUD	78	1,608,766.01 AUD
	TOUAREG	91	0.68%	4,846,857.67 AUD	1.09%	40	2,957,238.04 AUD	51	1,889,619.63 AUD	65	4,169,794.71 AUD	26	677,062.96 AUD

Pool Data VII

Distribution by Vehicle Brand and Models

Total Portfolio						Product Type			
Make	Model	Number of Contracts	Percentage of Contracts	Outstanding Discounted Receivables Balance	Percentage of Balance	Chattel Mortgage		Consumer Loan	
						Number of Contracts	Outstanding Discounted Receivables Balance	Number of Contracts	Outstanding Discounted Receivables Balance
	TRANSPORTER	129	0.96%	3,913,569.73 AUD	0.88%	113	3,306,997.85 AUD	16	606,571.88 AUD
	UP!	-	0.00%	- AUD	0.00%	-	- AUD	-	- AUD
	SubTotal	2,811	21.00%	78,243,073.63 AUD	17.64%	1,624	50,089,221.88 AUD	1,187	28,153,851.75 AUD
Volkswagen Group Vehicles	SubTotal	5,058	37.79%	181,605,217.99 AUD	40.94%	2,918	123,066,804.30 AUD	2,140	58,538,413.69 AUD

Pool Data VII

Distribution by Vehicle Brand and Models

Total Portfolio						Balloon				Vehicle Status			
Make	Model	Number of Contracts	Percentage of Contracts	Outstanding Discounted Receivables Balance	Percentage of Balance	Balloon		No Balloon		New		Used	
						Number of Contracts	Outstanding Discounted Receivables Balance	Number of Contracts	Outstanding Discounted Receivables Balance	Number of Contracts	Outstanding Discounted Receivables Balance	Number of Contracts	Outstanding Discounted Receivables Balance
	TRANSPORTER	129	0.96%	3,913,569.73 AUD	0.88%	41	1,702,927.91 AUD	88	2,210,641.82 AUD	105	3,554,559.41 AUD	24	359,010.32 AUD
	UP!	-	0.00%	- AUD	0.00%	-	- AUD	-	- AUD	-	- AUD	-	- AUD
	SubTotal	2,811	21.00%	78,243,073.63 AUD	17.64%	804	30,922,270.49 AUD	2,007	47,320,803.14 AUD	2,281	68,421,343.24 AUD	530	9,821,730.39 AUD
Volkswagen Group Vehicles	SubTotal	5,058	37.79%	181,605,217.99 AUD	40.94%	1,743	94,850,890.77 AUD	3,315	86,754,327.22 AUD	3,956	154,057,897.34 AUD	1,102	27,547,320.65 AUD

Pool Data VII

Distribution by Vehicle Brand and Models

Total Portfolio						Product Type			
Make	Model	Number of Contracts	Percentage of Contracts	Outstanding Discounted Receivables Balance	Percentage of Balance	Chattel Mortgage		Consumer Loan	
						Number of Contracts	Outstanding Discounted Receivables Balance	Number of Contracts	Outstanding Discounted Receivables Balance
Other Vehicles									
ABARTH		13	0.10%	325,089.28 AUD	0.07%	10	249,155.62 AUD	3	75,933.66 AUD
ALFA ROMEO		30	0.22%	1,212,514.65 AUD	0.27%	15	584,642.64 AUD	15	627,872.01 AUD
ASTON MARTIN		6	0.04%	996,704.32 AUD	0.22%	6	996,704.32 AUD	-	- AUD
BMW		144	1.08%	6,322,141.49 AUD	1.43%	112	5,406,485.74 AUD	32	915,655.75 AUD
CHEVROLET		27	0.20%	1,969,030.69 AUD	0.44%	24	1,760,765.14 AUD	3	208,265.55 AUD
CHRYSLER		5	0.04%	151,470.63 AUD	0.03%	2	99,246.81 AUD	3	52,223.82 AUD
CITROEN		6	0.04%	60,647.37 AUD	0.01%	5	56,544.03 AUD	1	4,103.34 AUD
DODGE		2	0.01%	17,016.89 AUD	0.00%	1	5,264.84 AUD	1	11,752.05 AUD
FERRARI		1	0.01%	183,637.62 AUD	0.04%	-	- AUD	1	183,637.62 AUD
FIAT		15	0.11%	315,537.89 AUD	0.07%	10	237,483.57 AUD	5	78,054.32 AUD
FORD		911	6.81%	31,769,065.64 AUD	7.16%	710	25,762,053.31 AUD	201	6,007,012.33 AUD
GENESIS		3	0.02%	203,320.92 AUD	0.05%	3	203,320.92 AUD	-	- AUD
GM		1	0.01%	71,318.98 AUD	0.02%	1	71,318.98 AUD	-	- AUD
GREAT WALL		18	0.13%	295,168.23 AUD	0.07%	12	201,330.37 AUD	6	93,837.86 AUD
GWM		55	0.41%	1,538,296.17 AUD	0.35%	40	1,053,814.62 AUD	15	484,481.55 AUD
HAVAL		61	0.46%	1,382,723.52 AUD	0.31%	33	724,804.24 AUD	28	657,919.28 AUD
HINO		1	0.01%	43,414.53 AUD	0.01%	1	43,414.53 AUD	-	- AUD
HOLDEN		306	2.29%	6,157,289.89 AUD	1.39%	161	3,382,173.25 AUD	145	2,775,116.64 AUD
HONDA		248	1.85%	5,203,748.44 AUD	1.17%	133	3,015,139.15 AUD	115	2,188,609.29 AUD
HYUNDAI		649	4.85%	14,236,886.45 AUD	3.21%	332	7,906,967.64 AUD	317	6,329,918.81 AUD
INFINITI		2	0.01%	33,263.03 AUD	0.01%	2	33,263.03 AUD	-	- AUD
ISUZU		281	2.10%	9,262,115.93 AUD	2.09%	195	6,345,117.02 AUD	86	2,916,998.91 AUD
JAGUAR		95	0.71%	4,627,659.96 AUD	1.04%	69	3,575,004.40 AUD	26	1,052,655.56 AUD
JEEP		145	1.08%	5,016,659.10 AUD	1.13%	95	3,647,919.60 AUD	50	1,368,739.50 AUD
KIA		387	2.89%	8,975,588.38 AUD	2.02%	226	5,838,542.01 AUD	161	3,137,046.37 AUD
LAND ROVER		568	4.24%	37,249,225.52 AUD	8.40%	430	29,937,019.59 AUD	138	7,312,205.93 AUD
LDV		250	1.87%	6,179,835.46 AUD	1.39%	216	5,304,748.12 AUD	34	875,087.34 AUD
LEXUS		11	0.08%	408,339.04 AUD	0.09%	11	408,339.04 AUD	-	- AUD
MAHINDRA		3	0.02%	39,795.09 AUD	0.01%	2	38,066.00 AUD	1	1,729.09 AUD
MASERATI		29	0.22%	2,964,792.88 AUD	0.67%	27	2,825,619.07 AUD	2	139,173.81 AUD
MAZDA		574	4.29%	14,171,260.10 AUD	3.19%	361	9,741,489.68 AUD	213	4,429,770.42 AUD
MERCEDES-BENZ		328	2.45%	15,378,839.48 AUD	3.47%	268	13,255,232.56 AUD	60	2,123,606.92 AUD
MG		219	1.64%	3,934,707.82 AUD	0.89%	87	1,437,259.96 AUD	132	2,497,447.86 AUD
MINI		14	0.10%	415,680.47 AUD	0.09%	11	329,843.15 AUD	3	85,837.32 AUD
MITSUBISHI		827	6.18%	19,934,292.61 AUD	4.49%	458	11,176,522.92 AUD	369	8,757,769.69 AUD
NISSAN		382	2.85%	10,613,140.93 AUD	2.39%	253	7,598,663.81 AUD	129	3,014,477.12 AUD
OPEL		1	0.01%	10,926.80 AUD	0.00%	-	- AUD	1	10,926.80 AUD
PEUGEOT		64	0.48%	1,733,851.63 AUD	0.39%	50	1,290,361.30 AUD	14	443,490.33 AUD
RAM		2	0.01%	100,166.46 AUD	0.02%	2	100,166.46 AUD	-	- AUD
RENAULT		160	1.20%	4,467,767.48 AUD	1.01%	135	3,953,674.87 AUD	25	514,092.61 AUD
ROLLS-ROYCE		2	0.01%	357,061.09 AUD	0.08%	2	357,061.09 AUD	-	- AUD
SSANGYONG		31	0.23%	883,726.72 AUD	0.20%	23	627,199.06 AUD	8	256,527.66 AUD
SUBARU		406	3.03%	9,734,746.70 AUD	2.19%	215	5,352,219.03 AUD	191	4,382,527.67 AUD
SUZUKI		148	1.11%	2,441,708.81 AUD	0.55%	51	849,354.25 AUD	97	1,592,354.56 AUD
TESLA		18	0.13%	995,418.45 AUD	0.22%	18	995,418.45 AUD	-	- AUD
TOYOTA		709	5.30%	21,847,062.30 AUD	4.92%	522	16,794,266.50 AUD	187	5,052,795.80 AUD
VOLVO		169	1.26%	7,777,642.38 AUD	1.75%	111	5,327,451.06 AUD	58	2,450,191.32 AUD
Other Vehicles	SubTotal	8,327	62.21%	262,010,298.22 AUD	59.06%	5,451	188,900,451.75 AUD	2,876	73,109,846.47 AUD
Total		13,385	100.00%	443,615,516.21 AUD	100.00%	8,369	311,967,256.05 AUD	5,016	131,648,260.16 AUD

Pool Data VII

Distribution by Vehicle Brand and Models

Total Portfolio						Balloon				Vehicle Status			
Make	Model	Number of Contracts	Percentage of Contracts	Outstanding Discounted Receivables Balance	Percentage of Balance	Balloon		No Balloon		New		Used	
						Number of Contracts	Outstanding Discounted Receivables Balance	Number of Contracts	Outstanding Discounted Receivables Balance	Number of Contracts	Outstanding Discounted Receivables Balance	Number of Contracts	Outstanding Discounted Receivables Balance
Other Vehicles													
ABARTH		13	0.10%	325,089.28 AUD	0.07%	8	214,604.30 AUD	5	110,484.98 AUD	8	214,604.30 AUD	5	110,484.98 AUD
ALFA ROMEO		30	0.22%	1,212,514.65 AUD	0.27%	18	858,822.75 AUD	12	353,691.90 AUD	24	1,024,063.58 AUD	6	188,451.07 AUD
ASTON MARTIN		6	0.04%	996,704.32 AUD	0.22%	5	927,905.17 AUD	1	68,799.15 AUD	2	503,095.00 AUD	4	493,609.32 AUD
BMW		144	1.08%	6,322,141.49 AUD	1.43%	60	3,751,377.10 AUD	84	2,570,764.39 AUD	63	3,613,039.50 AUD	81	2,709,101.99 AUD
CHEVROLET		27	0.20%	1,969,030.69 AUD	0.44%	15	1,189,261.23 AUD	12	779,769.46 AUD	25	1,850,996.42 AUD	2	118,034.27 AUD
CHRYSLER		5	0.04%	151,470.63 AUD	0.03%	1	62,644.23 AUD	4	88,826.40 AUD	2	99,246.81 AUD	3	52,223.82 AUD
CITROEN		6	0.04%	60,647.37 AUD	0.01%	1	5,526.25 AUD	5	55,121.12 AUD	3	34,952.00 AUD	3	25,695.37 AUD
DODGE		2	0.01%	17,016.89 AUD	0.00%	-	- AUD	2	17,016.89 AUD	-	- AUD	2	17,016.89 AUD
FERRARI		1	0.01%	183,637.62 AUD	0.04%	1	183,637.62 AUD	-	- AUD	-	- AUD	1	183,637.62 AUD
FIAT		15	0.11%	315,537.89 AUD	0.07%	3	82,457.22 AUD	12	233,080.67 AUD	11	253,715.53 AUD	4	61,822.36 AUD
FORD		911	6.81%	31,769,065.64 AUD	7.16%	253	11,251,548.75 AUD	658	20,517,516.89 AUD	602	23,621,333.04 AUD	309	8,147,732.60 AUD
GENESIS		3	0.02%	203,320.92 AUD	0.05%	2	152,742.23 AUD	1	50,578.69 AUD	3	203,320.92 AUD	-	- AUD
GM		1	0.01%	71,318.98 AUD	0.02%	1	71,318.98 AUD	-	- AUD	1	71,318.98 AUD	-	- AUD
GREAT WALL		18	0.13%	295,168.23 AUD	0.07%	2	45,292.56 AUD	16	249,875.67 AUD	17	283,997.25 AUD	1	11,170.98 AUD
GWM		55	0.41%	1,538,296.17 AUD	0.35%	9	273,418.25 AUD	46	1,264,877.92 AUD	55	1,538,296.17 AUD	-	- AUD
HAVAL		61	0.46%	1,382,723.52 AUD	0.31%	3	97,148.33 AUD	58	1,285,575.19 AUD	61	1,382,723.52 AUD	-	- AUD
HINO		1	0.01%	43,414.53 AUD	0.01%	1	43,414.53 AUD	-	- AUD	1	43,414.53 AUD	-	- AUD
HOLDEN		306	2.29%	6,157,289.89 AUD	1.39%	26	728,162.38 AUD	280	5,429,127.51 AUD	76	1,644,241.94 AUD	230	4,513,047.95 AUD
HONDA		248	1.85%	5,203,748.44 AUD	1.17%	38	1,150,943.67 AUD	210	4,052,804.77 AUD	182	4,197,133.54 AUD	66	1,006,614.90 AUD
HYUNDAI		649	4.85%	14,236,886.45 AUD	3.21%	94	3,089,184.54 AUD	555	11,147,701.91 AUD	446	11,080,352.09 AUD	203	3,156,534.36 AUD
INFINITI		2	0.01%	33,263.03 AUD	0.01%	-	- AUD	2	33,263.03 AUD	-	- AUD	2	33,263.03 AUD
ISUZU		281	2.10%	9,262,115.93 AUD	2.09%	57	2,265,029.80 AUD	224	6,997,086.13 AUD	228	8,053,067.56 AUD	53	1,209,048.37 AUD
JAGUAR		95	0.71%	4,627,659.96 AUD	1.04%	54	3,279,266.48 AUD	41	1,348,393.48 AUD	66	3,671,242.92 AUD	29	956,417.04 AUD
JEEP		145	1.08%	5,016,659.10 AUD	1.13%	40	2,081,133.21 AUD	105	2,935,525.89 AUD	81	3,537,114.22 AUD	64	1,479,544.88 AUD
KIA		387	2.89%	8,975,588.38 AUD	2.02%	68	2,352,545.41 AUD	319	6,623,042.97 AUD	298	7,361,415.49 AUD	89	1,614,172.89 AUD
LAND ROVER		568	4.24%	37,249,225.52 AUD	8.40%	326	25,720,245.35 AUD	242	11,528,980.17 AUD	412	29,961,918.16 AUD	156	7,287,307.36 AUD
LDV		250	1.87%	6,179,835.46 AUD	1.39%	50	1,398,694.81 AUD	200	4,781,140.65 AUD	242	6,040,318.68 AUD	8	139,516.78 AUD
LEXUS		11	0.08%	408,339.04 AUD	0.09%	6	256,341.69 AUD	5	151,997.35 AUD	5	219,429.36 AUD	6	188,909.68 AUD
MAHINDRA		3	0.02%	39,795.09 AUD	0.01%	-	- AUD	3	39,795.09 AUD	3	39,795.09 AUD	-	- AUD
MASERATI		29	0.22%	2,964,792.88 AUD	0.67%	22	2,611,647.88 AUD	7	353,145.00 AUD	23	2,621,708.76 AUD	6	343,084.12 AUD
MAZDA		574	4.29%	14,171,260.10 AUD	3.19%	122	4,411,672.54 AUD	452	9,759,587.56 AUD	399	11,245,990.51 AUD	175	2,925,269.59 AUD
MERCEDES-BENZ		328	2.45%	15,378,839.48 AUD	3.47%	128	7,966,398.92 AUD	200	7,412,440.56 AUD	154	9,374,711.82 AUD	174	6,004,127.66 AUD
MG		219	1.64%	3,934,707.82 AUD	0.89%	13	349,550.32 AUD	206	3,585,157.50 AUD	212	3,828,282.12 AUD	7	106,425.70 AUD
MINI		14	0.10%	415,680.47 AUD	0.09%	5	198,597.88 AUD	9	217,082.59 AUD	6	268,587.96 AUD	8	147,092.51 AUD
MITSUBISHI		827	6.18%	19,934,292.61 AUD	4.49%	116	3,767,067.28 AUD	711	16,167,225.33 AUD	595	15,606,656.17 AUD	232	4,327,636.44 AUD
NISSAN		382	2.85%	10,613,140.93 AUD	2.39%	68	2,766,755.85 AUD	314	7,846,385.08 AUD	223	7,505,764.12 AUD	159	3,107,376.81 AUD
OPEL		1	0.01%	10,926.80 AUD	0.00%	-	- AUD	1	10,926.80 AUD	-	- AUD	1	10,926.80 AUD
PEUGEOT		64	0.48%	1,733,851.63 AUD	0.39%	19	697,774.82 AUD	45	1,036,076.81 AUD	60	1,675,876.36 AUD	4	57,975.27 AUD
RAM		2	0.01%	100,166.46 AUD	0.02%	1	95,078.49 AUD	1	5,087.97 AUD	1	5,087.97 AUD	1	95,078.49 AUD
RENAULT		160	1.20%	4,467,767.48 AUD	1.01%	54	1,900,829.79 AUD	106	2,566,937.69 AUD	135	4,010,476.12 AUD	25	457,291.36 AUD
ROLLS-ROYCE		2	0.01%	357,061.09 AUD	0.08%	1	218,267.60 AUD	1	138,793.49 AUD	1	218,267.60 AUD	1	138,793.49 AUD
SSANGYONG		31	0.23%	883,726.72 AUD	0.20%	6	199,971.49 AUD	25	683,755.23 AUD	30	839,892.54 AUD	1	43,834.18 AUD
SUBARU		406	3.03%	9,734,746.70 AUD	2.19%	92	2,955,664.85 AUD	314	6,779,081.85 AUD	295	7,889,921.43 AUD	111	1,844,825.27 AUD
SUZUKI		148	1.11%	2,441,708.81 AUD	0.55%	8	159,490.54 AUD	140	2,282,218.27 AUD	111	1,987,294.03 AUD	37	454,414.78 AUD
TESLA		18	0.13%	995,418.45 AUD	0.22%	11	645,890.61 AUD	7	349,527.84 AUD	18	995,418.45 AUD	-	- AUD
TOYOTA		709	5.30%	21,847,062.30 AUD	4.92%	131	6,413,178.23 AUD	578	15,433,884.07 AUD	243	8,958,589.34 AUD	466	12,888,472.96 AUD
VOLVO		169	1.26%	7,777,642.38 AUD	1.75%	98	5,349,372.85 AUD	71	2,428,269.53 AUD	144	6,929,302.78 AUD	25	848,339.60 AUD
Other Vehicles	SubTotal	8,327	62.21%	262,010,298.22 AUD	59.06%	2,037	102,239,876.78 AUD	6,290	159,770,421.44 AUD	5,567	194,505,974.68 AUD	2,760	67,504,323.54 AUD
Total		13,385	100.00%	443,615,516.21 AUD	100.00%	3,780	197,090,767.55 AUD	9,605	246,524,748.66 AUD	9,523	348,563,872.02 AUD	3,862	95,051,644.19 AUD

Pool Data VIII

Region

Total Portfolio					Product Type			
Region	Number of Contracts	Percentage of Contracts	Outstanding Discounted Receivables Balance	Percentage of Balance	Chattel Mortgage		Consumer Loan	
					Number of Contracts	Outstanding Discounted Receivables Balance	Number of Contracts	Outstanding Discounted Receivables Balance
Australian Capital Territory	400	2.99%	11,772,229.34 AUD	2.65%	158	5,986,844.29 AUD	242	5,785,385.05 AUD
New South Wales	4,789	35.78%	166,117,366.18 AUD	37.45%	3,135	121,628,296.97 AUD	1,654	44,489,069.21 AUD
Northern Territory	108	0.81%	2,504,608.08 AUD	0.56%	40	1,055,816.75 AUD	68	1,448,791.33 AUD
Queensland	2,864	21.40%	93,353,237.55 AUD	21.04%	1,927	67,951,805.11 AUD	937	25,401,432.44 AUD
South Australia	563	4.21%	20,214,985.78 AUD	4.56%	384	15,080,195.25 AUD	179	5,134,790.53 AUD
Tasmania	480	3.59%	12,531,921.84 AUD	2.82%	203	6,289,169.75 AUD	277	6,242,752.09 AUD
Victoria	2,632	19.66%	89,892,608.87 AUD	20.26%	1,625	64,123,621.91 AUD	1,007	25,768,986.96 AUD
Western Australia	1,549	11.57%	47,228,558.57 AUD	10.65%	897	29,851,506.02 AUD	652	17,377,052.55 AUD
Total	13,385	100.00%	443,615,516.21 AUD	100.00%	8,369	311,967,256.05 AUD	5,016	131,648,260.16 AUD

Pool Data VIII

Region

Total Portfolio					Balloon				Vehicle Status			
Region	Number of Contracts	Percentage of Contracts	Outstanding Discounted Receivables Balance	Percentage of Balance	Balloon		No Balloon		New		Used	
					Number of Contracts	Outstanding Discounted Receivables Balance	Number of Contracts	Outstanding Discounted Receivables Balance	Number of Contracts	Outstanding Discounted Receivables Balance	Number of Contracts	Outstanding Discounted Receivables Balance
Australian Capital Territory	400	2.99%	11,772,229.34 AUD	2.65%	81	4,118,793.17 AUD	319	7,653,436.17 AUD	249	8,701,404.88 AUD	151	3,070,824.46 AUD
New South Wales	4,789	35.78%	166,117,366.18 AUD	37.45%	1,431	78,592,690.63 AUD	3,358	87,524,675.55 AUD	3,510	132,839,636.21 AUD	1,279	33,277,729.97 AUD
Northern Territory	108	0.81%	2,504,608.08 AUD	0.56%	4	160,453.15 AUD	104	2,344,154.93 AUD	87	2,069,726.69 AUD	21	434,881.39 AUD
Queensland	2,864	21.40%	93,353,237.55 AUD	21.04%	824	40,784,028.45 AUD	2,040	52,569,209.10 AUD	2,195	77,701,026.90 AUD	669	15,652,210.65 AUD
South Australia	563	4.21%	20,214,985.78 AUD	4.56%	206	10,888,862.91 AUD	357	9,326,122.87 AUD	418	16,708,704.49 AUD	145	3,506,281.29 AUD
Tasmania	480	3.59%	12,531,921.84 AUD	2.82%	81	3,144,409.12 AUD	399	9,387,512.72 AUD	255	7,279,678.81 AUD	225	5,252,243.03 AUD
Victoria	2,632	19.66%	89,892,608.87 AUD	20.26%	932	47,461,771.95 AUD	1,700	42,430,836.92 AUD	2,003	74,889,588.26 AUD	629	15,003,020.61 AUD
Western Australia	1,549	11.57%	47,228,558.57 AUD	10.65%	221	11,939,758.17 AUD	1,328	35,288,800.40 AUD	806	28,374,105.78 AUD	743	18,854,452.79 AUD
Total	13,385	100.00%	443,615,516.21 AUD	100.00%	3,780	197,090,767.55 AUD	9,605	246,524,748.66 AUD	9,523	348,563,872.02 AUD	3,862	95,051,644.19 AUD

Pool Data IX

Current COVID-19 Extensions

Total Portfolio					Product Type			
Current COVID-19 Extensions	Number of Contracts	Percentage of Contracts	Outstanding Discounted Receivables Balance	Percentage of Balance	Chattel Mortgage		Consumer Loan	
					Number of Contracts	Outstanding Discounted Receivables Balance	Number of Contracts	Outstanding Discounted Receivables Balance
Current COVID-19 Extension	19	0.14%	677,934.23 AUD	0.15%	15	585,901.33 AUD	4	92,032.90 AUD
No Current Extension	13,366	99.86%	442,937,581.98 AUD	99.85%	8,354	311,381,354.72 AUD	5,012	131,556,227.26 AUD
Total	13,385	100.00%	443,615,516.21 AUD	100.00%	8,369	311,967,256.05 AUD	5,016	131,648,260.16 AUD

* Representing contracts which are currently in a COVID-19 extension as at the Reporting Date

Pool Data IX

Current COVID-19 Extensions

Total Portfolio					Balloon				Vehicle Status			
Current COVID-19 Extensions	Number of Contracts	Percentage of Contracts	Outstanding Discounted Receivables Balance	Percentage of Balance	Balloon		No Balloon		New		Used	
					Number of Contracts	Outstanding Discounted Receivables Balance	Number of Contracts	Outstanding Discounted Receivables Balance	Number of Contracts	Outstanding Discounted Receivables Balance	Number of Contracts	Outstanding Discounted Receivables Balance
Current COVID-19 Extension	19	0.14%	677,934.23 AUD	0.15%	8	342,838.47 AUD	11	335,095.76 AUD	9	418,592.68 AUD	10	259,341.55 AUD
No Current Extension	13,366	99.86%	442,937,581.98 AUD	99.85%	3,772	196,747,929.08 AUD	9,594	246,189,652.90 AUD	9,514	348,145,279.34 AUD	3,852	94,792,302.64 AUD
Total	13,385	100.00%	443,615,516.21 AUD	100.00%	3,780	197,090,767.55 AUD	9,605	246,524,748.66 AUD	9,523	348,563,872.02 AUD	3,862	95,051,644.19 AUD

* Representing contracts which are currently in a COVID-19 extension as at the Reporting Date

Individual Hardship Extensions*

Individual Extensions Approved For After Poolcut*	Number of Contracts	Percentage of Contracts	Outstanding Discounted Receivables Balance	Percentage of Balance
None	13,311	99.45%	440,807,245.32 AUD	99.37%
1	68	0.51%	2,513,247.38 AUD	0.57%
2	6	0.04%	295,023.51 AUD	0.07%
3	-	0.00%	0.00 AUD	0.00%
4	-	0.00%	0.00 AUD	0.00%
5	-	0.00%	0.00 AUD	0.00%
Total	13,385	100.00%	443,615,516.21 AUD	100.00%

*Individual Hardship Extensions Approved For After Poolcut For Contracts Active At End of Reporting Period

Engine Type

Total Portfolio					Product Type			
Engine Type	Number of Contracts	Percentage of Contracts	Outstanding Discounted Receivables Balance	Percentage of Balance	Chattel Mortgage		Consumer Loan	
					Number of Contracts	Outstanding Discounted Receivables Balance	Number of Contracts	Outstanding Discounted Receivables Balance
EA 189 (Unfixed)	3	0.02%	21,836.18 AUD	0.00%	2	20,410.14 AUD	1	1,426.04 AUD
Other	13,382	99.98%	443,593,680.03 AUD	100.00%	8,367	311,946,845.91 AUD	5,015	131,646,834.12 AUD
Total	13,385	100.00%	443,615,516.21 AUD	100.00%	8,369	311,967,256.05 AUD	5,016	131,648,260.16 AUD

Engine Type

Total Portfolio					Balloon				Vehicle Status			
Engine Type	Number of Contracts	Percentage of Contracts	Outstanding Discounted Receivables Balance	Percentage of Balance	Balloon		No Balloon		New		Used	
					Number of Contracts	Outstanding Discounted Receivables Balance	Number of Contracts	Outstanding Discounted Receivables Balance	Number of Contracts	Outstanding Discounted Receivables Balance	Number of Contracts	Outstanding Discounted Receivables Balance
EA 189 (Unfixed)	3	0.02%	21,836.18 AUD	0.00%	-	- AUD	3	21,836.18 AUD	-	- AUD	3	21,836.18 AUD
Other	13,382	99.98%	443,593,680.03 AUD	100.00%	3,780	197,090,767.55 AUD	9,602	246,502,912.48 AUD	9,523	348,563,872.02 AUD	3,859	95,029,808.01 AUD
Total	13,385	100.00%	443,615,516.21 AUD	100.00%	3,780	197,090,767.55 AUD	9,605	246,524,748.66 AUD	9,523	348,563,872.02 AUD	3,862	95,051,644.19 AUD

Contract Level Data

Net Salvage Recoveries By Contract By Month

No.	Month / Year of Origination	Month / Year of Net Salvage	Outstanding Discounted Receivables Balance at Poolcut	ABS Gross Salvage Loss	ABS Net Salvage Loss	ABS Recoveries After Net Salvage	ABS Net Salvage Loss After Recoveries	Loss Percentage on Poolcut Balance	Geographical Location of Borrower	Vehicle Type (New/Used)	Vehicle Manufacturer	Product Type
1	02/2021	07/2022	69,286.66 AUD	68,260.06 AUD	23,440.30 AUD	- AUD	23,440.30 AUD	33.83%	Queensland	New	HYUNDAI	Chattel Mortgage
2	04/2017	08/2022	4,908.02 AUD	1,802.96 AUD	1,802.96 AUD	- AUD	1,802.96 AUD	36.73%	Western Australia	Used	TOYOTA	Consumer Loan
3	09/2020	08/2022	22,898.44 AUD	23,946.41 AUD	23,946.41 AUD	- AUD	23,946.41 AUD	104.58%	New South Wales	New	HYUNDAI	Chattel Mortgage
4	11/2020	08/2022	85,150.75 AUD	88,290.47 AUD	26,227.05 AUD	- AUD	26,227.05 AUD	30.80%	New South Wales	Used	AUDI	Consumer Loan
5	03/2021	08/2022	29,185.09 AUD	28,677.00 AUD	5,729.99 AUD	- AUD	5,729.99 AUD	19.63%	Queensland	Used	AUDI	Chattel Mortgage
Total	5		211,428.96 AUD	211,176.90 AUD	81,146.71 AUD	- AUD	81,146.71 AUD					

Contract Level Data

Net Salvage Recoveries By Contract By Month

No.	Month / Year of Origination	Month / Year of Net Salvage	Nov-21	Dec-21	Jan-22	Feb-22	Mar-22	Apr-22	May-22	Jun-22	Jul-22	Aug-22	Sep-22	Oct-22
1	02/2021	07/2022	- AUD	- AUD	- AUD	- AUD	- AUD	- AUD	- AUD	- AUD	- AUD	- AUD	- AUD	- AUD
2	04/2017	08/2022	- AUD	- AUD	- AUD	- AUD	- AUD	- AUD	- AUD	- AUD	- AUD	- AUD	- AUD	- AUD
3	09/2020	08/2022	- AUD	- AUD	- AUD	- AUD	- AUD	- AUD	- AUD	- AUD	- AUD	- AUD	- AUD	- AUD
4	11/2020	08/2022	- AUD	- AUD	- AUD	- AUD	- AUD	- AUD	- AUD	- AUD	- AUD	- AUD	- AUD	- AUD
5	03/2021	08/2022	- AUD	- AUD	- AUD	- AUD	- AUD	- AUD	- AUD	- AUD	- AUD	- AUD	- AUD	- AUD
Total	5		- AUD	- AUD	- AUD	- AUD	- AUD	- AUD	- AUD	- AUD	- AUD	- AUD	- AUD	- AUD

Contract Level Data

Net Salvage Recoveries By Contract By Month

No.	Month / Year of Origination	Month / Year of Net Salvage	Nov-22	Dec-22	Jan-23	Feb-23	Mar-23	Apr-23	May-23	Jun-23	Jul-23	Aug-23	Sep-23	Oct-23
1	02/2021	07/2022	- AUD	- AUD	- AUD	- AUD	- AUD	- AUD	- AUD	- AUD	- AUD	- AUD	- AUD	- AUD
2	04/2017	08/2022	- AUD	- AUD	- AUD	- AUD	- AUD	- AUD	- AUD	- AUD	- AUD	- AUD	- AUD	- AUD
3	09/2020	08/2022	- AUD	- AUD	- AUD	- AUD	- AUD	- AUD	- AUD	- AUD	- AUD	- AUD	- AUD	- AUD
4	11/2020	08/2022	- AUD	- AUD	- AUD	- AUD	- AUD	- AUD	- AUD	- AUD	- AUD	- AUD	- AUD	- AUD
5	03/2021	08/2022	- AUD	- AUD	- AUD	- AUD	- AUD	- AUD	- AUD	- AUD	- AUD	- AUD	- AUD	- AUD
Total	5		- AUD	- AUD	- AUD	- AUD	- AUD	- AUD	- AUD	- AUD	- AUD	- AUD	- AUD	- AUD

Contract Level Data

Net Salvage Recoveries By Contract By Month

#REF!

No.	Month / Year of Origination	Month / Year of Net Salvage	Nov-23	Dec-23	Jan-24	Feb-24	Mar-24	Apr-24	May-24	Jun-24	Jul-24	Aug-24	Sep-24	Oct-24
1	02/2021	07/2022	- AUD	- AUD	- AUD	- AUD	- AUD	- AUD	- AUD	- AUD	- AUD	- AUD	- AUD	- AUD
2	04/2017	08/2022	- AUD	- AUD	- AUD	- AUD	- AUD	- AUD	- AUD	- AUD	- AUD	- AUD	- AUD	- AUD
3	09/2020	08/2022	- AUD	- AUD	- AUD	- AUD	- AUD	- AUD	- AUD	- AUD	- AUD	- AUD	- AUD	- AUD
4	11/2020	08/2022	- AUD	- AUD	- AUD	- AUD	- AUD	- AUD	- AUD	- AUD	- AUD	- AUD	- AUD	- AUD
5	03/2021	08/2022	- AUD	- AUD	- AUD	- AUD	- AUD	- AUD	- AUD	- AUD	- AUD	- AUD	- AUD	- AUD
Total	5		- AUD	- AUD	- AUD	- AUD	- AUD	- AUD	- AUD	- AUD	- AUD	- AUD	- AUD	- AUD

Contract Level Data

Net Salvage Recoveries By Contract By Month

No.	Month / Year of Origination	Month / Year of Net Salvage	Nov-24	Dec-24	Jan-25	Feb-25	Mar-25	Apr-25	May-25	Jun-25	Jul-25	Aug-25
1	02/2021	07/2022	- AUD	- AUD	- AUD	- AUD	- AUD	- AUD	- AUD	- AUD	- AUD	- AUD
2	04/2017	08/2022	- AUD	- AUD	- AUD	- AUD	- AUD	- AUD	- AUD	- AUD	- AUD	- AUD
3	09/2020	08/2022	- AUD	- AUD	- AUD	- AUD	- AUD	- AUD	- AUD	- AUD	- AUD	- AUD
4	11/2020	08/2022	- AUD	- AUD	- AUD	- AUD	- AUD	- AUD	- AUD	- AUD	- AUD	- AUD
5	03/2021	08/2022	- AUD	- AUD	- AUD	- AUD	- AUD	- AUD	- AUD	- AUD	- AUD	- AUD
Total	5		- AUD	- AUD	- AUD	- AUD	- AUD	- AUD	- AUD	- AUD	- AUD	- AUD