



AUSTRALIAN LITHIUM FOR A CLEAN ENERGY FUTURE

Investor Presentation

OCTOBER 2022

ASX | LPM



Important INFORMATION

Forward Looking Statements

Certain statements contained in this presentation, including information as to the future financial or operating performance of Lithium Plus Minerals Ltd (“Lithium Plus”) and its projects, are forward looking statements. Such forward looking statements:

- include, among other things, statements regarding incomplete and uncertain proposals or targets, production and prices, operating costs and results, capital expenditures, and are or may be based on assumptions and estimates related to future technical, economic, market, political, social and other conditions;
- are necessarily based upon several estimates and assumptions that, while considered reasonable by Lithium Plus, are inherently subject to significant technical, business, economic, competitive, political and social uncertainties and contingencies; and
- involve known and unknown risks and uncertainties that could cause actual events or results to differ materially from estimated or anticipated events or results reflected in such forward-looking statements.

Lithium Plus disclaims any intent or obligation to update publicly any forward-looking statements, whether as a result of new information, future events or results or otherwise. The words “believe”, “expect”, “anticipate”, “indicate”, “contemplate”, “target”, “plan”, “intends”, “continue”, “budget”, “estimate”, “may”, “will”, “schedule” and similar expressions identify forward looking statements. All forward looking statements made in this presentation are qualified by the foregoing cautionary statements. Recipients are cautioned that forward looking statements are not guarantees of future performance and accordingly investors are cautioned not to put undue reliance on forward looking statements due to the inherent uncertainty therein.

Disclaimer

No representation or warranty, express or implied, is made as to the fairness, accuracy, completeness or correctness of the information, opinions and conclusions contained in this presentation. To the maximum extent permitted by law, none of Lithium Plus, its directors, employees or agents, nor any other person accepts any liability, including, without limitation, any liability arising out of fault of negligence, for any loss arising from the use of the information contained in this presentation. In particular, no representation or warranty, express or implied is given as to the accuracy, completeness or correctness, likelihood of achievement or reasonableness or any forecasts, prospects or returns contained in this presentation nor is any obligation assumed to update such information. Such forecasts, prospects or returns are by their nature subject to significant uncertainties and contingencies.

The information contained in this presentation is for informational purposes only and does not constitute an offer to issue, or arrange to issue, securities or other financial products. The information contained in this presentation is not investment or financial product advice and is not intended to be used as the basis for making an investment decision. The presentation has been prepared without considering the investment objectives, financial situation or needs of any particular person. Before making an investment decision, you should consider, with or without the assistance of a financial adviser, whether an investment is appropriate considering your particular investment needs, objectives and financial circumstances. Past performance is no guarantee of future performance.

Competent Persons Statement

The information in this report that relates to Exploration Results, Mineral Resources or Reserves is based on information compiled by Dr. Jason Berton, who is a member of the Australian Institute of Mining and Metallurgy. Dr. Berton has sufficient mineral exploration experience which is relevant to the style of mineralisation and type of deposit under consideration and to the activity he is undertaking to qualify as a competent person as defined in the 2012 Edition of the “Australasian Code for reporting of Exploration Results, Mineral Resources and Ore Reserves” (JORC Code). Dr. Berton consents to the inclusion in this report of the matters and information discussed, based upon the form and context in which it appears.

Exploration by Other Explorers

This presentation contains information sourced from the reports of Other Explorers. References to the original reports are provided as footnotes where the information is cited in this presentation. Lithium Plus does not vouch for the accuracy of these reports. Lithium Plus has taken the decision to include this information as it is in the public domain and as we assess it to be of relevance to shareholders and investors.

Lithium PLUS

HIGH IMPACT LITHIUM EXPLORATION

Focused on five projects within two highly prospective areas



+ Bynoe PROJECT AREA

BYNOE | Flagship project, neighbouring Core Lithium's Finnis Project

WINGATE | Known pegmatite district, limited historic exploration

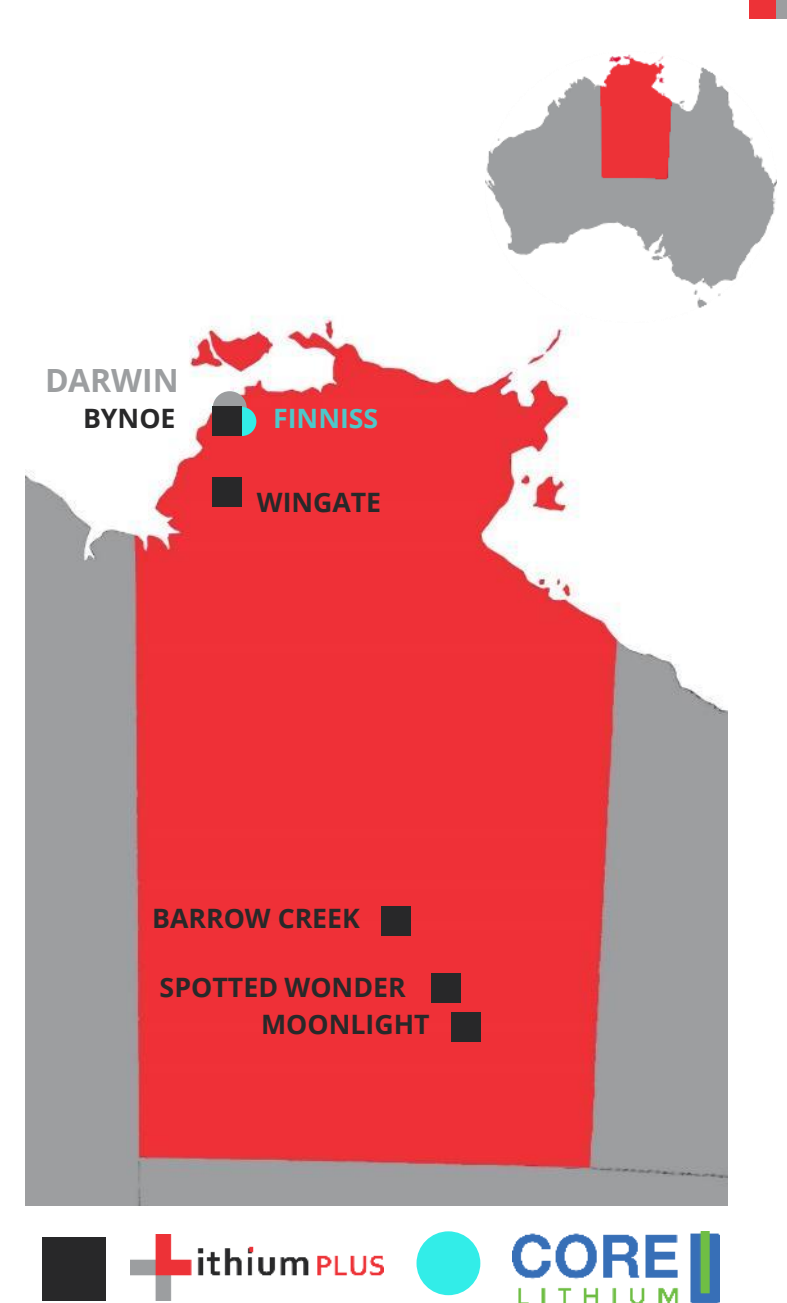


+ Arunta PROJECT AREA

BARROW CREEK | Historic tin and tantalum production

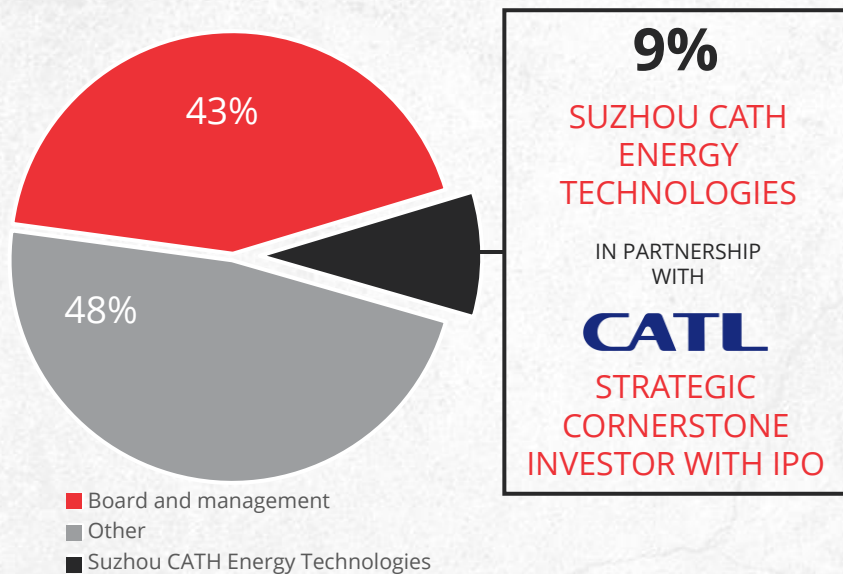
SPOTTED WONDER | Proven lithium mineralisation

MOONLIGHT | Within the Harts Range Pegmatite Field



Corporate **SNAPSHOT**

Register composition



Capital structure | ASX:LPM

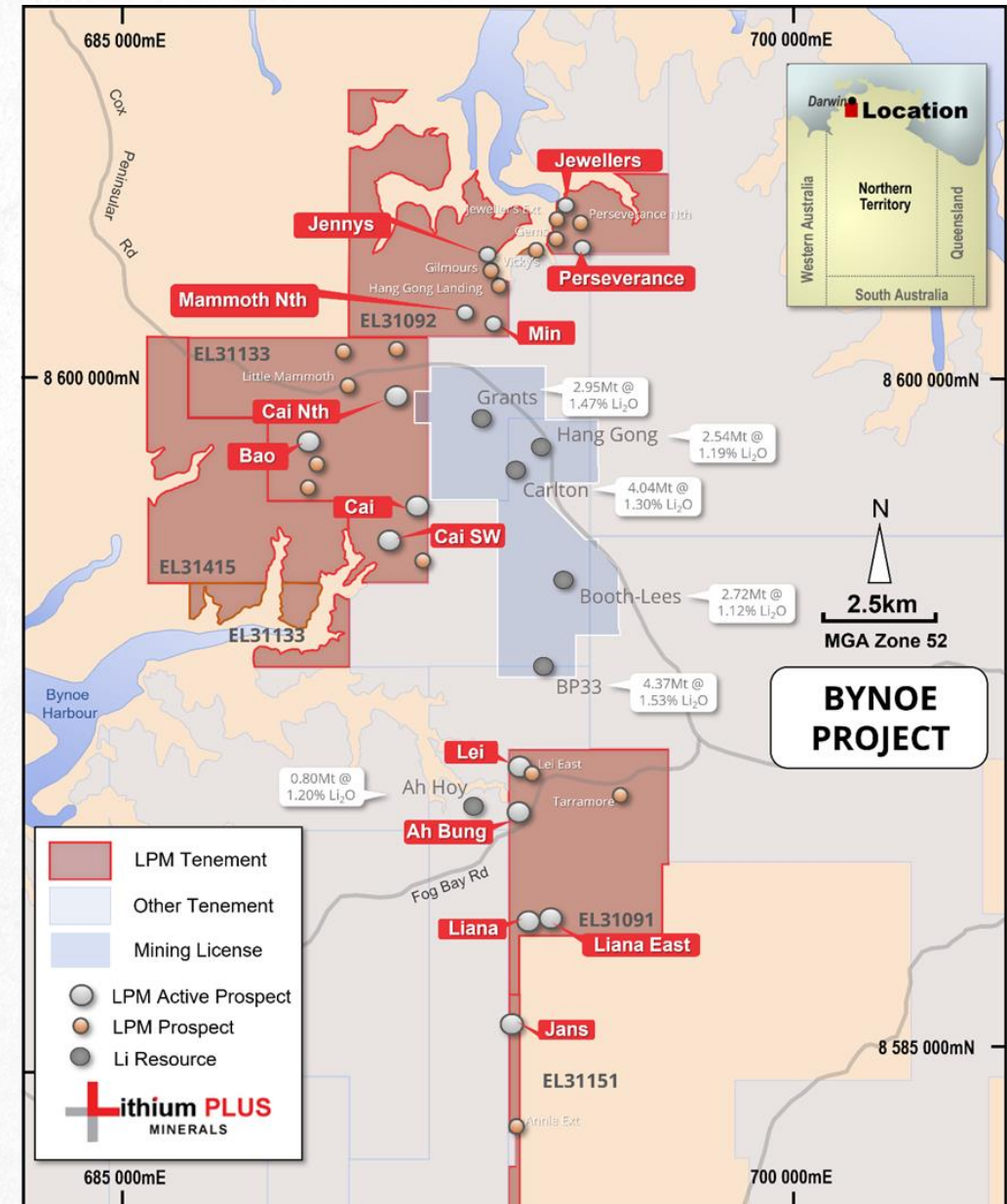
Share price ¹	A\$0.73
Total shares on issue ²	97.00M
Market capitalisation	A\$70.81M
Cash ³	A\$9.10M
Debt ³	A\$0.00M
Enterprise value	A\$61.71M

Note 1: At 17 October 2022
Note 2: At listing, 26 April 2022
Note 3: At 30 June 2022

Actively DRILLING

- Focus on key Bynoe Lithium Project
- Two rig, dual-phase exploration program
 - 10,000 metres of RC drilling
 - 1,800 metres of diamond drilling
- Phase 1 program **targeted Lei and Cai Prospects** with high grade spodumene mineralisation confirmed¹
- RC rig relocated to the Perseverance Prospect to test outcropping pegmatite targets

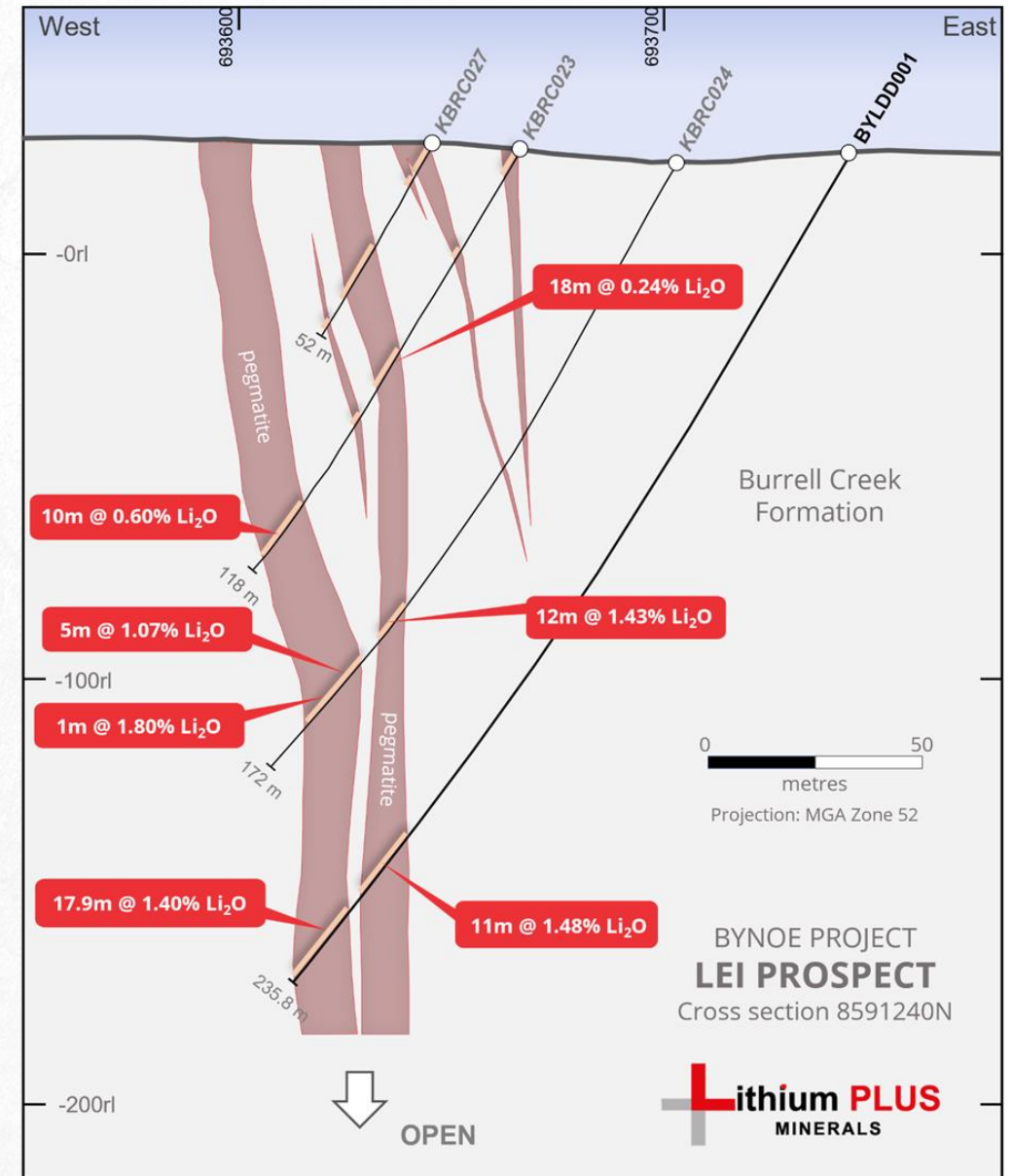
Note 1: Refer 18 October 2022 ASX Announcement "High grade lithium intercepts returned at Lei Prospect"



Phase 1 **SUCCESS**

- Significant extensional intersections of high-grade spodumene mineralisation including¹:
 - 11.0m @ 1.48% Li₂O** from 196m and **17.8m @ 1.40% Li₂O** from 217m (BYLDD001)
 - 11.0m @ 1.03% Li₂O** from 173m and **13.0m @ 1.31% Li₂O** from 192m (BYLDD023)
 - 14.0m @ 1.21% Li₂O** from 151m (BYLDD022)
- Provides confirmation of **extension of Lei spodumene-bearing pegmatite system**
- Encourages broader regional exploration in pursuit of **similar systems across the Bynoe tenure**

Note 1: Refer 18 October 2022 ASX Announcement "High grade lithium intercepts returned at Lei Prospect"



Investment HIGHLIGHTS

- 1 Premier project location
+ NEXT TO CORE LITHIUM'S FINNISS MINE DEVELOPMENT AND 45KM FROM DARWIN
- 2 Outstanding geological prospectivity
+ PHASE 1 DRILLING CONFIRMS HIGH GRADE Li_2O
- 3 Aggressive drilling program
+ TARGETING DEFINITION OF A SUBSTANTIAL MAIDEN RESOURCE BY Q1 2023
- 4 Strategic cornerstone investment
+ FROM LEADING GLOBAL BATTERY DEVELOPER AND MANUFACTURER
- 5 Proven board and management
+ WITH A STRONG FOCUS ON EXPLORATION AND RESOURCE DEVELOPMENT
- 6 Direct leverage to the battery transition
+ SET TO CAPITALISE ON A STRUCTURAL LITHIUM SUPPLY SHORTAGE



1. Premier project LOCATION

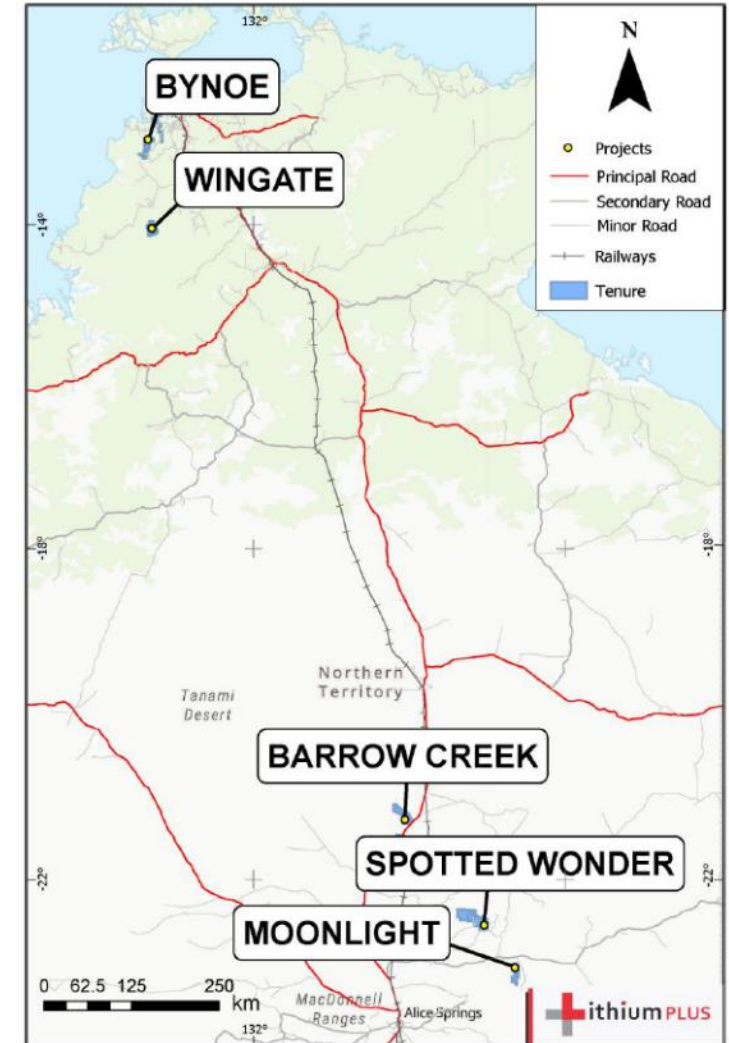
NEXT TO CORE'S FINNISS MINE DEVELOPMENT AND 45KM FROM DARWIN

- **Australia is a prolific mining nation**, built on a history of safe, stable mineral extraction
- **Strategically positioned 45km from Darwin Port** being Australia's nearest port to Asia and gateway for Australasian trade
- Flagship Bynoe Project is **adjacent to Core Lithium's Finnis mine development** (current Mineral Resources of 18.9Mt @ 1.32% Li₂O)¹

RESOURCE CATEGORY	TONNES (MT)	Li ₂ O%
Measured	5.60	1.46
Indicated	7.69	1.35
Inferred	5.57	1.12
Total	18.9	1.32

- Strategically located **45km south of Darwin**, benefiting from:
 - a **similar geological setting to Finnis**, with a number of prospects directly along strike from Core's BP33 deposit; and
 - **proximity to infrastructure**, labour and supply routes

Note 1: Refer 12 July 2022 ASX Announcement by Core Lithium Ltd (ASX: CXO) "Significant Increase to Finnis Lithium Project Mineral Resources and Ore Reserves"

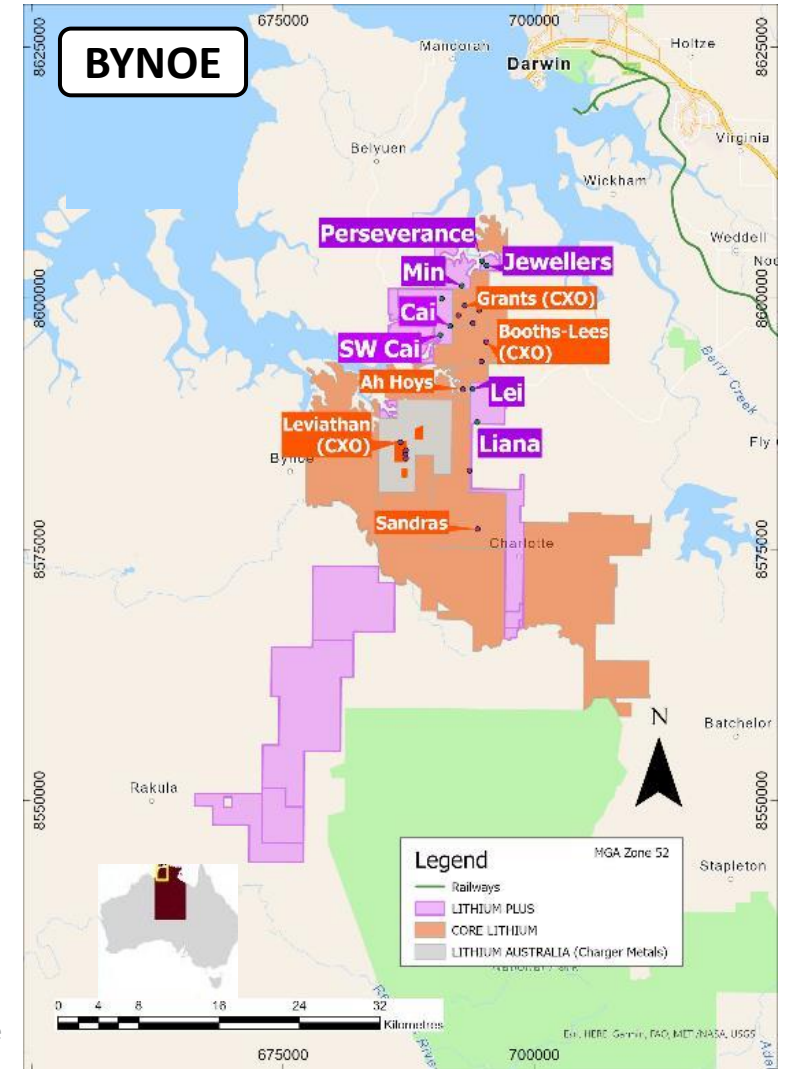


2. Outstanding geological PROSPECTIVITY

PHASE 1 DRILLING CONFIRMS HIGH GRADE Li_2O







- **Two project areas, containing 19 granted exploration licences** (and additional 3 exploration licences under application), across more than 1,690km² of tenure
- Flagship Bynoe Project returned **12m @ 1.42% Li_2O from 121m** (Lei Prospect, drilled 2017¹) confirming high grade spodumene-bearing pegmatite
- Lei Prospect is located 2km south of **Core's BP 33 deposit²** which has a **Mineral Resource of 4.37 Mt @ 1.53% Li_2O**
- Very small proportion of tenement area field sampled providing **significant opportunity** for follow up soil sampling and potential **lithium bearing pegmatite discoveries**
- **Multiple walk up, drill ready targets** identified and incorporated into an aggressive drilling program

Note 1: Refer 19 July 2017 ASX Announcement by Kingston Resources Limited (ASX: KSN) "Bynoe Phase 1 drilling results highlight lithium potential at Lei Prospect"
Note 2: Refer 12 July 2022 ASX Announcement by Core Lithium Ltd (ASX: CXO) "significant Increase to Finnis Lithium Project Mineral Resources and Ore Reserves"



3. Aggressive DRILLING PROGRAM

SUBSTANTIAL PLANNED PROGRAM OF EXPLORATION WORKS

ACTIVITY	Q2 CY22	Q3 CY22	Q4 CY22	Q1 CY23
ASX LISTING				
DRILLING				
DEEP GROUND PENETRATING RADAR				
SOIL SAMPLING				
MAGNETICS				
RESOURCE EVALUATION				

 Targeting | DEFINITION OF A MINERAL RESOURCE ESTIMATE BY Q1 23¹

Note 1: Target timeframes are subject to change and may be impacted by Covid or other unforeseen circumstances

4. Strategic CORNERSTONE INVESTMENT

FROM LEADING BATTERY DEVELOPER AND MANUFACTURER

- Suzhou CATH Energy Technologies (**CATH**) invested at IPO with a **9% equity interest**
- CATH is jointly owned by **Contemporary Amperex Technology Co. Ltd (CATL)** and **Mr Pei Zhenhua**
- CATL is the **world's largest electric vehicle (EV) battery manufacturer**
- Mr Pei is a significant investor in Yibin Tianyi Lithium Industry – **one of China's largest lithium converters**

CATL

A global leader of new energy innovative technologies, committed to providing premier solutions and services for new energy applications worldwide

TOP
**EV BATTERY
MANUFACTURER**
GLOBALLY¹

HOLDS 32.5% OF A
US\$27 BILLION
BATTERY MARKET¹

GLOBALLY
2.35 MILLION
EVs IN OPERATION
WITH CATL BATTERIES

**LITHIUM ION
BATTERY
SPECIALISTS**

Note 1: By consumption volume. Adapted from data from SNE Research

5. Proven board and MANAGEMENT

WITH A STRONG FOCUS ON EXPLORATION AND RESOURCE DEFINITION



Dr Bin Guo
EXECUTIVE CHAIRMAN

- Founder and Executive Chairman of Lithium Plus
- PhD in Geophysics with more than 20 years experience in mining and finance
- Wide range of technical and commercial knowledge gained at SRK Consulting, CITIC Securities and Mining One Consultants
- Previously Non-Executive Director of North American Lithium and member of AusIMM, AIG and ASEG



Mr Simon Kidston
NON EXECUTIVE DIRECTOR

- Finance professional with more than 25 years global experience with Macquarie Bank, HSBC and Helmsec Global Capital Limited
- Founding Director of renewable energy company Genex Power
- Previously involved in the establishment of ASX listed mining companies, Endocoal Ltd, Carabella Resources Ltd and Estrella Resources Ltd
- Current Non-Executive Director of Genex Power Ltd and QC Copper and Gold



Dr Jason Berton
NON EXECUTIVE DIRECTOR

- Structural geologist with over 20 years mining and exploration experience at Homestake, Barrick, BHP and SRK Consulting
- Current Managing Director of PolarX Limited, and former Managing Director of ASX-listed Estrella Resources
- PhD in Geology and member of AusIMM



Mr George Su
NON-EXECUTIVE DIRECTOR

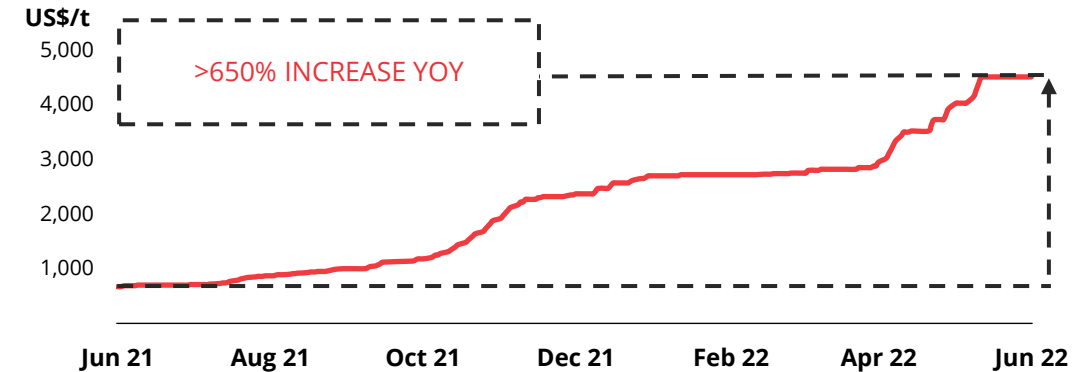
- Over 35 years' business experience in the Asia-Pacific region
- Current CEO and Managing Director of Richlink Australia
- Former country head of Australian operations at CITIC Securities and independent director of Macquarie Bank's China property fund
- Current Independent Director of YPB Group Ltd, an ASX listed technology company

6. Direct leverage to **BATTERY TRANSITION**

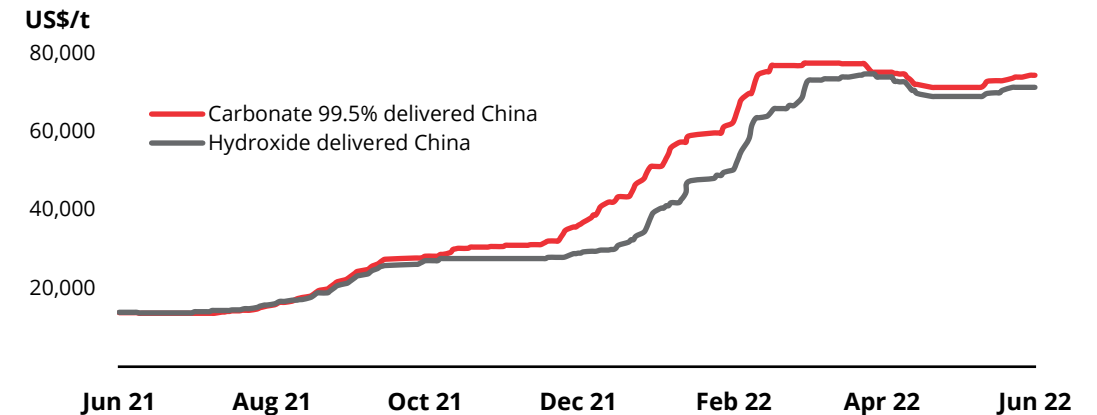
SET TO CAPITALISE ON A STRUCTURAL LITHIUM SUPPLY SHORTAGE

- Lithium is an **essential battery cathode material**
- **Lithium-rich spodumene concentrate** is a feedstock material used in the production of lithium chemicals that go into **batteries for Electric Vehicles (EVs)**
- Lithium **spodumene concentrate prices** have continued to strengthen since January listing, with YoY price appreciation of >650%
- **Supply** of spodumene concentrate remains **structurally constrained** – meaningful lithium supply response dependant on uptake of low grade, CO₂ intensive Chinese lepidolite production
- Lithium Plus is ideally placed to take advantage of **strong long term market fundamentals for spodumene concentrate**

Spodumene concentrate price



Carbonate and hydroxide price

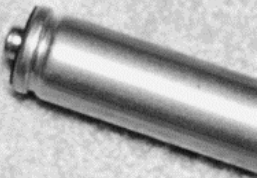
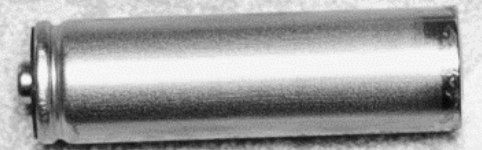


Source: 'Battery Metals Watch: The end of the beginning (2022)' – Goldman Sachs

Source: Asian Metals. Note carbonate and hydroxide prices in RMB converted at USD 0.155

Investment HIGHLIGHTS

1. **Premier** project location
2. **Outstanding** geological prospectivity
3. **Aggressive** drilling program
4. **Strategic** cornerstone investment
5. **Proven** board and management
6. **Direct leverage** to the battery transition



Appendix A

PROJECT AREA DETAIL



Project area SUMMARY

Bynoe PROJECT AREA

Bynoe Lithium Project

Situated on the Cox Peninsula, 45 km south of Darwin, on the northern end of the Litchfield Pegmatite Belt, with 11 granted tenements covering 297 km². Geologically centred around the Bynoe Pegmatite Field, the tenements share a border with Core Lithium's Finniss mine development. Significant lithium mineralisation was discovered at Lei in 2017 within the north-northeast trending spodumene bearing pegmatites. Current drill ready targets are Lei, SW Cai, Cai and Perseverance.

Wingate Lithium Project

Located 150km south of Darwin. this single tenement (EL31132) covers the Wingate Mountains Pegmatite District, the southern part of the Litchfield Pegmatite Belt. It contains the known presence of pegmatites with little exploration and minor historical production of tin. Historical gold workings (Fletcher's Gully) are present.

Arunta PROJECT AREA

Barrow Creek

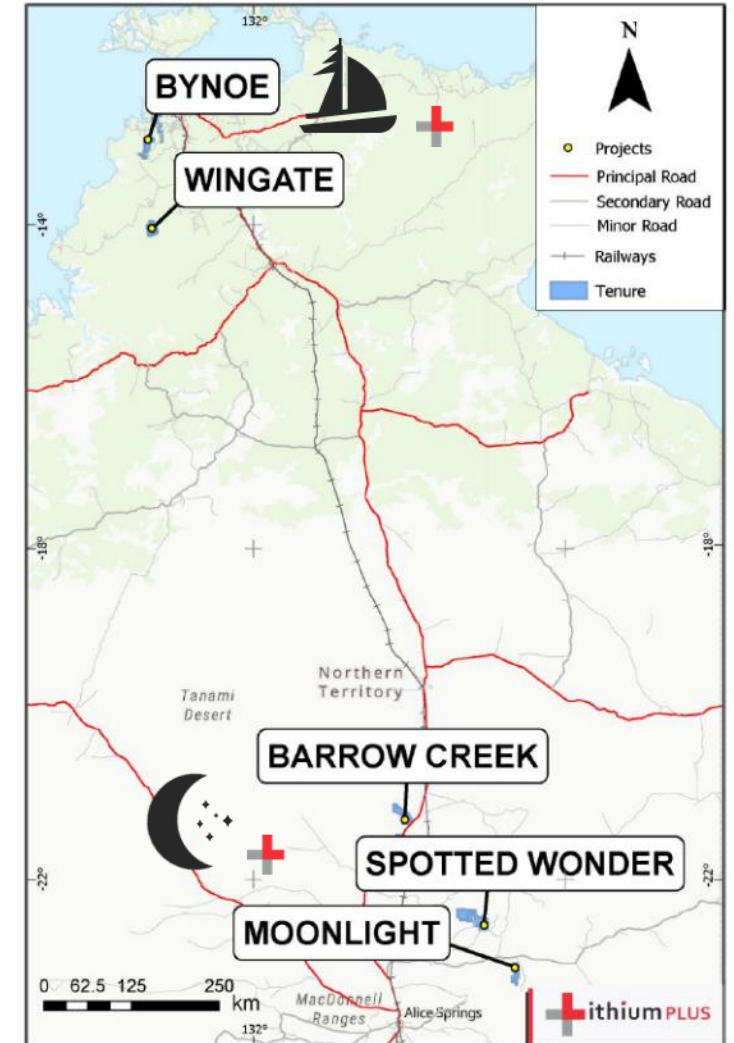
Located in the Northern Arunta pegmatite province, 300km north of Alice Springs. Historic tin and tantalum production and the presence of spodumene in nearby Anningie Pegmatite field suggest lithium potential.

Spotted Wonder

Located approx. 200km north-north-east of Alice Springs with proven lithium mineralisation, with amblygonite present in the Delmore Pegmatite.

Moonlight

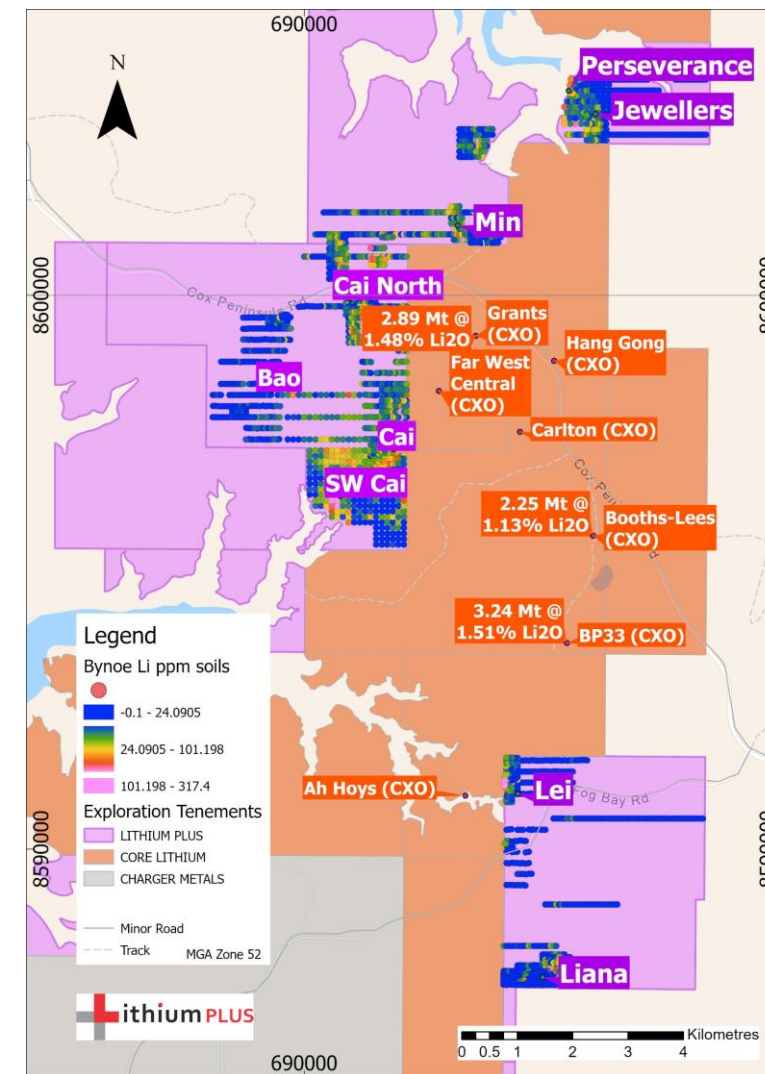
Located within the Harts Range Pegmatite Field, approx. 200km north-east of Alice Springs. Presence of pegmatites containing elbaite, indicative of lithium enrichment.



Bynoe **PROJECT**

NEIGHBOURING CORE LITHIUM'S FINNISS MINE DEVELOPMENT

- Situated on the Cox Peninsula, **45 km south of Darwin**, on the northern end of the Litchfield Pegmatite Belt
- Lithium Plus has **11 granted tenements covering 297 km²**
- Geologically centred around the Bynoe Pegmatite Field
- Tenements **share a border with Core Lithium's** Finniss mine development
- **Significant lithium mineralisation** was discovered at Lei in 2017 within the north-northeast trending spodumene bearing pegmatites
- **Current drill ready targets** are Lei, SW Cai, Cai and Perseverance prospects





Bynoe PROJECT

NEIGHBOURING CORE LITHIUM'S MINE DEVELOPMENT

- Analysis of limited **historic soil sampling returned strong lithium anomalies**
- **Six individual prospects** identified
- Weathered LCT (Lithium-Caesium-Tantalum) pegmatites identified at surface at Cai, Perseverance, Jewellers and Bao

**DRILL READY TARGETS IDENTIFIED AT
LEI, SW CAI, CAI AND
PERSEVERANCE**

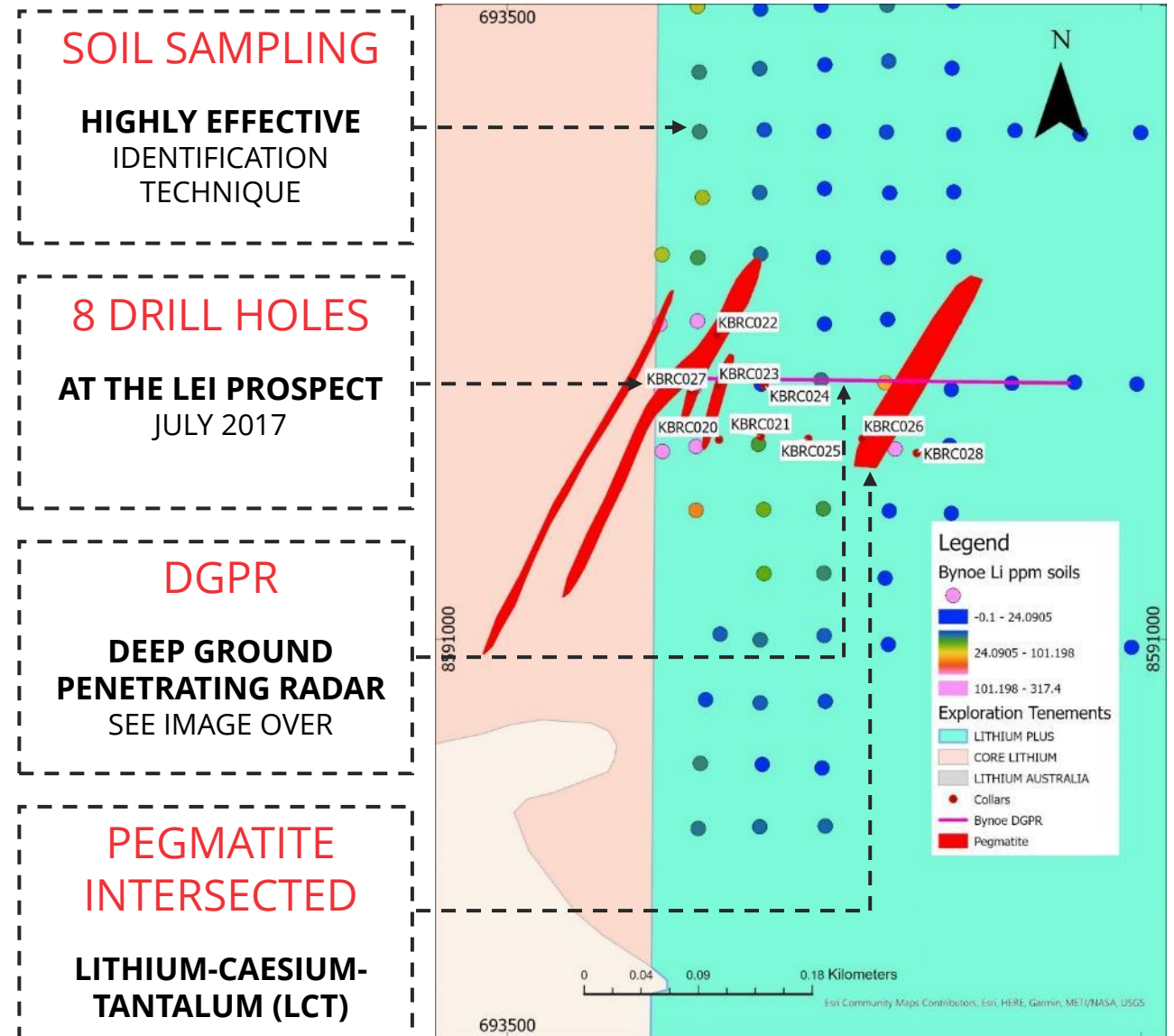
ADDITIONAL ANOMALIES TO BE ANALYSED IN DETAIL

PROSPECT	OUTCROP	SOILS	DGPR	MAG	DRILLING
Lei & Lianna		✓	✓	✓	✓
SW Cai		✓	✓	✓	
Cai	✓	✓	✓	✓	✓
Perseverance	✓	✓		✓	
Jewellers	✓	✓		✓	

Bynoe PROJECT LEI PROSPECT DETAIL

- **Key immediate exploration focus**
- Maiden 8-hole drill program undertaken in 2017, of which 7 were too shallow to intersect pegmatite subsequently identified by DGPR
- Located 2km south of and **contiguous with Core's BP 33 tenure (Mineral Resource of 4.37 Mt @ 1.53% Li₂O)¹**
- Multiple lithium bearing **pegmatite targets identified using soil sampling** - a highly effective lithium identification technique, particularly where limited outcropping and pegmatite weathering is extensive

Note 1: Refer 12 July 2022 ASX Announcement by Core Lithium Ltd (ASX: CXO) "Significant Increase to Finnis Lithium Project Mineral Resources and Ore Reserves"





Bynoe PROJECT

LEI PROSPECT DETAIL

**SIGNIFICANT LITHIUM MINERALISATION
DISCOVERED AT LEI PROSPECT IN 2017¹**

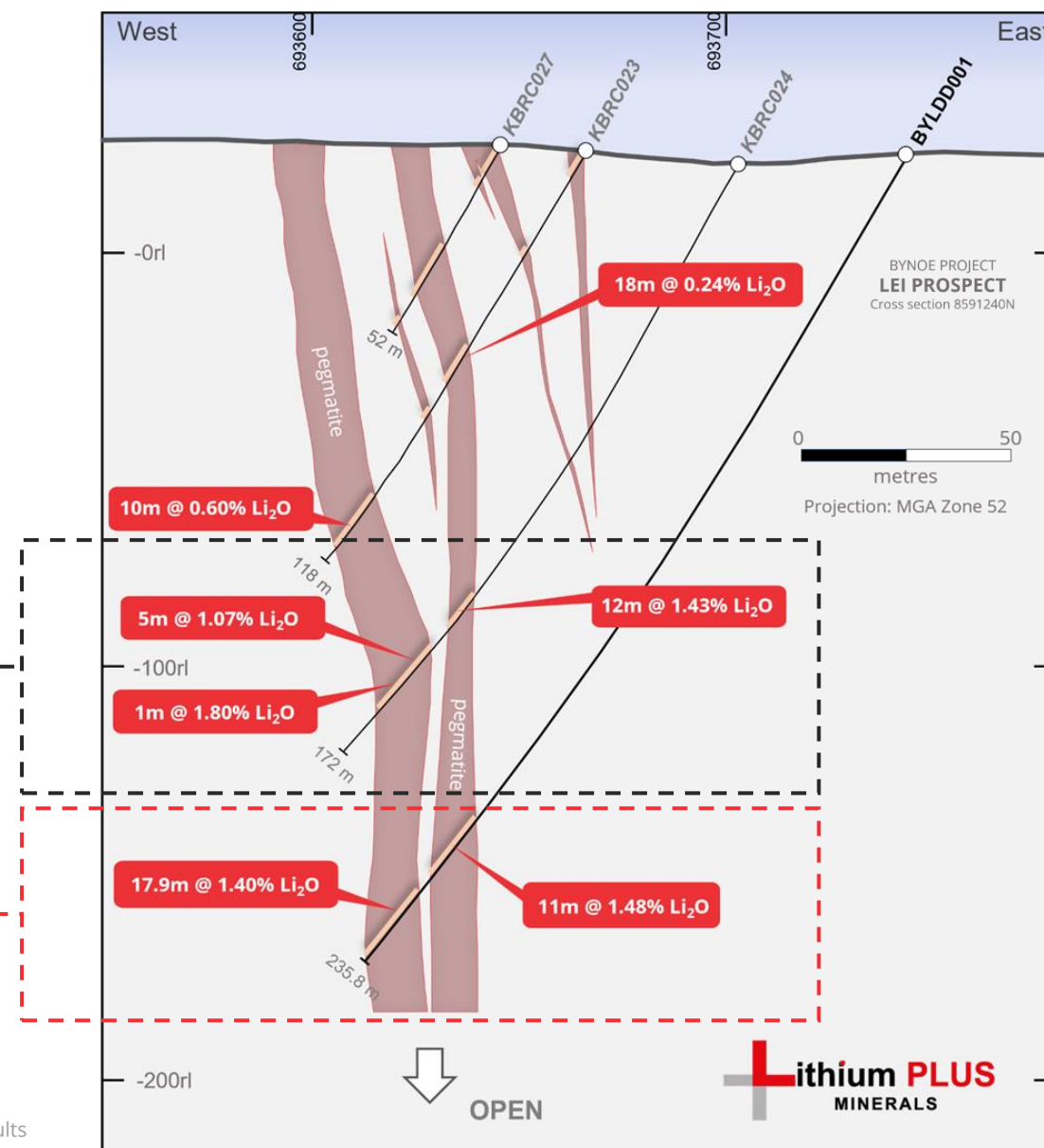
12M @ 1.43% Li₂O FROM 121M
INCLUDING 9M @ 1.69% Li₂O

**ADDITIONAL HIGH GRADE LITHIUM
INTERCEPTS AT LEI PROSPECT IN 2022²**

**11M @ 1.48% Li₂O FROM 196M AND
18M @ 1.40% Li₂O FROM 217M**
IN HOLE BYLDD001

**11M @ 1.03% Li₂O FROM 173M AND
13M @ 1.31% Li₂O FROM 192M**
IN HOLE BYLRC023

14M @ 1.21% Li₂O FROM 151M
IN HOLE BYLRC022



Note 1: Refer 19 July 2017 ASX Announcement by Kingston Resources Limited (ASX: KSN) "Bynoe Phase 1 drilling results highlight lithium potential at Lei"

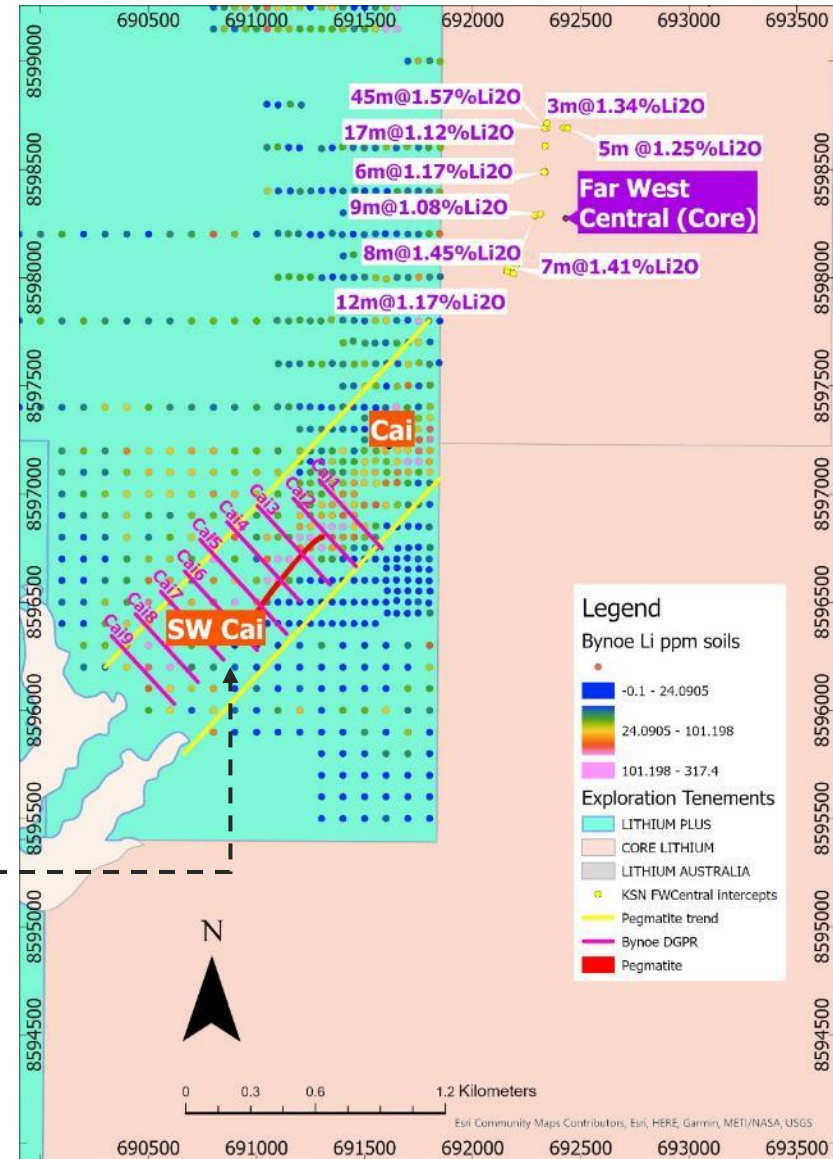
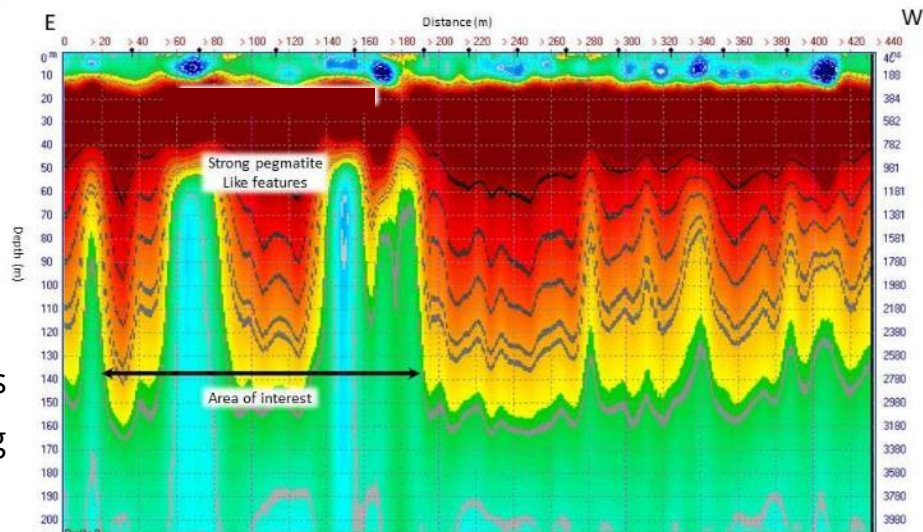
Note 2: Refer 18 October 2022 ASX Announcement "High grade lithium intercepts returned at Lei Prospect"



- ## DGPR LINE CAI 7

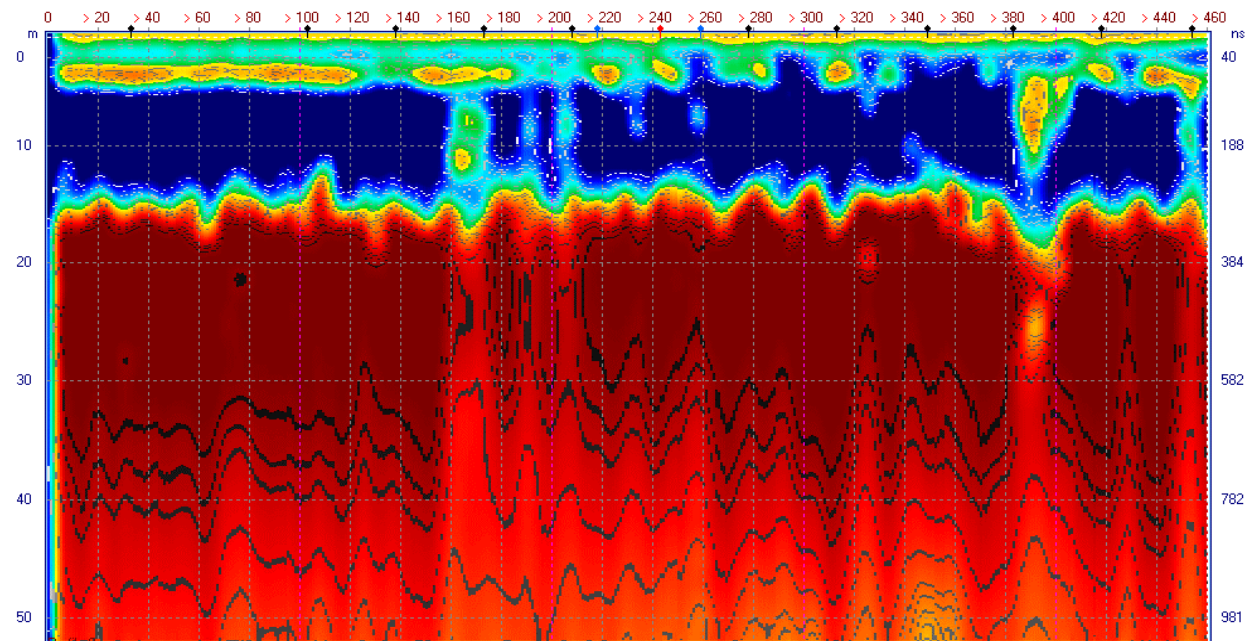
SIMILAR VERTICAL TRENDING ANOMALIES TO LEI

- 200m depth profile
- Signature suggests multiple pegmatite dykes
- Coincident with overlying soil anomaly



Bynoe **PROJECT** PERSEVERANCE & JEWELLERS

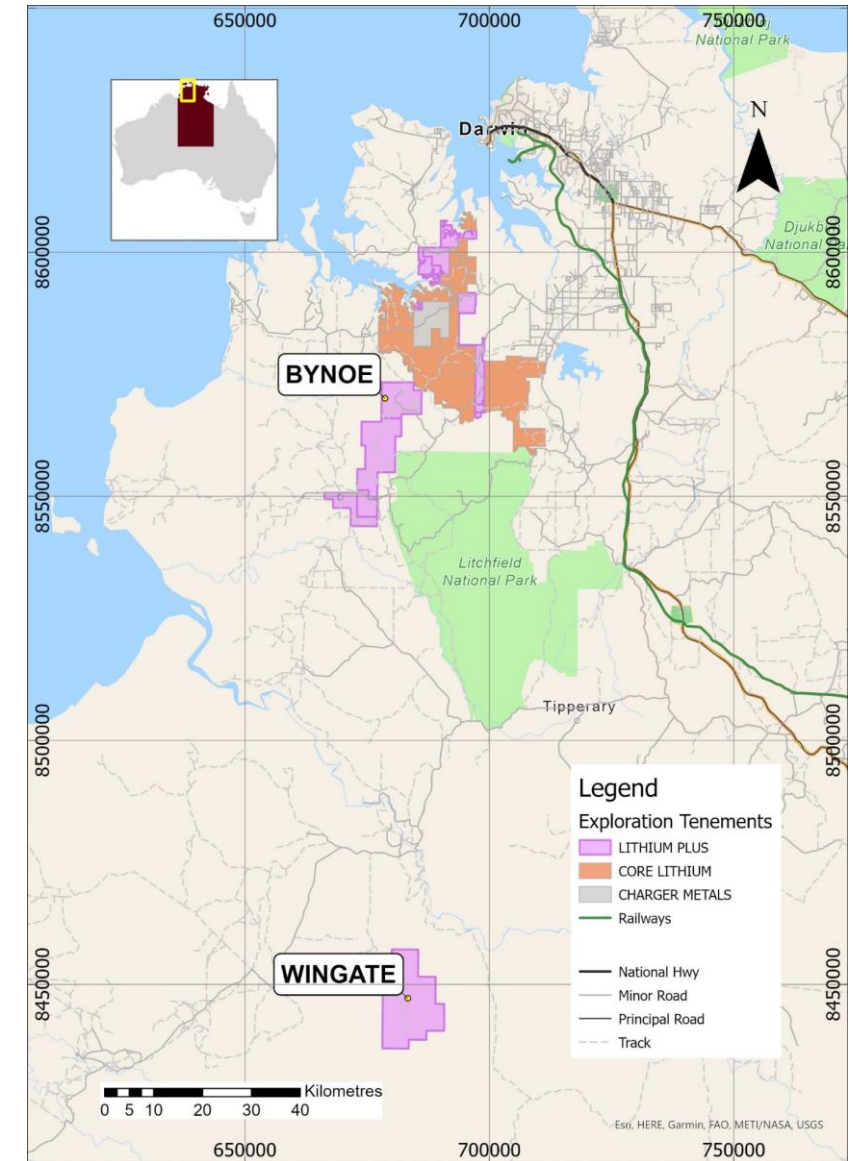
- Prospects located in northern Bynoe
- **Multiple lithium bearing pegmatite drill targets identified**
- Surface mapping has identified **several weathered pegmatites**:
 - 500 m long at Jewellers
 - >100 m long at Perseverance
- **Lithium soil anomalies** coincident with the mapped pegmatites
- DGPR surveys confirm **pegmatite drill targets continue at depth**



Wingate **PROJECT**

WINGATE MOUNTAINS PEGMATITE DISTRICT

- Located **150km south of Darwin**
- A single tenement (EL31132) covers the Wingate Mountains Pegmatite District, the southern part of the Litchfield Pegmatite Belt
- **Known presence of pegmatites** with little exploration and minor historical production of tin
- Historical gold workings (Fletcher's Gully) present and high grades known
- **Fieldwork planned for H2 CY22**



Arunta LITHIUM PROJECTS

THREE HIGHLY PROSPECTIVE PROJECTS

BARROW CREEK | Historic tin and tantalum production

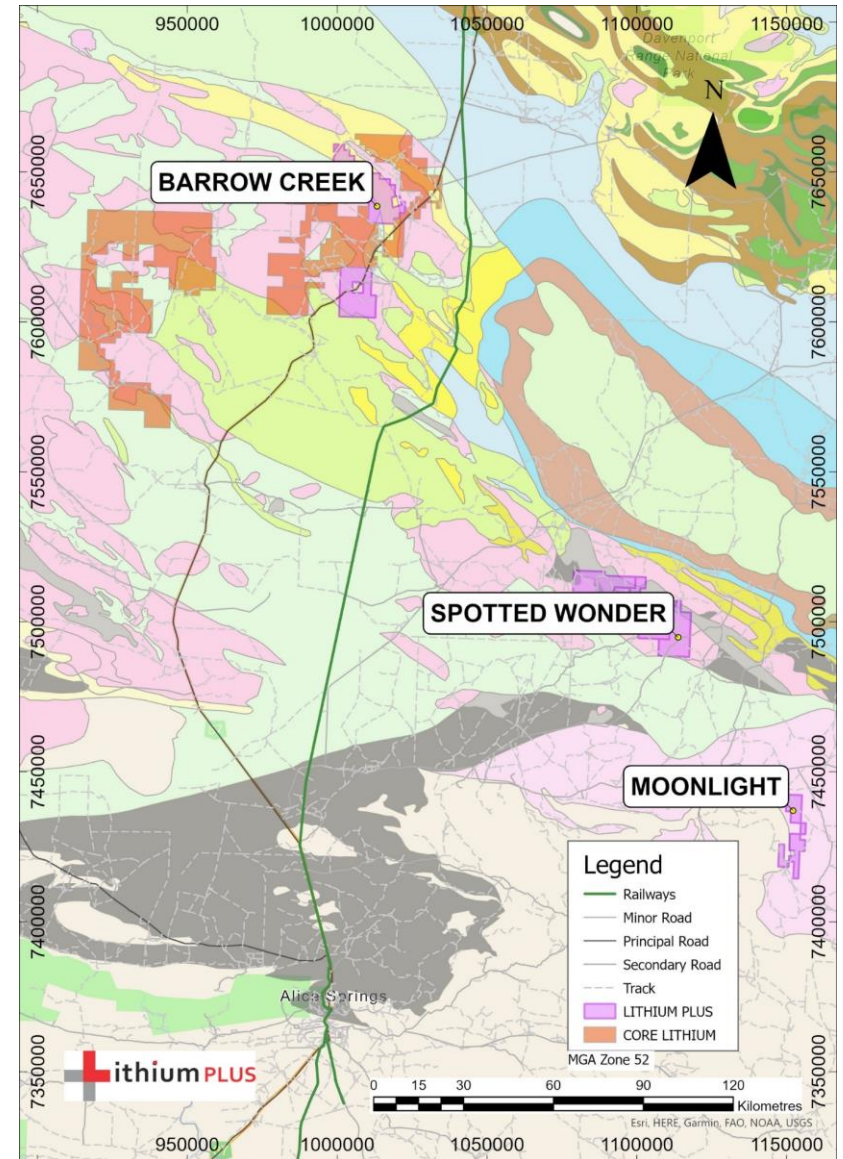
- Located in the Northern Arunta pegmatite province, 300km north of Alice Springs
- Historic tin and tantalum production and the presence of spodumene in nearby Anningie Pegmatite field suggest lithium potential

SPOTTED WONDER | Proven lithium mineralisation

- Located approx. 200km north-north-east of Alice Springs
- Proven lithium mineralisation, with amblygonite present in the Delmore Pegmatite

MOONLIGHT | Within the Harts Range Pegmatite Field

- Located within the Harts Range Pegmatite Field, approx. 200km north-east of Alice Springs
- Presence of pegmatites containing elbaite, indicative of lithium enrichment



Arunta LITHIUM PROJECTS

PLANNED FIELDWORK PROGRAM

- All projects within Arunta contain, or are expected to **contain lithium bearing pegmatites**
- Limited exploration history – **high prospectivity**
- Previous soil, rock chip and RAB sampling contributed to the **discovery of geochemical trends**
- Exploration strategy developed to **test local geology modelling**



Contact

DETAILS

Registered Address

Level 6, 22 Pitt Street

Sydney NSW 2000

📞 +61 2 8029 0666

✉️ skidston@lithiumplus.com.au

Share registry

AUTOMIC PTY LTD

Level 2, 267 St Georges Terrace

Perth WA 6000

📞 1300 288 664 (within Australia)

📞 +61 2 9698 5414 (international)

✉️ hello@automic.com.au

