



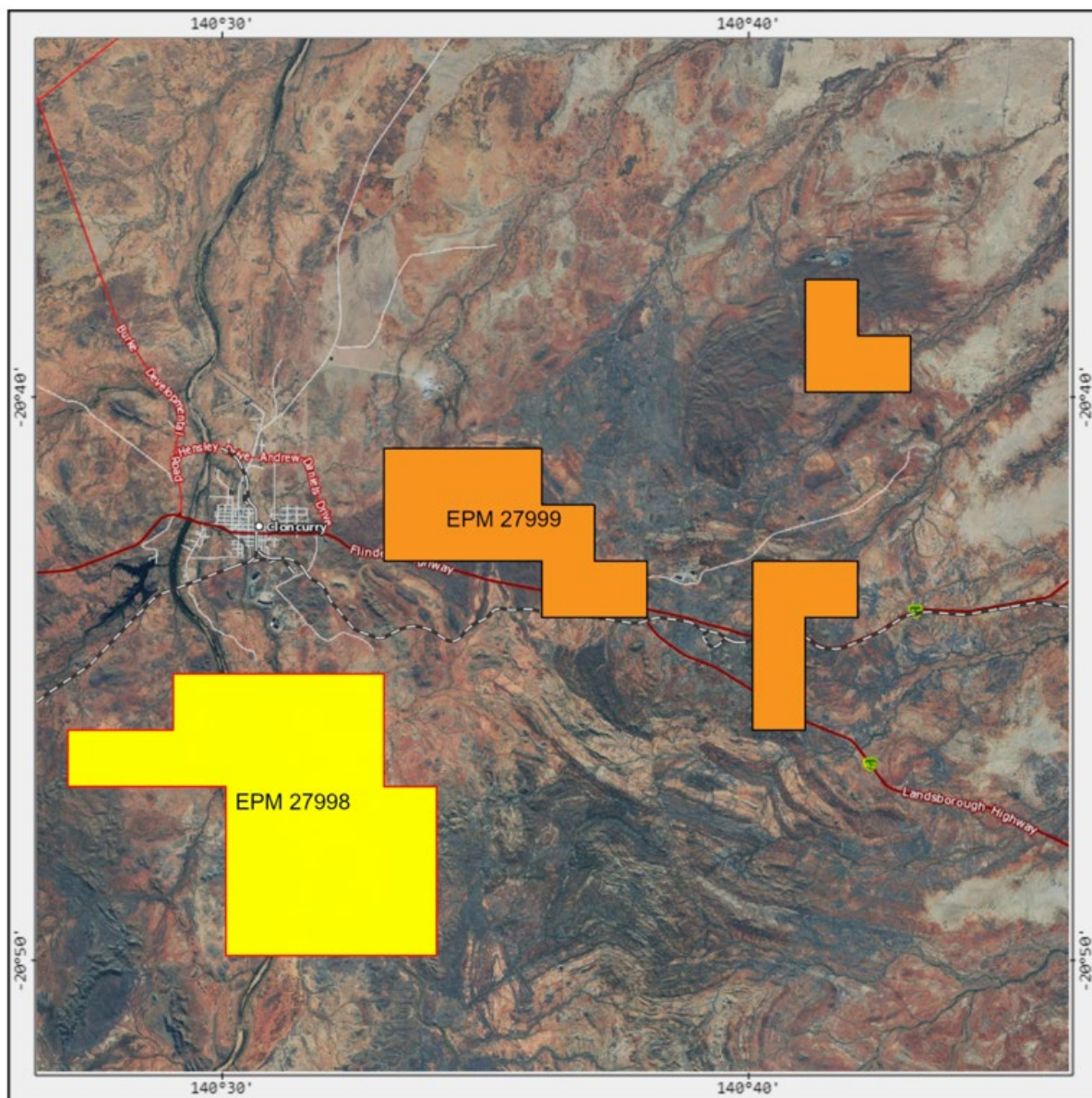
## Figtree Creek Project and Lorena Surrounds Project Tenements Granted

### *Key Highlights*

- Exploration Permit for Minerals (EPM) 27998 and EPM 27999 granted to Critical Minerals Group Limited's wholly owned subsidiary.
- EPM 27998 forms the Company's "Figtree Creek Project" and is considered prospective for iron oxide copper and gold mineralization.
- EPM 27999 forms the Company's "Lorena Surrounds Project" is considered prospective for iron oxide copper and gold mineralization.
- The Company has a work programme to systematically explore the newly granted tenements and identify potential mineralisation and drill targets.

Critical Minerals Group Limited (**ASX:CMG, Critical Minerals Group, CMG** or the **Company**) is pleased to announce that it has received notification from the Queensland Department of Resources that EPM 27998, forming the **Figtree Creek Project**, and EPM 27999, forming the **Lorena Surrounds Project**, have each been granted to the Company's wholly owned subsidiary CMG 1 Pty Ltd for a five year term.

The Figtree Creek Project and Lorena Surrounds Project form part of the portfolio of tenements identified by the Company in the North West minerals province of Queensland and complements the existing granted tenement at the Company's flagship **Lindfield Project** (EPM 27872) (refer to the Company's prospectus dated 25 May 2022 (**Prospectus**)) and the three recently applied for tenements forming the Company's projects known as the **Whinmoor Project** (EPM 28631 application), the **Lara Downs Project** (EPM 28635 application) and the **Lindfield North Project** (EPM 28636 application) (refer to ASX announcement dated 19 October 2022).



**Figure 1:** Map of EPM 27998 (Figtree Creek) and EPM 27999 (Lorena Surrounds)

**Source:** Queensland Government, GeoResGlobe, Available at: <https://georesglobe.information.qld.gov.au/>

## Figtree Creek Project

The Figtree Creek Project (EPM 27998) consists of 22 sub-blocks covering 70km<sup>2</sup>. The Figtree Creek Project is located approximately 10 km south south east of the township of Cloncurry and is 5km from the main infrastructure corridor of the Flinders Highway and the Great Northern Railway line.

The Figtree Creek Project is considered prospective for iron oxide copper and gold mineralization based on historical surface sampling, local structural geology with similar rock types and structures present in the Figtree Creek Project area to that of the Great Australian Mine style of copper-gold mineralisation (which is just 3km north of the project) and electromagnetic anomalies identified.



The project area has several rock chip samples, soil samples and stream sediment samples showing anomalous copper and gold assays (refer to section 9 of the Prospectus).

The Company has completed sufficient work to establish a work programme to systematically explore the tenement and identify potential mineralisation and drill targets which is detailed in its Prospectus.

## **Lorena Surrounds Project**

The Lorena Surrounds Project (EPM 27999) consists of 16 sub-blocks covering 51km<sup>2</sup>. The Lorena Surrounds Project is located 15km east of Cloncurry and intersects main infrastructure of the Flinders Highway and Great Northern Rail Line at the southern end of the tenement.

The Lorena Surrounds Project is considered prospective for iron oxide copper and gold mineralization based on historical drilling, local structural geology and electromagnetic anomalies identified (refer to section 9 of the Prospectus).

The Company has completed sufficient work to establish a work programme to systematically explore the tenement and identify potential mineralisation and drill targets which is detailed in its Prospectus.

This announcement was approved by the board.

### **For more information:**

**Scott Drelincourt**

*Managing Director*

[info@criticalmineralsgroup.com.au](mailto:info@criticalmineralsgroup.com.au)

(07) 5555 5055

### **Competent Person Statements**

The information in this announcement that relates to the exploration results, exploration targets and mineral resources was first reported by the Company in its Prospectus. The Company confirms that it is not aware of any new information or data that materially affects the information included in the Prospectus, and that all material assumptions and technical parameters underpinning the exploration results, exploration targets and mineral resources in the Prospectus continue to apply and have not materially changed.

### **Forward-Looking Statement**

This document may include forward-looking statements. Forward-looking statements include, but are not limited to, statements concerning planned exploration program and other statements that are not historical facts. When used in this document, the words such as “could”, “plan”, “estimate”, “expect”, “intend”, “may”, “potential”, “should” and similar expressions are forward-looking statements. Although the Company believes that its expectations reflected in these forward-looking statements are reasonable, such statements involve risks and uncertainties and no assurance can be given that actual results will be consistent with these forward-looking statements.