

NOVEMBER 2022

# Going for gold in Western Australia

One of the world's most prolific mineral provinces

Corey Nolan  
Managing Director



ASX: PGM



# Platina is a Western Australian focused gold explorer and owns a world-class scandium project in New South Wales



# World-class gold destination

## Yilgarn Craton

- World-class gold province
- High discovery potential
- Excellent infrastructure
- Sophisticated drilling capabilities

## Ashburton Basin

- Number of major gold deposits:
  - Mt Olympus
  - Karlawinda
  - Paulsens
- Flanks Pilbara Craton - hot spot exploration destination - Hemi (De Grey Mining)



# Key value drivers

Exploration  
upside in the  
gold portfolio

01



Sale of  
investments -  
minimises future  
equity dilution

02

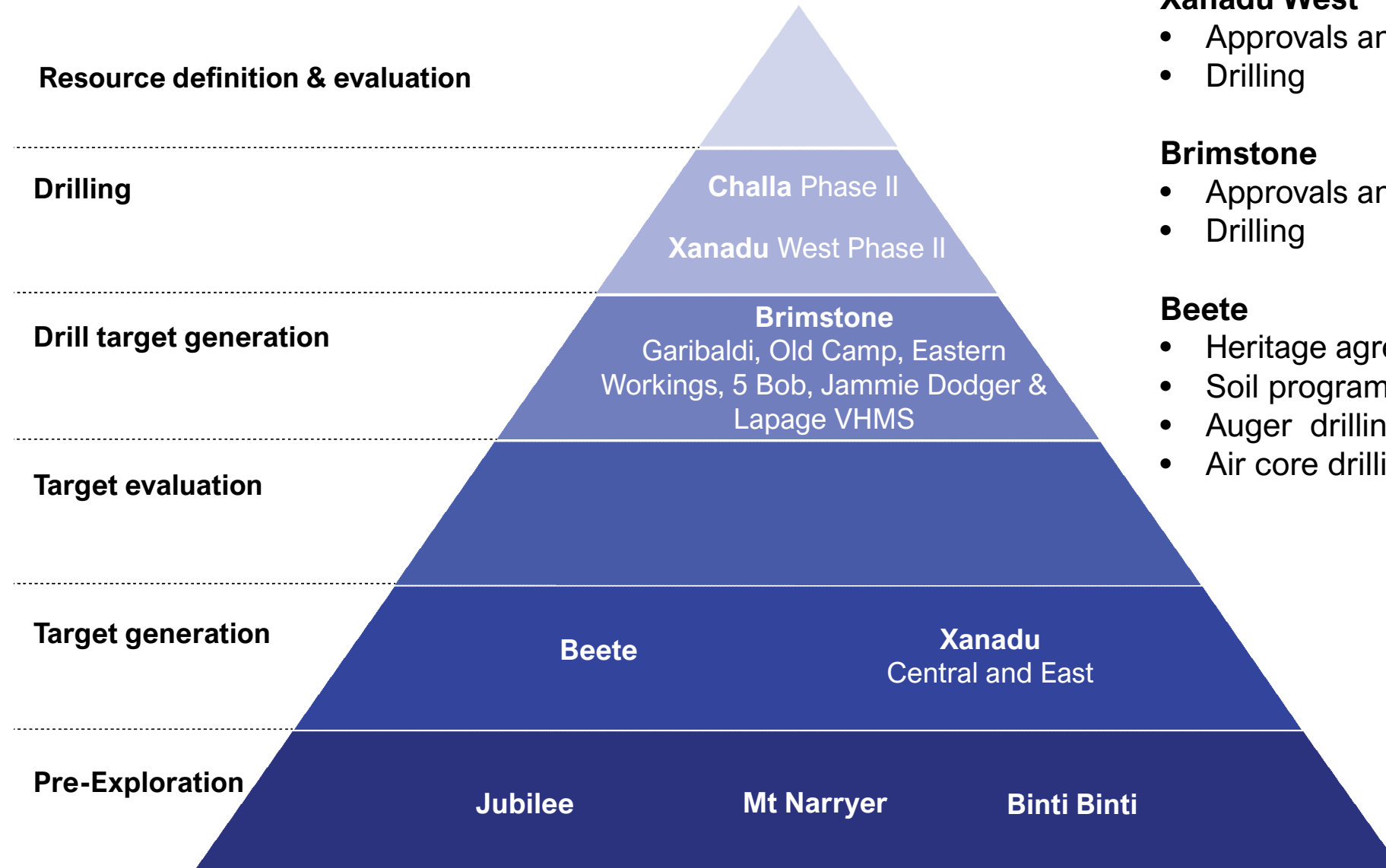


03

Unlocking the value  
of the Scandium  
Project



# Project Summary



## Priority Project Activities

### Xanadu West

- Approvals and clearances Q4/22
- Drilling Q2/23

### Brimstone

- Approvals and clearances Q4/22
- Drilling Q1/23

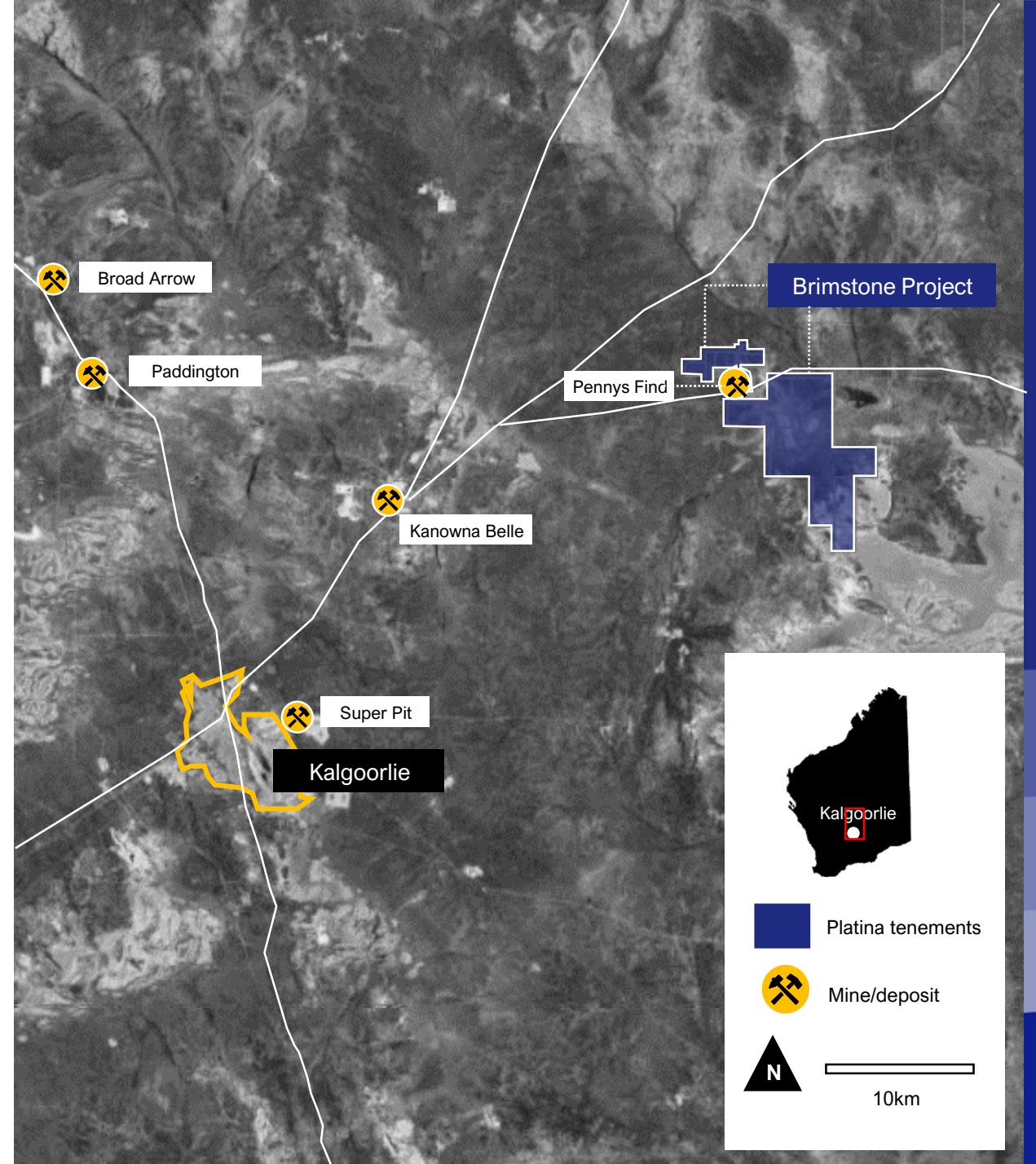
### Beete

- Heritage agreements Q1/23
- Soil program Q1/23
- Auger drilling Q2/23
- Air core drilling Q3/23

# Brimstone Project

Advanced stage, drill-ready exploration project

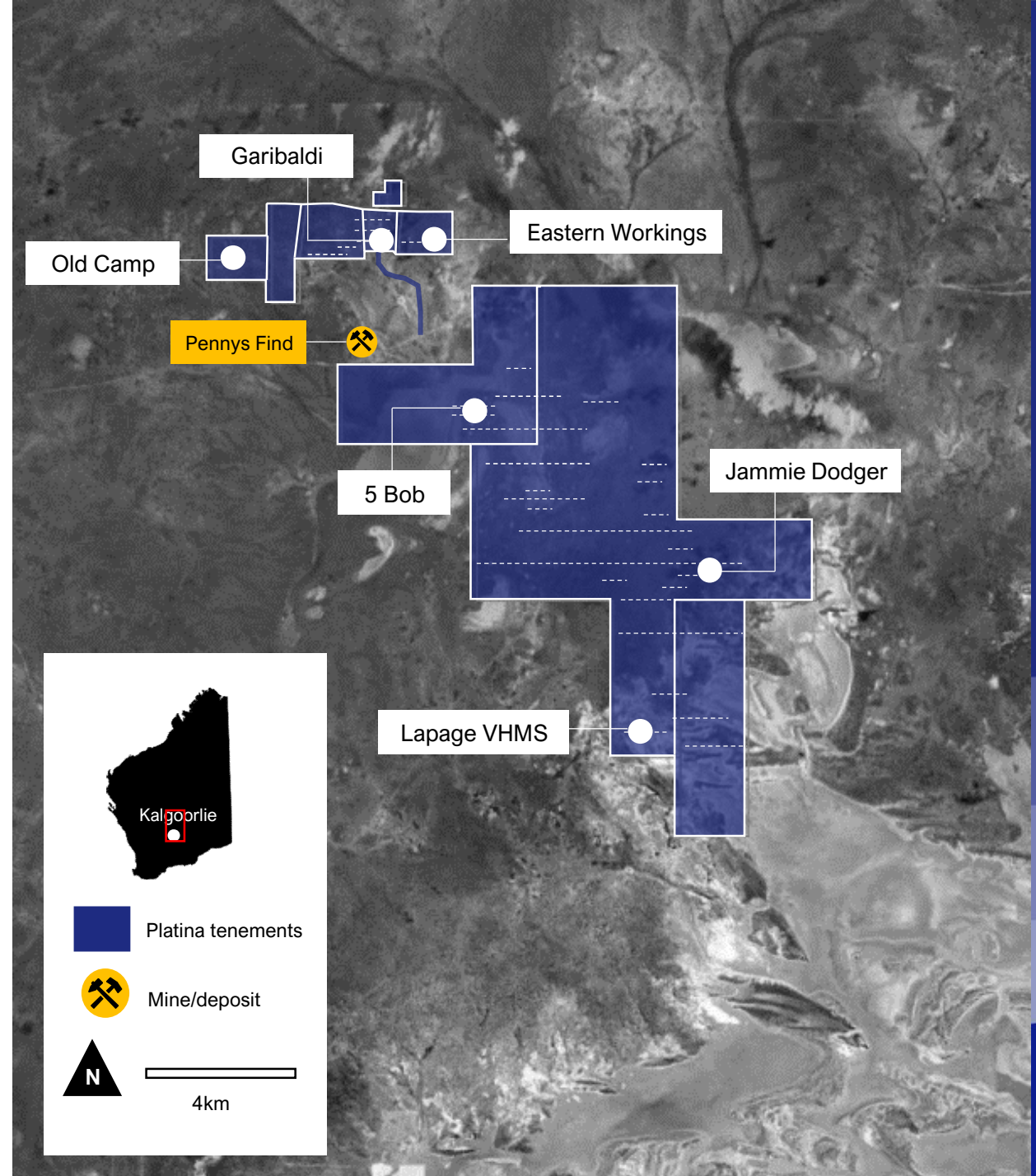
- Located 40km north-east of Kalgoorlie
- Tenement package 70km<sup>2</sup> including a Mining Licence at the advanced Garibaldi prospect
- 27km from Kanowna Belle and 2.5km from Penny's Find gold deposits
- Significant number of broad widths and high-grade gold mineralisation in historical drilling
- Interpreted geological structures cover ~10km of strike length of mineralisation on highly prospective greenstone rocks



# Brimstone Project

Six walk-up drill targets already defined

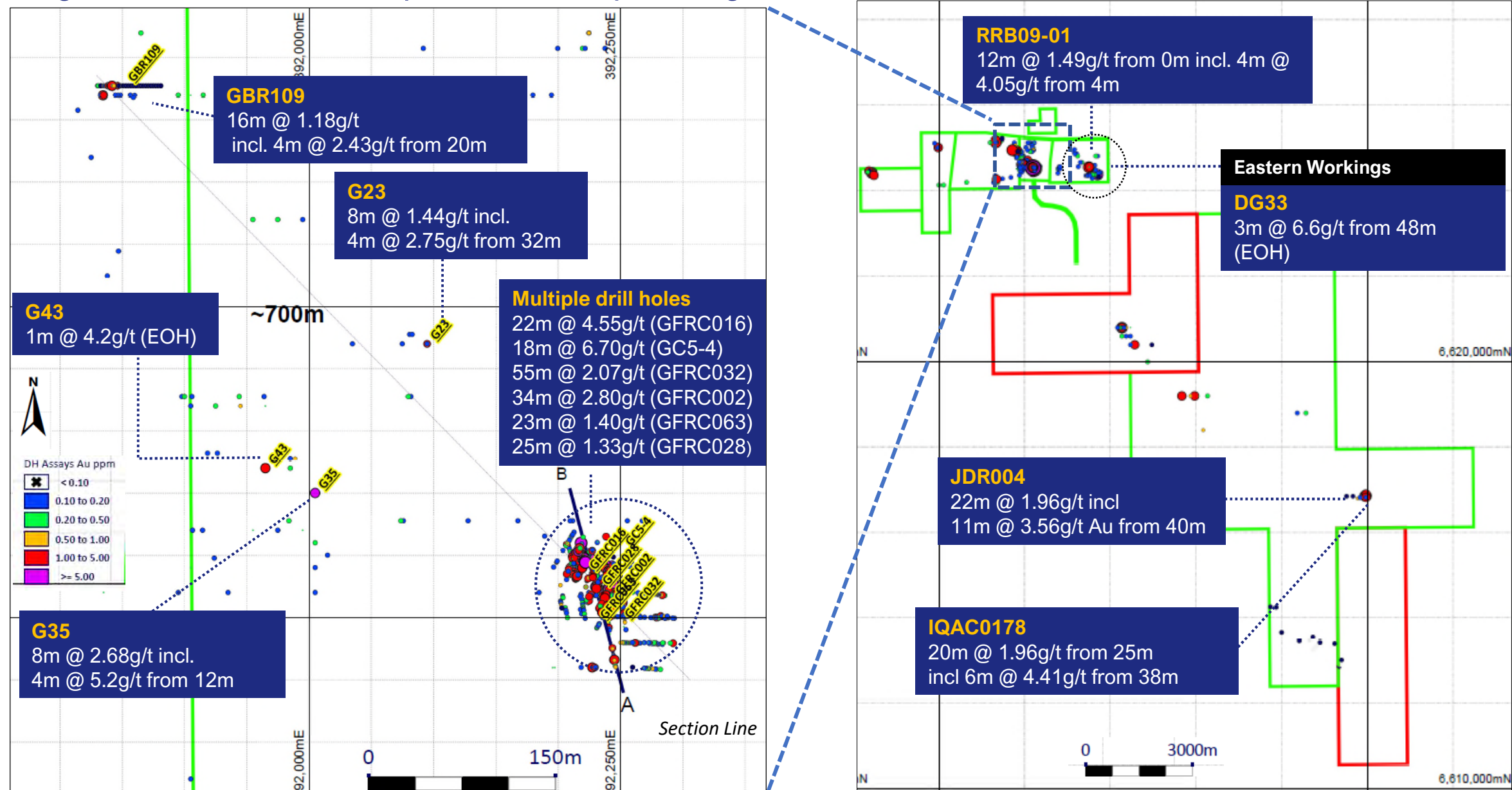
- ~\$5m of historical expenditure
- Over 964 holes drilled for 51,638m
- Most drill holes < 50m depth and 93% of holes drilled < 100m depth
- Six walk-up drill targets - Garibaldi, Eastern Workings, 5 Bob, Jammie Dodger and Lapage VHMS
- Cultural heritage clearance underway
- Drilling planned in early 2023





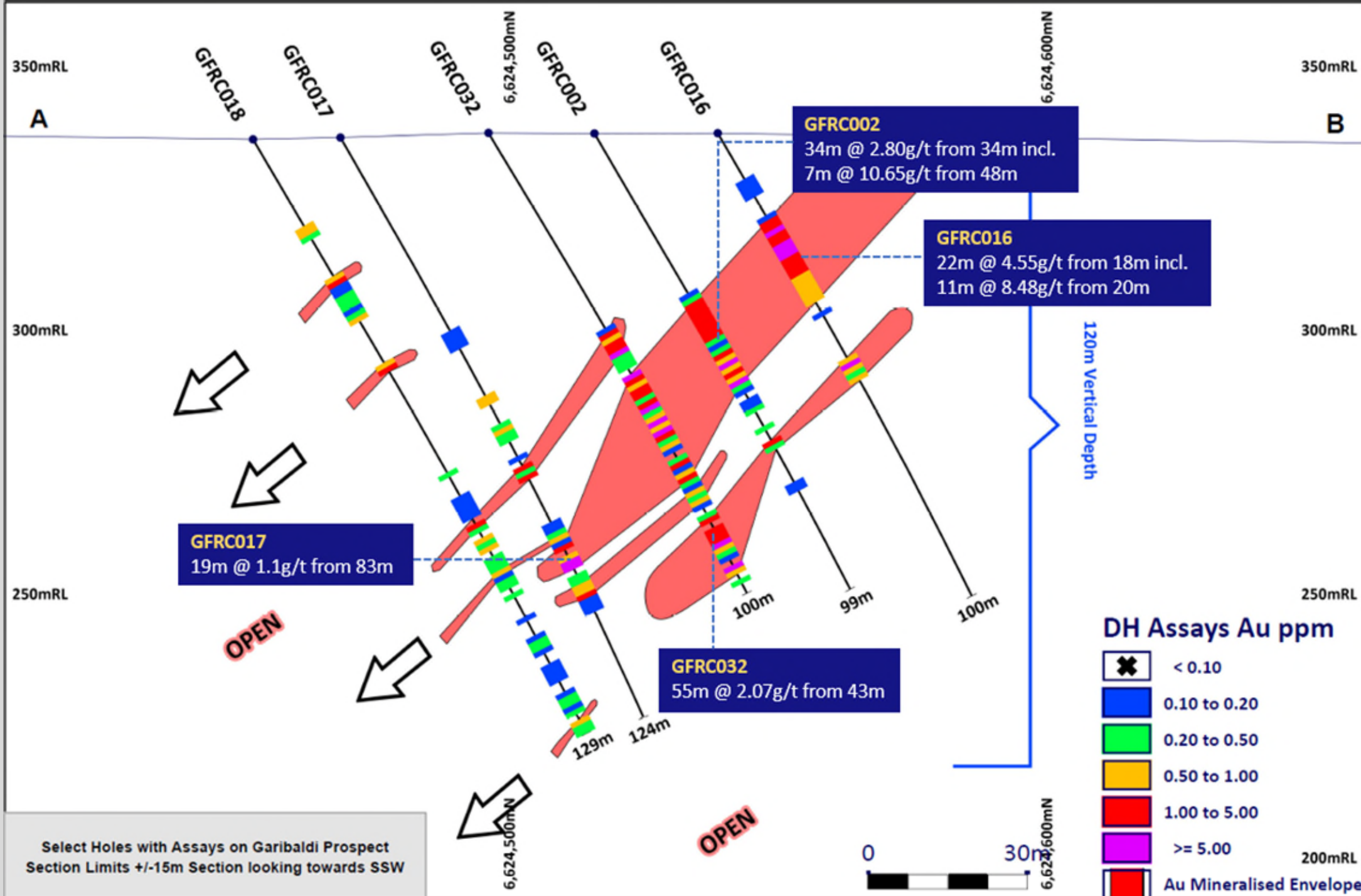
# Garibaldi Prospect

Large number of areas requires follow-up drilling



# Brimstone Project

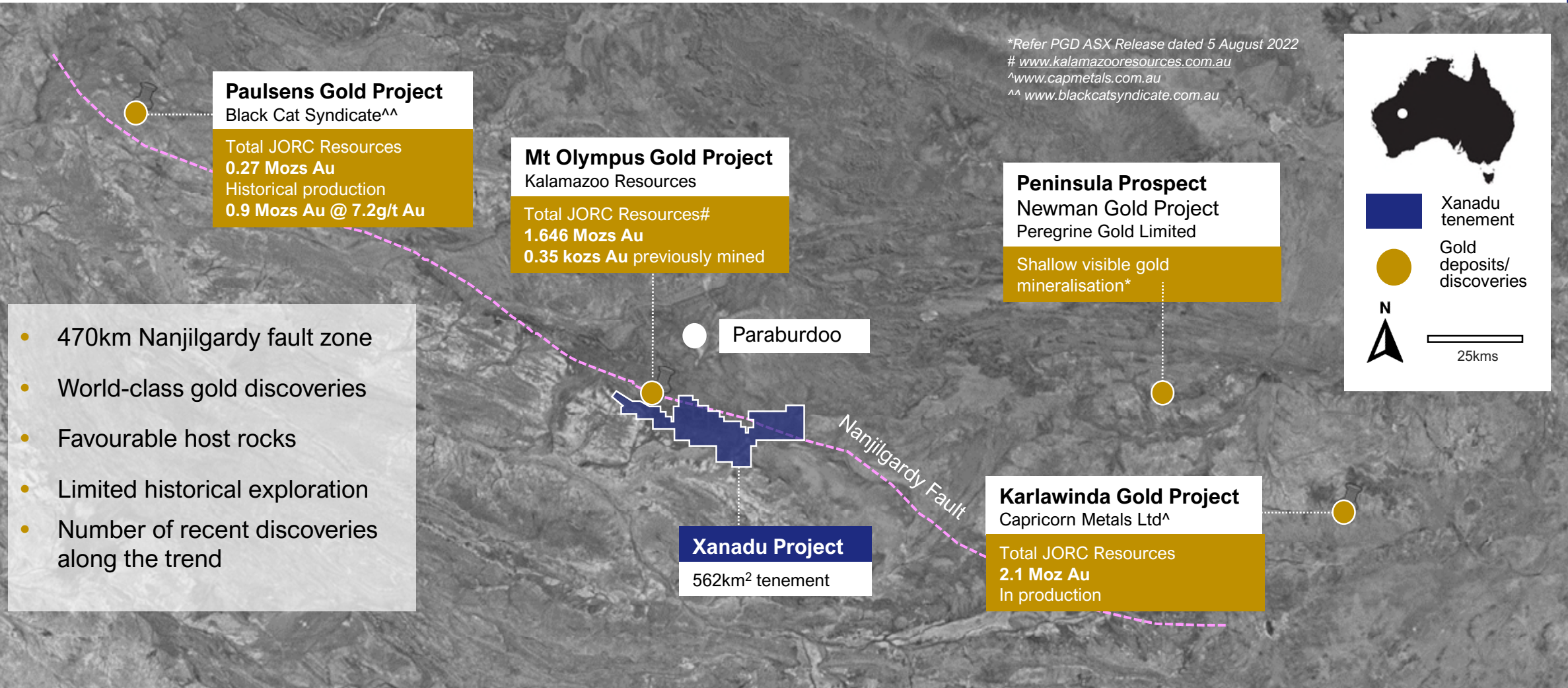
## Garibaldi Prospect





# Xanadu Project

Regional scale structural setting - 2Moz Au nearby





# Xanadu Project

**Mt Olympus Gold Project**  
Kalamazoo Resources#

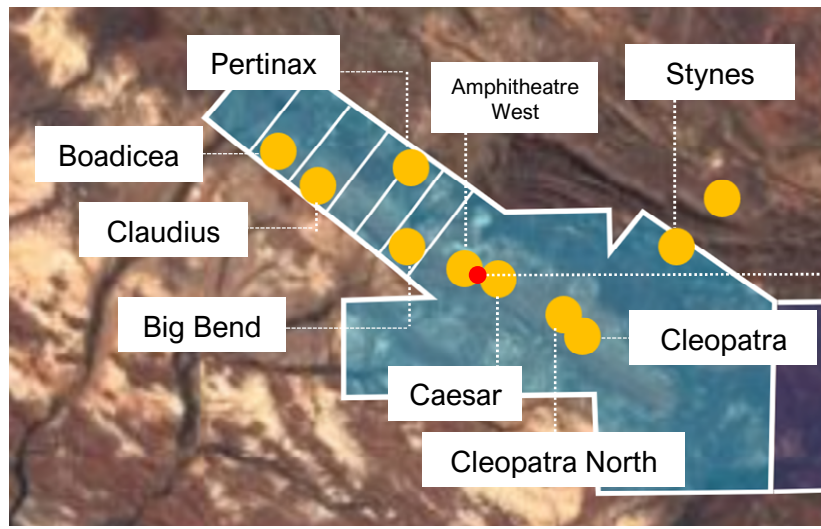
Total JORC Resources  
**1,650,000 oz Au#**

## LEGEND

- Xanadu Project
- Prospect
- Eastern Area
- Pit



4kms



**Amphitheatre Pit**





# Xanadu Project

## Drilling to target deeper gold potential

- Historical focus on shallow oxide mineralisation for heap leach operation
- Large number of economic grade and width drill intersections, including:
  - PNS359 – 12m @ 5.05g/t Au
  - CS028 – 20m @ 2.25g/t Au
  - PNS47 – 2m @ 22.6g/t Au
  - XRC057 – 13m @ 4.08g/t Au
  - XRC076 – 83m @ 0.64g/t Au
  - XRC016 – 56m @ 0.94g/t Au
- Widespread gold mineralisation with a large and intense hydrothermal alteration zone

## Exploration strategy

- 2,214m RC program completed, assays pending
- Phase 2 drilling program scheduled early 2023
- Target unexplored 45km strike extension

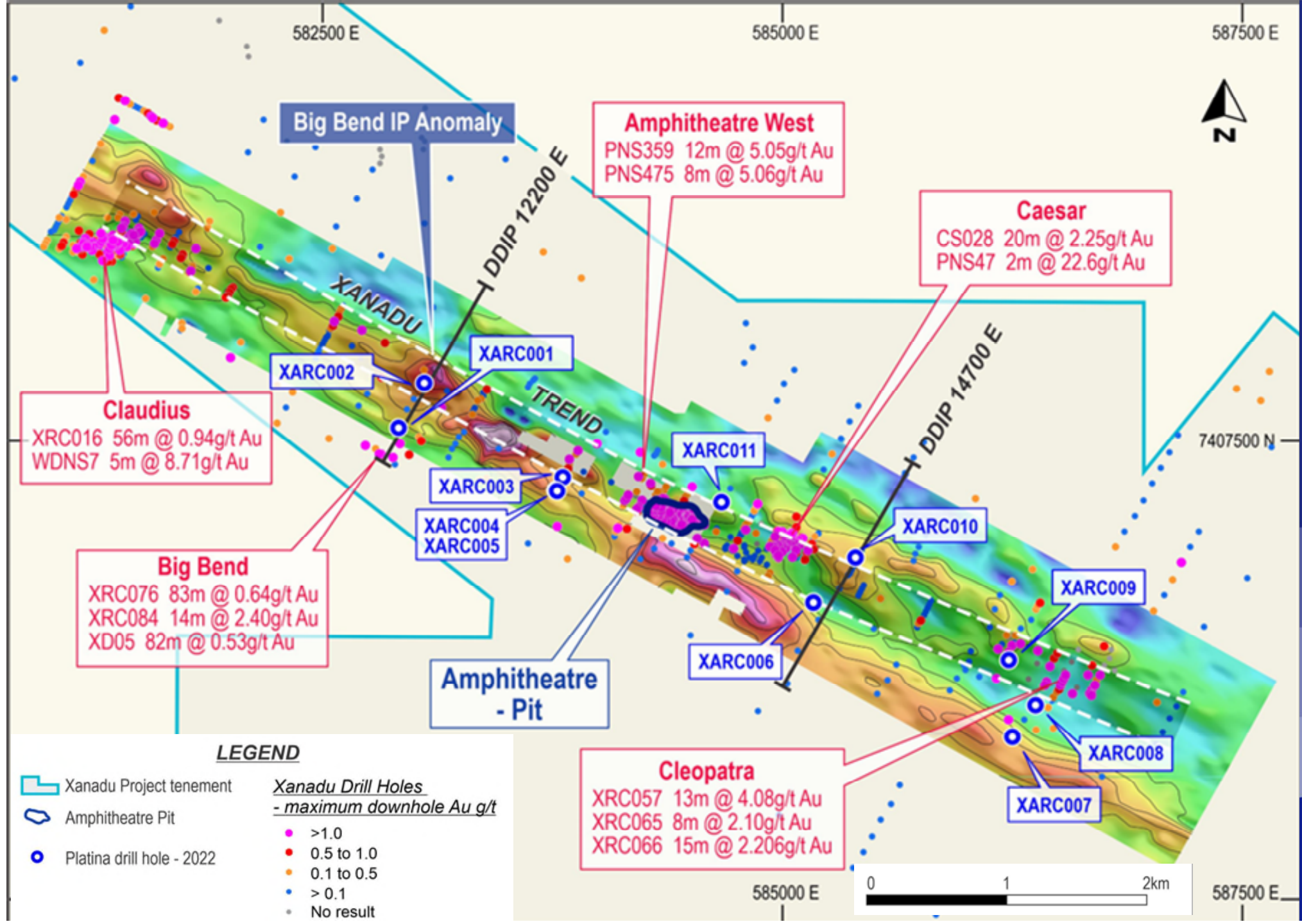


*Heap leach pads and ore stockpile, and historical mine*



# Xanadu Project

Location of August 2022  
drilling

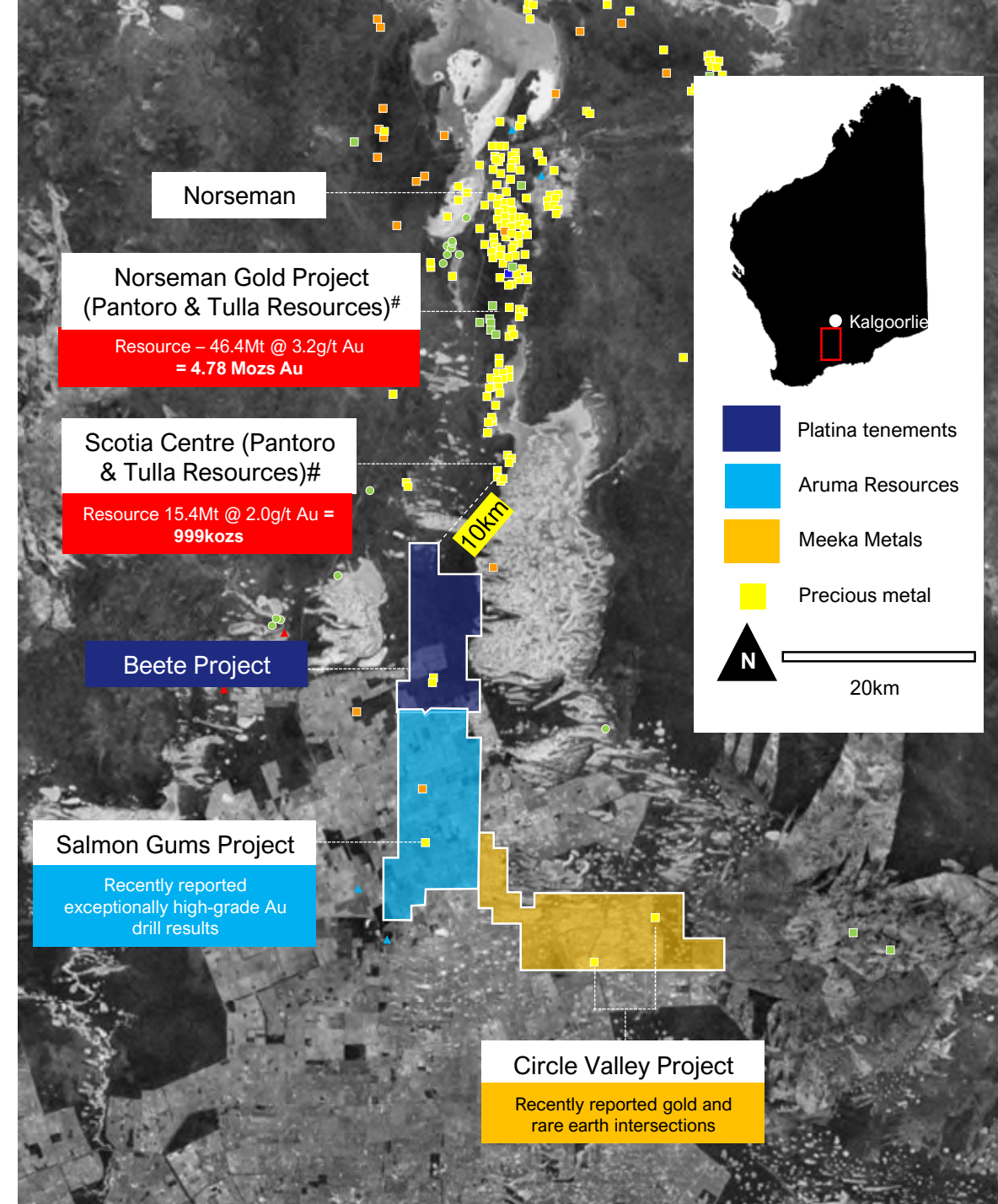


# Beete Project

Exciting new gold and rare earth project opportunity

- Located 50 km south of Norseman
- Tenements covers 139 km<sup>2</sup>
- Access from the Coolgardie to Esperance Highway
- Historical mining district with a number of small high-grade gold mines
- Thought to be a possible extension of the Norseman Greenstone Belt - historical gold production ~ 5.5 Mozs
- 10km south of the Scotia Mining Centre – 1 Mozs
- Recent discoveries to the south by Aruma Resources and Meeka Metals highlight gold potential
- Rare earth potential to be studied following Meeka Metals' success

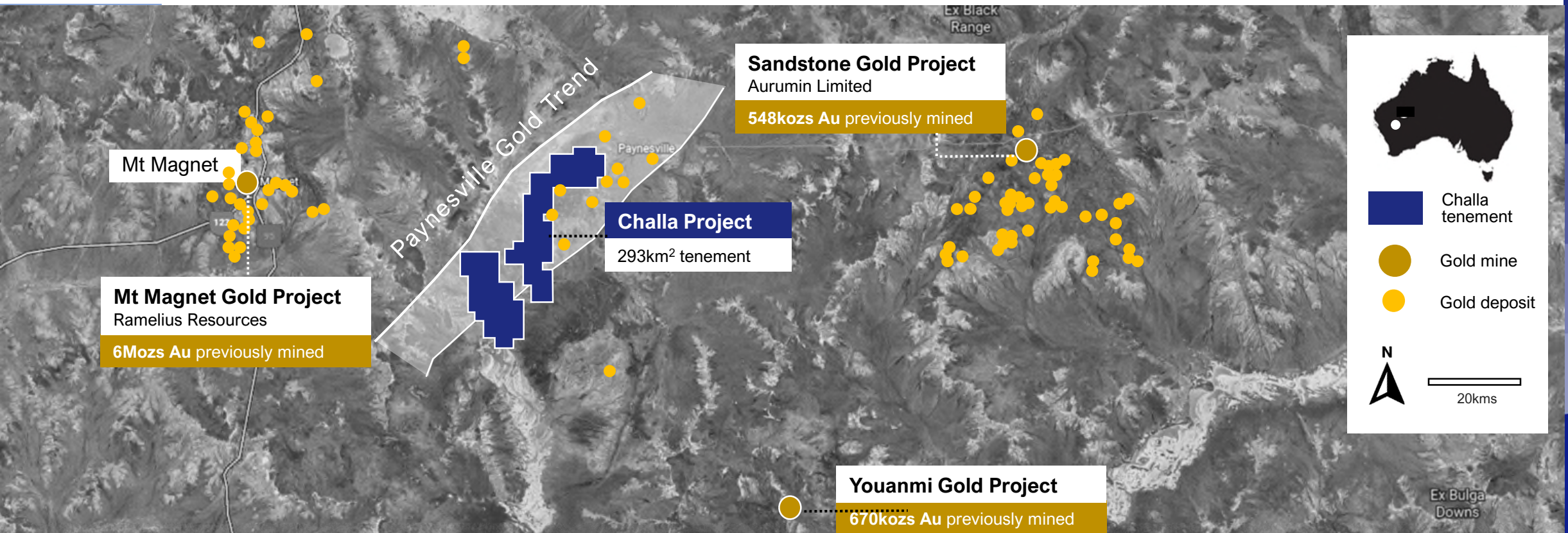
# [www.pantoro.com.au](http://www.pantoro.com.au) and [www.tullaresources.com.au](http://www.tullaresources.com.au)





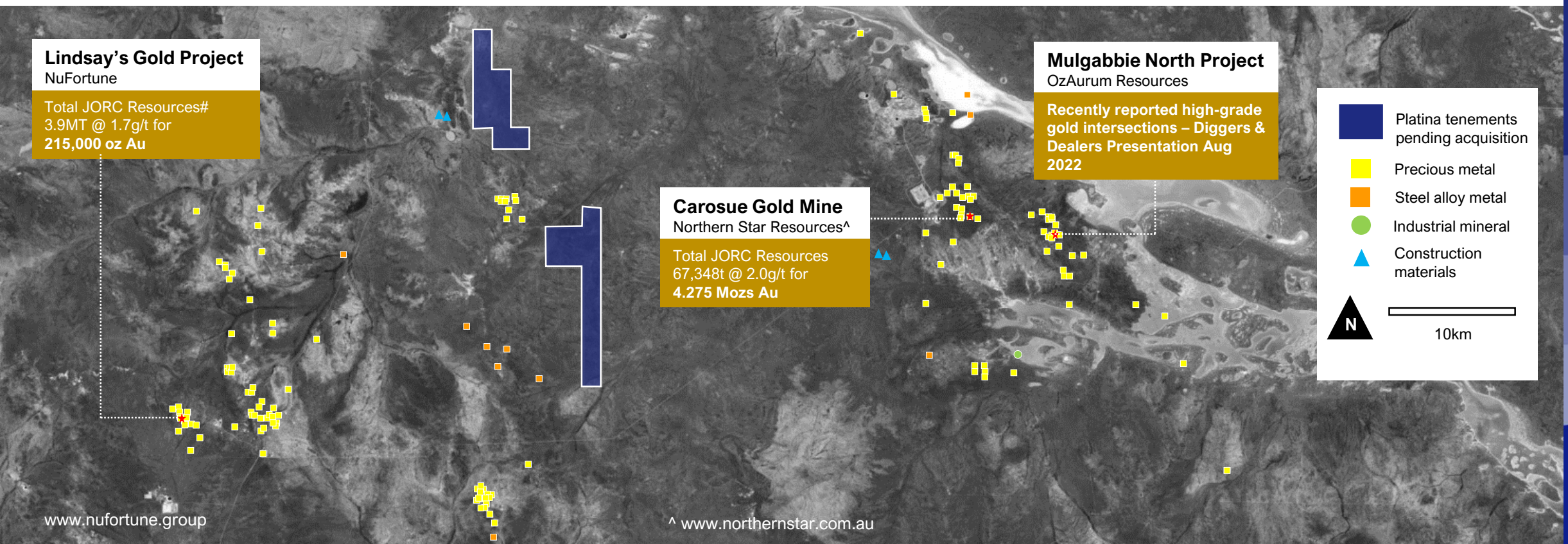
# Challa Project

- Prolific gold producing district:
  - Sandstone 1.3 million ozs
  - Mt Magnet 6 million ozs
  - Youanmi 670,000 ozs
- Four processing mills nearby
- Challa situated on major structure associated with a number of major gold projects
- Favourable greenstone host rocks
- Hydrothermal alteration along zones of major structural dislocation
- Phase 2 drilling planned in late 2023



# Binti Binti Project

- Two Exploration Licences covering 68km<sup>2</sup> approximately 50km north-east of Kalgoorlie.
- Tenements are accessible from the Goldfields Highway.
- Located in close proximity to NuFortune's Lindsay's Gold Project, OzAurum's Mulgabbie North Project and Northern Star's Carosue Dam Mine.





# Mt Narryer Project

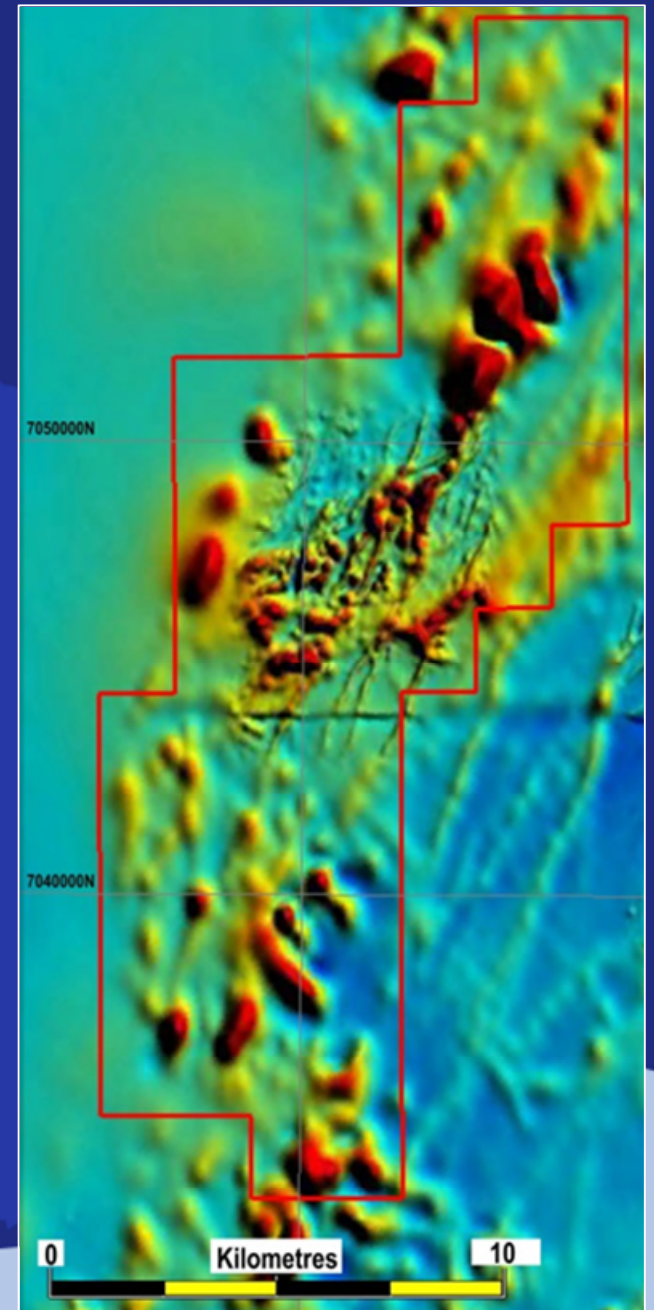
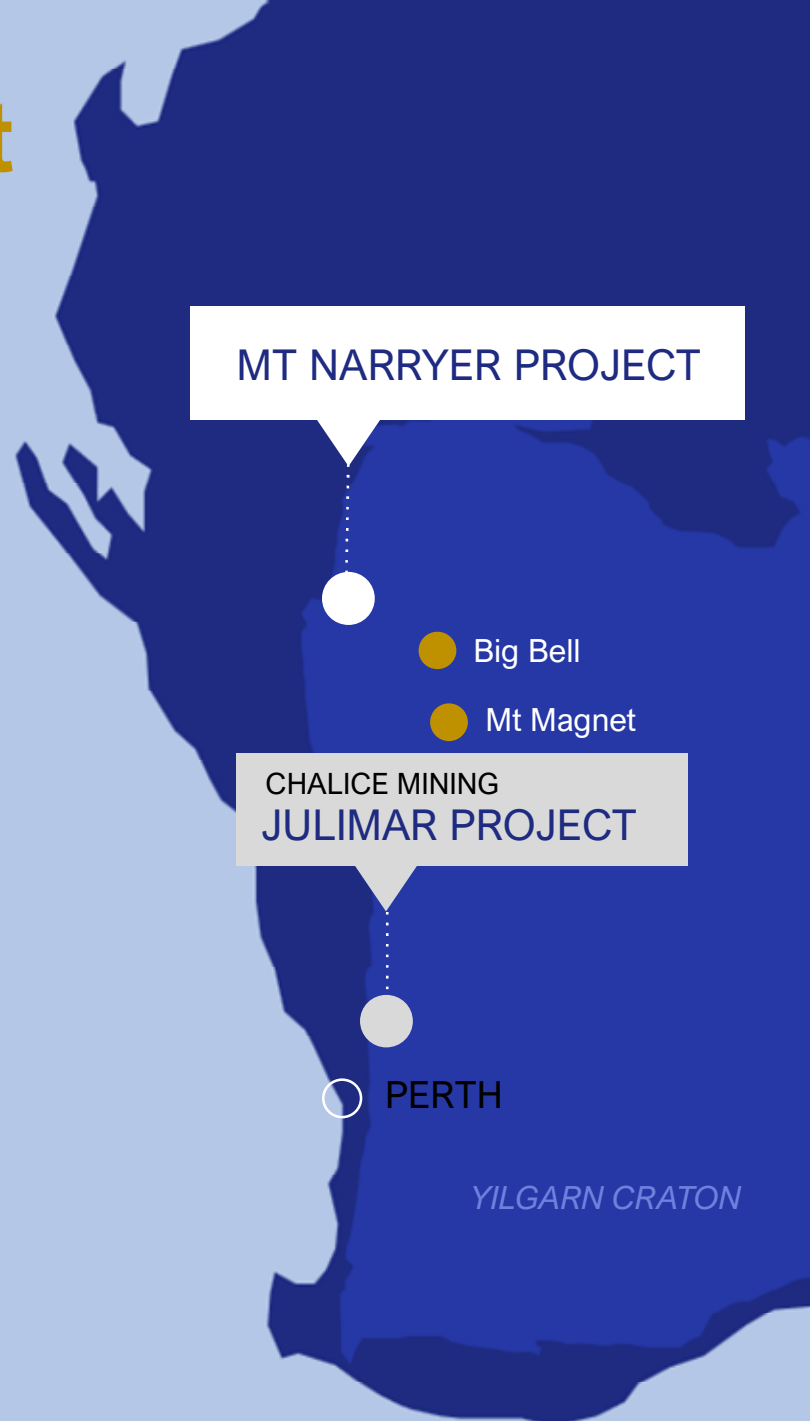
Target analogous to the Julimar discovery

## Prime location

- Application (E09/2423) covering 165km<sup>2</sup>
- Located in the western Yilgarn Craton
- Very little modern exploration due to lack of outcropping rocks

## Robust geological model

- Structure - covers an aeromagnetic high splaying off a major fault
- Prospective Craton edge margin – located between sediments and Archean granites and gneisses
- Soil sampling program to commence once tenement granted



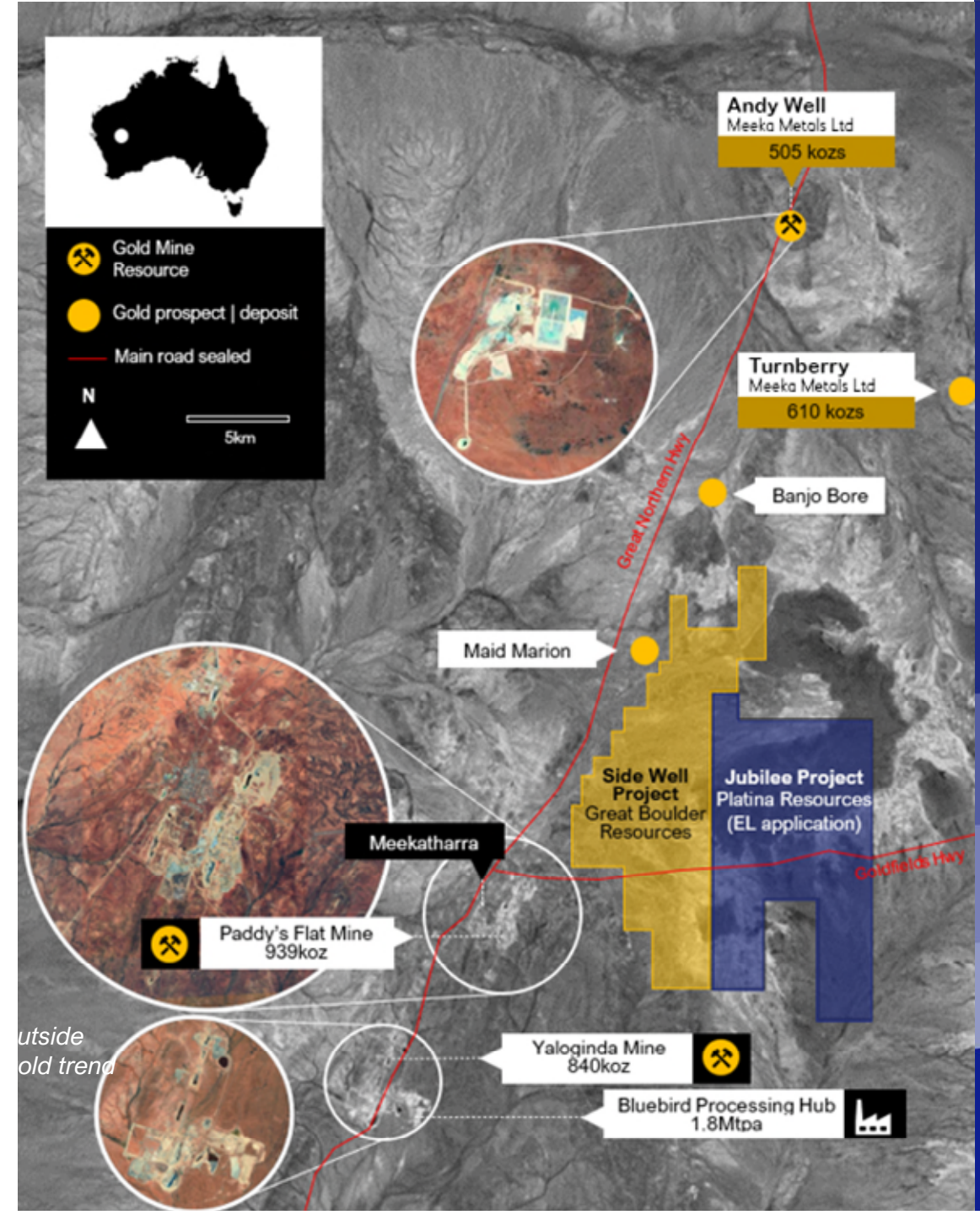
# Jubilee Project

## Prime location

- Application (E51/2114) covering 156km<sup>2</sup> in the Yilgarn Craton
- Close proximity to the Meekatharra gold project
- Adjoins Great Boulder Resources' (ASX:GBR) Side Well project which hosts the high-grade Mulga Bill prospect - recent drilling has intersected very high-grade gold

## Attractive geological features

- Magnetic interpretation indicates favourable structural settings which could potentially host gold mineralisation
- Very little modern exploration
- Historic prospector activity improves probability of mineralisation being present





# Platina Scandium Project

## Unlocking the value of a world-class scandium resource

- Master alloy development program:
  - diversifying the product mix and project marketability
  - capturing a greater share of the downstream value
- Permitting in-progress to secure Mining License
- Recent scandium developments from aluminum heavyweights drawing attention to scandium market opportunity

Definitive Feasibility Study Results  
December 2018\*

Start up CAPEX  
**A\$68m**

Post-tax NPV (8% real)  
**A\$234m**

Capital payback  
**5.3 years**

Annual EBITDA (avg)  
**A\$47m**

Stage 2 CAPEX  
**A\$16m**

Post-tax IRR  
**29%**

Annual Revenue (avg)  
**A\$77m**

Price forecast  
**US\$1,550/kg**

\* Value outcomes subject to securing offtake agreements and financing for construction and development.  
# see PGM ASX release, 25 Jan 2021, "Platina to unlock value in scandium project as market heats up"



# Corporate Overview

## Share price

A\$0.02

As at 5 November 2022  
52 week high \$0.078, low \$0.018

## Market capitalisation

A\$13.1m

As at 5 November 2022

## Shares on issue

654m#

## Cash

A\$2.6m

As at 30 September 2022

## Options on issue

32.36m

## Investments

A\$3.2m

As at 5 November 2022

## Enterprise value

A\$7.2m

# Post closing of Sangold transaction

## Board of Directors



### Corey Nolan Managing Director

27 years experience focused on the acquisition, funding, exploration and development of resource projects. Previously CEO at Sayona Mining Ltd. NED of Elementos Ltd



### Brian Moller Non-Executive Chairman

Partner with law firm HopgoodGanim for over 25 years and practices almost exclusively in the corporate area.



### Chris Hartley Non-Executive Director

Technical Director Strategic Materials for five years at Bloom Energy. Former BHP Billiton and Billiton International executive with more than 30 years international experience



### John Anderson Non-Executive Director

25 years experience in the resources sector in Australia and Asia Pacific including 12 years as a key executive at Santos Limited. Chairman of PNG public company Tolu Minerals Ltd the owner of the Tolukuma gold mine in PNG

## Executive



### Rohan Deshpande Exploration Manager

Geologist with 14 years' experience. Previously De Grey Mining Ltd's Exploration Manager – Hemi - one of the discovery team leaders on the multi-million ounce Hemi Gold Deposit in the Pilbara



### Paul Jurman Company Secretary/CFO

CPA with over 15 years' experience in company secretarial and financial roles for Australian public companies. Currently company secretary of ASX listed Carnavale Resources, Lord Resources and Tempest Minerals

# Investments to fund exploration activities

AIM: UFO

**A\$1.1m**

128 million shares

Developing iron ore, silver, and platinum projects in Western Australia

 **ALIEN**  
METALS

TSXV: MOON

**A\$0.1m**

6 million shares

Developing a zinc deposit rich in gold and silver in the USA


 **BLUE MOON ZINC**

UNLISTED#

**A\$1.9m**

49 million shares

Developing a large gold and platinum group metal project in Greenland

 **MAJOR PRECIOUS METALS**

ASX: NES

**A\$0.04m**

6.04 million shares

Controls 1,600km<sup>2</sup> of gold exploration ground in Western Australia

 **Nelson Resources**  
LIMITED

All figures as at 5 November 2022  
# Major Precious Metals de-listed from NEO on 7 October 2022 and valuation is based on last traded price. Major is expected to re-list on a new exchange in 2023

# Share price catalysts

**01**

Xanadu Phase I  
drill results

**02**

Brimstone &  
Xanadu Phase II  
drilling

**03**

New tenements  
granted

**04**

Unlocking value  
of non-core  
assets

**05**

Realising value  
from investments



# Disclaimer & Appendix

## CAUTIONARY AND FORWARD-LOOKING STATEMENTS

This presentation contains “forward-looking information” which may include, but is not limited to, statements with respect to the future financial or operating performance of Platina Resources Limited (“Platina”), its subsidiaries and its projects, the future price of platinum group metals (“PGM’s”), the estimation of mineral resources, operating and exploration expenditures, costs and timing of development of new deposits, costs and timing of future exploration, requirements for additional capital, government regulation, environmental risks, reclamation expenses, title disputes or claims and limitations of insurance coverage. Often, but not always, forward-looking statements can be identified by the use of words such as “plans”, “expects”, “is expected”, “budget”, “scheduled”, “estimates”, “forecasts”, “intends”, “anticipates”, or “believes” or variations (including negative variations) of such words and phrases, or state that certain actions, events or results “may”, “could”, “would”, “might” or “will” be taken, occur or be achieved. Forward-looking statements involve known and unknown risks, uncertainties and other factors which may cause the actual results, performance or achievements of Platina and/or its subsidiaries to be materially different from any future results, performance or achievements expressed or implied by the forward looking statements. Such factors include, among others, general business, economic, competitive, political and social uncertainties; the actual results of current exploration activities; conclusions of economic evaluations; changes in project parameters as plans continue to be refined; future prices of PGM’s; possible variations of ore grade or recovery rates; failure of plant, equipment or processes to operate as anticipated; accident, labour disputes and other risks of the mining industry; and delays in obtaining governmental approvals or financing or in the completion of development or construction activities. Although Platina has attempted to identify important factors that could cause actual actions, events or results to differ materially from those described in forward-looking statements, there may be other factors that could cause actions, events or results to differ from those anticipated, estimated or intended. Forward-looking statements contained herein are made as of the date of this presentation and Platina disclaims any obligation to update any forward-looking statements, whether as a result of new information, future events or results or otherwise. There can be no assurance that forward-looking statements will prove to be accurate, as actual results and future events could differ materially from those anticipated in such statements. Platina undertakes no obligation to update forward-looking statements if circumstances or management’s estimates or opinions should change. Accordingly, the reader is cautioned not to place undue reliance on forward-looking statements

## REFERENCES TO PREVIOUS ASX RELEASES

The information in this presentation that relates to Exploration Results, Mineral Resources and Ore Reserves were last reported by the Company in compliance with the 2012 Edition of the JORC Australasian Code for Reporting of Exploration Results, Mineral Resources and Ore Reserves in market releases dated as follows:

- Platina Scandium Project - Positive Definitive Feasibility Study, 13 December 2018;
- Platina Scandium Project Ore Reserve, 13 December 2018;
- Platina acquires gold project in prolific gold province, 11 June 2020
- Platina expanding presence in WA Goldfields, 23 July 2020
- Platina builds gold presence in Western Australia, 4th April 2021
- Platina moves closer to maiden drilling program at the Challa Gold Project, 31 March 2021
- Assay results at Challa to lead to maiden drilling program, 8 October 2021
- Platina geophysics identifies strong drill targets at Xanadu Gold Project in Western Australia, 22 February 2022
- Platina to build gold presence in Western Australia, 3 August 2022
- Pivotal Acquisition Builds WA gold footprint, 10 August 2022
- Platina Projects Update, 10 October 2022

The Company confirms that it is not aware of any new information or data that materially affects the information included in the market announcements referred above and further confirms that all material assumptions underpinning the production targets and all material assumptions and technical parameters underpinning the Ore Reserve and Mineral Resource statements contained in those market releases continue to apply and have not materially changed.

## DISCLAIMER

Statements regarding Platina Resources’ plans with respect to its mineral properties are forward-looking statements. There can be no assurance that Platina Resources’ plans for development of its mineral properties will proceed as currently expected. There can also be no assurance that Platina Resources will be able to confirm the presence of additional mineral deposits, that any mineralisation will prove to be economic or that a mine will successfully be developed on any of Platina Resources’ mineral properties or that Platina will achieve any of the valuation increases shown by the peer group companies.

This presentation was authorised by Mr Corey Nolan, Managing Director of Platina Resources Limited.

# Resources References in Presentation

Project / Owner / Source	Category	kt	g/t Au	Kozs
<b>Scotia Mining Centre</b>	Indicated	10,734	2.2	734
50% Tulla Resources and 50% Pantoro Limited	Inferred	4,736	1.5	227
	<b>Total</b>	<b>15,471</b>	<b>2.0</b>	<b>999</b>
<b>Norseman Gold Mineral Resource</b>	Measured	4,572	1.6	234
50% Tulla Resources and 50% Pantoro Limited	Indicated	22,529	3.1	2,259
Source: PNR: Mineral Resource Statement	Inferred	19,325	3.7	2,290
	<b>Total</b>	<b>46,414</b>	<b>3.2</b>	<b>4,787</b>
<b>Paulsens</b>	Indicated	0.315	3.4	34
Black Cat Syndicate	Inferred	1,983	1.9	118
Source: ASX Presentation, 22 July 2022	<b>Total</b>	<b>2,651</b>	<b>2.5</b>	<b>217</b>
<b>Lindsay's Gold Project</b>	Indicated	3,425	1.5	168.4
NuFortune Gold	Inferred	549	2.8	49.7
Source: Presentation 14 Oct 2021	<b>Total</b>	<b>3,974</b>	<b>1.7</b>	<b>215.1</b>
<b>Karlawinda</b>	Indicated	67,000	0.8	1,722
Capricorn Metals	Inferred	19,500	0.7	422
Source: www.capricornmetals.com.au	<b>Total</b>	<b>86,700</b>	<b>0.8</b>	<b>2,145</b>
<b>Mt Olympus</b>	Indicated	7,006	2.4	541
Kalamazoo	Inferred	13,783	2.5	1,105
www.kzr.com.au	<b>Total</b>	<b>20,789</b>	<b>2.5</b>	<b>1,646</b>
<b>Carouse Dam</b>	Measured	1,970	2.8	180
Northern Star	Indicated	11,681	2.9	1,085
www.nsr ltd.com.au	Inferred	9,148	2.9	860
	<b>Total</b>	<b>22,799</b>	<b>2.9</b>	<b>2,125</b>

# Resources References in Presentation

Project / Owner / Source	Category	kt	g/t Au	Kozs
<b>Paddy's Flat</b>	Measured	991	4.32	138
Westgold Resources Ltd	Indicated	10,991	1.72	604
	Inferred	2,505	2.22	179
	<b>Total</b>	<b>14,408</b>	<b>1.99</b>	<b>921</b>
<b>Yaloginda</b>	Measured	145	3.42	16
Westgold Resources Ltd	Indicated	8,439	1.82	494
	Inferred	7,053	1.46	330
	<b>Total</b>	<b>15,637</b>	<b>1.67</b>	<b>840</b>
<b>Andy Well</b>	Measured	150	11.4	55
Meeka Gold Limited	Indicated	1,050	9.3	315
	Inferred	650	6.5	135
	<b>Total</b>	<b>1,800</b>	<b>8.6</b>	<b>505</b>
<b>Turnberry</b>	Indicated	6,800	1.6	355
Meeka Gold Limited	Inferred	4,500	1.8	255
	<b>Total</b>	<b>13,100</b>	<b>2.6</b>	<b>1,115</b>



# Contact

Corey Nolan  
Managing Director

Telephone: +61 7 5580 9094

Email: [admin@platinaresources.com.au](mailto:admin@platinaresources.com.au)

[platinaresources.com.au](http://platinaresources.com.au)

