

**Deal Name:** **Driver Australia Seven**

**Issuer:** Perpetual Corporate Trust Limited (ABN 99 000 341 533)  
of Level 18, 123 Pitt Street,  
Sydney NSW 2000 Australia  
in its capacity as trustee of the Driver Australia Seven Trust.

**Originator of the Receivables:** Volkswagen Financial Services Australia Pty Ltd

**Seller of the Receivables:** Volkswagen Financial Services Australia Pty Ltd

**Servicer name:** Volkswagen Financial Services Australia Pty Ltd

**Reporting Entity:** Volkswagen Financial Services Australia Pty Ltd  
ABS Operations  
(Physical Address)  
Level 1, 24 Muir Road,  
Chullora NSW 2190  
(Postal Address)  
Locked Bag 4002  
Chullora NSW 2190

**Contact:** Phone: +61 2 9751 6257  
Fax: +61 2 9695 6399  
Email: ABSOperations.Australia@vwfs.com.au

**Corporate Service Provider:** Perpetual Corporate Trust Limited  
(ABN 99 000 341 533)  
of Level 18, 123 Pitt Street,  
Sydney NSW 2000 Australia in its personal capacity.



## Contents

Page	Table of Contents
1	<a href="#">Cover</a>
2	<a href="#">Contents</a>
3	<a href="#">Reporting Details</a>
4	<a href="#">Parties Overview</a>
5	<a href="#">Transaction Events I</a>
6	<a href="#">Transaction Events II</a>
7	<a href="#">Transaction Events III</a>
8	<a href="#">Information regarding the Notes I</a>
9	<a href="#">Information regarding the Notes II</a>
10	<a href="#">Cash Collateral Account</a>
11	<a href="#">Credit Enhancement</a>
12	<a href="#">Swap Fixing / Waterfall</a>
13	<a href="#">Retention of Net Economic Interest</a>
14	<a href="#">Amortisation Profile I</a>
15	<a href="#">Amortisation Profile II</a>
16	<a href="#">Run Out Schedule I</a>
18	<a href="#">Run Out Schedule II</a>
19	<a href="#">Outstanding Contracts I</a>
21	<a href="#">Outstanding Contracts II</a>
22	<a href="#">Arrears</a>
24	<a href="#">Net Salvage Loss</a>
25	<a href="#">Net Salvage After Recoveries</a>
26	<a href="#">Prepayments</a>
27	<a href="#">Pool Data I</a>
29	<a href="#">Pool Data II</a>
30	<a href="#">Pool Data III</a>
32	<a href="#">Pool Data IV</a>
34	<a href="#">Pool Data V</a>
36	<a href="#">Pool Data VI</a>
37	<a href="#">Pool Data VII</a>
43	<a href="#">Pool Data VIII</a>
45	<a href="#">Pool Data IX</a>
47	<a href="#">Hardship Extensions</a>
48	<a href="#">Engine Type</a>
50	<a href="#">Contract Level Data</a>

## Reporting Details

### Deal Overview

Pool Cut Date	31/10/2021	Publication Date:	16/11/2022 (16th of each month)
Scheduled Date of Clean-Up-Call	10/2025	Payment Date:	21/11/2022 (21st of each month)
Legal Maturity Date	21/01/2030	Reporting Date:	31/10/2022
Issue Date	22/11/2021	Asset Collection Period:	from 01/10/2022 until 31/10/2022
Period No.:	12	Interest Accrual Period	from 21/10/2022 until 21/11/2022
Reporting frequency:	Monthly	Note Payment Period:	from 21/10/2022 until 21/11/2022
Next Payment Date:	21/12/2022	Days accrued:	31

Vehicle Type at Pool Cut	Number of Contracts	Percentage of Contracts	Outstanding Discounted Receivables Balance	Percentage Outstanding Discounted Receivables Balance
New	10,680	70.07%	463,158,976.27 AUD	77.19%
Used	4,561	29.93%	136,866,121.79 AUD	22.81%
<b>Total</b>	<b>15,241</b>	<b>100.00%</b>	<b>600,025,098.06 AUD</b>	<b>100.00%</b>

Credit Type at Pool Cut	Number of Contracts	Percentage of Contracts	Outstanding Discounted Receivables Balance	Percentage Outstanding Discounted Receivables Balance
Chattel Mortgage	9,371	61.49%	414,965,143.56 AUD	69.16%
Consumer Loan	5,870	38.51%	185,059,954.50 AUD	30.84%
<b>Total</b>	<b>15,241</b>	<b>100.00%</b>	<b>600,025,098.06 AUD</b>	<b>100.00%</b>

Parties Overview

<p><b>Lead Managers:</b></p> <p><b>Australia and New Zealand Banking Group Limited</b> <b>(ABN 11 005 357 522)</b> ANZ Tower 242 Pitt Street Sydney, NSW 2000 Australia</p> <p><b>Bank of America Merrill Lynch (which is the trading name of Merrill Lynch International)</b> <b>(ARBN 125 336 567)</b> Merrill Lynch Financial Centre 2 King Edward Street London EC1A 1HQ United Kingdom</p>	<p><b>Security Trustee:</b></p> <p><b>P.T. Limited</b> <b>(ABN 67 004 454 666)</b> Level 18 123 Pitt Street Sydney NSW 2000 Australia</p>
<p><b>Trustee:</b></p> <p><b>Perpetual Corporate Trust Limited</b> <b>(ABN 99 000 341 533)</b> of Level 18, 123 Pitt Street, Sydney NSW 2000 Australia in its capacity as trustee of the Driver Australia Seven Trust.</p>	<p><b>Trust Manager:</b></p> <p><b>Perpetual Nominees Limited</b> <b>(ABN 37 000 733 700)</b> of Level 18, 123 Pitt Street, Sydney NSW 2000 Australia in its capacity as the trust manager for the Driver Australia Seven Trust</p>
<p><b>Sub Trust Manager:</b></p> <p><b>Volkswagen Financial Services Australia Pty Limited</b> <b>(ABN 20 097 071 460)</b> Level 1, 24 Muir Road, Chullora, NSW 2190</p>	<p><b>Account Bank:</b></p> <p><b>Australia and New Zealand Banking Group Limited</b> <b>(ABN 11 005 357 522)</b> ANZ Tower 242 Pitt Street Sydney, NSW 2000 Australia</p>
<p><b>Clearing Systems:</b></p> <p><b>Austraclear Limited</b> 30-32 Grosvenor Street. Sydney, NSW 2000</p>	<p><b>Swap Counterparty:</b></p> <p><b>ING Bank N.V.</b> <b>(ID 26 300 892 1)</b> Bijlmerdreef 106 1102 CT Amsterdam The Netherlands</p>
<p><b>Servicer:</b></p> <p><b>Volkswagen Financial Services Australia Pty Limited</b> <b>(ABN 20 097 071 460)</b> Level 1, 24 Muir Road, Chullora, NSW 2190 email: ABSOperations.Australia@vwfs.com.au phone: +61 2 9751 6257</p>	<p><b>Rating Agencies:</b></p> <p><b>Fitch Ratings</b> Attn.: Australia Surveillance Suite 15.01, Level 15, 135 King Street Sydney, NSW 2000 Australia email: australia.surveillance@fitchratings.com</p> <p><b>Moody's</b> Attn.: Monitor Sydney Level 10, 1 O'Connell Street Sydney, NSW 2000 Australia email: Monitor.Sydney@moodys.com</p>

**Transaction Events (I)**

**Clean-Up Call Condition**

Percentage of Current Outstanding Discounted Receivables Balance	<b>69.09%</b>	
Min. Percentage of Outstanding Discounted Receivables Balance	<b>10.00%</b>	The Clean-Up-Call Condition is expected to be reached in 10/2025.

**Clean-Up Call**

VWFS Australia will have the right at its option to exercise a Clean-Up Call and to repurchase all (but not only some) of the Purchased Receivables from the Issuer at any time when the then outstanding Aggregate Discounted Receivables Balance is less than ten (10) per cent. of the Aggregate Cut-off Date Discounted Receivables Balance and, assuming the Transaction Documents are given full effect, all payment obligations under the Notes, including principal and accrued interest, will thereby be fulfilled in accordance with the Order of Priority (the Clean-up Call Conditions).

Repurchase of Receivables	Number of contracts	% of Contracts	Outstanding Discounted Receivables Balance	% of Outstanding Discounted Receivables Balance	Interest Compensation Payment	Re-Purchase Price
Current Period	-	0.00%	- AUD	0.00%	- AUD	- AUD
Previous Periods	-	0.00%	- AUD	0.00%	- AUD	- AUD
<b>Total</b>	<b>-</b>	<b>0.00%</b>	<b>- AUD</b>	<b>0.00%</b>	<b>- AUD</b>	<b>- AUD</b>

If a repurchase of receivables occurred, it would only result from non-eligibility as of the respective Pool Cut Date (which has been discovered at a later stage), a Legitimate Repudiation of a Receivables Contract, a Reloaded Contract or a Flat-Cancelled Contract.

**Transaction Party Replacements**

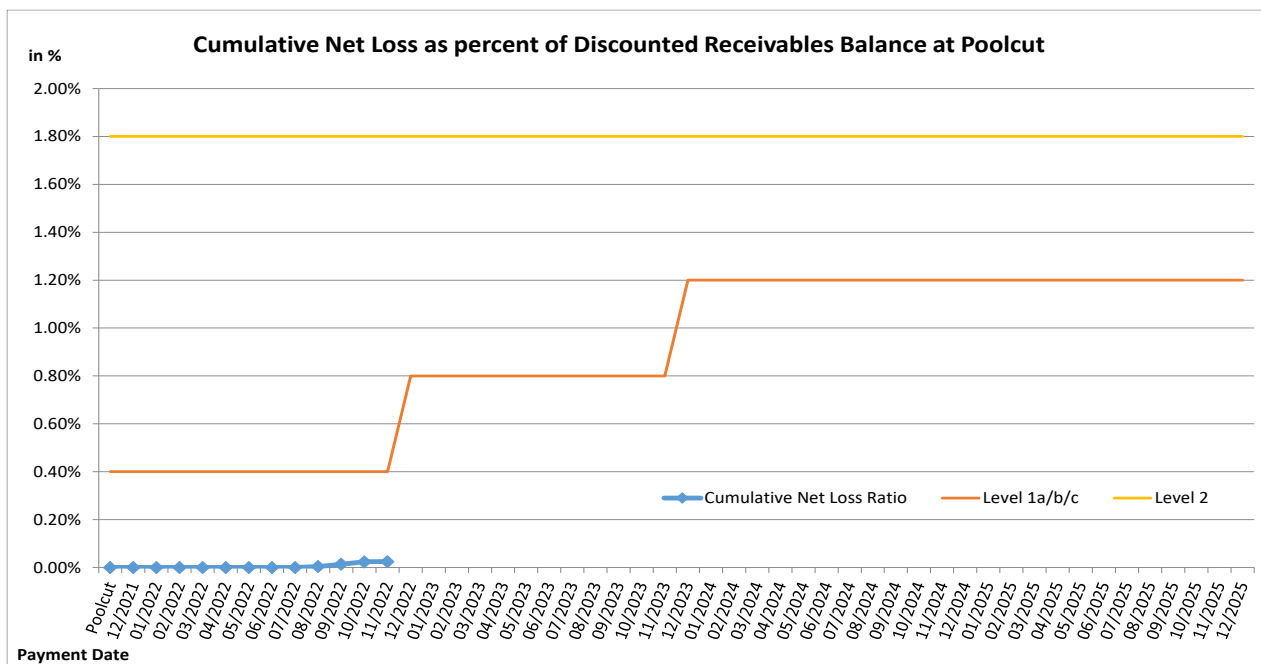
Capacity of Transaction Party	Date of Replacement	Reason for Replacement	Replaced Party	Replaced by

**Transaction Events (II)**

**Credit Enhancement Increase Conditions**

Level 1a Credit Enhancement Increase Condition - Cumulative Net Losses do not amount to 0.4% for any Payment Date prior to or during Nov 2022	NO
Level 1b Credit Enhancement Increase Condition - Cumulative Net Losses do not amount to 0.8% for any Payment Date from Dec 2022 but prior to or during Nov 2023	NO
Level 1c Credit Enhancement Increase Condition - Cumulative Net Losses do not amount to 1.2% for any Payment Date after Nov 2023	NO
Level 2 Credit Enhancement Increase Condition - Cumulative Net Losses do not amount to 1.8% for any Payment Date	NO

Net losses	Net Loss Amount
Net Salvage Loss registered in current Period	5,937.71 AUD
Cumulative Net Salvage Loss incl. current Period	147,433.81 AUD
Cumulative Net Salvage Loss as of the End of the Monthly Period	147,433.81 AUD
Discounted Balance as of Pool Cut Date	600,025,098.06 AUD
Cumulative Net Loss as percentage of Discounted Receivables Balance at Pool Cut	0.02457%



**Transaction Events (III)**

**Account Bank:**

Australia and New Zealand Banking Group Limited

Current Rating \*

Minimum required Rating (if no short term Rating available, the higher long term rating is applicable)

or

Fitch			Moody's		
Long Term	Short Term	Outlook	Long Term	Short Term	Outlook
A+	F1	Stable	Aa3	P-1	Stable
-	F1	-	A2	P-1	-
A	-	-	A2	P-1	-

If the Account Bank ceases to have the Account Bank Required Rating it shall, at its own cost,

(i) transfer the accounts to an Eligible Collateral Bank, or

(ii) provide a guarantee from an Eligible Guarantor, or

If none of the measures is taken within a given timespan, the Issuer may enter into new banking arrangements at its own initiative with another Account Bank.

(Please refer to the Prospectus for a complete description of the mechanism)

**Required Rating:**

**Fulfilled**

**Swap Counterparty**

ING Bank N.V.

Current Rating \*

Minimum required Rating for Class A Notes

Minimum required Rating for Class B Notes

Fitch			Moody's		
Long Term	Short Term	Outlook	Long Term	Short Term	Outlook
AA-	F1+	Stable	A1	P-1	Stable
A	F1	-	A3	-	-
-	-	-	A3	-	-

If the Swap Bank falls below the above mentioned Minimum Rating (Level I) it shall provide Eligible Credit Support by means of Cash or certain types of Prime Debt Obligations

If the Swap Bank ceases to have the even lower Rating as an Eligible Swap Counterparty (Level II) it shall, at its own cost,

(i) transfer all rights and obligations under the Swap Agreement to another Eligible Swap Partner or

(ii) provide a guarantee from an Eligible Guarantor.

If none of the measures is taken within a given timespan, the Issuer may enter into new arrangements at its own initiative with another Swap Bank.

(Please refer to the Prospectus for a complete description of the mechanism)

**Required Rating:**

**Fulfilled**

**Servicer**

Volkswagen Financial Services Australia Pty Ltd

If the Monthly Remittance Condition is satisfied, VWFS Australia, as the Servicer, is required to pay collections of the Purchased Receivables (including proceeds from the disposition of any Financed Objects) received by it during each Monthly Period into the Distribution Account in a single deposit no later than the Payment Date for that Monthly Period.

If the Monthly Remittance Condition is not met, the Servicer must remit collections received by it in respect of the Purchased Receivables in accordance with the procedure outlined in detail in "ADMINISTRATION OF THE PURCHASED RECEIVABLES UNDER THE SERVICING AGREEMENT - Commingling".

**Monthly  
Remittance  
Condition:**

**Fulfilled**

Information regarding the Notes I

Rating at Issue Date	Class A	Class B
Moody's	Aaa (sf)	Aa2 (sf)
Fitch	AAAsf	NRsf

Current Rating	Class A	Class B
Moody's	Aaa (sf)	Aa1 (sf)
Fitch	AAAsf	NRsf

Information on Notes	Class A	Class B
Legal maturity date	21/01/2030	21/01/2030
Scheduled Clean Up Call	Oct 2025	Oct 2025
ISIN:	AU3FN0063434	AU3FN0063442
Common Code:	239718256	239718272
Nominal Amount	100,000.00 AUD	100,000.00 AUD

Information on Interest	Class A	Class B
Spread/ Margin	70 bps	100 bps
Index Rate	1-Month-BBSW	1-Month-BBSW
Fixed/Floating	floating	floating
Current Coupon	1-Month-BBSW + 70	1-Month-BBSW + 100
Day Count Convention	actual/365	actual/365



## Information regarding the Notes II

Monthly Period:	10/2022
Payment Date:	21/11/2022
Interest Accrual Period (from/until)	from 21/10/2022 until 21/11/2022
Days accrued	31
Index Rate	1-Month-BBSW
Base Interest Rate:	2.7562%
Day Count Convention	actual/365

Interest Payments	Class A	Class B
Total Interest Amount of the Reporting Period	1,033,481.92 AUD	105,276.51 AUD
Paid Interest	1,033,481.92 AUD	105,276.51 AUD

Unpaid Interest	Class A	Class B
Unpaid Interest in the Reporting Period	- AUD	- AUD
Cumulative unpaid Interest	- AUD	- AUD

Note Balance	Class A	Class B
Note Balance as of Poolcut	526,200,000.00 AUD	33,000,000.00 AUD
Note Balance as of the Beginning of the Period	352,075,000.14 AUD	33,000,000.00 AUD
Redemption Amount per Class	14,320,269.90 AUD	- AUD
<b>Class Balance as of the End of the Period</b>	<b>337,754,730.24 AUD</b>	<b>33,000,000.00 AUD</b>

Payments to Investors per note	Class A	Class B
Interest Per Note	196.40 AUD	319.02 AUD
Principal Repayment by note	2,721.45 AUD	- AUD
Number of Notes	5,262	330
Note Factor	0.6418752	1.0000000

Overcollateralisation Percentage	Class A	Class B
Initial OC Percentage at Poolcut	12.3037%	6.8039%
Current OC Percentage	18.5300%	10.5700%
Target OC Percentage	26.0000%	18.0000%

Subordinated Loan	
Balance as of the Beginning of the Period	34,115,247.75 AUD
Regular Redemption from Waterfall	- AUD
Redemption from Cash Collateral Account	- AUD
Balance as of the End of the Period	34,115,247.75 AUD

## Cash Collateral Account

Cash collateral account (CCA)	Value
<b>CCA Opening Balance - Initial balance at poolcut</b>	<b>7,200,000.00 AUD</b>
<b>Balance as of the beginning of the period</b>	<b>6,000,000.00 AUD</b>
<b>Specified General Cash Collateral Account Balance</b>	<b>6,000,000.00 AUD</b>
the greater of: 1.20 per cent of the Aggregate Discounted Receivables Balance as of the end of the Monthly Period; and	4,974,735.55 AUD
the lesser of: \$6,000,000; and	6,000,000.00 AUD
the aggregate outstanding principal amount of the Class A Notes and Class B Notes as of the end of the Monthly Period	385,075,000.14 AUD
<b>Payments</b>	<b>- AUD</b>
General payment from CCA	- AUD
General payment to CCA	- AUD
<b>Balance as of the end of the period</b>	<b>6,000,000.00 AUD</b>

## Credit Enhancement

Credit Enhancement as of Poolcut Date	% of Aggregate Discounted Receivables Balance	Value
Class B Note	5.50%	33,000,000.00 AUD
Subordinated Loan	5.80%	34,825,098.06 AUD
Overcollateralisation	1.00%	6,000,000.00 AUD
Cash Collateral Account	1.20%	7,200,000.00 AUD

Cash Collateral Account (CCA)	Value	in % of Outstanding Discounted Receivables Balance as of Poolcut Date
<b>Initial Balance at Poolcut</b>	7,200,000.00 AUD	1.20%
<b>Initial Targeted Balance at Poolcut</b>	7,200,000.00 AUD	1.20%
<b>Current Targeted Balance</b>	6,000,000.00 AUD	1.00%
<b>Balance as of the Beginning of the Period</b>	6,000,000.00 AUD	1.00%
Payment from CCA	- AUD	0.00%
Payment to CCA	- AUD	0.00%
<b>Balance as of the End of the Period</b>	6,000,000.00 AUD	1.00%

## Calculation of Credit Enhancement

Initially, Driver Australia Seven's Credit Enhancement consists of the respective Note Issue in comparison to the Discounted Receivables Balance as of Poolcut, minus any Senior Debt Issuance. This 'Overcollateralisation' (i.e. Credit Enhancement excluding the Cash Collateral Account) is specific for each Note Series and increases with its seniority.

Subsequently, the 'Overcollateralisation' is calculated (as an Overcollateralisation Percentage) on a monthly basis, all on end of month figures. Considering the seniority of the respective Note Series, redemption is made until a Target Overcollateralisation Percentage has been reached. All remaining funds will be used to perform payments in the more junior positions of the Order of Priority.

The Target OC percentages for each Note Class are determined subject to 3 items:

- They will increase in 2 steps in case the Cumulative Net Loss Ratio exceeds a certain level and Credit Enhancement Increase Condition is met.
- They will increase to 100% if the Aggregate Discounted Receivables Balance falls below 10.00% of the Aggregate Discounted Receivables Balance at Cut-Off Date (without a Clean-Up Call being exercised).
- A Foreclosure Event causes the transaction to switch into sequential payment mode, in which case the OC Percentages will not determine the maximum redemption amount and may be exceeded.

In addition, there is the 'General Cash Reserve', in the form of a Cash Collateral Account, which is in principle to the benefit of all Tranches over the entire lifetime of the transaction.

**Swap Fixing / Waterfall**

<b>Amortising Interest Rate Swap</b>	<b>Class A</b>	<b>Class B</b>
Initial Principal	526,200,000.00 AUD	33,000,000.00 AUD
Underlying Principal for Reporting Period	352,075,000.14 AUD	33,000,000.00 AUD
Paying Leg	Fixed Interest Rate	Fixed Interest Rate
Receiving Leg	Floating Interest Rate	Floating Interest Rate
Net Swap Payments - Net Swap Receipts	(591,921.19 AUD)	(52,146.51 AUD)

<b>Available Distribution Amount Calculation</b>	<b>Payment to waterfall position</b>	<b>Remaining Amount</b>
1) i) Available Collections Amount from Contracts	16,238,244.18 AUD	16,238,244.18 AUD
1) ii) Available Collections - Interest on Trust Account	14,344.39 AUD	16,252,588.57 AUD
2) Drawings From Cash Collateral Account as provided for in clause 12.1 of the Issue Supplement	- AUD	16,252,588.57 AUD
3) i) Net Swap Receipts - Class A	591,921.19 AUD	16,844,509.76 AUD
3) ii) Net Swap Receipts - Class B	52,146.51 AUD	16,896,656.27 AUD
4) Damages and Indemnity Payments to Issuer	- AUD	16,896,656.27 AUD
5) Other Reimbursement Amounts	- AUD	16,896,656.27 AUD
6) Buffer Release Amount	(1,051,640.68 AUD)	15,845,015.59 AUD
Remaining Rounding Amount (M-1)	47.20 AUD	15,845,062.79 AUD

<b>Waterfall</b>	<b>Payment to waterfall position</b>	<b>Remaining Amount</b>
Available Distribution Amount	- AUD	15,845,062.79 AUD
1) Trust Beneficiary \$1	(1.00 AUD)	15,845,061.79 AUD
2) Taxes	- AUD	15,845,061.79 AUD
3) Trust Fees & Expenses and Servicer Fees	(385,987.16 AUD)	15,459,074.63 AUD
4. a) Net Swap Payments - Class A Notes	- AUD	15,459,074.63 AUD
4. b) Net Swap Payments - Class B Notes	- AUD	15,459,074.63 AUD
5. a) Interest accrued in prev. month - Class A	(1,033,481.92 AUD)	14,425,592.71 AUD
5. b) Interest Shortfalls from prior months - Class A	- AUD	14,425,592.71 AUD
6. a) Interest accrued in prev. month - Class B	(105,276.51 AUD)	14,320,316.20 AUD
6. b) Interest Shortfalls from prior months - Class B	- AUD	14,320,316.20 AUD
7) Payment to Cash Collateral Account	- AUD	14,320,316.20 AUD
8) Principal Payment - Class A	(14,320,269.90 AUD)	46.30 AUD
9) Principal Payment - Class B	- AUD	46.30 AUD
Remaining Rounding Amount (Current Period)	(46.30 AUD)	- AUD
10) Penalties, Costs, Expenses, Damages, Losses or Liabilities	- AUD	- AUD
11) Other Payment to Swap Counterparties	- AUD	- AUD
12) Subordinated Loan Accrued and Unpaid Interest	- AUD	- AUD
Interest Accrued this period on the Subordinated Loan	- AUD	- AUD
Unpaid Interest on the Subordinated Loan	- AUD	- AUD
13) Subordinated Loan Principal	- AUD	- AUD
14) Surplus Income Distribution to Beneficiary of the Trust	- AUD	- AUD

<b>Distribution of Cash Collateral Account surplus</b>	<b>Payment</b>	<b>Remaining Amount</b>
Payment from CCA	- AUD	- AUD
Payment of Interest Accrued this period on the Subordinated Loan	- AUD	- AUD
Payment of Unpaid Interest on the Subordinated Loan	- AUD	- AUD
Payment in respect of regular redemption to subordinated lender	- AUD	- AUD
Distribution to Beneficiary of the Trust	- AUD	- AUD

## Retention of Net Economic Interest

Period	Poolcut	Balance as at Current Period
<b>Total Assets</b>	<b>684,926,843.21 AUD</b>	<b>461,240,666.59 AUD</b>
Nominal Receivables Balance	684,926,843.21 AUD	461,240,666.59 AUD
<b>First loss piece</b>	<b>48,025,098.06 AUD</b>	<b>49,806,565.93 AUD</b>
Subordinated Loan balance	34,825,098.06 AUD	34,115,247.75 AUD
Overcollateralisation	6,000,000.00 AUD	9,691,318.18 AUD
General Cash Collateral Account balance	7,200,000.00 AUD	6,000,000.00 AUD
<b>Actual retention</b>	<b>7.01%</b>	<b>10.80%</b>

In its capacity as originator and original lender, VWFSA complies with the retention requirement of a material net economic interest in accordance with Article 6 (3) (d) of the European Securitisation Regulation.

By adhering to Article 6 (3) (d) of the European Securitisation Regulation, VWFSA will keep the exposures designated for retention on its balance sheet on an ongoing basis.

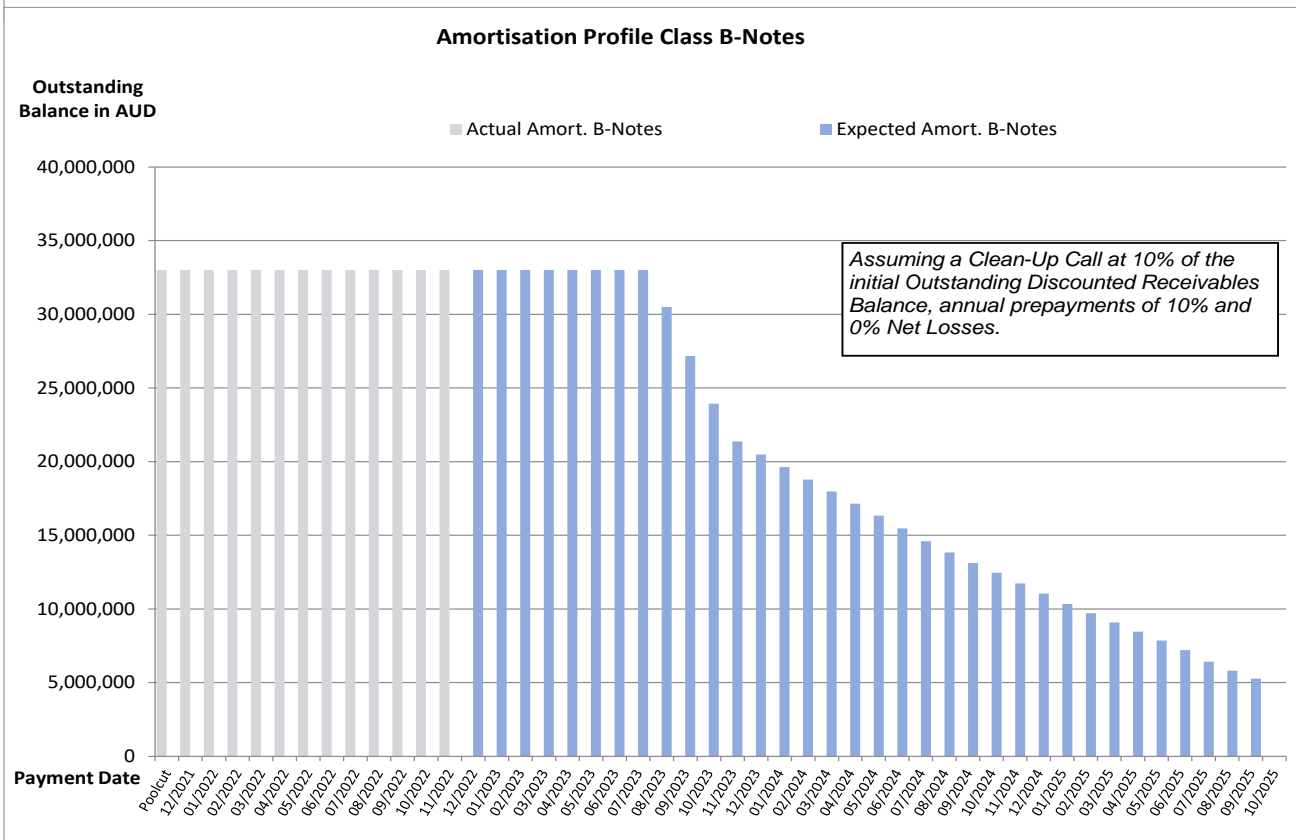
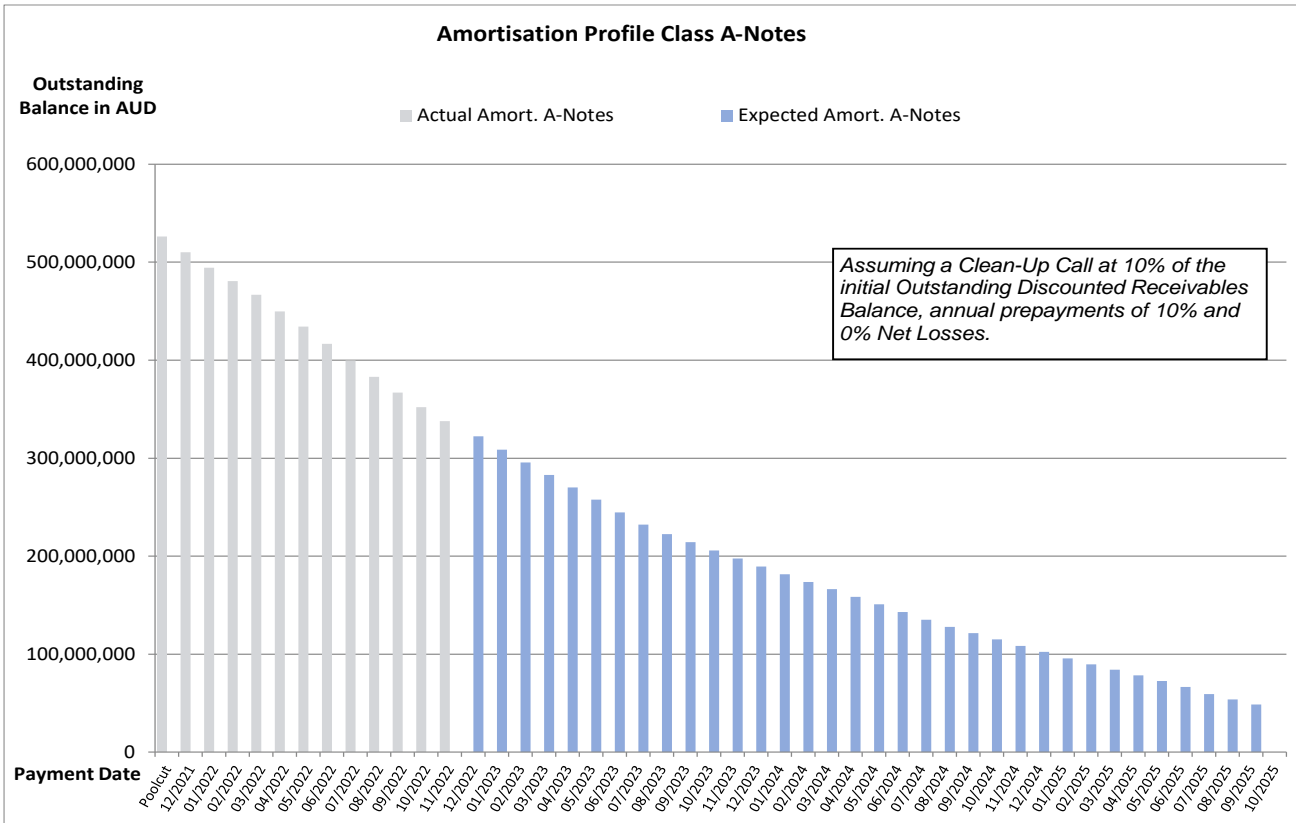
The latest end of month level of retention will be published on a monthly basis in the investor report.

### Amortisation Profile I

Note Class	Class A		Class B	
	At Closing: 1.85 yrs	Current: 1.49 yrs	At Closing: 2.84 yrs	Current: 1.79 yrs
WAL	Actual Note Balance	Forecasted Note Balance	Actual Note Balance	Forecasted Note Balance
Payment Date	Actual Note Balance	Forecasted Note Balance	Actual Note Balance	Forecasted Note Balance
Poolcut	526,200,000.00 AUD	- AUD	33,000,000.00 AUD	- AUD
12/2021	510,049,185.54 AUD	- AUD	33,000,000.00 AUD	- AUD
01/2022	494,276,866.74 AUD	- AUD	33,000,000.00 AUD	- AUD
02/2022	480,766,050.30 AUD	- AUD	33,000,000.00 AUD	- AUD
03/2022	466,604,640.18 AUD	- AUD	33,000,000.00 AUD	- AUD
04/2022	449,793,707.82 AUD	- AUD	33,000,000.00 AUD	- AUD
05/2022	434,204,927.58 AUD	- AUD	33,000,000.00 AUD	- AUD
06/2022	416,766,133.38 AUD	- AUD	33,000,000.00 AUD	- AUD
07/2022	399,553,605.18 AUD	- AUD	33,000,000.00 AUD	- AUD
08/2022	382,999,405.80 AUD	- AUD	33,000,000.00 AUD	- AUD
09/2022	367,050,704.76 AUD	- AUD	33,000,000.00 AUD	- AUD
10/2022	352,075,000.14 AUD	- AUD	33,000,000.00 AUD	- AUD
11/2022	337,754,730.24 AUD	- AUD	33,000,000.00 AUD	- AUD
12/2022	-	322,405,659.59 AUD	-	33,000,000.00 AUD
01/2023	-	308,674,707.43 AUD	-	33,000,000.00 AUD
02/2023	-	295,548,673.55 AUD	-	33,000,000.00 AUD
03/2023	-	282,859,111.81 AUD	-	33,000,000.00 AUD
04/2023	-	270,021,413.79 AUD	-	33,000,000.00 AUD
05/2023	-	257,549,720.95 AUD	-	33,000,000.00 AUD
06/2023	-	244,766,835.80 AUD	-	33,000,000.00 AUD
07/2023	-	232,259,549.09 AUD	-	33,000,000.00 AUD
08/2023	-	222,539,095.36 AUD	-	30,498,228.11 AUD
09/2023	-	214,171,889.05 AUD	-	27,177,069.59 AUD
10/2023	-	205,965,761.77 AUD	-	23,930,378.43 AUD
11/2023	-	197,702,327.10 AUD	-	21,373,224.55 AUD
12/2023	-	189,514,337.48 AUD	-	20,488,036.48 AUD
01/2024	-	181,633,537.31 AUD	-	19,636,058.08 AUD
02/2024	-	173,809,676.82 AUD	-	18,790,235.33 AUD
03/2024	-	166,258,793.02 AUD	-	17,973,923.57 AUD
04/2024	-	158,613,344.54 AUD	-	17,147,388.59 AUD
05/2024	-	151,056,427.08 AUD	-	16,330,424.55 AUD
06/2024	-	143,141,979.20 AUD	-	15,474,808.56 AUD
07/2024	-	135,042,013.08 AUD	-	14,599,136.55 AUD
08/2024	-	128,000,065.80 AUD	-	13,837,844.95 AUD
09/2024	-	121,358,746.01 AUD	-	13,119,864.43 AUD
10/2024	-	115,170,218.60 AUD	-	12,450,834.44 AUD
11/2024	-	108,589,545.27 AUD	-	11,739,410.30 AUD
12/2024	-	102,248,647.48 AUD	-	11,053,907.84 AUD
01/2025	-	95,622,765.09 AUD	-	10,337,596.22 AUD
02/2025	-	89,741,741.97 AUD	-	9,701,809.94 AUD
03/2025	-	84,109,364.83 AUD	-	9,092,904.30 AUD
04/2025	-	78,278,160.55 AUD	-	8,462,503.84 AUD
05/2025	-	72,679,901.45 AUD	-	7,857,286.64 AUD
06/2025	-	66,641,399.79 AUD	-	7,204,475.65 AUD
07/2025	-	59,412,840.40 AUD	-	6,423,009.77 AUD
08/2025	-	53,834,800.90 AUD	-	5,819,978.47 AUD
09/2025	-	48,792,707.29 AUD	-	5,274,887.27 AUD
10/2025	-	- AUD	-	- AUD

\*Based on the following assumptions: CPR of 10%, Net Losses of 0% and Clean Up Call at 10% of the original outstanding discounted receivables balance

**Amortisation Profile II**



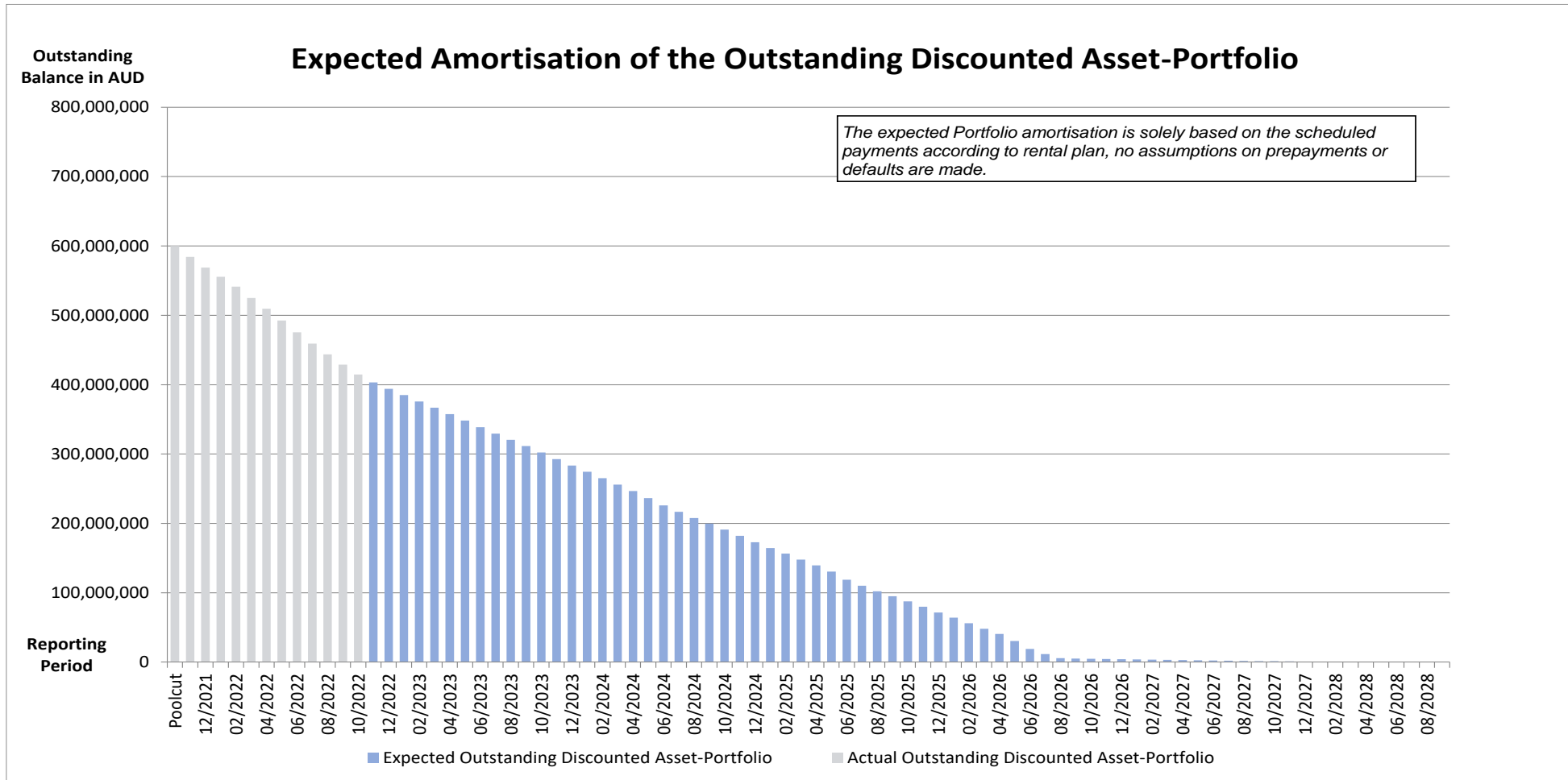
## Run Out Schedule I

End of Collection Period	Interest	Principal	Nominal Instalments
arrears	117,661.40 AUD	768,627.33 AUD	886,288.73 AUD
11/2022	1,891,924.04 AUD	10,448,019.74 AUD	12,339,943.78 AUD
12/2022	1,938,665.27 AUD	9,328,998.30 AUD	11,267,663.57 AUD
01/2023	1,903,203.54 AUD	9,022,923.65 AUD	10,926,127.19 AUD
02/2023	1,864,575.68 AUD	9,114,337.40 AUD	10,978,913.08 AUD
03/2023	1,821,466.85 AUD	9,170,518.34 AUD	10,991,985.19 AUD
04/2023	1,778,191.06 AUD	9,098,314.61 AUD	10,876,505.67 AUD
05/2023	1,734,739.23 AUD	9,424,279.71 AUD	11,159,018.94 AUD
06/2023	1,689,187.74 AUD	9,418,289.36 AUD	11,107,477.10 AUD
07/2023	1,643,835.47 AUD	9,320,547.04 AUD	10,964,382.51 AUD
08/2023	1,599,162.97 AUD	9,015,747.09 AUD	10,614,910.06 AUD
09/2023	1,555,652.06 AUD	9,070,045.37 AUD	10,625,697.43 AUD
10/2023	1,511,903.92 AUD	9,257,057.95 AUD	10,768,961.87 AUD
11/2023	1,466,886.47 AUD	9,534,400.69 AUD	11,001,287.16 AUD
12/2023	1,420,624.69 AUD	9,049,387.08 AUD	10,470,011.77 AUD
01/2024	1,376,604.52 AUD	9,228,377.70 AUD	10,604,982.22 AUD
02/2024	1,332,064.40 AUD	9,145,004.91 AUD	10,477,069.31 AUD
03/2024	1,287,934.69 AUD	9,328,277.82 AUD	10,616,212.51 AUD
04/2024	1,242,573.80 AUD	9,346,923.52 AUD	10,589,497.32 AUD
05/2024	1,197,383.02 AUD	9,952,500.39 AUD	11,149,883.41 AUD
06/2024	1,149,023.55 AUD	10,710,244.72 AUD	11,859,268.27 AUD
07/2024	1,097,063.33 AUD	9,217,347.36 AUD	10,314,410.69 AUD
08/2024	1,052,250.15 AUD	8,749,330.30 AUD	9,801,580.45 AUD
09/2024	1,009,688.78 AUD	8,118,739.03 AUD	9,128,427.81 AUD
10/2024	970,244.76 AUD	8,863,813.73 AUD	9,834,058.49 AUD
11/2024	927,155.64 AUD	8,855,348.77 AUD	9,782,504.41 AUD
12/2024	884,130.35 AUD	9,324,416.15 AUD	10,208,546.50 AUD
01/2025	838,771.19 AUD	8,197,065.21 AUD	9,035,836.40 AUD
02/2025	798,902.04 AUD	8,123,352.50 AUD	8,922,254.54 AUD
03/2025	759,396.33 AUD	8,525,746.58 AUD	9,285,142.91 AUD
04/2025	717,925.75 AUD	8,339,020.38 AUD	9,056,946.13 AUD
05/2025	677,391.03 AUD	9,089,163.13 AUD	9,766,554.16 AUD
06/2025	633,370.83 AUD	11,595,595.96 AUD	12,228,966.79 AUD
07/2025	576,995.27 AUD	8,704,547.53 AUD	9,281,542.80 AUD
08/2025	534,664.03 AUD	7,936,811.40 AUD	8,471,475.43 AUD
09/2025	496,082.70 AUD	7,348,159.63 AUD	7,844,242.33 AUD
10/2025	460,338.01 AUD	7,297,463.90 AUD	7,757,801.91 AUD
11/2025	425,251.22 AUD	7,651,009.39 AUD	8,076,260.61 AUD
12/2025	388,059.11 AUD	8,289,282.94 AUD	8,677,342.05 AUD
01/2026	347,870.63 AUD	7,574,952.35 AUD	7,922,822.98 AUD
02/2026	311,023.56 AUD	8,076,875.73 AUD	8,387,899.29 AUD
03/2026	271,749.52 AUD	7,856,181.80 AUD	8,127,931.32 AUD
04/2026	233,676.76 AUD	7,624,841.40 AUD	7,858,518.16 AUD
05/2026	196,589.73 AUD	10,040,011.53 AUD	10,236,601.26 AUD
06/2026	147,781.23 AUD	11,459,433.24 AUD	11,607,214.47 AUD
07/2026	92,100.65 AUD	7,332,547.46 AUD	7,424,648.11 AUD
08/2026	56,432.21 AUD	6,106,474.78 AUD	6,162,906.99 AUD
09/2026	26,731.81 AUD	344,513.84 AUD	371,245.65 AUD
10/2026	25,056.00 AUD	384,571.25 AUD	409,627.25 AUD
11/2026	23,188.62 AUD	325,121.08 AUD	348,309.70 AUD



12/2026	21,607.53 AUD	325,987.52 AUD	347,595.05 AUD
01/2027	20,028.49 AUD	314,169.37 AUD	334,197.86 AUD
02/2027	18,500.12 AUD	368,790.67 AUD	387,290.79 AUD
03/2027	16,738.04 AUD	361,489.88 AUD	378,227.92 AUD
04/2027	14,986.58 AUD	299,597.33 AUD	314,583.91 AUD
05/2027	13,529.05 AUD	310,197.34 AUD	323,726.39 AUD
06/2027	12,047.19 AUD	283,198.20 AUD	295,245.39 AUD
07/2027	10,669.48 AUD	269,546.62 AUD	280,216.10 AUD
08/2027	9,358.30 AUD	253,193.07 AUD	262,551.37 AUD
09/2027	8,126.62 AUD	240,121.12 AUD	248,247.74 AUD
10/2027	6,958.49 AUD	225,923.56 AUD	232,882.05 AUD
11/2027	5,859.53 AUD	207,867.07 AUD	213,726.60 AUD
12/2027	4,848.30 AUD	190,237.60 AUD	195,085.90 AUD
01/2028	3,922.76 AUD	172,815.27 AUD	176,738.03 AUD
02/2028	3,082.25 AUD	155,804.95 AUD	158,887.20 AUD
03/2028	2,324.24 AUD	138,773.23 AUD	141,097.47 AUD
04/2028	1,649.22 AUD	121,924.83 AUD	123,574.05 AUD
05/2028	1,056.04 AUD	96,072.42 AUD	97,128.46 AUD
06/2028	588.71 AUD	66,256.31 AUD	66,845.02 AUD
07/2028	266.43 AUD	39,864.97 AUD	40,131.40 AUD
08/2028	72.47 AUD	14,078.12 AUD	14,150.59 AUD
09/2028	4.02 AUD	631.31 AUD	635.33 AUD
10/2028	0.95 AUD	194.34 AUD	195.29 AUD
11/2028	- AUD	- AUD	- AUD
<b>Total</b>	<b>46,679,370.42 AUD</b>	<b>414,561,296.17 AUD</b>	<b>461,240,666.59 AUD</b>

**Run Out Schedule II**



**Outstanding Contracts I - Overview**

Total Portfolio as of Poolcut Date			Product Type			
Contract Status Development	Number of Contracts	Outstanding Discounted Receivables Balance	Chattel Mortgage		Consumer Loan	
			Number of Contracts	Outstanding Discounted Receivables Balance	Number of Contracts	Outstanding Discounted Receivables Balance
Normal	15,241	600,025,098.06 AUD	9,371	414,965,143.56 AUD	5,870	185,059,954.50 AUD
In Advance	-	- AUD	-	- AUD	-	- AUD
In Arrears	-	- AUD	-	- AUD	-	- AUD
Paid out/Matured	-	- AUD	-	- AUD	-	- AUD
Early Payout	-	- AUD	-	- AUD	-	- AUD
Gross Salvage	-	- AUD	-	- AUD	-	- AUD
Net Salvage	-	- AUD	-	- AUD	-	- AUD
<b>Total</b>	<b>15,241</b>	<b>600,025,098.06 AUD</b>	<b>9,371</b>	<b>414,965,143.56 AUD</b>	<b>5,870</b>	<b>185,059,954.50 AUD</b>

Total Portfolio as of Previous Month			Product Type			
Contract Status Development	Number of Contracts	Outstanding Discounted Receivables Balance	Chattel Mortgage		Consumer Loan	
			Number of Contracts	Outstanding Discounted Receivables Balance	Number of Contracts	Outstanding Discounted Receivables Balance
Normal	11,383	368,004,013.78 AUD	7,280	265,580,473.26 AUD	4,103	102,423,540.52 AUD
In Advance	764	26,987,192.92 AUD	395	15,811,099.70 AUD	369	11,176,093.22 AUD
In Arrears	1,038	33,489,529.28 AUD	571	20,241,007.44 AUD	467	13,248,521.84 AUD
Paid out/Matured	195	- AUD	122	- AUD	73	- AUD
Early Payout	1,850	- AUD	995	- AUD	855	- AUD
Gross Salvage	5	326,564.53 AUD	5	326,564.53 AUD	-	- AUD
Net Salvage	6	137,759.42 AUD	3	52,068.73 AUD	3	85,690.69 AUD
<b>Total</b>	<b>15,241</b>	<b>428,945,059.93 AUD</b>	<b>9,371</b>	<b>302,011,213.66 AUD</b>	<b>5,870</b>	<b>126,933,846.27 AUD</b>

Total Portfolio as of Current Reporting Period			Product Type			
Contract Status Development	Number of Contracts	Outstanding Discounted Receivables Balance	Chattel Mortgage		Consumer Loan	
			Number of Contracts	Outstanding Discounted Receivables Balance	Number of Contracts	Outstanding Discounted Receivables Balance
Normal	11,205	362,119,268.61 AUD	7,174	261,080,417.76 AUD	4,031	101,038,850.85 AUD
In Advance	862	22,908,950.60 AUD	441	12,871,309.94 AUD	421	10,037,640.66 AUD
In Arrears	924	29,150,917.91 AUD	523	18,581,493.39 AUD	401	10,569,424.52 AUD
Paid out/Matured	213	- AUD	137	- AUD	76	- AUD
Early Payout	2,024	- AUD	1,087	- AUD	937	- AUD
Gross Salvage	6	382,159.05 AUD	6	382,159.05 AUD	-	- AUD
Net Salvage	7	143,697.13 AUD	3	52,068.73 AUD	4	91,628.40 AUD
<b>Total</b>	<b>15,241</b>	<b>414,704,993.30 AUD</b>	<b>9,371</b>	<b>292,967,448.87 AUD</b>	<b>5,870</b>	<b>121,737,544.43 AUD</b>

**Outstanding Contracts I - Overview**

Total Portfolio as of Poolcut Date			Balloon				Type of Car			
Contract Status Development	Number of Contracts	Outstanding Discounted Receivables Balance	Balloon		No Balloon		New Vehicle		Used Vehicle	
			Number of Contracts	Outstanding Discounted Receivables Balance	Number of Contracts	Outstanding Discounted Receivables Balance	Number of Contracts	Outstanding Discounted Receivables Balance	Number of Contracts	Outstanding Discounted Receivables Balance
Normal	15,241	600,025,098.06 AUD	4,261	251,558,699.25 AUD	10,980	348,466,398.81 AUD	10,680	463,158,976.27 AUD	4,561	136,866,121.79 AUD
In Advance	-	- AUD	-	- AUD	-	- AUD	-	- AUD	-	- AUD
In Arrears	-	- AUD	-	- AUD	-	- AUD	-	- AUD	-	- AUD
Paid out/Matured	-	- AUD	-	- AUD	-	- AUD	-	- AUD	-	- AUD
Early Payout	-	- AUD	-	- AUD	-	- AUD	-	- AUD	-	- AUD
Gross Salvage	-	- AUD	-	- AUD	-	- AUD	-	- AUD	-	- AUD
Net Salvage	-	- AUD	-	- AUD	-	- AUD	-	- AUD	-	- AUD
<b>Total</b>	<b>15,241</b>	<b>600,025,098.06 AUD</b>	<b>4,261</b>	<b>251,558,699.25 AUD</b>	<b>10,980</b>	<b>348,466,398.81 AUD</b>	<b>10,680</b>	<b>463,158,976.27 AUD</b>	<b>4,561</b>	<b>136,866,121.79 AUD</b>

Total Portfolio as of Previous Month			Balloon				Type of Car			
Contract Status Development	Number of Contracts	Outstanding Discounted Receivables Balance	Balloon		No Balloon		New Vehicle		Used Vehicle	
			Number of Contracts	Outstanding Discounted Receivables Balance	Number of Contracts	Outstanding Discounted Receivables Balance	Number of Contracts	Outstanding Discounted Receivables Balance	Number of Contracts	Outstanding Discounted Receivables Balance
Normal	11,383	368,004,013.78 AUD	3,314	171,042,208.15 AUD	8,069	196,961,805.63 AUD	8,166	292,137,482.70 AUD	3,217	75,866,531.08 AUD
In Advance	764	26,987,192.92 AUD	178	9,471,937.71 AUD	586	17,515,255.21 AUD	522	20,320,823.46 AUD	242	6,666,369.46 AUD
In Arrears	1,038	33,489,529.28 AUD	237	11,498,335.76 AUD	801	21,991,193.52 AUD	710	25,096,017.98 AUD	328	8,393,511.30 AUD
Paid out/Matured	195	- AUD	21	- AUD	174	- AUD	107	- AUD	88	- AUD
Early Payout	1,850	- AUD	505	- AUD	1,345	- AUD	1,169	- AUD	681	- AUD
Gross Salvage	5	326,564.53 AUD	2	161,039.87 AUD	3	165,524.66 AUD	3	284,613.09 AUD	2	41,951.44 AUD
Net Salvage	6	137,759.42 AUD	4	130,237.25 AUD	2	7,522.17 AUD	3	104,010.20 AUD	3	33,749.22 AUD
<b>Total</b>	<b>15,241</b>	<b>428,945,059.93 AUD</b>	<b>4,261</b>	<b>192,303,758.74 AUD</b>	<b>10,980</b>	<b>236,641,301.19 AUD</b>	<b>10,680</b>	<b>337,942,947.43 AUD</b>	<b>4,561</b>	<b>91,002,112.50 AUD</b>

Total Portfolio as of Current Reporting Period			Balloon				Type of Car			
Contract Status Development	Number of Contracts	Outstanding Discounted Receivables Balance	Balloon		No Balloon		New Vehicle		Used Vehicle	
			Number of Contracts	Outstanding Discounted Receivables Balance	Number of Contracts	Outstanding Discounted Receivables Balance	Number of Contracts	Outstanding Discounted Receivables Balance	Number of Contracts	Outstanding Discounted Receivables Balance
Normal	11,205	362,119,268.61 AUD	3,293	169,650,520.36 AUD	7,912	192,468,748.25 AUD	8,082	288,714,924.09 AUD	3,123	73,404,344.52 AUD
In Advance	862	22,908,950.60 AUD	176	6,627,641.91 AUD	686	16,281,308.69 AUD	566	16,339,162.50 AUD	296	6,569,788.10 AUD
In Arrears	924	29,150,917.91 AUD	222	11,092,955.64 AUD	702	18,057,962.27 AUD	617	21,664,911.67 AUD	307	7,486,006.24 AUD
Paid out/Matured	213	- AUD	22	- AUD	191	- AUD	119	- AUD	94	- AUD
Early Payout	2,024	- AUD	541	- AUD	1,483	- AUD	1,288	- AUD	736	- AUD
Gross Salvage	6	382,159.05 AUD	2	160,491.50 AUD	4	221,667.55 AUD	4	344,437.67 AUD	2	37,721.38 AUD
Net Salvage	7	143,697.13 AUD	5	136,174.96 AUD	2	7,522.17 AUD	4	109,947.91 AUD	3	33,749.22 AUD
<b>Total</b>	<b>15,241</b>	<b>414,704,993.30 AUD</b>	<b>4,261</b>	<b>187,667,784.37 AUD</b>	<b>10,980</b>	<b>227,037,208.93 AUD</b>	<b>10,680</b>	<b>327,173,383.84 AUD</b>	<b>4,561</b>	<b>87,531,609.46 AUD</b>

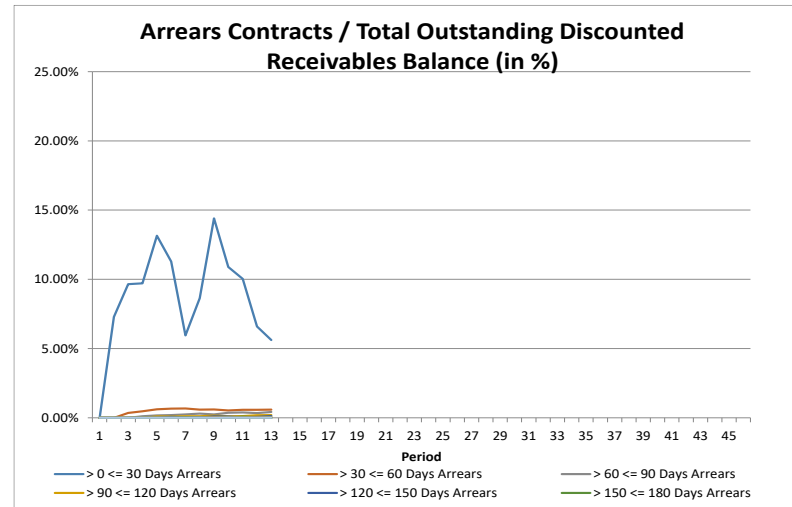
## Outstanding Contracts II - Collections

Collections This Reporting Month by Status	Change in Contract Statuses From Last Month	Number of Contracts This Month	Collections
Normal	(178)	11,205	9,678,806.55 AUD
In Advance	98	862	1,167,201.64 AUD
In Arrears	(114)	924	603,370.16 AUD
Paid out/Matured	18	213	25,533.56 AUD
Early Payout	174	2,024	4,735,294.10 AUD
Gross Salvage	1	6	6,975.79 AUD
Net Salvage	1	7	21,062.38 AUD
<b>Total</b>	<b>-</b>	<b>15,241</b>	<b>16,238,244.18 AUD</b>

Development of Pool within Reporting Period	Number of Active Contracts	Total Number of Contracts	Collection Variations	Outstanding Nominal Balance
<b>Beginning of Period</b>	<b>13,190</b>	<b>15,241</b>		<b>477,925,413.34 AUD</b>
<b>Scheduled Collections For Contracts Active This Period</b>			<b>10,913,168.83 AUD</b>	<b>10,913,168.83 AUD</b>
Collections Variations From Normal Contracts This Period			108,273.58 AUD	
Collection Variations From Contracts Paying Out Early This Period			4,672,715.34 AUD	
Collection Variations From Contracts Paying Out/Maturing This Period			9,294.61 AUD	
Collection Variations from Contracts in Advance This Period			776,604.12 AUD	
Collection Variations from Contract In Arrears This Period			(210,362.05 AUD)	
Collection Variations from Contracts Going Into Gross Salvage This Period			(2,325.93 AUD)	
Collection Variations from Contracts Going Into Net Salvage This Period			21,062.38 AUD	
Other Variations From Scheduled Collections This Period			- AUD	
<i>Instalment Collection Variations</i>			5,375,262.05 AUD	5,375,262.05 AUD
Contract Fees Collected This Period			59,896.59 AUD	
Interest Compensation Collections This Period			(110,083.29 AUD)	
<i>Non Instalment Collection Variations</i>			(50,186.70 AUD)	
<b>Actual Collections For Contracts Active This Period</b>			<b>16,238,244.18 AUD</b>	
Number of Contracts Paid Out Early This Month	174			
Number of Contracts Paid Out/Matured This Month	18			
Number of Contracts Into Net Salvage This Month	1			
Repurchased Contracts	-	-		
Less Recoveries After Net Salvage				(21,062.38 AUD)
Reduced Nominal Balance Due to Unpaid Rental At Net Salvage				5,937.71 AUD
Reduced Nominal Balance Due to Unpaid Rental At Early Payout				414,250.70 AUD
Reduced Nominal Balance Due to Other				(2,810.16 AUD)
<b>End of Period</b>	<b>12,997</b>	<b>15,241</b>		<b>461,240,666.59 AUD</b>

**Arrears Contracts**

Total Portfolio					Chattel Mortgage		Consumer Loan	
Days in Arrears	Number of Contracts	Number of Contracts (%)	Outstanding Discounted Receivables Balance	Outstanding Discounted Receivables Balance (%)	Number of Contracts	Outstanding Discounted Receivables Balance	Number of Contracts	Outstanding Discounted Receivables Balance
> 0 <= 30	760	5.85%	23,285,513.64 AUD	5.62%	403	13,874,404.44 AUD	357	9,411,109.20 AUD
> 30 <= 60	72	0.55%	2,458,656.71 AUD	0.59%	45	1,638,888.90 AUD	27	819,767.81 AUD
> 60 <= 90	50	0.38%	1,781,839.60 AUD	0.43%	39	1,589,051.50 AUD	11	192,788.10 AUD
> 90 <= 120	23	0.18%	812,105.02 AUD	0.20%	19	685,861.10 AUD	4	126,243.92 AUD
> 120 <= 150	12	0.09%	548,330.79 AUD	0.13%	12	548,330.79 AUD	-	- AUD
> 150 <= 180	6	0.05%	161,739.88 AUD	0.04%	5	151,593.08 AUD	1	10,146.80 AUD
> 180 <= 210	2	0.02%	129,715.62 AUD	0.03%	2	129,715.62 AUD	-	- AUD
> 210 <= 240	1	0.01%	171,152.99 AUD	0.04%	1	171,152.99 AUD	-	- AUD
> 240 <= 270	1	0.01%	108,807.90 AUD	0.03%	1	108,807.90 AUD	-	- AUD
> 270 <= 300	-	0.00%	- AUD	0.00%	-	- AUD	-	- AUD
> 300 <= 330	-	0.00%	- AUD	0.00%	-	- AUD	-	- AUD
> 330 <= 360	1	0.01%	9,368.69 AUD	0.00%	-	- AUD	1	9,368.69 AUD
> 360	-	0.00%	- AUD	0.00%	-	- AUD	-	- AUD
<b>Total</b>	<b>928</b>	<b>7.14%</b>	<b>29,467,230.84 AUD</b>	<b>7.11%</b>	<b>527</b>	<b>18,897,806.32 AUD</b>	<b>401</b>	<b>10,569,424.52 AUD</b>



**Arrears Contracts**

Total Portfolio					Balloon				Vehicle Status			
Days in Arrears	Number of Contracts	Number of Contracts (%)	Outstanding Discounted Receivables Balance	Outstanding Discounted Receivables Balance (%)	Balloon		No Balloon		New		Used	
					Number of Contracts	Outstanding Discounted Receivables Balance	Number of Contracts	Outstanding Discounted Receivables Balance	Number of Contracts	Outstanding Discounted Receivables Balance	Number of Contracts	Outstanding Discounted Receivables Balance
> 0 <= 30	760	5.85%	23,285,513.64 AUD	5.62%	169	8,062,274.22 AUD	591	15,223,239.42 AUD	509	17,225,755.10 AUD	251	6,059,758.54 AUD
> 30 <= 60	72	0.55%	2,458,656.71 AUD	0.59%	24	1,376,614.52 AUD	48	1,082,042.19 AUD	48	2,000,747.39 AUD	24	457,909.32 AUD
> 60 <= 90	50	0.38%	1,781,839.60 AUD	0.43%	17	846,602.09 AUD	33	935,237.51 AUD	34	1,330,004.23 AUD	16	451,835.37 AUD
> 90 <= 120	23	0.18%	812,105.02 AUD	0.20%	6	311,577.54 AUD	17	500,527.48 AUD	16	610,821.10 AUD	7	201,283.92 AUD
> 120 <= 150	12	0.09%	548,330.79 AUD	0.13%	3	282,985.56 AUD	9	265,345.23 AUD	6	381,987.29 AUD	6	166,343.50 AUD
> 150 <= 180	6	0.05%	161,739.88 AUD	0.04%	2	59,165.18 AUD	4	102,574.70 AUD	4	121,672.19 AUD	2	40,067.69 AUD
> 180 <= 210	2	0.02%	129,715.62 AUD	0.03%	-	- AUD	2	129,715.62 AUD	1	123,573.22 AUD	1	6,142.40 AUD
> 210 <= 240	1	0.01%	171,152.99 AUD	0.04%	1	171,152.99 AUD	-	- AUD	1	171,152.99 AUD	-	- AUD
> 240 <= 270	1	0.01%	108,807.90 AUD	0.03%	1	108,807.90 AUD	-	- AUD	-	- AUD	1	108,807.90 AUD
> 270 <= 300	-	0.00%	- AUD	0.00%	-	- AUD	-	- AUD	-	- AUD	-	- AUD
> 300 <= 330	-	0.00%	- AUD	0.00%	-	- AUD	-	- AUD	-	- AUD	-	- AUD
> 330 <= 360	1	0.01%	9,368.69 AUD	0.00%	-	- AUD	1	9,368.69 AUD	1	9,368.69 AUD	-	- AUD
> 360	-	0.00%	- AUD	0.00%	-	- AUD	-	- AUD	-	- AUD	-	- AUD
<b>Total</b>	<b>928</b>	<b>7.14%</b>	<b>29,467,230.84 AUD</b>	<b>7.11%</b>	<b>223</b>	<b>11,219,180.00 AUD</b>	<b>705</b>	<b>18,248,050.84 AUD</b>	<b>620</b>	<b>21,975,082.20 AUD</b>	<b>308</b>	<b>7,492,148.64 AUD</b>

**Net Salvage Loss**

Net Salvage Loss This Period			
Product Type	Type of Car	Number of Contracts	Net Salvage Loss
Chattel Mortgage	New	-	- AUD
	Used	-	- AUD
<b>Total Chattel Mortgage</b>		-	- AUD
Consumer Loan	New	1	5,937.71 AUD
	Used	-	- AUD
<b>Total Consumer Loan</b>		1	5,937.71 AUD
<b>Total</b>		1	5,937.71 AUD

<b>Cumulative Net Salvage Loss as of the End of the Monthly Period</b>	147,433.81 AUD
<b>Outstanding Discounted Receivables Balance at Poolcut</b>	600,025,098.06 AUD
<b>Cumulative Net Loss Ratio</b>	0.02457%

Monthly Period	Per Period		Cumulative Net Salvage Loss	
	Number of Contracts	Net Salvage Loss	Number of Contracts	Net Salvage Loss
11/2021	-	- AUD	-	- AUD
12/2021	-	- AUD	-	- AUD
01/2022	-	- AUD	-	- AUD
02/2022	-	- AUD	-	- AUD
03/2022	-	- AUD	-	- AUD
04/2022	-	- AUD	-	- AUD
05/2022	-	- AUD	-	- AUD
06/2022	-	- AUD	-	- AUD
07/2022	1	23,440.30 AUD	1	23,440.30 AUD
08/2022	4	57,706.41 AUD	5	81,146.71 AUD
09/2022	1	60,349.39 AUD	6	141,496.10 AUD
10/2022	1	5,937.71 AUD	7	147,433.81 AUD
11/2022	-	- AUD	-	- AUD
12/2022	-	- AUD	-	- AUD
01/2023	-	- AUD	-	- AUD
02/2023	-	- AUD	-	- AUD
03/2023	-	- AUD	-	- AUD
04/2023	-	- AUD	-	- AUD
05/2023	-	- AUD	-	- AUD
06/2023	-	- AUD	-	- AUD
07/2023	-	- AUD	-	- AUD
08/2023	-	- AUD	-	- AUD
09/2023	-	- AUD	-	- AUD
10/2023	-	- AUD	-	- AUD
11/2023	-	- AUD	-	- AUD
12/2023	-	- AUD	-	- AUD
01/2024	-	- AUD	-	- AUD
02/2024	-	- AUD	-	- AUD
03/2024	-	- AUD	-	- AUD
04/2024	-	- AUD	-	- AUD
05/2024	-	- AUD	-	- AUD
06/2024	-	- AUD	-	- AUD
07/2024	-	- AUD	-	- AUD
08/2024	-	- AUD	-	- AUD
09/2024	-	- AUD	-	- AUD
10/2024	-	- AUD	-	- AUD
11/2024	-	- AUD	-	- AUD
12/2024	-	- AUD	-	- AUD
01/2025	-	- AUD	-	- AUD
02/2025	-	- AUD	-	- AUD
03/2025	-	- AUD	-	- AUD
04/2025	-	- AUD	-	- AUD
05/2025	-	- AUD	-	- AUD
06/2025	-	- AUD	-	- AUD
07/2025	-	- AUD	-	- AUD
08/2025	-	- AUD	-	- AUD
09/2025	-	- AUD	-	- AUD
10/2025	-	- AUD	-	- AUD
11/2025	-	- AUD	-	- AUD
<b>Total</b>	<b>7</b>	<b>147,433.81 AUD</b>		



## Net Salvage After Recoveries

Net Salvaged Contracts						
Product Type	Vehicle Status	Number of Contracts	Gross Salvage Loss	Net Salvage Loss	Recoveries After Net Salvage	Net Salvage Loss After Recoveries
Chattel Mortgage	New	2	92,303.08 AUD	47,386.71 AUD	20,847.13 AUD	26,539.58 AUD
	Used	1	28,877.00 AUD	5,729.99 AUD	- AUD	5,729.99 AUD
<b>Total Chattel Mortgage</b>		<b>3</b>	<b>121,180.08 AUD</b>	<b>53,116.70 AUD</b>	<b>20,847.13 AUD</b>	<b>32,269.57 AUD</b>
Consumer Loan	New	2	66,539.05 AUD	66,287.10 AUD	(656.00) AUD	66,943.10 AUD
	Used	2	90,093.43 AUD	28,030.01 AUD	- AUD	28,030.01 AUD
<b>Total Consumer Loan</b>		<b>4</b>	<b>156,632.48 AUD</b>	<b>94,317.11 AUD</b>	<b>(656.00) AUD</b>	<b>94,973.11 AUD</b>
<b>Total</b>		<b>7</b>	<b>277,812.56 AUD</b>	<b>147,433.81 AUD</b>	<b>20,191.13 AUD</b>	<b>127,242.68 AUD</b>

## Prepayments

Period Number	Reporting Period	Unscheduled Payments	Opening Outstanding Discounted Receivables Balance	Periodic CPR	Annualised CPR
0	Poolcut	- AUD	- AUD		
1	11/2021	5,188,258.11 AUD	600,025,098.06 AUD	0.86%	10.03%
2	12/2021	4,579,685.92 AUD	584,284,031.03 AUD	0.78%	8.85%
3	01/2022	2,741,342.02 AUD	568,933,158.93 AUD	0.48%	5.53%
4	02/2022	3,337,851.56 AUD	555,556,298.45 AUD	0.60%	7.56%
5	03/2022	5,445,824.85 AUD	541,478,701.09 AUD	1.01%	11.22%
6	04/2022	4,593,099.08 AUD	524,992,591.30 AUD	0.87%	10.14%
7	05/2022	6,363,116.33 AUD	509,466,787.17 AUD	1.25%	13.76%
8	06/2022	6,297,060.40 AUD	492,432,848.37 AUD	1.28%	14.49%
9	07/2022	5,980,710.84 AUD	475,580,922.30 AUD	1.26%	13.84%
10	08/2022	5,404,312.88 AUD	459,209,842.01 AUD	1.18%	13.01%
11	09/2022	4,751,296.31 AUD	443,615,516.21 AUD	1.07%	12.28%
12	10/2022	4,429,370.71 AUD	428,807,300.51 AUD	1.03%	11.51%

The annualised Constant Prepayment Rate (CPR) of the underlying receivables is based upon the most recent periodic CPR. Periodic CPR is equal to the total unscheduled principal received in the most recent period divided by the start of period principal balance. This is then annualised as follows:

$$1 - ((1 - \text{Periodic CPR})^{\text{number of periods in a year}})$$

**Pool Data I**

**Down Payments**

Total Portfolio						Product Type			
Down Payment	Number of Contracts	Percentage of Contracts	Outstanding Discounted Receivables Balance	Percentage of Balance	Down Payment/ Purchase Price in %	Chattel Mortgage		Consumer Loan	
						Number of Contracts	Outstanding Discounted Receivables Balance	Number of Contracts	Outstanding Discounted Receivables Balance
No Down Payment	2,301	17.70%	75,995,421.55 AUD	18.33%	0.00%	1,574	57,846,913.35 AUD	727	18,148,508.20 AUD
0.01 - 10,000.00	6,435	49.51%	187,467,864.55 AUD	45.22%	10.88%	3,828	122,079,823.57 AUD	2,607	65,388,040.98 AUD
10,000.01 - 20,000.00	2,494	19.19%	78,381,337.94 AUD	18.91%	26.67%	1,600	56,631,695.03 AUD	894	21,749,642.91 AUD
20,000.01 - 30,000.00	919	7.07%	31,260,256.80 AUD	7.54%	35.89%	558	22,421,764.31 AUD	361	8,838,492.49 AUD
30,000.01 - 40,000.00	416	3.20%	14,824,644.00 AUD	3.58%	42.68%	267	10,959,799.04 AUD	149	3,864,844.96 AUD
40,000.01 - 50,000.00	192	1.48%	8,978,721.29 AUD	2.17%	44.22%	128	7,065,013.53 AUD	64	1,913,707.76 AUD
50,000.01 - 60,000.00	99	0.76%	5,456,783.03 AUD	1.32%	45.22%	74	4,750,763.48 AUD	25	706,019.55 AUD
60,000.01 - 70,000.00	52	0.40%	3,556,645.05 AUD	0.86%	46.38%	43	3,308,603.53 AUD	9	248,041.52 AUD
70,000.01 - 80,000.00	24	0.18%	1,356,093.23 AUD	0.33%	49.86%	17	1,076,341.48 AUD	7	279,751.75 AUD
80,000.01 - 90,000.00	16	0.12%	1,032,041.68 AUD	0.25%	54.10%	13	905,921.95 AUD	3	126,119.73 AUD
90,000.01 - 100,000.00	12	0.09%	1,268,494.02 AUD	0.31%	47.60%	8	1,055,953.54 AUD	4	212,540.48 AUD
100,000.01 - 110,000.00	8	0.06%	898,451.63 AUD	0.22%	45.16%	8	898,451.63 AUD	-	- AUD
110,000.01 - 120,000.00	5	0.04%	648,013.62 AUD	0.16%	48.81%	5	648,013.62 AUD	-	- AUD
120,000.01 - 130,000.00	5	0.04%	546,481.16 AUD	0.13%	51.70%	3	478,351.89 AUD	2	68,129.27 AUD
130,000.01 - 140,000.00	3	0.02%	483,308.90 AUD	0.12%	44.71%	3	483,308.90 AUD	-	- AUD
140,000.01 - 150,000.00	-	0.00%	- AUD	0.00%	0.00%	-	- AUD	-	- AUD
> 150,000.00	16	0.12%	2,406,737.72 AUD	0.58%	63.55%	15	2,304,661.29 AUD	1	102,076.43 AUD
<b>Total</b>	<b>12,997</b>	<b>100.00%</b>	<b>414,561,296.17 AUD</b>	<b>100.00%</b>	<b>19.52%</b>	<b>8,144</b>	<b>292,915,380.14 AUD</b>	<b>4,853</b>	<b>121,645,916.03 AUD</b>

Statistics Down Payments	
Minimum Down Payment	- AUD
Maximum Down Payment	630,000.00 AUD
Weighted Average Down Payment (Customers that made a Down Payment)	16,757.70 AUD
Weighted Average Down Payment	13,685.76 AUD

**Type of Payment**

Total Portfolio				
Type of Payment	Number of Contracts	Percentage of Contracts	Outstanding Discounted Receivables Balance	Percentage of Balance
Direct Debit	12,769	98.25%	407,298,612.52 AUD	98.25%
Other	228	1.75%	7,262,683.65 AUD	1.75%
<b>Total</b>	<b>12,997</b>	<b>100.00%</b>	<b>414,561,296.17 AUD</b>	<b>100.00%</b>

Product Type			
Chattel Mortgage		Consumer Loan	
Number of Contracts	Outstanding Discounted Receivables Balance	Number of Contracts	Outstanding Discounted Receivables Balance
7,998	287,520,150	4,771	119,778,462
146	5,395,230	82	1,867,454
<b>8,144</b>	<b>292,915,380.14 AUD</b>	<b>4,853</b>	<b>121,645,916.03 AUD</b>

**Pool Data I**

**Down Payments**

Total Portfolio						Balloon				Vehicle Status			
Down Payment	Number of Contracts	Percentage of Contracts	Outstanding Discounted Receivables Balance	Percentage of Balance	Down Payment/ Purchase Price in %	Balloon		No Balloon		New		Used	
						Number of Contracts	Outstanding Discounted Receivables Balance	Number of Contracts	Outstanding Discounted Receivables Balance	Number of Contracts	Outstanding Discounted Receivables Balance	Number of Contracts	Outstanding Discounted Receivables Balance
No Down Payment	2,301	17.70%	75,995,421.55 AUD	18.33%	0.00%	779	38,910,745.17 AUD	1,522	37,084,676.38 AUD	1,532	60,397,686.64 AUD	769	15,597,734.91 AUD
0.01 - 10,000.00	6,435	49.51%	187,467,864.55 AUD	45.22%	10.88%	1,687	75,354,861.21 AUD	4,748	112,113,003.34 AUD	4,378	142,374,924.26 AUD	2,057	45,092,940.29 AUD
10,000.01 - 20,000.00	2,494	19.19%	78,381,337.94 AUD	18.91%	26.67%	690	33,499,390.03 AUD	1,804	44,881,947.91 AUD	1,882	62,455,712.85 AUD	612	15,925,625.09 AUD
20,000.01 - 30,000.00	919	7.07%	31,260,256.80 AUD	7.54%	35.89%	258	15,314,624.53 AUD	661	15,945,632.27 AUD	752	26,019,467.83 AUD	167	5,240,788.97 AUD
30,000.01 - 40,000.00	416	3.20%	14,824,644.00 AUD	3.58%	42.68%	109	7,006,920.40 AUD	307	7,817,723.60 AUD	353	12,883,987.41 AUD	63	1,940,656.59 AUD
40,000.01 - 50,000.00	192	1.48%	8,978,721.29 AUD	2.17%	44.22%	64	5,385,597.32 AUD	128	3,593,123.97 AUD	158	7,258,781.49 AUD	34	1,719,939.80 AUD
50,000.01 - 60,000.00	99	0.76%	5,456,783.03 AUD	1.32%	45.22%	40	3,543,445.24 AUD	59	1,913,337.79 AUD	90	5,038,184.33 AUD	9	418,598.70 AUD
60,000.01 - 70,000.00	52	0.40%	3,556,645.05 AUD	0.86%	46.38%	23	2,347,836.88 AUD	29	1,208,808.17 AUD	45	3,022,256.39 AUD	7	534,388.66 AUD
70,000.01 - 80,000.00	24	0.18%	1,356,093.23 AUD	0.33%	49.86%	8	639,362.09 AUD	16	716,731.14 AUD	23	1,232,791.84 AUD	1	123,301.39 AUD
80,000.01 - 90,000.00	16	0.12%	1,032,041.68 AUD	0.25%	54.10%	5	602,518.31 AUD	11	429,523.37 AUD	15	965,743.20 AUD	1	66,298.48 AUD
90,000.01 - 100,000.00	12	0.09%	1,268,494.02 AUD	0.31%	47.60%	6	876,938.18 AUD	6	391,555.84 AUD	10	1,157,160.24 AUD	2	111,333.78 AUD
100,000.01 - 110,000.00	8	0.06%	898,451.63 AUD	0.22%	45.16%	2	400,261.50 AUD	6	498,190.13 AUD	6	623,919.16 AUD	2	274,532.47 AUD
110,000.01 - 120,000.00	5	0.04%	648,013.62 AUD	0.16%	48.81%	4	609,224.30 AUD	1	38,789.32 AUD	4	531,806.17 AUD	1	116,207.45 AUD
120,000.01 - 130,000.00	5	0.04%	546,481.16 AUD	0.13%	51.70%	3	478,351.89 AUD	2	68,129.27 AUD	4	362,561.56 AUD	1	183,919.60 AUD
130,000.01 - 140,000.00	3	0.02%	483,308.90 AUD	0.12%	44.71%	3	483,308.90 AUD	-	- AUD	3	483,308.90 AUD	-	- AUD
140,000.01 - 150,000.00	-	0.00%	- AUD	0.00%	0.00%	-	- AUD	-	- AUD	-	- AUD	-	- AUD
> 150,000.00	16	0.12%	2,406,737.72 AUD	0.58%	63.55%	12	2,078,223.46 AUD	4	328,514.26 AUD	14	2,255,143.66 AUD	2	151,594.06 AUD
<b>Total</b>	<b>12,997</b>	<b>100.00%</b>	<b>414,561,296.17 AUD</b>	<b>100.00%</b>	<b>19.52%</b>	<b>3,693</b>	<b>187,531,609.41 AUD</b>	<b>9,304</b>	<b>227,029,686.76 AUD</b>	<b>9,269</b>	<b>327,063,435.93 AUD</b>	<b>3,728</b>	<b>87,497,860.24 AUD</b>

Statistics Down Payments	
Minimum Down Payment	- AUD
Maximum Down Payment	630,000.00 AUD
Weighted Average Down Payment (Customers that made a Down Payment)	16,757.70 AUD
Weighted Average Down Payment	13,685.76 AUD

**Type of Payment**

Total Portfolio				
Type of Payment	Number of Contracts	Percentage of Contracts	Outstanding Discounted Receivables Balance	Percentage of Balance
Direct Debit	12,769	98.25%	407,298,612.52 AUD	98.25%
Other	228	1.75%	7,262,683.65 AUD	1.75%
<b>Total</b>	<b>12,997</b>	<b>100.00%</b>	<b>414,561,296.17 AUD</b>	<b>100.00%</b>

Balloon				Vehicle Status			
Balloon		No Balloon		New		Used	
Number of Contracts	Outstanding Discounted Receivables Balance	Number of Contracts	Outstanding Discounted Receivables Balance	Number of Contracts	Outstanding Discounted Receivables Balance	Number of Contracts	Outstanding Discounted Receivables Balance
3,627	183,856,963	9,142	223,441,650	9,112	321,383,895	3,657	85,914,718
66	3,674,647	162	3,588,037	157	5,679,541	71	1,583,142
<b>3,693</b>	<b>187,531,609.41 AUD</b>	<b>9,304</b>	<b>227,029,686.76 AUD</b>	<b>9,269</b>	<b>327,063,435.93 AUD</b>	<b>3,728</b>	<b>87,497,860.24 AUD</b>

## Pool Data II

### Distribution of Contracts and Vehicles per Borrower

Number of Contracts Per Borrower	Number of Customers	Percentage of Customers	Number of Contracts	Percentage of Contracts	Outstanding Discounted Receivables Balance	Percentage of Balance
1	15,362	99.14%	12,786	98.16%	494,497,328.65 AUD	98.29%
2	127	0.82%	222	1.70%	8,228,138.75 AUD	1.64%
3	6	0.04%	18	0.14%	364,345.06 AUD	0.07%
4	-	0.00%	-	0.00%	- AUD	0.00%
5	-	0.00%	-	0.00%	- AUD	0.00%
6 - 10	-	0.00%	-	0.00%	- AUD	0.00%
> 10	-	0.00%	-	0.00%	- AUD	0.00%
<b>Total</b>	<b>15,495</b>	<b>100.00%</b>	<b>13,026</b>	<b>100.00%</b>	<b>503,089,812.46 AUD</b>	<b>100.00%</b>

### Top 20 Borrower

Ranking	Outstanding Discounted Receivables Balance	Percentage of Overall Balance	Number of Contracts
1	602,207.80 AUD	0.14526 %	1
2	375,864.68 AUD	0.09067 %	1
3	375,864.68 AUD	0.09067 %	1
4	366,510.15 AUD	0.08841 %	1
5	366,510.15 AUD	0.08841 %	1
6	355,160.34 AUD	0.08567 %	1
7	350,576.78 AUD	0.08457 %	1
8	332,873.44 AUD	0.08030 %	1
9	323,467.48 AUD	0.07803 %	1
10	323,467.48 AUD	0.07803 %	1
11	307,636.74 AUD	0.07421 %	1
12	305,154.30 AUD	0.07361 %	1
13	271,336.57 AUD	0.06545 %	1
14	260,818.40 AUD	0.06291 %	1
15	258,658.39 AUD	0.06239 %	1
16	256,136.00 AUD	0.06178 %	1
17	254,921.35 AUD	0.06149 %	1
18	250,668.19 AUD	0.06047 %	1
19	248,443.46 AUD	0.05993 %	1
20	240,125.25 AUD	0.05792 %	1
	<b>6,426,401.63 AUD</b>	<b>1.55017 %</b>	<b>20</b>

**Pool Data III**

**Distribution by Outstanding Discounted Receivables Balance**

Total Portfolio					Product Type			
Distribution by Outstanding Discounted Receivables Balance	Number of Contracts	Percentage of Contracts	Outstanding Discounted Receivables Balance	Percentage of Balance	Chattel Mortgage		Consumer Loan	
					Number of Contracts	Outstanding Discounted Receivables Balance	Number of Contracts	Outstanding Discounted Receivables Balance
0.00 - 10,000.00	1,302	10.02%	7,411,339.05 AUD	1.79%	612	3,502,938.33 AUD	690	3,908,400.72 AUD
10,000.01 - 20,000.00	3,038	23.37%	46,951,586.31 AUD	11.33%	1,579	24,530,566.97 AUD	1,459	22,421,019.34 AUD
20,000.01 - 30,000.00	3,173	24.41%	78,673,240.95 AUD	18.98%	1,904	47,415,991.94 AUD	1,269	31,257,249.01 AUD
30,000.01 - 40,000.00	2,324	17.88%	80,500,070.95 AUD	19.42%	1,565	54,107,179.92 AUD	759	26,392,891.03 AUD
40,000.01 - 50,000.00	1,331	10.24%	59,213,584.68 AUD	14.28%	988	44,029,342.25 AUD	343	15,184,242.43 AUD
50,000.01 - 60,000.00	655	5.04%	35,684,087.69 AUD	8.61%	480	26,178,762.45 AUD	175	9,505,325.24 AUD
60,000.01 - 70,000.00	365	2.81%	23,494,342.87 AUD	5.67%	308	19,848,812.42 AUD	57	3,645,530.45 AUD
70,000.01 - 80,000.00	243	1.87%	18,169,511.45 AUD	4.38%	209	15,653,728.62 AUD	34	2,515,782.83 AUD
80,000.01 - 90,000.00	167	1.28%	14,129,583.63 AUD	3.41%	142	12,016,678.86 AUD	25	2,112,904.77 AUD
90,000.01 - 100,000.00	118	0.91%	11,152,322.91 AUD	2.69%	99	9,351,020.61 AUD	19	1,801,302.30 AUD
100,000.01 - 110,000.00	81	0.62%	8,484,675.27 AUD	2.05%	70	7,352,604.61 AUD	11	1,132,070.66 AUD
110,000.01 - 120,000.00	55	0.42%	6,301,655.36 AUD	1.52%	50	5,723,790.42 AUD	5	577,864.94 AUD
120,000.01 - 130,000.00	40	0.31%	4,972,758.51 AUD	1.20%	37	4,595,643.47 AUD	3	377,115.04 AUD
130,000.01 - 140,000.00	22	0.17%	2,978,965.12 AUD	0.72%	22	2,978,965.12 AUD	-	- AUD
140,000.01 - 150,000.00	16	0.12%	2,319,464.14 AUD	0.56%	16	2,319,464.14 AUD	-	- AUD
> 150,000.00	67	0.52%	14,124,107.28 AUD	3.41%	63	13,309,890.01 AUD	4	814,217.27 AUD
<b>Total</b>	<b>12,997</b>	<b>100.00%</b>	<b>414,561,296.17 AUD</b>	<b>100.00%</b>	<b>8,144</b>	<b>292,915,380.14 AUD</b>	<b>4,853</b>	<b>121,645,916.03 AUD</b>

Statistics Outstanding Discounted Receivables Balance	
Minimum Outstanding Discounted Receivables Balance	- AUD
Maximum Outstanding Discounted Receivables Balance	602,207.80 AUD
Average Outstanding Discounted Receivables Balance	31,896.69 AUD

**Distribution by Original Balance**

Total Portfolio					Product Type			
Distribution by Original Balance	Number of Contracts	Percentage of Contracts	Outstanding Discounted Receivables Balance	Percentage of Balance	Chattel Mortgage		Consumer Loan	
					Number of Contracts	Outstanding Discounted Receivables Balance	Number of Contracts	Outstanding Discounted Receivables Balance
0.00 - 10,000.00	88	0.68%	321,299.83 AUD	0.08%	32	110,535.53 AUD	56	210,764.30 AUD
10,000.01 - 20,000.00	1,253	9.64%	11,571,240.36 AUD	2.79%	555	5,157,058.45 AUD	698	6,414,181.91 AUD
20,000.01 - 30,000.00	2,633	20.26%	42,261,142.94 AUD	10.19%	1,345	21,745,660.41 AUD	1,288	20,515,482.53 AUD
30,000.01 - 40,000.00	2,675	20.58%	61,834,153.13 AUD	14.92%	1,537	35,617,488.75 AUD	1,138	26,216,664.38 AUD
40,000.01 - 50,000.00	2,044	15.73%	62,995,283.28 AUD	15.20%	1,353	41,519,172.58 AUD	691	21,476,110.70 AUD
50,000.01 - 60,000.00	1,576	12.13%	58,607,741.61 AUD	14.14%	1,135	42,125,682.01 AUD	441	16,482,059.60 AUD
60,000.01 - 70,000.00	1,031	7.93%	45,777,511.49 AUD	11.04%	749	33,098,633.26 AUD	282	12,678,878.23 AUD
70,000.01 - 80,000.00	520	4.00%	27,381,525.80 AUD	6.60%	413	21,867,172.95 AUD	107	5,514,352.85 AUD
80,000.01 - 90,000.00	288	2.22%	17,971,870.84 AUD	4.34%	241	15,115,739.50 AUD	47	2,856,131.34 AUD
90,000.01 - 100,000.00	198	1.52%	13,438,008.04 AUD	3.24%	174	11,758,713.79 AUD	24	1,679,294.25 AUD
100,000.01 - 110,000.00	218	1.68%	16,811,250.87 AUD	4.06%	189	14,612,191.92 AUD	29	2,199,058.95 AUD
110,000.01 - 120,000.00	100	0.77%	8,335,180.80 AUD	2.01%	89	7,373,856.77 AUD	11	961,324.03 AUD
120,000.01 - 130,000.00	91	0.70%	8,615,972.70 AUD	2.08%	70	6,707,241.37 AUD	21	1,908,731.33 AUD
130,000.01 - 140,000.00	69	0.53%	7,231,918.75 AUD	1.74%	62	6,488,155.90 AUD	7	743,762.85 AUD
140,000.01 - 150,000.00	50	0.38%	5,533,386.36 AUD	1.33%	47	5,198,189.40 AUD	3	335,196.96 AUD
> 150,000.00	163	1.25%	25,873,809.37 AUD	6.24%	153	24,419,887.55 AUD	10	1,453,921.82 AUD
<b>Total</b>	<b>12,997</b>	<b>100.00%</b>	<b>414,561,296.17 AUD</b>	<b>100.00%</b>	<b>8,144</b>	<b>292,915,380.14 AUD</b>	<b>4,853</b>	<b>121,645,916.03 AUD</b>

Statistics	
Minimum Original Balance	5,392.89 AUD
Maximum Original Balance	670,450.00 AUD
Weighted Average Original Receivables Balance (by ODRB)	70,132.55 AUD

**Pool Data III**

**Distribution by Outstanding Discounted Receivables Balance**

Total Portfolio					Balloon				Vehicle Status			
Distribution by Outstanding Discounted Receivables Balance	Number of Contracts	Percentage of Contracts	Outstanding Discounted Receivables Balance	Percentage of Balance	Balloon		No Balloon		New		Used	
					Number of Contracts	Outstanding Discounted Receivables Balance	Number of Contracts	Outstanding Discounted Receivables Balance	Number of Contracts	Outstanding Discounted Receivables Balance	Number of Contracts	Outstanding Discounted Receivables Balance
0.00 - 10,000.00	1,302	10.02%	7,411,339.05 AUD	1.79%	34	193,117.46 AUD	1,268	7,218,221.59 AUD	580	3,208,559.90 AUD	722	4,202,779.15 AUD
10,000.01 - 20,000.00	3,038	23.37%	46,951,586.31 AUD	11.33%	219	3,508,095.72 AUD	2,819	43,443,490.59 AUD	1,817	28,707,572.08 AUD	1,221	18,244,014.23 AUD
20,000.01 - 30,000.00	3,173	24.41%	78,673,240.95 AUD	18.98%	594	15,233,055.27 AUD	2,579	63,440,185.68 AUD	2,315	57,589,071.12 AUD	858	21,084,169.83 AUD
30,000.01 - 40,000.00	2,324	17.88%	80,500,070.95 AUD	19.42%	827	28,998,043.23 AUD	1,497	51,502,027.72 AUD	1,867	64,771,987.98 AUD	457	15,728,082.97 AUD
40,000.01 - 50,000.00	1,331	10.24%	59,213,584.68 AUD	14.28%	684	30,643,193.39 AUD	647	28,570,391.29 AUD	1,111	49,482,082.33 AUD	220	9,731,502.35 AUD
50,000.01 - 60,000.00	655	5.04%	35,684,087.69 AUD	8.61%	403	21,975,143.50 AUD	252	13,708,944.19 AUD	559	30,423,142.88 AUD	96	5,260,944.81 AUD
60,000.01 - 70,000.00	365	2.81%	23,494,342.87 AUD	5.67%	262	16,883,559.16 AUD	103	6,610,783.71 AUD	297	19,073,491.58 AUD	68	4,420,851.29 AUD
70,000.01 - 80,000.00	243	1.87%	18,169,511.45 AUD	4.38%	182	13,603,824.25 AUD	61	4,565,687.20 AUD	214	16,032,484.70 AUD	29	2,137,026.75 AUD
80,000.01 - 90,000.00	167	1.28%	14,129,583.63 AUD	3.41%	134	11,320,732.81 AUD	33	2,808,850.82 AUD	148	12,550,872.27 AUD	19	1,578,711.36 AUD
90,000.01 - 100,000.00	118	0.91%	11,152,322.91 AUD	2.69%	105	9,933,899.98 AUD	13	1,218,422.93 AUD	110	10,393,598.66 AUD	8	758,724.25 AUD
100,000.01 - 110,000.00	81	0.62%	8,484,675.27 AUD	2.05%	71	7,445,492.68 AUD	10	1,039,182.59 AUD	75	7,842,885.90 AUD	6	641,789.37 AUD
110,000.01 - 120,000.00	55	0.42%	6,301,655.36 AUD	1.52%	50	5,724,767.13 AUD	5	576,888.23 AUD	51	5,840,208.58 AUD	4	461,446.78 AUD
120,000.01 - 130,000.00	40	0.31%	4,972,758.51 AUD	1.20%	34	4,221,342.95 AUD	6	751,415.56 AUD	37	4,607,006.71 AUD	3	365,751.80 AUD
130,000.01 - 140,000.00	22	0.17%	2,978,965.12 AUD	0.72%	17	2,296,885.63 AUD	5	682,079.49 AUD	16	2,165,903.91 AUD	6	813,061.21 AUD
140,000.01 - 150,000.00	16	0.12%	2,319,464.14 AUD	0.56%	13	1,884,853.89 AUD	3	434,610.25 AUD	15	2,176,976.28 AUD	1	142,487.86 AUD
> 150,000.00	67	0.52%	14,124,107.28 AUD	3.41%	64	13,665,602.36 AUD	3	458,504.92 AUD	57	12,197,591.05 AUD	10	1,926,516.23 AUD
<b>Total</b>	<b>12,997</b>	<b>100.00%</b>	<b>414,561,296.17 AUD</b>	<b>100.00%</b>	<b>3,693</b>	<b>187,531,609.41 AUD</b>	<b>9,304</b>	<b>227,029,686.76 AUD</b>	<b>9,269</b>	<b>327,063,435.93 AUD</b>	<b>3,728</b>	<b>87,497,860.24 AUD</b>

Statistics Outstanding Discounted Receivables Balance	
Minimum Outstanding Discounted Receivables Balance	- AUD
Maximum Outstanding Discounted Receivables Balance	602,207.80 AUD
Average Outstanding Discounted Receivables Balance	31,896.69 AUD

**Distribution by Original Balance**

Total Portfolio					Balloon				Vehicle Status			
Distribution by Original Balance	Number of Contracts	Percentage of Contracts	Outstanding Discounted Receivables Balance	Percentage of Balance	Balloon		No Balloon		New		Used	
					Number of Contracts	Outstanding Discounted Receivables Balance	Number of Contracts	Outstanding Discounted Receivables Balance	Number of Contracts	Outstanding Discounted Receivables Balance	Number of Contracts	Outstanding Discounted Receivables Balance
0.00 - 10,000.00	88	0.68%	321,299.83 AUD	0.08%	-	- AUD	88	321,299.83 AUD	14	57,194.50 AUD	74	264,105.33 AUD
10,000.01 - 20,000.00	1,253	9.64%	11,571,240.36 AUD	2.79%	40	499,963.68 AUD	1,213	11,071,276.68 AUD	414	3,977,105.39 AUD	839	7,594,134.97 AUD
20,000.01 - 30,000.00	2,633	20.26%	42,261,142.94 AUD	10.19%	222	4,217,690.17 AUD	2,411	38,043,452.77 AUD	1,598	25,635,882.06 AUD	1,035	16,625,260.88 AUD
30,000.01 - 40,000.00	2,675	20.58%	61,834,153.13 AUD	14.92%	521	13,772,780.91 AUD	2,154	48,061,372.22 AUD	1,911	44,014,220.98 AUD	764	17,819,932.15 AUD
40,000.01 - 50,000.00	2,044	15.73%	62,995,283.28 AUD	15.20%	648	21,859,074.71 AUD	1,396	41,136,208.57 AUD	1,602	48,855,509.49 AUD	442	14,139,773.79 AUD
50,000.01 - 60,000.00	1,576	12.13%	58,607,741.61 AUD	14.14%	639	26,135,686.40 AUD	937	32,472,055.21 AUD	1,347	49,723,194.70 AUD	229	8,884,546.91 AUD
60,000.01 - 70,000.00	1,031	7.93%	45,777,511.49 AUD	11.04%	455	22,049,460.79 AUD	576	23,728,050.70 AUD	899	39,687,624.79 AUD	132	6,089,886.70 AUD
70,000.01 - 80,000.00	520	4.00%	27,381,525.80 AUD	6.60%	297	16,847,858.39 AUD	223	10,533,667.41 AUD	450	23,437,924.31 AUD	70	3,943,601.49 AUD
80,000.01 - 90,000.00	288	2.22%	17,971,870.84 AUD	4.34%	196	12,812,074.04 AUD	92	5,159,796.80 AUD	234	14,516,046.04 AUD	54	3,455,824.80 AUD
90,000.01 - 100,000.00	198	1.52%	13,438,008.04 AUD	3.24%	140	10,119,666.08 AUD	58	3,318,341.96 AUD	175	11,930,670.77 AUD	23	1,507,337.27 AUD
100,000.01 - 110,000.00	218	1.68%	16,811,250.87 AUD	4.06%	153	12,252,215.61 AUD	65	4,559,035.26 AUD	198	15,204,264.98 AUD	20	1,606,985.89 AUD
110,000.01 - 120,000.00	100	0.77%	8,335,180.80 AUD	2.01%	78	6,742,179.81 AUD	22	1,593,000.99 AUD	88	7,432,590.34 AUD	12	902,590.46 AUD
120,000.01 - 130,000.00	91	0.70%	8,615,972.70 AUD	2.08%	69	6,718,686.20 AUD	22	1,897,286.50 AUD	84	7,964,246.32 AUD	7	651,726.38 AUD
130,000.01 - 140,000.00	69	0.53%	7,231,918.75 AUD	1.74%	59	6,345,567.44 AUD	10	886,351.31 AUD	64	6,644,763.30 AUD	5	587,155.45 AUD
140,000.01 - 150,000.00	50	0.38%	5,533,386.36 AUD	1.33%	44	4,937,814.10 AUD	6	595,572.26 AUD	48	5,295,198.61 AUD	2	238,187.75 AUD
> 150,000.00	163	1.25%	25,873,809.37 AUD	6.24%	132	22,220,891.08 AUD	31	3,652,918.29 AUD	143	22,686,999.35 AUD	20	3,186,810.02 AUD
<b>Total</b>	<b>12,997</b>	<b>100.00%</b>	<b>414,561,296.17 AUD</b>	<b>100.00%</b>	<b>3,693</b>	<b>187,531,609.41 AUD</b>	<b>9,304</b>	<b>227,029,686.76 AUD</b>	<b>9,269</b>	<b>327,063,435.93 AUD</b>	<b>3,728</b>	<b>87,497,860.24 AUD</b>

Statistics	
Minimum Original Balance	5,392.89 AUD
Maximum Original Balance	670,450.00 AUD
Weighted Average Original Receivables Balance (by ODRB)	70,132.55 AUD

Pool Data IV

Interest Rate paid by the Receivable Debtor

Total Portfolio					Product Type			
Interest Rate paid by the Receivable Debtor	Number of Contracts	Percentage of Contracts	Outstanding Discounted Receivables Balance	Percentage of Balance	Chattel Mortgage		Consumer Loan	
					Number of Contracts	Outstanding Discounted Receivables Balance	Number of Contracts	Outstanding Discounted Receivables Balance
0.00%	-	0.00%	- AUD	0.00%	-	- AUD	-	- AUD
0.01% - 1.00%	-	0.00%	- AUD	0.00%	-	- AUD	-	- AUD
1.01% - 2.00%	570	4.39%	16,857,612.19 AUD	4.07%	351	11,522,452.20 AUD	219	5,335,159.99 AUD
2.01% - 3.00%	838	6.45%	36,129,999.04 AUD	8.72%	565	29,233,312.71 AUD	273	6,896,686.33 AUD
3.01% - 4.00%	1,169	8.99%	48,455,371.74 AUD	11.69%	1,160	48,180,202.19 AUD	9	275,169.55 AUD
4.01% - 5.00%	1,373	10.56%	51,618,719.18 AUD	12.45%	1,096	43,280,397.65 AUD	277	8,338,321.53 AUD
5.01% - 6.00%	1,863	14.33%	63,387,063.97 AUD	15.29%	1,186	44,612,879.79 AUD	677	18,774,184.18 AUD
6.01% - 7.00%	2,389	18.38%	69,902,114.52 AUD	16.86%	1,046	36,291,672.13 AUD	1,343	33,610,442.39 AUD
7.01% - 8.00%	1,911	14.70%	51,145,112.51 AUD	12.34%	683	22,336,298.49 AUD	1,228	28,808,814.02 AUD
8.01% - 9.00%	1,805	13.89%	50,914,207.77 AUD	12.28%	1,243	37,160,374.75 AUD	562	13,753,833.02 AUD
9.01% - 10.00%	832	6.40%	21,516,364.11 AUD	5.19%	661	17,331,134.71 AUD	171	4,185,229.40 AUD
10.01% - 11.00%	187	1.44%	3,895,415.79 AUD	0.94%	136	2,793,478.22 AUD	51	1,101,937.57 AUD
11.01% - 12.00%	28	0.22%	473,577.17 AUD	0.11%	11	135,296.94 AUD	17	338,280.23 AUD
12.01% - 13.00%	9	0.07%	66,372.94 AUD	0.02%	1	1,133.74 AUD	8	65,239.20 AUD
13.01% - 14.00%	10	0.08%	131,556.97 AUD	0.03%	2	31,655.27 AUD	8	99,901.70 AUD
14.01% - 15.00%	10	0.08%	65,337.76 AUD	0.02%	1	3,556.17 AUD	9	61,781.59 AUD
15.01% - 16.00%	3	0.02%	2,470.51 AUD	0.00%	2	1,535.18 AUD	1	935.33 AUD
> 16.00%	-	0.00%	- AUD	0.00%	-	- AUD	-	- AUD
<b>Total</b>	<b>12,997</b>	<b>100.00%</b>	<b>414,561,296.17 AUD</b>	<b>100.00%</b>	<b>8,144</b>	<b>292,915,380.14 AUD</b>	<b>4,853</b>	<b>121,645,916.03 AUD</b>

Statistics Interest Rate	
Minimum Interest Rate Debtor	1.40%
Maximum Interest Rate Debtor	15.24%
Weighted Average Interest Rate Debtor	5.93%



Pool Data IV

Interest Rate paid by the Receivable Debtor

Total Portfolio					Balloon				Vehicle Status			
Interest Rate paid by the Receivable Debtor	Number of Contracts	Percentage of Contracts	Outstanding Discounted Receivables Balance	Percentage of Balance	Balloon		No Balloon		New		Used	
					Number of Contracts	Outstanding Discounted Receivables Balance	Number of Contracts	Outstanding Discounted Receivables Balance	Number of Contracts	Outstanding Discounted Receivables Balance	Number of Contracts	Outstanding Discounted Receivables Balance
0.00%	-	0.00%	- AUD	0.00%	-	- AUD	-	- AUD	-	- AUD	-	- AUD
0.01% - 1.00%	-	0.00%	- AUD	0.00%	-	- AUD	-	- AUD	-	- AUD	-	- AUD
1.01% - 2.00%	570	4.39%	16,857,612.19 AUD	4.07%	183	7,617,791.77 AUD	387	9,239,820.42 AUD	570	16,857,612.19 AUD	-	- AUD
2.01% - 3.00%	838	6.45%	36,129,999.04 AUD	8.72%	367	22,574,262.01 AUD	471	13,555,737.03 AUD	838	36,129,999.04 AUD	-	- AUD
3.01% - 4.00%	1,169	8.99%	48,455,371.74 AUD	11.69%	523	30,563,493.56 AUD	646	17,891,878.18 AUD	1,071	45,395,070.02 AUD	98	3,060,301.72 AUD
4.01% - 5.00%	1,373	10.56%	51,618,719.18 AUD	12.45%	566	29,564,714.85 AUD	807	22,054,004.33 AUD	1,108	43,306,654.12 AUD	265	8,312,065.06 AUD
5.01% - 6.00%	1,863	14.33%	63,387,063.97 AUD	15.29%	635	32,663,657.01 AUD	1,228	30,723,406.96 AUD	1,431	52,199,815.96 AUD	432	11,187,248.01 AUD
6.01% - 7.00%	2,389	18.38%	69,902,114.52 AUD	16.86%	608	28,584,601.40 AUD	1,781	41,317,513.12 AUD	1,702	53,719,846.73 AUD	687	16,182,267.79 AUD
7.01% - 8.00%	1,911	14.70%	51,145,112.51 AUD	12.34%	373	16,675,599.53 AUD	1,538	34,469,512.98 AUD	1,056	32,488,615.64 AUD	855	18,656,496.87 AUD
8.01% - 9.00%	1,805	13.89%	50,914,207.77 AUD	12.28%	313	14,234,624.76 AUD	1,492	36,679,583.01 AUD	1,123	36,242,746.70 AUD	682	14,671,461.07 AUD
9.01% - 10.00%	832	6.40%	21,516,364.11 AUD	5.19%	110	4,622,199.31 AUD	722	16,894,164.80 AUD	315	9,815,242.64 AUD	517	11,701,121.47 AUD
10.01% - 11.00%	187	1.44%	3,895,415.79 AUD	0.94%	12	358,476.21 AUD	175	3,536,939.58 AUD	30	666,318.59 AUD	157	3,229,097.20 AUD
11.01% - 12.00%	28	0.22%	473,577.17 AUD	0.11%	1	30,594.17 AUD	27	442,983.00 AUD	10	127,145.43 AUD	18	346,431.74 AUD
12.01% - 13.00%	9	0.07%	66,372.94 AUD	0.02%	-	- AUD	9	66,372.94 AUD	3	5,282.23 AUD	6	61,090.71 AUD
13.01% - 14.00%	10	0.08%	131,556.97 AUD	0.03%	2	41,594.83 AUD	8	89,962.14 AUD	6	93,335.60 AUD	4	38,221.37 AUD
14.01% - 15.00%	10	0.08%	65,337.76 AUD	0.02%	-	- AUD	10	65,337.76 AUD	4	13,647.62 AUD	6	51,690.14 AUD
15.01% - 16.00%	3	0.02%	2,470.51 AUD	0.00%	-	- AUD	3	2,470.51 AUD	2	2,103.42 AUD	1	367.09 AUD
> 16.00%	-	0.00%	- AUD	0.00%	-	- AUD	-	- AUD	-	- AUD	-	- AUD
<b>Total</b>	<b>12,997</b>	<b>100.00%</b>	<b>414,561,296.17 AUD</b>	<b>100.00%</b>	<b>3,693</b>	<b>187,531,609.41 AUD</b>	<b>9,304</b>	<b>227,029,686.76 AUD</b>	<b>9,269</b>	<b>327,063,435.93 AUD</b>	<b>3,728</b>	<b>87,497,860.24 AUD</b>

Statistics Interest Rate	
Minimum Interest Rate Debtor	1.40%
Maximum Interest Rate Debtor	15.24%
Weighted Average Interest Rate Debtor	5.93%

**Pool Data V**

**Original Term**

Total Portfolio					Product Type			
Length of Original Term (months)	Number of Contracts	Percentage of Contracts	Outstanding Discounted Receivables Balance	Percentage of Balance	Chattel Mortgage		Consumer Loan	
					Number of Contracts	Outstanding Discounted Receivables Balance	Number of Contracts	Outstanding Discounted Receivables Balance
0 - 11	-	0.00%	- AUD	0.00%	-	- AUD	-	- AUD
12 - 23	30	0.23%	154,528.37 AUD	0.04%	18	104,721.47 AUD	12	49,806.90 AUD
24 - 35	283	2.18%	2,603,584.70 AUD	0.63%	181	2,038,046.93 AUD	102	565,537.77 AUD
36 - 47	1,439	11.07%	30,592,548.14 AUD	7.38%	1,008	24,513,192.64 AUD	431	6,079,355.50 AUD
48 - 59	1,954	15.03%	57,820,048.60 AUD	13.95%	1,263	42,081,336.60 AUD	691	15,738,712.00 AUD
60 - 71	8,701	66.95%	304,448,823.72 AUD	73.44%	5,674	224,178,082.50 AUD	3,027	80,270,741.22 AUD
> 71	590	4.54%	18,941,762.64 AUD	4.57%	-	- AUD	590	18,941,762.64 AUD
<b>Total</b>	<b>12,997</b>	<b>100.00%</b>	<b>414,561,296.17 AUD</b>	<b>100.00%</b>	<b>8,144</b>	<b>292,915,380.14 AUD</b>	<b>4,853</b>	<b>121,645,916.03 AUD</b>

Statistics Original Term	
Minimum Original Term in months	18
Maximum Original Term in months	84
Weighted Average Original Term month (by ODRB)	57.42

**Remaining Term**

Total Portfolio					Product Type			
Length of Remaining Term (months)	Number of Contracts	Percentage of Contracts	Outstanding Discounted Receivables Balance	Percentage of Balance	Chattel Mortgage		Consumer Loan	
					Number of Contracts	Outstanding Discounted Receivables Balance	Number of Contracts	Outstanding Discounted Receivables Balance
0 - 11	890	6.85%	8,062,035.87 AUD	1.94%	540	6,159,592.33 AUD	350	1,902,443.54 AUD
12 - 23	1,766	13.59%	39,330,566.44 AUD	9.49%	1,172	30,171,534.87 AUD	594	9,159,031.57 AUD
24 - 35	3,226	24.82%	96,911,486.77 AUD	23.38%	2,070	69,586,819.07 AUD	1,156	27,324,667.70 AUD
36 - 47	6,551	50.40%	249,994,159.10 AUD	60.30%	4,325	184,926,282.96 AUD	2,226	65,067,876.12 AUD
48 - 59	190	1.46%	6,797,735.49 AUD	1.64%	37	2,071,150.89 AUD	153	4,726,584.60 AUD
60 - 71	372	2.86%	13,401,668.65 AUD	3.23%	-	- AUD	372	13,401,668.65 AUD
> 71	2	0.02%	63,643.85 AUD	0.02%	-	- AUD	2	63,643.85 AUD
<b>Total</b>	<b>12,997</b>	<b>100.00%</b>	<b>414,561,296.17 AUD</b>	<b>100.00%</b>	<b>8,144</b>	<b>292,915,380.14 AUD</b>	<b>4,853</b>	<b>121,645,916.03 AUD</b>

Statistics Remaining Term	
Minimum Remaining Term in months	0
Maximum Remaining Term in months	73
Weighted Average Remaining Term in months (by ODRB)	37.60

**Distribution by Seasoning**

Total Portfolio					Product Type			
Seasoning (months)	Number of Contracts	Percentage of Contracts	Outstanding Discounted Receivables Balance	Percentage of Balance	Chattel Mortgage		Consumer Loan	
					Number of Contracts	Outstanding Discounted Receivables Balance	Number of Contracts	Outstanding Discounted Receivables Balance
0 - 11	39	0.30%	1,826,499.34 AUD	0.44%	34	1,716,483.26 AUD	5	110,016.08 AUD
12 - 23	9,256	71.22%	324,450,221.63 AUD	78.26%	5,934	232,545,010.14 AUD	3,322	91,905,211.49 AUD
24 - 35	3,178	24.45%	81,961,613.44 AUD	19.77%	1,935	54,948,807.57 AUD	1,243	27,012,805.87 AUD
36 - 47	154	1.18%	3,030,257.45 AUD	0.73%	77	1,809,238.29 AUD	77	1,221,019.16 AUD
48 - 59	337	2.59%	2,990,765.42 AUD	0.72%	154	1,750,075.46 AUD	183	1,240,689.96 AUD
60 - 71	27	0.21%	270,360.93 AUD	0.07%	10	145,765.42 AUD	17	124,595.51 AUD
> 71	6	0.05%	31,577.96 AUD	0.01%	-	- AUD	6	31,577.96 AUD
<b>Total</b>	<b>12,997</b>	<b>100.00%</b>	<b>414,561,296.17 AUD</b>	<b>100.00%</b>	<b>8,144</b>	<b>292,915,380.14 AUD</b>	<b>4,853</b>	<b>121,645,916.03 AUD</b>

Statistics Seasoning	
Minimum Seasoning in months	4
Maximum Seasoning in months	81
Weighted Average Seasoning Term in months (by ODRB)	19.87

**Pool Data V**

**Original Term**

Total Portfolio					Balloon				Vehicle Status			
Length of Original Term (months)	Number of Contracts	Percentage of Contracts	Outstanding Discounted Receivables Balance	Percentage of Balance	Balloon		No Balloon		New		Used	
					Number of Contracts	Outstanding Discounted Receivables Balance	Number of Contracts	Outstanding Discounted Receivables Balance	Number of Contracts	Outstanding Discounted Receivables Balance	Number of Contracts	Outstanding Discounted Receivables Balance
0 - 11	-	0.00%	- AUD	0.00%	-	- AUD	-	- AUD	-	- AUD	-	- AUD
12 - 23	30	0.23%	154,528.37 AUD	0.04%	2	38,346.50 AUD	28	116,181.87 AUD	9	61,262.86 AUD	21	93,265.51 AUD
24 - 35	283	2.18%	2,603,584.70 AUD	0.63%	18	771,364.60 AUD	265	1,832,220.10 AUD	86	1,079,343.46 AUD	197	1,524,241.24 AUD
36 - 47	1,439	11.07%	30,592,548.14 AUD	7.38%	291	11,985,025.73 AUD	1,148	18,607,522.41 AUD	998	25,010,550.56 AUD	441	5,581,997.58 AUD
48 - 59	1,954	15.03%	57,820,048.60 AUD	13.95%	577	27,137,490.47 AUD	1,377	30,682,558.13 AUD	1,580	51,123,933.77 AUD	374	6,696,114.83 AUD
60 - 71	8,701	66.95%	304,448,823.72 AUD	73.44%	2,805	147,599,382.11 AUD	5,896	156,849,441.61 AUD	6,198	236,707,193.58 AUD	2,503	67,741,630.14 AUD
> 71	590	4.54%	18,941,762.64 AUD	4.57%	-	- AUD	590	18,941,762.64 AUD	398	13,081,151.70 AUD	192	5,860,610.94 AUD
<b>Total</b>	<b>12,997</b>	<b>100.00%</b>	<b>414,561,296.17 AUD</b>	<b>100.00%</b>	<b>3,693</b>	<b>187,531,609.41 AUD</b>	<b>9,304</b>	<b>227,029,686.76 AUD</b>	<b>9,269</b>	<b>327,063,435.93 AUD</b>	<b>3,728</b>	<b>87,497,860.24 AUD</b>

Statistics Original Term	
Minimum Original Term in months	18
Maximum Original Term in months	84
Weighted Average Original Term month (by ODRB)	57.42

**Remaining Term**

Total Portfolio					Balloon				Vehicle Status			
Length of Remaining Term (months)	Number of Contracts	Percentage of Contracts	Outstanding Discounted Receivables Balance	Percentage of Balance	Balloon		No Balloon		New		Used	
					Number of Contracts	Outstanding Discounted Receivables Balance	Number of Contracts	Outstanding Discounted Receivables Balance	Number of Contracts	Outstanding Discounted Receivables Balance	Number of Contracts	Outstanding Discounted Receivables Balance
0 - 11	890	6.85%	8,062,035.87 AUD	1.94%	183	4,685,280.92 AUD	707	3,376,754.95 AUD	516	5,550,888.44 AUD	374	2,511,147.43 AUD
12 - 23	1,766	13.59%	39,330,566.44 AUD	9.49%	413	16,213,412.46 AUD	1,353	23,117,153.98 AUD	1,300	32,849,358.70 AUD	466	6,481,207.74 AUD
24 - 35	3,226	24.82%	96,911,486.77 AUD	23.38%	935	44,693,866.87 AUD	2,291	52,217,619.90 AUD	2,345	79,506,295.65 AUD	881	17,405,191.12 AUD
36 - 47	6,551	50.40%	249,994,159.10 AUD	60.30%	2,142	120,674,583.79 AUD	4,409	129,319,575.31 AUD	4,732	195,300,257.12 AUD	1,819	54,693,901.98 AUD
48 - 59	190	1.46%	6,797,735.49 AUD	1.64%	20	1,264,465.37 AUD	170	5,533,270.12 AUD	112	4,269,666.97 AUD	78	2,528,068.52 AUD
60 - 71	372	2.86%	13,401,668.65 AUD	3.23%	-	- AUD	372	13,401,668.65 AUD	262	9,523,325.20 AUD	110	3,878,343.45 AUD
> 71	2	0.02%	63,643.85 AUD	0.02%	-	- AUD	2	63,643.85 AUD	2	63,643.85 AUD	-	- AUD
<b>Total</b>	<b>12,997</b>	<b>100.00%</b>	<b>414,561,296.17 AUD</b>	<b>100.00%</b>	<b>3,693</b>	<b>187,531,609.41 AUD</b>	<b>9,304</b>	<b>227,029,686.76 AUD</b>	<b>9,269</b>	<b>327,063,435.93 AUD</b>	<b>3,728</b>	<b>87,497,860.24 AUD</b>

Statistics Remaining Term	
Minimum Remaining Term in months	0
Maximum Remaining Term in months	73
Weighted Average Remaining Term in months (by ODRB)	37.60

**Distribution by Seasoning**

Total Portfolio					Balloon				Vehicle Status			
Seasoning (months)	Number of Contracts	Percentage of Contracts	Outstanding Discounted Receivables Balance	Percentage of Balance	Balloon		No Balloon		New		Used	
					Number of Contracts	Outstanding Discounted Receivables Balance	Number of Contracts	Outstanding Discounted Receivables Balance	Number of Contracts	Outstanding Discounted Receivables Balance	Number of Contracts	Outstanding Discounted Receivables Balance
0 - 11	39	0.30%	1,826,499.34 AUD	0.44%	13	920,149.65 AUD	26	906,349.69 AUD	18	1,024,811.76 AUD	21	801,687.58 AUD
12 - 23	9,256	71.22%	324,450,221.63 AUD	78.26%	2,677	146,488,737.38 AUD	6,579	177,961,484.25 AUD	6,649	256,990,029.75 AUD	2,607	67,460,191.88 AUD
24 - 35	3,178	24.45%	81,961,613.44 AUD	19.77%	850	36,188,634.79 AUD	2,328	45,772,978.65 AUD	2,215	64,044,802.76 AUD	963	17,916,810.68 AUD
36 - 47	154	1.18%	3,030,257.45 AUD	0.73%	40	1,621,775.56 AUD	114	1,408,481.89 AUD	114	2,570,790.92 AUD	40	459,466.53 AUD
48 - 59	337	2.59%	2,990,765.42 AUD	0.72%	106	2,166,546.61 AUD	231	824,218.81 AUD	249	2,189,907.96 AUD	88	800,857.46 AUD
60 - 71	27	0.21%	270,360.93 AUD	0.07%	7	145,765.42 AUD	20	124,595.51 AUD	19	216,577.60 AUD	8	53,783.33 AUD
> 71	6	0.05%	31,577.96 AUD	0.01%	-	- AUD	6	31,577.96 AUD	5	26,515.18 AUD	1	5,062.78 AUD
<b>Total</b>	<b>12,997</b>	<b>100.00%</b>	<b>414,561,296.17 AUD</b>	<b>100.00%</b>	<b>3,693</b>	<b>187,531,609.41 AUD</b>	<b>9,304</b>	<b>227,029,686.76 AUD</b>	<b>9,269</b>	<b>327,063,435.93 AUD</b>	<b>3,728</b>	<b>87,497,860.24 AUD</b>

Statistics Seasoning	
Minimum Seasoning in months	4
Maximum Seasoning in months	81
Weighted Average Seasoning Term in months (by ODRB)	19.87

Pool Data VI

Product Type

Total Portfolio					Balloon				Vehicle Status			
Product Type	Number of Contracts	Percentage of Contracts	Outstanding Discounted Receivables Balance	Percentage of Balance	Balloon		No Balloon		New		Used	
					Number of Contracts	Outstanding Discounted Receivables Balance	Number of Contracts	Outstanding Discounted Receivables Balance	Number of Contracts	Outstanding Discounted Receivables Balance	Number of Contracts	Outstanding Discounted Receivables Balance
Chattel Mortgage	8,144	62.66%	292,915,380.14 AUD	70.66%	2,910	155,026,407.34 AUD	5,234	137,888,972.80 AUD	6,056	237,816,337.49 AUD	2,088	55,099,042.65 AUD
Consumer Loan	4,853	37.34%	121,645,916.03 AUD	29.34%	783	32,505,202.07 AUD	4,070	89,140,713.96 AUD	3,213	89,247,098.44 AUD	1,640	32,398,817.59 AUD
<b>Total</b>	<b>12,997</b>	<b>100.00%</b>	<b>414,561,296.17 AUD</b>	<b>100.00%</b>	<b>3,693</b>	<b>187,531,609.41 AUD</b>	<b>9,304</b>	<b>227,029,686.76 AUD</b>	<b>9,269</b>	<b>327,063,435.93 AUD</b>	<b>3,728</b>	<b>87,497,860.24 AUD</b>

Vehicle Status

Total Portfolio					Product Type			
Type of Car	Number of Contracts	Percentage of Contracts	Outstanding Discounted Receivables Balance	Percentage of Balance	Chattel Mortgage		Consumer Loan	
					Number of Contracts	Outstanding Discounted Receivables Balance	Number of Contracts	Outstanding Discounted Receivables Balance
New Vehicles	9,269	71.32%	327,063,435.93 AUD	78.89%	6,056	237,816,337.49 AUD	3,213	89,247,098.44 AUD
Used Vehicles	3,728	28.68%	87,497,860.24 AUD	21.11%	2,088	55,099,042.65 AUD	1,640	32,398,817.59 AUD
<b>Total</b>	<b>12,997</b>	<b>100.00%</b>	<b>414,561,296.17 AUD</b>	<b>100.00%</b>	<b>8,144</b>	<b>292,915,380.14 AUD</b>	<b>4,853</b>	<b>121,645,916.03 AUD</b>

Balloon

Total Portfolio				
Balloon	Number of Contracts	Percentage of Contracts	Outstanding Discounted Receivables Balance	Percentage of Balance
Balloon	3,693	28.41%	187,531,609.41 AUD	45.24%
No Balloon	9,304	71.59%	227,029,686.76 AUD	54.76%
<b>Total</b>	<b>12,997</b>	<b>100.00%</b>	<b>414,561,296.17 AUD</b>	<b>100.00%</b>

Pool Data VII

Distribution by Vehicle Brand and Models

Total Portfolio						Product Type				
Make	Model	Number of Contracts	Percentage of Contracts	Outstanding Discounted Receivables Balance	Percentage of Balance	Chattel Mortgage		Consumer Loan		
						Number of Contracts	Outstanding Discounted Receivables Balance	Number of Contracts	Outstanding Discounted Receivables Balance	
<b>Volkswagen Group Vehicles</b>										
AUDI	A1	51	0.39%	1,036,484.52 AUD	0.25%	25	504,290.48 AUD	26	532,194.04 AUD	
	A3	268	2.06%	8,776,449.62 AUD	2.12%	121	4,479,491.56 AUD	147	4,296,958.06 AUD	
	A4	124	0.95%	4,323,908.07 AUD	1.04%	70	2,958,333.53 AUD	54	1,365,574.54 AUD	
	A5	81	0.62%	3,421,168.10 AUD	0.83%	58	2,544,444.42 AUD	23	876,723.68 AUD	
	A6	28	0.22%	1,351,274.49 AUD	0.33%	18	1,016,336.87 AUD	10	334,937.62 AUD	
	A7	13	0.10%	1,010,285.23 AUD	0.24%	11	963,115.55 AUD	2	47,169.68 AUD	
	A8	4	0.03%	163,011.55 AUD	0.04%	3	140,344.81 AUD	1	22,666.74 AUD	
	E-TRON	9	0.07%	891,273.67 AUD	0.21%	8	829,106.42 AUD	1	62,167.25 AUD	
	Q2	96	0.74%	2,512,179.08 AUD	0.61%	40	1,137,996.18 AUD	56	1,374,182.90 AUD	
	Q3	272	2.09%	9,233,492.44 AUD	2.23%	146	5,317,611.35 AUD	126	3,915,881.09 AUD	
	Q5	296	2.28%	12,456,048.94 AUD	3.00%	197	8,477,357.08 AUD	99	3,978,691.86 AUD	
	Q7	222	1.71%	13,389,325.04 AUD	3.23%	175	10,853,241.91 AUD	47	2,536,083.13 AUD	
	Q8	21	0.16%	1,835,706.79 AUD	0.44%	19	1,728,624.50 AUD	2	107,082.29 AUD	
	R8	6	0.05%	830,988.74 AUD	0.20%	6	830,988.74 AUD	-	- AUD	
	TT	9	0.07%	284,245.44 AUD	0.07%	5	218,589.87 AUD	4	65,655.57 AUD	
	<b>SubTotal</b>	<b>1,500</b>	<b>11.54%</b>	<b>61,515,841.72 AUD</b>	<b>14.84%</b>	<b>902</b>	<b>41,999,873.27 AUD</b>	<b>598</b>	<b>19,515,968.45 AUD</b>	
BENTLEY	BENTAYGA	2	0.02%	491,556.34 AUD	0.12%	2	491,556.34 AUD	-	- AUD	
	CONTINENTAL	4	0.03%	536,807.13 AUD	0.13%	3	464,816.19 AUD	1	71,990.94 AUD	
	<b>SubTotal</b>	<b>6</b>	<b>0.05%</b>	<b>1,028,363.47 AUD</b>	<b>0.25%</b>	<b>5</b>	<b>956,372.53 AUD</b>	<b>1</b>	<b>71,990.94 AUD</b>	
LAMBORGHINI	AVENTADOR	1	0.01%	332,873.44 AUD	0.08%	1	332,873.44 AUD	-	- AUD	
	HURACAN	3	0.02%	896,229.30 AUD	0.22%	3	896,229.30 AUD	-	- AUD	
	URUS	2	0.02%	594,804.05 AUD	0.14%	1	323,467.48 AUD	1	271,336.57 AUD	
	<b>SubTotal</b>	<b>6</b>	<b>0.05%</b>	<b>1,823,906.79 AUD</b>	<b>0.44%</b>	<b>5</b>	<b>1,552,570.22 AUD</b>	<b>1</b>	<b>271,336.57 AUD</b>	
PORSCHE	BOXSTER	9	0.07%	986,526.65 AUD	0.24%	9	986,526.65 AUD	-	- AUD	
	CARRERA / 911	23	0.18%	4,480,850.42 AUD	1.08%	21	4,248,473.33 AUD	2	232,377.09 AUD	
	CAYENNE	79	0.61%	7,129,572.79 AUD	1.72%	71	6,724,930.05 AUD	8	404,642.74 AUD	
	CAYMAN	1	0.01%	83,618.45 AUD	0.02%	-	- AUD	1	83,618.45 AUD	
	MACAN	108	0.83%	7,808,492.94 AUD	1.88%	100	7,161,244.44 AUD	8	647,248.50 AUD	
	PANAMERA	-	0.00%	- AUD	0.00%	-	- AUD	-	- AUD	
	TAYCAN	13	0.10%	2,232,502.28 AUD	0.54%	13	2,232,502.28 AUD	-	- AUD	
	<b>SubTotal</b>	<b>233</b>	<b>1.79%</b>	<b>22,721,563.53 AUD</b>	<b>5.48%</b>	<b>214</b>	<b>21,353,676.75 AUD</b>	<b>19</b>	<b>1,367,886.78 AUD</b>	
SKODA	FABIA	39	0.30%	554,071.63 AUD	0.13%	10	189,742.22 AUD	29	364,329.41 AUD	
	KAROQ	54	0.42%	1,217,746.41 AUD	0.29%	20	440,542.97 AUD	34	777,203.44 AUD	
	KODIAQ	104	0.80%	3,328,982.78 AUD	0.80%	41	1,403,554.60 AUD	63	1,925,428.18 AUD	
	KAMIQ	69	0.53%	1,409,827.06 AUD	0.34%	17	314,245.60 AUD	52	1,095,581.46 AUD	
	SCALA	40	0.31%	827,463.00 AUD	0.20%	11	241,057.87 AUD	29	586,405.13 AUD	
	OCTAVIA	105	0.81%	2,304,087.20 AUD	0.56%	23	497,924.18 AUD	82	1,806,163.02 AUD	
	RAPID	1	0.01%	6,819.05 AUD	0.00%	-	- AUD	1	6,819.05 AUD	
	SUPERB	23	0.18%	703,882.05 AUD	0.17%	11	385,644.32 AUD	12	318,237.73 AUD	
	<b>SubTotal</b>	<b>435</b>	<b>3.35%</b>	<b>10,352,879.18 AUD</b>	<b>2.50%</b>	<b>133</b>	<b>3,472,711.76 AUD</b>	<b>302</b>	<b>6,880,167.42 AUD</b>	
VOLKSWAGEN	AMAROK	760	5.85%	23,898,841.23 AUD	5.76%	588	18,964,429.33 AUD	172	4,934,411.90 AUD	
	ARTEON	7	0.05%	231,860.32 AUD	0.06%	3	87,706.35 AUD	4	144,153.97 AUD	
	CADDY	98	0.75%	1,806,940.12 AUD	0.44%	91	1,729,637.84 AUD	7	77,302.28 AUD	
	CARAVELLE	4	0.03%	110,583.04 AUD	0.03%	3	77,840.35 AUD	1	32,742.69 AUD	
	CRAFTER	136	1.05%	4,240,296.25 AUD	1.02%	133	4,126,032.15 AUD	3	114,264.10 AUD	
	GOLF	414	3.19%	7,802,345.46 AUD	1.88%	152	3,193,097.99 AUD	262	4,609,247.47 AUD	
	JETTA	11	0.08%	51,200.57 AUD	0.01%	2	9,210.36 AUD	9	41,990.21 AUD	
	MULTIVAN	38	0.29%	1,423,935.33 AUD	0.34%	23	924,542.98 AUD	15	499,392.35 AUD	
	NEW BEETLE	4	0.03%	42,127.27 AUD	0.01%	1	15,939.84 AUD	3	26,187.43 AUD	
	PASSAT	44	0.34%	973,019.48 AUD	0.23%	18	341,238.04 AUD	26	631,781.44 AUD	
	POLO	171	1.32%	2,306,627.13 AUD	0.56%	54	730,120.25 AUD	117	1,576,506.88 AUD	
	SCIROCCO	2	0.02%	33,877.36 AUD	0.01%	-	- AUD	2	33,877.36 AUD	
	T-CROSS	164	1.26%	3,336,702.03 AUD	0.80%	48	1,001,778.87 AUD	116	2,334,923.16 AUD	
	T-ROC	102	0.78%	2,675,961.92 AUD	0.65%	31	884,026.00 AUD	71	1,791,935.92 AUD	
	TIGUAN	569	4.38%	15,316,265.85 AUD	3.69%	260	7,665,529.92 AUD	309	7,650,735.93 AUD	
	TOUAREG	90	0.69%	4,623,109.71 AUD	1.12%	68	3,753,993.84 AUD	22	869,115.87 AUD	

Pool Data VII

Distribution by Vehicle Brand and Models

Total Portfolio						Balloon				Vehicle Status			
Make	Model	Number of Contracts	Percentage of Contracts	Outstanding Discounted Receivables Balance	Percentage of Balance	Balloon		No Balloon		New		Used	
						Number of Contracts	Outstanding Discounted Receivables Balance	Number of Contracts	Outstanding Discounted Receivables Balance	Number of Contracts	Outstanding Discounted Receivables Balance	Number of Contracts	Outstanding Discounted Receivables Balance
<b>Volkswagen Group Vehicles</b>													
AUDI	A1	51	0.39%	1,036,484.52 AUD	0.25%	12	393,934.36 AUD	39	642,550.16 AUD	26	761,968.83 AUD	25	274,515.69 AUD
	A3	268	2.06%	8,776,449.62 AUD	2.12%	109	4,952,374.28 AUD	159	3,824,075.34 AUD	173	6,594,228.11 AUD	95	2,182,221.51 AUD
	A4	124	0.95%	4,323,908.07 AUD	1.04%	47	2,322,620.88 AUD	77	2,001,287.19 AUD	77	3,430,462.65 AUD	47	893,445.42 AUD
	A5	81	0.62%	3,421,168.10 AUD	0.83%	36	2,033,573.56 AUD	45	1,387,594.54 AUD	51	2,674,604.07 AUD	30	746,564.03 AUD
	A6	28	0.22%	1,351,274.49 AUD	0.33%	8	570,953.34 AUD	20	780,321.15 AUD	14	955,973.53 AUD	14	395,300.96 AUD
	A7	13	0.10%	1,010,285.23 AUD	0.24%	9	920,680.80 AUD	4	89,604.43 AUD	9	903,597.87 AUD	4	106,687.36 AUD
	A8	4	0.03%	163,011.55 AUD	0.04%	-	- AUD	4	163,011.55 AUD	2	114,402.64 AUD	2	48,608.91 AUD
	E-TRON	9	0.07%	891,273.67 AUD	0.21%	8	835,090.07 AUD	1	56,183.60 AUD	9	891,273.67 AUD	-	- AUD
	Q2	96	0.74%	2,512,179.08 AUD	0.61%	37	1,178,534.89 AUD	59	1,333,644.19 AUD	71	2,039,428.06 AUD	25	472,751.02 AUD
	Q3	272	2.09%	9,233,492.44 AUD	2.23%	108	4,776,043.23 AUD	164	4,457,449.21 AUD	228	8,408,026.48 AUD	44	825,465.96 AUD
	Q5	296	2.28%	12,456,048.94 AUD	3.00%	144	7,580,858.60 AUD	152	4,875,190.34 AUD	211	10,121,206.92 AUD	85	2,334,842.02 AUD
	Q7	222	1.71%	13,389,325.04 AUD	3.23%	114	8,763,087.36 AUD	108	4,626,237.68 AUD	140	10,312,643.04 AUD	82	3,076,682.00 AUD
	Q8	21	0.16%	1,835,706.79 AUD	0.44%	12	1,196,734.77 AUD	9	638,972.02 AUD	18	1,658,863.72 AUD	3	176,843.07 AUD
	R8	6	0.05%	830,988.74 AUD	0.20%	5	756,224.49 AUD	1	74,764.25 AUD	3	530,503.29 AUD	3	300,485.45 AUD
	TT	9	0.07%	284,245.44 AUD	0.07%	3	180,659.69 AUD	6	103,585.75 AUD	1	111,788.67 AUD	8	172,456.77 AUD
	<b>SubTotal</b>	<b>1,500</b>	<b>11.54%</b>	<b>61,515,841.72 AUD</b>	<b>14.84%</b>	<b>652</b>	<b>36,461,370.32 AUD</b>	<b>848</b>	<b>25,054,471.40 AUD</b>	<b>1,033</b>	<b>49,508,971.55 AUD</b>	<b>467</b>	<b>12,006,870.17 AUD</b>
BENTLEY	BENTAYGA	2	0.02%	491,556.34 AUD	0.12%	2	491,556.34 AUD	-	- AUD	1	307,636.74 AUD	1	183,919.60 AUD
	CONTINENTAL	4	0.03%	536,807.13 AUD	0.13%	1	175,558.38 AUD	3	361,248.75 AUD	-	- AUD	4	536,807.13 AUD
	<b>SubTotal</b>	<b>6</b>	<b>0.05%</b>	<b>1,028,363.47 AUD</b>	<b>0.25%</b>	<b>3</b>	<b>667,114.72 AUD</b>	<b>3</b>	<b>361,248.75 AUD</b>	<b>1</b>	<b>307,636.74 AUD</b>	<b>5</b>	<b>720,726.73 AUD</b>
LAMBORGHINI	AVENTADOR	1	0.01%	332,873.44 AUD	0.08%	1	332,873.44 AUD	-	- AUD	-	- AUD	1	332,873.44 AUD
	HURACAN	3	0.02%	896,229.30 AUD	0.22%	2	758,680.88 AUD	1	137,548.42 AUD	2	758,680.88 AUD	1	137,548.42 AUD
	URUS	2	0.02%	594,804.05 AUD	0.14%	2	594,804.05 AUD	-	- AUD	2	594,804.05 AUD	-	- AUD
	<b>SubTotal</b>	<b>6</b>	<b>0.05%</b>	<b>1,823,906.79 AUD</b>	<b>0.44%</b>	<b>5</b>	<b>1,686,358.37 AUD</b>	<b>1</b>	<b>137,548.42 AUD</b>	<b>4</b>	<b>1,353,484.93 AUD</b>	<b>2</b>	<b>470,421.86 AUD</b>
PORSCHE	BOXSTER	9	0.07%	986,526.65 AUD	0.24%	8	932,844.34 AUD	1	53,682.31 AUD	7	895,458.35 AUD	2	91,068.30 AUD
	CARRERA / 911	23	0.18%	4,480,850.42 AUD	1.08%	21	4,331,447.47 AUD	2	149,402.95 AUD	17	3,731,636.73 AUD	6	749,213.69 AUD
	CAYENNE	79	0.61%	7,129,572.79 AUD	1.72%	54	5,691,353.17 AUD	25	1,438,219.62 AUD	65	6,362,671.42 AUD	14	766,901.37 AUD
	CAYMAN	1	0.01%	83,618.45 AUD	0.02%	-	- AUD	1	83,618.45 AUD	-	- AUD	1	83,618.45 AUD
	MACAN	108	0.83%	7,808,492.94 AUD	1.88%	74	6,077,578.14 AUD	34	1,730,914.80 AUD	89	6,942,042.87 AUD	19	866,450.07 AUD
	PANAMERA	-	0.00%	- AUD	0.00%	-	- AUD	-	- AUD	-	- AUD	-	- AUD
	TAYCAN	13	0.10%	2,232,502.28 AUD	0.54%	13	2,232,502.28 AUD	-	- AUD	13	2,232,502.28 AUD	-	- AUD
	<b>SubTotal</b>	<b>233</b>	<b>1.79%</b>	<b>22,721,563.53 AUD</b>	<b>5.48%</b>	<b>170</b>	<b>19,265,725.40 AUD</b>	<b>63</b>	<b>3,455,838.13 AUD</b>	<b>191</b>	<b>20,164,311.65 AUD</b>	<b>42</b>	<b>2,557,251.88 AUD</b>
SKODA	FABIA	39	0.30%	554,071.63 AUD	0.13%	3	50,616.57 AUD	36	503,455.06 AUD	36	534,290.19 AUD	3	19,781.44 AUD
	KAROQ	54	0.42%	1,217,746.41 AUD	0.29%	8	227,140.11 AUD	46	990,606.30 AUD	54	1,217,746.41 AUD	-	- AUD
	KODIAQ	104	0.80%	3,328,982.78 AUD	0.80%	28	1,115,301.07 AUD	76	2,213,681.71 AUD	95	3,149,213.67 AUD	9	179,769.11 AUD
	KAMIQ	69	0.53%	1,409,827.06 AUD	0.34%	5	139,728.79 AUD	64	1,270,098.27 AUD	69	1,409,827.06 AUD	-	- AUD
	SCALA	40	0.31%	827,463.00 AUD	0.20%	8	184,469.38 AUD	32	642,993.62 AUD	40	827,463.00 AUD	-	- AUD
	OCTAVIA	105	0.81%	2,304,087.20 AUD	0.56%	26	878,078.83 AUD	79	1,426,008.37 AUD	93	2,152,734.48 AUD	12	151,352.72 AUD
	RAPID	1	0.01%	6,819.05 AUD	0.00%	-	- AUD	1	6,819.05 AUD	1	6,819.05 AUD	-	- AUD
	SUPERB	23	0.18%	703,882.05 AUD	0.17%	9	385,358.90 AUD	14	318,523.15 AUD	17	616,458.88 AUD	6	87,423.17 AUD
	<b>SubTotal</b>	<b>435</b>	<b>3.35%</b>	<b>10,352,879.18 AUD</b>	<b>2.50%</b>	<b>87</b>	<b>2,980,693.65 AUD</b>	<b>348</b>	<b>7,372,185.53 AUD</b>	<b>405</b>	<b>9,914,532.74 AUD</b>	<b>30</b>	<b>438,326.44 AUD</b>
VOLKSWAGEN	AMAROK	760	5.85%	23,898,841.23 AUD	5.76%	274	10,976,881.63 AUD	486	12,921,959.60 AUD	622	20,848,111.77 AUD	138	3,050,729.46 AUD
	ARTEON	7	0.05%	231,860.32 AUD	0.06%	5	201,472.30 AUD	2	30,388.02 AUD	2	74,699.08 AUD	5	157,161.24 AUD
	CADDY	98	0.75%	1,806,940.12 AUD	0.44%	22	583,088.38 AUD	76	1,223,851.74 AUD	77	1,548,215.10 AUD	21	258,725.02 AUD
	CARAVELLE	4	0.03%	110,583.04 AUD	0.03%	2	46,916.55 AUD	2	63,666.49 AUD	3	77,840.35 AUD	1	32,742.69 AUD
	CRAFTER	136	1.05%	4,240,296.25 AUD	1.02%	38	1,548,721.65 AUD	98	2,691,574.60 AUD	131	4,150,181.85 AUD	5	90,114.40 AUD
	GOLF	414	3.19%	7,802,345.46 AUD	1.88%	105	2,817,827.75 AUD	309	4,984,517.71 AUD	264	5,702,818.32 AUD	150	2,099,527.14 AUD
	JETTA	11	0.08%	51,200.57 AUD	0.01%	1	7,247.59 AUD	10	43,952.98 AUD	3	7,932.93 AUD	8	43,267.64 AUD
	MULTIVAN	38	0.29%	1,423,935.33 AUD	0.34%	13	664,098.22 AUD	25	759,837.11 AUD	27	1,123,538.47 AUD	11	300,396.86 AUD
	NEW BEETLE	4	0.03%	42,127.27 AUD	0.01%	-	- AUD	4	42,127.27 AUD	-	- AUD	4	42,127.27 AUD
	PASSAT	44	0.34%	973,019.48 AUD	0.23%	13	440,245.52 AUD	31	532,773.96 AUD	23	697,558.15 AUD	21	275,461.33 AUD
	POLO	171	1.32%	2,306,627.13 AUD	0.56%	21	420,656.29 AUD	150	1,885,970.84 AUD	146	2,137,513.53 AUD	25	169,113.60 AUD
	SCIROCCO	2	0.02%	33,877.36 AUD	0.01%	-	- AUD	2	33,877.36 AUD	-	- AUD	2	33,877.36 AUD
	T-CROSS	164	1.26%	3,336,702.03 AUD	0.80%	25	619,052.23 AUD	139	2,717,649.80 AUD	164	3,336,702.03 AUD	-	- AUD
	T-ROC	102	0.78%	2,675,961.92 AUD	0.65%	20	638,953.54 AUD	82	2,037,008.38 AUD	102	2,675,961.92 AUD	-	- AUD
	TIGUAN	569	4.38%	15,316,265.85 AUD	3.69%	167	5,864,366.30 AUD	402	9,451,899.55 AUD	492	13,796,297.84 AUD	77	1,519,968.01 AUD
	TOUAREG	90	0.69%	4,623,109.71 AUD	1.12%	40	2,872,983.28 AUD	50	1,750,126.43 AUD	65	4,000,783.59 AUD	25	622,326.12 AUD

Pool Data VII

Distribution by Vehicle Brand and Models

Total Portfolio						Product Type			
Make	Model	Number of Contracts	Percentage of Contracts	Outstanding Discounted Receivables Balance	Percentage of Balance	Chattel Mortgage		Consumer Loan	
						Number of Contracts	Outstanding Discounted Receivables Balance	Number of Contracts	Outstanding Discounted Receivables Balance
	TRANSPORTER	126	0.97%	3,721,892.59 AUD	0.90%	110	3,139,604.12 AUD	16	582,288.47 AUD
	UP!	-	0.00%	- AUD	0.00%	-	- AUD	-	- AUD
	<b>SubTotal</b>	<b>2,740</b>	<b>21.08%</b>	<b>72,595,585.66 AUD</b>	<b>17.51%</b>	<b>1,585</b>	<b>46,644,728.23 AUD</b>	<b>1,155</b>	<b>25,950,857.43 AUD</b>
<b>Volkswagen Group Vehicles</b>	<b>SubTotal</b>	<b>4,920</b>	<b>37.85%</b>	<b>170,038,140.35 AUD</b>	<b>41.02%</b>	<b>2,844</b>	<b>115,979,932.76 AUD</b>	<b>2,076</b>	<b>54,058,207.59 AUD</b>

Pool Data VII

Distribution by Vehicle Brand and Models

Total Portfolio						Balloon				Vehicle Status			
Make	Model	Number of Contracts	Percentage of Contracts	Outstanding Discounted Receivables Balance	Percentage of Balance	Balloon		No Balloon		New		Used	
						Number of Contracts	Outstanding Discounted Receivables Balance	Number of Contracts	Outstanding Discounted Receivables Balance	Number of Contracts	Outstanding Discounted Receivables Balance	Number of Contracts	Outstanding Discounted Receivables Balance
	TRANSPORTER	126	0.97%	3,721,892.59 AUD	0.90%	41	1,648,431.88 AUD	85	2,073,460.71 AUD	105	3,389,232.90 AUD	21	332,659.69 AUD
	UP!	-	0.00%	- AUD	0.00%	-	- AUD	-	- AUD	-	- AUD	-	- AUD
	<b>SubTotal</b>	<b>2,740</b>	<b>21.08%</b>	<b>72,595,585.66 AUD</b>	<b>17.51%</b>	<b>787</b>	<b>29,350,943.11 AUD</b>	<b>1,953</b>	<b>43,244,642.55 AUD</b>	<b>2,226</b>	<b>63,567,387.83 AUD</b>	<b>514</b>	<b>9,028,197.83 AUD</b>
<b>Volkswagen Group Vehicles</b>	<b>SubTotal</b>	<b>4,920</b>	<b>37.85%</b>	<b>170,038,140.35 AUD</b>	<b>41.02%</b>	<b>1,704</b>	<b>90,412,205.57 AUD</b>	<b>3,216</b>	<b>79,625,934.78 AUD</b>	<b>3,860</b>	<b>144,816,345.44 AUD</b>	<b>1,060</b>	<b>25,221,794.91 AUD</b>



Pool Data VII

Distribution by Vehicle Brand and Models

Total Portfolio						Product Type			
Make	Model	Number of Contracts	Percentage of Contracts	Outstanding Discounted Receivables Balance	Percentage of Balance	Chattel Mortgage		Consumer Loan	
						Number of Contracts	Outstanding Discounted Receivables Balance	Number of Contracts	Outstanding Discounted Receivables Balance
<b>Other Vehicles</b>									
ABARTH		13	0.10%	314,501.72 AUD	0.08%	10	240,691.56 AUD	3	73,810.16 AUD
ALFA ROMEO		30	0.23%	1,170,311.86 AUD	0.28%	15	564,238.77 AUD	15	606,073.09 AUD
ASTON MARTIN		6	0.05%	969,337.96 AUD	0.23%	6	969,337.96 AUD	-	- AUD
BMW		137	1.05%	5,983,794.92 AUD	1.44%	108	5,132,431.45 AUD	29	851,363.47 AUD
CHEVROLET		26	0.20%	1,833,788.08 AUD	0.44%	23	1,632,742.90 AUD	3	201,045.18 AUD
CHRYSLER		5	0.04%	145,307.08 AUD	0.04%	2	95,873.74 AUD	3	49,433.34 AUD
CITROEN		5	0.04%	51,140.10 AUD	0.01%	4	47,734.11 AUD	1	3,405.99 AUD
DODGE		2	0.02%	15,644.84 AUD	0.00%	1	4,767.97 AUD	1	10,876.87 AUD
FERRARI		1	0.01%	179,598.24 AUD	0.04%	-	- AUD	1	179,598.24 AUD
FIAT		15	0.12%	301,496.13 AUD	0.07%	10	227,015.79 AUD	5	74,480.34 AUD
FORD		889	6.84%	29,780,695.63 AUD	7.18%	695	24,288,911.30 AUD	194	5,491,784.33 AUD
GENESIS		3	0.02%	197,746.18 AUD	0.05%	3	197,746.18 AUD	-	- AUD
GM		1	0.01%	69,541.22 AUD	0.02%	1	69,541.22 AUD	-	- AUD
GREAT WALL		18	0.14%	280,547.37 AUD	0.07%	12	191,063.74 AUD	6	89,483.63 AUD
GWM		53	0.41%	1,443,450.34 AUD	0.35%	38	977,297.98 AUD	15	466,152.36 AUD
HAVAL		61	0.47%	1,326,952.37 AUD	0.32%	33	693,938.92 AUD	28	633,013.45 AUD
HINO		1	0.01%	42,354.30 AUD	0.01%	1	42,354.30 AUD	-	- AUD
HOLDEN		300	2.31%	5,703,145.22 AUD	1.38%	158	3,137,697.93 AUD	142	2,565,447.29 AUD
HONDA		239	1.84%	4,825,514.46 AUD	1.16%	127	2,783,214.42 AUD	112	2,042,300.04 AUD
HYUNDAI		628	4.83%	13,080,553.54 AUD	3.16%	324	7,339,315.89 AUD	304	5,741,237.65 AUD
INFINITI		2	0.02%	31,481.06 AUD	0.01%	2	31,481.06 AUD	-	- AUD
ISUZU		271	2.09%	8,624,762.52 AUD	2.08%	191	5,925,686.90 AUD	80	2,699,075.62 AUD
JAGUAR		89	0.68%	4,242,845.69 AUD	1.02%	64	3,272,131.35 AUD	25	970,714.34 AUD
JEEP		137	1.05%	4,466,890.45 AUD	1.08%	90	3,229,176.16 AUD	47	1,237,714.29 AUD
KIA		373	2.87%	8,295,015.85 AUD	2.00%	217	5,394,078.69 AUD	156	2,900,937.16 AUD
LAND ROVER		552	4.25%	35,045,062.34 AUD	8.45%	419	28,332,285.11 AUD	133	6,712,777.23 AUD
LDV		245	1.89%	5,815,687.09 AUD	1.40%	212	5,017,006.85 AUD	33	798,680.24 AUD
LEXUS		11	0.08%	392,055.90 AUD	0.09%	11	392,055.90 AUD	-	- AUD
MAHINDRA		3	0.02%	17,216.56 AUD	0.00%	2	16,639.80 AUD	1	576.76 AUD
MASERATI		28	0.22%	2,780,675.61 AUD	0.67%	26	2,644,287.75 AUD	2	136,387.86 AUD
MAZDA		559	4.30%	13,253,037.99 AUD	3.20%	355	9,179,011.37 AUD	204	4,074,026.62 AUD
MERCEDES-BENZ		313	2.41%	14,252,871.34 AUD	3.44%	255	12,268,688.07 AUD	58	1,984,183.27 AUD
MG		212	1.63%	3,659,546.90 AUD	0.88%	83	1,317,579.21 AUD	129	2,341,967.69 AUD
MINI		14	0.11%	398,666.65 AUD	0.10%	11	316,902.90 AUD	3	81,763.75 AUD
MITSUBISHI		807	6.21%	18,584,925.86 AUD	4.48%	448	10,432,414.19 AUD	359	8,152,511.67 AUD
NISSAN		372	2.86%	9,861,132.48 AUD	2.38%	247	7,071,337.94 AUD	125	2,789,794.54 AUD
OPEL		1	0.01%	10,440.64 AUD	0.00%	-	- AUD	1	10,440.64 AUD
PEUGEOT		63	0.48%	1,660,216.17 AUD	0.40%	49	1,236,898.37 AUD	14	423,317.80 AUD
RAM		2	0.02%	94,427.75 AUD	0.02%	2	94,427.75 AUD	-	- AUD
RENAULT		158	1.22%	4,252,654.63 AUD	1.03%	134	3,782,663.90 AUD	24	469,990.73 AUD
ROLLS-ROYCE		2	0.02%	349,643.69 AUD	0.08%	2	349,643.69 AUD	-	- AUD
SSANGYONG		30	0.23%	804,243.27 AUD	0.19%	22	556,799.94 AUD	8	247,443.33 AUD
SUBARU		388	2.99%	8,969,610.22 AUD	2.16%	207	4,930,025.91 AUD	181	4,039,584.31 AUD
SUZUKI		142	1.09%	2,244,888.60 AUD	0.54%	50	783,818.32 AUD	92	1,461,070.28 AUD
TESLA		18	0.14%	962,377.39 AUD	0.23%	18	962,377.39 AUD	-	- AUD
TOYOTA		685	5.27%	20,377,461.46 AUD	4.92%	501	15,613,398.64 AUD	184	4,764,062.82 AUD
VOLVO		167	1.28%	7,359,896.15 AUD	1.78%	111	5,148,714.09 AUD	56	2,211,182.06 AUD
<b>Other Vehicles</b>	<b>SubTotal</b>	<b>8,077</b>	<b>62.15%</b>	<b>244,523,155.82 AUD</b>	<b>58.98%</b>	<b>5,300</b>	<b>176,935,447.38 AUD</b>	<b>2,777</b>	<b>67,587,708.44 AUD</b>
<b>Total</b>		<b>12,997</b>	<b>100.00%</b>	<b>414,561,296.17 AUD</b>	<b>100.00%</b>	<b>8,144</b>	<b>292,915,380.14 AUD</b>	<b>4,853</b>	<b>121,645,916.03 AUD</b>

Pool Data VII

Distribution by Vehicle Brand and Models

Total Portfolio						Balloon				Vehicle Status			
Make	Model	Number of Contracts	Percentage of Contracts	Outstanding Discounted Receivables Balance	Percentage of Balance	Balloon		No Balloon		New		Used	
						Number of Contracts	Outstanding Discounted Receivables Balance	Number of Contracts	Outstanding Discounted Receivables Balance	Number of Contracts	Outstanding Discounted Receivables Balance	Number of Contracts	Outstanding Discounted Receivables Balance
<b>Other Vehicles</b>													
ABARTH		13	0.10%	314,501.72 AUD	0.08%	8	209,540.03 AUD	5	104,961.69 AUD	8	209,540.03 AUD	5	104,961.69 AUD
ALFA ROMEO		30	0.23%	1,170,311.86 AUD	0.28%	18	835,910.18 AUD	12	334,401.68 AUD	24	987,839.88 AUD	6	182,471.98 AUD
ASTON MARTIN		6	0.05%	969,337.96 AUD	0.23%	5	906,221.22 AUD	1	63,116.74 AUD	2	492,179.89 AUD	4	477,158.07 AUD
BMW		137	1.05%	5,983,794.92 AUD	1.44%	60	3,609,064.61 AUD	77	2,374,730.31 AUD	60	3,496,450.01 AUD	77	2,487,344.91 AUD
CHEVROLET		26	0.20%	1,833,788.08 AUD	0.44%	15	1,161,734.22 AUD	11	672,053.86 AUD	24	1,720,600.26 AUD	2	113,187.82 AUD
CHRYSLER		5	0.04%	145,307.08 AUD	0.04%	1	60,698.47 AUD	4	84,608.61 AUD	2	95,873.74 AUD	3	49,433.34 AUD
CITROEN		5	0.04%	51,140.10 AUD	0.01%	1	5,152.94 AUD	4	45,987.16 AUD	2	27,157.40 AUD	3	23,982.70 AUD
DODGE		2	0.02%	15,644.84 AUD	0.00%	-	- AUD	2	15,644.84 AUD	-	- AUD	2	15,644.84 AUD
FERRARI		1	0.01%	179,598.24 AUD	0.04%	1	179,598.24 AUD	-	- AUD	-	- AUD	1	179,598.24 AUD
FIAT		15	0.12%	301,496.13 AUD	0.07%	3	79,943.70 AUD	12	221,552.43 AUD	11	243,067.01 AUD	4	58,429.12 AUD
FORD		889	6.84%	29,780,695.63 AUD	7.18%	250	10,897,538.35 AUD	639	18,883,157.28 AUD	588	22,212,577.32 AUD	301	7,568,118.31 AUD
GENESIS		3	0.02%	197,746.18 AUD	0.05%	2	149,092.98 AUD	1	48,653.20 AUD	3	197,746.18 AUD	-	- AUD
GM		1	0.01%	69,541.22 AUD	0.02%	1	69,541.22 AUD	-	- AUD	1	69,541.22 AUD	-	- AUD
GREAT WALL		18	0.14%	280,547.37 AUD	0.07%	2	43,678.43 AUD	16	236,868.94 AUD	17	269,907.10 AUD	1	10,640.27 AUD
GWM		53	0.41%	1,443,450.34 AUD	0.35%	9	264,814.55 AUD	44	1,178,635.79 AUD	53	1,443,450.34 AUD	-	- AUD
HAVAL		61	0.47%	1,326,952.37 AUD	0.32%	3	94,636.00 AUD	58	1,232,316.37 AUD	61	1,326,952.37 AUD	-	- AUD
HINO		1	0.01%	42,354.30 AUD	0.01%	1	42,354.30 AUD	-	- AUD	1	42,354.30 AUD	-	- AUD
HOLDEN		300	2.31%	5,703,145.22 AUD	1.38%	25	651,768.91 AUD	275	5,051,376.31 AUD	74	1,500,752.99 AUD	226	4,202,392.23 AUD
HONDA		239	1.84%	4,825,514.46 AUD	1.16%	37	1,097,461.17 AUD	202	3,728,053.29 AUD	173	3,872,247.92 AUD	66	953,266.54 AUD
HYUNDAI		628	4.83%	13,080,553.54 AUD	3.16%	91	2,884,038.68 AUD	537	10,196,514.86 AUD	431	10,198,135.40 AUD	197	2,882,418.14 AUD
INFINITI		2	0.02%	31,481.06 AUD	0.01%	-	- AUD	2	31,481.06 AUD	-	- AUD	2	31,481.06 AUD
ISUZU		271	2.09%	8,624,762.52 AUD	2.08%	56	2,088,308.24 AUD	215	6,536,454.28 AUD	221	7,547,074.08 AUD	50	1,077,688.44 AUD
JAGUAR		89	0.68%	4,242,845.69 AUD	1.02%	49	3,006,290.54 AUD	40	1,236,555.15 AUD	62	3,377,840.66 AUD	27	865,005.03 AUD
JEEP		137	1.05%	4,466,890.45 AUD	1.08%	36	1,789,769.65 AUD	101	2,677,120.80 AUD	76	3,140,750.82 AUD	61	1,326,139.63 AUD
KIA		373	2.87%	8,295,015.85 AUD	2.00%	66	2,226,812.56 AUD	307	6,068,203.29 AUD	289	6,877,126.70 AUD	84	1,417,889.15 AUD
LAND ROVER		552	4.25%	35,045,062.34 AUD	8.45%	321	24,665,814.24 AUD	231	10,379,248.10 AUD	404	28,416,545.27 AUD	148	6,628,517.07 AUD
LDV		245	1.89%	5,815,687.09 AUD	1.40%	49	1,348,301.95 AUD	196	4,467,385.14 AUD	237	5,683,034.87 AUD	8	132,652.22 AUD
LEXUS		11	0.08%	392,055.90 AUD	0.09%	6	248,500.58 AUD	5	143,555.32 AUD	5	210,835.46 AUD	6	181,220.44 AUD
MAHINDRA		3	0.02%	17,216.56 AUD	0.00%	-	- AUD	3	17,216.56 AUD	-	- AUD	3	17,216.56 AUD
MASERATI		28	0.22%	2,780,675.61 AUD	0.67%	21	2,445,690.62 AUD	7	334,984.99 AUD	22	2,451,660.88 AUD	6	329,014.73 AUD
MAZDA		559	4.30%	13,253,037.99 AUD	3.20%	119	4,217,226.30 AUD	440	9,035,811.69 AUD	388	10,538,748.36 AUD	171	2,714,289.63 AUD
MERCEDES-BENZ		313	2.41%	14,252,871.34 AUD	3.44%	120	7,257,372.50 AUD	193	6,995,498.84 AUD	146	8,684,023.46 AUD	167	5,568,847.88 AUD
MG		212	1.63%	3,659,546.90 AUD	0.88%	13	339,813.86 AUD	199	3,319,733.04 AUD	206	3,566,344.18 AUD	6	93,202.72 AUD
MINI		14	0.11%	398,666.65 AUD	0.10%	5	193,270.43 AUD	9	205,396.22 AUD	6	259,370.88 AUD	8	139,295.77 AUD
MITSUBISHI		807	6.21%	18,584,925.86 AUD	4.48%	113	3,566,583.01 AUD	694	15,018,342.85 AUD	583	14,625,330.67 AUD	224	3,959,595.19 AUD
NISSAN		372	2.86%	9,861,132.48 AUD	2.38%	67	2,638,569.12 AUD	305	7,222,563.36 AUD	217	6,996,760.12 AUD	155	2,864,372.36 AUD
OPEL		1	0.01%	10,440.64 AUD	0.00%	-	- AUD	1	10,440.64 AUD	-	- AUD	1	10,440.64 AUD
PEUGEOT		63	0.48%	1,660,216.17 AUD	0.40%	19	675,464.93 AUD	44	984,751.24 AUD	60	1,605,918.22 AUD	3	54,297.95 AUD
RAM		2	0.02%	94,427.75 AUD	0.02%	1	92,723.59 AUD	1	1,704.16 AUD	1	1,704.16 AUD	1	92,723.59 AUD
RENAULT		158	1.22%	4,252,654.63 AUD	1.03%	54	1,845,708.05 AUD	104	2,406,946.58 AUD	134	3,819,115.91 AUD	24	433,538.72 AUD
ROLLS-ROYCE		2	0.02%	349,643.69 AUD	0.08%	1	216,396.64 AUD	1	133,247.05 AUD	1	216,396.64 AUD	1	133,247.05 AUD
SSANGYONG		30	0.23%	804,243.27 AUD	0.19%	6	194,933.81 AUD	24	609,309.46 AUD	29	762,077.81 AUD	1	42,165.46 AUD
SUBARU		388	2.99%	8,969,610.22 AUD	2.16%	90	2,804,512.19 AUD	298	6,165,098.03 AUD	285	7,289,032.62 AUD	103	1,680,577.60 AUD
SUZUKI		142	1.09%	2,244,888.60 AUD	0.54%	8	154,504.43 AUD	134	2,090,384.17 AUD	105	1,815,213.07 AUD	37	429,675.53 AUD
TESLA		18	0.14%	962,377.39 AUD	0.23%	11	629,926.87 AUD	7	332,450.52 AUD	18	962,377.39 AUD	-	- AUD
TOYOTA		685	5.27%	20,377,461.46 AUD	4.92%	129	6,168,649.51 AUD	556	14,208,811.95 AUD	234	8,427,136.79 AUD	451	11,950,324.67 AUD
VOLVO		167	1.28%	7,359,896.15 AUD	1.78%	96	5,061,472.02 AUD	71	2,298,424.13 AUD	142	6,549,081.55 AUD	25	810,814.60 AUD
<b>Other Vehicles</b>	<b>SubTotal</b>	<b>8,077</b>	<b>62.15%</b>	<b>244,523,155.82 AUD</b>	<b>58.98%</b>	<b>1,989</b>	<b>97,119,403.84 AUD</b>	<b>6,088</b>	<b>147,403,751.98 AUD</b>	<b>5,409</b>	<b>182,247,090.49 AUD</b>	<b>2,668</b>	<b>62,276,065.33 AUD</b>
<b>Total</b>		<b>12,997</b>	<b>100.00%</b>	<b>414,561,296.17 AUD</b>	<b>100.00%</b>	<b>3,693</b>	<b>187,531,609.41 AUD</b>	<b>9,304</b>	<b>227,029,686.76 AUD</b>	<b>9,269</b>	<b>327,063,435.93 AUD</b>	<b>3,728</b>	<b>87,476,860.24 AUD</b>

**Pool Data VIII**

**Region**

Region	Total Portfolio				Product Type			
	Number of Contracts	Percentage of Contracts	Outstanding Discounted Receivables Balance	Percentage of Balance	Chattel Mortgage		Consumer Loan	
					Number of Contracts	Outstanding Discounted Receivables Balance	Number of Contracts	Outstanding Discounted Receivables Balance
Australian Capital Territory	384	2.95%	10,889,960.95 AUD	2.63%	152	5,580,967.78 AUD	232	5,308,993.17 AUD
New South Wales	4,647	35.75%	155,114,421.98 AUD	37.42%	3,054	114,165,466.01 AUD	1,593	40,948,955.97 AUD
Northern Territory	105	0.81%	2,338,235.90 AUD	0.56%	39	1,000,973.40 AUD	66	1,337,262.50 AUD
Queensland	2,780	21.39%	87,405,829.31 AUD	21.08%	1,874	63,987,545.32 AUD	906	23,418,283.99 AUD
South Australia	549	4.22%	19,035,430.08 AUD	4.59%	376	14,272,308.28 AUD	173	4,763,121.80 AUD
Tasmania	465	3.58%	11,554,226.27 AUD	2.79%	199	5,909,473.29 AUD	266	5,644,752.98 AUD
Victoria	2,553	19.64%	84,141,290.19 AUD	20.30%	1,575	60,154,669.37 AUD	978	23,986,620.82 AUD
Western Australia	1,514	11.65%	44,081,901.49 AUD	10.63%	875	27,843,976.69 AUD	639	16,237,924.80 AUD
<b>Total</b>	<b>12,997</b>	<b>100.00%</b>	<b>414,561,296.17 AUD</b>	<b>100.00%</b>	<b>8,144</b>	<b>292,915,380.14 AUD</b>	<b>4,853</b>	<b>121,645,916.03 AUD</b>

**Pool Data VIII**

**Region**

Region	Total Portfolio				Balloon				Vehicle Status			
	Number of Contracts	Percentage of Contracts	Outstanding Discounted Receivables Balance	Percentage of Balance	Balloon		No Balloon		New		Used	
					Number of Contracts	Outstanding Discounted Receivables Balance	Number of Contracts	Outstanding Discounted Receivables Balance	Number of Contracts	Outstanding Discounted Receivables Balance	Number of Contracts	Outstanding Discounted Receivables Balance
Australian Capital Territory	384	2.95%	10,889,960.95 AUD	2.63%	77	3,807,683.72 AUD	307	7,082,277.23 AUD	239	8,071,225.81 AUD	145	2,818,735.14 AUD
New South Wales	4,647	35.75%	155,114,421.98 AUD	37.42%	1,399	74,500,409.60 AUD	3,248	80,614,012.38 AUD	3,422	124,767,863.57 AUD	1,225	30,346,558.41 AUD
Northern Territory	105	0.81%	2,338,235.90 AUD	0.56%	4	155,901.23 AUD	101	2,182,334.67 AUD	84	1,924,970.42 AUD	21	413,265.48 AUD
Queensland	2,780	21.39%	87,405,829.31 AUD	21.08%	805	38,845,587.92 AUD	1,975	48,560,241.39 AUD	2,139	73,098,324.62 AUD	641	14,307,504.69 AUD
South Australia	549	4.22%	19,035,430.08 AUD	4.59%	203	10,530,752.80 AUD	346	8,504,677.28 AUD	407	15,805,174.14 AUD	142	3,230,255.94 AUD
Tasmania	465	3.58%	11,554,226.27 AUD	2.79%	79	2,978,485.26 AUD	386	8,575,741.01 AUD	248	6,729,763.63 AUD	217	4,824,462.64 AUD
Victoria	2,553	19.64%	84,141,290.19 AUD	20.30%	911	45,335,782.34 AUD	1,642	38,805,507.85 AUD	1,942	70,085,587.52 AUD	611	14,055,702.67 AUD
Western Australia	1,514	11.65%	44,081,901.49 AUD	10.63%	215	11,377,006.54 AUD	1,299	32,704,894.95 AUD	788	26,580,526.22 AUD	726	17,501,375.27 AUD
<b>Total</b>	<b>12,997</b>	<b>100.00%</b>	<b>414,561,296.17 AUD</b>	<b>100.00%</b>	<b>3,693</b>	<b>187,531,609.41 AUD</b>	<b>9,304</b>	<b>227,029,686.76 AUD</b>	<b>9,269</b>	<b>327,063,435.93 AUD</b>	<b>3,728</b>	<b>87,497,860.24 AUD</b>

Pool Data IX

Current COVID-19 Extensions

Total Portfolio					Product Type			
Current COVID-19 Extensions	Number of Contracts	Percentage of Contracts	Outstanding Discounted Receivables Balance	Percentage of Balance	Chattel Mortgage		Consumer Loan	
					Number of Contracts	Outstanding Discounted Receivables Balance	Number of Contracts	Outstanding Discounted Receivables Balance
Current COVID-19 Extension	19	0.15%	564,766.84 AUD	0.14%	13	415,636.64 AUD	6	149,130.20 AUD
No Current Extension	12,978	99.85%	413,996,529.33 AUD	99.86%	8,131	292,499,743.50 AUD	4,847	121,496,785.83 AUD
<b>Total</b>	<b>12,997</b>	<b>100.00%</b>	<b>414,561,296.17 AUD</b>	<b>100.00%</b>	<b>8,144</b>	<b>292,915,380.14 AUD</b>	<b>4,853</b>	<b>121,645,916.03 AUD</b>

\* Representing contracts which are currently in a COVID-19 extension as at the Reporting Date

Pool Data IX

Current COVID-19 Extensions

Total Portfolio					Balloon				Vehicle Status			
Current COVID-19 Extensions	Number of Contracts	Percentage of Contracts	Outstanding Discounted Receivables Balance	Percentage of Balance	Balloon		No Balloon		New		Used	
					Number of Contracts	Outstanding Discounted Receivables Balance	Number of Contracts	Outstanding Discounted Receivables Balance	Number of Contracts	Outstanding Discounted Receivables Balance	Number of Contracts	Outstanding Discounted Receivables Balance
Current COVID-19 Extension	19	0.15%	564,766.84 AUD	0.14%	7	273,989.04 AUD	12	290,777.80 AUD	8	334,711.19 AUD	11	230,055.65 AUD
No Current Extension	12,978	99.85%	413,996,529.33 AUD	99.86%	3,686	187,257,620.37 AUD	9,292	226,738,908.96 AUD	9,261	326,728,724.74 AUD	3,717	87,267,804.59 AUD
<b>Total</b>	<b>12,997</b>	<b>100.00%</b>	<b>414,561,296.17 AUD</b>	<b>100.00%</b>	<b>3,693</b>	<b>187,531,609.41 AUD</b>	<b>9,304</b>	<b>227,029,686.76 AUD</b>	<b>9,269</b>	<b>327,063,435.93 AUD</b>	<b>3,728</b>	<b>87,497,860.24 AUD</b>

\* Representing contracts which are currently in a COVID-19 extension as at the Reporting Date

**Individual Hardship Extensions\***

Individual Extensions Approved For After Poolcut*	Number of Contracts	Percentage of Contracts	Outstanding Discounted Receivables Balance	Percentage of Balance
None	12,913	99.35%	411,397,188.36 AUD	99.24%
1	73	0.56%	2,737,705.79 AUD	0.66%
2	10	0.08%	389,667.39 AUD	0.09%
3	1	0.01%	36,734.63 AUD	0.01%
4	-	0.00%	0.00 AUD	0.00%
5	-	0.00%	0.00 AUD	0.00%
<b>Total</b>	<b>12,997</b>	<b>100.00%</b>	<b>414,561,296.17 AUD</b>	<b>100.00%</b>

\*Individual Hardship Extensions Approved For After Poolcut For Contracts Active At End of Reporting Period

**Engine Type**

Engine Type	Total Portfolio				Product Type			
	Number of Contracts	Percentage of Contracts	Outstanding Discounted Receivables Balance	Percentage of Balance	Chattel Mortgage		Consumer Loan	
					Number of Contracts	Outstanding Discounted Receivables Balance	Number of Contracts	Outstanding Discounted Receivables Balance
EA 189 (Unfixed)	3	0.02%	18,848.45 AUD	0.00%	2	18,370.77 AUD	1	477.68 AUD
Other	12,994	99.98%	414,542,447.72 AUD	100.00%	8,142	292,897,009.37 AUD	4,852	121,645,438.35 AUD
<b>Total</b>	<b>12,997</b>	<b>100.00%</b>	<b>414,561,296.17 AUD</b>	<b>100.00%</b>	<b>8,144</b>	<b>292,915,380.14 AUD</b>	<b>4,853</b>	<b>121,645,916.03 AUD</b>



**Engine Type**

Engine Type	Total Portfolio				Balloon				Vehicle Status			
	Number of Contracts	Percentage of Contracts	Outstanding Discounted Receivables Balance	Percentage of Balance	Balloon		No Balloon		New		Used	
					Number of Contracts	Outstanding Discounted Receivables Balance	Number of Contracts	Outstanding Discounted Receivables Balance	Number of Contracts	Outstanding Discounted Receivables Balance	Number of Contracts	Outstanding Discounted Receivables Balance
EA 189 (Unfixed)	3	0.02%	18,848.45 AUD	0.00%	-	- AUD	3	18,848.45 AUD	-	- AUD	3	18,848.45 AUD
Other	12,994	99.98%	414,542,447.72 AUD	100.00%	3,693	187,531,609.41 AUD	9,301	227,010,838.31 AUD	9,269	327,063,435.93 AUD	3,725	87,479,011.79 AUD
<b>Total</b>	<b>12,997</b>	<b>100.00%</b>	<b>414,561,296.17 AUD</b>	<b>100.00%</b>	<b>3,693</b>	<b>187,531,609.41 AUD</b>	<b>9,304</b>	<b>227,029,686.76 AUD</b>	<b>9,269</b>	<b>327,063,435.93 AUD</b>	<b>3,728</b>	<b>87,497,860.24 AUD</b>

**Contract Level Data**      **Net Salvage Recoveries By Contract By Month**

No.	Month / Year of Origination	Month / Year of Net Salvage	Outstanding Discounted Receivables Balance at Poolcut	ABS Gross Salvage Loss	ABS Net Salvage Loss	ABS Recoveries After Net Salvage	ABS Net Salvage Loss After Recoveries	Loss Percentage on Poolcut Balance	Geographical Location of Borrower	Vehicle Type (New/Used)	Vehicle Manufacturer	Product Type
1	02/2021	07/2022	69,286.66 AUD	68,260.06 AUD	23,440.30 AUD	- AUD	23,440.30 AUD	33.83%	Queensland	New	HYUNDAI	Chattel Mortgage
2	04/2017	08/2022	4,908.02 AUD	1,802.96 AUD	1,802.96 AUD	- AUD	1,802.96 AUD	36.73%	Western Australia	Used	TOYOTA	Consumer Loan
3	09/2020	08/2022	22,898.44 AUD	24,043.02 AUD	23,946.41 AUD	20,847.13 AUD	3,099.28 AUD	13.53%	New South Wales	New	HYUNDAI	Chattel Mortgage
4	11/2020	08/2022	85,150.75 AUD	86,290.47 AUD	26,227.05 AUD	- AUD	26,227.05 AUD	30.80%	New South Wales	Used	AUDI	Consumer Loan
5	03/2021	08/2022	29,185.09 AUD	28,877.00 AUD	5,729.99 AUD	- AUD	5,729.99 AUD	19.63%	Queensland	Used	AUDI	Chattel Mortgage
6	08/2021	09/2022	58,243.78 AUD	60,601.34 AUD	60,349.39 AUD	(656.00) AUD	61,005.39 AUD	104.74%	New South Wales	New	VOLVO	Consumer Loan
7	05/2017	10/2022	10,198.36 AUD	5,937.71 AUD	5,937.71 AUD	- AUD	5,937.71 AUD	58.22%	Western Australia	New	VOLKSWAGEN	Consumer Loan
<b>Total</b>	<b>7</b>		<b>279,871.10 AUD</b>	<b>277,812.56 AUD</b>	<b>147,433.81 AUD</b>	<b>20,191.13 AUD</b>	<b>127,242.68 AUD</b>					

**Contract Level Data**                      **Net Salvage Recoveries By Contract By Month**

No.	Month / Year of Origination	Month / Year of Net Salvage	Nov-21	Dec-21	Jan-22	Feb-22	Mar-22	Apr-22	May-22	Jun-22	Jul-22	Aug-22	Sep-22	Oct-22
1	02/2021	07/2022	- AUD	- AUD	- AUD	- AUD	- AUD	- AUD	- AUD	- AUD	- AUD	- AUD	- AUD	- AUD
2	04/2017	08/2022	- AUD	- AUD	- AUD	- AUD	- AUD	- AUD	- AUD	- AUD	- AUD	- AUD	- AUD	- AUD
3	09/2020	08/2022	- AUD	- AUD	- AUD	- AUD	- AUD	- AUD	- AUD	- AUD	- AUD	- AUD	- AUD	- AUD
4	11/2020	08/2022	- AUD	- AUD	- AUD	- AUD	- AUD	- AUD	- AUD	- AUD	- AUD	- AUD	(871.25) AUD	21,718.38 AUD
5	03/2021	08/2022	- AUD	- AUD	- AUD	- AUD	- AUD	- AUD	- AUD	- AUD	- AUD	- AUD	- AUD	- AUD
6	08/2021	09/2022	- AUD	- AUD	- AUD	- AUD	- AUD	- AUD	- AUD	- AUD	- AUD	- AUD	- AUD	(656.00) AUD
7	05/2017	10/2022	- AUD	- AUD	- AUD	- AUD	- AUD	- AUD	- AUD	- AUD	- AUD	- AUD	- AUD	- AUD
<b>Total</b>	<b>7</b>		- AUD	- AUD	- AUD	- AUD	- AUD	- AUD	- AUD	- AUD	- AUD	- AUD	(871.25) AUD	21,062.38 AUD

**Contract Level Data**                      **Net Salvage Recoveries By Contract By Month**

No.	Month / Year of Origination	Month / Year of Net Salvage	Nov-22	Dec-22	Jan-23	Feb-23	Mar-23	Apr-23	May-23	Jun-23	Jul-23	Aug-23	Sep-23	Oct-23
1	02/2021	07/2022	- AUD	- AUD	- AUD	- AUD	- AUD	- AUD	- AUD	- AUD	- AUD	- AUD	- AUD	- AUD
2	04/2017	08/2022	- AUD	- AUD	- AUD	- AUD	- AUD	- AUD	- AUD	- AUD	- AUD	- AUD	- AUD	- AUD
3	09/2020	08/2022	- AUD	- AUD	- AUD	- AUD	- AUD	- AUD	- AUD	- AUD	- AUD	- AUD	- AUD	- AUD
4	11/2020	08/2022	- AUD	- AUD	- AUD	- AUD	- AUD	- AUD	- AUD	- AUD	- AUD	- AUD	- AUD	- AUD
5	03/2021	08/2022	- AUD	- AUD	- AUD	- AUD	- AUD	- AUD	- AUD	- AUD	- AUD	- AUD	- AUD	- AUD
6	08/2021	09/2022	- AUD	- AUD	- AUD	- AUD	- AUD	- AUD	- AUD	- AUD	- AUD	- AUD	- AUD	- AUD
7	05/2017	10/2022	- AUD	- AUD	- AUD	- AUD	- AUD	- AUD	- AUD	- AUD	- AUD	- AUD	- AUD	- AUD
<b>Total</b>	<b>7</b>		- AUD	- AUD	- AUD	- AUD	- AUD	- AUD	- AUD	- AUD	- AUD	- AUD	- AUD	- AUD

Contract Level Data

Net Salvage Recoveries By Contract By Month

#REF!

No.	Month / Year of Origination	Month / Year of Net Salvage	Nov-23	Dec-23	Jan-24	Feb-24	Mar-24	Apr-24	May-24	Jun-24	Jul-24	Aug-24	Sep-24	Oct-24
1	02/2021	07/2022	- AUD	- AUD	- AUD	- AUD	- AUD	- AUD	- AUD	- AUD	- AUD	- AUD	- AUD	- AUD
2	04/2017	08/2022	- AUD	- AUD	- AUD	- AUD	- AUD	- AUD	- AUD	- AUD	- AUD	- AUD	- AUD	- AUD
3	09/2020	08/2022	- AUD	- AUD	- AUD	- AUD	- AUD	- AUD	- AUD	- AUD	- AUD	- AUD	- AUD	- AUD
4	11/2020	08/2022	- AUD	- AUD	- AUD	- AUD	- AUD	- AUD	- AUD	- AUD	- AUD	- AUD	- AUD	- AUD
5	03/2021	08/2022	- AUD	- AUD	- AUD	- AUD	- AUD	- AUD	- AUD	- AUD	- AUD	- AUD	- AUD	- AUD
6	08/2021	09/2022	- AUD	- AUD	- AUD	- AUD	- AUD	- AUD	- AUD	- AUD	- AUD	- AUD	- AUD	- AUD
7	05/2017	10/2022	- AUD	- AUD	- AUD	- AUD	- AUD	- AUD	- AUD	- AUD	- AUD	- AUD	- AUD	- AUD
<b>Total</b>	<b>7</b>		- AUD	- AUD	- AUD	- AUD	- AUD	- AUD	- AUD	- AUD	- AUD	- AUD	- AUD	- AUD

**Contract Level Data**                      **Net Salvage Recoveries By Contract By Month**

No.	Month / Year of Origination	Month / Year of Net Salvage	Nov-24	Dec-24	Jan-25	Feb-25	Mar-25	Apr-25	May-25	Jun-25	Jul-25	Aug-25
1	02/2021	07/2022	- AUD	- AUD	- AUD	- AUD	- AUD	- AUD	- AUD	- AUD	- AUD	- AUD
2	04/2017	08/2022	- AUD	- AUD	- AUD	- AUD	- AUD	- AUD	- AUD	- AUD	- AUD	- AUD
3	09/2020	08/2022	- AUD	- AUD	- AUD	- AUD	- AUD	- AUD	- AUD	- AUD	- AUD	- AUD
4	11/2020	08/2022	- AUD	- AUD	- AUD	- AUD	- AUD	- AUD	- AUD	- AUD	- AUD	- AUD
5	03/2021	08/2022	- AUD	- AUD	- AUD	- AUD	- AUD	- AUD	- AUD	- AUD	- AUD	- AUD
6	08/2021	09/2022	- AUD	- AUD	- AUD	- AUD	- AUD	- AUD	- AUD	- AUD	- AUD	- AUD
7	05/2017	10/2022	- AUD	- AUD	- AUD	- AUD	- AUD	- AUD	- AUD	- AUD	- AUD	- AUD
<b>Total</b>	<b>7</b>		- AUD	- AUD	- AUD	- AUD	- AUD	- AUD	- AUD	- AUD	- AUD	- AUD