



25 November 2022

ASX Market Announcements

**PRESENTATION AT AGM ON 25 NOVEMBER 2022**

A copy of the Powerpoint presentation on current exploration is attached

Authorised by:

**Eric Sam Yue**

**Executive Director/Company Secretary**

Contact: 02 9264 6988

Email: [office@ausmonresources.com.au](mailto:office@ausmonresources.com.au)

**AUSMON RESOURCES LIMITED** ABN 88 134 358 964  
'World Tower' Suite 1312, 87-89 Liverpool Street, Sydney NSW 2000 Australia.  
PO BOX 20188 World Square, NSW 2002 Australia  
Tel: **61 2 9264 6988** Fax: **61 2 9283 7166** Email: [office@ausmonresources.com.au](mailto:office@ausmonresources.com.au)  
[www.ausmonresources.com.au](http://www.ausmonresources.com.au) ASX code: **AOA**





# AUSMON RESOURCES

## AGM PRESENTATION

Mark Derriman (Chief Technical Officer)

25th NOVEMBER 2022

# 2022/2023 Exploration Overview



## **NSW Broken Hill: Kanbarra/Stirling Vale – Cobalt and Base Metals Exploration**

- Detailed evaluation of all exploration to date (planning underway).
- Review of Eaglehawk prospect exploration (Geochemistry, IP and Drilling) by Broken Hill based consultant (expected by end 2022)

## **NSW Broken Hill: Enmore/Eureka/Mt Darling – Cobalt and Base Metals Exploration**

- Plan IP survey for Enmore to cover the East Borehole area that is the site of historical drilling – (being considered for 2023)
- Digitise East Borehole and North Borehole historical drilling – (completed)
- IP survey in NW of Enmore – (being considered for 2023)
- Surficial geochemical exploration in Nth Eureka to extend known historical exploration outside the tenement – (planning underway)

# 2022/2023 Exploration Overview

## **NSW Tumut: Brungle Creek/McAlpine – Cobalt and Base Metals Exploration**

- Incorporate newly interpreted seismic data into the exploration model – (completed)
- Revise exploration target ahead of field program – (completed)
- Submit budget for field based exploration – (completed)
- Field based surficial exploration program planned for Q4 2022

## **SA Limestone Coast: Rare Earth Elements Exploration**

- Orientation study to map “clay” layers” (completed)
- Review of historical drilling across the tenements (completed)
- Planned sampling of historic drillholes for RSS (planned Q4 2022)
- Submit permit to DC’s to drill on road verges – (in progress)
- Submit budget for roadside drilling in 2023 – (not commenced)
- Attend community meetings ahead of drilling in 2023 – (not commenced)
- Send out drill tenders once approval for drilling has been granted – (not commenced)
- Drill along road verges to test for clay REE’s – (not commenced)



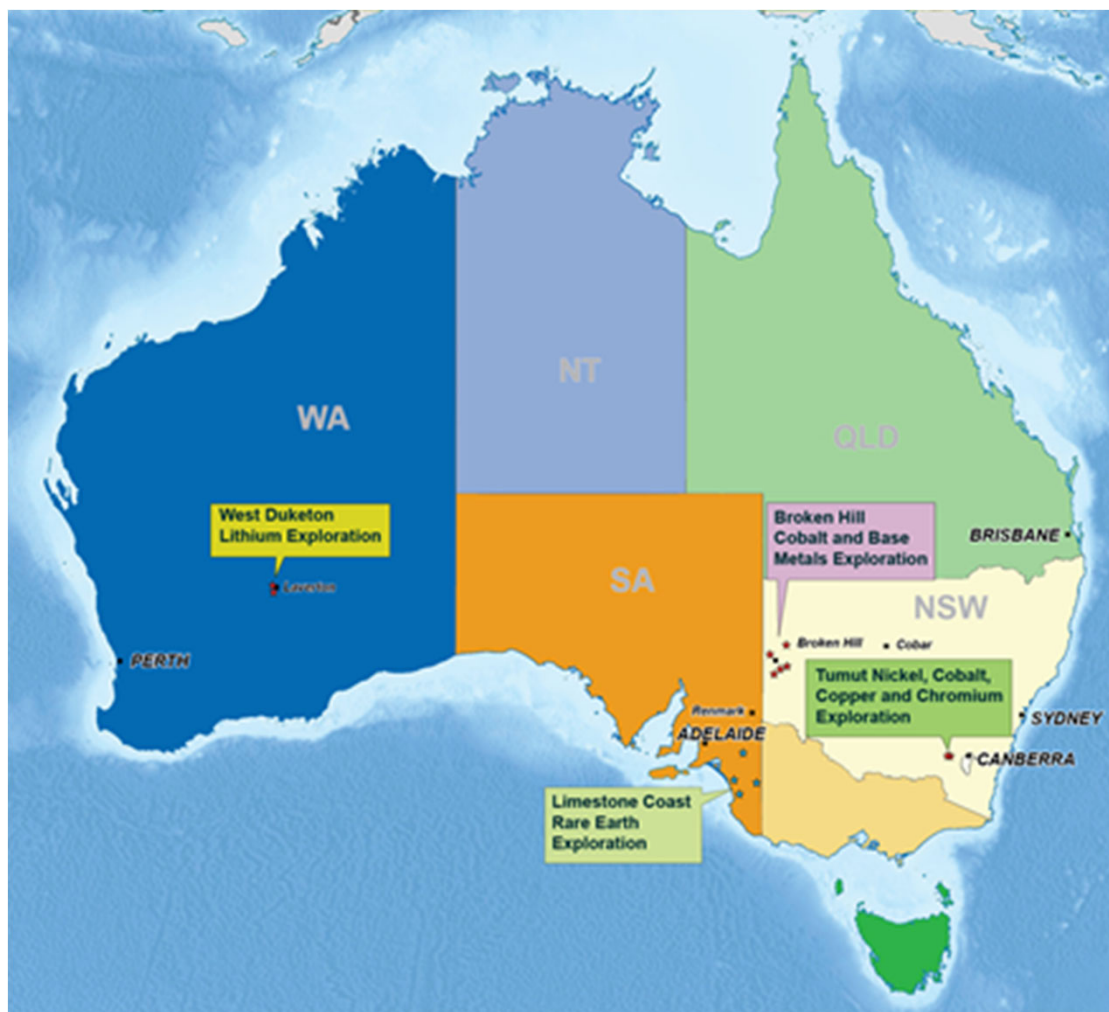
NSW : 7 Granted Tenements - Cobalt & Base Metals

SA : 4 Tenements Granted – REE

WA : 2 Tenement Applications - Lithium



AUSMON RESOURCES  
LIMITED



Historic  
McAlpine Cu  
Mine (Brungle  
Creek)



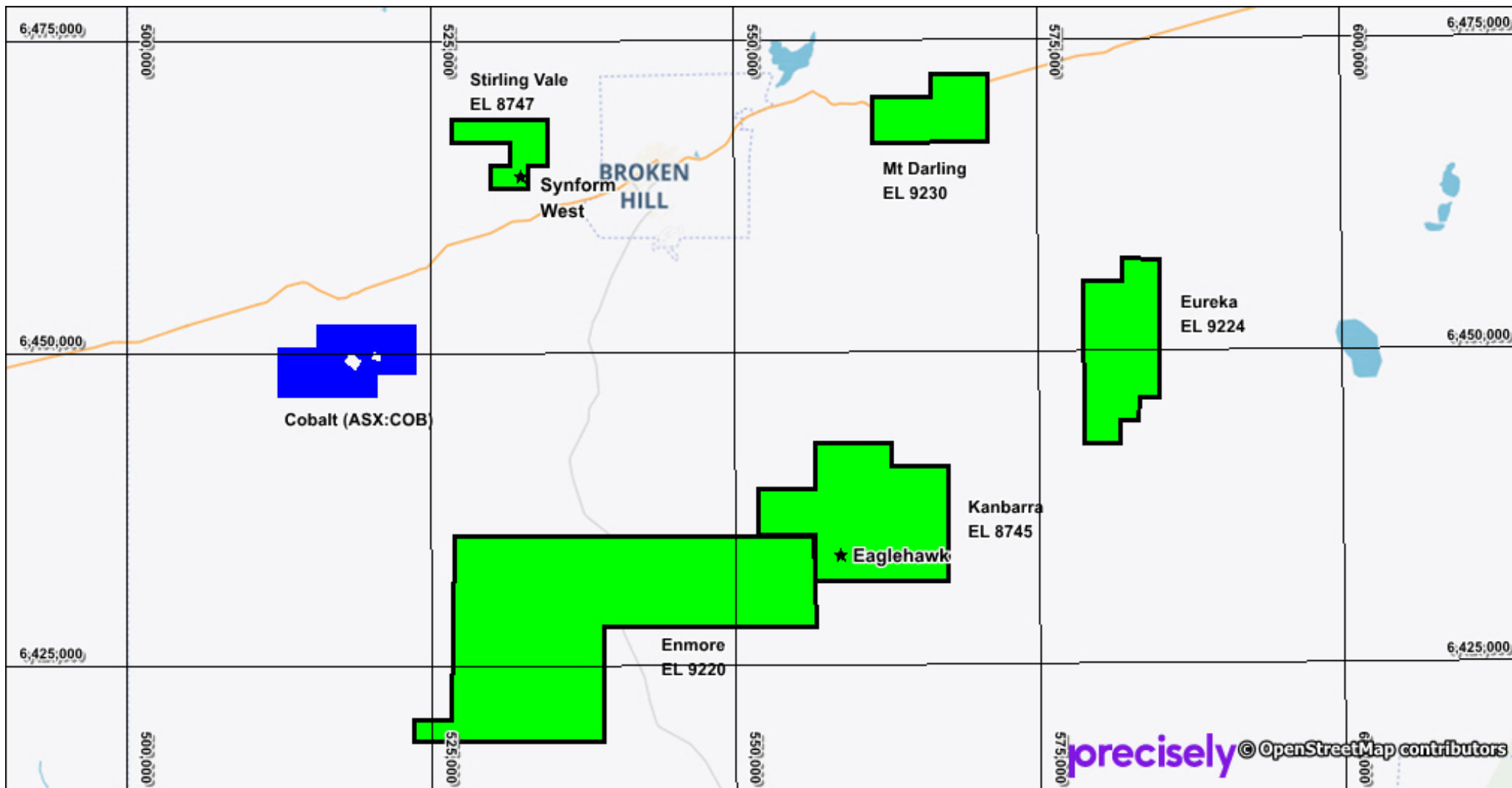
RC drilling at  
Eaglehawk  
(Kanbarra)





AUSMON RESOURCES  
LIMITED

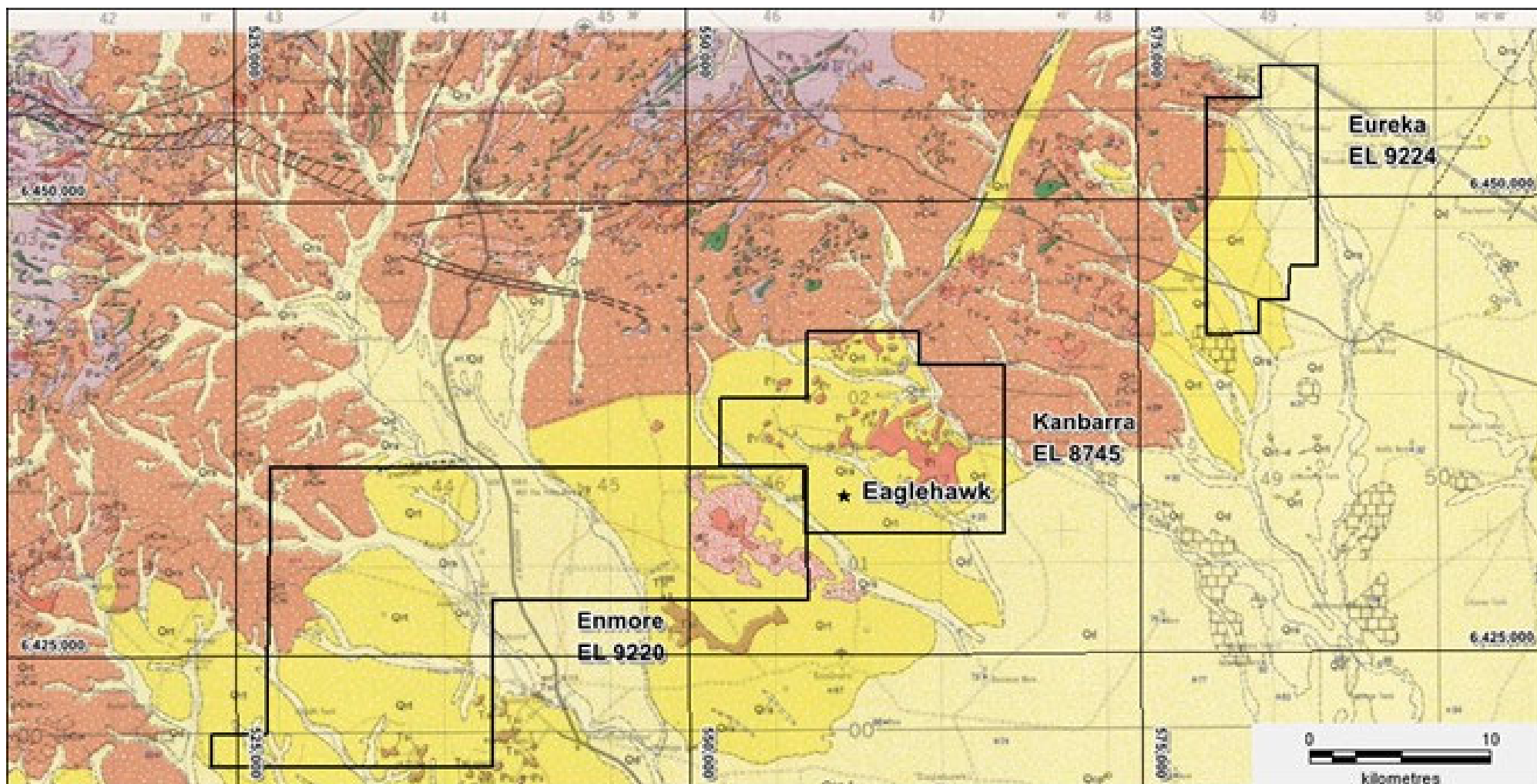
# NSW Broken Hill Tenements



# EL 9224 Eureka and EL 9220 Enmore Outcrop Geology



AUSMON RESOURCES  
LIMITED



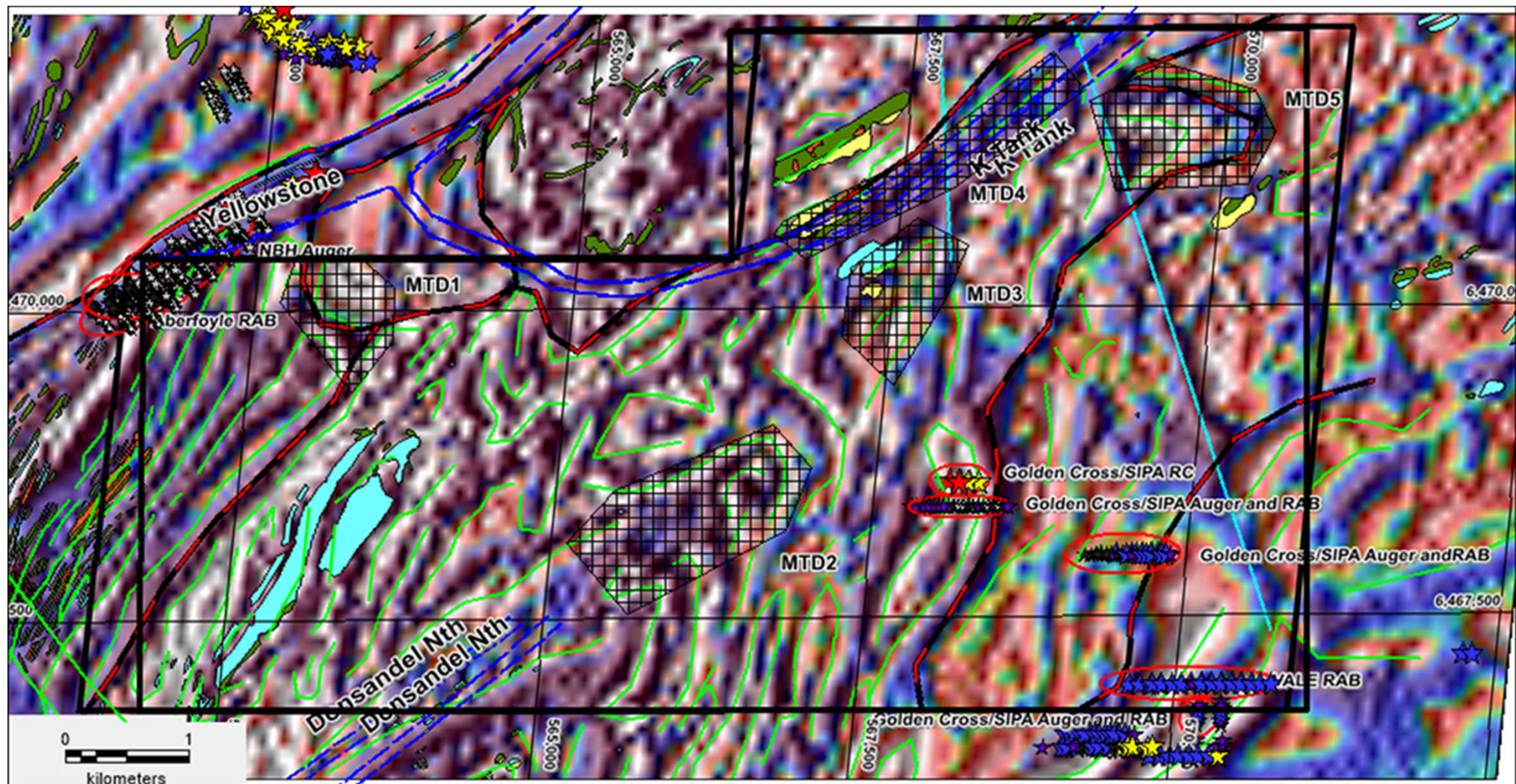
Transported cover sediments shown in shades of yellow



# EL 9230 Mt Darling Lithstructural



AUSMON RESOURCES  
LIMITED

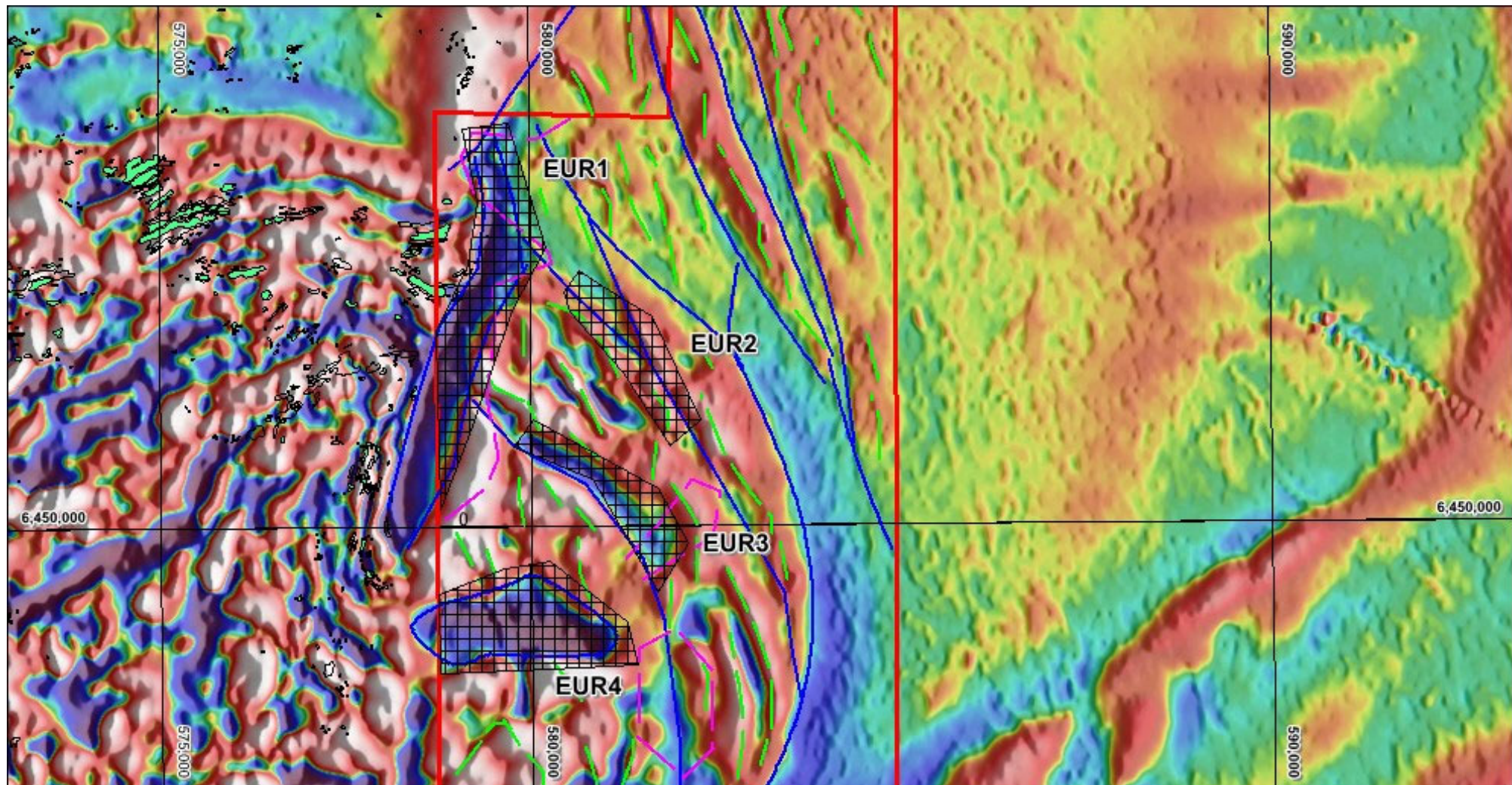




# EL 9224 Eureka Lithostructural



AUSMON RESOURCES  
LIMITED

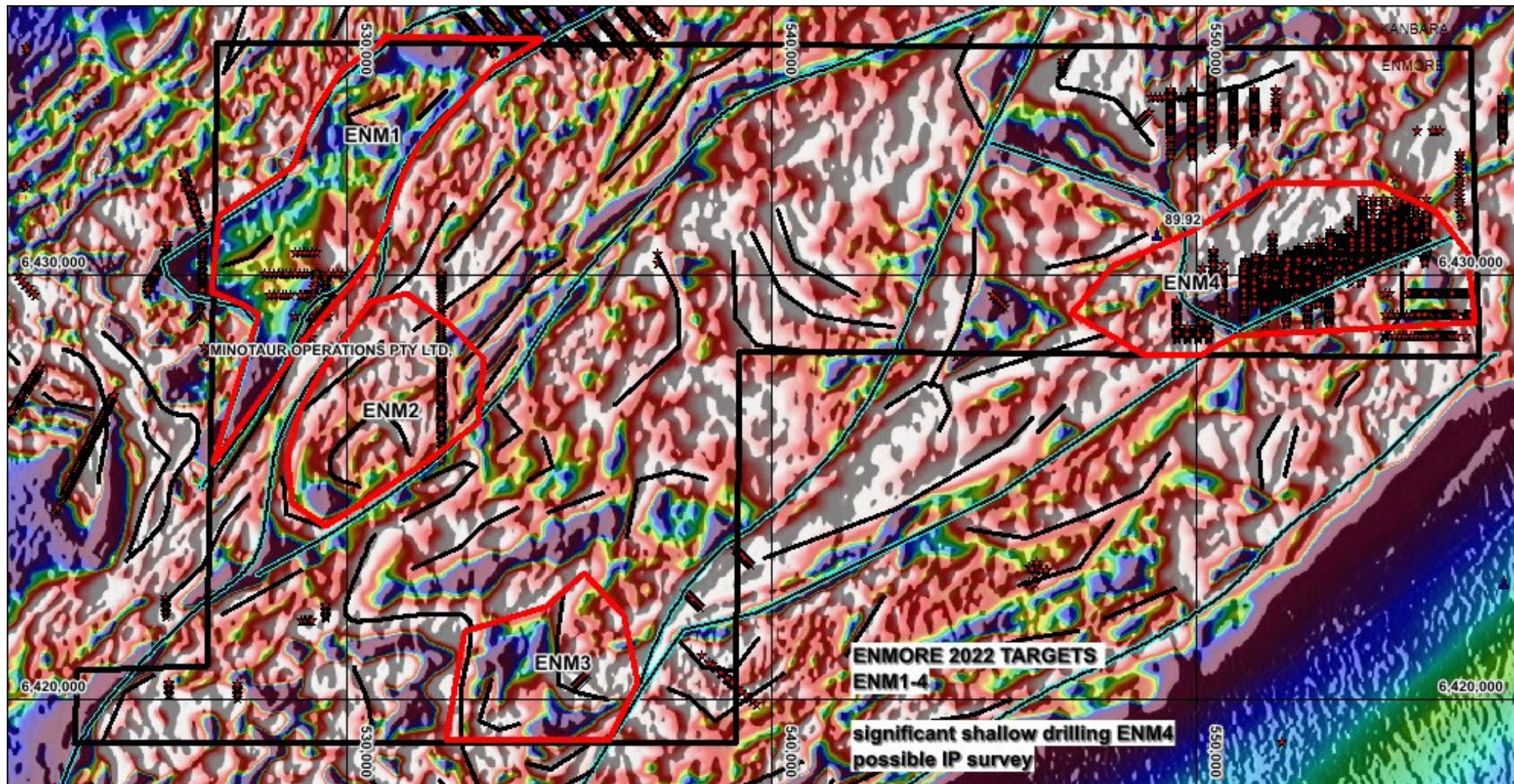




# EL 9220 Enmore Lithostructural



AUSMON RESOURCES  
LIMITED

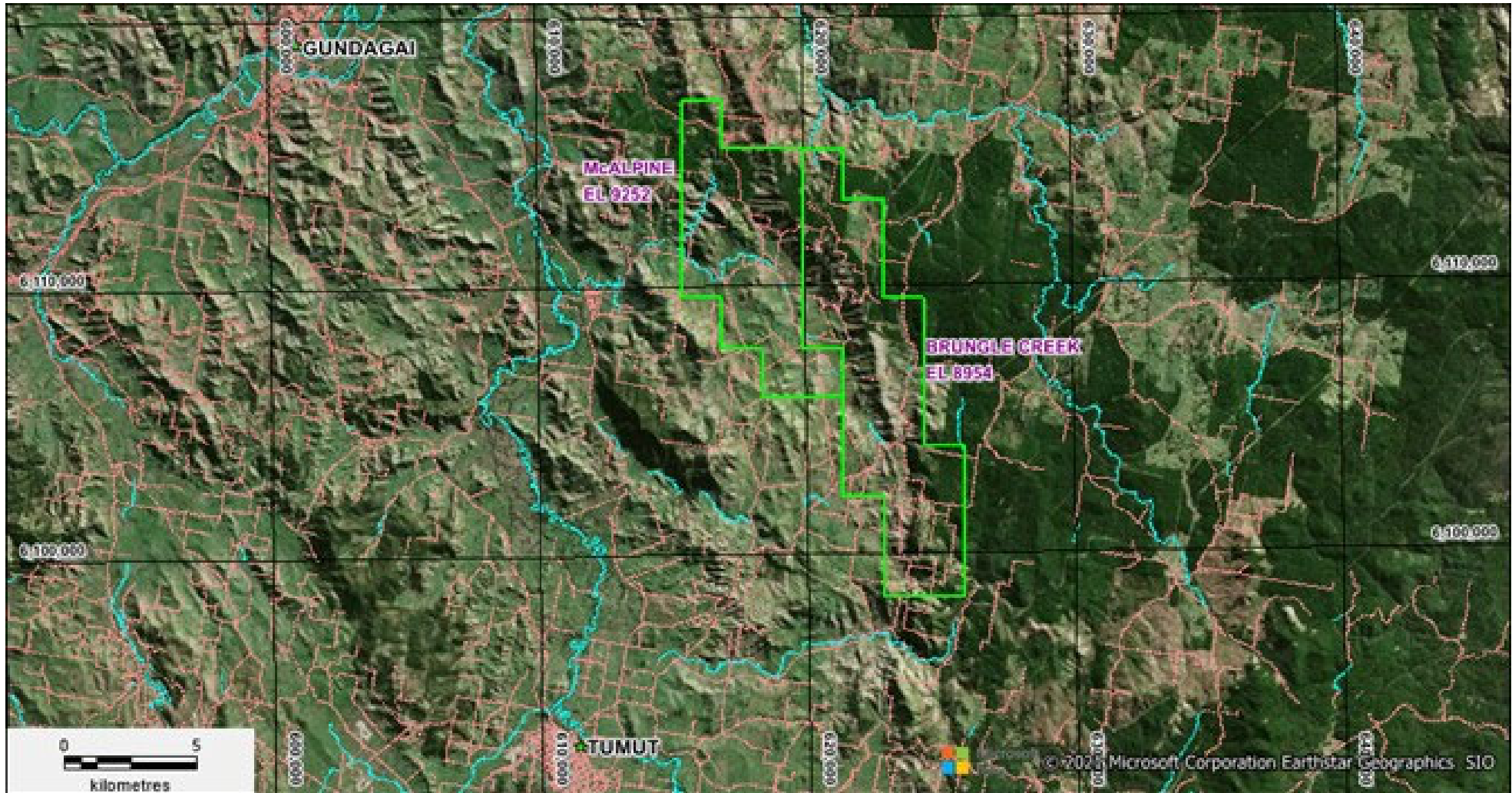




# NSW Tumut EL 8954 Brungle Creek and EL 9252 McAlpine



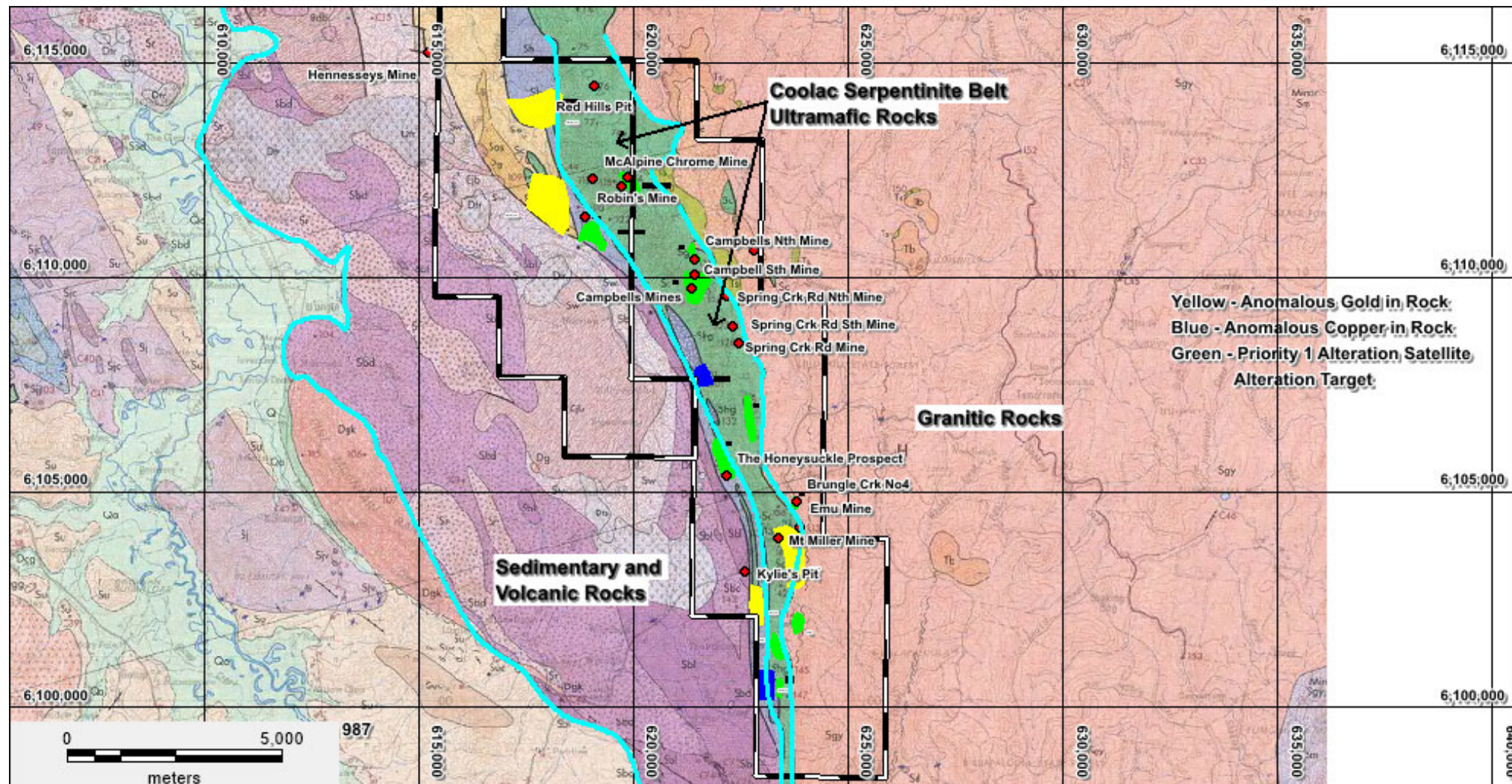
AUSMON RESOURCES  
LIMITED



# Tumut Geology/Prospects



**AUSMON RESOURCES  
LIMITED**

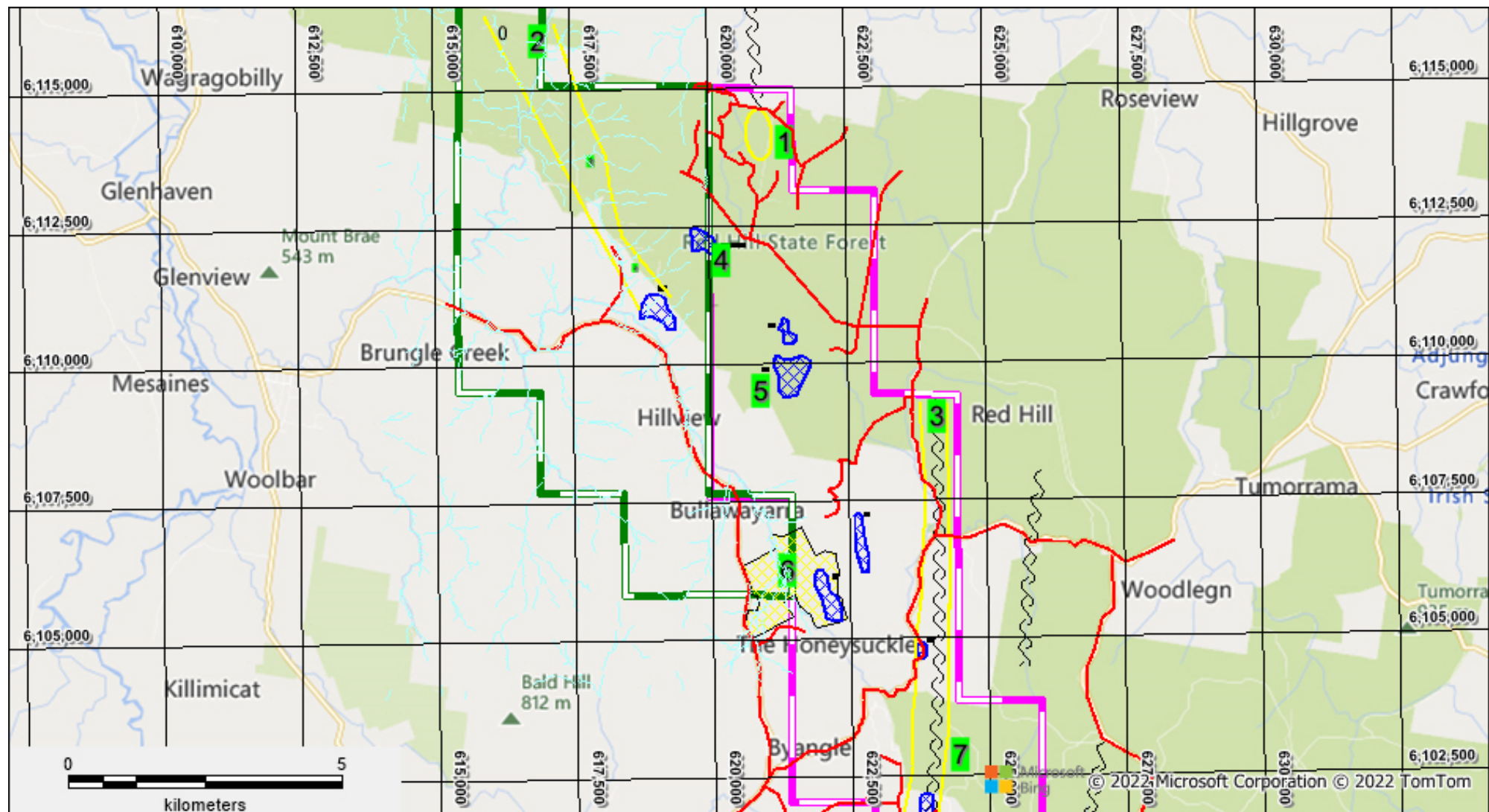




# Tumut 2022 Exploration Targets



AUSMON RESOURCES  
LIMITED

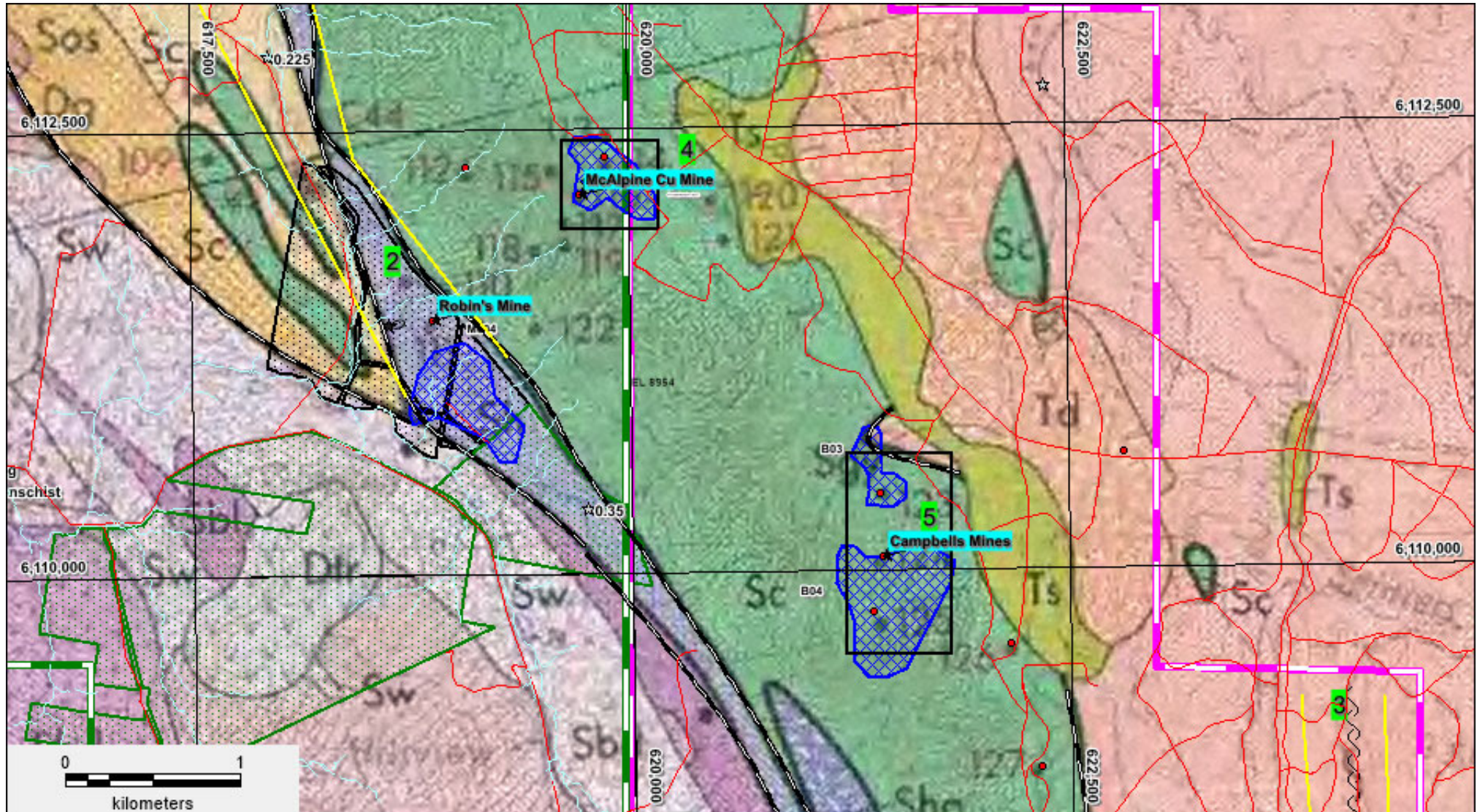




# Tumut Central Exploration Targets



AUSMON RESOURCES  
LIMITED

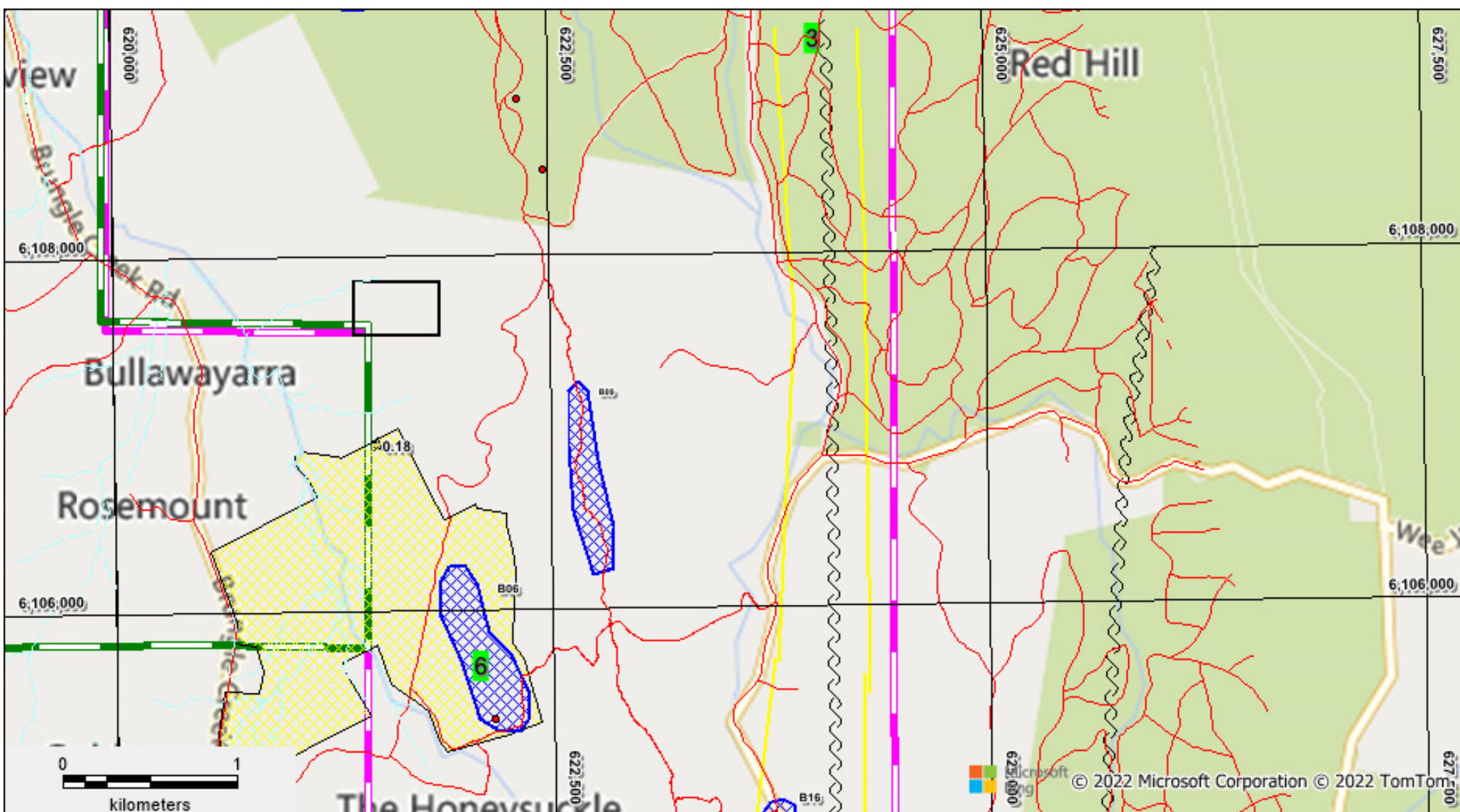




# Tumut South Exploration Targets



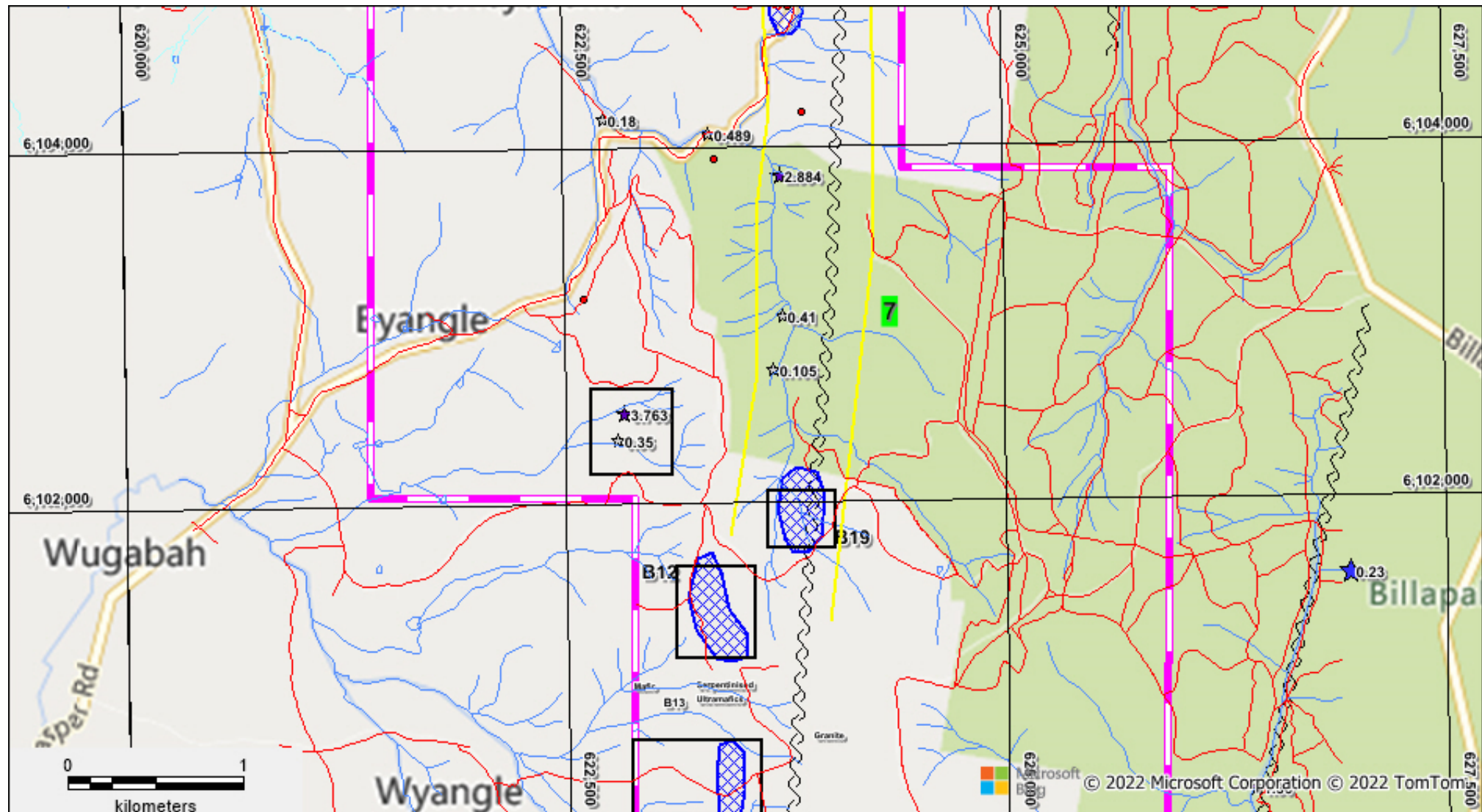
AUSMON RESOURCES  
LIMITED



# Tumut Far South Exploration Targets



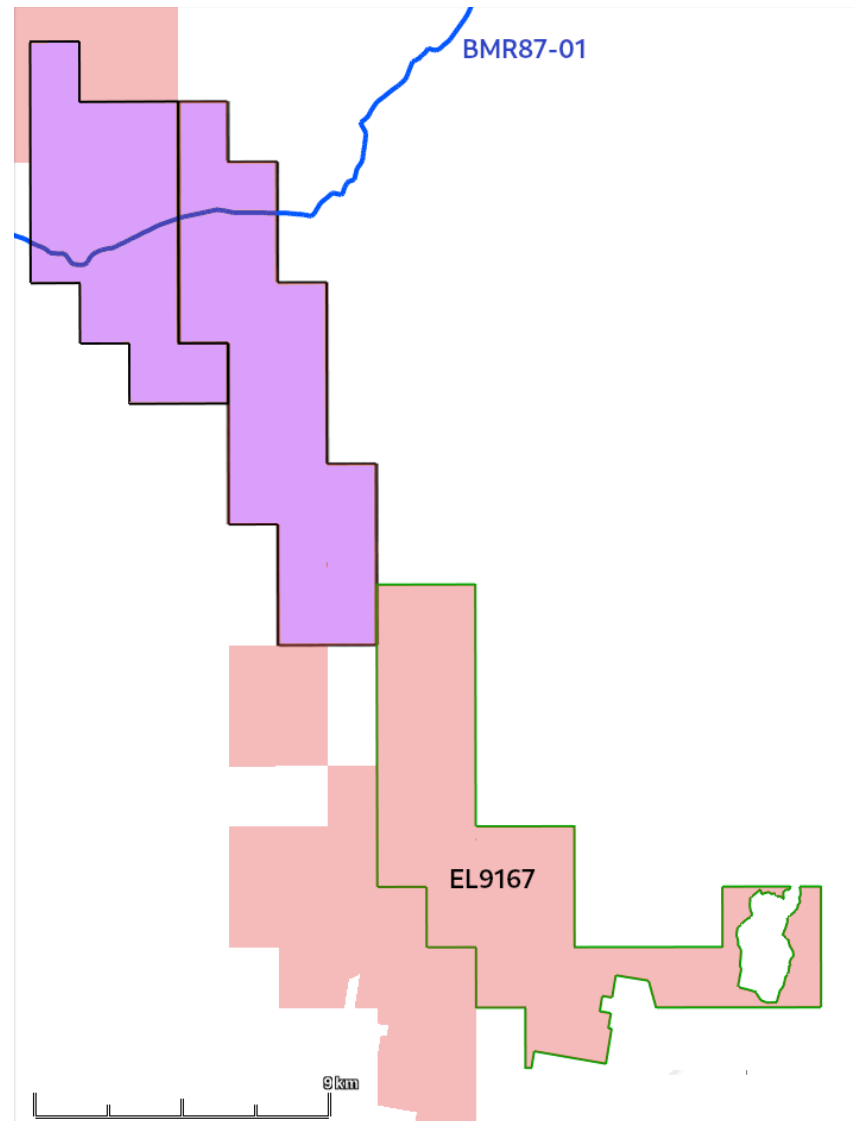
AUSMON RESOURCES  
LIMITED



# Brungle Creek and McAlpine Seismic



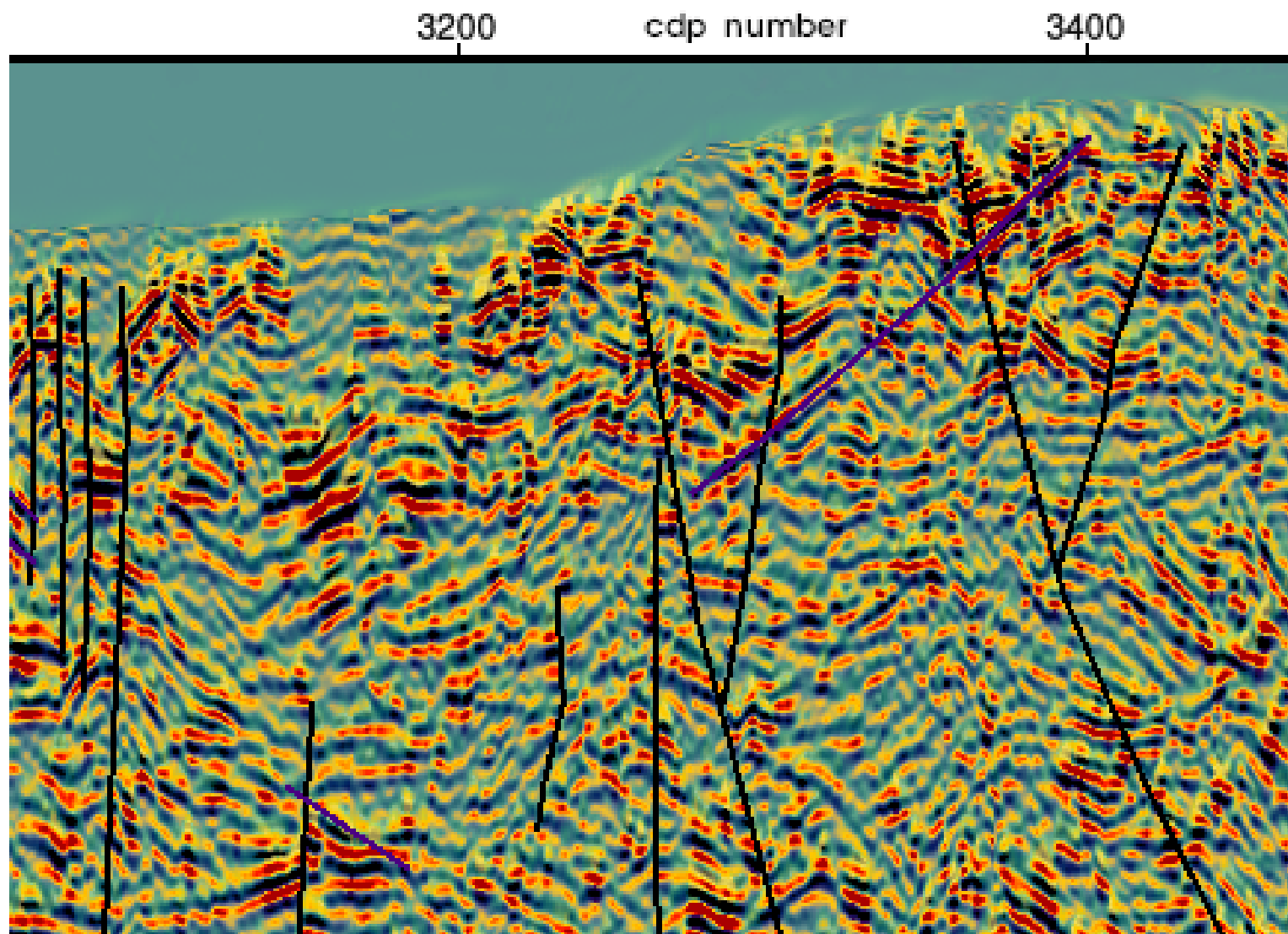
AUSMON RESOURCES  
LIMITED



# Brungle Creek and McAlpine Seismic New Interpretation



AUSMON RESOURCES  
LIMITED

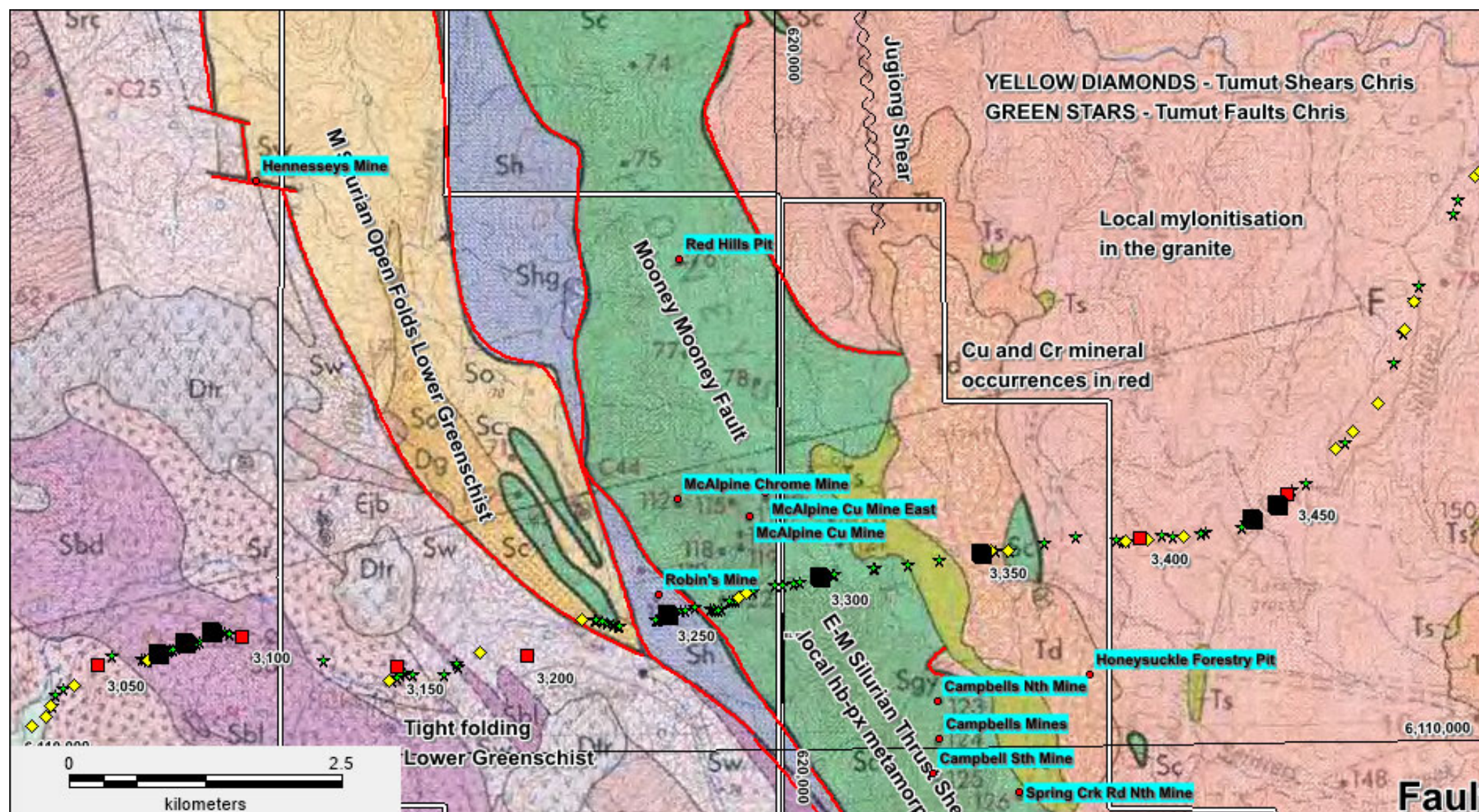




# Brungle Creek and McAlpine Seismic New Interpretation



AUSMON RESOURCES  
LIMITED





# SA : Limestone Coast



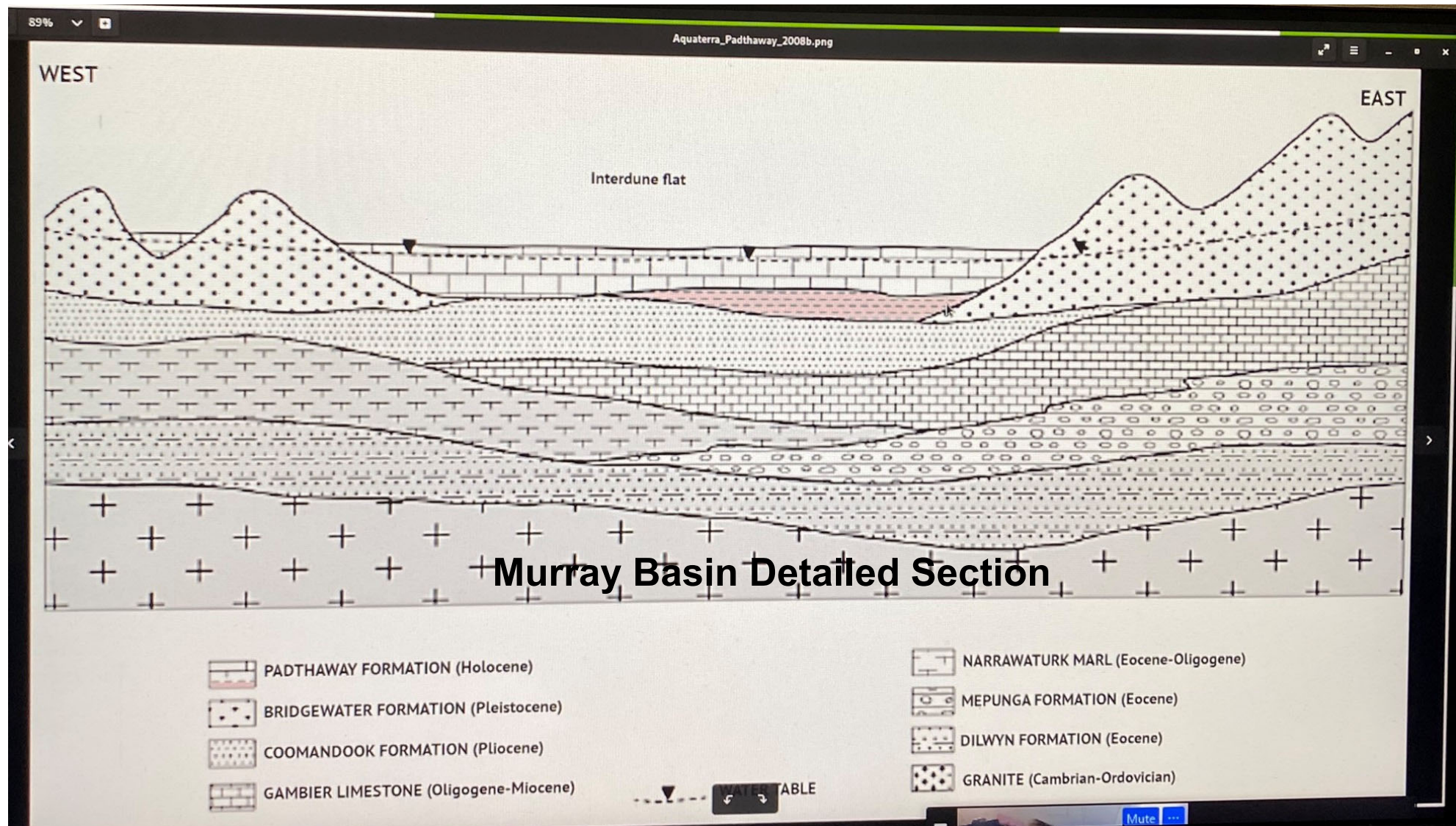
Examples of Proposed Verge Drilling Sites





AUSMON RESOURCES  
LIMITED

# SA : Limestone Coast REE Project

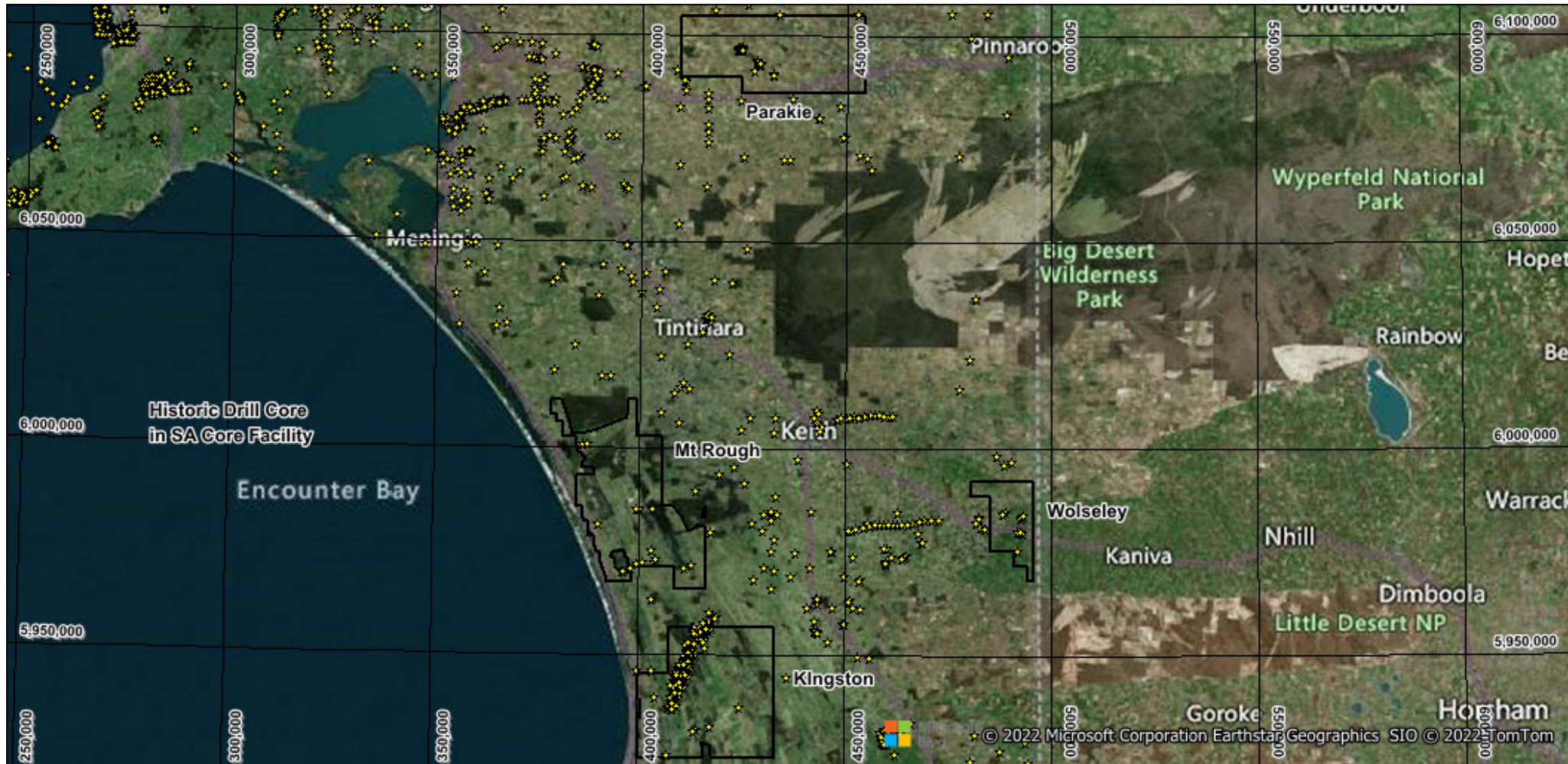






AUSMON RESOURCES  
LIMITED

# SA : Limestone Coast REE Project



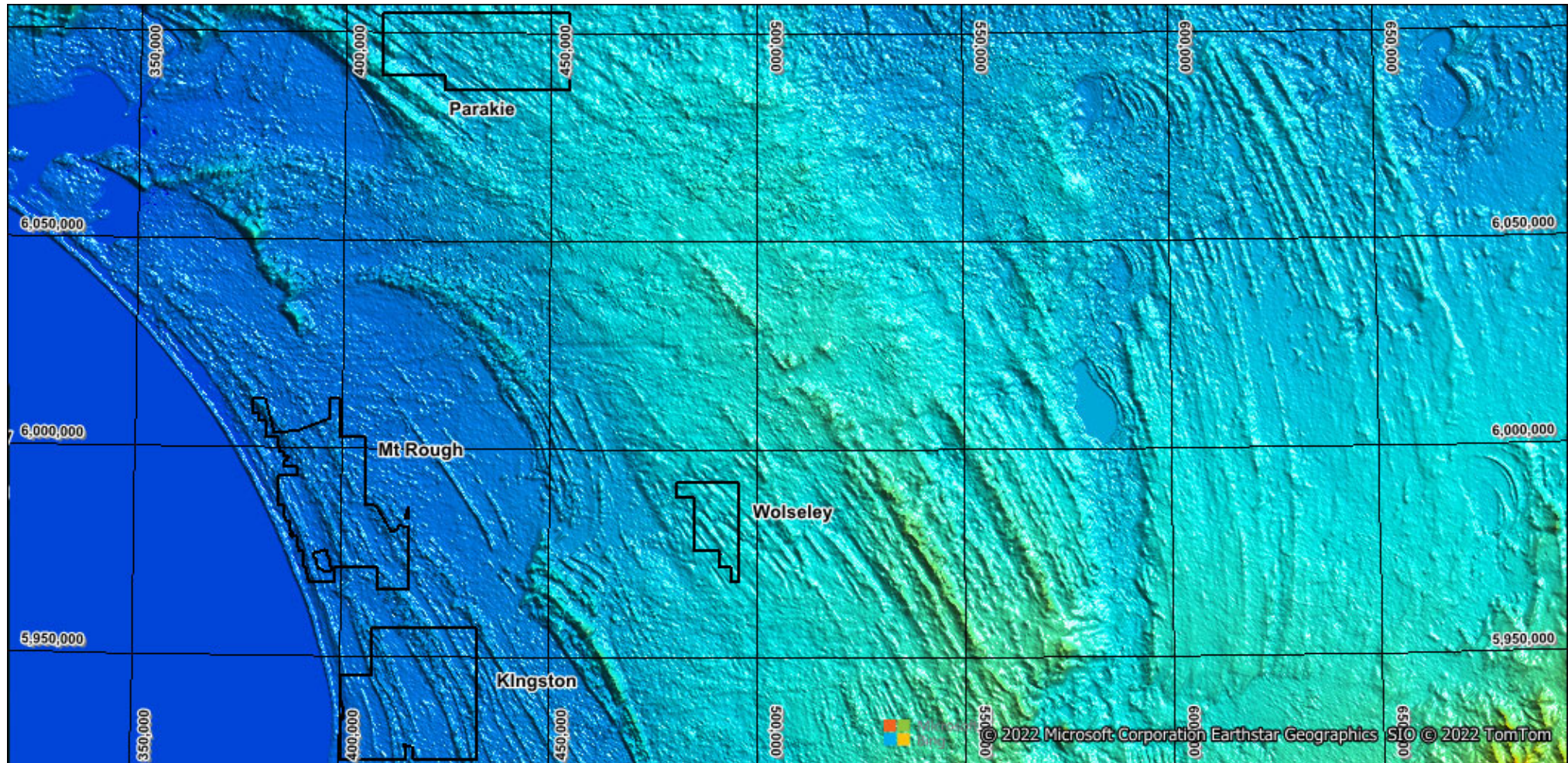
Historic core holes in SA Core Facility





AUSMON RESOURCES  
LIMITED

## SA : Limestone Coast Tenements



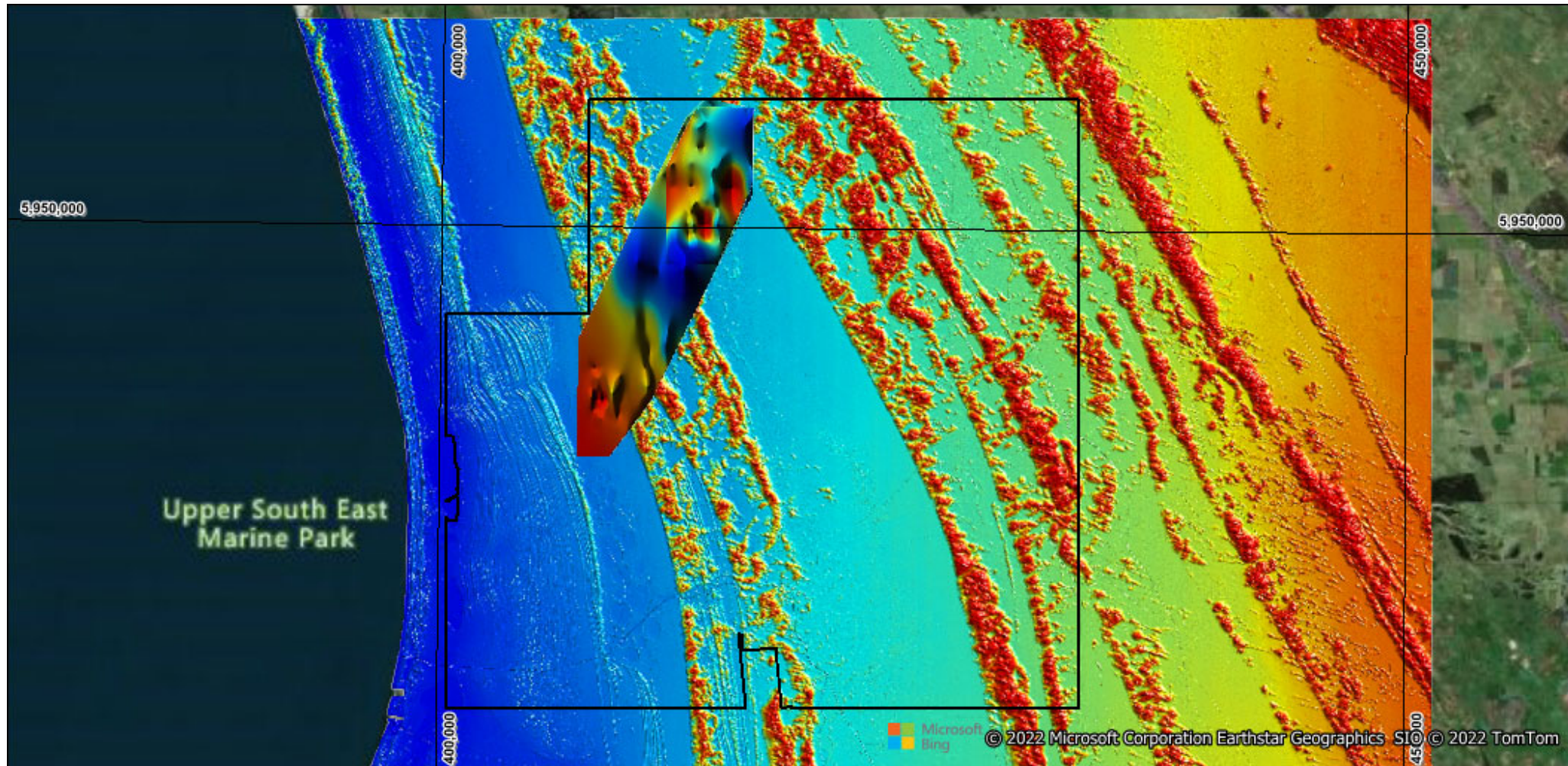
Digital Elevation Model (DEM) showing elevation and longitudinal sand dunes





AUSMON RESOURCES  
LIMITED

## SA : Limestone Coast Tenements



Clay study area in NW of Kingston tenement over 5m DEM



AUSMON RESOURCES  
LIMITED

# Disclaimer

Certain statements contained in this presentation, including information as to the future financial or operating performance of Ausmon Resources Limited and its projects, are forward-looking statements. Such forward looking statements:

- Are necessarily based upon a number of assumptions and estimates that, while considered reasonable by Ausmon Resources Limited, are inherently subject to significant technical, business, economic, competitive, political and social uncertainties and contingencies;
- Involve known and unknown risks and uncertainties that could cause actual events or results to differ materially from estimated or anticipated events or results reflected in such forward-looking statements; and
- May include, among other things, statements regarding targets, estimates and assumptions in respect of production, prices, operating costs, results, capital expenditures, reserves and resources, and are or may be based on assumptions and estimates related to future technical, economic, market, political, social and other conditions.

Ausmon Resources Limited disclaims any intent or obligation to update publicly any forward-looking statements, whether as a result of new information, future events or otherwise.

All forward-looking statements made in this presentation are qualified by the foregoing cautionary statements. Investors are cautioned that forward-looking statements are not guarantees of future performance and accordingly investors are cautioned not to rely on forward-looking statements due to the inherent uncertainty therein.

The information in this presentation relates to exploration results and is based on information compiled by Mr Mark Derriman, Member of the Australasian Institute of Geoscientist. Mr Derriman has sufficient experience that is relevant to the style of mineralisation and type of deposits under consideration and to the activities which he is undertaking to qualify as a Competent Person as defined in the 2012 Edition of the JORC Australasian Code for Reporting of Exploration Results, Mineral Resources and Ore Reserves.