



iTECH
MINERALS

**DISCOVERING
MATERIALS FOR THE
RENEWABLE ENERGY
ECONOMY**

IMPORTANT NOTICES

Disclaimer

This document has been prepared by iTech Minerals Limited (ACN 648 219 050) and/or its affiliates (together, “iTech” or the “Company”) for the exclusive use of the party to whom iTech delivers this document (the “Recipient”). The information contained in this document has been prepared in good faith by iTech. However, no representation or warranty, either express or implied, is made as to the accuracy, completeness, adequacy, or reliability of the information contained in this document. This document contains only a synopsis of more detailed information in relation to the matters described herein and accordingly no reliance may be placed for any purpose whatsoever on the sufficiency or completeness of such information as presented herein. This document should not be regarded by the Recipient as a substitute for the exercise of its own judgment and the Recipient should conduct its own due diligence in respect of the contents of this document. To the maximum extent permitted by law iTech, its directors, officers, employees, advisers, agents and related bodies corporate (“iTech Minerals”) disclaim any or all liability for any loss or damage which may be suffered by any person as a result of the use of, or reliance upon, anything contained within or omitted from this document (regardless of whether the loss or damage arises in connection with any negligence, default, lack of care or misrepresentation by the iTech Minerals or any other cause in connection with the provision of this document or the purported reliance on this document or the information contained in it). To the extent that any provisions in this Important Notices section may be construed as being a contravention of any law of the State or the Commonwealth, such provisions should be read down, severed or both as the case may require and the remaining provisions shall continue to have full force and effect.

This document has been prepared solely for informational purposes. This document does not constitute a prospectus and is not to be construed as a solicitation or an offer to buy or sell any securities, or related financial instruments, in any jurisdiction. The Recipient should not construe the contents of this document as legal, tax, accounting or investment advice or a recommendation. This document does not purport to contain all the information a Recipient would require making an informed decision whether to invest in the Company. Specifically, this document does not purport to contain all the information that investors and their professional advisers would reasonably require to make an informed assessment of the Company’s assets and liabilities, financial position and performance, profits, losses, and prospects. The Recipient must not rely on the information set out in this document and must make its own independent assessment and consult its own legal counsel, tax and financial advisors concerning any matter described herein. This document does not purport to be all-inclusive or to contain all the information that the Recipient may require. No investment, divestment or other financial decisions or actions should be based solely on the information in this document. The distribution of this document may be restricted by law in certain jurisdictions. This document must be treated as strictly confidential and must not be copied, reproduced, distributed, quoted, referred to or distributed to others at any time, in whole or in part, without the prior written consent of iTech.

Cautionary Statement Regarding Forward-Looking Information

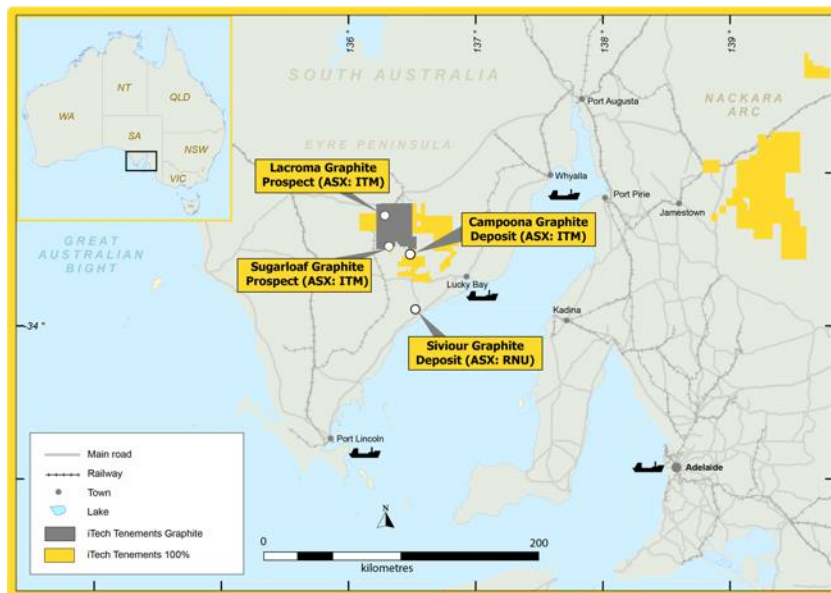
The figures, valuations, forecasts, estimates, opinions and projections contained herein involve elements of subjective judgment and analysis and assumption. iTech does not accept any liability in relation to any such matters, or to inform the Recipient of any matter arising or coming to the company’s notice after the date of this document which may affect any matter referred to herein. Any opinions expressed in this material are subject to change without notice, including because of using different assumptions and criteria. This document may contain forward-looking statements. Forward-looking statements are often, but not always, identified using words such as “seek”, “anticipate”, “believe”, “plan”, “expect”, “target” and “intend” and statements that an event or result “may”, “will”, “should”, “would”, “could”, or “might” occur or be achieved and other similar expressions. Forward-looking information is subject to business, legal and economic risks and uncertainties and other factors that could cause actual results to differ materially from those contained in forward-looking statements. Such factors include, among other things, risks relating to property interests, the global economic climate, commodity prices, sovereign and legal risks, and environmental risks. Forward-looking statements are based upon estimates and opinions at the date the statements are made. iTech undertakes no obligation to update these forward-looking statements for events or circumstances that occur after such dates or to update or keep current any of the information contained herein. Any estimates or projections as to events that may occur in the future (including projections of revenue, expense, net income, and performance) are based upon the best judgment of iTech from information available as of the date of this document. There is no guarantee that any of these estimates or projections will be achieved. Actual results will vary from the projections and such variations may be material. Nothing contained herein is, or shall be relied upon as, a promise or representation as to the past or future. Any reliance placed by the Recipient on this document, or on any forward-looking statement contained in or referred to in this document will be solely at the Recipient’s own risk. iTech Minerals expressly disclaims any and all liability relating or resulting from the use of all or any part of this document or any of the information contained herein.

Date and Currency

This document is dated 28th November 2022 (“Preparation Date. The delivery of this document at any time after the Preparation Date does not imply the information contained in it is correct at any time after the Preparation Date. Delivery of this document does not imply and is not to be relied upon as a representation or warranty that: (i) there has been no change since the Preparation Date in the business, operations, financial condition, prospects, creditworthiness, status, or affairs of the Company or any of the Company’s related bodies corporate or affiliates; or (ii) the information contained in this document remains correct and not misleading at any time after the Preparation Date. The information in this document should be considered dynamic and may change over time. Subject to its obligations at law, iTech has no responsibility or obligation to update this document or inform the recipient of any matter arising or coming to their notice after the Preparation Date which may affect any matter referred to in the document. All dollar values expressed in this document are Australian dollars (\$, A\$, or AUD).

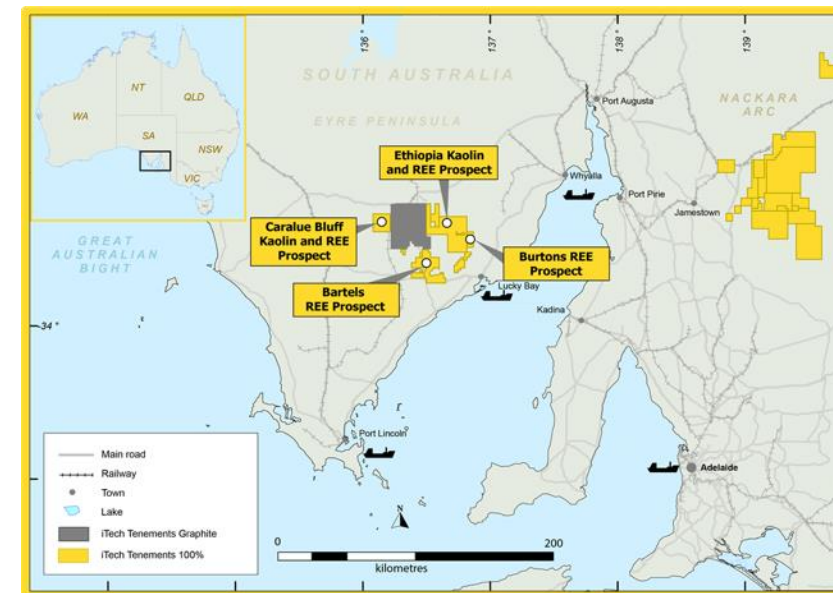
This presentation contains no new material information to the market

GRAPHITE PROJECTS – 100% Interest



- 100% interest with ~ 2,100 km² of tenement area
- JORC 2012 graphite resource of 8.55Mt @ 9.0% Total Graphitic Carbon (TGC)
- Potential to expand resources with Exploration Target (ET)¹ of **158 - 264 Mt @ 7 - 12 % TGC** at Sugarloaf

RARE EARTHS PROJECTS – 100% Interest




- 100% interest with 3,782 km² of tenement area
- Potential to expand resources with ET¹ of **110 - 220 Mt @ 635 - 832 ppm TREO and 19-22% Al₂O₃** at Caralue Bluff
- Drilling to date of over 9,805 m, 478 holes





¹ Exploration Target – the potential quantity and grade of the Exploration Target reported are conceptual in nature, there has been insufficient exploration to estimate a Mineral Resource and it is uncertain if further exploration will result in the estimation of a Mineral Resource.

ACHIEVEMENTS – IPO - Present

Eyre Peninsula Kaolin – REE Project

- Drilled 478 holes for a total of 9,805m 
- Discovered significant kaolin-REE mineralisation at Caralue Bluff and Ethiopia Prospects 
- Discovered clay hosted REE mineralisation at Burtons and Bartels 
- Defined Caralue Bluff Exploration Target - **110 - 220 Mt @ 635 - 832 ppm TREO and 19-22% Al_2O_3** 
- Resource drill program ready to commence post harvest 

Campooona Spherical Graphite Project

- Confirmed bulk sample production of high-quality battery grade spherical graphite from Campooona 
- Defined large Exploration Target of **158 - 264 Mt @ 7 - 12 % TGC** at Sugarloaf 
- Defined large drill target at Lacroma over 6km by 3km 
- Drill programs ready to commence post harvest 

CAPITAL RAISE – PLACEMENT

Placement of A\$4.5 million completed for 18,000,000 shares in total. Tranche 1 (14,400,000 shares issued and subsequent shareholder approval for Tranche 2 (remaining 3,600,000 shares).

The Shares under the Placement were issued at A\$0.25 per Share which represents:

- A 23.1% discount to the last close price on 8 November 2022 of A\$0.325;
- A 18.2% discount to the 5-day volume weighted average price of A\$0.306; and
- A 19.9% premium to the 15-day volume weighted average price of A\$0.312

Foster Stockbroking acted as Lead Manager and Bookrunner to the Placement.

CAPITAL RAISE – SHARE PURCHASE PLAN

Share Purchase Plan to raise up to \$2 million

iTech's existing eligible shareholders are invited to participate in the Share Purchase Plan **at the same issue price as the Placement** (A\$0.25 per share)

The SPP provides eligible shareholders the opportunity to increase their holding by up to A\$30,000 without incurring any brokerage or transaction costs

Eligible shareholders are residents in Australia or New Zealand that held iTech shares as at 7:00pm (AEST) on Thursday, 10 November 2022

If fully subscribed, iTech will have approximately **\$9 million cash at bank** to fund graphite, rare earth element and kaolin exploration and resource development



Glenn Davis – Non-executive Chairman

LLB, BEc, FAICD

Over 30 years experience as a solicitor in corporate and risk throughout Australia initially in a national firm and then a firm he founded

Expertise and experience in the execution of large transactions, risk management and in corporate activity regulated by the Corporations Act and ASX

Currently the non-executive chairman of Beach Energy Ltd



Michael Schwarz – Managing Director

BSc (Hons) Geology, FAusIMM, MAIG

Over 25 years' senior experience in mineral exploration

Extensive experience both at a senior corporate level and in the hands-on roles of a geologist

Founding Managing Director of Northern Cobalt (ASX:N27) where he gained valuable experience in the battery materials markets. Founding Director and Executive Director Exploration for Core Exploration Limited (ASX:CXO), Managing Director of Monax Mining Ltd (ASX:MOX), founding Director of Marmota Energy Ltd (ASX:MEU)



Gary Ferris – Non-executive Director

MSc (Geology/Earth Sciences), MAusIMM

More than 30 years' experience in exploration and management as a founding Managing Director of InterMet Resources Ltd (ASX: ITT) and Managing Director of Monax Mining (ASX: MOX)

Has a Master's degree from the Centre for Ore Deposits and Exploration Studies, University of Tasmania. He is a member of the Australasian Institute of Mining and Metallurgy

Managed research projects on the halloysite-kaolinite deposits of the Eyre Peninsula, SA for the SA Mines Department prior to working in industry



Jarek Kopias – Chief Financial Officer and Company Secretary

BCom, CPA, AGIA, ACG (CS, CGP)

Certified Practising Accountant and Chartered Secretary

Over 25 years' industry experience in a wide range of financial and secretarial roles within the resources industry

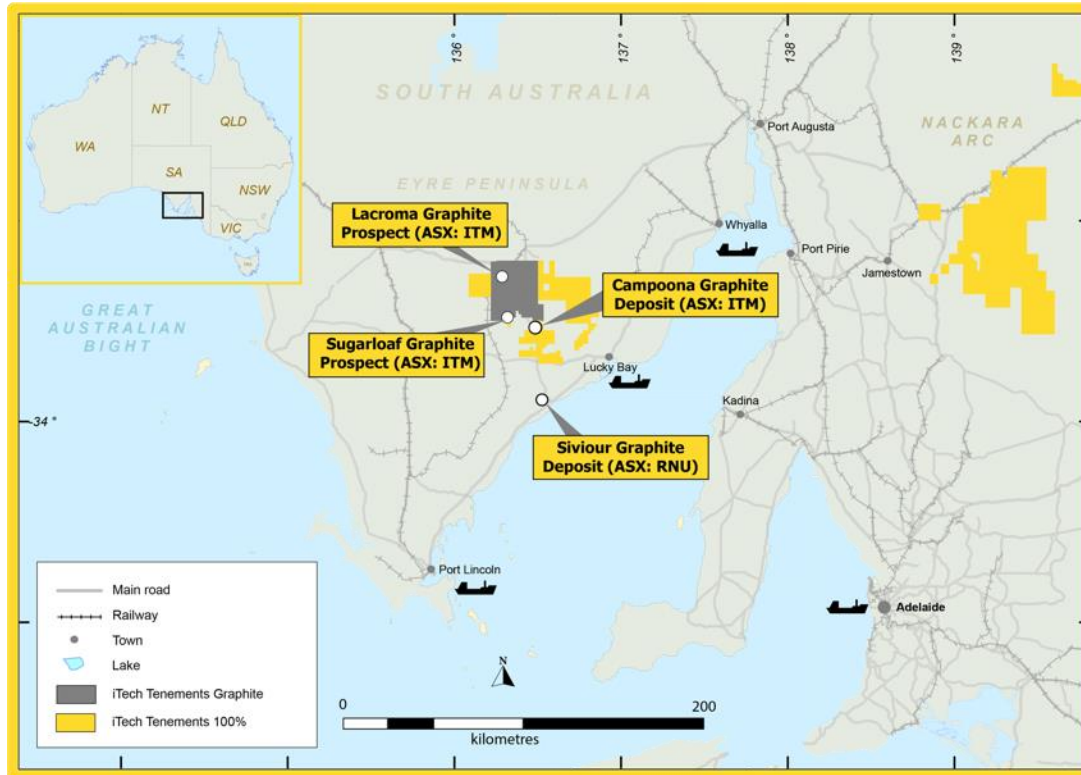
Worked in numerous financial roles for companies, specialising in the resource sector – including 5 years at WMC Resources Limited's Olympic Dam operations, 5 years at Newmont Mining Corporation - Australia's corporate office and 5 years at oil and gas producer and explorer, Stuart Petroleum Limited (prior to its merger with Senex Energy Limited)

Capital Structure

Shares on issue	110.5M
Options and rights	3.3M
Share Price (25/11/2022)	\$0.31
Market Capitalisation	\$34.2M
Cash – 30 Sep-22 quarterly*	\$7.0M
Enterprise Value (EV)	\$27.2M

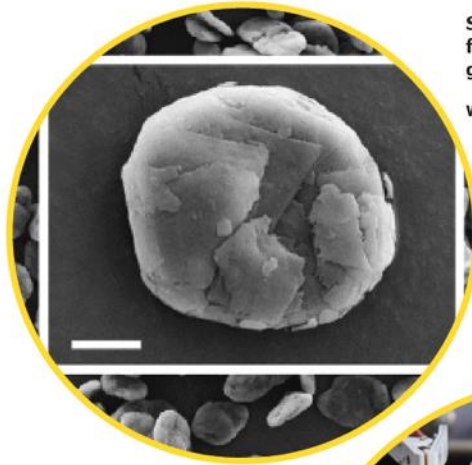
* adjusted for additional \$3.6 million in tranche 1 funds raised under recent placement

CAMPOONA SPHERICAL GRAPHITE PROJECT



- De-risked opportunity to supply spherical graphite into the battery markets
- JORC 2012 graphite resource of 8.55Mt @ 9.0% Total Graphitic Carbon (TGC)
- Granted mining lease and 2 multipurpose leases for processing and water infrastructure
- Demonstrated processing of Campoona ore into high purity concentrates, 94% and 99.99% Total Graphitic Carbon
- Proven production and testing of spherical graphite suitable for lithium-ion battery applications
- Potential to expand resources with ET of **158 - 264 Mt @ 7 - 12 % TGC** at Sugarloaf

ADVANCED GRAPHITE PROJECT



Spherical graphite produced from 95% TGC Campoona graphite concentrate.

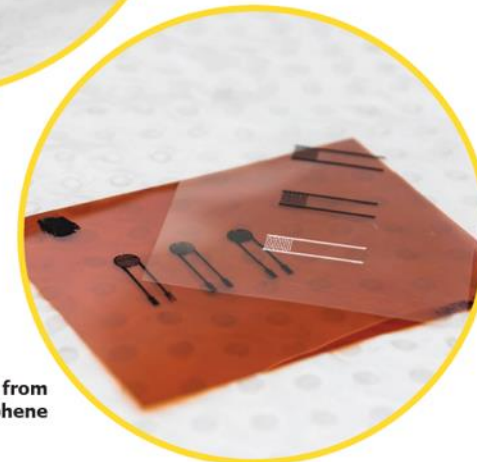
White bar = 5 microns.



Graphene produced from Campoona graphite concentrate



Lithium ion batteries made with Campoona graphite undergoing performance testing



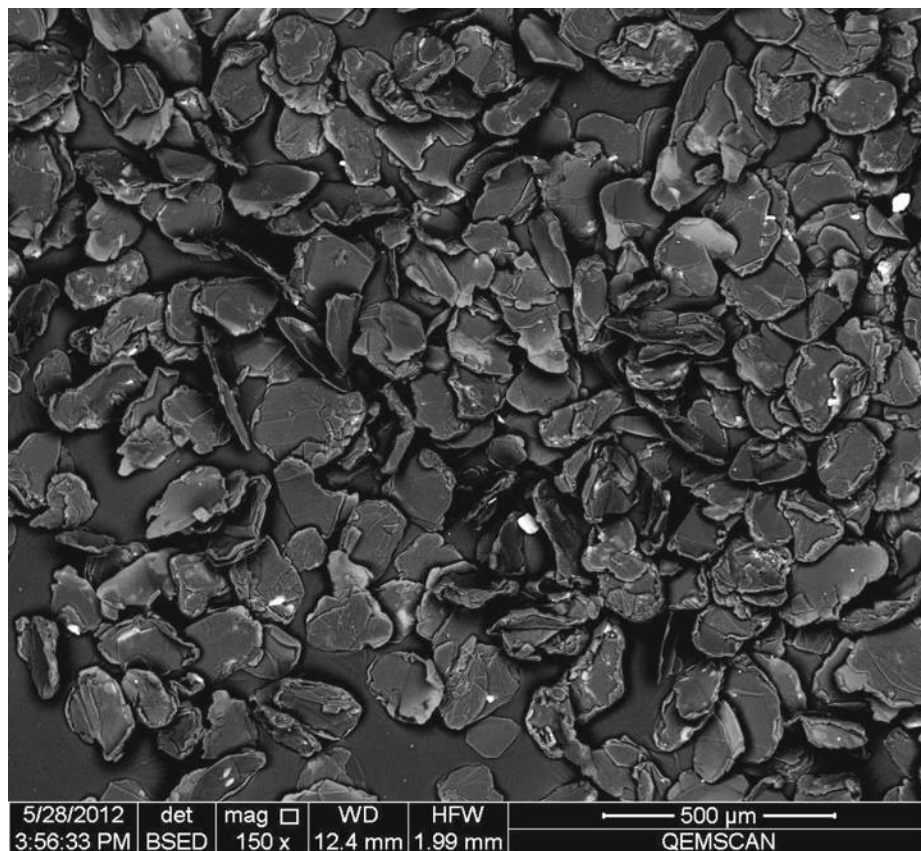
Biosensors produced from Campoona graphene

CAMPOONA SPHERICAL GRAPHITE PROJECT – METALLURGY RESULTS



- iTech acquired 100% of the Campoona Graphite Deposit in 2021
 - Project includes mining lease ML6470 and two multipurpose licences, MPL150 for processing facilities and MPL151 for water infrastructure
- Current Mining Lease Proposal incorporates use of hydrofluoric acid (HF) to achieve final purification from 95% to 99.5%
- Safety, environmental and cost implications of using HF are significant
- iTech aims to refine the process flow sheet to substitute an alternative final chemical purification method which is safer, more environmentally friendly and cheaper than HF
- ANZAPLAN has now completed metallurgical test work to refine the flow sheet

CAMPOONA SPHERICAL GRAPHITE PROJECT – BULK SAMPLE METALLURGY RESULTS



- Bulk sample metallurgical tests have achieved high purity fine flake graphite suitable for purified spherical graphite (PSG) production
 - Number of processing steps has been reduced from 11, in laboratory scale processing, to 8, in bulk sample production, suggesting a more cost-effective processing is achievable
 - Average purity of ~ 94% total graphitic carbon (TGC) with recoveries of ~80%
 - >96% of graphite flakes are less than -75 μm (small flake size) which is used for PSG production
- 42 kg of final concentrate was produced from 407kg of processed material
- Results were achieved through conventional graphite flotation process (non-chemical, non-thermal)
- Purification and spheronisation test work has been completed

Size Fraction	wt.-%
- 75 μm (fine)	96.07
+75 μm/- 150 μm (small)	3.37
+150 μm/- 180 μm (medium)	0.14
+180 μm/- 300 μm (large)	0.28
+ 300 μm (jumbo)	0.14

CAMPOONA SPHERICAL GRAPHITE PROJECT – PURIFICATION AND SPHERONISATION



- Both flake and spheronised products have been purified to 99.99% FC with caustic baking and caustic pressure leaching
- Has significant environmental and safety benefits over HF acid leaching
- Excellent unoptimized yield of 47% spherical graphite
- Preliminary, unoptimised results show that a spherical graphite with the following parameters can be readily produced

Specification	Campoona Graphite	Industry standard
Fixed Carbon (%)	99.99	99.95
Yield Test (wt %)	47	20-30
Tap Density (g/cm ³)	0.94	>0.9
D ₅₀	17.2	17-19
Ratio D ₉₀ /D ₁₀	3.16	<3.5

ITECH'S GRAPHITE POTENTIAL

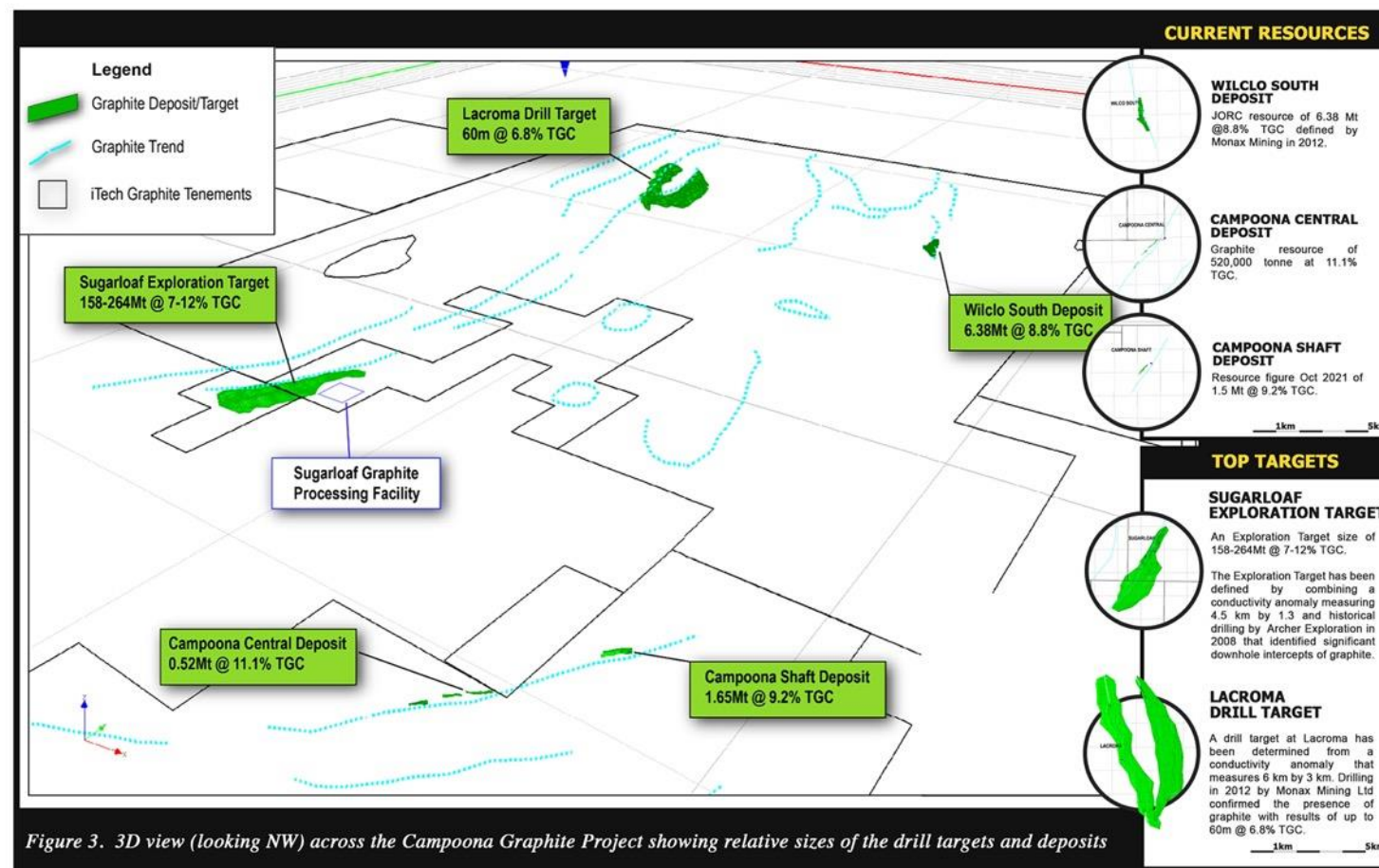
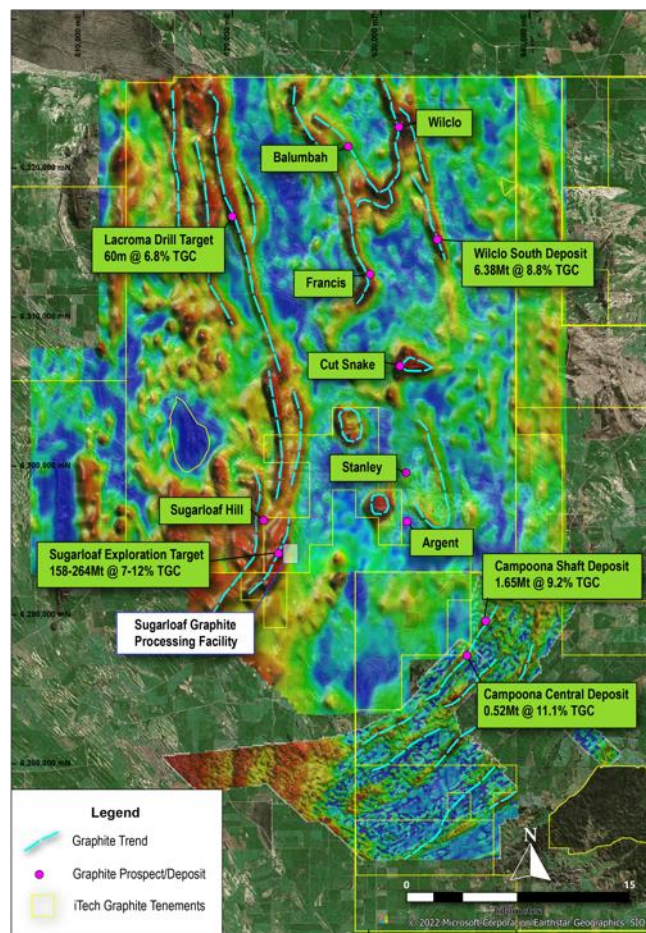
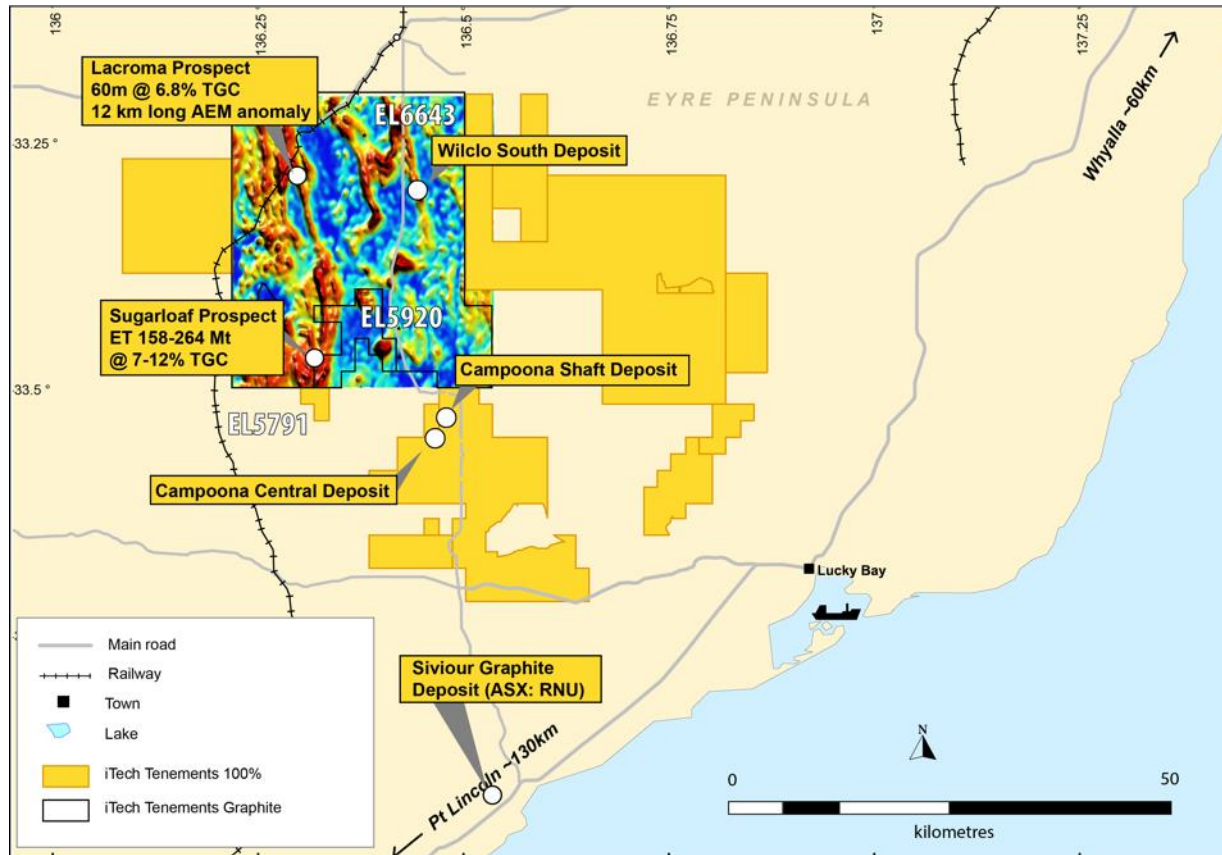


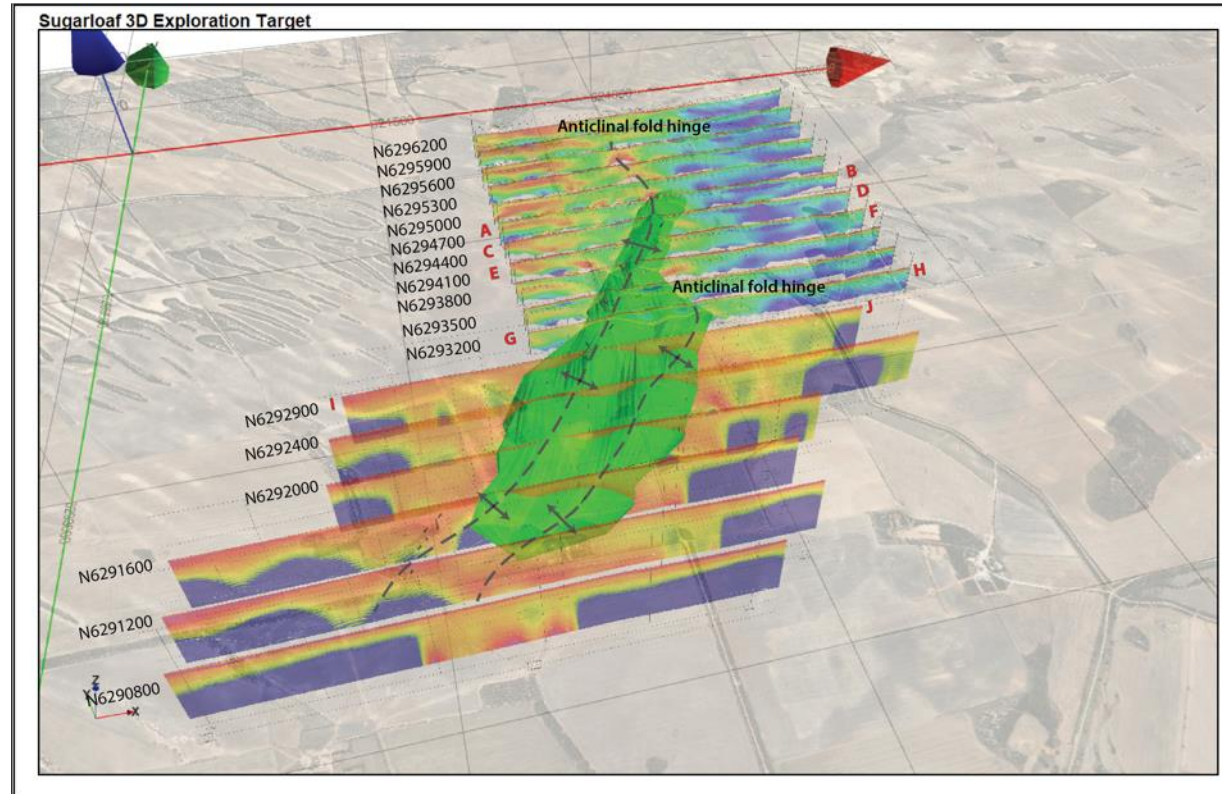
Figure 3. 3D view (looking NW) across the Campoona Graphite Project showing relative sizes of the drill targets and deposits

CAMPOONA SPHERICAL GRAPHITE PROJECT – NEXT STEPS SUGARLOAF



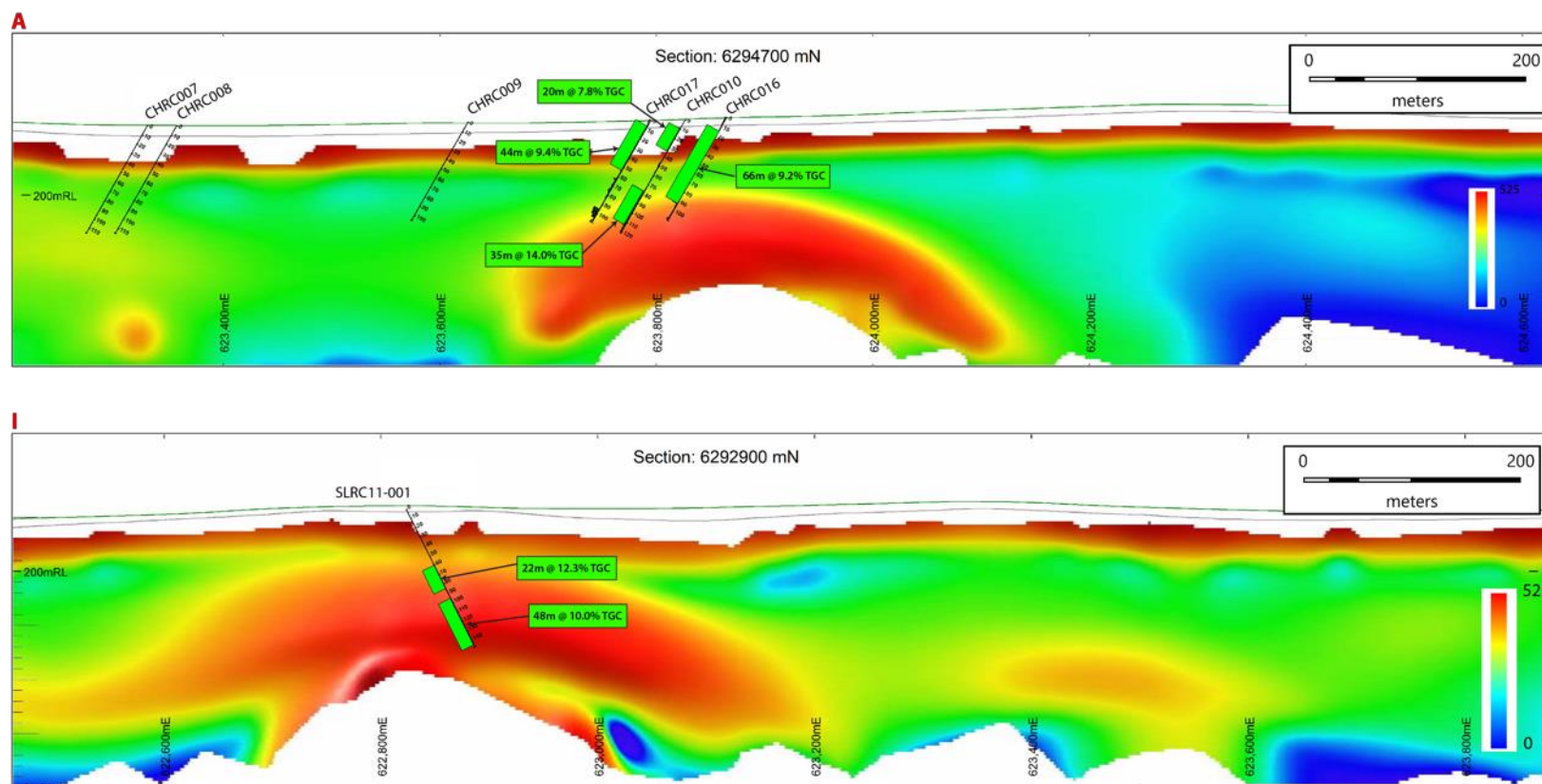
- Exploration target of **158 - 264 Mt @ 7 - 12 % TGC**
- Based on historical holes and progressive drilling by Archer since 2010 based on drilling and EM “shell”
- Grades of up to 25% TGC in drilling for parts of the target
- Consistently thick intersections >50m
- Microcrystalline graphite similar to Talga’s Vittangi Deposit in Sweden
- Sample is on its way to ANZAPLAN in Germany to start metallurgical test work

CAMPOONA SPHERICAL GRAPHITE PROJECT – NEXT STEPS SUGARLOAF

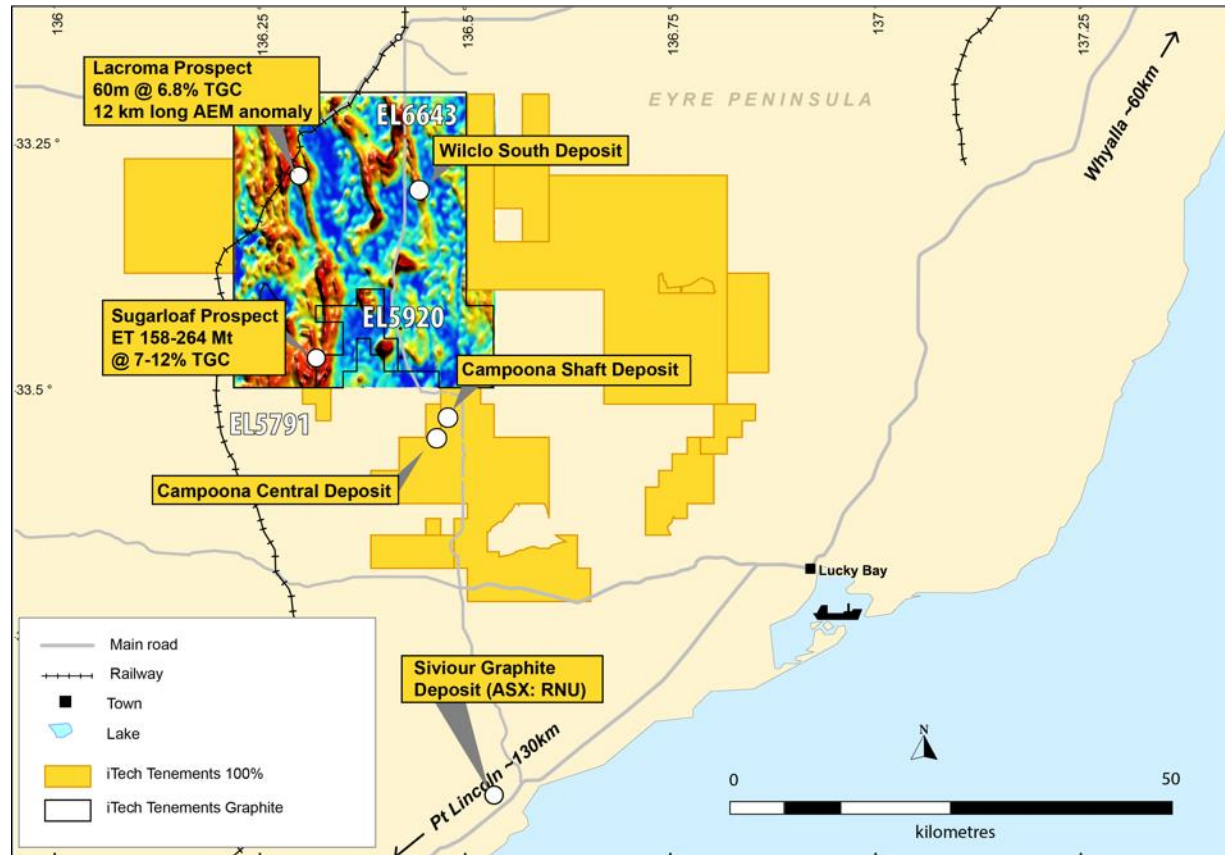


- Exploration target of **158 - 264 Mt @ 7 - 12 % TGC**
- Flat lying and shallow, outcrops at Sugarloaf Hill
- Aim to drill in the coming months to test resource upgrade potential
- Landowner agreements completed
- PEPR being prepared for drilling approval

CAMPOONA SPHERICAL GRAPHITE PROJECT – NEXT STEPS SUGARLOAF

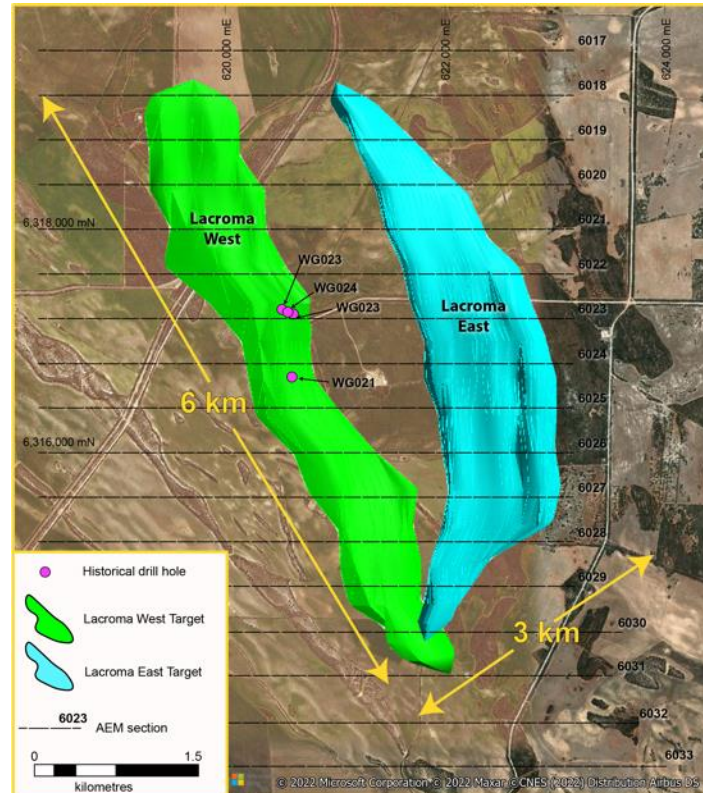


CAMPOONA SPHERICAL GRAPHITE PROJECT – NEXT STEPS - LACROMA



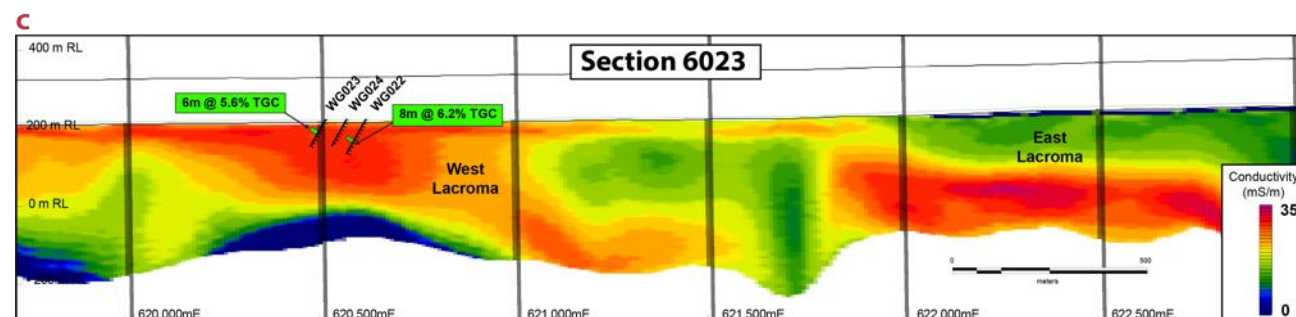
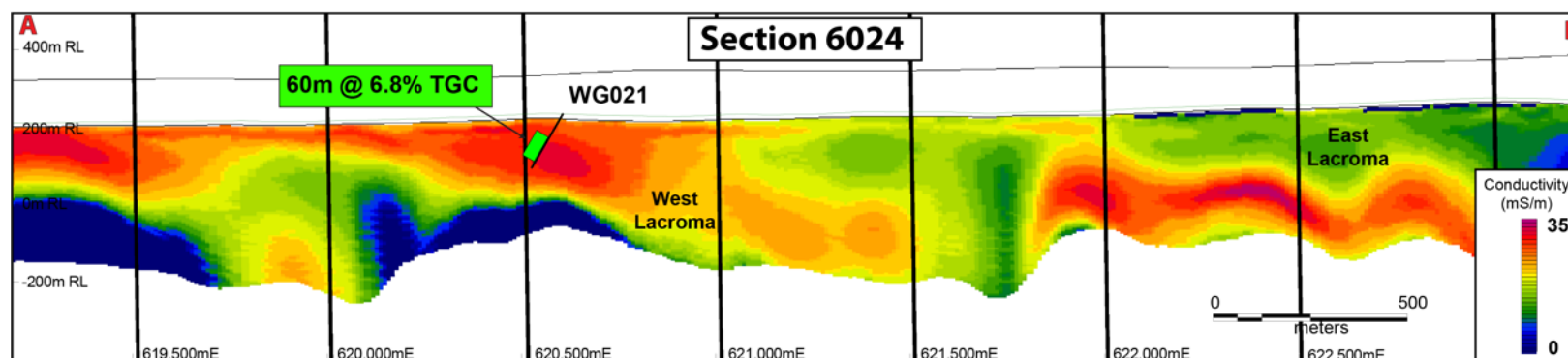
- iTech plans to add additional graphite resources at the Lacroma Prospect
- 12 km long electromagnetic anomaly (produced by graphite)
- Existing intersection of 60m @ 6.8% TGC
- **Metallurgical test work shows it can be run through the same flow sheet as Campoona**
- Aim to drill in the coming months to test resource upgrade potential
- Landowner agreements completed
- PEPR being prepared for drilling approval

CAMPOONA SPHERICAL GRAPHITE PROJECT – NEXT STEPS - LACROMA



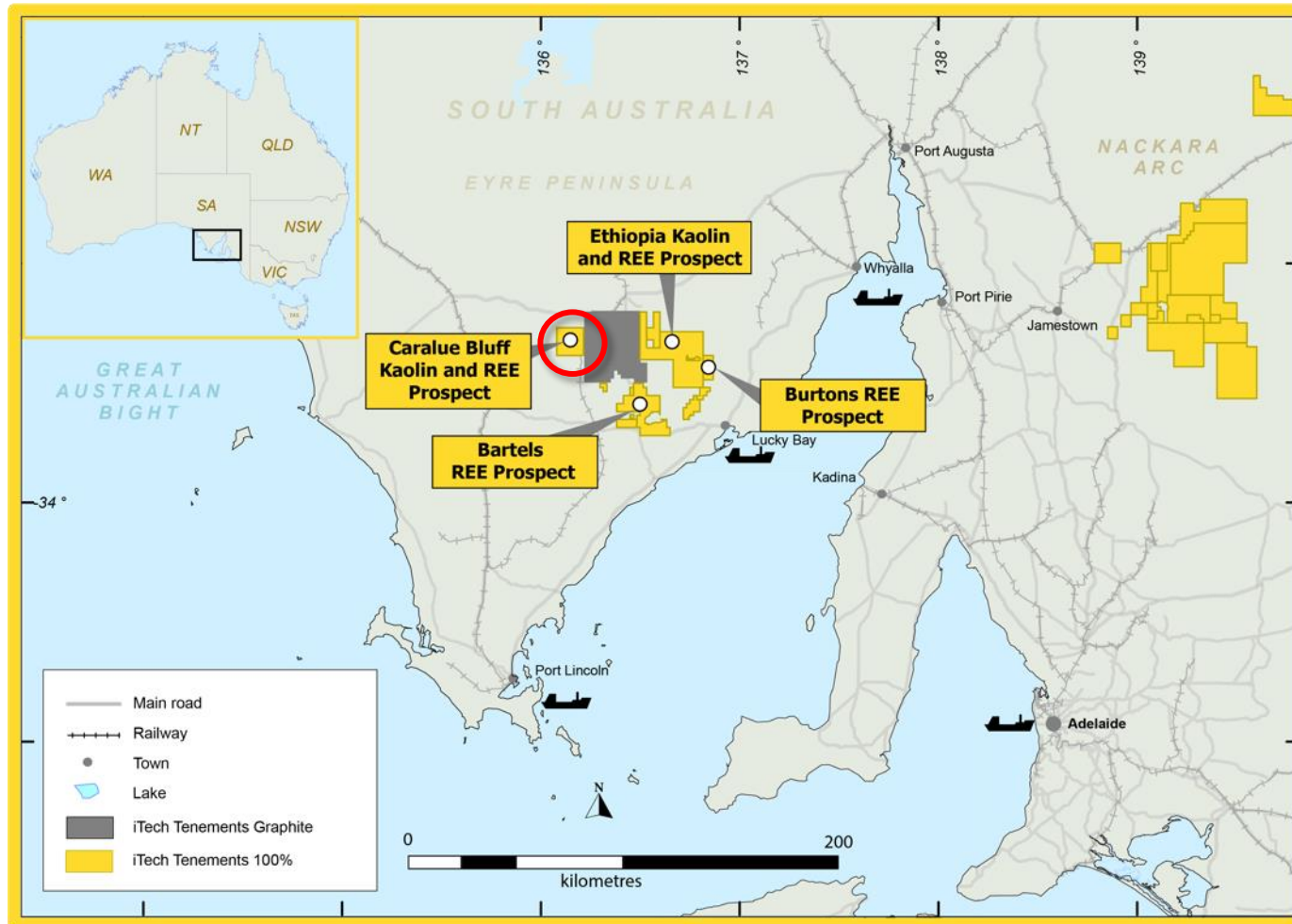
- Extensive drill target defined at Lacroma Graphite Prospect on the Eyre Peninsula
- A 12 km long airborne electromagnetic anomaly maps an extensive graphitic horizon on EL6634
- iTech has modelled a first stage drill target in the northern 6 km of the anomaly from electromagnetic sections and drill holes
- Drilling has confirmed the anomaly is caused by thick graphite mineralisation with drill hole WG021 intersecting 60m @ 6.8% total graphitic carbon (TGC)
- Preliminary metallurgy of dill hole WG021 demonstrates that a high-grade graphite concentrate of >90% TGC with recoveries of ~83% can be achieved using the same flowsheet established for the Campoona Graphite Deposit.

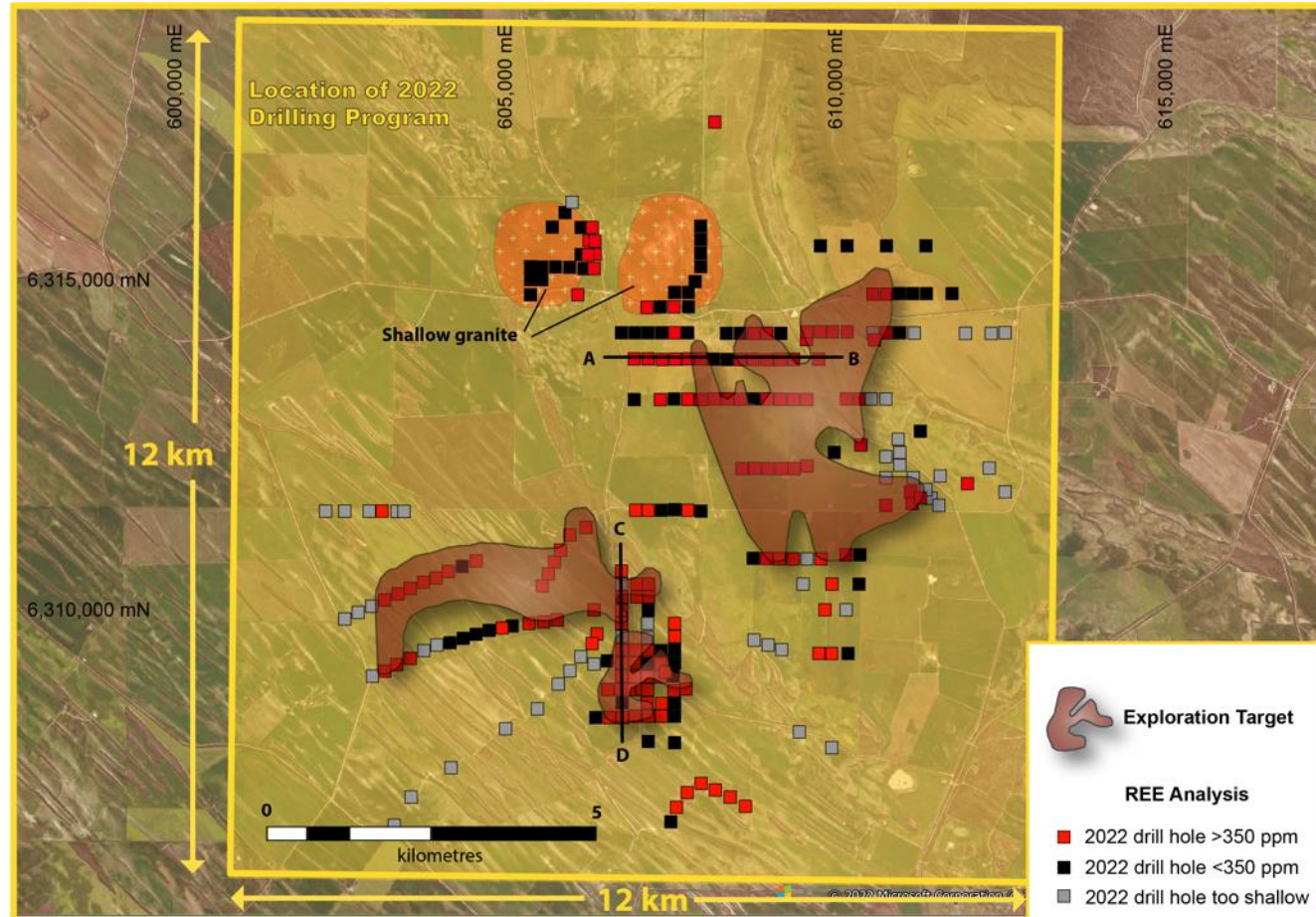
CAMPOONA SPHERICAL GRAPHITE PROJECT – NEXT STEPS LACROMA



Project Milestones

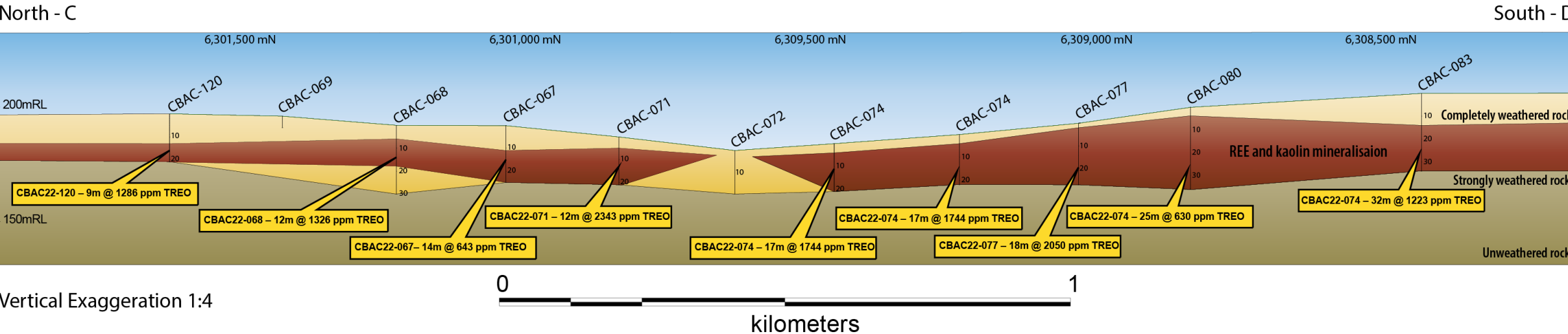
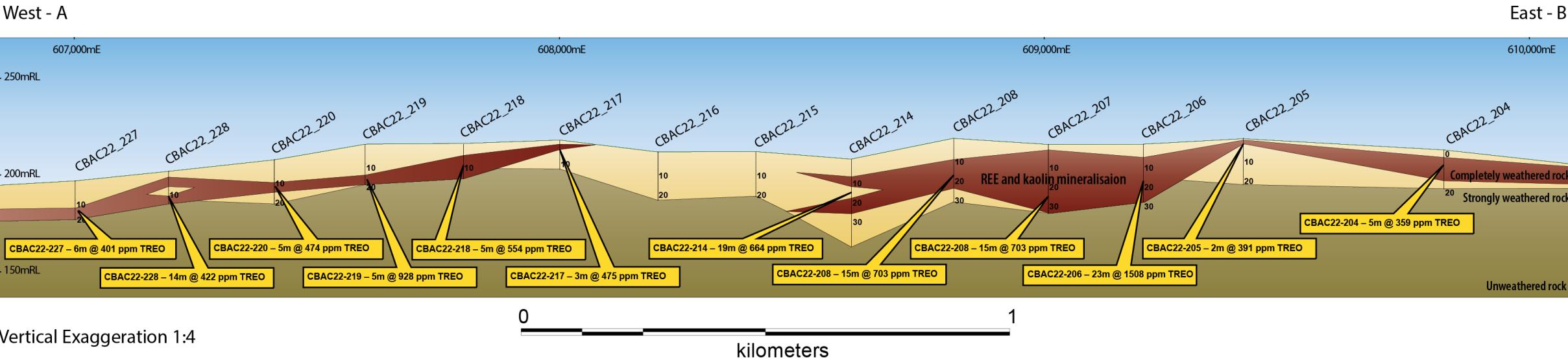
- **Metallurgical test work – Sugarloaf**
 - Sample sent to ANZAPLAN in Germany
 - Results due Jan 2023
- **Bulk sample for pilot plant – December 2022**
- **Exploration and resource drilling at Sugarloaf and Lacroma**
 - Landowner agreements – completed
 - Government drilling approvals – November 2022 - submitted
 - Commence drilling – December 2022
 - Finish drilling – H1 2023
 - Drill results – H1 2023
 - ET/Resource calculation – H1 2023

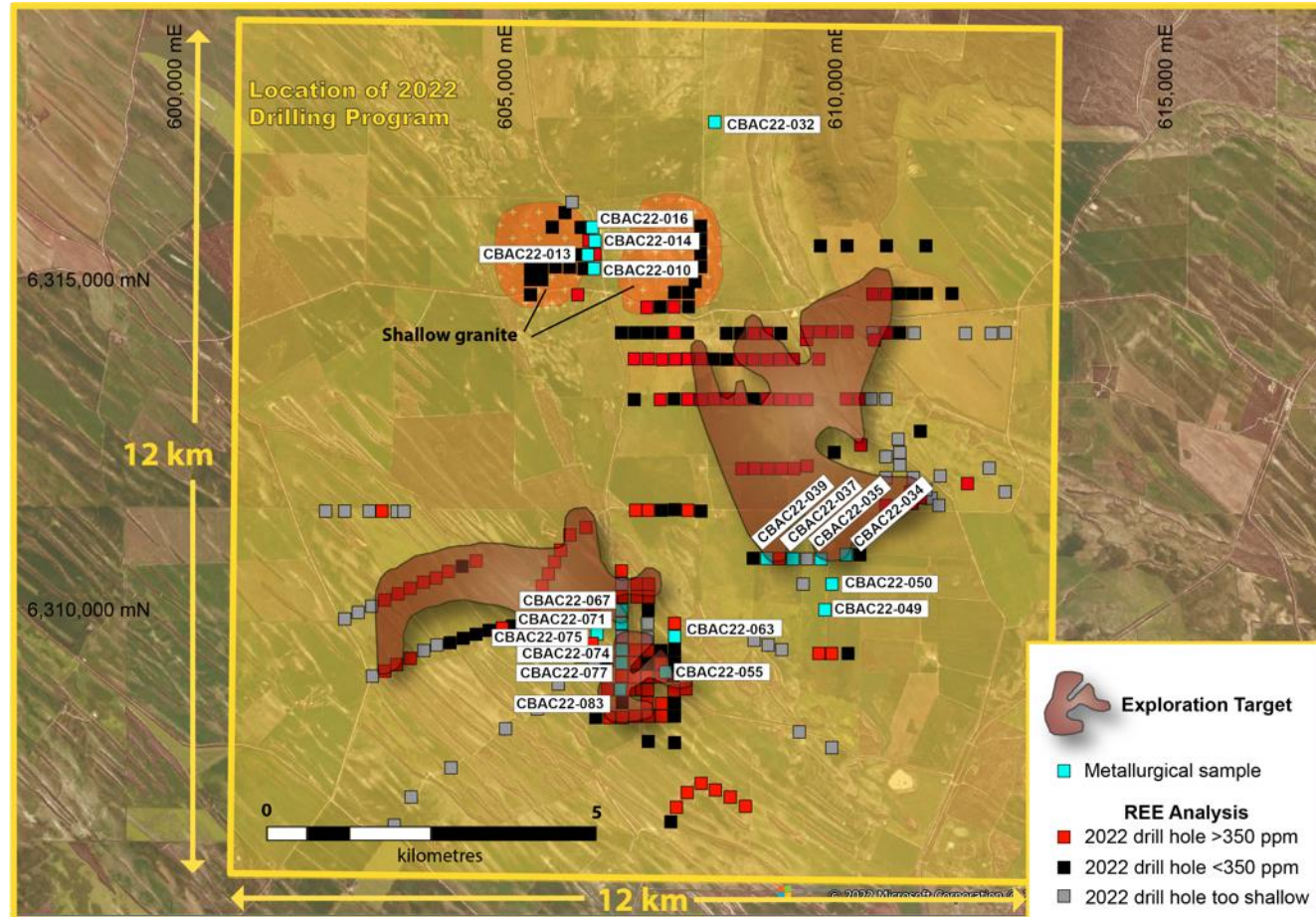




Caralue Bluff REE - Kaolin Exploration Target

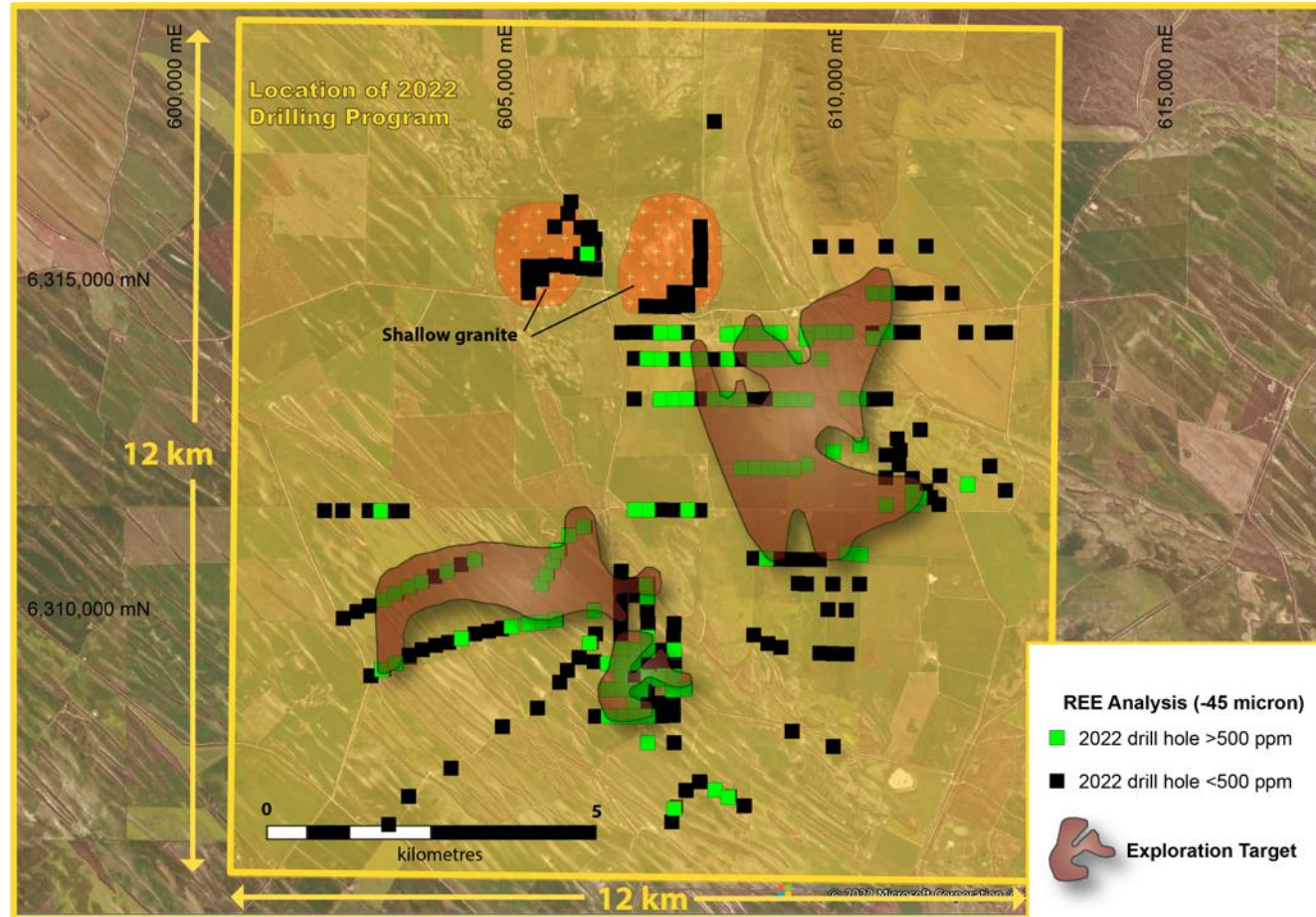
- 110 - 220 Mt @ 635 - 832 ppm TREO and 19-22% Al_2O_3
- Constrained by 79 drill holes (out of 260) which contain both coincident high REE and high purity kaolin values
- Based solely on drilling and is open in multiple directions
- REE mineralisation is rich in key magnet REE's (Nd-Pr-Dy-Tb) averaging 25% of the REE basket
- Average depth of 12m and thickness varies between 5-12m
- **Metallurgical test work pending**





Caralue Bluff REE - Kaolin Preliminary Metallurgy

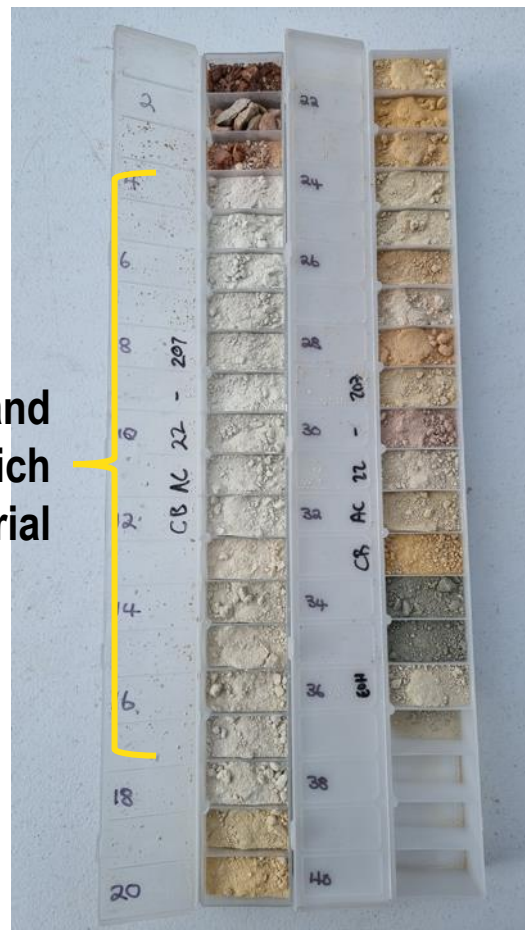
- 19 holes of 260 tested in first trial (7%)
- 8 within the exploration target
- Standard leach conditions for ionic and colloidal REEs
- Ionic test – pH4, 0.5M Ammonium sulphate, 30 mins, 25 degrees, 2 wt% solids density
- Colloidal test – pH1, Sulphuric acid, 2 hours, 25 degrees, 2 wt% solids density
- Maximum recoveries of the magnet REEs of
 - Nd – 28%
 - Pr – 31%
 - Dy – 65%
 - Tb – 57%
- Room for improvement by varying leaching conditions
- **Further metallurgical test work pending with higher acid concentrations and varying temperature**



Caralue Bluff Kaolin Test Work

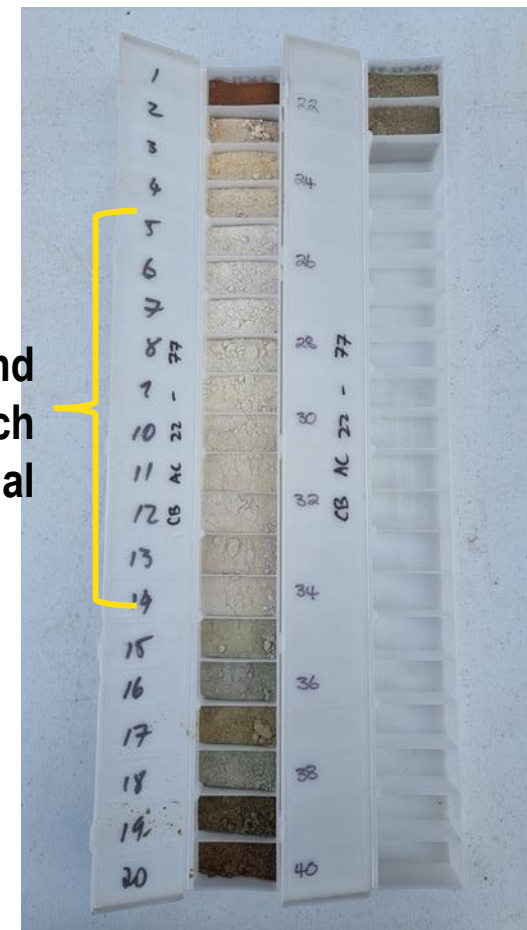
- 122 significant intersections above 500ppm TREO (260 holes)
- Significant results from -45-micron fractions include:
 - CBAC22-200 – 5m @ 37.6% Al_2O_3 , 0.6% Fe_2O_3 , 0.28% TiO_2 , 0.07% CaO and 1902 ppm TREO from 11m (62% yield)
 - CBAC22-203 – 5m @ 36.9% Al_2O_3 , 0.5% Fe_2O_3 , 1.08% TiO_2 , 0.02% CaO and 1241 ppm TREO from 5m (58% yield)
 - CBAC22-144 – 8m @ 36.8% Al_2O_3 , 0.22% Fe_2O_3 , 0.78% TiO_2 , 0.02% CaO and 1687 ppm TREO from 10m (70% yield)
 - CBAC22-138 – 14m @ 36.4% Al_2O_3 , 0.88% Fe_2O_3 , 0.70% TiO_2 , 0.07% CaO and 839 ppm TREO from 10m (67% yield)
 - CBAC22-162 – 6m @ 35.9% Al_2O_3 , 0.61% Fe_2O_3 , 1.19% TiO_2 , 0.04% CaO and 1679 ppm TREO from 14m (72% yield)
- High yields, low impurities, high REE grades
- CaO is very low, won't neutralise acid in REE leaching, low acid consumption

REE and
Kaolin rich
material

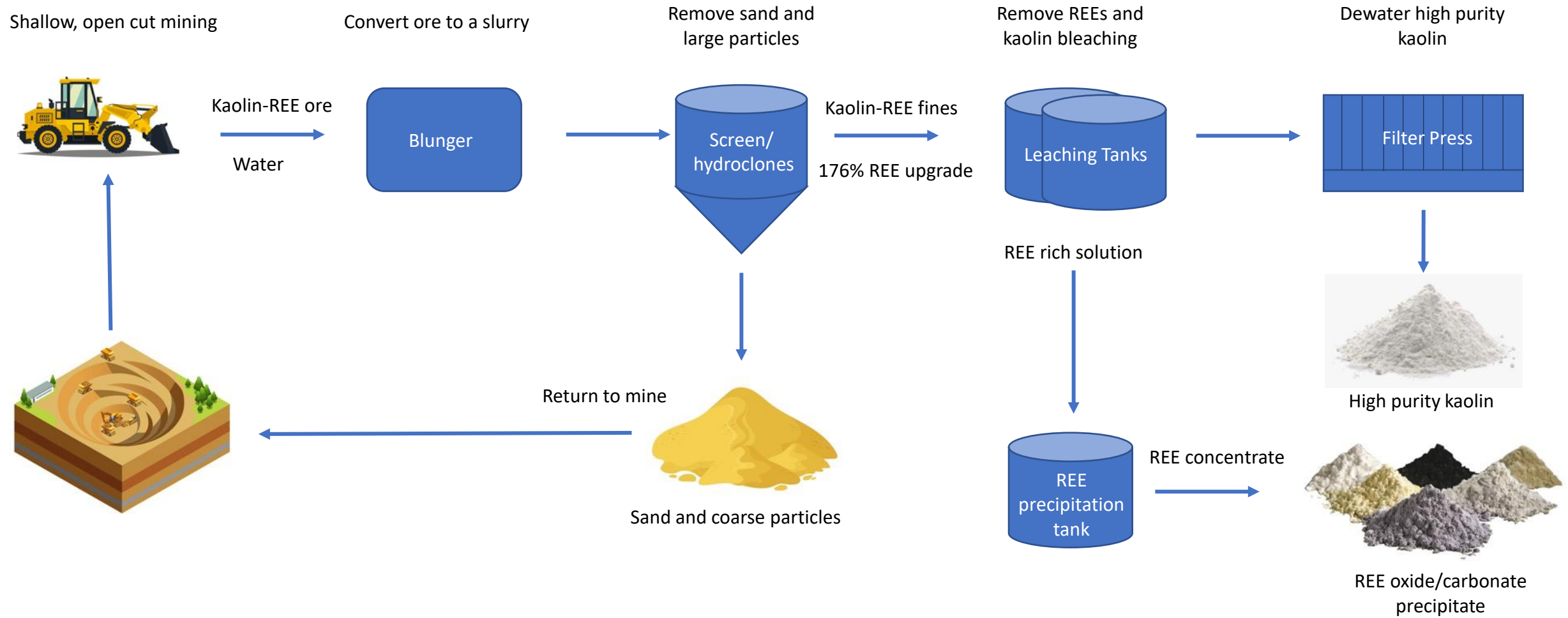


Chip tray of sample from drill hole CBAC22-207 which contains 27m @ 3071 ppm TREO from 3m

REE and
Kaolin rich
material



Chip tray of sample from drill hole CBAC22-077 which contains 8m @ 3771 ppm TREO from 4m



Project Milestones

- **Metallurgical test work** – November 2022
- **Exploration and resource drilling at Caralue Bluff**
 - Landowner agreements – completed
 - Government drilling approvals – submitted November 2022
 - Commence drilling – December 2022
 - Finish drilling – January 2023
 - Drill results – H1 2023
 - Resource calculation – H1 2023
- **Optimised metallurgical test work** – H2 2023

INVESTMENT HIGHLIGHTS

- Highly prospective geology with significant land holding
- JORC Graphite Resource of 8.55 Mt @ 9.0% TGC with granted mining lease
- Significant exploration targets of
 - Sugarloaf Graphite – 158-264 Mt @ 7-12% TGC
 - Caralue Bluff REE/Kaolin - 110 - 220 Mt @ 635 - 832 ppm TREO and 19-22% Al₂O₃
- 100% interest in all Graphite and Rare Earths Projects
- Desirable jurisdiction in South Australia close to existing infrastructure including
 - Ports at Whyalla and Lucky Bay
 - Skilled labour and mining support services at Whyalla
 - New high voltage power line transects tenements connecting significant renewable energy generators
- Growth opportunity, with tight capital structure and low enterprise value
- Full schedule of exploration work including drill programs
 - REE metallurgical test work – November 2022
 - Graphite drilling at Sugarloaf and Lacroma – Dec 2022
 - REE/Kaolin drilling – Dec 2022
 - Graphite and REE/Kaolin resource calculations – H1 2023

A background image showing several wind turbines in a field during a sunset or sunrise. The sky is filled with soft, orange and yellow clouds, and the sun is low on the horizon, creating a warm glow. The foreground shows the silhouettes of the wind turbines and some grass.

iTECH MINERALS – MULTIPLE BATTERY MATERIALS PROJECTS

Regolith “Clay Hosted” REE projects (e.g. Ionic Rare Earths, ASX:IXR)

- | Caralue Bluff (Exploration Target of 110 - 220 Mt @ 635 - 832 ppm TREO and 19-22% Al₂O₃)
- | Franklyn (Exploration Target of 45 – 91Mt at a grade of 30 – 36% Al₂O₃ (-45 µm size fraction))
- | Metallurgical test work pending

High Purity Kaolin Projects (e.g. Andromeda Metals, ASX: ADN)

- | Caralue Bluff (Exploration Target of 110 - 220 Mt @ 635 - 832 ppm TREO and 19-22% Al₂O₃)
- | Franklyn (Exploration Target of 45 – 91Mt at a grade of 30 – 36% Al₂O₃ (-45 µm size fraction))

Spherical Graphite Projects (e.g. Renascor, ASX: RNU)

- | Campoona (JORC Resource of 8.55Mt @ 9.0% Total Graphitic Carbon (TGC))
- | Lacroma – 12 km strike, metallurgy confirmed
- | Sugarloaf (Exploration Target of 158 – 264 Mt @ 7–12 % TGC)

INFORMATION

For further information please contact the authorising officer Michael Schwarz:

iTech Minerals
 Michael Schwarz, FAusIMM, AIG
 Managing Director
 E: mschwarz@itechminerals.com.au
 Ph: +61 2 5850 0000
 W: www.itechminerals.com.au

GLOSSARY

AEM = Airborne Electromagnetic
 EM = Electromagnetic
 FC = Fixed Carbon
 sg = specific gravity – a measure of density
 sq km = square kilometres
 TGC = Total Graphitic Carbon
 CREO = Critical Rare Earth Element Oxide
 ET – Exploration Target
 HREO = Heavy Rare Earth Element Oxide
 LREO = Light Rare Earth Element Oxide
 MREO = Magnet Rare Earth Element Oxide
 REE = Rare Earth Element
 REO = Rare Earth Element Oxide
 TREO = Total Rare Earth Element Oxide
 %NdPr = Percentage amount of neodymium and praseodymium as a proportion of the total amount of rare earth elements
 wt% = Weight percent
 µm = micron or millionth of a metre or a thousandth of a millimetre
 -45µm fraction = The portion of a drill sample that passes through a sieve that has hole sizes of 45 microns (45/1000th of a millimetre). This is generally the clay rich fraction.

COMPETENT PERSON STATEMENT

The information which relates to exploration results is based on and fairly represents information and supporting documentation compiled by Michael Schwarz. Mr Schwarz has sufficient experience, which is relevant to the style of mineralisation and type of deposit under consideration and to the activity which he is undertaking, to qualify as a Competent Person as defined in the 2012 edition of the 'Australasian Code for Reporting of Exploration Results, Mineral Resources and Ore Reserves' (the JORC Code). Mr Schwarz is a full-time employee of iTech Minerals Ltd and is a member of the Australian Institute of Geoscientists and the Australian Institute of Mining and Metallurgy. Mr Schwarz consents to the inclusion of the information in this report in the form and context in which it appears.

This announcement contains results that have previously released as "Replacement Prospectus" on 19 October 2021, "Campoonna Graphite Battery Anode Test Work Underway" on 22 November 2021, "Campoonna Spherical Graphite Project Concentrate" on 21 August 2022, "Campoonna Spherical Graphite Project Bulk sample produced" on 5 July 2022, "99.99% Spherical and Flake Graphite Produced from Campoonna" on 14 September 2022, "Sugarloaf Graphite Exploration Target, Eyre Peninsula" on 19 September 2022, "Lacroma Graphite drill Target on Eyre Peninsula" on 4 October 2022 and "200km of graphite potential at Eyre Peninsula projects". "Rare Earth Potential Identified at Kaolin Project" on 21 October 2021, "Rare Earth Potential Confirmed at Kaolin Project" on 12 November 2021, "New Rare Earth Prospect on the Eyre Peninsula" on 29 November 2021, "Positive Results Grow Rare Earth Potential at Kaolin Project" on 13 December 2021, "More Positive Rare Earth Results - Ethiopia Kaolin Project" on 12 January 2022, "Exploration Program Underway at EP Kaolin-REE Project" on 19 January 2022, "Eyre Peninsula Kaolin-REE Drilling Advancing Rapidly" on 16 February 2022, "Ionic Component Confirmed at Kaolin-REE Project" on 9 March 2022, "Drilling confirms third REE Prospect at Bartels – Eyre Peninsula" on 22 March 2022, "Eyre Peninsula Kaolin-REE Maiden Drilling Completed" on 7 April 2022, "Significant REEs discovered at Caralue Bluff" on 14 April 2022, "Substantial REEs in first drill holes at Ethiopia, Eyre Peninsula" on 18 May 2022, "Caralue Bluff and Ethiopia Prospects Continue to Grow" on 20 June 2022, "New REE drill results expand Caralue Bluff Prospect" on 18 July 2022, "More thick, high grade REEs at Caralue Bluff" on 22 July 2022, "Final Results from Caralue Bluff Prospect" on 11 August 2022, "Exploration Target defined at Caralue Bluff" on 18 August 2022, "Clay Hosted REE Projects Progress to Second Round of Testing" on 7 October 2022 and "Kaolin results upgrade REE contents by 176% at Caralue Bluff".

iTech confirms that the Company is not aware of any new information or data that materially affects the information included in the announcement and that all material assumptions and technical parameters underpinning the estimates continue to apply and have not changed.

Area	Resource Category	Tonnes (Mt)	Graphitic Carbon %	Contained Graphite (t)
Campoona Shaft	Measured	0.32	12.7	40,600
	Indicated	0.78	8.2	64,000
	Inferred	0.55	8.5	46,800
Central Campoona	Indicated	0.22	12.3	27,100
	Inferred	0.30	10.3	30,900
Wilclo South	Inferred	6.38	8.8	561,400
Combined	Total Resource	8.55	9.0	770,800

Global JORC 2012 Graphite Resources (5% TGC cut off) (ASX Release, 19-Oct-21, Replacement Prospectus)