

# ASX ANNOUNCEMENT

5 DECEMBER 2022

## Amendment to Woyla Project Update

### ANNOUNCEMENT

Far East Gold Limited (**FEG** or the **Company**) refers to the Woyla Project update lodged with the ASX on 29 November 2022.

At the request of the ASX, the Company provides an amended Woyla Project update which includes as Appendix A, a JORC table setting out Sampling Techniques and Data (Section 1) and Reporting of Exploration Results (Section 2). The amended Woyla Project Update also corrects a typographical error on p.7, in the 2<sup>nd</sup> paragraph under the heading "Remaining Drill Targeting". The following sentence which read:

"At Anak Perak, the Company intends to complete an additional two holes (approximately 300 meters) to target the southern extent of the vein/breccia system to test specific targets in the area where previous surface rock sampling returned assays of up to 119 g/t Au, 118 g/t Ag"

now reads:

"At Anak Perak, the Company intends to complete an additional two holes (approximately 300 meters) to target the southern extent of the vein/breccia system to test specific targets in the area where previous surface rock sampling returned assays of up to 119 g/t Au, 361 g/t Ag"

Release approved by the company's board of directors.

### FURTHER INFORMATION:

To receive company updates and investor information from Far East Gold, register your details on the investor portal: <https://fareastgold.investorportal.com.au/register/>

#### COMPANY ENQUIRIES

Paul Walker  
**Chairman**

Shane Menere  
**Chief Executive Officer**

Tim Young  
**Investor Relations & Capital Markets**

[e: paul.walker@fareast.gold](mailto:paul.walker@fareast.gold)  
m: + 61 408 776 145

[e: shane.menere@fareast.gold](mailto:shane.menere@fareast.gold)  
m: + 61 406 189 672  
+ 62 811 860 8378

[e: tim.young@fareast.gold](mailto:tim.young@fareast.gold)  
m: + 61 484 247 771

#### MEDIA ENQUIRIES

Sophie Bradley  
**IR Executive**  
**Reach Markets**

[e: IR@reachmarkets.com.au](mailto:IR@reachmarkets.com.au)  
m: +61 450 423 331

## **WOYLA PROJECT UPDATE: PHASE 1 DRILLING PROGRAM NEARING COMPLETION VISIBLE GOLD AND SILVER BEARING MINERALS OBSERVED**

Far East Gold Limited (**FEG** or the **Company**) announces that the Phase 1 drill program at the Woyla Project's Anak Perak prospect and Rek Rinti prospect is progressing as planned with the diamond core drilling activities nearing completion on-site. FEG is pleased to announce that use of a portable, hand-held XRF analyzer indicates the presence of discrete gold and silver bearing minerals within a Rek Rinti drill hole. This is consistent with the presence of the natural gold-silver alloy electrum and also the silver-rich minerals acanthite and argentite. The Company aims to conclude this phase of the Anak Perak and Rek Rinti drill programs and release preliminary assay results before the end of the year.

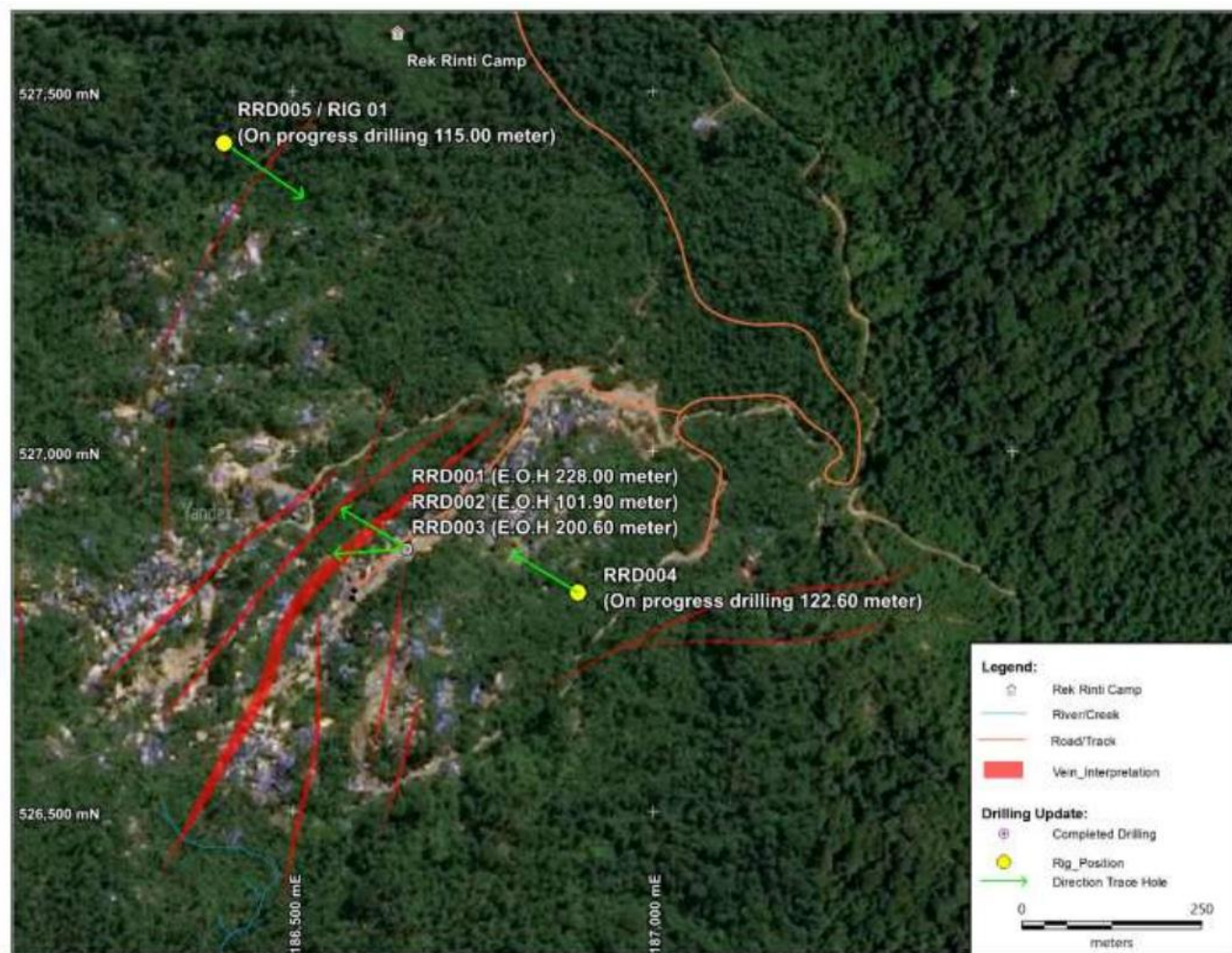
### **HIGHLIGHTS:**

- The Company's Woyla Copper Gold Project is a 24,260 ha 6<sup>th</sup> generation Contract of Work located in the Aceh Province, Indonesia. Exploration at the Woyla Project has identified four main epithermal vein systems; Anak Perak, Rek Rinti, Aloe Eumpeuk and Aloe Rek prospect areas have a combined strike length of over 13,000m.
- The first 3 holes (RRD001 to RRD003) of the planned 1,120m 5-hole Phase 1 diamond drill program have been completed at the Rek Rinti prospect area. Two drill rigs are currently operating at Rek Rinti for a total drilling to date of 768.50m.
- **Visible gold and silver bearing minerals associated with ginguro banding have been observed in the drill core of RRD004** and confirmed by portable XRF (pXRF) spec. Drill hole RRD004 is still underway and visual observations coupled with results from a portable, handheld x-ray analyzer (pXRF) indicate the presence of discrete gold and silver bearing minerals associated with ginguro banded quartz. **This is consistent with surface samples of ginguro banded quartz vein from the Rek Rinti prospect area that assayed up to 38 g/t Au and 581 g/t Ag.**
- The first 16 holes (APD001 to APD016) of the planned 2,560m 18-hole Phase 1 diamond drill program have been completed at the Anak Perak Main Zone. One drill rig is currently operating at Anak Perak for a total drilling to date of 2,125.70m. The holes represent 7 drill sections and confirm the presence of the Main Vein Zone over a strike length of 700m and to a vertical depth of approximately 150m.
- The Anak Perak Main Zone intersections show consistent zone width along the 700m of strike length investigated and indicate that the zone was the site of repeated and superimposed vein and breccia development.
- On 17 November 2022, the Company's **Woyla Project was a finalist and runner-up for the 2022 Australian Mining Prospect Awards – Discovery of the Year**. In further recognition of the Company's success in progressing the Woyla Project, the Indonesian Government's Director General – Mineral and Coal has invited FEG to participate as a delegate in the Indonesian National Seminar "*The 1<sup>st</sup> Indonesia Minerals Mining Industry Conference-Expo 2022*" to be held in Jakarta on 30 November.
- Join Chairman Paul Walker for an investor briefing today, 29<sup>th</sup> November at 12pm (AEDT) where he will discuss this announcement in more detail and provide an update on activities. [Book in or request a replay here.](#)



## REK RINTI – PHASE 1 DRILL PROGRAM

Three holes have been completed to date at the Rek Rinti prospect for a total of 530.5m (see Figure 1 below). Two drills are operating to test defined quartz veins and potential vein extensions. The program has been successful in intersecting quartz veins as defined on surface, in line with FEG predictions, and confirming the veins to have lateral and depth extent. The current drill program will test several quartz veins to approximately 50 and 100m depth.



**Figure 1:** Aerial map showing the surface extent of the Rek Rinti prospect area and location of completed drill holes

Initial observations confirm that the veins intersected reflect textures and alteration as mapped on surface which are also associated with significant gold and silver mineralization (see Figure 2 below). Significantly, the presence of zones of ginguro-banded quartz have been confirmed in drill core. **Hole RRD004 which is currently in progress, has intersected an approximately 37m wide zone of massive quartz veins and quartz breccia which contains zones of ginguro-banded quartz and disseminated sulphide minerals.** Core logging has identified the presence of visible galena and sphalerite and logging with a hand-held pXRF analyzer confirms the presence of discrete Au and Ag-rich minerals, indicative of electrum. The drill core is currently being half-core sampled for assay.





**Figure 2:** Sample of ginguro-banded quartz vein from artisanal mining pit in the Rek Rinti prospect. Assayed 38.14 g/t Au and 581 g/t Ag.



**Figure 3:** TOP: whole core sample of black ginguro-band in quartz vein from RDD004 104.5m. BOTTOM: whole core sample from RDD04 (109.6m) showing presence of electrum and other Ag-rich minerals indicated by yellow arrow as indicated by hard-held pXRF analyzer.

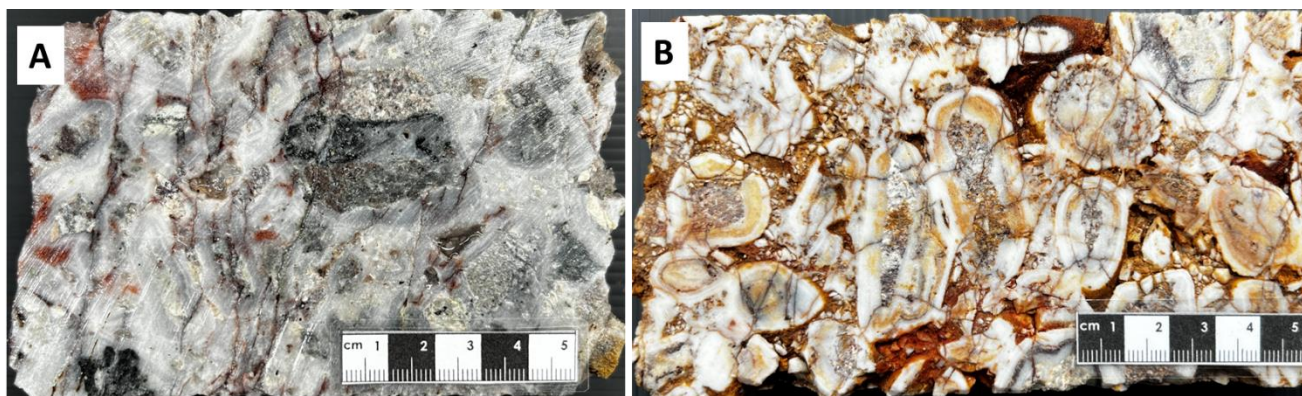


**Figure 4:** LEFT: Core sample from RRD004 (108.7m) quartz vein, white, colloform texture with black sulfide bends and spotted black sulfide, chalcedonic  $\pm$  crystal at vugh, strong silica alteration, 3% py-cpy-sp. RIGHT: Visible gold and silver bearing minerals showing presence of electrum indicated by red arrow as indicated by hard-held pXRF analyzer.

## ANAK PERAK MAIN ZONE – PHASE 1 DRILL PROGRAM

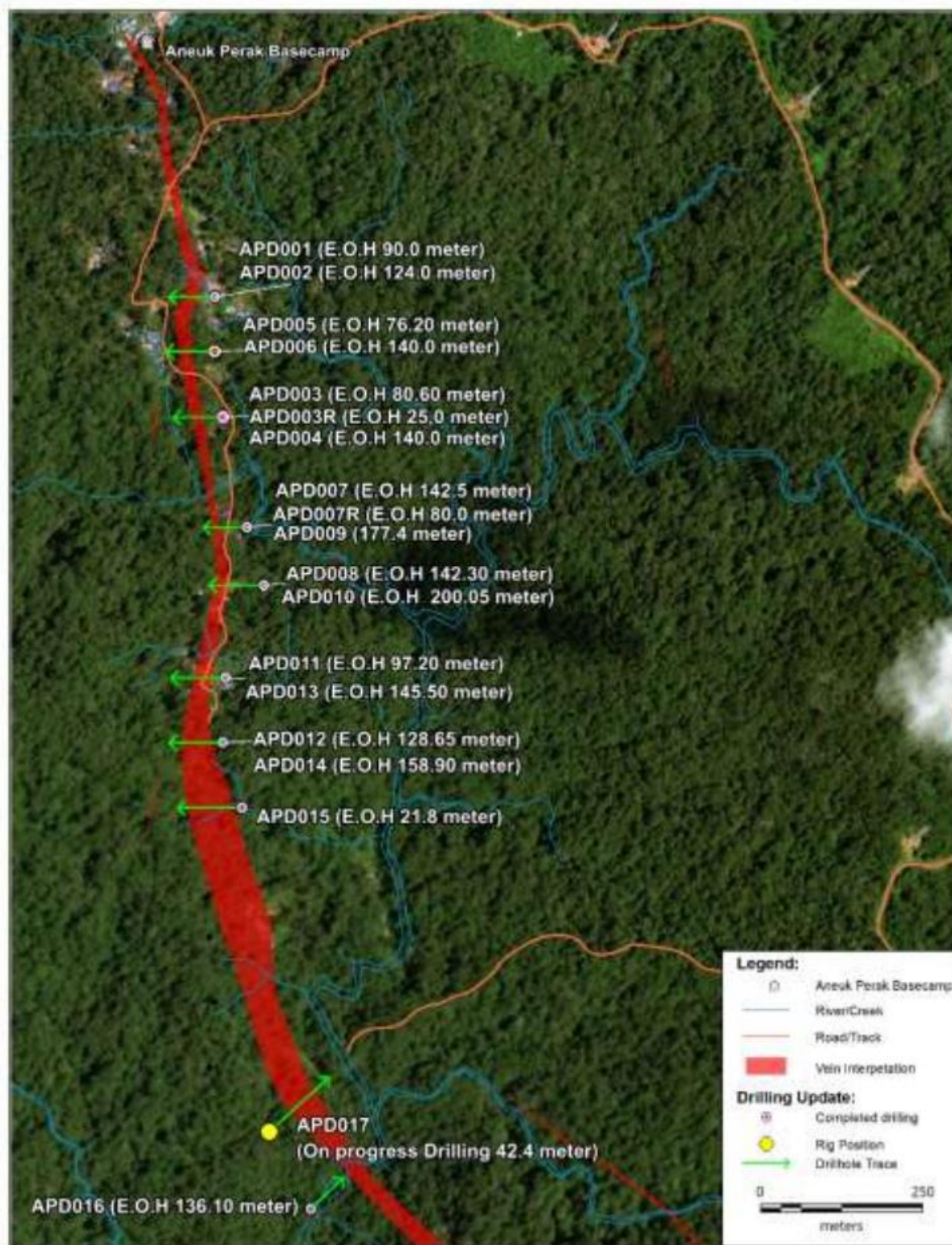
Sixteen diamond drill holes have been completed to date at the Anak Perak prospect area for a total of 2,125.7m. The holes have intersected the Anak Perak Main Zone vein-breccia as predicted over a strike length of 700m. Figure 6 shows the location of completed holes.

The drilled sections indicate that the main zone is comprised predominately of quartz stockwork and quartz matrix breccia with discrete narrow zones of massive chalcedonic and crystalline quartz. Vein textures include colloform and crustiform banding and narrow zones of cockade quartz breccia (see Figure 5 below). The core observations infer that brecciation was followed by a period of quartz veining/breccia that formed in open spaces. The occurrence of sulphide mineralization is manifest predominately as common pyrite with minor chalcopyrite, sphalerite and galena with very minor covellite and possible acanthite associated with emplacement of the quartz veins and cockade breccia.



**Figure 5:** APD drill core photos. A) multistage quartz breccia from APD001(37.20m) containing galena and sphalerite-sin quartz clast. B) cockade textured quartz breccia from APD003 (28.7m),



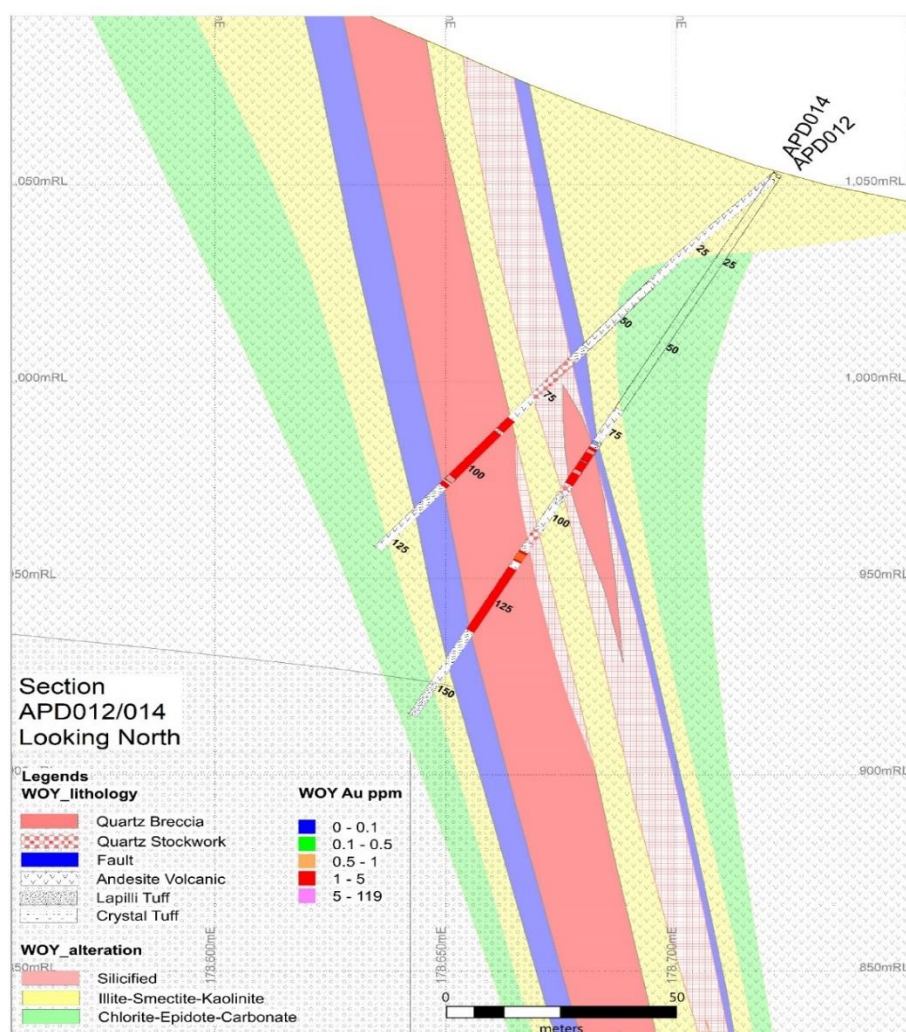


**Figure 6:** Aerial map showing the surface extent of the Anak Perak Main Zone and location of completed drill holes



It is also apparent that the process of brecciation and vein development within the Main Zone was multistage reflecting repeated and superimposed hydrothermal activity. In this context it is important to note that while multistage vein formation and sulphide mineralization is recognized, the development of these features was not consistent throughout the Main Zone. As such while the width and general characteristics of the Main Zone is similar from hole to hole, each hole reflects variable intensity of brecciation and development of quartz stockwork veins and also the associated alteration and mineral assemblage. The volcanic wallrocks also show variable intensity of clay and pyrite (argillic) alteration immediately adjacent to the main zone of quartz matrix breccia and quartz veining. A representative drill cross section for Anak Perak Main Zone is shown in Figure 7 below.

One feature that does appear consistent is that the zone hanging wall (uphole) and footwall wall (downhole) contacts with volcanic rock wall rock are marked by fault breccia. This indicates that the Main Zone developed in response to fault (likely seismic) activity whereby the host structure was dilated, and hydrothermal fluids emplaced. The presence of common cavities and vugs in the quartz breccia and veins indicates that open-space infilling was the dominate mechanism of Main Zone development.



**Figure 7:** Image shows interpreted cross section of APD012/014. The occurrence of hangingwall and footwall fault zones on the margins of zones of multi-stage quartz breccia and quartz stockwork and massive quartz veins is characteristic of the Anak Perak Main Zone.





Understanding the relationship and relative timing of these features will be integral to define what event or combination of events were important for emplacement of gold-silver mineralization in the system. As such, ongoing detailed core logging will provide the geological context with which to assess the assay results when received for the completed Phase 1 program.

### Remaining Drill Targeting

Drilling will continue with two drill rigs at the Rek Rinti prospect to continue to test the lateral and vertical extent of veins mapped on surface. Approximately 1,000m remain in the current drill plan.

**At Anak Perak, the Company intends to complete an additional two holes (approximately 300 meters) to target the southern extent of the vein/breccia system to test specific targets in the area where previous surface rock sampling returned assays of up to 119 g/t Au, 361 g/t Ag and high concentrations of Cu (1.8%), Pb (38%) and Zn (2.7%) hosted within structurally-controlled zones of sulphide-rich quartz vein / breccia (see Figure 8 below).**

Both programs are expected to be completed before the end of the year.



**Figure 8:** Photo of sulphide-rich quartz vein from southern extent of the Main Zone vein-breccia. Sample assayed; 119 g/t Au, 361 g/t Ag, 3.39 % Cu, 3.9 % Pb and 5.16 % Zn





## COMPETENT PERSON'S STATEMENT

*The information in this report that relates to Exploration Results and Mineral Resources is based on information compiled by FEG staff and approved by Michael C Corey, who is a Member of the Association of Professional Geoscientists of Ontario, Canada. Michael Corey is employed by the Company and has sufficient experience which is relevant to the style of mineralisation and type of deposit under consideration and to the activity which he is undertaking to qualify as a Competent Person as defined in the 2012 Edition of the 'Australasian Code for Reporting of Exploration Results, Mineral Resources and Ore Reserves'. Michael Corey has consented to the inclusion in this report of the matters based on his information in the form and context in which they appear.*

## JOIN AN INVESTOR BRIEFING

Join Chairman Paul Walker for a live investor briefing today, Tuesday 29<sup>th</sup> November at 12pm (AEDT), where he will discuss the announcement in more detail and provide an update on activities.

Book in or request a replay here: <https://fareastgold.investorportal.com.au/investor-briefing/>

## SHARE PURCHASE PLAN

Far East Gold has a current Share Purchase Plan open to eligible shareholders with funds to be used to progress exploration in Woyla.

Eligible shareholders can request an electronic copy of their personalised Share Purchase Plan application form from the below link.

Request SPP form: <https://fareastgold.investorportal.com.au/spp-opportunity/>

## ABOUT FAR EAST GOLD

Far East Gold Limited (ASX: FEG) is an ASX listed copper/gold exploration company with six advanced projects in Australia and Indonesia.

The Company's Woyla Copper Gold Project is a 24,260 ha 6th generation Contract of Work located in the Aceh region of North Sumatra, Indonesia. In the Company's opinion this project is one of the most highly prospective undrilled copper gold projects in South-East Asia with the potential to host high grade epithermal and porphyry deposits. FEG holds a 51% interest in the project that will increase to 80% upon the Company's completion of a feasibility study and definition of a maiden JORC resource estimate for the project.

Release approved by the company's board of directors.

**FURTHER INFORMATION:**

To receive company updates and investor information from Far East Gold, register your details on the investor portal: <https://fareastgold.investorportal.com.au/register/>

**COMPANY ENQUIRIES**

Paul Walker  
**Chairman**

Shane Menere  
**Chief Executive Officer**

Tim Young  
**Investor Relations & Capital Markets**

[e: paul.walker@fareast.gold](mailto:paul.walker@fareast.gold)

m: + 61 408 776 145

[e: shane.menere@fareast.gold](mailto:shane.menere@fareast.gold)

m: + 61 406 189 672  
+ 62 811 860 8378

[e: tim.young@fareast.gold](mailto:tim.young@fareast.gold)

m: + 61 484 247 771

**MEDIA ENQUIRIES**

Sophie Bradley  
**IR Executive**  
**Reach Markets**

[e: IR@reachmarkets.com.au](mailto:IR@reachmarkets.com.au)

m: +61 450 423 331

---



## ATTACHMENT A

### JORC Code, 2012 Edition – Table 1 report SPL1454

#### Section 1 Sampling Techniques and Data

(Criteria in this section apply to all succeeding sections.)

Criteria	JORC Code explanation	Commentary
<b>Sampling techniques</b>	<ul style="list-style-type: none"> <li><i>Nature and quality of sampling (eg cut channels, random chips, or specific specialised industry standard measurement tools appropriate to the minerals under investigation, such as down hole gamma sondes, or handheld XRF instruments, etc). These examples should not be taken as limiting the broad meaning of sampling.</i></li> <li><i>Include reference to measures taken to ensure sample representivity and the appropriate calibration of any measurement tools or systems used.</i></li> <li><i>Aspects of the determination of mineralisation that are Material to the Public Report.</i></li> <li><i>In cases where 'industry standard' work has been done this would be relatively simple (eg 'reverse circulation drilling was used to obtain 1 m samples from which 3 kg was pulverised to produce a 30 g charge for fire assay'). In other cases more explanation may be required, such as where there is coarse gold that has inherent sampling problems. Unusual commodities or mineralisation types (eg submarine nodules) may warrant disclosure of detailed information.</i></li> </ul>	<ul style="list-style-type: none"> <li>Rock samples were collected from quartz veins exposed on surface and within hand dug artisanal miner pits. Individual samples were comprised as pieces of the vein(s) material chipped the exposure. Effort was made to chip across the vein perpendicular to vein trend. Samples were collected from zones of visible sulphide mineralization and or alteration such as clay-pyrite or manganese.</li> <li>Samples were bagged and tagged with unique numbered assay tags inserted into each sample. The samples were delivered via commercial carrier to Pt. Geoservices Geoassay Mineral Laboratory located in Cikarang, Bekasi, West Java, Indonesia. The samples were oven dried at 105°C, weighed then jaw crushed to 70% less than 2mm, riffle split to obtain 250g, that was then pulverized to &gt;85% passing 75 microns. Two splits were taken from this product, one for analysis the other for QAQC. Each sample was analysed for gold using FAA30 fire assay method using a 30g charge with an AAS finish. Samples containing &gt;50 g/t (ppm) Au were further assayed using the FAGRAV gravimetric method. Ag, base metals and a suite of other elements were estimated by method GA102-ICP, which used an aqua regia digest with ICP-OES finish. Samples containing &gt;100ppm Ag were further assayed using GOA-02 method which was an aqua regia ore grade digest with an AA finish.</li> <li>A single certified reference material and a blank sample were inserted into the submitted sample batch for QAQC purpose.</li> </ul>
<b>Drilling techniques</b>	<ul style="list-style-type: none"> <li><i>Drill type (eg core, reverse circulation, open-hole hammer, rotary air blast, auger, Bangka, sonic, etc) and details (eg core diameter, triple or standard tube, depth of diamond tails, face-sampling bit or other type, whether core is oriented and if so, by what method, etc).</i></li> </ul>	<ul style="list-style-type: none"> <li>Drilling is being conducted using a wireline, man-portable diamond drill. Core is obtained using PQ (85mm) and HQ (63.5mm) triple tube core barrels. Oriented drill core is obtained using a Reflex Ori tool.</li> </ul>

Criteria	JORC Code explanation	Commentary
<b>Drill sample recovery</b>	<ul style="list-style-type: none"> <li>• <i>Method of recording and assessing core and chip sample recoveries and results assessed.</i></li> <li>• <i>Measures taken to maximise sample recovery and ensure representative nature of the samples.</i></li> <li>• <i>Whether a relationship exists between sample recovery and grade and whether sample bias may have occurred due to preferential loss/gain of fine/coarse material.</i></li> </ul>	<ul style="list-style-type: none"> <li>• All drill core is logged by Company geologist discriminating lithologies and recording pertinent geological observations related to mineralization and alteration.</li> <li>• Drilling is conducted using triple tube core barrel and utilising various drilling muds in combination with drill bit type and short core runs to maximize core recovery. The drill company is contractually obligated to obtain 90% core recovery.</li> <li>• At this point in the drill program there has not been enough data collected to determine if any sampling bias related to core recovery exists.</li> </ul>
<b>Logging</b>	<ul style="list-style-type: none"> <li>• <i>Whether core and chip samples have been geologically and geotechnically logged to a level of detail to support appropriate Mineral Resource estimation, mining studies and metallurgical studies.</i></li> <li>• <i>Whether logging is qualitative or quantitative in nature. Core (or costean, channel, etc) photography.</i></li> <li>• <i>The total length and percentage of the relevant intersections logged.</i></li> </ul>	<ul style="list-style-type: none"> <li>• All core is digitally logged in its entirety by Company geologists using unique capture codes and in sufficient detail to discriminate lithologies and record all pertinent geological observations related to mineralization, alteration and structural features. The core is also logged with respect to industry standard RQD parameters that record basic geotechnical factors. This data will form the basis for future mineral resource estimation and other deposit studies.</li> <li>• High resolution photographs are taken of all core boxes prior to being cut both wet and dry. Photographs are stored for future reference.</li> </ul>



Criteria	JORC Code explanation	Commentary
<b>Sub-sampling techniques and sample preparation</b>	<ul style="list-style-type: none"> <li>• <i>If core, whether cut or sawn and whether quarter, half or all core taken.</i></li> <li>• <i>If non-core, whether riffled, tube sampled, rotary split, etc and whether sampled wet or dry.</i></li> <li>• <i>For all sample types, the nature, quality and appropriateness of the sample preparation technique.</i></li> <li>• <i>Quality control procedures adopted for all sub-sampling stages to maximise representivity of samples.</i></li> <li>• <i>Measures taken to ensure that the sampling is representative of the in situ material collected, including for instance results for field duplicate/second-half sampling.</i></li> <li>• <i>Whether sample sizes are appropriate to the grain size of the material being sampled.</i></li> </ul>	<ul style="list-style-type: none"> <li>• The analytical methods selected are deemed appropriate for the level of analytical accuracy required at this early stage of exploration. The objective of the sampling was to determine where significant Au-Ag mineralization resides within the various textural types of quartz veins and alteration types that occur.</li> <li>• Half-core samples were bagged and tagged with unique numbered assay tags inserted into each sample. The samples were delivered via commercial carrier to Pt. Geoservices Geoassay Mineral Laboratory located in Cikarang, Bekasi, West Java, Indonesia. The samples were oven dried at 105°C, weighed then jaw crushed to 70% less than 2mm, riffle split to obtain 250g, that was then pulverized to &gt;85% passing 75 microns. Two splits were taken from this product, one for analysis the other for QAQC. Each sample was analysed for gold using FAA30 fire assay method using a 30g charge with an AAS finish. Samples containing &gt;50 g/t (ppm) Au were further assayed using the FAGRAV gravimetric method. Ag, base metals and a suite of other elements were estimated by method GA102-ICP, which used an aqua regia digest with ICP-OES finish. Samples containing &gt;100ppm Ag were further assayed using GOA-02 method which was an aqua regia ore grade digest with an AA finish.</li> <li>• A single certified reference material and a blank sample were inserted at the rate of 1 each per 25 core samples. for QAQC purpose.</li> <li>• The sample preparation completed at Pt.Geoservices prior to analysis are deemed appropriate for surface rock and drill core samples. Select high grade Au samples will also be analysed using a screen fire assay technique to determine if any coarse Au (+200 mesh) occurs.</li> <li>• Drill core is cut in half using a core saw with half core sampled for individual assay. Geologists are careful to avoid any sampling bias. Samples are collected at 0.25 to 1m intervals. to optimise understanding of the controls of mineralization with attention given to characterizing the different rock types and types and styles of mineralization and alteration that occur.</li> </ul>

<b>Quality of assay data and laboratory tests</b>	<ul style="list-style-type: none"> <li>• The nature, quality and appropriateness of the assaying and laboratory procedures used and whether the technique is considered partial or total.</li> <li>• For geophysical tools, spectrometers, handheld XRF instruments, etc, the parameters used in determining the analysis including instrument make and model, reading times, calibrations factors applied and their derivation, etc.</li> <li>• Nature of quality control procedures adopted (eg standards, blanks, duplicates, external laboratory checks) and whether acceptable levels of accuracy (ie lack of bias) and precision have been established.</li> </ul>	<ul style="list-style-type: none"> <li>• The sample prep and assay methods utilized by Pt. Geoservices are appropriate for the sample type assayed and level of accuracy required.</li> <li>• The Company regularly uses an Olympus Vanta portable hand-held XRF analyzer (2022) to screen drill core for mineralization before cutting and sampling. This allows for some understanding of the distribution of mineralization prior to sampling to better ensure that the sampled core is representative of the type and style of mineralization. Numerous readings are obtained and recorded for future reference.</li> <li>• The Company employs industry standard QAQC protocols to check the accuracy and bias of reported sample assays. Sample assay failures are indicated if outside of 3 standard deviations. Certified reference material, blanks and sample splits are also tracked over time to determine if any bias.</li> </ul>
<b>Verification of sampling and assaying</b>	<ul style="list-style-type: none"> <li>• The verification of significant intersections by either independent or alternative company personnel.</li> <li>• The use of twinned holes.</li> <li>• Documentation of primary data, data entry procedures, data verification, data storage (physical and electronic) protocols.</li> <li>• Discuss any adjustment to assay data.</li> </ul>	<ul style="list-style-type: none"> <li>• Core is logged by Company geologists with data entered digitally using set data codes for lithology, alteration, mineralization and related rock characteristics.</li> <li>• Core logging digital data is checked and verified for errors along with core assay data by Company data manager and stored in Access format.</li> <li>• There is no adjustment of assay data after QAQC determination of pass or fail.</li> </ul>
<b>Location of data points</b>	<ul style="list-style-type: none"> <li>• Accuracy and quality of surveys used to locate drill holes (collar and down-hole surveys), trenches, mine workings and other locations used in Mineral Resource estimation.</li> <li>• Specification of the grid system used.</li> <li>• Quality and adequacy of topographic control.</li> </ul>	<ul style="list-style-type: none"> <li>• Drillhole collars and collected field samples are located using hand-held Garmin GPS to a &lt;5m accuracy.</li> <li>• Drillhole collar locations will also be located by a surveyor using a Trimble GPS unit to a &lt;1m accuracy.</li> <li>• The project datum is UTM WGS 84 – Zone 47N.</li> <li>• The Company has resurveyed and confirmed accuracy of historical survey benchmarks on the property for current surveying requirements.</li> </ul>
<b>Data spacing and distribution</b>	<ul style="list-style-type: none"> <li>• Data spacing for reporting of Exploration Results.</li> <li>• Whether the data spacing and distribution is sufficient to establish the degree of geological and grade</li> </ul>	<ul style="list-style-type: none"> <li>• The spacing of collected field samples and the spacing of drill hole collars is deemed appropriate for the level of the current exploration program and initial drilling of selected targets to</li> </ul>



	<p><i>continuity appropriate for the Mineral Resource and Ore Reserve estimation procedure(s) and classifications applied.</i></p> <ul style="list-style-type: none"> <li>• <i>Whether sample compositing has been applied.</i></li> </ul>	<p>identify where mineralization occurs. This will be followed by more rigorous drilling to establish continuity and grade profile within zones of potential resource determination.</p> <ul style="list-style-type: none"> <li>• No physical sample compositing has been applied aside. Reported assays are averaged over specific, continuous zones if deemed significant. A cut-off of 0.2 g/t Au with a maximum 2m of internal dilution is utilized for determination of a significant assay interval.</li> </ul>
<b>Orientation of data in relation to geological structure</b>	<ul style="list-style-type: none"> <li>• <i>Whether the orientation of sampling achieves unbiased sampling of possible structures and the extent to which this is known, considering the deposit type.</i></li> <li>• <i>If the relationship between the drilling orientation and the orientation of key mineralised structures is considered to have introduced a sampling bias, this should be assessed and reported if material.</i></li> </ul>	<ul style="list-style-type: none"> <li>• Collected field samples and drill hole locations and drilling parameters are set to best obtain representative data according to the interpreted type and style and controls of mineralization being tested. Particular effort is made to drill normal to such controlling structures or host stratigraphy to obtain a near to true width zone indication as possible.</li> <li>• Downhole core orientations were obtained using a Axis digital orientation tool.</li> </ul>
<b>Sample security</b>	<ul style="list-style-type: none"> <li>• <i>The measures taken to ensure sample security.</i></li> </ul>	<ul style="list-style-type: none"> <li>• Collected samples were placed in sturdy plastic sacks and sealed for transport. Samples are delivered to expeditor and shipped. Any broken bags received by the lab are reported to the Company. This has not happened to date.</li> </ul>
<b>Audits or reviews</b>	<ul style="list-style-type: none"> <li>• <i>The results of any audits or reviews of sampling techniques and data.</i></li> </ul>	<ul style="list-style-type: none"> <li>• The have been no independent audit or review of sampling protocols.</li> </ul>

## Section 2 Reporting of Exploration Results

(Criteria listed in the preceding section also apply to this section.)

Criteria	JORC Code explanation	Commentary
<b>Mineral tenement and land tenure status</b>	<ul style="list-style-type: none"> <li>Type, reference name/number, location and ownership including agreements or material issues with third parties such as joint ventures, partnerships, overriding royalties, native title interests, historical sites, wilderness or national park and environmental settings.</li> <li>The security of the tenure held at the time of reporting along with any known impediments to obtaining a licence to operate in the area.</li> </ul>	<ul style="list-style-type: none"> <li>The The Woyla project tenement is held in the name of PT Woyla Aceh Minerals (PT WAM), which consists in 80% Woyla Aceh Ltd, 15% Quralon Pte Ltd, 2.5% PT Mutiara Mitramin, 2.5% PT Indo Noble Abadi. PT WAM holds a 6th Generation Contract of Work dated 17 March 1997.</li> <li>The Woyla Contract of Work was under a Mines Department approved state of suspension from exploration activities from 1999-2006 during the prolonged civil conflict in Aceh. An extended moratorium on exploration activities within Aceh has recently been lifted.</li> <li>The Contract of Work (177.K/30/DJB/2018) for the tenement was in voluntary suspension until FEG secured the necessary environmental and land use permits. FEG has recently been granted the environmental permit (PIPPIB) for 7688 ha of the protected forest area. This allows FEG to conduct exploration activities within the permit area under certain conditions.</li> </ul>
<b>Exploration done by other parties</b>	<ul style="list-style-type: none"> <li>Acknowledgment and appraisal of exploration by other parties.</li> </ul>	<ul style="list-style-type: none"> <li>Reconnaissance and detailed geological mapping were completed during 1996 – 1997 by Newcrest Mining and Barrick Gold. A helicopter-borne magnetic and radiometric survey was flown by World Geoscience in 1996. The companies collected stream, soil and rock samples of exposed veins and also completed petrology studies on selected samples.</li> </ul>

Criteria	JORC Code explanation	Commentary
<b>Geology</b>	<ul style="list-style-type: none"> <li>• <i>Deposit type, geological setting and style of mineralisation.</i></li> </ul>	<ul style="list-style-type: none"> <li>• The project area sits within the Neogene Gold Belt of Sumatra, characterised by Miocene-Neogene gold intrusion centred mineralisation. Along strike in a NW direction from the project area are the Miwah high-sulphidation gold deposit and Beutong- porphyry and skarn system and along strike to the SE lies the Abong (sediment hosted) and Meluak (high-sulphidation) gold deposits.</li> <li>• Previous exploration has identified several low sulphidation, epithermal type Au-Ag bearing quartz/breccia systems hosted within and likely controlled by a series of fault structures related to the Sumatra Fault and emplacement of intrusions. As such, Au-Cu porphyry style, associated skarn and high- sulphidation Au may also be found within the Woyla project area. Downstream from the known veins systems are several alluvial-Au workings (Anu Renguet).</li> </ul>
<b>Drill hole Information</b>	<ul style="list-style-type: none"> <li>• <i>A summary of all information material to the understanding of the exploration results including a tabulation of the following information for all Material drill holes:</i> <ul style="list-style-type: none"> <li>○ <i>easting and northing of the drill hole collar</i></li> <li>○ <i>elevation or RL (Reduced Level – elevation above sea level in metres) of the drill hole collar</i></li> <li>○ <i>dip and azimuth of the hole</i></li> <li>○ <i>down hole length and interception depth</i></li> <li>○ <i>hole length.</i></li> </ul> </li> <li>• <i>If the exclusion of this information is justified on the basis that the information is not Material and this exclusion does not detract from the understanding of the report, the Competent Person should clearly explain why this is the case.</i></li> </ul>	<ul style="list-style-type: none"> <li>• No previous drilling has been completed.</li> <li>• Specific details of all drill holes completed by FEG are reported.</li> </ul>
<b>Data aggregation methods</b>	<ul style="list-style-type: none"> <li>• <i>In reporting Exploration Results, weighting averaging techniques, maximum and/or minimum grade truncations (eg cutting of high grades) and cut-off grades are usually Material and should be stated.</i></li> <li>• <i>Where aggregate intercepts incorporate short lengths of high grade results and longer lengths of low grade results, the procedure used for such aggregation should be stated and some typical examples of such aggregations should be shown in detail.</i></li> <li>• <i>The assumptions used for any reporting of metal equivalent values should be clearly stated.</i></li> </ul>	<ul style="list-style-type: none"> <li>• All values are reported as assayed and no equivalent grades (eg. Au Eq) have been included.</li> </ul>



Criteria	JORC Code explanation	Commentary
<b>Relationship between mineralisation widths and intercept lengths</b>	<ul style="list-style-type: none"> <li>• These relationships are particularly important in the reporting of Exploration Results.</li> <li>• If the geometry of the mineralisation with respect to the drill hole angle is known, its nature should be reported.</li> <li>• If it is not known and only the down hole lengths are reported, there should be a clear statement to this effect (eg 'down hole length, true width not known').</li> </ul>	<ul style="list-style-type: none"> <li>• The rock samples collected are considered a reflection of the nature of mineralization at the point of sampling. Aside from a visual estimation at the time of sampling no accurate determination of vein widths was made.</li> <li>• The Company does distinguish between downhole length and true width (apparent) and reports each as necessary.</li> <li>• Drill core is cut in half using a core saw with half core sampled for individual assay. Geologists are careful to avoid any sampling bias. Samples are collected at 0.25 to 1m intervals. to optimise understanding of the controls of mineralization with attention given to characterizing the different rock types and types and styles of mineralization and alteration that occur.</li> </ul>
<b>Diagrams</b>	<ul style="list-style-type: none"> <li>• Appropriate maps and sections (with scales) and tabulations of intercepts should be included for any significant discovery being reported These should include, but not be limited to a plan view of drill hole collar locations and appropriate sectional views.</li> </ul>	<ul style="list-style-type: none"> <li>• Pertinent maps and sections are included in the corporate release of sample results</li> </ul>
<b>Balanced reporting</b>	<ul style="list-style-type: none"> <li>• Where comprehensive reporting of all Exploration Results is not practicable, representative reporting of both low and high grades and/or widths should be practiced to avoid misleading reporting of Exploration Results.</li> </ul>	<ul style="list-style-type: none"> <li>• Reporting is fully representative of the data.</li> </ul>
<b>Other substantive exploration data</b>	<ul style="list-style-type: none"> <li>• Other exploration data, if meaningful and material, should be reported including (but not limited to): geological observations; geophysical survey results; geochemical survey results; bulk samples – size and method of treatment; metallurgical test results; bulk density, groundwater, geotechnical and rock characteristics; potential deleterious or contaminating substances.</li> </ul>	<ul style="list-style-type: none"> <li>• All data is fully reported.</li> </ul>
<b>Further work</b>	<ul style="list-style-type: none"> <li>• The nature and scale of planned further work (eg tests for lateral extensions or depth extensions or large-scale step-out drilling).</li> <li>• Diagrams clearly highlighting the areas of possible extensions, including the main geological interpretations and future drilling areas, provided this information is not commercially sensitive.</li> </ul>	<ul style="list-style-type: none"> <li>• The company will incorporate all surface and drill core sample assay results in a secure database for future determination of a mineral resource estimate.</li> <li>• The current drill program as reported by FEG is the first completed on the property and results obtained will determine the scope of future drilling and property wide exploration.</li> </ul>

Section 3 does not apply as the information regarding the mineral resource was prepared and first disclosed under the 2004 Edition of the 'Australasian Code for Reporting of Exploration Results, Mineral Resources and Ore Reserves'. It has not been updated since to comply with the 2012 Edition of the 'Australasian Code for Reporting of Exploration Results, Mineral Resources and Ore Reserves' on the basis that the Company is not aware of any new information or data that materially affects the information and, in the case of the resource estimate, all material assumptions and technical parameters underpinning the estimate continue to apply and have not materially changed. Section 4 does not apply as reserve estimates are not being disclosed at this time and Section 5 does not apply as this section relates to the reporting of diamonds and other gemstones.