

ASX ANNOUNCEMENT

17 MARCH 2023



VISIBLE GOLD AND ELECTRUM IDENTIFIED AT REK RINTI VISIBLE GOLD IDENTIFIED AT ALOE EUMPEUK

Far East Gold Limited (**FEG** or the **Company**) is pleased to announce that as part of the Woyla Project's Phase 2 resource delineation drill program **visible gold and electrum has been identified within AGM007 drill core from the Rek Rinti prospect**. The Company is also pleased to announce that recent detailed mapping has identified coarse **visible gold within surface rock samples at the Aloe Eumpeuk prospect** located to the south of Rek Rinti.

HIGHLIGHTS:

Rek Rinti Prospect Area Phase 2 Resource Delineation Drill Program

- Finely disseminated **electrum and visible gold with other sulphides were identified within a quartz vein intersected in drill hole AGM007**. The hole was drilled as part of the Company's Phase 2 resource delineation drill program focused on the Agam Zone within the Rek Rinti prospect area.
- The mineralization occurs within narrow ginguero bands in massive quartz. This is consistent with the bonanza grade gold (Au) and silver (Ag) mineralization observed within ginguero bands intersected in the Phase 1 scout drillhole RRD004 situated 50m to northeast of AGM007 along strike and reported on previously by the Company (see ASX release 2 February 2023).
- **The identification of electrum and visible gold in drillhole AGM007 confirms lateral extension of high-grade mineralization** within the Agam Zone.

Aloe Eumpeuk Prospect Area Scout Drilling to Commence

- The Company is expediting preparations for the maiden scout drilling program at the Aloe Eumpeuk prospect area located 1.5km to the southwest of the Rek Rinti vein system. The Company expects the first ever drilling of this prospect area to commence before the end of March 2023.
- Previous exploration of Aloe Eumpeuk (Barrick, 1997) identified 2 high-grade veins extending for approximately 300m along strike. Previous sampling by FEG confirmed the occurrence of high grade gold and silver within massive quartz at surface. Assays of up to **63 g/t Au and 1,179 g/t Ag** were obtained from grab samples showing ginguero-bands.
- Recent mapping by FEG has confirmed vein extents and **identified coarse visible gold within samples of quartz taken from artisanal mining pits**. As part of the Company's Phase 2 scout drilling program FEG is preparing to undertake an initial 6 hole, 650m scout drill plan at Aloe Eumpeuk to test these veins that have delivered high grade gold and silver samples at surface.



REK RINTI PROSPECT - Resource Delineation Drill Program

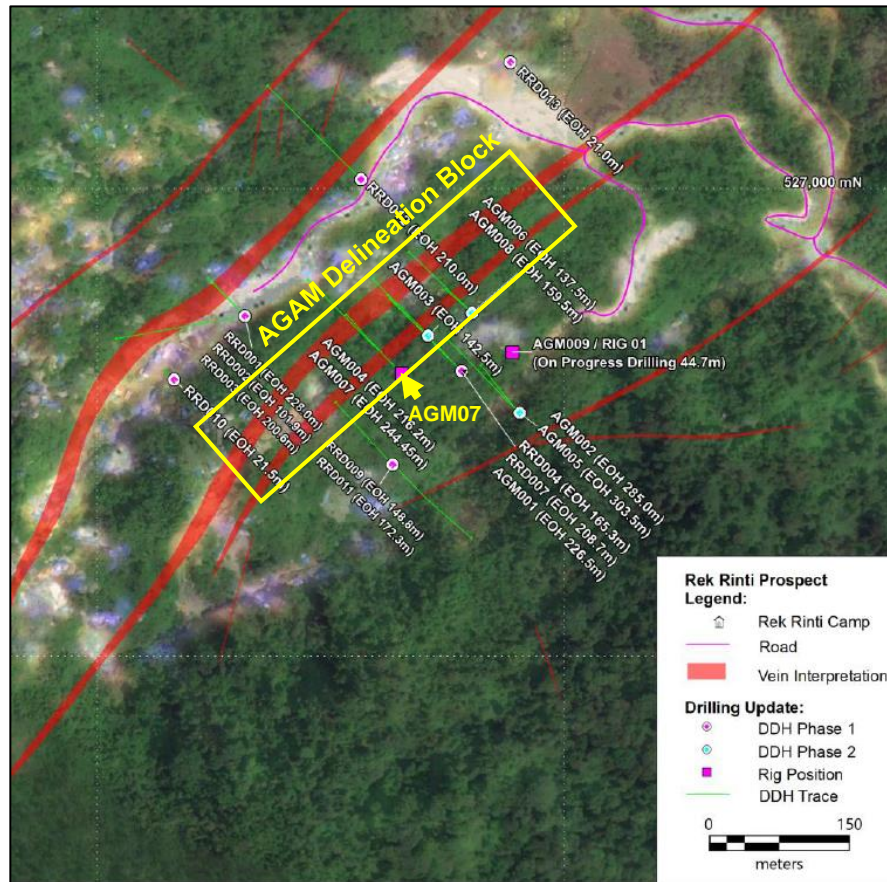


Figure 1: Plan map showing the interpreted surface extent of Rek Rinti vein system and the extent of the Agam Zone resource delineation block. The location of drillhole AGM07 is indicated as are other AGM holes completed as part of the Phase 2 drill program.

Hole ID	Easting	Northing	RL	Azimuth	Dip	Total
AGM001	186890	526805	762.19	315	60	226.50
AGM002	186935	526760	759.16	315	65	285.00
AGM003	186856	526840	756.51	315	53	142.50
AGM004	186823	526802	780.29	315	45	216.20
AGM005	186935	526760	759.16	315	73	303.50
AGM006	186895	526870	745.51	315	45	137.50
AGM007	186823	526802	780.29	315	68	244.45
AGM008	186895	526870	745.51	315	75	159.6
Total Meters						1,715.25

Table 1: Details for AGM drillholes completed to date. Refer to Figure 1 for hole locations.



Drill Hole AGM007

Finely disseminated gold and electrum and other sulphides were identified within quartz intersected in drill hole AGM007. The hole was drilled as part of the Phase 2 resource delineation drill program focused on the Agam Zone and was drilled to test the depth extension of massive quartz with ginguro banding intersected in hole AGM004 (Figure 2). The mineralization occurs within massive quartz developed adjacent to the footwall fault contact. Mineralization is manifest as coarse clots of dark grey sulphide mineralization interpreted to represent local zones of ginguro banded quartz (Figure 3). Based on the colour it appears that both visible gold and also the gold-silver alloy electrum occur. The pXRF analysis indicates the presence of significant Au, Ag, Pb, Zn occurring within the sulphide assemblage.

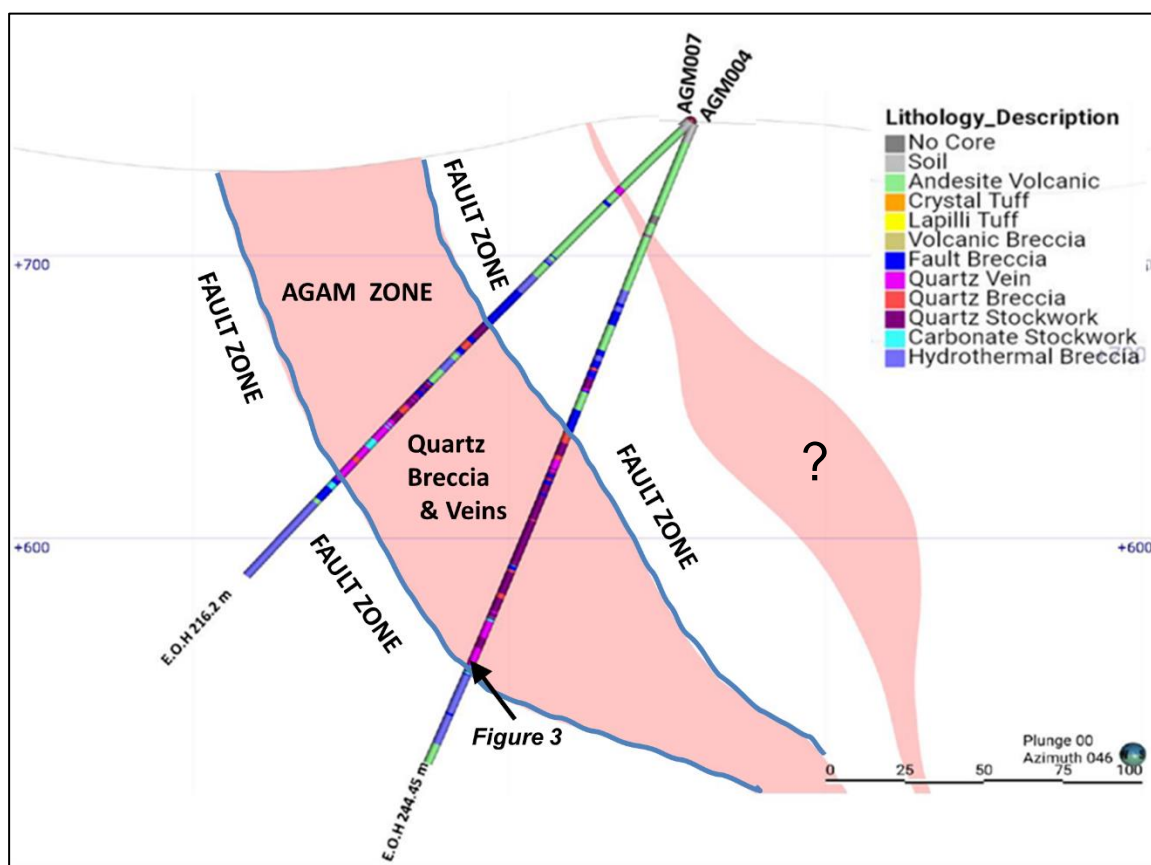


Figure 2: Schematic cross section of completed drill section for holes AGM004/AGM007. The section is located 50m to the southwest along strike from Phase 1 drill hole RRD004. The Agam zone is characterised by an outer quartz stock vein zone and central zone of massive quartz and quartz breccia. Brittle faults occur along the hangingwall and footwall contacts. The best developed (and highest grade) mineralization occurs within the central breccia zone and zones of massive quartz contained therein. The mineralization in hole AGM007 occurs at 201.3m downhole at the footwall contact perhaps indicating the important role faults played in channeling hydrothermal fluids. Assays are pending for both AGM drill holes.

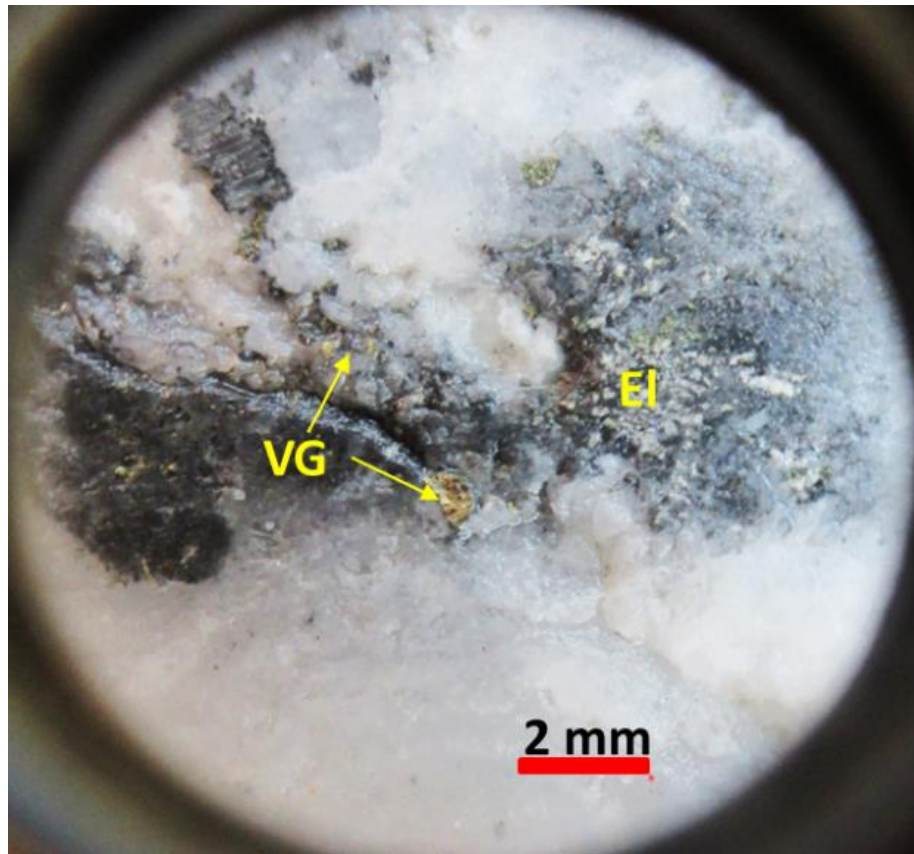


Figure 3: Photos of visible gold (VG) and electrum (EI) occurring in AGM007 as part of coarse clotted sulphide mineralization in massive quartz at 201.3m. pXRF analysis indicates up to 56g/t Au, 9,468 g/t Ag, associated with significant Zn, Pb and Cu mineralization. Note that the hand-held XRF provides confirmation that mineralization is present however it is not an accurate determination of the elemental concentration within the sample analysed. The pXRF readings are subject to confirmation by chemical analysis from an independent laboratory.



ALOE EUMPEUK - Scout Drill Program

As part of the Phase 2 scout drill program the Company is expediting preparation of a field camp and drill sites at the Aloe Eumpeuk prospect area southwest of Rek Rinti (Figure 4).

The Aloe Eumpeuk vein system was identified by Barrick exploration in 1997 but was not drilled. Barrick reported stream sediment samples from the area assayed up to 0.5 g/t Au and quartz float samples assays up to 12.4g/t Au, and 400g/t Ag.

Initial mapping and hand-dug trenching by Barrick exposed what were interpreted to be two separate quartz veins in two of the seven hand dug trenches. Thick soil cover prevented three trenches reaching bedrock but quartz fragments were noted in the soil. The veins were reportedly traced for 100m between the creek outcrop north of the 2 trenches and were up to 3m wide. Barrick reported channel samples from the exposed veins assayed up to 28g/t Au. Vein textures are vuggy, limonitic, to massive and saccaroidal with local well developed crustiform/colloform banding with black sulphides indicative of ginguro banding. Multiple generations of crosscutting veinlets were reported. The host rock is argillic altered porphyritic andesite.

Recent Company mapping could not confirm the trench locations however the historical results are consistent with recent sampling by the Company which identified surface quartz vein rubble from artisanal mining pits displaying well developed ginguro banding and visible gold (Figures 5,6).

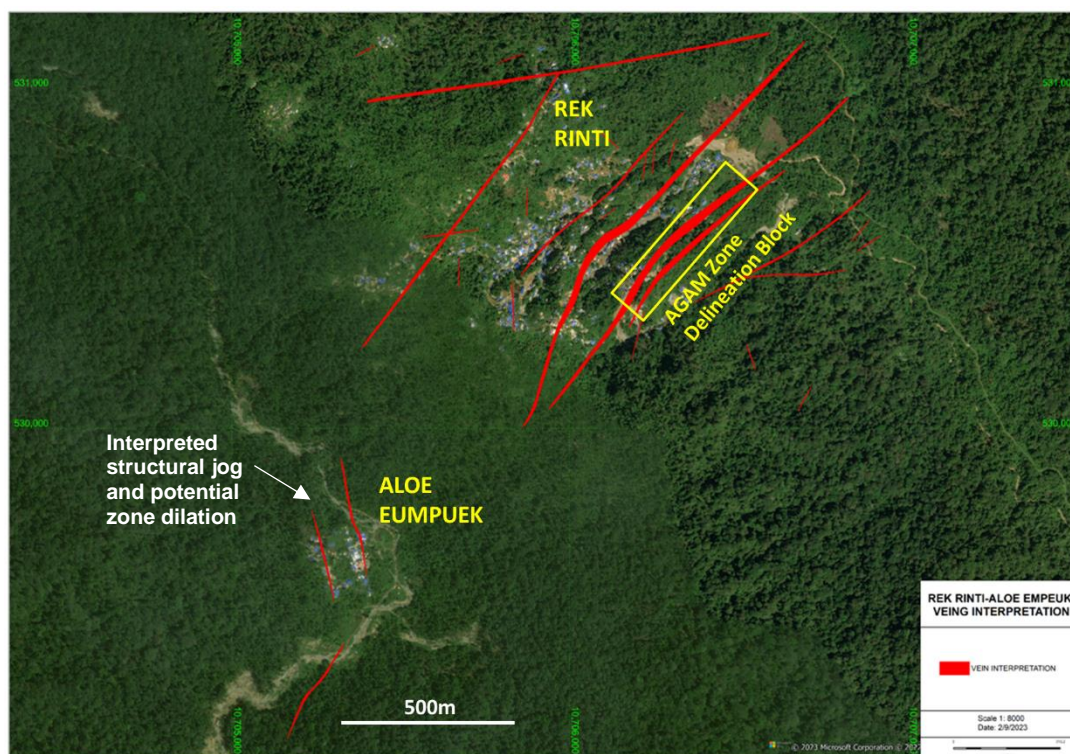


Figure 4: Plan map showing the interpreted surface extents of the Rek Rinti vein system and the Aloe Eumpeuk prospect area. Previous exploration by Barrick indicated the occurrence of 2 northwest trending quartz veins. The structural framework is consistent with the veins forming within a dilational jog. Such jogs are favourable zones for development of high-grade veins. Refer to Figure 5 for location and assay results of recent Company surface rock sampling.

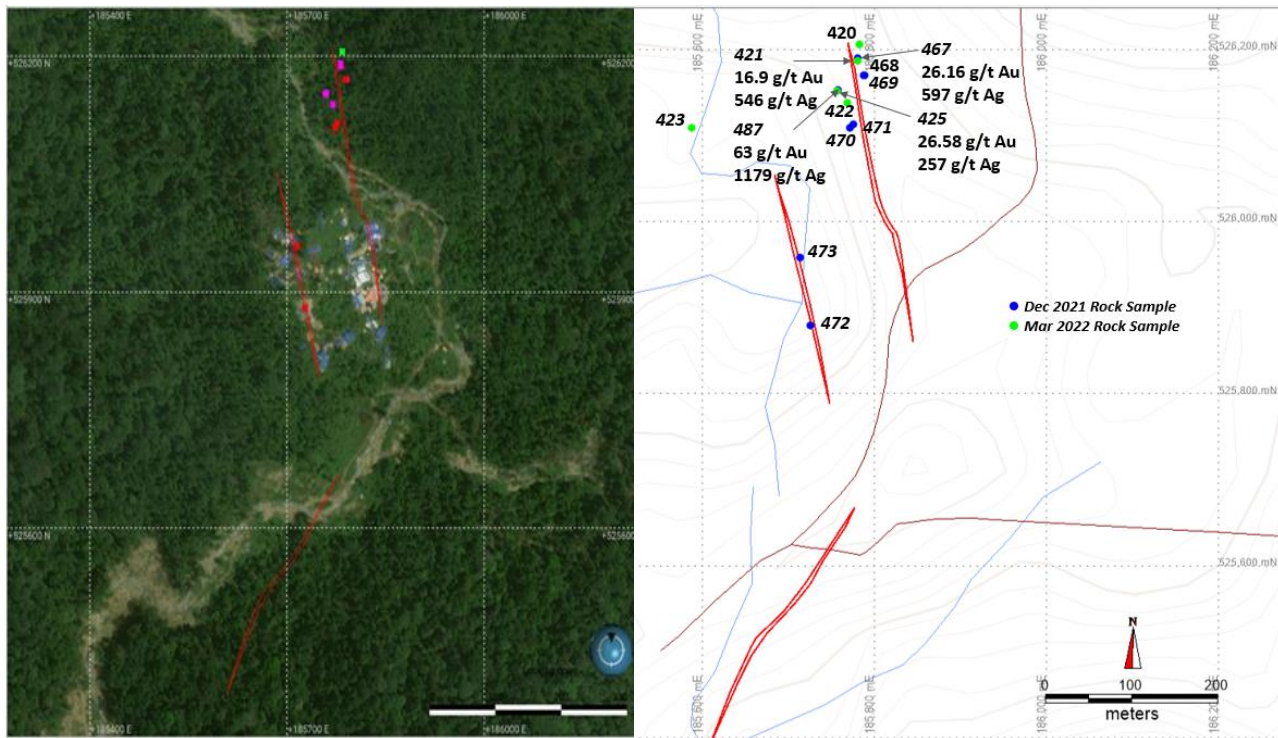
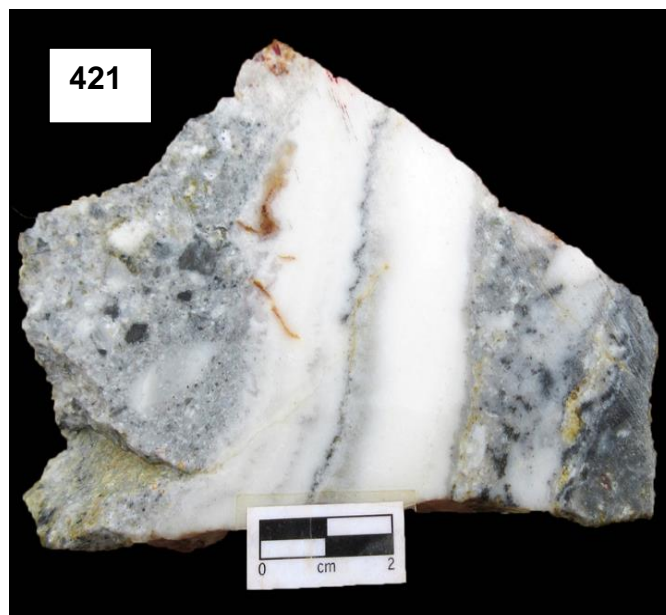


Figure 5: Above; Plan maps showing the interpreted surface extents of the Aloe Eumpeuk veins and locations and assay results of Company grab samples of quartz vein rubble at surface and within artisanal mining pits. **Below;** photos of quartz vein grab samples and assay results shown in upper right image. Sample 421: **16.9 g/t Au / 546 g/t Ag / 0.12 % Pb / 0.11 % Zn** from sample from pit showing chalcedonic-quartz, breccia, black silver (ginguro) band and disseminated pyrite. Sample 425: **26.58 g/t Au / 257 g/t Ag** from pit sample showing milky white chalcedonic-quartz, breccia, with crustiform, black ginguro band.





Recent mapping by the Company at the Aloe Eumpeuk prospect area has confirmed the occurrence of coarse visible gold in samples of quartz vein rubble taken from artisanal mining pits (Figure 6). The samples are intensely oxidized and while it is possible that some of the gold may reflect supergene alteration the Company believes the occurrence is consistent with other samples taken from pits along the inferred vein extents that returned high-grade Au-Ag assays from quartz exhibiting ginguro banding.

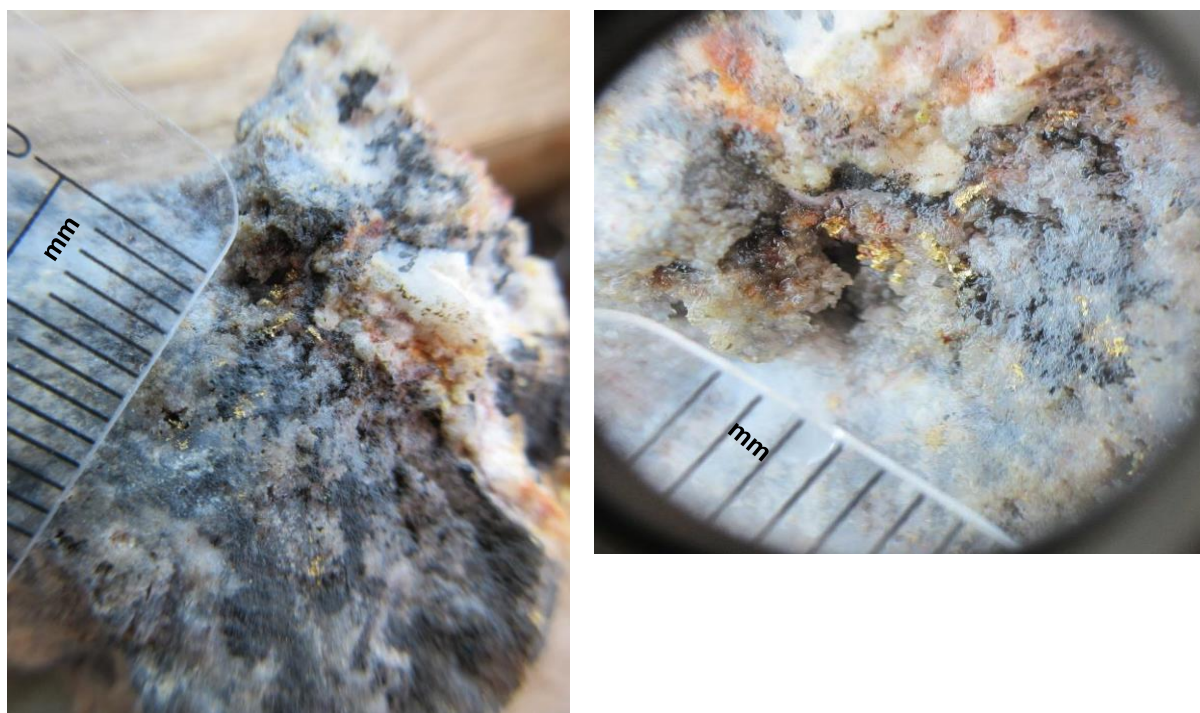


Figure 6: Above; Photos of rock grab samples of the Aloe Eumpeuk quartz veins taken from loose rock within artisanal mining pits. The samples shown contain multiple sites of visible gold and associated sulphides within massive, saccharoidal and vuggy oxidized quartz. Assays are pending for the samples. **Below;** photo of exposed quartz vein at Aloe Eumpeuk prospect.





The Company is expediting site preparation to complete an initial 6 hole, 650m scout drill program at Aloe Eumpeuk. The program is part of the Phase 2 scout drill program planned for the Woyla Project. The holes will test both interpreted quartz veins along 300m of interpreted strike length. The planned holes are coincident with high resistivity and high chargeability anomalies (Figure 7) as defined by a ground IP geophysical survey completed by the Company in collaboration with the Indonesian Government's Geological Agency (Badan Geology) in 2022.

It is the Company's intention to have a drill onsite at Aloe Eumpeuk before the end of Q1, 2023.

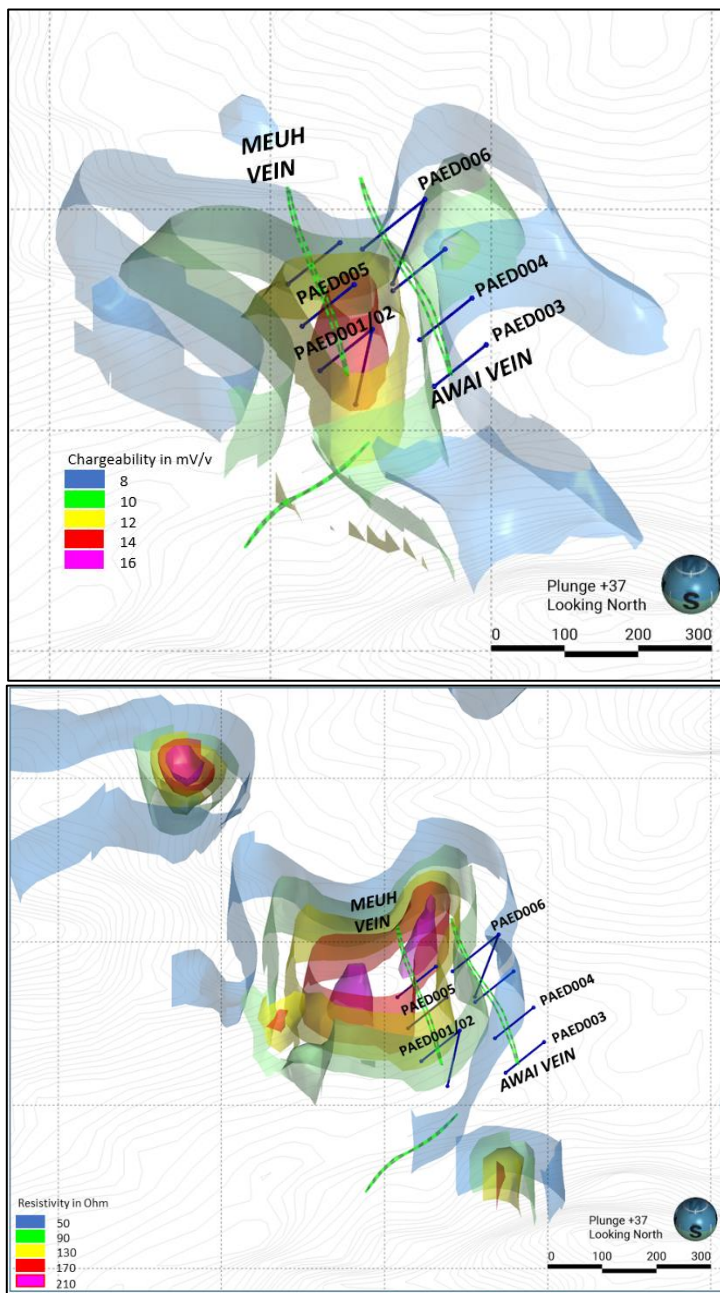


Figure 7: Images of 3D IP inversion models showing location of planned scout drillholes relative to coincident interpreted high chargeability (top) and high resistivity IP anomalies.



COMPETENT PERSON'S STATEMENT

The information in this report that relates to Exploration Results and Mineral Resources is based on information compiled by FEG staff and approved by Michael C Corey, who is a Member of the Association of Professional Geoscientists of Ontario, Canada. Michael Corey is employed by the Company and has sufficient experience which is relevant to the style of mineralisation and type of deposit under consideration and to the activity which he is undertaking to qualify as a Competent Person as defined in the 2012 Edition of the 'Australasian Code for Reporting of Exploration Results, Mineral Resources and Ore Reserves'. Michael Corey has consented to the inclusion in this report of the matters based on his information in the form and context in which they appear.

USE OF PORTABLE XRF

The Company regularly uses an Olympus Vanta portable hand-held XRF analyzer (2022) to screen drill core for mineralization before cutting and sampling. This allows for some understanding of the distribution of mineralization prior to sampling to better ensure that the sampled core is representative of the type and style of mineralization. Numerous readings are obtained and recorded for future reference. The hand-held XRF provides confirmation that mineralization is present however it is not an accurate determination of the elemental concentration within the sample analysed. Limitations include; very small analysis window, possible inhomogeneous distribution of mineralization, analytical penetration depth and possible effects from irregular rock surface. The pXRF readings are subject to confirmation by chemical analysis from an independent laboratory.

ABOUT FAR EAST GOLD

Far East Gold Limited (ASX: FEG) is an ASX listed copper/gold exploration company with six advanced projects in Australia and Indonesia.

The Company's Woyla Copper Gold Project is a 24,260 ha 6th generation Contract of Work located in the Aceh region of North Sumatra, Indonesia. In the Company's opinion this project is one of the most highly prospective undrilled copper gold projects in South-East Asia with the potential to host high grade epithermal and porphyry deposits. FEG hold a 51% interest in the project that will increase to 80% upon the Company's completion of a feasibility study and definition of a maiden JORC resource estimate for the project.

Release approved by the company's board of directors.



FURTHER INFORMATION:

To receive company updates and investor information from Far East Gold, register your details on the investor portal: <https://fareastgold.investorportal.com.au/register/>

COMPANY ENQUIRIES

Paul Walker
Chairman

Shane Menere
Chief Executive Officer

Tim Young
Investor Relations & Capital Markets

[e: paul.walker@fareast.gold](mailto:paul.walker@fareast.gold)
m: + 61 408 776 145

[e: shane.menere@fareast.gold](mailto:shane.menere@fareast.gold)
m: + 61 406 189 672
+ 62 811 860 8378

[e: tim.young@fareast.gold](mailto:tim.young@fareast.gold)
m: + 61 484 247 771

MEDIA ENQUIRIES

Sophie Bradley
IR Executive
Reach Markets

[e: IR@reachmarkets.com.au](mailto:IR@reachmarkets.com.au)
m: +61 450 423 331

ATTACHMENT X

JORC Code, 2012 Edition – Table 1 report SPL1454

Section 1 Sampling Techniques and Data

(Criteria in this section apply to all succeeding sections.)

Criteria	JORC Code explanation	Commentary
Sampling techniques	<ul style="list-style-type: none"> <i>Nature and quality of sampling (eg cut channels, random chips, or specific specialised industry standard measurement tools appropriate to the minerals under investigation, such as down hole gamma sondes, or handheld XRF instruments, etc). These examples should not be taken as limiting the broad meaning of sampling.</i> <i>Include reference to measures taken to ensure sample representivity and the appropriate calibration of any measurement tools or systems used.</i> <i>Aspects of the determination of mineralisation that are Material to the Public Report.</i> <i>In cases where 'industry standard' work has been done this would be relatively simple (eg 'reverse circulation drilling was used to obtain 1 m samples from which 3 kg was pulverised to produce a 30 g charge for fire assay'). In other cases more explanation may be required, such as where there is coarse gold that has inherent sampling problems. Unusual commodities or mineralisation types (eg submarine nodules) may warrant disclosure of detailed information.</i> 	<ul style="list-style-type: none"> Rock samples were collected from quartz veins exposed on surface and within hand dug artisanal miner pits. Individual samples were comprised as pieces of the vein(s) material chipped the exposure. Effort was made to chip across the vein perpendicular to vein trend. Samples were collected from zones of visible sulphide mineralization and or alteration such as clay-pyrite or manganese. Samples were bagged and tagged with unique numbered assay tags inserted into each sample. The samples were delivered via commercial carrier to Pt. Geoservices Geoassay Mineral Laboratory located in Cikarang, Bekasi, West Java, Indonesia. The samples were oven dried at 105°C, weighed then jaw crushed to 70% less than 2mm, riffle split to obtain 250g, that was then pulverized to >85% passing 75 microns. Two splits were taken from this product, one for analysis the other for QAQC. Each sample was analysed for gold using FAA30 fire assay method using a 30g charge with an AAS finish. Samples containing >50 g/t (ppm) Au were further assayed using the FAGRAV gravimetric method. Ag, base metals and a suite of other elements were estimated by method GA102-ICP, which used an aqua regia digest with ICP-OES finish. Samples containing >100ppm Ag were further assayed using GOA-02 method which was an aqua regia ore grade digest with an AA finish. A single certified reference material and a blank sample were inserted into the submitted sample batch for QAQC purpose.
Drilling techniques	<ul style="list-style-type: none"> <i>Drill type (eg core, reverse circulation, open-hole hammer, rotary air blast, auger, Bangka, sonic, etc) and details (eg core diameter, triple or standard tube, depth of diamond tails, face-sampling bit or other type, whether core is oriented and if so, by what method, etc).</i> 	<ul style="list-style-type: none"> Drilling is being conducted using a wireline, man-portable diamond drill. Core is obtained using PQ (85mm) and HQ (63.5mm) triple tube core barrels. Oriented drill core is obtained using an Axis digital Ori tool.

Criteria	JORC Code explanation	Commentary
Drill sample recovery	<ul style="list-style-type: none"> • <i>Method of recording and assessing core and chip sample recoveries and results assessed.</i> • <i>Measures taken to maximise sample recovery and ensure representative nature of the samples.</i> • <i>Whether a relationship exists between sample recovery and grade and whether sample bias may have occurred due to preferential loss/gain of fine/coarse material.</i> 	<ul style="list-style-type: none"> • All drill core is logged by Company geologist discriminating lithologies and recording pertinent geological observations related to mineralization and alteration. • Drilling is conducted using triple tube core barrel and utilising various drilling muds in combination with drill bit type and short core runs to maximize core recovery. The drill company is contractually obligated to obtain 90% core recovery. • At this point in the drill program there has not been enough data collected to determine if any sampling bias related to core recovery exists.
Logging	<ul style="list-style-type: none"> • <i>Whether core and chip samples have been geologically and geotechnically logged to a level of detail to support appropriate Mineral Resource estimation, mining studies and metallurgical studies.</i> • <i>Whether logging is qualitative or quantitative in nature. Core (or costean, channel, etc) photography.</i> • <i>The total length and percentage of the relevant intersections logged.</i> 	<ul style="list-style-type: none"> • All core is digitally logged in its entirety by Company geologists using unique capture codes and in sufficient detail to discriminate lithologies and record all pertinent geological observations related to mineralization, alteration and structural features. The core is also logged with respect to industry standard RQD parameters that record basic geotechnical factors. This data will form the basis for future mineral resource estimation and other deposit studies. • High resolution photographs are taken of all core boxes prior to being cut both wet and dry. Photographs are stored for future reference.

Criteria	JORC Code explanation	Commentary
Sub-sampling techniques and sample preparation	<ul style="list-style-type: none"> • <i>If core, whether cut or sawn and whether quarter, half or all core taken.</i> • <i>If non-core, whether riffled, tube sampled, rotary split, etc and whether sampled wet or dry.</i> • <i>For all sample types, the nature, quality and appropriateness of the sample preparation technique.</i> • <i>Quality control procedures adopted for all sub-sampling stages to maximise representivity of samples.</i> • <i>Measures taken to ensure that the sampling is representative of the in situ material collected, including for instance results for field duplicate/second-half sampling.</i> • <i>Whether sample sizes are appropriate to the grain size of the material being sampled.</i> 	<ul style="list-style-type: none"> • The analytical methods selected are deemed appropriate for the level of analytical accuracy required at this early stage of exploration. The objective of the sampling was to determine where significant Au-Ag mineralization resides within the various textural types of quartz veins and alteration types that occur. • Half-core samples were bagged and tagged with unique numbered assay tags inserted into each sample. The samples were delivered via commercial carrier to Pt. Geoservices Geoassay Mineral Laboratory located in Cikarang, Bekasi, West Java, Indonesia. The samples were oven dried at 105°C, weighed then jaw crushed to 70% less than 2mm, riffle split to obtain 250g, that was then pulverized to >85% passing 75 microns. Two splits were taken from this product, one for analysis the other for QAQC. Each sample was analysed for gold using FAA30 fire assay method using a 30g charge with an AAS finish. Samples containing >50 g/t (ppm) Au were further assayed using the FAGRAV gravimetric method. Ag, base metals and a suite of other elements were estimated by method GA102-ICP, which used an aqua regia digest with ICP-OES finish. Samples containing >100ppm Ag were further assayed using GOA-02 method which was an aqua regia ore grade digest with an AA finish. • A single certified reference material and a blank sample were inserted at the rate of 1 each per 25 core samples. for QAQC purpose. • The sample preparation completed at Pt.Geoservices prior to analysis are deemed appropriate for surface rock and drill core samples. Select high grade Au samples will also be analysed using a screen fire assay technique to determine if any coarse Au (+200 mesh) occurs. • Drill core is cut in half using a core saw with half core sampled for individual assay. Geologists are careful to avoid any sampling bias. Samples are collected at 0.25 to 1m intervals. to optimise understanding of the controls of mineralization with attention given to characterizing the different rock types and types and styles of mineralization and alteration that occur.

Quality of assay data and laboratory tests	<ul style="list-style-type: none"> • <i>The nature, quality and appropriateness of the assaying and laboratory procedures used and whether the technique is considered partial or total.</i> • <i>For geophysical tools, spectrometers, handheld XRF instruments, etc, the parameters used in determining the analysis including instrument make and model, reading times, calibrations factors applied and their derivation, etc.</i> • <i>Nature of quality control procedures adopted (eg standards, blanks, duplicates, external laboratory checks) and whether acceptable levels of accuracy (ie lack of bias) and precision have been established.</i> 	<ul style="list-style-type: none"> • The sample prep and assay methods utilized by Pt. Geoservices are appropriate for the sample type assayed and level of accuracy required. • The Company regularly uses an Olympus Vanta portable hand-held XRF analyzer (2022) to screen drill core for mineralization before cutting and sampling. This allows for some understanding of the distribution of mineralization prior to sampling to better ensure that the sampled core is representative of the type and style of mineralization. Numerous readings are obtained and recorded for future reference. • The hand-held XRF provides confirmation that mineralization is present however it is not an accurate determination of the concentration within the sample analysed. Limitations include; very small sampling window, homogeneity of mineralization, penetration depth, possible surface effects, etc. • The results obtained from the hand held pXRF are subject to confirmation by chemical analysis from an independent laboratory. • The Company employs industry standard QAQC protocols to check the accuracy and bias of reported sample assays. Sample assay failures are indicated if outside of 3 standard deviations. Certified reference material, blanks and sample splits are also tracked over time to determine if any bias.
Verification of sampling and assaying	<ul style="list-style-type: none"> • <i>The verification of significant intersections by either independent or alternative company personnel.</i> • <i>The use of twinned holes.</i> • <i>Documentation of primary data, data entry procedures, data verification, data storage (physical and electronic) protocols.</i> • <i>Discuss any adjustment to assay data.</i> 	<ul style="list-style-type: none"> • Core is logged by Company geologists with data entered digitally using set data codes for lithology, alteration, mineralization and related rock characteristics. • Core logging digital data is checked and verified for errors along with core assay data by Company data manager and stored in Access format. • There is no adjustment of assay data after QAQC determination of pass or fail.
Location of data points	<ul style="list-style-type: none"> • <i>Accuracy and quality of surveys used to locate drill holes (collar and down-hole surveys), trenches, mine workings and other locations used in Mineral Resource estimation.</i> • <i>Specification of the grid system used.</i> 	<ul style="list-style-type: none"> • Drillhole collars and collected field samples are located using hand-held Garmin GPS to a <5m accuracy. • Drillhole collar locations will also be located by a surveyor using a Trimble GPS unit to a <1m accuracy.

	<ul style="list-style-type: none"> • <i>Quality and adequacy of topographic control.</i> 	<ul style="list-style-type: none"> • The project datum is UTM WGS 84 – Zone 47N. • The Company has resurveyed and confirmed accuracy of historical survey benchmarks on the property for current surveying requirements.
Data spacing and distribution	<ul style="list-style-type: none"> • <i>Data spacing for reporting of Exploration Results.</i> • <i>Whether the data spacing and distribution is sufficient to establish the degree of geological and grade continuity appropriate for the Mineral Resource and Ore Reserve estimation procedure(s) and classifications applied.</i> • <i>Whether sample compositing has been applied.</i> 	<ul style="list-style-type: none"> • The spacing of collected field samples and the spacing of drill hole collars is deemed appropriate for the level of the current exploration program and initial drilling of selected targets to identify where mineralization occurs. This will be followed by more rigorous drilling to establish continuity and grade profile within zones of potential resource determination. • No physical sample compositing has been applied aside. Reported assays are averaged over specific, continuous zones if deemed significant. A cut-off of 0.2 g/t Au with a maximum 1m of internal dilution is utilized for determination of a significant assay interval. No top cut of high-grade assays has been done. • Where assay intervals include variable sample lengths the sample assays are weighted over the selected interval length to account for the variation.
Orientation of data in relation to geological structure	<ul style="list-style-type: none"> • <i>Whether the orientation of sampling achieves unbiased sampling of possible structures and the extent to which this is known, considering the deposit type.</i> • <i>If the relationship between the drilling orientation and the orientation of key mineralised structures is considered to have introduced a sampling bias, this should be assessed and reported if material.</i> 	<ul style="list-style-type: none"> • Collected field samples and drill hole locations and drilling parameters are set to best obtain representative data according to the interpreted type and style and controls of mineralization being tested. Particular effort is made to drill normal to such controlling structures or host stratigraphy to obtain a near to true width zone indication as possible. • Downhole core orientations were obtained using a Axis digital orientation tool.
Sample security	<ul style="list-style-type: none"> • <i>The measures taken to ensure sample security.</i> 	<ul style="list-style-type: none"> • Collected samples were placed in sturdy plastic sacks and sealed for transport. Samples are delivered to expeditor and shipped. Any broken bags received by the lab are reported to the Company. This has not happened to date.
Audits or reviews	<ul style="list-style-type: none"> • <i>The results of any audits or reviews of sampling techniques and data.</i> 	<ul style="list-style-type: none"> • The have been no independent audit or review of sampling protocols.

Section 2 Reporting of Exploration Results

(Criteria listed in the preceding section also apply to this section.)

Criteria	JORC Code explanation	Commentary
Mineral tenement and land tenure status	<ul style="list-style-type: none"> Type, reference name/number, location and ownership including agreements or material issues with third parties such as joint ventures, partnerships, overriding royalties, native title interests, historical sites, wilderness or national park and environmental settings. The security of the tenure held at the time of reporting along with any known impediments to obtaining a licence to operate in the area. 	<ul style="list-style-type: none"> The The Woyla project tenement is held in the name of PT Woyla Aceh Minerals (PT WAM), which consists in 80% Woyla Aceh Ltd, 15% Quralon Pte Ltd, 2.5% PT Mutiara Mitramin, 2.5% PT Indo Noble Abadi. PT WAM holds a 6th Generation Contract of Work dated 17 March 1997. The Woyla Contract of Work was under a Mines Department approved state of suspension from exploration activities from 1999-2006 during the prolonged civil conflict in Aceh. An extended moratorium on exploration activities within Aceh has recently been lifted. The Contract of Work (177.K/30/DJB/2018) for the tenement was in voluntary suspension until FEG secured the necessary environmental and land use permits. FEG has recently been granted the environmental permit (PIPIB) for 7688 ha of the protected forest area. This allows FEG to conduct exploration activities within the permit area under certain conditions.
Exploration done by other parties	<ul style="list-style-type: none"> Acknowledgment and appraisal of exploration by other parties. 	<ul style="list-style-type: none"> Reconnaissance and detailed geological mapping were completed during 1996 – 1997 by Newcrest Mining and Barrick Gold. A helicopter-borne magnetic and radiometric survey was flown by World Geoscience in 1996. The companies collected stream, soil and rock samples of exposed veins and also completed petrology studies on selected samples.

Criteria	JORC Code explanation	Commentary
Geology	<ul style="list-style-type: none"> • <i>Deposit type, geological setting and style of mineralisation.</i> 	<ul style="list-style-type: none"> • The project area sits within the Neogene Gold Belt of Sumatra, characterised by Miocene-Neogene gold intrusion centred mineralisation. Along strike in a NW direction from the project area are the Miwah high-sulphidation gold deposit and Beutong- porphyry and skarn system and along strike to the SE lies the Abong (sediment hosted) and Meluak (high-sulphidation) gold deposits. • Previous exploration has identified several low sulphidation, epithermal type Au-Ag bearing quartz/breccia systems hosted within and likely controlled by a series of fault structures related to the Sumatra Fault and emplacement of intrusions. As such, Au-Cu porphyry style, associated skarn and high- sulphidation Au may also be found within the Woyla project area. Downstream from the known veins systems are several alluvial-Au workings (Anu Renguet).
Drill hole Information	<ul style="list-style-type: none"> • <i>A summary of all information material to the understanding of the exploration results including a tabulation of the following information for all Material drill holes:</i> <ul style="list-style-type: none"> ○ <i>easting and northing of the drill hole collar</i> ○ <i>elevation or RL (Reduced Level – elevation above sea level in metres) of the drill hole collar</i> ○ <i>dip and azimuth of the hole</i> ○ <i>down hole length and interception depth</i> ○ <i>hole length.</i> • <i>If the exclusion of this information is justified on the basis that the information is not Material and this exclusion does not detract from the understanding of the report, the Competent Person should clearly explain why this is the case.</i> 	<ul style="list-style-type: none"> • No previous drilling has been completed. • Specific details of all drill holes completed by FEG are reported.
Data aggregation methods	<ul style="list-style-type: none"> • <i>In reporting Exploration Results, weighting averaging techniques, maximum and/or minimum grade truncations (eg cutting of high grades) and cut-off grades are usually Material and should be stated.</i> • <i>Where aggregate intercepts incorporate short lengths of high grade results and longer lengths of low grade results, the procedure used for such aggregation should be stated and some typical examples of such aggregations should be shown in detail.</i> • <i>The assumptions used for any reporting of metal equivalent values should be clearly stated.</i> 	<ul style="list-style-type: none"> • All values are reported as assayed and no equivalent grades (eg. Au Eq) have been included.

Criteria	JORC Code explanation	Commentary
Relationship between mineralisation widths and intercept lengths	<ul style="list-style-type: none"> • <i>These relationships are particularly important in the reporting of Exploration Results.</i> • <i>If the geometry of the mineralisation with respect to the drill hole angle is known, its nature should be reported.</i> • <i>If it is not known and only the down hole lengths are reported, there should be a clear statement to this effect (eg 'down hole length, true width not known').</i> 	<ul style="list-style-type: none"> • The rock samples collected are considered a reflection of the nature of mineralization at the point of sampling. Aside from a visual estimation at the time of sampling no accurate determination of vein widths was made. • The Company does distinguish between downhole length and true width (apparent) and reports each as necessary. • Drill core is cut in half using a core saw with half core sampled for individual assay. Geologists are careful to avoid any sampling bias. Samples are collected at 0.25 to 1m intervals. to optimise understanding of the controls of mineralization with attention given to characterizing the different rock types and types and styles of mineralization and alteration that occur.
Diagrams	<ul style="list-style-type: none"> • <i>Appropriate maps and sections (with scales) and tabulations of intercepts should be included for any significant discovery being reported These should include, but not be limited to a plan view of drill hole collar locations and appropriate sectional views.</i> 	<ul style="list-style-type: none"> • Pertinent maps and sections are included in the corporate release of sample results
Balanced reporting	<ul style="list-style-type: none"> • <i>Where comprehensive reporting of all Exploration Results is not practicable, representative reporting of both low and high grades and/or widths should be practiced to avoid misleading reporting of Exploration Results.</i> • 	<ul style="list-style-type: none"> • Reporting is fully representative of the data. •

Criteria	JORC Code explanation	Commentary
Other substantive exploration data	<ul style="list-style-type: none"> Other exploration data, if meaningful and material, should be reported including (but not limited to): geological observations; geophysical survey results; geochemical survey results; bulk samples – size and method of treatment; metallurgical test results; bulk density, groundwater, geotechnical and rock characteristics; potential deleterious or contaminating substances. 	<ul style="list-style-type: none"> All data is fully reported. Metallurgical characterization tests were performed on 3, Au-Ag mineralised samples compiled from retained coarse reject material of previously crushed Woyla drill core. The composites were made to be representative of the Au-Ag grade distribution reflected in the core assays. The test work was conducted at Pt. Geoservices Mineral Laboratory in Cikarang, West Java. The test flowsheets were designed by the Company's consultant metallurgist, Dr. Mark Steemson, who supervised the work and interpreted the results. The test work involved: <ul style="list-style-type: none"> 1. Full assays on each composite. 2. Diagnostic leach testing to determine the deportment of gold in each sample – cyanide leachable, carbonate hosted, arsenopyrite hosted, other sulphide hosted, and silicate encapsulated. The cyanide. Leachable includes cyanide leachable gravity gold and free gold. 3. Agitated leach test on each sample to determine gold and silver recoveries and cyanide usage. There was insufficient sample to remove gravity gold before the agitated leach tests. The average cyanide soluble gold recovery (gravity and free gold) was 91%, and for silver 86%. The non-cyanide leachable gold was evenly distributed amongst carbonate, arsenopyrite, other sulphides, and silicate encapsulated minerals. The diagnostic leach tests indicate that gold and silver can be recovered using conventional cyanide leaching. A significant part of the gold and silver is associated with coarse gravity gold. Additional testwork will be conducted to better determine the gravity recoverable gold component.
Further work	<ul style="list-style-type: none"> The nature and scale of planned further work (eg tests for lateral extensions or depth extensions or large-scale step-out drilling). Diagrams clearly highlighting the areas of possible extensions, including the main geological interpretations and future drilling areas, provided this information is not commercially sensitive. 	<ul style="list-style-type: none"> The company will incorporate all surface and drill core sample assay results in a secure database for future determination of a mineral resource estimate. The current drill program as reported by FEG is the first completed on the property and results obtained will determine the scope of future drilling and property wide exploration.

Section 3 does not apply as the information regarding the mineral resource was prepared and first disclosed under the 2004 Edition of the 'Australasian Code for Reporting of Exploration Results, Mineral Resources and Ore Reserves'. It has not been updated since to comply with the 2012 Edition of the 'Australasian Code for Reporting of Exploration Results, Mineral Resources and Ore Reserves' on the basis that the Company is not

aware of any new information or data that materially affects the information and, in the case of the resource estimate, all material assumptions and technical parameters underpinning the estimate continue to apply and have not materially changed. Section 4 does not apply as reserve estimates are not being disclosed at this time and Section 5 does not apply as this section relates to the reporting of diamonds and other gemstones.