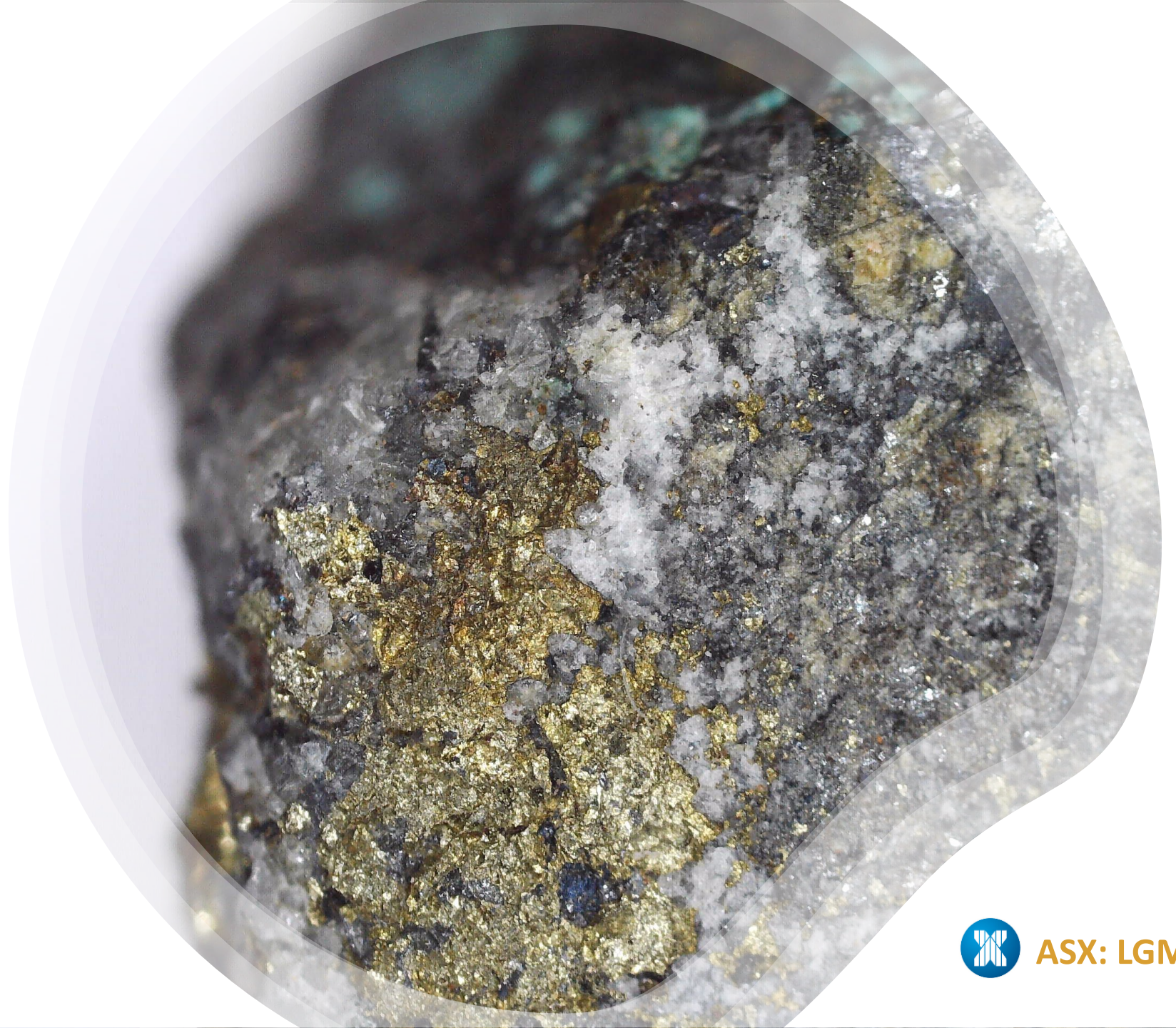




Accelerated Exploration Focused On Delivering World-class Assets

Gold and Copper, NSW

Brisbane Resources Lunch, 2 May 2023



Disclaimer

This presentation may contain certain statements and projections provided by or on behalf of Legacy Minerals Holdings Limited (**ASX: LGM, Legacy Minerals, or the Company**) with respect to the anticipated future undertakings. These forward-looking statements reflect various assumptions by or on behalf of Legacy Minerals.

Accordingly, these statements are subject to significant business, economic and competitive uncertainties and contingencies associated with the mining industry which may be beyond the control of Legacy Minerals which could cause actual results or trends to differ materially, including but not limited to price and currency fluctuations, geotechnical factors, drilling and production results, development progress, operating results, reserve estimates, legislative, fiscal and regulatory developments, economic and financial markets conditions in various countries, approvals and cost estimates, environmental risks, ability to meet funding requirements, share price volatility. Accordingly, there can be no assurance that such statements and projections will be realised. Legacy Minerals makes no representations as to the accuracy or completeness of any such statement of projections or that any forecasts will be achieved.

Additionally, Legacy Minerals makes no representation or warranty, express or implied, in relation to, and no responsibility or liability (whether for negligence, under statute or otherwise) is or will be accepted by Legacy Minerals or by any of their respective officers, directors, shareholders, partners, employees, or advisers as to or in relation to the accuracy or completeness of the information, statements, opinions or matters (express or implied) arising out of, contained in or derived from this presentation or any omission from this presentation or of any other written or oral information or opinions provided now or in the future to any interested party or its advisers. In furnishing this presentation, Legacy Minerals undertakes no obligation to provide any additional or updated information whether as a result of new information, future events or results or otherwise.

Nothing in this material should be construed as either an offer to sell or a solicitation of an offer to buy or sell securities. It does not include all available information and should not be used in isolation as a basis to invest in Legacy Minerals.

This presentation contains exploration results and historic exploration results as originally reported the Company's Prospectus dated 28 July 2021 and released 9 September and subsequent ASX market announcements. The Company confirms that it is not aware of any new information that materially affects the information included in the original market announcements and that all material assumptions and technical parameters underpinning the estimates in the relevant market announcements continue to apply and have not materially changed. The Company confirms that the form and context in which the Competent Persons' findings are presented have not been materially modified from the original market announcements.

The information in this presentation that relates to Exploration Targets, Exploration Results, Mineral Resources or Ore Reserves is based on information compiled by Thomas Wall, a Competent Person who is a Member of the Australian Institute of Geoscientists. Mr Wall is the Technical Director is a full-time employee of Legacy Minerals Limited and a shareholder, who has sufficient experience that is relevant to the style of mineralisation and type of deposit under consideration and to the activity being undertaken to qualify as a Competent Person as defined in the 2012 edition of the Australasian Code for Reporting of Exploration Results, Mineral Resources and Ore Reserves. Mr Wall consents to the inclusion in the report of the matters based on his information in the form and context in which it appears.

The release of these presentation materials has been authorised by the Board.



Depth of Projects in a World Class Jurisdiction

Black Range Au-Ag Epithermal

Rockley Cu-Au Porphyry

Cobar Au-Cu Cobar Type

Harden Au Orogenic

Bauloora Au-Ag Epithermal

Fontenoy Cu-Au Porphyry

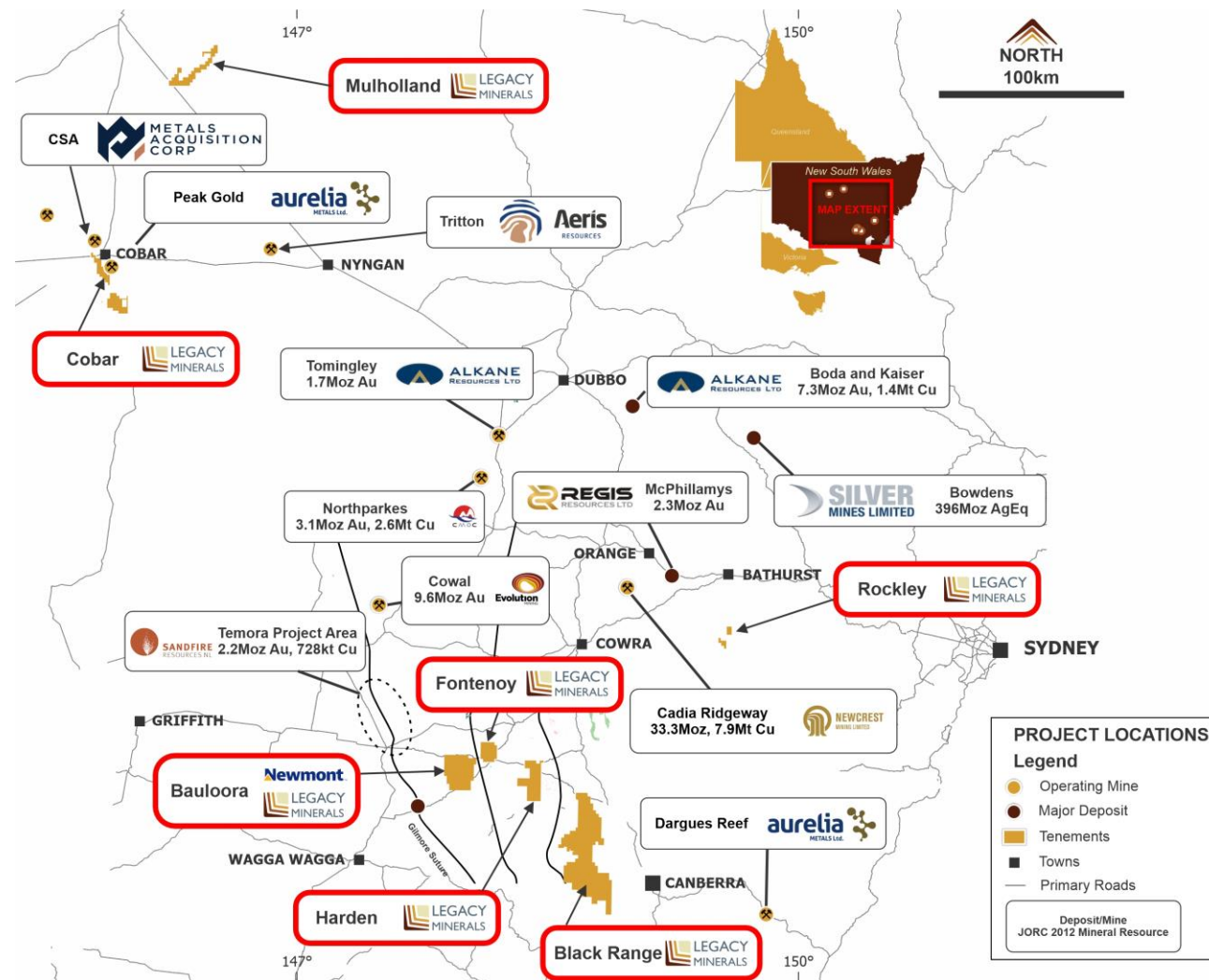
Mulholland Ni-Sn-REE Skarn

2,450km² of exploration tenements

Newmont

EARTH AI

EARTH AI



Map of central NSW showing Legacy Minerals tenements (red) and geographical location of major mining and exploration projects in NSW (figures are expressed as mineral resources).

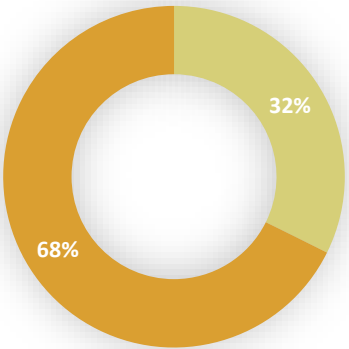
Note: references on this slide can be located in the Appendix – Endnotes on Slides 25 and 26

Company overview

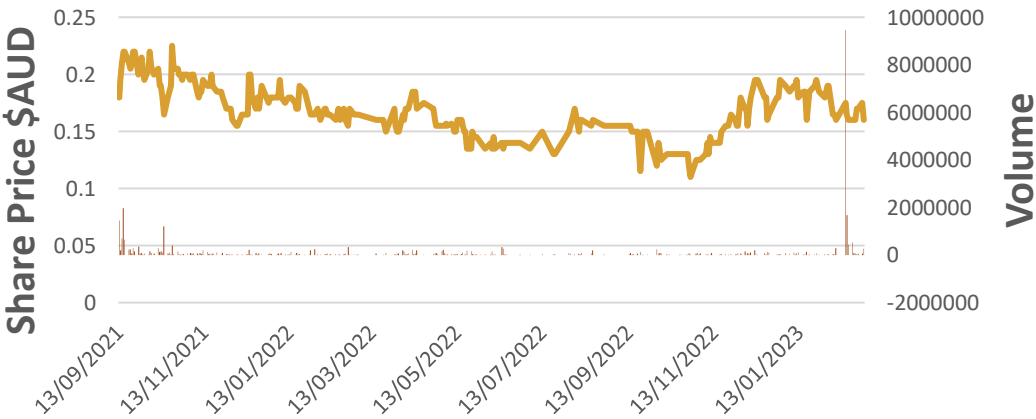
Capital Structure¹

ASX Share Price	\$0.17
Shares on Issues	83M
Options on Issue (30c, 22.5c)	4.9M, 0.4M
Market Capitalisation	\$13M
Cash (at Mar-31)	\$1.4M
Debt	Nil
Top 20	56%

Issued Capital



■ Board and Management
■ Other Shareholders



Directors



Dr David Carland
Non-Executive
Chairman

Investment banker with over 40 experience. Has held senior positions at UBS, Bankers Trust, CRA (now Rio Tinto). David was recently the Non-Executive Chair of Rex Minerals (RXM).



Douglas Menzies
Non-Executive
Director

Geologist with 28 years of widespread experience in the porphyry gold-copper districts of PNG and Australia, epithermal gold-silver projects in Australia, Indonesia, Fiji, Laos, Chile. Doug has held positions at Rio Tinto, Wafi-Golpu, and is the VP of Inflection Resources.



Matthew Wall
Non-Executive
Director

Commercial specialist with over 35 years of experience in metals and mining across sales, marketing, logistics, trading, and risk management. Matt has held senior management roles with Rio Tinto, EDF Trading and Wood Mackenzie and is the Chairman of Allegiance Coal (AHQ)

Management



Christopher Byrne
CEO & Managing
Director

Electrical Engineer with diverse experience in the mining sector with Anglo American across maintenance, operations, and capital works. Proven record of delivering large and complex mining and infrastructure projects in greenfield and brownfield environments



Thomas Wall
Exploration Manager
& Executive Director

Exploration Geologist with wide ranging exploration industry experience with senior roles at Peak Gold Mines and New South Resources. Demonstrated exploration and mining success across a variety of commodities and deposit styles

**Emerging large scale Au/Ag
low sulphidation vein field**



Bauloora Au-Ag (Newmont JV)

Newmont Joint Venture

Joint Venture Summary

- Discovery focused joint venture
- Legacy Minerals management of the project for initial period
- Carried through to production

Minimum Commitment

- Drill testing at the Breccia Sinter Prospect by end of 2023.
- Regional aerial magnetic survey of the tenements by end of 2023.
- A\$2 million spend within 24 months.

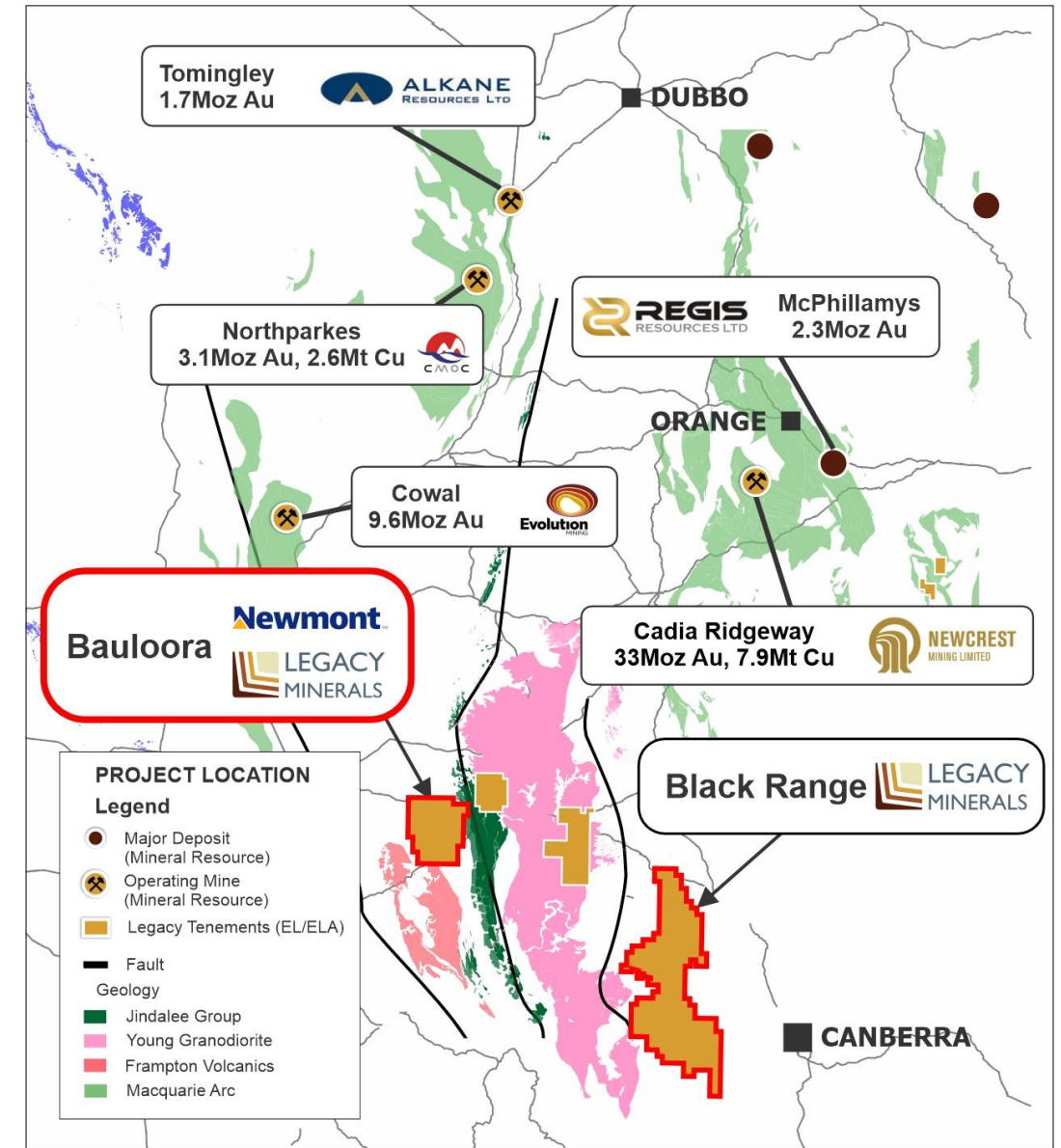
Earn in Phases

- A 51% farm-in interest by spending a total of A\$5 million within 48 months.
- 24% farm-in interest in the tenements by spending an additional A\$10 million.
- Minimum total of 12,000 meters of drilling

Newmont financing facility and Mining Joint Venture

- A Mining Joint Venture formed upon decision to mine
- LGM may elect to have Newmont finance development (NEM to earn-in up to 80%).
- The loan would be re-paid from Legacy Minerals' share of any future mining proceeds.

Note: references on this slide can be located in the Appendix – Endnotes on Slides 25 and 26



Map of central NSW showing Legacy Minerals tenements (red) and geographical location of major mining and exploration projects in NSW (figures are expressed as mineral resources).

Bauloora - Value creation through discovery success

District scale control – 330km² license

- Alteration across 150km² zone
- 27km² low sulphidation vein field

Untested potential

- Previously unrecognised opportunity
- 1 drill hole every 75ha, average depth 88m

High-Grades and Extensive Veining

- High-grade gold, silver and base metals
- Veins up to 3m wide at surface for >2km

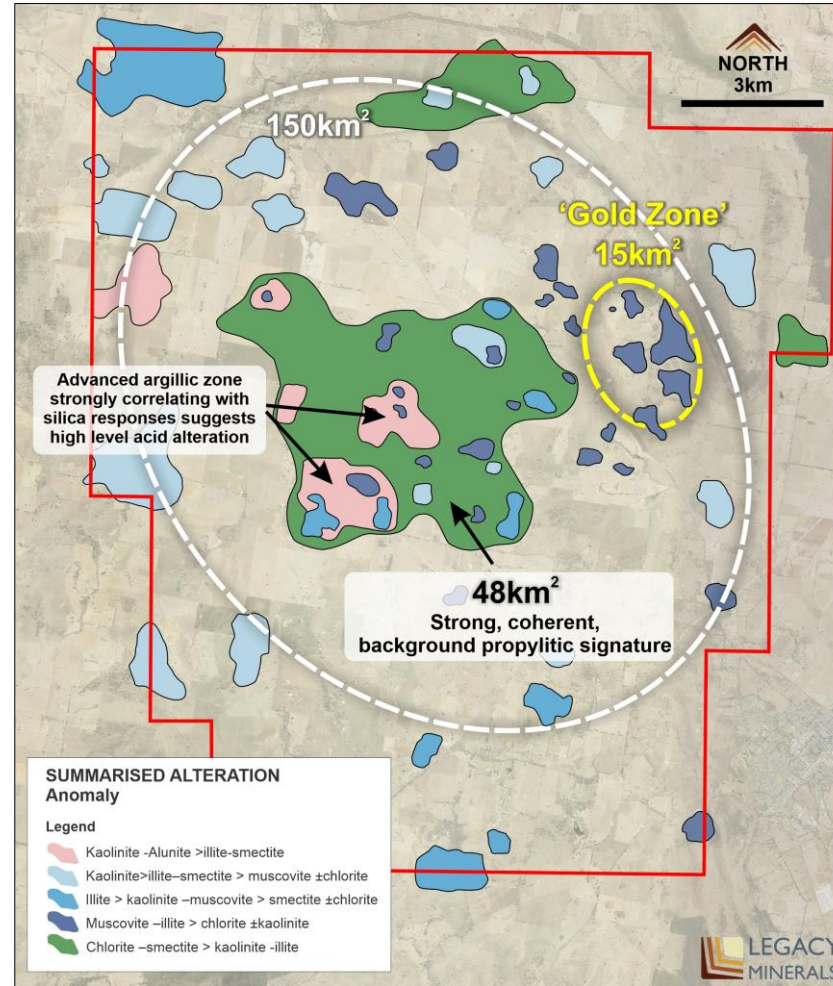
Preserved Epithermal System

- Widespread recognition of sinter
- Strongly elevated in Hg, Sb, and As

Low Risk Development Pathway

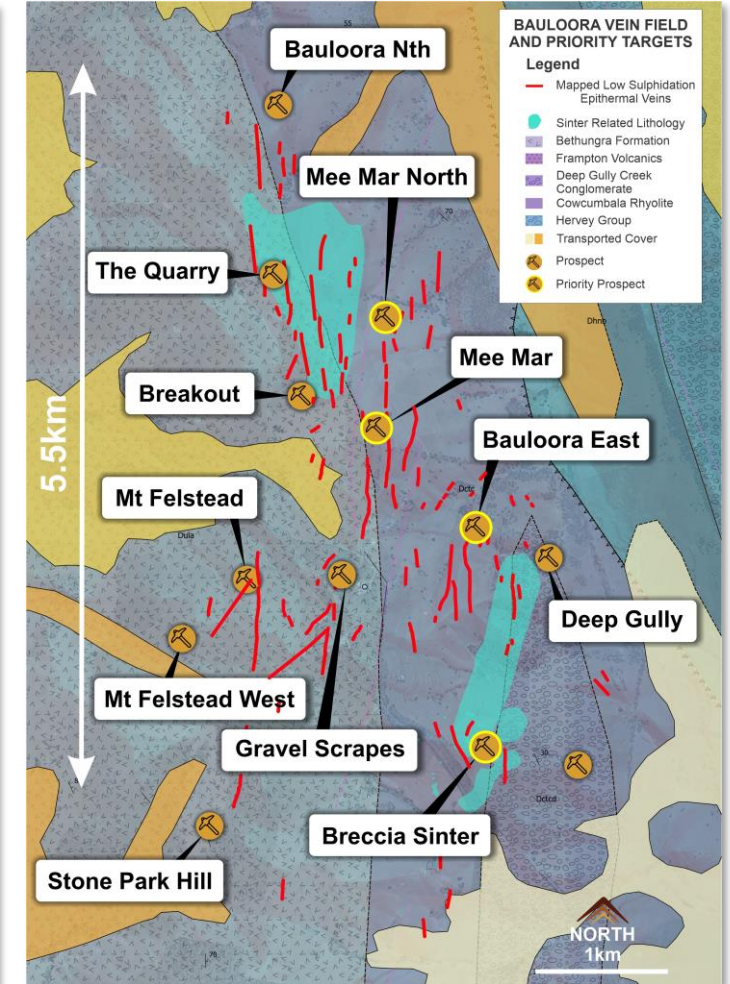
- Excellent metallurgical recoveries
- Close to infrastructure (power, rail, water)
- Good land access

Bauloora Project



Bauloora tenure (red) with ASTER interpreted propylitic signature and anomalous spectral responses shown and currently defined 'gold zone'¹

Primary Vein Field

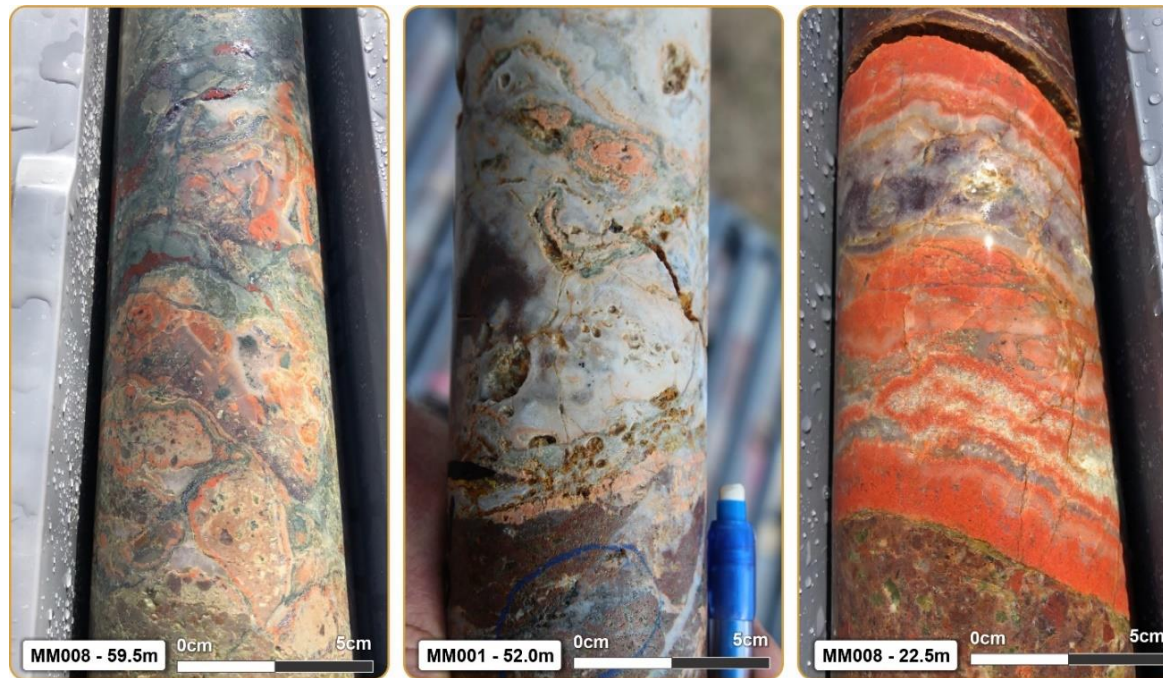


Current combined extent of low-sulphidation epithermal-style textured veins and sinter related lithology

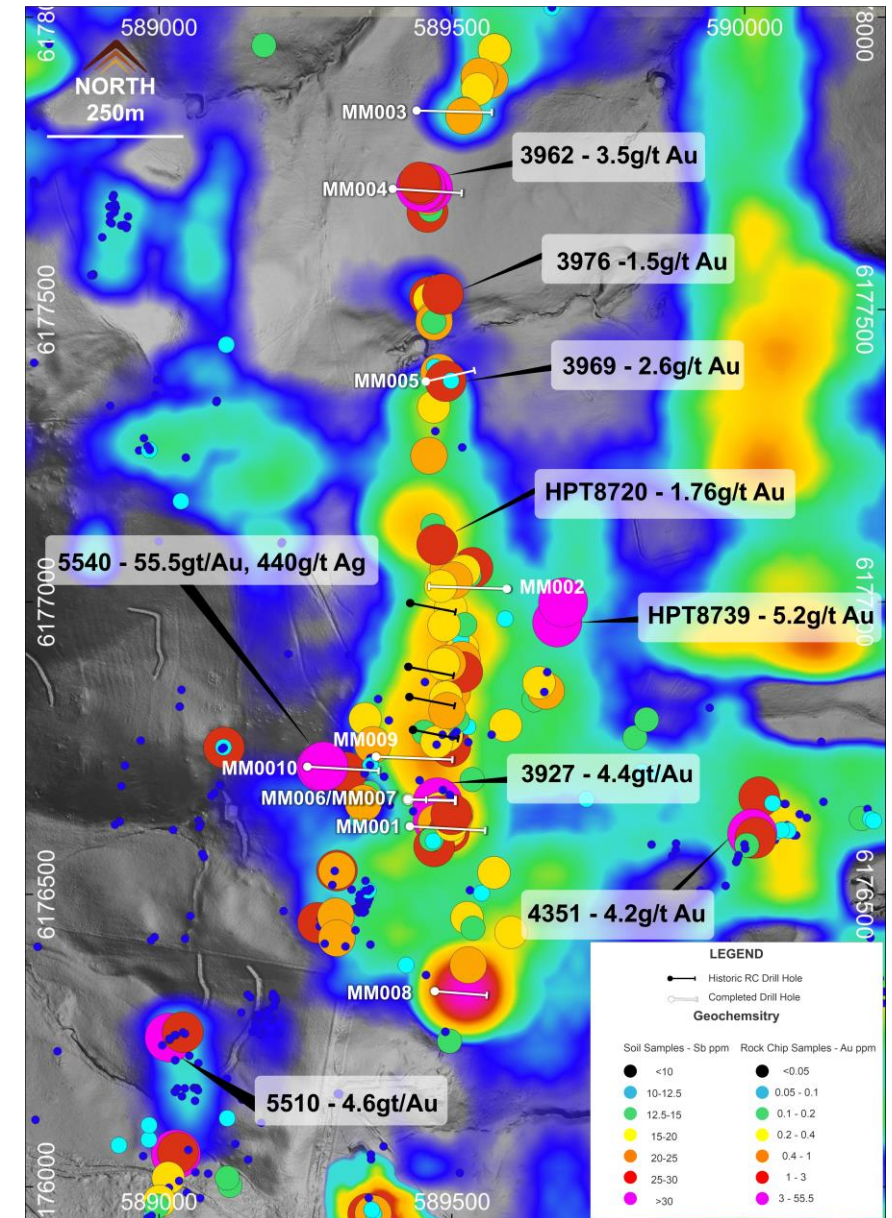
Drilling Completed – Assays pending

Targeting undrilled high order geochemical anomalous vein trends

- 1,649.6m of diamond drilling completed
- Wide spaced proof of concept drilling tested 1.5km of strike
- New epithermal vein discovery (MM008) parallel to Mee Mar vein trend
- Impressive shallow continuity of mineralisation across entire strike length tested



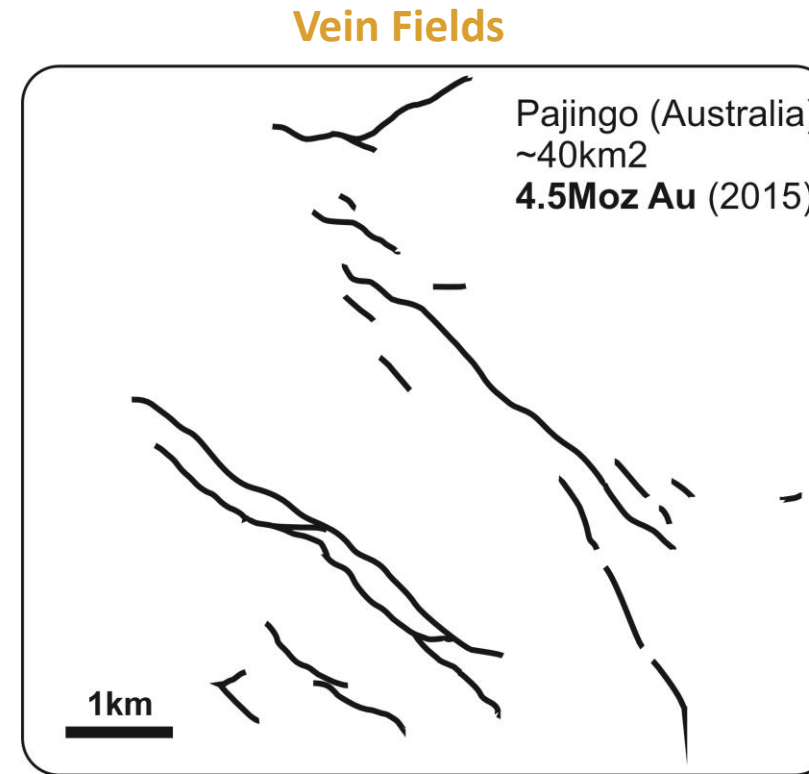
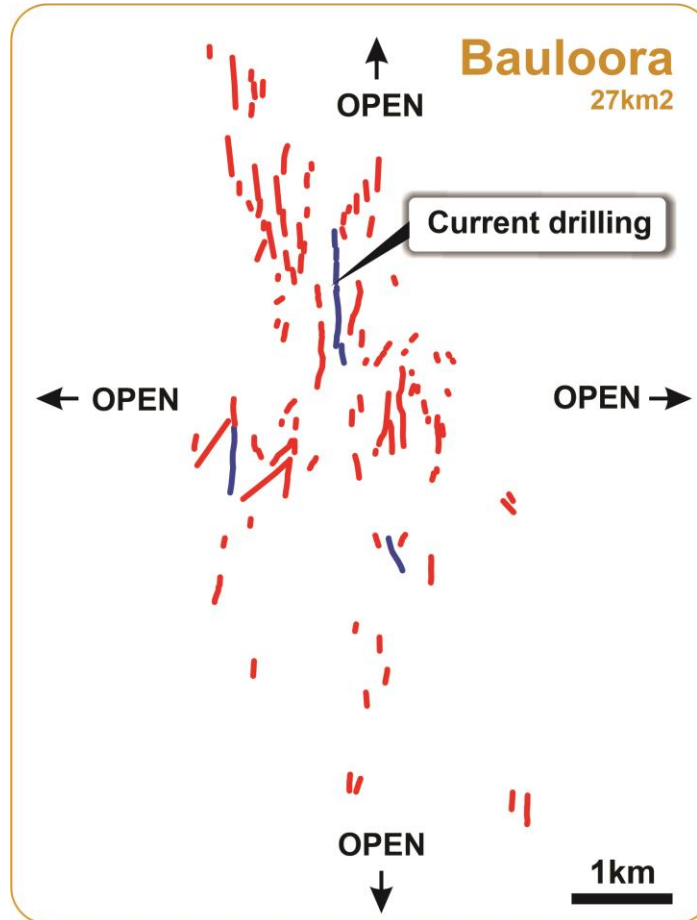
Hole MM008 and MM001 showing low sulphidation epithermal textured veins and breccia¹



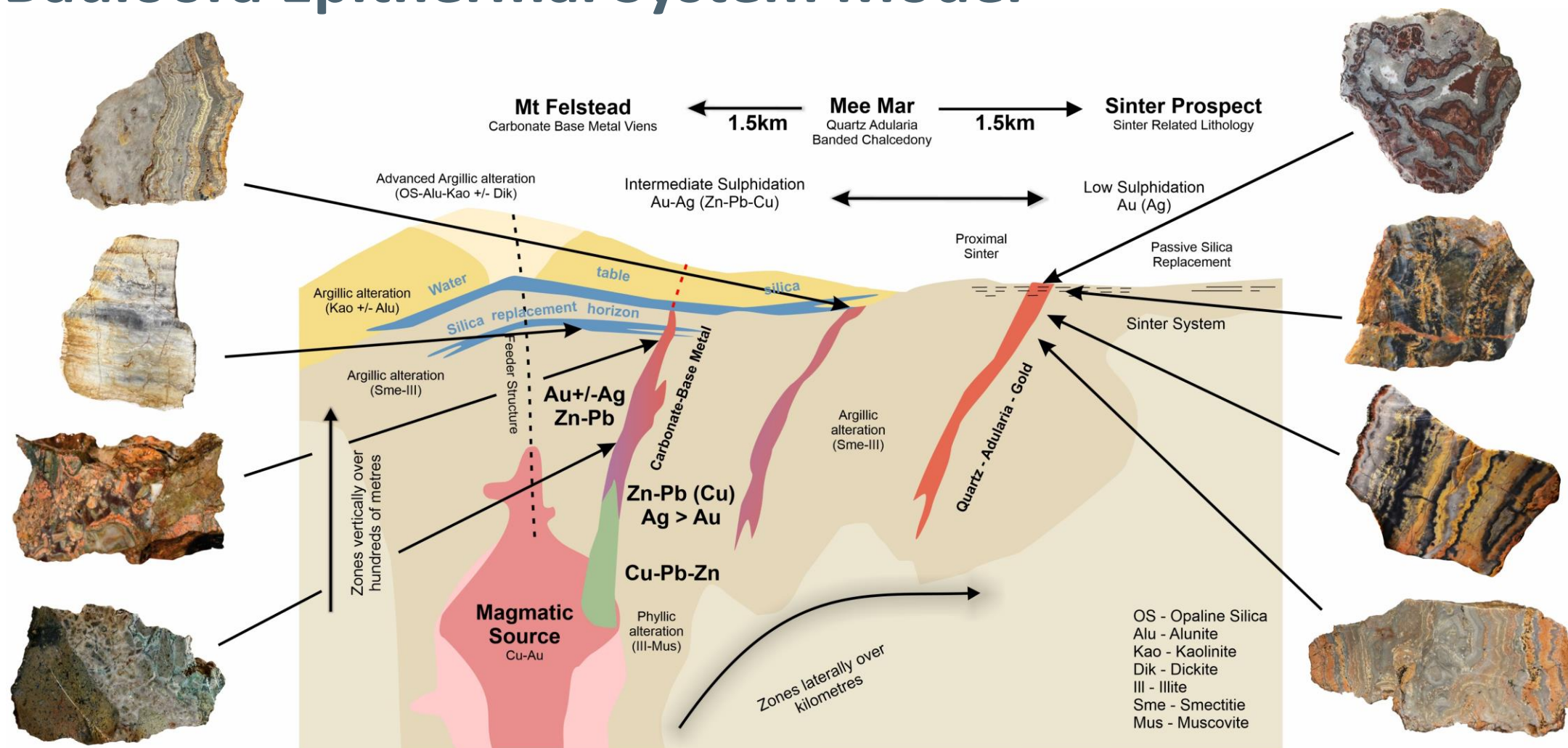
Mee Mar Prospect showing the location of completed diamond-cored drill holes, over Sb soil sample results and Au rock chip results²

Globally Significant Project Scale

- The Bauloora vein field is of similar scale to typical multi-million oz vein fields found globally¹
- The Company is actively stepping out and mapping the system which is **open in all directions**
- Technical comparisons due to similarities of textures, vein field size, and geochemistry made to major projects including Pajingo, Cracow and Cerro Negro



Bauloora Epithermal System Model



Interpreted depositional setting for rock sock samples (Modified from Global Ore Discovery, modified from Global Ore Discovery <https://www.globalorediscovery.com>).

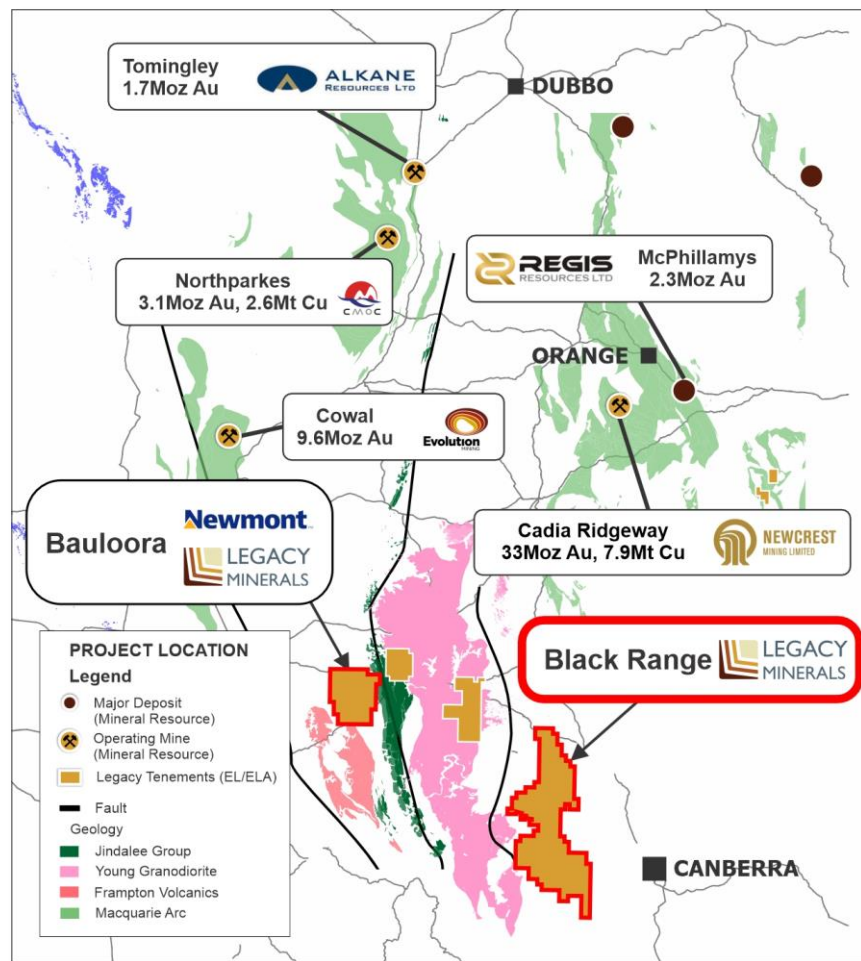
**District control of another
underexplored low
sulphidation epithermal**



Black Range Au-Ag

Black Range – Another large, underexplored epithermal system...

Regional Setting



Black Range EL and ELA (red) with solid geology showing major prospect and geology (public data, MinView Department of Regional NSW)

District scale control – 905km² license

- Large 4.5 x 1.5km silica-sericite-sulphide alteration zone (Sugarbag Hill Prospect)
- 30km of strike between known epithermal occurrences

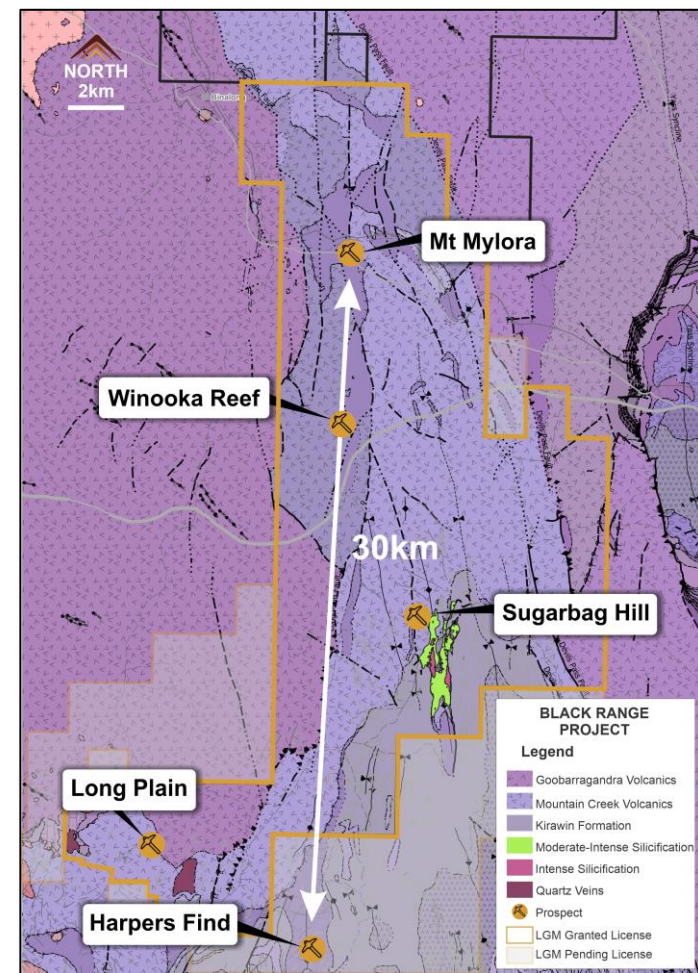
Untested potential

- 30 years since last drilling at Sugarbag Hill prospect - Newcrest Mining Limited 1992
- Extremely limited drilling across the tenement package

Work program underway

- Systematic work program to commence including geochemistry and geophysics

Black Range Project



Black Range regional geology map overlain with EL and ELA tenement boundaries

Black Range and Bauloora – Why does the opportunity still exist?

No drilling = no discovery

Bauloora

- Across the 27km² vein field zone 1 drill hole per 72 ha¹
- Systematic work not done

Black Range

- Average drill depth of 90m with 1 drill hole per 1,700 ha
- Virtually no exploration across the majority of 905km²(1)

No modern geochemistry or geophysics

Bauloora and Black Range

- Limited historic electrical geophysical surveys
- Geochemistry mostly limited to minimal elements
 - **Lack of pathfinder elements analysed**
- Geology and terrain is amenable to low cost – high value exploration methods

Held by major companies distracted by other successes

Summarised Timeline

Bauloora

Billiton Australia
Did not identify boiling zones

1992

North Limited (Rio Tinto)
Cowal Discovered - focus shifted

1995

Newmont and LGM
Joint Venture

2023



Black Range

Cadia Hill Discovered,
Newcrest cease exploration

No on ground exploration at
Sugarbag Hill since (over 30 years)

LGM peg tenement and
consolidate with ELA



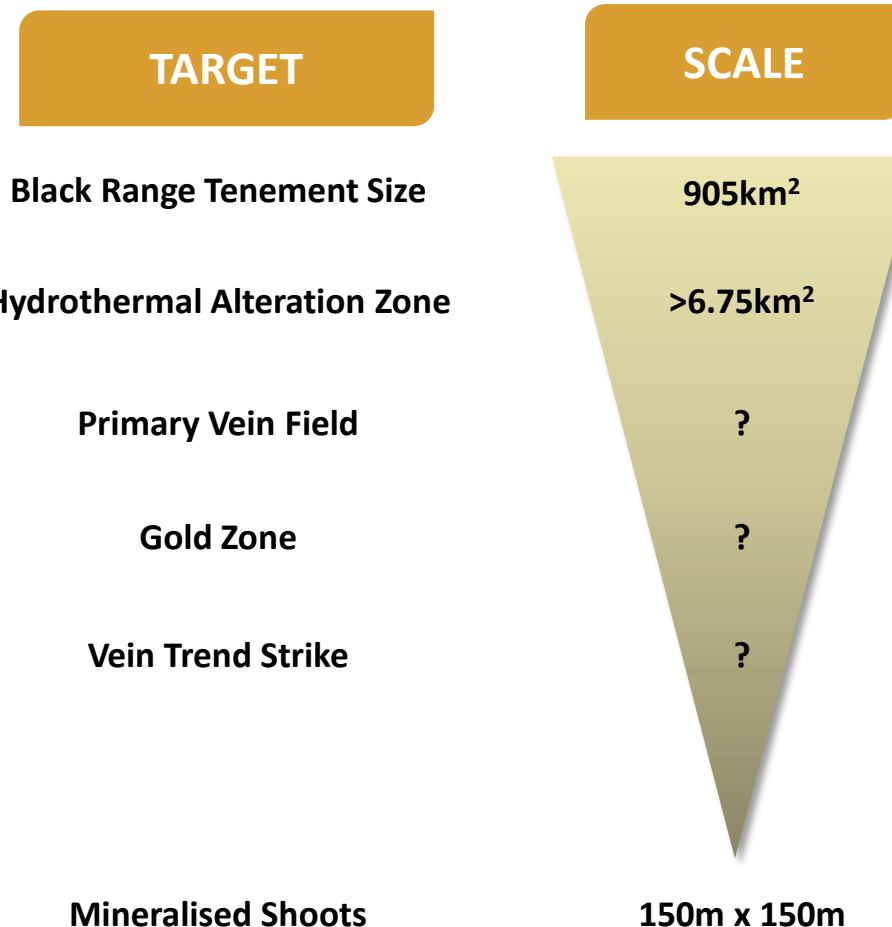
Black Range - Why are we excited?

Recognition of NSW's potential to host major systems

- Low-sulphidation epithermal systems are not common to NSW
 - With the age of the LFB, preservation is uncommon
- Bauloora was a breakthrough - the recognition of sinter related lithology makes it one of the world's oldest preserved epithermal systems
- Black Range, dated to have similar age mineralisation as Bauloora, and has a **large low temperature silicified upper zone or 'cap'** that may represent the top of a preserved epithermal system.
- Recognition of multiple caldera occurrences of Silurian and Devonian age

Our Approach

- Morden systematic exploration
 - Mapping, soil sampling, detailed magnetics and radiometrics
- **Boots on ground, ground truthing and rock chipping**



**Positioned in the Heart
of the Cobar Basin**



**Cobar
Au-Cu (Zn-Pb)**

Primed for Discovery

World class jurisdiction

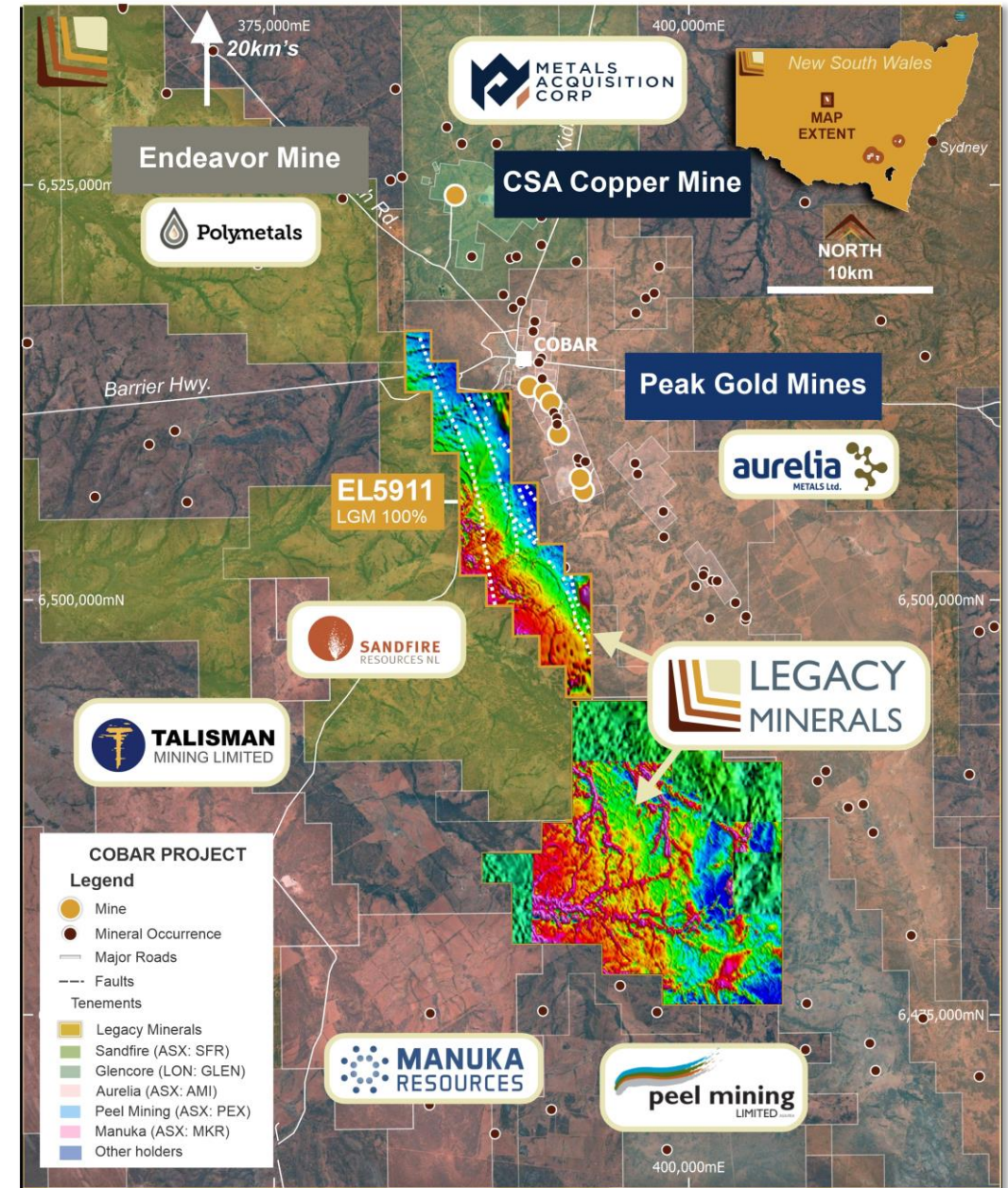
- Active region for acquisitions (CSA and Endeavor)
 - Less than 10km from Metals Acquisition Corp's CSA Mine (recently purchased from Glencore for \$1.1B USD)¹
- Sustained regional exploration successes
- Proximal to infrastructure and skilled mining workforce

Undrilled search space

- Only 4 shallow RC holes across 302km² exploration licence
- Undrilled geophysical anomalies – including IP, AEM and discrete mag highs
- **Late Time AEM conductors - potential bedrock anomalies**

Regionally significant gold-lag anomaly

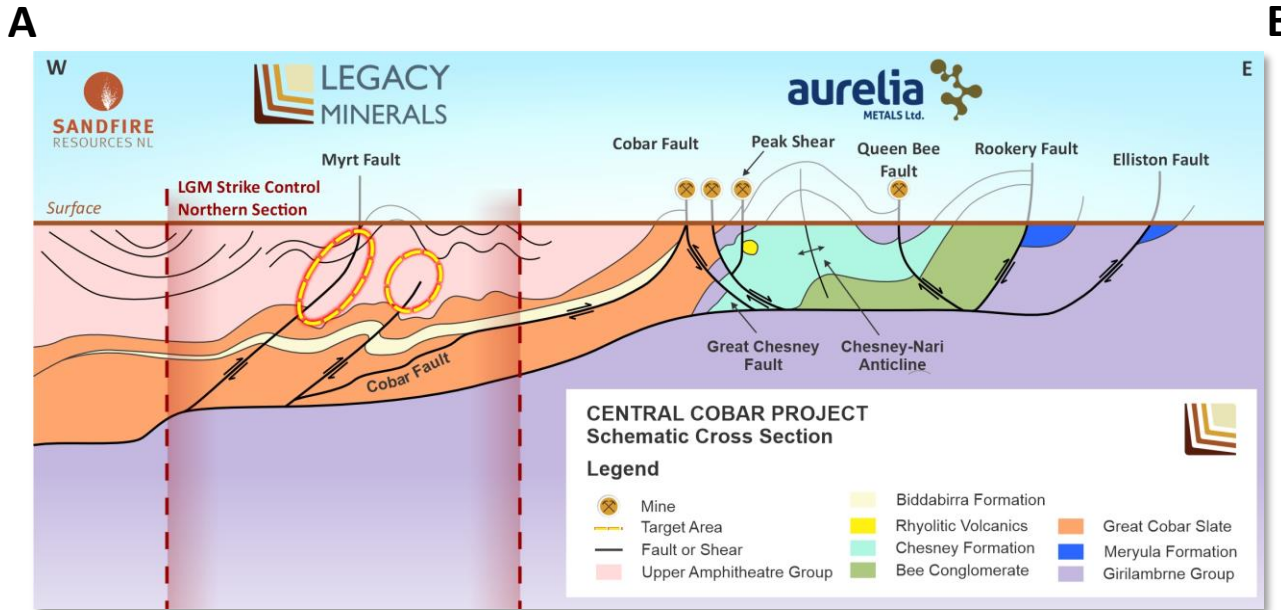
- Gold in lag up to 1.5g/t Au & 0.43g/t Au² (Yarrawonga)
- **Most major Cobar discoveries have an associated lag anomaly**



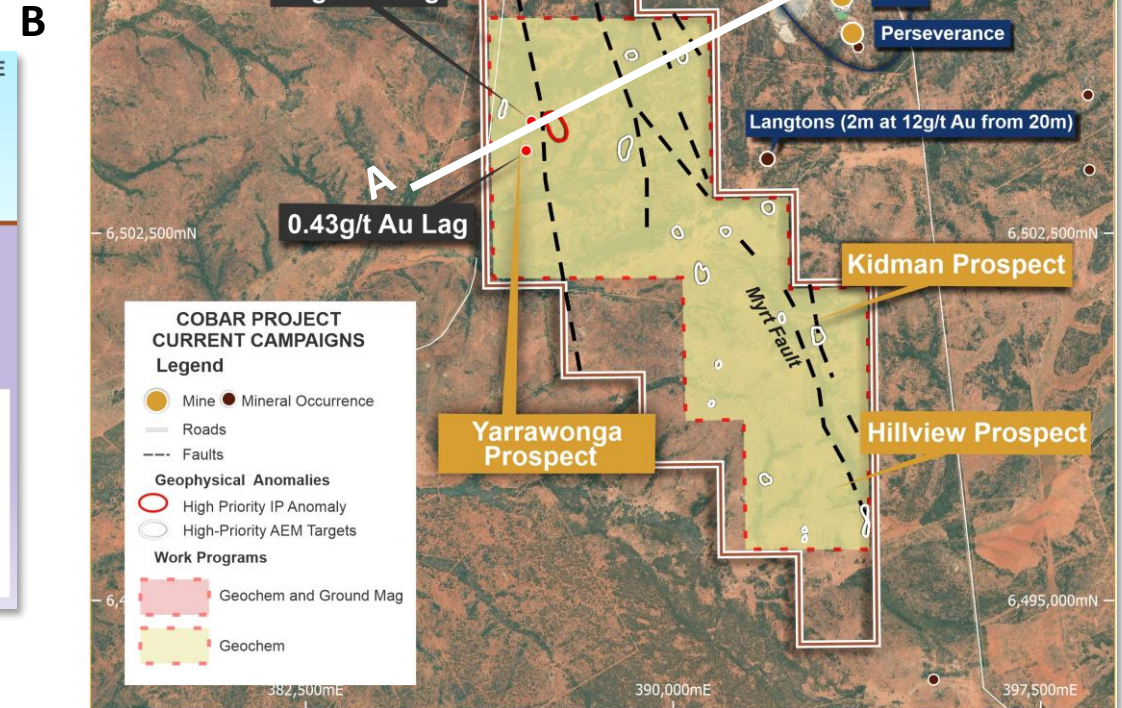
Cobar tenement boundary (EL5911) overlain with regional magnetics RTP and surrounding company licences

All the Right Ingredients

- ✓ Structural complexity – Mineralisation pathways
- ✓ Geochemically anomalous
- ✓ No sovereign risk, great land access, surrounded by mills and infrastructure
- ✓ Geophysically anomalous



Schematic cross section through the eastern Cobar Basin showing major faults and locations of major mineral deposits.¹



Cobar tenement (EL5911) boundary showing major deposits and prospect areas¹

**Prime position in
Australia's premier
Cu-Au porphyry district**



**Rockley
Cu-Au**

Rockley: An emerging porphyry district

Rockley - porphyry potential

- **Classic porphyry magnetic signature** - central magnetic high surrounded by a doughnut shaped magnetic low, on NW-SE fault, coincident with a discrete potassic high and widespread Au-Cu anomalism at surface⁴
- Prospective Phase 4 Ordovician Macquarie arc volcanics

Ongoing success in the LFB

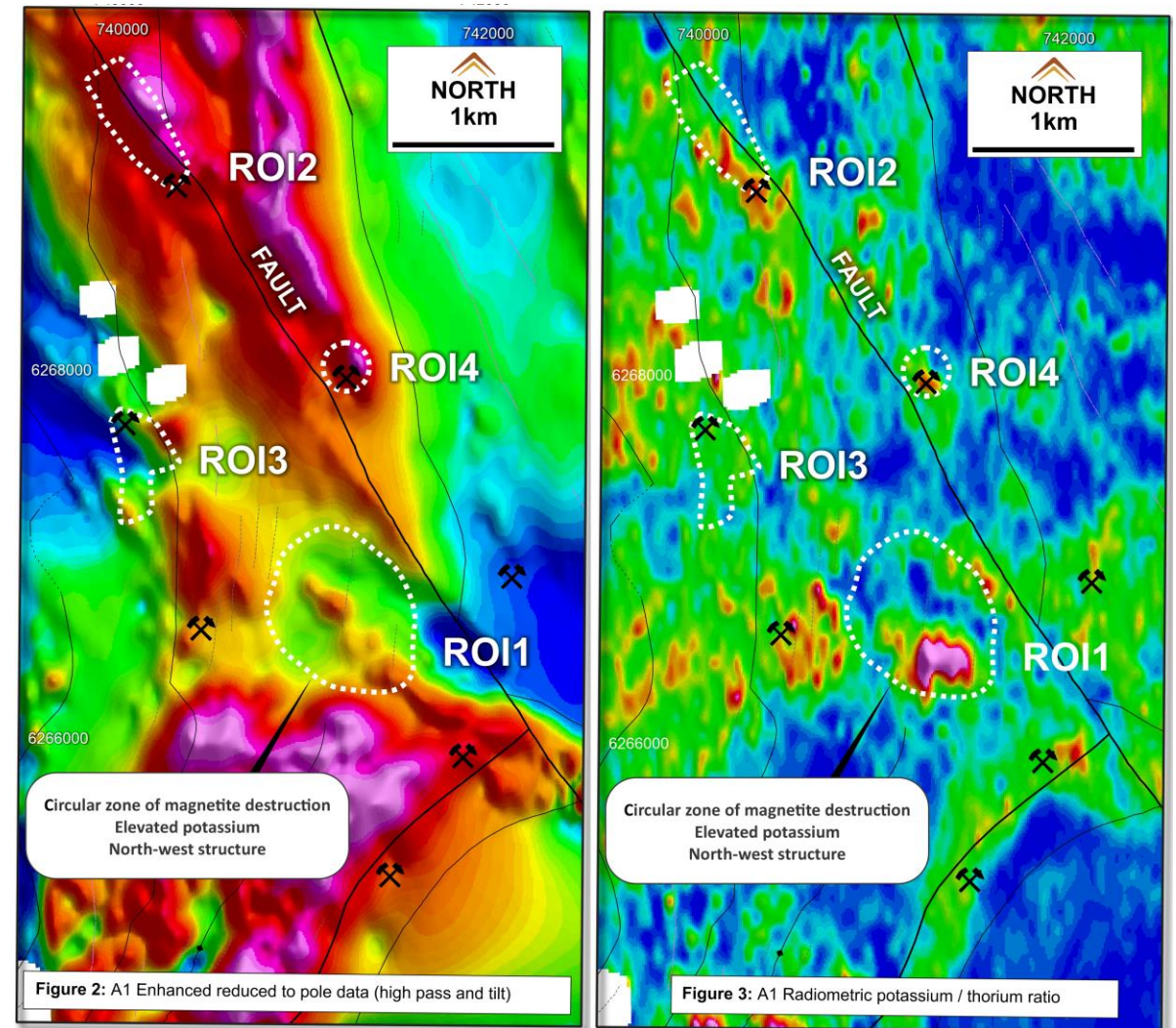
- Alkane (ASX: ALK) Boda discovery (2019)¹
- Magmatic (ASX: MAG) Corvette discovery (2022)²

Government Cu-Au prospectivity recognition

- LGM's tenement **assessed to be the most prospective area for porphyry related Cu-Au** in Rockley-Gulgong Volcanics (Geological Survey of NSW and Kenex)⁵

Nearby porphyry success

- Known to host porphyry related mineralisation - Bushranger (LON:XTR) inferred Mineral Resource **71Mt at 0.44% Cu³**
- Drilling intercepts the porphyry **from 11m** with recent intercepts **920m @ 0.3% Cu** from 110m inc. **156m @ 0.48% Cu³**



Rockley tenement (EL8926) showing RTP magnetics and K/Th radiometric images overlain with historical workings and identified regions of interest (ROI).⁴

ROCKLEY – Growing Au-Cu story

Overlooked and untested

- District proven to host significant porphyry mineralisation
- Limited geochemistry sampling and geophysical surveys across the tenement
- Scarcity of drilling across the tenement
 - Only 22 RAB historical holes in south of the porphyry area of interest¹
 - **No holes deeper than 15m depth**

All the right ingredients

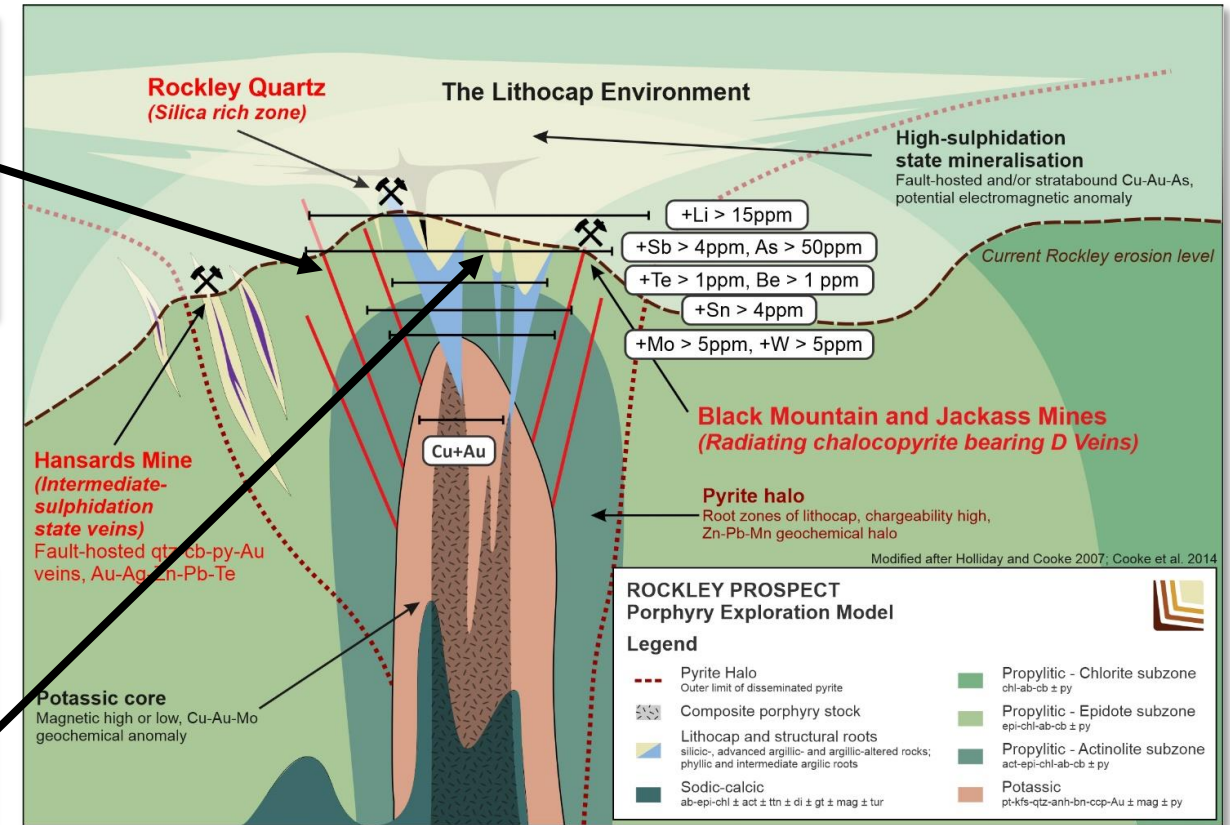
- Right rocks in the right district
 - Macquarie Arc Ordovician host rocks
- Historic high grade gold and copper mines grading up 21% Cu²
- **Wide spread Au and Cu anomalism¹**
 - 4km by 2km of rock chips grading 0.5% Cu



Rock sample of a porphyry-style D vein (using classification by Gustafson and Hunt, 1975) which reported 0.30g/t Au, 5.7g/t Ag, 0.54% Cu, 89ppm Pb, 2,160ppm Zn



Quartz vein with azurite staining (Quartz Hill Prospect) 0.25g/t Au, 69.3g/t Ag, 201ppm As, 0.24%ppm Cu, 1710ppm Sb



Schematic interpretative model for the project modified after Holliday and Cooke 2007; Cooke et al. 2014

**Discovery exposure with
leading artificial intelligence
exploration company**

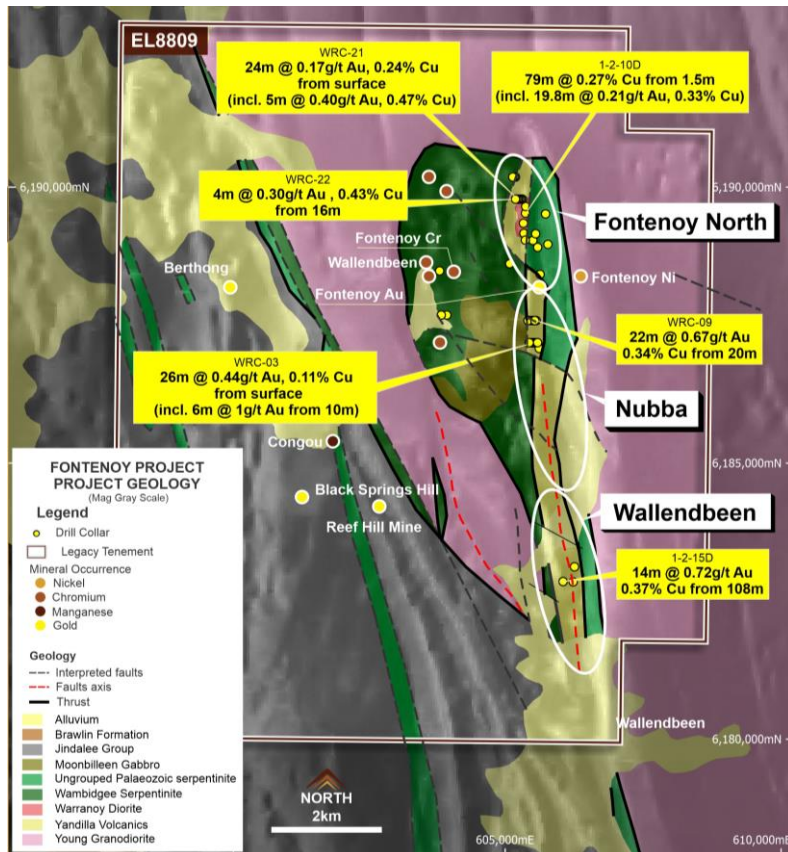


Earth AI

Realising value through strategic partners

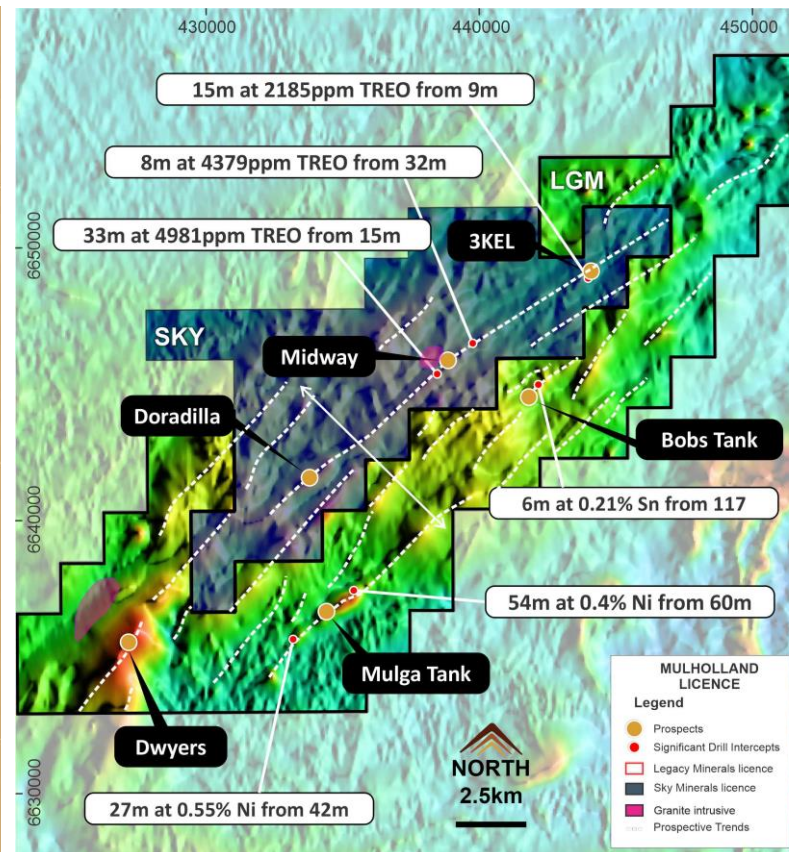
Fontenoy – Cu, Au, PGE

8km of copper and gold mineralisation with limited drill testing



Mulholland – Ni, Sn, REE

Known skarns and untested anomalies with several significant drill ready nickel and tin prospects



Earth AI

Strategic Alliance putting LGM at the exploration forefront¹

- Exposure for LGM shareholders to the priority AI owned by Earth AI (EAI)
- EAI have locally based drilling operations
- EAI will spend pp to \$4.5M over 2 years
- Unlike a 'classic JV' – purely success based
- LGM retain 100% ownership



Accelerated exposure to potential discoveries

Planned Exploration Program (Current Funding)



Q2


Black Range

Reconnaissance Field Work

Q2 - Q4

Black Range

Mapping and Geochem

Q3 - Q4

Black Range

Cobar

Drill Campaign

Q2

Cobar

AEM Modelling

Q2 - Q3

Cobar

Geochem

Q3


Rockley

Geochem

Upcoming Announcements

ASX Progress Results (Till June)	Anticipated Date
Black Range Exploration	Mid-End May
Mee Mar Assays	Early May
Cobar AEM Modelling	Mid-End May
Fontenoy Scout Geochem	April – May
Bauloora Exploration Program	Mid May



Q2

Mee Mar

Drill Assays

Q2

Bauloora

Geophysics

Q2 – Q3


Bauloora

Geochem

Q3

Bauloora -

Aerial mag/rad

Q3-Q4

Sinter Prospect

Drill Campaign

- Follow up drill campaigns
- Follow up generative work



Q2


Fontenoy

Scout Geochem

Q3

Fontenoy

AEM

Q3

Fontenoy

Drill Campaign

Partnership funding
up to \$19.5M over 8 years



Why Legacy Minerals



Emerging discovery at Bauloora



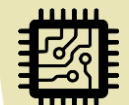
Two district scale epithermal gold projects



Depth of projects in a Tier 1 Province



Focused on delivering shareholder value



Exploration forefront with Artificial Intelligence

CONTACT

ASX:LGM

Chris Byrne

CEO and Managing Director

chris.byrne@legacyminerals.com.au

+61 (0) 499 527 547



ASX: LGM

Appendices – Endnotes

Slide 3, Slide 6: 1 Alkane Resources Kaiser Resource Estimate of ~4.7M Gold Equivalent 27 February 2023; 2 Silver Mines, Ord Minnett East coast Mining Conference, March 2023; 3 Alkane Resource and Reserve Statement FY22, 9 September 2022; 4 Newcrest Mining Annual Mineral Resources and Ore Reserves Statement 17 February 2022; 5 Sandfire Resources NL 2019 Annual Report ; 6 Regis Resources Annual Mineral Resource and Ore Reserve Statement 8 June 2022; 7 CMOC Northparkes Mining and Technical Information; 8 Evolution Mining 2022 Annual Report

Project	Company	Mineral Resource	Measured Resource	Indicated	Inferred Resource
Bowdens, NSW	Silver Mines Ltd	318Moz AuEq	185.6 AgEq	69.1 AgEq	63.3 AgEq
Boda-Kaiser, NSW	Alkane Resources Ltd	7.26Moz Au, 1.38Mt Cu	-	-	7.26Moz Au, 1.38Mt Cu
Tomingley, NSW	Alkane Resources Ltd	1.75Moz Au	0.13M Au	1.019Moz Au	0.59Moz
McPhillamys, NSW	Regis Resources Ltd	2.29Moz Au		2.28Moz Au	0.001Moz Au
Cadia-Ridegway, NSW	Newcrest Mining Ltd	33.31Moz Au, 7.9Mt Cu	0.31Moz Au, 0.041Mt Cu	33Moz Au, 7.3Mt Cu	0.75Moz, 1.1Mt Cu
Cowal, NSW	Evolution Mining Limited	9.618Moz Au	0.367Moz Au	7.33Moz Au	1.92Moz Au
Temora, NSW	Sandfire Resources Ltd	2.2Moz 728kt Cu	-	0.381Moz Au, 83kt Cu	1.8Moz Au, 645kt Cu
Nth Parkes, NSW	CMOC Mining Pty Ltd	3.09Moz Au, 2.63Mt Cu	1.64Moz Au, 1.2Mt Cu	1.1Moz Au, 1.1Mt Cu	0.35Moz Au, 0.33Mt Cu

Mineral Equivalents:

Bowdens: Calculations have been rounded to the nearest 100,000 t, 0.1 g/t silver and 0.01% zinc and lead grades respectively. The Ore Reserve is reported by economic cut-off grade with appropriate consideration of modifying factors including costs, geotechnical considerations, mining and process recoveries and metal pricing. Bowdens' silver equivalent: $\text{Ag Eq (g/t)} = \text{Ag (g/t)} + 33.48 \cdot \text{Pb (\%)} + 49.61 \cdot \text{Zn (\%)} + 80 \cdot \text{Au (g/t)}$ calculated from prices of US\$20/oz silver, US\$1.50/lb zinc, US\$1.00/lb lead, US\$1600/oz gold and metallurgical recoveries of 85% silver, 82% zinc, 83% lead and 85% gold estimated from test work commissioned by Silver Mines Limited (Silver Mines, Ord Minnett East coast Mining Conference, March 2023)

Appendices – Endnotes (continued)

Slide 7: 1: ASX: LGM 19 October 2022 Exploration Ramp up at Bauloora Epithermal Gold Project; 2:LGM ASX 1 November 2022 Geophysics Expands Potential Size of Bauloora Gold System

Slide 8: 1: LGM ASX: 15 February 2023 Significant new discovery at the Bauloora Epithermal Project; 2: LGM ASX: 21NOV2022 New High-Grade Gold Assays Returned Across Bauloora

Slide 9: 1: ASX: LGM 19 October 2022 Exploration Ramp up at Bauloora Epithermal Gold Project

Slide 13: 1: MinView, www.minview.geoscience.nsw.gov.au

Slide 16: 1: Metals Acquisition Corp March 17 2022, Metals Acquisition Corp. And Glencore Agree To Amend Terms Of The CSA Mine Acquisition; 2: Company's Prospectus dated 28 July 2021 lodged 9 September 2021 (ASX: LGM)

Slide 17: 1: Company's Prospectus dated 28 July 2021 lodged 9 September 2021 (ASX: LGM),

Slide 19: 1: ASX: ALK Discovery of Significant Porphyry Gold-Copper Mineralisation at Boda Prospect within Northern Molong Porphyry Project (NSW); 2: ASX: MAG Assays Confirm High Grade Mineralisation at the Corvette; 3: Xtract Resources plc 19 March 2021 First Drill Assay Results from the Bushranger Copper-Gold Project; 4: ASX: LGM 27 July 2022 Geophysics Defines Porphyry Copper-Gold Targets at Rockley; 5: Company's Prospectus dated 28 July 2021 lodged 9 September 2021 (ASX: LGM)

Slide 20: 1: ASX: LGM 4 April 2022: Extensive Copper and Gold in Rock Chips and Rockley; 2: Company's Prospectus dated 28 July 2021 lodged 9 September 2021 (ASX: LGM)

Slide 22: 1: ASX: LGM 3 May 2022: Strategic Exploration Alliance with AI Explorer