

Deal Name:	Driver Australia Seven
Issuer:	Perpetual Corporate Trust Limited (ABN 99 000 341 533) of Level 18, 123 Pitt Street, Sydney NSW 2000 Australia in its capacity as trustee of the Driver Australia Seven Trust.
Originator of the Receivables:	Volkswagen Financial Services Australia Pty Ltd
Seller of the Receivables:	Volkswagen Financial Services Australia Pty Ltd
Servicer name:	Volkswagen Financial Services Australia Pty Ltd
Reporting Entity:	Volkswagen Financial Services Australia Pty Ltd ABS Operations (Physical Address) Level 1, 24 Muir Road, Chullora NSW 2190 (Postal Address) Locked Bag 4002 Chullora NSW 2190
Contact:	Phone: +61 2 9751 6257 Fax: +61 2 9695 6399 Email: ABSOperations.Australia@vwfs.com.au
Corporate Service Provider:	Perpetual Corporate Trust Limited (ABN 99 000 341 533) of Level 18, 123 Pitt Street, Sydney NSW 2000 Australia in its personal capacity.



Contents

Page	Table of Contents
1	Cover
2	Contents
3	Reporting Details
4	Parties Overview
5	Transaction Events I
6	Transaction Events II
7	Transaction Events III
8	Information regarding the Notes I
9	Information regarding the Notes II
10	Cash Collateral Account
11	Credit Enhancement
12	Swap Fixing / Waterfall
13	Retention of Net Economic Interest
14	Amortisation Profile I
15	Amortisation Profile II
16	Run Out Schedule I
18	Run Out Schedule II
19	Outstanding Contracts I
21	Outstanding Contracts II
22	Arrears
24	Net Salvage Loss
25	Net Salvage After Recoveries
26	Prepayments
27	Pool Data I
29	Pool Data II
30	Pool Data III
32	Pool Data IV
34	Pool Data V
36	Pool Data VI
37	Pool Data VII
43	Pool Data VIII
45	Pool Data IX
47	Hardship Extensions
48	Engine Type
50	Contract Level Data

Reporting Details

Deal Overview

Pool Cut Date	31/10/2021	Publication Date:	16/05/2023 (16th of each month)
Scheduled Date of Clean-Up-Call	10/2025	Payment Date:	22/05/2023 (21st of each month)
Legal Maturity Date	21/01/2030	Reporting Date:	30/04/2023
Issue Date	22/11/2021	Asset Collection Period:	from 01/04/2023 until 30/04/2023
Period No.:	18	Interest Accrual Period	from 21/04/2023 until 22/05/2023
Reporting frequency:	Monthly	Note Payment Period:	from 21/04/2023 until 22/05/2023
Next Payment Date:	21/06/2023	Days accrued:	31

Vehicle Type at Pool Cut	Number of Contracts	Percentage of Contracts	Outstanding Discounted Receivables Balance	Percentage Outstanding Discounted Receivables Balance
New	10,680	70.07%	463,158,976.27 AUD	77.19%
Used	4,561	29.93%	136,866,121.79 AUD	22.81%
Total	15,241	100.00%	600,025,098.06 AUD	100.00%

Credit Type at Pool Cut	Number of Contracts	Percentage of Contracts	Outstanding Discounted Receivables Balance	Percentage Outstanding Discounted Receivables Balance
Chattel Mortgage	9,371	61.49%	414,965,143.56 AUD	69.16%
Consumer Loan	5,870	38.51%	185,059,954.50 AUD	30.84%
Total	15,241	100.00%	600,025,098.06 AUD	100.00%

Parties Overview

Lead Managers:	<p>Australia and New Zealand Banking Group Limited (ABN 11 005 357 522) ANZ Tower 242 Pitt Street Sydney, NSW 2000 Australia</p> <p>Bank of America Merrill Lynch (which is the trading name of Merrill Lynch International) (ARBN 125 336 567) Merrill Lynch Financial Centre 2 King Edward Street London EC1A 1HQ United Kingdom</p>	Security Trustee:	<p>P.T. Limited (ABN 67 004 454 666) Level 18 123 Pitt Street Sydney NSW 2000 Australia</p>
Trustee:	<p>Perpetual Corporate Trust Limited (ABN 99 000 341 533) of Level 18, 123 Pitt Street, Sydney NSW 2000 Australia in its capacity as trustee of the Driver Australia Seven Trust.</p>	Trust Manager:	<p>Perpetual Nominees Limited (ABN 37 000 733 700) of Level 18, 123 Pitt Street, Sydney NSW 2000 Australia in its capacity as the trust manager for the Driver Australia Seven Trust</p>
Sub Trust Manager:	<p>Volkswagen Financial Services Australia Pty Limited (ABN 20 097 071 460) Level 1, 24 Muir Road, Chullora, NSW 2190</p>	Account Bank:	<p>Australia and New Zealand Banking Group Limited (ABN 11 005 357 522) ANZ Tower 242 Pitt Street Sydney, NSW 2000 Australia</p>
Clearing Systems:	<p>Austraclear Limited 30-32 Grosvenor Street. Sydney, NSW 2000</p>	Swap Counterparty:	<p>ING Bank N.V. (ID 26 300 892 I) Bijlmerdreef 106 1102 CT Amsterdam The Netherlands</p>
Servicer:	<p>Volkswagen Financial Services Australia Pty Limited (ABN 20 097 071 460) Level 1, 24 Muir Road, Chullora, NSW 2190 email: ABSOperations.Australia@vwfs.com.au phone: +61 2 9751 6257</p>	Rating Agencies:	<p>Fitch Ratings Attn.: Australia Surveillance Suite 15.01, Level 15, 135 King Street Sydney, NSW 2000 Australia email: australia.surveillance@fitchratings.com</p> <p>Moody's Attn.: Monitor Sydney Level 10, 1 O'Connell Street Sydney, NSW 2000 Australia email: Monitor.Sydney@moodys.com</p>

Transaction Events (I)

Clean-Up Call Condition

Percentage of Current Outstanding Discounted Receivables Balance	55.40%	The Clean-Up-Call Condition is expected to be reached in 10/2025.
Min. Percentage of Outstanding Discounted Receivables Balance	10.00%	

Clean-Up Call

VWFS Australia will have the right at its option to exercise a Clean-Up Call and to repurchase all (but not only some) of the Purchased Receivables from the Issuer at any time when the then outstanding Aggregate Discounted Receivables Balance is less than ten (10) per cent. of the Aggregate Cut-off Date Discounted Receivables Balance and, assuming the Transaction Documents are given full effect, all payment obligations under the Notes, including principal and accrued interest, will thereby be fulfilled in accordance with the Order of Priority (the Clean-up Call Conditions).

Repurchase of Receivables	Number of contracts	% of Contracts	Outstanding Discounted Receivables Balance	% of Outstanding Discounted Receivables Balance	Interest Compensation Payment	Re-Purchase Price
Current Period	-	0.00%	- AUD	0.00%	- AUD	- AUD
Previous Periods	-	0.00%	- AUD	0.00%	- AUD	- AUD
Total	-	0.00%	- AUD	0.00%	- AUD	- AUD

If a repurchase of receivables occurred, it would only result from non-eligibility as of the respective Pool Cut Date (which has been discovered at a later stage), a Legitimate Repudiation of a Receivables Contract, a Reloaded Contract or a Flat-Cancelled Contract.

Transaction Party Replacements

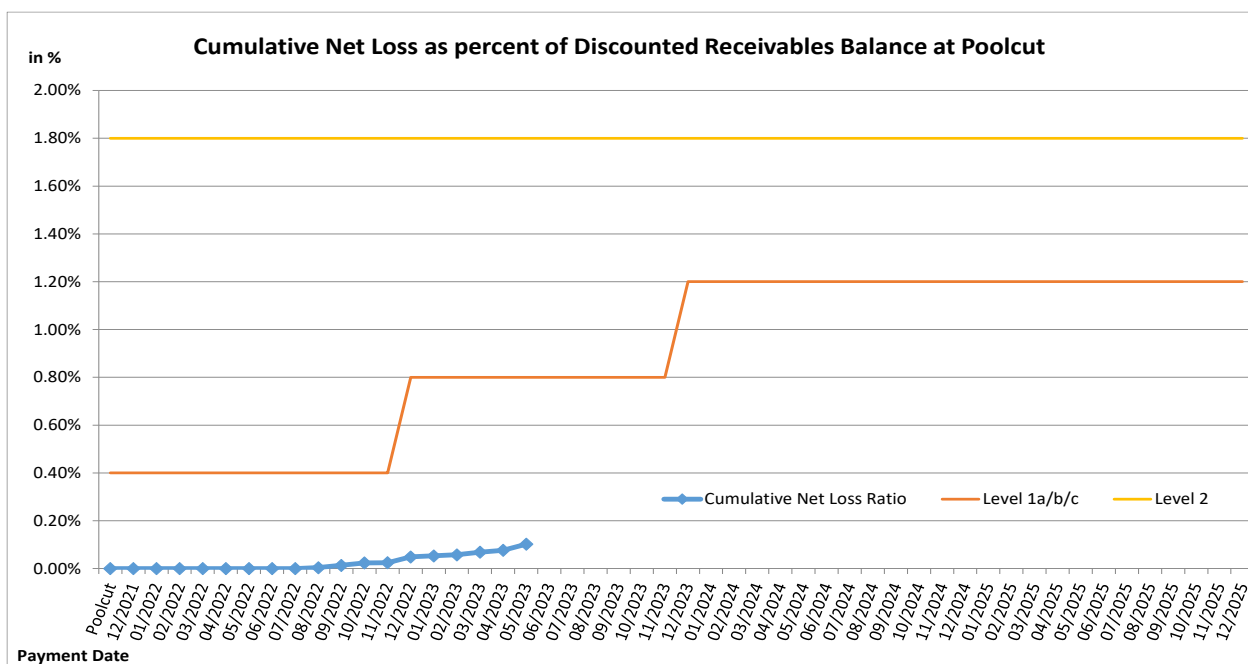
Capacity of Transaction Party	Date of Replacement	Reason for Replacement	Replaced Party	Replaced by

Transaction Events (II)

Credit Enhancement Increase Conditions

Level 1a Credit Enhancement Increase Condition - Cumulative Net Losses do not amount to 0.4% for any Payment Date prior to or during Nov 2022	NO
Level 1b Credit Enhancement Increase Condition - Cumulative Net Losses do not amount to 0.8% for any Payment Date from Dec 2022 but prior to or during Nov 2023	NO
Level 1c Credit Enhancement Increase Condition - Cumulative Net Losses do not amount to 1.2% for any Payment Date after Nov 2023	NO
Level 2 Credit Enhancement Increase Condition - Cumulative Net Losses do not amount to 1.8% for any Payment Date	NO

Net losses	Net Loss Amount
Net Salvage Loss registered in current Period	153,358.85 AUD
Cumulative Net Salvage Loss incl. current Period	612,790.92 AUD
Cumulative Net Salvage Loss as of the End of the Monthly Period	612,790.92 AUD
Discounted Balance as of Pool Cut Date	600,025,098.06 AUD
Cumulative Net Loss as percentage of Discounted Receivables Balance at Pool Cut	0.10213%



Transaction Events (III)

Account Bank:

Australia and New Zealand Banking Group Limited

Current Rating^{*}

Minimum required Rating (if no short term Rating available, the higher long term rating is applicable)

or

Fitch			Moody's		
Long Term	Short Term	Outlook	Long Term	Short Term	Outlook
A+	F1	Stable	Aa3	P-1	Stable
-	F1	-	A2	P-1	-
A	-	-	A2	P-1	-

If the Account Bank ceases to have the Account Bank Required Rating it shall, at its own cost,

(i) transfer the accounts to an Eligible Collateral Bank, or

(ii) provide a guarantee from an Eligible Guarantor, or

If none of the measures is taken within a given timespan, the Issuer may enter into new banking arrangements at its own initiative with another Account Bank.

(Please refer to the Prospectus for a complete description of the mechanism)

Required Rating:

Fulfilled

Swap Counterparty

ING Bank N.V.

Current Rating^{*}

Minimum required Rating for Class A Notes

Minimum required Rating for Class B Notes

Fitch			Moody's		
Long Term	Short Term	Outlook	Long Term	Short Term	Outlook
AA-	F1+	Stable	A1	P-1	Stable
A	F1	-	A3	-	-
-	-	-	A3	-	-

If the Swap Bank falls below the above mentioned Minimum Rating (Level I) it shall provide Eligible Credit Support by means of Cash or certain types of Prime Debt Obligations

If the Swap Bank ceases to have the even lower Rating as an Eligible Swap Counterparty (Level II) it shall, at its own cost,

(i) transfer all rights and obligations under the Swap Agreement to another Eligible Swap Partner or

(ii) provide a guarantee from an Eligible Guarantor.

If none of the measures is taken within a given timespan, the Issuer may enter into new arrangements at its own initiative with another Swap Bank.

(Please refer to the Prospectus for a complete description of the mechanism)

Required Rating:

Fulfilled

Servicer

Volkswagen Financial Services Australia Pty Ltd

If the Monthly Remittance Condition is satisfied, VWFS Australia, as the Servicer, is required to pay collections of the Purchased Receivables (including proceeds from the disposition of any Financed Objects) received by it during each Monthly Period into the Distribution Account in a single deposit no later than the Payment Date for that Monthly Period.

If the Monthly Remittance Condition is not met, the Servicer must remit collections received by it in respect of the Purchased Receivables in accordance with the procedure outlined in detail in "ADMINISTRATION OF THE PURCHASED RECEIVABLES UNDER THE SERVICING AGREEMENT - Commingling".

Monthly
Remittance
Condition:

Fulfilled

Information regarding the Notes I

Rating at Issue Date	Class A	Class B
Moody's	Aaa (sf)	Aa2 (sf)
Fitch	AAAsf	NRsf

Current Rating	Class A	Class B
Moody's	Aaa (sf)	Aa1 (sf)
Fitch	AAAsf	NRsf

Information on Notes	Class A	Class B
Legal maturity date	21/01/2030	21/01/2030
Scheduled Clean Up Call	Oct 2025	Oct 2025
ISIN:	AU3FN0063434	AU3FN0063442
Common Code:	239718256	239718272
Nominal Amount	100,000.00 AUD	100,000.00 AUD

Information on Interest	Class A	Class B
Spread/ Margin	70 bps	100 bps
Index Rate	1-Month-BBSW	1-Month-BBSW
Fixed/Floating	floating	floating
Current Coupon	1-Month-BBSW + 70	1-Month-BBSW + 100
Day Count Convention	actual/365	actual/365

Information regarding the Notes II

Monthly Period:	04/2023
Payment Date:	22/05/2023
Interest Accrual Period (from/until)	from 21/04/2023 until 22/05/2023
Days accrued	31
Index Rate	1-Month-BBSW
Base Interest Rate:	3.6100%
Day Count Convention	actual/365

Interest Payments	Class A	Class B
Total Interest Amount of the Reporting Period	975,722.44 AUD	129,206.30 AUD
Paid Interest	975,722.44 AUD	129,206.30 AUD

Unpaid Interest	Class A	Class B
Unpaid Interest in the Reporting Period	- AUD	- AUD
Cumulative unpaid Interest	- AUD	- AUD

Note Balance	Class A	Class B
Note Balance as of Poolcut	526,200,000.00 AUD	33,000,000.00 AUD
Note Balance as of the Beginning of the Period	266,550,924.84 AUD	33,000,000.00 AUD
Redemption Amount per Class	11,902,538.76 AUD	- AUD
Class Balance as of the End of the Period	254,648,386.08 AUD	33,000,000.00 AUD

Payments to Investors per note	Class A	Class B
Interest Per Note	185.43 AUD	391.53 AUD
Principal Repayment by note	2,261.98 AUD	- AUD
Number of Notes	5,262	330
Note Factor	0.4839384	1.0000000

Overcollateralisation Percentage	Class A	Class B
Initial OC Percentage at Poolcut	12.3037%	6.8039%
Current OC Percentage	23.3900%	13.4600%
Target OC Percentage	26.0000%	18.0000%

Subordinated Loan	
Balance as of the Beginning of the Period	34,115,247.75 AUD
Regular Redemption from Waterfall	- AUD
Redemption from Cash Collateral Account	- AUD
Balance as of the End of the Period	34,115,247.75 AUD

Cash Collateral Account

Cash collateral account (CCA)	Value
CCA Opening Balance - Initial balance at poolcut	7,200,000.00 AUD
Balance as of the beginning of the period	6,000,000.00 AUD
Specified General Cash Collateral Account Balance	6,000,000.00 AUD
the greater of: 1.20 per cent of the Aggregate Discounted Receivables Balance as of the end of the Monthly Period; and	3,988,745.78 AUD
the lesser of: \$6,000,000; and	6,000,000.00 AUD
the aggregate outstanding principal amount of the Class A Notes and Class B Notes as of the end of the Monthly Period	299,550,924.84 AUD
Payments	- AUD
General payment from CCA	- AUD
General payment to CCA	- AUD
Balance as of the end of the period	6,000,000.00 AUD

Credit Enhancement

Credit Enhancement as of Poolcut Date	% of Aggregate Discounted Receivables Balance	Value
Class B Note	5.50%	33,000,000.00 AUD
Subordinated Loan	5.80%	34,825,098.06 AUD
Overcollateralisation	1.00%	6,000,000.00 AUD
Cash Collateral Account	1.20%	7,200,000.00 AUD

Cash Collateral Account (CCA)	Value	in % of Outstanding Discounted Receivables Balance as of Poolcut Date
Initial Balance at Poolcut	7,200,000.00 AUD	1.20%
Initial Targeted Balance at Poolcut	7,200,000.00 AUD	1.20%
Current Targeted Balance	6,000,000.00 AUD	1.00%
Balance as of the Beginning of the Period	6,000,000.00 AUD	1.00%
Payment from CCA	- AUD	0.00%
Payment to CCA	- AUD	0.00%
Balance as of the End of the Period	6,000,000.00 AUD	1.00%

Calculation of Credit Enhancement

Initially, Driver Australia Seven's Credit Enhancement consists of the respective Note Issue in comparison to the Discounted Receivables Balance as of Poolcut, minus any Senior Debt Issuance. This 'Overcollateralisation' (i.e. Credit Enhancement excluding the Cash Collateral Account) is specific for each Note Series and increases with its seniority.

Subsequently, the 'Overcollateralisation' is calculated (as an Overcollateralisation Percentage) on a monthly basis, all on end of month figures. Considering the seniority of the respective Note Series, redemption is made until a Target Overcollateralisation Percentage has been reached. All remaining funds will be used to perform payments in the more junior positions of the Order of Priority.

The Target OC percentages for each Note Class are determined subject to 3 items:

- They will increase in 2 steps in case the Cumulative Net Loss Ratio exceeds a certain level and Credit Enhancement Increase Condition is met.
- They will increase to 100% if the Aggregate Discounted Receivables Balance falls below 10.00% of the Aggregate Discounted Receivables Balance at Cut-Off Date (without a Clean-Up Call being exercised).
- A Foreclosure Event causes the transaction to switch into sequential payment mode, in which case the OC Percentages will not determine the maximum redemption amount and may be exceeded.

In addition, there is the 'General Cash Reserve', in the form of a Cash Collateral Account, which is in principle to the benefit of all Tranches over the entire lifetime of the transaction.

Swap Fixing / Waterfall

Amortising Interest Rate Swap	Class A	Class B
Initial Principal	526,200,000.00 AUD	33,000,000.00 AUD
Underlying Principal for Reporting Period	266,550,924.84 AUD	33,000,000.00 AUD
Paying Leg	Fixed Interest Rate	Fixed Interest Rate
Receiving Leg	Floating Interest Rate	Floating Interest Rate
Net Swap Payments - Net Swap Receipts	(641,423.16 AUD)	(76,076.30 AUD)

Available Distribution Amount Calculation	Payment to waterfall position	Remaining Amount
1) i) Available Collections Amount from Contracts	13,391,533.44 AUD	13,391,533.44 AUD
1) ii) Available Collections - Interest on Trust Account	25,230.17 AUD	13,416,763.61 AUD
2) Drawings From Cash Collateral Account as provided for in clause 12.1 of the Issue Supplement	- AUD	13,416,763.61 AUD
3) i) Net Swap Receipts - Class A	641,423.16 AUD	14,058,186.77 AUD
3) ii) Net Swap Receipts - Class B	76,076.30 AUD	14,134,263.07 AUD
4) Damages and Indemnity Payments to Issuer	- AUD	14,134,263.07 AUD
5) Other Reimbursement Amounts	- AUD	14,134,263.07 AUD
6) Buffer Release Amount	(830,146.28 AUD)	13,304,116.79 AUD
Remaining Rounding Amount (M-1)	25.45 AUD	13,304,142.24 AUD

Waterfall	Payment to waterfall position	Remaining Amount
Available Distribution Amount	- AUD	13,304,142.24 AUD
1) Trust Beneficiary \$1	(1.00 AUD)	13,304,141.24 AUD
2) Taxes	- AUD	13,304,141.24 AUD
3) Trust Fees & Expenses and Servicer Fees	(296,656.20 AUD)	13,007,485.04 AUD
4. a) Net Swap Payments - Class A Notes	- AUD	13,007,485.04 AUD
4. b) Net Swap Payments - Class B Notes	- AUD	13,007,485.04 AUD
5. a) Interest accrued in prev. month - Class A	(975,722.44 AUD)	12,031,762.60 AUD
5. b) Interest Shortfalls from prior months - Class A	- AUD	12,031,762.60 AUD
6. a) Interest accrued in prev. month - Class B	(129,206.30 AUD)	11,902,556.30 AUD
6. b) Interest Shortfalls from prior months - Class B	- AUD	11,902,556.30 AUD
7) Payment to Cash Collateral Account	- AUD	11,902,556.30 AUD
8) Principal Payment - Class A	(11,902,538.76 AUD)	17.54 AUD
9) Principal Payment - Class B	- AUD	17.54 AUD
Remaining Rounding Amount (Current Period)	(17.54 AUD)	- AUD
10) Penalties, Costs, Expenses, Damages, Losses or Liabilities	- AUD	- AUD
11) Other Payment to Swap Counterparties	- AUD	- AUD
12) Subordinated Loan Accrued and Unpaid Interest	- AUD	- AUD
Interest Accrued this period on the Subordinated Loan	- AUD	- AUD
Unpaid Interest on the Subordinated Loan	- AUD	- AUD
13) Subordinated Loan Principal	- AUD	- AUD
14) Surplus Income Distribution to Beneficiary of the Trust	- AUD	- AUD

Distribution of Cash Collateral Account surplus	Payment	Remaining Amount
Payment from CCA	- AUD	- AUD
Payment of Interest Accrued this period on the Subordinated Loan	- AUD	- AUD
Payment of Unpaid Interest on the Subordinated Loan	- AUD	- AUD
Payment in respect of regular redemption to subordinated lender	- AUD	- AUD
Distribution to Beneficiary of the Trust	- AUD	- AUD

Retention of Net Economic Interest

Period	Poolcut	Balance as at Current Period
Total Assets	684,926,843.21 AUD	365,265,425.51 AUD
Nominal Receivables Balance	684,926,843.21 AUD	365,265,425.51 AUD
First loss piece	48,025,098.06 AUD	50,747,095.29 AUD
Subordinated Loan balance	34,825,098.06 AUD	34,115,247.75 AUD
Overcollateralisation	6,000,000.00 AUD	10,631,847.54 AUD
General Cash Collateral Account balance	7,200,000.00 AUD	6,000,000.00 AUD
Actual retention	7.01%	13.89%

In its capacity as originator and original lender, VWFSA complies with the retention requirement of a material net economic interest in accordance with Article 6 (3) (d) of the European Securitisation Regulation.

By adhering to Article 6 (3) (d) of the European Securitisation Regulation, VWFSA will keep the exposures designated for retention on its balance sheet on an ongoing basis.

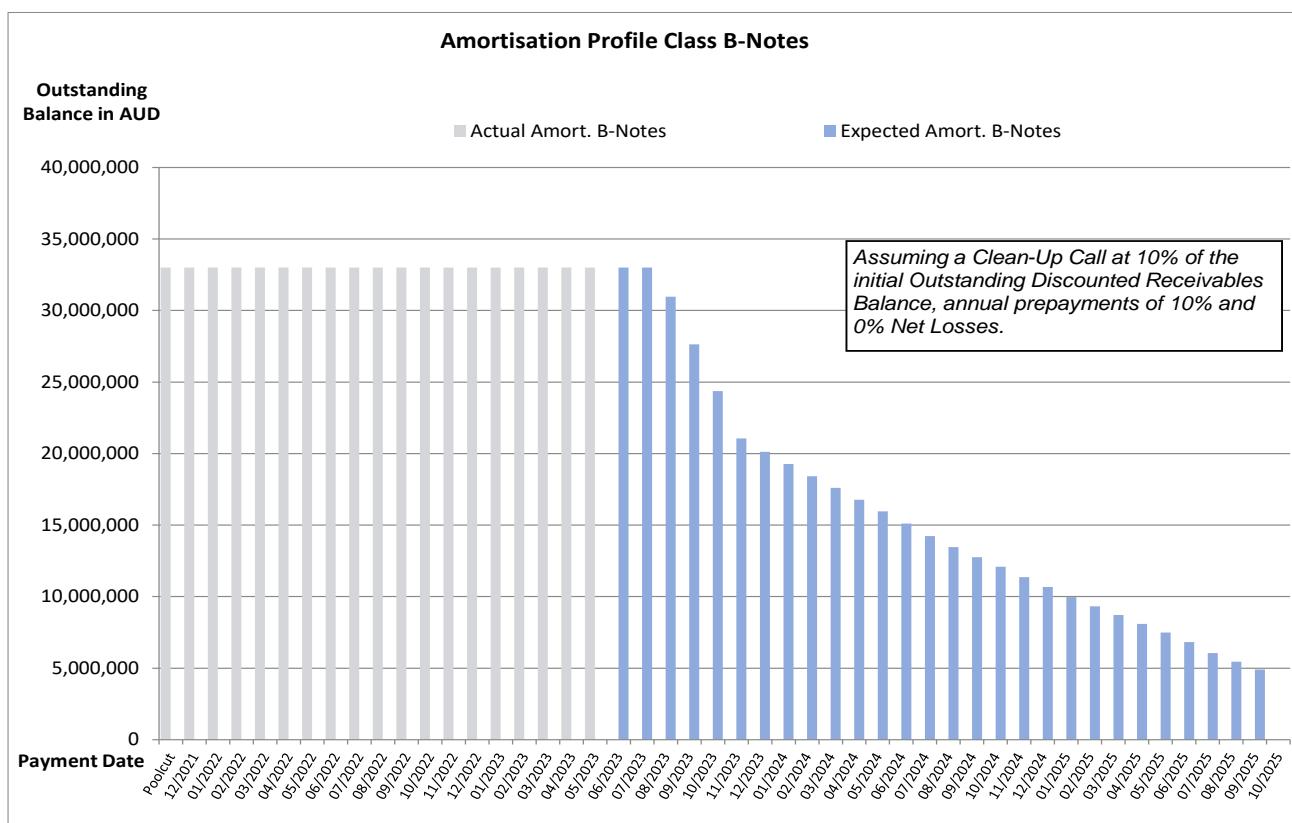
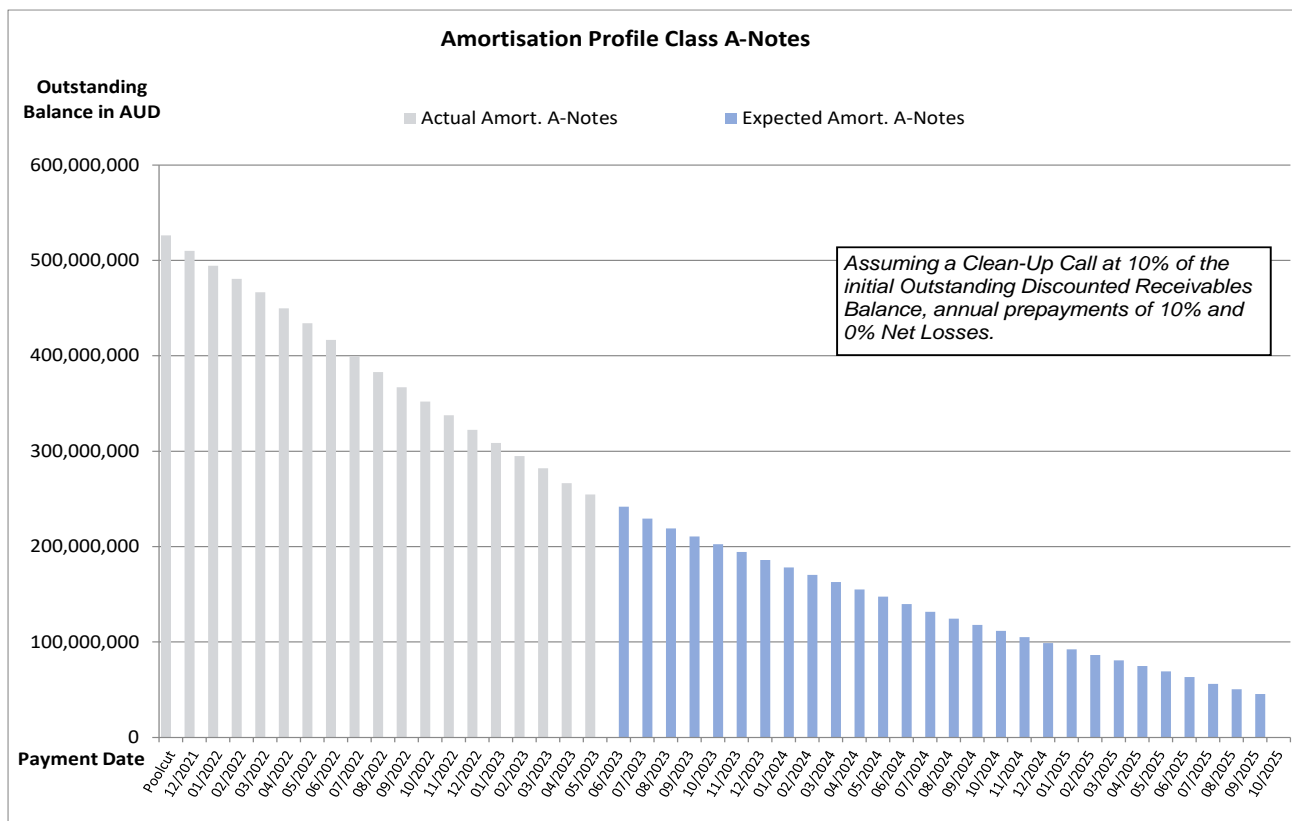
The latest end of month level of retention will be published on a monthly basis in the investor report.

Amortisation Profile I

Note Class	Class A		Class B	
WAL	At Closing: 1.85 yrs	Current: 1.34 yrs	At Closing: 2.84 yrs	Current: 1.27 yrs
Payment Date	Actual Note Balance	Forecasted Note Balance	Actual Note Balance	Forecasted Note Balance
Poolcut	526,200,000.00 AUD	- AUD	33,000,000.00 AUD	- AUD
12/2021	510,049,185.54 AUD	- AUD	33,000,000.00 AUD	- AUD
01/2022	494,276,866.74 AUD	- AUD	33,000,000.00 AUD	- AUD
02/2022	480,766,050.30 AUD	- AUD	33,000,000.00 AUD	- AUD
03/2022	466,604,640.18 AUD	- AUD	33,000,000.00 AUD	- AUD
04/2022	449,793,707.82 AUD	- AUD	33,000,000.00 AUD	- AUD
05/2022	434,204,927.58 AUD	- AUD	33,000,000.00 AUD	- AUD
06/2022	416,766,133.38 AUD	- AUD	33,000,000.00 AUD	- AUD
07/2022	399,553,605.18 AUD	- AUD	33,000,000.00 AUD	- AUD
08/2022	382,999,405.80 AUD	- AUD	33,000,000.00 AUD	- AUD
09/2022	367,050,704.76 AUD	- AUD	33,000,000.00 AUD	- AUD
10/2022	352,075,000.14 AUD	- AUD	33,000,000.00 AUD	- AUD
11/2022	337,754,730.24 AUD	- AUD	33,000,000.00 AUD	- AUD
12/2022	322,389,374.52 AUD	- AUD	33,000,000.00 AUD	- AUD
01/2023	308,497,905.00 AUD	- AUD	33,000,000.00 AUD	- AUD
02/2023	295,031,605.08 AUD	- AUD	33,000,000.00 AUD	- AUD
03/2023	282,007,734.12 AUD	- AUD	33,000,000.00 AUD	- AUD
04/2023	266,550,924.84 AUD	- AUD	33,000,000.00 AUD	- AUD
05/2023	254,648,386.08 AUD	- AUD	33,000,000.00 AUD	- AUD
06/2023	-	241,849,021.28 AUD	-	33,000,000.00 AUD
07/2023	-	229,325,242.64 AUD	-	33,000,000.00 AUD
08/2023	-	219,113,829.12 AUD	-	30,972,562.91 AUD
09/2023	-	210,746,622.80 AUD	-	27,634,758.07 AUD
10/2023	-	202,540,495.52 AUD	-	24,371,283.74 AUD
11/2023	-	194,277,060.85 AUD	-	21,065,682.36 AUD
12/2023	-	186,089,071.23 AUD	-	20,117,737.43 AUD
01/2024	-	178,208,271.06 AUD	-	19,265,759.03 AUD
02/2024	-	170,384,410.58 AUD	-	18,419,936.27 AUD
03/2024	-	162,833,526.77 AUD	-	17,603,624.52 AUD
04/2024	-	155,188,078.29 AUD	-	16,777,089.54 AUD
05/2024	-	147,631,160.84 AUD	-	15,960,125.49 AUD
06/2024	-	139,716,712.96 AUD	-	15,104,509.51 AUD
07/2024	-	131,616,746.84 AUD	-	14,228,837.49 AUD
08/2024	-	124,574,799.55 AUD	-	13,467,545.90 AUD
09/2024	-	117,933,479.76 AUD	-	12,749,565.38 AUD
10/2024	-	111,744,952.35 AUD	-	12,080,535.39 AUD
11/2024	-	105,164,279.02 AUD	-	11,369,111.25 AUD
12/2024	-	98,823,381.24 AUD	-	10,683,608.78 AUD
01/2025	-	92,197,498.84 AUD	-	9,967,297.17 AUD
02/2025	-	86,316,475.72 AUD	-	9,331,510.89 AUD
03/2025	-	80,684,098.58 AUD	-	8,722,605.25 AUD
04/2025	-	74,852,894.30 AUD	-	8,092,204.79 AUD
05/2025	-	69,254,635.20 AUD	-	7,486,987.59 AUD
06/2025	-	63,216,133.54 AUD	-	6,834,176.60 AUD
07/2025	-	55,987,574.15 AUD	-	6,052,710.72 AUD
08/2025	-	50,409,534.65 AUD	-	5,449,679.42 AUD
09/2025	-	45,367,441.04 AUD	-	4,904,588.22 AUD
10/2025	-	- AUD	-	- AUD

*Based on the following assumptions: CPR of 10%, Net Losses of 0% and Clean Up Call at 10% of the original outstanding discounted receivables balance

Amortisation Profile II

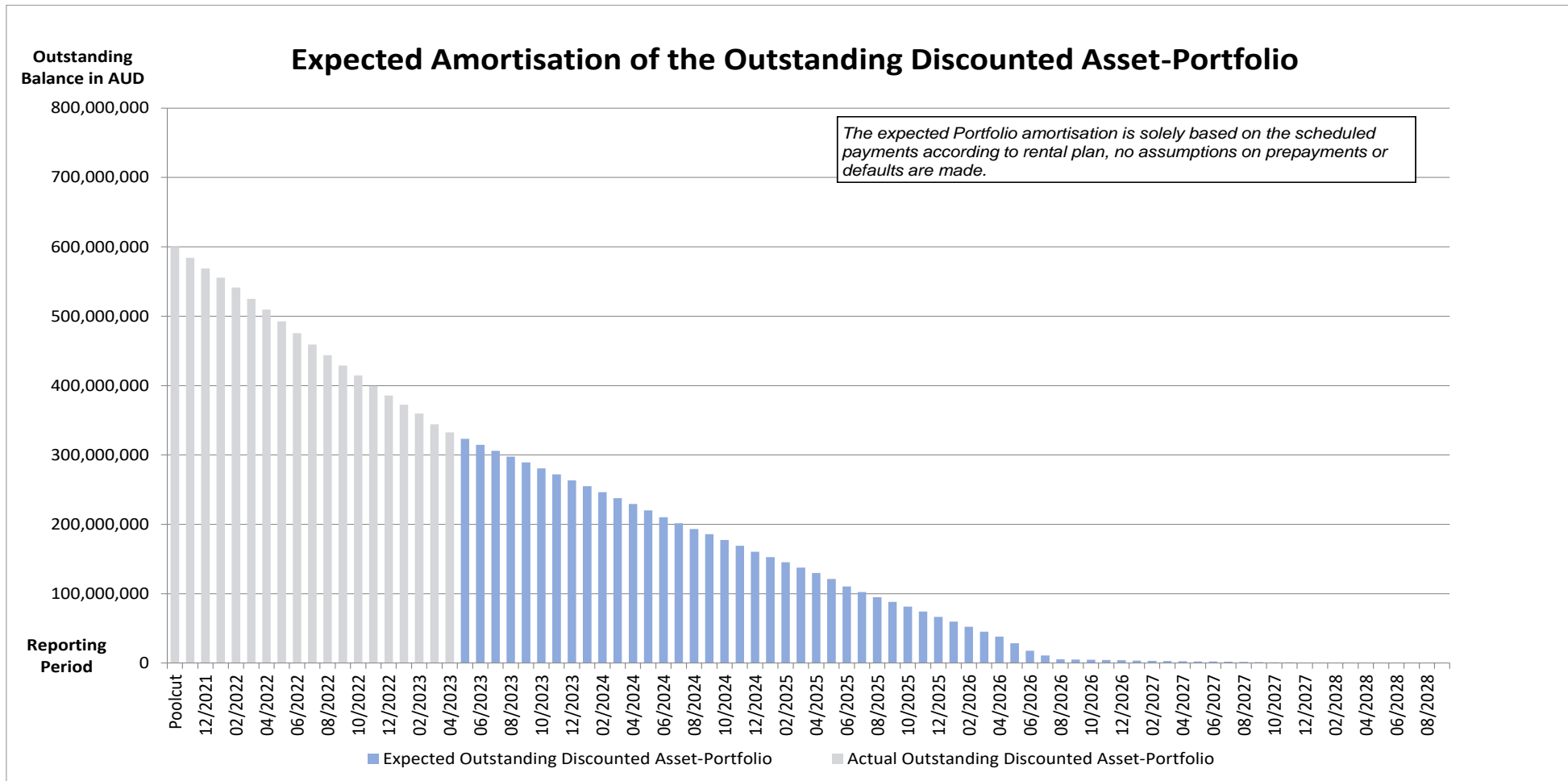


Run Out Schedule I

End of Collection Period	Interest	Principal	Nominal Instalments
arrears	120,902.93 AUD	912,348.32 AUD	1,033,251.25 AUD
05/2023	1,536,497.30 AUD	8,376,403.50 AUD	9,912,900.80 AUD
06/2023	1,548,256.12 AUD	8,649,229.56 AUD	10,197,485.68 AUD
07/2023	1,514,788.06 AUD	8,570,444.63 AUD	10,085,232.69 AUD
08/2023	1,478,589.82 AUD	8,290,453.96 AUD	9,769,043.78 AUD
09/2023	1,440,396.17 AUD	8,369,809.82 AUD	9,810,205.99 AUD
10/2023	1,401,334.55 AUD	8,556,955.10 AUD	9,958,289.65 AUD
11/2023	1,360,167.15 AUD	8,817,493.13 AUD	10,177,660.28 AUD
12/2023	1,317,648.40 AUD	8,399,911.77 AUD	9,717,560.17 AUD
01/2024	1,277,085.26 AUD	8,523,112.22 AUD	9,800,197.48 AUD
02/2024	1,236,426.96 AUD	8,485,530.34 AUD	9,721,957.30 AUD
03/2024	1,195,530.73 AUD	8,648,165.81 AUD	9,843,696.54 AUD
04/2024	1,153,933.01 AUD	8,553,974.62 AUD	9,707,907.63 AUD
05/2024	1,112,805.90 AUD	9,239,231.64 AUD	10,352,037.54 AUD
06/2024	1,068,190.09 AUD	9,898,697.47 AUD	10,966,887.56 AUD
07/2024	1,020,040.48 AUD	8,619,689.30 AUD	9,639,729.78 AUD
08/2024	978,267.46 AUD	8,173,004.51 AUD	9,151,271.97 AUD
09/2024	938,575.28 AUD	7,564,771.05 AUD	8,503,346.33 AUD
10/2024	902,075.22 AUD	8,270,766.91 AUD	9,172,842.13 AUD
11/2024	862,181.99 AUD	8,290,247.99 AUD	9,152,429.98 AUD
12/2024	821,886.12 AUD	8,704,813.06 AUD	9,526,699.18 AUD
01/2025	779,704.42 AUD	7,669,617.80 AUD	8,449,322.22 AUD
02/2025	742,404.39 AUD	7,581,726.42 AUD	8,324,130.81 AUD
03/2025	705,549.03 AUD	7,730,441.24 AUD	8,435,990.27 AUD
04/2025	667,987.52 AUD	7,776,444.24 AUD	8,444,431.76 AUD
05/2025	630,162.57 AUD	8,435,891.11 AUD	9,066,053.68 AUD
06/2025	589,155.83 AUD	10,811,093.36 AUD	11,400,249.19 AUD
07/2025	536,687.39 AUD	8,122,600.91 AUD	8,659,288.30 AUD
08/2025	497,187.17 AUD	7,473,581.49 AUD	7,970,768.66 AUD
09/2025	460,859.30 AUD	6,788,169.38 AUD	7,249,028.68 AUD
10/2025	427,947.16 AUD	6,805,398.73 AUD	7,233,345.89 AUD
11/2025	394,858.57 AUD	6,956,771.20 AUD	7,351,629.77 AUD
12/2025	361,185.58 AUD	7,724,817.06 AUD	8,086,002.64 AUD
01/2026	323,661.86 AUD	6,999,822.37 AUD	7,323,484.23 AUD
02/2026	289,619.85 AUD	7,219,116.42 AUD	7,508,736.27 AUD
03/2026	254,518.57 AUD	7,194,828.52 AUD	7,449,347.09 AUD
04/2026	219,543.48 AUD	7,114,683.72 AUD	7,334,227.20 AUD
05/2026	184,958.47 AUD	9,520,905.47 AUD	9,705,863.94 AUD
06/2026	138,803.76 AUD	10,842,208.47 AUD	10,981,012.23 AUD
07/2026	86,108.08 AUD	6,831,935.55 AUD	6,918,043.63 AUD
08/2026	52,874.92 AUD	5,529,928.37 AUD	5,582,803.29 AUD
09/2026	25,978.16 AUD	349,617.20 AUD	375,595.36 AUD
10/2026	24,277.49 AUD	404,289.60 AUD	428,567.09 AUD
11/2026	22,314.19 AUD	330,997.24 AUD	353,311.43 AUD
12/2026	20,704.54 AUD	324,480.66 AUD	345,185.20 AUD
01/2027	19,132.80 AUD	318,800.39 AUD	337,933.19 AUD
02/2027	17,581.93 AUD	362,062.86 AUD	379,644.79 AUD
03/2027	15,852.57 AUD	309,898.07 AUD	325,750.64 AUD
04/2027	14,352.06 AUD	277,398.53 AUD	291,750.59 AUD
05/2027	13,002.56 AUD	289,589.86 AUD	302,592.42 AUD

06/2027	11,593.82 AUD	290,752.30 AUD	302,346.12 AUD
07/2027	10,179.38 AUD	248,148.82 AUD	258,328.20 AUD
08/2027	8,972.32 AUD	293,212.26 AUD	302,184.58 AUD
09/2027	7,545.93 AUD	221,187.22 AUD	228,733.15 AUD
10/2027	6,469.97 AUD	207,396.95 AUD	213,866.92 AUD
11/2027	5,461.07 AUD	190,008.48 AUD	195,469.55 AUD
12/2027	4,536.71 AUD	174,919.13 AUD	179,455.84 AUD
01/2028	3,685.70 AUD	159,529.59 AUD	163,215.29 AUD
02/2028	2,909.81 AUD	143,672.00 AUD	146,581.81 AUD
03/2028	2,210.85 AUD	128,582.54 AUD	130,793.39 AUD
04/2028	1,585.39 AUD	112,122.58 AUD	113,707.97 AUD
05/2028	1,039.89 AUD	87,558.15 AUD	88,598.04 AUD
06/2028	613.97 AUD	61,062.07 AUD	61,676.04 AUD
07/2028	316.98 AUD	38,016.88 AUD	38,333.86 AUD
08/2028	132.00 AUD	15,710.32 AUD	15,842.32 AUD
09/2028	55.61 AUD	3,789.23 AUD	3,844.84 AUD
10/2028	37.18 AUD	3,288.97 AUD	3,326.15 AUD
11/2028	21.17 AUD	1,797.02 AUD	1,818.19 AUD
12/2028	12.43 AUD	989.94 AUD	1,002.37 AUD
01/2029	7.62 AUD	923.84 AUD	931.46 AUD
02/2029	3.12 AUD	642.13 AUD	645.25 AUD
03/2029	- AUD	- AUD	- AUD
Total	32,869,944.14 AUD	332,395,481.37 AUD	365,265,425.51 AUD

Run Out Schedule II



Outstanding Contracts I - Overview

Total Portfolio as of Poolcut Date			Product Type			
Contract Status Development	Number of Contracts	Outstanding Discounted Receivables Balance	Chattel Mortgage		Consumer Loan	
			Number of Contracts	Outstanding Discounted Receivables Balance	Number of Contracts	Outstanding Discounted Receivables Balance
Normal	15,241	600,025,098.06 AUD	9,371	414,965,143.56 AUD	5,870	185,059,954.50 AUD
In Advance	-	- AUD	-	- AUD	-	- AUD
In Arrears	-	- AUD	-	- AUD	-	- AUD
Paid out/Matured	-	- AUD	-	- AUD	-	- AUD
Early Payout	-	- AUD	-	- AUD	-	- AUD
Gross Salvage	-	- AUD	-	- AUD	-	- AUD
Net Salvage	-	- AUD	-	- AUD	-	- AUD
Total	15,241	600,025,098.06 AUD	9,371	414,965,143.56 AUD	5,870	185,059,954.50 AUD

Total Portfolio as of Previous Month			Product Type			
Contract Status Development	Number of Contracts	Outstanding Discounted Receivables Balance	Chattel Mortgage		Consumer Loan	
			Number of Contracts	Outstanding Discounted Receivables Balance	Number of Contracts	Outstanding Discounted Receivables Balance
Normal	9,940	288,858,110.05 AUD	6,432	210,594,660.55 AUD	3,508	78,263,449.50 AUD
In Advance	785	23,498,951.14 AUD	413	13,916,709.23 AUD	372	9,582,241.91 AUD
In Arrears	1,093	31,459,702.90 AUD	617	19,728,181.30 AUD	476	11,731,521.60 AUD
Paid out/Matured	485	- AUD	316	- AUD	169	- AUD
Early Payout	2,907	- AUD	1,569	- AUD	1,338	- AUD
Gross Salvage	14	529,563.97 AUD	11	420,419.74 AUD	3	109,144.23 AUD
Net Salvage	17	448,149.84 AUD	13	356,521.44 AUD	4	91,628.40 AUD
Total	15,241	344,794,477.90 AUD	9,371	245,016,492.26 AUD	5,870	99,777,985.64 AUD

Total Portfolio as of Current Reporting Period			Product Type			
Contract Status Development	Number of Contracts	Outstanding Discounted Receivables Balance	Chattel Mortgage		Consumer Loan	
			Number of Contracts	Outstanding Discounted Receivables Balance	Number of Contracts	Outstanding Discounted Receivables Balance
Normal	9,966	287,350,979.45 AUD	6,466	209,226,307.65 AUD	3,500	78,124,671.80 AUD
In Advance	595	14,053,953.57 AUD	286	7,584,393.31 AUD	309	6,469,560.26 AUD
In Arrears	1,093	30,618,333.88 AUD	621	19,783,623.79 AUD	472	10,834,710.09 AUD
Paid out/Matured	509	- AUD	337	- AUD	172	- AUD
Early Payout	3,043	- AUD	1,633	- AUD	1,410	- AUD
Gross Salvage	10	372,214.47 AUD	7	263,563.51 AUD	3	108,650.96 AUD
Net Salvage	25	596,917.26 AUD	21	505,288.86 AUD	4	91,628.40 AUD
Total	15,241	332,992,398.63 AUD	9,371	237,363,177.12 AUD	5,870	95,629,221.51 AUD

Outstanding Contracts I - Overview

Total Portfolio as of Poolcut Date			Balloon				Type of Car			
Contract Status Development	Number of Contracts	Outstanding Discounted Receivables Balance	Balloon		No Balloon		New Vehicle		Used Vehicle	
			Number of Contracts	Outstanding Discounted Receivables Balance	Number of Contracts	Outstanding Discounted Receivables Balance	Number of Contracts	Outstanding Discounted Receivables Balance	Number of Contracts	Outstanding Discounted Receivables Balance
Normal	15,241	600,025,098.06 AUD	4,261	251,558,699.25 AUD	10,980	348,466,398.81 AUD	10,680	463,158,976.27 AUD	4,561	136,866,121.79 AUD
In Advance	-	- AUD	-	- AUD	-	- AUD	-	- AUD	-	- AUD
In Arrears	-	- AUD	-	- AUD	-	- AUD	-	- AUD	-	- AUD
Paid out/Matured	-	- AUD	-	- AUD	-	- AUD	-	- AUD	-	- AUD
Early Payout	-	- AUD	-	- AUD	-	- AUD	-	- AUD	-	- AUD
Gross Salvage	-	- AUD	-	- AUD	-	- AUD	-	- AUD	-	- AUD
Net Salvage	-	- AUD	-	- AUD	-	- AUD	-	- AUD	-	- AUD
Total	15,241	600,025,098.06 AUD	4,261	251,558,699.25 AUD	10,980	348,466,398.81 AUD	10,680	463,158,976.27 AUD	4,561	136,866,121.79 AUD

Total Portfolio as of Previous Month			Balloon				Type of Car			
Contract Status Development	Number of Contracts	Outstanding Discounted Receivables Balance	Balloon		No Balloon		New Vehicle		Used Vehicle	
			Number of Contracts	Outstanding Discounted Receivables Balance	Number of Contracts	Outstanding Discounted Receivables Balance	Number of Contracts	Outstanding Discounted Receivables Balance	Number of Contracts	Outstanding Discounted Receivables Balance
Normal	9,940	288,858,110.05 AUD	2,931	139,885,136.74 AUD	7,009	148,972,973.31 AUD	7,211	231,182,297.44 AUD	2,729	57,675,812.61 AUD
In Advance	785	23,498,951.14 AUD	182	8,637,370.53 AUD	603	14,861,580.61 AUD	533	18,013,857.31 AUD	252	5,485,093.83 AUD
In Arrears	1,093	31,459,702.90 AUD	264	11,987,040.28 AUD	829	19,472,662.62 AUD	760	24,010,132.48 AUD	333	7,449,570.42 AUD
Paid out/Matured	485	- AUD	79	- AUD	406	- AUD	293	- AUD	192	- AUD
Early Payout	2,907	- AUD	791	- AUD	2,116	- AUD	1,867	- AUD	1,040	- AUD
Gross Salvage	14	529,563.97 AUD	6	343,671.05 AUD	8	185,892.92 AUD	9	424,726.90 AUD	5	104,837.07 AUD
Net Salvage	17	448,149.84 AUD	8	307,422.38 AUD	9	140,727.46 AUD	7	182,944.04 AUD	10	265,205.80 AUD
Total	15,241	344,794,477.90 AUD	4,261	161,160,640.98 AUD	10,980	183,633,836.92 AUD	10,680	273,813,958.17 AUD	4,561	70,980,519.73 AUD

Total Portfolio as of Current Reporting Period			Balloon				Type of Car			
Contract Status Development	Number of Contracts	Outstanding Discounted Receivables Balance	Balloon		No Balloon		New Vehicle		Used Vehicle	
			Number of Contracts	Outstanding Discounted Receivables Balance	Number of Contracts	Outstanding Discounted Receivables Balance	Number of Contracts	Outstanding Discounted Receivables Balance	Number of Contracts	Outstanding Discounted Receivables Balance
Normal	9,966	287,350,979.45 AUD	2,929	139,181,263.32 AUD	7,037	148,169,716.13 AUD	7,275	230,976,131.04 AUD	2,691	56,374,848.41 AUD
In Advance	595	14,053,953.57 AUD	125	4,446,090.72 AUD	470	9,607,862.85 AUD	386	10,489,337.60 AUD	209	3,564,615.97 AUD
In Arrears	1,093	30,618,333.88 AUD	284	12,832,176.54 AUD	809	17,786,157.34 AUD	750	23,021,724.26 AUD	343	7,596,609.62 AUD
Paid out/Matured	509	- AUD	81	- AUD	428	- AUD	306	- AUD	203	- AUD
Early Payout	3,043	- AUD	827	- AUD	2,216	- AUD	1,947	- AUD	1,096	- AUD
Gross Salvage	10	372,214.47 AUD	5	292,938.59 AUD	5	79,275.88 AUD	6	294,153.28 AUD	4	78,061.19 AUD
Net Salvage	25	596,917.26 AUD	10	349,762.15 AUD	15	247,155.11 AUD	10	216,281.21 AUD	15	380,636.05 AUD
Total	15,241	332,992,398.63 AUD	4,261	157,102,231.32 AUD	10,980	175,890,167.31 AUD	10,680	264,997,627.39 AUD	4,561	67,994,771.24 AUD

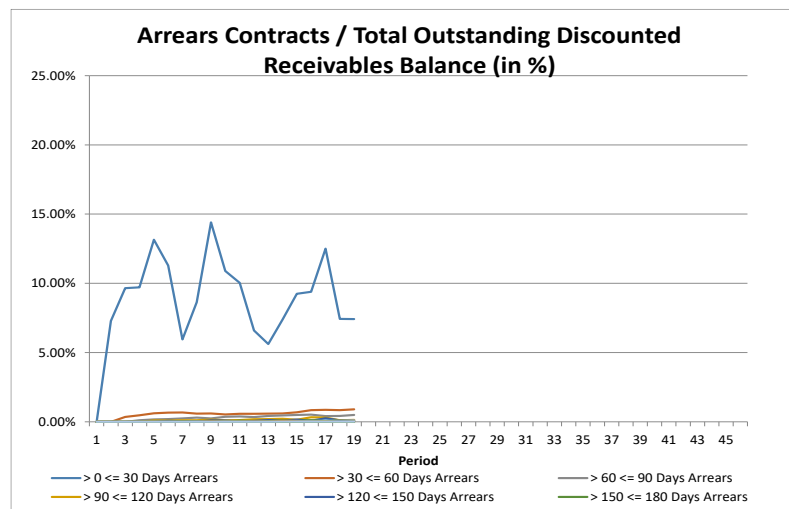
Outstanding Contracts II - Collections

Collections This Reporting Month by Status	Change in Contract Statuses From Last Month	Number of Contracts This Month	Collections
Normal	26	9,966	8,565,825.03 AUD
In Advance	(190)	595	775,035.36 AUD
In Arrears	-	1,093	748,547.39 AUD
Paid out/Matured	24	509	45,663.90 AUD
Early Payout	136	3,043	3,086,891.04 AUD
Gross Salvage	(4)	10	9,325.72 AUD
Net Salvage	8	25	160,245.00 AUD
Total	-	15,241	13,391,533.44 AUD

Development of Pool within Reporting Period	Number of Active Contracts	Total Number of Contracts	Collection Variations	Outstanding Nominal Balance
Beginning of Period	11,832	15,241		379,047,982.65 AUD
Scheduled Collections For Contracts Active This Period			9,737,574.89 AUD	9,737,574.89 AUD
Collections Variations From Normal Contracts This Period			86,532.89 AUD	
Collection Variations From Contracts Paying Out Early This Period			2,987,905.29 AUD	
Collection Variations From Contracts Paying Out/Maturing This Period			18,694.94 AUD	
Collection Variations from Contracts in Advance This Period			603,777.78 AUD	
Collection Variations from Contract In Arrears This Period			(204,993.90 AUD)	
Collection Variations from Contracts Going Into Gross Salvage This Period			1,131.53 AUD	
Collection Variations from Contracts Going Into Net Salvage This Period			145,040.83 AUD	
Other Variations From Scheduled Collections This Period			- AUD	
<i>Instalment Collection Variations</i>			3,638,089.36 AUD	3,638,089.36 AUD
Contract Fees Collected This Period			71,823.59 AUD	
Interest Compensation Collections This Period			(55,954.40 AUD)	
<i>Non Instalment Collection Variations</i>			15,869.19 AUD	
Actual Collections For Contracts Active This Period			13,391,533.44 AUD	
Number of Contracts Paid Out Early This Month	136			
Number of Contracts Paid Out/Matured This Month	24			
Number of Contracts Into Net Salvage This Month	8			
Repurchased Contracts	-	-		
Less Recoveries After Net Salvage				793.75 AUD
Reduced Nominal Balance Due to Unpaid Rental At Net Salvage				163,752.78 AUD
Reduced Nominal Balance Due to Unpaid Rental At Early Payout				241,081.44 AUD
Reduced Nominal Balance Due to Other				1,264.92 AUD
End of Period	11,664	15,241		365,265,425.51 AUD

Arrears Contracts

Total Portfolio					Chattel Mortgage		Consumer Loan	
Days in Arrears	Number of Contracts	Number of Contracts (%)	Outstanding Discounted Receivables Balance	Outstanding Discounted Receivables Balance (%)	Number of Contracts	Outstanding Discounted Receivables Balance	Number of Contracts	Outstanding Discounted Receivables Balance
> 0 <= 30	912	7.82%	24,644,406.53 AUD	7.41%	486	14,860,924.84 AUD	426	9,783,481.69 AUD
> 30 <= 60	97	0.83%	2,983,408.23 AUD	0.90%	65	2,262,616.26 AUD	32	720,791.97 AUD
> 60 <= 90	46	0.39%	1,651,359.91 AUD	0.50%	38	1,386,377.09 AUD	8	264,982.82 AUD
> 90 <= 120	12	0.10%	443,456.41 AUD	0.13%	10	393,628.91 AUD	2	49,827.50 AUD
> 120 <= 150	9	0.08%	148,027.09 AUD	0.04%	6	138,116.33 AUD	3	9,910.76 AUD
> 150 <= 180	8	0.07%	278,365.97 AUD	0.08%	6	208,348.26 AUD	2	70,017.71 AUD
> 180 <= 210	9	0.08%	259,361.47 AUD	0.08%	8	224,381.56 AUD	1	34,979.91 AUD
> 210 <= 240	2	0.02%	149,182.87 AUD	0.04%	2	149,182.87 AUD	-	- AUD
> 240 <= 270	4	0.03%	384,657.17 AUD	0.12%	4	384,657.17 AUD	-	- AUD
> 270 <= 300	-	0.00%	- AUD	0.00%	-	- AUD	-	- AUD
> 300 <= 330	-	0.00%	- AUD	0.00%	-	- AUD	-	- AUD
> 330 <= 360	-	0.00%	- AUD	0.00%	-	- AUD	-	- AUD
> 360	1	0.01%	9,368.69 AUD	0.00%	-	- AUD	1	9,368.69 AUD
Total	1,100	9.43%	30,951,594.34 AUD	9.31%	625	20,008,233.29 AUD	475	10,943,361.05 AUD



Arrears Contracts

Total Portfolio					Balloon				Vehicle Status			
Days in Arrears	Number of Contracts	Number of Contracts (%)	Outstanding Discounted Receivables Balance	Outstanding Discounted Receivables Balance (%)	Balloon		No Balloon		New		Used	
					Number of Contracts	Outstanding Discounted Receivables Balance	Number of Contracts	Outstanding Discounted Receivables Balance	Number of Contracts	Outstanding Discounted Receivables Balance	Number of Contracts	Outstanding Discounted Receivables Balance
> 0 <= 30	912	7.82%	24,644,406.53 AUD	7.41%	219	9,720,351.45 AUD	693	14,924,055.08 AUD	634	18,761,772.63 AUD	278	5,882,633.90 AUD
> 30 <= 60	97	0.83%	2,983,408.23 AUD	0.90%	29	1,458,801.11 AUD	68	1,524,607.12 AUD	60	2,247,038.33 AUD	37	736,369.90 AUD
> 60 <= 90	46	0.39%	1,651,359.91 AUD	0.50%	23	993,193.81 AUD	23	658,166.10 AUD	30	1,135,273.28 AUD	16	516,086.63 AUD
> 90 <= 120	12	0.10%	443,456.41 AUD	0.13%	6	265,179.65 AUD	6	178,276.76 AUD	8	305,712.90 AUD	4	137,743.51 AUD
> 120 <= 150	9	0.08%	148,027.09 AUD	0.04%	-	- AUD	9	148,027.09 AUD	5	51,366.46 AUD	4	96,660.63 AUD
> 150 <= 180	8	0.07%	278,365.97 AUD	0.08%	4	198,158.65 AUD	4	80,207.32 AUD	7	244,140.56 AUD	1	34,225.41 AUD
> 180 <= 210	9	0.08%	259,361.47 AUD	0.08%	3	83,141.74 AUD	6	176,219.73 AUD	6	187,432.00 AUD	3	71,929.47 AUD
> 210 <= 240	2	0.02%	149,182.87 AUD	0.04%	1	128,259.52 AUD	1	20,923.35 AUD	2	149,182.87 AUD	-	- AUD
> 240 <= 270	4	0.03%	384,657.17 AUD	0.12%	3	247,108.75 AUD	1	137,548.42 AUD	2	193,669.37 AUD	2	190,987.80 AUD
> 270 <= 300	-	0.00%	- AUD	0.00%	-	- AUD	-	- AUD	-	- AUD	-	- AUD
> 300 <= 330	-	0.00%	- AUD	0.00%	-	- AUD	-	- AUD	-	- AUD	-	- AUD
> 330 <= 360	-	0.00%	- AUD	0.00%	-	- AUD	-	- AUD	-	- AUD	-	- AUD
> 360	1	0.01%	9,368.69 AUD	0.00%	-	- AUD	1	9,368.69 AUD	1	9,368.69 AUD	-	- AUD
Total	1,100	9.43%	30,951,594.34 AUD	9.31%	288	13,094,194.68 AUD	812	17,857,399.66 AUD	755	23,284,957.09 AUD	345	7,666,637.25 AUD

Net Salvage Loss

Net Salvage Loss This Period			
Product Type	Type of Car	Number of Contracts	Net Salvage Loss
Chattel Mortgage	New	3	33,337.17 AUD
	Used	5	120,021.68 AUD
Total Chattel Mortgage		8	153,358.85 AUD
Consumer Loan	New	-	- AUD
	Used	-	- AUD
Total Consumer Loan		-	- AUD
Total		8	153,358.85 AUD

Cumulative Net Salvage Loss as of the End of the Monthly Period	612,790.92 AUD
Outstanding Discounted Receivables Balance at Poolcut	600,025,098.06 AUD
Cumulative Net Loss Ratio	0.10213%

Monthly Period	Per Period		Cumulative Net Salvage Loss	
	Number of Contracts	Net Salvage Loss	Number of Contracts	Net Salvage Loss
11/2021	-	- AUD	-	- AUD
12/2021	-	- AUD	-	- AUD
01/2022	-	- AUD	-	- AUD
02/2022	-	- AUD	-	- AUD
03/2022	-	- AUD	-	- AUD
04/2022	-	- AUD	-	- AUD
05/2022	-	- AUD	-	- AUD
06/2022	-	- AUD	-	- AUD
07/2022	1	23,440.30 AUD	1	23,440.30 AUD
08/2022	4	57,706.41 AUD	5	81,146.71 AUD
09/2022	1	60,349.39 AUD	6	141,496.10 AUD
10/2022	1	5,937.71 AUD	7	147,433.81 AUD
11/2022	2	144,698.53 AUD	9	292,132.34 AUD
12/2022	2	26,228.63 AUD	11	318,360.97 AUD
01/2023	2	25,455.90 AUD	13	343,816.87 AUD
02/2023	3	68,262.70 AUD	16	412,079.57 AUD
03/2023	1	47,352.50 AUD	17	459,432.07 AUD
04/2023	8	153,358.85 AUD	25	612,790.92 AUD
05/2023	-	- AUD	-	- AUD
06/2023	-	- AUD	-	- AUD
07/2023	-	- AUD	-	- AUD
08/2023	-	- AUD	-	- AUD
09/2023	-	- AUD	-	- AUD
10/2023	-	- AUD	-	- AUD
11/2023	-	- AUD	-	- AUD
12/2023	-	- AUD	-	- AUD
01/2024	-	- AUD	-	- AUD
02/2024	-	- AUD	-	- AUD
03/2024	-	- AUD	-	- AUD
04/2024	-	- AUD	-	- AUD
05/2024	-	- AUD	-	- AUD
06/2024	-	- AUD	-	- AUD
07/2024	-	- AUD	-	- AUD
08/2024	-	- AUD	-	- AUD
09/2024	-	- AUD	-	- AUD
10/2024	-	- AUD	-	- AUD
11/2024	-	- AUD	-	- AUD
12/2024	-	- AUD	-	- AUD
01/2025	-	- AUD	-	- AUD
02/2025	-	- AUD	-	- AUD
03/2025	-	- AUD	-	- AUD
04/2025	-	- AUD	-	- AUD
05/2025	-	- AUD	-	- AUD
06/2025	-	- AUD	-	- AUD
07/2025	-	- AUD	-	- AUD
08/2025	-	- AUD	-	- AUD
09/2025	-	- AUD	-	- AUD
10/2025	-	- AUD	-	- AUD
11/2025	-	- AUD	-	- AUD
Total	25	612,790.92 AUD		

Net Salvage After Recoveries

Net Salvaged Contracts						
Product Type	Vehicle Status	Number of Contracts	Gross Salvage Loss	Net Salvage Loss	Recoveries After Net Salvage	Net Salvage Loss After Recoveries
Chattel Mortgage	New	8	541,368.29 AUD	153,720.01 AUD	32,792.94 AUD	120,927.07 AUD
	Used	13	458,461.51 AUD	364,753.80 AUD	(250.92) AUD	365,004.72 AUD
Total Chattel Mortgage		21	999,829.80 AUD	518,473.81 AUD	32,542.02 AUD	485,931.79 AUD
Consumer Loan	New	2	66,539.05 AUD	66,287.10 AUD	(656.00) AUD	66,943.10 AUD
	Used	2	90,093.43 AUD	28,030.01 AUD	2,382.04 AUD	25,647.97 AUD
Total Consumer Loan		4	156,632.48 AUD	94,317.11 AUD	1,726.04 AUD	92,591.07 AUD
Total		25	1,156,462.28 AUD	612,790.92 AUD	34,268.06 AUD	578,522.86 AUD

Prepayments

Period Number	Reporting Period	Unscheduled Payments	Opening Outstanding Discounted Receivables Balance	Periodic CPR	Annualised CPR
0	Poolcut	- AUD	- AUD		
1	11/2021	5,188,258.11 AUD	600,025,098.06 AUD	0.86%	10.03%
2	12/2021	4,579,685.92 AUD	584,284,031.03 AUD	0.78%	8.85%
3	01/2022	2,741,342.02 AUD	568,933,158.93 AUD	0.48%	5.53%
4	02/2022	3,337,851.56 AUD	555,556,298.45 AUD	0.60%	7.56%
5	03/2022	5,445,824.85 AUD	541,478,701.09 AUD	1.01%	11.22%
6	04/2022	4,593,099.08 AUD	524,992,591.30 AUD	0.87%	10.14%
7	05/2022	6,363,116.33 AUD	509,466,787.17 AUD	1.25%	13.76%
8	06/2022	6,297,060.40 AUD	492,432,848.37 AUD	1.28%	14.49%
9	07/2022	5,980,710.84 AUD	475,580,922.30 AUD	1.26%	13.84%
10	08/2022	5,404,312.88 AUD	459,209,842.01 AUD	1.18%	13.01%
11	09/2022	4,751,296.31 AUD	443,615,516.21 AUD	1.07%	12.28%
12	10/2022	4,429,370.71 AUD	428,807,300.51 AUD	1.03%	11.51%
13	11/2022	3,951,482.72 AUD	414,561,296.17 AUD	0.95%	11.00%
14	12/2022	3,173,581.07 AUD	399,393,166.38 AUD	0.79%	8.97%
15	01/2023	3,259,724.76 AUD	385,740,376.49 AUD	0.85%	9.51%
16	02/2023	3,041,283.55 AUD	372,465,449.19 AUD	0.82%	10.14%
17	03/2023	5,189,122.89 AUD	359,589,767.53 AUD	1.44%	15.73%
18	04/2023	2,751,056.77 AUD	344,346,328.06 AUD	0.80%	9.30%

The annualised Constant Prepayment Rate (CPR) of the underlying receivables is based upon the most recent periodic CPR. Periodic CPR is equal to the total unscheduled principal received in the most recent period divided by the start of period principal balance. This is then annualised as follows:

$$1 - ((1 - \text{Periodic CPR})^{\text{number of periods in a year}})$$

Pool Data I

Down Payments

Total Portfolio						Product Type			
Down Payment	Number of Contracts	Percentage of Contracts	Outstanding Discounted Receivables Balance	Percentage of Balance	Down Payment/ Purchase Price in %	Chattel Mortgage		Consumer Loan	
						Number of Contracts	Outstanding Discounted Receivables Balance	Number of Contracts	Outstanding Discounted Receivables Balance
No Down Payment	2,017	17.29%	60,803,362.53 AUD	18.29%	0.00%	1,401	46,664,273.84 AUD	616	14,139,088.69 AUD
0.01 - 10,000.00	5,794	49.67%	150,170,399.19 AUD	45.18%	10.96%	3,473	98,664,616.12 AUD	2,321	51,505,783.07 AUD
10,000.01 - 20,000.00	2,267	19.44%	63,069,069.09 AUD	18.97%	26.53%	1,467	45,806,470.59 AUD	800	17,262,598.50 AUD
20,000.01 - 30,000.00	822	7.05%	24,774,806.50 AUD	7.45%	35.99%	508	18,004,022.02 AUD	314	6,770,784.48 AUD
30,000.01 - 40,000.00	381	3.27%	11,916,837.26 AUD	3.59%	42.75%	249	9,032,595.89 AUD	132	2,884,241.37 AUD
40,000.01 - 50,000.00	170	1.46%	7,468,646.99 AUD	2.25%	43.32%	116	5,885,190.39 AUD	54	1,583,456.60 AUD
50,000.01 - 60,000.00	83	0.71%	4,121,638.85 AUD	1.24%	45.21%	60	3,535,539.76 AUD	23	586,099.09 AUD
60,000.01 - 70,000.00	48	0.41%	3,040,849.28 AUD	0.91%	45.89%	40	2,868,920.32 AUD	8	171,928.96 AUD
70,000.01 - 80,000.00	23	0.20%	1,159,209.00 AUD	0.35%	49.59%	16	927,862.17 AUD	7	231,346.83 AUD
80,000.01 - 90,000.00	14	0.12%	863,329.22 AUD	0.26%	51.91%	11	753,262.64 AUD	3	110,066.58 AUD
90,000.01 - 100,000.00	11	0.09%	1,117,607.41 AUD	0.34%	46.51%	8	963,165.40 AUD	3	154,442.01 AUD
100,000.01 - 110,000.00	7	0.06%	735,780.43 AUD	0.22%	42.43%	7	735,780.43 AUD	-	- AUD
110,000.01 - 120,000.00	5	0.04%	614,499.94 AUD	0.18%	48.81%	5	614,499.94 AUD	-	- AUD
120,000.01 - 130,000.00	5	0.04%	509,379.33 AUD	0.15%	51.70%	3	461,640.67 AUD	2	47,738.66 AUD
130,000.01 - 140,000.00	3	0.03%	440,934.72 AUD	0.13%	44.71%	3	440,934.72 AUD	-	- AUD
140,000.01 - 150,000.00	-	0.00%	- AUD	0.00%	0.00%	-	- AUD	-	- AUD
> 150,000.00	14	0.12%	1,589,131.63 AUD	0.48%	68.07%	13	1,499,113.36 AUD	1	90,018.27 AUD
Total	11,664	100.00%	332,395,481.37 AUD	100.00%	19.53%	7,380	236,857,888.26 AUD	4,284	95,537,593.11 AUD

Statistics Down Payments	
Minimum Down Payment	- AUD
Maximum Down Payment	630,000.00 AUD
Weighted Average Down Payment (Customers that made a Down Payment)	16,358.20 AUD
Weighted Average Down Payment	13,365.88 AUD

Type of Payment

Total Portfolio				
Type of Payment	Number of Contracts	Percentage of Contracts	Outstanding Discounted Receivables Balance	Percentage of Balance
Direct Debit	11,417	97.88%	325,464,776.65 AUD	97.91%
Other	247	2.12%	6,930,704.72 AUD	2.09%
Total	11,664	100.00%	332,395,481.37 AUD	100.00%

Product Type			
Chattel Mortgage		Consumer Loan	
Number of Contracts	Outstanding Discounted Receivables Balance	Number of Contracts	Outstanding Discounted Receivables Balance
7,222	231,582,666	4,195	93,882,111
158	5,275,223	89	1,655,482
7,380	236,857,888.26 AUD	4,284	95,537,593.11 AUD

Pool Data I

Down Payments

Total Portfolio						Balloon				Vehicle Status			
Down Payment	Number of Contracts	Percentage of Contracts	Outstanding Discounted Receivables Balance	Percentage of Balance	Down Payment/ Purchase Price in %	Balloon		No Balloon		New		Used	
						Number of Contracts	Outstanding Discounted Receivables Balance	Number of Contracts	Outstanding Discounted Receivables Balance	Number of Contracts	Outstanding Discounted Receivables Balance	Number of Contracts	Outstanding Discounted Receivables Balance
No Down Payment	2,017	17.29%	60,803,362.53 AUD	18.29%	0.00%	703	32,428,198.89 AUD	1,314	28,375,163.64 AUD	1,401	49,263,609.84 AUD	616	11,539,752.69 AUD
0.01 - 10,000.00	5,794	49.67%	150,170,399.19 AUD	45.18%	10.96%	1,521	62,757,731.85 AUD	4,273	87,412,667.34 AUD	3,957	114,873,228.49 AUD	1,837	35,297,170.70 AUD
10,000.01 - 20,000.00	2,267	19.44%	63,069,069.09 AUD	18.97%	26.53%	629	28,235,106.29 AUD	1,638	34,833,962.80 AUD	1,727	50,559,946.28 AUD	540	12,509,122.81 AUD
20,000.01 - 30,000.00	822	7.05%	24,774,806.50 AUD	7.45%	35.99%	234	12,653,859.27 AUD	588	12,120,947.23 AUD	677	21,121,544.99 AUD	145	3,653,261.51 AUD
30,000.01 - 40,000.00	381	3.27%	11,916,837.26 AUD	3.59%	42.75%	100	5,943,986.96 AUD	281	5,972,850.30 AUD	325	10,415,271.77 AUD	56	1,501,565.49 AUD
40,000.01 - 50,000.00	170	1.46%	7,468,646.99 AUD	2.25%	43.32%	59	4,734,911.48 AUD	111	2,733,735.51 AUD	138	5,961,726.61 AUD	32	1,506,920.38 AUD
50,000.01 - 60,000.00	83	0.71%	4,121,638.85 AUD	1.24%	45.21%	34	2,706,647.92 AUD	49	1,414,990.93 AUD	77	3,858,742.44 AUD	6	262,896.41 AUD
60,000.01 - 70,000.00	48	0.41%	3,040,849.28 AUD	0.91%	45.89%	22	2,158,224.28 AUD	26	882,625.00 AUD	42	2,567,962.76 AUD	6	472,886.52 AUD
70,000.01 - 80,000.00	23	0.20%	1,159,209.00 AUD	0.35%	49.59%	8	598,372.07 AUD	15	560,836.93 AUD	22	1,046,485.55 AUD	1	112,723.45 AUD
80,000.01 - 90,000.00	14	0.12%	863,329.22 AUD	0.26%	51.91%	5	567,210.48 AUD	9	296,118.74 AUD	13	806,431.99 AUD	1	56,897.23 AUD
90,000.01 - 100,000.00	11	0.09%	1,117,607.41 AUD	0.34%	46.51%	6	821,738.10 AUD	5	295,869.31 AUD	10	1,059,188.65 AUD	1	58,418.76 AUD
100,000.01 - 110,000.00	7	0.06%	735,780.43 AUD	0.22%	42.43%	2	371,192.39 AUD	5	364,588.04 AUD	5	528,500.20 AUD	2	207,280.23 AUD
110,000.01 - 120,000.00	5	0.04%	614,499.94 AUD	0.18%	48.81%	4	581,537.34 AUD	1	32,962.60 AUD	4	503,585.55 AUD	1	110,914.39 AUD
120,000.01 - 130,000.00	5	0.04%	509,379.33 AUD	0.15%	51.70%	3	461,640.67 AUD	2	47,738.66 AUD	4	332,780.75 AUD	1	176,598.58 AUD
130,000.01 - 140,000.00	3	0.03%	440,934.72 AUD	0.13%	44.71%	3	440,934.72 AUD	-	- AUD	3	440,934.72 AUD	-	- AUD
140,000.01 - 150,000.00	-	0.00%	- AUD	0.00%	0.00%	-	- AUD	-	- AUD	-	- AUD	-	- AUD
> 150,000.00	14	0.12%	1,589,131.63 AUD	0.48%	68.07%	10	1,291,176.46 AUD	4	297,955.17 AUD	12	1,441,405.59 AUD	2	147,726.04 AUD
Total	11,664	100.00%	332,395,481.37 AUD	100.00%	19.53%	3,343	156,752,469.17 AUD	8,321	175,643,012.20 AUD	8,417	264,781,346.18 AUD	3,247	67,614,135.19 AUD

Statistics Down Payments	
Minimum Down Payment	- AUD
Maximum Down Payment	630,000.00 AUD
Weighted Average Down Payment (Customers that made a Down Payment)	16,358.20 AUD
Weighted Average Down Payment	13,365.88 AUD

Type of Payment

Total Portfolio				
Type of Payment	Number of Contracts	Percentage of Contracts	Outstanding Discounted Receivables Balance	Percentage of Balance
Direct Debit	11,417	97.88%	325,464,776.65 AUD	97.91%
Other	247	2.12%	6,930,704.72 AUD	2.09%
Total	11,664	100.00%	332,395,481.37 AUD	100.00%

Balloon				Vehicle Status			
Balloon		No Balloon		New		Used	
Number of Contracts	Outstanding Discounted Receivables Balance	Number of Contracts	Outstanding Discounted Receivables Balance	Number of Contracts	Outstanding Discounted Receivables Balance	Number of Contracts	Outstanding Discounted Receivables Balance
3,270	153,342,928	8,147	172,121,849	8,253	259,573,449	3,164	65,891,328
73	3,409,541	174	3,521,164	164	5,207,897	83	1,722,808
3,343	156,752,469.17 AUD	8,321	175,643,012.20 AUD	8,417	264,781,346.18 AUD	3,247	67,614,135.19 AUD

Pool Data II

Distribution of Contracts and Vehicles per Borrower

Number of Contracts Per Borrower	Number of Customers	Percentage of Customers	Number of Contracts	Percentage of Contracts	Outstanding Discounted Receivables Balance	Percentage of Balance
1	13,788	99.14%	11,473	98.17%	396,170,639.50 AUD	98.25%
2	113	0.81%	196	1.68%	6,730,428.63 AUD	1.67%
3	6	0.04%	18	0.15%	312,622.74 AUD	0.08%
4	-	0.00%	-	0.00%	- AUD	0.00%
5	-	0.00%	-	0.00%	- AUD	0.00%
6 - 10	-	0.00%	-	0.00%	- AUD	0.00%
> 10	-	0.00%	-	0.00%	- AUD	0.00%
Total	13,907	100.00%	11,687	100.00%	403,213,690.87 AUD	100.00%

Top 20 Borrower

Ranking	Outstanding Discounted Receivables Balance	Percentage of Overall Balance	Number of Contracts
1	354,316.63 AUD	0.10659 %	1
2	354,316.63 AUD	0.10659 %	1
3	333,628.63 AUD	0.10037 %	1
4	329,821.58 AUD	0.09923 %	1
5	312,748.72 AUD	0.09409 %	1
6	312,748.72 AUD	0.09409 %	1
7	286,037.35 AUD	0.08605 %	1
8	279,925.57 AUD	0.08421 %	1
9	245,118.36 AUD	0.07374 %	1
10	245,073.74 AUD	0.07373 %	1
11	242,222.29 AUD	0.07287 %	1
12	240,040.67 AUD	0.07222 %	1
13	238,923.33 AUD	0.07188 %	1
14	236,866.88 AUD	0.07126 %	1
15	231,110.53 AUD	0.06953 %	1
16	223,799.22 AUD	0.06733 %	1
17	206,370.39 AUD	0.06209 %	1
18	206,160.61 AUD	0.06202 %	1
19	204,978.19 AUD	0.06167 %	1
20	191,558.59 AUD	0.05763 %	1
	5,275,766.63 AUD	1.58720 %	20

Pool Data III

Distribution by Outstanding Discounted Receivables Balance

Total Portfolio					Product Type			
Distribution by Outstanding Discounted Receivables Balance	Number of Contracts	Percentage of Contracts	Outstanding Discounted Receivables Balance	Percentage of Balance	Chattel Mortgage		Consumer Loan	
					Number of Contracts	Outstanding Discounted Receivables Balance	Number of Contracts	Outstanding Discounted Receivables Balance
0.00 - 10,000.00	1,498	12.84%	8,920,852.47 AUD	2.68%	739	4,342,477.72 AUD	759	4,578,374.75 AUD
10,000.01 - 20,000.00	3,316	28.43%	50,512,981.32 AUD	15.20%	1,820	27,952,891.18 AUD	1,496	22,560,090.14 AUD
20,000.01 - 30,000.00	2,854	24.47%	70,516,742.24 AUD	21.21%	1,815	45,173,042.45 AUD	1,039	25,343,699.79 AUD
30,000.01 - 40,000.00	1,781	15.27%	61,335,271.99 AUD	18.45%	1,219	42,109,966.07 AUD	562	19,225,305.92 AUD
40,000.01 - 50,000.00	896	7.68%	39,705,655.20 AUD	11.95%	671	29,700,145.65 AUD	225	10,005,509.55 AUD
50,000.01 - 60,000.00	472	4.05%	25,656,502.36 AUD	7.72%	374	20,364,947.40 AUD	98	5,291,554.96 AUD
60,000.01 - 70,000.00	263	2.25%	16,998,605.85 AUD	5.11%	225	14,544,972.44 AUD	38	2,453,633.41 AUD
70,000.01 - 80,000.00	190	1.63%	14,248,008.78 AUD	4.29%	167	12,516,103.72 AUD	23	1,731,905.06 AUD
80,000.01 - 90,000.00	115	0.99%	9,744,062.13 AUD	2.93%	93	7,881,775.10 AUD	22	1,862,287.03 AUD
90,000.01 - 100,000.00	83	0.71%	7,834,703.88 AUD	2.36%	70	6,614,371.46 AUD	13	1,220,332.42 AUD
100,000.01 - 110,000.00	60	0.51%	6,282,905.10 AUD	1.89%	57	5,969,487.18 AUD	3	313,417.92 AUD
110,000.01 - 120,000.00	37	0.32%	4,216,613.21 AUD	1.27%	34	3,869,046.16 AUD	3	347,567.05 AUD
120,000.01 - 130,000.00	25	0.21%	3,138,546.65 AUD	0.94%	25	3,138,546.65 AUD	-	- AUD
130,000.01 - 140,000.00	18	0.15%	2,417,141.72 AUD	0.73%	18	2,417,141.72 AUD	-	- AUD
140,000.01 - 150,000.00	8	0.07%	1,170,771.73 AUD	0.35%	8	1,170,771.73 AUD	-	- AUD
> 150,000.00	48	0.41%	9,696,116.74 AUD	2.92%	45	9,092,201.63 AUD	3	603,915.11 AUD
Total	11,664	100.00%	332,395,481.37 AUD	100.00%	7,380	236,857,888.26 AUD	4,284	95,537,593.11 AUD

Statistics Outstanding Discounted Receivables Balance	
Minimum Outstanding Discounted Receivables Balance	- AUD
Maximum Outstanding Discounted Receivables Balance	354,316.63 AUD
Average Outstanding Discounted Receivables Balance	28,497.55 AUD

Distribution by Original Balance

Total Portfolio					Product Type			
Distribution by Original Balance	Number of Contracts	Percentage of Contracts	Outstanding Discounted Receivables Balance	Percentage of Balance	Chattel Mortgage		Consumer Loan	
					Number of Contracts	Outstanding Discounted Receivables Balance	Number of Contracts	Outstanding Discounted Receivables Balance
0.00 - 10,000.00	65	0.56%	187,078.38 AUD	0.06%	23	47,902.48 AUD	42	139,175.90 AUD
10,000.01 - 20,000.00	1,061	9.10%	8,282,635.99 AUD	2.49%	469	3,698,530.06 AUD	592	4,584,105.93 AUD
20,000.01 - 30,000.00	2,359	20.22%	32,704,079.64 AUD	9.84%	1,213	16,753,829.57 AUD	1,146	15,950,250.07 AUD
30,000.01 - 40,000.00	2,429	20.82%	49,102,183.92 AUD	14.77%	1,420	28,455,705.70 AUD	1,009	20,646,478.22 AUD
40,000.01 - 50,000.00	1,861	15.96%	50,636,129.61 AUD	15.23%	1,226	33,320,489.34 AUD	635	17,315,640.27 AUD
50,000.01 - 60,000.00	1,420	12.17%	46,669,806.35 AUD	14.04%	1,040	33,915,296.47 AUD	380	12,754,509.88 AUD
60,000.01 - 70,000.00	927	7.95%	36,425,427.72 AUD	10.96%	675	26,474,804.10 AUD	252	9,950,623.62 AUD
70,000.01 - 80,000.00	472	4.05%	22,057,512.31 AUD	6.64%	381	17,849,377.65 AUD	91	4,208,134.66 AUD
80,000.01 - 90,000.00	264	2.26%	14,894,350.78 AUD	4.48%	222	12,569,252.35 AUD	42	2,325,098.43 AUD
90,000.01 - 100,000.00	178	1.53%	11,225,610.87 AUD	3.38%	156	9,855,335.32 AUD	22	1,370,275.55 AUD
100,000.01 - 110,000.00	198	1.70%	14,035,668.83 AUD	4.22%	172	12,168,367.35 AUD	26	1,867,301.48 AUD
110,000.01 - 120,000.00	90	0.77%	7,088,474.60 AUD	2.13%	80	6,279,305.82 AUD	10	809,168.78 AUD
120,000.01 - 130,000.00	83	0.71%	7,243,012.92 AUD	2.18%	63	5,556,032.96 AUD	20	1,686,979.96 AUD
130,000.01 - 140,000.00	62	0.53%	5,970,158.58 AUD	1.80%	56	5,407,332.80 AUD	6	562,825.78 AUD
140,000.01 - 150,000.00	43	0.37%	4,335,594.18 AUD	1.30%	41	4,134,662.87 AUD	2	200,931.31 AUD
> 150,000.00	152	1.30%	21,537,756.69 AUD	6.48%	143	20,371,663.42 AUD	9	1,166,093.27 AUD
Total	11,664	100.00%	332,395,481.37 AUD	100.00%	7,380	236,857,888.26 AUD	4,284	95,537,593.11 AUD

Statistics	
Minimum Original Balance	5,398.00 AUD
Maximum Original Balance	471,296.41 AUD
Weighted Average Original Receivables Balance (by ODRB)	70,026.32 AUD

Pool Data III

Distribution by Outstanding Discounted Receivables Balance

Total Portfolio					Balloon				Vehicle Status			
Distribution by Outstanding Discounted Receivables Balance	Number of Contracts	Percentage of Contracts	Outstanding Discounted Receivables Balance	Percentage of Balance	Balloon		No Balloon		New		Used	
					Number of Contracts	Outstanding Discounted Receivables Balance	Number of Contracts	Outstanding Discounted Receivables Balance	Number of Contracts	Outstanding Discounted Receivables Balance	Number of Contracts	Outstanding Discounted Receivables Balance
0.00 - 10,000.00	1,498	12.84%	8,920,852.47 AUD	2.68%	30	167,489.29 AUD	1,468	8,753,363.18 AUD	703	4,340,556.59 AUD	795	4,580,295.88 AUD
10,000.01 - 20,000.00	3,316	28.43%	50,512,981.32 AUD	15.20%	254	4,159,599.02 AUD	3,062	46,353,382.30 AUD	2,161	33,368,697.80 AUD	1,155	17,144,283.52 AUD
20,000.01 - 30,000.00	2,854	24.47%	70,516,742.24 AUD	21.21%	680	17,318,953.13 AUD	2,174	53,197,789.11 AUD	2,185	54,134,651.85 AUD	669	16,382,090.39 AUD
30,000.01 - 40,000.00	1,781	15.27%	61,335,271.99 AUD	18.45%	796	27,697,328.29 AUD	985	33,637,943.70 AUD	1,455	50,112,991.83 AUD	326	11,222,280.16 AUD
40,000.01 - 50,000.00	896	7.68%	39,705,655.20 AUD	11.95%	550	24,504,932.31 AUD	346	15,200,722.89 AUD	767	34,012,274.02 AUD	129	5,693,381.18 AUD
50,000.01 - 60,000.00	472	4.05%	25,656,502.36 AUD	7.72%	314	17,097,411.50 AUD	158	8,559,090.86 AUD	399	21,653,945.33 AUD	73	4,002,557.03 AUD
60,000.01 - 70,000.00	263	2.25%	16,998,605.85 AUD	5.11%	204	13,214,776.11 AUD	59	3,783,829.74 AUD	218	14,109,831.44 AUD	45	2,888,774.41 AUD
70,000.01 - 80,000.00	190	1.63%	14,248,008.78 AUD	4.29%	157	11,789,511.10 AUD	33	2,458,497.68 AUD	172	12,912,217.54 AUD	18	1,335,791.24 AUD
80,000.01 - 90,000.00	115	0.99%	9,744,062.13 AUD	2.93%	104	8,808,447.35 AUD	11	935,614.78 AUD	106	8,978,200.11 AUD	9	765,862.02 AUD
90,000.01 - 100,000.00	83	0.71%	7,834,703.88 AUD	2.36%	74	7,001,259.09 AUD	9	833,444.79 AUD	78	7,352,526.33 AUD	5	482,177.55 AUD
100,000.01 - 110,000.00	60	0.51%	6,282,905.10 AUD	1.89%	56	5,865,846.58 AUD	4	417,058.52 AUD	56	5,861,857.00 AUD	4	421,048.10 AUD
110,000.01 - 120,000.00	37	0.32%	4,216,613.21 AUD	1.27%	34	3,865,861.96 AUD	3	350,751.25 AUD	32	3,650,831.54 AUD	5	565,781.67 AUD
120,000.01 - 130,000.00	25	0.21%	3,138,546.65 AUD	0.94%	20	2,514,422.28 AUD	5	624,124.37 AUD	23	2,889,877.39 AUD	2	248,669.26 AUD
130,000.01 - 140,000.00	18	0.15%	2,417,141.72 AUD	0.73%	14	1,879,742.69 AUD	4	537,399.03 AUD	12	1,608,377.19 AUD	6	808,764.53 AUD
140,000.01 - 150,000.00	8	0.07%	1,170,771.73 AUD	0.35%	8	1,170,771.73 AUD	-	- AUD	8	1,170,771.73 AUD	-	- AUD
> 150,000.00	48	0.41%	9,696,116.74 AUD	2.92%	48	9,696,116.74 AUD	-	- AUD	42	8,623,738.49 AUD	6	1,072,378.25 AUD
Total	11,664	100.00%	332,395,481.37 AUD	100.00%	3,343	156,752,469.17 AUD	8,321	175,643,012.20 AUD	8,417	264,781,346.18 AUD	3,247	67,614,135.19 AUD

Statistics Outstanding Discounted Receivables Balance	
Minimum Outstanding Discounted Receivables Balance	- AUD
Maximum Outstanding Discounted Receivables Balance	354,316.63 AUD
Average Outstanding Discounted Receivables Balance	28,497.55 AUD

Distribution by Original Balance

Total Portfolio					Balloon				Vehicle Status			
Distribution by Original Balance	Number of Contracts	Percentage of Contracts	Outstanding Discounted Receivables Balance	Percentage of Balance	Balloon		No Balloon		New		Used	
					Number of Contracts	Outstanding Discounted Receivables Balance	Number of Contracts	Outstanding Discounted Receivables Balance	Number of Contracts	Outstanding Discounted Receivables Balance	Number of Contracts	Outstanding Discounted Receivables Balance
0.00 - 10,000.00	65	0.56%	187,078.38 AUD	0.06%	-	- AUD	65	187,078.38 AUD	10	35,703.78 AUD	55	151,374.60 AUD
10,000.01 - 20,000.00	1,061	9.10%	8,282,635.99 AUD	2.49%	35	405,794.22 AUD	1,026	7,876,841.77 AUD	354	2,890,858.02 AUD	707	5,391,777.97 AUD
20,000.01 - 30,000.00	2,359	20.22%	32,704,079.64 AUD	9.84%	206	3,590,644.10 AUD	2,153	29,113,435.54 AUD	1,445	20,071,472.41 AUD	914	12,632,607.23 AUD
30,000.01 - 40,000.00	2,429	20.82%	49,102,183.92 AUD	14.77%	479	11,657,822.51 AUD	1,950	37,444,361.41 AUD	1,758	35,474,157.81 AUD	671	13,628,026.11 AUD
40,000.01 - 50,000.00	1,861	15.96%	50,636,129.61 AUD	15.23%	586	18,227,595.49 AUD	1,275	32,408,534.12 AUD	1,466	39,497,267.53 AUD	395	11,138,862.08 AUD
50,000.01 - 60,000.00	1,420	12.17%	46,669,806.35 AUD	14.04%	569	21,443,593.62 AUD	851	25,226,212.73 AUD	1,220	39,735,082.31 AUD	200	6,934,724.04 AUD
60,000.01 - 70,000.00	927	7.95%	36,425,427.72 AUD	10.96%	412	18,314,047.00 AUD	515	18,111,380.72 AUD	810	31,594,993.13 AUD	117	4,830,434.59 AUD
70,000.01 - 80,000.00	472	4.05%	22,057,512.31 AUD	6.64%	265	13,828,212.51 AUD	207	8,229,299.80 AUD	408	18,854,760.13 AUD	64	3,202,752.18 AUD
80,000.01 - 90,000.00	264	2.26%	14,894,350.78 AUD	4.48%	178	10,751,013.59 AUD	86	4,143,337.19 AUD	215	12,042,065.01 AUD	49	2,852,285.77 AUD
90,000.01 - 100,000.00	178	1.53%	11,225,610.87 AUD	3.38%	126	8,532,628.56 AUD	52	2,692,982.31 AUD	160	10,110,161.14 AUD	18	1,115,449.73 AUD
100,000.01 - 110,000.00	198	1.70%	14,035,668.83 AUD	4.22%	138	10,402,741.26 AUD	60	3,632,927.57 AUD	181	12,809,405.76 AUD	17	1,226,263.07 AUD
110,000.01 - 120,000.00	90	0.77%	7,088,474.60 AUD	2.13%	71	5,837,624.12 AUD	19	1,250,850.48 AUD	81	6,373,977.15 AUD	9	714,497.45 AUD
120,000.01 - 130,000.00	83	0.71%	7,243,012.92 AUD	2.18%	64	5,844,278.93 AUD	19	1,398,733.99 AUD	77	6,749,509.44 AUD	6	493,503.48 AUD
130,000.01 - 140,000.00	62	0.53%	5,970,158.58 AUD	1.80%	53	5,309,348.88 AUD	9	660,809.70 AUD	57	5,412,138.44 AUD	5	558,020.14 AUD
140,000.01 - 150,000.00	43	0.37%	4,335,594.18 AUD	1.30%	39	4,044,226.83 AUD	4	291,367.35 AUD	41	4,112,155.29 AUD	2	223,438.89 AUD
> 150,000.00	152	1.30%	21,537,756.69 AUD	6.48%	122	18,562,897.55 AUD	30	2,974,859.14 AUD	134	19,017,638.83 AUD	18	2,520,117.86 AUD
Total	11,664	100.00%	332,395,481.37 AUD	100.00%	3,343	156,752,469.17 AUD	8,321	175,643,012.20 AUD	8,417	264,781,346.18 AUD	3,247	67,614,135.19 AUD

Statistics	
Minimum Original Balance	5,398.00 AUD
Maximum Original Balance	471,296.41 AUD
Weighted Average Original Receivables Balance (by ODRB)	70,026.32 AUD

Pool Data IV

Interest Rate paid by the Receivable Debtor

Total Portfolio					Product Type			
Interest Rate paid by the Receivable Debtor	Number of Contracts	Percentage of Contracts	Outstanding Discounted Receivables Balance	Percentage of Balance	Chattel Mortgage		Consumer Loan	
					Number of Contracts	Outstanding Discounted Receivables Balance	Number of Contracts	Outstanding Discounted Receivables Balance
0.00%	-	0.00%	- AUD	0.00%	-	- AUD	-	- AUD
0.01% - 1.00%	-	0.00%	- AUD	0.00%	-	- AUD	-	- AUD
1.01% - 2.00%	543	4.66%	13,040,869.37 AUD	3.92%	331	8,716,929.84 AUD	212	4,323,939.53 AUD
2.01% - 3.00%	768	6.58%	29,241,415.77 AUD	8.80%	523	24,076,790.73 AUD	245	5,164,625.04 AUD
3.01% - 4.00%	1,088	9.33%	40,115,169.29 AUD	12.07%	1,079	39,872,076.67 AUD	9	243,092.62 AUD
4.01% - 5.00%	1,222	10.48%	41,758,982.50 AUD	12.56%	993	35,561,310.78 AUD	229	6,197,671.72 AUD
5.01% - 6.00%	1,648	14.13%	50,923,976.42 AUD	15.32%	1,055	36,001,689.98 AUD	593	14,922,286.44 AUD
6.01% - 7.00%	2,129	18.25%	55,673,962.66 AUD	16.75%	942	29,278,342.05 AUD	1,187	26,395,620.61 AUD
7.01% - 8.00%	1,695	14.53%	40,326,199.29 AUD	12.13%	610	17,767,019.32 AUD	1,085	22,559,179.97 AUD
8.01% - 9.00%	1,625	13.93%	40,557,658.35 AUD	12.20%	1,125	29,617,268.02 AUD	500	10,940,390.33 AUD
9.01% - 10.00%	748	6.41%	17,082,367.37 AUD	5.14%	600	13,730,873.83 AUD	148	3,351,493.54 AUD
10.01% - 11.00%	158	1.35%	3,127,835.29 AUD	0.94%	114	2,135,536.23 AUD	44	992,299.06 AUD
11.01% - 12.00%	22	0.19%	383,227.77 AUD	0.12%	8	100,050.81 AUD	14	283,176.96 AUD
12.01% - 13.00%	7	0.06%	46,700.12 AUD	0.01%	-	- AUD	7	46,700.12 AUD
13.01% - 14.00%	7	0.06%	78,445.10 AUD	0.02%	-	- AUD	7	78,445.10 AUD
14.01% - 15.00%	4	0.03%	38,672.07 AUD	0.01%	-	- AUD	4	38,672.07 AUD
15.01% - 16.00%	-	0.00%	- AUD	0.00%	-	- AUD	-	- AUD
> 16.00%	-	0.00%	- AUD	0.00%	-	- AUD	-	- AUD
Total	11,664	100.00%	332,395,481.37 AUD	100.00%	7,380	236,857,888.26 AUD	4,284	95,537,593.11 AUD

Statistics Interest Rate		
Minimum Interest Rate Debtor		1.40%
Maximum Interest Rate Debtor		14.99%
Weighted Average Interest Rate Debtor		5.91%

Pool Data IV

Interest Rate paid by the Receivable Debtor

Total Portfolio					Balloons				Vehicle Status			
Interest Rate paid by the Receivable Debtor	Number of Contracts	Percentage of Contracts	Outstanding Discounted Receivables Balance	Percentage of Balance	Balloons		No Balloons		New		Used	
					Number of Contracts	Outstanding Discounted Receivables Balance	Number of Contracts	Outstanding Discounted Receivables Balance	Number of Contracts	Outstanding Discounted Receivables Balance	Number of Contracts	Outstanding Discounted Receivables Balance
0.00%	-	0.00%	- AUD	0.00%	-	- AUD	-	- AUD	-	- AUD	-	- AUD
0.01% - 1.00%	-	0.00%	- AUD	0.00%	-	- AUD	-	- AUD	-	- AUD	-	- AUD
1.01% - 2.00%	543	4.66%	13,040,869.37 AUD	3.92%	173	6,469,284.68 AUD	370	6,571,584.69 AUD	543	13,040,869.37 AUD	-	- AUD
2.01% - 3.00%	768	6.58%	29,241,415.77 AUD	8.80%	344	19,281,526.85 AUD	424	9,959,888.92 AUD	768	29,241,415.77 AUD	-	- AUD
3.01% - 4.00%	1,088	9.33%	40,115,169.29 AUD	12.07%	486	26,068,820.66 AUD	602	14,046,348.63 AUD	1,004	37,730,038.30 AUD	84	2,385,130.99 AUD
4.01% - 5.00%	1,222	10.48%	41,758,982.50 AUD	12.56%	499	24,380,257.48 AUD	723	17,378,725.02 AUD	985	35,361,526.12 AUD	237	6,397,456.38 AUD
5.01% - 6.00%	1,648	14.13%	50,923,976.42 AUD	15.32%	569	27,458,335.06 AUD	1,079	23,465,641.36 AUD	1,288	42,391,526.94 AUD	360	8,532,449.48 AUD
6.01% - 7.00%	2,129	18.25%	55,673,962.66 AUD	16.75%	548	23,670,940.33 AUD	1,581	32,003,022.33 AUD	1,532	43,089,977.38 AUD	597	12,583,985.28 AUD
7.01% - 8.00%	1,695	14.53%	40,326,199.29 AUD	12.13%	327	13,421,334.98 AUD	1,368	26,904,864.31 AUD	952	26,078,079.99 AUD	743	14,248,119.30 AUD
8.01% - 9.00%	1,625	13.93%	40,557,658.35 AUD	12.20%	285	11,788,331.84 AUD	1,340	28,769,326.51 AUD	1,026	29,357,183.40 AUD	599	11,200,474.95 AUD
9.01% - 10.00%	748	6.41%	17,082,367.37 AUD	5.14%	101	3,881,493.27 AUD	647	13,200,874.10 AUD	284	7,804,117.45 AUD	464	9,278,249.92 AUD
10.01% - 11.00%	158	1.35%	3,127,835.29 AUD	0.94%	9	278,281.16 AUD	149	2,849,554.13 AUD	22	544,196.42 AUD	136	2,583,638.87 AUD
11.01% - 12.00%	22	0.19%	383,227.77 AUD	0.12%	1	27,087.90 AUD	21	356,139.87 AUD	7	86,190.66 AUD	15	297,037.11 AUD
12.01% - 13.00%	7	0.06%	46,700.12 AUD	0.01%	-	- AUD	7	46,700.12 AUD	1	206.96 AUD	6	46,493.16 AUD
13.01% - 14.00%	7	0.06%	78,445.10 AUD	0.02%	1	26,774.96 AUD	6	51,670.14 AUD	4	47,717.70 AUD	3	30,727.40 AUD
14.01% - 15.00%	4	0.03%	38,672.07 AUD	0.01%	-	- AUD	4	38,672.07 AUD	1	8,299.72 AUD	3	30,372.35 AUD
15.01% - 16.00%	-	0.00%	- AUD	0.00%	-	- AUD	-	- AUD	-	- AUD	-	- AUD
> 16.00%	-	0.00%	- AUD	0.00%	-	- AUD	-	- AUD	-	- AUD	-	- AUD
Total	11,664	100.00%	332,395,481.37 AUD	100.00%	3,343	156,752,469.17 AUD	8,321	175,643,012.20 AUD	8,417	264,781,346.18 AUD	3,247	67,614,135.19 AUD

Statistics Interest Rate			
Minimum Interest Rate Debtor			1.40%
Maximum Interest Rate Debtor			14.99%
Weighted Average Interest Rate Debtor			5.91%

Pool Data V

Original Term

Total Portfolio					Product Type			
Length of Original Term (months)	Number of Contracts	Percentage of Contracts	Outstanding Discounted Receivables Balance	Percentage of Balance	Chattel Mortgage		Consumer Loan	
					Number of Contracts	Outstanding Discounted Receivables Balance	Number of Contracts	Outstanding Discounted Receivables Balance
0 - 11	-	0.00%	- AUD	0.00%	-	- AUD	-	- AUD
12 - 23	3	0.03%	8,368.70 AUD	0.00%	2	6,570.96 AUD	1	1,797.74 AUD
24 - 35	150	1.29%	887,262.42 AUD	0.27%	95	720,541.01 AUD	55	166,721.41 AUD
36 - 47	1,297	11.12%	20,686,176.70 AUD	6.22%	914	16,753,802.86 AUD	383	3,932,373.84 AUD
48 - 59	1,818	15.59%	45,549,264.18 AUD	13.70%	1,190	33,666,865.12 AUD	628	11,882,399.06 AUD
60 - 71	7,855	67.34%	249,489,839.68 AUD	75.06%	5,179	185,710,108.31 AUD	2,676	63,779,731.38 AUD
> 71	541	4.64%	15,774,569.68 AUD	4.75%	-	- AUD	541	15,774,569.68 AUD
Total	11,664	100.00%	332,395,481.37 AUD	100.00%	7,380	236,857,888.26 AUD	4,284	95,537,593.11 AUD

Statistics Original Term			
Minimum Original Term in months			22
Maximum Original Term in months			84
Weighted Average Original Term month (by ODRB)			57.90

Remaining Term

Total Portfolio					Product Type			
Length of Remaining Term (months)	Number of Contracts	Percentage of Contracts	Outstanding Discounted Receivables Balance	Percentage of Balance	Chattel Mortgage		Consumer Loan	
					Number of Contracts	Outstanding Discounted Receivables Balance	Number of Contracts	Outstanding Discounted Receivables Balance
0 - 11	918	7.87%	8,907,745.67 AUD	2.68%	589	7,023,616.91 AUD	329	1,884,128.76 AUD
12 - 23	1,960	16.80%	41,981,868.52 AUD	12.63%	1,249	30,565,069.11 AUD	711	11,416,799.41 AUD
24 - 35	4,685	40.17%	130,778,916.73 AUD	39.34%	3,054	95,180,836.23 AUD	1,631	35,598,080.50 AUD
36 - 47	3,643	31.23%	135,802,816.55 AUD	40.86%	2,480	103,520,990.95 AUD	1,163	32,281,825.60 AUD
48 - 59	267	2.29%	8,282,579.52 AUD	2.49%	8	567,375.06 AUD	259	7,715,204.46 AUD
60 - 71	191	1.64%	6,641,554.38 AUD	2.00%	-	- AUD	191	6,641,554.38 AUD
> 71	-	0.00%	- AUD	0.00%	-	- AUD	-	- AUD
Total	11,664	100.00%	332,395,481.37 AUD	100.00%	7,380	236,857,888.26 AUD	4,284	95,537,593.11 AUD

Statistics Remaining Term			
Minimum Remaining Term in months			0
Maximum Remaining Term in months			70
Weighted Average Remaining Term in months (by ODRB)			32.51

Distribution by Seasoning

Total Portfolio					Product Type			
Seasoning (months)	Number of Contracts	Percentage of Contracts	Outstanding Discounted Receivables Balance	Percentage of Balance	Chattel Mortgage		Consumer Loan	
					Number of Contracts	Outstanding Discounted Receivables Balance	Number of Contracts	Outstanding Discounted Receivables Balance
0 - 11	9	0.08%	549,872.51 AUD	0.17%	8	514,300.15 AUD	1	35,572.36 AUD
12 - 23	4,455	38.19%	150,307,459.06 AUD	45.22%	2,997	111,942,652.89 AUD	1,458	38,364,806.17 AUD
24 - 35	6,617	56.73%	171,721,061.94 AUD	51.66%	4,096	118,603,957.76 AUD	2,521	53,117,104.18 AUD
36 - 47	452	3.88%	8,875,388.93 AUD	2.67%	236	5,471,945.00 AUD	216	3,403,443.93 AUD
48 - 59	82	0.70%	526,803.29 AUD	0.16%	41	311,487.95 AUD	41	215,315.34 AUD
60 - 71	38	0.33%	362,980.17 AUD	0.11%	2	13,544.51 AUD	36	349,435.66 AUD
> 71	11	0.09%	51,915.47 AUD	0.02%	-	- AUD	11	51,915.47 AUD
Total	11,664	100.00%	332,395,481.37 AUD	100.00%	7,380	236,857,888.26 AUD	4,284	95,537,593.11 AUD

Statistics Seasoning			
Minimum Seasoning in months			6
Maximum Seasoning in months			84
Weighted Average Seasoning Term in months (by ODRB)			25.44

Pool Data V

Original Term

Total Portfolio					Balloon				Vehicle Status			
Length of Original Term (months)	Number of Contracts	Percentage of Contracts	Outstanding Discounted Receivables Balance	Percentage of Balance	Balloon		No Balloon		New		Used	
					Number of Contracts	Outstanding Discounted Receivables Balance	Number of Contracts	Outstanding Discounted Receivables Balance	Number of Contracts	Outstanding Discounted Receivables Balance	Number of Contracts	Outstanding Discounted Receivables Balance
0 - 11	-	0.00%	- AUD	0.00%	-	- AUD	-	- AUD	-	- AUD	-	- AUD
12 - 23	3	0.03%	8,368.70 AUD	0.00%	-	- AUD	3	8,368.70 AUD	-	- AUD	3	8,368.70 AUD
24 - 35	150	1.29%	887,262.42 AUD	0.27%	12	379,922.94 AUD	138	507,339.48 AUD	39	321,919.92 AUD	111	565,342.50 AUD
36 - 47	1,297	11.12%	20,686,176.70 AUD	6.22%	264	9,344,680.96 AUD	1,033	11,341,495.74 AUD	905	17,184,705.66 AUD	392	3,501,471.04 AUD
48 - 59	1,818	15.59%	45,549,264.18 AUD	13.70%	548	22,919,406.11 AUD	1,270	22,629,858.07 AUD	1,479	40,576,473.91 AUD	339	4,972,790.27 AUD
60 - 71	7,855	67.34%	249,489,839.68 AUD	75.06%	2,519	124,108,459.16 AUD	5,336	125,381,380.53 AUD	5,629	195,827,560.10 AUD	2,226	53,662,279.59 AUD
> 71	541	4.64%	15,774,569.68 AUD	4.75%	-	- AUD	541	15,774,569.68 AUD	365	10,870,686.59 AUD	176	4,903,883.09 AUD
Total	11,664	100.00%	332,395,481.37 AUD	100.00%	3,343	156,752,469.17 AUD	8,321	175,643,012.20 AUD	8,417	264,781,346.18 AUD	3,247	67,614,135.19 AUD

Statistics Original Term			
Minimum Original Term in months			22
Maximum Original Term in months			84
Weighted Average Original Term month (by ODRB)			57.90

Remaining Term

Total Portfolio					Balloon				Vehicle Status			
Length of Remaining Term (months)	Number of Contracts	Percentage of Contracts	Outstanding Discounted Receivables Balance	Percentage of Balance	Balloon		No Balloon		New		Used	
					Number of Contracts	Outstanding Discounted Receivables Balance	Number of Contracts	Outstanding Discounted Receivables Balance	Number of Contracts	Outstanding Discounted Receivables Balance	Number of Contracts	Outstanding Discounted Receivables Balance
0 - 11	918	7.87%	8,907,745.67 AUD	2.68%	177	4,723,311.06 AUD	741	4,184,434.61 AUD	581	7,199,101.31 AUD	337	1,708,644.36 AUD
12 - 23	1,960	16.80%	41,981,868.52 AUD	12.63%	533	21,238,582.16 AUD	1,427	20,743,286.36 AUD	1,498	36,534,179.82 AUD	462	5,447,688.70 AUD
24 - 35	4,685	40.17%	130,778,916.73 AUD	39.34%	1,390	61,918,496.23 AUD	3,295	68,860,420.50 AUD	3,410	104,532,347.22 AUD	1,275	26,246,569.51 AUD
36 - 47	3,643	31.23%	135,802,816.55 AUD	40.86%	1,237	68,500,237.14 AUD	2,406	67,302,579.41 AUD	2,612	106,112,591.02 AUD	1,031	29,690,225.53 AUD
48 - 59	267	2.29%	8,282,579.52 AUD	2.49%	6	371,842.58 AUD	261	7,910,736.94 AUD	187	5,898,088.80 AUD	80	2,384,490.72 AUD
60 - 71	191	1.64%	6,641,554.38 AUD	2.00%	-	- AUD	191	6,641,554.38 AUD	129	4,505,038.01 AUD	62	2,136,516.37 AUD
> 71	-	0.00%	- AUD	0.00%	-	- AUD	-	- AUD	-	- AUD	-	- AUD
Total	11,664	100.00%	332,395,481.37 AUD	100.00%	3,343	156,752,469.17 AUD	8,321	175,643,012.20 AUD	8,417	264,781,346.18 AUD	3,247	67,614,135.19 AUD

Statistics Remaining Term			
Minimum Remaining Term in months			0
Maximum Remaining Term in months			70
Weighted Average Remaining Term in months (by ODRB)			32.51

Distribution by Seasoning

Total Portfolio					Balloon				Vehicle Status			
Seasoning (months)	Number of Contracts	Percentage of Contracts	Outstanding Discounted Receivables Balance	Percentage of Balance	Balloon		No Balloon		New		Used	
					Number of Contracts	Outstanding Discounted Receivables Balance	Number of Contracts	Outstanding Discounted Receivables Balance	Number of Contracts	Outstanding Discounted Receivables Balance	Number of Contracts	Outstanding Discounted Receivables Balance
0 - 11	9	0.08%	549,872.51 AUD	0.17%	5	304,385.44 AUD	4	245,487.07 AUD	5	308,930.12 AUD	4	240,942.39 AUD
12 - 23	4,455	38.19%	150,307,459.06 AUD	45.22%	1,328	71,341,623.54 AUD	3,127	78,965,835.52 AUD	3,144	118,088,511.45 AUD	1,311	32,218,947.61 AUD
24 - 35	6,617	56.73%	171,721,061.94 AUD	51.66%	1,860	80,264,606.17 AUD	4,757	91,456,455.77 AUD	4,864	138,536,331.72 AUD	1,753	33,184,730.22 AUD
36 - 47	452	3.88%	8,875,388.93 AUD	2.67%	119	4,457,729.15 AUD	333	4,417,659.78 AUD	317	7,124,278.64 AUD	135	1,751,110.29 AUD
48 - 59	82	0.70%	526,803.29 AUD	0.16%	30	370,580.36 AUD	52	156,222.93 AUD	54	424,903.86 AUD	28	101,899.43 AUD
60 - 71	38	0.33%	362,980.17 AUD	0.11%	1	13,544.51 AUD	37	349,435.66 AUD	26	263,621.32 AUD	12	99,358.85 AUD
> 71	11	0.09%	51,915.47 AUD	0.02%	-	- AUD	11	51,915.47 AUD	7	34,769.07 AUD	4	17,146.40 AUD
Total	11,664	100.00%	332,395,481.37 AUD	100.00%	3,343	156,752,469.17 AUD	8,321	175,643,012.20 AUD	8,417	264,781,346.18 AUD	3,247	67,614,135.19 AUD

Statistics Seasoning			
Minimum Seasoning in months			6
Maximum Seasoning in months			84
Weighted Average Seasoning Term in months (by ODRB)			25.44

Pool Data VI

Product Type

Total Portfolio					Balloon				Vehicle Status			
Product Type	Number of Contracts	Percentage of Contracts	Outstanding Discounted Receivables Balance	Percentage of Balance	Balloon		No Balloon		New		Used	
					Number of Contracts	Outstanding Discounted Receivables Balance	Number of Contracts	Outstanding Discounted Receivables Balance	Number of Contracts	Outstanding Discounted Receivables Balance	Number of Contracts	Outstanding Discounted Receivables Balance
Chattel Mortgage	7,380	63.27%	236,857,888.26 AUD	71.26%	2,652	130,482,199.20 AUD	4,728	106,375,689.06 AUD	5,543	193,877,512.66 AUD	1,837	42,980,375.60 AUD
Consumer Loan	4,284	36.73%	95,537,593.11 AUD	28.74%	691	26,270,269.97 AUD	3,593	69,267,323.14 AUD	2,874	70,903,833.52 AUD	1,410	24,633,759.59 AUD
Total	11,664	100.00%	332,395,481.37 AUD	100.00%	3,343	156,752,469.17 AUD	8,321	175,643,012.20 AUD	8,417	264,781,346.18 AUD	3,247	67,614,135.19 AUD

Vehicle Status

Total Portfolio					Product Type			
Type of Car	Number of Contracts	Percentage of Contracts	Outstanding Discounted Receivables Balance	Percentage of Balance	Chattel Mortgage		Consumer Loan	
					Number of Contracts	Outstanding Discounted Receivables Balance	Number of Contracts	Outstanding Discounted Receivables Balance
New Vehicles	8,417	72.16%	264,781,346.18 AUD	79.66%	5,543	193,877,512.66 AUD	2,874	70,903,833.52 AUD
Used Vehicles	3,247	27.84%	67,614,135.19 AUD	20.34%	1,837	42,980,375.60 AUD	1,410	24,633,759.59 AUD
Total	11,664	100.00%	332,395,481.37 AUD	100.00%	7,380	236,857,888.26 AUD	4,284	95,537,593.11 AUD

Balloon

Total Portfolio				
Balloon	Number of Contracts	Percentage of Contracts	Outstanding Discounted Receivables Balance	Percentage of Balance
Balloon	3,343	28.66%	156,752,469.17 AUD	47.16%
No Balloon	8,321	71.34%	175,643,012.20 AUD	52.84%
Total	11,664	100.00%	332,395,481.37 AUD	100.00%

Pool Data VII

Distribution by Vehicle Brand and Models

Total Portfolio						Product Type				
Make	Model	Number of Contracts	Percentage of Contracts	Outstanding Discounted Receivables Balance	Percentage of Balance	Chattel Mortgage		Consumer Loan		
						Number of Contracts	Outstanding Discounted Receivables Balance	Number of Contracts	Outstanding Discounted Receivables Balance	
Volkswagen Group Vehicles										
AUDI	A1	42	0.36%	771,905.91 AUD	0.23%	20	352,215.57 AUD	22	419,690.34 AUD	
	A3	232	1.99%	6,880,689.78 AUD	2.07%	106	3,545,800.82 AUD	126	3,334,888.96 AUD	
	A4	104	0.89%	3,281,752.11 AUD	0.99%	64	2,329,197.28 AUD	40	952,554.83 AUD	
	A5	65	0.56%	2,509,067.09 AUD	0.75%	45	1,882,188.44 AUD	20	626,878.65 AUD	
	A6	26	0.22%	1,123,273.36 AUD	0.34%	17	870,016.79 AUD	9	253,256.57 AUD	
	A7	11	0.09%	876,897.30 AUD	0.26%	10	867,315.48 AUD	1	9,581.82 AUD	
	A8	3	0.03%	114,973.37 AUD	0.03%	3	114,973.37 AUD	-	- AUD	
	E-TRON	5	0.04%	440,726.25 AUD	0.13%	4	379,016.41 AUD	1	61,709.84 AUD	
	Q2	83	0.71%	1,910,411.26 AUD	0.57%	32	817,215.08 AUD	51	1,093,196.18 AUD	
	Q3	243	2.08%	7,325,746.77 AUD	2.20%	130	4,249,155.63 AUD	113	3,076,591.14 AUD	
	Q5	258	2.21%	9,690,046.50 AUD	2.92%	176	6,782,019.78 AUD	82	2,908,026.72 AUD	
	Q7	202	1.73%	11,095,283.68 AUD	3.34%	160	9,167,583.00 AUD	42	1,927,700.68 AUD	
	Q8	18	0.15%	1,454,651.94 AUD	0.44%	16	1,362,278.98 AUD	2	92,372.96 AUD	
	R8	6	0.05%	781,929.53 AUD	0.24%	6	781,929.53 AUD	-	- AUD	
	TT	7	0.06%	232,721.76 AUD	0.07%	5	191,457.10 AUD	2	41,264.66 AUD	
		SubTotal	1,305	11.19%	48,490,076.61 AUD	14.59%	794	33,692,363.26 AUD	511	14,797,713.35 AUD
BENTLEY	BENTAYGA	2	0.02%	462,635.93 AUD	0.14%	2	462,635.93 AUD	-	- AUD	
	CONTINENTAL	4	0.03%	480,693.70 AUD	0.14%	3	422,274.94 AUD	1	58,418.76 AUD	
	SubTotal	6	0.05%	943,329.63 AUD	0.28%	5	884,910.87 AUD	1	58,418.76 AUD	
LAMBORGHINI	AVENTADOR	-	0.00%	- AUD	0.00%	-	- AUD	-	- AUD	
	HURACAN	2	0.02%	258,299.38 AUD	0.08%	2	258,299.38 AUD	-	- AUD	
	URUS	2	0.02%	557,867.08 AUD	0.17%	1	312,748.72 AUD	1	245,118.36 AUD	
	SubTotal	4	0.03%	816,166.46 AUD	0.25%	3	571,048.10 AUD	1	245,118.36 AUD	
PORSCHE	BOXSTER	7	0.06%	736,260.73 AUD	0.22%	7	736,260.73 AUD	-	- AUD	
	CARRERA / 911	21	0.18%	3,721,306.84 AUD	1.12%	19	3,509,474.17 AUD	2	211,832.67 AUD	
	CAYENNE	75	0.64%	6,062,122.18 AUD	1.82%	67	5,721,109.79 AUD	8	341,012.39 AUD	
	CAYMAN	1	0.01%	73,495.77 AUD	0.02%	-	- AUD	1	73,495.77 AUD	
	MACAN	99	0.85%	6,612,226.20 AUD	1.99%	92	6,060,321.28 AUD	7	551,904.92 AUD	
	PANAMERA	-	0.00%	- AUD	0.00%	-	- AUD	-	- AUD	
	TAYCAN	13	0.11%	2,100,403.96 AUD	0.63%	13	2,100,403.96 AUD	-	- AUD	
		SubTotal	216	1.85%	19,305,815.68 AUD	5.81%	198	18,127,569.93 AUD	18	1,178,245.75 AUD
	SKODA	FABIA	37	0.32%	444,464.89 AUD	0.13%	10	145,734.48 AUD	27	298,730.41 AUD
		KAROQ	52	0.45%	981,328.11 AUD	0.30%	19	324,209.83 AUD	33	657,118.28 AUD
KODIAQ		100	0.86%	2,723,588.29 AUD	0.82%	41	1,208,306.31 AUD	59	1,515,281.98 AUD	
KAMIQ		67	0.57%	1,213,583.82 AUD	0.37%	17	260,929.96 AUD	50	952,653.86 AUD	
SCALA		39	0.33%	686,433.29 AUD	0.21%	11	215,058.67 AUD	28	471,374.62 AUD	
OCTAVIA		95	0.81%	1,898,166.11 AUD	0.57%	22	420,863.99 AUD	73	1,477,302.12 AUD	
RAPID		1	0.01%	4,017.38 AUD	0.00%	-	- AUD	1	4,017.38 AUD	
SUPERB		22	0.19%	605,430.16 AUD	0.18%	11	333,901.95 AUD	11	271,528.21 AUD	
		SubTotal	413	3.54%	8,557,012.05 AUD	2.57%	131	2,909,005.19 AUD	282	5,648,006.86 AUD
VOLKSWAGEN	AMAROK	677	5.80%	18,308,509.64 AUD	5.51%	528	14,582,145.05 AUD	149	3,726,364.59 AUD	
	ARTEON	6	0.05%	202,930.41 AUD	0.06%	2	73,899.11 AUD	4	129,031.30 AUD	
	CADDY	87	0.75%	1,460,779.50 AUD	0.44%	82	1,417,187.02 AUD	5	43,592.48 AUD	
	CARAVELLE	2	0.02%	49,585.63 AUD	0.01%	2	49,585.63 AUD	-	- AUD	
	CRAFTER	122	1.05%	3,165,923.68 AUD	0.95%	120	3,108,590.07 AUD	2	57,333.61 AUD	
	GOLF	360	3.09%	5,886,705.83 AUD	1.77%	134	2,456,536.07 AUD	226	3,430,169.76 AUD	
	JETTA	8	0.07%	23,891.32 AUD	0.01%	2	3,364.03 AUD	6	20,527.29 AUD	
	MULTIVAN	33	0.28%	1,134,171.91 AUD	0.34%	20	791,017.26 AUD	13	343,154.65 AUD	
	NEW BEETLE	3	0.03%	30,970.39 AUD	0.01%	1	12,934.75 AUD	2	18,035.64 AUD	
	PASSAT	37	0.32%	802,478.02 AUD	0.24%	16	267,424.39 AUD	21	535,053.63 AUD	
	POLO	146	1.25%	1,808,395.48 AUD	0.54%	45	566,069.45 AUD	101	1,242,326.03 AUD	
	SCIROCCO	1	0.01%	18,479.10 AUD	0.01%	-	- AUD	1	18,479.10 AUD	
	T-CROSS	151	1.29%	2,669,578.65 AUD	0.80%	44	807,190.22 AUD	107	1,862,388.43 AUD	
	T-ROC	95	0.81%	2,137,170.31 AUD	0.64%	29	701,654.72 AUD	66	1,435,515.59 AUD	
	TIGUAN	502	4.30%	12,016,574.47 AUD	3.62%	236	6,133,385.67 AUD	266	5,883,188.80 AUD	
	TOUAREG	79	0.68%	3,793,489.55 AUD	1.14%	61	3,095,730.10 AUD	18	697,759.45 AUD	

Pool Data VII

Distribution by Vehicle Brand and Models

Total Portfolio						Balloon				Vehicle Status					
Make	Model	Number of Contracts	Percentage of Contracts	Outstanding Discounted Receivables Balance	Percentage of Balance	Number of Contracts	Balloon		No Balloon		New		Used		
							Outstanding Discounted Receivables Balance		Number of Contracts	Outstanding Discounted Receivables Balance	Number of Contracts	Outstanding Discounted Receivables Balance	Number of Contracts	Outstanding Discounted Receivables Balance	
Volkswagen Group Vehicles															
AUDI	A1	42	0.36%	771,905.91 AUD	0.23%	11	327,998.16 AUD		31	443,907.75 AUD		23	584,345.23 AUD		
	A3	232	1.99%	6,880,689.78 AUD	2.07%	93	3,974,331.19 AUD		139	2,906,358.59 AUD		150	5,246,549.57 AUD		
	A4	104	0.89%	3,281,752.11 AUD	0.99%	41	1,820,548.88 AUD		63	1,461,203.23 AUD		67	2,623,317.95 AUD		
	A5	65	0.56%	2,509,067.09 AUD	0.75%	31	1,632,448.08 AUD		34	876,619.01 AUD		45	2,091,712.80 AUD		
	A6	26	0.22%	1,123,273.36 AUD	0.34%	8	530,908.69 AUD		18	592,364.67 AUD		13	816,803.48 AUD		
	A7	11	0.09%	876,897.30 AUD	0.26%	9	840,136.83 AUD		2	36,760.47 AUD		9	809,429.30 AUD		
	A8	3	0.03%	114,973.37 AUD	0.03%	-	- AUD		3	114,973.37 AUD		2	94,506.05 AUD		
	E-TRON	5	0.04%	440,726.25 AUD	0.13%	4	392,458.17 AUD		1	48,268.08 AUD		5	440,726.25 AUD		
	Q2	83	0.71%	1,910,411.26 AUD	0.57%	33	972,594.04 AUD		50	937,817.22 AUD		61	1,545,287.11 AUD		
	Q3	243	2.08%	7,325,746.77 AUD	2.20%	93	3,815,774.94 AUD		150	3,509,971.83 AUD		204	6,702,874.62 AUD		
	Q5	258	2.21%	9,690,046.50 AUD	2.92%	126	6,186,967.63 AUD		132	3,503,078.87 AUD		181	7,870,499.85 AUD		
	Q7	202	1.73%	11,095,283.68 AUD	3.34%	103	7,535,324.49 AUD		99	3,559,959.19 AUD		127	8,665,421.08 AUD		
	Q8	18	0.15%	1,454,651.94 AUD	0.44%	10	972,433.36 AUD		8	482,218.58 AUD		16	1,329,839.44 AUD		
	R8	6	0.05%	781,929.53 AUD	0.24%	5	719,601.03 AUD		1	62,328.50 AUD		3	508,321.02 AUD		
	TT	7	0.06%	232,721.76 AUD	0.07%	3	166,626.26 AUD		4	66,095.50 AUD		1	104,628.19 AUD		
	SubTotal	1,305	11.19%	48,490,076.61 AUD	14.59%	570	29,888,151.75 AUD		735	18,601,924.86 AUD		907	39,434,261.94 AUD		
BENTLEY	BENTAYGA	2	0.02%	462,635.93 AUD	0.14%	2	462,635.93 AUD		-	- AUD		1	286,037.35 AUD		
	CONTINENTAL	4	0.03%	480,693.70 AUD	0.14%	1	168,906.74 AUD		3	311,786.96 AUD		-	- AUD		
	SubTotal	6	0.05%	943,329.63 AUD	0.28%	3	631,542.67 AUD		3	311,786.96 AUD		1	286,037.35 AUD		
LAMBORGHINI	AVENTADOR	-	0.00%	- AUD	0.00%	-	- AUD		-	- AUD		-	- AUD		
	HURACAN	2	0.02%	258,299.38 AUD	0.08%	1	120,750.96 AUD		1	137,548.42 AUD		1	120,750.96 AUD		
	URUS	2	0.02%	557,867.08 AUD	0.17%	2	557,867.08 AUD		-	- AUD		2	557,867.08 AUD		
	SubTotal	4	0.03%	816,166.46 AUD	0.25%	3	678,618.04 AUD		1	137,548.42 AUD		3	678,618.04 AUD		
PORSCHE	BOXSTER	7	0.06%	736,260.73 AUD	0.22%	6	689,783.15 AUD		1	46,477.58 AUD		6	689,783.15 AUD		
	CARRERA / 911	21	0.18%	3,721,306.84 AUD	1.12%	19	3,625,303.36 AUD		2	96,003.48 AUD		15	3,069,315.15 AUD		
	CAYENNE	75	0.64%	6,062,122.18 AUD	1.82%	51	4,955,836.60 AUD		24	1,106,285.58 AUD		62	5,474,843.59 AUD		
	CAYMAN	1	0.01%	73,495.77 AUD	0.02%	-	- AUD		1	73,495.77 AUD		-	- AUD		
	MACAN	99	0.85%	6,612,226.20 AUD	1.99%	70	5,257,801.48 AUD		29	1,354,424.72 AUD		84	6,015,004.47 AUD		
	PANAMERA	-	0.00%	- AUD	0.00%	-	- AUD		-	- AUD		-	- AUD		
	TAYCAN	13	0.11%	2,100,403.96 AUD	0.63%	13	2,100,403.96 AUD		-	- AUD		13	2,100,403.96 AUD		
	SubTotal	216	1.85%	19,305,815.68 AUD	5.81%	159	16,629,128.55 AUD		57	2,676,687.13 AUD		180	17,349,350.32 AUD		
	SKODA	FABIA	37	0.32%	444,464.89 AUD	0.13%	2	38,873.46 AUD		35	405,591.43 AUD		34	428,728.06 AUD	
		KAROQ	52	0.45%	981,328.11 AUD	0.30%	7	169,818.43 AUD		45	811,509.68 AUD		52	981,328.11 AUD	
KODIAQ		100	0.86%	2,723,588.29 AUD	0.82%	25	891,696.31 AUD		75	1,831,891.98 AUD		91	2,579,969.04 AUD		
KAMIQ		67	0.57%	1,213,583.82 AUD	0.37%	5	126,938.80 AUD		62	1,086,645.02 AUD		67	1,213,583.82 AUD		
SCALA		39	0.33%	686,433.29 AUD	0.21%	8	171,156.78 AUD		31	515,276.51 AUD		39	686,433.29 AUD		
OCTAVIA		95	0.81%	1,898,166.11 AUD	0.57%	26	797,170.08 AUD		69	1,100,996.03 AUD		86	1,793,923.87 AUD		
RAPID		1	0.01%	4,017.38 AUD	0.00%	-	- AUD		1	4,017.38 AUD		1	4,017.38 AUD		
SUPERB		22	0.19%	605,430.16 AUD	0.18%	9	352,385.28 AUD		13	253,044.88 AUD		17	544,633.62 AUD		
SubTotal		413	3.54%	8,557,012.05 AUD	2.57%	82	2,548,039.14 AUD		331	6,008,972.91 AUD		387	8,232,617.19 AUD		
VOLKSWAGEN		AMAROK	677	5.80%	18,308,509.64 AUD	5.51%	246	8,947,052.36 AUD		431	9,361,457.28 AUD		563	15,849,993.18 AUD	
	ARTEON	6	0.05%	202,930.41 AUD	0.06%	5	182,753.15 AUD		1	20,177.26 AUD		2	66,533.94 AUD		
	CADDY	87	0.75%	1,460,779.50 AUD	0.44%	20	505,907.95 AUD		67	954,871.55 AUD		70	1,252,505.05 AUD		
	CARAVELLE	2	0.02%	49,585.63 AUD	0.01%	-	- AUD		2	49,585.63 AUD		2	49,585.63 AUD		
	CRAFTER	122	1.05%	3,165,923.68 AUD	0.95%	37	1,318,347.48 AUD		85	1,847,576.20 AUD		120	3,128,523.87 AUD		
	GOLF	360	3.09%	5,886,705.83 AUD	1.77%	91	2,256,797.25 AUD		269	3,629,908.58 AUD		239	4,461,240.82 AUD		
	JETTA	8	0.07%	23,891.32 AUD	0.01%	-	- AUD		8	23,891.32 AUD		-	- AUD		
	MULTIVAN	33	0.28%	1,134,171.91 AUD	0.34%	11	528,873.57 AUD		22	605,298.34 AUD		23	880,727.64 AUD		
	NEW BEETLE	3	0.03%	30,970.39 AUD	0.01%	-	- AUD		3	30,970.39 AUD		-	- AUD		
	PASSAT	37	0.32%	802,478.02 AUD	0.24%	12	380,645.29 AUD		25	421,832.73 AUD		19	585,828.25 AUD		
	POLO	146	1.25%	1,808,395.48 AUD	0.54%	21	380,631.02 AUD		125	1,427,764.46 AUD		128	1,703,660.99 AUD		
	SCIROCCO	1	0.01%	18,479.10 AUD	0.01%	-	- AUD		1	18,479.10 AUD		-	- AUD		
	T-CROSS	151	1.29%	2,669,578.65 AUD	0.80%	23	507,945.29 AUD		128	2,161,633.36 AUD		151	2,669,578.65 AUD		
	T-ROC	95	0.81%	2,137,170.31 AUD	0.64%	20	571,477.08 AUD		75	1,565,693.23 AUD		95	2,137,170.31 AUD		
	TIGUAN	502	4.30%	12,016,574.47 AUD	3.62%	152	4,860,097.08 AUD		350	7,156,477.39 AUD		434	10,828,881.11 AUD		
	TOUAREG	79	0.68%	3,793,489.55 AUD	1.14%	36	2,411,641.09 AUD		43	1,381,848.46 AUD		60	3,322,013.20 AUD		

Pool Data VII

Distribution by Vehicle Brand and Models

Total Portfolio						Product Type			
Make	Model	Number of Contracts	Percentage of Contracts	Outstanding Discounted Receivables Balance	Percentage of Balance	Chattel Mortgage		Consumer Loan	
						Number of Contracts	Outstanding Discounted Receivables Balance	Number of Contracts	Outstanding Discounted Receivables Balance
	TRANSPORTER	103	0.88%	2,961,912.99 AUD	0.89%	89	2,484,524.46 AUD	14	477,388.53 AUD
	UP!	-	0.00%	- AUD	0.00%	-	- AUD	-	- AUD
	SubTotal	2,412	20.68%	56,471,546.88 AUD	16.99%	1,411	36,551,238.00 AUD	1,001	19,920,308.88 AUD
Volkswagen Group Vehicles	SubTotal	4,356	37.35%	134,583,947.31 AUD	40.49%	2,542	92,736,135.35 AUD	1,814	41,847,811.96 AUD

Pool Data VII

Distribution by Vehicle Brand and Models

Total Portfolio						Balloon				Vehicle Status			
Make	Model	Number of Contracts	Percentage of Contracts	Outstanding Discounted Receivables Balance	Percentage of Balance	Balloon		No Balloon		New		Used	
						Number of Contracts	Outstanding Discounted Receivables Balance	Number of Contracts	Outstanding Discounted Receivables Balance	Number of Contracts	Outstanding Discounted Receivables Balance	Number of Contracts	Outstanding Discounted Receivables Balance
	TRANSPORTER	103	0.88%	2,961,912.99 AUD	0.89%	36	1,356,155.98 AUD	67	1,605,757.01 AUD	89	2,725,850.54 AUD	14	236,062.45 AUD
	UP!	-	0.00%	- AUD	0.00%	-	- AUD	-	- AUD	-	- AUD	-	- AUD
	SubTotal	2,412	20.68%	56,471,546.88 AUD	16.99%	710	24,208,324.59 AUD	1,702	32,263,222.29 AUD	1,995	49,662,093.18 AUD	417	6,809,453.70 AUD
Volkswagen Group Vehicles	SubTotal	4,356	37.35%	134,583,947.31 AUD	40.49%	1,527	74,583,804.74 AUD	2,829	60,000,142.57 AUD	3,473	115,642,978.02 AUD	883	18,940,969.29 AUD

Pool Data VII

Distribution by Vehicle Brand and Models

Total Portfolio						Product Type			
Make	Model	Number of Contracts	Percentage of Contracts	Outstanding Discounted Receivables Balance	Percentage of Balance	Chattel Mortgage		Consumer Loan	
						Number of Contracts	Outstanding Discounted Receivables Balance	Number of Contracts	Outstanding Discounted Receivables Balance
Other Vehicles									
ABARTH		13	0.11%	282,086.01 AUD	0.08%	10	214,771.43 AUD	3	67,314.58 AUD
ALFA ROMEO		27	0.23%	922,901.04 AUD	0.28%	14	429,511.16 AUD	13	493,389.88 AUD
ASTON MARTIN		6	0.05%	885,627.08 AUD	0.27%	6	885,627.08 AUD	-	- AUD
BMW		122	1.05%	4,868,069.35 AUD	1.46%	98	4,192,963.13 AUD	24	675,106.22 AUD
CHEVROLET		23	0.20%	1,459,101.26 AUD	0.44%	21	1,318,238.61 AUD	2	140,862.65 AUD
CHRYSLER		5	0.04%	126,355.71 AUD	0.04%	2	85,555.84 AUD	3	40,799.87 AUD
CITROEN		4	0.03%	38,013.34 AUD	0.01%	3	36,861.40 AUD	1	1,151.94 AUD
DODGE		2	0.02%	11,795.76 AUD	0.00%	1	3,193.69 AUD	1	8,602.07 AUD
FERRARI		1	0.01%	167,242.18 AUD	0.05%	-	- AUD	1	167,242.18 AUD
FIAT		13	0.11%	191,204.57 AUD	0.06%	9	139,375.17 AUD	4	51,829.40 AUD
FORD		799	6.85%	23,689,687.81 AUD	7.13%	628	19,430,089.29 AUD	171	4,259,598.52 AUD
GENESIS		3	0.03%	181,687.19 AUD	0.05%	3	181,687.19 AUD	-	- AUD
GM		1	0.01%	64,102.72 AUD	0.02%	1	64,102.72 AUD	-	- AUD
GREAT WALL		14	0.12%	182,940.42 AUD	0.06%	9	120,555.09 AUD	5	62,385.33 AUD
GWM		50	0.43%	1,174,226.51 AUD	0.35%	37	824,498.98 AUD	13	349,727.53 AUD
HAVAL		57	0.49%	1,053,943.01 AUD	0.32%	31	550,460.41 AUD	26	503,482.60 AUD
HINO		1	0.01%	39,111.19 AUD	0.01%	1	39,111.19 AUD	-	- AUD
HOLDEN		260	2.23%	4,386,439.53 AUD	1.32%	137	2,422,307.49 AUD	123	1,964,132.04 AUD
HONDA		211	1.81%	3,811,265.51 AUD	1.15%	115	2,233,077.52 AUD	96	1,578,187.99 AUD
HYUNDAI		576	4.94%	10,578,362.35 AUD	3.18%	301	5,976,260.47 AUD	275	4,602,101.88 AUD
INFINITI		2	0.02%	26,030.23 AUD	0.01%	2	26,030.23 AUD	-	- AUD
ISUZU		253	2.17%	7,124,248.23 AUD	2.14%	178	4,910,679.45 AUD	75	2,213,568.78 AUD
JAGUAR		77	0.66%	3,380,096.43 AUD	1.02%	57	2,636,441.29 AUD	20	743,655.14 AUD
JEEP		120	1.03%	3,506,422.02 AUD	1.05%	80	2,568,061.97 AUD	40	938,360.05 AUD
KIA		342	2.93%	6,772,171.69 AUD	2.04%	204	4,454,262.86 AUD	138	2,317,908.83 AUD
LAND ROVER		505	4.33%	29,448,562.92 AUD	8.86%	385	24,009,421.67 AUD	120	5,439,141.25 AUD
LDV		224	1.92%	4,700,708.58 AUD	1.41%	196	4,059,323.29 AUD	28	641,385.29 AUD
LEXUS		10	0.09%	319,925.75 AUD	0.10%	10	319,925.75 AUD	-	- AUD
MAHINDRA		2	0.02%	13,771.48 AUD	0.00%	2	13,771.48 AUD	-	- AUD
MASERATI		21	0.18%	2,186,339.10 AUD	0.66%	19	2,058,247.88 AUD	2	128,091.22 AUD
MAZDA		486	4.17%	10,409,211.91 AUD	3.13%	313	7,276,594.08 AUD	173	3,132,617.83 AUD
MERCEDES-BENZ		283	2.43%	11,547,142.22 AUD	3.47%	233	9,945,368.73 AUD	50	1,601,773.49 AUD
MG		198	1.70%	2,942,220.81 AUD	0.89%	77	1,043,389.82 AUD	121	1,898,830.99 AUD
MINI		12	0.10%	319,563.50 AUD	0.10%	10	248,537.06 AUD	2	71,026.44 AUD
MITSUBISHI		742	6.36%	14,981,626.43 AUD	4.51%	419	8,507,575.90 AUD	323	6,474,050.53 AUD
NISSAN		343	2.94%	8,032,736.27 AUD	2.42%	230	5,805,751.44 AUD	113	2,226,984.83 AUD
OPEL		1	0.01%	9,007.24 AUD	0.00%	-	- AUD	1	9,007.24 AUD
PEUGEOT		58	0.50%	1,375,239.48 AUD	0.41%	46	1,014,406.03 AUD	12	360,833.45 AUD
RAM		1	0.01%	85,520.18 AUD	0.03%	1	85,520.18 AUD	-	- AUD
RENAULT		140	1.20%	3,367,340.24 AUD	1.01%	122	3,018,029.07 AUD	18	349,311.17 AUD
ROLLS-ROYCE		2	0.02%	321,259.27 AUD	0.10%	2	321,259.27 AUD	-	- AUD
SSANGYONG		27	0.23%	632,757.87 AUD	0.19%	19	411,848.68 AUD	8	220,909.19 AUD
SUBARU		347	2.97%	7,194,202.90 AUD	2.16%	185	3,975,815.82 AUD	162	3,218,387.08 AUD
SUZUKI		127	1.09%	1,733,276.35 AUD	0.52%	41	593,334.25 AUD	86	1,139,942.10 AUD
TESLA		17	0.15%	819,496.16 AUD	0.25%	17	819,496.16 AUD	-	- AUD
TOYOTA		623	5.34%	16,205,359.42 AUD	4.88%	457	12,410,819.07 AUD	166	3,794,540.35 AUD
VOLVO		157	1.35%	6,243,134.84 AUD	1.88%	106	4,439,593.62 AUD	51	1,803,541.22 AUD
Other Vehicles	SubTotal	7,308	62.65%	197,811,534.06 AUD	59.51%	4,838	144,121,752.91 AUD	2,470	53,689,781.15 AUD
Total		11,664	100.00%	332,395,481.37 AUD	100.00%	7,380	236,857,888.26 AUD	4,284	95,537,593.11 AUD

Pool Data VII

Distribution by Vehicle Brand and Models

Total Portfolio						Balloon				Vehicle Status			
Make	Model	Number of Contracts	Percentage of Contracts	Outstanding Discounted Receivables Balance	Percentage of Balance	Balloon		No Balloon		New		Used	
						Number of Contracts	Outstanding Discounted Receivables Balance	Number of Contracts	Outstanding Discounted Receivables Balance	Number of Contracts	Outstanding Discounted Receivables Balance	Number of Contracts	Outstanding Discounted Receivables Balance
Other Vehicles													
ABARTH		13	0.11%	282,086.01 AUD	0.08%	8	193,827.43 AUD	5	88,258.58 AUD	8	193,827.43 AUD	5	88,258.58 AUD
ALFA ROMEO		27	0.23%	922,901.04 AUD	0.28%	17	692,595.00 AUD	10	230,306.04 AUD	21	759,120.97 AUD	6	163,780.07 AUD
ASTON MARTIN		6	0.05%	885,627.08 AUD	0.27%	5	839,892.26 AUD	1	45,734.82 AUD	2	458,791.68 AUD	4	426,835.40 AUD
BMW		122	1.05%	4,868,069.35 AUD	1.46%	56	3,086,498.25 AUD	66	1,781,571.10 AUD	55	2,912,727.71 AUD	67	1,955,341.64 AUD
CHEVROLET		23	0.20%	1,459,101.26 AUD	0.44%	13	939,026.75 AUD	10	520,074.51 AUD	22	1,399,245.62 AUD	1	59,855.64 AUD
CHRYSLER		5	0.04%	126,355.71 AUD	0.04%	1	54,746.57 AUD	4	71,609.14 AUD	2	85,555.84 AUD	3	40,799.87 AUD
CITROEN		4	0.03%	38,013.34 AUD	0.01%	1	4,059.28 AUD	3	33,954.06 AUD	1	19,342.19 AUD	3	18,671.15 AUD
DODGE		2	0.02%	11,795.76 AUD	0.00%	-	- AUD	2	11,795.76 AUD	-	- AUD	2	11,795.76 AUD
FERRARI		1	0.01%	167,242.18 AUD	0.05%	1	167,242.18 AUD	-	- AUD	-	- AUD	1	167,242.18 AUD
FIAT		13	0.11%	191,204.57 AUD	0.06%	3	71,248.67 AUD	10	119,955.90 AUD	9	142,853.06 AUD	4	48,351.51 AUD
FORD		799	6.85%	23,689,687.81 AUD	7.13%	221	8,782,422.54 AUD	578	14,907,265.27 AUD	536	17,891,819.14 AUD	263	5,797,868.67 AUD
GENESIS		3	0.03%	181,687.19 AUD	0.05%	2	137,930.25 AUD	1	43,756.94 AUD	3	181,687.19 AUD	-	- AUD
GM		1	0.01%	64,102.72 AUD	0.02%	1	64,102.72 AUD	-	- AUD	1	64,102.72 AUD	-	- AUD
GREAT WALL		14	0.12%	182,940.42 AUD	0.06%	2	39,650.86 AUD	12	143,289.56 AUD	13	173,924.13 AUD	1	9,016.29 AUD
GWM		50	0.43%	1,174,226.51 AUD	0.35%	8	216,724.03 AUD	42	957,502.48 AUD	50	1,174,226.51 AUD	-	- AUD
HAVAI		57	0.49%	1,053,943.01 AUD	0.32%	3	87,037.13 AUD	54	966,905.88 AUD	57	1,053,943.01 AUD	-	- AUD
HINO		1	0.01%	39,111.19 AUD	0.01%	1	39,111.19 AUD	-	- AUD	1	39,111.19 AUD	-	- AUD
HOLDEN		260	2.23%	4,386,439.53 AUD	1.32%	22	564,754.97 AUD	238	3,821,684.56 AUD	59	1,139,039.83 AUD	201	3,247,399.70 AUD
HONDA		211	1.81%	3,811,265.51 AUD	1.15%	32	887,145.11 AUD	179	2,924,120.40 AUD	157	3,096,378.85 AUD	54	714,886.66 AUD
HYUNDAI		576	4.94%	10,578,362.35 AUD	3.18%	85	2,430,832.23 AUD	491	8,147,530.12 AUD	399	8,336,589.46 AUD	177	2,241,772.89 AUD
INFINITI		2	0.02%	26,030.23 AUD	0.01%	-	- AUD	2	26,030.23 AUD	-	- AUD	2	26,030.23 AUD
ISUZU		253	2.17%	7,124,248.23 AUD	2.14%	51	1,767,799.03 AUD	202	5,356,449.20 AUD	208	6,277,093.34 AUD	45	847,154.89 AUD
JAGUAR		77	0.66%	3,380,096.43 AUD	1.02%	44	2,455,703.92 AUD	33	924,392.51 AUD	54	2,657,789.94 AUD	23	722,306.49 AUD
JEEP		120	1.03%	3,506,422.02 AUD	1.05%	30	1,405,101.28 AUD	90	2,101,320.74 AUD	68	2,467,750.02 AUD	52	1,038,672.00 AUD
KIA		342	2.93%	6,772,171.69 AUD	2.04%	62	1,927,097.38 AUD	280	4,845,074.31 AUD	264	5,658,738.02 AUD	78	1,113,433.67 AUD
LAND ROVER		505	4.33%	29,448,562.92 AUD	8.86%	296	21,451,596.97 AUD	209	7,996,965.95 AUD	374	24,219,593.34 AUD	131	5,228,969.58 AUD
LDV		224	1.92%	4,700,708.58 AUD	1.41%	45	1,154,534.68 AUD	179	3,546,173.90 AUD	218	4,605,170.29 AUD	6	95,538.29 AUD
LEXUS		10	0.09%	319,925.75 AUD	0.10%	6	225,144.28 AUD	4	94,781.47 AUD	5	184,547.55 AUD	5	135,378.20 AUD
MAHINDRA		2	0.02%	13,771.48 AUD	0.00%	-	- AUD	2	13,771.48 AUD	2	13,771.48 AUD	-	- AUD
MASERATI		21	0.18%	2,186,339.10 AUD	0.66%	17	1,950,850.79 AUD	4	235,488.31 AUD	18	1,949,660.56 AUD	3	236,678.54 AUD
MAZDA		486	4.17%	10,409,211.91 AUD	3.13%	110	3,621,115.37 AUD	376	6,788,096.54 AUD	347	8,455,255.50 AUD	139	1,953,956.41 AUD
MERCEDES-BENZ		283	2.43%	11,547,142.22 AUD	3.47%	110	6,227,721.63 AUD	173	5,319,420.59 AUD	135	7,223,717.57 AUD	148	4,323,424.65 AUD
MG		198	1.70%	2,942,220.81 AUD	0.89%	13	307,980.21 AUD	185	2,634,240.60 AUD	192	2,862,174.48 AUD	6	80,046.33 AUD
MINI		12	0.10%	319,563.50 AUD	0.10%	5	177,102.72 AUD	7	142,460.78 AUD	5	202,096.13 AUD	7	117,467.37 AUD
MITSUBISHI		742	6.36%	14,981,626.43 AUD	4.51%	104	3,063,686.36 AUD	638	11,917,940.07 AUD	539	11,894,680.32 AUD	203	3,086,946.11 AUD
NISSAN		343	2.94%	8,032,736.27 AUD	2.42%	62	2,177,119.71 AUD	281	5,855,616.56 AUD	201	5,763,499.08 AUD	142	2,269,237.19 AUD
OPEL		1	0.01%	9,007.24 AUD	0.00%	-	- AUD	1	9,007.24 AUD	-	- AUD	1	9,007.24 AUD
PEUGEOT		58	0.50%	1,375,239.48 AUD	0.41%	18	591,080.54 AUD	40	784,158.94 AUD	55	1,330,252.16 AUD	3	44,987.32 AUD
RAM		1	0.01%	85,520.18 AUD	0.03%	1	85,520.18 AUD	-	- AUD	-	- AUD	1	85,520.18 AUD
RENAULT		140	1.20%	3,367,340.24 AUD	1.01%	49	1,515,428.22 AUD	91	1,851,912.02 AUD	118	3,010,034.71 AUD	22	357,305.53 AUD
ROLLS-ROYCE		2	0.02%	321,259.27 AUD	0.10%	1	204,978.19 AUD	1	116,281.08 AUD	1	204,978.19 AUD	1	116,281.08 AUD
SSANGYONG		27	0.23%	632,757.87 AUD	0.19%	5	154,822.54 AUD	22	477,935.33 AUD	26	595,696.85 AUD	1	37,061.02 AUD
SUBARU		347	2.97%	7,194,202.90 AUD	2.16%	82	2,356,086.39 AUD	265	4,838,116.51 AUD	259	5,937,188.33 AUD	88	1,257,014.57 AUD
SUZUKI		127	1.09%	1,733,276.35 AUD	0.52%	7	137,029.15 AUD	120	1,596,247.20 AUD	95	1,420,987.42 AUD	32	312,288.93 AUD
TESLA		17	0.15%	819,496.16 AUD	0.25%	11	581,468.94 AUD	6	238,027.22 AUD	17	819,496.16 AUD	-	- AUD
TOYOTA		623	5.34%	16,205,359.42 AUD	4.88%	116	4,956,928.68 AUD	507	11,248,430.74 AUD	214	6,691,733.76 AUD	409	9,513,625.66 AUD
VOLVO		157	1.35%	6,243,134.84 AUD	1.88%	89	4,373,919.85 AUD	68	1,869,214.99 AUD	133	5,570,176.43 AUD	24	672,958.41 AUD
Other Vehicles	SubTotal	7,308	62.65%	197,811,534.06 AUD	59.51%	1,816	82,168,664.43 AUD	5,492	115,642,869.63 AUD	4,944	149,138,368.16 AUD	2,364	48,673,165.90 AUD
Total		11,664	100.00%	332,395,481.37 AUD	100.00%	3,343	156,752,469.17 AUD	8,321	175,643,012.20 AUD	8,417	264,781,346.18 AUD	3,247	67,614,135.19 AUD

Pool Data VIII

Region

Total Portfolio					Product Type			
Region	Number of Contracts	Percentage of Contracts	Outstanding Discounted Receivables Balance	Percentage of Balance	Chattel Mortgage		Consumer Loan	
					Number of Contracts	Outstanding Discounted Receivables Balance	Number of Contracts	Outstanding Discounted Receivables Balance
Australian Capital Territory	337	2.89%	8,662,790.84 AUD	2.61%	138	4,655,916.11 AUD	199	4,006,874.73 AUD
New South Wales	4,169	35.74%	123,613,175.13 AUD	37.19%	2,759	91,543,622.26 AUD	1,410	32,069,552.87 AUD
Northern Territory	97	0.83%	1,924,665.47 AUD	0.58%	37	814,338.91 AUD	60	1,110,326.56 AUD
Queensland	2,511	21.53%	70,133,266.90 AUD	21.10%	1,711	51,843,101.34 AUD	800	18,290,165.56 AUD
South Australia	494	4.24%	15,325,782.94 AUD	4.61%	342	11,596,694.94 AUD	152	3,729,088.00 AUD
Tasmania	419	3.59%	9,220,537.28 AUD	2.77%	178	4,742,251.48 AUD	241	4,478,285.80 AUD
Victoria	2,283	19.57%	68,706,467.14 AUD	20.67%	1,428	49,614,958.30 AUD	855	19,091,508.84 AUD
Western Australia	1,354	11.61%	34,808,795.67 AUD	10.47%	787	22,047,004.92 AUD	567	12,761,790.75 AUD
Total	11,664	100.00%	332,395,481.37 AUD	100.00%	7,380	236,857,888.26 AUD	4,284	95,537,593.11 AUD

Pool Data VIII

Region

Total Portfolio					Balloon				Vehicle Status			
Region	Number of Contracts	Percentage of Contracts	Outstanding Discounted Receivables Balance	Percentage of Balance	Balloon		No Balloon		New		Used	
					Number of Contracts	Outstanding Discounted Receivables Balance	Number of Contracts	Outstanding Discounted Receivables Balance	Number of Contracts	Outstanding Discounted Receivables Balance	Number of Contracts	Outstanding Discounted Receivables Balance
Australian Capital Territory	337	2.89%	8,662,790.84 AUD	2.61%	68	3,286,287.79 AUD	269	5,376,503.05 AUD	212	6,501,916.73 AUD	125	2,160,874.11 AUD
New South Wales	4,169	35.74%	123,613,175.13 AUD	37.19%	1,268	61,816,872.03 AUD	2,901	61,796,303.10 AUD	3,104	100,687,301.17 AUD	1,065	22,925,873.96 AUD
Northern Territory	97	0.83%	1,924,665.47 AUD	0.58%	4	142,669.83 AUD	93	1,781,995.64 AUD	79	1,593,632.91 AUD	18	331,032.56 AUD
Queensland	2,511	21.53%	70,133,266.90 AUD	21.10%	728	32,321,820.08 AUD	1,783	37,811,446.82 AUD	1,953	58,943,925.03 AUD	558	11,189,341.87 AUD
South Australia	494	4.24%	15,325,782.94 AUD	4.61%	184	8,724,661.16 AUD	310	6,601,121.78 AUD	369	12,767,443.05 AUD	125	2,558,339.89 AUD
Tasmania	419	3.59%	9,220,537.28 AUD	2.77%	69	2,513,536.95 AUD	350	6,707,000.33 AUD	224	5,434,211.94 AUD	195	3,786,325.34 AUD
Victoria	2,283	19.57%	68,706,467.14 AUD	20.67%	829	38,542,204.77 AUD	1,454	30,164,262.37 AUD	1,768	57,735,133.61 AUD	515	10,971,333.53 AUD
Western Australia	1,354	11.61%	34,808,795.67 AUD	10.47%	193	9,404,416.56 AUD	1,161	25,404,379.11 AUD	708	21,117,781.74 AUD	646	13,691,013.93 AUD
Total	11,664	100.00%	332,395,481.37 AUD	100.00%	3,343	156,752,469.17 AUD	8,321	175,643,012.20 AUD	8,417	264,781,346.18 AUD	3,247	67,614,135.19 AUD

Pool Data IX

Current COVID-19 Extensions

Total Portfolio					Product Type			
Current COVID-19 Extensions	Number of Contracts	Percentage of Contracts	Outstanding Discounted Receivables Balance	Percentage of Balance	Chattel Mortgage		Consumer Loan	
					Number of Contracts	Outstanding Discounted Receivables Balance	Number of Contracts	Outstanding Discounted Receivables Balance
Current COVID-19 Extension	18	0.15%	604,190.19 AUD	0.18%	11	359,262.48 AUD	7	244,927.71 AUD
No Current Extension	11,646	99.85%	331,791,291.18 AUD	99.82%	7,369	236,498,625.78 AUD	4,277	95,292,665.40 AUD
Total	11,664	100.00%	332,395,481.37 AUD	100.00%	7,380	236,857,888.26 AUD	4,284	95,537,593.11 AUD

* Representing contracts which are currently in a COVID-19 extension as at the Reporting Date

Pool Data IX

Current COVID-19 Extensions

Total Portfolio					Balloon				Vehicle Status			
Current COVID-19 Extensions	Number of Contracts	Percentage of Contracts	Outstanding Discounted Receivables Balance	Percentage of Balance	Balloon		No Balloon		New		Used	
					Number of Contracts	Outstanding Discounted Receivables Balance	Number of Contracts	Outstanding Discounted Receivables Balance	Number of Contracts	Outstanding Discounted Receivables Balance	Number of Contracts	Outstanding Discounted Receivables Balance
Current COVID-19 Extension	18	0.15%	604,190.19 AUD	0.18%	4	168,876.79 AUD	14	435,313.40 AUD	11	376,374.43 AUD	7	227,815.76 AUD
No Current Extension	11,646	99.85%	331,791,291.18 AUD	99.82%	3,339	156,583,592.38 AUD	8,307	175,207,698.80 AUD	8,406	264,404,971.75 AUD	3,240	67,386,319.43 AUD
Total	11,664	100.00%	332,395,481.37 AUD	100.00%	3,343	156,752,469.17 AUD	8,321	175,643,012.20 AUD	8,417	264,781,346.18 AUD	3,247	67,614,135.19 AUD

* Representing contracts which are currently in a COVID-19 extension as at the Reporting Date

Individual Hardship Extensions*

Individual Extensions Approved For After Poolcut*	Number of Contracts	Percentage of Contracts	Outstanding Discounted Receivables Balance	Percentage of Balance
None	11,550	99.02%	328,336,611.86 AUD	98.78%
1	96	0.82%	3,422,506.49 AUD	1.03%
2	15	0.13%	545,258.77 AUD	0.16%
3	3	0.03%	91,104.25 AUD	0.03%
4	-	0.00%	0.00 AUD	0.00%
5	-	0.00%	0.00 AUD	0.00%
Total	11,664	100.00%	332,395,481.37 AUD	100.00%

*Individual Hardship Extensions Approved For After Poolcut For Contracts Active At End of Reporting Period

Engine Type

Total Portfolio					Product Type			
Engine Type	Number of Contracts	Percentage of Contracts	Outstanding Discounted Receivables Balance	Percentage of Balance	Chattel Mortgage		Consumer Loan	
					Number of Contracts	Outstanding Discounted Receivables Balance	Number of Contracts	Outstanding Discounted Receivables Balance
EA 189 (Unfixed)	1	0.01%	12,132.56 AUD	0.00%	1	12,132.56 AUD	-	- AUD
Other	11,663	99.99%	332,383,348.81 AUD	100.00%	7,379	236,845,755.70 AUD	4,284	95,537,593.11 AUD
Total	11,664	100.00%	332,395,481.37 AUD	100.00%	7,380	236,857,888.26 AUD	4,284	95,537,593.11 AUD

Engine Type

Total Portfolio					Balloon				Vehicle Status			
Engine Type	Number of Contracts	Percentage of Contracts	Outstanding Discounted Receivables Balance	Percentage of Balance	Balloon		No Balloon		New		Used	
					Number of Contracts	Outstanding Discounted Receivables Balance	Number of Contracts	Outstanding Discounted Receivables Balance	Number of Contracts	Outstanding Discounted Receivables Balance	Number of Contracts	Outstanding Discounted Receivables Balance
EA 189 (Unfixed)	1	0.01%	12,132.56 AUD	0.00%	-	- AUD	1	12,132.56 AUD	-	- AUD	1	12,132.56 AUD
Other	11,663	99.99%	332,383,348.81 AUD	100.00%	3,343	156,752,469.17 AUD	8,320	175,630,879.64 AUD	8,417	264,781,346.18 AUD	3,246	67,602,002.63 AUD
Total	11,664	100.00%	332,395,481.37 AUD	100.00%	3,343	156,752,469.17 AUD	8,321	175,643,012.20 AUD	8,417	264,781,346.18 AUD	3,247	67,614,135.19 AUD

Contract Level Data

Net Salvage Recoveries By Contract By Month

No.	Month / Year of Origination	Month / Year of Net Salvage	Outstanding Discounted Receivables Balance at Poolcut	ABS Gross Salvage Loss	ABS Net Salvage Loss	ABS Recoveries After Net Salvage	ABS Net Salvage Loss After Recoveries	Loss Percentage on Poolcut Balance	Geographical Location of Borrower	Vehicle Type (New/Used)	Vehicle Manufacturer	Product Type
1	02/2021	07/2022	69,286.66 AUD	68,260.06 AUD	23,440.30 AUD	- AUD	23,440.30 AUD	33.83%	Queensland	New	HYUNDAI	Chattel Mortgage
2	04/2017	08/2022	4,908.02 AUD	1,802.96 AUD	1,802.96 AUD	2,382.04 AUD	(579.08) AUD	-11.80%	Western Australia	Used	TOYOTA	Consumer Loan
3	09/2020	08/2022	22,898.44 AUD	24,043.02 AUD	23,946.41 AUD	24,792.94 AUD	(846.53) AUD	-3.70%	New South Wales	New	HYUNDAI	Chattel Mortgage
4	11/2020	08/2022	85,150.75 AUD	88,290.47 AUD	26,227.05 AUD	- AUD	26,227.05 AUD	30.80%	New South Wales	Used	AUDI	Consumer Loan
5	03/2021	08/2022	29,185.09 AUD	28,877.00 AUD	5,729.99 AUD	- AUD	5,729.99 AUD	19.63%	Queensland	Used	AUDI	Chattel Mortgage
6	08/2021	09/2022	58,243.78 AUD	60,601.34 AUD	60,349.39 AUD	(656.00) AUD	61,005.39 AUD	104.74%	New South Wales	New	VOLVO	Consumer Loan
7	05/2017	10/2022	10,198.36 AUD	5,937.71 AUD	5,937.71 AUD	- AUD	5,937.71 AUD	58.22%	Western Australia	New	VOLKSWAGEN	Consumer Loan
8	04/2021	11/2022	112,349.37 AUD	113,836.61 AUD	113,836.61 AUD	- AUD	113,836.61 AUD	101.32%	New South Wales	Used	MERCEDES-BENZ	Chattel Mortgage
9	06/2021	11/2022	42,591.10 AUD	36,679.72 AUD	30,861.92 AUD	3,000.00 AUD	27,861.92 AUD	65.42%	Victoria	Used	FORD	Chattel Mortgage
10	02/2020	12/2022	6,960.28 AUD	6,286.99 AUD	364.85 AUD	(135.89) AUD	500.74 AUD	7.19%	Queensland	Used	NISSAN	Chattel Mortgage
11	08/2021	12/2022	68,340.09 AUD	61,509.66 AUD	25,863.78 AUD	- AUD	25,863.78 AUD	37.85%	Victoria	New	FIAT	Chattel Mortgage
12	06/2021	01/2023	137,878.86 AUD	128,630.77 AUD	16,307.35 AUD	8,000.00 AUD	8,307.35 AUD	6.03%	Western Australia	New	BMW	Chattel Mortgage
13	07/2021	01/2023	21,033.51 AUD	17,507.31 AUD	9,148.55 AUD	- AUD	9,148.55 AUD	43.50%	Western Australia	Used	MITSUBISHI	Chattel Mortgage
14	07/2020	02/2023	34,078.73 AUD	31,217.40 AUD	31,217.40 AUD	- AUD	31,217.40 AUD	91.60%	Western Australia	Used	LAND ROVER	Chattel Mortgage
15	04/2021	02/2023	134,870.02 AUD	127,011.64 AUD	30,825.00 AUD	- AUD	30,825.00 AUD	22.86%	New South Wales	New	LAND ROVER	Chattel Mortgage
16	06/2021	02/2023	21,670.84 AUD	17,957.85 AUD	6,220.30 AUD	(450.03) AUD	6,670.33 AUD	30.78%	Western Australia	Used	MITSUBISHI	Chattel Mortgage
17	11/2017	03/2023	59,857.70 AUD	47,352.50 AUD	47,352.50 AUD	(2,665.00) AUD	50,017.50 AUD	83.56%	New South Wales	Used	MASERATI	Chattel Mortgage
18	06/2020	04/2023	34,408.76 AUD	36,218.47 AUD	36,218.47 AUD	- AUD	36,218.47 AUD	105.26%	New South Wales	Used	FORD	Chattel Mortgage
19	10/2020	04/2023	34,889.55 AUD	34,501.40 AUD	34,501.40 AUD	- AUD	34,501.40 AUD	98.89%	Victoria	Used	TOYOTA	Chattel Mortgage
20	04/2021	04/2023	20,917.22 AUD	18,794.44 AUD	3,489.95 AUD	- AUD	3,489.95 AUD	16.68%	Western Australia	Used	HYUNDAI	Chattel Mortgage
21	04/2021	04/2023	56,000.23 AUD	50,928.95 AUD	10,215.56 AUD	- AUD	10,215.56 AUD	18.24%	Queensland	New	HYUNDAI	Chattel Mortgage
22	06/2021	04/2023	63,143.63 AUD	51,309.14 AUD	11,590.66 AUD	- AUD	11,590.66 AUD	18.36%	Queensland	New	VOLKSWAGEN	Chattel Mortgage
23	06/2021	04/2023	33,941.35 AUD	29,675.05 AUD	11,530.95 AUD	- AUD	11,530.95 AUD	33.97%	Queensland	New	LDV	Chattel Mortgage
24	06/2021	04/2023	42,351.38 AUD	35,639.27 AUD	12,219.31 AUD	- AUD	12,219.31 AUD	28.85%	New South Wales	Used	LAND ROVER	Chattel Mortgage
25	08/2021	04/2023	35,197.90 AUD	33,592.55 AUD	33,592.55 AUD	- AUD	33,592.55 AUD	95.44%	Victoria	Used	SUBARU	Chattel Mortgage
Total	25		1,240,351.62 AUD	1,156,462.28 AUD	612,790.92 AUD	34,268.06 AUD	578,522.86 AUD					

Contract Level Data

Net Salvage Recoveries By Contract By Month

No.	Month / Year of Origination	Month / Year of Net Salvage	Nov-21	Dec-21	Jan-22	Feb-22	Mar-22	Apr-22	May-22	Jun-22	Jul-22	Aug-22	Sep-22	Oct-22
1	02/2021	07/2022	- AUD	- AUD	- AUD	- AUD	- AUD	- AUD	- AUD	- AUD	- AUD	- AUD	- AUD	- AUD
2	04/2017	08/2022	- AUD	- AUD	- AUD	- AUD	- AUD	- AUD	- AUD	- AUD	- AUD	- AUD	- AUD	- AUD
3	09/2020	08/2022	- AUD	- AUD	- AUD	- AUD	- AUD	- AUD	- AUD	- AUD	- AUD	- AUD	- AUD	- AUD
4	11/2020	08/2022	- AUD	- AUD	- AUD	- AUD	- AUD	- AUD	- AUD	- AUD	- AUD	- AUD	- AUD	- AUD
5	03/2021	08/2022	- AUD	- AUD	- AUD	- AUD	- AUD	- AUD	- AUD	- AUD	- AUD	- AUD	- AUD	- AUD
6	08/2021	09/2022	- AUD	- AUD	- AUD	- AUD	- AUD	- AUD	- AUD	- AUD	- AUD	- AUD	- AUD	- AUD
7	05/2017	10/2022	- AUD	- AUD	- AUD	- AUD	- AUD	- AUD	- AUD	- AUD	- AUD	- AUD	- AUD	- AUD
8	04/2021	11/2022	- AUD	- AUD	- AUD	- AUD	- AUD	- AUD	- AUD	- AUD	- AUD	- AUD	- AUD	- AUD
9	06/2021	11/2022	- AUD	- AUD	- AUD	- AUD	- AUD	- AUD	- AUD	- AUD	- AUD	- AUD	- AUD	- AUD
10	02/2020	12/2022	- AUD	- AUD	- AUD	- AUD	- AUD	- AUD	- AUD	- AUD	- AUD	- AUD	- AUD	- AUD
11	08/2021	12/2022	- AUD	- AUD	- AUD	- AUD	- AUD	- AUD	- AUD	- AUD	- AUD	- AUD	- AUD	- AUD
12	06/2021	01/2023	- AUD	- AUD	- AUD	- AUD	- AUD	- AUD	- AUD	- AUD	- AUD	- AUD	- AUD	- AUD
13	07/2021	01/2023	- AUD	- AUD	- AUD	- AUD	- AUD	- AUD	- AUD	- AUD	- AUD	- AUD	- AUD	- AUD
14	07/2020	02/2023	- AUD	- AUD	- AUD	- AUD	- AUD	- AUD	- AUD	- AUD	- AUD	- AUD	- AUD	- AUD
15	04/2021	02/2023	- AUD	- AUD	- AUD	- AUD	- AUD	- AUD	- AUD	- AUD	- AUD	- AUD	- AUD	- AUD
16	06/2021	02/2023	- AUD	- AUD	- AUD	- AUD	- AUD	- AUD	- AUD	- AUD	- AUD	- AUD	- AUD	- AUD
17	11/2017	03/2023	- AUD	- AUD	- AUD	- AUD	- AUD	- AUD	- AUD	- AUD	- AUD	- AUD	- AUD	- AUD
18	06/2020	04/2023	- AUD	- AUD	- AUD	- AUD	- AUD	- AUD	- AUD	- AUD	- AUD	- AUD	- AUD	- AUD
19	10/2020	04/2023	- AUD	- AUD	- AUD	- AUD	- AUD	- AUD	- AUD	- AUD	- AUD	- AUD	- AUD	- AUD
20	04/2021	04/2023	- AUD	- AUD	- AUD	- AUD	- AUD	- AUD	- AUD	- AUD	- AUD	- AUD	- AUD	- AUD
21	04/2021	04/2023	- AUD	- AUD	- AUD	- AUD	- AUD	- AUD	- AUD	- AUD	- AUD	- AUD	- AUD	- AUD
22	06/2021	04/2023	- AUD	- AUD	- AUD	- AUD	- AUD	- AUD	- AUD	- AUD	- AUD	- AUD	- AUD	- AUD
23	06/2021	04/2023	- AUD	- AUD	- AUD	- AUD	- AUD	- AUD	- AUD	- AUD	- AUD	- AUD	- AUD	- AUD
24	06/2021	04/2023	- AUD	- AUD	- AUD	- AUD	- AUD	- AUD	- AUD	- AUD	- AUD	- AUD	- AUD	- AUD
25	08/2021	04/2023	- AUD	- AUD	- AUD	- AUD	- AUD	- AUD	- AUD	- AUD	- AUD	- AUD	- AUD	- AUD
Total	25		- AUD	- AUD	- AUD	- AUD	- AUD	- AUD	- AUD	- AUD	- AUD	- AUD	(871.25) AUD	21,062.38 AUD

Contract Level Data

Net Salvage Recoveries By Contract By Month

No.	Month / Year of Origination	Month / Year of Net Salvage	Nov-22	Dec-22	Jan-23	Feb-23	Mar-23	Apr-23	May-23	Jun-23	Jul-23	Aug-23	Sep-23	Oct-23
1	02/2021	07/2022	- AUD	- AUD	- AUD	- AUD	- AUD	- AUD	- AUD	- AUD	- AUD	- AUD	- AUD	- AUD
2	04/2017	08/2022	100.00 AUD	- AUD	2,282.04 AUD	- AUD	- AUD	- AUD	- AUD	- AUD	- AUD	- AUD	- AUD	- AUD
3	09/2020	08/2022	- AUD	- AUD	3,074.56 AUD	- AUD	- AUD	871.25 AUD	- AUD	- AUD	- AUD	- AUD	- AUD	- AUD
4	11/2020	08/2022	- AUD	- AUD	- AUD	- AUD	- AUD	- AUD	- AUD	- AUD	- AUD	- AUD	- AUD	- AUD
5	03/2021	08/2022	- AUD	- AUD	- AUD	- AUD	- AUD	- AUD	- AUD	- AUD	- AUD	- AUD	- AUD	- AUD
6	08/2021	09/2022	- AUD	- AUD	- AUD	- AUD	- AUD	- AUD	- AUD	- AUD	- AUD	- AUD	- AUD	- AUD
7	05/2017	10/2022	- AUD	- AUD	- AUD	- AUD	- AUD	- AUD	- AUD	- AUD	- AUD	- AUD	- AUD	- AUD
8	04/2021	11/2022	- AUD	- AUD	- AUD	- AUD	- AUD	- AUD	- AUD	- AUD	- AUD	- AUD	- AUD	- AUD
9	06/2021	11/2022	- AUD	- AUD	- AUD	1,000.00 AUD	1,000.00 AUD	1,000.00 AUD	- AUD	- AUD	- AUD	- AUD	- AUD	- AUD
10	02/2020	12/2022	- AUD	- AUD	(135.89) AUD	- AUD	- AUD	- AUD	- AUD	- AUD	- AUD	- AUD	- AUD	- AUD
11	08/2021	12/2022	- AUD	- AUD	- AUD	- AUD	- AUD	- AUD	- AUD	- AUD	- AUD	- AUD	- AUD	- AUD
12	06/2021	01/2023	- AUD	- AUD	- AUD	8,000.00 AUD	- AUD	- AUD	- AUD	- AUD	- AUD	- AUD	- AUD	- AUD
13	07/2021	01/2023	- AUD	- AUD	- AUD	- AUD	- AUD	- AUD	- AUD	- AUD	- AUD	- AUD	- AUD	- AUD
14	07/2020	02/2023	- AUD	- AUD	- AUD	- AUD	- AUD	- AUD	- AUD	- AUD	- AUD	- AUD	- AUD	- AUD
15	04/2021	02/2023	- AUD	- AUD	- AUD	- AUD	- AUD	- AUD	- AUD	- AUD	- AUD	- AUD	- AUD	- AUD
16	06/2021	02/2023	- AUD	- AUD	- AUD	- AUD	(450.03) AUD	- AUD	- AUD	- AUD	- AUD	- AUD	- AUD	- AUD
17	11/2017	03/2023	- AUD	- AUD	- AUD	- AUD	- AUD	(2,665.00) AUD	- AUD	- AUD	- AUD	- AUD	- AUD	- AUD
18	06/2020	04/2023	- AUD	- AUD	- AUD	- AUD	- AUD	- AUD	- AUD	- AUD	- AUD	- AUD	- AUD	- AUD
19	10/2020	04/2023	- AUD	- AUD	- AUD	- AUD	- AUD	- AUD	- AUD	- AUD	- AUD	- AUD	- AUD	- AUD
20	04/2021	04/2023	- AUD	- AUD	- AUD	- AUD	- AUD	- AUD	- AUD	- AUD	- AUD	- AUD	- AUD	- AUD
21	04/2021	04/2023	- AUD	- AUD	- AUD	- AUD	- AUD	- AUD	- AUD	- AUD	- AUD	- AUD	- AUD	- AUD
22	06/2021	04/2023	- AUD	- AUD	- AUD	- AUD	- AUD	- AUD	- AUD	- AUD	- AUD	- AUD	- AUD	- AUD
23	06/2021	04/2023	- AUD	- AUD	- AUD	- AUD	- AUD	- AUD	- AUD	- AUD	- AUD	- AUD	- AUD	- AUD
24	06/2021	04/2023	- AUD	- AUD	- AUD	- AUD	- AUD	- AUD	- AUD	- AUD	- AUD	- AUD	- AUD	- AUD
25	08/2021	04/2023	- AUD	- AUD	- AUD	- AUD	- AUD	- AUD	- AUD	- AUD	- AUD	- AUD	- AUD	- AUD
Total	25		100.00 AUD	- AUD	5,220.71 AUD	9,000.00 AUD	549.97 AUD	(793.75) AUD	- AUD	- AUD	- AUD	- AUD	- AUD	- AUD

Contract Level Data

Net Salvage Recoveries By Contract By Month

#REF!

No.	Month / Year of Origination	Month / Year of Net Salvage	Nov-23	Dec-23	Jan-24	Feb-24	Mar-24	Apr-24	May-24	Jun-24	Jul-24	Aug-24	Sep-24	Oct-24
1	02/2021	07/2022	- AUD	- AUD	- AUD	- AUD	- AUD	- AUD	- AUD	- AUD	- AUD	- AUD	- AUD	- AUD
2	04/2017	08/2022	- AUD	- AUD	- AUD	- AUD	- AUD	- AUD	- AUD	- AUD	- AUD	- AUD	- AUD	- AUD
3	09/2020	08/2022	- AUD	- AUD	- AUD	- AUD	- AUD	- AUD	- AUD	- AUD	- AUD	- AUD	- AUD	- AUD
4	11/2020	08/2022	- AUD	- AUD	- AUD	- AUD	- AUD	- AUD	- AUD	- AUD	- AUD	- AUD	- AUD	- AUD
5	03/2021	08/2022	- AUD	- AUD	- AUD	- AUD	- AUD	- AUD	- AUD	- AUD	- AUD	- AUD	- AUD	- AUD
6	08/2021	09/2022	- AUD	- AUD	- AUD	- AUD	- AUD	- AUD	- AUD	- AUD	- AUD	- AUD	- AUD	- AUD
7	05/2017	10/2022	- AUD	- AUD	- AUD	- AUD	- AUD	- AUD	- AUD	- AUD	- AUD	- AUD	- AUD	- AUD
8	04/2021	11/2022	- AUD	- AUD	- AUD	- AUD	- AUD	- AUD	- AUD	- AUD	- AUD	- AUD	- AUD	- AUD
9	06/2021	11/2022	- AUD	- AUD	- AUD	- AUD	- AUD	- AUD	- AUD	- AUD	- AUD	- AUD	- AUD	- AUD
10	02/2020	12/2022	- AUD	- AUD	- AUD	- AUD	- AUD	- AUD	- AUD	- AUD	- AUD	- AUD	- AUD	- AUD
11	08/2021	12/2022	- AUD	- AUD	- AUD	- AUD	- AUD	- AUD	- AUD	- AUD	- AUD	- AUD	- AUD	- AUD
12	06/2021	01/2023	- AUD	- AUD	- AUD	- AUD	- AUD	- AUD	- AUD	- AUD	- AUD	- AUD	- AUD	- AUD
13	07/2021	01/2023	- AUD	- AUD	- AUD	- AUD	- AUD	- AUD	- AUD	- AUD	- AUD	- AUD	- AUD	- AUD
14	07/2020	02/2023	- AUD	- AUD	- AUD	- AUD	- AUD	- AUD	- AUD	- AUD	- AUD	- AUD	- AUD	- AUD
15	04/2021	02/2023	- AUD	- AUD	- AUD	- AUD	- AUD	- AUD	- AUD	- AUD	- AUD	- AUD	- AUD	- AUD
16	06/2021	02/2023	- AUD	- AUD	- AUD	- AUD	- AUD	- AUD	- AUD	- AUD	- AUD	- AUD	- AUD	- AUD
17	11/2017	03/2023	- AUD	- AUD	- AUD	- AUD	- AUD	- AUD	- AUD	- AUD	- AUD	- AUD	- AUD	- AUD
18	06/2020	04/2023	- AUD	- AUD	- AUD	- AUD	- AUD	- AUD	- AUD	- AUD	- AUD	- AUD	- AUD	- AUD
19	10/2020	04/2023	- AUD	- AUD	- AUD	- AUD	- AUD	- AUD	- AUD	- AUD	- AUD	- AUD	- AUD	- AUD
20	04/2021	04/2023	- AUD	- AUD	- AUD	- AUD	- AUD	- AUD	- AUD	- AUD	- AUD	- AUD	- AUD	- AUD
21	04/2021	04/2023	- AUD	- AUD	- AUD	- AUD	- AUD	- AUD	- AUD	- AUD	- AUD	- AUD	- AUD	- AUD
22	06/2021	04/2023	- AUD	- AUD	- AUD	- AUD	- AUD	- AUD	- AUD	- AUD	- AUD	- AUD	- AUD	- AUD
23	06/2021	04/2023	- AUD	- AUD	- AUD	- AUD	- AUD	- AUD	- AUD	- AUD	- AUD	- AUD	- AUD	- AUD
24	06/2021	04/2023	- AUD	- AUD	- AUD	- AUD	- AUD	- AUD	- AUD	- AUD	- AUD	- AUD	- AUD	- AUD
25	08/2021	04/2023	- AUD	- AUD	- AUD	- AUD	- AUD	- AUD	- AUD	- AUD	- AUD	- AUD	- AUD	- AUD
Total	25		- AUD	- AUD	- AUD	- AUD	- AUD	- AUD	- AUD	- AUD	- AUD	- AUD	- AUD	- AUD

Contract Level Data

Net Salvage Recoveries By Contract By Month

No.	Month / Year of Origination	Month / Year of Net Salvage	Nov-24	Dec-24	Jan-25	Feb-25	Mar-25	Apr-25	May-25	Jun-25	Jul-25	Aug-25
1	02/2021	07/2022	- AUD	- AUD	- AUD	- AUD	- AUD	- AUD	- AUD	- AUD	- AUD	- AUD
2	04/2017	08/2022	- AUD	- AUD	- AUD	- AUD	- AUD	- AUD	- AUD	- AUD	- AUD	- AUD
3	09/2020	08/2022	- AUD	- AUD	- AUD	- AUD	- AUD	- AUD	- AUD	- AUD	- AUD	- AUD
4	11/2020	08/2022	- AUD	- AUD	- AUD	- AUD	- AUD	- AUD	- AUD	- AUD	- AUD	- AUD
5	03/2021	08/2022	- AUD	- AUD	- AUD	- AUD	- AUD	- AUD	- AUD	- AUD	- AUD	- AUD
6	08/2021	09/2022	- AUD	- AUD	- AUD	- AUD	- AUD	- AUD	- AUD	- AUD	- AUD	- AUD
7	05/2017	10/2022	- AUD	- AUD	- AUD	- AUD	- AUD	- AUD	- AUD	- AUD	- AUD	- AUD
8	04/2021	11/2022	- AUD	- AUD	- AUD	- AUD	- AUD	- AUD	- AUD	- AUD	- AUD	- AUD
9	06/2021	11/2022	- AUD	- AUD	- AUD	- AUD	- AUD	- AUD	- AUD	- AUD	- AUD	- AUD
10	02/2020	12/2022	- AUD	- AUD	- AUD	- AUD	- AUD	- AUD	- AUD	- AUD	- AUD	- AUD
11	08/2021	12/2022	- AUD	- AUD	- AUD	- AUD	- AUD	- AUD	- AUD	- AUD	- AUD	- AUD
12	06/2021	01/2023	- AUD	- AUD	- AUD	- AUD	- AUD	- AUD	- AUD	- AUD	- AUD	- AUD
13	07/2021	01/2023	- AUD	- AUD	- AUD	- AUD	- AUD	- AUD	- AUD	- AUD	- AUD	- AUD
14	07/2020	02/2023	- AUD	- AUD	- AUD	- AUD	- AUD	- AUD	- AUD	- AUD	- AUD	- AUD
15	04/2021	02/2023	- AUD	- AUD	- AUD	- AUD	- AUD	- AUD	- AUD	- AUD	- AUD	- AUD
16	06/2021	02/2023	- AUD	- AUD	- AUD	- AUD	- AUD	- AUD	- AUD	- AUD	- AUD	- AUD
17	11/2017	03/2023	- AUD	- AUD	- AUD	- AUD	- AUD	- AUD	- AUD	- AUD	- AUD	- AUD
18	06/2020	04/2023	- AUD	- AUD	- AUD	- AUD	- AUD	- AUD	- AUD	- AUD	- AUD	- AUD
19	10/2020	04/2023	- AUD	- AUD	- AUD	- AUD	- AUD	- AUD	- AUD	- AUD	- AUD	- AUD
20	04/2021	04/2023	- AUD	- AUD	- AUD	- AUD	- AUD	- AUD	- AUD	- AUD	- AUD	- AUD
21	04/2021	04/2023	- AUD	- AUD	- AUD	- AUD	- AUD	- AUD	- AUD	- AUD	- AUD	- AUD
22	06/2021	04/2023	- AUD	- AUD	- AUD	- AUD	- AUD	- AUD	- AUD	- AUD	- AUD	- AUD
23	06/2021	04/2023	- AUD	- AUD	- AUD	- AUD	- AUD	- AUD	- AUD	- AUD	- AUD	- AUD
24	06/2021	04/2023	- AUD	- AUD	- AUD	- AUD	- AUD	- AUD	- AUD	- AUD	- AUD	- AUD
25	08/2021	04/2023	- AUD	- AUD	- AUD	- AUD	- AUD	- AUD	- AUD	- AUD	- AUD	- AUD
Total	25		- AUD	- AUD	- AUD	- AUD	- AUD	- AUD	- AUD	- AUD	- AUD	- AUD