



# MAIDEN DRILL PROGRAM COMMENCED AT ULTRA HIGH PURITY MCINTOSH GRAPHITE PROJECT

---

## Highlights

- GCM has commenced its maiden drill program which will test priority targets, some of which have never been drill tested (Figure 2) within the company's **substantial 67-101Mt @ 2-5 TGC%\* Exploration Target**.
- The maiden drill program will consist of up to ~10,000m of RC drilling to test the priority targets and diamond drilling for metallurgical and ore sorting test work.
- The drill program is expected to be completed end of June, with samples sent in batches for assaying as they become available.
- Further holes have been planned to extend the strike and depth extensions of the Emperor deposit.
- The company management has also recently returned from a successful European and North American visit to discuss potential offtake and JV partner agreements to develop a downstream Battery Anode Material plant using McIntosh Graphite.

---

\* Cautionary Statement: The potential quantity and grade of the Exploration Targets is conceptual in nature, there has been insufficient exploration work to estimate a mineral resource and it is uncertain if further exploration will result in defining a mineral resource as determined by JORC 2012 guidelines. See ASX announcement [Green-Critical-Minerals-Ltd-updates-the-McIntosh-Graphite-Project-Exploration-Target-07-March-2023](#)

**Green Critical Minerals Pty Ltd (“GCM” or “the Company”)** which holds earn-in rights for up to 80% of the advanced Ultra High Purity / High Quality McIntosh Graphite Project (see CML’s announcement on 15 June 2022) is pleased to announce to market that it commenced its maiden Reverse Circulation (RC) Drilling program on the company’s flagship McIntosh Graphite Project (“**the Project**”).

This program aims to unlock the potential of priority targets, some of which have never been drill tested, within the company's substantial 67-101Mt\* Exploration Target (refer to Figure 2).

*Figure 1 RC Drilling commenced at McIntosh Project*





### Drill Program

The maiden drill program is a significant milestone for GCM and represents an exciting phase of exploration. Up to 10,000 meters of reverse circulation (RC) drilling will be conducted to test priority targets. Additionally, diamond drilling will be employed for metallurgical and ore sorting test work.

We anticipate the drill program to be completed by the end of June, with samples sent in batches for assaying as they become available. This strategy allows for timely data acquisition and analysis with a steady stream of news flow.

Furthermore, we are pleased to announce that additional drill holes have been planned to extend the strike and depth extensions of the Emperor deposit. The Emperor deposit has previous test work to show it has excellent electrochemical properties needed to make premium quality battery anode material.

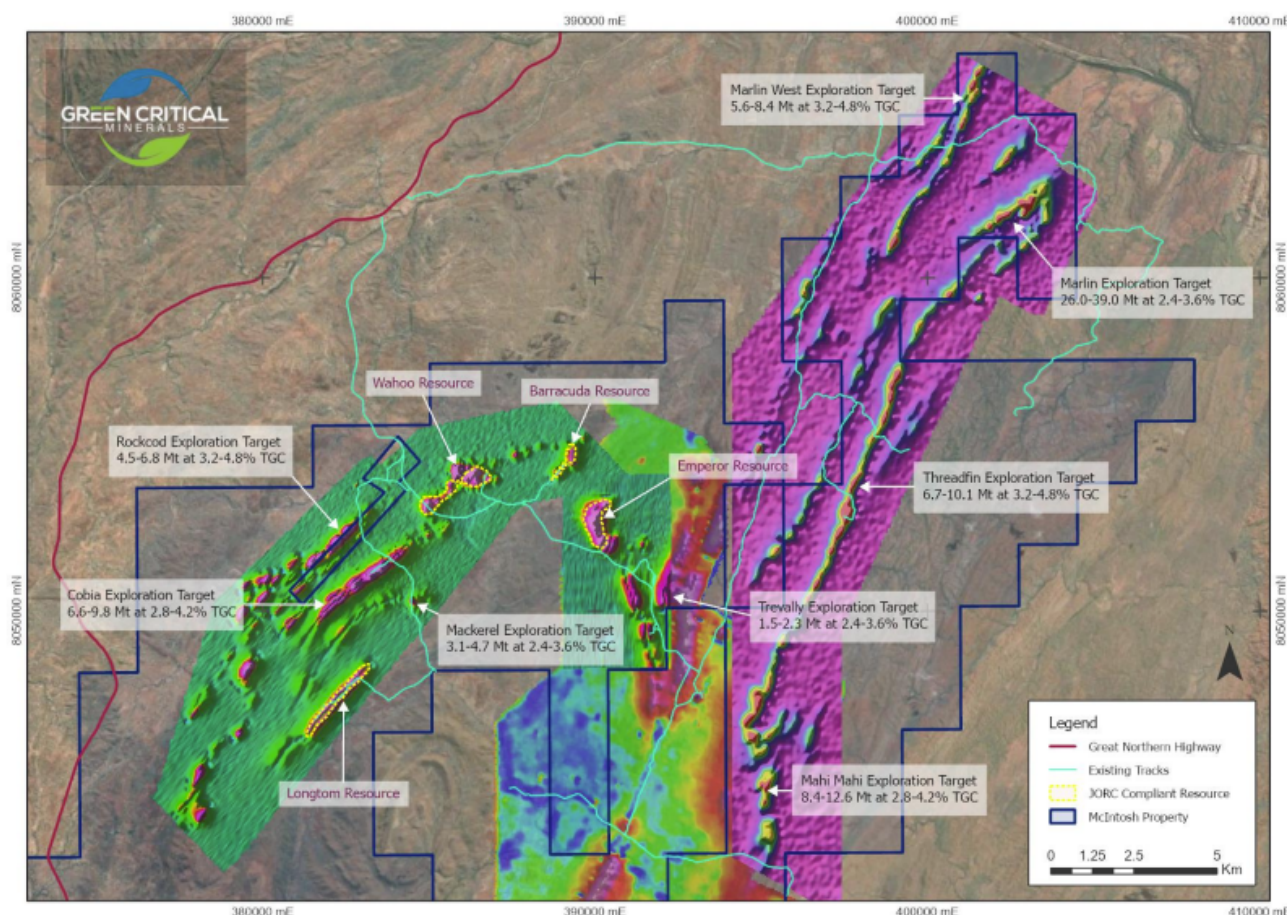
GCM is excited about the opportunities that lie ahead, and we are confident that the maiden drill program will provide valuable insights into the untapped potential of our priority targets. Our team is dedicated to delivering superior results for our shareholders and unlocking the full value of our mineral assets.

**Table 1 – Exploration Target\* Tonnes and Grades**

Prospect	Tonnage Range (Million Tonnes)		Grade Range (% TGC)	
	Minimum	Maximum	Minimum	Maximum
Emperor	2.4	3.6	3.6	5.4
Wahoo	1.2	1.8	3.6	5.4
Barracuda	1.2	1.8	3.6	5.4
Cobia	6.6	9.8	2.8	4.2
Marlin	26.0	39.0	2.4	3.6
Marlin West	5.6	8.4	3.2	4.8
Mahi Mahi	8.4	12.6	2.8	4.2
Threadfin	6.7	10.1	3.2	4.8
Rockcod	4.5	6.8	3.2	4.8
Mackerel	3.1	4.7	2.4	3.6
Trevally	1.5	2.3	2.4	3.6
<b>Total</b>	<b>67.2</b>	<b>100.9</b>	<b>2.0</b>	<b>5.0</b>



Figure 2: McIntosh Project location map showing Exploration Targets.



### CEO, Mark Lynch-Staunton Commented:

"I am thrilled to announce the commencement of our highly anticipated RC drill program, marking a significant milestone for GCM. The exploration potential that lies ahead is substantial. By tapping into these unexplored graphite targets, we aim to solidify our position as a leading player in the graphite industry".

### European/North American Trip

In line with our commitment to develop and maximise value from the Ultra High Purity McIntosh project, the company's management recently returned from a successful visit to Europe and North America. The purpose of the trip was to discuss potential offtake and joint venture (JV) partner agreements to develop a vertically integrated downstream Battery Anode Material plant for our flagship McIntosh Graphite project. Strong interest was received from several downstream technology partners to receive concentrate samples from the McIntosh project for test work and analysis. The company is working towards delivering concentrate sample for distribution to downstream technology partners for qualification purposes by the end of Q3.



### **NEXT STEPS**

The following works are underway as a matter of priority to advance the McIntosh Graphite Project:

- Maiden drill program
- Preliminary Ore sorting study
- Metallurgical test work campaign
- Battery Anode qualification test work commencement
- Downstream Processing Facility Scoping Study including a site selection study
- Delivery of updated McIntosh Upstream Pre-Feasibility study

### **Competent Person Statement:**

The information in this report that relates to the exploration activities are based on information compiled by Mr. S Nicholls, who is a Member of the Australian Institute of Geoscientists and full time employee of Apex Geoscience Australia Pty Ltd. Mr Nicholls has sufficient experience which is relevant to the style of mineralisation and type of deposit under consideration and to the activity which he is undertaking to qualify as a Competent Person as defined in the 2012 Edition of the 'Australasian Code for Reporting of Exploration Results, Mineral Resources and Ore Reserves'. Mr. Nicholls consents to the inclusion in the report of the matters based on his information in the form and context in which it appears.

### **Authorisation**

The provision of this announcement to the ASX has been authorised by the board of directors of Green Critical Minerals Limited.

Green Critical Minerals confirms that it is not aware of any new information or data that materially affects the exploration results contained in this announcement.

### **Forward Looking Statements**

Statements contained in this release, particularly those regarding possible or assumed future performance, costs, dividends, production levels or rates, prices, resources, reserves or potential growth of Green Critical Limited, are, or may be, forward looking statements. Such statements relate to future events and expectations and, as such, involve known and unknown risks and uncertainties. Actual results and developments may differ materially from those expressed or implied by these forward-looking statements depending on a variety of factors