



7 June 2023

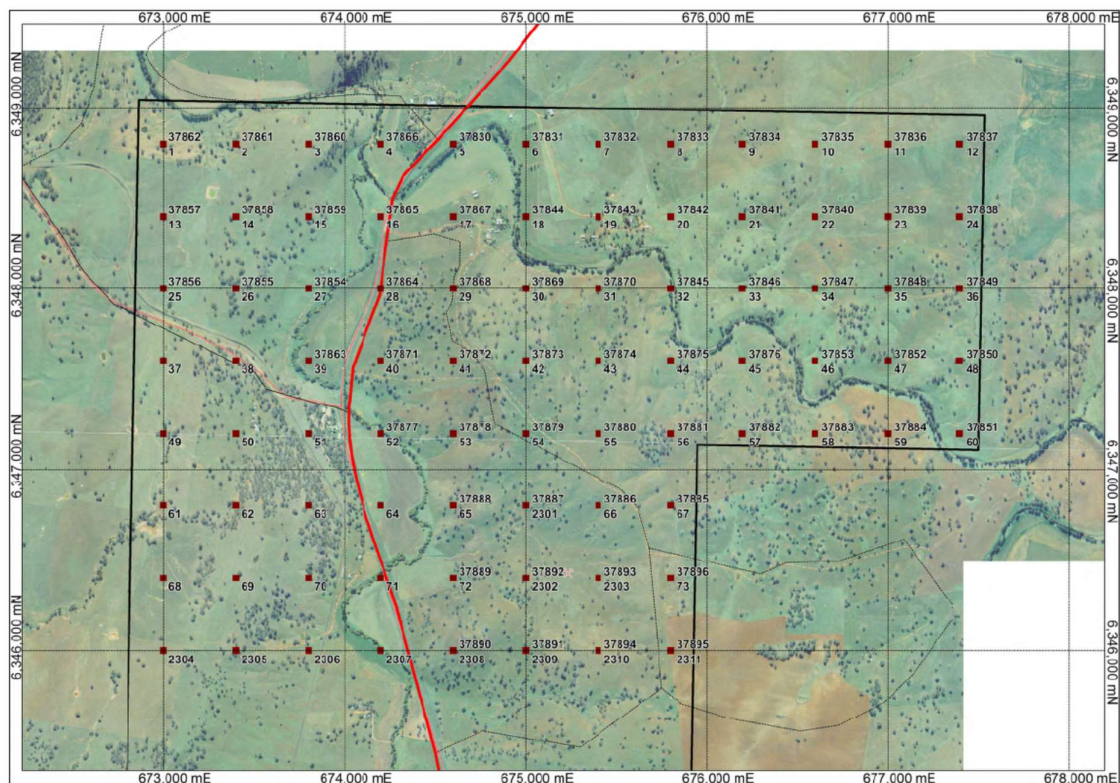
**ASX Market Announcements**

**Copper Hill  
Geochemistry Surface Sampling Update**

The Company (ASX:GCR) has received further soil geochemical results as part of an ongoing program to cover wider areas of the Copper Hill tenement Exploration Licence 6391, north of Molong, NSW. Sampling was disrupted by rain events in recent months, restricting access to agricultural land.

Infill and extension sampling of surface soils is designed to extend coverage based on a MGA grid [MGA z55 GDA94] over areas of Copper Hill and surrounds that are under-sampled or are potential future infrastructure sites [e.g., waste rock stack and tailings storage areas] or where some past sampling has been analysed for a limited number of elements, and varying collection and analytical techniques, leaving significant gaps in the multi-element coverage of target areas. The current stages of sampling aim to achieve a consistent multi-element surface geochemical dataset over the whole tenement.

Sampling has continued on a first pass spacing of 400m x 400m spacing in the Larras Lee area, for an additional 67 sites as shown in **Figure 1**.

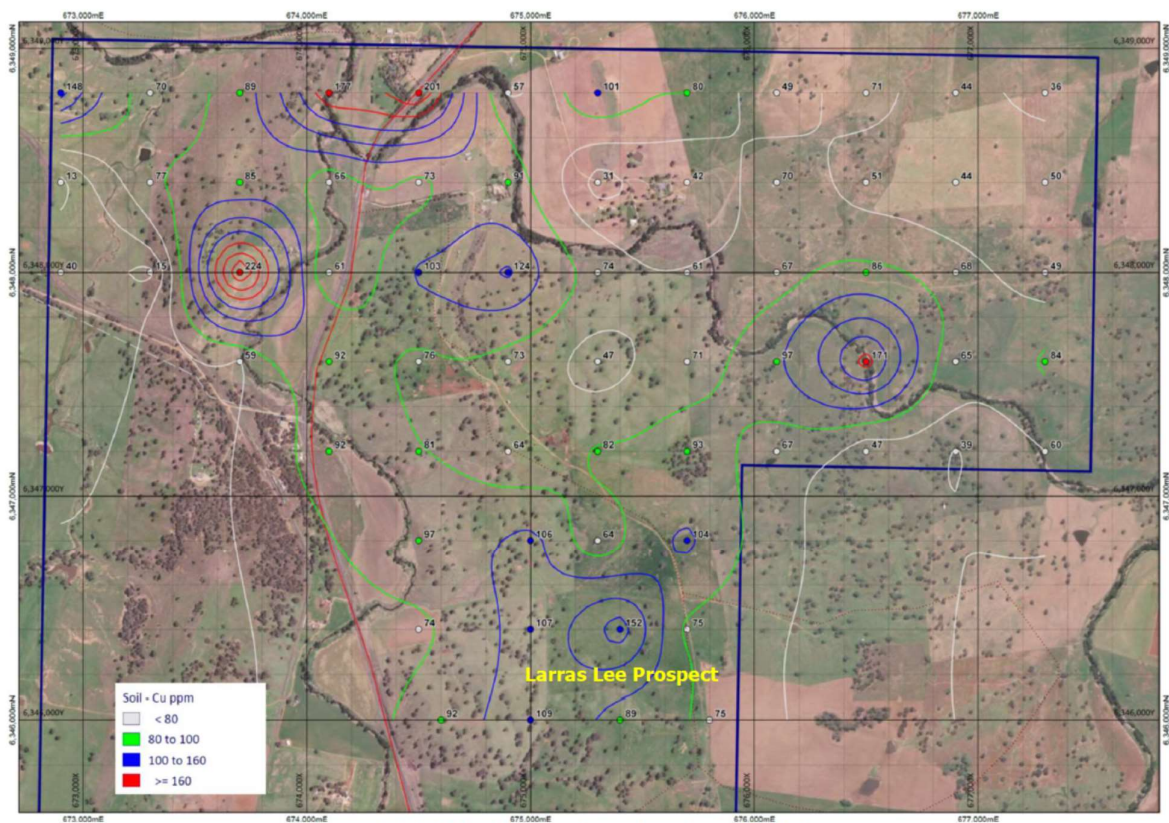


**Figure 1 EL6391 North: Tenement Geochemistry Locations**

The assay results for copper are shown in **Figure 2** and an extract tabulation of the main trace elements is included in **Appendix 1**.

Despite being underlain by the same geologic formations values are generally subdued with lower backgrounds compared with other areas to the south closer to Copper Hill, where zones are defined by +200ppm copper (*refer ASX announcement 13 July 2022: Copper Hill Tenement – Geochemistry Surface Sampling Update*). Increased sample spacing may reveal trends, but the overall response is low tenor. A single spot high in gold at site 20 (sample A37842) suggests coarse gold is present at that site; its significance will be investigated by reviewing other data sets and field reconnaissance.

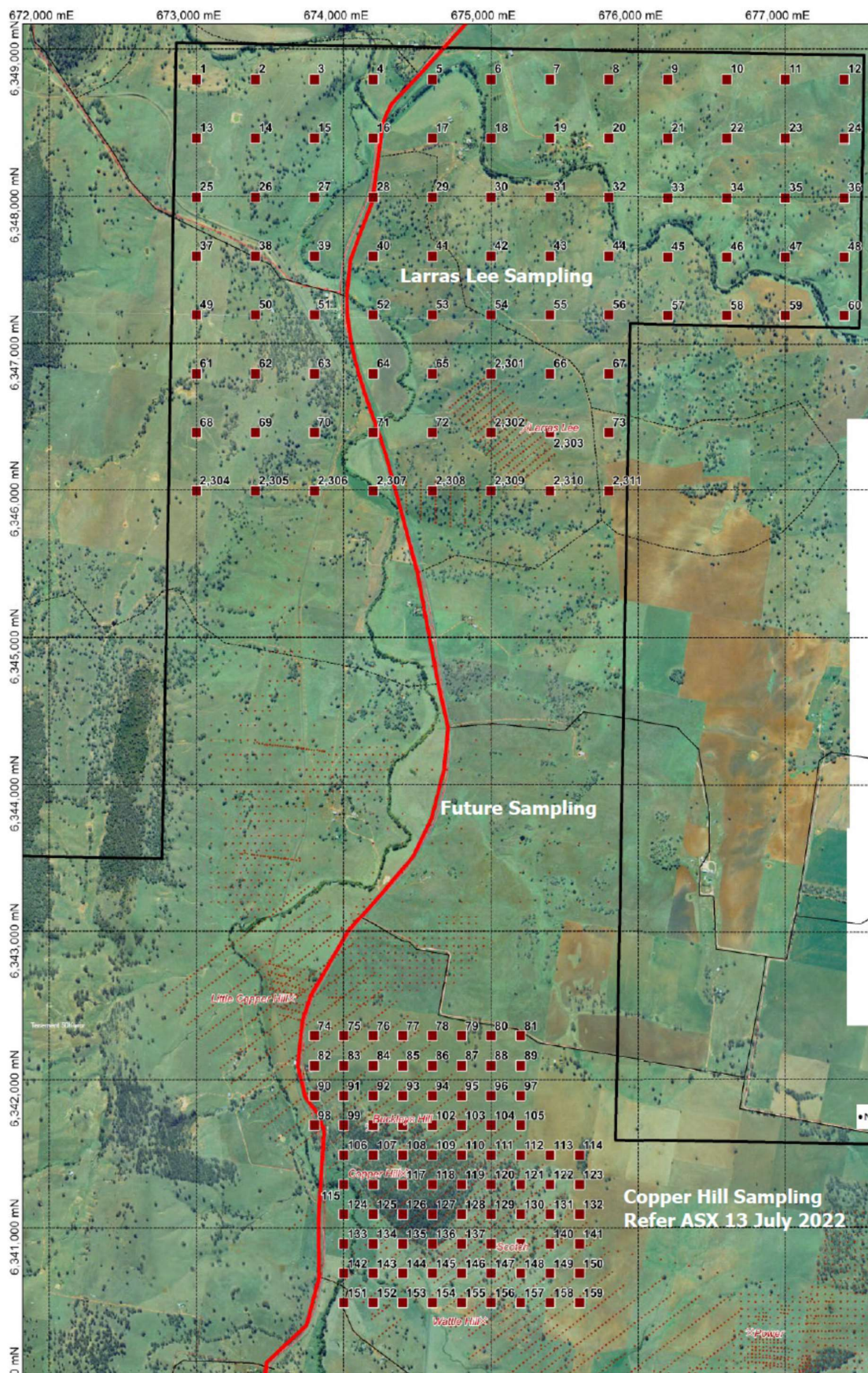
The Larras Lee Prospect, where low geochemical values were returned in past sampling, is located as shown in **Figure 2**.



**Figure 2 EL6391 North: Geochemistry Soil Copper**

When access conditions allow, further stages of sampling are planned to the south towards Copper (**Figure 3**)





**Figure 3 EL6391 North: Soil Sampling Program**

As the sampling program progresses and subject to the results, the Company intends to design and implement drilling programs in this area and/or other existing Copper Hill resource areas with possibly deep holes in addition to the current planned infill drilling, data-based resource extension drilling and potential deep holes.

---

This announcement has been reviewed and authorised for release by the executive chairman Jordan Li.

**References to previous announcements**

05 January 2022: Copper Hill Tenement – Planned Geochemistry Surface Sampling Completed

11 January 2022: Copper Hill Tenement – Geochemistry Surface Sampling Assay Results

13 July 2022: Copper Hill Tenement – Geochemistry Surface Sampling Update

**Forward-Looking Statement**

*This document may include forward-looking statements. Forward-looking statements include, but are not limited to, statements concerning planned exploration program and other statements that are not historical facts. When used in this document, the words such as “could”, “plan”, “estimate”, “expect”, “intend”, “may”, “potential”, “should” and similar expressions are forward-looking statements. Although Golden Cross Resources Limited believes that its expectations reflected in these forward-looking statements are reasonable, such statements involve risks and uncertainties and no assurance can be given that actual results will be consistent with these forward-looking statements.*

**Competent Person Statement**

*The information in this report that relates to Exploration Results is based on information from previous reports, compiled by Mr Bret Ferris, who is a Member of the Australasian Institute of Geoscientists. (AIG). Mr Ferris is a consultant to Golden Cross Resources Limited, and has sufficient experience relevant to the style of mineralisation and type of deposit under consideration and to the activity he is undertaking to qualify as a Competent Person as defined in the 2012 Edition of the “Australasian Code for Reporting of Exploration Results, Mineral Resources and Ore Reserves”. Mr Ferris consents to the inclusion in this report of the matters based on that information in the form and context in which it appears.*

**Carolyn Jacobs**

Joint Company Secretary

## Appendix 1: Copper Hill Soils: Tabulation of Key Elements

						ME-ICP4	u-AA26	ME-ICP4	ME-ICP4	ME-ICP4	ME-ICP4
						Cu	Au	Mo	Ag	Pb	Zn
Batch 3						ppm	ppm	ppm	ppm	ppm	ppm
Site	Locality	Easting MGA	Northing MGA	RL	SampNo	1	0.01	1	0.2	2	2
5	Larras Lee	674500	6348800		A37830	201	<0.01	<1	<0.2	7	72
6	Larras Lee	674900	6348800		A37831	57	0.02	<1	<0.2	13	76
7	Larras Lee	675300	6348800		A37832	101	<0.01	<1	<0.2	6	82
8	Larras Lee	675700	6348800		A37833	80	<0.01	<1	<0.2	5	63
9	Larras Lee	676100	6348800		A37834	49	<0.01	1	<0.2	7	46
10	Larras Lee	676500	6348800		A37835	71	<0.01	<1	<0.2	8	59
11	Larras Lee	676900	6348800		A37836	44	<0.01	1	<0.2	5	49
12	Larras Lee	677300	6348800		A37837	36	<0.01	1	<0.2	12	67
24	Larras Lee	677300	6348400		A37838	50	<0.01	1	<0.2	12	56
23	Larras Lee	676900	6348400		A37839	44	<0.01	<1	<0.2	8	54
22	Larras Lee	676500	6348400		A37840	51	<0.01	1	<0.2	8	49
21	Larras Lee	676100	6348400		A37841	70	<0.01	<1	<0.2	2	55
20	Larras Lee	675700	6348400		A37842	42	0.80	1	<0.2	13	40
19	Larras Lee	675300	6348400		A37843	31	<0.01	<1	<0.2	11	36
18	Larras Lee	674900	6348400		A37844	91	<0.01	<1	<0.2	6	73
32	Larras Lee	675700	6348000		A37845	61	<0.01	1	<0.2	8	44
33	Larras Lee	676100	6348000		A37846	67	<0.01	<1	<0.2	10	69
34	Larras Lee	676500	6348000		A37847	86	<0.01	<1	<0.2	8	64
35	Larras Lee	676900	6348000		A37848	68	<0.01	1	<0.2	10	57
36	Larras Lee	677300	6348000		A37849	49	<0.01	<1	<0.2	5	67
48	Larras Lee	677300	6347600		A37850	84	<0.01	1	<0.2	11	105
60	Larras Lee	677300	6347200		A37851	60	<0.01	1	<0.2	8	74
47	Larras Lee	676900	6347600		A37852	65	<0.01	<1	<0.2	3	56
46	Larras Lee	676500	6347600		A37853	171	0.01	<1	<0.2	7	67
27	Larras Lee	673700	6348000		A37854	224	<0.01	<1	<0.2	10	90
26	Larras Lee	673300	6348000		A37855	15	<0.01	<1	<0.2	8	15
25	Larras Lee	672900	6348000		A37856	40	<0.01	<1	<0.2	100	427
13	Larras Lee	672900	6348400		A37857	13	<0.01	<1	<0.2	18	60
14	Larras Lee	673300	6348400		A37858	77	0.03	3	<0.2	41	98
15	Larras Lee	673700	6348400		A37859	85	<0.01	1	<0.2	5	119
3	Larras Lee	673700	6348800		A37860	89	<0.01	<1	<0.2	11	39
2	Larras Lee	673300	6348800		A37861	70	0.02	1	<0.2	14	55
1	Larras Lee	672900	6348800		A37862	148	0.04	1	<0.2	22	69
39	Larras Lee	673700	6347600		A37863	59	<0.01	1	<0.2	11	67
28	Larras Lee	674100	6348000		A37864	61	<0.01	1	<0.2	13	68
16	Larras Lee	674100	6348400		A37865	66	<0.01	<1	<0.2	9	79
4	Larras Lee	674100	6348800		A37866	177	<0.01	<1	<0.2	6	88
17	Larras Lee	674500	6348400		A37867	73	<0.01	<1	<0.2	8	119
29	Larras Lee	674500	6348000		A37868	103	<0.01	<1	<0.2	7	77
30	Larras Lee	674900	6348000		A37869	124	<0.01	<1	<0.2	3	74
31	Larras Lee	675300	6348000		A37870	74	<0.01	<1	<0.2	5	76
40	Larras Lee	674100	6347600		A37871	92	<0.01	<1	<0.2	6	64
41	Larras Lee	674500	6347600		A37872	76	0.01	<1	<0.2	73	66
42	Larras Lee	674900	6347600		A37873	73	<0.01	<1	<0.2	9	52
43	Larras Lee	675300	6347600		A37874	47	<0.01	<1	<0.2	13	49
44	Larras Lee	675700	6347600		A37875	71	<0.01	<1	<0.2	9	58
45	Larras Lee	676100	6347600		A37876	97	<0.01	<1	<0.2	6	69
52	Larras Lee	674100	6347200		A37877	92	<0.01	<1	<0.2	9	67
53	Larras Lee	674500	6347200		A37878	81	<0.01	<1	<0.2	3	67
54	Larras Lee	674900	6347200		A37879	64	<0.01	1	<0.2	12	61
55	Larras Lee	675300	6347200		A37880	82	<0.01	<1	<0.2	7	46
56	Larras Lee	675700	6347200		A37881	93	<0.01	<1	<0.2	9	49
57	Larras Lee	676100	6347200		A37882	67	<0.01	<1	<0.2	12	50
58	Larras Lee	676500	6347200		A37883	47	<0.01	<1	<0.2	14	48
59	Larras Lee	676900	6347200		A37884	39	<0.01	<1	<0.2	11	43
67	Larras Lee	675700	6346800		A37885	104	<0.01	<1	<0.2	4	61
66	Larras Lee	675300	6346800		A37886	64	<0.01	<1	<0.2	5	72
2301	Larras Lee	675000	6346800		A37887	106	0.01	<1	<0.2	5	69
65	Larras Lee	674500	6346800		A37888	97	0.01	<1	<0.2	3	97
72	Larras Lee	674500	6346400		A37889	74	0.05	<1	<0.2	3	44
2308	Larras Lee	674600	6346000		A37890	92	0.02	<1	<0.2	4	51
2309	Larras Lee	675000	6346000		A37891	109	0.01	<1	<0.2	3	79
2302	Larras Lee	675000	6346400		A37892	107	<0.01	<1	<0.2	8	47
2303	Larras Lee	675400	6346400		A37893	152	0.01	<1	<0.2	3	69
2310	Larras Lee	675400	6346000		A37894	89	<0.01	<1	<0.2	6	80
2311	Larras Lee	675800	6346000		A37895	75	0.01	<1	<0.2	5	33
73	Larras Lee	675700	6346400		A37896	75	<0.01	1	<0.2	9	83



**Appendix 2: JORC Compliance Statement**  
**Surface Geochemical Sampling: Soil**  
**Sections 1 and 2 of Table 1, JORC Code, 2012 Edition**

**Section 1: Sampling Techniques and Data**

Criteria	JORC Code explanation	Commentary
<b>Sampling techniques</b>	<ul style="list-style-type: none"> <li>Nature and quality of sampling (eg cut channels, random chips, or specific specialised industry standard measurement tools appropriate to the minerals under investigation, such as down hole gamma sondes, or handheld XRF instruments, etc). These examples should not be taken as limiting the broad meaning of sampling.</li> <li>Include reference to measures taken to ensure sample representivity and the appropriate calibration of any measurement tools or systems used.</li> </ul>	<ul style="list-style-type: none"> <li>Samples were collected from skeletal soils at a depth of approximately 25cm using shovel &amp; mattock and sieved in the field to -2mm, producing a sample of ~100-200grams in kraft paper packets for lab submission. Site characteristics were noted in field sample books</li> </ul>
<b>Drilling techniques</b>	<ul style="list-style-type: none"> <li>Drill type (eg core, reverse circulation, open-hole hammer, rotary air blast, auger, Bangka, sonic, etc) and details (eg core diameter, triple or standard tube, depth of diamond tails, face-sampling bit or other type, whether core is oriented and if so, by what method, etc).</li> </ul>	<ul style="list-style-type: none"> <li>N/A</li> </ul>
<b>Drill sample recovery</b>	<ul style="list-style-type: none"> <li>Method of recording and assessing core and chip sample recoveries and results assessed.</li> <li>Measures taken to maximise sample recovery and ensure representative nature of the samples.</li> <li>Whether a relationship exists between sample recovery and grade and whether sample bias may have occurred due to preferential loss/gain of fine/coarse material.</li> </ul>	<ul style="list-style-type: none"> <li>N/A</li> </ul>
<b>Logging</b>	<ul style="list-style-type: none"> <li>Whether core and chip samples have been geologically and geotechnically logged to a level of detail to support appropriate Mineral Resource estimation, mining studies and metallurgical studies.</li> <li>Whether logging is qualitative or quantitative in nature. Core (or costean, channel, etc) photography.</li> <li>The total length and percentage of the relevant intersections logged.</li> </ul>	<ul style="list-style-type: none"> <li>Sample site characteristics and soil properties are noted in field sample books.</li> </ul>
<b>Sub-sampling techniques and sample preparation</b>	<ul style="list-style-type: none"> <li>If core, whether cut or sawn and whether quarter, half or all core taken.</li> <li>If non-core, whether riffled, tube sampled, rotary split, etc and whether sampled wet or dry.</li> <li>For all sample types, the nature, quality and appropriateness of the sample preparation technique.</li> <li>Quality control procedures adopted for all sub-sampling stages to maximise representivity of samples.</li> <li>Measures taken to ensure that the sampling is representative of the in-situ material collected, including for instance results for field duplicate/second-half sampling.</li> <li>Whether sample sizes are appropriate to the grain size of the material being sampled.</li> </ul>	<ul style="list-style-type: none"> <li>N/A</li> </ul>
<b>Quality of assay data and laboratory tests</b>	<ul style="list-style-type: none"> <li>The nature, quality and appropriateness of the assaying and laboratory procedures used and whether the technique is considered partial or total.</li> <li>For geophysical tools, spectrometers, handheld XRF instruments, etc, the parameters used in determining the analysis including instrument make and model, reading times, calibrations factors applied and their derivation, etc.</li> <li>Nature of quality control procedures adopted (eg standards, blanks, duplicates, external laboratory checks) and whether acceptable levels of accuracy (ie lack of bias) and precision have been established.</li> </ul>	<ul style="list-style-type: none"> <li>Sample preparation was maintained to match previous procedures - Assays undertaken after pulverising whole sample to &gt;90% passing 75 microns.</li> <li>Aqua Regia digest and analysis by ALS method ME-ICP41 (33 elements, low detection levels). Gold assays by 50g Fire Assay, ALS method Au-AA26. Analyses greater than 1% by method OG62</li> <li>No instrumental analyses undertaken.</li> <li>All samples analysed by Australian Laboratory Services. Preparation at the Brisbane laboratory and analysis at Orange. Standard internal checks, matching checks with other ALS labs and annual 'round robin' comparisons with competitor labs.</li> <li>Acceptable levels of accuracy and precision have been established</li> </ul>
<b>Verification of sampling and assaying</b>	<ul style="list-style-type: none"> <li>The verification of significant intersections by either independent or alternative company personnel.</li> <li>The use of twinned holes.</li> <li>Documentation of primary data, data entry procedures, data verification, data storage (physical and electronic) protocols.</li> <li>Discuss any adjustment to assay data.</li> </ul>	<ul style="list-style-type: none"> <li>N/A for soils samples</li> </ul>

Criteria	JORC Code explanation	Commentary
<b>Location of data points</b>	<ul style="list-style-type: none"> <li>Accuracy and quality of surveys used to locate drill holes (collar and down-hole surveys), trenches, mine workings and other locations used in Mineral Resource estimation.</li> <li>Specification of the grid system used.</li> <li>Quality and adequacy of topographic control.</li> </ul>	<ul style="list-style-type: none"> <li>Sample sites are located by handheld GPS.</li> <li>MGA grid system; zone 55, using GDA94 datum.</li> </ul>
<b>Data spacing and distribution</b>	<ul style="list-style-type: none"> <li>Data spacing for reporting of Exploration Results.</li> <li>Whether the data spacing and distribution is sufficient to establish the degree of geological and grade continuity appropriate for the Mineral Resource and Ore Reserve estimation procedure(s) and classifications applied.</li> <li>Whether sample compositing has been applied.</li> </ul>	<ul style="list-style-type: none"> <li>Sites are spaced 200 x 200 metres</li> <li>N/A.</li> </ul>
<b>Orientation of data in relation to geological structure</b>	<ul style="list-style-type: none"> <li>Whether the orientation of sampling achieves unbiased sampling of possible structures and the extent to which this is known, considering the deposit type.</li> <li>If the relationship between the drilling orientation and the orientation of key mineralised structures is considered to have introduced a sampling bias, this should be assessed and reported if material.</li> </ul>	<ul style="list-style-type: none"> <li>Copper Hill shows typical 'porphyry-style' mineralisation related to multi-phase intrusives and mineralisation disseminated and veined within various phases of porphyry intrusions and in veins and breccias within the adjacent country rock.</li> <li>N/A.</li> </ul>
<b>Sample security</b>	<ul style="list-style-type: none"> <li>The measures taken to ensure sample security.</li> </ul>	<ul style="list-style-type: none"> <li>No specific measures. The ALS Laboratory is 40 km from Copper Hill and GCR personnel prepared and transported all samples, which were receipted at lab.</li> </ul>
<b>Audits or reviews</b>	<ul style="list-style-type: none"> <li>The results of any audits or reviews of sampling techniques and data.</li> </ul>	<ul style="list-style-type: none"> <li>No audits have been carried out specifically on the sampling techniques.</li> </ul>

## Section 2: Reporting of Exploration Results

Criteria	JORC Code explanation	Commentary
<b>Mineral tenement and land tenure status</b>	<ul style="list-style-type: none"> <li>Type, reference name/number, location and ownership including agreements or material issues with third parties such as joint ventures, partnerships, overriding royalties, native title interests, historical sites, wilderness or national park and environmental settings.</li> <li>The security of the tenure held at the time of reporting along with any known impediments to obtaining a licence to operate in the area.</li> </ul>	<ul style="list-style-type: none"> <li>The Copper Hill – Molong Project is held 100% by GCR under EL6391 (33 units, 95 square kilometres).</li> <li>EL6391 is current to 10<sup>th</sup> March 2025.</li> </ul>
<b>Exploration done by other parties</b>	<ul style="list-style-type: none"> <li>Acknowledgment and appraisal of exploration by other parties.</li> </ul>	<ul style="list-style-type: none"> <li>Since 1960's Anaconda, Amax Australia, Le Nickel, BHP, and a series of Joint Ventures between Metallic Resources and Homestake, Cyprus Minerals, MIM and Newcrest.</li> </ul>
<b>Geology</b>	<ul style="list-style-type: none"> <li>Deposit type, geological setting and style of mineralisation.</li> </ul>	<ul style="list-style-type: none"> <li>Porphyry-style; tonalite–dacite multi-phase intrusions into andesitic island-arc volcanics with copper-gold in disseminations, sheeted veins, multidirectional stockworks, breccias and adjacent exoskarns</li> </ul>
<b>Drill hole Information</b>	<ul style="list-style-type: none"> <li>A summary of all information material to the understanding of the exploration results including a tabulation of the following information for all Material drill holes: <ul style="list-style-type: none"> <li>easting and northing of the drill hole collar</li> <li>elevation or RL (Reduced Level – elevation above sea level in metres) of the drill hole collar</li> <li>dip and azimuth of the hole</li> <li>down hole length and interception depth</li> <li>hole length.</li> </ul> </li> <li>If the exclusion of this information is justified on the basis that the information is not Material and this exclusion does not detract from the understanding of the report, the Competent Person should clearly explain why this is the case.</li> </ul>	<ul style="list-style-type: none"> <li>Not applicable for surface sampling</li> </ul>
<b>Data aggregation methods</b>	<ul style="list-style-type: none"> <li>In reporting Exploration Results, weighting averaging techniques, maximum and/or minimum grade truncations (eg cutting of high grades) and cut-off grades are usually Material and should be stated.</li> <li>Where aggregate intercepts incorporate short lengths of high grade results and longer lengths of low grade results, the procedure used for such aggregation should be stated and some typical examples of such aggregations should be shown in</li> </ul>	<ul style="list-style-type: none"> <li>Not applicable for surface sampling</li> </ul>

Criteria	JORC Code explanation	Commentary
	<p><i>detail.</i></p> <ul style="list-style-type: none"> <li>The assumptions used for any reporting of metal equivalent values should be clearly stated.</li> </ul>	
<b>Relationship between mineralisation widths and intercept lengths</b>	<ul style="list-style-type: none"> <li>These relationships are particularly important in the reporting of Exploration Results.</li> <li>If the geometry of the mineralisation with respect to the drill hole angle is known, its nature should be reported.</li> <li>If it is not known and only the down hole lengths are reported, there should be a clear statement to this effect (eg 'down hole length, true width not known').</li> </ul>	<ul style="list-style-type: none"> <li>Not applicable for surface sampling</li> </ul>
<b>Diagrams</b>	<ul style="list-style-type: none"> <li>Appropriate maps and sections (with scales) and tabulations of intercepts should be included for any significant discovery being reported. These should include, but not be limited to a plan view of drill hole collar locations and appropriate sectional views.</li> </ul>	<ul style="list-style-type: none"> <li>Data maps are compiled at appropriate scale for further interpretation</li> </ul>
<b>Balanced reporting</b>	<ul style="list-style-type: none"> <li>Where comprehensive reporting of all Exploration Results is not practicable, representative reporting of both low and high grades and/or widths should be practiced to avoid misleading reporting of Exploration Results.</li> </ul>	<ul style="list-style-type: none"> <li>Results for all samples have been reported</li> </ul>
<b>Other substantive exploration data</b>	<ul style="list-style-type: none"> <li>Other exploration data, if meaningful and material, should be reported including (but not limited to): geological observations; geophysical survey results; geochemical survey results; bulk samples – size and method of treatment; metallurgical test results; bulk density, groundwater, geotechnical and rock characteristics; potential deleterious or contaminating substances.</li> </ul>	<ul style="list-style-type: none"> <li>The sites of previous sampling are shown in Figure 3.</li> </ul>
<b>Further work</b>	<ul style="list-style-type: none"> <li>The nature and scale of planned further work (eg tests for lateral extensions or depth extensions or large-scale step-out drilling).</li> <li>Diagrams clearly highlighting the areas of possible extensions, including the main geological interpretations and future drilling areas, provided this information is not commercially sensitive.</li> </ul>	<ul style="list-style-type: none"> <li>Future sampling may include infill, and further extensions of open geochemical zones, and parts of EL6391 where surface geochemistry may be useful in targeting.</li> </ul>