

**Deal Name:** **Driver Australia Seven**

**Issuer:** Perpetual Corporate Trust Limited (ABN 99 000 341 533)  
of Level 18, 123 Pitt Street,  
Sydney NSW 2000 Australia  
in its capacity as trustee of the Driver Australia Seven Trust.

**Originator of the Receivables:** Volkswagen Financial Services Australia Pty Ltd

**Seller of the Receivables:** Volkswagen Financial Services Australia Pty Ltd

**Servicer name:** Volkswagen Financial Services Australia Pty Ltd

**Reporting Entity:** Volkswagen Financial Services Australia Pty Ltd  
ABS Operations  
(Physical Address)  
Level 1, 24 Muir Road,  
Chullora NSW 2190  
(Postal Address)  
Locked Bag 4002  
Chullora NSW 2190

**Contact:** Phone: +61 2 9751 6257  
Fax: +61 2 9695 6399  
Email: ABSOperations.Australia@vwfs.com.au

**Corporate Service Provider:** Perpetual Corporate Trust Limited  
(ABN 99 000 341 533)  
of Level 18, 123 Pitt Street,  
Sydney NSW 2000 Australia in its personal capacity.



## Contents

Page	Table of Contents
1	<a href="#">Cover</a>
2	<a href="#">Contents</a>
3	<a href="#">Reporting Details</a>
4	<a href="#">Parties Overview</a>
5	<a href="#">Transaction Events I</a>
6	<a href="#">Transaction Events II</a>
7	<a href="#">Transaction Events III</a>
8	<a href="#">Information regarding the Notes I</a>
9	<a href="#">Information regarding the Notes II</a>
10	<a href="#">Cash Collateral Account</a>
11	<a href="#">Credit Enhancement</a>
12	<a href="#">Swap Fixing / Waterfall</a>
13	<a href="#">Retention of Net Economic Interest</a>
14	<a href="#">Amortisation Profile I</a>
15	<a href="#">Amortisation Profile II</a>
16	<a href="#">Run Out Schedule I</a>
18	<a href="#">Run Out Schedule II</a>
19	<a href="#">Outstanding Contracts I</a>
21	<a href="#">Outstanding Contracts II</a>
22	<a href="#">Arrears</a>
24	<a href="#">Net Salvage Loss</a>
25	<a href="#">Net Salvage After Recoveries</a>
26	<a href="#">Prepayments</a>
27	<a href="#">Pool Data I</a>
29	<a href="#">Pool Data II</a>
30	<a href="#">Pool Data III</a>
32	<a href="#">Pool Data IV</a>
34	<a href="#">Pool Data V</a>
36	<a href="#">Pool Data VI</a>
37	<a href="#">Pool Data VII</a>
43	<a href="#">Pool Data VIII</a>
45	<a href="#">Pool Data IX</a>
47	<a href="#">Hardship Extensions</a>
48	<a href="#">Engine Type</a>
50	<a href="#">Contract Level Data</a>

## Reporting Details

### Deal Overview

Pool Cut Date	31/10/2021	Publication Date:	16/06/2023 (16th of each month)
Scheduled Date of Clean-Up-Call	10/2025	Payment Date:	21/06/2023 (21st of each month)
Legal Maturity Date	21/01/2030	Reporting Date:	31/05/2023
Issue Date	22/11/2021	Asset Collection Period:	from 01/05/2023 until 31/05/2023
Period No.:	19	Interest Accrual Period	from 22/05/2023 until 21/06/2023
Reporting frequency:	Monthly	Note Payment Period:	from 22/05/2023 until 21/06/2023
Next Payment Date:	21/07/2023	Days accrued:	30

Vehicle Type at Pool Cut	Number of Contracts	Percentage of Contracts	Outstanding Discounted Receivables Balance	Percentage Outstanding Discounted Receivables Balance
New	10,680	70.07%	463,158,976.27 AUD	77.19%
Used	4,561	29.93%	136,866,121.79 AUD	22.81%
<b>Total</b>	<b>15,241</b>	<b>100.00%</b>	<b>600,025,098.06 AUD</b>	<b>100.00%</b>

Credit Type at Pool Cut	Number of Contracts	Percentage of Contracts	Outstanding Discounted Receivables Balance	Percentage Outstanding Discounted Receivables Balance
Chattel Mortgage	9,371	61.49%	414,965,143.56 AUD	69.16%
Consumer Loan	5,870	38.51%	185,059,954.50 AUD	30.84%
<b>Total</b>	<b>15,241</b>	<b>100.00%</b>	<b>600,025,098.06 AUD</b>	<b>100.00%</b>

Parties Overview

<p><b>Lead Managers:</b></p> <p><b>Australia and New Zealand Banking Group Limited</b> (ABN 11 005 357 522) ANZ Tower 242 Pitt Street Sydney, NSW 2000 Australia</p> <p><b>Bank of America Merrill Lynch (which is the trading name of Merrill Lynch International)</b> (ARBN 125 336 567) Merrill Lynch Financial Centre 2 King Edward Street London EC1A 1HQ United Kingdom</p>	<p><b>Security Trustee:</b></p> <p><b>P.T. Limited</b> (ABN 67 004 454 666) Level 18 123 Pitt Street Sydney NSW 2000 Australia</p>
<p><b>Trustee:</b></p> <p><b>Perpetual Corporate Trust Limited</b> (ABN 99 000 341 533) of Level 18, 123 Pitt Street, Sydney NSW 2000 Australia in its capacity as trustee of the Driver Australia Seven Trust.</p>	<p><b>Trust Manager:</b></p> <p><b>Perpetual Nominees Limited</b> (ABN 37 000 733 700) of Level 18, 123 Pitt Street, Sydney NSW 2000 Australia in its capacity as the trust manager for the Driver Australia Seven Trust</p>
<p><b>Sub Trust Manager:</b></p> <p><b>Volkswagen Financial Services Australia Pty Limited</b> (ABN 20 097 071 460) Level 1, 24 Muir Road, Chullora, NSW 2190</p>	<p><b>Account Bank:</b></p> <p><b>Australia and New Zealand Banking Group Limited</b> (ABN 11 005 357 522) ANZ Tower 242 Pitt Street Sydney, NSW 2000 Australia</p>
<p><b>Clearing Systems:</b></p> <p><b>Austraclear Limited</b> 30-32 Grosvenor Street. Sydney, NSW 2000</p>	<p><b>Swap Counterparty:</b></p> <p><b>ING Bank N.V.</b> (ID 26 300 892 1) Bijlmerdreef 106 1102 CT Amsterdam The Netherlands</p>
<p><b>Servicer:</b></p> <p><b>Volkswagen Financial Services Australia Pty Limited</b> (ABN 20 097 071 460) Level 1, 24 Muir Road, Chullora, NSW 2190 email: ABSOperations.Australia@vwfs.com.au phone: +61 2 9751 6257</p>	<p><b>Rating Agencies:</b></p> <p><b>Fitch Ratings</b> Attn.: Australia Surveillance Suite 15.01, Level 15, 135 King Street Sydney, NSW 2000 Australia email: australia.surveillance@fitchratings.com</p> <p><b>Moody's</b> Attn.: Monitor Sydney Level 10, 1 O'Connell Street Sydney, NSW 2000 Australia email: Monitor.Sydney@moodys.com</p>

**Transaction Events (I)**

**Clean-Up Call Condition**

Percentage of Current Outstanding Discounted Receivables Balance	53.13%	
Min. Percentage of Outstanding Discounted Receivables Balance	10.00%	The Clean-Up-Call Condition is expected to be reached in 10/2025.

**Clean-Up Call**

VWFS Australia will have the right at its option to exercise a Clean-Up Call and to repurchase all (but not only some) of the Purchased Receivables from the Issuer at any time when the then outstanding Aggregate Discounted Receivables Balance is less than ten (10) per cent. of the Aggregate Cut-off Date Discounted Receivables Balance and, assuming the Transaction Documents are given full effect, all payment obligations under the Notes, including principal and accrued interest, will thereby be fulfilled in accordance with the Order of Priority (the Clean-up Call Conditions).

Repurchase of Receivables	Number of contracts	% of Contracts	Outstanding Discounted Receivables Balance	% of Outstanding Discounted Receivables Balance	Interest Compensation Payment	Re-Purchase Price
Current Period	-	0.00%	- AUD	0.00%	- AUD	- AUD
Previous Periods	-	0.00%	- AUD	0.00%	- AUD	- AUD
<b>Total</b>	<b>-</b>	<b>0.00%</b>	<b>- AUD</b>	<b>0.00%</b>	<b>- AUD</b>	<b>- AUD</b>

If a repurchase of receivables occurred, it would only result from non-eligibility as of the respective Pool Cut Date (which has been discovered at a later stage), a Legitimate Repudiation of a Receivables Contract, a Reloaded Contract or a Flat-Cancelled Contract.

**Transaction Party Replacements**

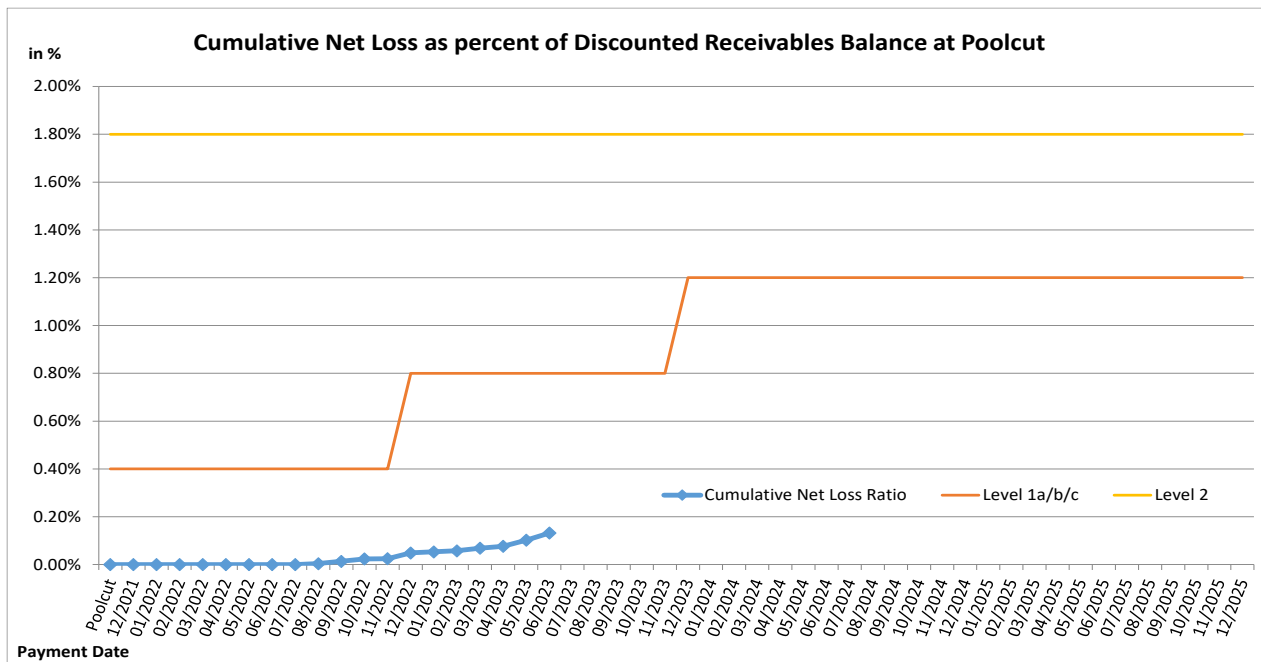
Capacity of Transaction Party	Date of Replacement	Reason for Replacement	Replaced Party	Replaced by

**Transaction Events (II)**

**Credit Enhancement Increase Conditions**

Level 1a Credit Enhancement Increase Condition - Cumulative Net Losses do not amount to 0.4% for any Payment Date prior to or during Nov 2022	NO
Level 1b Credit Enhancement Increase Condition - Cumulative Net Losses do not amount to 0.8% for any Payment Date from Dec 2022 but prior to or during Nov 2023	NO
Level 1c Credit Enhancement Increase Condition - Cumulative Net Losses do not amount to 1.2% for any Payment Date after Nov 2023	NO
Level 2 Credit Enhancement Increase Condition - Cumulative Net Losses do not amount to 1.8% for any Payment Date	NO

Net losses	Net Loss Amount
Net Salvage Loss registered in current Period	179,378.47 AUD
Cumulative Net Salvage Loss incl. current Period	792,169.39 AUD
Cumulative Net Salvage Loss as of the End of the Monthly Period	792,169.39 AUD
Discounted Balance as of Pool Cut Date	600,025,098.06 AUD
Cumulative Net Loss as percentage of Discounted Receivables Balance at Pool Cut	0.13202%



**Transaction Events (III)**

**Account Bank:**

Australia and New Zealand Banking Group Limited

Current Rating \*

Minimum required Rating (if no short term Rating available, the higher long term rating is applicable)

or

Fitch			Moody's		
Long Term	Short Term	Outlook	Long Term	Short Term	Outlook
A+	F1	Stable	Aa3	P-1	Stable
-	F1	-	A2	P-1	-
A	-	-	A2	P-1	-

If the Account Bank ceases to have the Account Bank Required Rating it shall, at its own cost,

(i) transfer the accounts to an Eligible Collateral Bank, or

(ii) provide a guarantee from an Eligible Guarantor, or

If none of the measures is taken within a given timespan, the Issuer may enter into new banking arrangements at its own initiative with another Account Bank.

(Please refer to the Prospectus for a complete description of the mechanism)

**Required Rating:**

**Fulfilled**

**Swap Counterparty**

ING Bank N.V.

Current Rating \*

Minimum required Rating for Class A Notes

Minimum required Rating for Class B Notes

Fitch			Moody's		
Long Term	Short Term	Outlook	Long Term	Short Term	Outlook
AA-	F1+	Stable	A1	P-1	Stable
A	F1	-	A3	-	-
-	-	-	A3	-	-

If the Swap Bank falls below the above mentioned Minimum Rating (Level I) it shall provide Eligible Credit Support by means of Cash or certain types of Prime Debt Obligations

If the Swap Bank ceases to have the even lower Rating as an Eligible Swap Counterparty (Level II) it shall, at its own cost,

(i) transfer all rights and obligations under the Swap Agreement to another Eligible Swap Partner or

(ii) provide a guarantee from an Eligible Guarantor.

If none of the measures is taken within a given timespan, the Issuer may enter into new arrangements at its own initiative with another Swap Bank.

(Please refer to the Prospectus for a complete description of the mechanism)

**Required Rating:**

**Fulfilled**

**Servicer**

Volkswagen Financial Services Australia Pty Ltd

If the Monthly Remittance Condition is satisfied, VWFS Australia, as the Servicer, is required to pay collections of the Purchased Receivables (including proceeds from the disposition of any Financed Objects) received by it during each Monthly Period into the Distribution Account in a single deposit no later than the Payment Date for that Monthly Period.

If the Monthly Remittance Condition is not met, the Servicer must remit collections received by it in respect of the Purchased Receivables in accordance with the procedure outlined in detail in "ADMINISTRATION OF THE PURCHASED RECEIVABLES UNDER THE SERVICING AGREEMENT - Commingling".

**Monthly  
Remittance  
Condition:**

**Fulfilled**

Information regarding the Notes I

Rating at Issue Date	Class A	Class B
Moody's	Aaa (sf)	Aa2 (sf)
Fitch	AAAsf	NRsf

Current Rating	Class A	Class B
Moody's	Aaa (sf)	Aa1 (sf)
Fitch	AAAsf	NRsf

Information on Notes	Class A	Class B
Legal maturity date	21/01/2030	21/01/2030
Scheduled Clean Up Call	Oct 2025	Oct 2025
ISIN:	AU3FN0063434	AU3FN0063442
Common Code:	239718256	239718272
Nominal Amount	100,000.00 AUD	100,000.00 AUD

Information on Interest	Class A	Class B
Spread/ Margin	70 bps	100 bps
Index Rate	1-Month-BBSW	1-Month-BBSW
Fixed/Floating	floating	floating
Current Coupon	1-Month-BBSW + 70	1-Month-BBSW + 100
Day Count Convention	actual/365	actual/365



## Information regarding the Notes II

Monthly Period:	05/2023
Payment Date:	21/06/2023
Interest Accrual Period (from/until)	from 22/05/2023 until 21/06/2023
Days accrued	30
Index Rate	1-Month-BBSW
Base Interest Rate:	3.8125%
Day Count Convention	actual/365

Interest Payments	Class A	Class B
Total Interest Amount of the Reporting Period	944,466.45 AUD	130,530.82 AUD
Paid Interest	944,466.45 AUD	130,530.82 AUD

Unpaid Interest	Class A	Class B
Unpaid Interest in the Reporting Period	- AUD	- AUD
Cumulative unpaid Interest	- AUD	- AUD

Note Balance	Class A	Class B
Note Balance as of Poolcut	526,200,000.00 AUD	33,000,000.00 AUD
Note Balance as of the Beginning of the Period	254,648,386.08 AUD	33,000,000.00 AUD
Redemption Amount per Class	13,807,435.38 AUD	- AUD
<b>Class Balance as of the End of the Period</b>	<b>240,840,950.70 AUD</b>	<b>33,000,000.00 AUD</b>

Payments to Investors per note	Class A	Class B
Interest Per Note	179.49 AUD	395.55 AUD
Principal Repayment by note	2,623.99 AUD	- AUD
Number of Notes	5,262	330
Note Factor	0.4576985	1.0000000

Overcollateralisation Percentage	Class A	Class B
Initial OC Percentage at Poolcut	12.3037%	6.8039%
Current OC Percentage	24.4500%	14.1000%
Target OC Percentage	26.0000%	18.0000%

Subordinated Loan	
Balance as of the Beginning of the Period	34,115,247.75 AUD
Regular Redemption from Waterfall	- AUD
Redemption from Cash Collateral Account	- AUD
Balance as of the End of the Period	34,115,247.75 AUD

## Cash Collateral Account

Cash collateral account (CCA)	Value
<b>CCA Opening Balance - Initial balance at poolcut</b>	<b>7,200,000.00 AUD</b>
<b>Balance as of the beginning of the period</b>	<b>6,000,000.00 AUD</b>
<b>Specified General Cash Collateral Account Balance</b>	<b>6,000,000.00 AUD</b>
the greater of: 1.20 per cent of the Aggregate Discounted Receivables Balance as of the end of the Monthly Period; and	3,825,453.49 AUD
the lesser of: \$6,000,000; and	6,000,000.00 AUD
the aggregate outstanding principal amount of the Class A Notes and Class B Notes as of the end of the Monthly Period	287,648,386.08 AUD
<b>Payments</b>	<b>- AUD</b>
General payment from CCA	- AUD
General payment to CCA	- AUD
<b>Balance as of the end of the period</b>	<b>6,000,000.00 AUD</b>

## Credit Enhancement

Credit Enhancement as of Poolcut Date	% of Aggregate Discounted Receivables Balance	Value
Class B Note	5.50%	33,000,000.00 AUD
Subordinated Loan	5.80%	34,825,098.06 AUD
Overcollateralisation	1.00%	6,000,000.00 AUD
Cash Collateral Account	1.20%	7,200,000.00 AUD

Cash Collateral Account (CCA)	Value	in % of Outstanding Discounted Receivables Balance as of Poolcut Date
<b>Initial Balance at Poolcut</b>	7,200,000.00 AUD	1.20%
<b>Initial Targeted Balance at Poolcut</b>	7,200,000.00 AUD	1.20%
<b>Current Targeted Balance</b>	6,000,000.00 AUD	1.00%
<b>Balance as of the Beginning of the Period</b>	6,000,000.00 AUD	1.00%
Payment from CCA	- AUD	0.00%
Payment to CCA	- AUD	0.00%
<b>Balance as of the End of the Period</b>	6,000,000.00 AUD	1.00%

## Calculation of Credit Enhancement

Initially, Driver Australia Seven's Credit Enhancement consists of the respective Note Issue in comparison to the Discounted Receivables Balance as of Poolcut, minus any Senior Debt Issuance. This 'Overcollateralisation' (i.e. Credit Enhancement excluding the Cash Collateral Account) is specific for each Note Series and increases with its seniority.

Subsequently, the 'Overcollateralisation' is calculated (as an Overcollateralisation Percentage) on a monthly basis, all on end of month figures. Considering the seniority of the respective Note Series, redemption is made until a Target Overcollateralisation Percentage has been reached. All remaining funds will be used to perform payments in the more junior positions of the Order of Priority.

The Target OC percentages for each Note Class are determined subject to 3 items:

- They will increase in 2 steps in case the Cumulative Net Loss Ratio exceeds a certain level and Credit Enhancement Increase Condition is met.
- They will increase to 100% if the Aggregate Discounted Receivables Balance falls below 10.00% of the Aggregate Discounted Receivables Balance at Cut-Off Date (without a Clean-Up Call being exercised).
- A Foreclosure Event causes the transaction to switch into sequential payment mode, in which case the OC Percentages will not determine the maximum redemption amount and may be exceeded.

In addition, there is the 'General Cash Reserve', in the form of a Cash Collateral Account, which is in principle to the benefit of all Tranches over the entire lifetime of the transaction.

**Swap Fixing / Waterfall**

<b>Amortising Interest Rate Swap</b>	<b>Class A</b>	<b>Class B</b>
Initial Principal	526,200,000.00 AUD	33,000,000.00 AUD
Underlying Principal for Reporting Period	254,648,386.08 AUD	33,000,000.00 AUD
Paying Leg	Fixed Interest Rate	Fixed Interest Rate
Receiving Leg	Floating Interest Rate	Floating Interest Rate
Net Swap Payments - Net Swap Receipts	(625,094.93 AUD)	(77,400.82 AUD)

<b>Available Distribution Amount Calculation</b>	<b>Payment to waterfall position</b>	<b>Remaining Amount</b>
1) i) Available Collections Amount from Contracts	15,245,165.12 AUD	15,245,165.12 AUD
1) ii) Available Collections - Interest on Trust Account	20,078.41 AUD	15,265,243.53 AUD
2) Drawings From Cash Collateral Account as provided for in clause 12.1 of the Issue Supplement	- AUD	15,265,243.53 AUD
3) i) Net Swap Receipts - Class A	625,094.93 AUD	15,890,338.46 AUD
3) ii) Net Swap Receipts - Class B	77,400.82 AUD	15,967,739.28 AUD
4) Damages and Indemnity Payments to Issuer	- AUD	15,967,739.28 AUD
5) Other Reimbursement Amounts	- AUD	15,967,739.28 AUD
6) Buffer Release Amount	(798,823.57 AUD)	15,168,915.71 AUD
Remaining Rounding Amount (M-1)	17.54 AUD	15,168,933.25 AUD

<b>Waterfall</b>	<b>Payment to waterfall position</b>	<b>Remaining Amount</b>
Available Distribution Amount	- AUD	15,168,933.25 AUD
1) Trust Beneficiary \$1	(1.00 AUD)	15,168,932.25 AUD
2) Taxes	- AUD	15,168,932.25 AUD
3) Trust Fees & Expenses and Servicer Fees	(286,497.07 AUD)	14,882,435.18 AUD
4. a) Net Swap Payments - Class A Notes	- AUD	14,882,435.18 AUD
4. b) Net Swap Payments - Class B Notes	- AUD	14,882,435.18 AUD
5. a) Interest accrued in prev. month - Class A	(944,466.45 AUD)	13,937,968.73 AUD
5. b) Interest Shortfalls from prior months - Class A	- AUD	13,937,968.73 AUD
6. a) Interest accrued in prev. month - Class B	(130,530.82 AUD)	13,807,437.91 AUD
6. b) Interest Shortfalls from prior months - Class B	- AUD	13,807,437.91 AUD
7) Payment to Cash Collateral Account	- AUD	13,807,437.91 AUD
8) Principal Payment - Class A	(13,807,435.38 AUD)	2.53 AUD
9) Principal Payment - Class B	- AUD	2.53 AUD
Remaining Rounding Amount (Current Period)	(2.53 AUD)	- AUD
10) Penalties, Costs, Expenses, Damages, Losses or Liabilities	- AUD	- AUD
11) Other Payment to Swap Counterparties	- AUD	- AUD
12) Subordinated Loan Accrued and Unpaid Interest	- AUD	- AUD
Interest Accrued this period on the Subordinated Loan	- AUD	- AUD
Unpaid Interest on the Subordinated Loan	- AUD	- AUD
13) Subordinated Loan Principal	- AUD	- AUD
14) Surplus Income Distribution to Beneficiary of the Trust	- AUD	- AUD

<b>Distribution of Cash Collateral Account surplus</b>	<b>Payment</b>	<b>Remaining Amount</b>
Payment from CCA	- AUD	- AUD
Payment of Interest Accrued this period on the Subordinated Loan	- AUD	- AUD
Payment of Unpaid Interest on the Subordinated Loan	- AUD	- AUD
Payment in respect of regular redemption to subordinated lender	- AUD	- AUD
Distribution to Beneficiary of the Trust	- AUD	- AUD

## Retention of Net Economic Interest

Period	Poolcut	Balance as at Current Period
<b>Total Assets</b>	<b>684,926,843.21 AUD</b>	<b>349,448,965.29 AUD</b>
Nominal Receivables Balance	684,926,843.21 AUD	349,448,965.29 AUD
<b>First loss piece</b>	<b>48,025,098.06 AUD</b>	<b>50,946,840.39 AUD</b>
Subordinated Loan balance	34,825,098.06 AUD	34,115,247.75 AUD
Overcollateralisation	6,000,000.00 AUD	10,831,592.64 AUD
General Cash Collateral Account balance	7,200,000.00 AUD	6,000,000.00 AUD
<b>Actual retention</b>	<b>7.01%</b>	<b>14.58%</b>

In its capacity as originator and original lender, VWFSA complies with the retention requirement of a material net economic interest in accordance with Article 6 (3) (d) of the European Securitisation Regulation.

By adhering to Article 6 (3) (d) of the European Securitisation Regulation, VWFSA will keep the exposures designated for retention on its balance sheet on an ongoing basis.

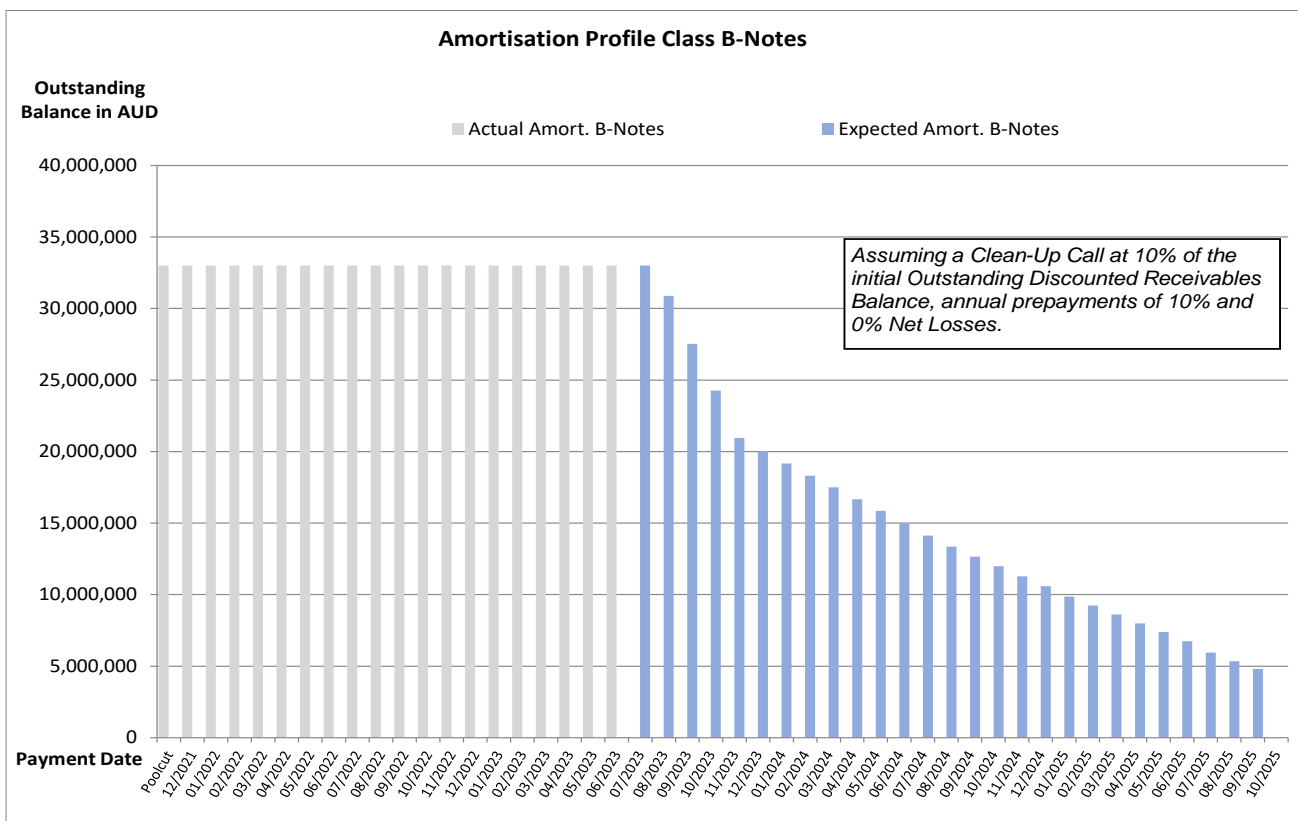
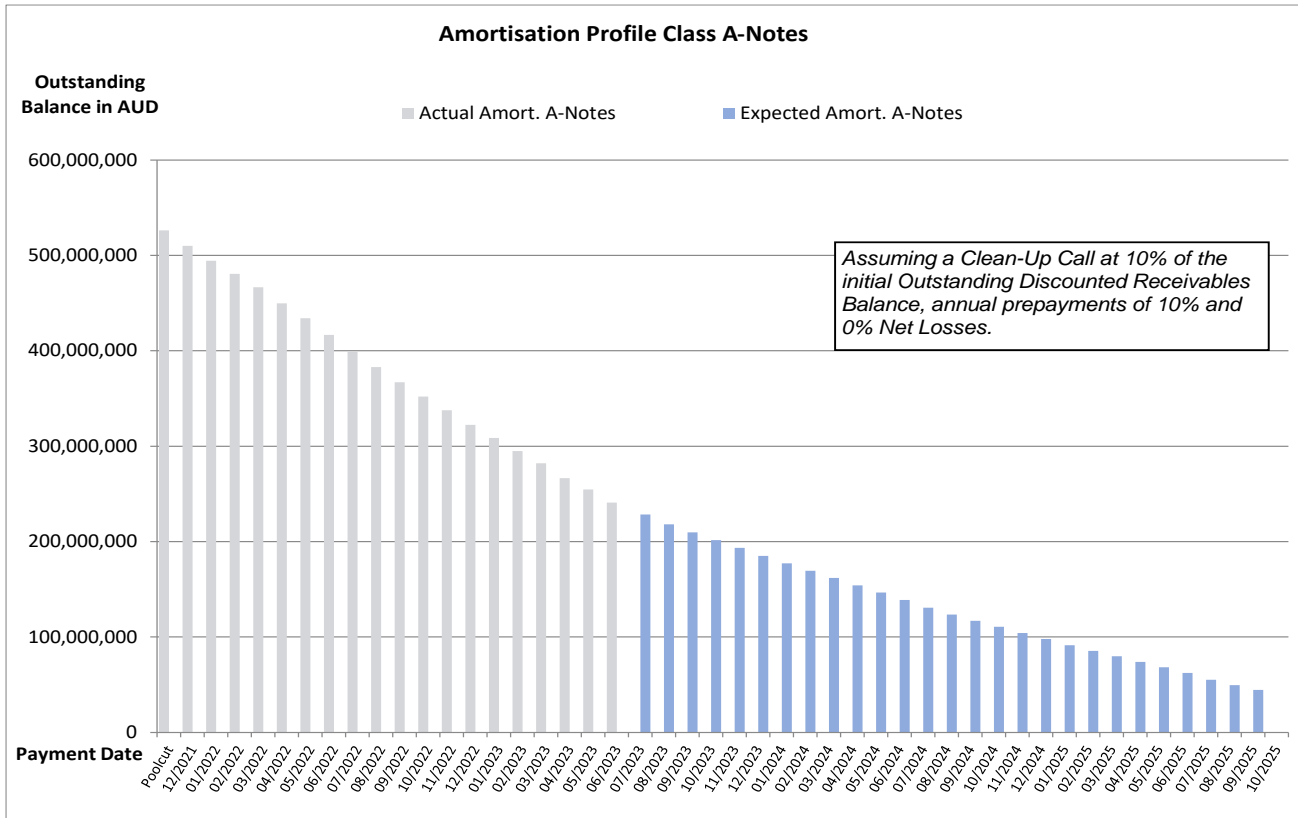
The latest end of month level of retention will be published on a monthly basis in the investor report.

### Amortisation Profile I

Note Class	Class A		Class B	
	At Closing: 1.85 yrs	Current: 1.30 yrs	At Closing: 2.84 yrs	Current: 1.18 yrs
WAL	Actual Note Balance	Forecasted Note Balance	Actual Note Balance	Forecasted Note Balance
Payment Date	Actual Note Balance	Forecasted Note Balance	Actual Note Balance	Forecasted Note Balance
Poolcut	526,200,000.00 AUD	- AUD	33,000,000.00 AUD	- AUD
12/2021	510,049,185.54 AUD	- AUD	33,000,000.00 AUD	- AUD
01/2022	494,276,866.74 AUD	- AUD	33,000,000.00 AUD	- AUD
02/2022	480,766,050.30 AUD	- AUD	33,000,000.00 AUD	- AUD
03/2022	466,604,640.18 AUD	- AUD	33,000,000.00 AUD	- AUD
04/2022	449,793,707.82 AUD	- AUD	33,000,000.00 AUD	- AUD
05/2022	434,204,927.58 AUD	- AUD	33,000,000.00 AUD	- AUD
06/2022	416,766,133.38 AUD	- AUD	33,000,000.00 AUD	- AUD
07/2022	399,553,605.18 AUD	- AUD	33,000,000.00 AUD	- AUD
08/2022	382,999,405.80 AUD	- AUD	33,000,000.00 AUD	- AUD
09/2022	367,050,704.76 AUD	- AUD	33,000,000.00 AUD	- AUD
10/2022	352,075,000.14 AUD	- AUD	33,000,000.00 AUD	- AUD
11/2022	337,754,730.24 AUD	- AUD	33,000,000.00 AUD	- AUD
12/2022	322,389,374.52 AUD	- AUD	33,000,000.00 AUD	- AUD
01/2023	308,497,905.00 AUD	- AUD	33,000,000.00 AUD	- AUD
02/2023	295,031,605.08 AUD	- AUD	33,000,000.00 AUD	- AUD
03/2023	282,007,734.12 AUD	- AUD	33,000,000.00 AUD	- AUD
04/2023	266,550,924.84 AUD	- AUD	33,000,000.00 AUD	- AUD
05/2023	254,648,386.08 AUD	- AUD	33,000,000.00 AUD	- AUD
06/2023	240,840,950.70 AUD	- AUD	33,000,000.00 AUD	- AUD
07/2023	-	228,312,418.19 AUD	-	33,000,000.00 AUD
08/2023	-	218,194,068.01 AUD	-	30,874,698.10 AUD
09/2023	-	209,826,861.69 AUD	-	27,532,085.92 AUD
10/2023	-	201,620,734.41 AUD	-	24,263,753.94 AUD
11/2023	-	193,357,299.74 AUD	-	20,953,418.44 AUD
12/2023	-	185,169,310.12 AUD	-	20,018,303.80 AUD
01/2024	-	177,288,509.95 AUD	-	19,166,325.40 AUD
02/2024	-	169,464,649.46 AUD	-	18,320,502.65 AUD
03/2024	-	161,913,765.66 AUD	-	17,504,190.88 AUD
04/2024	-	154,268,317.18 AUD	-	16,677,655.91 AUD
05/2024	-	146,711,399.73 AUD	-	15,860,691.86 AUD
06/2024	-	138,796,951.85 AUD	-	15,005,075.87 AUD
07/2024	-	130,696,985.73 AUD	-	14,129,403.86 AUD
08/2024	-	123,655,038.44 AUD	-	13,368,112.27 AUD
09/2024	-	117,013,718.65 AUD	-	12,650,131.75 AUD
10/2024	-	110,825,191.24 AUD	-	11,981,101.76 AUD
11/2024	-	104,244,517.91 AUD	-	11,269,677.61 AUD
12/2024	-	97,903,620.13 AUD	-	10,584,175.15 AUD
01/2025	-	91,277,737.73 AUD	-	9,867,863.54 AUD
02/2025	-	85,396,714.61 AUD	-	9,232,077.26 AUD
03/2025	-	79,764,337.47 AUD	-	8,623,171.62 AUD
04/2025	-	73,933,133.19 AUD	-	7,992,771.16 AUD
05/2025	-	68,334,874.09 AUD	-	7,387,553.96 AUD
06/2025	-	62,296,372.43 AUD	-	6,734,742.97 AUD
07/2025	-	55,067,813.04 AUD	-	5,953,277.09 AUD
08/2025	-	49,489,773.54 AUD	-	5,350,245.79 AUD
09/2025	-	44,447,679.93 AUD	-	4,805,154.59 AUD
10/2025	-	- AUD	-	- AUD

\*Based on the following assumptions: CPR of 10%, Net Losses of 0% and Clean Up Call at 10% of the original outstanding discounted receivables balance

### Amortisation Profile II



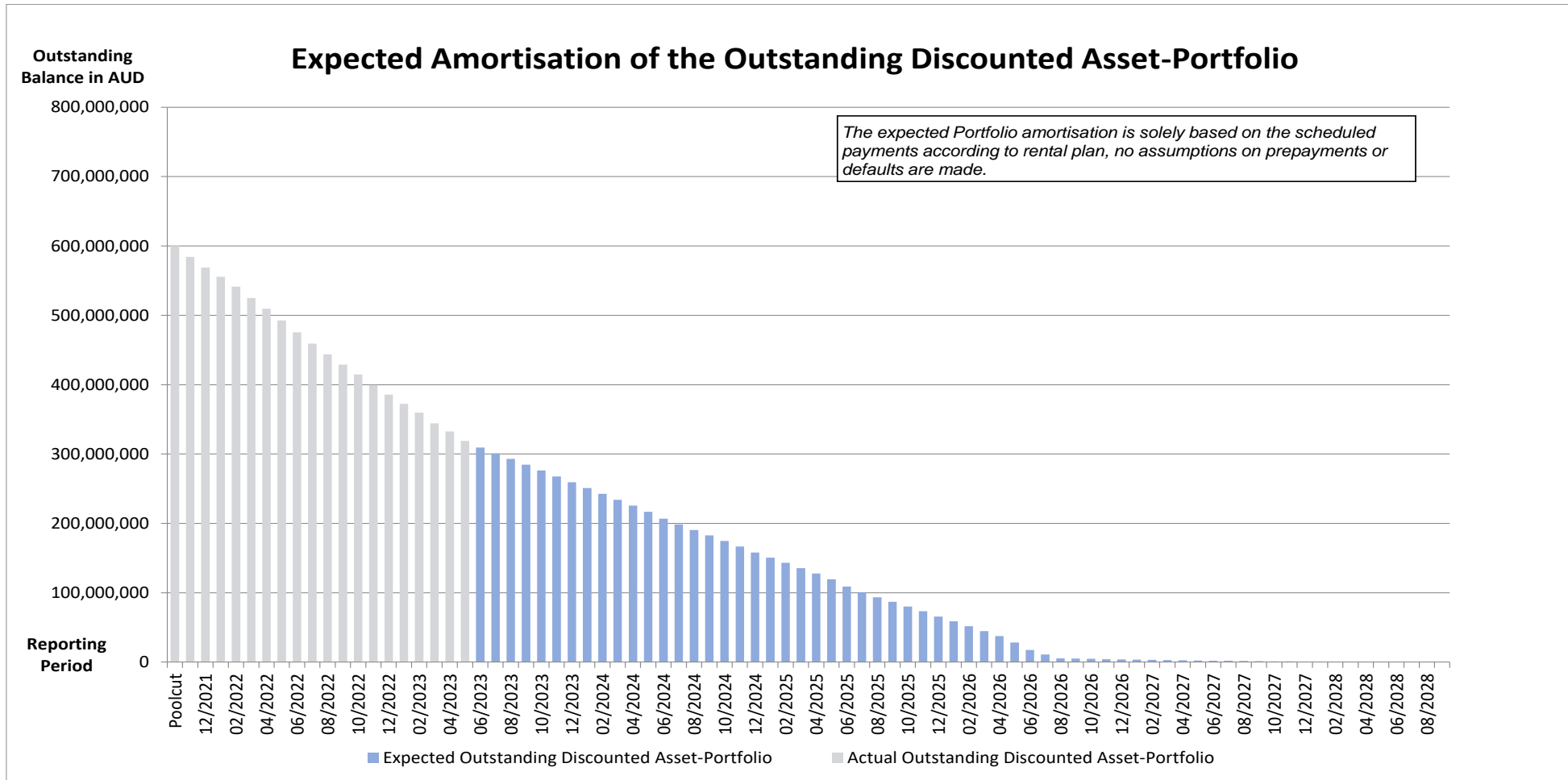
## Run Out Schedule I

End of Collection Period	Interest	Principal	Nominal Instalments
arrears	122,801.94 AUD	1,050,230.22 AUD	1,173,032.16 AUD
06/2023	1,365,103.53 AUD	8,337,493.90 AUD	9,702,597.43 AUD
07/2023	1,481,609.76 AUD	8,403,230.02 AUD	9,884,839.78 AUD
08/2023	1,449,332.61 AUD	8,134,350.01 AUD	9,583,682.62 AUD
09/2023	1,414,941.20 AUD	8,221,598.70 AUD	9,636,539.90 AUD
10/2023	1,376,670.03 AUD	8,418,421.87 AUD	9,795,091.90 AUD
11/2023	1,337,638.65 AUD	8,657,413.21 AUD	9,995,051.86 AUD
12/2023	1,296,219.17 AUD	8,269,227.67 AUD	9,565,446.84 AUD
01/2024	1,256,510.46 AUD	8,392,199.46 AUD	9,648,709.92 AUD
02/2024	1,216,001.49 AUD	8,340,305.07 AUD	9,556,306.56 AUD
03/2024	1,176,165.56 AUD	8,515,485.54 AUD	9,691,651.10 AUD
04/2024	1,135,110.55 AUD	8,425,936.39 AUD	9,561,046.94 AUD
05/2024	1,094,537.41 AUD	9,109,435.49 AUD	10,203,972.90 AUD
06/2024	1,050,542.63 AUD	9,733,807.66 AUD	10,784,350.29 AUD
07/2024	1,003,448.80 AUD	8,495,106.90 AUD	9,498,555.70 AUD
08/2024	962,215.70 AUD	8,041,613.39 AUD	9,003,829.09 AUD
09/2024	923,283.85 AUD	7,445,022.89 AUD	8,368,306.74 AUD
10/2024	887,448.25 AUD	8,147,606.05 AUD	9,035,054.30 AUD
11/2024	847,988.03 AUD	8,128,313.02 AUD	8,976,301.05 AUD
12/2024	808,697.23 AUD	8,474,085.12 AUD	9,282,782.35 AUD
01/2025	767,659.86 AUD	7,531,848.80 AUD	8,299,508.66 AUD
02/2025	731,113.25 AUD	7,469,654.32 AUD	8,200,767.57 AUD
03/2025	694,787.50 AUD	7,609,575.72 AUD	8,304,363.22 AUD
04/2025	657,789.39 AUD	7,665,414.91 AUD	8,323,204.30 AUD
05/2025	620,550.95 AUD	8,298,290.78 AUD	8,918,841.73 AUD
06/2025	580,185.46 AUD	10,621,983.57 AUD	11,202,169.03 AUD
07/2025	528,521.25 AUD	8,022,095.95 AUD	8,550,617.20 AUD
08/2025	489,660.89 AUD	7,357,949.12 AUD	7,847,610.01 AUD
09/2025	453,895.52 AUD	6,695,362.81 AUD	7,149,258.33 AUD
10/2025	421,421.31 AUD	6,706,177.33 AUD	7,127,598.64 AUD
11/2025	388,843.40 AUD	6,872,905.80 AUD	7,261,749.20 AUD
12/2025	355,447.49 AUD	7,648,419.45 AUD	8,003,866.94 AUD
01/2026	318,504.65 AUD	6,874,150.73 AUD	7,192,655.38 AUD
02/2026	285,073.96 AUD	7,111,765.85 AUD	7,396,839.81 AUD
03/2026	250,494.59 AUD	7,090,927.84 AUD	7,341,422.43 AUD
04/2026	216,008.49 AUD	6,900,449.57 AUD	7,116,458.06 AUD
05/2026	182,445.44 AUD	9,384,253.18 AUD	9,566,698.62 AUD
06/2026	136,988.57 AUD	10,734,701.69 AUD	10,871,690.26 AUD
07/2026	84,836.84 AUD	6,663,714.52 AUD	6,748,551.36 AUD
08/2026	52,421.99 AUD	5,464,165.39 AUD	5,516,587.38 AUD
09/2026	25,845.14 AUD	347,837.00 AUD	373,682.14 AUD
10/2026	24,153.13 AUD	402,773.97 AUD	426,927.10 AUD
11/2026	22,197.40 AUD	349,673.08 AUD	371,870.48 AUD
12/2026	20,496.89 AUD	321,995.14 AUD	342,492.03 AUD
01/2027	18,937.24 AUD	316,029.55 AUD	334,966.79 AUD
02/2027	17,399.66 AUD	359,156.94 AUD	376,556.60 AUD
03/2027	15,684.45 AUD	306,978.00 AUD	322,662.45 AUD
04/2027	14,198.13 AUD	274,464.27 AUD	288,662.40 AUD
05/2027	12,862.91 AUD	286,641.32 AUD	299,504.23 AUD
06/2027	11,468.51 AUD	287,849.04 AUD	299,317.55 AUD



07/2027	10,068.21 AUD	245,561.56 AUD	255,629.77 AUD
08/2027	8,873.71 AUD	290,612.44 AUD	299,486.15 AUD
09/2027	7,459.99 AUD	218,855.22 AUD	226,315.21 AUD
10/2027	6,395.36 AUD	205,496.87 AUD	211,892.23 AUD
11/2027	5,395.71 AUD	188,675.91 AUD	194,071.62 AUD
12/2027	4,477.83 AUD	173,580.08 AUD	178,057.91 AUD
01/2028	3,633.34 AUD	158,742.45 AUD	162,375.79 AUD
02/2028	2,861.27 AUD	142,848.43 AUD	145,709.70 AUD
03/2028	2,166.32 AUD	127,311.99 AUD	129,478.31 AUD
04/2028	1,547.05 AUD	110,845.84 AUD	112,392.89 AUD
05/2028	1,007.75 AUD	86,275.21 AUD	87,282.96 AUD
06/2028	588.07 AUD	59,772.89 AUD	60,360.96 AUD
07/2028	297.36 AUD	36,721.42 AUD	37,018.78 AUD
08/2028	118.68 AUD	14,409.09 AUD	14,527.77 AUD
09/2028	48.62 AUD	3,335.74 AUD	3,384.36 AUD
10/2028	32.39 AUD	2,833.28 AUD	2,865.67 AUD
11/2028	18.60 AUD	1,339.11 AUD	1,357.71 AUD
12/2028	12.09 AUD	919.37 AUD	931.46 AUD
01/2029	7.62 AUD	923.84 AUD	931.46 AUD
02/2029	3.12 AUD	642.13 AUD	645.25 AUD
03/2029	- AUD	- AUD	- AUD
<b>Total</b>	<b>30,661,174.20 AUD</b>	<b>318,787,791.09 AUD</b>	<b>349,448,965.29 AUD</b>

Run Out Schedule II



**Outstanding Contracts I - Overview**

Total Portfolio as of Poolcut Date			Product Type			
Contract Status Development	Number of Contracts	Outstanding Discounted Receivables Balance	Chattel Mortgage		Consumer Loan	
			Number of Contracts	Outstanding Discounted Receivables Balance	Number of Contracts	Outstanding Discounted Receivables Balance
Normal	15,241	600,025,098.06 AUD	9,371	414,965,143.56 AUD	5,870	185,059,954.50 AUD
In Advance	-	- AUD	-	- AUD	-	- AUD
In Arrears	-	- AUD	-	- AUD	-	- AUD
Paid out/Matured	-	- AUD	-	- AUD	-	- AUD
Early Payout	-	- AUD	-	- AUD	-	- AUD
Gross Salvage	-	- AUD	-	- AUD	-	- AUD
Net Salvage	-	- AUD	-	- AUD	-	- AUD
<b>Total</b>	<b>15,241</b>	<b>600,025,098.06 AUD</b>	<b>9,371</b>	<b>414,965,143.56 AUD</b>	<b>5,870</b>	<b>185,059,954.50 AUD</b>

Total Portfolio as of Previous Month			Product Type			
Contract Status Development	Number of Contracts	Outstanding Discounted Receivables Balance	Chattel Mortgage		Consumer Loan	
			Number of Contracts	Outstanding Discounted Receivables Balance	Number of Contracts	Outstanding Discounted Receivables Balance
Normal	9,966	287,350,979.45 AUD	6,466	209,226,307.65 AUD	3,500	78,124,671.80 AUD
In Advance	595	14,053,953.57 AUD	286	7,584,393.31 AUD	309	6,469,560.26 AUD
In Arrears	1,093	30,618,333.88 AUD	621	19,783,623.79 AUD	472	10,834,710.09 AUD
Paid out/Matured	509	- AUD	337	- AUD	172	- AUD
Early Payout	3,043	- AUD	1,633	- AUD	1,410	- AUD
Gross Salvage	10	372,214.47 AUD	7	263,563.51 AUD	3	108,650.96 AUD
Net Salvage	25	596,917.26 AUD	21	505,288.86 AUD	4	91,628.40 AUD
<b>Total</b>	<b>15,241</b>	<b>332,992,398.63 AUD</b>	<b>9,371</b>	<b>237,363,177.12 AUD</b>	<b>5,870</b>	<b>95,629,221.51 AUD</b>

Total Portfolio as of Current Reporting Period			Product Type			
Contract Status Development	Number of Contracts	Outstanding Discounted Receivables Balance	Chattel Mortgage		Consumer Loan	
			Number of Contracts	Outstanding Discounted Receivables Balance	Number of Contracts	Outstanding Discounted Receivables Balance
Normal	9,021	252,759,420.55 AUD	5,927	187,054,854.58 AUD	3,094	65,704,565.97 AUD
In Advance	1,268	31,756,355.64 AUD	655	18,498,000.04 AUD	613	13,258,355.60 AUD
In Arrears	1,117	34,053,695.13 AUD	642	21,783,130.13 AUD	475	12,270,565.00 AUD
Paid out/Matured	563	- AUD	372	- AUD	191	- AUD
Early Payout	3,235	- AUD	1,745	- AUD	1,490	- AUD
Gross Salvage	6	218,319.77 AUD	4	110,883.50 AUD	2	107,436.27 AUD
Net Salvage	31	770,153.98 AUD	26	677,310.89 AUD	5	92,843.09 AUD
<b>Total</b>	<b>15,241</b>	<b>319,557,945.07 AUD</b>	<b>9,371</b>	<b>228,124,179.14 AUD</b>	<b>5,870</b>	<b>91,433,765.93 AUD</b>

**Outstanding Contracts I - Overview**

Total Portfolio as of Poolcut Date			Balloon				Type of Car			
Contract Status Development	Number of Contracts	Outstanding Discounted Receivables Balance	Balloon		No Balloon		New Vehicle		Used Vehicle	
			Number of Contracts	Outstanding Discounted Receivables Balance	Number of Contracts	Outstanding Discounted Receivables Balance	Number of Contracts	Outstanding Discounted Receivables Balance	Number of Contracts	Outstanding Discounted Receivables Balance
Normal	15,241	600,025,098.06 AUD	4,261	251,558,699.25 AUD	10,980	348,466,398.81 AUD	10,680	463,158,976.27 AUD	4,561	136,866,121.79 AUD
In Advance	-	- AUD	-	- AUD	-	- AUD	-	- AUD	-	- AUD
In Arrears	-	- AUD	-	- AUD	-	- AUD	-	- AUD	-	- AUD
Paid out/Matured	-	- AUD	-	- AUD	-	- AUD	-	- AUD	-	- AUD
Early Payout	-	- AUD	-	- AUD	-	- AUD	-	- AUD	-	- AUD
Gross Salvage	-	- AUD	-	- AUD	-	- AUD	-	- AUD	-	- AUD
Net Salvage	-	- AUD	-	- AUD	-	- AUD	-	- AUD	-	- AUD
<b>Total</b>	<b>15,241</b>	<b>600,025,098.06 AUD</b>	<b>4,261</b>	<b>251,558,699.25 AUD</b>	<b>10,980</b>	<b>348,466,398.81 AUD</b>	<b>10,680</b>	<b>463,158,976.27 AUD</b>	<b>4,561</b>	<b>136,866,121.79 AUD</b>

Total Portfolio as of Previous Month			Balloon				Type of Car			
Contract Status Development	Number of Contracts	Outstanding Discounted Receivables Balance	Balloon		No Balloon		New Vehicle		Used Vehicle	
			Number of Contracts	Outstanding Discounted Receivables Balance	Number of Contracts	Outstanding Discounted Receivables Balance	Number of Contracts	Outstanding Discounted Receivables Balance	Number of Contracts	Outstanding Discounted Receivables Balance
Normal	9,966	287,350,979.45 AUD	2,929	139,181,263.32 AUD	7,037	148,169,716.13 AUD	7,275	230,976,131.04 AUD	2,691	56,374,848.41 AUD
In Advance	595	14,053,953.57 AUD	125	4,446,090.72 AUD	470	9,607,862.85 AUD	386	10,489,337.60 AUD	209	3,564,615.97 AUD
In Arrears	1,093	30,618,333.88 AUD	284	12,832,176.54 AUD	809	17,786,157.34 AUD	750	23,021,724.26 AUD	343	7,596,609.62 AUD
Paid out/Matured	509	- AUD	81	- AUD	428	- AUD	306	- AUD	203	- AUD
Early Payout	3,043	- AUD	827	- AUD	2,216	- AUD	1,947	- AUD	1,096	- AUD
Gross Salvage	10	372,214.47 AUD	5	292,938.59 AUD	5	79,275.88 AUD	6	294,153.28 AUD	4	78,061.19 AUD
Net Salvage	25	596,917.26 AUD	10	349,762.15 AUD	15	247,155.11 AUD	10	216,281.21 AUD	15	380,636.05 AUD
<b>Total</b>	<b>15,241</b>	<b>332,992,398.63 AUD</b>	<b>4,261</b>	<b>157,102,231.32 AUD</b>	<b>10,980</b>	<b>175,890,167.31 AUD</b>	<b>10,680</b>	<b>264,997,627.39 AUD</b>	<b>4,561</b>	<b>67,994,771.24 AUD</b>

Total Portfolio as of Current Reporting Period			Balloon				Type of Car			
Contract Status Development	Number of Contracts	Outstanding Discounted Receivables Balance	Balloon		No Balloon		New Vehicle		Used Vehicle	
			Number of Contracts	Outstanding Discounted Receivables Balance	Number of Contracts	Outstanding Discounted Receivables Balance	Number of Contracts	Outstanding Discounted Receivables Balance	Number of Contracts	Outstanding Discounted Receivables Balance
Normal	9,021	252,759,420.55 AUD	2,713	126,565,661.76 AUD	6,308	126,193,758.79 AUD	6,575	203,771,479.08 AUD	2,446	48,987,941.47 AUD
In Advance	1,268	31,756,355.64 AUD	266	10,465,705.11 AUD	1,002	21,290,650.53 AUD	889	24,127,140.77 AUD	379	7,629,214.87 AUD
In Arrears	1,117	34,053,695.13 AUD	302	14,574,184.50 AUD	815	19,479,510.63 AUD	791	26,446,840.45 AUD	326	7,606,854.68 AUD
Paid out/Matured	563	- AUD	91	- AUD	472	- AUD	339	- AUD	224	- AUD
Early Payout	3,235	- AUD	873	- AUD	2,362	- AUD	2,069	- AUD	1,166	- AUD
Gross Salvage	6	218,319.77 AUD	3	143,523.82 AUD	3	74,795.95 AUD	3	143,523.82 AUD	3	74,795.95 AUD
Net Salvage	31	770,153.98 AUD	13	380,995.13 AUD	18	389,158.85 AUD	14	248,728.88 AUD	17	521,425.10 AUD
<b>Total</b>	<b>15,241</b>	<b>319,557,945.07 AUD</b>	<b>4,261</b>	<b>152,130,070.32 AUD</b>	<b>10,980</b>	<b>167,427,874.75 AUD</b>	<b>10,680</b>	<b>254,737,713.00 AUD</b>	<b>4,561</b>	<b>64,820,232.07 AUD</b>

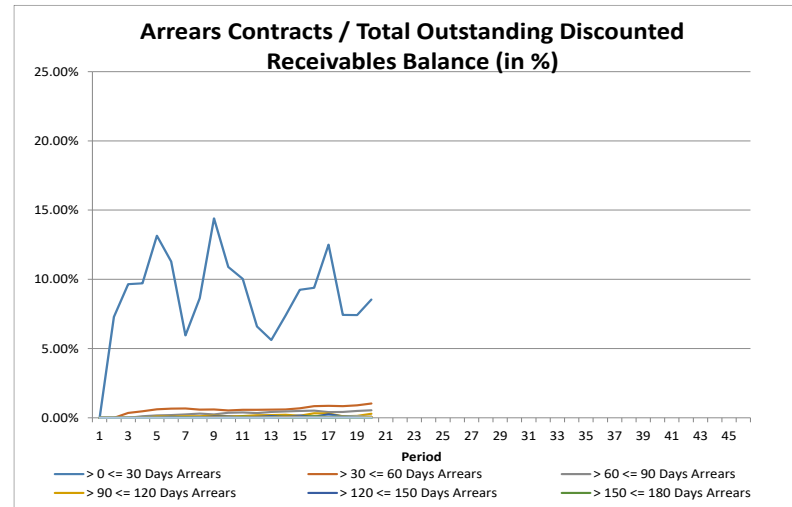
## Outstanding Contracts II - Collections

Collections This Reporting Month by Status	Change in Contract Statuses From Last Month	Number of Contracts This Month	Collections
Normal	(945)	9,021	7,749,823.79 AUD
In Advance	673	1,268	1,674,832.68 AUD
In Arrears	24	1,117	856,915.02 AUD
Paid out/Matured	54	563	132,974.00 AUD
Early Payout	192	3,235	4,689,608.03 AUD
Gross Salvage	(4)	6	972.62 AUD
Net Salvage	6	31	140,038.98 AUD
<b>Total</b>	<b>-</b>	<b>15,241</b>	<b>15,245,165.12 AUD</b>

Development of Pool within Reporting Period	Number of Active Contracts	Total Number of Contracts	Collection Variations	Outstanding Nominal Balance
<b>Beginning of Period</b>	<b>11,664</b>	<b>15,241</b>		<b>365,265,425.51 AUD</b>
<b>Scheduled Collections For Contracts Active This Period</b>			<b>9,912,900.80 AUD</b>	<b>9,912,900.80 AUD</b>
Collections Variations From Normal Contracts This Period			23,618.49 AUD	
Collection Variations From Contracts Paying Out Early This Period			4,575,361.01 AUD	
Collection Variations From Contracts Paying Out/Maturing This Period			40,906.16 AUD	
Collection Variations from Contracts in Advance This Period			912,341.08 AUD	
Collection Variations from Contract In Arrears This Period			(255,298.16 AUD)	
Collection Variations from Contracts Going Into Gross Salvage This Period			(4,033.01 AUD)	
Collection Variations from Contracts Going Into Net Salvage This Period			132,855.03 AUD	
Other Variations From Scheduled Collections This Period			- AUD	
<i>Instalment Collection Variations</i>			5,425,750.60 AUD	5,425,750.60 AUD
Contract Fees Collected This Period			59,796.51 AUD	
Interest Compensation Collections This Period			(153,282.79 AUD)	
<i>Non Instalment Collection Variations</i>			(93,486.28 AUD)	
<b>Actual Collections For Contracts Active This Period</b>			<b>15,245,165.12 AUD</b>	
Number of Contracts Paid Out Early This Month	192			
Number of Contracts Paid Out/Matured This Month	54			
Number of Contracts Into Net Salvage This Month	6			
Repurchased Contracts	-	-		
Less Recoveries After Net Salvage				1,827.99 AUD
Reduced Nominal Balance Due to Unpaid Rental At Net Salvage				190,732.78 AUD
Reduced Nominal Balance Due to Unpaid Rental At Early Payout				285,665.33 AUD
Reduced Nominal Balance Due to Other				(417.28 AUD)
<b>End of Period</b>	<b>11,412</b>	<b>15,241</b>		<b>349,448,965.29 AUD</b>

**Arrears Contracts**

Total Portfolio					Chattel Mortgage		Consumer Loan	
Days in Arrears	Number of Contracts	Number of Contracts (%)	Outstanding Discounted Receivables Balance	Outstanding Discounted Receivables Balance (%)	Number of Contracts	Outstanding Discounted Receivables Balance	Number of Contracts	Outstanding Discounted Receivables Balance
> 0 <= 30	910	7.97%	27,248,177.39 AUD	8.55%	490	16,137,586.17 AUD	420	11,110,591.22 AUD
> 30 <= 60	107	0.94%	3,283,464.26 AUD	1.03%	73	2,614,325.28 AUD	34	669,138.98 AUD
> 60 <= 90	48	0.42%	1,725,834.96 AUD	0.54%	36	1,375,681.52 AUD	12	350,153.44 AUD
> 90 <= 120	29	0.25%	943,860.18 AUD	0.30%	24	818,147.34 AUD	5	125,712.84 AUD
> 120 <= 150	6	0.05%	240,474.77 AUD	0.08%	5	232,331.61 AUD	1	8,143.16 AUD
> 150 <= 180	6	0.05%	105,391.84 AUD	0.03%	4	104,281.83 AUD	2	1,110.01 AUD
> 180 <= 210	4	0.04%	125,036.38 AUD	0.04%	3	56,233.36 AUD	1	68,803.02 AUD
> 210 <= 240	7	0.06%	210,873.81 AUD	0.07%	6	175,893.90 AUD	1	34,979.91 AUD
> 240 <= 270	1	0.01%	128,259.52 AUD	0.04%	1	128,259.52 AUD	-	- AUD
> 270 <= 300	2	0.02%	216,151.64 AUD	0.07%	2	216,151.64 AUD	-	- AUD
> 300 <= 330	-	0.00%	- AUD	0.00%	-	- AUD	-	- AUD
> 330 <= 360	-	0.00%	- AUD	0.00%	-	- AUD	-	- AUD
> 360	1	0.01%	9,368.69 AUD	0.00%	-	- AUD	1	9,368.69 AUD
<b>Total</b>	<b>1,121</b>	<b>9.82%</b>	<b>34,236,893.44 AUD</b>	<b>10.74%</b>	<b>644</b>	<b>21,858,892.17 AUD</b>	<b>477</b>	<b>12,378,001.27 AUD</b>



**Arrears Contracts**

Total Portfolio					Balloon				Vehicle Status			
Days in Arrears	Number of Contracts	Number of Contracts (%)	Outstanding Discounted Receivables Balance	Outstanding Discounted Receivables Balance (%)	Balloon		No Balloon		New		Used	
					Number of Contracts	Outstanding Discounted Receivables Balance	Number of Contracts	Outstanding Discounted Receivables Balance	Number of Contracts	Outstanding Discounted Receivables Balance	Number of Contracts	Outstanding Discounted Receivables Balance
> 0 <= 30	910	7.97%	27,248,177.39 AUD	8.55%	225	10,747,821.75 AUD	685	16,500,355.64 AUD	655	21,473,021.56 AUD	255	5,775,155.83 AUD
> 30 <= 60	107	0.94%	3,283,464.26 AUD	1.03%	35	1,824,692.18 AUD	72	1,458,772.08 AUD	71	2,433,664.67 AUD	36	849,799.59 AUD
> 60 <= 90	48	0.42%	1,725,834.96 AUD	0.54%	18	897,954.58 AUD	30	827,880.38 AUD	31	1,335,741.42 AUD	17	390,093.54 AUD
> 90 <= 120	29	0.25%	943,860.18 AUD	0.30%	14	516,466.86 AUD	15	427,393.32 AUD	17	556,555.13 AUD	12	387,305.05 AUD
> 120 <= 150	6	0.05%	240,474.77 AUD	0.08%	4	197,240.87 AUD	2	43,233.90 AUD	4	140,480.46 AUD	2	99,994.31 AUD
> 150 <= 180	6	0.05%	105,391.84 AUD	0.03%	-	- AUD	6	105,391.84 AUD	3	38,097.80 AUD	3	67,294.04 AUD
> 180 <= 210	4	0.04%	125,036.38 AUD	0.04%	2	75,626.04 AUD	2	49,410.34 AUD	4	125,036.38 AUD	-	- AUD
> 210 <= 240	7	0.06%	210,873.81 AUD	0.07%	3	83,141.74 AUD	4	127,732.07 AUD	5	157,073.24 AUD	2	53,800.57 AUD
> 240 <= 270	1	0.01%	128,259.52 AUD	0.04%	1	128,259.52 AUD	-	- AUD	1	128,259.52 AUD	-	- AUD
> 270 <= 300	2	0.02%	216,151.64 AUD	0.07%	2	216,151.64 AUD	-	- AUD	1	162,712.26 AUD	1	53,439.38 AUD
> 300 <= 330	-	0.00%	- AUD	0.00%	-	- AUD	-	- AUD	-	- AUD	-	- AUD
> 330 <= 360	-	0.00%	- AUD	0.00%	-	- AUD	-	- AUD	-	- AUD	-	- AUD
> 360	1	0.01%	9,368.69 AUD	0.00%	-	- AUD	1	9,368.69 AUD	1	9,368.69 AUD	-	- AUD
<b>Total</b>	<b>1,121</b>	<b>9.82%</b>	<b>34,236,893.44 AUD</b>	<b>10.74%</b>	<b>304</b>	<b>14,687,355.18 AUD</b>	<b>817</b>	<b>19,549,538.26 AUD</b>	<b>793</b>	<b>26,560,011.13 AUD</b>	<b>328</b>	<b>7,676,882.31 AUD</b>

**Net Salvage Loss**

Net Salvage Loss This Period			
Product Type	Type of Car	Number of Contracts	Net Salvage Loss
Chattel Mortgage	New	3	31,232.98 AUD
	Used	2	146,927.43 AUD
<b>Total Chattel Mortgage</b>		<b>5</b>	<b>178,160.41 AUD</b>
Consumer Loan	New	1	1,218.06 AUD
	Used	-	- AUD
<b>Total Consumer Loan</b>		<b>1</b>	<b>1,218.06 AUD</b>
<b>Total</b>		<b>6</b>	<b>179,378.47 AUD</b>

<b>Cumulative Net Salvage Loss as of the End of the Monthly Period</b>	792,169.39 AUD
<b>Outstanding Discounted Receivables Balance at Poolcut</b>	600,025,098.06 AUD
<b>Cumulative Net Loss Ratio</b>	0.13202%

Monthly Period	Per Period		Cumulative Net Salvage Loss	
	Number of Contracts	Net Salvage Loss	Number of Contracts	Net Salvage Loss
11/2021	-	- AUD	-	- AUD
12/2021	-	- AUD	-	- AUD
01/2022	-	- AUD	-	- AUD
02/2022	-	- AUD	-	- AUD
03/2022	-	- AUD	-	- AUD
04/2022	-	- AUD	-	- AUD
05/2022	-	- AUD	-	- AUD
06/2022	-	- AUD	-	- AUD
07/2022	1	23,440.30 AUD	1	23,440.30 AUD
08/2022	4	57,706.41 AUD	5	81,146.71 AUD
09/2022	1	60,349.39 AUD	6	141,496.10 AUD
10/2022	1	5,937.71 AUD	7	147,433.81 AUD
11/2022	2	144,698.53 AUD	9	292,132.34 AUD
12/2022	2	26,228.63 AUD	11	318,360.97 AUD
01/2023	2	25,455.90 AUD	13	343,816.87 AUD
02/2023	3	68,262.70 AUD	16	412,079.57 AUD
03/2023	1	47,352.50 AUD	17	459,432.07 AUD
04/2023	8	153,358.85 AUD	25	612,790.92 AUD
05/2023	6	179,378.47 AUD	31	792,169.39 AUD
06/2023	-	- AUD	-	- AUD
07/2023	-	- AUD	-	- AUD
08/2023	-	- AUD	-	- AUD
09/2023	-	- AUD	-	- AUD
10/2023	-	- AUD	-	- AUD
11/2023	-	- AUD	-	- AUD
12/2023	-	- AUD	-	- AUD
01/2024	-	- AUD	-	- AUD
02/2024	-	- AUD	-	- AUD
03/2024	-	- AUD	-	- AUD
04/2024	-	- AUD	-	- AUD
05/2024	-	- AUD	-	- AUD
06/2024	-	- AUD	-	- AUD
07/2024	-	- AUD	-	- AUD
08/2024	-	- AUD	-	- AUD
09/2024	-	- AUD	-	- AUD
10/2024	-	- AUD	-	- AUD
11/2024	-	- AUD	-	- AUD
12/2024	-	- AUD	-	- AUD
01/2025	-	- AUD	-	- AUD
02/2025	-	- AUD	-	- AUD
03/2025	-	- AUD	-	- AUD
04/2025	-	- AUD	-	- AUD
05/2025	-	- AUD	-	- AUD
06/2025	-	- AUD	-	- AUD
07/2025	-	- AUD	-	- AUD
08/2025	-	- AUD	-	- AUD
09/2025	-	- AUD	-	- AUD
10/2025	-	- AUD	-	- AUD
11/2025	-	- AUD	-	- AUD
<b>Total</b>	<b>31</b>	<b>792,169.39 AUD</b>		



**Net Salvage After Recoveries**

Net Salvaged Contracts						
Product Type	Vehicle Status	Number of Contracts	Gross Salvage Loss	Net Salvage Loss	Recoveries After Net Salvage	Net Salvage Loss After Recoveries
Chattel Mortgage	New	11	692,719.92 AUD	184,952.99 AUD	32,792.94 AUD	152,160.05 AUD
	Used	15	610,776.41 AUD	511,681.23 AUD	(2,153.53) AUD	513,834.76 AUD
<b>Total Chattel Mortgage</b>		<b>26</b>	<b>1,303,496.33 AUD</b>	<b>696,634.22 AUD</b>	<b>30,639.41 AUD</b>	<b>665,994.81 AUD</b>
Consumer Loan	New	3	68,257.11 AUD	67,505.16 AUD	(1,452.63) AUD	68,957.79 AUD
	Used	2	90,093.43 AUD	28,030.01 AUD	2,382.04 AUD	25,647.97 AUD
<b>Total Consumer Loan</b>		<b>5</b>	<b>158,350.54 AUD</b>	<b>95,535.17 AUD</b>	<b>929.41 AUD</b>	<b>94,605.76 AUD</b>
<b>Total</b>		<b>31</b>	<b>1,461,846.87 AUD</b>	<b>792,169.39 AUD</b>	<b>31,568.82 AUD</b>	<b>760,600.57 AUD</b>

## Prepayments

Period Number	Reporting Period	Unscheduled Payments	Opening Outstanding Discounted Receivables Balance	Periodic CPR	Annualised CPR
0	Poolcut	- AUD	- AUD		
1	11/2021	5,188,258.11 AUD	600,025,098.06 AUD	0.86%	10.03%
2	12/2021	4,579,685.92 AUD	584,284,031.03 AUD	0.78%	8.85%
3	01/2022	2,741,342.02 AUD	568,933,158.93 AUD	0.48%	5.53%
4	02/2022	3,337,851.56 AUD	555,556,298.45 AUD	0.60%	7.56%
5	03/2022	5,445,824.85 AUD	541,478,701.09 AUD	1.01%	11.22%
6	04/2022	4,593,099.08 AUD	524,992,591.30 AUD	0.87%	10.14%
7	05/2022	6,363,116.33 AUD	509,466,787.17 AUD	1.25%	13.76%
8	06/2022	6,297,060.40 AUD	492,432,848.37 AUD	1.28%	14.49%
9	07/2022	5,980,710.84 AUD	475,580,922.30 AUD	1.26%	13.84%
10	08/2022	5,404,312.88 AUD	459,209,842.01 AUD	1.18%	13.01%
11	09/2022	4,751,296.31 AUD	443,615,516.21 AUD	1.07%	12.28%
12	10/2022	4,429,370.71 AUD	428,807,300.51 AUD	1.03%	11.51%
13	11/2022	3,951,482.72 AUD	414,561,296.17 AUD	0.95%	11.00%
14	12/2022	3,173,581.07 AUD	399,393,166.38 AUD	0.79%	8.97%
15	01/2023	3,259,724.76 AUD	385,740,376.49 AUD	0.85%	9.51%
16	02/2023	3,041,283.55 AUD	372,465,449.19 AUD	0.82%	10.14%
17	03/2023	5,189,122.89 AUD	359,589,767.53 AUD	1.44%	15.73%
18	04/2023	2,751,056.77 AUD	344,346,328.06 AUD	0.80%	9.30%
19	05/2023	4,318,938.46 AUD	332,395,481.37 AUD	1.30%	14.27%

The annualised Constant Prepayment Rate (CPR) of the underlying receivables is based upon the most recent periodic CPR. Periodic CPR is equal to the total unscheduled principal received in the most recent period divided by the start of period principal balance. This is then annualised as follows:

$$1 - ((1 - \text{Periodic CPR})^{\text{number of periods in a year}})$$

**Pool Data I**

**Down Payments**

Total Portfolio						Product Type			
Down Payment	Number of Contracts	Percentage of Contracts	Outstanding Discounted Receivables Balance	Percentage of Balance	Down Payment/ Purchase Price in %	Chattel Mortgage		Consumer Loan	
						Number of Contracts	Outstanding Discounted Receivables Balance	Number of Contracts	Outstanding Discounted Receivables Balance
No Down Payment	1,963	17.20%	58,125,322.37 AUD	18.23%	0.00%	1,365	44,531,679.36 AUD	598	13,593,643.01 AUD
0.01 - 10,000.00	5,680	49.77%	144,350,261.36 AUD	45.28%	10.94%	3,409	95,015,054.95 AUD	2,271	49,335,206.41 AUD
10,000.01 - 20,000.00	2,223	19.48%	60,401,276.07 AUD	18.95%	26.54%	1,439	43,831,169.71 AUD	784	16,570,106.36 AUD
20,000.01 - 30,000.00	799	7.00%	23,797,875.60 AUD	7.47%	35.86%	495	17,388,593.58 AUD	304	6,409,282.02 AUD
30,000.01 - 40,000.00	373	3.27%	11,443,435.10 AUD	3.59%	42.61%	243	8,693,231.24 AUD	130	2,750,203.86 AUD
40,000.01 - 50,000.00	166	1.45%	7,227,358.59 AUD	2.27%	43.12%	114	5,725,702.68 AUD	52	1,501,655.91 AUD
50,000.01 - 60,000.00	82	0.72%	3,963,104.78 AUD	1.24%	45.37%	59	3,391,704.62 AUD	23	571,400.16 AUD
60,000.01 - 70,000.00	47	0.41%	2,894,393.88 AUD	0.91%	46.65%	39	2,730,846.61 AUD	8	163,547.27 AUD
70,000.01 - 80,000.00	22	0.19%	1,016,642.54 AUD	0.32%	50.64%	16	903,652.66 AUD	6	112,989.88 AUD
80,000.01 - 90,000.00	14	0.12%	841,161.64 AUD	0.26%	51.91%	11	735,674.59 AUD	3	105,487.05 AUD
90,000.01 - 100,000.00	10	0.09%	1,041,745.95 AUD	0.33%	46.35%	8	946,601.38 AUD	2	95,144.57 AUD
100,000.01 - 110,000.00	7	0.06%	713,936.10 AUD	0.22%	42.43%	7	713,936.10 AUD	-	- AUD
110,000.01 - 120,000.00	5	0.04%	608,818.84 AUD	0.19%	48.81%	5	608,818.84 AUD	-	- AUD
120,000.01 - 130,000.00	5	0.04%	503,089.97 AUD	0.16%	51.70%	3	458,807.85 AUD	2	44,282.12 AUD
130,000.01 - 140,000.00	3	0.03%	433,751.62 AUD	0.14%	44.71%	3	433,751.62 AUD	-	- AUD
140,000.01 - 150,000.00	-	0.00%	- AUD	0.00%	0.00%	-	- AUD	-	- AUD
> 150,000.00	13	0.11%	1,425,616.68 AUD	0.45%	68.76%	12	1,337,642.46 AUD	1	87,974.22 AUD
<b>Total</b>	<b>11,412</b>	<b>100.00%</b>	<b>318,787,791.09 AUD</b>	<b>100.00%</b>	<b>19.48%</b>	<b>7,228</b>	<b>227,446,868.25 AUD</b>	<b>4,184</b>	<b>91,340,922.84 AUD</b>

Statistics Down Payments	
Minimum Down Payment	- AUD
Maximum Down Payment	630,000.00 AUD
Weighted Average Down Payment (Customers that made a Down Payment)	16,281.32 AUD
Weighted Average Down Payment	13,312.71 AUD

**Type of Payment**

Total Portfolio				
Type of Payment	Number of Contracts	Percentage of Contracts	Outstanding Discounted Receivables Balance	Percentage of Balance
Direct Debit	11,172	97.90%	312,111,797.75 AUD	97.91%
Other	240	2.10%	6,675,993.34 AUD	2.09%
<b>Total</b>	<b>11,412</b>	<b>100.00%</b>	<b>318,787,791.09 AUD</b>	<b>100.00%</b>

Product Type			
Chattel Mortgage		Consumer Loan	
Number of Contracts	Outstanding Discounted Receivables Balance	Number of Contracts	Outstanding Discounted Receivables Balance
7,071	222,289,985	4,101	89,821,813
157	5,156,883	83	1,519,110
<b>7,228</b>	<b>227,446,868.25 AUD</b>	<b>4,184</b>	<b>91,340,922.84 AUD</b>

**Pool Data I**

**Down Payments**

Total Portfolio						Balloon				Vehicle Status			
Down Payment	Number of Contracts	Percentage of Contracts	Outstanding Discounted Receivables Balance	Percentage of Balance	Down Payment/ Purchase Price in %	Balloon		No Balloon		New		Used	
						Number of Contracts	Outstanding Discounted Receivables Balance	Number of Contracts	Outstanding Discounted Receivables Balance	Number of Contracts	Outstanding Discounted Receivables Balance	Number of Contracts	Outstanding Discounted Receivables Balance
No Down Payment	1,963	17.20%	58,125,322.37 AUD	18.23%	0.00%	692	31,284,910.55 AUD	1,271	26,840,411.82 AUD	1,373	47,161,474.33 AUD	590	10,963,848.04 AUD
0.01 - 10,000.00	5,680	49.77%	144,350,261.36 AUD	45.28%	10.94%	1,496	60,912,486.62 AUD	4,184	83,437,774.74 AUD	3,885	110,592,688.76 AUD	1,795	33,757,572.60 AUD
10,000.01 - 20,000.00	2,223	19.48%	60,401,276.07 AUD	18.95%	26.54%	616	27,075,577.64 AUD	1,607	33,325,698.43 AUD	1,693	48,358,820.52 AUD	530	12,042,455.55 AUD
20,000.01 - 30,000.00	799	7.00%	23,797,875.60 AUD	7.47%	35.86%	228	12,307,687.32 AUD	571	11,490,188.28 AUD	661	20,368,001.82 AUD	138	3,429,873.78 AUD
30,000.01 - 40,000.00	373	3.27%	11,443,435.10 AUD	3.59%	42.61%	98	5,755,549.81 AUD	275	5,687,885.29 AUD	320	10,025,734.84 AUD	53	1,417,700.26 AUD
40,000.01 - 50,000.00	166	1.45%	7,227,358.59 AUD	2.27%	43.12%	58	4,642,122.93 AUD	108	2,585,235.66 AUD	136	5,808,152.05 AUD	30	1,419,206.54 AUD
50,000.01 - 60,000.00	82	0.72%	3,963,104.78 AUD	1.24%	45.37%	34	2,675,077.45 AUD	48	1,288,027.33 AUD	76	3,706,364.97 AUD	6	256,739.81 AUD
60,000.01 - 70,000.00	47	0.41%	2,894,393.88 AUD	0.91%	46.65%	22	2,136,779.78 AUD	25	757,614.10 AUD	41	2,429,063.58 AUD	6	465,330.30 AUD
70,000.01 - 80,000.00	22	0.19%	1,016,642.54 AUD	0.32%	50.64%	7	479,886.95 AUD	15	536,755.59 AUD	22	1,016,642.54 AUD	-	- AUD
80,000.01 - 90,000.00	14	0.12%	841,161.64 AUD	0.26%	51.91%	5	560,557.01 AUD	9	280,604.63 AUD	13	785,858.07 AUD	1	55,303.57 AUD
90,000.01 - 100,000.00	10	0.09%	1,041,745.95 AUD	0.33%	46.35%	6	812,380.80 AUD	4	229,365.15 AUD	10	1,041,745.95 AUD	-	- AUD
100,000.01 - 110,000.00	7	0.06%	713,936.10 AUD	0.22%	42.43%	2	366,264.72 AUD	5	347,671.38 AUD	5	518,056.19 AUD	2	195,879.91 AUD
110,000.01 - 120,000.00	5	0.04%	608,818.84 AUD	0.19%	48.81%	4	576,843.96 AUD	1	31,974.88 AUD	4	498,801.71 AUD	1	110,017.13 AUD
120,000.01 - 130,000.00	5	0.04%	503,089.97 AUD	0.16%	51.70%	3	458,807.85 AUD	2	44,282.12 AUD	4	327,732.42 AUD	1	175,357.55 AUD
130,000.01 - 140,000.00	3	0.03%	433,751.62 AUD	0.14%	44.71%	3	433,751.62 AUD	-	- AUD	3	433,751.62 AUD	-	- AUD
140,000.01 - 150,000.00	-	0.00%	- AUD	0.00%	0.00%	-	- AUD	-	- AUD	-	- AUD	-	- AUD
> 150,000.00	13	0.11%	1,425,616.68 AUD	0.45%	68.76%	10	1,270,390.18 AUD	3	155,226.50 AUD	12	1,416,094.75 AUD	1	9,521.93 AUD
<b>Total</b>	<b>11,412</b>	<b>100.00%</b>	<b>318,787,791.09 AUD</b>	<b>100.00%</b>	<b>19.48%</b>	<b>3,284</b>	<b>151,749,075.19 AUD</b>	<b>8,128</b>	<b>167,038,715.90 AUD</b>	<b>8,258</b>	<b>254,488,984.12 AUD</b>	<b>3,154</b>	<b>64,298,806.97 AUD</b>

Statistics Down Payments	
Minimum Down Payment	- AUD
Maximum Down Payment	630,000.00 AUD
Weighted Average Down Payment (Customers that made a Down Payment)	16,281.32 AUD
Weighted Average Down Payment	13,312.71 AUD

**Type of Payment**

Total Portfolio				
Type of Payment	Number of Contracts	Percentage of Contracts	Outstanding Discounted Receivables Balance	Percentage of Balance
Direct Debit	11,172	97.90%	312,111,797.75 AUD	97.91%
Other	240	2.10%	6,675,993.34 AUD	2.09%
<b>Total</b>	<b>11,412</b>	<b>100.00%</b>	<b>318,787,791.09 AUD</b>	<b>100.00%</b>

Balloon				Vehicle Status			
Balloon		No Balloon		New		Used	
Number of Contracts	Outstanding Discounted Receivables Balance	Number of Contracts	Outstanding Discounted Receivables Balance	Number of Contracts	Outstanding Discounted Receivables Balance	Number of Contracts	Outstanding Discounted Receivables Balance
3,213	148,379,877	7,959	163,731,920	8,100	249,409,056	3,072	62,702,742
71	3,369,198	169	3,306,796	158	5,079,928	82	1,596,065
<b>3,284</b>	<b>151,749,075.19 AUD</b>	<b>8,128</b>	<b>167,038,715.90 AUD</b>	<b>8,258</b>	<b>254,488,984.12 AUD</b>	<b>3,154</b>	<b>64,298,806.97 AUD</b>

## Pool Data II

### Distribution of Contracts and Vehicles per Borrower

Number of Contracts Per Borrower	Number of Customers	Percentage of Customers	Number of Contracts	Percentage of Contracts	Outstanding Discounted Receivables Balance	Percentage of Balance
1	13,499	99.16%	11,229	98.20%	380,002,678.09 AUD	98.27%
2	109	0.80%	188	1.64%	6,402,516.60 AUD	1.66%
3	6	0.04%	18	0.16%	303,854.99 AUD	0.08%
4	-	0.00%	-	0.00%	- AUD	0.00%
5	-	0.00%	-	0.00%	- AUD	0.00%
6 - 10	-	0.00%	-	0.00%	- AUD	0.00%
> 10	-	0.00%	-	0.00%	- AUD	0.00%
<b>Total</b>	<b>13,614</b>	<b>100.00%</b>	<b>11,435</b>	<b>100.00%</b>	<b>386,709,049.68 AUD</b>	<b>100.00%</b>

### Top 20 Borrower

Ranking	Outstanding Discounted Receivables Balance	Percentage of Overall Balance	Number of Contracts
1	350,663.89 AUD	0.11000 %	1
2	350,663.89 AUD	0.11000 %	1
3	329,978.66 AUD	0.10351 %	1
4	326,303.24 AUD	0.10236 %	1
5	310,931.72 AUD	0.09754 %	1
6	310,931.72 AUD	0.09754 %	1
7	282,375.91 AUD	0.08858 %	1
8	275,648.90 AUD	0.08647 %	1
9	240,673.96 AUD	0.07550 %	1
10	239,436.11 AUD	0.07511 %	1
11	237,518.16 AUD	0.07451 %	1
12	236,005.51 AUD	0.07403 %	1
13	234,904.47 AUD	0.07369 %	1
14	227,795.20 AUD	0.07146 %	1
15	221,031.70 AUD	0.06934 %	1
16	203,367.52 AUD	0.06379 %	1
17	203,042.58 AUD	0.06369 %	1
18	202,513.50 AUD	0.06353 %	1
19	189,464.54 AUD	0.05943 %	1
20	189,393.66 AUD	0.05941 %	1
	<b>5,162,644.84 AUD</b>	<b>1.61946 %</b>	<b>20</b>

**Pool Data III**

**Distribution by Outstanding Discounted Receivables Balance**

Total Portfolio					Product Type			
Distribution by Outstanding Discounted Receivables Balance	Number of Contracts	Percentage of Contracts	Outstanding Discounted Receivables Balance	Percentage of Balance	Chattel Mortgage		Consumer Loan	
					Number of Contracts	Outstanding Discounted Receivables Balance	Number of Contracts	Outstanding Discounted Receivables Balance
0.00 - 10,000.00	1,542	13.51%	9,346,377.83 AUD	2.93%	765	4,595,032.05 AUD	777	4,751,345.78 AUD
10,000.01 - 20,000.00	3,311	29.01%	50,220,164.36 AUD	15.75%	1,823	27,838,748.28 AUD	1,488	22,381,416.08 AUD
20,000.01 - 30,000.00	2,810	24.62%	69,405,059.73 AUD	21.77%	1,815	45,132,444.71 AUD	995	24,272,615.02 AUD
30,000.01 - 40,000.00	1,676	14.69%	57,822,404.65 AUD	18.14%	1,142	39,573,850.01 AUD	534	18,248,554.64 AUD
40,000.01 - 50,000.00	839	7.35%	37,235,112.23 AUD	11.68%	627	27,765,257.43 AUD	212	9,469,854.80 AUD
50,000.01 - 60,000.00	436	3.82%	23,698,814.41 AUD	7.43%	356	19,378,966.07 AUD	80	4,319,848.34 AUD
60,000.01 - 70,000.00	249	2.18%	16,070,390.34 AUD	5.04%	215	13,899,297.00 AUD	34	2,171,093.34 AUD
70,000.01 - 80,000.00	181	1.59%	13,529,955.51 AUD	4.24%	157	11,736,352.79 AUD	24	1,793,602.72 AUD
80,000.01 - 90,000.00	111	0.97%	9,399,845.30 AUD	2.95%	91	7,718,203.40 AUD	20	1,681,641.90 AUD
90,000.01 - 100,000.00	73	0.64%	6,898,609.46 AUD	2.16%	60	5,684,022.43 AUD	13	1,214,587.03 AUD
100,000.01 - 110,000.00	60	0.53%	6,273,356.80 AUD	1.97%	58	6,064,002.92 AUD	2	209,353.88 AUD
110,000.01 - 120,000.00	32	0.28%	3,639,101.03 AUD	1.14%	30	3,407,306.97 AUD	2	231,794.06 AUD
120,000.01 - 130,000.00	26	0.23%	3,267,158.13 AUD	1.02%	26	3,267,158.13 AUD	-	- AUD
130,000.01 - 140,000.00	11	0.10%	1,474,695.11 AUD	0.46%	11	1,474,695.11 AUD	-	- AUD
140,000.01 - 150,000.00	8	0.07%	1,157,720.43 AUD	0.36%	8	1,157,720.43 AUD	-	- AUD
> 150,000.00	47	0.41%	9,349,025.77 AUD	2.93%	44	8,753,810.52 AUD	3	595,215.25 AUD
<b>Total</b>	<b>11,412</b>	<b>100.00%</b>	<b>318,787,791.09 AUD</b>	<b>100.00%</b>	<b>7,228</b>	<b>227,446,868.25 AUD</b>	<b>4,184</b>	<b>91,340,922.84 AUD</b>

Statistics Outstanding Discounted Receivables Balance	
Minimum Outstanding Discounted Receivables Balance	- AUD
Maximum Outstanding Discounted Receivables Balance	350,663.89 AUD
Average Outstanding Discounted Receivables Balance	27,934.44 AUD

**Distribution by Original Balance**

Total Portfolio					Product Type			
Distribution by Original Balance	Number of Contracts	Percentage of Contracts	Outstanding Discounted Receivables Balance	Percentage of Balance	Chattel Mortgage		Consumer Loan	
					Number of Contracts	Outstanding Discounted Receivables Balance	Number of Contracts	Outstanding Discounted Receivables Balance
0.00 - 10,000.00	62	0.54%	166,522.21 AUD	0.05%	20	41,438.79 AUD	42	125,083.42 AUD
10,000.01 - 20,000.00	1,028	9.01%	7,836,289.76 AUD	2.46%	455	3,486,868.49 AUD	573	4,349,421.27 AUD
20,000.01 - 30,000.00	2,296	20.12%	31,077,212.68 AUD	9.75%	1,179	15,854,330.49 AUD	1,117	15,222,882.19 AUD
30,000.01 - 40,000.00	2,375	20.81%	46,855,370.77 AUD	14.70%	1,392	27,174,633.99 AUD	983	19,680,736.78 AUD
40,000.01 - 50,000.00	1,828	16.02%	48,668,193.52 AUD	15.27%	1,198	31,913,596.37 AUD	630	16,754,597.15 AUD
50,000.01 - 60,000.00	1,391	12.19%	44,745,155.79 AUD	14.04%	1,021	32,594,252.92 AUD	370	12,150,902.87 AUD
60,000.01 - 70,000.00	915	8.02%	35,013,572.36 AUD	10.98%	665	25,396,079.99 AUD	250	9,617,492.37 AUD
70,000.01 - 80,000.00	467	4.09%	21,440,687.72 AUD	6.73%	378	17,396,561.36 AUD	89	4,044,126.36 AUD
80,000.01 - 90,000.00	260	2.28%	14,387,378.16 AUD	4.51%	221	12,202,172.69 AUD	39	2,185,205.47 AUD
90,000.01 - 100,000.00	176	1.54%	10,947,939.27 AUD	3.43%	154	9,606,375.29 AUD	22	1,341,563.98 AUD
100,000.01 - 110,000.00	192	1.68%	13,340,671.97 AUD	4.18%	169	11,708,180.64 AUD	23	1,632,491.33 AUD
110,000.01 - 120,000.00	89	0.78%	6,897,324.19 AUD	2.16%	79	6,102,913.50 AUD	10	794,410.69 AUD
120,000.01 - 130,000.00	83	0.73%	7,130,486.55 AUD	2.24%	63	5,472,367.27 AUD	20	1,658,119.28 AUD
130,000.01 - 140,000.00	61	0.53%	5,701,663.94 AUD	1.79%	55	5,149,141.61 AUD	6	552,522.33 AUD
140,000.01 - 150,000.00	41	0.36%	4,062,808.88 AUD	1.27%	39	3,864,928.85 AUD	2	197,880.03 AUD
> 150,000.00	148	1.30%	20,516,513.32 AUD	6.44%	140	19,483,026.00 AUD	8	1,033,487.32 AUD
<b>Total</b>	<b>11,412</b>	<b>100.00%</b>	<b>318,787,791.09 AUD</b>	<b>100.00%</b>	<b>7,228</b>	<b>227,446,868.25 AUD</b>	<b>4,184</b>	<b>91,340,922.84 AUD</b>

Statistics	
Minimum Original Balance	5,398.00 AUD
Maximum Original Balance	471,296.41 AUD
Weighted Average Original Receivables Balance (by ODRB)	70,072.69 AUD

**Pool Data III**

**Distribution by Outstanding Discounted Receivables Balance**

Total Portfolio					Balloon				Vehicle Status			
Distribution by Outstanding Discounted Receivables Balance	Number of Contracts	Percentage of Contracts	Outstanding Discounted Receivables Balance	Percentage of Balance	Balloon		No Balloon		New		Used	
					Number of Contracts	Outstanding Discounted Receivables Balance	Number of Contracts	Outstanding Discounted Receivables Balance	Number of Contracts	Outstanding Discounted Receivables Balance	Number of Contracts	Outstanding Discounted Receivables Balance
0.00 - 10,000.00	1,542	13.51%	9,346,377.83 AUD	2.93%	27	163,465.99 AUD	1,515	9,182,911.84 AUD	747	4,748,383.64 AUD	795	4,597,994.19 AUD
10,000.01 - 20,000.00	3,311	29.01%	50,220,164.36 AUD	15.75%	258	4,199,312.23 AUD	3,053	46,020,852.13 AUD	2,176	33,446,352.76 AUD	1,135	16,773,811.60 AUD
20,000.01 - 30,000.00	2,810	24.62%	69,405,059.73 AUD	21.77%	709	18,053,988.01 AUD	2,101	51,351,071.72 AUD	2,162	53,534,277.38 AUD	648	15,870,782.35 AUD
30,000.01 - 40,000.00	1,676	14.69%	57,822,404.65 AUD	18.14%	778	27,102,160.79 AUD	898	30,720,243.86 AUD	1,372	47,294,074.68 AUD	304	10,528,329.97 AUD
40,000.01 - 50,000.00	839	7.35%	37,235,112.23 AUD	11.68%	527	23,473,361.65 AUD	312	13,761,750.58 AUD	728	32,308,065.60 AUD	111	4,927,046.63 AUD
50,000.01 - 60,000.00	436	3.82%	23,698,814.41 AUD	7.43%	296	16,106,730.29 AUD	140	7,592,084.12 AUD	366	19,873,225.74 AUD	70	3,825,588.67 AUD
60,000.01 - 70,000.00	249	2.18%	16,070,390.34 AUD	5.04%	195	12,581,488.64 AUD	54	3,488,901.70 AUD	206	13,304,562.91 AUD	43	2,765,827.43 AUD
70,000.01 - 80,000.00	181	1.59%	13,529,955.51 AUD	4.24%	156	11,667,859.49 AUD	25	1,862,096.02 AUD	166	12,415,682.26 AUD	15	1,114,273.25 AUD
80,000.01 - 90,000.00	111	0.97%	9,399,845.30 AUD	2.95%	99	8,369,499.24 AUD	12	1,030,346.06 AUD	104	8,808,556.43 AUD	7	591,288.87 AUD
90,000.01 - 100,000.00	73	0.64%	6,898,609.46 AUD	2.16%	70	6,620,381.56 AUD	3	278,227.90 AUD	67	6,324,443.03 AUD	6	574,166.43 AUD
100,000.01 - 110,000.00	60	0.53%	6,273,356.80 AUD	1.97%	56	5,865,531.89 AUD	4	407,824.91 AUD	56	5,847,851.62 AUD	4	425,505.18 AUD
110,000.01 - 120,000.00	32	0.28%	3,639,101.03 AUD	1.14%	27	3,059,082.30 AUD	5	580,018.73 AUD	28	3,183,163.01 AUD	4	455,938.02 AUD
120,000.01 - 130,000.00	26	0.23%	3,267,158.13 AUD	1.02%	21	2,639,234.16 AUD	5	627,923.97 AUD	23	2,883,463.82 AUD	3	383,694.31 AUD
130,000.01 - 140,000.00	11	0.10%	1,474,695.11 AUD	0.46%	10	1,340,232.75 AUD	1	134,462.36 AUD	8	1,071,696.28 AUD	3	402,998.83 AUD
140,000.01 - 150,000.00	8	0.07%	1,157,720.43 AUD	0.36%	8	1,157,720.43 AUD	-	- AUD	8	1,157,720.43 AUD	-	- AUD
> 150,000.00	47	0.41%	9,349,025.77 AUD	2.93%	47	9,349,025.77 AUD	-	- AUD	41	8,287,464.53 AUD	6	1,061,561.24 AUD
<b>Total</b>	<b>11,412</b>	<b>100.00%</b>	<b>318,787,791.09 AUD</b>	<b>100.00%</b>	<b>3,284</b>	<b>151,749,075.19 AUD</b>	<b>8,128</b>	<b>167,038,715.90 AUD</b>	<b>8,258</b>	<b>254,488,984.12 AUD</b>	<b>3,154</b>	<b>64,298,806.97 AUD</b>

Statistics Outstanding Discounted Receivables Balance	
Minimum Outstanding Discounted Receivables Balance	- AUD
Maximum Outstanding Discounted Receivables Balance	350,663.89 AUD
Average Outstanding Discounted Receivables Balance	27,934.44 AUD

**Distribution by Original Balance**

Total Portfolio					Balloon				Vehicle Status			
Distribution by Original Balance	Number of Contracts	Percentage of Contracts	Outstanding Discounted Receivables Balance	Percentage of Balance	Balloon		No Balloon		New		Used	
					Number of Contracts	Outstanding Discounted Receivables Balance	Number of Contracts	Outstanding Discounted Receivables Balance	Number of Contracts	Outstanding Discounted Receivables Balance	Number of Contracts	Outstanding Discounted Receivables Balance
0.00 - 10,000.00	62	0.54%	166,522.21 AUD	0.05%	-	- AUD	62	166,522.21 AUD	10	33,534.04 AUD	52	132,988.17 AUD
10,000.01 - 20,000.00	1,028	9.01%	7,836,289.76 AUD	2.46%	33	369,734.28 AUD	995	7,466,555.48 AUD	346	2,732,477.90 AUD	682	5,103,811.86 AUD
20,000.01 - 30,000.00	2,296	20.12%	31,077,212.68 AUD	9.75%	200	3,484,071.33 AUD	2,096	27,593,141.35 AUD	1,408	19,103,700.59 AUD	888	11,973,512.09 AUD
30,000.01 - 40,000.00	2,375	20.81%	46,855,370.77 AUD	14.70%	467	11,209,283.72 AUD	1,908	35,646,087.05 AUD	1,724	33,905,375.54 AUD	651	12,949,995.23 AUD
40,000.01 - 50,000.00	1,828	16.02%	48,668,193.52 AUD	15.27%	574	17,596,728.56 AUD	1,254	31,071,464.96 AUD	1,440	38,009,096.87 AUD	388	10,659,096.65 AUD
50,000.01 - 60,000.00	1,391	12.19%	44,745,155.79 AUD	14.04%	560	20,782,504.09 AUD	831	23,962,651.70 AUD	1,194	38,065,547.79 AUD	197	6,679,608.00 AUD
60,000.01 - 70,000.00	915	8.02%	35,013,572.36 AUD	10.98%	406	17,724,752.53 AUD	509	17,288,819.83 AUD	800	30,366,695.31 AUD	115	4,646,877.05 AUD
70,000.01 - 80,000.00	467	4.09%	21,440,687.72 AUD	6.73%	263	13,545,886.37 AUD	204	7,894,801.35 AUD	405	18,364,105.50 AUD	62	3,076,582.22 AUD
80,000.01 - 90,000.00	260	2.28%	14,387,378.16 AUD	4.51%	177	10,431,802.71 AUD	83	3,955,575.45 AUD	212	11,662,935.25 AUD	48	2,724,442.91 AUD
90,000.01 - 100,000.00	176	1.54%	10,947,939.27 AUD	3.43%	125	8,340,617.65 AUD	51	2,607,321.62 AUD	158	9,853,638.67 AUD	18	1,094,300.60 AUD
100,000.01 - 110,000.00	192	1.68%	13,340,671.97 AUD	4.18%	135	10,011,254.88 AUD	57	3,329,417.09 AUD	177	12,271,148.35 AUD	15	1,069,523.62 AUD
110,000.01 - 120,000.00	89	0.78%	6,897,324.19 AUD	2.16%	70	5,683,105.90 AUD	19	1,214,218.29 AUD	80	6,195,471.96 AUD	9	701,852.23 AUD
120,000.01 - 130,000.00	83	0.73%	7,130,486.55 AUD	2.24%	64	5,771,899.97 AUD	19	1,358,586.58 AUD	77	6,647,631.91 AUD	6	482,854.64 AUD
130,000.01 - 140,000.00	61	0.53%	5,701,663.94 AUD	1.79%	53	5,151,197.50 AUD	8	550,466.44 AUD	56	5,148,582.70 AUD	5	553,081.24 AUD
140,000.01 - 150,000.00	41	0.36%	4,062,808.88 AUD	1.27%	37	3,783,198.36 AUD	4	279,610.52 AUD	39	3,841,870.15 AUD	2	220,938.73 AUD
> 150,000.00	148	1.30%	20,516,513.32 AUD	6.44%	120	17,863,037.34 AUD	28	2,653,475.98 AUD	132	18,287,171.59 AUD	16	2,229,341.73 AUD
<b>Total</b>	<b>11,412</b>	<b>100.00%</b>	<b>318,787,791.09 AUD</b>	<b>100.00%</b>	<b>3,284</b>	<b>151,749,075.19 AUD</b>	<b>8,128</b>	<b>167,038,715.90 AUD</b>	<b>8,258</b>	<b>254,488,984.12 AUD</b>	<b>3,154</b>	<b>64,298,806.97 AUD</b>

Statistics	
Minimum Original Balance	5,398.00 AUD
Maximum Original Balance	471,296.41 AUD
Weighted Average Original Receivables Balance (by ODRB)	70,072.69 AUD

Pool Data IV

Interest Rate paid by the Receivable Debtor

Total Portfolio					Product Type			
Interest Rate paid by the Receivable Debtor	Number of Contracts	Percentage of Contracts	Outstanding Discounted Receivables Balance	Percentage of Balance	Chattel Mortgage		Consumer Loan	
					Number of Contracts	Outstanding Discounted Receivables Balance	Number of Contracts	Outstanding Discounted Receivables Balance
0.00%	-	0.00%	- AUD	0.00%	-	- AUD	-	- AUD
0.01% - 1.00%	-	0.00%	- AUD	0.00%	-	- AUD	-	- AUD
1.01% - 2.00%	534	4.68%	12,389,662.79 AUD	3.89%	325	8,265,622.00 AUD	209	4,124,040.79 AUD
2.01% - 3.00%	755	6.62%	27,854,951.14 AUD	8.74%	517	23,000,600.74 AUD	238	4,854,350.40 AUD
3.01% - 4.00%	1,063	9.31%	38,766,942.90 AUD	12.16%	1,054	38,529,427.79 AUD	9	237,515.11 AUD
4.01% - 5.00%	1,196	10.48%	40,202,354.37 AUD	12.61%	977	34,282,037.33 AUD	219	5,920,317.04 AUD
5.01% - 6.00%	1,606	14.07%	48,663,757.18 AUD	15.27%	1,028	34,560,821.83 AUD	578	14,102,935.35 AUD
6.01% - 7.00%	2,088	18.30%	53,480,570.60 AUD	16.78%	920	28,189,411.47 AUD	1,168	25,291,159.13 AUD
7.01% - 8.00%	1,656	14.51%	38,754,600.18 AUD	12.16%	595	17,083,229.02 AUD	1,061	21,671,371.16 AUD
8.01% - 9.00%	1,597	13.99%	38,910,246.67 AUD	12.21%	1,107	28,366,051.74 AUD	490	10,544,194.93 AUD
9.01% - 10.00%	724	6.34%	16,214,587.21 AUD	5.09%	585	13,024,264.96 AUD	139	3,190,322.25 AUD
10.01% - 11.00%	156	1.37%	3,023,023.58 AUD	0.95%	112	2,049,760.52 AUD	44	973,263.06 AUD
11.01% - 12.00%	22	0.19%	371,373.30 AUD	0.12%	8	95,640.85 AUD	14	275,732.45 AUD
12.01% - 13.00%	6	0.05%	44,040.33 AUD	0.01%	-	- AUD	6	44,040.33 AUD
13.01% - 14.00%	6	0.05%	74,963.09 AUD	0.02%	-	- AUD	6	74,963.09 AUD
14.01% - 15.00%	3	0.03%	36,717.75 AUD	0.01%	-	- AUD	3	36,717.75 AUD
15.01% - 16.00%	-	0.00%	- AUD	0.00%	-	- AUD	-	- AUD
> 16.00%	-	0.00%	- AUD	0.00%	-	- AUD	-	- AUD
<b>Total</b>	<b>11,412</b>	<b>100.00%</b>	<b>318,787,791.09 AUD</b>	<b>100.00%</b>	<b>7,228</b>	<b>227,446,868.25 AUD</b>	<b>4,184</b>	<b>91,340,922.84 AUD</b>

Statistics Interest Rate	
Minimum Interest Rate Debtor	1.40%
Maximum Interest Rate Debtor	14.99%
Weighted Average Interest Rate Debtor	5.91%



Pool Data IV

Interest Rate paid by the Receivable Debtor

Total Portfolio					Balloon				Vehicle Status			
Interest Rate paid by the Receivable Debtor	Number of Contracts	Percentage of Contracts	Outstanding Discounted Receivables Balance	Percentage of Balance	Balloon		No Balloon		New		Used	
					Number of Contracts	Outstanding Discounted Receivables Balance	Number of Contracts	Outstanding Discounted Receivables Balance	Number of Contracts	Outstanding Discounted Receivables Balance	Number of Contracts	Outstanding Discounted Receivables Balance
0.00%	-	0.00%	- AUD	0.00%	-	- AUD	-	- AUD	-	- AUD	-	- AUD
0.01% - 1.00%	-	0.00%	- AUD	0.00%	-	- AUD	-	- AUD	-	- AUD	-	- AUD
1.01% - 2.00%	534	4.68%	12,389,662.79 AUD	3.89%	171	6,264,905.54 AUD	363	6,124,757.25 AUD	534	12,389,662.79 AUD	-	- AUD
2.01% - 3.00%	755	6.62%	27,854,951.14 AUD	8.74%	336	18,404,049.75 AUD	419	9,450,901.39 AUD	755	27,854,951.14 AUD	-	- AUD
3.01% - 4.00%	1,063	9.31%	38,766,942.90 AUD	12.16%	480	25,448,962.95 AUD	583	13,317,979.95 AUD	986	36,500,145.21 AUD	77	2,266,797.69 AUD
4.01% - 5.00%	1,196	10.48%	40,202,354.37 AUD	12.61%	494	23,721,991.87 AUD	702	16,480,362.50 AUD	971	34,078,563.55 AUD	225	6,123,790.82 AUD
5.01% - 6.00%	1,606	14.07%	48,663,757.18 AUD	15.27%	558	26,474,367.90 AUD	1,048	22,189,389.28 AUD	1,257	40,757,725.30 AUD	349	7,906,031.88 AUD
6.01% - 7.00%	2,088	18.30%	53,480,570.60 AUD	16.78%	543	23,135,341.40 AUD	1,545	30,345,229.20 AUD	1,507	41,497,674.35 AUD	581	11,982,896.25 AUD
7.01% - 8.00%	1,656	14.51%	38,754,600.18 AUD	12.16%	316	12,950,382.86 AUD	1,340	25,804,217.32 AUD	931	25,109,856.18 AUD	725	13,644,744.00 AUD
8.01% - 9.00%	1,597	13.99%	38,910,246.67 AUD	12.21%	278	11,271,979.70 AUD	1,319	27,638,266.97 AUD	1,009	28,181,812.60 AUD	588	10,728,434.07 AUD
9.01% - 10.00%	724	6.34%	16,214,587.21 AUD	5.09%	97	3,752,176.22 AUD	627	12,462,410.99 AUD	274	7,449,979.60 AUD	450	8,764,607.61 AUD
10.01% - 11.00%	156	1.37%	3,023,023.58 AUD	0.95%	9	272,519.55 AUD	147	2,750,504.03 AUD	22	532,950.22 AUD	134	2,490,073.36 AUD
11.01% - 12.00%	22	0.19%	371,373.30 AUD	0.12%	1	26,493.53 AUD	21	344,879.77 AUD	7	81,869.31 AUD	15	289,503.99 AUD
12.01% - 13.00%	6	0.05%	44,040.33 AUD	0.01%	-	- AUD	6	44,040.33 AUD	1	206.96 AUD	5	43,833.37 AUD
13.01% - 14.00%	6	0.05%	74,963.09 AUD	0.02%	1	25,903.92 AUD	5	49,059.17 AUD	3	45,688.83 AUD	3	29,274.26 AUD
14.01% - 15.00%	3	0.03%	36,717.75 AUD	0.01%	-	- AUD	3	36,717.75 AUD	1	7,898.08 AUD	2	28,819.67 AUD
15.01% - 16.00%	-	0.00%	- AUD	0.00%	-	- AUD	-	- AUD	-	- AUD	-	- AUD
> 16.00%	-	0.00%	- AUD	0.00%	-	- AUD	-	- AUD	-	- AUD	-	- AUD
<b>Total</b>	<b>11,412</b>	<b>100.00%</b>	<b>318,787,791.09 AUD</b>	<b>100.00%</b>	<b>3,284</b>	<b>151,749,075.19 AUD</b>	<b>8,128</b>	<b>167,038,715.90 AUD</b>	<b>8,258</b>	<b>254,488,984.12 AUD</b>	<b>3,154</b>	<b>64,298,806.97 AUD</b>

Statistics Interest Rate	
Minimum Interest Rate Debtor	1.40%
Maximum Interest Rate Debtor	14.99%
Weighted Average Interest Rate Debtor	5.91%

**Pool Data V**

**Original Term**

Total Portfolio					Product Type			
Length of Original Term (months)	Number of Contracts	Percentage of Contracts	Outstanding Discounted Receivables Balance	Percentage of Balance	Chattel Mortgage		Consumer Loan	
					Number of Contracts	Outstanding Discounted Receivables Balance	Number of Contracts	Outstanding Discounted Receivables Balance
0 - 11	-	0.00%	- AUD	0.00%	-	- AUD	-	- AUD
12 - 23	2	0.02%	3,892.02 AUD	0.00%	2	3,892.02 AUD	-	- AUD
24 - 35	126	1.10%	673,392.41 AUD	0.21%	80	571,026.16 AUD	46	102,366.25 AUD
36 - 47	1,249	10.94%	19,241,113.79 AUD	6.04%	884	15,656,251.08 AUD	365	3,584,862.71 AUD
48 - 59	1,783	15.62%	43,235,608.18 AUD	13.56%	1,168	32,151,786.64 AUD	615	11,083,821.54 AUD
60 - 71	7,716	67.61%	240,281,766.97 AUD	75.37%	5,094	179,063,912.35 AUD	2,622	61,217,854.62 AUD
> 71	536	4.70%	15,352,017.72 AUD	4.82%	-	- AUD	536	15,352,017.72 AUD
<b>Total</b>	<b>11,412</b>	<b>100.00%</b>	<b>318,787,791.09 AUD</b>	<b>100.00%</b>	<b>7,228</b>	<b>227,446,868.25 AUD</b>	<b>4,184</b>	<b>91,340,922.84 AUD</b>

Statistics Original Term	
Minimum Original Term in months	22
Maximum Original Term in months	84
Weighted Average Original Term month (by ODRB)	58.00

**Remaining Term**

Total Portfolio					Product Type			
Length of Remaining Term (months)	Number of Contracts	Percentage of Contracts	Outstanding Discounted Receivables Balance	Percentage of Balance	Chattel Mortgage		Consumer Loan	
					Number of Contracts	Outstanding Discounted Receivables Balance	Number of Contracts	Outstanding Discounted Receivables Balance
0 - 11	962	8.43%	9,937,834.76 AUD	3.12%	635	7,954,080.37 AUD	327	1,983,754.39 AUD
12 - 23	1,988	17.42%	42,389,630.05 AUD	13.30%	1,275	31,201,969.05 AUD	713	11,187,661.00 AUD
24 - 35	4,947	43.35%	138,180,358.22 AUD	43.35%	3,216	100,528,179.23 AUD	1,731	37,652,178.99 AUD
36 - 47	3,070	26.90%	114,043,791.29 AUD	35.77%	2,096	87,364,285.44 AUD	974	26,679,505.85 AUD
48 - 59	283	2.48%	8,496,049.43 AUD	2.67%	6	398,354.16 AUD	277	8,097,695.27 AUD
60 - 71	162	1.42%	5,740,127.34 AUD	1.80%	-	- AUD	162	5,740,127.34 AUD
> 71	-	0.00%	- AUD	0.00%	-	- AUD	-	- AUD
<b>Total</b>	<b>11,412</b>	<b>100.00%</b>	<b>318,787,791.09 AUD</b>	<b>100.00%</b>	<b>7,228</b>	<b>227,446,868.25 AUD</b>	<b>4,184</b>	<b>91,340,922.84 AUD</b>

Statistics Remaining Term	
Minimum Remaining Term in months	0
Maximum Remaining Term in months	69
Weighted Average Remaining Term in months (by ODRB)	31.68

**Distribution by Seasoning**

Total Portfolio					Product Type			
Seasoning (months)	Number of Contracts	Percentage of Contracts	Outstanding Discounted Receivables Balance	Percentage of Balance	Chattel Mortgage		Consumer Loan	
					Number of Contracts	Outstanding Discounted Receivables Balance	Number of Contracts	Outstanding Discounted Receivables Balance
0 - 11	6	0.05%	344,779.50 AUD	0.11%	6	344,779.50 AUD	-	- AUD
12 - 23	3,435	30.10%	112,151,682.36 AUD	35.18%	2,248	81,745,954.74 AUD	1,187	30,405,727.62 AUD
24 - 35	7,201	63.10%	191,943,145.24 AUD	60.21%	4,548	135,850,158.56 AUD	2,653	56,092,986.68 AUD
36 - 47	634	5.56%	13,172,978.33 AUD	4.13%	374	9,027,573.40 AUD	260	4,145,404.93 AUD
48 - 59	84	0.74%	773,392.03 AUD	0.24%	48	453,389.17 AUD	36	320,002.86 AUD
60 - 71	39	0.34%	344,290.14 AUD	0.11%	4	25,012.88 AUD	35	319,277.26 AUD
> 71	13	0.11%	57,523.49 AUD	0.02%	-	- AUD	13	57,523.49 AUD
<b>Total</b>	<b>11,412</b>	<b>100.00%</b>	<b>318,787,791.09 AUD</b>	<b>100.00%</b>	<b>7,228</b>	<b>227,446,868.25 AUD</b>	<b>4,184</b>	<b>91,340,922.84 AUD</b>

Statistics Seasoning	
Minimum Seasoning in months	7
Maximum Seasoning in months	84
Weighted Average Seasoning Term in months (by ODRB)	26.38

**Pool Data V**

**Original Term**

Total Portfolio					Balloon				Vehicle Status			
Length of Original Term (months)	Number of Contracts	Percentage of Contracts	Outstanding Discounted Receivables Balance	Percentage of Balance	Balloon		No Balloon		New		Used	
					Number of Contracts	Outstanding Discounted Receivables Balance	Number of Contracts	Outstanding Discounted Receivables Balance	Number of Contracts	Outstanding Discounted Receivables Balance	Number of Contracts	Outstanding Discounted Receivables Balance
0 - 11	-	0.00%	- AUD	0.00%	-	- AUD	-	- AUD	-	- AUD	-	- AUD
12 - 23	2	0.02%	3,892.02 AUD	0.00%	-	- AUD	2	3,892.02 AUD	-	- AUD	2	3,892.02 AUD
24 - 35	126	1.10%	673,392.41 AUD	0.21%	9	313,130.62 AUD	117	360,261.79 AUD	35	248,352.78 AUD	91	425,039.63 AUD
36 - 47	1,249	10.94%	19,241,113.79 AUD	6.04%	257	8,975,418.72 AUD	992	10,265,695.07 AUD	876	16,054,178.74 AUD	373	3,186,935.05 AUD
48 - 59	1,783	15.82%	43,235,608.18 AUD	13.56%	538	21,969,510.17 AUD	1,245	21,266,098.01 AUD	1,449	38,668,763.42 AUD	334	4,566,844.76 AUD
60 - 71	7,716	67.61%	240,281,766.97 AUD	75.37%	2,480	120,491,015.68 AUD	5,236	119,790,751.29 AUD	5,537	188,949,607.78 AUD	2,179	51,332,159.19 AUD
> 71	536	4.70%	15,352,017.72 AUD	4.82%	-	- AUD	536	15,352,017.72 AUD	361	10,568,081.40 AUD	175	4,783,936.32 AUD
<b>Total</b>	<b>11,412</b>	<b>100.00%</b>	<b>318,787,791.09 AUD</b>	<b>100.00%</b>	<b>3,284</b>	<b>151,749,075.19 AUD</b>	<b>8,128</b>	<b>167,038,715.90 AUD</b>	<b>8,258</b>	<b>254,488,984.12 AUD</b>	<b>3,154</b>	<b>64,298,806.97 AUD</b>

Statistics Original Term	
Minimum Original Term in months	22
Maximum Original Term in months	84
Weighted Average Original Term month (by ODRB)	58.00

**Remaining Term**

Total Portfolio					Balloon				Vehicle Status			
Length of Remaining Term (months)	Number of Contracts	Percentage of Contracts	Outstanding Discounted Receivables Balance	Percentage of Balance	Balloon		No Balloon		New		Used	
					Number of Contracts	Outstanding Discounted Receivables Balance	Number of Contracts	Outstanding Discounted Receivables Balance	Number of Contracts	Outstanding Discounted Receivables Balance	Number of Contracts	Outstanding Discounted Receivables Balance
0 - 11	962	8.43%	9,937,834.76 AUD	3.12%	195	5,297,863.35 AUD	767	4,639,971.41 AUD	632	8,248,893.96 AUD	330	1,688,950.80 AUD
12 - 23	1,988	17.42%	42,389,630.05 AUD	13.30%	539	21,521,095.47 AUD	1,449	20,868,534.58 AUD	1,520	36,884,420.15 AUD	468	5,505,209.90 AUD
24 - 35	4,947	43.35%	138,180,358.22 AUD	43.35%	1,499	66,301,735.42 AUD	3,448	71,878,622.80 AUD	3,605	110,492,668.82 AUD	1,342	27,687,689.40 AUD
36 - 47	3,070	26.90%	114,043,791.29 AUD	35.77%	1,046	58,287,725.48 AUD	2,024	55,756,065.81 AUD	2,193	88,847,078.54 AUD	877	25,196,712.75 AUD
48 - 59	283	2.48%	8,496,049.43 AUD	2.67%	5	340,655.47 AUD	278	8,155,393.96 AUD	198	6,085,034.16 AUD	85	2,411,015.27 AUD
60 - 71	162	1.42%	5,740,127.34 AUD	1.80%	-	- AUD	162	5,740,127.34 AUD	110	3,930,898.49 AUD	52	1,809,228.85 AUD
> 71	-	0.00%	- AUD	0.00%	-	- AUD	-	- AUD	-	- AUD	-	- AUD
<b>Total</b>	<b>11,412</b>	<b>100.00%</b>	<b>318,787,791.09 AUD</b>	<b>100.00%</b>	<b>3,284</b>	<b>151,749,075.19 AUD</b>	<b>8,128</b>	<b>167,038,715.90 AUD</b>	<b>8,258</b>	<b>254,488,984.12 AUD</b>	<b>3,154</b>	<b>64,298,806.97 AUD</b>

Statistics Remaining Term	
Minimum Remaining Term in months	0
Maximum Remaining Term in months	69
Weighted Average Remaining Term in months (by ODRB)	31.68

**Distribution by Seasoning**

Total Portfolio					Balloon				Vehicle Status			
Seasoning (months)	Number of Contracts	Percentage of Contracts	Outstanding Discounted Receivables Balance	Percentage of Balance	Balloon		No Balloon		New		Used	
					Number of Contracts	Outstanding Discounted Receivables Balance	Number of Contracts	Outstanding Discounted Receivables Balance	Number of Contracts	Outstanding Discounted Receivables Balance	Number of Contracts	Outstanding Discounted Receivables Balance
0 - 11	6	0.05%	344,779.50 AUD	0.11%	3	238,200.01 AUD	3	106,579.49 AUD	4	277,457.64 AUD	2	67,321.86 AUD
12 - 23	3,435	30.10%	112,151,682.36 AUD	35.18%	996	52,440,237.99 AUD	2,439	59,711,444.37 AUD	2,404	87,795,741.67 AUD	1,031	24,355,940.69 AUD
24 - 35	7,201	63.10%	191,943,145.24 AUD	60.21%	2,069	91,492,328.38 AUD	5,132	100,450,816.86 AUD	5,323	154,996,227.93 AUD	1,878	36,946,917.31 AUD
36 - 47	634	5.56%	13,172,978.33 AUD	4.13%	183	7,061,667.50 AUD	451	6,111,310.83 AUD	439	10,534,929.76 AUD	195	2,638,048.57 AUD
48 - 59	84	0.74%	773,392.03 AUD	0.24%	31	491,628.43 AUD	53	281,763.60 AUD	54	591,301.55 AUD	30	182,090.48 AUD
60 - 71	39	0.34%	344,290.14 AUD	0.11%	2	25,012.88 AUD	37	319,277.26 AUD	26	257,374.60 AUD	13	86,915.54 AUD
> 71	13	0.11%	57,523.49 AUD	0.02%	-	- AUD	13	57,523.49 AUD	8	35,950.97 AUD	5	21,572.52 AUD
<b>Total</b>	<b>11,412</b>	<b>100.00%</b>	<b>318,787,791.09 AUD</b>	<b>100.00%</b>	<b>3,284</b>	<b>151,749,075.19 AUD</b>	<b>8,128</b>	<b>167,038,715.90 AUD</b>	<b>8,258</b>	<b>254,488,984.12 AUD</b>	<b>3,154</b>	<b>64,298,806.97 AUD</b>

Statistics Seasoning	
Minimum Seasoning in months	7
Maximum Seasoning in months	84
Weighted Average Seasoning Term in months (by ODRB)	26.38

Pool Data VI

Product Type

Total Portfolio					Balloon				Vehicle Status			
Product Type	Number of Contracts	Percentage of Contracts	Outstanding Discounted Receivables Balance	Percentage of Balance	Balloon		No Balloon		New		Used	
					Number of Contracts	Outstanding Discounted Receivables Balance	Number of Contracts	Outstanding Discounted Receivables Balance	Number of Contracts	Outstanding Discounted Receivables Balance	Number of Contracts	Outstanding Discounted Receivables Balance
Chattel Mortgage	7,228	63.34%	227,446,868.25 AUD	71.35%	2,610	126,474,212.97 AUD	4,618	100,972,655.28 AUD	5,441	186,475,650.46 AUD	1,787	40,971,217.79 AUD
Consumer Loan	4,184	36.66%	91,340,922.84 AUD	28.65%	674	25,274,862.22 AUD	3,510	66,066,060.62 AUD	2,817	68,013,333.66 AUD	1,367	23,327,589.18 AUD
<b>Total</b>	<b>11,412</b>	<b>100.00%</b>	<b>318,787,791.09 AUD</b>	<b>100.00%</b>	<b>3,284</b>	<b>151,749,075.19 AUD</b>	<b>8,128</b>	<b>167,038,715.90 AUD</b>	<b>8,258</b>	<b>254,488,984.12 AUD</b>	<b>3,154</b>	<b>64,298,806.97 AUD</b>

Vehicle Status

Total Portfolio					Product Type			
Type of Car	Number of Contracts	Percentage of Contracts	Outstanding Discounted Receivables Balance	Percentage of Balance	Chattel Mortgage		Consumer Loan	
					Number of Contracts	Outstanding Discounted Receivables Balance	Number of Contracts	Outstanding Discounted Receivables Balance
New Vehicles	8,258	72.36%	254,488,984.12 AUD	79.83%	5,441	186,475,650.46 AUD	2,817	68,013,333.66 AUD
Used Vehicles	3,154	27.64%	64,298,806.97 AUD	20.17%	1,787	40,971,217.79 AUD	1,367	23,327,589.18 AUD
<b>Total</b>	<b>11,412</b>	<b>100.00%</b>	<b>318,787,791.09 AUD</b>	<b>100.00%</b>	<b>7,228</b>	<b>227,446,868.25 AUD</b>	<b>4,184</b>	<b>91,340,922.84 AUD</b>

Balloon

Total Portfolio				
Balloon	Number of Contracts	Percentage of Contracts	Outstanding Discounted Receivables Balance	Percentage of Balance
Balloon	3,284	28.78%	151,749,075.19 AUD	47.60%
No Balloon	8,128	71.22%	167,038,715.90 AUD	52.40%
<b>Total</b>	<b>11,412</b>	<b>100.00%</b>	<b>318,787,791.09 AUD</b>	<b>100.00%</b>

Pool Data VII

Distribution by Vehicle Brand and Models

Total Portfolio						Product Type				
Make	Model	Number of Contracts	Percentage of Contracts	Outstanding Discounted Receivables Balance	Percentage of Balance	Chattel Mortgage		Consumer Loan		
						Number of Contracts	Outstanding Discounted Receivables Balance	Number of Contracts	Outstanding Discounted Receivables Balance	
<b>Volkswagen Group Vehicles</b>										
AUDI	A1	41	0.36%	749,365.22 AUD	0.24%	20	342,192.08 AUD	21	407,173.14 AUD	
	A3	224	1.96%	6,607,977.61 AUD	2.07%	102	3,447,795.06 AUD	122	3,160,182.55 AUD	
	A4	102	0.89%	3,070,453.97 AUD	0.96%	62	2,143,383.56 AUD	40	927,070.41 AUD	
	A5	63	0.55%	2,431,322.19 AUD	0.76%	43	1,821,368.20 AUD	20	609,953.99 AUD	
	A6	25	0.22%	1,092,057.39 AUD	0.34%	16	846,336.99 AUD	9	245,720.40 AUD	
	A7	11	0.10%	857,208.21 AUD	0.27%	10	850,066.54 AUD	1	7,141.67 AUD	
	A8	3	0.03%	110,672.52 AUD	0.03%	3	110,672.52 AUD	-	- AUD	
	E-TRON	5	0.04%	435,856.04 AUD	0.14%	4	374,223.74 AUD	1	61,632.30 AUD	
	Q2	83	0.73%	1,858,695.90 AUD	0.58%	32	796,208.93 AUD	51	1,062,486.97 AUD	
	Q3	239	2.09%	7,074,240.73 AUD	2.22%	128	4,129,625.23 AUD	111	2,944,615.50 AUD	
	Q5	250	2.19%	9,356,898.35 AUD	2.94%	172	6,567,861.89 AUD	78	2,789,036.46 AUD	
	Q7	199	1.74%	10,768,009.99 AUD	3.38%	159	8,970,511.19 AUD	40	1,797,498.80 AUD	
	Q8	18	0.16%	1,423,202.90 AUD	0.45%	16	1,333,323.41 AUD	2	89,879.49 AUD	
	R8	6	0.05%	773,928.43 AUD	0.24%	6	773,928.43 AUD	-	- AUD	
	TT	7	0.06%	226,913.12 AUD	0.07%	5	186,989.93 AUD	2	39,923.19 AUD	
	<b>SubTotal</b>	<b>1,276</b>	<b>11.18%</b>	<b>46,836,802.57 AUD</b>	<b>14.69%</b>	<b>778</b>	<b>32,694,457.70 AUD</b>	<b>498</b>	<b>14,142,314.87 AUD</b>	
BENTLEY	BENTAYGA	2	0.02%	457,733.46 AUD	0.14%	2	457,733.46 AUD	-	- AUD	
	CONTINENTAL	3	0.03%	415,063.53 AUD	0.13%	3	415,063.53 AUD	-	- AUD	
	<b>SubTotal</b>	<b>5</b>	<b>0.04%</b>	<b>872,796.99 AUD</b>	<b>0.27%</b>	<b>5</b>	<b>872,796.99 AUD</b>	<b>-</b>	<b>- AUD</b>	
LAMBORGHINI	AVENTADOR	-	0.00%	- AUD	0.00%	-	- AUD	-	- AUD	
	HURACAN	1	0.01%	114,695.42 AUD	0.04%	1	114,695.42 AUD	-	- AUD	
	URUS	2	0.02%	551,605.68 AUD	0.17%	1	310,931.72 AUD	1	240,673.96 AUD	
	<b>SubTotal</b>	<b>3</b>	<b>0.03%</b>	<b>666,301.10 AUD</b>	<b>0.21%</b>	<b>2</b>	<b>425,627.14 AUD</b>	<b>1</b>	<b>240,673.96 AUD</b>	
PORSCHE	BOXSTER	7	0.06%	728,395.50 AUD	0.23%	7	728,395.50 AUD	-	- AUD	
	CARRERA / 911	19	0.17%	3,311,763.56 AUD	1.04%	18	3,214,343.81 AUD	1	97,419.75 AUD	
	CAYENNE	74	0.65%	5,958,521.26 AUD	1.87%	67	5,629,138.18 AUD	7	329,383.08 AUD	
	CAYMAN	1	0.01%	71,779.82 AUD	0.02%	-	- AUD	1	71,779.82 AUD	
	MACAN	98	0.86%	6,490,246.81 AUD	2.04%	91	5,945,825.32 AUD	7	544,421.49 AUD	
	PANAMERA	-	0.00%	- AUD	0.00%	-	- AUD	-	- AUD	
	TAYCAN	13	0.11%	2,078,011.21 AUD	0.65%	13	2,078,011.21 AUD	-	- AUD	
	<b>SubTotal</b>	<b>212</b>	<b>1.86%</b>	<b>18,638,718.16 AUD</b>	<b>5.85%</b>	<b>196</b>	<b>17,595,714.02 AUD</b>	<b>16</b>	<b>1,043,004.14 AUD</b>	
SKODA	FABIA	37	0.32%	430,307.22 AUD	0.13%	10	141,345.73 AUD	27	288,961.49 AUD	
	KAROQ	50	0.44%	946,774.62 AUD	0.30%	18	310,245.31 AUD	32	636,529.31 AUD	
	KODIAQ	98	0.86%	2,626,854.79 AUD	0.82%	41	1,176,009.86 AUD	57	1,450,844.93 AUD	
	KAMIQ	66	0.58%	1,165,252.98 AUD	0.37%	17	252,680.16 AUD	49	912,572.82 AUD	
	SCALA	39	0.34%	667,986.66 AUD	0.21%	11	210,743.94 AUD	28	457,242.72 AUD	
	OCTAVIA	95	0.83%	1,845,102.62 AUD	0.58%	22	408,091.57 AUD	73	1,437,011.05 AUD	
	RAPID	1	0.01%	3,536.17 AUD	0.00%	-	- AUD	1	3,536.17 AUD	
	SUPERB	22	0.19%	589,569.57 AUD	0.18%	11	325,131.93 AUD	11	264,437.64 AUD	
	<b>SubTotal</b>	<b>408</b>	<b>3.53%</b>	<b>8,275,334.63 AUD</b>	<b>2.60%</b>	<b>130</b>	<b>2,824,248.50 AUD</b>	<b>278</b>	<b>5,451,136.13 AUD</b>	
VOLKSWAGEN	AMAROK	663	5.81%	17,508,743.00 AUD	5.49%	515	13,936,581.27 AUD	148	3,572,161.73 AUD	
	ARTEON	6	0.05%	198,370.11 AUD	0.06%	2	72,057.40 AUD	4	126,312.71 AUD	
	CADDY	84	0.74%	1,382,441.96 AUD	0.43%	79	1,341,372.13 AUD	5	41,069.83 AUD	
	CARAVELLE	1	0.01%	47,198.57 AUD	0.01%	1	47,198.57 AUD	-	- AUD	
	CRAFTER	120	1.05%	3,006,836.37 AUD	0.94%	118	2,952,336.81 AUD	2	54,499.56 AUD	
	GOLF	349	3.06%	5,572,367.87 AUD	1.75%	130	2,316,747.91 AUD	219	3,255,619.96 AUD	
	JETTA	7	0.06%	20,715.58 AUD	0.01%	2	2,372.98 AUD	5	18,342.60 AUD	
	MULTIVAN	33	0.29%	1,108,144.78 AUD	0.35%	20	772,995.04 AUD	13	335,149.74 AUD	
	NEW BEETLE	3	0.03%	29,674.86 AUD	0.01%	1	12,425.34 AUD	2	17,249.52 AUD	
	PASSAT	35	0.31%	715,638.24 AUD	0.22%	16	259,545.73 AUD	19	456,092.51 AUD	
	POLO	144	1.26%	1,733,992.22 AUD	0.54%	44	534,198.15 AUD	100	1,199,794.07 AUD	
	SCIROCCO	1	0.01%	17,973.51 AUD	0.01%	-	- AUD	1	17,973.51 AUD	
	T-CROSS	148	1.30%	2,530,061.05 AUD	0.79%	43	757,577.79 AUD	105	1,772,483.26 AUD	
	T-ROC	95	0.83%	2,075,044.44 AUD	0.65%	29	680,003.41 AUD	66	1,395,041.03 AUD	
	TIGUAN	487	4.27%	11,341,236.78 AUD	3.56%	230	5,818,144.98 AUD	257	5,523,091.80 AUD	
	TOUAREG	76	0.67%	3,570,209.14 AUD	1.12%	60	2,931,996.09 AUD	16	638,213.05 AUD	

Pool Data VII

Distribution by Vehicle Brand and Models

Total Portfolio						Balloon				Vehicle Status			
Make	Model	Number of Contracts	Percentage of Contracts	Outstanding Discounted Receivables Balance	Percentage of Balance	Balloon		No Balloon		New		Used	
						Number of Contracts	Outstanding Discounted Receivables Balance	Number of Contracts	Outstanding Discounted Receivables Balance	Number of Contracts	Outstanding Discounted Receivables Balance	Number of Contracts	Outstanding Discounted Receivables Balance
<b>Volkswagen Group Vehicles</b>													
AUDI	A1	41	0.36%	749,365.22 AUD	0.24%	11	322,837.52 AUD	30	426,527.70 AUD	23	569,773.21 AUD	18	179,592.01 AUD
	A3	224	1.96%	6,607,977.61 AUD	2.07%	91	3,832,260.92 AUD	133	2,775,716.69 AUD	146	5,031,661.25 AUD	78	1,576,316.36 AUD
	A4	102	0.89%	3,070,453.97 AUD	0.96%	40	1,672,698.10 AUD	62	1,397,755.87 AUD	66	2,444,334.24 AUD	36	626,119.73 AUD
	A5	63	0.55%	2,431,322.19 AUD	0.76%	30	1,591,250.15 AUD	33	840,072.04 AUD	43	2,028,306.26 AUD	20	403,015.93 AUD
	A6	25	0.22%	1,092,057.39 AUD	0.34%	8	523,112.74 AUD	17	568,944.65 AUD	13	796,049.20 AUD	12	296,008.19 AUD
	A7	11	0.10%	857,208.21 AUD	0.27%	9	823,871.05 AUD	2	33,337.16 AUD	9	791,424.56 AUD	2	65,783.65 AUD
	A8	3	0.03%	110,672.52 AUD	0.03%	-	- AUD	3	110,672.52 AUD	2	91,133.27 AUD	1	19,539.25 AUD
	E-TRON	5	0.04%	435,856.04 AUD	0.14%	4	389,308.04 AUD	1	46,548.00 AUD	5	435,856.04 AUD	-	- AUD
	Q2	83	0.73%	1,858,695.90 AUD	0.58%	33	956,278.15 AUD	50	902,417.75 AUD	61	1,505,965.64 AUD	22	352,730.26 AUD
	Q3	239	2.09%	7,074,240.73 AUD	2.22%	92	3,734,342.61 AUD	147	3,339,898.12 AUD	200	6,482,486.32 AUD	39	591,754.41 AUD
	Q5	250	2.19%	9,356,898.35 AUD	2.94%	124	6,042,520.63 AUD	126	3,314,377.72 AUD	177	7,609,121.37 AUD	73	1,747,776.98 AUD
	Q7	199	1.74%	10,768,009.99 AUD	3.38%	102	7,344,244.54 AUD	96	3,333,567.10 AUD	125	8,350,690.57 AUD	73	2,327,121.07 AUD
	Q8	18	0.16%	1,423,202.90 AUD	0.45%	10	960,980.27 AUD	8	462,222.63 AUD	16	1,299,799.20 AUD	2	123,403.70 AUD
	R8	6	0.05%	773,928.43 AUD	0.24%	5	713,522.54 AUD	1	60,405.89 AUD	3	504,690.54 AUD	3	269,237.89 AUD
	TT	7	0.06%	226,913.12 AUD	0.07%	3	164,379.63 AUD	4	62,533.49 AUD	1	103,546.64 AUD	6	123,366.48 AUD
	<b>SubTotal</b>	<b>1,276</b>	<b>11.18%</b>	<b>46,836,802.57 AUD</b>	<b>14.69%</b>	<b>562</b>	<b>29,071,606.89 AUD</b>	<b>713</b>	<b>17,674,997.33 AUD</b>	<b>890</b>	<b>38,044,838.31 AUD</b>	<b>385</b>	<b>8,701,765.91 AUD</b>
BENTLEY	BENTAYGA	2	0.02%	457,733.46 AUD	0.14%	2	457,733.46 AUD	-	- AUD	1	282,375.91 AUD	1	175,357.55 AUD
	CONTINENTAL	3	0.03%	415,063.53 AUD	0.13%	1	167,779.18 AUD	2	247,284.35 AUD	-	- AUD	3	415,063.53 AUD
	<b>SubTotal</b>	<b>5</b>	<b>0.04%</b>	<b>872,796.99 AUD</b>	<b>0.27%</b>	<b>3</b>	<b>625,512.64 AUD</b>	<b>2</b>	<b>247,284.35 AUD</b>	<b>1</b>	<b>282,375.91 AUD</b>	<b>4</b>	<b>590,421.08 AUD</b>
LAMBORGHINI	AVENTADOR	-	0.00%	- AUD	0.00%	-	- AUD	-	- AUD	-	- AUD	-	- AUD
	HURACAN	1	0.01%	114,695.42 AUD	0.04%	1	114,695.42 AUD	-	- AUD	1	114,695.42 AUD	-	- AUD
	URUS	2	0.02%	551,605.68 AUD	0.17%	2	551,605.68 AUD	-	- AUD	2	551,605.68 AUD	-	- AUD
	<b>SubTotal</b>	<b>3</b>	<b>0.03%</b>	<b>666,301.10 AUD</b>	<b>0.21%</b>	<b>3</b>	<b>666,301.10 AUD</b>	<b>-</b>	<b>- AUD</b>	<b>3</b>	<b>666,301.10 AUD</b>	<b>-</b>	<b>- AUD</b>
PORSCHE	BOXSTER	7	0.06%	728,395.50 AUD	0.23%	6	683,139.24 AUD	1	45,256.26 AUD	6	683,139.24 AUD	1	45,256.26 AUD
	CARRERA / 911	19	0.17%	3,311,763.56 AUD	1.04%	17	3,224,812.13 AUD	2	86,951.43 AUD	14	2,787,182.85 AUD	5	524,580.71 AUD
	CAYENNE	74	0.65%	5,958,521.26 AUD	1.87%	51	4,894,359.36 AUD	23	1,064,161.90 AUD	62	5,386,673.74 AUD	12	571,847.52 AUD
	CAYMAN	1	0.01%	71,779.82 AUD	0.02%	-	- AUD	1	71,779.82 AUD	-	- AUD	1	71,779.82 AUD
	MACAN	98	0.86%	6,490,246.81 AUD	2.04%	69	5,184,144.70 AUD	29	1,306,102.11 AUD	84	5,904,559.35 AUD	14	585,687.46 AUD
	PANAMERA	-	0.00%	- AUD	0.00%	-	- AUD	-	- AUD	-	- AUD	-	- AUD
	TAYCAN	13	0.11%	2,078,011.21 AUD	0.65%	13	2,078,011.21 AUD	-	- AUD	13	2,078,011.21 AUD	-	- AUD
	<b>SubTotal</b>	<b>212</b>	<b>1.86%</b>	<b>18,638,718.16 AUD</b>	<b>5.85%</b>	<b>156</b>	<b>16,064,466.64 AUD</b>	<b>56</b>	<b>2,574,251.52 AUD</b>	<b>179</b>	<b>16,839,566.39 AUD</b>	<b>33</b>	<b>1,799,151.77 AUD</b>
SKODA	FABIA	37	0.32%	430,307.22 AUD	0.13%	2	38,116.20 AUD	35	392,191.02 AUD	34	415,210.95 AUD	3	15,096.27 AUD
	KAROQ	50	0.44%	946,774.62 AUD	0.30%	7	166,169.16 AUD	43	780,605.46 AUD	50	946,774.62 AUD	-	- AUD
	KODIAQ	98	0.86%	2,626,854.79 AUD	0.82%	25	877,341.58 AUD	73	1,749,513.21 AUD	89	2,489,273.79 AUD	9	137,581.00 AUD
	KAMIQ	66	0.58%	1,165,252.98 AUD	0.37%	5	124,673.29 AUD	61	1,040,579.69 AUD	66	1,165,252.98 AUD	-	- AUD
	SCALA	39	0.34%	667,986.66 AUD	0.21%	8	168,926.10 AUD	31	499,060.56 AUD	39	667,986.66 AUD	-	- AUD
	OCTAVIA	95	0.83%	1,845,102.62 AUD	0.58%	26	783,404.48 AUD	69	1,061,698.14 AUD	86	1,744,912.78 AUD	9	100,189.84 AUD
	RAPID	1	0.01%	3,536.17 AUD	0.00%	-	- AUD	1	3,536.17 AUD	1	3,536.17 AUD	-	- AUD
	SUPERB	22	0.19%	589,569.57 AUD	0.18%	9	346,876.45 AUD	13	242,693.12 AUD	17	532,090.01 AUD	5	57,479.56 AUD
	<b>SubTotal</b>	<b>408</b>	<b>3.53%</b>	<b>8,275,334.63 AUD</b>	<b>2.60%</b>	<b>82</b>	<b>2,505,507.26 AUD</b>	<b>326</b>	<b>5,769,877.37 AUD</b>	<b>382</b>	<b>7,965,037.96 AUD</b>	<b>26</b>	<b>310,346.67 AUD</b>
VOLKSWAGEN	AMAROK	663	5.81%	17,508,743.00 AUD	5.49%	245	8,724,327.93 AUD	418	8,784,415.07 AUD	551	15,140,095.24 AUD	112	2,368,647.76 AUD
	ARTEON	6	0.05%	198,370.11 AUD	0.06%	5	178,691.90 AUD	1	19,678.21 AUD	2	64,868.86 AUD	4	133,501.25 AUD
	CADDY	84	0.74%	1,382,441.96 AUD	0.43%	20	496,391.52 AUD	64	886,050.44 AUD	68	1,180,976.65 AUD	16	201,465.31 AUD
	CARAVELLE	1	0.01%	47,198.57 AUD	0.01%	-	- AUD	1	47,198.57 AUD	1	47,198.57 AUD	-	- AUD
	CRAFTER	120	1.05%	3,006,836.37 AUD	0.94%	35	1,254,607.66 AUD	85	1,752,228.71 AUD	118	2,970,606.95 AUD	2	36,229.42 AUD
	GOLF	349	3.06%	5,572,367.87 AUD	1.75%	86	2,137,530.17 AUD	263	3,434,837.70 AUD	231	4,204,127.28 AUD	118	1,368,240.59 AUD
	JETTA	7	0.06%	20,715.58 AUD	0.01%	-	- AUD	7	20,715.58 AUD	-	- AUD	7	20,715.58 AUD
	MULTIVAN	33	0.29%	1,108,144.78 AUD	0.35%	11	519,709.87 AUD	22	588,434.91 AUD	23	861,253.55 AUD	10	246,891.23 AUD
	NEW BEETLE	3	0.03%	29,674.86 AUD	0.01%	-	- AUD	3	29,674.86 AUD	-	- AUD	3	29,674.86 AUD
	PASSAT	35	0.31%	715,638.24 AUD	0.22%	12	374,671.08 AUD	23	340,967.16 AUD	18	535,348.87 AUD	17	180,289.37 AUD
	POLO	144	1.26%	1,733,992.22 AUD	0.54%	20	360,698.11 AUD	124	1,373,294.11 AUD	126	1,634,593.35 AUD	18	99,398.87 AUD
	SCIROCCO	1	0.01%	17,973.51 AUD	0.01%	-	- AUD	1	17,973.51 AUD	-	- AUD	1	17,973.51 AUD
	T-CROSS	148	1.30%	2,530,061.05 AUD	0.79%	23	498,701.57 AUD	125	2,031,359.48 AUD	148	2,530,061.05 AUD	-	- AUD
	T-ROC	95	0.83%	2,075,044.44 AUD	0.65%	20	560,184.13 AUD	75	1,514,860.31 AUD	95	2,075,044.44 AUD	-	- AUD
	TIGUAN	487	4.27%	11,341,236.78 AUD	3.56%	144	4,562,222.99 AUD	343	6,779,013.79 AUD	425	10,305,465.34 AUD	62	1,035,771.44 AUD
	TOUAREG	76	0.67%	3,570,209.14 AUD	1.12%	34	2,266,627.42 AUD	42	1,303,581.72 AUD	58	3,130,824.59 AUD	18	439,384.55 AUD

Pool Data VII

Distribution by Vehicle Brand and Models

Total Portfolio						Product Type			
Make	Model	Number of Contracts	Percentage of Contracts	Outstanding Discounted Receivables Balance	Percentage of Balance	Chattel Mortgage		Consumer Loan	
						Number of Contracts	Outstanding Discounted Receivables Balance	Number of Contracts	Outstanding Discounted Receivables Balance
	TRANSPORTER	98	0.86%	2,852,593.28 AUD	0.89%	85	2,385,797.99 AUD	13	466,795.29 AUD
	UP!	-	0.00%	- AUD	0.00%	-	- AUD	-	- AUD
	<b>SubTotal</b>	<b>2,350</b>	<b>20.59%</b>	<b>53,711,241.76 AUD</b>	<b>16.85%</b>	<b>1,375</b>	<b>34,821,351.59 AUD</b>	<b>975</b>	<b>18,889,890.17 AUD</b>
<b>Volkswagen Group Vehicles</b>	<b>SubTotal</b>	<b>4,254</b>	<b>37.28%</b>	<b>129,001,245.21 AUD</b>	<b>40.47%</b>	<b>2,486</b>	<b>89,234,225.94 AUD</b>	<b>1,768</b>	<b>39,767,019.27 AUD</b>

Pool Data VII

Distribution by Vehicle Brand and Models

Total Portfolio						Balloon				Vehicle Status			
Make	Model	Number of Contracts	Percentage of Contracts	Outstanding Discounted Receivables Balance	Percentage of Balance	Balloon		No Balloon		New		Used	
						Number of Contracts	Outstanding Discounted Receivables Balance	Number of Contracts	Outstanding Discounted Receivables Balance	Number of Contracts	Outstanding Discounted Receivables Balance	Number of Contracts	Outstanding Discounted Receivables Balance
	TRANSPORTER	98	0.86%	2,852,593.28 AUD	0.89%	36	1,332,433.54 AUD	62	1,520,159.74 AUD	85	2,623,735.23 AUD	13	228,858.05 AUD
	UP!	-	0.00%	- AUD	0.00%	-	- AUD	-	- AUD	-	- AUD	-	- AUD
	<b>SubTotal</b>	<b>2,350</b>	<b>20.59%</b>	<b>53,711,241.76 AUD</b>	<b>16.85%</b>	<b>691</b>	<b>23,266,797.89 AUD</b>	<b>1,659</b>	<b>30,444,443.87 AUD</b>	<b>1,949</b>	<b>47,304,199.97 AUD</b>	<b>401</b>	<b>6,407,041.79 AUD</b>
<b>Volkswagen Group Vehicles</b>	<b>SubTotal</b>	<b>4,254</b>	<b>37.28%</b>	<b>129,001,245.21 AUD</b>	<b>40.47%</b>	<b>1,497</b>	<b>72,200,192.42 AUD</b>	<b>2,756</b>	<b>56,710,854.44 AUD</b>	<b>3,404</b>	<b>111,102,319.64 AUD</b>	<b>849</b>	<b>17,808,727.22 AUD</b>



Pool Data VII

Distribution by Vehicle Brand and Models

Total Portfolio						Product Type			
Make	Model	Number of Contracts	Percentage of Contracts	Outstanding Discounted Receivables Balance	Percentage of Balance	Chattel Mortgage		Consumer Loan	
						Number of Contracts	Outstanding Discounted Receivables Balance	Number of Contracts	Outstanding Discounted Receivables Balance
Other Vehicles									
ABARTH		13	0.11%	276,679.78 AUD	0.09%	10	210,428.94 AUD	3	66,250.84 AUD
ALFA ROMEO		27	0.24%	905,091.35 AUD	0.28%	14	420,947.94 AUD	13	484,143.41 AUD
ASTON MARTIN		6	0.05%	871,436.75 AUD	0.27%	6	871,436.75 AUD	-	- AUD
BMW		119	1.04%	4,533,867.40 AUD	1.42%	95	3,874,694.70 AUD	24	659,172.70 AUD
CHEVROLET		23	0.20%	1,430,953.92 AUD	0.45%	21	1,292,488.91 AUD	2	138,465.01 AUD
CHRYSLER		5	0.04%	123,014.81 AUD	0.04%	2	83,806.79 AUD	3	39,208.02 AUD
CITROEN		4	0.04%	36,420.42 AUD	0.01%	3	35,706.55 AUD	1	713.87 AUD
DODGE		2	0.02%	11,197.80 AUD	0.00%	1	2,948.49 AUD	1	8,249.31 AUD
FERRARI		1	0.01%	165,147.63 AUD	0.05%	-	- AUD	1	165,147.63 AUD
FIAT		13	0.11%	185,663.68 AUD	0.06%	9	135,299.42 AUD	4	50,364.26 AUD
FORD		784	6.87%	22,820,479.77 AUD	7.16%	615	18,706,312.52 AUD	169	4,114,167.25 AUD
GENESIS		3	0.03%	179,794.94 AUD	0.06%	3	179,794.94 AUD	-	- AUD
GM		1	0.01%	63,180.49 AUD	0.02%	1	63,180.49 AUD	-	- AUD
GREAT WALL		13	0.11%	163,401.69 AUD	0.05%	9	116,918.69 AUD	4	46,483.00 AUD
GWM		50	0.44%	1,144,896.52 AUD	0.36%	37	803,659.43 AUD	13	341,237.09 AUD
HAVAL		55	0.48%	993,957.34 AUD	0.31%	30	516,927.53 AUD	25	477,029.81 AUD
HINO		1	0.01%	38,561.43 AUD	0.01%	1	38,561.43 AUD	-	- AUD
HOLDEN		248	2.17%	4,127,133.65 AUD	1.29%	130	2,249,808.85 AUD	118	1,877,324.80 AUD
HONDA		206	1.81%	3,644,688.65 AUD	1.14%	112	2,151,490.49 AUD	94	1,493,198.16 AUD
HYUNDAI		564	4.94%	10,182,651.94 AUD	3.19%	295	5,748,398.71 AUD	269	4,434,253.23 AUD
INFINITI		2	0.02%	25,106.23 AUD	0.01%	2	25,106.23 AUD	-	- AUD
ISUZU		246	2.16%	6,788,799.40 AUD	2.13%	174	4,693,645.82 AUD	72	2,095,153.58 AUD
JAGUAR		73	0.64%	3,162,914.70 AUD	0.99%	54	2,505,723.77 AUD	19	657,190.93 AUD
JEEP		116	1.02%	3,376,228.24 AUD	1.06%	78	2,510,766.61 AUD	38	865,461.63 AUD
KIA		336	2.94%	6,528,898.84 AUD	2.05%	200	4,283,323.67 AUD	136	2,245,575.17 AUD
LAND ROVER		499	4.37%	28,307,837.76 AUD	8.88%	379	22,993,483.20 AUD	120	5,314,354.56 AUD
LDV		219	1.92%	4,445,821.88 AUD	1.39%	191	3,819,964.63 AUD	28	625,857.25 AUD
LEXUS		10	0.09%	312,412.37 AUD	0.10%	10	312,412.37 AUD	-	- AUD
MAHINDRA		2	0.02%	13,285.25 AUD	0.00%	2	13,285.25 AUD	-	- AUD
MASERATI		21	0.18%	2,153,530.84 AUD	0.68%	19	2,027,440.61 AUD	2	126,090.23 AUD
MAZDA		475	4.16%	9,977,738.25 AUD	3.13%	308	7,019,100.51 AUD	167	2,958,637.74 AUD
MERCEDES-BENZ		277	2.43%	11,137,473.46 AUD	3.49%	229	9,574,117.57 AUD	48	1,563,355.89 AUD
MG		195	1.71%	2,824,489.12 AUD	0.89%	77	1,011,719.81 AUD	118	1,812,769.31 AUD
MINI		12	0.11%	312,864.85 AUD	0.10%	10	243,598.80 AUD	2	69,266.05 AUD
MITSUBISHI		730	6.40%	14,428,175.48 AUD	4.53%	411	8,150,825.72 AUD	319	6,277,349.76 AUD
NISSAN		333	2.92%	7,632,789.48 AUD	2.39%	223	5,526,485.10 AUD	110	2,106,304.38 AUD
OPEL		1	0.01%	8,852.50 AUD	0.00%	-	- AUD	1	8,852.50 AUD
PEUGEOT		58	0.51%	1,341,507.33 AUD	0.42%	46	990,207.76 AUD	12	351,299.57 AUD
RAM		1	0.01%	84,299.09 AUD	0.03%	1	84,299.09 AUD	-	- AUD
RENAULT		137	1.20%	3,234,764.72 AUD	1.01%	120	2,893,866.70 AUD	17	340,898.02 AUD
ROLLS-ROYCE		2	0.02%	316,447.66 AUD	0.10%	2	316,447.66 AUD	-	- AUD
SSANGYONG		27	0.24%	617,819.14 AUD	0.19%	19	401,226.07 AUD	8	216,593.07 AUD
SUBARU		341	2.99%	6,883,507.59 AUD	2.16%	182	3,784,419.02 AUD	159	3,099,088.57 AUD
SUZUKI		125	1.10%	1,656,858.47 AUD	0.52%	41	575,360.66 AUD	84	1,081,497.81 AUD
TESLA		16	0.14%	746,039.44 AUD	0.23%	16	746,039.44 AUD	-	- AUD
TOYOTA		612	5.36%	15,502,373.71 AUD	4.86%	450	11,898,074.76 AUD	162	3,604,298.95 AUD
VOLVO		154	1.35%	6,067,490.12 AUD	1.90%	104	4,308,889.91 AUD	50	1,758,600.21 AUD
Other Vehicles	SubTotal	7,158	62.72%	189,786,545.88 AUD	59.53%	4,742	138,212,642.31 AUD	2,416	51,573,903.57 AUD
<b>Total</b>		<b>11,412</b>	<b>100.00%</b>	<b>318,787,791.09 AUD</b>	<b>100.00%</b>	<b>7,228</b>	<b>227,446,868.25 AUD</b>	<b>4,184</b>	<b>91,340,922.84 AUD</b>

Pool Data VII

Distribution by Vehicle Brand and Models

Total Portfolio						Balloon				Vehicle Status			
Make	Model	Number of Contracts	Percentage of Contracts	Outstanding Discounted Receivables Balance	Percentage of Balance	Balloon		No Balloon		New		Used	
						Number of Contracts	Outstanding Discounted Receivables Balance	Number of Contracts	Outstanding Discounted Receivables Balance	Number of Contracts	Outstanding Discounted Receivables Balance	Number of Contracts	Outstanding Discounted Receivables Balance
<b>Other Vehicles</b>													
ABARTH		13	0.11%	276,679.78 AUD	0.09%	8	191,189.83 AUD	5	85,489.95 AUD	8	191,189.83 AUD	5	85,489.95 AUD
ALFA ROMEO		27	0.24%	905,091.35 AUD	0.28%	17	682,508.59 AUD	10	222,582.76 AUD	21	744,611.41 AUD	6	160,479.94 AUD
ASTON MARTIN		6	0.05%	871,436.75 AUD	0.27%	5	828,648.44 AUD	1	42,788.31 AUD	2	453,131.85 AUD	4	418,304.90 AUD
BMW		119	1.04%	4,533,867.40 AUD	1.42%	56	2,927,819.98 AUD	63	1,606,047.42 AUD	53	2,662,465.64 AUD	66	1,871,401.76 AUD
CHEVROLET		23	0.20%	1,430,953.92 AUD	0.45%	13	927,216.80 AUD	10	503,737.12 AUD	22	1,372,341.19 AUD	1	58,612.73 AUD
CHRYSLER		5	0.04%	123,014.81 AUD	0.04%	1	53,737.63 AUD	4	69,277.18 AUD	2	83,806.79 AUD	3	39,208.02 AUD
CITROEN		4	0.04%	36,420.42 AUD	0.01%	1	3,937.01 AUD	3	32,483.41 AUD	1	18,642.51 AUD	3	17,777.91 AUD
DODGE		2	0.02%	11,197.80 AUD	0.00%	-	- AUD	2	11,197.80 AUD	-	- AUD	2	11,197.80 AUD
FERRARI		1	0.01%	165,147.63 AUD	0.05%	1	165,147.63 AUD	-	- AUD	-	- AUD	1	165,147.63 AUD
FIAT		13	0.11%	185,663.68 AUD	0.06%	3	70,268.68 AUD	10	115,395.00 AUD	9	138,995.81 AUD	4	46,667.87 AUD
FORD		784	6.87%	22,820,479.77 AUD	7.16%	218	8,532,845.46 AUD	566	14,287,634.31 AUD	530	17,264,762.69 AUD	254	5,555,717.08 AUD
GENESIS		3	0.03%	179,794.94 AUD	0.06%	2	136,038.00 AUD	1	43,756.94 AUD	3	179,794.94 AUD	-	- AUD
GM		1	0.01%	63,180.49 AUD	0.02%	1	63,180.49 AUD	-	- AUD	1	63,180.49 AUD	-	- AUD
GREAT WALL		13	0.11%	163,401.69 AUD	0.05%	1	24,160.81 AUD	12	139,240.88 AUD	12	154,667.27 AUD	1	8,734.42 AUD
GWM		50	0.44%	1,144,896.52 AUD	0.36%	8	213,578.54 AUD	42	931,317.98 AUD	50	1,144,896.52 AUD	-	- AUD
HAVAL		55	0.48%	993,957.34 AUD	0.31%	3	85,539.74 AUD	52	908,417.60 AUD	55	993,957.34 AUD	-	- AUD
HINO		1	0.01%	38,561.43 AUD	0.01%	1	38,561.43 AUD	-	- AUD	1	38,561.43 AUD	-	- AUD
HOLDEN		248	2.17%	4,127,133.65 AUD	1.29%	19	465,939.62 AUD	229	3,661,194.03 AUD	56	1,091,547.63 AUD	192	3,035,586.02 AUD
HONDA		206	1.81%	3,644,688.65 AUD	1.14%	32	873,224.37 AUD	174	2,771,464.28 AUD	152	2,950,256.05 AUD	54	694,432.60 AUD
HYUNDAI		564	4.94%	10,182,651.94 AUD	3.19%	85	2,391,978.64 AUD	479	7,790,673.30 AUD	393	8,074,178.93 AUD	171	2,108,473.01 AUD
INFINITI		2	0.02%	25,106.23 AUD	0.01%	-	- AUD	2	25,106.23 AUD	-	- AUD	2	25,106.23 AUD
ISUZU		246	2.16%	6,788,799.40 AUD	2.13%	51	1,736,719.39 AUD	195	5,052,080.01 AUD	203	5,988,885.22 AUD	43	799,914.18 AUD
JAGUAR		73	0.64%	3,162,914.70 AUD	0.99%	42	2,303,531.98 AUD	31	859,382.72 AUD	52	2,489,007.65 AUD	21	673,907.05 AUD
JEEP		116	1.02%	3,376,228.24 AUD	1.06%	30	1,385,351.24 AUD	86	1,990,877.00 AUD	66	2,411,117.64 AUD	50	965,110.60 AUD
KIA		336	2.94%	6,528,898.84 AUD	2.05%	62	1,896,412.40 AUD	274	4,632,486.44 AUD	259	5,448,305.74 AUD	77	1,080,593.10 AUD
LAND ROVER		499	4.37%	28,307,837.76 AUD	8.88%	293	20,783,342.51 AUD	206	7,524,495.25 AUD	369	23,262,818.52 AUD	130	5,045,019.24 AUD
LDV		219	1.92%	4,445,821.88 AUD	1.39%	43	1,083,939.88 AUD	176	3,361,882.00 AUD	213	4,353,052.38 AUD	6	92,769.50 AUD
LEXUS		10	0.09%	312,412.37 AUD	0.10%	6	221,423.51 AUD	4	90,988.86 AUD	5	180,478.67 AUD	5	131,933.70 AUD
MAHINDRA		2	0.02%	13,285.25 AUD	0.00%	-	- AUD	2	13,285.25 AUD	2	13,285.25 AUD	-	- AUD
MASERATI		21	0.18%	2,153,530.84 AUD	0.68%	17	1,925,017.47 AUD	4	228,513.37 AUD	18	1,920,815.47 AUD	3	232,715.37 AUD
MAZDA		475	4.16%	9,977,738.25 AUD	3.13%	109	3,527,430.60 AUD	366	6,450,307.65 AUD	338	8,098,501.67 AUD	137	1,879,236.58 AUD
MERCEDES-BENZ		277	2.43%	11,137,473.46 AUD	3.49%	109	6,062,819.07 AUD	168	5,074,654.39 AUD	133	6,986,683.74 AUD	144	4,150,789.72 AUD
MG		195	1.71%	2,824,489.12 AUD	0.89%	13	303,386.44 AUD	182	2,521,102.68 AUD	189	2,746,662.07 AUD	6	77,827.05 AUD
MINI		12	0.11%	312,864.85 AUD	0.10%	5	173,746.86 AUD	7	139,117.99 AUD	5	198,283.46 AUD	7	114,581.39 AUD
MITSUBISHI		730	6.40%	14,428,175.48 AUD	4.53%	102	2,975,535.46 AUD	628	11,452,640.02 AUD	532	11,487,103.48 AUD	198	2,941,072.00 AUD
NISSAN		333	2.92%	7,632,789.48 AUD	2.39%	60	2,060,788.95 AUD	273	5,572,000.53 AUD	193	5,455,627.63 AUD	140	2,177,161.85 AUD
OPEL		1	0.01%	8,852.50 AUD	0.00%	-	- AUD	1	8,852.50 AUD	-	- AUD	1	8,852.50 AUD
PEUGEOT		58	0.51%	1,341,507.33 AUD	0.42%	18	581,005.56 AUD	40	760,501.77 AUD	55	1,298,388.77 AUD	3	43,118.56 AUD
RAM		1	0.01%	84,299.09 AUD	0.03%	1	84,299.09 AUD	-	- AUD	-	- AUD	1	84,299.09 AUD
RENAULT		137	1.20%	3,234,764.72 AUD	1.01%	48	1,465,018.05 AUD	89	1,769,746.67 AUD	116	2,886,256.21 AUD	21	348,508.51 AUD
ROLLS-ROYCE		2	0.02%	316,447.66 AUD	0.10%	1	203,042.58 AUD	1	113,405.08 AUD	1	203,042.58 AUD	1	113,405.08 AUD
SSANGYONG		27	0.24%	617,819.14 AUD	0.19%	5	152,861.50 AUD	22	464,957.64 AUD	26	581,542.97 AUD	1	36,276.17 AUD
SUBARU		341	2.99%	6,883,507.59 AUD	2.16%	80	2,251,068.76 AUD	261	4,632,438.83 AUD	254	5,686,897.53 AUD	87	1,196,610.06 AUD
SUZUKI		125	1.10%	1,656,858.47 AUD	0.52%	7	134,960.68 AUD	118	1,521,897.79 AUD	95	1,380,456.20 AUD	30	276,402.27 AUD
TESLA		16	0.14%	746,039.44 AUD	0.23%	10	514,704.91 AUD	6	231,334.53 AUD	16	746,039.44 AUD	-	- AUD
TOYOTA		612	5.36%	15,502,373.71 AUD	4.86%	111	4,696,588.72 AUD	501	10,805,784.99 AUD	211	6,439,611.58 AUD	401	9,062,762.13 AUD
VOLVO		154	1.35%	6,067,490.12 AUD	1.90%	88	4,260,167.12 AUD	66	1,807,323.00 AUD	131	5,412,613.94 AUD	23	654,876.18 AUD
<b>Other Vehicles</b>	<b>SubTotal</b>	<b>7,158</b>	<b>62.72%</b>	<b>189,786,545.88 AUD</b>	<b>59.53%</b>	<b>1,786</b>	<b>79,458,684.42 AUD</b>	<b>5,372</b>	<b>110,327,861.46 AUD</b>	<b>4,853</b>	<b>143,296,466.13 AUD</b>	<b>2,305</b>	<b>46,490,079.75 AUD</b>
<b>Total</b>		<b>11,412</b>	<b>100.00%</b>	<b>318,787,791.09 AUD</b>	<b>100.00%</b>	<b>3,283</b>	<b>151,658,876.84 AUD</b>	<b>8,128</b>	<b>167,038,715.90 AUD</b>	<b>8,257</b>	<b>254,398,785.77 AUD</b>	<b>3,154</b>	<b>64,298,806.97 AUD</b>

**Pool Data VIII**

**Region**

Region	Total Portfolio				Product Type			
	Number of Contracts	Percentage of Contracts	Outstanding Discounted Receivables Balance	Percentage of Balance	Chattel Mortgage		Consumer Loan	
					Number of Contracts	Outstanding Discounted Receivables Balance	Number of Contracts	Outstanding Discounted Receivables Balance
Australian Capital Territory	330	2.89%	8,342,959.75 AUD	2.62%	135	4,490,620.79 AUD	195	3,852,338.96 AUD
New South Wales	4,081	35.76%	118,653,512.88 AUD	37.22%	2,703	88,070,681.33 AUD	1,378	30,582,831.55 AUD
Northern Territory	96	0.84%	1,841,868.49 AUD	0.58%	36	760,756.33 AUD	60	1,081,112.16 AUD
Queensland	2,445	21.42%	66,926,544.62 AUD	20.99%	1,666	49,384,690.54 AUD	779	17,541,854.08 AUD
South Australia	485	4.25%	14,843,130.09 AUD	4.66%	336	11,209,742.00 AUD	149	3,633,388.09 AUD
Tasmania	408	3.58%	8,636,940.99 AUD	2.71%	174	4,444,947.67 AUD	234	4,191,993.32 AUD
Victoria	2,244	19.66%	66,172,377.54 AUD	20.76%	1,406	47,864,317.42 AUD	838	18,308,060.12 AUD
Western Australia	1,323	11.59%	33,370,456.73 AUD	10.47%	772	21,221,112.17 AUD	551	12,149,344.56 AUD
<b>Total</b>	<b>11,412</b>	<b>100.00%</b>	<b>318,787,791.09 AUD</b>	<b>100.00%</b>	<b>7,228</b>	<b>227,446,868.25 AUD</b>	<b>4,184</b>	<b>91,340,922.84 AUD</b>

**Pool Data VIII**

**Region**

Region	Total Portfolio				Balloon				Vehicle Status			
	Number of Contracts	Percentage of Contracts	Outstanding Discounted Receivables Balance	Percentage of Balance	Balloon		No Balloon		New		Used	
					Number of Contracts	Outstanding Discounted Receivables Balance	Number of Contracts	Outstanding Discounted Receivables Balance	Number of Contracts	Outstanding Discounted Receivables Balance	Number of Contracts	Outstanding Discounted Receivables Balance
Australian Capital Territory	330	2.89%	8,342,959.75 AUD	2.62%	68	3,237,061.85 AUD	262	5,105,897.90 AUD	208	6,272,136.82 AUD	122	2,070,822.93 AUD
New South Wales	4,081	35.76%	118,653,512.88 AUD	37.22%	1,247	59,789,418.12 AUD	2,834	58,864,094.76 AUD	3,051	96,945,247.22 AUD	1,030	21,708,265.66 AUD
Northern Territory	96	0.84%	1,841,868.49 AUD	0.58%	4	140,554.89 AUD	92	1,701,313.60 AUD	78	1,519,333.50 AUD	18	322,534.99 AUD
Queensland	2,445	21.42%	66,926,544.62 AUD	20.99%	713	31,241,195.81 AUD	1,732	35,685,348.81 AUD	1,907	56,320,960.14 AUD	538	10,605,584.48 AUD
South Australia	485	4.25%	14,843,130.09 AUD	4.66%	181	8,504,185.42 AUD	304	6,338,944.67 AUD	364	12,394,113.37 AUD	121	2,449,016.72 AUD
Tasmania	408	3.58%	8,636,940.99 AUD	2.71%	69	2,434,500.89 AUD	339	6,202,440.10 AUD	220	5,160,350.91 AUD	188	3,476,590.08 AUD
Victoria	2,244	19.66%	66,172,377.54 AUD	20.76%	814	37,325,201.35 AUD	1,430	28,847,176.19 AUD	1,739	55,661,456.54 AUD	505	10,510,921.00 AUD
Western Australia	1,323	11.59%	33,370,456.73 AUD	10.47%	188	9,076,956.86 AUD	1,135	24,293,499.87 AUD	691	20,215,385.62 AUD	632	13,155,071.11 AUD
<b>Total</b>	<b>11,412</b>	<b>100.00%</b>	<b>318,787,791.09 AUD</b>	<b>100.00%</b>	<b>3,284</b>	<b>151,749,075.19 AUD</b>	<b>8,128</b>	<b>167,038,715.90 AUD</b>	<b>8,258</b>	<b>254,488,984.12 AUD</b>	<b>3,154</b>	<b>64,298,806.97 AUD</b>

Pool Data IX

Current COVID-19 Extensions

Total Portfolio					Product Type			
Current COVID-19 Extensions	Number of Contracts	Percentage of Contracts	Outstanding Discounted Receivables Balance	Percentage of Balance	Chattel Mortgage		Consumer Loan	
					Number of Contracts	Outstanding Discounted Receivables Balance	Number of Contracts	Outstanding Discounted Receivables Balance
Current COVID-19 Extension	19	0.17%	546,085.81 AUD	0.17%	13	344,249.45 AUD	6	201,836.36 AUD
No Current Extension	11,393	99.83%	318,241,705.28 AUD	99.83%	7,215	227,102,618.80 AUD	4,178	91,139,086.48 AUD
<b>Total</b>	<b>11,412</b>	<b>100.00%</b>	<b>318,787,791.09 AUD</b>	<b>100.00%</b>	<b>7,228</b>	<b>227,446,868.25 AUD</b>	<b>4,184</b>	<b>91,340,922.84 AUD</b>

\* Representing contracts which are currently in a COVID-19 extension as at the Reporting Date

Pool Data IX

Current COVID-19 Extensions

Total Portfolio					Balloon				Vehicle Status			
Current COVID-19 Extensions	Number of Contracts	Percentage of Contracts	Outstanding Discounted Receivables Balance	Percentage of Balance	Balloon		No Balloon		New		Used	
					Number of Contracts	Outstanding Discounted Receivables Balance	Number of Contracts	Outstanding Discounted Receivables Balance	Number of Contracts	Outstanding Discounted Receivables Balance	Number of Contracts	Outstanding Discounted Receivables Balance
Current COVID-19 Extension	19	0.17%	546,085.81 AUD	0.17%	3	113,490.74 AUD	16	432,595.07 AUD	10	283,090.86 AUD	9	262,994.95 AUD
No Current Extension	11,393	99.83%	318,241,705.28 AUD	99.83%	3,281	151,635,584.45 AUD	8,112	166,606,120.83 AUD	8,248	254,205,893.26 AUD	3,145	64,035,812.02 AUD
<b>Total</b>	<b>11,412</b>	<b>100.00%</b>	<b>318,787,791.09 AUD</b>	<b>100.00%</b>	<b>3,284</b>	<b>151,749,075.19 AUD</b>	<b>8,128</b>	<b>167,038,715.90 AUD</b>	<b>8,258</b>	<b>254,488,984.12 AUD</b>	<b>3,154</b>	<b>64,298,806.97 AUD</b>

\* Representing contracts which are currently in a COVID-19 extension as at the Reporting Date

**Individual Hardship Extensions\***

Individual Extensions Approved For After Poolcut*	Number of Contracts	Percentage of Contracts	Outstanding Discounted Receivables Balance	Percentage of Balance
None	11,292	98.95%	314,678,298.77 AUD	98.71%
1	100	0.88%	3,403,713.45 AUD	1.07%
2	17	0.15%	615,248.66 AUD	0.19%
3	3	0.03%	90,530.21 AUD	0.03%
4	-	0.00%	0.00 AUD	0.00%
5	-	0.00%	0.00 AUD	0.00%
<b>Total</b>	<b>11,412</b>	<b>100.00%</b>	<b>318,787,791.09 AUD</b>	<b>100.00%</b>

\*Individual Hardship Extensions Approved For After Poolcut For Contracts Active At End of Reporting Period

**Engine Type**

Engine Type	Total Portfolio				Product Type			
	Number of Contracts	Percentage of Contracts	Outstanding Discounted Receivables Balance	Percentage of Balance	Chattel Mortgage		Consumer Loan	
					Number of Contracts	Outstanding Discounted Receivables Balance	Number of Contracts	Outstanding Discounted Receivables Balance
EA 189 (Unfixed)	1	0.01%	11,745.94 AUD	0.00%	1	11,745.94 AUD	-	- AUD
Other	11,411	99.99%	318,776,045.15 AUD	100.00%	7,227	227,435,122.31 AUD	4,184	91,340,922.84 AUD
<b>Total</b>	<b>11,412</b>	<b>100.00%</b>	<b>318,787,791.09 AUD</b>	<b>100.00%</b>	<b>7,228</b>	<b>227,446,868.25 AUD</b>	<b>4,184</b>	<b>91,340,922.84 AUD</b>



**Engine Type**

Engine Type	Total Portfolio				Balloon				Vehicle Status			
	Number of Contracts	Percentage of Contracts	Outstanding Discounted Receivables Balance	Percentage of Balance	Balloon		No Balloon		New		Used	
					Number of Contracts	Outstanding Discounted Receivables Balance	Number of Contracts	Outstanding Discounted Receivables Balance	Number of Contracts	Outstanding Discounted Receivables Balance	Number of Contracts	Outstanding Discounted Receivables Balance
EA 189 (Unfixed)	1	0.01%	11,745.94 AUD	0.00%	-	- AUD	1	11,745.94 AUD	-	- AUD	1	11,745.94 AUD
Other	11,411	99.99%	318,776,045.15 AUD	100.00%	3,284	151,749,075.19 AUD	8,127	167,026,969.96 AUD	8,258	254,488,984.12 AUD	3,153	64,287,061.03 AUD
<b>Total</b>	<b>11,412</b>	<b>100.00%</b>	<b>318,787,791.09 AUD</b>	<b>100.00%</b>	<b>3,284</b>	<b>151,749,075.19 AUD</b>	<b>8,128</b>	<b>167,038,715.90 AUD</b>	<b>8,258</b>	<b>254,488,984.12 AUD</b>	<b>3,154</b>	<b>64,298,806.97 AUD</b>

**Contract Level Data**                      **Net Salvage Recoveries By Contract By Month**

No.	Month / Year of Origination	Month / Year of Net Salvage	Outstanding Discounted Receivables Balance at Poolcut	ABS Gross Salvage Loss	ABS Net Salvage Loss	ABS Recoveries After Net Salvage	ABS Net Salvage Loss After Recoveries	Loss Percentage on Poolcut Balance	Geographical Location of Borrower	Vehicle Type (New/Used)	Vehicle Manufacturer	Product Type
1	02/2021	07/2022	69,286.66 AUD	68,260.06 AUD	23,440.30 AUD	- AUD	23,440.30 AUD	33.83%	Queensland	New	HYUNDAI	Chattel Mortgage
2	04/2017	08/2022	4,908.02 AUD	1,802.96 AUD	1,802.96 AUD	2,382.04 AUD	(579.08) AUD	-11.80%	Western Australia	Used	TOYOTA	Consumer Loan
3	09/2020	08/2022	22,898.44 AUD	24,043.02 AUD	23,946.41 AUD	24,792.94 AUD	(846.53) AUD	-3.70%	New South Wales	New	HYUNDAI	Chattel Mortgage
4	11/2020	08/2022	85,150.75 AUD	86,290.47 AUD	26,227.05 AUD	- AUD	26,227.05 AUD	30.80%	New South Wales	Used	AUDI	Consumer Loan
5	03/2021	08/2022	29,185.09 AUD	28,877.00 AUD	5,729.99 AUD	- AUD	5,729.99 AUD	19.63%	Queensland	Used	AUDI	Chattel Mortgage
6	08/2021	09/2022	58,243.78 AUD	60,601.34 AUD	60,349.39 AUD	(656.00) AUD	61,005.39 AUD	104.74%	New South Wales	New	VOLVO	Consumer Loan
7	05/2017	10/2022	10,198.36 AUD	5,937.71 AUD	5,937.71 AUD	(1,296.63) AUD	7,234.34 AUD	70.94%	Western Australia	New	VOLKSWAGEN	Consumer Loan
8	04/2021	11/2022	112,349.37 AUD	113,836.61 AUD	113,836.61 AUD	- AUD	113,836.61 AUD	101.32%	New South Wales	Used	MERCEDES-BENZ	Chattel Mortgage
9	06/2021	11/2022	42,591.10 AUD	36,679.72 AUD	30,861.92 AUD	4,000.00 AUD	26,861.92 AUD	63.07%	Victoria	Used	FORD	Chattel Mortgage
10	02/2020	12/2022	6,960.28 AUD	6,286.99 AUD	364.85 AUD	(135.89) AUD	500.74 AUD	7.19%	Queensland	Used	NISSAN	Chattel Mortgage
11	08/2021	12/2022	68,340.09 AUD	61,509.66 AUD	25,863.78 AUD	- AUD	25,863.78 AUD	37.85%	Victoria	New	FIAT	Chattel Mortgage
12	06/2021	01/2023	137,878.86 AUD	128,630.77 AUD	16,307.35 AUD	8,000.00 AUD	8,307.35 AUD	6.03%	Western Australia	New	BMW	Chattel Mortgage
13	07/2021	01/2023	21,033.51 AUD	17,507.31 AUD	9,148.55 AUD	- AUD	9,148.55 AUD	43.50%	Western Australia	Used	NISSAN	Chattel Mortgage
14	07/2020	02/2023	34,078.73 AUD	31,217.40 AUD	31,217.40 AUD	- AUD	31,217.40 AUD	91.60%	Western Australia	Used	LAND ROVER	Chattel Mortgage
15	04/2021	02/2023	134,870.02 AUD	127,011.64 AUD	30,825.00 AUD	- AUD	30,825.00 AUD	22.86%	New South Wales	New	LAND ROVER	Chattel Mortgage
16	06/2021	02/2023	21,670.84 AUD	17,957.85 AUD	6,220.30 AUD	(450.03) AUD	6,670.33 AUD	30.78%	Western Australia	Used	NISSAN	Chattel Mortgage
17	11/2017	03/2023	59,857.70 AUD	47,352.50 AUD	47,352.50 AUD	(2,665.00) AUD	50,017.50 AUD	83.56%	New South Wales	Used	MASERATI	Chattel Mortgage
18	06/2020	04/2023	34,408.76 AUD	36,349.31 AUD	36,218.47 AUD	(2,902.61) AUD	39,121.08 AUD	113.70%	New South Wales	Used	FORD	Chattel Mortgage
19	10/2020	04/2023	34,889.55 AUD	34,632.58 AUD	34,501.40 AUD	- AUD	34,501.40 AUD	98.89%	Victoria	Used	TOYOTA	Chattel Mortgage
20	04/2021	04/2023	20,917.22 AUD	18,794.44 AUD	3,489.95 AUD	- AUD	3,489.95 AUD	16.68%	Western Australia	Used	HYUNDAI	Chattel Mortgage
21	04/2021	04/2023	56,000.23 AUD	50,928.95 AUD	10,215.56 AUD	- AUD	10,215.56 AUD	18.24%	Queensland	New	HYUNDAI	Chattel Mortgage
22	06/2021	04/2023	63,143.63 AUD	51,309.14 AUD	11,590.66 AUD	- AUD	11,590.66 AUD	18.36%	Queensland	New	VOLKSWAGEN	Chattel Mortgage
23	06/2021	04/2023	33,941.35 AUD	29,875.05 AUD	11,530.95 AUD	- AUD	11,530.95 AUD	33.97%	Queensland	New	LDV	Chattel Mortgage
24	06/2021	04/2023	42,351.38 AUD	35,639.27 AUD	12,219.31 AUD	- AUD	12,219.31 AUD	28.85%	New South Wales	Used	LAND ROVER	Chattel Mortgage
25	08/2021	04/2023	35,197.90 AUD	33,592.55 AUD	33,592.55 AUD	- AUD	33,592.55 AUD	95.44%	Victoria	Used	SUBARU	Chattel Mortgage
26	11/2017	05/2023	19,855.82 AUD	642.26 AUD	642.26 AUD	- AUD	642.26 AUD	3.23%	Victoria	New	HOLDEN	Chattel Mortgage
27	12/2017	05/2023	9,408.39 AUD	1,715.06 AUD	1,715.06 AUD	500.00 AUD	715.06 AUD	7.63%	New South Wales	New	SUBARU	Consumer Loan
28	04/2021	05/2023	132,785.83 AUD	119,022.20 AUD	20,425.55 AUD	- AUD	20,425.55 AUD	15.38%	Queensland	New	LAND ROVER	Chattel Mortgage
29	04/2021	05/2023	11,040.86 AUD	8,366.08 AUD	3,240.63 AUD	- AUD	3,240.63 AUD	29.35%	New South Wales	Used	FORD	Chattel Mortgage
30	08/2021	05/2023	34,554.47 AUD	31,687.17 AUD	10,165.17 AUD	- AUD	10,165.17 AUD	29.42%	Queensland	New	TOYOTA	Chattel Mortgage
31	08/2021	05/2023	159,445.98 AUD	143,686.80 AUD	143,686.80 AUD	- AUD	143,686.80 AUD	90.12%	Queensland	Used	LAMBORGHINI	Chattel Mortgage
<b>Total</b>	<b>31</b>		<b>1,607,423.07 AUD</b>	<b>1,431,343.87 AUD</b>	<b>732,163.83 AUD</b>	<b>31,568.82 AUD</b>	<b>763,732.65 AUD</b>					

**Contract Level Data**                      **Net Salvage Recoveries By Contract By Month**

No.	Month / Year of Origination	Month / Year of Net Salvage	Nov-21	Dec-21	Jan-22	Feb-22	Mar-22	Apr-22	May-22	Jun-22	Jul-22	Aug-22	Sep-22	Oct-22
1	02/2021	07/2022	- AUD	- AUD	- AUD	- AUD	- AUD	- AUD	- AUD	- AUD	- AUD	- AUD	- AUD	- AUD
2	04/2017	08/2022	- AUD	- AUD	- AUD	- AUD	- AUD	- AUD	- AUD	- AUD	- AUD	- AUD	- AUD	- AUD
3	09/2020	08/2022	- AUD	- AUD	- AUD	- AUD	- AUD	- AUD	- AUD	- AUD	- AUD	- AUD	(871.25) AUD	21,718.38 AUD
4	11/2020	08/2022	- AUD	- AUD	- AUD	- AUD	- AUD	- AUD	- AUD	- AUD	- AUD	- AUD	- AUD	- AUD
5	03/2021	08/2022	- AUD	- AUD	- AUD	- AUD	- AUD	- AUD	- AUD	- AUD	- AUD	- AUD	- AUD	- AUD
6	08/2021	09/2022	- AUD	- AUD	- AUD	- AUD	- AUD	- AUD	- AUD	- AUD	- AUD	- AUD	- AUD	(656.00) AUD
7	05/2017	10/2022	- AUD	- AUD	- AUD	- AUD	- AUD	- AUD	- AUD	- AUD	- AUD	- AUD	- AUD	- AUD
8	04/2021	11/2022	- AUD	- AUD	- AUD	- AUD	- AUD	- AUD	- AUD	- AUD	- AUD	- AUD	- AUD	- AUD
9	06/2021	11/2022	- AUD	- AUD	- AUD	- AUD	- AUD	- AUD	- AUD	- AUD	- AUD	- AUD	- AUD	- AUD
10	02/2020	12/2022	- AUD	- AUD	- AUD	- AUD	- AUD	- AUD	- AUD	- AUD	- AUD	- AUD	- AUD	- AUD
11	08/2021	12/2022	- AUD	- AUD	- AUD	- AUD	- AUD	- AUD	- AUD	- AUD	- AUD	- AUD	- AUD	- AUD
12	06/2021	01/2023	- AUD	- AUD	- AUD	- AUD	- AUD	- AUD	- AUD	- AUD	- AUD	- AUD	- AUD	- AUD
13	07/2021	01/2023	- AUD	- AUD	- AUD	- AUD	- AUD	- AUD	- AUD	- AUD	- AUD	- AUD	- AUD	- AUD
14	07/2020	02/2023	- AUD	- AUD	- AUD	- AUD	- AUD	- AUD	- AUD	- AUD	- AUD	- AUD	- AUD	- AUD
15	04/2021	02/2023	- AUD	- AUD	- AUD	- AUD	- AUD	- AUD	- AUD	- AUD	- AUD	- AUD	- AUD	- AUD
16	06/2021	02/2023	- AUD	- AUD	- AUD	- AUD	- AUD	- AUD	- AUD	- AUD	- AUD	- AUD	- AUD	- AUD
17	11/2017	03/2023	- AUD	- AUD	- AUD	- AUD	- AUD	- AUD	- AUD	- AUD	- AUD	- AUD	- AUD	- AUD
18	06/2020	04/2023	- AUD	- AUD	- AUD	- AUD	- AUD	- AUD	- AUD	- AUD	- AUD	- AUD	- AUD	- AUD
19	10/2020	04/2023	- AUD	- AUD	- AUD	- AUD	- AUD	- AUD	- AUD	- AUD	- AUD	- AUD	- AUD	- AUD
20	04/2021	04/2023	- AUD	- AUD	- AUD	- AUD	- AUD	- AUD	- AUD	- AUD	- AUD	- AUD	- AUD	- AUD
21	04/2021	04/2023	- AUD	- AUD	- AUD	- AUD	- AUD	- AUD	- AUD	- AUD	- AUD	- AUD	- AUD	- AUD
22	06/2021	04/2023	- AUD	- AUD	- AUD	- AUD	- AUD	- AUD	- AUD	- AUD	- AUD	- AUD	- AUD	- AUD
23	06/2021	04/2023	- AUD	- AUD	- AUD	- AUD	- AUD	- AUD	- AUD	- AUD	- AUD	- AUD	- AUD	- AUD
24	06/2021	04/2023	- AUD	- AUD	- AUD	- AUD	- AUD	- AUD	- AUD	- AUD	- AUD	- AUD	- AUD	- AUD
25	08/2021	04/2023	- AUD	- AUD	- AUD	- AUD	- AUD	- AUD	- AUD	- AUD	- AUD	- AUD	- AUD	- AUD
26	11/2017	05/2023	- AUD	- AUD	- AUD	- AUD	- AUD	- AUD	- AUD	- AUD	- AUD	- AUD	- AUD	- AUD
27	12/2017	05/2023	- AUD	- AUD	- AUD	- AUD	- AUD	- AUD	- AUD	- AUD	- AUD	- AUD	- AUD	- AUD
28	04/2021	05/2023	- AUD	- AUD	- AUD	- AUD	- AUD	- AUD	- AUD	- AUD	- AUD	- AUD	- AUD	- AUD
29	04/2021	05/2023	- AUD	- AUD	- AUD	- AUD	- AUD	- AUD	- AUD	- AUD	- AUD	- AUD	- AUD	- AUD
30	08/2021	05/2023	- AUD	- AUD	- AUD	- AUD	- AUD	- AUD	- AUD	- AUD	- AUD	- AUD	- AUD	- AUD
31	08/2021	05/2023	- AUD	- AUD	- AUD	- AUD	- AUD	- AUD	- AUD	- AUD	- AUD	- AUD	- AUD	- AUD
<b>Total</b>	<b>31</b>	<b>05/2023</b>	<b>- AUD</b>	<b>- AUD</b>	<b>- AUD</b>	<b>- AUD</b>	<b>- AUD</b>	<b>- AUD</b>	<b>- AUD</b>	<b>- AUD</b>	<b>- AUD</b>	<b>- AUD</b>	<b>(871.25) AUD</b>	<b>21,062.38 AUD</b>

**Contract Level Data**      **Net Salvage Recoveries By Contract By Month**

No.	Month / Year of Origination	Month / Year of Net Salvage	Nov-22	Dec-22	Jan-23	Feb-23	Mar-23	Apr-23	May-23	Jun-23	Jul-23	Aug-23	Sep-23	Oct-23	
1	02/2021	07/2022	- AUD	- AUD	- AUD	- AUD	- AUD	- AUD	- AUD	- AUD	- AUD	- AUD	- AUD	- AUD	
2	04/2017	08/2022	100.00	- AUD	- AUD	- AUD	- AUD	- AUD	- AUD	- AUD	- AUD	- AUD	- AUD	- AUD	
3	09/2020	08/2022	- AUD	- AUD	2,282.04	AUD	- AUD	- AUD	- AUD	- AUD	- AUD	- AUD	- AUD	- AUD	
4	11/2020	08/2022	- AUD	- AUD	3,074.56	AUD	- AUD	- AUD	871.25	AUD	- AUD	- AUD	- AUD	- AUD	
5	03/2021	08/2022	- AUD	- AUD	- AUD	- AUD	- AUD	- AUD	- AUD	- AUD	- AUD	- AUD	- AUD	- AUD	
6	08/2021	09/2022	- AUD	- AUD	- AUD	- AUD	- AUD	- AUD	- AUD	- AUD	- AUD	- AUD	- AUD	- AUD	
7	05/2017	10/2022	- AUD	- AUD	- AUD	- AUD	- AUD	- AUD	(1,296.63)	AUD	- AUD	- AUD	- AUD	- AUD	
8	04/2021	11/2022	- AUD	- AUD	- AUD	- AUD	- AUD	- AUD	- AUD	- AUD	- AUD	- AUD	- AUD	- AUD	
9	06/2021	11/2022	- AUD	- AUD	- AUD	1,000.00	AUD	1,000.00	AUD	1,000.00	AUD	- AUD	- AUD	- AUD	
10	02/2020	12/2022	- AUD	- AUD	(135.89)	AUD	- AUD	- AUD	- AUD	- AUD	- AUD	- AUD	- AUD	- AUD	
11	08/2021	12/2022	- AUD	- AUD	- AUD	- AUD	- AUD	- AUD	- AUD	- AUD	- AUD	- AUD	- AUD	- AUD	
12	06/2021	01/2023	- AUD	- AUD	- AUD	8,000.00	AUD	- AUD	- AUD	- AUD	- AUD	- AUD	- AUD	- AUD	
13	07/2021	01/2023	- AUD	- AUD	- AUD	- AUD	- AUD	- AUD	- AUD	- AUD	- AUD	- AUD	- AUD	- AUD	
14	07/2020	02/2023	- AUD	- AUD	- AUD	- AUD	- AUD	- AUD	- AUD	- AUD	- AUD	- AUD	- AUD	- AUD	
15	04/2021	02/2023	- AUD	- AUD	- AUD	- AUD	- AUD	- AUD	- AUD	- AUD	- AUD	- AUD	- AUD	- AUD	
16	06/2021	02/2023	- AUD	- AUD	- AUD	- AUD	(450.03)	AUD	- AUD	- AUD	- AUD	- AUD	- AUD	- AUD	
17	11/2017	03/2023	- AUD	- AUD	- AUD	- AUD	- AUD	(2,665.00)	AUD	- AUD	- AUD	- AUD	- AUD	- AUD	
18	06/2020	04/2023	- AUD	- AUD	- AUD	- AUD	- AUD	- AUD	(2,902.61)	AUD	- AUD	- AUD	- AUD	- AUD	
19	10/2020	04/2023	- AUD	- AUD	- AUD	- AUD	- AUD	- AUD	- AUD	- AUD	- AUD	- AUD	- AUD	- AUD	
20	04/2021	04/2023	- AUD	- AUD	- AUD	- AUD	- AUD	- AUD	- AUD	- AUD	- AUD	- AUD	- AUD	- AUD	
21	04/2021	04/2023	- AUD	- AUD	- AUD	- AUD	- AUD	- AUD	- AUD	- AUD	- AUD	- AUD	- AUD	- AUD	
22	06/2021	04/2023	- AUD	- AUD	- AUD	- AUD	- AUD	- AUD	- AUD	- AUD	- AUD	- AUD	- AUD	- AUD	
23	06/2021	04/2023	- AUD	- AUD	- AUD	- AUD	- AUD	- AUD	- AUD	- AUD	- AUD	- AUD	- AUD	- AUD	
24	06/2021	04/2023	- AUD	- AUD	- AUD	- AUD	- AUD	- AUD	- AUD	- AUD	- AUD	- AUD	- AUD	- AUD	
25	08/2021	04/2023	- AUD	- AUD	- AUD	- AUD	- AUD	- AUD	- AUD	- AUD	- AUD	- AUD	- AUD	- AUD	
26	11/2017	05/2023	- AUD	- AUD	- AUD	- AUD	- AUD	- AUD	- AUD	- AUD	- AUD	- AUD	- AUD	- AUD	
27	12/2017	05/2023	- AUD	- AUD	- AUD	- AUD	- AUD	- AUD	500.00	AUD	- AUD	- AUD	- AUD	- AUD	
28	04/2021	05/2023	- AUD	- AUD	- AUD	- AUD	- AUD	- AUD	- AUD	- AUD	- AUD	- AUD	- AUD	- AUD	
29	04/2021	05/2023	- AUD	- AUD	- AUD	- AUD	- AUD	- AUD	- AUD	- AUD	- AUD	- AUD	- AUD	- AUD	
30	08/2021	05/2023	- AUD	- AUD	- AUD	- AUD	- AUD	- AUD	- AUD	- AUD	- AUD	- AUD	- AUD	- AUD	
31	08/2021	05/2023	- AUD	- AUD	- AUD	- AUD	- AUD	- AUD	- AUD	- AUD	- AUD	- AUD	- AUD	- AUD	
<b>Total</b>	<b>31</b>	<b>05/2023</b>	<b>100.00</b>	<b>AUD</b>	<b>- AUD</b>	<b>5,220.71</b>	<b>AUD</b>	<b>9,000.00</b>	<b>AUD</b>	<b>549.97</b>	<b>AUD</b>	<b>(1,665.00)</b>	<b>AUD</b>	<b>(1,827.99)</b>	<b>AUD</b>



**Contract Level Data**                      **Net Salvage Recoveries By Contract By Month**

No.	Month / Year of Origination	Month / Year of Net Salvage	Nov-24	Dec-24	Jan-25	Feb-25	Mar-25	Apr-25	May-25	Jun-25	Jul-25	Aug-25
1	02/2021	07/2022	- AUD	- AUD	- AUD	- AUD	- AUD	- AUD	- AUD	- AUD	- AUD	- AUD
2	04/2017	08/2022	- AUD	- AUD	- AUD	- AUD	- AUD	- AUD	- AUD	- AUD	- AUD	- AUD
3	09/2020	08/2022	- AUD	- AUD	- AUD	- AUD	- AUD	- AUD	- AUD	- AUD	- AUD	- AUD
4	11/2020	08/2022	- AUD	- AUD	- AUD	- AUD	- AUD	- AUD	- AUD	- AUD	- AUD	- AUD
5	03/2021	08/2022	- AUD	- AUD	- AUD	- AUD	- AUD	- AUD	- AUD	- AUD	- AUD	- AUD
6	08/2021	09/2022	- AUD	- AUD	- AUD	- AUD	- AUD	- AUD	- AUD	- AUD	- AUD	- AUD
7	05/2017	10/2022	- AUD	- AUD	- AUD	- AUD	- AUD	- AUD	- AUD	- AUD	- AUD	- AUD
8	04/2021	11/2022	- AUD	- AUD	- AUD	- AUD	- AUD	- AUD	- AUD	- AUD	- AUD	- AUD
9	06/2021	11/2022	- AUD	- AUD	- AUD	- AUD	- AUD	- AUD	- AUD	- AUD	- AUD	- AUD
10	02/2020	12/2022	- AUD	- AUD	- AUD	- AUD	- AUD	- AUD	- AUD	- AUD	- AUD	- AUD
11	08/2021	12/2022	- AUD	- AUD	- AUD	- AUD	- AUD	- AUD	- AUD	- AUD	- AUD	- AUD
12	06/2021	01/2023	- AUD	- AUD	- AUD	- AUD	- AUD	- AUD	- AUD	- AUD	- AUD	- AUD
13	07/2021	01/2023	- AUD	- AUD	- AUD	- AUD	- AUD	- AUD	- AUD	- AUD	- AUD	- AUD
14	07/2020	02/2023	- AUD	- AUD	- AUD	- AUD	- AUD	- AUD	- AUD	- AUD	- AUD	- AUD
15	04/2021	02/2023	- AUD	- AUD	- AUD	- AUD	- AUD	- AUD	- AUD	- AUD	- AUD	- AUD
16	06/2021	02/2023	- AUD	- AUD	- AUD	- AUD	- AUD	- AUD	- AUD	- AUD	- AUD	- AUD
17	11/2017	03/2023	- AUD	- AUD	- AUD	- AUD	- AUD	- AUD	- AUD	- AUD	- AUD	- AUD
18	06/2020	04/2023	- AUD	- AUD	- AUD	- AUD	- AUD	- AUD	- AUD	- AUD	- AUD	- AUD
19	10/2020	04/2023	- AUD	- AUD	- AUD	- AUD	- AUD	- AUD	- AUD	- AUD	- AUD	- AUD
20	04/2021	04/2023	- AUD	- AUD	- AUD	- AUD	- AUD	- AUD	- AUD	- AUD	- AUD	- AUD
21	04/2021	04/2023	- AUD	- AUD	- AUD	- AUD	- AUD	- AUD	- AUD	- AUD	- AUD	- AUD
22	06/2021	04/2023	- AUD	- AUD	- AUD	- AUD	- AUD	- AUD	- AUD	- AUD	- AUD	- AUD
23	06/2021	04/2023	- AUD	- AUD	- AUD	- AUD	- AUD	- AUD	- AUD	- AUD	- AUD	- AUD
24	06/2021	04/2023	- AUD	- AUD	- AUD	- AUD	- AUD	- AUD	- AUD	- AUD	- AUD	- AUD
25	08/2021	04/2023	- AUD	- AUD	- AUD	- AUD	- AUD	- AUD	- AUD	- AUD	- AUD	- AUD
26	11/2017	05/2023	- AUD	- AUD	- AUD	- AUD	- AUD	- AUD	- AUD	- AUD	- AUD	- AUD
27	12/2017	05/2023	- AUD	- AUD	- AUD	- AUD	- AUD	- AUD	- AUD	- AUD	- AUD	- AUD
28	04/2021	05/2023	- AUD	- AUD	- AUD	- AUD	- AUD	- AUD	- AUD	- AUD	- AUD	- AUD
29	04/2021	05/2023	- AUD	- AUD	- AUD	- AUD	- AUD	- AUD	- AUD	- AUD	- AUD	- AUD
30	08/2021	05/2023	- AUD	- AUD	- AUD	- AUD	- AUD	- AUD	- AUD	- AUD	- AUD	- AUD
31	08/2021	05/2023	- AUD	- AUD	- AUD	- AUD	- AUD	- AUD	- AUD	- AUD	- AUD	- AUD
<b>Total</b>	<b>31</b>		- AUD	- AUD	- AUD	- AUD	- AUD	- AUD	- AUD	- AUD	- AUD	- AUD