



Stalking Elephants

Nickel Sulphide Exploration in the East
African Nickel Belt

JUNE 2023



ASX: **ADD**

Important Notice & Disclaimer

This presentation has been prepared by Adavale Resources Ltd (ASX:ADD). This presentation contains background information about ADD current at the date of this presentation. The presentation is in summary form, has not been independently verified and does not purport to be all inclusive or complete nor does it contain all the information that a prospective investor may require in evaluating a possible investment in ADD or its assets.

Recipients should conduct their own investigations and perform their own analysis in order to satisfy themselves as to the accuracy and completeness of the information, statements and opinions contained in this presentation. All securities transactions involve risks, which include (among others) the risk of adverse or unanticipated market, financial or political developments. Recipients of this presentation who decide to invest in ADD do so at their own risk.

This presentation is for information purposes only. Neither this presentation nor the information contained in it constitutes an offer, invitation, solicitation or recommendation in relation to the purchase or sale of securities in any jurisdiction. This presentation is not a prospectus and does not contain all of the information which would be required to be disclosed in a prospectus. This presentation may not be distributed in any jurisdiction except in accordance with the legal requirements applicable in such jurisdiction. Recipients should inform themselves of the restrictions that apply in their own jurisdiction. A failure to do so may result in a violation of securities laws in such jurisdiction. This presentation does not constitute investment advice and has been prepared without taking into account the recipient's investment objectives, financial circumstances or particular needs and the opinions and recommendations in this presentation are not intended to represent recommendations of particular investments to particular persons. Recipients should seek their own professional, legal, tax, business and/ or financial advice when deciding if an investment is appropriate.

To the fullest extent permitted by law, ADD and its related bodies corporate, its directors, officers, employees and representatives (including its agents and advisers), disclaim all liability, take no responsibility for any part of this presentation, or for any errors in or omissions from this presentation arising out of negligence or otherwise and do not make any representation or warranty, express or implied, as to the currency, accuracy, reliability or completeness of any information, statements, opinions, estimates, forecasts, conclusions or other representations contained in this presentation.

This presentation contains forward looking statements concerning Adavale. Forward-looking statements are not statements of historical fact and actual events and results may differ materially from those described in the forward-looking statements as a result of a variety of risks, uncertainties and other factors. Forward-looking statements are inherently subject to business, economic, competitive, political and social uncertainties and contingencies. Many factors could cause the Company's actual results to differ materially from those expressed or implied in any forward-looking information provided by the Company, or on behalf of the Company. Such factors include, among other things, risks relating to additional funding requirements, metal prices, exploration, development and operating risks, competition, production risks, regulatory restrictions, including environmental regulation and liability and potential title disputes. Forward looking statements in this presentation are based on Adavale's beliefs, opinions and estimates of Adavale as of the dates the forward-looking statements are made, and no obligation is assumed to update forward looking statements if these beliefs, opinions and estimates should change or to reflect other future developments. Although management believes that the assumptions made by the Company and the expectations represented by such information are reasonable, there can be no assurance that the forward-looking information will prove to be accurate. Forward-looking information involves known and unknown risks, uncertainties, and other factors which may cause the actual results, performance or achievements of the Company to be materially different from any anticipated future results, performance or achievements expressed or implied by such forward-looking information. Such factors include, among others, the actual market price of nickel, the actual results of future exploration, changes in project parameters as plans continue to be evaluated, as well as those factors disclosed in the Company's publicly filed documents. Readers should not place undue reliance on forward-looking information. The Company does not undertake to update any forward-looking information, except in accordance with applicable securities laws. No representation, warranty or undertaking, express or implied, is given or made by the Company that the occurrence of the events expressed or implied in any forward- looking statements in this presentation will actually occur.

Important Notice & Disclaimer

Competent Person Statement

The information in this release that relates to “exploration results” for the Nickel Project is based on information compiled or reviewed by Mr David Dodd of MSA, South Africa. Mr Dodd is a consultant for Adavale Resources Limited and is a member of the SACNASP. Mr Dodd has sufficient experience that is relevant to the style of mineralisation and type of deposits under consideration as well as to the activity that is being undertaken to qualify as a Competent Person under the ASX Listing Rules. Mr Dodd consents to this release in the form and context in which it appears.

The information in this release that relates to “exploration results” for the Uranium Project is based on information compiled or reviewed by Mr Patrick Harvey MAppSci, Australia. Mr Harvey is a consultant for Adavale Resources Limited and is a member of the AIG. Mr Harvey has sufficient experience that is relevant to the style of mineralisation and type of deposits under consideration as well as to the activity that is being undertaken to qualify as a Competent Person under the ASX Listing Rules. Mr Harvey consents to this release in the form and context in which it appears.

Visual Estimates

Visual estimates of mineral abundance should never be considered a proxy or substitute for laboratory analyses where concentrations or grades are the factor of principal economic interest. Visual estimates also potentially provide no information regarding impurities or deleterious physical properties relevant to valuations.

The Company regularly uses a portable hand-held XRF analyser to screen drill core for mineralisation before cutting and sampling. This allows for some understanding of the distribution of mineralisation prior to sampling to better ensure that the sampled core is representative of the type and style of mineralisation. Numerous readings are obtained and recorded for future reference. The hand-held XRF provides confirmation that mineralisation is present however it is not an accurate determination of the elemental concentration within the sample analysed. Limitations include; very small analysis window, possible inhomogeneous distribution of mineralisation, analytical penetration depth and possible effects from irregular rock surface. The pXRF readings are subject to confirmation by chemical analysis from an independent laboratory.

References

1. ASX Announcement 7 July 2022 “32 Nickel Targets Identified in the East African Nickel Belt”
2. ASX Announcement 13 September 2022 “Multiple Nickel Targets generated from successful EM survey”
3. ASX Announcement 7 December 2022 “Exploration Update – Kabanga Jirani Nickel Project”
4. ASX Announcement 24 January 2023 “Strategic Expansion at Kabanga Jirani”
5. ASX Announcement 4 April 2023 “Nickel sulphide drill target and 15km anomaly defined”
6. ASX Announcement 28 April 2023 “March Quarterly Activity and Cashflow Report”
7. ASX Announcement 6 June 2023 “Massive Nickel Sulphides intersected at Kabanga Jirani”
8. ASX Announcement 8 June 2023 “Second Luhuma Central hole commenced at Kabanga Jirani”
9. ASX Announcement 19 June 2023 “ADD Continues to Intersect Zone of Strong Nickel Sulphide”
10. www.lifezonemetals.com

Investment Highlights



Exposure to
critical minerals
–
Nickel and
Uranium



A dominant nickel
exploration portfolio
surrounding an
'elephant'



Nickel drilling
campaign
underway with
significant upside



Experienced
management team
with deep African
experience and
nickel discoveries

Corporate Overview

ADD

ASX Code

520m

Shares

2.8c

Share Price (19 June)

\$14.6m

Market Cap

\$2.0m

Proforma Cash
(as at 31 March)

~6%

Board and
Management Ownership

190.6m

Options

98.3m (unlisted) @ \$0.03, exp 9/23
5m (unlisted) @ \$0.03, exp 8/25
9m (unlisted) @ \$0.15, exp 1/25
78.3m (listed) @ \$0.03, exp 12/25

200

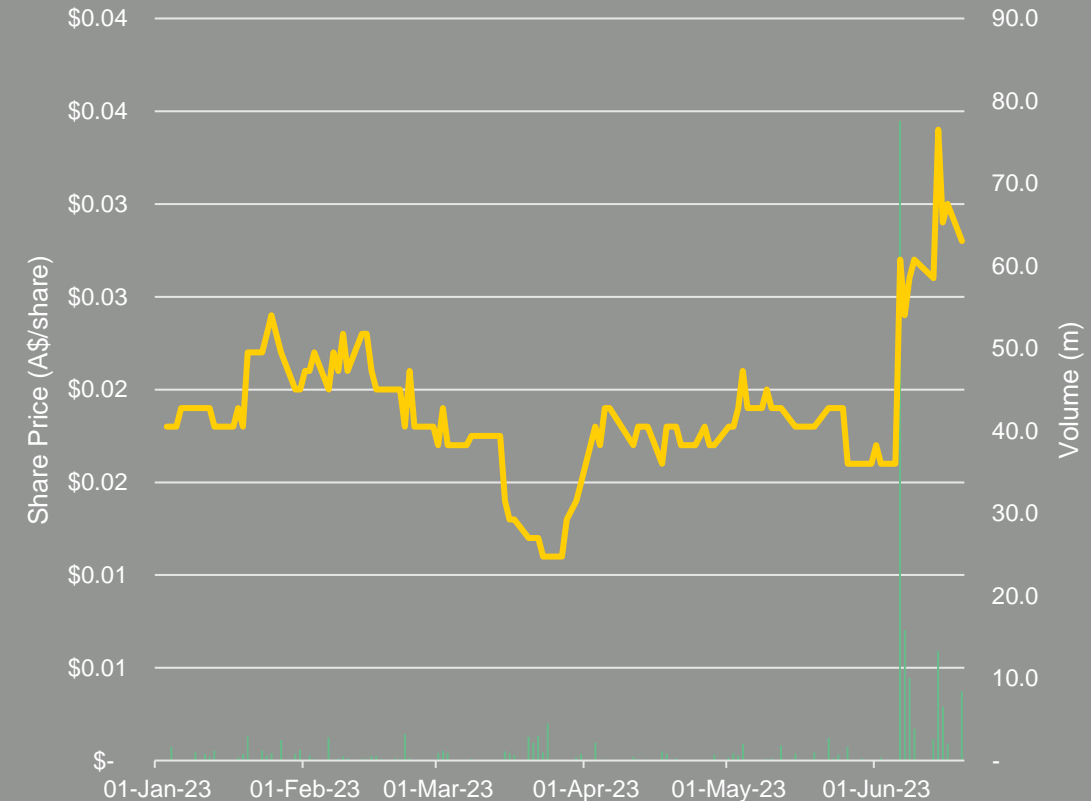
Convertible Notes

Face value \$10,000 each

17m

Performance
Rights

ADD Share Price - YTD



Experienced Team



Grant Pierce

Non-Executive Chairman

Mining engineer with ED, NED, GM experience. Strong and long-standing affinity with Tanzania



David Riekie

Executive Director

Corporate experience, ASX roles (NED, MD, ED, CEO) including Nickel, Uranium/Energy, African experience



John Hicks

Non-Executive Director

Accomplished Nickel Sulphide Geologist/ Explorer, 15yrs of GM level Geo/Explorer for ASX listed companies



Allan Ritchie

Chief Executive Officer

Experienced ASX/HKEX Energy and Resources CEO/ED/MD, 30+yr Investment Banking career



Leonard Math

Chief Financial Officer/ Coy Sec

Experienced Resources sector executive, ASX listed ED, CFO, Coy Sec



Gerald Mturi

Country Manager (Tanzania)

Accountant with over 25 years' experience at Total, Resolute Mining and the Tanzanian Chamber of Mines & Energy



Pashcal Wadeya

Chief Geologist (Tanzania)

Over 13 years' experience across Tanzania in a range of commodities and geological styles

Tanzania – An Attractive Mining Destination

- Mining is a crucial sector for Tanzania, generating more than US\$2.5 billion annually and accounting for over 50% of the country's exports by value
- President Samia Suluhu Hassan, has pledged a “commitment to the development of the mining sector”, with the aim of the mining sector accounting for 10% of the country's GDP by 2025, up from 6.7% in 2020
- Renewal of public sector management with focus on project delivery
- Framework Agreements with consistent terms are being executed with international mining company investors
- Clear government ownership interest (16%) established
- Good infrastructure in place, with upgrades underway



Tanzania – An Attractive Mining Destination

- Mining is a crucial sector for Tanzania, generating more than US\$2.5 billion annually and accounting for over 50% of the country's exports by value
- President Samia Suluhu Hassan, has pledged a “commitment to the development of the mining sector”, with the aim of the mining sector accounting for 10% of the country's GDP by 2025, up from 6.7% in 2020
- Renewal of public sector management with focus on project delivery
- Framework Agreements with consistent terms are being executed with international mining company investors
- Clear government ownership interest (16%) established
- Good infrastructure in place, with upgrades underway



President Samia Suluhu Hassan and US Vice President Kamala Harris recently met to discuss strengthening ties between the two countries.

Tanzanian Social and Community Focused Initiatives

Local community and health focused initiatives



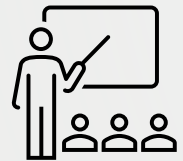
Vaka Health Foundation (sponsorship)

- Providing professional development train for 60 nurses at Ngara District Hospital
- AAMEG 2022 award winner:
Best Workforce & Industry Development Initiative



Bridge2Aid Australia

- Prevention of infant oral mutilation
- Training, awareness and treatment



Rulenge District School

- Donation of 80 classroom desks



Tanzanian Social and Community Focused Initiatives

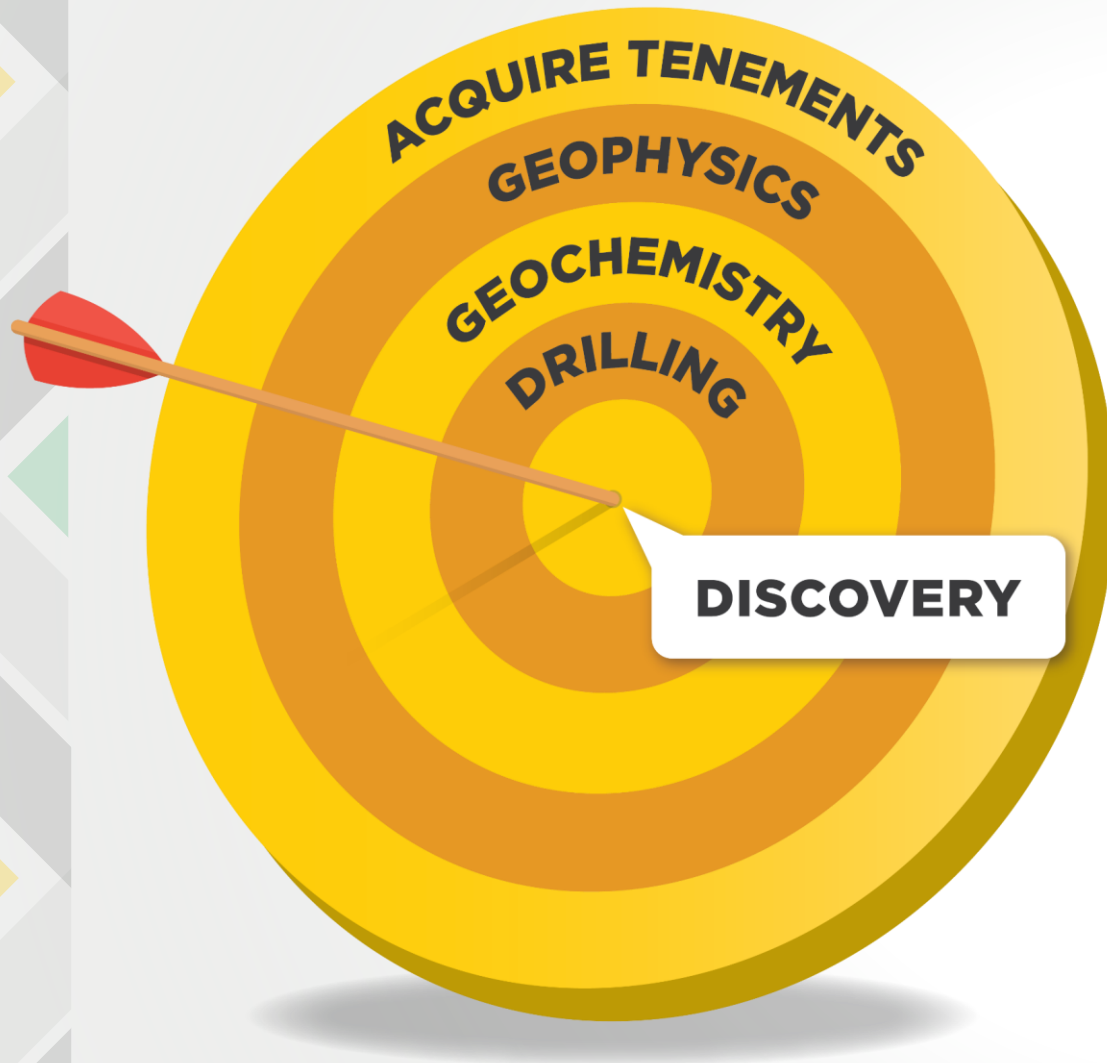
Commitment to local contract & employment opportunities

Local geological field assistants and contractors

- Drilling
- DHEM Surveys
- Ground Based Surveys (Soil and Gravity Surveys)
- Logistics



Methodical, Targeted Approach to Exploration



Ground Based/Field Survey(s)

- Field checking, logistics/Soil sampling (orientation);
- Initial gravity and preliminary drilling



Regional Scale Gravity Survey

- 1,000 sq km- 32 anomalies identified



Heli Airborne EM (HEM) Survey

- 9 HEM areas outlined



Prospect Ranking - Drilling

- Hierarchy of priority and type of drilling recommended
- Coincident/correlation review - gravity targets + HEM signatures



Audio Magnetotelluric (AMT) Surveys

- Assessment of high priority targets to refine drill targeting



Campaign Drilling Underway

- Targeted (RC/Diamond) over high priority prospects
- Assay results/pXRF readings

Kabanga Jirani + Luhuma

Dominance in East African Nickel Belt

Dominant nickel licence portfolio within the **East African Nickel Belt** of Tanzania covers **1,315 sq km**

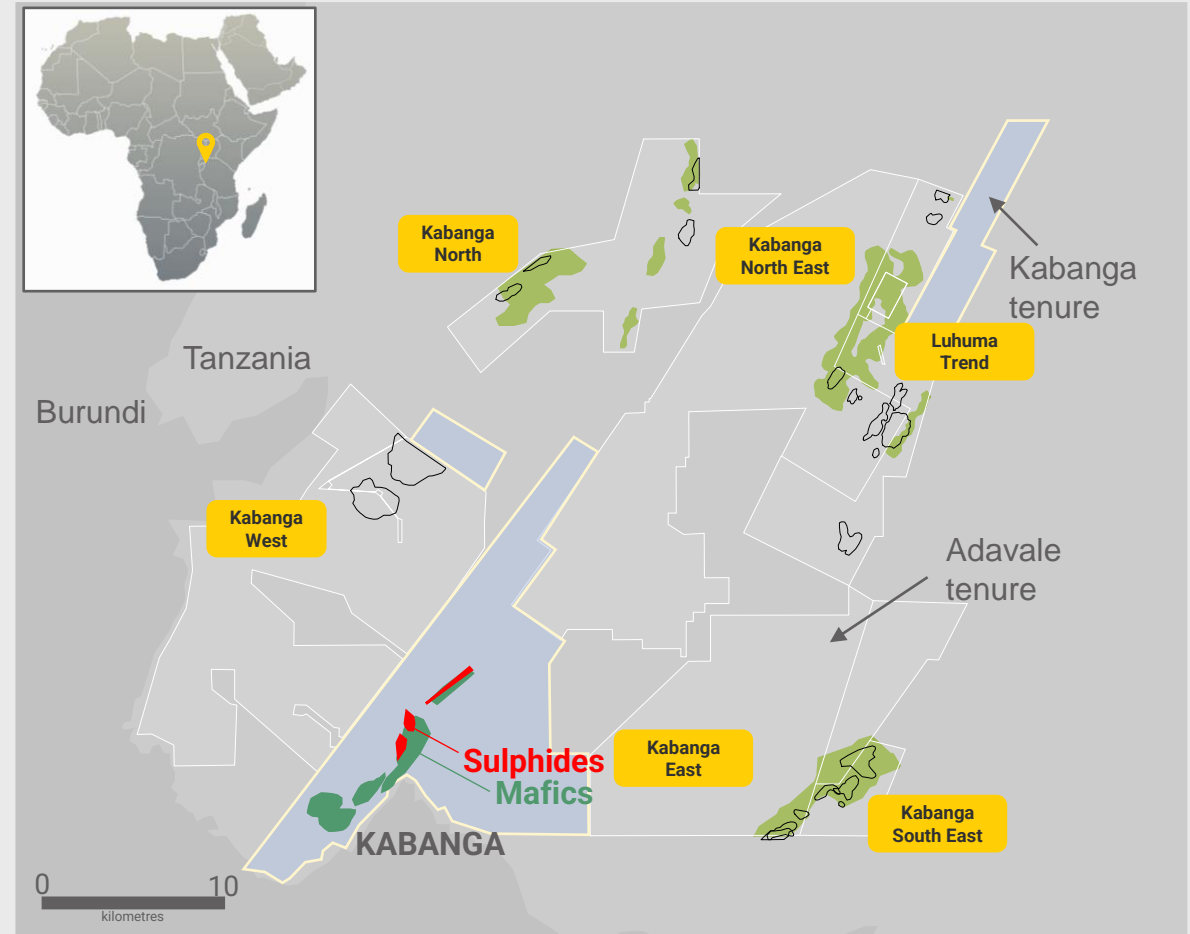
Portfolio Overview

100% owned Licences + Luhuma Farm – In ground (initial 65%, moving to 80%, trigger to 100%)

Licences are adjacent and along strike from the world's largest "under development" high-grade **Kabanga nickel sulphide deposit, 58Mt @ 2.62% Ni**

Gravity, magnetics, Heli-EM, soil geochemistry and Audio-MagnetoTellurics have been used for prospect targeting

Drilling is targeting high-priority conductors



Soil Anomalies

Gravity Anomalies

Luhuma Trend

Anomalous prospects over 10km strike

LUHUMA CENTRAL

Awarded in May 2023

High priority targets, refined using AMT

Nickel sulphides intercepted in first two drillholes

HEM 2

Initially drilled in 2022

Sulphides and right geology intersected

Drilling targeting basal ultramafics underway

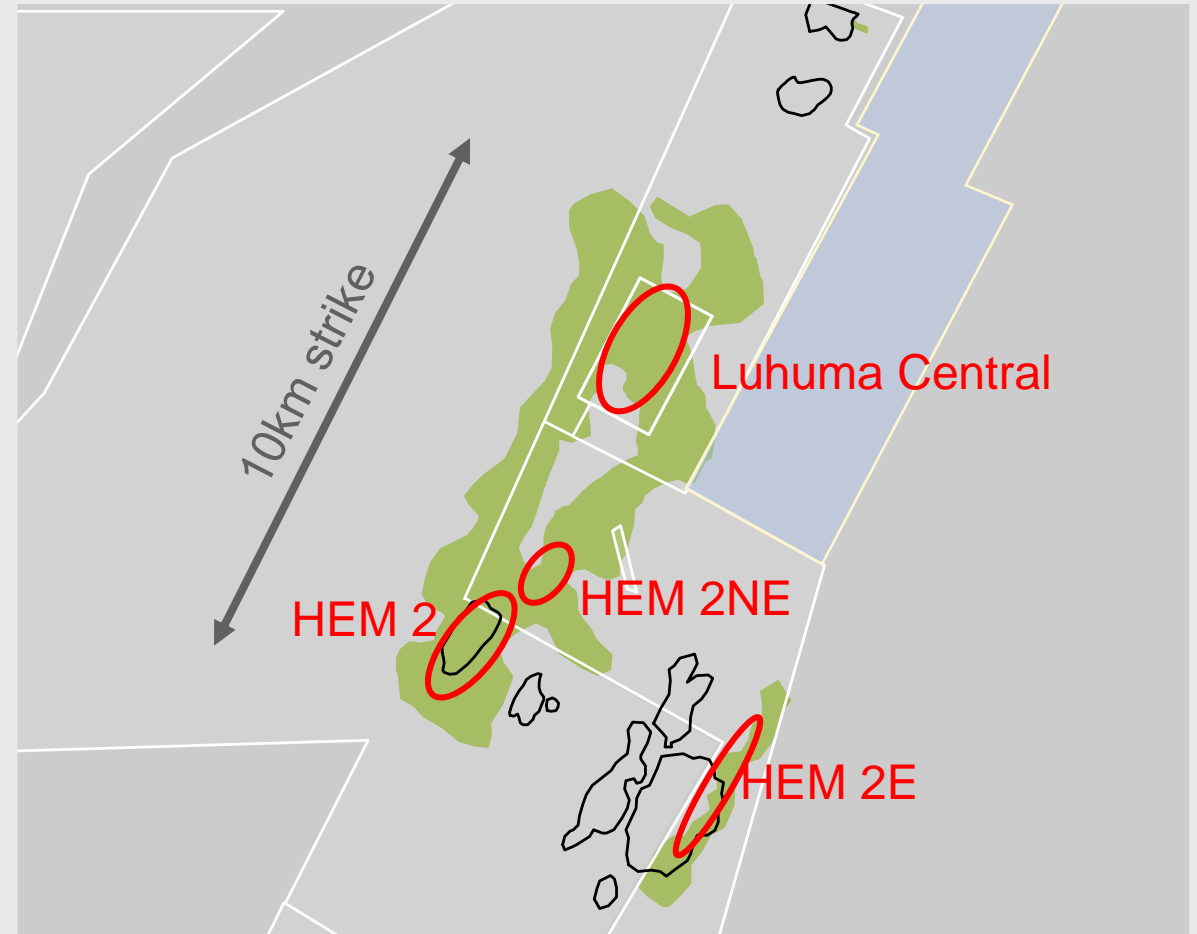
HEM 2NE

AMT surveys completed

Historical disseminated and massive nickel sulphide intercepts

HEM 2E

Coincident EM, gravity and soil geochem generated targets



Luhuma Central

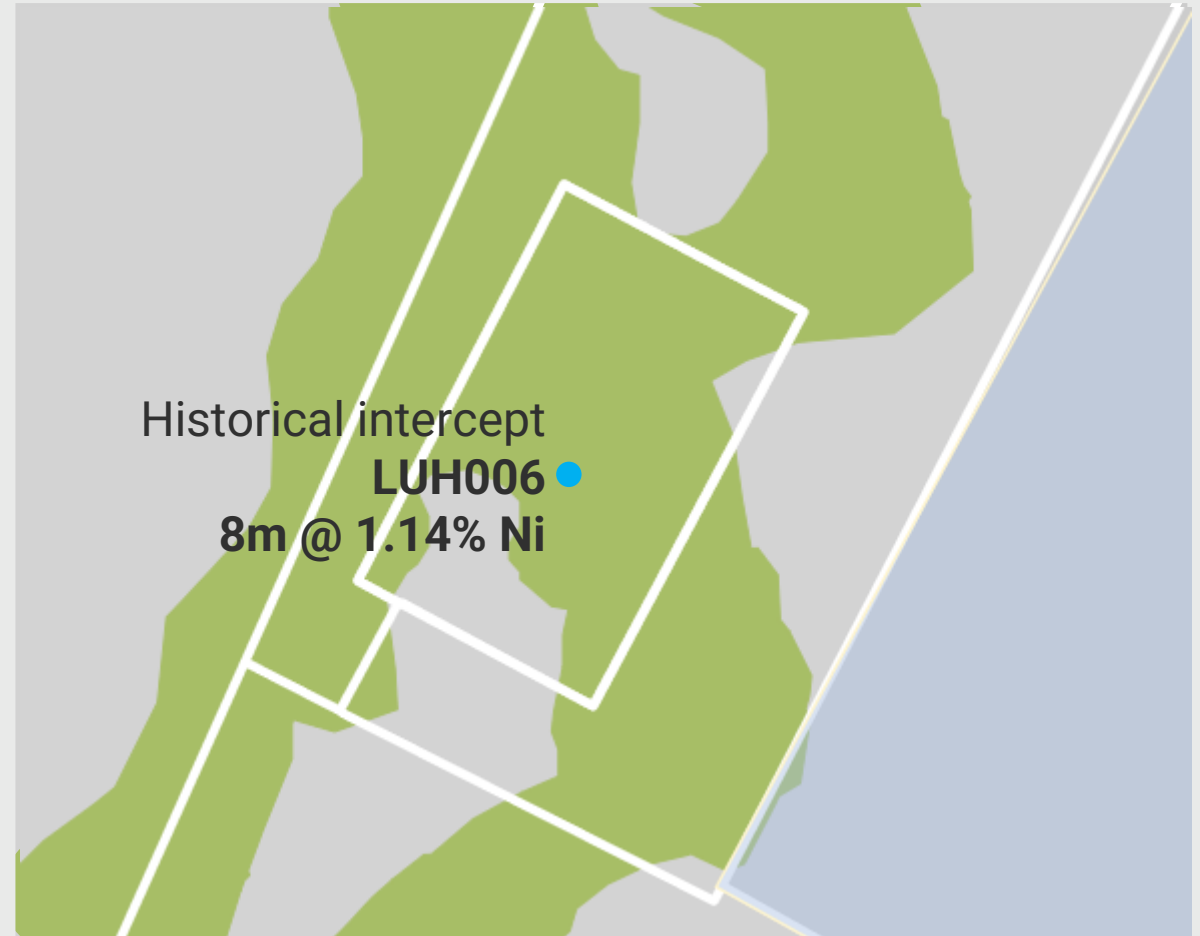
Historical nickel intercept leading the way

New 100% owned tenement has identified nickel sulphides

- Tenement awarded to Luhuma Central in May 2023 sits within the Luhuma JV ground
- Previous drilling by BHP intersected 8.4m @ 1.14% Ni in LUH-06
- Along strike from coincident gravity and heli-EM anomalies

“Luhuma Central was targeted for acquisition due to the known presence of nickel sulphides.

“Our initial drilling has not disappointed.”



Luhuma Central

Nickel sulphides intersected in first Adavale drillholes

DDLUHC-001



pXRF readings indicate a nickel grade of somewhere between 1.2% and 2.3% Ni for the 4.15m intersection with a calculated average of 1.5% Ni.

Visual estimates of mineral abundance should never be considered a proxy or substitute for laboratory analyses where concentrations or grades are the factor of principal economic interest. Visual estimates also potentially provide no information regarding impurities or deleterious physical properties relevant to valuations.



Luhuma Central

Nickel sulphides intersected in first Adavale drillholes

DDLUHC-002



pXRF readings indicate a calculated average nickel grade of 2.0% Ni.

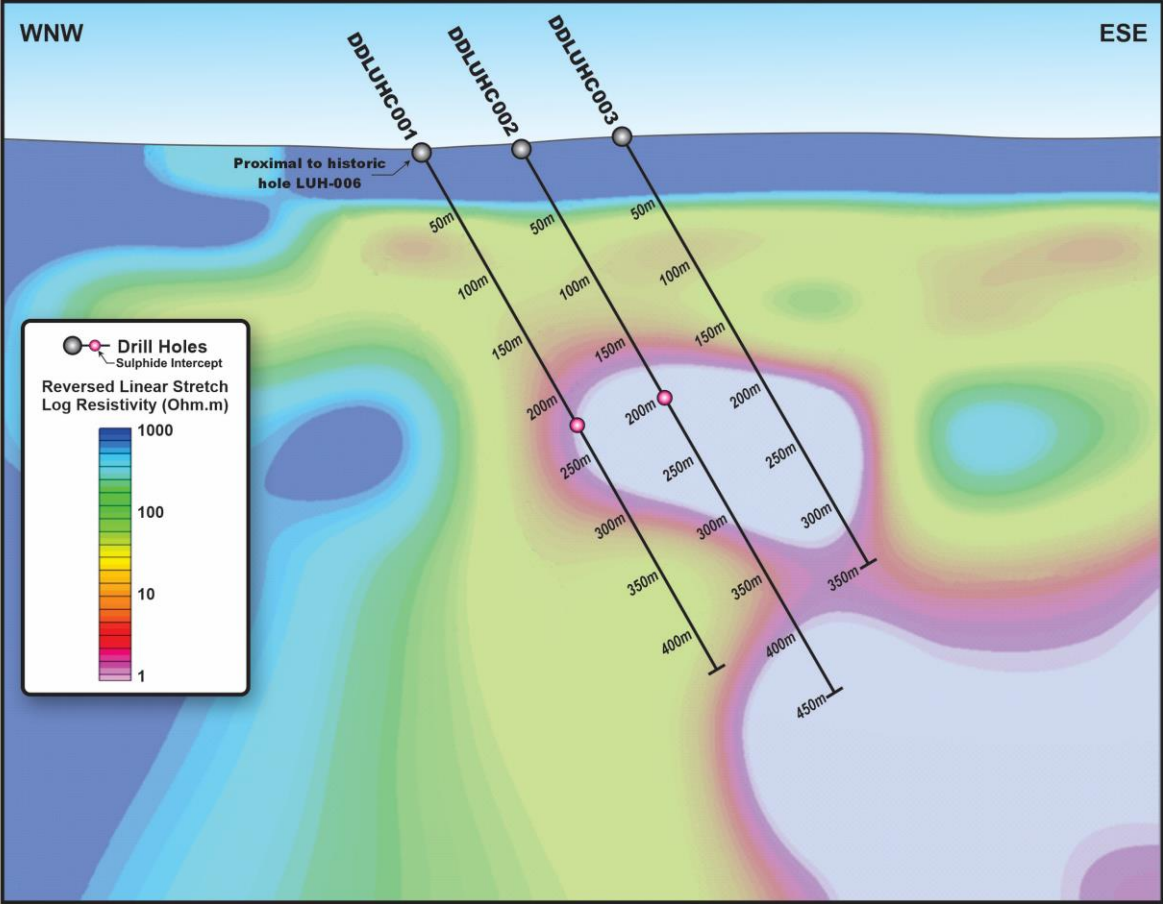
Zone of blebby and heavily disseminated sulphides with occasional semi-massive veinlets intersected

Visual estimates of mineral abundance should never be considered a proxy or substitute for laboratory analyses where concentrations or grades are the factor of principal economic interest. Visual estimates also potentially provide no information regarding impurities or deleterious physical properties relevant to valuations.



Luhuma Central

Nickel sulphides intersected in first Adavale drillholes



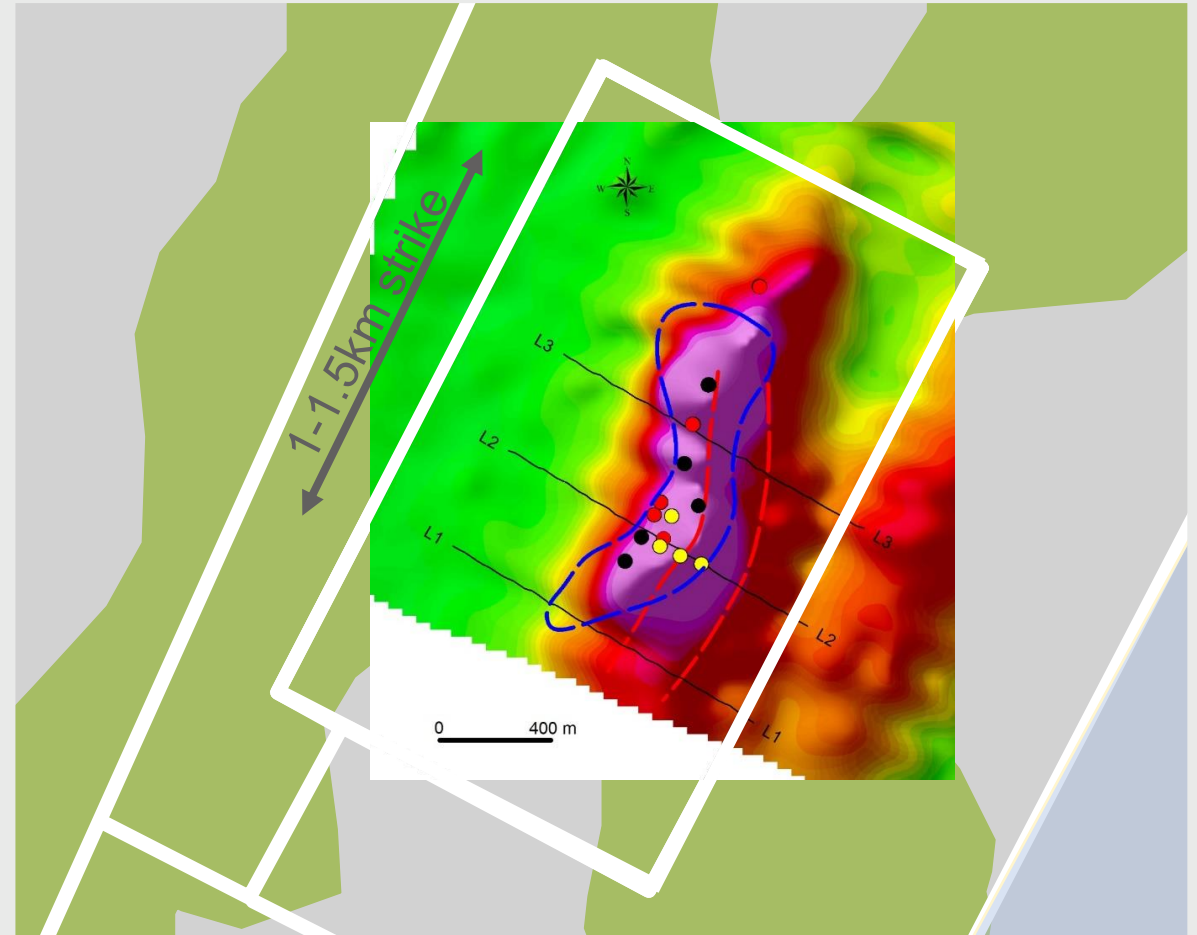
Luhuma Central

Nickel sulphides intersected in first Adavale drillholes

- Historical drillholes outlined ultramafic and massive sulphide intercepts.
- Interpreted prospective AMT anomaly extends over 1-1.5km
- Future drilling to test extensions along strike as well as down dip

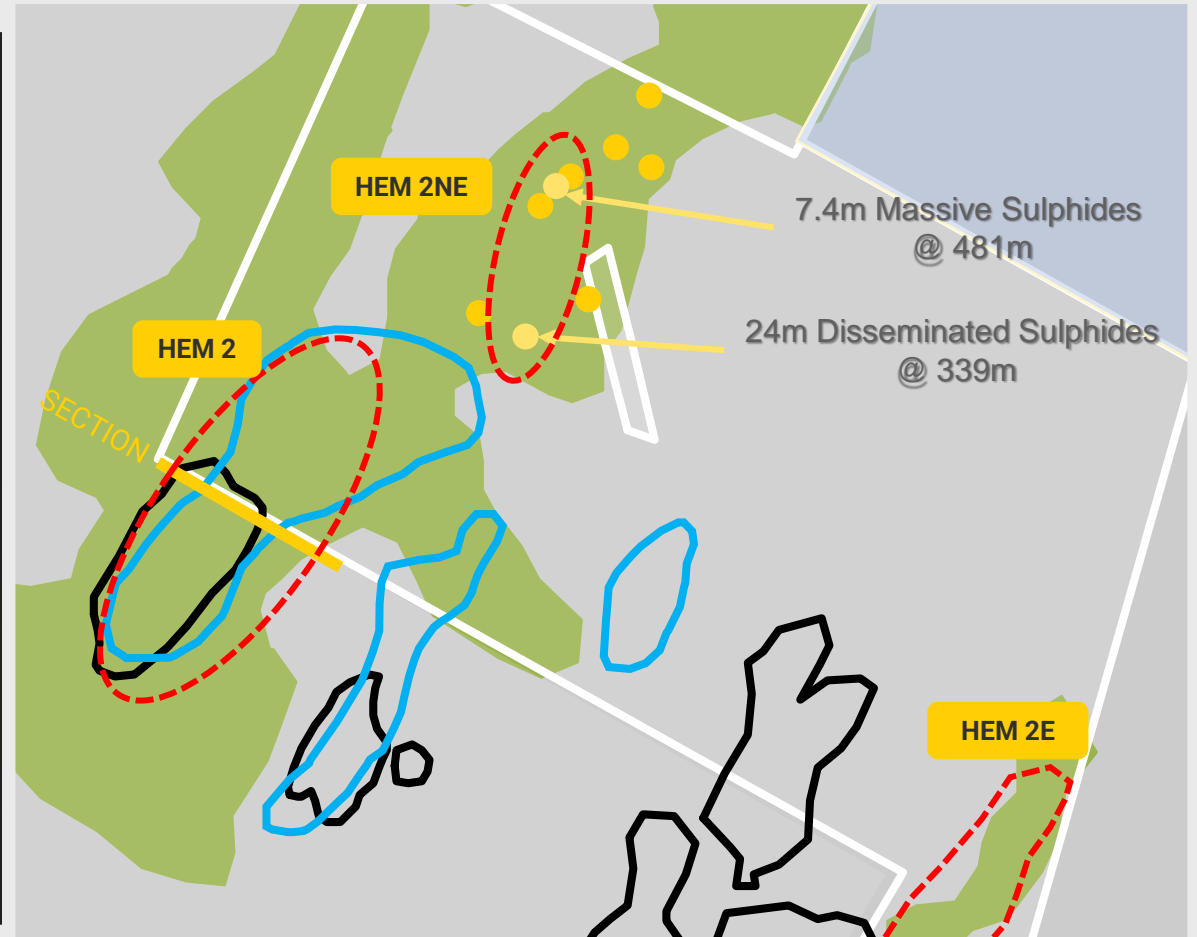
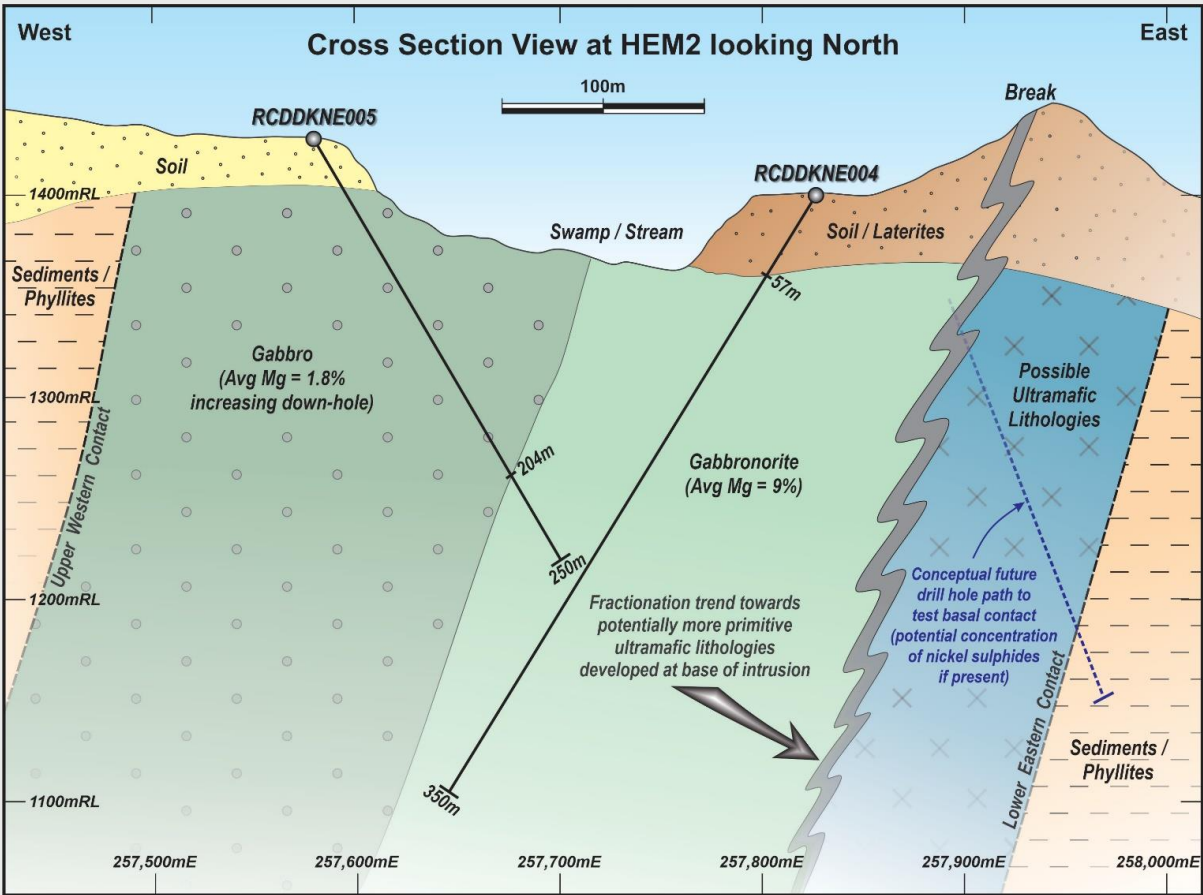
LEGEND

● Planned/In progress hole	▬ AMT Target Anomaly
● Massive sulphide historic hole	▬ Mag low ultramafics
● Ultramafic rocks	▬ Adavale tenure



HEM 2 and HEM 2NE

Drilling in 2022 intersected the right geology



○ Mag Anomaly
 Gravity Anomaly
 ■ Soils Anomaly

Next Steps

Busy for the remainder of 2023

- Expand diamond drilling at Luhuma Central
- Diamond drilling at HEM 2 & HEM2 NE
- RC drilling at HEM 2E & HEM 4
- Downhole EM on all diamond holes
- AMT at select targets
- Assays from July onwards



Investment Highlights



Electrification & Decarbonisation

Exposure to both Nickel & Uranium



Nearology

Proximal to high-grade nickel sulphide resources in the East African Nickel Belt



Nickel Results

High impact drilling campaign restarted ~5,000m



Uranium Bonus

Large project area with identified uranium mineralisation



Contacts

David Riekie

Executive Director

david@adavaleresources.com

For media and broker enquiries

Andrew Rowell

White Noise Communications

andrew@whitenoisecomms.com

investor@adavaleresources.com

M: 0400 466 226



www.adavaleresources.com



investor@adavaleresources.com



Adavale Resources Limited



@AdavaleL