

**Deal Name:** **Driver Australia Seven**

**Issuer:** Perpetual Corporate Trust Limited (ABN 99 000 341 533)  
of Level 18, 123 Pitt Street,  
Sydney NSW 2000 Australia  
in its capacity as trustee of the Driver Australia Seven Trust.

**Originator of the Receivables:** Volkswagen Financial Services Australia Pty Ltd

**Seller of the Receivables:** Volkswagen Financial Services Australia Pty Ltd

**Servicer name:** Volkswagen Financial Services Australia Pty Ltd

**Reporting Entity:** Volkswagen Financial Services Australia Pty Ltd  
ABS Operations  
(Physical Address)  
Level 1, 24 Muir Road,  
Chullora NSW 2190  
(Postal Address)  
Locked Bag 4002  
Chullora NSW 2190

**Contact:** Phone: +61 2 9751 6257  
Fax: +61 2 9695 6399  
Email: ABSOperations.Australia@vwfs.com.au

**Corporate Service Provider:** Perpetual Corporate Trust Limited  
(ABN 99 000 341 533)  
of Level 18, 123 Pitt Street,  
Sydney NSW 2000 Australia in its personal capacity.



## Contents

Page	Table of Contents
1	<a href="#">Cover</a>
2	<a href="#">Contents</a>
3	<a href="#">Reporting Details</a>
4	<a href="#">Parties Overview</a>
5	<a href="#">Transaction Events I</a>
6	<a href="#">Transaction Events II</a>
7	<a href="#">Transaction Events III</a>
8	<a href="#">Information regarding the Notes I</a>
9	<a href="#">Information regarding the Notes II</a>
10	<a href="#">Cash Collateral Account</a>
11	<a href="#">Credit Enhancement</a>
12	<a href="#">Swap Fixing / Waterfall</a>
13	<a href="#">Retention of Net Economic Interest</a>
14	<a href="#">Amortisation Profile I</a>
15	<a href="#">Amortisation Profile II</a>
16	<a href="#">Run Out Schedule I</a>
18	<a href="#">Run Out Schedule II</a>
19	<a href="#">Outstanding Contracts I</a>
21	<a href="#">Outstanding Contracts II</a>
22	<a href="#">Arrears</a>
24	<a href="#">Net Salvage Loss</a>
25	<a href="#">Net Salvage After Recoveries</a>
26	<a href="#">Prepayments</a>
27	<a href="#">Pool Data I</a>
29	<a href="#">Pool Data II</a>
30	<a href="#">Pool Data III</a>
32	<a href="#">Pool Data IV</a>
34	<a href="#">Pool Data V</a>
36	<a href="#">Pool Data VI</a>
37	<a href="#">Pool Data VII</a>
43	<a href="#">Pool Data VIII</a>
45	<a href="#">Pool Data IX</a>
47	<a href="#">Hardship Extensions</a>
48	<a href="#">Engine Type</a>
50	<a href="#">Contract Level Data</a>

## Reporting Details

### Deal Overview

Pool Cut Date	31/10/2021	Publication Date:	17/07/2023 (16th of each month)
Scheduled Date of Clean-Up-Call	09/2025	Payment Date:	21/07/2023 (21st of each month)
Legal Maturity Date	21/01/2030	Reporting Date:	30/06/2023
Issue Date	22/11/2021	Asset Collection Period:	from 01/06/2023 until 30/06/2023
Period No.:	20	Interest Accrual Period	from 21/06/2023 until 21/07/2023
Reporting frequency:	Monthly	Note Payment Period:	from 21/06/2023 until 21/07/2023
Next Payment Date:	21/08/2023	Days accrued:	30

Vehicle Type at Pool Cut	Number of Contracts	Percentage of Contracts	Outstanding Discounted Receivables Balance	Percentage Outstanding Discounted Receivables Balance
New	10,680	70.07%	463,158,976.27 AUD	77.19%
Used	4,561	29.93%	136,866,121.79 AUD	22.81%
<b>Total</b>	<b>15,241</b>	<b>100.00%</b>	<b>600,025,098.06 AUD</b>	<b>100.00%</b>

Credit Type at Pool Cut	Number of Contracts	Percentage of Contracts	Outstanding Discounted Receivables Balance	Percentage Outstanding Discounted Receivables Balance
Chattel Mortgage	9,371	61.49%	414,965,143.56 AUD	69.16%
Consumer Loan	5,870	38.51%	185,059,954.50 AUD	30.84%
<b>Total</b>	<b>15,241</b>	<b>100.00%</b>	<b>600,025,098.06 AUD</b>	<b>100.00%</b>

Parties Overview

<p><b>Lead Managers:</b></p> <p><b>Australia and New Zealand Banking Group Limited</b> <b>(ABN 11 005 357 522)</b> ANZ Tower 242 Pitt Street Sydney, NSW 2000 Australia</p> <p><b>Bank of America Merrill Lynch (which is the trading name of Merrill Lynch International)</b> <b>(ARBN 125 336 567)</b> Merrill Lynch Financial Centre 2 King Edward Street London EC1A 1HQ United Kingdom</p>	<p><b>Security Trustee:</b></p> <p><b>P.T. Limited</b> <b>(ABN 67 004 454 666)</b> Level 18 123 Pitt Street Sydney NSW 2000 Australia</p>
<p><b>Trustee:</b></p> <p><b>Perpetual Corporate Trust Limited</b> <b>(ABN 99 000 341 533)</b> of Level 18, 123 Pitt Street, Sydney NSW 2000 Australia in its capacity as trustee of the Driver Australia Seven Trust.</p>	<p><b>Trust Manager:</b></p> <p><b>Perpetual Nominees Limited</b> <b>(ABN 37 000 733 700)</b> of Level 18, 123 Pitt Street, Sydney NSW 2000 Australia in its capacity as the trust manager for the Driver Australia Seven Trust</p>
<p><b>Sub Trust Manager:</b></p> <p><b>Volkswagen Financial Services Australia Pty Limited</b> <b>(ABN 20 097 071 460)</b> Level 1, 24 Muir Road, Chullora, NSW 2190</p>	<p><b>Account Bank:</b></p> <p><b>Australia and New Zealand Banking Group Limited</b> <b>(ABN 11 005 357 522)</b> ANZ Tower 242 Pitt Street Sydney, NSW 2000 Australia</p>
<p><b>Clearing Systems:</b></p> <p><b>Austraclear Limited</b> 30-32 Grosvenor Street. Sydney, NSW 2000</p>	<p><b>Swap Counterparty:</b></p> <p><b>ING Bank N.V.</b> <b>(ID 26 300 892 1)</b> Bijlmerdreef 106 1102 CT Amsterdam The Netherlands</p>
<p><b>Servicer:</b></p> <p><b>Volkswagen Financial Services Australia Pty Limited</b> <b>(ABN 20 097 071 460)</b> Level 1, 24 Muir Road, Chullora, NSW 2190 email: ABSOperations.Australia@vwfs.com.au phone: +61 2 9751 6257</p>	<p><b>Rating Agencies:</b></p> <p><b>Fitch Ratings</b> Attn.: Australia Surveillance Suite 15.01, Level 15, 135 King Street Sydney, NSW 2000 Australia email: australia.surveillance@fitchratings.com</p> <p><b>Moody's</b> Attn.: Monitor Sydney Level 10, 1 O'Connell Street Sydney, NSW 2000 Australia email: Monitor.Sydney@moodys.com</p>

**Transaction Events (I)**

**Clean-Up Call Condition**

Percentage of Current Outstanding Discounted Receivables Balance	50.84%	
Min. Percentage of Outstanding Discounted Receivables Balance	10.00%	The Clean-Up-Call Condition is expected to be reached in 09/2025.

**Clean-Up Call**

VWFS Australia will have the right at its option to exercise a Clean-Up Call and to repurchase all (but not only some) of the Purchased Receivables from the Issuer at any time when the then outstanding Aggregate Discounted Receivables Balance is less than ten (10) per cent. of the Aggregate Cut-off Date Discounted Receivables Balance and, assuming the Transaction Documents are given full effect, all payment obligations under the Notes, including principal and accrued interest, will thereby be fulfilled in accordance with the Order of Priority (the Clean-up Call Conditions).

Repurchase of Receivables	Number of contracts	% of Contracts	Outstanding Discounted Receivables Balance	% of Outstanding Discounted Receivables Balance	Interest Compensation Payment	Re-Purchase Price
Current Period	-	0.00%	- AUD	0.00%	- AUD	- AUD
Previous Periods	-	0.00%	- AUD	0.00%	- AUD	- AUD
<b>Total</b>	-	<b>0.00%</b>	<b>- AUD</b>	<b>0.00%</b>	<b>- AUD</b>	<b>- AUD</b>

If a repurchase of receivables occurred, it would only result from non-eligibility as of the respective Pool Cut Date (which has been discovered at a later stage), a Legitimate Repudiation of a Receivables Contract, a Reloaded Contract or a Flat-Cancelled Contract.

**Transaction Party Replacements**

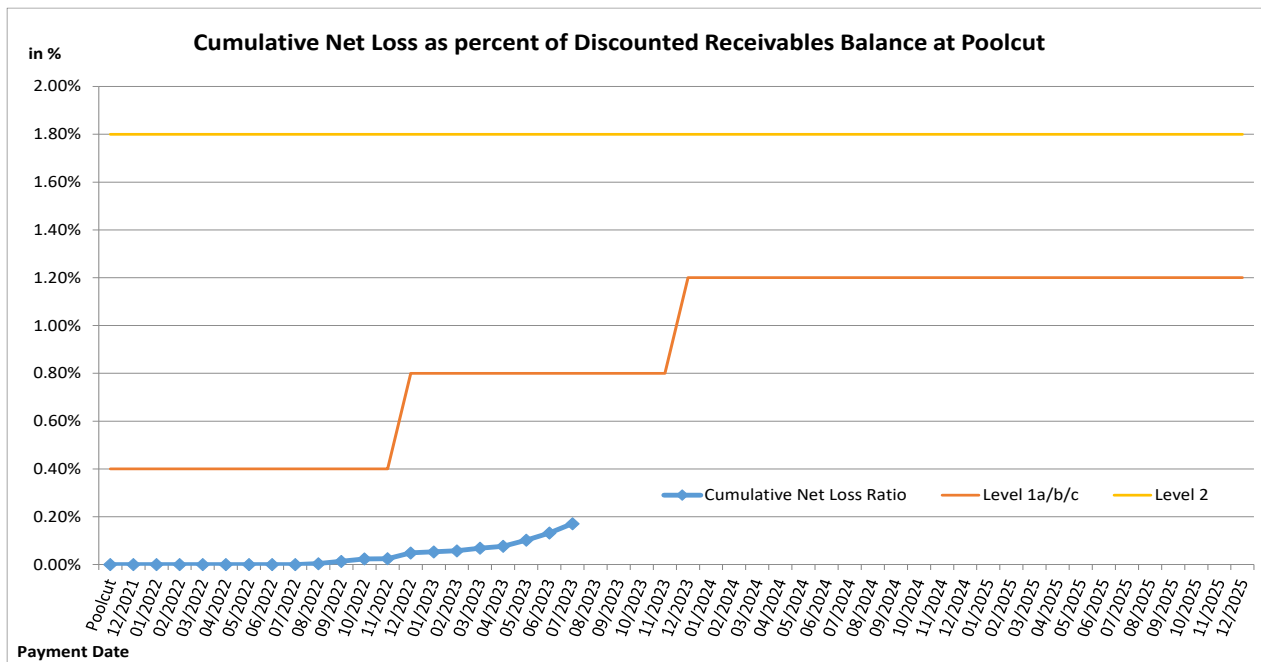
Capacity of Transaction Party	Date of Replacement	Reason for Replacement	Replaced Party	Replaced by

**Transaction Events (II)**

**Credit Enhancement Increase Conditions**

Level 1a Credit Enhancement Increase Condition - Cumulative Net Losses do not amount to 0.4% for any Payment Date prior to or during Nov 2022	NO
Level 1b Credit Enhancement Increase Condition - Cumulative Net Losses do not amount to 0.8% for any Payment Date from Dec 2022 but prior to or during Nov 2023	NO
Level 1c Credit Enhancement Increase Condition - Cumulative Net Losses do not amount to 1.2% for any Payment Date after Nov 2023	NO
Level 2 Credit Enhancement Increase Condition - Cumulative Net Losses do not amount to 1.8% for any Payment Date	NO

Net losses	Net Loss Amount
Net Salvage Loss registered in current Period	232,890.36 AUD
Cumulative Net Salvage Loss incl. current Period	1,025,059.75 AUD
Cumulative Net Salvage Loss as of the End of the Monthly Period	1,025,059.75 AUD
Discounted Balance as of Pool Cut Date	600,025,098.06 AUD
Cumulative Net Loss as percentage of Discounted Receivables Balance at Pool Cut	0.17084%



**Transaction Events (III)**

**Account Bank:**

Australia and New Zealand Banking Group Limited

Current Rating \*

Minimum required Rating (if no short term Rating available, the higher long term rating is applicable)

or

Fitch			Moody's		
Long Term	Short Term	Outlook	Long Term	Short Term	Outlook
A+	F1	Stable	Aa3	P-1	Stable
-	F1	-	A2	P-1	-
A	-	-	A2	P-1	-

If the Account Bank ceases to have the Account Bank Required Rating it shall, at its own cost,

(i) transfer the accounts to an Eligible Collateral Bank, or

(ii) provide a guarantee from an Eligible Guarantor, or

If none of the measures is taken within a given timespan, the Issuer may enter into new banking arrangements at its own initiative with another Account Bank.

(Please refer to the Prospectus for a complete description of the mechanism)

**Required Rating:**

**Fulfilled**

**Swap Counterparty**

ING Bank N.V.

Current Rating \*

Minimum required Rating for Class A Notes

Minimum required Rating for Class B Notes

Fitch			Moody's		
Long Term	Short Term	Outlook	Long Term	Short Term	Outlook
AA-	F1+	Stable	A1	P-1	Stable
A	F1	-	A3	-	-
-	-	-	A3	-	-

If the Swap Bank falls below the above mentioned Minimum Rating (Level I) it shall provide Eligible Credit Support by means of Cash or certain types of Prime Debt Obligations

If the Swap Bank ceases to have the even lower Rating as an Eligible Swap Counterparty (Level II) it shall, at its own cost,

(i) transfer all rights and obligations under the Swap Agreement to another Eligible Swap Partner or

(ii) provide a guarantee from an Eligible Guarantor.

If none of the measures is taken within a given timespan, the Issuer may enter into new arrangements at its own initiative with another Swap Bank.

(Please refer to the Prospectus for a complete description of the mechanism)

**Required Rating:**

**Fulfilled**

**Servicer**

Volkswagen Financial Services Australia Pty Ltd

If the Monthly Remittance Condition is satisfied, VWFS Australia, as the Servicer, is required to pay collections of the Purchased Receivables (including proceeds from the disposition of any Financed Objects) received by it during each Monthly Period into the Distribution Account in a single deposit no later than the Payment Date for that Monthly Period.

If the Monthly Remittance Condition is not met, the Servicer must remit collections received by it in respect of the Purchased Receivables in accordance with the procedure outlined in detail in "ADMINISTRATION OF THE PURCHASED RECEIVABLES UNDER THE SERVICING AGREEMENT - Commingling".

**Monthly  
Remittance  
Condition:**

**Fulfilled**

**Information regarding the Notes I**

Rating at Issue Date	Class A	Class B
Moody's	Aaa (sf)	Aa2 (sf)
Fitch	AAAsf	NRsf

Current Rating	Class A	Class B
Moody's	Aaa (sf)	Aa1 (sf)
Fitch	AAAsf	NRsf

Information on Notes	Class A	Class B
Legal maturity date	21/01/2030	21/01/2030
Scheduled Clean Up Call	Sep 2025	Sep 2025
ISIN:	AU3FN0063434	AU3FN0063442
Common Code:	239718256	239718272
Nominal Amount	100,000.00 AUD	100,000.00 AUD

Information on Interest	Class A	Class B
Spread/ Margin	70 bps	100 bps
Index Rate	1-Month-BBSW	1-Month-BBSW
Fixed/Floating	floating	floating
Current Coupon	1-Month-BBSW + 70	1-Month-BBSW + 100
Day Count Convention	actual/365	actual/365



## Information regarding the Notes II

Monthly Period:	06/2023
Payment Date:	21/07/2023
Interest Accrual Period (from/until)	from 21/06/2023 until 21/07/2023
Days accrued	30
Index Rate	1-Month-BBSW
Base Interest Rate:	4.0950%
Day Count Convention	actual/365

Interest Payments	Class A	Class B
Total Interest Amount of the Reporting Period	949,177.28 AUD	138,193.15 AUD
Paid Interest	949,177.28 AUD	138,193.15 AUD

Unpaid Interest	Class A	Class B
Unpaid Interest in the Reporting Period	- AUD	- AUD
Cumulative unpaid Interest	- AUD	- AUD

Note Balance	Class A	Class B
Note Balance as of Poolcut	526,200,000.00 AUD	33,000,000.00 AUD
Note Balance as of the Beginning of the Period	240,840,950.70 AUD	33,000,000.00 AUD
Redemption Amount per Class	13,837,902.36 AUD	- AUD
<b>Class Balance as of the End of the Period</b>	<b>227,003,048.34 AUD</b>	<b>33,000,000.00 AUD</b>

Payments to Investors per note	Class A	Class B
Interest Per Note	180.38 AUD	418.77 AUD
Principal Repayment by note	2,629.78 AUD	- AUD
Number of Notes	5,262	330
Note Factor	0.4314007	1.0000000

Overcollateralisation Percentage	Class A	Class B
Initial OC Percentage at Poolcut	12.3037%	6.8039%
Current OC Percentage	25.5900%	14.7700%
Target OC Percentage	26.0000%	18.0000%

Subordinated Loan	
Balance as of the Beginning of the Period	34,115,247.75 AUD
Regular Redemption from Waterfall	- AUD
Redemption from Cash Collateral Account	- AUD
Balance as of the End of the Period	34,115,247.75 AUD

## Cash Collateral Account

Cash collateral account (CCA)	Value
<b>CCA Opening Balance - Initial balance at poolcut</b>	<b>7,200,000.00 AUD</b>
<b>Balance as of the beginning of the period</b>	<b>6,000,000.00 AUD</b>
<b>Specified General Cash Collateral Account Balance</b>	<b>6,000,000.00 AUD</b>
the greater of: 1.20 per cent of the Aggregate Discounted Receivables Balance as of the end of the Monthly Period; and	3,660,918.39 AUD
the lesser of: \$6,000,000; and	6,000,000.00 AUD
the aggregate outstanding principal amount of the Class A Notes and Class B Notes as of the end of the Monthly Period	273,840,950.70 AUD
<b>Payments</b>	<b>- AUD</b>
General payment from CCA	- AUD
General payment to CCA	- AUD
<b>Balance as of the end of the period</b>	<b>6,000,000.00 AUD</b>

## Credit Enhancement

Credit Enhancement as of Poolcut Date	% of Aggregate Discounted Receivables Balance	Value
Class B Note	5.50%	33,000,000.00 AUD
Subordinated Loan	5.80%	34,825,098.06 AUD
Overcollateralisation	1.00%	6,000,000.00 AUD
Cash Collateral Account	1.20%	7,200,000.00 AUD

Cash Collateral Account (CCA)	Value	in % of Outstanding Discounted Receivables Balance as of Poolcut Date
<b>Initial Balance at Poolcut</b>	7,200,000.00 AUD	1.20%
<b>Initial Targeted Balance at Poolcut</b>	7,200,000.00 AUD	1.20%
<b>Current Targeted Balance</b>	6,000,000.00 AUD	1.00%
<b>Balance as of the Beginning of the Period</b>	6,000,000.00 AUD	1.00%
Payment from CCA	- AUD	0.00%
Payment to CCA	- AUD	0.00%
<b>Balance as of the End of the Period</b>	6,000,000.00 AUD	1.00%

## Calculation of Credit Enhancement

Initially, Driver Australia Seven's Credit Enhancement consists of the respective Note Issue in comparison to the Discounted Receivables Balance as of Poolcut, minus any Senior Debt Issuance. This 'Overcollateralisation' (i.e. Credit Enhancement excluding the Cash Collateral Account) is specific for each Note Series and increases with its seniority.

Subsequently, the 'Overcollateralisation' is calculated (as an Overcollateralisation Percentage) on a monthly basis, all on end of month figures. Considering the seniority of the respective Note Series, redemption is made until a Target Overcollateralisation Percentage has been reached. All remaining funds will be used to perform payments in the more junior positions of the Order of Priority.

The Target OC percentages for each Note Class are determined subject to 3 items:

- They will increase in 2 steps in case the Cumulative Net Loss Ratio exceeds a certain level and Credit Enhancement Increase Condition is met.
- They will increase to 100% if the Aggregate Discounted Receivables Balance falls below 10.00% of the Aggregate Discounted Receivables Balance at Cut-Off Date (without a Clean-Up Call being exercised).
- A Foreclosure Event causes the transaction to switch into sequential payment mode, in which case the OC Percentages will not determine the maximum redemption amount and may be exceeded.

In addition, there is the 'General Cash Reserve', in the form of a Cash Collateral Account, which is in principle to the benefit of all Tranches over the entire lifetime of the transaction.

**Swap Fixing / Waterfall**

<b>Amortising Interest Rate Swap</b>	<b>Class A</b>	<b>Class B</b>
Initial Principal	526,200,000.00 AUD	33,000,000.00 AUD
Underlying Principal for Reporting Period	240,840,950.70 AUD	33,000,000.00 AUD
Paying Leg	Fixed Interest Rate	Fixed Interest Rate
Receiving Leg	Floating Interest Rate	Floating Interest Rate
Net Swap Payments - Net Swap Receipts	(647,122.59 AUD)	(85,063.15 AUD)

<b>Available Distribution Amount Calculation</b>	<b>Payment to waterfall position</b>	<b>Remaining Amount</b>
1) i) Available Collections Amount from Contracts	15,205,580.95 AUD	15,205,580.95 AUD
1) ii) Available Collections - Interest on Trust Account	25,420.54 AUD	15,231,001.49 AUD
2) Drawings From Cash Collateral Account as provided for in clause 12.1 of the Issue Supplement	- AUD	15,231,001.49 AUD
3) i) Net Swap Receipts - Class A	647,122.59 AUD	15,878,124.08 AUD
3) ii) Net Swap Receipts - Class B	85,063.15 AUD	15,963,187.23 AUD
4) Damages and Indemnity Payments to Issuer	- AUD	15,963,187.23 AUD
5) Other Reimbursement Amounts	- AUD	15,963,187.23 AUD
6) Buffer Release Amount	(762,839.21 AUD)	15,200,348.02 AUD
Remaining Rounding Amount (M-1)	2.53 AUD	15,200,350.55 AUD

<b>Waterfall</b>	<b>Payment to waterfall position</b>	<b>Remaining Amount</b>
Available Distribution Amount	- AUD	15,200,350.55 AUD
1) Trust Beneficiary \$1	(1.00 AUD)	15,200,349.55 AUD
2) Taxes	- AUD	15,200,349.55 AUD
3) Trust Fees & Expenses and Servicer Fees	(275,032.51 AUD)	14,925,317.04 AUD
4. a) Net Swap Payments - Class A Notes	- AUD	14,925,317.04 AUD
4. b) Net Swap Payments - Class B Notes	- AUD	14,925,317.04 AUD
5. a) Interest accrued in prev. month - Class A	(949,177.28 AUD)	13,976,139.76 AUD
5. b) Interest Shortfalls from prior months - Class A	- AUD	13,976,139.76 AUD
6. a) Interest accrued in prev. month - Class B	(138,193.15 AUD)	13,837,946.61 AUD
6. b) Interest Shortfalls from prior months - Class B	- AUD	13,837,946.61 AUD
7) Payment to Cash Collateral Account	- AUD	13,837,946.61 AUD
8) Principal Payment - Class A	(13,837,902.36 AUD)	44.25 AUD
9) Principal Payment - Class B	- AUD	44.25 AUD
Remaining Rounding Amount (Current Period)	(44.25 AUD)	- AUD
10) Penalties, Costs, Expenses, Damages, Losses or Liabilities	- AUD	- AUD
11) Other Payment to Swap Counterparties	- AUD	- AUD
12) Subordinated Loan Accrued and Unpaid Interest	- AUD	- AUD
Interest Accrued this period on the Subordinated Loan	- AUD	- AUD
Unpaid Interest on the Subordinated Loan	- AUD	- AUD
13) Subordinated Loan Principal	- AUD	- AUD
14) Surplus Income Distribution to Beneficiary of the Trust	- AUD	- AUD

<b>Distribution of Cash Collateral Account surplus</b>	<b>Payment</b>	<b>Remaining Amount</b>
Payment from CCA	- AUD	- AUD
Payment of Interest Accrued this period on the Subordinated Loan	- AUD	- AUD
Payment of Unpaid Interest on the Subordinated Loan	- AUD	- AUD
Payment in respect of regular redemption to subordinated lender	- AUD	- AUD
Distribution to Beneficiary of the Trust	- AUD	- AUD

## Retention of Net Economic Interest

Period	Poolcut	Balance as at Current Period
<b>Total Assets</b>	<b>684,926,843.21 AUD</b>	<b>333,651,378.09 AUD</b>
Nominal Receivables Balance	684,926,843.21 AUD	333,651,378.09 AUD
<b>First loss piece</b>	<b>48,025,098.06 AUD</b>	<b>51,073,484.49 AUD</b>
Subordinated Loan balance	34,825,098.06 AUD	34,115,247.75 AUD
Overcollateralisation	6,000,000.00 AUD	10,958,236.74 AUD
General Cash Collateral Account balance	7,200,000.00 AUD	6,000,000.00 AUD
<b>Actual retention</b>	<b>7.01%</b>	<b>15.31%</b>

In its capacity as originator and original lender, VWFSA complies with the retention requirement of a material net economic interest in accordance with Article 6 (3) (d) of the European Securitisation Regulation.

By adhering to Article 6 (3) (d) of the European Securitisation Regulation, VWFSA will keep the exposures designated for retention on its balance sheet on an ongoing basis.

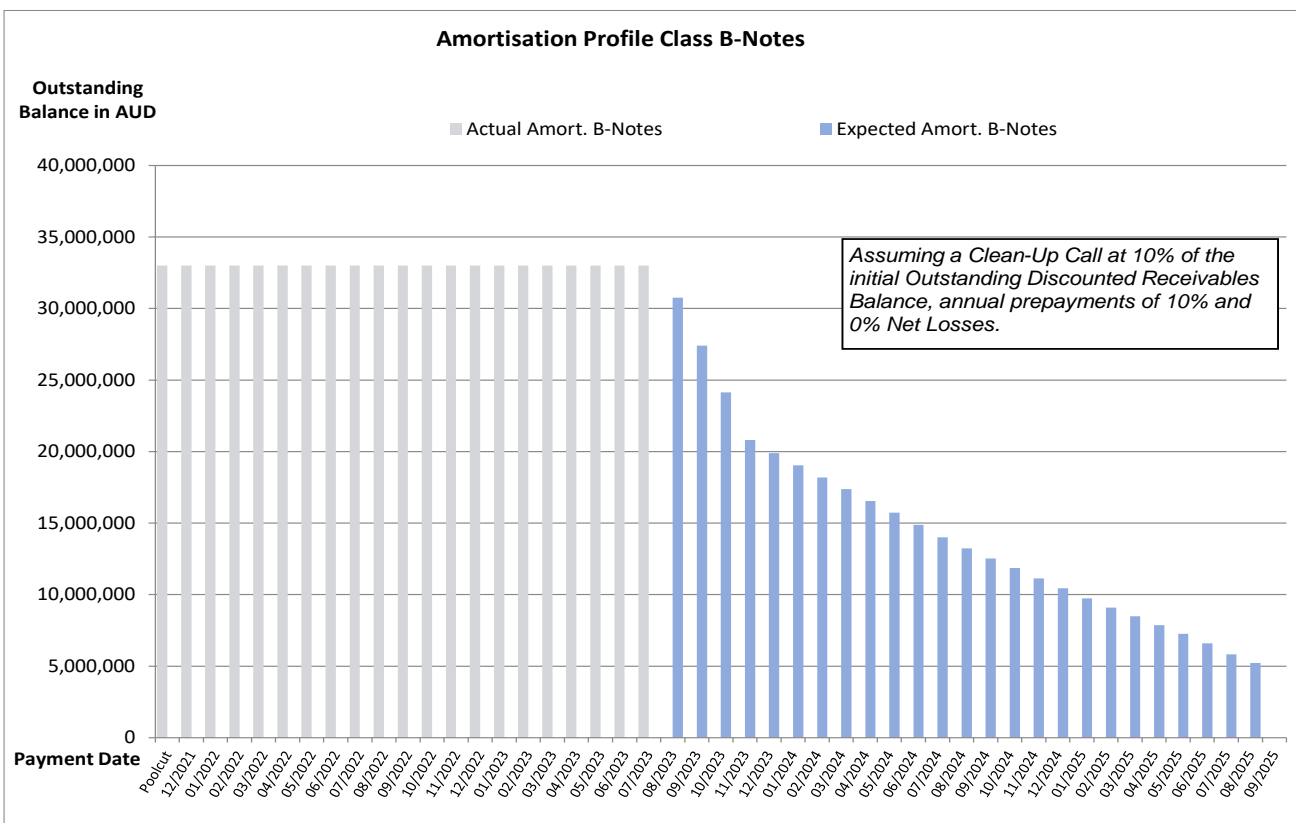
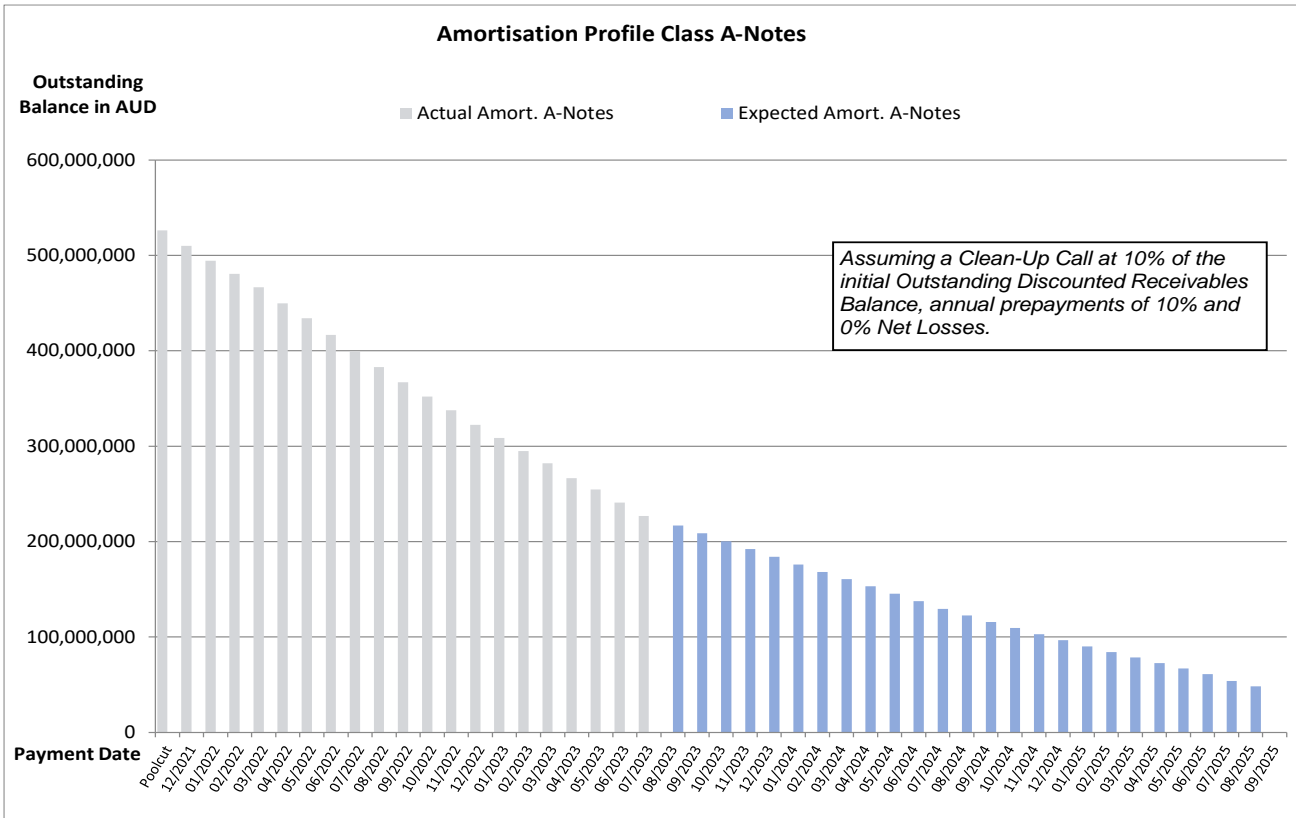
The latest end of month level of retention will be published on a monthly basis in the investor report.

### Amortisation Profile I

Note Class	Class A		Class B	
	At Closing: 1.85 yrs	Current: 1.27 yrs	At Closing: 2.84 yrs	Current: 1.08 yrs
WAL	Actual Note Balance	Forecasted Note Balance	Actual Note Balance	Forecasted Note Balance
Payment Date	Actual Note Balance	Forecasted Note Balance	Actual Note Balance	Forecasted Note Balance
Poolcut	526,200,000.00 AUD	- AUD	33,000,000.00 AUD	- AUD
12/2021	510,049,185.54 AUD	- AUD	33,000,000.00 AUD	- AUD
01/2022	494,276,866.74 AUD	- AUD	33,000,000.00 AUD	- AUD
02/2022	480,766,050.30 AUD	- AUD	33,000,000.00 AUD	- AUD
03/2022	466,604,640.18 AUD	- AUD	33,000,000.00 AUD	- AUD
04/2022	449,793,707.82 AUD	- AUD	33,000,000.00 AUD	- AUD
05/2022	434,204,927.58 AUD	- AUD	33,000,000.00 AUD	- AUD
06/2022	416,766,133.38 AUD	- AUD	33,000,000.00 AUD	- AUD
07/2022	399,553,605.18 AUD	- AUD	33,000,000.00 AUD	- AUD
08/2022	382,999,405.80 AUD	- AUD	33,000,000.00 AUD	- AUD
09/2022	367,050,704.76 AUD	- AUD	33,000,000.00 AUD	- AUD
10/2022	352,075,000.14 AUD	- AUD	33,000,000.00 AUD	- AUD
11/2022	337,754,730.24 AUD	- AUD	33,000,000.00 AUD	- AUD
12/2022	322,389,374.52 AUD	- AUD	33,000,000.00 AUD	- AUD
01/2023	308,497,905.00 AUD	- AUD	33,000,000.00 AUD	- AUD
02/2023	295,031,605.08 AUD	- AUD	33,000,000.00 AUD	- AUD
03/2023	282,007,734.12 AUD	- AUD	33,000,000.00 AUD	- AUD
04/2023	266,550,924.84 AUD	- AUD	33,000,000.00 AUD	- AUD
05/2023	254,648,386.08 AUD	- AUD	33,000,000.00 AUD	- AUD
06/2023	240,840,950.70 AUD	- AUD	33,000,000.00 AUD	- AUD
07/2023	227,003,048.34 AUD	- AUD	33,000,000.00 AUD	- AUD
08/2023	-	217,000,271.21 AUD	-	30,752,901.31 AUD
09/2023	-	208,633,064.90 AUD	-	27,404,057.69 AUD
10/2023	-	200,426,937.62 AUD	-	24,129,429.35 AUD
11/2023	-	192,163,502.95 AUD	-	20,812,957.01 AUD
12/2023	-	183,975,513.33 AUD	-	19,889,244.68 AUD
01/2024	-	176,094,713.16 AUD	-	19,037,266.28 AUD
02/2024	-	168,270,852.67 AUD	-	18,191,443.53 AUD
03/2024	-	160,719,968.87 AUD	-	17,375,131.77 AUD
04/2024	-	153,074,520.39 AUD	-	16,548,596.79 AUD
05/2024	-	145,517,602.93 AUD	-	15,731,632.75 AUD
06/2024	-	137,603,155.05 AUD	-	14,876,016.76 AUD
07/2024	-	129,503,188.93 AUD	-	14,000,344.75 AUD
08/2024	-	122,461,241.65 AUD	-	13,239,053.15 AUD
09/2024	-	115,819,921.86 AUD	-	12,521,072.63 AUD
10/2024	-	109,631,394.45 AUD	-	11,852,042.64 AUD
11/2024	-	103,050,721.12 AUD	-	11,140,618.50 AUD
12/2024	-	96,709,823.33 AUD	-	10,455,116.04 AUD
01/2025	-	90,083,940.94 AUD	-	9,738,804.42 AUD
02/2025	-	84,202,917.82 AUD	-	9,103,018.14 AUD
03/2025	-	78,570,540.68 AUD	-	8,494,112.50 AUD
04/2025	-	72,739,336.40 AUD	-	7,863,712.04 AUD
05/2025	-	67,141,077.30 AUD	-	7,258,494.84 AUD
06/2025	-	61,102,575.64 AUD	-	6,605,683.85 AUD
07/2025	-	53,874,016.25 AUD	-	5,824,217.97 AUD
08/2025	-	48,295,976.75 AUD	-	5,221,186.67 AUD
09/2025	-	- AUD	-	- AUD

\*Based on the following assumptions: CPR of 10%, Net Losses of 0% and Clean Up Call at 10% of the original outstanding discounted receivables balance

**Amortisation Profile II**



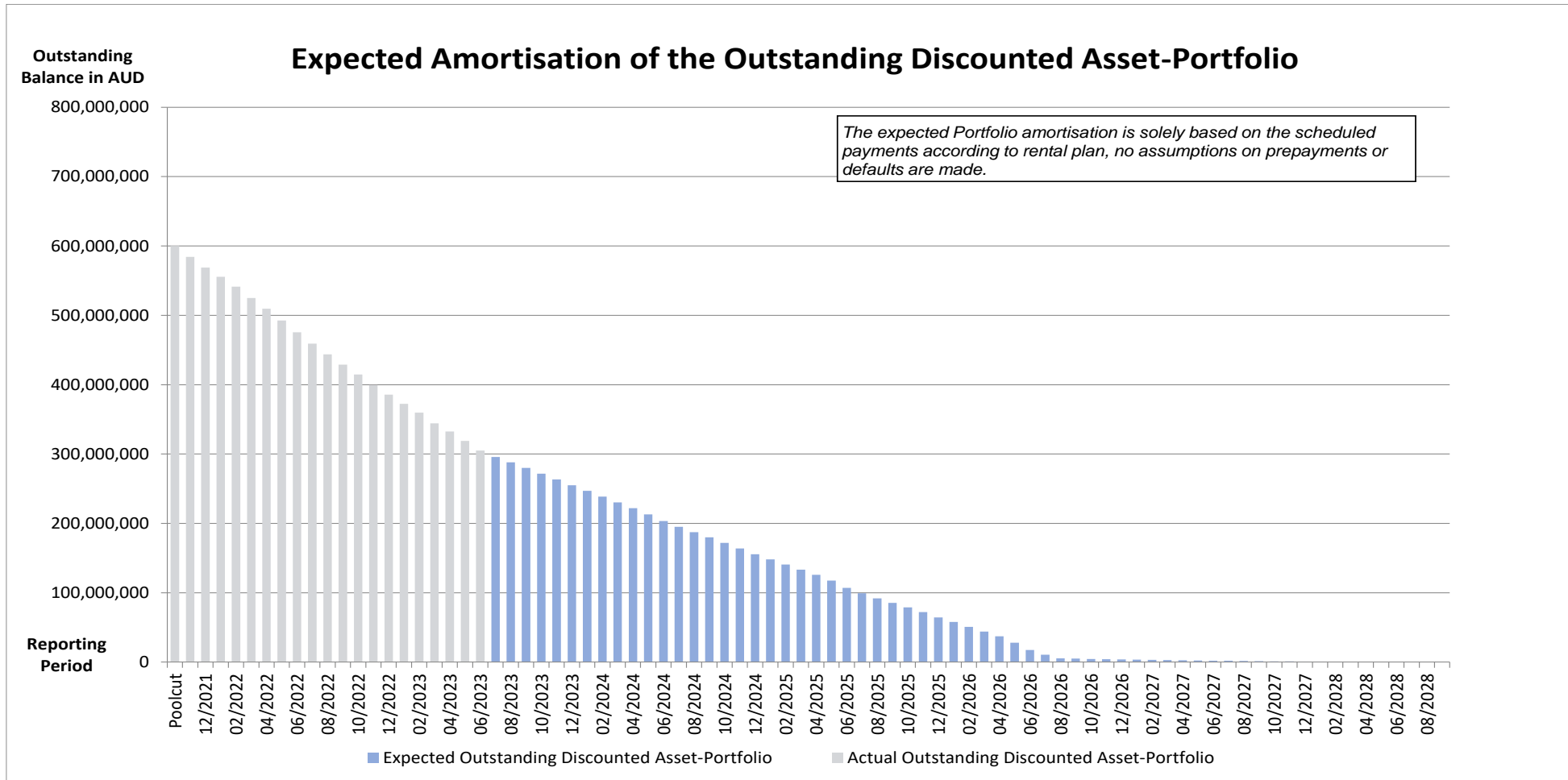
## Run Out Schedule I

End of Collection Period	Interest	Principal	Nominal Instalments
arrears	118,474.02 AUD	1,246,590.74 AUD	1,365,064.76 AUD
07/2023	1,251,067.35 AUD	7,995,518.16 AUD	9,246,585.51 AUD
08/2023	1,413,151.73 AUD	7,934,966.12 AUD	9,348,117.85 AUD
09/2023	1,384,608.95 AUD	8,057,805.32 AUD	9,442,414.27 AUD
10/2023	1,350,186.18 AUD	8,235,231.94 AUD	9,585,418.12 AUD
11/2023	1,312,813.79 AUD	8,448,176.59 AUD	9,760,990.38 AUD
12/2023	1,273,503.34 AUD	8,125,566.30 AUD	9,399,069.64 AUD
01/2024	1,235,053.51 AUD	8,252,022.30 AUD	9,487,075.81 AUD
02/2024	1,195,523.92 AUD	8,176,350.72 AUD	9,371,874.64 AUD
03/2024	1,156,192.62 AUD	8,375,429.09 AUD	9,531,621.71 AUD
04/2024	1,115,939.27 AUD	8,288,051.47 AUD	9,403,990.74 AUD
05/2024	1,075,889.74 AUD	8,985,176.00 AUD	10,061,065.74 AUD
06/2024	1,032,572.60 AUD	9,592,161.30 AUD	10,624,733.90 AUD
07/2024	986,296.19 AUD	8,293,683.03 AUD	9,279,979.22 AUD
08/2024	946,377.02 AUD	7,917,968.84 AUD	8,864,345.86 AUD
09/2024	908,133.41 AUD	7,330,990.60 AUD	8,239,124.01 AUD
10/2024	872,657.58 AUD	7,958,811.30 AUD	8,831,468.88 AUD
11/2024	834,026.53 AUD	8,018,043.51 AUD	8,852,070.04 AUD
12/2024	795,239.63 AUD	8,364,008.11 AUD	9,159,247.74 AUD
01/2025	754,657.66 AUD	7,424,526.27 AUD	8,179,183.93 AUD
02/2025	718,646.88 AUD	7,365,219.31 AUD	8,083,866.19 AUD
03/2025	682,984.07 AUD	7,454,597.66 AUD	8,137,581.73 AUD
04/2025	646,868.97 AUD	7,565,052.45 AUD	8,211,921.42 AUD
05/2025	610,115.60 AUD	8,189,240.60 AUD	8,799,356.20 AUD
06/2025	570,322.10 AUD	10,482,843.60 AUD	11,053,165.70 AUD
07/2025	519,334.79 AUD	7,842,144.95 AUD	8,361,479.74 AUD
08/2025	481,236.23 AUD	7,222,477.71 AUD	7,703,713.94 AUD
09/2025	446,331.43 AUD	6,609,488.45 AUD	7,055,819.88 AUD
10/2025	414,278.39 AUD	6,583,136.76 AUD	6,997,415.15 AUD
11/2025	382,280.35 AUD	6,774,506.21 AUD	7,156,786.56 AUD
12/2025	349,385.38 AUD	7,538,528.68 AUD	7,887,914.06 AUD
01/2026	312,844.49 AUD	6,625,665.76 AUD	6,938,510.25 AUD
02/2026	280,754.58 AUD	6,960,263.72 AUD	7,241,018.30 AUD
03/2026	246,912.15 AUD	7,020,234.07 AUD	7,267,146.22 AUD
04/2026	212,783.74 AUD	6,737,969.91 AUD	6,950,753.65 AUD
05/2026	180,011.10 AUD	9,309,439.99 AUD	9,489,451.09 AUD
06/2026	134,812.19 AUD	10,475,824.16 AUD	10,610,636.35 AUD
07/2026	84,024.49 AUD	6,604,133.51 AUD	6,688,158.00 AUD
08/2026	51,971.63 AUD	5,426,497.26 AUD	5,478,468.89 AUD
09/2026	25,578.04 AUD	344,276.28 AUD	369,854.32 AUD
10/2026	23,903.32 AUD	399,195.96 AUD	423,099.28 AUD
11/2026	21,965.01 AUD	346,077.32 AUD	368,042.33 AUD
12/2026	20,281.99 AUD	317,182.89 AUD	337,464.88 AUD
01/2027	18,745.75 AUD	311,193.89 AUD	329,939.64 AUD
02/2027	17,231.69 AUD	354,297.76 AUD	371,529.45 AUD
03/2027	15,540.13 AUD	302,095.17 AUD	317,635.30 AUD
04/2027	14,077.55 AUD	269,557.58 AUD	283,635.13 AUD
05/2027	12,766.22 AUD	282,420.06 AUD	295,186.28 AUD
06/2027	11,392.34 AUD	283,607.26 AUD	294,999.60 AUD
07/2027	10,012.69 AUD	242,640.96 AUD	252,653.65 AUD



08/2027	8,832.38 AUD	288,387.95 AUD	297,220.33 AUD
09/2027	7,429.48 AUD	216,874.96 AUD	224,304.44 AUD
10/2027	6,374.47 AUD	203,506.99 AUD	209,881.46 AUD
11/2027	5,384.52 AUD	187,020.24 AUD	192,404.76 AUD
12/2027	4,474.70 AUD	172,689.84 AUD	177,164.54 AUD
01/2028	3,634.53 AUD	157,847.89 AUD	161,482.42 AUD
02/2028	2,866.81 AUD	141,949.52 AUD	144,816.33 AUD
03/2028	2,176.23 AUD	126,408.71 AUD	128,584.94 AUD
04/2028	1,561.36 AUD	109,938.39 AUD	111,499.75 AUD
05/2028	1,026.48 AUD	85,592.80 AUD	86,619.28 AUD
06/2028	610.11 AUD	59,087.35 AUD	59,697.46 AUD
07/2028	322.74 AUD	36,652.55 AUD	36,975.29 AUD
08/2028	144.39 AUD	14,850.99 AUD	14,995.38 AUD
09/2028	72.18 AUD	3,932.19 AUD	4,004.37 AUD
10/2028	53.05 AUD	3,137.06 AUD	3,190.11 AUD
11/2028	37.78 AUD	2,550.97 AUD	2,588.75 AUD
12/2028	25.38 AUD	906.08 AUD	931.46 AUD
01/2029	20.97 AUD	910.49 AUD	931.46 AUD
02/2029	16.54 AUD	914.92 AUD	931.46 AUD
03/2029	12.09 AUD	919.37 AUD	931.46 AUD
04/2029	7.62 AUD	923.84 AUD	931.46 AUD
05/2029	3.12 AUD	642.13 AUD	645.25 AUD
06/2029	- AUD	- AUD	- AUD
<b>Total</b>	<b>28,574,845.26 AUD</b>	<b>305,076,532.83 AUD</b>	<b>333,651,378.09 AUD</b>

Run Out Schedule II



**Outstanding Contracts I - Overview**

Total Portfolio as of Poolcut Date			Product Type			
Contract Status Development	Number of Contracts	Outstanding Discounted Receivables Balance	Chattel Mortgage		Consumer Loan	
			Number of Contracts	Outstanding Discounted Receivables Balance	Number of Contracts	Outstanding Discounted Receivables Balance
Normal	15,241	600,025,098.06 AUD	9,371	414,965,143.56 AUD	5,870	185,059,954.50 AUD
In Advance	-	- AUD	-	- AUD	-	- AUD
In Arrears	-	- AUD	-	- AUD	-	- AUD
Paid out/Matured	-	- AUD	-	- AUD	-	- AUD
Early Payout	-	- AUD	-	- AUD	-	- AUD
Gross Salvage	-	- AUD	-	- AUD	-	- AUD
Net Salvage	-	- AUD	-	- AUD	-	- AUD
<b>Total</b>	<b>15,241</b>	<b>600,025,098.06 AUD</b>	<b>9,371</b>	<b>414,965,143.56 AUD</b>	<b>5,870</b>	<b>185,059,954.50 AUD</b>

Total Portfolio as of Previous Month			Product Type			
Contract Status Development	Number of Contracts	Outstanding Discounted Receivables Balance	Chattel Mortgage		Consumer Loan	
			Number of Contracts	Outstanding Discounted Receivables Balance	Number of Contracts	Outstanding Discounted Receivables Balance
Normal	9,021	252,759,420.55 AUD	5,927	187,054,854.58 AUD	3,094	65,704,565.97 AUD
In Advance	1,268	31,756,355.64 AUD	655	18,498,000.04 AUD	613	13,258,355.60 AUD
In Arrears	1,117	34,053,695.13 AUD	642	21,783,130.13 AUD	475	12,270,565.00 AUD
Paid out/Matured	563	- AUD	372	- AUD	191	- AUD
Early Payout	3,235	- AUD	1,745	- AUD	1,490	- AUD
Gross Salvage	6	218,319.77 AUD	4	110,883.50 AUD	2	107,436.27 AUD
Net Salvage	31	770,153.98 AUD	26	677,310.89 AUD	5	92,843.09 AUD
<b>Total</b>	<b>15,241</b>	<b>319,557,945.07 AUD</b>	<b>9,371</b>	<b>228,124,179.14 AUD</b>	<b>5,870</b>	<b>91,433,765.93 AUD</b>

Total Portfolio as of Current Reporting Period			Product Type			
Contract Status Development	Number of Contracts	Outstanding Discounted Receivables Balance	Chattel Mortgage		Consumer Loan	
			Number of Contracts	Outstanding Discounted Receivables Balance	Number of Contracts	Outstanding Discounted Receivables Balance
Normal	8,389	232,908,118.62 AUD	5,747	178,675,185.39 AUD	2,642	54,232,933.23 AUD
In Advance	1,298	31,560,631.95 AUD	538	15,587,664.94 AUD	760	15,972,967.01 AUD
In Arrears	1,464	40,445,242.71 AUD	769	23,498,774.68 AUD	695	16,946,468.03 AUD
Paid out/Matured	624	- AUD	425	- AUD	199	- AUD
Early Payout	3,425	- AUD	1,859	- AUD	1,566	- AUD
Gross Salvage	5	162,539.55 AUD	3	55,219.02 AUD	2	107,320.53 AUD
Net Salvage	36	993,642.79 AUD	30	899,896.65 AUD	6	93,746.14 AUD
<b>Total</b>	<b>15,241</b>	<b>306,070,175.62 AUD</b>	<b>9,371</b>	<b>218,716,740.68 AUD</b>	<b>5,870</b>	<b>87,353,434.94 AUD</b>

**Outstanding Contracts I - Overview**

Total Portfolio as of Poolcut Date			Balloon				Type of Car			
Contract Status Development	Number of Contracts	Outstanding Discounted Receivables Balance	Balloon		No Balloon		New Vehicle		Used Vehicle	
			Number of Contracts	Outstanding Discounted Receivables Balance	Number of Contracts	Outstanding Discounted Receivables Balance	Number of Contracts	Outstanding Discounted Receivables Balance	Number of Contracts	Outstanding Discounted Receivables Balance
Normal	15,241	600,025,098.06 AUD	4,261	251,558,699.25 AUD	10,980	348,466,398.81 AUD	10,680	463,158,976.27 AUD	4,561	136,866,121.79 AUD
In Advance	-	- AUD	-	- AUD	-	- AUD	-	- AUD	-	- AUD
In Arrears	-	- AUD	-	- AUD	-	- AUD	-	- AUD	-	- AUD
Paid out/Matured	-	- AUD	-	- AUD	-	- AUD	-	- AUD	-	- AUD
Early Payout	-	- AUD	-	- AUD	-	- AUD	-	- AUD	-	- AUD
Gross Salvage	-	- AUD	-	- AUD	-	- AUD	-	- AUD	-	- AUD
Net Salvage	-	- AUD	-	- AUD	-	- AUD	-	- AUD	-	- AUD
<b>Total</b>	<b>15,241</b>	<b>600,025,098.06 AUD</b>	<b>4,261</b>	<b>251,558,699.25 AUD</b>	<b>10,980</b>	<b>348,466,398.81 AUD</b>	<b>10,680</b>	<b>463,158,976.27 AUD</b>	<b>4,561</b>	<b>136,866,121.79 AUD</b>

Total Portfolio as of Previous Month			Balloon				Type of Car			
Contract Status Development	Number of Contracts	Outstanding Discounted Receivables Balance	Balloon		No Balloon		New Vehicle		Used Vehicle	
			Number of Contracts	Outstanding Discounted Receivables Balance	Number of Contracts	Outstanding Discounted Receivables Balance	Number of Contracts	Outstanding Discounted Receivables Balance	Number of Contracts	Outstanding Discounted Receivables Balance
Normal	9,021	252,759,420.55 AUD	2,713	126,565,661.76 AUD	6,308	126,193,758.79 AUD	6,575	203,771,479.08 AUD	2,446	48,987,941.47 AUD
In Advance	1,268	31,756,355.64 AUD	266	10,465,705.11 AUD	1,002	21,290,650.53 AUD	889	24,127,140.77 AUD	379	7,629,214.87 AUD
In Arrears	1,117	34,053,695.13 AUD	302	14,574,184.50 AUD	815	19,479,510.63 AUD	791	26,446,840.45 AUD	326	7,606,854.68 AUD
Paid out/Matured	563	- AUD	91	- AUD	472	- AUD	339	- AUD	224	- AUD
Early Payout	3,235	- AUD	873	- AUD	2,362	- AUD	2,069	- AUD	1,166	- AUD
Gross Salvage	6	218,319.77 AUD	3	143,523.82 AUD	3	74,795.95 AUD	3	143,523.82 AUD	3	74,795.95 AUD
Net Salvage	31	770,153.98 AUD	13	380,995.13 AUD	18	389,158.85 AUD	14	248,728.88 AUD	17	521,425.10 AUD
<b>Total</b>	<b>15,241</b>	<b>319,557,945.07 AUD</b>	<b>4,261</b>	<b>152,130,070.32 AUD</b>	<b>10,980</b>	<b>167,427,874.75 AUD</b>	<b>10,680</b>	<b>254,737,713.00 AUD</b>	<b>4,561</b>	<b>64,820,232.07 AUD</b>

Total Portfolio as of Current Reporting Period			Balloon				Type of Car			
Contract Status Development	Number of Contracts	Outstanding Discounted Receivables Balance	Balloon		No Balloon		New Vehicle		Used Vehicle	
			Number of Contracts	Outstanding Discounted Receivables Balance	Number of Contracts	Outstanding Discounted Receivables Balance	Number of Contracts	Outstanding Discounted Receivables Balance	Number of Contracts	Outstanding Discounted Receivables Balance
Normal	8,389	232,908,118.62 AUD	2,587	119,649,793.01 AUD	5,802	113,258,325.61 AUD	6,124	188,593,955.56 AUD	2,265	44,314,163.06 AUD
In Advance	1,298	31,560,631.95 AUD	270	10,981,405.32 AUD	1,028	20,579,226.63 AUD	887	23,991,258.85 AUD	411	7,569,373.10 AUD
In Arrears	1,464	40,445,242.71 AUD	349	15,345,436.04 AUD	1,115	25,099,806.67 AUD	1,062	30,896,292.00 AUD	402	9,548,950.71 AUD
Paid out/Matured	624	- AUD	99	- AUD	525	- AUD	375	- AUD	249	- AUD
Early Payout	3,425	- AUD	938	- AUD	2,487	- AUD	2,213	- AUD	1,212	- AUD
Gross Salvage	5	162,539.55 AUD	2	98,470.35 AUD	3	64,069.20 AUD	2	98,470.35 AUD	3	64,069.20 AUD
Net Salvage	36	993,642.79 AUD	16	573,437.60 AUD	20	420,205.19 AUD	17	418,570.70 AUD	19	575,072.09 AUD
<b>Total</b>	<b>15,241</b>	<b>306,070,175.62 AUD</b>	<b>4,261</b>	<b>146,648,542.32 AUD</b>	<b>10,980</b>	<b>159,421,633.30 AUD</b>	<b>10,680</b>	<b>243,998,547.46 AUD</b>	<b>4,561</b>	<b>62,071,628.16 AUD</b>

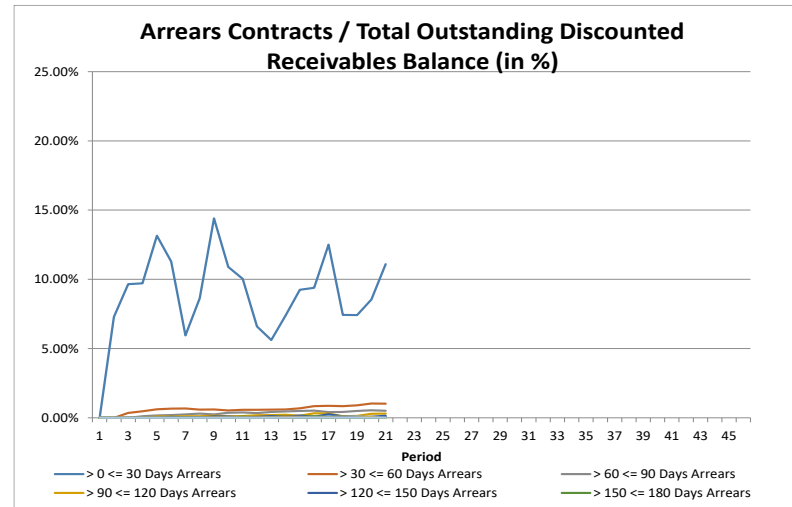
## Outstanding Contracts II - Collections

Collections This Reporting Month by Status	Change in Contract Statuses From Last Month	Number of Contracts This Month	Collections
Normal	(632)	8,389	7,370,400.32 AUD
In Advance	30	1,298	1,612,761.52 AUD
In Arrears	347	1,464	1,123,162.80 AUD
Paid out/Matured	61	624	138,188.36 AUD
Early Payout	190	3,425	4,868,900.62 AUD
Gross Salvage	(1)	5	14,255.74 AUD
Net Salvage	5	36	77,911.59 AUD
<b>Total</b>	<b>-</b>	<b>15,241</b>	<b>15,205,580.95 AUD</b>

Development of Pool within Reporting Period	Number of Active Contracts	Total Number of Contracts	Collection Variations	Outstanding Nominal Balance
<b>Beginning of Period</b>	<b>11,412</b>	<b>15,241</b>		<b>349,448,965.29 AUD</b>
<b>Scheduled Collections For Contracts Active This Period</b>			<b>9,702,597.43 AUD</b>	<b>9,702,597.43 AUD</b>
Collections Variations From Normal Contracts This Period			197,072.82 AUD	
Collection Variations From Contracts Paying Out Early This Period			4,824,936.66 AUD	
Collection Variations From Contracts Paying Out/Maturing This Period			51,061.32 AUD	
Collection Variations from Contracts in Advance This Period			921,827.25 AUD	
Collection Variations from Contract In Arrears This Period			(453,957.10 AUD)	
Collection Variations from Contracts Going Into Gross Salvage This Period			8,864.55 AUD	
Collection Variations from Contracts Going Into Net Salvage This Period			71,418.13 AUD	
Other Variations From Scheduled Collections This Period			- AUD	
<i>Instalment Collection Variations</i>			5,621,223.63 AUD	5,621,223.63 AUD
Contract Fees Collected This Period			61,268.88 AUD	
Interest Compensation Collections This Period			(179,508.99 AUD)	
<i>Non Instalment Collection Variations</i>			(118,240.11 AUD)	
<b>Actual Collections For Contracts Active This Period</b>			<b>15,205,580.95 AUD</b>	
Number of Contracts Paid Out Early This Month	190			
Number of Contracts Paid Out/Matured This Month	61			
Number of Contracts Into Net Salvage This Month	5			
Repurchased Contracts	-	-		
Less Recoveries After Net Salvage				(36,982.26 AUD)
Reduced Nominal Balance Due to Unpaid Rental At Net Salvage				251,701.45 AUD
Reduced Nominal Balance Due to Unpaid Rental At Early Payout				254,683.75 AUD
Reduced Nominal Balance Due to Other				4,363.20 AUD
<b>End of Period</b>	<b>11,156</b>	<b>15,241</b>		<b>333,651,378.09 AUD</b>

**Arrears Contracts**

Total Portfolio					Chattel Mortgage		Consumer Loan	
Days in Arrears	Number of Contracts	Number of Contracts (%)	Outstanding Discounted Receivables Balance	Outstanding Discounted Receivables Balance (%)	Number of Contracts	Outstanding Discounted Receivables Balance	Number of Contracts	Outstanding Discounted Receivables Balance
> 0 <= 30	1,268	11.37%	33,864,952.94 AUD	11.10%	617	17,917,519.28 AUD	651	15,947,433.66 AUD
> 30 <= 60	98	0.88%	3,115,432.30 AUD	1.02%	73	2,523,290.54 AUD	25	592,141.76 AUD
> 60 <= 90	45	0.40%	1,545,730.94 AUD	0.51%	34	1,338,318.58 AUD	11	207,412.36 AUD
> 90 <= 120	26	0.23%	925,249.61 AUD	0.30%	21	778,261.12 AUD	5	146,988.49 AUD
> 120 <= 150	13	0.12%	459,899.16 AUD	0.15%	12	421,265.91 AUD	1	38,633.25 AUD
> 150 <= 180	4	0.04%	140,512.57 AUD	0.05%	3	132,369.41 AUD	1	8,143.16 AUD
> 180 <= 210	4	0.04%	113,484.42 AUD	0.04%	4	113,484.42 AUD	-	- AUD
> 210 <= 240	1	0.01%	68,687.28 AUD	0.02%	-	- AUD	1	68,687.28 AUD
> 240 <= 270	5	0.04%	146,533.07 AUD	0.05%	4	111,553.16 AUD	1	34,979.91 AUD
> 270 <= 300	-	0.00%	- AUD	0.00%	-	- AUD	-	- AUD
> 300 <= 330	1	0.01%	162,712.26 AUD	0.05%	1	162,712.26 AUD	-	- AUD
> 330 <= 360	-	0.00%	- AUD	0.00%	-	- AUD	-	- AUD
> 360	1	0.01%	9,368.69 AUD	0.00%	-	- AUD	1	9,368.69 AUD
<b>Total</b>	<b>1,466</b>	<b>13.14%</b>	<b>40,552,563.24 AUD</b>	<b>13.29%</b>	<b>769</b>	<b>23,498,774.68 AUD</b>	<b>697</b>	<b>17,053,788.56 AUD</b>



**Arrears Contracts**

Total Portfolio					Balloon				Vehicle Status			
Days in Arrears	Number of Contracts	Number of Contracts (%)	Outstanding Discounted Receivables Balance	Outstanding Discounted Receivables Balance (%)	Balloon		No Balloon		New		Used	
					Number of Contracts	Outstanding Discounted Receivables Balance	Number of Contracts	Outstanding Discounted Receivables Balance	Number of Contracts	Outstanding Discounted Receivables Balance	Number of Contracts	Outstanding Discounted Receivables Balance
> 0 <= 30	1,268	11.37%	33,864,952.94 AUD	11.10%	272	11,677,646.90 AUD	996	22,187,306.04 AUD	935	26,020,594.31 AUD	333	7,844,358.63 AUD
> 30 <= 60	98	0.88%	3,115,432.30 AUD	1.02%	35	1,492,306.70 AUD	63	1,623,125.60 AUD	61	2,216,409.00 AUD	37	899,023.30 AUD
> 60 <= 90	45	0.40%	1,545,730.94 AUD	0.51%	18	964,451.52 AUD	27	581,279.42 AUD	30	1,176,808.72 AUD	15	368,922.22 AUD
> 90 <= 120	26	0.23%	925,249.61 AUD	0.30%	12	613,152.05 AUD	14	312,097.56 AUD	18	808,303.86 AUD	8	116,945.75 AUD
> 120 <= 150	13	0.12%	459,899.16 AUD	0.15%	6	253,852.91 AUD	7	206,046.25 AUD	8	286,660.23 AUD	5	173,238.93 AUD
> 150 <= 180	4	0.04%	140,512.57 AUD	0.05%	3	132,369.41 AUD	1	8,143.16 AUD	3	75,609.00 AUD	1	64,903.57 AUD
> 180 <= 210	4	0.04%	113,484.42 AUD	0.04%	-	- AUD	4	113,484.42 AUD	2	47,093.43 AUD	2	66,390.99 AUD
> 210 <= 240	1	0.01%	68,687.28 AUD	0.02%	1	68,687.28 AUD	-	- AUD	1	68,687.28 AUD	-	- AUD
> 240 <= 270	5	0.04%	146,533.07 AUD	0.05%	2	48,944.29 AUD	3	97,588.78 AUD	3	92,732.50 AUD	2	53,800.57 AUD
> 270 <= 300	-	0.00%	- AUD	0.00%	-	- AUD	-	- AUD	-	- AUD	-	- AUD
> 300 <= 330	1	0.01%	162,712.26 AUD	0.05%	1	162,712.26 AUD	-	- AUD	1	162,712.26 AUD	-	- AUD
> 330 <= 360	-	0.00%	- AUD	0.00%	-	- AUD	-	- AUD	-	- AUD	-	- AUD
> 360	1	0.01%	9,368.69 AUD	0.00%	-	- AUD	1	9,368.69 AUD	1	9,368.69 AUD	-	- AUD
<b>Total</b>	<b>1,466</b>	<b>13.14%</b>	<b>40,552,563.24 AUD</b>	<b>13.29%</b>	<b>350</b>	<b>15,414,123.32 AUD</b>	<b>1,116</b>	<b>25,138,439.92 AUD</b>	<b>1,063</b>	<b>30,964,979.28 AUD</b>	<b>403</b>	<b>9,587,583.96 AUD</b>

## Net Salvage Loss

Net Salvage Loss This Period			
Product Type	Type of Car	Number of Contracts	Net Salvage Loss
Chattel Mortgage	New	3	176,874.19 AUD
	Used	1	55,108.73 AUD
<b>Total Chattel Mortgage</b>		<b>4</b>	<b>231,982.92 AUD</b>
Consumer Loan	New	-	- AUD
	Used	1	907.44 AUD
<b>Total Consumer Loan</b>		<b>1</b>	<b>907.44 AUD</b>
<b>Total</b>		<b>5</b>	<b>232,890.36 AUD</b>

<b>Cumulative Net Salvage Loss as of the End of the Monthly Period</b>	1,025,059.75 AUD
<b>Outstanding Discounted Receivables Balance at Poolcut</b>	600,025,098.06 AUD
<b>Cumulative Net Loss Ratio</b>	0.17084%

Monthly Period	Per Period		Cumulative Net Salvage Loss	
	Number of Contracts	Net Salvage Loss	Number of Contracts	Net Salvage Loss
11/2021	-	- AUD	-	- AUD
12/2021	-	- AUD	-	- AUD
01/2022	-	- AUD	-	- AUD
02/2022	-	- AUD	-	- AUD
03/2022	-	- AUD	-	- AUD
04/2022	-	- AUD	-	- AUD
05/2022	-	- AUD	-	- AUD
06/2022	-	- AUD	-	- AUD
07/2022	1	23,440.30 AUD	1	23,440.30 AUD
08/2022	4	57,706.41 AUD	5	81,146.71 AUD
09/2022	1	60,349.39 AUD	6	141,496.10 AUD
10/2022	1	5,937.71 AUD	7	147,433.81 AUD
11/2022	2	144,698.53 AUD	9	292,132.34 AUD
12/2022	2	26,228.63 AUD	11	318,360.97 AUD
01/2023	2	25,455.90 AUD	13	343,816.87 AUD
02/2023	3	68,262.70 AUD	16	412,079.57 AUD
03/2023	1	47,352.50 AUD	17	459,432.07 AUD
04/2023	8	153,358.85 AUD	25	612,790.92 AUD
05/2023	6	179,378.47 AUD	31	792,169.39 AUD
06/2023	5	232,890.36 AUD	36	1,025,059.75 AUD
07/2023	-	- AUD	-	- AUD
08/2023	-	- AUD	-	- AUD
09/2023	-	- AUD	-	- AUD
10/2023	-	- AUD	-	- AUD
11/2023	-	- AUD	-	- AUD
12/2023	-	- AUD	-	- AUD
01/2024	-	- AUD	-	- AUD
02/2024	-	- AUD	-	- AUD
03/2024	-	- AUD	-	- AUD
04/2024	-	- AUD	-	- AUD
05/2024	-	- AUD	-	- AUD
06/2024	-	- AUD	-	- AUD
07/2024	-	- AUD	-	- AUD
08/2024	-	- AUD	-	- AUD
09/2024	-	- AUD	-	- AUD
10/2024	-	- AUD	-	- AUD
11/2024	-	- AUD	-	- AUD
12/2024	-	- AUD	-	- AUD
01/2025	-	- AUD	-	- AUD
02/2025	-	- AUD	-	- AUD
03/2025	-	- AUD	-	- AUD
04/2025	-	- AUD	-	- AUD
05/2025	-	- AUD	-	- AUD
06/2025	-	- AUD	-	- AUD
07/2025	-	- AUD	-	- AUD
08/2025	-	- AUD	-	- AUD
09/2025	-	- AUD	-	- AUD
10/2025	-	- AUD	-	- AUD
11/2025	-	- AUD	-	- AUD
<b>Total</b>	<b>36</b>	<b>1,025,059.75 AUD</b>		



**Net Salvage After Recoveries**

Net Salvaged Contracts						
Product Type	Vehicle Status	Number of Contracts	Gross Salvage Loss	Net Salvage Loss	Recoveries After Net Salvage	Net Salvage Loss After Recoveries
Chattel Mortgage	New	14	903,146.31 AUD	361,827.18 AUD	33,470.20 AUD	328,356.98 AUD
	Used	16	665,885.14 AUD	566,789.96 AUD	(3,013.91) AUD	569,803.87 AUD
<b>Total Chattel Mortgage</b>		<b>30</b>	<b>1,569,031.45 AUD</b>	<b>928,617.14 AUD</b>	<b>30,456.29 AUD</b>	<b>898,160.85 AUD</b>
Consumer Loan	New	3	68,257.11 AUD	67,505.16 AUD	35,712.75 AUD	31,792.41 AUD
	Used	3	91,000.87 AUD	28,937.45 AUD	2,382.04 AUD	26,555.41 AUD
<b>Total Consumer Loan</b>		<b>6</b>	<b>159,257.98 AUD</b>	<b>96,442.61 AUD</b>	<b>38,094.79 AUD</b>	<b>58,347.82 AUD</b>
<b>Total</b>		<b>36</b>	<b>1,728,289.43 AUD</b>	<b>1,025,059.75 AUD</b>	<b>68,551.08 AUD</b>	<b>956,508.67 AUD</b>

## Prepayments

Period Number	Reporting Period	Unscheduled Payments	Opening Outstanding Discounted Receivables Balance	Periodic CPR	Annualised CPR
0	Poolcut	- AUD	- AUD		
1	11/2021	5,188,258.11 AUD	600,025,098.06 AUD	0.86%	10.03%
2	12/2021	4,579,685.92 AUD	584,284,031.03 AUD	0.78%	8.85%
3	01/2022	2,741,342.02 AUD	568,933,158.93 AUD	0.48%	5.53%
4	02/2022	3,337,851.56 AUD	555,556,298.45 AUD	0.60%	7.56%
5	03/2022	5,445,824.85 AUD	541,478,701.09 AUD	1.01%	11.22%
6	04/2022	4,593,099.08 AUD	524,992,591.30 AUD	0.87%	10.14%
7	05/2022	6,363,116.33 AUD	509,466,787.17 AUD	1.25%	13.76%
8	06/2022	6,297,060.40 AUD	492,432,848.37 AUD	1.28%	14.49%
9	07/2022	5,980,710.84 AUD	475,580,922.30 AUD	1.26%	13.84%
10	08/2022	5,404,312.88 AUD	459,209,842.01 AUD	1.18%	13.01%
11	09/2022	4,751,296.31 AUD	443,615,516.21 AUD	1.07%	12.28%
12	10/2022	4,429,370.71 AUD	428,807,300.51 AUD	1.03%	11.51%
13	11/2022	3,951,482.72 AUD	414,561,296.17 AUD	0.95%	11.00%
14	12/2022	3,173,581.07 AUD	399,393,166.38 AUD	0.79%	8.97%
15	01/2023	3,259,724.76 AUD	385,740,376.49 AUD	0.85%	9.51%
16	02/2023	3,041,283.55 AUD	372,465,449.19 AUD	0.82%	10.14%
17	03/2023	5,189,122.89 AUD	359,589,767.53 AUD	1.44%	15.73%
18	04/2023	2,751,056.77 AUD	344,346,328.06 AUD	0.80%	9.30%
19	05/2023	4,318,938.46 AUD	332,395,481.37 AUD	1.30%	14.27%
20	06/2023	4,323,534.14 AUD	318,787,791.09 AUD	1.36%	15.31%

The annualised Constant Prepayment Rate (CPR) of the underlying receivables is based upon the most recent periodic CPR. Periodic CPR is equal to the total unscheduled principal received in the most recent period divided by the start of period principal balance. This is then annualised as follows:

$$1 - ((1 - \text{Periodic CPR})^{\text{number of periods in a year}})$$

**Pool Data I**

**Down Payments**

Total Portfolio						Product Type			
Down Payment	Number of Contracts	Percentage of Contracts	Outstanding Discounted Receivables Balance	Percentage of Balance	Down Payment/ Purchase Price in %	Chattel Mortgage		Consumer Loan	
						Number of Contracts	Outstanding Discounted Receivables Balance	Number of Contracts	Outstanding Discounted Receivables Balance
No Down Payment	1,905	17.08%	55,570,364.56 AUD	18.22%	0.00%	1,328	42,620,218.74 AUD	577	12,950,145.82 AUD
0.01 - 10,000.00	5,567	49.90%	137,937,312.57 AUD	45.21%	10.95%	3,335	90,731,873.49 AUD	2,232	47,205,439.08 AUD
10,000.01 - 20,000.00	2,180	19.54%	57,998,786.89 AUD	19.01%	26.51%	1,408	42,082,055.93 AUD	772	15,916,730.96 AUD
20,000.01 - 30,000.00	781	7.00%	22,648,457.67 AUD	7.42%	35.82%	485	16,622,339.72 AUD	296	6,026,117.95 AUD
30,000.01 - 40,000.00	363	3.25%	11,067,996.87 AUD	3.63%	42.32%	235	8,462,546.26 AUD	128	2,605,450.61 AUD
40,000.01 - 50,000.00	162	1.45%	6,981,035.34 AUD	2.29%	43.02%	111	5,541,474.02 AUD	51	1,439,561.32 AUD
50,000.01 - 60,000.00	79	0.71%	3,707,430.23 AUD	1.22%	45.40%	57	3,178,454.19 AUD	22	528,976.04 AUD
60,000.01 - 70,000.00	44	0.39%	2,732,512.48 AUD	0.90%	46.28%	36	2,577,509.73 AUD	8	155,002.75 AUD
70,000.01 - 80,000.00	20	0.18%	967,783.20 AUD	0.32%	50.31%	14	859,924.57 AUD	6	107,858.63 AUD
80,000.01 - 90,000.00	13	0.12%	821,910.70 AUD	0.27%	51.02%	10	718,495.71 AUD	3	103,414.99 AUD
90,000.01 - 100,000.00	10	0.09%	1,025,057.46 AUD	0.34%	46.35%	8	930,795.84 AUD	2	94,261.62 AUD
100,000.01 - 110,000.00	7	0.06%	691,985.51 AUD	0.23%	42.43%	7	691,985.51 AUD	-	- AUD
110,000.01 - 120,000.00	5	0.04%	603,110.10 AUD	0.20%	48.81%	5	603,110.10 AUD	-	- AUD
120,000.01 - 130,000.00	4	0.04%	496,770.05 AUD	0.16%	47.94%	3	455,961.25 AUD	1	40,808.80 AUD
130,000.01 - 140,000.00	3	0.03%	426,788.52 AUD	0.14%	44.71%	3	426,788.52 AUD	-	- AUD
140,000.01 - 150,000.00	-	0.00%	- AUD	0.00%	0.00%	-	- AUD	-	- AUD
> 150,000.00	13	0.12%	1,399,230.68 AUD	0.46%	68.76%	12	1,313,310.45 AUD	1	85,920.23 AUD
<b>Total</b>	<b>11,156</b>	<b>100.00%</b>	<b>305,076,532.83 AUD</b>	<b>100.00%</b>	<b>19.42%</b>	<b>7,057</b>	<b>217,816,844.03 AUD</b>	<b>4,099</b>	<b>87,259,688.80 AUD</b>

Statistics Down Payments	
Minimum Down Payment	- AUD
Maximum Down Payment	630,000.00 AUD
Weighted Average Down Payment (Customers that made a Down Payment)	16,359.88 AUD
Weighted Average Down Payment	13,379.89 AUD

**Type of Payment**

Total Portfolio				
Type of Payment	Number of Contracts	Percentage of Contracts	Outstanding Discounted Receivables Balance	Percentage of Balance
Direct Debit	10,909	97.79%	298,240,531.59 AUD	97.76%
Other	247	2.21%	6,836,001.24 AUD	2.24%
<b>Total</b>	<b>11,156</b>	<b>100.00%</b>	<b>305,076,532.83 AUD</b>	<b>100.00%</b>

Product Type			
Chattel Mortgage		Consumer Loan	
Number of Contracts	Outstanding Discounted Receivables Balance	Number of Contracts	Outstanding Discounted Receivables Balance
6,891	212,412,056	4,018	85,828,476
166	5,404,788	81	1,431,213
<b>7,057</b>	<b>217,816,844.03 AUD</b>	<b>4,099</b>	<b>87,259,688.80 AUD</b>

**Pool Data I**

**Down Payments**

Total Portfolio						Balloon				Vehicle Status			
Down Payment	Number of Contracts	Percentage of Contracts	Outstanding Discounted Receivables Balance	Percentage of Balance	Down Payment/ Purchase Price in %	Balloon		No Balloon		New		Used	
						Number of Contracts	Outstanding Discounted Receivables Balance	Number of Contracts	Outstanding Discounted Receivables Balance	Number of Contracts	Outstanding Discounted Receivables Balance	Number of Contracts	Outstanding Discounted Receivables Balance
No Down Payment	1,905	17.08%	55,570,364.56 AUD	18.22%	0.00%	677	30,083,820.91 AUD	1,228	25,486,543.65 AUD	1,344	45,170,289.49 AUD	561	10,400,075.07 AUD
0.01 - 10,000.00	5,567	49.90%	137,937,312.57 AUD	45.21%	10.95%	1,456	58,444,607.00 AUD	4,111	79,492,705.57 AUD	3,803	105,574,757.96 AUD	1,764	32,362,554.61 AUD
10,000.01 - 20,000.00	2,180	19.54%	57,998,786.89 AUD	19.01%	26.51%	607	26,211,678.94 AUD	1,573	31,787,107.95 AUD	1,660	46,435,197.20 AUD	520	11,563,589.69 AUD
20,000.01 - 30,000.00	781	7.00%	22,648,457.67 AUD	7.42%	35.82%	222	11,783,728.55 AUD	559	10,864,729.12 AUD	646	19,465,162.86 AUD	135	3,183,294.81 AUD
30,000.01 - 40,000.00	363	3.25%	11,067,996.87 AUD	3.63%	42.32%	97	5,645,920.53 AUD	266	5,422,076.34 AUD	310	9,685,427.50 AUD	53	1,382,569.37 AUD
40,000.01 - 50,000.00	162	1.45%	6,981,035.34 AUD	2.29%	43.02%	57	4,520,736.66 AUD	105	2,460,298.68 AUD	132	5,614,237.63 AUD	30	1,366,797.71 AUD
50,000.01 - 60,000.00	79	0.71%	3,707,430.23 AUD	1.22%	45.40%	31	2,470,349.40 AUD	48	1,237,080.83 AUD	73	3,457,708.08 AUD	6	249,722.15 AUD
60,000.01 - 70,000.00	44	0.39%	2,732,512.48 AUD	0.90%	46.28%	21	2,015,718.30 AUD	23	716,794.18 AUD	38	2,274,775.15 AUD	6	457,737.33 AUD
70,000.01 - 80,000.00	20	0.18%	967,783.20 AUD	0.32%	50.31%	7	474,955.32 AUD	13	492,827.88 AUD	20	967,783.20 AUD	-	- AUD
80,000.01 - 90,000.00	13	0.12%	821,910.70 AUD	0.27%	51.02%	5	555,210.89 AUD	8	266,699.81 AUD	12	768,208.54 AUD	1	53,702.16 AUD
90,000.01 - 100,000.00	10	0.09%	1,025,057.46 AUD	0.34%	46.35%	6	802,977.99 AUD	4	222,079.47 AUD	10	1,025,057.46 AUD	-	- AUD
100,000.01 - 110,000.00	7	0.06%	691,985.51 AUD	0.23%	42.43%	2	361,313.08 AUD	5	330,672.43 AUD	5	507,561.38 AUD	2	184,424.13 AUD
110,000.01 - 120,000.00	5	0.04%	603,110.10 AUD	0.20%	48.81%	4	572,127.75 AUD	1	30,982.35 AUD	4	493,994.59 AUD	1	109,115.51 AUD
120,000.01 - 130,000.00	4	0.04%	496,770.05 AUD	0.16%	47.94%	3	455,961.25 AUD	1	40,808.80 AUD	3	322,659.57 AUD	1	174,110.48 AUD
130,000.01 - 140,000.00	3	0.03%	426,788.52 AUD	0.14%	44.71%	3	426,788.52 AUD	-	- AUD	3	426,788.52 AUD	-	- AUD
140,000.01 - 150,000.00	-	0.00%	- AUD	0.00%	0.00%	-	- AUD	-	- AUD	-	- AUD	-	- AUD
> 150,000.00	13	0.12%	1,399,230.68 AUD	0.46%	68.76%	10	1,249,209.63 AUD	3	150,021.05 AUD	12	1,390,367.63 AUD	1	8,863.05 AUD
<b>Total</b>	<b>11,156</b>	<b>100.00%</b>	<b>305,076,532.83 AUD</b>	<b>100.00%</b>	<b>19.42%</b>	<b>3,208</b>	<b>146,075,104.72 AUD</b>	<b>7,948</b>	<b>159,001,428.11 AUD</b>	<b>8,075</b>	<b>243,579,976.76 AUD</b>	<b>3,081</b>	<b>61,496,556.07 AUD</b>

Statistics Down Payments	
Minimum Down Payment	- AUD
Maximum Down Payment	630,000.00 AUD
Weighted Average Down Payment (Customers that made a Down Payment)	16,359.88 AUD
Weighted Average Down Payment	13,379.89 AUD

**Type of Payment**

Total Portfolio				
Type of Payment	Number of Contracts	Percentage of Contracts	Outstanding Discounted Receivables Balance	Percentage of Balance
Direct Debit	10,909	97.79%	298,240,531.59 AUD	97.76%
Other	247	2.21%	6,836,001.24 AUD	2.24%
<b>Total</b>	<b>11,156</b>	<b>100.00%</b>	<b>305,076,532.83 AUD</b>	<b>100.00%</b>

Balloon				Vehicle Status			
Balloon		No Balloon		New		Used	
Number of Contracts	Outstanding Discounted Receivables Balance	Number of Contracts	Outstanding Discounted Receivables Balance	Number of Contracts	Outstanding Discounted Receivables Balance	Number of Contracts	Outstanding Discounted Receivables Balance
3,138	142,607,482	7,771	155,633,049	7,915	238,383,053	2,994	59,857,479
70	3,467,622	177	3,368,379	160	5,196,924	87	1,639,077
<b>3,208</b>	<b>146,075,104.72 AUD</b>	<b>7,948</b>	<b>159,001,428.11 AUD</b>	<b>8,075</b>	<b>243,579,976.76 AUD</b>	<b>3,081</b>	<b>61,496,556.07 AUD</b>

## Pool Data II

### Distribution of Contracts and Vehicles per Borrower

Number of Contracts Per Borrower	Number of Customers	Percentage of Customers	Number of Contracts	Percentage of Contracts	Outstanding Discounted Receivables Balance	Percentage of Balance
1	13,201	99.17%	10,981	98.23%	363,813,406.63 AUD	98.30%
2	104	0.78%	180	1.61%	5,988,656.58 AUD	1.62%
3	6	0.05%	18	0.16%	295,044.58 AUD	0.08%
4	-	0.00%	-	0.00%	- AUD	0.00%
5	-	0.00%	-	0.00%	- AUD	0.00%
6 - 10	-	0.00%	-	0.00%	- AUD	0.00%
> 10	-	0.00%	-	0.00%	- AUD	0.00%
<b>Total</b>	<b>13,311</b>	<b>100.00%</b>	<b>11,179</b>	<b>100.00%</b>	<b>370,097,107.79 AUD</b>	<b>100.00%</b>

### Top 20 Borrower

Ranking	Outstanding Discounted Receivables Balance	Percentage of Overall Balance	Number of Contracts
1	346,993.38 AUD	0.11374 %	1
2	346,993.38 AUD	0.11374 %	1
3	326,310.94 AUD	0.10696 %	1
4	322,767.79 AUD	0.10580 %	1
5	309,105.88 AUD	0.10132 %	1
6	309,105.88 AUD	0.10132 %	1
7	278,696.66 AUD	0.09135 %	1
8	271,351.43 AUD	0.08895 %	1
9	236,636.38 AUD	0.07757 %	1
10	236,207.94 AUD	0.07743 %	1
11	234,983.38 AUD	0.07702 %	1
12	233,073.50 AUD	0.07640 %	1
13	232,932.51 AUD	0.07635 %	1
14	224,463.74 AUD	0.07358 %	1
15	218,250.72 AUD	0.07154 %	1
16	201,097.56 AUD	0.06592 %	1
17	200,560.84 AUD	0.06574 %	1
18	193,860.48 AUD	0.06354 %	1
19	187,795.85 AUD	0.06156 %	1
20	187,323.12 AUD	0.06140 %	1
	<b>5,098,511.36 AUD</b>	<b>1.67122 %</b>	<b>20</b>

**Pool Data III**

**Distribution by Outstanding Discounted Receivables Balance**

Total Portfolio					Product Type			
Distribution by Outstanding Discounted Receivables Balance	Number of Contracts	Percentage of Contracts	Outstanding Discounted Receivables Balance	Percentage of Balance	Chattel Mortgage		Consumer Loan	
					Number of Contracts	Outstanding Discounted Receivables Balance	Number of Contracts	Outstanding Discounted Receivables Balance
0.00 - 10,000.00	1,572	14.09%	9,515,841.80 AUD	3.12%	775	4,727,865.70 AUD	797	4,787,976.10 AUD
10,000.01 - 20,000.00	3,358	30.10%	50,635,333.10 AUD	16.60%	1,870	28,439,766.70 AUD	1,488	22,195,566.40 AUD
20,000.01 - 30,000.00	2,705	24.25%	66,839,210.74 AUD	21.91%	1,742	43,335,010.22 AUD	963	23,504,200.52 AUD
30,000.01 - 40,000.00	1,575	14.12%	54,274,268.78 AUD	17.79%	1,092	37,806,638.06 AUD	483	16,467,630.72 AUD
40,000.01 - 50,000.00	794	7.12%	35,219,563.39 AUD	11.54%	591	26,199,061.33 AUD	203	9,020,502.06 AUD
50,000.01 - 60,000.00	410	3.68%	22,311,252.91 AUD	7.31%	332	18,081,331.91 AUD	78	4,229,921.00 AUD
60,000.01 - 70,000.00	229	2.05%	14,828,709.04 AUD	4.86%	200	12,953,354.21 AUD	29	1,875,354.83 AUD
70,000.01 - 80,000.00	165	1.48%	12,313,366.23 AUD	4.04%	143	10,667,044.39 AUD	22	1,646,321.84 AUD
80,000.01 - 90,000.00	112	1.00%	9,477,401.88 AUD	3.11%	89	7,528,427.41 AUD	23	1,948,974.47 AUD
90,000.01 - 100,000.00	63	0.56%	5,976,860.42 AUD	1.96%	57	5,414,585.03 AUD	6	562,275.39 AUD
100,000.01 - 110,000.00	62	0.56%	6,494,815.72 AUD	2.13%	60	6,288,719.84 AUD	2	206,095.88 AUD
110,000.01 - 120,000.00	24	0.22%	2,740,319.12 AUD	0.90%	22	2,511,922.60 AUD	2	228,396.52 AUD
120,000.01 - 130,000.00	23	0.21%	2,868,455.37 AUD	0.94%	23	2,868,455.37 AUD	-	- AUD
130,000.01 - 140,000.00	10	0.09%	1,331,543.42 AUD	0.44%	10	1,331,543.42 AUD	-	- AUD
140,000.01 - 150,000.00	7	0.06%	1,005,611.44 AUD	0.33%	7	1,005,611.44 AUD	-	- AUD
> 150,000.00	47	0.42%	9,243,979.47 AUD	3.03%	44	8,657,506.40 AUD	3	586,473.07 AUD
<b>Total</b>	<b>11,156</b>	<b>100.00%</b>	<b>305,076,532.83 AUD</b>	<b>100.00%</b>	<b>7,057</b>	<b>217,816,844.03 AUD</b>	<b>4,099</b>	<b>87,259,688.80 AUD</b>

Statistics Outstanding Discounted Receivables Balance	
Minimum Outstanding Discounted Receivables Balance	- AUD
Maximum Outstanding Discounted Receivables Balance	346,993.38 AUD
Average Outstanding Discounted Receivables Balance	27,346.41 AUD

**Distribution by Original Balance**

Total Portfolio					Product Type			
Distribution by Original Balance	Number of Contracts	Percentage of Contracts	Outstanding Discounted Receivables Balance	Percentage of Balance	Chattel Mortgage		Consumer Loan	
					Number of Contracts	Outstanding Discounted Receivables Balance	Number of Contracts	Outstanding Discounted Receivables Balance
0.00 - 10,000.00	57	0.51%	149,126.15 AUD	0.05%	18	36,886.47 AUD	39	112,239.68 AUD
10,000.01 - 20,000.00	996	8.93%	7,382,016.62 AUD	2.42%	442	3,302,860.02 AUD	554	4,079,156.60 AUD
20,000.01 - 30,000.00	2,247	20.14%	29,516,647.46 AUD	9.68%	1,150	15,056,721.04 AUD	1,097	14,459,926.42 AUD
30,000.01 - 40,000.00	2,316	20.76%	44,599,427.11 AUD	14.62%	1,351	25,844,567.57 AUD	965	18,754,859.54 AUD
40,000.01 - 50,000.00	1,795	16.09%	46,717,714.64 AUD	15.31%	1,177	30,624,114.72 AUD	618	16,093,599.92 AUD
50,000.01 - 60,000.00	1,363	12.22%	42,851,036.39 AUD	14.05%	997	31,168,436.90 AUD	366	11,682,599.49 AUD
60,000.01 - 70,000.00	899	8.06%	33,480,608.38 AUD	10.97%	653	24,278,584.81 AUD	246	9,202,023.57 AUD
70,000.01 - 80,000.00	452	4.05%	20,279,101.61 AUD	6.65%	366	16,439,650.24 AUD	86	3,839,451.37 AUD
80,000.01 - 90,000.00	255	2.29%	13,870,921.09 AUD	4.55%	216	11,729,536.27 AUD	39	2,141,384.82 AUD
90,000.01 - 100,000.00	176	1.58%	10,672,678.81 AUD	3.50%	154	9,355,430.99 AUD	22	1,317,247.82 AUD
100,000.01 - 110,000.00	187	1.68%	12,854,902.81 AUD	4.21%	165	11,337,484.77 AUD	22	1,517,418.04 AUD
110,000.01 - 120,000.00	87	0.78%	6,652,502.49 AUD	2.18%	77	5,873,241.67 AUD	10	779,260.82 AUD
120,000.01 - 130,000.00	80	0.72%	6,758,017.83 AUD	2.22%	61	5,227,155.78 AUD	19	1,530,862.05 AUD
130,000.01 - 140,000.00	61	0.55%	5,612,337.86 AUD	1.84%	55	5,070,668.05 AUD	6	541,669.81 AUD
140,000.01 - 150,000.00	41	0.37%	4,000,913.31 AUD	1.31%	39	3,806,099.41 AUD	2	194,813.90 AUD
> 150,000.00	144	1.29%	19,678,580.27 AUD	6.45%	136	18,665,405.32 AUD	8	1,013,174.95 AUD
<b>Total</b>	<b>11,156</b>	<b>100.00%</b>	<b>305,076,532.83 AUD</b>	<b>100.00%</b>	<b>7,057</b>	<b>217,816,844.03 AUD</b>	<b>4,099</b>	<b>87,259,688.80 AUD</b>

Statistics	
Minimum Original Balance	5,398.00 AUD
Maximum Original Balance	471,296.41 AUD
Weighted Average Original Receivables Balance (by ODRB)	70,345.18 AUD

**Pool Data III**

**Distribution by Outstanding Discounted Receivables Balance**

Total Portfolio					Balloon				Vehicle Status			
Distribution by Outstanding Discounted Receivables Balance	Number of Contracts	Percentage of Contracts	Outstanding Discounted Receivables Balance	Percentage of Balance	Balloon		No Balloon		New		Used	
					Number of Contracts	Outstanding Discounted Receivables Balance	Number of Contracts	Outstanding Discounted Receivables Balance	Number of Contracts	Outstanding Discounted Receivables Balance	Number of Contracts	Outstanding Discounted Receivables Balance
0.00 - 10,000.00	1,572	14.09%	9,515,841.80 AUD	3.12%	34	180,799.55 AUD	1,538	9,335,042.25 AUD	777	4,934,007.09 AUD	795	4,581,834.71 AUD
10,000.01 - 20,000.00	3,358	30.10%	50,635,333.10 AUD	16.60%	257	4,172,223.94 AUD	3,101	46,463,109.16 AUD	2,228	34,047,191.22 AUD	1,130	16,588,141.88 AUD
20,000.01 - 30,000.00	2,705	24.25%	66,839,210.74 AUD	21.91%	733	18,692,839.61 AUD	1,972	48,146,371.13 AUD	2,089	51,783,583.84 AUD	616	15,055,626.90 AUD
30,000.01 - 40,000.00	1,575	14.12%	54,274,268.78 AUD	17.79%	745	25,961,683.76 AUD	830	28,312,585.02 AUD	1,294	44,586,336.45 AUD	281	9,687,932.33 AUD
40,000.01 - 50,000.00	794	7.12%	35,219,563.39 AUD	11.54%	512	22,784,317.13 AUD	282	12,435,246.26 AUD	685	30,402,335.19 AUD	109	4,817,228.20 AUD
50,000.01 - 60,000.00	410	3.68%	22,311,252.91 AUD	7.31%	275	15,009,291.27 AUD	135	7,301,961.64 AUD	345	18,767,388.24 AUD	65	3,543,864.67 AUD
60,000.01 - 70,000.00	229	2.05%	14,828,709.04 AUD	4.86%	186	12,030,670.25 AUD	43	2,798,038.79 AUD	187	12,129,109.15 AUD	42	2,699,599.89 AUD
70,000.01 - 80,000.00	165	1.48%	12,313,366.23 AUD	4.04%	146	10,919,691.37 AUD	19	1,393,674.86 AUD	153	11,423,636.95 AUD	12	889,729.28 AUD
80,000.01 - 90,000.00	112	1.00%	9,477,401.88 AUD	3.11%	100	8,461,650.15 AUD	12	1,015,751.73 AUD	105	8,881,943.57 AUD	7	595,458.31 AUD
90,000.01 - 100,000.00	63	0.56%	5,976,860.42 AUD	1.96%	60	5,689,934.95 AUD	3	286,925.47 AUD	58	5,500,060.81 AUD	5	476,799.61 AUD
100,000.01 - 110,000.00	62	0.56%	6,494,815.72 AUD	2.13%	60	6,292,020.58 AUD	2	202,795.14 AUD	57	5,966,008.65 AUD	5	528,807.07 AUD
110,000.01 - 120,000.00	24	0.22%	2,740,319.12 AUD	0.90%	18	2,056,199.14 AUD	6	684,119.98 AUD	21	2,400,306.79 AUD	3	340,012.33 AUD
120,000.01 - 130,000.00	23	0.21%	2,868,455.37 AUD	0.94%	19	2,373,880.97 AUD	4	494,574.40 AUD	20	2,489,780.81 AUD	3	378,674.56 AUD
130,000.01 - 140,000.00	10	0.09%	1,331,543.42 AUD	0.44%	9	1,200,311.14 AUD	1	131,232.28 AUD	8	1,069,388.69 AUD	2	262,154.73 AUD
140,000.01 - 150,000.00	7	0.06%	1,005,611.44 AUD	0.33%	7	1,005,611.44 AUD	-	- AUD	7	1,005,611.44 AUD	-	- AUD
> 150,000.00	47	0.42%	9,243,979.47 AUD	3.03%	47	9,243,979.47 AUD	-	- AUD	41	8,193,287.87 AUD	6	1,050,691.60 AUD
<b>Total</b>	<b>11,156</b>	<b>100.00%</b>	<b>305,076,532.83 AUD</b>	<b>100.00%</b>	<b>3,208</b>	<b>146,075,104.72 AUD</b>	<b>7,948</b>	<b>159,001,428.11 AUD</b>	<b>8,075</b>	<b>243,579,976.76 AUD</b>	<b>3,081</b>	<b>61,496,556.07 AUD</b>

Statistics Outstanding Discounted Receivables Balance	
Minimum Outstanding Discounted Receivables Balance	- AUD
Maximum Outstanding Discounted Receivables Balance	346,993.38 AUD
Average Outstanding Discounted Receivables Balance	27,346.41 AUD

**Distribution by Original Balance**

Total Portfolio					Balloon				Vehicle Status			
Distribution by Original Balance	Number of Contracts	Percentage of Contracts	Outstanding Discounted Receivables Balance	Percentage of Balance	Balloon		No Balloon		New		Used	
					Number of Contracts	Outstanding Discounted Receivables Balance	Number of Contracts	Outstanding Discounted Receivables Balance	Number of Contracts	Outstanding Discounted Receivables Balance	Number of Contracts	Outstanding Discounted Receivables Balance
0.00 - 10,000.00	57	0.51%	149,126.15 AUD	0.05%	-	- AUD	57	149,126.15 AUD	10	31,251.13 AUD	47	117,875.02 AUD
10,000.01 - 20,000.00	996	8.93%	7,382,016.62 AUD	2.42%	33	358,753.70 AUD	963	7,023,262.92 AUD	335	2,577,628.70 AUD	661	4,804,387.92 AUD
20,000.01 - 30,000.00	2,247	20.14%	29,516,647.46 AUD	9.68%	189	3,243,786.57 AUD	2,058	26,272,860.89 AUD	1,377	18,110,816.93 AUD	870	11,405,830.53 AUD
30,000.01 - 40,000.00	2,316	20.76%	44,599,427.11 AUD	14.62%	450	10,647,240.62 AUD	1,866	33,952,186.49 AUD	1,682	32,255,593.31 AUD	634	12,343,833.80 AUD
40,000.01 - 50,000.00	1,795	16.09%	46,717,714.64 AUD	15.31%	567	17,084,723.30 AUD	1,228	29,632,991.34 AUD	1,413	36,432,855.65 AUD	382	10,284,858.99 AUD
50,000.01 - 60,000.00	1,363	12.22%	42,851,036.39 AUD	14.05%	549	19,988,506.39 AUD	814	22,862,530.00 AUD	1,167	36,413,939.25 AUD	196	6,437,097.14 AUD
60,000.01 - 70,000.00	899	8.06%	33,480,608.38 AUD	10.97%	398	17,004,924.44 AUD	501	16,475,683.94 AUD	788	29,109,773.79 AUD	111	4,370,834.59 AUD
70,000.01 - 80,000.00	452	4.05%	20,279,101.61 AUD	6.65%	254	12,812,166.31 AUD	198	7,466,935.30 AUD	390	17,316,728.86 AUD	62	2,962,372.75 AUD
80,000.01 - 90,000.00	255	2.29%	13,870,921.09 AUD	4.55%	173	10,078,716.95 AUD	82	3,792,204.14 AUD	207	11,209,550.25 AUD	48	2,661,370.84 AUD
90,000.01 - 100,000.00	176	1.58%	10,672,678.81 AUD	3.50%	125	8,146,237.91 AUD	51	2,526,440.90 AUD	158	9,599,523.25 AUD	18	1,073,155.56 AUD
100,000.01 - 110,000.00	187	1.68%	12,854,902.81 AUD	4.21%	133	9,717,193.47 AUD	54	3,137,709.34 AUD	172	11,805,599.23 AUD	15	1,049,303.58 AUD
110,000.01 - 120,000.00	87	0.78%	6,652,502.49 AUD	2.18%	68	5,476,048.19 AUD	19	1,176,454.30 AUD	78	5,963,357.00 AUD	9	689,145.49 AUD
120,000.01 - 130,000.00	80	0.72%	6,758,017.83 AUD	2.22%	62	5,496,132.51 AUD	18	1,261,885.32 AUD	74	6,283,839.18 AUD	6	474,178.65 AUD
130,000.01 - 140,000.00	61	0.55%	5,612,337.86 AUD	1.84%	53	5,082,063.46 AUD	8	530,274.40 AUD	56	5,064,219.54 AUD	5	548,118.32 AUD
140,000.01 - 150,000.00	41	0.37%	4,000,913.31 AUD	1.31%	37	3,733,116.82 AUD	4	267,796.49 AUD	39	3,781,291.96 AUD	2	219,621.35 AUD
> 150,000.00	144	1.29%	19,678,580.27 AUD	6.45%	117	17,205,494.08 AUD	27	2,473,086.19 AUD	129	17,624,008.73 AUD	15	2,054,571.54 AUD
<b>Total</b>	<b>11,156</b>	<b>100.00%</b>	<b>305,076,532.83 AUD</b>	<b>100.00%</b>	<b>3,208</b>	<b>146,075,104.72 AUD</b>	<b>7,948</b>	<b>159,001,428.11 AUD</b>	<b>8,075</b>	<b>243,579,976.76 AUD</b>	<b>3,081</b>	<b>61,496,556.07 AUD</b>

Statistics	
Minimum Original Balance	5,398.00 AUD
Maximum Original Balance	471,296.41 AUD
Weighted Average Original Receivables Balance (by ODRB)	70,345.18 AUD

Pool Data IV

Interest Rate paid by the Receivable Debtor

Total Portfolio					Product Type			
Interest Rate paid by the Receivable Debtor	Number of Contracts	Percentage of Contracts	Outstanding Discounted Receivables Balance	Percentage of Balance	Chattel Mortgage		Consumer Loan	
					Number of Contracts	Outstanding Discounted Receivables Balance	Number of Contracts	Outstanding Discounted Receivables Balance
0.00%	-	0.00%	- AUD	0.00%	-	- AUD	-	- AUD
0.01% - 1.00%	-	0.00%	- AUD	0.00%	-	- AUD	-	- AUD
1.01% - 2.00%	519	4.65%	11,563,589.71 AUD	3.79%	313	7,653,121.22 AUD	206	3,910,468.49 AUD
2.01% - 3.00%	734	6.58%	26,583,826.22 AUD	8.71%	500	22,009,003.47 AUD	234	4,574,822.75 AUD
3.01% - 4.00%	1,029	9.22%	37,155,046.83 AUD	12.18%	1,021	36,944,982.97 AUD	8	210,063.86 AUD
4.01% - 5.00%	1,163	10.42%	38,499,686.81 AUD	12.62%	951	32,841,501.56 AUD	212	5,658,185.25 AUD
5.01% - 6.00%	1,573	14.10%	46,736,627.13 AUD	15.32%	1,012	33,286,232.23 AUD	561	13,450,394.90 AUD
6.01% - 7.00%	2,040	18.29%	51,091,736.98 AUD	16.75%	896	26,953,544.63 AUD	1,144	24,138,192.35 AUD
7.01% - 8.00%	1,620	14.52%	36,974,226.64 AUD	12.12%	577	16,219,697.92 AUD	1,043	20,754,528.72 AUD
8.01% - 9.00%	1,573	14.10%	37,389,702.92 AUD	12.26%	1,090	27,260,133.96 AUD	483	10,129,568.96 AUD
9.01% - 10.00%	714	6.40%	15,665,304.40 AUD	5.13%	578	12,578,641.63 AUD	136	3,086,662.77 AUD
10.01% - 11.00%	155	1.39%	2,933,010.79 AUD	0.96%	111	1,979,480.08 AUD	44	953,530.71 AUD
11.01% - 12.00%	21	0.19%	335,663.21 AUD	0.11%	8	90,504.36 AUD	13	245,158.85 AUD
12.01% - 13.00%	6	0.05%	41,312.40 AUD	0.01%	-	- AUD	6	41,312.40 AUD
13.01% - 14.00%	6	0.05%	71,801.56 AUD	0.02%	-	- AUD	6	71,801.56 AUD
14.01% - 15.00%	3	0.03%	34,997.23 AUD	0.01%	-	- AUD	3	34,997.23 AUD
15.01% - 16.00%	-	0.00%	- AUD	0.00%	-	- AUD	-	- AUD
> 16.00%	-	0.00%	- AUD	0.00%	-	- AUD	-	- AUD
<b>Total</b>	<b>11,156</b>	<b>100.00%</b>	<b>305,076,532.83 AUD</b>	<b>100.00%</b>	<b>7,057</b>	<b>217,816,844.03 AUD</b>	<b>4,099</b>	<b>87,259,688.80 AUD</b>

Statistics Interest Rate	
Minimum Interest Rate Debtor	1.40%
Maximum Interest Rate Debtor	14.99%
Weighted Average Interest Rate Debtor	5.92%



Pool Data IV

Interest Rate paid by the Receivable Debtor

Total Portfolio					Balloon				Vehicle Status			
Interest Rate paid by the Receivable Debtor	Number of Contracts	Percentage of Contracts	Outstanding Discounted Receivables Balance	Percentage of Balance	Balloon		No Balloon		New		Used	
					Number of Contracts	Outstanding Discounted Receivables Balance	Number of Contracts	Outstanding Discounted Receivables Balance	Number of Contracts	Outstanding Discounted Receivables Balance	Number of Contracts	Outstanding Discounted Receivables Balance
0.00%	-	0.00%	- AUD	0.00%	-	- AUD	-	- AUD	-	- AUD	-	- AUD
0.01% - 1.00%	-	0.00%	- AUD	0.00%	-	- AUD	-	- AUD	-	- AUD	-	- AUD
1.01% - 2.00%	519	4.65%	11,563,589.71 AUD	3.79%	166	5,957,827.66 AUD	353	5,605,762.05 AUD	519	11,563,589.71 AUD	-	- AUD
2.01% - 3.00%	734	6.58%	26,583,826.22 AUD	8.71%	332	17,866,348.77 AUD	402	8,717,477.45 AUD	734	26,583,826.22 AUD	-	- AUD
3.01% - 4.00%	1,029	9.22%	37,155,046.83 AUD	12.18%	467	24,497,822.75 AUD	562	12,657,224.08 AUD	955	34,990,370.02 AUD	74	2,164,676.81 AUD
4.01% - 5.00%	1,163	10.42%	38,499,686.81 AUD	12.62%	485	22,870,676.77 AUD	678	15,629,010.04 AUD	944	32,582,141.98 AUD	219	5,917,544.83 AUD
5.01% - 6.00%	1,573	14.10%	46,736,627.13 AUD	15.32%	548	25,586,828.97 AUD	1,025	21,149,798.16 AUD	1,232	39,104,740.35 AUD	341	7,631,886.78 AUD
6.01% - 7.00%	2,040	18.29%	51,091,736.98 AUD	16.75%	527	22,166,238.42 AUD	1,513	28,925,498.56 AUD	1,480	39,710,250.45 AUD	560	11,381,486.53 AUD
7.01% - 8.00%	1,620	14.52%	36,974,226.64 AUD	12.12%	307	12,336,879.02 AUD	1,313	24,637,347.62 AUD	910	24,058,709.75 AUD	710	12,915,516.89 AUD
8.01% - 9.00%	1,573	14.10%	37,389,702.92 AUD	12.26%	271	10,843,969.71 AUD	1,302	26,545,733.21 AUD	996	27,123,345.07 AUD	577	10,266,357.85 AUD
9.01% - 10.00%	714	6.40%	15,665,304.40 AUD	5.13%	94	3,630,662.25 AUD	620	12,034,642.15 AUD	272	7,235,895.30 AUD	442	8,429,409.10 AUD
10.01% - 11.00%	155	1.39%	2,933,010.79 AUD	0.96%	9	266,724.81 AUD	146	2,666,285.98 AUD	22	520,998.19 AUD	133	2,412,012.60 AUD
11.01% - 12.00%	21	0.19%	335,663.21 AUD	0.11%	1	25,896.27 AUD	20	309,766.94 AUD	6	54,797.13 AUD	15	280,866.08 AUD
12.01% - 13.00%	6	0.05%	41,312.40 AUD	0.01%	-	- AUD	6	41,312.40 AUD	1	17.08 AUD	5	41,295.32 AUD
13.01% - 14.00%	6	0.05%	71,801.56 AUD	0.02%	1	25,229.32 AUD	5	46,572.24 AUD	3	43,986.06 AUD	3	27,815.50 AUD
14.01% - 15.00%	3	0.03%	34,997.23 AUD	0.01%	-	- AUD	3	34,997.23 AUD	1	7,309.45 AUD	2	27,687.78 AUD
15.01% - 16.00%	-	0.00%	- AUD	0.00%	-	- AUD	-	- AUD	-	- AUD	-	- AUD
> 16.00%	-	0.00%	- AUD	0.00%	-	- AUD	-	- AUD	-	- AUD	-	- AUD
<b>Total</b>	<b>11,156</b>	<b>100.00%</b>	<b>305,076,532.83 AUD</b>	<b>100.00%</b>	<b>3,208</b>	<b>146,075,104.72 AUD</b>	<b>7,948</b>	<b>159,001,428.11 AUD</b>	<b>8,075</b>	<b>243,579,976.76 AUD</b>	<b>3,081</b>	<b>61,496,556.07 AUD</b>

Statistics Interest Rate	
Minimum Interest Rate Debtor	1.40%
Maximum Interest Rate Debtor	14.99%
Weighted Average Interest Rate Debtor	5.92%

Pool Data V

Original Term

Total Portfolio					Product Type			
Length of Original Term (months)	Number of Contracts	Percentage of Contracts	Outstanding Discounted Receivables Balance	Percentage of Balance	Chattel Mortgage		Consumer Loan	
					Number of Contracts	Outstanding Discounted Receivables Balance	Number of Contracts	Outstanding Discounted Receivables Balance
0 - 11	-	0.00%	- AUD	0.00%	-	- AUD	-	- AUD
12 - 23	1	0.01%	3,582.76 AUD	0.00%	1	3,582.76 AUD	-	- AUD
24 - 35	89	0.80%	491,294.68 AUD	0.16%	57	429,672.05 AUD	32	61,622.63 AUD
36 - 47	1,190	10.67%	17,663,557.26 AUD	5.79%	837	14,400,330.63 AUD	353	3,263,226.63 AUD
48 - 59	1,744	15.63%	40,885,268.64 AUD	13.40%	1,140	30,425,918.16 AUD	604	10,459,350.48 AUD
60 - 71	7,603	68.15%	231,178,237.01 AUD	75.78%	5,022	172,557,340.43 AUD	2,581	58,620,896.58 AUD
> 71	529	4.74%	14,854,592.48 AUD	4.87%	-	- AUD	529	14,854,592.48 AUD
<b>Total</b>	<b>11,156</b>	<b>100.00%</b>	<b>305,076,532.83 AUD</b>	<b>100.00%</b>	<b>7,057</b>	<b>217,816,844.03 AUD</b>	<b>4,099</b>	<b>87,259,688.80 AUD</b>

Statistics Original Term	
Minimum Original Term in months	22
Maximum Original Term in months	84
Weighted Average Original Term month (by ODRB)	58.11

Remaining Term

Total Portfolio					Product Type			
Length of Remaining Term (months)	Number of Contracts	Percentage of Contracts	Outstanding Discounted Receivables Balance	Percentage of Balance	Chattel Mortgage		Consumer Loan	
					Number of Contracts	Outstanding Discounted Receivables Balance	Number of Contracts	Outstanding Discounted Receivables Balance
0 - 11	1,083	9.71%	12,045,278.54 AUD	3.95%	724	9,668,999.97 AUD	359	2,376,278.57 AUD
12 - 23	2,050	18.38%	43,941,518.21 AUD	14.40%	1,311	32,458,051.97 AUD	739	11,483,466.24 AUD
24 - 35	5,319	47.68%	151,514,628.52 AUD	49.66%	3,484	111,786,501.42 AUD	1,835	39,728,127.10 AUD
36 - 47	2,277	20.41%	84,161,364.74 AUD	27.59%	1,534	63,627,457.76 AUD	743	20,533,906.98 AUD
48 - 59	312	2.80%	9,617,967.67 AUD	3.15%	4	275,832.91 AUD	308	9,342,134.76 AUD
60 - 71	115	1.03%	3,795,775.15 AUD	1.24%	-	- AUD	115	3,795,775.15 AUD
> 71	-	0.00%	- AUD	0.00%	-	- AUD	-	- AUD
<b>Total</b>	<b>11,156</b>	<b>100.00%</b>	<b>305,076,532.83 AUD</b>	<b>100.00%</b>	<b>7,057</b>	<b>217,816,844.03 AUD</b>	<b>4,099</b>	<b>87,259,688.80 AUD</b>

Statistics Remaining Term	
Minimum Remaining Term in months	0
Maximum Remaining Term in months	69
Weighted Average Remaining Term in months (by ODRB)	30.74

Distribution by Seasoning

Total Portfolio					Product Type			
Seasoning (months)	Number of Contracts	Percentage of Contracts	Outstanding Discounted Receivables Balance	Percentage of Balance	Chattel Mortgage		Consumer Loan	
					Number of Contracts	Outstanding Discounted Receivables Balance	Number of Contracts	Outstanding Discounted Receivables Balance
0 - 11	3	0.03%	184,744.45 AUD	0.06%	3	184,744.45 AUD	-	- AUD
12 - 23	2,066	18.52%	66,462,448.86 AUD	21.79%	1,287	46,518,317.42 AUD	779	19,944,131.44 AUD
24 - 35	7,826	70.15%	214,112,924.08 AUD	70.18%	5,023	154,245,841.72 AUD	2,803	59,867,082.36 AUD
36 - 47	1,104	9.90%	23,003,029.98 AUD	7.54%	690	16,367,474.62 AUD	414	6,635,555.36 AUD
48 - 59	103	0.92%	949,862.17 AUD	0.31%	49	488,997.45 AUD	54	460,864.72 AUD
60 - 71	41	0.37%	311,745.51 AUD	0.10%	5	11,468.37 AUD	36	300,277.14 AUD
> 71	13	0.12%	51,777.78 AUD	0.02%	-	- AUD	13	51,777.78 AUD
<b>Total</b>	<b>11,156</b>	<b>100.00%</b>	<b>305,076,532.83 AUD</b>	<b>100.00%</b>	<b>7,057</b>	<b>217,816,844.03 AUD</b>	<b>4,099</b>	<b>87,259,688.80 AUD</b>

Statistics Seasoning	
Minimum Seasoning in months	7
Maximum Seasoning in months	84
Weighted Average Seasoning Term in months (by ODRB)	27.42

**Pool Data V**

**Original Term**

Total Portfolio					Balloon				Vehicle Status			
Length of Original Term (months)	Number of Contracts	Percentage of Contracts	Outstanding Discounted Receivables Balance	Percentage of Balance	Balloon		No Balloon		New		Used	
					Number of Contracts	Outstanding Discounted Receivables Balance	Number of Contracts	Outstanding Discounted Receivables Balance	Number of Contracts	Outstanding Discounted Receivables Balance	Number of Contracts	Outstanding Discounted Receivables Balance
0 - 11	-	0.00%	- AUD	0.00%	-	- AUD	-	- AUD	-	- AUD	-	- AUD
12 - 23	1	0.01%	3,582.76 AUD	0.00%	-	- AUD	1	3,582.76 AUD	-	- AUD	1	3,582.76 AUD
24 - 35	89	0.80%	491,294.68 AUD	0.16%	8	244,723.19 AUD	81	246,571.49 AUD	21	196,767.81 AUD	68	294,526.87 AUD
36 - 47	1,190	10.67%	17,663,557.26 AUD	5.79%	248	8,534,752.33 AUD	942	9,128,804.93 AUD	831	14,785,694.29 AUD	359	2,877,862.97 AUD
48 - 59	1,744	15.63%	40,885,268.64 AUD	13.40%	525	21,068,687.99 AUD	1,219	19,816,580.65 AUD	1,416	36,571,832.72 AUD	328	4,313,435.92 AUD
60 - 71	7,603	68.15%	231,178,237.01 AUD	75.78%	2,427	116,226,941.21 AUD	5,176	114,951,295.80 AUD	5,452	181,854,041.36 AUD	2,151	49,324,195.65 AUD
> 71	529	4.74%	14,854,592.48 AUD	4.87%	-	- AUD	529	14,854,592.48 AUD	355	10,171,640.58 AUD	174	4,682,951.90 AUD
<b>Total</b>	<b>11,156</b>	<b>100.00%</b>	<b>305,076,532.83 AUD</b>	<b>100.00%</b>	<b>3,208</b>	<b>146,075,104.72 AUD</b>	<b>7,948</b>	<b>159,001,428.11 AUD</b>	<b>8,075</b>	<b>243,579,976.76 AUD</b>	<b>3,081</b>	<b>61,496,556.07 AUD</b>

Statistics Original Term	
Minimum Original Term in months	22
Maximum Original Term in months	84
Weighted Average Original Term month (by ODRB)	58.11

**Remaining Term**

Total Portfolio					Balloon				Vehicle Status			
Length of Remaining Term (months)	Number of Contracts	Percentage of Contracts	Outstanding Discounted Receivables Balance	Percentage of Balance	Balloon		No Balloon		New		Used	
					Number of Contracts	Outstanding Discounted Receivables Balance	Number of Contracts	Outstanding Discounted Receivables Balance	Number of Contracts	Outstanding Discounted Receivables Balance	Number of Contracts	Outstanding Discounted Receivables Balance
0 - 11	1,083	9.71%	12,045,278.54 AUD	3.95%	243	6,581,288.16 AUD	840	5,463,990.38 AUD	737	10,172,189.15 AUD	346	1,873,089.39 AUD
12 - 23	2,050	18.38%	43,941,518.21 AUD	14.40%	557	22,349,859.66 AUD	1,493	21,591,658.55 AUD	1,548	37,991,773.27 AUD	502	5,949,744.94 AUD
24 - 35	5,319	47.68%	151,514,628.52 AUD	49.66%	1,633	73,833,977.25 AUD	3,686	77,680,651.27 AUD	3,872	120,522,939.01 AUD	1,447	30,991,689.51 AUD
36 - 47	2,277	20.41%	84,161,364.74 AUD	27.59%	773	43,125,701.16 AUD	1,504	41,035,663.58 AUD	1,619	65,352,337.79 AUD	658	18,809,026.95 AUD
48 - 59	312	2.80%	9,617,967.67 AUD	3.15%	2	184,278.49 AUD	310	9,433,689.18 AUD	222	6,996,627.93 AUD	90	2,621,339.74 AUD
60 - 71	115	1.03%	3,795,775.15 AUD	1.24%	-	- AUD	115	3,795,775.15 AUD	77	2,544,109.61 AUD	38	1,251,665.54 AUD
> 71	-	0.00%	- AUD	0.00%	-	- AUD	-	- AUD	-	- AUD	-	- AUD
<b>Total</b>	<b>11,156</b>	<b>100.00%</b>	<b>305,076,532.83 AUD</b>	<b>100.00%</b>	<b>3,208</b>	<b>146,075,104.72 AUD</b>	<b>7,948</b>	<b>159,001,428.11 AUD</b>	<b>8,075</b>	<b>243,579,976.76 AUD</b>	<b>3,081</b>	<b>61,496,556.07 AUD</b>

Statistics Remaining Term	
Minimum Remaining Term in months	0
Maximum Remaining Term in months	69
Weighted Average Remaining Term in months (by ODRB)	30.74

**Distribution by Seasoning**

Total Portfolio					Balloon				Vehicle Status			
Seasoning (months)	Number of Contracts	Percentage of Contracts	Outstanding Discounted Receivables Balance	Percentage of Balance	Balloon		No Balloon		New		Used	
					Number of Contracts	Outstanding Discounted Receivables Balance	Number of Contracts	Outstanding Discounted Receivables Balance	Number of Contracts	Outstanding Discounted Receivables Balance	Number of Contracts	Outstanding Discounted Receivables Balance
0 - 11	3	0.03%	184,744.45 AUD	0.06%	1	129,933.05 AUD	2	54,811.40 AUD	2	170,861.97 AUD	1	13,882.48 AUD
12 - 23	2,066	18.52%	66,462,448.86 AUD	21.79%	565	30,018,905.29 AUD	1,501	36,443,543.57 AUD	1,408	51,100,776.92 AUD	658	15,361,671.94 AUD
24 - 35	7,826	70.15%	214,112,924.08 AUD	70.18%	2,270	102,991,007.81 AUD	5,556	111,121,916.27 AUD	5,769	172,653,790.51 AUD	2,057	41,459,133.57 AUD
36 - 47	1,104	9.90%	23,003,029.98 AUD	7.54%	337	12,384,136.62 AUD	767	10,618,893.36 AUD	792	18,642,659.53 AUD	312	4,360,370.45 AUD
48 - 59	103	0.92%	949,862.17 AUD	0.31%	32	539,653.58 AUD	71	410,208.59 AUD	67	748,647.96 AUD	36	201,214.21 AUD
60 - 71	41	0.37%	311,745.51 AUD	0.10%	3	11,468.37 AUD	38	300,277.14 AUD	29	230,495.95 AUD	12	81,249.56 AUD
> 71	13	0.12%	51,777.78 AUD	0.02%	-	- AUD	13	51,777.78 AUD	8	32,743.92 AUD	5	19,033.86 AUD
<b>Total</b>	<b>11,156</b>	<b>100.00%</b>	<b>305,076,532.83 AUD</b>	<b>100.00%</b>	<b>3,208</b>	<b>146,075,104.72 AUD</b>	<b>7,948</b>	<b>159,001,428.11 AUD</b>	<b>8,075</b>	<b>243,579,976.76 AUD</b>	<b>3,081</b>	<b>61,496,556.07 AUD</b>

Statistics Seasoning	
Minimum Seasoning in months	7
Maximum Seasoning in months	84
Weighted Average Seasoning Term in months (by ODRB)	27.42

Pool Data VI

Product Type

Total Portfolio					Balloon				Vehicle Status			
Product Type	Number of Contracts	Percentage of Contracts	Outstanding Discounted Receivables Balance	Percentage of Balance	Balloon		No Balloon		New		Used	
					Number of Contracts	Outstanding Discounted Receivables Balance	Number of Contracts	Outstanding Discounted Receivables Balance	Number of Contracts	Outstanding Discounted Receivables Balance	Number of Contracts	Outstanding Discounted Receivables Balance
Chattel Mortgage	7,057	63.26%	217,816,844.03 AUD	71.40%	2,546	121,727,553.49 AUD	4,511	96,089,290.54 AUD	5,307	178,588,597.48 AUD	1,750	39,228,246.55 AUD
Consumer Loan	4,099	36.74%	87,259,688.80 AUD	28.60%	662	24,347,551.23 AUD	3,437	62,912,137.57 AUD	2,768	64,991,379.28 AUD	1,331	22,268,309.52 AUD
<b>Total</b>	<b>11,156</b>	<b>100.00%</b>	<b>305,076,532.83 AUD</b>	<b>100.00%</b>	<b>3,208</b>	<b>146,075,104.72 AUD</b>	<b>7,948</b>	<b>159,001,428.11 AUD</b>	<b>8,075</b>	<b>243,579,976.76 AUD</b>	<b>3,081</b>	<b>61,496,556.07 AUD</b>

Vehicle Status

Total Portfolio					Product Type			
Type of Car	Number of Contracts	Percentage of Contracts	Outstanding Discounted Receivables Balance	Percentage of Balance	Chattel Mortgage		Consumer Loan	
					Number of Contracts	Outstanding Discounted Receivables Balance	Number of Contracts	Outstanding Discounted Receivables Balance
New Vehicles	8,075	72.38%	243,579,976.76 AUD	79.84%	5,307	178,588,597.48 AUD	2,768	64,991,379.28 AUD
Used Vehicles	3,081	27.62%	61,496,556.07 AUD	20.16%	1,750	39,228,246.55 AUD	1,331	22,268,309.52 AUD
<b>Total</b>	<b>11,156</b>	<b>100.00%</b>	<b>305,076,532.83 AUD</b>	<b>100.00%</b>	<b>7,057</b>	<b>217,816,844.03 AUD</b>	<b>4,099</b>	<b>87,259,688.80 AUD</b>

Balloon

Total Portfolio				
Balloon	Number of Contracts	Percentage of Contracts	Outstanding Discounted Receivables Balance	Percentage of Balance
Balloon	3,208	28.76%	146,075,104.72 AUD	47.88%
No Balloon	7,948	71.24%	159,001,428.11 AUD	52.12%
<b>Total</b>	<b>11,156</b>	<b>100.00%</b>	<b>305,076,532.83 AUD</b>	<b>100.00%</b>

Pool Data VII

Distribution by Vehicle Brand and Models

Total Portfolio						Product Type				
Make	Model	Number of Contracts	Percentage of Contracts	Outstanding Discounted Receivables Balance	Percentage of Balance	Chattel Mortgage		Consumer Loan		
						Number of Contracts	Outstanding Discounted Receivables Balance	Number of Contracts	Outstanding Discounted Receivables Balance	
<b>Volkswagen Group Vehicles</b>										
AUDI	A1	41	0.37%	728,444.99 AUD	0.24%	20	332,347.13 AUD	21	396,097.86 AUD	
	A3	214	1.92%	6,129,972.56 AUD	2.01%	94	3,136,421.75 AUD	120	2,993,550.81 AUD	
	A4	99	0.89%	2,958,595.21 AUD	0.97%	60	2,076,873.83 AUD	39	881,721.38 AUD	
	A5	61	0.55%	2,344,919.37 AUD	0.77%	42	1,779,396.97 AUD	19	565,522.40 AUD	
	A6	25	0.22%	1,061,467.40 AUD	0.35%	16	823,328.58 AUD	9	238,138.82 AUD	
	A7	11	0.10%	840,103.80 AUD	0.28%	10	834,978.21 AUD	1	5,125.59 AUD	
	A8	3	0.03%	106,350.74 AUD	0.03%	3	106,350.74 AUD	-	- AUD	
	E-TRON	5	0.04%	431,456.97 AUD	0.14%	4	369,902.58 AUD	1	61,554.39 AUD	
	Q2	83	0.74%	1,804,263.44 AUD	0.59%	32	774,989.21 AUD	51	1,029,274.23 AUD	
	Q3	232	2.08%	6,759,261.01 AUD	2.22%	124	3,945,771.62 AUD	108	2,813,489.39 AUD	
	Q5	242	2.17%	9,031,741.47 AUD	2.96%	168	6,379,565.47 AUD	74	2,652,176.00 AUD	
	Q7	194	1.74%	10,344,632.05 AUD	3.39%	154	8,590,252.52 AUD	40	1,754,379.53 AUD	
	Q8	18	0.16%	1,392,439.93 AUD	0.46%	16	1,305,066.03 AUD	2	87,373.90 AUD	
	R8	6	0.05%	765,057.29 AUD	0.25%	6	765,057.29 AUD	-	- AUD	
	TT	6	0.05%	221,065.88 AUD	0.07%	4	182,235.88 AUD	2	38,830.00 AUD	
	<b>SubTotal</b>	<b>1,240</b>	<b>11.12%</b>	<b>44,919,772.11 AUD</b>	<b>14.72%</b>	<b>753</b>	<b>31,402,537.81 AUD</b>	<b>487</b>	<b>13,517,234.30 AUD</b>	
BENTLEY	BENTAYGA	2	0.02%	452,807.14 AUD	0.15%	2	452,807.14 AUD	-	- AUD	
	CONTINENTAL	3	0.03%	407,817.04 AUD	0.13%	3	407,817.04 AUD	-	- AUD	
	<b>SubTotal</b>	<b>5</b>	<b>0.04%</b>	<b>860,624.18 AUD</b>	<b>0.28%</b>	<b>5</b>	<b>860,624.18 AUD</b>	<b>-</b>	<b>- AUD</b>	
LAMBORGHINI	AVENTADOR	-	0.00%	- AUD	0.00%	-	- AUD	-	- AUD	
	HURACAN	1	0.01%	101,963.35 AUD	0.03%	1	101,963.35 AUD	-	- AUD	
	URUS	2	0.02%	545,313.82 AUD	0.18%	1	309,105.88 AUD	1	236,207.94 AUD	
	<b>SubTotal</b>	<b>3</b>	<b>0.03%</b>	<b>647,277.17 AUD</b>	<b>0.21%</b>	<b>2</b>	<b>411,069.23 AUD</b>	<b>1</b>	<b>236,207.94 AUD</b>	
PORSCHE	BOXSTER	7	0.06%	720,492.00 AUD	0.24%	7	720,492.00 AUD	-	- AUD	
	CARRERA / 911	20	0.18%	3,261,538.17 AUD	1.07%	19	3,165,816.11 AUD	1	95,722.06 AUD	
	CAYENNE	72	0.65%	5,764,047.95 AUD	1.89%	66	5,444,872.20 AUD	6	319,175.75 AUD	
	CAYMAN	1	0.01%	70,055.52 AUD	0.02%	-	- AUD	1	70,055.52 AUD	
	MACAN	94	0.84%	6,140,824.88 AUD	2.01%	88	5,701,840.93 AUD	6	438,983.95 AUD	
	PANAMERA	-	0.00%	- AUD	0.00%	-	- AUD	-	- AUD	
	TAYCAN	13	0.12%	2,055,509.55 AUD	0.67%	13	2,055,509.55 AUD	-	- AUD	
	<b>SubTotal</b>	<b>207</b>	<b>1.86%</b>	<b>18,012,468.07 AUD</b>	<b>5.90%</b>	<b>193</b>	<b>17,088,530.79 AUD</b>	<b>14</b>	<b>923,937.28 AUD</b>	
SKODA	FABIA	35	0.31%	398,664.17 AUD	0.13%	8	119,357.89 AUD	27	279,306.28 AUD	
	KAROQ	49	0.44%	915,059.31 AUD	0.30%	17	298,199.50 AUD	32	616,859.81 AUD	
	KODIAQ	95	0.85%	2,470,939.56 AUD	0.81%	38	1,059,992.15 AUD	57	1,410,947.41 AUD	
	KAMIQ	64	0.57%	1,119,876.21 AUD	0.37%	16	244,650.35 AUD	48	875,225.86 AUD	
	SCALA	39	0.35%	649,796.75 AUD	0.21%	11	206,408.16 AUD	28	443,388.59 AUD	
	OCTAVIA	90	0.81%	1,727,579.53 AUD	0.57%	20	377,917.84 AUD	70	1,349,661.69 AUD	
	RAPID	1	0.01%	3,068.22 AUD	0.00%	-	- AUD	1	3,068.22 AUD	
	SUPERB	21	0.19%	533,370.03 AUD	0.17%	11	316,375.63 AUD	10	216,994.40 AUD	
	<b>SubTotal</b>	<b>394</b>	<b>3.53%</b>	<b>7,818,353.78 AUD</b>	<b>2.56%</b>	<b>121</b>	<b>2,622,901.52 AUD</b>	<b>273</b>	<b>5,195,452.26 AUD</b>	
VOLKSWAGEN	AMAROK	648	5.81%	16,582,340.96 AUD	5.44%	500	13,146,591.18 AUD	148	3,435,749.78 AUD	
	ARTEON	6	0.05%	194,724.20 AUD	0.06%	2	70,836.54 AUD	4	123,887.66 AUD	
	CADDY	81	0.73%	1,296,316.84 AUD	0.42%	76	1,257,965.19 AUD	5	38,351.65 AUD	
	CARAVELLE	1	0.01%	45,995.77 AUD	0.02%	1	45,995.77 AUD	-	- AUD	
	CRAFTER	117	1.05%	2,846,556.38 AUD	0.93%	115	2,794,536.08 AUD	2	52,020.30 AUD	
	GOLF	337	3.02%	5,257,999.19 AUD	1.72%	125	2,196,908.17 AUD	212	3,061,091.02 AUD	
	JETTA	5	0.04%	17,664.93 AUD	0.01%	2	1,377.12 AUD	3	16,287.81 AUD	
	MULTIVAN	33	0.30%	1,080,154.85 AUD	0.35%	20	753,351.28 AUD	13	326,803.57 AUD	
	NEW BEETLE	3	0.03%	28,653.84 AUD	0.01%	1	11,913.45 AUD	2	16,740.39 AUD	
	PASSAT	33	0.30%	681,969.17 AUD	0.22%	15	238,099.99 AUD	18	443,869.18 AUD	
	POLO	143	1.28%	1,653,590.60 AUD	0.54%	44	515,634.26 AUD	99	1,137,956.34 AUD	
	SCIROCCO	1	0.01%	17,251.96 AUD	0.01%	-	- AUD	1	17,251.96 AUD	
	T-CROSS	146	1.31%	2,444,809.23 AUD	0.80%	42	723,026.35 AUD	104	1,721,782.88 AUD	
	T-ROC	94	0.84%	1,989,416.35 AUD	0.65%	29	643,134.07 AUD	65	1,346,282.28 AUD	
	TIGUAN	472	4.23%	10,723,321.50 AUD	3.51%	221	5,513,194.45 AUD	251	5,210,127.05 AUD	
	TOUAREG	74	0.66%	3,351,124.74 AUD	1.10%	58	2,729,219.87 AUD	16	621,904.87 AUD	

Pool Data VII

Distribution by Vehicle Brand and Models

Total Portfolio						Balloon				Vehicle Status			
Make	Model	Number of Contracts	Percentage of Contracts	Outstanding Discounted Receivables Balance	Percentage of Balance	Balloon		No Balloon		New		Used	
						Number of Contracts	Outstanding Discounted Receivables Balance	Number of Contracts	Outstanding Discounted Receivables Balance	Number of Contracts	Outstanding Discounted Receivables Balance	Number of Contracts	Outstanding Discounted Receivables Balance
<b>Volkswagen Group Vehicles</b>													
AUDI	A1	41	0.37%	728,444.99 AUD	0.24%	11	317,498.97 AUD	30	410,946.02 AUD	23	555,292.92 AUD	18	173,152.07 AUD
	A3	214	1.92%	6,129,972.56 AUD	2.01%	84	3,486,037.84 AUD	130	2,643,934.72 AUD	138	4,623,994.65 AUD	76	1,505,977.91 AUD
	A4	99	0.89%	2,958,595.21 AUD	0.97%	39	1,635,961.62 AUD	60	1,322,633.59 AUD	65	2,383,620.91 AUD	34	574,974.30 AUD
	A5	61	0.55%	2,344,919.37 AUD	0.77%	29	1,538,892.84 AUD	32	806,026.53 AUD	42	1,955,334.48 AUD	19	389,584.89 AUD
	A6	25	0.22%	1,061,467.40 AUD	0.35%	8	515,270.75 AUD	17	546,196.65 AUD	13	773,844.81 AUD	12	287,622.59 AUD
	A7	11	0.10%	840,103.80 AUD	0.28%	9	809,770.66 AUD	2	30,333.14 AUD	9	776,012.69 AUD	2	64,091.11 AUD
	A8	3	0.03%	106,350.74 AUD	0.03%	-	- AUD	3	106,350.74 AUD	2	87,744.08 AUD	1	18,606.66 AUD
	E-TRON	5	0.04%	431,456.97 AUD	0.14%	4	386,142.59 AUD	1	45,314.38 AUD	5	431,456.97 AUD	-	- AUD
	Q2	83	0.74%	1,804,263.44 AUD	0.59%	33	939,223.38 AUD	50	865,040.06 AUD	61	1,464,772.25 AUD	22	339,491.19 AUD
	Q3	232	2.08%	6,759,261.01 AUD	2.22%	90	3,587,221.41 AUD	142	3,172,039.60 AUD	195	6,207,452.89 AUD	37	551,808.12 AUD
	Q5	242	2.17%	9,031,741.47 AUD	2.96%	124	5,950,182.92 AUD	118	3,081,558.55 AUD	175	7,381,039.68 AUD	67	1,650,701.79 AUD
	Q7	194	1.74%	10,344,632.05 AUD	3.39%	100	7,138,686.28 AUD	94	3,205,945.77 AUD	122	8,089,267.95 AUD	72	2,255,364.10 AUD
	Q8	18	0.16%	1,392,439.93 AUD	0.46%	10	949,471.46 AUD	8	442,968.47 AUD	16	1,270,451.89 AUD	2	121,988.04 AUD
	R8	6	0.05%	765,057.29 AUD	0.25%	5	707,414.48 AUD	1	57,642.81 AUD	3	501,042.40 AUD	3	264,014.89 AUD
	TT	6	0.05%	221,065.88 AUD	0.07%	3	161,856.90 AUD	3	59,208.98 AUD	1	102,194.65 AUD	5	118,871.23 AUD
	<b>SubTotal</b>	<b>1,240</b>	<b>11.12%</b>	<b>44,919,772.11 AUD</b>	<b>14.72%</b>	<b>549</b>	<b>28,123,632.10 AUD</b>	<b>691</b>	<b>16,796,140.01 AUD</b>	<b>870</b>	<b>36,603,523.22 AUD</b>	<b>370</b>	<b>8,316,248.89 AUD</b>
BENTLEY	BENTAYGA	2	0.02%	452,807.14 AUD	0.15%	2	452,807.14 AUD	-	- AUD	1	278,696.66 AUD	1	174,110.48 AUD
	CONTINENTAL	3	0.03%	407,817.04 AUD	0.13%	1	166,646.14 AUD	2	241,170.90 AUD	-	- AUD	3	407,817.04 AUD
	<b>SubTotal</b>	<b>5</b>	<b>0.04%</b>	<b>860,624.18 AUD</b>	<b>0.28%</b>	<b>3</b>	<b>619,453.28 AUD</b>	<b>2</b>	<b>241,170.90 AUD</b>	<b>1</b>	<b>278,696.66 AUD</b>	<b>4</b>	<b>581,927.52 AUD</b>
LAMBORGHINI	AVENTADOR	-	0.00%	- AUD	0.00%	-	- AUD	-	- AUD	-	- AUD	-	- AUD
	HURACAN	1	0.01%	101,963.35 AUD	0.03%	1	101,963.35 AUD	-	- AUD	1	101,963.35 AUD	-	- AUD
	URUS	2	0.02%	545,313.82 AUD	0.18%	2	545,313.82 AUD	-	- AUD	2	545,313.82 AUD	-	- AUD
	<b>SubTotal</b>	<b>3</b>	<b>0.03%</b>	<b>647,277.17 AUD</b>	<b>0.21%</b>	<b>3</b>	<b>647,277.17 AUD</b>	<b>-</b>	<b>- AUD</b>	<b>3</b>	<b>647,277.17 AUD</b>	<b>-</b>	<b>- AUD</b>
PORSCHE	BOXSTER	7	0.06%	720,492.00 AUD	0.24%	6	676,463.00 AUD	1	44,029.00 AUD	6	676,463.00 AUD	1	44,029.00 AUD
	CARRERA / 911	20	0.18%	3,261,538.17 AUD	1.07%	18	3,183,682.83 AUD	2	77,855.34 AUD	15	2,751,716.44 AUD	5	509,821.73 AUD
	CAYENNE	72	0.65%	5,764,047.95 AUD	1.89%	51	4,831,749.57 AUD	21	932,298.38 AUD	60	5,206,542.14 AUD	12	557,505.81 AUD
	CAYMAN	1	0.01%	70,055.52 AUD	0.02%	-	- AUD	1	70,055.52 AUD	-	- AUD	1	70,055.52 AUD
	MACAN	94	0.84%	6,140,824.88 AUD	2.01%	67	4,939,724.03 AUD	27	1,201,100.85 AUD	80	5,567,828.83 AUD	14	572,996.05 AUD
	PANAMERA	-	0.00%	- AUD	0.00%	-	- AUD	-	- AUD	-	- AUD	-	- AUD
	TAYCAN	13	0.12%	2,055,509.55 AUD	0.67%	13	2,055,509.55 AUD	-	- AUD	13	2,055,509.55 AUD	-	- AUD
	<b>SubTotal</b>	<b>207</b>	<b>1.86%</b>	<b>18,012,468.07 AUD</b>	<b>5.90%</b>	<b>155</b>	<b>15,687,128.98 AUD</b>	<b>52</b>	<b>2,325,339.09 AUD</b>	<b>174</b>	<b>16,258,059.96 AUD</b>	<b>33</b>	<b>1,754,408.11 AUD</b>
SKODA	FABIA	35	0.31%	398,664.17 AUD	0.13%	1	19,551.33 AUD	34	379,112.84 AUD	32	384,211.80 AUD	3	14,452.37 AUD
	KAROQ	49	0.44%	915,059.31 AUD	0.30%	7	162,569.07 AUD	42	752,490.24 AUD	49	915,059.31 AUD	-	- AUD
	KODIAQ	95	0.85%	2,470,939.56 AUD	0.81%	23	777,727.03 AUD	72	1,693,212.53 AUD	87	2,338,367.96 AUD	8	132,571.60 AUD
	KAMIQ	64	0.57%	1,119,876.21 AUD	0.37%	5	122,463.48 AUD	59	997,412.73 AUD	64	1,119,876.21 AUD	-	- AUD
	SCALA	39	0.35%	649,796.75 AUD	0.21%	8	166,874.17 AUD	31	482,922.58 AUD	39	649,796.75 AUD	-	- AUD
	OCTAVIA	90	0.81%	1,727,579.53 AUD	0.57%	25	739,924.26 AUD	65	987,655.27 AUD	82	1,631,404.65 AUD	8	96,174.88 AUD
	RAPID	1	0.01%	3,068.22 AUD	0.00%	-	- AUD	1	3,068.22 AUD	1	3,068.22 AUD	-	- AUD
	SUPERB	21	0.19%	533,370.03 AUD	0.17%	8	300,444.61 AUD	13	232,925.42 AUD	16	478,979.46 AUD	5	54,390.57 AUD
	<b>SubTotal</b>	<b>394</b>	<b>3.53%</b>	<b>7,818,353.78 AUD</b>	<b>2.56%</b>	<b>77</b>	<b>2,289,553.95 AUD</b>	<b>317</b>	<b>5,528,799.53 AUD</b>	<b>370</b>	<b>7,520,764.36 AUD</b>	<b>24</b>	<b>297,589.42 AUD</b>
VOLKSWAGEN	AMAROK	648	5.81%	16,582,340.96 AUD	5.44%	240	8,432,443.35 AUD	408	8,149,897.61 AUD	537	14,287,987.86 AUD	111	2,294,353.10 AUD
	ARTEON	6	0.05%	194,724.20 AUD	0.06%	5	175,547.46 AUD	1	19,176.74 AUD	2	63,503.06 AUD	4	131,221.14 AUD
	CADDY	81	0.73%	1,296,316.84 AUD	0.42%	19	463,393.26 AUD	62	832,923.58 AUD	66	1,107,216.77 AUD	15	189,100.07 AUD
	CARAVELLE	1	0.01%	45,995.77 AUD	0.02%	-	- AUD	1	45,995.77 AUD	-	- AUD	-	- AUD
	CRAFTER	117	1.05%	2,846,556.38 AUD	0.93%	35	1,228,145.93 AUD	82	1,618,410.45 AUD	115	2,811,469.40 AUD	2	35,086.98 AUD
	GOLF	337	3.02%	5,257,999.19 AUD	1.72%	85	2,040,981.15 AUD	252	3,217,018.04 AUD	226	3,992,015.78 AUD	111	1,265,983.41 AUD
	JETTA	5	0.04%	17,664.93 AUD	0.01%	-	- AUD	5	17,664.93 AUD	-	- AUD	5	17,664.93 AUD
	MULTIVAN	33	0.30%	1,080,154.85 AUD	0.35%	11	510,775.25 AUD	22	569,379.60 AUD	23	840,681.65 AUD	10	239,473.20 AUD
	NEW BEETLE	3	0.03%	28,653.84 AUD	0.01%	-	- AUD	3	28,653.84 AUD	-	- AUD	3	28,653.84 AUD
	PASSAT	33	0.30%	681,969.17 AUD	0.22%	11	354,767.29 AUD	22	327,201.88 AUD	17	508,559.91 AUD	16	173,409.26 AUD
	POLO	143	1.28%	1,653,590.60 AUD	0.54%	20	354,264.74 AUD	123	1,299,325.86 AUD	125	1,560,067.46 AUD	18	93,523.14 AUD
	SCIROCCO	1	0.01%	17,251.96 AUD	0.01%	-	- AUD	1	17,251.96 AUD	-	- AUD	1	17,251.96 AUD
	T-CROSS	146	1.31%	2,444,809.23 AUD	0.80%	23	489,413.56 AUD	123	1,955,395.67 AUD	146	2,444,809.23 AUD	-	- AUD
	T-ROC	94	0.84%	1,989,416.35 AUD	0.65%	19	524,935.77 AUD	75	1,464,480.58 AUD	94	1,989,416.35 AUD	-	- AUD
	TIGUAN	472	4.23%	10,723,321.50 AUD	3.51%	143	4,414,121.07 AUD	329	6,309,200.43 AUD	413	9,727,238.90 AUD	59	996,082.60 AUD
	TOUAREG	74	0.66%	3,351,124.74 AUD	1.10%	34	2,111,174.05 AUD	40	1,239,950.69 AUD	56	2,984,679.17 AUD	18	366,445.57 AUD

Pool Data VII

Distribution by Vehicle Brand and Models

Total Portfolio						Product Type			
Make	Model	Number of Contracts	Percentage of Contracts	Outstanding Discounted Receivables Balance	Percentage of Balance	Chattel Mortgage		Consumer Loan	
						Number of Contracts	Outstanding Discounted Receivables Balance	Number of Contracts	Outstanding Discounted Receivables Balance
	TRANSPORTER	93	0.83%	2,726,174.96 AUD	0.89%	80	2,268,418.00 AUD	13	457,756.96 AUD
	UP!	-	0.00%	- AUD	0.00%	-	- AUD	-	- AUD
	<b>SubTotal</b>	<b>2,287</b>	<b>20.50%</b>	<b>50,938,065.47 AUD</b>	<b>16.70%</b>	<b>1,331</b>	<b>32,910,201.77 AUD</b>	<b>956</b>	<b>18,027,863.70 AUD</b>
<b>Volkswagen Group Vehicles</b>	<b>SubTotal</b>	<b>4,136</b>	<b>37.07%</b>	<b>123,196,560.78 AUD</b>	<b>40.38%</b>	<b>2,405</b>	<b>85,295,865.30 AUD</b>	<b>1,731</b>	<b>37,900,695.48 AUD</b>

Pool Data VII

Distribution by Vehicle Brand and Models

Total Portfolio						Balloon				Vehicle Status			
Make	Model	Number of Contracts	Percentage of Contracts	Outstanding Discounted Receivables Balance	Percentage of Balance	Balloon		No Balloon		New		Used	
						Number of Contracts	Outstanding Discounted Receivables Balance	Number of Contracts	Outstanding Discounted Receivables Balance	Number of Contracts	Outstanding Discounted Receivables Balance	Number of Contracts	Outstanding Discounted Receivables Balance
	TRANSPORTER	93	0.83%	2,726,174.96 AUD	0.89%	36	1,308,480.89 AUD	57	1,417,694.07 AUD	81	2,503,986.07 AUD	12	222,188.89 AUD
	UP!	-	0.00%	- AUD	0.00%	-	- AUD	-	- AUD	-	- AUD	-	- AUD
	<b>SubTotal</b>	<b>2,287</b>	<b>20.50%</b>	<b>50,938,065.47 AUD</b>	<b>16.70%</b>	<b>681</b>	<b>22,408,443.77 AUD</b>	<b>1,606</b>	<b>28,529,621.70 AUD</b>	<b>1,902</b>	<b>44,867,627.38 AUD</b>	<b>385</b>	<b>6,070,438.09 AUD</b>
<b>Volkswagen Group Vehicles</b>	<b>SubTotal</b>	<b>4,136</b>	<b>37.07%</b>	<b>123,196,560.78 AUD</b>	<b>40.38%</b>	<b>1,468</b>	<b>69,775,489.25 AUD</b>	<b>2,668</b>	<b>53,421,071.53 AUD</b>	<b>3,320</b>	<b>106,175,948.75 AUD</b>	<b>816</b>	<b>17,020,612.03 AUD</b>



Pool Data VII

Distribution by Vehicle Brand and Models

Total Portfolio						Product Type			
Make	Model	Number of Contracts	Percentage of Contracts	Outstanding Discounted Receivables Balance	Percentage of Balance	Chattel Mortgage		Consumer Loan	
						Number of Contracts	Outstanding Discounted Receivables Balance	Number of Contracts	Outstanding Discounted Receivables Balance
Other Vehicles									
ABARTH		13	0.12%	271,679.44 AUD	0.09%	10	206,497.57 AUD	3	65,181.87 AUD
ALFA ROMEO		27	0.24%	887,062.54 AUD	0.29%	14	412,583.31 AUD	13	474,479.23 AUD
ASTON MARTIN		6	0.05%	857,177.40 AUD	0.28%	6	857,177.40 AUD	-	- AUD
BMW		117	1.05%	4,410,203.76 AUD	1.45%	93	3,766,936.52 AUD	24	643,267.24 AUD
CHEVROLET		22	0.20%	1,399,942.26 AUD	0.46%	20	1,264,156.17 AUD	2	135,786.09 AUD
CHRYSLER		5	0.04%	119,725.35 AUD	0.04%	2	82,049.23 AUD	3	37,676.12 AUD
CITROEN		4	0.04%	35,026.82 AUD	0.01%	3	34,668.95 AUD	1	357.87 AUD
DODGE		2	0.02%	10,596.75 AUD	0.00%	1	2,702.05 AUD	1	7,894.70 AUD
FERRARI		1	0.01%	163,042.89 AUD	0.05%	-	- AUD	1	163,042.89 AUD
FIAT		12	0.11%	168,345.61 AUD	0.06%	9	130,935.82 AUD	3	37,409.79 AUD
FORD		767	6.88%	21,836,319.30 AUD	7.16%	601	17,882,922.00 AUD	166	3,953,397.30 AUD
GENESIS		3	0.03%	177,893.48 AUD	0.06%	3	177,893.48 AUD	-	- AUD
GM		1	0.01%	62,254.08 AUD	0.02%	1	62,254.08 AUD	-	- AUD
GREAT WALL		13	0.12%	157,806.00 AUD	0.05%	9	113,001.66 AUD	4	44,804.34 AUD
GWM		49	0.44%	1,116,027.66 AUD	0.37%	36	782,307.39 AUD	13	333,720.27 AUD
HAVAL		53	0.48%	931,135.90 AUD	0.31%	29	485,840.12 AUD	24	445,295.78 AUD
HINO		1	0.01%	38,009.00 AUD	0.01%	1	38,009.00 AUD	-	- AUD
HOLDEN		242	2.17%	3,919,679.89 AUD	1.28%	128	2,152,356.20 AUD	114	1,767,323.69 AUD
HONDA		202	1.81%	3,474,261.33 AUD	1.14%	109	2,045,110.63 AUD	93	1,429,150.70 AUD
HYUNDAI		555	4.97%	9,743,339.36 AUD	3.19%	291	5,504,523.99 AUD	264	4,238,815.37 AUD
INFINITI		2	0.02%	24,177.74 AUD	0.01%	2	24,177.74 AUD	-	- AUD
ISUZU		242	2.17%	6,582,285.42 AUD	2.16%	171	4,549,077.82 AUD	71	2,033,207.60 AUD
JAGUAR		70	0.63%	3,008,920.97 AUD	0.99%	51	2,367,668.10 AUD	19	641,252.87 AUD
JEEP		115	1.03%	3,279,102.04 AUD	1.07%	78	2,455,679.17 AUD	37	823,422.87 AUD
KIA		329	2.95%	6,189,722.00 AUD	2.03%	198	4,126,382.56 AUD	131	2,063,339.44 AUD
LAND ROVER		489	4.38%	27,257,267.04 AUD	8.93%	371	22,112,023.07 AUD	118	5,145,243.97 AUD
LDV		212	1.90%	4,198,126.18 AUD	1.38%	185	3,606,796.68 AUD	27	591,329.50 AUD
LEXUS		10	0.09%	303,865.21 AUD	0.10%	10	303,865.21 AUD	-	- AUD
MAHINDRA		2	0.02%	12,796.66 AUD	0.00%	2	12,796.66 AUD	-	- AUD
MASERATI		20	0.18%	2,038,592.86 AUD	0.67%	18	1,913,174.01 AUD	2	125,418.85 AUD
MAZDA		468	4.20%	9,549,735.06 AUD	3.13%	302	6,699,157.30 AUD	166	2,850,577.76 AUD
MERCEDES-BENZ		271	2.43%	10,415,296.03 AUD	3.41%	224	8,974,520.09 AUD	47	1,440,775.94 AUD
MG		195	1.75%	2,742,172.23 AUD	0.90%	77	978,490.60 AUD	118	1,763,681.63 AUD
MINI		12	0.11%	306,692.55 AUD	0.10%	10	238,574.16 AUD	2	68,118.39 AUD
MITSUBISHI		716	6.42%	13,830,715.62 AUD	4.53%	403	7,822,569.25 AUD	313	6,008,146.37 AUD
NISSAN		325	2.91%	7,260,380.33 AUD	2.38%	217	5,262,028.35 AUD	108	1,998,351.98 AUD
OPEL		1	0.01%	8,707.75 AUD	0.00%	-	- AUD	1	8,707.75 AUD
PEUGEOT		58	0.52%	1,307,543.81 AUD	0.43%	46	965,385.06 AUD	12	342,158.75 AUD
RAM		1	0.01%	83,072.06 AUD	0.03%	1	83,072.06 AUD	-	- AUD
RENAULT		134	1.20%	3,117,623.26 AUD	1.02%	118	2,787,062.94 AUD	16	330,560.32 AUD
ROLLS-ROYCE		2	0.02%	311,612.65 AUD	0.10%	2	311,612.65 AUD	-	- AUD
SSANGYONG		26	0.23%	598,578.06 AUD	0.20%	18	386,831.81 AUD	8	211,746.25 AUD
SUBARU		333	2.98%	6,599,070.98 AUD	2.16%	179	3,643,389.47 AUD	154	2,955,681.51 AUD
SUZUKI		120	1.08%	1,535,422.27 AUD	0.50%	40	512,684.61 AUD	80	1,022,737.66 AUD
TESLA		15	0.13%	691,985.85 AUD	0.23%	15	691,985.85 AUD	-	- AUD
TOYOTA		604	5.41%	14,946,852.60 AUD	4.90%	445	11,506,770.41 AUD	159	3,440,082.19 AUD
VOLVO		153	1.37%	5,900,126.00 AUD	1.93%	103	4,183,277.53 AUD	50	1,716,848.47 AUD
Other Vehicles	SubTotal	7,020	62.93%	181,879,972.05 AUD	59.62%	4,652	132,520,978.73 AUD	2,368	49,358,993.32 AUD
<b>Total</b>		<b>11,156</b>	<b>100.00%</b>	<b>305,076,532.83 AUD</b>	<b>100.00%</b>	<b>7,057</b>	<b>217,816,844.03 AUD</b>	<b>4,099</b>	<b>87,259,688.80 AUD</b>

Pool Data VII

Distribution by Vehicle Brand and Models

Total Portfolio						Balloon				Vehicle Status			
Make	Model	Number of Contracts	Percentage of Contracts	Outstanding Discounted Receivables Balance	Percentage of Balance	Balloon		No Balloon		New		Used	
						Number of Contracts	Outstanding Discounted Receivables Balance	Number of Contracts	Outstanding Discounted Receivables Balance	Number of Contracts	Outstanding Discounted Receivables Balance	Number of Contracts	Outstanding Discounted Receivables Balance
Other Vehicles													
ABARTH		13	0.12%	271,679.44 AUD	0.09%	8	188,570.77 AUD	5	83,108.67 AUD	8	188,570.77 AUD	5	83,108.67 AUD
ALFA ROMEO		27	0.24%	887,062.54 AUD	0.29%	17	672,593.32 AUD	10	214,469.22 AUD	21	729,700.79 AUD	6	157,361.75 AUD
ASTON MARTIN		6	0.05%	857,177.40 AUD	0.28%	5	817,349.93 AUD	1	39,827.47 AUD	2	447,444.49 AUD	4	409,732.91 AUD
BMW		117	1.05%	4,410,203.76 AUD	1.45%	54	2,859,389.87 AUD	63	1,550,813.89 AUD	53	2,608,796.06 AUD	64	1,801,407.70 AUD
CHEVROLET		22	0.20%	1,399,942.26 AUD	0.46%	13	915,079.39 AUD	9	484,862.87 AUD	21	1,342,579.11 AUD	1	57,363.15 AUD
CHRYSLER		5	0.04%	119,725.35 AUD	0.04%	1	52,723.78 AUD	4	67,001.57 AUD	2	82,049.23 AUD	3	37,676.12 AUD
CITROEN		4	0.04%	35,026.82 AUD	0.01%	1	3,937.01 AUD	3	31,089.81 AUD	1	17,939.43 AUD	3	17,087.39 AUD
DODGE		2	0.02%	10,596.75 AUD	0.00%	-	- AUD	2	10,596.75 AUD	-	- AUD	2	10,596.75 AUD
FERRARI		1	0.01%	163,042.89 AUD	0.05%	1	163,042.89 AUD	-	- AUD	-	- AUD	1	163,042.89 AUD
FIAT		12	0.11%	168,345.61 AUD	0.06%	3	69,072.00 AUD	9	99,273.61 AUD	8	123,369.69 AUD	4	44,975.92 AUD
FORD		767	6.88%	21,836,319.30 AUD	7.16%	212	8,122,733.85 AUD	555	13,713,585.45 AUD	521	16,609,253.21 AUD	246	5,227,066.09 AUD
GENESIS		3	0.03%	177,893.48 AUD	0.06%	2	134,136.54 AUD	1	43,756.94 AUD	3	177,893.48 AUD	-	- AUD
GM		1	0.01%	62,254.08 AUD	0.02%	1	62,254.08 AUD	-	- AUD	1	62,254.08 AUD	-	- AUD
GREAT WALL		13	0.12%	157,806.00 AUD	0.05%	1	23,709.50 AUD	12	134,096.50 AUD	12	149,342.03 AUD	1	8,463.97 AUD
GWM		49	0.44%	1,116,027.66 AUD	0.37%	8	210,258.78 AUD	41	905,768.88 AUD	49	1,116,027.66 AUD	-	- AUD
HAVAL		53	0.48%	931,135.90 AUD	0.31%	3	84,181.85 AUD	50	846,954.05 AUD	53	931,135.90 AUD	-	- AUD
HINO		1	0.01%	38,009.00 AUD	0.01%	1	38,009.00 AUD	-	- AUD	1	38,009.00 AUD	-	- AUD
HOLDEN		242	2.17%	3,919,679.89 AUD	1.28%	18	439,450.68 AUD	224	3,480,229.21 AUD	54	1,023,788.41 AUD	188	2,895,891.48 AUD
HONDA		202	1.81%	3,474,261.33 AUD	1.14%	30	811,345.25 AUD	172	2,662,916.08 AUD	149	2,828,027.90 AUD	53	646,233.43 AUD
HYUNDAI		555	4.97%	9,743,339.36 AUD	3.19%	83	2,297,966.03 AUD	472	7,445,373.33 AUD	386	7,712,093.25 AUD	169	2,031,246.11 AUD
INFINITI		2	0.02%	24,177.74 AUD	0.01%	-	- AUD	2	24,177.74 AUD	-	- AUD	2	24,177.74 AUD
ISUZU		242	2.17%	6,582,285.42 AUD	2.16%	51	1,705,097.53 AUD	191	4,877,187.89 AUD	200	5,805,783.21 AUD	42	776,502.21 AUD
JAGUAR		70	0.63%	3,008,920.97 AUD	0.99%	41	2,223,181.41 AUD	29	785,739.56 AUD	49	2,352,863.17 AUD	21	656,057.80 AUD
JEEP		115	1.03%	3,279,102.04 AUD	1.07%	30	1,364,205.93 AUD	85	1,914,896.11 AUD	65	2,337,823.51 AUD	50	941,278.53 AUD
KIA		329	2.95%	6,189,722.00 AUD	2.03%	60	1,823,064.71 AUD	269	4,366,657.29 AUD	254	5,169,609.11 AUD	75	1,020,112.89 AUD
LAND ROVER		489	4.38%	27,257,267.04 AUD	8.93%	287	20,052,244.78 AUD	202	7,205,022.26 AUD	360	22,341,787.89 AUD	129	4,915,479.15 AUD
LDV		212	1.90%	4,198,126.18 AUD	1.38%	41	1,019,307.83 AUD	171	3,178,818.35 AUD	207	4,126,411.15 AUD	5	71,715.03 AUD
LEXUS		10	0.09%	303,865.21 AUD	0.10%	6	216,687.40 AUD	4	87,177.81 AUD	5	175,222.34 AUD	5	128,642.87 AUD
MAHINDRA		2	0.02%	12,796.66 AUD	0.00%	-	- AUD	2	12,796.66 AUD	2	12,796.66 AUD	-	- AUD
MASERATI		20	0.18%	2,038,592.86 AUD	0.67%	16	1,817,088.36 AUD	4	221,504.50 AUD	17	1,809,859.94 AUD	3	228,732.92 AUD
MAZDA		468	4.20%	9,549,735.06 AUD	3.13%	106	3,373,450.41 AUD	362	6,176,284.65 AUD	332	7,736,341.84 AUD	136	1,813,393.22 AUD
MERCEDES-BENZ		271	2.43%	10,415,296.03 AUD	3.41%	104	5,577,770.28 AUD	167	4,837,525.75 AUD	129	6,557,633.20 AUD	142	3,857,662.83 AUD
MG		195	1.75%	2,742,172.23 AUD	0.90%	13	297,614.86 AUD	182	2,444,557.37 AUD	189	2,666,673.35 AUD	6	75,498.88 AUD
MINI		12	0.11%	306,692.55 AUD	0.10%	5	170,933.81 AUD	7	135,758.74 AUD	5	195,150.94 AUD	7	111,541.61 AUD
MITSUBISHI		716	6.42%	13,830,715.62 AUD	4.53%	99	2,873,757.50 AUD	617	10,956,958.12 AUD	520	11,024,184.82 AUD	196	2,806,530.80 AUD
NISSAN		325	2.91%	7,260,380.33 AUD	2.38%	59	1,948,541.51 AUD	266	5,311,838.82 AUD	188	5,193,242.26 AUD	137	2,067,138.07 AUD
OPEL		1	0.01%	8,707.75 AUD	0.00%	-	- AUD	1	8,707.75 AUD	-	- AUD	1	8,707.75 AUD
PEUGEOT		58	0.52%	1,307,543.81 AUD	0.43%	18	570,965.47 AUD	40	736,578.34 AUD	55	1,265,936.32 AUD	3	41,607.49 AUD
RAM		1	0.01%	83,072.06 AUD	0.03%	1	83,072.06 AUD	-	- AUD	-	- AUD	1	83,072.06 AUD
RENAULT		134	1.20%	3,117,623.26 AUD	1.02%	47	1,406,990.67 AUD	87	1,710,632.59 AUD	115	2,780,086.88 AUD	19	337,536.38 AUD
ROLLS-ROYCE		2	0.02%	311,612.65 AUD	0.10%	1	201,097.56 AUD	1	110,515.09 AUD	1	201,097.56 AUD	1	110,515.09 AUD
SSANGYONG		26	0.23%	598,578.06 AUD	0.20%	5	150,405.35 AUD	21	448,172.71 AUD	25	563,401.67 AUD	1	35,176.39 AUD
SUBARU		333	2.98%	6,599,070.98 AUD	2.16%	77	2,151,214.11 AUD	256	4,447,856.87 AUD	247	5,440,776.71 AUD	86	1,158,294.27 AUD
SUZUKI		120	1.08%	1,535,422.27 AUD	0.50%	6	96,865.35 AUD	114	1,438,556.92 AUD	92	1,283,297.34 AUD	28	252,124.93 AUD
TESLA		15	0.13%	691,985.85 AUD	0.23%	9	467,076.16 AUD	6	224,909.69 AUD	15	691,985.85 AUD	-	- AUD
TOYOTA		604	5.41%	14,946,852.60 AUD	4.90%	109	4,587,478.27 AUD	495	10,359,374.33 AUD	208	6,221,709.25 AUD	396	8,725,143.35 AUD
VOLVO		153	1.37%	5,900,126.00 AUD	1.93%	87	4,155,699.63 AUD	66	1,744,426.37 AUD	130	5,262,078.55 AUD	23	638,047.45 AUD
Other Vehicles	SubTotal	7,020	62.93%	181,879,972.05 AUD	59.62%	1,740	76,299,615.47 AUD	5,280	105,580,356.58 AUD	4,755	137,404,028.01 AUD	2,265	44,475,944.04 AUD
<b>Total</b>		<b>11,156</b>	<b>100.00%</b>	<b>305,076,532.83 AUD</b>	<b>100.00%</b>	<b>3,208</b>	<b>146,075,104.72 AUD</b>	<b>7,948</b>	<b>159,001,428.11 AUD</b>	<b>8,075</b>	<b>243,579,976.76 AUD</b>	<b>3,081</b>	<b>61,496,556.07 AUD</b>

**Pool Data VIII**

**Region**

Region	Total Portfolio				Product Type			
	Number of Contracts	Percentage of Contracts	Outstanding Discounted Receivables Balance	Percentage of Balance	Chattel Mortgage		Consumer Loan	
					Number of Contracts	Outstanding Discounted Receivables Balance	Number of Contracts	Outstanding Discounted Receivables Balance
Australian Capital Territory	322	2.89%	7,928,534.57 AUD	2.60%	130	4,212,936.31 AUD	192	3,715,598.26 AUD
New South Wales	3,985	35.72%	113,669,377.67 AUD	37.26%	2,640	84,536,371.34 AUD	1,345	29,133,006.33 AUD
Northern Territory	96	0.86%	1,774,039.22 AUD	0.58%	36	734,191.11 AUD	60	1,039,848.11 AUD
Queensland	2,390	21.42%	63,922,068.28 AUD	20.95%	1,627	47,204,513.31 AUD	763	16,717,554.97 AUD
South Australia	477	4.28%	14,235,564.61 AUD	4.67%	329	10,759,081.25 AUD	148	3,476,483.36 AUD
Tasmania	396	3.55%	8,179,282.95 AUD	2.68%	167	4,181,060.44 AUD	229	3,998,222.51 AUD
Victoria	2,189	19.62%	63,403,868.93 AUD	20.78%	1,371	45,847,437.11 AUD	818	17,556,431.82 AUD
Western Australia	1,301	11.66%	31,963,796.60 AUD	10.48%	757	20,341,253.16 AUD	544	11,622,543.44 AUD
<b>Total</b>	<b>11,156</b>	<b>100.00%</b>	<b>305,076,532.83 AUD</b>	<b>100.00%</b>	<b>7,057</b>	<b>217,816,844.03 AUD</b>	<b>4,099</b>	<b>87,259,688.80 AUD</b>

**Pool Data VIII**

**Region**

Region	Total Portfolio				Balloon				Vehicle Status			
	Number of Contracts	Percentage of Contracts	Outstanding Discounted Receivables Balance	Percentage of Balance	Balloon		No Balloon		New		Used	
					Number of Contracts	Outstanding Discounted Receivables Balance	Number of Contracts	Outstanding Discounted Receivables Balance	Number of Contracts	Outstanding Discounted Receivables Balance	Number of Contracts	Outstanding Discounted Receivables Balance
Australian Capital Territory	322	2.89%	7,928,534.57 AUD	2.60%	64	3,023,469.30 AUD	258	4,905,065.27 AUD	203	5,928,114.81 AUD	119	2,000,419.76 AUD
New South Wales	3,985	35.72%	113,669,377.67 AUD	37.26%	1,221	57,753,500.36 AUD	2,764	55,915,877.31 AUD	2,980	92,923,683.71 AUD	1,005	20,745,693.96 AUD
Northern Territory	96	0.86%	1,774,039.22 AUD	0.58%	4	138,429.22 AUD	92	1,635,610.00 AUD	78	1,461,094.83 AUD	18	312,944.39 AUD
Queensland	2,390	21.42%	63,922,068.28 AUD	20.95%	698	30,042,055.76 AUD	1,692	33,880,012.52 AUD	1,870	53,773,209.36 AUD	520	10,148,858.92 AUD
South Australia	477	4.28%	14,235,564.61 AUD	4.67%	177	8,237,698.73 AUD	300	5,997,865.88 AUD	357	11,866,850.01 AUD	120	2,368,714.60 AUD
Tasmania	396	3.55%	8,179,282.95 AUD	2.68%	67	2,313,579.87 AUD	329	5,865,703.08 AUD	209	4,826,658.93 AUD	187	3,352,624.02 AUD
Victoria	2,189	19.62%	63,403,868.93 AUD	20.78%	794	35,826,661.67 AUD	1,395	27,577,207.26 AUD	1,698	53,402,675.00 AUD	491	10,001,193.93 AUD
Western Australia	1,301	11.66%	31,963,796.60 AUD	10.48%	183	8,739,709.81 AUD	1,118	23,224,086.79 AUD	680	19,397,690.11 AUD	621	12,566,106.49 AUD
<b>Total</b>	<b>11,156</b>	<b>100.00%</b>	<b>305,076,532.83 AUD</b>	<b>100.00%</b>	<b>3,208</b>	<b>146,075,104.72 AUD</b>	<b>7,948</b>	<b>159,001,428.11 AUD</b>	<b>8,075</b>	<b>243,579,976.76 AUD</b>	<b>3,081</b>	<b>61,496,556.07 AUD</b>

Pool Data IX

Current COVID-19 Extensions

Total Portfolio					Product Type			
Current COVID-19 Extensions	Number of Contracts	Percentage of Contracts	Outstanding Discounted Receivables Balance	Percentage of Balance	Chattel Mortgage		Consumer Loan	
					Number of Contracts	Outstanding Discounted Receivables Balance	Number of Contracts	Outstanding Discounted Receivables Balance
Current COVID-19 Extension	17	0.15%	523,592.09 AUD	0.17%	9	235,116.09 AUD	8	288,476.00 AUD
No Current Extension	11,139	99.85%	304,552,940.74 AUD	99.83%	7,048	217,581,727.94 AUD	4,091	86,971,212.80 AUD
<b>Total</b>	<b>11,156</b>	<b>100.00%</b>	<b>305,076,532.83 AUD</b>	<b>100.00%</b>	<b>7,057</b>	<b>217,816,844.03 AUD</b>	<b>4,099</b>	<b>87,259,688.80 AUD</b>

\* Representing contracts which are currently in a COVID-19 extension as at the Reporting Date

Pool Data IX

Current COVID-19 Extensions

Total Portfolio					Balloon				Vehicle Status			
Current COVID-19 Extensions	Number of Contracts	Percentage of Contracts	Outstanding Discounted Receivables Balance	Percentage of Balance	Balloon		No Balloon		New		Used	
					Number of Contracts	Outstanding Discounted Receivables Balance	Number of Contracts	Outstanding Discounted Receivables Balance	Number of Contracts	Outstanding Discounted Receivables Balance	Number of Contracts	Outstanding Discounted Receivables Balance
Current COVID-19 Extension	17	0.15%	523,592.09 AUD	0.17%	3	101,144.00 AUD	14	422,448.09 AUD	11	325,201.26 AUD	6	198,390.83 AUD
No Current Extension	11,139	99.85%	304,552,940.74 AUD	99.83%	3,205	145,973,960.72 AUD	7,934	158,578,980.02 AUD	8,064	243,254,775.50 AUD	3,075	61,298,165.24 AUD
<b>Total</b>	<b>11,156</b>	<b>100.00%</b>	<b>305,076,532.83 AUD</b>	<b>100.00%</b>	<b>3,208</b>	<b>146,075,104.72 AUD</b>	<b>7,948</b>	<b>159,001,428.11 AUD</b>	<b>8,075</b>	<b>243,579,976.76 AUD</b>	<b>3,081</b>	<b>61,496,556.07 AUD</b>

\* Representing contracts which are currently in a COVID-19 extension as at the Reporting Date

**Individual Hardship Extensions\***

Individual Extensions Approved For After Poolcut*	Number of Contracts	Percentage of Contracts	Outstanding Discounted Receivables Balance	Percentage of Balance
None	11,034	98.91%	300,974,900.89 AUD	98.66%
1	101	0.91%	3,323,880.89 AUD	1.09%
2	18	0.16%	687,904.88 AUD	0.23%
3	3	0.03%	89,846.17 AUD	0.03%
4	-	0.00%	0.00 AUD	0.00%
5	-	0.00%	0.00 AUD	0.00%
<b>Total</b>	<b>11,156</b>	<b>100.00%</b>	<b>305,076,532.83 AUD</b>	<b>100.00%</b>

\*Individual Hardship Extensions Approved For After Poolcut For Contracts Active At End of Reporting Period

**Engine Type**

Engine Type	Total Portfolio				Product Type			
	Number of Contracts	Percentage of Contracts	Outstanding Discounted Receivables Balance	Percentage of Balance	Chattel Mortgage		Consumer Loan	
					Number of Contracts	Outstanding Discounted Receivables Balance	Number of Contracts	Outstanding Discounted Receivables Balance
EA 189 (Unfixed)	1	0.01%	11,377.53 AUD	0.00%	1	11,377.53 AUD	-	- AUD
Other	11,155	99.99%	305,065,155.30 AUD	100.00%	7,056	217,805,466.50 AUD	4,099	87,259,688.80 AUD
<b>Total</b>	<b>11,156</b>	<b>100.00%</b>	<b>305,076,532.83 AUD</b>	<b>100.00%</b>	<b>7,057</b>	<b>217,816,844.03 AUD</b>	<b>4,099</b>	<b>87,259,688.80 AUD</b>



**Engine Type**

Engine Type	Total Portfolio				Balloon				Vehicle Status			
	Number of Contracts	Percentage of Contracts	Outstanding Discounted Receivables Balance	Percentage of Balance	Balloon		No Balloon		New		Used	
					Number of Contracts	Outstanding Discounted Receivables Balance	Number of Contracts	Outstanding Discounted Receivables Balance	Number of Contracts	Outstanding Discounted Receivables Balance	Number of Contracts	Outstanding Discounted Receivables Balance
EA 189 (Unfixed)	1	0.01%	11,377.53 AUD	0.00%	-	- AUD	1	11,377.53 AUD	-	- AUD	1	11,377.53 AUD
Other	11,155	99.99%	305,065,155.30 AUD	100.00%	3,208	146,075,104.72 AUD	7,947	158,990,050.58 AUD	8,075	243,579,976.76 AUD	3,080	61,485,178.54 AUD
<b>Total</b>	<b>11,156</b>	<b>100.00%</b>	<b>305,076,532.83 AUD</b>	<b>100.00%</b>	<b>3,208</b>	<b>146,075,104.72 AUD</b>	<b>7,948</b>	<b>159,001,428.11 AUD</b>	<b>8,075</b>	<b>243,579,976.76 AUD</b>	<b>3,081</b>	<b>61,496,556.07 AUD</b>

**Contract Level Data**                      **Net Salvage Recoveries By Contract By Month**

No.	Month / Year of Origination	Month / Year of Net Salvage	Outstanding Discounted Receivables Balance at Poolcut	ABS Gross Salvage Loss	ABS Net Salvage Loss	ABS Recoveries After Net Salvage	ABS Net Salvage Loss After Recoveries	Loss Percentage on Poolcut Balance	Geographical Location of Borrower	Vehicle Type (New/Used)	Vehicle Manufacturer	Product Type
1	02/2021	07/2022	69,286.66 AUD	68,260.06 AUD	23,440.30 AUD	- AUD	23,440.30 AUD	33.83%	Queensland	New	HYUNDAI	Chattel Mortgage
2	04/2017	08/2022	4,908.02 AUD	1,802.96 AUD	1,802.96 AUD	2,382.04 AUD	(579.08) AUD	-11.80%	Western Australia	Used	TOYOTA	Consumer Loan
3	09/2020	08/2022	22,898.44 AUD	24,043.02 AUD	23,946.41 AUD	24,792.94 AUD	(846.53) AUD	-3.70%	New South Wales	New	HYUNDAI	Chattel Mortgage
4	11/2020	08/2022	85,150.75 AUD	86,290.47 AUD	26,227.05 AUD	- AUD	26,227.05 AUD	30.80%	New South Wales	Used	AUDI	Consumer Loan
5	03/2021	08/2022	29,185.09 AUD	28,877.00 AUD	5,729.99 AUD	- AUD	5,729.99 AUD	19.63%	Queensland	Used	AUDI	Chattel Mortgage
6	08/2021	09/2022	58,243.78 AUD	60,601.34 AUD	60,349.39 AUD	36,209.38 AUD	24,140.01 AUD	41.45%	New South Wales	New	VOLVO	Consumer Loan
7	05/2017	10/2022	10,198.36 AUD	5,937.71 AUD	5,937.71 AUD	(1,296.63) AUD	7,234.34 AUD	70.94%	Western Australia	New	VOLKSWAGEN	Consumer Loan
8	04/2021	11/2022	112,349.37 AUD	113,836.61 AUD	113,836.61 AUD	- AUD	113,836.61 AUD	101.32%	New South Wales	Used	MERCEDES-BENZ	Chattel Mortgage
9	06/2021	11/2022	42,591.10 AUD	36,679.72 AUD	30,861.92 AUD	5,000.00 AUD	25,861.92 AUD	69.72%	Victoria	Used	FORD	Chattel Mortgage
10	02/2020	12/2022	6,960.28 AUD	6,286.99 AUD	364.85 AUD	(135.89) AUD	500.74 AUD	7.19%	Queensland	Used	NISSAN	Chattel Mortgage
11	08/2021	12/2022	68,340.09 AUD	61,509.66 AUD	25,863.78 AUD	- AUD	25,863.78 AUD	37.85%	Victoria	New	FIAT	Chattel Mortgage
12	06/2021	01/2023	137,878.86 AUD	128,630.77 AUD	16,307.35 AUD	8,000.00 AUD	8,307.35 AUD	6.03%	Western Australia	New	BMW	Chattel Mortgage
13	07/2021	01/2023	21,033.51 AUD	17,507.31 AUD	9,148.55 AUD	- AUD	9,148.55 AUD	43.50%	Western Australia	Used	NISSAN	Chattel Mortgage
14	07/2020	02/2023	34,078.73 AUD	31,217.40 AUD	31,217.40 AUD	(630.38) AUD	31,847.78 AUD	93.45%	Western Australia	Used	LAND ROVER	Chattel Mortgage
15	04/2021	02/2023	134,870.02 AUD	127,011.64 AUD	30,825.00 AUD	- AUD	30,825.00 AUD	22.86%	New South Wales	New	LAND ROVER	Chattel Mortgage
16	06/2021	02/2023	21,670.84 AUD	17,957.85 AUD	6,220.30 AUD	(450.03) AUD	6,670.33 AUD	30.78%	Western Australia	Used	NISSAN	Chattel Mortgage
17	11/2017	03/2023	59,857.70 AUD	47,352.50 AUD	47,352.50 AUD	(2,665.00) AUD	50,017.50 AUD	83.56%	New South Wales	Used	MASERATI	Chattel Mortgage
18	06/2020	04/2023	34,408.76 AUD	36,349.31 AUD	36,218.47 AUD	(2,902.61) AUD	39,121.08 AUD	113.70%	New South Wales	Used	FORD	Chattel Mortgage
19	10/2020	04/2023	34,889.55 AUD	34,632.58 AUD	34,501.40 AUD	(1,230.00) AUD	35,731.40 AUD	102.41%	Victoria	Used	TOYOTA	Chattel Mortgage
20	04/2021	04/2023	20,917.22 AUD	18,794.44 AUD	3,489.95 AUD	- AUD	3,489.95 AUD	16.68%	Western Australia	Used	HYUNDAI	Chattel Mortgage
21	04/2021	04/2023	56,000.23 AUD	50,928.95 AUD	10,215.56 AUD	- AUD	10,215.56 AUD	18.24%	Queensland	New	HYUNDAI	Chattel Mortgage
22	06/2021	04/2023	63,143.63 AUD	51,309.14 AUD	11,590.66 AUD	- AUD	11,590.66 AUD	18.36%	Queensland	New	VOLKSWAGEN	Chattel Mortgage
23	06/2021	04/2023	33,941.35 AUD	29,875.05 AUD	11,530.95 AUD	- AUD	11,530.95 AUD	33.97%	Queensland	New	LDV	Chattel Mortgage
24	06/2021	04/2023	42,351.38 AUD	35,639.27 AUD	12,219.31 AUD	- AUD	12,219.31 AUD	28.85%	New South Wales	Used	LAND ROVER	Chattel Mortgage
25	08/2021	04/2023	35,197.90 AUD	33,592.55 AUD	33,592.55 AUD	- AUD	33,592.55 AUD	95.44%	Victoria	Used	SUBARU	Chattel Mortgage
26	11/2017	05/2023	19,855.82 AUD	642.26 AUD	642.26 AUD	677.26 AUD	(35.00) AUD	-0.18%	Victoria	New	HOLDEN	Chattel Mortgage
27	12/2017	05/2023	9,408.39 AUD	1,715.06 AUD	1,218.06 AUD	800.00 AUD	418.06 AUD	4.44%	New South Wales	New	SUBARU	Consumer Loan
28	04/2021	05/2023	132,785.83 AUD	119,022.20 AUD	20,425.55 AUD	- AUD	20,425.55 AUD	15.38%	Queensland	New	LAND ROVER	Chattel Mortgage
29	04/2021	05/2023	11,040.86 AUD	8,366.08 AUD	3,240.63 AUD	- AUD	3,240.63 AUD	29.35%	New South Wales	Used	FORD	Chattel Mortgage
30	08/2021	05/2023	34,554.47 AUD	31,687.17 AUD	10,165.17 AUD	- AUD	10,165.17 AUD	29.42%	Queensland	New	TOYOTA	Chattel Mortgage
31	08/2021	05/2023	159,445.98 AUD	143,686.80 AUD	143,686.80 AUD	- AUD	143,686.80 AUD	90.12%	Queensland	Used	LAMBORGHINI	Chattel Mortgage
32	12/2017	06/2023	12,248.43 AUD	907.44 AUD	907.44 AUD	- AUD	907.44 AUD	7.41%	New South Wales	Used	NISSAN	Consumer Loan
33	04/2020	06/2023	48,890.19 AUD	44,991.21 AUD	11,439.01 AUD	- AUD	11,439.01 AUD	23.40%	New South Wales	New	AUDI	Chattel Mortgage
34	07/2020	06/2023	147,698.03 AUD	134,108.56 AUD	134,108.56 AUD	- AUD	134,108.56 AUD	90.80%	Queensland	New	LAND ROVER	Chattel Mortgage
35	05/2021	06/2023	59,548.77 AUD	55,108.73 AUD	55,108.73 AUD	- AUD	55,108.73 AUD	92.54%	New South Wales	Used	MERCEDES-BENZ	Chattel Mortgage
36	08/2021	06/2023	36,259.44 AUD	31,326.62 AUD	31,326.62 AUD	- AUD	31,326.62 AUD	86.40%	Victoria	New	LDV	Chattel Mortgage
<b>Total</b>	<b>06/2023</b>	<b>06/2023</b>	<b>1,912,037.53 AUD</b>	<b>1,723,293.43 AUD</b>	<b>1,025,059.73 AUD</b>	<b>68,551.08 AUD</b>	<b>956,508.67 AUD</b>					

**Contract Level Data**      **Net Salvage Recoveries By Contract By Month**

No.	Month / Year of Origination	Month / Year of Net Salvage	Nov-21	Dec-21	Jan-22	Feb-22	Mar-22	Apr-22	May-22	Jun-22	Jul-22	Aug-22	Sep-22	Oct-22
1	02/2021	07/2022	- AUD	- AUD	- AUD	- AUD	- AUD	- AUD	- AUD	- AUD	- AUD	- AUD	- AUD	- AUD
2	04/2017	08/2022	- AUD	- AUD	- AUD	- AUD	- AUD	- AUD	- AUD	- AUD	- AUD	- AUD	- AUD	- AUD
3	09/2020	08/2022	- AUD	- AUD	- AUD	- AUD	- AUD	- AUD	- AUD	- AUD	- AUD	- AUD	(871.25) AUD	21,718.38 AUD
4	11/2020	08/2022	- AUD	- AUD	- AUD	- AUD	- AUD	- AUD	- AUD	- AUD	- AUD	- AUD	- AUD	- AUD
5	03/2021	08/2022	- AUD	- AUD	- AUD	- AUD	- AUD	- AUD	- AUD	- AUD	- AUD	- AUD	- AUD	- AUD
6	08/2021	09/2022	- AUD	- AUD	- AUD	- AUD	- AUD	- AUD	- AUD	- AUD	- AUD	- AUD	- AUD	(656.00) AUD
7	05/2017	10/2022	- AUD	- AUD	- AUD	- AUD	- AUD	- AUD	- AUD	- AUD	- AUD	- AUD	- AUD	- AUD
8	04/2021	11/2022	- AUD	- AUD	- AUD	- AUD	- AUD	- AUD	- AUD	- AUD	- AUD	- AUD	- AUD	- AUD
9	06/2021	11/2022	- AUD	- AUD	- AUD	- AUD	- AUD	- AUD	- AUD	- AUD	- AUD	- AUD	- AUD	- AUD
10	02/2020	12/2022	- AUD	- AUD	- AUD	- AUD	- AUD	- AUD	- AUD	- AUD	- AUD	- AUD	- AUD	- AUD
11	08/2021	12/2022	- AUD	- AUD	- AUD	- AUD	- AUD	- AUD	- AUD	- AUD	- AUD	- AUD	- AUD	- AUD
12	06/2021	01/2023	- AUD	- AUD	- AUD	- AUD	- AUD	- AUD	- AUD	- AUD	- AUD	- AUD	- AUD	- AUD
13	07/2021	01/2023	- AUD	- AUD	- AUD	- AUD	- AUD	- AUD	- AUD	- AUD	- AUD	- AUD	- AUD	- AUD
14	07/2020	02/2023	- AUD	- AUD	- AUD	- AUD	- AUD	- AUD	- AUD	- AUD	- AUD	- AUD	- AUD	- AUD
15	04/2021	02/2023	- AUD	- AUD	- AUD	- AUD	- AUD	- AUD	- AUD	- AUD	- AUD	- AUD	- AUD	- AUD
16	06/2021	02/2023	- AUD	- AUD	- AUD	- AUD	- AUD	- AUD	- AUD	- AUD	- AUD	- AUD	- AUD	- AUD
17	11/2017	03/2023	- AUD	- AUD	- AUD	- AUD	- AUD	- AUD	- AUD	- AUD	- AUD	- AUD	- AUD	- AUD
18	06/2020	04/2023	- AUD	- AUD	- AUD	- AUD	- AUD	- AUD	- AUD	- AUD	- AUD	- AUD	- AUD	- AUD
19	10/2020	04/2023	- AUD	- AUD	- AUD	- AUD	- AUD	- AUD	- AUD	- AUD	- AUD	- AUD	- AUD	- AUD
20	04/2021	04/2023	- AUD	- AUD	- AUD	- AUD	- AUD	- AUD	- AUD	- AUD	- AUD	- AUD	- AUD	- AUD
21	04/2021	04/2023	- AUD	- AUD	- AUD	- AUD	- AUD	- AUD	- AUD	- AUD	- AUD	- AUD	- AUD	- AUD
22	06/2021	04/2023	- AUD	- AUD	- AUD	- AUD	- AUD	- AUD	- AUD	- AUD	- AUD	- AUD	- AUD	- AUD
23	06/2021	04/2023	- AUD	- AUD	- AUD	- AUD	- AUD	- AUD	- AUD	- AUD	- AUD	- AUD	- AUD	- AUD
24	06/2021	04/2023	- AUD	- AUD	- AUD	- AUD	- AUD	- AUD	- AUD	- AUD	- AUD	- AUD	- AUD	- AUD
25	08/2021	04/2023	- AUD	- AUD	- AUD	- AUD	- AUD	- AUD	- AUD	- AUD	- AUD	- AUD	- AUD	- AUD
26	11/2017	05/2023	- AUD	- AUD	- AUD	- AUD	- AUD	- AUD	- AUD	- AUD	- AUD	- AUD	- AUD	- AUD
27	12/2017	05/2023	- AUD	- AUD	- AUD	- AUD	- AUD	- AUD	- AUD	- AUD	- AUD	- AUD	- AUD	- AUD
28	04/2021	05/2023	- AUD	- AUD	- AUD	- AUD	- AUD	- AUD	- AUD	- AUD	- AUD	- AUD	- AUD	- AUD
29	04/2021	05/2023	- AUD	- AUD	- AUD	- AUD	- AUD	- AUD	- AUD	- AUD	- AUD	- AUD	- AUD	- AUD
30	08/2021	05/2023	- AUD	- AUD	- AUD	- AUD	- AUD	- AUD	- AUD	- AUD	- AUD	- AUD	- AUD	- AUD
31	08/2021	05/2023	- AUD	- AUD	- AUD	- AUD	- AUD	- AUD	- AUD	- AUD	- AUD	- AUD	- AUD	- AUD
32	12/2017	06/2023	- AUD	- AUD	- AUD	- AUD	- AUD	- AUD	- AUD	- AUD	- AUD	- AUD	- AUD	- AUD
33	04/2020	06/2023	- AUD	- AUD	- AUD	- AUD	- AUD	- AUD	- AUD	- AUD	- AUD	- AUD	- AUD	- AUD
34	07/2020	06/2023	- AUD	- AUD	- AUD	- AUD	- AUD	- AUD	- AUD	- AUD	- AUD	- AUD	- AUD	- AUD
35	05/2021	06/2023	- AUD	- AUD	- AUD	- AUD	- AUD	- AUD	- AUD	- AUD	- AUD	- AUD	- AUD	- AUD
36	08/2021	06/2023	- AUD	- AUD	- AUD	- AUD	- AUD	- AUD	- AUD	- AUD	- AUD	- AUD	- AUD	- AUD
<b>Total</b>	<b>06/2021</b>	<b>06/2023</b>	- AUD	- AUD	- AUD	- AUD	- AUD	- AUD	- AUD	- AUD	- AUD	- AUD	(871.25) AUD	21,062.38 AUD

**Contract Level Data**      **Net Salvage Recoveries By Contract By Month**

No.	Month / Year of Origination	Month / Year of Net Salvage	Nov-22	Dec-22	Jan-23	Feb-23	Mar-23	Apr-23	May-23	Jun-23	Jul-23	Aug-23	Sep-23	Oct-23
1	02/2021	07/2022	- AUD	- AUD	- AUD	- AUD	- AUD	- AUD	- AUD	- AUD	- AUD	- AUD	- AUD	- AUD
2	04/2017	08/2022	100.00 AUD	- AUD	- AUD	- AUD	- AUD	- AUD	- AUD	- AUD	- AUD	- AUD	- AUD	- AUD
3	09/2020	08/2022	- AUD	- AUD	2,282.04 AUD	- AUD	- AUD	- AUD	- AUD	- AUD	- AUD	- AUD	- AUD	- AUD
4	11/2020	08/2022	- AUD	- AUD	3,074.56 AUD	- AUD	- AUD	- AUD	871.25 AUD	- AUD	- AUD	- AUD	- AUD	- AUD
5	03/2021	08/2022	- AUD	- AUD	- AUD	- AUD	- AUD	- AUD	- AUD	- AUD	- AUD	- AUD	- AUD	- AUD
6	08/2021	09/2022	- AUD	- AUD	- AUD	- AUD	- AUD	- AUD	- AUD	36,865.38 AUD	- AUD	- AUD	- AUD	- AUD
7	05/2017	10/2022	- AUD	- AUD	- AUD	- AUD	- AUD	- AUD	(1,296.63) AUD	- AUD	- AUD	- AUD	- AUD	- AUD
8	04/2021	11/2022	- AUD	- AUD	- AUD	- AUD	- AUD	- AUD	- AUD	- AUD	- AUD	- AUD	- AUD	- AUD
9	06/2021	11/2022	- AUD	- AUD	- AUD	1,000.00 AUD	1,000.00 AUD	1,000.00 AUD	1,000.00 AUD	1,000.00 AUD	- AUD	- AUD	- AUD	- AUD
10	02/2020	12/2022	- AUD	- AUD	(135.89) AUD	- AUD	- AUD	- AUD	- AUD	- AUD	- AUD	- AUD	- AUD	- AUD
11	08/2021	12/2022	- AUD	- AUD	- AUD	- AUD	- AUD	- AUD	- AUD	- AUD	- AUD	- AUD	- AUD	- AUD
12	06/2021	01/2023	- AUD	- AUD	- AUD	8,000.00 AUD	- AUD	- AUD	- AUD	- AUD	- AUD	- AUD	- AUD	- AUD
13	07/2021	01/2023	- AUD	- AUD	- AUD	- AUD	- AUD	- AUD	- AUD	- AUD	- AUD	- AUD	- AUD	- AUD
14	07/2020	02/2023	- AUD	- AUD	- AUD	- AUD	- AUD	- AUD	- AUD	(630.38) AUD	- AUD	- AUD	- AUD	- AUD
15	04/2021	02/2023	- AUD	- AUD	- AUD	- AUD	- AUD	- AUD	- AUD	- AUD	- AUD	- AUD	- AUD	- AUD
16	06/2021	02/2023	- AUD	- AUD	- AUD	- AUD	(450.03) AUD	- AUD	- AUD	- AUD	- AUD	- AUD	- AUD	- AUD
17	11/2017	03/2023	- AUD	- AUD	- AUD	- AUD	- AUD	(2,665.00) AUD	- AUD	- AUD	- AUD	- AUD	- AUD	- AUD
18	06/2020	04/2023	- AUD	- AUD	- AUD	- AUD	- AUD	- AUD	(2,902.61) AUD	- AUD	- AUD	- AUD	- AUD	- AUD
19	10/2020	04/2023	- AUD	- AUD	- AUD	- AUD	- AUD	- AUD	- AUD	(1,230.00) AUD	- AUD	- AUD	- AUD	- AUD
20	04/2021	04/2023	- AUD	- AUD	- AUD	- AUD	- AUD	- AUD	- AUD	- AUD	- AUD	- AUD	- AUD	- AUD
21	04/2021	04/2023	- AUD	- AUD	- AUD	- AUD	- AUD	- AUD	- AUD	- AUD	- AUD	- AUD	- AUD	- AUD
22	06/2021	04/2023	- AUD	- AUD	- AUD	- AUD	- AUD	- AUD	- AUD	- AUD	- AUD	- AUD	- AUD	- AUD
23	06/2021	04/2023	- AUD	- AUD	- AUD	- AUD	- AUD	- AUD	- AUD	- AUD	- AUD	- AUD	- AUD	- AUD
24	06/2021	04/2023	- AUD	- AUD	- AUD	- AUD	- AUD	- AUD	- AUD	- AUD	- AUD	- AUD	- AUD	- AUD
25	08/2021	04/2023	- AUD	- AUD	- AUD	- AUD	- AUD	- AUD	- AUD	- AUD	- AUD	- AUD	- AUD	- AUD
26	11/2017	05/2023	- AUD	- AUD	- AUD	- AUD	- AUD	- AUD	- AUD	677.26 AUD	- AUD	- AUD	- AUD	- AUD
27	12/2017	05/2023	- AUD	- AUD	- AUD	- AUD	- AUD	- AUD	500.00 AUD	300.00 AUD	- AUD	- AUD	- AUD	- AUD
28	04/2021	05/2023	- AUD	- AUD	- AUD	- AUD	- AUD	- AUD	- AUD	- AUD	- AUD	- AUD	- AUD	- AUD
29	04/2021	05/2023	- AUD	- AUD	- AUD	- AUD	- AUD	- AUD	- AUD	- AUD	- AUD	- AUD	- AUD	- AUD
30	08/2021	05/2023	- AUD	- AUD	- AUD	- AUD	- AUD	- AUD	- AUD	- AUD	- AUD	- AUD	- AUD	- AUD
31	08/2021	05/2023	- AUD	- AUD	- AUD	- AUD	- AUD	- AUD	- AUD	- AUD	- AUD	- AUD	- AUD	- AUD
32	12/2017	06/2023	- AUD	- AUD	- AUD	- AUD	- AUD	- AUD	- AUD	- AUD	- AUD	- AUD	- AUD	- AUD
33	04/2020	06/2023	- AUD	- AUD	- AUD	- AUD	- AUD	- AUD	- AUD	- AUD	- AUD	- AUD	- AUD	- AUD
34	07/2020	06/2023	- AUD	- AUD	- AUD	- AUD	- AUD	- AUD	- AUD	- AUD	- AUD	- AUD	- AUD	- AUD
35	05/2021	06/2023	- AUD	- AUD	- AUD	- AUD	- AUD	- AUD	- AUD	- AUD	- AUD	- AUD	- AUD	- AUD
36	08/2021	06/2023	- AUD	- AUD	- AUD	- AUD	- AUD	- AUD	- AUD	- AUD	- AUD	- AUD	- AUD	- AUD
<b>Total</b>	<b>06/2023</b>	<b>06/2023</b>	<b>100.00 AUD</b>	<b>- AUD</b>	<b>5,220.71 AUD</b>	<b>9,000.00 AUD</b>	<b>549.97 AUD</b>	<b>(1,665.00) AUD</b>	<b>(1,827.99) AUD</b>	<b>36,982.26 AUD</b>	<b>- AUD</b>	<b>- AUD</b>	<b>- AUD</b>	<b>- AUD</b>

Contract Level Data

Net Salvage Recoveries By Contract By Month

#REF!

No.	Month / Year of Origination	Month / Year of Net Salvage	Nov-23	Dec-23	Jan-24	Feb-24	Mar-24	Apr-24	May-24	Jun-24	Jul-24	Aug-24	Sep-24	Oct-24
1	02/2021	07/2022	- AUD	- AUD	- AUD	- AUD	- AUD	- AUD	- AUD	- AUD	- AUD	- AUD	- AUD	- AUD
2	04/2017	08/2022	- AUD	- AUD	- AUD	- AUD	- AUD	- AUD	- AUD	- AUD	- AUD	- AUD	- AUD	- AUD
3	09/2020	08/2022	- AUD	- AUD	- AUD	- AUD	- AUD	- AUD	- AUD	- AUD	- AUD	- AUD	- AUD	- AUD
4	11/2020	08/2022	- AUD	- AUD	- AUD	- AUD	- AUD	- AUD	- AUD	- AUD	- AUD	- AUD	- AUD	- AUD
5	03/2021	08/2022	- AUD	- AUD	- AUD	- AUD	- AUD	- AUD	- AUD	- AUD	- AUD	- AUD	- AUD	- AUD
6	08/2021	09/2022	- AUD	- AUD	- AUD	- AUD	- AUD	- AUD	- AUD	- AUD	- AUD	- AUD	- AUD	- AUD
7	05/2017	10/2022	- AUD	- AUD	- AUD	- AUD	- AUD	- AUD	- AUD	- AUD	- AUD	- AUD	- AUD	- AUD
8	04/2021	11/2022	- AUD	- AUD	- AUD	- AUD	- AUD	- AUD	- AUD	- AUD	- AUD	- AUD	- AUD	- AUD
9	06/2021	11/2022	- AUD	- AUD	- AUD	- AUD	- AUD	- AUD	- AUD	- AUD	- AUD	- AUD	- AUD	- AUD
10	02/2020	12/2022	- AUD	- AUD	- AUD	- AUD	- AUD	- AUD	- AUD	- AUD	- AUD	- AUD	- AUD	- AUD
11	08/2021	12/2022	- AUD	- AUD	- AUD	- AUD	- AUD	- AUD	- AUD	- AUD	- AUD	- AUD	- AUD	- AUD
12	06/2021	01/2023	- AUD	- AUD	- AUD	- AUD	- AUD	- AUD	- AUD	- AUD	- AUD	- AUD	- AUD	- AUD
13	07/2021	01/2023	- AUD	- AUD	- AUD	- AUD	- AUD	- AUD	- AUD	- AUD	- AUD	- AUD	- AUD	- AUD
14	07/2020	02/2023	- AUD	- AUD	- AUD	- AUD	- AUD	- AUD	- AUD	- AUD	- AUD	- AUD	- AUD	- AUD
15	04/2021	02/2023	- AUD	- AUD	- AUD	- AUD	- AUD	- AUD	- AUD	- AUD	- AUD	- AUD	- AUD	- AUD
16	06/2021	02/2023	- AUD	- AUD	- AUD	- AUD	- AUD	- AUD	- AUD	- AUD	- AUD	- AUD	- AUD	- AUD
17	11/2017	03/2023	- AUD	- AUD	- AUD	- AUD	- AUD	- AUD	- AUD	- AUD	- AUD	- AUD	- AUD	- AUD
18	06/2020	04/2023	- AUD	- AUD	- AUD	- AUD	- AUD	- AUD	- AUD	- AUD	- AUD	- AUD	- AUD	- AUD
19	10/2020	04/2023	- AUD	- AUD	- AUD	- AUD	- AUD	- AUD	- AUD	- AUD	- AUD	- AUD	- AUD	- AUD
20	04/2021	04/2023	- AUD	- AUD	- AUD	- AUD	- AUD	- AUD	- AUD	- AUD	- AUD	- AUD	- AUD	- AUD
21	04/2021	04/2023	- AUD	- AUD	- AUD	- AUD	- AUD	- AUD	- AUD	- AUD	- AUD	- AUD	- AUD	- AUD
22	06/2021	04/2023	- AUD	- AUD	- AUD	- AUD	- AUD	- AUD	- AUD	- AUD	- AUD	- AUD	- AUD	- AUD
23	06/2021	04/2023	- AUD	- AUD	- AUD	- AUD	- AUD	- AUD	- AUD	- AUD	- AUD	- AUD	- AUD	- AUD
24	06/2021	04/2023	- AUD	- AUD	- AUD	- AUD	- AUD	- AUD	- AUD	- AUD	- AUD	- AUD	- AUD	- AUD
25	08/2021	04/2023	- AUD	- AUD	- AUD	- AUD	- AUD	- AUD	- AUD	- AUD	- AUD	- AUD	- AUD	- AUD
26	11/2017	05/2023	- AUD	- AUD	- AUD	- AUD	- AUD	- AUD	- AUD	- AUD	- AUD	- AUD	- AUD	- AUD
27	12/2017	05/2023	- AUD	- AUD	- AUD	- AUD	- AUD	- AUD	- AUD	- AUD	- AUD	- AUD	- AUD	- AUD
28	04/2021	05/2023	- AUD	- AUD	- AUD	- AUD	- AUD	- AUD	- AUD	- AUD	- AUD	- AUD	- AUD	- AUD
29	04/2021	05/2023	- AUD	- AUD	- AUD	- AUD	- AUD	- AUD	- AUD	- AUD	- AUD	- AUD	- AUD	- AUD
30	08/2021	05/2023	- AUD	- AUD	- AUD	- AUD	- AUD	- AUD	- AUD	- AUD	- AUD	- AUD	- AUD	- AUD
31	08/2021	05/2023	- AUD	- AUD	- AUD	- AUD	- AUD	- AUD	- AUD	- AUD	- AUD	- AUD	- AUD	- AUD
32	12/2017	06/2023	- AUD	- AUD	- AUD	- AUD	- AUD	- AUD	- AUD	- AUD	- AUD	- AUD	- AUD	- AUD
33	04/2020	06/2023	- AUD	- AUD	- AUD	- AUD	- AUD	- AUD	- AUD	- AUD	- AUD	- AUD	- AUD	- AUD
34	07/2020	06/2023	- AUD	- AUD	- AUD	- AUD	- AUD	- AUD	- AUD	- AUD	- AUD	- AUD	- AUD	- AUD
35	05/2021	06/2023	- AUD	- AUD	- AUD	- AUD	- AUD	- AUD	- AUD	- AUD	- AUD	- AUD	- AUD	- AUD
36	08/2021	06/2023	- AUD	- AUD	- AUD	- AUD	- AUD	- AUD	- AUD	- AUD	- AUD	- AUD	- AUD	- AUD
<b>Total</b>	<b>06/2021</b>	<b>06/2023</b>	- AUD	- AUD	- AUD	- AUD	- AUD	- AUD	- AUD	- AUD	- AUD	- AUD	- AUD	- AUD

**Contract Level Data**      **Net Salvage Recoveries By Contract By Month**

No.	Month / Year of Origination	Month / Year of Net Salvage	Nov-24	Dec-24	Jan-25	Feb-25	Mar-25	Apr-25	May-25	Jun-25	Jul-25	Aug-25
1	02/2021	07/2022	- AUD	- AUD	- AUD	- AUD	- AUD	- AUD	- AUD	- AUD	- AUD	- AUD
2	04/2017	08/2022	- AUD	- AUD	- AUD	- AUD	- AUD	- AUD	- AUD	- AUD	- AUD	- AUD
3	09/2020	08/2022	- AUD	- AUD	- AUD	- AUD	- AUD	- AUD	- AUD	- AUD	- AUD	- AUD
4	11/2020	08/2022	- AUD	- AUD	- AUD	- AUD	- AUD	- AUD	- AUD	- AUD	- AUD	- AUD
5	03/2021	08/2022	- AUD	- AUD	- AUD	- AUD	- AUD	- AUD	- AUD	- AUD	- AUD	- AUD
6	08/2021	09/2022	- AUD	- AUD	- AUD	- AUD	- AUD	- AUD	- AUD	- AUD	- AUD	- AUD
7	05/2017	10/2022	- AUD	- AUD	- AUD	- AUD	- AUD	- AUD	- AUD	- AUD	- AUD	- AUD
8	04/2021	11/2022	- AUD	- AUD	- AUD	- AUD	- AUD	- AUD	- AUD	- AUD	- AUD	- AUD
9	06/2021	11/2022	- AUD	- AUD	- AUD	- AUD	- AUD	- AUD	- AUD	- AUD	- AUD	- AUD
10	02/2020	12/2022	- AUD	- AUD	- AUD	- AUD	- AUD	- AUD	- AUD	- AUD	- AUD	- AUD
11	08/2021	12/2022	- AUD	- AUD	- AUD	- AUD	- AUD	- AUD	- AUD	- AUD	- AUD	- AUD
12	06/2021	01/2023	- AUD	- AUD	- AUD	- AUD	- AUD	- AUD	- AUD	- AUD	- AUD	- AUD
13	07/2021	01/2023	- AUD	- AUD	- AUD	- AUD	- AUD	- AUD	- AUD	- AUD	- AUD	- AUD
14	07/2020	02/2023	- AUD	- AUD	- AUD	- AUD	- AUD	- AUD	- AUD	- AUD	- AUD	- AUD
15	04/2021	02/2023	- AUD	- AUD	- AUD	- AUD	- AUD	- AUD	- AUD	- AUD	- AUD	- AUD
16	06/2021	02/2023	- AUD	- AUD	- AUD	- AUD	- AUD	- AUD	- AUD	- AUD	- AUD	- AUD
17	11/2017	03/2023	- AUD	- AUD	- AUD	- AUD	- AUD	- AUD	- AUD	- AUD	- AUD	- AUD
18	06/2020	04/2023	- AUD	- AUD	- AUD	- AUD	- AUD	- AUD	- AUD	- AUD	- AUD	- AUD
19	10/2020	04/2023	- AUD	- AUD	- AUD	- AUD	- AUD	- AUD	- AUD	- AUD	- AUD	- AUD
20	04/2021	04/2023	- AUD	- AUD	- AUD	- AUD	- AUD	- AUD	- AUD	- AUD	- AUD	- AUD
21	04/2021	04/2023	- AUD	- AUD	- AUD	- AUD	- AUD	- AUD	- AUD	- AUD	- AUD	- AUD
22	06/2021	04/2023	- AUD	- AUD	- AUD	- AUD	- AUD	- AUD	- AUD	- AUD	- AUD	- AUD
23	06/2021	04/2023	- AUD	- AUD	- AUD	- AUD	- AUD	- AUD	- AUD	- AUD	- AUD	- AUD
24	06/2021	04/2023	- AUD	- AUD	- AUD	- AUD	- AUD	- AUD	- AUD	- AUD	- AUD	- AUD
25	08/2021	04/2023	- AUD	- AUD	- AUD	- AUD	- AUD	- AUD	- AUD	- AUD	- AUD	- AUD
26	11/2017	05/2023	- AUD	- AUD	- AUD	- AUD	- AUD	- AUD	- AUD	- AUD	- AUD	- AUD
27	12/2017	05/2023	- AUD	- AUD	- AUD	- AUD	- AUD	- AUD	- AUD	- AUD	- AUD	- AUD
28	04/2021	05/2023	- AUD	- AUD	- AUD	- AUD	- AUD	- AUD	- AUD	- AUD	- AUD	- AUD
29	04/2021	05/2023	- AUD	- AUD	- AUD	- AUD	- AUD	- AUD	- AUD	- AUD	- AUD	- AUD
30	08/2021	05/2023	- AUD	- AUD	- AUD	- AUD	- AUD	- AUD	- AUD	- AUD	- AUD	- AUD
31	08/2021	05/2023	- AUD	- AUD	- AUD	- AUD	- AUD	- AUD	- AUD	- AUD	- AUD	- AUD
32	12/2017	06/2023	- AUD	- AUD	- AUD	- AUD	- AUD	- AUD	- AUD	- AUD	- AUD	- AUD
33	04/2020	06/2023	- AUD	- AUD	- AUD	- AUD	- AUD	- AUD	- AUD	- AUD	- AUD	- AUD
34	07/2020	06/2023	- AUD	- AUD	- AUD	- AUD	- AUD	- AUD	- AUD	- AUD	- AUD	- AUD
35	05/2021	06/2023	- AUD	- AUD	- AUD	- AUD	- AUD	- AUD	- AUD	- AUD	- AUD	- AUD
36	08/2021	06/2023	- AUD	- AUD	- AUD	- AUD	- AUD	- AUD	- AUD	- AUD	- AUD	- AUD
<b>Total</b>	<b>06/2023</b>	<b>06/2023</b>	<b>- AUD</b>	<b>- AUD</b>	<b>- AUD</b>	<b>- AUD</b>	<b>- AUD</b>	<b>- AUD</b>	<b>- AUD</b>	<b>- AUD</b>	<b>- AUD</b>	<b>- AUD</b>