

Notice under ASX Listing Rule 3.10A

In accordance with ASX Listing Rule 3.10A, Legacy Minerals Holdings Limited (ASX: LGM) (**Company**) advises that the following securities will be released from ASX mandatory escrow:

Number of securities	Type of security	Escrow Release date	ASX Code
29,384,700	Fully paid ordinary shares	Wednesday 13 September 2023	LGMAD
3,500,000	Unquoted options, each exercisable into one fully paid ordinary share at \$0.30 on or before 22 June 2026	Wednesday 13 September 2023	LGMAF

In accordance with ASX Listing Rule 2.8.5, the Company will apply for quotation by lodging an Appendix 2A for the 29,384,700 fully paid ordinary shares within 5 business days of Wednesday 13 September 2023.

After the above securities are released, there will be no securities remaining subject to escrow.

Management comment - Legacy Minerals CEO & Managing Director, Christopher Byrne said:

“The release of these escrowed shares represents the majority of the board and management teams’ position in the Company, along with one of our IPO lead managers Saint Gabriel.

With drilling underway at Fontenoy and some highly compelling targets being delivered from our Bauloora Project with our partner Newmont, it is an exciting stage in the Legacy Minerals journey and a great time to be a shareholder.

As such the Legacy Minerals board and management team are committed to the upside we see in Legacy Minerals. We look forward to not only holding our position in the Company but increasing it when the opportunity arises.”

Approved by the Board of Legacy Minerals Holdings Limited.

For more information:

Chris Byrne

CEO & Managing Director

chris.byrne@legacyminerals.com.au

+61 (0) 499 527 547

About Legacy Minerals

Legacy Minerals is an ASX listed public company that has been involved in the exploration and development of gold, copper, and base-metal projects in the Lachlan Fold Belt since 2017. The Company has seven projects that present significant discovery opportunities for shareholders.

<p>Au-Cu (Pb-Zn) Cobar (EL9511)</p> <p>Undrilled targets next door to the Peak Gold Mines. Several priority geophysical anomalies and gold in lag up to 1.55g/t Au.</p>	<p>Au Harden (EL8809, EL9257)</p> <p>Large historical high-grade quartz-vein gold mineralisation. Drilling includes 3.6m at 21.7g/t Au 116m and 2m at 17.17g/t Au from 111m.</p>
<p>Au-Ag Bauloora (EL8994, EL9464) Newmont JV</p> <p>One of NSW's largest low-sulphidation epithermal systems with a 27km² epithermal vein field and 15km² gold zone.</p>	<p>Au-Cu Fontenoy (EL8995) Earth AI-Alliance</p> <p>An 8km long zone of Au and Cu anomalism defined in soil sampling and drilling. Significant drill intercepts include 79m at 0.27% Cu from 1.5m.</p>
<p>Cu-Au Rockley (EL8296)</p> <p>Prospective for porphyry Cu-Au and situated in the Macquarie Arc Ordovician host rocks with historic high-grade copper mines that graded up to 23% Cu.</p>	<p>Au-Ag Black Range (EL9466, ELA6613)</p> <p>Extensive low-sulphidation epithermal system with limited historical exploration. Epithermal preservation across 7km² of intense silicification</p>

Cu-Au Drake (EL6273, ELA6640)

Large collapsed caldera (~150km²) and associated mineralisation bears similar geological characteristics to other major pacific rim settings and deposits.

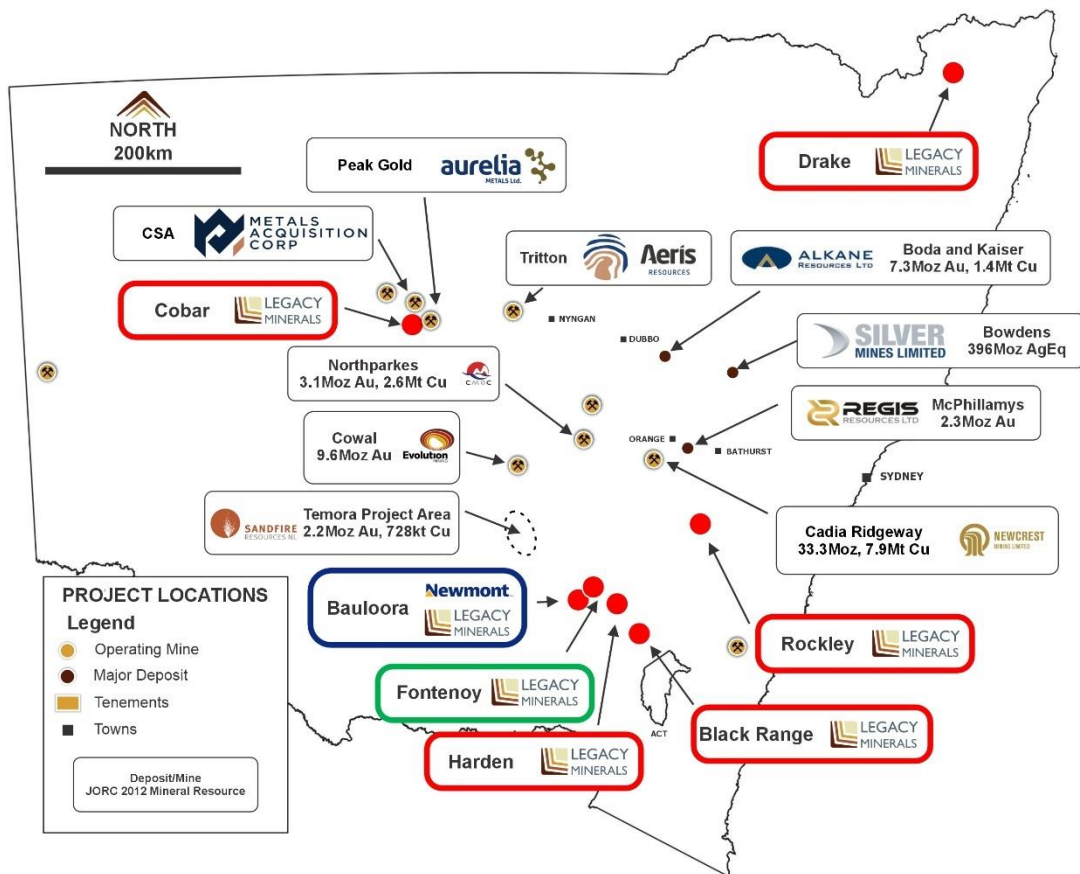


Figure 1: Regional setting of Legacy Minerals Projects^{i,ii,iii,iv,v}

Endnote

ⁱ CMOC Northparkes Mining and Technical Information, <http://www.northparkes.com/wp-content/uploads/2022/05/northparkes-mining-and-technical-information.pdf>

ⁱⁱ Alkane Resources Kaiser Resource Estimate of ~4.7M Gold Equivalent 27 February 2023

ⁱⁱⁱ Newcrest Mining Annual Mineral Resources and Ore Reserves Statement 17 February 2022

^{iv} Regis Resources Annual Mineral Resource and Ore Reserve Statement 8 June 2022

^v Evolution Mining 2022 Annual Report

Table 1: Major Mineral Resources of NSW

Project & Company	Mineral Resource	Measured Resource	Indicated Resource	Inferred Resource
Boda-Kaiser, NSW (Alkane Resources Ltd)	7.26Moz Au, 1.38Mt Cu	-	-	7.26Moz Au, 1.38Mt Cu
Tomingley, NSW (Alkane Resources Ltd)	1.75Moz Au	0.13M Au	1.019Moz Au	0.59Moz
McPhillamys, NSW (Regis Resources Ltd)	2.29Moz Au		2.28Moz Au	0.001Moz Au
Cadia-Ridegway, NSW (Newcrest Mining Ltd)	33.31Moz Au, 7.9Mt Cu	0.31Moz Au, 0.041Mt Cu	33Moz Au, 7.3Mt Cu	0.75Moz, 1.1Mt Cu
Cowal, NSW (Evolution Mining Limited)	9.618Moz Au	0.367Moz Au	7.33Moz Au	1.92Moz Au
Nth Parkes, NSW (CMOC Mining Pty Ltd)	3.09Moz Au, 2.63Mt Cu	1.64Moz Au, 1.2Mt Cu	1.1Moz Au, 1.1Mt Cu	0.35Moz Au, 0.33Mt Cu