

**Deal Name:** **Driver Australia Seven**

**Issuer:** Perpetual Corporate Trust Limited (ABN 99 000 341 533)  
of Level 18, 123 Pitt Street,  
Sydney NSW 2000 Australia  
in its capacity as trustee of the Driver Australia Seven Trust.

**Originator of the Receivables:** Volkswagen Financial Services Australia Pty Ltd

**Seller of the Receivables:** Volkswagen Financial Services Australia Pty Ltd

**Servicer name:** Volkswagen Financial Services Australia Pty Ltd

**Reporting Entity:** Volkswagen Financial Services Australia Pty Ltd  
ABS Operations  
(Physical Address)  
Level 1, 24 Muir Road,  
Chullora NSW 2190  
(Postal Address)  
Locked Bag 4002  
Chullora NSW 2190

**Contact:** Phone: +61 2 9751 6257  
Fax: +61 2 9695 6399  
Email: ABSOperations.Australia@vwfs.com.au

**Corporate Service Provider:** Perpetual Corporate Trust Limited  
(ABN 99 000 341 533)  
of Level 18, 123 Pitt Street,  
Sydney NSW 2000 Australia in its personal capacity.



## Contents

Page	Table of Contents
1	<a href="#">Cover</a>
2	<a href="#">Contents</a>
3	<a href="#">Reporting Details</a>
4	<a href="#">Parties Overview</a>
5	<a href="#">Transaction Events I</a>
6	<a href="#">Transaction Events II</a>
7	<a href="#">Transaction Events III</a>
8	<a href="#">Information regarding the Notes I</a>
9	<a href="#">Information regarding the Notes II</a>
10	<a href="#">Cash Collateral Account</a>
11	<a href="#">Credit Enhancement</a>
12	<a href="#">Swap Fixing / Waterfall</a>
13	<a href="#">Retention of Net Economic Interest</a>
14	<a href="#">Amortisation Profile I</a>
15	<a href="#">Amortisation Profile II</a>
16	<a href="#">Run Out Schedule I</a>
18	<a href="#">Run Out Schedule II</a>
19	<a href="#">Outstanding Contracts I</a>
21	<a href="#">Outstanding Contracts II</a>
22	<a href="#">Arrears</a>
24	<a href="#">Net Salvage Loss</a>
25	<a href="#">Net Salvage After Recoveries</a>
26	<a href="#">Prepayments</a>
27	<a href="#">Pool Data I</a>
29	<a href="#">Pool Data II</a>
30	<a href="#">Pool Data III</a>
32	<a href="#">Pool Data IV</a>
34	<a href="#">Pool Data V</a>
36	<a href="#">Pool Data VI</a>
37	<a href="#">Pool Data VII</a>
43	<a href="#">Pool Data VIII</a>
45	<a href="#">Pool Data IX</a>
47	<a href="#">Hardship Extensions</a>
48	<a href="#">Engine Type</a>
50	<a href="#">Contract Level Data</a>

**Reporting Details**

**Deal Overview**

Pool Cut Date	31/10/2021	Publication Date:	18/09/2023 (16th of each month)
Scheduled Date of Clean-Up-Call	09/2025	Payment Date:	21/09/2023 (21st of each month)
Legal Maturity Date	21/01/2030	Reporting Date:	31/08/2023
Issue Date	22/11/2021	Asset Collection Period:	from 01/08/2023 until 31/08/2023
Period No.:	22	Interest Accrual Period	from 21/08/2023 until 21/09/2023
Reporting frequency:	Monthly	Note Payment Period:	from 21/08/2023 until 21/09/2023
Next Payment Date:	23/10/2023	Days accrued:	31

Vehicle Type at Pool Cut	Number of Contracts	Percentage of Contracts	Outstanding Discounted Receivables Balance	Percentage Outstanding Discounted Receivables Balance
New	10,680	70.07%	463,158,976.27 AUD	77.19%
Used	4,561	29.93%	136,866,121.79 AUD	22.81%
<b>Total</b>	<b>15,241</b>	<b>100.00%</b>	<b>600,025,098.06 AUD</b>	<b>100.00%</b>

Credit Type at Pool Cut	Number of Contracts	Percentage of Contracts	Outstanding Discounted Receivables Balance	Percentage Outstanding Discounted Receivables Balance
Chattel Mortgage	9,371	61.49%	414,965,143.56 AUD	69.16%
Consumer Loan	5,870	38.51%	185,059,954.50 AUD	30.84%
<b>Total</b>	<b>15,241</b>	<b>100.00%</b>	<b>600,025,098.06 AUD</b>	<b>100.00%</b>

Parties Overview

<p><b>Lead Managers:</b></p> <p><b>Australia and New Zealand Banking Group Limited</b> <b>(ABN 11 005 357 522)</b> ANZ Tower 242 Pitt Street Sydney, NSW 2000 Australia</p> <p><b>Bank of America Merrill Lynch (which is the trading name of Merrill Lynch International)</b> <b>(ARBN 125 336 567)</b> Merrill Lynch Financial Centre 2 King Edward Street London EC1A 1HQ United Kingdom</p>	<p><b>Security Trustee:</b></p> <p><b>P.T. Limited</b> <b>(ABN 67 004 454 666)</b> Level 18 123 Pitt Street Sydney NSW 2000 Australia</p>
<p><b>Trustee:</b></p> <p><b>Perpetual Corporate Trust Limited</b> <b>(ABN 99 000 341 533)</b> of Level 18, 123 Pitt Street, Sydney NSW 2000 Australia in its capacity as trustee of the Driver Australia Seven Trust.</p>	<p><b>Trust Manager:</b></p> <p><b>Perpetual Nominees Limited</b> <b>(ABN 37 000 733 700)</b> of Level 18, 123 Pitt Street, Sydney NSW 2000 Australia in its capacity as the trust manager for the Driver Australia Seven Trust</p>
<p><b>Sub Trust Manager:</b></p> <p><b>Volkswagen Financial Services Australia Pty Limited</b> <b>(ABN 20 097 071 460)</b> Level 1, 24 Muir Road, Chullora, NSW 2190</p>	<p><b>Account Bank:</b></p> <p><b>Australia and New Zealand Banking Group Limited</b> <b>(ABN 11 005 357 522)</b> ANZ Tower 242 Pitt Street Sydney, NSW 2000 Australia</p>
<p><b>Clearing Systems:</b></p> <p><b>Austraclear Limited</b> 30-32 Grosvenor Street. Sydney, NSW 2000</p>	<p><b>Swap Counterparty:</b></p> <p><b>ING Bank N.V.</b> <b>(ID 26 300 892 1)</b> Bijlmerdreef 106 1102 CT Amsterdam The Netherlands</p>
<p><b>Servicer:</b></p> <p><b>Volkswagen Financial Services Australia Pty Limited</b> <b>(ABN 20 097 071 460)</b> Level 1, 24 Muir Road, Chullora, NSW 2190 email: ABSOperations.Australia@vwfs.com.au phone: +61 2 9751 6257</p>	<p><b>Rating Agencies:</b></p> <p><b>Fitch Ratings</b> Attn.: Australia Surveillance Suite 15.01, Level 15, 135 King Street Sydney, NSW 2000 Australia email: australia.surveillance@fitchratings.com</p> <p><b>Moody's</b> Attn.: Monitor Sydney Level 10, 1 O'Connell Street Sydney, NSW 2000 Australia email: Monitor.Sydney@moodys.com</p>

### Transaction Events (I)

#### Clean-Up Call Condition

Percentage of Current Outstanding Discounted Receivables Balance	46.73%	
Min. Percentage of Outstanding Discounted Receivables Balance	10.00%	The Clean-Up-Call Condition is expected to be reached in 09/2025.

#### Clean-Up Call

VWFS Australia will have the right at its option to exercise a Clean-Up Call and to repurchase all (but not only some) of the Purchased Receivables from the Issuer at any time when the then outstanding Aggregate Discounted Receivables Balance is less than ten (10) per cent. of the Aggregate Cut-off Date Discounted Receivables Balance and, assuming the Transaction Documents are given full effect, all payment obligations under the Notes, including principal and accrued interest, will thereby be fulfilled in accordance with the Order of Priority (the Clean-up Call Conditions).

Repurchase of Receivables	Number of contracts	% of Contracts	Outstanding Discounted Receivables Balance	% of Outstanding Discounted Receivables Balance	Interest Compensation Payment	Re-Purchase Price
Current Period	-	0.00%	- AUD	0.00%	- AUD	- AUD
Previous Periods	-	0.00%	- AUD	0.00%	- AUD	- AUD
<b>Total</b>	<b>-</b>	<b>0.00%</b>	<b>- AUD</b>	<b>0.00%</b>	<b>- AUD</b>	<b>- AUD</b>

If a repurchase of receivables occurred, it would only result from non-eligibility as of the respective Pool Cut Date (which has been discovered at a later stage), a Legitimate Repudiation of a Receivables Contract, a Reloaded Contract or a Flat-Cancelled Contract.

#### Transaction Party Replacements

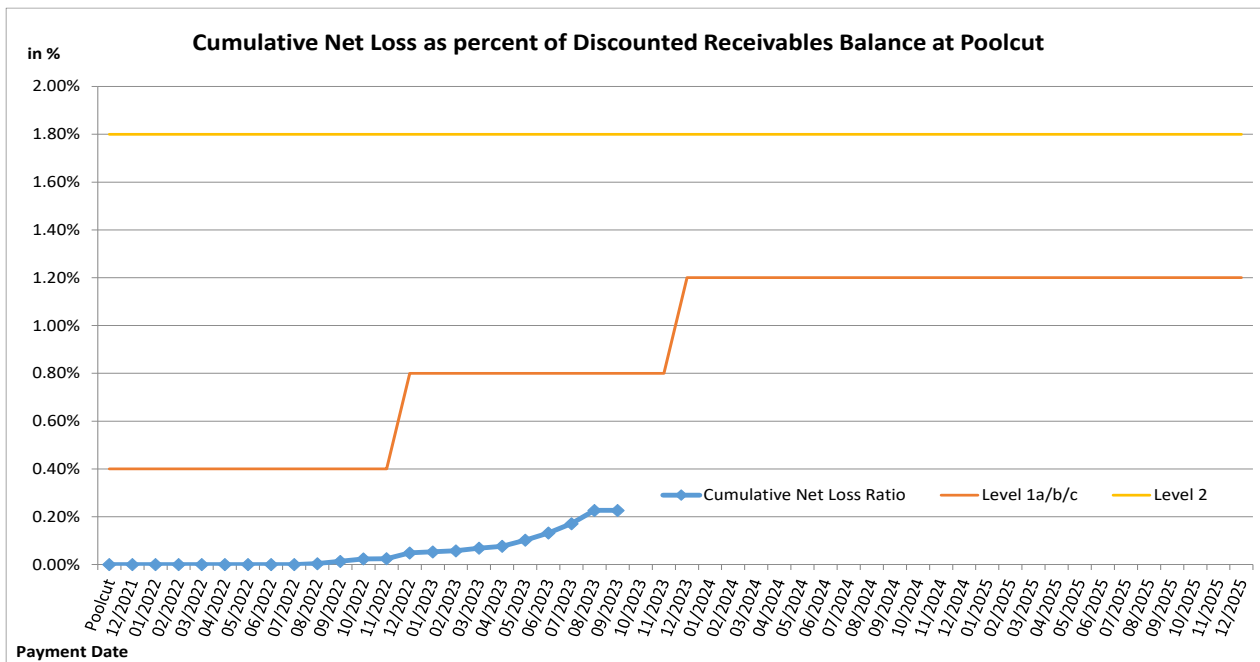
Capacity of Transaction Party	Date of Replacement	Reason for Replacement	Replaced Party	Replaced by

**Transaction Events (II)**

**Credit Enhancement Increase Conditions**

Level 1a Credit Enhancement Increase Condition - Cumulative Net Losses do not amount to 0.4% for any Payment Date prior to or during Nov 2022	NO
Level 1b Credit Enhancement Increase Condition - Cumulative Net Losses do not amount to 0.8% for any Payment Date from Dec 2022 but prior to or during Nov 2023	NO
Level 1c Credit Enhancement Increase Condition - Cumulative Net Losses do not amount to 1.2% for any Payment Date after Nov 2023	NO
Level 2 Credit Enhancement Increase Condition - Cumulative Net Losses do not amount to 1.8% for any Payment Date	NO

Net losses	Net Loss Amount
Net Salvage Loss registered in current Period	- AUD
Cumulative Net Salvage Loss incl. current Period	1,358,078.52 AUD
Cumulative Net Salvage Loss as of the End of the Monthly Period	1,358,078.52 AUD
Discounted Balance as of Pool Cut Date	600,025,098.06 AUD
Cumulative Net Loss as percentage of Discounted Receivables Balance at Pool Cut	0.22634%



### Transaction Events (III)

#### Account Bank:

Australia and New Zealand Banking Group Limited

Current Rating \*

Minimum required Rating (if no short term Rating available, the higher long term rating is applicable)

or

Fitch			Moody's		
Long Term	Short Term	Outlook	Long Term	Short Term	Outlook
A+	F1	Stable	Aa3	P-1	Stable
-	F1	-	A2	P-1	-
A	-	-	A2	P-1	-

If the Account Bank ceases to have the Account Bank Required Rating it shall, at its own cost,

(i) transfer the accounts to an Eligible Collateral Bank, or

(ii) provide a guarantee from an Eligible Guarantor, or

If none of the measures is taken within a given timespan, the Issuer may enter into new banking arrangements at its own initiative with another Account Bank.

(Please refer to the Prospectus for a complete description of the mechanism)

Required Rating:

**Fulfilled**

#### Swap Counterparty

ING Bank N.V.

Current Rating \*

Minimum required Rating for Class A Notes

Minimum required Rating for Class B Notes

Fitch			Moody's		
Long Term	Short Term	Outlook	Long Term	Short Term	Outlook
AA-	F1+	Stable	A1	P-1	Stable
A	F1	-	A3	-	-
-	-	-	A3	-	-

If the Swap Bank falls below the above mentioned Minimum Rating (Level I) it shall provide Eligible Credit Support by means of Cash or certain types of Prime Debt Obligations

If the Swap Bank ceases to have the even lower Rating as an Eligible Swap Counterparty (Level II) it shall, at its own cost,

(i) transfer all rights and obligations under the Swap Agreement to another Eligible Swap Partner or

(ii) provide a guarantee from an Eligible Guarantor.

If none of the measures is taken within a given timespan, the Issuer may enter into new arrangements at its own initiative with another Swap Bank.

(Please refer to the Prospectus for a complete description of the mechanism)

Required Rating:

**Fulfilled**

#### Servicer

Volkswagen Financial Services Australia Pty Ltd

If the Monthly Remittance Condition is satisfied, VWFS Australia, as the Servicer, is required to pay collections of the Purchased Receivables (including proceeds from the disposition of any Financed Objects) received by it during each Monthly Period into the Distribution Account in a single deposit no later than the Payment Date for that Monthly Period.

If the Monthly Remittance Condition is not met, the Servicer must remit collections received by it in respect of the Purchased Receivables in accordance with the procedure outlined in detail in "ADMINISTRATION OF THE PURCHASED RECEIVABLES UNDER THE SERVICING AGREEMENT - Commingling".

Monthly  
Remittance  
Condition:

**Fulfilled**

Information regarding the Notes I

Rating at Issue Date	Class A	Class B
Moody's	Aaa (sf)	Aa2 (sf)
Fitch	AAAsf	NRsf

Current Rating	Class A	Class B
Moody's	Aaa (sf)	Aa1 (sf)
Fitch	AAAsf	NRsf

Information on Notes	Class A	Class B
Legal maturity date	21/01/2030	21/01/2030
Scheduled Clean Up Call	Sep 2025	Sep 2025
ISIN:	AU3FN0063434	AU3FN0063442
Common Code:	239718256	239718272
Nominal Amount	100,000.00 AUD	100,000.00 AUD

Information on Interest	Class A	Class B
Spread/ Margin	70 bps	100 bps
Index Rate	1-Month-BBSW	1-Month-BBSW
Fixed/Floating	floating	floating
Current Coupon	1-Month-BBSW + 70	1-Month-BBSW + 100
Day Count Convention	actual/365	actual/365



## Information regarding the Notes II

Monthly Period:	08/2023
Payment Date:	21/09/2023
Interest Accrual Period (from/until)	from 21/08/2023 until 21/09/2023
Days accrued	31
Index Rate	1-Month-BBSW
Base Interest Rate:	4.0538%
Day Count Convention	actual/365

Interest Payments	Class A	Class B
Total Interest Amount of the Reporting Period	872,568.98 AUD	133,155.94 AUD
Paid Interest	872,568.98 AUD	133,155.94 AUD

Unpaid Interest	Class A	Class B
Unpaid Interest in the Reporting Period	- AUD	- AUD
Cumulative unpaid Interest	- AUD	- AUD

Note Balance	Class A	Class B
Note Balance as of Poolcut	526,200,000.00 AUD	33,000,000.00 AUD
Note Balance as of the Beginning of the Period	216,117,548.94 AUD	31,022,277.00 AUD
Redemption Amount per Class	8,611,473.48 AUD	3,367,362.90 AUD
<b>Class Balance as of the End of the Period</b>	<b>207,506,075.46 AUD</b>	<b>27,654,914.10 AUD</b>

Payments to Investors per note	Class A	Class B
Interest Per Note	165.82 AUD	403.50 AUD
Principal Repayment by note	1,636.54 AUD	10,204.13 AUD
Number of Notes	5,262	330
Note Factor	0.3943483	0.8380277

Overcollateralisation Percentage	Class A	Class B
Initial OC Percentage at Poolcut	12.3037%	6.8039%
Current OC Percentage	26.0000%	16.1400%
Target OC Percentage	26.0000%	18.0000%

Subordinated Loan	
Balance as of the Beginning of the Period	34,115,247.75 AUD
Regular Redemption from Waterfall	- AUD
Redemption from Cash Collateral Account	- AUD
Balance as of the End of the Period	34,115,247.75 AUD

## Cash Collateral Account

Cash collateral account (CCA)	Value
<b>CCA Opening Balance - Initial balance at poolcut</b>	<b>7,200,000.00 AUD</b>
<b>Balance as of the beginning of the period</b>	<b>6,000,000.00 AUD</b>
<b>Specified General Cash Collateral Account Balance</b>	<b>6,000,000.00 AUD</b>
the greater of: 1.20 per cent of the Aggregate Discounted Receivables Balance as of the end of the Monthly Period; and	3,364,962.92 AUD
the lesser of: \$6,000,000; and	6,000,000.00 AUD
the aggregate outstanding principal amount of the Class A Notes and Class B Notes as of the end of the Monthly Period	247,139,825.94 AUD
<b>Payments</b>	<b>- AUD</b>
General payment from CCA	- AUD
General payment to CCA	- AUD
<b>Balance as of the end of the period</b>	<b>6,000,000.00 AUD</b>

## Credit Enhancement

Credit Enhancement as of Poolcut Date	% of Aggregate Discounted Receivables Balance	Value
Class B Note	5.50%	33,000,000.00 AUD
Subordinated Loan	5.80%	34,825,098.06 AUD
Overcollateralisation	1.00%	6,000,000.00 AUD
Cash Collateral Account	1.20%	7,200,000.00 AUD

Cash Collateral Account (CCA)	Value	in % of Outstanding Discounted Receivables Balance as of Poolcut Date
<b>Initial Balance at Poolcut</b>	7,200,000.00 AUD	1.20%
<b>Initial Targeted Balance at Poolcut</b>	7,200,000.00 AUD	1.20%
<b>Current Targeted Balance</b>	6,000,000.00 AUD	1.00%
<b>Balance as of the Beginning of the Period</b>	6,000,000.00 AUD	1.00%
Payment from CCA	- AUD	0.00%
Payment to CCA	- AUD	0.00%
<b>Balance as of the End of the Period</b>	6,000,000.00 AUD	1.00%

## Calculation of Credit Enhancement

Initially, Driver Australia Seven's Credit Enhancement consists of the respective Note Issue in comparison to the Discounted Receivables Balance as of Poolcut, minus any Senior Debt Issuance. This 'Overcollateralisation' (i.e. Credit Enhancement excluding the Cash Collateral Account) is specific for each Note Series and increases with its seniority.

Subsequently, the 'Overcollateralisation' is calculated (as an Overcollateralisation Percentage) on a monthly basis, all on end of month figures. Considering the seniority of the respective Note Series, redemption is made until a Target Overcollateralisation Percentage has been reached. All remaining funds will be used to perform payments in the more junior positions of the Order of Priority.

The Target OC percentages for each Note Class are determined subject to 3 items:

- They will increase in 2 steps in case the Cumulative Net Loss Ratio exceeds a certain level and Credit Enhancement Increase Condition is met.
- They will increase to 100% if the Aggregate Discounted Receivables Balance falls below 10.00% of the Aggregate Discounted Receivables Balance at Cut-Off Date (without a Clean-Up Call being exercised).
- A Foreclosure Event causes the transaction to switch into sequential payment mode, in which case the OC Percentages will not determine the maximum redemption amount and may be exceeded.

In addition, there is the 'General Cash Reserve', in the form of a Cash Collateral Account, which is in principle to the benefit of all Tranches over the entire lifetime of the transaction.

**Swap Fixing / Waterfall**

<b>Amortising Interest Rate Swap</b>	<b>Class A</b>	<b>Class B</b>
Initial Principal	526,200,000.00 AUD	33,000,000.00 AUD
Underlying Principal for Reporting Period	216,117,548.94 AUD	31,022,277.00 AUD
Paying Leg	Fixed Interest Rate	Fixed Interest Rate
Receiving Leg	Floating Interest Rate	Floating Interest Rate
Net Swap Payments - Net Swap Receipts	(601,521.55 AUD)	(83,210.07 AUD)

<b>Available Distribution Amount Calculation</b>	<b>Payment to waterfall position</b>	<b>Remaining Amount</b>
1) i) Available Collections Amount from Contracts	13,223,195.13 AUD	13,223,195.13 AUD
1) ii) Available Collections - Interest on Trust Account	23,149.98 AUD	13,246,345.11 AUD
2) Drawings From Cash Collateral Account as provided for in clause 12.1 of the Issue Supplement	- AUD	13,246,345.11 AUD
3) i) Net Swap Receipts - Class A	601,521.55 AUD	13,847,866.66 AUD
3) ii) Net Swap Receipts - Class B	83,210.07 AUD	13,931,076.73 AUD
4) Damages and Indemnity Payments to Issuer	- AUD	13,931,076.73 AUD
5) Other Reimbursement Amounts	- AUD	13,931,076.73 AUD
6) Buffer Release Amount	(693,922.15 AUD)	13,237,154.58 AUD
Remaining Rounding Amount (M-1)	23.10 AUD	13,237,177.68 AUD

<b>Waterfall</b>	<b>Payment to waterfall position</b>	<b>Remaining Amount</b>
Available Distribution Amount	- AUD	13,237,177.68 AUD
1) Trust Beneficiary \$1	(1.00 AUD)	13,237,176.68 AUD
2) Taxes	- AUD	13,237,176.68 AUD
3) Trust Fees & Expenses and Servicer Fees	(252,584.68 AUD)	12,984,592.00 AUD
4. a) Net Swap Payments - Class A Notes	- AUD	12,984,592.00 AUD
4. b) Net Swap Payments - Class B Notes	- AUD	12,984,592.00 AUD
5. a) Interest accrued in prev. month - Class A	(872,568.98 AUD)	12,112,023.02 AUD
5. b) Interest Shortfalls from prior months - Class A	- AUD	12,112,023.02 AUD
6. a) Interest accrued in prev. month - Class B	(133,155.94 AUD)	11,978,867.08 AUD
6. b) Interest Shortfalls from prior months - Class B	- AUD	11,978,867.08 AUD
7) Payment to Cash Collateral Account	- AUD	11,978,867.08 AUD
8) Principal Payment - Class A	(8,611,473.48 AUD)	3,367,393.60 AUD
9) Principal Payment - Class B	(3,367,362.90 AUD)	30.70 AUD
Remaining Rounding Amount (Current Period)	(30.70 AUD)	- AUD
10) Penalties, Costs, Expenses, Damages, Losses or Liabilities	- AUD	- AUD
11) Other Payment to Swap Counterparties	- AUD	- AUD
12) Subordinated Loan Accrued and Unpaid Interest	- AUD	- AUD
Interest Accrued this period on the Subordinated Loan	- AUD	- AUD
Unpaid Interest on the Subordinated Loan	- AUD	- AUD
13) Subordinated Loan Principal	- AUD	- AUD
14) Surplus Income Distribution to Beneficiary of the Trust	- AUD	- AUD

<b>Distribution of Cash Collateral Account surplus</b>	<b>Payment</b>	<b>Remaining Amount</b>
Payment from CCA	- AUD	- AUD
Payment of Interest Accrued this period on the Subordinated Loan	- AUD	- AUD
Payment of Unpaid Interest on the Subordinated Loan	- AUD	- AUD
Payment in respect of regular redemption to subordinated lender	- AUD	- AUD
Distribution to Beneficiary of the Trust	- AUD	- AUD

## Retention of Net Economic Interest

Period	Poolcut	Balance as at Current Period
<b>Total Assets</b>	<b>684,926,843.21 AUD</b>	<b>305,347,412.01 AUD</b>
Nominal Receivables Balance	684,926,843.21 AUD	305,347,412.01 AUD
<b>First loss piece</b>	<b>48,025,098.06 AUD</b>	<b>51,252,586.88 AUD</b>
Subordinated Loan balance	34,825,098.06 AUD	34,115,247.75 AUD
Overcollateralisation	6,000,000.00 AUD	11,137,339.13 AUD
General Cash Collateral Account balance	7,200,000.00 AUD	6,000,000.00 AUD
<b>Actual retention</b>	<b>7.01%</b>	<b>16.79%</b>

In its capacity as originator and original lender, VWFSA complies with the retention requirement of a material net economic interest in accordance with Article 6 (3) (d) of the European Securitisation Regulation.

By adhering to Article 6 (3) (d) of the European Securitisation Regulation, VWFSA will keep the exposures designated for retention on its balance sheet on an ongoing basis.

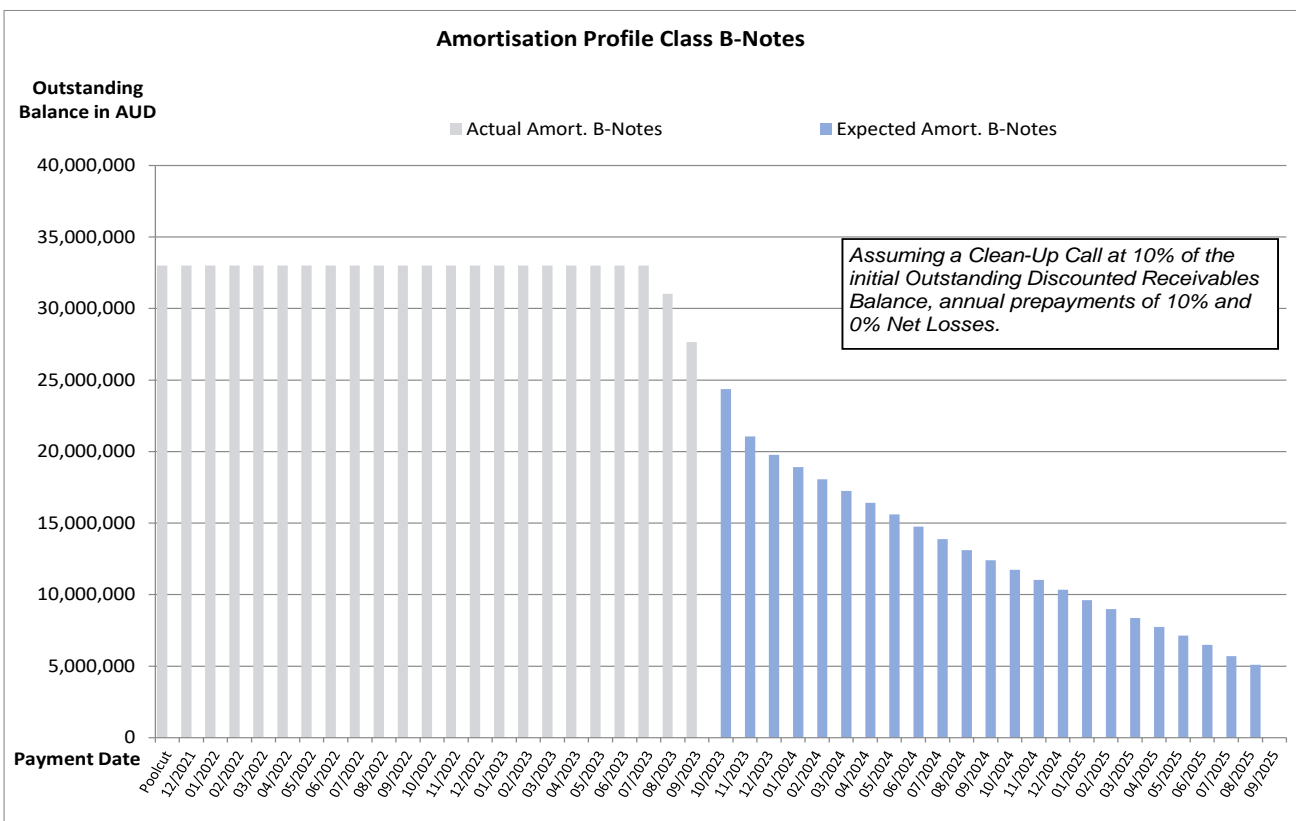
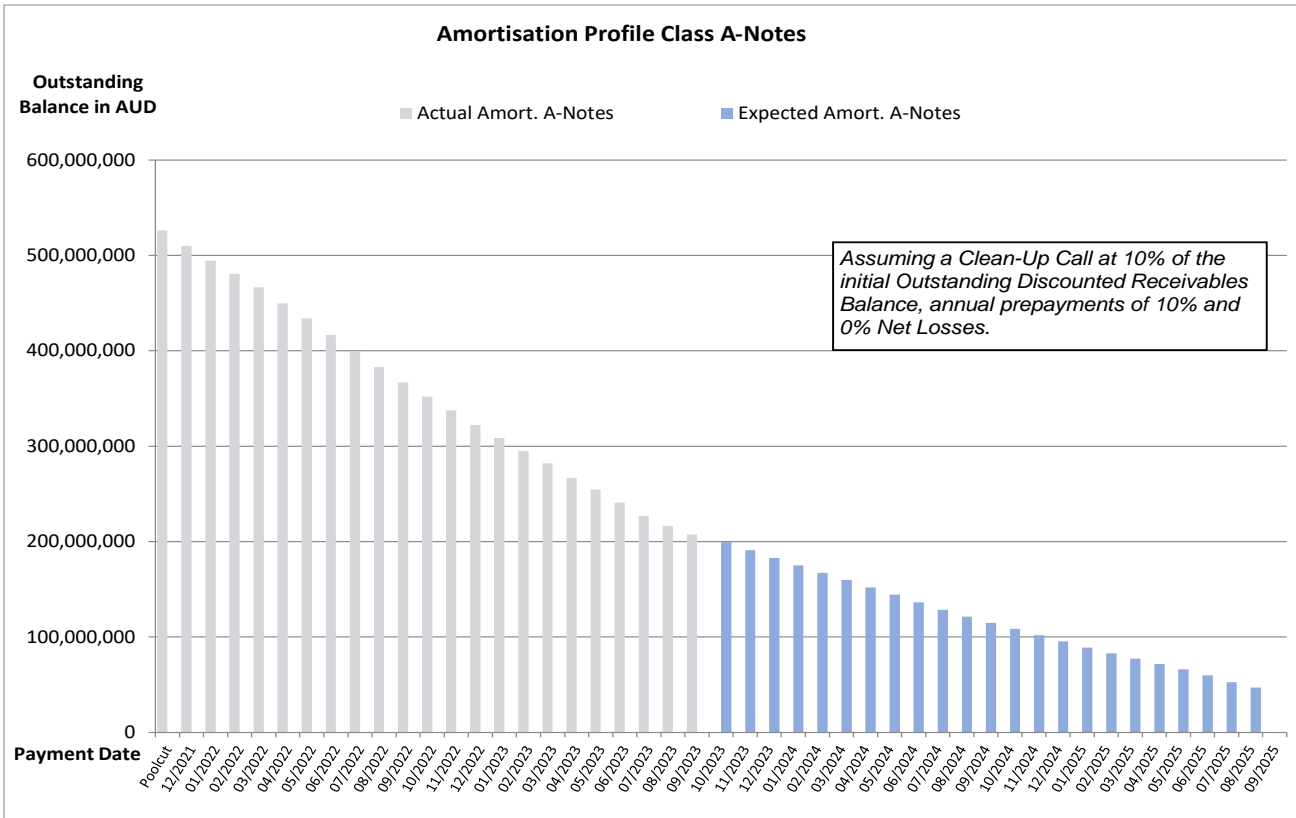
The latest end of month level of retention will be published on a monthly basis in the investor report.

### Amortisation Profile I

Note Class	Class A		Class B	
	At Closing: 1.85 yrs	Current: 1.22 yrs	At Closing: 2.84 yrs	Current: 0.96 yrs
WAL	Actual Note Balance	Forecasted Note Balance	Actual Note Balance	Forecasted Note Balance
Payment Date	Actual Note Balance	Forecasted Note Balance	Actual Note Balance	Forecasted Note Balance
Poolcut	526,200,000.00 AUD	- AUD	33,000,000.00 AUD	- AUD
12/2021	510,049,185.54 AUD	- AUD	33,000,000.00 AUD	- AUD
01/2022	494,276,866.74 AUD	- AUD	33,000,000.00 AUD	- AUD
02/2022	480,766,050.30 AUD	- AUD	33,000,000.00 AUD	- AUD
03/2022	466,604,640.18 AUD	- AUD	33,000,000.00 AUD	- AUD
04/2022	449,793,707.82 AUD	- AUD	33,000,000.00 AUD	- AUD
05/2022	434,204,927.58 AUD	- AUD	33,000,000.00 AUD	- AUD
06/2022	416,766,133.38 AUD	- AUD	33,000,000.00 AUD	- AUD
07/2022	399,553,605.18 AUD	- AUD	33,000,000.00 AUD	- AUD
08/2022	382,999,405.80 AUD	- AUD	33,000,000.00 AUD	- AUD
09/2022	367,050,704.76 AUD	- AUD	33,000,000.00 AUD	- AUD
10/2022	352,075,000.14 AUD	- AUD	33,000,000.00 AUD	- AUD
11/2022	337,754,730.24 AUD	- AUD	33,000,000.00 AUD	- AUD
12/2022	322,389,374.52 AUD	- AUD	33,000,000.00 AUD	- AUD
01/2023	308,497,905.00 AUD	- AUD	33,000,000.00 AUD	- AUD
02/2023	295,031,605.08 AUD	- AUD	33,000,000.00 AUD	- AUD
03/2023	282,007,734.12 AUD	- AUD	33,000,000.00 AUD	- AUD
04/2023	266,550,924.84 AUD	- AUD	33,000,000.00 AUD	- AUD
05/2023	254,648,386.08 AUD	- AUD	33,000,000.00 AUD	- AUD
06/2023	240,840,950.70 AUD	- AUD	33,000,000.00 AUD	- AUD
07/2023	227,003,048.34 AUD	- AUD	33,000,000.00 AUD	- AUD
08/2023	216,117,548.94 AUD	- AUD	31,022,277.00 AUD	- AUD
09/2023	207,506,075.46 AUD	- AUD	27,654,914.10 AUD	- AUD
10/2023	-	199,299,919.28 AUD	-	24,374,952.80 AUD
11/2023	-	191,036,484.61 AUD	-	21,053,213.14 AUD
12/2023	-	182,848,494.99 AUD	-	19,767,404.87 AUD
01/2024	-	174,967,694.82 AUD	-	18,915,426.47 AUD
02/2024	-	167,143,834.34 AUD	-	18,069,603.71 AUD
03/2024	-	159,592,950.53 AUD	-	17,253,291.95 AUD
04/2024	-	151,947,502.05 AUD	-	16,426,756.98 AUD
05/2024	-	144,390,584.60 AUD	-	15,609,792.93 AUD
06/2024	-	136,476,136.72 AUD	-	14,754,176.94 AUD
07/2024	-	128,376,170.60 AUD	-	13,878,504.93 AUD
08/2024	-	121,334,223.31 AUD	-	13,117,213.33 AUD
09/2024	-	114,692,903.53 AUD	-	12,399,232.81 AUD
10/2024	-	108,504,376.11 AUD	-	11,730,202.83 AUD
11/2024	-	101,923,702.78 AUD	-	11,018,778.68 AUD
12/2024	-	95,582,805.00 AUD	-	10,333,276.21 AUD
01/2025	-	88,956,922.60 AUD	-	9,616,964.61 AUD
02/2025	-	83,075,899.48 AUD	-	8,981,178.32 AUD
03/2025	-	77,443,522.34 AUD	-	8,372,272.69 AUD
04/2025	-	71,612,318.06 AUD	-	7,741,872.23 AUD
05/2025	-	66,014,058.96 AUD	-	7,136,655.03 AUD
06/2025	-	59,975,557.30 AUD	-	6,483,844.04 AUD
07/2025	-	52,746,997.91 AUD	-	5,702,378.16 AUD
08/2025	-	47,168,958.41 AUD	-	5,099,346.86 AUD
09/2025	-	- AUD	-	- AUD

\*Based on the following assumptions: CPR of 10%, Net Losses of 0% and Clean Up Call at 10% of the original outstanding discounted receivables balance

**Amortisation Profile II**



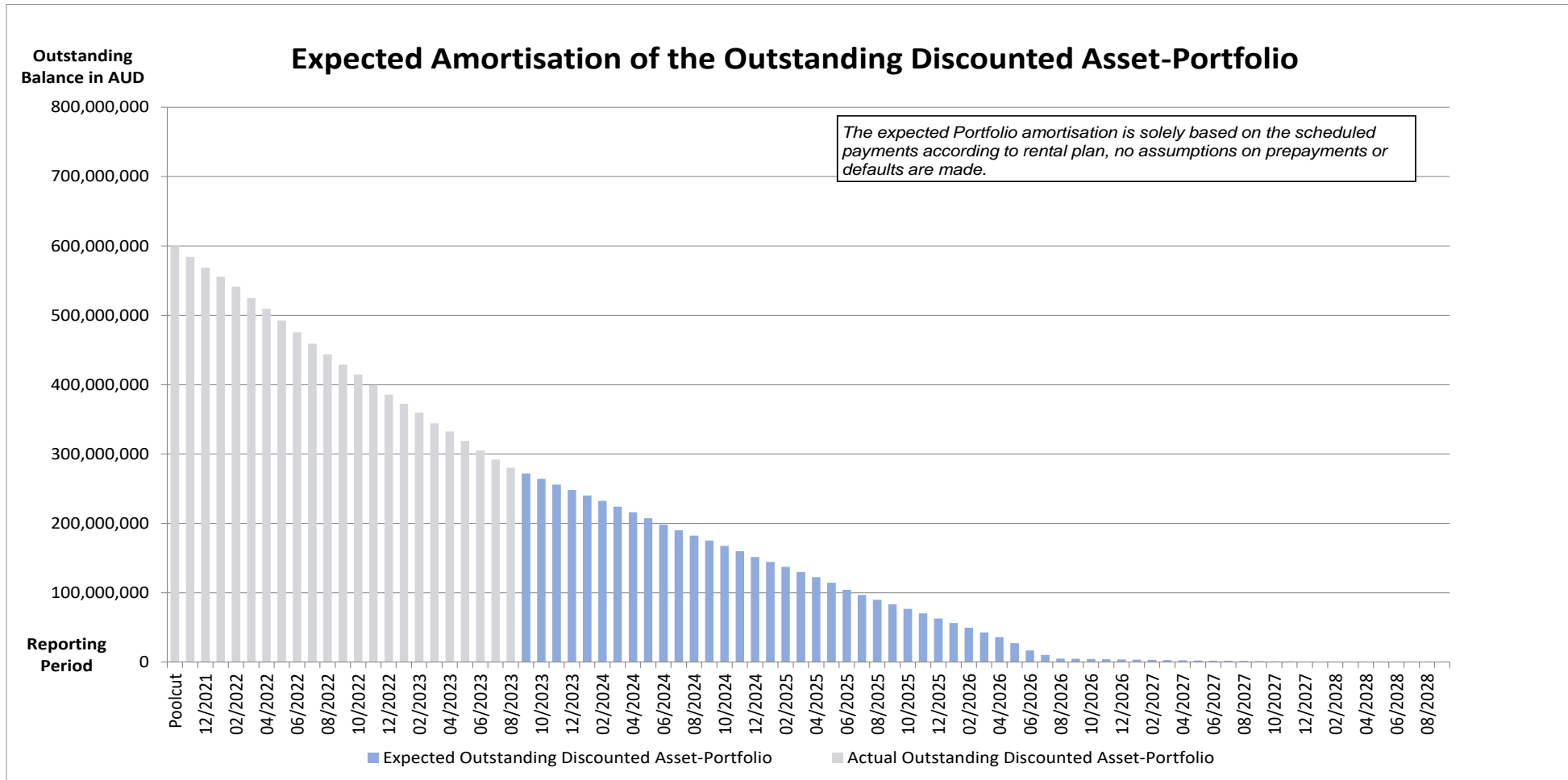
## Run Out Schedule I

End of Collection Period	Interest	Principal	Nominal Instalments
arrears	100,840.47 AUD	877,127.86 AUD	977,968.33 AUD
09/2023	1,091,530.58 AUD	7,514,056.67 AUD	8,605,587.25 AUD
10/2023	1,297,753.11 AUD	7,933,375.86 AUD	9,231,128.97 AUD
11/2023	1,269,345.85 AUD	8,121,529.53 AUD	9,390,875.38 AUD
12/2023	1,234,493.17 AUD	7,871,719.44 AUD	9,106,212.61 AUD
01/2024	1,199,181.62 AUD	7,938,003.89 AUD	9,137,185.51 AUD
02/2024	1,161,434.60 AUD	7,875,928.10 AUD	9,037,362.70 AUD
03/2024	1,124,631.14 AUD	8,122,566.13 AUD	9,247,197.27 AUD
04/2024	1,085,378.41 AUD	8,051,443.96 AUD	9,136,822.37 AUD
05/2024	1,047,208.31 AUD	8,752,687.39 AUD	9,799,895.70 AUD
06/2024	1,005,157.72 AUD	9,332,242.44 AUD	10,337,400.16 AUD
07/2024	960,032.06 AUD	8,002,628.19 AUD	8,962,660.25 AUD
08/2024	921,612.73 AUD	7,655,869.64 AUD	8,577,482.37 AUD
09/2024	884,571.99 AUD	7,071,743.03 AUD	7,956,315.02 AUD
10/2024	850,749.85 AUD	7,763,406.95 AUD	8,614,156.80 AUD
11/2024	813,030.84 AUD	7,823,798.13 AUD	8,636,828.97 AUD
12/2024	775,186.82 AUD	8,161,312.90 AUD	8,936,499.72 AUD
01/2025	735,669.15 AUD	7,240,175.86 AUD	7,975,845.01 AUD
02/2025	700,547.46 AUD	7,169,922.30 AUD	7,870,469.76 AUD
03/2025	665,899.59 AUD	7,282,135.20 AUD	7,948,034.79 AUD
04/2025	630,536.99 AUD	7,395,586.25 AUD	8,026,123.24 AUD
05/2025	594,564.74 AUD	8,025,285.25 AUD	8,619,849.99 AUD
06/2025	555,596.35 AUD	10,087,169.41 AUD	10,642,765.76 AUD
07/2025	506,558.97 AUD	7,515,698.39 AUD	8,022,257.36 AUD
08/2025	470,110.72 AUD	7,077,283.29 AUD	7,547,394.01 AUD
09/2025	435,844.41 AUD	6,460,499.72 AUD	6,896,344.13 AUD
10/2025	404,511.71 AUD	6,458,497.37 AUD	6,863,009.08 AUD
11/2025	373,317.65 AUD	6,627,885.84 AUD	7,001,203.49 AUD
12/2025	341,102.79 AUD	7,419,671.78 AUD	7,760,774.57 AUD
01/2026	305,128.55 AUD	6,482,413.76 AUD	6,787,542.31 AUD
02/2026	273,603.43 AUD	6,746,028.42 AUD	7,019,631.85 AUD
03/2026	240,786.58 AUD	6,921,626.12 AUD	7,162,412.70 AUD
04/2026	207,135.88 AUD	6,617,943.09 AUD	6,825,078.97 AUD
05/2026	174,952.55 AUD	8,882,982.14 AUD	9,057,934.69 AUD
06/2026	131,752.00 AUD	10,228,403.89 AUD	10,360,155.89 AUD
07/2026	82,135.62 AUD	6,492,392.57 AUD	6,574,528.19 AUD
08/2026	50,622.26 AUD	5,268,803.22 AUD	5,319,425.48 AUD
09/2026	24,995.79 AUD	339,552.36 AUD	364,548.15 AUD
10/2026	23,344.07 AUD	394,205.16 AUD	417,549.23 AUD
11/2026	21,430.02 AUD	340,966.05 AUD	362,396.07 AUD
12/2026	19,771.89 AUD	310,767.82 AUD	330,539.71 AUD
01/2027	18,266.84 AUD	285,910.28 AUD	304,177.12 AUD
02/2027	16,884.54 AUD	351,058.09 AUD	367,942.63 AUD
03/2027	15,176.77 AUD	298,279.86 AUD	313,456.63 AUD
04/2027	13,732.75 AUD	265,723.64 AUD	279,456.39 AUD
05/2027	12,440.07 AUD	275,454.19 AUD	287,894.26 AUD
06/2027	11,100.10 AUD	269,753.62 AUD	280,853.72 AUD
07/2027	9,787.82 AUD	235,290.42 AUD	245,078.24 AUD
08/2027	8,643.28 AUD	282,073.77 AUD	290,717.05 AUD
09/2027	7,271.08 AUD	210,656.13 AUD	217,927.21 AUD



10/2027	6,246.34 AUD	197,952.76 AUD	204,199.10 AUD
11/2027	5,283.41 AUD	181,438.99 AUD	186,722.40 AUD
12/2027	4,400.72 AUD	167,733.81 AUD	172,134.53 AUD
01/2028	3,584.68 AUD	153,596.46 AUD	157,181.14 AUD
02/2028	2,837.62 AUD	138,659.24 AUD	141,496.86 AUD
03/2028	2,163.07 AUD	123,102.52 AUD	125,265.59 AUD
04/2028	1,564.27 AUD	108,447.15 AUD	110,011.42 AUD
05/2028	1,036.65 AUD	85,518.21 AUD	86,554.86 AUD
06/2028	620.64 AUD	59,309.79 AUD	59,930.43 AUD
07/2028	332.18 AUD	37,062.32 AUD	37,394.50 AUD
08/2028	151.84 AUD	15,615.15 AUD	15,766.99 AUD
09/2028	75.91 AUD	4,699.81 AUD	4,775.72 AUD
10/2028	53.05 AUD	3,137.06 AUD	3,190.11 AUD
11/2028	37.78 AUD	2,550.97 AUD	2,588.75 AUD
12/2028	25.38 AUD	906.08 AUD	931.46 AUD
01/2029	20.97 AUD	910.49 AUD	931.46 AUD
02/2029	16.54 AUD	914.92 AUD	931.46 AUD
03/2029	12.09 AUD	919.37 AUD	931.46 AUD
04/2029	7.62 AUD	923.84 AUD	931.46 AUD
05/2029	3.12 AUD	642.13 AUD	645.25 AUD
06/2029	- AUD	- AUD	- AUD
<b>Total</b>	<b>24,933,835.57 AUD</b>	<b>280,413,576.44 AUD</b>	<b>305,347,412.01 AUD</b>

Run Out Schedule II



**Outstanding Contracts I - Overview**

Total Portfolio as of Poolcut Date			Product Type			
Contract Status Development	Number of Contracts	Outstanding Discounted Receivables Balance	Chattel Mortgage		Consumer Loan	
			Number of Contracts	Outstanding Discounted Receivables Balance	Number of Contracts	Outstanding Discounted Receivables Balance
Normal	15,241	600,025,098.06 AUD	9,371	414,965,143.56 AUD	5,870	185,059,954.50 AUD
In Advance	-	- AUD	-	- AUD	-	- AUD
In Arrears	-	- AUD	-	- AUD	-	- AUD
Paid out/Matured	-	- AUD	-	- AUD	-	- AUD
Early Payout	-	- AUD	-	- AUD	-	- AUD
Gross Salvage	-	- AUD	-	- AUD	-	- AUD
Net Salvage	-	- AUD	-	- AUD	-	- AUD
<b>Total</b>	<b>15,241</b>	<b>600,025,098.06 AUD</b>	<b>9,371</b>	<b>414,965,143.56 AUD</b>	<b>5,870</b>	<b>185,059,954.50 AUD</b>

Total Portfolio as of Previous Month			Product Type			
Contract Status Development	Number of Contracts	Outstanding Discounted Receivables Balance	Chattel Mortgage		Consumer Loan	
			Number of Contracts	Outstanding Discounted Receivables Balance	Number of Contracts	Outstanding Discounted Receivables Balance
Normal	8,042	224,261,701.76 AUD	5,584	173,557,289.67 AUD	2,458	50,704,412.09 AUD
In Advance	1,337	30,358,134.89 AUD	570	14,554,623.00 AUD	767	15,803,511.89 AUD
In Arrears	1,503	37,328,675.25 AUD	728	20,382,510.20 AUD	775	16,946,165.05 AUD
Paid out/Matured	679	- AUD	467	- AUD	212	- AUD
Early Payout	3,633	- AUD	1,985	- AUD	1,648	- AUD
Gross Salvage	3	102,199.81 AUD	2	33,512.53 AUD	1	68,687.28 AUD
Net Salvage	44	1,313,170.57 AUD	35	1,163,919.49 AUD	9	149,251.08 AUD
<b>Total</b>	<b>15,241</b>	<b>293,363,882.28 AUD</b>	<b>9,371</b>	<b>209,691,854.89 AUD</b>	<b>5,870</b>	<b>83,672,027.39 AUD</b>

Total Portfolio as of Current Reporting Period			Product Type			
Contract Status Development	Number of Contracts	Outstanding Discounted Receivables Balance	Chattel Mortgage		Consumer Loan	
			Number of Contracts	Outstanding Discounted Receivables Balance	Number of Contracts	Outstanding Discounted Receivables Balance
Normal	7,786	205,503,200.68 AUD	5,319	158,700,275.48 AUD	2,467	46,802,925.20 AUD
In Advance	1,715	43,908,232.05 AUD	814	23,075,922.82 AUD	901	20,832,309.23 AUD
In Arrears	1,177	30,826,173.59 AUD	626	18,542,206.71 AUD	551	12,283,966.88 AUD
Paid out/Matured	716	- AUD	495	- AUD	221	- AUD
Early Payout	3,799	- AUD	2,079	- AUD	1,720	- AUD
Gross Salvage	4	175,970.12 AUD	3	107,282.84 AUD	1	68,687.28 AUD
Net Salvage	44	1,313,170.57 AUD	35	1,163,919.49 AUD	9	149,251.08 AUD
<b>Total</b>	<b>15,241</b>	<b>281,726,747.01 AUD</b>	<b>9,371</b>	<b>201,589,607.34 AUD</b>	<b>5,870</b>	<b>80,137,139.67 AUD</b>

**Outstanding Contracts I - Overview**

Total Portfolio as of Poolcut Date			Balloon				Type of Car			
Contract Status Development	Number of Contracts	Outstanding Discounted Receivables Balance	Balloon		No Balloon		New Vehicle		Used Vehicle	
			Number of Contracts	Outstanding Discounted Receivables Balance	Number of Contracts	Outstanding Discounted Receivables Balance	Number of Contracts	Outstanding Discounted Receivables Balance	Number of Contracts	Outstanding Discounted Receivables Balance
Normal	15,241	600,025,098.06 AUD	4,261	251,558,699.25 AUD	10,980	348,466,398.81 AUD	10,680	463,158,976.27 AUD	4,561	136,866,121.79 AUD
In Advance	-	- AUD	-	- AUD	-	- AUD	-	- AUD	-	- AUD
In Arrears	-	- AUD	-	- AUD	-	- AUD	-	- AUD	-	- AUD
Paid out/Matured	-	- AUD	-	- AUD	-	- AUD	-	- AUD	-	- AUD
Early Payout	-	- AUD	-	- AUD	-	- AUD	-	- AUD	-	- AUD
Gross Salvage	-	- AUD	-	- AUD	-	- AUD	-	- AUD	-	- AUD
Net Salvage	-	- AUD	-	- AUD	-	- AUD	-	- AUD	-	- AUD
<b>Total</b>	<b>15,241</b>	<b>600,025,098.06 AUD</b>	<b>4,261</b>	<b>251,558,699.25 AUD</b>	<b>10,980</b>	<b>348,466,398.81 AUD</b>	<b>10,680</b>	<b>463,158,976.27 AUD</b>	<b>4,561</b>	<b>136,866,121.79 AUD</b>

Total Portfolio as of Previous Month			Balloon				Type of Car			
Contract Status Development	Number of Contracts	Outstanding Discounted Receivables Balance	Balloon		No Balloon		New Vehicle		Used Vehicle	
			Number of Contracts	Outstanding Discounted Receivables Balance	Number of Contracts	Outstanding Discounted Receivables Balance	Number of Contracts	Outstanding Discounted Receivables Balance	Number of Contracts	Outstanding Discounted Receivables Balance
Normal	8,042	224,261,701.76 AUD	2,541	117,592,227.96 AUD	5,501	106,669,473.80 AUD	5,917	182,244,727.75 AUD	2,125	42,016,974.01 AUD
In Advance	1,337	30,358,134.89 AUD	266	9,718,276.38 AUD	1,071	20,639,858.51 AUD	931	22,983,975.79 AUD	406	7,374,159.10 AUD
In Arrears	1,503	37,328,675.25 AUD	332	13,618,943.97 AUD	1,171	23,709,731.28 AUD	1,057	28,116,603.84 AUD	446	9,212,071.41 AUD
Paid out/Matured	679	- AUD	114	- AUD	565	- AUD	407	- AUD	272	- AUD
Early Payout	3,633	- AUD	988	- AUD	2,645	- AUD	2,345	- AUD	1,288	- AUD
Gross Salvage	3	102,199.81 AUD	2	97,897.50 AUD	1	4,302.31 AUD	2	97,897.50 AUD	1	4,302.31 AUD
Net Salvage	44	1,313,170.57 AUD	18	754,970.52 AUD	26	558,200.05 AUD	21	651,724.23 AUD	23	661,446.34 AUD
<b>Total</b>	<b>15,241</b>	<b>293,363,882.28 AUD</b>	<b>4,261</b>	<b>141,782,316.33 AUD</b>	<b>10,980</b>	<b>151,581,565.95 AUD</b>	<b>10,680</b>	<b>234,094,929.11 AUD</b>	<b>4,561</b>	<b>59,268,953.17 AUD</b>

Total Portfolio as of Current Reporting Period			Balloon				Type of Car			
Contract Status Development	Number of Contracts	Outstanding Discounted Receivables Balance	Balloon		No Balloon		New Vehicle		Used Vehicle	
			Number of Contracts	Outstanding Discounted Receivables Balance	Number of Contracts	Outstanding Discounted Receivables Balance	Number of Contracts	Outstanding Discounted Receivables Balance	Number of Contracts	Outstanding Discounted Receivables Balance
Normal	7,786	205,503,200.68 AUD	2,435	109,272,350.78 AUD	5,351	96,230,849.90 AUD	5,716	167,355,350.27 AUD	2,070	38,147,850.41 AUD
In Advance	1,715	43,908,232.05 AUD	374	15,150,362.04 AUD	1,341	28,757,870.01 AUD	1,246	33,562,626.51 AUD	469	10,345,605.54 AUD
In Arrears	1,177	30,826,173.59 AUD	288	12,367,561.89 AUD	889	18,458,611.70 AUD	822	23,436,677.36 AUD	355	7,389,496.23 AUD
Paid out/Matured	716	- AUD	120	- AUD	596	- AUD	421	- AUD	295	- AUD
Early Payout	3,799	- AUD	1,023	- AUD	2,776	- AUD	2,451	- AUD	1,348	- AUD
Gross Salvage	4	175,970.12 AUD	3	171,902.52 AUD	1	4,067.60 AUD	3	171,902.52 AUD	1	4,067.60 AUD
Net Salvage	44	1,313,170.57 AUD	18	754,970.52 AUD	26	558,200.05 AUD	21	651,724.23 AUD	23	661,446.34 AUD
<b>Total</b>	<b>15,241</b>	<b>281,726,747.01 AUD</b>	<b>4,261</b>	<b>137,717,147.75 AUD</b>	<b>10,980</b>	<b>144,009,599.26 AUD</b>	<b>10,680</b>	<b>225,178,280.89 AUD</b>	<b>4,561</b>	<b>56,548,466.12 AUD</b>

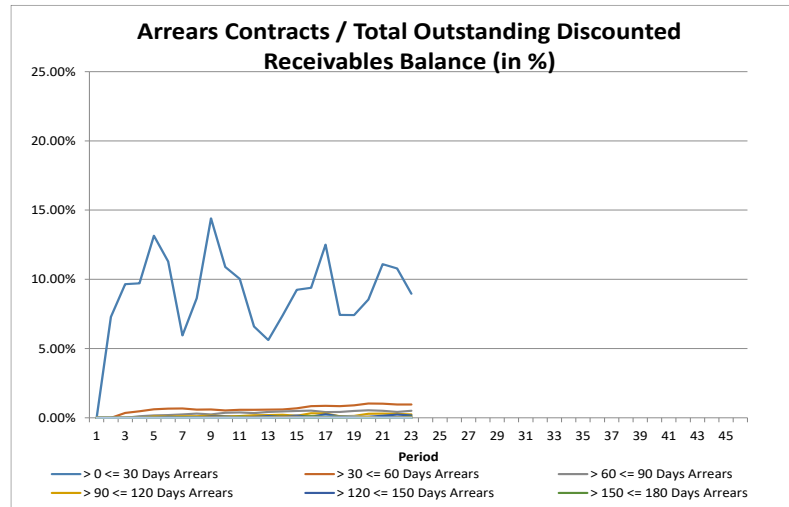
**Outstanding Contracts II - Collections**

Collections This Reporting Month by Status	Change in Contract Statuses From Last Month	Number of Contracts This Month	Collections
Normal	(256)	7,786	6,728,120.92 AUD
In Advance	378	1,715	1,759,081.31 AUD
In Arrears	(326)	1,177	868,812.31 AUD
Paid out/Matured	37	716	92,483.85 AUD
Early Payout	166	3,799	3,764,356.31 AUD
Gross Salvage	1	4	972.62 AUD
Net Salvage	-	44	9,367.81 AUD
<b>Total</b>	<b>-</b>	<b>15,241</b>	<b>13,223,195.13 AUD</b>

Development of Pool within Reporting Period	Number of Active Contracts	Total Number of Contracts	Collection Variations	Outstanding Nominal Balance
Beginning of Period	10,885	15,241		318,804,889.13 AUD
<b>Scheduled Collections For Contracts Active This Period</b>			<b>8,883,595.71 AUD</b>	<b>8,883,595.71 AUD</b>
Collections Variations From Normal Contracts This Period			150,856.79 AUD	
Collection Variations From Contracts Paying Out Early This Period			3,703,889.99 AUD	
Collection Variations From Contracts Paying Out/Maturing This Period			56,522.97 AUD	
Collection Variations from Contracts in Advance This Period			642,629.72 AUD	
Collection Variations from Contract In Arrears This Period			(183,606.67 AUD)	
Collection Variations from Contracts Going Into Gross Salvage This Period			(1,877.72 AUD)	
Collection Variations from Contracts Going Into Net Salvage This Period			6,465.20 AUD	
Other Variations From Scheduled Collections This Period			- AUD	
<i>Instalment Collection Variations</i>			4,374,880.28 AUD	4,374,880.28 AUD
Contract Fees Collected This Period			63,370.27 AUD	
Interest Compensation Collections This Period			(98,651.13 AUD)	
<i>Non Instalment Collection Variations</i>			(35,280.86 AUD)	
<b>Actual Collections For Contracts Active This Period</b>			<b>13,223,195.13 AUD</b>	
Number of Contracts Paid Out Early This Month	166			
Number of Contracts Paid Out/Matured This Month	37			
Number of Contracts Into Net Salvage This Month	-			
Repurchased Contracts	-	-		
Less Recoveries After Net Salvage				(10,239.06 AUD)
Reduced Nominal Balance Due to Unpaid Rental At Net Salvage				- AUD
Reduced Nominal Balance Due to Unpaid Rental At Early Payout				222,767.53 AUD
Reduced Nominal Balance Due to Other				(13,527.34 AUD)
<b>End of Period</b>	<b>10,682</b>	<b>15,241</b>		<b>305,347,412.01 AUD</b>

**Arrears Contracts**

Total Portfolio					Chattel Mortgage		Consumer Loan	
Days in Arrears	Number of Contracts	Number of Contracts (%)	Outstanding Discounted Receivables Balance	Outstanding Discounted Receivables Balance (%)	Number of Contracts	Outstanding Discounted Receivables Balance	Number of Contracts	Outstanding Discounted Receivables Balance
> 0 <= 30	995	9.31%	25,141,219.10 AUD	8.97%	480	13,690,961.03 AUD	515	11,450,258.07 AUD
> 30 <= 60	91	0.85%	2,714,489.33 AUD	0.97%	70	2,248,953.10 AUD	21	465,536.23 AUD
> 60 <= 90	44	0.41%	1,420,428.49 AUD	0.51%	36	1,280,042.46 AUD	8	140,386.03 AUD
> 90 <= 120	21	0.20%	693,917.23 AUD	0.25%	15	481,762.29 AUD	6	212,154.94 AUD
> 120 <= 150	11	0.10%	475,905.69 AUD	0.17%	10	460,274.08 AUD	1	15,631.61 AUD
> 150 <= 180	8	0.07%	240,864.46 AUD	0.09%	8	240,864.46 AUD	-	- AUD
> 180 <= 210	2	0.02%	21,477.60 AUD	0.01%	2	21,477.60 AUD	-	- AUD
> 210 <= 240	3	0.03%	105,312.69 AUD	0.04%	3	105,312.69 AUD	-	- AUD
> 240 <= 270	2	0.02%	57,016.02 AUD	0.02%	2	57,016.02 AUD	-	- AUD
> 270 <= 300	1	0.01%	68,687.28 AUD	0.02%	-	- AUD	1	68,687.28 AUD
> 300 <= 330	1	0.01%	30,123.63 AUD	0.01%	1	30,123.63 AUD	-	- AUD
> 330 <= 360	-	0.00%	- AUD	0.00%	-	- AUD	-	- AUD
> 360	-	0.00%	- AUD	0.00%	-	- AUD	-	- AUD
<b>Total</b>	<b>1,179</b>	<b>11.04%</b>	<b>30,969,441.52 AUD</b>	<b>11.04%</b>	<b>627</b>	<b>18,616,787.36 AUD</b>	<b>552</b>	<b>12,352,654.16 AUD</b>



**Arrears Contracts**

Total Portfolio					Balloon				Vehicle Status			
Days in Arrears	Number of Contracts	Number of Contracts (%)	Outstanding Discounted Receivables Balance	Outstanding Discounted Receivables Balance (%)	Balloon		No Balloon		New		Used	
					Number of Contracts	Outstanding Discounted Receivables Balance	Number of Contracts	Outstanding Discounted Receivables Balance	Number of Contracts	Outstanding Discounted Receivables Balance	Number of Contracts	Outstanding Discounted Receivables Balance
> 0 <= 30	995	9.31%	25,141,219.10 AUD	8.97%	222	9,370,785.24 AUD	773	15,770,433.86 AUD	708	19,315,457.55 AUD	287	5,825,761.55 AUD
> 30 <= 60	91	0.85%	2,714,489.33 AUD	0.97%	27	1,234,261.03 AUD	64	1,480,228.30 AUD	53	1,886,800.40 AUD	38	827,688.93 AUD
> 60 <= 90	44	0.41%	1,420,428.49 AUD	0.51%	18	859,500.08 AUD	26	560,928.41 AUD	30	1,153,047.23 AUD	14	267,381.26 AUD
> 90 <= 120	21	0.20%	693,917.23 AUD	0.25%	9	339,724.73 AUD	12	354,192.50 AUD	13	475,276.56 AUD	8	218,640.67 AUD
> 120 <= 150	11	0.10%	475,905.69 AUD	0.17%	5	361,256.06 AUD	6	114,649.63 AUD	6	277,227.62 AUD	5	198,678.07 AUD
> 150 <= 180	8	0.07%	240,864.46 AUD	0.09%	3	138,214.08 AUD	5	102,650.38 AUD	6	228,364.62 AUD	2	12,499.84 AUD
> 180 <= 210	2	0.02%	21,477.60 AUD	0.01%	1	2,965.00 AUD	1	18,512.60 AUD	2	21,477.60 AUD	-	- AUD
> 210 <= 240	3	0.03%	105,312.69 AUD	0.04%	3	105,312.69 AUD	-	- AUD	3	105,312.69 AUD	-	- AUD
> 240 <= 270	2	0.02%	57,016.02 AUD	0.02%	-	- AUD	2	57,016.02 AUD	1	18,170.11 AUD	1	38,845.91 AUD
> 270 <= 300	1	0.01%	68,687.28 AUD	0.02%	1	68,687.28 AUD	-	- AUD	1	68,687.28 AUD	-	- AUD
> 300 <= 330	1	0.01%	30,123.63 AUD	0.01%	1	30,123.63 AUD	-	- AUD	1	30,123.63 AUD	-	- AUD
> 330 <= 360	-	0.00%	- AUD	0.00%	-	- AUD	-	- AUD	-	- AUD	-	- AUD
> 360	-	0.00%	- AUD	0.00%	-	- AUD	-	- AUD	-	- AUD	-	- AUD
<b>Total</b>	<b>1,179</b>	<b>11.04%</b>	<b>30,969,441.52 AUD</b>	<b>11.04%</b>	<b>290</b>	<b>12,510,829.82 AUD</b>	<b>889</b>	<b>18,458,611.70 AUD</b>	<b>824</b>	<b>23,579,945.29 AUD</b>	<b>355</b>	<b>7,389,496.23 AUD</b>

**Net Salvage Loss**

Net Salvage Loss This Period			
Product Type	Type of Car	Number of Contracts	Net Salvage Loss
Chattel Mortgage	New	-	- AUD
	Used	-	- AUD
<b>Total Chattel Mortgage</b>		-	- AUD
Consumer Loan	New	-	- AUD
	Used	-	- AUD
<b>Total Consumer Loan</b>		-	- AUD
<b>Total</b>		-	- AUD

<b>Cumulative Net Salvage Loss as of the End of the Monthly Period</b>	1,358,078.52 AUD
<b>Outstanding Discounted Receivables Balance at Poolcut</b>	600,025,098.06 AUD
<b>Cumulative Net Loss Ratio</b>	0.22634%

Monthly Period	Per Period		Cumulative Net Salvage Loss	
	Number of Contracts	Net Salvage Loss	Number of Contracts	Net Salvage Loss
11/2021	-	- AUD	-	- AUD
12/2021	-	- AUD	-	- AUD
01/2022	-	- AUD	-	- AUD
02/2022	-	- AUD	-	- AUD
03/2022	-	- AUD	-	- AUD
04/2022	-	- AUD	-	- AUD
05/2022	-	- AUD	-	- AUD
06/2022	-	- AUD	-	- AUD
07/2022	1	23,440.30 AUD	1	23,440.30 AUD
08/2022	4	57,706.41 AUD	5	81,146.71 AUD
09/2022	1	60,349.39 AUD	6	141,496.10 AUD
10/2022	1	5,937.71 AUD	7	147,433.81 AUD
11/2022	2	144,698.53 AUD	9	292,132.34 AUD
12/2022	2	26,228.63 AUD	11	318,360.97 AUD
01/2023	2	25,455.90 AUD	13	343,816.87 AUD
02/2023	3	68,262.70 AUD	16	412,079.57 AUD
03/2023	1	47,352.50 AUD	17	459,432.07 AUD
04/2023	8	153,358.85 AUD	25	612,790.92 AUD
05/2023	6	179,378.47 AUD	31	792,169.39 AUD
06/2023	5	232,890.36 AUD	36	1,025,059.75 AUD
07/2023	8	333,018.77 AUD	44	1,358,078.52 AUD
08/2023	-	- AUD	44	1,358,078.52 AUD
09/2023	-	- AUD	-	- AUD
10/2023	-	- AUD	-	- AUD
11/2023	-	- AUD	-	- AUD
12/2023	-	- AUD	-	- AUD
01/2024	-	- AUD	-	- AUD
02/2024	-	- AUD	-	- AUD
03/2024	-	- AUD	-	- AUD
04/2024	-	- AUD	-	- AUD
05/2024	-	- AUD	-	- AUD
06/2024	-	- AUD	-	- AUD
07/2024	-	- AUD	-	- AUD
08/2024	-	- AUD	-	- AUD
09/2024	-	- AUD	-	- AUD
10/2024	-	- AUD	-	- AUD
11/2024	-	- AUD	-	- AUD
12/2024	-	- AUD	-	- AUD
01/2025	-	- AUD	-	- AUD
02/2025	-	- AUD	-	- AUD
03/2025	-	- AUD	-	- AUD
04/2025	-	- AUD	-	- AUD
05/2025	-	- AUD	-	- AUD
06/2025	-	- AUD	-	- AUD
07/2025	-	- AUD	-	- AUD
08/2025	-	- AUD	-	- AUD
09/2025	-	- AUD	-	- AUD
10/2025	-	- AUD	-	- AUD
11/2025	-	- AUD	-	- AUD
<b>Total</b>	<b>44</b>	<b>1,358,078.52 AUD</b>		



**Net Salvage After Recoveries**

Net Salvaged Contracts						
Product Type	Vehicle Status	Number of Contracts	Gross Salvage Loss	Net Salvage Loss	Recoveries After Net Salvage	Net Salvage Loss After Recoveries
Chattel Mortgage	New	17	1,139,614.14 AUD	598,295.01 AUD	33,162.70 AUD	565,132.31 AUD
	Used	18	717,141.34 AUD	606,234.73 AUD	32,077.03 AUD	574,157.70 AUD
<b>Total Chattel Mortgage</b>		<b>35</b>	<b>1,856,755.48 AUD</b>	<b>1,204,529.74 AUD</b>	<b>65,239.73 AUD</b>	<b>1,139,290.01 AUD</b>
Consumer Loan	New	4	76,257.55 AUD	75,505.60 AUD	36,905.30 AUD	38,600.30 AUD
	Used	5	166,234.00 AUD	78,043.18 AUD	2,382.04 AUD	75,661.14 AUD
<b>Total Consumer Loan</b>		<b>9</b>	<b>242,491.55 AUD</b>	<b>153,548.78 AUD</b>	<b>39,287.34 AUD</b>	<b>114,261.44 AUD</b>
<b>Total</b>		<b>44</b>	<b>2,099,247.03 AUD</b>	<b>1,358,078.52 AUD</b>	<b>104,527.07 AUD</b>	<b>1,253,551.45 AUD</b>

## Prepayments

Period Number	Reporting Period	Unscheduled Payments	Opening Outstanding Discounted Receivables Balance	Periodic CPR	Annualised CPR
0	Poolcut	- AUD	- AUD		
1	11/2021	5,188,258.11 AUD	600,025,098.06 AUD	0.86%	10.03%
2	12/2021	4,579,685.92 AUD	584,284,031.03 AUD	0.78%	8.85%
3	01/2022	2,741,342.02 AUD	568,933,158.93 AUD	0.48%	5.53%
4	02/2022	3,337,851.56 AUD	555,556,298.45 AUD	0.60%	7.56%
5	03/2022	5,445,824.85 AUD	541,478,701.09 AUD	1.01%	11.22%
6	04/2022	4,593,099.08 AUD	524,992,591.30 AUD	0.87%	10.14%
7	05/2022	6,363,116.33 AUD	509,466,787.17 AUD	1.25%	13.76%
8	06/2022	6,297,060.40 AUD	492,432,848.37 AUD	1.28%	14.49%
9	07/2022	5,980,710.84 AUD	475,580,922.30 AUD	1.26%	13.84%
10	08/2022	5,404,312.88 AUD	459,209,842.01 AUD	1.18%	13.01%
11	09/2022	4,751,296.31 AUD	443,615,516.21 AUD	1.07%	12.28%
12	10/2022	4,429,370.71 AUD	428,807,300.51 AUD	1.03%	11.51%
13	11/2022	3,951,482.72 AUD	414,561,296.17 AUD	0.95%	11.00%
14	12/2022	3,173,581.07 AUD	399,393,166.38 AUD	0.79%	8.97%
15	01/2023	3,259,724.76 AUD	385,740,376.49 AUD	0.85%	9.51%
16	02/2023	3,041,283.55 AUD	372,465,449.19 AUD	0.82%	10.14%
17	03/2023	5,189,122.89 AUD	359,589,767.53 AUD	1.44%	15.73%
18	04/2023	2,751,056.77 AUD	344,346,328.06 AUD	0.80%	9.30%
19	05/2023	4,318,938.46 AUD	332,395,481.37 AUD	1.30%	14.27%
20	06/2023	4,323,534.14 AUD	318,787,791.09 AUD	1.36%	15.31%
21	07/2023	3,783,712.22 AUD	305,076,532.83 AUD	1.24%	13.67%
22	08/2023	3,087,662.04 AUD	292,050,711.71 AUD	1.06%	11.76%

The annualised Constant Prepayment Rate (CPR) of the underlying receivables is based upon the most recent periodic CPR. Periodic CPR is equal to the total unscheduled principal received in the most recent period divided by the start of period principal balance. This is then annualised as follows:

$$1 - ((1 - \text{Periodic CPR})^{\text{number of periods in a year}})$$

**Pool Data I**

**Down Payments**

Total Portfolio						Product Type			
Down Payment	Number of Contracts	Percentage of Contracts	Outstanding Discounted Receivables Balance	Percentage of Balance	Down Payment/ Purchase Price in %	Chattel Mortgage		Consumer Loan	
						Number of Contracts	Outstanding Discounted Receivables Balance	Number of Contracts	Outstanding Discounted Receivables Balance
No Down Payment	1,791	16.77%	50,461,284.00 AUD	18.00%	0.00%	1,245	38,642,118.96 AUD	546	11,819,165.04 AUD
0.01 - 10,000.00	5,356	50.14%	127,172,503.55 AUD	45.35%	10.86%	3,210	83,747,419.05 AUD	2,146	43,425,084.50 AUD
10,000.01 - 20,000.00	2,099	19.65%	53,489,752.72 AUD	19.08%	26.45%	1,358	38,882,707.91 AUD	741	14,607,044.81 AUD
20,000.01 - 30,000.00	749	7.01%	20,957,756.54 AUD	7.47%	35.63%	467	15,424,665.92 AUD	282	5,533,090.62 AUD
30,000.01 - 40,000.00	345	3.23%	10,159,355.13 AUD	3.62%	42.07%	227	7,899,114.84 AUD	118	2,260,240.29 AUD
40,000.01 - 50,000.00	155	1.45%	6,462,220.37 AUD	2.30%	42.82%	107	5,121,437.11 AUD	48	1,340,783.26 AUD
50,000.01 - 60,000.00	77	0.72%	3,525,100.06 AUD	1.26%	44.99%	57	3,044,247.03 AUD	20	480,853.03 AUD
60,000.01 - 70,000.00	41	0.38%	2,503,547.71 AUD	0.89%	46.29%	34	2,389,196.15 AUD	7	114,351.56 AUD
70,000.01 - 80,000.00	19	0.18%	916,545.74 AUD	0.33%	50.16%	14	820,088.56 AUD	5	96,457.18 AUD
80,000.01 - 90,000.00	12	0.11%	752,730.21 AUD	0.27%	50.17%	9	654,835.86 AUD	3	97,894.35 AUD
90,000.01 - 100,000.00	10	0.09%	991,853.93 AUD	0.35%	46.35%	8	899,371.11 AUD	2	92,482.82 AUD
100,000.01 - 110,000.00	7	0.07%	647,763.46 AUD	0.23%	42.43%	7	647,763.46 AUD	-	- AUD
110,000.01 - 120,000.00	5	0.05%	591,609.19 AUD	0.21%	48.81%	5	591,609.19 AUD	-	- AUD
120,000.01 - 130,000.00	4	0.04%	488,885.34 AUD	0.17%	47.94%	3	450,226.44 AUD	1	38,658.90 AUD
130,000.01 - 140,000.00	3	0.03%	412,760.52 AUD	0.15%	44.71%	3	412,760.52 AUD	-	- AUD
140,000.01 - 150,000.00	-	0.00%	- AUD	0.00%	0.00%	-	- AUD	-	- AUD
> 150,000.00	9	0.08%	879,907.97 AUD	0.31%	65.89%	8	798,125.74 AUD	1	81,782.23 AUD
<b>Total</b>	<b>10,682</b>	<b>100.00%</b>	<b>280,413,576.44 AUD</b>	<b>100.00%</b>	<b>19.21%</b>	<b>6,762</b>	<b>200,425,687.85 AUD</b>	<b>3,920</b>	<b>79,987,888.59 AUD</b>

Statistics Down Payments	
Minimum Down Payment	- AUD
Maximum Down Payment	301,000.00 AUD
Weighted Average Down Payment (Customers that made a Down Payment)	15,692.61 AUD
Weighted Average Down Payment	12,868.68 AUD

**Type of Payment**

Total Portfolio				
Type of Payment	Number of Contracts	Percentage of Contracts	Outstanding Discounted Receivables Balance	Percentage of Balance
Direct Debit	10,432	97.66%	273,943,072.46 AUD	97.69%
Other	250	2.34%	6,470,503.98 AUD	2.31%
<b>Total</b>	<b>10,682</b>	<b>100.00%</b>	<b>280,413,576.44 AUD</b>	<b>100.00%</b>

Product Type			
Chattel Mortgage		Consumer Loan	
Number of Contracts	Outstanding Discounted Receivables Balance	Number of Contracts	Outstanding Discounted Receivables Balance
6,595	195,436,239	3,837	78,506,833
167	4,989,449	83	1,481,055
<b>6,762</b>	<b>200,425,687.85 AUD</b>	<b>3,920</b>	<b>79,987,888.59 AUD</b>

**Pool Data I**

**Down Payments**

Total Portfolio						Balloon				Vehicle Status			
Down Payment	Number of Contracts	Percentage of Contracts	Outstanding Discounted Receivables Balance	Percentage of Balance	Down Payment/ Purchase Price in %	Balloon		No Balloon		New		Used	
						Number of Contracts	Outstanding Discounted Receivables Balance	Number of Contracts	Outstanding Discounted Receivables Balance	Number of Contracts	Outstanding Discounted Receivables Balance	Number of Contracts	Outstanding Discounted Receivables Balance
No Down Payment	1,791	16.77%	50,461,284.00 AUD	18.00%	0.00%	642	27,739,517.54 AUD	1,149	22,721,766.46 AUD	1,287	41,196,125.58 AUD	504	9,265,158.42 AUD
0.01 - 10,000.00	5,356	50.14%	127,172,503.55 AUD	45.35%	10.86%	1,419	55,124,200.49 AUD	3,937	72,048,303.06 AUD	3,684	97,611,496.15 AUD	1,672	29,561,007.40 AUD
10,000.01 - 20,000.00	2,099	19.65%	53,489,752.72 AUD	19.08%	26.45%	586	24,672,043.55 AUD	1,513	28,817,709.17 AUD	1,606	43,019,854.23 AUD	493	10,469,898.49 AUD
20,000.01 - 30,000.00	749	7.01%	20,957,756.54 AUD	7.47%	35.63%	217	11,147,011.73 AUD	532	9,810,744.81 AUD	619	18,004,177.19 AUD	130	2,953,579.35 AUD
30,000.01 - 40,000.00	345	3.23%	10,159,355.13 AUD	3.62%	42.07%	94	5,389,565.30 AUD	251	4,769,789.83 AUD	293	8,862,581.41 AUD	52	1,296,773.72 AUD
40,000.01 - 50,000.00	155	1.45%	6,462,220.37 AUD	2.30%	42.82%	55	4,241,978.44 AUD	100	2,220,241.93 AUD	128	5,234,881.44 AUD	27	1,227,338.93 AUD
50,000.01 - 60,000.00	77	0.72%	3,525,100.06 AUD	1.26%	44.99%	31	2,407,986.02 AUD	46	1,117,114.04 AUD	71	3,287,787.66 AUD	6	237,312.40 AUD
60,000.01 - 70,000.00	41	0.38%	2,503,547.71 AUD	0.89%	46.29%	20	1,931,009.74 AUD	21	572,537.97 AUD	36	2,125,850.55 AUD	5	377,697.16 AUD
70,000.01 - 80,000.00	19	0.18%	916,545.74 AUD	0.33%	50.16%	7	464,410.52 AUD	12	452,135.22 AUD	19	916,545.74 AUD	-	- AUD
80,000.01 - 90,000.00	12	0.11%	752,730.21 AUD	0.27%	50.17%	5	543,094.27 AUD	7	209,635.94 AUD	11	702,254.28 AUD	1	50,475.93 AUD
90,000.01 - 100,000.00	10	0.09%	991,853.93 AUD	0.35%	46.35%	6	784,034.95 AUD	4	207,818.98 AUD	10	991,853.93 AUD	-	- AUD
100,000.01 - 110,000.00	7	0.07%	647,763.46 AUD	0.23%	42.43%	2	351,337.41 AUD	5	296,426.05 AUD	5	486,418.33 AUD	2	161,345.13 AUD
110,000.01 - 120,000.00	5	0.05%	591,609.19 AUD	0.21%	48.81%	4	562,626.40 AUD	1	28,982.79 AUD	4	484,310.11 AUD	1	107,299.08 AUD
120,000.01 - 130,000.00	4	0.04%	488,885.34 AUD	0.17%	47.94%	3	450,226.44 AUD	1	38,658.90 AUD	3	317,287.22 AUD	1	171,598.12 AUD
130,000.01 - 140,000.00	3	0.03%	412,760.52 AUD	0.15%	44.71%	3	412,760.52 AUD	-	- AUD	3	412,760.52 AUD	-	- AUD
140,000.01 - 150,000.00	-	0.00%	- AUD	0.00%	0.00%	-	- AUD	-	- AUD	-	- AUD	-	- AUD
> 150,000.00	9	0.08%	879,907.97 AUD	0.31%	65.89%	6	740,373.91 AUD	3	139,534.06 AUD	8	872,372.32 AUD	1	7,535.65 AUD
<b>Total</b>	<b>10,682</b>	<b>100.00%</b>	<b>280,413,576.44 AUD</b>	<b>100.00%</b>	<b>19.21%</b>	<b>3,100</b>	<b>136,962,177.23 AUD</b>	<b>7,582</b>	<b>143,451,399.21 AUD</b>	<b>7,787</b>	<b>224,526,556.66 AUD</b>	<b>2,895</b>	<b>55,887,019.78 AUD</b>

Statistics Down Payments	
Minimum Down Payment	- AUD
Maximum Down Payment	301,000.00 AUD
Weighted Average Down Payment (Customers that made a Down Payment)	15,692.61 AUD
Weighted Average Down Payment	12,868.68 AUD

**Type of Payment**

Total Portfolio				
Type of Payment	Number of Contracts	Percentage of Contracts	Outstanding Discounted Receivables Balance	Percentage of Balance
Direct Debit	10,432	97.66%	273,943,072.46 AUD	97.69%
Other	250	2.34%	6,470,503.98 AUD	2.31%
<b>Total</b>	<b>10,682</b>	<b>100.00%</b>	<b>280,413,576.44 AUD</b>	<b>100.00%</b>

Balloon				Vehicle Status			
Balloon		No Balloon		New		Used	
Number of Contracts	Outstanding Discounted Receivables Balance	Number of Contracts	Outstanding Discounted Receivables Balance	Number of Contracts	Outstanding Discounted Receivables Balance	Number of Contracts	Outstanding Discounted Receivables Balance
3,026	133,761,782	7,406	140,181,290	7,624	219,662,180	2,808	54,280,893
74	3,200,395	176	3,270,109	163	4,864,377	87	1,606,127
<b>3,100</b>	<b>136,962,177.23 AUD</b>	<b>7,582</b>	<b>143,451,399.21 AUD</b>	<b>7,787</b>	<b>224,526,556.66 AUD</b>	<b>2,895</b>	<b>55,887,019.78 AUD</b>

## Pool Data II

### Distribution of Contracts and Vehicles per Borrower

Number of Contracts Per Borrower	Number of Customers	Percentage of Customers	Number of Contracts	Percentage of Contracts	Outstanding Discounted Receivables Balance	Percentage of Balance
1	12,647	99.19%	10,517	98.26%	334,237,925.58 AUD	98.34%
2	97	0.76%	168	1.57%	5,358,337.74 AUD	1.58%
3	6	0.05%	18	0.17%	277,295.00 AUD	0.08%
4	-	0.00%	-	0.00%	- AUD	0.00%
5	-	0.00%	-	0.00%	- AUD	0.00%
6 - 10	-	0.00%	-	0.00%	- AUD	0.00%
> 10	-	0.00%	-	0.00%	- AUD	0.00%
<b>Total</b>	<b>12,750</b>	<b>100.00%</b>	<b>10,703</b>	<b>100.00%</b>	<b>339,873,558.32 AUD</b>	<b>100.00%</b>

### Top 20 Borrower

Ranking	Outstanding Discounted Receivables Balance	Percentage of Overall Balance	Number of Contracts
1	339,598.72 AUD	0.12111 %	1
2	339,598.72 AUD	0.12111 %	1
3	318,921.89 AUD	0.11373 %	1
4	315,645.21 AUD	0.11256 %	1
5	305,427.52 AUD	0.10892 %	1
6	305,427.52 AUD	0.10892 %	1
7	271,284.38 AUD	0.09674 %	1
8	262,693.66 AUD	0.09368 %	1
9	230,995.99 AUD	0.08238 %	1
10	229,876.77 AUD	0.08198 %	1
11	228,959.77 AUD	0.08165 %	1
12	227,210.61 AUD	0.08103 %	1
13	227,166.62 AUD	0.08101 %	1
14	217,752.12 AUD	0.07765 %	1
15	212,648.10 AUD	0.07583 %	1
16	194,906.44 AUD	0.06951 %	1
17	185,976.37 AUD	0.06632 %	1
18	184,434.07 AUD	0.06577 %	1
19	184,138.93 AUD	0.06567 %	1
20	182,847.66 AUD	0.06521 %	1
	<b>4,965,511.07 AUD</b>	<b>1.77078 %</b>	<b>20</b>

**Pool Data III**

**Distribution by Outstanding Discounted Receivables Balance**

Total Portfolio					Product Type			
Distribution by Outstanding Discounted Receivables Balance	Number of Contracts	Percentage of Contracts	Outstanding Discounted Receivables Balance	Percentage of Balance	Chattel Mortgage		Consumer Loan	
					Number of Contracts	Outstanding Discounted Receivables Balance	Number of Contracts	Outstanding Discounted Receivables Balance
0.00 - 10,000.00	1,681	15.74%	10,355,459.39 AUD	3.69%	840	5,289,365.90 AUD	841	5,066,093.49 AUD
10,000.01 - 20,000.00	3,324	31.12%	49,596,009.55 AUD	17.69%	1,859	27,874,593.14 AUD	1,465	21,721,416.41 AUD
20,000.01 - 30,000.00	2,532	23.70%	62,165,825.27 AUD	22.17%	1,659	40,866,870.19 AUD	873	21,298,955.08 AUD
30,000.01 - 40,000.00	1,421	13.30%	48,780,046.02 AUD	17.40%	997	34,372,343.02 AUD	424	14,407,703.00 AUD
40,000.01 - 50,000.00	709	6.64%	31,447,881.43 AUD	11.21%	534	23,701,949.24 AUD	175	7,745,932.19 AUD
50,000.01 - 60,000.00	343	3.21%	18,622,192.78 AUD	6.64%	283	15,390,864.21 AUD	60	3,231,328.57 AUD
60,000.01 - 70,000.00	217	2.03%	14,001,474.15 AUD	4.99%	185	11,945,269.16 AUD	32	2,056,204.99 AUD
70,000.01 - 80,000.00	152	1.42%	11,365,939.69 AUD	4.05%	129	9,615,946.64 AUD	23	1,749,993.05 AUD
80,000.01 - 90,000.00	96	0.90%	8,101,038.02 AUD	2.89%	79	6,658,921.99 AUD	17	1,442,116.03 AUD
90,000.01 - 100,000.00	61	0.57%	5,814,320.28 AUD	2.07%	57	5,438,478.78 AUD	4	375,841.50 AUD
100,000.01 - 110,000.00	50	0.47%	5,242,459.01 AUD	1.87%	48	5,031,888.68 AUD	2	210,570.33 AUD
110,000.01 - 120,000.00	23	0.22%	2,650,894.50 AUD	0.95%	22	2,538,021.48 AUD	1	112,873.02 AUD
120,000.01 - 130,000.00	17	0.16%	2,113,573.60 AUD	0.75%	17	2,113,573.60 AUD	-	- AUD
130,000.01 - 140,000.00	9	0.08%	1,208,849.87 AUD	0.43%	9	1,208,849.87 AUD	-	- AUD
140,000.01 - 150,000.00	6	0.06%	874,350.19 AUD	0.31%	6	874,350.19 AUD	-	- AUD
> 150,000.00	41	0.38%	8,073,262.69 AUD	2.88%	38	7,504,401.76 AUD	3	568,860.93 AUD
<b>Total</b>	<b>10,682</b>	<b>100.00%</b>	<b>280,413,576.44 AUD</b>	<b>100.00%</b>	<b>6,762</b>	<b>200,425,687.85 AUD</b>	<b>3,920</b>	<b>79,987,888.59 AUD</b>

Statistics Outstanding Discounted Receivables Balance	
Minimum Outstanding Discounted Receivables Balance	- AUD
Maximum Outstanding Discounted Receivables Balance	339,598.72 AUD
Average Outstanding Discounted Receivables Balance	26,251.04 AUD

**Distribution by Original Balance**

Total Portfolio					Product Type			
Distribution by Original Balance	Number of Contracts	Percentage of Contracts	Outstanding Discounted Receivables Balance	Percentage of Balance	Chattel Mortgage		Consumer Loan	
					Number of Contracts	Outstanding Discounted Receivables Balance	Number of Contracts	Outstanding Discounted Receivables Balance
0.00 - 10,000.00	47	0.44%	121,676.40 AUD	0.04%	13	28,472.30 AUD	34	93,204.10 AUD
10,000.01 - 20,000.00	912	8.54%	6,490,102.72 AUD	2.31%	400	2,899,924.82 AUD	512	3,590,177.90 AUD
20,000.01 - 30,000.00	2,150	20.13%	26,613,651.18 AUD	9.49%	1,097	13,520,589.40 AUD	1,053	13,093,061.78 AUD
30,000.01 - 40,000.00	2,222	20.80%	40,602,301.41 AUD	14.48%	1,296	23,519,130.31 AUD	926	17,083,171.10 AUD
40,000.01 - 50,000.00	1,739	16.28%	43,070,908.88 AUD	15.36%	1,142	28,215,414.66 AUD	597	14,855,494.22 AUD
50,000.01 - 60,000.00	1,322	12.38%	39,419,531.78 AUD	14.06%	967	28,617,592.85 AUD	355	10,801,938.93 AUD
60,000.01 - 70,000.00	860	8.05%	30,467,858.79 AUD	10.87%	625	22,090,691.55 AUD	235	8,377,167.24 AUD
70,000.01 - 80,000.00	435	4.07%	18,810,736.70 AUD	6.71%	352	15,230,385.45 AUD	83	3,580,351.25 AUD
80,000.01 - 90,000.00	252	2.36%	13,188,922.57 AUD	4.70%	213	11,132,293.04 AUD	39	2,056,629.53 AUD
90,000.01 - 100,000.00	163	1.53%	9,631,216.43 AUD	3.43%	144	8,534,389.49 AUD	19	1,096,826.94 AUD
100,000.01 - 110,000.00	182	1.70%	12,071,122.94 AUD	4.30%	160	10,613,109.44 AUD	22	1,458,013.50 AUD
110,000.01 - 120,000.00	86	0.81%	6,354,222.93 AUD	2.27%	76	5,605,846.71 AUD	10	748,376.22 AUD
120,000.01 - 130,000.00	80	0.75%	6,529,988.85 AUD	2.33%	61	5,058,545.12 AUD	19	1,471,443.73 AUD
130,000.01 - 140,000.00	55	0.51%	4,953,853.41 AUD	1.77%	49	4,433,046.14 AUD	6	520,807.27 AUD
140,000.01 - 150,000.00	40	0.37%	3,748,199.43 AUD	1.34%	38	3,559,562.60 AUD	2	188,636.83 AUD
> 150,000.00	137	1.28%	18,339,282.02 AUD	6.54%	129	17,366,693.97 AUD	8	972,588.05 AUD
<b>Total</b>	<b>10,682</b>	<b>100.00%</b>	<b>280,413,576.44 AUD</b>	<b>100.00%</b>	<b>6,762</b>	<b>200,425,687.85 AUD</b>	<b>3,920</b>	<b>79,987,888.59 AUD</b>

Statistics	
Minimum Original Balance	5,868.00 AUD
Maximum Original Balance	471,296.41 AUD
Weighted Average Original Receivables Balance (by ODRB)	70,759.37 AUD

**Pool Data III**

**Distribution by Outstanding Discounted Receivables Balance**

Total Portfolio					Balloon				Vehicle Status			
Distribution by Outstanding Discounted Receivables Balance	Number of Contracts	Percentage of Contracts	Outstanding Discounted Receivables Balance	Percentage of Balance	Balloon		No Balloon		New		Used	
					Number of Contracts	Outstanding Discounted Receivables Balance	Number of Contracts	Outstanding Discounted Receivables Balance	Number of Contracts	Outstanding Discounted Receivables Balance	Number of Contracts	Outstanding Discounted Receivables Balance
0.00 - 10,000.00	1,681	15.74%	10,355,459.39 AUD	3.69%	25	179,563.41 AUD	1,656	10,175,895.98 AUD	886	5,606,120.36 AUD	795	4,749,339.03 AUD
10,000.01 - 20,000.00	3,324	31.12%	49,596,009.55 AUD	17.69%	276	4,443,163.06 AUD	3,048	45,152,846.49 AUD	2,258	34,136,864.47 AUD	1,066	15,459,145.08 AUD
20,000.01 - 30,000.00	2,532	23.70%	62,165,825.27 AUD	22.17%	762	19,231,372.15 AUD	1,770	42,934,453.12 AUD	1,972	48,640,686.80 AUD	560	13,525,138.47 AUD
30,000.01 - 40,000.00	1,421	13.30%	48,780,046.02 AUD	17.40%	719	24,935,885.10 AUD	702	23,844,160.92 AUD	1,174	40,330,531.37 AUD	247	8,449,514.65 AUD
40,000.01 - 50,000.00	709	6.64%	31,447,881.43 AUD	11.21%	471	20,864,465.79 AUD	238	10,583,415.64 AUD	614	27,230,155.96 AUD	95	4,217,725.47 AUD
50,000.01 - 60,000.00	343	3.21%	18,622,192.78 AUD	6.64%	251	13,680,052.92 AUD	92	4,942,139.86 AUD	282	15,286,897.72 AUD	61	3,335,295.06 AUD
60,000.01 - 70,000.00	217	2.03%	14,001,474.15 AUD	4.99%	176	11,369,768.55 AUD	41	2,631,705.60 AUD	186	12,033,850.51 AUD	31	1,967,623.64 AUD
70,000.01 - 80,000.00	152	1.42%	11,365,939.69 AUD	4.05%	140	10,472,393.84 AUD	12	893,545.85 AUD	143	10,710,505.26 AUD	9	655,434.43 AUD
80,000.01 - 90,000.00	96	0.90%	8,101,038.02 AUD	2.89%	87	7,350,297.93 AUD	9	750,740.09 AUD	88	7,435,130.19 AUD	8	665,907.83 AUD
90,000.01 - 100,000.00	61	0.57%	5,814,320.28 AUD	2.07%	59	5,625,262.40 AUD	2	189,057.88 AUD	56	5,340,955.67 AUD	5	473,364.61 AUD
100,000.01 - 110,000.00	50	0.47%	5,242,459.01 AUD	1.87%	44	4,601,641.94 AUD	6	640,817.07 AUD	44	4,612,433.34 AUD	6	630,025.67 AUD
110,000.01 - 120,000.00	23	0.22%	2,650,894.50 AUD	0.95%	18	2,062,998.70 AUD	5	587,895.80 AUD	21	2,420,963.97 AUD	2	229,930.53 AUD
120,000.01 - 130,000.00	17	0.16%	2,113,573.60 AUD	0.75%	16	1,988,848.69 AUD	1	124,724.91 AUD	14	1,744,714.21 AUD	3	368,859.39 AUD
130,000.01 - 140,000.00	9	0.08%	1,208,849.87 AUD	0.43%	9	1,208,849.87 AUD	-	- AUD	8	1,077,927.42 AUD	1	130,922.45 AUD
140,000.01 - 150,000.00	6	0.06%	874,350.19 AUD	0.31%	6	874,350.19 AUD	-	- AUD	5	727,560.06 AUD	1	146,790.13 AUD
> 150,000.00	41	0.38%	8,073,262.69 AUD	2.88%	41	8,073,262.69 AUD	-	- AUD	36	7,191,259.35 AUD	5	882,003.34 AUD
<b>Total</b>	<b>10,682</b>	<b>100.00%</b>	<b>280,413,576.44 AUD</b>	<b>100.00%</b>	<b>3,100</b>	<b>136,962,177.23 AUD</b>	<b>7,582</b>	<b>143,451,399.21 AUD</b>	<b>7,787</b>	<b>224,526,556.66 AUD</b>	<b>2,895</b>	<b>55,887,019.78 AUD</b>

**Statistics Outstanding Discounted Receivables Balance**

Minimum Outstanding Discounted Receivables Balance	- AUD
Maximum Outstanding Discounted Receivables Balance	339,598.72 AUD
Average Outstanding Discounted Receivables Balance	26,251.04 AUD

**Distribution by Original Balance**

Total Portfolio					Balloon				Vehicle Status			
Distribution by Original Balance	Number of Contracts	Percentage of Contracts	Outstanding Discounted Receivables Balance	Percentage of Balance	Balloon		No Balloon		New		Used	
					Number of Contracts	Outstanding Discounted Receivables Balance	Number of Contracts	Outstanding Discounted Receivables Balance	Number of Contracts	Outstanding Discounted Receivables Balance	Number of Contracts	Outstanding Discounted Receivables Balance
0.00 - 10,000.00	47	0.44%	121,676.40 AUD	0.04%	-	- AUD	47	121,676.40 AUD	10	26,629.08 AUD	37	95,047.32 AUD
10,000.01 - 20,000.00	912	8.54%	6,490,102.72 AUD	2.31%	30	335,340.79 AUD	882	6,154,761.93 AUD	315	2,295,114.34 AUD	597	4,194,988.38 AUD
20,000.01 - 30,000.00	2,150	20.13%	26,613,651.18 AUD	9.49%	182	3,026,043.85 AUD	1,968	23,587,607.33 AUD	1,319	16,320,429.93 AUD	831	10,293,221.25 AUD
30,000.01 - 40,000.00	2,222	20.80%	40,602,301.41 AUD	14.48%	442	10,106,805.16 AUD	1,780	30,495,496.25 AUD	1,620	29,429,837.69 AUD	602	11,172,463.72 AUD
40,000.01 - 50,000.00	1,739	16.28%	43,070,908.88 AUD	15.36%	552	16,101,563.78 AUD	1,187	26,969,345.10 AUD	1,371	33,729,859.07 AUD	368	9,341,049.81 AUD
50,000.01 - 60,000.00	1,322	12.38%	39,419,531.78 AUD	14.06%	533	18,820,182.01 AUD	789	20,599,349.77 AUD	1,139	33,622,476.61 AUD	183	5,797,055.17 AUD
60,000.01 - 70,000.00	860	8.05%	30,467,858.79 AUD	10.87%	378	15,666,361.37 AUD	482	14,801,497.42 AUD	759	26,623,531.33 AUD	101	3,844,327.46 AUD
70,000.01 - 80,000.00	435	4.07%	18,810,736.70 AUD	6.71%	246	12,057,758.01 AUD	189	6,752,978.69 AUD	375	16,021,673.19 AUD	60	2,789,063.51 AUD
80,000.01 - 90,000.00	252	2.36%	13,188,922.57 AUD	4.70%	170	9,634,664.91 AUD	82	3,554,257.66 AUD	204	10,643,798.82 AUD	48	2,545,123.75 AUD
90,000.01 - 100,000.00	163	1.53%	9,631,216.43 AUD	3.43%	115	7,367,293.90 AUD	48	2,263,922.53 AUD	146	8,600,213.84 AUD	17	1,031,002.59 AUD
100,000.01 - 110,000.00	182	1.70%	12,071,122.94 AUD	4.30%	129	9,179,056.52 AUD	53	2,892,066.42 AUD	167	11,065,095.30 AUD	15	1,006,027.64 AUD
110,000.01 - 120,000.00	86	0.81%	6,354,222.93 AUD	2.27%	68	5,317,360.75 AUD	18	1,036,862.18 AUD	78	5,755,419.88 AUD	8	598,803.05 AUD
120,000.01 - 130,000.00	80	0.75%	6,529,988.85 AUD	2.33%	62	5,346,445.94 AUD	18	1,183,542.91 AUD	74	6,077,384.04 AUD	6	452,604.81 AUD
130,000.01 - 140,000.00	55	0.51%	4,953,853.41 AUD	1.77%	47	4,464,696.91 AUD	8	489,156.50 AUD	50	4,415,733.48 AUD	5	538,119.93 AUD
140,000.01 - 150,000.00	40	0.37%	3,748,199.43 AUD	1.34%	36	3,504,203.67 AUD	4	243,995.76 AUD	38	3,534,834.39 AUD	2	213,365.04 AUD
> 150,000.00	137	1.28%	18,339,282.02 AUD	6.54%	110	16,034,399.66 AUD	27	2,304,882.36 AUD	122	16,364,525.67 AUD	15	1,974,756.35 AUD
<b>Total</b>	<b>10,682</b>	<b>100.00%</b>	<b>280,413,576.44 AUD</b>	<b>100.00%</b>	<b>3,100</b>	<b>136,962,177.23 AUD</b>	<b>7,582</b>	<b>143,451,399.21 AUD</b>	<b>7,787</b>	<b>224,526,556.66 AUD</b>	<b>2,895</b>	<b>55,887,019.78 AUD</b>

**Statistics**

Minimum Original Balance	5,868.00 AUD
Maximum Original Balance	471,296.41 AUD
Weighted Average Original Receivables Balance (by ODRB)	70,759.37 AUD

**Pool Data IV**

**Interest Rate paid by the Receivable Debtor**

Interest Rate paid by the Receivable Debtor	Total Portfolio				Product Type			
	Number of Contracts	Percentage of Contracts	Outstanding Discounted Receivables Balance	Percentage of Balance	Chattel Mortgage		Consumer Loan	
					Number of Contracts	Outstanding Discounted Receivables Balance	Number of Contracts	Outstanding Discounted Receivables Balance
0.00%	-	0.00%	- AUD	0.00%	-	- AUD	-	- AUD
0.01% - 1.00%	-	0.00%	- AUD	0.00%	-	- AUD	-	- AUD
1.01% - 2.00%	505	4.73%	10,292,028.39 AUD	3.67%	305	6,747,496.46 AUD	200	3,544,531.93 AUD
2.01% - 3.00%	701	6.56%	24,491,932.24 AUD	8.73%	480	20,466,686.43 AUD	221	4,025,245.81 AUD
3.01% - 4.00%	984	9.21%	34,367,093.88 AUD	12.26%	977	34,175,471.45 AUD	7	191,622.43 AUD
4.01% - 5.00%	1,132	10.60%	36,171,287.61 AUD	12.90%	929	30,942,549.99 AUD	203	5,228,737.62 AUD
5.01% - 6.00%	1,490	13.95%	42,644,460.96 AUD	15.21%	957	30,397,104.35 AUD	533	12,247,356.61 AUD
6.01% - 7.00%	1,961	18.36%	47,022,242.71 AUD	16.77%	857	24,698,467.54 AUD	1,104	22,323,775.17 AUD
7.01% - 8.00%	1,537	14.39%	33,589,659.18 AUD	11.98%	547	14,634,652.72 AUD	990	18,955,006.46 AUD
8.01% - 9.00%	1,515	14.18%	34,419,434.09 AUD	12.27%	1,048	24,999,484.24 AUD	467	9,419,949.85 AUD
9.01% - 10.00%	682	6.38%	14,306,237.78 AUD	5.10%	551	11,495,436.41 AUD	131	2,810,801.37 AUD
10.01% - 11.00%	145	1.36%	2,690,870.26 AUD	0.96%	105	1,815,919.90 AUD	40	874,950.36 AUD
11.01% - 12.00%	16	0.15%	282,510.34 AUD	0.10%	6	52,418.36 AUD	10	230,091.98 AUD
12.01% - 13.00%	6	0.06%	36,850.85 AUD	0.01%	-	- AUD	6	36,850.85 AUD
13.01% - 14.00%	5	0.05%	66,253.13 AUD	0.02%	-	- AUD	5	66,253.13 AUD
14.01% - 15.00%	3	0.03%	32,715.02 AUD	0.01%	-	- AUD	3	32,715.02 AUD
15.01% - 16.00%	-	0.00%	- AUD	0.00%	-	- AUD	-	- AUD
> 16.00%	-	0.00%	- AUD	0.00%	-	- AUD	-	- AUD
<b>Total</b>	<b>10,682</b>	<b>100.00%</b>	<b>280,413,576.44 AUD</b>	<b>100.00%</b>	<b>6,762</b>	<b>200,425,687.85 AUD</b>	<b>3,920</b>	<b>79,987,888.59 AUD</b>

Statistics Interest Rate	
Minimum Interest Rate Debtor	1.40%
Maximum Interest Rate Debtor	14.99%
Weighted Average Interest Rate Debtor	5.91%



Pool Data IV

Interest Rate paid by the Receivable Debtor

Total Portfolio					Balloon				Vehicle Status			
Interest Rate paid by the Receivable Debtor	Number of Contracts	Percentage of Contracts	Outstanding Discounted Receivables Balance	Percentage of Balance	Balloon		No Balloon		New		Used	
					Number of Contracts	Outstanding Discounted Receivables Balance	Number of Contracts	Outstanding Discounted Receivables Balance	Number of Contracts	Outstanding Discounted Receivables Balance	Number of Contracts	Outstanding Discounted Receivables Balance
0.00%	-	0.00%	- AUD	0.00%	-	- AUD	-	- AUD	-	- AUD	-	- AUD
0.01% - 1.00%	-	0.00%	- AUD	0.00%	-	- AUD	-	- AUD	-	- AUD	-	- AUD
1.01% - 2.00%	505	4.73%	10,292,028.39 AUD	3.67%	162	5,550,212.14 AUD	343	4,741,816.25 AUD	505	10,292,028.39 AUD	-	- AUD
2.01% - 3.00%	701	6.56%	24,491,932.24 AUD	8.73%	321	16,915,092.09 AUD	380	7,576,840.15 AUD	701	24,491,932.24 AUD	-	- AUD
3.01% - 4.00%	984	9.21%	34,367,093.88 AUD	12.26%	447	22,956,508.19 AUD	537	11,410,585.69 AUD	922	32,499,475.71 AUD	62	1,867,618.17 AUD
4.01% - 5.00%	1,132	10.60%	36,171,287.61 AUD	12.90%	475	21,932,982.93 AUD	657	14,238,304.68 AUD	919	30,592,549.48 AUD	213	5,578,738.13 AUD
5.01% - 6.00%	1,490	13.95%	42,644,460.96 AUD	15.21%	524	23,693,954.09 AUD	966	18,950,506.87 AUD	1,177	35,642,406.86 AUD	313	7,002,054.10 AUD
6.01% - 7.00%	1,961	18.36%	47,022,242.71 AUD	16.77%	508	20,719,090.87 AUD	1,453	26,303,151.84 AUD	1,437	36,731,964.79 AUD	524	10,290,277.92 AUD
7.01% - 8.00%	1,537	14.39%	33,589,659.18 AUD	11.98%	296	11,326,020.93 AUD	1,241	22,263,638.25 AUD	870	21,951,395.63 AUD	667	11,638,263.55 AUD
8.01% - 9.00%	1,515	14.18%	34,419,434.09 AUD	12.27%	265	10,152,212.57 AUD	1,250	24,267,221.52 AUD	967	25,093,301.51 AUD	548	9,326,132.58 AUD
9.01% - 10.00%	682	6.38%	14,306,237.78 AUD	5.10%	91	3,411,897.48 AUD	591	10,894,340.30 AUD	261	6,654,397.01 AUD	421	7,651,840.77 AUD
10.01% - 11.00%	145	1.36%	2,690,870.26 AUD	0.96%	9	255,843.67 AUD	136	2,435,026.59 AUD	19	482,812.08 AUD	126	2,208,058.18 AUD
11.01% - 12.00%	16	0.15%	282,510.34 AUD	0.10%	1	24,693.02 AUD	15	257,817.32 AUD	4	47,222.90 AUD	12	235,287.44 AUD
12.01% - 13.00%	6	0.06%	36,850.85 AUD	0.01%	-	- AUD	6	36,850.85 AUD	1	- AUD	5	36,850.85 AUD
13.01% - 14.00%	5	0.05%	66,253.13 AUD	0.02%	1	23,669.25 AUD	4	42,583.88 AUD	3	40,354.63 AUD	2	25,898.50 AUD
14.01% - 15.00%	3	0.03%	32,715.02 AUD	0.01%	-	- AUD	3	32,715.02 AUD	1	6,715.43 AUD	2	25,999.59 AUD
15.01% - 16.00%	-	0.00%	- AUD	0.00%	-	- AUD	-	- AUD	-	- AUD	-	- AUD
> 16.00%	-	0.00%	- AUD	0.00%	-	- AUD	-	- AUD	-	- AUD	-	- AUD
<b>Total</b>	<b>10,682</b>	<b>100.00%</b>	<b>280,413,576.44 AUD</b>	<b>100.00%</b>	<b>3,100</b>	<b>136,962,177.23 AUD</b>	<b>7,582</b>	<b>143,451,399.21 AUD</b>	<b>7,787</b>	<b>224,526,556.66 AUD</b>	<b>2,895</b>	<b>55,887,019.78 AUD</b>

Statistics Interest Rate		
Minimum Interest Rate Debtor		1.40%
Maximum Interest Rate Debtor		14.99%
Weighted Average Interest Rate Debtor		5.91%

**Pool Data V**

**Original Term**

Total Portfolio					Product Type			
Length of Original Term (months)	Number of Contracts	Percentage of Contracts	Outstanding Discounted Receivables Balance	Percentage of Balance	Chattel Mortgage		Consumer Loan	
					Number of Contracts	Outstanding Discounted Receivables Balance	Number of Contracts	Outstanding Discounted Receivables Balance
0 - 11	-	0.00%	- AUD	0.00%	-	- AUD	-	- AUD
12 - 23	1	0.01%	3,582.76 AUD	0.00%	1	3,582.76 AUD	-	- AUD
24 - 35	32	0.30%	170,466.58 AUD	0.06%	20	149,023.56 AUD	12	21,443.02 AUD
36 - 47	1,077	10.08%	14,445,140.21 AUD	5.15%	765	11,883,407.69 AUD	312	2,561,732.52 AUD
48 - 59	1,674	15.67%	36,815,181.97 AUD	13.13%	1,097	27,547,365.97 AUD	577	9,267,816.00 AUD
60 - 71	7,387	69.15%	215,015,186.26 AUD	76.68%	4,879	160,842,307.87 AUD	2,508	54,172,878.39 AUD
> 71	511	4.78%	13,964,018.66 AUD	4.98%	-	- AUD	511	13,964,018.66 AUD
<b>Total</b>	<b>10,682</b>	<b>100.00%</b>	<b>280,413,576.44 AUD</b>	<b>100.00%</b>	<b>6,762</b>	<b>200,425,687.85 AUD</b>	<b>3,920</b>	<b>79,987,888.59 AUD</b>

Statistics Original Term	
Minimum Original Term in months	22
Maximum Original Term in months	84
Weighted Average Original Term month (by ODRB)	58.36

**Remaining Term**

Total Portfolio					Product Type			
Length of Remaining Term (months)	Number of Contracts	Percentage of Contracts	Outstanding Discounted Receivables Balance	Percentage of Balance	Chattel Mortgage		Consumer Loan	
					Number of Contracts	Outstanding Discounted Receivables Balance	Number of Contracts	Outstanding Discounted Receivables Balance
0 - 11	1,350	12.64%	16,445,685.83 AUD	5.86%	907	13,257,592.30 AUD	443	3,188,093.53 AUD
12 - 23	2,439	22.83%	53,721,781.71 AUD	19.16%	1,585	39,684,616.38 AUD	854	14,037,165.33 AUD
24 - 35	5,720	53.55%	171,427,824.56 AUD	61.13%	3,808	129,208,973.70 AUD	1,912	42,218,850.86 AUD
36 - 47	797	7.46%	27,212,992.18 AUD	9.70%	460	18,108,072.15 AUD	337	9,104,920.03 AUD
48 - 59	335	3.14%	10,267,281.24 AUD	3.67%	2	166,433.32 AUD	333	10,120,847.92 AUD
60 - 71	41	0.38%	1,318,010.92 AUD	0.47%	-	- AUD	41	1,318,010.92 AUD
> 71	-	0.00%	- AUD	0.00%	-	- AUD	-	- AUD
<b>Total</b>	<b>10,682</b>	<b>100.00%</b>	<b>280,413,576.44 AUD</b>	<b>100.00%</b>	<b>6,762</b>	<b>200,425,687.85 AUD</b>	<b>3,920</b>	<b>79,987,888.59 AUD</b>

Statistics Remaining Term	
Minimum Remaining Term in months	0
Maximum Remaining Term in months	68
Weighted Average Remaining Term in months (by ODRB)	29.06

**Distribution by Seasoning**

Total Portfolio					Product Type			
Seasoning (months)	Number of Contracts	Percentage of Contracts	Outstanding Discounted Receivables Balance	Percentage of Balance	Chattel Mortgage		Consumer Loan	
					Number of Contracts	Outstanding Discounted Receivables Balance	Number of Contracts	Outstanding Discounted Receivables Balance
0 - 11	3	0.03%	179,309.19 AUD	0.06%	3	179,309.19 AUD	-	- AUD
12 - 23	237	2.22%	7,247,982.11 AUD	2.58%	160	5,300,983.97 AUD	77	1,946,998.14 AUD
24 - 35	8,550	80.04%	237,384,092.96 AUD	84.65%	5,513	171,214,644.61 AUD	3,037	66,169,448.35 AUD
36 - 47	1,747	16.35%	34,325,970.48 AUD	12.24%	1,039	23,198,463.95 AUD	708	11,127,506.53 AUD
48 - 59	100	0.94%	993,717.28 AUD	0.35%	47	532,286.13 AUD	53	461,431.15 AUD
60 - 71	35	0.33%	246,098.80 AUD	0.09%	-	- AUD	35	246,098.80 AUD
> 71	10	0.09%	36,405.62 AUD	0.01%	-	- AUD	10	36,405.62 AUD
<b>Total</b>	<b>10,682</b>	<b>100.00%</b>	<b>280,413,576.44 AUD</b>	<b>100.00%</b>	<b>6,762</b>	<b>200,425,687.85 AUD</b>	<b>3,920</b>	<b>79,987,888.59 AUD</b>

Statistics Seasoning	
Minimum Seasoning in months	9
Maximum Seasoning in months	79
Weighted Average Seasoning Term in months (by ODRB)	29.35

**Pool Data V**

**Original Term**

Total Portfolio					Balloon				Vehicle Status			
Length of Original Term (months)	Number of Contracts	Percentage of Contracts	Outstanding Discounted Receivables Balance	Percentage of Balance	Balloon		No Balloon		New		Used	
					Number of Contracts	Outstanding Discounted Receivables Balance	Number of Contracts	Outstanding Discounted Receivables Balance	Number of Contracts	Outstanding Discounted Receivables Balance	Number of Contracts	Outstanding Discounted Receivables Balance
0 - 11	-	0.00%	- AUD	0.00%	-	- AUD	-	- AUD	-	- AUD	-	- AUD
12 - 23	1	0.01%	3,582.76 AUD	0.00%	-	- AUD	1	3,582.76 AUD	-	- AUD	1	3,582.76 AUD
24 - 35	32	0.30%	170,466.58 AUD	0.06%	2	52,088.01 AUD	30	118,378.57 AUD	6	29,324.11 AUD	26	141,142.47 AUD
36 - 47	1,077	10.08%	14,445,140.21 AUD	5.15%	219	7,372,449.20 AUD	858	7,072,691.01 AUD	764	12,191,748.47 AUD	313	2,253,391.74 AUD
48 - 59	1,674	15.67%	36,815,181.97 AUD	13.13%	512	19,726,993.64 AUD	1,162	17,088,188.33 AUD	1,363	33,056,029.13 AUD	311	3,759,152.84 AUD
60 - 71	7,387	69.15%	215,015,186.26 AUD	76.68%	2,367	109,810,646.38 AUD	5,020	105,204,539.88 AUD	5,310	169,587,689.70 AUD	2,077	45,427,496.56 AUD
> 71	511	4.78%	13,964,018.66 AUD	4.98%	-	- AUD	511	13,964,018.66 AUD	344	9,661,765.25 AUD	167	4,302,253.41 AUD
<b>Total</b>	<b>10,682</b>	<b>100.00%</b>	<b>280,413,576.44 AUD</b>	<b>100.00%</b>	<b>3,100</b>	<b>136,962,177.23 AUD</b>	<b>7,582</b>	<b>143,451,399.21 AUD</b>	<b>7,787</b>	<b>224,526,556.66 AUD</b>	<b>2,895</b>	<b>55,887,019.78 AUD</b>

Statistics Original Term	
Minimum Original Term in months	22
Maximum Original Term in months	84
Weighted Average Original Term month (by ODRB)	58.36

**Remaining Term**

Total Portfolio					Balloon				Vehicle Status			
Length of Remaining Term (months)	Number of Contracts	Percentage of Contracts	Outstanding Discounted Receivables Balance	Percentage of Balance	Balloon		No Balloon		New		Used	
					Number of Contracts	Outstanding Discounted Receivables Balance	Number of Contracts	Outstanding Discounted Receivables Balance	Number of Contracts	Outstanding Discounted Receivables Balance	Number of Contracts	Outstanding Discounted Receivables Balance
0 - 11	1,350	12.64%	16,445,685.83 AUD	5.86%	319	9,465,855.99 AUD	1,031	6,979,829.84 AUD	979	14,090,172.60 AUD	371	2,355,513.23 AUD
12 - 23	2,439	22.83%	53,721,781.71 AUD	19.16%	711	27,948,622.67 AUD	1,728	25,773,159.04 AUD	1,836	45,884,988.71 AUD	603	7,836,793.00 AUD
24 - 35	5,720	53.55%	171,427,824.56 AUD	61.13%	1,829	86,852,729.76 AUD	3,891	84,575,094.80 AUD	4,170	136,016,860.29 AUD	1,550	35,410,964.27 AUD
36 - 47	797	7.46%	27,212,992.18 AUD	9.70%	240	12,569,464.41 AUD	557	14,643,527.77 AUD	534	20,130,591.94 AUD	263	7,082,400.24 AUD
48 - 59	335	3.14%	10,267,281.24 AUD	3.67%	1	125,504.40 AUD	334	10,161,776.84 AUD	243	7,620,674.58 AUD	92	2,666,606.66 AUD
60 - 71	41	0.38%	1,318,010.92 AUD	0.47%	-	- AUD	41	1,318,010.92 AUD	25	783,268.54 AUD	16	534,742.38 AUD
> 71	-	0.00%	- AUD	0.00%	-	- AUD	-	- AUD	-	- AUD	-	- AUD
<b>Total</b>	<b>10,682</b>	<b>100.00%</b>	<b>280,413,576.44 AUD</b>	<b>100.00%</b>	<b>3,100</b>	<b>136,962,177.23 AUD</b>	<b>7,582</b>	<b>143,451,399.21 AUD</b>	<b>7,787</b>	<b>224,526,556.66 AUD</b>	<b>2,895</b>	<b>55,887,019.78 AUD</b>

Statistics Remaining Term	
Minimum Remaining Term in months	0
Maximum Remaining Term in months	68
Weighted Average Remaining Term in months (by ODRB)	29.06

**Distribution by Seasoning**

Total Portfolio					Balloon				Vehicle Status			
Seasoning (months)	Number of Contracts	Percentage of Contracts	Outstanding Discounted Receivables Balance	Percentage of Balance	Balloon		No Balloon		New		Used	
					Number of Contracts	Outstanding Discounted Receivables Balance	Number of Contracts	Outstanding Discounted Receivables Balance	Number of Contracts	Outstanding Discounted Receivables Balance	Number of Contracts	Outstanding Discounted Receivables Balance
0 - 11	3	0.03%	179,309.19 AUD	0.06%	1	125,504.40 AUD	2	53,804.79 AUD	2	166,433.32 AUD	1	12,875.87 AUD
12 - 23	237	2.22%	7,247,982.11 AUD	2.58%	68	3,030,562.08 AUD	169	4,217,420.03 AUD	162	5,474,901.18 AUD	75	1,773,080.93 AUD
24 - 35	8,550	80.04%	237,384,092.96 AUD	84.65%	2,504	115,896,942.50 AUD	6,046	121,487,150.46 AUD	6,283	190,757,794.74 AUD	2,267	46,626,298.22 AUD
36 - 47	1,747	16.35%	34,325,970.48 AUD	12.24%	497	17,323,101.30 AUD	1,250	17,002,869.18 AUD	1,244	27,114,106.60 AUD	503	7,211,863.88 AUD
48 - 59	100	0.94%	993,717.28 AUD	0.35%	30	586,066.95 AUD	70	407,650.33 AUD	69	824,627.66 AUD	31	169,089.62 AUD
60 - 71	35	0.33%	246,098.80 AUD	0.09%	-	- AUD	35	246,098.80 AUD	21	167,143.70 AUD	14	78,955.10 AUD
> 71	10	0.09%	36,405.62 AUD	0.01%	-	- AUD	10	36,405.62 AUD	6	21,549.46 AUD	4	14,856.16 AUD
<b>Total</b>	<b>10,682</b>	<b>100.00%</b>	<b>280,413,576.44 AUD</b>	<b>100.00%</b>	<b>3,100</b>	<b>136,962,177.23 AUD</b>	<b>7,582</b>	<b>143,451,399.21 AUD</b>	<b>7,787</b>	<b>224,526,556.66 AUD</b>	<b>2,895</b>	<b>55,887,019.78 AUD</b>

Statistics Seasoning	
Minimum Seasoning in months	9
Maximum Seasoning in months	79
Weighted Average Seasoning Term in months (by ODRB)	29.35

Pool Data VI

Product Type

Total Portfolio					Balloon				Vehicle Status			
Product Type	Number of Contracts	Percentage of Contracts	Outstanding Discounted Receivables Balance	Percentage of Balance	Balloon		No Balloon		New		Used	
					Number of Contracts	Outstanding Discounted Receivables Balance	Number of Contracts	Outstanding Discounted Receivables Balance	Number of Contracts	Outstanding Discounted Receivables Balance	Number of Contracts	Outstanding Discounted Receivables Balance
Chattel Mortgage	6,762	63.30%	200,425,687.85 AUD	71.48%	2,454	113,989,223.91 AUD	4,308	86,436,463.94 AUD	5,126	164,771,589.27 AUD	1,636	35,654,098.58 AUD
Consumer Loan	3,920	36.70%	79,987,888.59 AUD	28.52%	646	22,972,953.32 AUD	3,274	57,014,935.27 AUD	2,661	59,754,967.39 AUD	1,259	20,232,921.20 AUD
<b>Total</b>	<b>10,682</b>	<b>100.00%</b>	<b>280,413,576.44 AUD</b>	<b>100.00%</b>	<b>3,100</b>	<b>136,962,177.23 AUD</b>	<b>7,582</b>	<b>143,451,399.21 AUD</b>	<b>7,787</b>	<b>224,526,556.66 AUD</b>	<b>2,895</b>	<b>55,887,019.78 AUD</b>

Vehicle Status

Total Portfolio					Product Type			
Type of Car	Number of Contracts	Percentage of Contracts	Outstanding Discounted Receivables Balance	Percentage of Balance	Chattel Mortgage		Consumer Loan	
					Number of Contracts	Outstanding Discounted Receivables Balance	Number of Contracts	Outstanding Discounted Receivables Balance
New Vehicles	7,787	72.90%	224,526,556.66 AUD	80.07%	5,126	164,771,589.27 AUD	2,661	59,754,967.39 AUD
Used Vehicles	2,895	27.10%	55,887,019.78 AUD	19.93%	1,636	35,654,098.58 AUD	1,259	20,232,921.20 AUD
<b>Total</b>	<b>10,682</b>	<b>100.00%</b>	<b>280,413,576.44 AUD</b>	<b>100.00%</b>	<b>6,762</b>	<b>200,425,687.85 AUD</b>	<b>3,920</b>	<b>79,987,888.59 AUD</b>

Balloon

Total Portfolio				
Balloon	Number of Contracts	Percentage of Contracts	Outstanding Discounted Receivables Balance	Percentage of Balance
Balloon	3,100	29.02%	136,962,177.23 AUD	48.84%
No Balloon	7,582	70.98%	143,451,399.21 AUD	51.16%
<b>Total</b>	<b>10,682</b>	<b>100.00%</b>	<b>280,413,576.44 AUD</b>	<b>100.00%</b>

Pool Data VII

Distribution by Vehicle Brand and Models

Total Portfolio						Product Type				
Make	Model	Number of Contracts	Percentage of Contracts	Outstanding Discounted Receivables Balance	Percentage of Balance	Chattel Mortgage		Consumer Loan		
						Number of Contracts	Outstanding Discounted Receivables Balance	Number of Contracts	Outstanding Discounted Receivables Balance	
<b>Volkswagen Group Vehicles</b>										
AUDI	A1	39	0.37%	669,795.49 AUD	0.24%	19	303,751.00 AUD	20	366,044.49 AUD	
	A3	199	1.86%	5,482,360.12 AUD	1.96%	85	2,760,593.03 AUD	114	2,721,767.09 AUD	
	A4	95	0.89%	2,781,627.64 AUD	0.99%	57	1,971,585.41 AUD	38	810,042.23 AUD	
	A5	59	0.55%	2,170,837.76 AUD	0.77%	40	1,638,300.26 AUD	19	532,537.50 AUD	
	A6	23	0.22%	918,910.02 AUD	0.33%	16	776,975.45 AUD	7	141,934.57 AUD	
	A7	10	0.09%	804,581.02 AUD	0.29%	10	804,581.02 AUD	-	- AUD	
	A8	1	0.01%	29,897.13 AUD	0.01%	1	29,897.13 AUD	-	- AUD	
	E-TRON	5	0.05%	422,592.76 AUD	0.15%	4	361,195.33 AUD	1	61,397.43 AUD	
	Q2	78	0.73%	1,629,949.15 AUD	0.58%	30	714,387.66 AUD	48	915,561.49 AUD	
	Q3	221	2.07%	6,319,367.20 AUD	2.25%	120	3,728,316.39 AUD	101	2,591,050.81 AUD	
	Q5	235	2.20%	8,462,583.84 AUD	3.02%	161	5,938,979.98 AUD	74	2,523,603.86 AUD	
	Q7	179	1.68%	9,506,120.77 AUD	3.39%	143	7,886,698.20 AUD	36	1,619,422.57 AUD	
	Q8	17	0.16%	1,244,562.87 AUD	0.44%	15	1,162,236.78 AUD	2	82,326.09 AUD	
	R8	6	0.06%	748,913.50 AUD	0.27%	6	748,913.50 AUD	-	- AUD	
	TT	4	0.04%	83,351.52 AUD	0.03%	2	46,724.83 AUD	2	36,626.69 AUD	
	<b>SubTotal</b>	<b>1,171</b>	<b>10.96%</b>	<b>41,275,450.79 AUD</b>	<b>14.72%</b>	<b>709</b>	<b>28,873,135.97 AUD</b>	<b>462</b>	<b>12,402,314.82 AUD</b>	
BENTLEY	BENTAYGA	2	0.02%	442,882.50 AUD	0.16%	2	442,882.50 AUD	-	- AUD	
	CONTINENTAL	3	0.03%	393,181.51 AUD	0.14%	3	393,181.51 AUD	-	- AUD	
	<b>SubTotal</b>	<b>5</b>	<b>0.05%</b>	<b>836,064.01 AUD</b>	<b>0.30%</b>	<b>5</b>	<b>836,064.01 AUD</b>	<b>-</b>	<b>- AUD</b>	
LAMBORGHINI	AVENTADOR	-	0.00%	- AUD	0.00%	-	- AUD	-	- AUD	
	HURACAN	-	0.00%	- AUD	0.00%	-	- AUD	-	- AUD	
	URUS	2	0.02%	532,638.13 AUD	0.19%	1	305,427.52 AUD	1	227,210.61 AUD	
	<b>SubTotal</b>	<b>2</b>	<b>0.02%</b>	<b>532,638.13 AUD</b>	<b>0.19%</b>	<b>1</b>	<b>305,427.52 AUD</b>	<b>1</b>	<b>227,210.61 AUD</b>	
PORSCHE	BOXSTER	7	0.07%	704,569.49 AUD	0.25%	7	704,569.49 AUD	-	- AUD	
	CARRERA / 911	18	0.17%	3,062,957.19 AUD	1.09%	17	2,970,655.33 AUD	1	92,301.86 AUD	
	CAYENNE	71	0.66%	5,541,778.44 AUD	1.98%	65	5,238,319.03 AUD	6	303,459.41 AUD	
	CAYMAN	1	0.01%	66,581.71 AUD	0.02%	-	- AUD	1	66,581.71 AUD	
	MACAN	92	0.86%	5,760,205.61 AUD	2.05%	86	5,335,968.87 AUD	6	424,236.74 AUD	
	PANAMERA	-	0.00%	- AUD	0.00%	-	- AUD	-	- AUD	
	TAYCAN	13	0.12%	2,011,682.61 AUD	0.72%	13	2,011,682.61 AUD	-	- AUD	
	<b>SubTotal</b>	<b>202</b>	<b>1.89%</b>	<b>17,147,775.05 AUD</b>	<b>6.12%</b>	<b>188</b>	<b>16,261,195.33 AUD</b>	<b>14</b>	<b>886,579.72 AUD</b>	
SKODA	FABIA	34	0.32%	368,450.74 AUD	0.13%	8	112,927.19 AUD	26	255,523.55 AUD	
	KAROQ	47	0.44%	854,501.44 AUD	0.30%	16	275,350.71 AUD	31	579,150.73 AUD	
	KODIAQ	90	0.84%	2,266,563.30 AUD	0.81%	36	970,264.66 AUD	54	1,296,298.64 AUD	
	KAMIQ	63	0.59%	1,048,931.11 AUD	0.37%	16	228,366.09 AUD	47	820,565.02 AUD	
	SCALA	38	0.36%	592,331.42 AUD	0.21%	11	197,290.14 AUD	27	395,041.28 AUD	
	OCTAVIA	85	0.80%	1,534,816.15 AUD	0.55%	20	353,811.88 AUD	65	1,181,004.27 AUD	
	RAPID	1	0.01%	2,092.85 AUD	0.00%	-	- AUD	1	2,092.85 AUD	
	SUPERB	19	0.18%	483,286.37 AUD	0.17%	11	298,732.41 AUD	8	184,553.96 AUD	
	<b>SubTotal</b>	<b>377</b>	<b>3.53%</b>	<b>7,150,973.38 AUD</b>	<b>2.55%</b>	<b>118</b>	<b>2,436,743.08 AUD</b>	<b>259</b>	<b>4,714,230.30 AUD</b>	
VOLKSWAGEN	AMAROK	621	5.81%	14,740,971.99 AUD	5.26%	476	11,618,891.85 AUD	145	3,122,080.14 AUD	
	ARTEON	6	0.06%	186,873.92 AUD	0.07%	2	68,376.97 AUD	4	118,496.95 AUD	
	CADDY	78	0.73%	1,194,140.11 AUD	0.43%	74	1,162,749.10 AUD	4	31,391.01 AUD	
	CARAVELLE	1	0.01%	43,572.59 AUD	0.02%	1	43,572.59 AUD	-	- AUD	
	CRAFTER	113	1.06%	2,538,665.69 AUD	0.91%	111	2,492,009.31 AUD	2	46,656.38 AUD	
	GOLF	318	2.98%	4,726,479.90 AUD	1.69%	119	1,977,746.44 AUD	199	2,748,733.46 AUD	
	JETTA	3	0.03%	14,415.29 AUD	0.01%	-	- AUD	3	14,415.29 AUD	
	MULTIVAN	31	0.29%	980,357.81 AUD	0.35%	20	714,448.06 AUD	11	265,909.75 AUD	
	NEW BEETLE	3	0.03%	26,103.48 AUD	0.01%	1	10,882.19 AUD	2	15,221.29 AUD	
	PASSAT	30	0.28%	630,869.88 AUD	0.22%	13	217,173.77 AUD	17	413,696.11 AUD	
	POLO	137	1.28%	1,473,825.02 AUD	0.53%	40	436,176.57 AUD	97	1,037,648.45 AUD	
	SCIROCCO	1	0.01%	16,221.76 AUD	0.01%	-	- AUD	1	16,221.76 AUD	
	T-CROSS	143	1.34%	2,253,505.02 AUD	0.80%	42	667,268.54 AUD	101	1,586,236.48 AUD	
	T-ROC	90	0.84%	1,802,391.80 AUD	0.64%	28	600,258.51 AUD	62	1,202,133.29 AUD	
	TIGUAN	444	4.16%	9,669,541.24 AUD	3.45%	212	5,053,854.96 AUD	232	4,615,686.28 AUD	
	TOUAREG	69	0.65%	3,129,360.51 AUD	1.12%	53	2,538,279.12 AUD	16	591,081.39 AUD	

Pool Data VII

Distribution by Vehicle Brand and Models

Total Portfolio						Balloon				Vehicle Status			
Make	Model	Number of Contracts	Percentage of Contracts	Outstanding Discounted Receivables Balance	Percentage of Balance	Balloon		No Balloon		New		Used	
						Number of Contracts	Outstanding Discounted Receivables Balance	Number of Contracts	Outstanding Discounted Receivables Balance	Number of Contracts	Outstanding Discounted Receivables Balance	Number of Contracts	Outstanding Discounted Receivables Balance
<b>Volkswagen Group Vehicles</b>													
AUDI	A1	39	0.37%	669,795.49 AUD	0.24%	11	307,235.91 AUD	28	362,559.58 AUD	22	517,833.38 AUD	17	151,962.11 AUD
	A3	199	1.86%	5,482,360.12 AUD	1.96%	78	3,081,979.63 AUD	121	2,400,380.49 AUD	131	4,146,143.29 AUD	68	1,336,216.83 AUD
	A4	95	0.89%	2,781,627.64 AUD	0.99%	38	1,581,725.88 AUD	57	1,199,901.76 AUD	63	2,246,671.78 AUD	32	534,955.86 AUD
	A5	59	0.55%	2,170,837.76 AUD	0.77%	28	1,433,147.37 AUD	31	737,690.39 AUD	41	1,807,609.70 AUD	18	363,228.06 AUD
	A6	23	0.22%	918,910.02 AUD	0.33%	8	500,825.72 AUD	15	418,084.30 AUD	11	646,827.64 AUD	12	272,082.38 AUD
	A7	10	0.09%	804,581.02 AUD	0.29%	9	781,363.80 AUD	1	23,217.22 AUD	8	743,899.74 AUD	2	60,681.28 AUD
	A8	1	0.01%	29,897.13 AUD	0.01%	-	- AUD	1	29,897.13 AUD	1	29,897.13 AUD	-	- AUD
	E-TRON	5	0.05%	422,592.76 AUD	0.15%	4	379,765.43 AUD	1	42,827.33 AUD	5	422,592.76 AUD	-	- AUD
	Q2	78	0.73%	1,629,949.15 AUD	0.58%	33	906,059.40 AUD	45	723,889.75 AUD	60	1,380,891.48 AUD	18	249,057.67 AUD
	Q3	221	2.07%	6,319,367.20 AUD	2.25%	89	3,454,538.24 AUD	132	2,864,828.96 AUD	190	5,854,332.11 AUD	31	465,035.09 AUD
	Q5	235	2.20%	8,462,583.84 AUD	3.02%	121	5,657,265.22 AUD	114	2,805,318.62 AUD	171	6,944,703.11 AUD	64	1,517,880.73 AUD
	Q7	179	1.68%	9,506,120.77 AUD	3.39%	95	6,632,293.87 AUD	84	2,873,826.90 AUD	116	7,474,718.71 AUD	63	2,031,402.06 AUD
	Q8	17	0.16%	1,244,562.87 AUD	0.44%	9	839,966.78 AUD	8	404,596.09 AUD	15	1,125,426.83 AUD	2	119,136.04 AUD
	R8	6	0.06%	748,913.50 AUD	0.27%	5	695,109.08 AUD	1	53,804.42 AUD	3	493,692.80 AUD	3	255,220.70 AUD
	TT	4	0.04%	83,351.52 AUD	0.03%	1	27,823.78 AUD	3	55,527.74 AUD	-	- AUD	4	83,351.52 AUD
	<b>SubTotal</b>	<b>1,171</b>	<b>10.96%</b>	<b>41,275,450.79 AUD</b>	<b>14.72%</b>	<b>529</b>	<b>26,279,100.11 AUD</b>	<b>642</b>	<b>14,996,350.68 AUD</b>	<b>837</b>	<b>33,835,240.46 AUD</b>	<b>334</b>	<b>7,440,210.33 AUD</b>
BENTLEY	BENTAYGA	2	0.02%	442,882.50 AUD	0.16%	2	442,882.50 AUD	-	- AUD	1	271,284.38 AUD	1	171,598.12 AUD
	CONTINENTAL	3	0.03%	393,181.51 AUD	0.14%	1	164,363.49 AUD	2	228,818.02 AUD	-	- AUD	3	393,181.51 AUD
	<b>SubTotal</b>	<b>5</b>	<b>0.05%</b>	<b>836,064.01 AUD</b>	<b>0.30%</b>	<b>3</b>	<b>607,245.99 AUD</b>	<b>2</b>	<b>228,818.02 AUD</b>	<b>1</b>	<b>271,284.38 AUD</b>	<b>4</b>	<b>564,779.63 AUD</b>
LAMBORGHINI	AVENTADOR	-	0.00%	- AUD	0.00%	-	- AUD	-	- AUD	-	- AUD	-	- AUD
	HURACAN	-	0.00%	- AUD	0.00%	-	- AUD	-	- AUD	-	- AUD	-	- AUD
	URUS	2	0.02%	532,638.13 AUD	0.19%	2	532,638.13 AUD	-	- AUD	2	532,638.13 AUD	-	- AUD
	<b>SubTotal</b>	<b>2</b>	<b>0.02%</b>	<b>532,638.13 AUD</b>	<b>0.19%</b>	<b>2</b>	<b>532,638.13 AUD</b>	<b>-</b>	<b>- AUD</b>	<b>2</b>	<b>532,638.13 AUD</b>	<b>-</b>	<b>- AUD</b>
PORSCHE	BOXSTER	7	0.07%	704,569.49 AUD	0.25%	6	663,012.95 AUD	1	41,556.54 AUD	6	663,012.95 AUD	1	41,556.54 AUD
	CARRERA / 911	18	0.17%	3,062,957.19 AUD	1.09%	16	3,003,426.99 AUD	2	59,530.20 AUD	13	2,582,869.16 AUD	5	480,088.03 AUD
	CAYENNE	71	0.66%	5,541,778.44 AUD	1.98%	51	4,706,522.32 AUD	20	835,256.12 AUD	60	5,037,979.15 AUD	11	503,799.29 AUD
	CAYMAN	1	0.01%	66,581.71 AUD	0.02%	-	- AUD	1	66,581.71 AUD	-	- AUD	1	66,581.71 AUD
	MACAN	92	0.86%	5,760,205.61 AUD	2.05%	65	4,641,563.28 AUD	27	1,118,642.33 AUD	79	5,254,670.16 AUD	13	505,535.45 AUD
	PANAMERA	-	0.00%	- AUD	0.00%	-	- AUD	-	- AUD	-	- AUD	-	- AUD
	TAYCAN	13	0.12%	2,011,682.61 AUD	0.72%	13	2,011,682.61 AUD	-	- AUD	13	2,011,682.61 AUD	-	- AUD
	<b>SubTotal</b>	<b>202</b>	<b>1.89%</b>	<b>17,147,775.05 AUD</b>	<b>6.12%</b>	<b>151</b>	<b>15,026,208.15 AUD</b>	<b>51</b>	<b>2,121,566.90 AUD</b>	<b>171</b>	<b>15,550,214.03 AUD</b>	<b>31</b>	<b>1,597,561.02 AUD</b>
SKODA	FABIA	34	0.32%	368,450.74 AUD	0.13%	1	18,684.33 AUD	33	349,766.41 AUD	31	355,511.07 AUD	3	12,939.67 AUD
	KAROQ	47	0.44%	854,501.44 AUD	0.30%	7	155,030.22 AUD	40	699,471.22 AUD	47	854,501.44 AUD	-	- AUD
	KODIAQ	90	0.84%	2,266,563.30 AUD	0.81%	23	751,174.07 AUD	67	1,515,389.23 AUD	84	2,156,444.84 AUD	6	110,118.46 AUD
	KAMIQ	63	0.59%	1,048,931.11 AUD	0.37%	5	118,606.58 AUD	58	930,324.53 AUD	63	1,048,931.11 AUD	-	- AUD
	SCALA	38	0.36%	592,331.42 AUD	0.21%	8	162,063.70 AUD	30	430,267.72 AUD	38	592,331.42 AUD	-	- AUD
	OCTAVIA	85	0.80%	1,534,816.15 AUD	0.55%	23	662,925.14 AUD	62	871,891.01 AUD	79	1,460,131.73 AUD	6	74,684.42 AUD
	RAPID	1	0.01%	2,092.85 AUD	0.00%	-	- AUD	1	2,092.85 AUD	1	2,092.85 AUD	-	- AUD
	SUPERB	19	0.18%	483,286.37 AUD	0.17%	8	290,257.26 AUD	11	193,029.11 AUD	15	434,734.38 AUD	4	48,551.99 AUD
	<b>SubTotal</b>	<b>377</b>	<b>3.53%</b>	<b>7,150,973.38 AUD</b>	<b>2.55%</b>	<b>75</b>	<b>2,158,741.30 AUD</b>	<b>302</b>	<b>4,992,232.08 AUD</b>	<b>358</b>	<b>6,904,678.84 AUD</b>	<b>19</b>	<b>246,294.54 AUD</b>
VOLKSWAGEN	AMAROK	621	5.81%	14,740,971.99 AUD	5.26%	230	7,742,395.58 AUD	391	6,998,576.41 AUD	514	12,623,555.07 AUD	107	2,117,416.92 AUD
	ARTEON	6	0.06%	186,873.92 AUD	0.07%	5	168,707.45 AUD	1	18,166.47 AUD	2	60,750.36 AUD	4	126,123.56 AUD
	CADDY	78	0.73%	1,194,140.11 AUD	0.43%	19	444,166.06 AUD	59	749,974.05 AUD	64	1,029,454.78 AUD	14	164,685.33 AUD
	CARAVELLE	1	0.01%	43,572.59 AUD	0.02%	-	- AUD	1	43,572.59 AUD	-	- AUD	-	- AUD
	CRAFTER	113	1.06%	2,538,665.69 AUD	0.91%	35	1,175,162.87 AUD	78	1,363,502.82 AUD	111	2,505,936.40 AUD	2	32,729.29 AUD
	GOLF	318	2.98%	4,726,479.90 AUD	1.69%	82	1,901,989.93 AUD	236	2,824,489.97 AUD	217	3,589,096.05 AUD	101	1,137,383.85 AUD
	JETTA	3	0.03%	14,415.29 AUD	0.01%	-	- AUD	3	14,415.29 AUD	-	- AUD	3	14,415.29 AUD
	MULTIVAN	31	0.29%	980,357.81 AUD	0.35%	11	492,865.35 AUD	20	487,492.46 AUD	22	779,486.11 AUD	9	200,871.70 AUD
	NEW BEETLE	3	0.03%	26,103.48 AUD	0.01%	-	- AUD	3	26,103.48 AUD	-	- AUD	3	26,103.48 AUD
	PASSAT	30	0.28%	630,869.88 AUD	0.22%	11	343,129.80 AUD	19	287,740.08 AUD	16	478,078.98 AUD	14	152,790.90 AUD
	POLO	137	1.28%	1,473,825.02 AUD	0.53%	18	302,216.61 AUD	119	1,171,608.41 AUD	120	1,391,146.68 AUD	17	82,678.34 AUD
	SCIROCCO	1	0.01%	16,221.76 AUD	0.01%	-	- AUD	1	16,221.76 AUD	-	- AUD	1	16,221.76 AUD
	T-CROSS	143	1.34%	2,253,505.02 AUD	0.80%	22	454,768.58 AUD	121	1,798,736.44 AUD	143	2,253,505.02 AUD	-	- AUD
	T-ROC	90	0.84%	1,802,391.80 AUD	0.64%	18	503,427.03 AUD	72	1,298,964.77 AUD	90	1,802,391.80 AUD	-	- AUD
	TIGUAN	444	4.16%	9,669,541.24 AUD	3.45%	136	4,064,441.07 AUD	308	5,605,100.17 AUD	390	8,772,165.39 AUD	54	897,375.85 AUD
	TOUAREG	69	0.65%	3,129,360.51 AUD	1.12%	32	2,033,278.07 AUD	37	1,096,082.44 AUD	53	2,810,985.47 AUD	16	318,375.04 AUD

Pool Data VII

Distribution by Vehicle Brand and Models

Total Portfolio						Product Type			
Make	Model	Number of Contracts	Percentage of Contracts	Outstanding Discounted Receivables Balance	Percentage of Balance	Chattel Mortgage		Consumer Loan	
						Number of Contracts	Outstanding Discounted Receivables Balance	Number of Contracts	Outstanding Discounted Receivables Balance
	TRANSPORTER	91	0.85%	2,517,796.62 AUD	0.90%	78	2,081,673.19 AUD	13	436,123.43 AUD
	UP!	-	0.00%	- AUD	0.00%	-	- AUD	-	- AUD
	<b>SubTotal</b>	<b>2,179</b>	<b>20.40%</b>	<b>45,945,092.63 AUD</b>	<b>16.38%</b>	<b>1,270</b>	<b>29,683,361.17 AUD</b>	<b>909</b>	<b>16,261,731.46 AUD</b>
<b>Volkswagen Group Vehicles</b>	<b>SubTotal</b>	<b>3,936</b>	<b>36.85%</b>	<b>112,887,993.99 AUD</b>	<b>40.26%</b>	<b>2,291</b>	<b>78,395,927.08 AUD</b>	<b>1,645</b>	<b>34,492,066.91 AUD</b>

Pool Data VII

Distribution by Vehicle Brand and Models

Total Portfolio						Balloon				Vehicle Status			
Make	Model	Number of Contracts	Percentage of Contracts	Outstanding Discounted Receivables Balance	Percentage of Balance	Balloon		No Balloon		New		Used	
						Number of Contracts	Outstanding Discounted Receivables Balance	Number of Contracts	Outstanding Discounted Receivables Balance	Number of Contracts	Outstanding Discounted Receivables Balance	Number of Contracts	Outstanding Discounted Receivables Balance
	TRANSPORTER	91	0.85%	2,517,796.62 AUD	0.90%	35	1,208,102.77 AUD	56	1,309,693.85 AUD	79	2,307,772.70 AUD	12	210,023.92 AUD
	UP!	-	0.00%	- AUD	0.00%	-	- AUD	-	- AUD	-	- AUD	-	- AUD
	<b>SubTotal</b>	<b>2,179</b>	<b>20.40%</b>	<b>45,945,092.63 AUD</b>	<b>16.38%</b>	<b>654</b>	<b>20,834,651.17 AUD</b>	<b>1,525</b>	<b>25,110,441.46 AUD</b>	<b>1,822</b>	<b>40,447,897.40 AUD</b>	<b>357</b>	<b>5,497,195.23 AUD</b>
<b>Volkswagen Group Vehicles</b>	<b>SubTotal</b>	<b>3,936</b>	<b>36.85%</b>	<b>112,887,993.99 AUD</b>	<b>40.26%</b>	<b>1,414</b>	<b>65,438,584.85 AUD</b>	<b>2,522</b>	<b>47,449,409.14 AUD</b>	<b>3,191</b>	<b>97,541,953.24 AUD</b>	<b>745</b>	<b>15,346,040.75 AUD</b>



Pool Data VII

Distribution by Vehicle Brand and Models

Total Portfolio						Product Type			
Make	Model	Number of Contracts	Percentage of Contracts	Outstanding Discounted Receivables Balance	Percentage of Balance	Chattel Mortgage		Consumer Loan	
						Number of Contracts	Outstanding Discounted Receivables Balance	Number of Contracts	Outstanding Discounted Receivables Balance
Other Vehicles									
ABARTH		12	0.11%	236,610.06 AUD	0.08%	10	198,731.60 AUD	2	37,878.46 AUD
ALFA ROMEO		27	0.25%	851,062.87 AUD	0.30%	14	395,460.07 AUD	13	455,602.80 AUD
ASTON MARTIN		6	0.06%	828,450.24 AUD	0.30%	6	828,450.24 AUD	-	- AUD
BMW		112	1.05%	4,125,493.49 AUD	1.47%	89	3,512,467.26 AUD	23	613,026.23 AUD
CHEVROLET		22	0.21%	1,338,794.66 AUD	0.48%	20	1,208,134.40 AUD	2	130,660.26 AUD
CHRYSLER		5	0.05%	113,325.47 AUD	0.04%	2	78,508.43 AUD	3	34,817.04 AUD
CITROEN		3	0.03%	32,578.58 AUD	0.01%	3	32,578.58 AUD	-	- AUD
DODGE		2	0.02%	9,102.02 AUD	0.00%	1	2,085.21 AUD	1	7,016.81 AUD
FERRARI		1	0.01%	158,802.66 AUD	0.06%	-	- AUD	1	158,802.66 AUD
FIAT		12	0.11%	155,916.65 AUD	0.06%	9	120,843.43 AUD	3	35,073.22 AUD
FORD		735	6.88%	19,910,217.96 AUD	7.10%	578	16,350,970.10 AUD	157	3,559,247.86 AUD
GENESIS		3	0.03%	169,046.24 AUD	0.06%	3	169,046.24 AUD	-	- AUD
GM		1	0.01%	60,387.71 AUD	0.02%	1	60,387.71 AUD	-	- AUD
GREAT WALL		13	0.12%	147,220.89 AUD	0.05%	9	105,744.04 AUD	4	41,476.85 AUD
GWM		49	0.46%	1,058,719.72 AUD	0.38%	36	740,084.39 AUD	13	318,635.33 AUD
HAVAL		52	0.49%	878,171.79 AUD	0.31%	29	456,211.94 AUD	23	421,959.85 AUD
HINO		1	0.01%	36,896.06 AUD	0.01%	1	36,896.06 AUD	-	- AUD
HOLDEN		228	2.13%	3,546,295.62 AUD	1.26%	121	1,931,912.69 AUD	107	1,614,382.93 AUD
HONDA		196	1.83%	3,186,339.42 AUD	1.14%	104	1,872,254.88 AUD	92	1,314,084.54 AUD
HYUNDAI		540	5.06%	9,033,415.53 AUD	3.22%	286	5,105,634.81 AUD	254	3,927,780.72 AUD
INFINITI		1	0.01%	14,654.15 AUD	0.01%	1	14,654.15 AUD	-	- AUD
ISUZU		234	2.19%	6,091,631.61 AUD	2.17%	165	4,170,206.60 AUD	69	1,921,425.01 AUD
JAGUAR		68	0.64%	2,829,063.01 AUD	1.01%	49	2,222,119.62 AUD	19	606,943.39 AUD
JEEP		111	1.04%	2,993,061.33 AUD	1.07%	75	2,251,298.42 AUD	36	741,762.91 AUD
KIA		311	2.91%	5,703,079.35 AUD	2.03%	186	3,781,655.42 AUD	125	1,921,423.93 AUD
LAND ROVER		471	4.41%	25,371,426.10 AUD	9.05%	357	20,586,692.58 AUD	114	4,784,733.52 AUD
LDV		203	1.90%	3,802,564.24 AUD	1.36%	178	3,263,955.55 AUD	25	538,608.69 AUD
LEXUS		10	0.09%	288,190.40 AUD	0.10%	10	288,190.40 AUD	-	- AUD
MAHINDRA		2	0.02%	11,812.33 AUD	0.00%	2	11,812.33 AUD	-	- AUD
MASERATI		19	0.18%	1,815,920.88 AUD	0.65%	17	1,693,422.84 AUD	2	122,498.04 AUD
MAZDA		455	4.26%	8,890,902.45 AUD	3.17%	291	6,220,526.89 AUD	164	2,670,375.56 AUD
MERCEDES-BENZ		259	2.42%	9,488,677.53 AUD	3.38%	215	8,178,808.65 AUD	44	1,309,868.88 AUD
MG		185	1.73%	2,504,818.73 AUD	0.89%	72	900,315.52 AUD	113	1,604,503.21 AUD
MINI		11	0.10%	280,930.03 AUD	0.10%	9	215,008.10 AUD	2	65,921.93 AUD
MITSUBISHI		682	6.38%	12,636,682.46 AUD	4.51%	383	7,177,776.73 AUD	299	5,458,905.73 AUD
NISSAN		314	2.94%	6,680,953.93 AUD	2.38%	212	4,882,291.02 AUD	102	1,798,662.91 AUD
OPEL		1	0.01%	8,164.69 AUD	0.00%	-	- AUD	1	8,164.69 AUD
PEUGEOT		57	0.53%	1,220,174.01 AUD	0.44%	45	895,716.21 AUD	12	324,457.80 AUD
RAM		1	0.01%	80,600.06 AUD	0.03%	1	80,600.06 AUD	-	- AUD
RENAULT		133	1.25%	2,948,012.70 AUD	1.05%	117	2,635,058.74 AUD	16	312,953.96 AUD
ROLLS-ROYCE		1	0.01%	104,692.86 AUD	0.04%	1	104,692.86 AUD	-	- AUD
SSANGYONG		25	0.23%	550,752.26 AUD	0.20%	17	348,249.38 AUD	8	202,502.88 AUD
SUBARU		316	2.96%	5,995,187.89 AUD	2.14%	165	3,228,940.99 AUD	151	2,766,246.90 AUD
SUZUKI		112	1.05%	1,360,826.64 AUD	0.49%	35	421,983.64 AUD	77	938,843.00 AUD
TESLA		15	0.14%	664,710.42 AUD	0.24%	15	664,710.42 AUD	-	- AUD
TOYOTA		581	5.44%	13,744,369.15 AUD	4.90%	431	10,655,199.87 AUD	150	3,089,169.28 AUD
VOLVO		148	1.39%	5,566,875.60 AUD	1.99%	100	3,929,471.70 AUD	48	1,637,403.90 AUD
Other Vehicles	SubTotal	6,746	63.15%	167,525,582.45 AUD	59.74%	4,471	122,029,760.77 AUD	2,275	45,495,821.68 AUD
<b>Total</b>		<b>10,682</b>	<b>100.00%</b>	<b>280,413,576.44 AUD</b>	<b>100.00%</b>	<b>6,762</b>	<b>200,425,687.85 AUD</b>	<b>3,920</b>	<b>79,987,888.59 AUD</b>

Pool Data VII

Distribution by Vehicle Brand and Models

Total Portfolio						Balloon				Vehicle Status			
Make	Model	Number of Contracts	Percentage of Contracts	Outstanding Discounted Receivables Balance	Percentage of Balance	Balloon		No Balloon		New		Used	
						Number of Contracts	Outstanding Discounted Receivables Balance	Number of Contracts	Outstanding Discounted Receivables Balance	Number of Contracts	Outstanding Discounted Receivables Balance	Number of Contracts	Outstanding Discounted Receivables Balance
Other Vehicles													
ABARTH		12	0.11%	236,610.06 AUD	0.08%	7	158,113.03 AUD	5	78,497.03 AUD	7	158,113.03 AUD	5	78,497.03 AUD
ALFA ROMEO		27	0.25%	851,062.87 AUD	0.30%	17	652,349.30 AUD	10	198,713.57 AUD	21	700,181.42 AUD	6	150,881.45 AUD
ASTON MARTIN		6	0.06%	828,450.24 AUD	0.30%	5	794,587.74 AUD	1	33,862.50 AUD	2	435,986.63 AUD	4	392,463.61 AUD
BMW		112	1.05%	4,125,493.49 AUD	1.47%	53	2,758,935.97 AUD	59	1,366,557.52 AUD	51	2,493,255.35 AUD	61	1,632,238.14 AUD
CHEVROLET		22	0.21%	1,338,794.66 AUD	0.48%	13	884,144.72 AUD	9	454,649.94 AUD	21	1,284,462.38 AUD	1	54,332.28 AUD
CHRYSLER		5	0.05%	113,325.47 AUD	0.04%	1	50,681.26 AUD	4	62,644.21 AUD	2	78,508.43 AUD	3	34,817.04 AUD
CITROEN		3	0.03%	32,578.58 AUD	0.01%	1	3,937.01 AUD	2	28,641.57 AUD	1	16,522.99 AUD	2	16,055.59 AUD
DODGE		2	0.02%	9,102.02 AUD	0.00%	-	- AUD	2	9,102.02 AUD	-	- AUD	2	9,102.02 AUD
FERRARI		1	0.01%	158,802.66 AUD	0.06%	1	158,802.66 AUD	-	- AUD	-	- AUD	1	158,802.66 AUD
FIAT		12	0.11%	155,916.65 AUD	0.06%	3	65,275.98 AUD	9	90,640.67 AUD	8	114,349.73 AUD	4	41,566.92 AUD
FORD		735	6.88%	19,910,217.96 AUD	7.10%	204	7,587,268.32 AUD	531	12,322,949.64 AUD	497	15,129,795.74 AUD	238	4,780,422.22 AUD
GENESIS		3	0.03%	169,046.24 AUD	0.06%	2	130,305.82 AUD	1	38,740.42 AUD	3	169,046.24 AUD	-	- AUD
GM		1	0.01%	60,387.71 AUD	0.02%	1	60,387.71 AUD	-	- AUD	1	60,387.71 AUD	-	- AUD
GREAT WALL		13	0.12%	147,220.89 AUD	0.05%	1	22,800.28 AUD	12	124,420.61 AUD	12	139,324.47 AUD	1	7,896.42 AUD
GWM		49	0.46%	1,058,719.72 AUD	0.38%	8	203,424.32 AUD	41	855,295.40 AUD	49	1,058,719.72 AUD	-	- AUD
HAVAL		52	0.49%	878,171.79 AUD	0.31%	3	81,504.00 AUD	49	796,667.79 AUD	52	878,171.79 AUD	-	- AUD
HINO		1	0.01%	36,896.06 AUD	0.01%	1	36,896.06 AUD	-	- AUD	1	36,896.06 AUD	-	- AUD
HOLDEN		228	2.13%	3,546,295.62 AUD	1.26%	16	391,085.47 AUD	212	3,155,210.15 AUD	53	943,431.63 AUD	175	2,602,863.99 AUD
HONDA		196	1.83%	3,186,339.42 AUD	1.14%	30	782,423.27 AUD	166	2,403,916.15 AUD	145	2,599,778.69 AUD	51	586,560.73 AUD
HYUNDAI		540	5.06%	9,033,415.53 AUD	3.22%	81	2,136,027.41 AUD	459	6,897,388.12 AUD	379	7,166,532.54 AUD	161	1,866,882.99 AUD
INFINITI		1	0.01%	14,654.15 AUD	0.01%	-	- AUD	1	14,654.15 AUD	-	- AUD	1	14,654.15 AUD
ISUZU		234	2.19%	6,091,631.61 AUD	2.17%	49	1,601,135.12 AUD	185	4,490,496.49 AUD	194	5,385,925.54 AUD	40	705,706.07 AUD
JAGUAR		68	0.64%	2,829,063.01 AUD	1.01%	40	2,107,994.13 AUD	28	721,068.88 AUD	47	2,211,502.49 AUD	21	617,560.52 AUD
JEEP		111	1.04%	2,993,061.33 AUD	1.07%	27	1,198,623.00 AUD	84	1,794,438.33 AUD	62	2,107,641.11 AUD	49	885,420.22 AUD
KIA		311	2.91%	5,703,079.35 AUD	2.03%	57	1,727,150.23 AUD	254	3,975,929.12 AUD	243	4,780,443.17 AUD	68	922,636.18 AUD
LAND ROVER		471	4.41%	25,371,426.10 AUD	9.05%	275	18,744,038.02 AUD	196	6,627,388.08 AUD	349	20,844,369.67 AUD	122	4,527,056.43 AUD
LDV		203	1.90%	3,802,564.24 AUD	1.36%	40	966,805.81 AUD	163	2,835,758.43 AUD	198	3,735,601.51 AUD	5	66,962.73 AUD
LEXUS		10	0.09%	288,190.40 AUD	0.10%	6	208,690.41 AUD	4	79,499.99 AUD	5	166,197.29 AUD	5	121,993.11 AUD
MAHINDRA		2	0.02%	11,812.33 AUD	0.00%	-	- AUD	2	11,812.33 AUD	2	11,812.33 AUD	-	- AUD
MASERATI		19	0.18%	1,815,920.88 AUD	0.65%	15	1,608,536.58 AUD	4	207,384.30 AUD	16	1,595,211.08 AUD	3	220,709.80 AUD
MAZDA		455	4.28%	8,890,902.45 AUD	3.17%	104	3,201,982.26 AUD	351	5,688,920.19 AUD	322	7,202,765.39 AUD	133	1,688,137.06 AUD
MERCEDES-BENZ		259	2.42%	9,488,677.53 AUD	3.38%	99	5,099,696.20 AUD	160	4,388,981.33 AUD	125	6,016,745.63 AUD	134	3,471,931.90 AUD
MG		185	1.73%	2,504,818.73 AUD	0.89%	13	288,761.98 AUD	172	2,216,056.75 AUD	179	2,434,007.25 AUD	6	70,811.48 AUD
MINI		11	0.10%	280,930.03 AUD	0.10%	5	165,445.04 AUD	6	115,484.99 AUD	5	188,838.96 AUD	6	92,091.07 AUD
MITSUBISHI		682	6.38%	12,636,682.46 AUD	4.51%	98	2,749,625.57 AUD	584	9,887,056.89 AUD	504	10,126,852.00 AUD	178	2,509,830.46 AUD
NISSAN		314	2.94%	6,680,953.93 AUD	2.38%	58	1,864,427.30 AUD	256	4,816,526.63 AUD	183	4,841,191.10 AUD	131	1,839,762.83 AUD
OPEL		1	0.01%	8,164.69 AUD	0.00%	-	- AUD	1	8,164.69 AUD	-	- AUD	1	8,164.69 AUD
PEUGEOT		57	0.53%	1,220,174.01 AUD	0.44%	18	551,115.96 AUD	39	669,058.05 AUD	54	1,181,611.91 AUD	3	38,562.10 AUD
RAM		1	0.01%	80,600.06 AUD	0.03%	1	80,600.06 AUD	-	- AUD	-	- AUD	1	80,600.06 AUD
RENAULT		133	1.25%	2,948,012.70 AUD	1.05%	47	1,356,235.70 AUD	86	1,591,777.00 AUD	114	2,627,808.99 AUD	19	320,203.71 AUD
ROLLS-ROYCE		1	0.01%	104,692.86 AUD	0.04%	-	- AUD	1	104,692.86 AUD	-	- AUD	1	104,692.86 AUD
SSANGYONG		25	0.23%	550,752.26 AUD	0.20%	5	145,457.16 AUD	20	405,295.10 AUD	24	517,177.70 AUD	1	33,574.56 AUD
SUBARU		316	2.96%	5,995,187.89 AUD	2.14%	72	1,973,577.19 AUD	244	4,021,610.70 AUD	235	4,948,130.01 AUD	81	1,047,057.88 AUD
SUZUKI		112	1.05%	1,360,826.64 AUD	0.49%	6	93,358.09 AUD	106	1,267,468.55 AUD	87	1,153,814.03 AUD	25	207,012.61 AUD
TESLA		15	0.14%	664,710.42 AUD	0.24%	9	452,644.66 AUD	6	212,065.76 AUD	15	664,710.42 AUD	-	- AUD
TOYOTA		581	5.44%	13,744,369.15 AUD	4.90%	109	4,434,480.48 AUD	472	9,309,888.67 AUD	201	5,815,851.64 AUD	380	7,928,517.51 AUD
VOLVO		148	1.39%	5,566,875.60 AUD	1.99%	85	3,944,261.10 AUD	63	1,622,614.50 AUD	127	4,962,929.65 AUD	21	603,945.95 AUD
Other Vehicles	SubTotal	6,746	63.15%	167,525,582.45 AUD	59.74%	1,686	71,523,592.38 AUD	5,060	96,001,990.07 AUD	4,596	126,984,603.42 AUD	2,150	40,540,979.03 AUD
<b>Total</b>		<b>10,682</b>	<b>100.00%</b>	<b>280,413,576.44 AUD</b>	<b>100.00%</b>	<b>3,100</b>	<b>136,962,177.23 AUD</b>	<b>7,582</b>	<b>143,451,399.21 AUD</b>	<b>7,787</b>	<b>224,526,556.66 AUD</b>	<b>2,895</b>	<b>55,887,019.78 AUD</b>

**Pool Data VIII**

**Region**

Region	Total Portfolio				Product Type			
	Number of Contracts	Percentage of Contracts	Outstanding Discounted Receivables Balance	Percentage of Balance	Chattel Mortgage		Consumer Loan	
					Number of Contracts	Outstanding Discounted Receivables Balance	Number of Contracts	Outstanding Discounted Receivables Balance
Australian Capital Territory	302	2.83%	7,163,836.97 AUD	2.55%	120	3,767,862.87 AUD	182	3,395,974.10 AUD
New South Wales	3,817	35.73%	104,957,859.13 AUD	37.43%	2,528	78,066,269.02 AUD	1,289	26,891,590.11 AUD
Northern Territory	91	0.85%	1,566,968.14 AUD	0.56%	35	646,127.91 AUD	56	920,840.23 AUD
Queensland	2,283	21.37%	58,658,950.92 AUD	20.92%	1,557	43,412,301.01 AUD	726	15,246,649.91 AUD
South Australia	461	4.32%	13,314,620.54 AUD	4.75%	318	10,077,608.67 AUD	143	3,237,011.87 AUD
Tasmania	381	3.57%	7,509,310.47 AUD	2.68%	162	3,870,464.45 AUD	219	3,638,846.02 AUD
Victoria	2,111	19.76%	58,290,122.71 AUD	20.79%	1,319	42,020,365.37 AUD	792	16,269,757.34 AUD
Western Australia	1,236	11.57%	28,951,907.56 AUD	10.32%	723	18,564,688.55 AUD	513	10,387,219.01 AUD
<b>Total</b>	<b>10,682</b>	<b>100.00%</b>	<b>280,413,576.44 AUD</b>	<b>100.00%</b>	<b>6,762</b>	<b>200,425,687.85 AUD</b>	<b>3,920</b>	<b>79,987,888.59 AUD</b>

**Pool Data VIII**

**Region**

Region	Total Portfolio				Balloon				Vehicle Status			
	Number of Contracts	Percentage of Contracts	Outstanding Discounted Receivables Balance	Percentage of Balance	Balloon		No Balloon		New		Used	
					Number of Contracts	Outstanding Discounted Receivables Balance	Number of Contracts	Outstanding Discounted Receivables Balance	Number of Contracts	Outstanding Discounted Receivables Balance	Number of Contracts	Outstanding Discounted Receivables Balance
Australian Capital Territory	302	2.83%	7,163,836.97 AUD	2.55%	59	2,721,977.14 AUD	243	4,441,859.83 AUD	193	5,377,293.69 AUD	109	1,786,543.28 AUD
New South Wales	3,817	35.73%	104,957,859.13 AUD	37.43%	1,184	54,486,722.12 AUD	2,633	50,471,137.01 AUD	2,874	85,945,907.81 AUD	943	19,011,951.32 AUD
Northern Territory	91	0.85%	1,566,968.14 AUD	0.56%	3	94,813.26 AUD	88	1,472,154.88 AUD	74	1,299,142.26 AUD	17	267,825.88 AUD
Queensland	2,283	21.37%	58,658,950.92 AUD	20.92%	673	28,088,736.72 AUD	1,610	30,570,214.20 AUD	1,803	49,593,659.97 AUD	480	9,065,290.95 AUD
South Australia	461	4.32%	13,314,620.54 AUD	4.75%	171	7,848,418.99 AUD	290	5,466,201.55 AUD	348	11,159,976.16 AUD	113	2,154,644.38 AUD
Tasmania	381	3.57%	7,509,310.47 AUD	2.68%	65	2,185,920.69 AUD	316	5,323,389.78 AUD	203	4,456,948.26 AUD	178	3,052,362.21 AUD
Victoria	2,111	19.76%	58,290,122.71 AUD	20.79%	767	33,305,968.27 AUD	1,344	24,984,154.44 AUD	1,641	49,038,294.07 AUD	470	9,251,828.64 AUD
Western Australia	1,236	11.57%	28,951,907.56 AUD	10.32%	178	8,229,620.04 AUD	1,058	20,722,287.52 AUD	651	17,655,334.44 AUD	585	11,296,573.12 AUD
<b>Total</b>	<b>10,682</b>	<b>100.00%</b>	<b>280,413,576.44 AUD</b>	<b>100.00%</b>	<b>3,100</b>	<b>136,962,177.23 AUD</b>	<b>7,582</b>	<b>143,451,399.21 AUD</b>	<b>7,787</b>	<b>224,526,556.66 AUD</b>	<b>2,895</b>	<b>55,887,019.78 AUD</b>

Pool Data IX

Current COVID-19 Extensions

Total Portfolio					Product Type			
Current COVID-19 Extensions	Number of Contracts	Percentage of Contracts	Outstanding Discounted Receivables Balance	Percentage of Balance	Chattel Mortgage		Consumer Loan	
					Number of Contracts	Outstanding Discounted Receivables Balance	Number of Contracts	Outstanding Discounted Receivables Balance
Current COVID-19 Extension	15	0.14%	580,841.81 AUD	0.21%	10	393,405.90 AUD	5	187,435.91 AUD
No Current Extension	10,667	99.86%	279,832,734.63 AUD	99.79%	6,752	200,032,281.95 AUD	3,915	79,800,452.68 AUD
<b>Total</b>	<b>10,682</b>	<b>100.00%</b>	<b>280,413,576.44 AUD</b>	<b>100.00%</b>	<b>6,762</b>	<b>200,425,687.85 AUD</b>	<b>3,920</b>	<b>79,987,888.59 AUD</b>

\* Representing contracts which are currently in a COVID-19 extension as at the Reporting Date

Pool Data IX

Current COVID-19 Extensions

Total Portfolio					Balloon				Vehicle Status			
Current COVID-19 Extensions	Number of Contracts	Percentage of Contracts	Outstanding Discounted Receivables Balance	Percentage of Balance	Balloon		No Balloon		New		Used	
					Number of Contracts	Outstanding Discounted Receivables Balance	Number of Contracts	Outstanding Discounted Receivables Balance	Number of Contracts	Outstanding Discounted Receivables Balance	Number of Contracts	Outstanding Discounted Receivables Balance
Current COVID-19 Extension	15	0.14%	580,841.81 AUD	0.21%	2	97,280.59 AUD	13	483,561.22 AUD	7	334,915.95 AUD	8	245,925.86 AUD
No Current Extension	10,667	99.86%	279,832,734.63 AUD	99.79%	3,098	136,864,896.64 AUD	7,569	142,967,837.99 AUD	7,780	224,191,640.71 AUD	2,887	55,641,093.92 AUD
<b>Total</b>	<b>10,682</b>	<b>100.00%</b>	<b>280,413,576.44 AUD</b>	<b>100.00%</b>	<b>3,100</b>	<b>136,962,177.23 AUD</b>	<b>7,582</b>	<b>143,451,399.21 AUD</b>	<b>7,787</b>	<b>224,526,556.66 AUD</b>	<b>2,895</b>	<b>55,887,019.78 AUD</b>

\* Representing contracts which are currently in a COVID-19 extension as at the Reporting Date

**Individual Hardship Extensions\***

Individual Extensions Approved For After Poolcut*	Number of Contracts	Percentage of Contracts	Outstanding Discounted Receivables Balance	Percentage of Balance
None	10,558	98.84%	276,504,362.32 AUD	98.61%
1	101	0.95%	3,005,106.12 AUD	1.07%
2	19	0.18%	806,613.36 AUD	0.29%
3	4	0.04%	97,494.64 AUD	0.03%
4	-	0.00%	0.00 AUD	0.00%
5	-	0.00%	0.00 AUD	0.00%
<b>Total</b>	<b>10,682</b>	<b>100.00%</b>	<b>280,413,576.44 AUD</b>	<b>100.00%</b>

\*Individual Hardship Extensions Approved For After Poolcut For Contracts Active At End of Reporting Period

**Engine Type**

Engine Type	Total Portfolio				Product Type			
	Number of Contracts	Percentage of Contracts	Outstanding Discounted Receivables Balance	Percentage of Balance	Chattel Mortgage		Consumer Loan	
					Number of Contracts	Outstanding Discounted Receivables Balance	Number of Contracts	Outstanding Discounted Receivables Balance
EA 189 (Unfixed)	1	0.01%	10,599.54 AUD	0.00%	1	10,599.54 AUD	-	- AUD
Other	10,681	99.99%	280,402,976.90 AUD	100.00%	6,761	200,415,088.31 AUD	3,920	79,987,888.59 AUD
<b>Total</b>	<b>10,682</b>	<b>100.00%</b>	<b>280,413,576.44 AUD</b>	<b>100.00%</b>	<b>6,762</b>	<b>200,425,687.85 AUD</b>	<b>3,920</b>	<b>79,987,888.59 AUD</b>



**Engine Type**

Engine Type	Total Portfolio				Balloon				Vehicle Status			
	Number of Contracts	Percentage of Contracts	Outstanding Discounted Receivables Balance	Percentage of Balance	Balloon		No Balloon		New		Used	
					Number of Contracts	Outstanding Discounted Receivables Balance	Number of Contracts	Outstanding Discounted Receivables Balance	Number of Contracts	Outstanding Discounted Receivables Balance	Number of Contracts	Outstanding Discounted Receivables Balance
EA 189 (Unfixed)	1	0.01%	10,599.54 AUD	0.00%	-	- AUD	1	10,599.54 AUD	-	- AUD	1	10,599.54 AUD
Other	10,681	99.99%	280,402,976.90 AUD	100.00%	3,100	136,962,177.23 AUD	7,581	143,440,799.67 AUD	7,787	224,526,556.66 AUD	2,894	55,876,420.24 AUD
<b>Total</b>	<b>10,682</b>	<b>100.00%</b>	<b>280,413,576.44 AUD</b>	<b>100.00%</b>	<b>3,100</b>	<b>136,962,177.23 AUD</b>	<b>7,582</b>	<b>143,451,399.21 AUD</b>	<b>7,787</b>	<b>224,526,556.66 AUD</b>	<b>2,895</b>	<b>55,887,019.78 AUD</b>

**Contract Level Data**      **Net Salvage Recoveries By Contract By Month**

No.	Month / Year of Origination	Month / Year of Net Salvage	Outstanding Discounted Receivables Balance at Poolcut	ABS Gross Salvage Loss	ABS Net Salvage Loss	ABS Recoveries After Net Salvage	ABS Net Salvage Loss After Recoveries	Loss Percentage on Poolcut Balance	Geographical Location of Borrower	Vehicle Type (New/Used)	Vehicle Manufacturer	Product Type
1	02/2021	07/2022	69,286.66 AUD	68,260.06 AUD	23,440.30 AUD	- AUD	23,440.30 AUD	33.83%	Queensland	New	HYUNDAI	Chattel Mortgage
2	04/2017	08/2022	4,908.02 AUD	1,802.96 AUD	1,802.96 AUD	2,382.04 AUD	(579.08) AUD	-11.80%	Western Australia	Used	TOYOTA	Consumer Loan
3	09/2020	08/2022	22,898.44 AUD	24,043.02 AUD	23,946.41 AUD	24,792.94 AUD	(846.53) AUD	-3.70%	New South Wales	New	HYUNDAI	Chattel Mortgage
4	11/2020	08/2022	85,150.75 AUD	89,295.47 AUD	26,227.05 AUD	- AUD	26,227.05 AUD	30.80%	New South Wales	Used	AUDI	Consumer Loan
5	03/2021	08/2022	29,185.09 AUD	28,877.00 AUD	5,729.99 AUD	- AUD	5,729.99 AUD	19.63%	Queensland	Used	AUDI	Chattel Mortgage
6	08/2021	09/2022	58,243.78 AUD	60,601.34 AUD	60,349.38 AUD	36,209.38 AUD	24,140.01 AUD	41.45%	New South Wales	New	VOLVO	Consumer Loan
7	05/2017	10/2022	10,198.36 AUD	5,937.71 AUD	5,937.71 AUD	(1,296.63) AUD	7,234.34 AUD	70.94%	Western Australia	New	VOLKSWAGEN	Consumer Loan
8	04/2021	11/2022	112,349.37 AUD	113,836.61 AUD	113,836.61 AUD	- AUD	113,836.61 AUD	101.32%	New South Wales	Used	MERCEDES-BENZ	Chattel Mortgage
9	06/2021	11/2022	42,591.10 AUD	36,679.72 AUD	30,861.92 AUD	5,000.00 AUD	25,861.92 AUD	69.72%	Victoria	Used	FORD	Chattel Mortgage
10	02/2020	12/2022	6,960.28 AUD	6,286.99 AUD	364.85 AUD	(135.89) AUD	500.74 AUD	7.19%	Queensland	Used	NISSAN	Chattel Mortgage
11	08/2021	12/2022	68,340.09 AUD	61,509.66 AUD	25,863.78 AUD	- AUD	25,863.78 AUD	37.85%	Victoria	New	FIAT	Chattel Mortgage
12	06/2021	01/2023	137,878.86 AUD	128,630.77 AUD	16,307.35 AUD	8,000.00 AUD	8,307.35 AUD	6.03%	Western Australia	New	BMW	Chattel Mortgage
13	07/2021	01/2023	21,033.51 AUD	17,507.31 AUD	9,148.55 AUD	- AUD	9,148.55 AUD	43.50%	Western Australia	Used	NISSAN	Chattel Mortgage
14	07/2020	02/2023	34,078.73 AUD	31,217.40 AUD	31,217.40 AUD	(630.38) AUD	31,847.78 AUD	93.45%	Western Australia	Used	NISSAN	Chattel Mortgage
15	04/2021	02/2023	134,870.02 AUD	127,011.64 AUD	30,825.00 AUD	- AUD	30,825.00 AUD	22.86%	New South Wales	New	LAND ROVER	Chattel Mortgage
16	06/2021	02/2023	21,670.84 AUD	17,957.85 AUD	6,220.30 AUD	(450.03) AUD	6,670.33 AUD	30.78%	Western Australia	Used	NISSAN	Chattel Mortgage
17	11/2017	03/2023	59,857.70 AUD	47,352.50 AUD	47,352.50 AUD	(2,665.00) AUD	50,017.50 AUD	83.56%	New South Wales	Used	MASERATI	Chattel Mortgage
18	06/2020	04/2023	34,408.76 AUD	36,349.31 AUD	36,218.47 AUD	35,130.08 AUD	1,088.39 AUD	3.16%	New South Wales	Used	FORD	Chattel Mortgage
19	10/2020	04/2023	34,889.55 AUD	34,632.58 AUD	34,501.40 AUD	(1,506.75) AUD	36,008.15 AUD	103.21%	Victoria	Used	TOYOTA	Chattel Mortgage
20	04/2021	04/2023	20,917.22 AUD	18,794.44 AUD	3,489.95 AUD	- AUD	3,489.95 AUD	16.68%	Western Australia	Used	HYUNDAI	Chattel Mortgage
21	04/2021	04/2023	56,000.23 AUD	50,928.95 AUD	10,215.56 AUD	- AUD	10,215.56 AUD	18.24%	Queensland	New	HYUNDAI	Chattel Mortgage
22	06/2021	04/2023	63,143.63 AUD	51,309.14 AUD	11,590.66 AUD	- AUD	11,590.66 AUD	18.36%	Queensland	New	VOLKSWAGEN	Chattel Mortgage
23	06/2021	04/2023	33,941.35 AUD	29,875.05 AUD	11,530.95 AUD	- AUD	11,530.95 AUD	33.97%	Queensland	New	LDV	Chattel Mortgage
24	06/2021	04/2023	42,351.38 AUD	35,639.27 AUD	12,219.31 AUD	- AUD	12,219.31 AUD	28.85%	New South Wales	Used	LAND ROVER	Chattel Mortgage
25	08/2021	04/2023	35,197.90 AUD	33,592.55 AUD	33,592.55 AUD	(2,665.00) AUD	36,257.55 AUD	103.01%	Victoria	Used	TOYOTA	Chattel Mortgage
26	11/2017	05/2023	19,855.82 AUD	642.26 AUD	642.26 AUD	677.26 AUD	(35.00) AUD	-0.18%	Victoria	New	HOLDEN	Chattel Mortgage
27	12/2017	05/2023	9,408.39 AUD	1,715.06 AUD	1,218.06 AUD	1,592.55 AUD	(374.49) AUD	-3.98%	New South Wales	New	NISSAN	Consumer Loan
28	04/2021	05/2023	132,785.83 AUD	119,022.20 AUD	20,425.55 AUD	- AUD	20,425.55 AUD	15.38%	Queensland	New	LAND ROVER	Chattel Mortgage
29	04/2021	05/2023	11,040.86 AUD	8,366.08 AUD	3,240.63 AUD	- AUD	3,240.63 AUD	29.35%	New South Wales	Used	FORD	Chattel Mortgage
30	08/2021	05/2023	34,554.47 AUD	31,687.17 AUD	10,165.17 AUD	- AUD	10,165.17 AUD	29.42%	Queensland	New	TOYOTA	Chattel Mortgage
31	08/2021	05/2023	159,445.98 AUD	143,686.80 AUD	143,686.80 AUD	- AUD	143,686.80 AUD	90.12%	Queensland	Used	LAMBORGHINI	Chattel Mortgage
32	12/2017	06/2023	12,248.43 AUD	907.44 AUD	907.44 AUD	- AUD	907.44 AUD	7.41%	New South Wales	Used	NISSAN	Consumer Loan
33	04/2020	06/2023	48,890.19 AUD	44,991.21 AUD	11,439.01 AUD	- AUD	11,439.01 AUD	23.40%	New South Wales	New	AUDI	Chattel Mortgage
34	07/2020	06/2023	147,698.03 AUD	134,108.56 AUD	134,108.56 AUD	- AUD	134,108.56 AUD	90.80%	Queensland	New	LAND ROVER	Chattel Mortgage
35	05/2021	06/2023	59,548.77 AUD	55,108.73 AUD	55,108.73 AUD	- AUD	55,108.73 AUD	92.54%	New South Wales	Used	MERCEDES-BENZ	Chattel Mortgage
36	08/2021	06/2023	36,259.44 AUD	31,326.62 AUD	31,326.62 AUD	- AUD	31,326.62 AUD	86.40%	Victoria	New	LDV	Chattel Mortgage
37	12/2016	07/2023	17,330.41 AUD	8,000.44 AUD	8,000.44 AUD	400.00 AUD	7,600.44 AUD	43.86%	Australian Capital Territory	New	HYUNDAI	Consumer Loan
38	01/2020	07/2023	22,880.78 AUD	19,563.72 AUD	19,563.72 AUD	- AUD	19,563.72 AUD	85.50%	South Australia	Used	VOLKSWAGEN	Chattel Mortgage
39	08/2020	07/2023	166,861.45 AUD	171,370.95 AUD	171,370.95 AUD	- AUD	171,370.95 AUD	102.64%	Victoria	New	MASERATI	Chattel Mortgage
40	08/2020	07/2023	47,069.88 AUD	31,692.48 AUD	19,881.05 AUD	- AUD	19,881.05 AUD	42.24%	Tasmania	Used	VOLKSWAGEN	Chattel Mortgage
41	12/2020	07/2023	47,370.40 AUD	38,820.03 AUD	12,692.63 AUD	- AUD	12,692.63 AUD	26.79%	Victoria	Used	FORD	Consumer Loan
42	04/2021	07/2023	48,298.51 AUD	32,546.11 AUD	32,546.11 AUD	(307.50) AUD	32,853.61 AUD	68.02%	Victoria	New	VOLKSWAGEN	Chattel Mortgage
43	05/2021	07/2023	38,024.39 AUD	32,550.77 AUD	32,550.77 AUD	- AUD	32,550.77 AUD	85.60%	Victoria	New	LDV	Chattel Mortgage
44	06/2021	07/2023	45,449.19 AUD	36,413.10 AUD	36,413.10 AUD	- AUD	36,413.10 AUD	80.12%	South Australia	Used	AUDI	Consumer Loan
<b>Total</b>	<b>44</b>		<b>2,345,472.54 AUD</b>	<b>2,099,247.03 AUD</b>	<b>1,358,078.52 AUD</b>	<b>104,527.07 AUD</b>	<b>1,253,551.45 AUD</b>					

**Contract Level Data**      **Net Salvage Recoveries By Contract By Month**

No.	Month / Year of Origination	Month / Year of Net Salvage	Nov-21	Dec-21	Jan-22	Feb-22	Mar-22	Apr-22	May-22	Jun-22	Jul-22	Aug-22	Sep-22	Oct-22
1	02/2021	07/2022	- AUD	- AUD	- AUD	- AUD	- AUD	- AUD	- AUD	- AUD	- AUD	- AUD	- AUD	- AUD
2	04/2017	08/2022	- AUD	- AUD	- AUD	- AUD	- AUD	- AUD	- AUD	- AUD	- AUD	- AUD	- AUD	- AUD
3	09/2020	08/2022	- AUD	- AUD	- AUD	- AUD	- AUD	- AUD	- AUD	- AUD	- AUD	- AUD	(871.25) AUD	21,718.38 AUD
4	11/2020	08/2022	- AUD	- AUD	- AUD	- AUD	- AUD	- AUD	- AUD	- AUD	- AUD	- AUD	- AUD	- AUD
5	03/2021	08/2022	- AUD	- AUD	- AUD	- AUD	- AUD	- AUD	- AUD	- AUD	- AUD	- AUD	- AUD	- AUD
6	08/2021	09/2022	- AUD	- AUD	- AUD	- AUD	- AUD	- AUD	- AUD	- AUD	- AUD	- AUD	- AUD	(656.00) AUD
7	05/2017	10/2022	- AUD	- AUD	- AUD	- AUD	- AUD	- AUD	- AUD	- AUD	- AUD	- AUD	- AUD	- AUD
8	04/2021	11/2022	- AUD	- AUD	- AUD	- AUD	- AUD	- AUD	- AUD	- AUD	- AUD	- AUD	- AUD	- AUD
9	06/2021	11/2022	- AUD	- AUD	- AUD	- AUD	- AUD	- AUD	- AUD	- AUD	- AUD	- AUD	- AUD	- AUD
10	02/2020	12/2022	- AUD	- AUD	- AUD	- AUD	- AUD	- AUD	- AUD	- AUD	- AUD	- AUD	- AUD	- AUD
11	08/2021	12/2022	- AUD	- AUD	- AUD	- AUD	- AUD	- AUD	- AUD	- AUD	- AUD	- AUD	- AUD	- AUD
12	06/2021	01/2023	- AUD	- AUD	- AUD	- AUD	- AUD	- AUD	- AUD	- AUD	- AUD	- AUD	- AUD	- AUD
13	07/2021	01/2023	- AUD	- AUD	- AUD	- AUD	- AUD	- AUD	- AUD	- AUD	- AUD	- AUD	- AUD	- AUD
14	07/2020	02/2023	- AUD	- AUD	- AUD	- AUD	- AUD	- AUD	- AUD	- AUD	- AUD	- AUD	- AUD	- AUD
15	04/2021	02/2023	- AUD	- AUD	- AUD	- AUD	- AUD	- AUD	- AUD	- AUD	- AUD	- AUD	- AUD	- AUD
16	06/2021	02/2023	- AUD	- AUD	- AUD	- AUD	- AUD	- AUD	- AUD	- AUD	- AUD	- AUD	- AUD	- AUD
17	11/2017	03/2023	- AUD	- AUD	- AUD	- AUD	- AUD	- AUD	- AUD	- AUD	- AUD	- AUD	- AUD	- AUD
18	06/2020	04/2023	- AUD	- AUD	- AUD	- AUD	- AUD	- AUD	- AUD	- AUD	- AUD	- AUD	- AUD	- AUD
19	10/2020	04/2023	- AUD	- AUD	- AUD	- AUD	- AUD	- AUD	- AUD	- AUD	- AUD	- AUD	- AUD	- AUD
20	04/2021	04/2023	- AUD	- AUD	- AUD	- AUD	- AUD	- AUD	- AUD	- AUD	- AUD	- AUD	- AUD	- AUD
21	04/2021	04/2023	- AUD	- AUD	- AUD	- AUD	- AUD	- AUD	- AUD	- AUD	- AUD	- AUD	- AUD	- AUD
22	06/2021	04/2023	- AUD	- AUD	- AUD	- AUD	- AUD	- AUD	- AUD	- AUD	- AUD	- AUD	- AUD	- AUD
23	06/2021	04/2023	- AUD	- AUD	- AUD	- AUD	- AUD	- AUD	- AUD	- AUD	- AUD	- AUD	- AUD	- AUD
24	06/2021	04/2023	- AUD	- AUD	- AUD	- AUD	- AUD	- AUD	- AUD	- AUD	- AUD	- AUD	- AUD	- AUD
25	08/2021	04/2023	- AUD	- AUD	- AUD	- AUD	- AUD	- AUD	- AUD	- AUD	- AUD	- AUD	- AUD	- AUD
26	11/2017	05/2023	- AUD	- AUD	- AUD	- AUD	- AUD	- AUD	- AUD	- AUD	- AUD	- AUD	- AUD	- AUD
27	12/2017	05/2023	- AUD	- AUD	- AUD	- AUD	- AUD	- AUD	- AUD	- AUD	- AUD	- AUD	- AUD	- AUD
28	04/2021	05/2023	- AUD	- AUD	- AUD	- AUD	- AUD	- AUD	- AUD	- AUD	- AUD	- AUD	- AUD	- AUD
29	04/2021	05/2023	- AUD	- AUD	- AUD	- AUD	- AUD	- AUD	- AUD	- AUD	- AUD	- AUD	- AUD	- AUD
30	08/2021	05/2023	- AUD	- AUD	- AUD	- AUD	- AUD	- AUD	- AUD	- AUD	- AUD	- AUD	- AUD	- AUD
31	08/2021	05/2023	- AUD	- AUD	- AUD	- AUD	- AUD	- AUD	- AUD	- AUD	- AUD	- AUD	- AUD	- AUD
32	12/2017	06/2023	- AUD	- AUD	- AUD	- AUD	- AUD	- AUD	- AUD	- AUD	- AUD	- AUD	- AUD	- AUD
33	04/2020	06/2023	- AUD	- AUD	- AUD	- AUD	- AUD	- AUD	- AUD	- AUD	- AUD	- AUD	- AUD	- AUD
34	07/2020	06/2023	- AUD	- AUD	- AUD	- AUD	- AUD	- AUD	- AUD	- AUD	- AUD	- AUD	- AUD	- AUD
35	05/2021	06/2023	- AUD	- AUD	- AUD	- AUD	- AUD	- AUD	- AUD	- AUD	- AUD	- AUD	- AUD	- AUD
36	08/2021	06/2023	- AUD	- AUD	- AUD	- AUD	- AUD	- AUD	- AUD	- AUD	- AUD	- AUD	- AUD	- AUD
37	12/2016	07/2023	- AUD	- AUD	- AUD	- AUD	- AUD	- AUD	- AUD	- AUD	- AUD	- AUD	- AUD	- AUD
38	01/2020	07/2023	- AUD	- AUD	- AUD	- AUD	- AUD	- AUD	- AUD	- AUD	- AUD	- AUD	- AUD	- AUD
39	08/2020	07/2023	- AUD	- AUD	- AUD	- AUD	- AUD	- AUD	- AUD	- AUD	- AUD	- AUD	- AUD	- AUD
40	08/2020	07/2023	- AUD	- AUD	- AUD	- AUD	- AUD	- AUD	- AUD	- AUD	- AUD	- AUD	- AUD	- AUD
41	12/2020	07/2023	- AUD	- AUD	- AUD	- AUD	- AUD	- AUD	- AUD	- AUD	- AUD	- AUD	- AUD	- AUD
42	04/2021	07/2023	- AUD	- AUD	- AUD	- AUD	- AUD	- AUD	- AUD	- AUD	- AUD	- AUD	- AUD	- AUD
43	05/2021	07/2023	- AUD	- AUD	- AUD	- AUD	- AUD	- AUD	- AUD	- AUD	- AUD	- AUD	- AUD	- AUD
44	06/2021	07/2023	- AUD	- AUD	- AUD	- AUD	- AUD	- AUD	- AUD	- AUD	- AUD	- AUD	- AUD	- AUD
<b>Total</b>	<b>44</b>		- AUD	- AUD	- AUD	- AUD	- AUD	- AUD	- AUD	- AUD	- AUD	- AUD	(871.25) AUD	21,062.38 AUD

**Contract Level Data**      **Net Salvage Recoveries By Contract By Month**

No.	Month / Year of Origination	Month / Year of Net Salvage	Nov-22	Dec-22	Jan-23	Feb-23	Mar-23	Apr-23	May-23	Jun-23	Jul-23	Aug-23	Sep-23	Oct-23
1	02/2021	07/2022	- AUD	- AUD	- AUD	- AUD	- AUD	- AUD	- AUD	- AUD	- AUD	- AUD	- AUD	- AUD
2	04/2017	08/2022	100.00 AUD	- AUD	2,282.04 AUD	- AUD	- AUD	- AUD	- AUD	- AUD	- AUD	- AUD	- AUD	- AUD
3	09/2020	08/2022	- AUD	- AUD	3,074.56 AUD	- AUD	- AUD	- AUD	- AUD	- AUD	- AUD	871.25 AUD	- AUD	- AUD
4	11/2020	08/2022	- AUD	- AUD	- AUD	- AUD	- AUD	- AUD	- AUD	- AUD	- AUD	- AUD	- AUD	- AUD
5	03/2021	08/2022	- AUD	- AUD	- AUD	- AUD	- AUD	- AUD	- AUD	- AUD	- AUD	- AUD	- AUD	- AUD
6	08/2021	09/2022	- AUD	- AUD	- AUD	- AUD	- AUD	- AUD	- AUD	36,865.38 AUD	- AUD	- AUD	- AUD	- AUD
7	05/2017	10/2022	- AUD	- AUD	- AUD	- AUD	- AUD	- AUD	(1,296.63) AUD	- AUD	- AUD	- AUD	- AUD	- AUD
8	04/2021	11/2022	- AUD	- AUD	- AUD	- AUD	- AUD	- AUD	- AUD	- AUD	- AUD	- AUD	- AUD	- AUD
9	06/2021	11/2022	- AUD	- AUD	- AUD	1,000.00 AUD	1,000.00 AUD	1,000.00 AUD	1,000.00 AUD	1,000.00 AUD	- AUD	- AUD	- AUD	- AUD
10	02/2020	12/2022	- AUD	- AUD	(135.89) AUD	- AUD	- AUD	- AUD	- AUD	- AUD	- AUD	- AUD	- AUD	- AUD
11	08/2021	12/2022	- AUD	- AUD	- AUD	- AUD	- AUD	- AUD	- AUD	- AUD	- AUD	- AUD	- AUD	- AUD
12	06/2021	01/2023	- AUD	- AUD	- AUD	8,000.00 AUD	- AUD	- AUD	- AUD	- AUD	- AUD	- AUD	- AUD	- AUD
13	07/2021	01/2023	- AUD	- AUD	- AUD	- AUD	- AUD	- AUD	- AUD	- AUD	- AUD	- AUD	- AUD	- AUD
14	07/2020	02/2023	- AUD	- AUD	- AUD	- AUD	- AUD	- AUD	- AUD	(630.38) AUD	- AUD	- AUD	- AUD	- AUD
15	04/2021	02/2023	- AUD	- AUD	- AUD	- AUD	- AUD	- AUD	- AUD	- AUD	- AUD	- AUD	- AUD	- AUD
16	06/2021	02/2023	- AUD	- AUD	- AUD	- AUD	(450.03) AUD	- AUD	- AUD	- AUD	- AUD	- AUD	- AUD	- AUD
17	11/2017	03/2023	- AUD	- AUD	- AUD	- AUD	- AUD	(2,665.00) AUD	- AUD	- AUD	- AUD	- AUD	- AUD	- AUD
18	06/2020	04/2023	- AUD	- AUD	- AUD	- AUD	- AUD	- AUD	(2,902.61) AUD	- AUD	26,308.18 AUD	11,724.51 AUD	- AUD	- AUD
19	10/2020	04/2023	- AUD	- AUD	- AUD	- AUD	- AUD	- AUD	- AUD	(1,230.00) AUD	- AUD	(278.75) AUD	- AUD	- AUD
20	04/2021	04/2023	- AUD	- AUD	- AUD	- AUD	- AUD	- AUD	- AUD	- AUD	- AUD	- AUD	- AUD	- AUD
21	04/2021	04/2023	- AUD	- AUD	- AUD	- AUD	- AUD	- AUD	- AUD	- AUD	- AUD	- AUD	- AUD	- AUD
22	06/2021	04/2023	- AUD	- AUD	- AUD	- AUD	- AUD	- AUD	- AUD	- AUD	- AUD	- AUD	- AUD	- AUD
23	06/2021	04/2023	- AUD	- AUD	- AUD	- AUD	- AUD	- AUD	- AUD	- AUD	- AUD	- AUD	- AUD	- AUD
24	06/2021	04/2023	- AUD	- AUD	- AUD	- AUD	- AUD	- AUD	- AUD	- AUD	- AUD	- AUD	- AUD	- AUD
25	08/2021	04/2023	- AUD	- AUD	- AUD	- AUD	- AUD	- AUD	- AUD	- AUD	- AUD	(2,665.00) AUD	- AUD	- AUD
26	11/2017	05/2023	- AUD	- AUD	- AUD	- AUD	- AUD	- AUD	- AUD	677.26 AUD	- AUD	- AUD	- AUD	- AUD
27	12/2017	05/2023	- AUD	- AUD	- AUD	- AUD	- AUD	- AUD	500.00 AUD	300.00 AUD	300.00 AUD	492.55 AUD	- AUD	- AUD
28	04/2021	05/2023	- AUD	- AUD	- AUD	- AUD	- AUD	- AUD	- AUD	- AUD	- AUD	- AUD	- AUD	- AUD
29	04/2021	05/2023	- AUD	- AUD	- AUD	- AUD	- AUD	- AUD	- AUD	- AUD	- AUD	- AUD	- AUD	- AUD
30	08/2021	05/2023	- AUD	- AUD	- AUD	- AUD	- AUD	- AUD	- AUD	- AUD	- AUD	- AUD	- AUD	- AUD
31	08/2021	05/2023	- AUD	- AUD	- AUD	- AUD	- AUD	- AUD	- AUD	- AUD	- AUD	- AUD	- AUD	- AUD
32	12/2017	06/2023	- AUD	- AUD	- AUD	- AUD	- AUD	- AUD	- AUD	- AUD	- AUD	- AUD	- AUD	- AUD
33	04/2020	06/2023	- AUD	- AUD	- AUD	- AUD	- AUD	- AUD	- AUD	- AUD	- AUD	- AUD	- AUD	- AUD
34	07/2020	06/2023	- AUD	- AUD	- AUD	- AUD	- AUD	- AUD	- AUD	- AUD	- AUD	- AUD	- AUD	- AUD
35	05/2021	06/2023	- AUD	- AUD	- AUD	- AUD	- AUD	- AUD	- AUD	- AUD	- AUD	- AUD	- AUD	- AUD
36	08/2021	06/2023	- AUD	- AUD	- AUD	- AUD	- AUD	- AUD	- AUD	- AUD	- AUD	- AUD	- AUD	- AUD
37	12/2016	07/2023	- AUD	- AUD	- AUD	- AUD	- AUD	- AUD	- AUD	- AUD	- AUD	400.00 AUD	- AUD	- AUD
38	01/2020	07/2023	- AUD	- AUD	- AUD	- AUD	- AUD	- AUD	- AUD	- AUD	- AUD	- AUD	- AUD	- AUD
39	08/2020	07/2023	- AUD	- AUD	- AUD	- AUD	- AUD	- AUD	- AUD	- AUD	- AUD	- AUD	- AUD	- AUD
40	08/2020	07/2023	- AUD	- AUD	- AUD	- AUD	- AUD	- AUD	- AUD	- AUD	- AUD	- AUD	- AUD	- AUD
41	12/2020	07/2023	- AUD	- AUD	- AUD	- AUD	- AUD	- AUD	- AUD	- AUD	- AUD	- AUD	- AUD	- AUD
42	04/2021	07/2023	- AUD	- AUD	- AUD	- AUD	- AUD	- AUD	- AUD	- AUD	- AUD	(307.50) AUD	- AUD	- AUD
43	05/2021	07/2023	- AUD	- AUD	- AUD	- AUD	- AUD	- AUD	- AUD	- AUD	- AUD	- AUD	- AUD	- AUD
44	06/2021	07/2023	- AUD	- AUD	- AUD	- AUD	- AUD	- AUD	- AUD	- AUD	- AUD	- AUD	- AUD	- AUD
<b>Total</b>	<b>44</b>		<b>100.00 AUD</b>	<b>- AUD</b>	<b>5,220.71 AUD</b>	<b>9,000.00 AUD</b>	<b>549.97 AUD</b>	<b>(1,665.00) AUD</b>	<b>(2,699.24) AUD</b>	<b>36,982.26 AUD</b>	<b>26,608.18 AUD</b>	<b>10,239.06 AUD</b>	<b>- AUD</b>	<b>- AUD</b>

Contract Level Data

Net Salvage Recoveries By Contract By Month

#REF!

No.	Month / Year of Origination	Month / Year of Net Salvage	Nov-23	Dec-23	Jan-24	Feb-24	Mar-24	Apr-24	May-24	Jun-24	Jul-24	Aug-24	Sep-24	Oct-24
1	02/2021	07/2022	- AUD	- AUD	- AUD	- AUD	- AUD	- AUD	- AUD	- AUD	- AUD	- AUD	- AUD	- AUD
2	04/2017	08/2022	- AUD	- AUD	- AUD	- AUD	- AUD	- AUD	- AUD	- AUD	- AUD	- AUD	- AUD	- AUD
3	09/2020	08/2022	- AUD	- AUD	- AUD	- AUD	- AUD	- AUD	- AUD	- AUD	- AUD	- AUD	- AUD	- AUD
4	11/2020	08/2022	- AUD	- AUD	- AUD	- AUD	- AUD	- AUD	- AUD	- AUD	- AUD	- AUD	- AUD	- AUD
5	03/2021	08/2022	- AUD	- AUD	- AUD	- AUD	- AUD	- AUD	- AUD	- AUD	- AUD	- AUD	- AUD	- AUD
6	08/2021	09/2022	- AUD	- AUD	- AUD	- AUD	- AUD	- AUD	- AUD	- AUD	- AUD	- AUD	- AUD	- AUD
7	05/2017	10/2022	- AUD	- AUD	- AUD	- AUD	- AUD	- AUD	- AUD	- AUD	- AUD	- AUD	- AUD	- AUD
8	04/2021	11/2022	- AUD	- AUD	- AUD	- AUD	- AUD	- AUD	- AUD	- AUD	- AUD	- AUD	- AUD	- AUD
9	06/2021	11/2022	- AUD	- AUD	- AUD	- AUD	- AUD	- AUD	- AUD	- AUD	- AUD	- AUD	- AUD	- AUD
10	02/2020	12/2022	- AUD	- AUD	- AUD	- AUD	- AUD	- AUD	- AUD	- AUD	- AUD	- AUD	- AUD	- AUD
11	08/2021	12/2022	- AUD	- AUD	- AUD	- AUD	- AUD	- AUD	- AUD	- AUD	- AUD	- AUD	- AUD	- AUD
12	06/2021	01/2023	- AUD	- AUD	- AUD	- AUD	- AUD	- AUD	- AUD	- AUD	- AUD	- AUD	- AUD	- AUD
13	07/2021	01/2023	- AUD	- AUD	- AUD	- AUD	- AUD	- AUD	- AUD	- AUD	- AUD	- AUD	- AUD	- AUD
14	07/2020	02/2023	- AUD	- AUD	- AUD	- AUD	- AUD	- AUD	- AUD	- AUD	- AUD	- AUD	- AUD	- AUD
15	04/2021	02/2023	- AUD	- AUD	- AUD	- AUD	- AUD	- AUD	- AUD	- AUD	- AUD	- AUD	- AUD	- AUD
16	06/2021	02/2023	- AUD	- AUD	- AUD	- AUD	- AUD	- AUD	- AUD	- AUD	- AUD	- AUD	- AUD	- AUD
17	11/2017	03/2023	- AUD	- AUD	- AUD	- AUD	- AUD	- AUD	- AUD	- AUD	- AUD	- AUD	- AUD	- AUD
18	06/2020	04/2023	- AUD	- AUD	- AUD	- AUD	- AUD	- AUD	- AUD	- AUD	- AUD	- AUD	- AUD	- AUD
19	10/2020	04/2023	- AUD	- AUD	- AUD	- AUD	- AUD	- AUD	- AUD	- AUD	- AUD	- AUD	- AUD	- AUD
20	04/2021	04/2023	- AUD	- AUD	- AUD	- AUD	- AUD	- AUD	- AUD	- AUD	- AUD	- AUD	- AUD	- AUD
21	04/2021	04/2023	- AUD	- AUD	- AUD	- AUD	- AUD	- AUD	- AUD	- AUD	- AUD	- AUD	- AUD	- AUD
22	06/2021	04/2023	- AUD	- AUD	- AUD	- AUD	- AUD	- AUD	- AUD	- AUD	- AUD	- AUD	- AUD	- AUD
23	06/2021	04/2023	- AUD	- AUD	- AUD	- AUD	- AUD	- AUD	- AUD	- AUD	- AUD	- AUD	- AUD	- AUD
24	06/2021	04/2023	- AUD	- AUD	- AUD	- AUD	- AUD	- AUD	- AUD	- AUD	- AUD	- AUD	- AUD	- AUD
25	08/2021	04/2023	- AUD	- AUD	- AUD	- AUD	- AUD	- AUD	- AUD	- AUD	- AUD	- AUD	- AUD	- AUD
26	11/2017	05/2023	- AUD	- AUD	- AUD	- AUD	- AUD	- AUD	- AUD	- AUD	- AUD	- AUD	- AUD	- AUD
27	12/2017	05/2023	- AUD	- AUD	- AUD	- AUD	- AUD	- AUD	- AUD	- AUD	- AUD	- AUD	- AUD	- AUD
28	04/2021	05/2023	- AUD	- AUD	- AUD	- AUD	- AUD	- AUD	- AUD	- AUD	- AUD	- AUD	- AUD	- AUD
29	04/2021	05/2023	- AUD	- AUD	- AUD	- AUD	- AUD	- AUD	- AUD	- AUD	- AUD	- AUD	- AUD	- AUD
30	08/2021	05/2023	- AUD	- AUD	- AUD	- AUD	- AUD	- AUD	- AUD	- AUD	- AUD	- AUD	- AUD	- AUD
31	08/2021	05/2023	- AUD	- AUD	- AUD	- AUD	- AUD	- AUD	- AUD	- AUD	- AUD	- AUD	- AUD	- AUD
32	12/2017	06/2023	- AUD	- AUD	- AUD	- AUD	- AUD	- AUD	- AUD	- AUD	- AUD	- AUD	- AUD	- AUD
33	04/2020	06/2023	- AUD	- AUD	- AUD	- AUD	- AUD	- AUD	- AUD	- AUD	- AUD	- AUD	- AUD	- AUD
34	07/2020	06/2023	- AUD	- AUD	- AUD	- AUD	- AUD	- AUD	- AUD	- AUD	- AUD	- AUD	- AUD	- AUD
35	05/2021	06/2023	- AUD	- AUD	- AUD	- AUD	- AUD	- AUD	- AUD	- AUD	- AUD	- AUD	- AUD	- AUD
36	08/2021	06/2023	- AUD	- AUD	- AUD	- AUD	- AUD	- AUD	- AUD	- AUD	- AUD	- AUD	- AUD	- AUD
37	12/2016	07/2023	- AUD	- AUD	- AUD	- AUD	- AUD	- AUD	- AUD	- AUD	- AUD	- AUD	- AUD	- AUD
38	01/2020	07/2023	- AUD	- AUD	- AUD	- AUD	- AUD	- AUD	- AUD	- AUD	- AUD	- AUD	- AUD	- AUD
39	08/2020	07/2023	- AUD	- AUD	- AUD	- AUD	- AUD	- AUD	- AUD	- AUD	- AUD	- AUD	- AUD	- AUD
40	08/2020	07/2023	- AUD	- AUD	- AUD	- AUD	- AUD	- AUD	- AUD	- AUD	- AUD	- AUD	- AUD	- AUD
41	12/2020	07/2023	- AUD	- AUD	- AUD	- AUD	- AUD	- AUD	- AUD	- AUD	- AUD	- AUD	- AUD	- AUD
42	04/2021	07/2023	- AUD	- AUD	- AUD	- AUD	- AUD	- AUD	- AUD	- AUD	- AUD	- AUD	- AUD	- AUD
43	05/2021	07/2023	- AUD	- AUD	- AUD	- AUD	- AUD	- AUD	- AUD	- AUD	- AUD	- AUD	- AUD	- AUD
44	06/2021	07/2023	- AUD	- AUD	- AUD	- AUD	- AUD	- AUD	- AUD	- AUD	- AUD	- AUD	- AUD	- AUD
<b>Total</b>	<b>44</b>		- AUD	- AUD	- AUD	- AUD	- AUD	- AUD	- AUD	- AUD	- AUD	- AUD	- AUD	- AUD

**Contract Level Data**      **Net Salvage Recoveries By Contract By Month**

No.	Month / Year of Origination	Month / Year of Net Salvage	Nov-24	Dec-24	Jan-25	Feb-25	Mar-25	Apr-25	May-25	Jun-25	Jul-25	Aug-25
1	02/2021	07/2022	- AUD	- AUD	- AUD	- AUD	- AUD	- AUD	- AUD	- AUD	- AUD	- AUD
2	04/2017	08/2022	- AUD	- AUD	- AUD	- AUD	- AUD	- AUD	- AUD	- AUD	- AUD	- AUD
3	09/2020	08/2022	- AUD	- AUD	- AUD	- AUD	- AUD	- AUD	- AUD	- AUD	- AUD	- AUD
4	11/2020	08/2022	- AUD	- AUD	- AUD	- AUD	- AUD	- AUD	- AUD	- AUD	- AUD	- AUD
5	03/2021	08/2022	- AUD	- AUD	- AUD	- AUD	- AUD	- AUD	- AUD	- AUD	- AUD	- AUD
6	08/2021	09/2022	- AUD	- AUD	- AUD	- AUD	- AUD	- AUD	- AUD	- AUD	- AUD	- AUD
7	05/2017	10/2022	- AUD	- AUD	- AUD	- AUD	- AUD	- AUD	- AUD	- AUD	- AUD	- AUD
8	04/2021	11/2022	- AUD	- AUD	- AUD	- AUD	- AUD	- AUD	- AUD	- AUD	- AUD	- AUD
9	06/2021	11/2022	- AUD	- AUD	- AUD	- AUD	- AUD	- AUD	- AUD	- AUD	- AUD	- AUD
10	02/2020	12/2022	- AUD	- AUD	- AUD	- AUD	- AUD	- AUD	- AUD	- AUD	- AUD	- AUD
11	08/2021	12/2022	- AUD	- AUD	- AUD	- AUD	- AUD	- AUD	- AUD	- AUD	- AUD	- AUD
12	06/2021	01/2023	- AUD	- AUD	- AUD	- AUD	- AUD	- AUD	- AUD	- AUD	- AUD	- AUD
13	07/2021	01/2023	- AUD	- AUD	- AUD	- AUD	- AUD	- AUD	- AUD	- AUD	- AUD	- AUD
14	07/2020	02/2023	- AUD	- AUD	- AUD	- AUD	- AUD	- AUD	- AUD	- AUD	- AUD	- AUD
15	04/2021	02/2023	- AUD	- AUD	- AUD	- AUD	- AUD	- AUD	- AUD	- AUD	- AUD	- AUD
16	06/2021	02/2023	- AUD	- AUD	- AUD	- AUD	- AUD	- AUD	- AUD	- AUD	- AUD	- AUD
17	11/2017	03/2023	- AUD	- AUD	- AUD	- AUD	- AUD	- AUD	- AUD	- AUD	- AUD	- AUD
18	06/2020	04/2023	- AUD	- AUD	- AUD	- AUD	- AUD	- AUD	- AUD	- AUD	- AUD	- AUD
19	10/2020	04/2023	- AUD	- AUD	- AUD	- AUD	- AUD	- AUD	- AUD	- AUD	- AUD	- AUD
20	04/2021	04/2023	- AUD	- AUD	- AUD	- AUD	- AUD	- AUD	- AUD	- AUD	- AUD	- AUD
21	04/2021	04/2023	- AUD	- AUD	- AUD	- AUD	- AUD	- AUD	- AUD	- AUD	- AUD	- AUD
22	06/2021	04/2023	- AUD	- AUD	- AUD	- AUD	- AUD	- AUD	- AUD	- AUD	- AUD	- AUD
23	06/2021	04/2023	- AUD	- AUD	- AUD	- AUD	- AUD	- AUD	- AUD	- AUD	- AUD	- AUD
24	06/2021	04/2023	- AUD	- AUD	- AUD	- AUD	- AUD	- AUD	- AUD	- AUD	- AUD	- AUD
25	08/2021	04/2023	- AUD	- AUD	- AUD	- AUD	- AUD	- AUD	- AUD	- AUD	- AUD	- AUD
26	11/2017	05/2023	- AUD	- AUD	- AUD	- AUD	- AUD	- AUD	- AUD	- AUD	- AUD	- AUD
27	12/2017	05/2023	- AUD	- AUD	- AUD	- AUD	- AUD	- AUD	- AUD	- AUD	- AUD	- AUD
28	04/2021	05/2023	- AUD	- AUD	- AUD	- AUD	- AUD	- AUD	- AUD	- AUD	- AUD	- AUD
29	04/2021	05/2023	- AUD	- AUD	- AUD	- AUD	- AUD	- AUD	- AUD	- AUD	- AUD	- AUD
30	08/2021	05/2023	- AUD	- AUD	- AUD	- AUD	- AUD	- AUD	- AUD	- AUD	- AUD	- AUD
31	08/2021	05/2023	- AUD	- AUD	- AUD	- AUD	- AUD	- AUD	- AUD	- AUD	- AUD	- AUD
32	12/2017	06/2023	- AUD	- AUD	- AUD	- AUD	- AUD	- AUD	- AUD	- AUD	- AUD	- AUD
33	04/2020	06/2023	- AUD	- AUD	- AUD	- AUD	- AUD	- AUD	- AUD	- AUD	- AUD	- AUD
34	07/2020	06/2023	- AUD	- AUD	- AUD	- AUD	- AUD	- AUD	- AUD	- AUD	- AUD	- AUD
35	05/2021	06/2023	- AUD	- AUD	- AUD	- AUD	- AUD	- AUD	- AUD	- AUD	- AUD	- AUD
36	08/2021	06/2023	- AUD	- AUD	- AUD	- AUD	- AUD	- AUD	- AUD	- AUD	- AUD	- AUD
37	12/2016	07/2023	- AUD	- AUD	- AUD	- AUD	- AUD	- AUD	- AUD	- AUD	- AUD	- AUD
38	01/2020	07/2023	- AUD	- AUD	- AUD	- AUD	- AUD	- AUD	- AUD	- AUD	- AUD	- AUD
39	08/2020	07/2023	- AUD	- AUD	- AUD	- AUD	- AUD	- AUD	- AUD	- AUD	- AUD	- AUD
40	08/2020	07/2023	- AUD	- AUD	- AUD	- AUD	- AUD	- AUD	- AUD	- AUD	- AUD	- AUD
41	12/2020	07/2023	- AUD	- AUD	- AUD	- AUD	- AUD	- AUD	- AUD	- AUD	- AUD	- AUD
42	04/2021	07/2023	- AUD	- AUD	- AUD	- AUD	- AUD	- AUD	- AUD	- AUD	- AUD	- AUD
43	05/2021	07/2023	- AUD	- AUD	- AUD	- AUD	- AUD	- AUD	- AUD	- AUD	- AUD	- AUD
44	06/2021	07/2023	- AUD	- AUD	- AUD	- AUD	- AUD	- AUD	- AUD	- AUD	- AUD	- AUD
<b>Total</b>	<b>44</b>		- AUD	- AUD	- AUD	- AUD	- AUD	- AUD	- AUD	- AUD	- AUD	- AUD