



26 October 2023

ASX Market Announcements

**PRESENTATION AT AGM ON 26 OCTOBER 2023**

A copy of the Powerpoint presentation on current exploration is attached.

Authorised by:

Eric Sam Yue – Executive Director/Company secretary

Contact: 02 9264 6988

Email: [office@ausmonresources.com.au](mailto:office@ausmonresources.com.au)





# AUSMON RESOURCES LIMITED

## AGM PRESENTATION

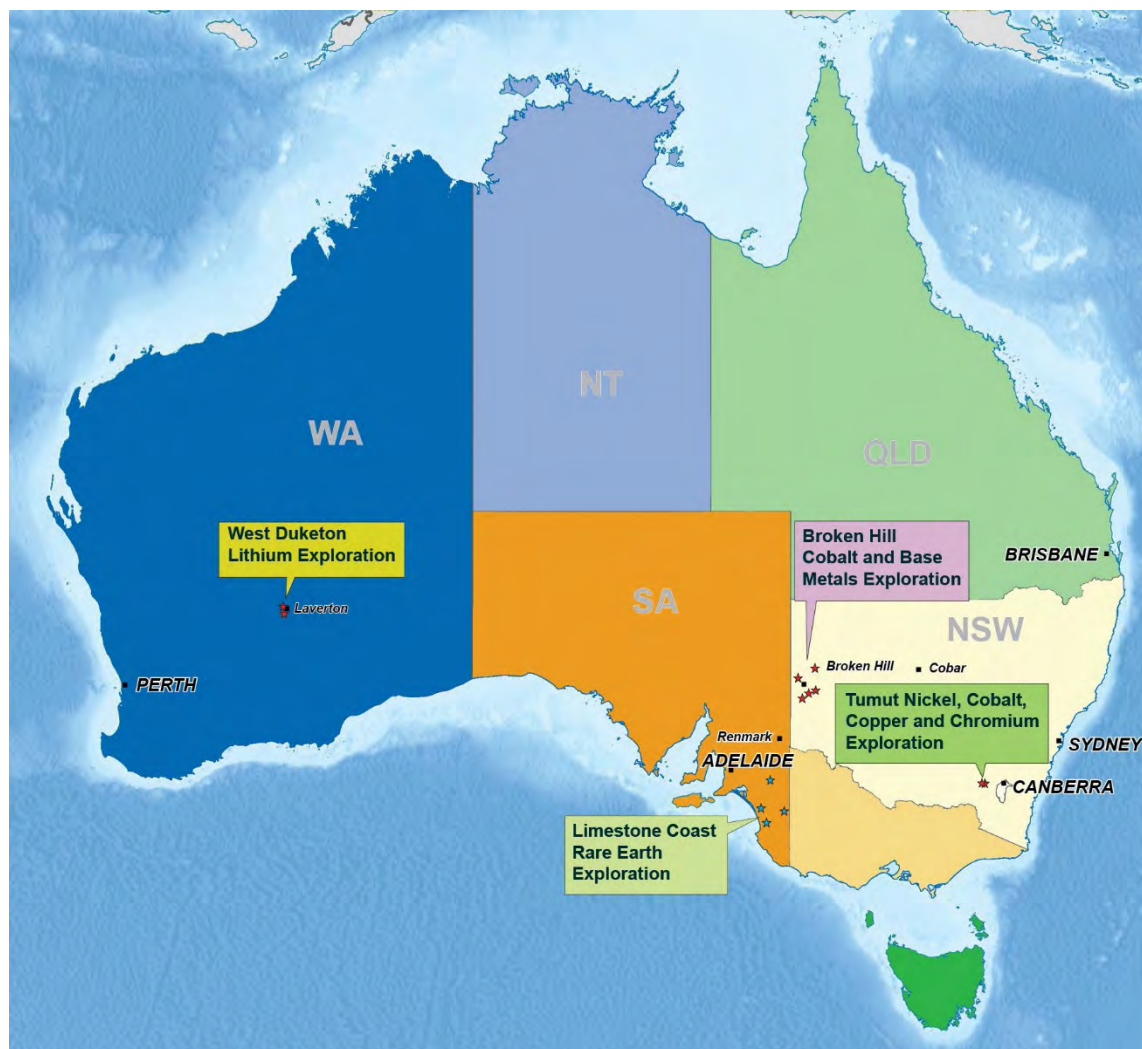
Mark Derriman (Chief Technical Officer)

26th OCTOBER 2023

**SA : 4 Tenements 100% Interest– Rare Earth Elements**  
**NSW : 7 Tenements 100% interest - Cobalt & Base Metals**  
**WA : 2 Tenement 100% interest - Lithium**



**AUSMON RESOURCES  
LIMITED**



# Exploration Activities Overview



AUSMON RESOURCES  
LIMITED

## SA Limestone Coast: Rare Earth Elements Exploration

- pXRF scan and lab tests of samples from historic holes in all 4 tenements (completed)
- Identify areas for Aircore drilling in all 4 tenements (completed)
- Obtain Council approvals to drill on selected road verges (completed)
- Approval from Mines Department for drilling at Parrakie and Wolseley (awaiting)
- Meetings with local communities in preparation of drilling (planning)
- Engage drillers/Traffic Managers for Aircore drilling on road verges (in process)
- ***Drill along road verges at Parrakie and Wolseley to test for clay REE's (December Qtr)***

## NSW Broken Hill: Enmore/Eureka/Mt Darling – Cobalt and Base Metals Exploration

- IP survey at Enmore over the East Borehole area of historical drilling (completed)
- Surficial geological sampling at NW Eureka (completed)
- Surficial geochemical sampling at Mt Darling (completed)
- Review data at Stirling Vale/Kanbarra for new exploration areas (on-going)
- ***Drill test East Borehole IP chargeability anomalies (in 2024)***

# Exploration Activities Overview



AUSMON RESOURCES  
LIMITED

## **NSW Tumut: Brungle Creek/McAlpine – Cobalt and Base Metals Exploration**

- Reprocessing and interpretation of seismic line traversing the tenements (completed)
- Field based surficial exploration program (completed)
- Elevated gold results warrant further exploration in certain areas (planning)

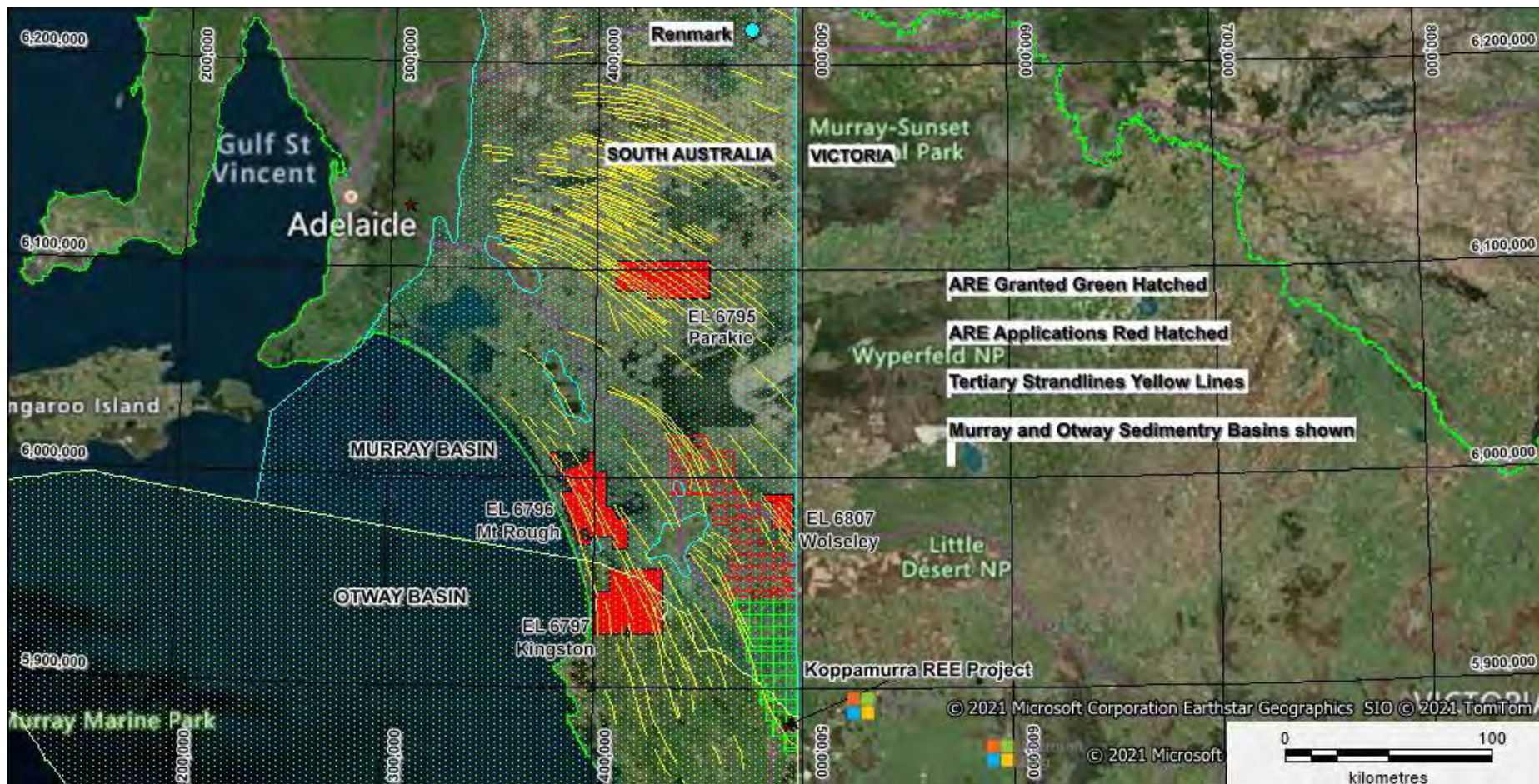
## **WA Laverton: Barneys/Neckersgat – Lithium Exploration**

- 2 Tenements granted in March 2023 (completed)
- Native Title compliance procedures (in process)
- Review historic data, mapping and surficial geochemical sampling (planning)





# SA: Limestone Coast REE Project



**4 Granted Tenements (in solid red) in Murray/Otway Basins**



# SA: Limestone Coast REE Project



**Examples of Proposed Verge Drilling Sites**



# SA: Limestone Coast REE Project

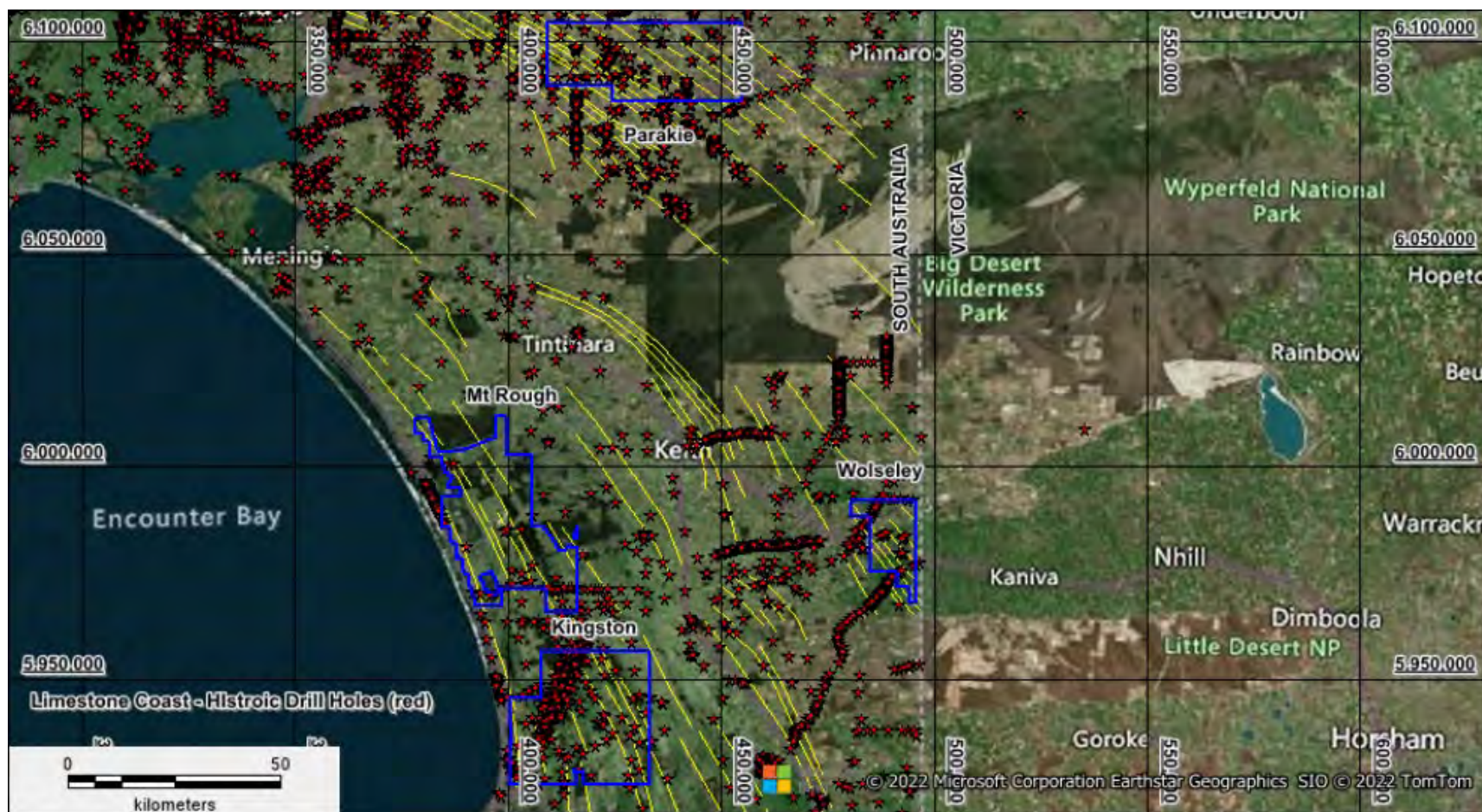


**Proposed road verge drilling traverses (in black)**





# SA: Limestone Coast REE Project

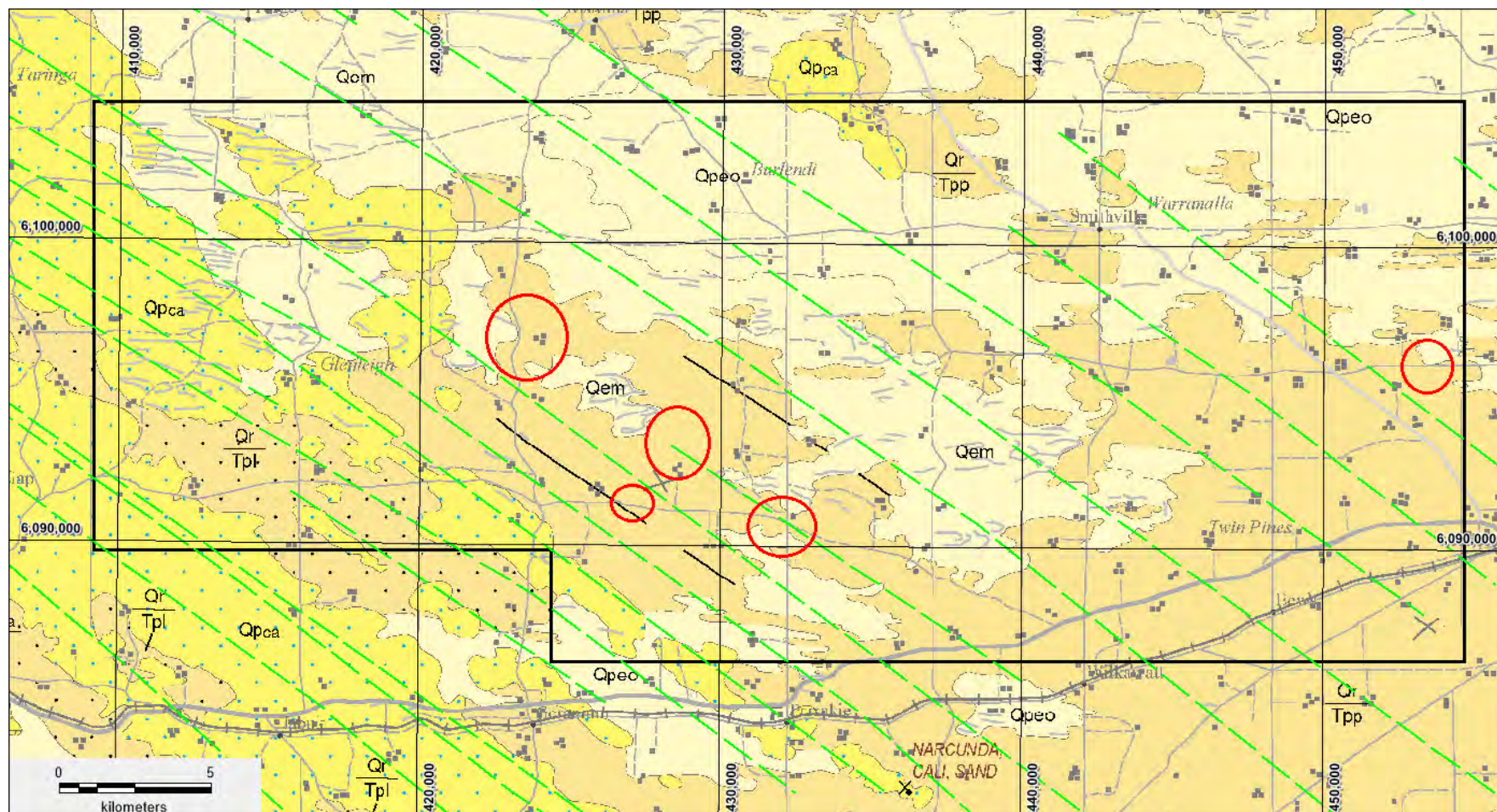


Limestone Coast Historic Drillholes (red dots)





# SA: Limestone Coast REE Project

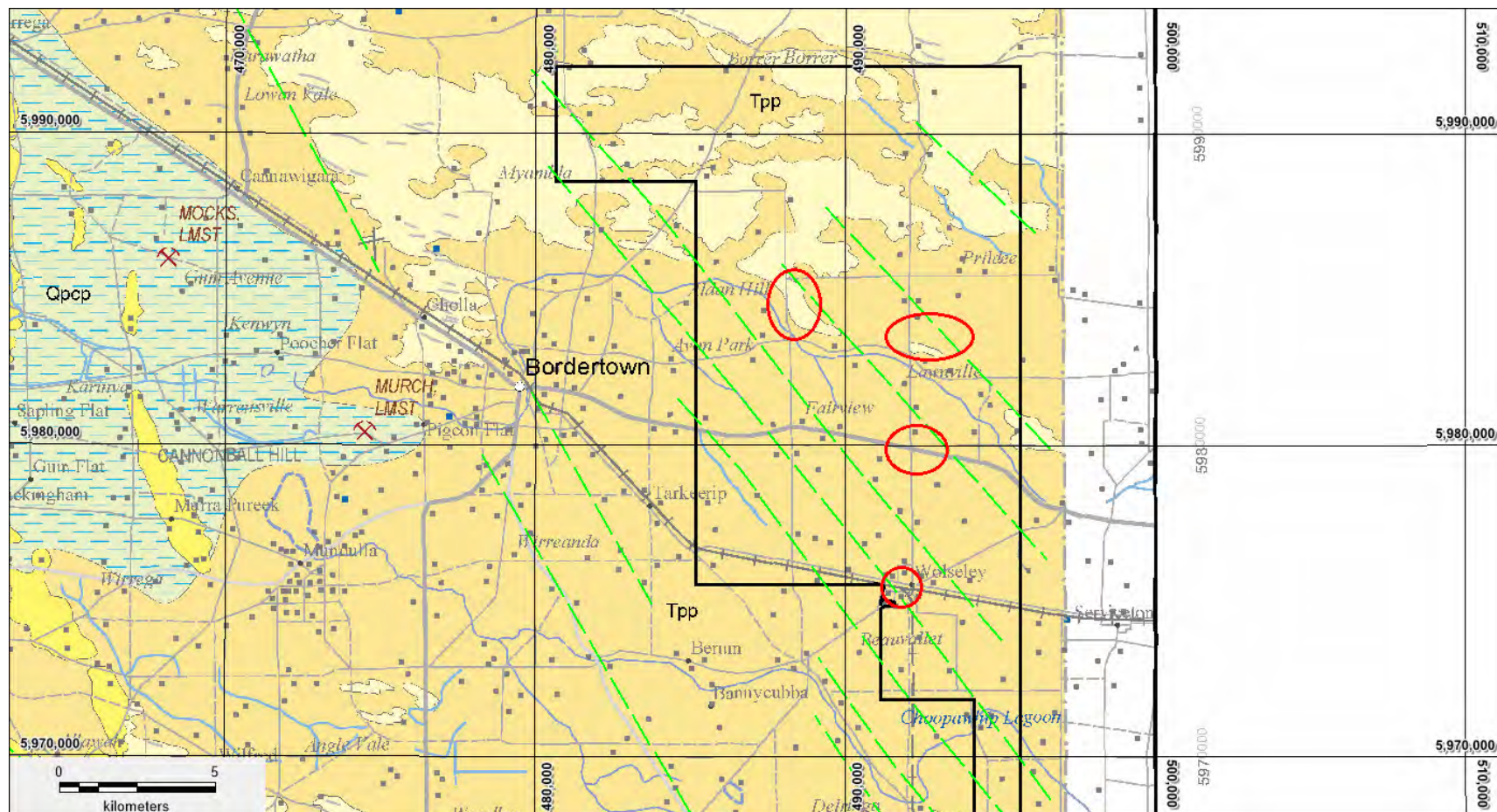


**Parrakie - areas (within red circles) subject to pXRF sampling and Laboratory tests**





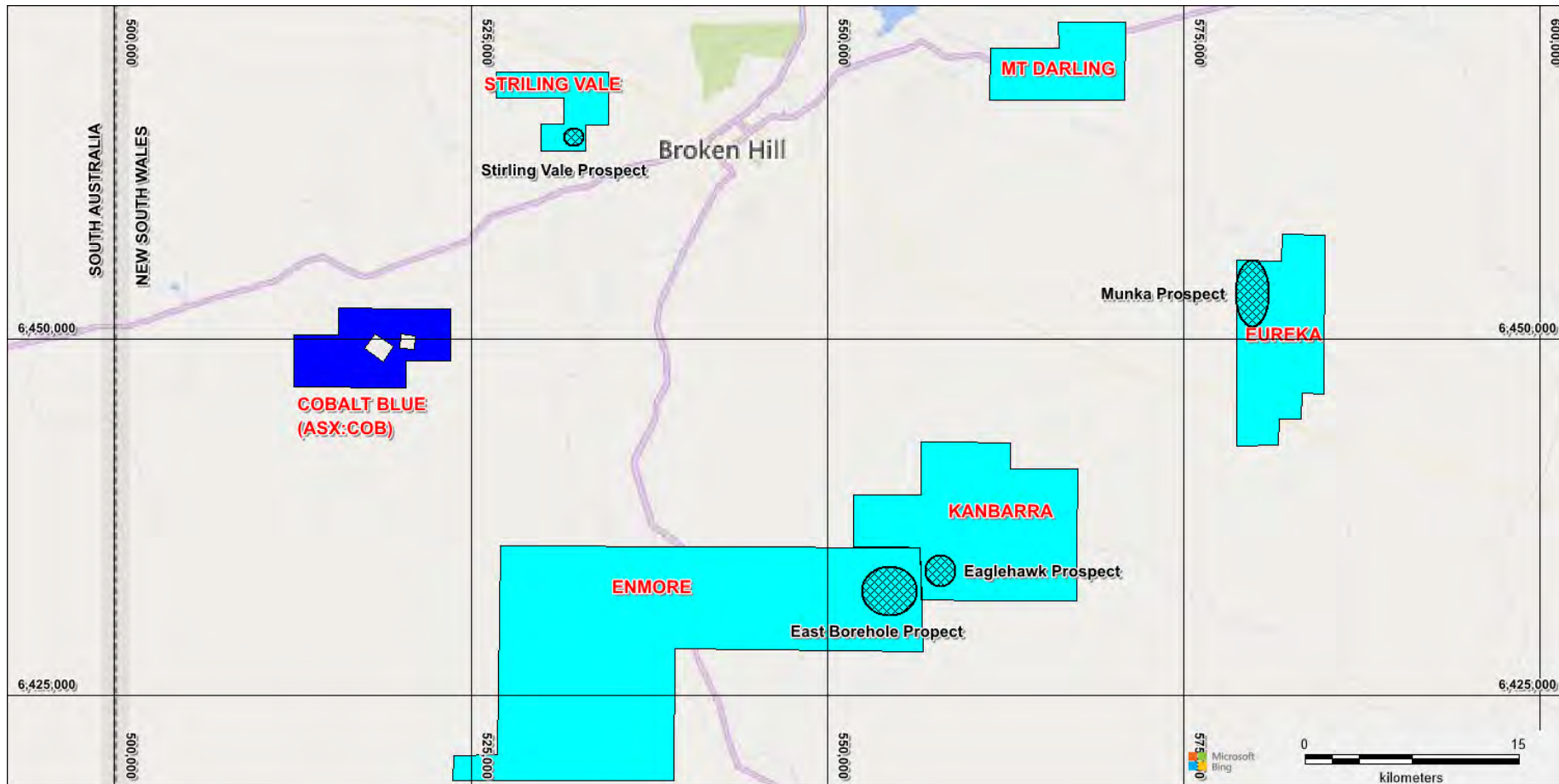
# SA: Limestone Coast REE Project



**Walseley - areas (within red circles) subject to pXRF sampling and laboratory tests**



# NSW: Broken Hill Tenements



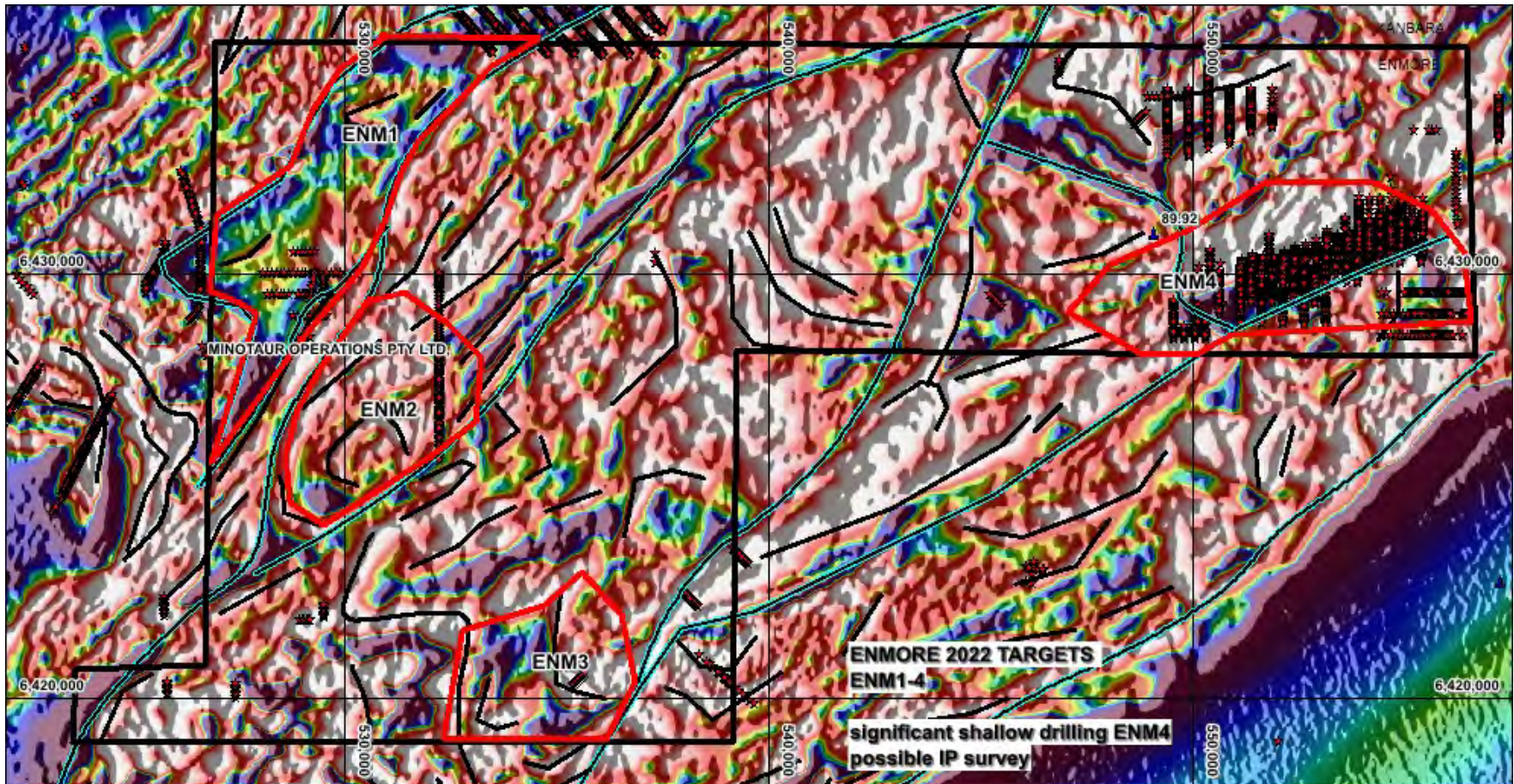
Tenements in Broken Hill – Key exploration prospects



# NSW: EL 9220 Enmore Lithostructural



AUSMON RESOURCES  
LIMITED



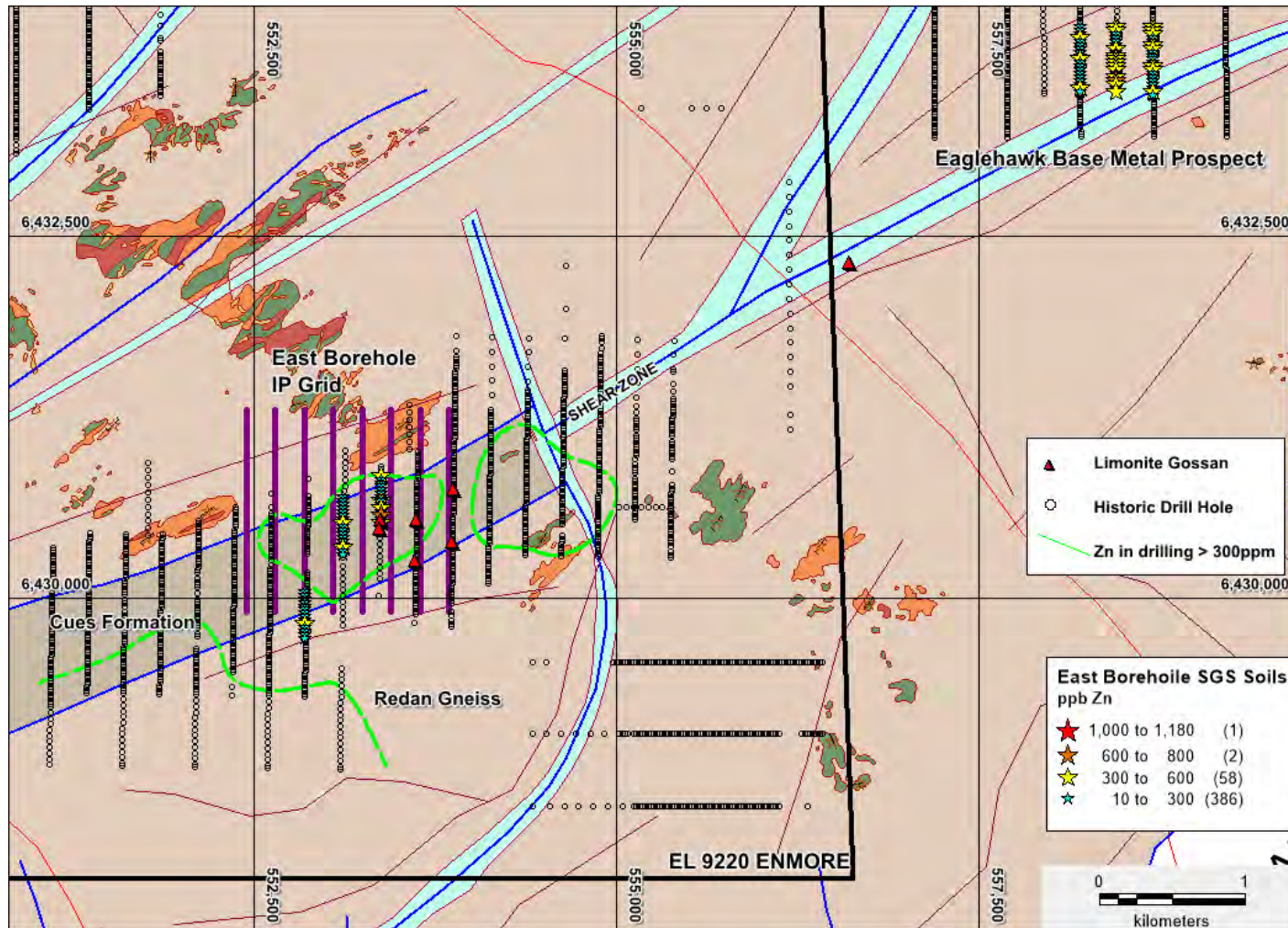
**Enmore on 1VD RTP Magnetics showing ENM Targets and historic drill collars  
(NSW Geological Survey GIS Database)**



# NSW: EL 9220 Enmore IP Survey



AUSMON RESOURCES  
LIMITED



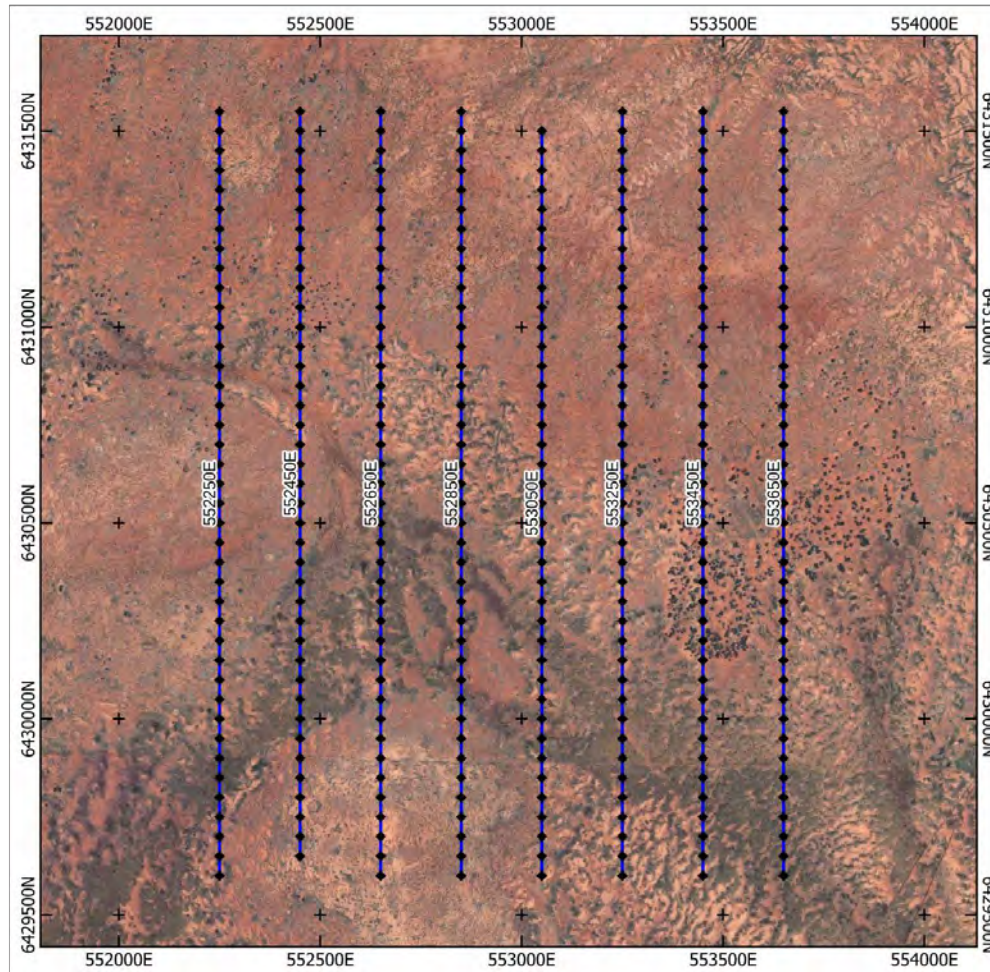
**Orientation Soil Sampling at East Borehole and Eaglehawk Prospects**



# NSW: EL 9220 Enmore IP Survey



AUSMON RESOURCES  
LIMITED

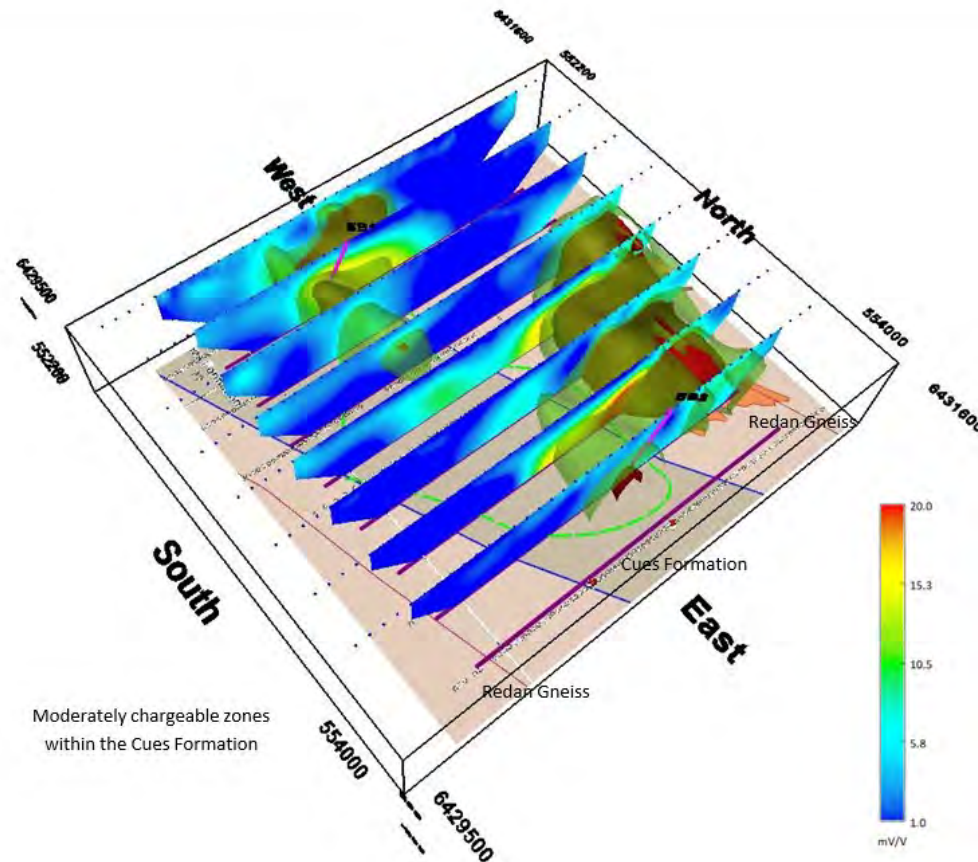


***East Borehole DDIP 2023 Survey Location Map***

# NSW: EL 9220 Enmore IP Survey



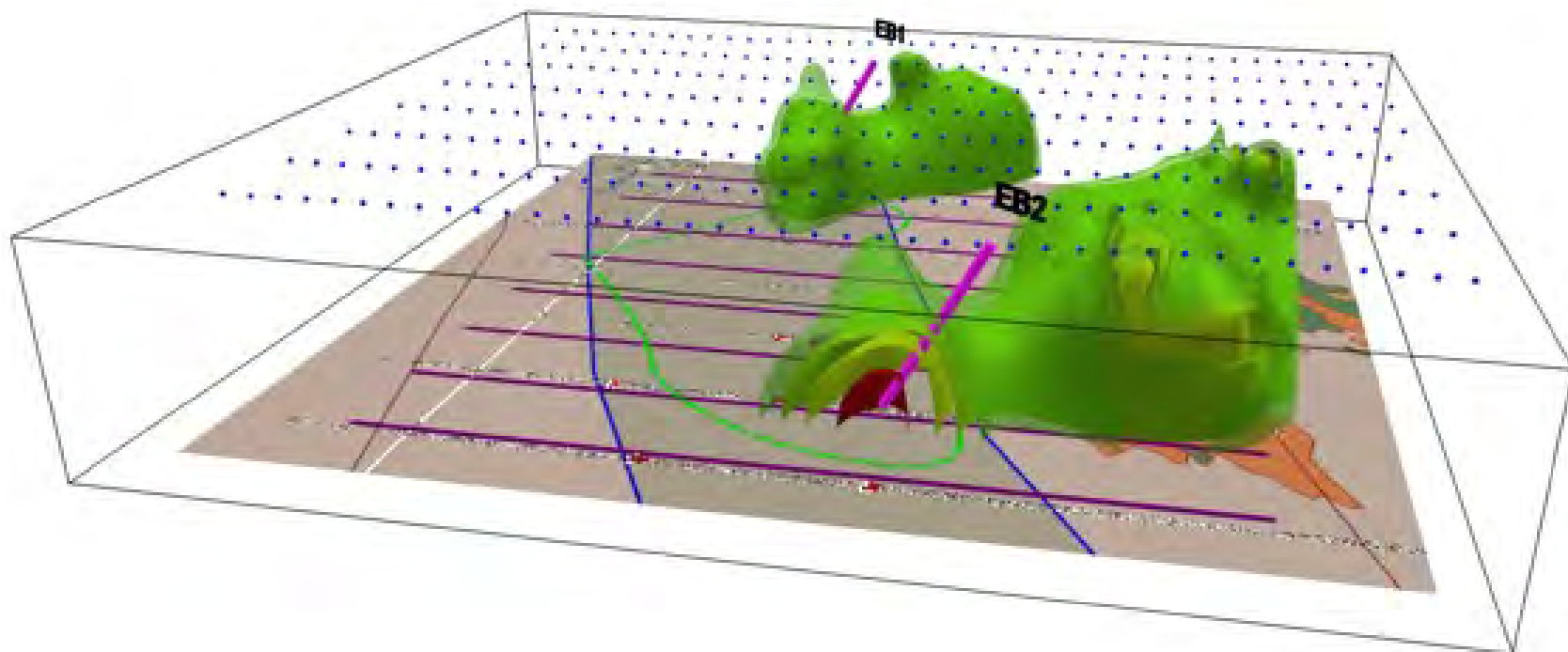
AUSMON RESOURCES  
LIMITED



**Perspective view looking from the SE. Sections are 2D inverted chargeability. Shells are from the 3D inverted chargeability model**



# NSW: EL 9220 Enmore IP Survey

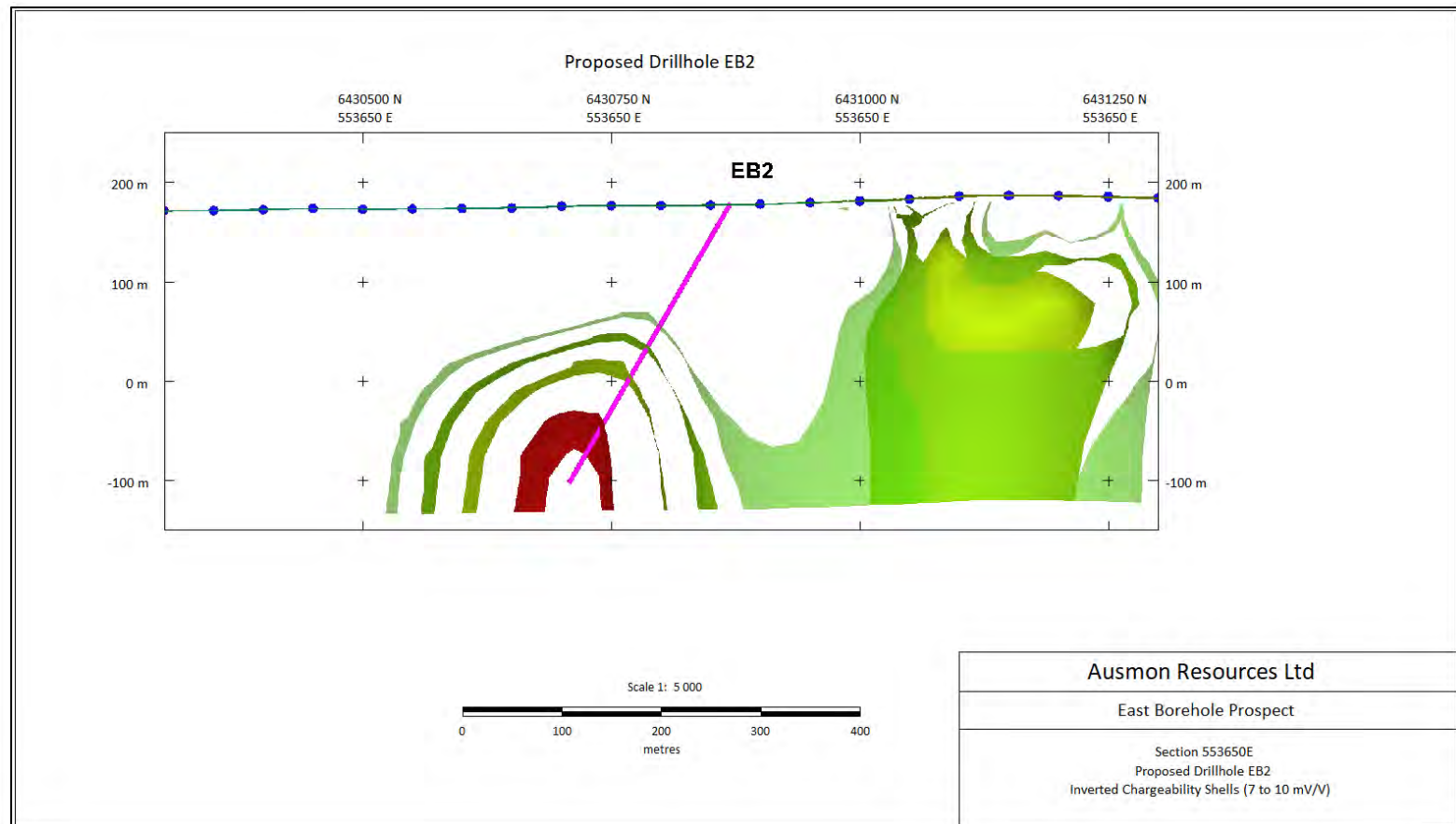


The proposed drill traces of the **two proposed drill holes EB1 and EB2** are shown in purple and Cues Formation outlined in blue.

# NSW: EL 9220 Enmore IP Survey



AUSMON RESOURCES  
LIMITED



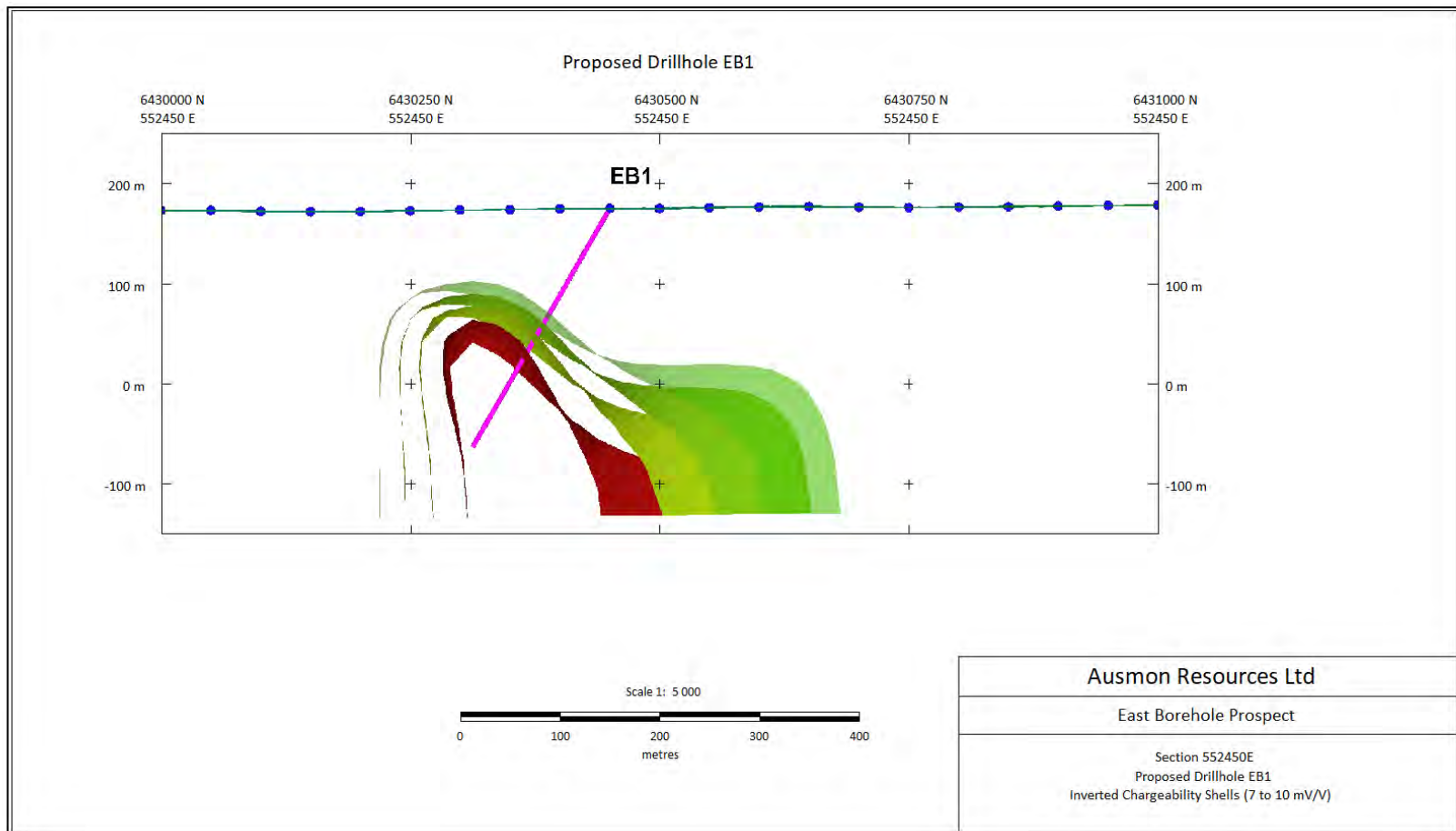
**Cross section showing proposed hole trace for **EB2** intersecting the western chargeability anomaly**



# NSW: EL 9220 Enmore IP Survey



AUSMON RESOURCES  
LIMITED

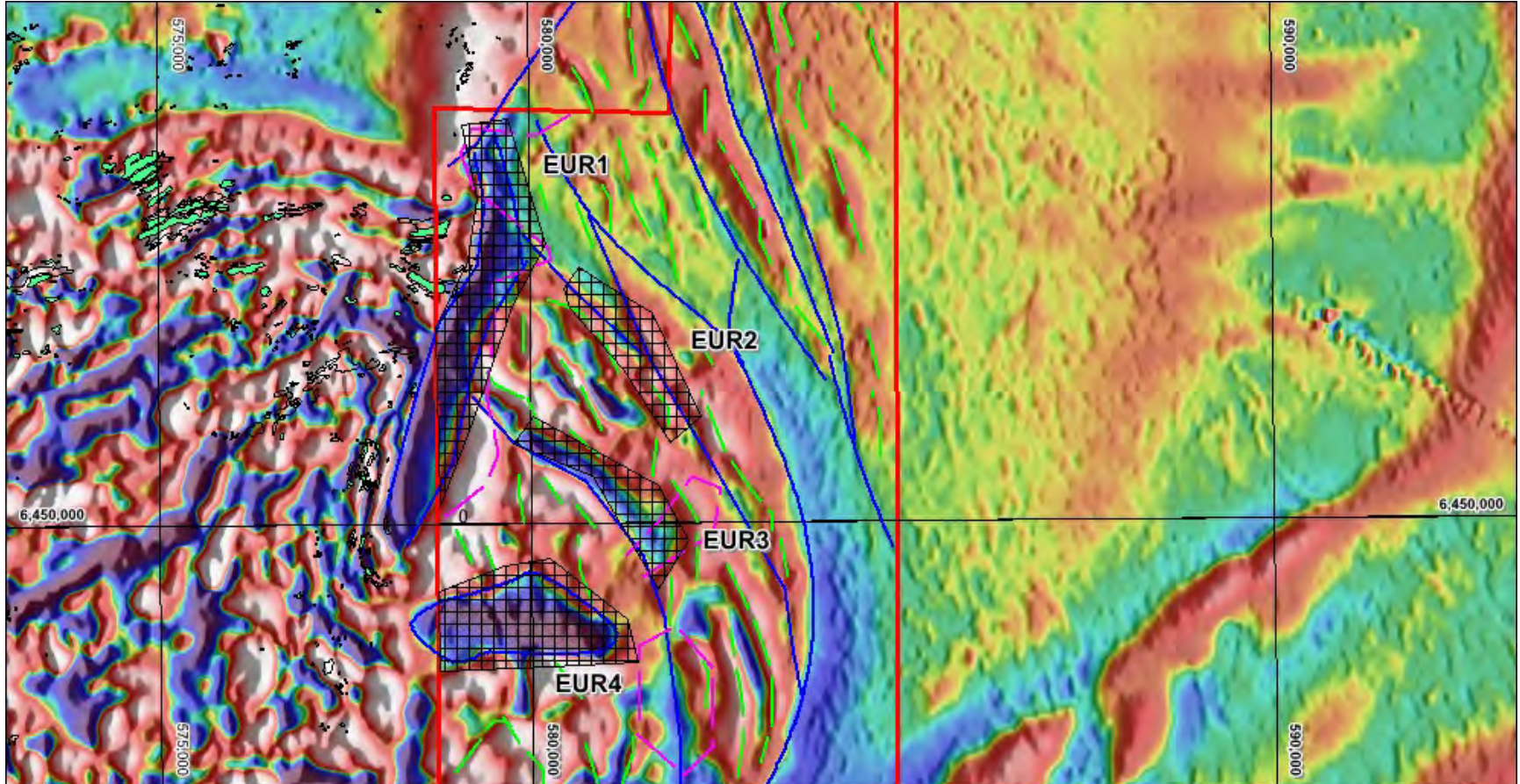


**Cross section showing proposed hole trace for **EB1** intersecting the western chargeability anomaly**

# NSW: EL 9224 Eureka Lithostructural



AUSMON RESOURCES  
LIMITED



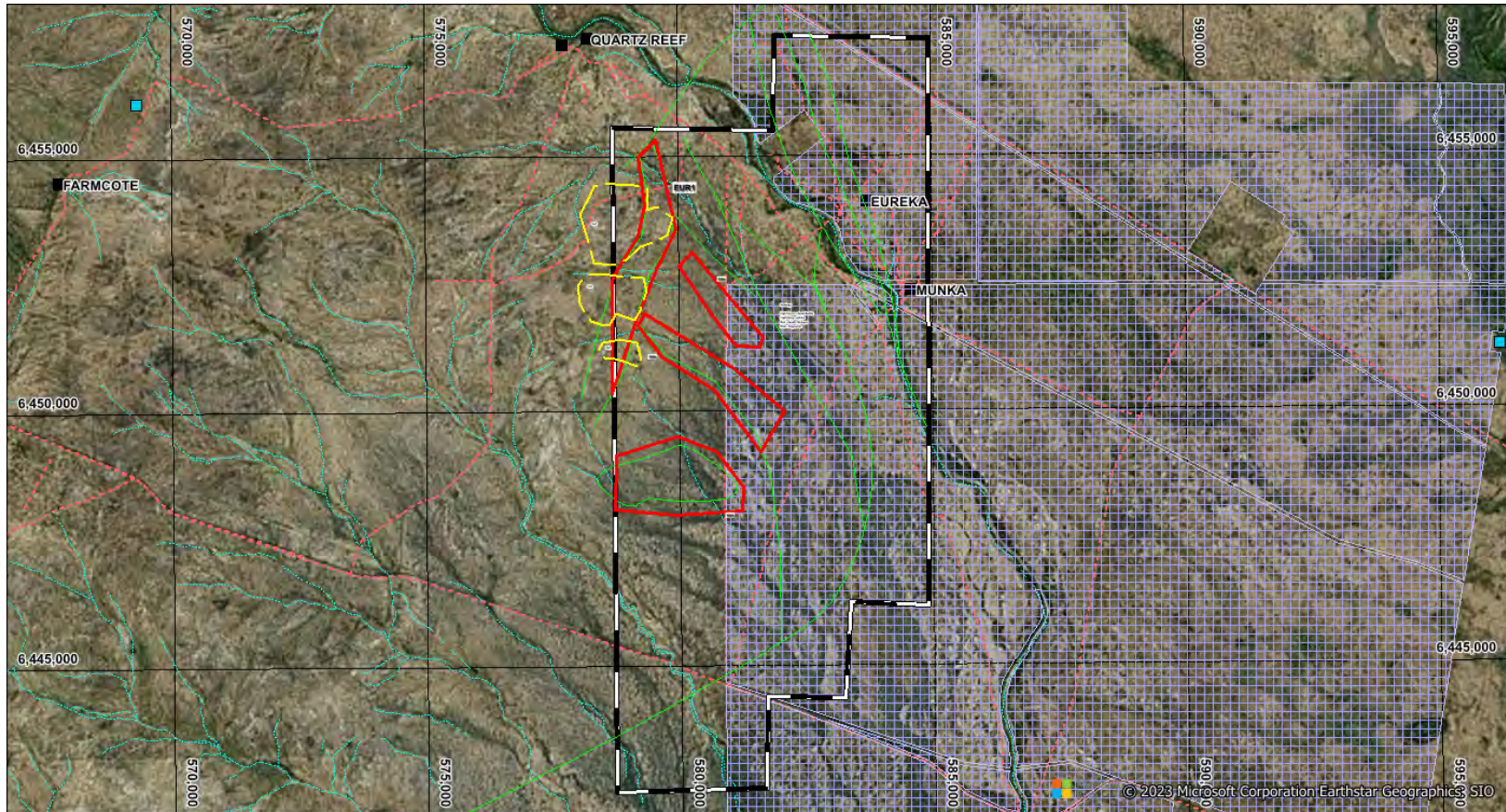
**Eureka Tenement on 1VD RTP Magnetics showing EUR targets**



# NSW: EL 9224 Eureka Lithostructural



AUSMON RESOURCES  
LIMITED



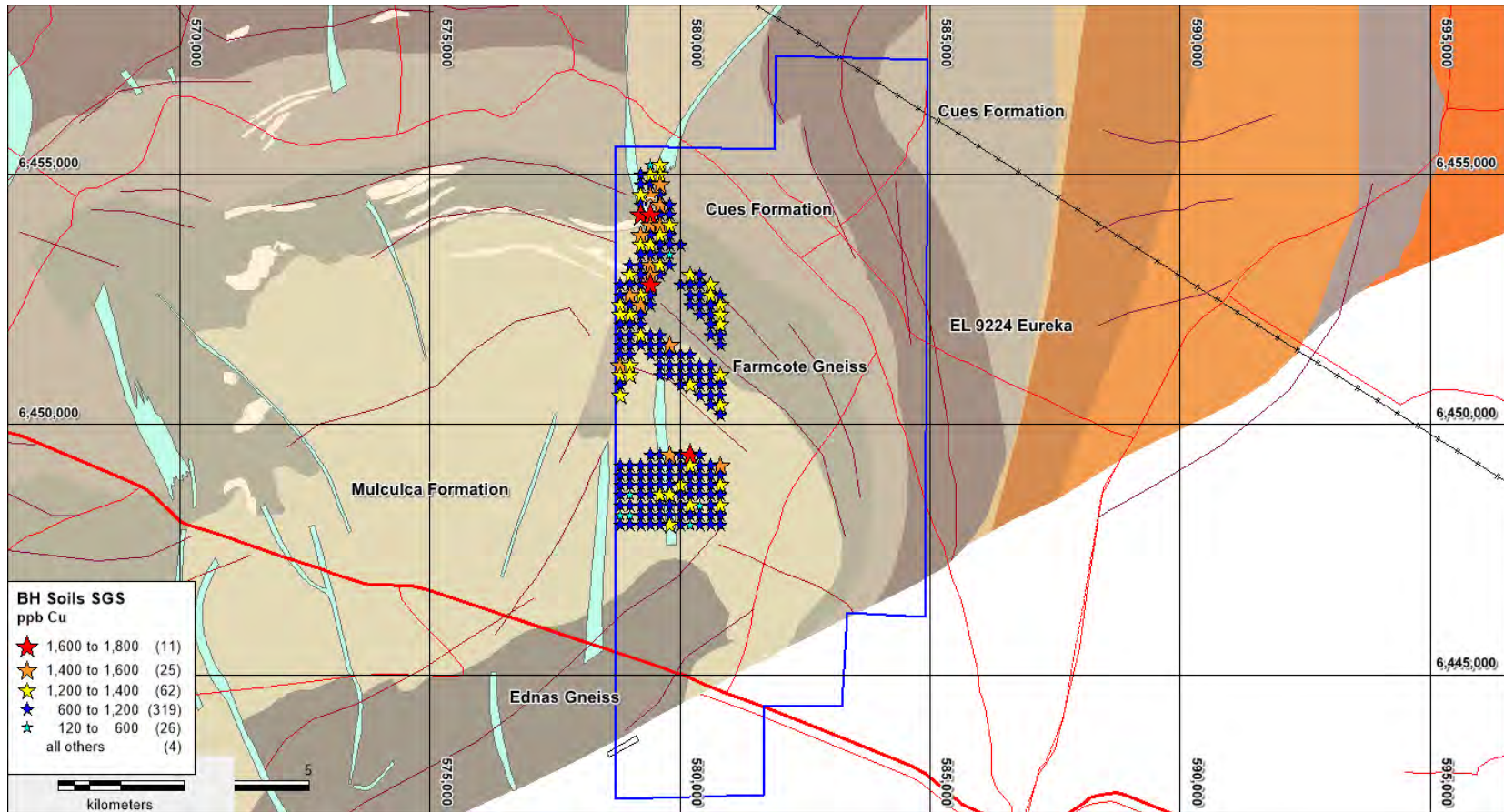
**Eureka Tenement showing EUR targets (red) and outcrop (yellow)**



# NSW: EL 9224 Eureka Lithostructural



AUSMON RESOURCES  
LIMITED



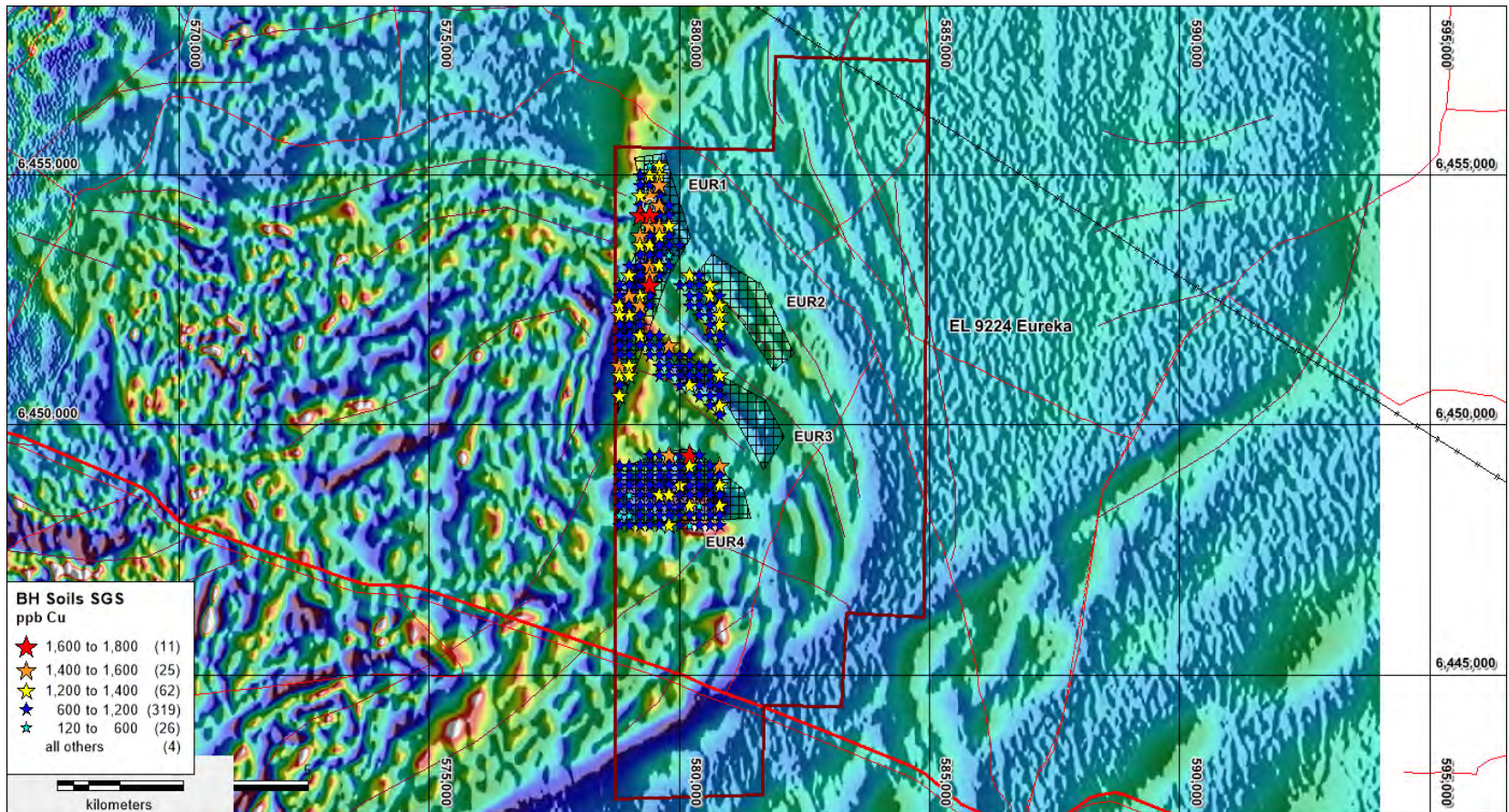
**Eureka MMI Soil Survey showing Cu results in ppb over interpreted geology  
(NSW Geological Survey)**



# NSW: EL 9224 Eureka Lithostructural



AUSMON RESOURCES  
LIMITED



**Eureka MMI Soil Survey showing Cu results in ppb over airborne magnetic image  
(NSW Geological Survey)**

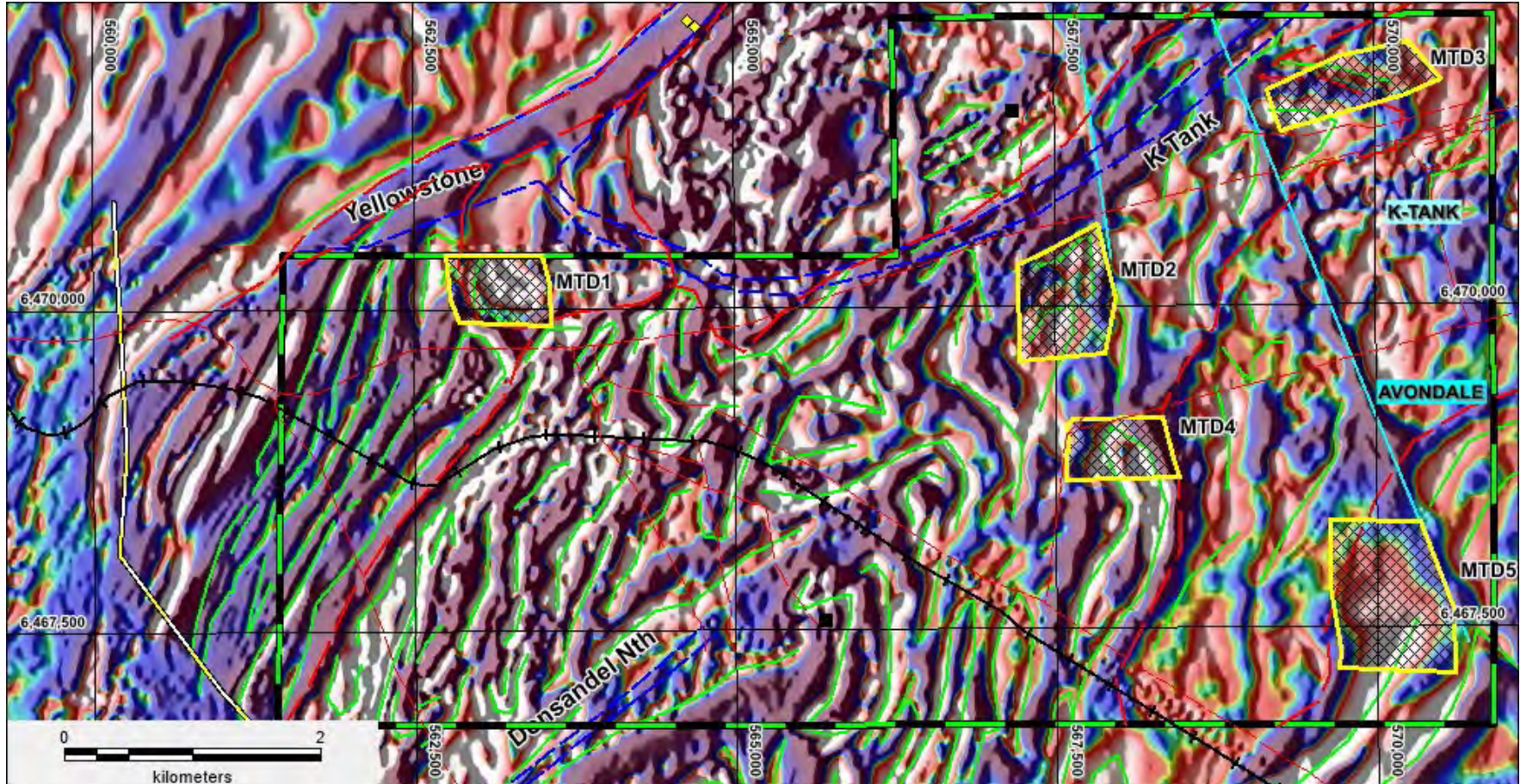


# NSW: EL 9230 Mt Darling

## Lithostructural



AUSMON RESOURCES  
LIMITED



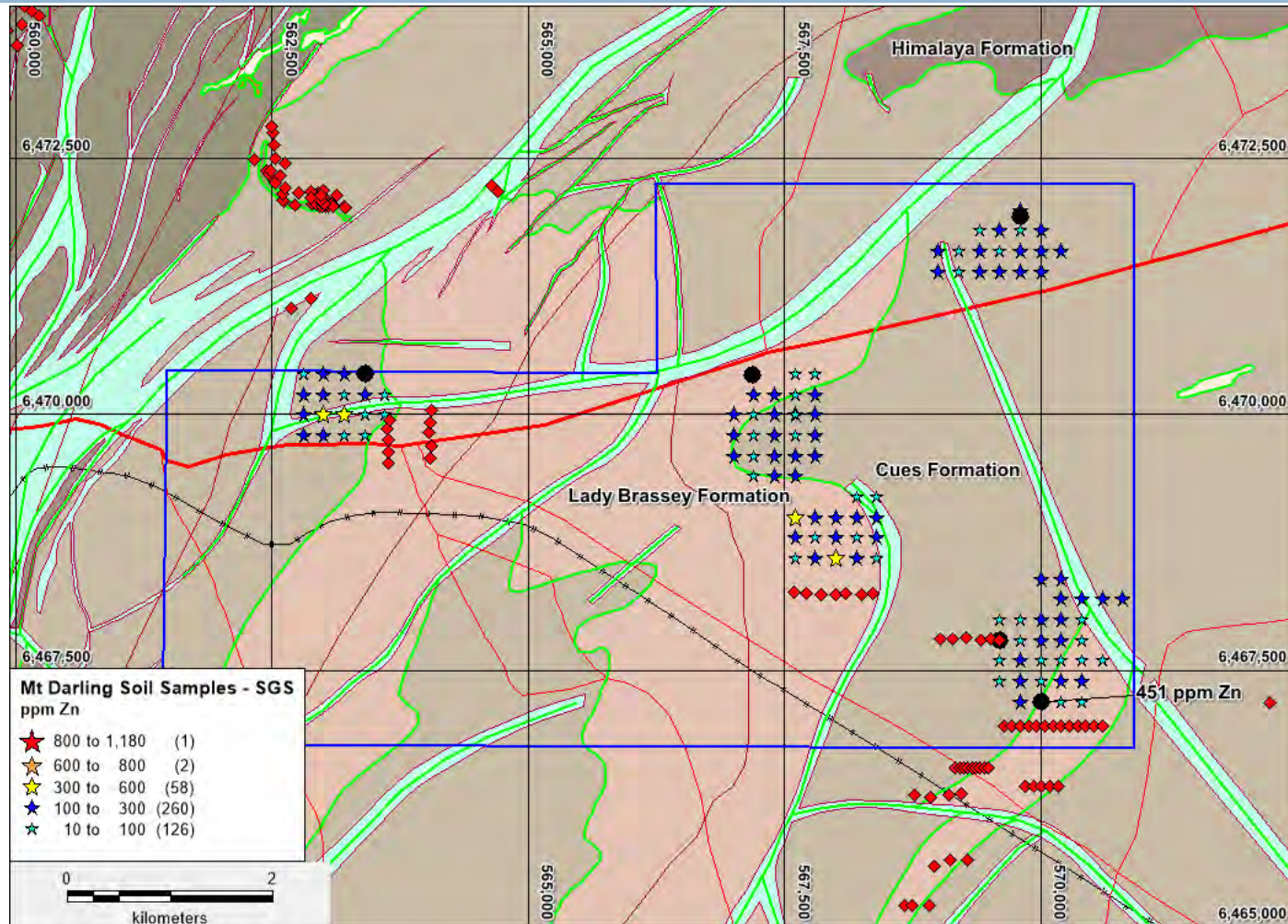
**Mt Darling on 1VD RTP Magnetics showing MTD targets**



# EL 9230 Mt Darling Lithostructural



AUSMON RESOURCES  
LIMITED



**Mt Darling MMI Soil Survey showing Zn results in ppb over geology**

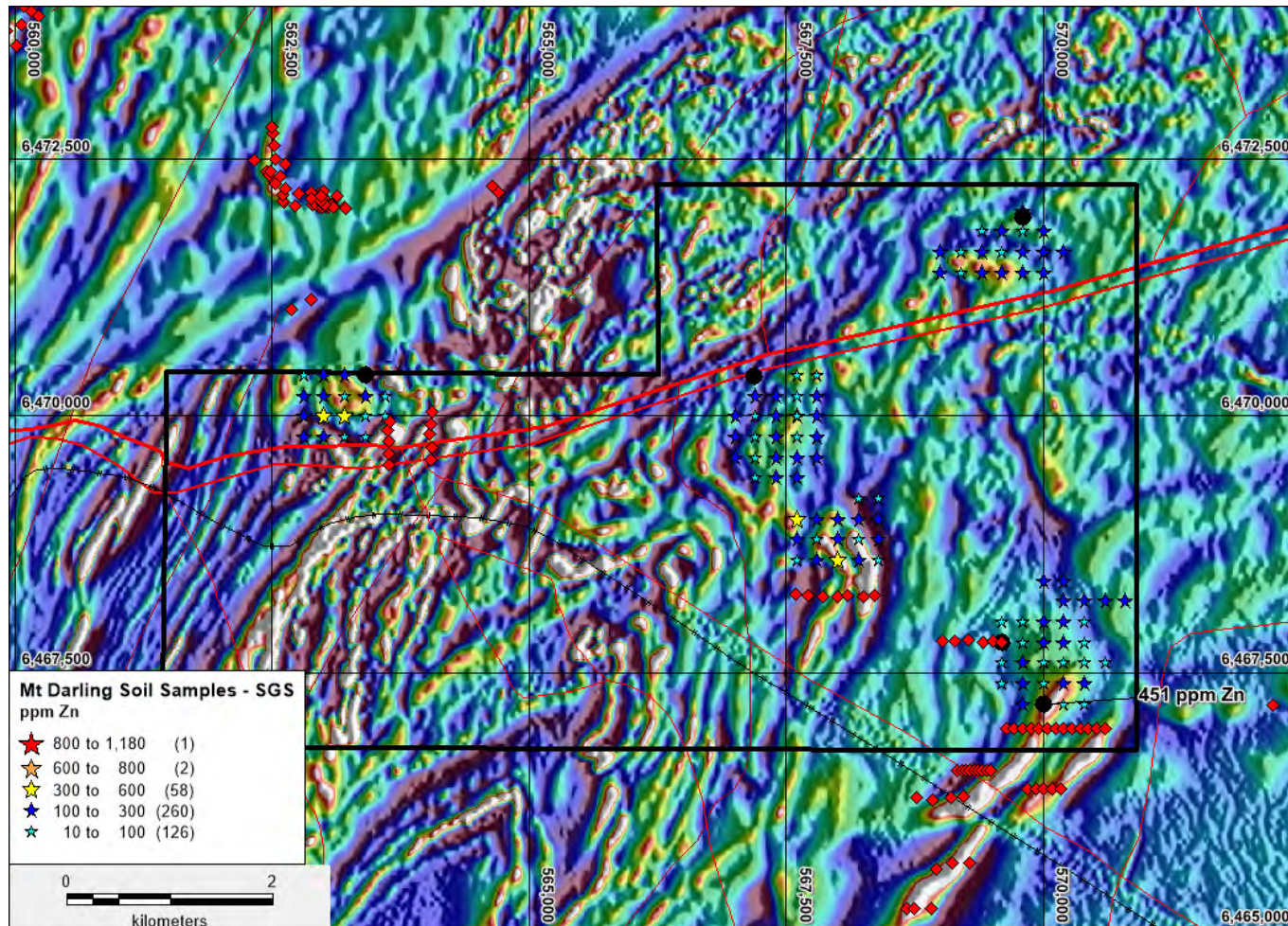


# NSW: EL 9230 Mt Darling

## Lithostructural



AUSMON RESOURCES  
LIMITED



**Mt Darling MMI Soil Survey showing Zn results in ppb over airborne magnetic image**

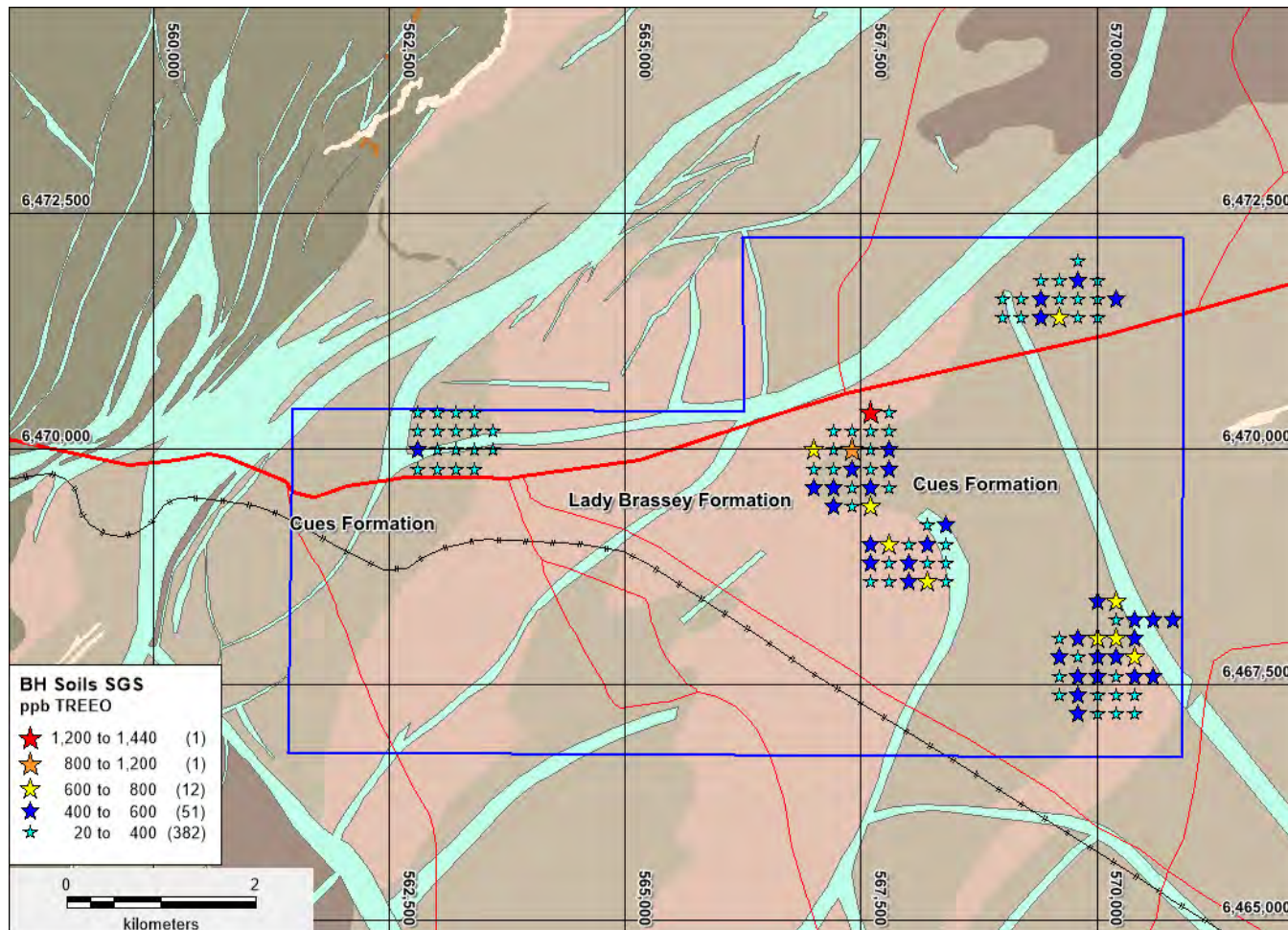


# NSW: EL 9230 Mt Darling

## Lithostructural



AUSMON RESOURCES  
LIMITED

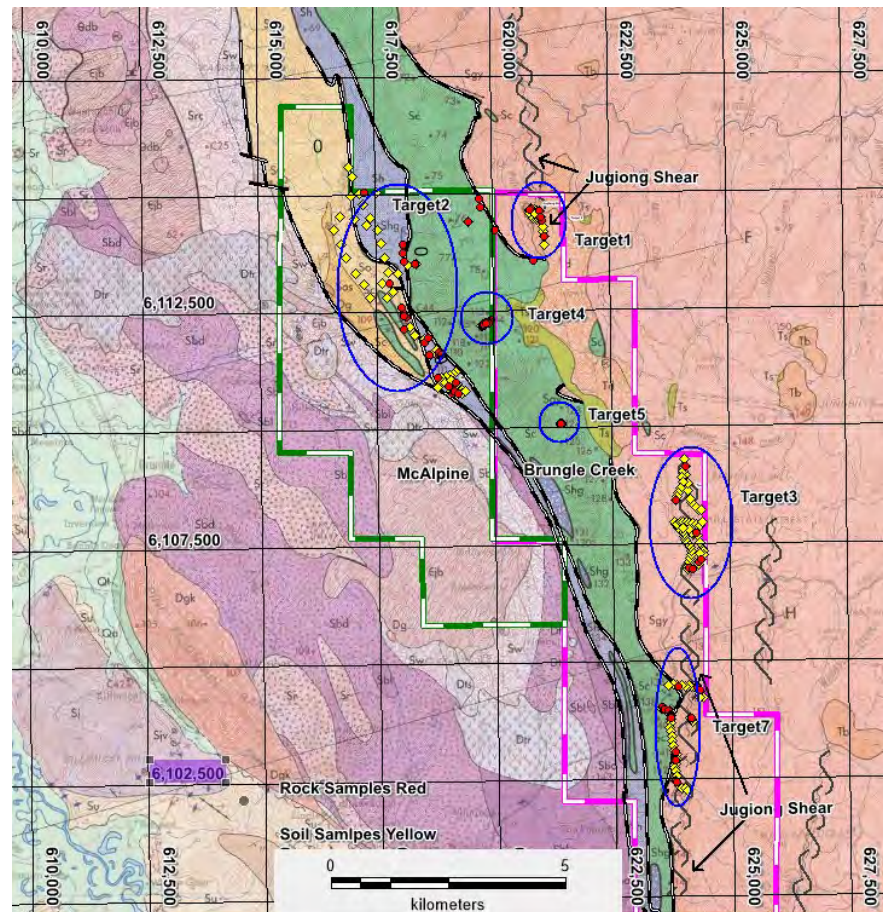


**Mt Darling MMI Soil Survey showing TREEO results in ppb over geology**

# NSW: Tumut EL 8954 Brungle Creek and EL 9252 McAlpine



AUSMON RESOURCES  
LIMITED



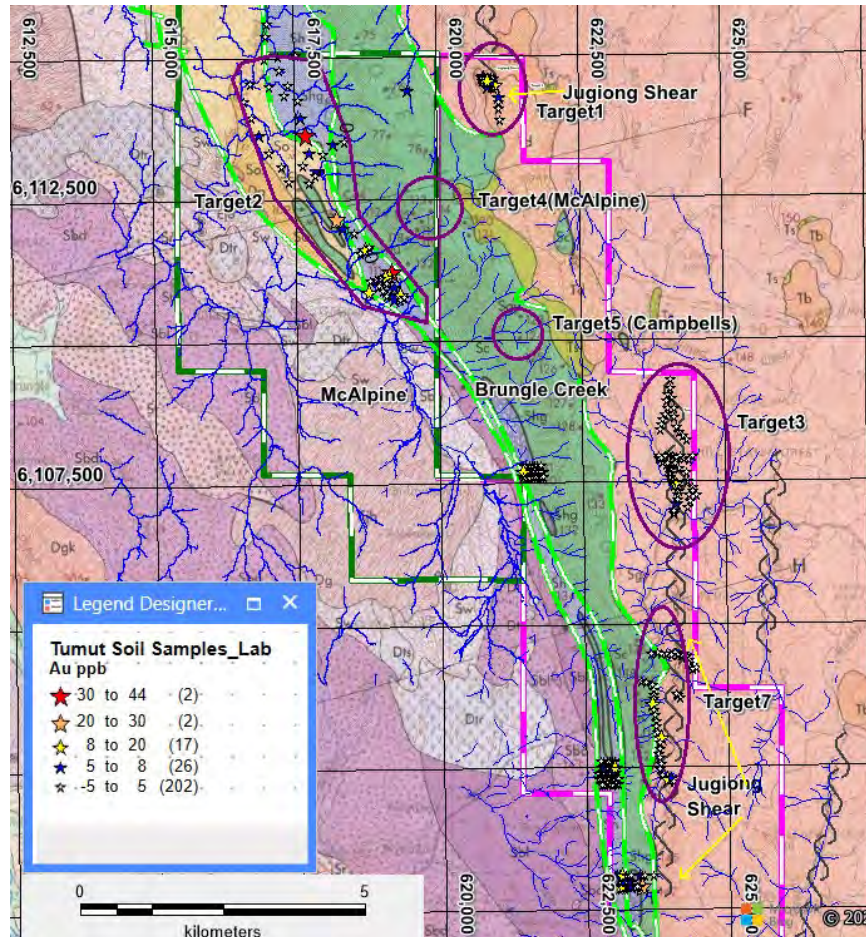
*Brungle Creek EL8954 (Pink boundary) and McAlpine EL9252 (Dark Green boundary)  
6 Target areas investigated: Red for rock sampling and Yellow for soil sampling traverses*



# NSW: Tumut EL 8954 Brungle Creek and EL 9252 McAlpine



AUSMON RESOURCES LIMITED

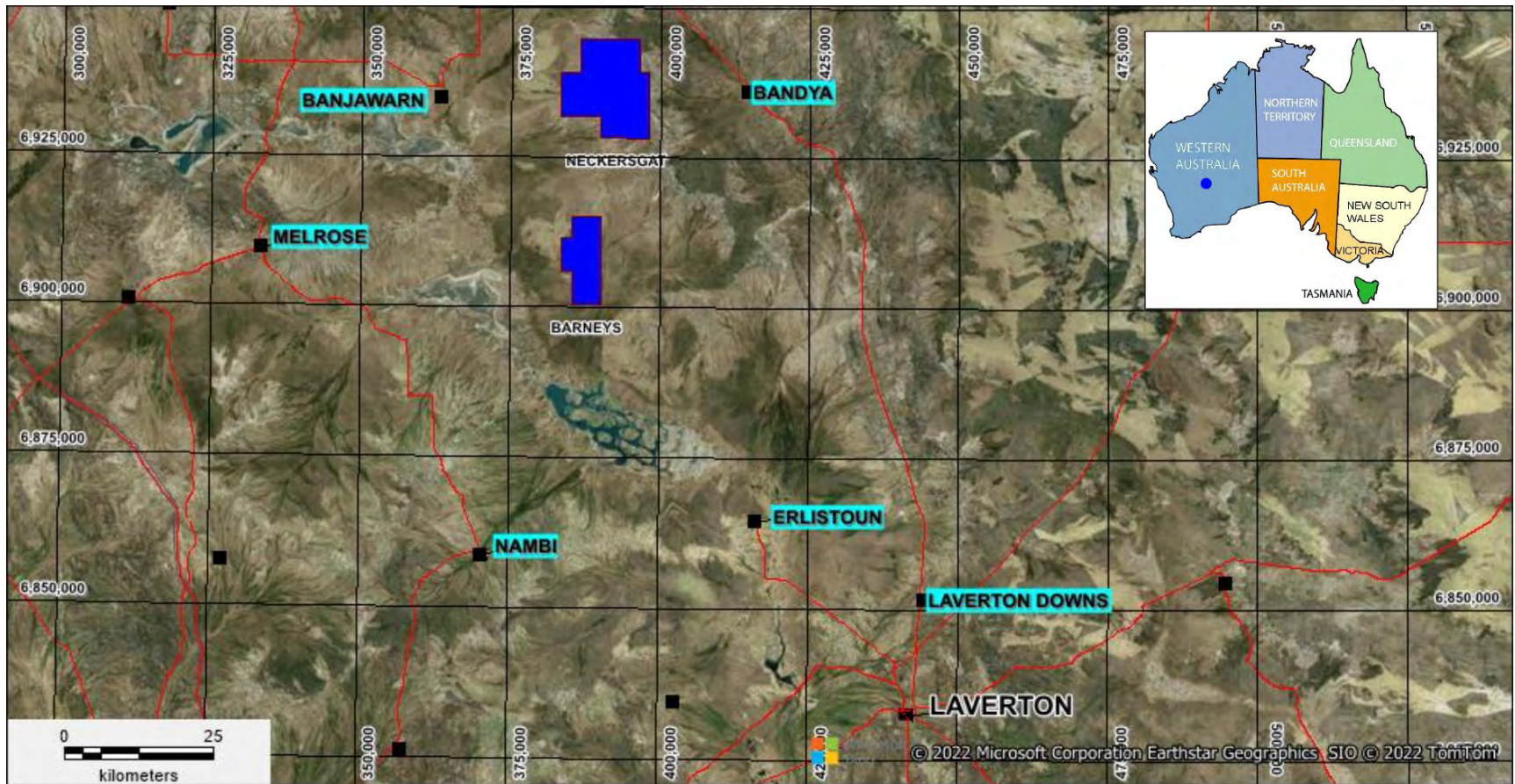


*Brungle Creek EL8954 (Pink boundary) and McAlpine EL9252 (Dark Green boundary) showing Au ppb soil results and faults in Light Green lines*

# WA: Laverton – Lithium Exploration



AUSMON RESOURCES  
LIMITED



**Barneys and Neckersgat located to the north of Laverton in the Eastern Goldfields of WA**





# Granted Licences

Tenement	Area Name	Location	Beneficial Interest	Status
EL 8745	Kanbarra	NSW	100%	Expiry on 15 May 2024
EL 8747	Stirling Vale	NSW	100%	Expiry on 24 May 2024
EL 8954	Brungle Creek	NSW	100%	Expiry on 11 March 2026
EL 9220	Enmore	NSW	100%	Expiry on 21 July 2026
EL 9224	Eureka	NSW	100%	Expiry on 21 July 2026
EL 9230	Mt Darling	NSW	100%	Expiry on 21 July 2026
EL 9252	McAlpine	NSW	100%	Expiry on 6 August 2027
EL 6795	Parakie	SA	100%	Grant on 5 July 2022 and expiry on 4 July 2028
EL 6796	Mt Rough	SA	100%	Grant on 5 July 2022 and expiry on 4 July 2028
EL 6797	Kingston	SA	100%	Grant on 5 July 2022 and expiry on 4 July 2028
EL 6807	Wolseley	SA	100%	Grant on 19 July 2022 and expiry on 18 July 2028
EL 38/3718	Barney	WA	100%	Grant on 17 March 2023 and expiry on 16 March 2028
EL 38/3719	Neckersgat	WA	100%	Grant on 17 March 2023 and expiry on 16 March 2028



**AUSMON RESOURCES  
LIMITED**

# Reference Technical Releases on ASX

<b>Date</b>	<b>Description</b>
29 July 2022	Quarterly Activities Report
6 September 2022	Field Exploration Commences for Rare earth in SA
5 October 2022	Field Reconnaissance Rare Earth Exploration in SA Completed
26 October 2022	Quarterly Activities Report
25 November 2022	Presentation at 2022 AGM
7 December 2022	Field Exploration Commences at EL8954 and EL9252
20 December 2022	Field Exploration Completed at EL8954 and EL9252, NSW
25 January 2023	Quarterly Activities Report
21 March 2023	Soil Sampling commences at ELs 9230/2224 Broken Hill, NSW
23 March 2023	Two tenements for lithium exploration granted in WA
30 March 2023	Field exploration sampling results at EL8954 and EL 9252 NSW
4 April 2023	Soil sampling completed at EL9230 and EL9224, Broken Hill NSW
28 April 2023	Quarterly Activities Report





# Disclaimer

Certain statements contained in this presentation, including information as to the future financial or operating performance of Ausmon Resources Limited and its projects, are forward-looking statements. Such forward looking statements:

- Are necessarily based upon a number of assumptions and estimates that, while considered reasonable by Ausmon Resources Limited, are inherently subject to significant technical, business, economic, competitive, political and social uncertainties and contingencies;
- Involve known and unknown risks and uncertainties that could cause actual events or results to differ materially from estimated or anticipated events or results reflected in such forward-looking statements; and
- May include, among other things, statements regarding targets, estimates and assumptions in respect of production, prices, operating costs, results, capital expenditures, reserves and resources, and are or may be based on assumptions and estimates related to future technical, economic, market, political, social and other conditions.

Ausmon Resources Limited disclaims any intent or obligation to update publicly any forward-looking statements, whether as a result of new information, future events or otherwise.

All forward-looking statements made in this presentation are qualified by the foregoing cautionary statements. Investors are cautioned that forward-looking statements are not guarantees of future performance and accordingly investors are cautioned not to rely on forward-looking statements due to the inherent uncertainty therein.

The information in this presentation relates to exploration results and is based on information compiled by Mr Mark Derriman, Member of the Australasian Institute of Geoscientist. Mr Derriman has sufficient experience that is relevant to the style of mineralisation and type of deposits under consideration and to the activities which he is undertaking to qualify as a Competent Person as defined in the 2012 Edition of the JORC Australasian Code for Reporting of Exploration Results, Mineral Resources and Ore Reserves.