



Discover. Develop. Sustain.

IMARC 2023-10-31

ASX:TEM

# Disclaimer



- Any material used in this presentation is only an overview and summary of certain data selected by the management of Tempest Minerals Ltd (“TEM”).
- The presentation does not purport to contain all the information that a prospective investor may require in evaluating a possible investment in TEM nor does it contain all the information which would be required in a disclosure document prepared in accordance with the requirements of the Corporations Act and should not be used in isolation as a basis to invest in TEM. Recipients of this presentation must make their own independent investigations, consideration and evaluation of TEM.
- TEM recommends that potential investors consult their professional advisor/s as an investment in TEM is considered to be speculative in nature.
- Statements in this presentation are made only as of the date of this presentation unless otherwise stated and the information in this presentation remains subject to change without notice. Reliance should not be placed on information or opinions contained in this presentation.
- To the maximum extent permitted by law, TEM disclaims any responsibility to inform any recipient of this presentation on any matter that subsequently comes to its notice which may affect any of the information contained in this document and presentation and undertakes no obligation to provide any additional or updated information whether as a result of new information, future events or results or otherwise.
- No representation or warranty, express or implied, is made as to the fairness, accuracy, completeness or correctness of the information, opinions or conclusions contained in or derived from this presentation or any omission from this presentation or of any other written or oral information or opinions provided now or in the future to any person.
- To the maximum extent permitted by law, neither TEM nor, any affiliates, related bodies corporate and their respective officers, directors, employees, advisors and agents, nor any other person, accepts any liability as to or in relation to the accuracy or completeness of the information, statements, opinions or matters (express or implied) arising out of, contained in or derived from this presentation or any omission from this presentation or of any other written or oral information or opinions provided now or in the future to any person.

## Competent Persons Statement

The scientific and technical information contained within this Presentation is based on, and fairly represents information prepared by Mr Don Smith, a Competent Person who is a Member of the Australian Institute of Mining and Metallurgy (Ausimm), Australian Institute of Geoscience (AIG) and Geological Society of Australia (GSA). Mr Smith is the Managing Director of Tempest Minerals Ltd and has sufficient experience that is relevant to the style of mineralisation and type of deposit under consideration and to the activity being undertaken to qualify as a Competent Person as defined in the 2012 Edition of the “Australasian Code for Reporting of Exploration Results, Mineral Resource and Ore Reserves”. Mr Smith consents to the inclusion in this presentation of the matters based on his information in the form and context in which it appears.

The Board of the Company has authorised the release of this presentation to the market.

A landscape photograph of a dry, open field with sparse vegetation and a bright sun in the sky. The sun is positioned in the upper center, creating a warm, golden glow. The foreground is filled with low-lying, scrubby plants and some bare, dark branches. The background shows a line of trees and a clear sky.

# Our Company



# Investor Snapshot

- Experienced Invested Management
- Innovative science and technology
- Modest price point

**Copper**  
**Gold**  
**Lithium**  
**Rare Earths**



ASX Code	Share Price
<b>TEM</b>	<b>\$0.008</b>
Shares on Issue	Market Cap
<b>511.4m</b>	<b>\$4m</b>
Cash @ Sep 30	Debt
<b>\$2m + Investments</b>	<b>\$0m</b>



## Board



**BRIAN MOLLER**

Non-executive Chairman

Brian has been a partner at the legal firm HopgoodGanim for 30 years and leads the Corporate Advisory and Governance practice. Brian is the chair or a non-executive director of several ASX listed companies; and was critical in the progression of LSE listed SolGold PLC to becoming one of the largest copper gold developments in the world.



**DON SMITH**

Managing Director

Don Smith is a Geologist and entrepreneur who holds a Bachelor of Science from Newcastle University and an MBA from The Australian Institute of Business. With over 20 years in the mining industry, he has held roles in junior through to multinational firms on projects spanning 6 continents and numerous commodities. Don is involved with a number of private and publicly listed resource companies.



**ANDREW HAYTHORPE**

Non-executive Director

Andrew Haythorpe has 30 years experience in geology, funds management and has been a Director and Chairman of a number of TSX and ASX listed companies including Crescent Gold. Andrew has been involved in over A\$300 million of mergers, acquisitions and capital raisings. Currently he is a Managing Director of Goldoiz Ltd and Stunalara Metals Pty Ltd and chairman of Allup Silica Ltd.



**OWEN BURCHELL**

Non-executive Director

Owen Burchell is a Mining Engineer with 20 years of technical, operational and corporate experience including management positions at Rio Tinto, BHP and Barrick Gold through to numerous mining start-ups, closures and operational turnaround projects. Owen is Managing Director of imminent ASX IPO Abarta Resources Limited.

# Sustainability



- ✓ Striving for best environmental practice
- ✓ Strong local stakeholder engagement
- ✓ Corporate governance committed board

# Innovation

- Strategic Partnerships  
Pioneering New Technology
- Industry leading digital  
innovation
- New science and research



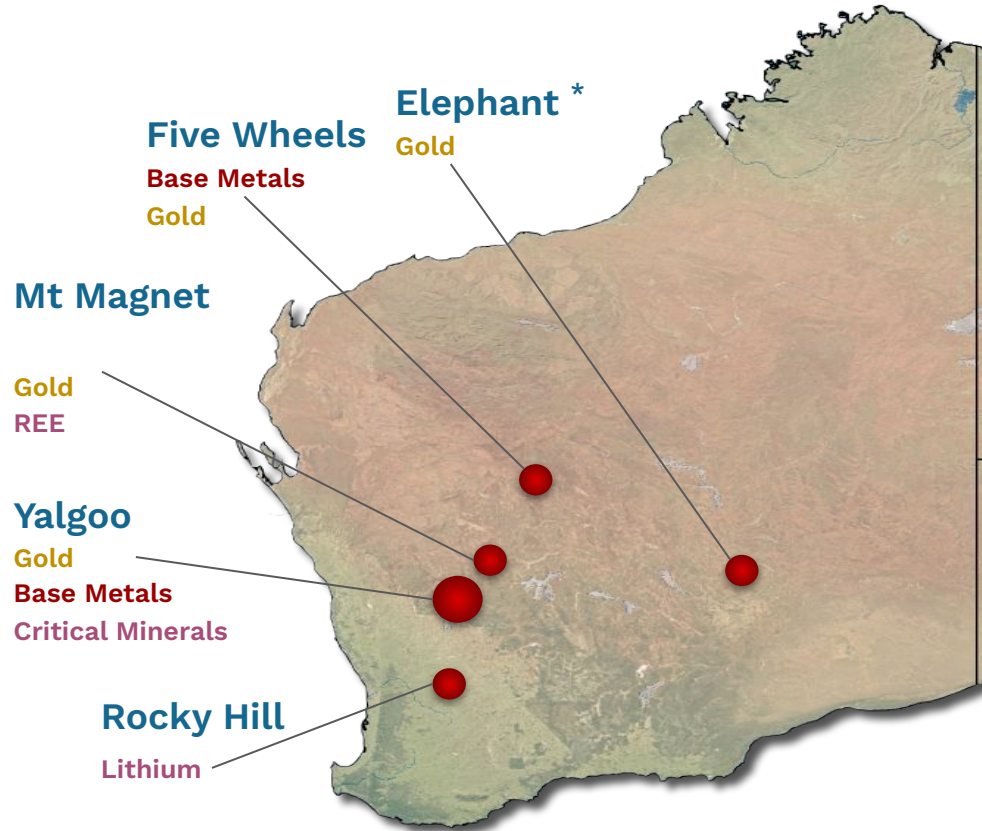
A landscape photograph showing a rocky, arid terrain. In the foreground, there are numerous reddish-brown rocks of various sizes scattered across the ground. A dirt path or road is visible on the left side. In the middle ground, there are several trees, some with sparse green foliage and others that are bare. In the background, a drilling rig or similar industrial equipment is visible, partially obscured by the trees. The sky is a clear, bright blue, and the sun is shining from the upper left, creating a lens flare effect. The overall scene suggests a mining or exploration site in a dry, open environment.

# Our Projects





# Australian Exploration



- ~2000 square kilometers of highly prospective territory
- High quality targets
- Derisked multi-commodity portfolio

\* Pending completion of conditions precedent and transaction

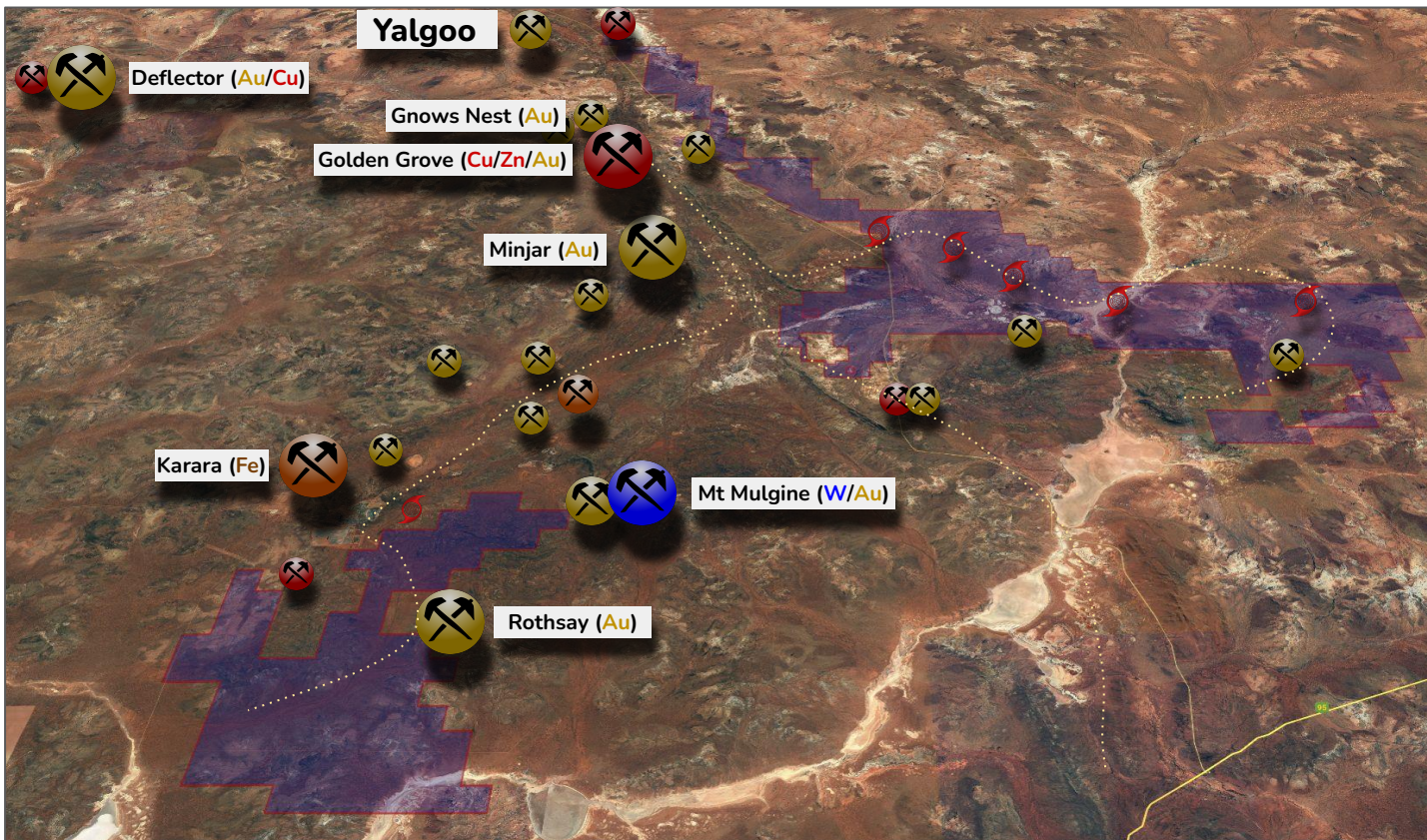


## World Class Yet Underexplored

- ★ >1,000km<sup>2</sup> - TEM 100%
- ★ >25% regional landholding
- ★ Proven potential. Massive opportunity.
- ★ 400 km from Perth | High impact exploration
- ★ Nearby world class mines | Major infrastructure



# Yalgoo - Scale And Precedent



## Opportunity

- <10km from existing world class operations
- 50+km of strike of previously unknown mineralised belt
- Parts never explored
- **First holes all mineralised**
- Recent geophysics multiple confirmed and new drill targets

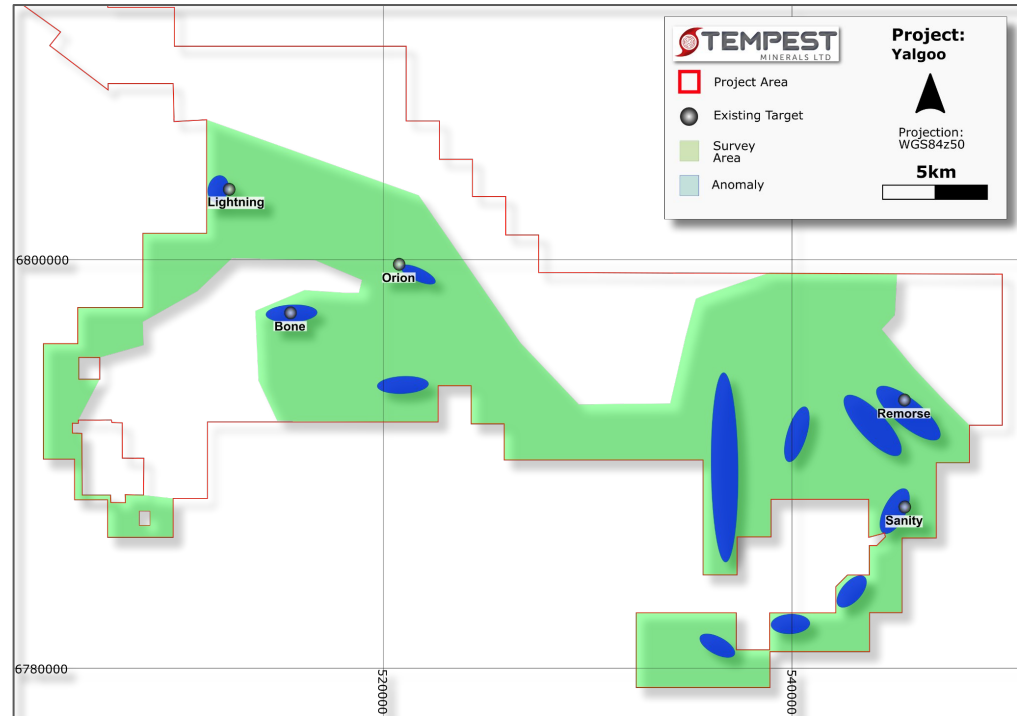




# Yalgoo - EM Survey Targets

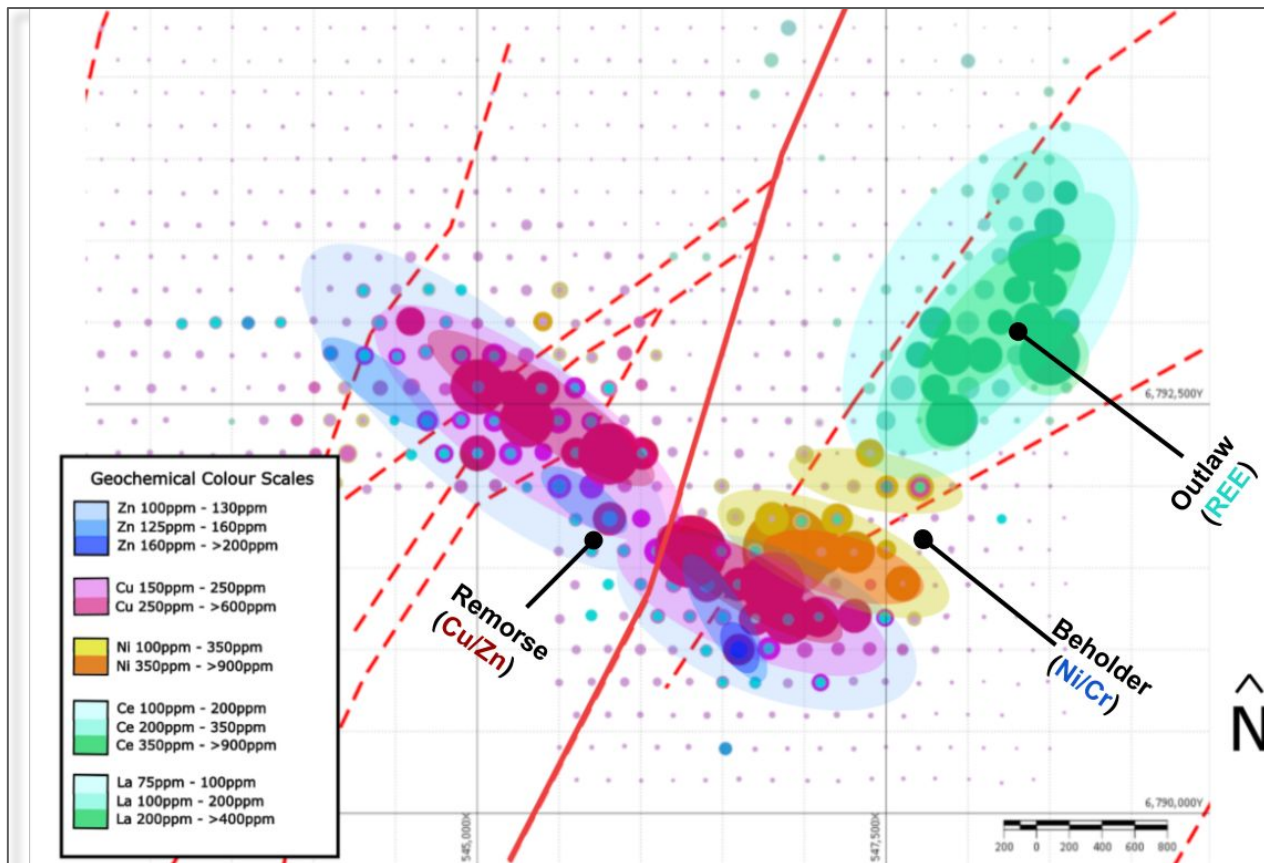
## Highlights

- Large scale high quality Electromagnetic Survey conducted mid 2023
- Preliminary results favourable with multiple exciting targets
- Correlation with several existing TEM drill targets
- Highly anomalous conductive signal observed at the Remorse base metal target





# Yalgoo - Remorse Copper Target



## Highlights

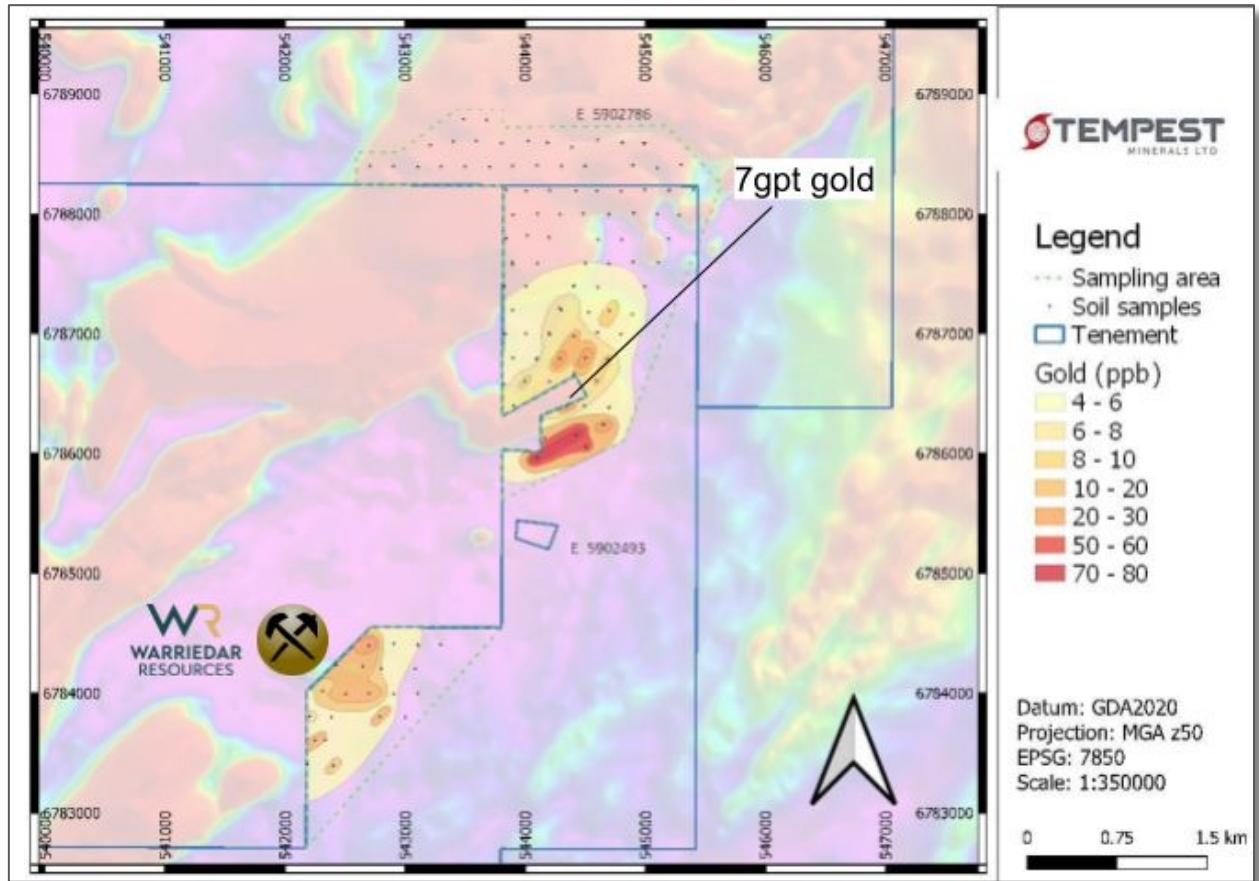
- 4 kilometre base metal anomaly identified at the Remorse Target
- Extremely coherent results for surface geochemistry
- Geochemistry potentially correlates with a VMS signature
- Further surface sampling in progress
- Drilling program in final stages of planning



# Yalgoo - Sanity Gold Target

## Highlights

- Rock chip results up to:
  - 7gpt gold,
  - 0.2% copper,
  - >60% iron
- Larger polymetallic soil envelope (up to 80ppb gold and 1,200ppm copper)
- Results beside known gold deposit with new resource currently being drilled - potential extension?





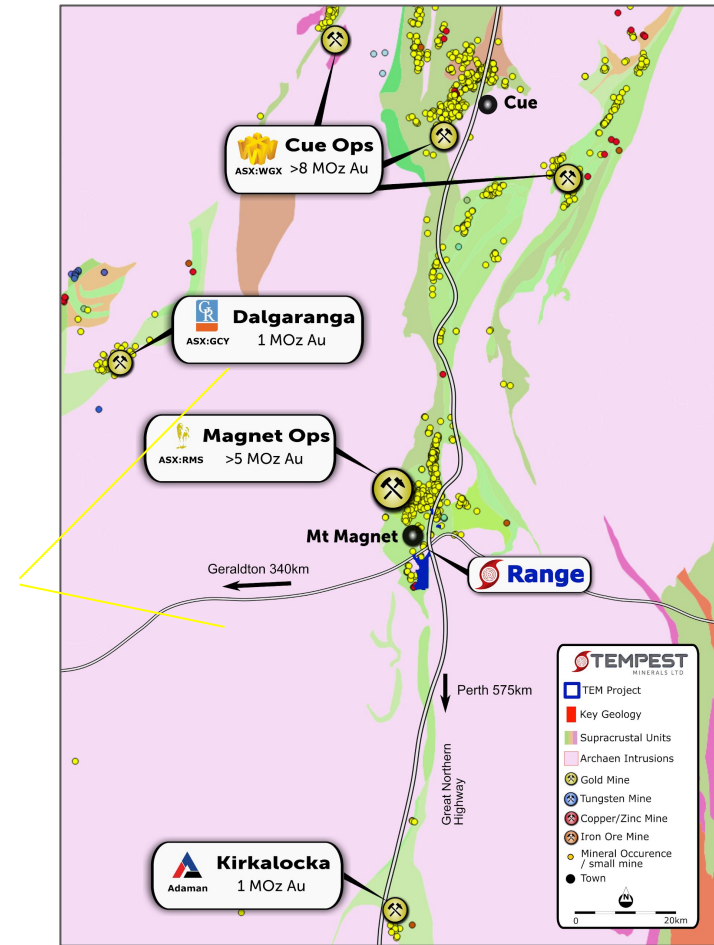
## In The Shadow Of The Headframe

- ★ >20km<sup>2</sup> - TEM 100%
- ★ New geology work | Gold and critical mineral potential
- ★ Mining region | Low bar to exploration and development
- ★ 5 km from processing facility | Operating neighbours

# Range - Mt Magnet Region

## World Class Location

- Prolific gold region - >6Moz historical production in Mount Magnet alone
- Adjacent success stories include:
  - Ramelius ASX:RMS
  - Genesis ASX:GMD
  - Westgold ASX:WGX
- Tenements adjacent to Ramelius' Mt Magnet operations to the north and west and Genesis to East



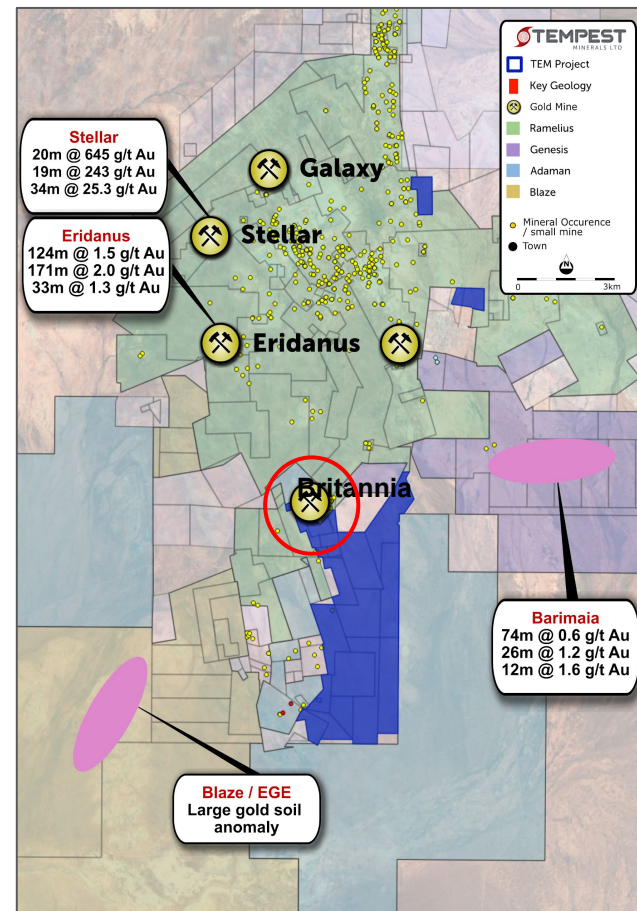


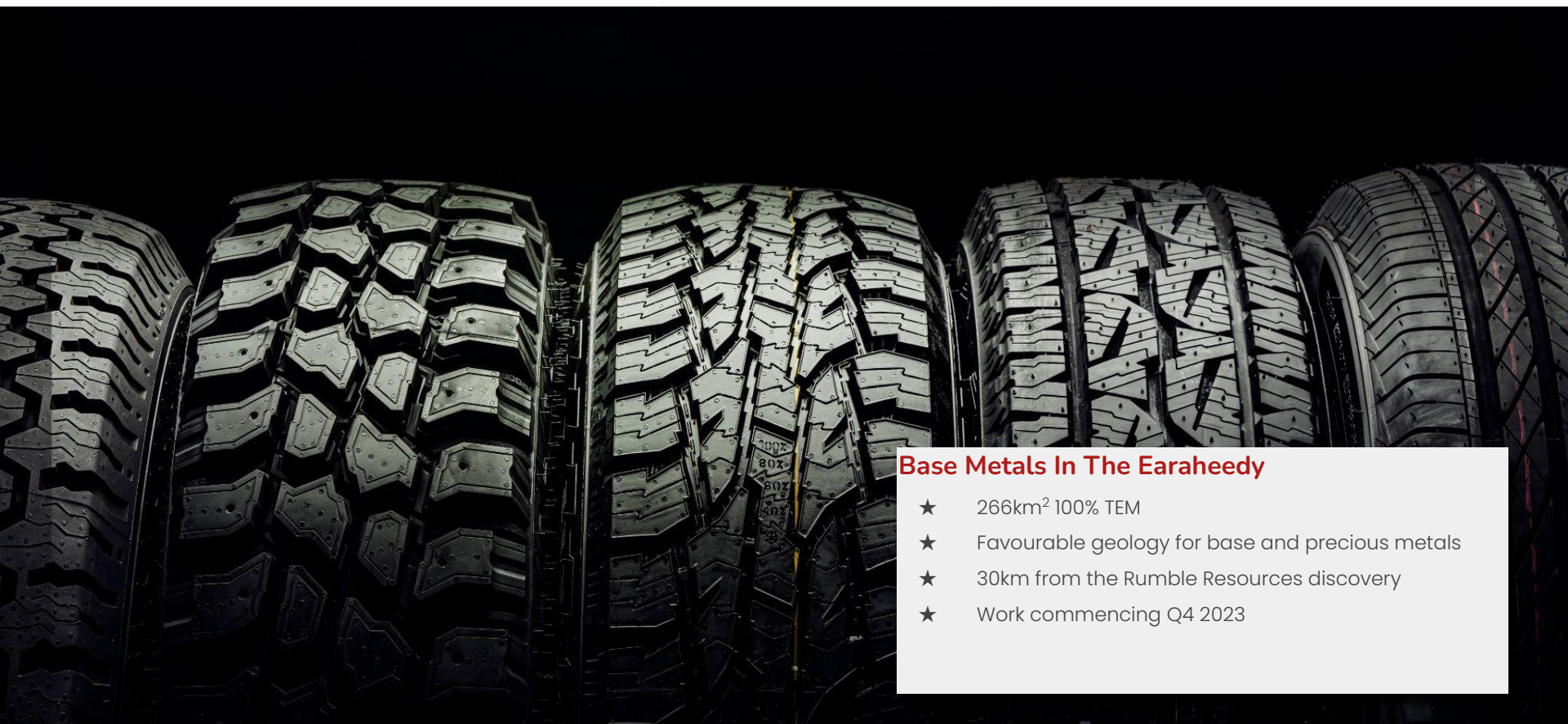


# Range - Project Overview

## Surrounded by Gold

- New geological models - new prospectivity
- Undocumented historic workings along strike from Britannia open pit.
- Wide spread mineralisation and alteration
- Target generation in progress - drill testing 2024



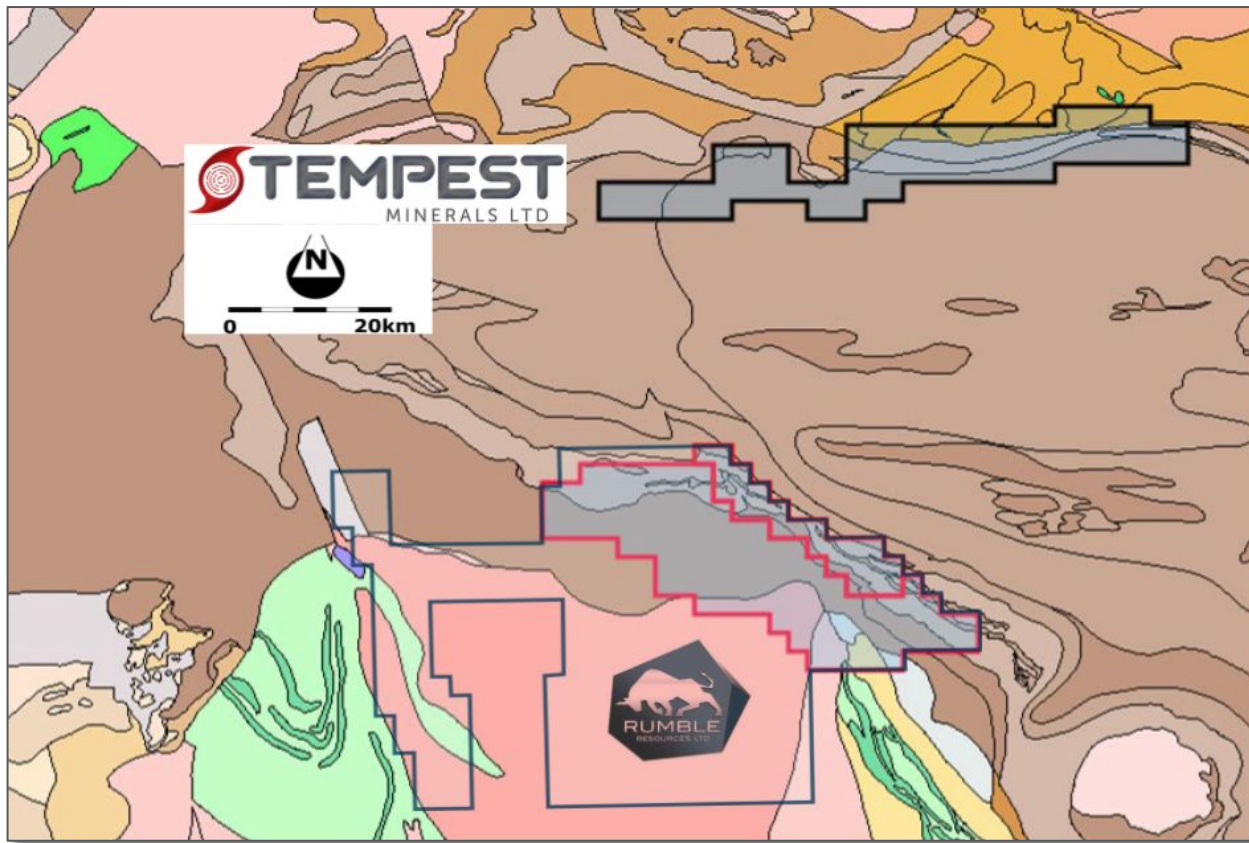


## Base Metals In The Earaheedy

- ★ 266km<sup>2</sup> 100% TEM
- ★ Favourable geology for base and precious metals
- ★ 30km from the Rumble Resources discovery
- ★ Work commencing Q4 2023



# Five Wheels - Leveraging The Earraheedy Discoveries



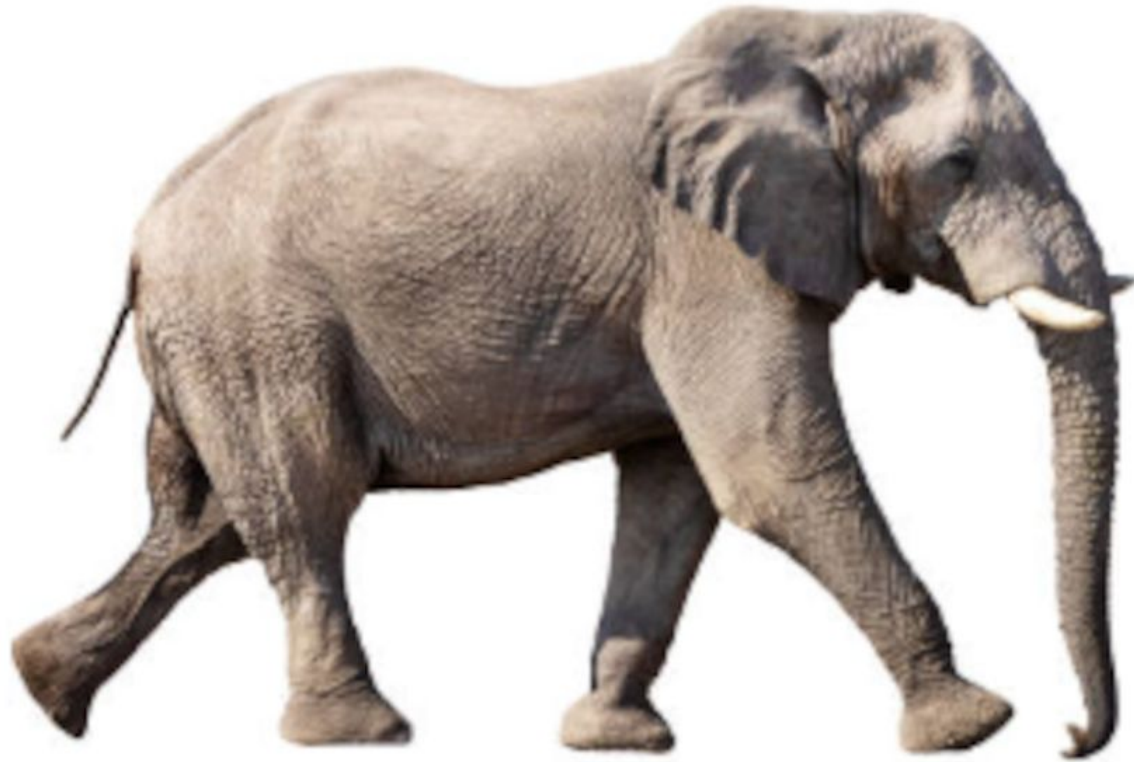
## Highlights

- Legacy exploration for iron has hints of base metals
- 50km of strike length
- Favourable geology
- Work commencing Q4 2023

# Five Wheels - Field Work In Progress



# Elephant



## Mammoth Gold Target

- ★ Large area | 194km<sup>2</sup>
- ★ Exciting Region | Albany Fraser Range
- ★ Multi million ounce target potential

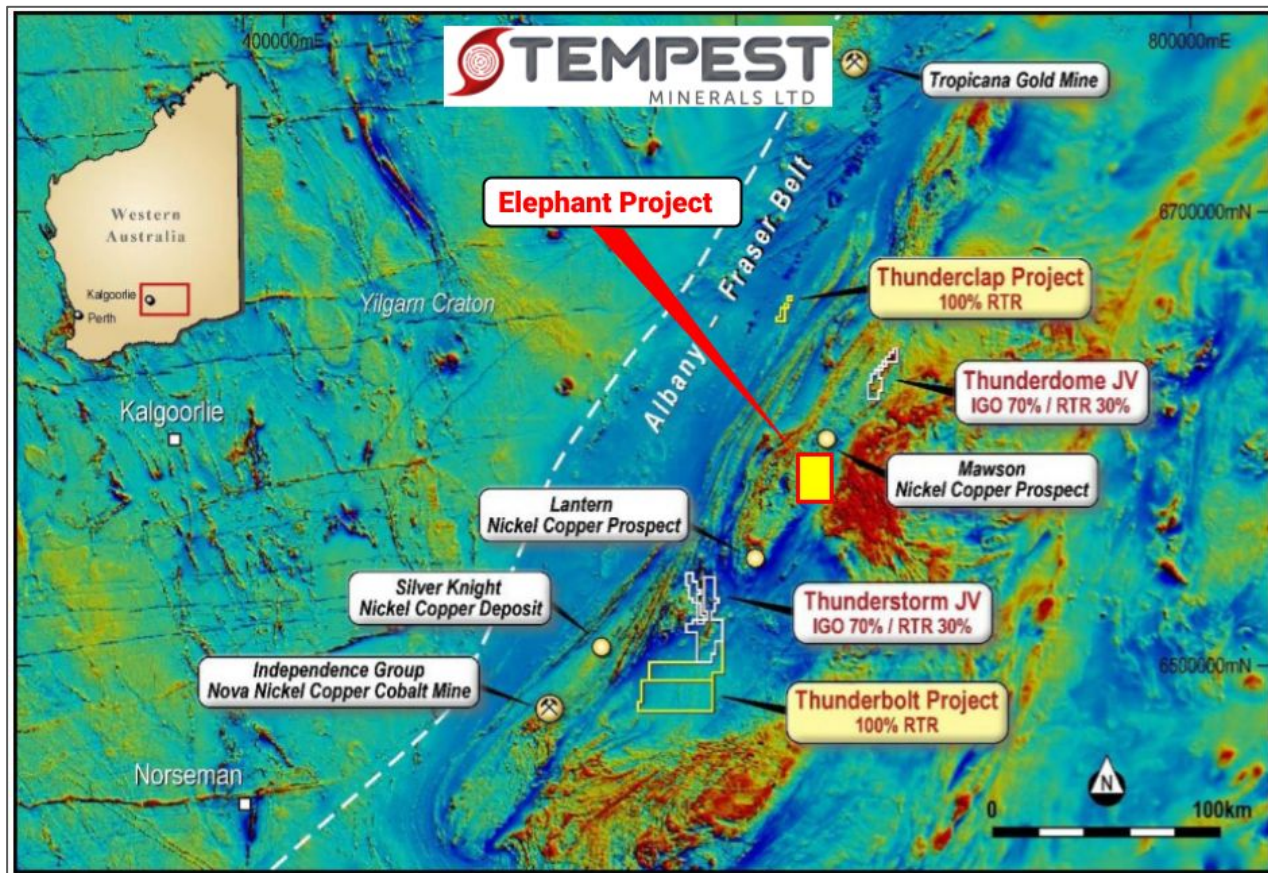
\* Pending completion of conditions precedent and transaction

# Elephant - Chasing Multimillion Ounce Targets

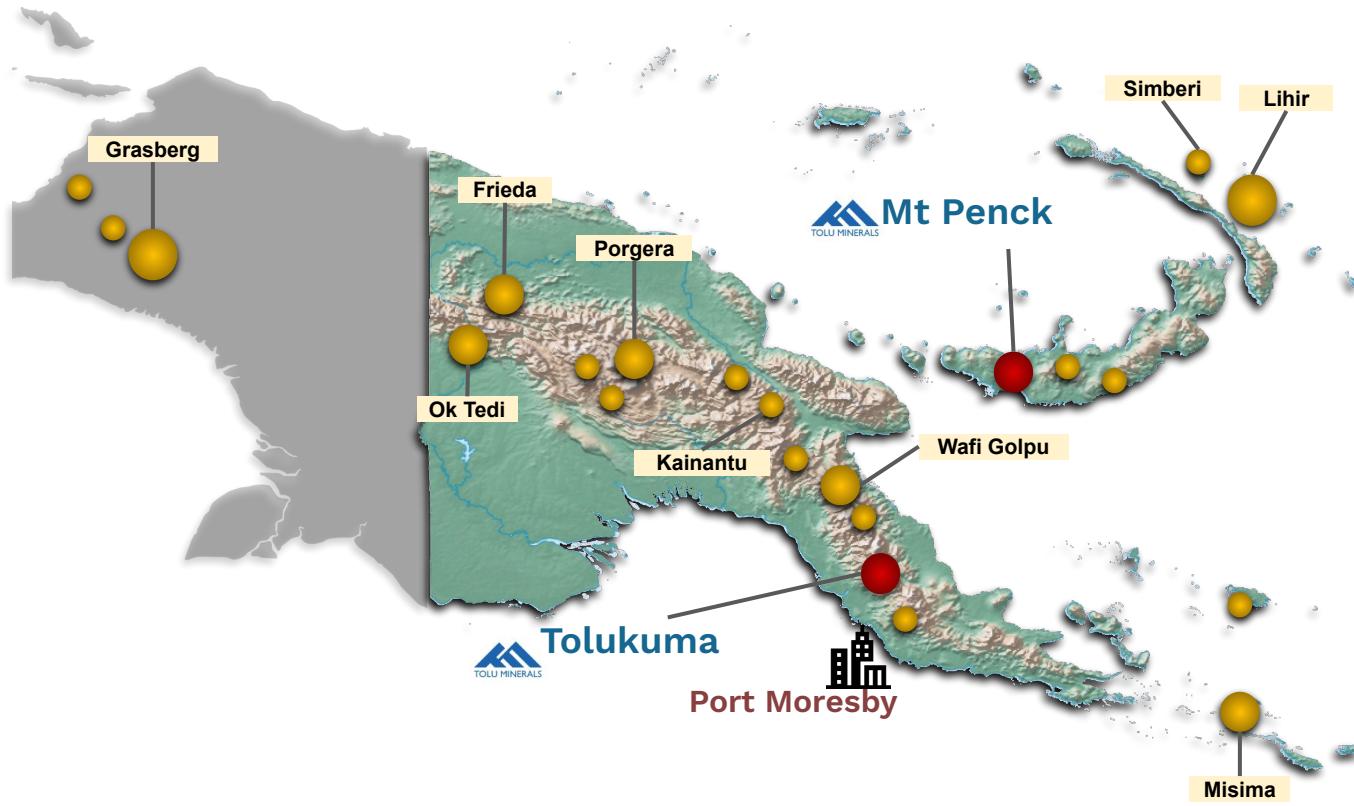


## Highlights

- Large orogenic boundary structures
- Large geophysical target
- 8km soil geochemistry anomaly
- Work expected to commence in 2024



# Papua New Guinea



# Tolu - Near Term Gold Production



## Tolu Minerals Ltd

- Tolukuma Mine Development
  - JORC Resource (0.5M Oz)
  - Mine restart work in progress
- Mt Penck
  - High grade gold in historic exploration
  - Nearby deposits with similar geology
- Soon to be listed on ASX - \$20M IPO
- TEM early investment

Deposit	Category	Tonnes	Grade Au (g/t)	Grade Ag (g/t)	Au (oz)	Ag (oz)
Tolukuma	Inferred	1,610,000	10	38	503,000	1,950,000

- Source Tolu Minerals Prospectus / AMC IGR 202210

TEM confirms that it is not aware of any new information or data that materially affects the information included in the report above and, in the case of estimates of mineral resources or ore reserves, that all material assumptions and technical parameters underpinning the estimates in the relevant report continue to apply and have not materially changed.



# Lithium



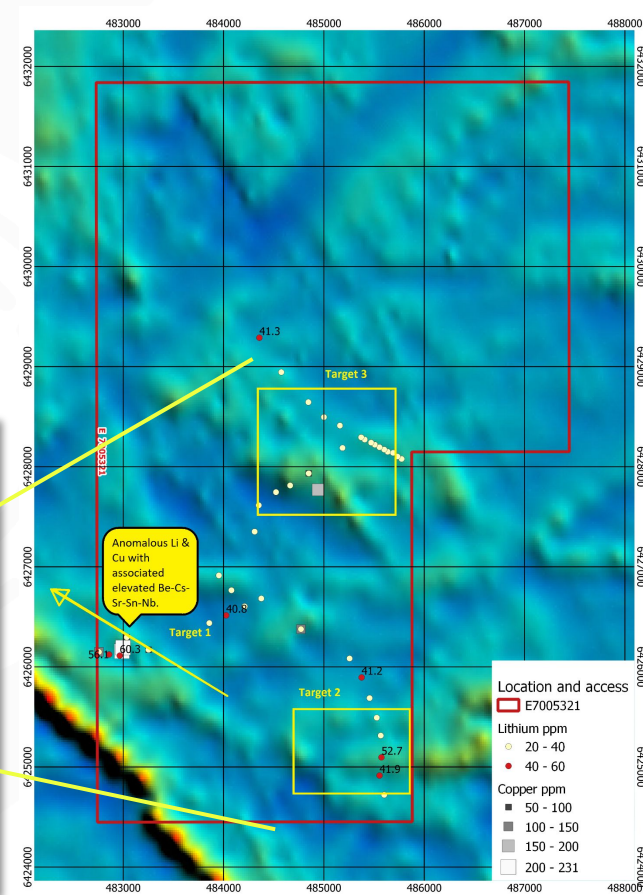
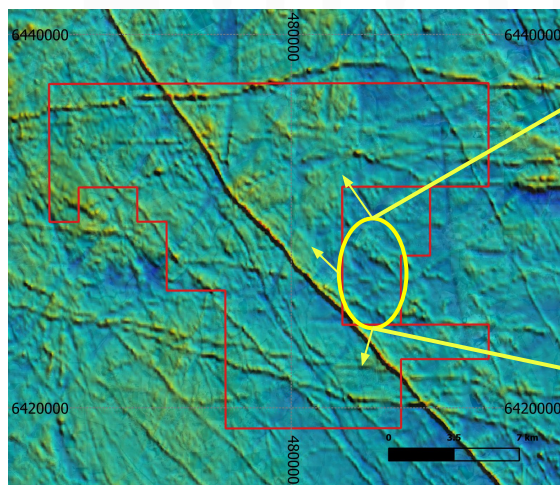
## Lithium: The Electric Future

- ★ Australian hardrock lithium exploration
- ★ African hardrock lithium exposure
- ★ North American brine lithium exposure
- ★ Assessing strategies to increase shareholder value in lithium



# Lithium - Rocky Hill

- 289km<sup>2</sup> 100% Tempest
- Highly accessible - 100km from Perth
- Exciting soil and geophysical anomalies
- Highly prospective for lithium and other commodities
- South West Terrane greenstones and metamorphics





# Lithium - Exposure

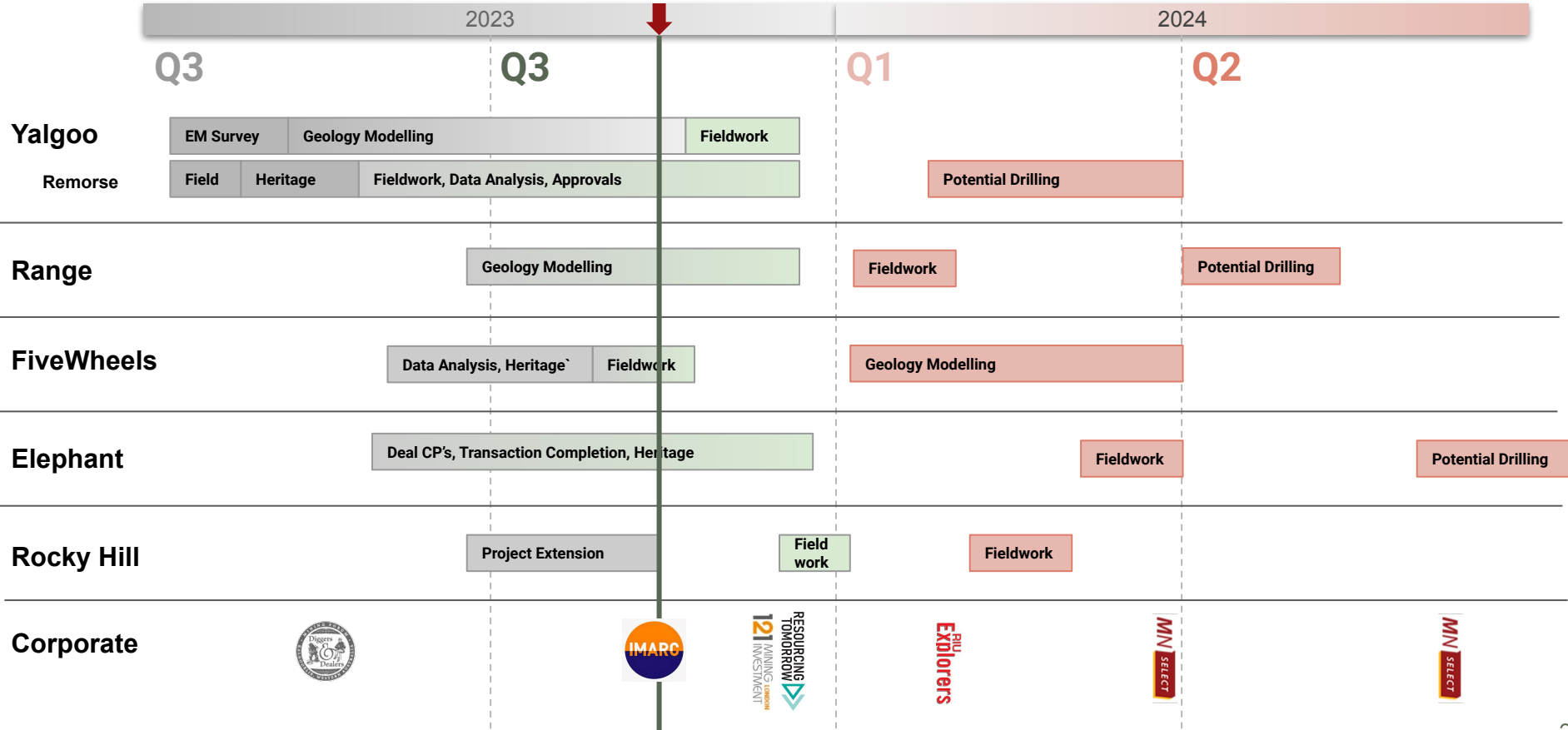


- ASX listed Argosy Minerals Ltd (ASX:AGY) is the operator of the Tonopah Lithium Project in Nevada, USA. Tempest has an agreed milestone payment upon Argosy announcing a JORC compliant reserve or the commencement of commercial production of lithium product.
- Tempest retains exposure to lithium and other commodities through its current equity holding of 25 million shares in high profile Premier African Minerals.



What's next?

# FY2024 Work Plan





# Upcoming News:

## Yalgoo

- Multiple targeted drill programs ready
- Further surface sampling
- EM survey target field verification
- Progression of other target areas in Yalgoo

## Range

- Modelling results
- Drill targeting

## Five Wheels

- First pass exploration results



# Key Points

- ✓ **Derisked multi-commodity multi-jurisdiction explorer developer**
- ✓ **Attractively priced with huge potential upside**
- ✓ **Exciting newsflow from ongoing exploration and corporate activity**

# Investor Channels



## Youtube

- <https://www.youtube.com/@TEMPESTMINERALS>
- New TEMPEST INSIDE - short docuseries
  - Season 02 out now



## Investor Hub

- [InvestorHub.tempestminerals.com](https://InvestorHub.tempestminerals.com)
- Exclusive content and direct company interaction

The screenshot shows the ASX Announcements page for Tempest Minerals Ltd. The page header includes the company name, stock price (\$0.024), and a change of -4.00%. Navigation links for 'Announcements', 'New investors', and 'Activity updates' are visible. The main content area is titled 'ASX Announcements' and features a search bar and a year filter (2023, 2022, 2021, 2020, 2019). A table lists three announcements:

Date	Announcement
10/02/2023 • 02:29PM	Application for quotation of securities - TEM
07/02/2023 • 05:17AM	PNG Update - Tolu Minerals to IPO in Q1 2023
30/01/2023 • 09:17AM	Quarterly Activities/Appendix 5B Cash Flow Report

At the bottom of the table, there is a '2 questions' icon. Below the table, it says 'Showing 1 to 3 of 3 results'.





# Contact



Level 2, Suite 9,  
389 Oxford Street,  
Mt Hawthorn  
Western Australia 6016



+61 8 9200 0435



info@tempestminerals.com



Tempestminerals.com



Tempest Minerals



Tempest Minerals



Tempest Minerals



Tempest Minerals



Tempest Minerals



Visit our new website and

- interact directly with TEM
- get all the latest ASX announcements
- company videos
- and more!

**investorhub.tempestminerals.com**