

12 December 2023

# **AR3 secures significant ~1800km<sup>2</sup> extension of flagship Koppamurra rare earths project in South Australia**

**Dalrymple project area in Queensland also extended with new exploration license; Assays pending from initial Dalrymple field program**

- **AR3 has extended its prospective tenure at Koppamurra by ~1,800km<sup>2</sup> to the south with the granting of South Australian Exploration Licenses (EL's) 6942/6943**
- **Preliminary reconnaissance within these new licenses indicates the presence of outcropping shallow clays; Follow-up exploration planned for early 2024**
- **At the Dalrymple Rare Earths Project in Queensland, Exploration Permit-Minerals (EPM) 28167 has been granted, adding ~80km<sup>2</sup> to the project area**
- **Soil and auger sampling program at Dalrymple has been completed and samples sent for analysis with results expected in early 2024**

Australian Rare Earths (ASX: AR3) is pleased to announce that it has secured significant extensions of tenure at its flagship Koppamurra clay-hosted rare earths project in South Australia and its Dalrymple rare earth exploration prospect in Queensland.

AR3 Chief Executive, Travis Beinke, said: *"The substantial increases in tenure is consistent with our aim of establishing an Australian portfolio of critical rare earth minerals projects, in particular the strategically important heavy rare earth elements with which ionic clay hosted rare resources are endowed."*

*"Sampling and mapping along the extensive road network within the new tenure at our flagship Koppamurra project will commence in early 2024 while an initial field program at the Dalrymple project in North Queensland has recently been completed. We look forward to receiving the assay results of the Dalrymple field program in early 2024."*

The grant of EL6942 and EL6943 in South Australia adds an additional 1,875 km<sup>2</sup> of tenure at the Koppamurra project, increasing the project area to 6,270 km<sup>2</sup> across South Australia and Victoria. An additional two EL applications in Victoria, EL8208 and EL8254, once granted, will increase the Koppamurra project area to 7,600km<sup>2</sup> (Figure 1).

Review of drill core samples from the South Australian Drill Core Reference Library (Core Library) confirmed shallow clay lithologies underlain by Gambier limestone analogous to the geological setting at Koppamurra. AR3's exploration team initially visited the Core Library in January 2023 and reviewed historic drill samples within the now granted EL6942 and EL6943. The favorable stratigraphy and shallow clays support the highly prospective nature for clay hosted rare earth element (REE) mineralisation within EL6942/6943.

Reconnaissance sampling and mapping along the extensive road network within EL6942 and EL6943 will commence in early 2024. The results will allow AR3 to further evaluate the prospectivity of the tenure before determining further exploration programs to delineate rare earth mineralisation.

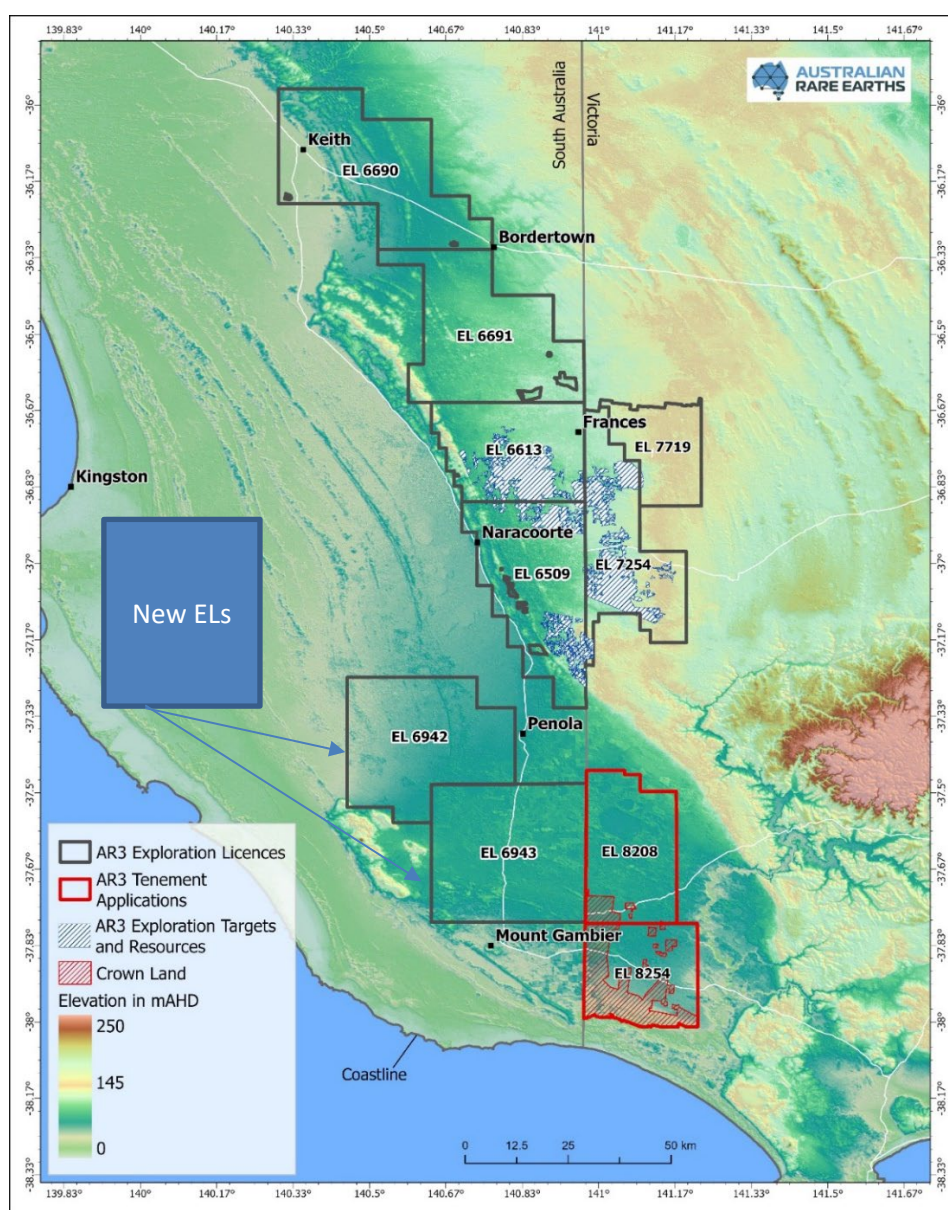


Figure 1- Koppamurra project area SA and Victoria



***Queensland Update:***

A recent field program at AR3's Dalrymple project in Queensland has generated a combination of surface and shallow auger samples within EPM28169 (Figure 2). Samples have been sent for analysis with assays expected to be received in early 2024.

The Dalrymple Project in northern Queensland comprises 4 granted EPM's and 1 EPM in application following the recent grant of EPM28167 bringing the total project area to 933km<sup>2</sup> (Figure 3). The remaining application at the Dalrymple project is well advanced and a grant is expected early 2024.

Applications are progressing at the Company's Oaky Valley, Sandy Tate, and 40-Mile Scrub EPM's in the Northern Queensland project (Figure 3).



*Figure 2- Field sampling EPM28169*

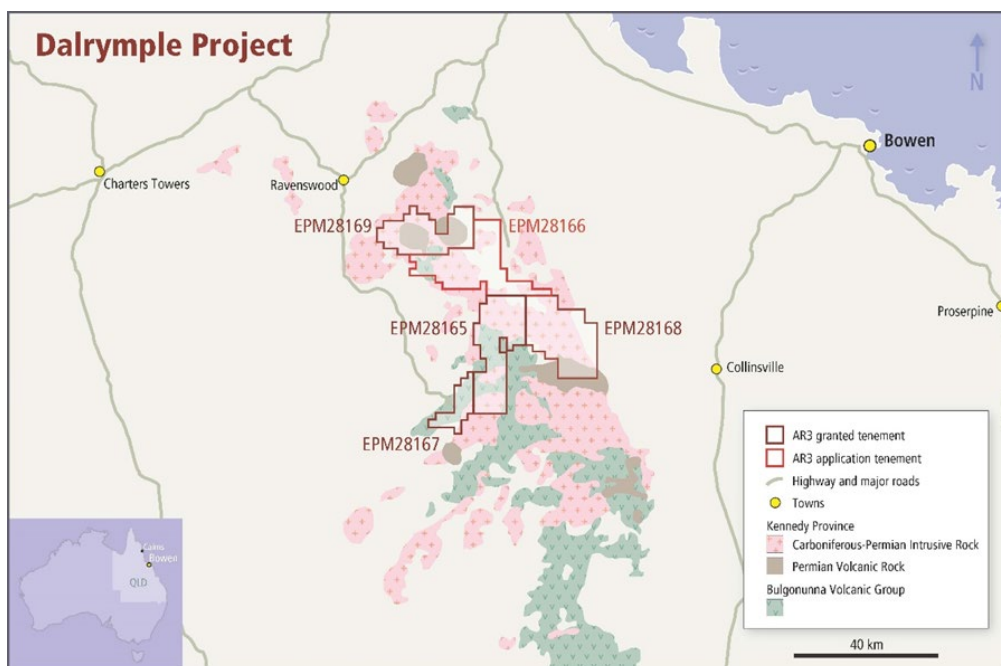


Figure 3- Dalrymple Project Area

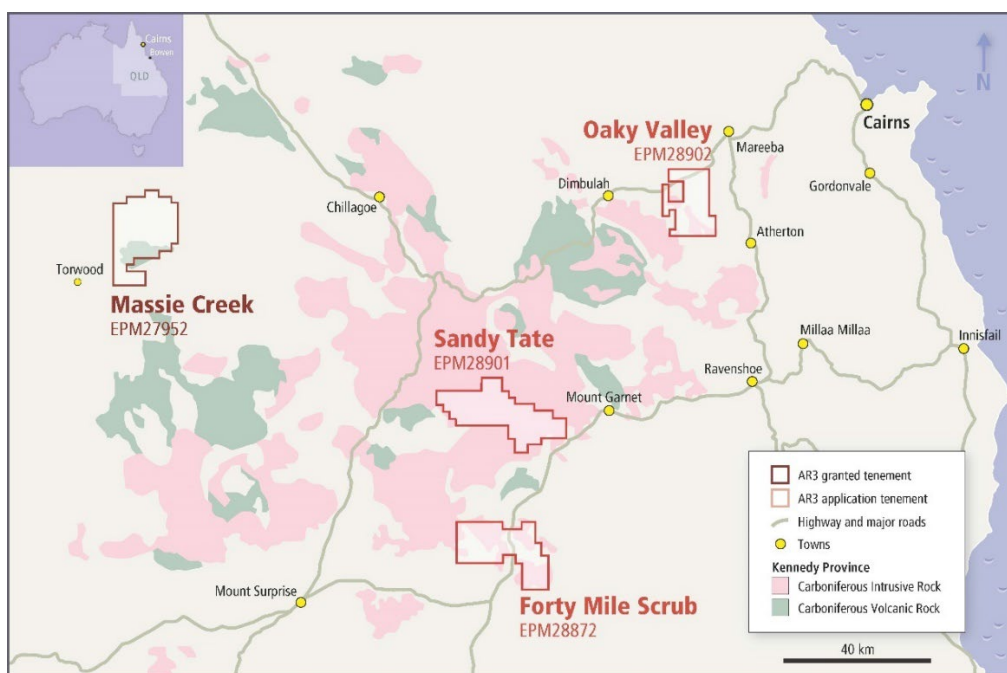


Figure 4- North Queensland Project Area



The announcement has been authorised for release by the Board of AR3 Limited.

**For further information please contact:**

**AR3 Limited**

Travis Beinke  
Chief Executive Officer  
T: 1 300 646 100

**Media Enquiries**

Nicholas Read / Paul Armstrong  
Read Corporate  
T: 08 9388 1474

**Competent Person's Statement**

*The information in this report that relates to Exploration results is based on information compiled by Australian Rare Earths Limited and reviewed by Mr Rick Pobjoy who is the Technical Director of the Company and a member of the Australian Institute of Mining and Metallurgy (AusIMM). Mr Pobjoy has sufficient experience that is relevant to the style of mineralisation, the type of deposit under consideration and to the activities undertaken to qualify as a Competent person as defined in the 2012 edition of the "Australasian Code for Reporting of Exploration Results, Mineral Resources and Ore Reserves". Mr Pobjoy consents to the inclusion in this report of the matters based on this information in the form and context in which it appears.*

**About Australian Rare Earths Limited**

*Australian Rare Earths is committed to the timely exploration and development of its 100% owned, flagship Koppamurra Project, located in the Koppamurra rare earths Province in southeastern South Australia and western Victoria. Koppamurra is a prospective ionic clay hosted rare earth deposit, uniquely rich in all the elements required in the manufacture of rare earth permanent magnets which are essential components in electric vehicles, wind turbines and domestic appliances. In addition AR3 is actively reviewing other potential prospective areas which may also host ionic clay hosted rare earth deposits throughout Australia.*

*The Company is focused on executing a growth strategy that will ensure AR3 is positioned to become an independent and sustainable source of rare earths, playing a pivotal role in the global transition to a green economy.*