

Deal Name:	Driver Australia Master
Issuer:	Perpetual Corporate Trust Limited (ABN 99 000 341 533) of Level 18, 123 Pitt Street, Sydney NSW 2000 Australia in its capacity as trustee of the Driver Australia Master Trust.
Originator of the Receivables:	Volkswagen Financial Services Australia Pty Ltd
Seller of the Receivables:	Volkswagen Financial Services Australia Pty Ltd
Servicer name:	Volkswagen Financial Services Australia Pty Ltd
Reporting Entity:	Volkswagen Financial Services Australia Pty Ltd ABS Operations (Physical Address) Level 1, 24 Muir Road, Chullora NSW 2190 (Postal Address) Locked Bag 4002 Chullora NSW 2190
Contact:	Phone: +61 2 9751 6257 Fax: +61 2 9695 6399 Email: ABSOperations.Australia@vwfs.com.au
Corporate Service Provider:	Perpetual Corporate Trust Limited (ABN 99 000 341 533) of Level 18, 123 Pitt Street, Sydney NSW 2000 Australia in its personal capacity.



Contents

Page	Table of Contents
1	Cover
2	Contents
3	Reporting Details
4	Parties Overview
5	Transaction Events I
6	Transaction Events II
7	Transaction Events III
8	Information regarding the Notes I
9	Information regarding the Notes II
11	Cash Collateral Account
12	Swap Fixing / Waterfall
13	Retention of Net Economic Interest
14	Amortisation Profile I
17	Amortisation Profile II
18	Run Out Schedule I
20	Run Out Schedule II
21	Outstanding Contracts I
23	Outstanding Contracts II
24	Arrears
26	Net Salvage Loss
27	Net Salvage After Recoveries
28	Prepayments
29	Pool Data I
31	Pool Data II
32	Pool Data III
34	Pool Data IV
36	Pool Data V
38	Pool Data VI
39	Pool Data VII
45	Pool Data VIII
47	Pool Data IX
49	Hardship Extensions
50	Engine Type
52	Contract Level Data

Reporting Details

Deal Overview

Pool Cut Date	31/05/2016	Publication Date:	18/01/2024 (5 business days before Payment Date)
Scheduled Date of Clean-Up-Call	25/11/2027	Payment Date:	25/01/2024 (25th of each month)
Legal Maturity Date	25/02/2033	Reporting Date:	31/12/2023 (last day of each month)
Issue Date	29/06/2016	Asset Collection Period:	from 01/12/2023 until 31/12/2023
Period No.:	91	Interest Accrual Period	from 27/12/2023 until 25/01/2024
Reporting frequency:	Monthly	Note Payment Period:	from 27/12/2023 until 25/01/2024
Next Payment Date:	26/02/2024	Days accrued:	29

Vehicle Type at Pool Cut	Number of Contracts	Percentage of Contracts	Outstanding Discounted Receivables Balance	Percentage Outstanding Discounted Receivables Balance
New	2,996	83.87%	113,632,498.43 AUD	88.40%
Used	576	16.13%	14,908,985.82 AUD	11.60%
Total	3,572	100.00%	128,541,484.25 AUD	100.00%

Credit Type at Pool Cut	Number of Contracts	Percentage of Contracts	Outstanding Discounted Receivables Balance	Percentage Outstanding Discounted Receivables Balance
Hire Purchase	27	0.76%	595,370.53 AUD	0.46%
Chattel Mortgage	2,047	57.31%	82,162,211.56 AUD	63.92%
Consumer Loan	1,498	41.94%	45,783,902.16 AUD	35.62%
Total	3,572	100.00%	128,541,484.25 AUD	100.00%

Parties Overview

Arranger:	Australia and New Zealand Banking Group Limited (ABN 11 005 357 522) ANZ Tower 242 Pitt Street Sydney, NSW 2000 Australia	Security Trustee:	P.T. Limited (ABN 67 004 454 666) Level 18 123 Pitt Street Sydney NSW 2000 Australia
Trustee:	Perpetual Corporate Trust Limited (ABN 99 000 341 533) of Level 18, 123 Pitt Street, Sydney NSW 2000 Australia in its capacity as trustee of the Driver Australia Master Trust.	Trust Manager:	Perpetual Nominees Limited (ABN 37 000 733 700) of Level 18, 123 Pitt Street, Sydney NSW 2000 Australia in its capacity as the trust manager for the Driver Australia Master Trust
Sub Trust Manager:	Volkswagen Financial Services Australia Pty Limited (ABN 20 097 071 460) Level 1, 24 Muir Road, Chullora, NSW 2190	Account Bank:	Australia and New Zealand Banking Group Limited (ABN 11 005 357 522) ANZ Tower 242 Pitt Street Sydney, NSW 2000 Australia
Clearing Systems:	Austraclear Limited 30-32 Grosvenor Street. Sydney, NSW 2000	Swap Counterparty:	ING Bank N.V. Foppingadreef 7 1102 BD Amsterdam The Netherlands
Servicer:	Volkswagen Financial Services Australia Pty Limited (ABN 20 097 071 460) Level 1, 24 Muir Road, Chullora, NSW 2190 email: ABSOperations.Australia@vwfs.com.au phone: +61 2 9751 6257	Rating Agencies:	Fitch Ratings Attn.: Australian Surveillance Suite 15.01, Level 15, 135 King Street Sydney, NSW 2000 Australia email: australia.surveillance@fitchratings.com Standard & Poor's Attn.: Structured Finance Surveillance Level 45, 120 Collins Street Melbourne, VIC 3000 Australia email: mel_sfsurveillance@spglobal.com

Transaction Events (I)

Clean-Up Call Condition	
Current Percentage of Initial Outstanding Discounted Receivables Balance*	1409.44%
Percentage of Maximum Outstanding Discounted Receivables Balance to trigger Clean-Up Call Condition	10.00%
Current Percentage of Maximum Outstanding Discounted Receivables Balance	76.92%

*This percentage may become greater than 100% whenever the current total outstanding discounted balance is larger than the Initial discounted balance as of initial Cut-Off-Date.

Clean-Up Call

VWFS Australia will have the right at its option, after the expiration of the Revolving Period, to exercise a Clean-Up Call and to repurchase all (but not only some) of the Purchased Receivables from the Issuer at any time when the then Outstanding Aggregate Discounted Receivables Balance is less than ten (10) per cent. of the Maximum Outstanding Discounted Receivables Balance and, assuming the Transaction Documents are given full effect, all payment obligations under the Notes, including principal and accrued interest, will thereby be fulfilled in accordance with the Order of Priority (the Clean-up Call Conditions).

Repurchase of Receivables	Number of contracts	% of Contracts	Outstanding Discounted Receivables Balance	% of Outstanding Discounted Receivables Balance	Interest Compensation Payment	Re-Purchase Price
Current Period	-	0.00%	- AUD	0.00%	- AUD	- AUD
Previous Periods	18	0.03%	615,112.21 AUD	0.03%	(10,104.56 AUD)	605,007.64 AUD
Total	18	0.03%	615,112.21 AUD	0.03%	(10,104.56 AUD)	605,007.64 AUD

If a repurchase of receivables occurred, it would only result from non-eligibility as of the respective Pool Cut Date (which has been discovered at a later stage), a Legitimate Repudiation of a Receivables Contract, a Reloaded Contract or a Flat-Cancelled Contract.

Transaction Party Replacements

Capacity of Transaction Party	Date of Replacement	Reason for Replacement	Replaced Party	Replaced by
Swap Counterparty Series A 2016-1	27-12-2023	Renewal 2023	RBC	ING
Swap Counterparty Series A 2016-2	27-12-2023	Renewal 2023	RBC	ING
Swap Counterparty Series A 2017-1	27-12-2023	Renewal 2023	RBC	ING
Swap Counterparty Series A 2017-2	27-12-2023	Renewal 2023	RBC	ING
Swap Counterparty Series A 2018-1	27-12-2023	Renewal 2023	RBC	ING
Swap Counterparty Series A 2019-1	27-12-2023	Renewal 2023	RBC	ING
Swap Counterparty Series A 2022-1	27-12-2023	Renewal 2023	RBC	ING
Swap Counterparty Series B 2016-2	27-12-2023	Renewal 2023	RBC	ING

Transaction events (II)

Revolving period	
Series revolving period expiration date of the last outstanding series of notes	27/12/2024
Date of occurrence of an early amortisation event	-
Revolving period end	27/12/2024

Accumulation account balance	30/11/2023	31/12/2023
Amounts not invested for the purchase of additional assets	- AUD	- AUD
Percentage not invested for the purchase of additional assets	0.00%	0.00%

Dynamic Net Loss Ratio	Ratio	Weighted Average Seasoning			
		<=12 Months > 0.20%	>12 <=24 Months ≥ 0.25%	>24 <=36 Months ≥ 0.30%	>36 Months ≥ 0.50%
31/10/2023	0.04076%	No	No	No	No
30/11/2023	0.03510%	No	No	No	No
31/12/2023	0.02488%	No	No	No	No

12-Months Average Dynamic Net Loss Ratio	Ratio
31/12/2023	0.02493%

Discounted balance as of the previous period	1,811,585,590.68 AUD
Discounted balance of all initial and additional assets	1,811,712,788.87 AUD
Weighted average seasoning	17.71 Months
Late Delinquency Ratio	0.19390%

Enforcement event	No
-------------------	----

Credit Enhancement Increase Condition		Not In Effect
a) the Dynamic Net Loss Ratio for three consecutive Payment Dates exceeds:		
(i) if weighted average seasoning is less or equal than 12 months	0.20%	No
(ii) if weighted average seasoning is between 12 (excl.) - 24 (incl.) months	0.25%	No
(iii) if weighted average seasoning is between 24 (excl.) - 36 (incl.) months	0.30%	No
(iv) if weighted average seasoning is > 36 months	0.50%	No
b) (i) during the Revolving Period the 12-Months Average Dynamic Net Loss Ratio exceeds:	0.90%	No
(ii) or after the end of the Revolving Period the 12-Months Average Dynamic Net Loss Ratio exceeds:	1.80%	No
c) the Late Delinquency Ratio exceeds		
on any Payment Date on or before 29 June 2017, or	0.80%	No
for any Payment Date thereafter	1.40%	No
d) a Servicer Replacement Event occurs and is continuing; or		No
e) the amount credited to the Cash Collateral Account is less than the Specified General Cash Collateral Account Balance.		No

Early Amortisation Event	Not In Effect
(a) The occurrence of a foreclosure event; or	No
(b) the Accumulation account balance > 15% of Aggregate Discounted Receivables Balance on two consecutive months;	No
(c) a Credit Enhancement Increase Condition has occurred; or	No
(d) In case of default/termination event: failure to replace swap counterparty or failure to post collateral by swap counterparty; or	No
(e) VWFS Australia ceases to be a wholly owned subsidiary of Volkswagen Financial Services AG; or	No
(f) On any Payment Date, the Class A Actual Overcollateralisation Percentage is determined as being lower than 16.9 per cent, or the Class B Actual Overcollateralisation Percentage is determined as being lower than 10.20 per cent	No

Transaction Events (III)

Account Bank:
 Australia and New Zealand Banking Group Limited

Current Rating:
 Minimum required Rating (if no short term Rating available, the higher long term rating is applicable)

Fitch		S&P	
Long Term	Short Term	Long Term	Short Term
A+	F1	AA-	A-1+
A	F1	A	-

If the Account Bank ceases to have the Account Bank Required Rating it shall, at its own cost,
 (i) transfer the accounts to an Eligible Collateral Bank, or
 (ii) provide a guarantee from an Eligible Guarantor, or
 If none of the measures is taken within a given timespan, the issuer may enter into new banking arrangements at its own initiative with another Account Bank.
 (Please refer to the Prospectus for a complete description of the mechanism)

Required Rating:

Fulfilled

Swap Counterparty:
 ING Bank N.V.

Current Rating:
 Minimum required Rating

Fitch		S&P	
Long Term	Short Term	Long Term	Short Term
AA-	F1+	A+	A-1
A	F1	A-	-
BBB	F2	A-	-

If the Swap Bank falls below the above mentioned Minimum Rating (Level I) it shall provide Eligible Credit Support by means of Cash or certain types of Prime Debt Obligations
 If the Swap Bank ceases to have the even lower Rating as an Eligible Swap Counterparty (Level II) it shall, at its own cost,
 (i) transfer all rights and obligations under the Swap Agreement to another Eligible Swap Partner or
 (ii) provide a guarantee from an Eligible Guarantor.
 If none of the measures is taken within a given timespan, the issuer may enter into new arrangements at its own initiative with another Swap Bank.
 (Please refer to the Prospectus for a complete description of the mechanism)

Required Rating:

Fulfilled

Information regarding the Notes 1

Rating at Issue Date	Series A 2016-1	Series A 2016-2	Series A 2016-3	Series A 2016-4	Series A 2017-1	Series A 2017-2	Series A 2018-1	Series A 2019-1	Series A 2022-1	Series B 2016-1	Series B 2016-2	Series B 2018-1
S&P Fitch	AAA(sf) AAA (sf)	AAA(sf) AAA (sf)	AAA(sf) AAA (sf)	AAA(sf) AAA (sf)	AAA(sf) AAA (sf)	AAA(sf) AAA (sf)	AAA(sf) AAA (sf)	AAA(sf) AAA (sf)	AAA(sf) AAA (sf)	A+sf A+ (sf)	A+sf A+ (sf)	A+sf A+ (sf)
Current Rating	Series A 2016-1	Series A 2016-2	Series A 2016-3	Series A 2016-4	Series A 2017-1	Series A 2017-2	Series A 2018-1	Series A 2019-1	Series A 2022-1	Series B 2016-1	Series B 2016-2	Series B 2018-1
S&P Fitch	AAA(sf) AAA (sf)	AAA(sf) AAA (sf)	AAA(sf) AAA (sf)	AAA(sf) AAA (sf)	AAA(sf) AAA (sf)	AAA(sf) AAA (sf)	AAA(sf) AAA (sf)	AAA(sf) AAA (sf)	AAA(sf) AAA (sf)	A+sf A+ (sf)	A+sf A+ (sf)	A+sf A+ (sf)
Information on Notes	Series A 2016-1	Series A 2016-2	Series A 2016-3	Series A 2016-4	Series A 2017-1	Series A 2017-2	Series A 2018-1	Series A 2019-1	Series A 2022-1	Series B 2016-1	Series B 2016-2	Series B 2018-1
ISIN	AU3FN0031654	AU3FN0036612	AU3FN0036620	AU3FN0033601	AU3FN0036737	AU3FN0037180	AU3FN0043253	AU3FN0048765	AU3FN0074407	AU3FN0036638	AU3FN0036646	AU3FN0045787
Common code	N/A	158275635	164069494	147315317	158275368	165105567	N/A	201788765	246044767	163733358	164069478	191100093
Original face value	100,000,00 AUD	100,000,00 AUD	100,000,00 AUD	100,000,00 AUD	100,000,00 AUD	100,000,00 AUD	100,000,00 AUD	100,000,00 AUD	100,000,00 AUD	10,000,00 AUD	10,000,00 AUD	10,000,00 AUD
Spread / Margin	1,3500%	1,3500%	1,3500%	1,3500%	1,3500%	1,3500%	1,3500%	1,3500%	1,3500%	2,6000%	2,6000%	2,6000%
Current coupon	5,6580%	5,6580%	5,6580%	5,6580%	5,6580%	5,6580%	5,6580%	5,6580%	5,6580%	6,9080%	6,9080%	6,9080%
Information on Interest	Class A	Class A	Class A	Class A	Class A	Class A	Class A	Class A	Class A	Class B	Class B	Class B
Legal final maturity date	25/02/2033	25/02/2033	25/02/2033	25/02/2033	25/02/2033	25/02/2033	25/02/2033	25/02/2033	25/02/2033	25/02/2033	25/02/2033	25/02/2033
Fixed/Floating	floating	floating	floating	floating	floating	floating	floating	floating	floating	floating	floating	floating
Day Count Convention	actual/365	actual/365	actual/365	actual/365	actual/365	actual/365	actual/365	actual/365	actual/365	actual/365	actual/365	actual/365
Index Rate (1-Month-BBSW)	4,3080%	4,3080%	4,3080%	4,3080%	4,3080%	4,3080%	4,3080%	4,3080%	4,3080%	4,3080%	4,3080%	4,3080%

Information regarding the Notes II

Monthly Period: 12/2023
 Payment Date: 25/01/2024
 Interest Accrual Period (from/until) from 27/12/2023 until 25/01/2024
 Days accrued 23
 Index Rate 1-Month-BBSW
 Base Interest Rate: 4.3080%
 Day Count Convention actual/365

	Series A 2016-1	Series A 2016-2	Series A 2016-3	Series A 2016-4	Series A 2017-1	Series A 2017-2	Series A 2018-1	Series A 2019-1	Series A 2022-1
Interest Payments									
Total Interest	1,701,957.40 AUD	340,751.11 AUD	- AUD	- AUD	850,978.70 AUD	510,677.13 AUD	1,532,031.39 AUD	681,052.68 AUD	850,978.70 AUD
Paid Interest	1,701,957.40 AUD	340,751.11 AUD	- AUD	- AUD	850,978.70 AUD	510,677.13 AUD	1,532,031.39 AUD	681,052.68 AUD	850,978.70 AUD
Unpaid Interest									
Unpaid Interest in the Reporting Period	- AUD	- AUD	- AUD	- AUD	- AUD	- AUD	- AUD	- AUD	- AUD
Cumulative Unpaid Interest	- AUD	- AUD	- AUD	- AUD	- AUD	- AUD	- AUD	- AUD	- AUD
Note Balance									
Note Balance as of the Beginning of the Period	378,600,000.00 AUD	75,800,000.00 AUD	- AUD	- AUD	189,300,000.00 AUD	113,600,000.00 AUD	340,800,000.00 AUD	151,500,000.00 AUD	189,300,000.00 AUD
Additional issue amount	- AUD	- AUD	- AUD	- AUD	- AUD	- AUD	- AUD	- AUD	- AUD
Redemption amount due to Amortising Series	- AUD	- AUD	- AUD	- AUD	- AUD	- AUD	- AUD	- AUD	- AUD
Redemption amount due to Term Take Out	- AUD	- AUD	- AUD	- AUD	- AUD	- AUD	- AUD	- AUD	- AUD
Class Balance as of the End of the Period	378,600,000.00 AUD	75,800,000.00 AUD	- AUD	- AUD	189,300,000.00 AUD	113,600,000.00 AUD	340,800,000.00 AUD	151,500,000.00 AUD	189,300,000.00 AUD
Payments to Investors per note									
Interest Per Note	449.54 AUD	449.54 AUD	- AUD	- AUD	449.54 AUD	449.54 AUD	449.54 AUD	449.54 AUD	449.54 AUD
Principal Repayment by note	448.54 AUD	449.54 AUD	- AUD	- AUD	448.54 AUD	448.54 AUD	449.54 AUD	449.54 AUD	449.54 AUD
Total									
Series A 2016-1	3,786	758	-	-	1,893	1,136	3,408	1,515	1,893
Notes									
Number of notes as of the beginning of the period	-	-	-	-	-	-	-	-	-
Increase of outstanding notes from tap-up	-	-	-	-	-	-	-	-	-
Reduction of outstanding notes from term take out	-	-	-	-	-	-	-	-	-
Number of notes as of the end of the period	3,786	758	-	-	1,893	1,136	3,408	1,515	1,893
Face value per note as of the beginning of period	100,000.00 AUD	100,000.00 AUD	- AUD	- AUD	100,000.00 AUD	100,000.00 AUD	100,000.00 AUD	100,000.00 AUD	100,000.00 AUD
Balance per note as of the end of the period	100,000.00 AUD	100,000.00 AUD	- AUD	- AUD	100,000.00 AUD	100,000.00 AUD	100,000.00 AUD	100,000.00 AUD	100,000.00 AUD
Notes Factor									
Series A 2016-1	1,000,000,000	1,000,000,000	-	-	1,000,000,000	1,000,000,000	1,000,000,000	1,000,000,000	1,000,000,000
Overcollateralisation Percentage									
Current OC Amount (before Top/Tap Up/TTO)	371,471,710.35 AUD	371,471,710.35 AUD	- AUD	- AUD	371,471,710.35 AUD	371,471,710.35 AUD	371,471,710.35 AUD	371,471,710.35 AUD	371,471,710.35 AUD
Current OC Percentage (before Top/Tap Up/TTO)	20.52%	20.52%	-	-	20.52%	20.52%	20.52%	20.52%	20.52%
Current OC Amount (after Top Up)	372,812,788.87 AUD	372,812,788.87 AUD	- AUD	- AUD	372,812,788.87 AUD	372,812,788.87 AUD	372,812,788.87 AUD	372,812,788.87 AUD	372,812,788.87 AUD
Current OC Percentage (after Top Up)	20.58%	20.58%	-	-	20.58%	20.58%	20.58%	20.58%	20.58%
Current OC Amount (after Top/Tap Up/TTO)	372,812,788.87 AUD	372,812,788.87 AUD	- AUD	- AUD	372,812,788.87 AUD	372,812,788.87 AUD	372,812,788.87 AUD	372,812,788.87 AUD	372,812,788.87 AUD
Current OC Percentage (after Top/Tap Up/TTO)	20.58%	20.58%	-	-	20.58%	20.58%	20.58%	20.58%	20.58%
Target OC Percentage (Resolving Period)	17.00%	17.00%	17.00%	17.00%	17.00%	17.00%	17.00%	17.00%	17.00%
Target OC Percentage (Amortising Period)	26.00%	26.00%	26.00%	26.00%	26.00%	26.00%	26.00%	26.00%	26.00%
Subordinated Loan									
Balance as of the beginning of the period	-	62,215,889.24 AUD	-	-	-	-	-	-	-
Balance increase from tap up	-	-	-	-	-	-	-	-	-
Redemption payments from term take out	-	-	-	-	-	-	-	-	-
Regular redemption from waterfall	-	2,587,846.25 AUD	-	-	-	-	-	-	-
Redemption from cash collateral account	-	-	-	-	-	-	-	-	-
Balance as of the end of the period	59,628,042.99 AUD	62,215,889.24 AUD	-	-	59,628,042.99 AUD	62,215,889.24 AUD	-	-	59,628,042.99 AUD
Current OC amount (before Top/Tap Up/TTO)	134,823,667.36 AUD	134,823,667.36 AUD	- AUD	- AUD	134,823,667.36 AUD	134,823,667.36 AUD	- AUD	- AUD	134,823,667.36 AUD
Current OC percentage (before Top/Tap Up/TTO)	7.4473%	7.4473%	-	-	7.4473%	7.4473%	-	-	7.4473%
Current OC amount (after Top/Tap Up/TTO)	136,164,745.88 AUD	136,164,745.88 AUD	- AUD	- AUD	136,164,745.88 AUD	136,164,745.88 AUD	- AUD	- AUD	136,164,745.88 AUD
Current OC percentage (after Top/Tap Up/TTO)	7.5158%	7.5158%	-	-	7.5158%	7.5158%	-	-	7.5158%

Information regarding the Notes II

Monthly Period: 12/2023
 Payment Date: 25/01/2024
 Interest Accrual Period (from/until) from 27/12/2023 until 25/01/2024
 Days accrued 23
 Index Rate 1-Month-BBSW
 Base Interest Rate: 4.3080%
 Day Count Convention actual/365

Publication Date: 18/01/2024
 Period: 12/2023 / Period No. 91
 Contents

Publication Date: 18/01/2024
 Period: 12/2023 / Period No. 91
 Contents

	Total Class A and B	Total Class A	Series B 2016-1	Series B 2016-2	Series B 2018-1	Total Class B
Interest Payments						
Total Interest Amount of the Reporting Period	7,440,009.87 AUD	6,468,427.11 AUD	- AUD	971,582.76 AUD	- AUD	971,582.76 AUD
Paid Interest	7,440,009.87 AUD	6,468,427.11 AUD	- AUD	971,582.76 AUD	- AUD	971,582.76 AUD
Unpaid Interest						
Unpaid Interest in the Reporting Period	- AUD	- AUD	- AUD	- AUD	- AUD	- AUD
Cumulative Unpaid Interest	- AUD	- AUD	- AUD	- AUD	- AUD	- AUD
Note Balance						
Note Balance as of the Beginning of the Period	1,615,920,000.00 AUD	1,438,900,000.00 AUD	- AUD	177,020,000.00 AUD	- AUD	177,020,000.00 AUD
Additional issue amount	- AUD	- AUD	- AUD	- AUD	- AUD	- AUD
Redemption amount due to Amortising Series	- AUD	- AUD	- AUD	- AUD	- AUD	- AUD
Redemption amount due to Term Take Out	- AUD	- AUD	- AUD	- AUD	- AUD	- AUD
Class Balance as of the End of the Period	1,615,920,000.00 AUD	1,438,900,000.00 AUD	- AUD	177,020,000.00 AUD	- AUD	177,020,000.00 AUD
Payments to Investors per note						
Interest Per Note	- AUD	- AUD	- AUD	54.89 AUD	- AUD	- AUD
Principal Repayment by note	- AUD	- AUD	- AUD	54.89 AUD	- AUD	- AUD
Total				54.89 AUD	- AUD	- AUD
Notes						
Number of notes as of the beginning of the period	32,091	14,389	-	17,702	-	17,702
Increase of outstanding notes from tap-up	-	-	-	-	-	-
Reduction of outstanding notes from term take out	-	-	-	-	-	-
Number of notes as of the end of the period	32,091	14,389	-	17,702	-	17,702
Face value per note as of the beginning of period	100,000.00 AUD	100,000.00 AUD	- AUD	10,000.00 AUD	- AUD	10,000.00 AUD
Balance per note as of the end of the period	1,000,000.00 AUD	1,000,000.00 AUD	- AUD	1,000,000.00 AUD	- AUD	1,000,000.00 AUD
Notes Factor						
Overcollateralisation Percentage						
Current OC Amount (before Top/Tap Up/TTO)	371,471,710.35 AUD	371,471,710.35 AUD	- AUD	194,451,710.35 AUD	- AUD	194,451,710.35 AUD
Current OC Percentage (before Top/Tap Up/TTO)	20.52%	20.52%	10.74%	10.74%	10.74%	10.74%
Current OC Amount (after Top Up)	372,812,788.87 AUD	372,812,788.87 AUD	- AUD	195,792,788.87 AUD	- AUD	195,792,788.87 AUD
Current OC Percentage (after Top Up)	20.58%	20.58%	10.81%	10.81%	10.81%	10.81%
Current OC Amount (after Top/Tap Up/TTO)	372,812,788.87 AUD	372,812,788.87 AUD	- AUD	195,792,788.87 AUD	- AUD	195,792,788.87 AUD
Current OC Percentage (after Top/Tap Up/TTO)	20.58%	20.58%	10.81%	10.81%	10.81%	10.81%
Target OC Percentage (Resolving Period)	17.00%	17.00%	18.00%	18.00%	18.00%	18.00%
Target OC Percentage (Amortising Period)	26.00%	26.00%	18.00%	18.00%	18.00%	18.00%
Subordinated Loan						
Balance as of the beginning of the period	62,215,889.24 AUD	- AUD	- AUD	- AUD	- AUD	- AUD
Balance increase from tap up	- AUD	- AUD	- AUD	- AUD	- AUD	- AUD
Redemption payments from term take out	2,587,846.25 AUD	2,587,846.25 AUD	- AUD	- AUD	- AUD	- AUD
Regular redemption from waterfall	- AUD	- AUD	- AUD	- AUD	- AUD	- AUD
Redemption from cash collateral account	- AUD	- AUD	- AUD	- AUD	- AUD	- AUD
Balance as of the end of the period	59,628,042.99 AUD	59,628,042.99 AUD	- AUD	- AUD	- AUD	- AUD
Current OC amount (before Top/Tap Up/TTO)	134,823,667.36 AUD	134,823,667.36 AUD	- AUD	- AUD	- AUD	- AUD
Current OC Percentage (before Top/Tap Up/TTO)	7.4473%	7.4473%	-	-	-	-
Current OC amount (after Top/Tap Up/TTO)	136,164,745.88 AUD	136,164,745.88 AUD	- AUD	- AUD	- AUD	- AUD
Current OC Percentage (after Top/Tap Up/TTO)	7.5158%	7.5158%	-	-	-	-

Cash Collateral Account

Cash collateral account (CCA)	Value
CCA Opening Balance - Initial balance at poolcut plus increases from tap-up/decrease from TTO	19,391,040.00 AUD
Balance as of the beginning of the period	19,391,040.00 AUD
Specified General Cash Collateral Account Balance	19,391,040.00 AUD
the greater of: 1.20% of the aggregate outstanding principal amount of the Notes as of the end of the Monthly Period; and	19,391,040.00 AUD
the lesser of: 0.70% of the Maximum Discounted Receivables Balance; and	16,487,266.37 AUD
the aggregate outstanding principal amount of the Notes as of the end of the Monthly Period	1,615,920,000.00 AUD
Payments	- AUD
General payment from CCA	- AUD
General payment to CCA	- AUD
Payment from CCA due to TTO	- AUD
Payment to CCA due to tap-up	- AUD
Balance as of the end of the period	19,391,040.00 AUD

Swap Fixing / Waterfall

Amortising Interest Rate Swap	Class A	Class B
Underlying Principal for Reporting Period	1,438,900,000.00 AUD	177,020,000.00 AUD
Paying Leg	Fixed Interest Rate	Fixed Interest Rate
Receiving Leg	Floating Interest Rate	Floating Interest Rate
Net Swap Payments - Net Swap Receipts	627.48 AUD	9,403.07 AUD
Available Distribution Amount Calculation	Payment to waterfall position	Remaining Amount
1) i) Available Collections Amount from Contracts	68,017,300.90 AUD	68,017,300.90 AUD
ii) Available Collections - Interest on Trust Accounts	304,726.48 AUD	68,322,027.38 AUD
2) Drawings from the Cash Collateral Account as provided for in clause 12.1 of the Issue Supplement	- AUD	68,322,027.38 AUD
3) Transfers from the Accumulation Account to the Distribution Account pursuant to clause 12.2 of the Issue Supplement	- AUD	68,322,027.38 AUD
4) Net Swap Receipts - Class A and Class B	- AUD	68,322,027.38 AUD
Net Swap Receipts on Series A 2016-1	- AUD	68,322,027.38 AUD
Net Swap Receipts on Series A 2016-2	- AUD	68,322,027.38 AUD
Net Swap Receipts on Series A 2016-3	- AUD	68,322,027.38 AUD
Net Swap Receipts on Series A 2016-4	- AUD	68,322,027.38 AUD
Net Swap Receipts on Series A 2017-1	- AUD	68,322,027.38 AUD
Net Swap Receipts on Series A 2017-2	- AUD	68,322,027.38 AUD
Net Swap Receipts on Series A 2018-1	- AUD	68,322,027.38 AUD
Net Swap Receipts on Series A 2019-1	- AUD	68,322,027.38 AUD
Net Swap Receipts on Series A 2022-1	- AUD	68,322,027.38 AUD
Net Swap Receipts on Series B 2016-1	- AUD	68,322,027.38 AUD
Net Swap Receipts on Series B 2016-2	- AUD	68,322,027.38 AUD
Net Swap Receipts on Series B 2018-1	- AUD	68,322,027.38 AUD
5) Damages and Indemnity Payments to Issuer	- AUD	68,322,027.38 AUD
6) Other Reimbursement Amounts	- AUD	68,322,027.38 AUD
7) Buffer Release Amount	(3,029,270.28 AUD)	65,292,757.10 AUD
Purchase price amount (clean-up call)	- AUD	65,292,757.10 AUD
Remaining Rounding Amount (M-1)	- AUD	65,292,757.10 AUD
Waterfall	Payment to waterfall position	Remaining Amount
Available Distribution Amount	- AUD	65,292,757.10 AUD
1) Trust Beneficiary \$1	(1.00 AUD)	65,292,756.10 AUD
2) Taxes	- AUD	65,292,756.10 AUD
3) Trust Fees & Expenses and Servicer Fees	(1,545,781.70 AUD)	63,746,974.40 AUD
4) Equal Rank Swap Payments	(10,030.55 AUD)	63,736,943.85 AUD
Net Swap Payments on Series A 2016-1	(165.10 AUD)	63,746,809.30 AUD
Net Swap Payments on Series A 2016-2	(33.06 AUD)	63,746,776.24 AUD
Net Swap Payments on Series A 2016-3	- AUD	63,746,776.24 AUD
Net Swap Payments on Series A 2016-4	- AUD	63,746,776.24 AUD
Net Swap Payments on Series A 2017-1	(82.55 AUD)	63,746,693.69 AUD
Net Swap Payments on Series A 2017-2	(49.54 AUD)	63,746,644.15 AUD
Net Swap Payments on Series A 2018-1	(148.61 AUD)	63,746,495.54 AUD
Net Swap Payments on Series A 2019-1	(66.07 AUD)	63,746,429.47 AUD
Net Swap Payments on Series A 2022-1	(82.55 AUD)	63,746,346.92 AUD
Net Swap Payments on Series B 2016-1	- AUD	63,746,346.92 AUD
Net Swap Payments on Series B 2016-2	(9,403.07 AUD)	63,736,943.85 AUD
Net Swap Payments on Series B 2018-1	- AUD	63,736,943.85 AUD
5) Interest Payment - Class A	(6,468,427.11 AUD)	57,268,516.74 AUD
(a) Accrued Interest & (b) Interest Shortfalls on Series A 2016-1	(1,701,957.40 AUD)	62,034,966.45 AUD
(a) Accrued Interest & (b) Interest Shortfalls on Series A 2016-2	(340,751.11 AUD)	61,694,235.34 AUD
(a) Accrued Interest & (b) Interest Shortfalls on Series A 2016-3	- AUD	61,694,235.34 AUD
(a) Accrued Interest & (b) Interest Shortfalls on Series A 2016-4	- AUD	61,694,235.34 AUD
(a) Accrued Interest & (b) Interest Shortfalls on Series A 2017-1	(850,978.70 AUD)	60,843,256.64 AUD
(a) Accrued Interest & (b) Interest Shortfalls on Series A 2017-2	(510,677.13 AUD)	60,332,579.51 AUD
(a) Accrued Interest & (b) Interest Shortfalls on Series A 2018-1	(1,532,031.39 AUD)	58,800,548.12 AUD
(a) Accrued Interest & (b) Interest Shortfalls on Series A 2019-1	(681,052.68 AUD)	58,119,495.44 AUD
(a) Accrued Interest & (b) Interest Shortfalls on Series A 2022-1	(850,978.70 AUD)	57,268,516.74 AUD
6) Interest Payment - Class B	(971,582.76 AUD)	56,296,933.98 AUD
(a) Accrued Interest & (b) Interest Shortfalls on Series B 2016-1	- AUD	57,268,516.74 AUD
(a) Accrued Interest & (b) Interest Shortfalls on Series B 2016-2	(971,582.76 AUD)	56,296,933.98 AUD
(a) Accrued Interest & (b) Interest Shortfalls on Series B 2018-1	- AUD	56,296,933.98 AUD
7) Payment to Cash Collateral Account	- AUD	56,296,933.98 AUD
8. a) Principal Payment - Class A	- AUD	56,296,933.98 AUD
Principal Payments on Series A 2016-1	- AUD	56,296,933.98 AUD
Principal Payments on Series A 2016-2	- AUD	56,296,933.98 AUD
Principal Payments on Series A 2016-3	- AUD	56,296,933.98 AUD
Principal Payments on Series A 2016-4	- AUD	56,296,933.98 AUD
Principal Payments on Series A 2017-1	- AUD	56,296,933.98 AUD
Principal Payments on Series A 2017-2	- AUD	56,296,933.98 AUD
Principal Payments on Series A 2018-1	- AUD	56,296,933.98 AUD
Principal Payments on Series A 2019-1	- AUD	56,296,933.98 AUD
Principal Payments on Series A 2022-1	- AUD	56,296,933.98 AUD
Remaining Rounding Amount from Current Period Class A	- AUD	56,296,933.98 AUD
8. b) Class A Accumulation Amount to Accumulation Account	- AUD	56,296,933.98 AUD
9. a) Principal Payment - Class B	- AUD	56,296,933.98 AUD
Principal Payments on Series B 2016-1	- AUD	56,296,933.98 AUD
Principal Payments on Series B 2016-2	- AUD	56,296,933.98 AUD
Principal Payments on Series B 2018-1	- AUD	56,296,933.98 AUD
Remaining Rounding Amount from Current Period Class B	- AUD	56,296,933.98 AUD
9. b) Class B Accumulation Amount to Accumulation Account	(53,247,493.56 AUD)	3,049,440.42 AUD
10) Penalties, Costs, Expenses, Damages, Losses or Liabilities	- AUD	3,049,440.42 AUD
11. a) Other Payment to Swap Counterparties	- AUD	3,049,440.42 AUD
11. b) Other Payment to Note Purchasers	- AUD	3,049,440.42 AUD
12) Subordinated Loan Accrued and Unpaid Interest	(461,594.17 AUD)	2,587,846.25 AUD
13) Subordinated Loan Principal	(2,587,846.25 AUD)	- AUD
14) Surplus Income Distribution to Beneficiary of the Trust	- AUD	- AUD
Distribution of Cash Collateral Account surplus	Payment	Remaining amount
Payment from CCA	- AUD	- AUD
Payment of Interest Accrued this period on the Subordinated Loan	- AUD	- AUD
Payment of Unpaid Interest on the Subordinated Loan	- AUD	- AUD
Payment in respect of regular redemption to subordinated lender	- AUD	- AUD
Distribution to Beneficiary of the Trust	- AUD	- AUD
Payments due to Term Take Out - not part of the waterfall	Payment	Remaining amount
Purchase price from Term Take Out	- AUD	- AUD
Redemption Class A	- AUD	- AUD
Redemption Class B	- AUD	- AUD
Redemption Subordinated Loan	- AUD	- AUD
Distribution to Beneficiary of the Trust	- AUD	- AUD

Retention of Net Economic Interest

Period	Poolcut	Balance as of the end of period - before top/tap-up/Term TakeOut	Balance as of the end of period - after top/tap-up/Term TakeOut
Total Assets	157,645,986.79 AUD	2,137,929,934.04 AUD	2,152,620,409.46 AUD
Nominal Receivables Balance	157,645,986.79 AUD	2,084,682,440.48 AUD	2,152,620,409.46 AUD
Accumulation Account balance	- AUD	53,247,493.56 AUD	- AUD
First loss piece	15,425,364.25 AUD	213,842,750.35 AUD	215,183,828.87 AUD
Subordinated Loan balance	12,766,069.41 AUD	59,628,042.99 AUD	59,628,042.99 AUD
Overcollateralisation	1,285,414.84 AUD	134,823,667.36 AUD	136,164,745.88 AUD
General Cash Collateral Account balance	1,373,880.00 AUD	19,391,040.00 AUD	19,391,040.00 AUD
Actual retention	9.78%	10.00%	10.00%

In its capacity as originator and original lender, VWFS Australia complies with the retention requirement of a material net economic interest in accordance with Article 6 (3) (d) of the European Securitisation Regulation

By adhering to Article 6 (3)(d) of the European Securitisation Regulation, VWFS Australia will keep the exposures designated for retention on its balance sheet on an ongoing basis. The latest end of month level of retention will be published on a monthly basis in the investor report.

Amortisation Profile I

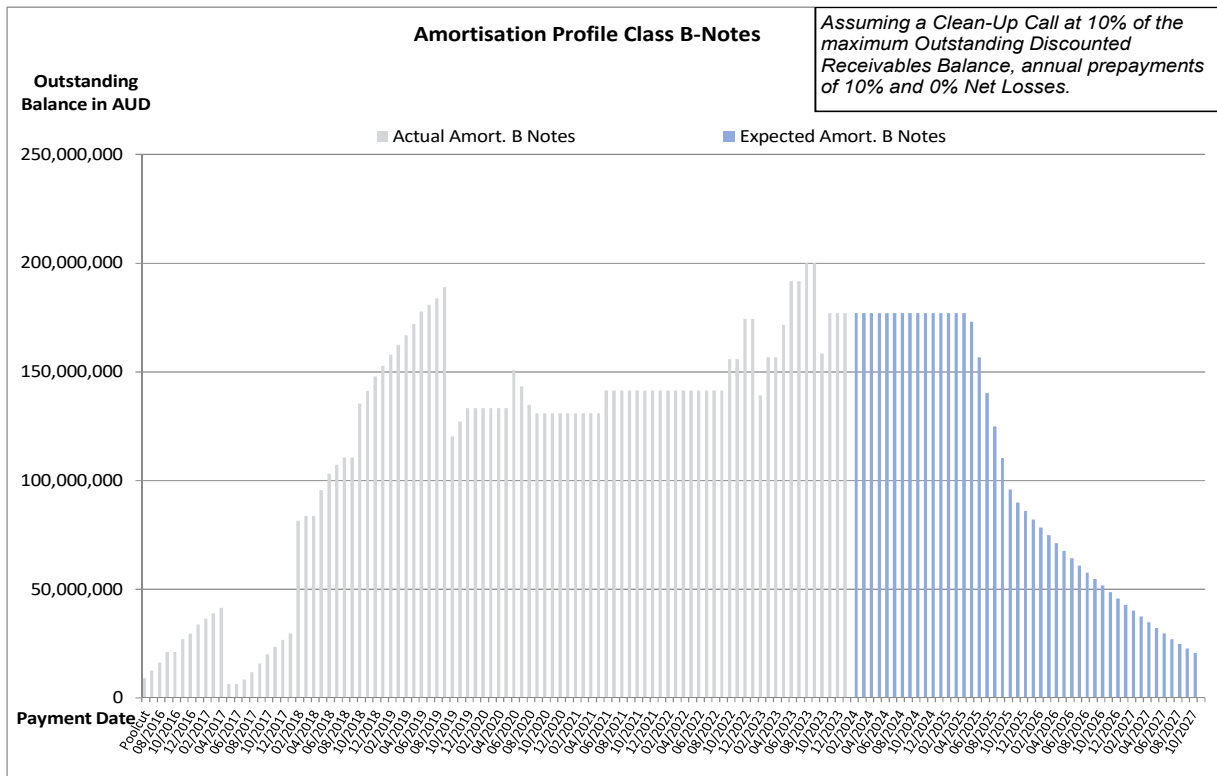
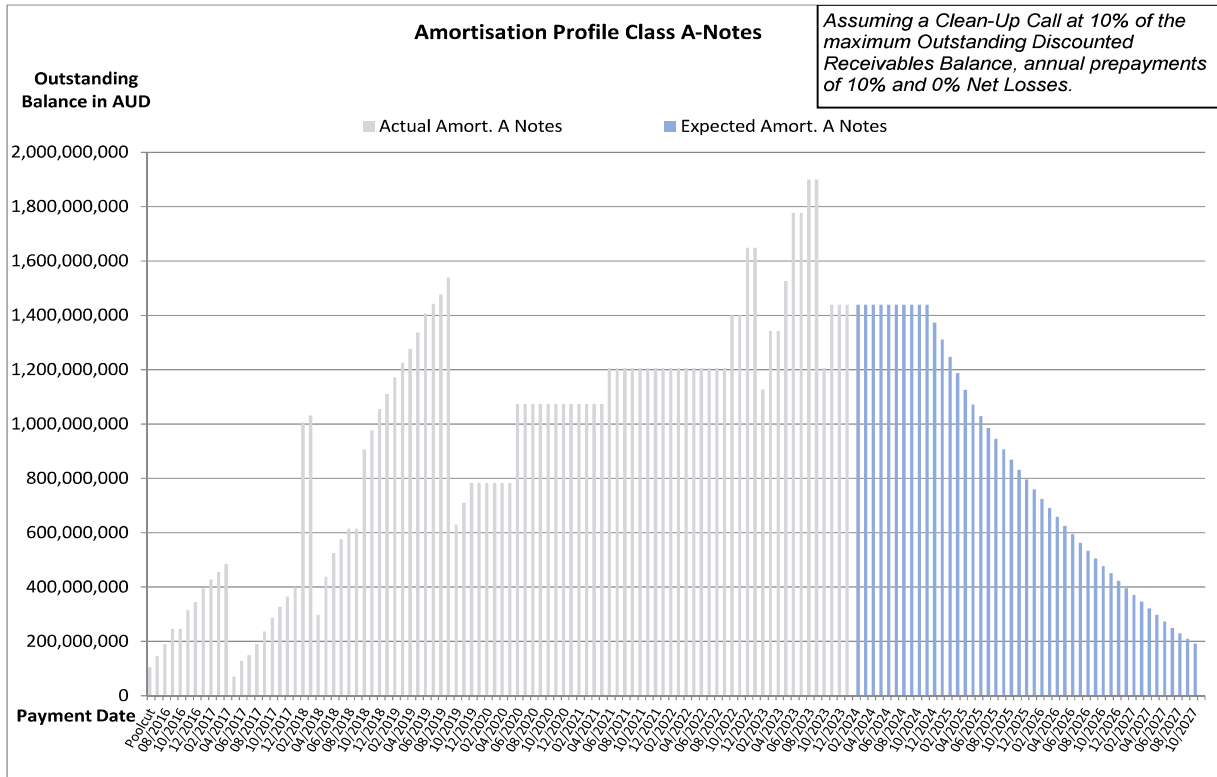
Note Class	Class A		Class B	
	At Closing: 2.64 yrs	Current: 2.29 yrs	At Closing: 3.25 yrs	Current: 2.30 yrs
Payment Date	Actual Note Balance	Forecasted Note Balance	Actual Note Balance	Forecasted Note Balance
Poolcut	105,400,000.00 AUD	- AUD	9,090,000.00 AUD	- AUD
07/2016	146,800,000.00 AUD	- AUD	12,620,000.00 AUD	- AUD
08/2016	189,600,000.00 AUD	- AUD	16,270,000.00 AUD	- AUD
09/2016	246,400,000.00 AUD	- AUD	21,120,000.00 AUD	- AUD
10/2016	246,400,000.00 AUD	- AUD	21,120,000.00 AUD	- AUD
11/2016	314,300,000.00 AUD	- AUD	26,910,000.00 AUD	- AUD
12/2016	344,500,000.00 AUD	- AUD	29,490,000.00 AUD	- AUD
01/2017	395,400,000.00 AUD	- AUD	33,840,000.00 AUD	- AUD
02/2017	427,200,000.00 AUD	- AUD	36,550,000.00 AUD	- AUD
03/2017	455,800,000.00 AUD	- AUD	38,990,000.00 AUD	- AUD
04/2017	485,400,000.00 AUD	- AUD	41,520,000.00 AUD	- AUD
05/2017	70,500,000.00 AUD	- AUD	6,540,000.00 AUD	- AUD
06/2017	128,000,000.00 AUD	- AUD	6,540,000.00 AUD	- AUD
07/2017	149,600,000.00 AUD	- AUD	8,380,000.00 AUD	- AUD
08/2017	191,000,000.00 AUD	- AUD	11,910,000.00 AUD	- AUD
09/2017	237,300,000.00 AUD	- AUD	15,870,000.00 AUD	- AUD
10/2017	287,700,000.00 AUD	- AUD	20,170,000.00 AUD	- AUD
11/2017	326,900,000.00 AUD	- AUD	23,520,000.00 AUD	- AUD
12/2017	365,000,000.00 AUD	- AUD	26,770,000.00 AUD	- AUD
01/2018	399,500,000.00 AUD	- AUD	29,720,000.00 AUD	- AUD
02/2018	1,005,000,000.00 AUD	- AUD	81,400,000.00 AUD	- AUD
03/2018	1,032,400,000.00 AUD	- AUD	83,740,000.00 AUD	- AUD
04/2018	298,500,000.00 AUD	- AUD	83,700,000.00 AUD	- AUD
05/2018	438,400,000.00 AUD	- AUD	95,640,000.00 AUD	- AUD
06/2018	525,300,000.00 AUD	- AUD	103,050,000.00 AUD	- AUD
07/2018	575,800,000.00 AUD	- AUD	107,360,000.00 AUD	- AUD
08/2018	615,000,000.00 AUD	- AUD	110,690,000.00 AUD	- AUD
09/2018	615,000,000.00 AUD	- AUD	110,690,000.00 AUD	- AUD
10/2018	907,000,000.00 AUD	- AUD	135,460,000.00 AUD	- AUD
11/2018	976,600,000.00 AUD	- AUD	141,360,000.00 AUD	- AUD
12/2018	1,054,500,000.00 AUD	- AUD	147,970,000.00 AUD	- AUD
01/2019	1,111,000,000.00 AUD	- AUD	152,760,000.00 AUD	- AUD
02/2019	1,172,200,000.00 AUD	- AUD	157,950,000.00 AUD	- AUD
03/2019	1,225,800,000.00 AUD	- AUD	162,500,000.00 AUD	- AUD
04/2019	1,276,500,000.00 AUD	- AUD	166,800,000.00 AUD	- AUD
05/2019	1,337,400,000.00 AUD	- AUD	171,970,000.00 AUD	- AUD
06/2019	1,406,400,000.00 AUD	- AUD	177,790,000.00 AUD	- AUD

Note Class	Class A		Class B	
WAL	At Closing: 2.64 yrs	Current: 2.29 yrs	At Closing: 3.25 yrs	Current: 2.30 yrs
Payment Date	Actual Note Balance	Forecasted Note Balance	Actual Note Balance	Forecasted Note Balance
07/2019	1,443,500,000.00 AUD	- AUD	180,920,000.00 AUD	- AUD
08/2019	1,477,900,000.00 AUD	- AUD	183,820,000.00 AUD	- AUD
09/2019	1,539,600,000.00 AUD	- AUD	189,030,000.00 AUD	- AUD
10/2019	629,900,000.00 AUD	- AUD	120,380,000.00 AUD	- AUD
11/2019	710,200,000.00 AUD	- AUD	127,150,000.00 AUD	- AUD
12/2019	783,900,000.00 AUD	- AUD	133,360,000.00 AUD	- AUD
01/2020	783,900,000.00 AUD	- AUD	133,360,000.00 AUD	- AUD
02/2020	783,900,000.00 AUD	- AUD	133,360,000.00 AUD	- AUD
03/2020	783,900,000.00 AUD	- AUD	133,360,000.00 AUD	- AUD
04/2020	783,900,000.00 AUD	- AUD	133,360,000.00 AUD	- AUD
05/2020	783,900,000.00 AUD	- AUD	133,360,000.00 AUD	- AUD
06/2020	1,074,500,000.00 AUD	- AUD	150,862,177.93 AUD	- AUD
07/2020	1,074,500,000.00 AUD	- AUD	143,278,597.13 AUD	- AUD
08/2020	1,074,500,000.00 AUD	- AUD	134,828,503.07 AUD	- AUD
09/2020	1,074,500,000.00 AUD	- AUD	130,990,000.00 AUD	- AUD
10/2020	1,074,500,000.00 AUD	- AUD	130,990,000.00 AUD	- AUD
11/2020	1,074,500,000.00 AUD	- AUD	130,990,000.00 AUD	- AUD
12/2020	1,074,500,000.00 AUD	- AUD	130,990,000.00 AUD	- AUD
01/2021	1,074,500,000.00 AUD	- AUD	130,990,000.00 AUD	- AUD
02/2021	1,074,500,000.00 AUD	- AUD	130,990,000.00 AUD	- AUD
03/2021	1,074,500,000.00 AUD	- AUD	130,990,000.00 AUD	- AUD
04/2021	1,074,500,000.00 AUD	- AUD	130,990,000.00 AUD	- AUD
05/2021	1,074,500,000.00 AUD	- AUD	130,990,000.00 AUD	- AUD
06/2021	1,206,700,000.00 AUD	- AUD	141,500,000.00 AUD	- AUD
07/2021	1,206,700,000.00 AUD	- AUD	141,500,000.00 AUD	- AUD
08/2021	1,206,700,000.00 AUD	- AUD	141,500,000.00 AUD	- AUD
09/2021	1,206,700,000.00 AUD	- AUD	141,500,000.00 AUD	- AUD
10/2021	1,206,700,000.00 AUD	- AUD	141,500,000.00 AUD	- AUD
11/2021	1,206,700,000.00 AUD	- AUD	141,500,000.00 AUD	- AUD
12/2021	1,206,700,000.00 AUD	- AUD	141,500,000.00 AUD	- AUD
01/2022	1,206,700,000.00 AUD	- AUD	141,500,000.00 AUD	- AUD
02/2022	1,206,700,000.00 AUD	- AUD	141,500,000.00 AUD	- AUD
03/2022	1,206,700,000.00 AUD	- AUD	141,500,000.00 AUD	- AUD
04/2022	1,206,700,000.00 AUD	- AUD	141,500,000.00 AUD	- AUD
05/2022	1,206,700,000.00 AUD	- AUD	141,500,000.00 AUD	- AUD
06/2022	1,206,700,000.00 AUD	- AUD	141,500,000.00 AUD	- AUD
07/2022	1,206,700,000.00 AUD	- AUD	141,500,000.00 AUD	- AUD
08/2022	1,206,700,000.00 AUD	- AUD	141,500,000.00 AUD	- AUD
09/2022	1,206,700,000.00 AUD	- AUD	141,500,000.00 AUD	- AUD
10/2022	1,400,000,000.00 AUD	- AUD	155,900,000.00 AUD	- AUD
11/2022	1,400,000,000.00 AUD	- AUD	155,900,000.00 AUD	- AUD
12/2022	1,649,000,000.00 AUD	- AUD	174,500,000.00 AUD	- AUD

Note Class	Class A		Class B	
WAL	At Closing: 2.64 yrs	Current: 2.29 yrs	At Closing: 3.25 yrs	Current: 2.30 yrs
Payment Date	Actual Note Balance	Forecasted Note Balance	Actual Note Balance	Forecasted Note Balance
01/2023	1,650,000,000.00 AUD	- AUD	174,500,000.00 AUD	- AUD
02/2023	1,127,400,000.00 AUD	- AUD	139,320,000.00 AUD	- AUD
03/2023	1,342,400,000.00 AUD	- AUD	156,620,000.00 AUD	- AUD
04/2023	1,342,400,000.00 AUD	- AUD	156,620,000.00 AUD	- AUD
05/2023	1,527,400,000.00 AUD	- AUD	171,620,000.00 AUD	- AUD
06/2023	1,777,400,000.00 AUD	- AUD	191,720,000.00 AUD	- AUD
07/2023	1,777,400,000.00 AUD	- AUD	191,720,000.00 AUD	- AUD
08/2023	1,900,000,000.00 AUD	- AUD	200,000,000.00 AUD	- AUD
09/2023	1,900,000,000.00 AUD	- AUD	200,000,000.00 AUD	- AUD
10/2023	1,207,500,000.00 AUD	- AUD	158,420,000.00 AUD	- AUD
11/2023	1,438,900,000.00 AUD	- AUD	177,020,000.00 AUD	- AUD
12/2023	1,438,900,000.00 AUD	- AUD	177,020,000.00 AUD	- AUD
01/2024	1,438,900,000.00 AUD	- AUD	177,020,000.00 AUD	- AUD
02/2024	- AUD	1,438,900,000.00 AUD	- AUD	177,020,000.00 AUD
03/2024	- AUD	1,438,900,000.00 AUD	- AUD	177,020,000.00 AUD
04/2024	- AUD	1,438,900,000.00 AUD	- AUD	177,020,000.00 AUD
05/2024	- AUD	1,438,900,000.00 AUD	- AUD	177,020,000.00 AUD
06/2024	- AUD	1,438,900,000.00 AUD	- AUD	177,020,000.00 AUD
07/2024	- AUD	1,438,900,000.00 AUD	- AUD	177,020,000.00 AUD
08/2024	- AUD	1,438,900,000.00 AUD	- AUD	177,020,000.00 AUD
09/2024	- AUD	1,438,900,000.00 AUD	- AUD	177,020,000.00 AUD
10/2024	- AUD	1,438,900,000.00 AUD	- AUD	177,020,000.00 AUD
11/2024	- AUD	1,438,900,000.00 AUD	- AUD	177,020,000.00 AUD
12/2024	- AUD	1,373,768,854.26 AUD	- AUD	177,020,000.00 AUD
01/2025	- AUD	1,310,145,217.21 AUD	- AUD	177,020,000.00 AUD
02/2025	- AUD	1,247,257,410.64 AUD	- AUD	177,020,000.00 AUD
03/2025	- AUD	1,186,367,728.44 AUD	- AUD	177,020,000.00 AUD
04/2025	- AUD	1,126,295,056.19 AUD	- AUD	177,020,000.00 AUD
05/2025	- AUD	1,071,525,093.97 AUD	- AUD	172,970,851.00 AUD
06/2025	- AUD	1,028,975,669.91 AUD	- AUD	156,677,378.85 AUD
07/2025	- AUD	985,844,677.14 AUD	- AUD	140,180,412.50 AUD
08/2025	- AUD	946,086,939.07 AUD	- AUD	125,040,712.69 AUD
09/2025	- AUD	907,585,461.75 AUD	- AUD	110,335,810.11 AUD
10/2025	- AUD	869,795,194.89 AUD	- AUD	96,028,910.12 AUD
11/2025	- AUD	832,373,374.93 AUD	- AUD	89,986,310.80 AUD
12/2025	- AUD	796,044,862.90 AUD	- AUD	86,058,904.10 AUD
01/2026	- AUD	759,797,728.41 AUD	- AUD	82,140,294.96 AUD
02/2026	- AUD	725,420,843.31 AUD	- AUD	78,423,874.96 AUD
03/2026	- AUD	692,410,923.19 AUD	- AUD	74,855,234.94 AUD
04/2026	- AUD	658,380,338.41 AUD	- AUD	71,176,252.80 AUD
05/2026	- AUD	626,172,123.53 AUD	- AUD	67,694,283.62 AUD
06/2026	- AUD	594,981,059.73 AUD	- AUD	64,322,276.73 AUD
07/2026	- AUD	562,678,917.85 AUD	- AUD	60,830,153.28 AUD
08/2026	- AUD	533,451,342.48 AUD	- AUD	57,670,415.40 AUD
09/2026	- AUD	505,817,979.19 AUD	- AUD	54,683,024.77 AUD
10/2026	- AUD	477,804,760.34 AUD	- AUD	51,654,568.69 AUD
11/2026	- AUD	450,413,051.77 AUD	- AUD	48,693,302.90 AUD
12/2026	- AUD	422,908,317.90 AUD	- AUD	45,719,818.15 AUD
01/2027	- AUD	396,227,830.69 AUD	- AUD	42,835,441.15 AUD
02/2027	- AUD	371,539,094.93 AUD	- AUD	40,166,388.65 AUD
03/2027	- AUD	347,135,853.06 AUD	- AUD	37,528,200.33 AUD
04/2027	- AUD	321,680,301.76 AUD	- AUD	34,776,248.84 AUD
05/2027	- AUD	297,989,190.55 AUD	- AUD	32,215,047.63 AUD
06/2027	- AUD	273,977,914.60 AUD	- AUD	29,619,234.01 AUD
07/2027	- AUD	249,419,721.08 AUD	- AUD	26,964,294.17 AUD
08/2027	- AUD	229,736,303.42 AUD	- AUD	24,836,357.13 AUD
09/2027	- AUD	209,798,518.73 AUD	- AUD	22,680,920.95 AUD
10/2027	- AUD	191,624,021.04 AUD	- AUD	20,716,110.39 AUD
11/2027	- AUD	- AUD	- AUD	- AUD

*Based on the following assumptions: CPR of 10%, Net Losses of 0% and Clean Up Call at 10% of the maximum outstanding discounted receivables balance

Amortisation Profile II

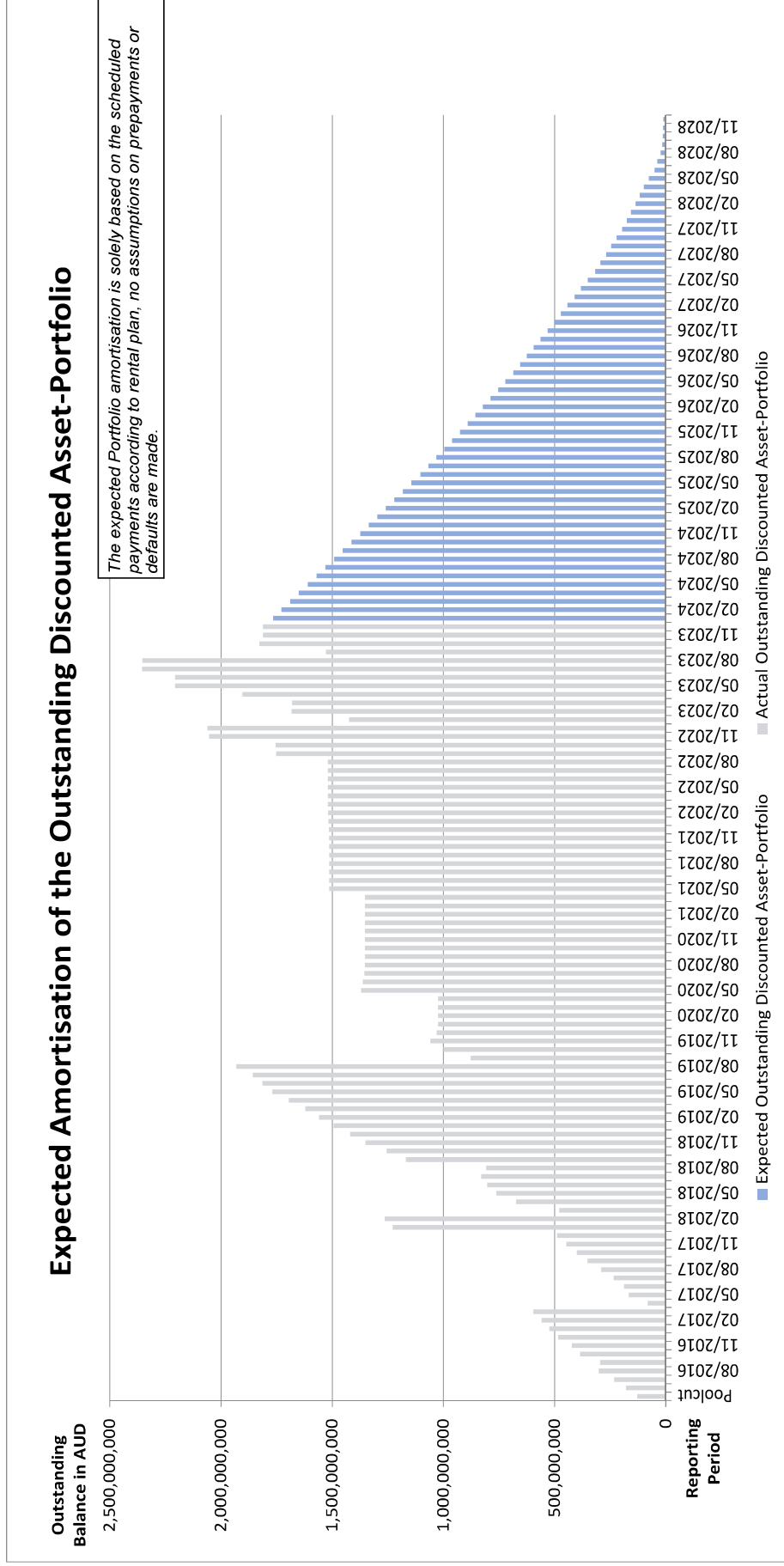


Run Out Schedule I

End of Collection Period	Interest	Principal	Nominal Instalments
arrears	965,974.68 AUD	7,649,069.59 AUD	8,615,044.27 AUD
01/2024	11,825,687.97 AUD	37,587,786.17 AUD	49,413,474.14 AUD
02/2024	12,903,135.09 AUD	38,511,425.30 AUD	51,414,560.39 AUD
03/2024	12,686,735.38 AUD	39,372,124.76 AUD	52,058,860.14 AUD
04/2024	12,431,388.84 AUD	38,287,026.04 AUD	50,718,414.88 AUD
05/2024	12,163,205.87 AUD	39,387,268.08 AUD	51,550,473.95 AUD
06/2024	11,881,361.29 AUD	40,328,157.21 AUD	52,209,518.50 AUD
07/2024	11,593,574.00 AUD	39,301,975.72 AUD	50,895,549.72 AUD
08/2024	11,310,223.06 AUD	38,941,495.44 AUD	50,251,718.50 AUD
09/2024	11,027,754.09 AUD	39,366,763.28 AUD	50,394,517.37 AUD
10/2024	10,739,052.73 AUD	39,123,582.35 AUD	49,862,635.08 AUD
11/2024	10,452,249.58 AUD	39,696,668.55 AUD	50,148,918.13 AUD
12/2024	10,160,897.27 AUD	38,928,487.39 AUD	49,089,384.66 AUD
01/2025	9,874,110.12 AUD	38,128,270.30 AUD	48,002,380.42 AUD
02/2025	9,593,980.77 AUD	38,120,028.48 AUD	47,714,009.25 AUD
03/2025	9,313,829.23 AUD	38,587,689.66 AUD	47,901,518.89 AUD
04/2025	9,029,145.15 AUD	37,197,208.31 AUD	46,226,353.46 AUD
05/2025	8,754,766.10 AUD	38,492,455.33 AUD	47,247,221.43 AUD
06/2025	8,470,921.87 AUD	40,820,007.45 AUD	49,290,929.32 AUD
07/2025	8,170,322.86 AUD	36,149,475.27 AUD	44,319,798.13 AUD
08/2025	7,903,208.73 AUD	35,241,167.95 AUD	43,144,376.68 AUD
09/2025	7,642,288.88 AUD	35,490,448.40 AUD	43,132,737.28 AUD
10/2025	7,379,567.24 AUD	35,708,945.69 AUD	43,088,512.93 AUD
11/2025	7,115,368.40 AUD	35,260,140.39 AUD	42,375,508.79 AUD
12/2025	6,854,592.26 AUD	35,918,538.91 AUD	42,773,131.17 AUD
01/2026	6,588,734.53 AUD	33,780,434.33 AUD	40,369,168.86 AUD
02/2026	6,338,885.01 AUD	33,282,036.48 AUD	39,620,921.49 AUD
03/2026	6,093,051.37 AUD	35,330,028.51 AUD	41,423,079.88 AUD
04/2026	5,831,408.89 AUD	33,458,672.45 AUD	39,290,081.34 AUD
05/2026	5,583,830.99 AUD	32,635,093.05 AUD	38,218,924.04 AUD
06/2026	5,342,312.21 AUD	35,793,686.45 AUD	41,135,998.66 AUD
07/2026	5,077,290.03 AUD	31,053,532.39 AUD	36,130,822.42 AUD
08/2026	4,847,513.66 AUD	29,198,407.39 AUD	34,045,921.05 AUD
09/2026	4,631,431.71 AUD	31,080,957.86 AUD	35,712,389.57 AUD
10/2026	4,401,247.49 AUD	30,735,018.92 AUD	35,136,266.41 AUD
11/2026	4,173,855.33 AUD	32,103,942.61 AUD	36,277,797.94 AUD
12/2026	3,936,051.62 AUD	31,312,609.18 AUD	35,248,660.80 AUD
01/2027	3,704,481.91 AUD	28,456,141.56 AUD	32,160,623.47 AUD
02/2027	3,493,708.62 AUD	29,317,781.18 AUD	32,811,489.80 AUD
03/2027	3,276,781.17 AUD	31,822,559.70 AUD	35,099,340.87 AUD
04/2027	3,041,179.36 AUD	29,388,740.20 AUD	32,429,919.56 AUD
05/2027	2,823,581.16 AUD	30,895,401.72 AUD	33,718,982.88 AUD
06/2027	2,594,789.83 AUD	32,848,127.19 AUD	35,442,917.02 AUD
07/2027	2,351,597.21 AUD	23,835,460.60 AUD	26,187,057.81 AUD
08/2027	2,175,339.43 AUD	25,244,015.09 AUD	27,419,354.52 AUD
09/2027	1,988,585.51 AUD	22,613,190.28 AUD	24,601,775.79 AUD
10/2027	1,821,065.14 AUD	24,777,170.81 AUD	26,598,235.95 AUD
11/2027	1,637,622.85 AUD	23,910,849.89 AUD	25,548,472.74 AUD
12/2027	1,460,712.80 AUD	21,371,226.96 AUD	22,831,935.36 AUD
01/2028	1,302,434.11 AUD	19,294,345.45 AUD	20,596,779.56 AUD

End of Collection Period	Interest	Principal	Nominal Instalments
02/2028	1,159,540.71 AUD	19,988,920.42 AUD	21,148,461.13 AUD
03/2028	1,011,477.26 AUD	19,346,325.10 AUD	20,357,802.36 AUD
04/2028	868,340.78 AUD	18,467,803.26 AUD	19,336,144.04 AUD
05/2028	731,537.31 AUD	22,457,349.21 AUD	23,188,886.52 AUD
06/2028	565,337.60 AUD	24,988,002.27 AUD	25,553,339.87 AUD
07/2028	380,224.43 AUD	12,127,224.05 AUD	12,507,448.48 AUD
08/2028	290,409.18 AUD	15,949,999.09 AUD	16,240,408.27 AUD
09/2028	172,255.22 AUD	6,336,835.56 AUD	6,509,090.78 AUD
10/2028	125,311.52 AUD	3,261,098.70 AUD	3,386,410.22 AUD
11/2028	101,152.79 AUD	1,114,945.92 AUD	1,216,098.71 AUD
12/2028	92,892.11 AUD	1,072,599.12 AUD	1,165,491.23 AUD
01/2029	84,945.96 AUD	1,037,404.10 AUD	1,122,350.06 AUD
02/2029	77,260.78 AUD	981,156.23 AUD	1,058,417.01 AUD
03/2029	69,991.98 AUD	931,816.83 AUD	1,001,808.81 AUD
04/2029	63,089.37 AUD	881,069.33 AUD	944,158.70 AUD
05/2029	56,562.12 AUD	832,220.75 AUD	888,782.87 AUD
06/2029	50,397.04 AUD	787,021.33 AUD	837,418.37 AUD
07/2029	44,566.72 AUD	750,643.86 AUD	795,210.58 AUD
08/2029	39,005.74 AUD	709,329.41 AUD	748,335.15 AUD
09/2029	33,751.25 AUD	672,525.52 AUD	706,276.77 AUD
10/2029	28,768.97 AUD	625,847.64 AUD	654,616.61 AUD
11/2029	24,132.60 AUD	572,136.79 AUD	596,269.39 AUD
12/2029	19,894.24 AUD	514,371.86 AUD	534,266.10 AUD
01/2030	16,083.63 AUD	462,120.25 AUD	478,203.88 AUD
02/2030	12,660.22 AUD	416,344.73 AUD	429,004.95 AUD
03/2030	9,575.96 AUD	355,443.89 AUD	365,019.85 AUD
04/2030	6,938.41 AUD	285,729.91 AUD	292,668.32 AUD
05/2030	4,821.67 AUD	236,288.20 AUD	241,109.87 AUD
06/2030	3,071.27 AUD	189,716.04 AUD	192,787.31 AUD
07/2030	1,665.81 AUD	119,931.49 AUD	121,597.30 AUD
08/2030	777.36 AUD	69,180.54 AUD	69,957.90 AUD
09/2030	264.85 AUD	25,088.60 AUD	25,353.45 AUD
10/2030	78.98 AUD	9,616.97 AUD	9,695.95 AUD
11/2030	7.75 AUD	1,045.63 AUD	1,053.38 AUD
12/2030	- AUD	- AUD	- AUD
Total	340,907,624.99 AUD	1,811,712,788.87 AUD	2,152,620,409.46 AUD

Run Out Schedule II



Outstanding Contracts I - Overview

Total Portfolio as of Poclcut Date		Hire Purchase		Chattel Mortgage		Consumer Loan		
Contract Status Development	Number of Contracts	Outstanding Discounted Receivables Balance	Number of Contracts	Outstanding Discounted Receivables Balance	Number of Contracts	Outstanding Discounted Receivables Balance	Number of Contracts	
Normal	3,572	128,541,484.25 AUD	27	595,370.83 AUD	2,047	82,162,211.56 AUD	1,498	45,783,902.16 AUD
In Advance	-	- AUD	-	- AUD	-	- AUD	-	- AUD
In Arrears	-	- AUD	-	- AUD	-	- AUD	-	- AUD
Paid out/Matured	-	- AUD	-	- AUD	-	- AUD	-	- AUD
Early Payout	-	- AUD	-	- AUD	-	- AUD	-	- AUD
Gross Salvage	-	- AUD	-	- AUD	-	- AUD	-	- AUD
Net Salvage	-	- AUD	-	- AUD	-	- AUD	-	- AUD
Total	3,572	128,541,484.25 AUD	27	595,370.83 AUD	2,047	82,162,211.56 AUD	1,498	45,783,902.16 AUD

Total Portfolio as of Previous Month		Hire Purchase		Chattel Mortgage		Consumer Loan		
Contract Status Development	Number of Contracts	Outstanding Discounted Receivables Balance	Number of Contracts	Outstanding Discounted Receivables Balance	Number of Contracts	Outstanding Discounted Receivables Balance	Number of Contracts	
Normal	39,899	1,408,971,617.70 AUD	8	145,913.80 AUD	24,506	1,024,668,843.72 AUD	15,385	384,156,860.18 AUD
In Advance	8,327	207,569,126.24 AUD	3	41,548.86 AUD	3,175	96,208,207.04 AUD	5,149	111,319,370.34 AUD
In Arrears	6,028	192,952,003.99 AUD	-	- AUD	3,026	112,497,519.16 AUD	3,002	80,454,484.83 AUD
Paid out/Matured	13,910	- AUD	33	- AUD	7,597	- AUD	6,280	- AUD
Early Payout	52,352	- AUD	48	- AUD	19,293	- AUD	33,011	- AUD
Gross Salvage	1,938	2,092,842.75 AUD	-	- AUD	49	1,526,674.41 AUD	38	566,168.34 AUD
Net Salvage	1,938	39,296,075.65 AUD	3	11,370.98 AUD	974	23,570,842.89 AUD	961	15,713,861.68 AUD
Total	122,341	1,650,881,668.23 AUD	95	198,633.64 AUD	58,620	1,258,472,087.92 AUD	63,826	592,210,745.27 AUD

Total Portfolio as of Current Reporting Period		Hire Purchase		Chattel Mortgage		Consumer Loan		
Contract Status Development	Number of Contracts	Outstanding Discounted Receivables Balance	Number of Contracts	Outstanding Discounted Receivables Balance	Number of Contracts	Outstanding Discounted Receivables Balance	Number of Contracts	
Normal	39,529	1,386,009,749.05 AUD	8	139,661.88 AUD	24,470	1,017,925,908.86 AUD	15,051	368,544,178.31 AUD
In Advance	8,408	212,864,548.10 AUD	3	38,622.84 AUD	3,229	100,196,003.55 AUD	5,176	112,629,921.61 AUD
In Arrears	6,325	210,413,727.35 AUD	-	- AUD	3,141	120,435,169.15 AUD	3,184	89,978,558.20 AUD
Paid out/Matured	14,188	- AUD	33	- AUD	7,758	- AUD	6,397	- AUD
Early Payout	53,065	- AUD	48	- AUD	19,590	- AUD	33,427	- AUD
Gross Salvage	84	1,824,764.37 AUD	-	- AUD	47	1,374,303.47 AUD	37	450,460.90 AUD
Net Salvage	1,962	39,727,352.43 AUD	3	11,370.98 AUD	989	23,871,708.93 AUD	970	15,844,282.52 AUD
Total	123,561	1,851,448,151.30 AUD	95	189,655.80 AUD	59,224	1,263,803,093.96 AUD	64,242	587,447,401.54 AUD

Outstanding Contracts I - Overview

Total Portfolio as of Payout Date										
Contract Status Development	Number of Contracts	Outstanding Discounted Receivables Balance	Balloon		No Balloon		New Vehicle		Used Vehicle	
			Number of Contracts	Outstanding Discounted Receivables Balance	Number of Contracts	Outstanding Discounted Receivables Balance	Number of Contracts	Outstanding Discounted Receivables Balance	Number of Contracts	Outstanding Discounted Receivables Balance
Normal	3,572	128,541,484.25 AUD	1,480	67,743,395.28 AUD	2,112	60,798,088.97 AUD	2,996	113,632,498.43 AUD	576	14,908,985.82 AUD
In Advance	-	- AUD	-	- AUD	-	- AUD	-	- AUD	-	- AUD
In Arrears	-	- AUD	-	- AUD	-	- AUD	-	- AUD	-	- AUD
Paid out/Matured	-	- AUD	-	- AUD	-	- AUD	-	- AUD	-	- AUD
Early Payout	-	- AUD	-	- AUD	-	- AUD	-	- AUD	-	- AUD
Gross Salvage	-	- AUD	-	- AUD	-	- AUD	-	- AUD	-	- AUD
Net Salvage	-	- AUD	-	- AUD	-	- AUD	-	- AUD	-	- AUD
Total	3,572	128,541,484.25 AUD	1,480	67,743,395.28 AUD	2,112	60,798,088.97 AUD	2,996	113,632,498.43 AUD	576	14,908,985.82 AUD

Total Portfolio as of Previous Month										
Contract Status Development	Number of Contracts	Outstanding Discounted Receivables Balance	Balloon		No Balloon		New Vehicle		Used Vehicle	
			Number of Contracts	Outstanding Discounted Receivables Balance	Number of Contracts	Outstanding Discounted Receivables Balance	Number of Contracts	Outstanding Discounted Receivables Balance	Number of Contracts	Outstanding Discounted Receivables Balance
Normal	39,899	1,408,971,617.70 AUD	11,718	679,623,172.16 AUD	28,181	729,348,445.54 AUD	27,764	1,078,395,948.86 AUD	12,135	330,575,667.84 AUD
In Advance	8,327	207,569,126.24 AUD	1,591	64,158,292.97 AUD	6,736	143,410,833.27 AUD	5,611	150,626,792.96 AUD	2,716	56,942,333.28 AUD
In Arrears	6,028	192,952,003.99 AUD	1,521	75,512,307.98 AUD	4,507	117,439,696.01 AUD	3,886	135,613,491.71 AUD	2,142	57,338,512.28 AUD
Paid out/Matured	13,910	- AUD	3,686	- AUD	10,224	- AUD	10,164	- AUD	3,746	- AUD
Early Payout	52,352	- AUD	13,148	- AUD	39,204	- AUD	34,702	- AUD	17,650	- AUD
Gross Salvage	87	2,092,842.75 AUD	37	1,442,311.90 AUD	50	650,530.85 AUD	59	1,655,043.37 AUD	28	437,798.38 AUD
Net Salvage	1,938	39,296,075.65 AUD	631	20,143,053.89 AUD	1,307	19,153,021.86 AUD	1,079	25,657,630.55 AUD	869	13,638,445.00 AUD
Total	122,541	1,650,881,668.23 AUD	32,332	840,879,136.70 AUD	90,209	1,010,002,927.53 AUD	83,265	1,391,946,906.45 AUD	39,276	456,932,957.76 AUD

Total Portfolio as of Current Reporting Period										
Contract Status Development	Number of Contracts	Outstanding Discounted Receivables Balance	Balloon		No Balloon		New Vehicle		Used Vehicle	
			Number of Contracts	Outstanding Discounted Receivables Balance	Number of Contracts	Outstanding Discounted Receivables Balance	Number of Contracts	Outstanding Discounted Receivables Balance	Number of Contracts	Outstanding Discounted Receivables Balance
Normal	39,529	1,386,009,749.05 AUD	11,662	675,981,993.73 AUD	27,867	710,627,755.32 AUD	27,525	1,067,090,201.06 AUD	12,004	319,579,547.99 AUD
In Advance	8,408	212,864,548.10 AUD	1,628	68,388,621.06 AUD	6,780	144,475,927.04 AUD	5,687	154,213,389.28 AUD	2,721	58,651,158.82 AUD
In Arrears	6,325	210,413,727.35 AUD	1,594	82,181,022.93 AUD	4,731	128,232,704.42 AUD	4,093	147,998,641.16 AUD	2,232	62,415,086.19 AUD
Paid out/Matured	14,188	- AUD	3,762	- AUD	10,426	- AUD	10,378	- AUD	3,810	- AUD
Early Payout	53,065	- AUD	13,317	- AUD	39,748	- AUD	35,157	- AUD	17,908	- AUD
Gross Salvage	84	1,824,764.37 AUD	30	1,163,602.53 AUD	54	661,161.84 AUD	53	1,357,360.13 AUD	31	467,404.24 AUD
Net Salvage	1,962	39,727,352.43 AUD	638	20,305,120.48 AUD	1,324	19,422,241.95 AUD	1,091	25,856,244.37 AUD	871	13,871,118.06 AUD
Total	123,561	1,851,448,151.30 AUD	32,631	848,020,360.73 AUD	90,930	1,003,419,790.57 AUD	83,984	1,396,455,836.00 AUD	39,577	454,984,315.30 AUD

Outstanding Contracts II - Collections

Collections This Reporting Month by Status	Change in Contract Statuses From Last Month	Number of Contracts This Month	Collections
Normal	(1,390)	38,509	36,950,378.47 AUD
In Advance	81	8,408	9,148,000.46 AUD
In Arrears	297	6,325	4,981,239.22 AUD
Paid out/Matured	278	14,188	1,257,161.06 AUD
Early Payout	713	53,065	15,255,473.81 AUD
Gross Salvage	(3)	84	179,154.28 AUD
Net Salvage	24	1,962	245,893.60 AUD
Total	-	122,541	68,017,300.90 AUD

Development of Pool within Reporting Period	Number of Active Contracts	Total Number of Contracts	Collection Variations	Outstanding Nominal Balance
Beginning of Period	54,341	122,541		2,155,100,470.57 AUD
Scheduled Collections For Contracts Active This Period			49,765,652.91 AUD	49,765,652.91 AUD
Collections Variations From Normal Contracts This Period			792,755.55 AUD	
Collection Variations From Contracts Paying Out Early This Period			14,790,288.96 AUD	
Collection Variations From Contracts Paying Out/Maturing This Period			787,092.21 AUD	
Collection Variations from Contracts in Advance This Period			4,144,437.34 AUD	
Collection Variations from Contract In Arrears This Period			(2,156,702.12 AUD)	
Collection Variations from Contracts Going Into Gross Salvage This Period			60,539.21 AUD	
Collection Variations from Contracts Going Into Net Salvage This Period			273,734.62 AUD	
Other Variations From Scheduled Collections This Period			- AUD	
<i>Instalment Collection Variations</i>			18,692,145.77 AUD	18,692,145.77 AUD
Contract Fees Collected This Period			266,665.68 AUD	
Interest Compensation Collections This Period			(707,163.46 AUD)	
<i>Non Instalment Collection Variations</i>			(440,497.78 AUD)	
Actual Collections For Contracts Active This Period			68,017,300.90 AUD	
Number of Contracts Paid Out Early This Month	713			
Number of Contracts Paid Out/Matured This Month	278			
Number of Contracts Into Net Salvage This Month	24			
Repurchased Contracts	-	-		
Less Recoveries After Net Salvage				(158,626.91 AUD)
Reduced Nominal Balance Due to Unpaid Rental At Net Salvage				493,322.54 AUD
Reduced Nominal Balance Due to Unpaid Rental At Early Payout				1,724,973.90 AUD
Reduced Nominal Balance Due to Other				(99,438.12 AUD)
End of Period before Top / Tap-up	53,326	122,541		2,084,682,440.48 AUD
Top / Tap-up	1,020	1,020		67,937,968.98 AUD
Term Take Out	-	-		- AUD
End of Period after Top / Tap-up	54,346	123,561		2,152,620,409.46 AUD

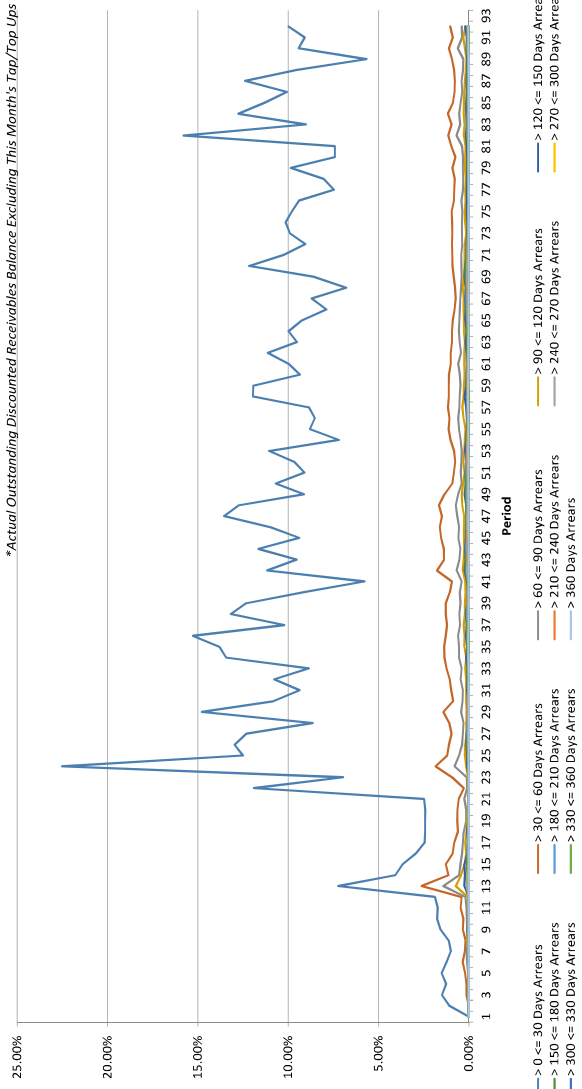
Development of outstanding pool during the reporting period	Number of active contracts	Outstanding Discounted Receivables Balance	Outstanding Nominal Balance
Balance as at the Beginning of Period	54,341	1,811,585,590.68 AUD	2,155,100,470.57 AUD
Balance as at the End of Period - before Top / Tap-up	53,326	1,757,124,216.79 AUD	2,084,682,440.48 AUD
Top / Tap-up for the Period	1,020	54,588,572.08 AUD	67,937,968.98 AUD
Term Take Out	-	- AUD	- AUD
Balance as at the end of the period	54,346	1,811,712,788.87 AUD	2,152,620,409.46 AUD

Arrears Contracts

Total Portfolio				Hire Purchase			Chattel Mortgage			Consumer Loan		
Days in Arrears	Number of Contracts	Number of Contracts (%)	Outstanding Discounted Receivables Balance	Outstanding Discounted Receivables Balance (%)	Number of Contracts	Outstanding Discounted Receivables Balance	Number of Contracts	Outstanding Discounted Receivables Balance	Number of Contracts	Outstanding Discounted Receivables Balance	Number of Contracts	Outstanding Discounted Receivables Balance
> 0 <= 30	5,127	9.43%	175,288,226.89 AUD	9.68%	-	- AUD	2,411	95,144,681.60 AUD	2,716	80,143,545.29 AUD	2,716	80,143,545.29 AUD
> 30 <= 60	636	1.17%	18,133,008.82 AUD	1.00%	-	- AUD	364	12,177,310.77 AUD	272	5,955,697.65 AUD	272	5,955,697.65 AUD
> 60 <= 90	235	0.43%	6,855,074.39 AUD	0.38%	-	- AUD	148	4,895,496.63 AUD	87	1,841,575.76 AUD	87	1,841,575.76 AUD
> 90 <= 120	121	0.22%	3,186,564.45 AUD	0.18%	-	- AUD	79	2,280,996.92 AUD	42	905,567.53 AUD	42	905,567.53 AUD
> 120 <= 150	92	0.17%	3,486,620.79 AUD	0.19%	-	- AUD	67	3,120,964.79 AUD	25	365,696.00 AUD	25	365,696.00 AUD
> 150 <= 180	58	0.11%	1,410,994.20 AUD	0.08%	-	- AUD	36	1,042,613.86 AUD	22	368,380.34 AUD	22	368,380.34 AUD
> 180 <= 210	36	0.07%	1,270,589.75 AUD	0.07%	-	- AUD	25	1,084,695.67 AUD	11	185,894.08 AUD	11	185,894.08 AUD
> 210 <= 240	23	0.04%	758,361.67 AUD	0.04%	-	- AUD	15	614,476.49 AUD	8	143,885.18 AUD	8	143,885.18 AUD
> 240 <= 270	13	0.02%	529,670.94 AUD	0.03%	-	- AUD	7	347,106.86 AUD	6	182,564.08 AUD	6	182,564.08 AUD
> 270 <= 300	7	0.01%	157,499.59 AUD	0.01%	-	- AUD	5	132,783.92 AUD	2	81,286.74 AUD	2	81,286.74 AUD
> 300 <= 330	5	0.01%	164,158.03 AUD	0.01%	-	- AUD	1	82,871.29 AUD	4	26,281.70 AUD	4	26,281.70 AUD
> 330 <= 360	3	0.01%	57,642.31 AUD	0.00%	-	- AUD	1	31,360.61 AUD	2	21,289.65 AUD	2	21,289.65 AUD
> 360	6	0.01%	574,785.25 AUD	0.03%	-	- AUD	5	553,495.60 AUD	1	21,289.65 AUD	1	21,289.65 AUD
Total	6,362	11.71%	211,853,218.88 AUD	11.89%	-	- AUD	3,164	121,606,857.01 AUD	3,198	90,246,539.87 AUD	3,198	90,246,539.87 AUD

Arrears Contracts / Total Outstanding Discounted Receivables Balance (in %)

*Actual Outstanding Discounted Receivables Balance Excluding This Month's Top/Top Ups



Arrears Contracts

Days in Arrears	Total Portfolio											
	Balloon		No Balloon		New		Used		Vehicle Status			
	Number of Contracts	Outstanding Discounted Receivables Balance	Outstanding Discounted Receivables Balance (%)	Number of Contracts	Outstanding Discounted Receivables Balance	Outstanding Discounted Receivables Balance (%)	Number of Contracts	Outstanding Discounted Receivables Balance	Outstanding Discounted Receivables Balance (%)	Number of Contracts	Outstanding Discounted Receivables Balance	
> 0 <= 30	5,127	175,288,226.89 AUD	9.43%	1,204	63,955,879.41 AUD	9.68%	3,923	111,332,347.48 AUD	3,387	125,200,574.91 AUD	1,740	50,087,651.98 AUD
> 30 <= 60	636	18,133,008.82 AUD	1.17%	202	9,518,096.07 AUD	1.00%	434	8,614,912.55 AUD	373	11,738,162.25 AUD	263	6,394,846.37 AUD
> 60 <= 90	235	6,855,074.39 AUD	0.43%	84	3,512,967.17 AUD	0.38%	151	3,322,107.22 AUD	149	4,800,557.61 AUD	86	2,034,536.76 AUD
> 90 <= 120	121	3,186,564.45 AUD	0.22%	39	1,646,477.31 AUD	0.18%	82	1,540,107.14 AUD	71	2,125,912.83 AUD	50	1,060,671.92 AUD
> 120 <= 150	92	3,486,620.79 AUD	0.17%	31	1,972,091.10 AUD	0.19%	61	1,514,528.69 AUD	61	2,526,235.97 AUD	31	960,383.82 AUD
> 150 <= 180	58	1,410,994.20 AUD	0.11%	20	671,138.20 AUD	0.08%	38	739,856.00 AUD	31	918,795.04 AUD	27	492,201.16 AUD
> 180 <= 210	36	1,270,589.75 AUD	0.07%	12	679,830.29 AUD	0.07%	24	590,759.56 AUD	19	587,699.56 AUD	17	682,890.19 AUD
> 210 <= 240	23	758,361.67 AUD	0.04%	6	300,095.15 AUD	0.04%	17	458,266.52 AUD	16	217,985.45 AUD	16	540,376.22 AUD
> 240 <= 270	13	529,670.94 AUD	0.02%	3	214,904.97 AUD	0.03%	10	314,765.97 AUD	6	281,151.23 AUD	7	268,519.71 AUD
> 270 <= 300	7	157,499.59 AUD	0.01%	3	92,079.04 AUD	0.01%	4	65,420.55 AUD	4	87,964.86 AUD	3	69,534.73 AUD
> 300 <= 330	5	164,158.03 AUD	0.01%	1	82,871.29 AUD	0.01%	4	81,286.74 AUD	1	18,600.79 AUD	4	145,557.24 AUD
> 330 <= 360	3	57,642.31 AUD	0.01%	1	31,360.61 AUD	0.00%	2	26,281.70 AUD	1	31,360.61 AUD	2	26,281.70 AUD
> 360	6	574,785.25 AUD	0.03%	5	528,516.80 AUD	0.03%	1	46,268.45 AUD	6	574,785.25 AUD	-	- AUD
Total	6,362	211,853,218.88 AUD	11.71%	1,611	83,206,507.41 AUD	11.89%	4,751	128,646,909.47 AUD	4,116	149,089,765.06 AUD	2,246	62,763,451.82 AUD

Net Salvage Loss

Net Salvage Loss This Period			
Product Type	Type of Car	Number of Contracts	Net Salvage Loss
Hire Purchase	New	-	- AUD
	Used	-	- AUD
Total Hire Purchase			- AUD
Chattel Mortgage	New	9	187,972.08 AUD
	Used	6	126,130.45 AUD
Total Chattel Mortgage		15	314,102.53 AUD
Consumer Loan	New	3	17,779.29 AUD
	Used	6	118,861.82 AUD
Total Consumer Loan		9	136,641.11 AUD
Total		24	450,743.64 AUD

Cumulative Net Salvage Loss as of the End of the Monthly Period 41,663,871.88 AUD

Monthly Period	Per Period		Cumulative Net Salvage Loss	
	Number of Contracts	Net Salvage Loss	Number of Contracts	Net Salvage Loss
06/2016	-	- AUD	-	- AUD
07/2016	-	- AUD	-	- AUD
08/2016	-	- AUD	-	- AUD
09/2016	-	- AUD	-	- AUD
10/2016	-	- AUD	-	- AUD
11/2016	-	- AUD	-	- AUD
12/2016	-	- AUD	-	- AUD
01/2017	-	- AUD	-	- AUD
02/2017	1	8,659.67 AUD	1	8,659.67 AUD
03/2017	2	15,457.38 AUD	3	24,117.05 AUD
04/2017	4	64,411.10 AUD	7	88,528.15 AUD
05/2017	6	193,850.16 AUD	13	282,378.31 AUD
06/2017	4	84,435.94 AUD	17	366,814.25 AUD
07/2017	5	174,503.10 AUD	22	541,317.35 AUD
08/2017	4	63,033.72 AUD	26	604,351.07 AUD
09/2017	4	60,388.74 AUD	30	664,739.81 AUD
10/2017	5	89,775.80 AUD	35	754,515.61 AUD
11/2017	4	65,535.01 AUD	39	820,050.62 AUD
12/2017	4	56,065.96 AUD	43	876,116.58 AUD
01/2018	3	40,025.11 AUD	46	916,141.69 AUD
02/2018	5	174,489.66 AUD	51	1,090,631.35 AUD
03/2018	4	111,947.99 AUD	55	1,202,579.34 AUD
04/2018	5	63,221.28 AUD	60	1,265,800.62 AUD
05/2018	3	82,177.84 AUD	63	1,347,978.46 AUD
06/2018	11	180,207.73 AUD	74	1,528,186.19 AUD
07/2018	15	335,958.62 AUD	89	1,864,144.81 AUD
08/2018	8	155,956.77 AUD	97	2,020,101.58 AUD
09/2018	16	578,503.82 AUD	113	2,598,605.40 AUD
10/2018	24	493,397.89 AUD	137	3,092,003.29 AUD
11/2018	28	543,744.36 AUD	165	3,635,747.65 AUD
12/2018	27	654,933.69 AUD	192	4,290,681.34 AUD
01/2019	18	340,061.07 AUD	210	4,630,742.41 AUD
02/2019	17	296,152.35 AUD	227	4,926,894.76 AUD
03/2019	19	361,089.40 AUD	246	5,287,984.16 AUD
04/2019	21	456,733.76 AUD	267	5,744,717.92 AUD
05/2019	40	826,522.38 AUD	307	6,571,240.30 AUD
06/2019	43	1,179,248.54 AUD	350	7,750,488.84 AUD
07/2019	36	913,275.80 AUD	386	8,663,764.64 AUD
08/2019	49	1,059,618.67 AUD	435	9,723,383.31 AUD
09/2019	55	2,052,110.64 AUD	490	11,775,493.95 AUD
10/2019	50	1,497,436.73 AUD	540	13,272,930.68 AUD
11/2019	53	976,220.75 AUD	593	14,249,151.43 AUD
12/2019	36	784,407.21 AUD	629	15,033,558.64 AUD
01/2020	53	750,804.12 AUD	682	15,784,362.76 AUD
02/2020	56	1,079,393.05 AUD	738	16,863,755.81 AUD
03/2020	54	1,194,356.98 AUD	792	18,058,112.79 AUD
04/2020	23	817,311.33 AUD	815	18,875,424.12 AUD
05/2020	22	475,290.51 AUD	837	19,350,714.63 AUD
06/2020	28	533,663.47 AUD	865	19,884,378.10 AUD
07/2020	32	794,862.67 AUD	897	20,679,240.77 AUD
08/2020	29	596,825.67 AUD	926	21,276,066.44 AUD
09/2020	35	890,017.39 AUD	961	22,166,083.83 AUD
10/2020	30	486,800.05 AUD	991	22,652,883.88 AUD
11/2020	34	699,042.67 AUD	1,015	23,351,926.55 AUD
12/2020	24	405,646.08 AUD	1,039	23,757,572.63 AUD
01/2021	24	329,303.29 AUD	1,063	24,086,875.92 AUD
02/2021	26	463,028.40 AUD	1,089	24,549,904.32 AUD
03/2021	30	686,937.28 AUD	1,119	25,236,841.60 AUD
04/2021	19	327,469.95 AUD	1,138	25,564,311.55 AUD
05/2021	25	1,001,217.41 AUD	1,163	26,565,528.96 AUD
06/2021	23	606,487.98 AUD	1,186	27,172,016.94 AUD
07/2021	32	776,906.39 AUD	1,218	27,948,923.33 AUD
08/2021	-	- AUD	1,218	27,948,923.33 AUD
09/2021	44	986,362.13 AUD	1,262	28,935,285.46 AUD
10/2021	18	427,492.56 AUD	1,280	29,362,778.02 AUD
11/2021	27	858,207.96 AUD	1,307	30,220,985.98 AUD
12/2021	22	654,105.35 AUD	1,329	30,875,091.33 AUD
01/2022	26	422,625.81 AUD	1,355	31,297,717.14 AUD
02/2022	35	675,039.42 AUD	1,390	31,972,756.56 AUD
03/2022	40	622,330.80 AUD	1,430	32,595,087.36 AUD
04/2022	35	781,362.13 AUD	1,465	33,376,449.49 AUD
05/2022	43	563,989.26 AUD	1,508	33,940,438.75 AUD
06/2022	17	417,908.46 AUD	1,525	34,358,347.21 AUD
07/2022	19	381,313.70 AUD	1,544	34,739,660.91 AUD
08/2022	23	268,132.92 AUD	1,567	34,997,793.83 AUD
09/2022	19	392,830.31 AUD	1,586	35,390,624.14 AUD
10/2022	11	115,292.66 AUD	1,597	35,505,916.80 AUD
11/2022	21	411,893.55 AUD	1,618	35,917,810.35 AUD
12/2022	13	140,086.04 AUD	1,631	36,057,896.39 AUD
01/2023	20	250,873.06 AUD	1,651	36,308,769.45 AUD
02/2023	27	532,922.24 AUD	1,678	36,841,691.69 AUD
03/2023	21	307,933.92 AUD	1,699	37,149,625.61 AUD
04/2023	23	219,521.29 AUD	1,722	37,369,146.90 AUD
05/2023	31	484,497.15 AUD	1,753	37,853,644.05 AUD
06/2023	27	500,062.82 AUD	1,780	38,353,706.87 AUD
07/2023	30	423,300.77 AUD	1,810	38,777,007.64 AUD
08/2023	32	490,119.49 AUD	1,842	39,267,127.13 AUD
09/2023	36	691,579.95 AUD	1,878	39,958,707.08 AUD
10/2023	31	622,915.21 AUD	1,909	40,581,622.29 AUD
11/2023	29	641,505.95 AUD	1,938	41,223,128.24 AUD
12/2023	24	450,743.64 AUD	1,962	41,663,871.88 AUD
Total	1,962	41,663,871.88 AUD		

Net Salvage After Recoveries

Product Type	Vehicle Status	Number of Contracts	Net Salvaged Contracts				Recoveries After Net Salvage	Net Salvage Loss After Recoveries
			Gross Salvage Loss	Net Salvage Loss	Recoveries After Net Salvage	Net Salvage Loss After Recoveries		
Hire Purchase	New	1	40,177.90 AUD	- AUD	- AUD	- AUD	- AUD	
	Used	2	29,707.01 AUD	11,441.01 AUD	3,385.37 AUD	8,055.64 AUD		
Total Hire Purchase		3	69,884.91 AUD	11,441.01 AUD	3,385.37 AUD	8,055.64 AUD		
Chattel Mortgage	New	603	25,589,967.08 AUD	17,598,259.67 AUD	7,224,636.88 AUD	10,373,622.79 AUD		
	Used	386	10,005,337.73 AUD	7,546,013.67 AUD	2,213,656.41 AUD	5,332,357.26 AUD		
Total Chattel Mortgage		989	35,595,304.81 AUD	25,144,273.34 AUD	9,438,293.29 AUD	15,705,980.05 AUD		
Consumer Loan	New	487	12,831,231.43 AUD	9,516,667.25 AUD	3,213,620.73 AUD	6,303,046.52 AUD		
	Used	483	8,837,483.97 AUD	6,991,490.28 AUD	1,691,021.12 AUD	5,300,469.16 AUD		
Total Consumer Loan		970	21,668,715.40 AUD	16,508,157.53 AUD	4,904,641.85 AUD	11,603,515.68 AUD		
Total		1,962	57,333,905.12 AUD	41,663,871.88 AUD	14,346,320.51 AUD	27,317,551.37 AUD		

Prepayments

Period Number	Reporting Period	Unscheduled Payments	Opening Outstanding Discounted Receivables Balance	Periodic CPR	Annualised CPR
0	Poolcut	- AUD	- AUD		
1	06/2016	537,166.66 AUD	128,541,484.25 AUD	0.42%	4.98%
2	07/2016	906,595.00 AUD	179,392,456.69 AUD	0.51%	5.81%
3	08/2016	890,907.68 AUD	232,102,954.87 AUD	0.38%	4.44%
4	09/2016	1,235,997.63 AUD	301,945,240.73 AUD	0.41%	4.88%
5	10/2016	1,588,515.69 AUD	296,009,482.18 AUD	0.54%	6.16%
6	11/2016	2,534,984.15 AUD	385,825,380.57 AUD	0.66%	7.73%
7	12/2016	2,505,126.54 AUD	422,525,298.67 AUD	0.59%	6.78%
8	01/2017	1,847,481.80 AUD	484,857,963.77 AUD	0.38%	4.40%
9	02/2017	3,137,295.31 AUD	523,948,227.56 AUD	0.60%	7.53%
10	03/2017	4,012,131.88 AUD	559,160,428.50 AUD	0.72%	8.13%
11	04/2017	2,952,569.02 AUD	595,475,047.06 AUD	0.50%	5.87%
12	05/2017	865,328.53 AUD	81,209,476.71 AUD	1.07%	11.85%
13	06/2017	408,835.10 AUD	167,129,116.13 AUD	0.24%	2.94%
14	07/2017	981,701.98 AUD	188,783,291.07 AUD	0.52%	5.95%
15	08/2017	1,818,221.32 AUD	234,657,080.70 AUD	0.77%	8.75%
16	09/2017	1,176,500.88 AUD	290,934,514.24 AUD	0.40%	4.81%
17	10/2017	1,664,361.68 AUD	352,631,440.33 AUD	0.47%	5.42%
18	11/2017	1,657,888.63 AUD	400,885,663.72 AUD	0.41%	4.92%
19	12/2017	2,340,178.62 AUD	447,585,548.73 AUD	0.52%	5.99%
20	01/2018	2,089,616.08 AUD	490,005,221.05 AUD	0.43%	4.91%
21	02/2018	5,816,886.74 AUD	1,228,611,171.35 AUD	0.47%	6.00%
22	03/2018	7,445,882.87 AUD	1,263,679,754.59 AUD	0.59%	6.72%
23	04/2018	2,439,138.71 AUD	480,447,418.63 AUD	0.51%	6.00%
24	05/2018	3,760,601.40 AUD	673,585,227.97 AUD	0.56%	6.38%
25	06/2018	4,988,399.35 AUD	761,987,488.61 AUD	0.65%	7.68%
26	07/2018	4,707,290.40 AUD	803,598,975.18 AUD	0.59%	6.68%
27	08/2018	5,490,028.86 AUD	830,672,670.64 AUD	0.66%	7.51%
28	09/2018	4,263,899.93 AUD	808,625,153.03 AUD	0.53%	6.23%
29	10/2018	5,566,813.30 AUD	1,169,494,068.15 AUD	0.48%	5.46%
30	11/2018	5,607,642.47 AUD	1,255,188,075.10 AUD	0.45%	5.30%
31	12/2018	5,004,509.68 AUD	1,350,607,758.37 AUD	0.37%	4.28%
32	01/2019	5,992,664.69 AUD	1,419,627,082.87 AUD	0.42%	4.86%
33	02/2019	6,454,440.76 AUD	1,494,209,617.76 AUD	0.43%	5.49%
34	03/2019	7,091,601.77 AUD	1,559,614,349.82 AUD	0.45%	5.22%
35	04/2019	6,910,226.02 AUD	1,621,407,998.62 AUD	0.43%	5.06%
36	05/2019	10,832,525.78 AUD	1,695,623,389.36 AUD	0.64%	7.27%
37	06/2019	7,617,772.80 AUD	1,769,659,427.08 AUD	0.43%	5.11%
38	07/2019	11,889,972.42 AUD	1,814,824,519.27 AUD	0.66%	7.45%
39	08/2019	12,650,780.00 AUD	1,856,556,636.14 AUD	0.68%	7.73%
40	09/2019	13,495,900.79 AUD	1,931,113,707.06 AUD	0.70%	8.18%
41	10/2019	6,945,495.28 AUD	876,707,602.78 AUD	0.79%	8.94%
42	11/2019	6,058,919.45 AUD	999,395,199.91 AUD	0.61%	7.13%
43	12/2019	5,886,808.91 AUD	1,059,311,281.71 AUD	0.56%	6.35%
44	01/2020	5,884,858.59 AUD	1,030,430,910.19 AUD	0.57%	6.54%
45	02/2020	6,068,593.63 AUD	1,024,907,811.35 AUD	0.59%	7.22%
46	03/2020	6,519,019.85 AUD	1,024,883,636.45 AUD	0.64%	7.26%
47	04/2020	3,328,191.22 AUD	1,024,903,303.16 AUD	0.32%	3.89%
48	05/2020	6,091,671.85 AUD	1,024,880,017.57 AUD	0.59%	6.80%
49	06/2020	11,286,591.81 AUD	1,369,829,651.10 AUD	0.82%	9.60%
50	07/2020	14,063,112.81 AUD	1,363,010,710.69 AUD	1.03%	11.52%
51	08/2020	11,213,998.45 AUD	1,355,992,764.99 AUD	0.83%	9.34%
52	09/2020	11,783,429.31 AUD	1,353,258,777.97 AUD	0.87%	10.12%
53	10/2020	10,899,202.56 AUD	1,352,980,232.30 AUD	0.81%	9.11%
54	11/2020	10,516,801.85 AUD	1,352,970,282.43 AUD	0.78%	9.08%
55	12/2020	8,809,269.67 AUD	1,352,965,063.34 AUD	0.65%	7.42%
56	01/2021	8,660,409.61 AUD	1,352,966,182.80 AUD	0.64%	7.28%
57	02/2021	10,265,855.98 AUD	1,352,974,643.34 AUD	0.76%	9.45%
58	03/2021	15,996,121.35 AUD	1,353,023,715.56 AUD	1.18%	13.07%
59	04/2021	12,125,113.39 AUD	1,352,983,525.12 AUD	0.90%	10.37%
60	05/2021	13,754,986.90 AUD	1,352,968,108.00 AUD	1.02%	11.34%
61	06/2021	15,842,999.16 AUD	1,513,180,888.28 AUD	1.05%	12.02%
62	07/2021	16,289,630.96 AUD	1,513,134,178.77 AUD	1.08%	11.97%
63	08/2021	16,060,785.49 AUD	1,513,165,264.29 AUD	1.06%	11.81%
64	09/2021	15,863,898.04 AUD	1,513,137,370.07 AUD	1.05%	12.03%
65	10/2021	15,114,523.90 AUD	1,513,152,867.91 AUD	1.00%	11.15%
66	11/2021	18,695,621.66 AUD	1,513,147,193.40 AUD	1.24%	14.04%
67	12/2021	17,086,274.56 AUD	1,513,139,552.71 AUD	1.13%	12.52%
68	01/2022	13,464,494.44 AUD	1,515,429,705.68 AUD	0.89%	9.97%
69	02/2022	17,097,995.65 AUD	1,517,026,944.03 AUD	1.13%	13.74%
70	03/2022	18,687,849.26 AUD	1,518,625,733.63 AUD	1.23%	13.57%
71	04/2022	17,621,499.64 AUD	1,519,959,998.42 AUD	1.16%	13.23%
72	05/2022	18,604,881.35 AUD	1,519,972,723.59 AUD	1.22%	13.50%
73	06/2022	19,729,658.28 AUD	1,519,969,622.49 AUD	1.30%	14.70%
74	07/2022	17,917,953.68 AUD	1,519,990,070.14 AUD	1.18%	13.03%
75	08/2022	18,175,447.81 AUD	1,519,982,522.65 AUD	1.20%	13.21%
76	09/2022	17,805,403.53 AUD	1,519,958,601.66 AUD	1.17%	13.36%
77	10/2022	17,632,474.08 AUD	1,522,906,324.06 AUD	1.01%	11.22%
78	11/2022	20,309,039.04 AUD	1,754,180,281.59 AUD	1.16%	13.21%
79	12/2022	18,224,981.35 AUD	2,054,223,680.83 AUD	0.89%	9.96%
80	01/2023	12,798,749.65 AUD	2,060,105,639.48 AUD	0.62%	7.07%
81	02/2023	11,208,289.44 AUD	1,424,689,133.33 AUD	0.79%	9.78%
82	03/2023	15,828,910.66 AUD	1,683,000,486.94 AUD	0.94%	10.53%
83	04/2023	10,129,263.21 AUD	1,680,546,298.50 AUD	0.60%	7.09%
84	05/2023	19,743,667.17 AUD	1,904,561,516.56 AUD	1.04%	11.55%
85	06/2023	21,112,837.29 AUD	2,206,083,490.17 AUD	0.96%	11.04%
86	07/2023	17,476,055.84 AUD	2,207,561,835.56 AUD	0.79%	8.93%
87	08/2023	20,256,147.58 AUD	2,355,323,767.43 AUD	0.86%	9.67%
88	09/2023	18,096,461.35 AUD	2,354,327,330.99 AUD	0.77%	8.96%
89	10/2023	12,938,253.58 AUD	1,528,294,021.15 AUD	0.85%	9.53%
90	11/2023	14,720,890.18 AUD	1,827,525,644.57 AUD	0.81%	9.37%
91	12/2023	9,334,764.23 AUD	1,811,585,590.68 AUD	0.52%	5.90%

The annualised Constant Prepayment Rate (CPR) of the underlying receivables is based upon the most recent periodic CPR. Periodic CPR is equal to the total unscheduled principal received in the most recent period divided by the start of period principal balance. This is then annualised as follows:

$$1 - ((1 - \text{Periodic CPR})^{\text{number of periods in a year}})$$

Pool Data I

Down Payments

Down Payment	Total Portfolio				Hire Purchase		Chattel Mortgage		Consumer Loan		
	Number of Contracts	Percentage of Contracts	Outstanding Discounted Receivables Balance	Percentage of Balance	Down Payment/ Purchase Price in %	Number of Contracts	Outstanding Discounted Receivables Balance	Number of Contracts	Outstanding Discounted Receivables Balance	Number of Contracts	Outstanding Discounted Receivables Balance
No Down Payment	9,168	16.87%	280,391,240.29 AUD	15.48%	0.00%	3	64,356.38 AUD	5,710	206,302,499.19 AUD	3,455	74,024,384.72 AUD
0.01 - 10,000.00	25,693	47.28%	738,898,761.07 AUD	40.78%	10.04%	6	72,663.34 AUD	13,461	452,520,649.77 AUD	12,226	286,303,447.96 AUD
10,000.01 - 20,000.00	10,260	18.88%	336,561,647.21 AUD	18.58%	25.43%	2	41,265.10 AUD	6,026	231,952,106.32 AUD	4,232	104,568,275.79 AUD
20,000.01 - 30,000.00	4,244	7.81%	159,358,553.73 AUD	8.80%	34.44%	-	- AUD	2,429	112,193,094.33 AUD	1,815	47,165,459.40 AUD
30,000.01 - 40,000.00	2,041	3.76%	83,465,742.50 AUD	4.61%	41.48%	-	- AUD	1,188	60,278,246.17 AUD	853	23,158,197.33 AUD
40,000.01 - 50,000.00	1,118	2.06%	57,270,758.18 AUD	3.16%	43.66%	-	- AUD	723	45,900,605.10 AUD	395	11,370,153.08 AUD
50,000.01 - 60,000.00	574	1.05%	33,246,176.74 AUD	1.84%	45.99%	-	- AUD	387	26,548,742.66 AUD	187	6,897,434.08 AUD
60,000.01 - 70,000.00	354	0.65%	23,689,030.84 AUD	1.31%	48.61%	-	- AUD	253	18,463,066.96 AUD	101	5,225,963.86 AUD
70,000.01 - 80,000.00	206	0.38%	15,843,702.07 AUD	0.86%	49.61%	-	- AUD	154	12,634,116.24 AUD	52	2,809,585.83 AUD
80,000.01 - 90,000.00	133	0.24%	10,431,194.93 AUD	0.58%	51.07%	-	- AUD	97	8,352,770.25 AUD	36	2,078,424.68 AUD
90,000.01 - 100,000.00	119	0.22%	13,847,782.11 AUD	0.76%	46.98%	-	- AUD	84	12,363,716.07 AUD	25	1,484,067.04 AUD
100,000.01 - 110,000.00	76	0.14%	6,029,527.94 AUD	0.33%	59.04%	-	- AUD	58	5,209,717.31 AUD	18	819,810.63 AUD
110,000.01 - 120,000.00	55	0.10%	5,799,259.31 AUD	0.32%	55.39%	-	- AUD	44	5,208,304.18 AUD	11	590,965.13 AUD
120,000.01 - 130,000.00	37	0.07%	3,245,168.92 AUD	0.18%	61.77%	-	- AUD	29	2,994,120.04 AUD	8	251,048.88 AUD
130,000.01 - 140,000.00	27	0.05%	3,632,163.93 AUD	0.20%	50.92%	-	- AUD	25	3,539,337.56 AUD	2	92,826.37 AUD
140,000.01 - 150,000.00	34	0.06%	6,186,270.92 AUD	0.34%	47.93%	-	- AUD	32	5,893,818.37 AUD	2	292,402.55 AUD
> 150,000.00	207	0.38%	34,148,168.18 AUD	1.88%	65.85%	-	- AUD	177	29,578,476.51 AUD	30	4,569,681.67 AUD
Total	54,346	100.00%	1,811,712,788.87 AUD	100.00%	21.55%	11	178,284.82 AUD	30,887	1,239,931,385.03 AUD	23,448	571,603,119.02 AUD

Statistics Down Payments

Minimum Down Payment	- AUD
Maximum Down Payment	630,824.95 AUD
Weighted Average Down Payment (Customers that made a Down Payment)	24,150.82 AUD
Weighted Average Down Payment	20,413.19 AUD

Type of Payment

Type of Payment	Total Portfolio			Chattel Mortgage			Consumer Loan		
	Number of Contracts	Percentage of Contracts	Outstanding Discounted Receivables Balance	Number of Contracts	Outstanding Discounted Receivables Balance	Number of Contracts	Outstanding Discounted Receivables Balance		
Direct Debit	52,819	97.19%	1,770,170,293.98 AUD	30,025	1,210,940,219	22,784	559,069,943		
Other	1,527	2.81%	41,542,494.89 AUD	862	28,991,166	664	12,533,176		
Total	54,346	100.00%	1,811,712,788.87 AUD	30,887	1,239,931,385.03 AUD	23,448	571,603,119.02 AUD		

Pool Data I

Down Payments

Down Payment	Total Portfolio										Balloon			No Balloon			New			Used		
	Number of Contracts	Percentage of Contracts	Outstanding Discounted Receivables Balance	Percentage of Balance	Down Payment/ Purchase Price in %	Number of Contracts	Outstanding Discounted Receivables Balance	Number of Contracts	Outstanding Discounted Receivables Balance	Number of Contracts	Outstanding Discounted Receivables Balance	Number of Contracts	Outstanding Discounted Receivables Balance	Number of Contracts	Outstanding Discounted Receivables Balance	Number of Contracts	Outstanding Discounted Receivables Balance	Number of Contracts	Outstanding Discounted Receivables Balance			
																				Number of Contracts	Outstanding Discounted Receivables Balance	Number of Contracts
No Down Payment	9,168	16.87%	280,391,240.29 AUD	15.48%	0.00%	2,865	137,672,052.63 AUD	6,303	142,719,187.66 AUD	5,500	201,549,385.20 AUD	3,668	78,841,855.09 AUD									
0.01 - 10,000.00	25,693	47.28%	738,898,761.07 AUD	40.78%	10.04%	6,371	289,436,036.11 AUD	19,322	449,460,724.96 AUD	16,931	540,719,199.80 AUD	8,762	198,177,561.27 AUD									
10,000.01 - 20,000.00	10,260	18.88%	336,561,647.21 AUD	18.58%	25.43%	2,847	146,411,987.46 AUD	7,413	190,149,679.75 AUD	7,425	252,531,094.72 AUD	2,835	84,030,552.49 AUD									
20,000.01 - 30,000.00	4,244	7.81%	159,358,553.73 AUD	8.80%	34.44%	1,223	78,666,405.18 AUD	3,021	80,692,144.55 AUD	3,307	126,257,186.49 AUD	937	33,101,367.24 AUD									
30,000.01 - 40,000.00	2,041	3.76%	83,455,742.50 AUD	4.61%	41.48%	525	39,069,919.46 AUD	1,516	44,345,523.04 AUD	1,703	69,468,292.67 AUD	338	14,027,149.63 AUD									
40,000.01 - 50,000.00	1,118	2.05%	57,270,758.18 AUD	3.16%	43.56%	347	32,266,704.27 AUD	771	25,004,053.91 AUD	930	47,251,144.22 AUD	188	10,019,613.96 AUD									
50,000.01 - 60,000.00	574	1.05%	33,246,176.74 AUD	1.84%	45.99%	186	18,960,402.98 AUD	388	14,285,773.76 AUD	493	27,571,240.47 AUD	81	5,674,936.27 AUD									
60,000.01 - 70,000.00	354	0.65%	23,689,030.84 AUD	1.31%	48.61%	126	13,583,401.97 AUD	228	10,105,628.87 AUD	308	20,841,246.20 AUD	46	2,847,784.64 AUD									
70,000.01 - 80,000.00	206	0.38%	15,843,702.07 AUD	0.86%	49.61%	84	10,431,473.73 AUD	122	5,112,228.34 AUD	176	13,606,036.00 AUD	30	1,937,666.07 AUD									
80,000.01 - 90,000.00	133	0.24%	10,431,194.93 AUD	0.58%	51.07%	53	6,086,403.54 AUD	80	4,344,791.39 AUD	116	9,310,271.48 AUD	17	1,120,923.45 AUD									
90,000.01 - 100,000.00	119	0.22%	13,847,782.11 AUD	0.76%	46.98%	58	10,046,497.46 AUD	61	3,801,284.65 AUD	101	11,596,472.68 AUD	18	2,251,309.43 AUD									
100,000.01 - 110,000.00	76	0.14%	6,029,527.94 AUD	0.33%	55.04%	24	3,304,130.77 AUD	52	2,725,397.17 AUD	70	5,488,228.20 AUD	6	541,299.74 AUD									
110,000.01 - 120,000.00	55	0.10%	5,799,259.31 AUD	0.32%	55.39%	28	3,912,005.34 AUD	27	1,887,252.97 AUD	44	4,255,270.96 AUD	11	1,543,988.35 AUD									
120,000.01 - 130,000.00	37	0.07%	3,245,168.92 AUD	0.18%	61.77%	11	1,766,826.12 AUD	26	1,478,342.80 AUD	32	2,632,448.49 AUD	5	612,720.43 AUD									
130,000.01 - 140,000.00	27	0.05%	3,632,163.93 AUD	0.20%	50.92%	13	2,382,391.22 AUD	14	1,249,772.71 AUD	19	2,417,929.50 AUD	8	1,214,234.43 AUD									
140,000.01 - 150,000.00	34	0.06%	6,186,270.92 AUD	0.34%	47.93%	25	5,568,922.36 AUD	9	617,298.56 AUD	28	5,191,054.94 AUD	6	995,165.98 AUD									
> 150,000.00	207	0.38%	34,148,168.18 AUD	1.88%	65.85%	128	28,129,694.65 AUD	79	6,018,463.53 AUD	175	29,973,089.41 AUD	32	4,175,068.77 AUD									
Total	54,346	100.00%	1,817,712,788.87 AUD	100.00%	21.55%	14,914	827,715,240.25 AUD	39,432	983,937,548.82 AUD	37,328	1,370,599,591.63 AUD	16,988	441,113,197.24 AUD									

Statistics Down Payments

Minimum Down Payment	- AUD
Maximum Down Payment	630,824.95 AUD
Weighted Average Down Payment (Customers that made a Down Payment)	24,150.82 AUD
Weighted Average Down Payment	20,413.19 AUD

Type of Payment

Type of Payment	Total Portfolio		
	Number of Contracts	Outstanding Discounted Receivables Balance	Percentage of Balance
Direct Debit	52,819	1,770,170,293.98 AUD	97.71%
Other	1,527	41,542,494.89 AUD	2.29%
Total	54,346	1,811,712,788.87 AUD	100.00%

Type of Payment	Balloon						No Balloon						New						Used					
	Number of Contracts	Outstanding Discounted Receivables Balance	Number of Contracts	Outstanding Discounted Receivables Balance	Number of Contracts	Outstanding Discounted Receivables Balance	Number of Contracts	Outstanding Discounted Receivables Balance	Number of Contracts	Outstanding Discounted Receivables Balance	Number of Contracts	Outstanding Discounted Receivables Balance	Number of Contracts	Outstanding Discounted Receivables Balance	Number of Contracts	Outstanding Discounted Receivables Balance	Number of Contracts	Outstanding Discounted Receivables Balance						
																			Number of Contracts	Outstanding Discounted Receivables Balance	Number of Contracts	Outstanding Discounted Receivables Balance	Number of Contracts	Outstanding Discounted Receivables Balance
Direct Debit	14,468	807,003,338	38,351	963,166,966	36,420	1,341,975,163	16,399	428,195,141																
Other	446	20,711,902	1,081	20,830,593	938	28,624,439	569	12,918,056																
Total	14,914	827,715,240.25 AUD	39,432	983,937,548.82 AUD	37,358	1,370,599,591.63 AUD	16,988	441,113,197.24 AUD																

Pool Data II

Distribution of Contracts and Vehicles per Borrower

Number of Contracts Per Borrower	Number of Customers	Percentage of Customers	Number of Contracts	Percentage of Contracts	Outstanding Discounted Receivables Balance	Percentage of Balance
1	62,785	98.24%	52,588	96.16%	2,097,992,822.00 AUD	96.15%
2	1,025	1.60%	1,776	3.25%	74,323,307.94 AUD	3.41%
3	76	0.12%	218	0.40%	6,997,578.30 AUD	0.32%
4	19	0.03%	68	0.12%	2,008,725.24 AUD	0.09%
5	2	0.00%	6	0.01%	110,647.22 AUD	0.01%
6 - 10	3	0.00%	21	0.04%	531,637.49 AUD	0.02%
> 10	1	0.00%	9	0.02%	64,253.52 AUD	0.00%
Total	63,911	100.00%	54,686	100.00%	2,182,028,971.71 AUD	100.00%

Top 20 Borrower

Ranking	Outstanding Discounted Receivables Balance	Percentage of Overall Balance	Number of Contracts
1	694,016.40 AUD	0.03831 %	1
2	666,371.71 AUD	0.03678 %	2
3	661,314.43 AUD	0.03650 %	1
4	651,127.63 AUD	0.03594 %	1
5	641,098.33 AUD	0.03539 %	1
6	641,098.33 AUD	0.03539 %	1
7	622,975.34 AUD	0.03439 %	2
8	586,620.73 AUD	0.03238 %	1
9	581,676.52 AUD	0.03211 %	1
10	566,192.51 AUD	0.03125 %	1
11	556,132.77 AUD	0.03070 %	1
12	556,132.77 AUD	0.03070 %	1
13	554,463.87 AUD	0.03060 %	1
14	554,463.87 AUD	0.03060 %	1
15	552,723.11 AUD	0.03051 %	1
16	549,593.87 AUD	0.03034 %	1
17	547,055.51 AUD	0.03020 %	1
18	527,234.37 AUD	0.02910 %	1
19	527,234.37 AUD	0.02910 %	1
20	518,627.91 AUD	0.02863 %	2
	11,756,154.35 AUD	0.64890 %	23

Pool Data III

Distribution by Outstanding Discounted Receivables Balance

Total Portfolio					Hire Purchase		Chattel Mortgage		Consumer Loan	
Distribution by Outstanding Discounted Receivables Balance	Number of Contracts	Percentage of Contracts	Outstanding Discounted Receivables Balance	Percentage of Balance	Number of Contracts	Outstanding Discounted Receivables Balance	Number of Contracts	Outstanding Discounted Receivables Balance	Number of Contracts	Outstanding Discounted Receivables Balance
0.00 - 10,000.00	9,175	16.88%	50,344,626.66 AUD	2.78%	4	23,641.80 AUD	3,802	21,527,661.30 AUD	5,369	28,793,323.56 AUD
10,000.01 - 20,000.00	11,964	22.01%	180,137,098.48 AUD	9.94%	2	35,890.89 AUD	5,680	86,055,885.33 AUD	6,282	94,015,332.26 AUD
20,000.01 - 30,000.00	10,383	19.11%	257,089,300.97 AUD	14.19%	5	118,762.13 AUD	5,491	136,750,701.09 AUD	4,887	120,219,837.76 AUD
30,000.01 - 40,000.00	7,912	14.96%	274,421,697.59 AUD	15.15%	-	- AUD	4,779	165,018,960.44 AUD	3,153	108,402,717.15 AUD
40,000.01 - 50,000.00	5,117	9.42%	228,275,375.23 AUD	12.80%	-	- AUD	3,338	149,263,915.48 AUD	1,779	79,011,459.75 AUD
50,000.01 - 60,000.00	3,211	5.91%	174,964,989.75 AUD	9.66%	-	- AUD	2,291	125,009,298.11 AUD	920	49,975,691.64 AUD
60,000.01 - 70,000.00	2,014	3.71%	130,078,312.61 AUD	7.18%	-	- AUD	1,531	98,885,743.45 AUD	483	31,192,569.16 AUD
70,000.01 - 80,000.00	1,238	2.28%	92,410,722.68 AUD	5.10%	-	- AUD	1,013	75,710,706.52 AUD	225	16,700,016.16 AUD
80,000.01 - 90,000.00	837	1.54%	70,861,901.32 AUD	3.91%	-	- AUD	703	59,536,074.64 AUD	134	11,325,826.68 AUD
90,000.01 - 100,000.00	660	1.03%	53,030,831.24 AUD	2.93%	-	- AUD	495	46,879,197.48 AUD	65	6,151,633.76 AUD
100,000.01 - 110,000.00	421	0.77%	44,142,143.19 AUD	2.44%	-	- AUD	366	38,397,158.58 AUD	55	5,744,984.61 AUD
110,000.01 - 120,000.00	270	0.50%	31,011,528.40 AUD	1.71%	-	- AUD	241	27,664,409.95 AUD	29	3,347,118.45 AUD
120,000.01 - 130,000.00	221	0.41%	27,635,031.23 AUD	1.53%	-	- AUD	200	25,025,410.20 AUD	21	2,609,621.03 AUD
130,000.01 - 140,000.00	197	0.36%	26,598,120.06 AUD	1.47%	-	- AUD	181	24,417,637.14 AUD	16	2,180,482.92 AUD
140,000.01 - 150,000.00	163	0.30%	23,542,679.22 AUD	1.30%	-	- AUD	155	22,388,885.65 AUD	8	1,153,793.57 AUD
> 150,000.00	663	1.22%	147,148,430.24 AUD	8.12%	-	- AUD	621	136,369,719.87 AUD	42	10,778,710.57 AUD
Total	54,346	100.00%	1,811,712,788.87 AUD	100.00%	11	178,284.82 AUD	30,887	1,239,931,885.03 AUD	23,448	571,603,119.02 AUD

Statistics Outstanding Discounted Receivables Balance

Minimum Outstanding Discounted Receivables Balance	- AUD
Maximum Outstanding Discounted Receivables Balance	694,016.40 AUD
Average Outstanding Discounted Receivables Balance	33,336.64 AUD

Distribution by Original Balance

Total Portfolio					Hire Purchase		Chattel Mortgage		Consumer Loan	
Distribution by Original Balance	Number of Contracts	Percentage of Contracts	Outstanding Discounted Receivables Balance	Percentage of Balance	Number of Contracts	Outstanding Discounted Receivables Balance	Number of Contracts	Outstanding Discounted Receivables Balance	Number of Contracts	Outstanding Discounted Receivables Balance
0.00 - 10,000.00	302	0.56%	1,272,508.74 AUD	0.07%	-	- AUD	76	320,009.11 AUD	226	962,499.63 AUD
10,000.01 - 20,000.00	4,854	8.93%	40,188,682.76 AUD	2.22%	1	7,665.10 AUD	1,782	14,839,949.73 AUD	3,072	25,348,733.03 AUD
20,000.01 - 30,000.00	10,229	18.82%	145,391,521.21 AUD	8.03%	1	23,557.42 AUD	4,222	60,277,321.94 AUD	6,006	85,106,534.17 AUD
30,000.01 - 40,000.00	10,911	20.08%	232,557,978.14 AUD	12.84%	2	29,142.54 AUD	5,435	116,656,521.18 AUD	5,474	115,877,899.54 AUD
40,000.01 - 50,000.00	8,673	15.96%	248,892,803.20 AUD	13.73%	2	83,781.85 AUD	5,013	144,614,883.28 AUD	3,658	104,188,777.38 AUD
50,000.01 - 60,000.00	6,395	11.77%	228,813,143.21 AUD	12.63%	4	34,137.91 AUD	4,114	147,333,232.70 AUD	2,277	81,396,128.66 AUD
60,000.01 - 70,000.00	4,237	7.80%	184,751,767.98 AUD	10.20%	2	- AUD	2,970	130,013,631.37 AUD	1,265	54,703,998.70 AUD
70,000.01 - 80,000.00	2,557	4.71%	135,246,306.08 AUD	7.47%	-	- AUD	1,915	101,117,737.03 AUD	642	34,128,569.05 AUD
80,000.01 - 90,000.00	1,504	2.77%	92,230,951.11 AUD	5.09%	-	- AUD	1,215	74,598,029.23 AUD	289	17,632,921.88 AUD
90,000.01 - 100,000.00	968	1.78%	68,015,493.62 AUD	3.75%	-	- AUD	808	57,144,833.40 AUD	160	10,870,660.22 AUD
100,000.01 - 110,000.00	987	1.82%	75,497,432.57 AUD	4.17%	-	- AUD	875	66,755,872.66 AUD	112	8,741,559.91 AUD
110,000.01 - 120,000.00	449	0.83%	37,570,427.12 AUD	2.07%	-	- AUD	376	31,319,274.80 AUD	73	6,251,152.32 AUD
120,000.01 - 130,000.00	441	0.81%	41,712,608.01 AUD	2.30%	-	- AUD	384	36,297,128.06 AUD	57	5,415,479.95 AUD
130,000.01 - 140,000.00	296	0.54%	29,217,095.01 AUD	1.61%	-	- AUD	266	26,067,216.39 AUD	30	3,149,878.62 AUD
140,000.01 - 150,000.00	297	0.55%	33,007,231.70 AUD	1.82%	-	- AUD	276	30,881,794.39 AUD	21	2,125,437.31 AUD
> 150,000.00	1,246	2.29%	217,406,838.41 AUD	12.00%	-	- AUD	1,160	201,693,949.76 AUD	86	15,712,888.65 AUD
Total	54,346	100.00%	1,811,712,788.87 AUD	100.00%	11	178,284.82 AUD	30,887	1,239,931,885.03 AUD	23,448	571,603,119.02 AUD

Statistics

Minimum Original Balance	3,450.00 AUD
Maximum Original Balance	783,782.13 AUD
Weighted Average Original Receivables Balance (by ODRB)	84,944.97 AUD

Pool Data III

Distribution by Outstanding Discounted Receivables Balance

Distribution by Outstanding Discounted Receivables Balance	Total Portfolio				Balloon				No Balloon				Vehicle Status			
	Number of Contracts	Percentage of Contracts	Outstanding Discounted Receivables Balance	Percentage of Balance	Number of Contracts	Outstanding Discounted Receivables Balance	Number of Contracts	Outstanding Discounted Receivables Balance	Number of Contracts	Outstanding Discounted Receivables Balance	Number of Contracts	Outstanding Discounted Receivables Balance	Number of Contracts	Outstanding Discounted Receivables Balance	Number of Contracts	Outstanding Discounted Receivables Balance
0.00 - 10.000.00	9,175	16.88%	50,344,626.66 AUD	2.78%	307	1,875,004.55 AUD	8,868	48,469,622.11 AUD	4,986	27,248,381.23 AUD	4,189	23,096,245.43 AUD	4,986	27,248,381.23 AUD	4,189	23,096,245.43 AUD
10.000.01 - 20.000.00	11,964	22.01%	180,137,098.48 AUD	9.94%	1,519	23,977,856.58 AUD	10,445	156,160,241.90 AUD	7,414	112,274,893.06 AUD	4,550	67,862,405.42 AUD	1,519	112,274,893.06 AUD	4,550	67,862,405.42 AUD
20.000.01 - 30.000.00	10,383	19.11%	267,089,300.97 AUD	14.19%	2,408	60,465,763.51 AUD	7,975	196,623,537.46 AUD	7,975	178,082,074.41 AUD	3,216	79,007,226.56 AUD	2,408	178,082,074.41 AUD	3,216	79,007,226.56 AUD
30.000.01 - 40.000.00	7,912	14.96%	274,421,697.59 AUD	15.15%	2,575	89,597,069.54 AUD	5,337	184,824,628.05 AUD	5,337	206,068,097.31 AUD	1,980	68,553,600.28 AUD	2,575	206,068,097.31 AUD	1,980	68,553,600.28 AUD
40.000.01 - 50.000.00	5,117	9.42%	228,275,376.23 AUD	12.80%	2,096	91,242,787.45 AUD	3,081	137,032,587.78 AUD	3,081	175,160,995.94 AUD	1,193	53,114,869.29 AUD	2,096	175,160,995.94 AUD	1,193	53,114,869.29 AUD
50.000.01 - 60.000.00	3,211	5.91%	174,964,989.75 AUD	9.66%	1,541	84,231,478.70 AUD	1,670	90,753,511.06 AUD	1,670	139,530,440.53 AUD	652	35,454,549.22 AUD	1,541	139,530,440.53 AUD	652	35,454,549.22 AUD
60.000.01 - 70.000.00	2,014	3.71%	130,078,312.61 AUD	7.18%	1,149	74,390,244.20 AUD	865	55,688,068.41 AUD	1,652	106,748,406.94 AUD	362	23,329,906.67 AUD	1,149	106,748,406.94 AUD	362	23,329,906.67 AUD
70.000.01 - 80.000.00	1,238	2.28%	92,410,722.68 AUD	5.10%	803	59,997,693.98 AUD	435	32,413,028.70 AUD	1,006	75,052,512.03 AUD	232	17,358,210.65 AUD	803	75,052,512.03 AUD	232	17,358,210.65 AUD
80.000.01 - 90.000.00	837	1.54%	70,861,901.32 AUD	3.91%	554	46,940,703.29 AUD	283	23,921,198.03 AUD	644	54,546,687.09 AUD	193	16,315,214.23 AUD	554	54,546,687.09 AUD	193	16,315,214.23 AUD
90.000.01 - 100.000.00	660	1.23%	53,030,831.24 AUD	2.93%	425	40,274,350.94 AUD	135	12,756,480.30 AUD	468	44,362,156.62 AUD	92	8,668,672.62 AUD	425	44,362,156.62 AUD	92	8,668,672.62 AUD
100.000.01 - 110.000.00	421	0.77%	44,142,143.19 AUD	2.41%	316	33,111,020.43 AUD	105	11,031,122.76 AUD	315	33,019,491.05 AUD	106	11,122,652.14 AUD	316	33,019,491.05 AUD	106	11,122,652.14 AUD
110.000.01 - 120.000.00	270	0.50%	31,011,528.40 AUD	1.71%	221	25,384,524.91 AUD	49	5,627,003.49 AUD	227	26,051,744.48 AUD	43	4,959,783.92 AUD	221	26,051,744.48 AUD	43	4,959,783.92 AUD
120.000.01 - 130.000.00	221	0.41%	27,635,031.23 AUD	1.53%	172	21,020,164.99 AUD	49	6,114,866.24 AUD	189	23,640,049.31 AUD	32	3,994,981.92 AUD	172	23,640,049.31 AUD	32	3,994,981.92 AUD
130.000.01 - 140.000.00	197	0.36%	26,598,120.62 AUD	1.47%	163	22,029,736.45 AUD	34	4,568,383.61 AUD	169	22,826,525.74 AUD	28	3,771,594.32 AUD	163	22,826,525.74 AUD	28	3,771,594.32 AUD
140.000.01 - 150.000.00	163	0.30%	23,542,679.22 AUD	1.30%	135	19,514,044.19 AUD	28	4,028,635.03 AUD	139	20,074,206.42 AUD	24	3,468,472.80 AUD	135	20,074,206.42 AUD	24	3,468,472.80 AUD
> 150.000.00	663	1.22%	147,148,430.24 AUD	8.12%	590	132,822,806.54 AUD	73	14,325,623.70 AUD	567	125,913,617.47 AUD	66	21,234,812.77 AUD	590	125,913,617.47 AUD	66	21,234,812.77 AUD
Total	54,346	100.00%	1,811,712,788.87 AUD	100.00%	14,914	827,715,240.25 AUD	39,432	985,997,548.62 AUD	37,358	1,370,939,591.63 AUD	16,988	441,113,197.24 AUD	37,358	1,370,939,591.63 AUD	16,988	441,113,197.24 AUD

Statistics Outstanding Discounted Receivables Balance

Minimum Outstanding Discounted Receivables Balance	- AUD
Maximum Outstanding Discounted Receivables Balance	694,016.40 AUD
Average Outstanding Discounted Receivables Balance	33,336.64 AUD

Distribution by Original Balance

Distribution by Original Balance	Total Portfolio				Balloon				No Balloon				Vehicle Status			
	Number of Contracts	Percentage of Contracts	Outstanding Discounted Receivables Balance	Percentage of Balance	Number of Contracts	Outstanding Discounted Receivables Balance	Number of Contracts	Outstanding Discounted Receivables Balance	Number of Contracts	Outstanding Discounted Receivables Balance	Number of Contracts	Outstanding Discounted Receivables Balance	Number of Contracts	Outstanding Discounted Receivables Balance	Number of Contracts	Outstanding Discounted Receivables Balance
0.00 - 10.000.00	302	0.56%	1,272,508.74 AUD	0.07%	-	- AUD	302	1,272,508.74 AUD	68	261,886.58 AUD	234	1,010,622.16 AUD	68	261,886.58 AUD	234	1,010,622.16 AUD
10.000.01 - 20.000.00	4,854	8.93%	40,188,682.76 AUD	2.22%	123	1,412,084.63 AUD	4,731	38,776,597.93 AUD	1,828	15,474,231.02 AUD	3,026	24,714,451.74 AUD	1,828	15,474,231.02 AUD	3,026	24,714,451.74 AUD
20.000.01 - 30.000.00	10,229	18.82%	145,391,521.21 AUD	8.03%	814	13,685,563.81 AUD	9,415	131,705,957.40 AUD	5,566	78,020,877.63 AUD	4,663	67,370,643.58 AUD	5,566	78,020,877.63 AUD	4,663	67,370,643.58 AUD
30.000.01 - 40.000.00	10,911	20.08%	232,557,978.14 AUD	12.84%	1,852	43,782,986.09 AUD	9,059	188,774,992.05 AUD	7,499	157,584,093.93 AUD	3,412	74,873,684.21 AUD	7,499	157,584,093.93 AUD	3,412	74,873,684.21 AUD
40.000.01 - 50.000.00	8,673	15.96%	248,892,803.20 AUD	13.73%	2,422	75,508,547.37 AUD	6,251	173,324,255.83 AUD	6,543	184,149,780.01 AUD	2,130	64,683,023.19 AUD	6,543	184,149,780.01 AUD	2,130	64,683,023.19 AUD
50.000.01 - 60.000.00	6,395	11.77%	228,813,143.21 AUD	12.63%	2,243	85,950,458.35 AUD	4,152	142,862,684.86 AUD	5,060	177,129,085.77 AUD	1,335	51,684,057.44 AUD	5,060	177,129,085.77 AUD	1,335	51,684,057.44 AUD
60.000.01 - 70.000.00	4,237	7.80%	184,751,767.98 AUD	10.20%	1,826	84,277,317.20 AUD	2,411	100,474,450.78 AUD	3,509	151,078,381.46 AUD	728	33,673,386.52 AUD	3,509	151,078,381.46 AUD	728	33,673,386.52 AUD
70.000.01 - 80.000.00	2,557	4.71%	135,246,306.08 AUD	7.47%	1,289	70,693,108.24 AUD	1,269	64,553,197.84 AUD	2,154	113,047,910.30 AUD	403	22,198,395.72 AUD	1,289	113,047,910.30 AUD	403	22,198,395.72 AUD
80.000.01 - 90.000.00	1,504	2.77%	92,230,951.11 AUD	5.09%	887	57,179,434.12 AUD	607	35,051,516.99 AUD	1,233	74,690,170.90 AUD	271	17,540,780.21 AUD	887	74,690,170.90 AUD	271	17,540,780.21 AUD
90.000.01 - 100.000.00	968	1.78%	68,015,493.62 AUD	3.75%	618	44,208,152.61 AUD	350	23,807,341.01 AUD	752	52,354,300.46 AUD	216	15,661,193.16 AUD	618	52,354,300.46 AUD	216	15,661,193.16 AUD
100.000.01 - 110.000.00	987	1.82%	75,497,432.57 AUD	4.17%	674	53,020,177.88 AUD	313	22,077,254.69 AUD	801	59,968,901.55 AUD	188	15,528,531.02 AUD	674	59,968,901.55 AUD	188	15,528,531.02 AUD
110.000.01 - 120.000.00	449	0.83%	37,570,427.12 AUD	2.07%	341	29,460,970.65 AUD	108	8,089,456.47 AUD	375	30,781,979.44 AUD	73	6,788,447.68 AUD	341	30,781,979.44 AUD	73	6,788,447.68 AUD
120.000.01 - 130.000.00	441	0.81%	41,712,608.01 AUD	2.30%	323	30,934,962.72 AUD	120	10,777,052.28 AUD	372	34,619,719.58 AUD	69	7,092,886.47 AUD	323	34,619,719.58 AUD	69	7,092,886.47 AUD
130.000.01 - 140.000.00	296	0.54%	29,217,095.01 AUD	1.61%	233	26,933,224.44 AUD	63	6,045,212.36 AUD	266	26,020,762.87 AUD	30	3,196,332.14 AUD	233	26,020,762.87 AUD	30	3,196,332.14 AUD
140.000.01 - 150.000.00	297	0.55%	33,007,231.70 AUD	1.82%	252	26,933,224.44 AUD	65	6,474,007.26 AUD	252	27,702,930.34 AUD	45	5,304,301.36 AUD	252	27,702,930.34 AUD	45	5,304,301.36 AUD
> 150.000.00	1,246	2.29%	217,406,838.41 AUD	12.00%	1,030	187,476,429.29 AUD	216	29,930,409.12 AUD	1,079	187,714,579.83 AUD	167	29,692,258.58 AUD	1,079	187,714,579.83 AUD	167	29,692,258.58 AUD
Total	54,346	100.00%	1,811,712,788.87 AUD	100.00%	14,914	827,715,240.25 AUD	39,432	985,997,548.62 AUD	37,358	1,370,939,591.63 AUD	16,988	441,113,197.24 AUD	37,358	1,370,939,591.63 AUD	16,988	441,113,197.24 AUD

Statistics

Minimum Original Balance	3,450.00 AUD
Maximum Original Balance	783,782.13 AUD
Weighted Average Original Receivables Balance (by ODRB)	84,944.97 AUD

Pool Data IV

Interest Rate paid by the Receivable Debtor

Interest Rate paid by the Receivable Debtor	Total Portfolio					Hire Purchase			Product Type			Consumer Loan	
	Number of Contracts	Percentage of Contracts	Outstanding Discounted Receivables Balance	Percentage of Balance	Number of Contracts	Outstanding Discounted Receivables Balance	Number of Contracts	Chattel/Mortgage		Number of Contracts	Outstanding Discounted Receivables Balance	Number of Contracts	Outstanding Discounted Receivables Balance
								Outstanding Discounted Receivables Balance	Number of Contracts				
0.00%	1	0.00%	1,961.47 AUD	0.00%	-	- AUD	-	- AUD	-	1	1,961.47 AUD	1	- AUD
0.01% - 1.00%	1	0.00%	- AUD	0.00%	-	- AUD	-	- AUD	-	1	- AUD	1	- AUD
1.01% - 2.00%	857	1.58%	17,847,646.75 AUD	0.99%	-	- AUD	-	- AUD	503	503	12,265,462.06 AUD	354	5,582,184.69 AUD
2.01% - 3.00%	1,391	2.56%	39,780,424.20 AUD	2.20%	2	6,496.30 AUD	2	6,496.30 AUD	838	838	30,710,303.89 AUD	551	9,063,624.01 AUD
3.01% - 4.00%	2,669	4.91%	88,984,415.06 AUD	4.91%	-	- AUD	-	- AUD	2,606	2,606	86,905,364.73 AUD	63	2,079,050.33 AUD
4.01% - 5.00%	3,384	6.23%	119,631,984.62 AUD	6.60%	-	- AUD	-	- AUD	2,781	2,781	105,368,564.62 AUD	603	14,263,420.00 AUD
5.01% - 6.00%	5,349	9.84%	166,421,393.64 AUD	9.19%	3	58,501.94 AUD	3	58,501.94 AUD	3,190	3,190	117,374,239.05 AUD	2,156	48,988,652.65 AUD
6.01% - 7.00%	8,622	15.87%	286,088,477.61 AUD	15.79%	2	46,203.66 AUD	2	46,203.66 AUD	4,306	4,306	194,827,440.83 AUD	4,314	91,214,833.12 AUD
7.01% - 8.00%	9,695	17.84%	316,661,704.62 AUD	17.48%	1	17,728.17 AUD	1	17,728.17 AUD	4,478	4,478	208,417,426.37 AUD	5,216	108,226,550.08 AUD
8.01% - 9.00%	8,111	14.92%	269,112,096.82 AUD	14.85%	3	49,354.75 AUD	3	49,354.75 AUD	4,552	4,552	184,755,149.54 AUD	3,556	84,307,592.53 AUD
9.01% - 10.00%	6,022	11.08%	205,296,754.33 AUD	11.33%	-	- AUD	-	- AUD	3,562	3,562	134,584,060.36 AUD	2,460	70,712,693.97 AUD
10.01% - 11.00%	3,403	6.26%	115,967,679.18 AUD	6.40%	-	- AUD	-	- AUD	1,380	1,380	51,451,980.55 AUD	2,023	64,515,698.63 AUD
11.01% - 12.00%	2,466	4.54%	91,399,726.67 AUD	5.04%	-	- AUD	-	- AUD	1,154	1,154	46,563,205.27 AUD	1,312	44,836,521.40 AUD
12.01% - 13.00%	1,802	3.32%	73,220,494.38 AUD	4.04%	-	- AUD	-	- AUD	1,220	1,220	53,335,538.01 AUD	582	19,884,956.37 AUD
13.01% - 14.00%	493	0.91%	18,811,637.91 AUD	1.04%	-	- AUD	-	- AUD	291	291	12,335,322.44 AUD	202	6,476,315.47 AUD
14.01% - 15.00%	67	0.12%	1,940,929.89 AUD	0.11%	-	- AUD	-	- AUD	25	25	1,037,327.31 AUD	42	903,602.58 AUD
15.01% - 16.00%	10	0.02%	376,638.35 AUD	0.02%	-	- AUD	-	- AUD	1	1	- AUD	9	376,638.35 AUD
> 16.00%	3	0.01%	168,823.37 AUD	0.01%	-	- AUD	-	- AUD	-	-	- AUD	3	168,823.37 AUD
Total	54,346	100.00%	1,811,712,788.87 AUD	100.00%	11	178,284.82 AUD	11	178,284.82 AUD	30,887	30,887	1,239,931,385.03 AUD	23,448	574,603,119.02 AUD

Statistics Interest Rate

Minimum Interest Rate Debtor	0.00%
Maximum Interest Rate Debtor	17.28%
Weighted Average Interest Rate Debtor	7.76%

Pool Data IV

Interest Rate paid by the Receivable Debtor

Interest Rate paid by the Receivable Debtor	Total Portfolio											
	Ballloon			No Ballloon			New			Used		
	Number of Contracts	Percentage of Contracts	Outstanding Discounted Receivables Balance	Percentage of Balance	Number of Contracts	Outstanding Discounted Receivables Balance	Number of Contracts	Outstanding Discounted Receivables Balance	Number of Contracts	Outstanding Discounted Receivables Balance	Number of Contracts	Outstanding Discounted Receivables Balance
0.01% - 1.00%	1	0.00%	1,961.47 AUD	0.00%	-	- AUD	1	1,961.47 AUD	1	-	-	- AUD
1.01% - 2.00%	1	0.00%	-	0.00%	-	- AUD	1	-	1	-	-	- AUD
2.01% - 3.00%	857	1.58%	17,847,646.75 AUD	0.99%	280	10,082,848.10 AUD	577	7,764,798.65 AUD	855	17,898,827.40 AUD	2	8,819.35 AUD
3.01% - 4.00%	1,391	2.56%	39,780,424.20 AUD	2.20%	561	25,100,107.26 AUD	830	14,680,316.94 AUD	1,384	39,470,221.85 AUD	7	310,202.35 AUD
4.01% - 5.00%	2,669	4.91%	88,984,415.06 AUD	4.91%	1,259	58,809,324.78 AUD	1,410	30,175,090.28 AUD	2,481	83,739,904.11 AUD	188	5,244,510.95 AUD
5.01% - 6.00%	3,384	6.23%	119,631,984.62 AUD	6.60%	1,449	74,138,832.08 AUD	1,935	45,493,152.54 AUD	2,815	103,485,394.11 AUD	569	16,146,590.51 AUD
6.01% - 7.00%	5,349	9.84%	166,421,393.64 AUD	9.19%	1,896	91,660,414.42 AUD	3,453	74,760,979.22 AUD	4,332	142,460,071.41 AUD	1,017	23,961,322.23 AUD
7.01% - 8.00%	8,622	15.87%	286,088,477.61 AUD	17.48%	2,615	148,417,862.00 AUD	6,007	137,670,615.61 AUD	6,686	242,340,587.81 AUD	1,936	43,747,889.80 AUD
8.01% - 9.00%	9,695	17.84%	316,661,704.62 AUD	17.48%	2,445	145,273,715.42 AUD	7,250	171,387,989.20 AUD	6,748	254,329,947.47 AUD	2,947	62,331,757.15 AUD
9.01% - 10.00%	8,111	14.92%	269,112,096.82 AUD	14.85%	1,824	118,232,351.90 AUD	6,287	150,879,744.92 AUD	4,852	188,650,262.84 AUD	3,259	80,461,833.98 AUD
10.01% - 11.00%	6,022	11.08%	205,296,754.33 AUD	11.33%	1,307	80,793,418.33 AUD	4,715	124,503,336.00 AUD	3,194	127,550,655.09 AUD	2,828	77,746,099.24 AUD
11.01% - 12.00%	3,403	6.26%	115,967,679.18 AUD	6.40%	552	32,456,356.43 AUD	2,851	83,511,322.75 AUD	1,693	69,242,820.34 AUD	1,710	46,724,858.84 AUD
12.01% - 13.00%	2,466	4.54%	91,399,726.67 AUD	5.04%	373	21,136,855.05 AUD	2,093	70,262,871.62 AUD	1,319	56,065,558.94 AUD	1,147	35,334,167.73 AUD
13.01% - 14.00%	1,802	3.32%	73,220,494.38 AUD	4.04%	290	17,961,791.91 AUD	1,512	55,258,702.47 AUD	837	38,268,330.17 AUD	965	34,952,164.21 AUD
14.01% - 15.00%	493	0.91%	18,811,637.91 AUD	1.04%	57	3,257,031.43 AUD	436	15,554,606.48 AUD	134	6,351,972.14 AUD	359	12,459,665.77 AUD
15.01% - 16.00%	67	0.12%	1,940,929.89 AUD	0.11%	5	286,586.01 AUD	62	1,654,343.88 AUD	20	528,195.39 AUD	47	1,412,734.50 AUD
> 16.00%	10	0.02%	376,638.35 AUD	0.02%	1	107,745.13 AUD	9	268,893.22 AUD	4	139,662.36 AUD	6	236,975.99 AUD
Total	54,346	100.00%	1,811,712,788.87 AUD	100.00%	14,914	827,715,240.25 AUD	39,432	983,997,548.62 AUD	37,358	1,370,699,691.63 AUD	16,988	441,113,197.24 AUD

Statistics Interest Rate

Minimum Interest Rate Debtor	0.00%
Maximum Interest Rate Debtor	17.28%
Weighted Average Interest Rate Debtor	7.76%

Pool Data V

Original Term

Length of Original Term (months)	Total Portfolio			Hire Purchase			Chattel Mortgage			Consumer Loan		
	Number of Contracts	Percentage of Contracts	Outstanding Discounted Receivables Balance	Percentage of Balance	Number of Contracts	Outstanding Discounted Receivables Balance	Number of Contracts	Outstanding Discounted Receivables Balance	Number of Contracts	Outstanding Discounted Receivables Balance	Number of Contracts	Outstanding Discounted Receivables Balance
0 - 11	-	0.00%	- AUD	0.00%	-	- AUD	-	- AUD	-	- AUD	-	- AUD
12 - 23	316	0.58%	4,023,687.46 AUD	0.22%	-	- AUD	167	2,612,969.24 AUD	149	1,410,718.22 AUD	149	1,410,718.22 AUD
24 - 35	1,184	2.18%	19,735,729.36 AUD	1.09%	-	- AUD	737	14,578,353.11 AUD	447	5,157,376.25 AUD	447	5,157,376.25 AUD
36 - 47	4,529	8.33%	115,607,551.74 AUD	6.38%	-	- AUD	2,908	87,825,867.96 AUD	1,621	27,781,683.78 AUD	1,621	27,781,683.78 AUD
48 - 59	6,716	12.36%	194,590,530.33 AUD	10.74%	7	37,696.33 AUD	4,287	149,465,544.51 AUD	2,425	45,087,287.49 AUD	2,425	45,087,287.49 AUD
60 - 71	37,795	69.55%	1,370,094,046.86 AUD	75.62%	4	140,586.49 AUD	22,788	995,448,650.21 AUD	15,000	384,484,810.16 AUD	15,000	384,484,810.16 AUD
> 71	3,806	7.00%	107,671,243.12 AUD	5.94%	-	- AUD	-	- AUD	3,806	107,671,243.12 AUD	3,806	107,671,243.12 AUD
Total	54,346	100.00%	1,811,712,788.87 AUD	100.00%	11	178,284.82 AUD	30,887	1,239,931,385.03 AUD	23,448	571,603,119.02 AUD	23,448	571,603,119.02 AUD

Statistics Original Term

Minimum Original Term in months	12
Maximum Original Term in months	84
Weighted Average Original Term month (by ODRB)	58.12

Remaining Term

Length of Remaining Term (months)	Total Portfolio			Hire Purchase			Chattel Mortgage			Consumer Loan		
	Number of Contracts	Percentage of Contracts	Outstanding Discounted Receivables Balance	Percentage of Balance	Number of Contracts	Outstanding Discounted Receivables Balance	Number of Contracts	Outstanding Discounted Receivables Balance	Number of Contracts	Outstanding Discounted Receivables Balance	Number of Contracts	Outstanding Discounted Receivables Balance
0 - 11	7,094	12.94%	68,114,225.53 AUD	3.76%	5	64,171.14 AUD	3,721	46,807,576.77 AUD	3,308	21,242,477.62 AUD	3,308	21,242,477.62 AUD
12 - 23	9,902	18.22%	188,384,803.00 AUD	10.40%	4	67,910.02 AUD	5,732	132,346,077.17 AUD	4,146	57,760,815.81 AUD	4,146	57,760,815.81 AUD
24 - 35	11,132	20.46%	529,216,128.88 AUD	16.17%	2	46,203.66 AUD	6,090	235,366,329.38 AUD	4,440	92,603,995.27 AUD	4,440	92,603,995.27 AUD
36 - 47	13,712	25.23%	591,733,893.30 AUD	31.36%	-	- AUD	8,316	413,231,972.28 AUD	3,396	156,521,921.04 AUD	3,396	156,521,921.04 AUD
48 - 59	11,859	21.82%	391,091,650.57 AUD	34.32%	-	- AUD	6,468	410,977,429.46 AUD	4,681	176,262,850.93 AUD	4,681	176,262,850.93 AUD
60 - 71	652	1.20%	33,117,847.78 AUD	1.83%	-	- AUD	-	- AUD	682	1,919,822.59 AUD	682	1,919,822.59 AUD
> 71	54,346	100.00%	1,811,712,788.87 AUD	100.00%	11	178,284.82 AUD	30,887	1,239,931,385.03 AUD	23,448	571,603,119.02 AUD	23,448	571,603,119.02 AUD

Statistics Remaining Term

Minimum Remaining Term in months	0
Maximum Remaining Term in months	82
Weighted Average Remaining Term in months (by ODRB)	40.47

Distribution by Seasoning

Seasoning (months)	Total Portfolio			Hire Purchase			Chattel Mortgage			Consumer Loan		
	Number of Contracts	Percentage of Contracts	Outstanding Discounted Receivables Balance	Percentage of Balance	Number of Contracts	Outstanding Discounted Receivables Balance	Number of Contracts	Outstanding Discounted Receivables Balance	Number of Contracts	Outstanding Discounted Receivables Balance	Number of Contracts	Outstanding Discounted Receivables Balance
0 - 11	14,163	26.06%	704,940,658.86 AUD	38.91%	-	- AUD	8,263	486,130,548.71 AUD	5,900	218,810,110.15 AUD	5,900	218,810,110.15 AUD
12 - 23	16,490	30.34%	645,470,135.97 AUD	35.63%	-	- AUD	10,020	458,202,414.25 AUD	6,470	187,267,721.72 AUD	6,470	187,267,721.72 AUD
24 - 35	10,221	18.81%	264,453,112.37 AUD	14.60%	2	46,203.66 AUD	6,186	180,930,483.96 AUD	4,033	83,476,424.76 AUD	4,033	83,476,424.76 AUD
36 - 47	8,487	15.62%	143,408,232.42 AUD	7.92%	7	97,943.25 AUD	4,616	90,333,683.81 AUD	3,864	52,976,605.36 AUD	3,864	52,976,605.36 AUD
48 - 59	4,378	8.06%	49,116,793.06 AUD	2.71%	2	34,137.91 AUD	1,734	24,079,939.92 AUD	2,642	25,002,715.23 AUD	2,642	25,002,715.23 AUD
60 - 71	441	0.81%	3,655,490.09 AUD	0.20%	-	- AUD	68	254,314.39 AUD	373	3,401,175.70 AUD	373	3,401,175.70 AUD
> 71	166	0.31%	668,366.10 AUD	0.04%	-	- AUD	-	- AUD	166	668,366.10 AUD	166	668,366.10 AUD
Total	54,346	100.00%	1,811,712,788.87 AUD	100.00%	11	178,284.82 AUD	30,887	1,239,931,385.03 AUD	23,448	571,603,119.02 AUD	23,448	571,603,119.02 AUD

Statistics Seasoning

Minimum Seasoning in months	2
Maximum Seasoning in months	84
Weighted Average Seasoning Term in months (by ODRB)	17.71

Pool Data V

Original Term

Length of Original Term (months)	Total Portfolio				Balloon		No Balloon		Vehicle Status	
	Number of Contracts	Percentage of Contracts	Outstanding Discounted Receivables Balance	Percentage of Balance	Number of Contracts	Outstanding Discounted Receivables Balance	Number of Contracts	Outstanding Discounted Receivables Balance	New	Used
0 - 11	-	0.00%	- AUD	0.00%	-	- AUD	-	- AUD	-	-
12 - 23	316	0.58%	4,023,687.46 AUD	10.40%	46	1,654,826.04 AUD	270	2,368,861.42 AUD	135	1,976,130.78 AUD
24 - 35	1,184	2.18%	19,735,729.36 AUD	51.09%	107	5,330,326.09 AUD	1,077	14,405,403.27 AUD	372	9,459,352.65 AUD
36 - 47	4,529	8.33%	115,607,551.74 AUD	30.88%	817	42,600,949.22 AUD	3,712	73,006,602.52 AUD	2,804	85,366,324.35 AUD
48 - 59	6,716	12.36%	194,590,530.33 AUD	51.74%	1,850	91,784,148.49 AUD	4,866	102,806,381.84 AUD	5,061	160,649,226.46 AUD
60 - 71	37,795	69.55%	1,370,094,046.86 AUD	36.62%	12,094	686,344,990.41 AUD	25,701	683,739,056.45 AUD	26,445	1,038,615,152.38 AUD
> 71	3,806	7.00%	107,671,243.12 AUD	2.87%	3,806	107,671,243.12 AUD	-	- AUD	2,541	74,533,405.01 AUD
Total	54,346	100.00%	1,811,712,788.87 AUD	100.00%	14,914	827,715,240.25 AUD	39,432	983,997,548.62 AUD	37,358	1,370,599,591.63 AUD

Statistics Original Term

Minimum Original Term in months	12
Maximum Original Term in months	84
Weighted Average Original Term month (by ODRB)	58.12

Remaining Term

Length of Remaining Term (months)	Total Portfolio				Balloon		No Balloon		Vehicle Status	
	Number of Contracts	Percentage of Contracts	Outstanding Discounted Receivables Balance	Percentage of Balance	Number of Contracts	Outstanding Discounted Receivables Balance	Number of Contracts	Outstanding Discounted Receivables Balance	New	Used
0 - 11	7,094	12.94%	68,114,225.53 AUD	3.76%	1,816	42,928,620.30 AUD	5,218	25,185,605.23 AUD	4,767	54,626,380.93 AUD
12 - 23	9,902	18.22%	188,384,803.00 AUD	10.40%	2,434	89,168,846.07 AUD	7,448	89,195,956.93 AUD	9,507	142,944,911.45 AUD
24 - 35	11,132	20.46%	529,218,128.28 AUD	29.21%	2,924	144,584,690.52 AUD	8,208	184,355,437.76 AUD	7,948	232,007,454.69 AUD
36 - 47	13,712	25.23%	591,738,893.30 AUD	32.64%	4,232	212,188,962.36 AUD	9,440	289,550,930.34 AUD	9,479	422,790,664.42 AUD
48 - 59	11,859	21.82%	391,603,650.57 AUD	21.62%	3,468	216,560,120.40 AUD	7,821	310,674,411.01 AUD	7,816	493,238,496.42 AUD
60 - 71	652	1.20%	33,117,847.78 AUD	1.83%	652	- AUD	902	33,117,847.78 AUD	490	21,839,461.39 AUD
> 71	54,346	100.00%	1,811,712,788.87 AUD	100.00%	14,914	827,715,240.25 AUD	39,432	983,997,548.62 AUD	37,358	1,370,599,591.63 AUD

Statistics Remaining Term

Minimum Remaining Term in months	0
Maximum Remaining Term in months	82
Weighted Average Remaining Term in months (by ODRB)	40.47

Distribution by Seasoning

Seasoning (months)	Total Portfolio				Balloon		No Balloon		Vehicle Status	
	Number of Contracts	Percentage of Contracts	Outstanding Discounted Receivables Balance	Percentage of Balance	Number of Contracts	Outstanding Discounted Receivables Balance	Number of Contracts	Outstanding Discounted Receivables Balance	New	Used
0 - 11	14,163	26.06%	704,940,658.86 AUD	38.91%	3,894	307,056,159.92 AUD	10,269	397,884,498.94 AUD	9,789	539,921,572.16 AUD
12 - 23	16,490	30.34%	645,470,135.97 AUD	35.63%	4,721	298,126,737.50 AUD	11,769	347,343,398.47 AUD	10,948	473,294,302.93 AUD
24 - 35	10,221	18.81%	264,453,112.37 AUD	14.60%	2,811	124,446,033.03 AUD	7,410	140,007,079.34 AUD	7,101	200,939,184.27 AUD
36 - 47	8,487	15.62%	143,408,232.42 AUD	7.92%	2,319	71,479,687.31 AUD	6,168	71,928,545.11 AUD	6,128	114,582,133.95 AUD
48 - 59	4,378	8.06%	49,116,793.06 AUD	2.71%	1,141	26,352,308.10 AUD	3,237	22,764,484.96 AUD	2,976	38,719,358.04 AUD
60 - 71	441	0.81%	3,655,490.09 AUD	0.20%	28	254,314.39 AUD	413	3,401,175.70 AUD	295	2,619,306.48 AUD
> 71	166	0.31%	668,365.10 AUD	0.04%	166	- AUD	166	668,365.10 AUD	121	536,623.80 AUD
Total	54,346	100.00%	1,811,712,788.87 AUD	100.00%	14,914	827,715,240.25 AUD	39,432	983,997,548.62 AUD	37,358	1,370,599,591.63 AUD

Statistics Seasoning

Minimum Seasoning in months	2
Maximum Seasoning in months	84
Weighted Average Seasoning Term in months (by ODRB)	17.71

Pool Data VI

Product Type

Product Type	Total Portfolio			Balloon		No Balloon		New		Used		
	Number of Contracts	Percentage of Contracts	Outstanding Discounted Receivables Balance	Percentage of Balance	Number of Contracts	Outstanding Discounted Receivables Balance	Number of Contracts	Outstanding Discounted Receivables Balance	Number of Contracts	Outstanding Discounted Receivables Balance	Number of Contracts	Outstanding Discounted Receivables Balance
Hire Purchase	11	0.02%	178,284.82 AUD	0.01%	3	72,568.47 AUD	7	99,758.55 AUD	4	78,526.27 AUD		
Chattel Mortgage	30,887	56.83%	1,239,931,385.03 AUD	68.44%	11,589	690,656,503.87 AUD	19,298	549,274,881.16 AUD	22,133	962,964,130.73 AUD	8,754	276,967,254.30 AUD
Consumer Loan	23,448	43.15%	571,603,119.02 AUD	31.55%	3,322	136,986,177.91 AUD	20,128	434,616,941.11 AUD	15,218	407,535,702.35 AUD	8,230	164,067,416.67 AUD
Total	54,346	100.00%	1,811,712,788.87 AUD	100.00%	14,914	827,715,240.25 AUD	39,432	983,997,548.62 AUD	37,358	1,370,599,591.63 AUD	16,988	441,113,197.24 AUD

Vehicle Status

Type of Car	Total Portfolio			Hire Purchase		Chattel Mortgage		Consumer Loan	
	Number of Contracts	Percentage of Contracts	Outstanding Discounted Receivables Balance	Number of Contracts	Outstanding Discounted Receivables Balance	Number of Contracts	Outstanding Discounted Receivables Balance	Number of Contracts	Outstanding Discounted Receivables Balance
New Vehicles	37,358	68.74%	1,370,599,591.63 AUD	7	99,758.55 AUD	22,133	962,964,130.73 AUD	15,218	407,535,702.35 AUD
Used Vehicles	16,988	31.26%	441,113,197.24 AUD	4	78,526.27 AUD	8,754	276,967,254.30 AUD	8,230	164,067,416.67 AUD
Total	54,346	100.00%	1,811,712,788.87 AUD	11	178,284.82 AUD	30,887	1,239,931,385.03 AUD	23,448	571,603,119.02 AUD

Balloon

Total Portfolio			Percentage of Balance
Number of Contracts	Percentage of Contracts	Outstanding Discounted Receivables Balance	
Balloon	14,914	27.44%	827,715,240.25 AUD
No Balloon	39,432	72.56%	983,997,548.62 AUD
Total	54,346	100.00%	1,811,712,788.87 AUD

Pool Data VII
Distribution by Vehicle Brand and Models

Volkswagen Group Vehicles		Total Portfolio				Hire Purchase			Chattel Mortgage			Consumer Loan		
Make	Model	Number of Contracts	Percentage of Contracts	Outstanding Discounted Receivables Balance	Percentage of Balance	Number of Contracts	Outstanding Discounted Receivables Balance	Percentage of Balance	Number of Contracts	Outstanding Discounted Receivables Balance	Number of Contracts	Outstanding Discounted Receivables Balance	Number of Contracts	Outstanding Discounted Receivables Balance
AUDI	A1	136	0.25%	2,300,333.46 AUD	0.13%	-	-	-	49	830,719.26 AUD	-	-	87	1,469,614.20 AUD
	A3	925	1.70%	31,165,301.47 AUD	1.72%	-	-	-	456	18,695,267.61 AUD	-	-	469	12,307,013.86 AUD
	A4	309	0.57%	10,287,517.22 AUD	0.57%	-	-	-	173	6,665,592.49 AUD	-	-	136	3,421,924.73 AUD
	A5	312	0.57%	13,854,639.76 AUD	0.76%	-	-	-	191	9,464,110.37 AUD	-	-	121	4,390,529.39 AUD
	A6	82	0.15%	5,946,049.77 AUD	0.33%	-	-	-	68	5,339,434.47 AUD	-	-	14	606,615.30 AUD
	A7	59	0.11%	5,475,224.39 AUD	0.30%	-	-	-	49	4,391,044.13 AUD	-	-	10	1,084,180.26 AUD
	A8	10	0.02%	940,504.25 AUD	0.05%	-	-	-	8	745,128.49 AUD	-	-	2	198,375.76 AUD
	Q2	375	0.69%	9,022,855.18 AUD	0.50%	-	-	-	148	3,543,227.92 AUD	-	-	230	5,479,627.26 AUD
	Q3	168	0.31%	4,868,917.53 AUD	0.26%	-	-	-	67	1,863,788.44 AUD	-	-	101	2,999,129.09 AUD
	Q4	1,063	1.98%	42,869,002.23 AUD	2.38%	-	-	-	629	29,148,798.14 AUD	-	-	434	13,688,204.09 AUD
	Q7	684	1.28%	38,699,073.22 AUD	2.13%	-	-	-	560	32,774,314.94 AUD	-	-	124	5,924,758.28 AUD
	Q8	142	0.26%	15,366,539.89 AUD	0.85%	-	-	-	124	13,688,100.68 AUD	-	-	18	1,688,439.21 AUD
	E-TRON	51	0.09%	5,395,655.24 AUD	0.30%	-	-	-	39	4,527,524.60 AUD	-	-	12	868,130.64 AUD
	R8	14	0.03%	1,862,111.51 AUD	0.10%	-	-	-	11	1,694,903.15 AUD	-	-	3	277,208.36 AUD
	TT	45	0.08%	2,111,602.54 AUD	0.12%	-	-	-	38	1,867,237.12 AUD	-	-	7	244,365.42 AUD
	SUBTOTAL	5,104	9.39%	214,957,823.56 AUD	11.82%	-	-	-	3,028	149,069,132.85 AUD	-	-	2,076	64,988,799.71 AUD
BENTLEY	ARNAGE	-	0.00%	-	0.00%	-	-	-	-	-	-	-	-	-
	BENTAYGA	30	0.06%	6,416,384.83 AUD	0.35%	-	-	-	27	5,845,155.17 AUD	-	-	3	571,229.66 AUD
	CONTINENTAL	9	0.02%	2,169,739.39 AUD	0.12%	-	-	-	8	1,602,346.88 AUD	-	-	1	566,192.51 AUD
	EXPAN	1	0.00%	1,660,765.66 AUD	0.09%	-	-	-	1	1,660,765.66 AUD	-	-	-	-
	MULLSANE	1	0.00%	1,690,508.33 AUD	0.01%	-	-	-	1	1,690,508.33 AUD	-	-	-	-
	SUBTOTAL	48	0.09%	10,893,013.38 AUD	0.60%	-	-	-	44	9,761,691.79 AUD	-	-	4	1,137,422.17 AUD
CUPRA	ATECA	15	0.03%	667,716.18 AUD	0.04%	-	-	-	7	330,382.18 AUD	-	-	8	337,334.00 AUD
	BORN	4	0.01%	174,176.12 AUD	0.01%	-	-	-	2	99,989.68 AUD	-	-	2	74,186.44 AUD
	FORMENTOR	120	0.22%	5,204,360.79 AUD	0.29%	-	-	-	33	1,541,184.04 AUD	-	-	87	3,663,176.75 AUD
	LEON	29	0.05%	1,009,952.88 AUD	0.05%	-	-	-	8	341,293.24 AUD	-	-	21	688,659.64 AUD
	SUBTOTAL	168	0.31%	7,056,205.97 AUD	0.39%	-	-	-	50	2,312,849.14 AUD	-	-	118	4,743,356.83 AUD
LAMBORGHINI	GALLARDO	4	0.00%	-	0.00%	-	-	-	-	-	-	-	-	-
	AVENTADOR	4	0.01%	1,497,961.89 AUD	0.07%	-	-	-	4	1,497,961.89 AUD	-	-	-	-
	URUS	23	0.04%	5,807,508.90 AUD	0.28%	-	-	-	17	3,796,022.86 AUD	-	-	5	1,722,020.11 AUD
	MURCIELAGO	7	0.00%	5,076,228.97 AUD	0.28%	-	-	-	7	5,076,228.97 AUD	-	-	-	-
	SUBTOTAL	44	0.08%	12,157,382.56 AUD	0.67%	-	-	-	39	10,435,362.45 AUD	-	-	5	1,722,020.11 AUD
PORSCHE	BOXSTER	101	0.19%	11,973,972.38 AUD	0.66%	-	-	-	95	11,504,386.16 AUD	-	-	6	469,586.22 AUD
	CARRERA / 911	159	0.29%	29,789,914.06 AUD	1.64%	-	-	-	143	27,978,366.17 AUD	-	-	16	1,810,547.89 AUD
	CAVAYNE	437	0.80%	46,151,741.06 AUD	2.55%	-	-	-	408	44,222,415.43 AUD	-	-	29	1,929,325.63 AUD
	CAYMAN	8	0.01%	426,580.08 AUD	0.02%	-	-	-	5	260,528.76 AUD	-	-	3	166,051.32 AUD
	TAYCAN	104	0.19%	15,254,200.25 AUD	0.84%	-	-	-	93	14,118,225.68 AUD	-	-	11	1,135,974.57 AUD
	MACAN	738	1.35%	53,600,589.99 AUD	2.96%	-	-	-	644	48,228,079.32 AUD	-	-	91	5,406,490.64 AUD
	MACAN R	2	0.00%	3,063,837.43 AUD	0.16%	-	-	-	2	3,176,022.86 AUD	-	-	-	-
	SUBTOTAL	1,521	2.83%	161,938,023.21 AUD	8.63%	-	-	-	1,414	150,116,029.34 AUD	-	-	157	10,917,016.46 AUD
SKODA	FABIA	94	0.17%	986,389.80 AUD	0.05%	-	-	-	15	168,029.34 AUD	-	-	79	820,360.26 AUD
	KAROQ	210	0.39%	4,252,804.82 AUD	0.23%	-	-	-	165	1,437,079.36 AUD	-	-	145	2,815,725.26 AUD
	KODIAQ	341	0.63%	9,221,012.63 AUD	0.51%	-	-	-	158	4,569,880.44 AUD	-	-	183	4,651,132.19 AUD
	OCTAVIA	275	0.51%	4,985,564.05 AUD	0.28%	-	-	-	74	1,594,349.52 AUD	-	-	201	3,401,214.53 AUD
	RAPID	21	0.04%	106,201.16 AUD	0.01%	-	-	-	5	16,236.27 AUD	-	-	16	89,964.89 AUD
	SCALA	65	0.12%	1,038,684.83 AUD	0.05%	-	-	-	20	362,347.64 AUD	-	-	45	676,337.19 AUD
	KAMIQ	179	0.33%	3,534,789.97 AUD	0.20%	-	-	-	34	663,821.29 AUD	-	-	145	2,850,968.68 AUD
	ROOMSTER	93	0.17%	2,560,244.19 AUD	0.12%	-	-	-	36	908,110.57 AUD	-	-	56	1,350,692.71 AUD
	SUPERB	9	0.02%	1,444,444.44 AUD	0.08%	-	-	-	1	3,440.82 AUD	-	-	7	27,817.04 AUD
	SUBTOTAL	1,231	2.31%	26,411,203.32 AUD	1.43%	-	-	-	408	9,742,533.91 AUD	-	-	372	16,815,000.43 AUD
VOLKSWAGEN	AMAROK	2,868	4.76%	60,861,036.18 AUD	4.45%	1	26,087.06 AUD	0.00%	1,891	63,096,052.91 AUD	694	17,538,896.21 AUD	694	2,344,296.00 AUD
	ARTICO	136	0.25%	6,109,935.43 AUD	0.34%	-	-	-	77	3,765,649.43 AUD	-	-	59	3,344,296.00 AUD
	CADDY	309	0.57%	5,966,150.89 AUD	0.33%	-	-	-	294	5,682,676.18 AUD	-	-	15	283,474.71 AUD
	CARAVELLE	18	0.03%	596,277.19 AUD	0.03%	-	-	-	15	492,551.90 AUD	-	-	3	103,725.29 AUD
	CRAFTER	392	0.72%	13,431,994.03 AUD	0.74%	-	-	-	379	13,072,060.29 AUD	-	-	13	359,933.74 AUD
	EOS	2	0.00%	9,687.80 AUD	0.00%	-	-	-	1	3,792.87 AUD	-	-	1	5,894.93 AUD
	GOLF	1,770	3.26%	30,696,912.39 AUD	1.69%	-	-	-	544	11,027,148.88 AUD	-	-	1,226	19,669,765.51 AUD
	JETTA	8	0.02%	37,025.17 AUD	0.00%	-	-	-	2	9,208.13 AUD	-	-	7	27,817.04 AUD
	NEW BEETLE	25	0.05%	8,340,399.88 AUD	0.45%	-	-	-	164	6,526,754.86 AUD	-	-	14	1,519,643.02 AUD
	NEW BEETLE	8	0.01%	44,1516.94 AUD	0.00%	-	-	-	5	1,444,516.94 AUD	-	-	3	44,516.94 AUD
	PASSAT	225	0.41%	5,890,669.29 AUD	0.31%	-	-	-	111	2,680,190.33 AUD	-	-	114	2,891,478.98 AUD
	POLO	640	1.18%	7,622,389.14 AUD	0.42%	-	-	-	142	1,845,530.65 AUD	-	-	498	5,776,858.49 AUD
	SCIROCCO	11	0.02%	146,784.77 AUD	0.01%	-	-	-	9	22,379.27 AUD	-	-	9	124,405.50 AUD
	TIGUAN	2,422	4.46%	69,238,904.15 AUD	3.82%	2	27,419.51 AUD	0.01%	1,057	33,295,781.31 AUD	1,383	36,915,703.33 AUD	1,383	3,404,269.82 AUD
	TOUAREG	335	0.62%	16,896,131.01 AUD	0.93%	-	-	-	249	13,495,861.19 AUD	-	-	86	3,404,269.82 AUD
	TRANSPORTER	369	0.68%	9,998,804.29 AUD	0.55%	-	-	-	324	8,819,637.25 AUD	-	-	45	1,179,167.04 AUD
	T-CROSS	934	1.72%	19,175,857.70 AUD	1.09%	-	-	-	238	5,333,765.84 AUD	-	-	696	14,385,091.86 AUD
	T-ROC	863	1.59%	26,597,665.30 AUD	1.47%	-	-	-	269	9,096,398.42 AUD	-	-	594	17,461,266.88 AUD



Pool Data VII

Distribution by Vehicle Brand and Models

Volkswagen Group Vehicles	Total Portfolio				Billion				No Billion				Vehicle Status			
	Model	Number of Contracts	Percentage of Contracts	Outstanding Discounted Receivables Balance	Percentage of Balance	Number of Contracts	Outstanding Discounted Receivables Balance	Number of Contracts	Outstanding Discounted Receivables Balance	Number of Contracts	Outstanding Discounted Receivables Balance	Number of Contracts	Outstanding Discounted Receivables Balance	Used		
AUDI	A1	136	0.25%	2,300,333.46 AUD	0.13%	23	525,297.42 AUD	113	1,775,036.04 AUD	70	1,579,616.72 AUD	66	720,714.74 AUD			
	A3	925	1.70%	31,165,301.47 AUD	1.72%	362	6,500,239.56 AUD	563	14,615,061.91 AUD	360	22,609,506.68 AUD	360	8,555,094.79 AUD			
	A4	309	0.57%	10,287,517.22 AUD	0.57%	140	6,947,707.02 AUD	169	3,339,810.20 AUD	154	6,525,027.79 AUD	154	3,762,489.43 AUD			
	A5	312	0.57%	13,854,639.76 AUD	0.76%	137	8,860,036.72 AUD	175	5,178,603.04 AUD	144	7,870,330.31 AUD	168	5,984,309.45 AUD			
	A6	58	0.15%	4,237,306.52 AUD	0.23%	37	4,237,306.52 AUD	37	4,237,306.52 AUD	51	4,682,965.84 AUD	31	1,263,063.93 AUD			
	A7	59	0.11%	5,475,224.39 AUD	0.30%	38	4,155,665.13 AUD	21	1,319,559.26 AUD	36	4,052,082.22 AUD	23	1,423,142.17 AUD			
	A8	10	0.02%	940,504.25 AUD	0.05%	4	485,388.82 AUD	6	452,115.43 AUD	7	704,915.49 AUD	3	235,588.76 AUD			
	Q2	375	0.69%	9,022,855.19 AUD	0.50%	108	3,115,790.76 AUD	167	5,904,064.42 AUD	218	6,536,111.76 AUD	157	3,486,743.42 AUD			
	Q3	1,036	1.90%	32,893,734.33 AUD	1.82%	375	11,954,146.23 AUD	661	20,939,588.10 AUD	361	11,935,641.13 AUD	361	6,050,143.00 AUD			
	Q4	1,083	1.98%	42,685,032.43 AUD	2.38%	423	23,627,658.50 AUD	660	18,757,373.93 AUD	710	33,664,333.80 AUD	348	10,530,688.81 AUD			
	Q7	694	1.28%	38,699,073.22 AUD	2.15%	359	23,704,474.11 AUD	414	14,894,599.11 AUD	414	26,129,050.65 AUD	280	12,470,022.57 AUD			
	Q8	142	0.26%	15,356,539.89 AUD	0.85%	85	10,445,894.83 AUD	57	4,910,645.06 AUD	120	13,003,136.68 AUD	22	2,359,403.21 AUD			
	E-TRON	51	0.09%	5,395,655.24 AUD	0.30%	35	4,238,120.38 AUD	16	1,157,534.86 AUD	45	4,742,084.09 AUD	6	653,571.15 AUD			
	R8	14	0.03%	1,862,111.51 AUD	0.10%	11	1,628,111.15 AUD	3	234,000.36 AUD	11	684,528.61 AUD	1	1,167,582.90 AUD			
	TT	45	0.08%	2,111,602.54 AUD	0.12%	21	1,336,268.21 AUD	24	775,334.33 AUD	24	1,536,101.15 AUD	21	575,501.39 AUD			
	SUBTOTAL	5,104	9.39%	214,957,923.56 AUD	11.82%	2,116	121,534,614.06 AUD	2,888	92,463,309.59 AUD	3,277	156,874,743.94 AUD	1,827	97,183,179.82 AUD			
BENTLEY	ARNAGE	-	0.00%	- AUD	0.00%	-	- AUD	-	- AUD	-	- AUD	-	- AUD			
	BENTAYGA	30	0.06%	6,416,834.83 AUD	0.35%	21	5,250,261.69 AUD	9	1,166,573.14 AUD	9	4,191,316.74 AUD	12	2,226,066.09 AUD			
	CONTINENTAL	9	0.02%	2,168,739.39 AUD	0.12%	4	1,711,161.10 AUD	5	457,578.29 AUD	4	1,443,759.21 AUD	4	40,064.18 AUD			
	FLYING SPUR	1	0.00%	1,068,885.47 AUD	0.06%	2	1,850,863.79 AUD	2	1,850,863.79 AUD	1	1,850,863.79 AUD	1	1,850,863.79 AUD			
	MULLANE	1	0.00%	169,508.33 AUD	0.01%	6	169,508.33 AUD	1	169,508.33 AUD	1	169,508.33 AUD	1	169,508.33 AUD			
	SUBTOTAL	48	0.09%	10,893,013.86 AUD	0.60%	32	8,900,246.43 AUD	18	1,938,737.63 AUD	29	7,489,426.18 AUD	19	3,403,633.76 AUD			
CUPRA	ATECA	15	0.03%	667,716.18 AUD	0.04%	6	279,585.16 AUD	9	388,131.02 AUD	15	667,716.18 AUD	-	- AUD			
	BORN	4	0.01%	174,176.12 AUD	0.01%	-	- AUD	4	174,176.12 AUD	4	174,176.12 AUD	-	- AUD			
	FORMENTOR	120	0.22%	5,204,360.79 AUD	0.29%	36	1,662,207.40 AUD	84	3,542,153.39 AUD	120	5,204,360.79 AUD	-	- AUD			
	LEON	29	0.05%	1,009,952.88 AUD	0.05%	10	368,376.49 AUD	19	644,576.39 AUD	28	972,963.48 AUD	1	36,989.40 AUD			
	SUBTOTAL	168	0.31%	7,056,205.97 AUD	0.39%	52	2,310,189.05 AUD	118	4,746,066.92 AUD	167	7,019,216.57 AUD	1	36,989.40 AUD			
LAMBORGHINI	GALLARDO	-	0.00%	- AUD	0.00%	-	- AUD	-	- AUD	-	- AUD	-	- AUD			
	AVENTADOR	4	0.01%	1,497,961.89 AUD	0.07%	3	825,486.32 AUD	1	373,775.96 AUD	2	749,468.94 AUD	2	1,484,465.14 AUD			
	URUS	23	0.04%	16,629,454.15 AUD	0.92%	16	10,469,951.19 AUD	5	6,159,503.96 AUD	16	10,469,951.19 AUD	3	1,887,111.59 AUD			
	MURCIELAGO	17	0.03%	5,076,228.97 AUD	0.28%	16	4,878,529.51 AUD	1	202,300.46 AUD	14	4,888,517.04 AUD	-	- AUD			
	SUBTOTAL	44	0.08%	12,157,972.56 AUD	0.67%	32	10,894,367.99 AUD	23	1,263,215.57 AUD	32	9,838,977.14 AUD	12	2,316,005.42 AUD			
PORSCHE	BOXSTER	101	0.19%	11,973,932.56 AUD	0.66%	76	10,894,367.99 AUD	25	14,068,622.24 AUD	74	10,043,237.62 AUD	27	1,930,374.71 AUD			
	CARRERA / 911	159	0.29%	29,789,914.06 AUD	1.64%	118	26,207,971.34 AUD	41	3,580,942.72 AUD	112	23,334,892.54 AUD	47	6,454,021.52 AUD			
	CAVAYNE	437	0.80%	46,151,741.06 AUD	2.55%	296	38,202,769.01 AUD	141	10,126,972.05 AUD	367	40,886,183.90 AUD	70	5,285,557.16 AUD			
	CAYMAN	8	0.01%	426,580.08 AUD	0.02%	3	170,195.51 AUD	5	255,384.57 AUD	-	- AUD	-	- AUD			
	TAYCAN	104	0.19%	15,254,200.25 AUD	0.84%	79	12,594,351.30 AUD	25	2,659,848.95 AUD	99	14,806,097.30 AUD	8	648,102.95 AUD			
	MACAN	738	1.35%	53,600,989.99 AUD	2.98%	489	41,103,167.09 AUD	246	12,527,820.87 AUD	591	45,263,999.58 AUD	144	8,346,571.40 AUD			
	MACAN R	1,521	2.82%	161,033,232.83 AUD	8.83%	70	3,049,436.32 AUD	430	912,692.42 AUD	1,236	9,012,227.79 AUD	233	642,871.59 AUD			
	SUBTOTAL	1,521	2.82%	161,033,232.83 AUD	8.83%	1,036	123,915,513.18 AUD	430	31,263,459.13 AUD	1,236	137,263,459.13 AUD	312	23,176,373.00 AUD			
SKODA	FABIA	94	0.17%	986,389.80 AUD	0.05%	48	46,450.18 AUD	90	939,939.42 AUD	78	814,884.44 AUD	16	171,505.16 AUD			
	KAROQ	4	0.00%	4,252,804.82 AUD	0.23%	4	1,162,635.68 AUD	162	3,090,168.94 AUD	189	3,885,511.16 AUD	21	367,293.46 AUD			
	KODIAQ	341	0.63%	9,221,012.63 AUD	0.51%	98	3,260,841.32 AUD	243	5,960,171.31 AUD	277	7,794,888.80 AUD	64	1,426,123.83 AUD			
	OCTAVIA	275	0.51%	4,985,564.05 AUD	0.28%	81	1,627,445.55 AUD	214	3,358,118.50 AUD	206	3,954,309.37 AUD	69	1,031,254.68 AUD			
	RAPID	21	0.04%	106,201.16 AUD	0.01%	2	22,173.00 AUD	19	84,028.16 AUD	15	84,852.51 AUD	6	21,348.65 AUD			
	SCALA	65	0.12%	1,038,684.83 AUD	0.06%	12	271,965.17 AUD	53	765,729.66 AUD	65	1,038,684.83 AUD	-	- AUD			
	KAMIQ	179	0.33%	3,534,789.97 AUD	0.20%	27	677,585.21 AUD	152	2,857,224.76 AUD	173	3,388,256.33 AUD	6	146,533.64 AUD			
	ROOMSTER	-	0.00%	- AUD	0.00%	-	- AUD	-	- AUD	-	- AUD	-	- AUD			
	SUPERB	93	0.17%	2,560,244.19 AUD	0.14%	34	1,029,144.43 AUD	59	1,231,089.96 AUD	60	1,635,216.80 AUD	33	626,027.38 AUD			
	SUBTOTAL	1,261	2.35%	26,411,203.32 AUD	1.45%	516	8,088,210.54 AUD	935	18,315,333.39 AUD	1,063	22,506,604.24 AUD	218	3,343,073.09 AUD			
VOLKSWAGEN	AMAROK	2,986	5.65%	60,861,036.18 AUD	4.45%	899	38,040,661.66 AUD	1,887	42,620,384.52 AUD	1,944	67,132,737.09 AUD	637	13,528,069.09 AUD			
	ARTEQON	136	0.25%	6,109,955.43 AUD	0.34%	66	3,549,801.71 AUD	119	2,560,133.72 AUD	119	5,424,456.48 AUD	22	686,478.95 AUD			
	CADDY	309	0.57%	5,966,150.89 AUD	0.33%	218	2,144,233.47 AUD	218	3,821,857.42 AUD	226	4,776,665.58 AUD	83	1,189,485.33 AUD			
	CARAVELLE	18	0.03%	596,277.19 AUD	0.03%	6	235,177.15 AUD	12	361,100.04 AUD	14	472,195.03 AUD	4	124,082.16 AUD			
	CRAFTER	392	0.72%	13,431,994.03 AUD	0.74%	130	5,774,398.46 AUD	262	7,697,595.57 AUD	357	12,691,633.35 AUD	35	770,458.70 AUD			
	EOS	2	0.00%	9,687.80 AUD	0.00%	2	9,687.80 AUD	-	- AUD	-	- AUD	-	- AUD			
	GOLF	1,770	3.26%	30,695,912.39 AUD	1.69%	345	9,061,822.02 AUD	1,425	21,635,090.37 AUD	1,020	19,803,896.72 AUD	750	10,885,015.67 AUD			
	JETTA	8	0.02%	37,025.17 AUD	0.00%	-	- AUD	9	37,025.17 AUD	-	- AUD	9	37,025.17 AUD			
	NEOS	25	0.05%	8,154,515.95 AUD	0.45%	91	4,517,092.65 AUD	157	3,006,200.66 AUD	157	6,946,598.36 AUD	56	1,140,516.04 AUD			
	NEW BEETLE	8	0.01%	44,516.94 AUD	0.00%	6	4,429,676.25 AUD	16	3,150,993.04 AUD	126	4,054,239.10 AUD	99	1,528,430.19 AUD			
	PASSAT	225	0.41%	5,560,669.20 AUD	0.31%	65	1,666,722.79 AUD	180	4,229,676.25 AUD	180	5,953,666.35 AUD	120	1,395,609.80 AUD			
	POLO	640	1.18%	7,622,389.14 AUD	0.42%	93	8,844.23 AUD	547	137,940.54 AUD	520	6,226,779.34 AUD	11	146,784.77 AUD			
	SCIROCCO	11	0.02%	146,784.77 AUD	0.01%	1	26,137,386.30 AUD	1,707	43,101,517.85 AUD	1,881	57,245,633.36 AUD	541	11,969,370.80 AUD			
	TIGUAN	2,422	4.46%	16,895,131.01 AUD	0.92%	115	10,547,960.14 AUD	1,707	6,350,170.87 AUD	237	14,387,146.61 AUD	98	2,500,984.40 AUD			
	TOLAREG	335	0.62%	9,998,804.29 AUD	0.55%	113	3,884,007.60 AUD	256	6,104,796.69 AUD	290	8,966,230.03 AUD	79	1,432,565.26 AUD			
	TRANSPORTER	934	1.72%	19,718,857.70 AUD	1.09%	132	6,367,742.99 AUD	802	16,367,742.99 AUD	905	19,125,263.62 AUD	29	593,594.08 AUD			
	T-CROSS	863	1.													

Pool Data VII

Distribution by Vehicle Brand and Models

Make	Total Portfolio			Hire Purchase			Chattel Mortgage			Consumer Loan			
	Model	Number of Contracts	Percentage of Contracts	Outstanding Discounted Receivables Balance	Percentage of Balance	Number of Contracts	Outstanding Discounted Receivables Balance	Percentage of Balance	Number of Contracts	Outstanding Discounted Receivables Balance	Percentage of Balance	Number of Contracts	Outstanding Discounted Receivables Balance
VW		11,235	20.67%	301,437,878.25 AUD	18.64%	4	73,623.17 AUD	0.00%	5,769	5,769	0.00%	-	-
Sub Total		19,454	35.80%	733,101,287.75 AUD	40.46%	5	77,063.99 AUD	0.00%	10,745	10,745	0.00%	5,472	123,091,815.37 AUD
Volkswagen Group Vehicles		19,454	35.80%	733,101,287.75 AUD	40.46%	5	77,063.99 AUD	0.00%	10,745	10,745	0.00%	5,472	123,091,815.37 AUD

Pool Data VII

Distribution by Vehicle Brand and Models

Make	Total Portfolio				Balloon				Vehicle Status				
	Model	Number of Contracts	Percentage of Contracts	Outstanding Discounted Receivables Balance	Number of Contracts	Outstanding Discounted Receivables Balance	Percentage of Balance	Number of Contracts	Outstanding Discounted Receivables Balance	Number of Contracts	Outstanding Discounted Receivables Balance	Number of Contracts	Outstanding Discounted Receivables Balance
IPI		11,235	20.67%	301,437,878.25 AUD	3,107	118,789,766.16 AUD	18.64%	8,128	182,638,112.09 AUD	8,641	252,927,050.00 AUD	2,594	48,510,828.25 AUD
Sub Total		19,454	35.80%	733,101,287.75 AUD	6,711	400,307,974.54 AUD	40.46%	12,643	332,793,313.21 AUD	14,471	593,893,849.83 AUD	4,963	139,207,637.92 AUD

Pool Data VII
Distribution by Vehicle Brand and Models

Other Vehicles	Total Portfolio				Hire Purchase			Chattel Mortgage			Consumer Loan		
	Make	Model	Number of Contracts	Percentage of Contracts	Outstanding Discounted Receivables Balance	Percentage of Balance	Number of Contracts	Outstanding Discounted Receivables Balance	Number of Contracts	Outstanding Discounted Receivables Balance	Number of Contracts	Outstanding Discounted Receivables Balance	
ABARTH			53	0.10%	1,213,217.68 AUD	0.07%	-	-	29	802,081.88 AUD	24	411,155.80 AUD	
ALFA ROMEO			132	0.24%	6,249,829.81 AUD	0.34%	-	-	86	4,374,496.74 AUD	46	1,875,333.07 AUD	
ALPINA			1	0.00%	128,800.32 AUD	0.01%	-	-	1	128,800.32 AUD	-	- AUD	
ASTON MARTIN			19	0.03%	3,851,170.86 AUD	0.21%	-	-	15	3,222,350.83 AUD	4	628,819.93 AUD	
BMW			765	1.41%	37,228,796.91 AUD	2.05%	-	-	564	30,346,426.49 AUD	201	6,879,340.42 AUD	
BYD			37	0.07%	1,457,172.75 AUD	0.08%	-	-	37	1,457,172.75 AUD	-	- AUD	
CHEVROLET			18	0.03%	585,522.85 AUD	0.03%	-	-	9	304,132.86 AUD	9	281,389.99 AUD	
CHEVROLET			117	0.22%	9,077,630.89 AUD	0.50%	-	-	103	8,158,043.96 AUD	14	919,586.93 AUD	
CHEVROLET			19	0.04%	642,470.69 AUD	0.04%	-	-	10	427,810.58 AUD	9	214,660.11 AUD	
CHRYSLER			26	0.05%	358,882.91 AUD	0.02%	-	-	16	167,591.16 AUD	10	188,291.75 AUD	
DODGE			34	0.06%	9,880,731.81 AUD	0.55%	-	-	29	7,666,898.76 AUD	5	2,213,832.85 AUD	
FERRARI			60	0.11%	851,444.30 AUD	0.05%	-	-	26	400,302.30 AUD	34	451,142.00 AUD	
FORD			3,716	6.84%	128,893,413.18 AUD	7.11%	42,810.23 AUD	2,532	83,800,241.07 AUD	1,182	35,050,361.88 AUD		
FOTON			2	0.00%	11,346.68 AUD	0.00%	-	-	-	- AUD	2	11,346.68 AUD	
GENESIS			19	0.03%	1,399,249.48 AUD	0.08%	-	-	16	1,236,845.68 AUD	3	162,403.80 AUD	
GM			4	0.01%	333,319.36 AUD	0.02%	-	-	-	- AUD	-	- AUD	
GREAT WALL			23	0.04%	221,426.87 AUD	0.01%	-	-	14	333,319.36 AUD	9	88,061.95 AUD	
GMV			413	0.76%	13,062,445.76 AUD	0.72%	-	-	269	8,335,257.39 AUD	144	4,689,178.37 AUD	
HONDA			3	0.01%	1,457,172.75 AUD	0.08%	-	-	3	1,457,172.75 AUD	-	- AUD	
HOLDEN			1,087	2.00%	17,446,229.37 AUD	0.96%	-	-	450	7,848,306.89 AUD	637	9,597,922.48 AUD	
HONDA			798	1.47%	12,696,276.73 AUD	0.70%	-	-	334	5,666,811.82 AUD	464	7,070,464.11 AUD	
HYUNDAI			2,863	5.43%	64,346,941.65 AUD	3.55%	-	-	1,246	30,722,046.78 AUD	1,707	33,624,894.87 AUD	
INEOS			1	0.00%	83,223.63 AUD	0.00%	-	-	-	- AUD	1	83,223.63 AUD	
INFINITI			7	0.01%	115,870.81 AUD	0.01%	-	-	5	91,803.42 AUD	2	24,067.39 AUD	
ISUZU			1,386	2.55%	43,839,469.50 AUD	2.43%	-	-	803	25,600,130.58 AUD	583	18,439,338.92 AUD	
JAGUAR			303	0.56%	13,569,943.15 AUD	0.75%	-	-	204	9,786,345.26 AUD	99	3,803,597.89 AUD	
JEEP			547	1.01%	16,901,836.85 AUD	0.89%	-	-	316	11,166,608.64 AUD	231	5,735,227.31 AUD	
KIA			2,027	3.73%	47,412,871.09 AUD	2.82%	23,536.33 AUD	882	23,236,716.46 AUD	1,144	24,050,617.69 AUD		
KIA			2,028	3.73%	47,412,871.09 AUD	2.82%	23,536.33 AUD	882	23,236,716.46 AUD	1,144	24,050,617.69 AUD		
LAND ROVER			1	0.00%	13,569.94 AUD	0.00%	-	-	1	13,569.94 AUD	-	- AUD	
LDV			1,163	2.20%	32,271,013.43 AUD	1.78%	9,468.46 AUD	1,163	32,271,013.43 AUD	-	- AUD		
LEXUS			64	0.12%	1,773,144.55 AUD	0.10%	-	-	44	1,453,971.15 AUD	20	319,173.40 AUD	
LOTUS			3	0.01%	312,368.99 AUD	0.02%	-	-	-	- AUD	2	231,723.30 AUD	
MAHINDRA			18	0.03%	385,725.63 AUD	0.02%	-	-	13	307,782.44 AUD	5	77,943.19 AUD	
MASERATI			128	0.24%	13,833,118.79 AUD	0.76%	-	-	108	11,934,057.49 AUD	20	1,899,061.30 AUD	
MAZDA			1,947	3.58%	41,875,457.06 AUD	2.31%	-	-	1,015	24,884,951.34 AUD	932	16,990,506.72 AUD	
MCLAREN			9	0.02%	2,860,948.10 AUD	0.16%	-	-	9	2,860,948.10 AUD	-	- AUD	
MERCEDES-BENZ			1,361	2.50%	76,041,666.35 AUD	4.20%	-	-	1,087	65,222,405.62 AUD	274	10,819,260.73 AUD	
MG			1,210	2.23%	20,919,588.91 AUD	1.15%	-	-	457	8,025,573.23 AUD	753	12,893,995.68 AUD	
MINI			1,016	1.88%	14,165,826.83 AUD	0.78%	-	-	717	10,165,826.83 AUD	299	4,000,000.00 AUD	
MITSUBISHI			3,663	6.82%	78,221,932.83 AUD	4.32%	-	-	1,781	42,890,532.89 AUD	1,772	35,337,410.79 AUD	
NISSAN			1,889	3.52%	33,586,799.51 AUD	1.85%	-	-	781	21,906,562.19 AUD	608	11,680,187.39 AUD	
NISSAN			2	0.00%	7,693.32 AUD	0.00%	-	-	-	- AUD	1	315.63 AUD	
PEUGEOT			227	0.42%	5,754,492.20 AUD	0.32%	-	-	163	4,348,785.92 AUD	64	1,405,706.28 AUD	
PEUGEOT			46	0.08%	4,726,435.35 AUD	0.26%	-	-	37	3,843,752.39 AUD	9	782,682.96 AUD	
RENAULT			467	0.86%	11,128,038.72 AUD	0.61%	-	-	356	8,632,015.36 AUD	111	2,236,023.34 AUD	
ROLLS ROYCE			8	0.01%	2,516,741.00 AUD	0.14%	-	-	7	2,387,174.22 AUD	1	129,566.78 AUD	
SSANGYONG			139	0.26%	4,183,047.75 AUD	0.23%	-	-	108	3,163,139.61 AUD	31	1,019,908.14 AUD	
SUBARU			1,485	2.73%	30,652,749.89 AUD	1.69%	-	-	659	14,012,276.10 AUD	826	16,628,473.78 AUD	
TESLA			143	0.26%	7,442,024.71 AUD	0.41%	-	-	130	6,800,759.98 AUD	13	641,264.73 AUD	
TESLA			143	0.26%	7,442,024.71 AUD	0.41%	-	-	130	6,800,759.98 AUD	13	641,264.73 AUD	
TOYOTA			2,900	5.34%	63,838,613.47 AUD	4.63%	25,393.27 AUD	1,947	61,724,701.61 AUD	951	22,068,518.59 AUD		
TOYOTA			976	1.80%	43,241,578.31 AUD	2.39%	-	-	594	27,481,343.32 AUD	382	15,760,234.99 AUD	
Other Vehicles			34,892	64.20%	1,078,611,501.12 AUD	59.24%	101,220.83 AUD	20,142	730,242,999.35 AUD	14,744	348,267,280.94 AUD		
Total			54,346	100.00%	1,614,712,786.87 AUD	100.00%	178,284.82 AUD	30,887	1,239,931,385.03 AUD	23,448	571,603,119.02 AUD		

Pool Data VII
Distribution by Vehicle Brand and Models

Other Vehicles	Total Portfolio				Balloon				No Balloon				Vehicle Status					
	Model	Number of Contracts	Percentage of Contracts	Outstanding Discounted Receivables Balance	Percentage of Balance	Number of Contracts	Outstanding Discounted Receivables Balance	Number of Contracts	Outstanding Discounted Receivables Balance	Number of Contracts	Outstanding Discounted Receivables Balance	Number of Contracts	Outstanding Discounted Receivables Balance	Number of Contracts	Outstanding Discounted Receivables Balance	Used		
ABARTH		53	0.10%	1,213,217.68 AUD	0.07%	21	617,503.26 AUD	32	595,714.42 AUD	46	1,088,753.00 AUD	7	124,464.68 AUD	7	124,464.68 AUD			
ALFA ROMEO		132	0.24%	6,249,829.81 AUD	0.34%	85	4,886,525.28 AUD	47	1,353,304.53 AUD	98	5,255,252.84 AUD	34	994,576.97 AUD	34	994,576.97 AUD			
ALPINA		1	0.00%	128,800.32 AUD	0.01%	1	128,800.32 AUD	-	-	-	-	-	-	1	128,800.32 AUD			
ASTON MARTIN		19	0.03%	3,851,170.86 AUD	0.21%	16	3,707,479.81 AUD	3	143,691.05 AUD	11	22,022,022.61 AUD	8	1,029,148.25 AUD	8	1,029,148.25 AUD			
BMW		765	1.41%	37,228,796.91 AUD	2.05%	352	24,494,082.42 AUD	413	12,734,689.49 AUD	337	22,018,094.82 AUD	428	15,210,672.09 AUD	428	15,210,672.09 AUD			
BYD		37	0.07%	1,457,172.75 AUD	0.08%	5	223,106.24 AUD	32	1,234,066.51 AUD	37	1,457,172.75 AUD	-	-	-	-			
CHEVROLET		18	0.03%	585,522.85 AUD	0.03%	2	70,417.73 AUD	16	515,105.12 AUD	18	585,522.85 AUD	-	-	-	-			
CHEVROLET		117	0.22%	9,077,630.89 AUD	0.50%	66	5,776,831.51 AUD	51	3,300,199.48 AUD	105	8,156,216.08 AUD	12	921,412.89 AUD	12	921,412.89 AUD			
CHRYSLER		19	0.03%	3,470,010.69 AUD	0.19%	4	352,353.29 AUD	5	19,173.39 AUD	4	171,659.83 AUD	15	309,751.50 AUD	15	309,751.50 AUD			
CITROEN		26	0.05%	358,892.91 AUD	0.02%	4	77,217.77 AUD	23	288,675.14 AUD	19	288,675.14 AUD	-	-	-	-			
DODGE		34	0.06%	9,880,731.81 AUD	0.55%	22	8,182,760.82 AUD	12	1,697,970.99 AUD	15	5,886,379.05 AUD	19	4,024,352.56 AUD	19	4,024,352.56 AUD			
FERRARI		60	0.11%	851,444.30 AUD	0.05%	18	367,948.12 AUD	42	483,496.18 AUD	42	483,496.18 AUD	39	592,544.23 AUD	21	258,900.05 AUD	21	258,900.05 AUD	
FIAT		3,716	6.84%	128,893,413.18 AUD	7.11%	1,054	48,475,197.13 AUD	2,662	80,418,216.05 AUD	2,441	96,849,943.97 AUD	1,275	33,049,469.21 AUD	1,275	33,049,469.21 AUD			
FOTON		2	0.00%	11,346.68 AUD	0.00%	-	-	2	11,346.68 AUD	2	11,346.68 AUD	1	4,623.64 AUD	1	4,623.64 AUD			
GENESIS		19	0.03%	1,399,249.48 AUD	0.08%	11	844,331.51 AUD	8	454,917.97 AUD	15	1,244,097.79 AUD	4	156,151.69 AUD	4	156,151.69 AUD			
GREAT WALL		23	0.04%	221,426.87 AUD	0.01%	2	156,667.34 AUD	2	176,652.02 AUD	2	176,652.02 AUD	3	250,902.85 AUD	3	250,902.85 AUD			
HONDA		413	0.76%	13,062,445.76 AUD	0.72%	211	2,610,622.21 AUD	335	10,232,389.35 AUD	408	12,923,234.31 AUD	3	42,804.64 AUD	3	42,804.64 AUD			
HOLDEN		3,087	5.75%	15,065,466.83 AUD	0.83%	1,771	8,945,344.81 AUD	2,316	6,120,122.02 AUD	2,316	6,120,122.02 AUD	5	191,707.02 AUD	5	191,707.02 AUD			
HONDA		1,087	2.00%	17,446,229.37 AUD	0.96%	102	2,303,344.87 AUD	985	15,142,884.50 AUD	298	4,265,309.88 AUD	789	13,180,920.51 AUD	789	13,180,920.51 AUD			
HONDA		798	1.47%	12,696,276.73 AUD	0.70%	388	1,904,056.99 AUD	710	10,732,218.74 AUD	551	8,901,729.24 AUD	247	3,834,550.49 AUD	247	3,834,550.49 AUD			
HYUNDAI		2,953	5.43%	64,346,941.65 AUD	3.55%	383	13,080,618.45 AUD	2,570	51,266,323.20 AUD	2,119	51,266,323.20 AUD	2,119	51,266,323.20 AUD	2,119	51,266,323.20 AUD			
INFINITI		7	0.01%	83,223.63 AUD	0.00%	1	83,223.63 AUD	4	62,448.25 AUD	3	37,088,316.03 AUD	4	70,816.55 AUD	4	70,816.55 AUD			
ISUZU		1,386	2.55%	43,839,469.50 AUD	2.43%	262	10,591,759.78 AUD	1,124	33,347,709.72 AUD	1,126	37,088,316.03 AUD	260	6,851,151.47 AUD	260	6,851,151.47 AUD			
JAGUAR		303	0.56%	13,590,943.15 AUD	0.75%	162	8,771,871.49 AUD	141	4,818,071.66 AUD	170	9,109,676.09 AUD	133	4,490,267.06 AUD	133	4,490,267.06 AUD			
JEEP		547	1.01%	16,801,836.95 AUD	0.89%	147	7,075,257.08 AUD	400	9,826,578.87 AUD	282	11,326,652.78 AUD	285	9,051,827.86 AUD	285	9,051,827.86 AUD			
KIA		2,027	3.73%	47,412,871.09 AUD	2.62%	332	4,472,871.09 AUD	1,695	35,540,235.35 AUD	1,523	38,321,043.28 AUD	504	8,991,263.20 AUD	504	8,991,263.20 AUD			
LAND ROVER		1,018	1.89%	13,065,076.94 AUD	0.73%	111	89,356,639.70 AUD	1,111	1,018,018.01 AUD	1,111	1,018,018.01 AUD	86	1,372,016.52 AUD	86	1,372,016.52 AUD			
LEXUS		1,163	2.12%	32,271,013.43 AUD	1.78%	221	7,392,629.70 AUD	972	24,956,383.73 AUD	1,131	30,894,965.91 AUD	44	972,016.52 AUD	44	972,016.52 AUD			
LOTUS		3	0.01%	312,368.99 AUD	0.02%	1	231,723.30 AUD	1	80,665.69 AUD	3	312,368.99 AUD	3	312,368.99 AUD	3	312,368.99 AUD			
MAHINDRA		18	0.03%	385,725.63 AUD	0.02%	5	155,325.25 AUD	13	230,400.38 AUD	17	383,533.13 AUD	1	2,192.50 AUD	1	2,192.50 AUD			
MASERATI		128	0.24%	13,833,118.79 AUD	0.76%	90	11,405,099.89 AUD	38	2,428,018.90 AUD	94	11,582,450.47 AUD	34	2,250,668.32 AUD	34	2,250,668.32 AUD			
MAZDA		1,947	3.58%	41,875,457.06 AUD	2.31%	420	13,166,447.50 AUD	1,527	28,707,009.56 AUD	1,239	30,195,729.35 AUD	708	11,679,733.71 AUD	708	11,679,733.71 AUD			
MCLAREN		9	0.02%	2,860,948.10 AUD	0.16%	9	2,860,948.10 AUD	-	-	7	2,268,303.40 AUD	2	592,644.70 AUD	2	592,644.70 AUD			
MERCEDES-BENZ		1,361	2.50%	76,041,666.35 AUD	4.20%	614	46,426,951.47 AUD	747	29,615,714.88 AUD	607	44,620,655.98 AUD	754	31,427,010.36 AUD	754	31,427,010.36 AUD			
MG		1,210	2.23%	20,919,588.91 AUD	1.15%	90	2,049,715.27 AUD	1,120	18,869,873.64 AUD	1,107	19,306,865.10 AUD	103	1,612,022.81 AUD	103	1,612,022.81 AUD			
MINI		1,125	2.07%	16,629,323.83 AUD	0.92%	41	1,629,323.83 AUD	1,084	15,000,000.00 AUD	1,084	15,000,000.00 AUD	45	17,125,701.01 AUD	45	17,125,701.01 AUD			
MINI		3,663	6.68%	78,927,932.83 AUD	4.32%	506	15,393,272.56 AUD	3,057	62,460,660.27 AUD	2,558	61,102,231.43 AUD	921	13,663,881.66 AUD	921	13,663,881.66 AUD			
NISSAN		1,389	2.56%	33,585,799.51 AUD	1.85%	266	10,129,955.41 AUD	1,133	23,455,804.10 AUD	688	19,921,877.85 AUD	721	13,663,881.66 AUD	721	13,663,881.66 AUD			
NISSAN		2	0.00%	7,693.32 AUD	0.00%	2	7,693.32 AUD	-	-	2	7,693.32 AUD	-	-	-	-			
PEUGEOT		227	0.42%	5,754,492.20 AUD	0.32%	67	2,300,449.73 AUD	160	3,454,042.47 AUD	195	5,227,226.26 AUD	32	527,263.94 AUD	32	527,263.94 AUD			
PEUGEOT		46	0.08%	4,726,456.35 AUD	0.26%	26	2,913,359.57 AUD	20	1,813,075.78 AUD	42	4,434,153.63 AUD	4	292,281.72 AUD	4	292,281.72 AUD			
RENAULT		467	0.86%	11,128,038.72 AUD	0.61%	153	4,514,517.78 AUD	314	6,613,520.94 AUD	388	9,921,649.92 AUD	79	1,206,388.80 AUD	79	1,206,388.80 AUD			
ROLLS-ROYCE		8	0.01%	2,516,741.00 AUD	0.14%	7	2,463,015.73 AUD	1	53,725.27 AUD	5	2,007,485.24 AUD	3	509,252.76 AUD	3	509,252.76 AUD			
SSANGYONG		139	0.26%	4,183,047.75 AUD	0.23%	36	1,233,077.94 AUD	103	2,949,969.81 AUD	134	2,949,969.81 AUD	5	106,823.06 AUD	5	106,823.06 AUD			
SUBARU		1,485	2.73%	30,652,749.89 AUD	1.69%	273	7,659,865.04 AUD	1,212	23,992,884.85 AUD	1,030	23,100,679.70 AUD	455	7,510,876.19 AUD	455	7,510,876.19 AUD			
TESLA		143	0.26%	7,442,024.71 AUD	0.41%	66	3,884,380.34 AUD	67	3,557,644.37 AUD	122	6,373,592.71 AUD	21	1,098,502.00 AUD	21	1,098,502.00 AUD			
TESLA		143	0.26%	7,442,024.71 AUD	0.41%	66	3,884,380.34 AUD	67	3,557,644.37 AUD	122	6,373,592.71 AUD	21	1,098,502.00 AUD	21	1,098,502.00 AUD			
TOYOTA		2,900	5.34%	63,838,613.47 AUD	4.63%	514	22,353,324.22 AUD	2,386	61,485,289.25 AUD	1,018	34,608,964.12 AUD	1,882	49,229,749.35 AUD	1,882	49,229,749.35 AUD			
VOLVO		976	1.80%	43,241,578.31 AUD	2.39%	415	21,449,392.11 AUD	561	21,792,186.20 AUD	800	37,526,064.92 AUD	176	5,715,513.39 AUD	176	5,715,513.39 AUD			
Other Vehicles		34,892	64.20%	1,078,611,501.12 AUD	59.24%	8,203	427,407,265.71 AUD	26,689	651,204,235.41 AUD	22,887	776,705,941.80 AUD	12,005	301,905,559.32 AUD	12,005	301,905,559.32 AUD			
Total		54,346	100.00%	1,814,712,786.87 AUD	100.00%	14,914	827,715,240.25 AUD	39,332	983,997,548.62 AUD	37,358	1,370,599,891.63 AUD	16,988	441,115,197.24 AUD	16,988	441,115,197.24 AUD			

Pool Data VIII

Region

Region	Total Portfolio				Product Type					
	Hire Purchase		Chattel Mortgage		Consumer Loan					
	Number of Contracts	Percentage of Contracts	Outstanding Discounted Receivables Balance	Percentage of Balance	Number of Contracts	Outstanding Discounted Receivables Balance	Number of Contracts	Outstanding Discounted Receivables Balance		
Australian Capital Territory	1,583	2.91%	49,589,612.52 AUD	2.74%	-	- AUD	563	25,898,554.37 AUD	1,020	23,691,058.15 AUD
New South Wales	19,284	35.48%	681,991,598.19 AUD	37.64%	6	94,795.91 AUD	11,657	489,123,878.24 AUD	7,621	192,772,924.04 AUD
Northern Territory	381	0.70%	8,086,006.10 AUD	0.45%	-	- AUD	127	2,823,566.60 AUD	254	5,262,439.50 AUD
Queensland	11,218	20.64%	344,108,329.17 AUD	18.99%	1	9,480.40 AUD	6,461	230,980,392.99 AUD	4,756	113,118,455.78 AUD
South Australia	1,983	3.65%	68,204,447.32 AUD	3.76%	1	24,364.03 AUD	1,248	49,512,785.43 AUD	734	18,667,297.86 AUD
Tasmania	2,182	4.02%	58,129,062.06 AUD	3.21%	-	- AUD	867	30,285,604.25 AUD	1,315	27,843,457.81 AUD
Victoria	11,131	20.48%	400,864,279.24 AUD	22.13%	3	49,644.48 AUD	6,549	288,207,073.21 AUD	4,579	112,607,561.55 AUD
Western Australia	6,584	12.11%	200,739,454.27 AUD	11.08%	-	- AUD	3,415	123,099,529.94 AUD	3,169	77,639,924.33 AUD
Total	54,346	100.00%	1,811,712,788.87 AUD	100.00%	11	178,284.82 AUD	30,887	1,239,931,365.03 AUD	23,448	571,603,119.02 AUD

Pool Data VIII

Region

Region	Total Portfolio				Balloon			No Balloon			New			Vehicle Status		
	Number of Contracts	Percentage of Contracts	Outstanding Receivables Balance	Percentage of Balance	Number of Contracts	Outstanding Discounted Receivables Balance	Number of Contracts	Outstanding Discounted Receivables Balance	Number of Contracts	Outstanding Discounted Receivables Balance	Number of Contracts	Outstanding Discounted Receivables Balance	Number of Contracts	Outstanding Discounted Receivables Balance	Used	
															Number of Contracts	Outstanding Discounted Receivables Balance
Australian Capital Territory	1,583	2.91%	49,589,612.52 AUD	2.74%	351	19,989,640.18 AUD	1,232	29,599,972.34 AUD	876	32,803,812.16 AUD	707	16,785,800.36 AUD				
New South Wales	19,284	35.48%	681,991,598.19 AUD	37.64%	5,764	333,046,817.89 AUD	13,520	348,944,780.30 AUD	13,738	525,829,217.55 AUD	5,546	156,162,380.64 AUD				
Northern Territory	381	0.70%	8,086,006.10 AUD	0.45%	23	1,011,632.36 AUD	358	7,074,373.74 AUD	313	7,157,177.63 AUD	68	928,828.47 AUD				
Queensland	11,218	20.64%	344,108,329.17 AUD	18.99%	2,945	151,791,027.76 AUD	8,273	192,317,301.41 AUD	8,539	282,339,717.13 AUD	2,679	61,768,612.04 AUD				
South Australia	1,983	3.65%	68,204,447.32 AUD	3.76%	653	34,626,085.33 AUD	1,330	33,578,361.99 AUD	1,423	54,344,892.85 AUD	560	13,859,554.47 AUD				
Tasmania	2,182	4.02%	58,129,062.06 AUD	3.21%	333	15,663,246.81 AUD	1,849	42,465,815.25 AUD	1,090	32,731,685.50 AUD	1,092	25,397,376.56 AUD				
Victoria	11,131	20.48%	400,864,279.24 AUD	22.13%	3,942	219,123,424.07 AUD	7,189	181,740,855.17 AUD	8,164	321,941,066.32 AUD	2,967	78,923,222.92 AUD				
Western Australia	6,584	12.11%	200,739,454.27 AUD	11.08%	903	52,463,365.85 AUD	5,681	148,276,088.42 AUD	3,215	113,452,032.49 AUD	3,369	87,287,421.78 AUD				
Total	54,346	100.00%	1,811,712,788.87 AUD	100.00%	14,914	827,715,240.25 AUD	39,432	983,897,548.62 AUD	37,358	1,370,599,591.63 AUD	16,988	441,113,197.24 AUD				

Pool Data IX

Current COVID-19 Extensions

Current COVID-19 Extensions	Total Portfolio			Hire Purchase		Chattel Mortgage		Consumer Loan		
	Number of Contracts	Percentage of Contracts	Outstanding Discounted Receivables Balance	Percentage of Balance	Number of Contracts	Outstanding Discounted Receivables Balance	Number of Contracts	Outstanding Discounted Receivables Balance	Number of Contracts	Outstanding Discounted Receivables Balance
Current COVID-19 Extension	95	0.17%	3,342,956.97 AUD	0.18%	-	- AUD	52	2,115,108.61 AUD	43	1,227,848.36 AUD
No Current Extension	54,251	99.83%	1,808,369,831.90 AUD	99.82%	11	178,284.82 AUD	30,835	1,237,816,276.42 AUD	23,405	570,375,270.66 AUD
Total	54,346	100.00%	1,811,712,788.87 AUD	100.00%	11	178,284.82 AUD	30,887	1,239,931,385.03 AUD	23,448	571,603,119.02 AUD

* Representing contracts which are currently in a COVID-19 extension as at the Reporting Date

Pool Data IX

Current COVID-19 Extensions

Current COVID-19 Extensions	Total Portfolio				Vehicle Status									
	Number of Contracts	Percentage of Contracts	Outstanding Discounted Receivables Balance	Percentage of Balance	Balloon			No Balloon			New		Used	
					Number of Contracts	Outstanding Discounted Receivables Balance	Number of Contracts	Outstanding Discounted Receivables Balance	Number of Contracts	Outstanding Discounted Receivables Balance	Number of Contracts	Outstanding Discounted Receivables Balance		
Current COVID-19 Extension	95	0.17%	3,342,956.97 AUD	0.18%	25	1,342,347.57 AUD	70	2,000,609.40 AUD	53	1,929,950.39 AUD	42	1,413,006.58 AUD		
No Current Extension	54,251	99.83%	1,808,369,831.90 AUD	99.82%	14,889	826,372,892.68 AUD	39,362	981,996,939.22 AUD	37,305	1,368,669,641.24 AUD	16,946	439,700,190.66 AUD		
Total	54,346	100.00%	1,811,712,788.87 AUD	100.00%	14,914	827,715,240.25 AUD	39,432	983,997,548.62 AUD	37,358	1,370,599,591.63 AUD	16,988	441,113,197.24 AUD		

* Representing contracts which are currently in a COVID-19 extension as at the Reporting Date

Individual Hardship Extensions*

Individual Extensions Approved For After Poolcut*	Number of Contracts	Percentage of Contracts	Outstanding Discounted Receivables Balance	Percentage of Balance
None	53,072	97.66%	1,785,240,273.08 AUD	98.54%
1	984	1.81%	20,656,189.33 AUD	1.14%
2	228	0.42%	4,797,735.21 AUD	0.26%
3	53	0.10%	863,318.64 AUD	0.05%
4	9	0.02%	155,272.61 AUD	0.01%
5	-	0.00%	0.00 AUD	0.00%
Total	54,346	100.00%	1,811,712,788.87 AUD	100.00%

*Individual Hardship Extensions Approved For After Poolcut For Contracts Active At End of Reporting Period

Engine Type

Engine Type	Total Portfolio						Hire Purchase		Chattel Mortgage		Consumer Loan	
	Number of Contracts	Percentage of Contracts	Outstanding Discounted Receivables Balance	Percentage of Balance	Number of Contracts	Outstanding Discounted Receivables Balance	Number of Contracts	Outstanding Discounted Receivables Balance	Number of Contracts	Outstanding Discounted Receivables Balance		
	EA 189 (Unfixed)	3	0.01%	16,686.17 AUD	0.00%	-	- AUD	1	3,652.70 AUD	2	13,033.47 AUD	
Other	54,343	99.99%	1,811,696,102.70 AUD	100.00%	11	178,284.82 AUD	30,886	1,239,927,732.33 AUD	23,446	571,590,085.55 AUD		
Total	54,346	100.00%	1,811,712,788.87 AUD	100.00%	11	178,284.82 AUD	30,887	1,239,931,385.03 AUD	23,448	571,603,119.02 AUD		

Engine Type

Engine Type	Total Portfolio											
	Ballloon		No Ballloon		New		Used		Vehicle Status			
	Number of Contracts	Percentage of Contracts	Outstanding Discounted Receivables Balance	Percentage of Balance	Number of Contracts	Outstanding Discounted Receivables Balance	Number of Contracts	Outstanding Discounted Receivables Balance	Number of Contracts	Outstanding Discounted Receivables Balance		
EA 189 (Unfixed)	3	0.01%	16,686.17 AUD	0.00%	-	- AUD	3	16,686.17 AUD	-	- AUD	3	16,686.17 AUD
Other	54,343	99.99%	1,811,696,102.70 AUD	100.00%	14,914	827,715,240.25 AUD	39,429	963,980,862.45 AUD	37,358	1,370,599,591.63 AUD	16,985	441,096,511.07 AUD
Total	54,346	100.00%	1,811,712,788.87 AUD	100.00%	14,914	827,715,240.25 AUD	39,432	983,997,548.62 AUD	37,358	1,370,599,591.63 AUD	16,988	441,113,197.24 AUD