



MAXIMUS RESOURCES

RIU Explorers Conference

February 2024 **ASX:MXR**

DISCLAIMER



Nature of this document: The purpose of this presentation is to provide general information about Maximus Resources Limited (the 'Company'). Unless otherwise stated herein, the information in this presentation is based on the Company's own information and estimates. In attending this presentation or viewing this document you agree to be bound by the following terms and conditions. This document has been prepared by the Company and information in this document should be read in conjunction with other announcements made by the Company to the Australian Securities Exchange and available at www.maximusresources.com or www.asx.com.

Not an offer: This presentation is for information purposes only and does not constitute or form any part of any offer or invitation to sell or issue, or any solicitation of any offer to purchase or subscribe for, any securities in the Company in any jurisdiction. This presentation and its contents must not be distributed, transmitted or viewed by any person in any jurisdiction where the distribution, transmission or viewing of this document would be unlawful under the securities or other laws of that or any other jurisdiction.

Not financial product advice: This presentation does not take into account the individual investment objectives, financial situation and particular needs of each of the Company's Shareholders. You may wish to seek independent financial and taxation advice before making any decision in respect of this presentation. Neither the Company nor any of its related bodies corporate is licensed to provide financial product advice in respect of the Company's securities or any other financial products.

Forward-looking statements: Certain statements in the presentation are or may be "forward-looking statements" and represent the Company's intentions, projections, expectations or beliefs concerning, among other things, future operating and exploration results or the Company's future performance. These forward-looking statements speak, and the presentation generally speaks, only at the date hereof. The projections, estimates and beliefs contained in such forward-looking statements necessarily involve known and unknown risks and uncertainties, and are necessarily based on assumptions, which may cause the Company's actual performance, results and achievements in future periods to differ materially from any express or implied estimates or projections. Accordingly, readers are cautioned not to place undue reliance on forward looking statements. Relevant factors which may affect the Company's actual performance, results and achievements include changes in commodity price, foreign exchange fluctuations and general economic conditions, increased costs and demand for production inputs, the speculative nature of exploration and project development, diminishing quantities or grades of reserves, political and social risks, changes to laws and regulations, environmental conditions, and recruitment and retention of personnel.

Disclaimer: No representation or warranty, express or implied, is made by the Company that the material contained in this presentation will be achieved or prove to be correct. Except for statutory liability which cannot be excluded, each of the Company, its directors, officers, employees, advisers and agents expressly disclaims any responsibility for the accuracy, fairness, sufficiency or completeness of the material contained in this presentation, or any opinions or beliefs contained in this document, and excludes all liability whatsoever (including in negligence) for any loss or damage which may be suffered by any person as a consequence of any information in this presentation or any error or omission there from. The Company is under no obligation to update or keep current the information contained in this presentation or to correct any inaccuracy or omission which may become apparent, or to furnish any person with any further information. Any opinions expressed in the presentation are subject to change without notice.

Unverified information: This presentation may contain information (including information derived from publicly available sources) that has not been independently verified by the Company.

Refer to the Company's ASX Announcements for JORC Table 1 and Table 2 for results and information contained in this presentation.

MULTI-COMMODITY EXPOSURE



Highly prospective projects in a premier jurisdiction



World-class Geology and Location.



Solid Foundation ~**335,000 oz Au.**#



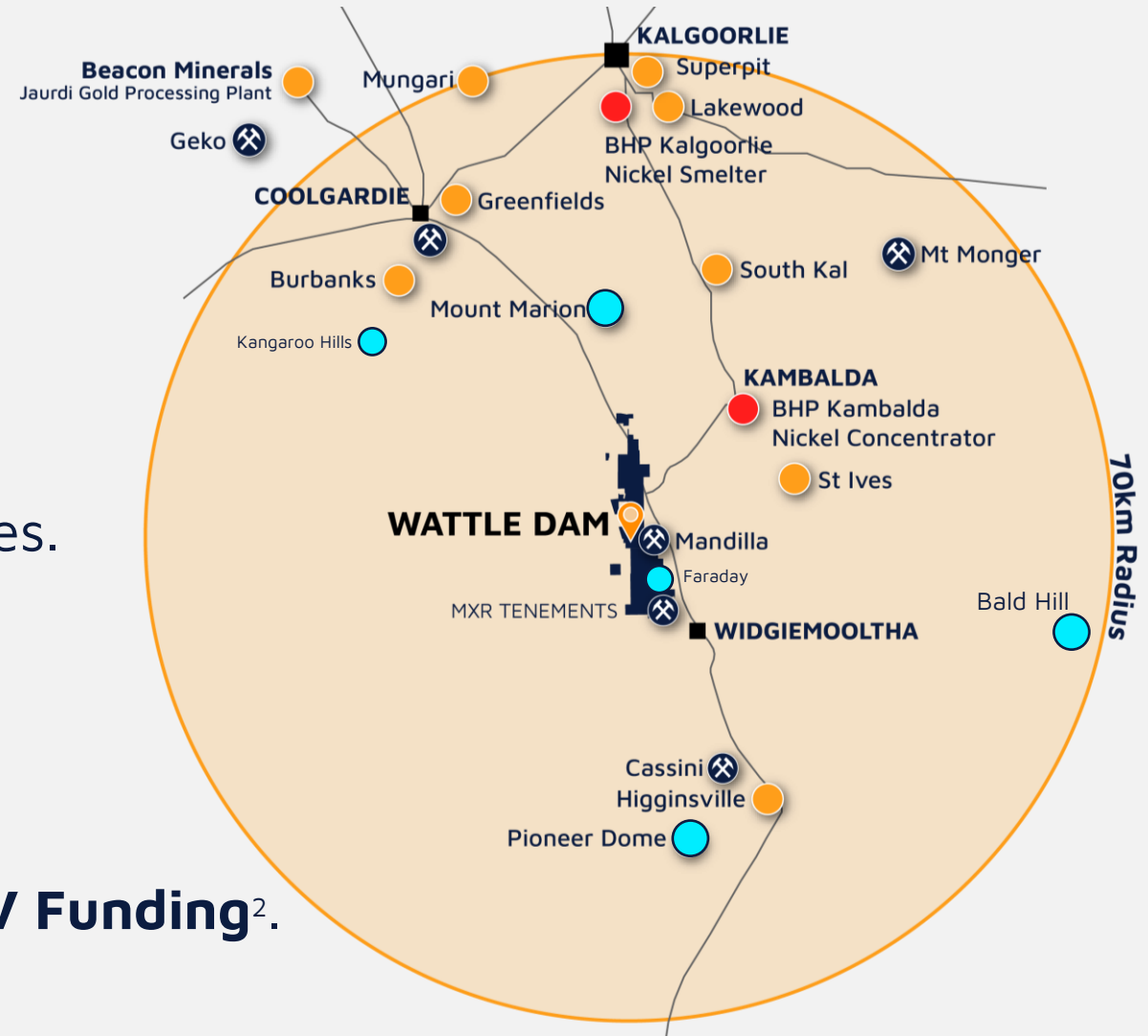
Demonstrated high-grade discoveries.



Gold, Lithium and Nickel.



~\$2.15m¹ cash + ~\$4.8m Lithium JV Funding².



SPARGOVILLE PROJECT

GOLD FOCUSED

Growing +335,000 oz Au resource highlights near surface growth opportunities. Limited by drilling.

WATTLE DAM GOLD PROJECT

- Drill targeting Wattle Dam repetition.
- Near-term production under review.

REGIONAL TARGETS

- 117 sqkm of 100% gold rights. 20km west of >10Moz St Ives gold camp.
- Granted Mining Tenements.
- Several advanced gold resources and targets.
- Strong gold mineralisation and geochemistry trends assisting targeted drilling.

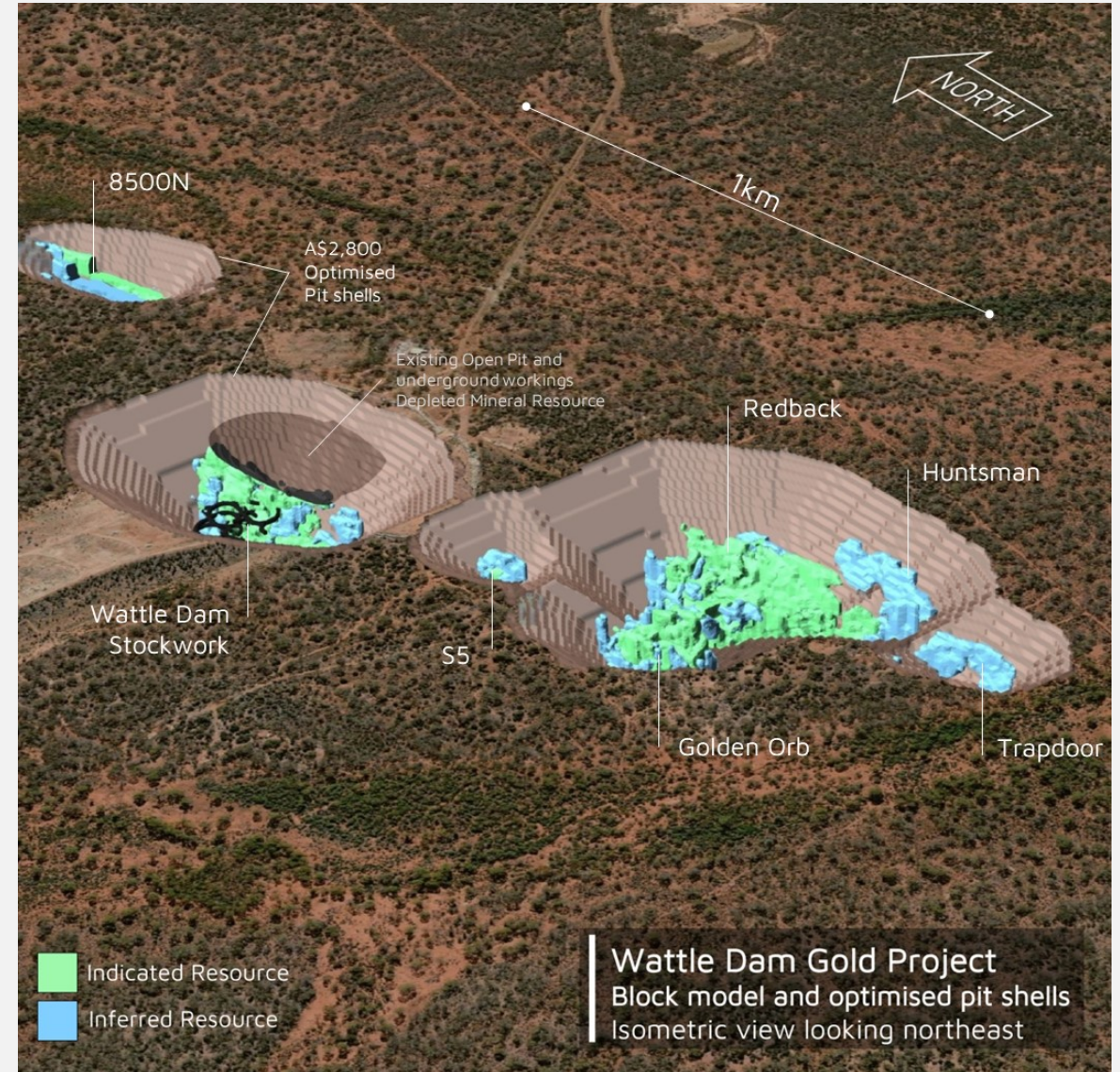


WATTLE DAM GOLD PROJECT MINERAL RESOURCE UPDATE



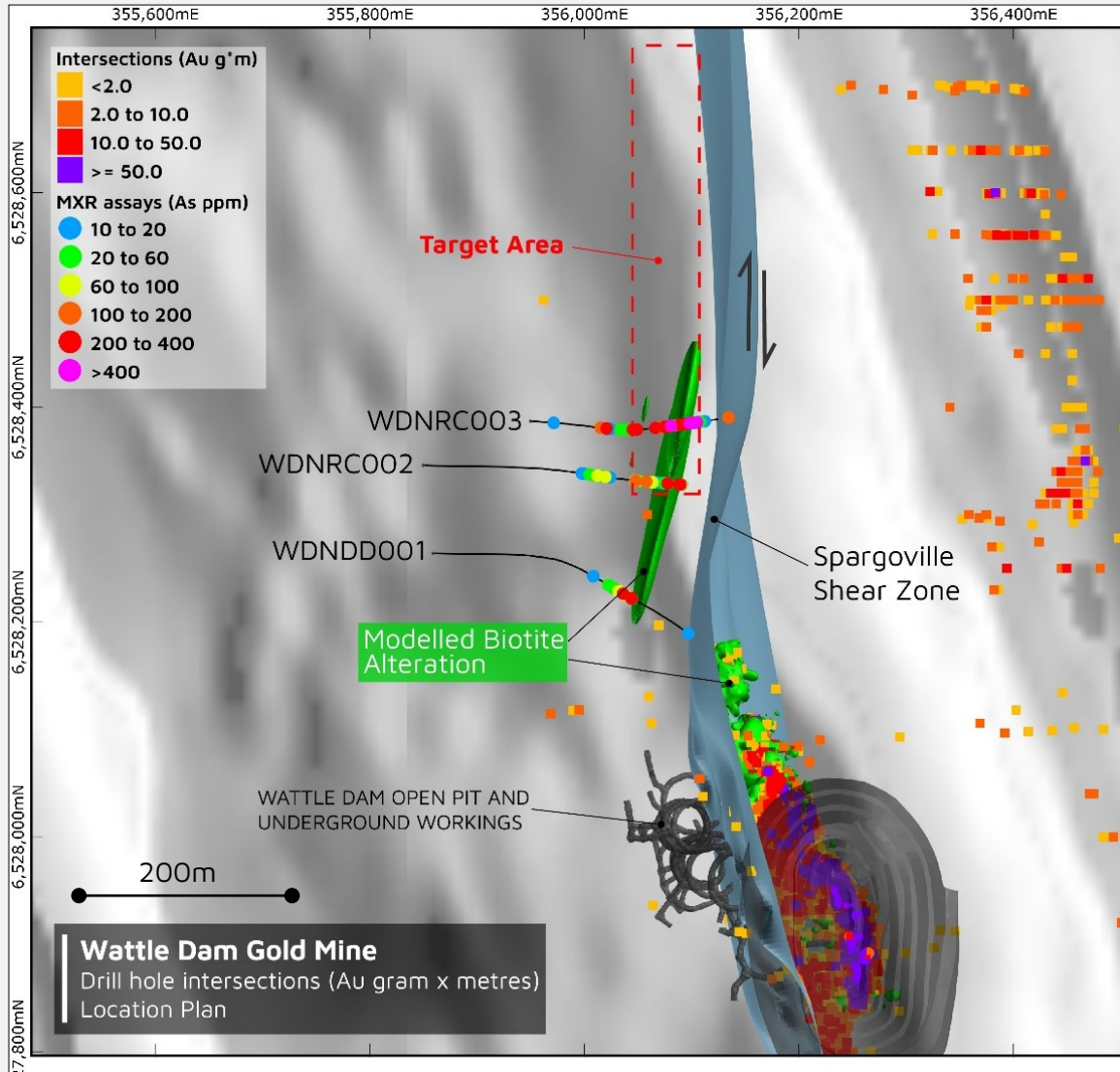
5.4 mt @ 1.45 g/t Au for 251,500 oz Au

- **250% increase in resources.**
- Mineralisation remains open. Only limited by drilling
- 95% resource in optimised pit shells.
- 153koz in Indicated Category.
- Metallurgical recoveries 92% - 97%.
- **Foundation for development studies.**



WATTLE DAM GOLD MINE

DEMONSTRATED HIGH-GRADE POTENTIAL

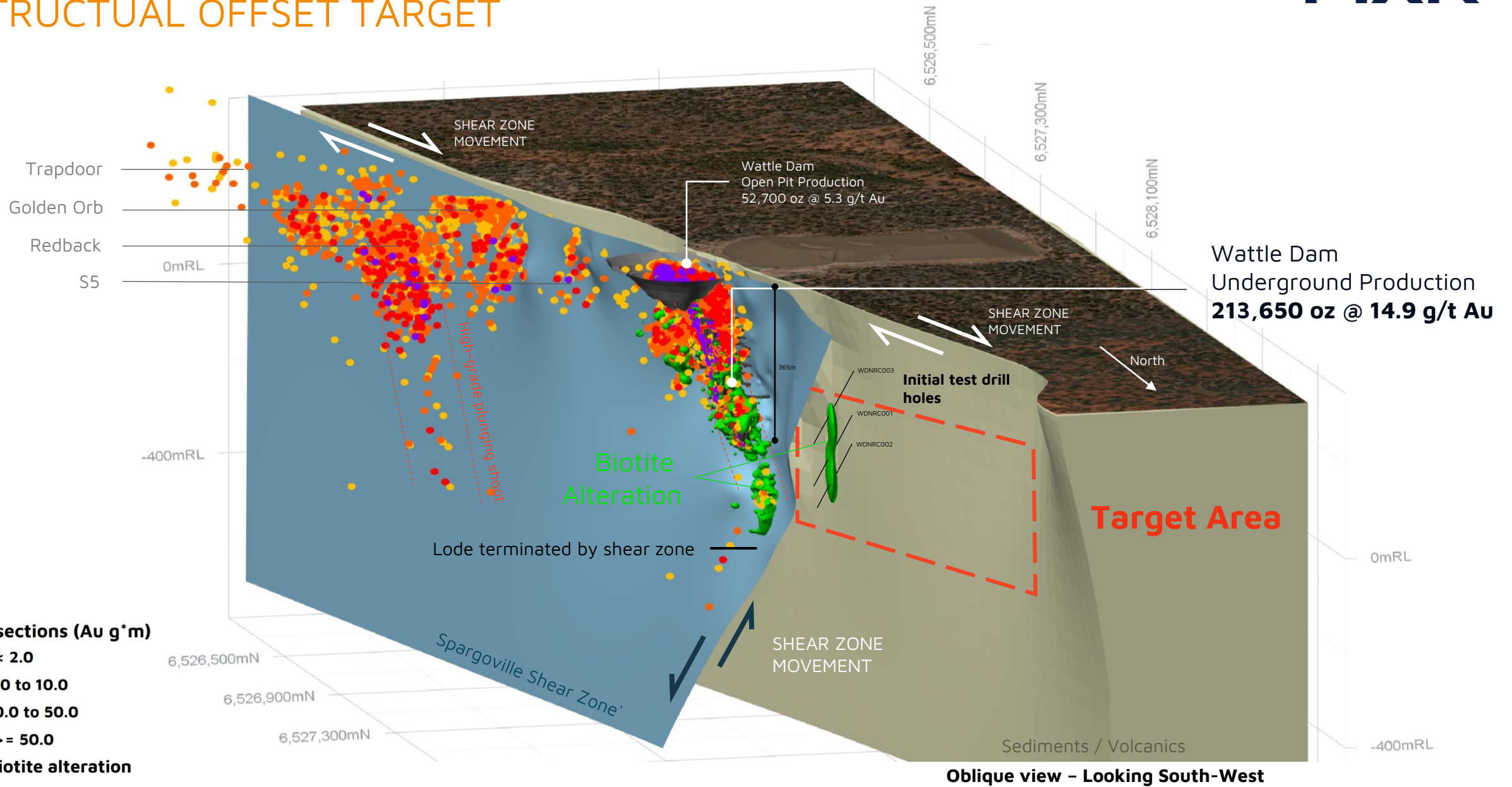


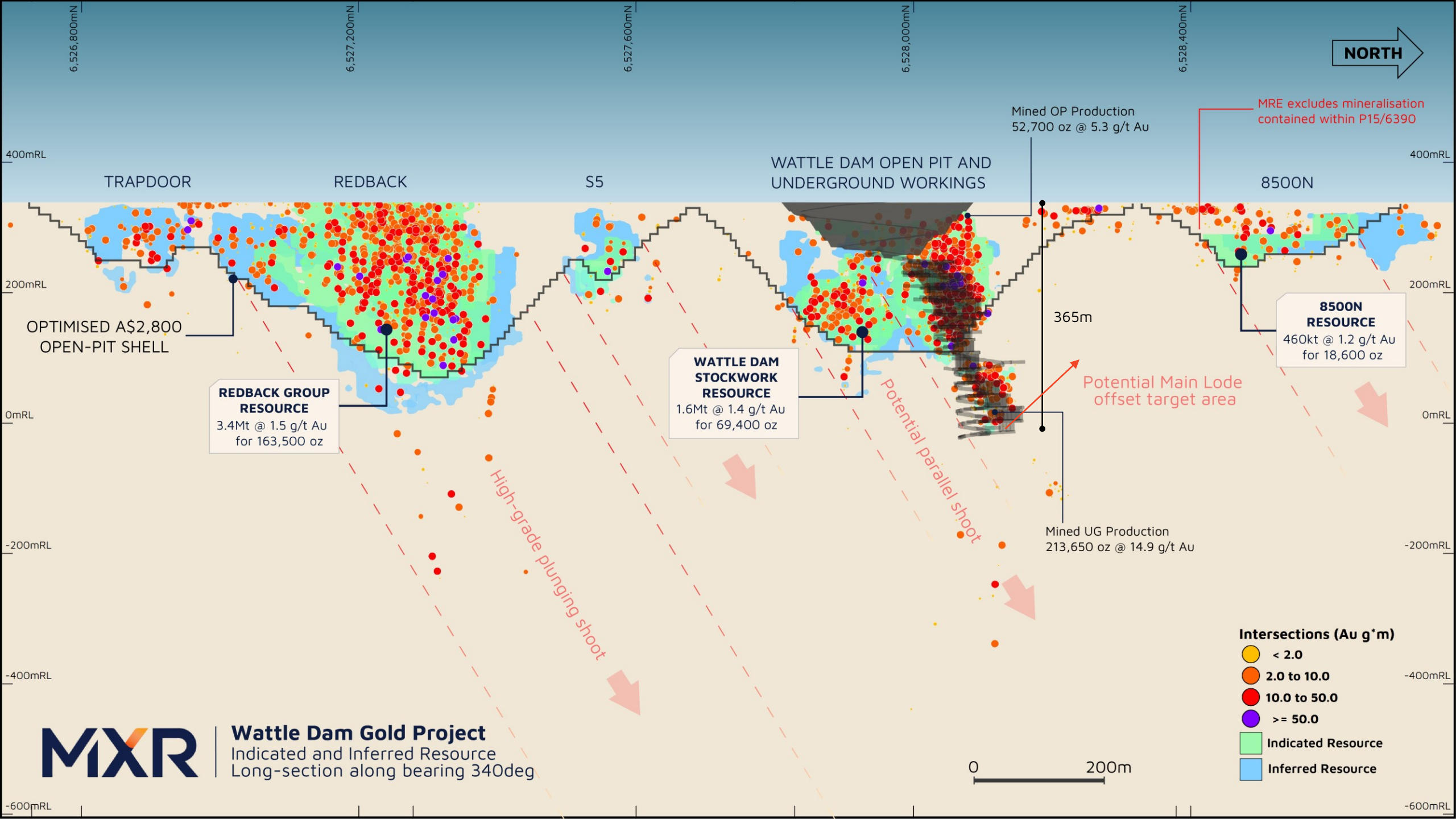
- Mined from 2008-2012 historical production:

Open pit	52,700 oz	@ 5 g/t Au
Underground	213,650 oz	@ 15 g/t Au
Total	266,350 oz	@ 11 g/t Au
- High-grade lode 40-100m in strike length.
- **Shear zone terminates mineralisation.**
- Potential structural offset to the west.
- **No previous drill testing western side of shear zone.**
- Drilling confirms similar geological sequence, 70m wide gold mineralisation and pathfinder elements.

WATTLE DAM GOLD MINE

STRUCTURAL OFFSET TARGET





6,526,800mN

6,527,200mN

6,527,600mN

6,528,000mN

6,528,400mN

TRAPDOOR

REDBACK

S5

WATTLE DAM OPEN PIT AND UNDERGROUND WORKINGS

8500N

OPTIMISED A\$2,800 OPEN-PIT SHELL

REDBACK GROUP RESOURCE
3.4Mt @ 1.5 g/t Au
for 163,500 oz

WATTLE DAM STOCKWORK RESOURCE
1.6Mt @ 1.4 g/t Au
for 69,400 oz

8500N RESOURCE
460kt @ 1.2 g/t Au
for 18,600 oz

Mined OP Production
52,700 oz @ 5.3 g/t Au

Mined UG Production
213,650 oz @ 14.9 g/t Au

MRE excludes mineralisation contained within P15/6390

Potential Main Lode offset target area

Potential parallel shoot

High-grade plunging shoot

- Intersections (Au g*m)**
- < 2.0
 - 2.0 to 10.0
 - 10.0 to 50.0
 - >= 50.0
 - Indicated Resource
 - Inferred Resource



Wattle Dam Gold Project
Indicated and Inferred Resource
Long-section along bearing 340deg

0 200m

-600mRL

-600mRL

-400mRL

-400mRL

-200mRL

-200mRL

0mRL

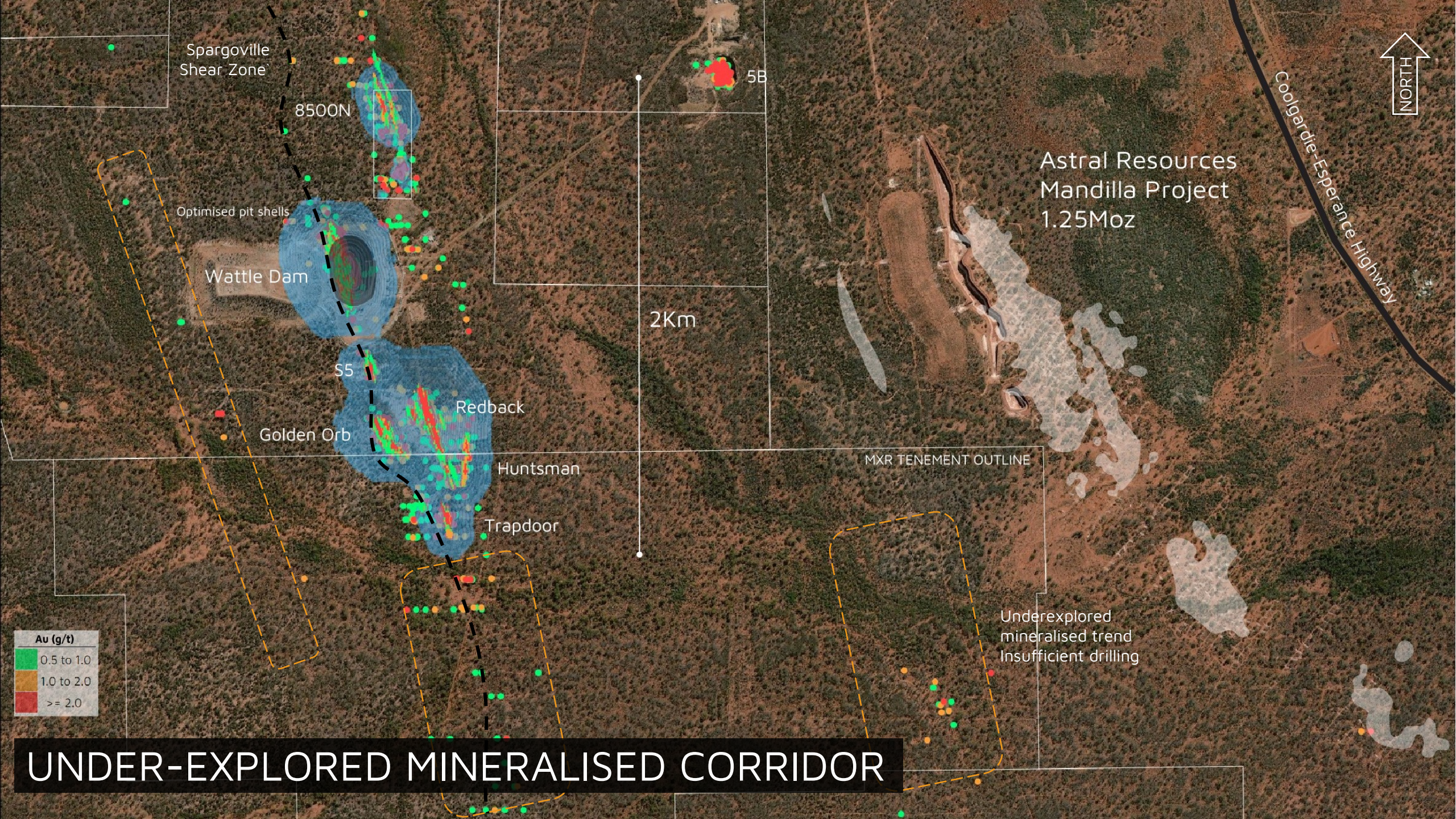
0mRL

200mRL

200mRL

400mRL

400mRL



Spargoville Shear Zone

8500N

Optimised pit shells

Wattle Dam

S5

Golden Orb

Redback

Huntsman

Trapdoor

5B

2Km

Astral Resources
Mandilla Project
1.25Moz

Coolgardie-Esperance Highway



MXR TENEMENT OUTLINE

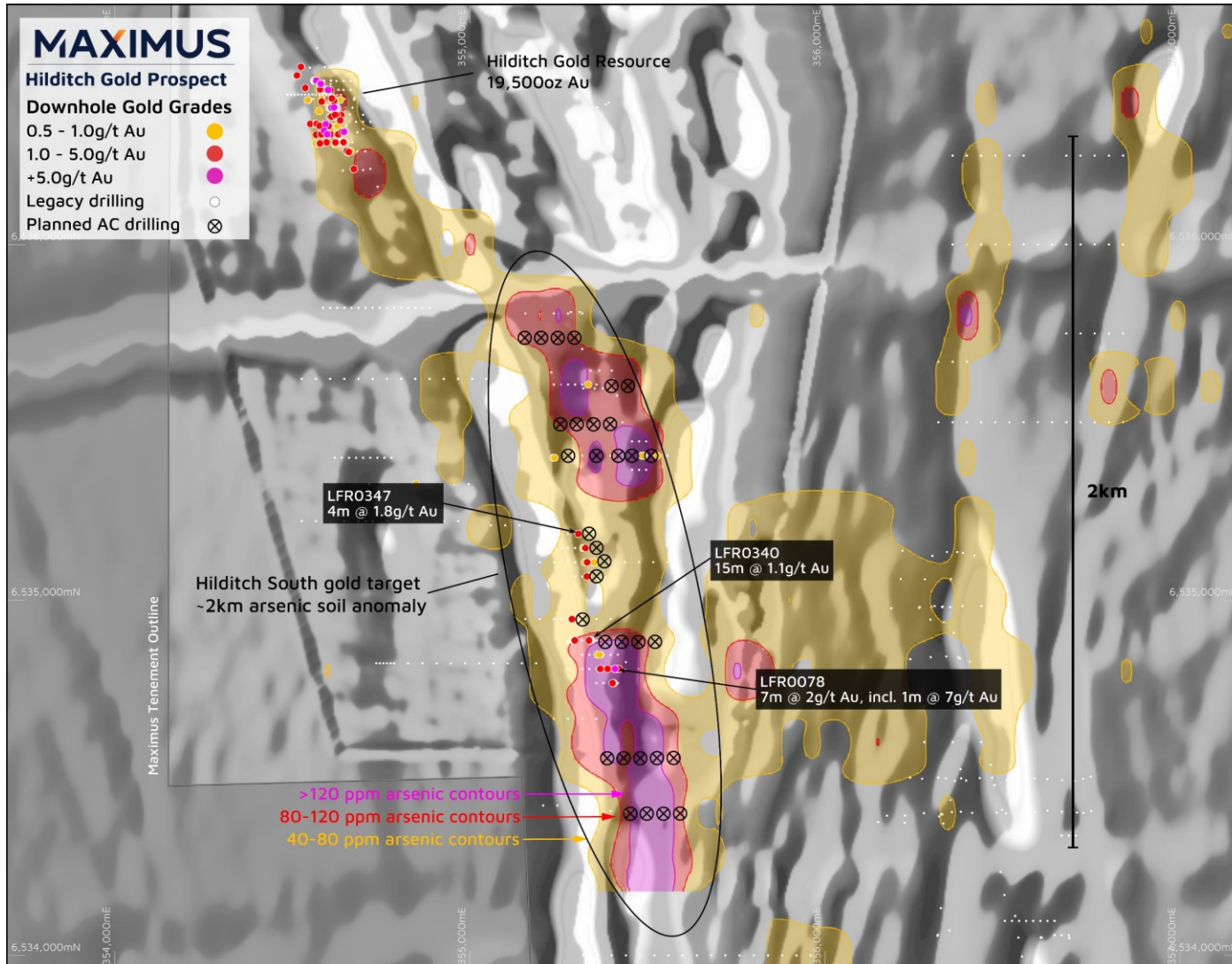
Underexplored mineralised trend
Insufficient drilling

Au (g/t)	
Green	0.5 to 1.0
Orange	1.0 to 2.0
Red	>= 2.0

UNDER-EXPLORED MINERALISED CORRIDOR

REGIONAL TARGETS

GEOCHEMISTRY DELIVERING ADDITIONAL TARGETS



- ~2km long gold target identified.
- Project wide geochemical sampling defining priority drill targets.
- Geochemistry data has highlighted a significant gold pathfinder trend.
- Arsenic and antimony geochemical anomaly strongly correlates with legacy gold intersections.
- Cost effective aircore drilling to refine targets for future drilling programs.



LITHIUM

WA's LITHIUM CORRIDOR

- Two lithium projects - Lefroy + Larkinville.
- Located within one of the world's most prospective hard rock lithium regions.
- ~20km south of Mineral Resources Limited (ASX:MIN) Mt Marion lithium mine.
- Granted Mining Licenses.
- **Strategic US\$3m partnership with KOMIR.**

Spodumene bearing pegmatites confirmed.[^]

[^] ASX:MXR Announcement – 21 November 2023.

LEFROY JOINT VENTURE

STRATEGIC LITHIUM PARTNERSHIP



- KOMIR to fund US\$3m (~A\$4.8m) for 30% interest in the Lefroy Lithium Project.
- KOMIR is a South Korean Government Agency, responsible for national resource security, including developing overseas capacity to supply into the Korean market.
- South Korea home to three of the world's five biggest electric vehicle (EV) batter manufactures.
- Non-binding MOU executed with LG Energy Solution. Option to acquire KOMIR's interest in the Lithium JV.

COOLGARDIE

STRATEGIC HOLDING

EASTERN GOLDFIELDS LITHIUM CORRIDOR

Future Battery Minerals Kangaroo Hills

Mineral Resources Mt Marion Project

KAMBALDA

Kali Metals Spargoville Project

Maximus Resources Lefroy Lithium JV

Marquee Resources/MinRes Spargoville JV

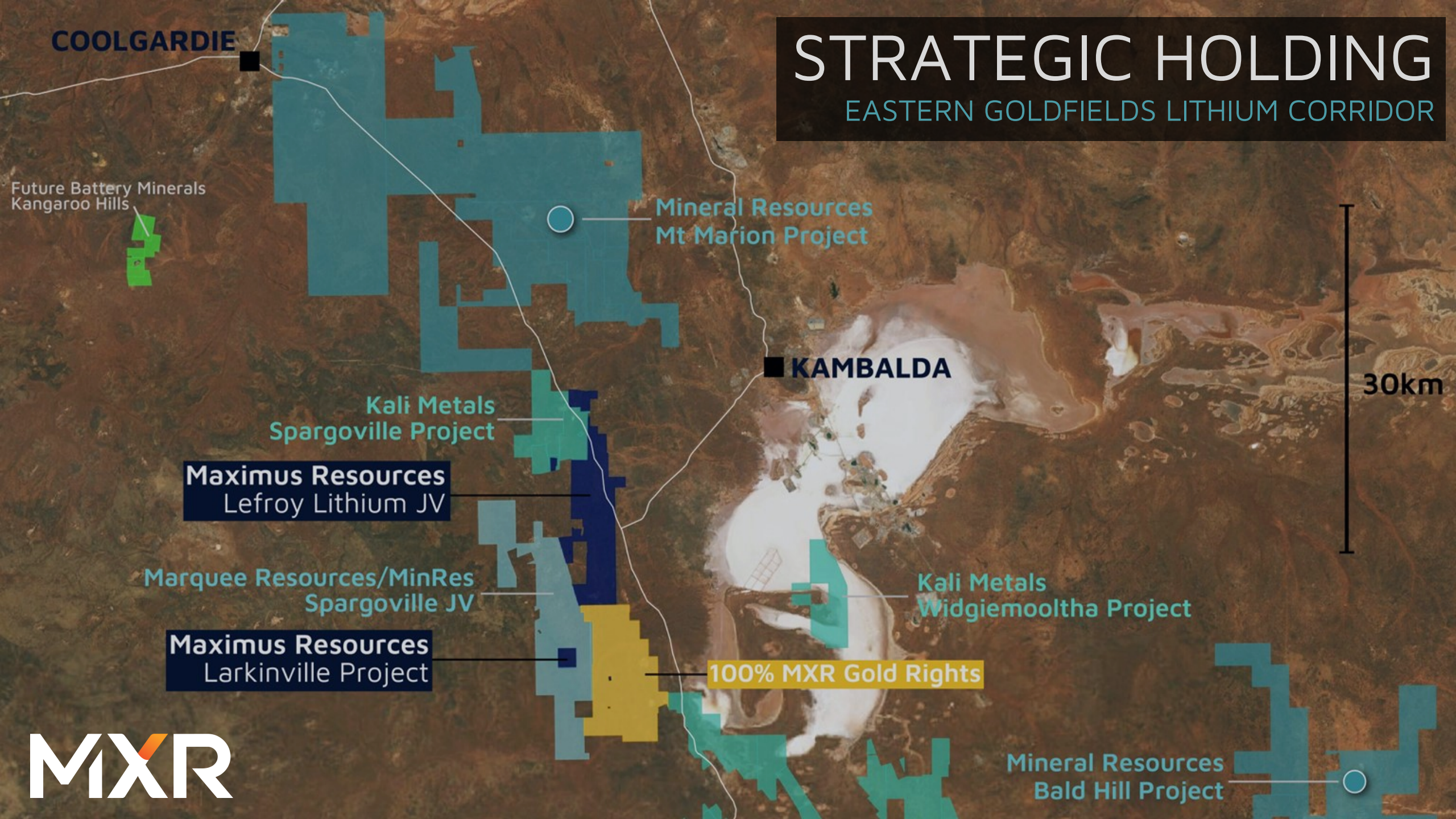
Maximus Resources Larkinville Project

Kali Metals Widgiemooltha Project

100% MXR Gold Rights

30km

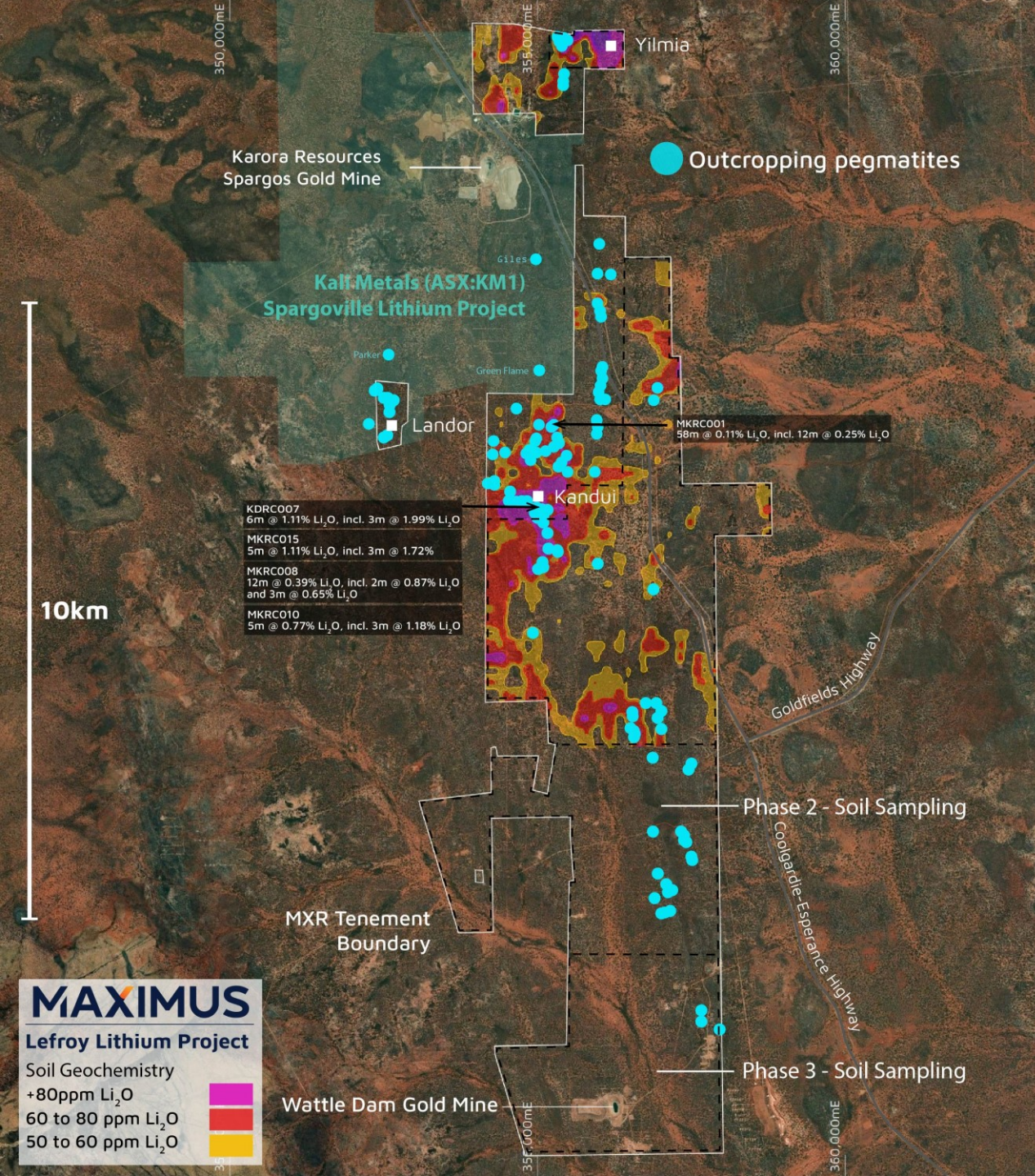
Mineral Resources Bald Hill Project



LEFROY

EXCITING DISCOVERY

- Similar geological setting as Mt Marion.
- Swarm (+80) out-cropping pegmatites.
- Highly fractionated LCT pegmatites.
- First pass drill program completed.
- **Spodumene dominant mineralisation confirmed in first pass drill program.**
- Large scale lithium mineralised system.
- **Fully funded exploration program with strategic partner underway.**

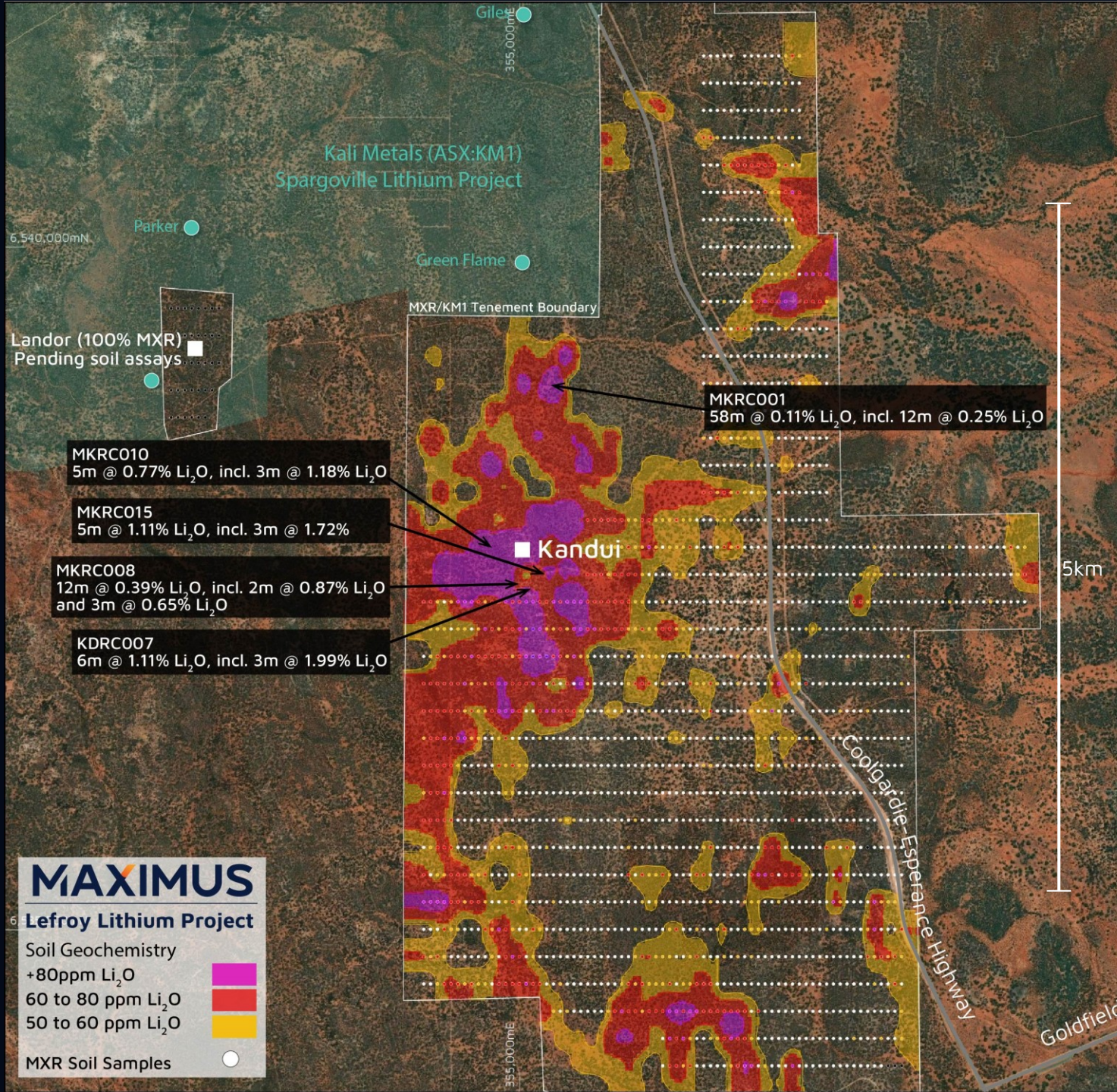


LEFROY

EXPLORATION PROGRAMME

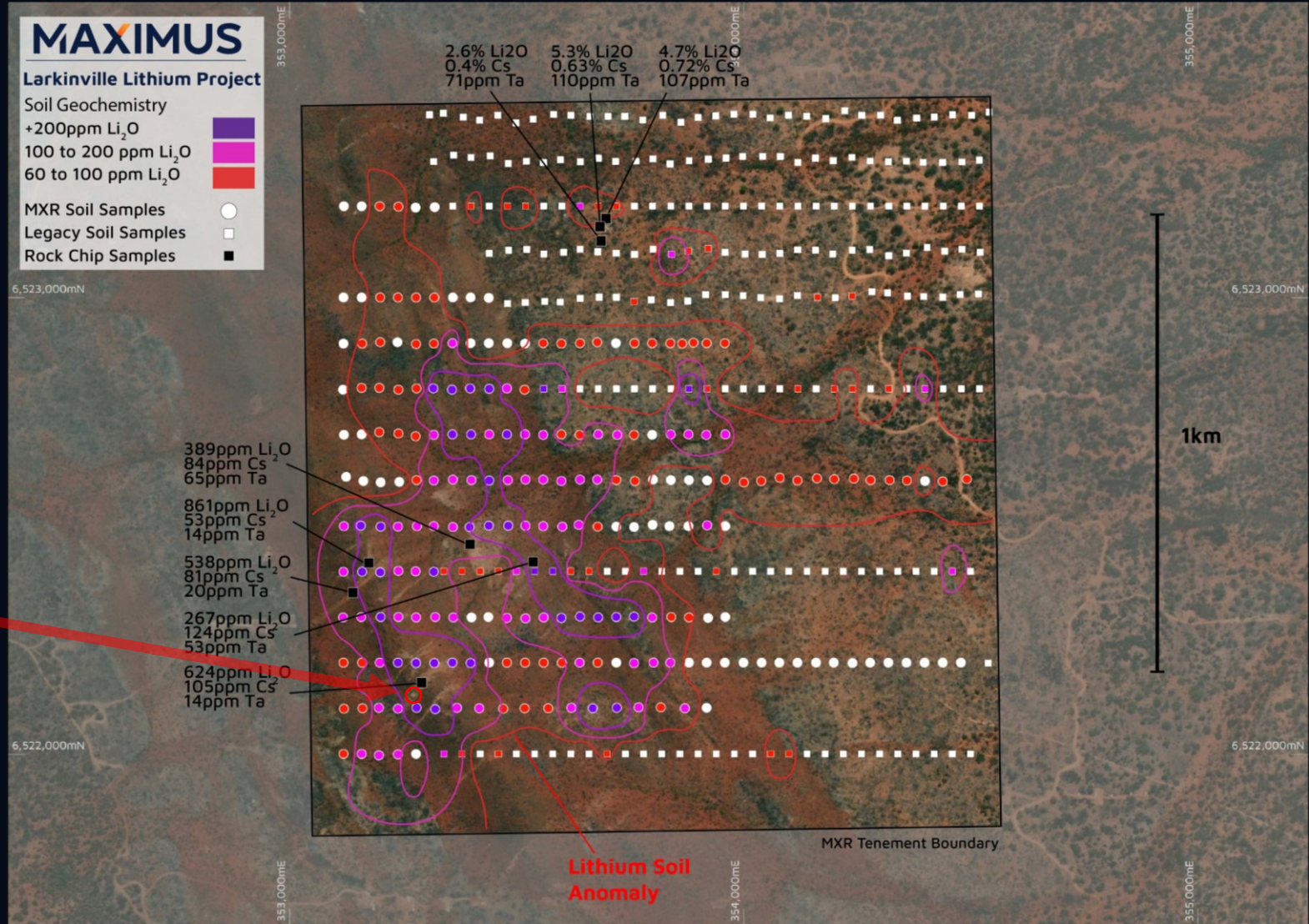
- 3km x 1.5km lithium soil anomaly.
- First pass scout drilling completed.
- Spodumene-bearing pegmatite over 600m x 500m.[^]
 - 6m at 1.11% Li₂O, incl. 3m at 1.99% Li₂O from 91m (KDRCC007)
 - 5m at 1.11% Li₂O, incl. 3m at 1.72% Li₂O from 111m (MKRC015)
 - 58m @ 0.11% Li₂O from 46m (MKRC001)
- **Follow up infill and extension drilling to commence during March-24 Quarter**

[^] ASX:MXR announcement 21 November 2023



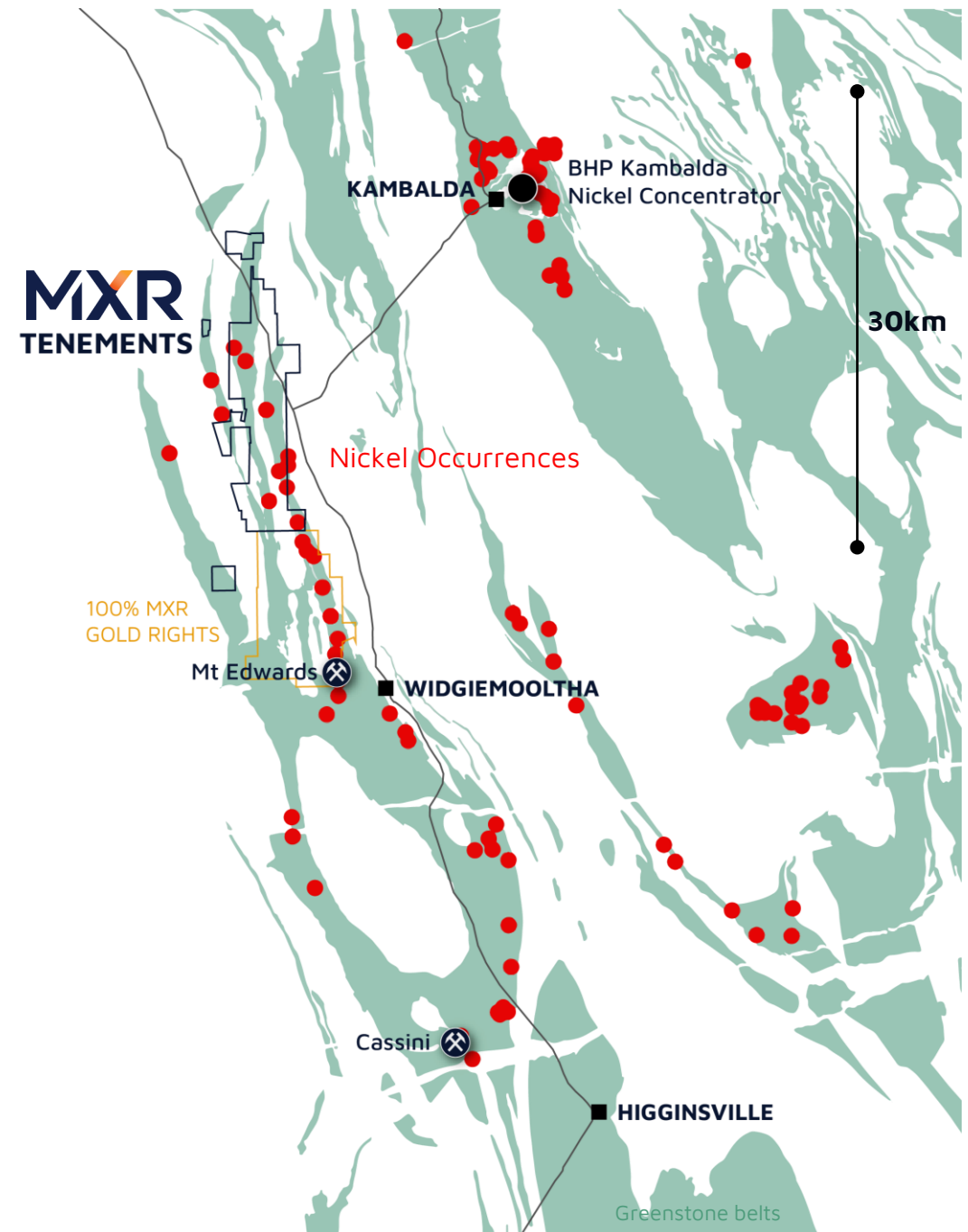
LARKINVILLE

HIGHLY ELEVATED GEOCHEMISTRY



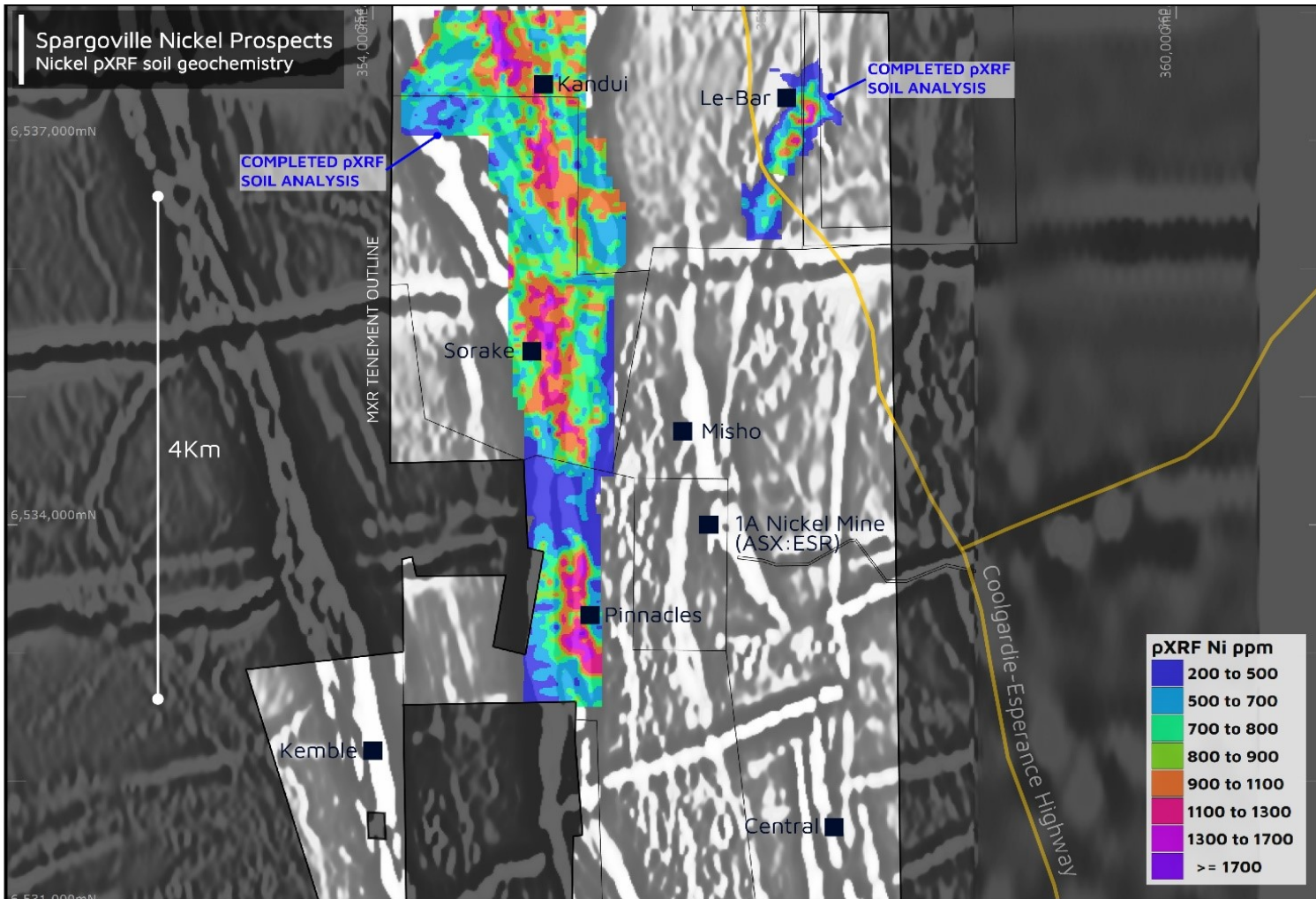
NICKEL SULPHIDE EXPLORATION

- **World-class nickel address.**
- Growing demand for high-quality nickel ore.
- 25km from BHP Kambalda Nickel Concentrator.
- **Systematic “Geochemistry first” exploration, delivering priority targets.**
- Numerous repetitions of prospective basal contact horizon.
- **Limited modern nickel exploration.**



REGIONAL NICKEL EXPLORATION

GEOCHEMISTRY DELIVERING ADDITIONAL TARGETS



- Limited multi-element geochemical mapping.
- Targeted soil sampling programme ongoing, **supporting gold and nickel exploration.**
- Platinum Group Metals (PGM), strongly associated with Kambalda-type nickel sulphide deposits.
- New targets identified - **Pinnacles, Sorake, and Le-Bar Prospects.**

CORPORATE SNAPSHOT

As of 12th February 2024

Capital Structure

Share price \$0.033 (close price 12 Feb 2024)

Share on Issue 320,605,768

Options on Issue 12M unlisted @ \$0.085

Market Capitalisation \$10.5M

Cash \$2.15M (31 Dec 2023)

Enterprise Value \$8.4M (EV ~ \$25 / oz Au)

Top 20 Holders 45% (**Beacon Minerals Limited - 19.7 %**)

PROVEN MINE DISCOVERY AND DEVELOPMENT EXPERIENCE

Board

Martin Janes Non-Exec Chairman

Tim Wither Managing Director

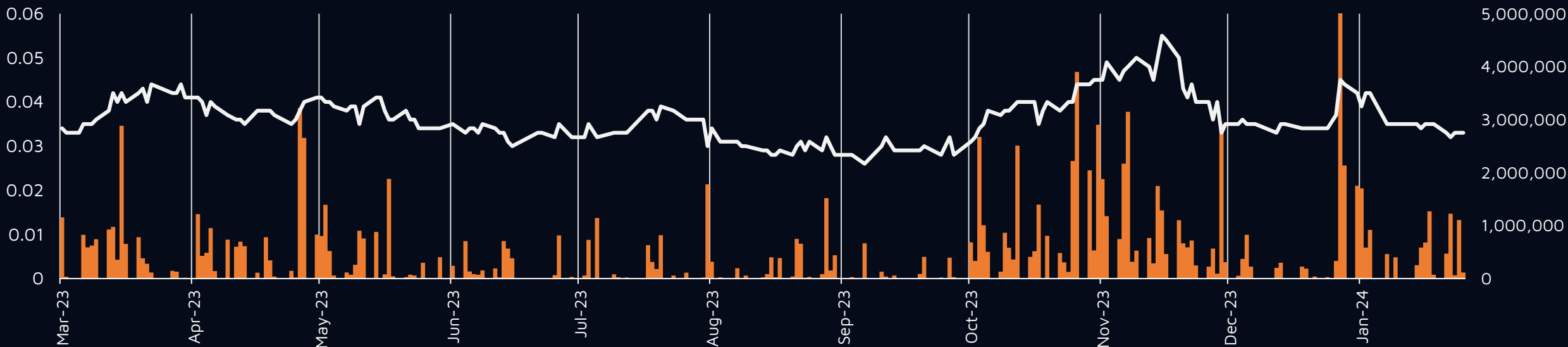
Graham McGarry Non-Exec Director

Management

Rajita Alwis Company Secretary

Gregor Bennett Exploration Manager

DAILY SHARE PRICE



DAILY SHARE VOLUME

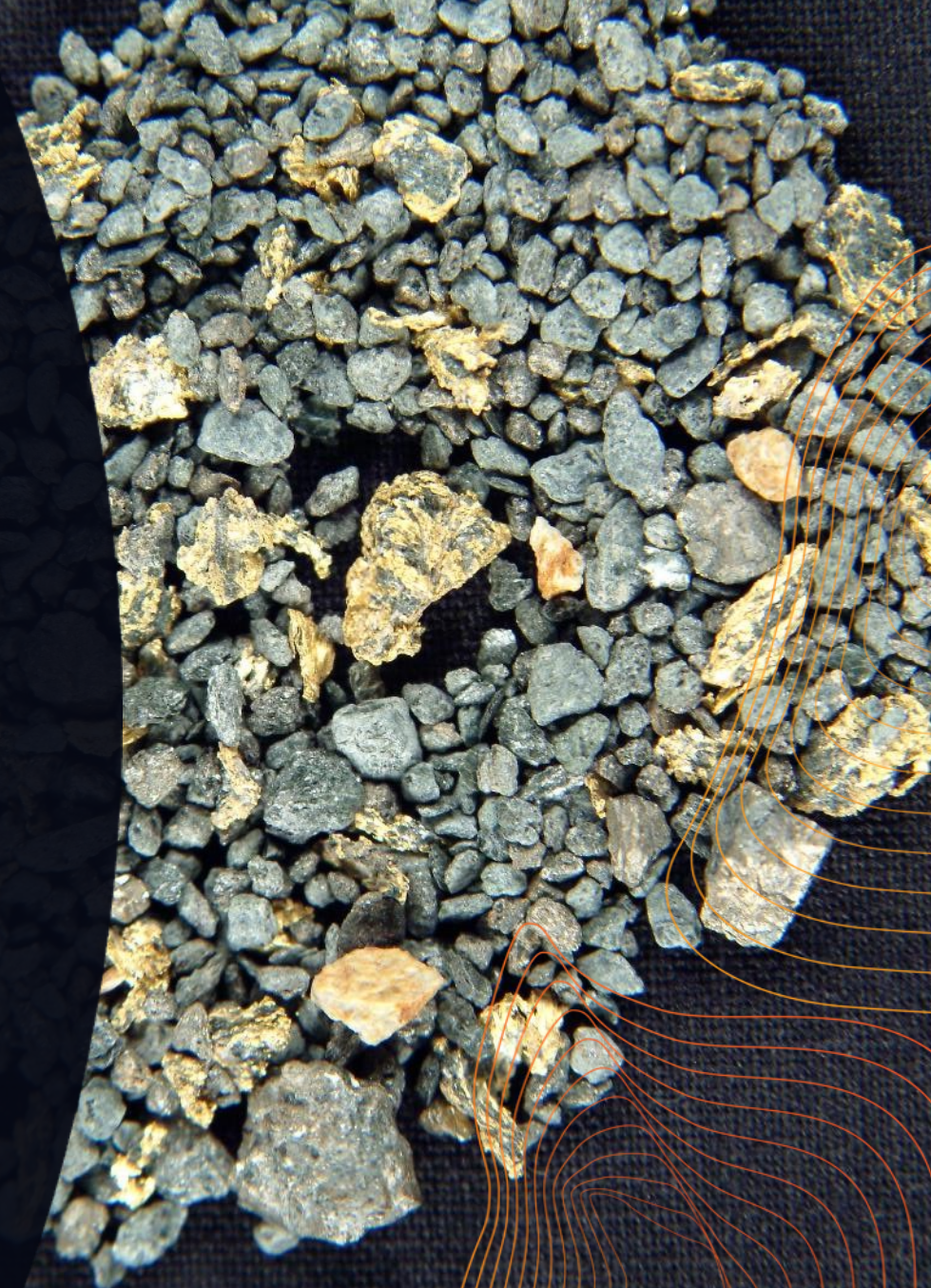
INVESTMENT HIGHLIGHTS

- Fully-funded systematic Lithium exploration programme underway.
- Significant gold upside. Growing resource base of 335,000 oz @ 1.5 g/t Au.#
- Demonstrated high-grade discovery potential.
- Multi commodity exposure – Gold, Lithium and Nickel.
- Granted mining tenure in world-class geology.
- Near-term cash flow opportunities.

Strong growth upside from a pipeline of exciting gold, lithium and nickel targets.

Refer to Appendix A

Drill cuttings - Wattle Dam Gold Mine



Appendix A

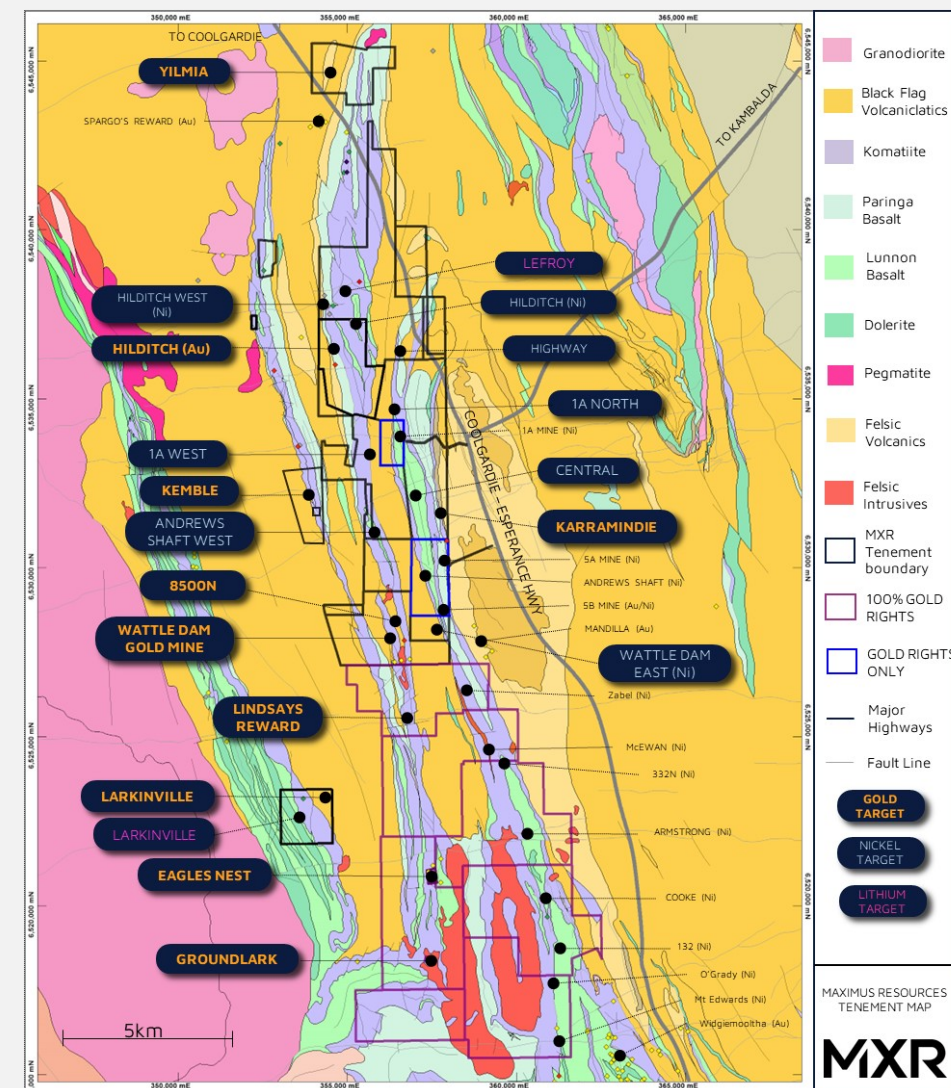


JORC (2012) Mineral Resource Statement

Spargoville group resources by deposit location								
RESOURCE	Last update	Indicated		Inferred		Total		
		Tonnes ('000t)	Grade (g/t Au)	Tonnes ('000t)	Grade (g/t Au)	Tonnes ('000t)	Grade (g/t Au)	Ounces
Eagles Nest	Feb-17	150	1.8	530	2.0	680	2.0	42,550
Larkinville	Nov-23	222	1.8	26	1.4	249	1.8	14,040
5B	Nov-16	—	—	75	3.1	75	3.1	7,450
Hilditch	Nov-23	274	1.1	208	1.5	482	1.3	19,500
Wattle Dam Gold Project	Jul-23	3,400	1.4	2,000	1.5	5,400	1.4	251,500
TOTAL		4,046	1.4	2,840	1.7	6,886	1.5	335,040

Notes:

1. Mineral resources reported in the announcement dated 19 December 2023.
2. To comply with ASX LR5.23.2 Maximus confirms that it is not aware of any new information or data that materially affects the information included in this market announcement and in the case of the above mineral resources, all material assumptions and technical parameters underpinning the estimates continue to apply and have not materially changed. The Company confirms that the form and context in which the Competent Person's findings are presented have not been materially modified from the original market announcement.
3. Figures have been rounded and hence may not add up exactly to the given totals.





INVESTOR RELATIONS ENQUIRIES

T. +61 8 7324 3172 | E. info@maximusresources.com

www.maximusresources.com