

# GOLD MOUNTAIN

---

Critical minerals  
for the clean  
energy transition

---

# Important notice & disclaimer

---

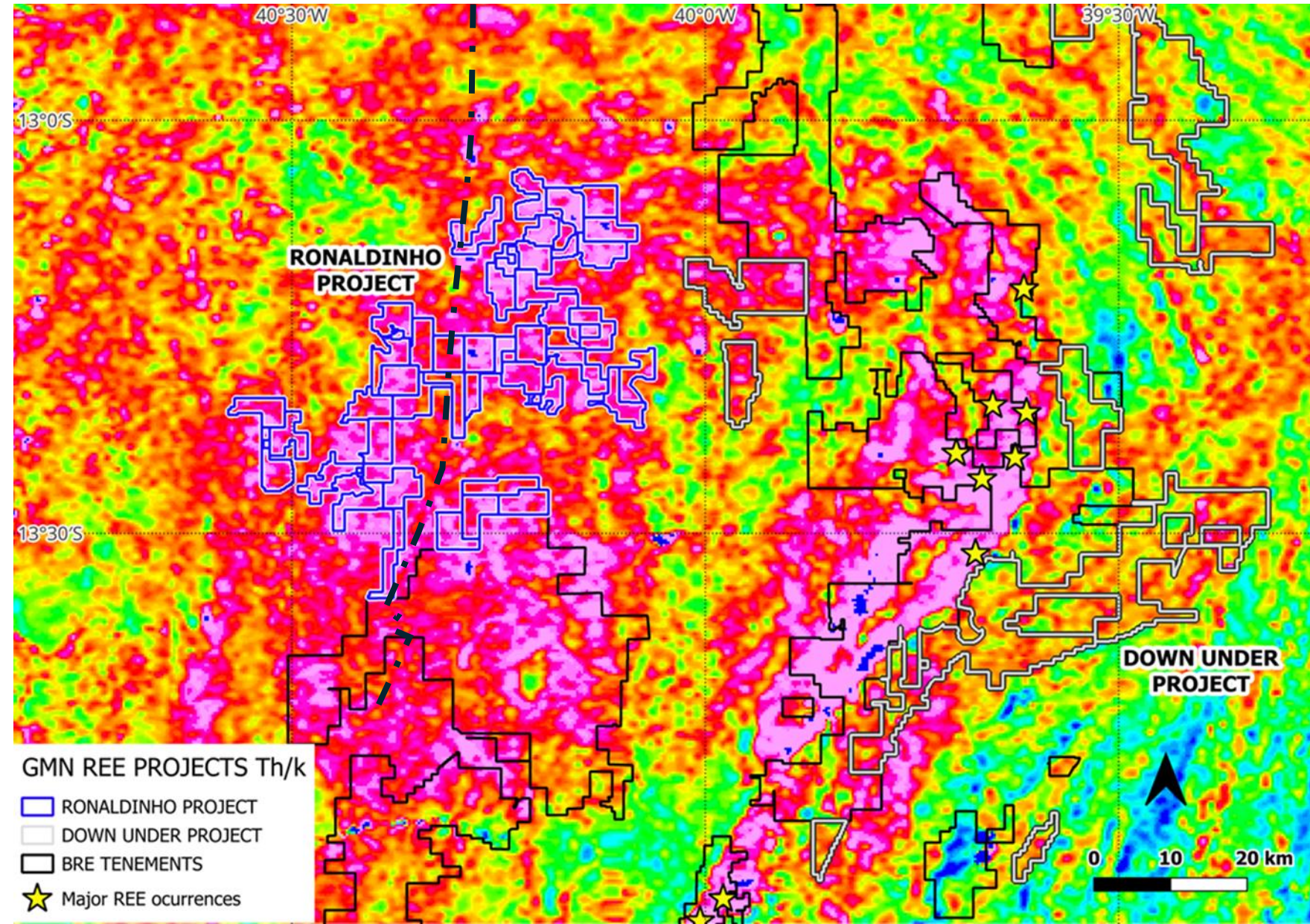
- This presentation has been prepared by Gold Mountain Limited (“GMN”) for the sole purpose of providing general information on GMN (“Purpose”). This presentation is provided by GMN for information purposes only, without taking into account any potential investors’ personal objectives, financial situation or needs. It should not be relied upon by the recipient in considering the merits of any particular transaction. It is not an offer to buy or sell, or a solicitation to invest in or refrain from investing in, any securities or other investment product. Nothing in this presentation constitutes investment, legal, tax, accounting or other advice. The recipient should consider its own financial situation, objectives and needs, and conduct its own independent investigation and assessment of the contents of this presentation, including obtaining investment, legal, tax, accounting and such other advice as it considers necessary or appropriate.
- This presentation has been prepared on the basis of available information. It contains selected information and does not purport to be all-inclusive or to contain all of the information that may be relevant to the Purpose. The recipient acknowledges that circumstances may change and that this presentation may become outdated as a result. GMN is under no obligation to update or correct this presentation. GMN, its related bodies corporate and other affiliates, and their respective directors, employees, consultants and agents make no representation or warranty as to the accuracy, completeness, timeliness or reliability of the contents of this presentation. To the maximum extent permitted by law, no member of the GMN accepts any liability (including, without limitation, any liability arising from fault or negligence on the part of any of them) for any loss whatsoever arising from the use of this presentation or its contents or otherwise arising in connection with it.
- This presentation may contain forward-looking statements, forecasts, estimates and projections (“Forward Statements”). No independent third party has reviewed the reasonableness of any such statements or assumptions. No member of GMN represents or warrants that such Forward Statements will be achieved or will prove to be correct. Actual future results and operations could vary materially from the Forward Statements. Similarly, no representation or warranty is made that the assumptions on which the Forward Statements are based may be reasonable. No audit, review or verification has been undertaken by the GMN or an independent third party of the assumptions, data, results, calculations and forecasts presented or referred to in this presentation.
- The recipient acknowledges that neither it nor GMN intends that GMN act or be responsible as a fiduciary to the recipient, its management, stockholders, creditors or any other person. Each of the recipient and GMN, by accepting and providing this presentation respectively, expressly disclaims any fiduciary relationship and agrees that the recipient is responsible for making its own independent judgments with respect to any transaction and any other matters regarding this presentation.



# Ronaldinho REE Project

- AIM – to find a significant resource of IAC type REE mineralisation and also high grade hard rock mineralisation.
- LOCATION – adjacent to and along strike from BRE tenements with known significant resources of REE, base map Th/K.
- PRINCIPAL TARGETS – very high thorium anomalies, magnetic response, very high lateritic index response, favourable geology and major structural corridor.

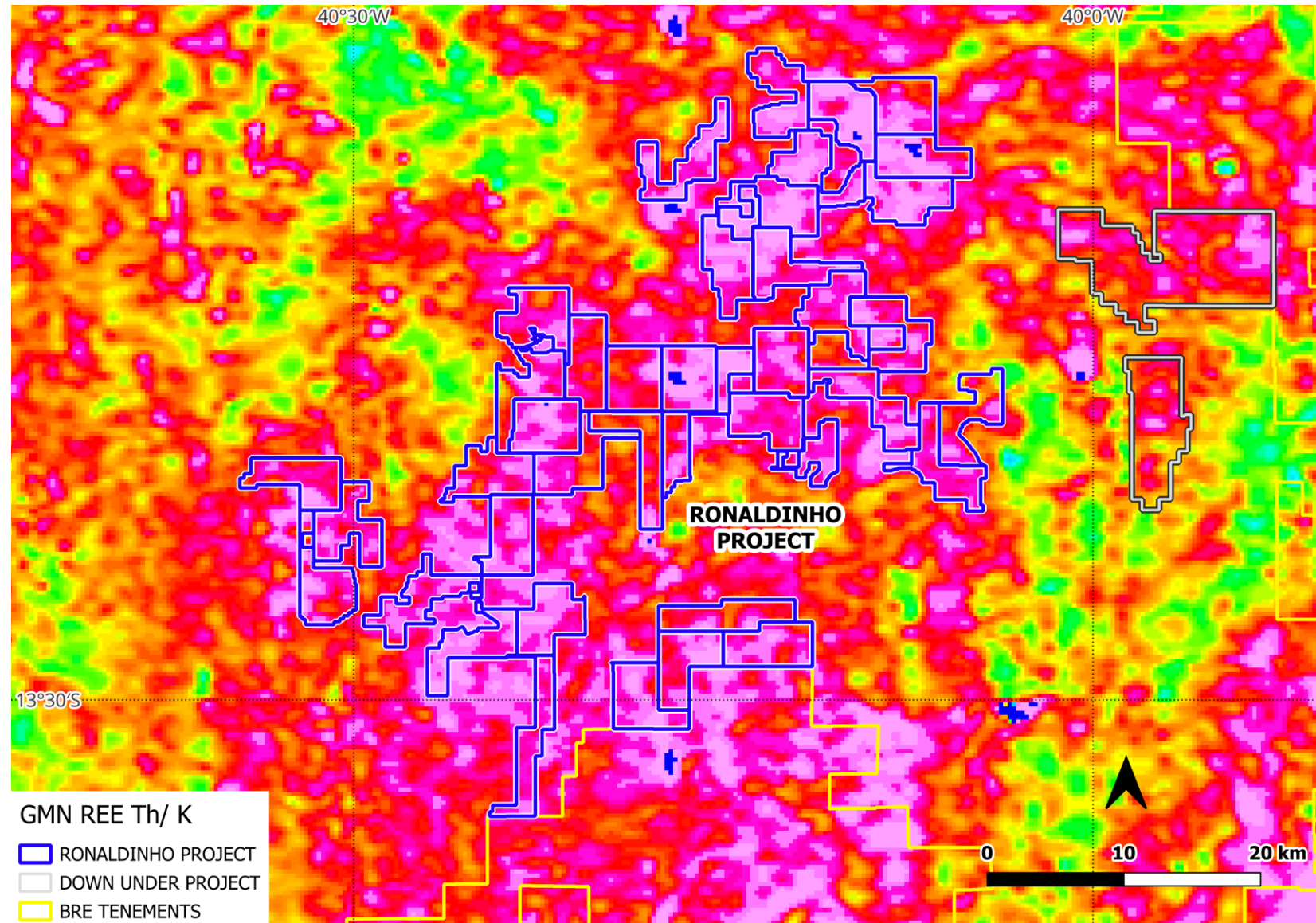
Sources - Maps: 1. BRE Prospectus; Ref 2. CPRM and ANM websites.





# Ronaldinho REE Project

1. Carry out detailed evaluation of theses, previous exploration and prospectus on the region.
2. Define prospective areas based on all available data
3. Detailed field planning on critical aspects for IAC and hard rock mineralisation



Sources - Maps: Ref 2. CPRM and ANM websites.



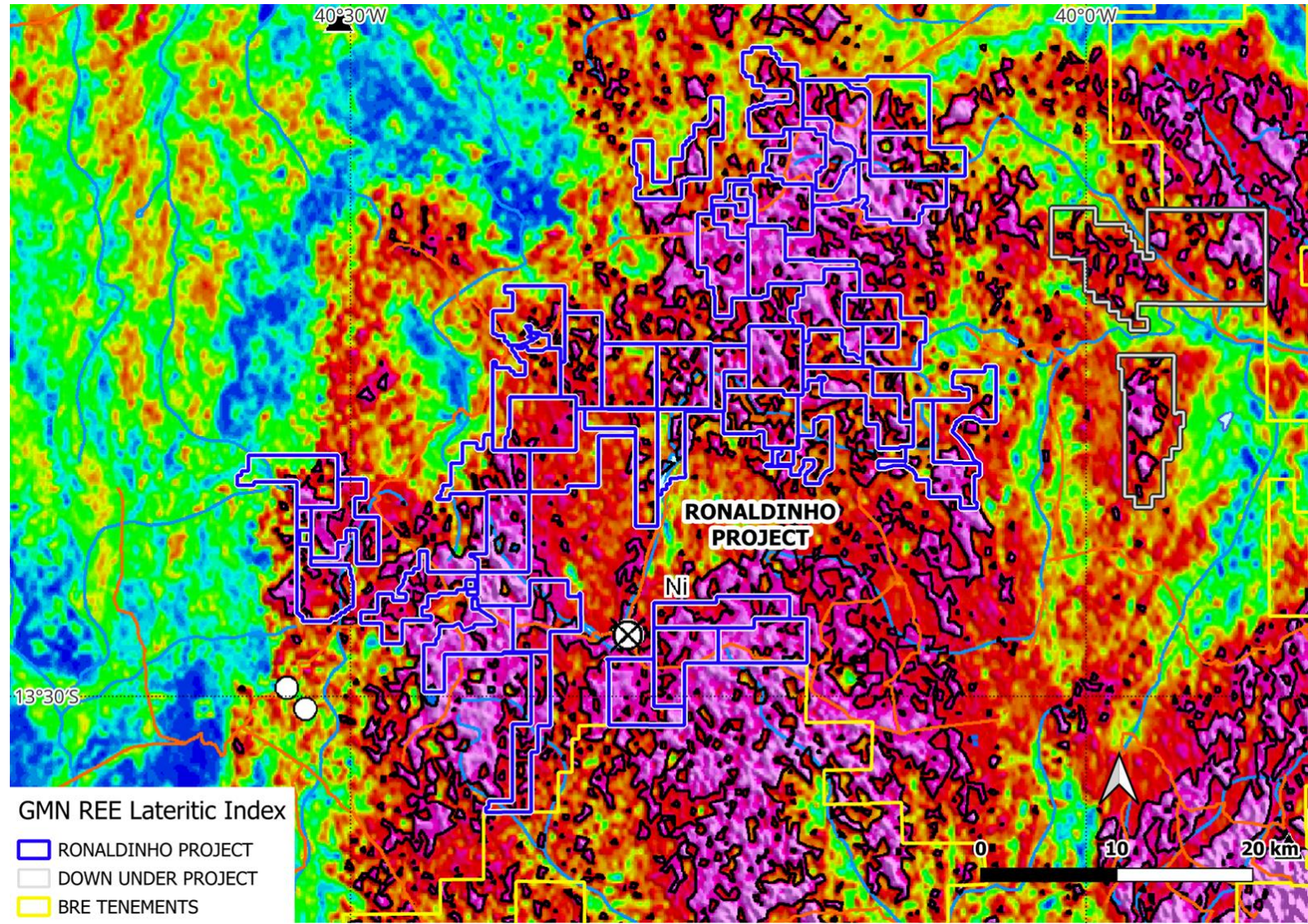
# Ronaldinho REE Project

## SYSTEMATIC EXPLORATION PLANNING

Must have strong weathering and preserved weathering profiles.

Geomorphic mapping under way with very high thorium anomalies over different age surfaces

Spectral analysis of satellite imagery to define the edges of laterite present to refine IAC search areas within tenements.



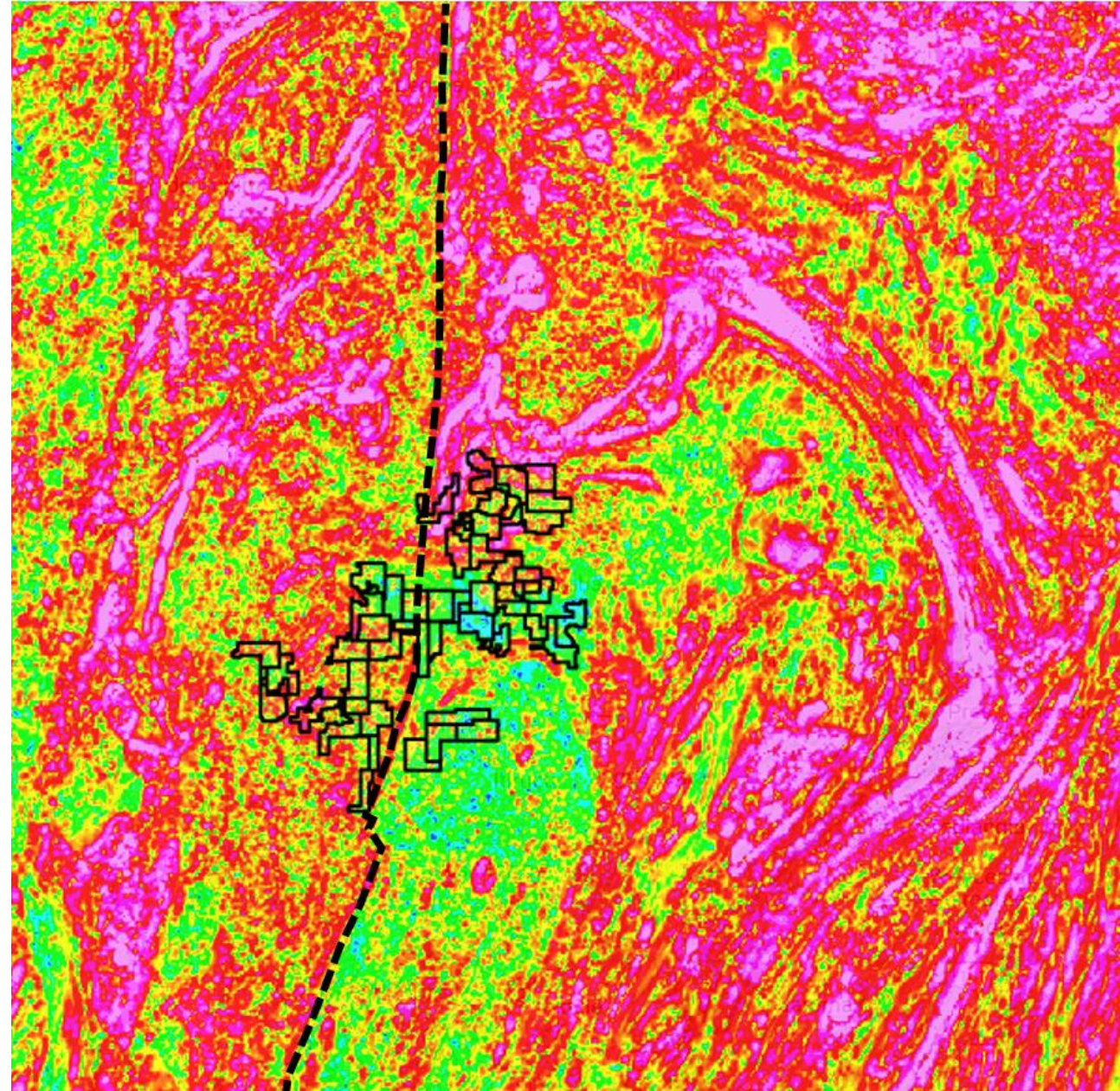
Sources - Maps: Ref 2. CPRM and ANM websites.



# Ronaldinho REE Project

## EXPLORATION PLANNING

1. Magnetic gradient image of the Ronaldinho region showing a major magnetic linear which is over 600 km long
2. Major structures may control both intrusives and hydrothermal activity postdating the Amazonian orogeny when major folds, identified from the magnetic image, may have been formed



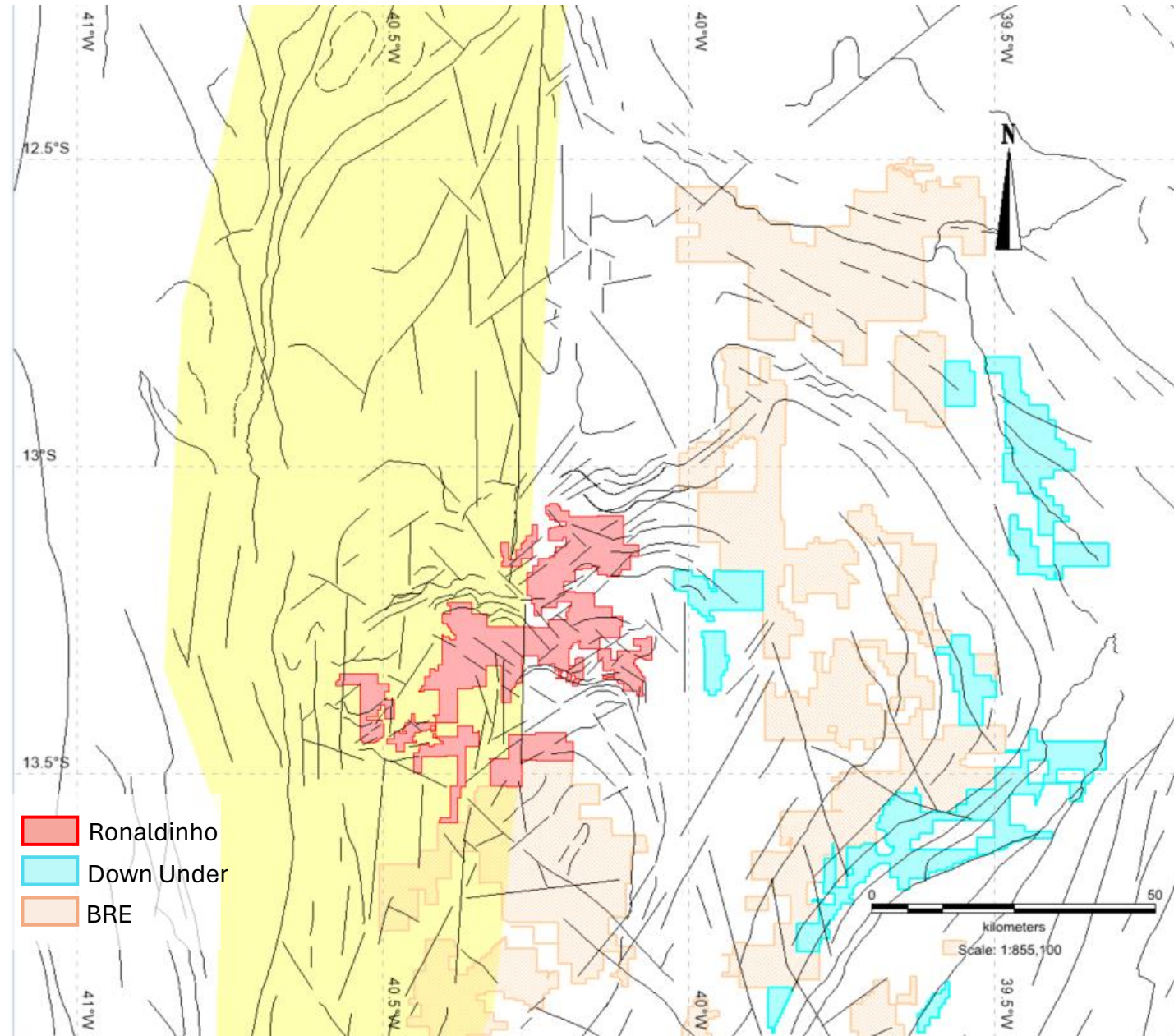
Sources - Maps: Ref 2. CPRM and ANM websites



# Ronaldinho REE Project

## EXPLORATION PLANNING

1. Structural interpretation of the Ronaldinho region showing a major magnetic linear zone which is over 600 km long in yellow.
2. Major folds east of the N-S zone terminate in this structural zone



Sources - Maps: Ref 2. CPRM and ANM websites



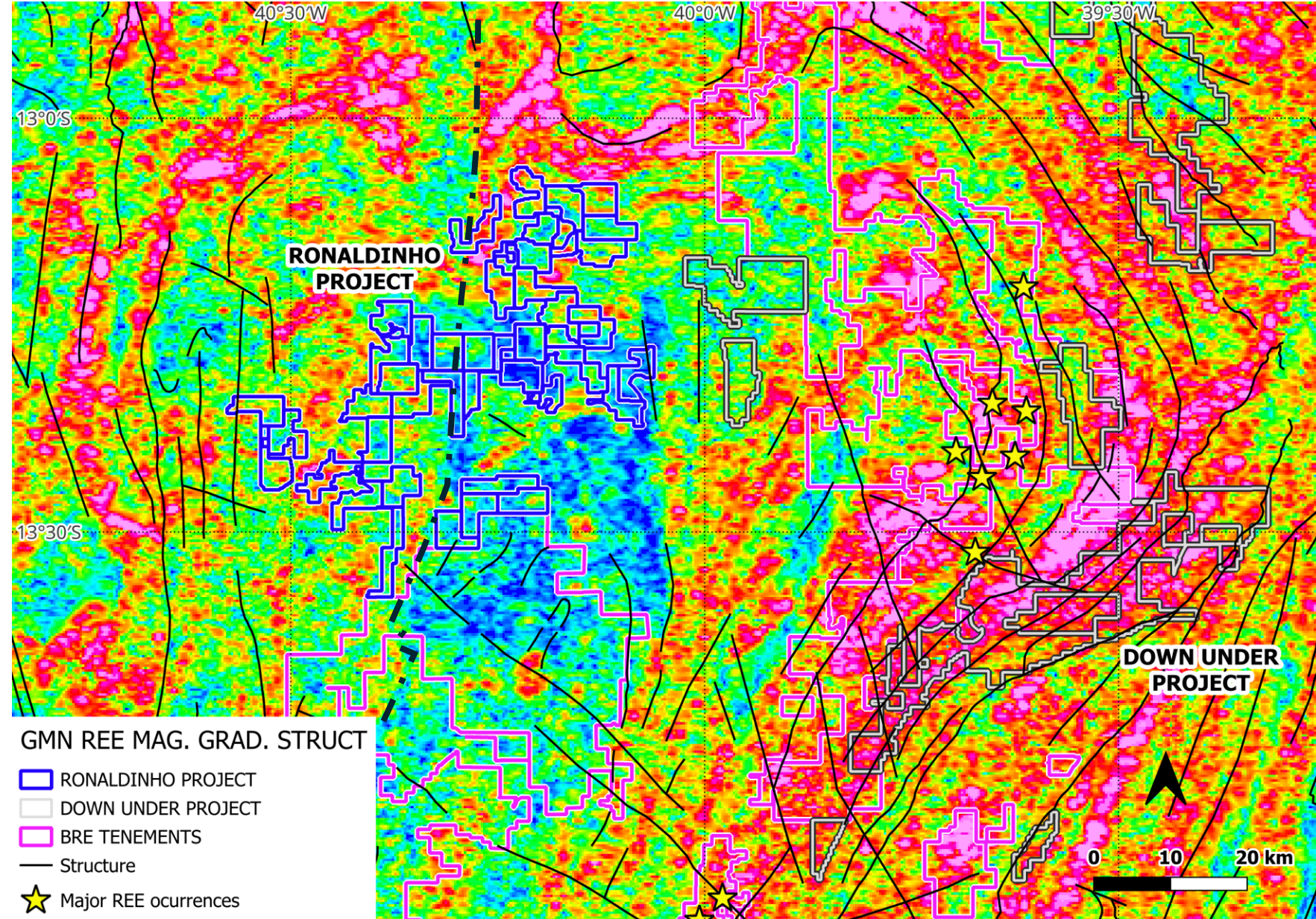
# Ronaldinho REE Project

## EXPLORATION PLANNING

Folded units continuous with competitor ground with proven REE

Magnetic low, possibly representing a broad hydrothermally altered zone or a broad area of non magnetic rocks.

Magnetic high shows trend continuity from the Down Under region project into the northern part of the Ronaldinho Project.



Sources - Maps: Ref 1. BRE Prospectus; Ref 2. CPRM and ANM websites

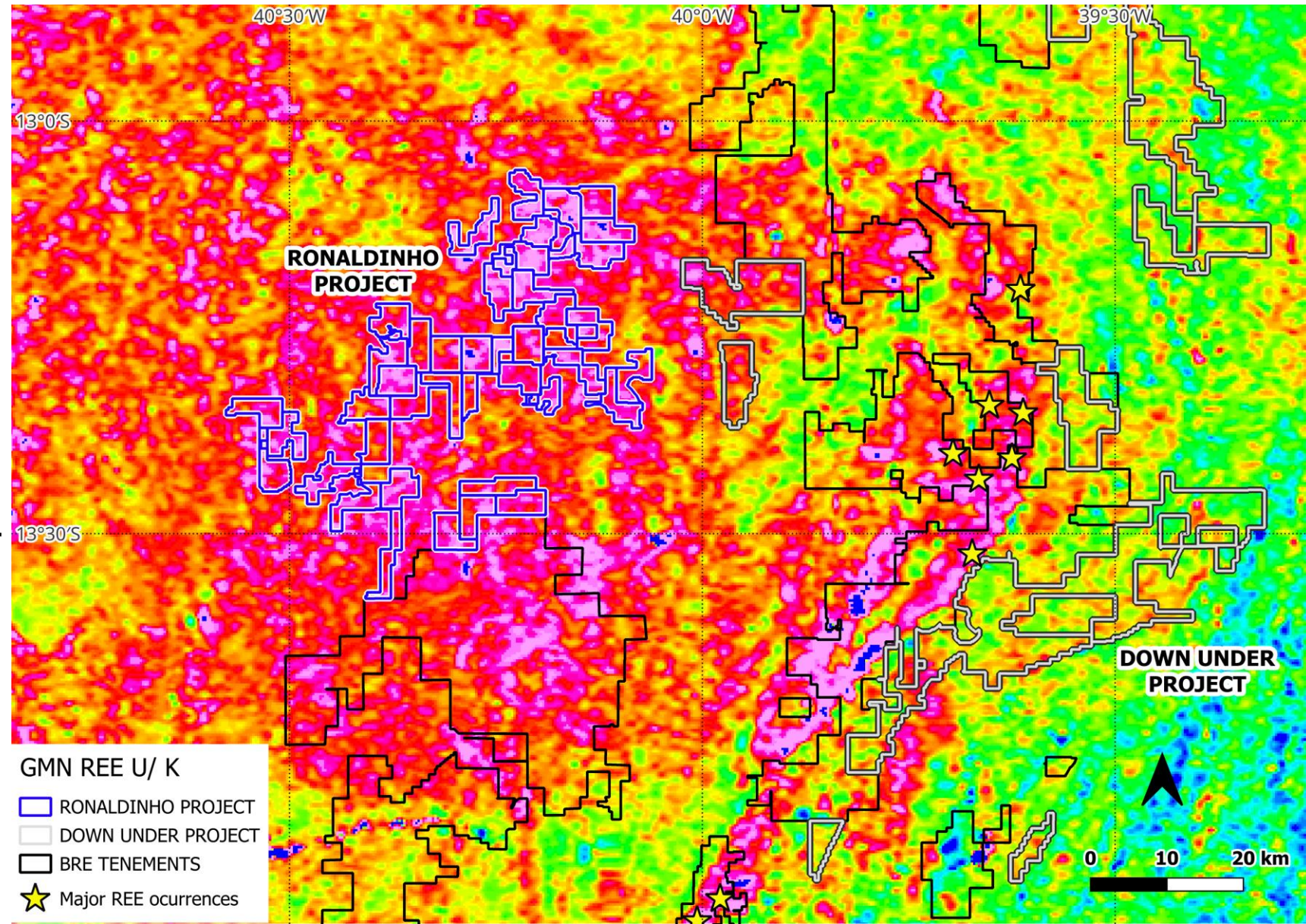


# Ronaldinho REE Project

## EXPLORATION PLANNING

### High Uranium anomalies

Uranium is closely associated with much of the known primary and secondary REE mineralisation and is a further indication of good potential for REE mineralisation within the project area.



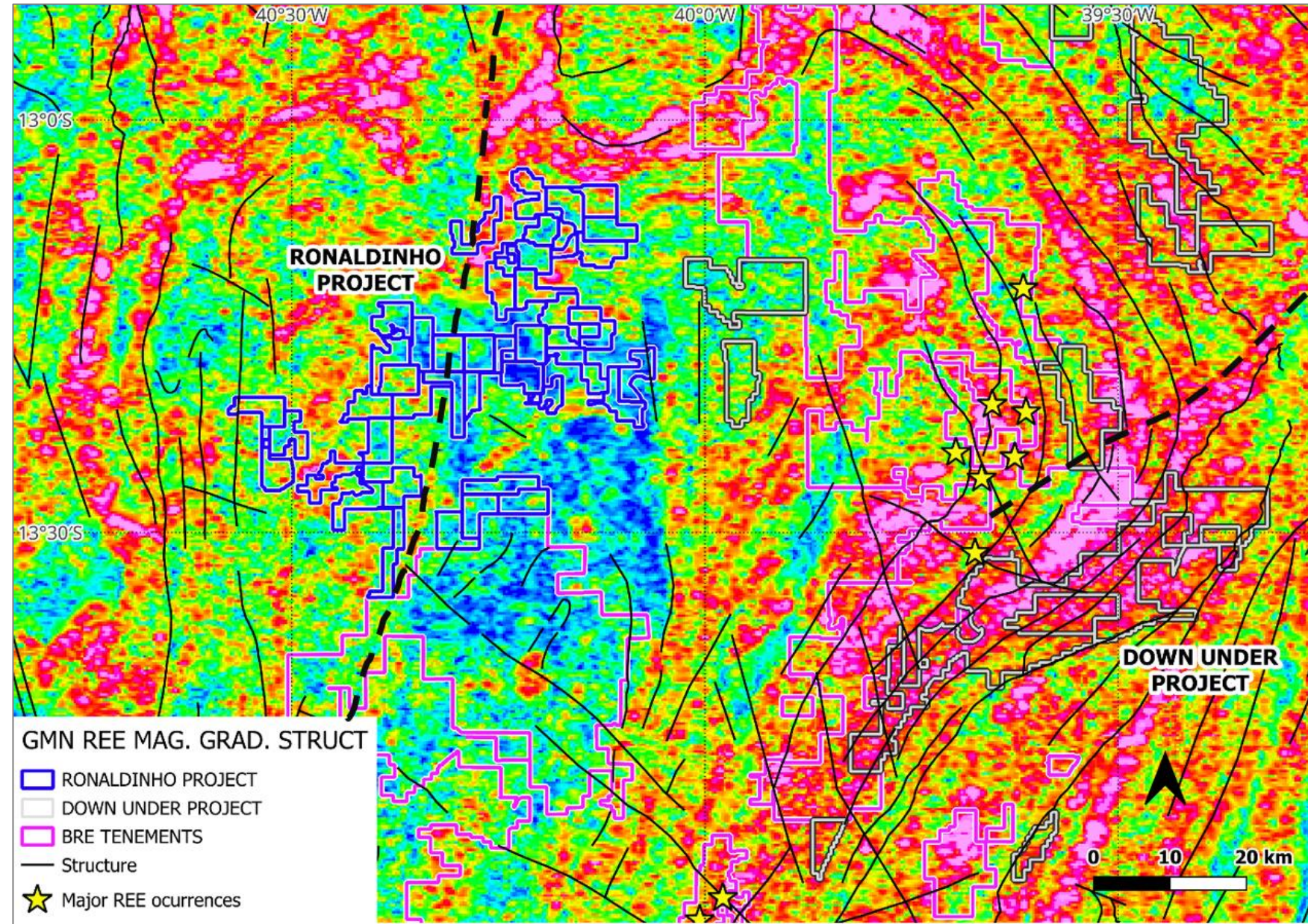
Sources - Maps: Ref 1. BRE Prospectus; Ref 2. CPRM and ANM websites.



# Ronaldinho REE Project

## EXPLORATION PLANNING

Mapped folding in the Ronaldinho region and the major regional scale magnetic linear/fault zone passing through the GMN tenements



Sources - Maps: Ref 1. BRE Prospectus; Ref 2. CPRM and ANM websites.

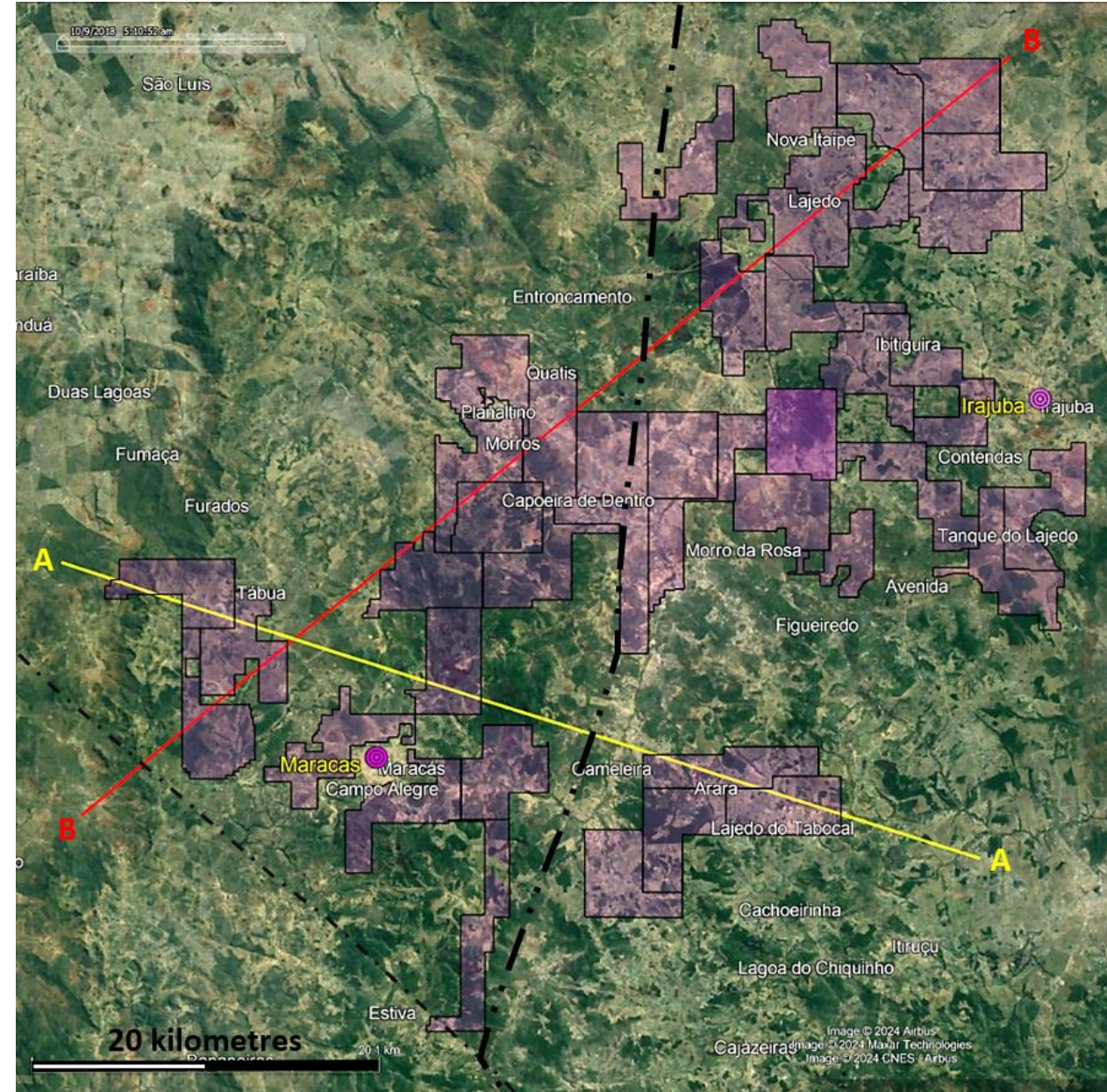


# Ronaldinho REE Project

## EXPLORATION PLANNING

Two topographic section lines were placed through old high level surfaces and across lower level areas to better understand the geomorphology and potential of the surfaces recognised

Sources - Maps: Ref 2. CPRM and ANM websites; Ref 3. Google Earth base map.

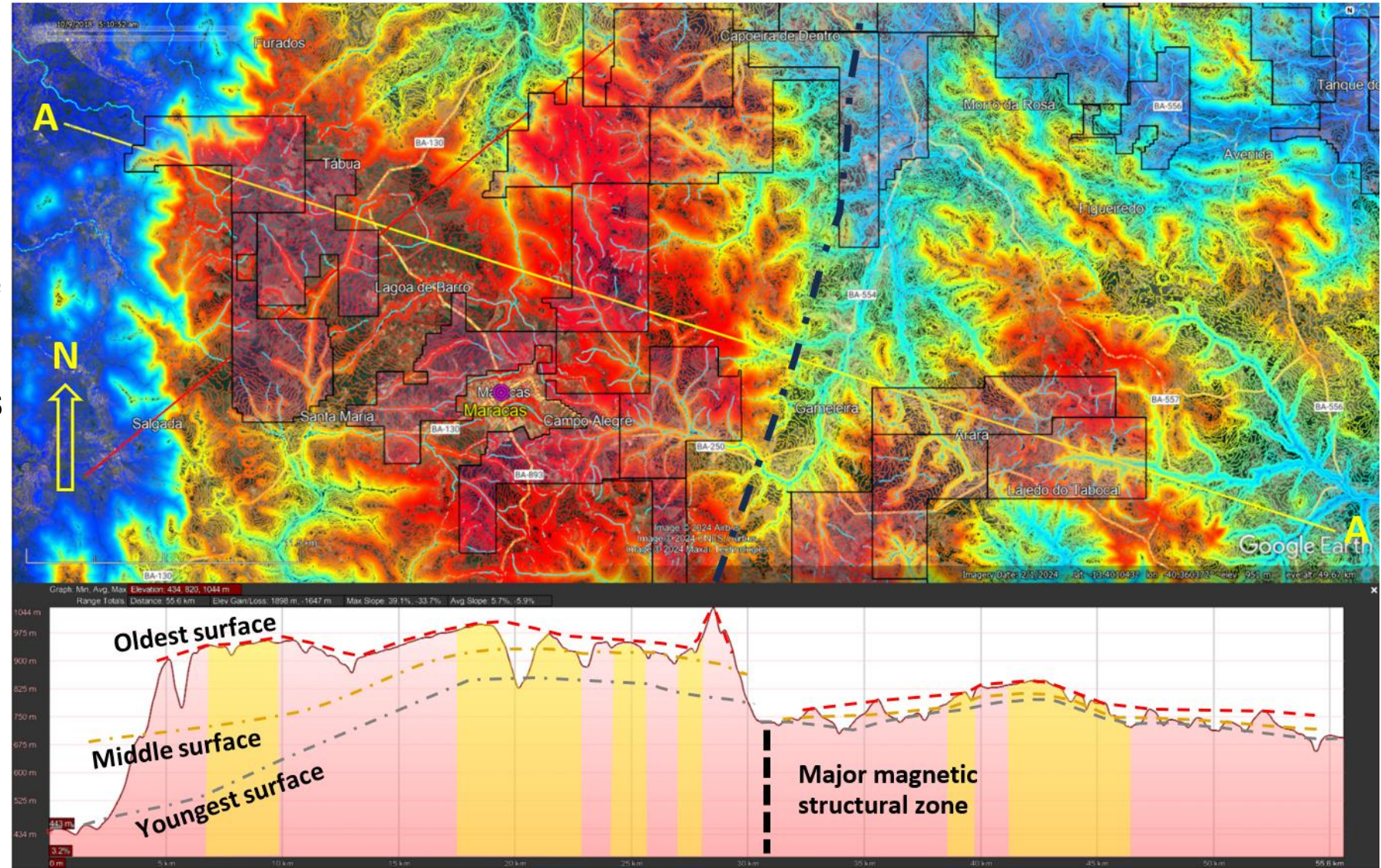




# Ronaldinho REE Project

## EXPLORATION PLANNING

1. Two topographic section lines were placed through old high level surfaces and across lower level areas to better understand the geomorphology and potential of the surfaces recognised
2. Section A-A shown with highest Thorium anomalies in yellow



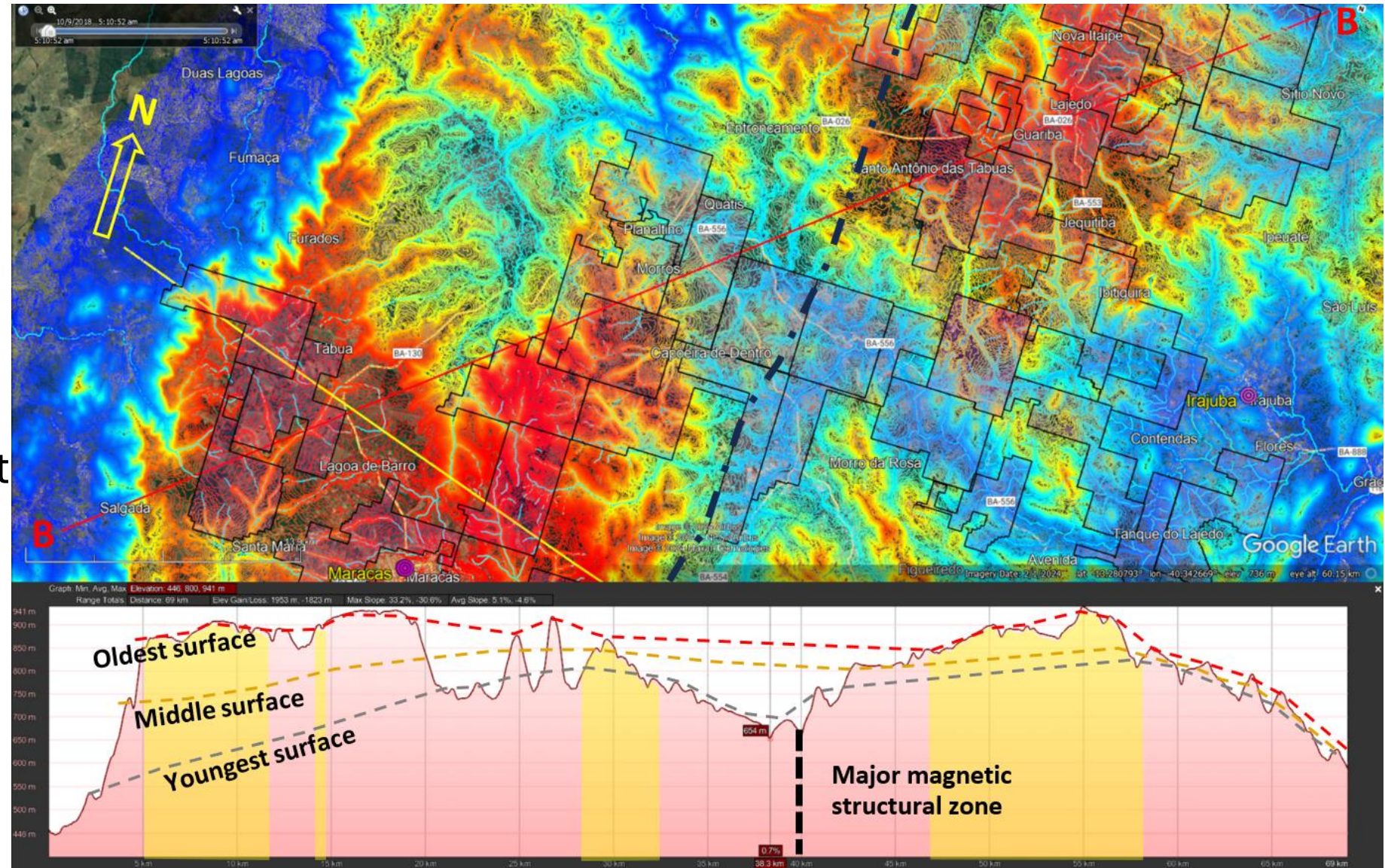
Sources - Maps: Ref 2. CPRM and ANM websites; Ref 3. Google Earth base map. Ref 4. SRTM data



# Ronaldinho REE Project

## EXPLORATION PLANNING

1. Section B-B with highest Thorium anomalies shown in yellow
2. Sections cross the magnetic linear/ fault zone which has an apparent throw of about 200 metres post dating the oldest recognised surface



Sources - Maps: Ref 2. CPRM and ANM websites; Ref 3. Google Earth base map. Ref 4. SRTM data



# Ronaldinho REE Project

---

## FUTURE EXPLORATION PLANNING

1. Further interpretation of the thorium and uranium anomalies will be undertaken to highlight potentially more prospective areas.
2. Interpretation of topography has allowed GMN to better correlate surfaces with potential so detailed work to trace the surfaces will be undertaken.
3. Stream sediment sampling planning is complete and covers all tenements, sampling waiting for tenements to be granted.
4. Radiometric traversing will be routinely undertaken to detect potential ultra high grade hard rock REE mineralisation.
5. Detailed regional magnetics analysis and structural interpretation in progress.



# Ronaldinho REE Project

---

## References

1. Brazilian Rare Earths Prospectus dated 13 November 2023. Brazilian Rare Earths Limited
2. Brazil Geological Survey (CPRM) website <https://geosgb.sgb.gov.br/> and the Brazil National Mining Agency (ANM) website <https://geo.anm.gov.br/portal/apps/webappviewer/index.html?id=6a8f5ccc4b6a4c2bba79759aa952d908>
3. Google Earth, <https://earth.google.com/intl/earth/download/ge/agree.html>
4. SRTM, <https://www.earthdata.nasa.gov/sensors/srtm#:~:text=The Shuttle Radar Topography Mission,global dataset of land elevations.>

Any additional interpretations or markings on maps has been provided by suitably qualified GMN Team members.

Where a Competent Person has previously issued the written consent to the inclusion of their findings in a report, a company re-issuing that information to the Public whether in the form of a presentation or a subsequent announcement must, state the report name, date and reference the location of the original source Public Report for public access. The information is extracted from the following announcements:

GMN ASX Release 2 April 2024 GMN acquires Ronaldinho Rare Earths Project

All announcements are available to view on [www.goldmountainltd.com.au](http://www.goldmountainltd.com.au) . The company confirms that it is not aware of any new information or data that materially affects the information included in the original market announcement and, in the case of estimates of Mineral Resources or Ore Reserves, that all material assumptions and technical parameters underpinning the estimates in the relevant market announcement continue to apply and have not materially changed. The company confirms that the form and context in which the Competent Person's findings are presented have not been materially modified from the original market announcement.