

March 2024 Quarterly Activities Report

26 April 2024

NORTH AMERICAN LITHIUM ACHIEVES NEW DAILY PRODUCTION RECORDS

Québec, Canada

Significant increase in ore mined at NAL operation from mining areas with lower strip ratios and commencement of Phase 3 mining areas with higher ore tonnes than expected.

Record monthly and quarterly spodumene concentrate production, with the quarter up 18% to 40,439 dmt at an average grade of 5.4% Li₂O. March production of 15,699 dmt was up 13% on prior record.

Adverse weather and tailings line blockages reduced process plant utilisation to 73%, a decrease of 2% compared to the prior quarter.

Lithium recovery for the quarter was 67%, an increase of 5% compared to the prior quarter.

Four marine cargos and one rail cargo of concentrate sold by NAL during the quarter. Of these, one marine cargo and one rail cargo were sold to Piedmont Lithium.

Major capital projects substantially completed at NAL, including the Crushed Ore Dome and Tailings Storage Facility 1. The Crushed Ore Dome started commissioning in April 2024. Lower capital expenditures are expected at NAL moving forward.

Finalisation of Definitive Feasibility Study (DFS) for the Moblan Lithium Project, confirming a post-tax net present value (NPV) of C\$2.2 billion.

Western Australia, Australia

77-hole aircore drilling program at Tabba Tabba identified high potential pegmatite systems containing caesium and tantalum, across two key drill areas. An orientation ground gravity survey has commenced, with gravity data to assist targeting the pegmatite system and potential lithium rich zones at depth for RC drilling.

Corporate

Appointment of experienced mining executive, Mr Lucas Dow as independent non-executive director. Mr Dow has joined the Audit and Risk Committee and Nomination and Remuneration Committee.

Quarterly Highlights

Ore Mined

351,100 wmt

9% QoQ



Concentrate Produced

40,439 dmt

18% QoQ



Concentrate Sold

58,055 dmt

142% QoQ



Revenue

A\$58M

152% QoQ



Average Realised Selling Price

A\$999 / dmt

6% QoQ



Unit Operating Cost (FOB)

A\$1,536 / dmt

10% QoQ



Cash Balance

A\$99M

(37%) QoQ



Management Commentary

It was another quarter of strong operational performance for Sayona, with concentrate production at NAL increasing 18% Quarter on Quarter (QoQ) to 40,439 dmt. Concentrate sales were up 142% Quarter on Quarter which included some catch up from the December 2023 Quarter and the commencement of rail shipments to Tesla.

Following the completion of an operational review that confirmed on going production ramp-up at NAL, the team continues to optimise mining and production processes, with significant improvements in ore production and future ore availability (ore in sight up 53% Quarter on Quarter). Mill utilisation dipped to 73% (from 75% in the prior quarter) as both adverse weather conditions and blockage issues in the tailings line adversely impacted overall utilisation. Despite these challenges, recovery throughout the quarter continued to improve, successfully meeting the ramp-up target of 67%. In March, the mill performance was particularly strong exceeding the ramp-up recovery target with a recovery rate of 69%.

The Crushed Ore Dome is now complete and commissioning commenced in April. The dome is poised to significantly boost operational reliability during winter, providing an additional 6,000 tonnes storage capacity of crushed ore between the crusher and the mill. The additional storage capacity of crushed ore enables approximately 1.5 days of continuous mill operation without the need for further ore crushing, improving maintenance scheduling for the crushing area. The Tailing Storage Facility 1 has also been completed during the quarter.

The Moblan Definitive Feasibility Study confirmed a net present value for the project of C\$2.2 billion. The challenging market conditions of recent months highlight the importance of developing Tier 1 lithium projects that are strategically located near existing transport corridors with end markets and that have the potential to deliver high grade lithium concentrate at competitive operating costs. Moblan is an exceptional lithium deposit and we will apply Sayona's operational expertise to minimise costs and develop the Project as efficiently as possible.

Exploration activity continued during the March Quarter, with drilling results progressively becoming available at both NAL and Moblan. The results are being compiled for ASX release and may provide the potential for further increases to the existing lithium resources at both projects.

The first drill program at the highly prospective Tabba Tabba lithium tenements in Western Australia has been completed with encouraging results released post quarter. A gravity survey has been completed during April and earthworks prepared for a deeper RC drilling program that will commence shortly.

During the quarter, Sayona appointed Lucas Dow as an additional independent Non-Executive Director which further strengthens our corporate governance. Mr Dow has also joined the Audit and Risk Committee and Nomination and Remuneration Committee.

Sayona has an enviable portfolio of projects and exploration tenements that will generate material value for shareholders and ensure the Company is well positioned in the growing North American lithium market. Amid challenging market conditions, Sayona remains focused on delivering results for shareholders and ensuring the Company is well positioned for the eventual upturn.

Mr James Brown
Executive Director & Interim CEO

KEY RESULTS AND ACTIVITIES

Safety and Sustainability

Health and Safety

The Total Recordable Injury Frequency Rate (TRIFR) decreased significantly in the March Quarter, marking the lowest quarterly TRIFR since the restart of operations at North American Lithium. This improvement was driven by a reduction in the number of recordable injuries at NAL, while worked hours at the site remained relatively stable Quarter on Quarter. The NAL mill recorded 1 lost time injury during the quarter.

During the quarter, the Company implemented the critical risks control program, which included training all employees and contractors on risk controls. Reviewed work cards and streamlined toolbox meetings were also implemented during the quarter. The implementation of the critical risks and control program is expected to continue next quarter, in combination with additional planned activities and training for site employees and contractors.

ESG and Community Engagement

During the quarter, NAL received permitting approval to expand the NAL pit to encompass current Phase 3 mining operations. Additional permitting work progressed during the quarter related to the modification and expansion of waste rock stockpiles.

Engagement with local communities in the Abitibi-Temiscamingue Hub and Eeyou Istchee James Bay Hub continued during the quarter, which included the regular quarterly committee meetings covering matters specific to the NAL operation and Moblan project respectively.

Negotiations continued with the Abitibiwinni and Lac Simon communities with a view to reaching a mutually beneficial Impact and Benefit Agreement. Meetings were also held with Cree communities to discuss the 2024 drilling campaign in the Eeyou Istchee James Bay Hub.

Operational and Financial Performance

Table 1: Summary of Key Metrics for Period Ended 31 March 2024

	Unit	Q3 FY24	Q2 FY24	QoQ Variance	YTD FY24	YTD FY23	YTD Variance
North American Lithium¹							
Ore Mined	wmt	351,100	322,448	9%	897,968	179,864	399%
Recovery	%	67	62	5%	62	43	19%
Concentrate Produced	dmt	40,439	34,237	18%	106,162	3,510	2,925%
Concentrate Grade Produced	%	5.4	5.5	(0.1%)	5.4	5.7	(0.3%)
Concentrate Sold	dmt	58,055	23,942	142%	130,208	-	-
Average Realised Selling Price (FOB) ²	\$/dmt	999	946	6%	1,354	-	-
Revenue	\$M	58	23	152%	176	-	-
Unit Operating Cost (FOB) ³	\$/dmt	1,536	1,397	10%	1,398	-	-
Group¹							
Cash Balance	\$M	99	158	(37%)	99	98	1%
AUD:CAD	\$	0.8867	0.8862	0%	0.8837	0.9027	2%

North American Lithium Mining

Ore mined of 351,100 wet metric tonnes (wmt) was 9% higher than the previous quarter due to higher mining activity in Phase 1 areas with low strip ratios. The commencement of mining in Phase 3 delivered unexpected gains in ore tonnes compared to the Ore Reserve block model. ROM feed grade delivered to the ROM stockpile at the plant averaged 1.23% Li₂O for the quarter, which was higher than previous quarters due to higher grade ore mined around the historical underground mine workings. The Run of Mine (ROM) stockpile totalled 256,665 tonnes as at 31 March 2024, a 56% increase from 31 December 2023. The ROM stockpile has been increased to manage mine productivity fluctuations as mining activity progresses through the areas of historical underground mine workings. Completion of the Crushed Ore Dome also provides the ability to build crushed ore inventory between the crusher and the mill.

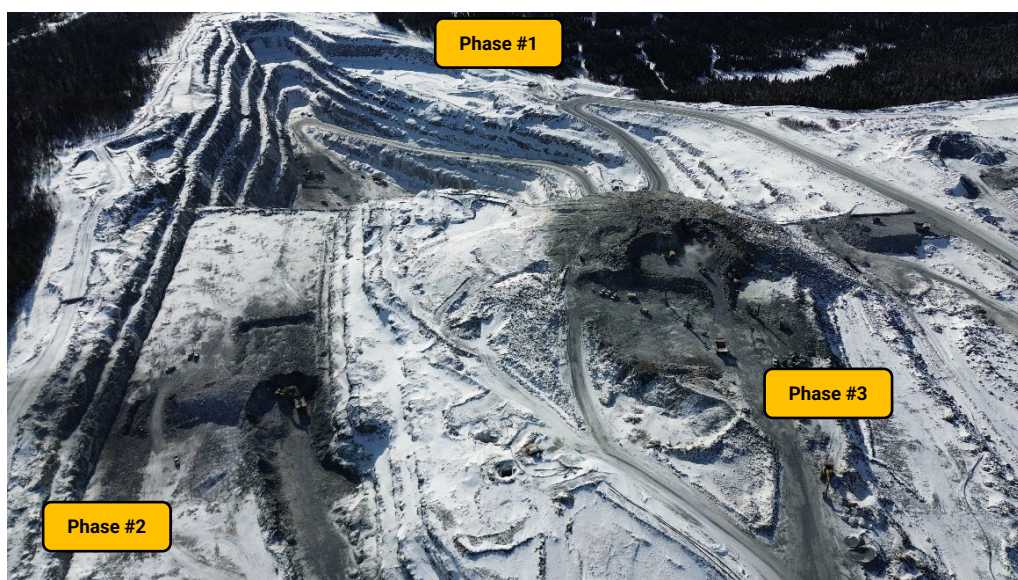


Figure 1: NAL mining areas

¹ All figures are reported in 100% terms. Numbers presented may not add up precisely to the totals provided due to rounding.

² Average realised selling price is calculated on an accruals basis and reported in \$/dmt sold, FOB Port of Québec.

³ Unit operating cost is calculated on an accruals basis and includes mining, processing, transport, port charges, site-based general and administration costs and cash based inventory movements, and excludes depreciation and amortisation charges, freight and royalties. It is reported in \$/dmt sold, FOB Port of Québec.

Production

The crushing circuit processed 260,528 tonnes of ore at an average feed grade of 1.24% Li₂O, a 3% decrease in ore processed compared to the previous quarter. Improvements in feed grade offset lower ore processed due to challenges resulting from winter conditions and mechanical unplanned shutdowns.

Process plant utilisation declined during the quarter with an average mill utilisation of 73%, a decrease of 2% compared to the prior quarter. Mill utilisation was lower due to unplanned shutdowns caused by freezing in crushing buildings, frozen conveyor belts and heating issues. The ability to build crushed ore inventory between the crusher and mill from the new refeed system improved plant utilisation and ore processed tonnages, with plant utilisation averaging 78% in February and March post commissioning of the refeed system.

The Li₂O recovery for the quarter was 67%, an increase of 5% compared to the prior quarter. Recoveries improved due to strong operational performance from metallurgical improvement and the positive impact of a retrofit high-density conditioning tank installed in the prior quarter. A historical record global process recovery of 69% was achieved in March 2024.

NAL produced 40,439 dry metric tonnes of spodumene concentrate at an average grade of 5.4% Li₂O, an increase of 18% compared to the prior quarter. The rise in concentrate production was achieved by higher feed grade and higher recoveries, despite the negative impact of challenging winter conditions and unplanned shutdowns that reduced mill operating time and ore throughput.

In March 2024, NAL achieved a record monthly production of 15,699 dry metric tonnes, a 13% increase on the previous monthly production record observed in December 2023. NAL achieved multiple daily production records of spodumene concentrate in March between 710 – 750 dry metric tonnes per day.

Sales

NAL revenue was A\$58 million for the quarter, an increase of 152% compared to the prior quarter. The increase in revenue was driven by a 142% increase in concentrate tonnes sold by NAL in addition to a 6% increase in average realised selling price for the quarter.

Total concentrate sold during the quarter was 58,055 dry metric tonnes, an increase of 142% on the prior quarter. Four marine cargos departed port during the quarter, with three cargos sold to the international lithium market and one cargo sold to Piedmont Lithium. NAL also shipped concentrate from the port by rail which was sold to Piedmont Lithium. The increase in sales volume Quarter on Quarter resulted from the carryover of a 2023 shipment for Piedmont Lithium that departed port in January 2024. Average marine cargo shipment size for the quarter was approximately 14,000 dry metric tonnes of spodumene concentrate.

The average realised selling price (FOB) increased by 6% to A\$999/dmt (US\$657/dmt) compared to the previous quarter. NAL's average realised selling price for the quarter was negatively impacted by the weighting of cargos to spot market prices. Lithium price indices stabilised throughout the quarter, with NAL incurring Quotational Period adjustments totalling A\$4.5 million (A\$77/dmt) relating to a December 2023 Quarter shipment. The estimated underlying average realised selling price achieved for the quarter, excluding Quotational Period adjustments, was approximately A\$1,076/dmt (US\$706/dmt).

A total of 2,040 tonnes of spodumene concentrate was stockpiled at the port as at 31 March 2024.

Costs

Unit operating costs for NAL increased 10% Quarter on Quarter to A\$1,536/dmt (US\$1,008/dmt). Controllable costs increased due to seasonal pit dewatering activities as the NAL operations head into the Northern Hemisphere spring. Higher mine transport costs were incurred from the haulage of waste material over longer distances to available waste rock stockpiles. These higher waste rock transport costs are expected to persist into the 2025 fiscal year.

Unit operating costs benefitted from significantly higher concentrate sold during the quarter, however this was mostly offset by unfavourable inventory movements resulting from the sale of higher cost inventory built up over the first half of the 2024 fiscal year. The unfavourable inventory movements were a reversal of the favourable inventory movements observed in the prior quarter.

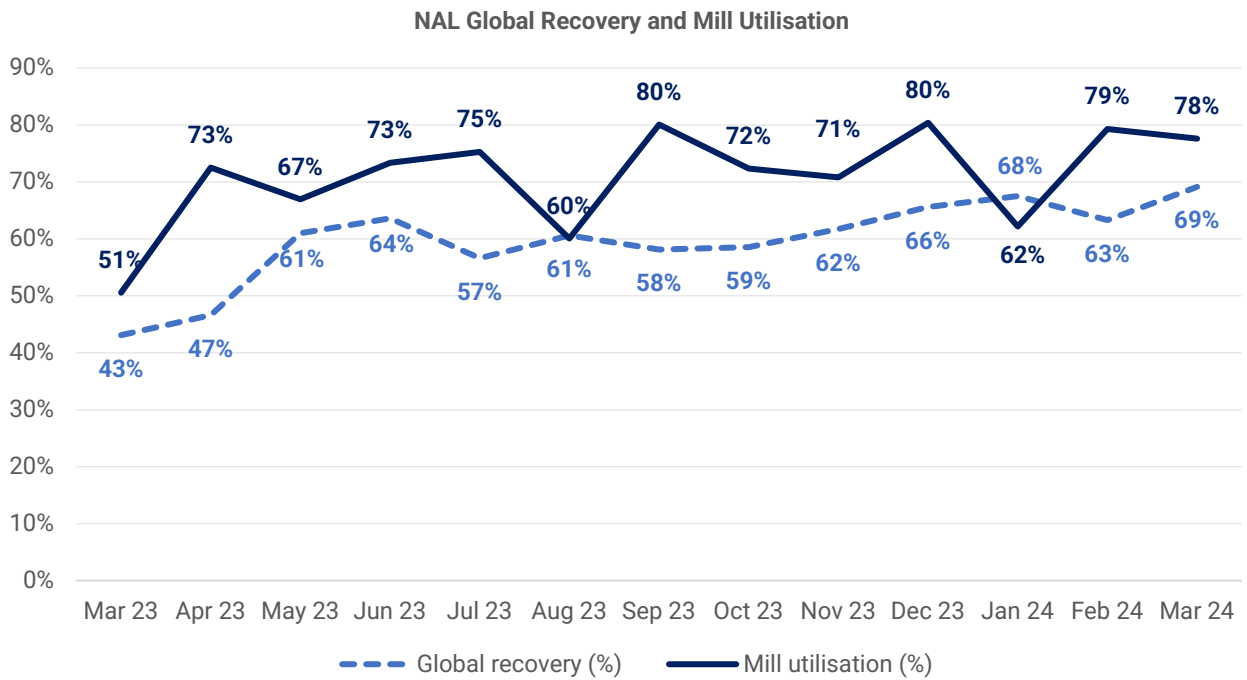


Figure 2: NAL Global Recovery and Mill Utilisation

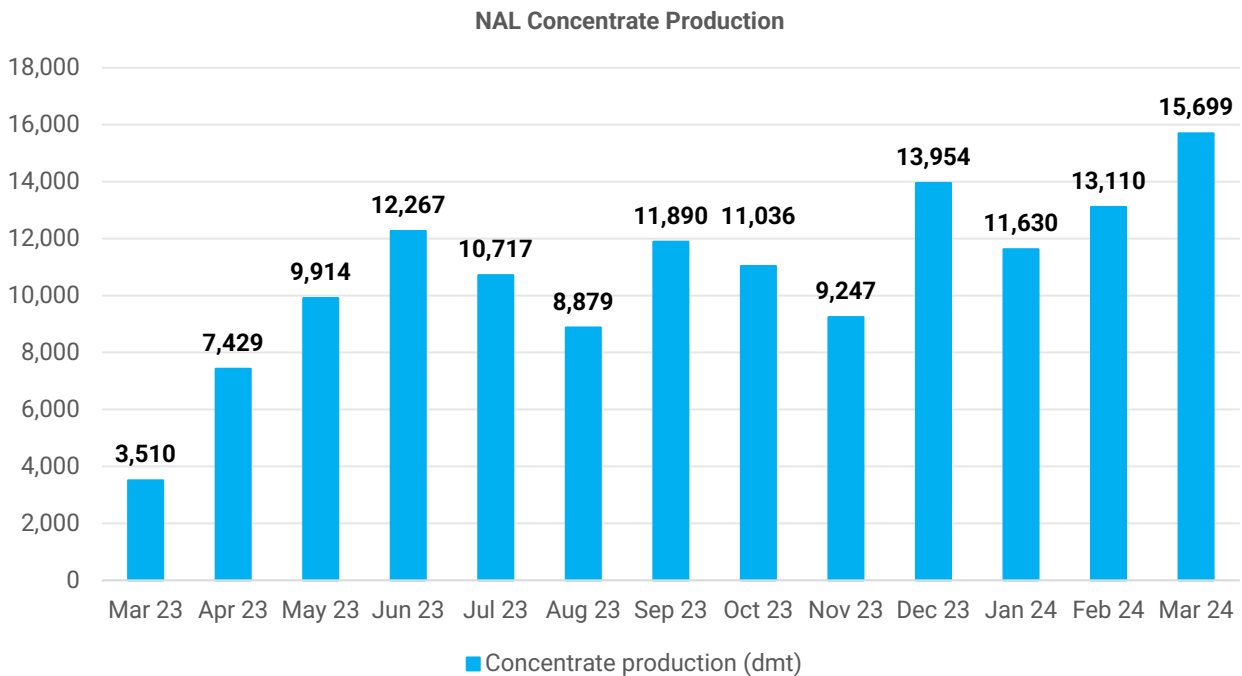


Figure 3: NAL Concentrate Production

Project Development

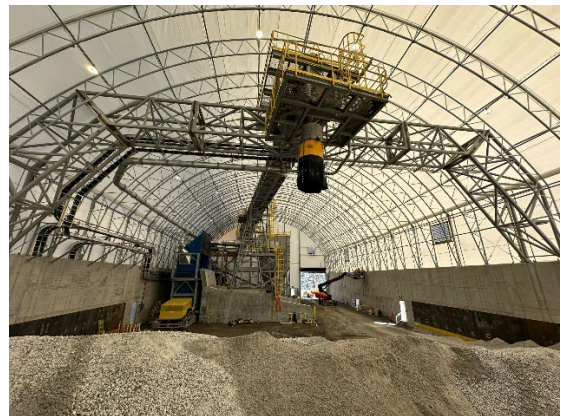
Québec, Canada

North American Lithium Crushed Ore Dome

The Crushed Ore Dome is designed to act as a secondary supply source of crushed ore to the mill to maintain process plant utilisation. The dome will have a storage capacity of around 6,000 tonnes of crushed ore when completed.

The concrete installation of the loading ramp was completed during the quarter, together with the installation of the dome fabric for the North and South walls. All mechanical installation had been completed by the end of March, with the exception of the retractable chute which will be installed in April. Installation of all cable trays is complete, and power cables have been pulled to all conveyors and junction boxes have been installed.

Pre-operation verification activities continued during the quarter, with a plant shutdown planned in April for final equipment installation. Post quarter end, the build of the crushed ore stockpile commenced inside the dome.



Figures 4 and 5: Crushed Ore Dome final stages of construction

Jaw Crusher C-150

The Jaw Crusher C-150 project is designed to stabilise mill throughput by minimising blockages in the crushing circuit and minimising use of the rock hammer on the ROM pad. All C-150 componentry was received at site during the quarter, with the decision made to complete installation on the ROM pad. The C-150 jaw crusher will be installed following the completion of civil works next quarter.

Moblan Definitive Feasibility Study

The definitive feasibility study (DFS) for the development of a lithium mine and concentrator at Moblan was released during the quarter, confirming a post-tax net present value (NPV) of C\$2.2 billion for the project. The Moblan DFS was based on an annual production rate of 300ktpa spodumene concentrate over 21-year Life of Mine (LOM) via open pit mining at a rate of 1.8Mtpa.

Moblan Lithium Project Permitting

The environmental assessment process continued for the Moblan Lithium Project during the quarter. Activities on site included progression of base line environmental studies which will contribute to the Environmental and Social Impact Assessment (ESIA) that is underway. Once completed, the ESIA will be submitted to Québec authorities with the Cree Nation Government also involved in the approval process.

Applications for the use of land for the Moblan processing plant and mine waste storage facility have been submitted and approved by authorities, with a decree from the environmental authorities remaining outstanding. Federal authorisations are also required to be obtained for the anticipated impacts on watercourses in the immediate area.

Authier Lithium Project Permitting

The environmental assessment process continued for the Authier Lithium Project during the quarter. Key activities included continuation of studies on transport, air quality, water treatment and noise. Community and stakeholder consultations are planned for next quarter to discuss results from the studies which will form part of the Environmental and Social Impact Assessment (ESIA). Finalisation and submission of the impact assessment is targeted for the end of 2024, with BAPE (Bureau d'audiences publiques sur l'environnement) hearings possible in early 2025.

Exploration

Québec, Canada

North American Lithium

The 2024 exploration drilling program commenced at NAL during the quarter, with the program designed to confirm geological continuity and assess the potential for new discoveries outside the mining lease. The drilling program objectives include detailed assessments of the thickness and geometry necessary for the potential identification and conversion of mineral resources. At 31 March 2024, a total of 12 diamond drill holes measuring a total of 3,687 metres had been completed, with two drill rigs used throughout the quarter. The 25,000 metre drilling program is expected to be completed by the end of 2024.

Vallée Lithium Project

The 2023 Vallée Lithium Project drilling results were received during the quarter. They do not support progression to the Second Option of the earn-in and joint venture agreement. As such, NAL will retain its' current 25% interest in the Vallée Lithium Project Joint Venture and will evaluate other opportunities within the JV tenements as they are identified.

Western Australia, Australia

Tabba Tabba Project

The maiden exploration drilling completed at Tabba Tabba in December 2023 identified high potential pegmatite systems containing caesium and tantalum¹. The 77-hole air core drilling program for 1,473m focused on two key areas, with results in the northern drill area identifying a zone of alteration, interpreted as the targeted southern extension to the Tabba Tabba mine stratigraphy. The southern drill area, sited around the Roadside and Turley prospects, intersected narrow pegmatite within broader zones of elevated tantalum and caesium geochemistry, typical of a LCT type pegmatite system.

An orientation ground gravity geophysical survey has been completed during April to identify the prospective gabbro – sediment contact for targeting, as this is an important control for lithium mineralisation within the area. The gravity survey covers a 7km x 2km area and comprises approximately 2,500 stations. Once completed, the gravity data will help target the pegmatite system and potential lithium rich zones at depth for Reverse Circulation (RC) testing.

Mt Dove Project

Planning for first drilling at Mt Dove continued during the quarter. The program will test magnetic features and structural targets beneath cover for bedrock gold anomalism of similar style to De Grey Mining's nearby Hemi discovery.

Morella Lithium Joint Venture Project

Sayona holds a 49% equity stake in the Morella Lithium Joint Venture, which comprises lithium rights to six tenements in the Pilbara covering 426 square kilometres and two tenements in South Murchison covering 48 square kilometres. Morella Corporation Limited (ASX: 1MC) is the manager of the joint venture.

During the quarter project data including geochemistry, geophysics and geological mapping continued to be reviewed with multiple targets being identified. At the Tabba Tabba East tenement a preliminary RC drill programme has been outlined with commencement planned during Q4 FY24.

At the Mt Edon project in the South Murchison a significant volume of pegmatites cut the greenstone stratigraphy. A RC drill programme has been outlined for 2024 to assess deep ground penetrating radar (DGPR) features, geochemical targets and mapped pegmatites.

¹ Refer ASX announcement on 11 April 2024

Corporate

Non-Executive Director Appointment

In February 2024, Mr Lucas Dow was appointed as a Non-Executive Director, effective 14 February 2024. Mr Dow is a highly experienced mining engineer, who has led resources organisations at the Chief Executive Officer level and held executive and non-executive director roles in both listed and unlisted entities. Mr Dow previously held the role of CEO, Bravus Mining & Resources, being critical to the successful commencement of the Carmichael mine and rail projects in Central Queensland.

Appointment of Chair and CEO

The search for a suitably qualified Chair and CEO continued during the quarter. Appointments for these key roles are dependent on identifying candidates with relevant skillsets for the respective positions. The Company will announce appointments for these positions following Board approval of recommendations from the Nomination and Remuneration Committee.

Interim Financial Report

Sayona released its Interim Financial Report for the half year ended 31 December 2023 on 14 March 2024. The Group recorded an underlying EBITDA of \$9.5 million for the half year (2023: \$20.4 million underlying EBITDA loss), and a consolidated loss after income tax of \$32.5 million over the same period (2023: \$18.7 million loss).

Cash Balance ¹

The balance of cash and cash equivalents at the end of the quarter was \$98.9 million, a \$59.1 million decrease over the equivalent balance of \$158.0 million at 31 December 2023.

Major cash inflows for the quarter included:

- net receipts from customers of \$29.5 million from the sale of spodumene concentrate, which included customer repayments of \$13.6 million for Quotational Period adjustments relating to a prior quarter shipment;
- proceeds of \$15.2 million from joint venture partners; and
- proceeds of \$2.1 million relating to interest income.

Major cash outflows for the quarter included:

- \$66.9 million on production expenditure;
- \$16.3 million on capital expenditure relating to the acquisition of plant and equipment at the Québec lithium projects;
- \$19.3 million on administration, corporate and payroll costs across all projects in Canada and Australia; and
- \$7.7 million on exploration and evaluation expenditure mainly relating to the Québec lithium projects.

During the quarter, the Company made payments of \$0.5 million to related parties, representing remuneration for Executive Directors and Non-Executive Directors.

Sayona Québec Joint Venture (SYQ) Cashflow

During the quarter, SYQ had receipts from customers of \$30 million and payments of operating costs of \$70 million, resulting in a net cash outflow from operating activities of \$40 million reflecting the continuing ramp-up of NAL operations. SYQ incurred lower quarterly capital expenditure of \$16 million and exploration expenditure of \$2 million, resulting in a net cash outflow from investing activities of \$18 million. Equity contributions from joint venture partners totalled \$61 million for the quarter. The net increase in cash and cash equivalents for the SYQ joint venture was \$3 million.

Group Cashflow

Outside of the SYQ joint venture, Sayona incurred payments of operating costs of \$13 million. Sayona (excluding SYQ) incurred capital expenditure of \$1 million and exploration expenditure of \$6 million, resulting in a net cash outflow from investing activities of \$7 million. Sayona made payments to the SYQ joint venture of \$46 million. Other net cash flows were an inflow of \$4 million. The net decrease in cash and cash equivalents for Sayona, excluding the SYQ joint venture, was \$62 million.

¹ All financial information is unaudited and may be subject to change in the final audited financial statements.

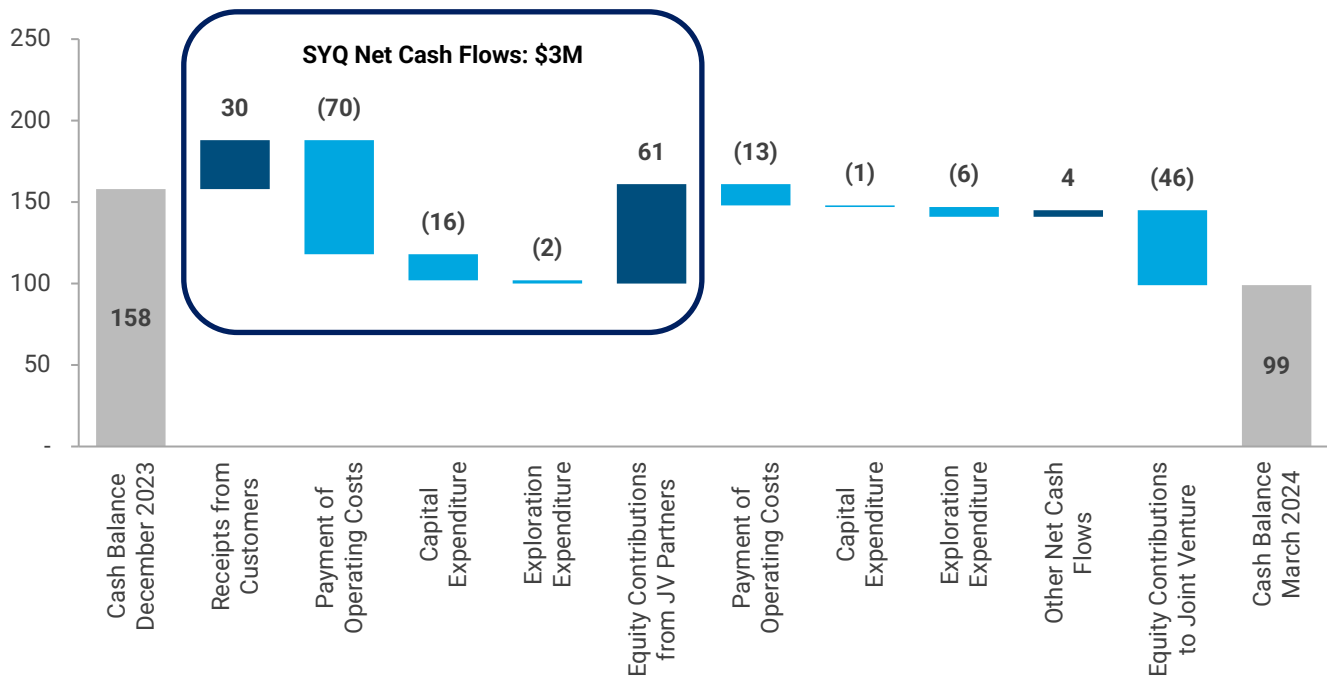


Figure 6: Sayona net cash flows for March 2024 Quarter

Capital Structure

At 31 March 2024, the Company had the following capital structure:

- 10,293,296,014 ordinary fully paid shares; and
- 12,234,482 unquoted options expiring on various dates.

Announcement authorised for release by Mr James Brown, Executive Director & Interim CEO of Sayona Mining Limited.

For more information, please contact:

Andrew Barber

President, Investor Relations

Email: ir@sayonamining.com.au

Phone: +61 7 3369 7058

The following information applies to this report:

- 1 All references to dollars and cents are Australian currency, unless otherwise stated.
- 2 Numbers presented may not add up precisely to the totals provided due to rounding.

The following abbreviations may have been used throughout this report: cost, insurance and freight (CIF); dry metric tonne (dmt); earnings before interest and tax (EBIT); earnings before interest, tax, depreciation and amortisation (EBITDA); free on board (FOB); life of mine (LOM); lithium carbonate (Li_2CO_3); lithium hydroxide (LiOH); lithium oxide (Li_2O); net present value (NPV); run of mine (ROM); thousand tonnes (kt); tonnes (t); and wet metric tonne (wmt).

Forward-Looking Statements

This report may contain certain forward-looking statements. Such statements are only predictions, based on certain assumptions and involve known and unknown risks, uncertainties and other factors, many of which are beyond Sayona Mining Limited's control. Actual events or results may differ materially from the events or results expected or implied in any forward-looking statement. The inclusion of such statements should not be regarded as a representation, warranty or prediction with respect to the accuracy of the underlying assumptions or that any forward-looking statements will be or are likely to be fulfilled.

Sayona Mining Limited undertakes no obligation to update any forward-looking statement or other statement to reflect events or circumstances after the date of this report (subject to securities exchange disclosure requirements).

The information in this report does not take into account the objectives, financial situation or particular needs of any person. Nothing contained in this report constitutes investment, legal, tax or other advice.

About Sayona Mining

Sayona Mining Limited is a North American lithium producer (ASX: SYA; OTCQB: SYAXF) with projects in Québec, Canada and Western Australia, Australia.

In Québec, Sayona's assets include North American Lithium, the Authier Lithium Project and its emerging Tansim Lithium Project, which are supported by a strategic partnership with American lithium developer Piedmont Lithium Inc. (Nasdaq: PLL; ASX: PLL). Sayona also holds a 60% interest in the Moblan Lithium Project in northern Québec.

In Western Australia, Sayona holds a large tenement portfolio in the Pilbara region prospective for gold and lithium. The Company is exploring for Hemi-style gold targets in the world-class Pilbara region, while a portion of its key lithium projects are subject to a joint venture with Morella Corporation Limited (ASX: 1MC).

For more information, please visit us at www.sayonamining.com.au

References to Previous ASX Releases

- Drilling at Tabba Tabba Finds High Potential Pegmatites – 11 April 2024
- Operational Review Supports NAL Ramp-Up Plan – 4 April 2024
- Half Year Accounts – 14 March 2024
- Moblan Lithium Project Definitive Feasibility Study – 20 February 2024
- Appointment of New Non-Executive Director – 15 February 2024
- Quarterly Activities/Appendix 5B Cash Flow Report – 31 January 2024
- Operational review to optimise NAL cost structure – 25 January 2024
- Drilling Underway at Tabba Tabba Lithium Project – 6 December 2023

The Company confirms that it is not aware of any new information or data that materially affects the information included in the original market announcement and all material assumptions and technical parameters continue to apply and have not materially changed. The Company confirms that the form and context in which the Competent Person's findings are presented have not been materially modified from the original market announcements.

Appendices

Australian Tenement Schedule as at 31 March 2024

Project	Location	Tenement	Name	Commodity	Status	Interest
WA Graphite Projects	Western Australia, Australia	E80/4511	Western Iron	Graphite	Granted	100%
		E80/4949	Corkwood	Graphite	Granted	100%
WA Lithium and Gold Projects	Western Australia, Australia	E45/2364	Tabba Tabba	Lithium	Granted	100%
		E45/4703	Tabba Tabba East	Gold & Lithium	Granted	49% ^(1,2)
		E45/4716	Red Rock	Gold & Lithium	Granted	100%
		E45/4726	West Wodgina	Gold & Lithium	Granted	49% ^(1,2)
		E45/5288	Strelley	Gold & Lithium	Granted	49% ^(1,2)
		E45/5289	Strelley West	Gold & Lithium	Granted	49% ^(1,2)
		E45/6650	Indee	Gold & Lithium	Application	100%
		E45/5904	Mac Well	Gold & Lithium	Granted	49% ^(1,2)
		E47/2983	Mallina	Lithium	Granted	49% ⁽¹⁾
		E47/3802	Friendly Creek	Gold & Lithium	Granted	100%
		E47/3829	Deep Well	Gold & Lithium	Granted	100%
		E47/3950	Mt Dove	Gold & Lithium	Granted	100%
		E59/2055	Mt Edon West	Lithium	Granted	49% ⁽¹⁾
		E59/2092	Mt Edon	Lithium	Granted	39% ⁽¹⁾
		E47/4870	Mount Satirist	Gold & Lithium	Application	100%
E47/4872	Station Peak	Gold & Lithium	Application	100%		

⁽¹⁾ Tenement subject to Morella Lithium Joint Venture.

⁽²⁾ Gold rights are 100% owned by Sayona.

Canadian Tenement Schedule as at 31 March 2024

Project	Tenement	Interest	Project	Tenement	Interest	Project	Tenement	Interest
Authier	2116146	75%	Pontiac	2638660	75%	Pontiac	2638714	75%
Lithium Project	2116154	75%	Claims	2638661	75%	Claims	2638715	75%
	2116155	75%		2638662	75%	Québec, Canada	2638716	75%
Location	2116156	75%	Québec, Canada	2638663	75%	(continued)	2638717	75%
Québec, Canada	2183454	75%	(continued)	2638664	75%	(continued)	2638718	75%
	2183455	75%		2638665	75%		2638719	75%
Commodity	2187651	75%		2638666	75%		2638720	75%
Lithium	2187652	75%		2638667	75%		2638721	75%
	2192470	75%		2638668	75%		2638722	75%
Total Claims	2192471	75%		2638669	75%		2638723	75%
24	2194819	75%		2638670	75%		2638724	75%
	2195725	75%		2638671	75%		2638725	75%
	2219206	75%		2638672	75%		2638726	75%
	2219207	75%		2638673	75%		2638727	75%
	2219208	75%		2638674	75%		2638728	75%
	2219209	75%		2638675	75%		2638729	75%
	2240226	75%		2638676	75%		2638730	75%
	2240227	75%		2638677	75%		2638731	75%
	2247100	75%		2638678	75%		2638732	75%
	2247101	75%		2638679	75%		2638733	75%
	2472424	75%		2638680	75%		2638734	75%
	2472425	75%		2638681	75%		2638735	75%
	2480180	75%		2638682	75%		2638736	75%
	2507910	75%		2638683	75%		2638737	75%
North American Lithium	1005	75%		2638684	75%		2638738	75%
	2145325	75%		2638685	75%		2638739	75%
	2145326	75%		2638686	75%		2638740	75%
Location	2145327	75%		2638687	75%		2638741	75%
Québec, Canada	2145328	75%		2638688	75%		2638742	75%
	2145329	75%		2638689	75%		2638743	75%
Commodity	2145330	75%		2638690	75%		2638744	75%
Lithium	2145331	75%		2638691	75%		2638745	75%
	2145332	75%		2638692	75%		2638746	75%
Total Claims	2145333	75%		2638693	75%		2638747	75%
22	2145334	75%		2638694	75%		2638748	75%
	2145335	75%		2638695	75%		2638749	75%
	2145336	75%		2638696	75%		2638750	75%
	2154987	75%		2638697	75%		2638751	75%
	2154988	75%		2638698	75%		2638752	75%
	2154989	75%		2638699	75%		2638753	75%
	2154990	75%		2638700	75%		2638754	75%
	2154991	75%		2638701	75%		2638755	75%
	2154992	75%		2638702	75%		2638756	75%
	2154993	75%		2638703	75%		2638757	75%
	2569722	75%		2638704	75%		2638758	75%
	2569723	75%		2638705	75%		2638760	75%
Pontiac Claims	2638652	75%		2638706	75%		2638761	75%
	2638653	75%		2638707	75%		2638762	75%
Commodity	2638654	75%		2638708	75%		2638763	75%
Lithium	2638655	75%		2638709	75%		2638764	75%
	2638656	75%		2638710	75%		2638765	75%
Total Claims	2638657	75%		2638711	75%		2638766	75%
1,284	2638658	75%		2638712	75%		2638767	75%
	2638659	75%		2638713	75%		2638768	75%

Canadian Tenement Schedule as at 31 March 2024 (continued)

Project	Tenement	Interest	Project	Tenement	Interest	Project	Tenement	Interest
Pontiac Claims	2638769	75%	Pontiac Claims	2638823	75%	Pontiac Claims	2638877	75%
	2638770	75%		2638824	75%		2638878	75%
	2638771	75%		2638825	75%		2638879	75%
Location Québec, Canada	2638772	75%	Québec, Canada (continued)	2638826	75%	Québec, Canada (continued)	2638880	75%
	2638773	75%		2638827	75%		2638881	75%
Commodity Lithium	2638774	75%		2638828	75%		2638882	75%
	2638775	75%		2638829	75%		2638883	75%
Total Claims 1,284	2638776	75%		2638830	75%		2638884	75%
	2638777	75%		2638831	75%		2638885	75%
	2638778	75%		2638832	75%		2638886	75%
	2638779	75%		2638833	75%		2638887	75%
	2638780	75%		2638834	75%		2638888	75%
	2638781	75%		2638835	75%		2638889	75%
	2638782	75%		2638836	75%		2638890	75%
	2638783	75%		2638837	75%		2638891	75%
	2638784	75%		2638838	75%		2638892	75%
	2638785	75%		2638839	75%		2638893	75%
	2638786	75%		2638840	75%		2638894	75%
	2638787	75%		2638841	75%		2639224	75%
	2638788	75%		2638842	75%		2639225	75%
	2638789	75%		2638843	75%		2639226	75%
	2638790	75%		2638844	75%		2639227	75%
	2638791	75%		2638845	75%		2639228	75%
	2638792	75%		2638846	75%		2639229	75%
	2638793	75%		2638847	75%		2639230	75%
	2638794	75%		2638848	75%		2639231	75%
	2638795	75%		2638849	75%		2639232	75%
	2638796	75%		2638850	75%		2639233	75%
	2638797	75%		2638851	75%		2639234	75%
	2638798	75%		2638852	75%		2639235	75%
	2638799	75%		2638853	75%		2639236	75%
	2638800	75%		2638854	75%		2639237	75%
	2638801	75%		2638855	75%		2639238	75%
	2638802	75%		2638856	75%		2639239	75%
	2638803	75%		2638857	75%		2639240	75%
	2638804	75%		2638858	75%		2639241	75%
	2638805	75%		2638859	75%		2639242	75%
	2638806	75%		2638860	75%		2639243	75%
	2638807	75%		2638861	75%		2639244	75%
	2638808	75%		2638862	75%		2639245	75%
	2638809	75%		2638863	75%		2639246	75%
	2638810	75%		2638864	75%		2639247	75%
	2638811	75%		2638865	75%		2639248	75%
	2638812	75%		2638866	75%		2639249	75%
	2638813	75%		2638867	75%		2639250	75%
	2638814	75%		2638868	75%		2639251	75%
	2638815	75%		2638869	75%		2639252	75%
	2638816	75%		2638870	75%		2639253	75%
	2638817	75%		2638871	75%		2639254	75%
	2638818	75%		2638872	75%		2639255	75%
	2638819	75%		2638873	75%		2639256	75%
	2638820	75%		2638874	75%		2639257	75%
	2638821	75%		2638875	75%		2639258	75%
	2638822	75%		2638876	75%		2639259	75%

Canadian Tenement Schedule as at 31 March 2024 (continued)

Project	Tenement	Interest	Project	Tenement	Interest	Project	Tenement	Interest
Pontiac Claims	2639260	75%	Pontiac Claims	2639314	75%	Pontiac Claims	2639368	75%
	2639261	75%		2639315	75%		2639369	75%
	2639262	75%		2639316	75%		2639370	75%
Location Québec, Canada	2639263	75%	Québec, Canada (continued)	2639317	75%	Québec, Canada (continued)	2639371	75%
	2639264	75%		2639318	75%		2639372	75%
Commodity Lithium	2639265	75%		2639319	75%		2639373	75%
	2639266	75%		2639320	75%		2639374	75%
Total Claims 1,284	2639267	75%		2639321	75%		2639375	75%
	2639268	75%		2639322	75%		2639376	75%
	2639269	75%		2639323	75%		2639377	75%
	2639270	75%		2639324	75%		2639378	75%
	2639271	75%		2639325	75%		2639379	75%
	2639272	75%		2639326	75%		2639380	75%
	2639273	75%		2639327	75%		2639381	75%
	2639274	75%		2639328	75%		2639382	75%
	2639275	75%		2639329	75%		2639383	75%
	2639276	75%		2639330	75%		2639384	75%
	2639277	75%		2639331	75%		2639385	75%
	2639278	75%		2639332	75%		2639386	75%
	2639279	75%		2639333	75%		2639387	75%
	2639280	75%		2639334	75%		2639388	75%
	2639281	75%		2639335	75%		2639389	75%
	2639282	75%		2639336	75%		2639390	75%
	2639283	75%		2639337	75%		2639391	75%
	2639284	75%		2639338	75%		2639392	75%
	2639285	75%		2639339	75%		2639393	75%
	2639286	75%		2639340	75%		2639394	75%
	2639287	75%		2639341	75%		2639395	75%
	2639288	75%		2639342	75%		2639396	75%
	2639289	75%		2639343	75%		2639397	75%
	2639290	75%		2639344	75%		2639398	75%
	2639291	75%		2639345	75%		2639399	75%
	2639292	75%		2639346	75%		2639400	75%
	2639293	75%		2639347	75%		2639401	75%
	2639294	75%		2639348	75%		2639402	75%
	2639295	75%		2639349	75%		2639403	75%
	2639296	75%		2639350	75%		2639404	75%
	2639297	75%		2639351	75%		2639405	75%
	2639298	75%		2639352	75%		2639406	75%
	2639299	75%		2639353	75%		2639407	75%
	2639300	75%		2639354	75%		2639408	75%
	2639301	75%		2639355	75%		2639409	75%
	2639302	75%		2639356	75%		2639410	75%
	2639303	75%		2639357	75%		2639411	75%
	2639304	75%		2639358	75%		2639412	75%
	2639305	75%		2639359	75%		2639413	75%
	2639306	75%		2639360	75%		2639414	75%
	2639307	75%		2639361	75%		2639415	75%
	2639308	75%		2639362	75%		2639416	75%
	2639309	75%		2639363	75%		2639417	75%
	2639310	75%		2639364	75%		2639418	75%
	2639311	75%		2639365	75%		2639419	75%
	2639312	75%		2639366	75%		2639420	75%
	2639313	75%		2639367	75%		2639421	75%

Canadian Tenement Schedule as at 31 March 2024 (continued)

Project	Tenement	Interest	Project	Tenement	Interest	Project	Tenement	Interest
Pontiac Claims	2639422	75%	Pontiac Claims	2639477	75%	Pontiac Claims	2639531	75%
	2639423	75%		2639478	75%		2639532	75%
	2639424	75%		2639479	75%		2639533	75%
Location Québec, Canada	2639425	75%	Québec, Canada (continued)	2639480	75%	Québec, Canada (continued)	2639534	75%
	2639426	75%		2639481	75%		2639535	75%
	2639427	75%		2639482	75%		2639536	75%
Commodity Lithium	2639428	75%		2639483	75%		2639537	75%
	2639429	75%		2639484	75%		2639538	75%
	2639430	75%		2639485	75%		2639539	75%
Total Claims 1,284	2639431	75%		2639486	75%		2639540	75%
	2639432	75%		2639487	75%		2639541	75%
	2639433	75%		2639488	75%		2639542	75%
	2639434	75%		2639489	75%		2639543	75%
	2639435	75%		2639490	75%		2639544	75%
	2639436	75%		2639491	75%		2639545	75%
	2639437	75%		2639492	75%		2639546	75%
	2639438	75%		2639493	75%		2639547	75%
	2639439	75%		2639494	75%		2639548	75%
	2639440	75%		2639495	75%		2639549	75%
	2639441	75%		2639496	75%		2639550	75%
	2639442	75%		2639497	75%		2639551	75%
	2639443	75%		2639498	75%		2639552	75%
	2639444	75%		2639499	75%		2639553	75%
	2639445	75%		2639500	75%		2639554	75%
	2639446	75%		2639501	75%		2639555	75%
	2639447	75%		2639502	75%		2639556	75%
	2639448	75%		2639503	75%		2639557	75%
	2639449	75%		2639504	75%		2639558	75%
	2639450	75%		2639505	75%		2639559	75%
	2639451	75%		2639506	75%		2639560	75%
	2639452	75%		2639507	75%		2639561	75%
	2639453	75%		2639508	75%		2639562	75%
	2639454	75%		2639509	75%		2639563	75%
	2639455	75%		2639510	75%		2639564	75%
	2639456	75%		2639511	75%		2639565	75%
	2639457	75%		2639512	75%		2639566	75%
	2639459	75%		2639513	75%		2639567	75%
	2639460	75%		2639514	75%		2639568	75%
	2639461	75%		2639515	75%		2639569	75%
	2639462	75%		2639516	75%		2639570	75%
	2639463	75%		2639517	75%		2639571	75%
	2639464	75%		2639518	75%		2639572	75%
	2639465	75%		2639519	75%		2639573	75%
	2639466	75%		2639520	75%		2639574	75%
	2639467	75%		2639521	75%		2639575	75%
	2639468	75%		2639522	75%		2639576	75%
	2639469	75%		2639523	75%		2639577	75%
	2639470	75%		2639524	75%		2639578	75%
	2639471	75%		2639525	75%		2639579	75%
	2639472	75%		2639526	75%		2639580	75%
	2639473	75%		2639527	75%		2639581	75%
	2639474	75%		2639528	75%		2639582	75%
	2639475	75%		2639529	75%		2639583	75%
	2639476	75%		2639530	75%		2639584	75%

Canadian Tenement Schedule as at 31 March 2024 (continued)

Project	Tenement	Interest	Project	Tenement	Interest	Project	Tenement	Interest
Pontiac Claims	2639585	75%	Pontiac Claims	2639768	75%	Pontiac Claims	2639822	75%
	2639586	75%		2639769	75%		2639823	75%
	2639587	75%		2639770	75%		2639824	75%
Location Québec, Canada	2639588	75%	Québec, Canada (continued)	2639771	75%	Québec, Canada (continued)	2639825	75%
	2639589	75%		2639772	75%		2639826	75%
Commodity Lithium	2639590	75%	2639773	75%	2639827	75%		
	2639591	75%	2639774	75%	2639828	75%		
	2639592	75%	2639775	75%	2639829	75%		
Total Claims 1,284	2639593	75%	2639776	75%	2639830	75%		
	2639594	75%	2639777	75%	2639831	75%		
	2639595	75%	2639778	75%	2639832	75%		
	2639596	75%	2639779	75%	2639833	75%		
	2639597	75%	2639780	75%	2639834	75%		
	2639598	75%	2639781	75%	2639835	75%		
	2639599	75%	2639782	75%	2639836	75%		
	2639600	75%	2639783	75%	2639837	75%		
	2639601	75%	2639784	75%	2639838	75%		
	2639602	75%	2639785	75%	2639839	75%		
	2639603	75%	2639786	75%	2639840	75%		
	2639604	75%	2639787	75%	2639841	75%		
	2639605	75%	2639788	75%	2639842	75%		
	2639606	75%	2639789	75%	2639843	75%		
	2639607	75%	2639790	75%	2639844	75%		
	2639608	75%	2639791	75%	2639845	75%		
	2639609	75%	2639792	75%	2639846	75%		
	2639610	75%	2639793	75%	2639847	75%		
	2639611	75%	2639794	75%	2639848	75%		
	2639612	75%	2639795	75%	2639849	75%		
	2639613	75%	2639796	75%	2639850	75%		
	2639614	75%	2639797	75%	2639851	75%		
	2639615	75%	2639798	75%	2639852	75%		
	2639616	75%	2639799	75%	2639853	75%		
	2639746	75%	2639800	75%	2639854	75%		
	2639747	75%	2639801	75%	2640010	75%		
	2639748	75%	2639802	75%	2640026	75%		
	2639749	75%	2639803	75%	2640027	75%		
	2639750	75%	2639804	75%	2640028	75%		
	2639751	75%	2639805	75%	2640029	75%		
	2639752	75%	2639806	75%	2640030	75%		
	2639753	75%	2639807	75%	2640031	75%		
	2639754	75%	2639808	75%	2640032	75%		
	2639755	75%	2639809	75%	2640033	75%		
	2639756	75%	2639810	75%	2640034	75%		
	2639757	75%	2639811	75%	2640035	75%		
	2639758	75%	2639812	75%	2640036	75%		
	2639759	75%	2639813	75%	2640037	75%		
	2639760	75%	2639814	75%	2640038	75%		
	2639761	75%	2639815	75%	2640039	75%		
	2639762	75%	2639816	75%	2640040	75%		
	2639763	75%	2639817	75%	2640041	75%		
	2639764	75%	2639818	75%	2640042	75%		
	2639765	75%	2639819	75%	2640043	75%		
	2639766	75%	2639820	75%	2640044	75%		
	2639767	75%	2639821	75%	2640045	75%		

Canadian Tenement Schedule as at 31 March 2024 (continued)

Project	Tenement	Interest	Project	Tenement	Interest	Project	Tenement	Interest
Pontiac Claims	2640046	75%	Pontiac Claims	2640100	75%	Pontiac Claims	2640154	75%
	2640047	75%		2640101	75%		2640155	75%
	2640048	75%		2640102	75%		2640156	75%
Location Québec, Canada	2640049	75%	Québec, Canada (continued)	2640103	75%	Québec, Canada (continued)	2640157	75%
	2640050	75%		2640104	75%		2640158	75%
	2640051	75%		2640105	75%		2640159	75%
Commodity Lithium	2640052	75%	2640106	75%	2640160	75%		
	2640053	75%	2640107	75%	2640161	75%		
Total Claims 1,284	2640054	75%	2640108	75%	2640162	75%		
	2640055	75%	2640109	75%	2640163	75%		
	2640056	75%	2640110	75%	2640164	75%		
	2640057	75%	2640111	75%	2640165	75%		
	2640058	75%	2640112	75%	2640166	75%		
	2640059	75%	2640113	75%	2640167	75%		
	2640060	75%	2640114	75%	2640168	75%		
	2640061	75%	2640115	75%	2640169	75%		
	2640062	75%	2640116	75%	2640170	75%		
	2640063	75%	2640117	75%	2640171	75%		
	2640064	75%	2640118	75%	2640172	75%		
	2640065	75%	2640119	75%	2640173	75%		
	2640066	75%	2640120	75%	2640174	75%		
	2640067	75%	2640121	75%	2640175	75%		
	2640068	75%	2640122	75%	2640176	75%		
	2640069	75%	2640123	75%	2640177	75%		
	2640070	75%	2640124	75%	2640178	75%		
	2640071	75%	2640125	75%	2640179	75%		
	2640072	75%	2640126	75%	2640180	75%		
	2640073	75%	2640127	75%	2640181	75%		
	2640074	75%	2640128	75%	2640182	75%		
	2640075	75%	2640129	75%	2640183	75%		
	2640076	75%	2640130	75%	2640184	75%		
	2640077	75%	2640131	75%	2640185	75%		
	2640078	75%	2640132	75%	2640186	75%		
	2640079	75%	2640133	75%	2640187	75%		
	2640080	75%	2640134	75%	2640188	75%		
	2640081	75%	2640135	75%	2640189	75%		
	2640082	75%	2640136	75%	2640190	75%		
	2640083	75%	2640137	75%	2640191	75%		
	2640084	75%	2640138	75%	2640192	75%		
	2640085	75%	2640139	75%	2640193	75%		
	2640086	75%	2640140	75%	2640194	75%		
	2640087	75%	2640141	75%	2640195	75%		
	2640088	75%	2640142	75%	2640196	75%		
	2640089	75%	2640143	75%	2640197	75%		
	2640090	75%	2640144	75%	2640198	75%		
	2640091	75%	2640145	75%	2640199	75%		
	2640092	75%	2640146	75%	2640200	75%		
	2640093	75%	2640147	75%	2640201	75%		
	2640094	75%	2640148	75%	2640202	75%		
	2640095	75%	2640149	75%	2640203	75%		
	2640096	75%	2640150	75%	2640204	75%		
	2640097	75%	2640151	75%	2640205	75%		
	2640098	75%	2640152	75%	2640206	75%		
	2640099	75%	2640153	75%	2640207	75%		

Canadian Tenement Schedule as at 31 March 2024 (continued)

Project	Tenement	Interest	Project	Tenement	Interest	Project	Tenement	Interest
Pontiac Claims	2640208	75%	Pontiac Claims	2640262	75%	Pontiac Claims	2640731	75%
	2640209	75%		2640263	75%		2640732	75%
	2640210	75%		2640264	75%		2640733	75%
Location Québec, Canada	2640211	75%	Québec, Canada (continued)	2640265	75%	Québec, Canada (continued)	2640734	75%
	2640212	75%		2640266	75%		2640735	75%
	2640213	75%		2640267	75%		2640736	75%
Commodity Lithium	2640214	75%		2640268	75%		2640737	75%
	2640215	75%		2640269	75%		2640738	75%
	2640216	75%		2640270	75%		2640739	75%
Total Claims 1,284	2640217	75%		2640271	75%		2640740	75%
	2640218	75%		2640272	75%		2640741	75%
	2640219	75%		2640273	75%		2640742	75%
	2640220	75%		2640274	75%		2640743	75%
	2640221	75%		2640275	75%		2640744	75%
	2640222	75%		2640276	75%		2640745	75%
	2640223	75%		2640277	75%		2640746	75%
	2640224	75%		2640278	75%		2640747	75%
	2640225	75%		2640279	75%		2640748	75%
	2640226	75%		2640280	75%		2640749	75%
	2640227	75%		2640281	75%		2640750	75%
	2640228	75%		2640282	75%		2640751	75%
	2640229	75%		2640283	75%		2640752	75%
	2640230	75%		2640284	75%		2640753	75%
	2640231	75%		2640285	75%		2640754	75%
	2640232	75%		2640286	75%		2640755	75%
	2640233	75%		2640287	75%		2640756	75%
	2640234	75%		2640288	75%		2640757	75%
	2640235	75%		2640289	75%		2640758	75%
	2640236	75%		2640290	75%		2640759	75%
	2640237	75%		2640291	75%		2640760	75%
	2640238	75%		2640292	75%		2640761	75%
	2640239	75%		2640293	75%		2640762	75%
	2640240	75%		2640294	75%		2640763	75%
	2640241	75%		2640295	75%		2640764	75%
	2640242	75%		2640296	75%		2640765	75%
	2640243	75%		2640297	75%		2640766	75%
	2640244	75%		2640298	75%		2640767	75%
	2640245	75%		2640299	75%		2640768	75%
	2640246	75%		2640300	75%		2640769	75%
	2640247	75%		2640301	75%		2640770	75%
	2640248	75%		2640717	75%		2640771	75%
	2640249	75%		2640718	75%		2640772	75%
	2640250	75%		2640719	75%		2640773	75%
	2640251	75%		2640720	75%		2640774	75%
	2640252	75%		2640721	75%		2640775	75%
	2640253	75%		2640722	75%		2640776	75%
	2640254	75%		2640723	75%		2640777	75%
	2640255	75%		2640724	75%		2640778	75%
	2640256	75%		2640725	75%		2640779	75%
	2640257	75%		2640726	75%		2640780	75%
	2640258	75%		2640727	75%		2640781	75%
	2640259	75%		2640728	75%		2640782	75%
	2640260	75%		2640729	75%		2640783	75%
	2640261	75%		2640730	75%		2640784	75%

Canadian Tenement Schedule as at 31 March 2024 (continued)

Project	Tenement	Interest	Project	Tenement	Interest	Project	Tenement	Interest
Pontiac Claims	2640785	75%	Pontiac Claims	2640839	75%	Pontiac Claims	2641140	75%
	2640786	75%		2640840	75%		2641141	75%
	2640787	75%		2640841	75%		2641142	75%
Location Québec, Canada	2640788	75%	Québec, Canada (continued)	2640842	75%	Québec, Canada (continued)	2641143	75%
	2640789	75%		2640843	75%		2641144	75%
	2640790	75%		2640844	75%		2641145	75%
Commodity Lithium	2640791	75%		2640845	75%		2641146	75%
	2640792	75%		2640846	75%		2641147	75%
Total Claims 1,284	2640793	75%		2640847	75%		2641148	75%
	2640794	75%		2640848	75%		2641149	75%
	2640795	75%		2640849	75%		2641150	75%
	2640796	75%		2641004	75%		2641151	75%
	2640797	75%		2641005	75%		2641152	75%
	2640798	75%		2641006	75%		2641424	75%
	2640799	75%		2641007	75%		2641425	75%
	2640800	75%		2641008	75%		2643810	75%
	2640801	75%		2641009	75%		2643811	75%
	2640802	75%		2641010	75%		2643812	75%
	2640803	75%		2641011	75%		2643813	75%
	2640804	75%		2641012	75%		2643814	75%
	2640805	75%		2641013	75%		2643819	75%
	2640806	75%		2641014	75%		2643820	75%
	2640807	75%		2641108	75%		2643821	75%
	2640808	75%		2641109	75%		2643822	75%
	2640809	75%		2641110	75%		2643823	75%
	2640810	75%		2641111	75%		2643824	75%
	2640811	75%		2641112	75%		2643825	75%
	2640812	75%		2641113	75%		2643826	75%
	2640813	75%		2641114	75%		2643827	75%
	2640814	75%		2641115	75%		2643829	75%
	2640815	75%		2641116	75%		2643830	75%
	2640816	75%		2641117	75%		2643831	75%
	2640817	75%		2641118	75%		2643832	75%
	2640818	75%		2641119	75%		2643833	75%
	2640819	75%		2641120	75%		2643834	75%
	2640820	75%		2641121	75%		2643835	75%
	2640821	75%		2641122	75%		2643836	75%
	2640822	75%		2641123	75%		2643837	75%
2640823	75%		2641124	75%		2643838	75%	
2640824	75%		2641125	75%		2643839	75%	
2640825	75%		2641126	75%		2643840	75%	
2640826	75%		2641127	75%		2643841	75%	
2640827	75%		2641128	75%		2643842	75%	
2640828	75%		2641129	75%		2644631	75%	
2640829	75%		2641130	75%		2644632	75%	
2640830	75%		2641131	75%		2644633	75%	
2640831	75%		2641132	75%		2644634	75%	
2640832	75%		2641133	75%		2644635	75%	
2640833	75%		2641134	75%		2644636	75%	
2640834	75%		2641135	75%		2644637	75%	
2640835	75%		2641136	75%		2644638	75%	
2640836	75%		2641137	75%		2644639	75%	
2640837	75%		2641138	75%		2644640	75%	
2640838	75%		2641139	75%		2644641	75%	

Canadian Tenement Schedule as at 31 March 2024 (continued)

Project	Tenement	Interest	Project	Tenement	Interest	Project	Tenement	Interest
Pontiac Claims	2644642	75%	Tansim Lithium Project	2440850	75%	Tansim Lithium Project	2519266	75%
	2644643	75%		2440851	75%		2519267	75%
	2644644	75%		2440852	75%		2519268	75%
Location Québec, Canada	2644648	75%	Québec, Canada (continued)	2440853	75%	Québec, Canada (continued)	2519269	75%
	2644649	75%		2440854	75%		2519270	75%
	2646177	75%		2440855	75%		2519271	75%
Commodity Lithium	2646178	75%	2440856	75%	2519272	75%		
	2646179	75%	2440857	75%	2519273	75%		
	2646180	75%	2440858	75%	2519274	75%		
Total Claims 1,284	2646181	75%	2440859	75%	2519275	75%		
	2646182	75%	2440860	75%	2519276	75%		
	2648060	75%	2440890	75%	2519277	75%		
	2648061	75%	2440891	75%	2519278	75%		
	2648686	75%	2440892	75%	2519279	75%		
	2648687	75%	2440893	75%	2519280	75%		
	2685903	75%	2440894	75%	2519281	75%		
	2685904	75%	2440895	75%	2519282	75%		
	2687680	75%	2440896	75%	2519283	75%		
	2687681	75%	2440897	75%	2519284	75%		
	2687682	75%	2440898	75%	2519285	75%		
	2687683	75%	2440899	75%	2519286	75%		
	2687684	75%	2440900	75%	2519287	75%		
	2687685	75%	2440901	75%	2519288	75%		
	2706313	75%	2440902	75%	2519289	75%		
	2706314	75%	2440903	75%	2519290	75%		
	2706315	75%	2440907	75%	2519291	75%		
	2706316	75%	2440908	75%	2519292	75%		
	2706317	75%	2440909	75%	2519293	75%		
	2706318	75%	2440919	75%	2519294	75%		
	2706319	75%	2440920	75%	2519295	75%		
	2706320	75%	2440925	75%	2519296	75%		
	2706321	75%	2440930	75%	2519297	75%		
	2745268	75%	2440935	75%	2519298	75%		
	2745269	75%	2440936	75%	2519299	75%		
	Tansim Lithium Project	1133877	75%	2440991	75%	2519300	75%	
		2415443	75%	2440992	75%	2519301	75%	
2415444		75%	2440993	75%	2519302	75%		
Location Québec, Canada	2436732	75%	2440994	75%	2519303	75%		
	2436733	75%	2450758	75%	2519304	75%		
	2436734	75%	2519251	75%	2519305	75%		
Commodity Lithium	2440836	75%	2519252	75%	2519306	75%		
	2440837	75%	2519253	75%	2519307	75%		
	2440838	75%	2519254	75%	2519308	75%		
Total Claims 186	2440839	75%	2519255	75%	2519309	75%		
	2440840	75%	2519256	75%	2519310	75%		
	2440841	75%	2519257	75%	2519311	75%		
	2440842	75%	2519258	75%	2519312	75%		
	2440843	75%	2519259	75%	2519313	75%		
	2440844	75%	2519260	75%	2519314	75%		
	2440845	75%	2519261	75%	2519315	75%		
	2440846	75%	2519262	75%	2519316	75%		
	2440847	75%	2519263	75%	2519317	75%		
	2440848	75%	2519264	75%	2519323	75%		
	2440849	75%	2519265	75%	2519324	75%		

Canadian Tenement Schedule as at 31 March 2024 (continued)

Project	Tenement	Interest	Project	Tenement	Interest	Project	Tenement	Interest
Tansim	2572665	75%	Tansim	2603823	75%	Lac Albert	2630529	100%
Lithium Project	2572666	75%	Lithium Project	2603824	75%	Lithium Project	2630530	100%
	2572667	75%		2603825	75%		2630531	100%
Location	2572668	75%		2603826	75%	Location	2630532	100%
Québec, Canada	2572669	75%	Vallée Lithium Project (NAL)	2154756	18.75%	Québec, Canada	2630533	100%
	2572670	75%		2154757	18.75%		2630534	100%
Commodity Lithium	2572671	75%		2154758	18.75%	Commodity Lithium	2630535	100%
	2572672	75%		2154759	18.75%		2630536	100%
	2572673	75%	Location	2154760	75%		2630537	100%
Total Claims 186	2572674	75%	Québec, Canada	2154761	75%	Total Claims 121	2630538	100%
	2572675	75%		2154762	18.75%		2630539	100%
	2572676	75%	Commodity Lithium	2167929	18.75%		2630540	100%
	2572677	75%		2167930	18.75%		2630541	100%
	2572678	75%		2167931	18.75%		2630542	100%
	2572679	75%	Total Claims 48	2167932	18.75%		2630543	100%
	2572680	75%		2167933	75%		2630544	100%
	2572681	75%		2167934	75%		2630545	100%
	2572682	75%		2167935	75%		2630546	100%
	2572683	75%		2167936	75%		2630547	100%
	2572684	75%		2167937	75%		2630548	100%
	2572685	75%		2167938	75%		2630549	100%
	2572686	75%		2444462	75%		2630550	100%
	2572687	75%		2444463	75%		2630551	100%
	2572688	75%		2451339	18.75%		2630552	100%
	2572689	75%		2455374	18.75%		2630553	100%
	2572690	75%		2455375	18.75%		2630554	100%
	2572691	75%		2455376	18.75%		2630555	100%
	2572692	75%		2455377	18.75%		2630556	100%
	2572693	75%		2455378	18.75%		2630557	100%
	2572694	75%		2455379	18.75%		2630558	100%
	2572695	75%		2455380	18.75%		2630559	100%
	2572696	75%		2455381	18.75%		2630560	100%
	2572697	75%		2455382	18.75%		2630561	100%
	2572698	75%		2455383	18.75%		2630562	100%
	2572699	75%		2455384	18.75%		2630563	100%
	2572700	75%		2469674	18.75%		2630564	100%
	2572701	75%		2490652	75%		2630565	100%
	2572702	75%		2490653	75%		2630566	100%
	2572703	75%		2490654	75%		2630567	100%
	2579261	75%		2490655	75%		2630568	100%
	2579262	75%		2490656	75%		2630569	100%
	2579263	75%		2520897	18.75%		2630570	100%
	2579264	75%		2520905	18.75%		2630571	100%
	2579265	75%		2520959	75%		2630572	100%
	2579266	75%		2520960	18.75%		2630573	100%
	2579267	75%		2521241	18.75%		2630574	100%
	2579268	75%		2521242	18.75%		2630575	100%
	2579269	75%		2521243	18.75%		2630576	100%
	2579270	75%		2521244	75%		2630577	100%
	2579271	75%		2521245	75%		2630578	100%
	2601768	75%		2521246	75%		2630579	100%
	2601773	75%		2521247	75%		2630580	100%
	2601778	75%					2630581	100%
	2601783	75%					2630582	100%

Canadian Tenement Schedule as at 31 March 2024 (continued)

Project	Tenement	Interest	Project	Tenement	Interest	Project	Tenement	Interest
Lac Albert	2630583	100%	Lac Albert	2630637	100%	Troilus	1117936	100%
Lithium Project	2630584	100%	Lithium Project	2630638	100%	Claims	2090518	100%
	2630585	100%		2630639	100%		2090923	100%
Location	2630586	100%		2630640	100%	Québec, Canada	2090924	100%
Québec, Canada	2630587	100%	Québec, Canada (continued)	2630641	100%	(continued)	2158088	100%
	2630588	100%		2630642	100%		2166942	100%
Commodity	2630589	100%		2630643	100%		2173601	100%
Lithium	2630590	100%		2630644	100%		2173630	100%
	2630591	100%		2630645	100%		2173631	100%
Total Claims	2630592	100%		2630646	100%		2173633	100%
121	2630593	100%		2630647	100%		2173637	100%
	2630594	100%		2630648	100%		2173638	100%
	2630595	100%		2630649	100%		2173640	100%
	2630596	100%					2173641	100%
	2630597	100%	Moblan Lithium Project	2195586	60%		2209948	100%
	2630598	100%		2195587	60%		2219972	100%
	2630599	100%	Location	2331201	60%		2219973	100%
	2630600	100%	Québec, Canada	2331202	60%		2220041	100%
	2630601	100%		2331203	60%		2220042	100%
	2630602	100%	Commodity	2331204	60%		2220063	100%
	2630603	100%	Lithium	2331205	60%		2220064	100%
	2630604	100%		2331206	60%		2240755	100%
	2630605	100%	Total Claims	2331207	60%		2240757	100%
	2630606	100%	20	2331208	60%		2253415	100%
	2630607	100%		2331353	60%		2253424	100%
	2630608	100%		2331354	60%		2253432	100%
	2630609	100%		2331355	60%		2253516	100%
	2630610	100%		2331356	60%		2253517	100%
	2630611	100%		2331357	60%		2253518	100%
	2630612	100%		2331358	60%		2253519	100%
	2630613	100%		2331359	60%		2253520	100%
	2630614	100%		2338382	60%		2253521	100%
	2630615	100%		2378688	60%		2253522	100%
	2630616	100%		2378689	60%		2253528	100%
	2630617	100%	Troilus Claims	22693	100%		2253529	100%
	2630618	100%		22694	100%		2253530	100%
	2630619	100%	Location	23716	100%		2253531	100%
	2630620	100%	Québec, Canada	23717	100%		2253877	100%
	2630621	100%		23730	100%		2253878	100%
	2630622	100%	Commodity	23931	100%		2253880	100%
	2630623	100%	Lithium	24255	100%		2262720	100%
	2630624	100%		24257	100%		2264368	100%
	2630625	100%	Total Claims	24261	100%		2264369	100%
	2630626	100%	1,824	24269	100%		2264372	100%
	2630627	100%		44235	100%		2264374	100%
	2630628	100%		81197	100%		2264375	100%
	2630629	100%		81198	100%		2264376	100%
	2630630	100%		81199	100%		2264400	100%
	2630631	100%		81203	100%		2283442	100%
	2630632	100%		81204	100%		2283443	100%
	2630633	100%		1117911	100%		2283444	100%
	2630634	100%		1117912	100%		2283445	100%
	2630635	100%		1117918	100%		2323529	100%
	2630636	100%		1117919	100%		2323531	100%
				1117926	100%			

Canadian Tenement Schedule as at 31 March 2024 (continued)

Project	Tenement	Interest	Project	Tenement	Interest	Project	Tenement	Interest
Troilus Claims	2323706	100%	Troilus Claims	2389122	100%	Troilus Claims	2401505	100%
	2323708	100%		2389123	100%		2404406	100%
Location Québec, Canada	2323709	100%	Québec, Canada (continued)	2389124	100%	Québec, Canada (continued)	2424548	100%
	2323712	100%		2391579	100%		2424549	100%
	2323714	100%		2401405	100%		2424550	100%
Commodity Lithium	2323746	100%		2401406	100%		2424551	100%
	2323747	100%		2401407	100%		2424553	100%
Total Claims 1,824	2323748	100%		2401410	100%		2428481	100%
	2323749	100%		2401411	100%		2428483	100%
	2342477	100%		2401412	100%		2429184	100%
	2369221	100%		2401413	100%		2429185	100%
	2371567	100%		2401414	100%		2429186	100%
	2371568	100%		2401415	100%		2429187	100%
	2371569	100%		2401416	100%		2429188	100%
	2371577	100%		2401417	100%		2443513	100%
	2371578	100%		2401424	100%		2443514	100%
	2371579	100%		2401425	100%		2443515	100%
	2371580	100%		2401426	100%		2443516	100%
	2371581	100%		2401427	100%		2443517	100%
	2371582	100%		2401428	100%		2443518	100%
	2371584	100%		2401429	100%		2443519	100%
	2372785	100%		2401430	100%		2443520	100%
	2372786	100%		2401431	100%		2443521	100%
	2372787	100%		2401432	100%		2443522	100%
	2372788	100%		2401439	100%		2443523	100%
	2372789	100%		2401440	100%		2443524	100%
	2372794	100%		2401441	100%		2443525	100%
	2385965	100%		2401442	100%		2443526	100%
	2385966	100%		2401443	100%		2443527	100%
	2385967	100%		2401449	100%		2443528	100%
	2385968	100%		2401452	100%		2443529	100%
	2385969	100%		2401453	100%		2443530	100%
	2385971	100%		2401454	100%		2443531	100%
	2385972	100%		2401455	100%		2443532	100%
	2385973	100%		2401456	100%		2447808	100%
	2385974	100%		2401486	100%		2447833	100%
	2385975	100%		2401487	100%		2447851	100%
	2385976	100%		2401488	100%		2447852	100%
	2389106	100%		2401489	100%		2447983	100%
	2389107	100%		2401490	100%		2447986	100%
	2389108	100%		2401491	100%		2447993	100%
	2389109	100%		2401492	100%		2447994	100%
	2389110	100%		2401493	100%		2447995	100%
	2389111	100%		2401494	100%		2447996	100%
	2389112	100%		2401495	100%		2447997	100%
	2389113	100%		2401496	100%		2453351	100%
	2389114	100%		2401497	100%		2453352	100%
	2389115	100%		2401498	100%		2453353	100%
	2389116	100%		2401499	100%		2453354	100%
	2389117	100%		2401500	100%		2453355	100%
	2389118	100%		2401501	100%		2453356	100%
	2389119	100%		2401502	100%		2453357	100%
	2389120	100%		2401503	100%		2453358	100%
	2389121	100%		2401504	100%		2453359	100%

Canadian Tenement Schedule as at 31 March 2024 (continued)

Project	Tenement	Interest	Project	Tenement	Interest	Project	Tenement	Interest
Troilus Claims	2453360	100%	Troilus Claims	2457010	100%	Troilus Claims	2510200	100%
	2453361	100%		2457011	100%		2510205	100%
Location Québec, Canada	2453362	100%	Québec, Canada (continued)	2457014	100%	Québec, Canada (continued)	2510206	100%
	2453363	100%		2457015	100%		2510207	100%
	2453364	100%		2457016	100%		2510208	100%
Commodity Lithium	2453365	100%		2457018	100%		2510209	100%
	2453366	100%		2457019	100%		2510210	100%
Total Claims 1,824	2453367	100%		2457022	100%		2510211	100%
	2453368	100%		2457024	100%		2510212	100%
	2453369	100%		2457026	100%		2510213	100%
	2453370	100%		2457027	100%		2510214	100%
	2453371	100%		2457028	100%		2510215	100%
	2453372	100%		2457029	100%		2510216	100%
	2453373	100%		2457030	100%		2510217	100%
	2453374	100%		2457031	100%		2510271	100%
	2453375	100%		2457033	100%		2510272	100%
	2453376	100%		2457034	100%		2510273	100%
	2453377	100%		2457035	100%		2510274	100%
	2453378	100%		2461571	100%		2510275	100%
	2453379	100%		2461984	100%		2510276	100%
	2453380	100%		2461985	100%		2510292	100%
	2453381	100%		2461986	100%		2510293	100%
	2453382	100%		2461987	100%		2510294	100%
	2453383	100%		2461988	100%		2510295	100%
	2453384	100%		2461989	100%		2510726	100%
	2453385	100%		2461991	100%		2510727	100%
	2454358	100%		2461992	100%		2510728	100%
	2454359	100%		2461993	100%		2510729	100%
	2454360	100%		2461994	100%		2510730	100%
	2454361	100%		2461995	100%		2510731	100%
	2454362	100%		2465289	100%		2515565	100%
	2454363	100%		2465290	100%		2515594	100%
	2454364	100%		2465291	100%		2515603	100%
	2454365	100%		2465292	100%		2517129	100%
	2454366	100%		2468133	100%		2517191	100%
	2454367	100%		2471375	100%		2517192	100%
	2454368	100%		2472338	100%		2517193	100%
	2454369	100%		2472339	100%		2517194	100%
	2454370	100%		2472340	100%		2517195	100%
	2454375	100%		2472341	100%		2517196	100%
	2454376	100%		2472342	100%		2517197	100%
	2454377	100%		2472343	100%		2517198	100%
	2454409	100%		2472346	100%		2517199	100%
	2454410	100%		2472347	100%		2517200	100%
	2454411	100%		2472348	100%		2517201	100%
	2454412	100%		2472349	100%		2517202	100%
	2454413	100%		2472350	100%		2517203	100%
	2454414	100%		2472356	100%		2517204	100%
	2457004	100%		2510194	100%		2517205	100%
	2457005	100%		2510195	100%		2517206	100%
	2457006	100%		2510196	100%		2517207	100%
	2457007	100%		2510197	100%		2517208	100%
	2457008	100%		2510198	100%		2517209	100%
	2457009	100%		2510199	100%		2517210	100%

Canadian Tenement Schedule as at 31 March 2024 (continued)

Project	Tenement	Interest	Project	Tenement	Interest	Project	Tenement	Interest
Troilus Claims	2517211	100%	Troilus Claims	2517408	100%	Troilus Claims	2517598	100%
	2517212	100%		2517409	100%		2517599	100%
	2517213	100%		2517410	100%		2517600	100%
Location Québec, Canada	2517214	100%	Québec, Canada (continued)	2517411	100%	Québec, Canada (continued)	2517601	100%
	2517215	100%		2517412	100%		2517602	100%
	2517216	100%		2517413	100%		2517690	100%
Commodity Lithium	2517217	100%		2517414	100%		2517691	100%
	2517218	100%		2517415	100%		2517692	100%
Total Claims 1,824	2517232	100%		2517416	100%		2517693	100%
	2517233	100%		2517417	100%		2517694	100%
	2517234	100%		2517418	100%		2517695	100%
	2517235	100%		2517419	100%		2517696	100%
	2517236	100%		2517420	100%		2517697	100%
	2517237	100%		2517421	100%		2517698	100%
	2517238	100%		2517422	100%		2517699	100%
	2517239	100%		2517423	100%		2517700	100%
	2517240	100%		2517424	100%		2517701	100%
	2517241	100%		2517425	100%		2517702	100%
	2517242	100%		2517426	100%		2517703	100%
	2517243	100%		2517427	100%		2517704	100%
	2517244	100%		2517564	100%		2517705	100%
	2517245	100%		2517565	100%		2517706	100%
	2517246	100%		2517566	100%		2517707	100%
	2517247	100%		2517567	100%		2517708	100%
	2517378	100%		2517568	100%		2517709	100%
	2517379	100%		2517569	100%		2517710	100%
	2517380	100%		2517570	100%		2517711	100%
	2517381	100%		2517571	100%		2517712	100%
	2517382	100%		2517572	100%		2517713	100%
	2517383	100%		2517573	100%		2517714	100%
	2517384	100%		2517574	100%		2517715	100%
	2517385	100%		2517575	100%		2517716	100%
	2517386	100%		2517576	100%		2517717	100%
	2517387	100%		2517577	100%		2517718	100%
	2517388	100%		2517578	100%		2517719	100%
	2517389	100%		2517579	100%		2517720	100%
	2517390	100%		2517580	100%		2517721	100%
	2517391	100%		2517581	100%		2517722	100%
	2517392	100%		2517582	100%		2517723	100%
	2517393	100%		2517583	100%		2517724	100%
	2517394	100%		2517584	100%		2517725	100%
	2517395	100%		2517585	100%		2517726	100%
	2517396	100%		2517586	100%		2517727	100%
	2517397	100%		2517587	100%		2517728	100%
	2517398	100%		2517588	100%		2517729	100%
	2517399	100%		2517589	100%		2517730	100%
	2517400	100%		2517590	100%		2517731	100%
	2517401	100%		2517591	100%		2517732	100%
	2517402	100%		2517592	100%		2517733	100%
	2517403	100%		2517593	100%		2517734	100%
	2517404	100%		2517594	100%		2517735	100%
	2517405	100%		2517595	100%		2517740	100%
	2517406	100%		2517596	100%		2517741	100%
	2517407	100%		2517597	100%		2517742	100%

Canadian Tenement Schedule as at 31 March 2024 (continued)

Project	Tenement	Interest	Project	Tenement	Interest	Project	Tenement	Interest
Troilus Claims	2517743	100%	Troilus Claims	2518150	100%	Troilus Claims	2543367	100%
	2517744	100%		2518151	100%		2543368	100%
Location Québec, Canada	2518087	100%	Québec, Canada (continued)	2518152	100%	Québec, Canada (continued)	2543369	100%
	2518088	100%		2518153	100%		2543370	100%
	2518089	100%		2518931	100%		2543551	100%
Commodity Lithium	2518090	100%		2519330	100%		2543552	100%
	2518091	100%		2519775	100%		2543558	100%
Total Claims 1,824	2518092	100%		2534958	100%		2543559	100%
	2518093	100%		2541680	100%		2543560	100%
	2518094	100%		2541681	100%		2543561	100%
	2518095	100%		2541819	100%		2543562	100%
	2518096	100%		2541820	100%		2543563	100%
	2518097	100%		2541821	100%		2543564	100%
	2518098	100%		2541822	100%		2543565	100%
	2518099	100%		2541823	100%		2543566	100%
	2518100	100%		2541824	100%		2543567	100%
	2518101	100%		2541825	100%		2543568	100%
	2518102	100%		2541826	100%		2543569	100%
	2518103	100%		2541827	100%		2543573	100%
	2518104	100%		2541828	100%		2543653	100%
	2518105	100%		2541829	100%		2543654	100%
	2518106	100%		2541830	100%		2543655	100%
	2518107	100%		2541831	100%		2543656	100%
	2518108	100%		2541832	100%		2543657	100%
	2518109	100%		2541833	100%		2543658	100%
	2518110	100%		2541834	100%		2543659	100%
	2518111	100%		2541835	100%		2543660	100%
	2518112	100%		2541836	100%		2543661	100%
	2518113	100%		2541837	100%		2543662	100%
	2518114	100%		2541838	100%		2543781	100%
	2518115	100%		2541839	100%		2543782	100%
	2518116	100%		2541840	100%		2543783	100%
	2518117	100%		2541841	100%		2543784	100%
	2518129	100%		2541842	100%		2543785	100%
	2518130	100%		2541843	100%		2543786	100%
	2518131	100%		2542167	100%		2543787	100%
	2518132	100%		2542168	100%		2543788	100%
	2518133	100%		2542169	100%		2543789	100%
	2518134	100%		2542170	100%		2544905	100%
	2518135	100%		2542817	100%		2544906	100%
	2518136	100%		2542818	100%		2544907	100%
	2518137	100%		2542819	100%		2544908	100%
	2518138	100%		2542820	100%		2544909	100%
	2518139	100%		2542821	100%		2544910	100%
	2518140	100%		2542822	100%		2544911	100%
	2518141	100%		2542823	100%		2544912	100%
	2518142	100%		2542824	100%		2544913	100%
	2518143	100%		2542825	100%		2544914	100%
	2518144	100%		2542826	100%		2544915	100%
	2518145	100%		2542827	100%		2544916	100%
	2518146	100%		2542828	100%		2544917	100%
	2518147	100%		2542829	100%		2544918	100%
	2518148	100%		2542830	100%		2544919	100%
	2518149	100%		2542831	100%		2544920	100%

Canadian Tenement Schedule as at 31 March 2024 (continued)

Project	Tenement	Interest	Project	Tenement	Interest	Project	Tenement	Interest
Troilus Claims	2544921	100%	Troilus Claims	2555551	100%	Troilus Claims	2555608	100%
	2544922	100%		2555555	100%		2555609	100%
Location Québec, Canada	2555479	100%	Québec, Canada (continued)	2555556	100%	Québec, Canada (continued)	2555610	100%
	2555480	100%		2555557	100%		2555611	100%
	2555481	100%		2555558	100%		2555614	100%
Commodity Lithium	2555482	100%		2555559	100%		2555615	100%
	2555483	100%		2555560	100%		2555616	100%
Total Claims 1,824	2555484	100%		2555561	100%		2555617	100%
	2555485	100%		2555562	100%		2555618	100%
	2555486	100%		2555563	100%		2555621	100%
	2555487	100%		2555564	100%		2555622	100%
	2555488	100%		2555565	100%		2555623	100%
	2555489	100%		2555566	100%		2555624	100%
	2555490	100%		2555567	100%		2555625	100%
	2555491	100%		2555568	100%		2555626	100%
	2555492	100%		2555569	100%		2555630	100%
	2555493	100%		2555570	100%		2555631	100%
	2555494	100%		2555571	100%		2555632	100%
	2555495	100%		2555572	100%		2555633	100%
	2555496	100%		2555573	100%		2555634	100%
	2555497	100%		2555574	100%		2555635	100%
	2555498	100%		2555575	100%		2555687	100%
	2555499	100%		2555576	100%		2555688	100%
	2555500	100%		2555577	100%		2555689	100%
	2555501	100%		2555578	100%		2555690	100%
	2555502	100%		2555579	100%		2555691	100%
	2555503	100%		2555580	100%		2555692	100%
	2555504	100%		2555581	100%		2555693	100%
	2555515	100%		2555582	100%		2555694	100%
	2555516	100%		2555583	100%		2555695	100%
	2555520	100%		2555584	100%		2555696	100%
	2555521	100%		2555585	100%		2555697	100%
	2555522	100%		2555586	100%		2555698	100%
	2555523	100%		2555587	100%		2555699	100%
	2555524	100%		2555588	100%		2555700	100%
	2555525	100%		2555589	100%		2555701	100%
	2555526	100%		2555590	100%		2555702	100%
	2555527	100%		2555591	100%		2555703	100%
	2555528	100%		2555592	100%		2555704	100%
	2555529	100%		2555593	100%		2555705	100%
	2555530	100%		2555594	100%		2555706	100%
	2555531	100%		2555595	100%		2555707	100%
	2555537	100%		2555596	100%		2555708	100%
	2555538	100%		2555597	100%		2555709	100%
	2555539	100%		2555598	100%		2555710	100%
	2555540	100%		2555599	100%		2555711	100%
	2555541	100%		2555600	100%		2555712	100%
	2555542	100%		2555601	100%		2555713	100%
	2555543	100%		2555602	100%		2555714	100%
	2555544	100%		2555603	100%		2555715	100%
	2555547	100%		2555604	100%		2555716	100%
	2555548	100%		2555605	100%		2555717	100%
	2555549	100%		2555606	100%		2555718	100%
	2555550	100%		2555607	100%		2555719	100%

Canadian Tenement Schedule as at 31 March 2024 (continued)

Project	Tenement	Interest	Project	Tenement	Interest	Project	Tenement	Interest
Troilus Claims	2555720	100%	Troilus Claims	2555774	100%	Troilus Claims	2555836	100%
	2555721	100%		2555775	100%		2555847	100%
Location Québec, Canada	2555722	100%	Québec, Canada (continued)	2555776	100%	Québec, Canada (continued)	2555848	100%
	2555723	100%		2555777	100%		2555849	100%
	2555724	100%		2555778	100%		2555850	100%
Commodity Lithium	2555725	100%		2555779	100%		2555851	100%
	2555726	100%		2555780	100%		2555852	100%
Total Claims 1,824	2555727	100%		2555781	100%		2555853	100%
	2555728	100%		2555782	100%		2555854	100%
	2555729	100%		2555783	100%		2555855	100%
	2555730	100%		2555784	100%		2555856	100%
	2555731	100%		2555785	100%		2555857	100%
	2555732	100%		2555786	100%		2555858	100%
	2555733	100%		2555787	100%		2555859	100%
	2555734	100%		2555788	100%		2555860	100%
	2555735	100%		2555789	100%		2555861	100%
	2555736	100%		2555790	100%		2555862	100%
	2555737	100%		2555791	100%		2555863	100%
	2555738	100%		2555792	100%		2555864	100%
	2555739	100%		2555793	100%		2555865	100%
	2555740	100%		2555794	100%		2555866	100%
	2555741	100%		2555795	100%		2555867	100%
	2555742	100%		2555796	100%		2555868	100%
	2555743	100%		2555797	100%		2555869	100%
	2555744	100%		2555798	100%		2555870	100%
	2555745	100%		2555799	100%		2555871	100%
	2555746	100%		2555800	100%		2555872	100%
	2555747	100%		2555801	100%		2555873	100%
	2555748	100%		2555802	100%		2555874	100%
	2555749	100%		2555803	100%		2555875	100%
	2555750	100%		2555804	100%		2555876	100%
	2555751	100%		2555805	100%		2555877	100%
	2555752	100%		2555814	100%		2555878	100%
	2555753	100%		2555815	100%		2555879	100%
	2555754	100%		2555816	100%		2555880	100%
	2555755	100%		2555817	100%		2555881	100%
	2555756	100%		2555818	100%		2555882	100%
	2555757	100%		2555819	100%		2555883	100%
	2555758	100%		2555820	100%		2555884	100%
	2555759	100%		2555821	100%		2555885	100%
	2555760	100%		2555822	100%		2555886	100%
	2555761	100%		2555823	100%		2555887	100%
	2555762	100%		2555824	100%		2555888	100%
	2555763	100%		2555825	100%		2555889	100%
	2555764	100%		2555826	100%		2555890	100%
	2555765	100%		2555827	100%		2555891	100%
	2555766	100%		2555828	100%		2555892	100%
	2555767	100%		2555829	100%		2555893	100%
	2555768	100%		2555830	100%		2555894	100%
	2555769	100%		2555831	100%		2555895	100%
	2555770	100%		2555832	100%		2555896	100%
	2555771	100%		2555833	100%		2555897	100%
	2555772	100%		2555834	100%		2555898	100%
	2555773	100%		2555835	100%		2555899	100%

Canadian Tenement Schedule as at 31 March 2024 (continued)

Project	Tenement	Interest	Project	Tenement	Interest	Project	Tenement	Interest
Troilus Claims	2555900	100%	Troilus Claims	2555954	100%	Troilus Claims	2556008	100%
	2555901	100%		2555955	100%		2556009	100%
	2555902	100%		2555956	100%		2556010	100%
Location Québec, Canada	2555903	100%	Québec, Canada (continued)	2555957	100%	Québec, Canada (continued)	2556011	100%
	2555904	100%		2555958	100%		2556012	100%
	2555905	100%		2555959	100%		2556013	100%
Commodity Lithium	2555906	100%		2555960	100%		2556014	100%
	2555907	100%		2555961	100%		2556015	100%
Total Claims 1,824	2555908	100%		2555962	100%		2556016	100%
	2555909	100%		2555963	100%		2556017	100%
	2555910	100%		2555964	100%		2556018	100%
	2555911	100%		2555965	100%		2556019	100%
	2555912	100%		2555966	100%		2556020	100%
	2555913	100%		2555967	100%		2556021	100%
	2555914	100%		2555968	100%		2556022	100%
	2555915	100%		2555969	100%		2556023	100%
	2555916	100%		2555970	100%		2556024	100%
	2555917	100%		2555971	100%		2556025	100%
	2555918	100%		2555972	100%		2556026	100%
	2555919	100%		2555973	100%		2556027	100%
	2555920	100%		2555974	100%		2556028	100%
	2555921	100%		2555975	100%		2556029	100%
	2555922	100%		2555976	100%		2556030	100%
	2555923	100%		2555977	100%		2556031	100%
	2555924	100%		2555978	100%		2556032	100%
	2555925	100%		2555979	100%		2556033	100%
	2555926	100%		2555980	100%		2556034	100%
	2555927	100%		2555981	100%		2556035	100%
	2555928	100%		2555982	100%		2556036	100%
	2555929	100%		2555983	100%		2556037	100%
	2555930	100%		2555984	100%		2556038	100%
	2555931	100%		2555985	100%		2556039	100%
	2555932	100%		2555986	100%		2556040	100%
	2555933	100%		2555987	100%		2556041	100%
	2555934	100%		2555988	100%		2556042	100%
	2555935	100%		2555989	100%		2556043	100%
	2555936	100%		2555990	100%		2556044	100%
	2555937	100%		2555991	100%		2556045	100%
2555938	100%		2555992	100%		2556046	100%	
2555939	100%		2555993	100%		2556047	100%	
2555940	100%		2555994	100%		2556048	100%	
2555941	100%		2555995	100%		2556049	100%	
2555942	100%		2555996	100%		2556050	100%	
2555943	100%		2555997	100%		2556051	100%	
2555944	100%		2555998	100%		2556052	100%	
2555945	100%		2555999	100%		2556053	100%	
2555946	100%		2556000	100%		2556054	100%	
2555947	100%		2556001	100%		2556055	100%	
2555948	100%		2556002	100%		2556056	100%	
2555949	100%		2556003	100%		2556057	100%	
2555950	100%		2556004	100%		2556058	100%	
2555951	100%		2556005	100%		2556059	100%	
2555952	100%		2556006	100%		2556060	100%	
2555953	100%		2556007	100%		2556061	100%	

Canadian Tenement Schedule as at 31 March 2024 (continued)

Project	Tenement	Interest	Project	Tenement	Interest	Project	Tenement	Interest
Troilus Claims	2556062	100%	Troilus Claims	2556116	100%	Troilus Claims	2561649	100%
	2556063	100%		2556117	100%		2561842	100%
	2556064	100%		2556118	100%		2561843	100%
Location Québec, Canada	2556065	100%	Québec, Canada (continued)	2556119	100%	Québec, Canada (continued)	2561844	100%
	2556066	100%		2556120	100%		2561845	100%
	2556067	100%		2556121	100%		2561846	100%
Commodity Lithium	2556068	100%		2556122	100%		2563696	100%
	2556069	100%		2556123	100%		2563697	100%
	Total Claims 1,824	2556070	100%		2556124	100%		2563698
	2556071	100%		2556125	100%		2563699	100%
	2556072	100%		2556126	100%		2563700	100%
	2556073	100%		2556127	100%		2563701	100%
	2556074	100%		2556128	100%		2563702	100%
	2556075	100%		2556129	100%		2563703	100%
	2556076	100%		2556130	100%		2563704	100%
	2556077	100%		2556131	100%		2563705	100%
	2556078	100%		2556132	100%		2563706	100%
	2556079	100%		2556133	100%		2563707	100%
	2556080	100%		2556134	100%		2563708	100%
	2556081	100%		2558334	100%		2563709	100%
	2556082	100%		2560642	100%		2563710	100%
	2556083	100%		2560643	100%		2563711	100%
	2556084	100%		2560644	100%		2563712	100%
	2556085	100%		2560645	100%		2563713	100%
	2556086	100%		2560646	100%		2563714	100%
	2556087	100%		2560647	100%		2563715	100%
	2556088	100%		2560648	100%		2563716	100%
	2556089	100%		2560649	100%		2563717	100%
	2556090	100%		2560650	100%		2563718	100%
	2556091	100%		2560651	100%		2563719	100%
	2556092	100%		2560652	100%		2564837	100%
	2556093	100%		2560653	100%		2565953	100%
	2556094	100%		2560656	100%		2565954	100%
	2556095	100%		2560657	100%		2565955	100%
	2556096	100%		2560658	100%		2565956	100%
	2556097	100%		2560659	100%		2565957	100%
	2556098	100%		2560660	100%		2565958	100%
	2556099	100%		2560661	100%		2566120	100%
	2556100	100%		2560664	100%		2566121	100%
	2556101	100%		2560665	100%		2566122	100%
	2556102	100%		2560666	100%		2566123	100%
	2556103	100%		2560667	100%		2566124	100%
	2556104	100%		2560670	100%		2566125	100%
	2556105	100%		2560671	100%		2566126	100%
	2556106	100%		2560672	100%		2566963	100%
	2556107	100%		2561222	100%		2566964	100%
	2556108	100%		2561223	100%		2566965	100%
	2556109	100%		2561224	100%		2566966	100%
	2556110	100%		2561225	100%		2566967	100%
	2556111	100%		2561226	100%		2566968	100%
	2556112	100%		2561227	100%		2566969	100%
	2556113	100%		2561228	100%		2566970	100%
	2556114	100%		2561253	100%		2566971	100%
	2556115	100%		2561254	100%		2566972	100%

Canadian Tenement Schedule as at 31 March 2024 (continued)

Project	Tenement	Interest	Project	Tenement	Interest	Project	Tenement	Interest
Troilus Claims	2566973	100%	Troilus Claims	2567512	100%	Troilus Claims	2571278	100%
	2566974	100%		2567513	100%		2571279	100%
Location Québec, Canada	2566975	100%	Québec, Canada (continued)	2567514	100%	Québec, Canada (continued)	2571280	100%
	2566976	100%		2567515	100%		2571281	100%
	2566977	100%		2571228	100%		2571282	100%
Commodity Lithium	2566978	100%		2571229	100%		2571283	100%
	2567332	100%		2571230	100%		2571284	100%
Total Claims 1,824	2567333	100%		2571231	100%		2571285	100%
	2567334	100%		2571232	100%		2571286	100%
	2567335	100%		2571233	100%		2571287	100%
	2567336	100%		2571234	100%		2571288	100%
	2567337	100%		2571235	100%		2571289	100%
	2567338	100%		2571236	100%		2571290	100%
	2567339	100%		2571237	100%		2571291	100%
	2567340	100%		2571238	100%		2571292	100%
	2567341	100%		2571239	100%		2571293	100%
	2567470	100%		2571240	100%		2571294	100%
	2567471	100%		2571241	100%		2571295	100%
	2567472	100%		2571242	100%		2571296	100%
	2567473	100%		2571243	100%		2571297	100%
	2567474	100%		2571244	100%		2571298	100%
	2567475	100%		2571245	100%		2571299	100%
	2567476	100%		2571246	100%		2571300	100%
	2567477	100%		2571247	100%		2571301	100%
	2567478	100%		2571248	100%		2571302	100%
	2567479	100%		2571249	100%		2571303	100%
	2567484	100%		2571250	100%		2571304	100%
	2567485	100%		2571251	100%		2571305	100%
	2567486	100%		2571252	100%		2571306	100%
	2567487	100%		2571253	100%		2571307	100%
	2567488	100%		2571254	100%		2571348	100%
	2567489	100%		2571255	100%		2571349	100%
	2567490	100%		2571256	100%		2571350	100%
	2567491	100%		2571257	100%		2571351	100%
	2567492	100%		2571258	100%		2571352	100%
	2567493	100%		2571259	100%		2571353	100%
	2567494	100%		2571260	100%		2571354	100%
	2567495	100%		2571261	100%		2571355	100%
	2567496	100%		2571262	100%		2571356	100%
	2567497	100%		2571263	100%		2571357	100%
	2567498	100%		2571264	100%		2571358	100%
	2567499	100%		2571265	100%		2571359	100%
	2567500	100%		2571266	100%		2571360	100%
	2567501	100%		2571267	100%		2571361	100%
	2567502	100%		2571268	100%		2571362	100%
	2567503	100%		2571269	100%		2571363	100%
	2567504	100%		2571270	100%		2571364	100%
	2567505	100%		2571271	100%		2571365	100%
	2567506	100%		2571272	100%		2571366	100%
	2567507	100%		2571273	100%		2571367	100%
	2567508	100%		2571274	100%		2571368	100%
	2567509	100%		2571275	100%		2571369	100%
	2567510	100%		2571276	100%		2571370	100%
	2567511	100%		2571277	100%		2571371	100%

Canadian Tenement Schedule as at 31 March 2024 (continued)

Project	Tenement	Interest	Project	Tenement	Interest	Project	Tenement	Interest
Troilus Claims	2571372	100%	Troilus Claims	2571426	100%	Troilus Claims	2571659	100%
	2571373	100%		2571427	100%		2571660	100%
Location Québec, Canada	2571374	100%	Québec, Canada (continued)	2571607	100%	Québec, Canada (continued)	2571661	100%
	2571375	100%		2571608	100%		2571662	100%
	2571376	100%		2571609	100%		2571663	100%
Commodity Lithium	2571377	100%		2571610	100%		2571664	100%
	2571378	100%		2571611	100%		2571665	100%
Total Claims 1,824	2571379	100%		2571612	100%		2571666	100%
	2571380	100%		2571613	100%		2571667	100%
	2571381	100%		2571614	100%		2571668	100%
	2571382	100%		2571615	100%		2571669	100%
	2571383	100%		2571616	100%		2571670	100%
	2571384	100%		2571617	100%		2571671	100%
	2571385	100%		2571618	100%		2571672	100%
	2571386	100%		2571619	100%		2571673	100%
	2571387	100%		2571620	100%		2571674	100%
	2571388	100%		2571621	100%		2571675	100%
	2571389	100%		2571622	100%		2571676	100%
	2571390	100%		2571623	100%		2571677	100%
	2571391	100%		2571624	100%		2571678	100%
	2571392	100%		2571625	100%		2571679	100%
	2571393	100%		2571626	100%		2571680	100%
	2571394	100%		2571627	100%		2571681	100%
	2571395	100%		2571628	100%		2571682	100%
	2571396	100%		2571629	100%		2571683	100%
	2571397	100%		2571630	100%		2571684	100%
	2571398	100%		2571631	100%		2571685	100%
	2571399	100%		2571632	100%		2571686	100%
	2571400	100%		2571633	100%		2571827	100%
	2571401	100%		2571634	100%		2571828	100%
	2571402	100%		2571635	100%		2571829	100%
	2571403	100%		2571636	100%		2571830	100%
	2571404	100%		2571637	100%		2571831	100%
	2571405	100%		2571638	100%		2571832	100%
	2571406	100%		2571639	100%		2571833	100%
	2571407	100%		2571640	100%		2571834	100%
	2571408	100%		2571641	100%		2571835	100%
	2571409	100%		2571642	100%		2571836	100%
	2571410	100%		2571643	100%		2571837	100%
	2571411	100%		2571644	100%		2571838	100%
	2571412	100%		2571645	100%		2571839	100%
	2571413	100%		2571646	100%		2571840	100%
	2571414	100%		2571647	100%		2571841	100%
	2571415	100%		2571648	100%		2571842	100%
	2571416	100%		2571649	100%		2571843	100%
	2571417	100%		2571650	100%		2571844	100%
	2571418	100%		2571651	100%		2571845	100%
	2571419	100%		2571652	100%		2571846	100%
	2571420	100%		2571653	100%		2571847	100%
	2571421	100%		2571654	100%		2571848	100%
	2571422	100%		2571655	100%		2571849	100%
	2571423	100%		2571656	100%		2571850	100%
	2571424	100%		2571657	100%		2571851	100%
	2571425	100%		2571658	100%		2571852	100%

Canadian Tenement Schedule as at 31 March 2024 (continued)

Project	Tenement	Interest	Project	Tenement	Interest	Project	Tenement	Interest
Troilus Claims	2571853	100%	Troilus Claims	2574429	100%	Troilus Claims	2576073	100%
	2571854	100%		2574430	100%		2576074	100%
Location Québec, Canada	2571855	100%	Québec, Canada (continued)	2574431	100%	Québec, Canada (continued)	2576075	100%
	2571856	100%		2574432	100%		2576076	100%
	2571857	100%		2574433	100%		2576077	100%
Commodity Lithium	2571858	100%		2574434	100%		2576078	100%
	2571859	100%		2574435	100%		2576079	100%
Total Claims 1,824	2571860	100%		2574436	100%		2576080	100%
	2571861	100%		2574437	100%		2576081	100%
	2571862	100%		2574438	100%		2576082	100%
	2571863	100%		2574439	100%		2576083	100%
	2571864	100%		2574440	100%		2576084	100%
	2571865	100%		2574441	100%		2576085	100%
	2571866	100%		2574442	100%		2576086	100%
	2571867	100%		2574443	100%		2576087	100%
	2571868	100%		2574444	100%		2576088	100%
	2571869	100%		2574445	100%		2576089	100%
	2571870	100%		2574446	100%		2576090	100%
	2571871	100%		2574447	100%		2576091	100%
	2571872	100%		2574448	100%		2576092	100%
	2571873	100%		2574449	100%		2582568	100%
	2571874	100%		2574450	100%			
	2571875	100%		2574451	100%			
	2571876	100%		2574452	100%			
	2571877	100%		2574453	100%			
	2571878	100%		2574454	100%			
	2571879	100%		2575778	100%			
	2571880	100%		2576046	100%			
	2571881	100%		2576047	100%			
	2571882	100%		2576048	100%			
	2571883	100%		2576049	100%			
	2571884	100%		2576050	100%			
	2571885	100%		2576051	100%			
	2571886	100%		2576052	100%			
	2571887	100%		2576053	100%			
	2571888	100%		2576054	100%			
	2571889	100%		2576055	100%			
	2571890	100%		2576056	100%			
	2571891	100%		2576057	100%			
	2571892	100%		2576058	100%			
	2571893	100%		2576059	100%			
	2571894	100%		2576060	100%			
	2571895	100%		2576061	100%			
	2571896	100%		2576062	100%			
	2574357	100%		2576063	100%			
	2574420	100%		2576064	100%			
	2574421	100%		2576065	100%			
	2574422	100%		2576066	100%			
	2574423	100%		2576067	100%			
	2574424	100%		2576068	100%			
	2574425	100%		2576069	100%			
	2574426	100%		2576070	100%			
	2574427	100%		2576071	100%			
	2574428	100%		2576072	100%			

Appendix 5B

Mining exploration entity or oil and gas exploration entity quarterly cash flow report

Name of entity

SAYONA MINING LIMITED

ABN

26 091 951 978

Quarter ended ("current quarter")

31 MARCH 2024

Consolidated statement of cash flows	Current quarter \$A'000	Year to date (9 months) \$A'000
1. Cash flows from operating activities		
1.1 Receipts from customers	29,543	152,841
1.2 Payments for		
(a) exploration & evaluation	-	-
(b) development	-	-
(c) production	(66,888)	(159,623)
(d) staff costs	(14,437)	(33,875)
(e) administration and corporate costs	(4,848)	(12,462)
1.3 Dividends received (see note 3)	-	-
1.4 Interest received	2,069	6,648
1.5 Interest and other costs of finance paid	(374)	(592)
1.6 Income taxes paid	-	-
1.7 Government grants and tax incentives	-	207
1.8 Other		
– Net deposits refunded / (paid)	3,642	1,891
– Other income	107	549
1.9 Net cash from / (used in) operating activities	(51,186)	(44,416)
2. Cash flows from investing activities		
2.1 Payments to acquire or for:		
(a) entities	-	-
(b) tenements	-	-
(c) property, plant and equipment	(16,250)	(84,855)
(d) exploration & evaluation	(7,692)	(36,795)
(e) investments	-	-
(f) other non-current assets	-	-

Consolidated statement of cash flows		Current quarter \$A'000	Year to date (9 months) \$A'000
2.2	Proceeds from the disposal of:		
	(a) entities	-	-
	(b) tenements	-	-
	(c) property, plant and equipment	-	-
	(d) investments	-	-
	(e) other non-current assets	-	-
2.3	Cash flows from loans to other entities	-	-
2.4	Dividends received (see note 3)	-	-
2.5	Other	-	-
2.6	Net cash from / (used in) investing activities	(23,942)	(121,650)

3.	Cash flows from financing activities		
3.1	Proceeds from issues of equity securities (excluding convertible debt securities)	-	31,399
3.2	Proceeds from issue of convertible debt securities	-	-
3.3	Proceeds from exercise of options	-	6,000
3.4	Transaction costs related to issues of equity securities or convertible debt securities	-	(1,211)
3.5	Proceeds from borrowings	-	-
3.6	Repayment of borrowings	(509)	(1,499)
3.7	Transaction costs related to loans and borrowings	-	-
3.8	Dividends paid	-	-
3.9	Other – Proceeds from joint venture partners	15,198	19,352
3.10	Net cash from / (used in) financing activities	14,689	54,041

4.	Net increase / (decrease) in cash and cash equivalents for the period		
4.1	Cash and cash equivalents at beginning of period	157,980	211,119
4.2	Net cash from / (used in) operating activities (item 1.9 above)	(51,186)	(44,416)
4.3	Net cash from / (used in) investing activities (item 2.6 above)	(23,942)	(121,650)
4.4	Net cash from / (used in) financing activities (item 3.10 above)	14,689	54,041

Mining exploration entity or oil and gas exploration entity quarterly cash flow report

Consolidated statement of cash flows		Current quarter \$A'000	Year to date (9 months) \$A'000
4.5	Effect of movement in exchange rates on cash held	1,325	(228)
4.6	Cash and cash equivalents at end of period	98,866	98,866

5.	Reconciliation of cash and cash equivalents at the end of the quarter (as shown in the consolidated statement of cash flows) to the related items in the accounts	Current quarter \$A'000	Previous quarter \$A'000
5.1	Bank balances	46,175	30,190
5.2	Call deposits	52,691	127,790
5.3	Bank overdrafts	-	-
5.4	Other – restricted cash in escrow	-	-
5.5	Cash and cash equivalents at end of quarter (should equal item 4.6 above)	98,866	157,980

6.	Payments to related parties of the entity and their associates	Current quarter \$A'000
6.1	Aggregate amount of payments to related parties and their associates included in item 1	473
6.2	Aggregate amount of payments to related parties and their associates included in item 2	-
<i>Note: if any amounts are shown in items 6.1 or 6.2, your quarterly activity report must include a description of, and an explanation for, such payments.</i>		

Mining exploration entity or oil and gas exploration entity quarterly cash flow report

7. Financing facilities	Total facility amount at quarter end \$A'000	Amount drawn at quarter end \$A'000
<i>Note: the term "facility" includes all forms of financing arrangements available to the entity. Add notes as necessary for an understanding of the sources of finance available to the entity.</i>		
7.1 Loan facilities	-	-
7.2 Credit standby arrangements	-	-
7.3 Other (please specify)	200,000	-
7.4 Total financing facilities	200,000	-
7.5 Unused financing facilities available at quarter end		193,550
7.6	Include in the box below a description of each facility above, including the lender, interest rate, maturity date and whether it is secured or unsecured. If any additional financing facilities have been entered into or are proposed to be entered into after quarter end, include a note providing details of those facilities as well.	
	<p>The Company entered into an At-the-Market Subscription Agreement (ATM) (previously referred to as a Controlled Placement Agreement (CPA)) with Acuity Capital on 29 October 2019. On 29 April 2021, the parties agreed to increase the ATM limit from \$3 million to a new limit of \$15 million and to extend the expiry date of the ATM to 31 July 2023. On 1 March 2022, the Company announced it had agreed to increase the ATM limit to a new limit of \$50 million.</p> <p>On 5 August 2022, the parties agreed to further increase the ATM limit to a new limit of \$200 million and to extend the expiry date of the ATM to 31 July 2025. To date, the Company has utilised the ATM to raise \$6.45 million. The remaining standby equity capital available under the ATM is \$193.55 million. The Company retains full control of all aspects of the placement process. There are no requirements on the Company to utilise the facility and it may terminate the Agreement at any time, without cost or penalty.</p>	

8. Estimated cash available for future operating activities	\$A'000
8.1 Net cash from / (used in) operating activities (item 1.9)	(51,186)
8.2 (Payments for exploration & evaluation classified as investing activities) (item 2.1(d))	(7,692)
8.3 Total relevant outgoings (item 8.1 + item 8.2)	(58,878)
8.4 Cash and cash equivalents at quarter end (item 4.6)	98,866
8.5 Unused finance facilities available at quarter end (item 7.5)	193,550
8.6 Total available funding (item 8.4 + item 8.5)	292,416
8.7 Estimated quarters of funding available (item 8.6 divided by item 8.3)	5.0
<i>Note: if the entity has reported positive relevant outgoings (ie a net cash inflow) in item 8.3, answer item 8.7 as "N/A". Otherwise, a figure for the estimated quarters of funding available must be included in item 8.7.</i>	
8.8	If item 8.7 is less than 2 quarters, please provide answers to the following questions:
8.8.1	Does the entity expect that it will continue to have the current level of net operating cash flows for the time being and, if not, why not?
	Answer: N/A

Mining exploration entity or oil and gas exploration entity quarterly cash flow report

8.8.2 Has the entity taken any steps, or does it propose to take any steps, to raise further cash to fund its operations and, if so, what are those steps and how likely does it believe that they will be successful?

Answer: N/A

8.8.3 Does the entity expect to be able to continue its operations and to meet its business objectives and, if so, on what basis?

Answer: N/A

Note: where item 8.7 is less than 2 quarters, all of questions 8.8.1, 8.8.2 and 8.8.3 above must be answered.

Compliance statement

- 1 This statement has been prepared in accordance with accounting standards and policies which comply with Listing Rule 19.11A.
- 2 This statement gives a true and fair view of the matters disclosed.

26 April 2024

Date:

Paul Crawford – Company Secretary

Authorised by:
(Name of body or officer authorising release – see note 4)

Notes

1. This quarterly cash flow report and the accompanying activity report provide a basis for informing the market about the entity's activities for the past quarter, how they have been financed and the effect this has had on its cash position. An entity that wishes to disclose additional information over and above the minimum required under the Listing Rules is encouraged to do so.
2. If this quarterly cash flow report has been prepared in accordance with Australian Accounting Standards, the definitions in, and provisions of, *AASB 6: Exploration for and Evaluation of Mineral Resources* and *AASB 107: Statement of Cash Flows* apply to this report. If this quarterly cash flow report has been prepared in accordance with other accounting standards agreed by ASX pursuant to Listing Rule 19.11A, the corresponding equivalent standards apply to this report.
3. Dividends received may be classified either as cash flows from operating activities or cash flows from investing activities, depending on the accounting policy of the entity.
4. If this report has been authorised for release to the market by your board of directors, you can insert here: "By the board". If it has been authorised for release to the market by a committee of your board of directors, you can insert here: "By the [name of board committee – eg Audit and Risk Committee]". If it has been authorised for release to the market by a disclosure committee, you can insert here: "By the Disclosure Committee".
5. If this report has been authorised for release to the market by your board of directors and you wish to hold yourself out as complying with recommendation 4.2 of the ASX Corporate Governance Council's *Corporate Governance Principles and Recommendations*, the board should have received a declaration from its CEO and CFO that, in their opinion, the financial records of the entity have been properly maintained, that this report complies with the appropriate accounting standards and gives a true and fair view of the cash flows of the entity, and that their opinion has been formed on the basis of a sound system of risk management and internal control which is operating effectively.