

Gold Mountain Limited
(ASX: GMN)

24/589 Stirling Highway
Cottesloe WA 6011
Australia

Directors and Management

David Evans

Executive Director

Syed Hizam Alsagoff

Non-Executive Director

Aharon Zaetz

Non-Executive Director

Rhys Davies

Company Secretary

Projects

Lithium Projects (Brazil)

Cococi region

Custodia

Iguatu region

Jacurici

Juremal region

Salinas region

Salitre

Serido Belt

Copper Projects (Brazil)

Ararenda region

Sao Juliao region

Iguatu region

REE Projects (Brazil)

Jequie

Copper Projects (PNG)

Wabag region

Green River region

ASX Announcement/Press Release | 29 April 2024

Gold Mountain Limited (ASX:GMN)

Quarterly Activities Report

For the Quarter Ended 31 March 2024

Gold Mountain's (ASX:GMN) ("The Company" or "GMN") activities maintained momentum in the 3rd quarter of the financial year ending 30 June 2024 with increasing activity Brazil and planning for future work in PNG.

Highlights

Brazil

- Major progress on REE regional sampling
- Initiated exploration on Brazil copper projects
- Acquired highly prospective Araxa Nb project

Papua New Guinea

- Desktop research being conducted reviewing historic information

Corporate

- Completed oversubscribed \$3m capital raising to advance exploration on highly prospective REE, IOCG, Nb and lithium projects.

Rare Earth Elements Brazil:

JEQUIÉ REGION REE DOWN UNDER PROJECTS

- Poções

Planning of initial geological review and stream sediment sampling in progress. Regional satellite imagery study in progress.

- Itagi

Stream sediment sampling has commenced. Regional satellite imagery study in progress.

ASX:GMN

info@goldmountainltd.com.au

+61 421 903 222

- **Teolândia**

Orientation sampling completed, priority 1 area sampling completed, sample processing in progress. Initial samples submitted to the laboratory. Regional satellite imagery study in progress.

- **Varzedo**

Regional satellite imagery study in progress. Stream sediment sampling scheduled for Q4 2023_4.

- **Irajuba**

Regional satellite imagery study in progress. No field work undertaken.

- **Jiquiriçá**

Regional satellite imagery study in progress. No field work undertaken.

Location of the Down Under REE projects is shown on figure 1.

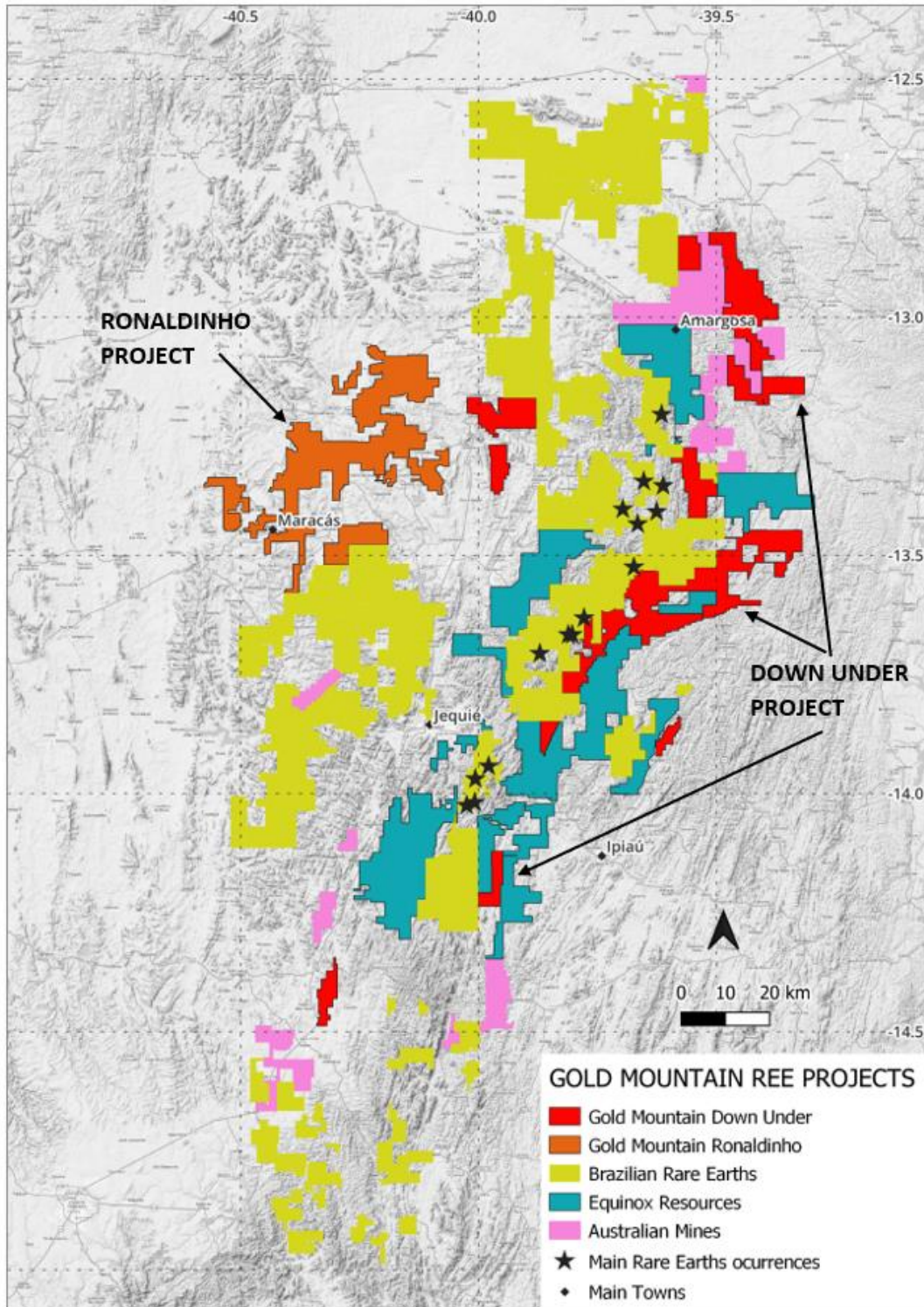


Figure 1 Down Under projects shown in red.

MARACÁS REGION REE RONALDINHO PROJECT

- **Ronaldinho Project**

A total of 41 licences were applied for covering an area of 803 km². An interpretation of structure using magnetic data and existing mapping has been undertaken. A preliminary interpretation of the geomorphology was undertaken and three surfaces recognised, the same as in the Down Under Project ASX release.

Contact with the office of the Mayor of Maracás has been made and visits to the Mayor will be undertaken in June 2024 to introduce the Company to the local officials.

Figure 2 shows the location of the Ronaldinho Project in relation to the Down Under Project.

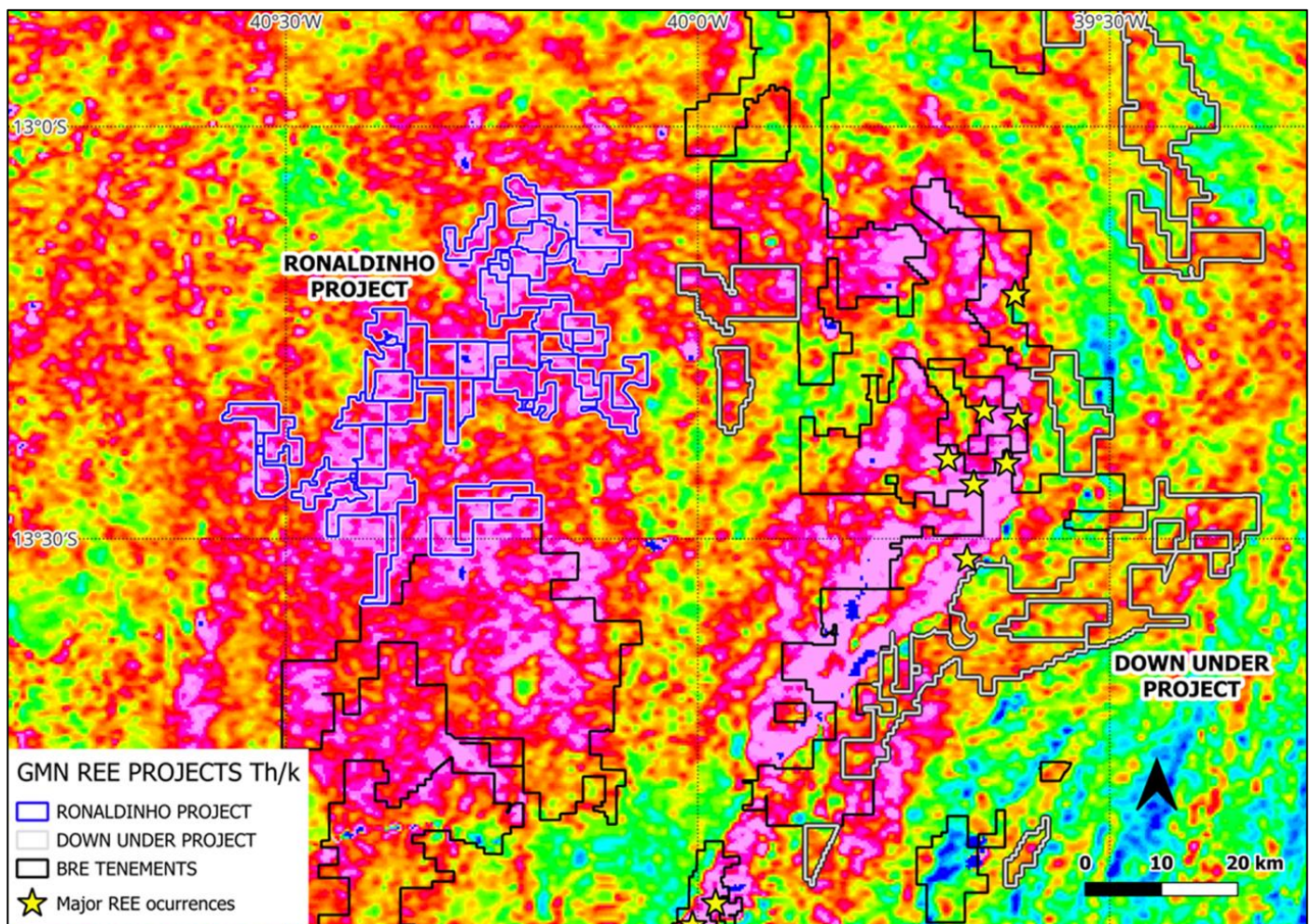


Figure 2. Location of the Ronaldinho project on the Thorium anomaly base plan.

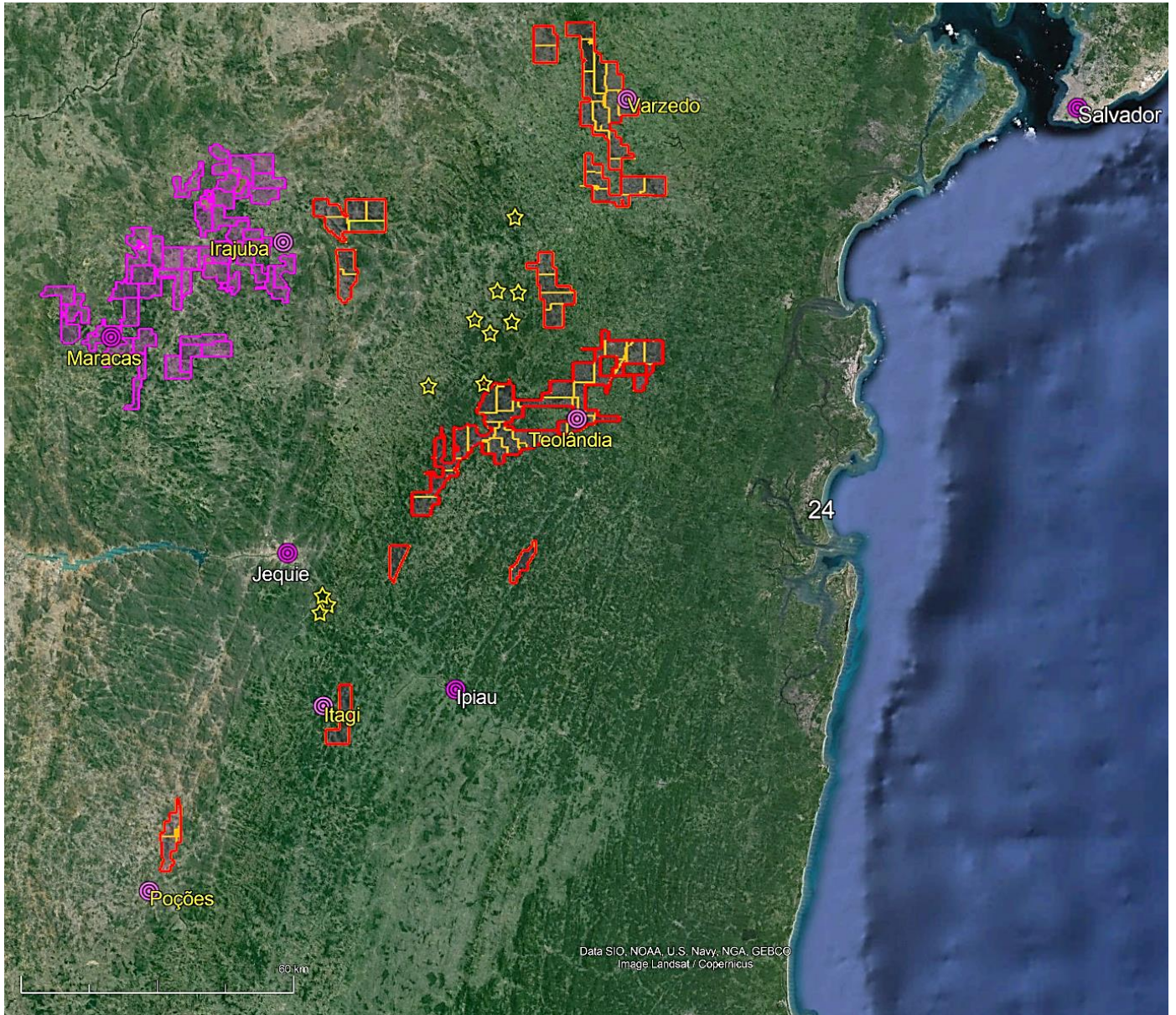


Figure 3. Location of the Jequié region Down Under and Ronaldinho REE projects and known significant REE deposits as gold stars.

Copper Brazil:

IGUATU COPPER PROJECT

- **Iguatu**

Stream sediment sampling is in progress on and around the known iron occurrences in the Iguatu tenement and around the magnetic anomalies interpreted from regional scale magnetic data. Samples are being processed and analysed.

Figure 4 shows the known copper, iron and interpreted magnetic anomalies in the Iguatu-Sao Juliao and Cococi Project areas.

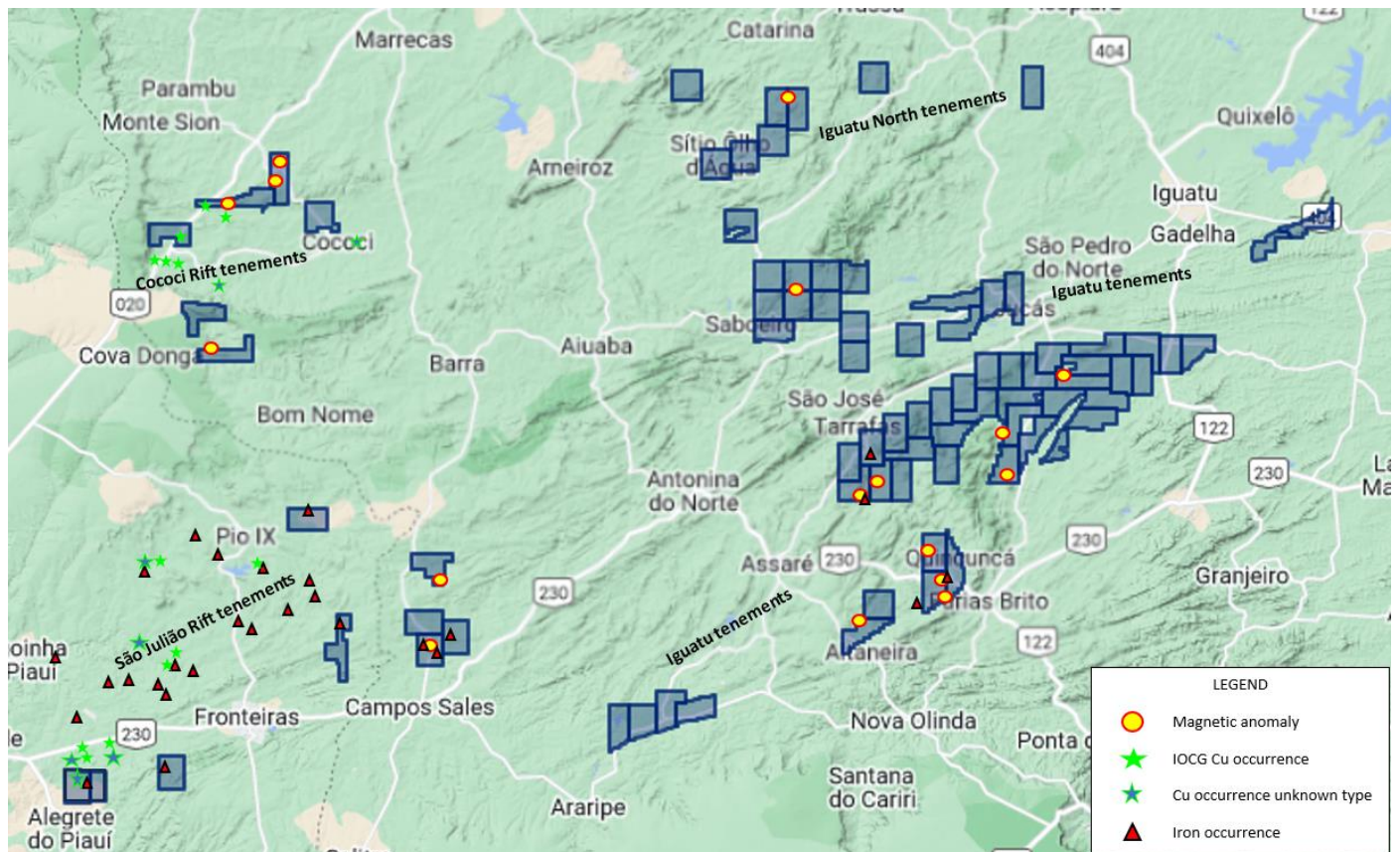


Figure 4. Copper, iron and interpreted magnetic anomalies in the Iguatu-Sao Juliao and Cococi Project areas.

ARARENDA COPPER PROJECT

Figure 5 shows the known potential source rock, copper and iron occurrences on the Ararenda and Ibiapaba project areas

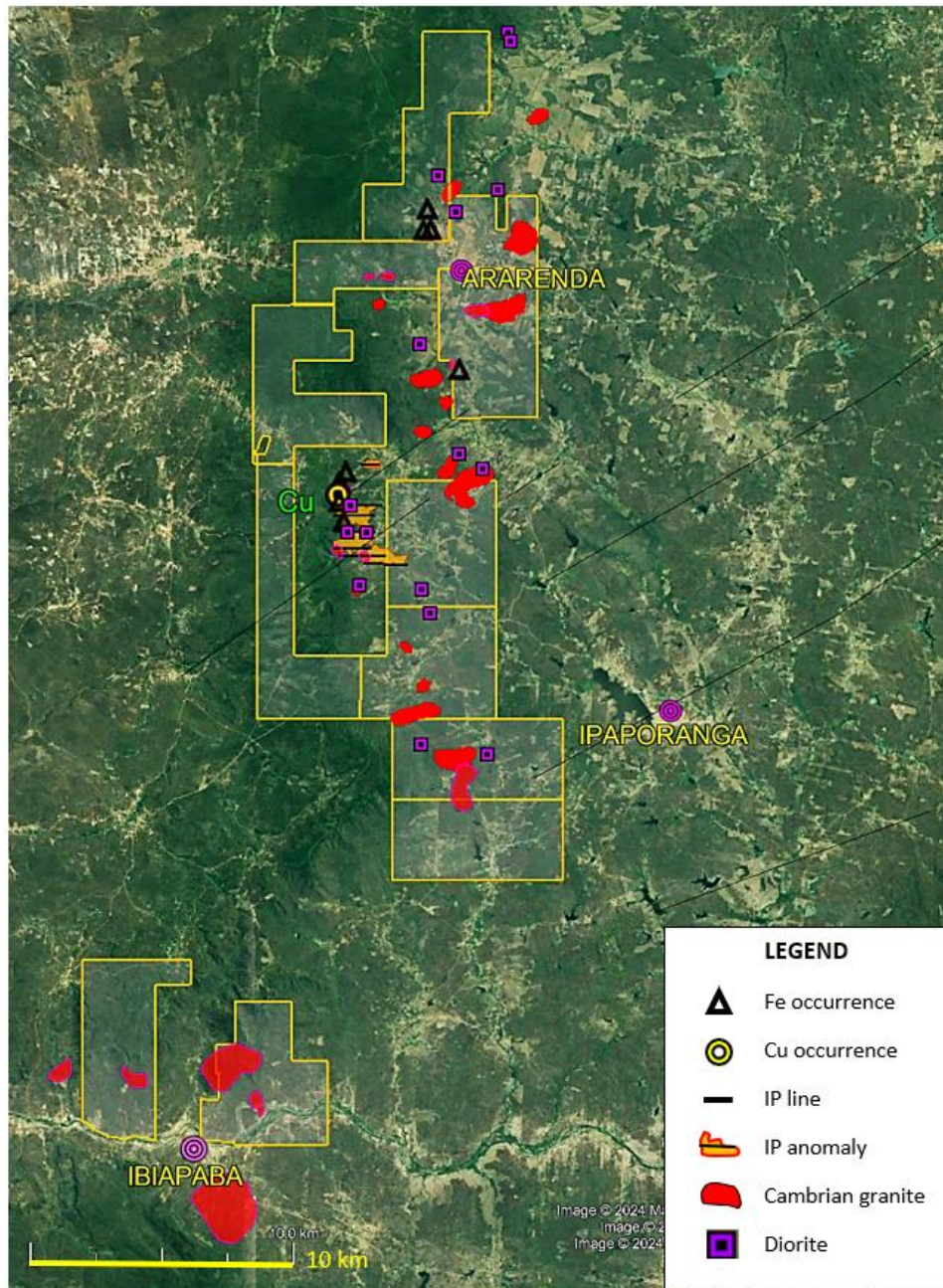


Figure 5. Distribution of copper, iron and IP survey anomalies as well as potential source rocks for the known IOCG type mineralisation at Ararenda and Ibiapaba projects.

Papua New Guinea:

- Green River ELA 2786 and Amanab ELA 2808 Copper Gold

No work undertaken pending grant of the Green River and Amanab tenements

Figure 6 shows the location of the two ELA's and high grade rock chip samples

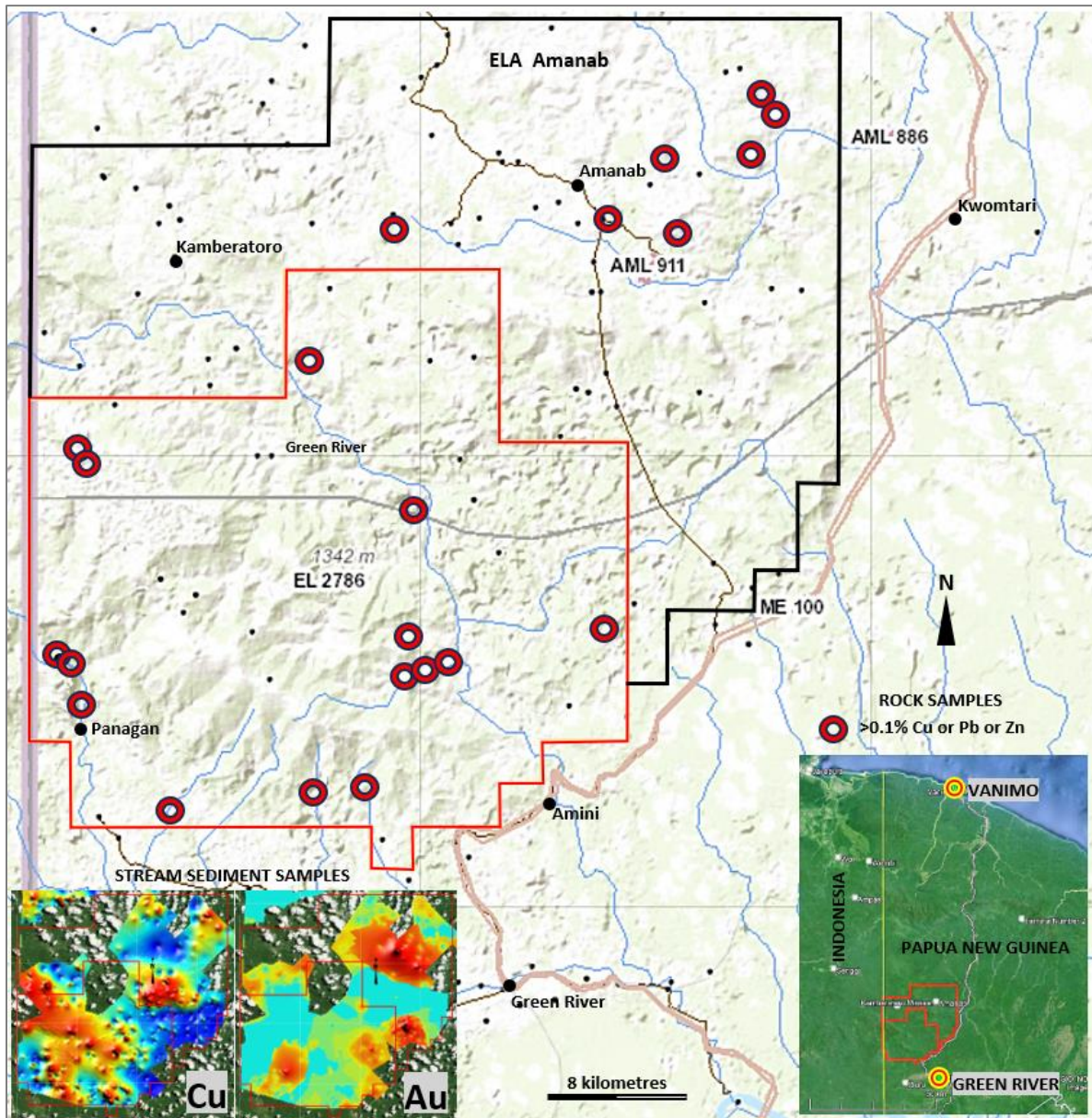


Figure 6. Location of the Green River and Amanab Ela's in West Sepik Province.

- **Wabag Project Copper-Gold**

A detailed desktop review of all existing and newly acquired historical data, including regional geophysics, on the Wabag project is continuing to be undertaken to assess the extent of the opportunities present.

Brazil Lithium:

JUREMAL REGION LITHIUM PROJECTS

- **Juremal and Juremal North**

No field work undertaken with changed priorities to REE and copper prior to obtaining additional lithium results.

No additional work was carried out on the Juremal North tenement.

Salitre Project

Soil sampling was completed to infill lines to 200 metre spacing over the main anomaly over 3.8 km. Lines at 400 and 200 metre spacing now cover a total of 6.4 km of potential strike, however no additional results are currently available for interpretation and release.

Figure 7 shows thematic maps of the Lithium anomalies in Juremal and Salitre

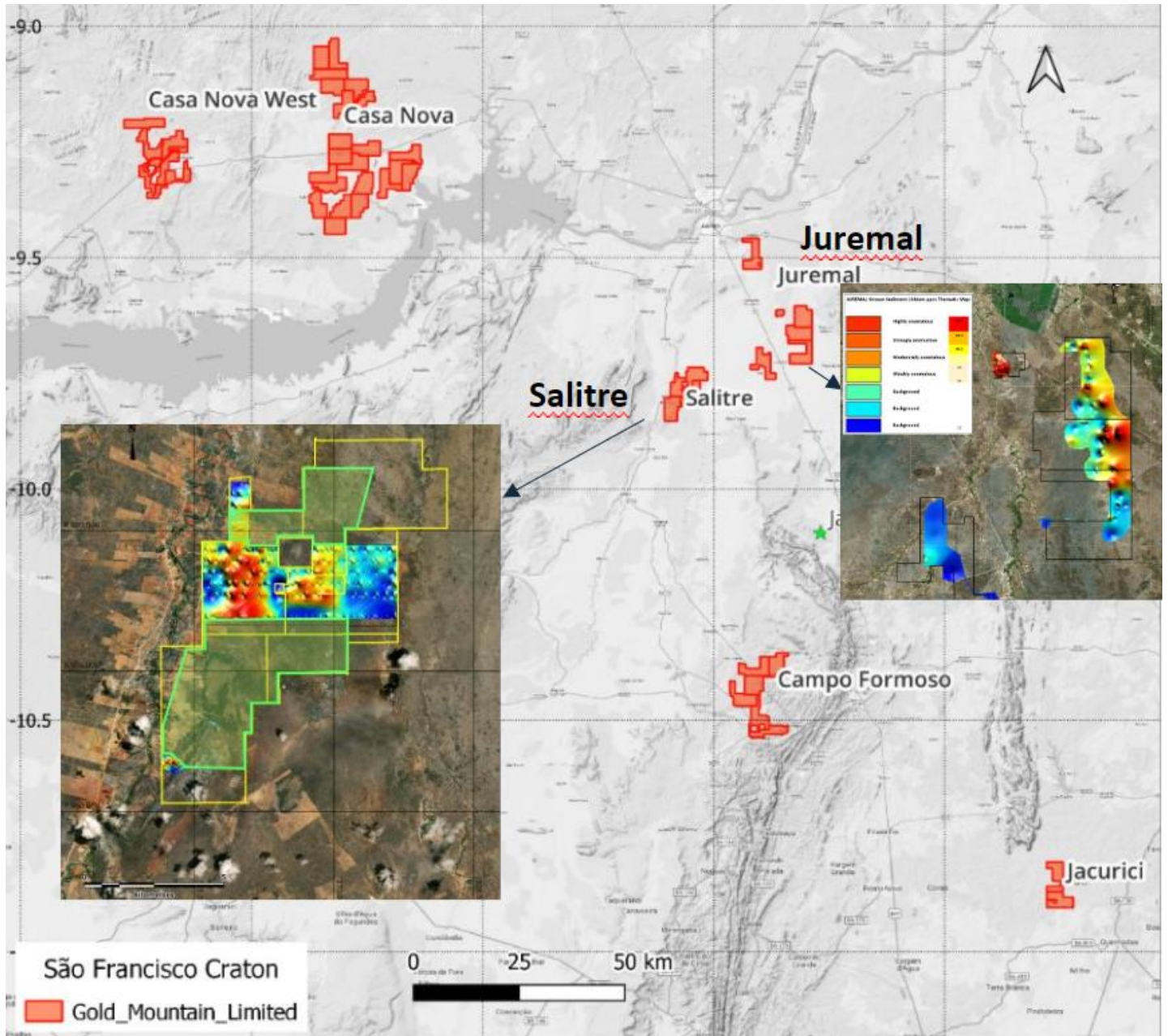


Figure 7. Thematic maps of lithium anomalies at Juremal and Salitre projects.

SERIDO BELT LITHIUM PROJECTS

Figure 8 shows the three tenements above which were granted in the current quarter.

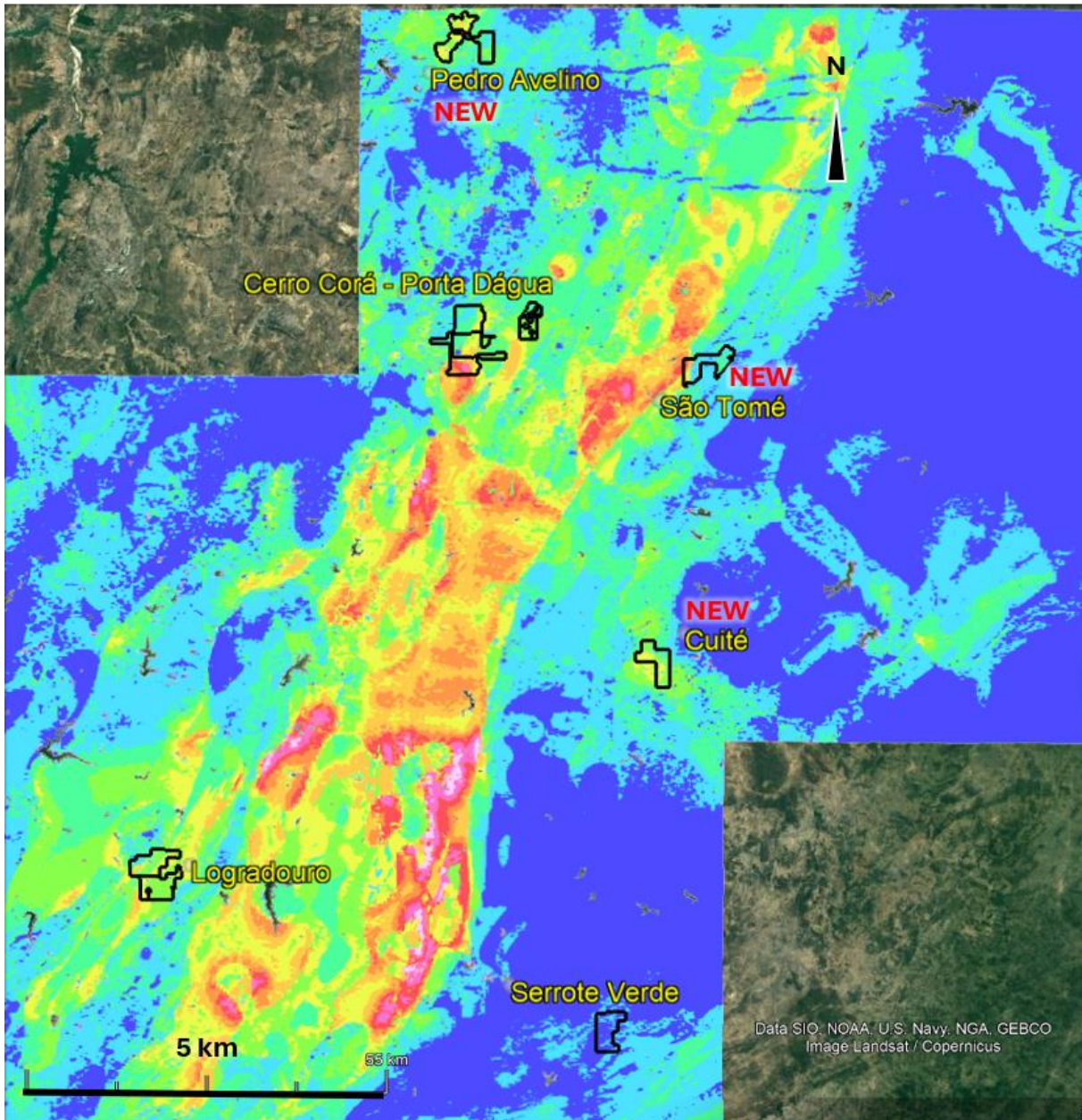


Figure 8. GMN's Serido Belt projects including 3 newly granted tenements (Pedro Avelino, São Tomé and Cuieté) on Brazilian Geological Survey (CPRM) Lithium favourability map in the Seridó Lithium Belt, state of Rio Grande do Norte, Brazil.

- **Logradouro**

No field work undertaken, planning for soil sampling in progress.

- **Cerro Cora-Porta D'Água**

Planning for soil sampling in progress with combining all prior data to assess priorities.

The Cerro Cora-Porta D'Água tenements lie within the more prospective areas of the CPRM Lithium Favourability Map, 2022.

CUSTODIA PROJECT

- **Custodia**

Results from the 60 stream sediment samples were interpreted and reported on January 19 2024. High priority catchments were identified for follow up soil sampling and drill target definition.

No additional field work was carried out as work commenced on REE and copper projects.

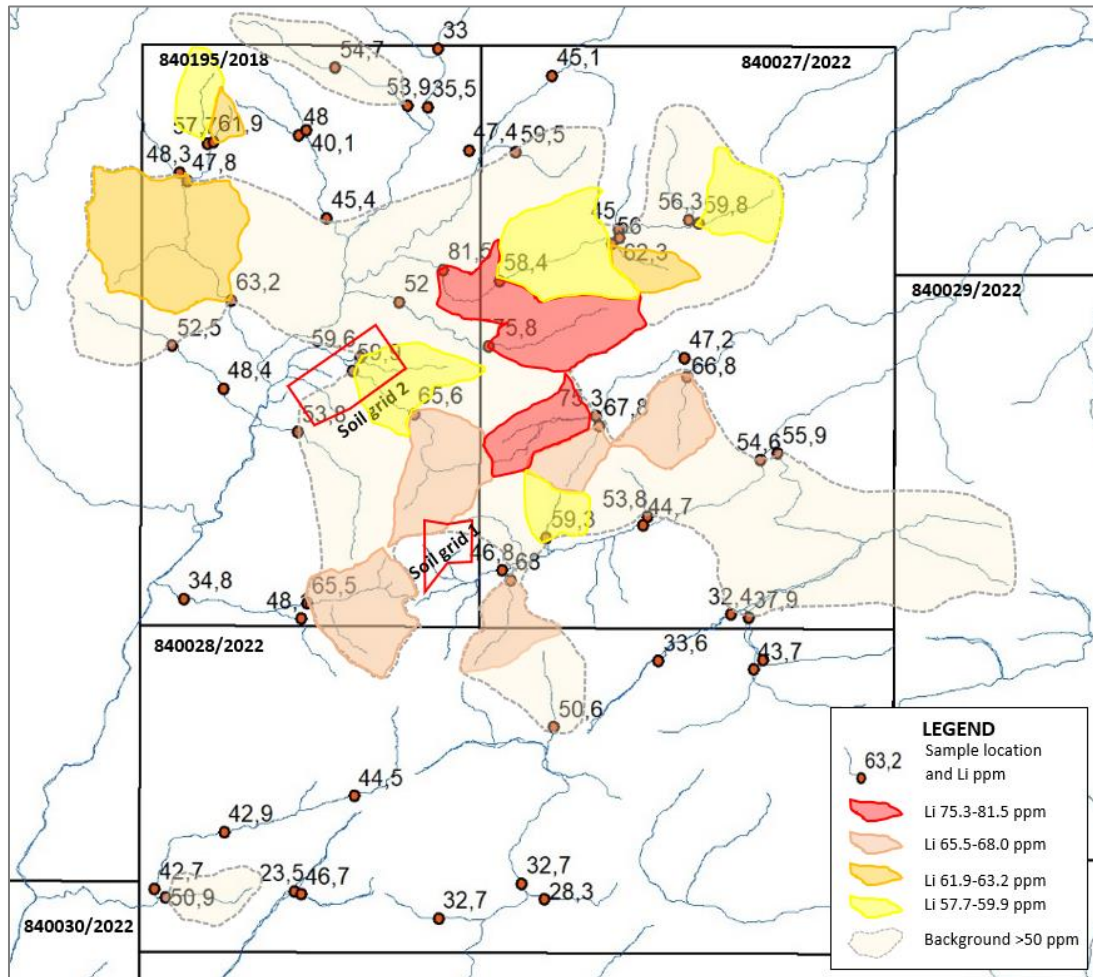


Figure 9. Custodia stream sediment sample anomalies and the locations of previous soil grids in red outlines (ASX release January 19 2024).

CAMPO FORMOSO LITHIUM AND TUNGSTEN PROJECT

- **Campo Formoso**

Results were received in April, they were interpreted and released on 16 April 2024.

A series of lithium anomalous catchments were defined and are ready for follow up soil and stream sediment sampling.

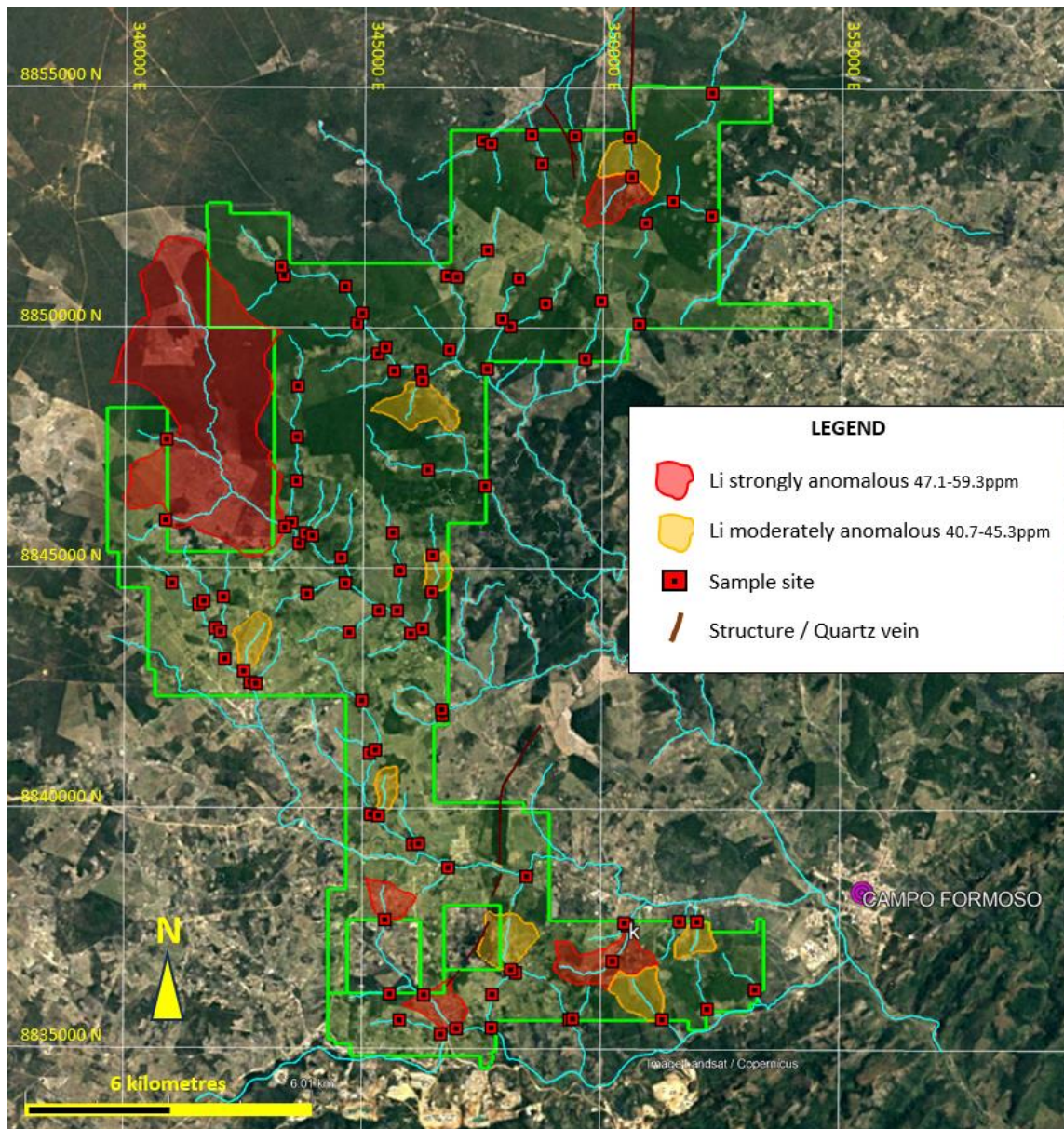


Figure 10. Distribution of stream sediment Lithium anomalies in the Campo Formoso catchment areas.

Future follow up work is planned with detailed mapping and soil sampling to define drilling targets.

SOLONOPOLE LITHIUM PROJECTS

- Solonopole

Stream sediment sampling was completed however results are still being processed by the laboratory.

IGUATU NORTH LITHIUM PROJECTS

- **Iguatu North**

Stream sediment sampling commenced however no results have been received for interpretation and release.

CAMBRIAN RIFTS COPPER AND LITHIUM PROJECTS

- **Sao Juliao**

Sampling commenced, samples waiting for processing and analysis.

- **Iguatu**

Stream sediment sampling commenced to target known pegmatites for lithium as well as iron occurrences and interpreted magnetic anomalies that may represent iron occurrences. Figure 11 shows the interpreted magnetic anomalies as well as known copper and iron occurrences (ASX release 8 April 2024).

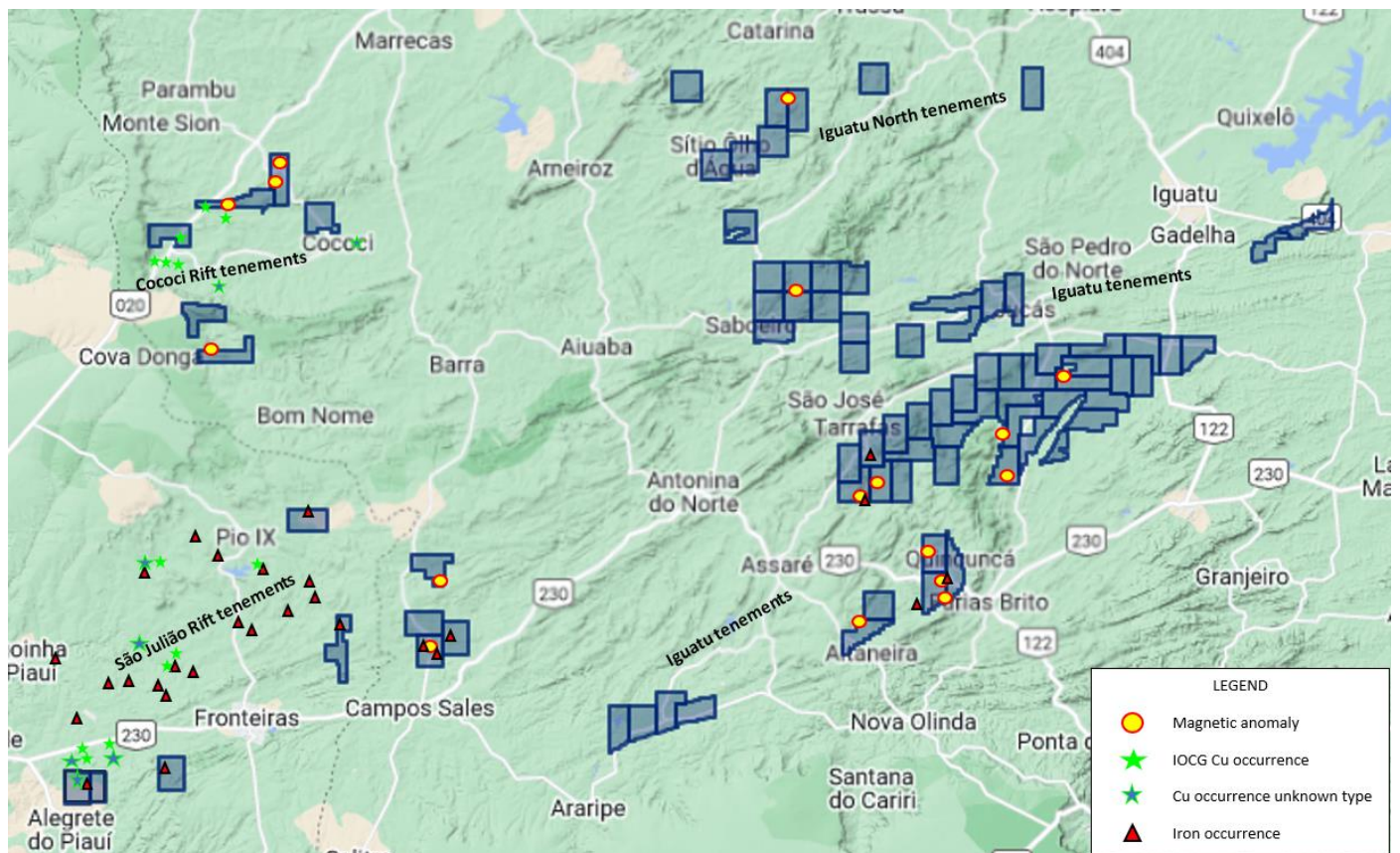


Figure 11. Known copper and iron occurrences and interpreted magnetic anomalies for follow up sampling.

SALINAS 2 LITHIUM PROJECTS

- **Salinas**

54 stream sediment samples were previously collected, processed and submitted to the laboratory. No results have been received for interpretation and release.

- **Bananal Valley**

A further 17 samples were collected to give a total of 55 stream sediment samples were collected, processed and submitted to the laboratory. No results have been received for interpretation and release.

- **Agua Boa**

46 stream sediment samples were previously collected, processed and submitted to the laboratory. No results have been received for interpretation and release.

- **Pedra Grande (Almenara)**

24 stream sediment samples were collected, processed and submitted to the laboratory. No results have been received for interpretation and release.

ARAXA NIOBIUM PROJECT

GMN applied for 388 km² of tenements in the Araxa region, located over and around known carbonatites or over interpreted carbonatites. One of the carbonatites at Araxa contains the worlds largest niobium mine and has 94% of the world's niobium reserves.

Extensive hydrothermally altered zones up to 2.5 km wide surround the carbonatites and typically these hydrothermal zones can have enrichment in elements such as Th, REE and F hosted by REE fluorocarbonates, fluorite and other fluoride phases.

Figure 12 shows the tenements in relation to mapped carbonatites shown in bright blue.

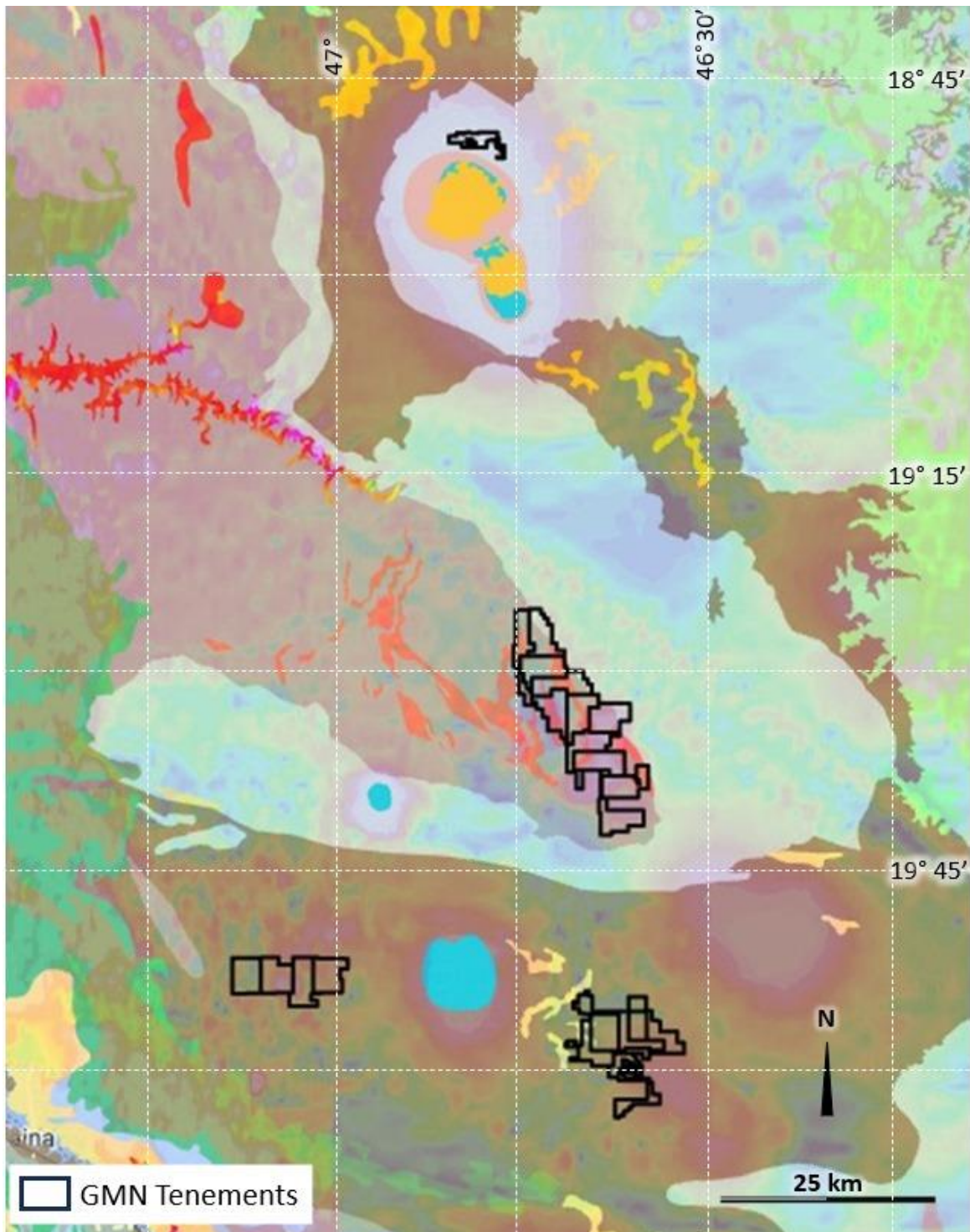


Figure 12. Mapped mid Proterozoic sedimentary sequence with the Late Cretaceous carbonatite complexes shown in bright blue. The geology is overlaid on the magnetic gradient image.

Figure 13 shows the location of the tenements in relation to magnetic anomalies similar to those that are associated with the carbonatite hosting the Araxá mine.

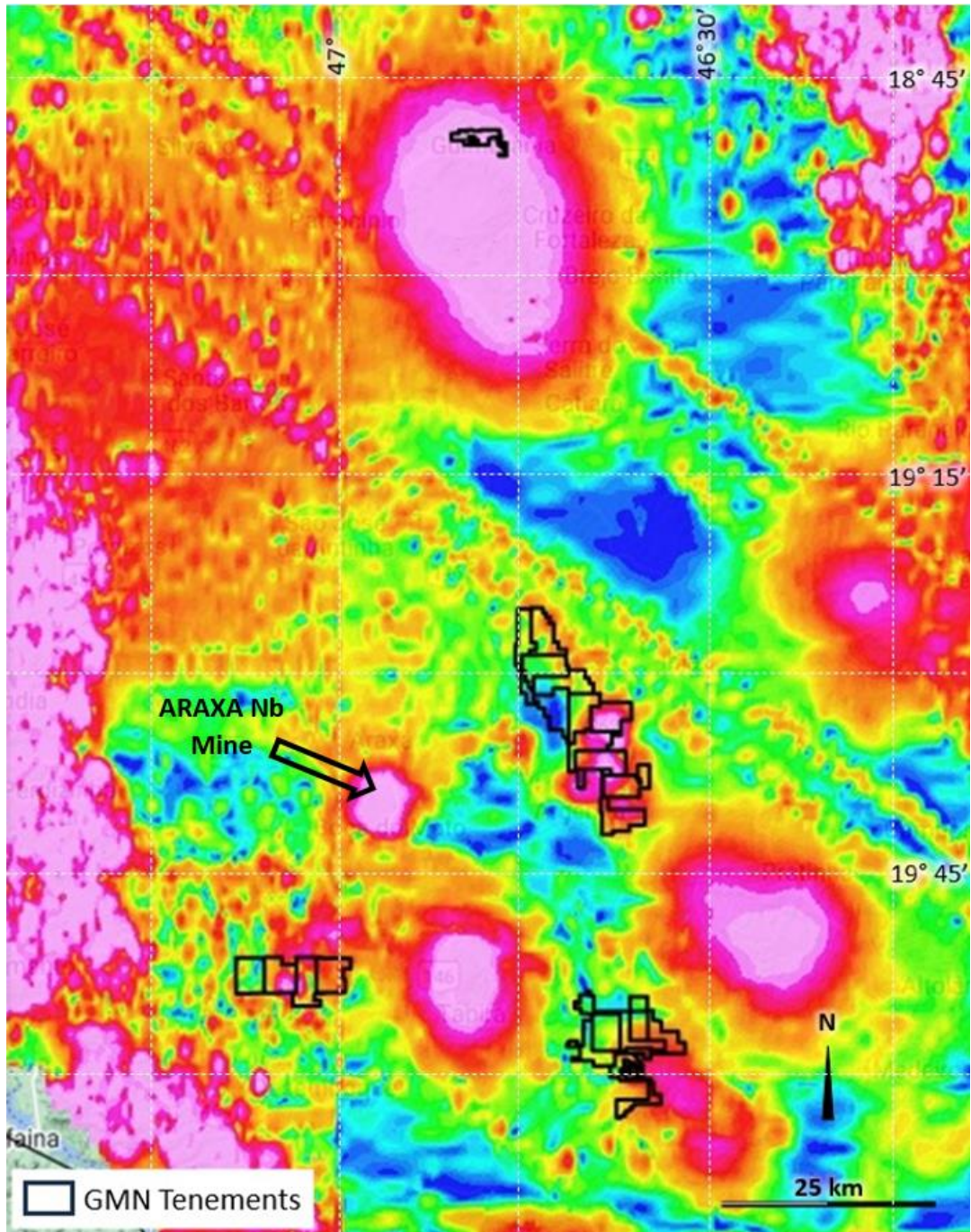


Figure 13. Tenements in relation to total magnetic gradient field. Pink ovals represent the magnetic responses to known and interpreted carbonatites

Corporate and Financial

Capital Raising

On 7 March 2024 the Company announced a successful capital raising of \$3m. \$0.4m is subject to shareholder approval at the upcoming General Meeting.

Board Changes

There have been no board changes in the quarter.

Cash Position

As at 31 March 2024, the Company had approximately \$2.161m of cash and nil debt.

References

This Quarterly Activities Report contains information reported in accordance with JORC 2012 in the following announcements released during the reporting period. The Company is not aware of any new information or data that materially affects the information included in those market announcements.

19/01/2024 Custodia Project Update

02/02/2024 Down Under Rare Earths Element Project Update

15/02/2024 Exploration commences on Clay-Hosted REE tenements

23/02/2024 GMN secures ground near world's largest Niobium producer

07/03/2024 Investor Presentation

21/03/2024 GMN identifies rocks prospective for high grade REE

08/04/2024 Critical Minerals - REE Investor Presentation

08/04/2024 Critical minerals - Copper investor presentation

02/04/2024 GMN acquires Ronaldinho Rare Earths Project

15/04/2024 Down Under Project Investor Hub Presentation

16/04/2024 Exciting new exploration results at Campo Formoso Project

- END -

This ASX announcement has been authorised by the Board of Gold Mountain Limited

For further information, please contact:

Gold Mountain Limited

David Evans

Executive Director

M: +61 421 903 222

E: info@goldmountainltd.com.au

About Us

Gold Mountain (ASX:GMN) is a mineral explorer with projects based in Brazil and Papua New Guinea (PNG). These assets, which are highly prospective for a range of metals including lithium, nickel, copper and gold, are now actively being explored.

Gold Mountain has gradually diversified its project portfolio. The Company has a 75% holding in a package of highly prospective lithium licenses located within the eastern Brazilian lithium belt, spread over parts of the Borborema Province and São Francisco craton in north-eastern Brazil.

More recently, Gold Mountain acquired a 75% interest in a package of seven highly prospective lithium exploration licenses located in the Salinas II Project area in eastern Brazil and pegged an additional three tenements in the Seridó Lithium Pegmatite Belt in NE Brazil.

In late 2023 GMN pegged 62 REE tenements adjacent to significant REE resources in eastern Brazil

Recently GMN has pegged 41 REE tenements along strike from significant REE resources in eastern Brazil

GMN has also pegged 20 Niobium-REE tenements in southeast Brazil close to the world's largest niobium mine.

In PNG, Gold Mountain is exploring the Wabag Project, which covers approximately 1036km² of highly prospective exploration ground in the Papuan Mobile belt. This project contains three major target areas, Mt Wipi, Monoyal and Sak Creek, all lying within a northwest-southeast striking structural corridor. The three prospects have significant potential to host a porphyry copper-gold-molybdenum system and, or a copper-gold skarn system. Gold Mountain's current focus is Mt Wipi, which has been subjected to several phases of exploration, and the potential to host a significant copper-gold deposit is high. The current secondary targets are, in order of priority, Monoyal and Sak Creek.

Gold Mountain has also applied for a 550km² exploration licence at Amanab, contiguous with the 498 km² Green River ELA here high grade Cu-Au and Pb-Zn float has been found and porphyry style mineralisation was identified by previous explorers. Intrusive float, considered to be equivalent to the hosts of the majority of Cu and Au deposits in mainland PNG, was also previously identified and is present in both ELA's.

Appendix A

ASX Additional Information

ASX LR 5.3.1:

Exploration and Evaluation Expenditure during the quarter was \$615k. Details of the exploration activities are set out in this report.

Expenditure	\$'000
Consultancy and Wages	288
Tenement Management, Site Services and Other including taxes	212
Geophysics and laboratory	115
Total	615

ASX LR 5.3.2:

The Company confirms there were no production or development activities during the quarter.

ASX LR 5.3.3:

Mining Tenements held/applied for at the end of the quarter and their location

Brazil

Project_Name	Tenement No	Area_ha	Status	Holders Name	GMN Ownership	Commodity	State
Salinas South	830554/2023	1995.48	GRANTED	Mars Mines Brasil Ltda	75%	LITHIUM	Minas Gerais
Salinas South	830569/2023	1972.77	GRANTED	Mars Mines Brasil Ltda	75%	LITHIUM	Minas Gerais
Salinas South	830606/2023	1971.54	GRANTED	Mars Mines Brasil Ltda	75%	LITHIUM	Minas Gerais
Salinas South	830612/2023	1971.58	GRANTED	Mars Mines Brasil Ltda	75%	LITHIUM	Minas Gerais
Salinas South	830559/2023	1985.11	GRANTED	Mars Mines Brasil Ltda	75%	LITHIUM	Minas Gerais
Salinas South	830563/2023	1975.77	GRANTED	Mars Mines Brasil Ltda	75%	LITHIUM	Minas Gerais
Salinas South	830564/2023	1985.35	GRANTED	Mars Mines Brasil Ltda	75%	LITHIUM	Minas Gerais
Salinas South	830565/2023	1973.03	GRANTED	Mars Mines Brasil Ltda	75%	LITHIUM	Minas Gerais
Salinas South	830567/2023	1982.9	GRANTED	Mars Mines Brasil Ltda	75%	LITHIUM	Minas Gerais
Salinas South	830605/2023	1976.04	GRANTED	Mars Mines Brasil Ltda	75%	LITHIUM	Minas Gerais
Salinas South	830544/2023	1986.91	GRANTED	Mars Mines Brasil Ltda	75%	LITHIUM	Minas Gerais
Salinas South	830546/2023	1981.5	GRANTED	Mars Mines Brasil Ltda	75%	LITHIUM	Minas Gerais
Salinas South	830547/2023	1981.7	GRANTED	Mars Mines Brasil Ltda	75%	LITHIUM	Minas Gerais
Salinas South	830549/2023	1496.3	GRANTED	Mars Mines Brasil Ltda	75%	LITHIUM	Minas Gerais
Salinas South	830553/2023	1969.81	GRANTED	Mars Mines Brasil Ltda	75%	LITHIUM	Minas Gerais
Salinas South	830556/2023	1980.98	GRANTED	Mars Mines Brasil Ltda	75%	LITHIUM	Minas Gerais
Salinas South	830557/2023	1982.85	GRANTED	Mars Mines Brasil Ltda	75%	LITHIUM	Minas Gerais
Salinas South	830558/2023	1980.92	GRANTED	Mars Mines Brasil Ltda	75%	LITHIUM	Minas Gerais
Salinas South	830560/2023	1985.68	GRANTED	Mars Mines Brasil Ltda	75%	LITHIUM	Minas Gerais
Salinas South	830562/2023	1975.75	GRANTED	Mars Mines Brasil Ltda	75%	LITHIUM	Minas Gerais
Salinas South	830566/2023	1985.29	GRANTED	Mars Mines Brasil Ltda	75%	LITHIUM	Minas Gerais
Salinas South	830568/2023	1931.79	GRANTED	Mars Mines Brasil Ltda	75%	LITHIUM	Minas Gerais
Salinas South	830542/2023	1987.08	GRANTED	Mars Mines Brasil Ltda	75%	LITHIUM	Minas Gerais
Salinas South	830610/2023	1976.26	GRANTED	Mars Mines Brasil Ltda	75%	LITHIUM	Minas Gerais
Salinas South	830611/2023	1808.55	GRANTED	Mars Mines Brasil Ltda	75%	LITHIUM	Minas Gerais
Salinas South	830607/2023	1984.11	GRANTED	Mars Mines Brasil Ltda	75%	LITHIUM	Minas Gerais
Salinas South	830609/2023	1983.76	GRANTED	Mars Mines Brasil Ltda	75%	LITHIUM	Minas Gerais
Coroaci	830622/2023	1987.45	GRANTED	Mars Mines Brasil Ltda	75%	LITHIUM	Minas Gerais
Coroaci	830618/2023	1985.55	GRANTED	Mars Mines Brasil Ltda	75%	LITHIUM	Minas Gerais
Coroaci	830617/2023	1987.17	GRANTED	Mars Mines Brasil Ltda	75%	LITHIUM	Minas Gerais
Coroaci	830616/2023	1973.78	GRANTED	Mars Mines Brasil Ltda	75%	LITHIUM	Minas Gerais
Coroaci (Coroaci South)	831203/2023	1983.51	GRANTED	Mars GMN Brazil Ltda	100%	LITHIUM	Minas Gerais
Coroaci (Coroaci South)	831204/2023	1980.59	GRANTED	Mars GMN Brazil Ltda	100%	LITHIUM	Minas Gerais
Casa Nova	870140/2023	1966.81	GRANTED	Mars Mines Brasil Ltda	75%	COPPER	Bahia
Casa Nova	870167/2023	1959.48	GRANTED	Mars Mines Brasil Ltda	75%	COPPER	Bahia
Casa Nova	870133/2023	1239.09	GRANTED	Mars Mines Brasil Ltda	75%	COPPER	Bahia
Casa Nova	870134/2023	1981.79	GRANTED	Mars Mines Brasil Ltda	75%	COPPER	Bahia
Casa Nova	870135/2023	1877.38	GRANTED	Mars Mines Brasil Ltda	75%	COPPER	Bahia
Casa Nova	870137/2023	1975.64	GRANTED	Mars Mines Brasil Ltda	75%	COPPER	Bahia
Casa Nova	870138/2023	1966.82	GRANTED	Mars Mines Brasil Ltda	75%	COPPER	Bahia
Casa Nova	870141/2023	1973.41	GRANTED	Mars Mines Brasil Ltda	75%	COPPER	Bahia
Casa Nova	870143/2023	1988.83	GRANTED	Mars Mines Brasil Ltda	75%	COPPER	Bahia

Casa Nova	870145/2023	1870.02	GRANTED	Mars Mines Brasil Ltda	75%	COPPER	Bahia
Casa Nova	870164/2023	1969.83	GRANTED	Mars Mines Brasil Ltda	75%	COPPER	Bahia
Casa Nova	870170/2023	1961.99	GRANTED	Mars Mines Brasil Ltda	75%	COPPER	Bahia
Casa Nova	870171/2023	1957.13	GRANTED	Mars Mines Brasil Ltda	75%	COPPER	Bahia
Casa Nova	870136/2023	1970.98	GRANTED	Mars Mines Brasil Ltda	75%	COPPER	Bahia
Casa Nova	870139/2023	1962.82	GRANTED	Mars Mines Brasil Ltda	75%	COPPER	Bahia
Casa Nova	870142/2023	1940.46	GRANTED	Mars Mines Brasil Ltda	75%	COPPER	Bahia
Casa Nova	870144/2023	1940.8	GRANTED	Mars Mines Brasil Ltda	75%	COPPER	Bahia
Casa Nova	870165/2023	1979.19	GRANTED	Mars Mines Brasil Ltda	75%	COPPER	Bahia
Casa Nova	870168/2023	1974.56	GRANTED	Mars Mines Brasil Ltda	75%	COPPER	Bahia
Casa Nova	870163/2023	1961.13	GRANTED	Mars Mines Brasil Ltda	75%	COPPER	Bahia
Casa Nova	870166/2023	1885.85	GRANTED	Mars Mines Brasil Ltda	75%	COPPER	Bahia
Casa Nova	870169/2023	1978.73	GRANTED	Mars Mines Brasil Ltda	75%	COPPER	Bahia
Casa Nova West	870186/2023	1957.6	GRANTED	Mars Mines Brasil Ltda	75%	COPPER	Bahia
Casa Nova West	870189/2023	1980.74	GRANTED	Mars Mines Brasil Ltda	75%	COPPER	Bahia
Casa Nova West	870185/2023	1962.35	GRANTED	Mars Mines Brasil Ltda	75%	COPPER	Bahia
Casa Nova West	870188/2023	1917.92	GRANTED	Mars Mines Brasil Ltda	75%	COPPER	Bahia
Casa Nova West	870187/2023	1978.74	GRANTED	Mars Mines Brasil Ltda	75%	COPPER	Bahia
Casa Nova West	870190/2023	1978.26	GRANTED	Mars Mines Brasil Ltda	75%	COPPER	Bahia
Salitre	871756/2022	509.95	GRANTED	Mars Mines Brasil Ltda	75%	PHOSPHATE	Bahia
Salitre	871753/2022	1324.24	GRANTED	Mars Mines Brasil Ltda	75%	PHOSPHATE	Bahia
Salitre	871755/2022	1695.4	GRANTED	Mars Mines Brasil Ltda	75%	PHOSPHATE	Bahia
Salitre	871754/2022	1164.1	GRANTED	Mars Mines Brasil Ltda	75%	PHOSPHATE	Bahia
Salitre (Salitre South)	872267/2021	1958.72	GRANTED	Fertfos Mineracao e FERTILIZANTES LTDA	100%	PHOSPHATE	Bahia
Campo Formoso	870210/2022	1935.9	GRANTED	MARS MINES BRASIL LTDA	75%	LITHIUM	Bahia
Campo Formoso	870211/2022	1974.25	GRANTED	MARS MINES BRASIL LTDA	75%	LITHIUM	Bahia
Campo Formoso	870212/2022	1991.88	GRANTED	TATIANA BARBOSA DE SOUZA LIBARDI	75%	LITHIUM	Bahia
Campo Formoso	870214/2022	1879.04	GRANTED	TATIANA BARBOSA DE SOUZA LIBARDI	75%	LITHIUM	Bahia
Campo Formoso	870215/2022	1511.3	GRANTED	TATIANA BARBOSA DE SOUZA LIBARDI	75%	LITHIUM	Bahia
Campo Formoso	870213/2022	1995.18	GRANTED	TATIANA BARBOSA DE SOUZA LIBARDI	75%	LITHIUM	Bahia
Icó	800853/2022	1793.68	GRANTED	Carlos Augusto Batista da Silveira	75%	LITHIUM	Ceara
Icó	800016/2023	1972.75	GRANTED	MARS MINES BRASIL LTDA	75%	COPPER	Ceara
Icó	800017/2023	1981.58	GRANTED	MARS MINES BRASIL LTDA	75%	COPPER	Ceara
Icó	800019/2023	1967.84	GRANTED	MARS MINES BRASIL LTDA	75%	COPPER	Ceara
Icó	800022/2023	1977.35	GRANTED	MARS MINES BRASIL LTDA	75%	COPPER	Ceara
Icó	800023/2023	1980.61	GRANTED	MARS MINES BRASIL LTDA	75%	COPPER	Ceara
Icó	800020/2023	1973.71	GRANTED	MARS MINES BRASIL LTDA	75%	COPPER	Ceara
Icó	800018/2023	1927.21	GRANTED	MARS MINES BRASIL LTDA	75%	COPPER	Ceara
Iguatu North	800160/2022	1999.45	GRANTED	TATIANA BARBOSA DE SOUZA LIBARDI	75%	COPPER	Ceara
Iguatu North	800161/2022	1999.49	GRANTED	TATIANA BARBOSA DE SOUZA LIBARDI		COPPER	Ceara
Iguatu North	800163/2022	1965.63	GRANTED	TATIANA BARBOSA DE SOUZA LIBARDI	75%	COPPER	Ceara
Iguatu North	800097/2022	1961.62	GRANTED	TATIANA BARBOSA DE SOUZA LIBARDI	75%	COPPER	Ceara
Iguatu North	800096/2022	1992.26	GRANTED	TATIANA BARBOSA DE SOUZA LIBARDI	75%	COPPER	Ceara
Iguatu North	800154/2022	1971.14	GRANTED	TATIANA BARBOSA DE SOUZA LIBARDI	75%	COPPER	Ceara
Iguatu North	800159/2022	1988.37	GRANTED	TATIANA BARBOSA DE SOUZA LIBARDI	75%	COPPER	Ceara

Iguatu North	800157/2022	1999.16	GRANTED	TATIANA BARBOSA DE SOUZA LIBARDI	75%	COPPER	Ceara
Iguatu North	800158/2022	1988.99	GRANTED	TATIANA BARBOSA DE SOUZA LIBARDI	75%	COPPER	Ceara
Iguatu North	800155/2022	1999.04	GRANTED	TATIANA BARBOSA DE SOUZA LIBARDI	75%	COPPER	Ceara
Iguatu North	800156/2022	1999.06	GRANTED	TATIANA BARBOSA DE SOUZA LIBARDI	75%	COPPER	Ceara
Solonópole	800416/2022	1976.35	GRANTED	TATIANA BARBOSA DE SOUZA LIBARDI	75%	LITHIUM	Ceara
Solonópole	800418/2022	1977.29	GRANTED	TATIANA BARBOSA DE SOUZA LIBARDI	75%	LITHIUM	Ceara
Solonópole	800420/2022	1973.73	GRANTED	TATIANA BARBOSA DE SOUZA LIBARDI	75%	LITHIUM	Ceara
Solonópole	800424/2022	1962.42	GRANTED	TATIANA BARBOSA DE SOUZA LIBARDI	75%	LITHIUM	Ceara
Solonópole	800426/2022	1966.24	GRANTED	TATIANA BARBOSA DE SOUZA LIBARDI	75%	LITHIUM	Ceara
Solonópole	800427/2022	1966.24	GRANTED	TATIANA BARBOSA DE SOUZA LIBARDI	75%	LITHIUM	Ceara
Solonópole	800429/2022	1989.47	GRANTED	TATIANA BARBOSA DE SOUZA LIBARDI	75%	LITHIUM	Ceara
Solonópole	800421/2022	1990.48	GRANTED	TATIANA BARBOSA DE SOUZA LIBARDI	75%	LITHIUM	Ceara
Solonópole	800422/2022	1979.94	GRANTED	TATIANA BARBOSA DE SOUZA LIBARDI	75%	LITHIUM	Ceara
Solonópole	800423/2022	1995.76	GRANTED	TATIANA BARBOSA DE SOUZA LIBARDI	75%	LITHIUM	Ceara
Solonópole	800417/2022	1976.35	GRANTED	TATIANA BARBOSA DE SOUZA LIBARDI	75%	LITHIUM	Ceara
Solonópole	800425/2022	1997.13	GRANTED	TATIANA BARBOSA DE SOUZA LIBARDI	75%	LITHIUM	Ceara
Solonópole	800428/2022	1991	GRANTED	TATIANA BARBOSA DE SOUZA LIBARDI	75%	LITHIUM	Ceara
Solonópole	800419/2022	1987.36	GRANTED	TATIANA BARBOSA DE SOUZA LIBARDI	75%	LITHIUM	Ceara
Bandarra - Sao Brás	846078/2022	1975.77	GRANTED	TATIANA BARBOSA DE SOUZA LIBARDI	75%	LITHIUM	Paraiba
Bandarra - Sao Brás	846080/2022	1987.94	GRANTED	TATIANA BARBOSA DE SOUZA LIBARDI	75%	LITHIUM	Paraiba
Bandarra - Sao Brás	846079/2022	1999.76	GRANTED	TATIANA BARBOSA DE SOUZA LIBARDI	75%	LITHIUM	Paraiba
Bandarra - Sao Brás	848004/2023	1795.17	GRANTED	MARS MINES BRASIL LTDA	75%	COPPER	Rio Grande do Norte
Bandarra - Sao Brás	848003/2023	1363.63	GRANTED	TATIANA BARBOSA DE SOUZA LIBARDI	75%	COPPER	Rio Grande do Norte
Bandarra - Sao Brás	848087/2022	1951.39	GRANTED	TATIANA BARBOSA DE SOUZA LIBARDI	75%	LITHIUM	Rio Grande do Norte
Cococi	800255/2022	1995.11	GRANTED	TATIANA BARBOSA DE SOUZA LIBARDI	75%	COPPER	Ceara
Cococi	800320/2022	1987.03	GRANTED	TATIANA BARBOSA DE SOUZA LIBARDI	75%	COPPER	Ceara
Cococi	800248/2022	1994.59	GRANTED	TATIANA BARBOSA DE SOUZA LIBARDI	75%	COPPER	Ceara
Cococi	800319/2022	1977.57	GRANTED	TATIANA BARBOSA DE SOUZA LIBARDI	75%	COPPER	Ceara

Cococi	800322/2022	1977.44	GRANTED	TATIANA BARBOSA DE SOUZA LIBARDI	75%	COPPER	Ceara
Cococi	800321/2022	1978.52	GRANTED	TATIANA BARBOSA DE SOUZA LIBARDI	75%	COPPER	Ceara
São Julião	803054/2022	1961.81	APPLICATION	TATIANA BARBOSA DE SOUZA LIBARDI	75%	COPPER	Piaui
São Julião	800317/2022	1984.82	GRANTED	TATIANA BARBOSA DE SOUZA LIBARDI	75%	COPPER	Ceara
São Julião	800249/2022	1986.16	GRANTED	TATIANA BARBOSA DE SOUZA LIBARDI	75%	COPPER	Ceara
São Julião	800250/2022	1998.32	GRANTED	TATIANA BARBOSA DE SOUZA LIBARDI	75%	COPPER	Ceara
São Julião	800318/2022	1988.27	GRANTED	TATIANA BARBOSA DE SOUZA LIBARDI	75%	COPPER	Ceara
São Julião	803053/2022	1992.05	GRANTED	TATIANA BARBOSA DE SOUZA LIBARDI	75%	COPPER	Piaui
São Julião	803036/2022	1082.49	GRANTED	TATIANA BARBOSA DE SOUZA LIBARDI	75%	COPPER	Piaui
São Julião	803055/2022	1994.55	GRANTED	TATIANA BARBOSA DE SOUZA LIBARDI	75%	COPPER	Piaui
São Julião	803035/2022	1993.94	GRANTED	TATIANA BARBOSA DE SOUZA LIBARDI	75%	COPPER	Piaui
Ararenda	800602/2022	1983.65	GRANTED	MARS MINES BRASIL LTDA	75%	COPPER	Ceara
Ararenda	800520/2022	1981.05	GRANTED	TATIANA BARBOSA DE SOUZA LIBARDI	75%	COPPER	Ceara
Ararenda	800521/2022	1344.04	GRANTED	TATIANA BARBOSA DE SOUZA LIBARDI	75%	COPPER	Ceara
Ararenda	800522/2022	1990.8	GRANTED	TATIANA BARBOSA DE SOUZA LIBARDI	75%	COPPER	Ceara
Ararenda	800524/2022	1920.38	GRANTED	TATIANA BARBOSA DE SOUZA LIBARDI	75%	COPPER	Ceara
Ararenda	800523/2022	1990.72	APPLICATION	TATIANA BARBOSA DE SOUZA LIBARDI	75%	COPPER	Ceara
Ararenda	800370/2022	1980.3	GRANTED	TATIANA BARBOSA DE SOUZA LIBARDI	75%	COPPER	Ceara
Ararenda	800371/2022	1982.69	GRANTED	TATIANA BARBOSA DE SOUZA LIBARDI	75%	COPPER	Ceara
Ararenda	800372/2022	1971.46	GRANTED	TATIANA BARBOSA DE SOUZA LIBARDI	75%	COPPER	Ceara
Ararenda	800373/2022	1989.46	GRANTED	TATIANA BARBOSA DE SOUZA LIBARDI	75%	COPPER	Ceara
Ararenda	800525/2022	1839.07	GRANTED	TATIANA BARBOSA DE SOUZA LIBARDI	75%	COPPER	Ceara
Iguatu	800074/2022	1897.47	GRANTED	TATIANA BARBOSA DE SOUZA LIBARDI	75%	COPPER	Ceara
Iguatu	800073/2022	1940.28	GRANTED	TATIANA BARBOSA DE SOUZA LIBARDI	75%	COPPER	Ceara
Iguatu	800075/2022	1861.87	GRANTED	TATIANA BARBOSA DE SOUZA LIBARDI	75%	COPPER	Ceara
Iguatu	800077/2022	1952.65	GRANTED	TATIANA BARBOSA DE SOUZA LIBARDI	75%	COPPER	Ceara
Iguatu	800078/2022	1932.34	GRANTED	TATIANA BARBOSA DE SOUZA LIBARDI	75%	COPPER	Ceara
Iguatu	800251/2022	1997.84	GRANTED	TATIANA BARBOSA DE SOUZA LIBARDI	75%	COPPER	Ceara
Iguatu	800105/2022	1988.31	GRANTED	TATIANA BARBOSA DE SOUZA LIBARDI	75%	COPPER	Ceara

Iguatu	800110/2022	1984.22	GRANTED	TATIANA BARBOSA DE SOUZA LIBARDI	75%	COPPER	Ceara
Iguatu	800106/2022	1993.09	GRANTED	TATIANA BARBOSA DE SOUZA LIBARDI	75%	COPPER	Ceara
Iguatu	800102/2022	1991.99	GRANTED	TATIANA BARBOSA DE SOUZA LIBARDI	75%	COPPER	Ceara
Iguatu	800112/2022	1928.39	GRANTED	TATIANA BARBOSA DE SOUZA LIBARDI	75%	COPPER	Ceara
Iguatu	800108/2022	1911.98	GRANTED	TATIANA BARBOSA DE SOUZA LIBARDI	75%	COPPER	Ceara
Iguatu	800109/2022	1988.41	GRANTED	TATIANA BARBOSA DE SOUZA LIBARDI	75%	COPPER	Ceara
Iguatu	800115/2022	1977.38	GRANTED	TATIANA BARBOSA DE SOUZA LIBARDI	75%	COPPER	Ceara
Iguatu	800117/2022	1990.5	GRANTED	TATIANA BARBOSA DE SOUZA LIBARDI	75%	COPPER	Ceara
Iguatu	800101/2022	1998.52	GRANTED	TATIANA BARBOSA DE SOUZA LIBARDI	75%	COPPER	Ceara
Iguatu	800107/2022	1929.28	GRANTED	TATIANA BARBOSA DE SOUZA LIBARDI	75%	COPPER	Ceara
Iguatu	800124/2022	1990.23	GRANTED	TATIANA BARBOSA DE SOUZA LIBARDI	75%	COPPER	Ceara
Iguatu	800126/2022	1990.09	GRANTED	TATIANA BARBOSA DE SOUZA LIBARDI	75%	COPPER	Ceara
Iguatu	800130/2022	1971.32	GRANTED	TATIANA BARBOSA DE SOUZA LIBARDI	75%	COPPER	Ceara
Iguatu	800132/2022	1986.13	GRANTED	TATIANA BARBOSA DE SOUZA LIBARDI	75%	COPPER	Ceara
Iguatu	800125/2022	1990.15	GRANTED	TATIANA BARBOSA DE SOUZA LIBARDI	75%	COPPER	Ceara
Iguatu	800123/2022	1990.3	GRANTED	TATIANA BARBOSA DE SOUZA LIBARDI	75%	COPPER	Ceara
Iguatu	800151/2022	1992.99	GRANTED	TATIANA BARBOSA DE SOUZA LIBARDI	75%	COPPER	Ceara
Iguatu	800147/2022	1993.21	GRANTED	TATIANA BARBOSA DE SOUZA LIBARDI	75%	COPPER	Ceara
Iguatu	800140/2022	1987.16	GRANTED	TATIANA BARBOSA DE SOUZA LIBARDI	75%	COPPER	Ceara
Iguatu	800148/2022	1993.02	GRANTED	TATIANA BARBOSA DE SOUZA LIBARDI	75%	COPPER	Ceara
Iguatu	800137/2022	1977.91	GRANTED	TATIANA BARBOSA DE SOUZA LIBARDI	75%	COPPER	Ceara
Iguatu	800139/2022	1984.97	GRANTED	TATIANA BARBOSA DE SOUZA LIBARDI	75%	COPPER	Ceara
Iguatu	800152/2022	1993.17	GRANTED	TATIANA BARBOSA DE SOUZA LIBARDI	75%	COPPER	Ceara
Iguatu	800150/2022	1993.35	GRANTED	TATIANA BARBOSA DE SOUZA LIBARDI	75%	COPPER	Ceara
Iguatu	800131/2022	1922.43	GRANTED	TATIANA BARBOSA DE SOUZA LIBARDI	75%	COPPER	Ceara
Iguatu	800128/2022	1923.6	GRANTED	TATIANA BARBOSA DE SOUZA LIBARDI	75%	COPPER	Ceara
Iguatu	800129/2022	1976.16	GRANTED	TATIANA BARBOSA DE SOUZA LIBARDI	75%	COPPER	Ceara
Iguatu	800121/2022	1990.5	GRANTED	TATIANA BARBOSA DE SOUZA LIBARDI	75%	COPPER	Ceara

Iguatu	800127/2022	1990.01	GRANTED	TATIANA BARBOSA DE SOUZA LIBARDI	75%	COPPER	Ceara
Iguatu	800145/2022	1991.66	GRANTED	TATIANA BARBOSA DE SOUZA LIBARDI	75%	COPPER	Ceara
Iguatu	800143/2022	1928.64	GRANTED	TATIANA BARBOSA DE SOUZA LIBARDI	75%	COPPER	Ceara
Iguatu	800149/2022	1988.8	GRANTED	TATIANA BARBOSA DE SOUZA LIBARDI	75%	COPPER	Ceara
Iguatu	800141/2022	1973.33	GRANTED	TATIANA BARBOSA DE SOUZA LIBARDI	75%	COPPER	Ceara
Iguatu	800144/2022	1969.5	GRANTED	TATIANA BARBOSA DE SOUZA LIBARDI	75%	COPPER	Ceara
Iguatu	800253/2022	1999.19	GRANTED	TATIANA BARBOSA DE SOUZA LIBARDI	75%	COPPER	Ceara
Iguatu	800254/2022	1998.17	GRANTED	TATIANA BARBOSA DE SOUZA LIBARDI	75%	COPPER	Ceara
Iguatu	800252/2022	1998.91	GRANTED	TATIANA BARBOSA DE SOUZA LIBARDI	75%	COPPER	Ceara
Iguatu	800114/2022	1101.53	APPLICATION	TATIANA BARBOSA DE SOUZA LIBARDI	75%	COPPER	Ceara
Iguatu	800064/2022	1641.39	GRANTED	TATIANA BARBOSA DE SOUZA LIBARDI	75%	COPPER	Ceara
Iguatu	800098/2022	1992.44	GRANTED	TATIANA BARBOSA DE SOUZA LIBARDI	75%	COPPER	Ceara
Iguatu	800103/2022	1898.89	GRANTED	TATIANA BARBOSA DE SOUZA LIBARDI	75%	COPPER	Ceara
Iguatu	800065/2022	1142.02	GRANTED	TATIANA BARBOSA DE SOUZA LIBARDI	75%	COPPER	Ceara
Iguatu	800146/2022	1950.79	APPLICATION	TATIANA BARBOSA DE SOUZA LIBARDI	75%	COPPER	Ceara
Iguatu	800178/2022	1902.8	GRANTED	TATIANA BARBOSA DE SOUZA LIBARDI	75%	COPPER	Ceara
Iguatu	800133/2022	1974.04	GRANTED	TATIANA BARBOSA DE SOUZA LIBARDI	75%	COPPER	Ceara
Iguatu	800113/2022	1999.05	GRANTED	TATIANA BARBOSA DE SOUZA LIBARDI	75%	COPPER	Ceara
Iguatu	800122/2022	1990.36	GRANTED	TATIANA BARBOSA DE SOUZA LIBARDI	75%	COPPER	Ceara
Iguatu	800116/2022	1994.08	GRANTED	TATIANA BARBOSA DE SOUZA LIBARDI	75%	COPPER	Ceara
Iguatu	800076/2022	1972.54	GRANTED	TATIANA BARBOSA DE SOUZA LIBARDI	75%	COPPER	Ceara
Iguatu	800153/2022	1985.11	GRANTED	TATIANA BARBOSA DE SOUZA LIBARDI	75%	COPPER	Ceara
Bananal Valley (Água Boa)	831703/2022	1898.71	GRANTED	TATIANA BARBOSA DE SOUZA LIBARDI	75%	LITHIUM	Minas Gerais
Bananal Valley	831700/2022	540.56	GRANTED	TATIANA BARBOSA DE SOUZA LIBARDI	75%	LITHIUM	Minas Gerais
Bananal Valley	831702/2022	1623.69	GRANTED	TATIANA BARBOSA DE SOUZA LIBARDI	75%	LITHIUM	Minas Gerais
Pedra Grande (Almenara)	831704/2022	1980.08	GRANTED	TATIANA BARBOSA DE SOUZA LIBARDI	75%	LITHIUM	Minas Gerais
Salinas	831697/2022	618.53	GRANTED	TATIANA BARBOSA DE SOUZA LIBARDI	75%	LITHIUM	Minas Gerais
Salinas	831696/2022	979.15	GRANTED	TATIANA BARBOSA DE SOUZA LIBARDI	75%	LITHIUM	Minas Gerais

Salinas	831698/2022	1455.51	GRANTED	TATIANA BARBOSA DE SOUZA LIBARDI	75%	LITHIUM	Minas Gerais
Chapada do Norte	831195/2023	1987.79	GRANTED	MARS GMN BRAZIL LTDA	100%	LITHIUM	Minas Gerais
Chapada do Norte	831196/2023	1986.32	GRANTED	MARS GMN BRAZIL LTDA	100%	LITHIUM	Minas Gerais
Chapada do Norte	831200/2023	1983.93	GRANTED	MARS GMN BRAZIL LTDA	100%	LITHIUM	Minas Gerais
Chapada do Norte	831198/2023	1979.32	APPLICATION	MARS GMN BRAZIL LTDA	100%	LITHIUM	Minas Gerais
Custódia	840195/2018	1599.49	GRANTED	MARS MINES BRASIL LTDA	75%	LITHIUM	Pernambuco
Custódia	840029/2022	1957.62	GRANTED	TATIANA BARBOSA DE SOUZA LIBARDI	75%	LITHIUM	Pernambuco
Custódia	840027/2022	1955.24	GRANTED	TATIANA BARBOSA DE SOUZA LIBARDI	75%	LITHIUM	Pernambuco
Custódia	840028/2022	1988.74	GRANTED	TATIANA BARBOSA DE SOUZA LIBARDI	75%	LITHIUM	Pernambuco
Jacurici	870217/2022	1947.17	GRANTED	TATIANA BARBOSA DE SOUZA LIBARDI	75%	LITHIUM	Bahia
Jacurici	870216/2022	1994.75	GRANTED	TATIANA BARBOSA DE SOUZA LIBARDI	75%	LITHIUM	Bahia
Juremal	870541/2022	1969.35	GRANTED	TATIANA BARBOSA DE SOUZA LIBARDI	75%	LITHIUM	Bahia
Juremal	870207/2022	1990.23	GRANTED	TATIANA BARBOSA DE SOUZA LIBARDI	75%	LITHIUM	Bahia
Juremal	870208/2022	262.39	GRANTED	TATIANA BARBOSA DE SOUZA LIBARDI	75%	LITHIUM	Bahia
Juremal	870542/2022	1999.75	GRANTED	TATIANA BARBOSA DE SOUZA LIBARDI	75%	LITHIUM	Bahia
Juremal	870543/2022	1988.98	GRANTED	TATIANA BARBOSA DE SOUZA LIBARDI	75%	LITHIUM	Bahia
Juremal (Juremal North)	871298/2022	1996.84	GRANTED	TATIANA BARBOSA DE SOUZA LIBARDI	75%	LITHIUM	Bahia
Franciscópolis	831215/2023	1987.45	GRANTED	MARS GMN BRAZIL LTDA	100%	LITHIUM	Minas Gerais
Franciscópolis	831216/2023	1987.96	GRANTED	MARS GMN BRAZIL LTDA	100%	LITHIUM	Minas Gerais
Franciscópolis	831217/2023	1986.33	GRANTED	MARS GMN BRAZIL LTDA	100%	LITHIUM	Minas Gerais
Franciscópolis	831219/2023	1984.8	GRANTED	MARS GMN BRAZIL LTDA	100%	LITHIUM	Minas Gerais
Franciscópolis	831218/2023	1985.63	GRANTED	MARS GMN BRAZIL LTDA	100%	LITHIUM	Minas Gerais
Alto Santo	801056/2023	1986.68	APPLICATION	MARS GMN BRAZIL LTDA	100%	LITHIUM	Ceara
Alto Santo	801154/2023	1985.91	APPLICATION	MARS GMN BRAZIL LTDA	100%	LITHIUM	Ceara
Alto Santo	801155/2023	1985.61	APPLICATION	MARS GMN BRAZIL LTDA	100%	LITHIUM	Ceara
Alto Santo	801156/2023	1985.82	APPLICATION	MARS GMN BRAZIL LTDA	100%	LITHIUM	Ceara
Alto Santo	801149/2023	1982.69	APPLICATION	MARS MINES BRASIL LTDA	100%	LITHIUM	Ceara
Alto Santo	801150/2023	1986.6	APPLICATION	MARS MINES BRASIL LTDA	100%	LITHIUM	Ceara
Alto Santo	801151/2023	1984.03	APPLICATION	MARS MINES BRASIL LTDA	100%	LITHIUM	Ceara
Alto Santo	801152/2023	1985.94	APPLICATION	MARS MINES BRASIL LTDA	100%	LITHIUM	Ceara
Alto Santo	801153/2023	1986.55	APPLICATION	MARS MINES BRASIL LTDA	100%	LITHIUM	Ceara
Quiterianópolis	801058/2023	1985.73	APPLICATION	MARS GMN BRAZIL LTDA	100%	LITHIUM	Ceara
Quiterianópolis	801059/2023	1982.65	APPLICATION	MARS GMN BRAZIL LTDA	100%	LITHIUM	Ceara
Quiterianópolis	801057/2023	1984.34	APPLICATION	MARS GMN BRAZIL LTDA	100%	LITHIUM	Ceara
Quiterianópolis	801061/2023	1985.14	APPLICATION	MARS GMN BRAZIL LTDA	100%	LITHIUM	Ceara
Logradouro	848133/2022	1999.78	GRANTED	TATIANA BARBOSA DE SOUZA LIBARDI	75%	LITHIUM	Rio Grande do Norte
Logradouro	848135/2022	1955.29	GRANTED	TATIANA BARBOSA DE SOUZA LIBARDI	75%	LITHIUM	Rio Grande do Norte
Cerro Corá - Porta D'água	848131/2022	1980.72	GRANTED	TATIANA BARBOSA DE SOUZA LIBARDI	75%	LITHIUM	Rio Grande do Norte
Cerro Corá - Porta D'água	848132/2022	1885.99	GRANTED	TATIANA BARBOSA DE SOUZA LIBARDI	75%	LITHIUM	Rio Grande do Norte
Cerro Corá - Porta D'água	848134/2022	1104.27	GRANTED	TATIANA BARBOSA DE SOUZA LIBARDI	75%	LITHIUM	Rio Grande do Norte

Serrote Verde	846115/2022	1998.77	APPLICATION	TATIANA BARBOSA DE SOUZA LIBARDI	75%	LITHIUM	Paraiba
São Tomé	848395/2023	1985.62	APPLICATION	MARS GMN BRAZIL LTDA	75%	LITHIUM	Rio Grande do Norte
Pedro Avelino	848396/2023	1821.57	APPLICATION	MARS GMN BRAZIL LTDA	75%	LITHIUM	Rio Grande do Norte
Cuieté	848397/2023	1984.87	APPLICATION	MARS GMN BRAZIL LTDA	75%	LITHIUM	Rio Grande do Norte
Down Under	872218/2023	1980.63	GRANTED	MARS GMN BRAZIL LTDA	100%	REE	Bahia
Down Under	872219/2023	1982.27	GRANTED	MARS GMN BRAZIL LTDA	100%	REE	Bahia
Down Under	872220/2023	1984.58	GRANTED	MARS GMN BRAZIL LTDA	100%	REE	Bahia
Down Under	872221/2023	1984.14	GRANTED	MARS GMN BRAZIL LTDA	100%	REE	Bahia
Down Under	872222/2023	1974.65	GRANTED	MARS GMN BRAZIL LTDA	100%	REE	Bahia
Down Under	872223/2023	1985.85	GRANTED	MARS GMN BRAZIL LTDA	100%	REE	Bahia
Down Under	872224/2023	1985.88	GRANTED	MARS GMN BRAZIL LTDA	100%	REE	Bahia
Down Under	872225/2023	1985.1	GRANTED	MARS GMN BRAZIL LTDA	100%	REE	Bahia
Down Under	872226/2023	1985.34	GRANTED	MARS GMN BRAZIL LTDA	100%	REE	Bahia
Down Under	872227/2023	1982.13	GRANTED	MARS GMN BRAZIL LTDA	100%	REE	Bahia
Down Under	872228/2023	1986.26	GRANTED	MARS GMN BRAZIL LTDA	100%	REE	Bahia
Down Under	872229/2023	1985.59	GRANTED	MARS GMN BRAZIL LTDA	100%	REE	Bahia
Down Under	872230/2023	1937.92	GRANTED	MARS GMN BRAZIL LTDA	100%	REE	Bahia
Down Under	872231/2023	1913.79	GRANTED	MARS GMN BRAZIL LTDA	100%	REE	Bahia
Down Under	872232/2023	1982.18	GRANTED	MARS GMN BRAZIL LTDA	100%	REE	Bahia
Down Under	872233/2023	1987.2	GRANTED	MARS GMN BRAZIL LTDA	100%	REE	Bahia
Down Under	872234/2023	1986.17	GRANTED	MARS GMN BRAZIL LTDA	100%	REE	Bahia
Down Under	872235/2023	1984.99	GRANTED	MARS GMN BRAZIL LTDA	100%	REE	Bahia
Down Under	872237/2023	1986.46	GRANTED	MARS GMN BRAZIL LTDA	100%	REE	Bahia
Down Under	872238/2023	1987.5	GRANTED	MARS GMN BRAZIL LTDA	100%	REE	Bahia
Down Under	872334/2023	1981.95	GRANTED	MARS GMN BRAZIL LTDA	100%	REE	Bahia
Down Under	872335/2023	1979.88	GRANTED	MARS GMN BRAZIL LTDA	100%	REE	Bahia
Down Under	872341/2023	1950.8	GRANTED	MARS GMN BRAZIL LTDA	100%	REE	Bahia
Down Under	872344/2023	1978.61	GRANTED	MARS GMN BRAZIL LTDA	100%	REE	Bahia
Down Under	872373/2023	1973.78	GRANTED	MARS GMN BRAZIL LTDA	100%	REE	Bahia
Down Under	872375/2023	1987.07	GRANTED	MARS GMN BRAZIL LTDA	100%	REE	Bahia
Down Under	872377/2023	1980.76	GRANTED	MARS GMN BRAZIL LTDA	100%	REE	Bahia
Down Under	872378/2023	1984.77	GRANTED	MARS GMN BRAZIL LTDA	100%	REE	Bahia
Down Under	872379/2023	1977.25	GRANTED	MARS GMN BRAZIL LTDA	100%	REE	Bahia
Down Under	872385/2023	1981.03	GRANTED	MARS GMN BRAZIL LTDA	100%	REE	Bahia
Down Under	872411/2023	1943.77	GRANTED	MARS GMN BRAZIL LTDA	100%	REE	Bahia
Down Under	872413/2023	1983.21	GRANTED	MARS GMN BRAZIL LTDA	100%	REE	Bahia
Down Under	872415/2023	1958.12	GRANTED	MARS GMN BRAZIL LTDA	100%	REE	Bahia
Down Under	872416/2023	1981.93	GRANTED	MARS GMN BRAZIL LTDA	100%	REE	Bahia
Down Under	872417/2023	1982.97	GRANTED	MARS GMN BRAZIL LTDA	100%	REE	Bahia
Down Under	872420/2023	1987.24	GRANTED	MARS GMN BRAZIL LTDA	100%	REE	Bahia
Down Under	872421/2023	1983.85	GRANTED	MARS GMN BRAZIL LTDA	100%	REE	Bahia
Down Under	872422/2023	1984.17	GRANTED	MARS GMN BRAZIL LTDA	100%	REE	Bahia
Down Under	872424/2023	1979.94	GRANTED	MARS GMN BRAZIL LTDA	100%	REE	Bahia
Down Under	872425/2023	1984.09	GRANTED	MARS GMN BRAZIL LTDA	100%	REE	Bahia
Down Under	872427/2023	1962.54	GRANTED	MARS GMN BRAZIL LTDA	100%	REE	Bahia
Down Under	872428/2023	1986.54	GRANTED	MARS GMN BRAZIL LTDA	100%	REE	Bahia
Down Under	872429/2023	1985.03	GRANTED	MARS GMN BRAZIL LTDA	100%	REE	Bahia
Down Under	872430/2023	1971.82	GRANTED	MARS GMN BRAZIL LTDA	100%	REE	Bahia
Down Under	872333/2023	1943.82	APPLICATION	MARS GMN BRAZIL LTDA	100%	REE	Bahia
Down Under	872336/2023	1684.26	APPLICATION	MARS GMN BRAZIL LTDA	100%	REE	Bahia
Down Under	872339/2023	1965.33	APPLICATION	MARS GMN BRAZIL LTDA	100%	REE	Bahia
Down Under	872340/2023	1977.1	APPLICATION	MARS GMN BRAZIL LTDA	100%	REE	Bahia

Down Under	872342/2023	1956.59	APPLICATION	MARS GMN BRAZIL LTDA	100%	REE	Bahia
Down Under	872343/2023	1979.48	APPLICATION	MARS GMN BRAZIL LTDA	100%	REE	Bahia
Down Under	872346/2023	1984.65	APPLICATION	MARS GMN BRAZIL LTDA	100%	REE	Bahia
Down Under	872350/2023	1982.4	APPLICATION	MARS GMN BRAZIL LTDA	100%	REE	Bahia
Down Under	872356/2023	1757.46	APPLICATION	MARS GMN BRAZIL LTDA	100%	REE	Bahia
Down Under	872414/2023	715.12	APPLICATION	MARS GMN BRAZIL LTDA	100%	REE	Bahia
Down Under	872418/2023	1981.59	APPLICATION	MARS GMN BRAZIL LTDA	100%	REE	Bahia
Down Under	872419/2023	1020.09	APPLICATION	MARS GMN BRAZIL LTDA	100%	REE	Bahia
Down Under	872431/2023	1535.43	APPLICATION	MARS GMN BRAZIL LTDA	100%	REE	Bahia
Down Under	870179/2024	28.84	Application	Mars GMN Brazil Ltda	100%	REE	Bahia
Down Under	870177/2024	680.26	Application	Mars GMN Brazil Ltda	100%	REE	Bahia
Down Under	870180/2024	290.56	Application	Mars GMN Brazil Ltda	100%	REE	Bahia
Down Under	870178/2024	123.32	Application	Mars GMN Brazil Ltda	100%	REE	Bahia
Down Under	870181/2024	119.61	Application	Mars GMN Brazil Ltda	100%	REE	Bahia
Ronaldinho	870478/2024	1985.85	Application	Quantum Litio Brasil Ltda	100%	REE	Bahia
Ronaldinho	870479/2024	1978.54	Application	Quantum Litio Brasil Ltda	100%	REE	Bahia
Ronaldinho	870481/2024	1984.38	Application	Quantum Litio Brasil Ltda	100%	REE	Bahia
Ronaldinho	870482/2024	1983.38	Application	Quantum Litio Brasil Ltda	100%	REE	Bahia
Ronaldinho	870483/2024	1984.56	Application	Quantum Litio Brasil Ltda	100%	REE	Bahia
Ronaldinho	870484/2024	1985.1	Application	Quantum Litio Brasil Ltda	100%	REE	Bahia
Ronaldinho	870485/2024	1963.84	Application	Quantum Litio Brasil Ltda	100%	REE	Bahia
Ronaldinho	870486/2024	1987.76	Application	Quantum Litio Brasil Ltda	100%	REE	Bahia
Ronaldinho	870487/2024	1981.92	Application	Quantum Litio Brasil Ltda	100%	REE	Bahia
Ronaldinho	870489/2024	1963.84	Application	Quantum Litio Brasil Ltda	100%	REE	Bahia
Ronaldinho	870490/2024	1987.56	Application	Quantum Litio Brasil Ltda	100%	REE	Bahia
Ronaldinho	870491/2024	1981.05	Application	Quantum Litio Brasil Ltda	100%	REE	Bahia
Ronaldinho	870492/2024	1965.79	Application	Quantum Litio Brasil Ltda	100%	REE	Bahia
Ronaldinho	870494/2024	1987.54	Application	Quantum Litio Brasil Ltda	100%	REE	Bahia
Ronaldinho	870495/2024	1970.64	Application	Quantum Litio Brasil Ltda	100%	REE	Bahia
Ronaldinho	870496/2024	1987.03	Application	Quantum Litio Brasil Ltda	100%	REE	Bahia
Ronaldinho	870497/2024	1986.22	Application	Quantum Litio Brasil Ltda	100%	REE	Bahia
Ronaldinho	870498/2024	1987.74	Application	Quantum Litio Brasil Ltda	100%	REE	Bahia
Ronaldinho	870499/2024	1986.44	Application	Quantum Litio Brasil Ltda	100%	REE	Bahia
Ronaldinho	870500/2024	1987.37	Application	Quantum Litio Brasil Ltda	100%	REE	Bahia
Ronaldinho	870501/2024	1962.71	Application	Quantum Litio Brasil Ltda	100%	REE	Bahia
Ronaldinho	870502/2024	1988.25	Application	Quantum Litio Brasil Ltda	100%	REE	Bahia
Ronaldinho	870504/2024	1985.05	Application	Quantum Litio Brasil Ltda	100%	REE	Bahia
Ronaldinho	870505/2024	1987.11	Application	Quantum Litio Brasil Ltda	100%	REE	Bahia
Ronaldinho	870506/2024	1983.77	Application	Quantum Litio Brasil Ltda	100%	REE	Bahia
Ronaldinho	870507/2024	1987.74	Application	Quantum Litio Brasil Ltda	100%	REE	Bahia
Ronaldinho	870508/2024	1984.65	Application	Quantum Litio Brasil Ltda	100%	REE	Bahia
Ronaldinho	870509/2024	1983.8	Application	Quantum Litio Brasil Ltda	100%	REE	Bahia
Ronaldinho	870510/2024	1987.45	Application	Quantum Litio Brasil Ltda	100%	REE	Bahia
Ronaldinho	870512/2024	1985.05	Application	Quantum Litio Brasil Ltda	100%	REE	Bahia
Ronaldinho	870513/2024	1979.46	Application	Quantum Litio Brasil Ltda	100%	REE	Bahia
Ronaldinho	870514/2024	1986.21	Application	Quantum Litio Brasil Ltda	100%	REE	Bahia
Ronaldinho	870515/2024	1986.58	Application	Quantum Litio Brasil Ltda	100%	REE	Bahia
Ronaldinho	870516/2024	1980.5	Application	Quantum Litio Brasil Ltda	100%	REE	Bahia
Ronaldinho	870518/2024	1982.06	Application	Quantum Litio Brasil Ltda	100%	REE	Bahia
Ronaldinho	870519/2024	1982.66	Application	Quantum Litio Brasil Ltda	100%	REE	Bahia
Ronaldinho	870525/2024	1982.14	Application	Quantum Litio Brasil Ltda	100%	REE	Bahia
Ronaldinho	870526/2024	1970.48	Application	Quantum Litio Brasil Ltda	100%	REE	Bahia
Ronaldinho	870527/2024	1066.86	Application	Quantum Litio Brasil Ltda	100%	REE	Bahia
Ronaldinho	870528/2024	1987.12	Application	Quantum Litio Brasil Ltda	100%	REE	Bahia
Ronaldinho	870529/2024	1987.41	Application	Quantum Litio Brasil Ltda	100%	REE	Bahia
Araxa	830326/2024	1986.08	Application	Mars GMN Brazil Ltda	100%	Niobium	Minas Gerais

Araxa	830327/2024	1989.02	Application	Mars GMN Brazil Ltda	100%	Niobium	Minas Gerais
Araxa	830328/2024	1979.62	Application	Mars GMN Brazil Ltda	100%	Niobium	Minas Gerais
Araxa	830329/2024	1951.68	Application	Mars GMN Brazil Ltda	100%	Niobium	Minas Gerais
Araxa	830330/2024	1986.98	Application	Mars GMN Brazil Ltda	100%	Niobium	Minas Gerais
Araxa	830331/2024	1986.33	Application	Mars GMN Brazil Ltda	100%	Niobium	Minas Gerais
Araxa	830332/2024	1985.46	Application	Mars GMN Brazil Ltda	100%	Niobium	Minas Gerais
Araxa	830333/2024	1988.98	Application	Mars GMN Brazil Ltda	100%	Niobium	Minas Gerais
Araxa	830336/2024	1989.19	Application	Mars GMN Brazil Ltda	100%	Niobium	Minas Gerais
Araxa	830334/2024	1984.15	Application	Mars GMN Brazil Ltda	100%	Niobium	Minas Gerais
Araxa	830338/2024	1988.15	Application	Mars GMN Brazil Ltda	100%	Niobium	Minas Gerais
Araxa	830339/2024	1988.63	Application	Mars GMN Brazil Ltda	100%	Niobium	Minas Gerais
Araxa	830340/2024	1986.79	Application	Mars GMN Brazil Ltda	100%	Niobium	Minas Gerais
Araxa	830341/2024	1988.91	Application	Mars GMN Brazil Ltda	100%	Niobium	Minas Gerais
Araxa	830343/2024	1988.50	Application	Mars GMN Brazil Ltda	100%	Niobium	Minas Gerais
Araxa	830377/2024	1986.41	Application	Quantum Litio Brasil Ltda	100%	Niobium	Minas Gerais
Araxa	830380/2024	1987.88	Application	Quantum Litio Brasil Ltda	100%	Niobium	Minas Gerais
Araxa	830383/2024	1975.63	Application	Quantum Litio Brasil Ltda	100%	Niobium	Minas Gerais
Araxa	830384/2024	1988.45	Application	Quantum Litio Brasil Ltda	100%	Niobium	Minas Gerais
Araxa	830402/2024	1110.69	Application	Quantum Litio Brasil Ltda	100%	Niobium	Minas Gerais

Wabag Project and Green River Project Tenements - PNG

Licence	Licence Name	Licence Holder	GMN Interest	Area	Status
EL1966	Sak Creek	Viva No. 20 Limited	70%	30 sub-blocks	Renewal Pending
EL1968	Crown Ridge	Viva No. 20 Limited	70%	30 sub-blocks	Renewal Pending
EL2306	Alakula/Kompam Station	Khor ENG Hock & Sons (PNG) /Abundance Valley (PNG) Limited	70%	48 sub-blocks	Renewal Pending
EL2563	Kompaim	Abundance Valley (PNG) Limited	100%	48 sub-blocks	Renewal Pending
EL2565	Londol	Viva Gold (PNG) Limited	100%	74 sub-blocks	Renewal Pending
EL3632	Mt. Wipi	GMN 6768 (PNG) Limited	100%	74 sub-blocks	Renewal Pending
EL2705	Kaipares	Abundance Valley (PNG) Limited	100%	5 sub-blocks	Active
ELA2786	Green River	Viva Gold (PNG) Limited	100%	146 sub-blocks	Active
ELA2779	Nelemanda	Abundance Valley (PNG) Limited	100%	30 sub-blocks	Application
ELA7808	Anamab	Viva Gold (PNG) Limited	100%	161 sub-blocks	Application

Mining Tenements acquired during the quarter and their location

The following Brazil tenements included in the table above were acquired in the quarter

Project_Name	Tenement No	Area_ha	Status	Holders Name	GMN Ownership	Commodity	State
Down Under	870179/2024	28.84	Application	Mars GMN Brazil Ltda	100%	REE	Bahia
Down Under	870177/2024	680.26	Application	Mars GMN Brazil Ltda	100%	REE	Bahia
Down Under	870180/2024	290.56	Application	Mars GMN Brazil Ltda	100%	REE	Bahia
Down Under	870178/2024	123.32	Application	Mars GMN Brazil Ltda	100%	REE	Bahia
Down Under	870181/2024	119.61	Application	Mars GMN Brazil Ltda	100%	REE	Bahia
Ronaldinho	870478/2024	1985.85	Application	Quantum Litio Brasil Ltda	100%	REE	Bahia
Ronaldinho	870479/2024	1978.54	Application	Quantum Litio Brasil Ltda	100%	REE	Bahia
Ronaldinho	870481/2024	1984.38	Application	Quantum Litio Brasil Ltda	100%	REE	Bahia
Ronaldinho	870482/2024	1983.38	Application	Quantum Litio Brasil Ltda	100%	REE	Bahia
Ronaldinho	870483/2024	1984.56	Application	Quantum Litio Brasil Ltda	100%	REE	Bahia
Ronaldinho	870484/2024	1985.1	Application	Quantum Litio Brasil Ltda	100%	REE	Bahia
Ronaldinho	870485/2024	1963.84	Application	Quantum Litio Brasil Ltda	100%	REE	Bahia

Ronaldinho	870486/2024	1987.76	Application	Quantum Litio Brasil Ltda	100%	REE	Bahia
Ronaldinho	870487/2024	1981.92	Application	Quantum Litio Brasil Ltda	100%	REE	Bahia
Ronaldinho	870489/2024	1963.84	Application	Quantum Litio Brasil Ltda	100%	REE	Bahia
Ronaldinho	870490/2024	1987.56	Application	Quantum Litio Brasil Ltda	100%	REE	Bahia
Ronaldinho	870491/2024	1981.05	Application	Quantum Litio Brasil Ltda	100%	REE	Bahia
Ronaldinho	870492/2024	1965.79	Application	Quantum Litio Brasil Ltda	100%	REE	Bahia
Ronaldinho	870494/2024	1987.54	Application	Quantum Litio Brasil Ltda	100%	REE	Bahia
Ronaldinho	870495/2024	1970.64	Application	Quantum Litio Brasil Ltda	100%	REE	Bahia
Ronaldinho	870496/2024	1987.03	Application	Quantum Litio Brasil Ltda	100%	REE	Bahia
Ronaldinho	870497/2024	1986.22	Application	Quantum Litio Brasil Ltda	100%	REE	Bahia
Ronaldinho	870498/2024	1987.74	Application	Quantum Litio Brasil Ltda	100%	REE	Bahia
Ronaldinho	870499/2024	1986.44	Application	Quantum Litio Brasil Ltda	100%	REE	Bahia
Ronaldinho	870500/2024	1987.37	Application	Quantum Litio Brasil Ltda	100%	REE	Bahia
Ronaldinho	870501/2024	1962.71	Application	Quantum Litio Brasil Ltda	100%	REE	Bahia
Ronaldinho	870502/2024	1988.25	Application	Quantum Litio Brasil Ltda	100%	REE	Bahia
Ronaldinho	870504/2024	1985.05	Application	Quantum Litio Brasil Ltda	100%	REE	Bahia
Ronaldinho	870505/2024	1987.11	Application	Quantum Litio Brasil Ltda	100%	REE	Bahia
Ronaldinho	870506/2024	1983.77	Application	Quantum Litio Brasil Ltda	100%	REE	Bahia
Ronaldinho	870507/2024	1987.74	Application	Quantum Litio Brasil Ltda	100%	REE	Bahia
Ronaldinho	870508/2024	1984.65	Application	Quantum Litio Brasil Ltda	100%	REE	Bahia
Ronaldinho	870509/2024	1983.8	Application	Quantum Litio Brasil Ltda	100%	REE	Bahia
Ronaldinho	870510/2024	1987.45	Application	Quantum Litio Brasil Ltda	100%	REE	Bahia
Ronaldinho	870512/2024	1985.05	Application	Quantum Litio Brasil Ltda	100%	REE	Bahia
Ronaldinho	870513/2024	1979.46	Application	Quantum Litio Brasil Ltda	100%	REE	Bahia
Ronaldinho	870514/2024	1986.21	Application	Quantum Litio Brasil Ltda	100%	REE	Bahia
Ronaldinho	870515/2024	1986.58	Application	Quantum Litio Brasil Ltda	100%	REE	Bahia
Ronaldinho	870516/2024	1980.5	Application	Quantum Litio Brasil Ltda	100%	REE	Bahia
Ronaldinho	870518/2024	1982.06	Application	Quantum Litio Brasil Ltda	100%	REE	Bahia
Ronaldinho	870519/2024	1982.66	Application	Quantum Litio Brasil Ltda	100%	REE	Bahia
Ronaldinho	870525/2024	1982.14	Application	Quantum Litio Brasil Ltda	100%	REE	Bahia
Ronaldinho	870526/2024	1970.48	Application	Quantum Litio Brasil Ltda	100%	REE	Bahia
Ronaldinho	870527/2024	1066.86	Application	Quantum Litio Brasil Ltda	100%	REE	Bahia
Ronaldinho	870528/2024	1987.12	Application	Quantum Litio Brasil Ltda	100%	REE	Bahia
Ronaldinho	870529/2024	1987.41	Application	Quantum Litio Brasil Ltda	100%	REE	Bahia
Araxa	830326/2024	1986.08	Application	Mars GMN Brazil Ltda	100%	Niobium	Minas Gerais
Araxa	830327/2024	1989.02	Application	Mars GMN Brazil Ltda	100%	Niobium	Minas Gerais
Araxa	830328/2024	1979.62	Application	Mars GMN Brazil Ltda	100%	Niobium	Minas Gerais
Araxa	830329/2024	1951.68	Application	Mars GMN Brazil Ltda	100%	Niobium	Minas Gerais
Araxa	830330/2024	1986.98	Application	Mars GMN Brazil Ltda	100%	Niobium	Minas Gerais
Araxa	830331/2024	1986.33	Application	Mars GMN Brazil Ltda	100%	Niobium	Minas Gerais
Araxa	830332/2024	1985.46	Application	Mars GMN Brazil Ltda	100%	Niobium	Minas Gerais
Araxa	830333/2024	1988.98	Application	Mars GMN Brazil Ltda	100%	Niobium	Minas Gerais
Araxa	830336/2024	1989.19	Application	Mars GMN Brazil Ltda	100%	Niobium	Minas Gerais
Araxa	830334/2024	1984.15	Application	Mars GMN Brazil Ltda	100%	Niobium	Minas Gerais
Araxa	830338/2024	1988.15	Application	Mars GMN Brazil Ltda	100%	Niobium	Minas Gerais
Araxa	830339/2024	1988.63	Application	Mars GMN Brazil Ltda	100%	Niobium	Minas Gerais
Araxa	830340/2024	1986.79	Application	Mars GMN Brazil Ltda	100%	Niobium	Minas Gerais
Araxa	830341/2024	1988.91	Application	Mars GMN Brazil Ltda	100%	Niobium	Minas Gerais
Araxa	830343/2024	1988.50	Application	Mars GMN Brazil Ltda	100%	Niobium	Minas Gerais
Araxa	830377/2024	1986.41	Application	Quantum Litio Brasil Ltda	100%	Niobium	Minas Gerais
Araxa	830380/2024	1987.88	Application	Quantum Litio Brasil Ltda	100%	Niobium	Minas Gerais
Araxa	830383/2024	1975.63	Application	Quantum Litio Brasil Ltda	100%	Niobium	Minas Gerais
Araxa	830384/2024	1988.45	Application	Quantum Litio Brasil Ltda	100%	Niobium	Minas Gerais
Araxa	830402/2024	1110.69	Application	Quantum Litio Brasil Ltda	100%	Niobium	Minas Gerais

Mining Tenements disposed of during the quarter and their location

Project_Name	Tenement No	Area_ha	Status	Holders Name	GMN Ownership	Commodity	State
Custódia	840030/2022	1959.05	Application	Tatiana Barbosa de Souza Libardi	75%	Lithium	Pernambuco
Custódia	840031/2022	1953.17	Application	Tatiana Barbosa de Souza Libardi	75%	Lithium	Pernambuco
Icó	800025/2023	1685.47	Application	Mars Mines Brasil Ltda	75%	Copper	Ceara
Icó	800021/2023	1506.94	Application	Mars Mines Brasil Ltda	75%	Copper	Ceara
Icó	800024/2023	1968	Application	Mars Mines Brasil Ltda	75%	Copper	Ceara

Farm-in or farm-out agreements entered into in the quarter

Nil

Beneficial percentage interests held in farm-in or farm-out agreements at the end of the quarter

Nil

ASX LR 5.3.5:

Payments to related parties of the entity and their associates: during the March 2024 quarter approximately \$178,083 was paid to Directors and associates for director and consulting fees.

Appendix 5B

Mining exploration entity or oil and gas exploration entity quarterly cash flow report

Name of entity

Gold Mountain Limited

ABN

79 115 845 942

Quarter ended ("current quarter")

31 March 2024

Consolidated statement of cash flows	Current quarter \$A'000	Year to date (12 months) \$A'000
1. Cash flows from operating activities		
1.1 Receipts from customers		
1.2 Payments for		
(a) exploration & evaluation	-	-
(b) development	-	-
(c) production	-	-
(d) staff costs	-	-
(e) administration and corporate costs	(423)	(1,226)
1.3 Dividends received (see note 3)	-	-
1.4 Interest received	1	9
1.5 Interest and other costs of finance paid	-	-
1.6 Income taxes paid	-	-
1.7 Government grants and tax incentives	-	-
1.8 Other (provide details if material)	-	-
1.9 Net cash from / (used in) operating activities	(422)	(1,217)

2. Cash flows from investing activities		
2.1 Payments to acquire or for:		
(a) entities	-	-
(b) tenements	-	-
(c) property, plant and equipment	-	(10)
(d) exploration & evaluation	(615)	(2,449)
(e) investments	-	-
(f) other non-current assets	-	-

Mining exploration entity or oil and gas exploration entity quarterly cash flow report

Consolidated statement of cash flows		Current quarter \$A'000	Year to date (12 months) \$A'000
2.2	Proceeds from the disposal of:		
	(a) entities	-	-
	(b) tenements	-	-
	(c) property, plant and equipment	-	-
	(d) investments	-	-
	(e) other non-current assets	-	-
2.3	Cash flows from loans to other entities	-	-
2.4	Dividends received (see note 3)	-	-
2.5	Other (provide details if material)	-	-
2.6	Net cash from / (used in) investing activities	(615)	(2,459)

3.	Cash flows from financing activities		
3.1	Proceeds from issues of equity securities (excluding convertible debt securities)	2,426	4,528
3.2	Proceeds from issue of convertible debt securities	-	-
3.3	Proceeds from exercise of options	-	-
3.4	Transaction costs related to issues of equity securities or convertible debt securities	-	-
3.5	Proceeds from borrowings	20	20
3.6	Repayment of borrowings	(3)	(14)
3.7	Transaction costs related to loans and borrowings	-	-
3.8	Dividends paid	-	-
3.9	Other – Repayment of lease liability	-	-
3.10	Net cash from / (used in) financing activities	2,443	4,534

4.	Net increase / (decrease) in cash and cash equivalents for the period		
4.1	Cash and cash equivalents at beginning of period	755	1,303
4.2	Net cash from / (used in) operating activities (item 1.9 above)	(422)	(1,217)
4.3	Net cash from / (used in) investing activities (item 2.6 above)	(615)	(2,459)
4.4	Net cash from / (used in) financing activities (item 3.10 above)	2,443	4,534

Mining exploration entity or oil and gas exploration entity quarterly cash flow report

Consolidated statement of cash flows		Current quarter \$A'000	Year to date (12 months) \$A'000
4.5	Effect of movement in exchange rates on cash held	-	-
4.6	Cash and cash equivalents at end of period	2,161	2,161

5.	Reconciliation of cash and cash equivalents at the end of the quarter (as shown in the consolidated statement of cash flows) to the related items in the accounts	Current quarter \$A'000	Previous quarter \$A'000
5.1	Bank balances	2,161	755
5.2	Call deposits	-	-
5.3	Bank overdrafts	-	-
5.4	Other (provide details)	-	-
5.5	Cash and cash equivalents at end of quarter (should equal item 4.6 above)	2,161	755

6.	Payments to related parties of the entity and their associates	Current quarter \$A'000
6.1	Aggregate amount of payments to related parties and their associates included in item 1	178
6.2	Aggregate amount of payments to related parties and their associates included in item 2	-

Note: if any amounts are shown in items 6.1 or 6.2, your quarterly activity report must include a description of, and an explanation for, such payments.

Mining exploration entity or oil and gas exploration entity quarterly cash flow report

7. Financing facilities	Total facility amount at quarter end \$A'000	Amount drawn at quarter end \$A'000
<i>Note: the term "facility" includes all forms of financing arrangements available to the entity. Add notes as necessary for an understanding of the sources of finance available to the entity.</i>		
7.1 Loan facilities	-	-
7.2 Credit standby arrangements	-	-
7.3 Other (please specify)	-	-
7.4 Total financing facilities	-	-
7.5 Unused financing facilities available at quarter end		-
7.6 Include in the box below a description of each facility above, including the lender, interest rate, maturity date and whether it is secured or unsecured. If any additional financing facilities have been entered into or are proposed to be entered into after quarter end, include a note providing details of those facilities as well.		

8. Estimated cash available for future operating activities	\$A'000
8.1 Net cash from / (used in) operating activities (item 1.9)	(422)
8.2 (Payments for exploration & evaluation classified as investing activities) (item 2.1(d))	(615)
8.3 Total relevant outgoings (item 8.1 + item 8.2)	(1,037)
8.4 Cash and cash equivalents at quarter end (item 4.6)	2,161
8.5 Unused finance facilities available at quarter end (item 7.5)	-
8.6 Total available funding (item 8.4 + item 8.5)	2,161
8.7 Estimated quarters of funding available (item 8.6 divided by item 8.3)	2.08
<i>Note: if the entity has reported positive relevant outgoings (ie a net cash inflow) in item 8.3, answer item 8.7 as "N/A". Otherwise, a figure for the estimated quarters of funding available must be included in item 8.7.</i>	
8.8 If item 8.7 is less than 2 quarters, please provide answers to the following questions:	
8.8.1 Does the entity expect that it will continue to have the current level of net operating cash flows for the time being and, if not, why not?	
Answer: N/A	
8.8.2 Has the entity taken any steps, or does it propose to take any steps, to raise further cash to fund its operations and, if so, what are those steps and how likely does it believe that they will be successful?	
Answer: N/A	
8.8.3 Does the entity expect to be able to continue its operations and to meet its business objectives and, if so, on what basis?	
Answer: N/A	
<i>Note: where item 8.7 is less than 2 quarters, all of questions 8.8.1, 8.8.2 and 8.8.3 above must be answered.</i>	

Compliance statement

- 1 This statement has been prepared in accordance with accounting standards and policies which comply with Listing Rule 19.11A.
- 2 This statement gives a true and fair view of the matters disclosed.

Date: 29 April 2024

Authorised by: **By the Board**.....
(Name of body or officer authorising release – see note 4)

Notes

1. This quarterly cash flow report and the accompanying activity report provide a basis for informing the market about the entity's activities for the past quarter, how they have been financed and the effect this has had on its cash position. An entity that wishes to disclose additional information over and above the minimum required under the Listing Rules is encouraged to do so.
2. If this quarterly cash flow report has been prepared in accordance with Australian Accounting Standards, the definitions in, and provisions of, *AASB 6: Exploration for and Evaluation of Mineral Resources* and *AASB 107: Statement of Cash Flows* apply to this report. If this quarterly cash flow report has been prepared in accordance with other accounting standards agreed by ASX pursuant to Listing Rule 19.11A, the corresponding equivalent standards apply to this report.
3. Dividends received may be classified either as cash flows from operating activities or cash flows from investing activities, depending on the accounting policy of the entity.
4. If this report has been authorised for release to the market by your board of directors, you can insert here: "By the board". If it has been authorised for release to the market by a committee of your board of directors, you can insert here: "By the [name of board committee – eg Audit and Risk Committee]". If it has been authorised for release to the market by a disclosure committee, you can insert here: "By the Disclosure Committee".
5. If this report has been authorised for release to the market by your board of directors and you wish to hold yourself out as complying with recommendation 4.2 of the ASX Corporate Governance Council's *Corporate Governance Principles and Recommendations*, the board should have received a declaration from its CEO and CFO that, in their opinion, the financial records of the entity have been properly maintained, that this report complies with the appropriate accounting standards and gives a true and fair view of the cash flows of the entity, and that their opinion has been formed on the basis of a sound system of risk management and internal control which is operating effectively.