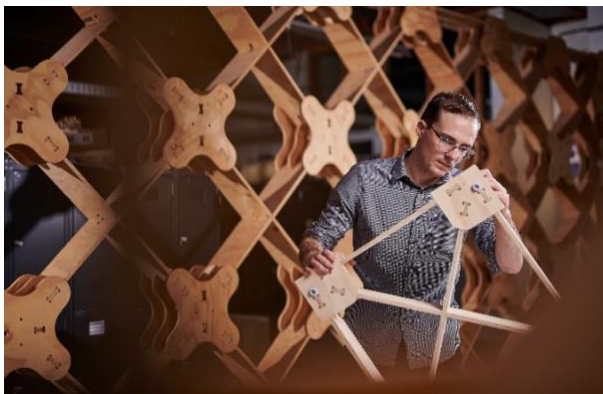
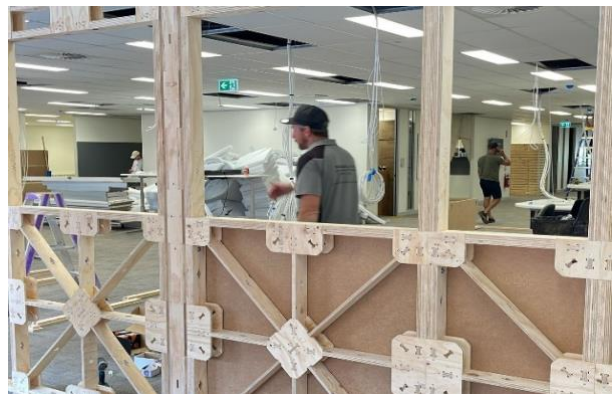


ASX Release

WOTSO doubles down on its commitment to sustainability by partnering with XFrame for truly flexible and recyclable workspaces



XFrame founder Ged Finch with his creation.



XFrame panels being installed at WOTSO Liverpool.

WOTSO has taken the concept of FlexSpace to a new level, partnering with XFrame and embracing the early-stage company's patented wall framing technology.

Unlike industry standard practice, XFrame can be installed or deconstructed in hours for reuse in other spaces.

The concept instantly appealed to Jessie Glew, Chief Executive Officer of WOTSO, Australia's home-grown ASX-listed flexible workspace operator.

"What interested me immediately about XFrame was the sustainability piece," says Glew.

"Whilst the external cladding of our spaces is upcycled or recycled as much as possible with material that we've taken from other fit-outs, or collected along the way, the actual framing used to make the internal walls wasn't recyclable.

"This is what's really cool about XFrame because immediately the system is sustainable," says Glew.

Recycling and upcycling are integral to WOTSO, which has 26 sites across Australia and New Zealand, with more on the way.

Using second-hand materials adds character and resonates with its thousands of members.

"It's something we've done since the business started in 2014," says Glew.

WOTSO PROPERTY (ASX: WOT)

A stapled security comprising:
Ostow Limited (ACN 636 701 267)
WOTSO Property Trust (ARSN 109 684 773)
Planloc Limited (ACN 062 367 560)

50 Yeo Street, Neutral Bay, NSW 2089 Australia
PO Box 612, Neutral Bay, NSW 2089 Australia
Tel +61 2 9157 4069 or 1800 203 170
invest@wotso.com
www.wotso.com



Off the back of the recent successful installation of XFrame at WOTSO's new Liverpool workspace the business plans to integrate the product throughout its fit-outs where possible.

"The nature of the FlexSpace beast is that you've got businesses expanding or contracting all the time, or you're reconfiguring your space because you need to include more co-working area or need to build more offices.

"With XFrame you can literally unclip the wall from the floor, move it and reinstate it in a new location, enabling us to be more flexible with our space in a sustainable way," says Glew.

Ged Finch, XFrame founder and Chief Technology Officer, developed the concept while studying architecture and witnessing the disturbing amount of waste generated by the construction industry.

Internal wall framing – which typically uses nailed 4x2 (90mm x 45mm) timber - is a major contributor, getting ripped up and thrown away with every refit.

"Because it's not designed to be deconstructed there's so much cost involved in recovering the materials in a high-value manner, that it's just not economical.

"That's why you see fit-outs being gutted because there's no value in those materials and quite often the materials being used don't hold up to multiple use cycles.

"Timber has some value but because it's full of nails and been cut into bits to suit the specific site builders are very reluctant to reuse 4x2 and it usually goes to landfill," says Finch.

His solution was to create the XFrame internal walling system: rectangular panels either 1.2m x 2.4m or 0.6m x 2.4m made from plywood (Australian plantation radiata pine) that is braced corner-to-corner with an X support.

There are no nails, only bolts and clips, making it easy to build and take apart.

"Part of the whole rationale of XFrame is that X is the bracing component, which means the panel is really stable and we can put different linings (walls) on because we can accurately predict where all the fixing points are," Finch says.

The look and feel gets down to the client and the material they want to use.

"As XFrame grows we hope to establish a thriving reuse market, facilitating buy-back, recovery and redeployment of the system to ensure long term waste minimisation," says Finch.

For further information please contact:

WOTSO Property on +61 2 9157 4069 or invest@wotso.com

*Authorised for lodgement by
Agata Ryan, Company Secretary*

WOTSO PROPERTY (ASX: WOT)

A stapled security comprising:
Ostow Limited (ACN 636 701 267)
WOTSO Property Trust (ARSN 109 684 773)
Planloc Limited (ACN 062 367 560)

50 Yeo Street, Neutral Bay, NSW 2089 Australia
PO Box 612, Neutral Bay, NSW 2089 Australia
Tel +61 2 9157 4069 or 1800 203 170
invest@wotso.com
www.wotso.com