

11 June 2024

## Drilling Grants received from Northern Territory Government

Litchfield Minerals Limited (“**Litchfield**” or the “**Company**”) (**ASX:LMS**), a company with a strategic emphasis on critical minerals, is pleased to announce that the Company is a successful recipient of two grants from the Geophysics and Drilling Collaborations program administered by the Northern Territory Geological Survey, totalling \$300,000.

In April 2021, the Northern Territory Government announced the Initiative to attract new exploration investment and bring forward the next generation of resource discoveries in the Northern Territory. As part of this Initiative, the Geophysics and Drilling Collaborations Program (Collaborations Program) was designed to encourage exploration drilling and geophysical acquisition projects in underexplored areas where there is a paucity of geological information.

The Company has secured funding assistance with drilling on the Patmungala, Silver King and Copper Flats targets.

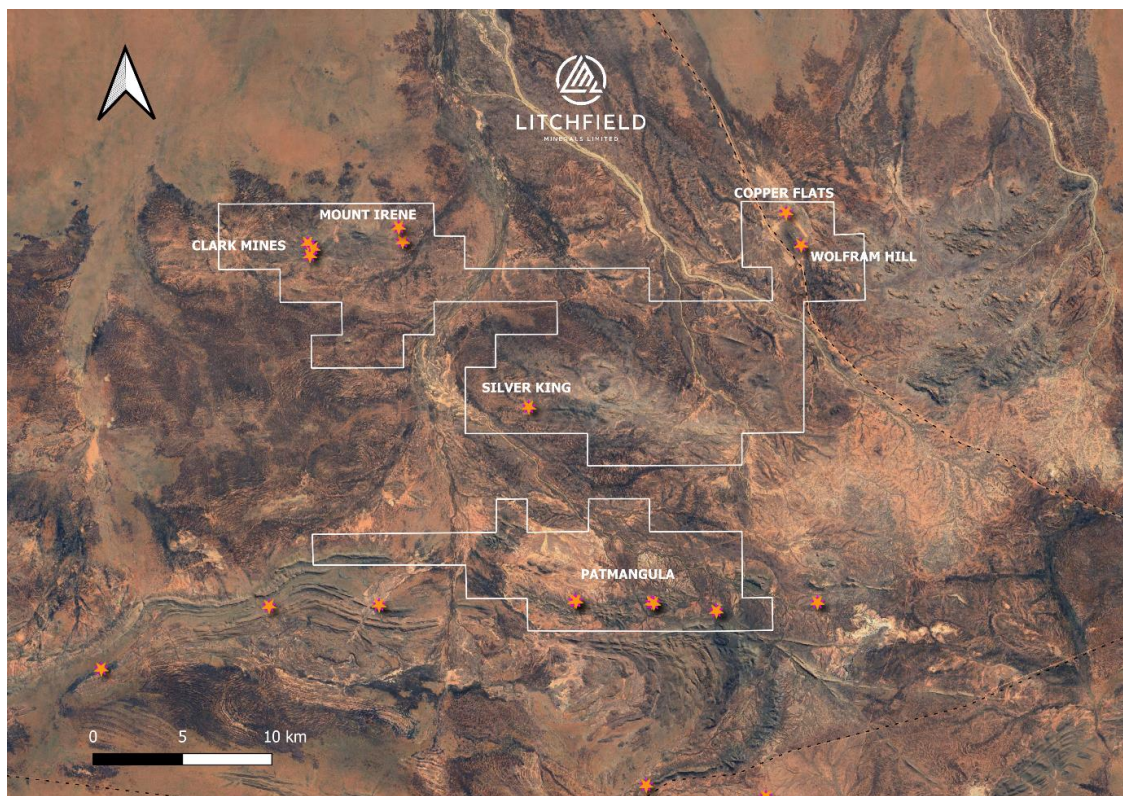


Figure 1 : Mount Doreen Project – Exploration Targets

**Matthew Pustahya, Managing Director commented on the grant funding.**

*“Litchfield Minerals has successfully secured co-funding for two grant applications focused on critical minerals exploration in both greenfield and brownfield drilling on the Mount Doreen tenement package. This funding comes from the Northern Territory Government’s Geophysics and Drilling Collaborations (GDC) program.*

*The Northern Territory Government's support highlights the exceptional quality of our projects and the proficiency of our technical team. We are heartened by their confidence in our efforts and the recognition of our work."*

### About Litchfield Minerals

Litchfield Minerals is a critical mineral explorer, primarily searching for base metals and uranium in the Northern Territory of Australia. Our mission is to be a pioneering copper and other minerals exploration company, which is committed to delivering cost-effective, innovative and sustainable exploration solutions.

We aim to unlock the full potential of copper and other mineral resources while minimising environmental impact, ensuring the longevity and affordability of this essential metal for future generations.

We are dedicated to involving cutting-edge technology, responsible practices and stakeholder collaboration drives us to continuously redefine the industry standards and deliver value to our investors, communities and the world."

The announcement has been approved by the Board of Directors.

For further information please contact:

Matthew Pustahya  
[Matthew@litchfieldminerals.com.au](mailto:Matthew@litchfieldminerals.com.au)

Jane Morgan  
[jm@janemorganmanagement.com.au](mailto:jm@janemorganmanagement.com.au)

### Follow us on:



[www.litchfieldminerals.com.au](http://www.litchfieldminerals.com.au)



[https://twitter.com/Litchfield\\_LMS](https://twitter.com/Litchfield_LMS)



<https://www.linkedin.com/company/litchfield-minerals-limited/>