



Additional Exploration Permits acquired – Selwyn Project

Green Critical Minerals Ltd ('GCM' or 'the Company') provides the following update on Red Fox Resources Pty Limited ("Red Fox"), in which GCM holds 30.4%. Red Fox have today released the attached announcement on the Company's website that it has acquired five additional Exploration Permits in the Selwyn district, complementing its pre-existing EPMs in the Selwyn area.

The URL for the Red Fox announcement is:

https://www.redfoxresources.net.au/wpcontent/uploads/2024/06/RF_20240621_Selwyn_acquisition.pdf

Authorisation

The provision of this announcement to the ASX has been authorised by the Board of directors of Green Critical Minerals Limited.

21 June 2024

Additional Exploration Permits acquired – Selwyn Project

Red Fox Resources Pty Ltd (Red Fox) has acquired five additional Exploration Permits (EPMs) in the Selwyn district, south of Cloncurry. The EPMs are in addition to Red Fox' four EPMs (100% owned) in the area.

Red Fox has secured four granted EPMs from Fetch Metals Pty Ltd in a deal involving the sale to Fetch of a partial interest in EPM 17602 Top Camp (in the Cloncurry district) held by the private company of Red Fox Chairman, Doug Young. Under the deal, Red Fox has acquired 100% interest in the four Fetch EPMs at little cost. Prior indicative approval for the transfers has been given by the Minister with the transfers expected to be completed within a month.

The EPMs acquired by Red Fox from Fetch Metals are:

Tenement ID	Granted date	Expiry date	Area (sub-blocks)	Area (sq km)
EPM 18073	19-Sep-11	18-Sep-25	18	57.4
EPM 25192	16-Dec-14	15-Dec-26	6	19.1
EPM 25454	24-Dec-14	23-Dec-26	4	12.8
EPM 25455	1-May-15	30-Apr-27	2	6.3

Red Fox has also applied for and has priority in a new EPM 28993 in its own name:

Tenement ID	Application Date	Area (sub-blocks)	Area (sq km)
EPMa 28993	12-Jan-2024	5	15.9

While the acquired ground and the new application area is not large it compliments Red Fox pre-existing EPMs in the Selwyn area and will be amalgamated into the project area. The combined area of Red Fox holdings in the Selwyn Project is now 139 sub blocks or 443km².

Importantly, the acquisition contains several priority prospects (or parts of priority prospects with part previously held by Red Fox). These priority targets (see Figure 1), Heathrow, Camel Dam (north and south) and Jasper Ridge North have had little exploration work over the previous decade.

Assessment by Red Fox of the acquired areas has commenced.

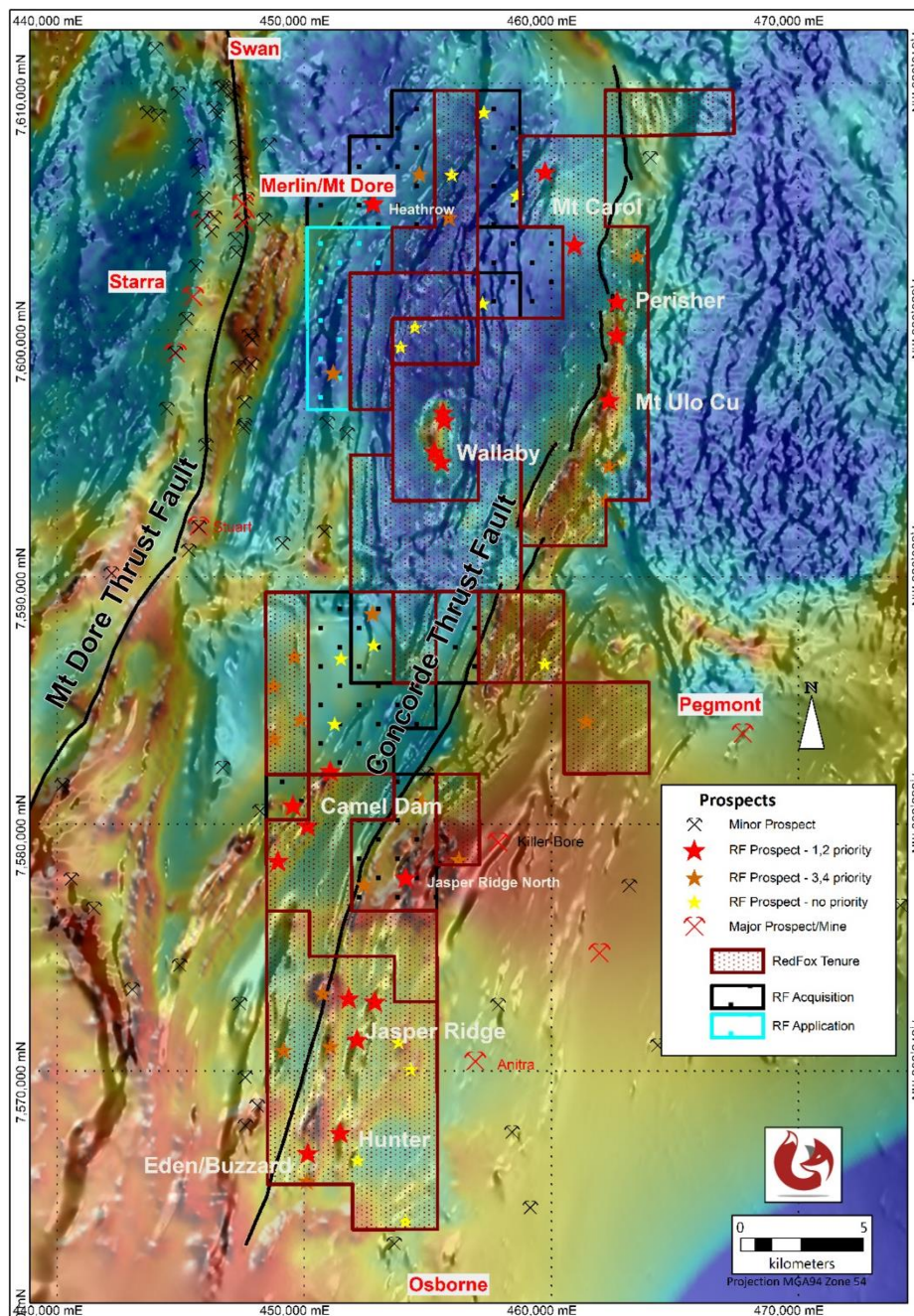


Figure 1: Red Fox Holdings - Selwyn Project showing acquired tenure (black) and new application (blue)

About Red Fox Resources

Red Fox Resources is a private mineral exploration company and project generator that was founded on a strategy to acquire **high-quality, advanced exploration targets** with the potential to rapidly add value. It is focused on exploration for large copper, gold and zinc deposits, with fifteen wholly owned, granted tenements located in the highly mineralised Georgetown, Cloncurry and Selwyn districts of north Queensland. The company holds three EPMS in the Ernest Henry area targeting IOCG style copper/gold deposits now under joint venture with Evolution Mining. Red Fox also has an additional EPM in the Cloncurry district targeting high grade gold and nine EPMS in the Selwyn district targeting IOCG and Pb-Zn-Ag deposits. Further information about the company and its projects is available at: <http://www.redfoxresources.net.au/>