



Slide Deck

Sharewise
2024.07.19

Disclaimer

Discover
Develop
Sustain

- Any material used in this presentation is only an overview and summary of certain data selected by the management of Tempest Minerals Ltd ("TEM").
- The presentation does not purport to contain all the information that a prospective investor may require in evaluating a possible investment in TEM nor does it contain all the information which would be required in a disclosure document prepared in accordance with the requirements of the Corporations Act and should not be used in isolation as a basis to invest in TEM. Recipients of this presentation must make their own independent investigations, consideration and evaluation of TEM.
- TEM recommends that potential investors consult their professional advisor/s as an investment in TEM is considered to be speculative in nature.
- Statements in this presentation are made only as of the date of this presentation unless otherwise stated and the information in this presentation remains subject to change without notice. Reliance should not be placed on information or opinions contained in this presentation.
- To the maximum extent permitted by law, TEM disclaims any responsibility to inform any recipient of this presentation on any matter that subsequently comes to its notice which may affect any of the information contained in this document and presentation and undertakes no obligation to provide any additional or updated information whether as a result of new information, future events or results or otherwise.
- No representation or warranty, express or implied, is made as to the fairness, accuracy, completeness or correctness of the information, opinions or conclusions contained in or derived from this presentation or any omission from this presentation or of any other written or oral information or opinions provided now or in the future to any person.
- To the maximum extent permitted by law, neither TEM nor, any affiliates, related bodies corporate and their respective officers, directors, employees, advisors and agents, nor any other person, accepts any liability as to or in relation to the accuracy or completeness of the information, statements, opinions or matters (express or implied) arising out of, contained in or derived from this presentation or any omission from this presentation or of any other written or oral information or opinions provided now or in the future to any person.

Competent Persons Statement

The scientific and technical information contained within this Presentation is based on, and fairly represents information prepared by Mr Don Smith, a Competent Person who is a Member of the Australian Institute of Mining and Metallurgy (Ausimm), Australian Institute of Geoscience (AIG) and Geological Society of Australia (GSA). Mr Smith is the Managing Director of Tempest Minerals Ltd and has sufficient experience that is relevant to the style of mineralisation and type of deposit under consideration and to the activity being undertaken to qualify as a Competent Person as defined in the 2012 Edition of the "Australasian Code for Reporting of Exploration Results, Mineral Resource and Ore Reserves". Mr Smith consents to the inclusion in this presentation of the matters based on his information in the form and context in which it appears.

The Board of the Company has authorised the release of this presentation to the market.

Discover
Develop
Sustain



Our Company

Investor Snapshot



Corporate

- ✓ Structure
- ✓ Funding
- ✓ Valuation

ASX Code: TEM

Share Price: \$0.008

Shares: 543m

Market Cap: \$4.3m

Cash: * \$1.0m
(@Mar31)

In April 2024, TEM sold 2 million Tolu shares for proceeds of \$1M (before costs) and raised \$194K from Rights issue.

Investments: \$0.4m

Team

- ✓ Experience
- ✓ Passion
- ✓ Investment



BRIAN MOLLER
Non-executive Chairman



DON SMITH
Managing Director



ANDREW HAYTHORPE
Non-executive Director



OWEN BURCHELL
Non-executive Director

Difference

- ✓ Sustainability
- ✓ Innovation
- ✓ Potential



Strong commitments to:

- Environment
- Heritage
- Governance



Technology Leadership:

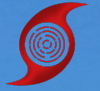
- Early ML adopter
- Paperless organisation
- Analysis automation



Growth:

- Strong outlook
- Strategic planning
- Exceptional Project Pipeline

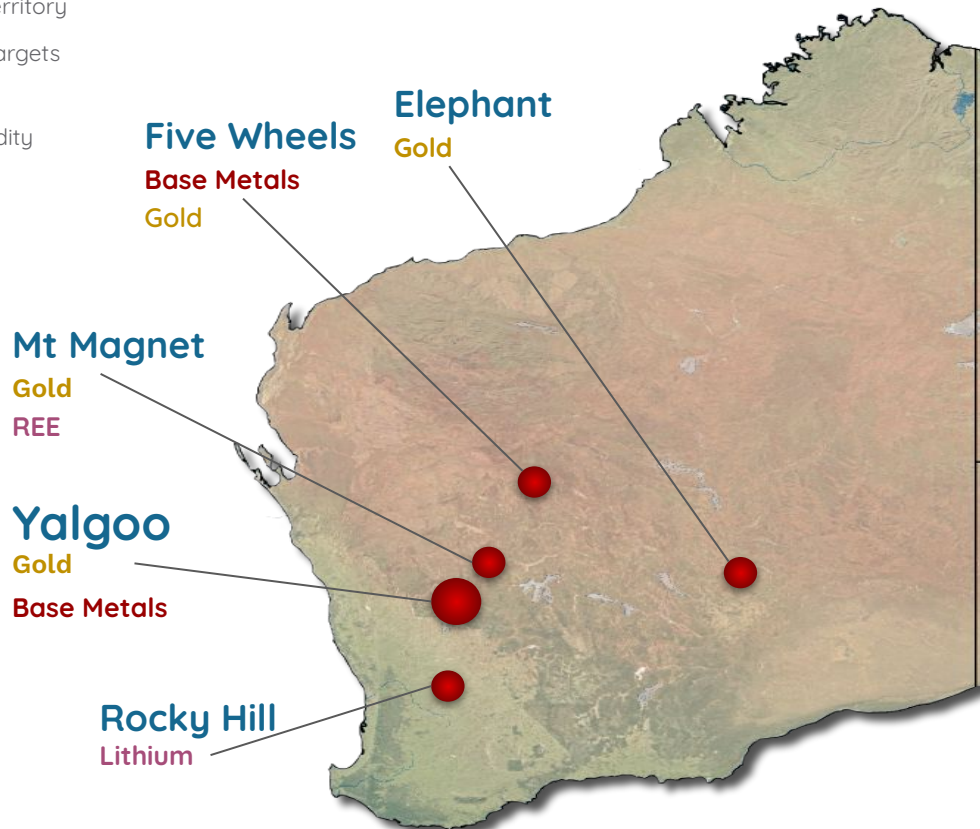
Discover
Develop
Sustain

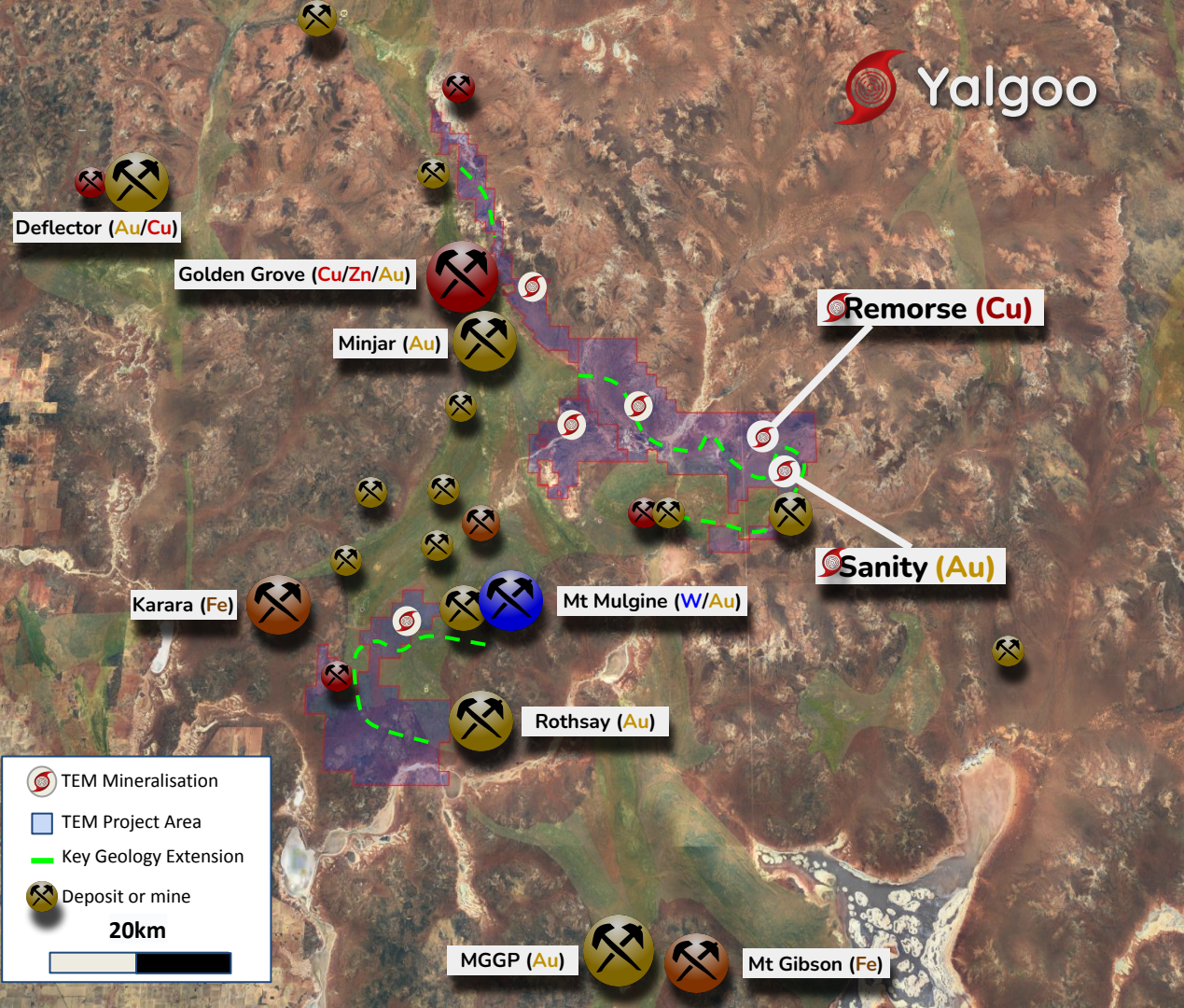


Our Projects



- ~2,000 square kilometres of highly prospective territory
- High quality targets
- Derisked multi-commodity portfolio

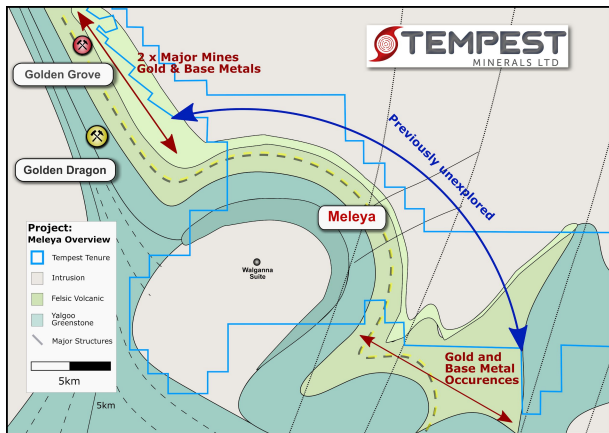




World Class. Potential.

- 4hrs from Perth
- Major infrastructure
- Adjacent world class mines
- >1,000km² (100% TEM)
- Largely unexplored
- Dozens of targets
- Multiple mineral discoveries by TEM
- **Multiple drill programs imminent**
 - Remorse (Copper)
 - Sanity (Gold)

Background



2022

- Extensive in field exploration
- Multiple drill programs
- **Multiple copper and gold mineralisation discoveries**



2020

- Conceptual geological model proven in the field
- Extension of Yalgoo belt
- **Entirely new province area**







2023

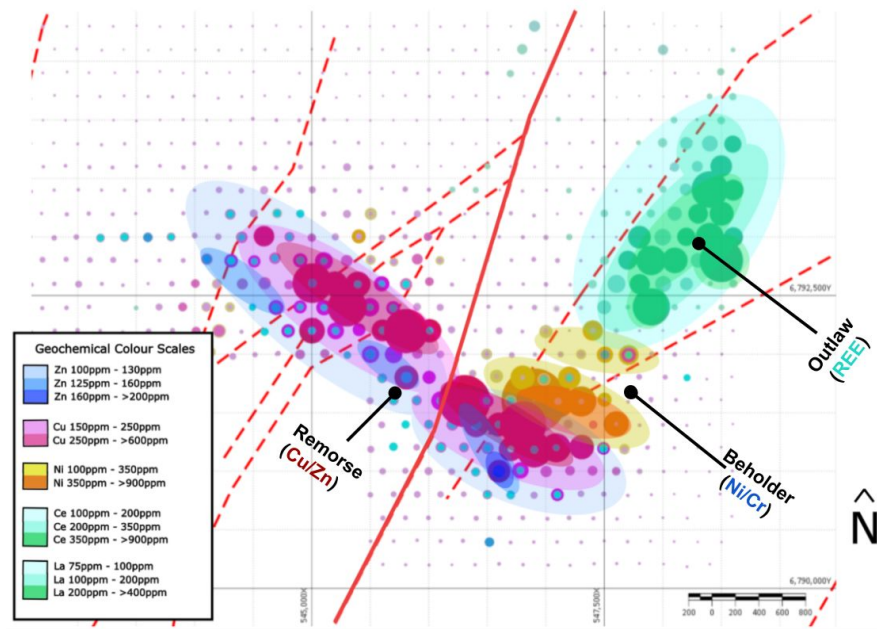
- Large geophysical survey
- Refined geological models
- **Exceptional New Copper & Gold Targets**



Drill Target: Remorse (Copper)

Highlights

-  4 kilometre base metal anomaly
-  Extremely coherent surface geochemistry
-  Matches strong geophysical (EM) anomaly
-  5,000m drilling program in July





Drill Target: Sanity (Gold)

Highlights



Rock chip results up to:

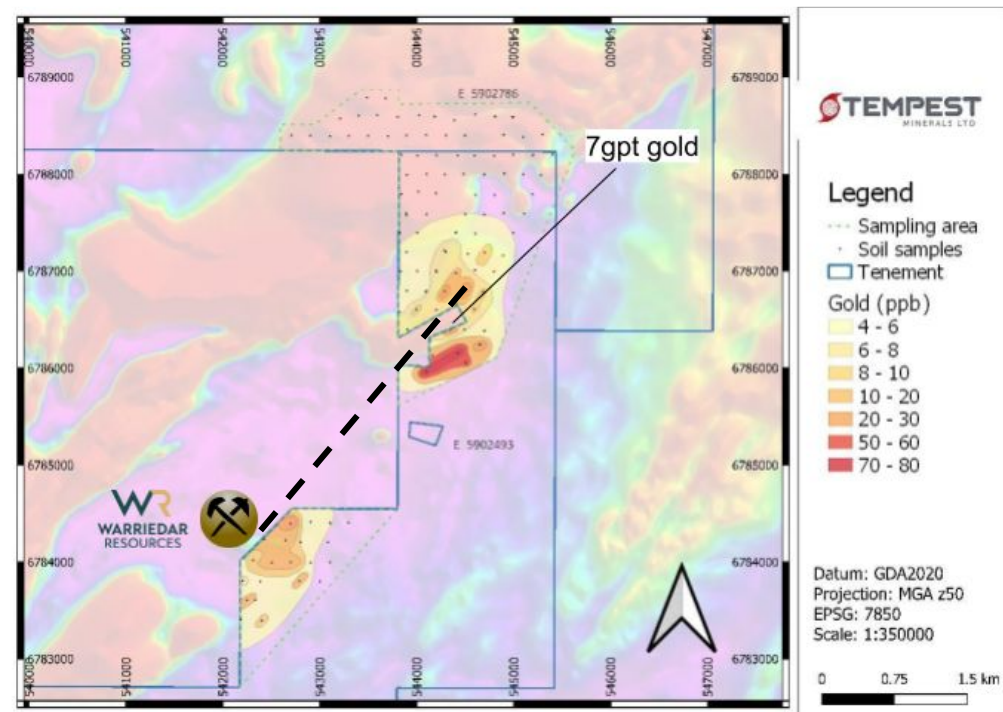
- 7gpt gold,
- 0.2% copper,
- >60% iron



Large envelope (80ppb gold)



Beside known gold deposit currently being drilled - potential extension?





Work Status

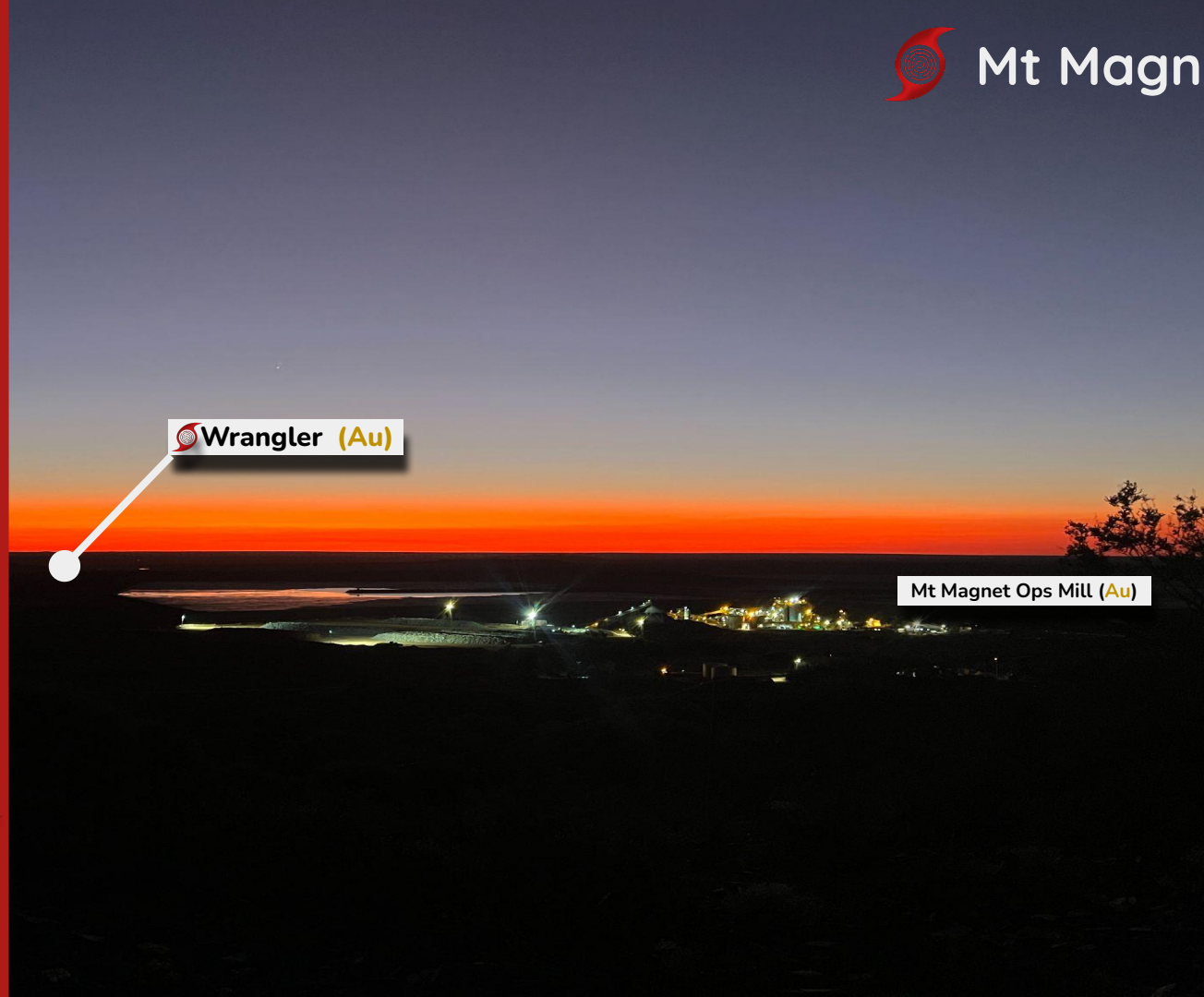
- ~5,000m RC Program
- Exceptional Copper Target
- Heritage surveys completed
- Regulatory approvals received
- Site preparation and earthworks commencing
- **Drilling commencing ASAP**



Badimia Heritage Survey Team at Remorse




Near Mine. Potential.

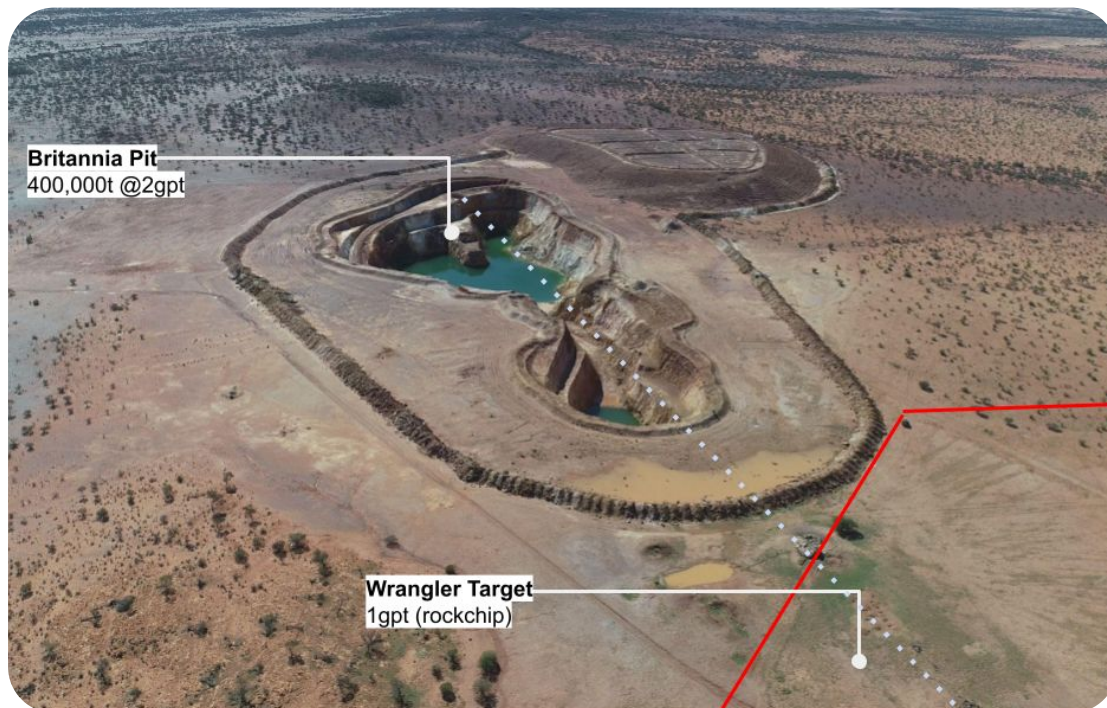
- >20km² - TEM 100%
- Operating neighbours
- 5 km from processing facility
- Low bar for development
- Recent work shows gold at surface
- Untested historic workings and mineralised outcrops along strike from open pit
- Multiple New Drill Targets
 - Wrangler



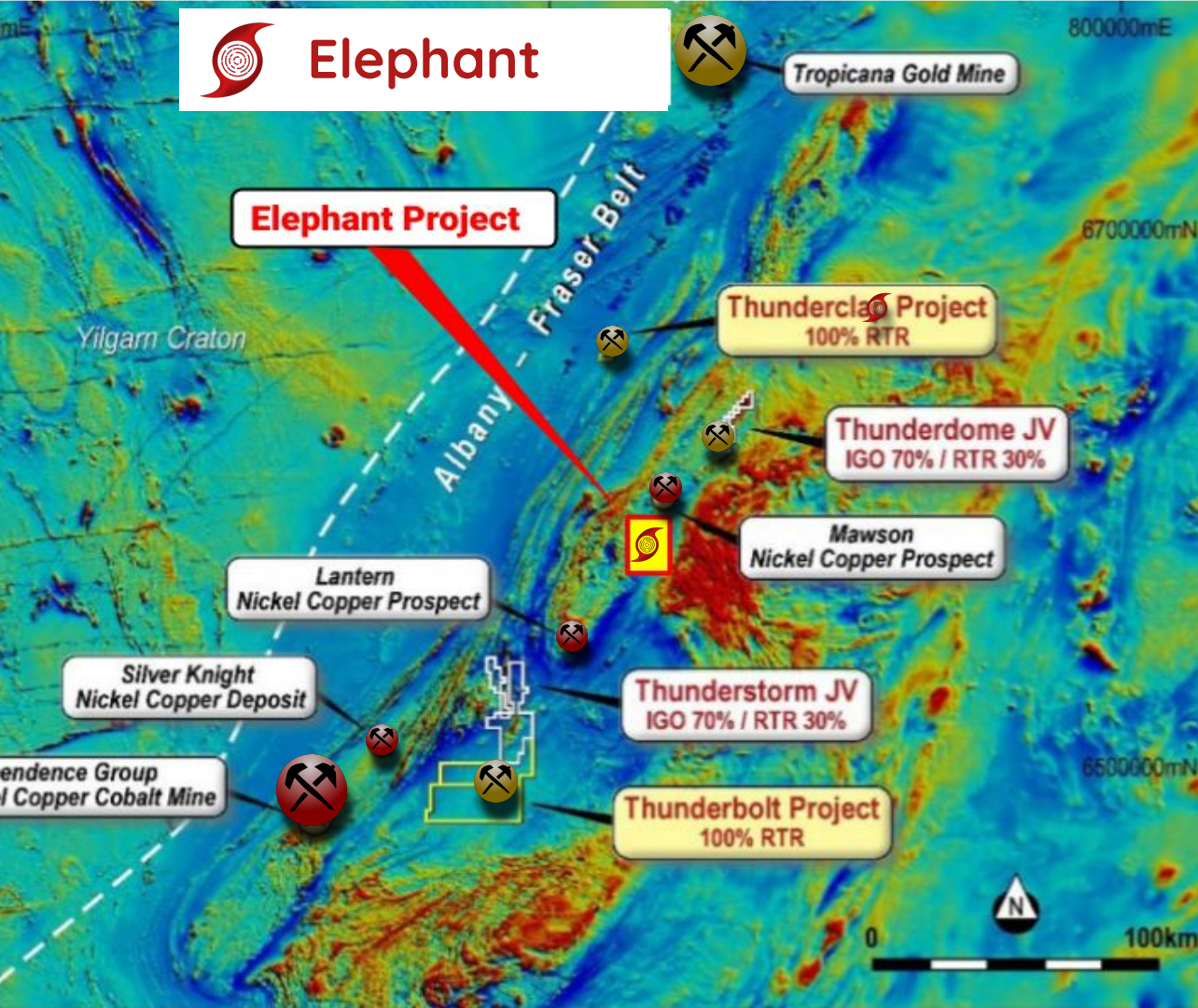


Drill Target: Wrangler

-  1gpt gold rock chips in new target area along strike from existing open pits
-  Identification of multiple new exploration targets
-  Preparation for further fieldwork and drilling in progress



[Learn more](#) 



Mammoth. Potential.

- 194km²
- Exciting Fraser Range Region
- Large geological structures
- Multi million ounce targets
- Main drill target
 - Large geophysical signature
 - 8km soil geochemistry

New Frontiers. Potential.

- 266km² 100% TEM
- 50km of strike length of high profile Earraheedy Basin
- 30km from major Copper/Zinc discoveries
- Base metals in legacy iron exploration not follow up
- **Major geophysics program in planning (government co-funded)**



Discover
Develop
Sustain



What's Next?

Upcoming News:

Yalgoo

- Drilling at Remorse

Range

- Wrangler drilling progression

Other Projects

- Ongoing fieldwork and results

Contact Us



Level 2, Suite 9,
389 Oxford Street,
Mt Hawthorn
Western Australia 6016



+61 8 9200 0435



info@tempestminerals.com



Tempestminerals.com



Visit us and:

- interact directly with TEM
- get all the latest ASX announcements
- company videos and more!

investorhub.tempestminerals.com

