

BOARD & MANAGEMENT

Glenn Davis - Chair
Michael Schwarz - MD
Gary Ferris - NED
Jarek Kopias - Co Sec

CAPITAL STRUCTURE

Ordinary Shares
Issued 122.3M

Options
Issued 3.0M

Performance rights
Issued 3.6M

CONTACT

Address:
Level 3, 170 Greenhill Rd
PARKSIDE SA 5063

Email:
info@itechminerals.com.au

Website:
www.itechminerals.com.au

Telephone:
+61 2 5850 0000



Location:
Reynolds Range,
Northern Territory

Contact:
Michael Schwarz
Managing Director
E: mschwarz@itechminerals.com.au
Ph: +61 2 5850 0000
W: www.itechminerals.com.au



NEW TENEMENT APPLICATION DOUBLES REYNOLDS RANGE EXPOSURE

HIGHLIGHTS

- iTech Mineral has applied for a new tenement at its Reynolds Range Project in the Northern Territory
- The application is adjacent to the three tenements being acquired from Prodigy Gold NL with recent rock chip samples of
 - 182g/t Au at the Sabre prospect
 - 18.2% Cu, 285g/t Ag and 1.0g/t Au reported at the Scimitar prospect
 - 8% Li₂O reported for the GMF Pegmatite
- When granted, the new application (EL 33881) will more than double iTech's ground holding in the Reynolds Range area from 375 km² to over 792 km²
- The new tenement captures the same prospective trends for gold, copper-gold-silver and lithium mineralisation

"iTech was able to apply for vacant ground adjacent to the tenements currently being acquired at Reynolds Range. The ground covers the same trends prospective for gold, copper-gold-silver and lithium mineralisation as confirmed by recent rock chip sampling results and effectively doubles iTech's tenure in the Reynolds Range area."

Managing Director - Mike Schwarz

Reynolds Range Project Background

The Reynolds Range project consists of three Exploration Licences, currently being acquired by iTech Minerals Ltd, of which Prodigy Gold NL (ASX: PRX) holds 100% of two licences and 80% of another, the 20% of this license is owned by Select Resources Pty Ltd (Select) (Figure 1). The project covers a total of 375 km² of the Aileron Province, part of the Paleoproterozoic North Australian Craton. The Project is located 90-230km NNW of Alice Springs with access available from the Stuart Highway and then the un-sealed Mt Denison road. The new tenement application EL 23888, covers 416 km² and is adjacent to the south and east of the three existing tenements.

Reynolds Range Tenement Application

In late May, Managing Director Michael Schwarz and fellow ITM Director Gary Ferris visited the Reynolds Range Project to assess the potential for copper and gold mineralisation across the project area, following a recently completed review of historical exploration. Having travelled across the full 70km of strike of the Reynolds Range tenement package, the directors were impressed by the widespread scale gold, copper-gold-silver and potential for lithium mineralisation, with outcropping pegmatites mapped at over 1.4 km long and 100m wide.

Vacant ground was identified, to the south and east of the tenement being investigated, which captured the same geological trends and prospectivity identified in the historical review and reconnaissance field trip. iTech was able to successfully lodge a tenement application over the most prospective ground in the form of EL 33881, adding an additional 416 km² to the 375 km² of tenure currently being acquired from Prodigy Gold NL.

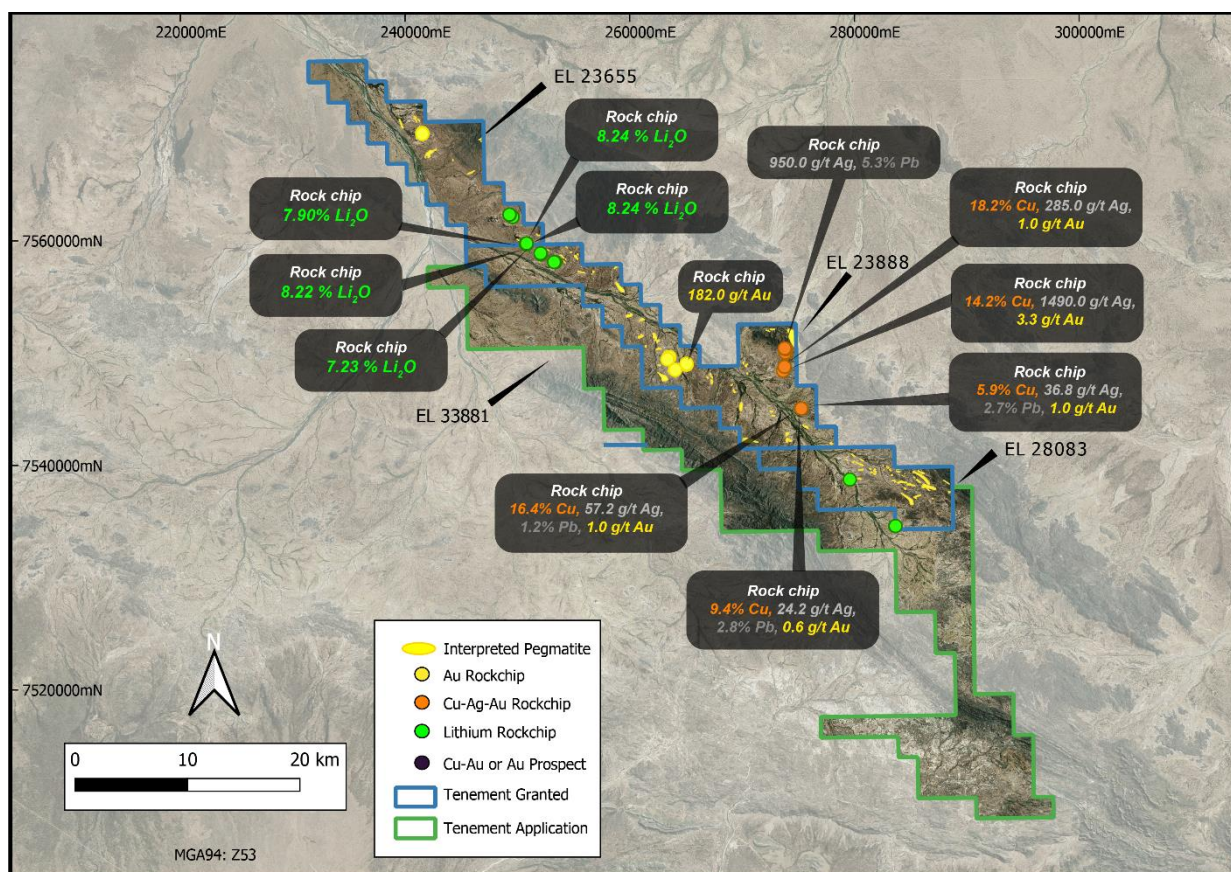


Figure 1. Location diagram of EL 23655, EL 23888 and EL 28083 and application EL 33881 with location of rock chip samples taken.

iTech's Managing Director, Mike Schwarz, is currently in the field with iTech geologists following up the latest gold, copper-gold-silver and lithium rock chip results, visiting newly identified prospects and assessing the potential of the new tenement application. Additional rock chip results from this program are expected to be available in the next 5-6 weeks.

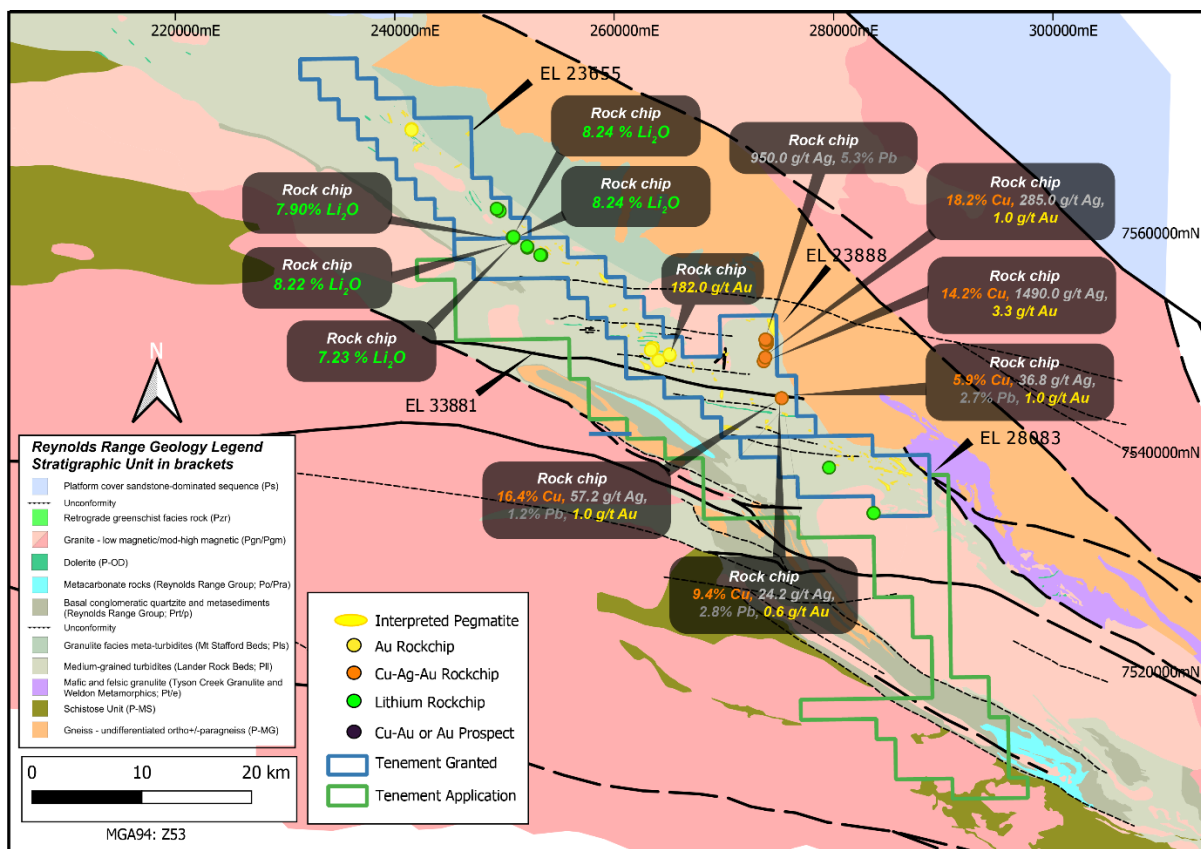


Figure 2. Location diagram of EL 23655, EL 23888 and EL 28083 and application EL 33881 with significant lithium, gold and copper rock chips on regional geology.

For further information please contact the authorising officer Michael Schwarz:

iTech Minerals

Michael Schwarz, FAusIMM, AIG

Managing Director

E: mschwarz@itechminerals.com.au

Ph: +61 2 5850 0000

W: www.itechminerals.com.au

ABOUT iTECH MINERALS LTD

iTech Minerals Ltd (**ASX:ITM, iTech or Company**) is an ASX listed mineral exploration company exploring for and developing battery materials and critical minerals within its 100% owned Australian projects. The Company is exploring for graphite, kaolinite-halloysite, clay hosted rare earth element (REE) mineralisation and developing the Campoona Graphite Deposit in South Australia. The Company also has extensive exploration tenure prospective for Cu-Au porphyry mineralisation, IOCG mineralisation and gold mineralisation in South Australia and the Northern Territory and tin, tungsten, and polymetallic Cobar style mineralisation in New South Wales.

ASX Announcement References¹

15 May 2024	17m @ 3.93 g/t Au in Drilling and 20.3% Cu in Rock Chips
7 June 2024	Sampling Confirms Potential at Reynolds Range
5 July 2024	182 g/t Au in Rock Chips from Reynolds Range
23 July 2024	18.2% Cu and 1,490 g/t Ag Rock Chips at Reynolds Range
24 July 2024	Lithium Pegmatite Discovered at Reynolds Range

¹ iTech confirms that the Company is not aware of any new information or data that materially affects the results reported in this announcement.