

Gold Mountain Limited
(ASX: GMN)

24/589 Stirling Highway
Cottesloe WA 6011
Australia

Directors and Management

David Evans
Executive Director

Syed Hizam Alsagoff
Non-Executive Director

Aharon Zaetz
Non-Executive Director

Rhys Davies
Company Secretary

Projects

Lithium Projects (Brazil)

Cococi region
Custodia
Iguatu region
Jacurici
Juremal region
Salinas region
Salitre
Serido Belt

Copper Projects (Brazil)

Ararenda region
Sao Juliao region
Iguatu region

REE Projects (Brazil)

Jequie

Copper Projects (PNG)

Wabag region
Green River region

ASX:GMN

info@goldmountainltd.com.au

+61 421 903 222

Quarterly Activities Report For the Quarter Ended 30 June 2024

Gold Mountain's (ASX: **GMN**) ("The Company" or "**GMN**") activities maintained momentum in the 4th quarter of the financial year ending 30 June 2024 with increasing activity Brazil and planning for future work in PNG.

Highlights

Brazil

REE

- Completed radiometric traversing and stream sediment sampling on far less than half of the approximately 1,773 km² in the Down Under project with excellent results to date, far exceeding the Company's expectations with high grades results of up to 4,582 ppm TREO.
- Geochemical anomalies indicating the presence of the ultra-high grade monazite mineralisation, a different geochemical response to areas that are just IAC type mineralisation.
- 36 localities within our tenements had anomalies indicating hard rock ultra-high grade monazite rich mineralization with REE anomalous catchments covering approximately 145km². Subsequent to the quarter the company has defined auger drill targets.

Lithium

- Salitre project farm out agreement entered into with ASX:AL8, GMN will retain a minimum of a 10% carried interest until decision to mine.
- Initial assays received from regional stream sediment sampling with peak values of 672 ppm lithium in Bananal Valley and 226 ppm in Agua Boa. 54 anomalous results out of 55 samples. This confirms the very high potential for significantly mineralised LCT pegmatites.
- Strongly anomalous stream sediment samples at the Campo Formoso project.

Copper

- Iguatu project confirmed as highly prospective for large scale Copper and Lithium.
- Assays received from regional stream sediment sampling with widespread anomalies in a suite of elements including Cu, Au, Fe, Hg and Ba indicative of Olympic Dam style post tectonic Iron Oxide Copper Gold (IOCG) deposit
- Review of Wabag project identifies 3 porphyry systems.

Brazil:

Rare Earth Elements Brazil:

The company is currently primarily focused on exploring the province scale Down Under and Ronaldinho project areas which cover 1,773 km² over airborne radiometric anomalies with a strong thorium signal and highly prospective for ultra-high-grade hard rock monazite hosted REE-Nb-U-Sc mineralisation which is contiguous and along strike from ASX:BRE 510Mt Inferred Mineral Resource including a free dig resource of 4.1 Mt at 32,000 ppm TREO.

So far, the results for an initial 345 stream sediment samples have been received and interpreted with a further 437 samples at the laboratories as of July 20th. With interpreted results showing major potential for ultra-high-grade monazite dominated hard rock mineralisation as well as for IAC type mineralisation.

Figure 1 shows the locations of the projects and exploration progress.

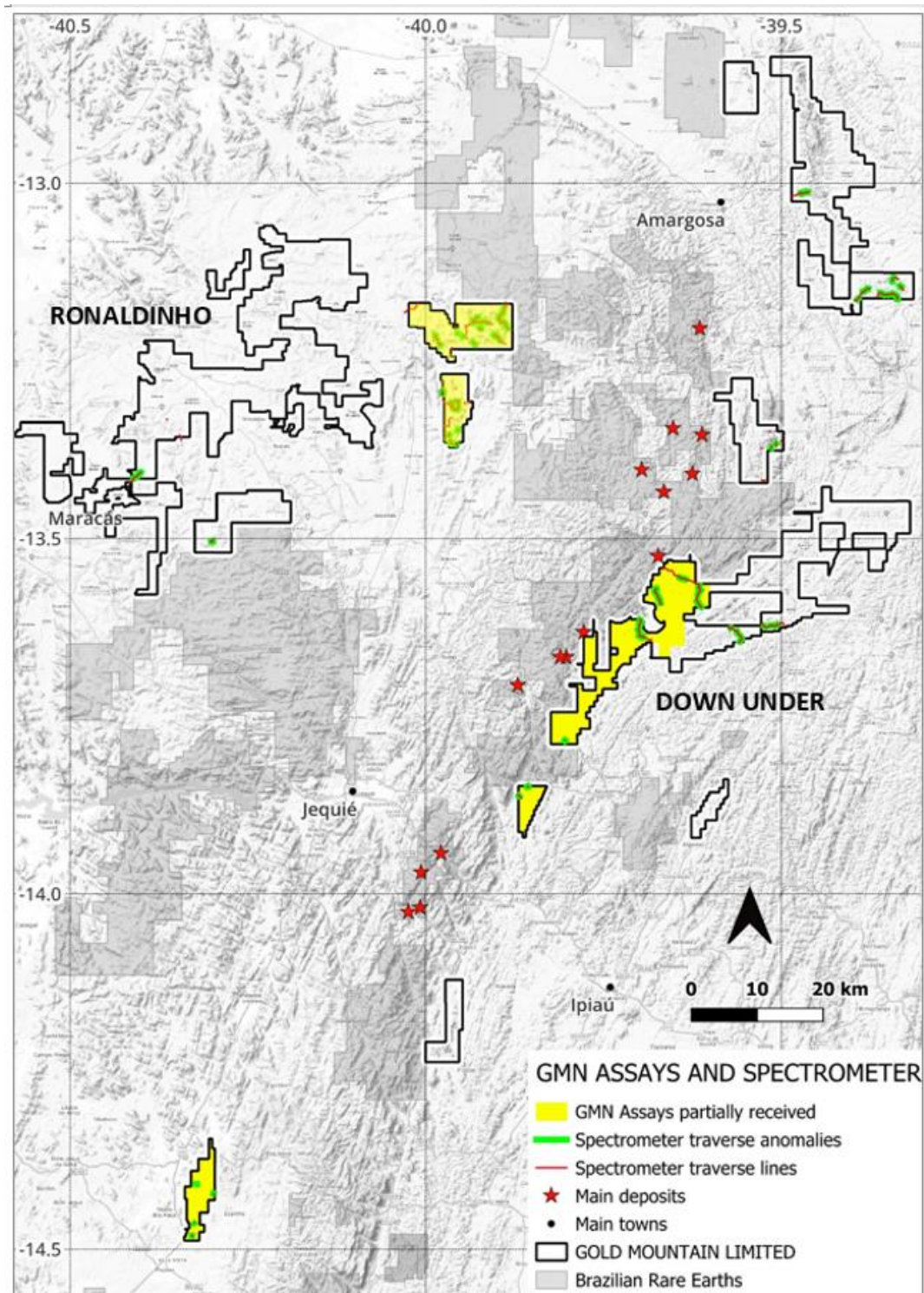


Figure 1. Location of the Down Under and Ronaldinho project areas showing areas part covered by released results, spectrometer traverses with Th anomalies and REE deposits in Brazilian Rare Earths tenements.

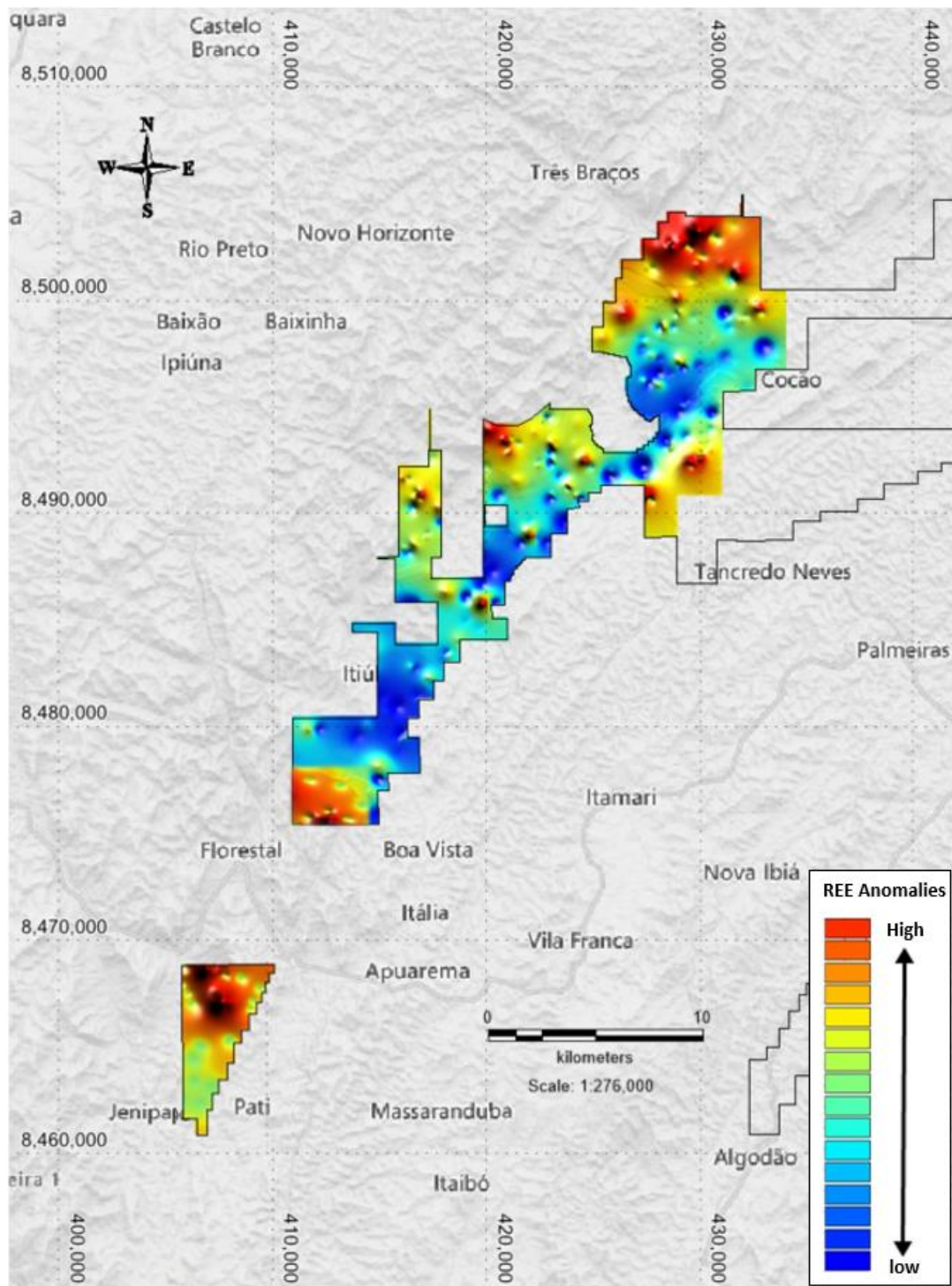


Figure 2. Thematic map of REE anomalies in the central part of the Down Under project. Peak stream sediment sample anomalies were 898.39 ppm TREE, with many results exceeding the best results from orientation samples on known mineralisation

JEQUIÉ REGION REE DOWN UNDER PROJECTS

- Poções

Initial batches of sample results released, with substantial strongly anomalous results present Figure 3 shows the extent of anomalies from results received. Additional sample results have not yet been received.

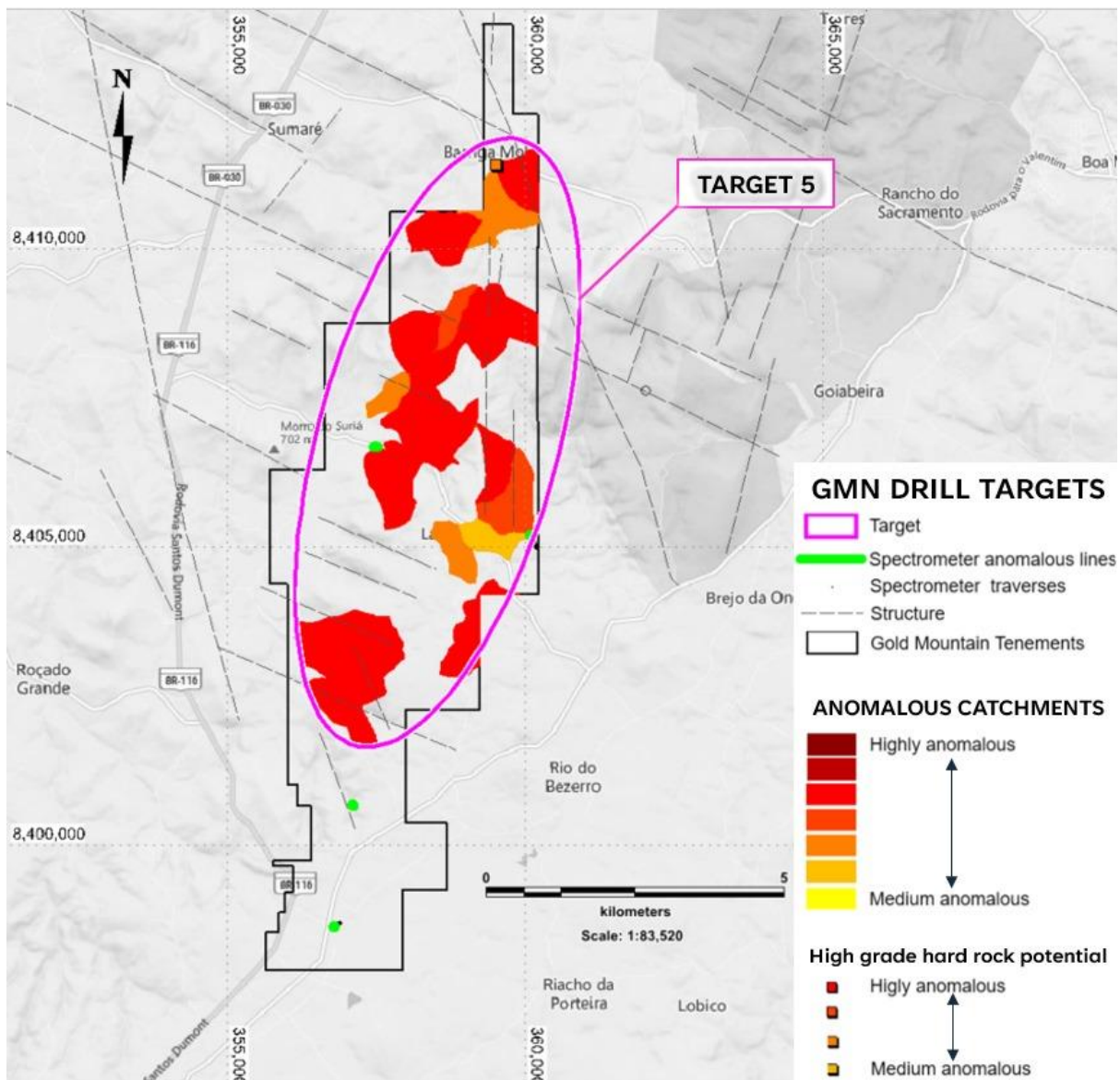


Figure 3. Drill targets in the southern part of the Down Under Project.

- Itagi

Stream sediment sampling has commenced. Regional satellite imagery study completed and under interpretation.

- Teolândia

Orientation sampling completed, priority 1 area sampling completed, results released show very highly anomalous results for REE and indicate potential also for hard rock ultra-high grade REE-Nb-U-Sc mineralisation.

Figure 4 shows the highest priority follow up area where permits to drill are being obtained.

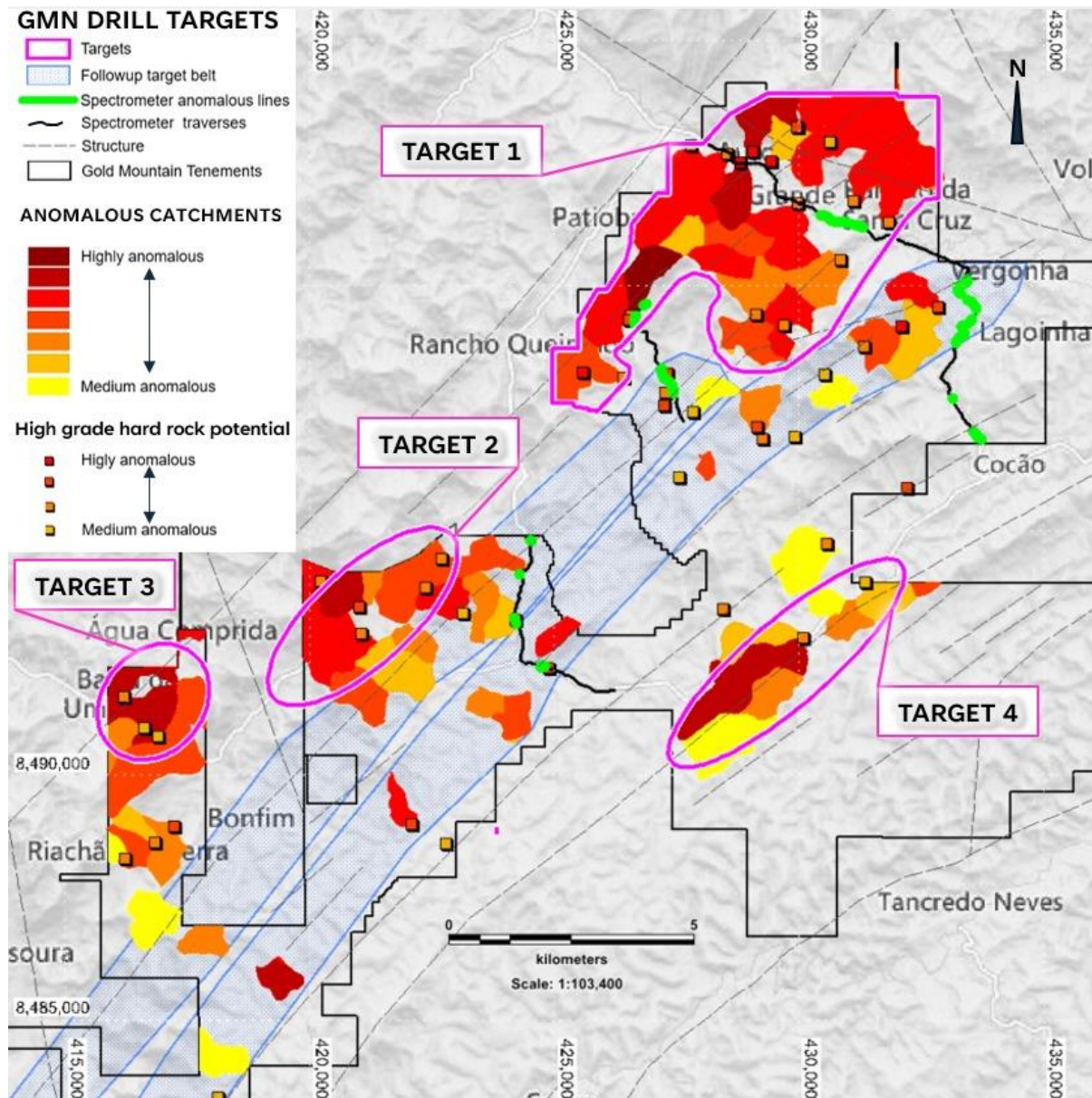


Figure 4. Drill targets and follow up target belts in the central part of the Down Under Project.

- **Irajuba**

Regional satellite imagery study completed and under interpretation. Results received were very encouraging with very high stream sediment results for TREO. Significant anomalies indicative of hard rock ultra-high grade monazite mineralisation were also found, generally associated with areas that had very high TREO anomalies.

Figure 5 shows results for Irajuba.

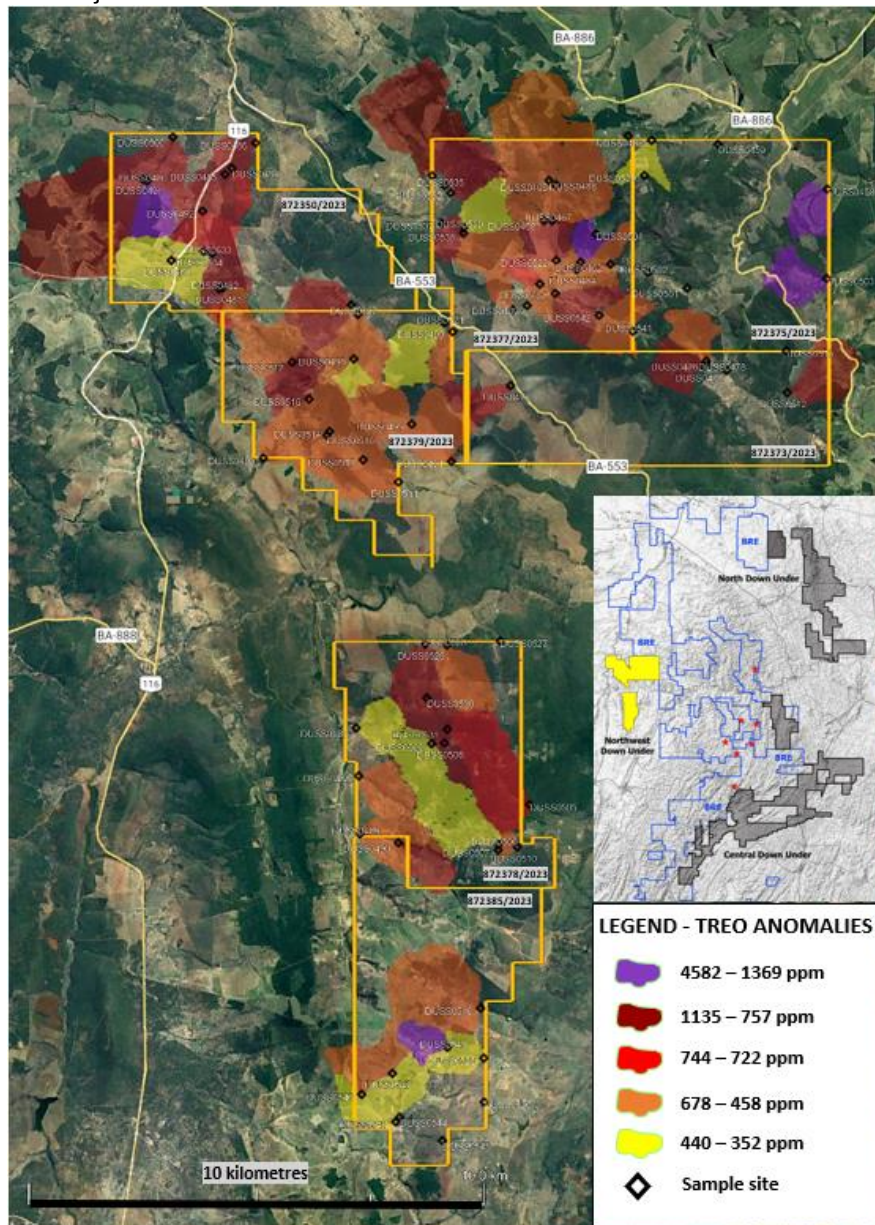


Figure 5. TREO anomalies plotted as anomalous stream sediment catchments. Maximum value of 4582 ppm TREO. Location of the Irajuba prospect in Northwest Down Under Project shown in inset map.

- **Varzedo**

Regional satellite imagery study completed and under interpretation.

- **Jiquiriçá**

Regional satellite imagery study completed and under interpretation. Stream sediment sampling completed, Samples at the laboratory.

MARACÁS REGION REE RONALDINHO PROJECT

- **Ronaldinho Project**

A total of 41 licences were applied for covering an area of 803 km². An interpretation of structure using magnetic data and existing mapping has been undertaken. A preliminary interpretation of the geomorphology was undertaken and three surfaces recognised, the same as in the Down Under Project region.

A presentation was made to the office of the Mayor of Maracás and the staff welcomed our presence in the district and assured us of their support for our exploration activities. Figure 6 shows the location of the Ronaldinho Project in relation to the Down Under Project.

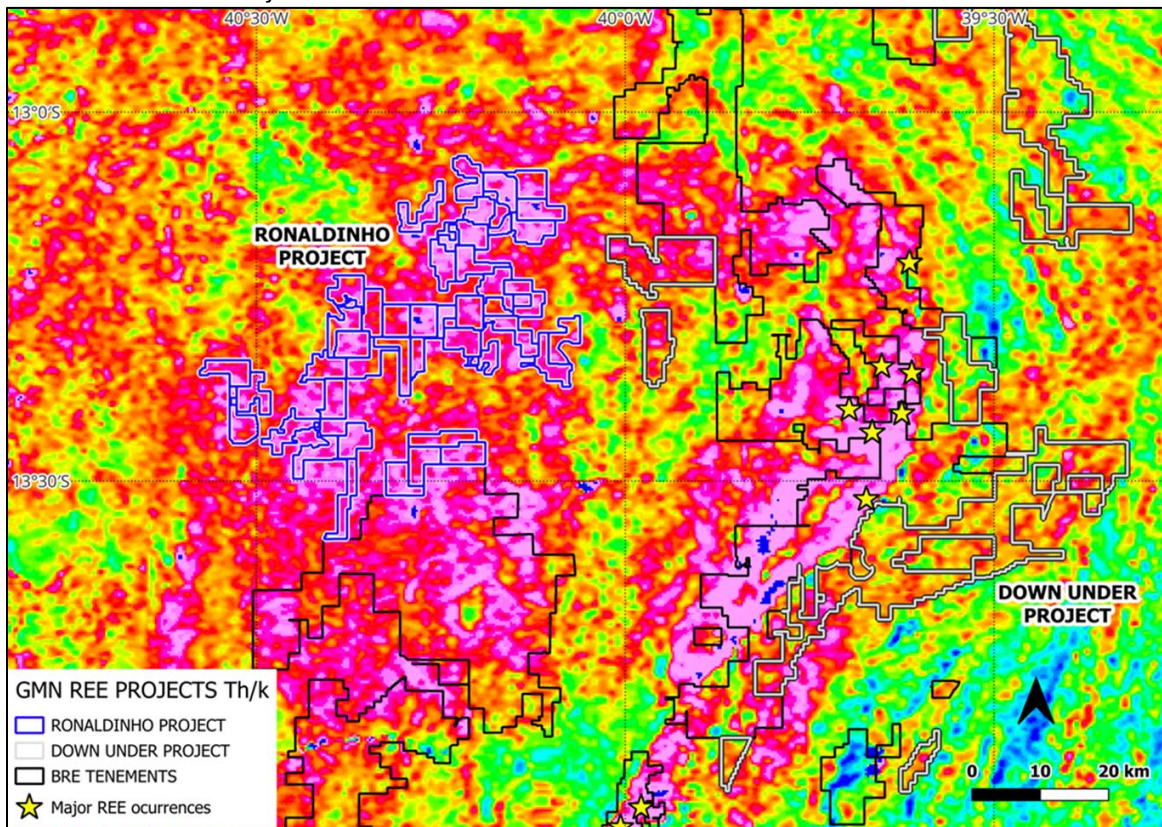


Figure 6. Location of the Ronaldinho project on the Thorium anomaly base plan. Gold stars are significant REE deposits.

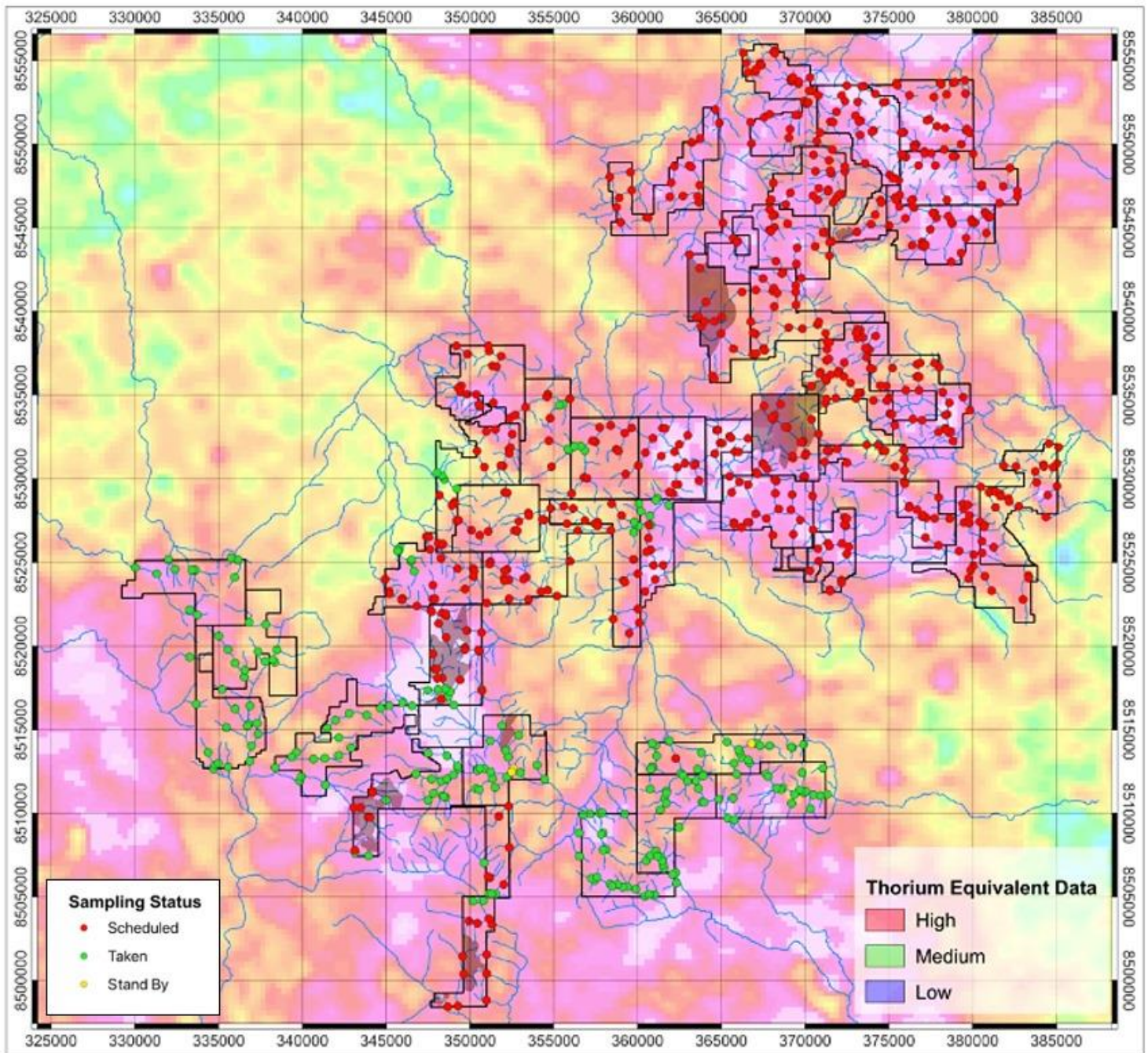


Figure 7. Location of the 234 samples collected on Ronaldinho REE project.

Lithium Brazil:

SALINAS 2 LITHIUM PROJECTS

The Salinas region tenements lie in a region where many of the lithium pegmatite occurrences, including the major resources, lie along a series of NE trending structures, visible in magnetics and in alignments of pegmatites and pegmatite accessory mineral occurrences. Figure 8 shows the location of the GMN tenements, all of which have now been stream sediment sampled.

Results received from the Bananal Valley and Agua Boa tenements were very encouraging with high order anomalies on both tenements. Anomalies in Bananal Valley cannot be put into context yet because GMN haven't received all the results, however the results on Agua Boa are very encouraging with high order lithium and lithium pathfinder anomalies.

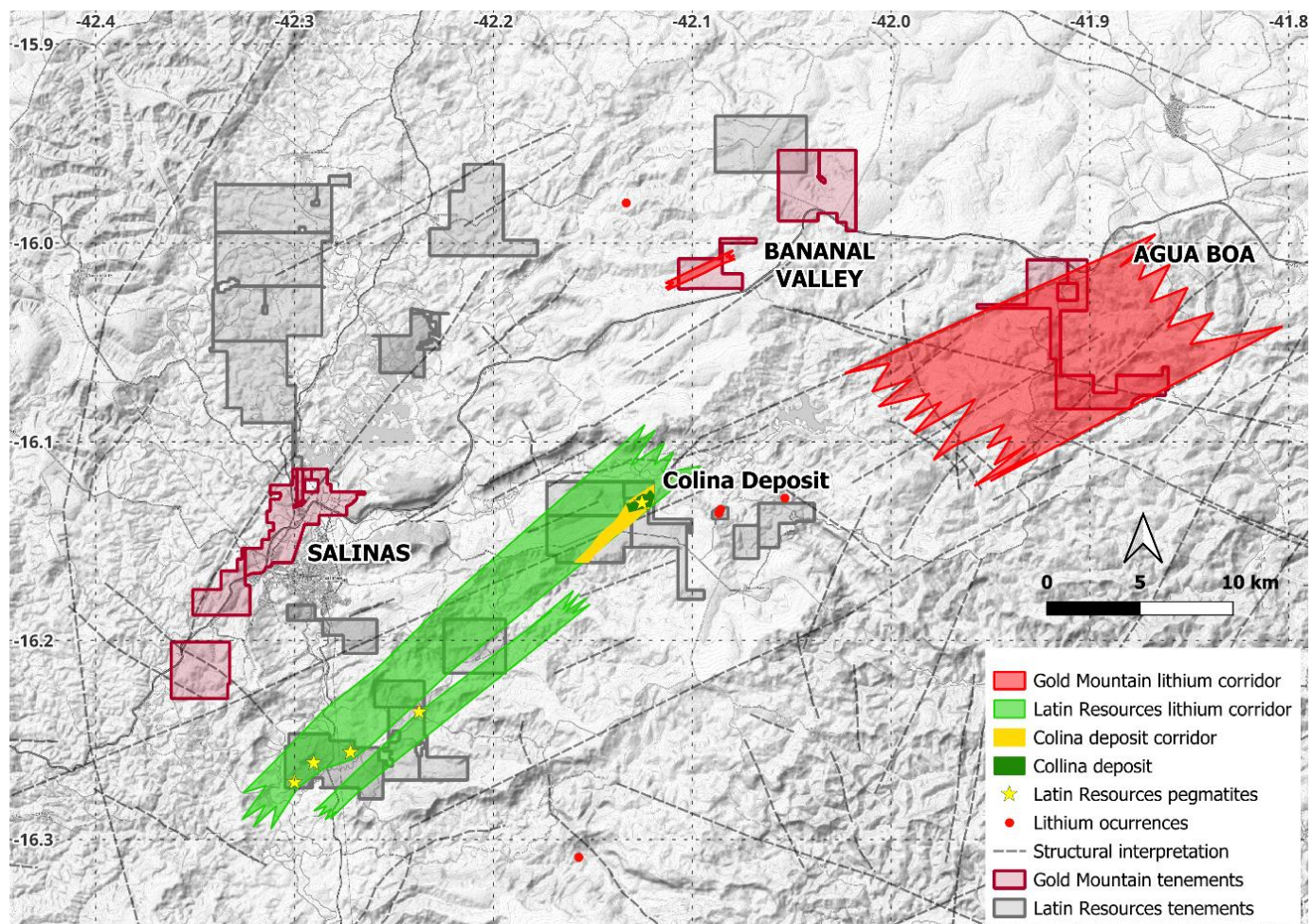


Figure 8. Salinas II area tenements and the NE structural trends interpreted from topography, magnetics and radiometric data. The trend of Latin Resource's "Lithium Corridor", based on maps released by Latin Resources. Location of the Agua Boa and Bananal Valley tenements are shown in context of known lithium occurrences and the Colina deposit. A series of parallel northeasterly trending zones with lithium pegmatites is inferred.

- **Salinas**

54 stream sediment samples were previously collected, processed and submitted to the laboratory. No results have been received for interpretation and release.

- **Bananal Valley**

Results for two samples have been received and gave very strongly anomalous results adjacent to two pegmatites previously mapped by GMN.

- **Agua Boa**

Figure 9 shows the Anomalies on the Agua Boa tenement.

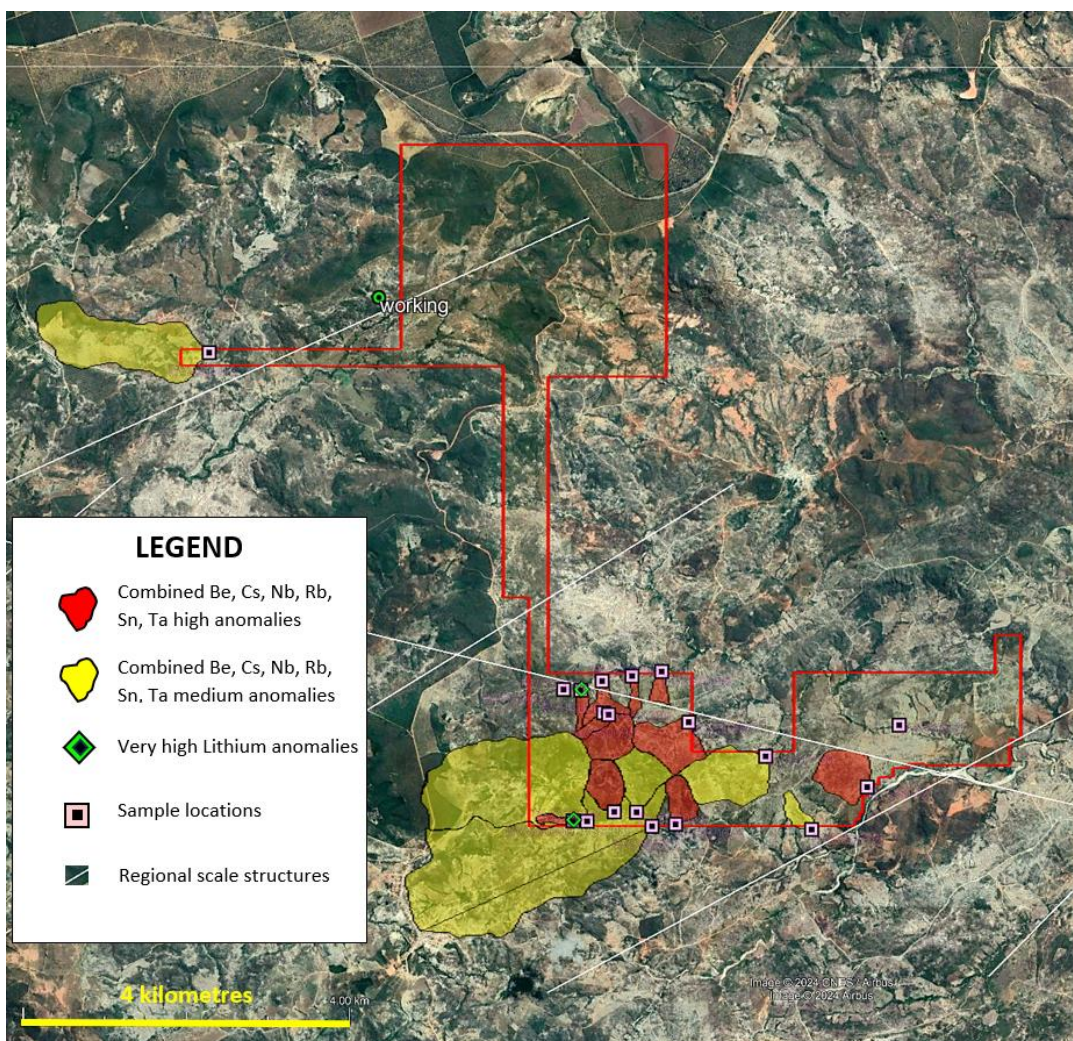


Figure 9. Highest priority target zone in the southern part of the Agua Boa tenement. Multi-element LCT mineral anomalies are plotted with the highest order lithium anomalies shown by the green diamonds. The marked working is of unknown type but lies in very close proximity to the tenements boundary so is of significant interest.

Numerous pegmatites were found in initial mapping on the tenement and now need detailed follow up sampling to develop drill targets.

Pedra Grande (Almenara)

24 stream sediment samples were collected, processed and submitted to the laboratory. No results have been received for interpretation and release.

JUREMAL - CAMPO FORMOSO REGION LITHIUM PROJECTS

- **Juremal and Juremal North**

Planning for soil sampling on the defined anomalous catchment areas now ready to be undertaken.

Figure 10 shows the locations of the Salitre, Juremal and Campo Formoso lithium projects in relation to the known spodumene bearing Jaguar pegmatite.

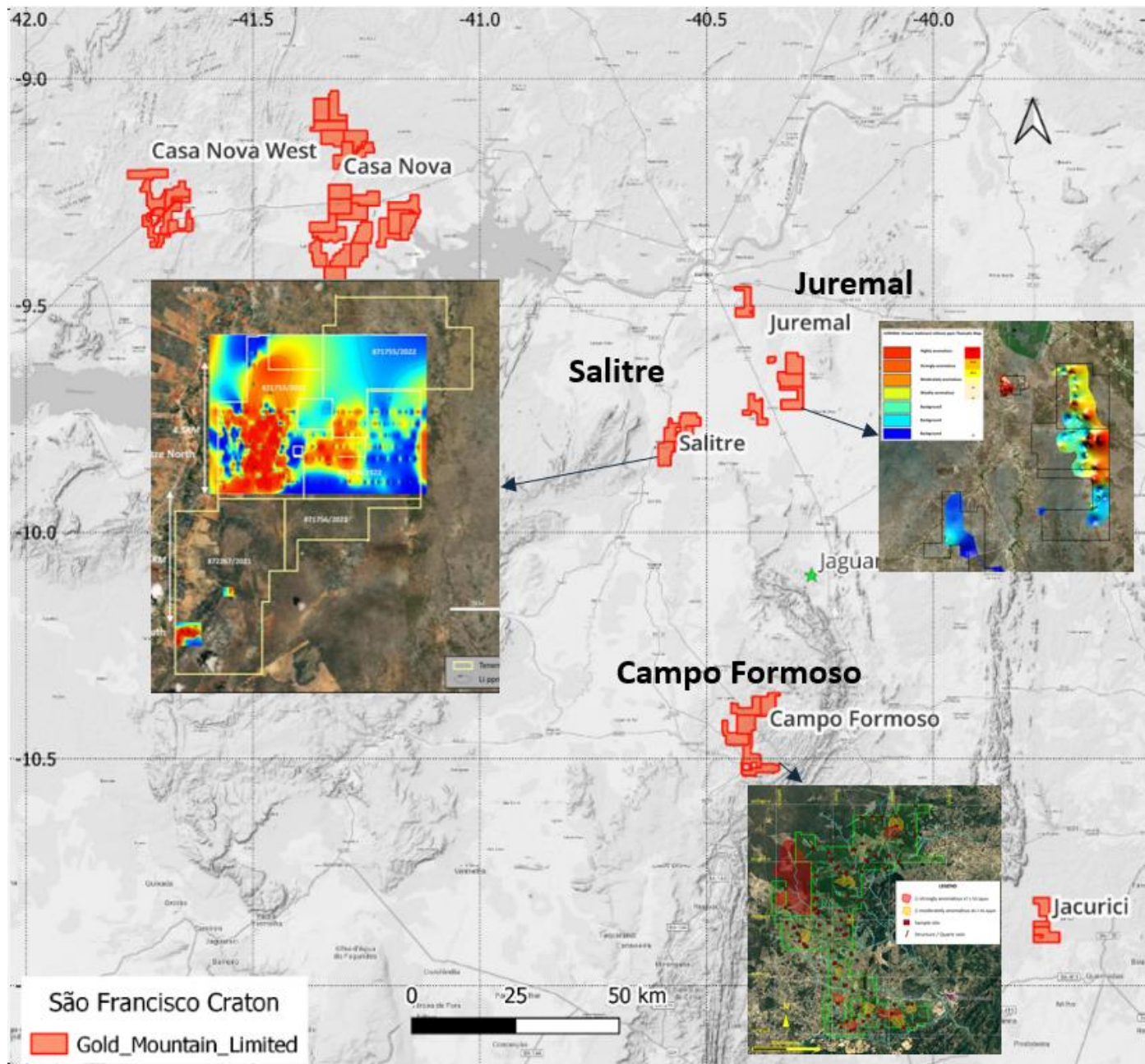


Figure 10. Thematic maps of lithium anomalies at Juremal, Salitre projects and Li anomalous catchments at the Campo Formoso Project.

- **Salitre Project**

Soil sampling was completed to infill lines to 200 metre spacing over the main anomaly over 3.8 km. Lines at 400 and 200 metre spacing now cover a total of 6.4 km of potential strike. A prominent 4.5 km long by 1 km wide >60ppm

anomaly together with LCT pegmatite pathfinder elements beryllium, caesium, niobium and tin has been defined, with potential to extend south to the anomalies 4.5 km south at Salitre South. This is a drill ready target. A second parallel lithium anomaly has been defined on 400 m spaced lines and requires infill soil sampling to define drill targets (AL8 ASX release 18 June 2024)

Figure 11 shows a thematic map of the Lithium anomalies at Salitre

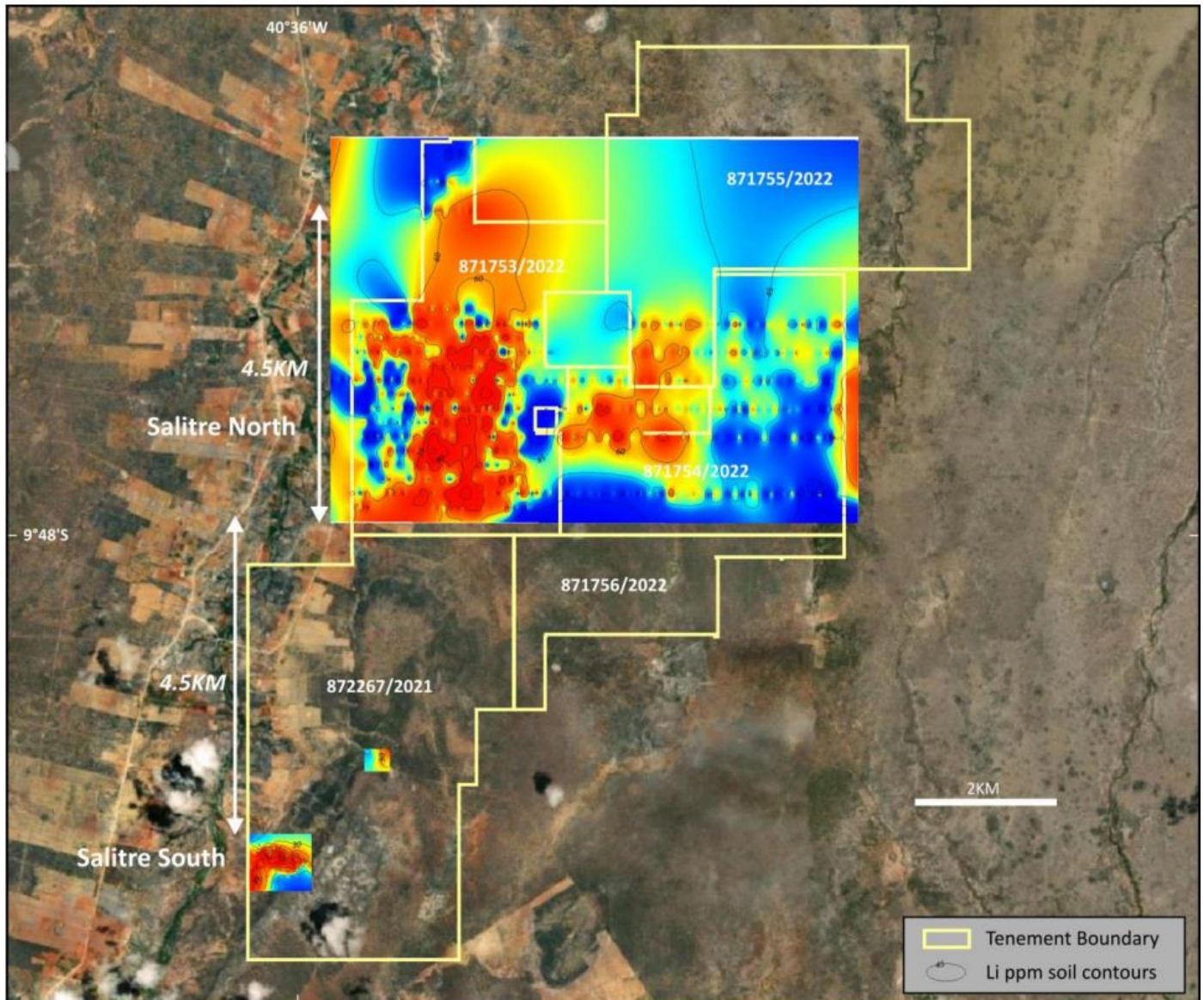


Figure 11. Thematic map of major lithium anomalies at Salitre.

- **Campo Formoso**

The Campo Formoso project lies approximately 60 km south of the Juremal project area and 30 km south of the substantial Jaguar lithium pegmatite.

Stream sediment results were interpreted and lithium anomalous catchments are shown on Figure 12.

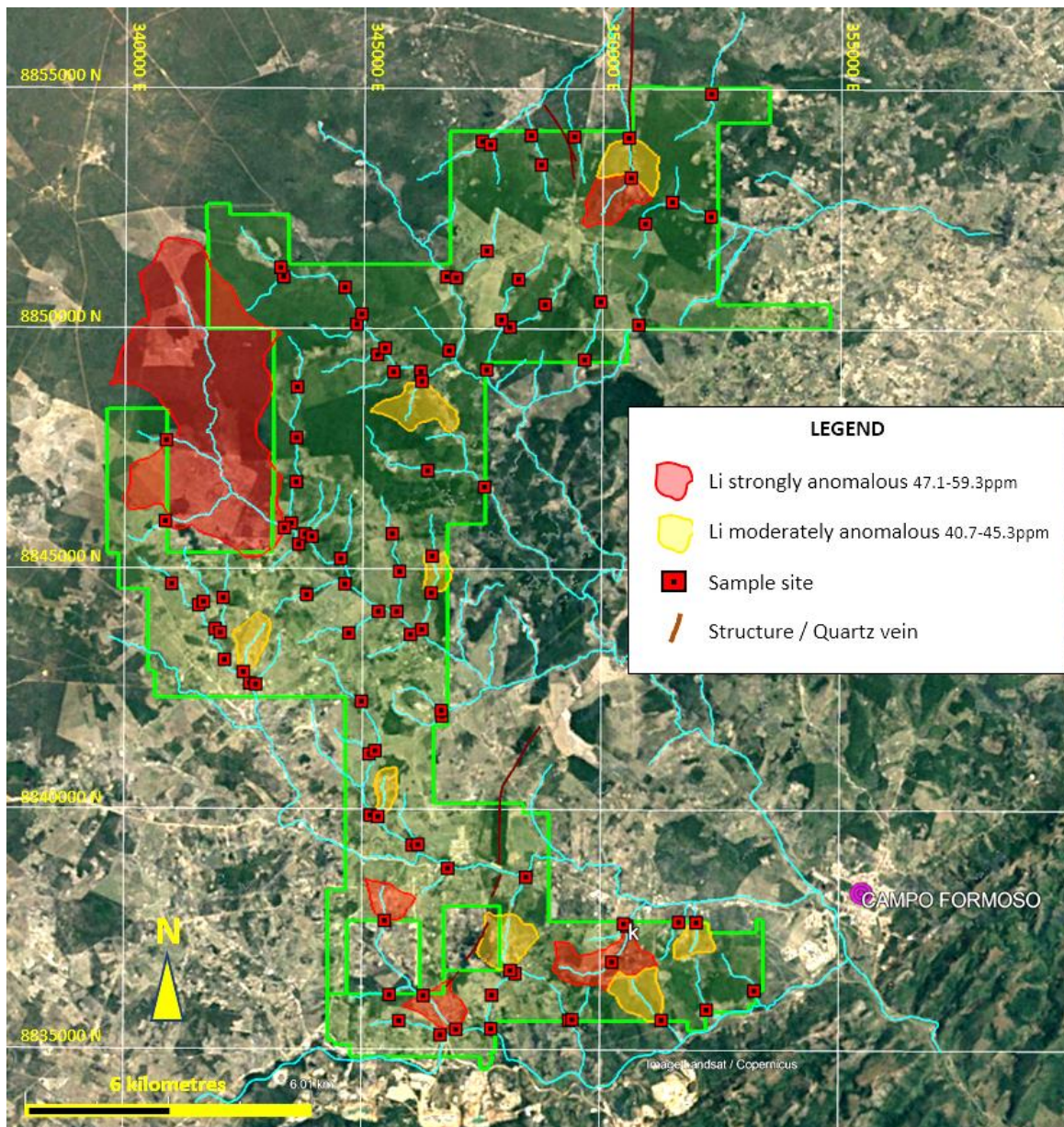


Figure 12. Lithium anomalous catchments in the Campo Formoso tenements.

Follow up with soil sampling in the highly ranked anomalous catchments is now required to develop drill targets.

SERIDO BELT LITHIUM PROJECTS

Figure 13 shows the Serido Belt lithium favourability map with the GMN lithium projects as well as major competitors.

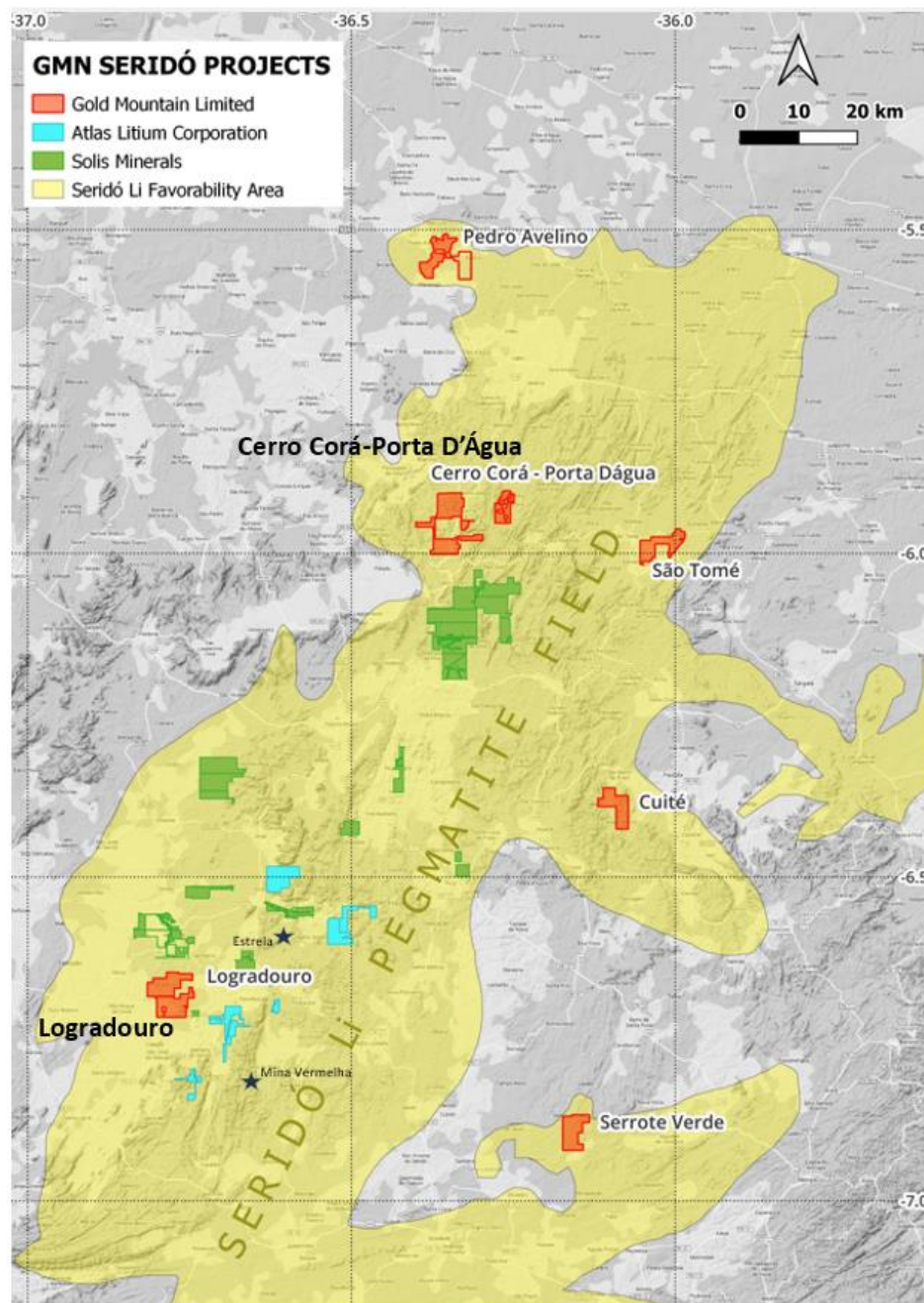


Figure 13. Serido Belt Lithium Favourability map showing GMN tenements and major competitors.

- Logradouro

The Logradouro tenements lie within the more prospective areas of the CPRM Lithium Favourability Map, 2022 and GMN has mapped over 250 pegmatites there. Soil sampling on anomalous catchments will develop drill targets on some of the known pegmatites. No field work undertaken.

Figure 14 shows the lithium anomalous catchments on Logradouro project area.

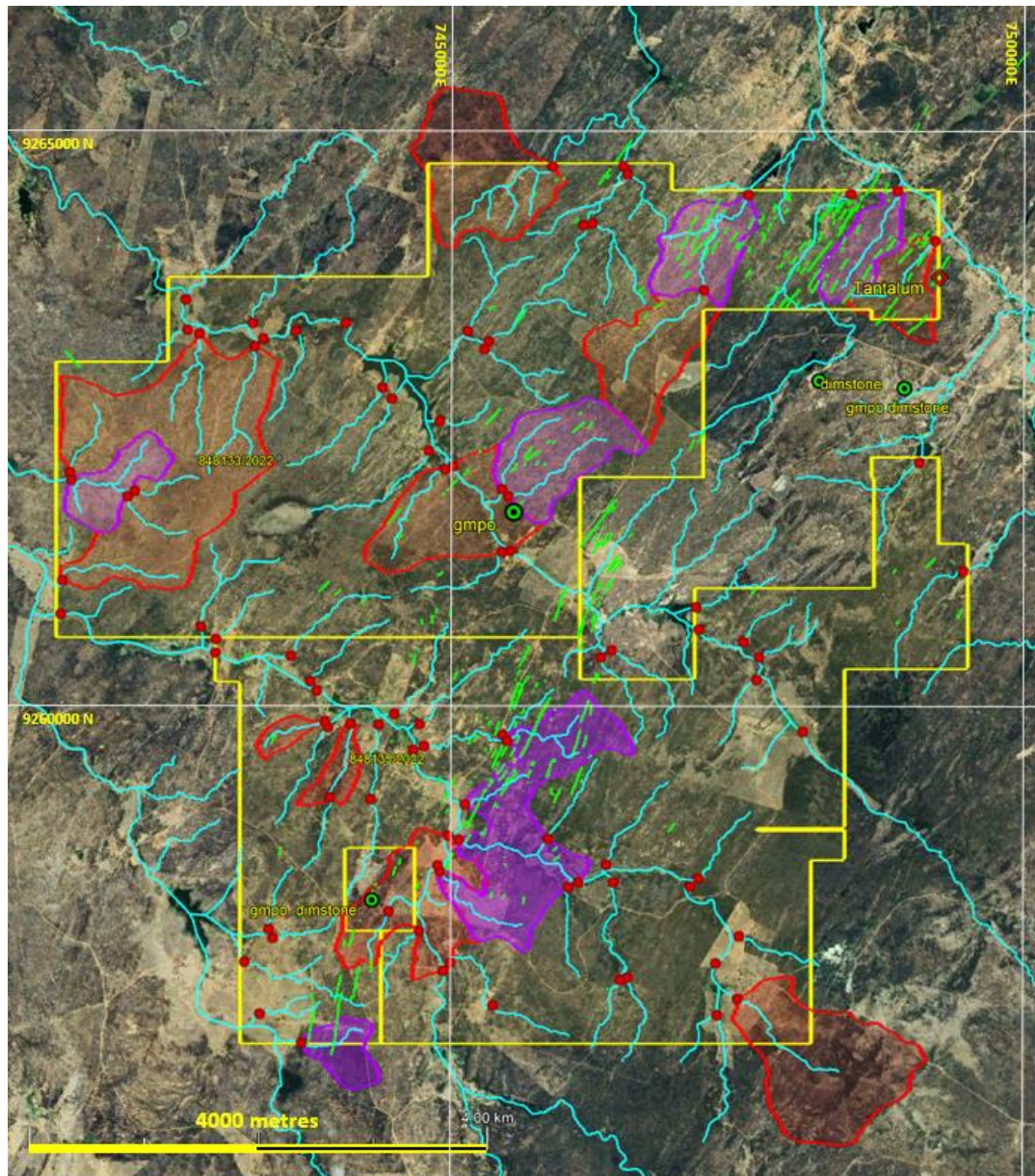


Figure 14. Logradouro anomalous catchments together with the mapped pegmatites in green. Li anomalies in stream sediment samples range up to 143 ppm.

- **Cerro Cora-Porta D'Água**

Planning for soil sampling in progress with combining all prior data to assess priorities.

The Cerro Cora-Porta D'Água tenements lie within the more prospective areas of the CPRM Lithium Favourability Map, 2022.

- **Serrote Verde**

The Brazilian government require GMN to explore for Uranium as well as Lithium on this tenement. Once agreements are finalised, work will be undertaken. No field work was carried out as work was prioritised for REE and copper projects.

SOLONOPOLE LITHIUM PROJECTS

- **Solonopole**

Stream sediment sampling was completed however results are still being processed by the laboratory and anticipated in early August.

IGUATU NORTH LITHIUM PROJECTS

- **Iguatu North**

Stream sediment sampling results showed that significant lithium and LCT element suite anomalies are present in Iguatu North and southwards in the Iguatu Copper tenements.

An additional six mapped pegmatites are contained within the Iguatu North tenements. Recently released results on the lithium in Iguatu North and Iguatu tenements showed that significant anomalies were present and that, coupled with recent CPRM data showing that gem tourmaline was present, shows significant potential for evolved lithium bearing pegmatites is present.

Figure 15 shows the lithium anomalies on Iguatu North.

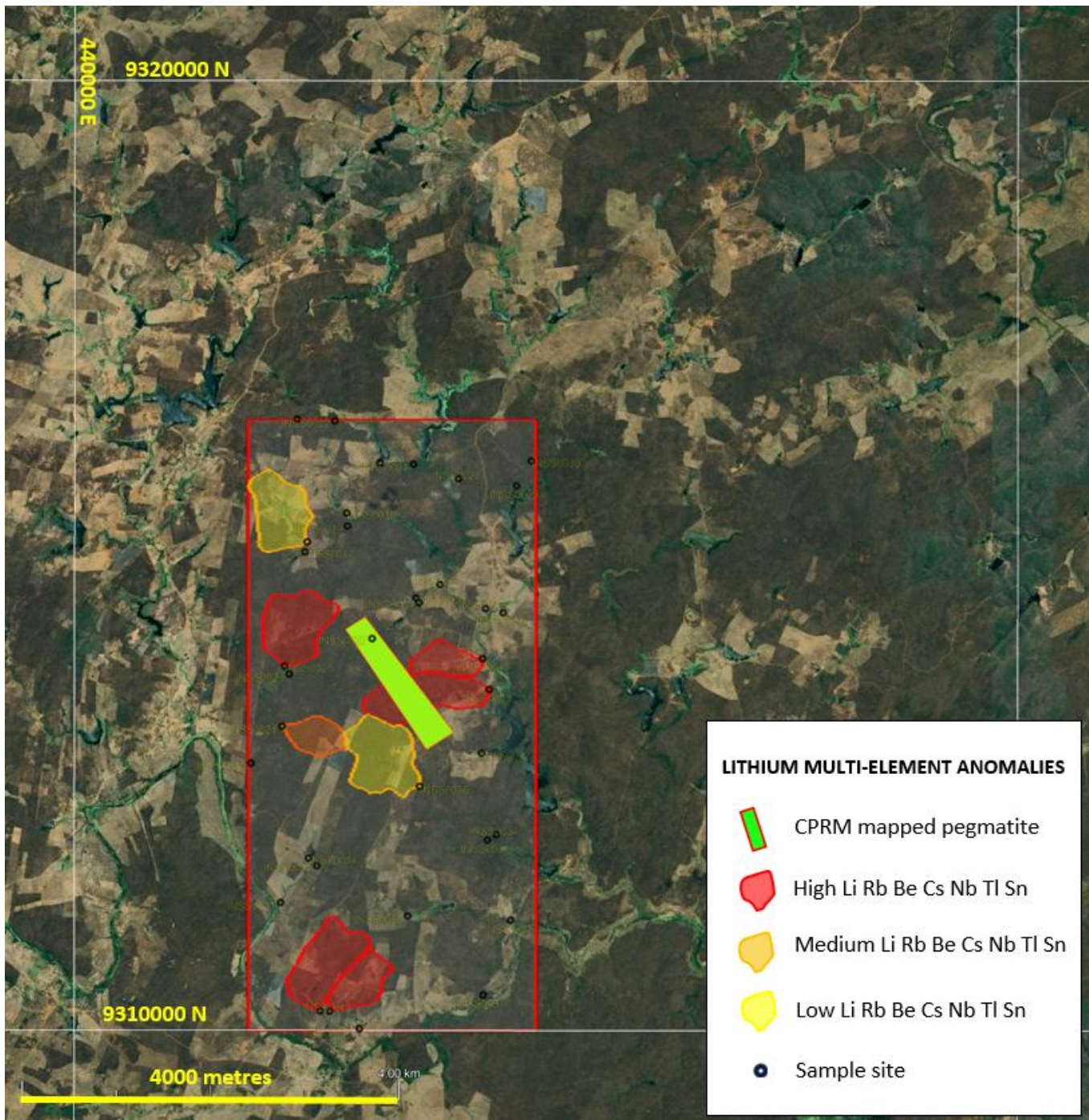


Figure 15. LCT lithium multielement element suite anomalies identified in first pass regional scale stream sediment sampling in Iguatu North.

Additional lithium anomalies were found on the adjacent Iguatu tenements, shown on figure 16.

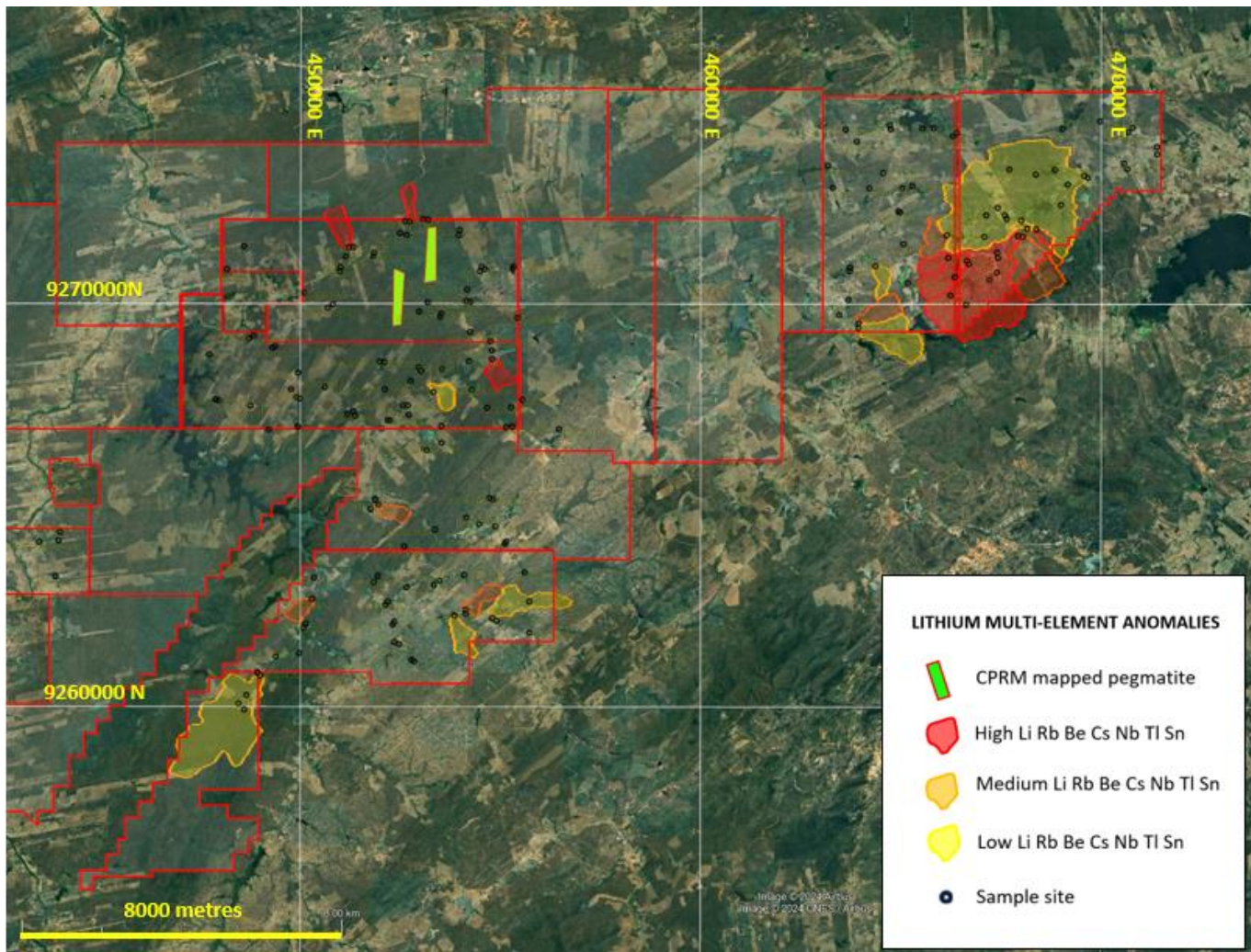


Figure 16. LCT lithium multielement element suite anomalies identified in first pass regional scale stream sediment sampling in Iguatu.

Peak values for lithium in the stream sediments was 105 ppm which is a high order anomaly. As there is a strong correlation of lithium with Rb, Be, Cs, Nb, Tl and Sn and each of those elements with each other and combined multi-element anomaly was plotted to give the anomalous catchment areas.

Additional tenements with known pegmatites mapped in them by the CPRM are shown on figure 17.

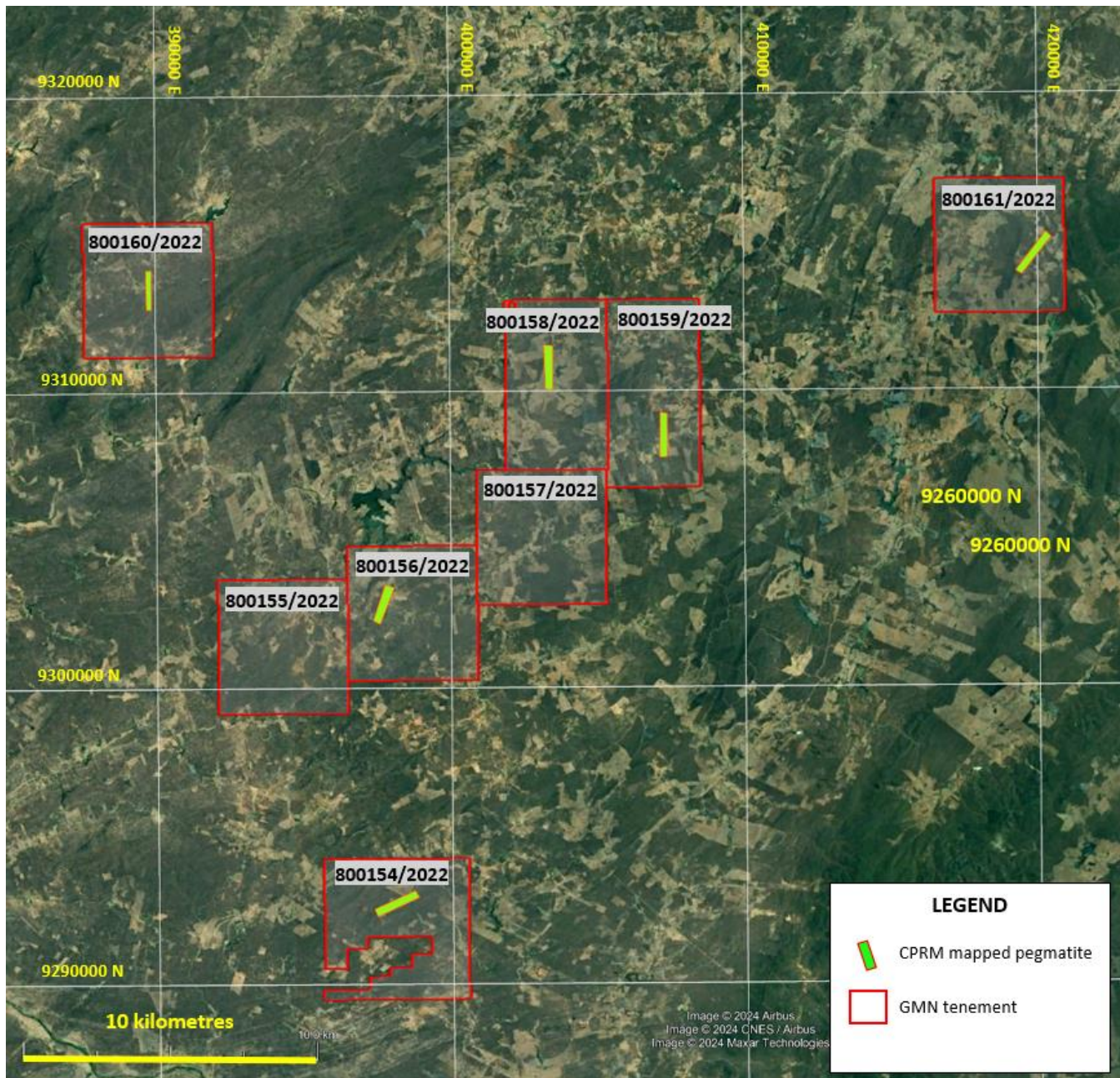


Figure 17. Location of mapped pegmatites, now recognised as of high interest with new data released from the CPRM and from our initial stream sediment survey data that had some very high values for lithium in stream sediments.

JACURICI LITHIUM PROJECT

- Jacurici

Results received and interpreted. Low order anomalies of LCT type were found but not of sufficient magnitude to warrant further work. Maximum value for Lithium was 31.1 ppm, an anomalous value, with a background with a maximum value of 28 ppm Li.

Figure 18 shows the lithium anomalies and multi-element LCT association anomalies coincident with and surrounding the lithium anomalies.

It is recommended that the two Jacurici tenements be relinquished.

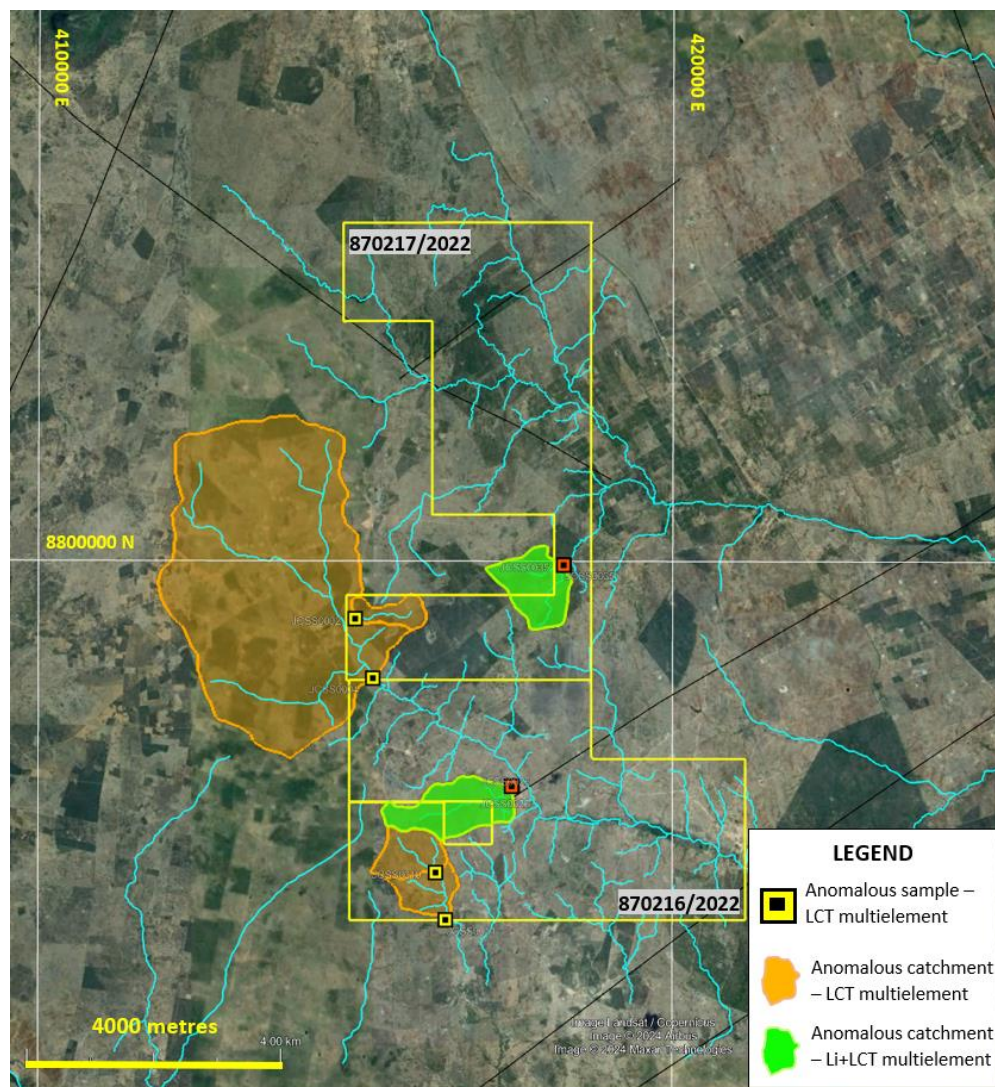


Figure 18. LCT lithium multielement element suite and lithium anomalies in Jacurici Project.

Copper Brazil:

GMN holds significant areas prospective for copper but also lithium in the western part of the Borborema Province.

Figure 19 shows the location of the Iguatu, Sao Juliao, Cococi and Ararenda copper projects.

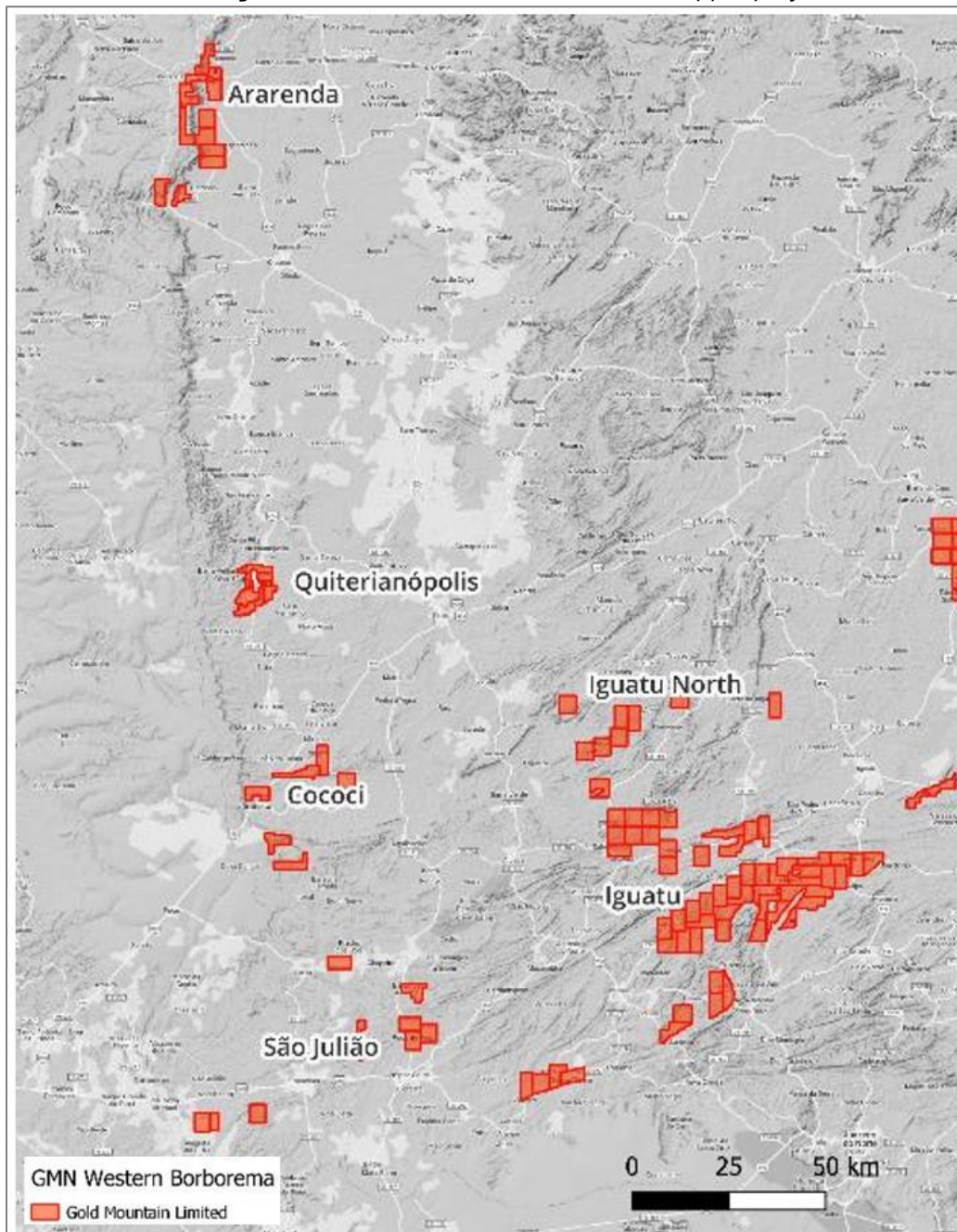


Figure 19. Location of the Iguatu, Sao Juliao, Cococi and Ararenda copper projects in the Western Borborema Province

Results released 23/7/2024 show that significant multi element anomalies for both IOCG copper and for LCT type lithium pegmatite deposits were found in the Iguatu and Iguatu North tenements.

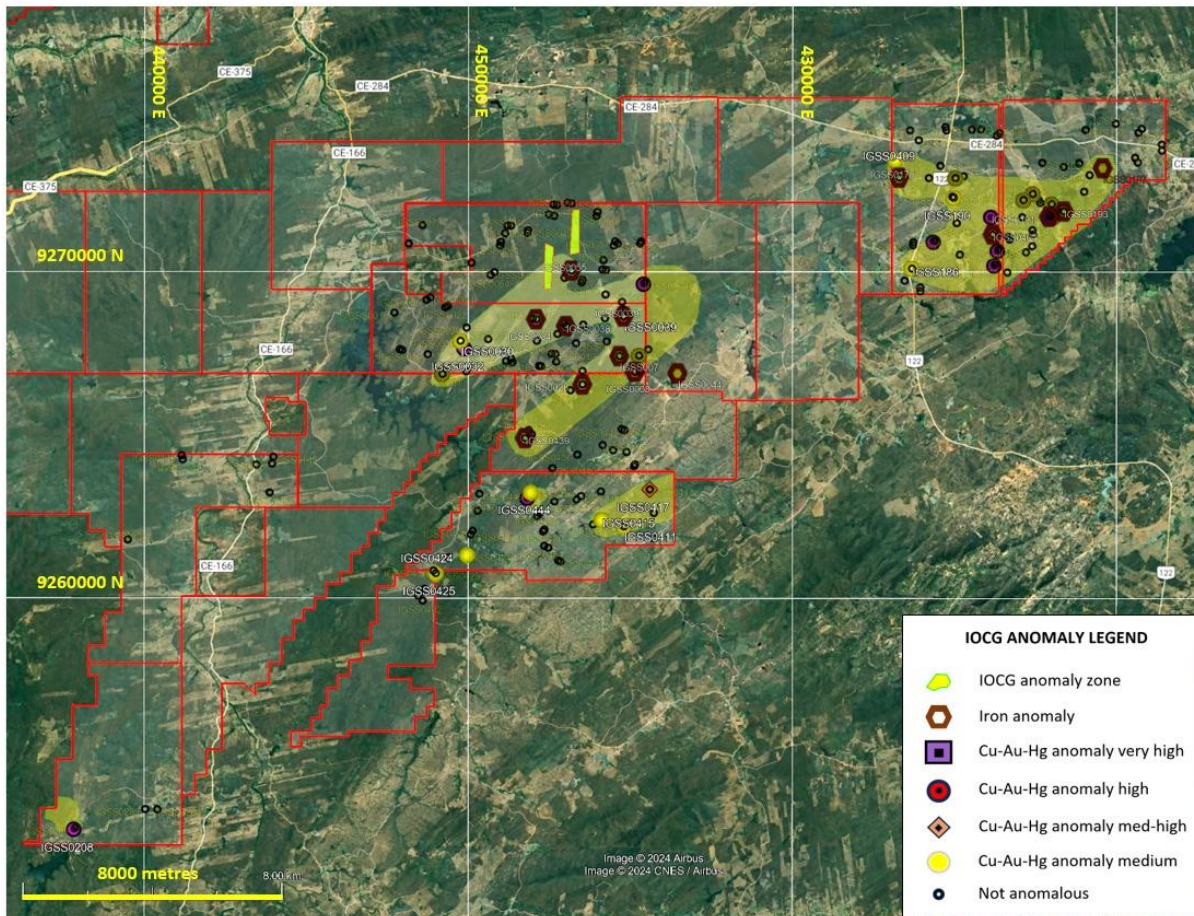


Figure 21. IOCG type anomalies identified in first pass regional scale stream sediment sampling.

- **Sao Juliao and Cococi**

Stream sediment sampling is currently well advanced on the Sao Juliao project and will commence in Cococi shortly. Both these areas have extensive copper occurrences and confirmed IOCG type mineralisation.

ARARENDA COPPER PROJECT

- **Ararenda**

Stream sediment sampling planned to commence Q1 2024-5.

- **Ibiapaba**

Stream sediment sampling planned to commence Q1 2024-5.

Figure 22 shows the known potential source rocks together with copper occurrences and the major IP anomaly that extends into the GMN tenement area.

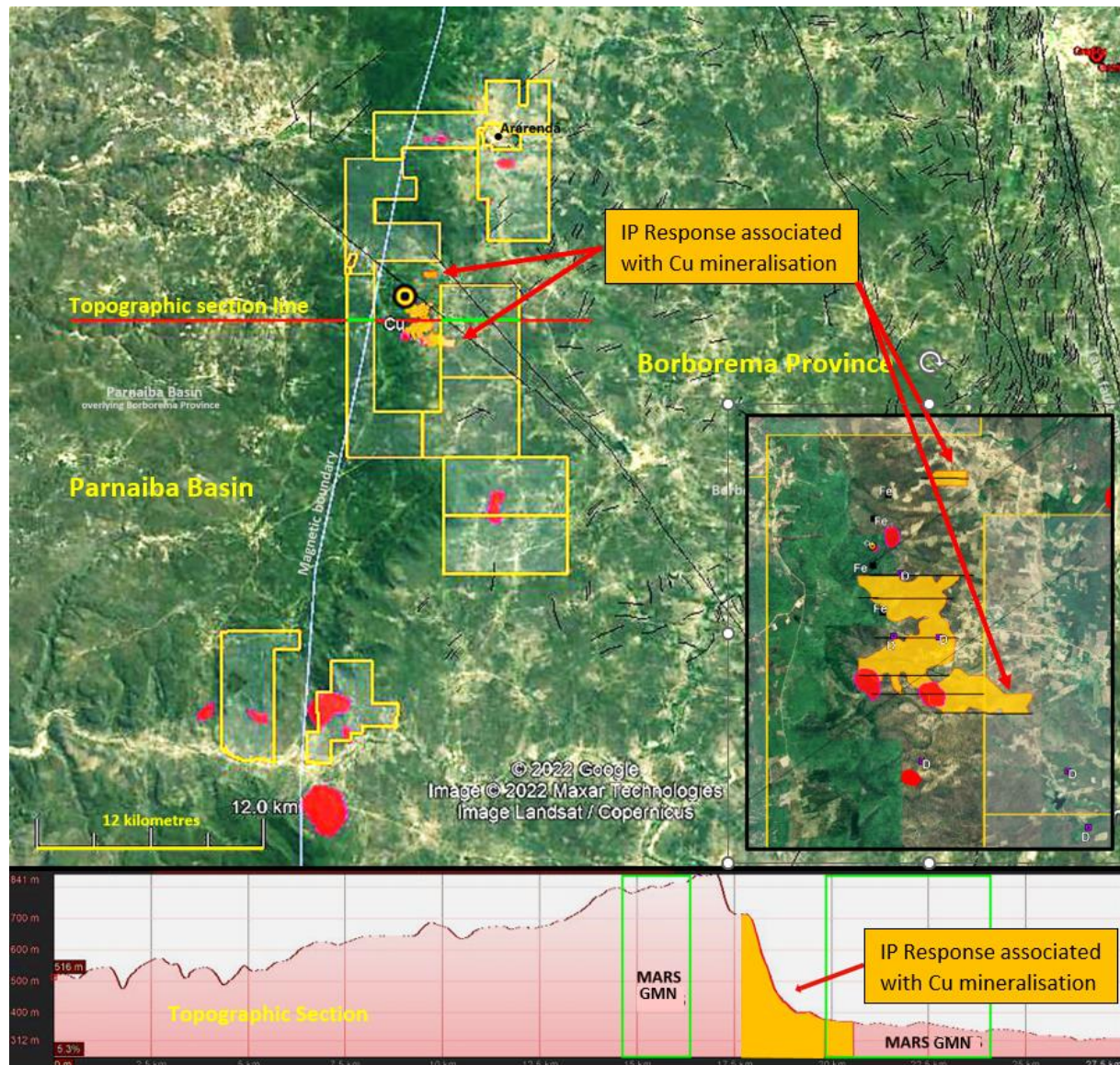


Figure 22. Distribution of copper, iron and IP survey anomalies as well as potential source rocks for the known IOCG type mineralisation at Ararenda and Ibiapaba projects.

Araxa Project

GMN applied for 388 km² of tenements in the Araxa region, located over and around known carbonatites or over interpreted carbonatites. One of the carbonatites at Araxa contains the World's largest niobium mine and has 94% of the World's niobium reserves.

Extensive hydrothermally altered zones up to 2.5 km wide surround the carbonatites and typically these hydrothermal zones can have enrichment in elements such as Th, REE and F hosted by REE fluorocarbonates, fluorite and other fluoride phases.

Figure 23 shows the tenements in relation to mapped carbonatites shown in bright blue.

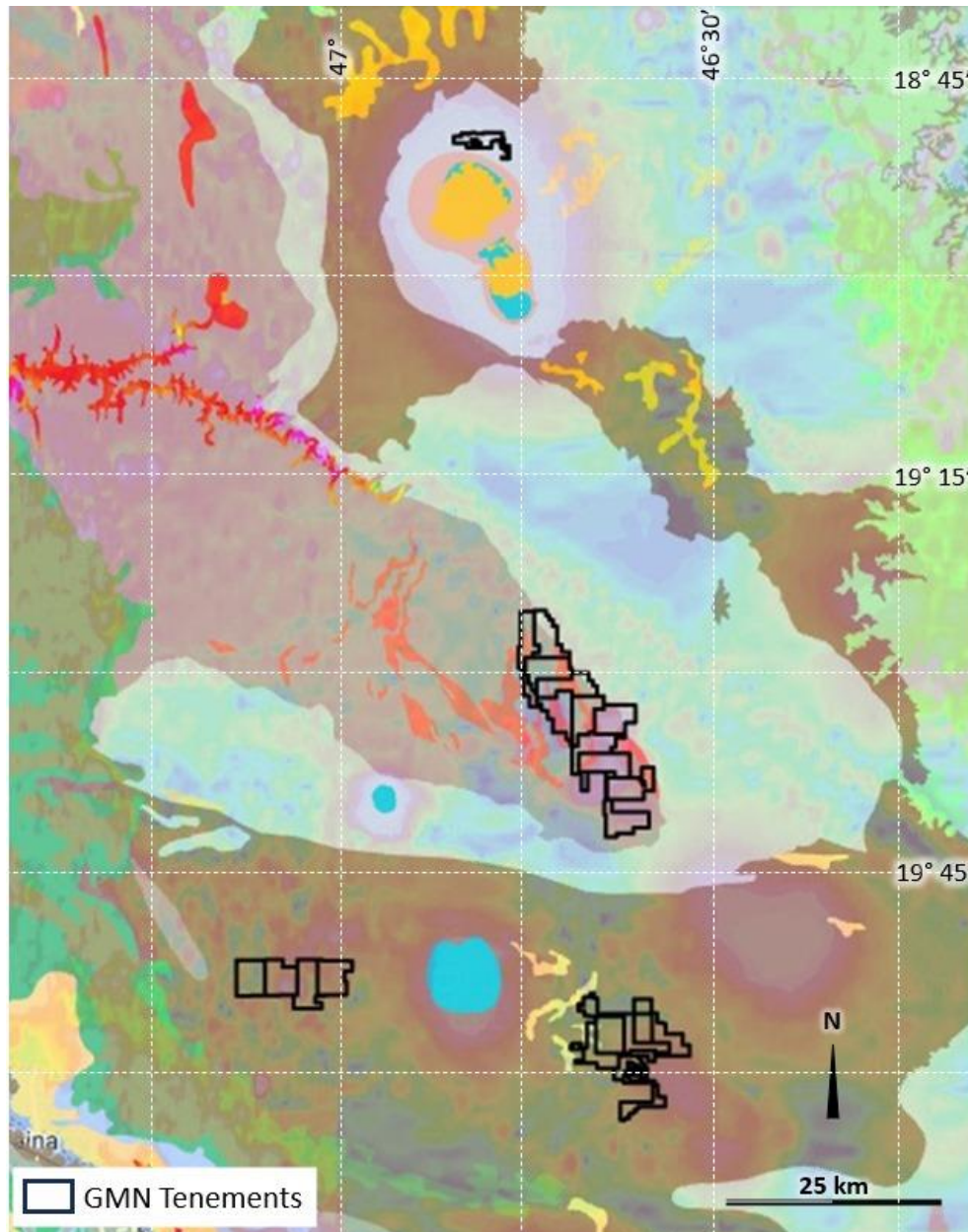


Figure 23. Mapped mid Proterozoic sedimentary sequence with the Late Cretaceous carbonatite complexes shown in bright blue. The geology is overlaid on the magnetic gradient image.

Figure 24 shows the location of the tenements in relation to magnetic anomalies similar to those that are associated with the carbonatite hosting the Araxá mine.

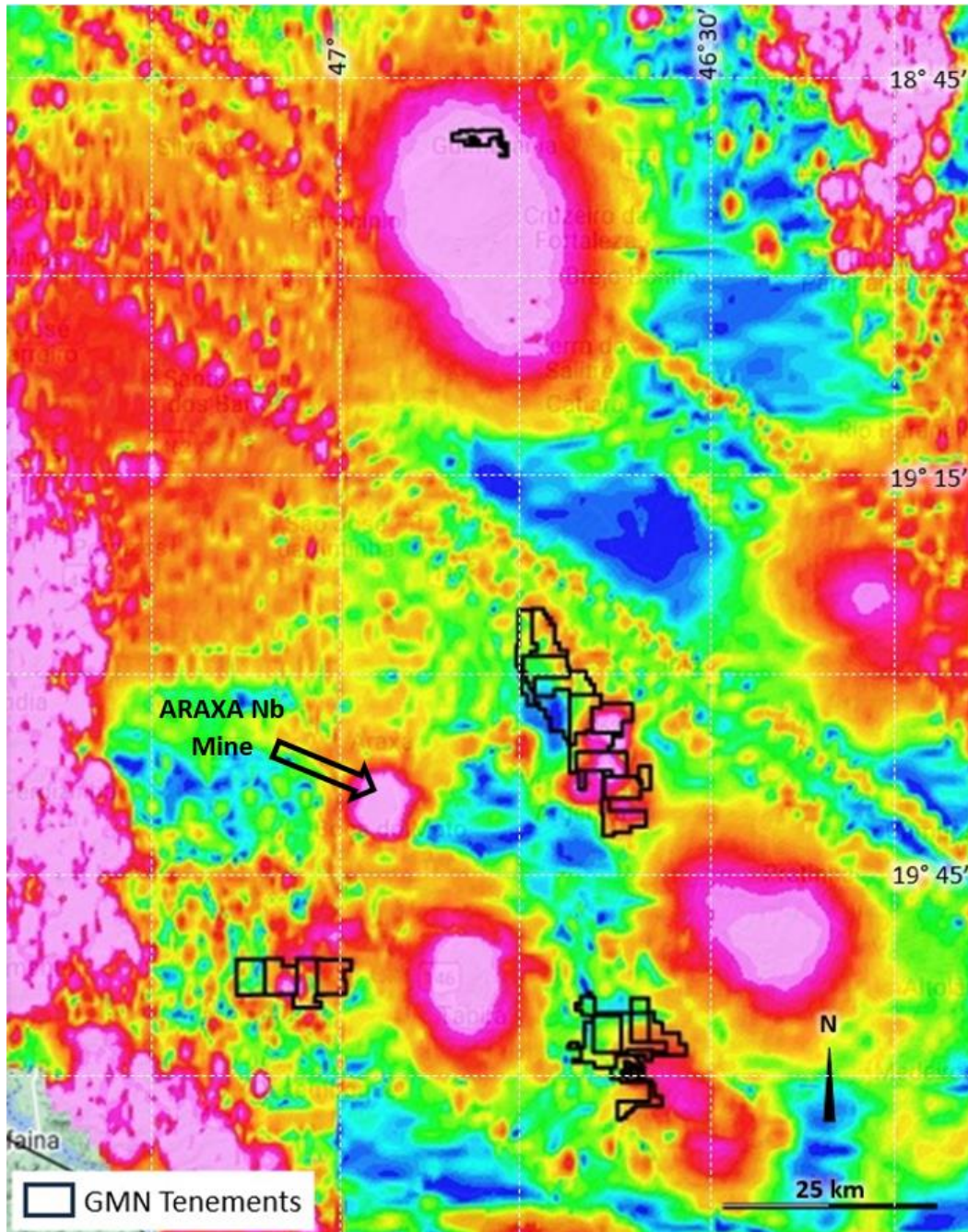


Figure 24. Tenements in relation to total magnetic gradient field. Pink ovals represent the magnetic responses to known and interpreted carbonatites.

Papua New Guinea:

▪ Wabag Project Copper-Gold

A detailed desktop review of all existing and newly acquired historical data, including regional geophysics, on the Wabag project, building on the expert review completed by Steve Grawin (1 August 2023), was completed.

Major findings were:

- Mongae Creek is a major priority 1 target, it has not been drilled deep enough however the focus of mineralisation is confirmed and leakage of mineralisation from a source at depth up a major structural zone has occurred.
- 3D geochemical modelling at Mongae Creek will be used to define the depth of drilling required.
- New target area identified from the review of the Crown Ridge data is located up to 5 kilometres to the north of Crown Ridge in an area with a significant Cu/Zn anomaly and a major north trending fault zone.
- GMN has appointed a porphyry and epithermal expert with relevant skills and experience to manage the program technically, mentor and train staff in appropriate techniques to ensure a more rigorous approach to all aspects of GMN's field work
- Re-logging of all existing diamond drill core, including using PIMA logging, is planned to assist understanding the extensive alteration halos present at the Mongae Creek and Mt Wipi project areas to keep vectoring towards the mineralisation centres of the porphyry systems.
- Infilling data gaps at Mt Wipi is required to model the area and define a probable porphyry system at depth.
- Drill targets will be defined based on the 3D modelling and the new and upgraded interpretations of the geochemical, geological, structural and mineralogical data and from the relogging of existing core.
- Additional targets that may have significant skarn and epithermal systems also are interpreted to exist at Sak Creek – K-Lam, Mongae Creek, Mt Wipi, Lombokai and in Mamba Creek, north of Crown Ridge.

Detailed budgeting of the first phase of follow up work on Mamba Creek has been completed with field work anticipated to commence in Q1 2024-5.

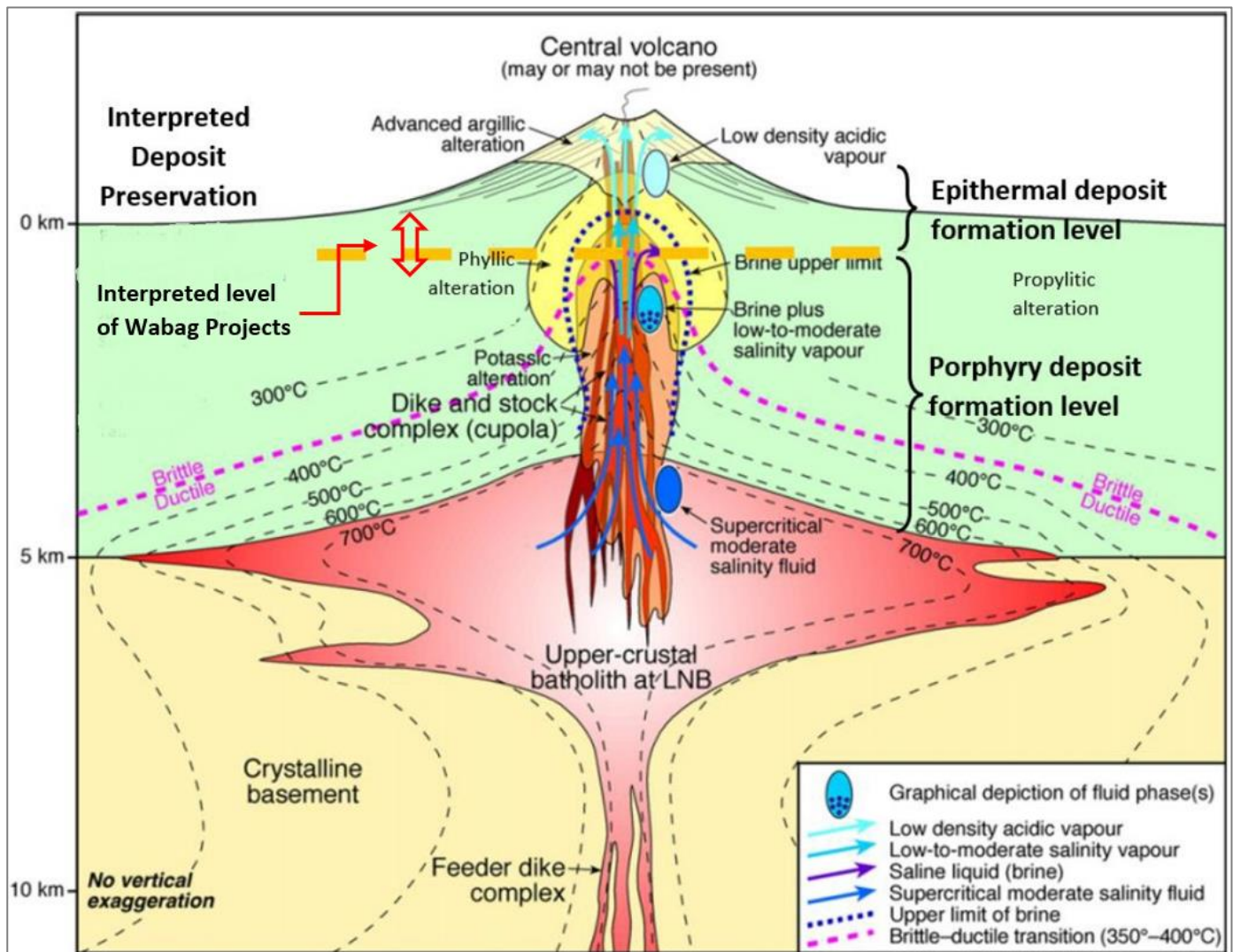


Figure 25. Interpreted position of mineralisation seen at Wabag on a conceptual porphyry model showing the porphyry-epithermal transition zone and relationship to the source magmas. Drilling has not been deep enough in the past.

- Green River ELA 2786 and Anamab ELA 2808 Copper Gold

No work undertaken pending grant of the Green River and Amanab tenements.

Figure 26 shows the location of the two ELA's and high grade rock chip samples

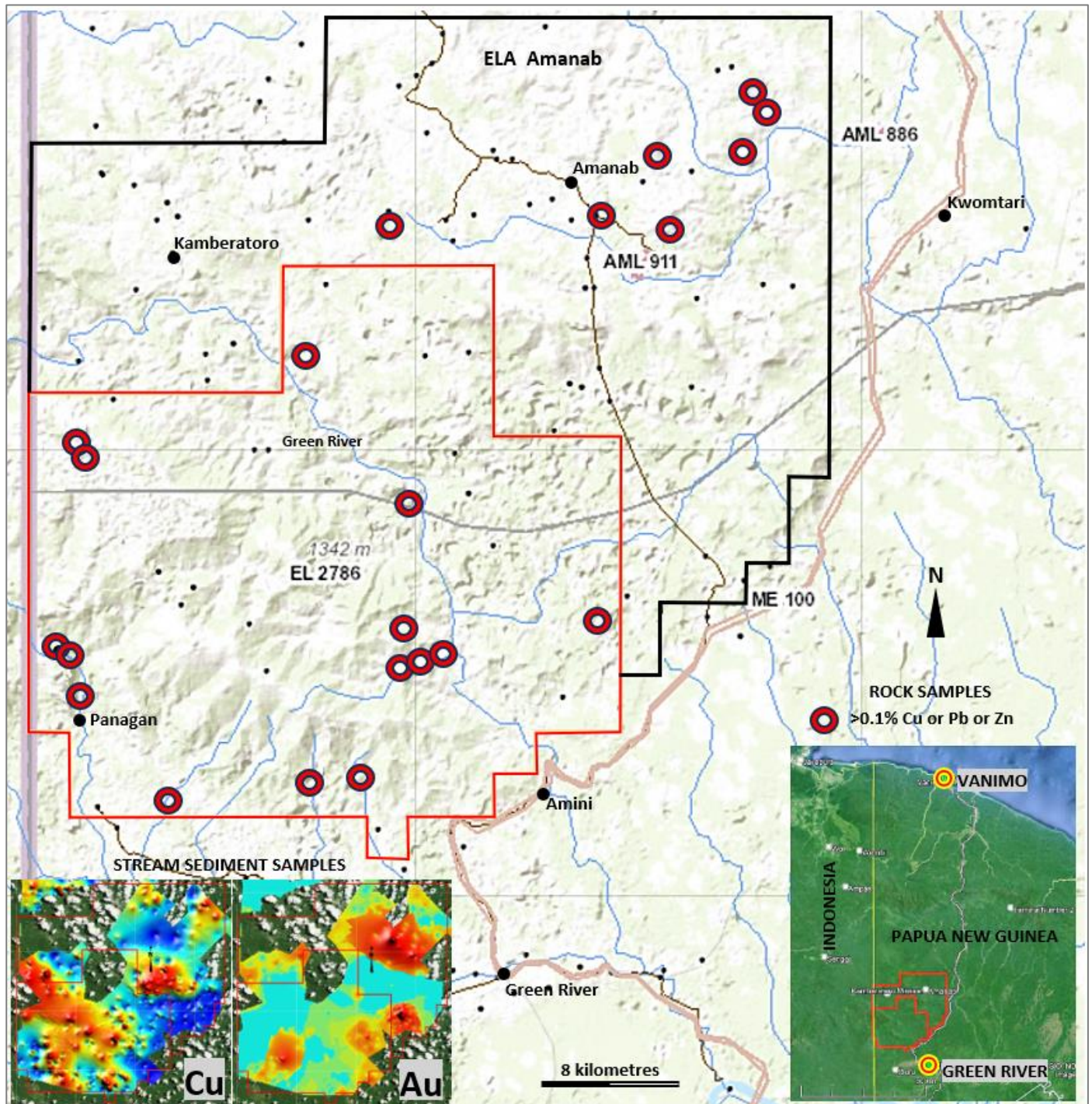


Figure 26. Location of the Green River and Amanab Ela's in West Sepik Province.

Corporate and Financial

Capital Raising

On 16 May 2024 the Company held a General Meeting at which Tranche 2 of the placement from March 2024 was approved raising a further \$418,780.

Board Changes

There have been no board changes in the quarter.

Cash Position

As at 30 June 2024, the Company had approximately \$866k of cash and nil debt.

References

This Quarterly Activities Report contain information reported in accordance with JORC 2012 in the following announcements released during the reporting period. The Company is not aware of any new information or data that materially affects the information included in those market announcements.

2 April 2024 GMN acquires Ronaldinho Rare Earths Project
8 April 2024 Critical Minerals – Copper investor presentation
8 April 2024 Critical Minerals – REE Investor Presentation
15 April 2024 Down Under Project Investor Hub Presentation
16 April 2024 Exciting new exploration results at Campo Formoso Project
9 May 2024 Wabag major review interprets at least 3 Porphyry systems
7 June 2024 Significant anomalies identified on Ronaldinho REE project
18 June 2024 AL8 completes Earn In Agreement on Salitre Lithium Prospect
8 July 2024 Critical Minerals – REE Investor Presentation
8 July 2024 Highly anomalous widespread REE assays at Down Under
12 July 2024 Technical Presentation Brazil and PNG
22 July 2024 Rare Earth (REE) drill targets defined at Down Under Project
23 July 2024 Strongly anomalous IOCG Copper and LCT pegmatites.
24 July 2024 Very High Grade REE Assays in 2nd are in Down Under Project
25 July 2024 Strongly anomalous lithium results Salinas Lithium Valley

- END -

This ASX announcement has been authorised by the Board of Gold Mountain Limited

For further information, please contact:

Gold Mountain Limited

David Evans

Executive Director

M: +61 421 903 222

E: info@goldmountainltd.com.au

About Us

Gold Mountain (ASX:GMN) is a mineral explorer with projects based in Brazil and Papua New Guinea (PNG). These assets, which are highly prospective for a range of metals including REE, niobium, scandium, uranium, lithium, nickel, copper and gold, are now actively being explored.

Gold Mountain has gradually diversified its project portfolio. The Company has a 75% holding in a package of highly prospective lithium and copper licenses located within the eastern Brazilian lithium belt, spread over parts of the Lithium Valley, Borborema Province, including the Seridó Lithium Pegmatite Belt and São Francisco craton in north-eastern Brazil.

GMN has pegged over 100 REE tenements along strike from or adjacent to significant REE resources in eastern Brazil and 20 Niobium-REE tenements in southeast Brazil close to the world's largest niobium mine.

In PNG, Gold Mountain is exploring the Wabag Project, which covers approximately 1,036km² of highly prospective exploration ground in the Papuan Mobile belt. This project contains three major target areas, Mt Wipi, Monoyal and Sak Creek, all lying within a northwest-southeast striking structural corridor. The three prospects have significant potential to host a porphyry copper-gold-molybdenum system and, or a copper-gold skarn system. Gold Mountain's current focus is Mt Wipi, which has been subjected to several phases of exploration, and the potential to host a significant copper-gold deposit is high. The current secondary targets are, in order of priority, Monoyal and Sak Creek.

Gold Mountain has also applied for a 550km² exploration licence at Amanab, contiguous with the 498 km² Green River ELA here high grade Cu-Au and Pb-Zn float has been found and porphyry style mineralisation was identified by previous explorers. Intrusive float, considered to be equivalent to the hosts of the majority of Cu and Au deposits in mainland PNG, was also previously identified and is present in both ELA's.

Appendix A

ASX Additional Information

ASX LR 5.3.1:

Exploration and Evaluation Expenditure during the quarter was [\$1.084m]. Details of the exploration activities are set out in this report.

Expenditure	\$'000
Consultancy and Wages	282
Tenement Management, Site Services and Other including taxes	850
Geophysics and laboratory	223
Total	1,355

ASX LR 5.3.2:

The Company confirms there were no production or development activities during the quarter.

ASX LR 5.3.3: Mining Tenements held/applied for at the end of the quarter and their location

Wabag Project and Green River-Amanab Project Tenements - PNG

License	License Name	License Holder	GMN Interest	Status	Area	Area km2	Granted	Expiry
EL1966	Sak Creek	Viva No.20 Limited	70%	Active - Renewal Pending-MAC	30 sub-blocks	102	27/06/2013	26/06/2023
EL1968	Crown Ridge	Viva No.20 Limited	70%	Active - Renewal Pending-MAC	30 sub-blocks	102	28/11/2013	27/11/2023
EL2306	Alukula / Kompam Station	Khor ENG Hock & Sons (PNG) Limited / Abundance Valley (PNG) Limited	70%	Active - Renewal Pending-MAC	48 sub-blocks	164	14/02/2015	13/12/2023
EL2563	Kompam	Abundance Valley (PNG) Limited	100%	Active - Renewal Pending	48 sub-blocks	164	23/01/2020	22/01/2022
EL2565	Londol	Viva Gold (PNG) Limited	100%	Active - Renewal Pending	74 sub-blocks	252	27/05/2019	26/05/2023
EL2632	Mt. Wipi	GMN 6768 (PNG) Limited	100%	Active- Renewal submitted	74 sub-blocks	252	14/08/2020	13/08/2024
EL2705	Yengit	Abundance Valley (PNG) Limited	100%	Active	5 sub-blocks	17	31/10/2023	30/10/2025
ELA2779	Nelemanda	Abundance Valley (PNG) Limited	100%	Application in time	30 sub-blocks	102		
ELA2786	Green River	Viva Gold (PNG) Limited	100%	Active – recalled, objection lodged	146 sub-blocks	498	22/4/2024	21/4/2026
ELA2808	Amanab	Viva Gold (PNG) Limited	100%	Application - Wardens Hearing to be scheduled	161 sub-blocks	549		

Lithium, Copper, Copper-Nickel and REE Projects Tenement Status Brazil

Project_Name	Tenement No	Area_ha	Status	Holders Name	GMN Ownership	Commodity	State
Salinas South	830554/2023	1995.48	GRANTED	Mars Mines Brasil Ltda	75%	LITHIUM	Minas Gerais
Salinas South	830569/2023	1972.77	GRANTED	Mars Mines Brasil Ltda	75%	LITHIUM	Minas Gerais
Salinas South	830606/2023	1971.54	GRANTED	Mars Mines Brasil Ltda	75%	LITHIUM	Minas Gerais
Salinas South	830612/2023	1971.58	GRANTED	Mars Mines Brasil Ltda	75%	LITHIUM	Minas Gerais
Salinas South	830559/2023	1985.11	GRANTED	Mars Mines Brasil Ltda	75%	LITHIUM	Minas Gerais
Salinas South	830563/2023	1975.77	GRANTED	Mars Mines Brasil Ltda	75%	LITHIUM	Minas Gerais
Salinas South	830564/2023	1985.35	GRANTED	Mars Mines Brasil Ltda	75%	LITHIUM	Minas Gerais
Salinas South	830565/2023	1973.03	GRANTED	Mars Mines Brasil Ltda	75%	LITHIUM	Minas Gerais
Salinas South	830567/2023	1982.9	GRANTED	Mars Mines Brasil Ltda	75%	LITHIUM	Minas Gerais
Salinas South	830605/2023	1976.04	GRANTED	Mars Mines Brasil Ltda	75%	LITHIUM	Minas Gerais
Salinas South	830544/2023	1986.91	GRANTED	Mars Mines Brasil Ltda	75%	LITHIUM	Minas Gerais
Salinas South	830546/2023	1981.5	GRANTED	Mars Mines Brasil Ltda	75%	LITHIUM	Minas Gerais
Salinas South	830547/2023	1981.7	GRANTED	Mars Mines Brasil Ltda	75%	LITHIUM	Minas Gerais
Salinas South	830549/2023	1496.3	GRANTED	Mars Mines Brasil Ltda	75%	LITHIUM	Minas Gerais
Salinas South	830553/2023	1969.81	GRANTED	Mars Mines Brasil Ltda	75%	LITHIUM	Minas Gerais
Salinas South	830556/2023	1980.98	GRANTED	Mars Mines Brasil Ltda	75%	LITHIUM	Minas Gerais
Salinas South	830557/2023	1982.85	GRANTED	Mars Mines Brasil Ltda	75%	LITHIUM	Minas Gerais
Salinas South	830558/2023	1980.92	GRANTED	Mars Mines Brasil Ltda	75%	LITHIUM	Minas Gerais
Salinas South	830560/2023	1985.68	GRANTED	Mars Mines Brasil Ltda	75%	LITHIUM	Minas Gerais
Salinas South	830562/2023	1975.75	GRANTED	Mars Mines Brasil Ltda	75%	LITHIUM	Minas Gerais
Salinas South	830566/2023	1985.29	GRANTED	Mars Mines Brasil Ltda	75%	LITHIUM	Minas Gerais
Salinas South	830568/2023	1931.79	GRANTED	Mars Mines Brasil Ltda	75%	LITHIUM	Minas Gerais
Salinas South	830542/2023	1987.08	GRANTED	Mars Mines Brasil Ltda	75%	LITHIUM	Minas Gerais
Salinas South	830610/2023	1976.26	GRANTED	Mars Mines Brasil Ltda	75%	LITHIUM	Minas Gerais
Salinas South	830611/2023	1808.55	GRANTED	Mars Mines Brasil Ltda	75%	LITHIUM	Minas Gerais
Salinas South	830607/2023	1984.11	GRANTED	Mars Mines Brasil Ltda	75%	LITHIUM	Minas Gerais
Salinas South	830609/2023	1983.76	GRANTED	Mars Mines Brasil Ltda	75%	LITHIUM	Minas Gerais
Coroaci	830622/2023	1987.45	GRANTED	Mars Mines Brasil Ltda	75%	LITHIUM	Minas Gerais
Coroaci	830618/2023	1985.55	GRANTED	Mars Mines Brasil Ltda	75%	LITHIUM	Minas Gerais
Coroaci	830617/2023	1987.17	GRANTED	Mars Mines Brasil Ltda	75%	LITHIUM	Minas Gerais
Coroaci	830616/2023	1973.78	GRANTED	Mars Mines Brasil Ltda	75%	LITHIUM	Minas Gerais
Coroaci (Coroaci South)	831203/2023	1983.51	GRANTED	Mars GMN Brazil Ltda	100%	LITHIUM	Minas Gerais
Coroaci (Coroaci South)	831204/2023	1980.59	GRANTED	Mars GMN Brazil Ltda	100%	LITHIUM	Minas Gerais
Casa Nova	870140/2023	1966.81	GRANTED	Mars Mines Brasil Ltda	75%	COPPER	Bahia
Casa Nova	870167/2023	1959.48	GRANTED	Mars Mines Brasil Ltda	75%	COPPER	Bahia
Casa Nova	870133/2023	1239.09	GRANTED	Mars Mines Brasil Ltda	75%	COPPER	Bahia
Casa Nova	870134/2023	1981.79	GRANTED	Mars Mines Brasil Ltda	75%	COPPER	Bahia
Casa Nova	870135/2023	1877.38	GRANTED	Mars Mines Brasil Ltda	75%	COPPER	Bahia
Casa Nova	870137/2023	1975.64	GRANTED	Mars Mines Brasil Ltda	75%	COPPER	Bahia
Casa Nova	870138/2023	1966.82	GRANTED	Mars Mines Brasil Ltda	75%	COPPER	Bahia
Casa Nova	870141/2023	1973.41	GRANTED	Mars Mines Brasil Ltda	75%	COPPER	Bahia
Casa Nova	870143/2023	1988.83	GRANTED	Mars Mines Brasil Ltda	75%	COPPER	Bahia
Casa Nova	870145/2023	1870.02	GRANTED	Mars Mines Brasil Ltda	75%	COPPER	Bahia
Casa Nova	870164/2023	1969.83	GRANTED	Mars Mines Brasil Ltda	75%	COPPER	Bahia
Casa Nova	870170/2023	1961.99	GRANTED	Mars Mines Brasil Ltda	75%	COPPER	Bahia
Casa Nova	870171/2023	1957.13	GRANTED	Mars Mines Brasil Ltda	75%	COPPER	Bahia
Casa Nova	870136/2023	1970.98	GRANTED	Mars Mines Brasil Ltda	75%	COPPER	Bahia
Casa Nova	870139/2023	1962.82	GRANTED	Mars Mines Brasil Ltda	75%	COPPER	Bahia
Casa Nova	870142/2023	1940.46	GRANTED	Mars Mines Brasil Ltda	75%	COPPER	Bahia
Casa Nova	870144/2023	1940.8	GRANTED	Mars Mines Brasil Ltda	75%	COPPER	Bahia

Casa Nova	870165/2023	1979.19	GRANTED	Mars Mines Brasil Ltda	75%	COPPER	Bahia
Casa Nova	870168/2023	1974.56	GRANTED	Mars Mines Brasil Ltda	75%	COPPER	Bahia
Casa Nova	870163/2023	1961.13	GRANTED	Mars Mines Brasil Ltda	75%	COPPER	Bahia
Casa Nova	870166/2023	1885.85	GRANTED	Mars Mines Brasil Ltda	75%	COPPER	Bahia
Casa Nova	870169/2023	1978.73	GRANTED	Mars Mines Brasil Ltda	75%	COPPER	Bahia
Casa Nova West	870186/2023	1957.6	GRANTED	Mars Mines Brasil Ltda	75%	COPPER	Bahia
Casa Nova West	870189/2023	1980.74	GRANTED	Mars Mines Brasil Ltda	75%	COPPER	Bahia
Casa Nova West	870185/2023	1962.35	GRANTED	Mars Mines Brasil Ltda	75%	COPPER	Bahia
Casa Nova West	870188/2023	1917.92	GRANTED	Mars Mines Brasil Ltda	75%	COPPER	Bahia
Casa Nova West	870187/2023	1978.74	GRANTED	Mars Mines Brasil Ltda	75%	COPPER	Bahia
Casa Nova West	870190/2023	1978.26	GRANTED	Mars Mines Brasil Ltda	75%	COPPER	Bahia
Salitre	871756/2022	509.95	GRANTED	Mars Mines Brasil Ltda	75%	PHOSPHATE	Bahia
Salitre	871753/2022	1324.24	GRANTED	Mars Mines Brasil Ltda	75%	PHOSPHATE	Bahia
Salitre	871755/2022	1695.4	GRANTED	Mars Mines Brasil Ltda	75%	PHOSPHATE	Bahia
Salitre	871754/2022	1164.1	GRANTED	Mars Mines Brasil Ltda	75%	PHOSPHATE	Bahia
Salitre (Salitre South)	872267/2021	1958.72	GRANTED	Fertfos Mineracao e FERTILIZANTES LTDA	100%	PHOSPHATE	Bahia
Campo Formoso	870210/2022	1935.9	GRANTED	MARS MINES BRASIL LTDA	75%	LITHIUM	Bahia
Campo Formoso	870211/2022	1974.25	GRANTED	MARS MINES BRASIL LTDA	75%	LITHIUM	Bahia
Campo Formoso	870212/2022	1991.88	GRANTED	TATIANA BARBOSA DE SOUZA LIBARDI	75%	LITHIUM	Bahia
Campo Formoso	870214/2022	1879.04	GRANTED	TATIANA BARBOSA DE SOUZA LIBARDI	75%	LITHIUM	Bahia
Campo Formoso	870215/2022	1511.3	GRANTED	TATIANA BARBOSA DE SOUZA LIBARDI	75%	LITHIUM	Bahia
Campo Formoso	870213/2022	1995.18	GRANTED	TATIANA BARBOSA DE SOUZA LIBARDI	75%	LITHIUM	Bahia
Icó	800853/2022	1793.68	GRANTED	Carlos Augusto Batista da Silveira	75%	LITHIUM	Ceara
Icó	800016/2023	1972.75	GRANTED	MARS MINES BRASIL LTDA	75%	COPPER	Ceara
Icó	800017/2023	1981.58	GRANTED	MARS MINES BRASIL LTDA	75%	COPPER	Ceara
Icó	800019/2023	1967.84	GRANTED	MARS MINES BRASIL LTDA	75%	COPPER	Ceara
Icó	800022/2023	1977.35	GRANTED	MARS MINES BRASIL LTDA	75%	COPPER	Ceara
Icó	800023/2023	1980.61	GRANTED	MARS MINES BRASIL LTDA	75%	COPPER	Ceara
Icó	800020/2023	1973.71	GRANTED	MARS MINES BRASIL LTDA	75%	COPPER	Ceara
Icó	800018/2023	1927.21	GRANTED	MARS MINES BRASIL LTDA	75%	COPPER	Ceara
Iguatu North	800160/2022	1999.45	GRANTED	TATIANA BARBOSA DE SOUZA LIBARDI	75%	COPPER	Ceara
Iguatu North	800161/2022	1999.49	GRANTED	TATIANA BARBOSA DE SOUZA LIBARDI		COPPER	Ceara
Iguatu North	800163/2022	1965.63	GRANTED	TATIANA BARBOSA DE SOUZA LIBARDI	75%	COPPER	Ceara
Iguatu North	800097/2022	1961.62	GRANTED	TATIANA BARBOSA DE SOUZA LIBARDI	75%	COPPER	Ceara
Iguatu North	800096/2022	1992.26	GRANTED	TATIANA BARBOSA DE SOUZA LIBARDI	75%	COPPER	Ceara
Iguatu North	800154/2022	1971.14	GRANTED	TATIANA BARBOSA DE SOUZA LIBARDI	75%	COPPER	Ceara
Iguatu North	800159/2022	1988.37	GRANTED	TATIANA BARBOSA DE SOUZA LIBARDI	75%	COPPER	Ceara
Iguatu North	800157/2022	1999.16	GRANTED	TATIANA BARBOSA DE SOUZA LIBARDI	75%	COPPER	Ceara
Iguatu North	800158/2022	1988.99	GRANTED	TATIANA BARBOSA DE SOUZA LIBARDI	75%	COPPER	Ceara
Iguatu North	800155/2022	1999.04	GRANTED	TATIANA BARBOSA DE SOUZA LIBARDI	75%	COPPER	Ceara
Iguatu North	800156/2022	1999.06	GRANTED	TATIANA BARBOSA DE SOUZA LIBARDI	75%	COPPER	Ceara

Solonópole	800416/2022	1976.35	GRANTED	TATIANA BARBOSA DE SOUZA LIBARDI	75%	LITHIUM	Ceara
Solonópole	800418/2022	1977.29	GRANTED	TATIANA BARBOSA DE SOUZA LIBARDI	75%	LITHIUM	Ceara
Solonópole	800420/2022	1973.73	GRANTED	TATIANA BARBOSA DE SOUZA LIBARDI	75%	LITHIUM	Ceara
Solonópole	800424/2022	1962.42	GRANTED	TATIANA BARBOSA DE SOUZA LIBARDI	75%	LITHIUM	Ceara
Solonópole	800426/2022	1966.24	GRANTED	TATIANA BARBOSA DE SOUZA LIBARDI	75%	LITHIUM	Ceara
Solonópole	800427/2022	1966.24	GRANTED	TATIANA BARBOSA DE SOUZA LIBARDI	75%	LITHIUM	Ceara
Solonópole	800429/2022	1989.47	GRANTED	TATIANA BARBOSA DE SOUZA LIBARDI	75%	LITHIUM	Ceara
Solonópole	800421/2022	1990.48	GRANTED	TATIANA BARBOSA DE SOUZA LIBARDI	75%	LITHIUM	Ceara
Solonópole	800422/2022	1979.94	GRANTED	TATIANA BARBOSA DE SOUZA LIBARDI	75%	LITHIUM	Ceara
Solonópole	800423/2022	1995.76	GRANTED	TATIANA BARBOSA DE SOUZA LIBARDI	75%	LITHIUM	Ceara
Solonópole	800417/2022	1976.35	GRANTED	TATIANA BARBOSA DE SOUZA LIBARDI	75%	LITHIUM	Ceara
Solonópole	800425/2022	1997.13	GRANTED	TATIANA BARBOSA DE SOUZA LIBARDI	75%	LITHIUM	Ceara
Solonópole	800428/2022	1991	GRANTED	TATIANA BARBOSA DE SOUZA LIBARDI	75%	LITHIUM	Ceara
Solonópole	800419/2022	1987.36	GRANTED	TATIANA BARBOSA DE SOUZA LIBARDI	75%	LITHIUM	Ceara
Bandarra - Sao Brás	846078/2022	1975.77	GRANTED	TATIANA BARBOSA DE SOUZA LIBARDI	75%	LITHIUM	Paraiba
Bandarra - Sao Brás	846080/2022	1987.94	GRANTED	TATIANA BARBOSA DE SOUZA LIBARDI	75%	LITHIUM	Paraiba
Bandarra - Sao Brás	846079/2022	1999.76	GRANTED	TATIANA BARBOSA DE SOUZA LIBARDI	75%	LITHIUM	Paraiba
Bandarra - Sao Brás	848004/2023	1795.17	GRANTED	MARS MINES BRASIL LTDA	75%	COPPER	Rio Grande do Norte
Bandarra - Sao Brás	848003/2023	1363.63	GRANTED	TATIANA BARBOSA DE SOUZA LIBARDI	75%	COPPER	Rio Grande do Norte
Bandarra - Sao Brás	848087/2022	1951.39	GRANTED	TATIANA BARBOSA DE SOUZA LIBARDI	75%	LITHIUM	Rio Grande do Norte
Cococi	800255/2022	1995.11	GRANTED	TATIANA BARBOSA DE SOUZA LIBARDI	75%	COPPER	Ceara
Cococi	800320/2022	1987.03	GRANTED	TATIANA BARBOSA DE SOUZA LIBARDI	75%	COPPER	Ceara
Cococi	800248/2022	1994.59	GRANTED	TATIANA BARBOSA DE SOUZA LIBARDI	75%	COPPER	Ceara
Cococi	800319/2022	1977.57	GRANTED	TATIANA BARBOSA DE SOUZA LIBARDI	75%	COPPER	Ceara
Cococi	800322/2022	1977.44	GRANTED	TATIANA BARBOSA DE SOUZA LIBARDI	75%	COPPER	Ceara
Cococi	800321/2022	1978.52	GRANTED	TATIANA BARBOSA DE SOUZA LIBARDI	75%	COPPER	Ceara
São Julião	803054/2022	1961.81	APPLICATION	TATIANA BARBOSA DE SOUZA LIBARDI	75%	COPPER	Piaui
São Julião	800317/2022	1984.82	GRANTED	TATIANA BARBOSA DE SOUZA LIBARDI	75%	COPPER	Ceara

São Julião	800249/2022	1986.16	GRANTED	TATIANA BARBOSA DE SOUZA LIBARDI	75%	COPPER	Ceara
São Julião	800250/2022	1998.32	GRANTED	TATIANA BARBOSA DE SOUZA LIBARDI	75%	COPPER	Ceara
São Julião	800318/2022	1988.27	GRANTED	TATIANA BARBOSA DE SOUZA LIBARDI	75%	COPPER	Ceara
São Julião	803053/2022	1992.05	GRANTED	TATIANA BARBOSA DE SOUZA LIBARDI	75%	COPPER	Piaui
São Julião	803036/2022	1082.49	GRANTED	TATIANA BARBOSA DE SOUZA LIBARDI	75%	COPPER	Piaui
São Julião	803055/2022	1994.55	GRANTED	TATIANA BARBOSA DE SOUZA LIBARDI	75%	COPPER	Piaui
São Julião	803035/2022	1993.94	GRANTED	TATIANA BARBOSA DE SOUZA LIBARDI	75%	COPPER	Piaui
Ararenda	800602/2022	1983.65	GRANTED	MARS MINES BRASIL LTDA	75%	COPPER	Ceara
Ararenda	800520/2022	1981.05	GRANTED	TATIANA BARBOSA DE SOUZA LIBARDI	75%	COPPER	Ceara
Ararenda	800521/2022	1344.04	GRANTED	TATIANA BARBOSA DE SOUZA LIBARDI	75%	COPPER	Ceara
Ararenda	800522/2022	1990.8	GRANTED	TATIANA BARBOSA DE SOUZA LIBARDI	75%	COPPER	Ceara
Ararenda	800524/2022	1920.38	GRANTED	TATIANA BARBOSA DE SOUZA LIBARDI	75%	COPPER	Ceara
Ararenda	800523/2022	1990.72	APPLICATION	TATIANA BARBOSA DE SOUZA LIBARDI	75%	COPPER	Ceara
Ararenda	800370/2022	1980.3	GRANTED	TATIANA BARBOSA DE SOUZA LIBARDI	75%	COPPER	Ceara
Ararenda	800371/2022	1982.69	GRANTED	TATIANA BARBOSA DE SOUZA LIBARDI	75%	COPPER	Ceara
Ararenda	800372/2022	1971.46	GRANTED	TATIANA BARBOSA DE SOUZA LIBARDI	75%	COPPER	Ceara
Ararenda	800373/2022	1989.46	GRANTED	TATIANA BARBOSA DE SOUZA LIBARDI	75%	COPPER	Ceara
Ararenda	800525/2022	1839.07	GRANTED	TATIANA BARBOSA DE SOUZA LIBARDI	75%	COPPER	Ceara
Iguatu	800074/2022	1897.47	GRANTED	TATIANA BARBOSA DE SOUZA LIBARDI	75%	COPPER	Ceara
Iguatu	800073/2022	1940.28	GRANTED	TATIANA BARBOSA DE SOUZA LIBARDI	75%	COPPER	Ceara
Iguatu	800075/2022	1861.87	GRANTED	TATIANA BARBOSA DE SOUZA LIBARDI	75%	COPPER	Ceara
Iguatu	800077/2022	1952.65	GRANTED	TATIANA BARBOSA DE SOUZA LIBARDI	75%	COPPER	Ceara
Iguatu	800078/2022	1932.34	GRANTED	TATIANA BARBOSA DE SOUZA LIBARDI	75%	COPPER	Ceara
Iguatu	800251/2022	1997.84	GRANTED	TATIANA BARBOSA DE SOUZA LIBARDI	75%	COPPER	Ceara
Iguatu	800105/2022	1988.31	GRANTED	TATIANA BARBOSA DE SOUZA LIBARDI	75%	COPPER	Ceara
Iguatu	800110/2022	1984.22	GRANTED	TATIANA BARBOSA DE SOUZA LIBARDI	75%	COPPER	Ceara
Iguatu	800106/2022	1993.09	GRANTED	TATIANA BARBOSA DE SOUZA LIBARDI	75%	COPPER	Ceara
Iguatu	800102/2022	1991.99	GRANTED	TATIANA BARBOSA DE SOUZA LIBARDI	75%	COPPER	Ceara
Iguatu	800112/2022	1928.39	GRANTED	TATIANA BARBOSA DE SOUZA LIBARDI	75%	COPPER	Ceara

Iguatu	800108/2022	1911.98	GRANTED	TATIANA BARBOSA DE SOUZA LIBARDI	75%	COPPER	Ceara
Iguatu	800109/2022	1988.41	GRANTED	TATIANA BARBOSA DE SOUZA LIBARDI	75%	COPPER	Ceara
Iguatu	800115/2022	1977.38	GRANTED	TATIANA BARBOSA DE SOUZA LIBARDI	75%	COPPER	Ceara
Iguatu	800117/2022	1990.5	GRANTED	TATIANA BARBOSA DE SOUZA LIBARDI	75%	COPPER	Ceara
Iguatu	800101/2022	1998.52	GRANTED	TATIANA BARBOSA DE SOUZA LIBARDI	75%	COPPER	Ceara
Iguatu	800107/2022	1929.28	GRANTED	TATIANA BARBOSA DE SOUZA LIBARDI	75%	COPPER	Ceara
Iguatu	800124/2022	1990.23	GRANTED	TATIANA BARBOSA DE SOUZA LIBARDI	75%	COPPER	Ceara
Iguatu	800126/2022	1990.09	GRANTED	TATIANA BARBOSA DE SOUZA LIBARDI	75%	COPPER	Ceara
Iguatu	800130/2022	1971.32	GRANTED	TATIANA BARBOSA DE SOUZA LIBARDI	75%	COPPER	Ceara
Iguatu	800132/2022	1986.13	GRANTED	TATIANA BARBOSA DE SOUZA LIBARDI	75%	COPPER	Ceara
Iguatu	800125/2022	1990.15	GRANTED	TATIANA BARBOSA DE SOUZA LIBARDI	75%	COPPER	Ceara
Iguatu	800123/2022	1990.3	GRANTED	TATIANA BARBOSA DE SOUZA LIBARDI	75%	COPPER	Ceara
Iguatu	800151/2022	1992.99	GRANTED	TATIANA BARBOSA DE SOUZA LIBARDI	75%	COPPER	Ceara
Iguatu	800147/2022	1993.21	GRANTED	TATIANA BARBOSA DE SOUZA LIBARDI	75%	COPPER	Ceara
Iguatu	800140/2022	1987.16	GRANTED	TATIANA BARBOSA DE SOUZA LIBARDI	75%	COPPER	Ceara
Iguatu	800148/2022	1993.02	GRANTED	TATIANA BARBOSA DE SOUZA LIBARDI	75%	COPPER	Ceara
Iguatu	800137/2022	1977.91	GRANTED	TATIANA BARBOSA DE SOUZA LIBARDI	75%	COPPER	Ceara
Iguatu	800139/2022	1984.97	GRANTED	TATIANA BARBOSA DE SOUZA LIBARDI	75%	COPPER	Ceara
Iguatu	800152/2022	1993.17	GRANTED	TATIANA BARBOSA DE SOUZA LIBARDI	75%	COPPER	Ceara
Iguatu	800150/2022	1993.35	GRANTED	TATIANA BARBOSA DE SOUZA LIBARDI	75%	COPPER	Ceara
Iguatu	800131/2022	1922.43	GRANTED	TATIANA BARBOSA DE SOUZA LIBARDI	75%	COPPER	Ceara
Iguatu	800128/2022	1923.6	GRANTED	TATIANA BARBOSA DE SOUZA LIBARDI	75%	COPPER	Ceara
Iguatu	800129/2022	1976.16	GRANTED	TATIANA BARBOSA DE SOUZA LIBARDI	75%	COPPER	Ceara
Iguatu	800121/2022	1990.5	GRANTED	TATIANA BARBOSA DE SOUZA LIBARDI	75%	COPPER	Ceara
Iguatu	800127/2022	1990.01	GRANTED	TATIANA BARBOSA DE SOUZA LIBARDI	75%	COPPER	Ceara
Iguatu	800145/2022	1991.66	GRANTED	TATIANA BARBOSA DE SOUZA LIBARDI	75%	COPPER	Ceara
Iguatu	800143/2022	1928.64	GRANTED	TATIANA BARBOSA DE SOUZA LIBARDI	75%	COPPER	Ceara
Iguatu	800149/2022	1988.8	GRANTED	TATIANA BARBOSA DE SOUZA LIBARDI	75%	COPPER	Ceara

Iguatu	800141/2022	1973.33	GRANTED	TATIANA BARBOSA DE SOUZA LIBARDI	75%	COPPER	Ceara
Iguatu	800144/2022	1969.5	GRANTED	TATIANA BARBOSA DE SOUZA LIBARDI	75%	COPPER	Ceara
Iguatu	800253/2022	1999.19	GRANTED	TATIANA BARBOSA DE SOUZA LIBARDI	75%	COPPER	Ceara
Iguatu	800254/2022	1998.17	GRANTED	TATIANA BARBOSA DE SOUZA LIBARDI	75%	COPPER	Ceara
Iguatu	800252/2022	1998.91	GRANTED	TATIANA BARBOSA DE SOUZA LIBARDI	75%	COPPER	Ceara
Iguatu	800114/2022	1101.53	APPLICATION	TATIANA BARBOSA DE SOUZA LIBARDI	75%	COPPER	Ceara
Iguatu	800064/2022	1641.39	GRANTED	TATIANA BARBOSA DE SOUZA LIBARDI	75%	COPPER	Ceara
Iguatu	800098/2022	1992.44	GRANTED	TATIANA BARBOSA DE SOUZA LIBARDI	75%	COPPER	Ceara
Iguatu	800103/2022	1898.89	GRANTED	TATIANA BARBOSA DE SOUZA LIBARDI	75%	COPPER	Ceara
Iguatu	800065/2022	1142.02	GRANTED	TATIANA BARBOSA DE SOUZA LIBARDI	75%	COPPER	Ceara
Iguatu	800146/2022	1950.79	APPLICATION	TATIANA BARBOSA DE SOUZA LIBARDI	75%	COPPER	Ceara
Iguatu	800178/2022	1902.8	GRANTED	TATIANA BARBOSA DE SOUZA LIBARDI	75%	COPPER	Ceara
Iguatu	800133/2022	1974.04	GRANTED	TATIANA BARBOSA DE SOUZA LIBARDI	75%	COPPER	Ceara
Iguatu	800113/2022	1999.05	GRANTED	TATIANA BARBOSA DE SOUZA LIBARDI	75%	COPPER	Ceara
Iguatu	800122/2022	1990.36	GRANTED	TATIANA BARBOSA DE SOUZA LIBARDI	75%	COPPER	Ceara
Iguatu	800116/2022	1994.08	GRANTED	TATIANA BARBOSA DE SOUZA LIBARDI	75%	COPPER	Ceara
Iguatu	800076/2022	1972.54	GRANTED	TATIANA BARBOSA DE SOUZA LIBARDI	75%	COPPER	Ceara
Iguatu	800153/2022	1985.11	GRANTED	TATIANA BARBOSA DE SOUZA LIBARDI	75%	COPPER	Ceara
Bananal Valley (Água Boa)	831703/2022	1898.71	GRANTED	TATIANA BARBOSA DE SOUZA LIBARDI	75%	LITHIUM	Minas Gerais
Bananal Valley	831700/2022	540.56	GRANTED	TATIANA BARBOSA DE SOUZA LIBARDI	75%	LITHIUM	Minas Gerais
Bananal Valley	831702/2022	1623.69	GRANTED	TATIANA BARBOSA DE SOUZA LIBARDI	75%	LITHIUM	Minas Gerais
Pedra Grande (Almenara)	831704/2022	1980.08	GRANTED	TATIANA BARBOSA DE SOUZA LIBARDI	75%	LITHIUM	Minas Gerais
Salinas	831697/2022	618.53	GRANTED	TATIANA BARBOSA DE SOUZA LIBARDI	75%	LITHIUM	Minas Gerais
Salinas	831696/2022	979.15	GRANTED	TATIANA BARBOSA DE SOUZA LIBARDI	75%	LITHIUM	Minas Gerais
Salinas	831698/2022	1455.51	GRANTED	TATIANA BARBOSA DE SOUZA LIBARDI	75%	LITHIUM	Minas Gerais
Chapada do Norte	831195/2023	1987.79	GRANTED	MARS GMN BRAZIL LTDA	100%	LITHIUM	Minas Gerais
Chapada do Norte	831196/2023	1986.32	GRANTED	MARS GMN BRAZIL LTDA	100%	LITHIUM	Minas Gerais
Chapada do Norte	831200/2023	1983.93	GRANTED	MARS GMN BRAZIL LTDA	100%	LITHIUM	Minas Gerais
Chapada do Norte	831198/2023	1979.32	APPLICATION	MARS GMN BRAZIL LTDA	100%	LITHIUM	Minas Gerais
Custódia	840195/2018	1599.49	GRANTED	MARS MINES BRASIL LTDA	75%	LITHIUM	Pernambuco
Custódia	840029/2022	1957.62	GRANTED	TATIANA BARBOSA DE SOUZA LIBARDI	75%	LITHIUM	Pernambuco

Custódia	840027/2022	1955.24	GRANTED	TATIANA BARBOSA DE SOUZA LIBARDI	75%	LITHIUM	Pernambuco
Custódia	840028/2022	1988.74	GRANTED	TATIANA BARBOSA DE SOUZA LIBARDI	75%	LITHIUM	Pernambuco
Jacurici	870217/2022	1947.17	GRANTED	TATIANA BARBOSA DE SOUZA LIBARDI	75%	LITHIUM	Bahia
Jacurici	870216/2022	1994.75	GRANTED	TATIANA BARBOSA DE SOUZA LIBARDI	75%	LITHIUM	Bahia
Juremal	870541/2022	1969.35	GRANTED	TATIANA BARBOSA DE SOUZA LIBARDI	75%	LITHIUM	Bahia
Juremal	870207/2022	1990.23	GRANTED	TATIANA BARBOSA DE SOUZA LIBARDI	75%	LITHIUM	Bahia
Juremal	870208/2022	262.39	GRANTED	TATIANA BARBOSA DE SOUZA LIBARDI	75%	LITHIUM	Bahia
Juremal	870542/2022	1999.75	GRANTED	TATIANA BARBOSA DE SOUZA LIBARDI	75%	LITHIUM	Bahia
Juremal	870543/2022	1988.98	GRANTED	TATIANA BARBOSA DE SOUZA LIBARDI	75%	LITHIUM	Bahia
Juremal (Juremal North)	871298/2022	1996.84	GRANTED	TATIANA BARBOSA DE SOUZA LIBARDI	75%	LITHIUM	Bahia
Franciscópolis	831215/2023	1987.45	GRANTED	MARS GMN BRAZIL LTDA	100%	LITHIUM	Minas Gerais
Franciscópolis	831216/2023	1987.96	GRANTED	MARS GMN BRAZIL LTDA	100%	LITHIUM	Minas Gerais
Franciscópolis	831217/2023	1986.33	GRANTED	MARS GMN BRAZIL LTDA	100%	LITHIUM	Minas Gerais
Franciscópolis	831219/2023	1984.8	GRANTED	MARS GMN BRAZIL LTDA	100%	LITHIUM	Minas Gerais
Franciscópolis	831218/2023	1985.63	GRANTED	MARS GMN BRAZIL LTDA	100%	LITHIUM	Minas Gerais
Alto Santo	801056/2023	1986.68	APPLICATION	MARS GMN BRAZIL LTDA	100%	LITHIUM	Ceara
Alto Santo	801154/2023	1985.91	APPLICATION	MARS GMN BRAZIL LTDA	100%	LITHIUM	Ceara
Alto Santo	801155/2023	1985.61	APPLICATION	MARS GMN BRAZIL LTDA	100%	LITHIUM	Ceara
Alto Santo	801156/2023	1985.82	APPLICATION	MARS GMN BRAZIL LTDA	100%	LITHIUM	Ceara
Alto Santo	801149/2023	1982.69	APPLICATION	MARS MINES BRASIL LTDA	100%	LITHIUM	Ceara
Alto Santo	801150/2023	1986.6	APPLICATION	MARS MINES BRASIL LTDA	100%	LITHIUM	Ceara
Alto Santo	801151/2023	1984.03	APPLICATION	MARS MINES BRASIL LTDA	100%	LITHIUM	Ceara
Alto Santo	801152/2023	1985.94	APPLICATION	MARS MINES BRASIL LTDA	100%	LITHIUM	Ceara
Alto Santo	801153/2023	1986.55	APPLICATION	MARS MINES BRASIL LTDA	100%	LITHIUM	Ceara
Quiterianópolis	801058/2023	1985.73	APPLICATION	MARS GMN BRAZIL LTDA	100%	LITHIUM	Ceara
Quiterianópolis	801059/2023	1982.65	APPLICATION	MARS GMN BRAZIL LTDA	100%	LITHIUM	Ceara
Quiterianópolis	801057/2023	1984.34	APPLICATION	MARS GMN BRAZIL LTDA	100%	LITHIUM	Ceara
Quiterianópolis	801061/2023	1985.14	APPLICATION	MARS GMN BRAZIL LTDA	100%	LITHIUM	Ceara
Logradouro	848133/2022	1999.78	GRANTED	TATIANA BARBOSA DE SOUZA LIBARDI	75%	LITHIUM	Rio Grande do Norte
Logradouro	848135/2022	1955.29	GRANTED	TATIANA BARBOSA DE SOUZA LIBARDI	75%	LITHIUM	Rio Grande do Norte
Cerro Corá - Porta D'água	848131/2022	1980.72	GRANTED	TATIANA BARBOSA DE SOUZA LIBARDI	75%	LITHIUM	Rio Grande do Norte
Cerro Corá - Porta D'água	848132/2022	1885.99	GRANTED	TATIANA BARBOSA DE SOUZA LIBARDI	75%	LITHIUM	Rio Grande do Norte
Cerro Corá - Porta D'água	848134/2022	1104.27	GRANTED	TATIANA BARBOSA DE SOUZA LIBARDI	75%	LITHIUM	Rio Grande do Norte
Serrote Verde	846115/2022	1998.77	APPLICATION	TATIANA BARBOSA DE SOUZA LIBARDI	75%	LITHIUM	Paraíba
São Tomé	848395/2023	1985.62	APPLICATION	MARS GMN BRAZIL LTDA	75%	LITHIUM	Rio Grande do Norte
Pedro Avelino	848396/2023	1821.57	APPLICATION	MARS GMN BRAZIL LTDA	75%	LITHIUM	Rio Grande do Norte
Cuieté	848397/2023	1984.87	APPLICATION	MARS GMN BRAZIL LTDA	75%	LITHIUM	Rio Grande do Norte
Down Under	872218/2023	1980.63	GRANTED	MARS GMN BRAZIL LTDA	100%	REE	Bahia

Down Under	872219/2023	1982.27	GRANTED	MARS GMN BRAZIL LTDA	100%	REE	Bahia
Down Under	872220/2023	1984.58	GRANTED	MARS GMN BRAZIL LTDA	100%	REE	Bahia
Down Under	872221/2023	1984.14	GRANTED	MARS GMN BRAZIL LTDA	100%	REE	Bahia
Down Under	872222/2023	1974.65	GRANTED	MARS GMN BRAZIL LTDA	100%	REE	Bahia
Down Under	872223/2023	1985.85	GRANTED	MARS GMN BRAZIL LTDA	100%	REE	Bahia
Down Under	872224/2023	1985.88	GRANTED	MARS GMN BRAZIL LTDA	100%	REE	Bahia
Down Under	872225/2023	1985.1	GRANTED	MARS GMN BRAZIL LTDA	100%	REE	Bahia
Down Under	872226/2023	1985.34	GRANTED	MARS GMN BRAZIL LTDA	100%	REE	Bahia
Down Under	872227/2023	1982.13	GRANTED	MARS GMN BRAZIL LTDA	100%	REE	Bahia
Down Under	872228/2023	1986.26	GRANTED	MARS GMN BRAZIL LTDA	100%	REE	Bahia
Down Under	872229/2023	1985.59	GRANTED	MARS GMN BRAZIL LTDA	100%	REE	Bahia
Down Under	872230/2023	1937.92	GRANTED	MARS GMN BRAZIL LTDA	100%	REE	Bahia
Down Under	872231/2023	1913.79	GRANTED	MARS GMN BRAZIL LTDA	100%	REE	Bahia
Down Under	872232/2023	1982.18	GRANTED	MARS GMN BRAZIL LTDA	100%	REE	Bahia
Down Under	872233/2023	1987.2	GRANTED	MARS GMN BRAZIL LTDA	100%	REE	Bahia
Down Under	872234/2023	1986.17	GRANTED	MARS GMN BRAZIL LTDA	100%	REE	Bahia
Down Under	872235/2023	1984.99	GRANTED	MARS GMN BRAZIL LTDA	100%	REE	Bahia
Down Under	872237/2023	1986.46	GRANTED	MARS GMN BRAZIL LTDA	100%	REE	Bahia
Down Under	872238/2023	1987.5	GRANTED	MARS GMN BRAZIL LTDA	100%	REE	Bahia
Down Under	872334/2023	1981.95	GRANTED	MARS GMN BRAZIL LTDA	100%	REE	Bahia
Down Under	872335/2023	1979.88	GRANTED	MARS GMN BRAZIL LTDA	100%	REE	Bahia
Down Under	872341/2023	1950.8	GRANTED	MARS GMN BRAZIL LTDA	100%	REE	Bahia
Down Under	872344/2023	1978.61	GRANTED	MARS GMN BRAZIL LTDA	100%	REE	Bahia
Down Under	872373/2023	1973.78	GRANTED	MARS GMN BRAZIL LTDA	100%	REE	Bahia
Down Under	872375/2023	1987.07	GRANTED	MARS GMN BRAZIL LTDA	100%	REE	Bahia
Down Under	872377/2023	1980.76	GRANTED	MARS GMN BRAZIL LTDA	100%	REE	Bahia
Down Under	872378/2023	1984.77	GRANTED	MARS GMN BRAZIL LTDA	100%	REE	Bahia
Down Under	872379/2023	1977.25	GRANTED	MARS GMN BRAZIL LTDA	100%	REE	Bahia
Down Under	872385/2023	1981.03	GRANTED	MARS GMN BRAZIL LTDA	100%	REE	Bahia
Down Under	872411/2023	1943.77	GRANTED	MARS GMN BRAZIL LTDA	100%	REE	Bahia
Down Under	872413/2023	1983.21	GRANTED	MARS GMN BRAZIL LTDA	100%	REE	Bahia
Down Under	872415/2023	1958.12	GRANTED	MARS GMN BRAZIL LTDA	100%	REE	Bahia
Down Under	872416/2023	1981.93	GRANTED	MARS GMN BRAZIL LTDA	100%	REE	Bahia
Down Under	872417/2023	1982.97	GRANTED	MARS GMN BRAZIL LTDA	100%	REE	Bahia
Down Under	872420/2023	1987.24	GRANTED	MARS GMN BRAZIL LTDA	100%	REE	Bahia
Down Under	872421/2023	1983.85	GRANTED	MARS GMN BRAZIL LTDA	100%	REE	Bahia
Down Under	872422/2023	1984.17	GRANTED	MARS GMN BRAZIL LTDA	100%	REE	Bahia
Down Under	872424/2023	1979.94	GRANTED	MARS GMN BRAZIL LTDA	100%	REE	Bahia
Down Under	872425/2023	1984.09	GRANTED	MARS GMN BRAZIL LTDA	100%	REE	Bahia
Down Under	872427/2023	1962.54	GRANTED	MARS GMN BRAZIL LTDA	100%	REE	Bahia
Down Under	872428/2023	1986.54	GRANTED	MARS GMN BRAZIL LTDA	100%	REE	Bahia
Down Under	872429/2023	1985.03	GRANTED	MARS GMN BRAZIL LTDA	100%	REE	Bahia
Down Under	872430/2023	1971.82	GRANTED	MARS GMN BRAZIL LTDA	100%	REE	Bahia
Down Under	872333/2023	1943.82	APPLICATION	MARS GMN BRAZIL LTDA	100%	REE	Bahia
Down Under	872336/2023	1684.26	APPLICATION	MARS GMN BRAZIL LTDA	100%	REE	Bahia
Down Under	872339/2023	1965.33	APPLICATION	MARS GMN BRAZIL LTDA	100%	REE	Bahia
Down Under	872340/2023	1977.1	APPLICATION	MARS GMN BRAZIL LTDA	100%	REE	Bahia
Down Under	872342/2023	1956.59	APPLICATION	MARS GMN BRAZIL LTDA	100%	REE	Bahia
Down Under	872343/2023	1979.48	APPLICATION	MARS GMN BRAZIL LTDA	100%	REE	Bahia
Down Under	872346/2023	1984.65	APPLICATION	MARS GMN BRAZIL LTDA	100%	REE	Bahia
Down Under	872350/2023	1982.4	APPLICATION	MARS GMN BRAZIL LTDA	100%	REE	Bahia
Down Under	872356/2023	1757.46	APPLICATION	MARS GMN BRAZIL LTDA	100%	REE	Bahia
Down Under	872414/2023	715.12	APPLICATION	MARS GMN BRAZIL LTDA	100%	REE	Bahia
Down Under	872418/2023	1981.59	APPLICATION	MARS GMN BRAZIL LTDA	100%	REE	Bahia
Down Under	872419/2023	1020.09	APPLICATION	MARS GMN BRAZIL LTDA	100%	REE	Bahia
Down Under	872431/2023	1535.43	APPLICATION	MARS GMN BRAZIL LTDA	100%	REE	Bahia

Down Under	870179/2024	28.84	Application	Mars GMN Brazil Ltda	100%	REE	Bahia
Down Under	870177/2024	680.26	Application	Mars GMN Brazil Ltda	100%	REE	Bahia
Down Under	870180/2024	290.56	Application	Mars GMN Brazil Ltda	100%	REE	Bahia
Down Under	870178/2024	123.32	Application	Mars GMN Brazil Ltda	100%	REE	Bahia
Down Under	870181/2024	119.61	Application	Mars GMN Brazil Ltda	100%	REE	Bahia
Ronaldinho	870478/2024	1985.85	Application	Quantum Litio Brasil Ltda	100%	REE	Bahia
Ronaldinho	870479/2024	1978.54	Application	Quantum Litio Brasil Ltda	100%	REE	Bahia
Ronaldinho	870481/2024	1984.38	Application	Quantum Litio Brasil Ltda	100%	REE	Bahia
Ronaldinho	870482/2024	1983.38	Application	Quantum Litio Brasil Ltda	100%	REE	Bahia
Ronaldinho	870483/2024	1984.56	Application	Quantum Litio Brasil Ltda	100%	REE	Bahia
Ronaldinho	870484/2024	1985.1	Application	Quantum Litio Brasil Ltda	100%	REE	Bahia
Ronaldinho	870485/2024	1963.84	Application	Quantum Litio Brasil Ltda	100%	REE	Bahia
Ronaldinho	870486/2024	1987.76	Application	Quantum Litio Brasil Ltda	100%	REE	Bahia
Ronaldinho	870487/2024	1981.92	Application	Quantum Litio Brasil Ltda	100%	REE	Bahia
Ronaldinho	870489/2024	1963.84	Application	Quantum Litio Brasil Ltda	100%	REE	Bahia
Ronaldinho	870490/2024	1987.56	Application	Quantum Litio Brasil Ltda	100%	REE	Bahia
Ronaldinho	870491/2024	1981.05	Application	Quantum Litio Brasil Ltda	100%	REE	Bahia
Ronaldinho	870492/2024	1965.79	Application	Quantum Litio Brasil Ltda	100%	REE	Bahia
Ronaldinho	870494/2024	1987.54	Application	Quantum Litio Brasil Ltda	100%	REE	Bahia
Ronaldinho	870495/2024	1970.64	Application	Quantum Litio Brasil Ltda	100%	REE	Bahia
Ronaldinho	870496/2024	1987.03	Application	Quantum Litio Brasil Ltda	100%	REE	Bahia
Ronaldinho	870497/2024	1986.22	Application	Quantum Litio Brasil Ltda	100%	REE	Bahia
Ronaldinho	870498/2024	1987.74	Application	Quantum Litio Brasil Ltda	100%	REE	Bahia
Ronaldinho	870499/2024	1986.44	Application	Quantum Litio Brasil Ltda	100%	REE	Bahia
Ronaldinho	870500/2024	1987.37	Application	Quantum Litio Brasil Ltda	100%	REE	Bahia
Ronaldinho	870501/2024	1962.71	Application	Quantum Litio Brasil Ltda	100%	REE	Bahia
Ronaldinho	870502/2024	1988.25	Application	Quantum Litio Brasil Ltda	100%	REE	Bahia
Ronaldinho	870504/2024	1985.05	Application	Quantum Litio Brasil Ltda	100%	REE	Bahia
Ronaldinho	870505/2024	1987.11	Application	Quantum Litio Brasil Ltda	100%	REE	Bahia
Ronaldinho	870506/2024	1983.77	Application	Quantum Litio Brasil Ltda	100%	REE	Bahia
Ronaldinho	870507/2024	1987.74	Application	Quantum Litio Brasil Ltda	100%	REE	Bahia
Ronaldinho	870508/2024	1984.65	Application	Quantum Litio Brasil Ltda	100%	REE	Bahia
Ronaldinho	870509/2024	1983.8	Application	Quantum Litio Brasil Ltda	100%	REE	Bahia
Ronaldinho	870510/2024	1987.45	Application	Quantum Litio Brasil Ltda	100%	REE	Bahia
Ronaldinho	870512/2024	1985.05	Application	Quantum Litio Brasil Ltda	100%	REE	Bahia
Ronaldinho	870513/2024	1979.46	Application	Quantum Litio Brasil Ltda	100%	REE	Bahia
Ronaldinho	870514/2024	1986.21	Application	Quantum Litio Brasil Ltda	100%	REE	Bahia
Ronaldinho	870515/2024	1986.58	Application	Quantum Litio Brasil Ltda	100%	REE	Bahia
Ronaldinho	870516/2024	1980.5	Application	Quantum Litio Brasil Ltda	100%	REE	Bahia
Ronaldinho	870518/2024	1982.06	Application	Quantum Litio Brasil Ltda	100%	REE	Bahia
Ronaldinho	870519/2024	1982.66	Application	Quantum Litio Brasil Ltda	100%	REE	Bahia
Ronaldinho	870525/2024	1982.14	Application	Quantum Litio Brasil Ltda	100%	REE	Bahia
Ronaldinho	870526/2024	1970.48	Application	Quantum Litio Brasil Ltda	100%	REE	Bahia
Ronaldinho	870527/2024	1066.86	Application	Quantum Litio Brasil Ltda	100%	REE	Bahia
Ronaldinho	870528/2024	1987.12	Application	Quantum Litio Brasil Ltda	100%	REE	Bahia
Ronaldinho	870529/2024	1987.41	Application	Quantum Litio Brasil Ltda	100%	REE	Bahia
Araxa	830326/2024	1986.08	Application	Mars GMN Brazil Ltda	100%	Niobium	Minas Gerais
Araxa	830327/2024	1989.02	Application	Mars GMN Brazil Ltda	100%	Niobium	Minas Gerais
Araxa	830328/2024	1979.62	Application	Mars GMN Brazil Ltda	100%	Niobium	Minas Gerais
Araxa	830329/2024	1951.68	Application	Mars GMN Brazil Ltda	100%	Niobium	Minas Gerais
Araxa	830330/2024	1986.98	Application	Mars GMN Brazil Ltda	100%	Niobium	Minas Gerais
Araxa	830331/2024	1986.33	Application	Mars GMN Brazil Ltda	100%	Niobium	Minas Gerais
Araxa	830332/2024	1985.46	Application	Mars GMN Brazil Ltda	100%	Niobium	Minas Gerais
Araxa	830333/2024	1988.98	Application	Mars GMN Brazil Ltda	100%	Niobium	Minas Gerais
Araxa	830336/2024	1989.19	Application	Mars GMN Brazil Ltda	100%	Niobium	Minas Gerais
Araxa	830334/2024	1984.15	Application	Mars GMN Brazil Ltda	100%	Niobium	Minas Gerais

Araxa	830338/2024	1988.15	Application	Mars GMN Brazil Ltda	100%	Niobium	Minas Gerais
Araxa	830339/2024	1988.63	Application	Mars GMN Brazil Ltda	100%	Niobium	Minas Gerais
Araxa	830340/2024	1986.79	Application	Mars GMN Brazil Ltda	100%	Niobium	Minas Gerais
Araxa	830341/2024	1988.91	Application	Mars GMN Brazil Ltda	100%	Niobium	Minas Gerais
Araxa	830343/2024	1988.50	Application	Mars GMN Brazil Ltda	100%	Niobium	Minas Gerais
Araxa	830377/2024	1986.41	Application	Quantum Litio Brasil Ltda	100%	Niobium	Minas Gerais
Araxa	830380/2024	1987.88	Application	Quantum Litio Brasil Ltda	100%	Niobium	Minas Gerais
Araxa	830383/2024	1975.63	Application	Quantum Litio Brasil Ltda	100%	Niobium	Minas Gerais
Araxa	830384/2024	1988.45	Application	Quantum Litio Brasil Ltda	100%	Niobium	Minas Gerais
Araxa	830402/2024	1110.69	Application	Quantum Litio Brasil Ltda	100%	Niobium	Minas Gerais

Mining Tenements acquired during the quarter and their location

Nil

Mining Tenements disposed of during the quarter and their location

Nil

Farm-in or farm-out agreements entered into in the quarter

Alderan Resources (AL8) entered an Earn in agreement on the Salitre project during the quarter.

Beneficial percentage interests held in farm-in or farm-out agreements at the end of the quarter

Nil

ASX LR 5.3.5:

Payments to related parties of the entity and their associates during the June 2024 quarter approximately \$183,250 was paid to Directors and associates for director fees, consulting fees and expense reimbursements.

Appendix 5B

Mining exploration entity or oil and gas exploration entity quarterly cash flow report

Name of entity

Gold Mountain Limited

ABN

79 115 845 942

Quarter ended ("current quarter")

30 June 2024

Consolidated statement of cash flows		Current quarter \$A'000	Year to date (12 months) \$A'000
1.	Cash flows from operating activities		
1.1	Receipts from customers		
1.2	Payments for		
	(a) exploration & evaluation	-	-
	(b) development	-	-
	(c) production	-	-
	(d) staff costs	-	-
	(e) administration and corporate costs	(332)	(1,559)
1.3	Dividends received (see note 3)	-	-
1.4	Interest received	9	18
1.5	Interest and other costs of finance paid	-	-
1.6	Income taxes paid	-	-
1.7	Government grants and tax incentives	-	-
1.8	Other (provide details if material)	-	-
1.9	Net cash from / (used in) operating activities	(323)	(1,541)

2.	Cash flows from investing activities		
2.1	Payments to acquire or for:		
	(a) entities	-	-
	(b) tenements	-	-
	(c) property, plant and equipment	-	(10)
	(d) exploration & evaluation	(1,356)	(3,804)
	(e) investments	-	-
	(f) other non-current assets	-	-

Consolidated statement of cash flows		Current quarter \$A'000	Year to date (12 months) \$A'000
2.2	Proceeds from the disposal of:		
	(a) entities	-	-
	(b) tenements	-	-
	(c) property, plant and equipment	-	-
	(d) investments	-	-
	(e) other non-current assets	-	-
2.3	Cash flows from loans to other entities	-	-
2.4	Dividends received (see note 3)	-	-
2.5	Other (provide details if material)	-	-
2.6	Net cash from / (used in) investing activities	(1,356)	(3,814)

3.	Cash flows from financing activities		
3.1	Proceeds from issues of equity securities (excluding convertible debt securities)	391	4,919
3.2	Proceeds from issue of convertible debt securities	-	-
3.3	Proceeds from exercise of options	-	-
3.4	Transaction costs related to issues of equity securities or convertible debt securities	-	-
3.5	Proceeds from borrowings	-	20
3.6	Repayment of borrowings	(7)	(21)
3.7	Transaction costs related to loans and borrowings	-	-
3.8	Dividends paid	-	-
3.9	Other – Repayment of lease liability	-	-
3.10	Net cash from / (used in) financing activities	384	4,918

4.	Net increase / (decrease) in cash and cash equivalents for the period		
4.1	Cash and cash equivalents at beginning of period	2,161	1,303
4.2	Net cash from / (used in) operating activities (item 1.9 above)	(323)	(1,541)
4.3	Net cash from / (used in) investing activities (item 2.6 above)	(1,356)	(3,814)
4.4	Net cash from / (used in) financing activities (item 3.10 above)	384	4,918

Mining exploration entity or oil and gas exploration entity quarterly cash flow report

Consolidated statement of cash flows		Current quarter \$A'000	Year to date (12 months) \$A'000
4.5	Effect of movement in exchange rates on cash held	-	-
4.6	Cash and cash equivalents at end of period	866	866

5.	Reconciliation of cash and cash equivalents at the end of the quarter (as shown in the consolidated statement of cash flows) to the related items in the accounts	Current quarter \$A'000	Previous quarter \$A'000
5.1	Bank balances	866	2,161
5.2	Call deposits	-	-
5.3	Bank overdrafts	-	-
5.4	Other (provide details)	-	-
5.5	Cash and cash equivalents at end of quarter (should equal item 4.6 above)	866	2,161

6.	Payments to related parties of the entity and their associates	Current quarter \$A'000
6.1	Aggregate amount of payments to related parties and their associates included in item 1	183
6.2	Aggregate amount of payments to related parties and their associates included in item 2	-
<i>Note: if any amounts are shown in items 6.1 or 6.2, your quarterly activity report must include a description of, and an explanation for, such payments.</i>		

Mining exploration entity or oil and gas exploration entity quarterly cash flow report

7. Financing facilities <i>Note: the term "facility" includes all forms of financing arrangements available to the entity. Add notes as necessary for an understanding of the sources of finance available to the entity.</i>	Total facility amount at quarter end \$A'000	Amount drawn at quarter end \$A'000
7.1 Loan facilities	-	-
7.2 Credit standby arrangements	-	-
7.3 Other (please specify)	-	-
7.4 Total financing facilities	-	-
7.5 Unused financing facilities available at quarter end		-
7.6 Include in the box below a description of each facility above, including the lender, interest rate, maturity date and whether it is secured or unsecured. If any additional financing facilities have been entered into or are proposed to be entered into after quarter end, include a note providing details of those facilities as well.		

8. Estimated cash available for future operating activities	\$A'000
8.1 Net cash from / (used in) operating activities (item 1.9)	(323)
8.2 (Payments for exploration & evaluation classified as investing activities) (item 2.1(d))	(1,356)
8.3 Total relevant outgoings (item 8.1 + item 8.2)	(1,679)
8.4 Cash and cash equivalents at quarter end (item 4.6)	866
8.5 Unused finance facilities available at quarter end (item 7.5)	-
8.6 Total available funding (item 8.4 + item 8.5)	866
8.7 Estimated quarters of funding available (item 8.6 divided by item 8.3)	0.52
<i>Note: if the entity has reported positive relevant outgoings (ie a net cash inflow) in item 8.3, answer item 8.7 as "N/A". Otherwise, a figure for the estimated quarters of funding available must be included in item 8.7.</i>	
8.8 If item 8.7 is less than 2 quarters, please provide answers to the following questions:	
8.8.1 Does the entity expect that it will continue to have the current level of net operating cash flows for the time being and, if not, why not?	
Answer: Yes	
8.8.2 Has the entity taken any steps, or does it propose to take any steps, to raise further cash to fund its operations and, if so, what are those steps and how likely does it believe that they will be successful?	
Answer: Yes, the company is looking to raise further funds. It is likely to be successful.	
8.8.3 Does the entity expect to be able to continue its operations and to meet its business objectives and, if so, on what basis?	
Answer: Yes, recent promising exploration results will enable the Company to raise funds.	
<i>Note: where item 8.7 is less than 2 quarters, all of questions 8.8.1, 8.8.2 and 8.8.3 above must be answered.</i>	

Compliance statement

- 1 This statement has been prepared in accordance with accounting standards and policies which comply with Listing Rule 19.11A.
- 2 This statement gives a true and fair view of the matters disclosed.

Date: 31 July 2024

Authorised by: **By the Board**.....
(Name of body or officer authorising release – see note 4)

Notes

1. This quarterly cash flow report and the accompanying activity report provide a basis for informing the market about the entity's activities for the past quarter, how they have been financed and the effect this has had on its cash position. An entity that wishes to disclose additional information over and above the minimum required under the Listing Rules is encouraged to do so.
2. If this quarterly cash flow report has been prepared in accordance with Australian Accounting Standards, the definitions in, and provisions of, *AASB 6: Exploration for and Evaluation of Mineral Resources* and *AASB 107: Statement of Cash Flows* apply to this report. If this quarterly cash flow report has been prepared in accordance with other accounting standards agreed by ASX pursuant to Listing Rule 19.11A, the corresponding equivalent standards apply to this report.
3. Dividends received may be classified either as cash flows from operating activities or cash flows from investing activities, depending on the accounting policy of the entity.
4. If this report has been authorised for release to the market by your board of directors, you can insert here: "By the board". If it has been authorised for release to the market by a committee of your board of directors, you can insert here: "By the [name of board committee – eg Audit and Risk Committee]". If it has been authorised for release to the market by a disclosure committee, you can insert here: "By the Disclosure Committee".
5. If this report has been authorised for release to the market by your board of directors and you wish to hold yourself out as complying with recommendation 4.2 of the ASX Corporate Governance Council's *Corporate Governance Principles and Recommendations*, the board should have received a declaration from its CEO and CFO that, in their opinion, the financial records of the entity have been properly maintained, that this report complies with the appropriate accounting standards and gives a true and fair view of the cash flows of the entity, and that their opinion has been formed on the basis of a sound system of risk management and internal control which is operating effectively.