

7 August 2024

DRILLING UNDERWAY TO TEST NEW, HIGH-PRIORITY TARGETS

Drilling to test newly-identified targets at Kelpie Hill and Windmill Dam, along strike from the high-grade Evergreen zone on the highly prospective Woorara Fault

HIGHLIGHTS

- Reverse Circulation (RC) drilling is underway to test new, high-priority areas at the Company's Cobar Project in the Cobar Basin, NSW.
- The 'Kelpie Hill' and 'Windmill Dam' targets, located to the north and south of the high-grade Evergreen Zone within EL6321, have previously returned strongly anomalous base metal grades in surface rock chip sampling.
- The drilling is designed to further unlock the potential along the highly prospective Woorara Fault, a key regional structure associated with mineralisation in the southern Cobar Basin.

Eastern Metals Ltd (**ASX: EMS**) ("**Eastern Metals**" or "**the Company**") is pleased to advise that Reverse Circulation (RC) drilling has commenced to test newly identified high-priority targets at its Cobar Project in the southern Cobar Basin, NSW (refer to **Figure 1**).

The drilling will initially focus on the Kelpie Hill and Windmill Dam targets, located to the north and south of the high-grade Evergreen Zone at Browns Reef¹ (EL6321), both of which returned highly anomalous grades from surface rock chip sampling². In-fill and extensional drilling is also planned at other areas within the tenement including at Evergreen (refer to **Figure 2**).

The drilling program, which is expected to comprise approximately 2,000 metres, will be undertaken by Drillit Consulting Pty Ltd – an experienced drilling contractor based in the Cobar Basin. The drilling is expected to take three weeks to complete (weather dependent), with initial assay results expected in September 2024.

Eastern Metals' Chief Executive Officer Ley Kingdom said: *"Strong alteration at surface and rock chip sampling across Kelpie Hill and Windmill Dam have returned anomalous copper, lead, zinc and*

¹ Eastern Metals Ltd (ASX:EMS) ASX Announcements 27 June 2022, 'Evergreen Discovery Zone Expanded at Browns Reef' & 2 August 2022, 'More High-Grade Assays in Evergreen Discovery at Browns Reef'

² Eastern Metals Ltd (ASX:EMS) ASX Announcement 3 June 2024, 'New High-Priority Targets Identified at Browns Reef, NSW'

silver results, which lie along the highly prospective Woorara Fault along strike from Evergreen. We are delighted to now be drill testing these new and exciting base metal targets.”

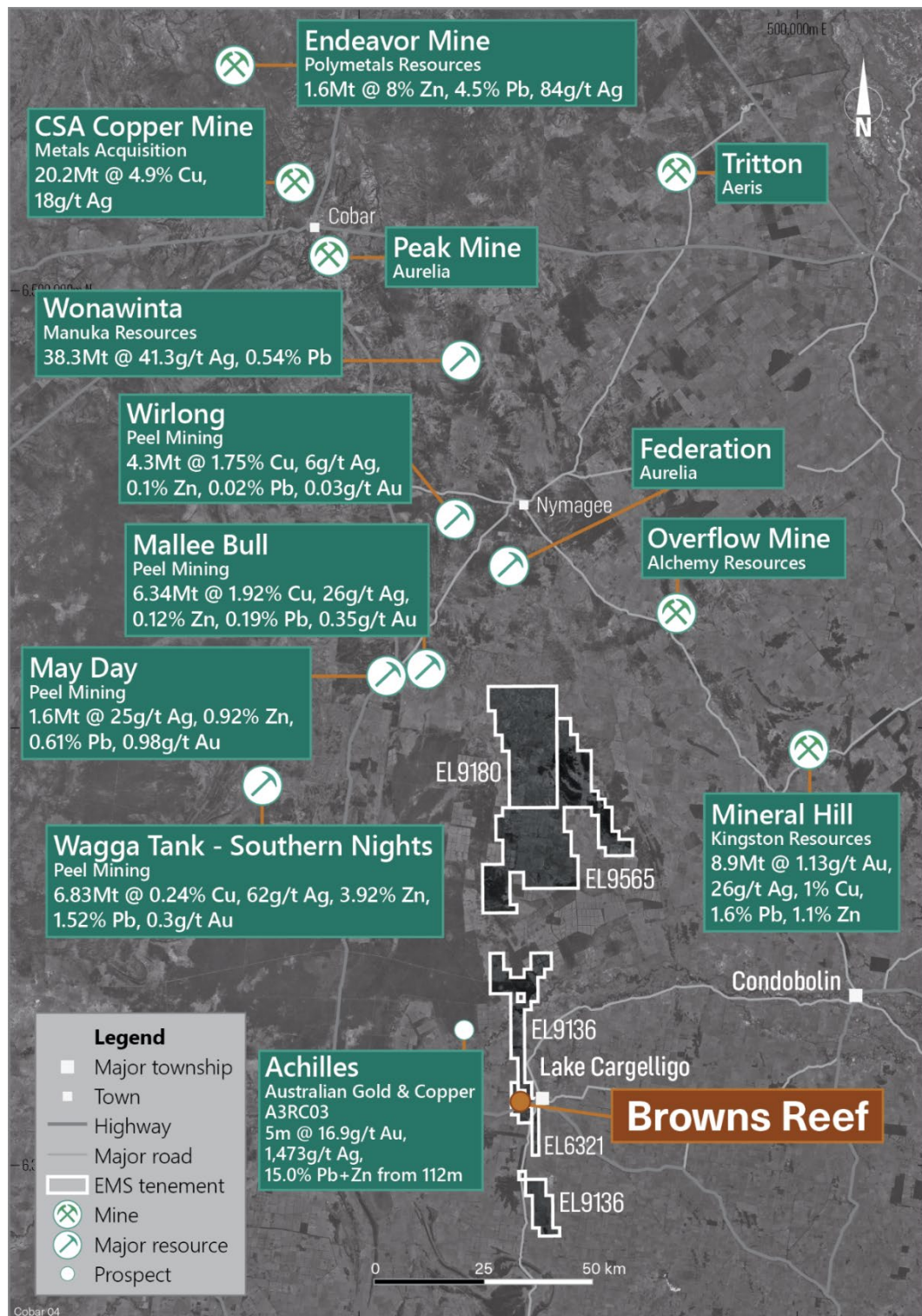


Figure 1: Location of the Cobar Project, southern Cobar Basin, NSW and EL6321, ‘Browns Reef’³.

³ The third-party projects are not considered by the Company to be peer comparisons to the Company’s projects; Eastern Metals is a mineral explorer, not a mineral producer. The third-party projects listed are from producing operations or approved mining projects. Information extracted from each company’s website, market announcements, presentations and reports lodged during the FY2023 and FY2024 periods.

EL6321 Browns Reef

Overview

Browns Reef (EL6321) is an advanced exploration project located 5km west of Lake Cargelligo in the southern Cobar Basin, NSW. It is a structurally controlled, polymetallic system extending along the inferred Woorara Fault and the Preston Formation and Clements Formation contact.

Assay results from recent fieldwork programs to the north and south of the known high-grade mineralisation at Evergreen have returned highly anomalous grades from surface rock chip samples⁴.

Mapping and pXRF traverses along the Woorara Fault, a regional-scale structure related to known mineralisation at the high-grade Pineview and Evergreen zones, identified new anomalous zones north and south of Evergreen, named “Kelpie Hill” and “Windmill Dam”.

Kelpie Hill is located approximately 700 metres to the north-west of Evergreen, and Windmill Dam is 500 metres to the south-east. Refer to **Figure 2**.

The pXRF demonstrated that soil anomalism of lead (Pb) and arsenic (As) were readily traceable within the soil profiles and decreasing Pb results could effectively map out the basalt and Clements Formation contact zones. Rock chip samples paired with the pXRF readings were able to distinguish further prospective zones to the south and north of Evergreen⁵.

The RC program has been designed to test whether the anomalous grades from surface rock chip samples and results from pXRF soil readings represent further zones of mineralisation between Pineview and Evergreen and, potentially, to the north of Evergreen.

⁴ Eastern Metals Ltd (ASX:EMS) ASX Announcement 3 June 2024, ‘New High-Priority Targets Identified at Browns Reef, NSW’

⁵ Eastern Metals Ltd (ASX:EMS) ASX Announcements 27 June 2022, ‘Evergreen Discovery Zone Expanded at Browns Reef’ & 2 August 2022, ‘More High-Grade Assays in Evergreen Discovery at Browns Reef’

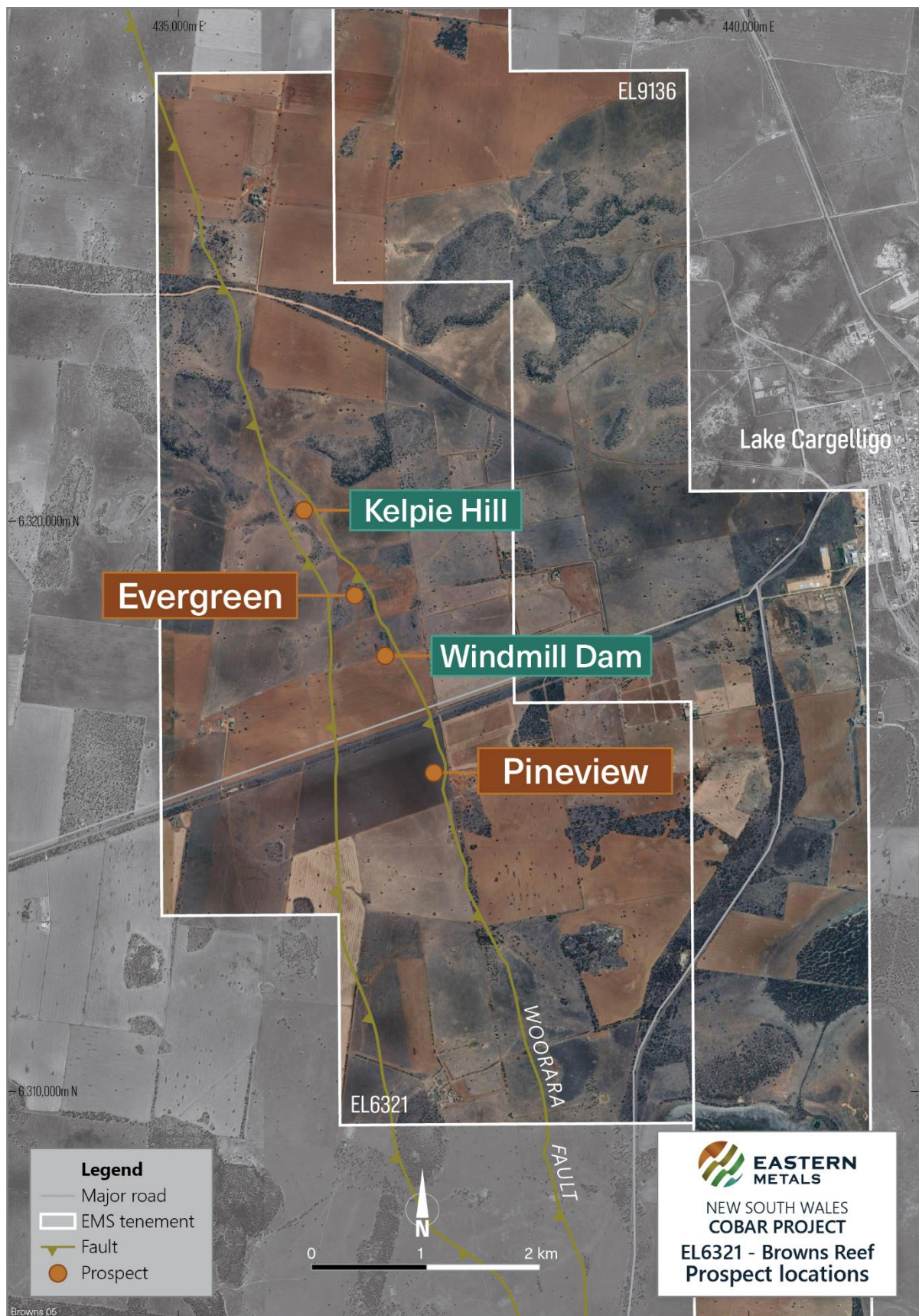


Figure 2: Location of Browns Reef, EL6321 and the Pineview, Evergreen, Kelpie Hill & Windmill Dam prospects.

Forward-Looking Statements

This document may include forward-looking statements. Forward-looking statements include, but are not limited to, statements concerning the Company's planned activities, including mining and exploration programs, and other statements that are not historical facts. When used in this document, the words such as "could", "plan", "estimate", "expect", "intend", "may", "potential", "should" and similar expressions are forward-looking statements. In addition, summaries of Exploration Results and estimates of Mineral Resources and Ore Reserves could also be forward looking statements.

Although Eastern Metals believes that its expectations reflected in these forward-looking statements are reasonable, such statements involve risks and uncertainties and no assurance can be given that actual results will be consistent with these forward-looking statements.

Previously Reported Information

Certain information in this announcement references previously reported announcements. The announcements are available to view on the Company's website (www.easternmetals.com.au) and on the ASX website (www.asx.com.au). Other than the new information set out in this announcement, the Company confirms that it is not aware of any new information or data that materially affects the information included in the previous announcements and that all material assumptions and technical parameters underpinning the exploration results continue to apply and have not materially changed.

Authorisation for this Announcement

This announcement has been authorised for release by the Company's Disclosure Officers in accordance with its Disclosure and Communications Policy which is available on the Company's website, www.easternmetals.com.au.

Contacts

For more information, please contact:

Ley Kingdom

Chief Executive Officer

leykingdom@easternmetals.com.au

M: 0407 487 409

Nicholas Read

Read Corporate

nicholas@readcorporate.com.au

P: 08 9388 1474

M: 0419 929 046