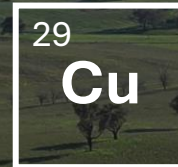


# Drilling for major discoveries



1 November 2024

Chris Byrne, *CEO & Managing Director*  
[chris.byrne@legacyminerals.com.au](mailto:chris.byrne@legacyminerals.com.au) +61 499 527 547

AGM Presentation

# Disclaimer

This presentation may contain certain statements and projections provided by or on behalf of Legacy Minerals Holdings Limited (**ASX: LGM, Legacy Minerals, or the Company**) with respect to the anticipated future undertakings. These forward-looking statements reflect various assumptions by or on behalf of Legacy Minerals. Accordingly, these statements are subject to significant business, economic and competitive uncertainties and contingencies associated with the mining industry which may be beyond the control of Legacy Minerals which could cause actual results or trends to differ materially, including but not limited to price and currency fluctuations, geotechnical factors, drilling and production results, development progress, operating results, reserve estimates, legislative, fiscal and regulatory developments, economic and financial markets conditions in various countries, approvals and cost estimates, environmental risks, ability to meet funding requirements, share price volatility. Accordingly, there can be no assurance that such statements and projections will be realised. Legacy Minerals makes no representations as to the accuracy or completeness of any such statement of projections or that any forecasts will be achieved.

Additionally, Legacy Minerals makes no representation or warranty, express or implied, in relation to, and no responsibility or liability (whether for negligence, under statute or otherwise) is or will be accepted by Legacy Minerals or by any of their respective officers, directors, shareholders, partners, employees, or advisers as to or in relation to the accuracy or completeness of the information, statements, opinions or matters (express or implied) arising out of, contained in or derived from this presentation or any omission from this presentation or of any other written or oral information or opinions provided now or in the future to any interested party or its advisers. In furnishing this presentation, Legacy Minerals undertakes no obligation to provide any additional or updated information whether as a result of new information, future events or results or otherwise. Nothing in this material should be construed as either an offer to sell or a solicitation of an offer to buy or sell securities. It does not include all available information and should not be used in isolation as a basis to invest in Legacy Minerals.

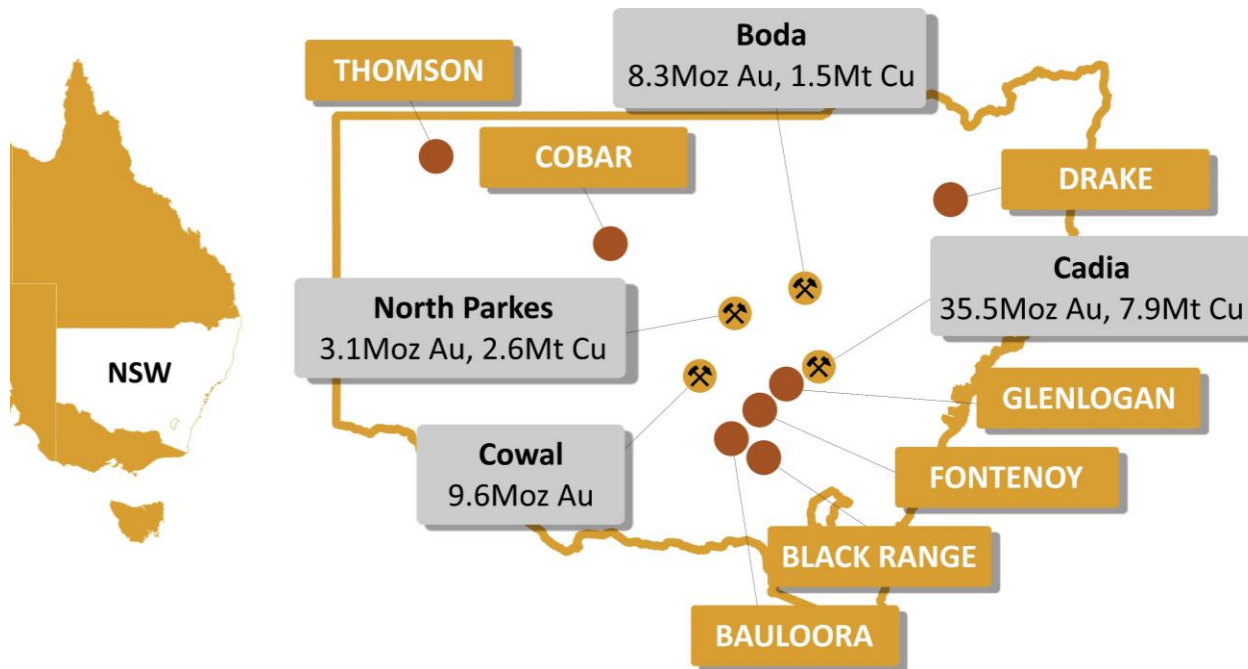
This presentation contains exploration results and historic exploration results as originally reported the Company's Prospectus dated 28 July 2021 and released 9 September and subsequent ASX market announcements. The Company confirms that it is not aware of any new information that materially affects the information included in the original market announcements and that all material assumptions and technical parameters underpinning the estimates in the relevant market announcements continue to apply and have not materially changed. The Company confirms that the form and context in which the Competent Persons' findings are presented have not been materially modified from the original market announcements.

The information in this presentation that relates to Exploration Targets, Exploration Results, Mineral Resources or Ore Reserves is based on information compiled by Thomas Wall, a Competent Person who is a Member of the Australian Institute of Geoscientists. Mr Wall is the Technical Director is a full-time employee of Legacy Minerals Limited and a shareholder, who has sufficient experience that is relevant to the style of mineralisation and type of deposit under consideration and to the activity being undertaken to qualify as a Competent Person as defined in the 2012 edition of the Australasian Code for Reporting of Exploration Results, Mineral Resources and Ore Reserves. Mr Wall consents to the inclusion in the report of the matters based on his information in the form and context in which it appears.

The release of these presentation materials has been authorised by the Board.



# A premier gold, silver and copper portfolio



Map of NSW showing Legacy Minerals tenements and geographical location of major mining and exploration projects in NSW<sup>1</sup> (figures are expressed as mineral resources).

**100% Owned Projects -7,067km<sup>2</sup>**

**Thomson, Drake, and Black Range**

**Joint Venture Projects -1,070km<sup>2</sup>**

**Bauloora, Fontenoy, Glenloghan, Cobar**

**Newmont**

**S2R**  
S2 Resources

**EARTH AI**

**HELIIX**  
RESOURCES LIMITED

## Why New South Wales?

- Home to Australia's largest gold mine (Cadia) and continued discovery success e.g. Achilles (AGC:ASX), Spur (WTM:ASX)
- Potential validated by global mining company investment
  - **Since 2023, NSW has seen A\$16Bn in mining M&A deals and \$300m in exploration JVs.**

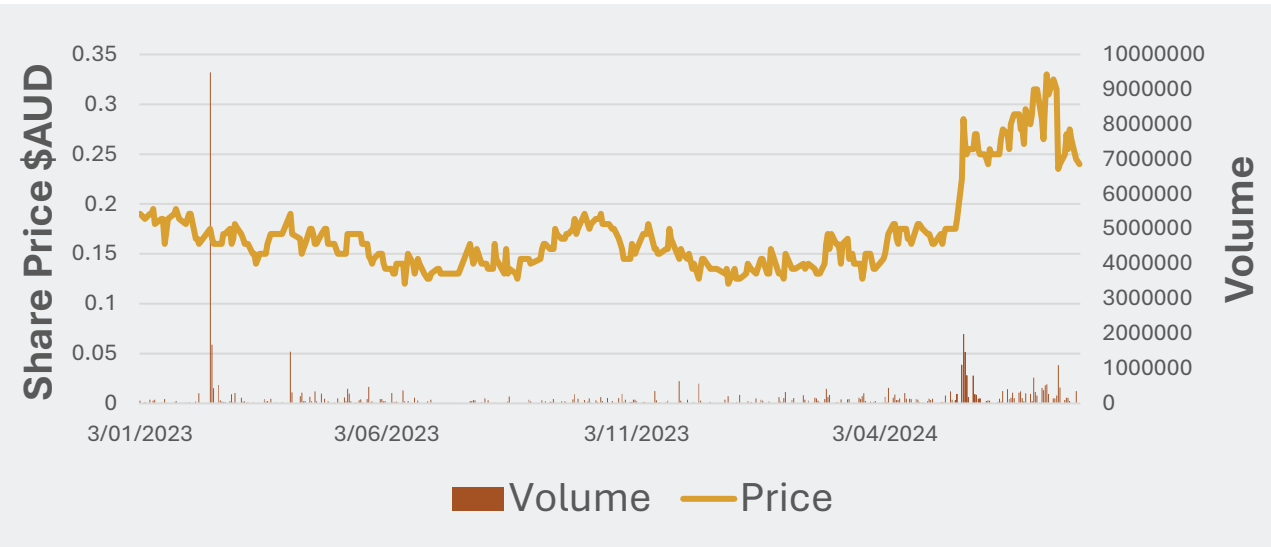


**ASX: LGM**



# Legacy Minerals at a glance

**Share Price**      **\$0.22**      **Market Cap**      **\$23M**



**Shares**  
**105M**

**Top 20**  
**46%**

**2024 Drill Campaigns**  
**6 across 5 Projects**

**Joint Venture Funding**  
**\$28.3M**

**Cash – 30 Sep**  
**\$1.6M**

**Debt**  
**Nil**

**Newmont**

**S2R**  
S2 Resources

**HELIX**  
RESOURCES LIMITED

**EARTH AI**

## Board and Management



**Dr David Carland**  
Non-Executive  
Chairman



**Matthew Wall**  
Non-Executive  
Director



**Douglas Menzies**  
Non-Executive  
Director



**Christopher Byrne**  
CEO and  
Managing Director



**Thomas Wall**  
Exploration Manager  
and Executive Director



**ASX: LGM**



# Strategy to deliver shareholder value



Acquiring, discovering, and developing high quality gold, copper, and silver projects

## Discovery

Active drilling and targeting

Focussed on gold, silver, and copper

Looking for Tier-1 Type Deposits

## Acquisitions

Low-cost acquisitions

Growth opportunities

Diverse mix of early stage (Thomson) and advanced projects (Drake)

## Partnerships

Non-dilutive discovery exposure

\$28M secured in earn-in agreements to date

Ongoing, multiple discovery catalysts





# Thomson

Belt scale exploration opportunity





# Discovery Opportunity

## Belt-scale exploration opportunity

### Confirmed Intrusion related Au-Cu Potential

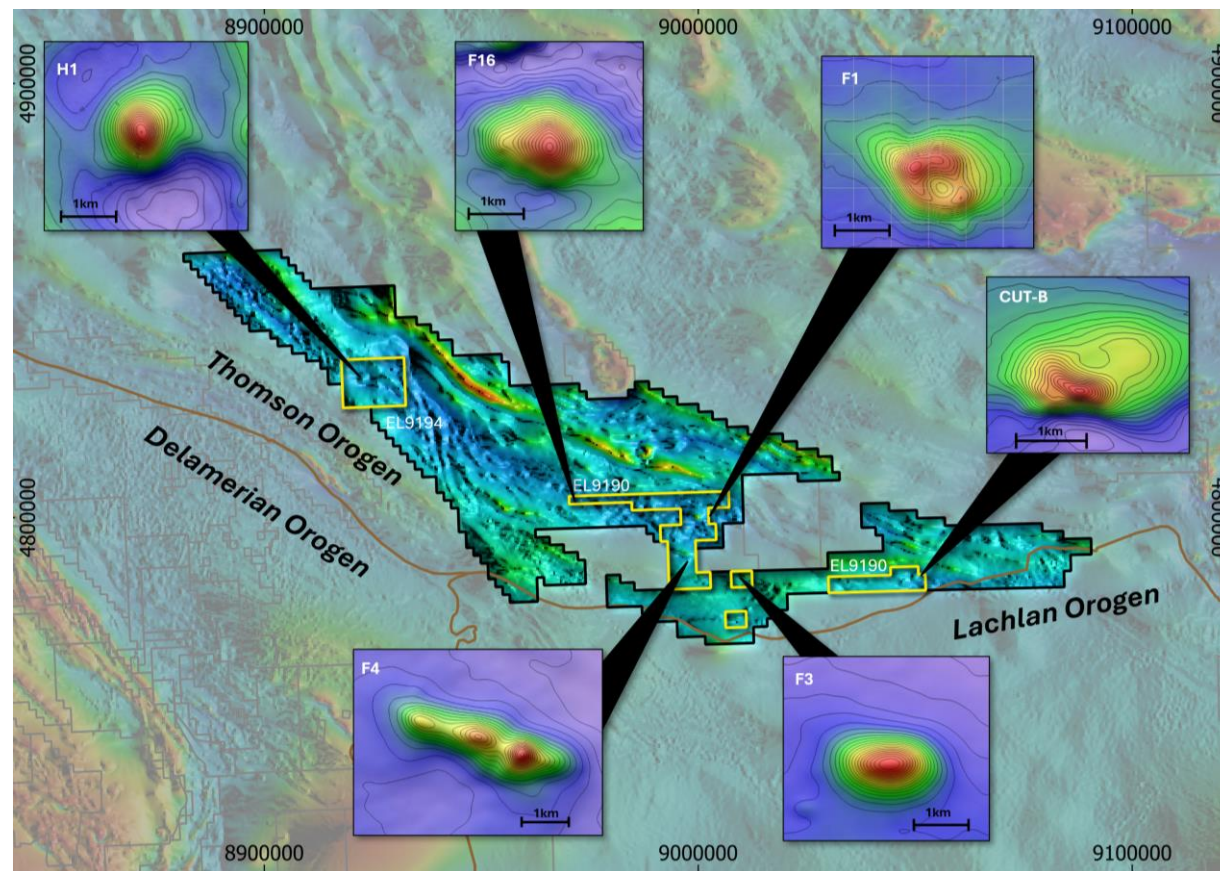
- Proof of concept confirmed in historic drilling
- Target rich environment
  - Numerous bulls-eye magnetic and gravity anomalies
- Large alteration footprints confirmed (tourmaline, biotite, silica and pyrrhotite)

### One of the most under-explored orogens in Australia

- Potential for large deposits due to first mover advantage.
- Belt scale exploration opportunity (5,500km<sup>2</sup>)
- Successful discovery opens multitude of walk-up drill targets

### Pathway to Discovery

- Gravity survey > magnetic and gravity modelling > drilling
- Cover sequence geophysically transparent for gravity, magnetics, IP and potentially ground EM.
- Shallow cover means cost-effective discovery rates.



Project overview showing EL9190, EL9194, ELA6777 and examples of “bullseye” magnetic targets. All magnetic targets shown here indicate a magnetic body >100Mt<sup>1</sup>.



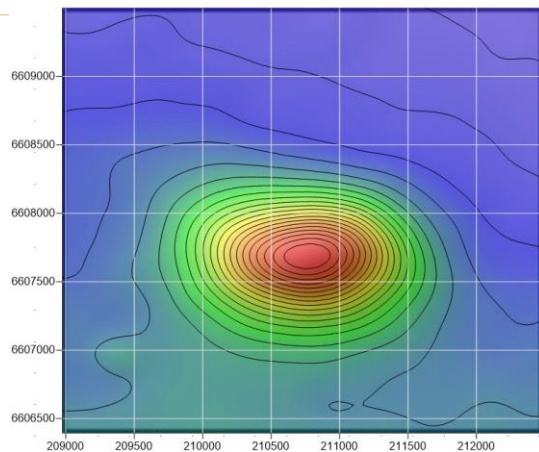


# Multiple opportunities for a large deposit discovery

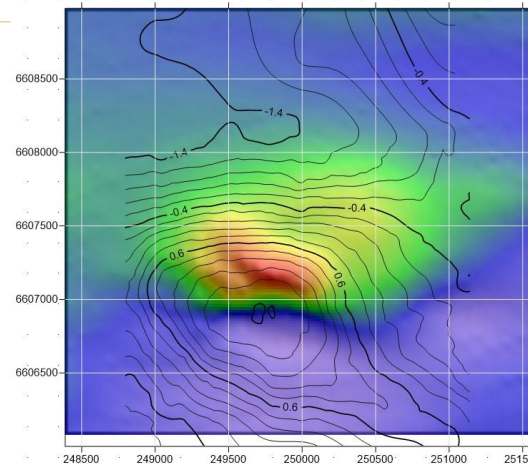
## Highlight Prospects<sup>1,2</sup>

Target	Modelled mag body size	Previous Drilling	Key observations
F3	350Mt	<b>Not tested.</b> Hole passed nearby but did not intercept the interpreted causative magnetic body.	Strong <b>silica-pyrrhotite alteration and veining</b>
CUT-B	>100Mt	<b>Not tested.</b> Magnetic susceptibility measurements of the drill core indicate the magnetic anomaly remains untested.	Coincident gravity anomaly. Extensive tourmaline and biotite alteration and tourmaline + sulphide vein. (up to 0.53g/t Au, 113g/t Ag, 0.5% Cu, 4.2% Zn, 0.5% Bi, 0.6% W)
CUT-A	170Mt	<b>Not tested.</b> Magnetic susceptibility measurements of the drill core indicate the magnetic anomaly remains untested.	<b>480m zone of alteration</b> - silicification, veining and brecciation indicating an extensive mineralized hydrothermal system. (up to 3.73g/t Au, 58g/t Ag, 0.12% Bi, 105ppm Mo, 1.8% Pb, and 1.0% Zn)

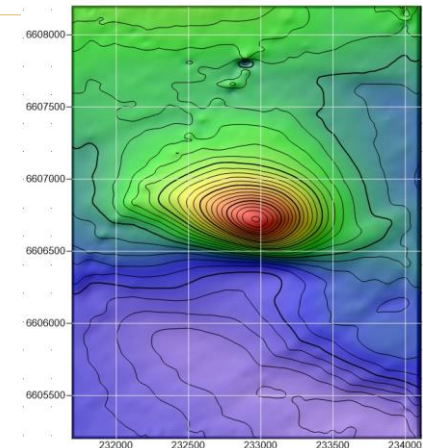
F3



CUT-B



CUT-A



ASX: LGM

Note: references on this slide are in the Appendix – Endnotes on Slides 29-31



# Drake

An Extensive and Underexplored Au-Ag-Cu system





# Drake - Unlocking a target-rich epithermal space

## A 'Legacy' project with new vision and approach

### What's Legacy Minerals Strategy?

- A focus on delivering value through Au-Ag-Cu and discovery
- Low-cost acquisition and sunk capital provide expectational room for growth
  - **\$190k unencumbered sale with an estimated \$50M in infrastructure and previous exploration**

**Drake Area** - Currently Secured (EL6273, EL9161, NOPD for Red Rock, White Rock)

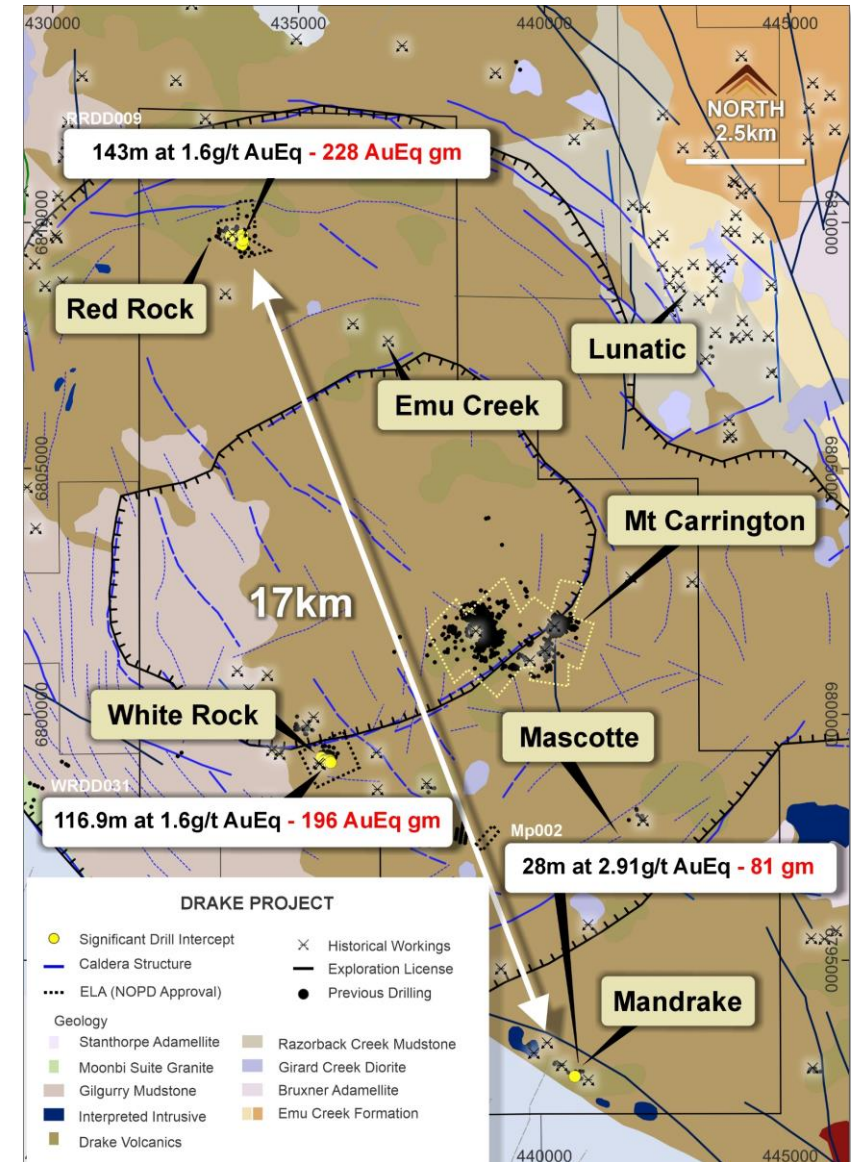
- ~160km<sup>2</sup> of the Drake Caldera with resources of ~17Moz AgEq<sup>1</sup>

### 1. Discovery Upside – Porgera style Cu-Au deposit (~19.7Moz)<sup>2</sup>

- One of the largest, epithermal complexes in NSW
- Multiple untested opportunities for shallow epithermal and deeper porphyry targets
- Limited drilling with hundreds of historic workings inc. the largest producing copper mines
- **13 x 100 AuEq g/t m hits**

### 2. De-risked future upside – Brownfields Site

- Tailings dam, freshwater dam, grid easement, site sheds, housing
- Long life exploration licences, no royalties, no encumbrances



ASX: LGM

Note: references on this slide are in the Appendix – Endnotes on Slides 29-31



# Key Exploration Prospects

## Red Rock, White Rock, Emu Creek, Lunatic Field

### Redrock – Epithermal Au-Ag (Cu-Zn-Pb) <sup>1</sup>

- (228 AuEq gxm) 143m at 1.1g/t Au, 3g/t Ag, and 0.9% Pb+Zn from 0m (RRDD009)
- (135 AuEq gxm) 88m at 0.9g/t Au, 5g/t Ag, and 1.1% Pb+Zn from 0m (RRDD011)
- (150 AuEq gxm) 121.6m at 0.7g/t Au, 3g/t Ag, and 1.1% Pb+Zn from 1m (RRDD004)

### White Rock North – Epithermal Ag-Au<sup>1</sup>

- (230 Au Eq gxm) 37.1m at 0.2g/t Au, 422g/t Ag, 1.5% Pb+Zn from 0m (PWR128)
- (193 AuEq gxm) 58.5m at 0.2g/t Au, 204g/t Ag, 1.1% Pb+Zn from 25.5m (PWR172)
- (196 AuEq gxm) 116.9m at 0.1g/t Au, 59g/t Ag, 1.7% Pb+Zn from 0m (WRDD031)

### Emu Creek - Cu

The largest historical producing copper mine in the district

No modern exploration since 1970

### Lunatic Field – Hillgrove Style Antimony<sup>2</sup>

Caledonian Reef: **29.2% Sb, 3.1g/t Au, 46g/t Ag** (80/M179)

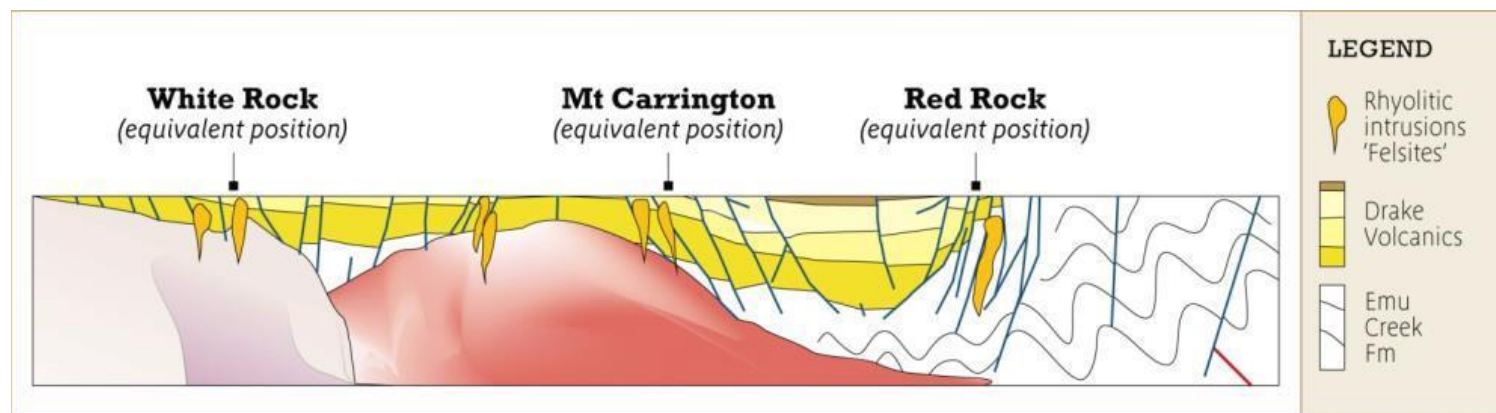
Hugh & Jackson Reef: **20.4% Sb, 1.8g/t Au** (80/M176), **15.8% Sb, 0.25g/t Au** (62145)

Deep Creek Sb Vein: **7.1% Sb, 0.55g/t Au** (62147)

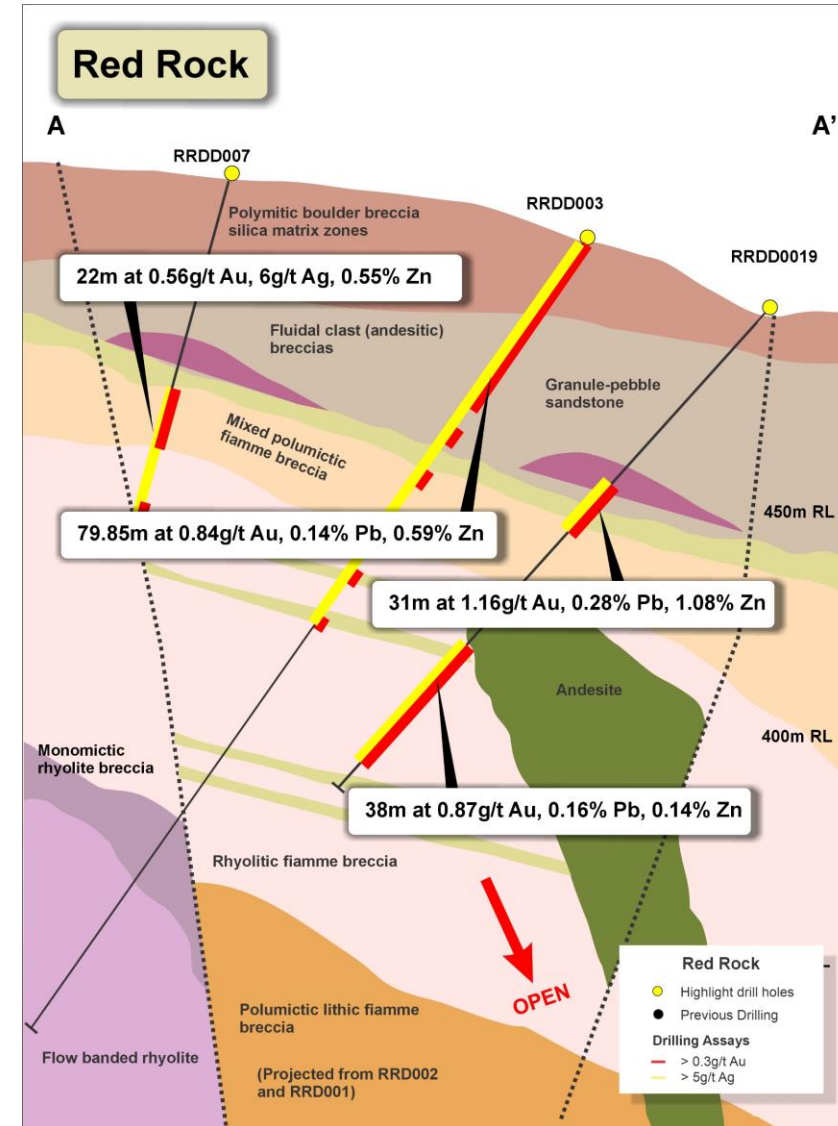
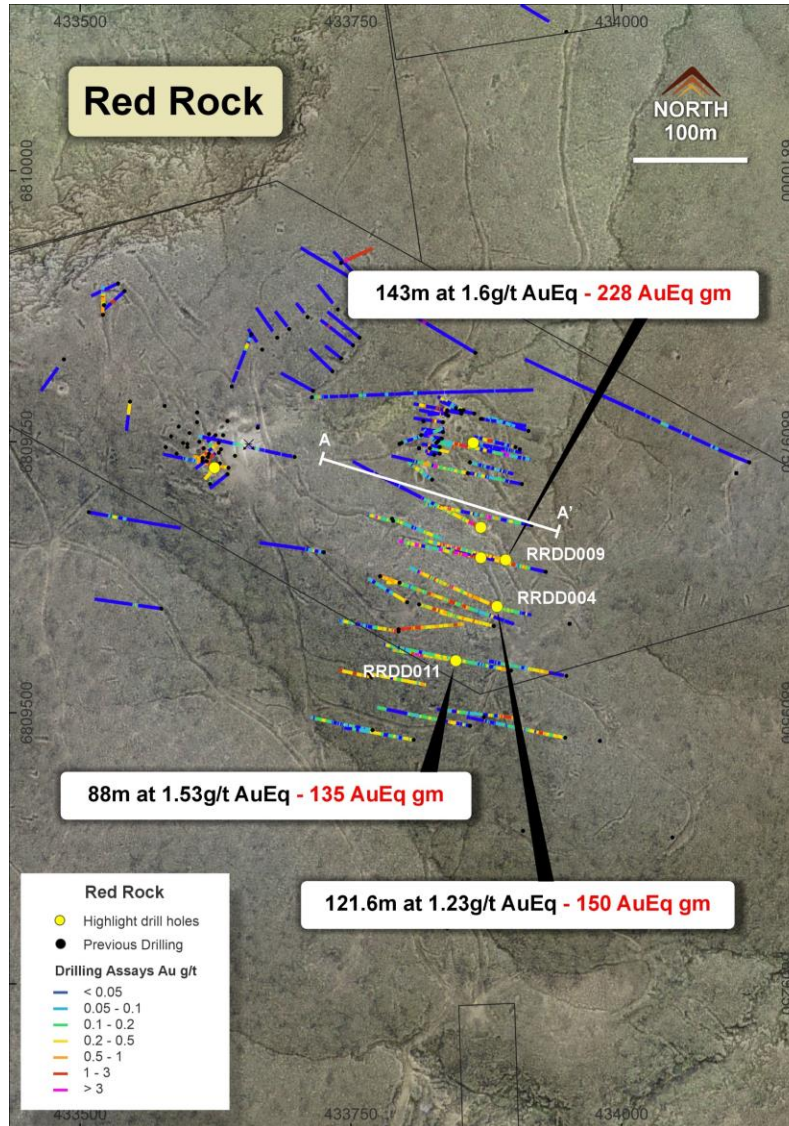
Victoria Reefs: **39.0g/t Au, 4g/t Ag** (113919), **7.7g/t Au, 7g/t Ag** (113917)

Collins Mine: **63.4g/t Au, 6g/t Ag** (62140), **56g/t Au, 3g/t Ag** (62141)

## Drake Caldera Cross Section



# Red Rock – Open Gold Targets<sup>1</sup>





# Black Range

Under explored gold-silver epithermal systems





# Black Range

100% ownership of a large underexplored epithermal system

District scale control – 905km<sup>2</sup> license

- **Newcrest** were the last to complete significant exploration over **30 years ago**<sup>1</sup>
- Newcrest relinquished the ground in 1992 (Cadia discovery)<sup>1</sup>

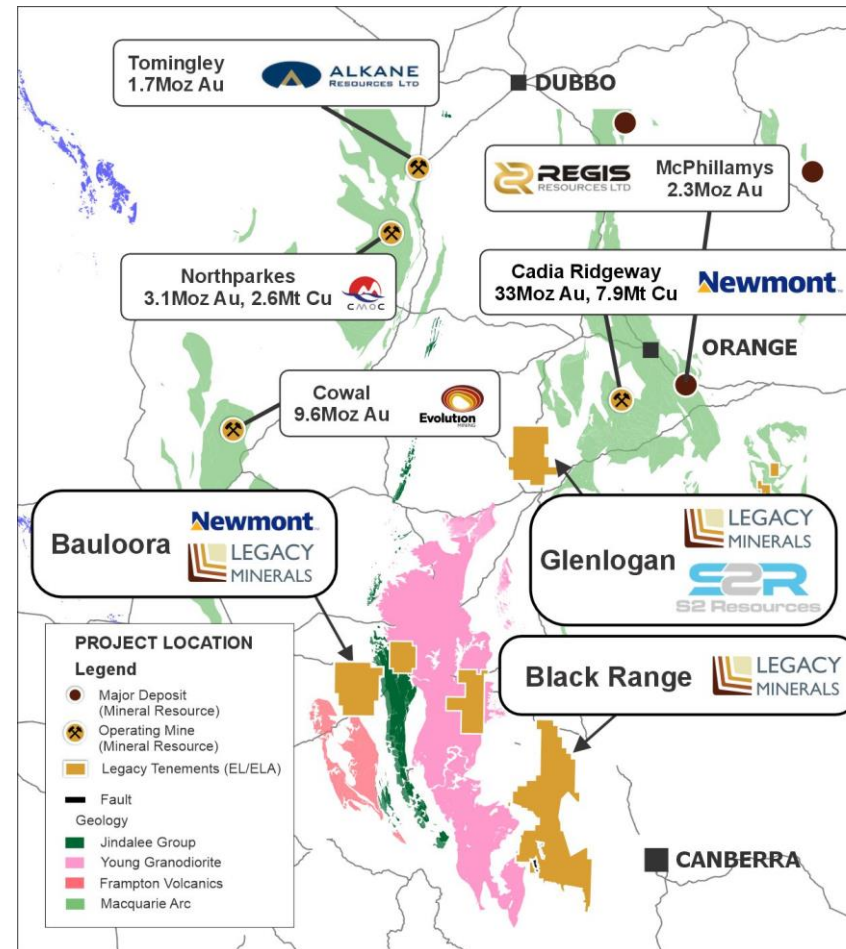
Why is it a compelling project?

- Preservation and widespread Au-Ag anomalism (Sugarbag Hill, Mt Mylora)<sup>1,2</sup>
- 65km from Bauloora with clear parallels between the two systems
- Newcrest dated Black Range to be the same age mineralisation as Bauloora<sup>1</sup>

Large Scale Potential

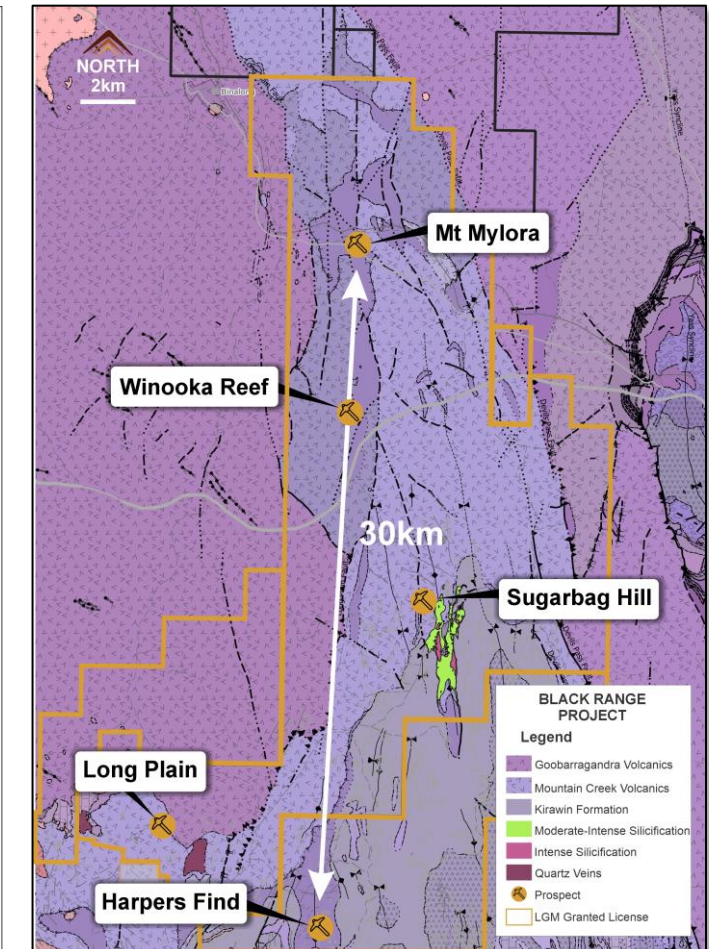
- Rock chips up to 1,440g/t Ag and 2.06g/t Au underpin district potential<sup>3</sup>

## Black Range Project



Regional Setting of the Black Range project and nearby operations<sup>2,3,4,5,6</sup>

## Main Prospects



Black Range EL with solid geology showing major prospect



ASX: LGM



# Rockley

Premier position in a world-class copper terrain





# Rockley

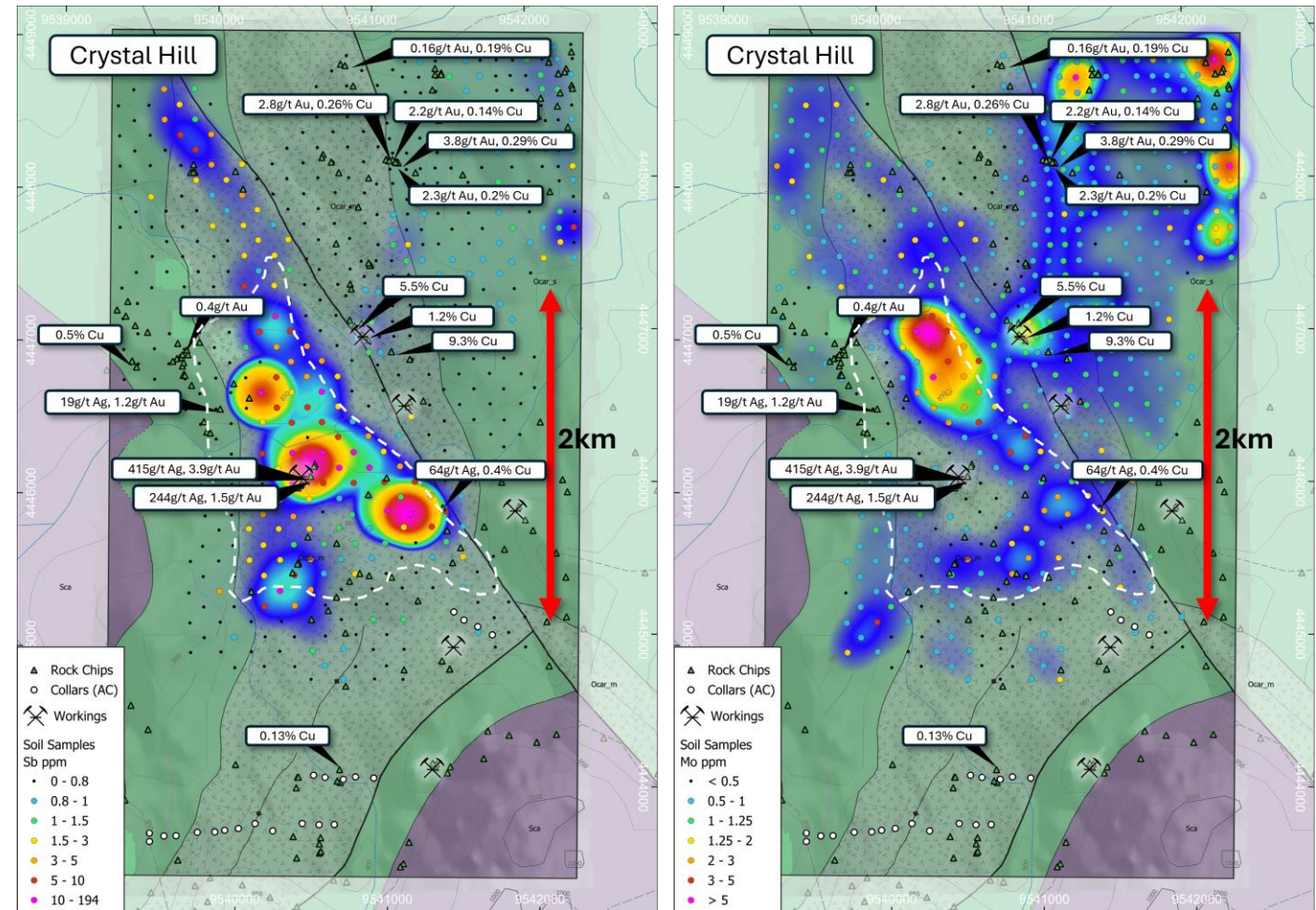
## Targeting a large porphyry copper deposit

### Overlooked and untested

- District proven to host significant porphyry mineralisation
- Limited geochemistry sampling and geophysical surveys across the tenement
- Scarcity of drilling across the tenement<sup>1</sup>
  - Only 22 RAB historical holes in south of the porphyry area of interest
  - No holes deeper than 15m depth**

### All the right ingredients

- Right rocks in the right district
  - Macquarie Arc Ordovician host rocks
- Historic high grade gold and copper mines grading up 21% Cu<sup>1</sup>
- Wide spread Au and Cu anomalism<sup>2</sup>**
  - 4km by 2km of rock chips grading 0.1% Cu<sup>2</sup>





# Rockley – Untested Potential

## An emerging porphyry district

- **Classic porphyry magnetic signature** - central magnetic high surrounded by a doughnut shaped magnetic low, on NW-SE fault, coincident with a discrete potassic high and widespread Au-Cu anomalism at surface
- Prospective Phase 4 Ordovician Macquarie arc volcanics

## Ongoing success in the district

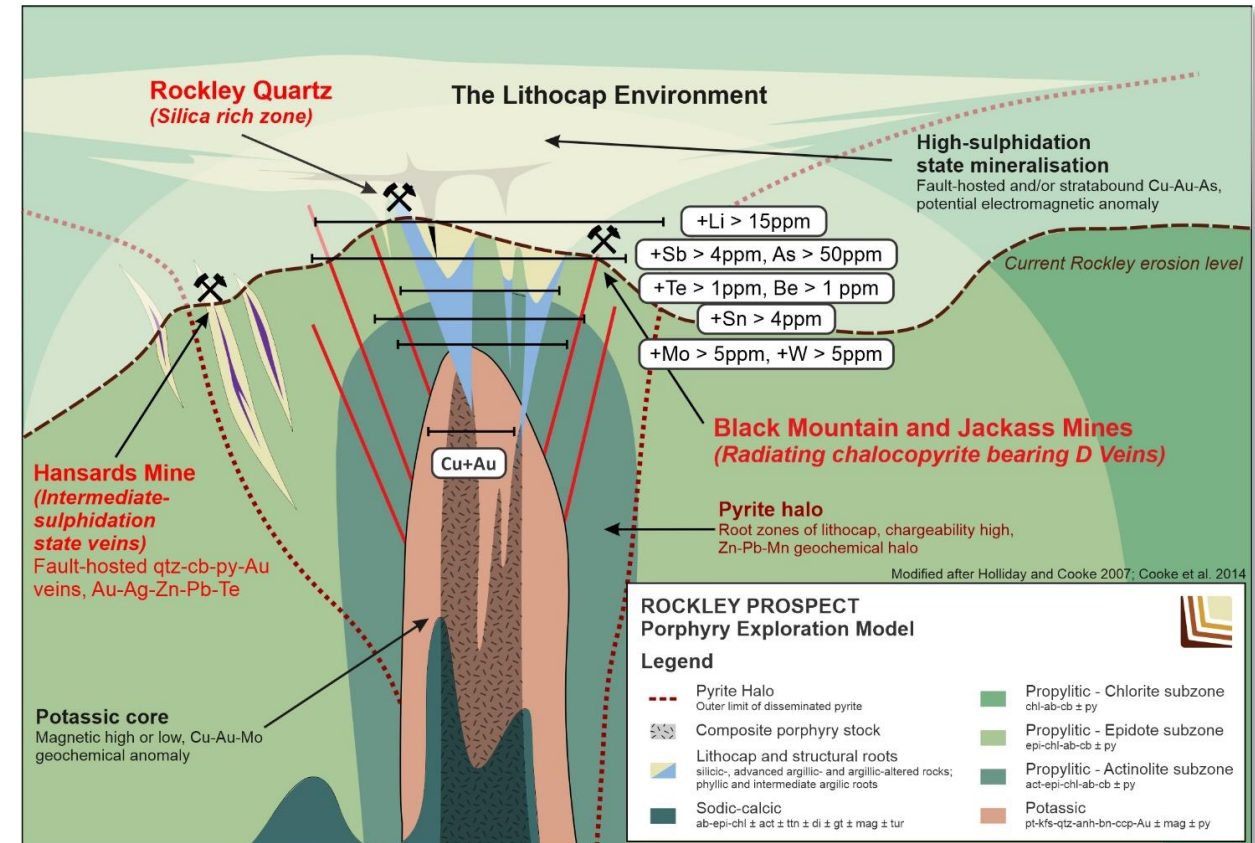
- Alkane (ASX: ALK) Boda discovery (2019)<sup>1</sup>
- Magmatic (ASX: MAG) Corvette discovery (2022)<sup>2</sup>

## Rockley – Gov. Cu-Au prospectivity recognition

- LGM's tenement **assessed to be the most prospective area for porphyry related Cu-Au** (Geological Survey of NSW and Kenex)

## Nearby porphyry success

- Known to host porphyries - Bushranger (LON:XTR)
- Bushranger drilling intercepts the porphyry **from 11m** with recent intercepts **920m @ 0.3% Cu** from 110m **inc. 156m @ 0.48% Cu<sup>3</sup>**





# Harden

High-Grade, historical gold mining district





# Harden

## Extensive, untested gold opportunity

### Significant Historical Production

- District has produced **~460,000 oz of gold<sup>1</sup>** with the two largest historical hard rock mines held within LGM's tenements
- These two mines produced **~75,000 oz Au at 28.6g/t Au<sup>1</sup>**

### High-grade drill intercepts<sup>1, 2</sup>

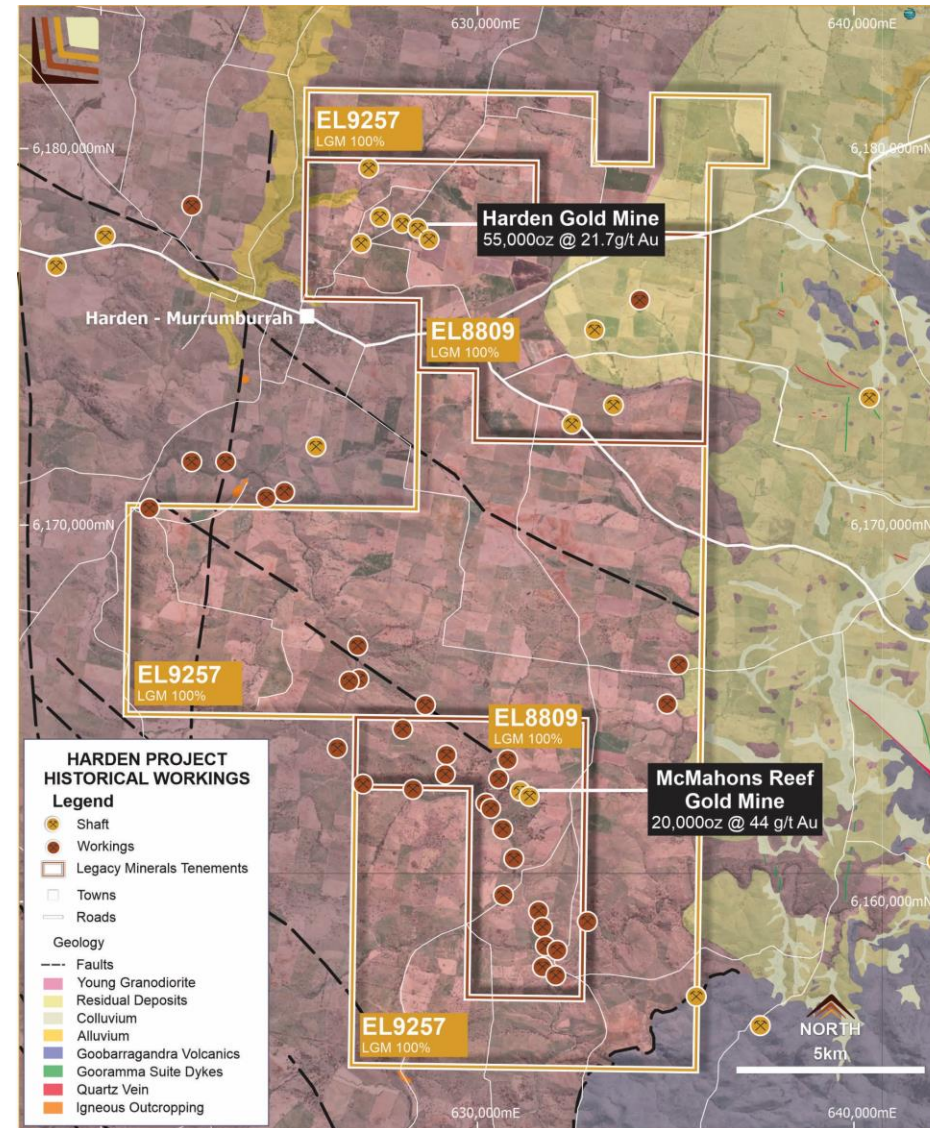
- 5m at 7.06g/t Au** from 110m incl. **2m at 17.17g/t Au** (RC21HN005)
- 3.6m at 21.7g/t Au** from 116m incl. **2m at 37.9g/t Au** (MR05)
- 3m at 10.8g/t Au** from 20m incl. **1m at 19.2g/t Au** (HP27/8)
- 4m at 4.12g/t Au** from 79m incl. **3m at 6.41g/t Au** (RC21HN006)
- 6m at 3.65g/t Au** from 128m incl. **3m at 6.41g/t Au** (RC21HN011)

### Significant project scale

- Multiple known mineralised faults with significant potential to define more

### Early Rudimentary Mining = Grade Left Behind

- Interpreted cut-off grade between 12-15g/t Au<sup>1</sup>
- Mining operations ceased in 1913 due to dewatering challenges - hydro electric project that would have helped dewater the mine not delivered until 1928



ASX: LGM

Note: references on this slide are in the Appendix – Endnotes on Slides 29-31



# Joint Venture Projects

\$28.5M in JVs sees sustained discovery effort



**Newmont**™



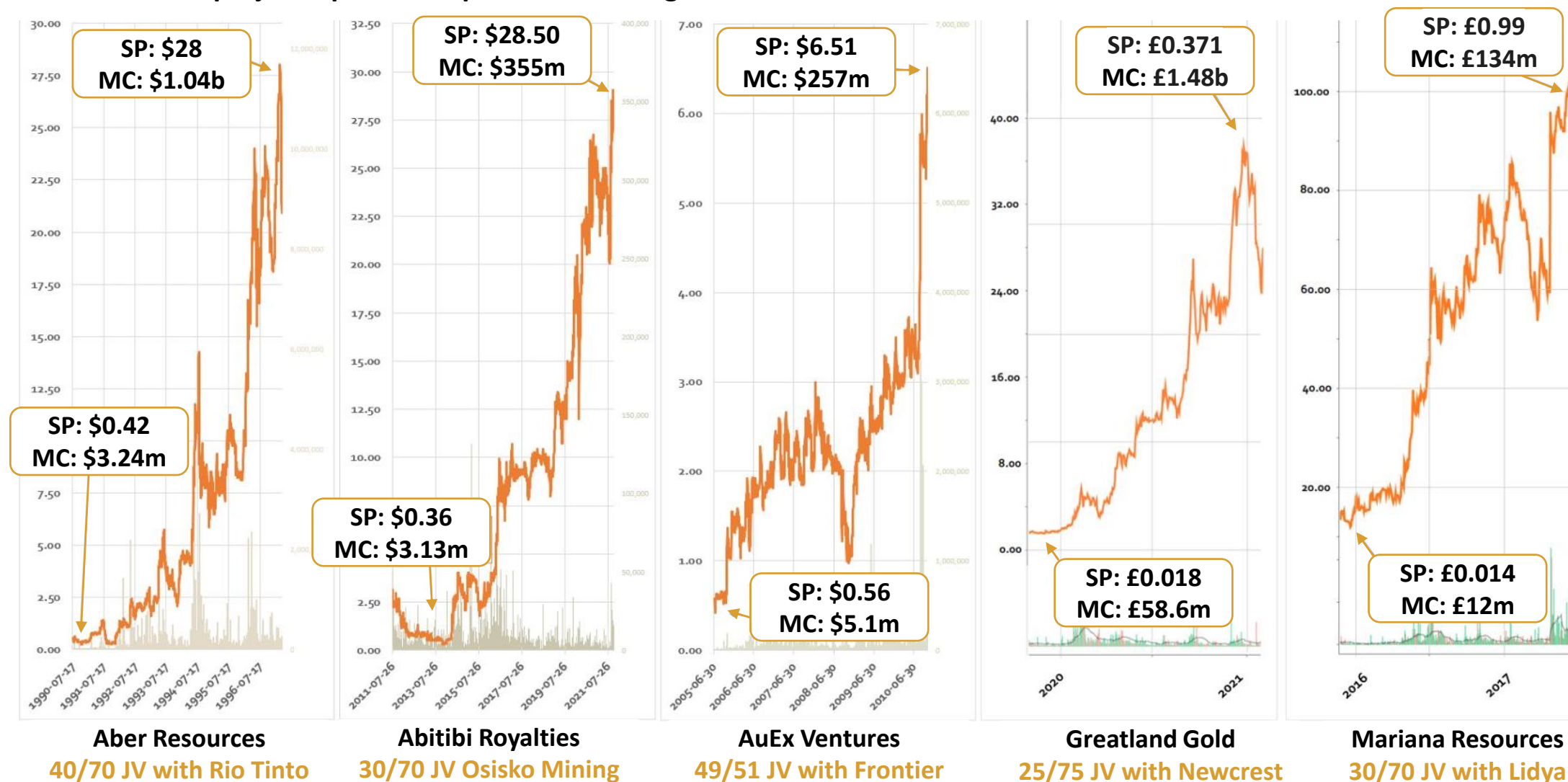
**HELIX**  
RESOURCES LIMITED

**EARTH AI**



# The upside in a JV - non-dilutive potential for value creation

Like 100% owned projects, partnerships can deliver significant returns for shareholders



ASX: LGM

Note: references on this slide are in the Appendix – Endnotes on Slides 29-31



# Glenlogan – S2 Resources JV (\$6m)

## Highly encouraging first drill results

### Preliminary Drill Observations

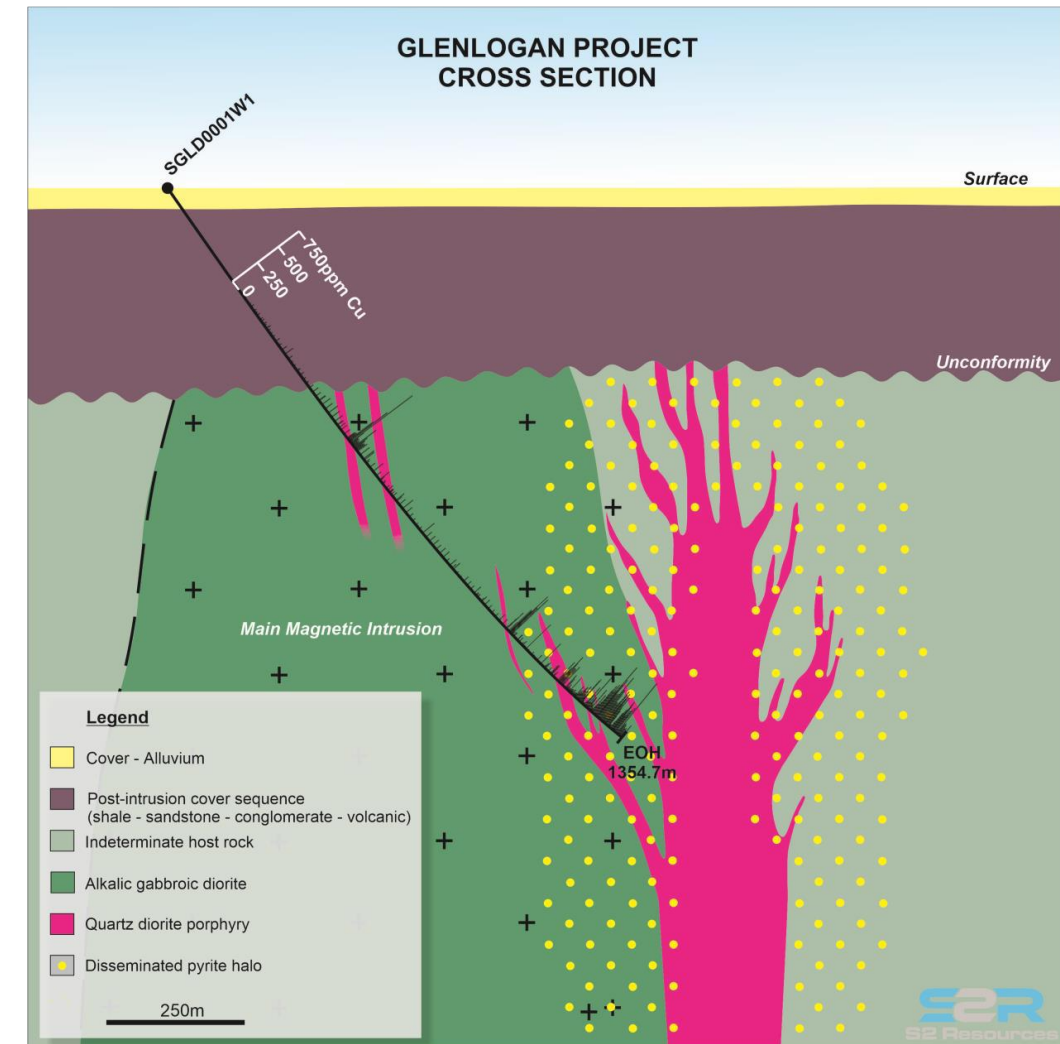
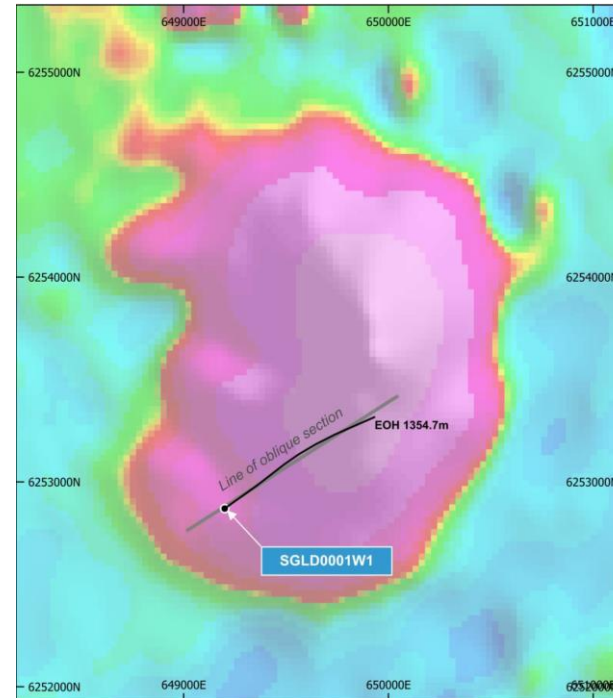
- Late magmatic chalcopyrite and elevated copper
- **May represent the fringes of a nearby potentially mineralised porphyry intrusion as yet untested by drilling**

### Joint Venture Terms

- Up to \$6M spent over 6 years.
- Minimum drill meters.
- LGM option for 20% loan carried to mining.

### Partnership with a leading exploration company

- S2 Resources led by Dr Mark Bennet with Mark Creasy as major shareholder





# Fontenoy – EarthAI Alliance (\$4.5m)

## Drilling Underway

### Discovery Drillhole – February 2024<sup>1</sup>

- 120m at 0.3g/t 3E PGE\* including a higher-grade zone of:
- 10m at 1.2g/t 3E PGE, 0.2% Ni and 891ppm Cu from 388m down-hole.

### Joint Venture Terms<sup>2</sup>

- \$4M earn in over 4 years
- Minimum commitment to drill
- LGM loan carried through to commercial production at 20%

### Unlocked potential for magmatic-related PGE-Ni-Cu

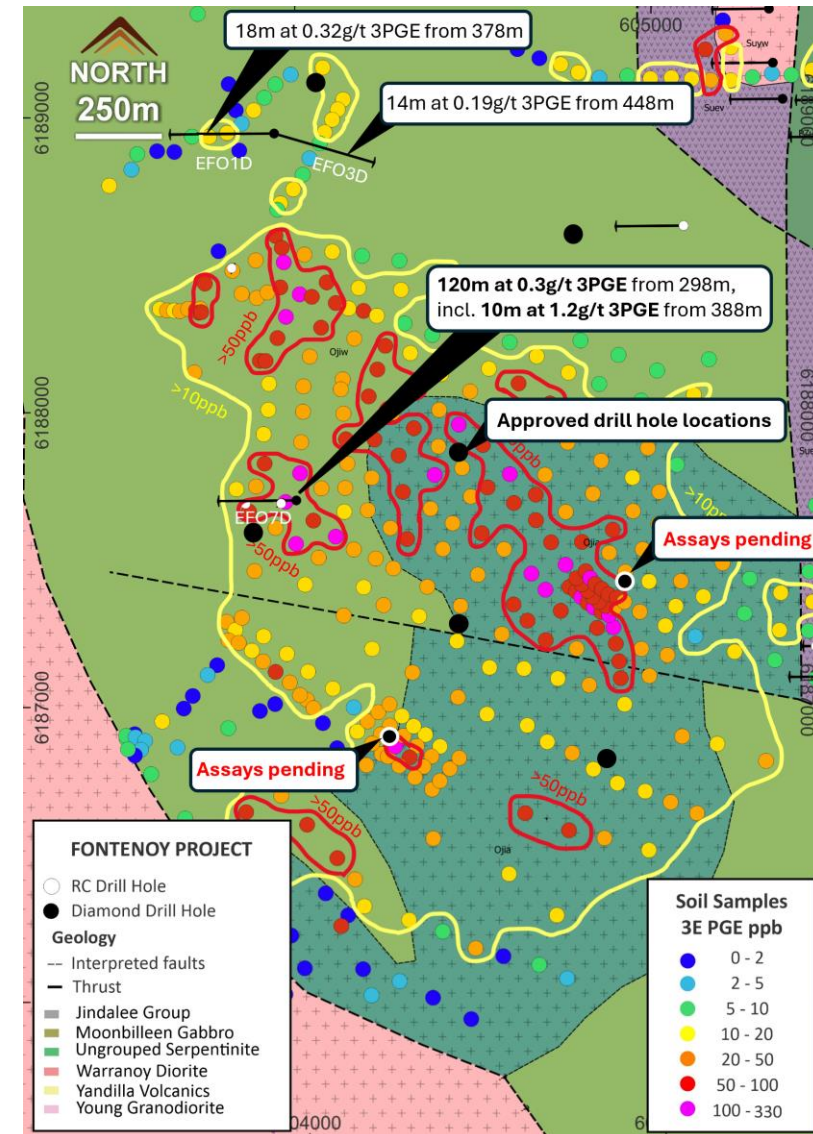
- Deposit styles such Nova-Bollinger (IGO) and Julimar (Chalice)<sup>3</sup>.

### PGE's and Nickel listed as Critical and Strategic Minerals

- Their value, rarity and strategic importance underpin the value for shareholders

### Shareholders are exposed to cutting edge AI

- Strong potential to make further discoveries





# Bauloora – Newmont (\$15M)

## Drill planning underway

### Ongoing discovery exposure

- Further 2024 drilling planned

### Joint Venture Terms<sup>1</sup>

- Up to \$15M spent over 8 years.
- Minimum drill meters.
- **LGM option for 20% loan carried to mining.**

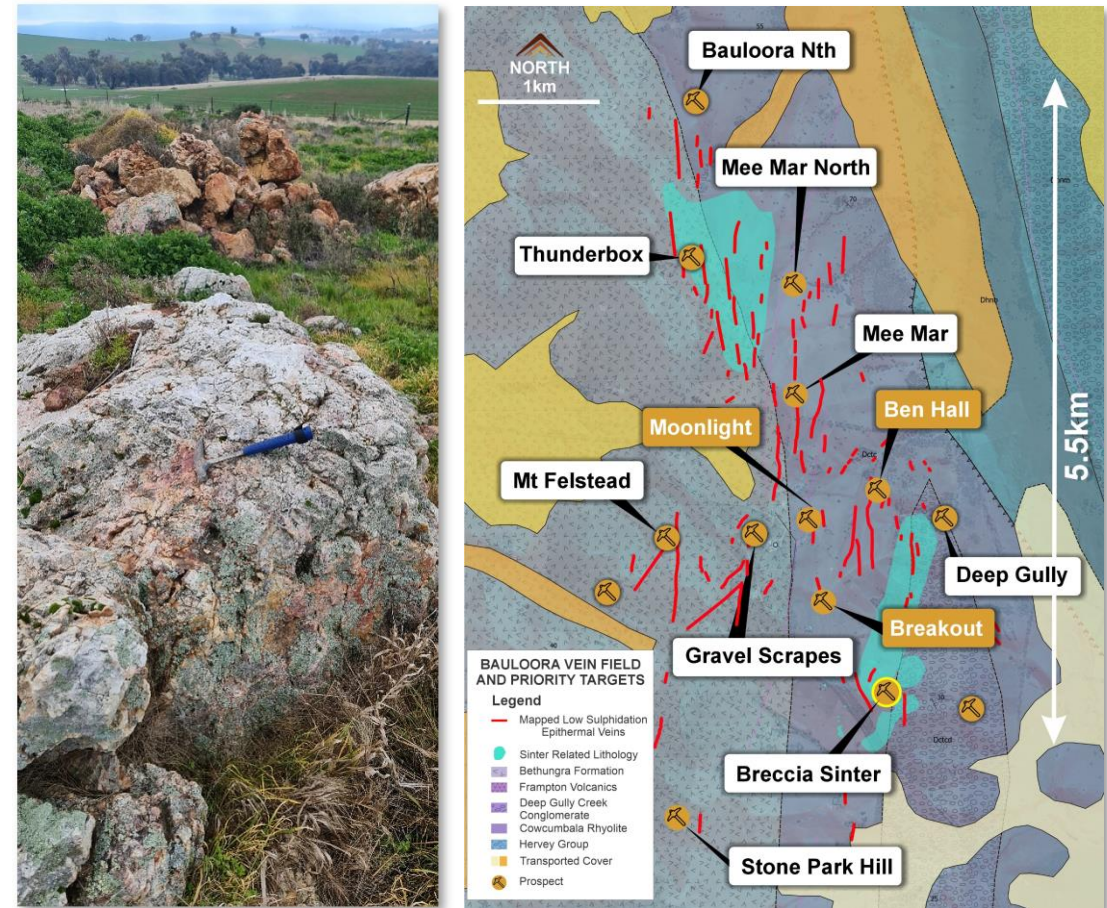
### District scale control

- 27km<sup>2</sup> low sulphidation epithermal vein field<sup>2</sup>
- Target rich environment

### High-Grades and Extensive Veining

- Veins up to 3m wide at surface strike >2km
- **3,701g/t Ag, 6.9g/t Au, 6.4% Cu, and 55% Pb+Zn (0.2m face sample)<sup>4</sup>**
- **6m at 3.56g/t Au, 10.95g/t Ag, 0.22% Cu and 6.47% Pb+Zn (from 57m)<sup>4</sup>**

## Primary Vein Field and Current Targets

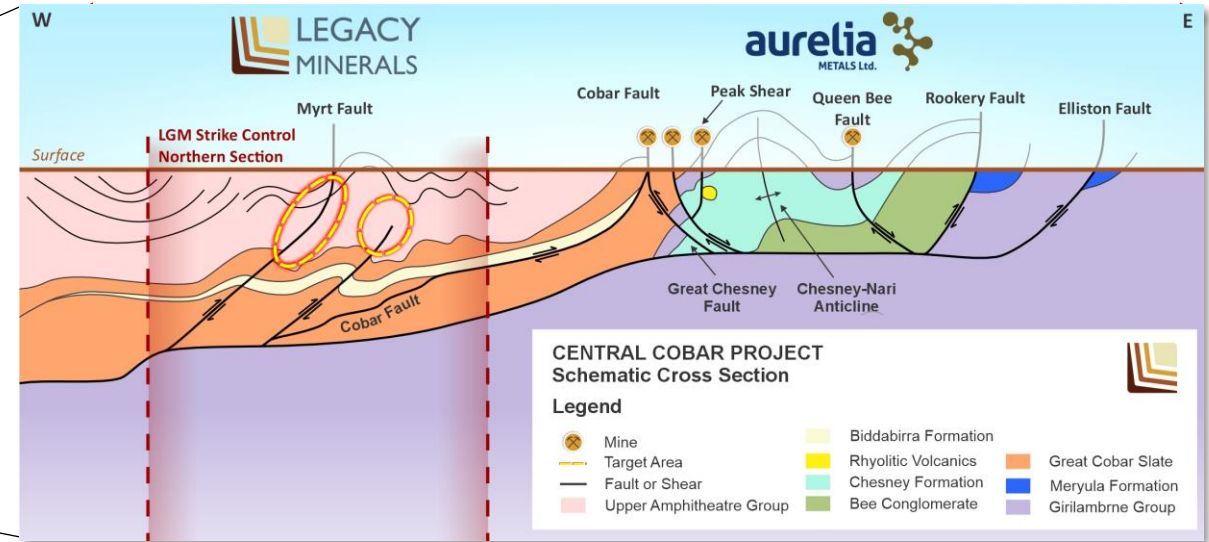
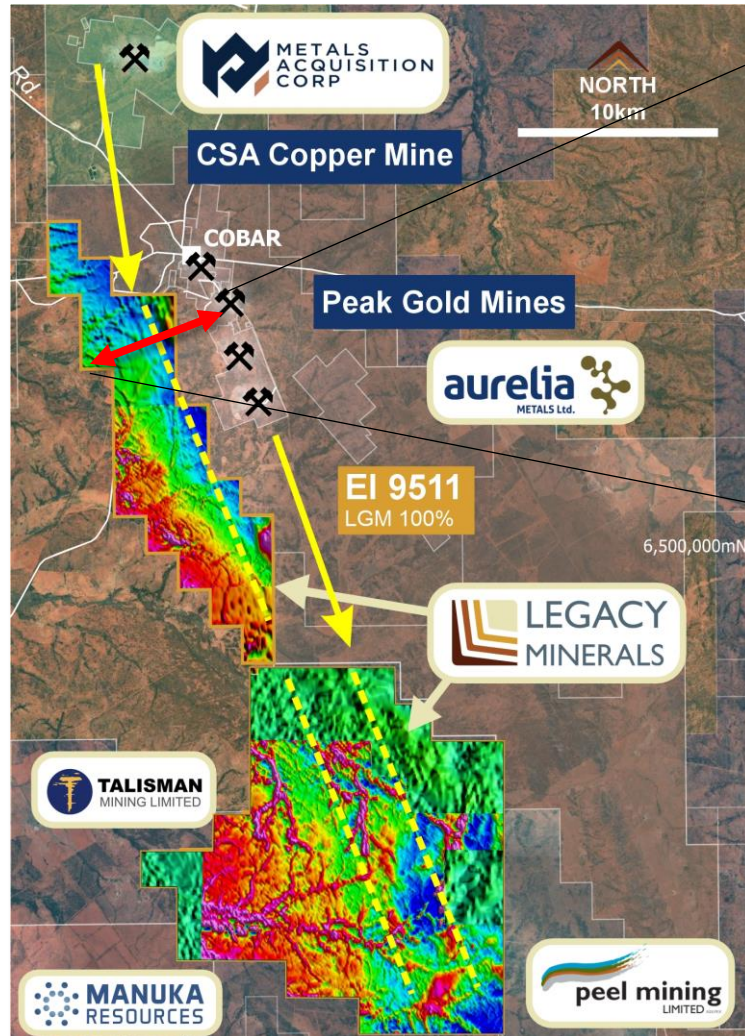


Current combined extent of interpreted low-sulphidation epithermal-style textured veins and sinter related lithology<sup>2</sup>



# Central Cobar – Helix JV (\$2.8M)

New Joint Venture will see an active exploration program



## Prospective, undrilled search space

- Along strike of the Peak Gold Mine Corridor (Aurelia, ASX)
- Along strike of the CSA Mine (Metals Acquisition Corp, ASX)
- Interpretation that the western margins of the Peak Corridor has structural complexity and potential for fluid pathways that form many Cobar-Type deposits<sup>1</sup>

## Key Terms of the Joint Venture<sup>2</sup>

- \$2.8M over six years and three stages to earn 80%
- LGM' ability to contribute at each stage
- Minimum expenditure and commitments to drill



ASX: LGM



# The Year Ahead – 100% Projects

Deliver shareholder value through discovery and development



## Thomson

ANT survey planned for completion

Sampling of historical drilling

Drilling testing multiple large IRG-Cu targets

## Drake

LiDAR interpretation underway

Large airborne geophysical survey

Historical geophysics reprocessed

Geochemical surveys

Drill testing large epithermal-porphyry targets

## Black Range

Extension of regional geochemical survey

Planned ground electrical survey Mt Mylora and Sugarbag Hill

Drill testing large epithermal targets

## Rockley

Ongoing ground-work

Drill targeting

Partnership assessment

## Harden

Desktop studies

Partnership assessment



# The Year Ahead – Joint Venture Projects

Deliver shareholder value through non-dilute discovery exposure



## Bauloora

Drilling targets across the northern vein field

Ongoing regional geochemical surveys

Targeting an extensive Au-Ag vein system

## Fontenoy

Drilling the Gramont PGE Discovery

Further regional geochemical surveys

Drilling planned

Targeting a large PGE discovery

## Glenlogan

Planned geophysics of Shellback Anomaly

Assessment of follow up drilling

Targeting a Cu-Au porphyry discovery ~55km from Cadia

## Cobar

Geophysical surveys planned

Drill testing

Target a Cobar type discovery in the head frame of the Peak Gold Mines.



# Investment Highlights

Deliver shareholder value through acquiring, exploring and developing projects

Right Structure

Right People

Right Ground

Actively  
Drilling





## Appendices – Endnotes

**Slide 3, Slide 15:** 1 Alkane Resources Kaiser Resource Estimate of ~4.7M Gold Equivalent 27 February 2023; 2 Silver Mines, Ord Minnett East coast Mining Conference, March 2023; 3 Alkane Resource and Reserve Statement FY22, 9 September 2022; 4 Newcrest Mining Annual Mineral Resources and Ore Reserves Statement 17 February 2022; 5 Sandfire Resources NL 2019 Annual Report ; 6 Regis Resources Annual Mineral Resource and Ore Reserve Statement 8 June 2022; 7 CMOC Northparkes Mining and Technical Information; 8 Evolution Mining 2022 Annual Report

Project & Company	Mineral Resource	Measured Resource	Indicated Resource	Inferred Resource
Boda-Kaiser, NSW (Alkane Resources Ltd)	7.26Moz Au, 1.38Mt Cu	-	-	7.26Moz Au, 1.38Mt Cu
Tomingley, NSW (Alkane Resources Ltd)	1.75Moz Au	0.13M Au	1.019Moz Au	0.59Moz
McPhillamys, NSW (Regis Resources Ltd)	2.29Moz Au	-	2.28Moz Au	0.001Moz Au
Cadia and Ridgeway, NSW (2023) (Newmont Corporation)	35Moz Au, 7.9Mt Cu	0.30Moz Au, 0.041Mt Cu	30.98Moz Au, 6.97Mt Cu	4.06Moz, 0.91Mt Cu
Cowal, NSW (Evolution Mining Limited)	9.618Moz Au	0.367Moz Au	7.33Moz Au	1.92Moz Au
Nth Parkes, NSW (Evolution Mining Limited)	3.09Moz Au, 2.63Mt Cu	1.64Moz Au, 1.2Mt Cu	1.1Moz Au, 1.1Mt Cu	0.35Moz Au, 0.33Mt Cu





## Appendices – Endnotes (continued)

- Slide 7:** 1: ASX Release LGM 21 October 2024 *Leading-edge geophysics to accelerate targeting at Thomson*, Technical Review of the Falcon Project, July 2023, Bob Richardson (unpublished)
- Slide 8:** 1: ASX Release LGM 21 October 2024 *Leading-edge geophysics to accelerate targeting at Thomson 2* Technical Review of the Falcon Project, July 2023, Bob Richardson (unpublished)
- Slide 11:** 1 ASX LGM Release 29 October 2024 *3,050gt Silver and 79gt Gold in Historical Drake Drilling*, ASX Release 2 ASX Release LGM 16 September 29% *Antimony Rock Chips Identified in Drake Project Review*
- Slide 10:** 1 ASX LGM Release 29 October 2024 *3,050gt Silver and 79gt Gold in Historical Drake Drilling*, World Gold, 2 Pacific Rim Epithermal [https://corbettgeology.com/wp-content/uploads/2016/07/corbett\\_pacific\\_rim\\_epithermal\\_au.pdf](https://corbettgeology.com/wp-content/uploads/2016/07/corbett_pacific_rim_epithermal_au.pdf)
- Slide 11:** 1 ASX LGM Release 29 October 2024 *3,050gt Silver and 79gt Gold in Historical Drake Drilling*
- Slide 12:** 1 ASX LGM Release 29 October 2024 *3,050gt Silver and 79gt Gold in Historical Drake Drilling*
- Slide 14:** 1: ASX LGM: 23 October 2023 Large 2.2km Long Gold Anomaly defined at Black Range, 2: ASX LGM: 11 October 2023 Widespread Silica Sinter Confirmed at Black Range. 3: ASX LGM 18 July 2024 Black Range Drilling Assays Returned and Exploration Update, 1992 Newcrest Mining Limited (R00001533) License 3137 Goondah
- Slide 16:** 1 ASX: LGM 9 SEP Prospectus dated 28 July 2021, 2 ASX Release LGM 14 October 2024 *New Copper-Gold Prospects Defined at Crystal Hill, Rockley*
- Slide 17:** ASX: ALK Discovery of Significant Porphyry Gold-Copper Mineralisation at Boda Prospect within Northern Molong Porphyry Project (NSW), 2 ASX: MAG Assays Confirm High Grade Mineralisation at the Corvette, 3 ASX LGM <https://xtractresources.com/bushranger-project>, 4 ASX LGM 27 JUL 23 Geophysics Defines Porphyry Copper-Gold Targets at Rockley
- Slide 19:** ASX: LGM 9 SEP Prospectus dated 28 July 2021
- Slide 20:** GoldDiscovery Group, [https://www.linkedin.com/posts/golddiscovery-media-b-v\\_why-buy-a-junior-miner-with-a-minority-stake-activity-7173060437201129472-UGoE?utm\\_source=share&utm\\_medium=member\\_desktop](https://www.linkedin.com/posts/golddiscovery-media-b-v_why-buy-a-junior-miner-with-a-minority-stake-activity-7173060437201129472-UGoE?utm_source=share&utm_medium=member_desktop)
- Slide 22:** 1: Rio Tinto Exploration Pty. Limited, EL5226 Cowra 8 Final Report Bathurst SI55-08 NSW, Australia, October 1997, 2: ASX 9 November 2023 Major Untested Porphyry Cu-Au Target Defined at New Project, 3: ASX LGM 29 January LGM: S2R enter \$6M Farm-in at Glenlogan Porphyry Project, ASX S2R: 18 July 2024, Drilling started at Glenlogan Copper-Gold Project, NSW, ASX LGM: 3 September 2024 S2R: Glenlogan Drilling Update
- Slide 23:** 1 ASX LGM Release 25 October 2024 *Platinum & Palladium Drilling Underway at Fontenoy*, ASX LGM 26 February 2024 Artificial Intelligence makes Magmatic PGE-Ni-Cu Discovery, 2: ASX LGM 3 May 2022 *Strategic Exploration Alliance with AI Explorer* 3 IGO Ltd, <https://www.igo.com.au/site/operations/nova> 3 Chalice Mining Limited, <https://chalicemining.com/gonneville/>
- Slide 24:** 1: ASX LGM: 5 April 2023 Newmont Farm-in at Bauloora Project, ASX LGM 2: ASX LGM 27 April 2023 Exploration underway at new low-sulphidation epithermal, NSW, 3: ASX LGM: 16 June 2022 High-Grade Silver, Gold Drill Results, Met-Testing Underway, Legacy Minerals Prospectus, dated 28 July 2021, 4: ASX LGM: 10 May 2023 Drilling Assays Confirm New Epithermal Discovery at Bauloora
- Slide 25:** 1: ASX LGM: 19 August 2024 Helix Resources to Farm-in to Legacy's Central Cobar Project, ASX HLX: 19 August 2024 Helix Expands Cobar Copper-Gold Foothold





## Appendices – Endnotes (continued)

### Drake Mineral Resource Estimate as at 26 March 2024

Deposit	Resource Classification	Grade					Metal			
		Tonnes (Mt)	Au (g/t)	Ag (g/t)	Zn (%)	Cu (%)	Au (koz)	Ag (koz)	Zn (kt)	Cu (kt)
Strauss (ELA)	Indicated (JORC 2012)	2.2	1.48	1.74	0.49	0.08	105	123	10.7	1.7
	Inferred (JORC 2012)	1.36	0.69	1.81	0.33	0.06	30	79	4.4	0.9
Kylo (ELA)	Indicated (JORC 2012)	2.14	1.25	1.35	0.19	0.04	86	93	4.1	0.8
	Inferred (JORC 2012)	0.3	0.41	1.17	0.18	0.05	4	11	0.5	0.1
Sub-Total		6	1.17	1.59	0.33	0.06	225	306	19.8	3.5
Red Rock (EL)	Inferred (JORC 2004)	1.63	1.6	2.2			54	182		
Guy Bell (ELA)	Inferred (JORC 2004)	0.16	2.5	4.9			13	24		
Sub-Total		1.79	1.2	3.6			67	206		
Lady Hampden (ELA)	Indicated (JORC 2004)	1.84	0.6	69			37	4056		
	Inferred (JORC 2004)	2.47	0.3	51			27	4023		
White Rock (EL)	Indicated (JORC 2004)	1.71		77				4214		
	Inferred (JORC 2004)	2.66		47				3978		
White Rock North (EL)	Inferred (JORC 2004)	3.18		52				5314		
Silver King (ELA)	Inferred (JORC 2004)	0.64		59				1218		
Sub-Total		8.95	0.1	51			64	22803		
Total (JORC 2012 + JORC 2004)		16.74					356	23315		

The Strauss and Kylo Mineral Resources have been estimated using a gold cut-off of 0.3g/t Au and 25g/t Ag, 0.1% Cu, 0.1% Pb, and 0.1% Zn<sup>ii</sup>. The Guy Bell Mineral Resource has been estimated using a cut-off of 0.5g/t Au and Red Rock has been estimated using a 0.7g/t Au cut-off. Silver dominant Mineral Resources (Lady Hampden, White Rock, White Rock North, and Silver King) have been estimated using a cut-off of 25g/t Ag. The Red Rock, Guy Bell, Lady Hampden, White Rock, White Rock North, and Silver King Mineral Resources was prepared and reported in accordance with the JORC Code (2004). The Resources figures have not been updated since to comply with the JORC Code 2012 on the basis that the information has not materially changed since it was last reported<sup>iii</sup>.

