

An aerial photograph of a large, circular open-pit mine. The mine's interior shows distinct terraced levels of earth and rock, with a dark pool of water at the bottom. The surrounding landscape is arid, with sparse, low-lying vegetation and a clear, bright sky. The overall scene is captured in a high-angle, wide shot, emphasizing the scale of the mining operation.

MAXIMUS RESOURCES

Annual General Meeting Presentation

November 2024 ASX:MXR

DISCLAIMER



Nature of this document: The purpose of this presentation is to provide general information about Maximus Resources Limited (the 'Company'). Unless otherwise stated herein, the information in this presentation is based on the Company's own information and estimates. In attending this presentation or viewing this document you agree to be bound by the following terms and conditions. This document has been prepared by the Company and information in this document should be read in conjunction with other announcements made by the Company to the Australian Securities Exchange and available at www.maximusresources.com or www.asx.com.

Not an offer: This presentation is for information purposes only and does not constitute or form any part of any offer or invitation to sell or issue, or any solicitation of any offer to purchase or subscribe for, any securities in the Company in any jurisdiction. This presentation and its contents must not be distributed, transmitted or viewed by any person in any jurisdiction where the distribution, transmission or viewing of this document would be unlawful under the securities or other laws of that or any other jurisdiction.

Not financial product advice: This presentation does not take into account the individual investment objectives, financial situation and particular needs of each of the Company's Shareholders. You may wish to seek independent financial and taxation advice before making any decision in respect of this presentation. Neither the Company nor any of its related bodies corporate is licensed to provide financial product advice in respect of the Company's securities or any other financial products.

Forward-looking statements: Certain statements in the presentation are or may be "forward-looking statements" and represent the Company's intentions, projections, expectations or beliefs concerning, among other things, future operating and exploration results or the Company's future performance. These forward-looking statements speak, and the presentation generally speaks, only at the date hereof. The projections, estimates and beliefs contained in such forward-looking statements necessarily involve known and unknown risks and uncertainties, and are necessarily based on assumptions, which may cause the Company's actual performance, results and achievements in future periods to differ materially from any express or implied estimates or projections. Accordingly, readers are cautioned not to place undue reliance on forward looking statements. Relevant factors which may affect the Company's actual performance, results and achievements include changes in commodity price, foreign exchange fluctuations and general economic conditions, increased costs and demand for production inputs, the speculative nature of exploration and project development, diminishing quantities or grades of reserves, political and social risks, changes to laws and regulations, environmental conditions, and recruitment and retention of personnel.

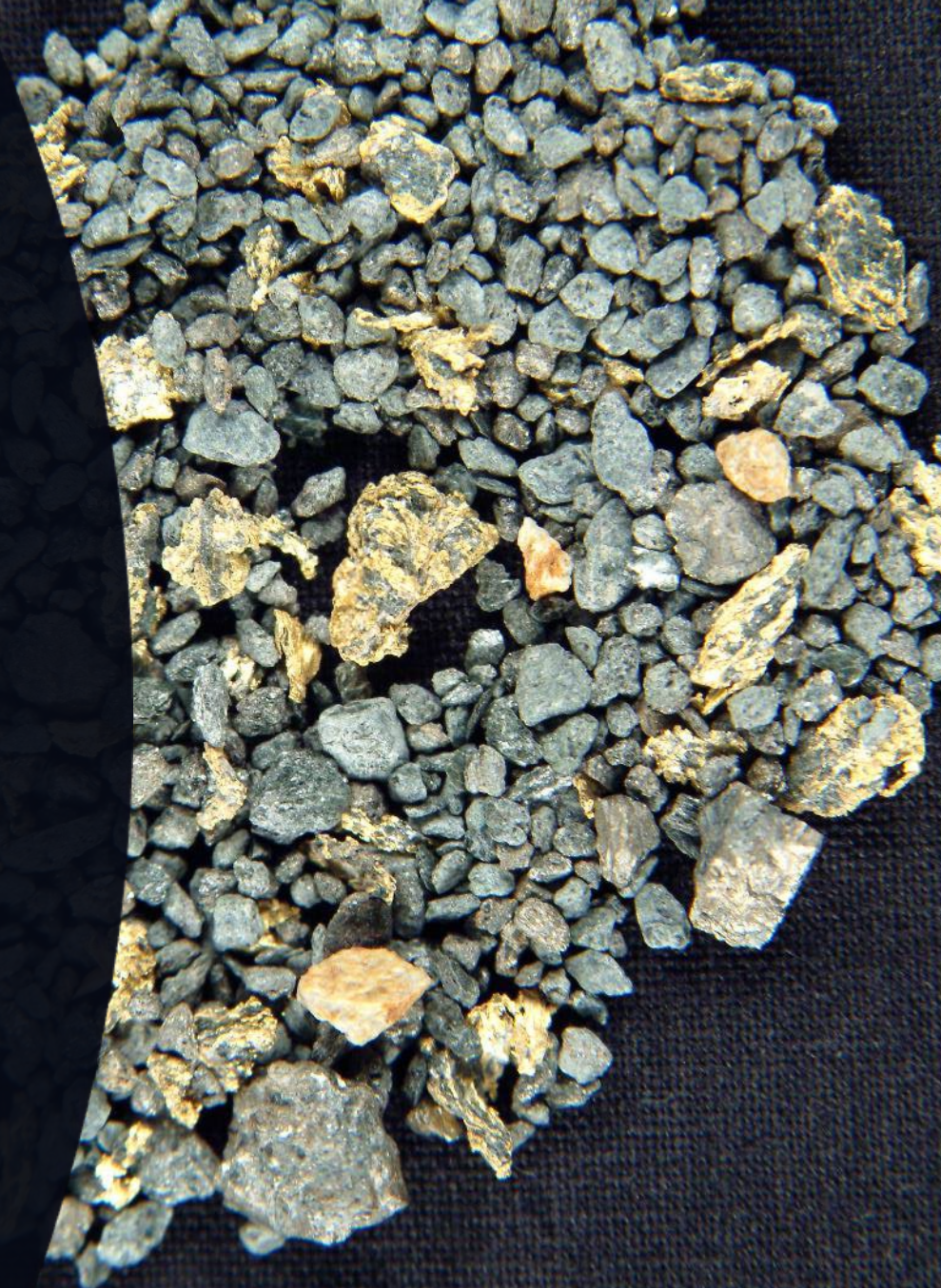
Disclaimer: No representation or warranty, express or implied, is made by the Company that the material contained in this presentation will be achieved or prove to be correct. Except for statutory liability which cannot be excluded, each of the Company, its directors, officers, employees, advisers and agents expressly disclaims any responsibility for the accuracy, fairness, sufficiency or completeness of the material contained in this presentation, or any opinions or beliefs contained in this document, and excludes all liability whatsoever (including in negligence) for any loss or damage which may be suffered by any person as a consequence of any information in this presentation or any error or omission there from. The Company is under no obligation to update or keep current the information contained in this presentation or to correct any inaccuracy or omission which may become apparent, or to furnish any person with any further information. Any opinions expressed in the presentation are subject to change without notice.

Unverified information: This presentation may contain information (including information derived from publicly available sources) that has not been independently verified by the Company.

Refer to the Company's ASX Announcements for JORC Table 1 and Table 2 for results and information contained in this presentation.

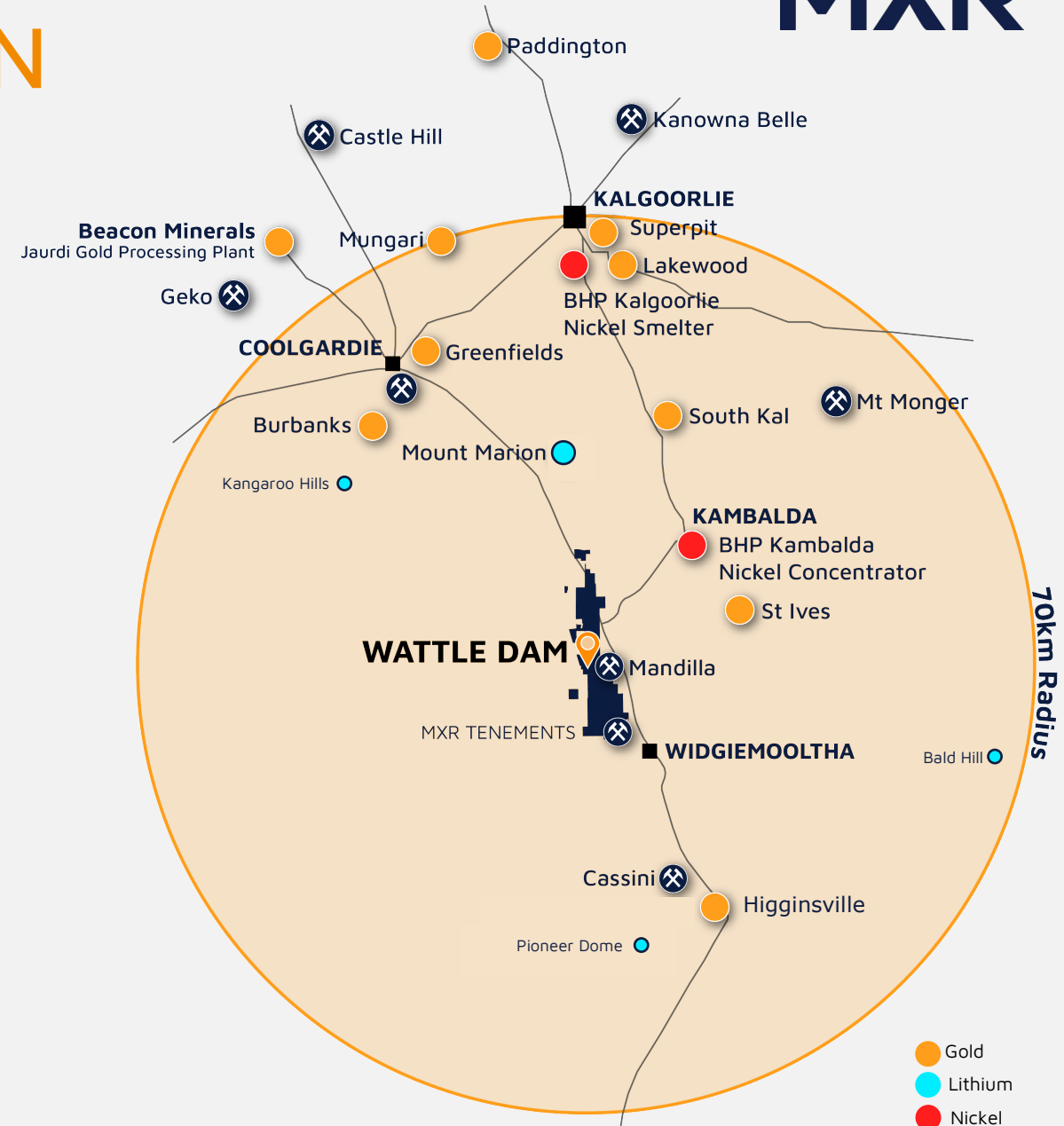
Why Invest with **MAXIMUS**

- Growing gold resource of 335,000 oz @ 1.5 g/t Au[#].
- Granted mining tenure in world-class geology with demonstrated high-grade discovery potential.
- Sequence of shallow high-grade open pit resources.
- Toll Milling strategy to generate cash flow for resource growth.
- Multi-commodity exposure – Au, Li and Ni.
- Fully funded Lithium JV exploration program.



PATHWAY TO PRODUCTION

- Prime location with fantastic access to infrastructure and gold processing facilities.
- Emerging sequence of shallow, low CAPEX open-pit production opportunities.
- Toll Milling strategy to generate cash flow for resource growth.
- Studies advancing for mining approvals across several projects to be 'Shovel Ready'.
- Active discussions with potential mining and toll-milling partners.



SPARGOVILLE PROJECT

Growing 335,050 oz Au# resource highlights growth opportunities. Limited only by drilling.

WATTLE DAM GOLD PROJECT

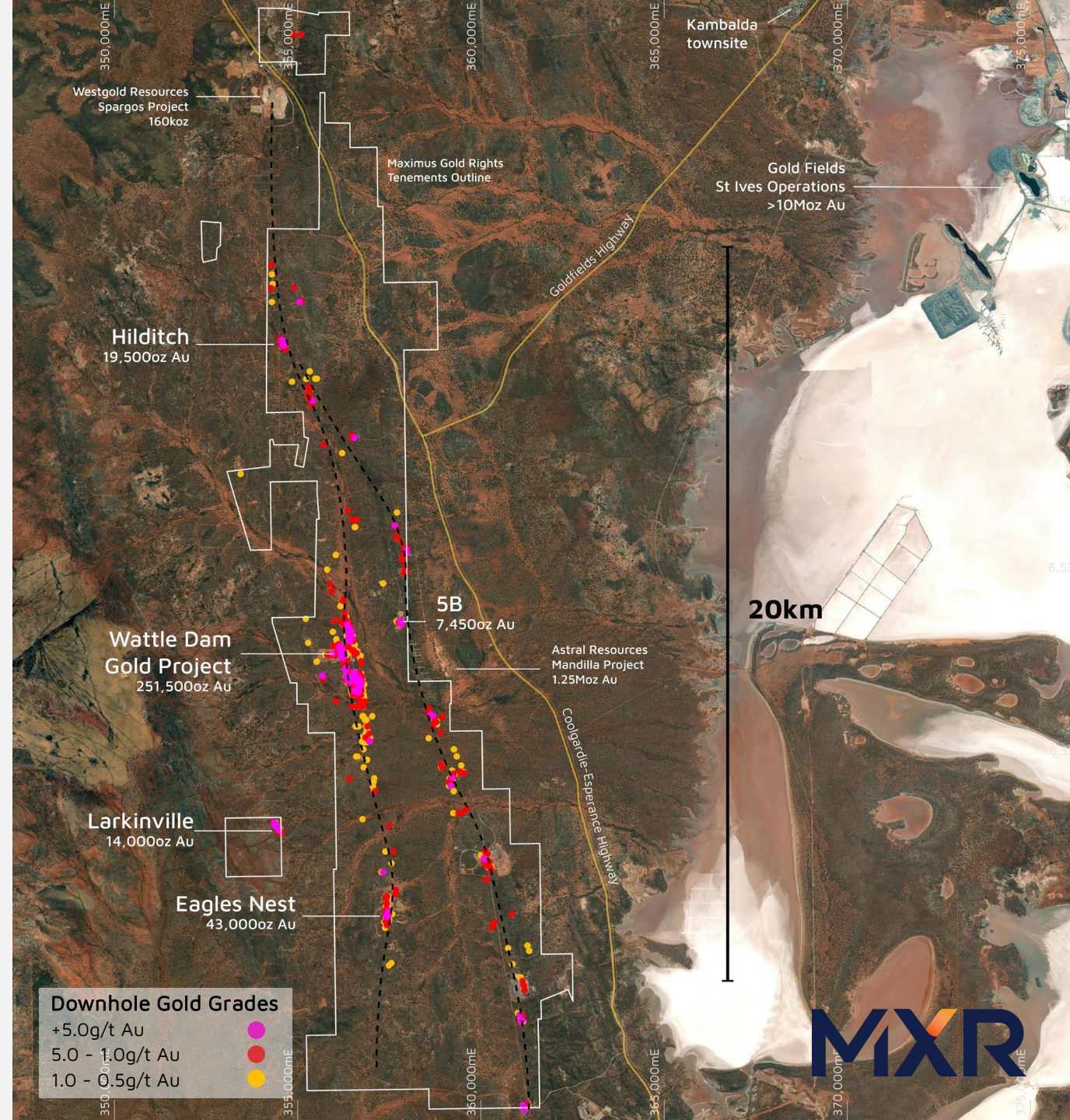
- Drilling targeting Wattle Dam high-grade shoot repetition.
- Expansion of shallow open-pit resources.
- 100% MXR. Existing mine Infrastructure.

REGIONAL GOLD TARGETS

- 117 sqkm of granted mining tenements.
- Fertile geology. ~20km west of >10M oz Au Goldfields St Ives gold camp.
- Advanced gold resources and targets.

Strong gold mineralisation and geochemistry trends assisting targeted drilling.

Refer to Appendix A



GOLD PRODUCTION PIPELINE



Sequences of free milling gold resources within short trucking distance to several toll-milling facilities.

Wattle Dam Project (100% MXR)

MRE: 251,500 oz @ 1.4 g/t Au

- Shallow resource 95% within 200m of surface.
- 153,000 oz Au in Indicated Category.
- 92% - 97% gold recovery.
- Existing mine infrastructure.
- **8500N Paleochannel shallow mineralisation (<20m). Low-cost, low-risk production opportunity.**

Eagles Nest (100% MXR)

MRE: 42,550 oz @ 2.0 g/t Au

- Shallow high grade.
- 7km south of the Wattle Dam Gold Project.
- Drilling focused on resource classification and expansion.
- ~3km of untested strike with rock chips up to 9.8g/t Au.
- Discovery site the 1,135 oz 'The Golden Eagle' nugget

Hilditch (90% MXR)

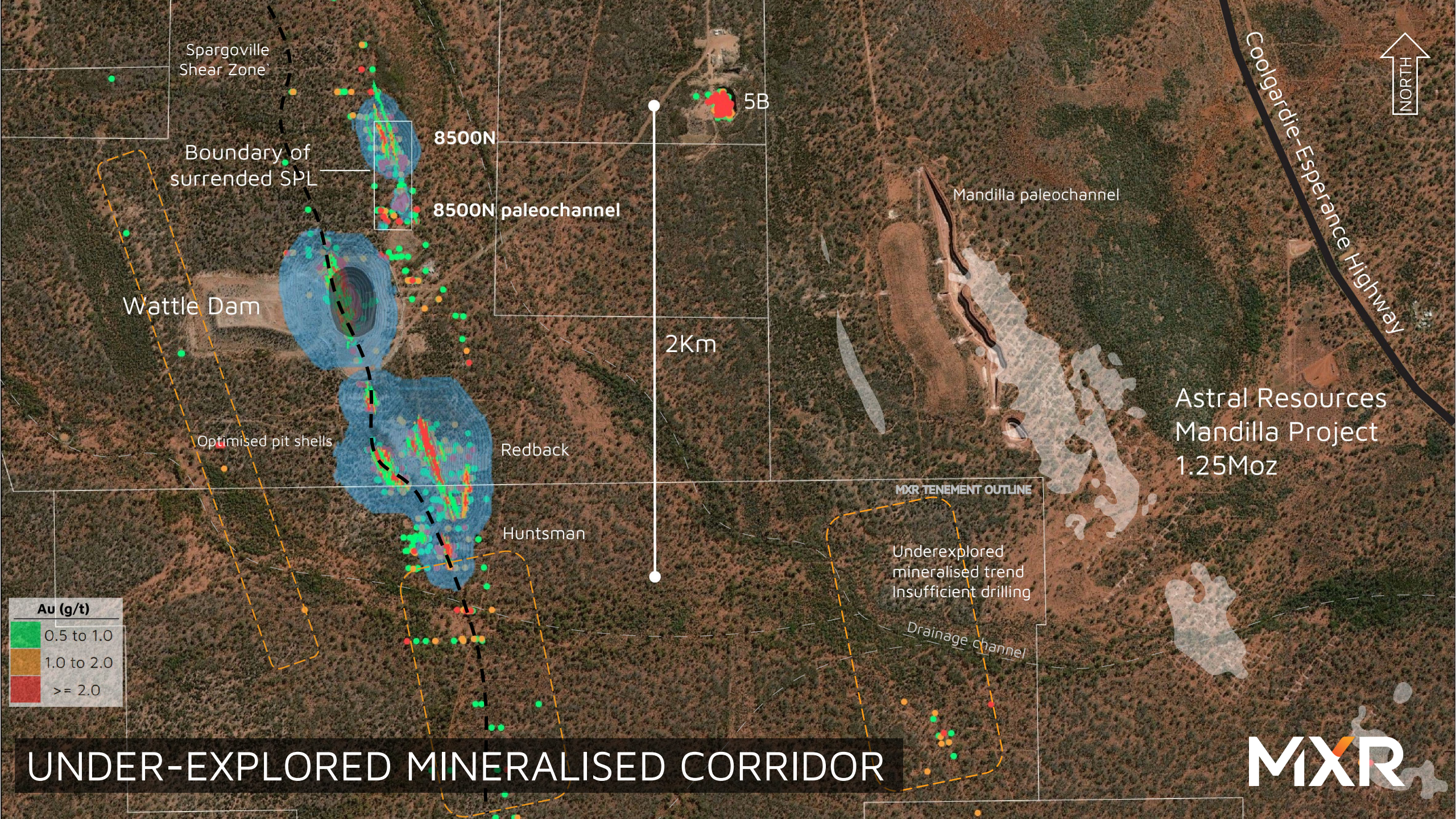
MRE: 19,500 oz @ 1.3 g/t Au

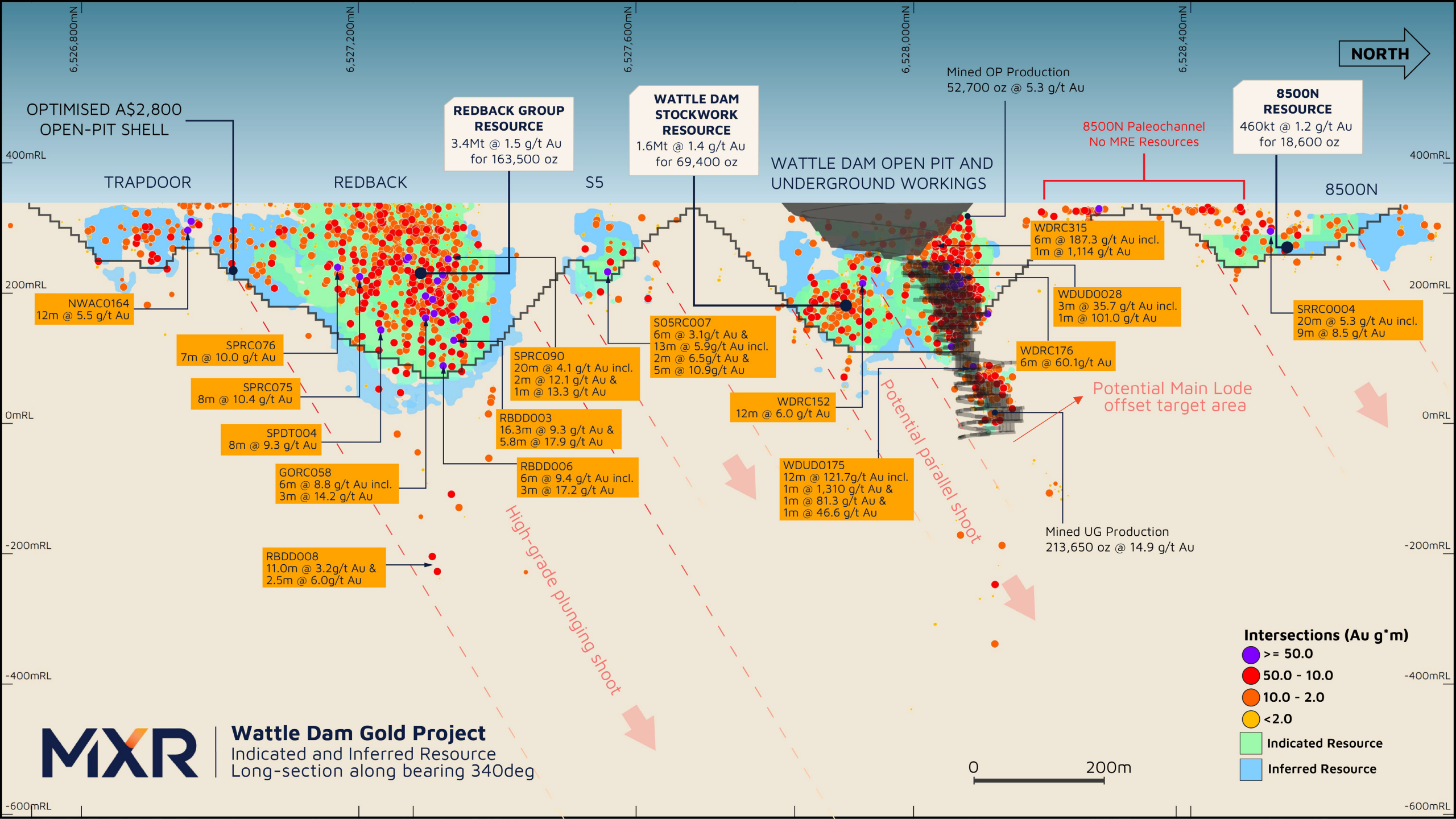
- Shallow, mineralisation starts at surface.
- Open at depth with strike extension south.
- Excellent site access.
- 91% - 96% gold recovery.
- **Development studies underway.**
- Flora and Fauna surveys completed.

Larkinville (75% MXR)

MRE: 14,040 oz @ 1.8 g/t Au

- JV with Develop Global Ltd.
- 91% reported Indicated classification.
- Excellent metallurgical recoveries up to 97%.
- **Development studies underway.**
- Deep weathering reduces production costs.





Wattle Dam Gold Project
Indicated and Inferred Resource
Long-section along bearing 340deg

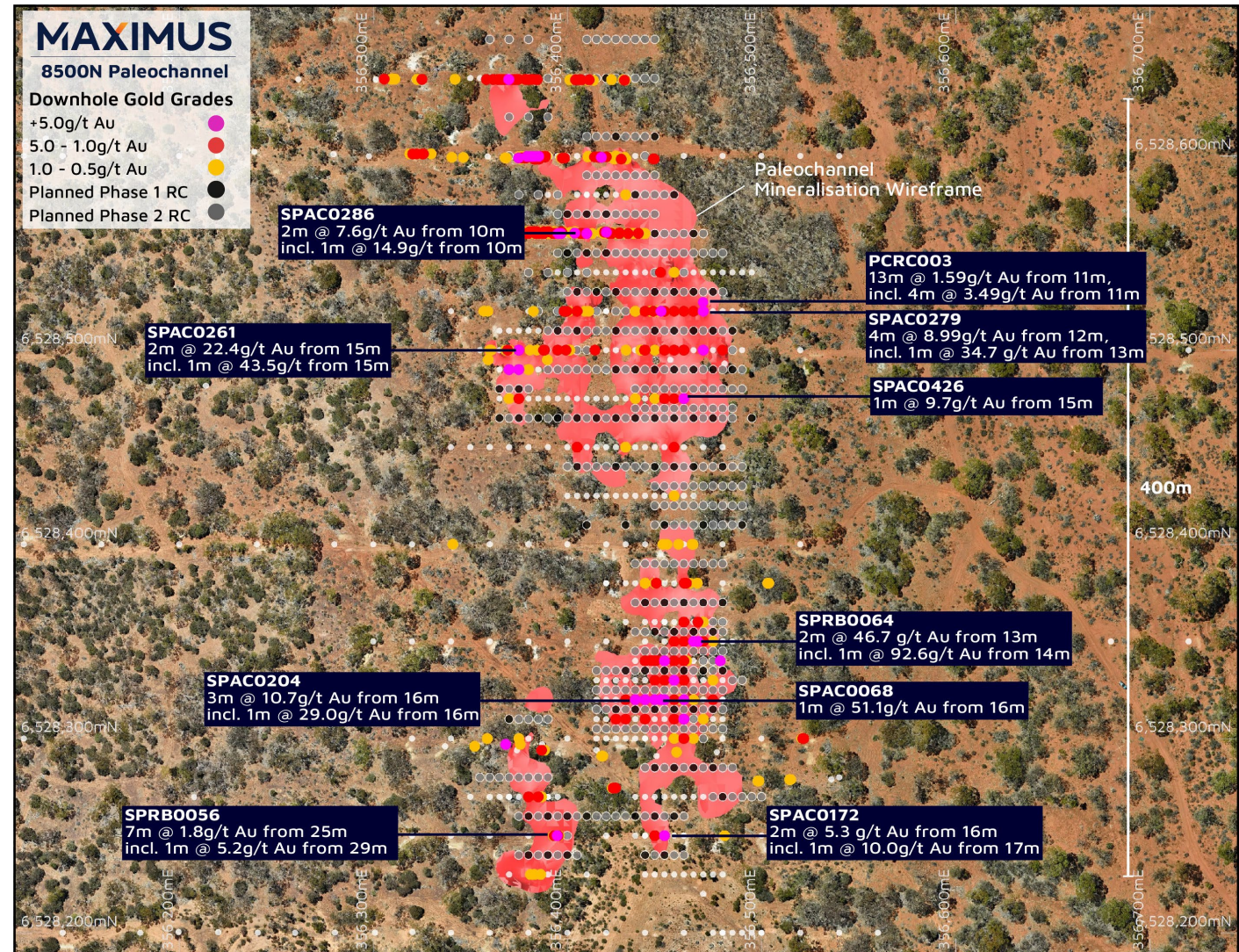
8500N PALEOCHANNEL

LOW-COST, LOW-RISK PRODUCTION OPPORTUNITY



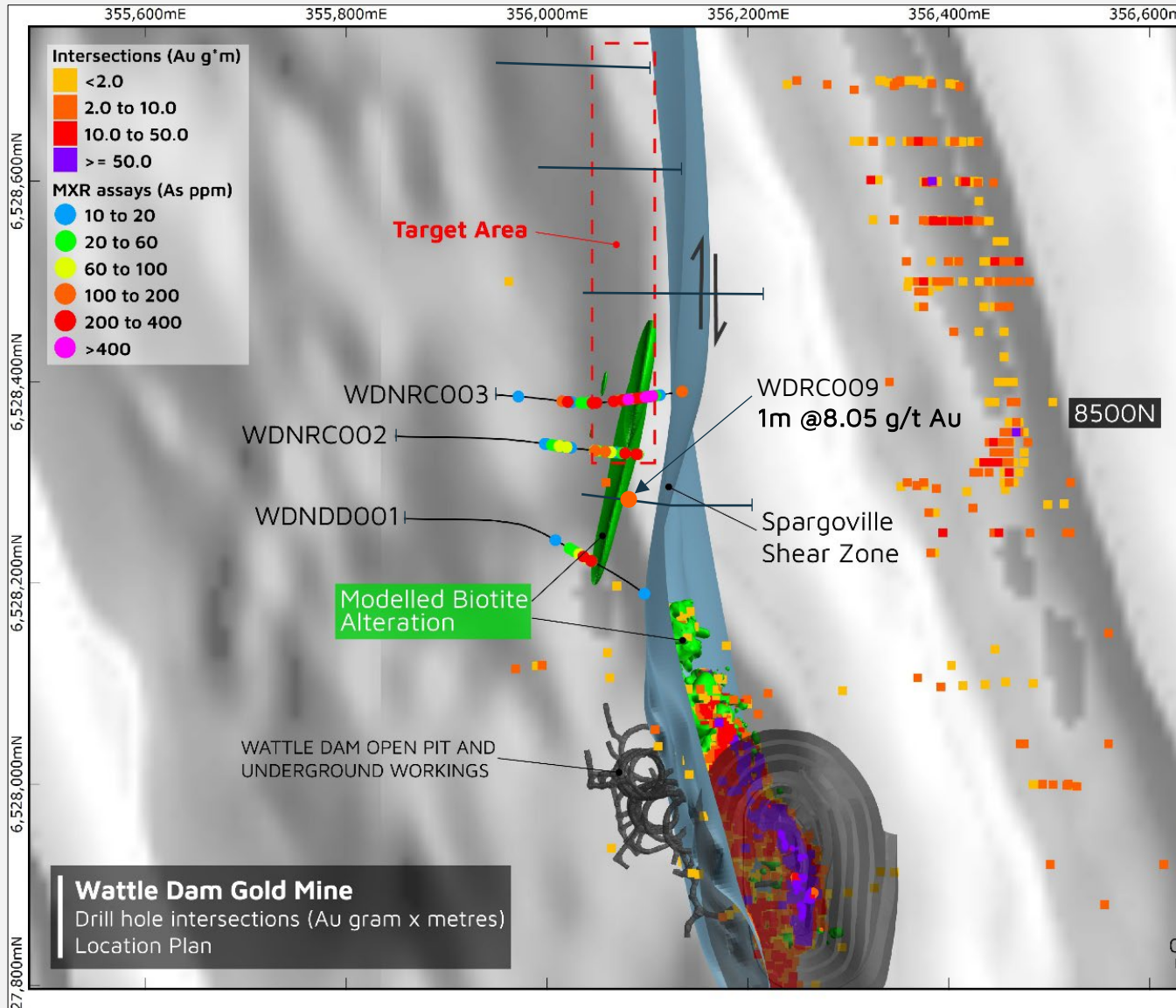
- Shallow 10 to 20m below surface.
- Significant high-grade legacy intersection up to 2m @ 45.7g/t Au from 13m incl. 1m @ 92.6 g/t from 14m (SPRB0064)*.
- Mineralisation ranging from 1 to 13m thick.
- Free-digging qualities (no drill and blast required) give favourable economics.
- Advanced geological modelling highlights potential resource expansion.
- No JORC Resources. Staged grade control drill programs underway.

Potential starter operation to support a sequence of larger open pit operations.



WATTLE DAM GOLD MINE

DEMONSTRATED HIGH-GRADE POTENTIAL

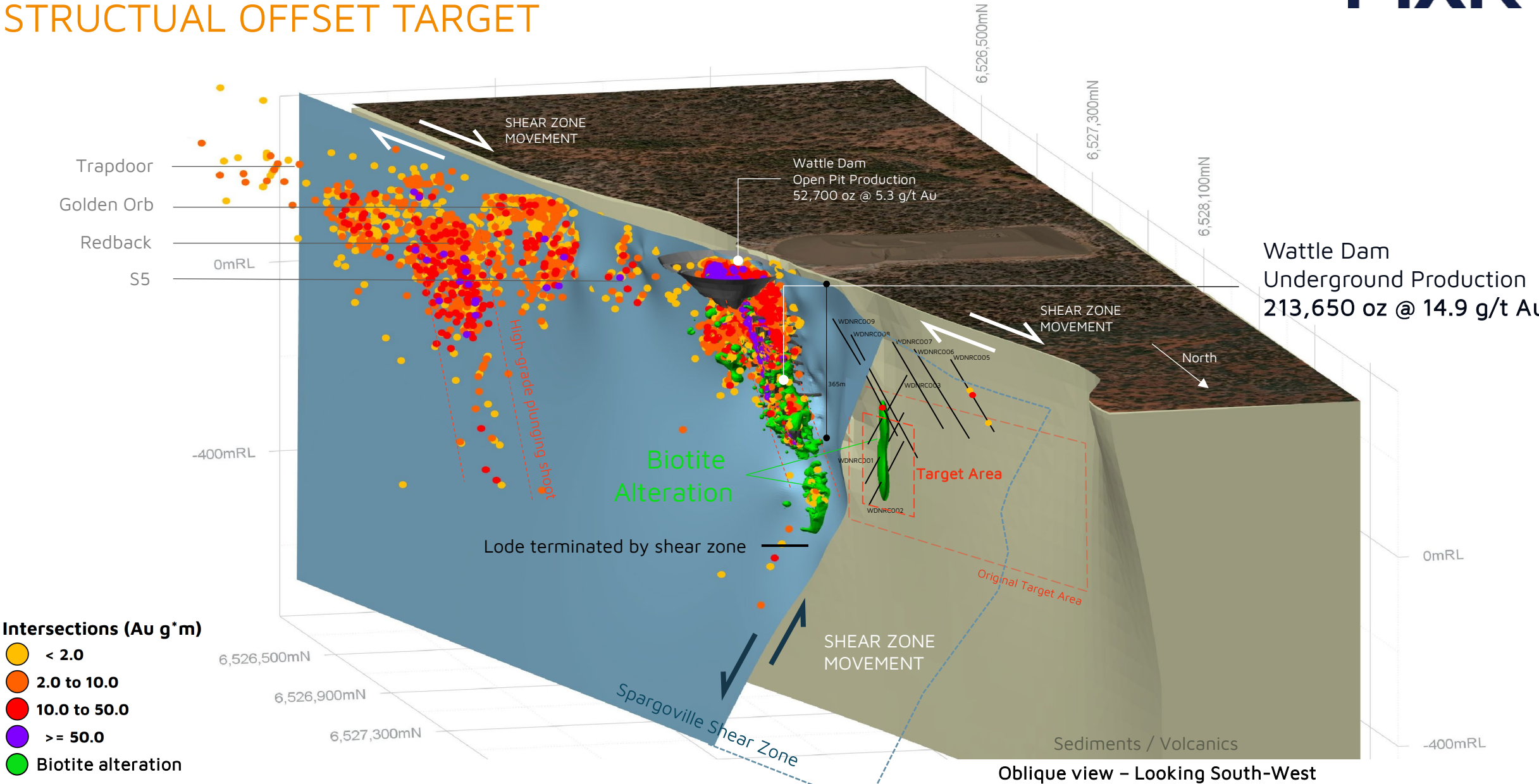


- Mined from 2008-2012 historical production:

Open pit	52,700 oz	@ 5.3 g/t Au
Underground	213,650 oz	@ 14.9 g/t Au
Total	266,350 oz	@ 11 g/t Au
- High-grade lode 40-100m in strike length.
- **Shear zone terminates mineralisation.**
- Potential structural offset to the west.
- No previous drill testing western side of shear zone. Legacy drilling focused on eastern side of the shear zone following mineralisation down dip.
- Drilling confirms a similar geological sequence refining drill targeting.

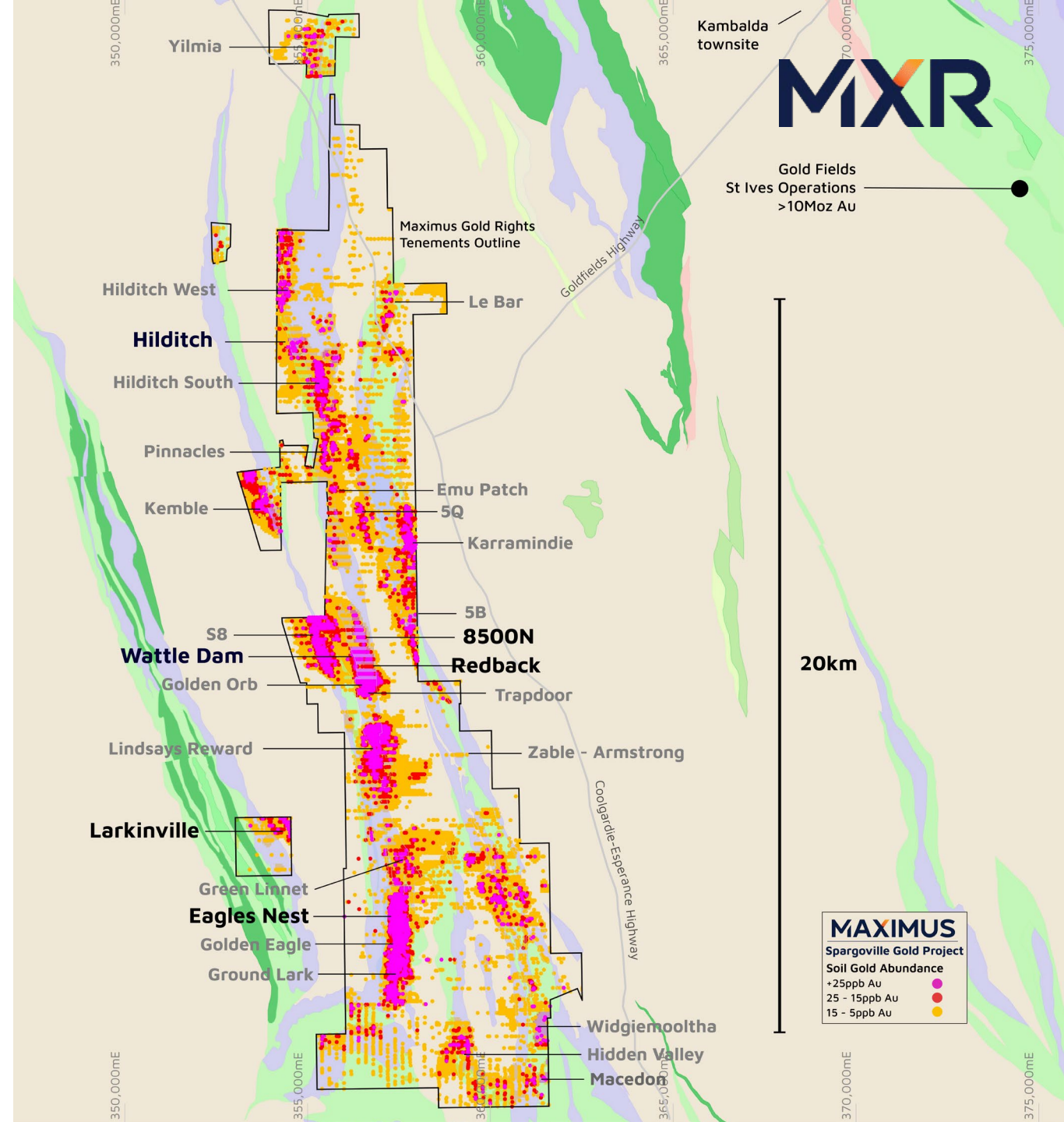
WATTLE DAM GOLD MINE

STRUCTURAL OFFSET TARGET



HIGH DISCOVERY POTENTIAL UNDER-EXPLORED REGION

- +30km of strike of granted mining tenements in a world-class gold region producing +15Moz Au.
- Strong correlation with porphyry contact assisting drill targeting.
- Advancements in modelling utilising a significant geological dataset.
- Numerous priority drill targets.
- Low-cost discovery. **Drilling focused on shallow open-pit gold resources.**





LITHIUM

WA's EASTERN GOLDFIELDS LITHIUM CORRIDOR

- Two lithium projects - Lefroy + Larkinville.
- Located within one of the world's most prospective hard rock lithium regions.
- ~20km south of Mineral Resources Limited (ASX:MIN) Mt Marion lithium mine.
- Strategic US\$3m partnership with KOMIR and MOU with LG Energy Solutions.

Large-scale fertile lithium system

LEFROY LITHIUM JOINT VENTURE

STRATEGIC LITHIUM PARTNERSHIP



Korea Mine Rehabilitation and
Mineral Resources Corp.

KOMIR



- KOMIR funding US\$3m (~A\$4.5m) of exploration for 30% interest in the Lefroy Lithium Project.
- South Korea Government agency responsible for national resource security, including development of overseas capacity to supply into the Korean market.
- South Korea is home to three of the world's five largest Electric Vehicle (EV) battery manufacturers.
- Non-binding MOU executed with LG Energy Solution. Option to acquire KOMIR JV interest.

STRATEGIC HOLDING

EASTERN GOLDFIELDS LITHIUM CORRIDOR

Mineral Resources (ASX:MIN)
Mt Marion Project

■ KAMBALDA

Kali Metals (ASX:KM1)
Spargoville Project

Dynamic Metals (ASX:DYM)
MinRes Widgiemooltha JV

Maximus Resources
Lefroy Lithium JV

Marquee Resources (ASX:MQR)
MinRes Spargoville JV

Kali Metals (ASX:KM1)
Widgiemooltha Project

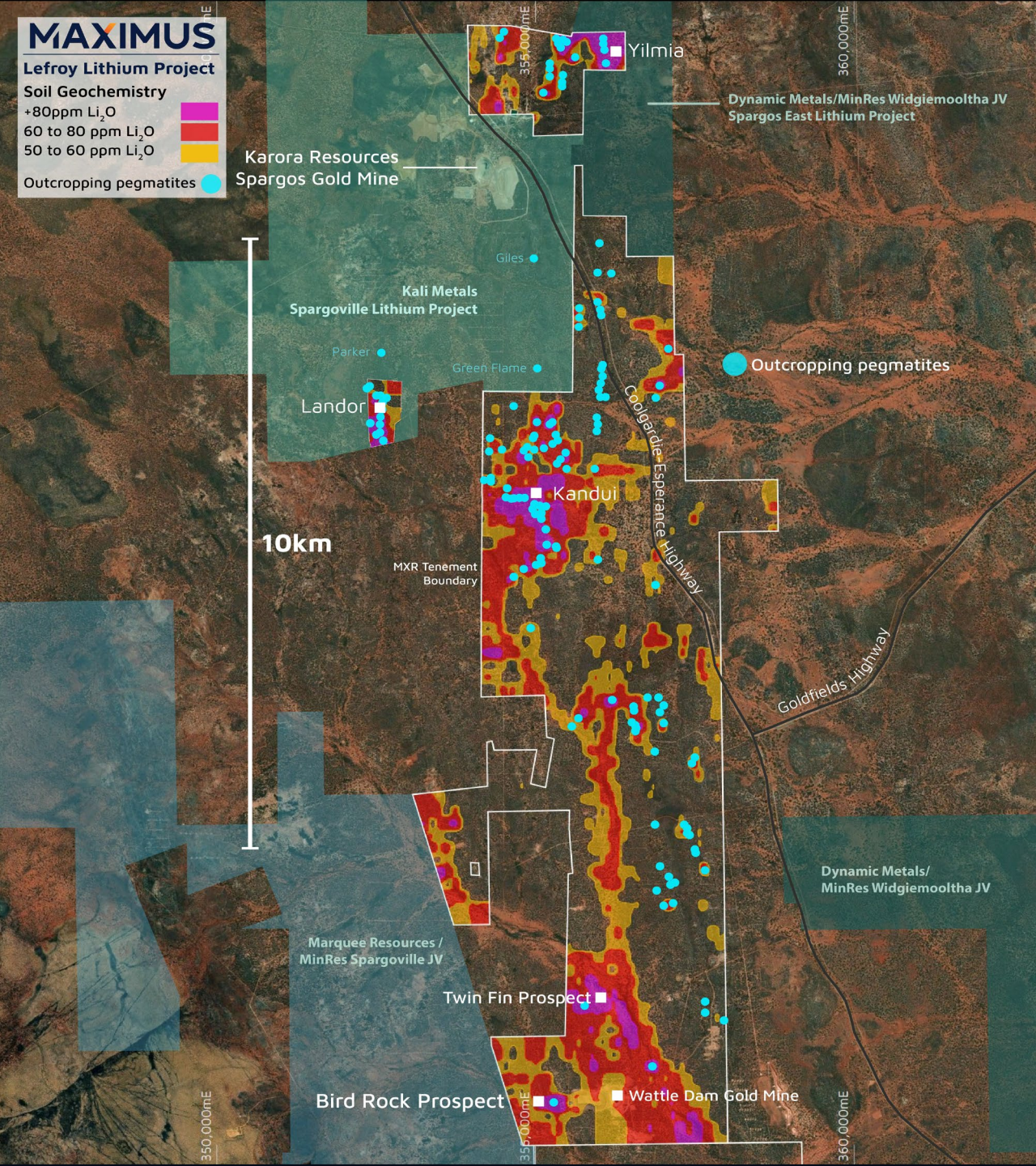
Maximus Resources
Larkinville Project

100% MXR Gold Rights

Mineral Resources
Bald Hill Project

30km

MXR



LEFROY

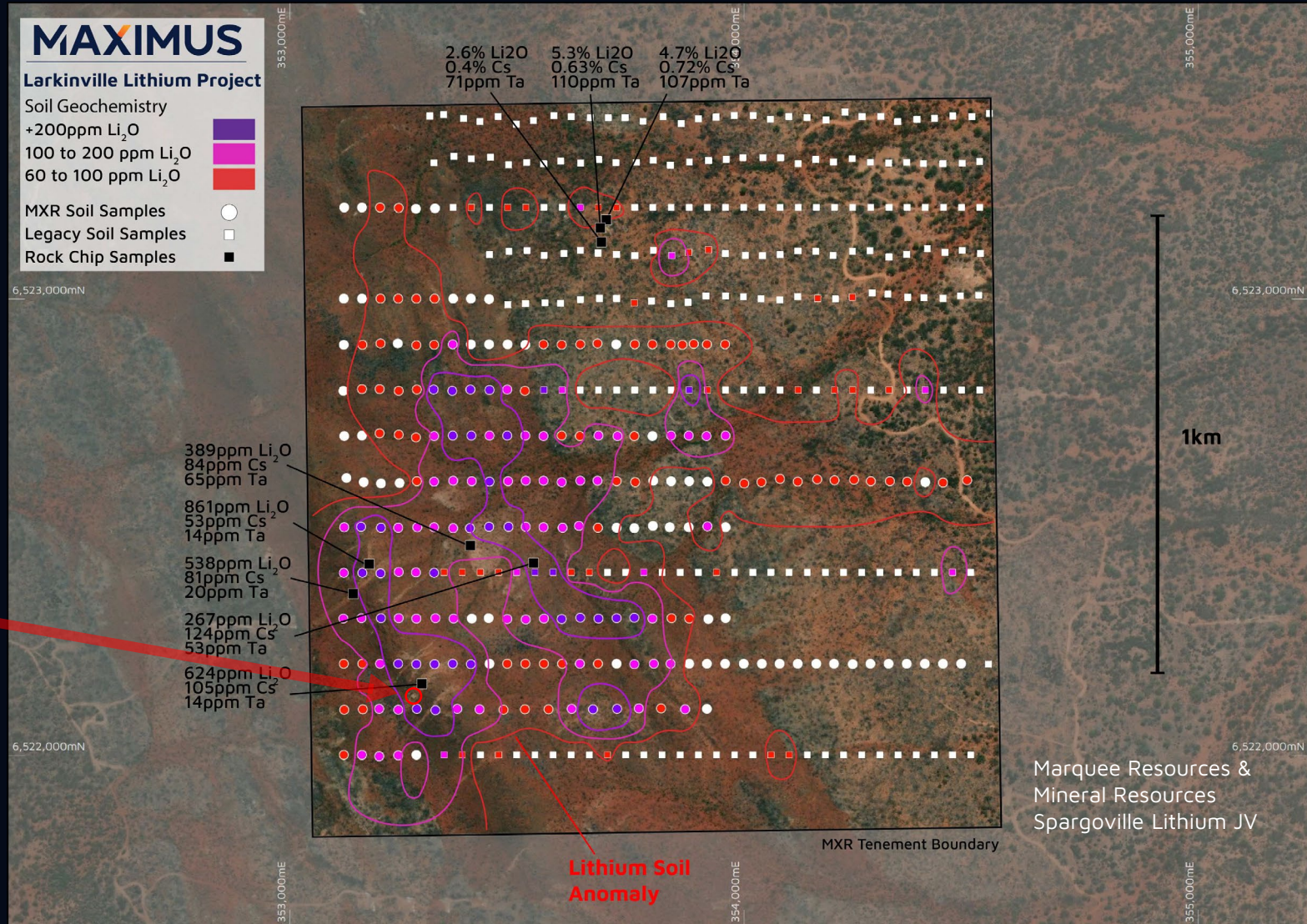
ADVANCED TARGETS

- Similar geological setting as Mt Marion.
- Swarm (+80) out-cropping pegmatites.
- Significant lithium in soil anomaly.
- Thick spodumene-bearing pegmatite intersected over a large area – Kandui.
 - 6m at 1.11% Li_2O , incl. 3m at 1.99% Li_2O from 91m (KDRCO07)
 - 5m at 1.11% Li_2O , incl. 3m at 1.72% Li_2O from 111m (MKRC015)
 - 18m @ 0.24% Li_2O from 116m, incl. 2m @ 0.50% Li_2O from 119m (MKRC043)
 - 58m @ 0.11% Li_2O from 46m (MKRC001)

Fully funded exploration program
with strategic partner underway.

LARKINVILLE

Outcropping spodumene-bearing pegmatites.



MXR CORPORATE SNAPSHOT

PROVEN MINE DISCOVERY AND
DEVELOPMENT EXPERIENCE

Capital Structure

Share price	\$0.041 (6 November 2024)
Share on Issue	427,927,691
Options on Issue	Nil
Market Capitalisation	~\$17.5 M
Cash	~\$3.1M (September 24 Quarter)
Enterprise Value	\$14.4M (EV ~\$43 / oz Au)
Top 20 Holders	55% (Beacon Minerals Limited - 19.7 %) (Mr Colin Petroulas - 13.8 %)

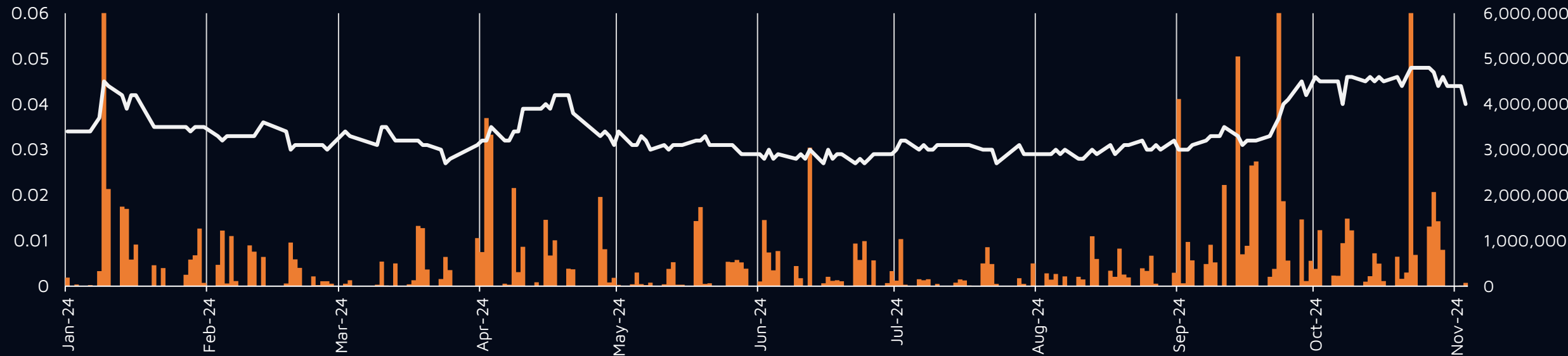
Board

Martin Janes	Non-Exec Chair
Tim Wither	Managing Director
Graham McGarry	Non-Exec Director

Management

Rajita Alwis	Company Secretary
Gregor Bennett	Exploration Manager

DAILY SHARE PRICE



UPCOMING CATALYSTS

- Development studies advancing for mining approvals across several projects to be 'Shovel Ready'.
- **Active discussions to secure toll milling to generate cash flow for resource growth.**
- Drilling focused on shallow open pit resources.
- Balanced approach with ongoing drill testing advanced exploration targets.
- Fully funded lithium exploration program.

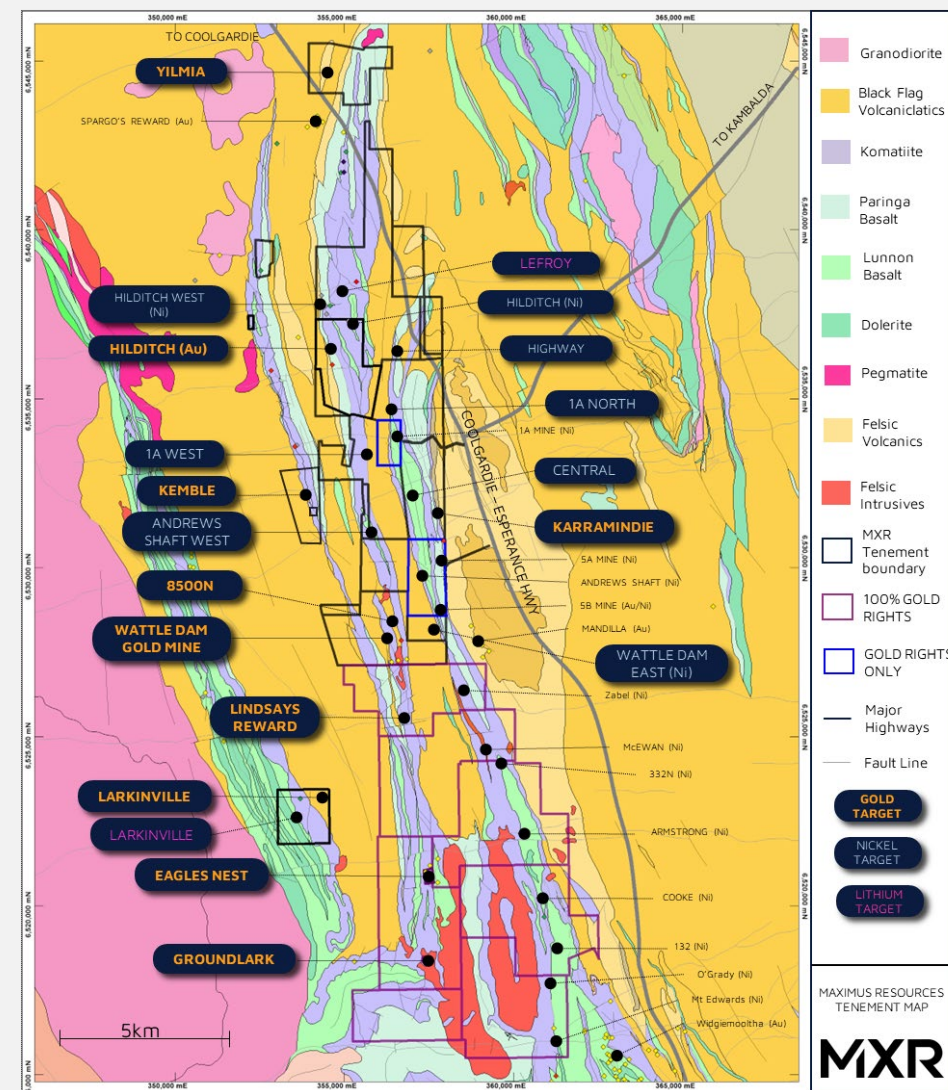


Appendix A



JORC (2012) Mineral Resource Statement

Spargoville group resources by deposit location								
RESOURCE	Last update	Indicated		Inferred		Total		
		Tonnes ('000t)	Grade (g/t Au)	Tonnes ('000t)	Grade (g/t Au)	Tonnes ('000t)	Grade (g/t Au)	Ounces
Eagles Nest	Feb-17	150	1.8	530	2.0	680	2.0	42,550
Larkinvile	Nov-23	222	1.8	26	1.4	249	1.8	14,040
5B	Nov-16	—	—	75	3.1	75	3.1	7,450
Hilditch	Nov-23	274	1.1	208	1.5	482	1.3	19,500
Wattle Dam Gold Project	Jul-23	3,400	1.4	2,000	1.5	5,400	1.4	251,500
TOTAL		4,046	1.4	2,840	1.7	6,886	1.5	335,040
Notes:								
<ol style="list-style-type: none"> Mineral resources reported in the announcement dated 19 December 2023. To comply with ASX LR5.23.2 Maximus confirms that it is not aware of any new information or data that materially affects the information included in this market announcement and in the case of the above mineral resources, all material assumptions and technical parameters underpinning the estimates continue to apply and have not materially changed. The Company confirms that the form and context in which the Competent Person's findings are presented have not been materially modified from the original market announcement. Figures have been rounded and hence may not add up exactly to the given totals. 								



The logo consists of the letters 'MAXR' in a bold, white, sans-serif font. The letter 'X' is formed by two overlapping diagonal strokes. A small, orange-to-yellow gradient triangular shape is positioned at the top of the 'X', pointing towards the right, which serves as a distinctive visual element.

MAXR

www.maximusresources.com