

ASX: SQX

8 NOVEMBER 2024

DRILL REPORT CONFIRMS HIGH IMPACT DRILL TARGETS

- **High impact drill targets delineated for the 2 new areas for exploration targeting a copper/gold porphyry system identified by the recent soil sampling program.**
- **Significant exploration potential for both Intrusion Related Gold and porphyry-style copper-gold mineralisation.**
- **Further geophysical surveys and drilling recommended to delineate mineralised zones.**

SQX Resources Limited (SQX or Company) is pleased to announce the completion of a drill report of Ollenburgs Project, located in southeast Queensland. The project encompasses the Scrub Paddock (**Scrub Paddock**) and Ollenburgs (**Ollenburgs**) prospects, both of which have demonstrated promising potential for gold and copper mineralisation.

Drilling Report

The recent work has further highlighted the potential for intrusive related gold (**IRG**) and copper – gold porphyry-style mineralisation at both the Scrub Paddock and Ollenburgs prospects (refer ASX Announcement - Geochemical Program Identifies New Copper/Gold Targets – 5 April 2024). A key feature of the project is the "line of lode" structure at Scrub Paddock, which has now been confirmed to extend to depths of over 400m and remains open in all directions (refer ASX Announcement - Extended Scrub Paddock Intercept of 553m @ 0.10 g/t Au – 19 July 2023).

The drilling report compiled the SQX Scrub Paddock drilling results and assessed the anomalous copper-gold-arsenic soil geochemistry defining the prospect over a 2km strike length.

The reprocessed geophysical data suggests that multi-phase intrusions and associated alteration may be linked to gold and copper mineralisation, particularly at the Ollenburgs prospect. Historical rock chip sampling at Ollenburgs returned copper values up to 6.56% and gold values up to 19.6g/t Au, indicating strong potential for porphyry copper-gold systems.

SQX Executive Chairman, Mr Patric Glovac, commented:

"We are very encouraged by the identification of drill targets at the Ollenburgs Project, which has been confirmed by the independent drilling report. The discovery of narrow, high-grade gold intercepts, combined with the potential for both IRG and porphyry-style mineralisation, reinforces our belief in the significant exploration potential of this region."

"Our previously completed geophysical work and drilling have provided valuable insights into the mineralisation system at Scrub Paddock and have identified several key targets for further investigation. With these positive indicators, we are well-positioned to advance our exploration program and unlock the full value of this promising project."

"Our strategy remains focused on thorough and systematic exploration to identify high-priority targets. The recent data points to untapped potential at both Scrub Paddock and Ollenburgs. The drill report marks an important step forward for SQX, and we look forward to providing further updates as we continue to explore this exciting area."

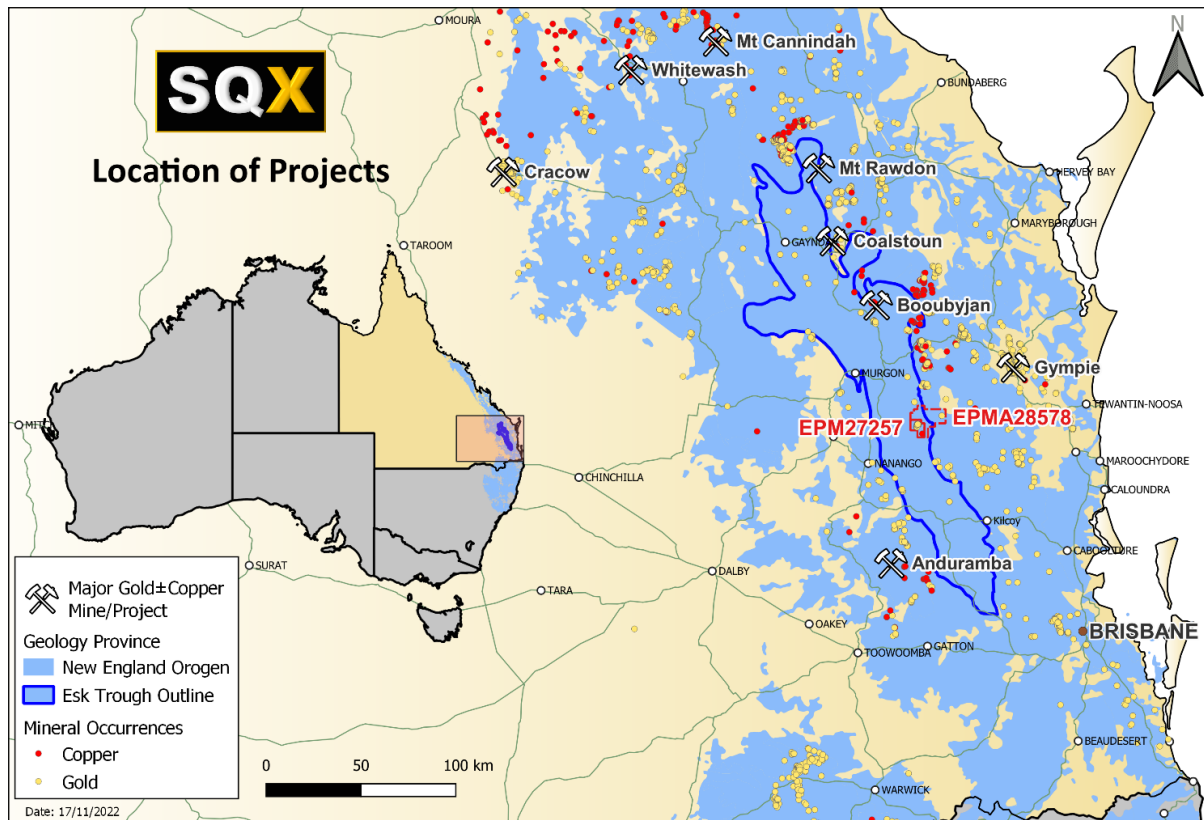


Figure 1 SQX's Location of Projects

Exploration Summary

The Ollenburgs Project includes Exploration Permit (EPM) 27257 and the pending application EPMA 28578, covering a total area of approximately 177 km². The project is situated within the Esk Basin, which forms part of the New England Fold Belt – a region known for hosting significant porphyry copper-gold deposits.

Exploration work at the Scrub Paddock prospect has included a combination of geophysics, soil sampling, and drilling performed by the Company since listing on 16 February 2023 with the focus on testing the porphyry-style gold-copper and IRG mineralisation models.

Key Drilling Results

Previous drilling at Scrub Paddock targeted several geophysical anomalies identified in previous surveys now indicates gold mineralisation is occurring over 2km strike lengths and extending to depths of 400m below surface is open in all directions (refer ASX Announcement - Extended Scrub Paddock Intercept of 553m @ 0.10 g/t Au – 19 July 2023).

Significant results from the drilling campaign (6 holes for 2,366m) include:

- Hole SP002: 126m @ 0.21g/t Au from 245m, including 1m @ 8.31g/t Au and 1m @ 4.14g/t Au.
- Hole SP001: 152m @ 0.12g/t Au from 93m, including 1m @ 1.99g/t Au.
- Hole SP006: 32m @ 0.23g/t Au from 210m, including 8m @ 0.88g/t Au.

The key feature of the recent work considers Scrub Paddock has potential for IRG mineralisation occurring as narrow gold-bearing quartz-sulphide veins in both the andesite volcanic country rock, intrusive diorite and dykes. The veins are associated with extensive biotite and locally K-feldspar alteration occurred downhole on a semi-regular nature separated by barrens intervals. The magnetic character of the Scrub Paddock intrusive diorite could be multiple intrusive phases with potential for alteration and mineralisation (Figure 2).

The reprocessed magnetic data allows for interpretation of the geology and indicates the Scrub Paddock intrusion and Ollenburgs intrusion are offset by a northwest trending regional fault (Figure 2). The interpretation of the magnetics suggests Ollenburgs may be the best target for copper-gold porphyry style mineralisation.

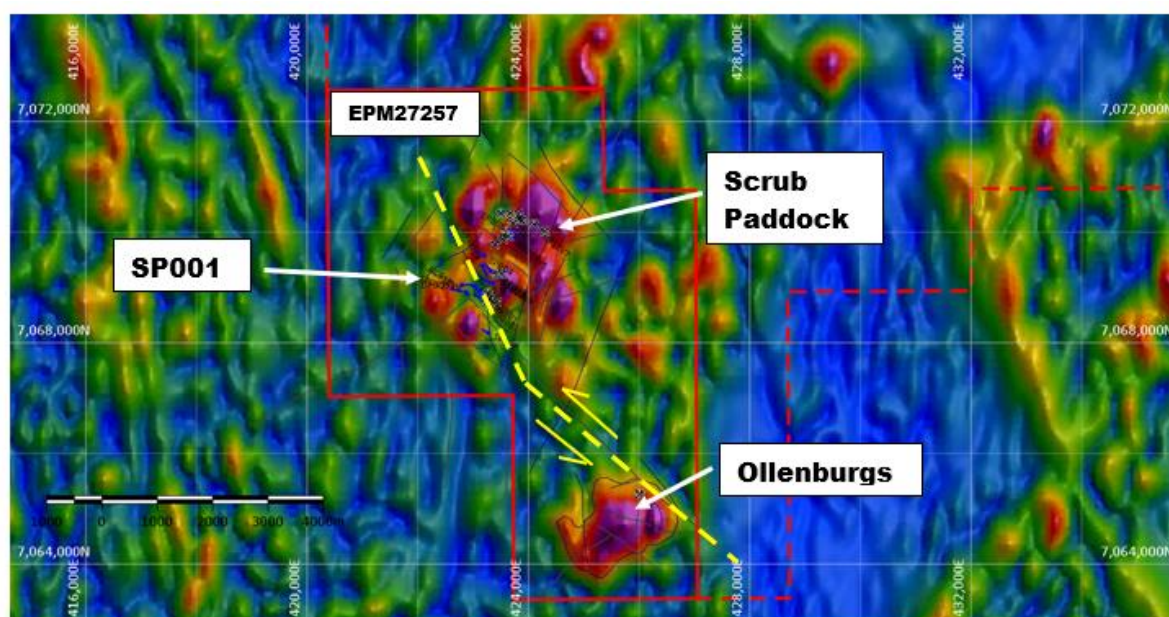


Figure 2 Airborne magnetic data image (TMI-TRP) showing the northwest trending fault offsetting Scrub Paddock and Ollenburgs prospects.

Drill Report Recommendations

Specific recommendations from the drill report include:

- Detailed ground magnetic and IP surveys at Scrub Paddock and Ollenburgs to refine drill targets.
- Further drilling at Scrub Paddock to test the open-ended gold mineralisation along the line of lode and adjacent parallel structures.

SQX remains committed to unlocking the full potential of the Ollenburgs Project (within the context of its broader portfolio building strategy).

This announcement has been approved and authorised to be released to the ASX by the Board of Directors of SQX Resources Limited.

– ENDS –

For further information please contact:

SQX Resources Limited

Patric Glovac

Executive Chairman

E: info@sqxresources.com

Additional information is available at sqxresources.com.

About SQX Resources Limited (SQX)

SQX is a modern mineral exploration company dedicated to delivering shareholder value by building a portfolio of exploration, development, and operating assets. Its current focus is on gold and copper mineralisation at the Ollenburs and Scrub Paddock prospects, located on EPM 27257 in the underexplored Esk Basin in southeast Queensland near major regional infrastructure and population centres. Both prospects feature known mineralisation and historical mine workings.

Scrub Paddock

Identified as a potential gold-copper porphyry, the Scrub Paddock Prospect features more than 20 mineral occurrences and historical mine workings with surface mineralisation extending across a ~2km strike length. Soil sampling and drilling have already confirmed gold and copper mineralisation; the extent of this mineralisation, both along the strike of the surface anomaly and at depth, is unknown. The Company is aiming to define an economic mineral resource.

Ollenburs

Ollenburs hosts potential for a copper-gold porphyry system and features several copper/gold/silver mine workings, an anomaly visible on aeromagnetic mapping, a surface soil and rock-chip geochemical anomaly across ~300x50m and no historical drilling. The Company intends to expand soil sampling, undertake IP surveying and, if justified, follow up with drilling.

Competent Person's Statement

The information in this announcement that relates to historical exploration results were reported by the Company in accordance with listing rule 5.7 on 19 July 2023, 5 April 2024 and in SQX's Prospectus dated 30 November 2022, released to ASX on 16 February 2023. The Company confirms it is not aware of any new information or data that materially affects the information included in the original announcements
