



# Targeting the next big discovery

16 December 2024

Chris Byrne, *CEO & Managing Director*  
[chris.byrne@legacyminerals.com.au](mailto:chris.byrne@legacyminerals.com.au) +61 499 527 547

Company Webinar



# Disclaimer

This presentation may contain certain statements and projections provided by or on behalf of Legacy Minerals Holdings Limited (**ASX: LGM, Legacy Minerals, or the Company**) with respect to the anticipated future undertakings. These forward-looking statements reflect various assumptions by or on behalf of Legacy Minerals. Accordingly, these statements are subject to significant business, economic and competitive uncertainties and contingencies associated with the mining industry which may be beyond the control of Legacy Minerals which could cause actual results or trends to differ materially, including but not limited to price and currency fluctuations, geotechnical factors, drilling and production results, development progress, operating results, reserve estimates, legislative, fiscal and regulatory developments, economic and financial markets conditions in various countries, approvals and cost estimates, environmental risks, ability to meet funding requirements, share price volatility. Accordingly, there can be no assurance that such statements and projections will be realised. Legacy Minerals makes no representations as to the accuracy or completeness of any such statement of projections or that any forecasts will be achieved.

Additionally, Legacy Minerals makes no representation or warranty, express or implied, in relation to, and no responsibility or liability (whether for negligence, under statute or otherwise) is or will be accepted by Legacy Minerals or by any of their respective officers, directors, shareholders, partners, employees, or advisers as to or in relation to the accuracy or completeness of the information, statements, opinions or matters (express or implied) arising out of, contained in or derived from this presentation or any omission from this presentation or of any other written or oral information or opinions provided now or in the future to any interested party or its advisers. In furnishing this presentation, Legacy Minerals undertakes no obligation to provide any additional or updated information whether as a result of new information, future events or results or otherwise. Nothing in this material should be construed as either an offer to sell or a solicitation of an offer to buy or sell securities. It does not include all available information and should not be used in isolation as a basis to invest in Legacy Minerals.

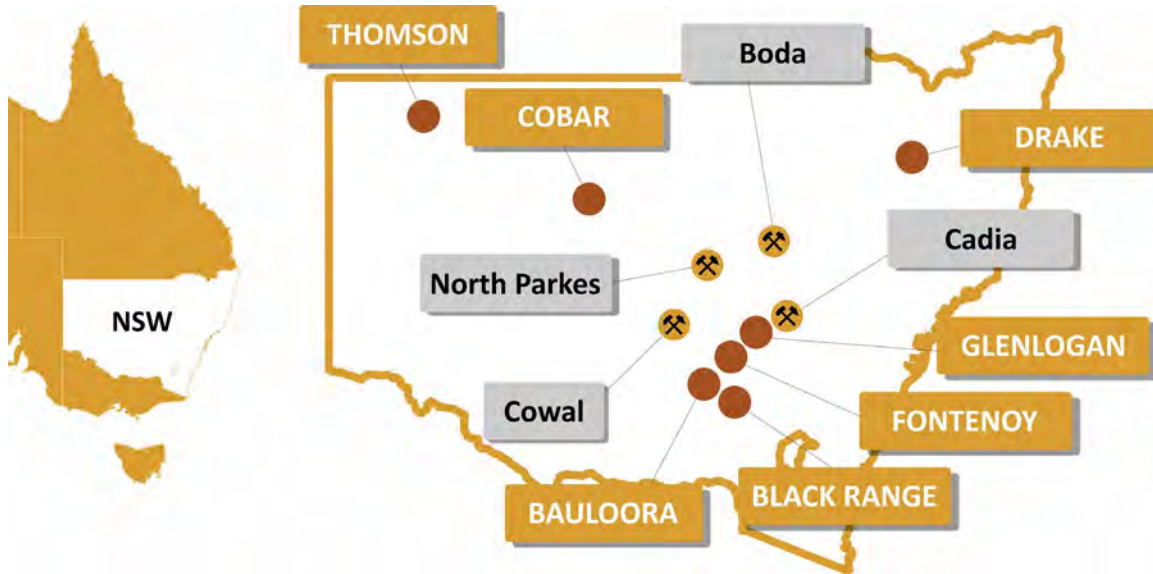
This presentation contains exploration results and historic exploration results as originally reported the Company's Prospectus dated 28 July 2021 and released 9 September and subsequent ASX market announcements. The Company confirms that it is not aware of any new information that materially affects the information included in the original market announcements and that all material assumptions and technical parameters underpinning the estimates in the relevant market announcements continue to apply and have not materially changed. The Company confirms that the form and context in which the Competent Persons' findings are presented have not been materially modified from the original market announcements.

The information in this presentation that relates to Exploration Targets, Exploration Results, Mineral Resources or Ore Reserves is based on information compiled by Thomas Wall, a Competent Person who is a Member of the Australian Institute of Geoscientists. Mr Wall is the Technical Director is a full-time employee of Legacy Minerals Limited and a shareholder, who has sufficient experience that is relevant to the style of mineralisation and type of deposit under consideration and to the activity being undertaken to qualify as a Competent Person as defined in the 2012 edition of the Australasian Code for Reporting of Exploration Results, Mineral Resources and Ore Reserves. Mr Wall consents to the inclusion in the report of the matters based on his information in the form and context in which it appears.

The release of these presentation materials has been authorised by the Board.



# Legacy Minerals - A premier gold, silver and copper portfolio



Map of NSW showing Legacy Minerals tenements and geographical location of major mining and exploration projects

**100% Owned Projects -7,067km<sup>2</sup>**

**Thomson, Drake, and Black Range**

**Joint Venture Projects -1,070km<sup>2</sup>**

**Bauloora, Fontenoy, Glenloghan, Cobar**

**Newmont**

**EARTH AI**

**S2 Resources**

## Why New South Wales?

- Home to Australia's largest gold mine (Cadia) and continued discovery success
- Value demonstrated by global mining company investment
  - **Since 2023, NSW has seen A\$16B in mining M&A deals and \$300m in exploration JVs<sup>1</sup>**
- Underexplored – WA receives almost 4 times more annual expenditure than NSW<sup>2</sup>

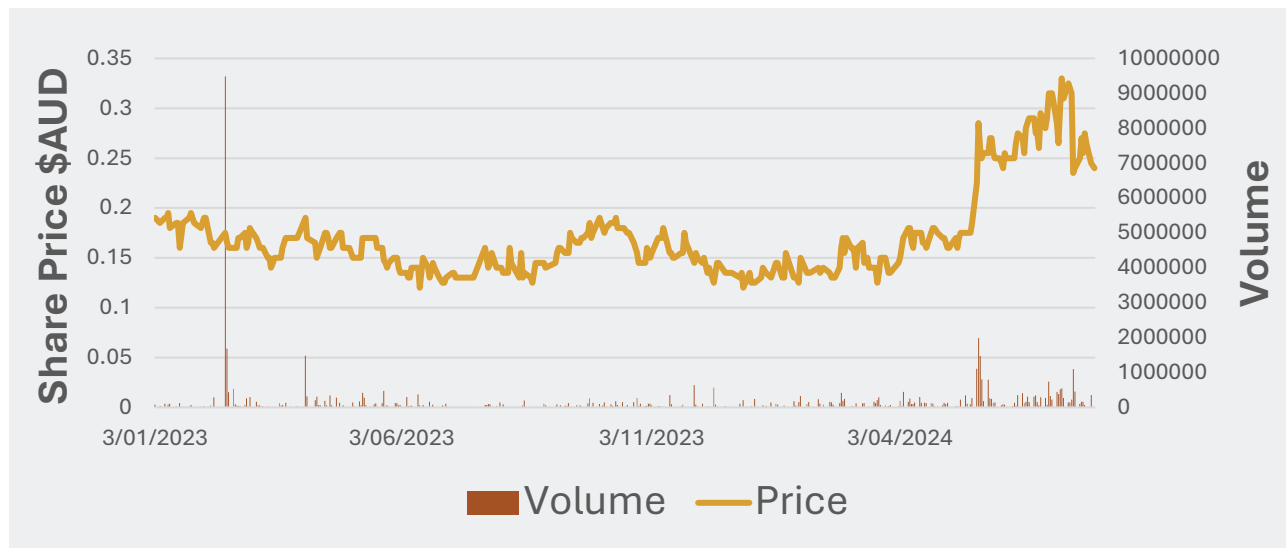


**ASX: LGM**

Note: references on this slide are in the Appendix – Endnotes on Slides 30-31

# Legacy Minerals at a glance

**Share Price** \$0.16 **Market Cap** \$19M



**Shares**  
118M

**Top 20**  
42%

**2024 Drill Campaigns**  
7 across 5 Prospects

**Joint Venture Funding**  
\$28.3M

**Cash – 31 Sep**  
\$1.6M  
\$3M raised in quarter

**Debt**  
Nil

**Newmont**

**S2R**  
S2 Resources

**EARTH AI**

**New Significant Shareholder**  
Fleet Space

**FLEET**

## Board and Management



**Dr David Carland**  
Non-Executive  
Chairman



**Matthew Wall**  
Non-Executive  
Director



**Douglas Menzies**  
Non-Executive  
Director



**Christopher Byrne**  
CEO and  
Managing Director



**Thomas Wall**  
Exploration Manager  
and Executive Director



**ASX: LGM**



# Strategy to deliver shareholder value



Discovery

Acquisitions

Partnerships

## Targeting multi-million-ounce gold and copper systems

### Drake

One of NSW's largest  
epithermal systems

Targeting a major pacific-  
rim gold-copper system

Comparable in size to the  
giant Porgera complex  
19Moz Au<sup>1</sup>

Hits and widespread  
high-grade gold, silver,  
and copper

### Bauloora

One of the largest  
epithermal vein fields in  
Australia

Targeting a globally  
significant discovery: A Tier  
1 Deposit 500kOz Pa

Newmont Farm-in and  
providing technical  
expertise

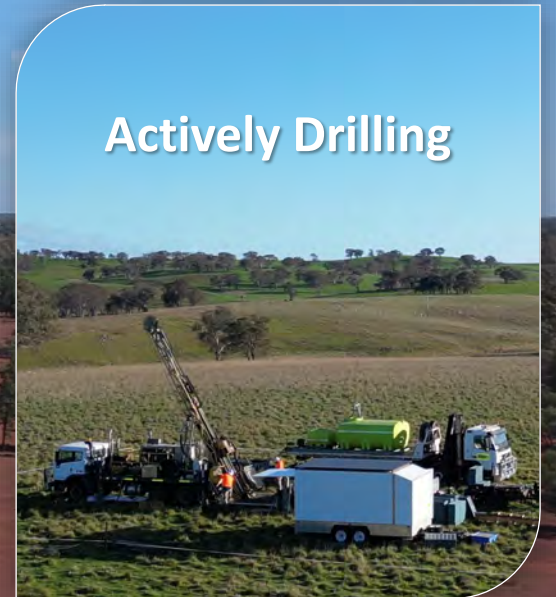
### Thomson

Belt scale, 5,000km<sup>2</sup> gold  
and copper project

Targeting Hemi (13.6Moz<sup>2</sup>)  
or Havieron (8.4Moz  
AuEq<sup>2</sup>) discovery

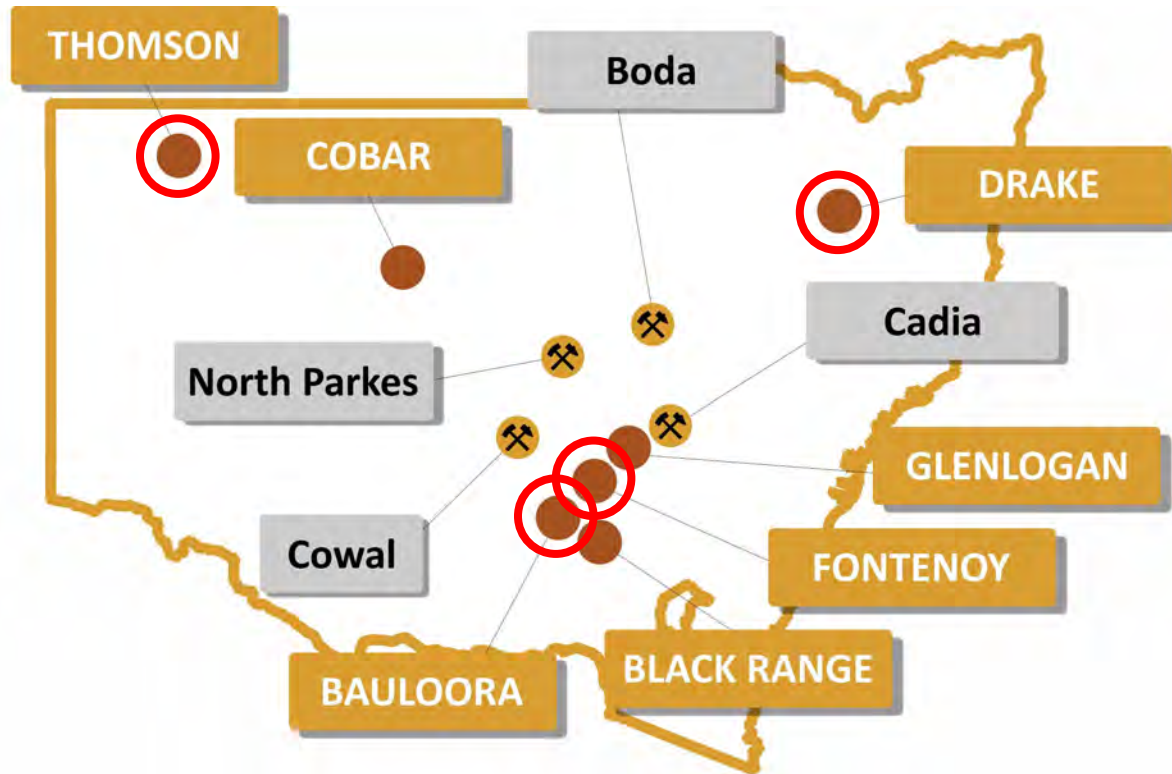
Undrilled targets are  
being unpacked with  
leading geophysics

### Actively Drilling



# Boots and Rigs on the Ground

Active exploration campaigns underway



## Thomson

- On-ground gravity and ambient noise tomography (ANT)
- AI-driven drill target generation – Fleet Space
- Drill planning for Jan/Feb 2025 campaign
- Historic drill core cutting and sampling underway

## Bauloora

- Drill campaign underway

## Fontenoy

- Drill campaign underway

## Drake

- LiDAR ground truthing
- Airborne Magnetotelluric survey planning
- Mineral Resource Update underway

## New engagement of Chief Technical Advisor – Dr John Greenfield

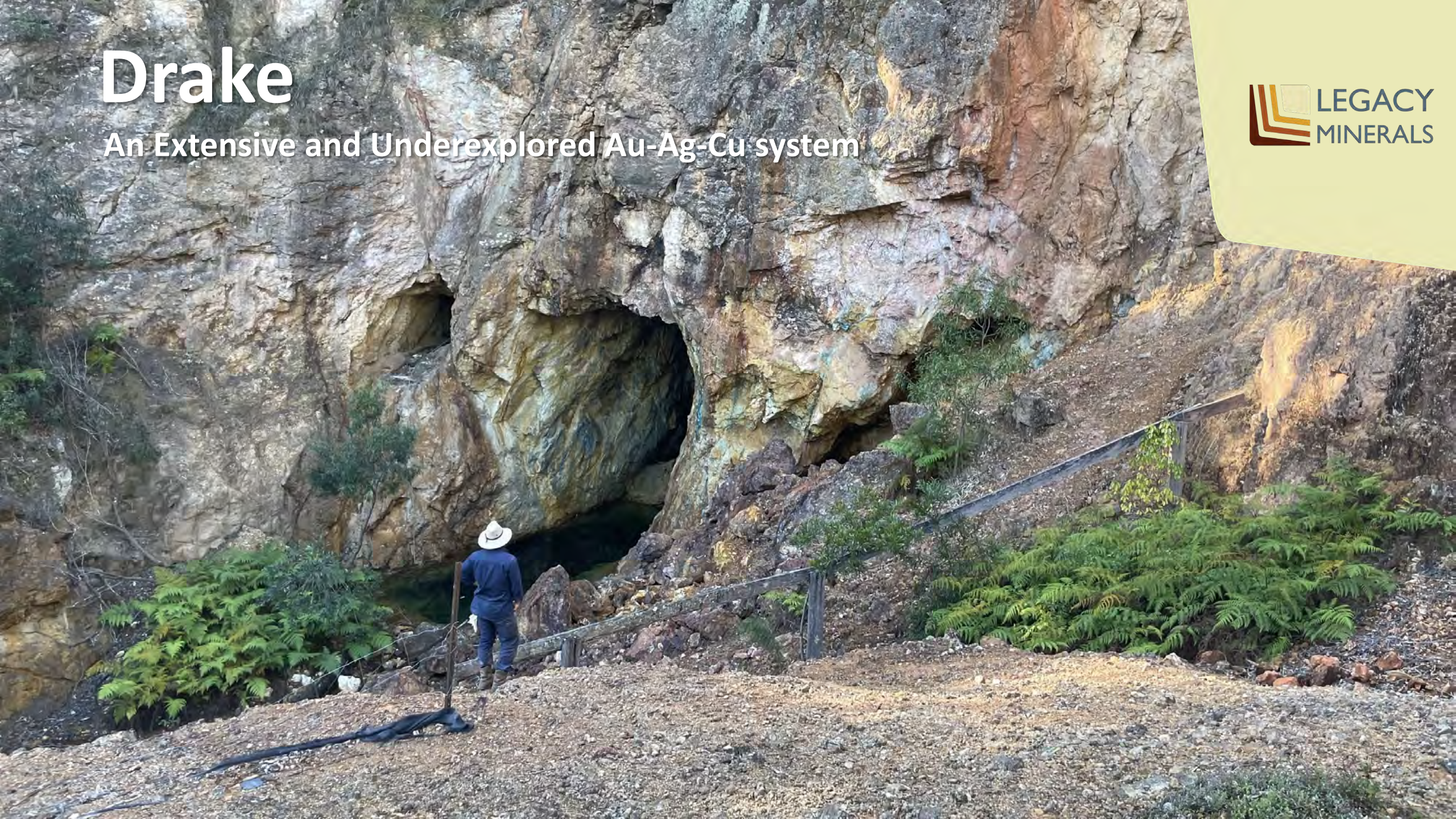
- Ex-Principal Geologist (Newmont) and ex-Director, Geological Survey of NSW
- Technical expertise to deliver on LGM's discovery strategy





# Drake

An Extensive and Underexplored Au-Ag-Cu system





# Drake - Unlocking a target-rich epithermal space

## A 'Legacy' project with new vision and approach

### Discovery Upside – Porgera style Cu-Au deposit (~19.7Moz)<sup>1</sup>

- One of the largest mineral systems in NSW
- Multiple untested discovery opportunities
- Limited shallow drilling with thousands of historic workings
- **Demonstrated potential for significant deposit - 14 x 100 AuEq g/t m hits<sup>2</sup>**

### Existing Resource<sup>3</sup>

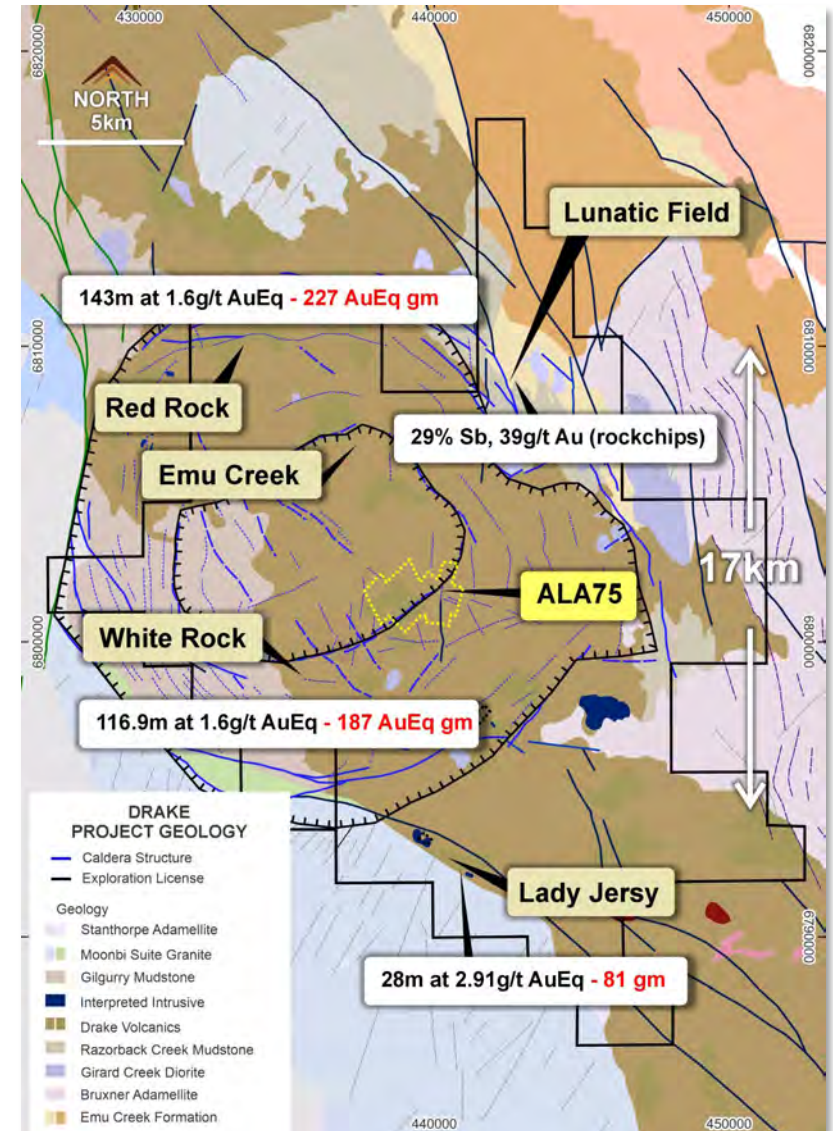
- Existing JORC 2004 and 2012 Resource (see ASX Release 13 Nov)

### De-risked future upside – Brownfields Site

- Tailings dam, freshwater dam, grid easement, site sheds, housing
- Long life exploration licences, no royalties, no encumbrances
- Estimated \$30-50M in infrastructure and previous exploration

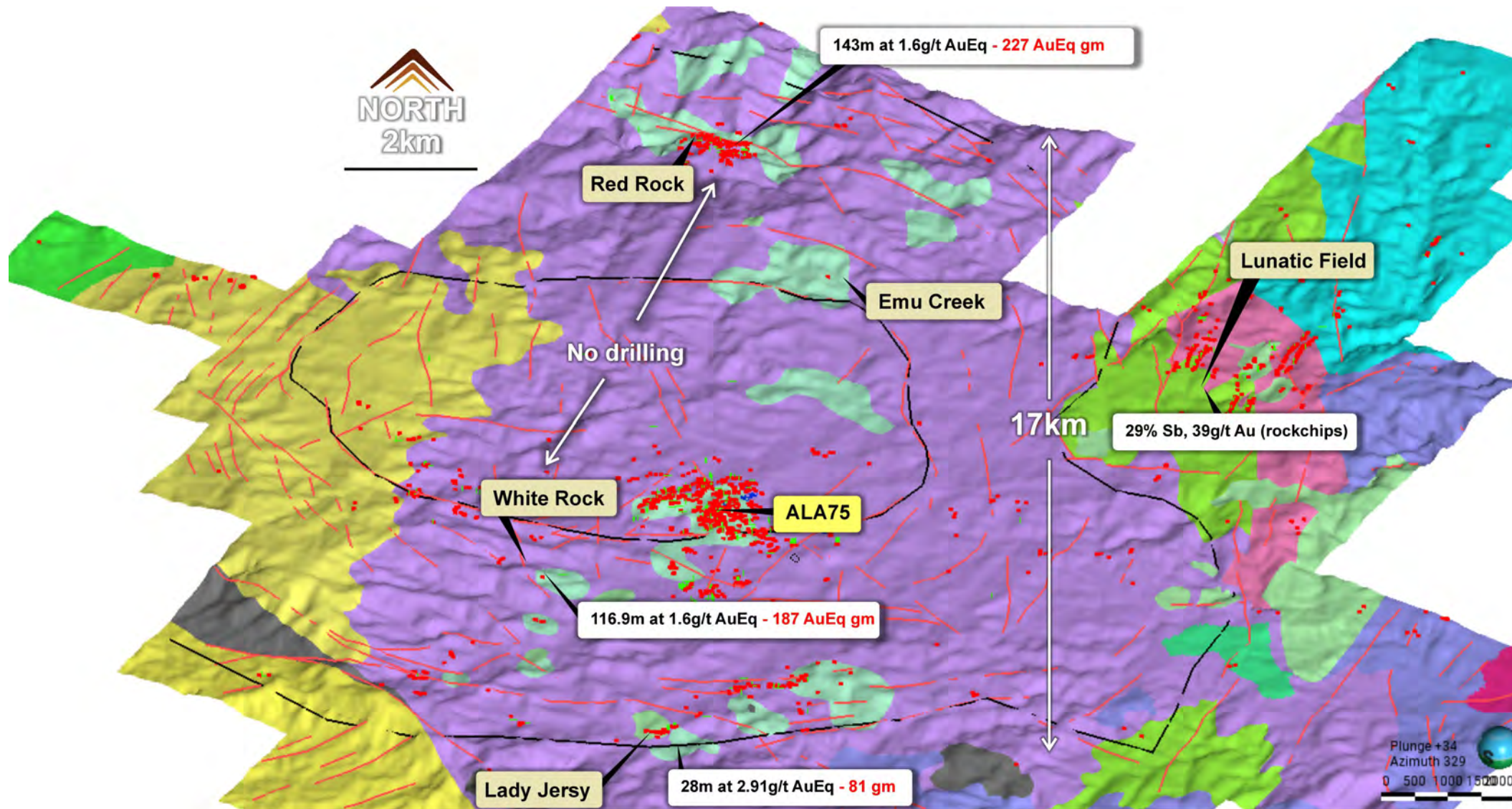
### Future opportunity - Mt Carrington Area ALA75

- Currently an Assessment Lease Application (ALA)





# Drake - Unlocking a target-rich epithermal space<sup>1</sup>





# Drake – Over 100% increase in Historical workings identified<sup>1</sup>

## LiDAR Survey Interpretation

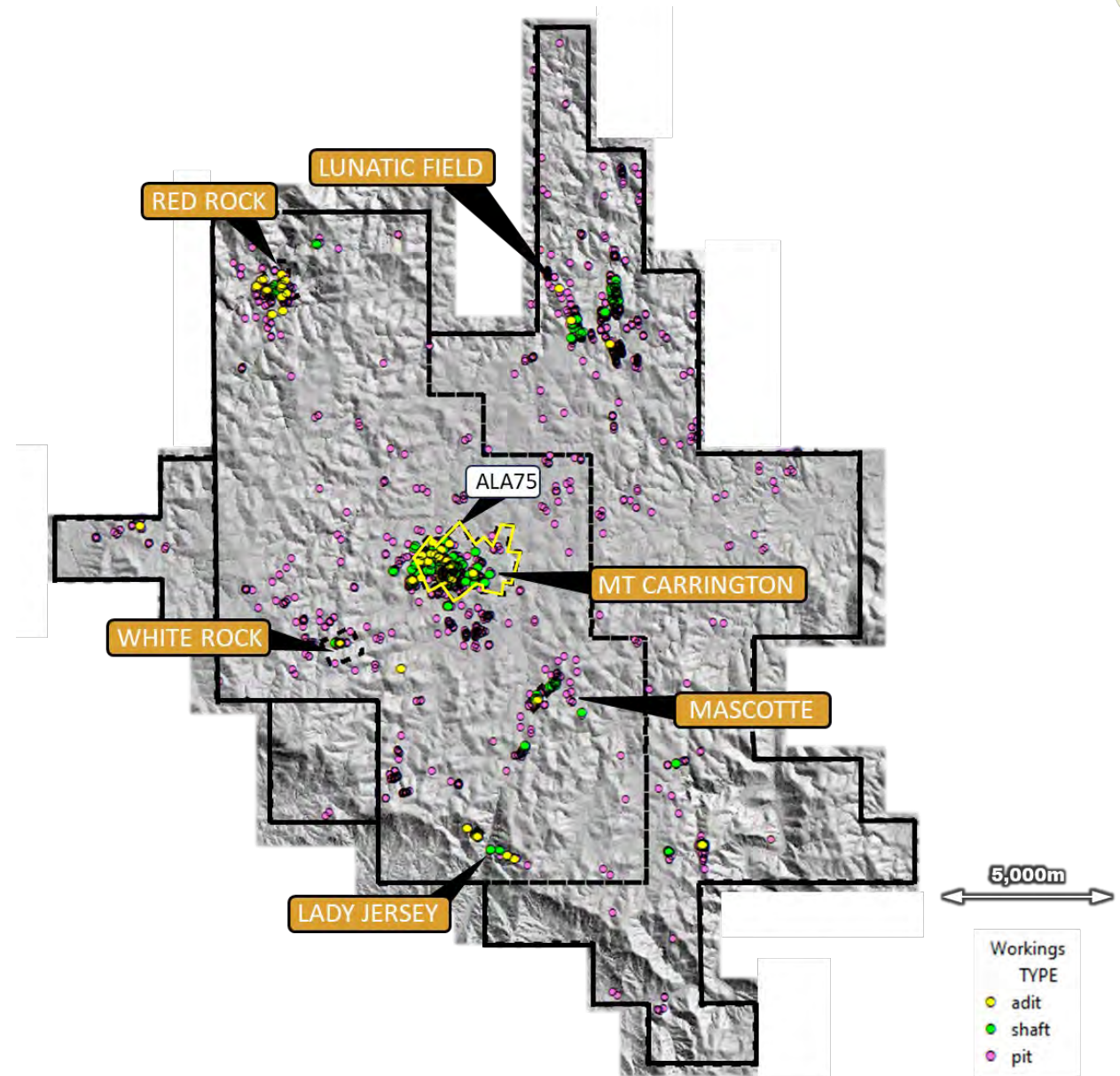
- 391 mine shafts
- 250 adits (mine tunnels)
- 2,726 trenches and prospecting pits
- 3,367 total historical mining features, increases from approximately 1,663.

## Extensive Mineral System Footprint

- Scale and density of workings highlights the size of mineral system present.
- New high potential areas identified for future exploration focus.
- Large number of shafts and workings have never been subject to modern surface sampling, geophysics or drilling.

## Geophysical Review

- LiDAR facilitates enhanced interpretation of existing geophysical datasets.
- Interpreting outcrop allows for accelerated ground-truthing activities.



Note: references on this slide are in the Appendix – Endnotes on Slide 29





# Advanced Exploration Prospects

## Red Rock, White Rock, Emu Creek, Lunatic Field<sup>1</sup>

### Redrock – Epithermal Au-Ag (Cu-Zn-Pb)<sup>1</sup>

- **228 AuEq gxm** 143m at 1.1g/t Au, 3g/t Ag, and 0.9% Pb+Zn from 0m (RRDD009)
- **135 AuEq gxm** 88m at 0.9g/t Au, 5g/t Ag, and 1.1% Pb+Zn from 0m (RRDD011)
- **150 AuEq gxm** 121.6m at 0.7g/t Au, 3g/t Ag, and 1.1% Pb+Zn from 1m (RRDD004)

### White Rock North – Epithermal Ag-Au<sup>1</sup>

- **230 Au Eq gxm** 37.1m at 0.2g/t Au, 422g/t Ag, 1.5% Pb+Zn from 0m (PWR128)
- **193 AuEq gxm** 58.5m at 0.2g/t Au, 204g/t Ag, 1.1% Pb+Zn from 25.5m (PWR172)
- **196 AuEq gxm** 116.9m at 0.1g/t Au, 59g/t Ag, 1.7% Pb+Zn from 0m (WRDD031)

### Emu Creek - Cu

The largest historical producing copper mine in the district

No modern exploration since 1970

### Lunatic Field – Hillgrove Style Antimony<sup>2</sup>

Caledonian Reef: **29.2% Sb, 3.1g/t Au, 46g/t Ag** (80/M179)

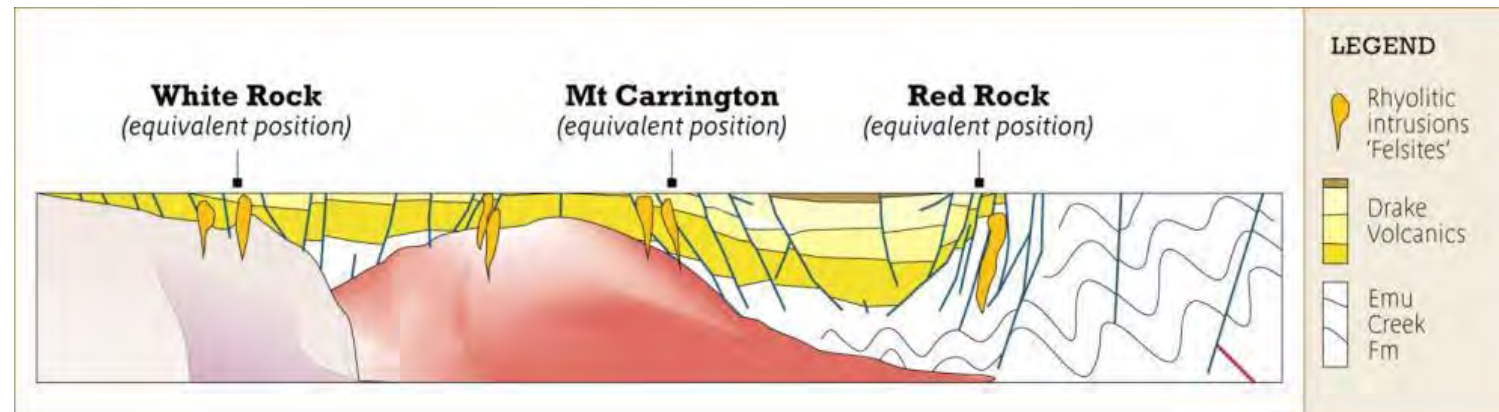
Hugh & Jackson Reef: **20.4% Sb, 1.8g/t Au** (80/M176), **15.8% Sb, 0.25g/t Au** (62145)

Deep Creek Sb Vein: **7.1% Sb, 0.55g/t Au** (62147)

Victoria Reefs: **39.0g/t Au, 4g/t Ag** (113919), **7.7g/t Au, 7g/t Ag** (113917)

Collins Mine: **63.4g/t Au, 6g/t Ag** (62140), **56g/t Au, 3g/t Ag** (62141)

## Drake Caldera Cross Section







# Thomson

Belt scale exploration opportunity





# Thomson Discovery Opportunity

## Belt-scale exploration opportunity

### Confirmed Intrusion related Au-Cu Potential

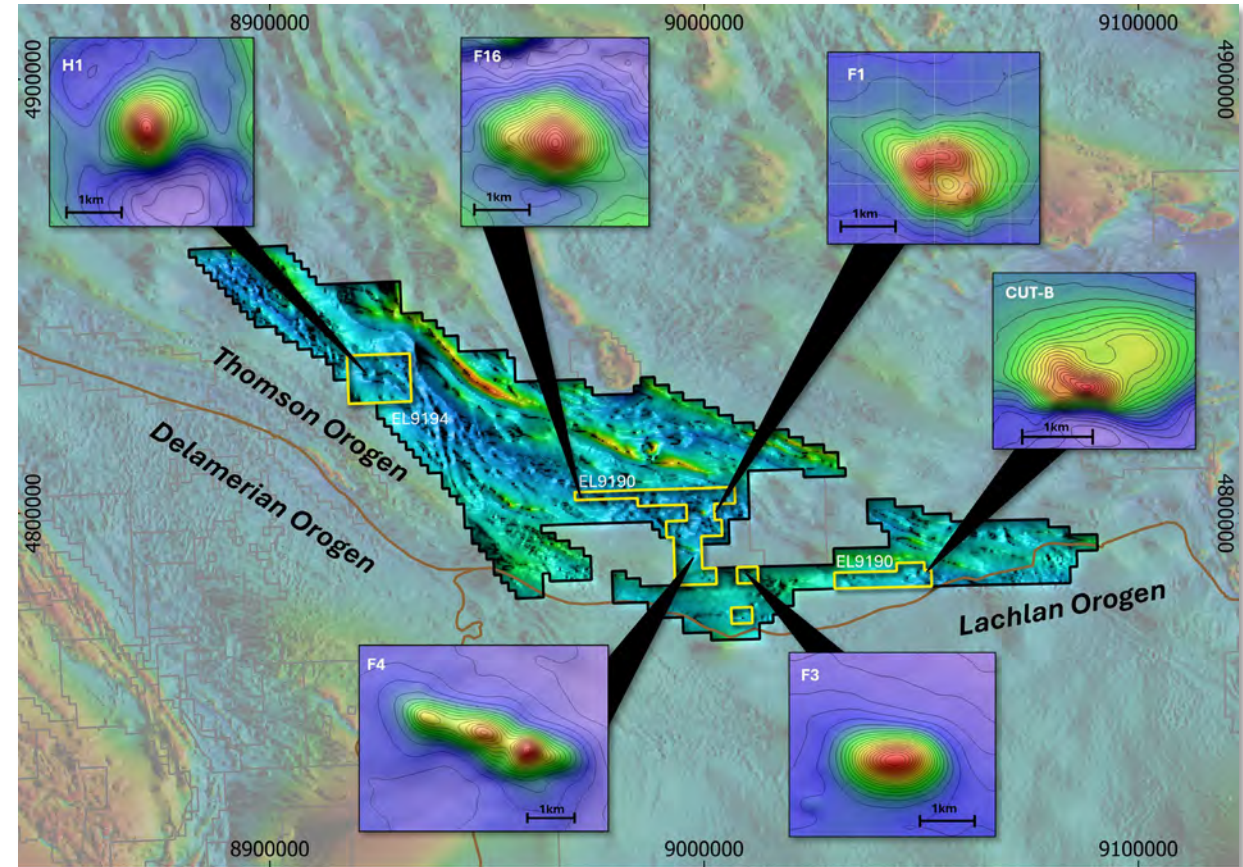
- Proof of concept confirmed in historic drilling
- Target rich environment
  - Numerous bulls-eye magnetic and gravity anomalies
- Large alteration footprints confirmed (tourmaline, biotite, silica and pyrrhotite)

### One of the most under-explored orogens in Australia

- Potential for large deposits due to first mover advantage.
- Belt scale exploration opportunity (5,500km<sup>2</sup>)
- Successful discovery opens multitude of walk-up drill targets

### Pathway to Discovery

- Gravity survey > magnetic and gravity modelling > drilling
- Cover sequence geophysically transparent for gravity, magnetics, IP and potentially ground EM.
- Shallow cover means cost-effective discovery rates.



Project overview showing EL9190, EL9194, EL9278 and examples of “bullseye” magnetic targets. All magnetic targets shown here indicate a magnetic body >100Mt<sup>1</sup>.





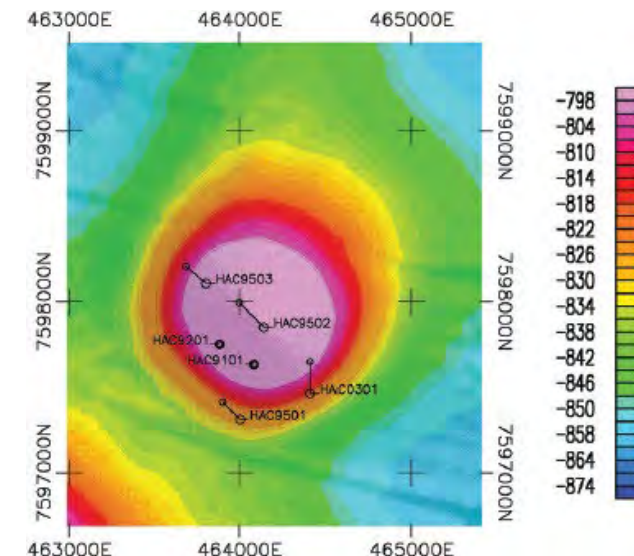
# Analogue Deposit<sup>1</sup>

## Havieron Deposit (Greatland Gold)<sup>1</sup>

### Au-Cu Intrusion Related Deposit

- Havieron is an intrusion- related system with gold and copper mineralisation hosted in breccia, vein and massive sulphide (pyrrhotite dominant) styles
- High grade gold and copper mineralisation discovered under more than 400 m of post-mineralisation cover
- Drill testing of a coincident magnetic and residual gravity anomaly.
- Circular magnetic anomaly within generally bland magnetic terrain.

- ✓ Bulls-eye to sub-circular magnetic high anomalies
- ✓ Meta-sedimentary host rocks;
- ✓ Pyrrhotite related mineralisation; and
- ✓ Related gravity high anomalies.



Discovery of the Havieron Gold-Copper deposit, WA (James *et al.*, 2022)

Note: references on this slide are in the Appendix – Endnotes on Slide 29

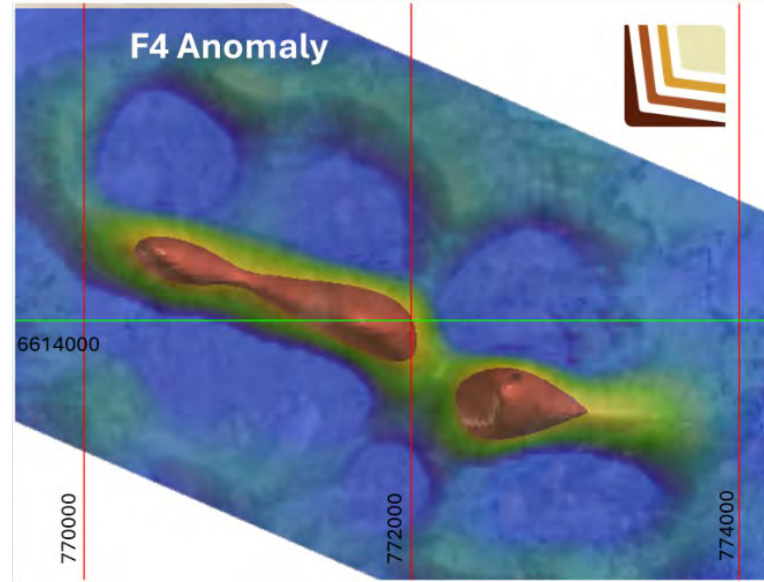
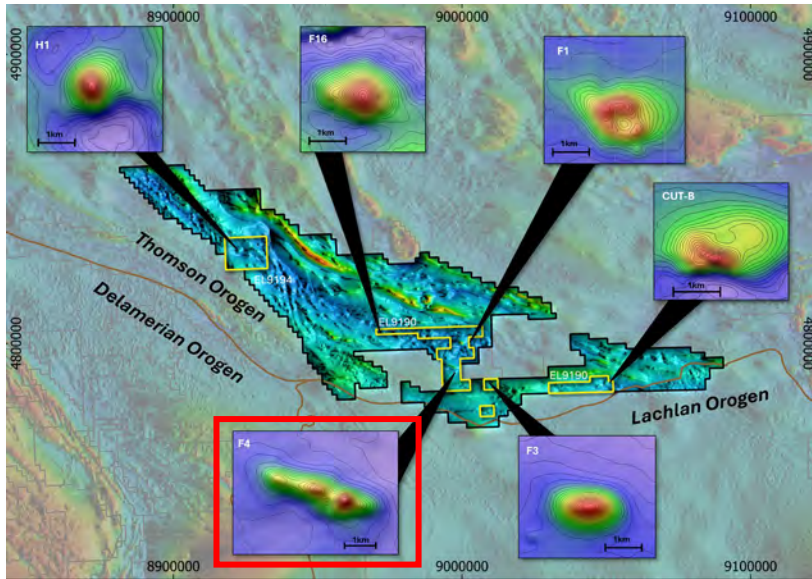


ASX: LGM

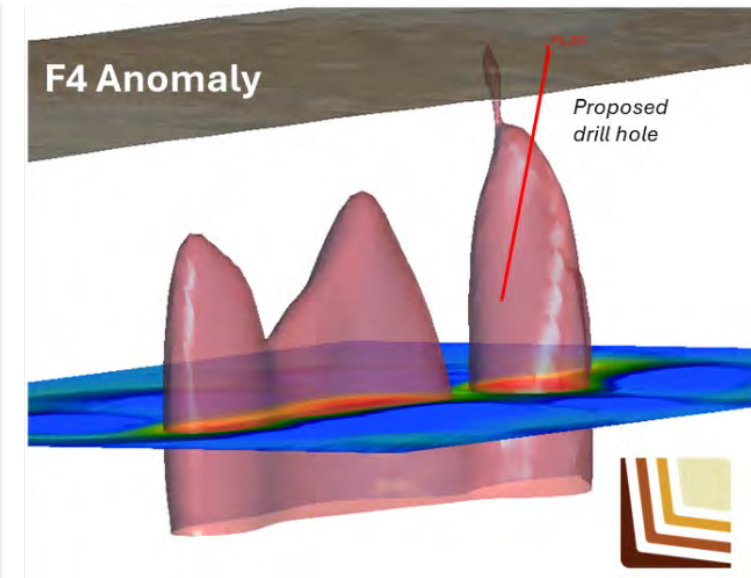


# Highlight: F4 Anomaly Mag Modelling<sup>1</sup>

## Undrilled high priority target



Plan view of the F4 magnetic anomaly shells (>0.006 SI) over aerial image.



3D magnetic inversion model anomaly shells (>0.006 SI) (section 6613500mN, MGA94 z54).

- Undrilled sub-linear magnetic anomaly
- Modelled magnetic body strikes WNW over an extent ~3km.
- No known nearby lithologies in the district to account for the features observed in the magnetic data
- Modelled magnetic geometry is not consistent with other known felsic-intermediate intrusives
- Magnetic body is modelled to come to within 160m of surface

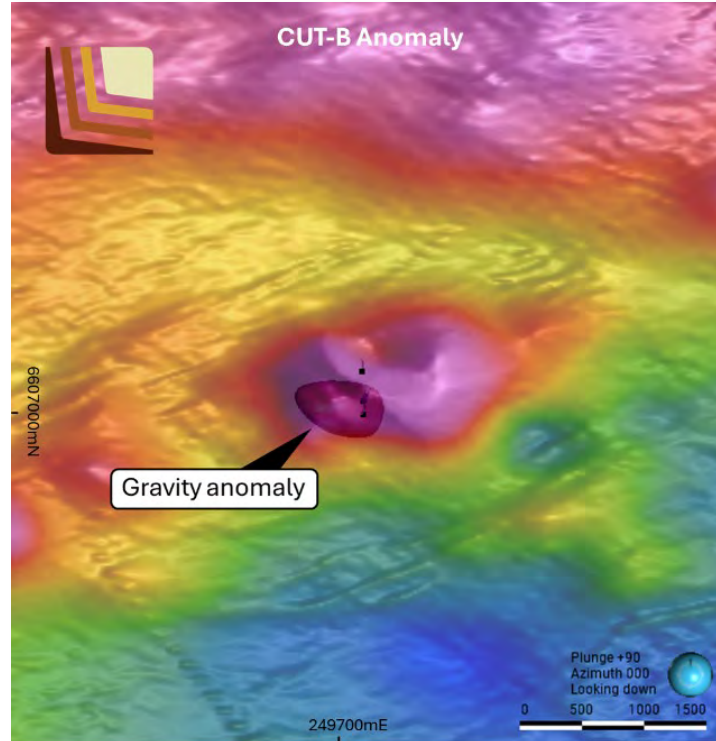


# CUT-B Anomaly<sup>1</sup>

## Compelling Geophysical Target

### Confirmed Intrusion related Au-Cu Potential

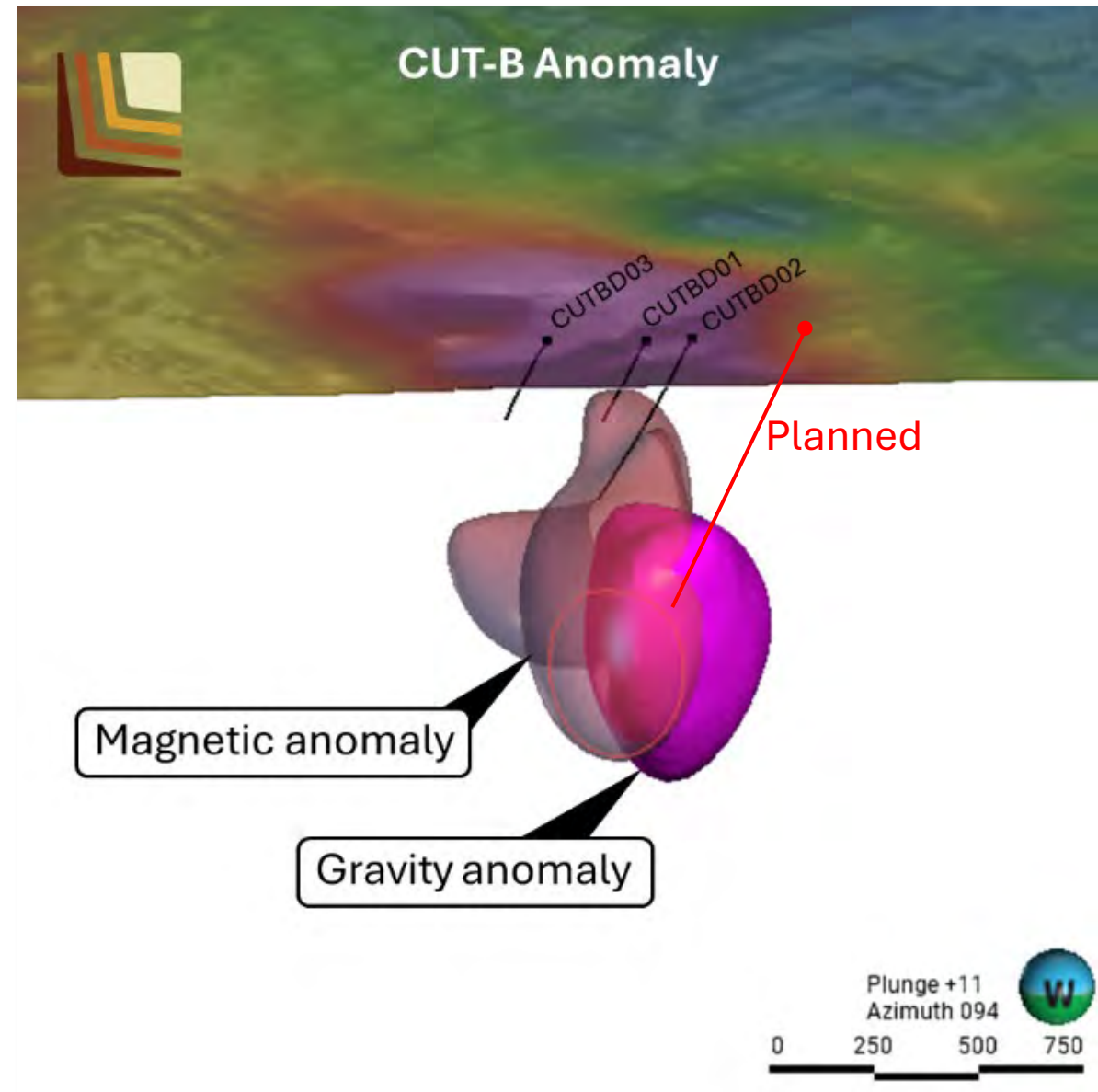
- Proof of concept confirmed in historic drilling
- Untested gravity anomaly along strike of strong and extensive alteration intercepted in drilling
- Proximal IRG-Cu pathfinders indicate nearby prospectivity



Plan view of the CUT-B magnetic and gravity anomaly.



ASX: LGM



Untested gravity high anomaly (density >2.8) adjacent to magnetic anomaly shells (>0.005 SI) (section 249,700mE, MGA94 z55).

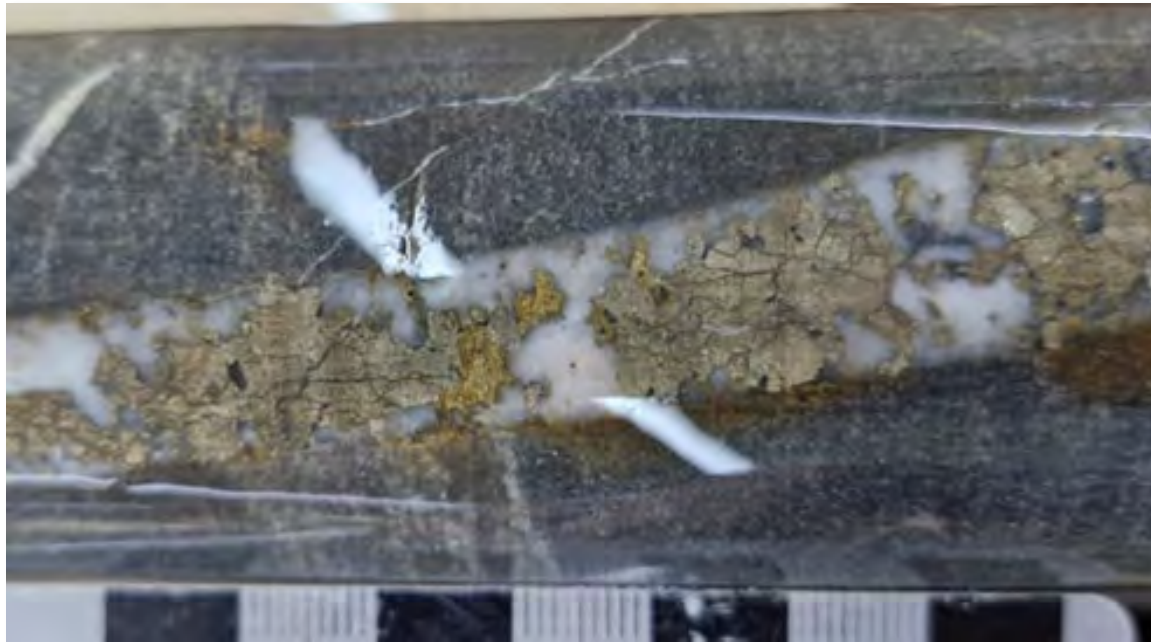
Note: references on this slide are in the Appendix – Endnotes on Slide 29



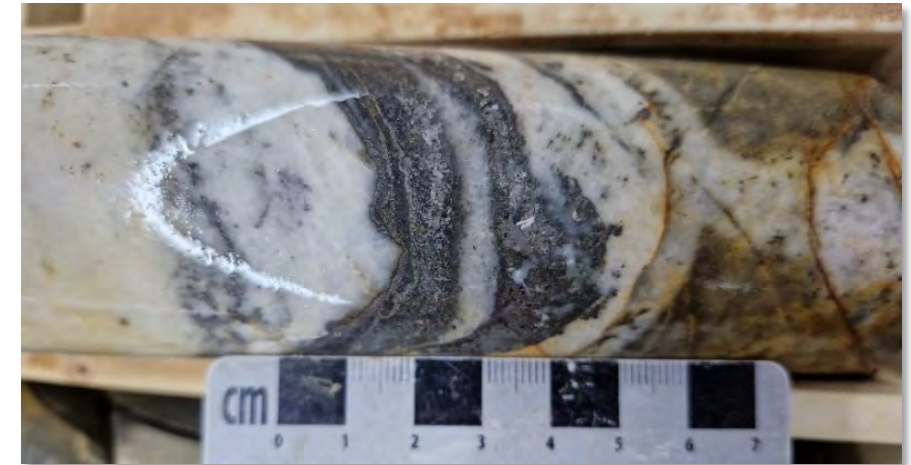
# Significant Unsampled Core<sup>1</sup>

## Core cutting underway

- A significant amount of core remains unsampled from the 2011 drilling.
- LGM is undertaking a re-assay of ~1,000m of the core which will include multi-element analysis.



CUTBD03, 145m – Unsampled pyrite(brass-yellow)-pyrrhotite (brown-bronze) in quartz vein<sup>1</sup>



CUTBD02, 419.8m – Unsampled arsenopyrite (grey) in quartz vein<sup>1</sup>



CUTAD01, 433m – Unsampled pyrite (brass yellow) – chalcopyrite (yellow) quartz vein<sup>1</sup>

Cautionary Note – Visual Estimates of Mineralisation: ‘Visual estimates of mineral abundance should never be considered a proxy or substitute for laboratory analyses where concentrations or grades are the factor of principal economic interest. Visual estimates also potentially provide no information regarding impurities or deleterious physical properties relevant to valuations. See ASX Release LGM 9 December 2024 Thomson Drill Targets Announcement 4 December 2024 – Amended, for further information’

# Deploying leading Geophysics – ANT & Gravity

## Ambient Noise Tomography Deployment

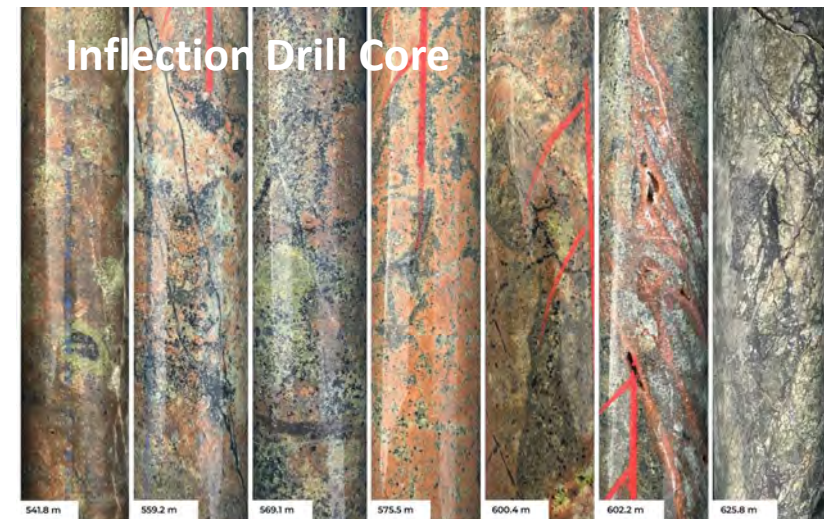
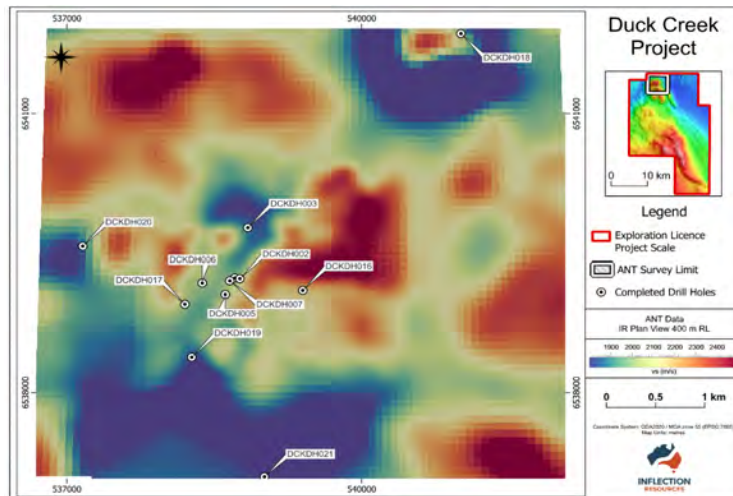
Large-scale, 3D subsurface data to identify belt-scale architecture including cross-arc structures that may direct fluid flow and influence the formation of large-scale intrusive bodies and mineral systems

## ANT imaging being implemented by major mining companies

- 2024 Barrick Gold, Reko Diq porphyry Cu-Au for near-mine targeting<sup>1</sup>.
- 2023-2024 Anglo Gold Ashanti (NSW Macquarie Arc)<sup>2</sup>

## Drill target definition and regional geological model

- Delivered best results for AngloGold Ashanti (Inflection drilling) in NSW<sup>3</sup>



ASX: LGM

Inflection Duck Creek ANT and Drill Core<sup>3</sup>

Note: references on this slide are in the Appendix – Endnotes on Slide 29



# Black Range

Under explored gold-silver epithermal systems





# Black Range

20

## A large underexplored epithermal system

### District scale control – 905km<sup>2</sup> license

- **Newcrest** were the last to complete significant exploration over **30 years ago**<sup>1</sup>
- Newcrest relinquished the ground in 1992 (Cadia discovery)<sup>1</sup>

### Significance of the known geology

- Preservation and widespread Au-Ag anomalism (Sugarbag Hill, Mt Mylora)<sup>1,2</sup>
- 65km from Bauloora with clear parallels between the two systems
- Newcrest dated Black Range to be the same age mineralisation as Bauloora<sup>1</sup>

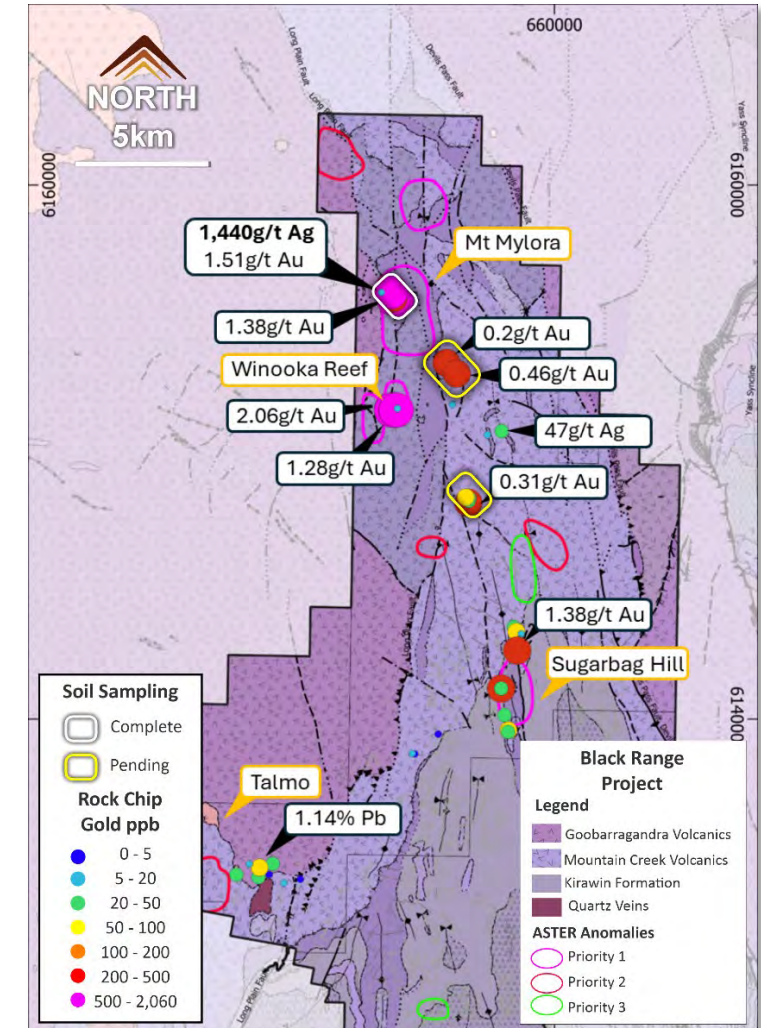
### Large Scale Potential

- Interpreted to be a nested caldera setting with widespread epithermal style mineralisation.
- Rock chips up to 1,440g/t Ag and 2.06g/t Au underpin district potential<sup>3</sup>



Black Range Rock Chip

### Main Prospects



Black Range EL with solid geology showing major prospect



ASX: LGM

Note: references on this slide are in the Appendix – Endnotes on Slide 29



# Joint Venture Projects

\$28.5M in JVs sees sustained discovery effort



**Newmont**™



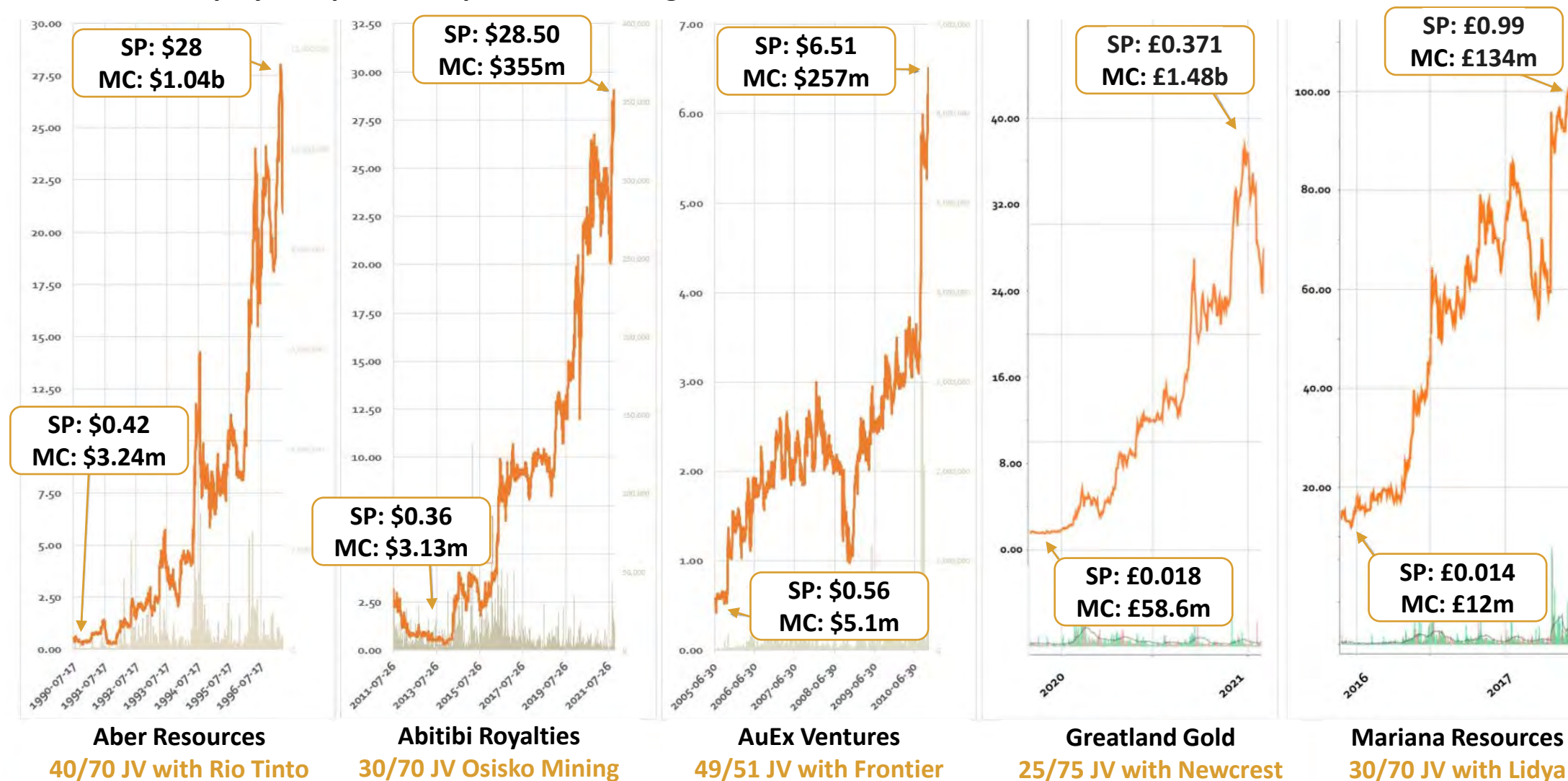
**HELIX**  
RESOURCES LIMITED

EARTH AI



# The upside in a JV - non-dilutive potential for value creation

Like 100% owned projects, partnerships can deliver significant returns for shareholders



ASX: LGM

Note: references on this slide are in the Appendix – Endnotes on Slide 29



# Bauloora – Newmont (\$15M)

## Drilling campaign underway

### Joint Venture Terms<sup>1</sup>

- Up to \$15M spent over 8 years.
- Minimum drill meters.
- **LGM option for 20% loan carried to mining.**

### District scale control

- 27km<sup>2</sup> low sulphidation epithermal vein field<sup>2</sup>
- Target rich environment

### High-Grades and Extensive Veining

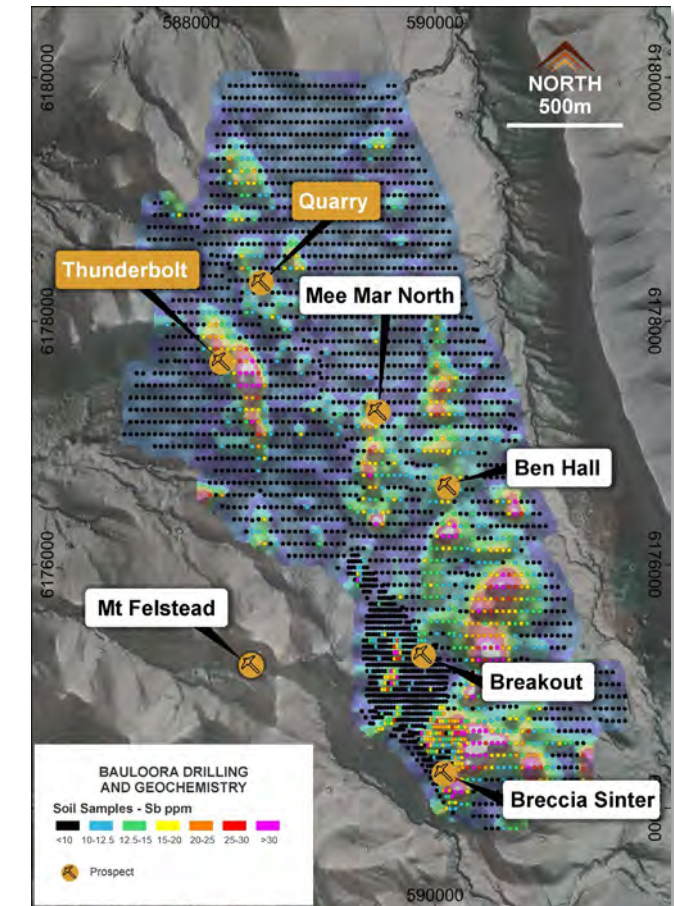
- Veins up to 3m wide at surface strike >2km
- **3,701g/t Ag, 6.9g/t Au, 6.4% Cu, and 55% Pb+Zn (0.2m face sample)**<sup>4</sup>
- 6m at 3.56g/t Au, 10.95g/t Ag, 0.22% Cu and 6.47% Pb+Zn (from 57m)<sup>4</sup>

Cautionary Note – Visual Estimates of Mineralisation: ‘Visual estimates of mineral abundance should never be considered a proxy or substitute for laboratory analyses where concentrations or grades are the factor of principal economic interest. Visual estimates also potentially provide no information regarding impurities or deleterious physical properties relevant to valuations. See ASX Release LGM 25 November 2024 Drilling Underway at the Bauloora Project - Amended



Example of outcropping epithermal chalcedony-quartz vein at the Quarry Prospect (no estimated sulphides, no samples taken)<sup>5</sup>

## Primary Vein Field and Current Targets



Current combined extent of interpreted low-sulphidation epithermal-style textured veins and sinter related lithology<sup>2</sup>



# Fontenoy – EarthAI Alliance (\$4.5m)

## Drilling Underway

### Discovery Drillhole – February 2024<sup>1,4</sup>

- 120m at 0.3g/t 3E PGE\* including a higher-grade zone of:
  - 10m at 1.2g/t 3E PGE, 0.2% Ni and 891ppm Cu from 388m down-hole
- 200m at 0.15g/t 3E PGE\*

### Joint Venture Terms<sup>2</sup>

- \$4M earn in over 4 years
- Minimum commitment to drill
- LGM loan carried through to commercial production at 20%

### Unlocked potential for magmatic-related PGE-Ni-Cu

- Deposit styles such Nova-Bollinger (IGO) and Julimar (Chalice)<sup>3</sup>.

### PGE's and Nickel listed as Critical and Strategic Minerals

- Their value, rarity and strategic importance underpin the value for shareholders

### Shareholders are exposed to cutting edge AI

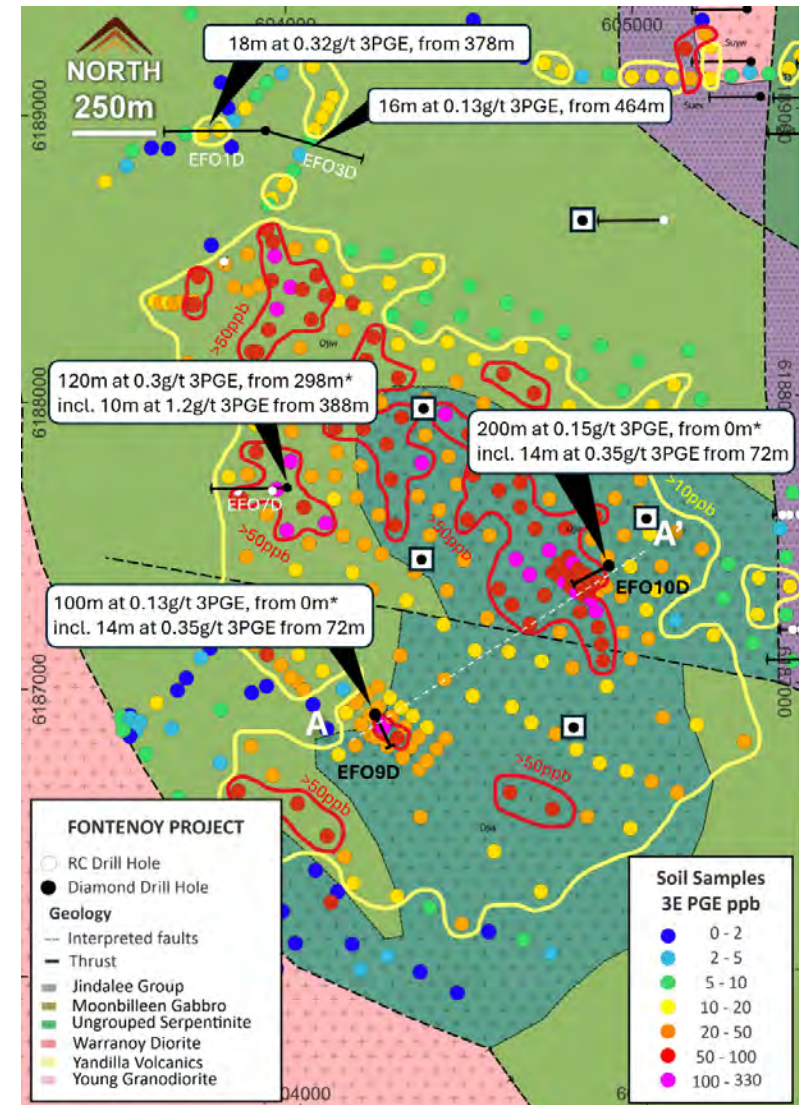
- Strong potential to make further discoveries



ASX: LGM

\* No cut off grade

# EARTH AI



Fontenoy Soil Footprint and Drilling<sup>4</sup>

Note: references on this slide are in the Appendix – Endnotes on Slide 29



# Glenlogan – S2 Resources JV (\$6m)

## Highly encouraging first drill results

### Preliminary Drill Observations

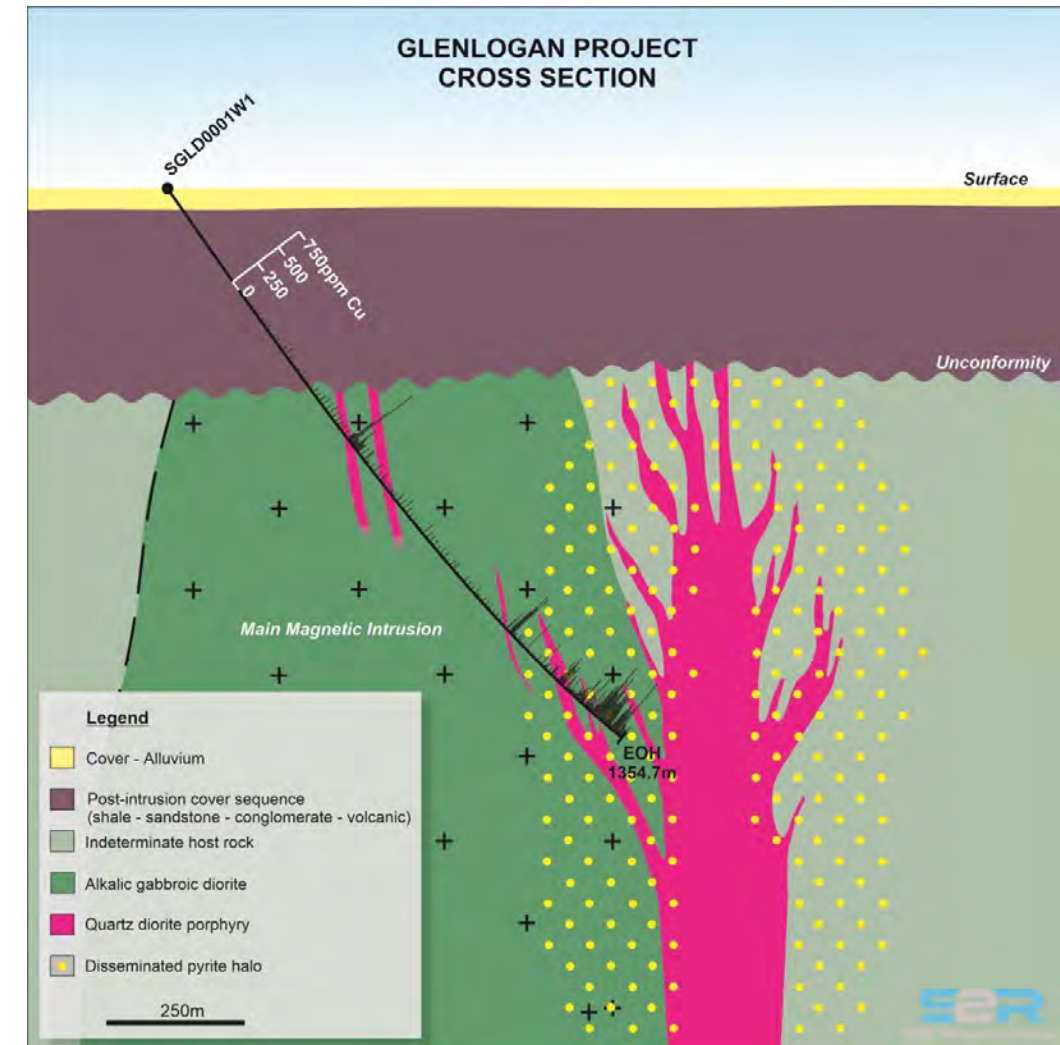
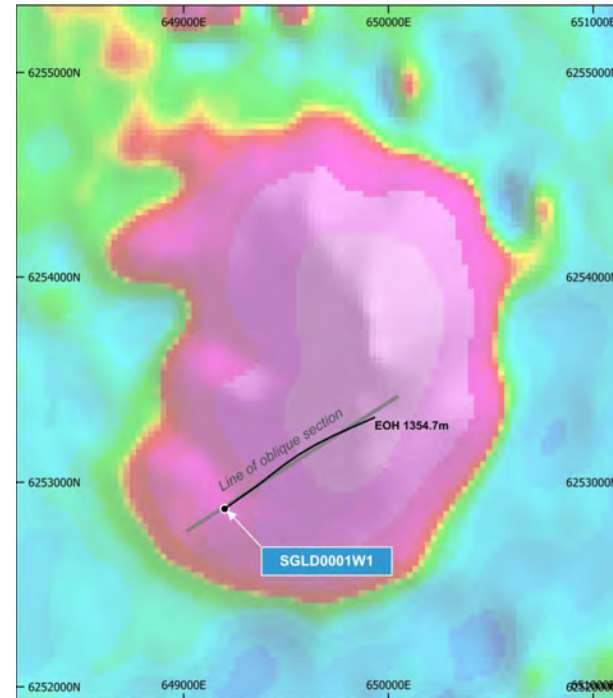
- Late magmatic chalcopyrite and elevated copper
- **May represent the fringes of a nearby potentially mineralised porphyry intrusion as yet untested by drilling**

### Joint Venture Terms

- Up to \$6M spent over 6 years.
- Minimum drill meters.
- LGM option for 20% loan carried to mining.

### Partnership with a leading exploration company

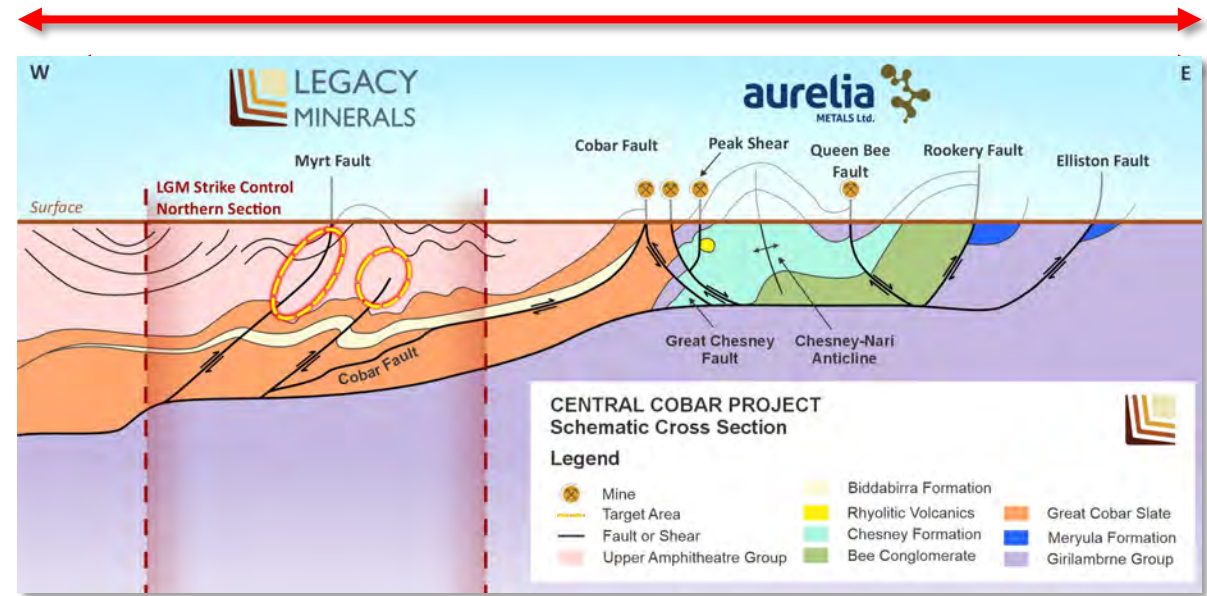
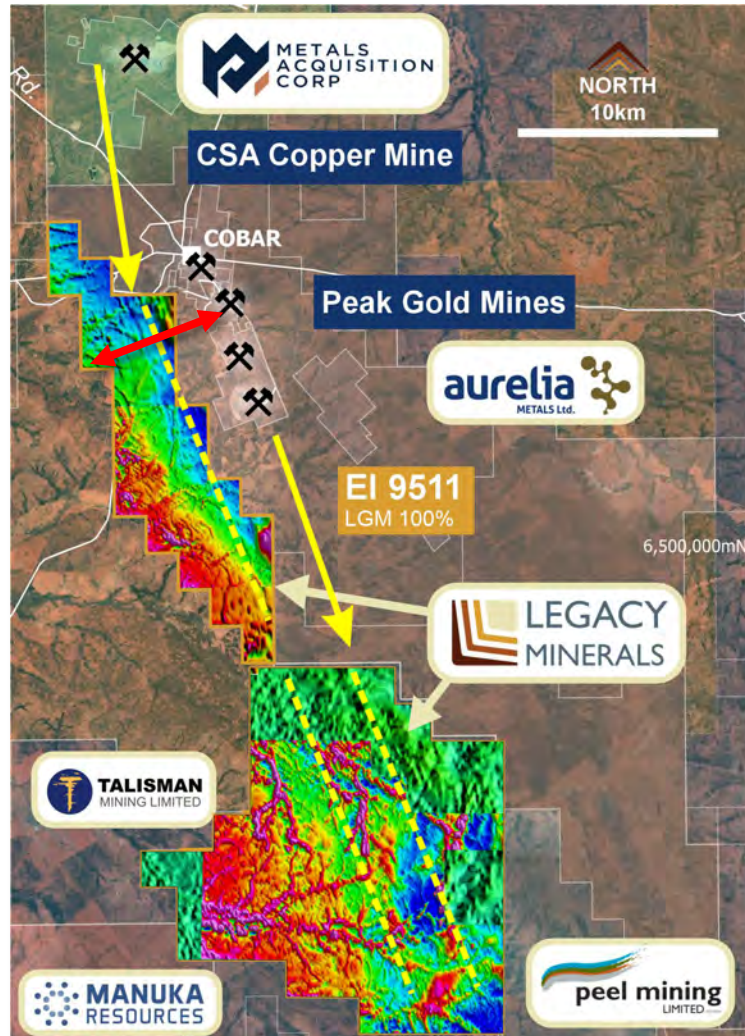
- S2 Resources led by Dr Mark Bennet with Mark Creasy as major shareholder





# Central Cobar – Helix JV (\$2.8M)

New Joint Venture will see an active exploration program



## Prospective, undrilled search space

- Along strike of the Peak Gold Mine Corridor (Aurelia, ASX)
- Along strike of the CSA Mine (Metals Acquisition Corp, ASX)
- Interpretation that the western margins of the Peak Corridor has structural complexity and potential for fluid pathways that form many Cobar-Type deposits<sup>1</sup>

## Key Terms of the Joint Venture<sup>2</sup>

- \$2.8M over six years and three stages to earn 80%
- LGM' ability to contribute at each stage
- Minimum expenditure and commitments to drill

Note: references on this slide are in the Appendix – Endnotes on Slide 29

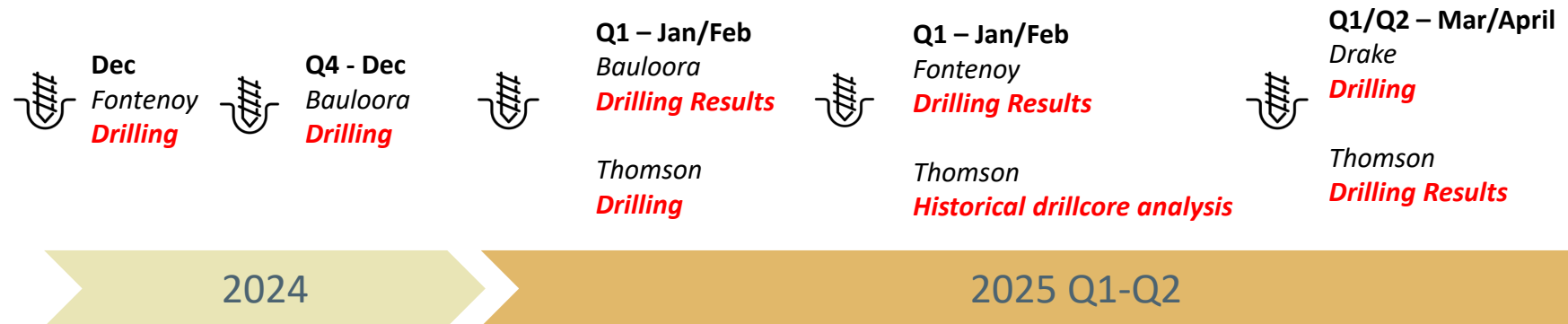


# Timeframes and Discovery Catalysts

## Ongoing drilling and target generation



### Drilling



### Target Generation

**Q4 - Dec**  
Thomson  
ANT/gravity underway

Drake  
LiDAR Results  
Resource update commenced

**Q1 - Jan**  
Thomson  
ANT/gravity results

Drake  
Resource update  
Airborne MT underway

**Q2 - Feb**  
Drake  
Airborne MT results  
Mt Carrington (ALA update)  
MRE Update





# Investment Highlights

Deliver shareholder value through discovery, divestment/acquisition and development

Right Structure

Right People

Right Ground

Actively Drilling





# Appendices – Endnotes

**Intro Slide 3:** 1 Blue Ocean Equities, Waratah Minerals Research Initiation (8 October 2024), Australia's Identified Mineral Resources 2023, Mineral Exploration, 1 March 2024, Geoscience Australia

**Drake Slide 8:** 1 World Gold, 2 Pacific Rim Epithermal [https://corbettgeology.com/wp-content/uploads/2016/07/corbett\\_pacific\\_rim\\_epithermal\\_au.pdf](https://corbettgeology.com/wp-content/uploads/2016/07/corbett_pacific_rim_epithermal_au.pdf),

2 ASX LGM Release 29 October 2024 *3,050gt Silver and 79gt Gold in Historical Drake Drilling*, **Slide 9:** 1 ASX LGM Release 29 October 2024 *3,050gt Silver and 79gt Gold in Historical Drake Drilling* **Slide 10:** ASX Release LGM 16 December 2024 *Over 100% Increase in Historical Mines identified at Drake* **Slide 11:** 1 ASX LGM Release 29 October 2024 *3,050gt Silver and 79gt Gold in Historical Drake Drilling*; ASX LGM Release 16 Sep 2024 *29% Antimony Rock Chips Identified in Drake Project Review*

**Thomson Slide 13:** ASX Release LGM 9 December 2024 *Thomson Drill Targets Announcement 4 December 2024 – Amended*, **Slide 14:** 1 AIM release GGP 21 December 2023, *Havieron Mineral Resource Estimate update, Exceptional Mineral Resource growth continues at Havieron*. 2 Hanneson, J. E., & Baxter, C. N. (2022). Discovery of the Havieron Gold-Copper deposit, WA. *Preview*, 2022(219), 42–47. **Slide 15:** 1 ASX Release LGM 9 December 2024 *Thomson Drill Targets Announcement 4 December 2024 – Amended*

**Slide 16:** 1 ASX Release LGM 9 December 2024 *Thomson Drill Targets Announcement 4 December 2024 – Amended*, **Slide 17:** 1 ASX Release LGM 9 December 2024 *Thomson Drill Targets Announcement 4 December 2024 - Amended*

**Slide 18:** 1 Gold Fields Taps ExoSphere To Advance Exploration at Salares Norte in Chile, 3 October 2024 2 Fleet Space's ExoSphere Enhances Barrick Gold's Data-Driven Copper Exploration at Reko Diq, 9 July 2024

**Slide 20:** ASX Release LGM 18 July 2024, *Diamond Drilling Assays Returned at Sugarbag Hill, Black Range and Project Wide Exploration Update*. **Slide 23:** 1: ASX LGM: 5 April 2023 *Newmont Farm-in at Bauloora Project*, ASX LGM 2: ASX LGM 27 April 2023 *Exploration underway at new low-sulphidation epithermal, NSW*, 3: ASX LGM: 16 June 2022 *High-Grade Silver, Gold Drill Results, Met-Testing Underway, Legacy Minerals Prospectus*, dated 28 July 2021, 4: ASX LGM: 10 May 2023 *Drilling Assays Confirm New Epithermal Discovery at Bauloora*, 5: ASX LGM 25 November 2024 *Drilling underway at the Bauloora Project - Amended*

**Slide 24:** 1 ASX LGM Release 25 October 2024 *Platinum & Palladium Drilling Underway at Fontenoy*, ASX LGM 26 February 2024 *Artificial Intelligence makes Magmatic PGE-Ni-Cu Discovery*, 2: ASX LGM 3 May 2022 *Strategic Exploration Alliance with AI Explorer* 3 IGO Ltd, <https://www.igo.com.au/site/operations/nova> 3 Chalice Mining Limited, <https://chalicemining.com/gonneville/>

**Slide 25:** 1: Rio Tinto Exploration Pty. Limited, EL5226 Cowra 8 Final Report Bathurst SI55-08 NSW, Australia, October 1997, 2: ASX 9 November 2023 *Major Untested Porphyry Cu-Au Target Defined at New Project*, 3: ASX LGM 29 January LGM: S2R enter \$6M Farm-in at Glenlogan Porphyry Project, ASX S2R: 18 July 2024, *Drilling started at Glenlogan Copper-Gold Project, NSW*, ASX LGM: 3 September 2024 S2R: *Glenlogan Drilling Update*

**Slide 26:** 1: ASX LGM: 19 August 2024 *Helix Resources to Farm-in to Legacy's Central Cobar Project*, ASX HLX: 19 August 2024 *Helix Expands Cobar Copper-Gold Foothold*

**Joint Ventures Slide 27:** GoldDiscovery Group, [https://www.linkedin.com/posts/golddiscovery-media-b-v\\_why-buy-a-junior-miner-with-a-minority-stake-activity-7173060437201129472-UGoE?utm\\_source=share&utm\\_medium=member\\_desktop](https://www.linkedin.com/posts/golddiscovery-media-b-v_why-buy-a-junior-miner-with-a-minority-stake-activity-7173060437201129472-UGoE?utm_source=share&utm_medium=member_desktop)

