



ASX Announcement/Press Release | 2 January 2025

Gold Mountain Limited (ASX:GMN)

Amendment to ASX Announcement

Gold Mountain Limited (ASX: GMN) ("Gold Mountain" or "the Company" or "GMN") advises that it has updated the announcement released on 11 December 2024 "Strongly clustered Lithium results". The attached announcement now includes tabulated assay results under Appendix 3.

- END -

This ASX announcement has been authorised by the Board of Gold Mountain Limited

For further information, please contact:

Gold Mountain Limited

David Evans

Executive Director

M: +61 421 903 222

E: info@goldmountainltd.com.au

Gold Mountain Limited
(ASX: GMN)

24/589 Stirling Highway
Cottesloe WA 6011
Australia

Directors and Management

David Evans

Executive Director

Syed Hizam Alsagoff

Non-Executive Director

Aharon Zaetz

Non-Executive Director

Maria Lucila Seco

Non-Executive Director

Marcelo Idoyaga

Non-Executive Director

Rhys Davies

CFO & Company Secretary

Projects

Lithium Projects (Brazil)

Cococi region

Custodia

Iguatu region

Jacurici

Juremal region

Salinas region

Salitre

Serido Belt

Copper Projects (Brazil)

Ararenda region

Sao Juliao region

Iguatu region

REE Projects (Brazil)

Jequie

Copper Projects (PNG)

Wabag region

Green River region

ASX:GMN

info@goldmountainltd.com.au

+61 421 903 222

ASX Announcement/Press Release | 11 December 2024

Gold Mountain Limited (ASX:GMN)

Significant Lithium Anomalies Identified at Bandarra-São Braz Project

Gold Mountain Limited (ASX: GMN) ("Gold Mountain" or "the Company" or "GMN") is excited to announce it has received 61 stream sediment samples from the Bandarra-Sao Braz Project in Brazil.

Highlights

Work Undertaken

- Strongly clustered anomalous Lithium assays received from regional stream sediment sampling with peak values of 76 ppm lithium in NNE trend, parallel to regional structure.
- High potential for lithium bearing LCT pegmatites with strongly correlated Rb, Cs, Sn, Tl and Be.
- Two major anomalies, one over 7.5 km and the second over 1.9 km within tenements.
- Artisanal mines for feldspar and aquamarine (beryl) present in the larger anomaly area.

Future Workplan

- Mapping of exposures in drainages, infill stream sediment sampling followed by grid soil sampling will be undertaken to define the sources of the high order stream sediment anomalies.
- Drill targets will be the anticipated outcome of work undertaken.

David Evans, Managing Director, commented "The latest set of results have laid solid foundations for our ongoing exploration program at the Bandarra-São Braz Project, and I'm genuinely excited about what lies ahead for Gold Mountain in 2025. With a strong pipeline of large lithium, rare earth, and copper targets in emerging mining hotspots, the future looks very promising."

Details

Significantly anomalous stream sediment sample results that were strongly clustered were found on two of the Bandarra-São Braz tenements.

Catchment areas for each anomalous sample were defined on 5 metre contoured DTM and coloured to indicate magnitude.

The combination of strongly anomalous lithium results within the Bandarra-São Braz tenements associated with a major structural zone, the Portalegre Shear Zone, is highly encouraging.

The lithium results are strongly correlated with a series of LCT pegmatite pathfinder elements including Cs, Tl, Sn and Rb. Table 1 shows the correlation chart for the Bandarra-São Braz samples.

R	0.90	0.80	0.70	0.60	0.50	0.40	0.30
Li		Rb	Cs Sn Tl	Be Y	Pb	Ce In La Re Ti	Al Ga Mo Se Te W
Rb		Li Tl	Be Cs Y	Pb Re Th	Ce In La	Ga Se	Al Bi k Mo
Cs		Be	Li Pb Rb Sn	Tl Y	Th Zr	Ge In Re	Ce Ga La Mo Nb Se
Sn	Tl	Rb Y	Cs Li Re	Be In	La Pb Th	Ce In La Re Ti	Al Bi Ga Mo Te
Tl	Sn	Rb	Li Y	Be Cs In Re	Al Ce Ga La Pb	Mo Th W	Cu Te
Be		Cs Pb	Rb	Bi Li Sn Th Tl Zr	Hf Y	Ce Ga	In La Nb Re
Pb		Be	Cs Th	Rb Y	Bi Ce Li Sn Ti	Hf La Mo Re Se Zr	Nb U

Table 1. Correlation chart for lithium anomalous samples in the Bandarra-São Braz tenements.

Images & Maps

Figure 1 shows the location of the Bandarra-São Braz Project tenements in relation to Major structural zones in the Borborema Province

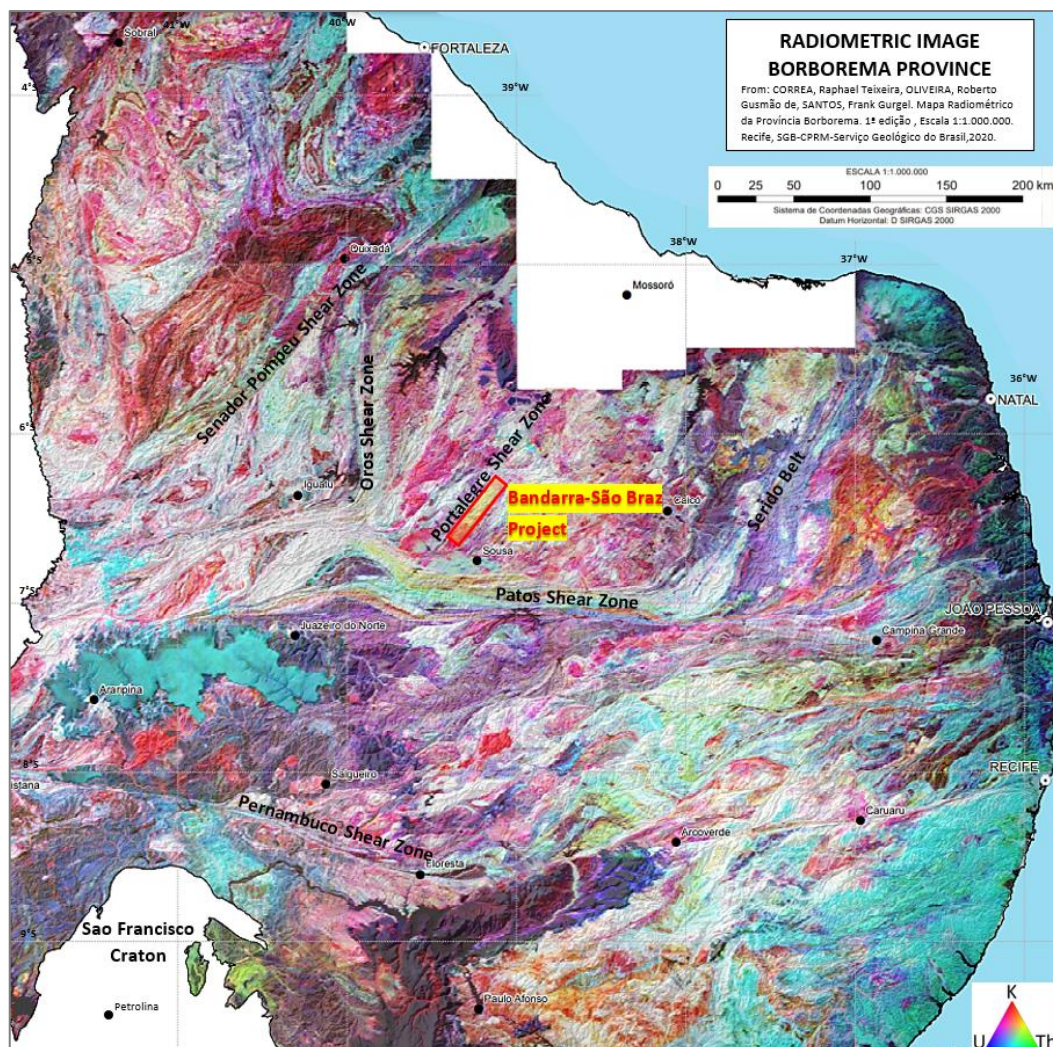


Figure 1. Location of the Bandarra-São Braz Project tenements in the Borborema Province on the radiometric KUT image of the Borborema Province.

Major structural zones are very often the focus for late stage intrusive activity, and in the Borborema Province, are associated with the lithium producing areas of the Serido Belt and the past producing area around Solonopole.

Figure 2 shows the anomalous lithium catchments found in the Bandarra-São Braz Project tenements.

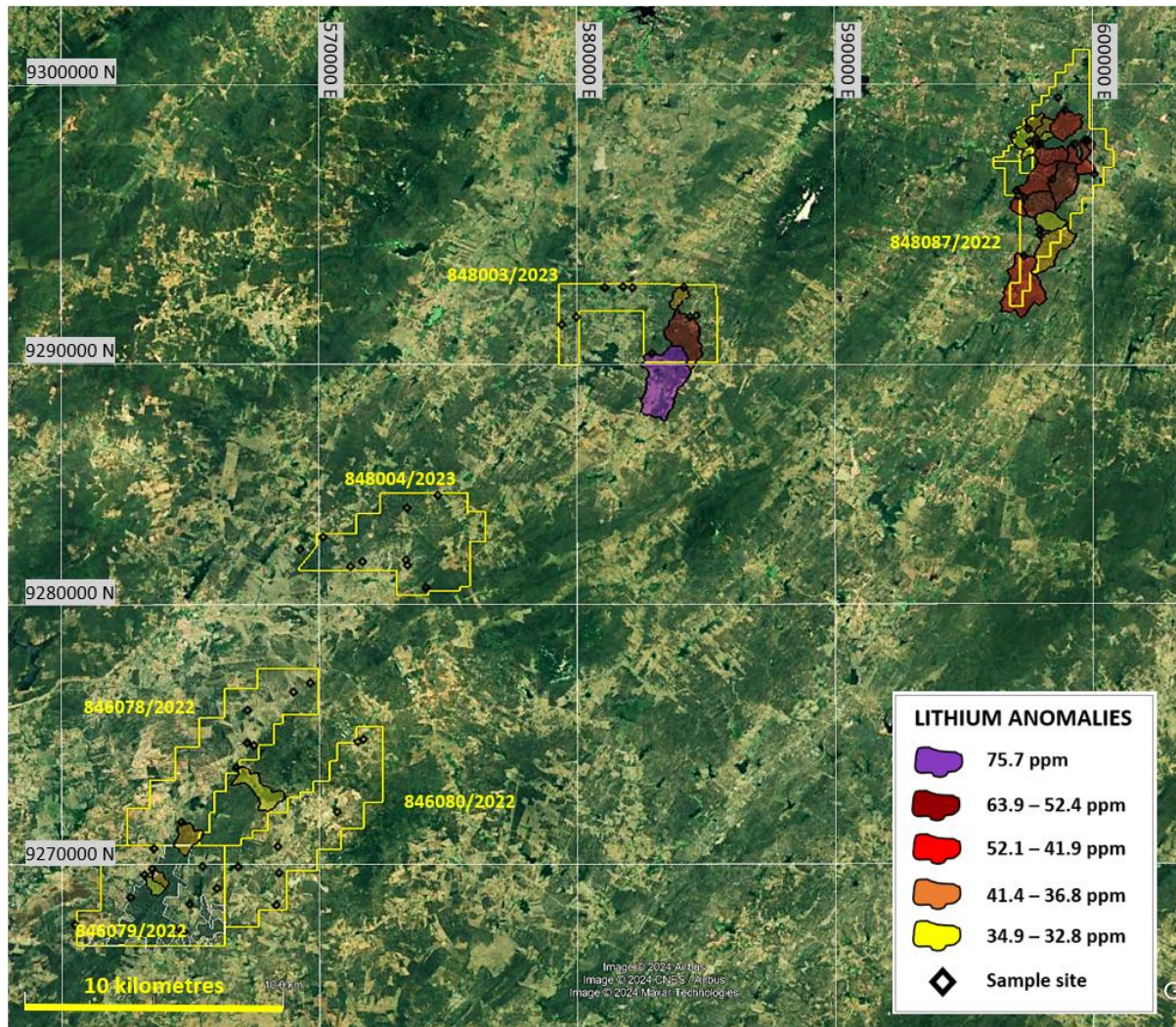


Figure 2. Lithium anomalies are plotted as anomalous catchments indicates the large prospective area that is present, particularly in the northern tenement, 848087/2022.

Previous artisanal mining has been carried out for amazonite, feldspar, emerald, beryl and aquamarine, a gem quality variety of beryl.

Figure 3 shows the CPRM recorded mineral occurrences of mineralisation in the Bandarra-São Braz Project tenements and surrounding areas.

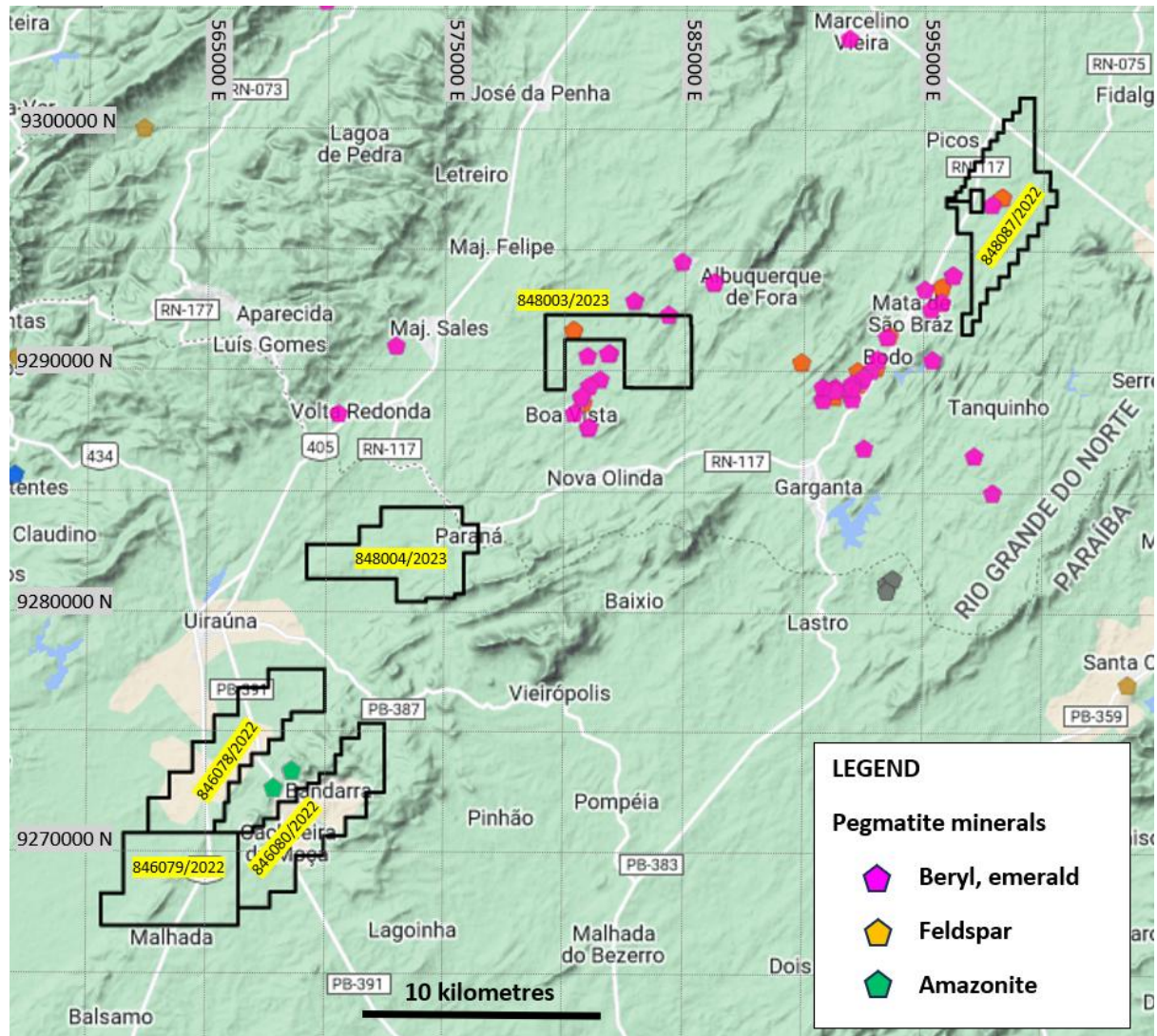


Figure 3. Pegmatite mineral occurrences in the Bandarra-Sao Braz region. Regional structural strike is evident in alignment of topography in the regional scale splay shear zone in the tenements region.

Mapping of occurrences of pegmatite and the rock types present is routinely carried out during stream sediment sampling. A total of 111 points were mapped where geological observations took place.

Figure 4 shows the location of the geological summary of points recorded indicating the widespread pegmatite locations observed.

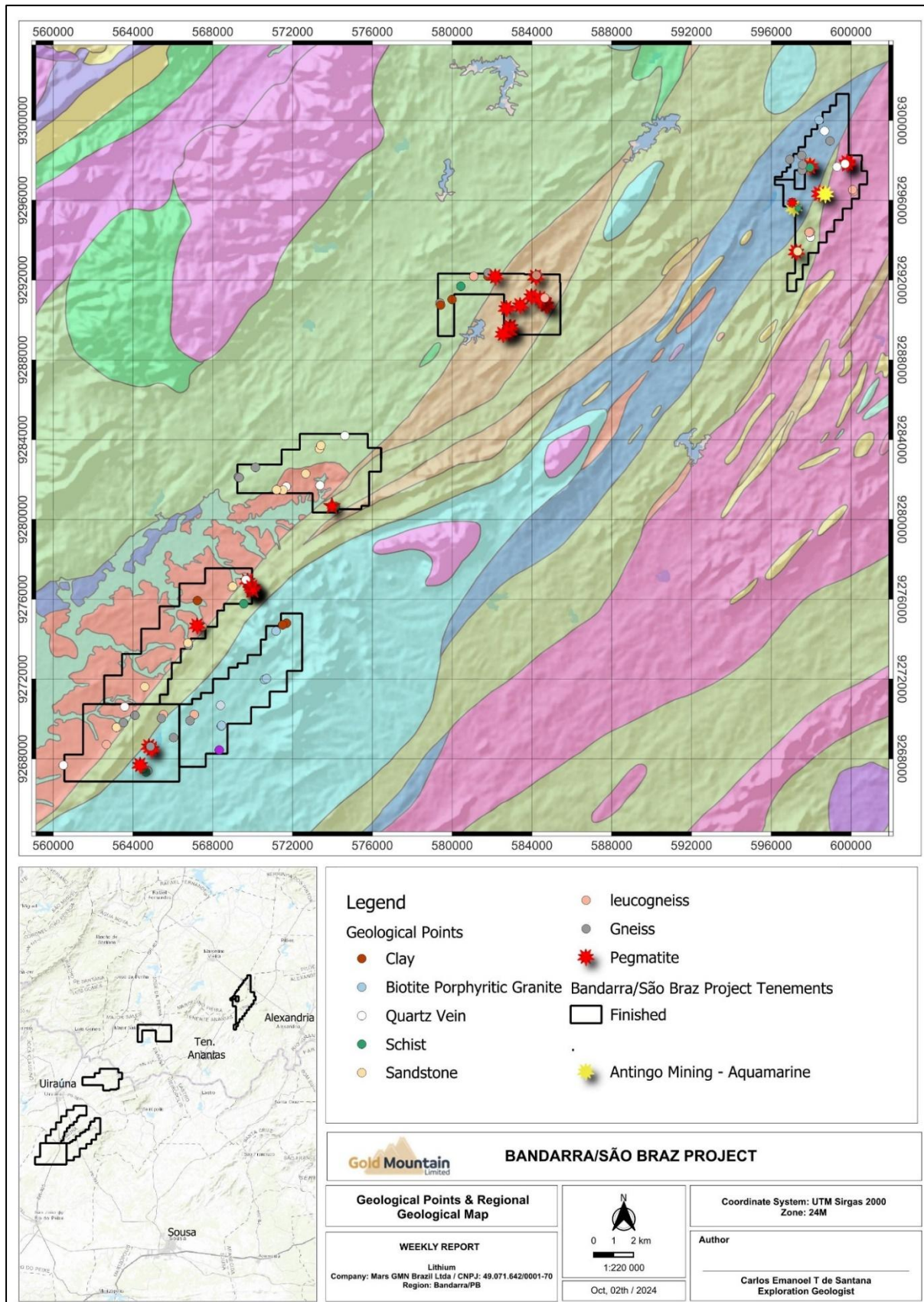


Figure 4. Locations at which pegmatites were found during regional stream sediment sampling.

Mapping was not the primary purpose of the work and the pegmatites found are considered to be a small proportion of what are likely to be present. Maximum widths of pegmatite found during stream sediment sampling was approximately 7 metres.

Competent Persons Statement

The information in this ASX release is based on information compiled by Peter Temby, a Competent Person who is a Member of Australian Institute of Geoscientists. Exploration results are included in this announcement including mapping done as a part of stream sediment sampling programs. Peter Temby is an independent consultant working currently for Mars Mines Ltd. Peter Temby confirms there is no potential for a conflict of interest in acting as the Competent Person. Peter Temby has sufficient experience that is relevant to the style of mineralisation and type of deposit under consideration and to the activity being undertaken to qualify as a Competent Person as defined in the 2012 Edition of the 'Australasian Code for Reporting of Exploration Results, Mineral Resources and Ore Reserves'. Peter Temby consents to the inclusion in the report of the matters based on his information in the form and context in which it appears.

- END -

This ASX announcement has been authorised by the Board of Gold Mountain Limited

For further information, please contact:

Gold Mountain Limited

David Evans

Executive Director

M: +61 421 903 222

E: info@goldmountainltd.com.au

About Us

Gold Mountain (ASX:GMN) is a mineral explorer with projects based in Brazil and Papua New Guinea (PNG). These assets, which are highly prospective for a range of metals including rare earth elements, niobium, lithium, nickel, copper and gold, are now actively being explored.

Gold Mountain has gradually diversified its project portfolio. The Company has highly prospective rare earth elements (REE), niobium, copper and lithium licenses located within the eastern Brazilian lithium belt, spread over parts of the Borborema Province and São Francisco craton in north-eastern Brazil including in Salinas, Mines Gerais.

In PNG, Gold Mountain is exploring the Wabag Project, which covers approximately 950km² of highly prospective exploration ground in the Papuan Mobile belt. This project contains four major targets, Mongae Creek-Monoyal, Sak Creek, Mamba Creek and Mt Wipi,, all lying within a northwest-southeast striking structural corridor. The four prospects have significant potential to host a porphyry copper-gold-molybdenum system and, or a copper-gold epithermal or skarn system. Gold Mountain's current focus is Mongae Creek-Monoyal, which has been subjected to several phases of exploration, and the potential to host a significant copper-gold deposit is high. The current secondary targets are, in order of priority, Lombokai, Sak Creek, Mt Wipi, and Mamba Creek, a new target, which sampling suggests is a porphyry centre, possibly similar to Mongae Creek-Monoyal.

Gold Mountain has also applied for a total of 1,048 km² in two exploration licences at Green River where high grade Cu-Au and Pb-Zn float has been found and porphyry style mineralisation was identified by previous explorers. Intrusive float, considered to be equivalent to the hosts of the

majority of Cu and Au deposits in mainland PNG, was also previously identified. One tenement has been granted; the other is waiting for Mining Wardens hearings with local villagers to determine if the tenement will be granted.

List of references

GMN ASX Release 14 October 2024 Market Update - Exploration Progress on Lithium and REE in Brazil

GMN ASX Release 12 July 2024 Technical Presentation Brazil and PNG

GMN ASX Release 7 March 2024 Investor Presentation

GMN ASX Release 11 Dec 2023 Investor Presentation

GMN ASX Release 24 January 2023 Gold Mountain Restructures its Brazilian Lithium JV Portfolio

LRS ASX Release 2 March 2023 PDAC Presentation March 2023

LRS ASX Release 30 May 2024 Collina Lithium Deposit MRE Upgrade: Global JORC MRE - 77.7 [Mt@1.24%Li2O](#) 95% of Collina Deposit now in Measured and Indicated Categories – 67.27 Mt @1.27% Li2O

LRS ASX Release 18 October 2023 Salinas District Scale Resource Continues to Grow Towards a Tier One Lithium Deposit

LRS ASX Release 28 August 2023 Positive High- Grade Lithium Results continue at Colina

Appendix 1 JORC Code, 2012 Edition – Table 1

Section 1 - Sampling Techniques and Data

(Criteria in this section apply to all succeeding sections)

Criteria	JORC Code Explanation	Commentary
<i>Sampling techniques</i>	<ul style="list-style-type: none"> Nature and quality of sampling (eg cut channels, random chips, or specific specialised industry standard measurement tools appropriate to the minerals under investigation, such as down hole gamma sondes, or handheld XRF instruments, etc). These examples should not be taken as limiting the broad meaning of sampling. Include reference to measures taken to ensure sample representivity and the appropriate calibration of any measurement tools or systems used. Aspects of the determination of mineralisation that are Material to the Public Report. In cases where 'industry standard' work has been done this would be relatively simple (eg 'reverse circulation drilling was used to obtain 1 m samples from which 3 kg was pulverised to produce a 30 g charge for fire assay'). In other cases more explanation may be required, such as where there is coarse gold that has inherent sampling problems. Unusual commodities or mineralisation types (eg submarine nodules) may warrant disclosure of detailed information. 	<ul style="list-style-type: none"> Stream sediment sampling was carried out in drainages over 500 metres long with spacing planned at approximate 1 km on drainages. Stream sediment samples weighed approximately 1 kg each. Sample is pre-processed to a -10 micron sample fraction that is submitted to the laboratory. Samples are not considered representative of the possible grade of mineralisation at depth however they are considered to well represent the metals that are attached to clays, fine iron oxides and micaceous minerals as the fine fraction used is better able to travel in low gradient catchments than coarser fractions. The size fraction is representative of the geochemistry of the catchment. Analytical procedures are industry standard 2 acid digest and ICP analysis with very low detection limits.
<i>Drilling techniques</i>	<ul style="list-style-type: none"> Drill type (eg core, reverse circulation, open-hole hammer, rotary air blast, auger, Bangka, sonic, etc) and details (eg core diameter, triple or standard tube, depth of diamond tails, face-sampling bit or other type, whether 	<ul style="list-style-type: none"> No drilling undertaken

Criteria	JORC Code Explanation	Commentary
	<i>core is oriented and if so, by what method, etc).</i>	
<i>Drill sample recovery</i>	<ul style="list-style-type: none"> ▪ <i>Method of recording and assessing core and chip sample recoveries and results assessed.</i> ▪ <i>Measures taken to maximise sample recovery and ensure representative nature of the samples.</i> ▪ <i>Whether a relationship exists between sample recovery and grade and whether sample bias may have occurred due to preferential loss/gain of fine/coarse material.</i> 	<ul style="list-style-type: none"> ▪ <i>No drilling undertaken</i> ▪ <i>Samples are considered representative due to the fine grain size and taking the sample in active channels.</i> ▪ <i>Sample recovery and grade relationships are not relevant to the type of stream sediment fraction targeted in the stream sediment samples</i>
<i>Logging</i>	<ul style="list-style-type: none"> ▪ <i>Whether core and chip samples have been geologically and geotechnically logged to a level of detail to support appropriate Mineral Resource estimation, mining studies and metallurgical studies.</i> ▪ <i>Whether logging is qualitative or quantitative in nature. Core (or costean, channel, etc) photography.</i> ▪ <i>The total length and percentage of the relevant intersections logged.</i> 	<ul style="list-style-type: none"> ▪ <i>No drilling undertaken</i> ▪ <i>Stream sediment sampling is subjective however the fraction sampled and the preparation and analytical procedures used make the samples readily compared and more representative than -80 # samples.</i> ▪ <i>All sample data including stream size and associated lithologies in the stream are recorded on site.</i> ▪ <i>Data recorded is quantitative for location and stream width and qualitative for any percentages of lithologies present as gravel.</i>
<i>Sub-sampling techniques and sample preparation</i>	<ul style="list-style-type: none"> ▪ <i>If core, whether cut or sawn and whether quarter, half or all core taken.</i> ▪ <i>If non-core, whether riffled, tube sampled, rotary split, etc and whether sampled wet or dry.</i> ▪ <i>For all sample types, the nature, quality and appropriateness of the sample preparation technique.</i> ▪ <i>Quality control procedures adopted for all sub-sampling stages to maximise representivity of samples.</i> ▪ <i>Measures taken to ensure that the sampling is representative of the in situ material collected, including for</i> 	<ul style="list-style-type: none"> ▪ <i>No drilling undertaken</i> ▪ <i>All samples were collected at 1 kg bulks in the field, screened at approximately 2.5 mm then securely packaged and taken to the GMN sample preparation laboratory.</i> ▪ <i>Sample preparation undertaken by GMN prior to sample dispatch to ALS at Belo Horizonte was to separate the sample in an apparatus using Stokes Law to produce a nominal -10 micron fraction for dispatch to the lab after drying. Samples are dried in a low temperature drying cabinet.</i> ▪ <i>Sample representativity of the catchment was well represented in the -10 micron samples as this size fraction will travel over low gradient surfaces better than coarser fraction samples.</i>

Criteria	JORC Code Explanation	Commentary
	<p><i>instance results for field duplicate/second-half sampling.</i></p> <ul style="list-style-type: none"> ▪ <i>Whether sample sizes are appropriate to the grain size of the material being sampled.</i> 	<p><i>No duplicates are collected in the field however residues from extraction of the clay fraction are retained to ensure a repeat analysis could be performed if required.</i></p>
<p><i>Quality of assay data and laboratory tests</i></p>	<ul style="list-style-type: none"> ▪ <i>The nature, quality and appropriateness of the assaying and laboratory procedures used and whether the technique is considered partial or total.</i> ▪ <i>For geophysical tools, spectrometers, handheld XRF instruments, etc, the parameters used in determining the analysis including instrument make and model, reading times, calibrations factors applied and their derivation, etc.</i> ▪ <i>Nature of quality control procedures adopted (eg standards, blanks, duplicates, external laboratory checks) and whether acceptable levels of accuracy (ie lack of bias) and precision have been established.</i> 	<ul style="list-style-type: none"> ▪ <i>Sample preparation at the ALS lab is to pulverise the -10 micron sample, screen at -80# and analyse by the selected method required.</i> ▪ <i>The analytical techniques used are two acid digest and ICP-MS, the 2 acid digest method is a partial digest technique, compared to fusion digests and then ICP-MS, however differences in the analytical values of certified reference materials by the two methods suggest that 2 acid digests are suitable for non-resource sampling in exploration work. ALS codes used were ME-MS41L.</i> ▪ <i>No standards duplicates or blanks accompany these initial samples that will not be used other than to indicate potentially interesting element contents of the variably weathered samples</i> ▪ <i>Checks of the analytical values of CRM's used by the laboratory against the CRM specification sheets were made to assess whether analyses were within acceptable limits</i>
<p><i>Verification of sampling and assaying</i></p>	<ul style="list-style-type: none"> ▪ <i>The verification of significant intersections by either independent or alternative company personnel.</i> ▪ <i>The use of twinned holes.</i> ▪ <i>Documentation of primary data, data entry procedures, data verification, data storage (physical and electronic) protocols.</i> ▪ <i>Discuss any adjustment to assay data.</i> 	<ul style="list-style-type: none"> ▪ <i>No drilling or drill hole samples analysed</i> ▪ <i>No twin holes drilled</i> ▪ <i>No verification will be undertaken for these initial samples, which will not be used in any resource estimate. The samples are to determine the levels of Li and other valuable elements in stream sediment samples</i> ▪ <i>All field data is checked upon entry into spreadsheets and storage in the company data base.</i> ▪ <i>No adjustments are made to assay data except to plot below detection as half detection limit and over limit as the value of maximum detection.</i>

Criteria	JORC Code Explanation	Commentary
<i>Location of data points</i>	<ul style="list-style-type: none"> ▪ Accuracy and quality of surveys used to locate drill holes (collar and down-hole surveys), trenches, mine workings and other locations used in Mineral Resource estimation. ▪ Specification of the grid system used. ▪ Quality and adequacy of topographic control. 	<ul style="list-style-type: none"> ▪ Data points are measured by hand held Garmin 65 Multiband instruments with accuracy to 3 metres ▪ Grid system used is SIRGAS 2000 which is equivalent to WGS84 for hand held GPS instruments ▪ Elevations are measured by hand held GPS and are sufficiently accurate for this stage of exploration. ▪ Stream sediment sample sites are measured by hand held Garmin 65 multiband instruments with 3 metre accuracy in open conditions.
<i>Data spacing and distribution</i>	<ul style="list-style-type: none"> ▪ Data spacing for reporting of Exploration Results. ▪ Whether the data spacing, and distribution is sufficient to establish the degree of geological and grade continuity appropriate for the Mineral Resource and Ore Reserve estimation procedure(s) and classifications applied. ▪ Whether sample compositing has been applied. 	<ul style="list-style-type: none"> ▪ Stream sediment sampling was carried out at approximately 1 km intervals on drainages over 500 metres long. ▪ No sample compositing was undertaken. ▪ Samples are not used for estimation of grade.
<i>Orientation of data in relation to geological structure</i>	<ul style="list-style-type: none"> ▪ Whether the orientation of sampling achieves unbiased sampling of possible structures and the extent to which this is known, considering the deposit type. ▪ If the relationship between the drilling orientation and the orientation of key mineralised structures is considered to have introduced a sampling bias, this should be assessed and reported if material. 	<ul style="list-style-type: none"> ▪ No drilling undertaken. ▪ Many streams are controlled by regional structure which may also control mineralisation and may bias results to some degree. The close spacing of samples and the grain size of the sample submitted for analysis is thought to have removed much of the potential bias that may be present.
<i>Sample security</i>	<ul style="list-style-type: none"> ▪ The measures taken to ensure sample security. 	<ul style="list-style-type: none"> ▪ Stream sediment samples are taken to the GMN laboratory daily and kept under secure conditions. ▪ Prepared samples are securely packed and dispatched to ALS by reliable couriers or hand delivered by GMN personnel.

Criteria	JORC Code Explanation	Commentary
<i>Audits or reviews</i>	<ul style="list-style-type: none"> <i>The results of any audits or reviews of sampling techniques and data.</i> 	<ul style="list-style-type: none"> <i>Reviews of stream sediments sampling are undertaken in the field at irregular intervals by senior staff and new employees are trained by field crew in sampling techniques prior to working independently.</i>

Section 2 - Reporting of Exploration Results

(Criteria listed in the preceding section also apply to this section.)

Criteria	JORC Code Explanation	Commentary
<i>Mineral tenement and land tenure status</i>	<ul style="list-style-type: none"> Type, reference name/number, location and ownership including agreements or material issues with third parties such as joint ventures, partnerships, overriding royalties, native title interests, historical sites, wilderness or national park and environmental settings. The security of the tenure held at the time of reporting along with any known impediments to obtaining a licence to operate in the area. 	<p>GMN holds 6 granted tenements in the Bandarra-São Braz Project. GMN has 75% ownership of the 6 granted tenements.</p> <ul style="list-style-type: none"> There are no known serious impediments to obtaining a licence to operate in the area. Access permissions from local landholders are required. No Native title, historical sites, wilderness or national park and environmental settings are known to be present in the tenements.
<i>Exploration done by other parties</i>	<ul style="list-style-type: none"> Acknowledgment and appraisal of exploration by other parties. 	<ul style="list-style-type: none"> No known exploration for lithium has been carried out on the exploration licence areas. Exploitation of occurrences of other mineral resources is known in artisanal mines for feldspar, emerald and aquamarine (varieties of beryl) and amazonite.
<i>Geology</i>	<ul style="list-style-type: none"> Deposit type, geological setting and style of mineralisation. 	<ul style="list-style-type: none"> Principal deposit type sought is lithium bearing pegmatites. The tenements lie in the Borborema Province that has extensive Ediacaran intrusions as well as some Cambrian intrusives. Lithium pegmatites are known in several areas in the Borborema Province, with a current producer in the Serido Belt and past producers in the Solonopole region.
<i>Drill hole Information</i>	<ul style="list-style-type: none"> A summary of all information material to the understanding of the exploration results including a tabulation of the following information for all Material drill holes: <ul style="list-style-type: none"> easting and northing of the drill hole collar elevation or RL (Reduced Level – elevation above sea level in metres) of the drill hole collar dip and azimuth of the hole down hole length and interception depth 	<ul style="list-style-type: none"> No drilling undertaken Locations of all stream sediment samples and of anomalies are shown on maps in this report. Elevations of all stream sediment samples are recorded together with easting and northing.

Criteria	JORC Code Explanation	Commentary
	<ul style="list-style-type: none"> ○ <i>hole length.</i> ▪ <i>If the exclusion of this information is justified on the basis that the information is not Material and this exclusion does not detract from the understanding of the report, the Competent Person should clearly explain why this is the case.</i> 	
<i>Data aggregation methods</i>	<ul style="list-style-type: none"> ▪ <i>In reporting Exploration Results, weighting averaging techniques, maximum and/or minimum grade truncations (eg cutting of high grades) and cut-off grades are usually Material and should be stated.</i> ▪ <i>Where aggregate intercepts incorporate short lengths of high grade results and longer lengths of low grade results, the procedure used for such aggregation should be stated and some typical examples of such aggregations should be shown in detail.</i> ▪ <i>The assumptions used for any reporting of metal equivalent values should be clearly stated.</i> 	<ul style="list-style-type: none"> ▪ <i>No drilling undertaken, no cut off grades applied</i> ▪ <i>All sample results were included in the interpretations of the stream sediment data and no cut off was applied to results.</i> ▪ <i>No sample aggregation was undertaken</i> ▪ <i>No metal equivalent values reported</i>
<i>Relationship between mineralisation widths and intercept lengths</i>	<ul style="list-style-type: none"> ▪ <i>These relationships are particularly important in the reporting of Exploration Results.</i> ▪ <i>If the geometry of the mineralisation with respect to the drill hole angle is known, its nature should be reported.</i> ▪ <i>If it is not known and only the down hole lengths are reported, there should be a clear statement to this effect (eg 'down hole length, true width not known').</i> 	<ul style="list-style-type: none"> ▪ <i>No drilling undertaken</i> ▪ <i>No intersection made to report</i> ▪ <i>Geometry of mineralisation if present is unknown, however pegmatites found to date have NE to NNE trends.</i>
<i>Diagrams</i>	<ul style="list-style-type: none"> ▪ <i>Appropriate maps and sections (with scales) and tabulations of intercepts should be included for any significant discovery being reported These should include, but not be limited to a plan view of drill hole collar locations and appropriate sectional views.</i> 	<ul style="list-style-type: none"> ▪ <i>No drilling undertaken; plan views of tenement surface geochemical sample locations are provided</i> ▪ <i>Sectional views are not relevant to surface sample interpretation.</i>

Criteria	JORC Code Explanation	Commentary																												
Balanced reporting	<ul style="list-style-type: none">Where comprehensive reporting of all Exploration Results is not practicable, representative reporting of both low and high grades and/or widths should be practiced to avoid misleading reporting of Exploration Results.	<ul style="list-style-type: none">The range of anomalous results in ppm is given for the principal elements .<table><tr><th>Element</th><th>Highest</th><th>Lowest</th><th>Median</th></tr><tr><td>Li</td><td>75.7</td><td>6</td><td>28.9</td></tr><tr><td>Rb</td><td>214</td><td>30.2</td><td>124.5</td></tr><tr><td>Cs</td><td>23.6</td><td>1.89</td><td>8.04</td></tr><tr><td>Sn</td><td>7.43</td><td>0.72</td><td>1.81</td></tr><tr><td>Tl</td><td>1.295</td><td>0.247</td><td>0.611</td></tr><tr><td>Be</td><td>6.53</td><td>1.16</td><td>2.36</td></tr></table>	Element	Highest	Lowest	Median	Li	75.7	6	28.9	Rb	214	30.2	124.5	Cs	23.6	1.89	8.04	Sn	7.43	0.72	1.81	Tl	1.295	0.247	0.611	Be	6.53	1.16	2.36
Element	Highest	Lowest	Median																											
Li	75.7	6	28.9																											
Rb	214	30.2	124.5																											
Cs	23.6	1.89	8.04																											
Sn	7.43	0.72	1.81																											
Tl	1.295	0.247	0.611																											
Be	6.53	1.16	2.36																											
Other substantive exploration data	<ul style="list-style-type: none">Other exploration data, if meaningful and material, should be reported including (but not limited to): geological observations; geophysical survey results; geochemical survey results; bulk samples – size and method of treatment; metallurgical test results; bulk density, groundwater, geotechnical and rock characteristics; potential deleterious or contaminating substances.	<ul style="list-style-type: none">Artisanal mining for beryl, including emerald and aquamarine and feldspar including amazonite, has been carried out in and adjacent to the GMN tenements.																												
Further work	<ul style="list-style-type: none">The nature and scale of planned further work (eg tests for lateral extensions or depth extensions or large-scale step-out drilling).Diagrams clearly highlighting the areas of possible extensions, including the main geological interpretations and future drilling areas, provided this information is not commercially sensitive.	<ul style="list-style-type: none">Additional work is follow up drainage sampling to better define the anomaly source areas, grid soil sampling and mapping of outcrop to define areas for resource drilling.Diagrams show target catchment areas based on current results which will probably be subject to change as further results are obtained.Interpretation of the major controls of anomalous responses are inferred from the distribution of the anomalies on plans of the tenements and are thought to be regional structure parallel in a NNE direction..																												

Appendix 3 Assay Results

SAMPLE	Bandarra-Sao Braz		ME-MS 41L	ME-MS 41L	ME-MS 41L	ME-MS 41L	ME-MS 41L	ME-MS 41L	ME-MS 41L	ME-MS 41L	ME-MS 41L	ME-MS 41L	ME-MS 41L	ME-MS 41L	ME-MS 41L	ME-MS 41L	ME-MS 41L	ME-MS 41L
DESCRIPTION	SIRGAS 2000		Au	Cs	Li	Pd	Sn	Ag	Al	As	Bi	Cu	Fe	Mo	Pt	Rb	Tl	U
	E Z24	N Z24	ppm	ppm	ppm	ppm	ppm	ppm	%	ppm	ppm	ppm	%	ppm	ppm	ppm	ppm	ppm
BASS0001	571721	9274818	0.0014	2.96	12.5	0.0005	1.49	0.042	2.84	0.25	0.161	4.05	2.33	0.12	0.001	41.6	0.359	2.38
BASS0002	571508	9274719	0.0006	3.23	13.5	0.0005	1.31	0.036	3	0.37	0.182	3.78	2.62	0.16	0.001	38	0.338	2.51
BASS0003	569664	9276983	0.002	6.23	23	0.002	1.46	0.056	2.69	0.86	0.217	32.2	4.33	0.23	0.002	60.5	0.367	1.6
BASS0004	569015	9276636	0.0016	6.23	20	0.0005	1.6	0.062	3.29	0.62	0.357	35.9	5.1	0.28	0.001	87.9	0.464	2.54
BASS0005	567227	9275932	0.0021	5.22	21.5	0.0005	1.76	0.073	3.29	0.63	0.301	26.5	3.52	0.16	0.001	90.2	0.528	3.55
BASS0006	570698	9272025	0.0007	2.88	15.5	0.0005	1.38	0.021	3.24	0.3	0.132	2.93	3.02	0.13	0.001	41.4	0.37	1.945
BASS0007	566852	9269913	0.0007	3.27	9.6	0.0005	0.93	0.028	1.59	0.08	0.145	7.76	1.34	0.15	0.001	44.6	0.302	1.965
BASS0008	566029	9269073	0.0007	11.1	29.5	0.0005	1.55	0.049	3.4	0.17	0.366	20.3	3.8	0.2	0.001	81.7	0.611	5.42
BASS0009	564741	9267401	0.0006	7.54	21.4	0.0005	1.44	0.049	2.91	0.16	0.282	19.5	3.33	0.37	0.001	107	0.571	3.22
BASS0010	564515	9267520	0.0009	7.61	19	0.0005	1.4	0.044	2.94	0.06	0.333	23.8	3.62	0.29	0.002	114	0.541	3.05
BASS0011	564969	9268477	0.0008	8.04	21.4	0.0005	1.4	0.038	2.84	0.39	0.354	19.4	3.03	0.36	0.001	118	0.58	2.59
BASS0012	568392	9270686	0.0088	2.07	10.2	0.003	1	0.043	1.94	0.21	0.106	5.77	1.35	0.15	0.001	30.2	0.247	1.84
BASS0013	568438	9269673	0.0008	2.71	13.1	0.0005	1.32	0.035	2.82	0.21	0.136	4.02	2.34	0.11	0.001	45	0.391	1.755
BASS0014	568329	9268438	0.0364	2.6	11.6	0.007	1.7	0.077	3.32	0.3	0.1035	6.74	2.83	0.2	0.001	47.6	0.401	1.575
BASS0015	560514	9267686	0.0016	1.89	13.6	0.001	1.17	0.035	2.56	0.41	0.1585	19.55	2.6	0.35	0.001	57.9	0.306	0.854
BASS0016	562669	9268727	0.0008	9.84	29.7	0.0005	2.12	0.059	2.49	0.1	0.527	14.2	2.44	0.45	0.001	87.9	0.469	4.91
BASS0017	563223	9269603	0.0014	11.2	34.9	0.0005	2.52	0.066	2.91	0.26	0.619	20.9	3.46	0.43	0.001	126	0.604	4.51
BASS0018	563527	9269820	0.001	12.9	41.4	0.0005	2.55	0.055	3.52	0.13	0.505	21.8	4.13	0.32	0.001	141	0.663	4.13
BASS0019	563584	9270610	0.0013	6.33	18.7	0.001	1.63	0.039	2.75	0.55	0.304	17.9	2.54	0.21	0.001	70.3	0.418	2.22
BASS0020	564655	9271627	0.0012	13.5	37.1	0.0005	2.45	0.051	3.37	0.31	0.514	26.9	3.52	0.26	0.001	139	0.694	3.38
BASS0021	565465	9269928	0.0009	8.18	26.8	0.0005	1.7	0.054	3.27	0.25	0.337	22.7	3.37	0.31	0.001	138	0.649	3.04
BASS0022	567479	9274578	0.0018	13	23.9	0.003	1.88	0.037	3.49	1.58	0.35	37.5	4.4	0.46	0.002	146.5	0.71	3.26
BASS0023	567208	9274679	0.0021	6.18	12	0.002	1.13	0.028	2.76	0.35	0.204	8.68	2.41	0.06	0.001	37.2	0.347	0.892

BASS0024	566796	9273718	0.0017	12.2	33.4	0.0005	1.52	0.073	4.41	0.26	0.45	56.3	6.61	0.27	0.003	104	0.536	2.13
BASS0025	569266	9282126	0.0011	8.93	14.6	0.001	2.1	0.034	4.1	0.62	0.247	45.6	3.82	0.38	0.001	129	0.792	2.42
BASS0026	570160	9282592	0.0009	6.54	21.9	0.005	1.66	0.029	4.3	0.18	0.094	14.9	4.85	0.18	0.001	169	0.807	2.3
BASS0027	574615	9284192	0.0012	5.86	13.7	0.007	1.67	0.051	2.44	0.43	0.27	19.1	3.15	0.26	0.001	118.5	0.621	3.73
BASS0028	573421	9283710	0.0008	2.93	6	0.0005	0.72	0.047	1.35	0.21	0.1025	9.03	1.42	0.24	0.001	40.1	0.265	1.865
BASS0029	571694	9281649	0.0005	5.4	11.8	0.001	1	0.035	1.44	0.24	0.129	10.4	1.76	0.14	0.001	63.5	0.332	0.972
BASS0030	571225	9281460	0.0006	8.06	11.4	0.003	1.13	0.038	1.82	0.47	0.1455	21	2.25	0.22	0.001	87	0.397	1.415
BASS0031	574152	9280650	0.0035	4.98	17.6	0.008	1.72	0.134	1.98	4.69	0.312	9.89	3.01	0.34	0.001	52.2	0.283	3.58
BASS0032	573377	9281708	0.0011	4.84	16.3	0.0005	1.53	0.028	2.43	0.52	0.166	15.85	2.63	0.14	0.001	71.8	0.424	1.48
BASS0033	573437	9281508	0.0012	5.31	10.8	0.003	1.18	0.035	2.22	0.64	0.1475	20.8	2.84	0.14	0.002	71.4	0.373	1.365
BASS0034	579423	9290749	0.0005	9.59	18.7	0.004	2.23	0.035	3.59	0.63	0.273	16.75	3.96	0.26	0.001	144.5	0.602	5.14
BASS0035	579992	9291041	0.0008	19.65	29.8	0.006	1.63	0.034	3.35	0.44	0.244	15.9	4.67	0.49	0.001	178.5	0.725	5.2
BASS0036	581092	9292174	0.0002	19.45	30.9	0.012	3.13	0.048	3.84	0.28	2.16	21.8	4.2	0.44	0.001	166	0.641	2.38
BASS0037	581799	9292201	0.0014	13.4	30.2	0.013	3.11	0.077	4.86	0.4	0.463	37.3	6.29	0.24	0.002	177.5	0.802	7.55
BASS0038	582164	9292170	0.0008	13.85	27.9	0.003	2.93	0.035	3.55	0.38	0.62	14.35	3.3	0.41	0.001	127	0.574	5.46
BASS0039	582922	9289636	0.0009	23.6	75.7	0.009	5.21	0.051	4.32	0.52	1.16	20.8	4.1	0.41	0.001	214	1.01	8.49
BASS0040	584156	9292182	0.0005	11.1	38.1	0.006	2.91	0.038	3.33	0.41	0.346	21.7	3.3	0.54	0.001	135	0.631	6.42
BASS0041	584388	9291034	0.0005	18.5	52.4	0.011	4.75	0.059	3.43	0.26	0.293	19.65	3.16	0.6	0.001	207	0.927	20.5
BASS0042	584644	9291091	0.0011	8.65	28.9	0.008	2.92	0.04	3.47	0.005	0.277	22.1	3.59	0.78	0.004	120	0.657	16.45
BASS0043	597972	9294157	0.0007	11.1	41.4	0.009	2.13	0.054	3.59	0.66	0.168	30.4	4.19	0.57	0.005	138.5	0.696	4.22
BASS0044	597956	9294394	0.0008	9.92	34.8	0.012	2.67	0.11	2.98	0.18	0.429	34.9	3.35	0.55	0.004	124.5	0.595	4.72
BASS0045	597336	9293374	0.0005	11.2	42.9	0.008	2.94	0.089	3.78	0.33	0.203	38.2	3.98	1.06	0.004	150	0.748	36.5
BASS0046	597051	9295885	0.0002	9.69	44.2	0.012	2.64	0.071	3.94	0.48	0.311	34.8	4.46	0.32	0.001	156.5	0.714	4.88
BASS0047	597131	9295685	0.0002	11	41.9	0.0005	2.47	0.063	3.5	0.41	0.504	29.4	4.35	0.44	0.001	140	0.684	3.55
BASS0048	597337	9295595	0.0001	14.95	58.2	0.005	3.39	0.066	3.83	0.43	0.389	34.3	4.62	0.5	0.001	171	0.844	6.21
BASS0049	596935	9298036	0.0005	7.76	34.8	0.006	2.41	0.057	4.01	0.62	0.289	32	4.84	0.41	0.001	152.5	0.715	2.55
BASS0050	597827	9297887	0.0005	7.95	39.5	0.011	1.77	0.047	4.02	0.97	0.188	41.6	5.08	0.41	0.001	159	0.721	1.5
BASS0051	597934	9297645	0.0001	7.47	46.8	0.0005	2.34	0.072	3.88	0.44	0.223	39.1	4.58	0.39	0.001	134	0.628	2.72
BASS0052	597926	9297705	0.0001	7.36	29.2	0.0005	1.87	0.049	3.78	0.53	0.424	15.6	3.58	0.35	0.001	81.5	0.509	1.975

BASS0053	597569	9297782	0.0006	6.53	32.8	0.0005	1.81	0.068	4.02	0.69	0.146	21.7	3.59	0.28	0.001	139	0.701	2.46
BASS0054	597525	9298256	0.0002	7.84	36.8	0.0005	2.62	0.082	4.37	0.32	0.1495	38.2	5.06	0.25	0.001	143.5	0.686	1.715
BASS0055	598944	9298977	0.0003	8.88	50.4	0.0005	3.39	0.075	4.68	0.33	0.264	40.5	4.89	0.29	0.001	168.5	0.868	3.28
BASS0056	598675	9299473	0.0004	4.4	27.9	0.0005	1.8	0.054	3.74	0.43	0.1225	26.5	4.24	0.31	0.001	101	0.529	1.35
BASS0057	599820	9297821	0.0002	16	63.9	0.0005	6.19	0.059	4.32	0.14	0.399	35	4.47	0.89	0.001	204	1.175	4.91
BASS0058	599704	9297816	0.0003	19.9	55.3	0.0005	7.43	0.072	4.7	0.17	0.467	51.2	4.85	0.53	0.001	200	1.295	4.49
BASS0059	599287	9297671	0.0001	7.36	47.9	0.003	2.15	0.056	4.04	0.21	0.212	34.9	4.09	0.34	0.002	119.5	0.677	3.09
BASS0060	600078	9296529	0.0003	13.95	52.1	0.0005	3.34	0.093	4.43	0.47	0.25	74.5	5.07	0.88	0.001	180	1.1	5.07
BASS0061	598437	9296334	0.0001	13.4	60.6	0.0005	3.89	0.073	3.43	0.13	0.327	29.9	3.6	0.43	0.001	174.5	0.91	4.67