

Well-funded, Western Australian gold explorer

Corey Nolan, Managing Director

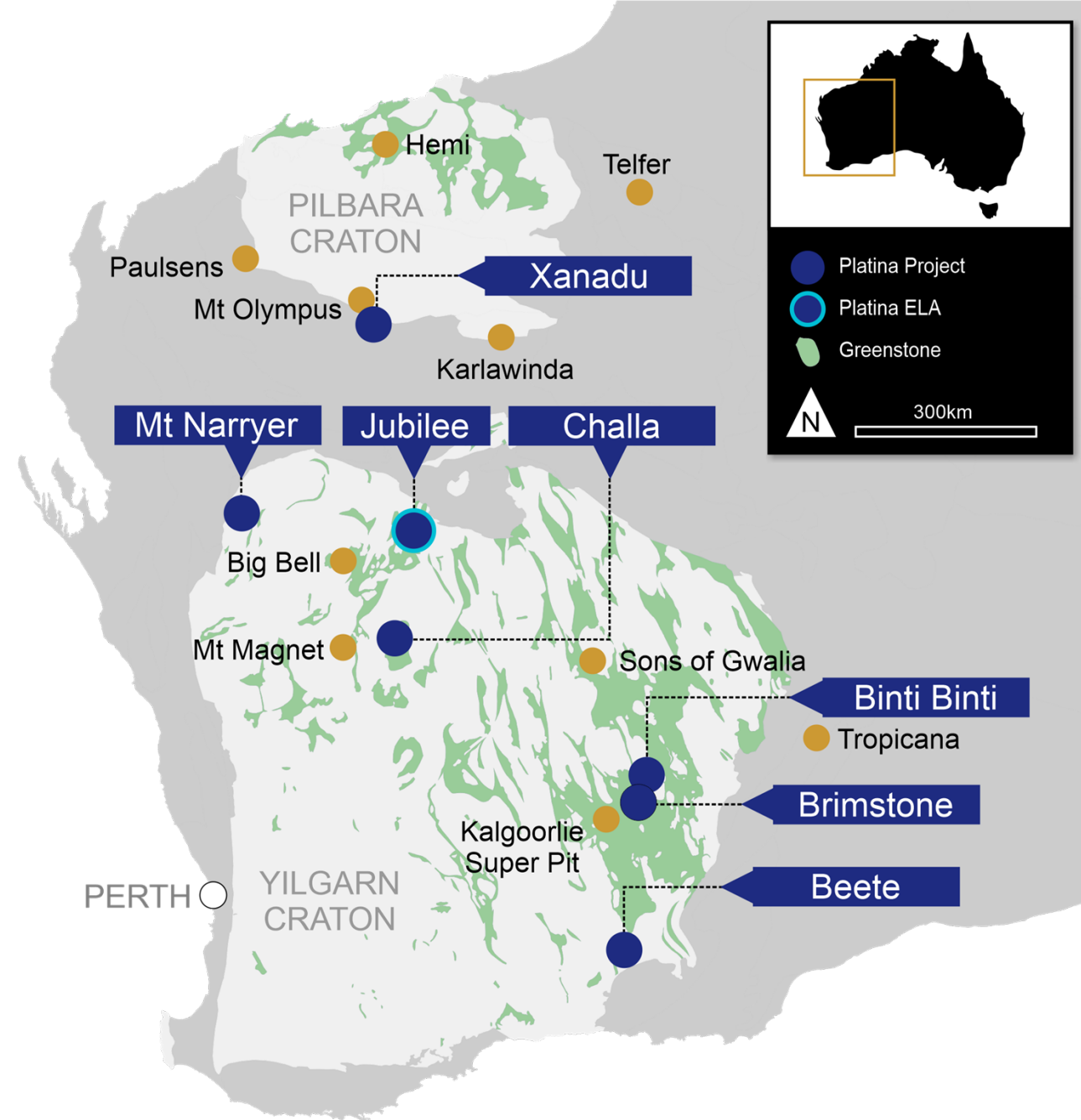
February RIU, Fremantle
February 2025

ASX:PGM

platinaresources.com.au



Platina is exploring high-potential gold projects in the Yilgarn Craton and Ashburton Basin in Western Australia



Opportunity for significant share price upside leverage to discovery success



People

Experience in project appraisal, exploration, acquisitions and feasibility studies



Projects

Target geological environments conducive to finding +1Moz gold deposits



Payments

Well-funded with A\$12 million in cash and potential milestone payments of A\$4.8m

A proven track record of success



30 years' experience focused on the acquisition, funding, exploration and development of resource projects

Previously CEO at Sayona Mining Ltd where he acquired the Authier lithium project in Canada

Non-Executive Director of Elementos Ltd

Corey Nolan
Managing Director



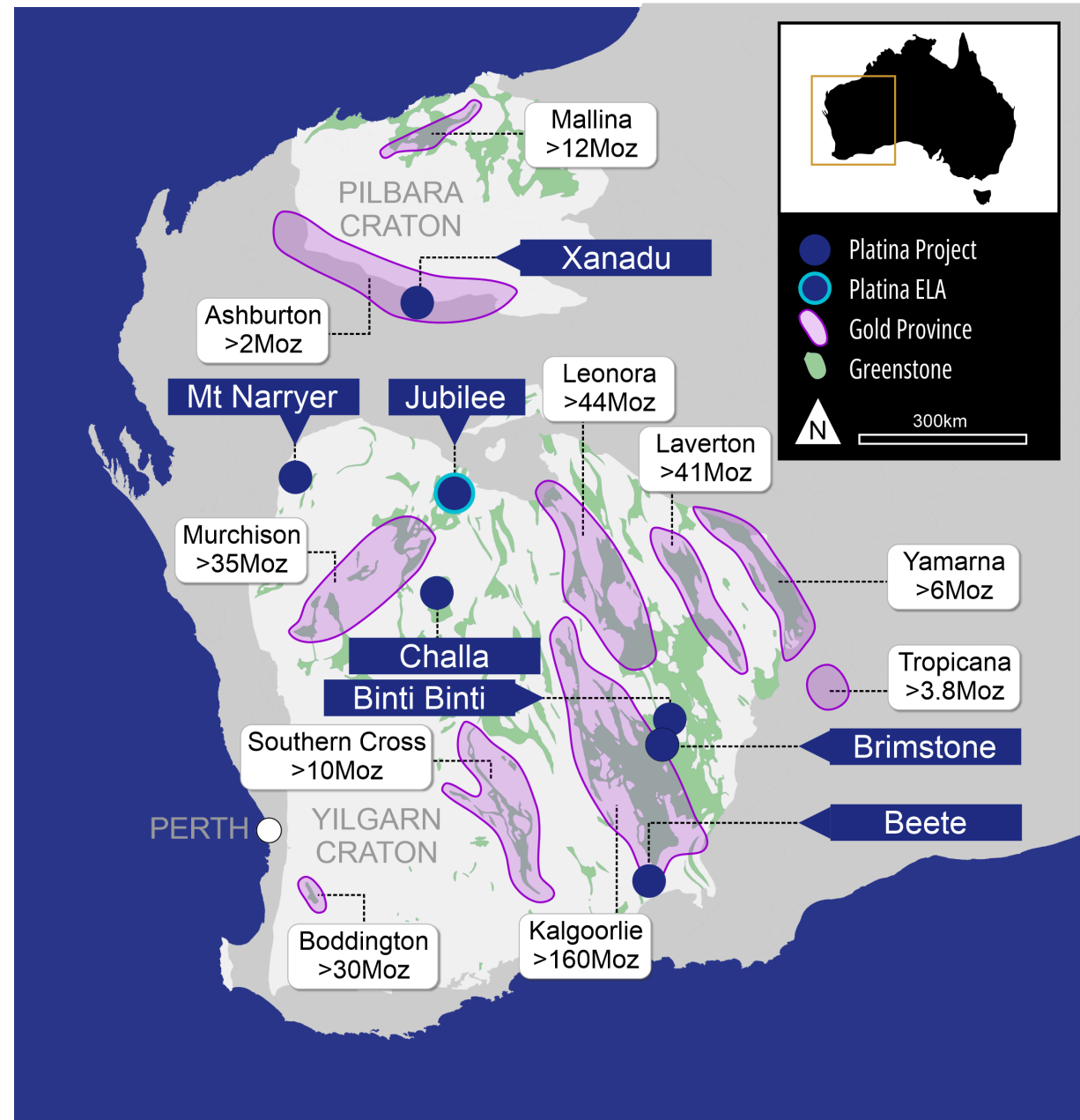
Geologist with 15 years' experience primarily focused on the Pilbara and Yilgarn Craton in WA

Previously Exploration Manager Hemi at De Grey Mining and part of the discovery team on the multi-million-ounce Hemi gold deposit

Rohan Deshpande
Exploration Manager

Targeting projects with an endowment potential of +1Mozs

- 01 Greenstone belts within the Archean age Yilgarn and Pilbara Cratons
- 02 Craton and terrane boundaries with mantle tapping faults and shear zones
- 03 2nd and 3rd order structures along with dilatational jogs, folding and faulting events
- 04 Igneous intrusive rocks



Western Australia is a premier mining jurisdiction

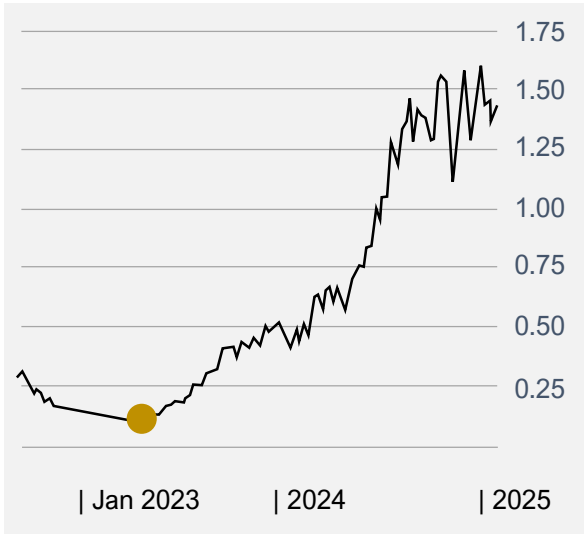
- 01 Toll treatment options available
- 02 World class infrastructure
- 03 Streamlined permitting
- 04 Corporate appeal for gold assets



Recent WA gold discoveries rewarded



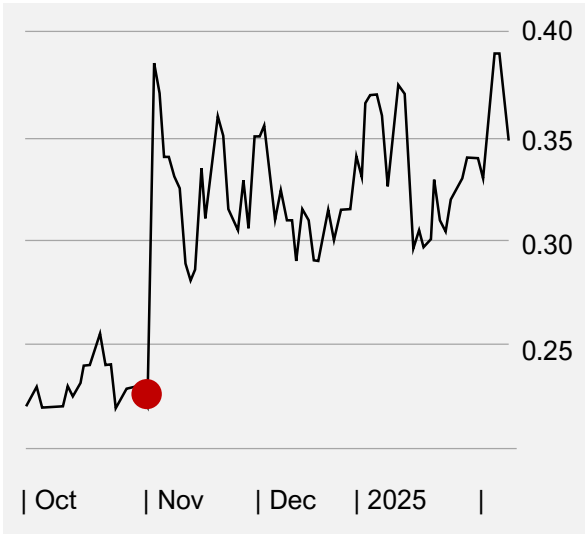
Spartan Resources
(ASX:SPR)



● 16 April 2024

New High-Grade Discovery – “Pepper” Prospect

Ordell Minerals
(ASX:ORD)



● 4 November 2024

Shallow, High-Grade Gold Mineralisation Intersected at Barimaia Gold Project

Priority projects have strong news flow



Xanadu Project

Diamond drilling – in progress



Beete Project

Geophysics 2QCY25

Aircore drilling 3QCY25



Challa Project

Cultural heritage surveys

Aircore drilling 2QCY25



Brimstone Project

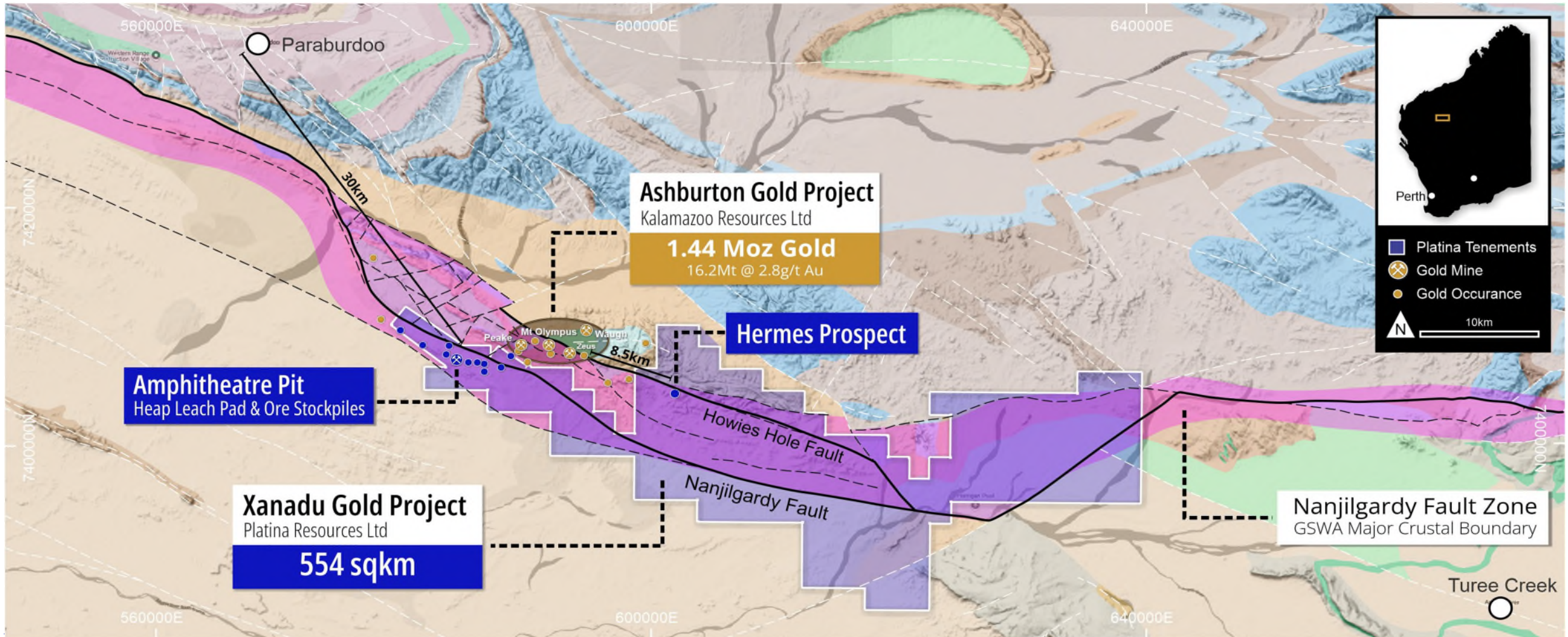
Cultural heritage agreements

Assessing options to unlock value of the project

Xanadu Gold Project

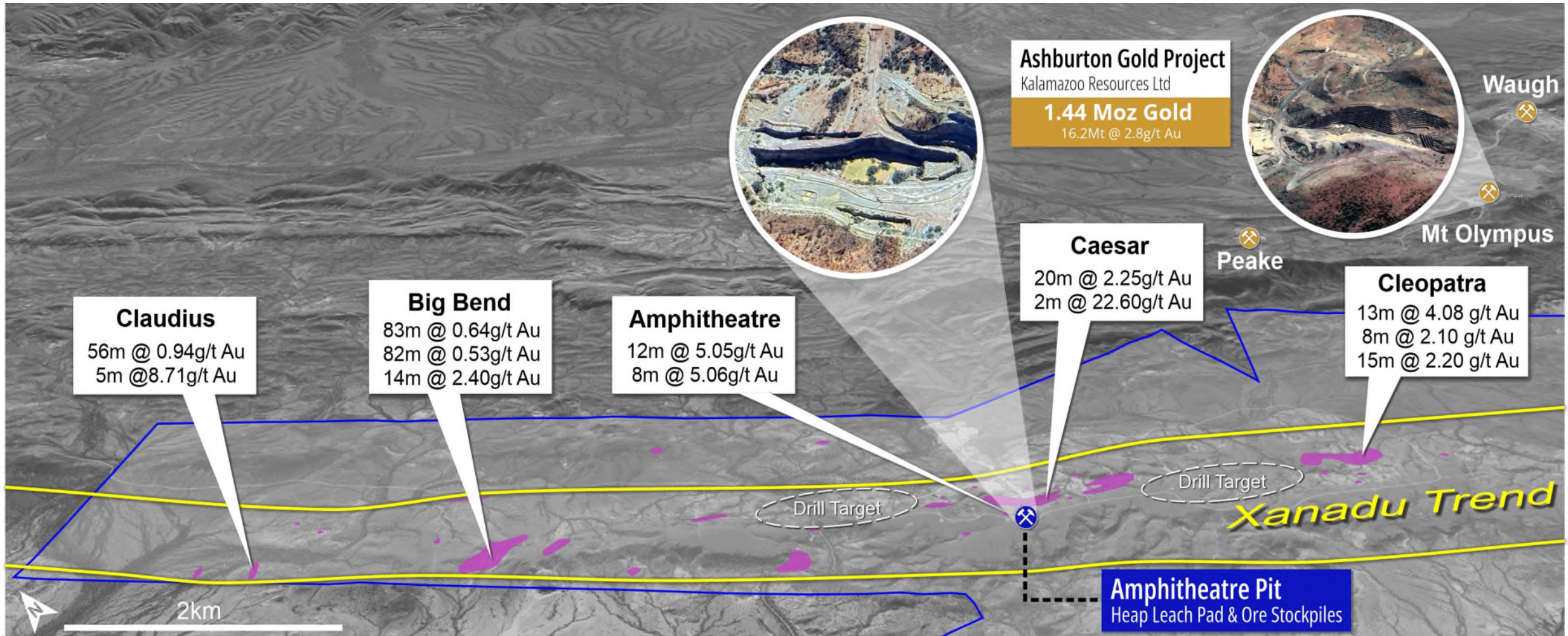
Regional scale geological setting adjacent to 1.44 Moz resource

De Grey have option to buy Ashburton for \$30 million#



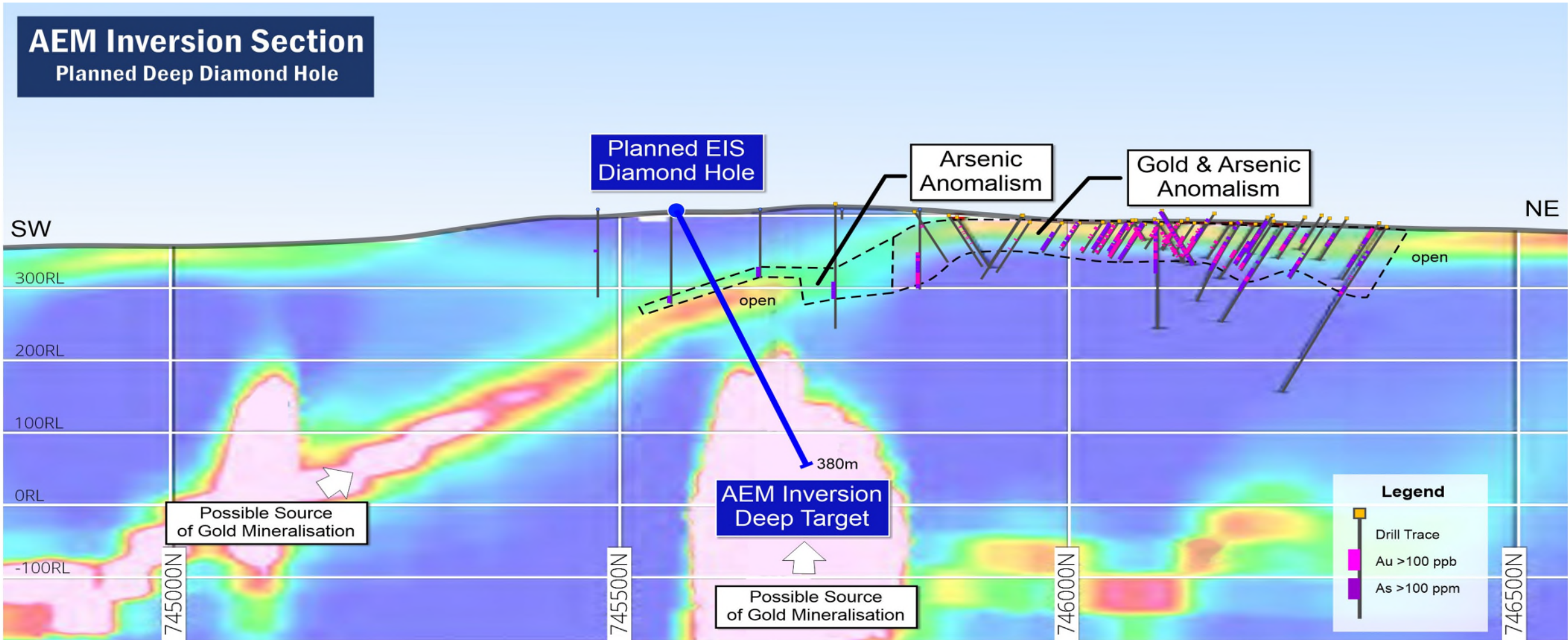
Xanadu Gold Project

Historical focus on shallow oxide resources
– PGM assessing deeper potential of the 10km mineralized zone



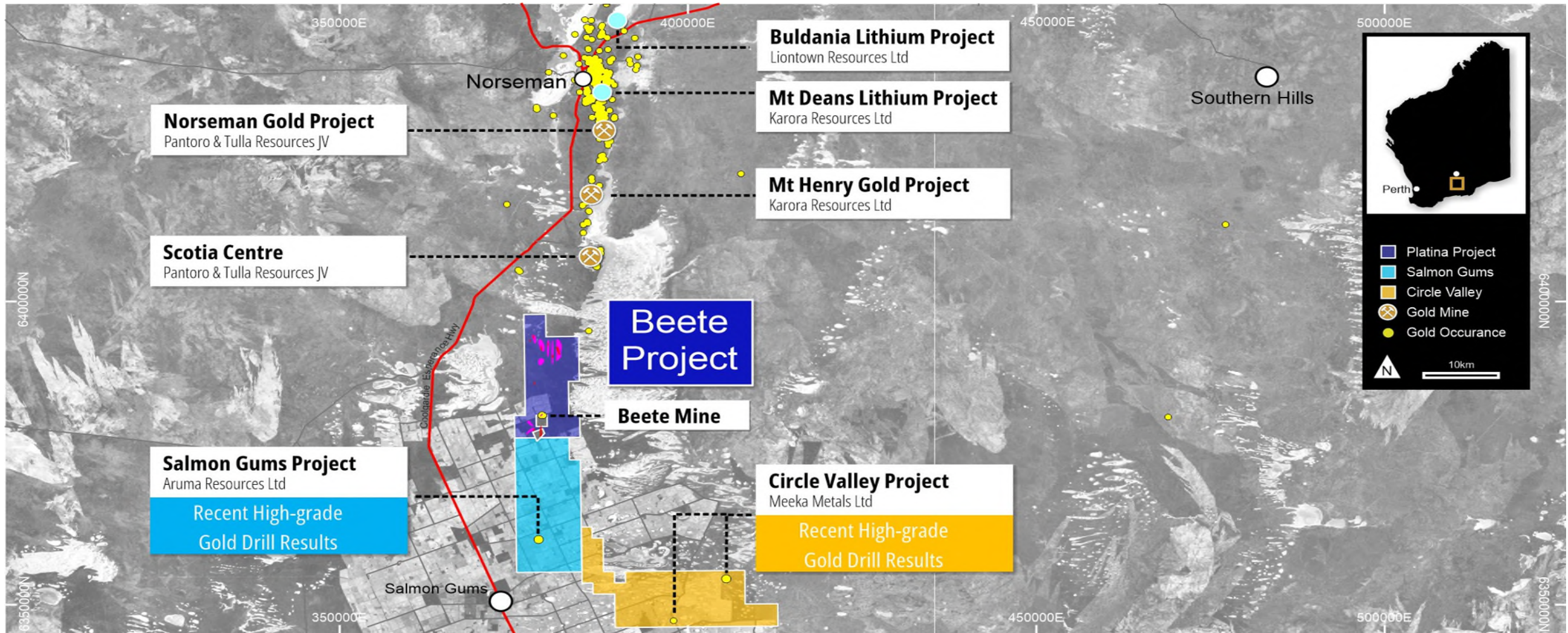
Xanadu Gold Project

Diamond drilling underway to target deeper geophysical target



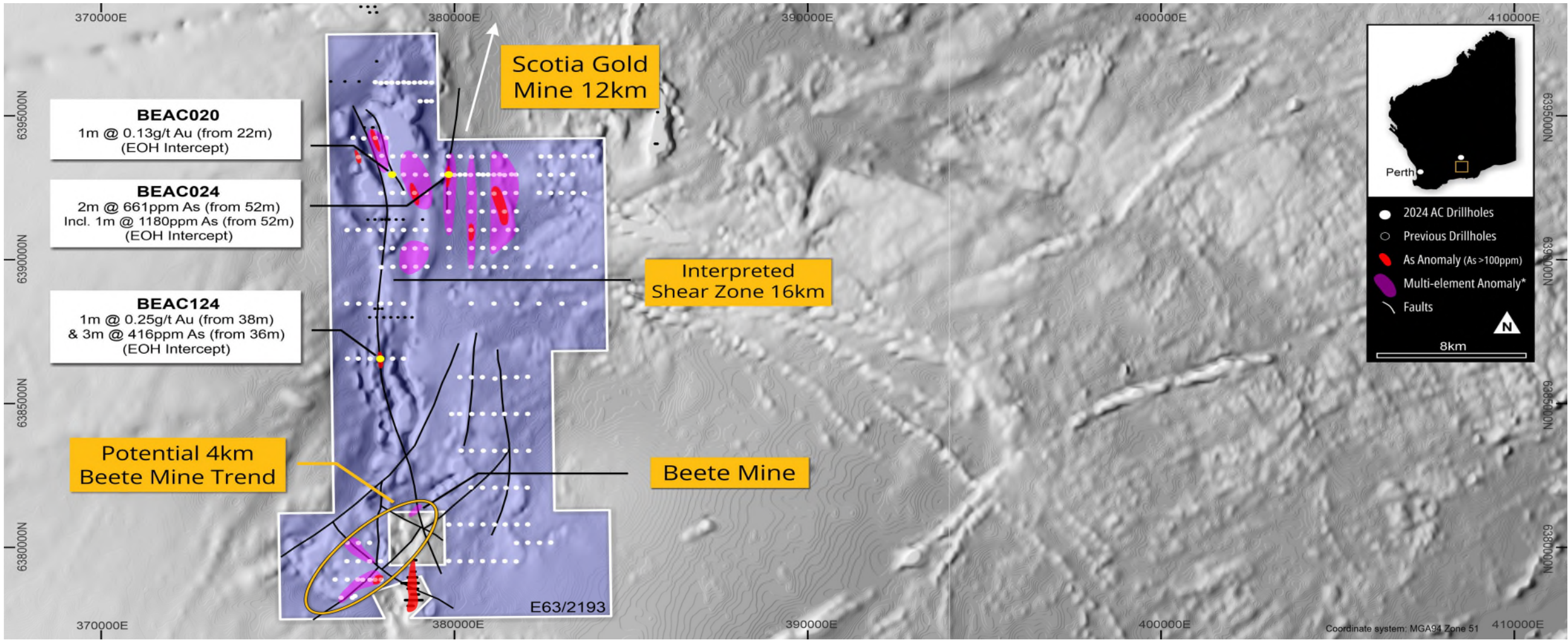
Beete Gold Project

Located along strike from
+5Moz Norseman gold centre



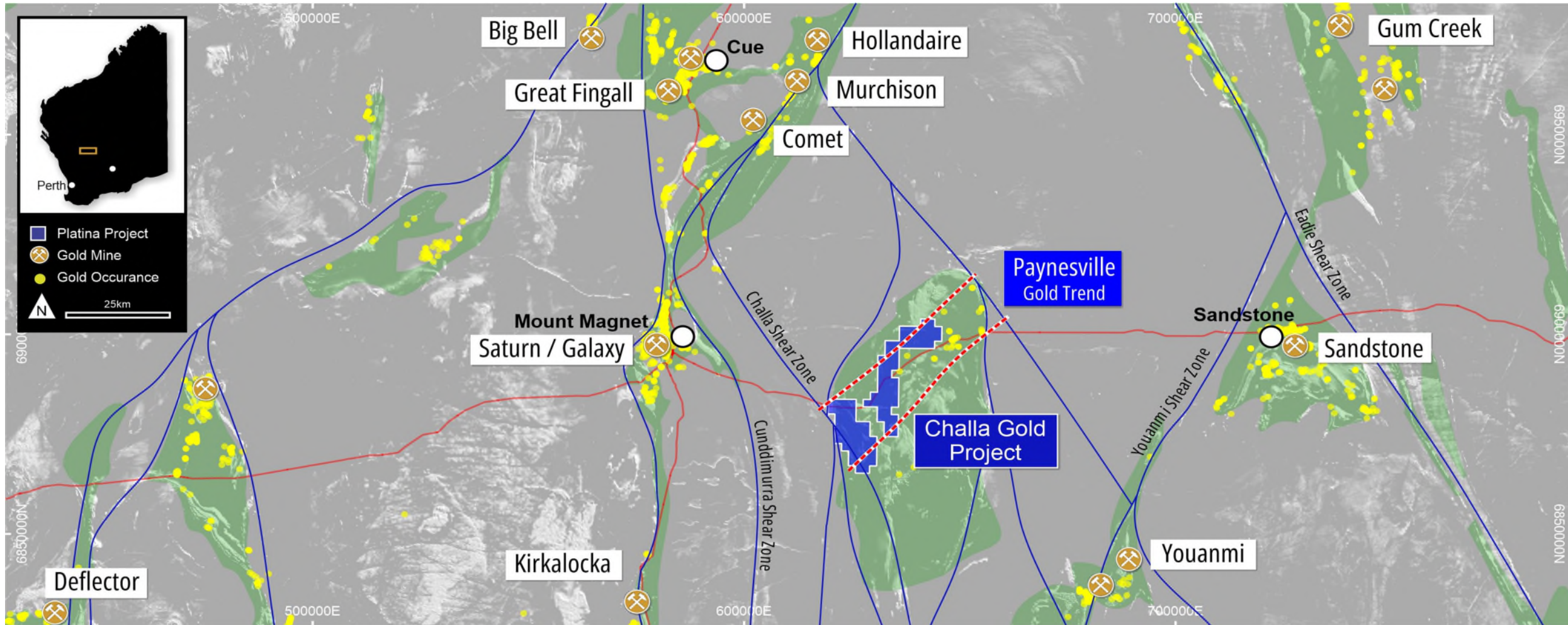
Beete Gold Project

Geophysics and air core drilling planned to test gold and arsenic anomalies



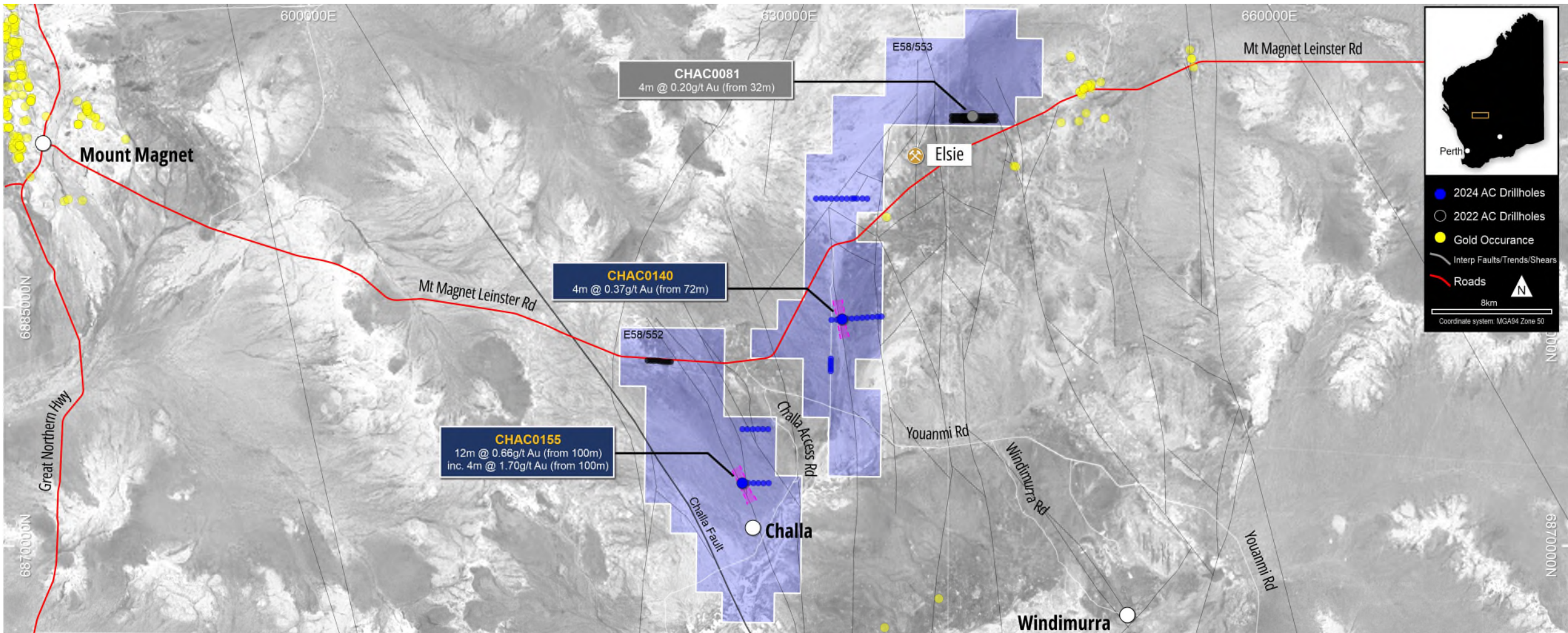
Challa Gold Project

Located within prolific gold producing district highlighted by Mt Magnet Mine (produced over 6Moz)



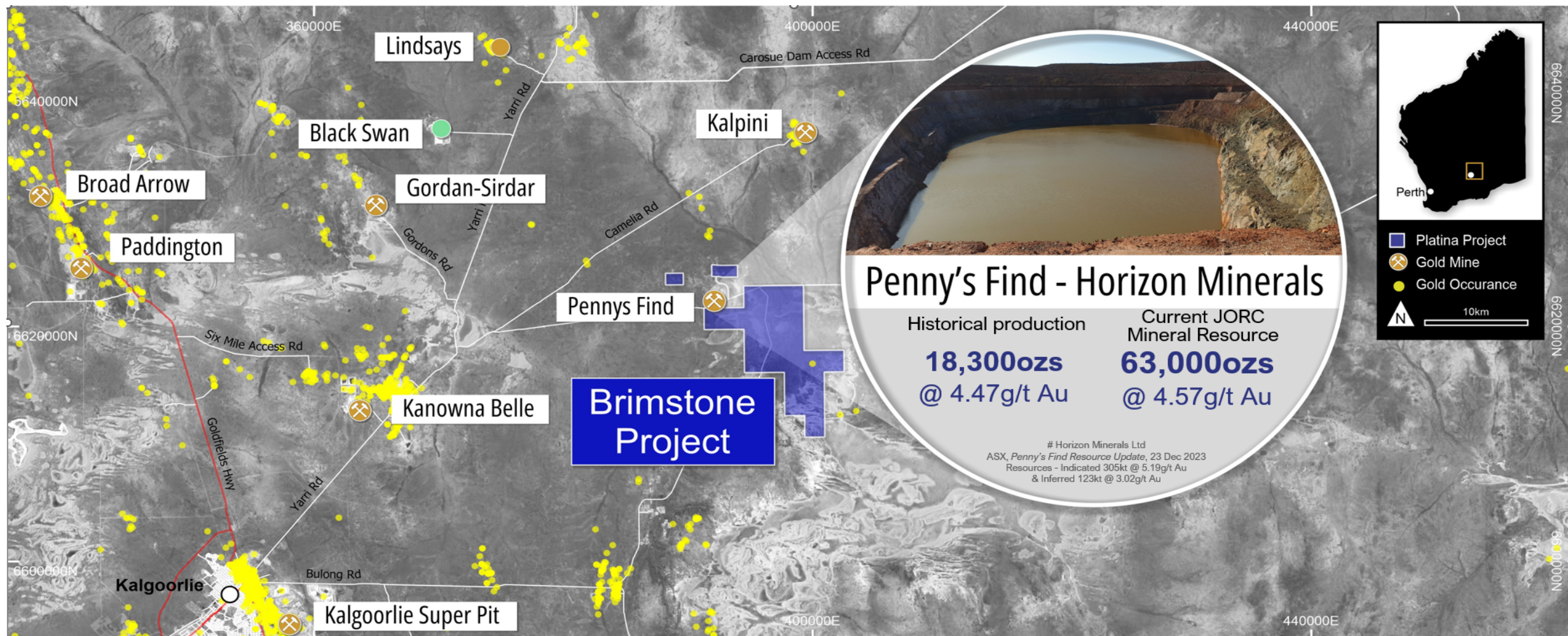
Challa Gold Project

Geophysics and aircore drilling required to test previously encouraging drilling results



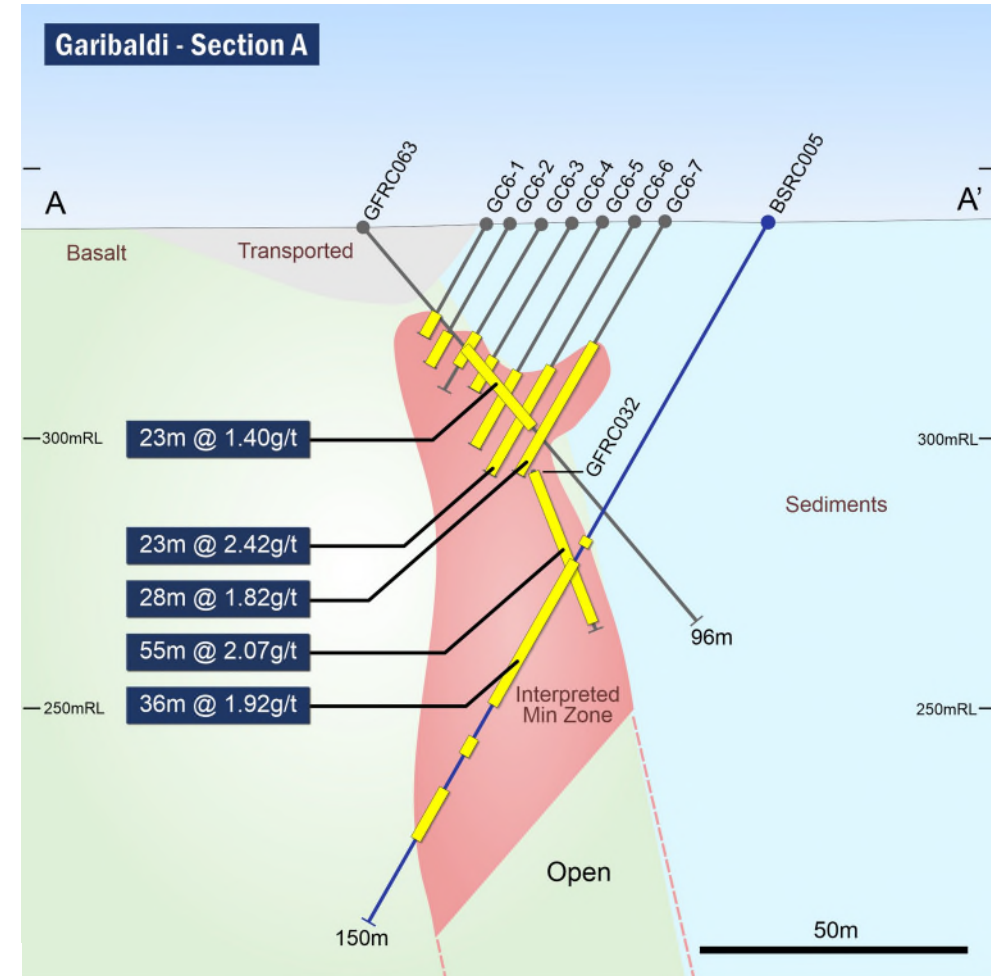
Brimstone Gold Project

Located close to the high-grade Penny's Find deposit owned by Horizon Minerals



Brimstone Gold Project

Assessing options on how to best unlock the value of the project - historical drilling demonstrates large widths and high grades



Well funded

Share price

A\$0.021

As at 11 February 2025
52 week high \$0.032, low \$0.017

Market capitalisation

A\$13.1m

As at 11 February 2025

Cash

A\$12.3m

As at 31 December 2024

Potential for another
\$4.83m in milestone
payments from the
scandium sale

Options on issue

31.5m

Shares on issue

623.1m

As at 11 February 2025

Well funded

Share price

A\$0.021

As at 11 February 2025
52 week high \$0.032, low \$0.017

Market capitalisation

A\$13.1m

As at 11 February 2025

Cash

A\$12.3m

As at 31 December 2024

Potential for another \$4.83m in milestone payments from the scandium sale

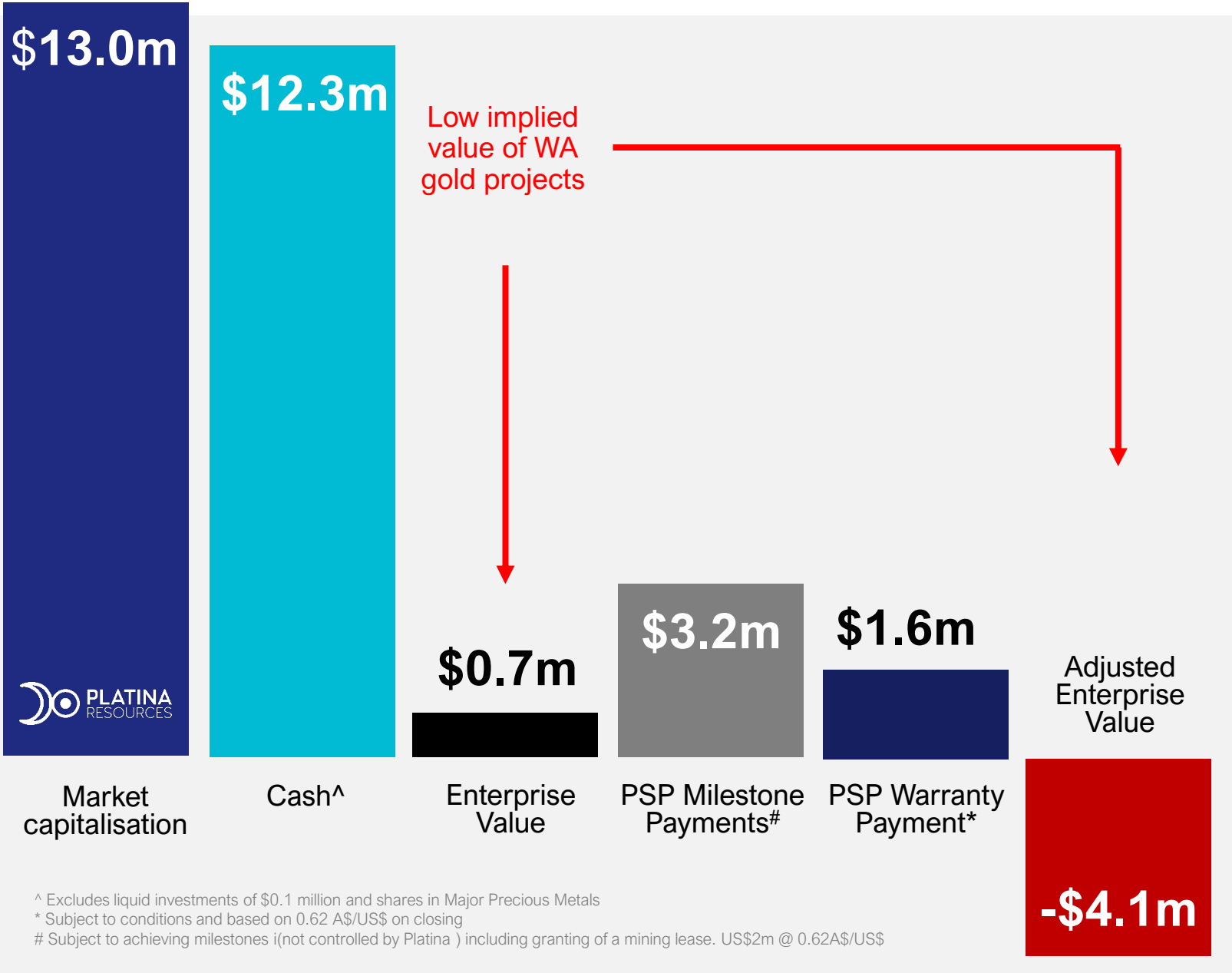
Options on issue

31.5m

Shares on issue

623.1m

As at 11 February 2025



Share price catalysts

01

Xanadu Project

Diamond drilling at
Xanadu Project 1QCY25

02

Beete & Challa Projects

Geophysics
Aircore drilling

03

Brimstone Project

Unlocking the value
of the project

04

Gold price

Leverage to
increasing gold price



Disclaimer

CAUTIONARY AND FORWARD-LOOKING STATEMENTS

This presentation contains “forward-looking information” which may include, but is not limited to, statements with respect to the future financial or operating performance of Platina Resources Limited (“Platina”), its subsidiaries and its projects, the future price of platinum group metals (“PGM’s”), the estimation of mineral resources, operating and exploration expenditures, costs and timing of development of new deposits, costs and timing of future exploration, requirements for additional capital, government regulation, environmental risks, reclamation expenses, title disputes or claims and limitations of insurance coverage. Often, but not always, forward-looking statements can be identified by the use of words such as “plans”, “expects”, “is expected”, “budget”, “scheduled”, “estimates”, “forecasts”, “intends”, “anticipates”, or “believes” or variations (including negative variations) of such words and phrases, or state that certain actions, events or results “may”, “could”, “would”, “might” or “will” be taken, occur or be achieved. Forward-looking statements involve known and unknown risks, uncertainties and other factors which may cause the actual results, performance or achievements of Platina and/or its subsidiaries to be materially different from any future results, performance or achievements expressed or implied by the forward looking statements. Such factors include, among others, general business, economic, competitive, political and social uncertainties; the actual results of current exploration activities; conclusions of economic evaluations; changes in project parameters as plans continue to be refined; future prices of PGM’s; possible variations of ore grade or recovery rates; failure of plant, equipment or processes to operate as anticipated; accident, labour disputes and other risks of the mining industry; and delays in obtaining governmental approvals or financing or in the completion of development or construction activities. Although Platina has attempted to identify important factors that could cause actual actions, events or results to differ materially from those described in forward-looking statements, there may be other factors that could cause actions, events or results to differ from those anticipated, estimated or intended. Forward-looking statements contained herein are made as of the date of this presentation and Platina disclaims any obligation to update any forward-looking statements, whether as a result of new information, future events or results or otherwise. There can be no assurance that forward-looking statements will prove to be accurate, as actual results and future events could differ materially from those anticipated in such statements. Platina undertakes no obligation to update forward-looking statements if circumstances or management’s estimates or opinions should change. Accordingly, the reader is cautioned not to place undue reliance on forward-looking statements

REFERENCES TO PREVIOUS ASX RELEASES

The information in this presentation that relates to Exploration Results, Mineral Resources and Ore Reserves were last reported by the Company in compliance with the 2012 Edition of the JORC Australasian Code for Reporting of Exploration Results, Mineral Resources and Ore Reserves in market releases dated as follows:

- 9 Nov 2023 Garibaldi mineralisation extended and new targets identified.
- 4 April 2024 Extension of oxide gold mineralisation confirmed at Xanadu.
- 8 August 2024 AC drilling identified multiple gold targets at Beete
- 21 Feb 2023 New gold exploration target identified at Xanadu.
- 04 Oct 2024 Gold mineralisation along major shear zone at Challa Project.
- 01 Nov 2024 EIS grant to drill Xanadu Deeps target and Mt Narryer update.

The Company confirms that it is not aware of any new information or data that materially affects the information included in the market announcements referred above and further confirms that all material assumptions underpinning the production targets and all material assumptions and technical parameters underpinning the Ore Reserve and Mineral Resource statements contained in those market releases continue to apply and have not materially changed.

DISCLAIMER

Statements regarding Platina Resources’ plans with respect to its mineral properties are forward-looking statements. There can be no assurance that Platina Resources’ plans for development of its mineral properties will proceed as currently expected. There can also be no assurance that Platina Resources will be able to confirm the presence of additional mineral deposits, that any mineralisation will prove to be economic or that a mine will successfully be developed on any of Platina Resources’ mineral properties or that Platina will achieve any of the valuation increases shown by the peer group companies.

This presentation was authorised by Corey Nolan, Managing Director of Platina Resources Limited.

Contact

Corey Nolan
Managing Director

Phone +61 7 5580 9094
admin@platinareources.com.au

ASX: PGM

platinareources.com.au



Leonora, Western Australia

Appendix 1

Resources references in presentation

| Project / Owner / Source | Category | kt | g/t Au | Kozs |
|---|-----------|--------|--------|-------|
| Scotia Mining Centre | Indicated | 10,734 | 2.2 | 734 |
| Pantoro Limited | Inferred | 4,736 | 1.5 | 227 |
| www.pantorold.com.au | Total | 15,471 | 2.0 | 999 |
| Norseman Gold Mineral Resource | Measured | 4,572 | 1.6 | 234 |
| Pantoro Limited | Indicated | 22,529 | 3.1 | 2,259 |
| Source: PNR: Mineral Resource Statement | Inferred | 19,325 | 3.7 | 2,290 |
| | Total | 46,414 | 3.2 | 4,787 |
| Paulsens | Measured | 170 | 10.5 | 56 |
| | Indicated | 827 | 9.6 | 254 |
| Black Cat Syndicate | Inferred | 348 | 8.6 | 97 |
| Source: www.bc8.com.au | Total | 1,345 | 9.4 | 407 |
| Lindsay's Gold Project | Indicated | 3,425 | 1.5 | 168.4 |
| NuFortune Gold | Inferred | 549 | 2.8 | 49.7 |
| Source: Presentation 14 Oct 2021 | Total | 3,974 | 1.7 | 215.1 |
| Karlawinda | Indicated | 67,000 | 0.8 | 1,722 |
| Capricorn Metals | Inferred | 19,500 | 0.7 | 422 |
| Source: www.capricornmetals.com.au | Total | 86,700 | 0.8 | 2,145 |
| Mt Olympus | Indicated | 9,699 | 2.9 | 911 |
| Kalamazoo | Inferred | 6,491 | 2.5 | 525 |
| www.kzr.com.au | Total | 20,789 | 2.5 | 1,436 |

| Project / Owner / Source | Category | kt | g/t Au | Kozs |
|--------------------------|-----------|--------|--------|-------|
| Carouse Dam | Measured | 1,970 | 2.8 | 180 |
| Northern Star | Indicated | 11,681 | 2.9 | 1,085 |
| www.nsrld.com.au | Inferred | 9,148 | 2.9 | 860 |
| | Total | 22,799 | 2.9 | 2,125 |
| Yaloginda | Measured | 145 | 3.42 | 16 |
| Westgold Resources Ltd | Indicated | 8,439 | 1.82 | 494 |
| | Inferred | 7,053 | 1.46 | 330 |
| | Total | 15,637 | 1.67 | 840 |
| Andy Well | Measured | 150 | 11.4 | 55 |
| Meeka Gold Limited | Indicated | 1,050 | 9.3 | 315 |
| | Inferred | 650 | 6.5 | 135 |
| | Total | 1,800 | 8.6 | 505 |
| Turnberry | Indicated | 6,800 | 1.6 | 355 |
| Meeka Gold Limited | Inferred | 4,500 | 1.8 | 255 |
| | Total | 13,100 | 2.6 | 1,115 |
| Penny's Find | Indicated | 305 | 5.19 | 51 |
| Horizon Minerals Limited | Inferred | 123 | 3.02 | 12 |
| | Total | 429 | 4.57 | 63 |