

## **ASX Announcement**

19 March 2025

### **MAAS GROUP HOLDINGS – INVESTOR PRESENTATION MARCH 2025**

Maas Group Holdings Limited (“MGH” or the “Company”) attaches an investor presentation to be given by Mr Wes Maas, CEO and Managing Director at Morgans Business Breakfast in Brisbane on 19 March 2025.

This announcement has been authorised by Candice O’Neill, Company Secretary of MGH

For further information, please contact Tim Smart, Corporate Strategy and Investor Relations on 0407220561 or [investorrelations@maasgroup.com.au](mailto:investorrelations@maasgroup.com.au).

### **About MAAS Group Holdings Limited**

MGH is an independent leading Australian construction material, equipment and service provider with diversified exposures across the civil, infrastructure, mining and real estate markets.



# MAAS

**BUILDING FUTURE INFRASTRUCTURE AND DELIVERING ON OUR COMMITMENTS**

**MAAS**

# VALUES DRIVEN



## **TRUST**

*only earned through action*



## **TEAMWORK**

*focused on safety and solutions*



## **COMMITMENT**

*deliver on commitments to customers*



## **LEADERSHIP**

*the courage to strive for excellence*



## **CANDOUR**

*transparent conversations to get it right*

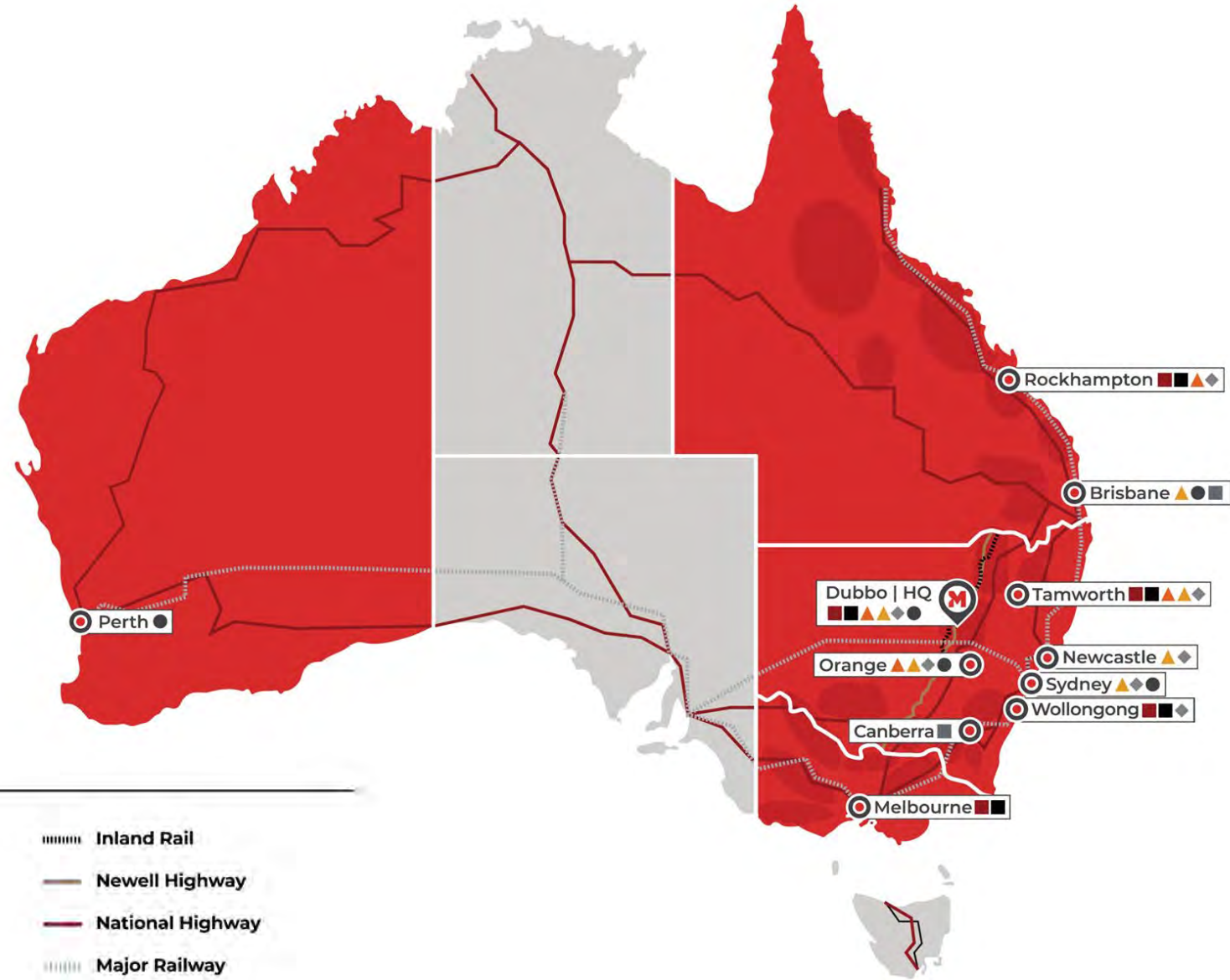


## **OWNERSHIP**

*empowered to get it right  
and be accountable for the results*

# OUR FOOTPRINT

Maas continues to grow its operations and asset portfolio on the east coast of Australia, in addition to Western Australia and internationally, in line with major infrastructure and construction projects.



## KEY

- |   |   |
|---|---|
|  Maas Headquarters                     |  Real Estate Residential Developments  |
|  Maas Office/Hub                       |  Real Estate Commercial Developments   |
|  Construction Material Quarries        |  Civil Construction & Hire Assets and resources  |
|  Construction Material Concrete plants |  Manufacturing & Sales Manufacturing, product support and parts sales and distribution centres |
|  Construction Material Asphalt         |   |

- |  |
|--|
|  Inland Rail            |
|  Newell Highway         |
|  National Highway       |
|  Major Railway          |
|  Renewable Energy Zones |



# 20+ YEARS OF GROWTH

Since its foundation in 2002, Maas Group has grown from a small equipment hire company based in Dubbo to a large, diverse ASX-listed corporation with global operations.

Our history and success as a company and the culture we have fostered have laid the foundations of the business we are today and the business that we aspire to be in the future.





# COMMUNITY & ENVIRONMENT

## Fundamental to our business are the communities in which we operate.

We are committed to helping make them better, more sustainable and thriving places for those that live there today and in the future. In our day-to-day operations, we do this by developing authentic communities that enhance the lifestyle of those living there and those that visit. We plan places that encourage active living and promote the natural environment. We also invest in community and shared facilities that allow people to meet and come together.

Maas is proud to support local events, charities and initiatives that contribute to the social and economic benefit of our community, including Dolly's Dream national charity and countless local teams, events and initiatives. We are proud to support the communities that support us.

## Maas embraces sustainability and continues to operate in an environmentally and socially responsible manner.

It is committed to integrating sustainable practices and policies in its businesses to create a more sustainable world for all. Maas recognises in order to achieve long term success, it must foster responsible practices in safety, our communities, environment and climate, and governance.

### Organisations we support:



# OUR OPERATING SEGMENTS

## INDUSTRIAL OPERATING SEGMENTS



### CONSTRUCTION MATERIALS

- Quarries
- Concrete
- Asphalt
- Geotechnical Engineering
- Logistics



### CIVIL CONSTRUCTION & HIRE

- Equipment Hire
- Civil Construction
- Electrical Transmission & Distribution



### MANUFACTURING & EQUIPMENT SALES

- Equipment sales
- Manufacturing
- Distribution

## REAL ESTATE OPERATING SEGMENTS



### RESIDENTIAL REAL ESTATE

- Residential developments
- Home building
- Build-to-rent
- Land Lease Communities



### COMMERCIAL REAL ESTATE

- Commercial Real Estate
- Commercial Construction
- Insurance
- Building materials

**Maas Group Holdings strategically manage capital allocation, collective resources, and intellectual property across all operating segments and assets. Our vertically integrated system sets us apart, allowing us to supply and perform construction activities seamlessly.**



# CONSTRUCTION MATERIALS

**SERVICES:** Quarries • Concrete • Asphalt • Geotechnical Engineering • Logistics

We are a leading supplier of quarry materials, aggregates, pre-mix concrete, crushing and screening services, asphalt and logistics to the civil infrastructure, renewable energy, building and construction, and mining sectors across the east coast of Australia. We also offer geotechnical services, including geological engineering, drilling and testing through our Macquarie Geotech business





# CIVIL CONSTRUCTION AND HIRE

**SERVICES:** Equipment Hire •  
Civil Construction • Electrical  
Transmission & Distribution

Maas' Civil Construction and Hire segment is the most mature operating segment, providing construction and above-ground plant hire as well as electrical transmission and distribution services to major infrastructure and renewable energy projects across Australia.





# MANUFACTURING & EQUIPMENT SALES

**SERVICES:** Equipment Sales •  
Manufacturing • Distribution

Maas Manufacturing is an engineering firm, manufacturer and retailer of industrial machinery, serving both aboveground and below-ground markets. Comet Equipment supplies above-ground machinery, while Jacon Equipment specialises in the rock mining and civil tunnelling sectors



**JACON**  
EQUIPMENT

**VMS**

**COMET**  
EQUIPMENT



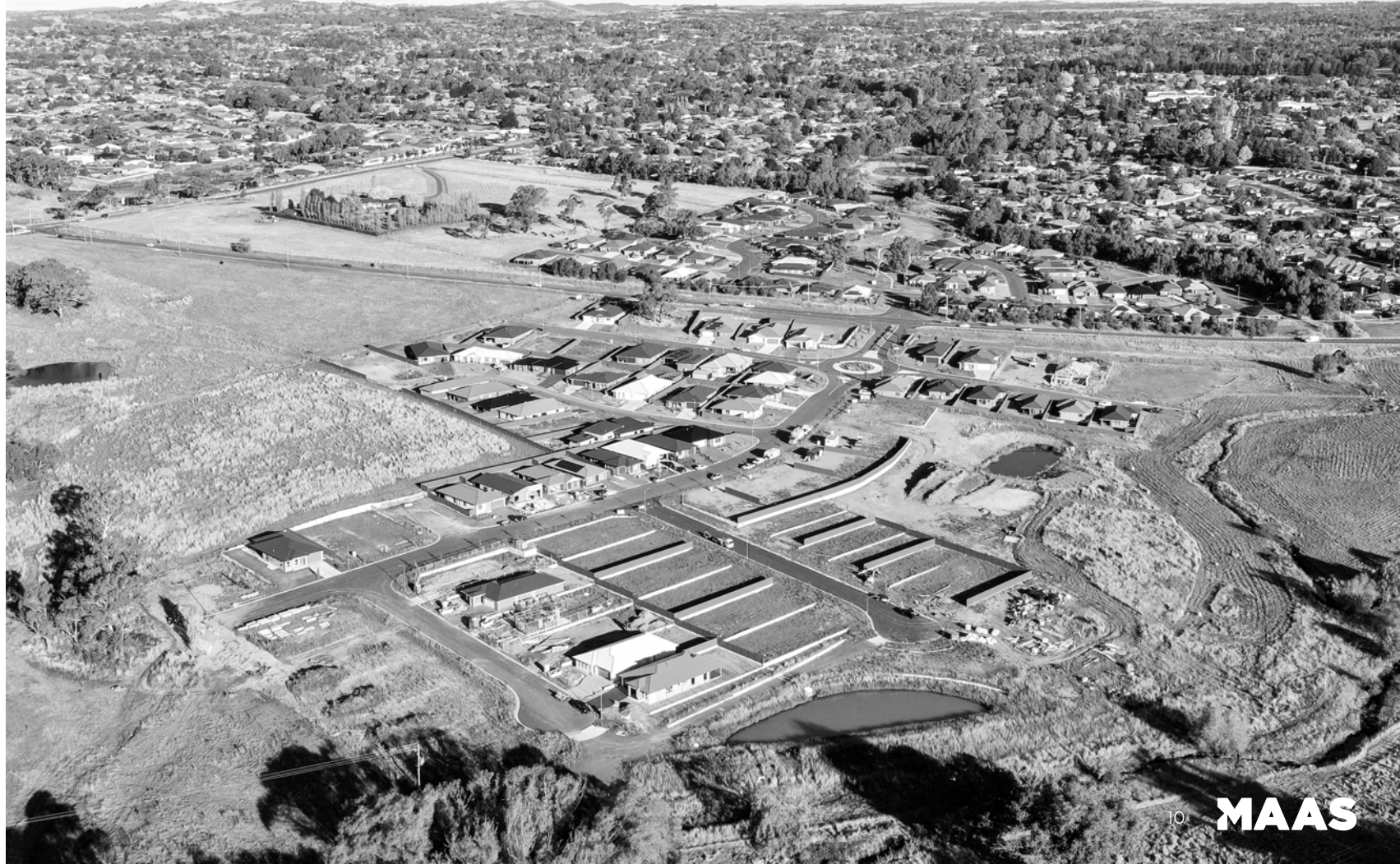
# RESIDENTIAL REAL ESTATE

## **SERVICES:** Residential Developments • Home Building • Build-to-Rent • Land Lease Communities

Our residential portfolio and products are diverse, with assets across Australia, including in Dubbo, Orange, Mudgee, Tamworth, Bathurst, Griffith, Lithgow, and Rockhampton, yielding a current pipeline of circa 8,000 lots.

As well as traditional greenfield residential masterplan subdivisions, we continue to develop our product offering to include diversified land sale offerings and ready built homes, medium density lifestyle developments and land lease communities, in addition to our external home construction services.

**MAAS**





# COMMERCIAL REAL ESTATE

**SERVICES:** Commercial Real Estate •  
Commercial Construction • Insurance •  
Building Materials

The Commercial Real Estate business develops commercial and industrial properties focused on the industrial, self-storage and childcare sectors. Complementing the development business are commercial construction delivery businesses, building supplies and insurance repair building businesses which continue to deliver growth for the segment.

**MAAS**

**Astley's**



**MAAS**

# OUR TEAM

---



**Wes Maas**  
CEO and  
Managing Director



**Craig Bellamy**  
Company Secretary and  
Chief Financial Officer (CFO)



**Candice O'Neill**  
Company Secretary and  
General Counsel



**Andrew Letfallah**  
Chief Operating  
Officer (COO)



**Megan Byrne**  
Manager Corporate  
Finance



**Tanya Gale**  
Executive Director –  
Corporate Development



**Damien Porter**  
Director of Business  
Development



**Ryan Roberts**  
Chief Operating Officer (COO) –  
Construction Materials



**Tim Smart**  
Head of Investor Relations and  
Corporate Strategy



**Christine Ashcroft**  
Group Health and  
Safety Manager



**Josh Large**  
Director –  
Civil Construction & Hire

# MAAS

[www.maasgroup.com.au](http://www.maasgroup.com.au)