

BOARD & MANAGEMENT

Chris Sutherland – *Chair*
Duncan Chessell – *MD, CEO*
Peter McIntyre – *NED*
Greg Hall – *NED*
Dr Tony Belperio – *NED*
Jarek Kopias – *Co Sec, CFO*

Technical Advisory Panel

John Main – *Chair*
Dr Tony Belperio
Duncan Chessell

Expert Consultants

Professor Bruce Schaefer
Dr Paul Kitto
Ian Warland
Dr David Rawlings
Michael Rodda
Theo Aravanis
Neil Hughes
AMC Mining Group

CONTACT

Adelaide Office
21 Sydenham Road
Norwood SA 5067
Australia

info@coppersearch.com.au
www.coppersearch.com.au

Key HMS Tenements Granted & New Ground Staked - Eromanga Basin HMS Project, SA

Copper Search Limited (ASX: CUS) (**CUS, Copper Search or the Company**) is pleased to announce the granting of two key tenements highly prospective for HMS at the Company's Eromanga Basin HMS Project – South Australia. The Company is also pleased to announce further strategic ground staking, prospective for Heavy Minerals Sands (HMS). This follows the HMS potential recently identified at the Company's existing ground near William Creek, SA, on EL 6195 "Anna Creek". **This included a pan concentrate grab sample consisting of 35% zircon, 20% Ilmenite, 20% leucoxene, and 5% Rutile, sample ID: CUSHM002, announced 26 May 2025.**

Summary:

- Strategic portfolio of HMS Exploration Licence Applications lodged in South Australia's Eromanga Basin – further review ongoing
- **Key application numbers ELA2025/017 and /019 granted** as Exploration Licence **EL7071 "Nilpinna" and EL7072 "Eddy" near William Creek**
- **Field work commencing next week to conduct mapping and sampling to prioritise drill targets**
- Heritage survey planned for the last week of August with the Arabana Traditional Owners in preparation for the first HMS drill program
- 4,000m Air-core drill program planned at the Nilpinna, Anna Creek and Eddy Targets for Q3-4, subject to regulatory approvals
- Fully funded for the planned drilling program with the recent Placement and Rights Issue, combined \$1.15m raised before costs.

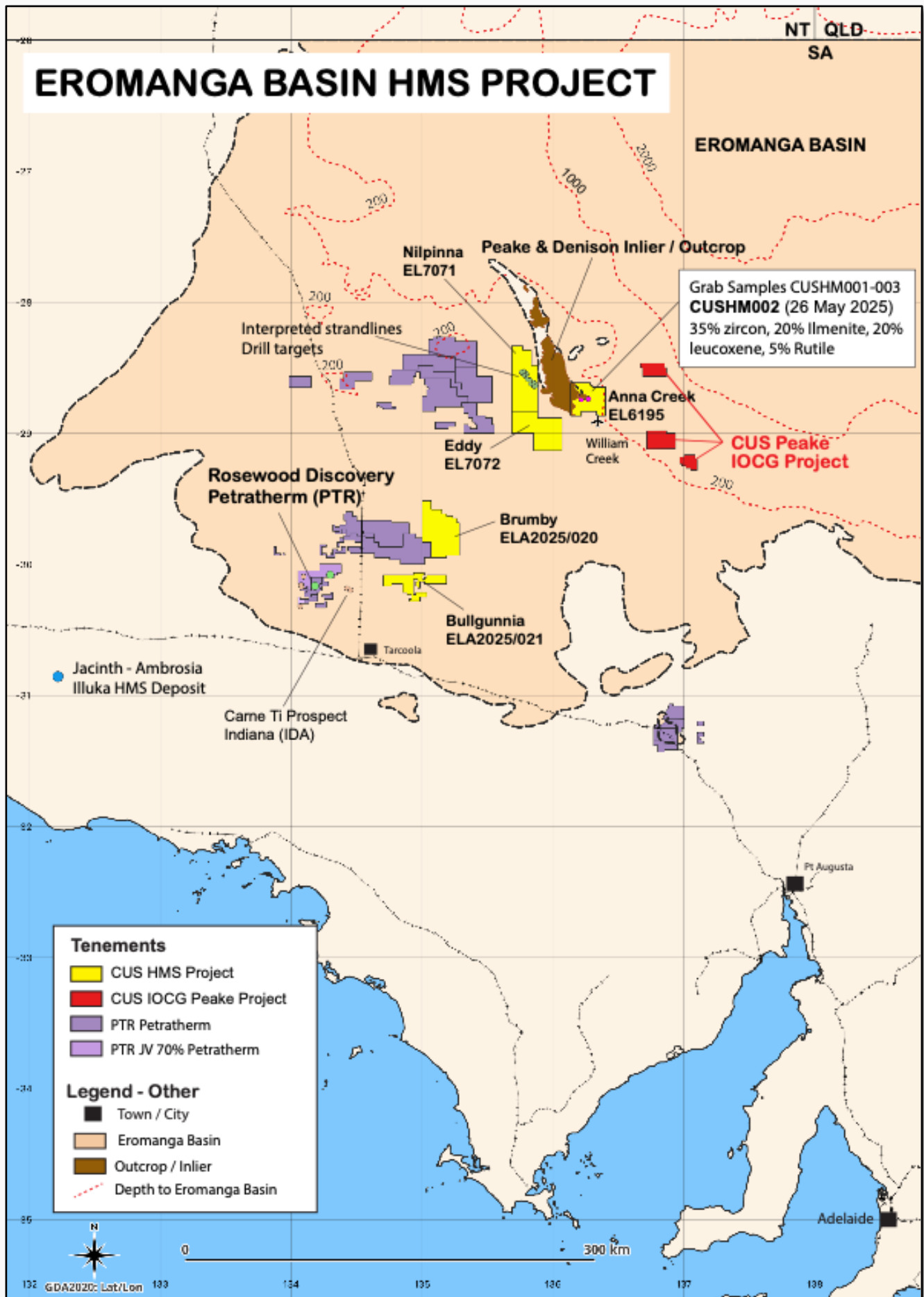
Duncan Chessell, Managing Director, commented

The identification of this previously unrecognised opportunity for HMS in the Eromanga Basin near William Creek is a new and potentially high-impact opportunity for shareholders. Low-cost air-core drilling is scheduled to commence later this year on the first set of drill targets.

Building on the previously unrecognised exploration space, our team has quickly deployed machine learning tools, reviewed historical data sets, and added four prospective tenements by staking open ground. Further desktop review and low-cost boots-on-the-ground reconnaissance are highly effective in building a pipeline of prospective targets at the Company's new Eromanga Basin HMS Project.

Work on our NSW Cu-Au Projects is ongoing with a small infill gravity survey on the Byrock Project due to be completed shortly to finalise high-priority drill targets. We have also submitted grant applications for co-funding of drilling and geophysics costs to the NSW Government for both the Byrock and Theseus Projects. The NSW Government will announce its decisions on 30 September.

I am very pleased to see the back half of the year shaping up to be drill-ready on multiple targets for in-demand commodities Cu, Au, Ti and Zircon.



For further information, please get in touch with Duncan Chessell, the authorising officer for this announcement or Julian Harvey, Investor Relations.

Duncan Chessell
Managing Director
duncan@coppersearch.com.au
Copper Search Limited
+61 414 804 055

Julian Harvey
Investor Relations
jharvey@coppersearch.com.au
Copper Search Limited
+61 404 897 584

JORC Information

The Company confirms that it is unaware of any new information or data that materially affects the information included in cross-referenced announcements. The Company confirms that the form and context in which the Competent Person's findings are presented have not been materially modified from the original announcements. No new exploration results are reported.

References

Copper Search ASX announcement 26/5/2025 HMS Targets Identified Peake Project, SA.
Petratherm ASX: PTR. Company website, ASX Announcements and Presentations.

General comments

This report includes data from the SA Government SARIG website and includes references to mineral occurrences outside of Copper Search tenements. The Company confirms that it is unaware of any new information or data that materially affects the information included in these announcements or historical reports.

References to neighbouring projects have been obtained from company websites, reports and/or ASX announcements referenced in the body of this report.

ELA – Exploration Licence Applications

ELA2025-020 Brumby and ELA2025-021 Bulgunnia are in the application stage. Until they are granted, there is no guarantee that the South Australian Government Department of Energy and Mines will issue these licenses to the Company.

Abbreviations

Au = Gold, Ag = Silver, Cu = Copper, Mo = Molybdenum, As = Arsenic, K = Potassium, Pb = Lead, U = Uranium, Zn = Zinc, Bi = Bismuth, Te = Tellurium, Ti = Titanium, Zr = Zirconium, HMS = Heavy Mineral Sands, VHM = Valuable Heavy Minerals, Zircon = Zirconium silicate (ZnSiO₄)

ppm = parts per million, ppb = parts per billion, g/t = grams per tonne, % = percentage
1ppm = 1g/t, oz = ounce, t = tonne, m = metre, km = kilometre, k = 1,000M = 1,000,000