

Mithril Resources Ltd

(MTH:ASX)

Annual General Meeting

Exploration Update


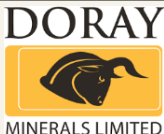

David Hutton | Managing Director | 09 November 2016

- ✓ Active explorers
- ✓ Gold, copper, nickel
- ✓ Strong project pipeline
- ✓ Quality Exploration Partners
- ✓ \$0.5M raised to fund gold drilling
- ✓ Activity and news flow on multiple fronts



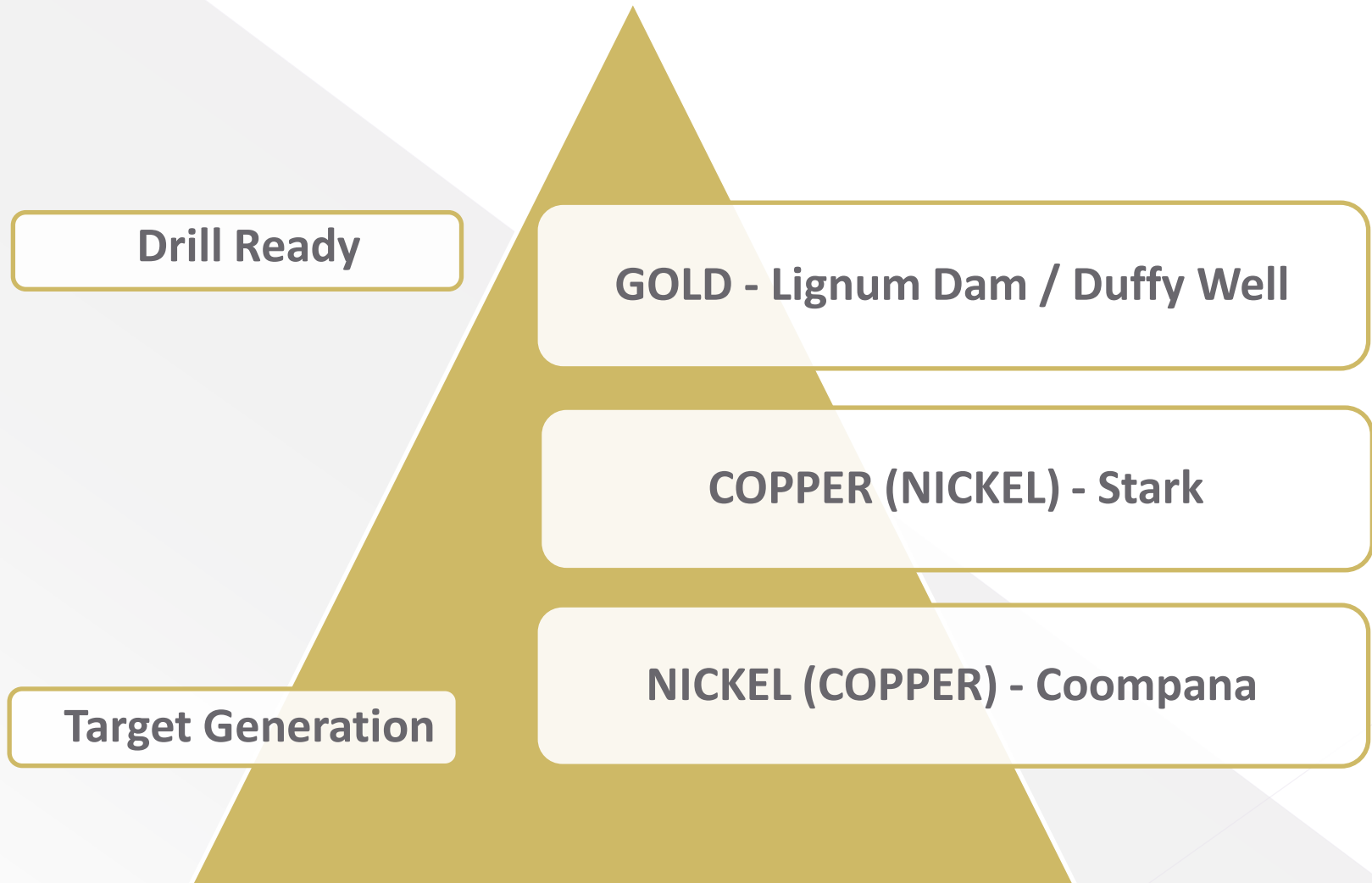
Planned activities

MTH:ASX

Project	Location	Funding	2016			2017		
			Oct	Nov	Dec	Jan	Feb	Mar
Lignum Dam (Gold)	Kalgoorlie			Drilling		Results		
Duffy Well (Gold)	Meekatharra		Drilling	Results				
Coompana (Nickel / Copper)	South Aust			Target Generation		Results	SA Government Gravity survey	

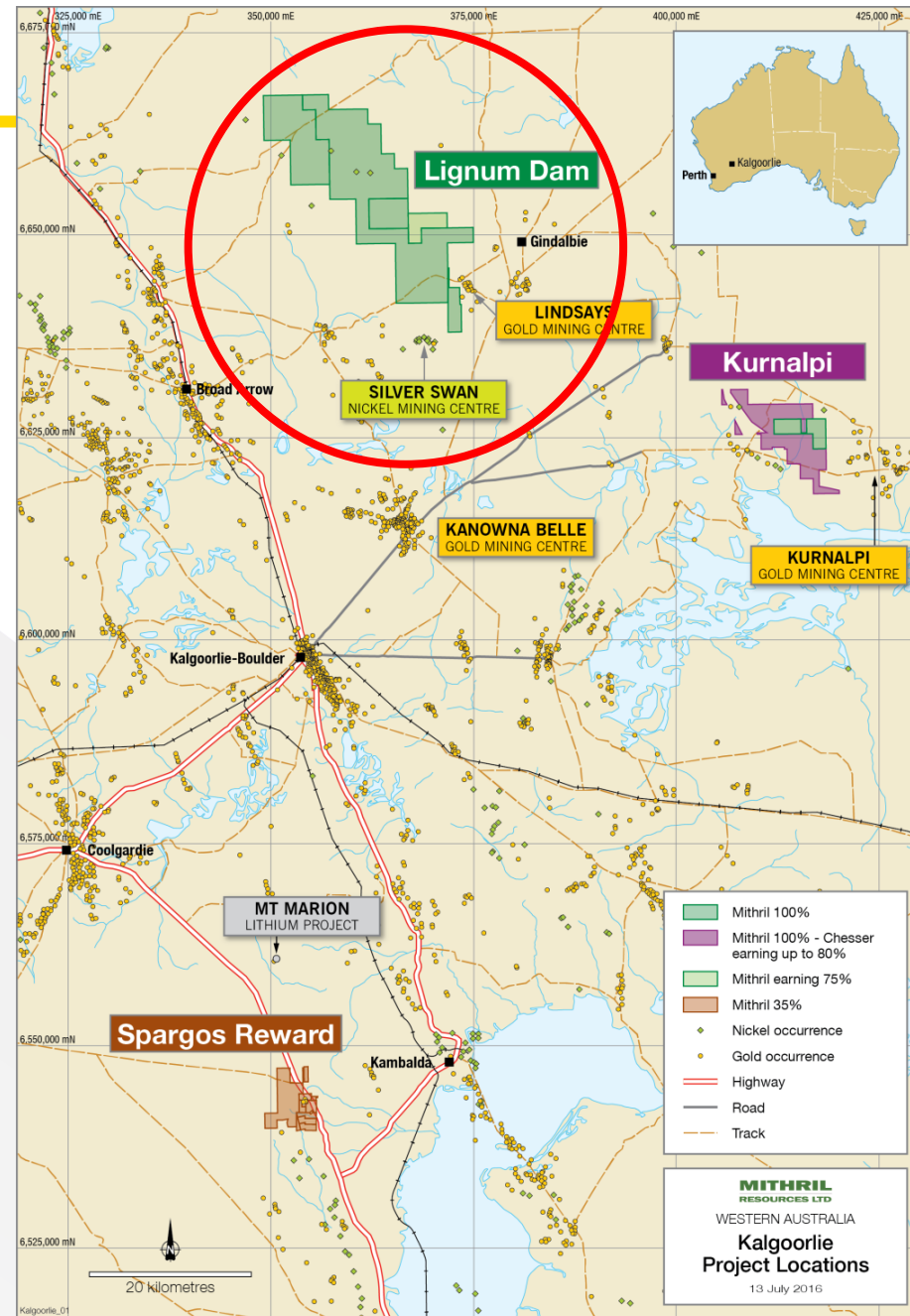
Also presenting at the SA Exploration & Mining Conference
Adelaide - 2 December 2016





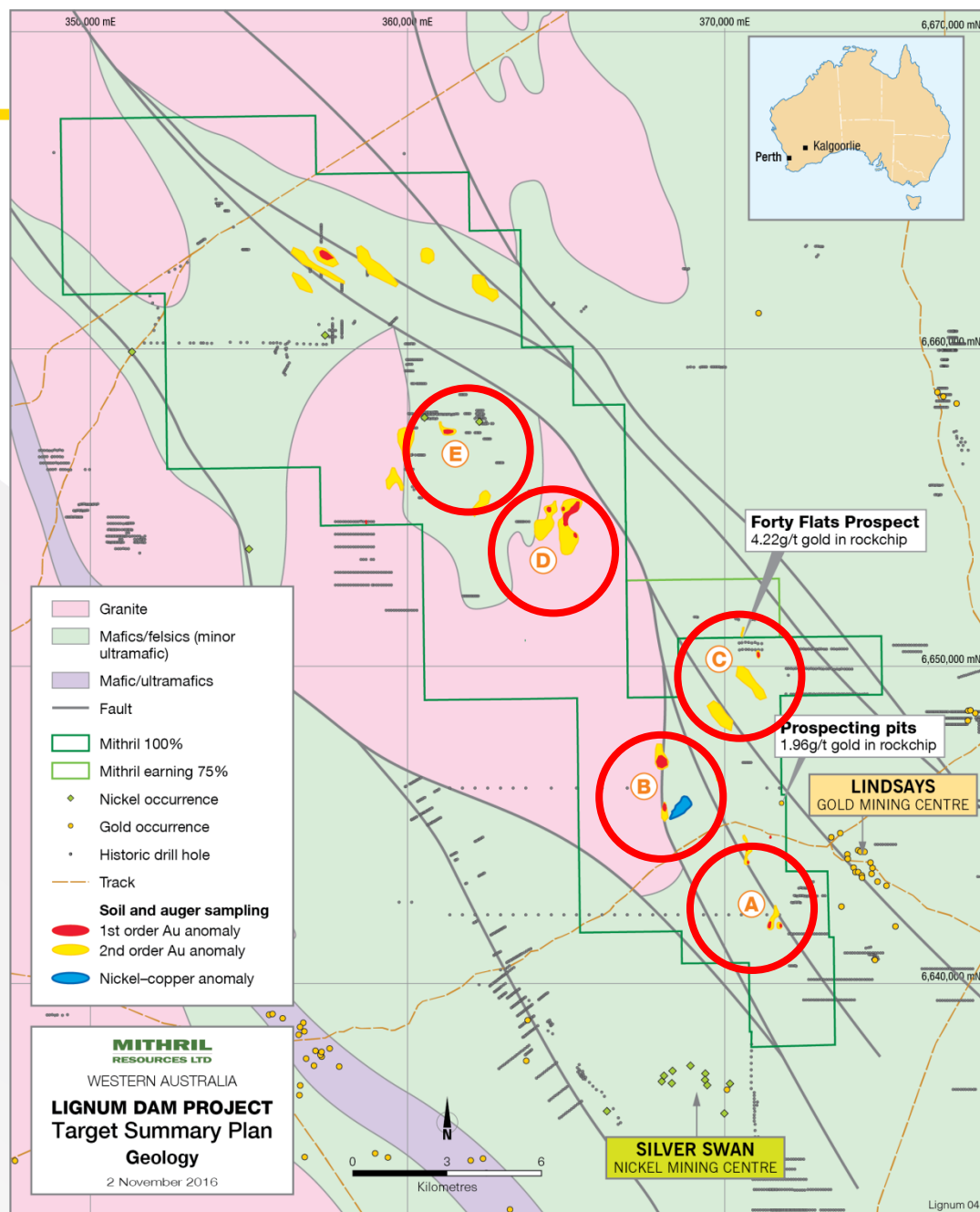
Lignum Dam

- 100% - owned
- Kalgoorlie
- Proven gold district with established infrastructure



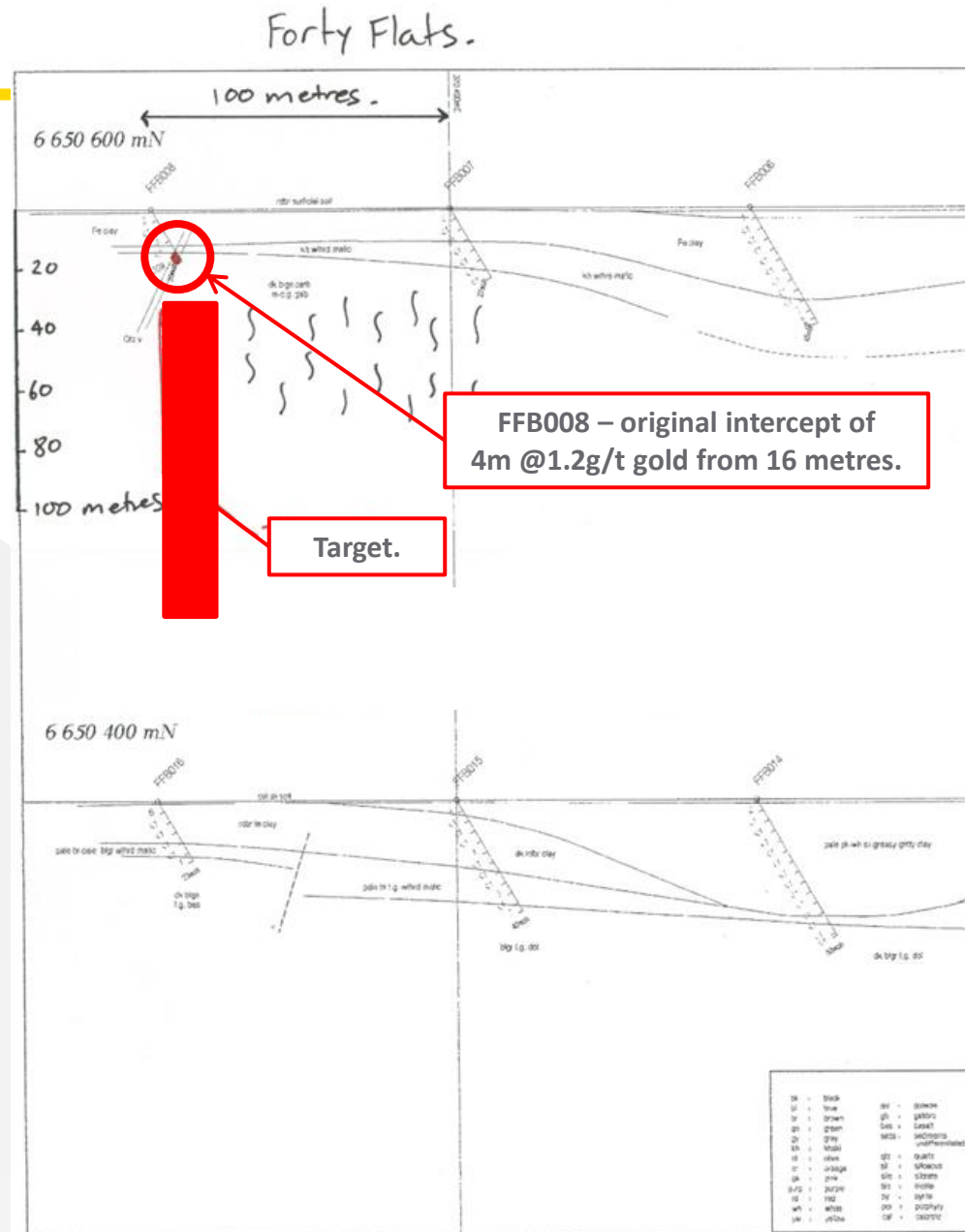
Lignum Dam

- 5 Priority targets
- Gold deposits along strike
- No recent exploration
- **Aircore drilling this month**



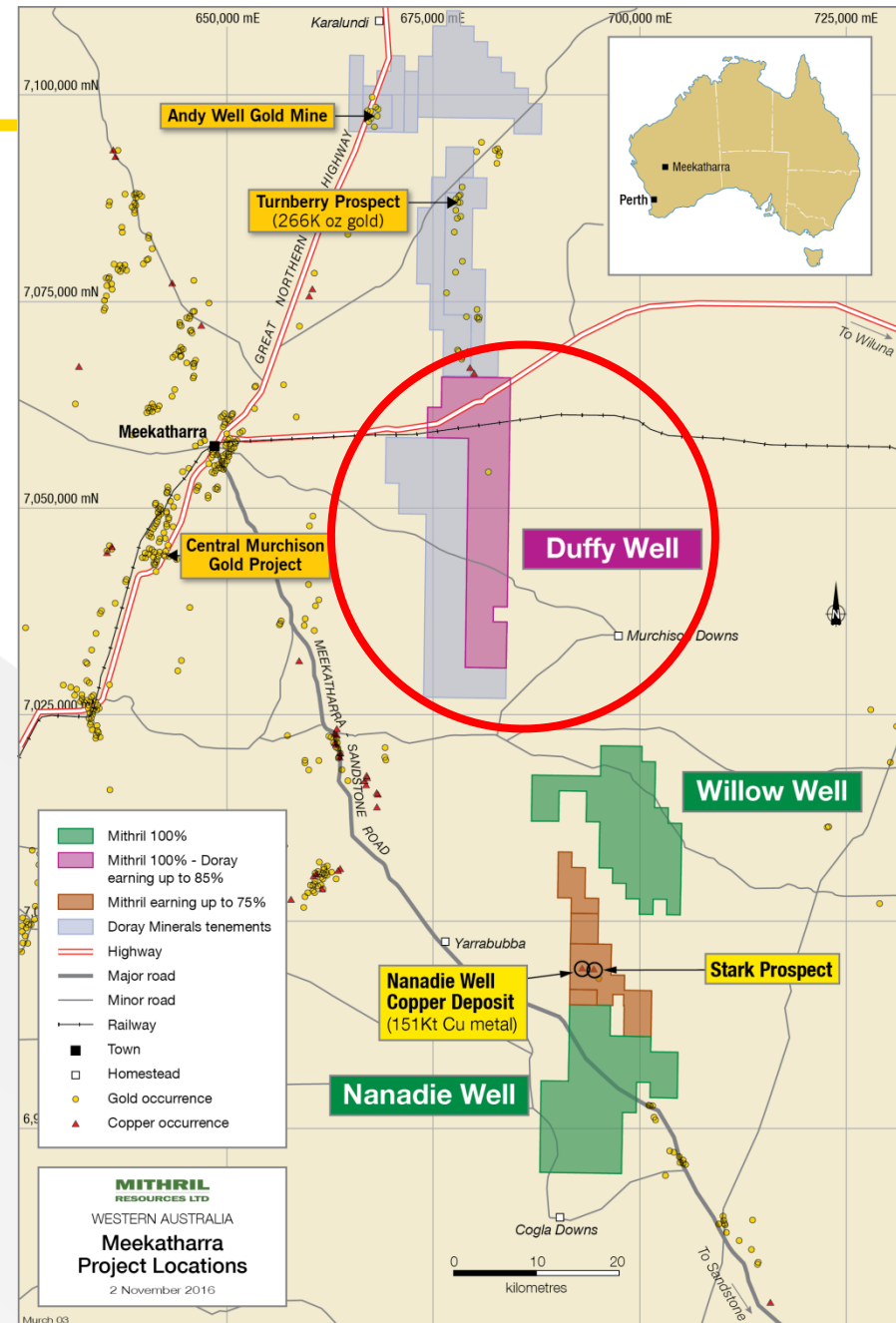
Forty Flats

- Priority gold target
- Last RAB hole on drill line intersects 4m @ 1.2g/t gold at bottom of hole
- Resampling of last metre returns 1m @ 4.22g/t gold
- Never followed up
- **Aircore drilling this month**



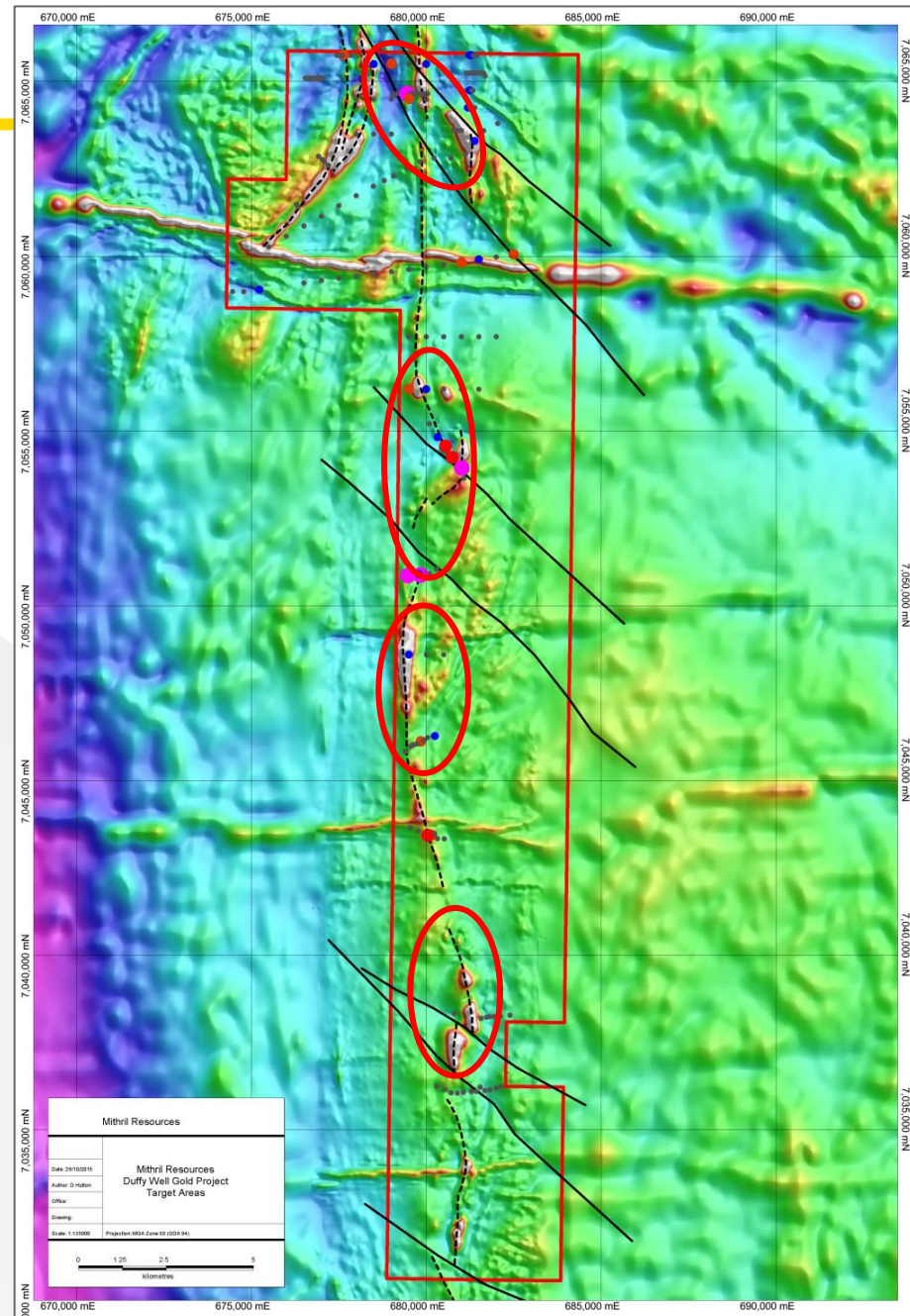
Duffy Well

- Doray Minerals (DRM:ASX) earning initial 51%
- Meekatharra
- Proven gold district with established infrastructure



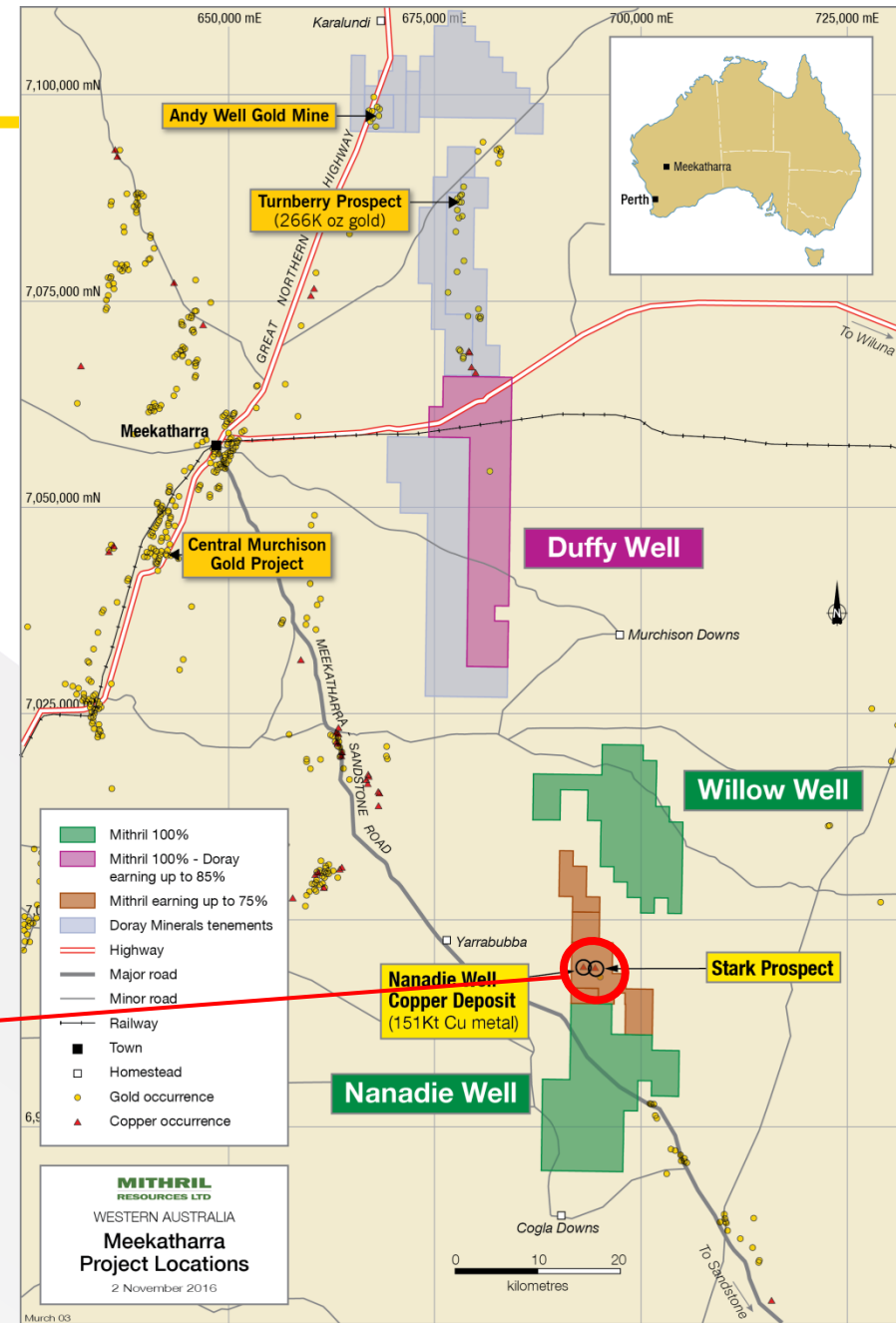
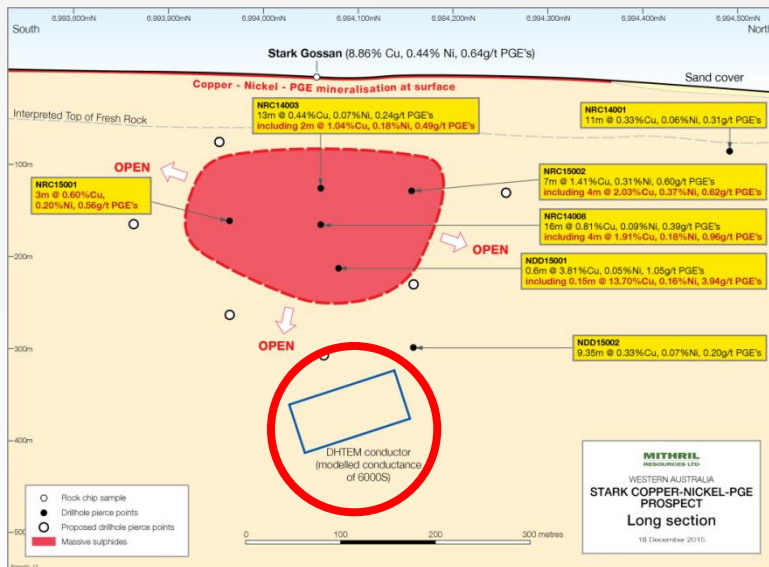
Duffy Well

- Along strike from Doray's Turnberry Deposit where they have intersected:
 - ✓ 3m @ 10.1g/t gold,
 - ✓ 5m @ 17.4g/t gold, and
 - ✓ 4m @ 17.9g/t gold
- **Results awaited from Doray's recent drilling at Duffy Well**

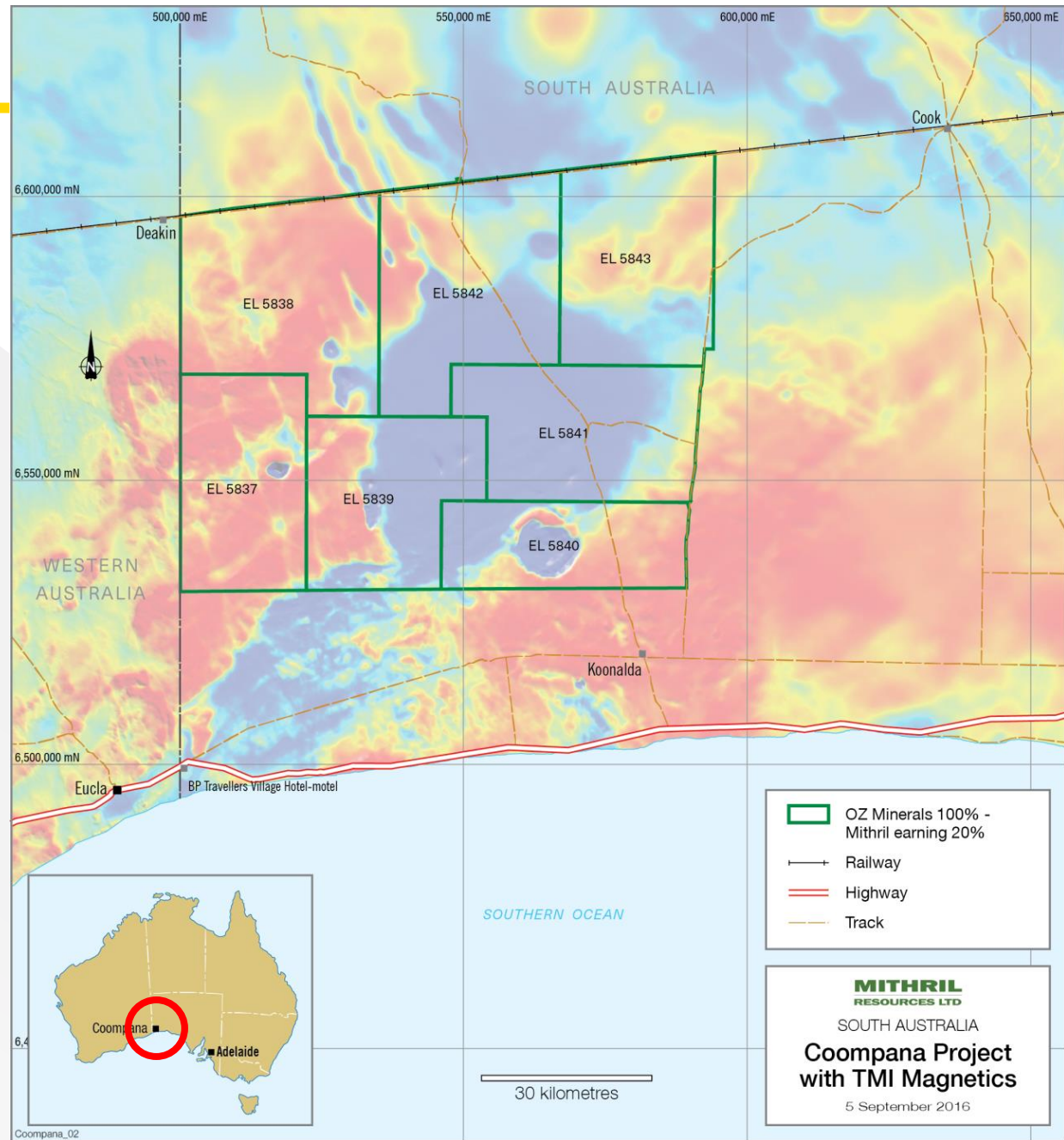


Stark

- Mithril earning 75%
- Untested 6000S EM conductor below existing massive copper sulphides
- Walk up drill target

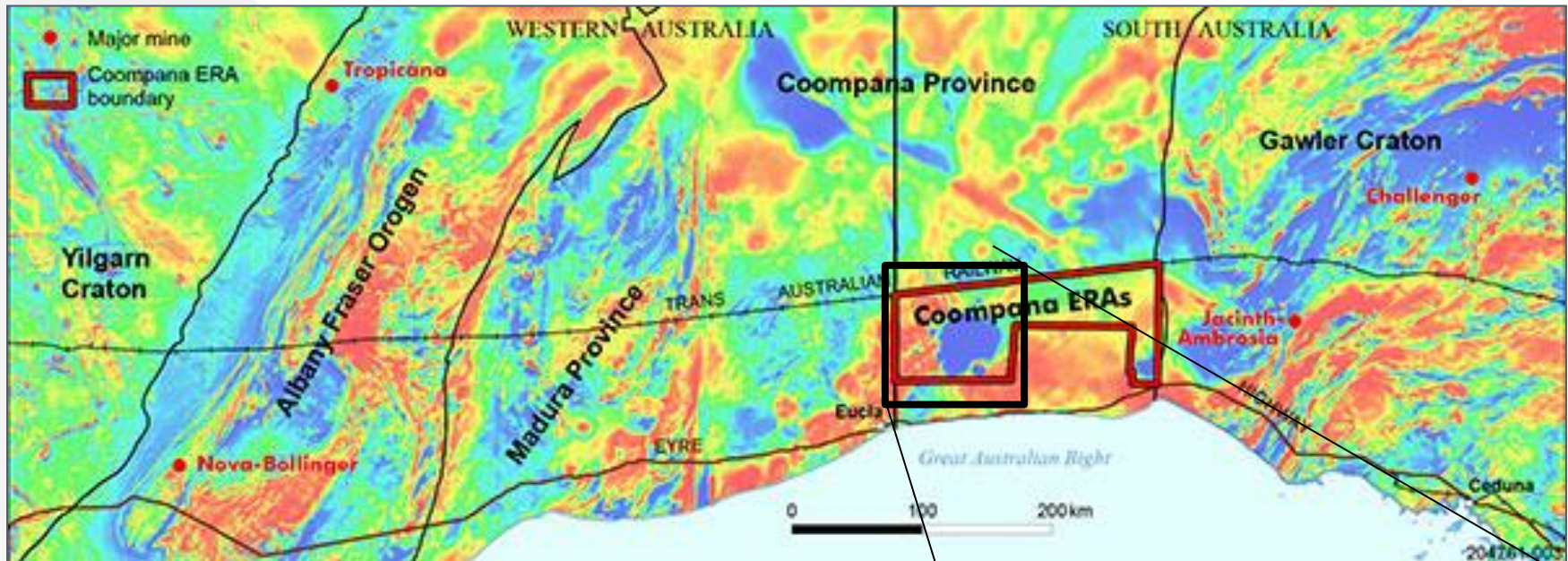


Coompana

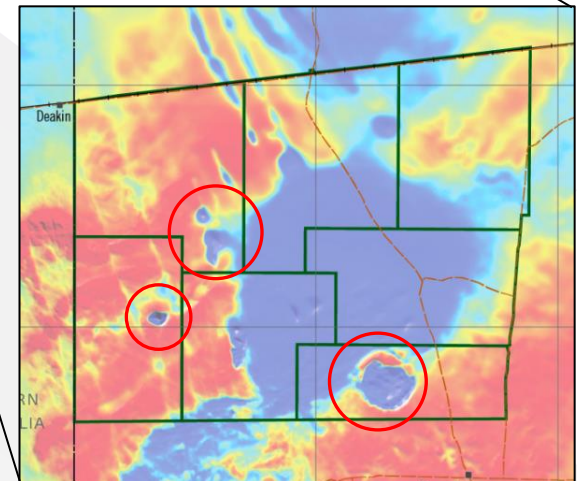


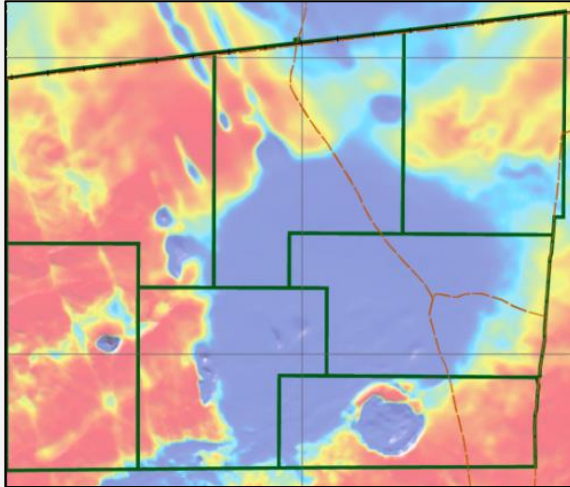
- OZ Minerals (OZL:ASX) funding Mithril's target generation
- On decision to drill, Mithril can earn 20% by funding \$0.4M of a \$2M drill program with balance funded by OZ
- OZ will underpin any Mithril capital raising in support of drilling
- **Target generation and community consultation underway**



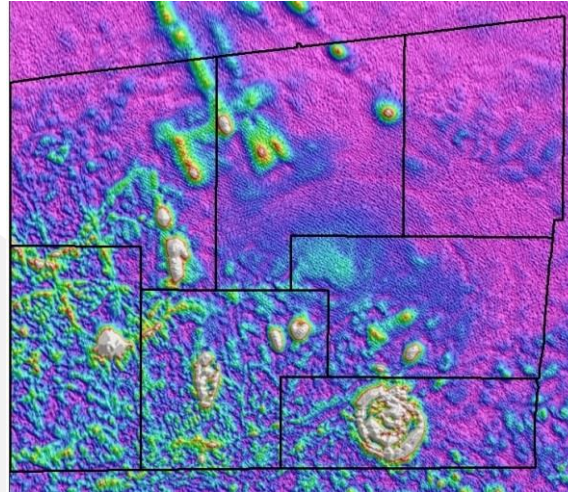


- Elephant country
- Targeting nickel-copper-PGE's
- Geophysical data key to exploration success

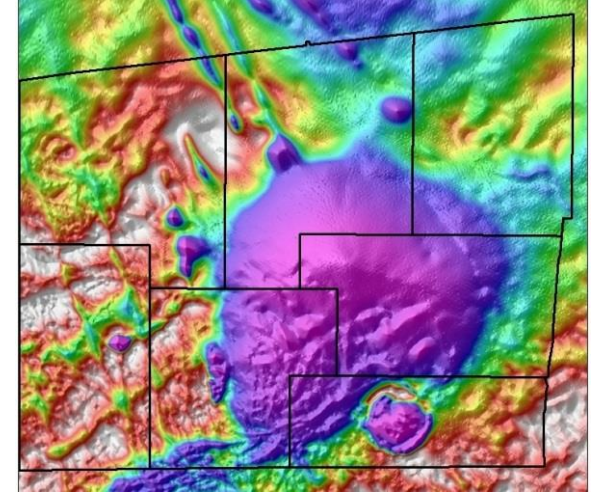




Magnetics_TMI

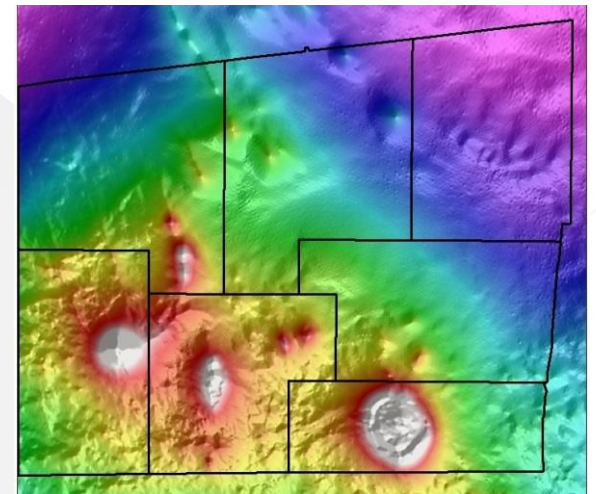


Magnetics_AnSig_Neshade_lin



Magnetics_TMI_Seshade_ni

- Mithril image processing of new SA Government aeromagnetic data
- SA Government acquiring new gravity data early 2017
- **First target generation results early 2017**



Magnetics_VIAS_SEshade_lin

Thankyou

- Shareholders
- Staff and Directors
- Families
- Exploration Partners



Corporate Summary

MTH:ASX

Overview

Shares on issue	566M
Options (unlisted)	10.9M
Market Cap	\$2.83M
Cash (end Sept 16 Qtr.)*	\$0.39M
EV	\$2.20M

Shareholders 1,821

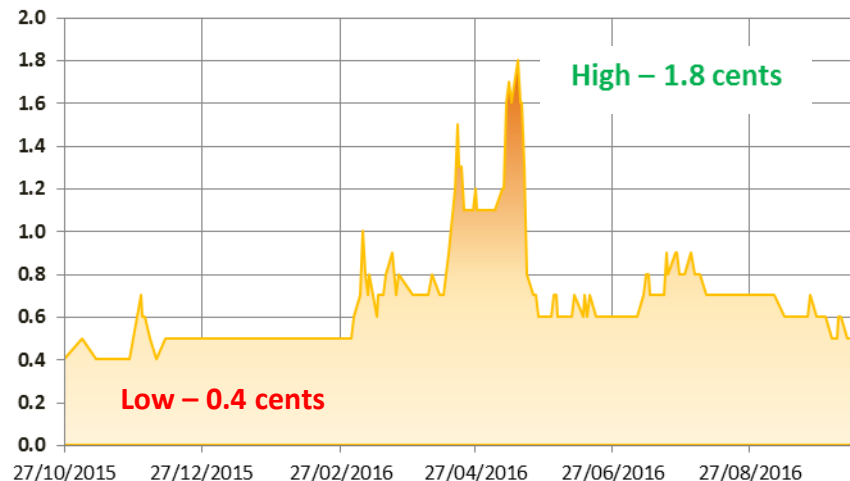
Top 40 (hold 37%)
82% Retail
5% Institutions
3% Directors

*Cash excludes additional \$0.54M raised
in November 2016 Share Purchase Plan

Directors and Management

Graham Ascough	Non Executive Chairman
David Hutton	Managing Director
Donald Stephens	Non Executive Director & Company Secretary
Jim McKinnon-Matthews	Geology Manager

MTH Closing Share Price (cents) last 12 months



Nanadie Well Copper Deposit (MTH earning 75%)

2004 JORC Category	Tonnes (Mt)	Copper %	Gold ppm	Contained Copper (tonnes)	Contained gold (ounces)
Inferred	36.07	0.42	0.064	151,506	74,233

- ❑ Refer to Intermin Resources' ASX Announcement "Initial Resource Estimate for the Nanadie Well Cu-Au Project" dated 19 September 2013.
- ❑ The information pertaining to the Nanadie Well Copper Deposit Inferred Resource was prepared and first disclosed by Intermin Resources under the JORC Code 2004. It has not been updated since to comply with the JORC Code 2012 on the basis that the information has not materially changed since it was last reported.

Further details (including JORC 2012 Code Reporting Tables, where applicable) for the information included in this Presentation can be found in the following announcements previously lodged with the ASX:

- Mithril to drill priority targets at Lignum Dam - 27.10.2016
- Doray gold drilling underway at Duffy Well - 13.10.2016
- Coompana Province target generation commences - 01.09.2016
- Doray to drill gold targets at Duffy Well JV - 15.08.2016
- Fieldwork confirms priority gold targets at Lignum Dam - 04.08.2016
- Quarterly Activities & Cash Flow Report June 2016 - 27.07.2016
- Oz Minerals and Mithril to explore SA's last frontier - 21.07.2016
- Priority targets on new wholly owned Kalgoorlie gold project - 01.06.2016
- Duffy Well JV Gold Exploration Update - 25.05.2016

Contact Details

MTH:ASX

- ❑ Website : www.mithrilresources.com.au
- ❑ Email : dhutton@mithrilresources.com.au
- ❑ Phone : 041 797 4843



@MTHResources

